

SNOWDONIA SLATE TRAIL

England & Wales · Charity number 1182188

Details

Status Registered

Legal form CIO

Registered 2019-02-25

Register [View on the Charity Commission register](#)

Contact

Address 44A High Street
Llanberis
Caernarfon
Gwynedd
LL55 4EU

Phone 07955723244

Email info@snowdoniaslatetrail.org

Website www.snowdoniaslatetrail.org

Activities

Objects: 1.THE ADVANCEMENT OF EDUCATION FOR THE PUBLIC BENEFIT IN THE UNIQUE SLATE HERITAGE AND CULTURE OF SNOWDONIA.2.THE PROVISION OF FACILITIES FOR RECREATION OR OTHER LEISURE TIME OCCUPATION FOR THE PUBLIC AT LARGE IN THE INTERESTS OF SOCIAL WELFARE BY MONITORING, MANAGING AND ENHANCING THE SNOWDONIA SLATE TRAIL LONG DISTANCE FOOTPATH.

Activities: The Trust seeks to advance education for the public benefit in the unique slate heritage and culture of Snowdonia by maintaining its website and interpretative boards.We provide facilities for recreation or other leisure time occupation for the public at large in the interests of social welfare by monitoring, managing and enhancing the Snowdonia Slate Trail long distance footpath.

Classification

- **How:** Acts As An Umbrella Or Resource Body, Other Charitable Activities
- **What:** General Charitable Purposes, Arts/culture/heritage/science
- **Who:** The General Public/mankind

Geography

- Conwy
- Gwynedd

Finances

Period end	Income	Expenditure	Assets	Employees
2025-03-31	£35,401	£32,830	-	-
2024-03-31	£15,052	£6,825	-	-
2023-03-31	£1,601	£4,440	-	-
2022-03-31	£6,250	£4,637	-	-
2021-03-31	£996	£1,808	-	-

Trustees

Name	Role	Appointed
Dr Joan Cutting	Chair	2019-02-07
Aled Owen BSc MA		2019-02-07
Evelyn Lucy Lloyd		2025-03-29
Mieko Yamaguchi		2019-09-19
Nicola Isobel Austin		2026-04-29
PAUL BRIDGES		2019-02-07
Roger Kenneth Greenhalgh		2022-10-29

SNOWDONIA SLATE TRAIL

England & Wales - Charity number 1182188

Accounts

Snowdonia Slate Trail Trust

Registered Charity Number 1182188



Annual Report For year ending 5 April 2025
Presented at the AGM held on 1st November 2025

CONTENTS

Company Information	3
Aims of the Charity.....	3
Details of Trustees as at 5 April 2025	4
Details of Senior Wardens and Representatives as at 5 April 2025	4
Structure, Governance and Management.....	4
Induction and Training	5
Risk Management	6
Marketing Report	6
Financial Review	6
Treasurer’s Report.....	7
Social Media.....	7
Project Initiatives	11
Facilitation	11
Senior Warden Report	11
Warden Engagement	12
Warden Reports	13
Bangor to Bethesda Café Coed y Brenin	13
Bethesda Caffi Coed Y Brenin to Waunfawr Snowdonia Parc.....	14
Waunfawr Snowdonia Parc to Nantlle Glan Rhonwy	14
Rhyd Ddu to Beddgelert Section	15
Croesor to TanyGrisiau.....	16
Tanygrisiau Café to Eagles Penmachno	17
Tanygrisiau Café to Eagles Penmachno	18
TanYGrisiau Cafe To Eagles Penmachno	19
Between Betws-y-Coed & Capel Curig.	20
Projects Report	25
Acknowledgements.....	28
Appendices	29
Letter from Janet Finch-Saunders AM.....	29
Letter from Sian Gwellian AS	29
Charity Commission Accounts	29
Letter from Liz Saville Roberts MP	29

COMPANY INFORMATION

Registered: 15 February 2019

Chair: Joan Cutting

Charity Number: 1182188

Registered Office: 44a Stryd Fawr
Llanberis
LL55 4EU

Independent Examiner: Alun Griffith

Bankers: Bank of Scotland

AIMS OF THE CHARITY

1. The advancement of education for the public benefit in the unique slate heritage and culture of Snowdonia.
2. The provision of facilities for recreation or other leisure time occupation for the public at large in the interests of social welfare by monitoring, managing and enhancing the Snowdonia Slate Trail long distance footpath.

DETAILS OF TRUSTEES AS AT 5 APRIL 2025

Joan Cutting - Chair

Evelyn Storrie - Secretary

Aled Owen -Treasurer

Roger Greenhalgh

Dorothy Howarth - Social Media

Mieko Yamaguchi - Route Details Updates

Lisa Wells – Lead Trustee, Wardens

Paul Bridges

DETAILS OF SENIOR WARDENS AND REPRESENTATIVES AS AT 5 APRIL 2025

Graham Fitch representing The Ramblers

Snowdonia Society – no current Representative

David Jones – Senior Warden covering Bangor to Beddgelert & Ogwen to Bethesda

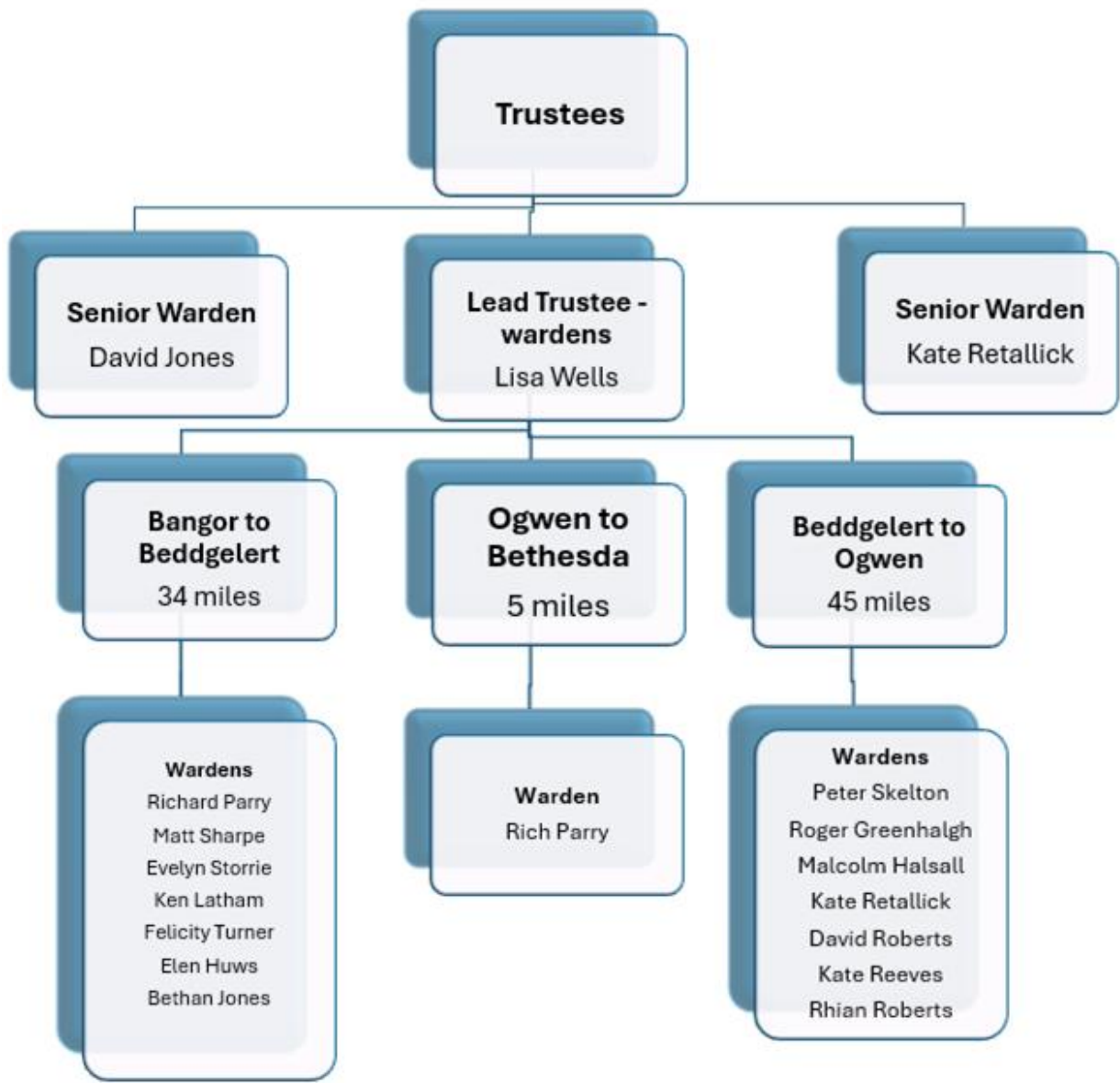
Kate Retallick - Senior Warden covering Beddgelert to Ogwen

STRUCTURE, GOVERNANCE AND MANAGEMENT

The governing document of the Snowdonia Slate Trail Trust is the Constitution of the Snowdonia Slate Trail Trust, a Charitable Incorporated Organisation, (Foundation Structure) as amended on 7 February 2019. Copies of this document can be inspected on request.

The Snowdonia Slate Trail Trust is managed by the Board of Trustees. At present, there are 8 Trustees.

Other people who wish to assist with the Trust do so as Wardens or volunteers.



Version 1 2025-10-19

The Board of Trustees generally meets once a year, and occasionally at other times as necessary, and meetings are open to wardens and interested parties to attend. Otherwise, communication is via email or the WhatsApp group.

INDUCTION AND TRAINING

New Trustees are given the Charities Commission “How to be a Trustee” document. Trustees are encouraged to keep up to date with charity law by private learning. This year, there have been no training events.

RISK MANAGEMENT

The Trustees carry out a continuous and ongoing review of policies designed to identify, manage and avert risk, both financial and operational. The Treasurer aims to report regularly on the state of the finances and reviews past performance and future needs. The Trustees act accordingly.

MARKETING REPORT

No marketing report has been produced. It will be discussed at the AGM whether the Trust requires a Trustee responsible for this.

FINANCIAL REVIEW

The Trust maintains a healthy bank balance and continues to monitor expenditure such that it remains sustainable. The 2024-25 account was audited, and no issues were highlighted. A full Treasurer`s report is included below.

Policy on Reserves

The Snowdonia Slate Trail Trust needs reserves for the following reasons: -

- To provide sufficient working capital for its day-to-day needs
- To enable it to continue to operate in the event of a crisis.
- To enable it to cope with any reduction in its income.
- To finance and underpin growth in its activities.

TREASURER'S REPORT

The financial report to be submitted to the Charities Commission appended to this document covers the financial year 2024-25. The full account spreadsheet can be made available to anyone who requests it.

In that year, we raised a £960 grant for the project to carry out a survey of the route to identify what might be needed to bring it up to National Trail standard. A £9400 grant was achieved to carry out research on how the Trail is used and what might increase public awareness of it. £3200 was raised for our schools project and a further £2750 for the information boards. Finally, we received £16200 as part of our input into the £1M research project on sustainable tourism around the Trail.

Book sales raised £390. Minor donations and sales of medal and badges raised £1280, over twice the previous year. This includes donations from Aled of £700 which he was paid for translating the National Trail survey, and £300 he received for managing our part of the £1M research project. That project will bring in about £100 per month for the next four years. Gift Aid brought in about £800.

Main expenditure was on insurance (£164), website maintenance (£325), maintenance (£1381), postage (£364), passport stamps (£333), benches (£1902), Schools project (£1663), user research (£9483), the £1m research project (£8504) and the survey (£9700). This brought our available funds to £19616, of which £13545 was restricted, while the rest was allocated to the further improvements and the survey.

Since the end of the last financial year and as at 20 September 2025, about £13100 has been received, of which £10800 is for the major research project and £1000 for the boards project. The recent major expenditure has been £14342 on the major research project and £3971 on the boards project.

Sale of goods is slow. We have ample supplies of T-shirts, and metal and sew-on badges, as well as medals and car stickers, and would not recommend expanding our range of items for sale at present.

Aled Owen
Treasurer

SOCIAL MEDIA

From Dorothy Howarth

Snowdonia Slate Trail has over 4500 followers on Facebook and 315 on Instagram

THE PASSPORT SCHEME

Joan Cutting

18 September 2025

We're into the 7th year of the Passport Scheme. Medals cost £3.50 and most people add a donation for path maintenance. Here's how the income from medals and donations is looking to date:

Date	Medals	Income £
Aug 2018 to Nov 2019	13	105.50
Nov 2019 to Sep 2020	7	72.00
May 2021 to Oct 2021	19	340.50
Oct 2021 to Oct 2022	24	184.00
Oct 2022 to Oct 2023	40	308.10
Nov 2023 to Sep 2024	12	117.00
Oct 2024 to Oct 2025	19	164.50
TOTAL	133	1,292.00

We now have 26 venues participating in the Passport Scheme (25 last year).

- Caffi'r Pafiliwn, Blaenau Ffestiniog - closed
- Caffi Blas a Waun, Antur Waunfawr – re-opened
- Caffi Siabod – re-opened

As for the total number of visits stamped per venue, recorded in the last three years when passports are sent to us with medal requests, the following 14 venues have had more than 20 (11 venues last year)

- Caffi Coed y Brenin (23)
- Amgueddfa National Slate Museum - Llanberis (30)
- Canolfan Y Fron (40)
- Beddgelert Tourist Information Centre (39)
- Lakeside Café, Tanygrisiau (40)
- Y Pengwern, Llan Ffestiniog (37)
- Pen y Bryn Stores, Llan Ffestiniog (33)
- Ty Uchaf - The Eagles (22)
- Londis Penmachno (22)
- Conwy Falls (33)
- Betws Tourist Information Centre (35)
- Ty Hyll (25)
- Joe Brown Shop, Capel Curig (26)
- Canolfan Ogwen - Kiosk (23)

The Passport Scheme seems to be healthy, judging by this slight increase in medals, income, venues and stamps. However, our records show that ten venues have had between zero and two visits stamped since January.

The ten venues with the low number of stamps offer various reasons

- Lodge Dinorwig: “We definitely have some guests who are not fussed about the passports (mainly when the weather forecast is damp and they are camping for the next leg of the trail) and some didn't even know about the stamps at all.”
- Pitch and Hike Camping: “most are not interested in the passport despite us hugely and very enthusiastically promoting it! /.../ Maybe it's our location along the route, not at the start, not at the end etc. We also think people might stop more at us when the weather is bad and they just want a break. At that point they seem quite knackered!!! We take them a thermos of hot water but by then they don't have any interest in any admin!!!”
- Caffi Croesor: “A frequent topic that arose from stamp collectors was that many of the venues advertised to collect stamps from were no longer trading or they were closed, so although folk made it to the destination they were unable to collect their stamps.”
- Crib Goch Outdoor: “Could it be that people haven't then gone on to complete a passport and send it in?”
- National Slate Museum: “we have found the visitor figures for the Quarry Hospital to be considerably less than the Museum”

The number getting stamps is greater than the number applying for a medal

- When I asked Pitch and Hike Camping why they'd stamped none: "We have stamped quite a few passports, mainly new ones we give out."
- When I asked National Slate Museum why they'd stamped none: “the staff in the Quarry Hospital have engaged with approx. 7 people with either stamping their passports or giving passports out.”
- When I asked Crib Goch Outdoor World why they thought they'd stamped only five: “We've definitely stamped more than 5”
- When I asked Lodge Dinorwig why they thought they'd stamped only five: “We have had less stamping business since closing the Cafe but I can assure you, it's been a lot more than 5. I'd say I stamped about 15 passports alone this year.”
- When I asked Joe Brown Shops Capel Curig why they thought they'd stamped only two: “We have definitely had more than two people stamp their passport this year - I'd estimate 30+”

The number walking the SST is greater than the number getting stamps

- Pitch and Hike Camping: "We have had lots of Slate Trail users come through. /.../ We also follow the slate trail Facebook page. It seems the path is gaining popularity. /.../ We are very proud of the slate trail."
- Betws Tourist information Centre (35 stamps): "A fair number of Slate Trail Walkers have come through the TIC, we must receive at least 5 each week."
- Beddgelert Tourist information Centre (39 stamps): "The slate trail is certainly popular, more so this year. We have met a lot of people doing and enjoying the trail so it seems to have been a very successful year."
- Caffi Croesor (11 stamps): "We did meet quite a few passing along the trail."
- Poblado Coffi (10 stamps): "We've seen a decent amount of slate trail traffic come through after the summer busyness."

The Passport Scheme is having a positive effect

- Pitch and Hike Camping: "The scheme is definitely helping us."
- Poblado Coffi: "It's great to be a stop off for walkers and the advertising and stamp incentive helps."
- Beddgelert Tourist information Centre: the SST "draws more people into Beddgelert and to our information centre so it's a very welcome addition to the activities on offer in the area!"
- Betws Tourist information Centre: "We feel the scheme likely does help our venue, and knowledge of the route is helpful to direct some walkers who are up for trying something new."
- Janet Finch-Saunders MS, in a letter pledging support to make the SST a national trail,: "I've been impressed by the positive impact the route is having on local businesses. For example, the passport project is to be commended for encouraging walkers to enter and spend in local cafes, pubs, and much more."

PROJECT INITIATIVES

Roger Greenhalgh

- **Schools Resources** proofs-of-concept materials: production of a Teachers' Guide, Activity Materials, and a small set of exploratory guides (app-based and with PDF-equivalents). These are currently awaiting minor revisions due to some on-going site-location and access changes, and for bi-lingual re-factoring.
- **Bloomberg Connect** digital collections app: compilation of online slate heritage/culture interpretations for a variety of iconic locations throughout or adjacent to the Slate Trail. This is in response to an opportunity for broadening trail discoverability through the Bloomberg Connect initiative of Bloomberg Philanthropies, who provide the platform for creating digital app representations of many Museums and Heritage/Culture Trails internationally.

FACILITATION

Roger Greenhalgh

- Investigation and creation of online document storage, sharing and archiving capability for use by trustees and wardens (awaiting release at November AGM)
- Set-up of equipment store for Trail Maintenance tools, equipment and consumables at Beddgelert (using space provided by Lancashire Mountaineering Club)
- Trail improvements (waymarking and some bracken clearance) undertaken at Cilgwyn/Pen-y-Orsedd in conjunction with volunteers from the Caru Eryri initiative of the Snowdonia Society.

SENIOR WARDEN REPORT

David Jones

Gradually, over a three-month period, I undertook a systematic check of the spelling, grammar & general information in the Snowdonia Slate Trail website, in both the English & Welsh options. My report can be seen on the SST Google site, as are my trail reports. <https://sites.google.com/view/snowdoniaslatetrail/home>

Cut a tree blocking the trail as you ascend from Waunfawr, as highlighted by Evelyn, plus the addition of roundels on the new ladder stiles, & some light pruning of gorse up to Ty'n y Graig ruin.

Upkeep of the LIVE (trail furniture) & Passport Maps.

Undertake trail visits for inspection, maintenance (where possible) & trail furniture data collection (Lodge Dinorwig to Waunfawr & Betws-y-Coed to Capel Curig).

WARDEN ENGAGEMENT

Roger Greenhalgh

Whilst acting in an independent capacity, (but demonstrating advocacy for the Snowdonia Slate Trail in the wider locality), Roger has been involved with the delivery of a number of slate-heritage-themed workshops and projects, which each raise the profile of both the Snowdonia Slate Trail and the broader World Heritage Site.

For example:

- **Community Map-making** workshop : participants undertook some simple survey techniques similar to those used by the Ordnance Survey mapping teams in the Victorian era, then through co-design and consensus contributed to the production of a digital map of Cwm Croesor.
- **Lithophone making** workshop: participants constructed small xylophones using natural slate, and experimented with techniques to perfect their use.
- **Hidden Histories** discovery walks: short local guided walks with heritage discovery themes.
- Attendance at a variety of WHS community engagement events
- Participation in the steering group of the Dolennu Partnership project
- Co-authoring of the Snowdonia Slate Trail business & visitor survey (October 2024)
- Representation on the Education sub-group of the World Heritage Site
- Professional accreditation by the Association for Heritage Interpretation
- Participation in the Arfon/Dwyfor Local Access Forum

WARDEN REPORTS

BANGOR TO BETHESDA CAFÉ COED Y BRENIN

Rich Parry

“Pnawn da Oll,

Great day out on the LILIE/ SST today. Me and my mate Mali, inspected the Bangor to Bethesda section covering 9.6 miles in distance (left her lead near Bangor rugby club, realised near Ffarm Cochwillan so had to trundle back 😊).

The trail is in good condition, generally the signing is good, I'll go back and replace a few of the roundels near Cochwillan.

A couple of branches across the path:

Bangor rugby - has been there for a while. I've cleared the first tree and removed a couple of limbs from the larger tree across the path. The remaining branch is quite big so would require a chainsaw to clear.

Near KG01-011

Kissing gate near Ffarm Cochwillan. A large ash branch has fallen near the gate. It's possible to negotiate the branch to get through the gate.

On that point, I really like the new Kissing gates on the trail, far easier to pass through than the older & narrower old kissing gate!!! 😊

As I mentioned, I'll go back out to replace missing or fadden roundels

TR01-001 Port Penrhyn

GA01-001 Giât Mynydd / gate near Rachub.

I'll report back when completed.”



BETHESDA CAFFI COED Y BRENIN TO WAUNFAWR SNOWDONIA PARC

Matt Sharpe

March 12th- Betws Garmon- Aberglaslyn and return . No issues to report today, path clear, signs in good order, small amount of litter removed.

July 20th- Llanberis- Betws Garmon one way. Trail quite busy today, 2 roundels replaced toward peak of Moel Eilio. Usual litter removal, but path in good order and way markers clearly visible.

September 20th- Beddgelert- Aberglaslyn. Some bracken removed, gate put back on hinges by train crossing. All parts of path clear.

WAUNFAWR SNOWDONIA PARC TO NANTLLE GLAN RHONWY

Evelyn Storrie

I have walked the entire section once during the year and the earlier section towards Y Fron several times. On my first walk of the section, there was a tree blocking the path which David subsequently cleared. There is a signposting issue near the garden where the footpath goes left as the track veers right which has been discussed on the WhatsApp group and also a post that is due to be replaced in the next month. Most of my work on the trail has been to do with cutting back the vegetation on the first section after joining the path from the Rhosgadfan road. I have also noted that there is Himalayan balsam on this section which will need to be dealt with next spring. I have occasionally met a local on the trail and the feedback has been positive.

RHYD DDU TO BEDDGELERT SECTION

Ken Latham

The warm spring early summer of the year saw many walkers on my section from Rhyd Ddu to Beddgelert and I have walked it about 15 times so far, (due to ongoing knee problems, still waiting for an op 3 years later! the Nantlle section on my patch has been put on the back burner slightly)

I encountered a lot of foreign walkers this year, many from Canada but yet to meet anyone from the States, a crew from France who thought the trail was 'Tres magnifique' and Italians, Dutch, Latvia and a couple who had come over from Japan just to do the trail! Our reputation is far and wide it seems.

A few of the signs and general trail furniture is looking a bit worn out and I think we will need to look at some of this in the next year, luckily the National Park have undertaken some much-needed bridge repairs.

The wooden post (not ours) at the junction of the forest track as you drop down to the railway at Caer Gors seems to have lost its fingers for some inexplicable reason, souvenir hunters? And I've had to replace some of the roundels too; there must be garage walls or people's kitchens with our roundels on display as a memento of being on the trail.

The tree destruction is still causing the use of the diversion at The Forest Campsite but doesn't seem to be causing much problem, although I have had to raise the fallen/moved barriers on virtually every trip. This is going to be a bit undertaking to clear the damage.

I've noticed and spoke to a few people who have been going from the car park at the Train Station in Rhyd Ddu and taking the Yr Wyddfa path as far as Penlon and then dropping down to pick up the trail at Caer Gors as supposed to going round Llyn y Gader, not sure why as it's off the official trail but is a nice diversion if you want to go a bit high, might be worth adding as an alternative choice in the next guidebook possibly.

Summing up it's been a busy year on my bit and it still proves very popular as a short day walk too, I spoke to lots of people who were just doing this section but taking in the Llyn Llywelyn circuit and then dropping down to Beddgelert, the dam here at the lake has now been landscaped and has some great picnic tables and is proving very popular, possibly another one for the book!

One gripe I did get from a few folks was the lack of benches or just anywhere comfy to sit and have a break, not sure how we can tackle this though.

CROESOR TO TANYGRISIAU

Roger Greenhalgh

Regular wardening duties on the through-route of this section have been somewhat diminished by the temporary limitations of the current warden's health. (Knee replacement revision surgery was successfully achieved for him in September, and a further intervention is now scheduled for early 2026.) In the meanwhile, regular wardening visits were still made to each of the lowland lengths of this section, i.e. Cwm Croesor and Cwmorthin. This section of the trail continues to be popular with hikers, although many of its casual visitors are observed to be favouring circular subsections which utilise the trail in part, but incorporate "loops" such as via Cnicht, or via the Moelwynion and the Stwlan Dam. Planning to hike the "through route" here remains dependant on some adept or inventive public transport planning, (hence the popularity of circular routes.)

The Tanygrisiau car park at the foot of the ascent to Cwmorthin continues to have a litter problem, and is frequently busy with picnicking day visitors who take short strolls up Llyn Cwmorthin, but little further. Lakeside Café, Tanygrisiau, have made considerable improvements to their own car park and strongly encourage non-café visitors to make use of the upper public car parking facilities.

The Croesor car park suffers much less of a litter problem. Oriel Café Croesor has now re-opened with the café under new management, after a lengthy period of dormancy. The adjacent gallery has been rejuvenated through a newly re-established community group, Hwb Croesor, and has begun to host an eclectic range of exhibits and events. Some of this impetus has been enabled through funding from the LlenNI Llechi community engagement initiative which has arisen as a result of the UNESCO World Heritage Site (WHS) listing of the North Wales slate heritage landscape. The opportunity to utilise volunteers from the Caru Eryri initiative of the Snowdonia Society to tackle the waterlogging of the newly installed pedestrian gate above Rhosydd has, unfortunately, been placed on hold as a result of staffing shortages with the Snowdonia Society.

TANYGRISIAU CAFÉ TO EAGLES PENMACHNO

Rhian Roberts

January

Walked with Kate Reeves from Cwm Penmachno to sign leading off tarmac road in Cwm Teigl.

There were a couple of signage issues which were sorted out that day either by ourselves or by Roger after our walk.

August

Checked the route from the scrapyards up to Bryn Mawr in Cwm Cynfal twice - once to check the route and second time to do path clearance in areas where it is permitted.

Findings were:

- Some large trees blocking the path in the woods near the waterfalls - they have been there for some time
- Path very overgrown in areas where we don't have landowner permission to clear. This included Pengwern woods which is the responsibility of NRW
- Path from scrap yard down to Blaenau very overgrown and some subsidence make it difficult to walk on in places. I think this is the same bit of path Kate Reeves reported on in the WhatsApp group back in January
- Fallen trees in small bit of woodland near Bryn Mawr have now been cleared by NRW
- No indication of where trail goes at garages at the end of Dorvil road if travelling clockwise round the route.

Photos and grid references of all issues were put on the WhatsApp Group for reference.

TANYGRISIAU CAFÉ TO EAGLES PENMACHNO

Kate Retallick

I did not replace posts or waymarkers on the high ground above Rhiw Bach following discussion at the previous AGM about landowners potentially removing waymarkers in this area. We need to engage with landowners for this section but I have been advised it would be best to approach in Welsh. I will need assistance with this as my Welsh is very limited.

I distributed the remaining trail leaflets distributed to a local campsite and café.

I undertook infrequent bracken bashing on an ad-hoc basis on the high ground above Rhiw Bach but did not exert any significant singular effort so as not to attract attention from landowners. This section of trail remains wild and exciting; a number of people I met on the trail enjoyed the unmaintained nature of this area!

I replaced and repaired some trail signage around the Penmachno area (between Cwm Penmachno and Conwy Falls) on an opportunistic basis.

I have a large number of photographs with geotags ready for the map but I still need to liaise with David in order to get access to the editing rights to help maintain the map.

Off road motorcycle use of footpath approaching Penmachno village from the South has ceased after discussion with local riding groups.

The steps immediately down from Conwy Falls Café car park down towards Betws-y-Coed are very eroded now and need repair as they are getting challenging to negotiate. It is very steep and muddy here and the steps themselves are beginning to become obstructive. This is a permissive section of path I believe. The footpath further down is also more eroded towards the river side (not a problem yet) and tree obstructions are frequently removed.

The concept of allowing wardens to work on any section of trail and share responsibilities remains good but, in reality, I have not been able to meet up and coordinate routine trail walks since I don't plan my walks in advance and have different availability to others. I think we need to continue to allow wardens to conduct inspections, litter picking and roundel replacement alone if they are going to be out anyway but, alongside this, we need to have the option for teaming up to undertake larger tasks such as tree clearance and bracken bashing.

TANYGRISIAU CAFE TO EAGLES PENMACHNO

Kate Reeves

This year, the girls and I have walked several sections of the trail and still enjoy it every time.

We've chopped our way through some overgrown sections and replaced roundels and added new ones where needed.

We've reported small sections that need attention such as the small hill down into Blaenau, the wall at the Ugly House and fallen trees.

BETWEEN BETWS-Y-COED & CAPEL CURIG.

David Jones

Collecting Trail data, inspection & maintenance (where possible)

Thursday 2nd October 2025

“Having parked in Capel Curig, I utilised Sherpa’s S1 bus service to take me to Betws-y-Coed where I alighted & walked the Trail back to Capel Curig.

This mainly wooded section gave shelter from the stiff breeze on this cool day. No great problems along the Trail which would curtail one’s progress along it. Though there were instances of fallen branches, these could be negotiated by going around or under them. Also, there were some muddy bits; no surprise after so much rain recently, which were possible to skirt around.

One bit of pruning around a hidden post & replacement of four pairs of weathered roundels were undertaken during my transit.

We’re already aware of the damaged wall next to the bridge by Tŷ Hyll.

Instances mentioned above are shown below in the sequence they were encountered along the Trail.

1. SH 785 566 – Fallen branches on the path can easily be walked around.



2. SH 769 577 – Pruned around hidden post at fork in path ...



3. SH 769 577 – ... & replaced both weathered roundels.



4. SH 762 577 – Replaced a pair of weathered roundels.



5. SH 758 575 - Replaced a pair of weathered roundels.



6. SH 756 575 - Damaged wall next to the bridge on the A5 by Tŷ Hyll.



7. SH 752 578 – Removal of roundel from old stile dumped in stream. SH 752 578 – Removal of roundel from old stile dumped in stream.



8. SH 749 579 - Replaced a pair of weathered roundels.



9. SH 749 579 – Muddy patch immediately after marker post off forest track.



10. SH 747 579 – Two muddy patches & fallen branches in quick succession (you can walk under the branches).



Other Trail Maintenance Support

From Aled & Joan

Although we're not wardens, while down in the area in August, Joan and I took the opportunity to cut back hedges and bracken at Llandegai and Dorothea. A rewarding couple of half days, and excellent exercise.

Mieko Yamaguchi regularly walks various sections of the trail and reports back on issues found via the WhatsApp group.

PROJECTS REPORT

End information boards

This is now complete with information boards installed at Porth Penrhyn and Bethesda.



Repairs to Permissive Path at Conwy Falls

New steps have been installed by Conwy Council

Permissive Path at Yr Ocar

The bid to categorise this as a Public Right of Way is still in the system and will take a few more years to process.

Permissive Path at Grisiaucochion, Bethesda

Sorting out the paperwork for this informal but much used path has ground to a halt due to landownership issues. The link has been used for many, many years and there is a case for it to become a Public Right of Way. Aled has tried to gather evidence of its historic use but with little response. This could do with some local investigation.

Access Improvements in Partnership with The Ramblers and Gwynedd Council

We and the Ramblers contributed to new gates and stile improvements South of Waunfawr. We have also undertaken to part fund better signing on the moors between Waunfawr and Y Fron, where we have received a number of comments saying the route isn't clear here. We await details of a project to replace stiles with gates in the Tanygrisiau area.

Improvements to the Trail on the Migneint

We have received quite a lot of negative feedback regarding the state of the path in this area. Aled has recently written to NRW asking their advice on how to go about improvements.

Closed Footpath at Ty Hyll

Although not a project of ours, Aled is trying to get Conwy Council to repair and reopen the riverside path at Ty Hyll. Both Betws y Coed and Capel Curig Community Councils have failed to get action, so a letter has been sent to Conwy Council legal department to try and find out what the situation is.

Investigation of Trail User and Business Feedback

Roger and Tansy Rogerson carried out some extensive research on users of the Trail, how it is viewed by businesses around the Trail, and how to make the most of the Trail. A summary is included in the Appendix.

The Dolennu Project

After an initial pilot project, a consortium of community groups and social enterprises in the Bethesda, Nantlle and Ffestiniog areas saw the Snowdonia Slate Trail as a major opportunity for sustainable tourism. Subsequently, they secured funding of £1M over five years to carry out further research.

The Snowdonia Slate Trail Trust has been co-opted onto the group and manages, with Tansy Rogerson, a group of community researchers in the Conwy Valley area who are looking at the effects of tourism on communities, the concept of sustainable tourism, and the potential for maximising benefit around the Trail.

Our budget is £2700 per month for the first year. There has been much training of the researchers, data gathering at community events and involvement in workshops. The initial findings will be presented at a conference in early 2026.

Although the Snowdonia Slate Trail will not benefit from capital funding through this project, it certainly raises its profile.

Schools Education Project

Schools Resources proofs-of-concept materials: production of a Teachers' Guide, Activity Materials, and a small set of exploratory guides (app-based and with PDF-equivalents). These are currently awaiting minor revisions due to some on-going site-location and access changes, and for bi-lingual re-factoring.

Further news

In a recent poll by the outdoor specialist Blacks, the Snowdonia Slate Trail came equal second to West Highland Way with regard to customer satisfaction.

CADW featured the Snowdonia Slate Trail in a lengthy article in their Spring 2025 magazine.

Walk magazine featured the Trail as one of 10 to walk in their Spring edition

The Guardian is likely to feature the Snowdonia Slate Trail in a Spring 2026 edition, after being taken round the route by Walkers` Britain, who provide self-guided tours.

International tour provider UTracks now included the Snowdonia Slate Trail in their offer, as does HF Holidays.

Aled has been in contact with MPs and MSs suggesting they support our aims of becoming a National Trail. So far, Sian Gwenllian MP and Janet Finch-Saunders MS have responded positively, while Claire Hughes MP wants to talk to us. Aled continues to pursue the others!

APPENDIX

Investigation Report - Summary/abstract

The Snowdonia Slate Trail is a long-distance hiking route passing through some of the less frequented but beautiful parts of Snowdonia, North Wales, traversing each of the major mountain ranges, and offering a range of experiences from mountain to forest, lake to river, from the valley to the sea. It was developed and launched in 2017, through the support of a wide range of community stakeholders, crossing different counties and lands owned by many different owners, by strategically linking and waymarking a series of pre-existing established Public Rights of Way.

The route connects a significant series of communities whose culture and heritage has each been hugely influenced by and sometimes founded upon more than two centuries of slate industry, now much reduced and changed yet still with some production in evidence. For these communities the shift in the focus of local employment and the growth and diversification of tourism has brought its challenges, especially to Welsh culture and language.

In preparing and planning for the economic and cultural shift towards sustainable tourism, the various stakeholder groups recognised the strategic value of the Snowdonia Slate Trail through links between the communities of the slate heritage landscape and its potential profile in the region.

This research study set out to identify what economic benefits this and other comparable trails create. The study sought to estimate how many people use the trail (from which to derive further estimates of economic benefit). Through surveys and interviews the study elucidated how businesses may be benefitting now, and also what other facilities current and future trail users need.

An element of the research which involved working with the community slate researchers to investigate how the SST could further nurture the Welsh language and culture, returned results suggesting actions from a number of interviewed organisations and businesses. This included bilingual interpretation and community content led information boards, a mix of digital and live immersive experiences, a sample 1-day thematic itinerary, further stakeholder collaborations and developing and integrating strong Welsh language policies into the trail's management.

ACKNOWLEDGEMENTS

Heritage Lottery Fund
Magnox
CADW
Blakemore Foundation
Snowdonia National Park CAE Fund
The Foyle Foundation
The Garfield Weston Foundation
The Oakdale Trust
Community Fund in Wales
HF Holidays
Horizon
First
Dŵr Cymru
The Laspen Trust
Bethesda Town Council
Ffestiniog Town Council
Gwynedd Council
Conwy County Borough Council
Ashley Foundation
Rehau Plastics, Blaenau Ffestiniog
Red Nose Day
Cambrian Railways PAVO
Mantell Gwynedd
Ninevah Trust
Gaynor Cemlyn-Jones Trust
Menter Môn,
Elusen Ogwen
LleChi LleNi and
thanks to our wardens.

APPENDICES

LETTER FROM JANET FINCH-SAUNDERS AM

LETTER FROM SIAN GWELLIAN AS

CHARITY COMMISSION ACCOUNTS

LETTER FROM LIZ SAVILLE ROBERTS MP



Janet.Finch-Saunders@senedd.wales

Constituency Office

29 Madoc Street,
Llandudno LL30 2TL

Swyddfa'r Etholaeth

29 Stryd Madog,
Llandudno LL30 2TL

01492 871 198

Llwybr Llechi Eryri / Snowdonia
Slate Trail, *Dros Ebst* / *By*
Email

18 September 2025

Annwyl Sir/Madam,

Mae'n bleser gen i ysgrifenu i fynegi fy nghefnogaeth i uchelgais eich Ymddiriedolaeth i'r Llwybr ddod yn Llwybr Cenedlaethol / It is my pleasure to be writing to express my support of your Trust's ambition for the route to become a National Trail.

Er nad wyf wedi llwyddo i gerdded y llwybr cyfan, mwynheais y darn rhwng Llyn Ogwen a Chapel Curig yn fawr iawn. Mae'r tirwedd yn syfrdanol a'r llwybr wedi'i arwyddo'n dda. Yn fwy na hynny, rwy'n cofio meddwl pa mor wych oedd cael llwybr cymharol wastad yn Eryri, oherwydd nid yw pawb sy'n byw ac yn treulio gwyliau yma eisiau dringo mynyddoedd serth! Whilst I have not managed to walk the whole route, I thoroughly enjoyed the section between Llyn Ogwen and Capel Curig. The landscape is breathtaking and the route well signed. More so, I recall thinking how marvellous it was to have a relatively flat route in Eryri, because not all who live and holiday here wish to climb steep mountains!

Mae pwysigrwydd y llwybr hyd yn oed yn fwy amlwg wrth ystyried bod y tirwedd y mae wedi'i hysbrydoli ganddi bellach wedi dod yn Safle Treftadaeth y Byd UNESCO. Yn ddiamau, mae hyn yn denu hyd yn oed mwy o bobl i fwynhau ein treftadaeth llechi, felly mae gwir angen i ni gefnogi cynlluniau sy'n hyrwyddo teithio yn gynaliadwy. Nid oes ffordd well o wneud hynny na chefnogi Llwybr Llechi Eryri / The importance of the route is even more apparent when considering that the very landscape it is inspired by has now become UNESCO World Heritage Site. Undoubtedly, this is attracting even more people to enjoy our slate heritage, so we really need to support schemes that champion travelling and sightseeing sustainably. There is no better way of doing that than backing the Slate Trail.

Rwyf hefyd yn falch iawn o'r effaith gadarnhaol y mae'r llwybr yn ei chael ar fusnesau lleol. Er enghraifft, mae'r prosiect pasbort i'w ganmol am annog cerddwyr i fynd i mewn i a gwario yn caffis, tafarndai, a llawer mwy o leoliadau'n lleol / I have also been impressed by the positive impact the route is having on local businesses. For example, the passport project is to be commended for encouraging walkers to enter and spend in local cafes, pubs, and much more.

[Parh/
Cont..
.]

[Parh/Cont].

Y cyfan sydd ar ôl i mi yw mynegi pa mor ddiolchgar ydw i i'r holl dîm y tu ôl i'r fenter wirioneddol wych hon. Edrychaf ymlaen at ei gweld yn mynd o nerth i nerth / All that remains is for me to express how grateful I am to all the team behind this genuinely fantastic initiative. I look forward to seeing it going from strength to strength.

Yn gywir,

A handwritten signature in cursive script that reads "Janet".

Janet Finch-Saunders MS/AS

Siân Gwenllian

Aelod o'r Senedd dros Arfon

Member of the Senedd for Arfon

Senedd Cymru


8 Stryd y Castell, Caernarfon, Gwynedd, LL55 1SE
Sian.Gwenllian@senedd.cymru
<https://senedd.cymru/rodi/sian-gwenllian-as/>

Welsh Parliament

8 Castle Street, Caernarfon, Gwynedd, LL55 1SE
Sian.Gwenllian@senedd.wales
<https://senedd.wales/people/sian-gwenllian-ms/>

01286 672076 

sian_gwenllian_plaid 

Siangwenfelin 

SianGwenllianASMS 

12 Awst 2025

Parthed: Llwybr Llechi Eryri

Deallaf fod Llwybr Llechi Eryri yn awyddus i edrych ar y posibilrwydd o geisio am ddynodiad Llwybr Cenedlaethol ac i wneud y mwyaf o'r manteision posibl o'r dynodiad hwnnw. Credaf fod ystod o dystiolaeth wedi'i chasglu gan y grŵp i ddangos bod y llwybr eisoes yn llwyddiannus iawn ac yn llwybr deniadol a phoblogaidd, ac i ddangos yr achos economaidd dros gael dynodiad Llwybr Cenedlaethol.

Rwy'n credu bod llawer o waith wedi'i wneud i gynnal a gwella'r llwybr, yn ogystal ag adeiladu partneriaethau â rhanddeiliaid allweddol, a gellir adeiladu ar y gwaith hwn wrth weithio tuag at y dynodiad Llwybr Cenedlaethol.

Mewn egwyddor, felly, rwy'n cefnogi'r nod o gael y dynodiad Llwybr Cenedlaethol ond yn cydnabod bod angen gwneud llawer o waith, a chodi arian, er mwyn cyrraedd yr amcan hwnnw. Fel yr Aelod o'r Senedd dros Arfon, dymunaf yn dda iddynt gyda'r gwaith ac edrychaf ymlaen at dderbyn diweddariadau ar y cynnydd.

Yn gywir



Siân Gwenllian
Aelod o'r Senedd dros Arfon



HOUSE OF COMMONS
LONDON SW1A 0AA

Hydref 2, 2025

I'r sawl sydd angen gwybod

LLYTHYR CEFNOGAETH AR GYFER CAIS AM GRANT A STATWS LLWYBR CERDDED CENEDLAETHOL - LLWYBR LLECHI ERYRI

Yr wyf yn ysgrifennu fel Aelod Seneddol dros Ddwyfor Meirionnydd i gynnig fy nghefnogaeth lawn i'r cais am grant i ddatblygu a chydabod Llwybr Llechi Eryri fel llwybr cerdded cenedlaethol. Mae Llwybr Llechi Eryri yn cynnig cyfle unigryw i ddathlu treftadaeth ddiwydiannol, ddiwylliannol a chymdeithasol Gwynedd, gan gysylltu cymunedau hanesyddol â thirweddau eiconig sy'n adlewyrchu hanes y diwydiant llechi.

Dynodwyd ardaloedd llechi Gwynedd yn safle Treftadaeth y Byd gan UNESCO ac mae'r llwybr yn rhan annatod o weledigaeth ehangach i hyrwyddo twristiaeth gynaliadwy sy'n gweithio i gymunedau. Byddai dynodi statws cenedlaethol i'r llwybr yn gam naturiol nesaf i sicrhau ei gynaliadwyedd, ei hygyrchedd, a'i gyfraniad parhaol i economi a hunaniaeth y cymunedau llechi.

Bydd sicrhau grant yn galluogi datblygu'r prosiect, ymgysylltu â'r cyhoedd, gan sicrhau bod y llwybr yn adnodd byw i bobl leol ac ymwelwyr fel ei gilydd.

Yn gywir

Liz Saville Roberts AS/MP
Dwyfor Meirionnydd

Beechwood House, Heol y Bont, Dolgellau, Gwynedd, LL40 1AU
liz.savilleroberts.mp@parliament.uk
01341 421 116



CHARITY COMMISSION
FOR ENGLAND AND WALES

Charity Name
Powdonia Slate Trail Trust

No (if any)
1182188

Receipts and payments accounts

CC16a

For the period from	Period start date 01-Apr-24	To	Period end date 31-Mar-25
----------------------------	--------------------------------	-----------	------------------------------

Section A Receipts and payments

	Unrestricted funds to the nearest £	Restricted funds to the nearest £	Endowment funds to the nearest £	Total funds to the nearest £	Last year to the nearest £
A1 Receipts					
Bring forward	5,939	10,980			
Activities for generating funds (trading)-medals	38		-	38	164
Activities for generating funds (trading) -badges	49		-	49	110
Donations - medals	78		-	78	191
Donations - other	1,165	-	-	1,165	158
Refunded postage				-	-
T-shirt sales	-			-	14
Gift Aid	807			807	-
Amazon Smile/Easyfundraising	115			115	246
				-	-
Donations - guidebook sales	389		-	389	2,702
Dolennu Research Project		16,200	-	16,200	-
Noticeboard grants		2,750	-	2,750	-
Schools Project		3,200			
Worker research project		9,400			
CellB Workshop	250				329
Survey grants		960	-	960	11,140
Sub total (Gross income for AR)	8,830	43,490	-	52,320	15,054
A2 Asset and investment sales, (see table).					
	-	-	-	-	-
	-	-	-	-	-
Sub total	-	-	-	-	-
Total receipts	8,830	43,490	-	52,320	15,054
A3 Payments					
Insurance	165	-	-	165	165
Trustee expenses	190	-	-	190	
Stickers			-	-	95
Maintenance	703	678	-	1,381	219
Website	325			325	295
Path improvement			-	-	923
Mantell Gwynedd sub	10			10	10
Postage	364		-	364	116
End features			-	-	2,500
Stationery	14			14	-
Warden equipment					-
Passport project	333		-	333	101
Noticeboard project	489			489	
Dolennu research project		8,504		8,504	
Schools project		1,663		1,663	
Survey National Trail project		9,700		9,700	2,400
Worker project	231	9,462	-	9,693	-
Sub total	2,823	30,007	-	32,830	6,824
A4 Asset and investment purchases, (see table)					
	-	-	-	-	-
	-	-	-	-	-
Sub total	-	1	-	-	10/09/2025 -

Total payments	2,823	#	30,007	-	32,830	6,824
Net of receipts/(payments)	68	#	2,503	-	19,490	16,918
A5 Transfers between funds	-		-	-	-	-
A6 Cash funds last year end	5,939		10,980		10,980	-
Cash funds this year end	6,007		13,483		19,490	16,918

Section B Statement of assets and liabilities at the end of the period

Categories	Details	Unrestricted funds to nearest £	Restricted funds to nearest £	Endowment funds to nearest £
B1 Cash funds	From Section A	6,007	13,483	-
				-
		-	-	-
	Total cash funds	6,007	13,483	-
(agree balances with receipts and payments account(s))		OK	OK	OK

	Details	Unrestricted funds to nearest £	Restricted funds to nearest £	Endowment funds to nearest £
B2 Other monetary assets		-	-	-
		-	-	-
		-	-	-
		-	-	-
		-	-	-
		-	-	-
		-	-	-

	Details	Fund to which asset belongs	Cost (optional)	Current value (optional)
B3 Investment assets			-	-
			-	-
			-	-
			-	-
			-	-

	Details	Fund to which asset belongs	Cost (optional)	Current value (optional)
B4 Assets retained for the charity's own use			-	-
			-	-
			-	-
			-	-
			-	-
			-	-
			-	-
			-	-
			-	-

	Details	Fund to which liability relates	Amount due (optional)	When due (optional)
B5 Liabilities			-	
			-	
			-	
			-	
			-	

Signed by one or two trustees on behalf of all the trustees

Signature	Print Name	Date of approval
#VALUE!	Aled Owen	05/07/2025 20/09/2025

--	--	--

: Aled Owen <info@snowdoniaslatetrail.org>; aledocwm@btinternet.com

Subject: Re: Llwybr Llechi Eryri



Jyst rhag of bod y neges wedi mynd ar goll

On Tue, 27 May 2025 at 12:37, Alun Griffiths <ebostfi67@gmail.com> wrote:
Helo Aled,

Wrthi yn cwblhau gwirio y cyfrifon. Pob dim yn edrych yn gret. Fe rwyf yn cadw petha yn daclus iawn. Fe roeddat wedi sylwi bod y £62.72 o'i le. Markel Internation yw hwn ar y mantolen banc ar 1/10/24. Fe rwyf wedi cofnodi hwn yn yn Ledger 24-25 fel Insurance £164.64 a Worker Project £62.72. Hyn yn iawn. Ond, wrth edrych ar y TAB Account 24-25 rwyf wedi cynnwys £62.72 o dan prosiect Dolennu (a heb tynnu y £62.72 o Worker Project). Felly rwyf wedi cofnodi dau £62.72 yn lle un. Hyn ddim yn broblem ogwbl ond gan ei fod yn wariant Restricted, well i ti gadarnhau y prosiect gorau i egluro y gwariant yma.

Gobeithio bod hyn yn gwneud synnwyr (??/!!). Os wyt eisiau sgwrs sydyn i'w drafod, coreso i ti ffonio fi 07939029092 pam yn gyfleus.

Cofion
Alun

SNOWDONIA SLATE TRAIL

England & Wales - Charity number 1182188

Accounts

Snowdonia Slate Trail



Annual Report
For year ending 5 April 2024
(with further information up to October 2024)

Presented at the AGM held on 19 October 2024

Snowdonia Slate Trail Trust
Registered Charity Number 1182188

Contents

Charity Information

Aims of the Charity

Details of Trustees and Advisors

Structure, governance and management

Financial Review

Objectives and Activities

Achievements and Performance

Responsibilities of the Committee

Secretary`s Report

Treasurer`s Report

Maintenance Report

Marketing Report

Other reports

Acknowledgements

2023-2024 Financial Statement

COMPANY INFORMATION

Registered 15 February 2019

Chair Joan Cutting

Charity Number 1182188

Registered Office 1 Hen Siop
Upper Llandwrog
Caernarfon
LL54 7RE

Independent Examiner Vacant at present

Bankers Bank of Scotland

Aims of the Charity

- 1. The advancement of education for the public benefit in the unique slate heritage and culture of Snowdonia.*
- 2. The provision of facilities for recreation or other leisure time occupation for the public at large in the interests of social welfare by monitoring, managing and enhancing the Snowdonia Slate Trail long distance footpath.*

Details of Trustees as at 5 April 2024

Joan Cutting – **Chair**

Vivienne Oxley - **Secretary**

Aled Owen – **Treasurer**

Roger Greenhalgh – **Warden co-ordinator**

Dorothy Howarth – **Twitter account**

Mieko Yamaguchi – **Route details updates**

Details of Wardens and representatives as at 5 April 2024

Graham Fitch representing The Ramblers

Dan Goodwin representing Snowdonia Society

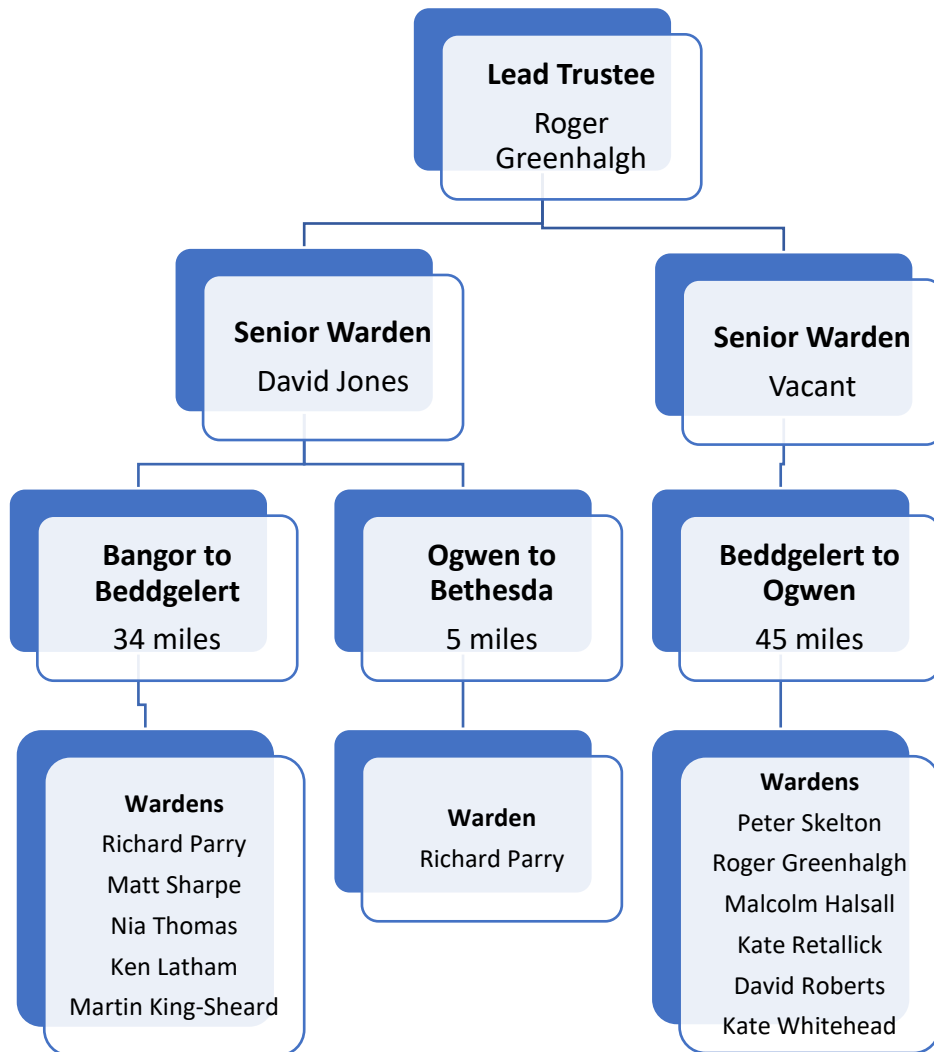
David Jones – Senior Warden

Vacancy for Senior Warden (covering Beddgelert to Ogwen)

Structure, governance and management

The governing document of the Snowdonia Slate Trail Trust is the Constitution of the Snowdonia Slate Trail Trust, a Charitable Incorporated Organisation, (Foundation Structure) as amended on 7 February 2019. Copies of this document can be inspected on request.

The Snowdonia Slate Trail Trust is managed by the Board of Trustees. At present, there are 8 Trustees. Other people who wish to assist with the Trust do so as Wardens or volunteers.



The Board of Trustees generally meets once a year, and occasionally at other times as necessary, and meetings are open to wardens and interested parties to attend. Otherwise, communication is via email or the WhatsApp group.

Induction and Training

New Trustees are given the Charities Commission “How to be a Trustee” document. Trustees are encouraged to keep up to date with charity law by private learning. This year, there have been no training events.

Risk Management

The Trustees carry out a continuous and ongoing review of policies designed to identify, manage and avert risk, both financial and operational. The Treasurer aims to report regularly on the state of the finances and reviews past performance and future needs. The Trustees act accordingly.

Financial Review

The Trust maintains a healthy bank balance and continues to monitor expenditure such that it remains sustainable. The 2023-24 account was audited, and no issues were highlighted. A full Treasurer's report is included below.

Policy on Reserves

The Snowdonia Slate Trail Trust needs reserves for the following reasons: -

- To provide sufficient working capital for its day-to-day needs
- To enable it to continue to operate in the event of a crisis.
- To enable it to cope with any reduction in its income.
- To finance and underpin growth in its activities.

Treasurer's Report

The financial report to be submitted to the Charities Commission is appended to this document covers the financial year 2023-24. The full account spreadsheet can be made available to anyone who requests it.

In that year, we raised a £11,140 grant for the project to carry out a survey of the route to identify what might be needed to bring it up to National Trail standard. A further £860 will be claimed on completion of the report. Book sales raised £2702. Minor donations and sales of medal and badges raised £622, over twice the previous year. A Gift Aid application was not made in this financial year but the application in 23-24 brought in about £800.

Main expenditure was on insurance (£164), website maintenance (£295), maintenance (£219), postage (£116), passport stamps (£101), benches (£1902), Rhosydd gate (£923) and the survey (£2400). This brought our available funds to £1,6918, of which £5,939 was unrestricted, while the rest was allocated to the further improvements and the survey.

Since the end of the last financial year and as at 20 August 2024, about £13,900 has been received, of which £3,200 is for the schools' project and £9,400 for a temporary worker to research into walker and business needs to increase the benefit of the Trail. The recent major expenditure has been £1,150 on the schools' project, £8,400 on the survey and £2,828 on the worker project.

Easyfundraising.com brought in £38. Everyone is greatly encouraged to use Easyfundraising. If all trustees and wardens did use it, it is estimated that this would raise about £500 per year for the Trail. Gift Aid has brought in about £800.

Sale of goods is slow. We have ample supplies of metal and sew-on badges, as well as medals, and would not recommend expanding our range of items for sale at present. We have, however, purchased car stickers at £95 which are given out with sales etc to advertise the Trail.

Aled Owen
Treasurer

Maintenance Report

David Jones (Senior Warden)

Here is mainly what I got up to as a volunteer warden for the SST since our last AGM.

During various visits, I collected trail data between Llan Ffestiniog & Rhiw-Bach quarry where some minor maintenance was also carried out. Reports of all visits have been circulated.

I also undertook a reconnaissance of a possible alternative route to the one currently going through the scrap yard in Tanygrisiau.

I have also continued with the upkeep of the passport map for the website.

Ken Latham (Warden)

Rhyd Ddu to Beddgelert section

This section continues to be very popular and having walked it several times this year it always had other walkers on it, which was great to see, we spoke with several people who were walking the whole trail, more this year than last it seemed, despite us having the wettest summer since Noah was a boy!!

Once more this year the 'Sherpa' bus service has proved to be a real bonus and as regular users ourselves we have seen and talked to a lot of passengers who were doing sections of the SST and returning to their cars.

A lot of the roundels were showing signs of age and had lost their colouring or were missing. We replaced a lot of these, one of which we had put on the gate post at Parc y Gader only to find it had been 'pinched' a couple of days later, possibly taken as a SST trophy, it has since been replaced.

The bridges on this section are also showing signs of wear and a few cross-members are broken, the main bridge crossing the Afon Gwyrfaï had a rotted cross-member. This has been temporarily repaired by SNPA. The bridge crossing the small stream in the 'parc' itself is still in need of repair as is the one as you drop down to Beddgelert to Cwm Cloch Farm.

Quite a few of the walkers we talked to asked if and when it would become a National Trail and if this gets the go ahead then I think it would become a very popular trail and put it among some of the best long-distance walks in the UK.

Matt Sharpe (Warden)

December 23 – Llanberis-Waunfawr and back. No problems, one roundel replaced on gate toward top of road after ruined cottage

March 24 – Rhyd Ddu-Betws Garmon. Some worn bridge footings but nothing considerable to report. Trail in good condition despite recent heavy rain

September 24 – Betws Garmon-Beddgelert. Two roundels replaced. Several bridges worn, already reported. Path in good shape, all roundels and posts in place.

I have not been out as often as I would have liked this year but have been pleased to see this section appears to be minimal maintenance, the only exception being the bridges of which you are already aware.

Kate Whitehead (Warden)

Betws y Coed to Ogwen Cottage:

Gates and stiles are all in good working order and the forestry work above Capel Curig has finished for now, however, there are numerous big, deep muddy patches that are coming impossible to avoid. Llyn Ogwen path is very wet.

Tanygrisiau to Llan Festiniog:

There are Ongoing issues with the scrap yard as already mentioned. Bracken is covering the path up to and above head height during summer months. The worst part is along the wall and over the hill just past the scrap yard.

New signs have been placed on a new pole at Waterloo Hotel, Betws y Coed.

Roger Greenhalgh (Warden Co-ordinator)

WARDENING OF TRAIL SECTIONS

Warden report for Tanygrisiau-Croesor trail section

This section of the trail gets walked regularly – probably at about 4 to 6 week intervals in part, either Cwmorthin – Rhosydd and back or Croesor-Rhosydd and back. Less often as a through walk as it involves co-ordination of lifts between the ends.

The route is still well waymarked and all the waymarks are in good condition. In response to the (early draft of the) recent Birchill Access trail condition survey, a couple of additional roundels were put in place adjacent to Oriol Caffi Croesor.

There has been a slow ongoing dialogue with Gwyn Lloyd Evans concerning the soggy ground through the replacement gate at the top of Rhosydd – Caru Eryri are keen to assist us with volunteers in order to dig out a drainage channel and possibly place some of the adjacent chunks of slate there to give firmer footing, but need written/mailed confirmation of landowner permission, which Gwyn was going to obtain. Still being chased for a response. Once that's confirmed Caru Eryri have agreed on the same occasion to help to install a waymark right up at the top where the route crosses over to Cwm Croesor – in accordance with the suggestion in the Birchill Access trail condition survey.

It's also been noted that the Eryri National Park have recently removed the large information board from the Croesor car park. I'm of the understanding that this is part of a wider information board refreshment/replacement scheme underway throughout the National Park.

On each occasion of walking the route (and often on intermediate short visits), I litterpick the car parks at both ends. There is very rarely much at the Croesor end – often just a few discarded or forgotten items which get left beside the Portaloos there. Tanygrisiau gets much more, mostly in the car park and along the flat path section to the waterfall, and around the foot of the waterfall. There are sometimes

occasional deposits further up the track near to the next plunge pool, and very occasionally also in the buildings at Cwmorthin Terrace. On the rest of the route litter is not an issue.

Warden report for Croesor-Nantmor-Beddgelert trail section

My neighbour Malcolm Halsall recently volunteered to take up the wardening reins with this stretch – mainly because I often dog-walk along parts of this in his company, and also because he cycles over that way almost weekly. Essentially, I am “buddying” Malcom whilst he gets to know the patch. Again, this section gets very little litter, other than occasionally at the Nantmor car park. I happen to call in there probably about once per week whilst dog-walking, and do a quick litterpick of the car park and of the picnic area through the railway arch. It’s not a big issue.

The section of path at the foot of Garreg Bengam has been particularly wet this year, and frequently runs with continual surface run-off from the boggy terrain either side. The path base itself is mostly firm and stony, but slippery when wet. There are a few minor sumped sections where the water collects, and walkers have a tendency to skirt around it. No specific action taken as yet, other than via a slightly grumpily-responded conversation with another of my neighbours who is a close friend of the landowner there – to the effect that he’s always being blamed for poor maintenance by walkers, and expected to repair at his own expense – when in fact that section of trail is registered as an “unclassified highway” (hence the Council’s responsibility). For now, I have chosen to let the dust settle (and hopefully the weather to improve).

Oriel Caffi Croesor

The premises of the currently closed Café at Croesor have been under much local discussion by the local community in respect of seeking to find a sustainable plan for re-opening it, in whatever re-incarnation that might take. Malcolm and I have both attended various “consultative” events there, and there seems to be community interest in establishing it as some form of community hub, but plans have been vague and fluid. A certain amount of restoration of the fabric of the building has been underway in recent months, and at one point there was a plan to lease it to an interim tenant for the purpose of running an artisan cider-making business, but these plans too seem to have changed (again). There are occasional pop-up entertainment events happening there, in the meanwhile.

Warden co-ordination

As mentioned above, I’m happy to welcome Malcolm Halsall to the team, and am in the process of showing him the ropes!

Wardening equipment stowage: we have an ever-dwindling supply of SST roundels and a fairly healthy supply of 4x4 timber posts and metal street-signage fingerboards, The stock of these has now been relocated from Aled’s emporium at Penmachno to a space in the shed at Lancashire Mountaineering Club’s bunkhouse at Cae Ysgubor, Beddgelert LL55 4NE. The shed is accessible with a key, and the key is held in a combination-locked keybox on the nearby telegraph pole. This means that wardens in deed of this kit and any of the associated maintenance tools can get to it at anytime (so long as I tell them the keybox code)

PROJECTS

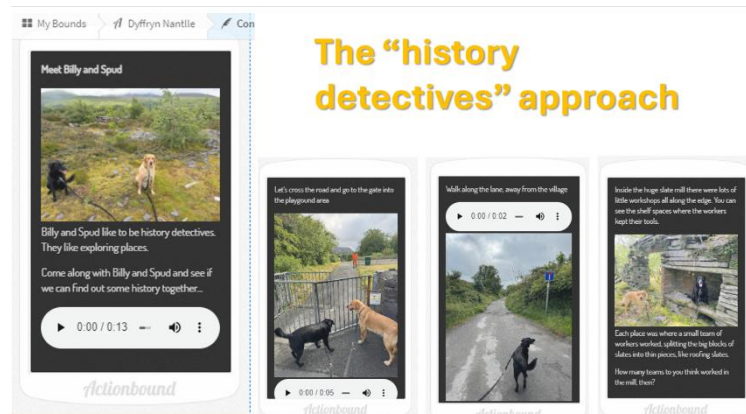
Schools Resources project

The Trust received funding from the Ashley Family Foundation to develop a small set of bi-lingual schools resources to help primary school teachers get groups of pupils out on short local field trips to local slate

heritage locations. The funding cover Phases 1 and 2 of this scheme, getting us to a working Proof-of-Concept, with a view to use that as a firm basis from which to seek additional funding to scale out these initial deliverables with more content and to more locations.

Phase 1		Phase 2			Phase 3			
✔ Set up resource-building & storage platform	= Populate platform with draft materials	Refine & expand materials			Enhance discoverability of materials through Adroddi Cymunedia Hub			
✔ Gather rich-media materials	= Apply livery to platform(s)	= Copyright clearance of rich-media materials			Expand RLOs			
✔ Agree intended pedagogy & aspirations for learning modalities	Confirm validity of pedagogy with practitioners; = Establish Cynefn building framework				Promote pedagogy & resources as exemplars with Curriculum Wales			
✔ Identify initial locations for potential field-visits with pupils	✔ Finalize locations				Expand range of locations			
✔ Identify specific routes for intended field visits	= Finalize routes				Expand range of routes			
✔ Identify common scope of learning activities and intended outcomes	Finalize activities	Map activities and outcomes onto Cynefn building framework			Disseminate Cynefn building framework			
✔ Prepare initial indicative content	= Expand and refine content	Iterative content refinement; Content translation; = Classification of resources against Adroddi Cymunedia taxonomy			Expand and refine resources and scope of resources			
✔ Test functionality of initial early draft products	Alpha-test of content & functionality	Iterative functionality adjustments			Ensure platform performance scalability			
Mid June	Late June/early July	Mid/late July/late June	Early August	Mid-late August	Early/mid September	Late September	Late 2024	2025+

The project team consists of Roger Greenhalgh and Ceridwen Oakley. The outputs are mostly digital resources, some for suitable via mobile devices out in the field, and others for use back in the classroom. Due to circumstances beyond our control, this project is running a few weeks behind, although the core of the principal deliverables are all now in place.



The on-site deliverable is a location-enabled smartphone/tablet app which guides the pupils between specific site locations on a trail. The pupils adopt the role of “history detectives” and try to come up with their own answers to the Who, What, Where, When, Why? of the places they explore. Dogs “Billy” and “Spud” lead the way and help them to ‘discover’ various artefacts and puzzle out what these bits of evidence tell them about the heritage which

surrounds them. The app has short pieces of video footage showing what working life in the quarries was like at the actual locations they visit.

Once back in class there are more online resources to draw upon. These have been gathered together into an online archive, which they can draw upon to fulfil their own further research projects, enquiries,

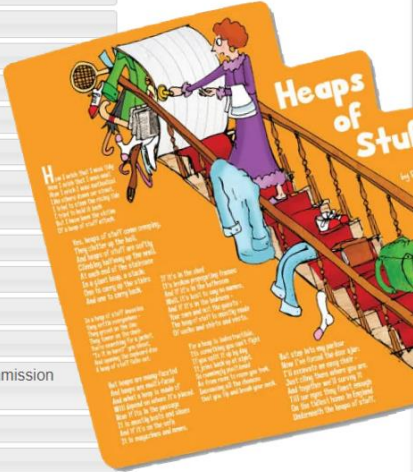
role-plays and other creative work.

resources.snowdoniaslatetrail.info/preview.php?template_id=4#page1

Llwybr Llechi Eryri – Snowdonia Slate Trail - Stock Resources

Table of Contents

- 1) About these rich-media stock resources ✓
- 2) Historical Photos ✓
- 3) Y Chwarelwr footage ✓
- 4) Current Day Photos ✓
- 5) Snowdonia Slate Trail Fly-throughs ✓
- 6) The Peoples Collection ✓
- 7) Museum of Wales ✓
- 8) Britain from Above ✓
- 9) RCAHMW Slate Heritage Landscape promo ✓
- 10) Dry Stone Walling - story without words ✓
- 11) Beam engine animation ✓
- 12) Cornish Engine Compilation ✓
- 13) Maenofferen Slate Quarry, Blaenau Ffestiniog, North Wales - Royal Commission Animation ✓
- 14) Penrhyn Slate Splitting ✓
- 15) Diwydiant: Chwarel Cwt-Y-Bugail ✓

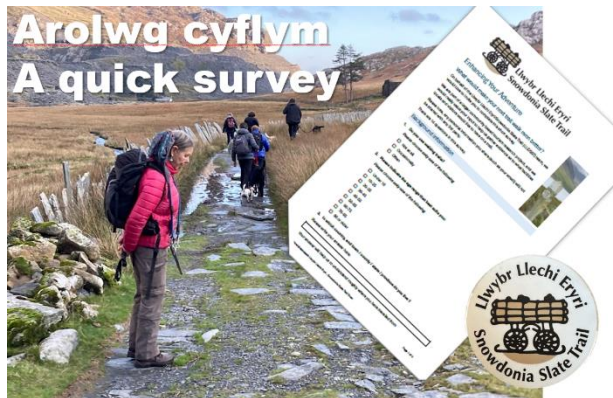


The illustration shows a woman in a purple dress and white apron pushing a wooden cart filled with various household items like a green bag, a blue bag, and a wooden chest. The cart is on a wooden track. The title 'Heaps of Stuff' is written in a stylized font. Below the illustration is a poem in Welsh.

BUSINESS INTELLIGENCE PROJECT

Running contemporarily with the schools' resources project has been a research project delving into several key business intelligence aspects of tourism and also its influence on Welsh language and culture. This too was tackled primarily by a team of two lead researchers, Roger Greenhalgh and Tansy Rogerson, and the Welsh Culture strand of this involved coordination of input from a pre-existing team of "slate researchers" based in the communities of Blaenau Ffestiniog, Dyffryn Ogwen and Dyffryn Nantlle.

Key features of the research methodology included the production, dissemination and analysis of a couple of surveys, one aimed at the Business community and the other at the community of trail users. There was also a strand which explores the challenge of ascertaining footfall data on the trail's usage and how with such data we may be better able to derive estimates of the economic value of the trail to the local economy.



The slate researchers provided some further insights into actions in their communities, too, which would foster appreciation of Welsh language and culture and be complementary to the further development and promotion of the Snowdonia Slate Trail.

The report has now been produced and at the time of writing is in the course of translation prior to publication.

In each case, the work involved in developing the schools' resources and in dialogue with business and trail-user groups has already furnished us with considerable insight, and developed and consolidated a wide range of networking links.

MARK RICHARDS

During the last autumn we were visited by author and artist Mark Richards, a writer and illustrator of walking guides, and he accompanied some of our wardens out on a few sections of the trail. His intention has been to gather materials to illustrate some sort of publication in this area, as most of his recent work has been focused on the Lake District (as his home territory). Many of his books are listed online here: <https://www.cicerone.co.uk/authors/mark-richards> (together with a short biography).

Most recently he got sidetracked into a sizeable commission on “Hadrians Trees” – walking much of Hadrian’s Wall in search of significant ancient trees and their successors. It would seem that this exercise has kept him busy and despite his best intentions to return to visit and illustrate more of the trail here, the opportunity has not yet arisen, though I do stay in touch periodically, and keep an open door.



An Autumn visit with a couple of colleagues gave opportunity to achieve this, and to embed the three new waymark posts along this section. These yellow-topped posts now successfully provide a good clear line-of-sight route between the Rhosydd Quarry buildings and the defunct reservoir dam above the Croesor Quarry.

(Incidentally, away from this section, too, I was able to join a **Caru Eryri** work party to lay a series of slate paving slabs in a similarly boggy section of the trail near Llyn Morwynion.)



Also worth noting

(on the Llanffestiniog-Penmachno section) may be that the cattle grid on the track at the top of Cwm Tiegl, (between Manod and Rhiw Bach) has recently been replaced with a full-width gate with inbuilt pedestrian gate, and the old cattlegrid infilled. This has hugely improved the accessibility of this short section of track.

Although my wardening focus is officially the Tanygrisiau-Croesor section, I’m a frequent walker of several of the adjoining sections, too! I regularly walk through here to visit the *Cwt y Bugail* Quarry, which lies just a short distance to the north-east of the Slate Trail.



Off-trail routes to nearby artefacts

The growing public awareness of the Slate Trail has meant that I'm often asked about how best to reach some of the closely (but not directly) adjacent slate industry artefacts that have gained attention.

For example:

<https://www.llechi.cymru/index.php/slateareas/gorseddau>

On several occasions I've received feedback from such adventuring hikers that certain routes which diverge from the Slate Trail may deserve some greater prominence, and in some cases may also deserve some better waymarking. A good example would be the divergent route from Beddgelert over to

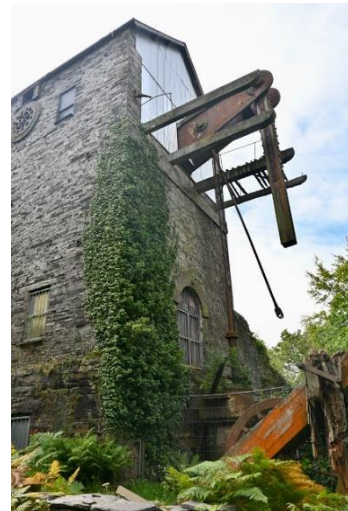


Cwm Ystraddlyn, notable for the Ynys y Pandy slate mill, the Gorseddau Quarry (and its overhanging wall), the Treforys miners' village.

Other oft-queried locations include the Prince of Wales Quarry, beyond, in Cwm Pennant, and the defunct pumping engine in the Dorothea Quarry.

These sorts of outlying artefacts are now gaining greater attention through social media posts and the press.

<https://www.theguardian.com/environment/2018/mar/31/country-diary-a-long-abandoned-slate-quarrys-enduring-monuments>



Education Report

See previous sections

Marketing Report

See previous sections

Passport Scheme

We're into the sixth year of the Passport Scheme. Here's how it's looking so far:

Aug 2018 to Nov 2019	13 medals	£105.50
Nov 2019 to Sep 2020	7 medals	£ 72.00
May 2021 to Oct 2021	19 medals	£340.50
Oct 2021 to Oct 2022	24 medals	£184.00
Oct 2022 to Oct 2023	40 medals	£308.10
Nov 2023 to Sep 2024	12 medals	£117.00
TOTAL	112 medals	£1,127.00

We now have **25 venues fully participating** in the Passport Scheme - the new one is

- Crib Goch Outdoor, Llanberis (they paid for the new stamp, as they asked for it, and the brand/business already has a stamp for Crib Goch Outdoor, Beddgelert).

Caffi Siabod, already in the scheme, has changed hands. It's now run by Nadeem Abbasi, who has a passport for Londis Penmachno, but didn't ask for a stamp for Caffi Siabod.

Aled continues to keep a tally of the number of visits stamped per venue. The following **11 of the venues have had more than 20**, compared to the five venues last year:

- Amgueddfa National Slate Museum - Llanberis (26)
- Canolfan Y Fron (32)
- Beddgelert Tourist Information Centre (29)
- Lakeside Café, Tanygrisiau (29)
- Y Pengwern, Llan Ffestiniog (30)
- Pen y Bryn Stores, Llan Ffestiniog (26)
- Conwy Falls (28)
- Betws Tourist Information Centre (27)
- Ty Hyll (20)
- Joe Brown Shop, Capel Curig (21)
- Canolfan Ogwen - Kiosk (21)

Two issues to discuss in the AGM:

- This year we've sent out very few medals. The number is as low as in the first two years of the scheme. What are the causes and solutions? e.g. we could promote it once the Schools' Project is under way.
- Half the medal winners live in Wales, the rest in England or Scotland, one in Germany, one in Poland. How to promote the trail round Europe and further afield?

Joan Cutting
26 September 2024

Website

The website continues to be used for downloading maps and instructions, and for sales

Aled Owen

Projects Report

Start and end features

This is now complete.



Repairs to permissive path at Conwy Falls

The steps here still require repair. Despite the Permissive Path Agreement having been renewed, Conwy Council has yet to repair them. As with many of our projects, this one requires a bit of patience.

Permissive Path at Yr Ocar

The bid to categorise this as a PRow is in the system and will take up to two years to process.

Broader Community Involvement

A consortium of community groups and social enterprises in the Bethesda, Nantlle and Ffestiniog areas see the Trail as a major opportunity for sustainable tourism. They secured funding to carry out research on opportunities and have achieved further significant funding which can be tapped into.

Trail Survey

Birchill Access Consultants have completed a survey of the route and reported on what actions are required to bring the Trail up to National Trail standard. The report also highlights other desirable actions.

Aled Owen

Other Reports

Andrew McDougall – Trustee

Although I am happy to continue as a Trustee, I recognise that I have not made much of a contribution in this past year. In this context I will stand down so my place can be taken by someone more proactive if colleagues consider this appropriate.

Acknowledgements

Heritage Lottery Fund

Magnox

CADW

Blakemore Foundation

Snowdonia National Park CAE Fund

The Foyle Foundation

The Garfield Weston Foundation

The Oakdale Trust

Community Fund in Wales

HF Holidays

Horizon

First

Dŵr Cymru

The Laspen Trust

Bethesda Town Council

Ffestiniog Town Council

Gwynedd Council

Conwy County Borough Council

Ashley Foundation

Rehau Plastics, Blaenau Ffestiniog

Red Nose Day

Cambrian Railways PAVO

Mantell Gwynedd

One private donor

Ninevah Trust

Gaynor Cemlyn-Jones Trust

Menter Môn, and

thanks to our wardens.

All the above have contributed towards the success of our organisation.



Receipts and payments accounts

For the period from	Period start date 1-Apr-23	To	Period end date 31-Mar-24
---------------------	-------------------------------	----	------------------------------

Section A Receipts and payments

	Unrestricted funds to the nearest £	Restricted funds to the nearest £	Endowment funds to the nearest £	Total funds to the nearest £	Last year to the nearest £
A1 Receipts					
Bring forward	3,626	5,065			
Activities for generating funds (trading)-medals	164		-	164	56
Activities for generating funds (trading) -badges	110		-	110	13
Donations - medals	191		-	191	87
Donations - other	158	-	-	158	98
Refunded postage				-	
T-shirt sales	14			14	99
Gift Aid				-	
Amazon Smile/Easyfundraising	246			246	5
Calendar Sales			-	-	
Donations - guidebook sales	2,702		-	2,702	73
Footpath improvements grants		-	-	-	1,017
End feature grants			-	-	153
SCOTO Workshop	329				
Survey grants		11,140	-	11,140	
Sub total(Gross income for AR)	7,538	16,205	-	23,743	1,601
A2 Asset and investment sales, (see table).					
	-	-	-	-	-
	-	-	-	-	-
Sub total	-	-	-	-	-
Total receipts	7,538	16,205	-	23,743	1,601
A3 Payments					
Insurance	165	-	-	165	165
Trustee expenses		-	-	-	
Stickers	95		-	95	204
Maintenance	219		-	219	
Website	295		-	295	250
Path improvement		923	-	923	
Mantell Gwynedd sub	10	-	-	10	10
Postage	116		-	116	161
End features	598	1,903	-	2,500	3,400
Stationery	-			-	20
Warden equipment					69
Passport project	101	-	-	101	
Survey		2,400	-	2,400	
T-shirts	-	-	-	-	161
Sub total	1,599	5,225	-	6,825	4,440
A4 Asset and investment purchases, (see table)					
	-	-	-	-	-
	-	-	-	-	-
Sub total	-	-	-	-	-
Total payments	1,599	5,225	-	6,825	

<i>Net of receipts/(payments)</i>	5,939	10,980	-	16,918	
A5 Transfers between funds	-	-	-	-	-
A6 Cash funds last year end	-	-	-	-	-
<i>Cash funds this year end</i>	5,939	10,980	-	16,918	-

Section B Statement of assets and liabilities at the end of the period

Categories	Details	Unrestricted funds to nearest £	Restricted funds to nearest £	Endowment funds to nearest £
B1 Cash funds	From Section A	5,939	10,980	-
				-
		-	-	-
	Total cash funds	5,939	10,980	-
	(agree balances with receipts and payments account(s))	OK	OK	OK

Categories	Details	Unrestricted funds to nearest £	Restricted funds to nearest £	Endowment funds to nearest £
B2 Other monetary assets		-	-	-
		-	-	-
		-	-	-
		-	-	-
		-	-	-
		-	-	-

Categories	Details	Fund to which asset belongs	Cost (optional)	Current value (optional)
B3 Investment assets			-	-
			-	-
			-	-
			-	-
			-	-

Categories	Details	Fund to which asset belongs	Cost (optional)	Current value (optional)
B4 Assets retained for the charity's own use			-	-
			-	-
			-	-
			-	-
			-	-
			-	-
			-	-
			-	-
			-	-

Categories	Details	Fund to which liability relates	Amount due (optional)	When due (optional)
B5 Liabilities			-	
			-	
			-	
			-	
			-	

Signed by one or two trustees on behalf of all the trustees	Signature	Print Name	Date of approval

--	--	--

SNOWDONIA SLATE TRAIL

England & Wales - Charity number 1182188

Accounts



Receipts and payments accounts

For the period from	Period start date 01-Apr-22	To	Period end date 31-Mar-23
---------------------	--------------------------------	----	------------------------------

Section A Receipts and payments

	Unrestricted funds to the nearest £	Restricted funds to the nearest £	Endowment funds to the nearest £	Total funds to the nearest £	Last year to the nearest £
A1 Receipts					
Bring forward	4,165	7,364			
Activities for generating funds (trading)- medals	56		-	56	109
Activities for generating funds (trading) - badges	13		-	13	-
Donations - medals	87		-	87	321
Donations - other	98	-	-	98	123
Refunded postage				-	-
Donations - T-shirt sales	99			99	45
Gift Aid				-	379
Amazon Smile/Easyfundraising	5			5	-
Calendar Sales			-	-	602
Donations - guidebook sales	73		-	73	1,019
Footpath improvements grants		1,017	-	1,017	1,017
End feature grants		153	-	153	4,250
Website grants			-	-	2,000
Sub total (Gross income for AR)	4,595	8,534	-	13,129	9,865
A2 Asset and investment sales, (see table).					
	-	-	-	-	-
	-	-	-	-	-
Sub total	-	-	-	-	-
Total receipts	4,595	8,534	-	13,129	9,865
A3 Payments					
Insurance	165	-	-	165	165
Trustee expenses		-	-	-	
Sew-on Badges	183		-	183	
Badges	21				
Maintenance			-	-	575
Website	250			250	4,753
Path improvement			-	-	
Mantell Gwynedd sub	10	-	-	10	669
Postage	161		-	161	230
End features		3,400	-	3,400	
Warden Equipment		69			
Stationery	20			20	
Passport project		-	-	-	
T-shirts	161	-	-	161	-
Sub total	971	3,469	-	4,350	6,392
A4 Asset and investment purchases. (see table)					
	-	-	-	-	-
	-	-	-	-	-
Sub total	-	-	-	-	-
Total payments	971	3,469	-	4,350	
Net of receipts/(payments)	3,624	5,065	-	8,779	
A5 Transfers between funds	-	-	-	-	-
A6 Cash funds last year end	-	-	-	-	-
Cash funds this year end	3,624	5,065	-	8,779	-

Section B Statement of assets and liabilities at the end of the period

Categories	Details	Unrestricted funds to nearest £	Restricted funds to nearest £	Endowment funds to nearest £
B1 Cash funds	From Section A	3,624	5,065	-
				-
		-	-	-
	Total cash funds	3,624	5,065	-
	(agree balances with receipts and payments account(s))	OK	OK	OK
B2 Other monetary assets	Details	Unrestricted funds to nearest £	Restricted funds to nearest £	Endowment funds to nearest £
		-	-	-
		-	-	-
		-	-	-
		-	-	-
		-	-	-
		-	-	-
B3 Investment assets	Details	Fund to which asset belongs	Cost (optional)	Current value (optional)
			-	-
			-	-
			-	-
			-	-
B4 Assets retained for the charity's own use	Details	Fund to which asset belongs	Cost (optional)	Current value (optional)
			-	-
			-	-
			-	-
			-	-
			-	-
			-	-
			-	-
B5 Liabilities	Details	Fund to which liability relates	Amount due (optional)	When due (optional)
			-	
			-	
			-	
			-	
Signed by one or two trustees on behalf of all the trustees	Signature	Print Name	Date of approval	

Snowdonia Slate Trail



Annual Report
For year ending 5 April 2023
(with further information up to November 2023)

Presented at the AGM held on 25 November 2023

Snowdonia Slate Trail Trust
Registered Charity Number 1182188

Contents

Charity Information
Aims of the Charity
Details of Trustees and Advisors
Structure, governance and management
Financial Review
Objectives and Activities
Achievements and Performance
Responsibilities of the Committee
Secretary`s Report
Treasurer`s Report
Maintenance Report
Marketing Report
Other reports
Acknowledgements

2022-2023 Financial Statement

COMPANY INFORMATION

Registered	15 February 2019
Chair	Joan Cutting
Charity Number	1182188
Registered Office	1 Hen Siop Upper Llandwrog Caernarfon LL54 7RE
Independent Examiner	Vacant at present
Bankers	Bank of Scotland

Aims of the Charity

- 1. The advancement of education for the public benefit in the unique slate heritage and culture of Snowdonia.*
- 2. The provision of facilities for recreation or other leisure time occupation for the public at large in the interests of social welfare by monitoring, managing and enhancing the Snowdonia Slate Trail long distance footpath.*

Details of Trustees as at 5 April 2023

Joan Cutting – **Chair**

Vivienne Oxley - **Secretary**

Aled Owen – **Treasurer**

Roger Greenhalgh – **Warden co-ordinator**

Dorothy Howarth – **Twitter account**

Mieko Yamaguchi – **Route details updates**

Details of Wardens and representatives as at 5 April 2023

Graham Fitch representing The Ramblers

Dan Goodwin representing Snowdonia Society

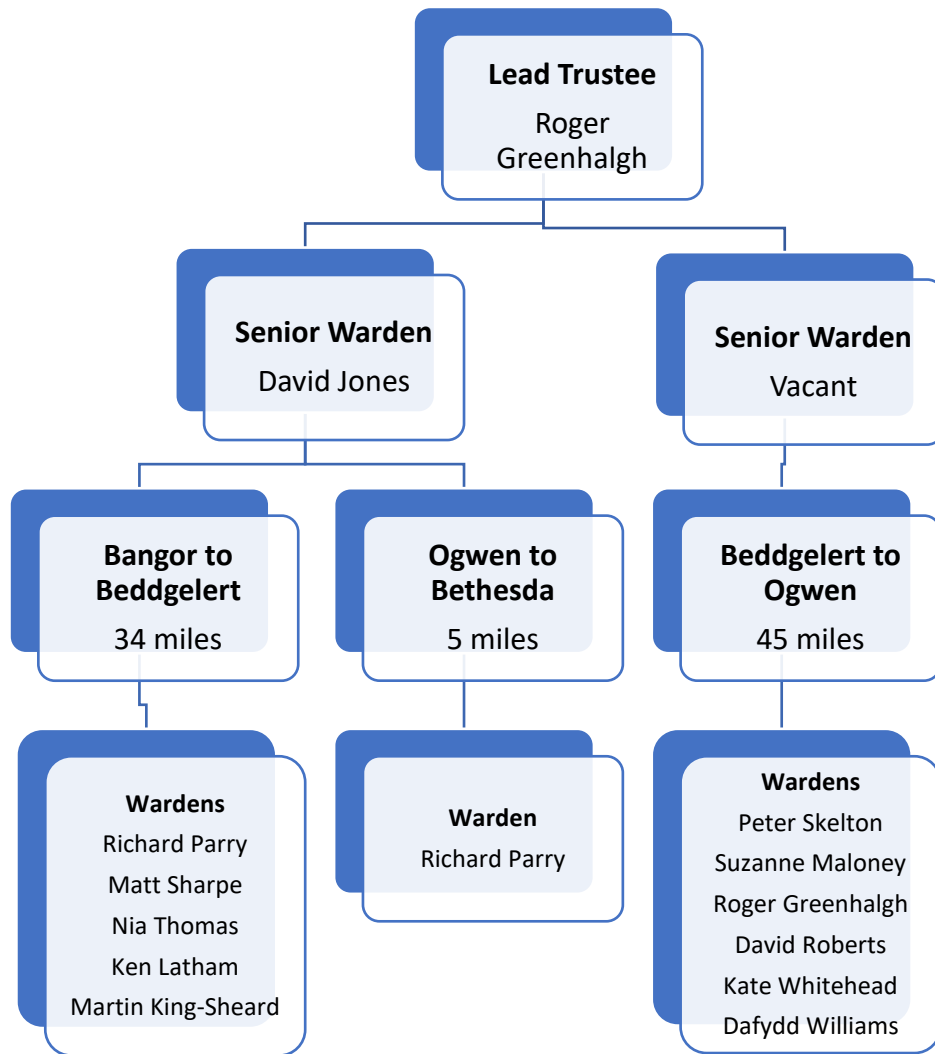
David Jones – Senior Warden

Vacancy for Senior Warden (covering Beddgelert to Ogwen)

Structure, governance and management

The governing document of the Snowdonia Slate Trail Trust is the Constitution of the Snowdonia Slate Trail Trust, a Charitable Incorporated Organisation, (Foundation Structure) as amended on 7 February 2019. Copies of this document can be inspected on request.

The Snowdonia Slate Trail Trust is managed by the Board of Trustees. At present, there are 8 Trustees. Other people who wish to assist with the Trust do so as Wardens or volunteers.



The Board of Trustees generally meets once a year, and occasionally at other times as necessary, and meetings are open to wardens and interested parties to attend. Otherwise, communication is via email or the WhatsApp group.

Induction and Training

New Trustees are given the Charities Commission “How to be a Trustee” document. Trustees are encouraged to keep up to date with charity law by private learning. This year, there have been no training events.

Risk Management

The Trustees carry out a continuous and ongoing review of policies designed to identify, manage and avert risk, both financial and operational. The Treasurer aims to report regularly on the state of the finances and reviews past performance and future needs. The Trustees act accordingly.

Financial Review

The Trust maintains a healthy bank balance and continues to monitor expenditure such that it remains sustainable. The 2022-23 account was audited, and no issues were highlighted. A full Treasurer's report is included below.

Policy on Reserves

The Snowdonia Slate Trail Trust needs reserves for the following reasons: -

- To provide sufficient working capital for its day-to-day needs
- To enable it to continue to operate in the event of a crisis.
- To enable it to cope with any reduction in its income.
- To finance and underpin growth in its activities.

Treasurer's Report

The financial report to be submitted to the Charities Commission is appended to this document covers the financial year 2022-23. The full account spreadsheet can be made available to anyone who requests it.

In that year, we raised a £1066 grant for the project to improve access above Rhosydd Quarry. Minor donations and sales of medal and badges raised £264, about half the previous year. A Just Giving appeal brought in £153 for the end features. A Gift Aid application has not been made this year but a larger application next year covering book sales, which are a donation from Aled, is expected to bring in about £600.

Main expenditure was on insurance (£164), website maintenance (£250), maintenance (£398), postage (£160), sew-on badges (£183), more T-Shirts (£161) and benches (£3400). This brought our available funds to £8696, of which £3630 was unrestricted, while the rest was allocated to the end features and further improvements.

Since the end of the last financial year and as at 30 August 2022, about £3240 has been received, of which £2690 is a donation from Aled for guidebook sales. The recent major expenditure has been £1900 on the end features and £923 on the Rhosydd gate.

Easyfundraising.com brought in £87 with about £150 due to us. Everyone is greatly encouraged to use Easyfundraising5. If all trustees and wardens, it is estimated that this would raise about £500 per year for the Trail.

Sale of goods is slow. We have ample supplies of metal and sew-on badges, as well as medals, and would not recommend expanding our range of items for sale at present.

Aled Owen
Treasurer

Maintenance Report

David Jones (Senior Warden)

Here is mainly what I got up to as a volunteer warden for the SST since our last AGM (29th October 2022).

4th Dec 2022 - Placed 3 pairs of roundels between Nantlle & the forest boundary north of Rhyd Ddu, in readiness of Cerdded Conwy Walks' planned walk along this section.

24th Dec 2022 - Visited Blaen Fferam quarry (Y Fron) to see for myself regarding someone's concern about navigating through a working quarry.

16th April 2023 - Visited Tal-y-Mignedd Isaf farm to see the situation regarding the blocked gate by the ford. Also spoke to the farmer.

7th May 2023 - Visited Gwaen Gynfi moor to do a recce. regarding the (original) missing posts.

Summer 2023 - I walked the 3 sections between Beddgelert & Llan Ffestiniog to collect trail data. As you're probably aware, the entering of data onto the LIVE map takes a long time. It took me two months to enter the data for these sections to the detail & accuracy I set myself

Prior to next AGM - Before the next upcoming AGM at the end of November, I would hopefully have made a start in collecting trail data for the next section (Llan Ffestiniog to Penmachno), which I'll probably break down into 3 sub-sections for data collecting purposes.

Ken Latham (Warden)

Rhyd Ddu to Beddgelert section

I've managed to walk this section on about a dozen occasions this year and noticed that this section of the trail is becoming very popular with walkers again after what seem to have been a couple of quiet years. The much improved Snowdon Sherpa Bus service is proving to be popular too with an hourly service running between Rhyd Ddu and Beddgelert with many walkers taking advantage of using the service for this section as a linear walk and returning to their cars at the car parks in the villages after completing the walk.

A day was spent replacing and cleaning quite a few roundels which had broken or become discoloured, one or two posts are looking a bit worse for wear and these will need some attention in the new year.

Matt Sharpe (Warden)

Section inspections carried out 2023-

Betws-Penmachno January. No issues noted, path in good condition with little vegetation. Walls, styles and fences intact. Signs remain in good condition.

Rhyd Ddu- Llanberis March. Two roundels replaced from my stock on this occasion both near the summit, with little vegetation and no damage to styles, walls or fences. Wet and boggy in parts but to be expected after weeks of inclement weather.

Rhyd Ddu- Beddgelert March. Pathways in excellent condition with limited requirement for maintenance due to limited vegetation growth. No damage to report, path drying out and remains clearly visible for its entire duration. Some roundels fading but no need to replace currently. Noted for future reference.

Beddgelert- Rhyd Ddu May. Hot walk, vegetation growth getting stronger but pathway in excellent condition. River low currently but posing no problems to walkway or signage. Styles good. No damage to walls or fences- some been replaced recently.

I've struggled to get out in the past few months, but still have every intention of checking out this gate on Mynydd Llandegai asap.

Martin King-Sheard (Warden)

I became a warden in 2022/ 23 for the section between Rhyd Ddu and Y Fron. I hiked from Blaenau Ffestiniog to Bangor via this section in 2022 and immediately fell in love the Slate Trail. It is a great privilege to be part of the team that look after the Trail and I have enjoyed walking my section during the last year.

At the time of writing this I am planning my Autumn hike with a stock of roundels at the ready! The what's app group has helped me to feel a part of the team but I look forward to meeting some of the other wardens and trustees in the coming year!

Kate Whitehead (Warden)

Tanygrisiau to Llan Ffestiniog.

Lots more roundels added to section for clearer route finding, especially around the farm just below Llan Ffestiniog.

Road signs fixed at stile crossing on main road in Blaenau over to the scrap yard.

Bracken can be huge and a problem but without landowner's permission I am loathe to chop/bash it. Still enjoying walking on many parts of the path and love sharing it with friends and family.

Dafydd Morgan Williams (Warden)

Cwt y Bugail – Llan Ffestiniog

In the last year I've walked the whole route twice and walked the route down from Llyn Morwynion down to the Pengwern Arms many times.

When I walked the whole route during February this year, I shared with the warden's group chat that a gate was missing on the kissing gate on the Migneint Road B4391, this was replaced quite promptly.

The section from Cwt y Bugail to Llyn Morwynion was very wet and boggy when I did it, to be expected! and nothing to report on that part back then, all the roundels were intact.

The Forestry Commission has been felling the forestry by Bont Newydd, the trail remained open for this duration. The wooden bridge crossing the river had a few loose handrails when I crossed it as time, I haven't been down since July to see if any repairs have been made.

I'm hoping to do the whole route again before Christmas to see if any roundels need replacing and see if everything is still in place, by then the bracken will have gone down hopefully.

Roger Greenhalgh (Warden Co-ordinator)

Trail Section Overview

Judging merely by the number of visitors encountered whilst wardening this section of the Trail, it seems to have become increasingly popular with visitors this year, especially to the Rhosydd Quarry. The walk up to Rhosydd from Tanygrisiau seems to be the most popular approach. Another routine but less popular route is for hikers from Croesor to focus on firstly ascending Cnicht then to circle round via Llyn Conglog and return to Croesor by the lower miners' track below Croesor Quarry (rather than via the Slate Trail route through the quarry head). This is just from casual periodic observation rather than from any actual headcount.

In fine weather, a particularly popular short walk is the short ascent to Llyn Cwmorthin alongside the waterfalls. In the summer, the pools here have become popular picnic spots.

The growing success of the **Go Below** (<https://www.go-below.co.uk/>) mine exploration activities at Cwmorthin also now regularly brings groups up this route (on foot), and their new underground glamping facility **Deep Sleep** (<https://www.go-below.co.uk/deep-sleep.asp>) has gained further traction. Whilst wardening at Cwmorthin I've now several times been asked by visitors where they should meet or park for this – the Go Below facility at Tanygrisiau Station Car Park isn't particularly clearly signposted at the moment.

Litter

One key function of wardening duties on this section which I undertake is to litter pick at reasonably regular intervals. It continues to be very rare indeed to encounter litter of any sort on the remoter lengths of this trail section, but the Tanygrisiau car park above Dolrhedyn Terrace is by far the exception. This car park is a regular catch-point for a variety of small-scale litter such as food packaging, drinks cans, dog poo bags and even disposable nappies. To a lesser extent this also applies for about 300 yards along the track to the Cwmorthin waterfall and up towards the Cwmorthin Quarry (alongside the other stream cascades.)

Croesor car park also occasionally accumulates small amounts of litter and sometimes discarded or forgotten hiking apparel, usually left alongside the Portaloo facility.

Off-road motor bikes

Whilst wardening this section I have occasionally encountered small groups of off-road motor-bikes using the trail. They have always been polite and respectful, and to date I have not yet witnessed any proceeding off-trail, though there is some evidence (in the form of tyre imprints) of such activity above Rhosydd Quarry towards Llyn Conglog. As yet this area hasn't apparently suffered significant erosion from this activity but I maintain a watchful eye.

It may be useful to clarify which sections of the route (if any) are permissible for passage by such vehicles. There is clearly a considerable local interest in dirt-biking, as higher up the waste heaps to the immediate east of Cwmorthin there are a couple of impromptu dirt-bike circuits clearly marked out on the upper levels, (and the tyre tracks also indicate that some dirt bikes are now occasionally ascending from here and heading cross-country along the ridge top towards Llyn Conglog.)

Wild camping

Various articles in the press and posts on social media now highlight the delights and successful experiences of wild-camping along the Slate Trail. Whilst wardening along this section I have fairly regularly encountered tents carefully and sensitively pitched in remote off-trail locations and have so far always had positive and friendly interactions with such wild-campers. To date, I have always noted their presence to be respectful of the environment and their participants to be aware of and follow the principle of “leave no trace”.

A particularly well crafted and pertinent recent post is this example of Becky Angell's blog: <https://www.beckythetraveller.com/walking-snowdonia-slate-trail-llwybr-llechi-eryri-wild-camping/>

Waymarking & access

Many of the social media posts I have spotted are particularly positive about how well waymarked the Trail is, and it is pleasing to report that the roundels which I installed on this section during 2021/22 appear to be surviving well!

The most challenging part of this route for waymarking has arguably been the fairly barren upland section from Cwmorthin through the Rhosydd Quarry and over the *bwlch* to the Croesor Quarry. The terrain is tricky to find reliable places to affix roundels or insert marker posts. Even so, it is pleasing to report on continuing success.

Early in the year the Trust negotiated with Gwynedd Council to arrange for a contractor to install a pedestrian gateway as a replacement for the dilapidated and poorly positioned ladder stile above Rhosydd. The work was funded by the Trust, and the opportunity was also taken for the contractor to deliver a set of waymarker posts up there for future deployment

The subsequently installed and repositioned gate has been a great improvement. After a couple of months of usage, however, despite being located on higher ground, the pathway through the gate began to lodge run-off water, the footway became muddy, and so has warranted revisiting to insert some rock slabs to step on and some channel clearance to encourage drainage.

An Autumn visit with a couple of colleagues gave opportunity to achieve this, and to embed the three new waymark posts along this section. These yellow-topped posts now successfully provide a good clear line-of-sight route between the Rhosydd Quarry buildings and the defunct reservoir dam above the Croesor Quarry.

(Incidentally, away from this section, too, I was able to join a **Caru Eryri** work party to lay a series of slate paving slabs in a similarly boggy section of the trail near Llyn Morwynion.)

Also worth noting (on the Llanffestiniog-Penmachno section) may be that the cattle grid on the track at the top of Cwm Tiegl, (between Manod and Rhiw Bach) has recently been replaced with a full-width gate with inbuilt pedestrian gate, and the old cattlegrid infilled. This has hugely improved the accessibility of this short section of track.

Although my wardening focus is officially the Tanygrisiau-Croesor section, I'm a frequent walker of several of the adjoining sections, too! I regularly walk through here to visit the *Cwt y Bugail* Quarry, which lies just a short distance to the north-east of the Slate Trail.

Off-trail routes to nearby artefacts

The growing public awareness of the Slate Trail has meant that I'm often asked about how best to reach some of the closely (but not directly) adjacent slate industry artefacts that have gained attention.

For example: <https://www.llechi.cymru/index.php/slateareas/gorseddau>

On several occasions I've received feedback from such adventuring hikers that certain routes which diverge from the Slate Trail may deserve some greater prominence, and in some cases may also deserve some better waymarking. A good example would be the divergent route from Beddgelert over to Cwm Ystraddlyn, notable for the Ynys y Pandy slate mill, the Gorseddau Quarry (and its overhanging wall), the Treforys miners' village.

Other oft-queried locations include the Prince of Wales Quarry, beyond, in Cwm Pennant, and the defunct pumping engine in the Dorothea Quarry.

These sorts of outlying artefacts are now gaining greater attention through social media posts and the press. <https://www.theguardian.com/environment/2018/mar/31/country-diary-a-long-abandoned-slate-quarrys-enduring-monuments>

Education Report

Talks and seminars

Aled gave a talk to Edinburgh Ramblers in November 2022 and is due to give another presentation to Edinburgh u3a Geology Group in February 2024.

Marketing Report

Brochures

Brochures are available in a number of outlets but more effort needs to be made to ensure these outlets maintain their stock. I think once the present supply is exhausted, we will need to decide whether they are worth continuing. Only Beaumaris Tourist Information Centre and Lodge Dinorwig have asked for replacements. Perhaps someone might like to take over the brochure distribution post.

Aled Owen

Facebook, Twitter and Instagram

SST are on 3 social media platforms:

- Facebook with 4,050 followers which serves to share information about the Trail as well as Trail walkers' experiences and photos.
- Instagram which is a new addition with 93 followers to date

- Twitter has 1,211 followers but we've lost access to the account

Tiktok did not suit our market, unless you have an avid walker who loves selfies, promoting a brand and music to the background.

Bilingual posts are used as this seems to draw a broader range of views, comments and an overall good response.

SST is on quite a few other walking/Snowdonia/slate groups and sharing our posts in there is slowly building up a larger follower base.

Aled Owen and Dorothy Howarth

Guidebook

Sales of the guidebook continue to exceed expectations, the guide being one of Rucksack Readers` best sellers. Sales through the website will have generated about £7000, including Gift Aid, for path maintenance and development to date.

Aled Owen

Passport Scheme

We're into the fifth year of the Passport Scheme. Here's how it's looking so far:

Aug 2018 to Nov 2019	13 medals	£105.50
Nov 2019 to Sep 2020	7 medals	£ 72.00
May 2021 to Oct 2021	19 medals	£340.50
Oct 2021 to Oct 2022	24 medals	£184.00
Oct 2022 to Sep 2023	40 medals	£261.10
TOTAL	102 medals	£1,010.00

This year we've sent the highest number of medals yet. It's even higher than last year, which was post Covid lockdown. However, this increase was due to the participation of Focused Performance (trail running holidays), which brought a group of 11. Without them, the number would have been the same. They bumped up the income, as did one very generous walker.

We have **24 venues** fully participating in the Passport Scheme. This includes five new ones:

- Poblado Coffi, Nantlle
- Trigonos, Nantlle
- Caffi`r Pafiliwn, Blaenau Ffestiniog
- Caffi Y Gorlan, Blaenau Ffestiniog
- Pitch and Hike, Capel Curig

20 June 2022, Aled started keeping a tally of the number of passport stamps per venue. The following venues had more than 20 stamps:

- Canolfan Y Fron

- Beddgelert Tourist Information Centre
- Lakeside Café, Tanygrisiau
- Y Pengwern, Llan Ffestiniog
- Pen y Bryn Stores, Llan Ffestiniog

Three venues aren't fully functioning:

- Caffi Blas y Waun, Antur Waunfawr is temporarily closed – they're re-developing.
- Lodge Dinorwig doesn't have a café any more - they do have a stamp in the bunkhouse but few people get stamps there.
- Oriol Caffi Croesor – the café is closed but there's a pop-up, the future of which is unknown.

David Jones has created an excellent interactive Google map, showing passport locations and details, and it has been uploaded to the website.

Last year I suggested that, to increase the medal and donation rate,

- The passport needs to be brought onto the home page.
 - Aled contacted the webmaster about a prominent link and learned it would cost £200-£300. The current homepage link will have to suffice.
- We could get comments about the thrill of getting a medal from the children who have completed, for the website.
 - We've put under Walkers' Stories, a page entitled Children's Tales. I've requested comments.
- We could think of school visits to promote it.
 - Action at the last meeting said we'd explore the marketing of the trail to kids in schools. Pending.

Joan Cutting

Website

The website continues to be used for downloading maps and instructions, and for sales

Aled Owen

T-shirts

We have a supply of T-shirts with our embroidered logo for sale which continues to raise a modest amount of funds. Sales are very slow.

Button badges and sew-on badges

Again, we have a supply of badges but sales are very slow.

Aled Owen

Further marketing ideas

Car stickers could prove to be a cheap, effective and accessible way to promote the SST all over the UK, available via our website. To further promote this they could be offered post free and by holding a one-off competition to win a car sticker for the best photo shared.

Dorothy Howarth

Projects Report

Path Improvements above Llan Ffestiniog

Contrary to last year's annual report, the project had not been completed. The few stones remaining alongside the path were placed along the path by volunteers from the Snowdonia Society this year and the project is truly complete. Many thanks to the Snowdonia Society for their efforts.

Start and end features

The benches are complete and one has been installed in Bethesda. The bench allocated to Porth Penrhyn remains in store pending construction of a base by Gwynedd Council's contractors, who are using the site at present. Installation is due in February 2024.

Repairs to permissive path at Conwy Falls

The steps here require repair. After much negotiation, Conwy Council has agreed to carry out those repairs. However, the work is delayed pending extension of the Permissive Path Agreement period.

Broader Community Involvement

A consortium of community groups and social enterprises in the Bethesda, Nantlle and Ffestiniog areas see the Trail as a major opportunity for sustainable tourism. They have secured funding to carry out research on opportunities and are hopeful of achieving further significant funding which can be tapped into, for example, to carry out an assessment of the Trail and the work necessary to bring it up to National Trail standard.

Aled Owen

Publication by Mark Richards

An exciting prospect for 2024 is the production of an illustrated book on the Trail by Mark Richards. Mark is a walking artist who has, hitherto, concentrated on the Lake District and the Dales. His work is reminiscent of that of Arthur Wainwright, and the production of a book on the Trail will widen even more the awareness of the Trail. Thanks to all trustees and wardens who accompanied Mark on wanders along the route.

Roger Greenhalgh

Acknowledgements

Heritage Lottery Fund
Magnox,
CADW,
Blakemore Foundation,
Snowdonia National Park CAE Fund,
The Foyle Foundation,
The Garfield Weston Foundation,
The Oakdale Trust,
Community Foundation in Wales,
HF Holidays,
Horizon,
First Hydro,
Dŵr Cymru,
The Laspen Trust,
Bethesda Town Council,
Ffestiniog Town Council,
Gwynedd Council,
Conwy County Borough Council,
Snowdonia National Park
Snowdonia Society
The Ramblers
Ashley Foundation
Rehau Plastics, Blaenau Ffestiniog,
Red Nose,
Cambrian Railways PAVD,
Mantell Gwynedd
and
our wardens.

All the above have contributed towards the success of our organisation.

SNOWDONIA SLATE TRAIL

England & Wales - Charity number 1182188

Accounts

Snowdonia Slate Trail



Annual Report
For year ending 5 April 2022
(with further information up to October 2022)

Presented at the AGM held on 29 October 2022

Snowdonia Slate Trail Trust
Registered Charity Number 1182188

Contents

Charity Information
Aims of the Charity
Details of Trustees and Advisors
Structure, governance and management
Financial Review
Objectives and Activities
Achievements and Performance
Responsibilities of the Committee
Secretary`s Report
Treasurer`s Report
Maintenance Report
Marketing Report
Other reports
Acknowledgements

2021-2022 Financial Statement



COMPANY INFORMATION

Registered 15 February 2019

Chair Joan Cutting

Charity Number 1182188

Registered Office 1 Ddol Terrace
Cwm Penmachno
Betws y Coed
Conwy
LL24 0RP

Independent Examiner Lisa Ruddin
32 Forest Gardens
Partington
Manchester
M31 4PL

Bankers Bank of Scotland

Aims of the Charity

- 1. The advancement of education for the public benefit in the unique slate heritage and culture of Snowdonia.*
- 2. The provision of facilities for recreation or other leisure time occupation for the public at large in the interests of social welfare by monitoring, managing and enhancing the Snowdonia Slate Trail long distance footpath.*

Details of Trustees as at 5 April 2020

Joan Cutting – **Chair**

Paul Bridges - **Secretary**

Aled Owen – **Treasurer**

Chris Perry – **Warden co-ordinator**

Dorothy Howarth – **Twitter account**

Mieko Yamaguchi – **Route details updates**

Details of Wardens and representatives as at 5 April 2021

Graham Fitch representing The Ramblers

Dan Goodwin representing Snowdonia Society

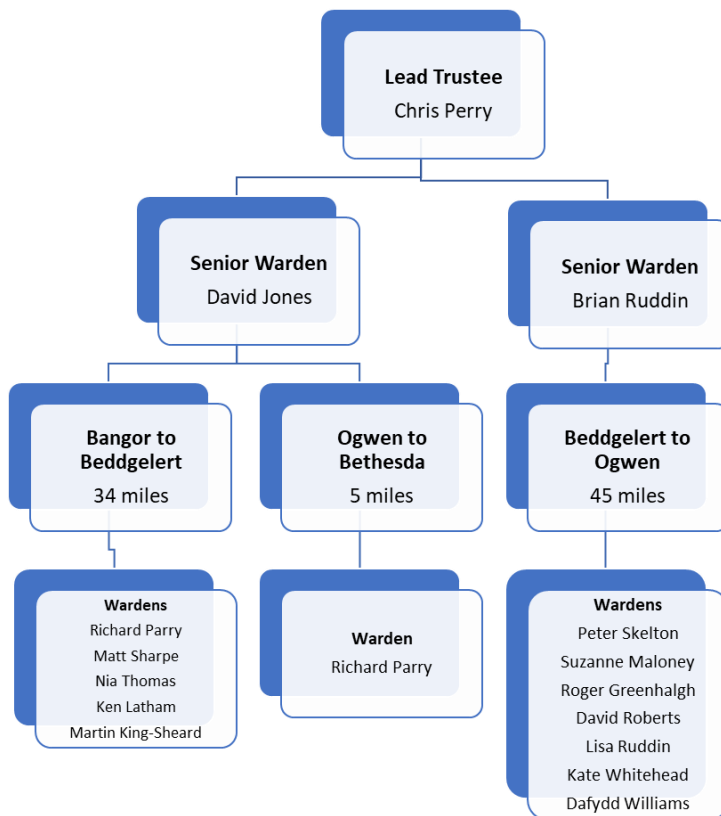
David Jones – Senior Warden

Brian Ruddin – Senior Warden

Structure, governance and management

The governing document of the Snowdonia Slate Trail Trust is the Constitution of the Snowdonia Slate Trail Trust, a Charitable Incorporated Organisation, (Foundation Structure) as amended on 7 February 2019. Copies of this document can be inspected on request.

The Snowdonia Slate Trail Trust is managed by the Board of Trustees. At present, there are 6 Trustees. Other people who wish to assist with the Trust do so as Wardens or volunteers.



The Board of Trustees generally meets once a year, and occasionally at other times as necessary, and meetings are open to wardens and interested parties to attend. Otherwise, communication is via email or the WhatsApp group.

Induction and Training

New Trustees are given the Charities Commission “How to be a Trustee” document. Trustees are encouraged to keep up to date with charity law by private learning. This year, there have been no training events.

Risk Management

The Trustees carry out a continuous and ongoing review of policies designed to identify, manage and avert risk, both financial and operational. The Treasurer aims to report regularly on the state of the finances and reviews past performance and future needs. The Trustees act accordingly.

Financial Review

The Trust maintains a healthy bank balance and continues to monitor expenditure such that it remains sustainable. The 2021-22 account was audited, and no issues were highlighted. A full Treasurer`s report is included below.

Policy on Reserves

The Snowdonia Slate Trail Trust needs reserves for the following reasons:-

- To provide sufficient working capital for its day to day needs
- To enable it to continue to operate in the event of a crisis.
- To enable it to cope with any reduction in its income.
- To finance and underpin growth in its activities.

This is our fourth year and has seen us raise no grants of £6250 for projects. The Trustees hope to continue in the same vein in the future.

Objectives and Activities

The objectives of the Charity remain in the forefront for the Trustees. Fundraising continues sustainably according to the needs of any identified projects or required maintenance of the Trail. However, the current economic situation is making it more difficult to raise funds from agencies whose budgets are under pressure.

Achievements and Performance

We are very pleased that we have managed to continue our sustainable fundraising in this difficult economic climate through grants and donations.

Responsibilities of the Committee

The Committee is required to prepare financial statements for each financial year in accordance with United Kingdom Generally Accepted Accounting Practice (United Kingdom Accounting Standards and

applicable law). The financial statements are required by law to give a true and fair view of the state of affairs of the company and of its incoming resources and application of resources of the company for that period. In preparing those financial statements the committee is required to select suitable accounting policies and apply them consistently, make judgments and estimates that are reasonable and prudent, state whether applicable accounting standards have been followed subject to any material departures disclosed and explained in the financial statements and prepare the financial statements on the going concern basis unless it is inappropriate to presume that the company will continue in business.

The committee is responsible for keeping proper accounting records which disclose with reasonable accuracy at any time the financial position of the company and to enable them to ensure that the financial statements comply with the requirements of the Charities Act 1993 and Charities SORP 2005 and the Charity's constitution. They are also responsible for safeguarding the assets of the Company and hence for taking reasonable steps for the prevention and detection of fraud and other irregularities.

As far as we are aware, there is no relevant information of which the Company's independent examiner is unaware of, and we have taken all the steps that we ought to have taken as Trustees to make ourselves aware of any relevant financial information and to establish that the charity's independent examiner is aware of that information.

The report has been prepared in accordance with the special provisions of the Charities Act 1993 applicable to small charities.

On behalf of the Trustees

Paul Bridges (Secretary)

Date 29th October 2022

Treasurer's Report

The financial report appended to this document covers the financial year 2021-22.

In that year, we raised £6250 through five grants for the end features project and for setting up the new website. Minor donations and medal sales raised £596. Income from book sales is, in fact, a donation from Aled. The £1019 income attracted gift aid of £379. The calendar made a loss of £67 and has been abandoned for the future.

Main expenditure was on equipment for wardens (£176), the old and new website (£4753), maintenance (£398), postage (£230) and insurance (£164). This brought our available funds to £11530, of which £416 was unrestricted, while the rest was allocated to the end features, further improvements, and to website maintenance.

Since the end of the last financial year and as at 30 September 2022, about £240 has been received, mostly in donations and medal sales, while the major expenditure has been £1900 on the end features.

Amazon Smile had contributed £5 to date, while Easyfundraising.com shows about £77 owing to us.

Aled Owen

Treasurer

Maintenance Report



We now have two senior wardens and 12 wardens. Two, Martin King-Sheard and Dafydd Williams are very recent recruits and will be reporting over the next year. The following reports show the work typically carried out by our much appreciated wardens. David's suggestion of yellow post tops has been commented on very positively by walkers.

During the past year, my main achievement has been to place yellow caps on marker posts along two of the remoter sections of the Trail I oversee (Gwaen Gynfi moor [x8], & between the 'Rock Garden' & Y Fron [x14]).

David Jones – Senior Warden

All road signs cleaned in Betws y Coed



Ogwen Cottage – Capel Curig

6 Roundels added along the route

National Trust Foot stile requiring attention



Large accumulation of water before bridge – walkers climbing fence to avoid. Needs infilling.

Road sign on Tryfan side of A5 is slightly loose. Will replace on next visit.

All older roundels on this section will need replacing next year.

Capel Curig – Ty Hyll

Overall, the path was in good condition with very little cutting back needed. I noted there has been a little path restoration in places shortly after the first bridge.

4 missing roundels/screws replaced.

Lining of footpath exposed.



Replacement post needed as original was rotten and had been moved from original location. Secured as best as possible – will return with replacement post. Shrubbery cut back.

November 2021- walked Llanberis to Rhyd Ddu with no issues. Several faded or broken roundels replaced and two added at crossroads before the boggy section on approach to the farm before the descent. Retraced the same section with no problems on return.



March 2022. Rhyd Ddu- Beddgelert including Aberglaslyn stretch to town. No works required, path in excellent condition with all markers present. Rubbish collected filled two bags and some logs moved away from path.

May 2022- Beddgelert- Rhyd Ddu. Again no problems to report. Bushes growing well put path clearly visible and safe to navigate. No markers missing.

September 2022- Rhyd Ddu toward Llanberis but stopped before descent into town and returned the same route. No buses this day so avoided the hilly tarmac section. No problems to report. Path is beautiful up here, nice to see the seasons changing.

I've walked various other sections around Betws and Dolwyddelan at various points this year also with no problems noted. April, August and September. Nettles and bracken chopped back in a few places but nothing detrimental to the trails beauty or my enjoyment of it.

Matt Sharpe



The girls and I have been out and about between Tanygrisiau and Llan Ffestiniog on some beautiful days. Signage between Blaenau Ffestiniog and Afon Teigl has been improved but still needs a couple of posts placing in strategic positions. The bracken has taken a bashing! Pleased to say that, outside of the towns, litter has been minimal on the Trail.

Looking forward to some beautiful frosty walks.

Kate, Jemima and Cecily Whitehead

Rich Parry is a recent recruit and covers Bangor to Bethesda. He has been involved in replacing roads signs with our new strengthened signs.

Rich Parry



Throughout 2022, Nia and Noel have kept close watch on sections from Waunfawr to Nantlle, ensuring that they are traversable and clearly marked. This has been through a longer full inspection before the summer, with another planned for autumn, and through shorter walks of different parts of the trail. On these walks, it has been heartening to see how many individuals are supporting the path through its usage. A particular favourite of the pair has been a pair of mountain bikers, who had just finished the (rather steep!) ascent from Waunfawr and were catching their breath before continuing on to Y Fron.

Over the summer, local businesses thrived along the trail. Special mention goes to Canolfan Y Fron, a community led enterprise which has numerous activities such as yoga classes and carboot sales. Further along the trail, Poblado Coffee had their second annual summer of Saturday sessions, commencing with a 5k jog around Dorothea Quarry and its sights and ending with a musica performance. Not forgetting the locally roasted coffees available! Truly something for everyone on this section in 2022.



Nia Williams

Earlier in the year I tackled the insertion or replacement of a small number of waymarking roundels at obtuse or unclear points on the route, in situations where it was quite difficult to identify suitable substrate on which to mount them.

A useful technique for vertical slate surfaces proved to be to drill out a set of three small pilot holes, mount the roundel initially with an outdoor/waterproof mastic applied to the rear and also into the pilot holes, then insert a set of short galvanised roofing nails into the holes

I've returned to these points regularly throughout the season, and can confirm that all of them are still holding in place well.



Litter hasn't been a problem at any point along the route. However, I've still had cause to do the occasional litter-pick at each of these two car parks. I soon learned the patterns! Tanygrisiau, for example, gets its share of overnight van-campers, (hence food wrappers and nappies) and is a popular local dog-walk (hence poo bags)

Roger Greenhough (Part of a more comprehensive report to the Trustees)

It's been a very strange year with one thing or another, I managed to get admitted to hospital and ended up being diagnosed with long Covid. This really knocked the wind out of my sails and I was not managing to get out as much as I would have liked. Despite this I managed to walk my Rhyd Ddu to Beddgelert section several times and to be honest it was mostly in a good state, the odd fix of a post here and there and asking the SNPA to replace/mend a signpost near the old packhorse bridge, I'm still waiting!

All of the roundels are in good condition.

The Nantlle section I only managed to complete twice. There is a lot of tree removal work going on and the section from the roadside (B4418) at Nantlle through the farm is an ongoing quagmire and a broken stile at Drws y Coed was reported to the park authority too.

I hope to get back on this section in the coming month, or I might wait till the ground is frozen!

Some damage has occurred to the roundels at the Dorothea Slate Quarries, and this is an ongoing issue, vandalism from the roundels being used as targets by the local youths apparently. It's difficult to see any way of avoiding this, I'll keep replacing them, one of us will get fed up with it in the end!

It is a great help that we now have a new Warden, Martin, joining us on this section too. One thing to note and this is not on my 'patch' is that the Dinorwig Lodge tearoom has ceased trading as a café.

Ken Latham

Betws y Coed to Ugly House done. No issues identified.

Dai Roberts

Having only started being a Warden on this section since June and knee trouble, i've only been able to walk the whole route once at the start of last month, there was nothing to report then only dense bracken coming up from Cwm farm towards the waterfall, by now it should be coming to the end of its life.

I've walked down to Cymerau falls from Llan Ffestiniog a few times and again nothing major to report on that. The new signage on Bont Newydd has been very useful, and as mentioned on the what's app group the dense bracken on the side of the river by Bont Newydd has meant that the path has deviated towards the middle of the field.

I'm hoping to be able to walk the section a more over the coming winter now and keep an eye out on any problems.

Diolch yn fawr

Dafydd Morgan

We love being wardens for the trail. It's great getting outdoors in the fresh air to start with but also the fact that whilst we're out checking the markers (roundels) we're helping a bigger wider community enjoy the trail, keeping them safer so they don't get lost, reporting back any issues we can't deal with instantly. Above all its meeting people; something about being outside walking, everyone is super friendly and want to chat - love our patch too.

Suzanne and Shaun Maloney

Education Report

Talks and seminars

Aled recently took part in a Podcast for Snowdonia National Park to be distributed in November. No talks have happened although one to Edinburgh Ramblers is scheduled in November.

Marketing Report

Brochures - Aled

Brochures are available in a number of outlets but more effort needs to be made to ensure these outlets maintain their stock. I think once the present supply is exhausted, we will need to decide whether they are worth continuing.

Facebook, Twitter and Instagram

Our Facebook page has some 3800 followers and serves to share information about the Trail as well as Trail walkers` experiences and photos. Both Instagram and Twitter have around 1200 followers each. Dorothy has arranged a Tic Toc account.

Aled Owen and Dorothy Howarth

Guidebook

Sales of the guidebook have exceeded expectations with well over 3000 sold. A new edition was published in early 2022. Sales through the website will have generated about £5200 for path maintenance and development to date.

Aled Owen

Passport and medals

We're into the fourth year of the Passport Scheme. Here's how it's looking so far:

Aug 2018 to Nov 2019	13 medals	£105.50
Nov 2019 to Sep 2020	7 medals	£ 72
May 2021 to Oct 2021	19 medals	£340.50
Oct 2021 to Oct 2022	24 medals	£184
TOTAL	62 medals	£702

This year we've had the highest number of medals yet. However, compared to last year, which only ran six months from May to October due to Covid, the number's gone down. Double last year's medal total would have been 38. The donations alongside the medal cost are far lower than last year as well, although some people were very generous then.

The question is, does it matter? Are we happy with this medal and donation rate, or is there something we could do to increase it? The website says walkers can give a donation towards trail maintenance if they wish. Maybe the passport needs to be brought onto the home page. Maybe we could get comments about the thrill of getting a medal from the children who have completed, for the website. Maybe we could think of school visits to promote it.

Joan Cutting

Website

The website continues to be used for downloading maps and instructions. The new website was up and running on time and is working well. It is easy for us to update. The "Shop" page which is working well.

Aled Owen

T-shirts

We have a supply of T-shirts with our embroidered logo for sale which will raise a modest amount of funds. Sales are very slow.

Aled Owen

Calendars

Calendars made a loss of £67 so the trustees have decided not to produce one for next year.

Aled Owen

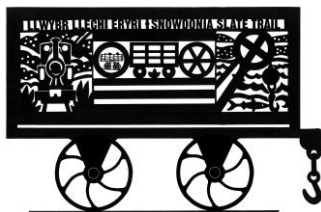
Projects Report

Path Improvements above Llan Ffestiniog.

This project has been completed. There are a few stones remaining alongside the path but they will soon be covered by the bracken.

Start and end features

After the initial hitch, we decided to change approach and commission two bespoke benches, designed by Yvonne Amor and Justin Taylor of Penmachno at a cost of £5-6000. All funds are in place and we have, with Miekò's help, negotiated with Gwynedd Council to place a concrete base at Porth Penrhyn. It is hoped that the



benches will be installed in November.

Other News



Jemima and Cecily raised over £1000 for Llanberis Mountain Rescue and OVMRO this year by walking the trail. Earlier this month, that achievement was recognised by Scouts Cymru at the National AGM in Llandrindod Wells with a big Well Done in Community Impact Award.

Kate Whitehead

Acknowledgements

National Lottery
Magnox,
CADW,
Blakemore Trust,
Snowdonia National Park CAE Fund,
The Foyle Foundation,
The Garfield Weston Foundation,
The Oakdale Trust,
Community Foundation in Wales,
HF Holidays,
Horizon,
First Hydro,
Dwr Cymru,
The Laspen Trust,
Bethesda Town Council,
Ffestiniog Town Council,
Gwynedd Council,
Conwy County Borough Council,
Snowdonia National Park
Snowdonia Society
The Ramblers
Ashley Foundation
Rehau, Blaenau Ffestiniog

and
our wardens.

All the above have contributed towards the success of our organisation.



Receipts and payments accounts

For the period from	Period start date 1-Apr-21	To	Period end date 31-Mar-22
---------------------	-------------------------------	----	------------------------------

Section A Receipts and payments

	Unrestricted funds to the nearest £	Restricted funds to the nearest £	Endowment funds to the nearest £	Total funds to the nearest £
A1 Receipts				
Bring forward	3,323	5,751		
Activities for generating funds (trading)- medals	109		-	109
Activities for generating funds (trading) - badges			-	-
Donations - medals	321		-	321
Donations - other	123	-	-	123
Refunded postage				-
Donations - T-shirt sales	45			45
Gift Aid	379			379
Refunded Land registry fees				-
Calendar Sales	602		-	602
Donations - guidebook sales	1,019		-	1,019
Footpath improvements from book sales				-
Footpath improvements grants			-	-
End feature grants		4,250	-	4,250
Website grants		2,000	-	2,000
Sub total (Gross income for AR)	5,919	12,001	-	17,920
A2 Asset and investment sales, (see table).				
	-	-	-	-
	-	-	-	-
Sub total	-	-	-	-
Total receipts	5,919	12,001	-	17,920
A3 Payments				
Insurance	165	-	-	165
Trustee expenses		-	-	-
Deposit on end feature		-	-	-
Maintenance	398	177	-	575
Website	293	4,460	-	4,753
Path improvement			-	-
Calendar costs	669	-	-	669
Postage	230		-	230
End features		-	-	-
Passport project		-	-	-
	-	-	-	-
Sub total	1,754	4,637	-	6,391
A4 Asset and investment purchases, (see table)				
	-	-	-	-
	-	-	-	-
Sub total	-	-	-	-
Total payments	1,754	4,637	-	6,391
Net of receipts/(payments)	4,165	7,364	-	11,529
A5 Transfers between funds	-	-	-	-
A6 Cash funds last year end	-	-	-	-
Cash funds this year end	4,165	7,364	-	11,529

Section B Statement of assets and liabilities at the end of the period

Categories	Details	Unrestricted funds to nearest £	Restricted funds to nearest £
B1 Cash funds	From Section A	4,165	7,364
		-	-
	Total cash funds	4,165	7,364
	(agree balances with receipts and payments account(s))	OK	OK

	Details	Unrestricted funds to nearest £	Restricted funds to nearest £
B2 Other monetary assets		-	-
		-	-
		-	-
		-	-
		-	-
		-	-

	Details	Fund to which asset belongs	Cost (optional)
B3 Investment assets			-
			-
			-
			-
			-

	Details	Fund to which asset belongs	Cost (optional)
B4 Assets retained for the charity's own use			-
			-
			-
			-
			-
			-
			-
			-
			-

	Details	Fund to which liability relates	Amount due (optional)
B5 Liabilities			-
			-
			-
			-
			-

Signed by one or two trustees on behalf of all the trustees

Signature	Print Name

CC16a



Last year
to the nearest £

24
-
30
50
10
10
795
77
-
-

-
-

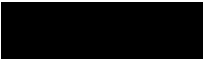
-

165
794
672
14
163
-

-

--

-
-
-



Endowment funds

to nearest £

-
-
-
-

OK

Endowment funds

to nearest £

-
-
-
-
-
-

Current value (optional)

-
-
-
-
-

Current value (optional)

-
-
-
-
-
-
-
-
-

When due (optional)

Date of approval

SNOWDONIA SLATE TRAIL

England & Wales - Charity number 1182188

Accounts

Snowdonia Slate Trail



Annual Report
For year ending 5 April 2021
(with further information up to October 2021)

Presented at the AGM held on 20 November 2021

Snowdonia Slate Trail Trust
Registered Charity Number 1182188

Contents

Charity Information
Aims of the Charity
Details of Trustees and Advisors
Structure, governance and management
Financial Review
Objectives and Activities
Achievements and Performance
Responsibilities of the Committee
Secretary`s Report
Treasurer`s Report
Maintenance Report
Marketing Report
Other reports
Acknowledgements

2020-2021 Financial Statement



COMPANY INFORMATION

Registered 15 February 2019

Chair Joan Cutting

Charity Number 1182188

Registered Office 1 Ddol Terrace
Cwm Penmachno
Betws y Coed
Conwy
LL24 0RP

Independent Examiner Lisa Ruddin
32 Forest Gardens
Partington
Manchester
M31 4PL

Bankers Bank of Scotland

Aims of the Charity

- 1. The advancement of education for the public benefit in the unique slate heritage and culture of Snowdonia.*
- 2. The provision of facilities for recreation or other leisure time occupation for the public at large in the interests of social welfare by monitoring, managing and enhancing the Snowdonia Slate Trail long distance footpath.*

Details of Trustees as at 5 April 2020

Joan Cutting – **Chair**

Paul Bridges - **Secretary**

Aled Owen – **Treasurer**

Chris Perry – **Warden co-ordinator**

Dorothy Howarth – **Twitter account**

Mieko Yamaguchi – **Route details updates**

Details of Wardens and representatives as at 5 April 2020

Graham Fitch representing The Ramblers

Dan Goodwin representing Snowdonia Society

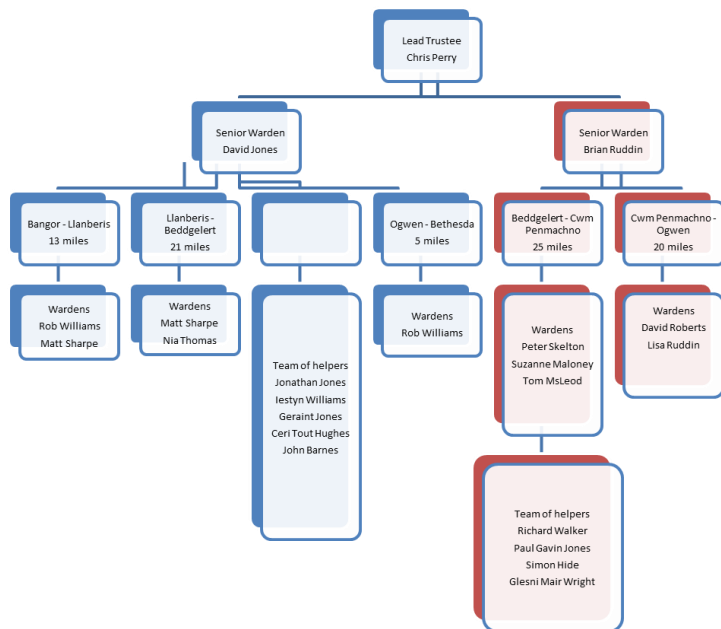
David Jones – Senior Warden

Brian Ruddin – Senior Warden

Structure, governance and management

The governing document of the Snowdonia Slate Trail Trust is the Constitution of the Snowdonia Slate Trail Trust, a Charitable Incorporated Organisation, (Foundation Structure) as amended on 7 February 2019. Copies of this document can be inspected on request.

The Snowdonia Slate Trail Trust is managed by the Board of Trustees. At present, there are 5 Trustees. Other people who wish to assist with the Trust do so as Wardens or volunteers.



The Board of Trustees generally meets twice a year, and occasionally at other times as necessary, and meetings are open to wardens and interested parties to attend. Due to Covid-19, the Trustees have only met virtually, and once, in the past year.

Induction and Training

New Trustees are given the Charities Commission “How to be a Trustee” document. Trustees are encouraged to keep up to date with charity law by private learning. This year, there have been no training events.

Risk Management

The Trustees carry out a continuous and ongoing review of policies designed to identify, manage and avert risk, both financial and operational. The Treasurer

aims to report regularly on the state of the finances and reviews past performance and future needs. The Trustees act accordingly.

Financial Review

The Trust maintains a healthy bank balance and continues to monitor expenditure such that it remains sustainable. The 2020-21 account was audited and no issues were highlighted. A full Treasurer`s report is included below.

Policy on Reserves

The Snowdonia Slate Trail Trust needs reserves for the following reasons:-

- To provide sufficient working capital for its day to day needs
- To enable it to continue to operate in the event of a crisis.
- To enable it to cope with any reduction in its income.
- To finance and underpin growth in its activities.

This is our third year and has seen us raise no grants for projects, although £3000 has been raised since 5 April 2021. The Trustees hope to continue in the same vein in the future.

Objectives and Activities

The objectives of the Charity remain in the forefront for the Trustees. Fundraising continues sustainably according to the needs of any identified projects or required maintenance of the Trail. However, the current economic situation is making it more difficult to raise funds from agencies whose budgets are under pressure.

Achievements and Performance

We are very pleased that we have managed to continue our sustainable fundraising in this difficult economic climate through grants and donations.

Responsibilities of the Committee

The Committee is required to prepare financial statements for each financial year in accordance with United Kingdom Generally Accepted Accounting Practice (United Kingdom Accounting Standards and applicable law). The financial statements are required by law to give a true and fair view of the state of affairs of the company and of its incoming resources and application of resources of the company for that period. In preparing those financial statements the committee is required to select suitable accounting policies and apply them consistently, make judgments and estimates that are reasonable and prudent, state whether applicable accounting standards have been followed subject to any material departures disclosed and explained in the financial statements and prepare the financial statements on the going concern basis unless it is inappropriate to presume that the company will continue in business.

The committee is responsible for keeping proper accounting records which disclose with reasonable accuracy at any time the financial position of the company and to enable them to ensure that the financial statements comply with the requirements of the Charities Act 1993 and Charities SORP 2005 and the

Charity`s constitution. They are also responsible for safeguarding the assets of the Company and hence for taking reasonable steps for the prevention and detection of fraud and other irregularities.

As far as we are aware, there is no relevant information of which the Company`s independent examiner is unaware of, and we have taken all the steps that we ought to have taken as Trustees to make ourselves aware of any relevant financial information and to establish that the charity`s independent examiner is aware of that information.

The report has been prepared in accordance with the special provisions of the Charities Act 1993 applicable to small charities.

On behalf of the Trustees

Paul Bridges (Secretary)

Date 15th November 2021

Secretary`s Report

The Board of Trustees generally meets twice a year, and occasionally at other times as necessary. Annual General Meetings (AGMs) occur once a year. Last years' AGM took place 23rd November 2020, virtually over a video call due to Covid19. This year's meeting will take place November 20th 2021. All meetings have an agenda and minutes follow. All meetings are open to wardens and interested parties to attend. This report documents the activities of the organisation over the last year.

Paul Bridges

Secretary

Treasurer`s Report

The financial report appended to this document covers the financial year 2020-21.

In that year, dominated by Covid-19, we had no grants, but had minor donations and income from medal sales of £181. Calendar sales brought in a profit of £123.

Main expenditure was on the path improvement project (£122), equipment for wardens (£671), end features (£1500), passports (£163) and insurance (£164). This brought our available funds to £9075, of which £3324 was unrestricted, while the rest was allocated to the end features, the footpath project and further improvements, and to website maintenance.

Since the end of the last financial year and as at 30 October 2021, about £4000 has been received, mostly in grants for the new website and end features, while the major expenditure has been £398 on plastic post tops and £750 on the new website. In addition, £2477 was paid to Creativity Jones, our webmaster over the past three years, for hosting and maintenance. This drew down our restricted funds of £2460 carried over from the original Heritage Lottery Grant

Aled Owen

Treasurer

Maintenance Report

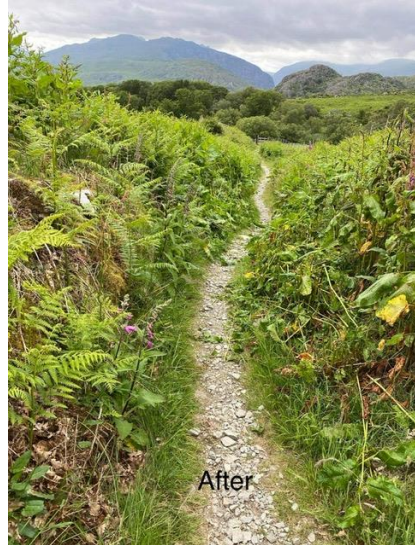
Lisa Ruddin - Warden

Here is a breakdown of the activity from the last outing on the trail from Ogwen Cottage to the Ugly House:

1 x yellow post top installed

5 x roundels replaced

- 2 x roundels introduced on to a new post
- 2 x plastic road signs replaced - green
- 2 x plastic road signs replaced - brown
- 3 x posts made secure
- 2 x exposed screws secured on wooden bridge
- 2 x overgrown undergrowth cut back for access



Peter Skelton – Warden

Slate Trail walked and re-signed from Llyn Morwynion Reservoir to the slate mine; There were 4 signs then replaced. From the slate mine to Cwm Penmachno, 3 signs were replaced.

David Jones – Senior Warden

As a volunteer warden, when time allows, I walk sections of the trail and will take notes of any situation that may affect a walkers' progress along the trail, fixing some of those issues as I go. e.g. new or replacement roundels, cutting back encroaching brambles or branches, etc. I issue a report on my return of my findings and actions, some of which may need a subsequent visit to solve or repair. I suggested yellow post tops which have been adopted.



Matt Sharpe

May 2021: Walked from Llanberis to Rhyd Ddu - no real issues to report, replaced two roundels which were faded on the ascent toward the peak. Some overgrown areas, although not infringing on the path too seriously.

October 2021: Walked from Beddgelert to Rhyd Ddu - no issues to report. All roundels correct, path in good condition, although very boggy in places. A few stiles close to the end of their useful life, but no damage causing a danger to path users yet.

Rob Williams

The last year has been different again - further stay at home messages have made it difficult for many and access to the outdoors been as important as ever. I have been one of the lucky ones as I live just a few meters from the trail, owning a dog and being a keen runner means I am on the trail nearly every day (hopefully looking to run the whole trail next year)

I cover a large section from Ogwen Cottage to Port Penrhyn, while most of the trail is on well-marked paths and is well maintained we do on occasion have the odd broken gate and styles. The most fulfilling part of volunteering however is meeting and discussing with such a wide range of people, especially with a panad at Ogwen Cottage.

I have set up a Instagram (Slate trail Warden) page to try and share photos of my trips along the trail and often get messages from people around the world asking about the trail.

Suzanne and Shaun Maloney

Shaun & I love being wardens, we enjoy getting out in the outdoors and seeing the seasons come & go. Since becoming wardens we've worn our hi-viz vest each time we've gone out and have been stopped a number of times by hikers not quite sure which direction to go, we've got into some interesting conversations with people which possibly wouldn't have happened without us wearing them. Our grandsons have joined us a few times and have also enjoyed replacing worn markers.

Looking after the markers and making sure the paths are accessible gives us a sense of pride that we are helping keep a little bit of history alive for everyone to enjoy

Education Report

Talks and seminars

None have happened due to Covid-19

Marketing Report

Brochures - Aled

Brochures are available in a number of outlets but more effort needs to be made to ensure these outlets maintain their stock

Facebook, Twitter and Instagram – Aled, Dorothy and Chris

Our Facebook page has some 3400 followers and serves to share information about the Trail as well as Trail walkers` experiences and photos. Both Instagram and Twitter have over 1100 followers each. Dorothy has arranged a Tic Toc account.

Guidebook - Aled

Sales of the guidebook have exceeded expectations with approximately 3000 sold. Sales through the website will have generated about £4500 for path maintenance and development to date.

Passport and medals –Joan

We're into the third year of the Passport Scheme. Here's how it's looking so far:

Aug 2018 to Nov 2019	13 medals	£105.50
Nov 2019 to Sep 2020	7 medals	£72.00
May 2021 to Oct 2021	19 medals	<u>£340.50</u>
TOTAL	38 medals	£518.00

The uptake this year is up from the 7 medals of last year to 18, in part because of the lifting of Covid-19 restrictions. However, despite the fact that walkers have mostly been out and about for only five months, it's been the best year so far, because of the

- Publication of the map of venues in the Passport Scheme on the SST website
- Increased promotion of the Passport Scheme on Facebook, Instagram and Twitter, carried out by SST Trust members
- Communication Sep, Oct and Nov 2020 between myself and the 16 existing venues, to raise awareness of the scheme amongst all staff, thus ensuring that the stamp and passports were readily available for walkers
- Addition of 7 new venues (thanks to suggestions from SST Trust members), with the consequent dispatch of passports and stamps Nov 2020 to March 2021, thus ensuring that, even if several venues were closed, there were enough open for walkers to obtain their 8 required stamps

The cost of medals has remained at £3.50 over the three years. The total income this year is £340.50 because many walkers have been exceedingly generous in their donations to path maintenance.

We decided against QR codes on the wall outside venues for walkers to scan as it was considered unfeasible.

Website - Aled

The website continues to be used for downloading maps and instructions.

Our webmaster is retiring at the end of 2021 and we have commissioned an upgraded website from a another provider. This site is being built and will be ready for the end of the year.

The Charity Commission has approved including the passport page and the accommodations age on our main website and we will get this done. We do now have a “Shop” page which is working well.

We have decided to omit the app as it is possible to download all route details and GPS from the website.

T-shirts - Aled

We have a supply of T-shirts with our embroidered logo for sale which will raise a modest amount of funds. Sales are very slow.

Calendars – Aled

Calendars made a profit of only £123 so we have decided to reduce the order to 175 this year and see how it goes. Orders are very slow at the moment.

Other

The Trail, and the work of the wardens, particularly Lisa and Brian Ruddin, will feature on Weatherman Walking in 2022.

Projects Report

Path Improvements above Llan Ffestiniog.

The Snowdonia Society has assured us that work will commence soon to complete this project, which has been delayed by the pandemic

Start and end features

The metalworker commissioned to build two slate trucks went into administration early in the pandemic and omitted to tell us of these difficulties. We have, therefore, lost the deposit of £1500 paid for materials. Aled is trying to contact him to see whether those materials are available but has had no success.

We have decided to change approach and commission two bespoke benches, designed by Yvonne Amor and Justin Taylor of Penmachno at a cost of £5-6000. We have allocated funds of £1900 already and are awaiting the outcome of a number of grant applications. Aled feels confident that we can raise the necessary amount in the next year.

Acknowledgements

National Lottery
Magnox,
CADW,
Blakemore Trust,
Snowdonia National Park CAE Fund,
The Foyle Foundation,
The Garfield Weston Foundation,
The Oakdale Trust,
Community Foundation in Wales,
HF Holidays,
Horizon,
First Hydro,
Dwr Cymru,
The Laspen Trust,
Bethesda Town Council,
Ffestiniog Town Council,
Gwynedd Council,
Conwy County Borough Council,
Snowdonia National Park
Ashley Foundation
Rehau, Blaenau Ffestiniog
and
our wardens.

All the above have contributed towards the success of our organisation.

Accounts 2019-20

Month	Income	Unrestricted					Restricted										Month
		Medals	Medal donations	Donations Badges	Other Donations	Donation Use of Logo	Calendar Sales inc postage	Refund Land Registry End Features	T-shirt sales	Guidebook transfer donation	HLF funds for website maintenance	Gwynedd grant for interpretative boards transferred from CCG	Donations from book sales towards demonstration improvement project	Grants towards demonstration improvement project	Grants towards end features		
Bring forward	9886.87																
April	£0.00																April
May	£0.00																May
June	£0.00																June
July	£0.00																July
August	£42.81	£3.50	£20.00					£7.00		£12.31						August	
Sept	£45.31	£13.00	£7.00					£3.00	£10.00	£12.31						Sept	
October	£265.93				£0.01	£50.00	£215.92									October	
November	£420.02						£394.04			£25.98						November	
December	£187.81						£161.81			£26.00						December	
January	£32.85	£7.00	£3.00				£22.85									January	
February	£0.00															February	
March	£0.00															March	
Totals	£10,881.60	£23.50	£30.00	£0.00	£0.01	£50.00	£794.62	£10.00	£10.00	£76.60	£0.00	£0.00	£0.00	£0.00	£0.00	£0.00	£994.73
Total										£994.73	Total					£0.00	£994.73

Month	Income	Unrestricted					Restricted										Month
		Insurance	Trustee expenses	Payment for end features	Maintenance	Passports	Calendar costs	Calendar postage					Warden safety equipment	Bron yr Erw path improvement			
Bring forward																	
03/19	£0.00																
April	£122.50													£122.50			April
May	£0.00																May
June	£0.00																June
July	£0.00																July
August	£305.92											£305.92				August	
Sept	£554.68			£14.00			£507.18					£33.50				Sept	
October	£164.64	£164.64														October	
November	£81.81							£81.81								November	
December	£194.58					£163.48		£31.10								December	
January	£51.74							£51.74								January	
February	£0.00															February	
March	£331.76											£331.76				March	
Totals	£1,807.63	£164.64	£0.00	£14.00	£0.00	£163.48	£507.18	£164.65	£0.00	£0.00	£0.00	£671.18	£122.50	£0.00	£0.00	£1,807.63	
Total										£1,013.95	Total					£793.68	£1,807.63

£812.90
0.0

£122.79 Calendar profit

Running Total	Income	Expenditure	Balance
2019-2020			9,886.87 Brought forward
April	£0.00	£122.50	9,764.37
May	£0.00	£0.00	9,764.37
June	£0.00	£0.00	9,764.37
July	£0.00	£0.00	9,764.37
August	£42.81	£305.92	9,501.26
September	£45.31	£554.68	8,991.89
October	£265.93	£164.64	9,093.18
November	£420.02	£81.81	9,431.39
December	£187.81	£194.58	9,424.62
January	£32.85	£51.74	9,405.73
February	£0.00	£0.00	9,405.73
March	£0.00	£331.76	9,073.97

9514.94

Restricted funds	Carried Forward	Income	Expenditure	Balance
Path improvement	£3,184.97	£0.00	£793.68	£2,391.29
End features	£0.00	£0.00	£0.00	£0.00
Interpretation	£900.00	£0.00	£0.00	£900.00
Website maintenance	£2,460.00	£0.00	£0.00	£2,460.00

£5,751.29
£3,322.68

Restricted
Unrestricted

£0
£0

Unrestricted funds	Income	Expenditure	Balance
	£4,336.63	£1,013.95	£3,322.68

£9,073.97

0.0

2019-20	Date	Income	Breakdown	Expenditure		Gift Aid	GASD
		994.73		1,807.63			9,886.87 9,073.97
April				122.5	Cheque 000017		Ultra donation Cheque to Aled for trailer hire
May							
June							
July							
August				305.92	Cheque 000018		Cheque to Aled for warden T shirts
	09/04/2020	12.31	Transfer			12.31	Guidebook donation Aled's donation
	08/11/2020	7	Pay in slip 500015				Refund of Land Registry fee
	08/27/2020	3	Pay in slip 500016				Refund of Land Registry fee
	08/30/2020	3.5	Transfer				Medal
		20.00	Transfer			20	Donation
September				14	Cheque 000019		Land registry fee to determine landownership at Porth Penrhyn
	09/26/2020	3.5	Transfer	33.5	Cheque 000019		Postage for warden equipment
	09/26/2020	6.5				6.5	Gary Corns Medal
	09/28/2020	12.31	Transfer			12.31	Gary Corns Donation Aled's donation
	09/28/2020	10				10.01	Geoff Roberts Book Aled's donation
	09/28/2020	9.5	Pay in slip 500017				Medals
	09/30/2020	0.5		507.18	Cheque 000020	0.5	Donation
October				164.64	Cheque 000021		Calendar costs to Aled
	10/15/2020	132.62	Paypal Transfer				Market Insurance
	10/20/2020	0.01	Paypal Transfer				Calendar Sales up to Ruth White
	10/30/2020	50.00					Paypal set up bank account
		83.30	Paypal Transfer				Donation from Breeze Adventures
							Calendar Sales up to Alison Greaves
November				81.81	Cheque 000022		Calendar sales to Angharad Price
	11/03/2020	20.94	Paypal Transfer				Aled's calendars
	11/03/2020	66.00	Bank Transfer				Calendar sales to Shaun Maloney
	11/10/2020	91.03	Paypal Transfer				Calendars Lisa Ruddin
	11/24/2020	22.50	Bank Transfer				Michelle Jenkins Books donation
	11/24/2020	25.98	Bank Transfer			25.98	Calendar postage to Aled Aled's donation
	11/24/2020	15.00	Bank Transfer				Calendars Aled
	11/25/2020	15.00	Bank Transfer				Calendars
	11/26/2020	72.00	Bank Transfer				Calendars Joan
	11/26/2020	48.02	Paypal Transfer				Calendars to Joan Cutting
	11/29/2020	43.55	Paypal Transfer				Calendars to Mo Houghton
December				163.48	Cheque 000023		Expand Passport Scheme to Aled
	12/01/2020	6.00	Bank Transfer				BACS Adrian Curtis Calendar
	12/06/2020	26.00	Bank Transfer				BACS Adrian Curtis Books donation
	12/09/2020	43.07	Paypal Transfer			31.1	Calendars to Michelle Cale
	12/10/2020						Calendar postage to Aled
	12/13/2021	35.95	Paypal Transfer				Calendars
	12/27/2020	10.00	Bank Transfer				BACS from Joan Calendar
	12/27/2020	43.14	Paypal Transfer				Calendars to Jane Marsh
	12/30/2020	23.65	Paypal Transfer				Calendars to Sarah Saunderson
January				51.74	Cheque 000025		Calendars to Keith Bell
	01/14/2021	22.85	Paypal Transfer				Calendar postage to Aled
	01/28/2021	7.00	Paypal Transfer				Medals from Ceri
	01/30/2021	3.00					Donation from Ceri
February							
March				331.76	Cheque 000026		Warden equipment and postage. Expenses to Aled
	03/23/2021						
							Carried forward 9,886.87
							Income 994.73
							Outgoings 1,807.63
							Balance 9,073.97

Projects

Path improvement project, Llan Ffestiniog

	Income Restricted		Outgoings Restricted	Unrestricted	
First Hydro	1500		1920		
Dwr Cymru	1000		192		
Blakemore	200		245		
HF Holidays	1560		384		
			96		
			122.5		
			38.03		
			778.06		
			671.18		
Totals	4260		4446.77	0	0
	-186.77				

End features

	Income Restricted		Outgoings Restricted	Unrestricted	
Oakdale	1000		1250	250	
Laspen Trust	250				
Totals	1250		1250	250	1500

Stone from Meirionethshire granite
Haulage John Roberts Ffestiniog
Farmer for haulage
Stone from Meirionethshire granite
Haulage John Roberts Ffestiniog
Farmer for haulage
Acknowledgement sign
New signs etc
Hi viz and T-shirts

Total	
-------	--

Deposit Aspley Colliery Creations

Total	
-------	--

Accounts 2019-20

Month	Income	Unrestricted							Restricted						Month	
		Medals	Medal donations	Donations Badges	Other Donations	Transfer from CAG	Postage		HLF funds for website maintenance	Gwynedd grant for interpretative boards transferred from CAG	Donations from book sales towards demonstration improvement project	Grants towards demonstration improvement project	Grants towards end features			
Bring forward	11306.46															
Feb 25 - 03/19	£162.00					£162.00										
April	£223.00					£20.00										
May	£13.50	£3.50	£10.00								£200.00					
June	£1,000.00											£1,000.00				
July	£5.00	£3.50	£1.50													
August	£250.00											£250.00				
Sept	£0.00															
October	£10.00	£3.50	£6.50													
November	£20.00	£3.50	£16.50													
December	£2,573.50	£3.50	£10.00									£2,560.00				
January	£0.00															
February	£18.50	£7.00	£11.50													
March	£10.00	£7.00	£3.00													
Totals	£15,591.96	£31.50	£59.00	£0.00	£162.00	£0.00	£3.00	£0.00	£0.00	£0.00	£0.00	£0.00	£2,760.00	£1,250.00	£0.00	£4,285.50
													Total	Total	£0.00	£4,010.00

Adjustment, moved £162 from previous year to this year to satisfy Charities Commission.

Month	Income	Unrestricted					Restricted						Month			
		Insurance	Trustee expenses	Payment for end features	Maintenance	Passports				Bron yr Erw path improvement	Payment for end features					
Bring forward	03/19	£0.00														
April	£0.00															
May	£0.00															
June	£0.00															
July	£1,500.00			£250.00								£1,250.00				
August	£178.00	£28.00		£150.00												
Sept	£0.00															
October	£224.00	£224.00														
November	£2,357.00										£2,357.00					
December	£0.00															
January	£739.80			£739.80												
February	£38.26			£38.26												
March	£668.03				£150.00							£518.03				
Totals	£5,705.09	£252.00	£0.00	£250.00	£928.06	£150.00	£0.00	£0.00	£0.00	£0.00	£0.00	£2,875.03	£1,250.00	£0.00	£5,705.09	
													Total	Total	£0.00	£4,125.03

£1,419.59

Running Total	Income	Expenditure	Balance
2019-2020			11306.46 Brought forward
March	£162.00	£0.00	11,468.46
April	£223.00	£0.00	11,691.46
May	£13.50	£0.00	11,704.96
June	£1,000.00	£0.00	12,704.96
July	£5.00	£1,500.00	11,209.96
August	£250.00	£178.00	11,281.96
September	£0.00	£0.00	11,281.96
October	£10.00	£224.00	11,067.96
November	£20.00	£2,357.00	8,730.96
December	£2,573.50	£0.00	11,304.46
January	£0.00	£739.80	10,564.66
February	£18.50	£38.26	10,544.90
March	£10.00	£668.03	9,886.87

Restricted funds	Carried Forward	Income	Expenditure	Balance
Path improvement	£3,300.00	£2,760.00	£2,875.03	£3,184.97
End features		£1,250.00	£1,250.00	£0.00
Interpretation	£900.00	£0.00	£0.00	£900.00
Website maintenance	£2,460.00	£0.00	£0.00	£2,460.00

Unrestricted funds	Income	Expenditure	Balance
	£5,083.96	£1,580.06	£3,503.90

£6,544.97 Restricted
£3,341.90 Unrestricted

£9,886.87 0.0

2019-20	Date	Income	Breakdown	Expenditu
		0.00		0.00
		4,285.50		5,705.09
March		162.00		
April		23	20.00 Transfer 3.00	
		200	200.00	
May		13.5	3.5 Pay in slip 500007 10.00	
June		1,000.00	Pay in slip 500008	
July		5.00	5 Transfer	
				1500
August		250.00	Pay in slip 500009	
				28
September				150
October				224
		10.00	3.5 Pay in slip 500010 6.5	
November				1920 192 245
		20.00	Transfer Stuart Marcy	
December		1,560.00 3.50 10.00 1000	Transfer 3.5 Pay in slip 500011 10 Pay in slip 500012	
January				739.8
February				28.88 3.38 6
		18.50	7 11.5	
March				96 384 150
		10.00	7 3	
				38.03



ire

Gift Aid GASD

		Ultra donation	
		Donation for climbing guides	20
		Postage	
		Blakemore grant for Path improvements	
		Medal	
		Donation	10
		Oakdale grant for truck	
		Medal plus donation	1.5
Cheque 000003		Initial payment for truck	
		Laspen Trust for truck	
Cheque 000004		Additional insurance	
Cheque 000005		Fence repair Conwy Falls	
Cheque 000006		Insurance	
		Medal	
		Donation	6.5
Cheque 000007		Meirionethshire Granite	
Cheque 000008		John Roberts Haulage	
Cheque 000009		Richard Hughes Trailer hire	
		Medal Donation	16.5
Cheque 000010		Cancelled cheque	
Transfer		HF Holidays for Path improvements	
		Medal	
		Donation	
		Welsh Water for path improvement	
Cheque 000011		Brissco for roundels	
Cheque 000012		Screws for roundels	
		Packaging for roundels	
		Postage for Roundels	
		Medals	
		Donation	11.5
Cheque 000013		John Roberts Haulage	
Cheque 000014		Aled for Meirionethshire Granite	
Cheque 000015		Aled for passports	
		Medals	
		Donation	3
Cheque 000016		Aled for acknowledgement sign	



11,306.46
9,886.87

Carried forward 11,306.46

Income 4,285.50

Expenditure 5,705.09

Balance 9,886.87

Accounts 2018-19

Month	Income	Unrestricted							Restricted					Month				
		Medals	Medal donations	Donations Badges	Other Donations	Transfer from CCAG	Postage		HLF funds for website maintenance	Gwynedd grant for interpretative boards transferred from CCAG	Donations from book sales towards demonstration improvement project	Grants towards demonstration improvement project						
Bring forward																		
04/18	£0.00														April			
May	£0.00														May			
June	£0.00														June			
July	£0.00														July			
August	£0.00														August			
Sept	£4,361.95	£14.00	£28.00	£59.95				£2,460.00		£1,800.00					Sept			
October	£0.00														October			
November	£5,620.26	£21.00	£34.00			£4,665.26			£900.00						November			
December	£25.60				£25.60										December			
January	£0.00														January			
February	£0.00														February			
March	£1,662.00				£162.00							£1,500.00			March			
Totals	£11,669.81	£35.00	£62.00	£59.95	£187.60	£4,665.26	£0.00	£0.00	£2,460.00	£900.00	£1,800.00	£1,500.00	£0.00	£0.00	£11,669.81			
Total														£5,009.81	Total	£6,660.00	£11,669.81	0.00

Month	Expenditure	Unrestricted							Restricted					Month				
		Insurance	Trustee expenses															
Bring forward																		
04/18	£0.00														April			
May	£0.00														May			
June	£0.00														June			
July	£0.00														July			
August	£0.00														August			
Sept	£0.00														Sept			
October	£151.20	£151.20													October			
November	£0.00														November			
December	£50.15		£50.15												December			
January	£0.00														January			
February	£0.00														February			
March	£0.00														March			
Totals	£201.35	£151.20	£50.15	£0.00	£0.00	£0.00	£0.00	£0.00	£0.00	£0.00	£0.00	£0.00	£0.00	£0.00	£201.35			
Total														£201.35	Total	£0.00	£201.35	0.00

Running Total	Income	Expenditure	Balance
2018-19			
April	£0.00	£0.00	0.00
May	£0.00	£0.00	0.00
June	£0.00	£0.00	0.00
July	£0.00	£0.00	0.00
August	£0.00	£0.00	0.00
September	£4,361.95	£0.00	£4,361.95
October	£0.00	£151.20	£4,210.75
November	£5,620.26	£0.00	£9,831.01
December	£25.60	£50.15	£9,806.46
January	£0.00	£0.00	£9,806.46
February	£0.00	£0.00	£9,806.46
March	£1,662.00	£0.00	£11,468.46

£11,468.46 0.00

Restricted funds	Income	Expenditure	Balance
Path improvement	£3,300.00	£0.00	£3,300.00
Interpretative boards	£900.00	£0.00	£900.00
Website maintenance	£2,460.00	£0.00	£2,460.00

£6,660.00

Unrestricted funds	Income	Expenditure	Balance
	£5,009.81	£201.35	£4,808.46

£11,468.46 0.00

2018-19	Date	Income	Breakdown	Expenditure		Gift Aid	GASD	Balance	Balance as shown on internet
September		11,669.81		201.35				###	11491.46
	HLF funds for web maintenance	### 2,460.00	2460 Cheque	500001					
	Medal	### 7.00	17 Cheque	500002					
	Donations	10					10		
	Medal	7	25 Cash						
	Donations	18.00					18		
	Donation from book sales from Aled	### 1,800.00	1800 Transfer			1800			
	Donations for badges	### 59.95	59.95 Cash	500003			59.95		
October	Insurance premium	###			151.2	Cheque 000001			
November	Gwynedd grant for boards, paid for already	### 900.00	900 Cheque	500004					
	Medals	### 17.50	25 Cheque	500005					
	Donation	7.50					7.5		
	Medals	### 3.50	30 Transfer						
	Donation	26.50					26.5		
	Transfer from CCAG	### 4,665.26	4665.26 Transfer						
December	Donation from Aled	### 25.60	Transfer			25.6			
	Expenses 12-12-18 to Aled	###			50.15	Cheque 000002			
	Grant from First Hydro	### 1,500.00	1500 Cheque	500006					
March	Ultra donation	162.00	162 Transfer						

	Amount	Received
Truck project		1250
Oakdale	1000	1000
Laspen	500	250
Zip World	?	
G L Jones	?	
C L Jones	?	
Dickies	?	
Hanson	?	Not interested

	Amount	Received
Bron yr Erw Footpath		4260
CFIW	1000	
SNP	1000	0 Fund discontinued
First Hydro	1500	1500
HDH Wills	1000	0 Unsuccessful
Foyle	1500	0 Unsuccessful
Dwr Cymru	1000	1000
Blakemore	500	200
HF Holidays	1000	1560

Typical annual budget

Income	3650
From books henceforth	500
From Medals	50
From Donations	100
Grants	3000
Expenditure	3600
Replacement roundels	0
Replacement boards	200
Improvements	2000
Set aside for major improvements in SSSIs	1300
Marketing projects	100

Improvement projects will be identified by wardens and local agencies