



Carers
Hub
Lambeth

Annual Report & Financial Statements

For the Year Ended 31st March 2023

Carers Hub
Registered charity number 1182120
www.carershub.org.uk





Contents

A message from our Chair	2
Reference & Administrative Information	3
Purposes & Aims	4
Statement of Public Benefit	4
Annual Report & Financial Statements	
Report of the Trustees	5
About Carers' Hub	5
Our Core Services & Key Achievements	7
Acknowledgement to Funders & Partners ..	12
Financial Review	13
Principal Funding Sources	



A message from our Chair

In the following pages of this report we will share what we do at Carers' Hub, our achievements over 2022-2023 and our financial position. I took on the role of Chair at Carers' Hub in September 2022 and I am hugely proud of the difference we have made to carers' lives in Lambeth in the past year.

The year 2022-2023 was a challenging year for carers. Just as carers and their families took a breath after the pressures of the COVID-19 pandemic gradually started to ease, as the summer drew to an end, they were faced with a growing cost of living crisis. Rising inflation has meant carers, who were already in precarious financial positions due to their caring role, have struggled to make ends meet, finding it difficult to heat their homes, buy food and essential items and pay their rent. Carers also disproportionately experience poor mental health, anxiety and isolation and the stress and worry of debt, bills and housing as a result of the crisis has only compounded this.

During the year we have, as a result, seen a rise in demand for our services, making our role in Lambeth as the main charity dedicated to supporting carers even more vital. Much like during the pandemic, Alice Dias our Chief Executive and our dedicated team stepped up and through their knowledge, commitment, expertise and compassion have ensured that carers voices are heard, that their wellbeing is supported, that we connect them to each other and that we influence local decision making on their behalf. The four pillars of our work that have formed the foundation of our Carers' Hub five year strategy which we launched in July 2022.

We ended 2022-2023 with a clear vision and strategy for the future and in a strong financial position, thanks to our funders and supporters which we value greatly. Collaboration and partnership are also vital to our work, and we appreciate the partnerships we have across the borough that help us to achieve our mission for carers. As a small but growing charity we also rely on our Trustees who give up their time and skills and on our team who make a difference to carers' lives every day - thank you so much for being part of our organisation.

Laura Perkins

Chair

Carers' Hub



Reference & Administrative Information

Registered Charity Name	Carers' Hub
Charity Registration Number	1182120
Company Registration Number	11403363
Registered Office & Operational Address	We are 336, 336 Brixton Road SW9 7AA
Accountants	Hilary Adams Ltd Chartered Accountants 158 High Street Herne Bay Kent CT6 5NP
Bankers	Royal Bank of Scotland (RBS)
Trustees	<p>Laura Perkins Chair</p> <p>Simon Hebditch Vice Chair</p> <p>Weyinmi Guate Treasurer, from September 2023</p> <p>Hilary Adams Treasurer, to February 2023</p> <p>Amit Desai</p> <p>Duncan Cook (to September 2022)</p> <p>Ijeoma Obi (from November 2023)</p> <p>James Hynard</p> <p>James Norris</p> <p>Joanna Oka (from September 2023)</p> <p>Natalie Wall (from September 2023)</p> <p>Sangeeta Sooriah (to September 2022)</p>



Purposes & Aims

Our charity's purposes as set out in the objects contained in the company's memorandum of association are to:

- relieve the stresses experienced by carers, and beneficiaries in England and Wales.

“Beneficiaries” means any person or persons who have care needs as a result of disability, illness or age.

“Carers” means any person involved in the provision of care without receiving remuneration other than statutory benefits, for a person or people who have care needs as a result of disability, illness or age.

Statement of Public Benefit

The Trustees have paid due regard to the guidance on public benefit produced by The Charity Commission and are confident that the work of the charity meets all the criteria for public benefit.



Annual Report & Financial Statements

Report of the Trustees

The trustees, who are also directors of the charity for the purposes of the Companies Act 2006, present their report with the financial statements of the charity for the year ended 31 March 2023.

The trustees have adopted the provisions of Accounting and Reporting by Charities: Statement of Recommended Practice applicable to charities preparing their accounts in accordance with the Financial Reporting Standard applicable in the UK and Republic of Ireland (FRS 102) (effective 1 January 2019).

About Carers' Hub

Our mission is to improve carers' lives in Lambeth through quality services and community engagement.

Carers' Hub Lambeth is an independent local charity based in Brixton. Our work stems from the fact carers often go about their roles despite the toll it might take on their own wellbeing, often having to make sacrifices that hamper their own ability to lead a normal life. Whether financial, educational or otherwise, we seek to limit the challenges that carers face. We achieve this through four core workstreams:

1. raising awareness of carers,
2. influencing local policy through community engagement activities,
3. improving carer wellbeing and
4. connecting carers to each other and support and training opportunities through our services.

Since we set up as an independent charity in July 2018, we have reached over **2,500** carers across all ages



Carers' Hub Lambeth has **four key objectives**:

	<h3>Improve Carers' Wellbeing</h3> <p>Caring for a loved one, family member, friend or neighbour, can have a significant impact on all aspects of a carer's own life. Through peer support groups and one-to-one appointments, our dedicated and passionate team work with carers aged 5 and up to help overcome challenges around managing at home, finances, caring with confidence, education and employment, physical health and emotional wellbeing</p>
	<h3>Increase Connections</h3> <p>There is a lot of support on offer in Lambeth, but these things can be difficult to find. We're here to fill those gaps. We provide information on training courses, local services and help carers build connections with each other and their community. We help professionals to connect too through our Carers Collaborative Network.</p>
	<h3>Raise Awareness</h3> <p>We believe caring is everybody's business. We work hard to raise awareness through outreach in the community, GP practices and local hospitals, presentations to schools and social work teams, through partnership working and our involvement with the Lambeth Carers' Strategy.</p>
	<h3>Influence</h3> <p>We believe that the development of local policy, practice and services that affect carers should take carers' experiences into account. For this reason, we host a range of workshops and forums for carers to make their voices heard throughout the year. Our Carers' Strategy Development Manager plays a key role in the development and delivery of the Lambeth Carers' Strategy.</p>



Our Core Services & Key Achievements

Young Carers & Young Adult Carers



A young carer is a child or young person under the age of 18 who helps look after a family member or friend, who has an illness or condition. This might be a physical illness; mental illness; learning disability; or some form of drug or alcohol problem. A young adult carer is a young person aged 18-25.

Our young carers team works with children from the age of 5 upwards, offering support and information to young carers and their families. Adventure, friendship and support are super-important for young carers, so we split our work into 4 areas:

- We organise a mixture of exciting activities throughout the year.
- We provide a listening ear and relevant help to young carers and their families.
- We run monthly young carers groups – a space to relax and have fun.
- We run dedicated projects working with schools to support young carers with their education

Helped my confidence, and exposure therapy to things I wouldn't usually try like drama and acting. (Young carer reflecting on our holiday programme)

Our Young Adult Carers Service works with Young Adult Carers aged 15-21. Providing tailored 1-2-1 support, working together to address the issues most important to the individual young person. We run a monthly young adult carers meetup group, creating a regular space for Young Adult Carers to make friends, discuss important topics and hear from local organisations. In addition, we offer a programme of activities throughout the year including social, creative and wellbeing activities and learning opportunities.

Carers Hub Lambeth is helpful because I can get support from other people who I have things in common with and it improved my confidence in asking other people for help. - Young Adult Carer, aged 16

During 2022-2023, **471** young carers and young adult carers accessed our service. This included **329** young carers aged 5 - 15 and **136** carers aged 16 - 25 and an additional **6** who did not disclose their age. We received **279** new referrals into the service. We held **151** activities, including **125** activities specifically for Young Carers,



19 specifically for Young Adult Carers and **7** open to young carers across a range of ages. There were **1046** attendances at our events and activities. We also connected young carers, young adult carers and their families to helpful information and external support via **480** signposts and **179** external referrals.

Young Carers Assessments

In April 2022, Lambeth Council commissioned Carers' Hub to deliver the statutory young carers assessments for the borough, undertaken by a dedicated Referrals & Assessments Officer. The Officer conducts home visits and assessments with young carers and their families, exploring the needs of the young person and their family. We connect young carers and their families to long-term support offered by Carers Hub and wider provision. Seeking to help young carers maintain their own wellbeing and achieve their aspirations In 2022-23, **143** young carers were assessed, **44** of whom have gone to access the wider offer from the young carers team. In addition, the officer made **40** external referrals and **130** signposts to essential information and support.

Thank you so very much! I am so grateful. You have helped me so much!

She's really having fun, she loves coming to the activities!

- Parents of Young Carers who have had a Young Carers Assessment and now access further support from the Young Carers Team.

Young Carers Grants (Short-breaks)

In May 2022, Lambeth Council and the South East London ICS jointly funded Carers' Hub to pilot the provision of Short-Breaks grants to young carers aged between five and twenty-one, for whom replacement care is not normally available.

The Short Breaks pilot supported young carers to access activities and events offered by Carers' Hub and by wider organisations, which benefited the young carers' mental health and wellbeing.

Over the course of the pilot **72 grants** were awarded. The young carers used their grants for a number of different activities, such as accessing after school classes (drum classes; swimming, ballet, creative courses); going on trips to theme parks, leisure and gym memberships or buying a personal item of their choice. Young carers valued the ability to choose to spend the grant in a way that they felt most beneficial, ensuring the support was tailored to their needs and aspirations.

This grant helped my children feel valued and confident in their caring roles.

- Parent of Young Carer



Young Carers & Education

Carers Hub runs two projects to reduce the negative impacts of caring on young carers' education.

Funded by Sir Walter St John's Educational Charity we offer a term-time **Young Carers Homework Club** for young carers aged 11 to 16, running an online on Mondays and an in-person on Tuesdays. The clubs offer a place where our young carers can complete their homework in a supportive environment outside the classroom and away from their caring responsibilities.

Over 2022-23, **61** young carers attended the Homework Club, with **280** attendances in total. We held 60 sessions of the Homework Club, a mix of online and face to face sessions to ensure our offer was accessible. The Club is facilitated by a Homework Club Coordinator, who helped to connect young carers to external support via **13** referrals and **43** signposts.



It is really beneficial to them- they enjoy the sessions and speaking to you because they can vent and they are loved and listened to, they need to know that they have an extension of school and a space to do that.

- Parent of young carer

Funded via the Walcot Foundation, we offer 1 to 1 support and peer support sessions for Secondary School aged young carers. The project initially focussed on working closely with 6 target secondary schools to identify young carers and offer space for our worker to meet young carers in school on a 1 to 1 basis and in school peer support. Since September 2022, the project has been opened up to young carers across the community offering a monthly peer support session based outside of the school setting and access to 1 to 1 support from the project officer. Over 2022-2023, **78 young carers** aged 12-16 were supported, and a total of **24 peer support groups** offered with **142 attendances**. The project officer also connected young carers to wider support via 56 signposts to local organisations.

(I)... enjoy group sessions and 1-2-1s. It's good to talk to people. Made me enjoy school more

- Young Carer



Adult Carers includes, carers for dementia, learning disabilities and mental health



An adult carer is someone aged 18 and over who cares, unpaid, for a friend or family member who has an illness, disability, mental health problem or addiction.

- 1) We provide tailored 1-2-1 support, whether that relates to finances, day-to-day tasks or something different.
- 2) We run peer support groups for carers to share their experience of caring, make friends, and develop new skills. Different carers face different challenges, and that's why our groups are specialised. We run groups tailored to dementia, mental health and learning disability carers.
- 3) We host a variety of information sessions, learning opportunities, wellbeing and social activities throughout the year.
- 4) We deliver first aid training and provide free legal clinics through our partnerships.
- 5) And if we can't help, we'll do our best to link carers with someone that can through up-to-date information, signposting and referrals.

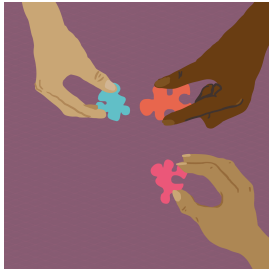
During 2022-3, **938** adult carers accessed our service. We ran a total of **51** peer support groups during the year, with **352** attendances. We hosted a range of social, wellbeing and information sessions, running **102** activities in total with **805** attendances. In addition, we ensured carers were connected to essential information and wider support, via **904** signposts and **356** external referrals.

Honestly what can I say, I was going through such a tough period and now I am through such a tough period thanks to you. I am flourishing and me and my son are thriving

- Adult Carer



Carers Strategy



Carers' Hub sees the Carers Strategy as a vital opportunity to raise awareness of carers and improve carer support in our borough. Through our Carers Strategy Development Manager post, we're working with the Carers Collaborative Strategy Group (CCSG) to help realise the carers strategy.

Carers' Hub plays a key role in delivering the strategy's priorities including leading the development of the **Lambeth Carers Card** and hosting the **Carers Collaborative Network**. We coordinate the **Carers Collaborative Strategy Group**, and are working together with fellow members to drive forward the Carers Strategy in Lambeth. The CCSG is currently undertaking a refresh of the Lambeth Carers Strategy, ensuring we learn from the insights of local carers, community members and professionals. Over 2022-23:

- Over **229** carers aged 18 plus signed up to the Lambeth Carers Card, accessing emergency planning support, local discounts at participating local businesses and essential information.
- We hosted **4** meetings of the Carers Collaborative Network welcoming speakers including the London LGBTQ + Carers project, Lambeth Talking Therapies, South London Listens, Carers4Carers and more.
- We facilitated **4** meetings of the Carers Collaborative Strategy Group to help inform the refresh of the Lambeth Carers Strategy.
- In the Autumn 2022, we supported Integrated Commissioning to undertake a consultation to feed into the refresh of the Lambeth Strategy, co-hosting in person and online focus groups and helping to develop and promote surveys to capture the insights and experiences of local unpaid carers.



Acknowledgement to funders and partners

At Carers' Hub we have been working hard to improve carers' lives in Lambeth, through quality services and community engagement. We appreciate each and every one of our donors and partners and wouldn't be able to be where we are without their support.

We would like to acknowledge and thank everyone who enables us to do the work that we do: our trustees, our team, Lambeth carers, commissioners, local voluntary sector partners, and NHS colleagues.

We also want to say thank you to our corporate partners, ZS Associates, for their continued support around the development of our strategic plans.

Our funders: Lambeth Council, South East London Integrated Cares Board, Lambeth Public Health, Walcot Foundation, Sir Walter St John Educational Charity and King's Civic Challenge.



Financial Review

Review of the Charity's Financial Position

The statement of financial activities for 2022-2023 is set out on page 16 and shows a reported surplus for the year of £29,688 (2022: £29,977) of which a deficit of £4,505 (2022: £6,729) is restricted income. The position of the charity at the year end is set out on page 17.

Our surplus this year largely results from having staff vacancies.

Principal Funding Sources

Our principal source of funding is Lambeth Council for those services being delivered through Connect Lambeth (previously Independent Living and Carers' Partnership). NHS South East London Integrated Care Board also funds a proportion of our work. Recognising the considerable financial pressure facing local authorities both now and in the future, the charity is considering ways of diversifying its funding base, particularly in relation to grants, donations and corporate partnerships.

Details of the sources of funds are set out in the accounts. The Board confirms that the financial statements comply with current statutory requirements, the requirements of the company's governing document and the requirements of the Statement of Recommended Practice (the Charities SORP 2019).

Honorary Officers are also elected at the AGM. Trustees will normally serve a three-year term and are eligible for subsequent re-election for one additional three-year term.

Reserves Policy

Total Reserves as of 31 March 2023 are: £252,443 (2022: £222,755) of which £38,306 (2022: £42,811) represent restricted funds.

The Board of Trustees has examined the charity's requirements for reserves in light of the main risks to the organisation. It has established a policy whereby the unrestricted funds not committed or invested in tangible fixed assets (free reserves) held by the charity should be at a level equivalent to three months of operating costs. The budgeted expenditure for 2023-2024 is £451,894, therefore there is a target of a minimum of £112,966 in free funds.



Trustee Induction and Training

An induction is provided for all new Trustees and ongoing training opportunities are made available.

The Board held a review of its skills and experience this year to inform our recruitment strategy to increase the size of our Board and ensure it meets the needs of the organisation. All Trustees give their time voluntarily and receive no remuneration from the charity. Any expenses reclaimed from the Charity are out in the accounts. The trustees delegate day to day management to the Chief Executive.

Risk Management

The Trustees have reviewed the major strategic, business and operational risks which the charity faces. Actions to address key risk areas have been agreed and progress is reviewed regularly. In addition, strong financial controls are in place to mitigate the risk of financial losses due to theft or fraud and these controls are regularly reviewed.

Responsibilities of the Board of Trustees

Company law requires the Management Committee to prepare financial statements for each financial year which give a true and fair view of the state of the affairs of the charitable company as at the balance sheet date and of its incoming resources and application of resources, including income and expenditure for the financial year.

In preparing those financial statements, the management committee should follow best practice and:

- select suitable accounting policies and then apply them consistently;
- make judgements and estimates that are reasonable and prudent; and
- prepare the financial statements on the going concern basis unless it is not appropriate to assume that the company will continue on that basis.

The Board of Trustees is responsible for maintaining proper accounting records which disclose with reasonable accuracy at any time the financial position of the charitable company and to enable them to ensure that the financial statements comply with the Companies Act 2006. The Board is also responsible for safeguarding the assets of the charitable company and hence for taking reasonable steps for the prevention and detection of fraud and other irregularities.

Members of the Management Committee

Members of the Management Committee, who are directors for the purpose of company law and trustees for the purpose of charity law, who served during the year



and up to the date of this report are set out in page 3.

In accordance with company law, as the company's directors, we certify that:

- As the directors of the company, we have taken all the steps that we ought to have taken in order to make ourselves aware of any relevant independent examination information and to establish that the charity's independent examiners are aware of that information.

Independent Examiners of Accounts

Hilary Adams Ltd were appointed as the charitable company's Independent Examiners during the year and have expressed their willingness to continue in that capacity.

The report has been prepared in accordance with FRS 102.

Approved by the Management Committee on and signed on its behalf by:

Laura Perkins – Director



Statement of Financial Activities (including Income and Expenditure) for the Year Ended 31 March 2023

	Notes	Unrestricted Funds 2023 £	Restricted Funds 2023 £	Total Funds 2023 £	Total Funds 2022 £
Incoming resources:					
Voluntary income:	3				
Donations & grants		6,351	140,237	146,588	124,096
Lambeth funding contracts		264,948	36,238	301,186	264,948
Activities for generating funds:					
Investment income		739	-	739	-
Incoming resources from charitable activities:					
Other income		-	-	-	-
Total incoming resources		272,038	176,475	448,513	389,044
Resources expended					
Costs of generating funds:					
Costs of generating voluntary income		-	-	-	-
Charitable activities		250,872	167,953	418,825	359,067
Total resources expended	2	250,872	167,953	418,825	359,067
STATEMENT OF TOTAL RECOGNISED GAINS AND LOSSES					
Net incoming resources before other recognised gains (net income for the year)		21,166	8,522	29,688	29,977
Transfer depreciation reserve		-	-	-	-
Transfer reserves		13,027	(13,027)	-	-
Other recognised gains					
Gain on revaluation of investments		-	-	-	-
Net movement in funds		34,193	(4,505)	29,688	29,977
Total funds brought forward		179,944	42,811	222,755	192,778
Total funds carried forward	11	214,137	38,306	252,443	222,755

Movements in funds are disclosed in Note 11 to the financial statements.



Statement of Financial Position for the Year Ended 31 March 2023

				31.3.23	31.3.22
	Notes	Unrestricted funds £	Restricted funds £	Total funds £	Total funds £
FIXED ASSETS					
Tangible assets	8	1,255	122	1,377	2,246
CURRENT ASSETS					
Debtors	9	-	26,394	26,394	26,289
Cash at bank and in hand		<u>212,882</u>	<u>22,121</u>	<u>235,003</u>	<u>217,005</u>
		212,882	48,515	261,397	243,294
CREDITORS					
Amounts falling due within one year	10	-	(10,331)	(10,331)	(22,785)
NET CURRENT ASSETS		<u>212,882</u>	<u>38,184</u>	<u>251,066</u>	<u>220,509</u>
TOTAL ASSETS LESS CURRENT LIABILITIES		<u>214,137</u>	<u>38,306</u>	<u>252,443</u>	<u>222,755</u>
NET ASSETS		<u>214,137</u>	<u>38,306</u>	<u>252,443</u>	<u>222,755</u>
FUNDS	11				
Unrestricted funds				214,137	179,944
Restricted funds				<u>38,306</u>	<u>42,811</u>
TOTAL FUNDS				<u>252,443</u>	<u>222,755</u>

The company is entitled to exemption from audit under Section 477 of the Companies Act 2006 for the year ended 31 March 2023.

The members have not required the company to obtain an audit of its financial statements for the year ended 31 March 2023 in accordance with Section 476 of the Companies Act 2006.

The directors acknowledge their responsibilities for:

- ensuring that the company keeps accounting records which comply with Sections 386 and 387 of the Companies Act 2006 and
- preparing financial statements which give a true and fair view of the state of affairs of the company as at the end of each financial year and of its surplus or deficit for each financial year in accordance with the requirements of



Sections 394 and 395 and which otherwise comply with the requirements of the Companies Act 2006 relating to financial statements, so far as applicable to the company.

The financial statements have been prepared in accordance with the provisions of Financial Reporting Standard 102 “The Financial Reporting Standard applicable in the UK and Republic of Ireland” and the Companies Act 2006.

The financial statements were approved by the Board of Trustees on 8th June 2023 and were signed by:

.....

Laura Perkins – Director



Notes for the Financial Statements For the Year Ended 31 March 2023

1. STATUTORY INFORMATION

Carers' Hub is a private company, limited by guarantee, registered in England and Wales. The company's registered number and registered office address can be found on the Company Information page.

2. ACCOUNTING POLICIES

Basis of preparing the financial statements

These financial statements have been prepared in accordance with the provisions Financial Reporting Standard 102 "The Financial Reporting Standard applicable in the UK and Republic of Ireland" and the Companies Act 2006. The financial statements have been prepared under the historical cost convention.

Financial Reporting Standard Number 1

Exemption has been taken from preparing a cash flow statement on the grounds that the company qualifies as a small company.

Turnover

Turnover represents grants and contract funding payments received.

Tangible fixed assets

Depreciation is provided at the following annual rates in order to write off each asset over its estimated useful life.

Plant and machinery etc - 33% on cost,
20% on cost

Fund accounting

- Unrestricted funds are available for use at the discretion of the trustees in



furtherance of the general objectives of the charity.

- Designated funds are unrestricted funds earmarked by the Management Committee for particular purposes.
- Restricted funds are subjected to restrictions on their expenditure imposed by the donor or through the terms of an appeal.

Incoming resources

All incoming resources are included in the statement of financial activities when the charity is entitled to the income and the amount can be quantified with reasonable accuracy. The following specific policies are applied to particular categories of income:

- Grants and contract funding payments are recognised when receivable;
- Investment income is included when receivable.

Resources expended

Expenditure is recognised on an accruals basis as a liability is incurred. Expenditure includes VAT and is reported as part of the expenditure to which it relates:

- Costs of generating funds comprise the costs associated with both the costs of attracting the income and those of providing the facilities to generate the income.
- Charitable expenditure comprises those costs incurred by the charity in the delivery of its activities and services for its beneficiaries. It includes both costs that can be allocated directly to such activities and those costs of an indirect nature necessary to support them.



NOTES TO THE FINANCIAL STATEMENTS - continued
for the Year Ended 31 March 2023

2. Total Resources Expended

	AC Prevention of Health	Advanced Care Project	CT Young Careers Action Day	Digital Resource for Careers	Jack Patchey	Kings Civic Challenge	Recovery Grant	SWSJ	Walcot Foundation	Winter Monies	YAC Project	YC Prevention of Better Mental Health	Young Careers	Young Careers Assessments	Young Careers Discretionary Payments	Youth & Play Fund	Core	2023 Total	2022 Total
Costs directly allocated to activities																			
Staff costs	14,702	6,569	-	-	-	1,588	-	6,610	16,037	22,340	25,615	3,566	240	25,327	3,839	-	212,529	338,962	303,366
Activity costs	946	-	269	-	1,898	2,123	-	474	1,122	773	1,372	2,474	5	173	3,705	1,000	12,287	28,621	14,888
Support costs allocated to activities																			
Establishment costs	-	-	300	-	-	644	-	1,025	2,874	1,800	1,107	-	-	1,092	-	-	12,881	21,723	18,038
General office expenses	3,036	-	-	1,800	2	603	359	1,544	2,451	3,532	795	79	-	1,972	-	-	11,680	27,853	20,527
Fees & finance charges	-	-	-	-	-	-	-	-	50	-	-	-	-	-	-	-	548	598	439
Depreciation	-	-	-	-	-	-	-	120	1	-	-	-	-	-	-	-	947	1,068	1,809
Total resources expended	18,684	6,569	569	1,800	1,900	4,958	359	9,773	22,535	28,445	28,889	6,119	245	28,564	7,544	1,000	250,872	418,825	359,067



3. INCOMING RESOURCES FROM ACTIVITIES TO FURTHER THE CHARITY'S OBJECTS

	Unrestricted	Restricted	2023 Total	2022 Total
	£	£	£	£
ILCP	264,948	-	264,948	264,948
ICC Lambeth	-	36,238	36,238	-
NHS SE London CCG	-	29,000	29,000	29,000
NHS SE London ICB	-	1,000	1,000	-
Jack Petchey Foundation	-	1,800	1,800	2,700
Compassion in Dying	-	12,062	12,062	8,041
Sir Walter St John	-	9,881	9,881	9,133
Walcot Foundation	-	25,000	25,000	23,498
Kings Civic	-	5,000	5,000	-
Young Carers	-	9,754	9,754	17,635
Public Health Commissioning	-	12,245	12,245	33,069
Age UK	-	34,495	34,495	-
Other	6,351	-	6,351	1,020
	<u>271,299</u>	<u>176,475</u>	<u>447,774</u>	<u>389,044</u>

4. EMPLOYEES AND DIRECTORS

	31.3.23 £	31.3.22 £
Wages and salaries	310,386	278,408
Social security costs	22,487	19,825
Pension	<u>6,089</u>	<u>5,133</u>
	<u>338,962</u>	<u>303,366</u>

The average monthly number of employees during the year was as follows:

	31.3.23	31.3.22
Manager	1	1
Direct	<u>20</u>	<u>16</u>
	<u>21</u>	<u>17</u>

No employee received emoluments of more than £60,000 in the year.

5. NET INCOMING (OUTGOING) RESOURCES

The operating surplus/(deficit) is stated after charging:

	31.3.23 £	31.3.22 £
Depreciation – owned asset	<u>1,068</u>	<u>1,809</u>
Directors' remuneration and other benefits etc	<u>-</u>	<u>-</u>



6. TRUSTEE REMUNERATION AND RELATED PARTY TRANSACTIONS

No members of the management committee received any remuneration during the year (2022: Nil).
No expenses were reimbursed during the year (2022: Nil).

No trustee or other person related to the charity had any personal interest in any contract or transaction entered into by the charity during the year (2022: Nil).

7. TAXATION

As a charity, Carers' Hub is exempt from tax on income and gains falling within section 505 of the Taxes Act 1988 or s256 of the Taxation of Chargeable Gains Act 1992 to the extent that these are applied to its charitable objects. No tax charges have arisen in the Charity.

8. TANGIBLE FIXED ASSETS

	Plant and machinery etc £
COST	
At 1 April 2022	7,386
Additions	199
At 31 March 2023	7,585
DEPRECIATION	
At 1 April 2022	5,140
Charge for year	1,068
At 31 March 2023	6,208
NET BOOK VALUE	
At 31 March 2023	1,377
At 31 March 2022	2,246

9. DEBTORS: AMOUNTS FALLING DUE WITHIN ONE YEAR

	31.3.23 £	31.3.22 £
Trade debtors	18,119	14,500
Other debtors	8,275	11,789
	26,394	26,289

10. CREDITORS: AMOUNTS FALLING DUE WITHIN ONE YEAR

	31.3.23 £	31.3.22 £
Taxation and social security	6,355	6,465
Other creditors	3,976	16,320
	10,331	22,785



11. MOVEMENT IN FUNDS

	At 1.4.22	Net movement in funds	Transfers between funds	At 31.3.23
Unrestricted				
Core	<u>179,944</u>	<u>21,166</u>	<u>13,027</u>	<u>214,137</u>
	179,944	21,166	13,027	214,137
Restricted				
AC Prevention & Promotion	12,066	(12,561)	495	-
Advanced Care Planning Project	(1,221)	5,492	(4,271)	-
CT Young Carers Action Day	-	181	-	181
Digital Resource for Carers	-	(1,800)	-	(1,800)
Jack Petchey	1,731	(100)	-	1,631
Kings Civic Challenge	-	42	-	42
Recovery Grant	-	(359)	-	(359)
SWSJ	(2,078)	108	-	(1,970)
Walcot Foundation	18,541	2,465	-	21,006
Winter Monies	(2,131)	6,050	(3,919)	-
YAC Project	10,575	111	-	10,686
YC Prevention & Promotion	5,328	4	(5,332)	-
Young Carers	-	(245)	-	(245)
Young Carers Assessments	-	7,674	-	7,674
Young Carers Discretionary	-	1,460	-	1,460
Youth & Play Fund	-	-	-	-
	<u>42,811</u>	<u>8,522</u>	<u>(13,027)</u>	<u>38,306</u>
TOTAL FUNDS	<u>222,755</u>	<u>29,688</u>	<u>-</u>	<u>252,443</u>

Net movement in funds, included in the above, are as follows

	Incoming resources	Resources expended	Movement in funds
Unrestricted			
Core	<u>272,038</u>	<u>(250,872)</u>	<u>21,166</u>
	272,038	(250,872)	21,166
Restricted			
AC Prevention & Promotion	6,123	(18,684)	(12,561)
Advanced Care Planning Project	12,061	(6,569)	5,492
CT Young Carers Action Day	750	(569)	181
Digital Resource for Carers	-	(1,800)	(1,800)
Jack Petchey	1,800	(1,900)	(100)
Kings Civic Challenge	5,000	(4,958)	42
Recovery Grant	-	(359)	(359)
SWSJ	9,881	(9,773)	108
Walcot Foundation	25,000	(22,535)	2,465
Winter Monies	34,495	(28,445)	6,050
YAC Project	29,000	(28,889)	111
YC Prevention & Promotion	6,123	(6,119)	4
Young Carers	-	(245)	(245)
Young Carers Assessments	36,238	(28,564)	7,674
Young Carers Discretionary	9,004	(7,544)	1,460
Youth & Play Fund	1,000	(1,000)	-
	<u>176,475</u>	<u>(167,953)</u>	<u>8,522</u>
	<u>448,513</u>	<u>(418,825)</u>	<u>29,688</u>



Chartered Accountants' Independent Examiner's Report to the Trustees of the Unaudited Financial Statements of Carers' Hub

We report on the accounts of the company for the year ended 31 March 2023, which are set out on pages 10 to 16.

Respective responsibilities of trustees and examiner

The trustees are responsible for the preparation of the accounts. The trustees consider that an audit is not required for this year under section 144 of the Charities Act 2011 (the 2011 Act) and that an independent examination is needed. Having satisfied ourselves that the charity is not subject to audit under company law and is eligible for independent examination, it is our responsibility to:

- examine the accounts under section 145 of the 2011 Act;
- to follow the procedures laid down in the general Directions given by the Charity Commission under section 145(5)(b) of the 2011 Act; and
- to state whether particular matters have come to our attention.

Basis of independent examiner's report

Our examination was carried out in accordance with the general Directions given by the Charity Commission.

An examination includes a review of the accounting records kept by the charity and a comparison of the accounts presented with those records. It also includes consideration of any unusual items or disclosures in the accounts, and seeking explanations from you as trustees concerning any such matters. The procedures undertaken do not provide all the evidence that would be required in an audit and consequently no opinion is given as to whether the accounts present a 'true and fair view' and the report is limited to those matters set out in the statement below.

Independent examiner's statement

In connection with our examination, no matter has come to our attention:

(1) which gives us reasonable cause to believe that in any material respect the requirements:

- to keep accounting records; and
- to prepare accounts which accord with the accounting records, comply with the accounting requirements of and with the methods and principles of the



Statement of Recommended Practice: Accounting and Reporting by Charities
have not been met; or

(2) to which, in our opinion, attention should be drawn in order to enable a proper understanding of the accounts to be reached.

Hilary Adams

Hilary Adams Ltd
Chartered Accountants
158 High Street
Herne Bay
Kent
CT6 5NP

Date: 07/08/2023