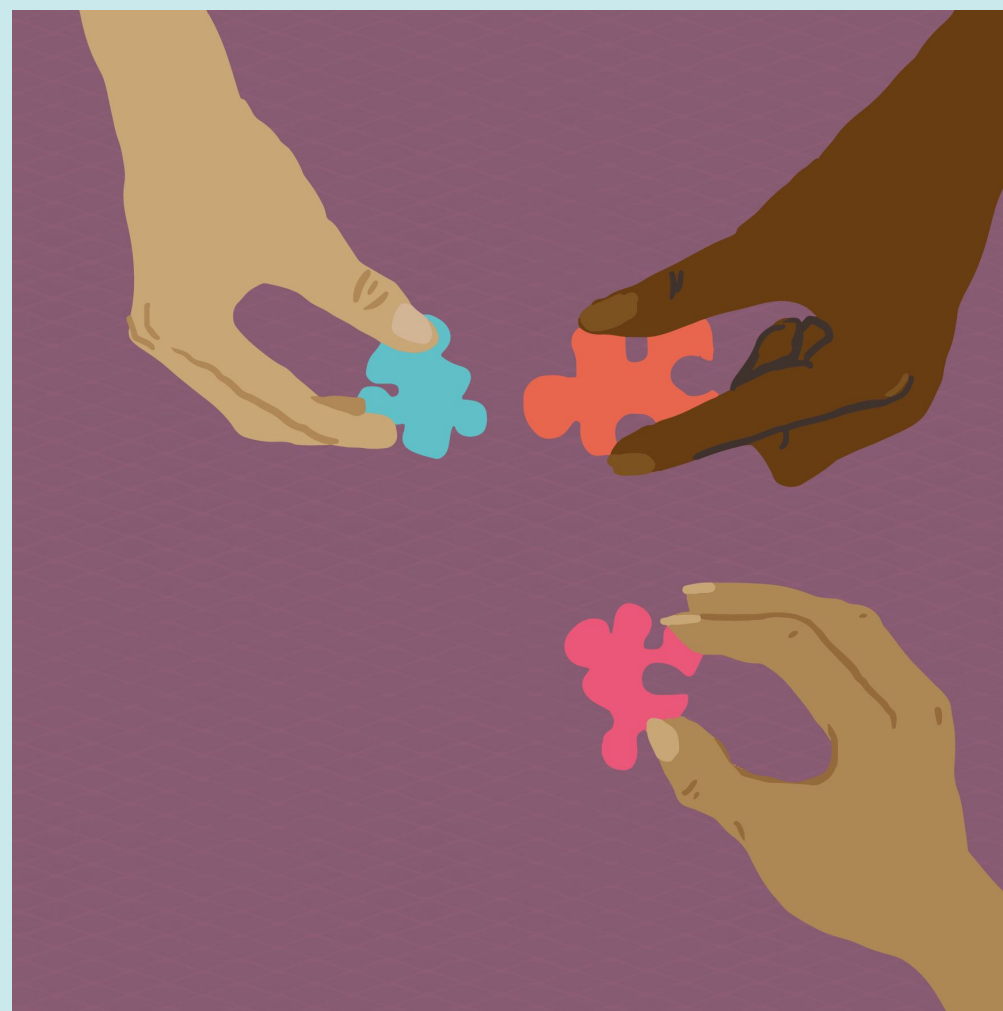


**Carers
Hub
Lambeth**

Report of the Trustees and Unaudited Financial Statements for the year Ended 31 March 2022



Charity Number: 1182120.

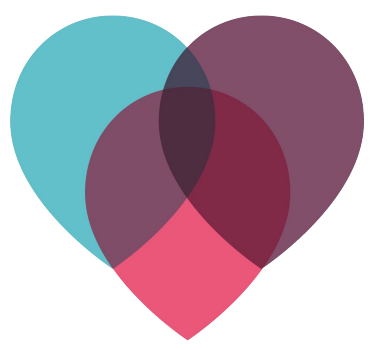
**A company limited by guarantee registered in England and
Wales No. 11403363**



Contents of the Financial Statements for the year ended 31 March 2022

A message from our Chair	3
Reference & Administrative Information	4
Report of the Trustees	5
Financial Review	15
Statement of Financial Activities	18
Statement of Financial Position	19
Notes to the Financial Statements	20
Independent Examiner’s Report	25
Acknowledgement to Funders & Partners	26





A message from our Chair

Over the following pages this report summarises what it is that we do at Carers' Hub Lambeth; our key achievements over 2021-2022; and our financial position. I am very proud that all make for positive reading thanks to the efforts of the team at Carers' Hub who work tirelessly to support carers in Lambeth. However, the data also emphasise the continued need for and importance of their work.

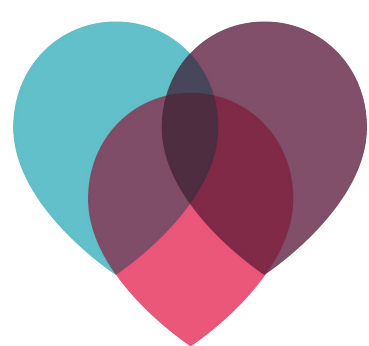
Covid-19 was a continued presence over the last year. Building on the lessons from the previous year we adapted our services to meet the high level of demand while protecting our community's health. The Carers' Hub team also ensured that our carers were fully briefed on the vaccination and booster programmes. While Covid-19 hasn't fully gone away, we hopefully find ourselves in a more stable and less challenging place this year thanks in part to the protection afforded by those vaccines.

We are also in a strong financial position thanks to the support of our funders, both old and new. This means that we are starting to look to the future, and in the coming months we are excited to be publishing Carers' Hub strategy for the next few years (distinct but closely aligned to the Lambeth Carers' Strategy). We know what we do already is important and effective, so the focus will be on evolution, not revolution: making sure we reach everyone who needs support, offer the services that they need, and build awareness of carers and insight into the challenges they face.

All that is left for me to do is thank my fellow trustees, the team at Carers' Hub, and in particular our Chief Executive Alice Dias for all of their sterling work.

James Hynard
Chair of the Board of Trustees





Reference and administrative information

Registered Charity Name

Carers' Hub

Charity Registration Number

1182120

Registered Office and Operational Address

336 Brixton Road, London
SW9 7AA

Company Registration Number

11403363

Trustees

James Hynard (Chair)
Amit Desai (Deputy Chair)
Hilary Adams (Treasurer)
Duncan Cook (Vice Treasurer)
James Norris
Laura Perkins
Sangeeta Sooriah
Simon Hebditch

Accountants

Hilary Adams Ltd, Chartered
Accountants, 158 High Street Herne
Bay, Kent CT6 5NP

Bankers

Royal Bank of Scotland

The trustees, who are also directors of the charity for the purposes of the Companies Act 2006, present their report with the financial statements of the charity for the year ended 31 March 2022. The trustees have adopted the provisions of Accounting and Reporting by Charities: Statement of Recommended Practice applicable to charities preparing their accounts in accordance with the Financial Reporting Standard applicable in the UK and Republic of Ireland (FRS 102) (effective 1 January 2019).



Purposes and Aims

Our charity's purposes as set out in the objects contained in the company's memorandum of association are to:

- relieve the stresses experienced by carers, and beneficiaries in England and Wales.

“Beneficiaries” means any person or persons who have care needs as a result of disability, illness or age.

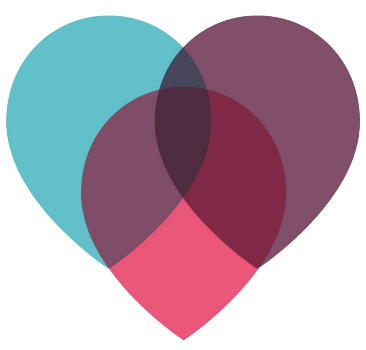
“Carers” means any person involved in the provision of care without receiving remuneration other than statutory benefits, for a person or people who have care needs as a result of disability, illness or age.

Statement on Public Benefit

The Trustees have paid due regard to the guidance on public benefit produced by The Charity Commission and are confident that the work of the charity meets all the criteria for public benefit.

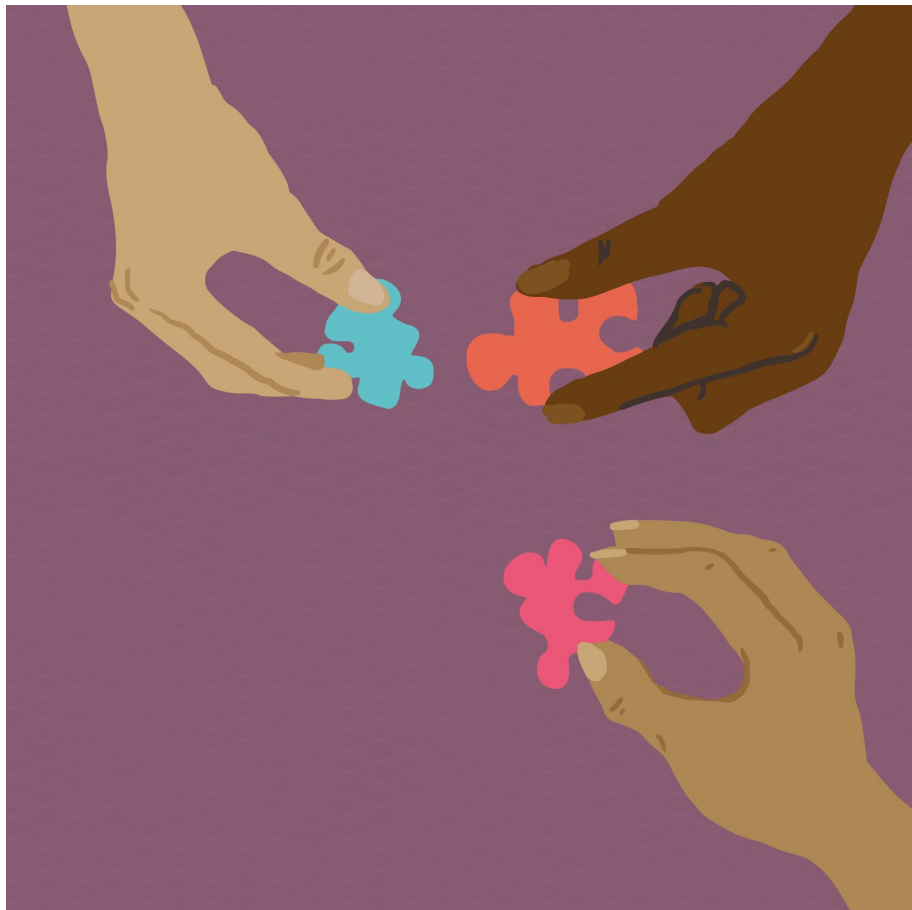


'I would feel cut off without Carers' Hub, it is a reliable, safe place to meet others who get it'. Young Adult Carer



About Carers' Hub

Our mission is to improve carers' lives in Lambeth through quality services and community engagement.



Carers' Hub Lambeth is an independent local charity based in Brixton. Our work stems from the fact carers often go about their roles despite the toll it might take on their own wellbeing, often having to make sacrifices that hamper their own ability to lead a normal life. Whether financial, educational or otherwise, we seek to limit the challenges that carers face. We achieve this through four core workstreams: raising awareness of carers, influencing local policy through community engagement activities, improving carer wellbeing and connecting carers to each other and to support and training opportunities through our services.



I just wanted to say a big thank you to everyone for their help and support since I reconnected with Carers Hub in August. After 18 months of self-isolation and a reduction in my regular support circle, the phone calls and emails, the invitations to classes, regular wellbeing sessions and one-off events has been really positive and confidence building at a time when I was feeling low and lost.



Carers' Hub Lambeth has four key objectives:

Improve Carers' Wellbeing

Caring for a loved one, family member, friend or neighbour, can have a significant impact on all aspects of a carers own life. Through peer support groups and one-to-one appointments, our dedicated and passionate team work with carers aged 5 and up to help overcome challenges around managing at home, finances, caring with confidence, education and employment, physical health and emotional wellbeing.

Increase Connections

There is a lot of support on offer in Lambeth, but these things can be difficult to find. We're here to fill those gaps. We provide information on training courses, local services and help carers build connections with each other and their community. We help professionals to connect too through our Carers Collaborative Network.

Raise Awareness

We believe caring is everybody's business. We work hard to raise awareness through outreach in the community, GP practices and local hospitals, presentations to schools and social work teams, through partnership working and our involvement with the Lambeth Carers' Strategy.

Influence

We believe that the development of local policy, practice and services that affect carers should take carers' experiences into account. For this reason, we host a range of workshops and forums for carers to make their voices heard throughout the year. Our Carers' Strategy Development Manager plays a key role in the development and delivery of the Lambeth Carers' Strategy.



Our core services

Young Carers

A young carer is **anyone aged 5 to 21 who helps look after a family member or friend**, who has an illness or condition. This might be a physical illness; mental illness; learning disability; or some form of drug or alcohol problem.

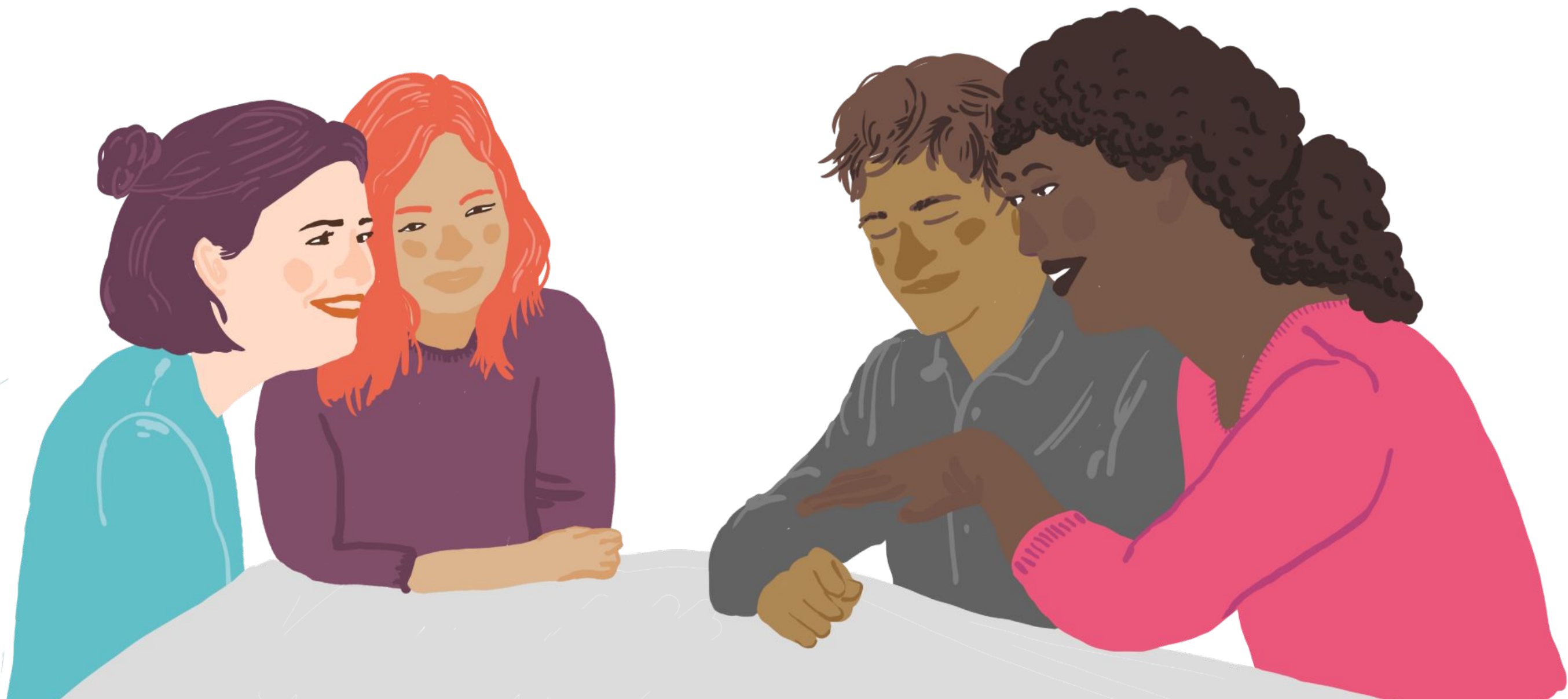
Our young carers team works with children from the age of 5 upwards, offering support and information to young carers and their families. Adventure, friendship and support are super-important for young carers, so we split our work into 4 areas:

We organise a mixture of **exciting activities** throughout the year.

We provide a **listening ear** and relevant help to young carers and their families.

We run **dedicated projects** working with schools to support young carers with their education

We run **monthly young carers groups** – a space to relax and have fun.





Adult Carers

An adult carer is someone aged 18+ who cares, unpaid, for a friend or family member who has an illness or condition. This might be a physical illness; mental illness; learning disability; or some form of drug or alcohol problem.


We provide **tailored 1-2-1 support**, whether that relates to finances, day-to-day tasks or something different.

We host a variety of **information sessions** and **learning opportunities** throughout the year.

We run **peer support groups** for carers to share their experience of caring, make friends, and develop new skills. Different carers face different challenges, and that’s why our groups are specialised. We run groups tailored to dementia, mental health and learning disability carers.

We deliver advance care planning workshops, and provide free legal clinics through our partnerships.

And if we can’t help, we’ll do our best to link carers with someone that can through up-to-date information, signposting and referrals.



Offered by Carers’ Hub in partnership with MYsocial, the Lambeth Carers Card connects carers to relevant services, support emergency planning and access to online resources.



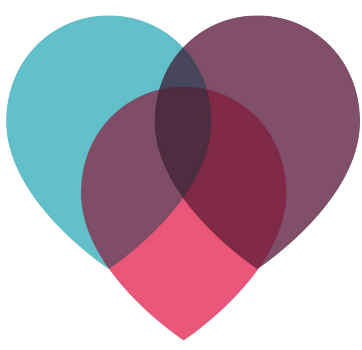
Carers Strategy

Carers' Hub Lambeth sees the Carers Strategy as a vital opportunity to raise awareness of carers and improve carer support in our borough. Through our Carers Strategy Development Manager post, we're working with the Carers Collaborative Strategy Group (CCSG) to help realise the carers strategy. The CCSG have been most recently focusing upon:

- **Building the Lambeth Carers Card offer**, to recognise carers and their vital contribution to our community
- **Raising awareness of carers in Lambeth** to increase understanding within local services and the wider community
- **Responding to the impact of Covid 19** to support carers navigate the challenges resulting from the pandemic
- **Working with local partners and services** to improve support and ensure carers become everyone's business

How we're involved

- Carers' Hub Lambeth are playing a key role in delivering the Action Plan including leading the development of the **Lambeth Carers Card**.
- We host and coordinate the **Carers Collaborative Network**
- The **Carers Strategy Development Manager** is based at Carers Hub Lambeth. Helping us to connect the work of the carers strategy more closely with carers and our partners working in the community.
- We coordinate the **Carers Collaborative Strategy Group**, and are working together with fellow members to drive forward the Carers Strategy in Lambeth.



Key Achievements


The pre-existing challenges facing many unpaid carers have been hugely exacerbated over recent years by the Covid-19 pandemic and the impact of the cost of living crisis, negatively affecting the mental health and wellbeing of many of the carers we work with here in Lambeth. In 2021-22 we continued to provide 1:1 and peer support to our carers with a big focus on improving their mental health and wellbeing.




IMPROVE
WELLBEING



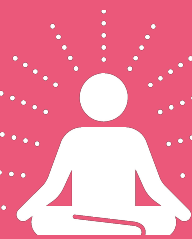
INCREASE
CONNECTIONS



1271
carers supported



19,178
contacts recorded with carers



2,545
attendances to events and social activities both face to face and online



1,410
signposts were made to external organisations



467
direct referrals were made to external organisations



198
Carers signed up for the Lambeth Carers Card



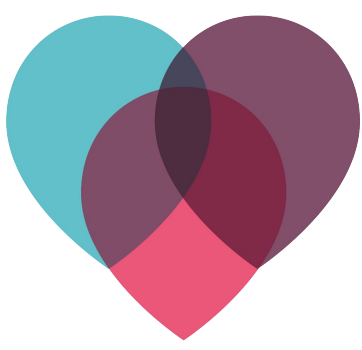
5 Emergency Planning sessions delivered to carers via the Lambeth Carers Card



Carers Collaborative Network, hosted by Carers' Hub, brings together local professionals and volunteers working with unpaid carers. It meets quarterly offering a space to share updates and discuss key themes affecting carers. In 2021/22 these included Suicide Prevention, employment support and uptake of Covid-19 vaccination.

“I enjoyed the course and speaking to others, sharing information, and having a space to be creative was very enjoyable.”

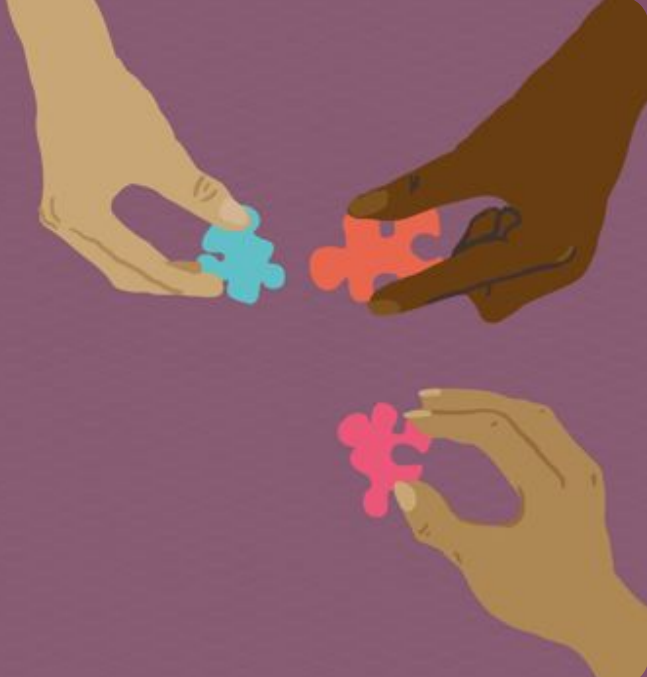
Carer



Report of the Trustees for the Year Ended 31 March 2022



RAISING AWARENESS



INFLUENCE



9 Carer Awareness Training sessions have been delivered to a mix of voluntary sector, health, social care and education professionals. We also ran two sessions for Social Prescribers at Age UK Lambeth and pan London DWP assessors.



Helped to raise awareness of young carers through online school assemblies and staff workshops.



Helped raise awareness of young and adult carers at a number of outreach events across the borough. We spoke to partners and carers at the Black Communities Health & Wellbeing Day, HBD Community Breakfast, Digital Inclusion Network, wellbeing events organised by Age UK Lambeth, Thriving Streatham advice fairs and Beacon Project’s Mental Health Community Day.



Championed carers’ mental health and wellbeing through the pandemic and secured funding from Public Health to deliver wellbeing activities and further 1:1 support to our carers.



The Carers Strategy Development Manager coordinates the **Carers Collaborative Strategy Group** and are working together with fellow members to drive forward the Carers Strategy in Lambeth.



Worked in partnership with Children’s Services at Lambeth Council to **co-host Young Carers Awareness training** for local professionals, bringing together perspectives from social care practice and Carers’ Hub Lambeth.



Worked in partnership with commissioners to ensure carers in Lambeth were fully briefed about Covid-19 vaccines and boosters.



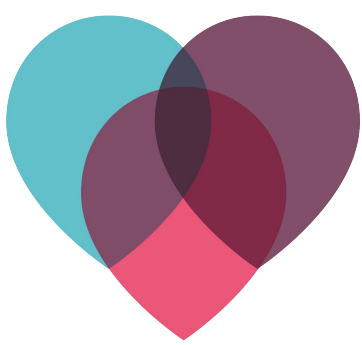
Worked in partnership with commissioners to secure funding to deliver the Young Carers’ Assessments in Lambeth, starting April 2022.



The Carers’ Hub team regularly gather feedback from carers so their voices raised and their insights, experiences and ideas shared with partners and commissioners to shape local policy and practice.

“Along with all the useful tools and having access to a network of other unpaid carers has helped me to feel less alone in this world (especially during a pandemic, social distance, isolation and separation). Joining has awoken me to a world of possibilities within my role as a carer for my son and re-connected me with a new digital world but with real people!”

Adult Carer



YOUNG CARERS



Our young carers team works with children from the age of 5 upwards, offering support and information to young carers and their families. Adventure, friendship and support are super-important for young carers, so we split our work into four areas:



We organise a mixture of exciting activities throughout the year



We run monthly young carers groups – a space to relax and have fun



We provide a listening ear and relevant help to young carers and their families



We run dedicated projects working with schools to support young carers with their education



363
total
attendances
across 43 days
of activities



57
attendances
across 6 young
carers' events,
including Carers'
Rights Day &
Young Carers
Action Day



466
young
carers
accessed
our service



171
young carers
supported via 44
drop-in sessions at
local school and 37
Homework club
sessions (online
and face to face)

YOUNG ADULT CARERS

A young adult carer is someone aged 16-21 who cares, unpaid, for a friend or family member who has an illness, disability, mental health problem or addiction. Some caring roles are big, others small. Either way, we're here to help. We know that friendship, support and trying new things can provide the boost that young adult carers need, so we split our work into three areas:



We provide
tailored 1-2-1
support



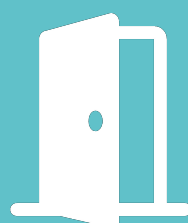
We organise a
mixture of fun activities
throughout the year



We run a monthly
young adult
carers group



KEY ACHIEVEMENTS



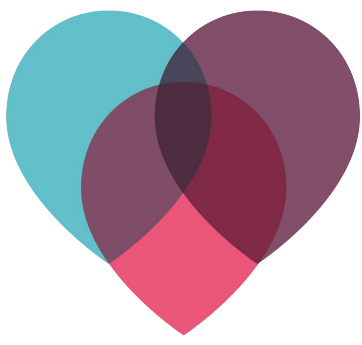
143
young adult
carers accessed
our service



142
young adult carer
attendances across
16 activities



58
Attendances
to 12 peer
support groups



ADULT CARERS INCLUDE CARERS FOR LEARNING DISABILITIES, MENTAL HEALTH AND DEMENTIA

An adult carer is someone aged 18+ who cares, unpaid, for a friend or family member who has an illness, disability, mental health problem or addiction.



We provide tailored 1-2-1 support, whether that relates to finances, day-to-day tasks or something different.



We run peer support groups for carers to share their experience of caring, make friends, and develop new skills. Different carers face different challenges, and that’s why our groups are specialised. We run groups tailored to dementia, mental health and learning disability carers.



We host a variety of information sessions and learning opportunities throughout the year.



We deliver advance care planning workshops and provide free legal clinics through our partnerships.

And if we can’t help, we’ll do our best to link carers with someone that can through up-to-date information, signposting and referrals.



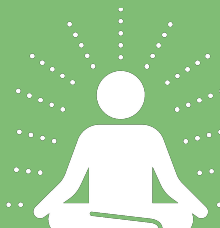
785
carers
accessed
our service



39
peer support
groups with
212 attendances



735
attendances
to 112 days of
activities



386
Attendances to
wellbeing activities
and workshops to
support carers in
their caring role -
e.g.: mindfulness,
Tai Chi, sleep
hygiene, and a
number of
workshops
delivered by Not a
Care in the World.



24
Attendances
to 11 Advance
Care Planning
Workshops,
and 12
advance
statements
completed



34
carers
attended 12
legal clinics



1125
signposts
and 314
referrals for
adult carers



Financial Review

Review of the charity's financial position

The statement of financial activities for 2021-2022 is set out on page 18 and shows a reported surplus for the year of £29,977 (2021: £30,757) of which £6,729 (2021: £1,328) is restricted income. The position of the charity at the year end is set out on page 16.

Our surplus this year largely results from some of our services being delivered online due to the Covid-19 restrictions and from having staff vacancies.

Principal Funding Sources

Our principal source of funding is Lambeth Council for those services being delivered through Connect Lambeth (previously Independent Living and Carers' Partnership). NHS South East London CCG also funds a proportion of our work. Recognising the considerable financial pressure facing local authorities both now and in the future, the charity is considering ways of diversifying its funding base, particularly in relation to grants, donations and corporate partnerships.

Details of the sources of funds are set out in the accounts. The Board confirms that the financial statements comply with current statutory requirements, the requirements of the company's governing document and the requirements of the Statement of Recommended Practice (the Charities SORP 2019).

Reserves Policy

Total Reserves as of 31 March 2022 are: £222,755 (2021: 192,778) of which £42,811 (2021: 36,082) represent restricted funds.

The Board of Trustees has examined the charity's requirements for reserves in light of the main risks to the organisation. It has established a policy whereby the unrestricted funds not committed or invested in tangible fixed assets (free reserves) held by the charity should be at a level equivalent to three months of operating costs. The budgeted expenditure for 2022/23 is £437,706 therefore there is a target of a minimum of £109,427 in free funds.



Financial Review

Honorary Officers are also elected at the AGM. Trustees will normally serve a three-year term and are eligible for subsequent re-election for one additional three-year term.

Trustee induction and training

An induction is provided for all new Trustees and ongoing training opportunities are made available.

The Board held a review of its skills and experience this year to inform our recruitment strategy to increase the size of our Board and ensure it meets the needs of the organisation. All Trustees give their time voluntarily and receive no remuneration from the charity. Any expenses reclaimed from the Charity are set out in the accounts. The Trustees delegate day to day management to the Chief Executive.

Risk Management

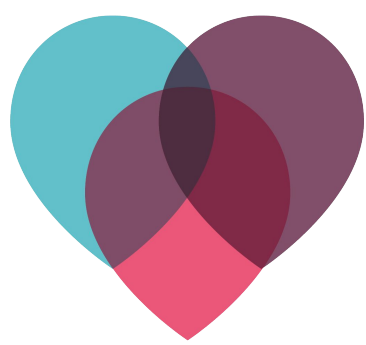
The Trustees have reviewed the major strategic, business and operational risks which the charity faces. Actions to address key risk areas have been agreed and progress is reviewed regularly. In addition, strong financial controls are in place to mitigate the risk of financial losses due to theft or fraud and these controls are regularly reviewed.

Responsibilities of the Board of Trustees

Company law requires the Management Committee to prepare financial statements for each financial year which give a true and fair view of the state of the affairs of the charitable company as at the balance sheet date and of its incoming resources and application of resources, including income and expenditure for the financial year.

In preparing those financial statements, the management committee should follow best practice and:

- select suitable accounting policies and then apply them consistently;
- make judgements and estimates that are reasonable and prudent; and



Financial Review

- prepare the financial statements on the going concern basis unless it is not appropriate to assume that the company will continue on that basis.

The Board of Trustees is responsible for maintaining proper accounting records which disclose with reasonable accuracy at any time the financial position of the charitable company and to enable them to ensure that the financial statements comply with the Companies Act 1985. The Board is also responsible for safeguarding the assets of the charitable company and hence for taking reasonable steps for the prevention and detection of fraud and other irregularities.

Members of the Management Committee

Members of the Management Committee, who are directors for the purpose of company law and trustees for the purpose of charity law, who served during the year and up to the date of this report are set out in page 4.

In accordance with company law, as the company's directors, we certify that:
- As the directors of the company, we have taken all the steps that we ought to have taken in order to make ourselves aware of any relevant independent examination information and to establish that the charity's independent examiners are aware of that information.

Independent Examiners of Accounts

Hilary Adams Ltd were appointed as the charitable company's Independent Examiners during the year and have expressed their willingness to continue in that capacity.

The report has been prepared in accordance with FRS 102.

Approved by the Management Committee on _____ and signed on its behalf by:

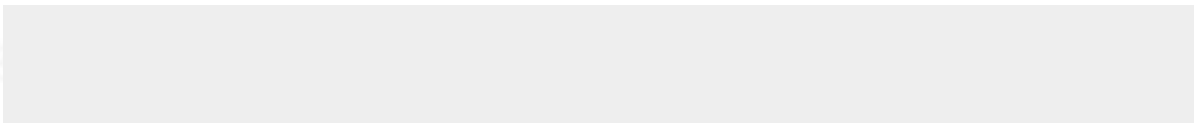
James Hynard – Director

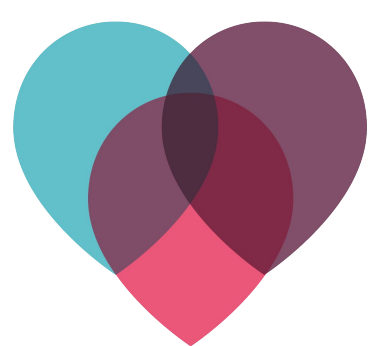


Statement of Financial Activities (including Income and Expenditure) for the Year Ended 31 March 2022

	Notes	Unrestricted Funds 2022 £	Restricted Funds 2022 £	Total Funds 2022 £	Total Funds 2021 £
Incoming resources:					
Voluntary Income:	3				
Donations & grants		1,020	123,076	124,096	79,328
Lambeth funding contracts		264,948	-	264,948	264,948
Activities for generating funds:					
Investment income		-	-	-	-
Incoming resources from charitable activities:					
Other income		-	-	-	-
Total incoming resources		265,968	123,076	389,044	344,276
Resources expended					
Costs of generating funds:					
Costs of generating voluntary income		-	-	-	-
Charitable activities		243,655	115,412	359,067	313,519
Total resources expended	2	243,655	115,412	359,067	313,519
STATEMENT OF TOTAL RECOGNISED GAINS AND LOSSES					
Net incoming resources before other recognised gains					
(net income for the year)		22,313	7,664	29,977	30,757
Transfer depreciation reserve		-	-	-	-
Transfer reserves		935	(935)	-	-
Other recognised gains					
Gain on revaluation of investments		-	-	-	-
Net movement in funds		23,248	6,729	29,977	30,757
Total funds brought forward		156,696	36,082	192,778	162,021
Total funds carried forward	11	179,944	42,811	222,755	192,778

Movements in funds are disclosed in Note 11 to the financial statements.





Statement of Financial Position - 31 March 2022

CARERS' HUB

STATEMENT OF FINANCIAL POSITION					
31 March 2022					
			31.3.22	31.3.21	
	Notes	Unrestricted funds £	Restricted funds £	Total funds £	Total funds £
FIXED ASSETS					
Tangible assets	8	1,998	248	2,246	1,678
CURRENT ASSETS					
Debtors	9	-	26,289	26,289	4,058
Cash at bank and in hand		<u>177,946</u>	<u>39,059</u>	<u>217,005</u>	<u>198,668</u>
		177,946	65,348	243,294	202,726
CREDITORS					
Amounts falling due within one year	10	-	(22,785)	(22,785)	(11,626)
NET CURRENT ASSETS		<u>177,946</u>	<u>42,563</u>	<u>220,509</u>	<u>191,100</u>
TOTAL ASSETS LESS CURRENT LIABILITIES		<u>179,944</u>	<u>42,811</u>	<u>222,755</u>	<u>192,778</u>
NET ASSETS		<u>179,944</u>	<u>42,811</u>	<u>222,755</u>	<u>192,778</u>
FUNDS	11				
Unrestricted funds				179,944	156,696
Restricted funds				<u>42,811</u>	<u>36,082</u>
TOTAL FUNDS				<u>222,755</u>	<u>192,778</u>

The company is entitled to exemption from audit under Section 477 of the Companies Act 2006 for the year ended 31 March 2022.

The members have not required the company to obtain an audit of its financial statements for the year ended 31 March 2022 in accordance with Section 476 of the Companies Act 2006.

The directors acknowledge their responsibilities for:

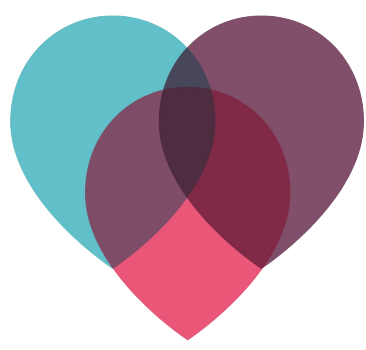
(a) ensuring that the company keeps accounting records which comply with Sections 386 and 387 of the Companies Act 2006 and

(b) preparing financial statements which give a true and fair view of the state of affairs of the company as at the end of each financial year and of its surplus or deficit for each financial year in accordance with the requirements of Sections 394 and 395 and which otherwise comply with the requirements of the Companies Act 2006 relating to financial statements, so far as applicable to the company.

The financial statements have been prepared in accordance with the provisions of Financial Reporting Standard 102 “The Financial Reporting Standard applicable in the UK and Republic of Ireland” and the Companies Act 2006.

The financial statements were approved by the Board of Trustees on and were signed by:

.....
Mr James Hynard – Director



Notes for the Financial Statements

For the Year Ended 31 March 2022

1. STATUTORY INFORMATION

Carers' Hub is a private company, limited by guarantee, registered in England and Wales. The company's registered number and registered office address can be found on the Company Information page.

2. ACCOUNTING POLICIES

Basis of preparing the financial statements

These financial statements have been prepared in accordance with the provisions Financial Reporting Standard 102 "The Financial Reporting Standard applicable in the UK and Republic of Ireland" and the Companies Act 2006. The financial statements have been prepared under the historical cost convention.

Financial Reporting Standard Number 1

Exemption has been taken from preparing a cash flow statement on the grounds that the company qualifies as a small company.

Turnover

Turnover represents grants and contract funding payments received.

Tangible fixed assets

Depreciation is provided at the following annual rates in order to write off each asset over its estimated useful life.

Plant and machinery etc	-33% on cost,
	-20% on cost

Fund accounting

- Unrestricted funds are available for use at the discretion of the trustees in furtherance of the general objectives of the charity.
- Designated funds are unrestricted funds earmarked by the Management Committee for particular purposes.
- Restricted funds are subjected to restrictions on their expenditure imposed by the donor or through the terms of an appeal.

Incoming resources

All incoming resources are included in the statement of financial activities when the charity is entitled to the income and the amount can be quantified with reasonable accuracy. The following specific policies are applied to particular categories of income:

- Grants and contract funding payments are recognised when receivable;
- Investment income is included when receivable.

Resources expended

Expenditure is recognised on an accruals basis as a liability is incurred. Expenditure includes VAT and is reported as part of the expenditure to which it relates:

- Costs of generating funds comprise the costs associated with both the costs of attracting the income and those of providing the facilities to generate the income.
- Charitable expenditure comprises those costs incurred by the charity in the delivery of its activities and services for its beneficiaries. It includes both costs that can be allocated directly to such activities and those costs of an indirect nature necessary to support them.



Notes for the Financial Statements - continued

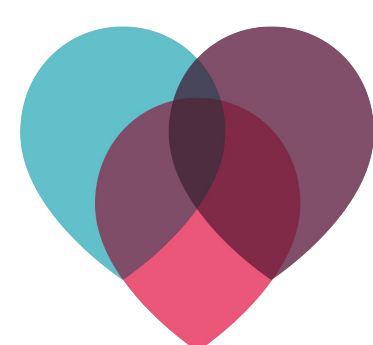
For the Year Ended 31 March 2022

CARERS' HUB

NOTES TO THE FINANCIAL STATEMENTS - continued
for the Year Ended 31 March 2022

2. Total Resources Expended

	Basis of allocation	Advanced Care Planning Project	AC Prevention & Promotion of Better Mental Health	DWP Access to Work	Jack Petchey	Kings Civic Challenge	SWSJ	Walcot Foundation	Winter Monies	YAC Project	YC Prevention & Promotion of Better Mental Health	Core	2022 Total	2021 Total
	£	£	£	£	£	£	£	£	£	£	£	£	£	£
Costs directly allocated to activities	Direct	11,641	13,710	-	-	1,168	8,557	18,502	2,131	26,424	10,089	211,144	303,366	276,266
	Direct	-	4,134	-	1,778	1,609	569	236	-	1,436	845	4,281	14,888	6,558
Support costs allocated to activities	Floor area	-	1,400	-	-	1,400	500	914	-	500	410	12,914	18,038	12,630
	Usage	-	1,759	132	-	1,014	882	1,331	-	1,145	963	13,301	20,527	15,853
	Usage	-	-	-	-	-	-	-	-	-	-	439	439	753
	Usage	-	-	-	-	-	184	49	-	-	-	1,576	1,809	1,459
Total resources expended		11,641	21,003	132	1,778	5,191	10,692	21,032	2,131	29,505	12,307	243,655	359,067	313,519



Notes for the Financial Statements - continued

For the Year Ended 31 March 2022

3. **INCOMING RESOURCES FROM ACTIVITIES TO FURTHER THE CHARITY'S OBJECTS**

	Unrestricted	Restricted	2022 Total	2021 Total
	£	£	£	£
ILCP	264,948	-	264,948	264,948
NHS SE London CCG	-	29,000	29,000	-
NHS CAMHS	-	-	-	14,500
Jack Petchey Foundation	-	2,700	2,700	1,750
Compassion in Dying	-	8,041	8,041	7,456
Sir Walter St John	-	9,133	9,133	8,881
Walcot Foundation	-	23,498	23,498	23,161
Kings Civic	-	-	-	5,000
Healthwatch	-	-	-	361
Young Carers	-	17,635	17,635	-
Public Health Commissioning	-	33,069	33,069	-
Other	1,020	-	1,020	18,219
	265,968	123,076	389,044	344,276

4. **EMPLOYEES AND DIRECTORS**

	31.3.22 £	31.3.21 £
Wages and salaries	278,408	252,388
Social security costs	19,825	18,885
Pension	5,133	4,633
Other staff costs	-	360
	303,366	276,266

The average monthly number of employees during the year was as follows:

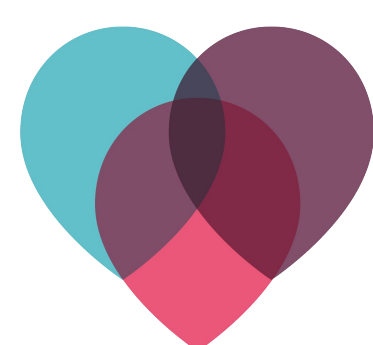
	31.3.22	31.3.21
Manager	1	1
Direct	16	13
	17	14

No employee received emoluments of more than £60,000 in the year.

5. **NET INCOMING (OUTGOING) RESOURCES**

The operating surplus/(deficit) is stated after charging:

	31.3.22 £	31.3.21 £
Depreciation – owned asset	1,809	1,459
Directors' remuneration and other benefits etc	-	-



Notes for the Financial Statements - continued

For the Year Ended 31 March 2022

6. **TRUSTEE REMUNERATION AND RELATED PARTY TRANSACTIONS**

No members of the management committee received any remuneration during the year (2021: Nil).
No expenses were reimbursed during the year (2021: Nil).

No trustee or other person related to the charity had any personal interest in any contract or transaction entered into by the charity during the year (2021: Nil).

7. **TAXATION**

As a charity, Carers' Hub is exempt from tax on income and gains falling within section 505 of the Taxes Act 1988 or s256 of the Taxation of Chargeable Gains Act 1992 to the extent that these are applied to its charitable objects. No tax charges have arisen in the Charity.

8. **TANGIBLE FIXED ASSETS**

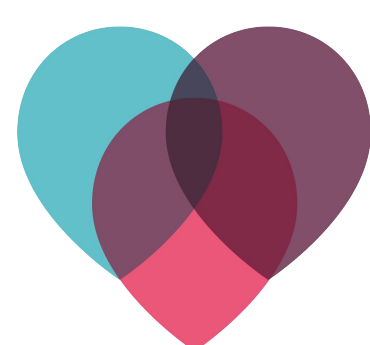
	Plant and machinery etc £
COST	
At 1 April 2021	5,009
Additions	<u>2,377</u>
At 31 March 2022	<u>7,386</u>
DEPRECIATION	
At 1 April 2021	3,331
Charge for year	<u>1,809</u>
At 31 March 2022	<u>5,140</u>
NET BOOK VALUE	
At 31 March 2022	<u>2,246</u>
At 31 March 2021	<u>1,678</u>

9. **DEBTORS: AMOUNTS FALLING DUE WITHIN ONE YEAR**

	31.3.22 £	31.3.21 £
Trade debtors	14,500	-
Other debtors	<u>11,789</u>	<u>4,058</u>
	<u>26,289</u>	<u>4,058</u>

10. **CREDITORS: AMOUNTS FALLING DUE WITHIN ONE YEAR**

	31.3.22 £	31.3.21 £
Taxation and social security	6,465	10,306
Other creditors	<u>16,320</u>	<u>1,320</u>
	<u>22,785</u>	<u>11,626</u>



Notes for the Financial Statements - continued

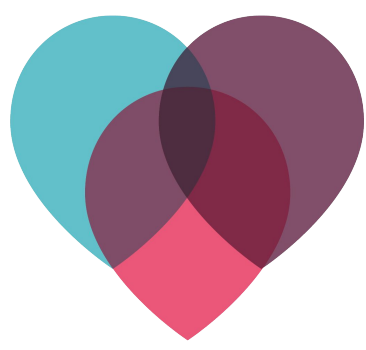
For the Year Ended 31 March 2022

11. MOVEMENT IN FUNDS

	At 1.4.21	Net movement in funds	Transfers between funds	At 31.3.22
Unrestricted				
Core	156,696	22,313	935	179,944
	156,696	22,313	935	179,944
Restricted				
Advanced Care Planning Project	2,379	(3,600)	-	(1,221)
AC Prevention & Promotion	-	12,066	-	12,066
Because we all care Campaign	321	-	(321)	-
DWP Access to Work	-	(132)	132	-
Jack Petchey	809	922	-	1,731
Kings Civic Challenge	5,000	(5,191)	191	-
SWSJ	(519)	(1,559)	-	(2,078)
Walcot Foundation	16,075	2,466	-	18,541
Winter Monies	-	(2,131)	-	(2,131)
YAC Project	11,080	(505)	-	10,575
YC Prevention & Promotion	-	5,328	-	5,328
Young Carers	836	-	(836)	-
GP Federation Project	101	-	(101)	-
	36,082	7,664	(935)	42,811
TOTAL FUNDS	192,778	29,977	-	222,755

Net movement in funds, included in the above, are as follows

	Incoming resources	Resources expended	Movement in funds
Unrestricted			
Core	265,968	(243,655)	22,313
	265,968	(243,655)	22,313
Restricted			
Advanced Care Planning Project	8,041	(11,641)	(3,600)
AC Prevention & Promotion	33,069	(21,003)	12,066
Because we all care Campaign	-	-	-
DWP Access to Work	-	(132)	(132)
Jack Petchey	2,700	(1,778)	922
Kings Civic Challenge	-	(5,191)	(5,191)
SWSJ	9,133	(10,692)	(1,559)
Walcot Foundation	23,498	(21,032)	2,466
Winter Monies	-	(2,131)	(2,131)
YAC Project	29,000	(29,505)	(505)
YC Prevention & Promotion	17,635	(12,307)	5,328
Young Carers	-	-	-
GP Federation Project	-	-	-
	123,076	(115,412)	7,664
	389,044	(359,067)	29,977



Chartered Accountants’ Independent Examiner’s Report to the Trustees of the Unaudited Financial Statements of Carers’ Hub

We report on the accounts of the company for the year ended 31 March 2022, which are set out on pages 18 to 24.

Respective responsibilities of trustees and examiner

The trustees are responsible for the preparation of the accounts. The trustees consider that an audit is not required for this year under section 144 of the Charities Act 2011 (the 2011 Act) and that an independent examination is needed. Having satisfied ourselves that the charity is not subject to audit under company law and is eligible for independent examination, it is our responsibility to:

- examine the accounts under section 145 of the 2011 Act;
- to follow the procedures laid down in the general Directions given by the Charity Commission under section 145(5)(b) of the 2011 Act; and
- to state whether particular matters have come to our attention.

Basis of independent examiner’s report

Our examination was carried out in accordance with the general Directions given by the Charity Commission. An examination includes a review of the accounting records kept by the charity and a comparison of the accounts presented with those records. It also includes consideration of any unusual items or disclosures in the accounts, and seeking explanations from you as trustees concerning any such matters. The procedures undertaken do not provide all the evidence that would be required in an audit and consequently no opinion is given as to whether the accounts present a ‘true and fair view’ and the report is limited to those matters set out in the statement below.

Independent examiner’s statement

In connection with our examination, no matter has come to our attention:

- (1) which gives us reasonable cause to believe that in any material respect the requirements:
- to keep accounting records; and
 - to prepare accounts which accord with the accounting records, comply with the accounting requirements of and with the methods and principles of the Statement of Recommended Practice: Accounting and Reporting by Charities have not been met; or
- (2) to which, in our opinion, attention should be drawn in order to enable a proper understanding of the accounts to be reached.

Hilary Adams Ltd
Chartered Accountants
158 High Street
Herne Bay
Kent
CT6 5NP

Date:



Acknowledgement to funders and partners

We would like to acknowledge and thank everyone who enables us to do the work that we do: carers, commissioners, local voluntary sector partners, and NHS colleagues.

We also want to say thank you to our corporate partners, ZS Associates, for their support around the development of our strategic plans.

Thank you to our staff team for always working hard to deliver the support that carers' needs and ensuring that their voices are heard.

And lastly, but not least, a massive thank you to our trustees who are an important group of volunteers who oversee the charity's overall governance and strategic direction. Thank you for all your work and support provided to the team.

Our funders: Lambeth Council, South East London Clinical Commissioning Group, Lambeth Public Health, Walcot Foundation, Sir Walter St John Educational Charity.

