

**BURY VOLUNTARY COMMUNITY &
FAITH ALLIANCE**

**FINANCIAL STATEMENTS
FOR THE YEAR ENDED 31 MARCH 2023**

Registered Charity No. 1182039

**BURY VOLUNTARY COMMUNITY &
FAITH ALLIANCE**

INDEX

<u>CONTENTS</u>	<u>PAGE NUMBER</u>
TRUSTEES ANNUAL REPORT	1 - 11
INDEPENDENT EXAMINERS REPORT	12
STATEMENT OF FINANCIAL ACTIVITIES	13
BALANCE SHEET	14
STATEMENT OF CASH FLOWS	15
NOTES TO THE ACCOUNTS	16 - 26

Report of the Trustees for the year ended 31st March 2023

The Trustees present their annual report and financial statements of the organisation for the year ended 31st March 2023. The financial statements have been prepared in accordance with the accounting policies set out in note 1 to the accounts and comply with the organisation's trust deed.

Reference and administrative information

Charitable Incorporated Organisation
 Name: Bury Voluntary Community & Faith Alliance
 Charitable Incorporated Organisation Number: 1182039
 Date Registered: 14th February 2019

Trustees

The Trustees serving during the period to 31st March 2023, and up to the date of signing, were as follows:

Andy Hazeldine	Chair & HR Sub Committee
Vicky Maloney	Deputy Chair & HR Sub Committee
Jill Logan	Treasurer and Chair of Finance Sub Committee
Tanveer Ahmed	Finance Sub Committee
Mark Cunningham	Deputy Chair
Clare Fordham	HR Sub Committee
Laura Wolstenholme	(appointed July 2022)
Katie Jenkinson	(resigned November 2022)
Tina Harrison	(appointed November 2022)
Jumoke Ilevbabor	

The Board is actively recruiting to ensure a wide breadth of interest and expertise across its membership.

Principal Office

First Floor
 Castle Buildings
 Market Place
 Bury
 BL9 0LD

Independent Examiners

Community Accountancy Service Limited
 The Grange
 Pilgrim Drive
 Beswick
 Manchester
 M11 3TQ

Bankers

Unity Trust Bank
Nine Brindley Place
Birmingham
B1 2HB

Investment Managers

CCLA
Senator House
85 Queen Victoria Street
London
EC4V 4ET

Objectives and activities

The purposes of the organisation are:

Vision

To enhance the quality of life of local residents by supporting a thriving community & voluntary sector in Bury

Aim

To support voluntary, community, social enterprises and faith organisations in the borough of Bury to enhance and improve the lives of local communities and residents.

Who are we?

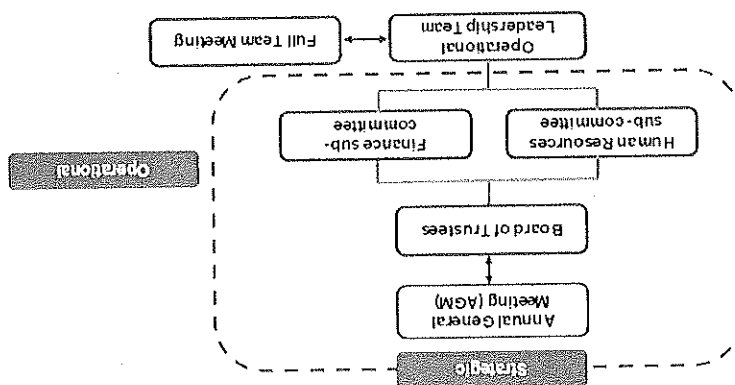
Bury VCFA enhances local community and voluntary action by enabling Voluntary, Community, Faith and Sector organisations (VCSE) in Bury to provide support and deliver services. We will do this through developing capacity in the VCSE, effective strategic engagement with our statutory partners and by forging alliances with local businesses and communities

The organisation furthers its charitable purposes for the public benefit through:

- enabling and supporting local VCSE to deliver services in Bury;
- VCSE, public and private sectors to their local communities through local VCSE organisations;
- facilitating a single point of access for the public sector (Bury Council, NHS, primary, secondary & acute health services; Police; Fire; etc.) with local voluntary organisations, community and faith groups;
- creating opportunities to exchange information about areas of interest and promote good communication between various sectors;
- facilitating a forum to develop partnership working locally.
- supporting VCSE organisations with sustainability; income generation and fundraising

Structure, governance and management

Bury Voluntary Community & Faith Alliance is a Charitable Incorporated Organisation governed by its constitution dated 20th March 2018 and registration as a Charitable Incorporated Organisation number 1182039 with the Charity Commission on 14th February 2019.



Appointment of Trustees

As set out in the Constitution, Trustees will be elected by the members attending the Annual General meeting. Each year, Trustees shall retire from office by rotation based on their length of service and may offer themselves for re-election.

Trustee induction and training

Upon first appointment all Trustees receive an induction and are also provided the following information :

- role and responsibilities of a Trustees
- copy of the constitution,
- Bury VCFA latest budget and Accounts
- Strategic Plan
- staff details and organisation chart
- key policies - equal opportunities; confidentiality/data protection/privacy

Organisation

The Trustees administer the Organisation.

Related parties and co-operation with other organisations

No Trustee receives remuneration or other benefit from their work with the Organisation. Any connection between a Trustee or Senior Manager with any service providers must be disclosed to the full Board of Trustees in the same way as any other contractual relationship with a related party.

A review of achievements and performance (2022/2023)

Bury VCA local infrastructure services are built on four strategic priorities:

- Leadership and Advocacy
- Partnerships and Collaboration
- Capacity Building
- Volunteering

In addition to our infrastructure provision, Bury VCA also provides connections to non-medical community interventions through the Beacon Social Prescribing Service for the borough and our Housing Welfare Project based at the mental health unit at Fairfield Hospital.

Leadership and Advocacy

Our work within leadership and advocacy is diverse. But at its heart is ensuring the voice of the Sector is heard within Bury and Greater Manchester.

Bury VCA continues to play a role in the GM VCSE Leadership Group and work around the GM Accord into working arrangements with public sector partners. This has included securing UK Shared Prosperity Fund investment to 'level-up' local infrastructure services in the borough which will begin in 2023-24.

We have continued to broaden our membership of the Bury VCSE Leadership Group, ensuring we build on the growing influence and voice of the diverse Sector in Bury. As a result of this, the Leadership Group will be leading a key, cross-sectoral Team Bury Away Day event in 23-24.

In 2022-23, Bury VCA increased strategic representation on local boards and partnerships to champion the role of the VCSE sector and influence decision-making around the shaping of future services.

Bury VCA has been a key delivery partner in Bury's *Let's Do It* (Team Bury Strategy), ensuring sectoral representation on key partnerships including:

- Bury Locality Board
- Bury Integrated Care Partnership
- Team Bury
- Bury Health and Wellbeing Board
- Children's Strategic Partnership Board
- Community Safety Partnership (VCA chairs the Community Cohesion sub-group)

A key feature of Bury VCA's leadership and advocacy support for the Sector is ensuring effective communications across a variety of media including e-bulletins, social media, film and networks. In 2022-23:

- 25 VCSE sector news and information e-bulletins
- 12 funding bulletins were distributed to 700+ recipients
- 3500 social media followers

- 2900 visitors to the website, per month

In March 2023, we achieved the Local Infrastructure Quality Award (LIQA) for NAVCA, our national membership organisation. The LIQA is the only quality accredited process designed specifically for local VCSE local infrastructure provision and benchmarks the quality of our services in four key areas: Leadership and Advocacy, Partnerships and Collaboration, Capacity Building and Volunteering. During this year, Bury VCFA supported the process for the establishment of a new Home from Hospital service, facilitating conversations to learn from other areas and bringing together VCSE sector and clinical staff to support the co-design of a model for Bury.

As a membership organisation, a key priority this year has been to develop our offer to member groups and promote the benefits of membership at every opportunity. A new online application system has been developed along with access to a suite of free online training modules for all member groups, supported by licences provided by Bury Council.

In 2022-23, Bury VCFA moved into new office premises in Bury Town Centre. Alongside providing a permanent base for our team, it also enables meeting, training and one-to-one rooms to support our operational functions, and provides meeting spaces for the VCSE sector and partners. We are co-located with two other VCSE organisations, Citizens Advice Bury/Bolton and Bury Street Pastors, increasing the social value created by the complementary nature of our work.

Partnerships and Collaboration

Bury VCFA leads a number of projects and programmes within Bury as part of our role as a Local Infrastructure Organisation. In 2022-23, we began work with the Greater Manchester Violence Reduction Unit which saw four organisations receive grants – 1Message, Bury Defence Academy, Friends of Hazlewood and Early Break. These organisations worked together to form an alliance with support from Bury VCFA. The alliance has co-designed a series of interventions that provide positive role models for young people and raise aspirations through positive engagement. The Bury Local Pilot is a Sport England-funded programme that uses a place-based behaviour change approach to create sustainable change in physical activity levels. The pilot has had an initial focus in Radcliffe but has also taken a borough-wide viewpoint resulting in the creation of the Borough's Wellness Strategy. Bury VCFA is part of the local steering group to ensure the sector remains at the heart of this work. Bury VCFA continues to facilitate and support the Bury Older Peoples Network. The network has grown from strength to strength this year developing its own identity and focus. Monthly meetings now take place with focus topics including the Cost of

Living, Adult Social Care and the GM Age Friendly Strategy. The Network will be hosting the Bury Older People's Event during Volunteers Week in 23-24.

We work collaboratively with Bury Council colleagues in providing support to Bury Faith Forum as it continues to develop and grow. Key areas of focus in 22-23 included supporting the humanitarian response to the Ukraine crisis, hate crime awareness and working with the Forum to connect with interfaith opportunities at Fairfield Hospital in Bury.

We have continued representation on the Anti-Poverty Steering Group, providing insights from the VCSE sector to shape priorities, monitor demands on the Sector and disseminating information and resources including the Money Advice Tool. We developed a new Cost of Living resources webpage to support VCSE groups supporting anti-poverty initiatives and have worked with partners from the Bury Community Support Network (a network of groups tackling poverty) in consultations around allocation of the Household Support Fund.

Our partnership with the Bury LGBTQI Forum has developed further in 2022-23. Our LGBT Development Officer has continued to provide dedicated support to the Forum and Bury PRIDE and has built strong links with Greater Manchester Police, mental health services, faith organisations, local schools and colleges, arts and culture organisations and the broader VCSE sector. Key events during the year have included a World Aids Day reception hosted by the Mayor, and HIV awareness session with members of the LGBT Youth Group and a poetry event at Bury Art Gallery

In 2022-23, we facilitated delivery of the Connect 5 mental health promotion training programme designed to increase the confidence and skills of front-line staff and volunteers about mental health and wellbeing.

Capacity Building

In 2022-23 our team supported 156 VCSE groups and organisations within the borough with a range of development issues. This includes setting up new groups and writing constitutions, understanding and choosing the right legal structure and registration with Charity Commission and CIC Regulator. Support around funding remains a key area of work including funding searches and "critical friend" support around bid writing.

Our training programme is a key part of our capacity building offer. During 2022-23 our training programme was refreshed following the analyses of a training needs survey and 33 training opportunities were delivered to 258 participants.

In 2022-23, Bury VCFA continued to develop its role as a deliverer of grants to the VCSE sector in order to strengthen sustainability and build resilience.

70 VCSE organisations received grants in 2022-23; £213k was administered in investments to the VCSE sector by Bury VCFA through the following grants programmes:

- Standing Together and Hate Crime Awareness grants (crime reduction and cohesion grants – on behalf of Bury Council).
- Community Investment and Cost-of-Living grants (on behalf of Bury Council).
- Household Support grants (on behalf of Bury Council).
- Bury Local Delivery Pilot to encourage physical activity.
- Health and wellbeing grants to support VCSE groups delivering social prescribing interventions.

Volunteering

This year we continued to provide training and good practice support to volunteer managers across the borough. Six Volunteer Coordinators Forums were delivered with a range of themes covered including volunteer induction, volunteer recruitment using social media, youth volunteering, safe volunteering and risk assessment. Bury VCFA provides the volunteer brokerage service for the borough as well as providing support for individuals to take their first steps into volunteering.

- 149 new volunteer registrations
- 219 volunteer referrals
- **12 Volunteer Bulletins issued during 22 – 23** distributed to approximately 1400 recipients, marketing local volunteering opportunities with local groups/organisations.

Bury VCFA Volunteer Passport was developed to support those furthest away from volunteering with sessions delivered in partnership with Bury Adult Learning Centre and the Pathways to Employment ESOL conversation club.

The Bury Volunteer Strategy was a key piece of work this year with extensive engagement work across the VCSE sector and partner organisations. The Volunteering Strategy 23-26 has been shared and signed off with the Team Bury Coordination Group and will be launched at the beginning of 2023.

As part of the Volunteering Strategy we have worked with Bury Youth Service to provide introduction to Youth Work training for volunteers. The aim of this being to support VCSE groups to engage with young people around volunteering opportunities and encourage youth leadership within their groups.

In addition, we organised a webinar around the benefits of youth volunteering in collaboration with a local representative of the Duke of Edinburgh Award Scheme.

Volunteer stalls/fairs were organised at Black History Month events and in each neighbourhood of Bury with Asda, Morrisons and Tesco supermarkets all participating and supporting key messaging around promotion and benefits of volunteering in local communities.

During Volunteers Week in June, we established the Roll of Appreciation to celebrate the contribution of volunteers across the Borough of Bury. We received over 100 nominations with all volunteers nominated received a Certificate of Appreciation signed by the Leader of the Council and Chief Officer of Bury VCFA.

Social Prescribing

Bury VCFA Social Prescribing Service (Beacon) has continued to work in partnership with Primary Care Networks to provide non-medical interventions to support the health and wellbeing of people in Bury. Link Workers spend time with individuals to understand their needs and interests and use their knowledge of the VCSE sector to connect people to appropriate support and activities in their neighbourhood. In 2022 – 23:

- 991 referrals were made into the Beacon Social Prescribing Service supporting better self-care.
- 976 connections into community activities were made.
- Beacon's Link Workers made 9623 active connections with referrals.

Bury VCFA Housing Welfare Link Worker is based on the mental health unit at Fairfield Hospital. The Service provides an holistic approach to discharge ensuring people have the correct housing, welfare and benefit support and are connected into community services to re-establish independence in the community. In 2022-23, 69 people were supported with discharge from hospital.

Financial review

VCFA is responsible for its own day-to-day financial transactions and management, reporting to Trustees on a regular, bi-monthly basis.

A Finance Sub-Committee oversees the management of Bury VCFA finances; it reports directly to the Bury VCFA Board of Trustees. The Sub-Committee comprises: Jill Logan (FSC Chair / Trustee and Board Treasurer), Tan Ahmed (Trustee), and Luke Bidwell (Operational Director, Early Break).

FSC members and Trustees are satisfied that all funding grant received is being used according to the relevant funding agreement/SLA and in the widest interests of the VCSE Sector in Bury.

Investment powers and policy

The overall objective as specified by our Investment Policy is to create sufficient income and capital growth to enable the charity to carry out its purposes consistently year by year with due and proper consideration for future needs and the maintenance of and, if possible, enhancement of the value of the invested funds while they are retained.

Both capital and income may be used at any time for the furtherance of the charity's aims and therefore the portfolio should be managed on a total return basis. The portfolio asset allocation will fall within the following broad planning ranges and the performance will be measured against a target of inflation plus 3%.

Reserves policy and going concern

The balance held in unrestricted reserves at 31st March 2023 was £99,807 of which £97,170 are free reserves, after allowing for funds tied up in tangible fixed assets.

The Organisation's main source of income is grants. The Trustees consider that it is appropriate to prepare the accounts on a going concern basis and, consequently, the accounts do not include any adjustments that would be necessary if these sources of income should cease.

The Trustees aim to establish and maintain free reserves in unrestricted funds at a level, which equates to approximately six months of unrestricted charitable expenditure. The Trustees consider that this level will provide sufficient funds to ensure that support and governance costs are covered.

The Trustees consider that the organisation is a going concern. Any reliance on grant funding is managed through a flexible approach to activities and project delivery.

It should be noted that a significant proportion of VCFA income is ring-fenced for grants to third parties, with VCFA acting as a grant-processing agent. As such, of

the total reserves (£17,562) only £349,807 was for VCFA core-business, the remainder being for dispersal as grants to third party organisations, or to managed-projects.

Risk management

VCFA maintains a comprehensive risk register which is updated and reviewed by the Trustees regularly. As the Organisation continues to establish itself, Trustees conduct a review of the major risks to which the organisation may be exposed and systems will be established to mitigate those risks.

Plans for Future Periods

Bury VCFA proposes to continue to develop and enhance its activities and services, in the interests of a thriving and dynamic VCSE sector for Bury.

Plans for 2023-24

- Completion of Strategic Plan which outlines priorities for period 2023-26 including income generation plan;
- Review of operational structure to ensure capacity in place to deliver on strategic priorities;
- Launch of Bury Volunteering Strategy 2023-26;
- Continued growth of Bury VCFA membership and further development of our membership offer;
- Re-negotiation of service level agreement with Bury Council for delivery of local infrastructure services in Bury;

Trustees responsibilities in relation to the financial statements

The Organisation's Trustees are responsible for preparing a 'Trustees' annual report and financial statements in accordance with applicable law and United Kingdom Accounting Standards (United Kingdom Generally Accepted Accounting Practice), which give a true and fair view of the state of affairs of the organisation and of the incoming resources and application of resources, including the income and expenditure for that period.

In preparing the financial statements, the Trustees will be required to:

- Select suitable accounting principles and then apply them consistently;
- Observe the methods and principles in the applicable Charities SORP;
- Make judgments and estimates that are reasonable and prudent;
- State whether applicable accounting standards have been followed, subject to any material departures that must be disclosed and explained in the financial statements;
- Prepare the financial statements on a going concern basis unless it is appropriate to presume that the organisation will not continue in business.

The Trustees are responsible for keeping proper accounting records that disclose with reasonable accuracy at any time the financial position of the organisation and to enable them to ensure that the financial statements comply with legal requirements. They are also responsible for safeguarding the assets of the organisation and taking reasonable steps for the prevention and detection of fraud and other irregularities.

By order of the Trustees



Jill Logan
Treasurer

Date: 29th November 2023

**INDEPENDENT EXAMINERS REPORT TO THE TRUSTEES OF
BURY VOLUNTARY COMMUNITY & FAITH ALLIANCE
REGISTERED CHARITY NO. 1182039**

I report on the accounts of the charity, for the year ended 31st March 2023, which are set out on pages 13 to 26.

Respective Responsibilities of Trustees and Examiner

The charity's trustees are responsible for the preparation of the accounts. The charity trustees consider that an audit is not required for this year under section 144(2) of the Charities Act 2011 (the 2011 Act) and that an independent examination is needed. The charity is preparing accrued accounts and I am qualified to undertake the examination by being a qualified member of the Association of Chartered Certified Accountants.

It is my responsibility to:

- Examine the accounts under section 145 of the 2011 Act;
- follow the procedures laid down in the general Directions given by the Charity Commission under section 145(5)(b) of the 2011 Act; and
- To state whether particular matters have come to my attention.

Basis of Independent Examiners Report

My examination was carried out in accordance with the General Directions given by the Charity Commission. An examination includes a review of the accounting records kept by the charity and a comparison of the accounts presented with those records. It also includes consideration of any unusual items or disclosures in the accounts, and seeking explanations from you as trustees concerning any such matters. The procedures undertaken do not provide all the evidence that would be required in an audit, and consequently no opinion is given as to whether the accounts present a "true and fair view" and the report is limited to those matters set out below.

Independent Examiner's Statement

In connection with my examination, other than listed below, no matter has come to my attention: (1) which gives me reasonable cause to believe that in any material respect the requirements: to keep accounting records have in accordance with section 130 of the 2011 Act; and to prepare accounts which accord with the accounting records and to comply with the accounting requirements of the 2011 Act, have not been met; or (2) to which, in my opinion, attention should be drawn in order to enable a proper understanding of the accounts to be reached.

Signed: A.M. King

AM King FCCA

Date: 29th November 2023

Community Accountancy Service Ltd
The Grange, Pilgrim Drive, Beswick,
Manchester, M11 3TQ

STATEMENT OF FINANCIAL ACTIVITIES
FOR THE YEAR ENDED 31 MARCH 2023
(INCLUDING INCOME AND EXPENDITURE ACCOUNT)

	Total Funds	Year Ended 31 March 2023	Year Ended 31 March 2022	Total Funds
	£	£	£	£
Income from:				
Donations and legacies	(3)	513	600	1,113
Charitable Activities	(4)	209,141	529,460	738,601
Other Trading Activities	(5)	15,600	-	15,600
Bank Interest		1,665	-	1,665
Total		226,919	530,060	756,979
Expenditure on:				
Raising Funds	(6)	1,147	818	1,965
Charitable Activities	(6)	214,181	577,551	791,732
Other	(6)	155	62	217
Total		215,483	578,431	793,914
Net gains/(losses) on investments		(12,125)	-	(12,125)
Net income/(expenditure)		(689)	(48,371)	(49,060)
Transfers between funds	(17)	(326)	326	-
Net movement in funds		(1,015)	(48,045)	(49,060)
Reconciliation of funds				
Funds brought forward	(17)	350,822	415,800	766,622
Total funds carried forward	(17)	349,807	367,755	717,562
				756,950

The statement of financial activities includes all gains and losses in the year. All incoming resources and resources expended derive from continuing activities.

The notes on pages 16 to 26 form part of these accounts.

BALANCE SHEET AS AT 31 MARCH 2023

	2023	2022	Notes
Fixed assets:			
Tangible assets	5,031	9,739	(11)
Fixed Asset investments	414,679	452,504	(11)
Total fixed assets	419,710	462,243	
Current assets:			
Stocks	-	-	(12)
Debtors	92,489	55,497	(13)
Cash at Bank & in Hand	224,205	270,245	
Total current assets	316,694	325,742	
Liabilities:			
Creditors: Amounts falling due within one year	18,842	21,363	(14)
Net current assets or liabilities	297,852	304,379	
Total assets less current liabilities	717,562	766,622	
Creditors: Amounts falling due after more than one year	-	-	(16)
Provisions for liabilities	-	-	
Total net assets or liabilities	717,562	766,622	
The funds of the organisation:			
Restricted income funds	367,755	415,800	(17)
Unrestricted income funds	349,807	350,822	(17)
Total organisation funds	717,562	766,622	

Approved on behalf of the Trustees Management Committee

Jill Logan

Treasurer

Date: 29th November 2023

The notes on pages 16 to 26 form part of these accounts.

Statement of Cash Flows for the year ended 31 March 2023

15

Reconciliation of net movement in funds to net cash flow from operating activities		
Year Ended 31 March 2023	Year Ended 31 March 2022	
Net movement in funds	(49,060)	9,672
Add back depreciation	6,696	6,941
Deduct investment income	(1,665)	(131)
Deduct gains/add back losses on investments	12,125	(27,265)
Decrease/(increase) in stocks	-	-
Decrease/(increase) in debtors	(36,992)	20,768
Increase/(decrease) in creditors	(2,521)	2,048
Net cash used in operating activities	(71,417)	12,033
Cash flows from investment activities:		
Interest	1,665	131
Transfer to investments	25,700	(200,000)
Purchase of fixed assets	(1,988)	(9,771)
Net cash provided by investing activities	25,377	(209,640)
Increase/(decrease) in cash and cash equivalents during the year	(46,040)	(197,607)
Cash and cash equivalents brought forward	270,245	467,852
Cash and cash equivalents carried forward	224,205	270,245

Notes to the accounts

1. Accounting policies

(a) Basis of preparation and assessment of going concern

The accounts (financial statements) have been prepared under the historical cost convention with items recognised at cost or transaction value unless otherwise stated in the relevant notes to these accounts.

(b) Funds structure

Restricted funds are funds which are to be used in accordance with specific restrictions imposed by the donor or trust deed. There are 33 restricted funds. Unrestricted income funds comprise those funds which the trustees are free to use for any purpose in furtherance of the objects. Unrestricted funds include designated funds where the trustees, at their discretion, have created a fund for a specific purpose. Further details of each fund are disclosed in note 17.

(c) Income recognition

All income is recognised once the organisation has entitlement to the income, it is probable that the income will be received and the amount of income receivable can be measured reliably. Donations are recognised when the organisation has been notified in writing of both the amount and settlement date. In the event that a donation is subject to conditions that require a level of performance before the organisation is entitled to the funds, the income is deferred and not recognised until either those conditions are fully met, or the fulfilment of those conditions is wholly within the control of the organisation and it is probable that those conditions will be fulfilled in the reporting period. Interest on funds held on deposit is included when receivable and the amount can be measured reliably by the organisation; this is normally upon notification of the interest paid or payable by the bank.

(d) Expenditure Recognition

Liabilities are recognised as expenditure as soon as there is a legal or constructive obligation committing the organisation to that expenditure, it is probable that settlement will be required and the amount of the obligation can be measured reliably. All expenditure is accounted for on an accruals basis. All expenses including support costs and governance costs are allocated or apportioned to the applicable expenditure headings. For more information on this attribution refer to note (f) below.

(e) Irrecoverable VAT

Irrecoverable VAT is charged against the expenditure heading for which it was incurred.

(f) Allocation of support and governance costs

Support costs have been allocated between governance costs and other support costs. Governance costs comprise all costs involving the public accountability of the organisation and its compliance with regulation and good practice. These costs include costs related to independent examination and legal fees together with an apportionment of overhead and support costs. Governance costs and support costs relating to charitable activities have been apportioned based on type of expense. The allocation of support and governance costs is analysed in note 8.

(g) Costs of raising funds

The costs of raising funds consists of events.

(h) Charitable Activities

Costs of charitable activities include governance costs and an apportionment of support costs as shown in note 7.

(i) Tangible fixed assets and depreciation

All assets costing more than £500 are capitalised and valued at historical cost. Depreciation is charged on the following basis:

Equipment	33.33% on cost
Fixtures & Fittings	25% on cost

Notes to the accounts

(f) Realised gains and losses

All gains and losses are taken to the Statement of Financial Activities as they arise. Realised gains and losses on investments are calculated as the difference between sales proceeds and their opening carrying value or their purchase value if acquired subsequent to the first day of the financial year. Unrealised gains and losses are calculated as the difference between the fair value at the year end and their varying value. Realised and unrealised investment gains and losses are combined in the Statement of Financial Activities.

(k) Pensions

The organisation currently administers contributions to an auto-enrolment pension scheme on behalf of individuals. The organisation has no liability beyond administering the contributions and paying these to the pension company.

(i) Debtors

Trade and other debtors are recognised at the settlement amount due after any trade discount offered. Prepayments are valued at the amount prepaid net of any trade discounts due.

(m) Creditors and provisions

Creditors and provisions are recognised where the charity has a present obligation resulting from a past event that will probably result in the transfer of funds to a third party and the amount due to settle the obligation can be measured or estimated reliably. Creditors and provisions are normally recognised at their settlement amount after allowing for any trade discounts due.

2. Related party transactions and trustees' expenses and remuneration

The trustees all give freely their time and expertise without any form of remuneration or other benefit in cash or kind. Expenses paid to the trustees in the year totalled £nil (2022: £nil).

The partner of an employee was paid during the year for self-employed contract work. The contract, qualifications and suitability for the role were discussed by the Trustees prior to appointment. The amount paid during the year was £2,362.

3. Donations and Legacies

	Unrestricted	Restricted	Total Funds	
Year Ended 31 March 2023	513	600	1,113	812
Year Ended 31 March 2022	513	600	1,113	812

Donations

Previous reporting period

	Unrestricted	Restricted	Total Funds	
Year Ended 31 March 2022	214	598	812	812
Year Ended 31 March 2021	214	598	812	812

Donations

Notes to the accounts

4. Income from charitable activities

	Unrestricted	Restricted	Total Funds	Total Funds
	Year Ended 31 March 2023	Year Ended 31 March 2023	Year Ended 31 March 2023	Year Ended 31 March 2022
	£	£	£	£
Unrestricted grants:				
Bury MBC	200,901	-	200,901	140,000
10GM	8,240	-	8,240	8,000
Restricted grants:				
10GM - Big Conversation	-	5,000	5,000	-
10GM - UK Shared Prosperity Fund	-	20,000	20,000	-
10GM - Violence Reduction Alliance	-	15,000	15,000	-
Albert Gubay Charity Bury Community Support	-	-	-	40,000
Answer Cancer	-	-	-	4,400
Bury Involvement Group	-	-	-	8,306
Bury Primary Care Network	-	44,047	44,047	37,087
Bury MBC	-	-	-	20,000
Bury MBC Bury Community Support	-	7,365	7,365	40,000
Bury MBC Community Investment Fund	-	25,694	25,694	-
Bury MBC Connect 5 Training	-	9,973	9,973	-
Bury MBC Cost of Living Fund	-	95,000	95,000	-
Bury MBC Hate Crime Awareness	-	10,000	10,000	-
Bury MBC Household Support Fund	-	40,000	40,000	-
Bury MBC Older Persons Network (formerly Bury MBC Mid to Later Life)	-	10,000	10,000	10,000
Sustain	-	450	450	-
Bury MBC Third Party Funds	-	-	-	3,590
Forever Manchester	-	-	-	(1,799)
Horizons Primary Care Network	-	89,047	89,047	90,561
NAVCA	-	-	-	1,500
NHS Bury CCG Cardiac Rehabilitation	-	-	-	46,454
NHS England	-	-	-	5,600
NHS Trafford CCG	-	-	-	40,000
Prestwich Primary Care Network (formerly Fairfield Group Practice)	-	24,788	24,788	29,556
Unsworth Medical Centre	-	33,096	33,096	32,814
Workers Educational Association	-	-	-	4,825
Bury MBC LGBTIQI	-	-	-	30,000
Bury MBC Standing Together	-	100,000	100,000	100,000
	209,141	529,460	738,601	690,894

Notes to the accounts

4. Income from charitable activities

Previous reporting period

Unrestricted	Restricted	Total Funds
Year Ended 31 March 2022	Year Ended 31 March 2022	Year Ended 31 March 2022
£	£	£
140,000	-	140,000
Bury MBC		
Bolton CVS		
10GM		
Restricted grants:		
Albert Gubay Charity Bury Community Support	40,000	40,000
Answer Cancer	4,400	4,400
Bury Involvement Group	8,306	8,306
Bury Primary Care Network	37,087	37,087
Bury MBC	20,000	20,000
Bury MBC Mid to Later Life	10,000	10,000
Bury MBC Community Support	40,000	40,000
Bury MBC Third Party Funds	3,590	3,590
Fairfield Group Practice	29,556	29,556
Forever Manchester	(1,799)	(1,799)
Horizons Primary Care Network	90,561	90,561
NAVCA	1,500	1,500
NHS Bury CCG Cardiac Rehabilitation	46,454	46,454
NHS England	5,600	5,600
NHS Trafford CCG	40,000	40,000
Unsworth Medical Centre	32,814	32,814
Workers Educational Association	4,825	4,825
Bury MBC LGBTQI	30,000	30,000
Bury MBC Standing Together	100,000	100,000
148,000	542,894	690,894

5. Income from other trading activities

Training and other income

Previous reporting period

Unrestricted	Restricted	Total Funds
Year Ended 31 March 2023	Year Ended 31 March 2023	Year Ended 31 March 2023
£	£	£
15,600	-	15,600
4,318	-	4,318
15,600	-	15,600
Training and other income		
Unrestricted	Restricted	Total Funds
Year Ended 31 March 2022	Year Ended 31 March 2022	Year Ended 31 March 2022
£	£	£
4,318	-	4,318
4,318	-	4,318
Training and other income		

Notes to the accounts

6. Expenditure

	Expenditure on raising funds:		
	Year Ended 31 March 2022	Year Ended 31 March 2023	Community Engagement in Bury Year Ended 31 March 2023
Website	1,850	1,100	1,100
Publicity	746	865	865
	2,596	1,965	1,965
Expenditure on charitable activities:			
Employment Costs	389,795	472,710	472,710
Recruitment	-	429	429
Distribution of Grants	230,007	213,105	213,105
Donations Paid	500	150	150
Client Costs	-	250	250
Outsourced Work	27,237	17,112	17,112
Bad Debts	-	-	-
Refreshments	683	3,014	3,014
Training	2,137	10,879	10,879
Travel Costs	952	1,907	1,907
Volunteer Expenses	580	154	154
Equipment	919	676	676
Bank Charges	137	205	205
Supervision	1,320	990	990
Staff Clothing	-	803	803
Staff Safety Devices	941	1,613	1,613
Rent	2,545	12,377	12,377
Room Hire	1,167	4,487	4,487
Subscriptions	2,222	3,046	3,046
Heat and Light	5,672	-	-
Cleaning	2,487	-	-
Repairs & Maintenance	4,920	-	-
Office Removals	771	6,433	6,433
IT Support Costs	12,355	18,049	18,049
Insurance	1,272	1,326	1,326
Telephone Costs	5,660	7,752	7,752
Governance	4,168	6,320	6,320
Post, Printing & Stationery	4,513	1,449	1,449
Depreciation	6,941	6,696	6,696
	709,901	791,732	791,732
Other expenditure:	1,251	217	217
Sundry	1,251	217	217
	713,748	793,914	793,914
Unrestricted funds	156,589	215,483	215,483
Restricted funds	557,159	578,431	578,431
	713,748	793,914	793,914

7. Analysis of expenditure on charitable activities

As per note b.

8. Allocation of governance and support costs

The breakdown of support costs and how these were allocated between governance and other support costs is shown

below:

	2023	2022	2021
Payroll Bureau Fees	2,045	-	2,045
HR Fees	1,781	-	1,781
Trustee Expenses	4	4	-
Professional Fees	1,500	-	1,500
Accountancy Fees	990	990	-
	6,320	994	5,326
General Support	Governance	Total 2023	Basis of apportionment

Previous reporting period

Payroll Bureau Fees	1,661	1,661	type of expense	4,168
HR Fees	-	1,517	type of expense	990
Accountancy Fees	-	-	type of expense	990
General Support	3,178	3,178		
Governance	990	990		
Total 2022	4,168	4,168		

9. Analysis of staff costs

Year Ended 31 March	Year Ended 31 March 2023	Year Ended 31 March 2022
	£	£
Wages and Salaries	430,010	356,904
Redundancy	-	(621)
Holiday Pay Accrual Adjustment	(2,162)	31,114
Social Security Costs	13,748	9,050
Pension Costs	472,710	389,795
Support costs	472,710	389,795
Charitable activities	472,710	389,795

The average number of employees during the period was 20 (2022: 15).

The organisation considers its key management personnel comprises the trustees. The total

No employee has benefits in excess of £60,000.

10. Independent Examiner Fees

Year Ended	Year Ended	Independent examination fees
31 March 2023	31 March 2022	
£	£	
990	990	
990	990	

Notes to the accounts

11. Tangible Fixed Assets

Cost	At 01 April 2022	Additions	At 31 March 2023
13,510	2,329	11,181	13,510
6,696	816	5,880	6,696
20,206	3,145	17,061	20,206
NET BOOK VALUE			
At 31 March 2023	1,060	3,971	5,031
At 31 March 2022	1,876	7,863	9,739
Depreciation			
At 01 April 2022	2,329	11,181	13,510
Charge for Period	816	5,880	6,696
At 31 March 2023	3,145	17,061	20,206
At 01 April 2022	4,205	19,044	23,249
Additions	-	1,988	1,988
At 31 March 2023	4,205	21,032	25,237
Fixtures & Fittings			
Equipment			
Total			

Fixed Assets Investments

Valuation at 01.04.22	452,504	225,239	225,239
(Disposals)/Additions	(25,700)		200,000
Unrealised (Losses)/Gains	(12,125)		27,265
Realised Gains	-		-
Valuation at 31.03.23	414,679	452,504	452,504

12. Stocks

The organisation does not hold stocks of any items.

13. Analysis of debtors

Debtors	83,411	49,952	49,952
Prepayments	9,078	5,545	5,545
	92,489	55,497	55,497

Debtors and prepayments related to restricted funds £82,954 and unrestricted funds £9,535 (2022: £54,511/£986).

14. Creditors: amounts falling due within one year

Other creditors and accruals	7,059	7,395	7,395
Holiday Pay accrual	2,269	4,431	4,431
Deferred income	275	-	-
Taxation and Social Security	9,239	9,537	9,537
	18,842	21,363	21,363

15. Deferred income

Deferred income comprises grants received in advance.

At 01 April 2022	-	-	-
Amount released to income earned from charitable activities	275	-	-
Amount deferred in year	275	-	-
Balance at 31 March 2023	275	-	-

16. Creditors: amounts falling due after more than one year

Provisions for liabilities	-	-	-
	£	£	£
2023	2022	2022	2022

Notes to the accounts

17. Analysis of charitable funds

Analysis of movements in unrestricted funds

	Balance at 01 April 2022	Income Resources	Expend Resources	Transfers	Balance at 31 March 2023
General Fund	£ 50,822	£ 214,794	£ (215,483)	£ 49,674	£ 99,807
Designated Funds	300,000	-	-	(50,000)	250,000
	350,822	214,794	(215,483)	(326)	349,807

Previous reporting period

	Balance at 01 April 2021	Income Resources	Expend Resources	Transfers	Balance at 31 March 2022
General Fund	£ 57,483	£ 179,928	£ (156,589)	£ (30,000)	£ 50,822
Designated Funds	270,000	-	-	30,000	300,000
	327,483	179,928	(156,589)	-	350,822

Name of unrestricted fund:

General Fund
Designated Funds
The "free reserves" after allowing for all designated funds
For future office move, sustainability and systems upgrades

Analysis of movements in restricted funds

	Balance at 01 April 2022	Income Resources	Expend Resources	Transfers	Balance at 31 March 2023
Awards for All	212	-	(212)	-	-
10GM - Big Conversation	-	5,000	(5,000)	-	-
10GM - UK Shared Prosperity Fund	-	20,000	-	-	20,000
10GM - Violence Reduction Alliance	-	15,000	(5,784)	-	9,216
Albert Gubay Charity Bury Community Support	8,900	-	(8,900)	-	-
Answer Cancer	4,325	-	(929)	-	3,396
Bury Involvement Group	5,357	-	(340)	-	5,017
Bury Primary Care Network	5,761	44,047	(42,977)	-	6,831
Bury MBC Older Persons Network (formerly Bury MBC Mid to Later Life)	8,438	10,000	(4,277)	-	14,161
Bury MBC Community Investment Fund	-	25,694	(14,711)	-	10,983
Bury MBC Connect 5 Training	-	9,973	(4,004)	-	5,969
Bury MBC Cost of Living Fund	-	95,000	(13,600)	-	81,400
Bury MBC Hate Crime Awareness	-	10,000	(3,000)	-	7,000
Bury MBC Household Support Fund	-	40,000	(29,472)	-	10,528
Sustain	-	450	-	-	450
Bury MBC Third Party Funds	3,590	-	(3,590)	-	-
Bury MBC Transformation Fund (formerly Bury MBC Social Prescribing)	164,226	-	(74,013)	-	90,213
Restricted Donations	1,461	600	(10)	-	2,051
Bury Community Support Network	2,613	7,365	(21,826)	-	(11,848)
Prestwich Primary Care Network (formerly Fairfield Group Practice)	2,557	24,788	(23,789)	-	3,556
NHS Bury CCG Handy Person Scheme	14,063	-	(14,063)	-	-
Horizons Primary Care Network	11,577	89,047	(86,618)	-	14,006
Bury MBC Let's Get Radcliffe Moving	200	-	-	-	200
National Lottery Community Fund	16,867	-	(4,296)	-	12,571
NAVCA	4,500	-	-	-	4,500
NHS Bury CCG Cardiac Rehabilitation	41,161	-	(28,921)	-	12,240
NHS England	5,600	-	(5,600)	-	-
NHS Trafford CCG	36,286	-	(28,281)	-	8,005
NHS Bury CCG LWBC	8,628	-	(2,948)	-	5,680
Unsworth Medical Centre	2,143	33,096	(29,242)	326	5,997
Workers Educational Association	(326)	-	-	-	-
Bury MBC LGBTQI	21,039	-	(12,788)	-	8,251
Bury MBC Standing Together	46,822	100,000	(109,240)	-	37,382
	415,800	530,060	(578,431)	326	367,755

Notes to the accounts

17. Analysis of charitable funds

Analysis of movements in restricted funds

Previous reporting period

	Balance at 01 April 2021	Income	Resources	Expenditure	Transfers	Balance at 31 March 2022
Awards for All	423	-	-	(211)	-	212
Albert Gubay Charity Bury Community Support	-	40,000	-	(31,100)	-	8,900
Answer Cancer	-	4,400	-	(75)	-	4,325
Bury Involvement Group	7,859	8,306	-	(10,808)	-	5,357
Bury Primary Care Network	3,752	37,087	-	(35,078)	-	5,761
Bury MBC	-	20,000	-	(20,000)	-	-
Bury MBC Mid to Later Life	-	10,000	-	(1,562)	-	8,438
Bury MBC Bury Community Support	-	40,000	-	(40,000)	-	-
Bury MBC Third Party Funds	-	3,590	-	-	-	3,590
Bury MBC Social Prescribing	239,161	-	-	(74,935)	-	164,226
Restricted Donations	1,139	598	-	(276)	-	1,461
Bury Community Support Network	6,215	-	-	(3,602)	-	2,613
Fairfield Group Practice	2,195	29,556	-	(29,194)	-	2,557
Forever Manchester	4,405	(1,799)	-	(2,606)	-	-
Forever Manchester Volunteers	4,977	-	-	(4,977)	-	-
NHS Bury CCG Handy Person Scheme	41,063	-	-	(27,000)	-	14,063
Horizons Primary Care Network	5,332	90,561	-	(84,316)	-	11,577
Bury MBC Let's Get Radcliffe Moving	7,200	-	-	(7,000)	-	200
National Lottery Community Fund	38,726	-	-	(21,859)	-	16,867
NAVCA	3,000	1,500	-	-	-	4,500
NHS Bury CCG Cardiac Rehabilitation	-	46,454	-	(5,293)	-	41,161
NHS England	-	5,600	-	-	-	5,600
NHS Trafford CCG	-	40,000	-	(3,714)	-	36,286
NHS Bury CCG LWBC	8,628	-	-	-	-	8,628
Bury MBC Rough Sleepers Project	4,119	-	-	(4,119)	-	-
Unsworth Medical Centre	1,934	32,814	-	(32,605)	-	2,143
Workers Educational Association	338	4,825	-	(5,489)	-	(326)
Bury MBC Suicide Prevention	39	-	-	(39)	-	-
Bury MBC LGBTIQ	-	30,000	-	(8,961)	-	21,039
Bury MBC Standing Together	48,962	100,000	-	(102,340)	-	46,622
	429,467	543,492	-	(557,159)	-	415,800

Notes to the accounts

17. Analysis of charitable funds

Analysis of movements in restricted funds

Name of restricted fund:	Description, nature and purpose of the fund
Awards for All	to establish a resource and equipment library, and to deliver training to VCF groups in Bury. The balance on this fund represents future depreciation.
10GM - Big Conversation	for a community consultation programme
10GM - UK Shared Prosperity Fund	for development of local infrastructure organisation (VCFs), plus grant dispersals
10GM - Violence Reduction Alliance	for salary and on-costs, and operational costs of Violence Reduction Alliance
Albert Gubay Charity Bury Community Support	Facilitator (East Bury)
Answer Cancer	for community support, grant dispersals including food banks and training.
Bury Involvement Group	for health and wellbeing support including training.
Bury Primary Care Network	for Mental Health Crisis Community Support
Bury MBC Older Persons Network (formerly Bury	for salary and on-costs of Social Prescribing Link Worker
MBC Mid to Later Life)	for community support and development including networking and training.
Bury MBC Community Investment Fund	grants for dispersal to 3rd party organisations (cost-of-living crisis)
Bury MBC Connect 5 Training	training provision for mental health and well-being
Bury MBC Cost of Living Fund	grants for dispersal to 3rd party organisations (cost-of-living crisis)
Bury MBC Hate Crime Awareness	grants for dispersal to 3rd party organisations
Bury MBC Household Support Fund	grants for dispersal to 3rd party organisations (cost-of-living crisis)
Sustain	contribution to VCFs core-costs, plus grant dispersals (food poverty)
Bury MBC Third Party Funds	holding grant for Prestwich Environment Fund.
Bury MBC Transformation Fund (formerly Bury	for salary and on-costs of Beacon SPS Manager and core, operational costs
MBC Social Prescribing)	of the Beacon Service
Restricted Donations	contribution to Bury Community Fund
Bury Community Support Network	holding funds on behalf of the Network, which did not have a bank account
Prestwich Primary Care Network (formerly Fairfield	for salary and on-costs of Beacon SPS Link Worker(s)
Group Practice)	provision of odd job support to elderly and vulnerable residents of Bury
NHS Bury CCG Handy Person Scheme	(including management fee to Bury VCFs)
Horizons Primary Care Network	for salary and on-costs of Beacon SPS Link Worker(s)
Bury MBC Let's Get Radcliffe Moving	to support fitness and well-being projects across Bury
National Lottery Community Fund	to support recruitment and development of volunteering in Bury
NAVCA	core grant to support VCFs with unforeseen Covid related costs
NHS Bury CCG Cardiac Rehabilitation	for cardiac rehabilitation service review consultation.
NHS England	for recruitment costs.
NHS Trafford CCG	for recruitment for social prescribing service.
NHS Bury CCG LWBC	to support promotion of Cancer Support Services in Bury
Unsworth Medical Centre	for salary and on-costs of Beacon SPS Link Worker(s)
Workers Educational Association	European Social Fund support to help volunteers into employment
Bury MBC LGBTIQ)	third party funds.
Bury MBC Standing Together	grants for dispersal to 3rd party organisations (Hate Crime Awareness)

Notes to the accounts

18. Analysis of net assets between funds

	Unrestricted funds	Designated funds	Restricted funds	Total 2023
Tangible Fixed assets	2,637	-	2,394	5,031
Investments	414,679	-	-	414,679
Cash at bank and in hand	(313,427)	250,000	287,632	224,205
Other net current assets/(liabilities)	(4,082)	-	77,729	73,647
Creditors of more than one year	-	-	-	-
Total	99,807	250,000	367,755	717,562

Previous reporting period

	Unrestricted funds	Designated funds	Restricted funds	Total 2022
Tangible Fixed assets	4,040	-	5,699	9,739
Investments	452,504	-	-	452,504
Cash at bank and in hand	(394,225)	300,000	364,470	270,245
Other net current assets/(liabilities)	(11,497)	-	45,631	34,134
Creditors of more than one year	-	-	-	-
Total	50,822	300,000	415,800	766,622

19. Financial instruments

The organisation only has financial assets and liabilities of a kind that qualify as basic financial instruments. Basic financial instruments are initially recognised on a transaction value and subsequently measured at their settlement value with the exception of bank loans which are subsequently measured at an amortised cost using the effective interest method.

20. Operating Lease Commitments

The charity's total future minimum lease payments under non-cancellable operating leases is as follows:

	2023	2022
Less than one year	30,000	-
One to five years	120,000	-
	150,000	-

Service charges are payable in addition to the above rent amounts.