



THE COWSHED

Annual Report and Accounts

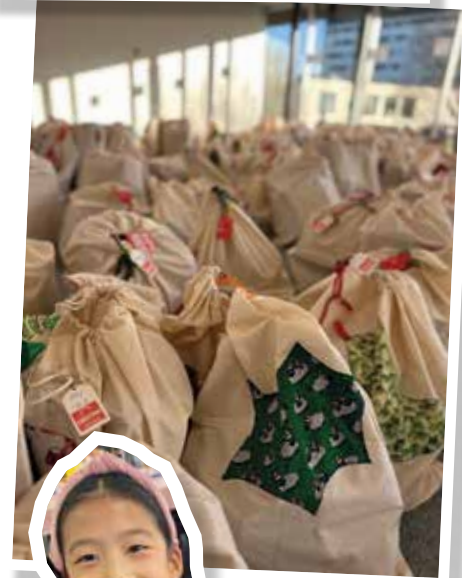
For the period 2024 - 2025





Contents

Organisation Details.....	4
Who we are and what we do.....	5
Chair of Trustee's Report.....	6
Chief Executive's Message.....	7
What makes The Cowshed.....	8
The change we are creating	9
What we delivered together	10
What our community needs and how we help.....	11
Case Study - Toby's Story	12
Community kindness in action.....	13
Seasonal campaigns	15
Christmas.....	16
Our community	18
Collaboration	20
Events spotlight.....	21
Eco at the Cowshed	22
Case Study - Holly's Story	23
How you can help	24
Financial Review - Independent Examiner's Report.....	25
Accounts - Statement of Financial Activity	26
Accounts - Balance Sheet	27
Notes to the Financial Accounts	
1. Basis of Preparation	28
2. Accounting Policies	29
3. Income Analysis	30
4. Analysis of Receipts of Government Grants.....	32
5. Donated Goods, Facilities and Services	32
6. Expenditure Analysis	33
10. Fees for Examination of Accounts	35
11. Paid Employees	35
12. Pension Scheme	36
14. Tangible Fixed Assets	37
19. Debtors and Prepayments.....	37
20. Creditors and Accruals	38
24. Cash at Bank and In Hand	38
27. Charity Funds	39
28. Transactions with Trustees and Related Parties	42
Structure Governance and Management.....	42



Organisation Details

STAFF

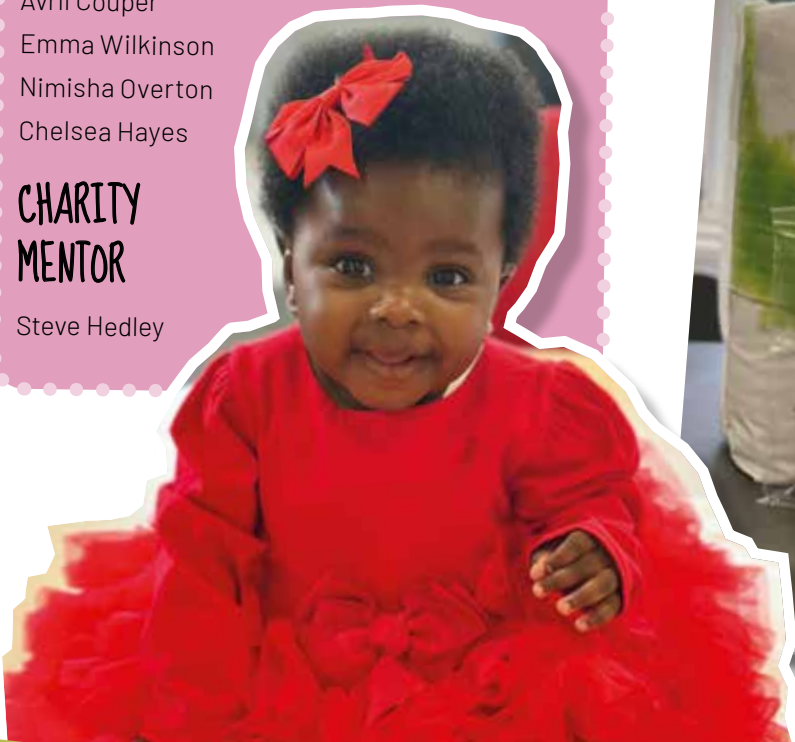
Sally Russell..... Founder/CEO
Rebecca Russell..... Operations Manager
Rebecca Mole Fundraising Manager
Audrey Knox..... Craft Co-ordinator
Liz Meadows Donation Centre
Supervisor / Hygiene Bank
Co-ordinator
Yvonne John Donation Centre Supervisor
Ruth Warms..... Donation Centre Supervisor
Alison Mansoor Referrals Supervisor
Caroline Worman Referrals Supervisor
Sarah Horton Referrals Co-ordinator
Claire Hewitt..... Referrals Co-ordinator
Candice Botha Fundraising Assistant
Gemma Winder Referrals Administrator
Jess Lawrence Donation Centre Supervisor
/ Community Engagement
Worker
Michelle Barclay..... Office Administrator
Anne-Marie Eden Accounts Executive

TRUSTEES

Kester Russell..... First Trustee & Founder
Sharon Ketley
Avril Couper
Emma Wilkinson
Nimisha Overton
Chelsea Hayes

CHARITY MENTOR

Steve Hedley



DUTIES OF THE TRUSTEES

The Trustees have complied with their duty to have due regard to the guidance on public benefit published by The Charities Commission in exercising their powers or duties.

Address –

**Rubra 2, Mulberry Business Park, Fishponds Road,
Wokingham, RG41 2GY**

The Cowshed is a registered charity (Charitable Incorporated Organisation) in England and Wales (1181550) with the following objectives;

The relief of poverty of persons in need in particular but not exclusively by providing such persons with good quality free clothing.



Who we are and what we do

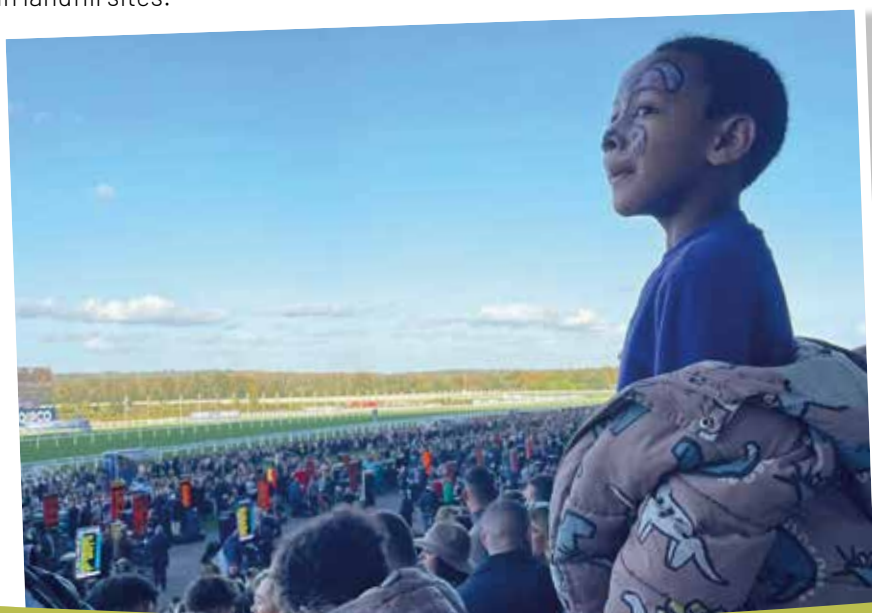
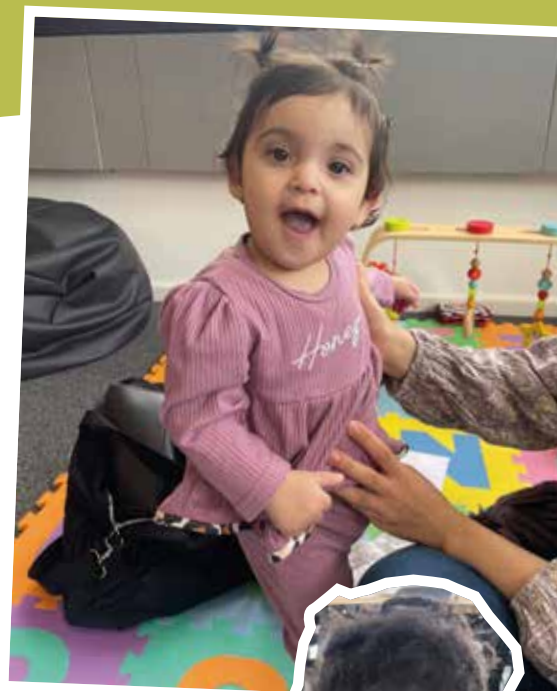
The Cowshed charity started in September 2018 and officially launched in February 2019 to give practical support to people of all backgrounds in a time of personal crisis. Since we started we have supported over 40,000 people in need in Berkshire. The main aim of The Cowshed is to lovingly provide excellent quality, cleaned and ironed clothes, underwear, bedding, curtains, toiletries, and other essential items free to anyone in need. The clothes are donated from the public as well as retailers and manufacturers. They are then sorted, washed, and ironed ready to be delivered by our drivers or collected by social services, other professionals or our clients. The idea is that our clients feel they are receiving a gift to assist them in a time of crisis rather than some old clothes that are over worn, marked or damaged.

The people in need are referred to us through social services, churches, schools, charities, doctors, and other professionals. We then provide the items that are requested free of charge. The Cowshed is staffed mostly by our amazing volunteers.

The Cowshed has a threefold impact: recycling used clothing, helping those most in need in our communities with essential items and creating a community craft group to support the main charity.

All the clothes that are donated to us are repurposed. The excellent quality clothes are washed and ironed ready for our clients, the slightly damaged clothing /bedding is repurposed by our arts and crafts group to make items for us to sell and tote bags for us to put our referrals in. Pre-loved Bras are sent to Against Breast Cancer and the plastic bags we receive donations in are given to the food banks locally or recycled. We also work with many other groups to recycle as much as we can. Anything left after this is sold to a recycling organisation to raise further funds to help sustain the charity.

We are extremely excited about having established a movement which directly impacts those most in need in the local community in a positive, loving, non-judgemental way, as well as helping the environment by reusing clothes and other items which would otherwise have ended up in landfill sites.



Chair of Trustee's Statement

INTRODUCTION

It is with great pride and gratitude that I present this year's Report and Accounts on behalf of the Board of Trustees.

The past year has once again demonstrated the extraordinary impact of The Cowshed's work, both in terms of scale and significance. In a period marked by ongoing financial hardship across the community and increased pressure on both individuals and public services, the role of The Cowshed as a frontline response charity has never been more vital.

This year we have seen a remarkable increase in demand across all areas of service, with referrals rising by over 25%. Our reach continues to extend far beyond our original footprint, supporting people from across Berkshire including a substantial and growing number of asylum seekers now housed within the county. The volume of individuals and families we have been able to support, often at the most difficult points in their lives, stands as testament to the tireless work of our staff and volunteers.

Despite considerable operational challenges, The Cowshed has remained steadfast in its mission to deliver dignity, stability and practical support. Our sustainability continues to depend on careful stewardship, strong community partnerships, and the extraordinary generosity of individuals, corporates, and funders who believe in our work. We are particularly

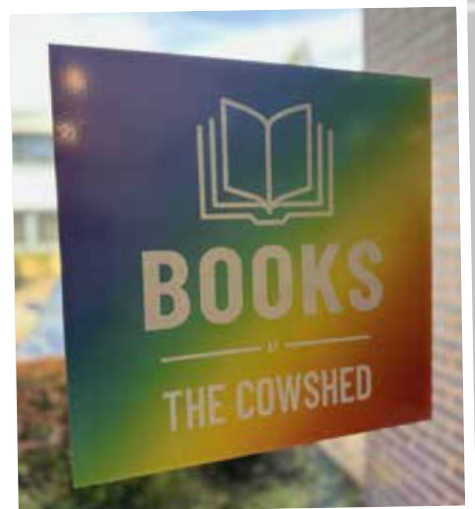
grateful to the National Lottery Community Fund, whose support is enabling strategic long-term planning.

On behalf of the Trustees, I offer our heartfelt thanks to all who contribute to The Cowshed's work – staff, volunteers, donors, referrers and community partners. The impact reflected in these pages is your achievement too.

We look forward to building on this strong foundation in the year ahead.



**Chair of Trustees,
The Cowshed**



Chief Executive's Message

This year, more than ever, I wanted our Annual Accounts and Impact Report to focus on what truly matters: the difference The Cowshed makes every single day. Whenever we welcome visitors into our building, their reaction is always the same: surprise, amazement, and often disbelief at the sheer breadth and scale of the work we do. In the constant activity of meeting urgent need, we rarely pause to share these stories or celebrate the impact our supporters and team create. My hope is that this report offers a snapshot of the incredible work happening here, and the public benefit this charity quietly but powerfully delivers.

It has not been an easy year for the charity sector. The impending increases in National Insurance and the Real Living Wage have placed growing pressure on already stretched organisations like ours. We have had to look creatively at new ways to bring in income, because we simply cannot reduce our staffing levels any further without compromising essential services, something I am absolutely committed to protecting.

Running a charity is never easy, and this year has brought its share of added pressures. Supporting an organisation of more than 450 people is a significant undertaking. Despite this, our small and remarkable team consistently goes above and beyond, showing extraordinary skill, commitment, and care. While funding uncertainty and short-term planning challenges remain, we continue to move forward thanks to the resilience of our team and the generosity of individuals and organisations who support us, even in difficult times.

And yet, despite all of this, it is impossible to feel discouraged for long. Every day, we witness the profound impact of The Cowshed's work. Lives are changed here. Families are supported at their lowest moments. Volunteers find purpose, connection, and healing as they give their time to help others. The good far outweighs the worry.

My faith has carried me through the hardest moments this year. Time and again, at the very moment we feel stretched to breaking point, The Cowshed magic happens. The exact item a client needs appears at our door. A grant we desperately hoped for is awarded. The perfect person applies for a role, seemingly nudged by something bigger



than any of us. In the midst of daily pressures, it is easy to overlook these moments, but they remind us why this work matters so deeply.

Looking ahead, our priority is to make The Cowshed as secure as possible so we can continue supporting as many people as we can. The latest Joseph Rowntree Foundation UK Poverty 2025 report shows that poverty levels in the UK remain persistently high, with around 14.3 million people, including 4.3 million children, about three in ten, living in poverty in 2022/23. Children continue to have the highest poverty rates, with especially high levels among families with younger children, three or more children, and lone-parent households. Disabled people, those with long-term mental health conditions, and people with caring responsibilities also remain significantly more likely to experience poverty. JRF highlights that poverty has not diminished and, in many cases, has become deeper, with rising levels of hardship and destitution across the UK. These are the very people who come to our door, and with your support, we will continue to be there for them.

Next year, we will continue doing what The Cowshed does best: showing love, kindness, and practical support to those who need it most. None of this would be possible without our exceptional team and our incredible army of volunteers, who pour compassion, energy, and heart into everything we do.

Thank you to everyone who has been part of this journey so far, our staff, volunteers, donors, partners, and supporters. Your support makes it possible for The Cowshed to be a place of hope, care, and transformation for everyone in our community.

With heartfelt gratitude,

A handwritten signature in black ink, appearing to read 'Sally Arnold'.

**Chief Executive,
The Cowshed Charity**

What makes The Cowshed

1. OUR VISION FOR BERKSHIRE



We firmly believe that everyone deserves access to basic necessities, regardless of their circumstances. Our vision is a community where no one goes without the essentials they need to live with comfort and dignity and where kindness and sustainability go hand in hand.

2. HOW WE'RE WORKING TOWARDS THIS

We support families and individuals in crisis by providing high-quality donated clothing, bedding, toiletries and household items, all free of charge through our trusted referral network.

But The Cowshed is about more than practical help. We're building a culture of compassion across Berkshire, one where people come together to care for their neighbours and protect our planet.

Through volunteering, we give people the chance to contribute their time, skills and kindness, creating a strong sense of shared purpose. We collaborate with community groups, schools, businesses and faith organisations, strengthening the network of local support. And by nurturing relationships of trust and respect, we're helping to build a community where everyone feels valued and included.



Everything we do is rooted in kindness and in the belief that small acts of care can make a big difference.

3. WHY OUR WORK MATTERS

Hardship can happen to anyone. By providing families and individuals in crisis with good-quality clothing and essential items, we give them one less thing to worry about and the confidence to face other challenges.

The Cowshed's impact extends beyond meeting immediate needs. Through our work, we:

- **SUPPORT THOSE IN NEED**
- **PROMOTE CLOTHING RECYCLING**
- **BUILD COMMUNITY CONNECTIONS**



Every donated item serves a purpose. Quality clothes are prepared for clients; slightly damaged garments are repurposed by our community arts and crafts group into tote bags or sold to raise funds; and remaining textiles are sent for recycling, contributing to a circular economy.

Fast fashion has fuelled waste with brands releasing up to 24 collections a year and less than 1% of discarded garments are recycled. At The Cowshed, we aim to change that narrative, showing how compassion and sustainability can go hand in hand.

4. OUR VALUES



Love - we care deeply about the people we help, showing compassion and respect in every interaction.

Community - we bring people together to share what they have, creating a network of kindness and mutual support.

Collaboration - we work hand in hand with volunteers, partners and referral agencies to reach those most in need.

Recycling - every donation tells a story. With more than 150 tonnes of items recycled annually, we turn generosity into action, helping people in need while caring for the environment.

Empowerment - we aim to give people a leg up, not a handout, helping them get back on their feet and rebuild their confidence.

5. WHERE TO FIND US



All aspects of our work take place from our main base:

The Cowshed, Rubra 2, Mulberry Bus. Park, Fishponds Road, RG41 2GY

Visitors are welcome by appointment, and donations can be dropped off during our opening hours.



6. CONNECT WITH US

www.thecowshed.org

email: info@thecowshed.org



@cowshedcharity

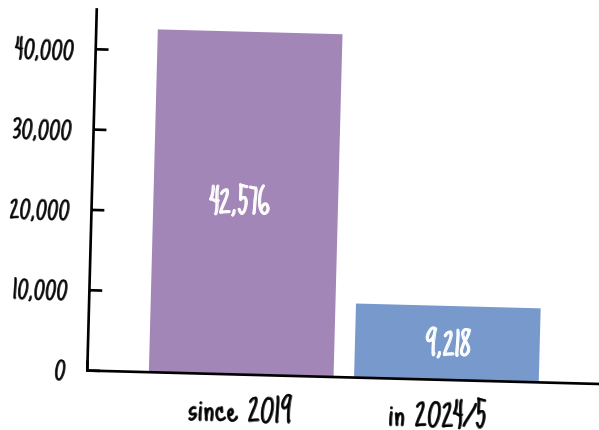


The change we are creating

Together, we're changing lives – one parcel, one person, one act of kindness at a time.

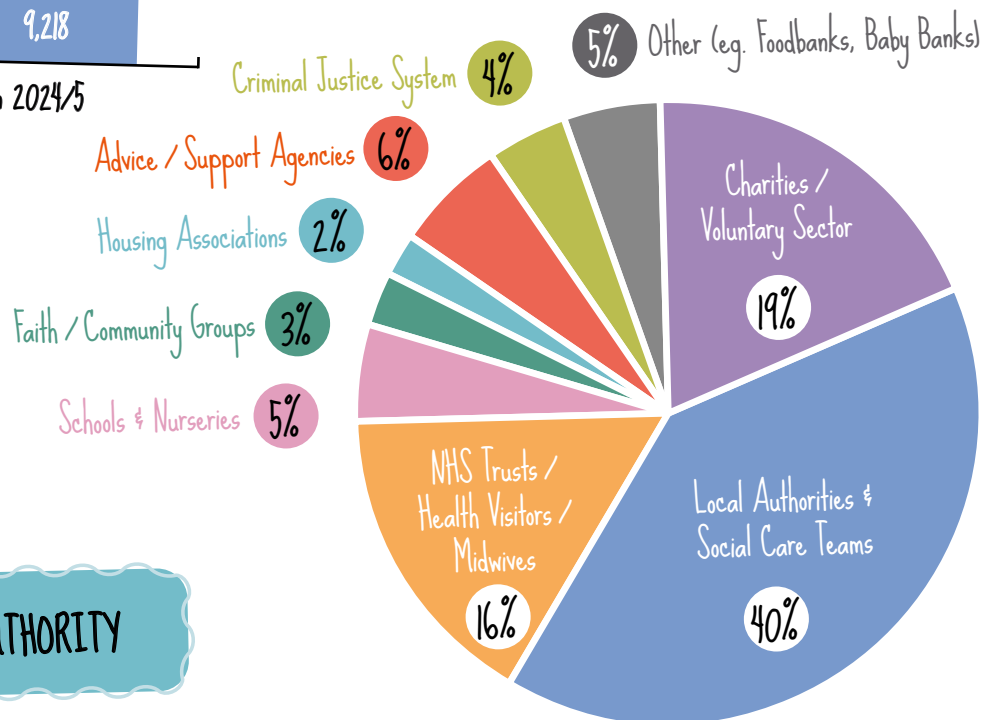
1. NUMBER OF INDIVIDUALS SUPPORTED

On average 631 individuals each month

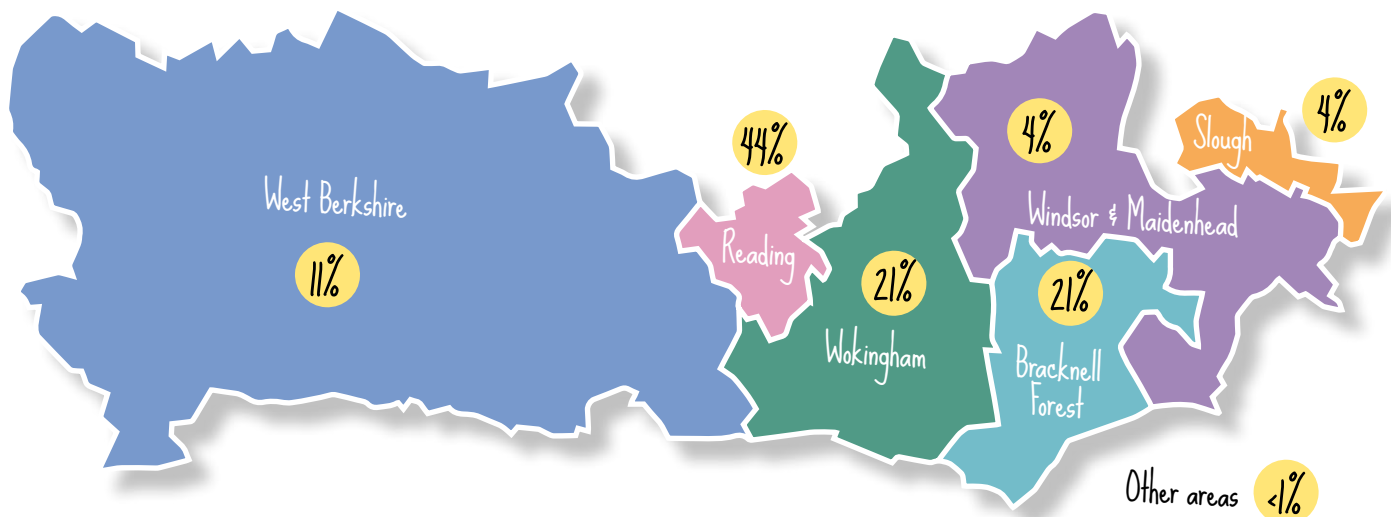


2. WHO REFERS TO THE COWSHED

1,637 professionals, 445 referring organisations

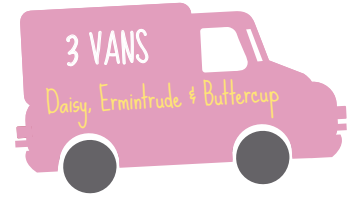


3. REFERRALS BY LOCAL AUTHORITY



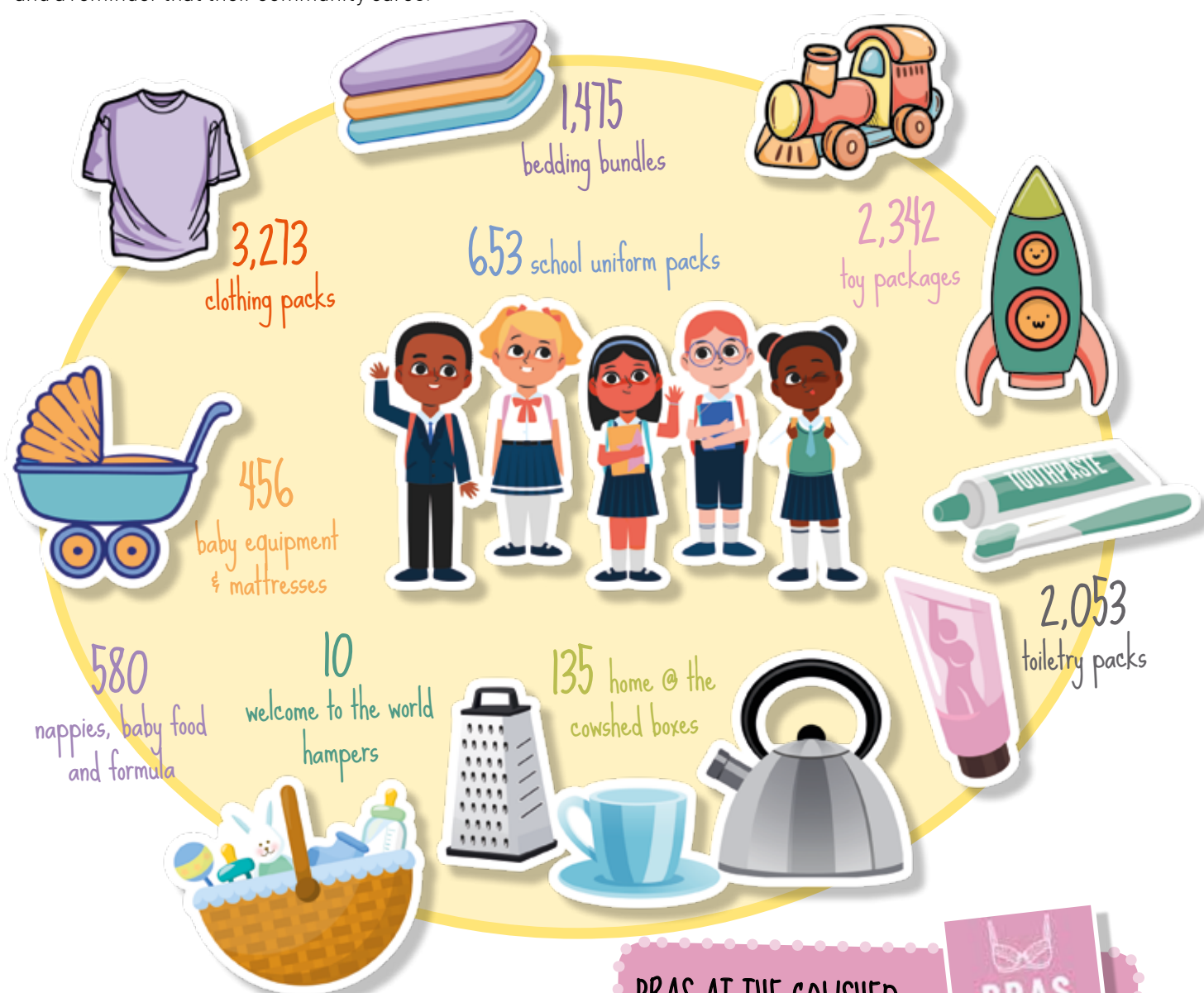
4. OUR DELIVERIES

With thanks to Carcomm Coachworks



What we delivered together

Each of these items represents more than a donation, it's a moment of relief for a family or individual facing crisis, and a reminder that their community cares.



WELCOME TO THE WORLD

Care leavers can be very much on their own with little family support and no-one to turn to other than the leaving care team. Growing up in care can be hard, as you miss out on many things, so when a care leaver becomes pregnant, it can be a very daunting time. The gift of a 'Welcome to the World Hamper' with beautiful and essential items which every new mum should have, will be a way of making them feel valued, and help prepare for and celebrate the birth of their child.

BRAS AT THE COWSHED

This is a special initiative providing women in need with brand new, professionally fitted bras, thanks to the generous support of Wacoal Europe. Our trained volunteers offer personalised fittings for cup sizes A to HH at our Wokingham centre, where each client receives two beautiful new bras from Fantasie or Freya (subject to stock). At The Cowshed, we know that finding the right bra is about more than comfort. A well-fitted bra can transform how a woman looks and feels, giving her the support and confidence she needs to feel her best. Yet for many of our clients, a good bra is a luxury they simply can't afford.



What our community needs and how we help

Across the UK, one in five people live in poverty – including 4.3 million children (Joseph Rowntree Foundation, UK Poverty 2025). Poverty is also rising across the UK, and Berkshire is not exempt. While our county is often seen as prosperous, pockets of deprivation remain, particularly in Reading and surrounding areas, where many families struggle to afford essentials like clothing, bedding and toiletries.

In Reading, around one in six children live in households below the poverty line, rising to over 30 percent in Whitley ward (Reading Borough Council Ward Profiles, 2020). Many of these families are in work but still struggle to afford the essentials.

Although areas like Wokingham and West Berkshire show above-average wages, high housing and living costs mean even small, unexpected expenses can trigger crisis (Berkshire Observatory, 2024). For those on lower incomes, access to basics such as clothing, bedding and toiletries can make a meaningful difference – offering relief, dignity, and one less worry when times are tough. Behind every parcel we deliver is a story of resilience, kindness, but also the growing pressure on families across Berkshire.

Here are just some ways in which we are making an impact:

1. REMOVING BARRIERS TO EDUCATION

The cost of school uniform is one of the biggest pressures facing low-income families.

According to The Children's Society (2023) (www.childrenssociety.org.uk/the-cost-of-school-uniform-2023), secondary school uniforms now cost an average of £422 per child each year, and primary uniforms £287. More than half of parents surveyed said they've had to cut back on essentials such as food or heating to pay for school clothes and one in eight reported their child being sent home for wearing the wrong uniform.

Through our School Uniform Project, The Cowshed provides high-quality uniform items to children across Berkshire, ensuring that no pupil misses out or feels excluded because of what they wear. In 2024/25 we distributed school uniform to 653 children.



2. SUPPORTING SAFE SLEEPING

A growing number of families referred to The Cowshed need help preparing a safe place for their baby to sleep. Many are living in temporary accommodation, overcrowded homes, or facing financial hardship without the means to provide a suitable sleep space.

Through our Safe Sleep initiative, we provide Moses baskets, cots, mattresses and bedding to over 400 children, all checked and prepared in line with The Lullaby Trust's Safer Sleep guidelines. Each pack ensures that a baby has a clear, flat and secure sleeping space, helping to reduce the risks associated with unsafe arrangements such as sofa-sleeping or bed-sharing.

Every safe sleeping bundle we provide gives new parents peace of mind and every baby a safer start in life.



3. VALUE OF ITEMS PROVIDED



£1,708,440 Overall Value

£1,304,750 PRELOVED AND INKIND DONATIONS

£403,690 NEW - INCLUDING CHRISTMAS PROJECT

0 £300,000 £600,000 £900,000 £1,200,000 £1,500,000

Case Study – Toby's Story

Toby's journey is one of courage and resilience. As a teenager, he was placed into foster care when his father became seriously ill. In the years that followed, life became very hard. Toby experienced homelessness, battled with alcohol and drug use, and spent time sleeping rough.

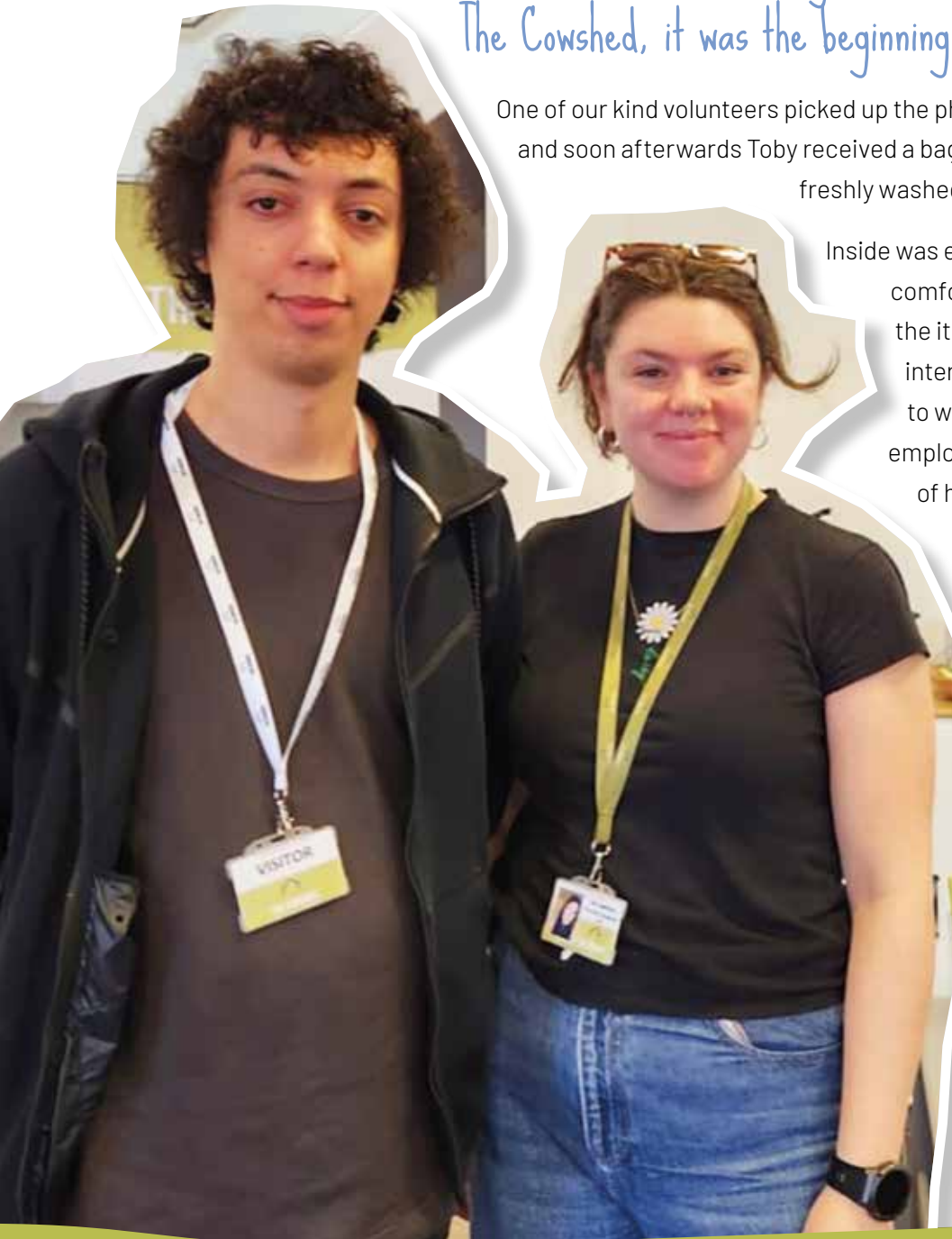
When Citizens Advice Wokingham referred Toby to The Cowshed, it was the beginning of a new chapter.

One of our kind volunteers picked up the phone to ask what he might need, and soon afterwards Toby received a bag of clothing, carefully chosen, freshly washed, and neatly folded with love.

Inside was everything he needed to feel comfortable and valued. Among the items was a smart outfit for job interviews. It gave Toby the confidence to walk through the door of an employer and present the best version of himself. That outfit became the key to his very first job.

A few years later we were reunited with Toby in the most wonderful way. The company he was working for had signed up for a corporate volunteering day at our donations centre, and there he was, smiling, giving back to the charity that had once helped him in his time of need.

Toby's story is a reminder that when kindness is offered with dignity, it can change not just a day, but the whole direction of a life.



Community kindness in action

The Cowshed is more than a place to receive help with essential items, it is a space where people find connection, kindness and community. Through a range of outreach projects, we support families and individuals across Berkshire with both practical help and opportunities to come together.

BOOKS AT THE COWSHED

Through our work with Care4Calais, we discovered that many refugee children living in local hotels had limited access to books and activities. To help change this, we created free book libraries for each hotel, which we regularly restock with donated books. We also provided toys for hotels that were able to create dedicated playrooms, giving children safe and welcoming spaces to learn and play.

We also have free book libraries at Emmbrook Junior School and at The Cowshed in Wokingham, where children can choose up to five books to take home in a homemade tote bag. These small libraries help spark imagination and a love of reading, while making sure every child has access to stories of their own.



HYGIENE POVERTY

Through our partnership with The Hygiene Bank, we are committed to reducing hygiene and period poverty across the local area.

Last year, we supported 2,053 individuals with toiletries, sanitary products and nappies, helping to restore comfort, dignity and confidence during difficult times. We also provided more than 200 toiletry and hygiene packs to local schools and all libraries in Wokingham Borough, ensuring essentials were available where they were most needed.

In addition, we share new toiletries with partner organisations including Elizabeth Fry and Bracknell Foodbank, extending the reach of our support even further. To promote good dental health, every hygiene pack includes a toothbrush and toothpaste, helping children build positive dental habits from an early age.

MOTHERS' COFFEE MORNINGS

This year, we hosted three Mothers' Coffee Mornings, each welcoming around 25 new or expecting mothers from vulnerable or isolated backgrounds.

Held quarterly in partnership with the Royal Berkshire Maternity Team and Royal Berkshire Maternity and Neonatal Voices, these gatherings provide a welcoming and supportive space for mothers to meet others, share experiences and receive guidance from maternity and neonatal health professionals.

Mothers are encouraged to bring their babies and young children, creating an inclusive and relaxed environment that helps reduce isolation and promotes emotional wellbeing during the early stages of parenthood.



HOSPITAL BAGS

In partnership with the Poppy Team at the Royal Berkshire Hospital, we provide hospital bags for refugee mothers to ensure they have everything they need when going into hospital to give birth.

Each bag includes toiletries, nightwear, towels, maternity pads and essential baby items, helping new mothers feel prepared, cared for and confident at such an important time. Since starting this initiative just a year ago, we have already provided more than 150 bags, offering comfort and reassurance to families beginning a new chapter of life in our community.



Community kindness in action

REFUGEE AND ASYLUM SEEKER SUPPORT

We continue to work closely with local councils and community organisations to support refugee families living in Berkshire.

Beyond providing essential items, we also create opportunities for connection and inclusion. During the summer, we hosted two free barbecue and activity days for refugees living in local hotels, bringing families together for food, crafts, music and football. These events offered a chance to relax, connect and feel part of the community.

This year, we are especially proud of our refugee football team, a wonderful example of community in action. The team brings together players from many different countries, backgrounds and experiences, all united by their love of the game. Every week, they come together to support one another, share laughter and build confidence, showing what belonging truly means.

For many, access to activities can be limited, leaving people feeling isolated. The football sessions promote wellbeing, mental health and integration, offering a safe and supportive space to connect and thrive.



COURSES AT THE COWSHED

Throughout the year, we run a variety of paid and free classes and events that bring people together, encourage creativity and help build new skills.

Our programme includes sewing courses for adults and children, Christmas wreath-making workshops, patchwork and jewellery-making sessions. Each class offers a welcoming space to learn something new, meet others and enjoy the satisfaction of creating something by hand.



Seasonal campaigns

EASTER

Supporting families with a little Easter kindness.

Every year we give our clients a small Easter gift to brighten the holiday season. Easter eggs and colouring activities bring so much joy to children during the school break, adding a little extra happiness and fun for families who may be facing difficult times.

This year's Easter Project was a wonderful success, thanks to the generosity of our community. Schools, businesses, and local organisations came together to donate hundreds of Easter eggs and treats that filled our hampers and brought smiles to so many children.

We were able to support over 300 families, ensuring that more children could enjoy a happy and memorable Easter.

We are incredibly grateful to everyone who supported this project.



PROM AT THE COWSHED

Ensuring no young person misses out on their prom experience.

Prom is a special milestone for many young people. It is a moment to celebrate achievement, friendship, and confidence. For some, the cost of dresses, suits, and accessories can be a real barrier.

This year, through our Free Borrowing Service and Prom Hire Service, we supported over 250 young people. Some were referred by schools, social workers, churches, and community organisations, while others reached out to us directly after hearing about the service.

We do more than lend outfits. We make sure every detail is taken care of. From shoes and jewellery to stylish bags and makeup to keep, our team helps each young person feel comfortable, confident, and ready to enjoy their big night.

By offering both free and affordable hire options, we remove financial barriers while promoting sustainability. Hiring a dress for £50 or a suit for £25, plus a £10 cleaning fee, helps fund our free borrowing scheme. Each hire helps another young person take part and make lasting memories.



"J and H both had a lovely day and proudly showed us everything they made. They were delighted with their bags full of goodies too." - Parent

"My daughter had the best time and has already asked to come back again." - Parent

HOLIDAY ACTIVITIES AND FOOD PROGRAMME

Throughout the summer, we hosted a series of creative activity days paired with delicious barbecue lunches, thanks to the support of our corporate partner EPSCM.

Over four weeks, we welcomed around 80 children who might not otherwise have had the opportunity to enjoy such special days out. The sessions were filled with arts and crafts, gardening, jewellery making, and much more, creating joyful experiences and lasting memories.

This initiative was delivered in partnership with Wokingham Borough Council and the Holiday Activities and Food programme, with generous sponsorship from Wokingham United Charities. The success of these sessions was down to the dedication of our volunteers and staff, and the excitement and creativity of the children who took part.



Christmas

DELIVERING FESTIVE JOY AND HOPE TO FAMILIES ACROSS BERKSHIRE.

Months of preparation go into our Christmas project, beginning as early as June. This year, our talented craft group lovingly created nearly 3,000 handmade sacks, each one designed to make Christmas feel extra special. With our Winnersh Triangle premises transformed into a hub of festive activity, staff and volunteers spent countless hours planning, phoning families, and carefully matching gifts to each child's interests.

The 2024 Christmas Project was the largest fundraising and community initiative of the year. We were supported by The Saltshaker Community Group, who made over 1,000 beautiful food hampers to provide families with an extra special treat. Over 120 companies and organisations contributed gifts or donations, and 11 schools joined in with collections. Fifty-eight organisations booked one of our Christmas present post boxes, and we also took part in Giving Trees with Wokingham and Connect Reading, as well as the Reading Toy Run. These partnerships ensured that thousands of children received gifts and festive support. The appeal also created opportunities for volunteering, community engagement, and corporate team involvement, reflecting the generosity and collaboration that defines The Cowshed.

Thanks to the incredible generosity of our community, we were able to make Christmas brighter for thousands of families. Support poured in from local people,

schools, churches, and more than 80 corporate partners who donated toys, gifts, and funds through our Amazon Wishlist, community bins, and JustGiving page.

A heartfelt thank you goes to all the organisations and individuals who contributed, including Kodak, who donated the batteries that made sure every toy could be enjoyed on Christmas morning.

The wrapping phase was an enormous effort. Together with corporate teams and volunteers, we wrapped 20,376 presents for 2,547 children and young people, dedicating 1,750 hours to ensure every gift was beautifully prepared. We also hosted 120 self-selection appointments, giving families the chance to choose and wrap presents themselves, creating a truly personal and empowering experience.

Our volunteer drivers then delivered 1,995 sacks of gifts across Berkshire, supported by vans from Carcomm Coachworks and additional help from Leighton Park School.

After the project, more than 150 families completed our survey, sharing heartfelt gratitude and feedback that will help us continue to grow and improve year after year. Families gave an average rating of 4.7 out of 5, showing how accessible and supportive the experience felt for those we helped.

SCAN ME TO READ
LAST YEAR'S REPORT





"I HAVE NO WORDS TO EXPRESS HOW THANKFUL I AM FOR THE INCREDIBLE GENEROSITY OF THE COWSHED - YOU MADE IT SO I COULD GIVE MY BOY CHRISTMAS, WHICH I OTHERWISE WOULD HAVE STRUGGLED TO DO. YOU HAVE MADE MORE DIFFERENCE THAN YOU'LL EVER KNOW. THANK YOU ARE SMALL WORDS BUT HEARTFELT!" - Parent

"WE ARE INCREDIBLY GRATEFUL, YOU GAVE US THE GIFT OF NOT HAVING TO WORRY ABOUT ENSURING OUR CHILDREN HAD A MAGICAL CHRISTMAS. THEIR SMILES AND EXCITEMENT THIS CHRISTMAS WAS EVERYTHING WE WANTED AND WE WANT TO THANK YOU FROM THE BOTTOM OF OUR HEARTS FOR THIS." - Parent



Our Community

THE HEART OF THE COWSHED

This year, over 400 volunteers gave their time, skills, and compassion to support The Cowshed's work. Volunteering with us means supporting local people in crisis and helping to build a kinder, more connected community. Our volunteers are the heart and soul of The Cowshed, and their incredible kindness and commitment make all the difference. We simply couldn't do it without them.

Our volunteers support every part of life at The Cowshed. Whether helping in the busy Donations Centre sorting and preparing items for families, welcoming clients and fulfilling requests in the Referrals Centre, or getting creative with our Craft @ The Cowshed group, their time and energy keep everything running smoothly. From washing and ironing to sewing, preparing items for families, driving, fundraising, and lending a listening ear, our volunteers make an incredible difference every day.

I started volunteering at The Cowshed after a long period away from paid employment due to illness. I was immediately impressed by the enthusiasm and commitment of all who worked and volunteered at the charity, and, on a personal level, the way I was so warmly accepted and welcomed to 'the gang.' The sheer hard graft shown by every single person helping out was such a refreshing environment to be in, and the camaraderie and sheer joy of being part of a charity whose support and need was growing in front of our eyes was awe-inspiring.

My colleagues at The Cowshed took me from a very difficult period in my life back to believing in myself. The support and friendship were amazing, and I never want to lose my link with the charity, whether it be through helping out, donating, or just coming in to say hi and make tea for those working so hard for the benefit of others.

As much as I helped the charity by volunteering, they helped me to move on with my life, and I will always be grateful for that."

- A Cowshed Volunteer



DUKE OF EDINBURGH STUDENTS

24 young people completed their Duke of Edinburgh's Award volunteered with us this year, bringing enthusiasm and commitment to every task. Their placements helped them build confidence, gain new skills, and make a real difference in their community.

Our Community

WOKINGHAM AND READING YOUTH JUSTICE TEAMS

We were pleased to welcome members of the Wokingham and Reading Youth Justice Teams, who supported donation sorting and project work as part of their community service. Their involvement provided valuable opportunities for giving back, developing teamwork skills, and building positive connections within the community.

CLASP

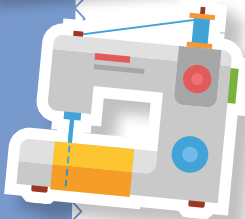
We have been delighted to continue our partnership with CLASP, whose members volunteer regularly at The Cowshed. The CLASP team brings positivity and dedication to everything they do, and we are so proud to work alongside them.



CRAFT AT THE COWSHED

Craft @ The Cowshed is a creative and community led programme that brings people together through shared purpose. It helps reduce loneliness and isolation, particularly among older adults and people from all walks of life who may feel disconnected, while enabling volunteers of all ages and backgrounds to contribute meaningfully to our charity's mission.

With over 100 regular participants, the group has grown into a warm and welcoming community where creativity, connection, and care come together. Participants make beautiful tote bags used in our essential item distributions, as well as cushions, bunting, and gifts that raise funds to support our wider work. Beyond crafting, the group provides friendship, purpose, and a sense of belonging, a space filled with conversation, laughter, and kindness.



SCHOOL GROUPS

We have welcomed a wide range of school groups who volunteered their time to help support local families. This included students from Addington SEN School, Heathermount School, and Luckley House School. Their energy, teamwork, and commitment have been incredible, and it has been wonderful to see so many young people engaging with the values of kindness and service.



Collaboration

WORKING TOGETHER TO MAKE A LASTING DIFFERENCE.

Corporate and community partnerships have been central to our work this year. Their generosity, time, and expertise have helped us reach more families and strengthen the support we offer across the region.

CORPORATE AND COMMUNITY SUPPORT

Corporate and community partners have been at the heart of our work again this year. From financial donations to hands on volunteering, their involvement has made a real difference.

We were proud to work with so many incredible organisations, including Winnersh Triangle, Blandy and Blandy, EPSCM, Adobe, Boehringer Ingelheim, Dell, Oracle, Harrods, and EMCOR. Their teams rolled up their sleeves to help with projects ranging from creating Home at The Cowshed boxes and wrapping gifts, to supporting workshops, community events, and on-site repairs and maintenance.

Local organisations such as Rotary Clubs, Lions Clubs, Women's Institutes, and faith groups continued to champion our work through fundraising events, collections, and volunteering. Schools and nurseries across the region also played a vital role, raising funds through sponsored events and creative community activities.

Community led initiatives, including golf days, guitar recitals, bake sales, quiz nights, and sponsored challenges organised by schools, clubs, and faith groups, also provided significant support. We are especially grateful to Touring Sport and AJP Property Services for their ongoing commitment to hosting charity golf days, Sonning Golf Club for their extensive fundraising activities, and the Gurdwara, who collected donations at the Nagar Kirtan procession.

We are also grateful to organisations like Oracle, Progress Theatre, and Ascot, who donated free tickets to cultural and sporting events for the families we support. These opportunities, including theatre trips, race days, football matches and more, allowed families we support to relax, spend time together, and enjoy experiences they might not otherwise have had.



CORPORATE VOLUNTEERING

Over 400 people spent their corporate volunteering day with The Cowshed this year, an incredible contribution of time and energy. Whether cleaning prams, ironing clothes, wrapping gifts, making Home at The Cowshed boxes, or helping with seasonal campaigns, every volunteer played a part in supporting local families and building stronger community connections.



CHARITY OF THE YEAR PARTNERSHIPS

Being chosen as a Charity of the Year partner means more than fundraising. It is about shared purpose, teamwork, and creativity. This year we were delighted to work with:

- **Blandy and Blandy** – fundraising champions supporting us for two years.
- **Sonning Golf Club** – chosen by both Captains, raising incredible amounts through varied events.
- **Reading Maiden Erlegh Inner Wheel** – fundraising and sharing their craft skills with our sewing team.
- **EPSCM** – volunteering at events and sponsoring our new gazebo.
- **Prospect Estate Agency** – a year long programme of staff led fundraising.
- **The Royal Berkshire Hotel** – offering their stunning venue and support for fundraising events.
- **Bespoke IFA** – donating through client referral linked giving.

These partnerships have brought energy, creativity, and generosity to everything we do. Together, they have helped us extend our reach, engage new supporters, and build lasting relationships that strengthen our community.



LOOKING AHEAD Our collaborations this year have shown just how powerful partnership can be. As we look ahead, we are excited to keep building on this momentum, working with businesses, schools, and community groups to create new opportunities, inspire more volunteers, and continue making a real difference for local families.

Events spotlight

LITTLE BLACK DRESS SALES

Making the most of what we have to support local families.

Our Little Black Dress sales raised an incredible £29,000 during the year, helping to fund our work supporting families in need. The events featured beautiful evening and occasion wear that our clients do not always have a need for, giving these outfits a new life while supporting others in the community.

The sales were a wonderful way to bring people together, promote sustainability, and raise vital funds. Shoppers left with something special, knowing their purchase would help another family through a difficult time.



WOKINGHAM LIONS SWIMATHON

Making a splash for The Cowshed.

A team of Cowshed staff and volunteers took part in the Wokingham Lions Swimathon, raising over £3,000 to support our work and help raise awareness across the community. The event was filled with teamwork, laughter, and a shared sense of purpose as everyone swam their lengths to make a difference.

The Swimathon also holds a special place in our hearts as we remember our dear friend and longstanding volunteer Dave, who sadly passed away not long after the event. His kindness, humour, and generosity of spirit made a lasting impression on everyone at The Cowshed, and we are proud to have shared this moment with him.



SONNING GOLF CLUB

We were beyond grateful to Sonning Golf Club for their extraordinary support throughout 2024, raising an amazing £59,000 for The Cowshed. The funds directly supported individuals and families across the borough who

were facing times of crisis, helping to provide clothing, household essentials, and practical support.

The club's remarkable fundraising success was led by Clubhouse Captain Kevin James and Lady Captain Sue Hardyman, who both chose The Cowshed as their Charity of the Year. Thanks to the generosity of club members, friends, and the wider community, Kevin

raised an incredible £53,000 through a variety of events and challenges.

The year was filled with creative and inspiring fundraising activities. Kevin began the year with the annual drive-In event in January, followed by an evening of Night Golf in February. July's Captain's Charity Day brought together a full day of golf and a lively charity auction, while September's Away Day at Royal Winchester Golf Club proved another highlight.

In early 2024, Kevin also took on a personal weight loss challenge, losing 30 pounds with Slimming World between January and March. On the longest day of the year, he completed an incredible 72-hole golf marathon starting at 4.45am. His yearlong birdie challenge saw him achieve 61 birdies and one eagle over 96 rounds at Sonning Golf Club (165 in total), inspiring generous donations from members and supporters throughout the season.

This phenomenal fundraising total reflected not only Kevin and Sue's dedication but also the generosity, enthusiasm, and community spirit of everyone at Sonning Golf Club.





Every single week, our Donation Centre processes an incredible three tonnes of donated goods and it's all thanks to the dedication and hard work of our amazing staff and volunteers.

There's a real sense of community at The Cowshed. Volunteers work side-by-side, forging friendships while making a tangible difference. Their enthusiasm, compassion, and teamwork are the heartbeat of our charity.

Sustainability is also at the core of what we do. We work hard to dispose of items responsibly.

1. SUSTAINABLE CLOTHES RECYCLING

We accept donations of preloved clothing, bed linens, and other textiles, and sort through them to determine what is in good condition. These items are then laundered and given to our clients who are in need. Items that are not in excellent condition are repurposed by our community arts and crafts group, which creates tote bags for us to use when distributing referrals. This helps to minimise our use of plastic bags. Any remaining items are sold to recycling organisations to raise funds for the charity.

2. REDUCTION OF PLASTIC USAGE

We aim to minimise our use of plastic bags by repurposing items into tote bags, that all our referrals are provided in, as mentioned above. We also use biodegradable or compostable materials whenever possible and rehome or reuse plastic bags we receive donations in. Any plastics we cannot reuse or rehome are recycled.

3. RE-DISTRIBUTION OF SECOND-HAND ITEMS

We are proud to be a part of the Against Breast Cancer Bra Recycling Scheme. This program collects unwanted or unloved bras and raises vital funds for pioneering breast cancer research. The scheme also helps support small businesses in developing countries by providing affordable bras that are otherwise expensive to produce locally.

We are also committed to supporting other local charities and organisations as well. We stock free book libraries at Emmbrook School and in local refugee hotels and pass on any household goods we receive but cannot use to Jac in a Box Wokingham. In addition, we provide older age clothing to Dress for Dignity at The Royal Berkshire Hospital and Tena pads to WADE.

Please see below for some other ways in which we are recycling.

RECYCLING INITIATIVES

Clothing	Bags2School, Dress for Dignity (clothes for the elderly), Little Black Dress Shop (Occasion wear).
Soft Plastics	Local Supermarkets
Unsuitable Toys and Homeware	Anglo Collections
Textiles	Craft at The Cowshed
Used Tights	Elastic Bands
Used Bras	Against Breast Cancer
Carrier Bags/Bags for Life	Local food banks, SHARE
Tumble Dryer Sheets	Ali's Recycling for the Local Community
Books	Sue Ryder, Free book libraries (Emmbrook School, Refugee hotels)
Unsuitable blankets, towels, and flannels	Various animal centres
Costume Jewellery	Vintage Cash Cow, sold online or at auction, jewellery making workshops
Suitcases	Care4Calais
Batteries	Valpac Recycling
Spectacles	Wokingham Lions
Broken items	Reading Re3 recycling centre
Cardboard	Recycled weekly



Case Study – Holly's Story

Holly was born with a rare medical condition, which meant she had to spend her first few months in hospital and relied on a feeding tube. It was a difficult start for her and for her parents, who spent as much time as possible by her side. Holly's mum was on maternity leave, and her dad had taken time off work to support them both, but the long hospital stays, and the uncertainty took their toll. The family were doing their best, but they were exhausted, worried, and finding it hard to manage financially.

When Holly began pulling out her feeding tube, the hospital team suggested that she wear vests and babygrows with built-in mittens to help stop her from catching hold of it. Her health visitor could see how much the family were struggling and referred them to The Cowshed for some extra support.

We were able to put together a care package including babygrows with mittens, some extra clothing, and a few comforting items for their time in hospital. It was a small way to make things a little easier for Holly's parents during a really challenging time.

About a month later, as Christmas approached, we were delighted to bring some festive cheer to the hospital with a special Santa sack for Holly, complete with a hand-sewn holly leaf made by our wonderful craft group. It was lovely to be able to share a little joy and show the family that they were being thought of and supported by their community.

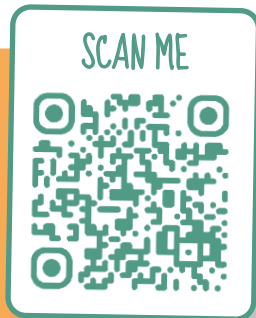


How you can help

DONATE FUNDS

Make a one off or regular contribution to support our work.

👉 justgiving.com/charity/thecowshed



DONATE ITEMS

Find out what we need and how to donate at

👉 thecowshed.org/how-and-what-to-donate



VOLUNTEER YOUR TIME

Join our amazing team of volunteers and help make a difference.

👉 thecowshed.org/volunteering

✉️ volunteers@thecowshed.org



PARTNER OR FUNDRAISE WITH US

Are you a business, school or community group that would like to get involved?

✉️ fundraising@thecowshed.org

MAKE A REFERRAL

If you are a professional wanting to refer someone for support, please email

✉️ referrals@thecowshed.org



VOLUNTEER WITH US

If you can spare a few hours every week, we would love to have you join our dynamic and energetic team of amazing volunteers. Whether you are looking to help on your own, with friends, or as part of a work or community group, there is a place for you at The Cowshed.

Our volunteers support us in so many ways, sorting donations, helping at community events, crafting, driving, or assisting in our referral centre. Whatever your skills, you will be part of a welcoming team that makes a real difference to local families every day.

Register your interest at thecowshed.org/volunteering or email volunteers@thecowshed.org to find out more.

WORKING TOGETHER TO SHARE MORE

This year, we were incredibly grateful to receive generous stock donations from our corporate and retail partners, including Harrods, InKind Direct, Tesco, and Pigeon Organics. These contributions of surplus and end of line items provided essential clothing, toiletries, homeware, toys, and baby products for local families in need.

By donating unsold or excess stock, our partners help ensure that high quality items are reused rather than wasted, bringing dignity and comfort to those we support.

If your organisation would like to donate stock, collaborate on a product partnership, or explore how we can work together, please contact info@thecowshed.org.

THANK YOU!

This year has shown the power of community in action. To everyone who has given their time, skills, donations and encouragement, thank you.

Your kindness has helped us support thousands of families and individuals across Berkshire, providing comfort, dignity and hope when it was needed most. Every parcel packed, every item sorted, every hour volunteered has made a real difference to both people and the planet.

Through your generosity we have not only supported those facing hardship but also reduced waste, reused resources and promoted sustainable ways of caring for one another and our environment.

To our volunteers, staff, trustees, referral partners, donors, funders, schools, community groups and corporate partners, we are truly grateful for your continued support and belief in what we do.

Together we are helping to build a Berkshire rooted in care, compassion and community.



Financial Review – Independent Examiner's Report

I report on the accounts of The Cowshed for the period from 1st April 2024 to 31st March 2025, which are set out on pages 26 to 42

RESPECTIVE RESPONSIBILITIES OF TRUSTEES AND EXAMINER

The charity's trustees are responsible for the preparation of the accounts. The charity's trustees consider that an audit is not required for this year under section 144(2) of the Charities Act 2011 (the 2011 Act) and that an independent examination is needed. It is my responsibility to:

- examine the accounts under section 145 of the 2011 Act
- to follow the procedures laid down in the general Directions given by the commission under section 145(5)(b) of the 2011 Act
- to state whether particular matters have come to my attention

BASIS OF INDEPENDENT EXAMINER'S STATEMENT

My examination was carried out in accordance with the general Directions given by the Charity Commission. An examination includes a review of the accounting records kept by the charity and a comparison of the accounts presented with those records. It also includes consideration of any unusual items or disclosures in the accounts, and seeking explanations from you as trustees concerning any such matters. The procedures undertaken do not provide all the evidence that would be required in an audit and consequently no opinion is given as to whether the accounts present a 'true and fair view' and the report is limited to those matters set out in the next statement.

INDEPENDENT EXAMINER'S STATEMENT

In connection with my examination, no matter has come to my attention:

1. which gives me reasonable cause to believe that in any material respect the requirements:
 - to keep accounting records in accordance with section 130 of the 2011 Act and
 - to prepare accounts which accord with the accounting records and comply with the accounting requirements of the 2011 Act have not been met;

or

2. to which, in my opinion, attention should be drawn in order to enable a proper understanding of the accounts to be reached

Signed:



Name: Mrs Balvinder Kaur Dhillon

Date: 16th December 2025

Relevant professional qualification or body:

FCCA (Fellow of the Association of Chartered Certified Accountants)

Address: 1 Harris Close, Woodley, Reading, RG5 4XH

Accounts – Statement of Financial Activity 2024/25

Categories by Activity	Unrestricted funds £	Restricted income funds £	Endowment funds £	Total funds £	Prior year funds £
Incoming resources (Note 3)	F01	F02	F03	F04	F05
Income and endowments from:					
Donations and legacies	258,862	256,713	-	515,575	577,494
Charitable activities	51,364	-	-	51,364	56,925
Other trading activities	89,441	-	-	89,441	58,001
Investments	-	-	-	-	-
Separate material item of income	-	-	-	-	-
Other	-	-	-	-	-
Total	399,667	256,713	-	656,380	692,420

Resources expended (Note 6)					
Expenditure on:					
Raising funds	30,953	-	-	30,953	30,656
Charitable activities	396,428	252,104	-	648,532	617,476
Separate material item of expense	-	-	-	-	850
Other	-	-	-	-	-
Total	427,381	252,104	-	679,485	648,982

Net income/(expenditure) before investment gains/(losses)	-27,714	4,609	-	-23,105	43,438
Net gains/(losses) on investments	-	-	-	-	-
Net income/(expenditure)	-27,714	4,609	-	-23,105	43,438
Extraordinary items	-	-	-	-	-
Transfers between funds	-	-	-	-	-
Other recognised gains/(losses):					
Gains and losses on revaluation of fixed assets for the charity's own use	-	-	-	-	-
Other gains/(losses)	-	-	-	-	-
Net movement in funds	-27,714	4,609	-	-23,105	43,438
Reconciliation of funds:					
Total funds brought forward	91,861	-	-	91,861	48,423
TOTAL FUNDS CARRIED FORWARD	64,147	4,609	-	68,756	91,861

Accounts – Balance Sheet Financial Year 2024/25

Categories by Activity	Unrestricted funds £	Restricted income funds £	Endowment funds £	Total this year £	Total last year £
Fixed assets	F01	F02	F03	F04	F05
Intangible assets	-	-	-	-	-
Tangible assets	39,292	-	-	39,292	47,482
Heritage assets	-	-	-	-	-
Investments	-	-	-	-	-
Total fixed assets	39,292	-	-	39,292	47,482
Current assets					
Stocks (Note 18)	-	-	-	-	-
Debtors	23,980	-	-	23,980	255
Investments	-	-	-	-	-
Cash at bank and in hand	15,128	-	-	15,128	60,138
Total current assets	39,109	-	-	39,109	60,393
Creditors: amounts falling due within one year	9,376	-	-	9,376	15,752
Net current assets/(liabilities)	29,733	-	-	29,733	44,641
Total assets less current liabilities	69,025	-	-	69,025	92,123
Creditors: amounts falling due after one year	-	-	-	-	-
Provisions for liabilities	-	-	-	-	-
Total net assets or liabilities	69,025	-	-	69,025	92,123
Funds of the Charity					
Endowment funds	-	-	-	-	-
Restricted income funds	-	-	-	-	-
Unrestricted funds	69,025	-	-	69,025	92,193
Revaluation reserve	-	-	-	-	-
TOTAL FUNDS	69,025	-	-	69,025	92,193

1. BASIS OF PREPARATION

1.1 BASIS OF ACCOUNTING

These accounts have been prepared under the historical cost convention with items recognised at cost or transaction value unless otherwise stated in the relevant note(s) to these accounts.

The accounts have been prepared in accordance with:

- the Statement of Recommended Practice: Accounting and Reporting by Charities preparing their accounts in accordance with the Financial Reporting Standard applicable in the UK and Republic of Ireland (FRS 102) issued on 16 July 2014
- and with the Charities Act 2011

The charity constitutes a public benefit entity as defined by FRS 102.*

1.2 GOING CONCERN

The accounts are prepared on a going concern basis.

1.3 CHANGE OF ACCOUNTING POLICY

The accounts present a true and fair view and the accounting policies adopted are those outlined in note [2].

1.4 CHANGES TO ACCOUNTING ESTIMATES

No changes to accounting estimates have occurred in the reporting period (3.46 FRS 102 SORP).

1.5 MATERIAL PRIOR YEAR ERRORS

No material prior year error have been identified in the reporting period (3.47 FRS 102 SORP).



2. ACCOUNTING POLICIES

2.1 RECONCILIATION TO GAAP -

NOT APPLICABLE

2.2 INCOME

This standard list of accounting policies has been applied by the charity except for those ticked "No" or "N/A". Where a different or additional policy has been adopted then this is detailed in the box below.

Recognition of income

These are included in the Statement of Financial Activities (SoFA) when:

- the charity becomes entitled to the resources;
- it is more likely than not that the trustees will receive the resources; and
- the monetary value can be measured with sufficient reliability.

Yes No N/A

X		
---	--	--

Offsetting

There has been no offsetting of assets and liabilities, or income and expenses, unless required or permitted by the FRS 102 SORP or FRS 102.

Yes No N/A

X		
---	--	--

Grants and donations

Grants and donations are only included in the SoFA when the general income recognition criteria are met (5.10 to 5.12 FRS102 SORP).

Yes No N/A

X		
---	--	--

Government grants

The charity has received government grants in the reporting period

Yes No N/A

X		
---	--	--

Donated goods

Donated goods are measured at fair value (the amount for which the asset could be exchanged) unless impractical to do so.

Goods donated for on-going use by the charity are recognised as tangible fixed assets and included in the SoFA as incoming resources when receivable.

Yes No N/A

X		
---	--	--

Support costs

The charity has incurred expenditure on support costs.

Yes No N/A

X		
---	--	--

Volunteer help

The value of any voluntary help received is not included in the accounts but is described in the trustees' annual report.

Yes No N/A

X		
---	--	--

2.3 EXPENDITURE AND LIABILITIES

Liability recognition

Liabilities are recognised where it is more likely than not that there is a legal or constructive obligation committing the charity to pay out resources and the amount of the obligation can be measured with reasonable certainty.

Yes No N/A

X		
---	--	--

Deferred income

No material item of deferred income has been included in the accounts.

Yes No N/A

X		
---	--	--

2.4 ASSETS

Tangible fixed assets for use by charity

These are capitalised if they can be used for more than one year, and cost at least

£100

They are valued at cost.

Yes No N/A

X		
---	--	--

The depreciation rates and methods used are disclosed in note 10.2.

Debtors

Debtors (including trade debtors and loans receivable) are measured on initial recognition at settlement amount after any trade discounts or amount advanced by the charity. Subsequently, they are measured at the cash or other consideration expected to be received.

Yes No N/A

X		
---	--	--

Notes to the Accounts Financial Year 2024/25

3. INCOME ANALYSIS

Analysis	Unrestricted funds £	Restricted income funds £	Endowment funds £	Total funds £	Prior year £
Donations and legacies:					
Donations and gifts	104,800	27,739	-	132,539	106,862
Gift Aid	10,201	-	-	10,201	13,158
Legacies	-	-	-	-	-
General grants provided by government/ other charities					
- General Activity	99,292			99,292	81,800
- Referrals Bedding		2,954		2,954	11,130
- Referrals Clothing (including Uniform)		75,730		75,730	46,770
- Rent / Rates		-		-	40,697
- Salaries		50,605		50,605	102,167
- Utilities		-		-	22,833
- Christmas		2,000		2,000	3,000
- Other (including Ukraine/Minibus/Toiletries)		26,950		26,950	55,366
Membership subscriptions and sponsorships which are in substance donations		15,428	-	15,428	7,400
Donated goods, facilities and services		-	-	-	-
Fundraising Activities	44,569	55,307	-	99,876	86,311
Other	-	-	-	-	-
Total	258,862	256,713	-	515,575	577,494

Charitable activities:					
Recycling	51,364	-	-	51,364	56,925
WUC Funding	-	-	-	-	-
Other	-	-	-	-	-
Total	51,364	-	-	51,364	56,925

Notes to the Accounts Financial Year 2024/25

3. INCOME ANALYSIS CONT.

Analysis	Unrestricted funds £	Restricted income funds £	Endowment funds £	Total funds £	Prior year £
Other trading activities:					
Shop sales of donated items	61,350	-	-	61,350	37,314
Prom Sales	7,253	-	-	7,253	2,960
Courses	20,838	-	-	20,838	15,671
Help Us Grow Project	-	-	-	-	-
Other Revenue	-	-	-	-	2,055
Warm Winter Project	-	-	-	-	-
Other	-	-	-	-	-
Total	89,441	-	-	89,441	58,000
TOTAL INCOME	399,667	256,713	-	656,380	692,419



4. ANALYSIS OF RECEIPTS OF GOVERNMENT GRANTS

Description		This year £	Last year £
Government grant 1	Wokingham Borough Council Essential Clothing -Asylum Seekers	19,000	
Government grant 2	Wokingham Borough Council Health and Activity Programme	750	
Government grant 3	Wokingham Borough Council Winter Hardship Funding		3,000
Government grant 4	Bracknell Forest Council Hardship Funding	10,000	20,000
Government grant 5	Bracknell Forest Council - Ukraine Refugees		5,000
Government grant 6	Reading Council - Household Support Fund	42,000	
Government grant 7	Community Organisations Cost of Living Fund - The National Lottery		70,000
Government grant 8	West Berkshire Council Hardship Funding		8,000
Total		71,750	106,000

Please provide details of the accounting policy for the recognition and valuation of donated goods, facilities and services.

None

Please provide details of any unfulfilled conditions and other contingencies attaching to resources from donated goods and services not recognised in income.

Not applicable

5. DONATED GOODS, FACILITIES AND SERVICES

Please give details of other forms of other donated goods and services not recognised in the accounts, eg. contribution of unpaid volunteers.

Unpaid volunteers contribute to the charity in a wide variety of roles which cannot be quantified.

The charity receives a significant amount of donations of goods which are donated free of charge as part of the core service. Due to the volume and variety of goods received and distributed, it is impractical to assess the value of these goods and therefore they are not included in these accounts.

6. EXPENDITURE ANALYSIS

Analysis	Unrestricted funds £	Restricted income funds £	Endowment Funds	Total funds £	Prior year £
Expenditure on raising funds:					
Incurred seeking donations	-	-	-	-	1,150
Incurred seeking legacies	-	-	-	-	-
Incurred seeking grants	-	-	-	-	-
Operating membership schemes and social lotteries	-	-	-	-	-
Staging fundraising events	22,623	-	-	22,623	21,166
Fundraising agents	-	-	-	-	-
Operating charity shops	-	-	-	-	-
Operating a trading company undertaking non-charitable trading activity	-	-	-	-	-
Advertising, marketing, direct mail and publicity	8,330	-	-	8,330	8,340
Start up costs incurred in generating new source of future income	-	-	-	-	-
Database development costs	-	-	-	-	-
Other trading activities	-	-	-	-	-
Investment management costs:	-	-	-	-	-
Portfolio management costs	-	-	-	-	-
Cost of obtaining investment advice	-	-	-	-	-
Investment administration costs	-	-	-	-	-
Intellectual property licencing costs	-	-	-	-	-
Rent collection, property repairs and maintenance charges	-	-	-	-	-
Total expenditure on raising funds	30,953	-	-	30,953	30,656

6. EXPENDITURE ANALYSIS CONT.

Analysis	Unrestricted funds £	Restricted income funds £	Endow-ment Funds	Total funds £	Prior year £
Expenditure on charitable activities:					
Salaries	244,723	64,605	-	309,328	194,731
Rent, Rates, Utilities	55,332	-	-	55,332	137,191
Purchases for referrals	6,285	101,335	-	107,620	92,962
Ukrainian refugees	-	-	-	-	13,387
Other refugee events	3,574	1,500	-	5,074	4,307
Set Up Costs	-	-	-	-	19,000
General Expenses	16,820	2,018	-	18,838	1,646
Other Costs	-	-	-	-	4,231
Arts and Craft Supplies	6,846	-	-	6,846	3,627
Children's Craft Project/classes	335	1,950	-	2,285	2,843
Christmas Sacks Project	13,384	65,876	-	79,260	68,020
Easter Hamper Project	2,869	-	-	2,869	3,876
Accountancy	1,356	-	-	1,356	3,994
Noah's Box Project (now called Home at the Cowshed)	-	14,701	-	14,701	7,960
Building Materials and Maintenance	5,020	-	-	5,020	14,108
Vehicle Costs	7,135	-	-	7,135	4,631
Insurance Costs	6,624	-	-	6,624	5,450
IT Software, Subscriptions and Consumables	8,132	-	-	8,132	12,391
Staff Training	2,013	-	-	2,013	3,430
Depreciation Expense	15,979	120	-	16,099	19,690
Hygiene Bank	-	-	-	-	-
Total expenditure on charitable activities	396,428	252,104	-	648,532	617,475

Analysis	Unrestricted funds £	Restricted income funds £	Endow-ment Funds	Total funds £	Prior year £
Separate material item of expense					
Staff Welfare	-	-	-	-	850
Total other expenditure	-	-	-	-	850

Notes to the Accounts Financial Year 2024/25

Analysis	Unrestricted funds £	Restricted income funds £	Endowment Funds	Total funds £	Prior year £
Other					
-	-	-	-	-	-
Total other expenditure	-	-	-	-	-
TOTAL EXPENDITURE	427,381	252,104	-	679,485	648,981

10. FEES FOR EXAMINATION OF ACCOUNTS

	This year £	Last year £
Independent examiner's fees	0	0
Assurance services other than audit or independent examination	0	0
Tax advisory fees	0	0
Other fees (for example: financial advice, consultancy, accountancy services) paid to the independent examiner	0	0

11. PAID EMPLOYEES

11.1 Staff Costs

	This year £	Last year £
Salaries and wages	324,567	212,353
Social security costs	-	-
Pension costs (defined contribution scheme)	4,760	2,378
Other employee benefits	-	-
Total staff costs	329,328	214,731

Please provide details of expenditure on staff working for the charity whose contracts are with and are paid by a related party

Not applicable

No employees received employee benefits (excluding employer pension costs) for the reporting period of more than £60,000

True

Please provide the total amount paid to key management personnel (includes trustees and senior management) for their services to the charity

52,362

11.2. Average head count in the year

	This year number	Last year number
Fundraising	1	1
Charitable Activities	9	6
Governance	1	1
Other	-	-
Total	11	8

12. DEFINED CONTRIBUTION PENSION SCHEME OR DEFINED BENEFIT SCHEME ACCOUNTED FOR AS A DEFINED CONTRIBUTION SCHEME

Amount of contributions recognised in the SOFA as an expense

4,760

Please explain the basis for allocating the liability and expense of defined contribution pension scheme between activities and between restricted and unrestricted funds.

The liability and expense of the defined contribution pension scheme is allocated to expenditure on charitable activities. Unrestricted funds are used except where a restricted fund was received for salary costs for a specific role.



Notes to the Accounts Financial Year 2024/25

14. TANGIBLE FIXED ASSETS

14.1. Cost or valuation

	Freehold land & buildings £	Other land & buildings	Plant, machinery and motor vehicles £	Computer Equipment £	Fixtures, fittings and equipment £	Total £
At the beginning of the year	-	-	10,611	11,467	52,594	74,672
Additions	-	-	2,160	3,903	1,883	7,946
Revaluations	-	-	-	-	-	-
Disposals	-	-	-1,730	-38		-1,768
Transfers *	-	-	-	-	-	-
At end of the year	-	-	11,041	15,332	54,478	80,850

14.2 Depreciation and Impairments

**Basis	SL or RB	SL or RB	SL 5 Years	SL 3 Years	SL 10 Years & 3 Years	SL or RB
** Rate			5 Years	3 Years	10/3 Years	

Straight Line ("SL") or Reducing Balance ("RB")

At beginning of the year	-	-	4,323	6,877	15,989	27,189
Disposals	-	-	-1,730			-1,730
Depreciation	-	-	3,678	3,300	9,121	16,099
Impairment	-	-	-	-	-	-
Transfers*	-	-	-	-	-	-
At end of the year	-	-	6,271	10,177	25,110	41,558

14.3. Net Book Value

Net book value at the beginning of the year	-	-	6,288	4,590	36,605	47,483
Net book value at the end of the year	-	-	4,770	5,154	29,368	39,292

19. DEBTORS AND PREPAYMENTS

19.1. Analysis of debtors	This year £	Last year £
Trade debtors	-	-
Prepayments and accrued income	23,066.00	-
Other debtors	914.30	255.00
Total	23,980.30	255.00

20. CREDITORS AND ACCRUALS

20.1. Analysis of creditors	Amounts falling due within one year		Amounts falling due after more than one year	
	This year £	Last year £	This year £	Last year £
Accruals for grants payable	-	-	-	-
Bank loans and overdrafts	-	-	-	-
Trade creditors	994	2,658	-	-
Payments received on account for contracts or performance-related grants	-	-	-	-
Accruals and deferred income	-	5,000	-	-
Taxation and social security	5,906	4,273	-	-
Other creditors	2,475	3,821	-	-
Total	9,376	15,752	-	-

20.2 Deferred income

Please explain the reasons why income is deferred.

Income is deferred when we receive a grant in advance for expenditure over a specified period of time. The income is released when the expenditure has occurred.

Movement in deferred income account	This year £	Last year £
Balance at the start of the reporting period	5,000	38,114
Amounts added in current period	-	5,000
Amounts released to income from previous periods	-5,000	-38,114
Balance at the end of the reporting period	-	5,000

24. CASH AT BANK AND IN HAND

	This year £	Last year £
Short term cash investments (less than 3 months maturity date)	-	-
Short term deposits	-	-
Cash at bank and on hand	15,128	60,138
Other	-	-
Total	15,128	60,138

Notes to the Accounts Financial Year 2024/25

27. CHARITY FUNDS

27.1. Details of material funds held and movements during the CURRENT reporting period

Key: PE - permanent endowment funds; EE - expendable endowment funds; R - restricted income funds, including special trusts, of the charity; and U - unrestricted funds

Fund names	Type PE, EER or UR*	Purpose and Restrictions	Fund balances brought forward £	Income £	Expendi- ture £	Fund balances carried forward £
The Englefield Charity	R	Minibus		2,500		2,500
Reading Borough Council Household Fund	R	Prams/Mattresses etc		5,000	-5,000	-
52 Lives	R	Clothing for Referrals	-	4,500	-4,500	-
52 Lives	R	Refugees Events	-	1,500	-1,500	-
Berkshire Community	R	Baby Equipment	-	3,000	-3,000	-
Wokingham United Charities	R	Health and Activity Programme	-	1,200	-1,200	-
Reading Borough Council Household Fund	R	Family Packs	-	5,000	-5,000	-
Berkshire Masons	R	Welcome to the World Pack	-	3,500	-3,500	-
Wokingham Borough Council	R	Health and Activity Programme	-	750	-750	-
Wokingham Lions	R	Event and Marketing Banners	-	500	-500	-
Hall Hunter	R	Laundry Equipment	-	1,500	-120	1,380
Berkshire Community	R	Bedding for Referrals	-	2,000	-2,000	-
Bracknell Forest Council	R	Bedding for Referrals	-	865	-865	-
Russell Players	R	Bedding for Referrals	-	89	-89	-
Berkshire Community	R	Clothing for Referrals	-	4,000	-4,000	-
Reading Borough Council Household Fund	R	Clothing for Referrals	-	11,000	-11,000	-
Bracknell Forest Council	R	Clothing for Referrals	-	3,480	-3,480	
Souter Charitable Trust	R	Clothing for Referrals	-	3,000	-3,000	-
Thames Valley Police	R	Clothing for Referrals	-	4,000	-4,000	-
Wokingham Borough Council	R	Clothing for Referrals - Asylum Seekers	-	19,000	-19,000	-
Berkshire Community	R	Toiletries for Referrals	-	1,000	-1,000	-
Bracknell Forest Council	R	Toiletries for Referrals	-	1,500	-1,500	-
CAF	R	Salary	-	50,000	-50,000	-
Bracknell Forest Council	R	Salary	-	605	-605	-
Wokingham United Charities	R	Xmas	-	2,000	-2,000	-
Reading Borough Council Household Fund	R	School Uniform	-	21,000	-21,000	
Bracknell Forest Council	R	School Uniform	-	2,950	-2,950	
Toyota	R	School Uniform	-	1,800	-1,800	

27. CHARITY FUNDS - CONTINUED

Warfield Parish	R	School Uniform	-	1,000	-1,000	-
Cotswold Fayre	R	Home Boxes	-	1,800	-1,800	-
Boehringer Ingelheim Ltd	R	Home Boxes	-	4,898	-4,171	727
Wokingham Town Council	R	Home Boxes	-	880	-880	-
Bracknell Forest Council	R	Home Boxes	-	600	-600	-
Thames Valley Police	R	Home Boxes	-	3,000	-3,000	-
Berkshire Community	R	Home Boxes	-	3,000	-3,000	-
Rotary Club - Crowthorne	R	Home Boxes	-	1,250	-1,250	-
Sonning Golf Club -Fundraising	R	Salaries	-	14,000	-14,000	-
Sonning Golf Club -Fundraising	R	Xmas	-	41,307	-41,307	-
Restricted Donations	R	Toiletries	-	351	-351	-
Restricted Donations	R	Clothing	-	864	-864	-
Restricted Donations	R	Bedding	-	2,437	-2,437	-
Restricted Donations	R	Xmas	-	22,270	-22,270	-
Restricted Donations	R	Gift Cards	-	300	-300	-
Restricted Donations	R	Other	-	1,518	-1,518	-
Other funds	UR	All other income and expenditure	102,583	399,668	-427,380	74,871
Total Funds			102,583	656,380	-679,485	79,478

CHARITY FUNDS PREVIOUS YEAR

27.2. Details of material funds held and movements during the PREVIOUS reporting period

Key: PE - permanent endowment funds; EE - expendable endowment funds; R - restricted income funds, including special trusts, of the charity; and U - unrestricted funds

Fund names	Type PE, EER or UR*	Purpose and Restrictions	Fund balances brought forward £	Income £	Expenditure £	Fund balances carried forward £
National Lottery Community Fund (carry over)	R	Rent and Rates		11,572	-11,572	-
National Lottery Community Fund (carry over)	R	Salary		25,667	-25,667	-
National Lottery Community Fund (carry over)	R	Utilities		1,833	-1,833	-
Community Organisations Cost of Living Fund - The National Lottery	R	Clothing for Referrals		6,000	-6,000	-
Community Organisations Cost of Living Fund - The National Lottery	R	Salary		31,000	-31,000	-
Community Organisations Cost of Living Fund - The National Lottery	R	Premises - Rent / Rates etc		16,500	-16,500	-
Community Organisations Cost of Living Fund - The National Lottery	R	Utilities		16,500	-16,500	-

Notes to the Accounts Financial Year 2024/25

CHARITY FUNDS PREVIOUS YEAR - CONTINUED

Bracknell Forest Council	R	Ukraine Families		5,000	-5,000	-
Berkshire Community	R	Bedding for Referrals		3,000	-3,000	-
Bracknell Forest Council	R	Bedding for Referrals		6,630	-6,630	-
Cash for Kids	R	Bedding for Referrals		1,500	-1,500	-
Greeham Trust	R	Clothing for Referrals		2,000	-2,000	-
Berkshire Community	R	Clothing for Referrals		7,000	-7,000	-
Hedley Foundation	R	Refugees		3,500	-3,500	-
Postcode lottery	R	Clothing for Referrals		10,000	-10,000	-
Bracknell Forest Council	R	Clothing for Referrals		6,630	-6,630	-
National Lottery Main Grant	R	Rent and Rates		12,625	-12,625	-
National Lottery Main Grant	R	Salary		28,000	-28,000	-
National Lottery Main Grant	R	Utilities		2,000	-2,000	-
Bracknell Forest Council	R	Toiletries for Referrals		3,000	-3,000	-
Anton Jurgen	R	Salary		2,500	-2,500	-
Postcode lottery	R	Salary		15,000	-15,000	-
Migrant Help	R	Utilities		2,500	-2,500	-
52 Lives Life	R	Xmas		1,000	-1,000	-
Wokingham United Charities	R	Xmas		2,000	-2,000	-
Cotswold Fayre	R	Home Boxes		1,800	-1,800	-
Abbvie	R	Home Boxes		5,000	-5,000	-
Bracknell Forest Council	R	Home Boxes		600	-600	-
Cash for kids	R	School Uniform		3,250	-3,250	-
Bupa	R	School Uniform		5,000	-5,000	-
Bracknell Forest Council	R	School Uniform		2,950	-2,950	-
52 Lives Life	R	School Uniform		1,500	-1,500	-
St.James Place	R	CRM System		2,615	-2,615	-
Berkshire Masons	R	Maternity (Welcome to World) Packs		3,500	-3,500	-
Mobbs memorial trust	R	Irons		1,000	-1,000	-
Migrant Help	R	Bra Fitting Training		500	-500	-
Migrant Help	R	Maternity Bags		2,000	-2,000	-
The Clothworkers	R	Set Up Costs New Building		19,000	-19,000	-
West Berkshire Council	R	Prams / Car Seats		8,000	-8,000	-
Englefield Trust	R			1,000	-1,000	-
Restricted Donations	R	Xmas		31,689	-31,689	-
Restricted Donations	R	Other		13,365	-13,365	-
Wokingham Town Council	R			1,000	-1,000	-
Other funds	UR	All other income and expenditure	59,145	365,694	-322,256	102,583
Total Funds			59,145	692,420	-648,982	102,583

28. TRANSACTIONS WITH TRUSTEES AND RELATED PARTIES

28.1 Trustee remuneration and benefits

None of the trustees have been paid any remuneration or received any other benefits from an employment with their charity or a related entity (True or False)

True

28.2 Trustees' expenses

No trustee expenses have been incurred (True or False)

True

28.3 Transaction(s) with related parties

There have been no related party transactions in the reporting period (True or False)

True

STRUCTURE GOVERNANCE AND MANAGEMENT

The Cowshed is a Charitable Incorporated Organisation and as such is governed in line with the Foundation Constitution. All trustees are voluntary and are appointed via a selection process and approval by the Board of Trustees in accordance with the constitution.

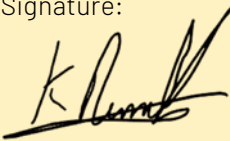
DECLARATIONS

The Trustees declare that they have approved the trustees' report above.

Signed on behalf of the charity's trustees

Date: 15th January 2026

Signature:



Name: Kester John Russell

Position: Chair of Trustees







THE COWSHED

Rubra 2, Mulberry Business Park, Fishponds Road, Wokingham, RG41 2GY | Tel: 0118 934 5120

Email: info@thecowshed.org | www.thecowshed.org

Visit our website and social media for more info on our other initiatives

