

THE KORA TRUST

England & Wales · Charity number 1181515

Details

Status Registered

Legal form CIO

Registered 2019-01-10

Register [View on the Charity Commission register](#)

Contact

Address 12 Grosvenor Road
London
N10 2DS

Phone 02088159533

Email koratrust@gmail.com

Website <https://www.thekoratrust.org>

Activities

Objects: THE RELIEF OF POVERTY AND ADVANCEMENT OF EDUCATION OF PEOPLE LIVING IN KAFOUNTINE AND SURROUNDING AREAS IN THE CASAMANCE, SENEGAL THROUGH SUPPORT AND FUNDING FOR PROJECTS.

Activities: The relief of poverty in Kafountine and surrounding areas in the Casamance, Senegal through support for projects including, but not restricted to education, economic development and environmental sustainability. Principally through fund raising but other forms of help, such as technical expertise, may be offered

Classification

- **How:** Makes Grants To Organisations, Provides Other Finance, Provides Advocacy/advice/information, Other Charitable Activities
- **What:** General Charitable Purposes, The Prevention Or Relief Of Poverty

Geography

- Senegal

Finances

Period end	Income	Expenditure	Assets	Employees
2025-03-31	£5,395	£4,140	-	-
2024-03-31	£3,714	£3,310	-	-
2023-03-31	£2,754	£4,027	-	-
2022-03-31	£4,742	£4,245	-	-
2021-03-31	£4,363	£3,613	-	-

Trustees

Name	Role	Appointed
KATHERINE ANN PICKERING	Chair	2018-04-01
ANNIE MENTER		2018-04-01
Jack Matthew Hamilton		2019-02-23
NIGEL JOHN HAMILTON		2018-04-01

THE KORA TRUST

England & Wales - Charity number 1181515

Accounts



Trustees' Annual Report for the period

From **1/4/24** Period start date To **31/3/25**
Period end date

Charity name: The Kora Trust

Charity registration number:1181515

Objectives and Activities

	SORP reference	
Summary of the purposes of the charity as set out in its governing document	Para 1.17	The relief of poverty and advancement of education of people living in Kafountine and the surrounding areas in the Casamance, Senegal through support and funding for projects
Summary of the main activities in relation to those purposes for the public benefit, in particular, the activities, projects or services identified in the accounts.	Para 1.17 and 1.19	Providing funding to organisations running projects that meet the Charity's criteria. Occasional help in kind (eg tools or equipment)
Statement confirming whether the trustees have had regard to the guidance issued by the Charity Commission on public benefit	Para 1.18	This is incorporated in the Charity's Constitution. All Trustees have signed a document confirming that they understand the requirements

Additional information (optional)

You may choose to include further statements where relevant about:

	SORP reference	
Policy on grant making	Para 1.38	The Chair of the Trust lives part of the year in Kafountine and the other Trustees are regular visitors. The Trust is therefore well integrated with the community in Kafountine and aware of its needs and aspirations. Trustees will consider support for any project that (a) supports and is consistent with the aims of the Trust and (b) originates from and/or has significant support within the local community. They will also have regard to whether a project has the potential to become self-supporting and/or whether supporting it can unlock other funding sources (e.g. other charities), so as to maximise the effectiveness and sustainability of the help given. However we recognise that the lack of resources within Kafountine means that this cannot always be guaranteed and will not be a

		condition of funding. In practice the Trust will have limited funds available to it and a more complex and detailed application and decision-making process is not considered appropriate or proportionate at this time.
Policy on social investment including program related investment	Para 1.38	n/a
Contribution made by volunteers	Para 1.38	The Charity has no paid staff. Most donor activity is financial help, although occasional donations in kind, or hands-on help with a specific project activity, may also happen from time to time. Volunteers have also organised occasional fund raising events
Other		

Achievements and Performance

	SORP reference	
Summary of the main achievements of the charity, identifying the difference the charity's work has made to the circumstances of its beneficiaries and any wider benefits to society as a whole.	Para 1.20	<p>The Little School</p> <p>The first project supported by the Kora Trust, and still our most significant ongoing commitment is the Youssouph Kalagan Diatta pre-school, locally known as the Little School.</p> <p>The community-run pre-school prepares children for entry into the local primary school. Most children only speak a local language at home and are taught first steps in French, personal hygiene and social skills. This enables them to focus their energies more effectively on learning when they enter primary school.</p> <p>The school is subject to inspection by, and has been found to meet the requirements of, the Senegalese government.</p> <p>The Trust supports the salaries of two teachers and a teaching assistant. It helps build and maintain the facilities at the school, including help to build a new classroom as well as accommodation for the teachers. There are two classrooms. Until recently the second was made of bamboo-like material which provided shade but offered no protection during the rainy season and needed almost complete renewal every year.</p>

A donation from the estate of a supporter enabled us to build a less picturesque, but far more practical permanent structure. We have also recently put a roof on the toilets and mended the fences surrounding the school, which had been broken down by marauding cattle!

Souada Coly Pottery

The Souada Coly pottery is the last surviving traditional potter in the Kafountine area.

When Souda was introduced to the Trust the pottery was struggling. In particular her kiln was broken and she did not have the capital to replace it. This traditional skill was in danger of being lost, not least because her daughters were reluctant to commit to a declining business.

The Trust helped to build a new kiln for the pottery, a clay and wood store and a simple undercover showroom where Souada could display her work and even run workshops.

With the above improvements, Souada has been able to increase her output and regularly supply her functional earthenware pots to local markets, as well as create new work, which has attracted passing visitors and tourists. Now with the revamped set up, two of her daughters have committed to the business, continuing the traditional skills that have sustained their family for many years.

Nature Vert

This is a project, developed and managed by local woodworkers, to guarantee supply of wood for future generations. They have joined forces with a local farmer to pilot a tree-planting project.

They aim to persuade the Marie (the local Council) to allocate land to this project but need to demonstrate its viability for this to happen. At present the pilot is being run on a beautifully tended market garden, growing a wide variety of fruit and vegetables, just outside Kafountine.

The trees are *Acacia mangium*, Australian black wattle, a non-native but naturalised species not considered invasive. They are unusually fast growing for a hardwood, growing to a usable size in five years. They also have the huge

		<p>advantage of being termite resistant.</p> <p>Our funding initially was to buy 700 reusable sachets in which seeds (which are collected from around existing trees) were planted. Under half the seedlings survived. The two problems were relying on enthusiastic but essentially unreliable volunteers for watering in the dry season and lack of protection from battering and drowning in the rainy season.</p> <p>We have therefore provided further funding for a “bache” to protect the seedlings in their first rainy season and to pay a small retainer to those volunteers who have proved reliable to assist with expenses (getting to the site, food and refreshments).</p> <p>Kalilu</p> <p>Kalilu is a cooperative of local tailors. They have identified that the cuttings from their work, which would otherwise go to landfill, can be woven together to form an extremely strong fabric, which then be used to make a variety of highly colourful and very robust products, such as bags and jackets. The co-op would support several women, working from home, in weaving the cuttings together. In order that Kalilu can demonstrate what can be made, the Trust has paid for a heavy-duty sewing machine, capable of working the thick material. We are also working with Kalilu to establish links with the local girls’ school for tailors with a view to linking the project to formal training.</p> <p>Progress has not been as fast as was originally hoped, due partly to the illness of one of the principals and also to the demands of day-to-day working, which do not always leave time for forward planning. This is a reminder of the everyday realities of making things happen in Senegal. We have arranged for a local business to buy the sewing machine, enabling us to recover expenditure on it, but we remain in touch with the project and are ready to support it should it get off the ground again.</p>
--	--	--

Additional information (optional)

You may choose to include further statements where relevant about:

Achievements against objectives set	Para 1.41	
-------------------------------------	-----------	--

Performance of fundraising activities against objectives set	Para 1.41	
Investment performance against objectives	Para 1.41	
Other		

Financial Review

Review of the charity's financial position at the end of the period	Para 1.21	On 31/3/25 the Trust had a balance of £2450.71 its current account. During the year its income was £5394.64 and its expenditure £4139.93. Income from Standing Orders, which is regular and reasonably secure, was £2850, with the balance coming from individual donations, some fund-raising events addition, we have the equivalent of 5 months wages for Little School staff (approx. £1375) lodged in a Senegalese bank as security should our funding stream be insufficient. We therefore believe the Charity's funding is reasonably stable and adequate to meet our responsibilities.
Statement explaining the policy for holding reserves stating why they are held	Para 1.22	
Amount of reserves held	Para 1.22	
Reasons for holding zero reserves	Para 1.22	The financial size of the Charity and the fact that it has no fixed costs (buildings employees etc) does not warrant holding reserves, over and above a prudent current account balance
Details of fund materially in deficit	Para 1.24	
Explanation of any uncertainties about the charity continuing as a going concern	Para 1.23	None

Additional information (optional)

You may choose to include further statements where relevant about:

The charity's principal sources of funds (including any fundraising)	Para 1.47	
Investment policy and objectives including any social investment policy adopted	Para 1.46	
A description of the principal risks facing the charity	Para 1.46	
Other		

Structure, Governance and Management

Description of charity's trusts:		
Type of governing document (trust deed, royal charter)	Para 1.25	Trust Deed
How is the charity constituted? (e.g unincorporated association, CIO)	Para 1.25	CIO whose only voting members are its Trustees
Trustee selection methods including details of any constitutional provisions e.g. election to post or name of any person or body entitled to appoint one or more trustees	Para 1.25	<p>(a) Every charity trustee must be a natural person.</p> <p>(b) No individual may be appointed as a charity trustee of the CIO:</p> <ul style="list-style-type: none"> • if he or she is under the age of 16 years; or • if he or she would automatically cease to hold office under the provisions of clause [12(1)(e)]. of the Constitution <p>(c) No one is entitled to act as a charity trustee whether on appointment or on any re-appointment until he or she has expressly acknowledged, in whatever way the charity trustees decide, his or her acceptance of the office of charity trustee.</p> <p>(d) Apart from the first charity trustees, every trustee must be appointed [for a term of [three] years] by a resolution passed at a properly convened meeting of the charity trustees.</p> <p>(e) In selecting individuals for appointment as charity trustees, the charity trustees must have regard to the skills, knowledge and experience needed for the effective operation of the CIC</p>

Additional information (optional)

You may choose to include further statements where relevant about:

Policies and procedures adopted for the induction and training of trustees	Para 1.51	
The charity's organisational structure and any wider network with which the charity works	Para 1.51	
Relationship with any related parties	Para 1.51	
Other		

--	--	--

Reference and Administrative details

Charity name	The Kora Trust
Other name the charity uses	Kafountine Connections
Registered charity number	1181515
Charity's principal address	12 Grosvenor Road, London, N10 2DS

Funds held as custodian trustees on behalf of others

Description of the assets held in this capacity	n/a
Name and objects of the charity on whose behalf the assets are held and how this falls within the custodian charity's objects	
Details of arrangements for safe custody and segregation of such assets from the charity's own assets	

Additional information (optional)

Names and addresses of advisers (Optional information)

Type of adviser	Name	Address

Name of chief executive or names of senior staff members (Optional information)

--

Exemptions from disclosure

Reason for non-disclosure of key personnel details

--

Other optional information

--

Declarations

The trustees declare that they have approved the trustees' report above.

Signed on behalf of the charity's trustees

Signature(s)

--	--

Full name(s)

--	--

Position (eg Secretary,
Chair, etc)

--	--

Date

--

Total Receipts & Payments Account for the year ended 31/3/25

	Unrestricted	Restricted	Total	Previous year
Receipts				
Standing order	2,790.00	60.00	2,850.00	
Single donation	1,291.89	50.00	1,341.89	
Fundraising	-	-	-	
Gift aid	982.76	-	982.76	
Card cashback	0.69	-	0.69	
Paypal	219.30	-	219.30	
Receipt - spare 7	-	-	-	
Receipt - spare 8	-	-	-	
Receipt - spare 9	-	-	-	
Receipt - spare 10	-	-	-	
Total receipts	5,284.64	110.00	5,394.64	-
Payments				
Wages	-	3,029.85	3,029.85	
Website	167.28	-	167.28	
School resources	-	201.17	201.17	
Building materials and labour	-	281.59	281.59	
Administrative costs	-	-	-	
Volunteer support	-	-	-	
Equipment	-	460.04	460.04	
Payment - spare 8	-	-	-	
Payment - spare 9	-	-	-	
Payment - spare 10	-	-	-	
Payment - spare 11	-	-	-	
Payment - spare 12	-	-	-	
Payment - spare 13	-	-	-	
Payment - spare 14	-	-	-	
Payment - spare 15	-	-	-	
Payment - spare 16	-	-	-	
Payment - spare 17	-	-	-	
Payment - spare 18	-	-	-	
Payment - spare 19	-	-	-	
Payment - spare 20	-	-	-	
Payment - spare 21	-	-	-	
Payment - spare 22	-	-	-	
Payment - spare 23	-	-	-	
Payment - spare 24	-	-	-	
Payment - spare 25	-	-	-	
Total payments	167.28	3,972.65	4,139.93	-
Net receipts / (payments)	5,117.36	(3,862.65)	1,254.71	-
Transfer	-	-	-	-
Balance brought forward	16,191.12	(14,995.05)	1,196.07	-
Balance carried forward	21,308.48	(18,857.70)	2,450.78	-
Made up of:				
Current account	2,450.78			
Deposit account	-			
Cash float	-			
Spare	-			
	2,450.78			

Checks - this should equal zero

0.00

Approval of the accounts

The financial statements were approved at a meeting of the management committee and signed on its behalf by:

Signed: 

Name: Nigel Hamilton (Management Committee member)

Date: 31/01/26

THE KORA TRUST

England & Wales - Charity number 1181515

Accounts



Trustees' Annual Report for the period

From **1/4/23** Period start date To **31/3/24**
Period end date

Charity name: The Kora Trust

Charity registration number: 1181515

Objectives and Activities

	SORP reference	
Summary of the purposes of the charity as set out in its governing document	Para 1.17	The relief of poverty and advancement of education of people living in Kafountine and the surrounding areas in the Casamance, Senegal through support and funding for projects
Summary of the main activities in relation to those purposes for the public benefit, in particular, the activities, projects or services identified in the accounts.	Para 1.17 and 1.19	Providing funding to organisations running projects that meet the Charity's criteria. Occasional help in kind (eg tools or equipment)
Statement confirming whether the trustees have had regard to the guidance issued by the Charity Commission on public benefit	Para 1.18	This is incorporated in the Charity's Constitution. All Trustees have signed a document confirming that they understand the requirements

Additional information (optional)

You may choose to include further statements where relevant about:

	SORP reference	
Policy on grant making	Para 1.38	The Chair of the Trust lives part of the year in Kafountine and the other Trustees are regular visitors. The Trust is therefore well integrated with the community in Kafountine and aware of its needs and aspirations. Trustees will consider support for any project that (a) supports and is consistent with the aims of the Trust and (b) originates from and/or has significant support within the local community. They will also have regard to whether a project has the potential to become self-supporting and/or whether supporting it can unlock other funding sources

		(e.g. other charities), so as to maximise the effectiveness and sustainability of the help given. However we recognise that the lack of resources within Kafountine means that this cannot always be guaranteed and will not be a condition of funding. In practice the Trust will have limited funds available to it and a more complex and detailed application and decision-making process is not considered appropriate or proportionate at this time.
Policy on social investment including program related investment	Para 1.38	n/a
Contribution made by volunteers	Para 1.38	The Charity has no paid staff. Most donor activity is financial help, although occasional donations in kind, or hands-on help with a specific project activity, may also happen from time to time
Other		

Achievements and Performance

	SORP reference	
Summary of the main achievements of the charity, identifying the difference the charity's work has made to the circumstances of its beneficiaries and any wider benefits to society as a whole.	Para 1.20	<p>The Little School</p> <p>The first project supported by the Kora Trust, and still our most significant ongoing commitment is the Youssouph Kalagan Diatta pre-school, locally known as the Little School.</p> <p>The community-run pre-school prepares children for entry into the local primary school. Most children only speak a local language at home and are taught first steps in French, personal hygiene and social skills. This enables them to focus their energies more effectively on learning when they enter primary school.</p> <p>The school is subject to inspection by, and has been found to meet the requirements of, the Senegalese government.</p> <p>The Trust supports the salaries of two teachers and a teaching assistant. It helps build and maintain the facilities at the</p>

school, including help to build a new classroom as well as accommodation for the teachers. There are two classrooms. Until recently the second was made of bamboo-like material which provided shade but offered no protection during the rainy season and needed almost complete renewal every year. A donation from the estate of a supporter enabled us to build a less picturesque, but far more practical permanent structure. We have also recently put a roof on the toilets and mended the fences surrounding the school, which had been broken down by marauding cattle!

Souada Coly Pottery

The Souada Coly pottery is the last surviving traditional potter in the Kafountine area.

When Souda was introduced to the Trust the pottery was struggling. In particular her kiln was broken and she did not have the capital to replace it. This traditional skill was in danger of being lost, not least because her daughters were reluctant to commit to a declining business.

The Trust helped to build a new kiln for the pottery, a clay and wood store and a simple undercover showroom where Souada could display her work and even run workshops.

With the above improvements, Souada has been able to increase her output and regularly supply her functional earthenware pots to local markets, as well as create new work, which has attracted passing visitors and tourists. Now with the revamped set up, two of her daughters have committed to the business, continuing the traditional skills that have sustained their family for many years.

Nature Vert

This is a project, developed and managed by local woodworkers, to guarantee supply of wood for future generations. They have joined forces with a local farmer to pilot a tree-planting project.

They aim to persuade the Marie (the local Council) to allocate land to this project but need to demonstrate its viability for this to happen. At present the pilot is being run on a beautifully tended market garden,

growing a wide variety of fruit and vegetables, just outside Kafountine.

The trees are *Acacia mangium*, Australian black wattle, a non-native but naturalised species not considered invasive. They are unusually fast growing for a hardwood, growing to a usable size in five years. They also have the huge advantage of being termite resistant.

Our funding initially was to buy 700 reusable sachets in which seeds (which are collected from around existing trees) were planted. Under half the seedlings survived. The two problems were relying on enthusiastic but essentially unreliable volunteers for watering in the dry season and lack of protection from battering and drowning in the rainy season.

We have therefore provided further funding for a "bache" to protect the seedlings in their first rainy season and to pay a small retainer to those volunteers who have proved reliable to assist with expenses (getting to the site, food and refreshments).

Kalilu

Kalilu is a cooperative of local tailors. They have identified that the cuttings from their work, which would otherwise go to landfill, can be woven together to form an extremely strong fabric, which then be used to make a variety of highly colourful and very robust products, such as bags and jackets. The co-op would support several women, working from home, in weaving the cuttings together. In order that Kalilu can demonstrate what can be made, the Trust has paid for a heavy-duty sewing machine, capable of working the thick material. We are also working with Kalilu to establish links with the local girls' school for tailors with a view to linking the project to formal training.

Progress has not been as fast as was originally hoped, due partly to the illness of one of the principals and also to the demands of day-to-day working, which do not always leave time for forward planning. This is a reminder of the everyday realities of making things happen in Senegal The co-op, and we, remain committed to the project and are confident it can succeed.

--	--	--

Additional information (optional)

You may choose to include further statements where relevant about:

Achievements against objectives set	Para 1.41	
Performance of fundraising activities against objectives set	Para 1.41	
Investment performance against objectives	Para 1.41	
Other		

Financial Review

Review of the charity's financial position at the end of the period	Para 1.21	On 31/3/24 the Trust had a balance of £1196.07 in its current account. During the year its income was £3713.56 and its expenditure £3494. Income from Standing Orders, which is regular and reasonably secure, was £2080, with the balance coming from individual donations, some fund-raising events and Gift Aid. In addition, we have the equivalent of 5 months wages for Little School staff (approx. £1375) lodged in a Senegalese bank as security should our funding stream be insufficient. We therefore believe the Charity's funding is reasonably stable and adequate to meet our responsibilities.
Statement explaining the policy for holding reserves stating why they are held	Para 1.22	
Amount of reserves held	Para 1.22	
Reasons for holding zero reserves	Para 1.22	The financial size of the Charity and the fact that it has no fixed costs (buildings employees etc) does not warrant holding reserves, over and above a prudent current account balance
Details of fund materially in deficit	Para 1.24	
Explanation of any uncertainties about the charity continuing as a going concern	Para 1.23	None.

Additional information (optional)

You may choose to include further statements where relevant about:

The charity's principal sources of funds (including any fundraising)	Para 1.47	
Investment policy and objectives including any social investment policy adopted	Para 1.46	
A description of the principal risks facing the charity	Para 1.46	
Other		

Structure, Governance and Management

Description of charity's trusts:		
Type of governing document (trust deed, royal charter)	Para 1.25	Trust Deed
How is the charity constituted? (e.g unincorporated association, CIO)	Para 1.25	CIO whose only voting members are its Trustees
Trustee selection methods including details of any constitutional provisions e.g. election to post or name of any person or body entitled to appoint one or more trustees	Para 1.25	<p>(a) Every charity trustee must be a natural person.</p> <p>(b) No individual may be appointed as a charity trustee of the CIO:</p> <ul style="list-style-type: none"> • if he or she is under the age of 16 years; or • if he or she would automatically cease to hold office under the provisions of clause [12(1)(e)]. of the Constitution <p>(c) No one is entitled to act as a charity trustee whether on appointment or on any re-appointment until he or she has expressly acknowledged, in whatever way the charity trustees decide, his or her acceptance of the office of charity trustee.</p> <p>(d) Apart from the first charity trustees, every trustee must be appointed [for a term of [three] years] by a resolution passed at a properly convened meeting of the charity trustees.</p> <p>(e) In selecting individuals for appointment as charity trustees, the charity trustees must have regard to the skills, knowledge and experience needed for the effective operation of the CIC</p>

Additional information (optional)

You may choose to include further statements where relevant about:

Policies and procedures adopted for the induction and training of trustees	Para 1.51	
The charity's organisational structure and any wider network with which the charity works	Para 1.51	

Relationship with any related parties	Para 1.51	
Other		

Reference and Administrative details

Charity name	The Kora Trust
Other name the charity uses	Kafountine Connections
Registered charity number	1181515
Charity's principal address	12 Grosvenor Road London N10 2DS

Funds held as custodian trustees on behalf of others

Description of the assets held in this capacity	n/a
Name and objects of the charity on whose behalf the assets are held and how this falls within the custodian charity's objects	
Details of arrangements for safe custody and segregation of such assets from the charity's own assets	

Additional information (optional)

Names and addresses of advisers (Optional information)

Type of adviser	Name	Address

Name of chief executive or names of senior staff members (Optional information)

--

Exemptions from disclosure

Reason for non-disclosure of key personnel details

--

Other optional information

--

Declarations

The trustees declare that they have approved the trustees' report above.

Signed on behalf of the charity's trustees

Signature(s)

--	--

Full name(s)

--	--

Position (eg Secretary,
Chair, etc)

--	--

Date

--

The Kora Trust

Total Receipts & Payments Account for the year ended 31/03/24

	Unrestricted	Restricted	Total	Previous year
Receipts				
Standing order	2,020.00	60.00	2,080.00	
Single donation	30.00	300.00	330.00	
Fundraising	-	-	-	
Gift aid	964.56	-	964.56	
Amazon smile	20.43	-	20.43	
Card cashback	0.21	-	0.21	
Paypal	318.36	-	318.36	
Receipt - spare 8	-	-	-	
Receipt - spare 9	-	-	-	
Receipt - spare 10	-	-	-	
Total receipts	3,353.56	360.00	3,713.56	-
Payments				
Wages	-	2,875.67	2,875.67	
Website	43.20	-	43.20	
School resources	-	-	-	
Building materials and labour	-	-	-	
Administrative costs	-	-	-	
Volunteer support	-	-	-	
Equipment	-	575.22	575.22	
Payment - spare 8	-	-	-	
Payment - spare 9	-	-	-	
Payment - spare 10	-	-	-	
Payment - spare 11	-	-	-	
Payment - spare 12	-	-	-	
Payment - spare 13	-	-	-	
Payment - spare 14	-	-	-	
Payment - spare 15	-	-	-	
Payment - spare 16	-	-	-	
Payment - spare 17	-	-	-	
Payment - spare 18	-	-	-	
Payment - spare 19	-	-	-	
Payment - spare 20	-	-	-	
Payment - spare 21	-	-	-	
Payment - spare 22	-	-	-	
Payment - spare 23	-	-	-	
Payment - spare 24	-	-	-	
Payment - spare 25	-	-	-	
Total payments	43.20	3,450.89	3,494.09	-
Net receipts / (payments)	3,310.36	(3,090.89)	219.47	-
Transfer	-	-	-	
Balance brought forward	12,880.76	(11,904.16)	976.60	
Balance carried forward	16,191.12	(14,995.05)	1,196.07	-
Made up of:				
Current account	1,196.07			
Deposit account	-			
Cash float	-			
Spare	-			
	1,196.07			

Checks - this should equal zero 0.00

Approval of the accounts

The financial statements were approved at a meeting of the management committee and signed on its behalf by:

Signed: 

Name: Nigel Hamilton (Management Committee member)

Date: 16/1/24

THE KORA TRUST

England & Wales - Charity number 1181515

Accounts



Trustees' Annual Report for the period

From 1/04/2022 Period start date To 31/03/2023
Period end date

Charity name: The Kora Trust

Charity registration number: 1181515

Objectives and Activities

	SORP reference	
Summary of the purposes of the charity as set out in its governing document	Para 1.17	The relief of poverty and advancement of education of people living in Kafountine and the surrounding areas in the Casamance, Senegal through support and funding for projects
Summary of the main activities in relation to those purposes for the public benefit, in particular, the activities, projects or services identified in the accounts.	Para 1.17 and 1.19	Providing funding to organisations running projects that meet the Charity's criteria. Occasional help in kind (eg tools, equipment)
Statement confirming whether the trustees have had regard to the guidance issued by the Charity Commission on public benefit	Para 1.18	This is incorporated in the Charity's Constitution. All Trustees have signed a document confirming that they understand the requirements

Additional information (optional)

You may choose to include further statements where relevant about:

	SORP reference	
Policy on grant making	Para 1.38	The Chair of the Trust lives part of the year in Kafountine and the other Trustees are regular visitors. The Trust is therefore well integrated with the community in Kafountine and aware of its needs and aspirations. Trustees will consider support for any project that (a) supports and is consistent with the aims of the Trust and (b) originates from and/or has significant support within the local community. They will also have regard to whether a project has the potential to become self-supporting and/or whether supporting it can unlock other funding sources (e.g. other charities), so as to maximise the effectiveness and

		sustainability of the help given. However we recognise that the lack of resources within Kafountine means that this cannot always be guaranteed and will not be a condition of funding. In practice the Trust will have limited funds available to it and a more complex and detailed application and decision-making process is not considered appropriate or proportionate at this time
Policy on social investment including program related investment	Para 1.38	n/a
Contribution made by volunteers	Para 1.38	The Charity has no paid staff. Most donor activity is financial help, although occasional donations in kind, or hands-on help with a project also take place.
Other		

Achievements and Performance

	SORP reference	
Summary of the main achievements of the charity, identifying the difference the charity's work has made to the circumstances of its beneficiaries and any wider benefits to society as a whole.	Para 1.20	<p>Since it was established in 2019 the Charity has supported four projects.</p> <p>The Youssouph Kalagan Diatta Pre-School</p> <p>With help from The Kora Trust, the school has built up from just a handful of children in 2010 to over 120 today. Resources are scarce and one of the ways in which guests of the Kora Workshop and supporters of the Trust have been able to support the school has been by donating simple appropriate equipment and learning resources.</p> <p>The community-run pre-school prepares children for entry into the local primary school. Most children only speak a local language at home and are taught first steps in French, personal hygiene and social skills. This enables them to focus their energies more effectively on learning when they enter primary school.</p> <p>The Trust supports the salaries of two teachers and helps build and maintain the facilities at the school, including help to</p>

build a new classroom as well as accommodation for the teachers.

The Souda Coly Pottery

Souada Coly is a potter who sustains traditional pottery skills, a trade, unusually, led by women and who also provides a very necessary product. This once-thriving pottery needed investment to maintain its viability.

The Trust is helping to build a new kiln for Souada, and a simple undercover showroom where Souada can display her work and run workshops.

With the above improvements, Souada has been able to increase her output and regularly supply her functional earthenware pots to local markets, as well as create new work, which can sell to passing visitors. She was one of the last in a line of potters and her skills were in danger of being lost. Her daughters couldn't see a future in the declining business but now with a revamped set up, two of her daughters have decided to learn the traditional skills that have sustained their family for many years.

Kalilu

Kalilu is a women's cooperative, using a plaiting technique to recycle cuttings from local tailors to make a strong and colourful fabric which can then be used to make bags, clothes, etc.

The Trust financed the purchase of a heavy duty sewing machine, necessary to work with the thick material.

Nature Vert

This is a project, developed and managed by local woodworkers to guarantee supply of wood for future generations. They have joined forces with a local farmer to pilot a tree-planting project.

They aim to persuade the Marie (the local Council) to allocate land to this project but need to demonstrate its viability for this to happen. At present the pilot is being run on a beautifully tended market garden, growing a wide variety of fruit and vegetables, just outside Kafountine.

		<p>The trees are <i>Acacia mangium</i>, Australian black wattle, a non-native but naturalised species not considered invasive. They are unusually fast growing for a hardwood, growing to a usable size in five years. They also have the huge advantage of being termite resistant.</p> <p>Our funding initially was to buy 700 reusable sachets in which seeds (which are collected from around existing trees) were planted.</p> <p>In addition, through the work of one supporter in particular the Trust has supplied woodwork and shoemaking tools to local tradespeople</p> <p>With the help of residents in his home village of Bamford in Derbyshire, Philip Taylor collected together around 25kg of woodwork and shoemaking tools which have now been distributed around Kafountine.</p> <p>These tools are helping families to become more self sufficient and increase productivity and prosperity.</p>
--	--	--

Additional information (optional)

You may choose to include further statements where relevant about:

Achievements against objectives set	Para 1.41	We essentially respond to local needs as our limited resources allow. We do not believe that a target-driven performance culture is appropriate for this organisation
Performance of fundraising activities against objectives set	Para 1.41	
Investment performance against objectives	Para 1.41	
Other		

Financial Review

Review of the charity's financial position at the end of the period	Para 1.21	On 31/3/22 the charity's bank balance stood at £2250.01. Income during the year was £2754 and expenditure £4027. Expenditure exceeded income largely because an accumulated balance and the promise of a large donation enabled us to fund significant building works in the pre-school. Our income from Standing Orders was £1075, which represents a stable base for our expenditure. Our one ongoing commitment is to the salaries at the pre-school, which amounted to £2979. Our balance would cover 9 months salaries, without any income, plus, in accordance with Senegalese requirements, we have lodged a sum equivalent to three months' salaries in an account linked to the school. We therefore view the charity's financial position as stable, with additional projects dependent on future income. Such projects, of course also offer opportunities for additional fund raising.
Statement explaining the policy for holding reserves stating why they are held	Para 1.22	We do not hold separate reserves.
Amount of reserves held	Para 1.22	
Reasons for holding zero reserves	Para 1.22	The financial size of the Charity and the fact that it has no fixed costs (buildings employees etc) does not warrant holding reserves, over and above a prudent positive bank balance.
Details of fund materially in deficit	Para 1.24	
Explanation of any uncertainties about the charity continuing as a going concern	Para 1.23	None with current levels of support and expenditure

Additional information (optional)

You may choose to include further statements where relevant about:

The charity's principal sources of funds (including any fundraising)	Para 1.47	Donations, primarily from people who have visited Kafountine, through standing orders. Occasional one-off fund-raising events
Investment policy and objectives including any social investment policy adopted	Para 1.46	n/a
A description of the principal	Para 1.46	Low risk of disruption caused by political upheaval in Senegal. Low because (a) historical stability of Senegal (b) Kafountine

risks facing the charity		is in a quiet rural area.
Other		

Structure, Governance and Management

Description of charity's trusts:		Trust Deed
Type of governing document (trust deed, royal charter)	Para 1.25	CIO whose only voting members are its Trustees
How is the charity constituted? (e.g. unincorporated association, CIO)	Para 1.25	<p>(a) Every charity trustee must be a natural person.</p> <p>(b) No individual may be appointed as a charity trustee of the CIO:</p> <ul style="list-style-type: none"> • if he or she is under the age of 16 years; or • if he or she would automatically cease to hold office under the provisions of clause [12(1)(e)]. Of the Constitution <p>(c) No one is entitled to act as a charity trustee whether on appointment or on any re-appointment until he or she has expressly acknowledged, in whatever way the charity trustees decide, his or her acceptance of the office of charity trustee.</p> <p>(d) Apart from the first charity trustees, every trustee must be appointed [for a term of [three] years] by a resolution passed at a properly convened meeting of the charity trustees.</p> <p>(e) In selecting individuals for appointment as charity trustees, the charity trustees must have regard to the skills, knowledge and experience needed for the effective administration of the CIO.</p>
Trustee selection methods including details of any constitutional provisions e.g. election to post or name of any person or body entitled to appoint one or more trustees	Para 1.25	Trustees able to appoint further Trustees

Additional information (optional)

You may choose to include further statements where relevant about:

		We regard it as essential that any Trustee
--	--	--

Policies and procedures adopted for the induction and training of trustees	Para 1.51	should have visited and be familiar with the community of Kafountine
The charity's organisational structure and any wider network with which the charity works	Para 1.51	
Relationship with any related parties	Para 1.51	
Other		

Reference and Administrative details

Charity name	The Kora Trust
Other name the charity uses	
Registered charity number	1181515
Charity's principal address	12 Grosvenor Road, London, N10 2DS, UK

Names of the charity trustees who manage the charity

	Trustee name	Office (if any)	Dates acted if not for whole year	Name of person (or body) entitled to appoint trustee (if any)
1	Katherine Pickering	Chair		
2	Nigel Hamilton	Treasurer		
3	Jack Hamilton			
4	Annie Menter			
5				
6				
7				
8				
9				
10				
11				
12				
13				
14				
15				
16				
17				
18				
19				
20				

Corporate trustees – names of the directors at the date the report was approved

Director name		

Name of trustees holding title to property belonging to the charity

Trustee name	Dates acted if not for whole year	

Funds held as custodian trustees on behalf of others

Description of the assets held in this capacity	n/a
Name and objects of the charity on whose behalf the assets are held and how this falls within the custodian charity's objects	
Details of arrangements for safe custody and segregation of such assets from the charity's own assets	

Additional information (optional)

Names and addresses of advisers (Optional information)

Type of adviser	Name	Address

Name of chief executive or names of senior staff members (Optional information)

--

Exemptions from disclosure

Reason for non-disclosure of key personnel details

--

Other optional information

--

Declarations

The trustees declare that they have approved the trustees' report above.

Signed on behalf of the charity's trustees

Signature(s)

--	--

Full name(s)

Nigel Hamilton

Nigel Hamilton	
----------------	--

Position (eg Secretary,
Chair, etc)

Treasurer

Treasurer	
-----------	--

Date

23/6/24

23/6/24

The Korn Trust - year end 310323

Receipts & Payments Account

Current account

	Total	Unrestricted	School	Prabry	Kurila	Hartwood	Resolving	Spave fund 5	Spave fund 7	Spave fund 8	Spave fund 9	Spave fund 10	Spave fund 11
Receipts													
Standing order	1,075.00	1,045.00	30.00										
Single donation	1,674.00	1,674.00											
Functioning													
Gift aid	5.00	5.00											
Amazon Smile													
Receipt - spare 6													
Receipt - spare 7													
Receipt - spare 8													
Receipt - spare 9													
Receipt - spare 10													
2,754.00	2,754.00	30.00											
Payments													
Wages	2,975.86		2,975.86										
Website													
School resources													
Building materials and labour	1,047.55		1,047.55										
Admin - labative costs													
Volunteer support													
Equipment													
Payment - spare 8													
Payment - spare 9													
Payment - spare 10													
Payment - spare 11													
Payment - spare 12													
Payment - spare 13													
Payment - spare 14													
Payment - spare 15													
Payment - spare 16													
Payment - spare 17													
Payment - spare 18													
Payment - spare 19													
Payment - spare 20													
Payment - spare 21													
Payment - spare 22													
Payment - spare 23													
Payment - spare 24													
Payment - spare 25													
4,027.41	4,027.41												
Net receipts / (payments)	(1,273.41)	2,724.00	(3,997.41)										
Transfer													
Balance brought forward	2,250.01	15,166.78	17,803.79	(25.95)									
Balance carried forward	976.60	12,869.78	(11,803.24)	(29.94)									
	0.00												

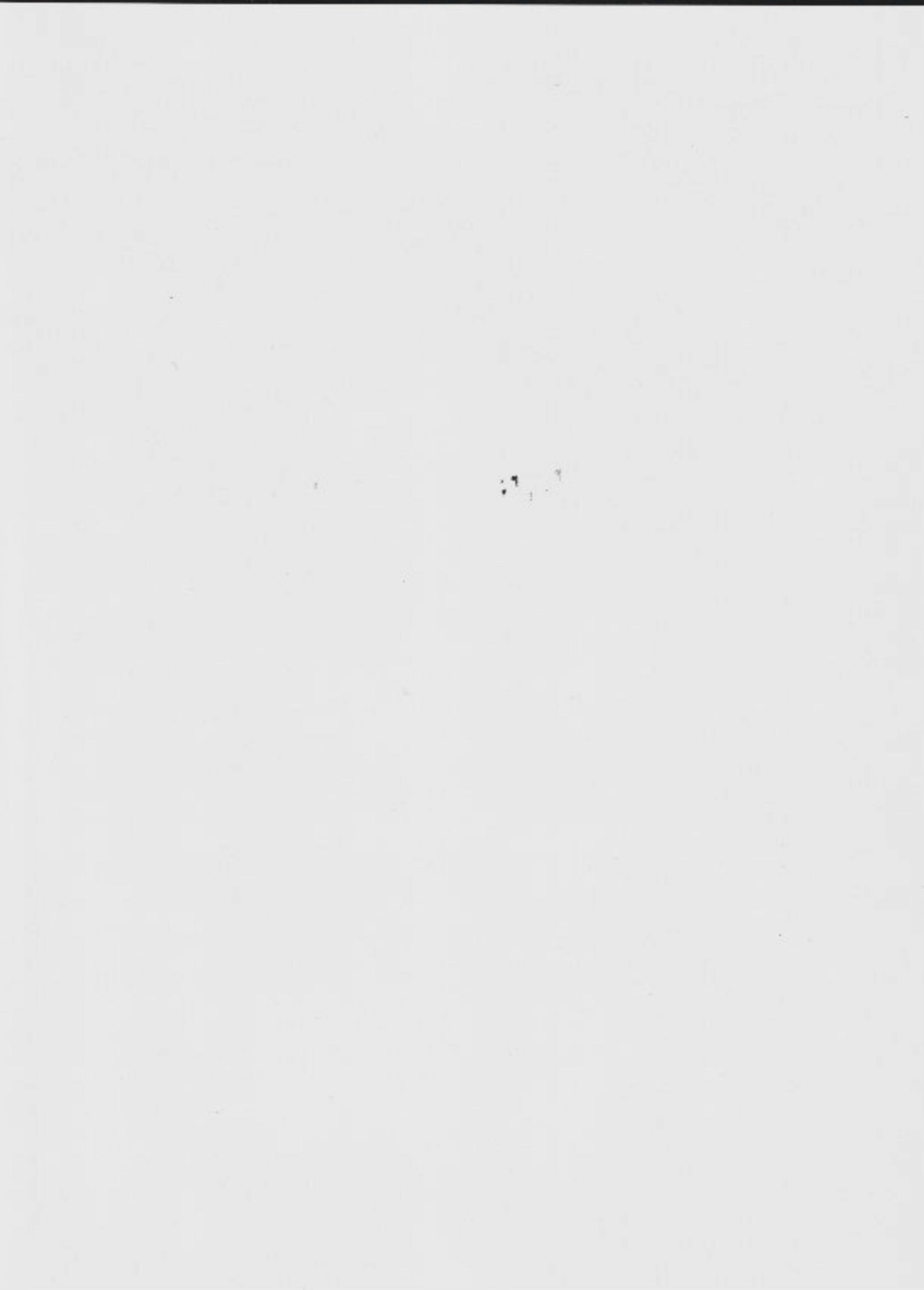
Dress - 1/15/2024

[Handwritten Signature]
 N. Hamilton
 Treasurer
 30/6/24

THE KORA TRUST

England & Wales - Charity number 1181515

Accounts



THE KORA TRUST

England & Wales - Charity number 1181515

Accounts

		this cannot always be guaranteed and will not be a condition of funding. In practice the Trust will have limited funds available to it and a more complex and detailed application and decision-making process is not considered appropriate or proportionate at this time
Policy on social investment including program related investment	Para 1.38	n/a
Contribution made by volunteers	Para 1.38	The Charity has no paid staff. Most donor activity is financial help, although occasional donations in kind, or hands-on help with a project also take place.
Other		

Achievements and Performance

	SORP reference	
Summary of the main achievements of the charity, identifying the difference the charity's work has made to the circumstances of its beneficiaries and any wider benefits to society as a whole.	Para 1.20	<p>Since it was established in 2019 the Charity has primarily supported two projects.</p> <p>The Youssouph Kalagan Diatta Pre-School With help from The Kora Trust, the school has built up from just a handful of children in 2010 to over 120 today. Resources are scarce and one of the ways in which guests of the Kora Workshop and supporters of the Trust have been able to support the school has been by donating simple appropriate equipment and learning resources.</p> <p>The community-run pre-school prepares children for entry into the local primary school. Most children only speak a local language at home and are taught first steps in French, personal hygiene and social skills. This enables them to focus their energies more effectively on learning when they enter primary school.</p> <p>The Trust supports the salaries of two teachers and helps build and maintain the facilities at the school, including help to build a new classroom as well as accommodation for the teachers.</p> <p>The Souda Coly Pottery</p>

		<p>Souada Coly is a potter who sustains traditional pottery skills, a trade, unusually, led by women and who also provides a very necessary product. This once-thriving pottery needed investment to maintain its viability.</p> <p>The Trust is helping to build a new kiln for Souada, and a simple undercover showroom where Souada can display her work and run workshops.</p> <p>With the above improvements, Souada has been able to increase her output and regularly supply her functional earthenware pots to local markets, as well as create new work, which can sell to passing visitors. She was one of the last in a line of potters and her skills were in danger of being lost. Her daughters couldn't see a future in the declining business but now with a revamped set up, two of her daughters have decided to learn the traditional skills that have sustained their family for many years.</p> <p>In addition, through the work of one supporter in particular the Trust has supplied woodwork and shoemaking tools to local tradespeople</p> <p>With the help of residents in his home village of Bamford in Derbyshire, Philip Taylor collected together around 25kg of woodwork and shoemaking tools which have now been distributed around Kafountine.</p> <p>These tools are helping families to become more self sufficient and increase productivity and prosperity.</p>
--	--	---

Additional information (optional)

You may choose to include further statements where relevant about:

Achievements against objectives set	Para 1.41	We essentially respond to local needs as our limited resources allow. We do not believe that a target-driven performance culture is appropriate for this organisation
Performance of fundraising activities against objectives set	Para 1.41	

Investment performance against objectives	Para 1.41	
Other		

Financial Review

Review of the charity's financial position at the end of the period	Para 1.21	<p>On 31/3/21 The Trust had a balance of £1752.70 in its bank account. During the year income was £4363.13 and expenditure £3,612.91.</p> <p>The only ongoing commitment undertaken by the Charity is to pay the wages of school employees. In the year 20/21 this accounted for £3237.81 expenditure, which was more than covered by income. The school salaries averaged £269.82 pcm. The Trust has a a monthly guaranteed income from Standing Orders of £237.50 and, given our existing balance and our ability to raise one-off donations we are confident of being able to meet this commitment for the foreseeable future.</p> <p>As a relatively new charity we are confident that our profile and our fund-raising capacity is still growing. This means we will continue to meet our obligations to the school and look for other projects going forward</p>
Statement explaining the policy for holding reserves stating why they are held	Para 1.22	
Amount of reserves held	Para 1.22	
Reasons for holding zero reserves	Para 1.22	The financial size of the Charity and the fact that it has no fixed costs (buildings employees etc) does not warrant holding reserves, over and above a prudent positive bank balance.
Details of fund materially in deficit	Para 1.24	
Explanation of any uncertainties about the charity continuing as a going concern	Para 1.23	

Additional information (optional)

You may choose to include further statements where relevant about:

The charity's principal sources of funds (including any fundraising)	Para 1.47	
Investment policy and objectives including any social investment policy adopted	Para 1.46	

A description of the principal risks facing the charity	Para 1.46	
Other		

Structure, Governance and Management

Description of charity's trusts:		
Type of governing document (trust deed, royal charter)	Para 1.25	Trust Deed
How is the charity constituted? (e.g unincorporated association, CIO)	Para 1.25	CIO whose only voting members are its Trustees
Trustee selection methods including details of any constitutional provisions e.g. election to post or name of any person or body entitled to appoint one or more trustees	Para 1.25	<p>(a) Every charity trustee must be a natural person.</p> <p>(b) No individual may be appointed as a charity trustee of the CIO:</p> <ul style="list-style-type: none"> • if he or she is under the age of 16 years; or • if he or she would automatically cease to hold office under the provisions of clause [12(1)(e)]. <p>Of the Constitution</p> <p>(c) No one is entitled to act as a charity trustee whether on appointment or on any re-appointment until he or she has expressly acknowledged, in whatever way the charity trustees decide, his or her acceptance of the office of charity trustee.</p> <p>(d) Apart from the first charity trustees, every trustee must be appointed [for a term of [three] years] by a resolution passed at a properly convened meeting of the charity trustees.</p> <p>(e) In selecting individuals for appointment as charity trustees, the charity trustees must have regard to the skills, knowledge and experience needed for the effective administration of the CIO.</p>

Additional information (optional)

You may choose to include further statements where relevant about:

Policies and procedures adopted for the induction and training of trustees	Para 1.51	We regard it as essential that any Trustee should have visited and be familiar with the community of Kafountine
The charity's organisational structure and any wider network with which the charity works	Para 1.51	
Relationship with any related parties	Para 1.51	

Other		

Reference and Administrative details

Charity name	The Kora Trust
Other name the charity uses	
Registered charity number	1181515
Charity's principal address	12 Grosvenor Road, London, N10 2DS, UK

Names of the charity trustees who manage the charity

	Trustee name	Office (if any)	Dates acted if not for whole year	Name of person (or body) entitled to appoint trustee (if any)
1	Nigel Hamilton	Treasurer		
2	Katherine Pickering			
3	Annie Menter			
4	Jack Hamilton			
5				
6				
7				
8				
9				
10				
11				
12				
13				
14				
15				
16				
17				
18				
19				
20				

Corporate trustees – names of the directors at the date the report was approved

Director name		

Name of trustees holding title to property belonging to the charity

Trustee name	Dates acted if not for whole year	

Funds held as custodian trustees on behalf of others

Description of the assets held in this capacity	n/a
Name and objects of the charity on whose behalf the assets are held and how this falls within the custodian charity's objects	
Details of arrangements for safe custody and segregation of such assets from the charity's own assets	

Additional information (optional)

Names and addresses of advisers (Optional information)

Type of adviser	Name	Address
-----------------	------	---------

Name of chief executive or names of senior staff members (Optional information)

--

Exemptions from disclosure

Reason for non-disclosure of key personnel details

n/a

Other optional information

--

Year ending 2/3/21

The Korn Trust

Total Receipts & Payments Account

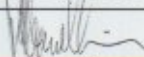
	Total	Unrestricted	School	Parkery	Space fund 3	Space fund 4	Space fund 5	Space fund 6	Space fund 7	Space fund 8	Space fund 9	Space fund 10	Space fund 11
Receipts													
Standing order	2,000.00	2,000.00	60.00	0.00	0.00	0.00	0.00	0.00	0.00	0.00	0.00	0.00	0.00
Single donation	689.00	684.00	35.00	0.00	0.00	0.00	0.00	0.00	0.00	0.00	0.00	0.00	0.00
Fundraising	0.00	0.00	0.00	0.00	0.00	0.00	0.00	0.00	0.00	0.00	0.00	0.00	0.00
Gift Aid	763.43	513.43	0.00	0.00	0.00	0.00	0.00	0.00	0.00	0.00	0.00	0.00	0.00
Multiple donations	540.70	540.70	0.00	0.00	0.00	0.00	0.00	0.00	0.00	0.00	0.00	0.00	0.00
Receipt - space 6	0.00	0.00	0.00	0.00	0.00	0.00	0.00	0.00	0.00	0.00	0.00	0.00	0.00
Receipt - space 7	0.00	0.00	0.00	0.00	0.00	0.00	0.00	0.00	0.00	0.00	0.00	0.00	0.00
Receipt - space 8	0.00	0.00	0.00	0.00	0.00	0.00	0.00	0.00	0.00	0.00	0.00	0.00	0.00
Receipt - space 9	0.00	0.00	0.00	0.00	0.00	0.00	0.00	0.00	0.00	0.00	0.00	0.00	0.00
Receipt - space 10	0.00	0.00	0.00	0.00	0.00	0.00	0.00	0.00	0.00	0.00	0.00	0.00	0.00
Payments	4,383.13	4,018.13	345.00	0.00	0.00	0.00	0.00	0.00	0.00	0.00	0.00	0.00	0.00
Wages	3,237.81	0.00	3,237.81	0.00	0.00	0.00	0.00	0.00	0.00	0.00	0.00	0.00	0.00
Wholesale	46.79	46.79	0.00	0.00	0.00	0.00	0.00	0.00	0.00	0.00	0.00	0.00	0.00
School materials	128.88	0.00	128.88	0.00	0.00	0.00	0.00	0.00	0.00	0.00	0.00	0.00	0.00
Building materials and labour	199.43	0.00	0.00	199.43	0.00	0.00	0.00	0.00	0.00	0.00	0.00	0.00	0.00
Payment - space 6	0.00	0.00	0.00	0.00	0.00	0.00	0.00	0.00	0.00	0.00	0.00	0.00	0.00
Payment - space 7	0.00	0.00	0.00	0.00	0.00	0.00	0.00	0.00	0.00	0.00	0.00	0.00	0.00
Payment - space 8	0.00	0.00	0.00	0.00	0.00	0.00	0.00	0.00	0.00	0.00	0.00	0.00	0.00
Payment - space 9	0.00	0.00	0.00	0.00	0.00	0.00	0.00	0.00	0.00	0.00	0.00	0.00	0.00
Payment - space 10	0.00	0.00	0.00	0.00	0.00	0.00	0.00	0.00	0.00	0.00	0.00	0.00	0.00
Payment - space 11	0.00	0.00	0.00	0.00	0.00	0.00	0.00	0.00	0.00	0.00	0.00	0.00	0.00
Payment - space 12	0.00	0.00	0.00	0.00	0.00	0.00	0.00	0.00	0.00	0.00	0.00	0.00	0.00
Payment - space 13	0.00	0.00	0.00	0.00	0.00	0.00	0.00	0.00	0.00	0.00	0.00	0.00	0.00
Payment - space 14	0.00	0.00	0.00	0.00	0.00	0.00	0.00	0.00	0.00	0.00	0.00	0.00	0.00
Payment - space 15	0.00	0.00	0.00	0.00	0.00	0.00	0.00	0.00	0.00	0.00	0.00	0.00	0.00
Payment - space 16	0.00	0.00	0.00	0.00	0.00	0.00	0.00	0.00	0.00	0.00	0.00	0.00	0.00
Payment - space 17	0.00	0.00	0.00	0.00	0.00	0.00	0.00	0.00	0.00	0.00	0.00	0.00	0.00
Payment - space 18	0.00	0.00	0.00	0.00	0.00	0.00	0.00	0.00	0.00	0.00	0.00	0.00	0.00
Payment - space 19	0.00	0.00	0.00	0.00	0.00	0.00	0.00	0.00	0.00	0.00	0.00	0.00	0.00
Payment - space 20	0.00	0.00	0.00	0.00	0.00	0.00	0.00	0.00	0.00	0.00	0.00	0.00	0.00
Payment - space 21	0.00	0.00	0.00	0.00	0.00	0.00	0.00	0.00	0.00	0.00	0.00	0.00	0.00
Payment - space 22	0.00	0.00	0.00	0.00	0.00	0.00	0.00	0.00	0.00	0.00	0.00	0.00	0.00
Payment - space 23	0.00	0.00	0.00	0.00	0.00	0.00	0.00	0.00	0.00	0.00	0.00	0.00	0.00
Payment - space 24	0.00	0.00	0.00	0.00	0.00	0.00	0.00	0.00	0.00	0.00	0.00	0.00	0.00
Payment - space 25	0.00	0.00	0.00	0.00	0.00	0.00	0.00	0.00	0.00	0.00	0.00	0.00	0.00
Net receipts / (payments)	760.22	3,971.34	(3,021.69)	(199.43)	0.00	0.00	0.00	0.00	0.00	0.00	0.00	0.00	0.00
Transfer	0.00	0.00	0.00	0.00	0.00	0.00	0.00	0.00	0.00	0.00	0.00	0.00	0.00
Balance brought forward	1,002.46	2,038.81	11,820.141	283.71	0.00	0.00	0.00	0.00	0.00	0.00	0.00	0.00	0.00
Balance carried forward	1,762.76	6,670.26	(4,961.03)	84.28	0.00	0.00	0.00	0.00	0.00	0.00	0.00	0.00	0.00
Make up of:													
Current account	1,762.70												
Savings account	0.00												
Cash float	0.00												
Spare	1,762.76												
0.00													

Checked - the amount equal zero

Declarations

The trustees declare that they have approved the trustees' report above.

Signed on behalf of the charity's trustees

Signature(s)		
Full name(s)	Nigel John Hamilton	
Position (eg Secretary, Chair, etc)	Treasurer	
Date	31/3/22.	