

Big Leaf Foundation

annual review

april 2021

contents

04 about us	05 about our beneficiaries	06 our approach
07 our achievements	17 priorities for the year ahead	18 governance & management
20 finance & accounts	22 thank you	23 support us

Editorial: Vicki Felgate, Louise Baumberg, Kayte Cable, Rachel Ellis & Ben Monro
Design: Vicki Felgate Cover images: Big Leaf Foundation

Copyright Big Leaf Foundation 2021

welcome

What an unexpected year it has been for everyone. None of us could have predicted the challenges so suddenly thrown up by a global pandemic, or the ever-changing situation that ensued. The new world into which we were plunged turned all of our plans on their heads and we found ourselves having to rethink and rebuild all of our programmes, almost overnight.

We knew from the start that the vital information around keeping safe from COVID was not necessarily reaching people whose first language was not English and we wanted all the young people we support to be as clear as possible on how to keep themselves safe. We knew that the ever-changing guidelines and rules around social distancing, as well as the surge in fake news and misinformation, meant that simple and accessible information for everyone was more important than ever.

We were deeply concerned about the impact of enforced isolation on the young people we support who are often already so alone; and were particularly worried about all those arriving who would not be able to connect with their new community in lockdown.

And we knew that for many, educational progress was likely to be severely impacted, either due to reduced provision, limits on access or the enormous challenge of sustaining motivation for online learning over such a long time.

But we also knew that Big Leaf needed to respond to these challenges – to ensure our young people knew they were not forgotten, and to remain committed to our fundamental belief that where there is hardship, there is also hope.

And in the midst of all these challenges and concerns, there came times of real opportunity and optimism.

Moving projects online meant that we could reach young people all across Surrey, and not only build our understanding of their needs and hopes, but also adjust our projects accordingly.

Being compelled to think creatively brought us ideas we hadn't considered before, and in exchanging ideas with like-minded organisations, we discovered new connections that have turned into lasting partnerships.

Through all of this, Big Leaf itself has continued to grow. In the last year we have welcomed a new trustee, three new paid staff and 10 new volunteers. It's this incredible commitment, passion and diversity of experience within our team that enabled us to reach more young people, run more projects, raise more funds to support our work and expand our ideas and plans for the year ahead.

We continue to be amazed by the generosity of the people around us, from our funders and individual donors to the many people offering to help in other ways. But most of all we're inspired by the young people we support, by their willingness to show up, engage and grasp opportunities and support when it's offered, even in the most difficult of times.

As we move into what we all hope is a more optimistic time for the world, we're taking with us the knowledge that there is a whole community around us who share our determination to help these incredible young people begin their new lives.

Kayte & Vicki
Big Leaf Foundation Founders

Big Leaf Foundation, PO Box 1544, Woking, GU24 8UH
www.bigleafaffoundation.org.uk | contact@bigleafaffoundation.org.uk

UK Registered Charity Number 1181180



Image © Vicki Felgate / Big Leaf Foundation

about us

Our vision is of a community where displaced young people are valued, supported and given the opportunity to create better outcomes for themselves.

Big Leaf Foundation is a small charity working with displaced young people aged 16-25 living in Surrey.

Our aim is to provide a nurturing programme of activities, projects and events that focus on combating social isolation and improving wellbeing for the young people we support.

We want to engage the young people we work with to be excited about the opportunities available to them, and to value their unique talents and abilities so that they can rediscover their potential and move forward with renewed optimism.

We want to support and empower these young people to know they are more than the status they have been given, and help them find their place within the local community.

Our projects range from sports, equine-assisted learning and creative arts projects to providing casework support and residential workshops, alongside our new online programme, built in response to the restrictions on social contact during the pandemic.

www.bigleaffoundation.org.uk/about

“

“First time in my life I have this big enjoy. First time I big happy. In Afghanistan... only sad and pain. My life on farm big big enjoy. My first long happy in my life.”

B about his time with Big Leaf at Jamie's Farm

about our beneficiaries

The young people we support have all been forced to leave their homes – many fled conflict and religious or political persecution, some were trafficked, some were kidnapped from their families and forced to train as child soldiers, and others were promised the dream of a better life and smuggled to the UK at huge cost to their families.

Surrey remains the third largest receiver of Unaccompanied Asylum-Seeking Children (UASC) in the UK – there are around 145 (under 18s) living in care in the county. And there are many more displaced young people who were resettled in Surrey with their families as part of the government's Vulnerable Person Resettlement Scheme (VPRS) or who arrived as UASC and have now turned 18 but still need support.

Over the past year, we have worked with 70 young people – from Albania, Afghanistan, Eritrea, Ethiopia, Iran, Iraq, Kurdistan, Libya, Niger, Sudan, Syria, Vietnam and Yemen.

The majority of young people we support arrive as UASC. Each has a unique story of how they came to the UK but the challenges they face once here are similar.

Separated children arrive alone, often in shock and without language or cultural understanding, and have to navigate their new lives, and the long and complex asylum system, without the support of family or friends. Even for those who come with family, the experience can be overwhelming, confusing and incredibly difficult.

Cut off from everything that is familiar to them, displaced young people are particularly vulnerable to loneliness, isolation, anxiety and boredom. They face huge barriers in accessing legal support, education, employment and, most importantly, in finding a community.

These issues have been exacerbated by the COVID-19 pandemic, with no way to make new friends, difficulties accessing education and an increase in targeted scams and disinformation leaving them even more isolated and fearful.

Some are living in limbo, awaiting a decision from the Home Office as to whether they'll be allowed to remain in the UK or if they'll be forcibly returned to the countries they once fled. For these young people in particular it can be impossible to imagine any kind of a future.

But despite these challenges, and the trauma and anxiety about family or friends left behind, the young people we work with are strong, resilient and determined, and given the right support can thrive in their new communities.

“

R was lucky enough to meet people who supported him to feel safe and embrace the opportunities available to him. Through determination and hard work, he's now started an electrical apprenticeship. He's a person who has come a long way and will go far.”

Petrina, foster carer

our approach

We're a growing team of passionate individuals, determined to support and empower displaced young people to know they are more than their status, and help them find their place within their local community.

Our team includes refugee care and migration studies experts, experienced youth workers, ex-social workers and finance, project management, fundraising and communications specialists. The team has combined experience of more than 20 years working with displaced young people.

our values

Trust & Transparency

Nothing is more important to us than trust, because so many of our young people have experienced a world in which they can trust no one. It's essential that we build trusted relationships with our young people, and that they have confidence that we will always act in their best interests. We do this through maintaining high standards of openness, honesty and transparency.

Equality

We approach everything we do with a deep sense of empathy and compassion. We strive to create a sense of community to which we all belong, on equal footing and to create a safe, secure and non-judgemental space for young people to engage and build new friendships, explore new activities, and uncover their talents and passions.

Growth

Everything we do is focused on promoting the personal growth of our young people – growth that allows them to know they are more than the status they have been given and that each one of them is unique and valued.

working in partnership

Working in partnership with local organisations, agencies and business is an important part of our approach. These partners bring valuable skills and experience to our work but this also enables us to build community engagement and create understanding and trust in the place we all live. Over the last two years Big Leaf has built has a network of more than 25 community and multi-agency partners who are core to delivering our projects.

“

“Big Leaf works closely with us to enable access to education, combat isolation and improve wellbeing. Each project, event or online interaction makes a profound and lasting impact. It's a privilege to work in partnership with the team and to witness their unequivocal support for our young people.”

Anna, Surrey Virtual School

over the past year we:

- launched **10 projects** including a new online programme
- engaged **70 displaced young people** in our projects, 33% more than the previous year
- provided **28 young people** with **casework support**
- more than doubled capacity with **3 new part-time staff**
- engaged a team of **volunteers** who together have **given 1500 hours** to supporting displaced young people
- partnered with 9 new local organisations and agencies** to deliver our projects
- raised more than £90,000** to support our work.

our projects

Big Leaf Foundation aims to help displaced young people belong and grow. Our projects are built around four core strands – safety, health and wellbeing, community and knowledge.

Through our direct experience of working with displaced young people we have come to understand some of the main challenges many of them face and our projects are designed to address these challenges.



supporting young people throughout the pandemic

The last year has presented new challenges for us all. The restrictions on movement and social contact meant we weren't able to run our normal programmes. We needed to find new ways of providing support so we

developed a range of online activities to help our young people stay connected, with us and each other, during lockdown. Together, these have created a safe space and opportunity for regular interactions to take place; for young people to share concerns about health and education, or raise questions about the pandemic in general while also connecting with new friends and improving their language skills.

our achievements

Over the past year we have launched 10 projects – focused around health and wellbeing, building relationships and staying connected during lockdown and providing opportunities for learning. This has included a new casework service (below), our online Keep Talking programme (p10), an outdoor summer school (p12), a summer activity week (p13) and a music project in partnership with Surrey Arts (p14).
Read on to find out more.

CASEWORK | ensuring young people have access to the support they need

We launched our new casework service in April 2020, providing tailored advice and advocacy and helping young people understand and access the services to which they are entitled.

Our caseworker worked with 28 young people over the last year, supporting them to access welfare, legal, healthcare, education or recreation services.

Much of our casework provision is around giving young people emotional support in the difficult situations in which they find themselves and acting as an advocate for them.

Building relationships where the young people trust that we genuinely care about their wellbeing and will be honest with them is essential. We know it makes a difference for the young people to feel that someone is helping them and they are not alone.

One of our young people recently said “**Big Leaf is always on your side**” and this is perhaps the greatest compliment we can hope for.

www.bigleaffoundation.org.uk/casework

case study

Most colleges moved to online learning in response to the Covid-19 pandemic. With timetables often subject to change at the last minute, B struggled to follow what he was meant to be doing and when, and had problems accessing online lessons.

Our caseworker supported him to raise these issues with the college and as a result, the college assigned B a Progress Coach to help him access online learning and catch up with the work he'd missed.

Without Big Leaf's support, B would have found it very difficult to access his studies and would have been at risk of disengaging altogether. He's now engaging and working well.

“

“Louise has gone above and beyond in supporting my young person... attending medical appointments, ensuring interpreters are available and finding educational support. She offers so much support and guidance.”

Ann, keyworker

over the past year we also:

- recruited and trained **3 new casework volunteers** to enable us to increase our casework provision
- introduced a **new database system with multi-factor authentication** to ensure all sensitive data is secure

- engaged with local MP** on the cases of two YP who have waited more than 18 months for their substantive interviews.
- With thanks to **The Tresanton Trust** for funding our casework provision.

SUPPORTING THROUGH TRANSLATION |

helping keep young people safe

It's essential that displaced young people have access to the same information as everyone else, and are not further disadvantaged or at risk because of their low level of English.

translated covid-19 updates

Over the last year, the government has released extensive guidance about COVID-19 – the signs and symptoms, what to do if you think you have it and the rules you must follow to help prevent spreading it. But very little of this is available in the languages spoken within our local displaced community and the translated guidance that does exist is often complicated and relies on people having a high level of literacy in their own language, something that's not always present among our beneficiaries.

Since the pandemic started we've created simple translations, in up to 12 different languages, each time there has been a significant new update to the guidance.

combating fake news

Fake news and malicious disinformation have surged during the pandemic, with reports of vulnerable or minority groups being deliberately targeted.

Misleading health advice and ill-informed conspiracy theories put everyone at risk. But at a time when lockdown and social distancing measures have pushed people back into their rooms with the internet for company, we have been increasingly concerned about the risk to the young people we support.

In response, we created a short film in 10 languages representative of our displaced young people – to help them identify, and avoid spreading, fake news.

www.bigleafaffoundation.org.uk/fake-news-film

These translations have been shared through our network of partners and direct with young people themselves to ensure they reach all who need them.

www.bigleafaffoundation.org.uk/covid-19-advice

“

“These are so helpful, thank you.”

Janine, Children & Family Health Surrey



“

“I have just watched the film and it is brilliant, clear and accessible.”

Kalyani, British Red Cross

over the past year we also:

- made and **distributed 100 reusable fabric facemasks** to displaced young people throughout Surrey
- created a simple **leaflet in 12 languages** showing the **main SMS scams** & tips on how to check a message is real

With thanks to **The National Lottery Community Fund** and the **Community Foundation for Surrey** for their continued support in funding our COVID-19 translations.



KEEP TALKING | staying connected through lockdown

We developed a range of online activities to help local displaced young people stay connected, with us and each other, during lockdown. Our Keep Talking programme has helped young people improve English, be creative and share concerns about health and education throughout the pandemic.

2020 presented new challenges for us all. But for the young people we support it was especially difficult, with limited access to school and college, no way to make new friends and worries about keeping safe or about friends and family back home. With the pandemic restricting movement, we couldn't to run our normal activities and we were concerned that our young people were at greater risk of isolation. We needed to create something to help them keep talking.

We teamed up with some of our trusted partners to provide a wide selection of activities – from creative arts, cartooning and photography to sport and fitness and English and maths.

“

“It was an absolute pleasure to help. I was over the moon with their engagement... joking and having fun.”

Mohamed, Keep Talking volunteer

photography

During the first lockdown, we worked with acclaimed photographer, Kate Stanworth, to set weekly challenges that young people could complete at home using camera phones.

Kate invited our young people to take photos of something that interested them on their daily walk, be it the park, streets or a local footpath.

ABOVE | M's image (top left) shows his creative use of filters with a rainbow, the symbol of thanks to NHS staff during the pandemic, overlaid on a photo of his favourite tree. **H's image (top right)** shows his own reflection in the stream he passed each day on his walk.

as part of our keep talking programme we also:

- 🍌 **distributed 50 lockdown activity packs**, containing art materials, origami and seeds to grow indoors
- 🍌 **held a virtual Iftar celebration** – delivering homemade meals and hosting an online session to break fast together
- 🍌 **hosted regular 'ask a question' sessions** for young people to get online support with homework
- 🍌 **ran a Friday night 'film night'** exploring different genres of film and talking about our favourite films.

creative arts

We've seen first-hand at our summer camp the powerful impact art can have on displaced young people – offering distraction from daily stressors and instead providing calm focus and opportunities for positive connections to the past.

Working with graphic journalist, Dan Archer, and Big Leaf co-founder and artist, Vicki, we created video tutorials on cartooning and origami for people to try at home. We also ran a series of online art lessons.

“

“I really like drawing more than anything because when I start drawing I don't think about anything else, I don't stress and I just focus on drawing.” **M**

English and maths

We've been running English and maths lessons online for young people still awaiting college places or those in college but wanting some extra support. These sessions are deliberately dynamic and informal and there is always a lot of laughter. We have a fantastic team of translators and volunteers supporting the sessions and the group has found a level of familiarity and ease which means the classes combine learning and achievement with a sense of fun and friendship.

sport and fitness

Our online sport and fitness sessions have provided an opportunity for young people to keep fit and improve their English through talking about the sports they love.

The weekly workout segments, where the group warm-up and train together, have been a great motivational and team-building space which the young people have really enjoyed.

🔗 With thanks to the **Community Foundation for Surrey** for funding our Keep Talking programme and to all of our **volunteers, translators and partners** who supported us to make this programme a success.



Illustrations © M

ABOVE | M's artwork which focused on the human form and the photos (**opposite**) were featured in a lockdown-inspired exhibition in Guildford in the summer.

“

“Lockdown was the hardest time for me as I have never experienced anything like it before. However, I kept myself busy by practising my English and doing different activities. I was studying English on zoom [with Big Leaf]. It was sensational. I learned a lot of new words and sentences.” **H**

Collectively, these online activities have created a safe space and opportunity for regular interactions to take place; for young people to share concerns about health and education, or raise questions about the pandemic in general while also connecting with new friends and improving their language skills.

www.bigleaffoundation.org.uk/keep-talking



Image © Louise Baumberg / Big Leaf Foundation

SUMMER HIVE SCHOOL | outdoor learning after lockdown

This summer we ran an outdoor Summer Hive School in Guildford to help displaced young people re-engage with learning after the disruption of the lockdown period, and introduce those new to the UK to the basics of English ahead of the start of the college year.

We heard from key workers, foster carers and young people themselves that the long period of lockdown affected their mental wellbeing and made it difficult for them to engage with college work – sometimes due to technical or accessibility issues, but also because of a lack of focus and growing lethargy towards engagement of any sort.

We wanted to address this. But restrictions meant we couldn't run sessions indoors. So we borrowed a pop-up classroom from the Human Hive and ran an outdoor summer school in a local park.

The weather in the UK can be unpredictable at best. Some days the heat was so intense that everyone was tired and distracted. Other days there were gales that blew away our cardboard whiteboards and threatened to take the classroom too. Then there was the rain, which came in sideways and soaked everyone, and a thunderstorm...

...but the joy of language learning is that everything, including the weather, provides an opportunity to learn.

“

“The team have given B enormous help to further develop and improve his English, general knowledge and overall confidence. I simply cannot thank them enough.”

Foster carer talking about the impact of the summer school.



© Kayte Cable / Big Leaf Foundation

Claps of thunder led to discussions about different words for sounds. The heat brought about a list of words to do with exhaustion, and the importance of knowing the difference between *knackered* and *naked*. Running for cover from the rain into the multi-storey carpark provided new light opportunities for our photography session.

“

“It was great. I loved it all.” A



Images © Vicki Felgate / Big Leaf Foundation

SUMMER ACTIVITY WEEK | re-imagining our summer camp

Covid restrictions meant we couldn't run our annual summer residential at Trill Farm in Devon. But having seen the impact of lockdown on our young people we knew we had to do something in its place. If we couldn't go to Trill, then we should take as much as possible from our Trill experience, and bring it to us.

Working with a brilliant team of partners, we organised a week of activities in Surrey. We wanted to remain true to our Trill outcomes: to give young people the chance to be outside, and in company (especially after so much time inside and alone); to create time and space to breathe; to boost language skills through participation in a range of different activities; to interact with the community around us; to eat well and to have fun.

We spent a day with the team at The Heart Centre in Ockham. Working with horses, building trust through grooming, and leading them through the obstacle course in the paddock, had such a calming effect and even the most nervous participant immersed himself in the tasks.

We went to Surrey Outdoor Learning and Development centre in the hills just outside of Dorking, first for wood whittling and leatherwork and then later for climbing and high rope activities.

The first day at SOLD was a different pace... activities that required the use of hands, attention to detail, and focus. H spent two hours carefully shaping and engraving a walking stick for his foster carer and another showed us how they used to decorate sticks back home. But the second day was full of energy, a chance to challenge themselves and to support one another as they climbed, abseiled and leapt (with a harness) from the high trapeze.

In between, there was music, food, organic gardening at the wonderful Rosamund Community Garden in the pouring rain and whole lot of laughter.

“

“I could come often to see friends and learn English, and have fun, so I wasn't lonely this time.” A

www.bigleafoundation.org.uk/blog/keep-talking-activity-week-2020

over the summer we also:

- ran a **woodcraft session with Big Hat Bushcamp** – making music sticks and cooking together over an open fire
- joined forces with Surrey Virtual School to take **6 young people to Jamie's Farm for an activity day**.

With huge thanks to **everyone who donated to our crowdfunding campaign** to support our summer activities and to **The Human Hive** and all our partners for their kindness and support.



Pixabay

MUSIC CONNECTS | bringing young people together

2020 presented many challenges, not least the increase in isolation for young people already very much alone. But it also brought opportunities. Opportunities to engage new young people, new partners and to think creatively about how to respond to the ever-changing situation. Music is a great connector and connection is something we all needed. In December we launched a new collaborative music project to bring together young people from both displaced and local youth communities to write and record a song.

Talking to people about our work and why we do it is important to Big Leaf. It gives us a chance to correct false or malicious narratives in public discourse and share the human, rather than political, side of displacement.

During lockdown we were invited to speak to several sixth-form groups about issues of displacement, and on each occasion, it was notable that most students had heard negative misinformation about refugees and asylum seekers. But after hearing from our team many were keen to help.

The challenge is that these two peer groups rarely have the opportunity to meet each other. Our Music Connects project was designed to change this.

Working with the brilliant team at Surrey Arts, we created a new songwriting project bringing displaced and local teenagers together through a series of online sessions, that cut across language and cultural divides.

We didn't want this to be a project where local young people came to "help" displaced young people. We wanted to create an equal footing from the start while still embracing the seven different languages and the range of musical tastes and experiences within the group. We wanted to acknowledge the diversity and the commonality – and there was so much of both.

We were delighted to have two professional musicians with us on this project. Representing two very different musical genres, Manchester rapper, DJ and producer Chimp, and the 90s pop icon, performer and songwriter Chesney Hawkes, worked side-by-side with the tutors and young song writers while providing unique insights into the music industry.

“

“It's been so great working with everyone on the project... from different countries, different parts of the world, different backgrounds... it's been so great to gain an idea of different cultures and just make amazing music together.”

Music Connects participant

Together the team ran a series of online workshops focused around songwriting, performing and recording. But it was the first few sessions, building a sense of trust and community between the young people (and the tutors), that were perhaps the most important. We shared favourite songs and examples of music from around the world and the tutors led activities that encouraged movement and broke through any shyness or self-consciousness. And when it came to creating the song, it all fell together so naturally because everyone felt relaxed, safe and supported to share their ideas.

They spoke of how the pandemic had brought us all together in a shared experience, that has at times been difficult, lonely and anxious. From this came the idea to write about a different place – a place that is beautiful, peaceful and safe, and most importantly, somewhere you will not be alone.

This idea also gave space to talk about other things: anxiety, self-doubt, identities, friendship and love, subjects everyone could recognise. And “**remember who you are**” became a leitmotif of the song.

The song is now in its final mixing stage and we can’t wait to share it.

Follow us on twitter www.twitter.com/bigleafoundation1 or on our website www.bigleafoundation.org.uk for more information about the song release.

“

“It’s helped me gain so much more confidence, it’s such an amazing experience... it’s been absolutely amazing getting to know all of these different people that I otherwise probably would never have met.” **Music Connects participant**

This was a new approach for us. It was exhilarating and at times, overwhelming. But the feedback from participants speaks for itself. We want a community that is willing to reach across different languages and life experience and that sees strength and opportunity in its diversity. Perhaps it’s our teenagers who can do this better than any of us.



© Kayte Cable / Big Leaf Foundation

ABOVE | The Academy for Contemporary Music (ACM) offered us use of their flagship studio in Guildford for the final recording. Restrictions meant we couldn’t record together but the studio experience was a source of huge excitement for everyone and as people arrived and left, there were shouts and waves as they recognised other faces from the screens of the preceding weeks.

With huge thanks to the **National Lottery Community Fund** for funding our Music Connects project, and to **ACM, Chimpo, Chesney Hawkes**, the brilliant **Surrey Arts** team and our **volunteer translators**.



Images © Vicki Felgate & Louise Baumberg / Big Leaf Foundation

EAST SURREY LAUNCH | celebrating our new programmes

To celebrate our expansion into East Surrey, we took a group of young people from Redhill and the surrounding area to Surrey Outdoor Learning & Development (SOLD) for a day of activities.

Providing much-needed respite following months of lockdown, our first in-person event of 2021 focused on those *most* isolated. It was a chance to connect, to make friends and to be outdoors. For most, it was the first time we had met off screen and the power of in-person connection was shared by participants and the team alike.

Surrounded by greenery in SOLD's peaceful grounds at High Ashurst, the morning was about getting to know each other, practising English and team-bonding through games and activities. We drew hand mandalas to reflect our likes and dislikes, and share our hopes for the future. We worked in groups, with each team competing to get as many people jumping together, in time, using a Japanese Nawatobi (a giant skipping rope) and we ate lunch *together*, after so much time in lockdown eating alone.

In the afternoon, it was over to the brilliant SOLD instructors for some climbing, abseiling and high ropes. The group supported one another, both physically and mentally, anchoring each other during the climbs and shouting words of encouragement from below.

The 'let it land' session at the end provided a chance to reflect and share thoughts about the day. Everyone said **"meeting new friends"** was the best thing about it. But there was another shared theme in the responses and A's words capture it best: **"It was my happiest day since coming to UK."**

The SOLD launch event was a special day and an exciting glimpse of the potential for us to offer support in East Surrey. But most importantly, it reminded us about the importance of human interaction and social networks for vulnerable young people during an incredibly challenging and isolating year.

“

"I can't thank you enough. M really enjoyed it. He showed me pictures on his phone as soon as he got in the car! Thank you for giving him this opportunity." **Molly, Social Worker**

£ With huge thanks to **Surrey Virtual School** for its support in funding our activity day and to the brilliant team at SOLD for making our visit so special.

priorities for the year ahead

Big Leaf Foundation is entering its third year. We have a brilliant and dedicated team but also a growing number of displaced young people in need of our support. The last year has shown us that where there is hardship there is also hope and we know that with your support we can continue to make a positive difference in the lives of these young people.

expanding our programmes

In late 2020, in response to growing demand, we expanded our activities and geographical reach to provide much-needed support for young people in and around the Redhill area. Our East Surrey programme seeks to build on previous successes in other parts of the county – combining a range of sports with a regular drop-in hub, while also creating new activities to suit the interests and needs of participants.

Over the coming year we will expand to facilitate educational and vocational opportunities in East Surrey, developing participatory approaches to include young people in their own development.

Working with local partners we will also grow our sports programme to combine football with tailored ESOL classes. The I Speak Football programme will focus on English language and literacy through both playing and studying football.

supporting young leaders

We are committed to supporting displaced young people to participate in the development and leadership of Big Leaf. Our new Young Leaders programme, launching this autumn, will support young people to build their confidence and knowledge. Using a trauma-informed approach to explore identity, advocacy, leadership and legal rights we aim to help participants feel more empowered within themselves, their local community and within Big Leaf itself.

amplifying our voice

Big Leaf Foundation is entering its third year and we're growing – both in terms of the number of young people we support and our geographical spread. To ensure we can continue to fulfil our objectives we need to engage more people in our work and make our collective 'voice' louder through increased awareness of the issues and how people can help. But we also recognise the need to do more to improve the rights of displaced young people and/or ensure existing legal rights are upheld.

Over the coming year our new Communications and Campaigns Coordinator will expand and enhance our presence to engage more people in our work, and explore how Big Leaf can best support and add value to campaigns that work to improve and uphold refugee rights.

growing our knowledge

2020 has been a difficult year for all of us, but especially for the young people we support. The pandemic has kept people in their homes, sometimes with just the internet for company, and the impact of this enforced isolation and changing context shouldn't be underestimated. We're committed to responding to this. Over the coming year we will focus on growing our team's knowledge in several areas (through both internal and external training for staff, trustees and volunteers) including: risks and vulnerabilities, mental health, campaigning and advocacy, and media and communications.

Find out how you can help us to achieve these aims on [page 23](#) or at www.bigleaffoundation.org.uk/support-us

governance, structure & management

Big Leaf Foundation is controlled by its Constitution incorporated on 14 July 2018. It was recognised as a Charitable Incorporated Organisation on 14 December 2018 (UK Registered Charity Number 1181180) whose only voting members are its charity trustees ('Foundation' model constitution). The charity is run by the Board of Trustees who are responsible for ensuring the charity has a clear vision, mission and strategic direction and is focused on achieving these.

appointment of trustees

Any person over the age of 16 who is willing to act as a trustee, and has not been disqualified from acting as a trustee by virtue of sections 178-180 of the Charities Act 2011 (or any statutory re-enactment or modification of that provision), may be appointed to be a trustee by a decision of the trustees.

There must be at least three trustees and a maximum of eight. Apart from the first trustees, every trustee must be appointed for a term of three years, by a resolution passed at a properly convened meeting of the trustees.

Retiring trustees are eligible for reappointment. But a trustee who has served for three consecutive terms may not be reappointed for a fourth but may be reappointed after an interval of at least one year. In selecting individuals for appointment as trustees, the trustees consider the skills, knowledge and experience needed for the effective administration of the CIO.

Big Leaf Foundation's trustees include business and charitable sector professionals with experience in youth work, education, finance, project management, IT, fundraising and communications.

Big Leaf Foundation is committed to the ongoing professional development of its trustees and their

knowledge is kept up to date through internal and external training, knowledge sharing with partner organisations, academic reading and regular participation in project team meetings.

The trustees meet at least six times per year and more regularly in periods of high activity or change. We ask that trustees attend a minimum of two Big Leaf Foundation projects per year as we strongly believe this contributes to a better understanding of our organisation, how we work and the young people we support. All trustees are DBS checked at an enhanced level.

The Programme Managers report on the operational plan at each trustee meeting. Big Leaf Foundation has a Safeguarding Sub Committee that meets to discuss safeguarding and review and update safeguarding policies and processes as needed. This committee includes the DSL, DDSL and the Chair or trustees.

The trustees have delegated authority to the Programme Managers with clear limitations. The Chair and the Programme Managers also have regular meetings to discuss operational matters and resource needs.

risks & mitigations

Risk of harm to the young people we support

Mitigation | Safeguarding is embedded in Big Leaf, with all staff and volunteers trained at an appropriate level through our safeguarding partner. We have a range of policies in place to support good practice, including safeguarding, health and safety and code of conduct for staff and volunteers. Our policies are reviewed and updated once a year.

Insufficient funds to achieve our objectives

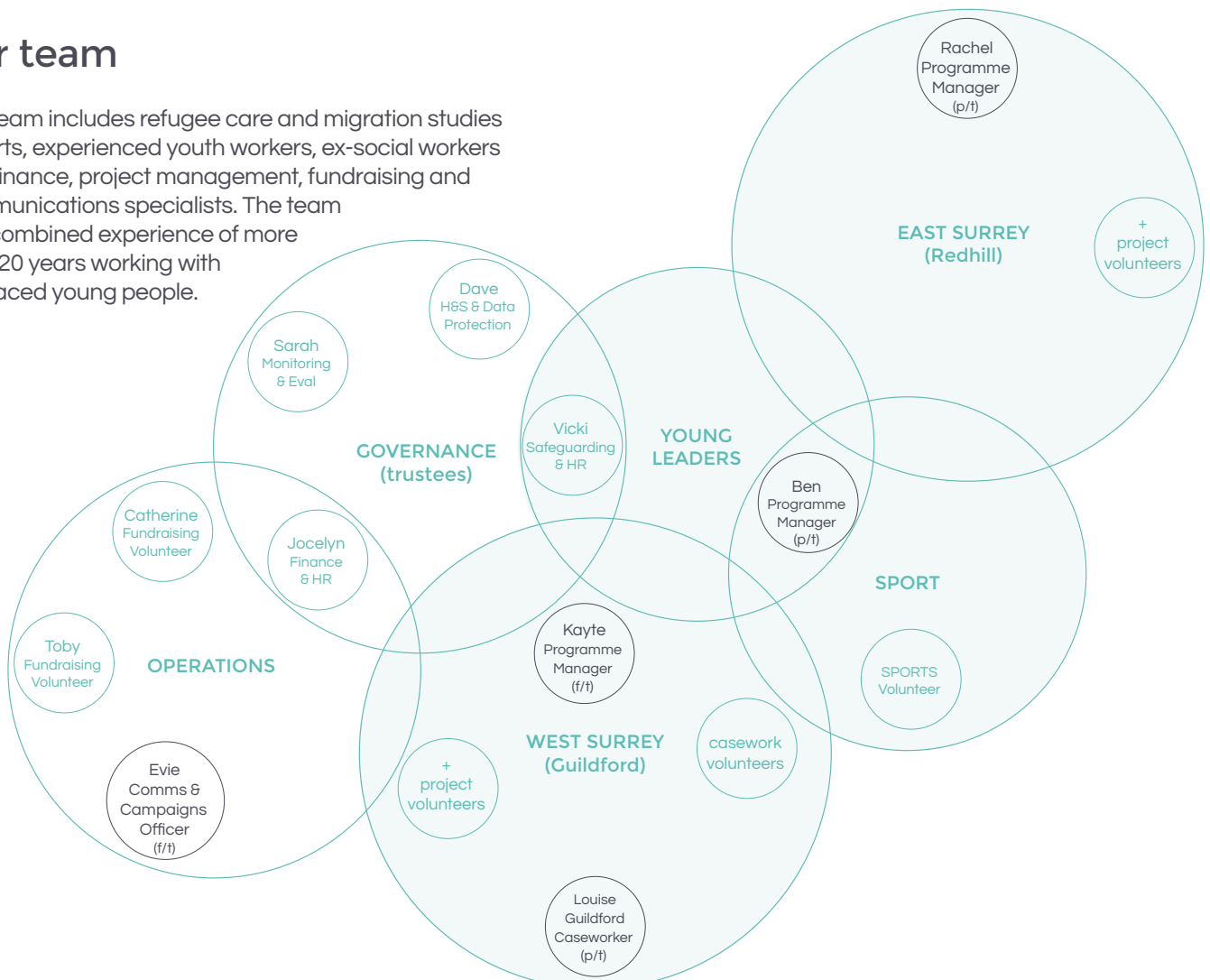
Mitigation | In year one Big Leaf was reliant on two main funders for the majority of its income. Since then we have continued to grow and diversify our funding base and in year two we received funding from ten trusts and organisations. We have also recruited two experienced fundraising volunteers who, together with the support of the trustees, are working to secure additional long-term core funding.

Loss of core team members & associated knowledge

Mitigation | We invest in our team through both professional training and providing clinical supervision sessions for all direct contact staff to support wellbeing. Our pay structure is in line with sector median average and reviewed every two years. We use a horizontal management structure, with all team members on an equal level; and an open and creative work culture where ideas are valued and successes are shared.

our team

Our team includes refugee care and migration studies experts, experienced youth workers, ex-social workers and finance, project management, fundraising and communications specialists. The team has combined experience of more than 20 years working with displaced young people.



finance & accounts

Big Leaf Foundation is a registered charity and relies on donations from both trusts and individuals to continue its work.

We have a small dedicated team of fundraising volunteers who work together with the trustees and core team to research and make applications to relevant grants and funders.

We are extremely grateful to our four main grant funders and donors who together fund our core staffing costs. But over the last year we have also received a number of pandemic-related emergency grants from the Community Foundation for Surrey, the National Lottery Community Fund and Sport England.

Together these grants have enabled us to engage remotely with our young people, create accessible translations of the ever-changing Covid-19 guidance and run outdoor fitness sessions for young people after the first lockdown.

We're delighted to have also seen an increase in the number of regular monthly donations from individuals in the last year.

statement of financial activities for the year ended March 2021

income

Trusts & Grants	£79,264
Individual Donations	£12,191
Gift Aid & Interest	£1,642

TOTAL

£93,097

BROUGHT FORWARD from FY20 (ending March 2020)

General Fund	£7404
Restricted Funds	£91,240
Total brought forward	£98,644

expenditure

Core Costs	£10,941
Staff Costs	£62,784
Project costs	£18,983

TOTAL

£92,709

BROUGHT FORWARD to FY22 (ending March 2022)

General Fund	£5,770
Restricted Funds	£93,253
Total brought forward	£99,032

This year we submitted our first independently audited accounts (for the year ending March 2020) as part of our commitment to the Charity Commission. This was our first full external financial review and resulted in smooth sign off.

Our FY21 (ending March 2021) accounts will be audited over the coming months. The independent auditor's report will be available on our website www.bigleafaffoundation.org.uk and added to this review and republished.

restricted funds

Restrictions arise when specified by the donor or when funds are raised for particular restricted purposes. Current restricted funds include grants for specific project work or income that is allocated to staff costs.

Our team members engage with us as self-employed contractors rather than employees. The majority of our restricted funds are held in reserve for these contractor costs.

restricted funding includes:

project name and/or funder	purpose
National Lottery Community Fund in partnership with the Community Foundation for Surrey Emergency response (Covid) fund	Emergency response funding to enable Big Leaf Foundation to continue providing COVID-19 updates in the languages spoken within our local displaced community.
Community Foundation for Surrey Equine-assisted learning	Funding to run equine-assisted learning programmes throughout the year (postponed due to Covid-restrictions and due to restart in April 2021).
National Lottery Community Fund Music Connects	Funding to run our collaborative music project – bringing together young people from both displaced and local youth communities in Surrey to write and record a song.
Sport England Tackling Inequalities Fund in partnership with Active Surrey Park Gym	Funding for outdoor fitness programme to re-engage displaced young people in exercise after lockdown.
Surrey Virtual School East Surrey projects & hub provision	One-off grant for an activity day for new UASC arrivals in East Surrey and a 4-week hub programme in Redhill.
Tresanton Trust Casework & hub provision	Two-year grant, providing funding for our part-time caseworker and weekly hub in Guildford.
Twelve Healers Trust & Healing Herbs Ltd. Staff costs	Funding for programme managers and new Communications & Campaigns Coordinator.

Over the coming year we will focus on increasing our fundraising activities. We have now reached an income threshold that means we are eligible to apply for larger long-term grants that were previously unavailable to us.

We have made significant progress in diversifying our funding streams in the last year but it is our intent to diversify further, both in terms of core funding and project funding, so that we can support more young people through our work.

thank you

We'd like to thank everyone who has worked with us this year. From our funders to our brilliant team of volunteers – we couldn't have done it without you.

donors

- Mashood Ashraf
- Active Surrey
- Capgemini
- Chertsey Rotary Club
- Community Foundation for Surrey
- Guildford Philanthropy
- Healing Herbs Ltd
- The National Lottery Community Fund
- Salesforce

- Sport England
- Surrey Virtual School
- The Tresanton Trust
- Twelve Healers Trust
- Jocelyn Zanasi

We'd also like to thank everyone who donated to our crowdfund campaigns and Christmas appeal or give regularly through our Charities Aid Foundation page. There are too many of you to list individually here, but your contributions funded our summer school, supported our summer activity week and ensured we were able to make young people feel welcome at Christmas.

partners

- Big Hat Bushcamp | Ian Brember
- Musical artists | Chesney Hawkes and Chimp
- Child and Family Health Surrey | Janine Gallini
- Jamie's Farm | Liz Ikamba, Dom Koole, Clare Martin and the whole Jamie's Farm team
- Photographer | Kate Stanworth
- Love the Ball | Jack Holmes and Jack Oxenham
- Rosamund Community Garden | Clare Millington, Helen Harris and John Bannister
- Streetwise Safety Training | Martyn Bowie

- Surrey Arts | Liz Ikamba, Sara Khoorosi, Orli, Jim Pinchen and Richard Smith.
- Surrey Virtual School | Lisa Smith and Anna MacLean
- Surrey Outdoor Learning & Development | Ben Rayner and the SOLD team
- Surrey Police | PC Phil Jebb, PC Laura Magwick-Smith and Borough Commander David Bentley
- SwimLab | Salim Ahmed
- The HEART Centre | Wendy Firmin-Price
- The Human Hive | Darren Abrahams

volunteers

- Pippo Ajroldi
- Marco Ajroldi
- Hilal Alshareef
- Toby Athersuch
- Charito Berru
- Jaego Cable
- Jessame Cable
- Richard Cable
- Sarah Cozens
- Alison Craze
- Ghaith Durkawi
- Susan Eade
- Huda Farran
- Ashagre Hailu
- Ella Hood

- Sokol Klogjiri
- Arian Kochi
- Bahar Joya
- Catherine Loy
- Rami Mehri
- Sarah Nuttall
- Daniela Palazzolo
- Felicity Penn-Jones
- Jim Pinchen
- Miranda Postance
- Mohamed Ragab
- Helen Shepherd
- Akira Takenaka
- Aliyu Tanko
- Binh Tran

- Katie Wilson
- Rachel Wright
- Giorgio Zanasi

trustees

- Vicki Felgate
- Sarah Phillips
- Dave Wagstaff
- Jocelyn Zanasi

core team

- Louise Baumberg
- Kayte Cable
- Rachel Ellis
- Ben Monro

support us

We can only achieve our aims with your help.
Your support will mean that displaced young people in Surrey will be able to rediscover their potential and find their place in the local community.

donate

Your money will help to fund projects that combat social isolation and improve wellbeing among young refugees and asylum seekers in Surrey.

www.bigleafaffoundation.org.uk/support-us

partner with us

We work with a growing network of organisations and individuals to develop projects that will inspire our young people. If you have a project idea that you'd like to talk to us about please email

contact@bigleafaffoundation.org.uk

volunteer

We're a small and dedicated team, determined to support and empower displaced young people. If this sounds like something you want to help us achieve please get in touch.

contact@bigleafaffoundation.org.uk



Image © Vicki Felgate / Big Leaf Foundation



“

The greatest gift any of us can give is to make a difference to peoples lives. Big Leaf Foundation has achieved this. Thank you to everyone.

UASC foster carer

”



Big Leaf Foundation			Charity No (if any)	1181180			CC17a
Annual accounts for the period							
Period start date	4/1/2020	To	3/31/2021				

Section A Statement of financial activities

Recommended categories by activity	Details of own analysis	Note	Unrestricted funds £	Restricted income funds £	Endowment funds £	Total this year £	Unrestricted funds opening balance	Restricted income funds opening balance	Total last year £
			F01	F02	F03	F04	F01b	F02b	F05
Incoming resources (Note 3)									
Incoming resources from generated funds			13,171	79,894	-	93,065	7,405	91,240	98,645
Voluntary income		S01	-	-	-	-			-
Activities for generating funds		S02	-	-	-	-			-
Investment income		S03	-	-	-	-			-
Incoming resources from charitable activities		S04	-	-	-	-			-
Other incoming resources		S05	-	-	-	-			-
Total incoming resources		S06	13,171	79,894	-	93,065			98,645
									191,710
Resources expended (Notes 4-8)									
Costs of Generating Funds			-	-	-	-			-
Costs of generating voluntary income		S07	-	-	-	-			-
Fundraising trading costs		S08	-	-	-	-			-
Investment management costs		S09	-	-	-	-			-
Charitable activities		S10	7,365	-	-	7,365	7,405	77,936	92,706
Governance costs		S11	-	-	-	-			-
Other resources expended		S12	-	-	-	-			-
Total resources expended		S13	7,365	-	-	7,365	7,405	77,936	92,706
Net incoming/(outgoing) resources before transfers		S14	5,806	79,894	-	85,700			5,939
Gross transfers between funds		S15	-	-	-	-			-
Net incoming/(outgoing) resources before other recognised gains/(losses)		S16	5,806	79,894	-	85,700	-	13,304	5,939
Other recognised gains/(losses)									
Gains and losses on revaluation of fixed assets for the charity's own use		S17	-	-	-	-			-
Gains and losses on investment assets		S18	-	-	-	-			-
Net movement in funds		S19	5,806	79,894	-	85,700			5,939
Total funds brought forward from opening balance		S20	-	13,304	-				13,304
Total funds carried forward		S21	5,806	93,198	-	99,004			

Total Income + Opening Balance

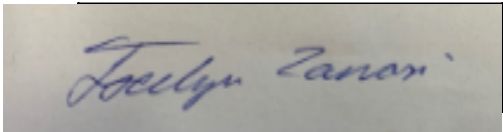
Total Spend
92,706

Assumption all Opening Balance is consumed first

Total carried Forward
99,004

Section B Balance sheet

	Note	Unrestricted funds £	Restricted income funds £	Endowment funds £	Total this year £	Total last year £
		F01	F02	F03	F04	F05
Fixed assets						
Tangible assets (Note 9)	B01	-	-	-	-	-
	B02	-	-	-	-	-
Investments (Note 10)	B03	-	-	-	-	-
Total fixed assets	B04	-	-	-	-	-
Current assets						
Stock and work in progress	B05	-	-	-	-	-
Debtors (Note 11)	B06	-	-	-	-	-
(Short term) investments	B07	-	-	-	-	-
Cash at bank and in hand	B08	5,806	93,198	-	99,004	-
Total current assets	B09	5,806	93,198	-	99,004	-
Creditors: amounts falling due within one year (Note 12)	B10	-	-	-	-	-
Net current assets/(liabilities)	B11	5,806	93,198	-	99,004	-
Total assets less current liabilities	B12	5,806	93,198	-	99,004	-
Creditors: amounts falling due after one year (Note 12)	B13	-	-	-	-	-
Provisions for liabilities and charges	B14	-	-	-	-	-
Net assets	B15	5,806	93,198	-	99,004	-
Funds of the Charity						
Unrestricted funds	B16	5,806			5,806	-
	B17	-			-	-
Restricted income funds (Note 13)	B18		93,198		93,198	-
Endowment funds (Note 13)	B19			-	-	-
Total funds	B20	5,806	93,198	-	99,004	-

Signed by one or two trustees on behalf of all the trustees	Signature	Print Name	Date of approval
		Jocelyn Zanasi	5th April 2021

Cells highlighted in Yellow contain formulas to add up columns C,D and E but these are not protected cells

Cells highlighted in Blue contain formulas in protected cells. The protection can be removed from the tools menu

Note 1 **Basis of preparation**

This section should be completed by all charities.

1.1 Basis of accounting

These accounts have been prepared on the basis of historic cost (except that investments are shown at market value) in accordance with:

- Accounting and Reporting by Charities – Statement of Recommended Practice (SORP 2005);
- and with*

<input type="checkbox"/>

 Accounting Standards;
- or

<input type="checkbox"/>

 Financial Reporting Standards for Smaller Enterprises (FRSSE);
- and with the Charities Act.

[** except for the following].

Give details in this box if a different standard has been followed.

* -Tick as appropriate:

- if all relevant disclosures shown in the pack have been given then please tick “Accounting Standards”;
- if disclosures completed in these accounts have been restricted to those required by the FRSSE, then please tick “Financial Reporting Standards for Smaller Enterprises (FRSSE)”.

** - If no departures from the chosen standards have been made then delete these words; otherwise give details of any changes in the boxes.

1.2 Change in basis of accounting

There has been no change to the accounting policies (valuation rules and methods of accounting) since last year.

Give details in this box of any material changes that have been made.

§ if no changes have been made to accounting policies then delete these words.

1.3 Changes to previous accounts

No changes have been made to accounts for previous years

Give details in this box of any material changes that have been made.

§§ if no changes have been made to accounts for previous periods then delete these words.

Note 2 Accounting policies

This standard list of accounting policies has been applied by the charity except for those deleted. Where a different or additional policy has been adopted then this is detailed in the box below.

INCOMING RESOURCES

Recognition of incoming resources	<p>These are included in the Statement of Financial Activities (SoFA) when:</p> <ul style="list-style-type: none"> · the charity becomes entitled to the resources; · the trustees are virtually certain they will receive the resources; and · the monetary value can be measured with sufficient reliability.
Incoming resources with related expenditure	Where incoming resources have related expenditure (as with fundraising or contract income) the incoming resources and related expenditure are reported gross in the SoFA.
Grants and donations	Grants and donations are only included in the SoFA when the charity has unconditional entitlement to the resources.
Tax reclaims on donations and gifts	Incoming resources from tax reclaims are included in the SoFA at the same time as the gift to which they relate.
Contractual income and performance related grants	This is only included in the SoFA once the related goods or services have been delivered.
Gifts in kind	<p>Gifts in kind are accounted for at a reasonable estimate of their value to the charity or the amount actually realised.</p> <p>Gifts in kind for sale or distribution are included in the accounts as gifts only when sold or distributed by the charity.</p> <p>Gifts in kind for use by the charity are included in the SoFA as incoming resources when receivable.</p>
Donated services and facilities	These are only included in incoming resources (with an equivalent amount in resources expended) where the benefit to the charity is reasonably quantifiable, measurable and material. The value placed on these resources is the estimated value to the charity of the service or facility received.
Volunteer help	The value of any voluntary help received is not included in the accounts but is described in the trustees’ annual report.
Investment income	This is included in the accounts when receivable.
Investment gains and losses	This includes any gain or loss on the sale of investments and any gain or loss resulting from revaluing investments to market value at the end of the year.

EXPENDITURE AND LIABILITIES

Liability recognition	Liabilities are recognised as soon as there is a legal or constructive obligation committing the charity to pay out resources.
Governance costs	Include costs of the preparation and examination of statutory accounts, the costs of trustee meetings and cost of any legal advice to trustees on governance or constitutional matters.
Grants with performance conditions	Where the charity gives a grant with conditions for its payment being a specific level of service or output to be provided, such grants are only recognised in the SoFA once the recipient of the grant has provided the specified service or output.
Grants payable without performance conditions	These are only recognised in the accounts when a commitment has been made and there are no conditions to be met relating to the grant which remain in the control of the charity.
Support Costs	Support costs include central functions and have been allocated to activity cost categories on a basis consistent with the use of resources, eg allocating property costs by floor areas, or per capita, staff costs by the time spent and other costs by their usage.

ASSETS

Tangible fixed assets for use by charity

These are capitalised if they can be used for more than one year, and cost at least £500. They are valued at cost or a reasonable value on receipt.

Investments

Investments quoted on a recognised stock exchange are valued at market value at the year end. Other investment assets are included at trustees' best estimate of market value.

Stocks and work in progress

These are valued at the lower of cost or market value.

**POLICIES ADOPTED
ADDITIONAL TO OR
DIFFERENT FROM
THOSE ABOVE**

Note 3 Analysis of incoming resources

Incoming resources may be further analysed if this would help the reader of the accounts.

	Analysis	This year £	Last year £
Voluntary income - Donations	General fund Donations + gift aid	13,202	-
	Restricted fund donations - Private donor - Contractor costs	23,998	-
	Grants & Project Funds	55,897	-
		-	-
		-	-
	Total	93,096	-
Activities for generating funds		-	-
		-	-
		-	-
		-	-
		-	-
	Total	-	-
Investment income		-	-
		-	-
		-	-
		-	-
		-	-
	Total	-	-
Incoming resources from charitable activities		-	-
		-	-
		-	-
		-	-
		-	-
	Total	-	-

Note 4 **Analysis of resources expended**

Resources expended may be further analysed if this would help the reader of the accounts.

Analysis		This year £	Last year £
Costs of generating voluntary income	All income generated by volunteers or by Trustees	-	-
		-	-
		-	-
		-	-
		-	-
	Total	-	-
Fundraising trading costs	No fundraising costs incurred	-	-
		-	-
		-	-
		-	-
		-	-
	Total	-	-
Investment management costs	No Investment costs incurred	-	-
		-	-
		-	-
	Total	-	-
Charitable activities	Contractor Cost	62,849	-
	Project Cost	15,086	-
	General Costs, including travel, insurance, telephony,	14,770	-
		-	-
		-	-
	Total	92,705	-
Governance costs	No Governance cost incurred	-	-
		-	-
		-	-
	Total	-	-

Note 5Support Costs

Please complete this note if the charity has analysed its expenses using activity categories and has support costs.

Support cost type	Fundraising activity £	Charitable Activity £	Governance Activity £	Total Cost £
	-	-	-	-
	-	-	-	-
	-	-	-	-
	-	-	-	-
	-	-	-	-
	-	-	-	-
	-	-	-	-
Total	-	-	-	-

Note 6Details of certain items of expenditure

6.1 Trustee expenses

Please provide details of the amount of any payment or reimbursement of out-of-pocket expenses made to trustees or to third parties for expenses incurred by trustees. If no expenses were paid, please enter 'None' in the appropriate box(es).

	This year	Last year
Number of trustees who were paid expenses	2	
Nature of the expenses	Travel, Project cost reimbursement . Vicki Ashraf Felgate & Jocelyn Zanas	
Total amount paid	£1,400	£

6.2 Fees for examination or audit of the accounts

Please provide details of the amount paid for any statutory external scrutiny of accounts and other services provided by your independent examiner or auditor. If nothing was paid please enter NONE in the appropriate box(es).

	This year £	Last year £
Independent examiner's or auditors' fees for reporting on the accounts	0	
Other fees (for example: advice, consultancy, accountancy services) paid to the independent examiner or auditor		

Note 8

Grantmaking

Please complete this note if the charity made any grants or donations which in aggregate form a material part of the charitable activities undertaken.

8.1 Total value of grants

Purpose for which grants made	Grants to institutions Total amount £	Grants to individuals Total amount £
No grants were made	-	-
	-	-
	-	-
	-	-
	-	-
	-	-
	-	-
Total	-	-

8.1 Grantmaking costs

If the charity's accounts are prepared on the "activity basis" please give details of any support cost associated with grantmaking. Please enter "Nil" if the charity does not identify and/or allocate support costs.

Support costs of grantmaking

£

8.3 Grants made to institutions

If the charity has made grants to particular institutions that are material in the context of its grantmaking please give details of the institution supported, purpose of the grant and total paid to each institution listed. Sufficient information should be given to provide a reasonable understanding of the range of institutions supported.

Names of institutions	Purpose	Total amount of grants paid £
		-
		-
		-
		-
		-
		-
		-
		-
		-
		-
Total grants to institutions		-

Note 9

Tangible fixed assets

Please complete this note if the charity has any tangible fixed assets

9.1 Cost or valuation

	Freehold land & buildings	Other land & buildings	Plant, machinery and motor vehicles	Fixtures, fittings and equipment	Payments on account and assets under construction	Total
	£	£	£	£	£	£
Balance brought forward	-	-	-	-	-	-
Additions	-	-	-	-	-	-
Revaluations	-	-	-	-	-	-
Disposals	-	-	-	-	-	-
Transfers *	-	-	-	-	-	-
Balance carried forward	-	-	-	-	-	-

No Fixed assets owned

9.2 Accumulated depreciation and impairment provisions

**Basis	SL or RB	SL or RB	SL or RB	SL or RB	SL or RB	
** Rate						
Balance brought forward	-	-	-	-	-	-
Depreciation charge for year	-	-	-	-	-	-
Impairment provisions	-	-	-	-	-	-
Revaluations	-	-	-	-	-	-
Disposals	-	-	-	-	-	-
Transfers*	-	-	-	-	-	-
Balance carried forward	-	-	-	-	-	-

9.3 Net book value

Brought forward	-	-	-	-	-	-
Carried forward	-	-	-	-	-	-

9.4 Revaluation

If any fixed assets have been revalued please give details of the valuer and method of valuation

* The "transfers" row is for movements between fixed asset categories.

** Please indicate the method of depreciation by deleting the method not applicable (SL = straight line; RB = reducing balance). Also please indicate the rate of depreciation: for straight line, what is the anticipated life of the asset (in years); for reducing balance, what is the percentage annual deduction.

Note 10 Investment assets

Please complete this note if the charity has any investment assets.

10.1 Fixed assets investments

	£
Carrying (market) value at beginning of year	-
Add: additions to investments at cost	-
Less: disposals at carrying value	-
Add/(deduct): net gain/(loss) on revaluation	-
Carrying (market) value at end of year	-

No investments in place

Please provide below:

10.2 A breakdown of the market values of investments shown above agreeing with the balance sheet row B03.

10.3 A breakdown of the income from investments agreeing with SOFA row S03.

Analysis of investments

	10.2 Market value at year end £	10.3 Income from investments for the year £
Investment properties	-	-
Investments listed on a recognised stock exchange or held in common investment funds, open ended investment companies, unit trusts or other collective investment schemes	-	-
Investments in subsidiary or connected undertakings and companies	-	-
Securities not listed on a recognised Stock Exchange	-	-
Cash held as part of the investment portfolio	-	-
Other investments	-	-
Total	-	-

10.4 Material investment holdings

If any single investment is material in terms of its value (for example represents more than 5 per cent of the value of the charity’s total investments) please provide details.

Investment held	
Market Value	

Note 11Debtors and prepayments

Please complete this note if the charity has any debtors or prepayments.

Analysis of debtors	Amounts falling due within one year		Amounts falling due after more than one year	
	This year £	Last year £	This year £	Last year £
Trade debtors	-	-	-	-
Amounts due from subsidiary and associated undertakings	-	-	-	-
Other debtors	-	-	-	-
Prepayments and accrued income	-	-	-	-
Total	-	-	-	-

No debtors

Note 12Creditors and accruals

Please complete this note if the charity has any creditors or accruals.

12.1 Analysis of creditors

	Amounts falling due within one year		Amounts falling due after more than one year	
	This year £	Last year £	This year £	Last year £
Loans and overdrafts	-	-	-	-
Trade creditors	-	-	-	-
Amounts due to subsidiary and associated undertakings	-	-	-	-
Other creditors	-	-	-	-
Accruals and deferred income	-	-	-	-
Total	-	-	-	-

No creditors

12.2 Security over assets

If any loan, overdraft or other creditor holds a charge or other security over any assets of the charity please provide details.

Section C	Notes to the accounts	(cont)
------------------	------------------------------	---------------

Note 13 **Endowment and restricted income funds**

Please complete this section if the charity has any endowment or restricted income funds.

13.1 Funds held

Please give a brief description of any of the following type of funds held by the charity:

- permanent endowment funds (PE);
- expendable endowment funds (EE); and
- restricted income funds, including special trusts, of the charity (R).

Fund Name	Type PE, EE or R	Purpose and Restrictions
Restricted Fund - Contractor - (Kayte Cable)	R	Private Donation - Restricted to fund Program Director Role Contractor
Restricted Fund - 2nd Contractor (Rachel Ellis)	R	Private Donation - Restricted to fund Program Manager - East Surrey - Contractor
Restricted Fund - 3rd Contractor (Ben Munro)	R	Private Donation - Restricted to fund Sports Program Manager Role Contractor
Restricted Fund - 4th Contractor (Comm)	R	Private Donation - Restricted to fund Comms Program Manager Role Contractor
Restricted Fund - Mash	R	Private Donation - Restricted to fund for Equine project
Restricted Fund - Equine	R	Charity Grant - Guildford Philanthropy - Restricted to fund Equine therapy Project
Restricted Fund - Hub	R	Charity Grant - Treasanton Trust - Restricted to fund weekly Hub - ESOL, Maths and wellbeing
Restricted Fund - Case Work (Louise)	R	Charity Grant - Treasanton Trust - Restricted to fund wCaseworked - Contractor
Restricted Fund - Translation Grant	R	Charity Grant - Surrey CC - Restricted to fund Covid 19 Guidance translations
Lottery funding	R	Charity Grant - National Lottery - Restricted to fund residential ESOL, Maths and wellbeing program

13.2 Movements of major funds

Please give details of the movements of the major funds summarised in the restricted and endowment columns of the Statement of Financial Activities.

Fund names	Fund balances brought forward £	Incoming resources £	Outgoing resources £	Transfers £	Gains and losses £	Fund balances carried forward £
	-	-	-	-	-	-
	-	-	-	-	-	-
	-	-	-	-	-	-
	-	-	-	-	-	-
	-	-	-	-	-	-
	-	-	-	-	-	-
Total Funds	-	-	-	-	-	-

13.3 Transfers between funds

Please give details of any transfers between funds.

From Fund (Name)	To Fund (Name)	Reason	Amount

Note 14

Transactions with related parties

If the charity has any transactions with related parties (other than the trustee expenses explained in note 6) details of such transactions should be provided in this note. If there are no transactions to report, please enter “None” in the relevant boxes.

14.1 Remuneration and benefits

Please give the amount of, and legal authority for, any remuneration or other benefits paid to a trustee or other related parties by the charity or any institution or company connected with it.

Name of trustee or connected party	Legal authority (eg order, governing document)	Amounts paid or benefit value	
		This year £	Last year £

None

14.2 Loans

Please give details of and amounts owing to or from the charity’s trustees or other related parties by the charity at the year end.

	Name of trustee or connected party	Legal authority	Amount owing	
			This year £	Last year £
Due to trustees and related parties				
Due from trustees and related parties				

No Loans given

14.3 Other transaction(s) with trustees or related parties

Please give details of any transaction undertaken by (or on behalf of) the charity in which a trustee or related party has a material interest.

Name of the trustee or related party	Relationship to charity	Description of the transaction(s)	This year £	Last year £

Section C	Notes to the accounts	(cont)
<div><div>Note 15</div><div>Additional Disclosures</div><div>The following are significant matters which are not covered in other notes and need to be included to provide a proper understanding of the accounts. If there is insufficient room here, please add a separate sheet.</div></div>		



CHARITY COMMISSION FOR ENGLAND AND WALES

Independent examiner's report on the accounts

Report to the trustees/ members of	Charity Name Big Leaf Foundation		
On accounts for the year ended	March 2021	Charity no (if any)	1181180
Set out on pages	<div></div> <small>(remember to include the page numbers of additional sheets)</small>		

I report to the trustees on my examination of the accounts of the above charity ("the Trust") for the year ended 31 / 03 / 2021.

Responsibilities and basis of report As the charity trustees of the Trust, you are responsible for the preparation of the accounts in accordance with the requirements of the Charities Act 2011 ("the Act").

I report in respect of my examination of the Trust's accounts carried out under section 145 of the 2011 Act and in carrying out my examination, I have followed the applicable Directions given by the Charity Commission under section 145(5)(b) of the Act.

Independent examiner's statement

I have completed my examination. I confirm that no material matters have come to my attention (other than that disclosed below *) in connection with the examination which gives me cause to believe that in, any material respect:

- accounting records were not kept in accordance with section 130 of the Act or
- the accounts do not accord with the accounting records

I have no concerns and have come across no other matters in connection with the examination to which attention should be drawn in order to enable a proper understanding of the accounts to be reached.

** Please delete the words in the brackets if they do not apply.*

Signed: Sarah Medhurst Date: 14/1/2022

Name: SARAH MEDHURST

Relevant professional
qualification(s) or body
(if any):

CHARTERED ACCOUNTANT
ICAEW.

Address:

6 BUTLER RD.
BAGSHOT
GU19 5QF