

SHEFFIELD KOREAN CHURCH

England & Wales · Charity number 1180549

Details

Status Registered

Legal form CIO

Registered 2018-11-05

Register [View on the Charity Commission register](#)

Contact

Address Wesley Hall
Crookes
Sheffield
S10 1UD

Phone 07473059909

Email waydo63@gmail.com

Website <https://www.sheffieldkoreanchurch.org>

Activities

Objects: TO ADVANCE THE CHRISTIANITY RELIGION IN THE UK FOR THE BENEFIT OF THE PUBLIC THROUGH THE HOLDING OF PRAYER MEETING, LECTURES, WORSHIP AND PUBLIC CELEBRATION OF RELIGIOUS FESTIVALS PRODUCING AND DISTRIBUTING LITERATURE ON CHRISTIANITY TO ENLIGHTEN OTHERS ABOUT THE CHRISTIANITY.

Activities: To advance the Christianity religion in UK for the benefit of the public through the holding of prayer meeting, lectures, Worship and public celebration of religious festivals producing and distributing literature on Christianity to enlighten others about the Christianity.

Classification

- **How:** Provides Services, Provides Advocacy/advice/information, Sponsors Or Undertakes Research
- **What:** Religious Activities
- **Who:** Children/young People, Elderly/old People, People Of A Particular Ethnic Or Racial Origin

Geography

- Sheffield City

Finances

Period end	Income	Expenditure	Assets	Employees
2024-12-31	£21,696	£26,660	-	-
2023-12-31	£24,347	£24,233	-	-
2022-12-31	£19,497	£22,592	-	-
2021-12-31	£26,380	£21,287	-	-
2020-12-31	£19,884	£22,175	-	-

Trustees

Name	Role	Appointed
BOKHEI STEERS	Chair	2018-11-01
JUNGHYUN PARK		2018-11-01
SUJIN JOUNG		2018-11-01

SHEFFIELD KOREAN CHURCH

England & Wales - Charity number 1180549

Accounts

Sheffield Korean Church
Trustees' report and financial statements
for the year ended 31 December 2024

Charity number: 1180549

Structure, governance and management

Sheffield Korean Church is a registered charity and is governed by its own constitution. The operational management of the organisation's day to day activities are delegated to trustees.

Objectives and activities

The main object of the Company is:

To advance the Christianity religion in UK for the benefit of the public through the holding of prayer meeting, lectures, Worship and public celebration of religious festivals producing and distributing literature on Christianity to enlighten others about the Christianity.

Achievements and performance

The Charity has performed fairly well collecting £21696 during the year ended 31 Dec 2024. The charity organises Sunday worship services and emphasis was laid on increasing monthly donations and controlling costs.

Statement of trustees' responsibilities

The trustees are responsible for preparing the Trustees' Annual Report and the financial statements in accordance with applicable law and United Kingdom Accounting Standards (United Kingdom Generally Accepted Accounting Practice).

Law applicable to charities in England and Wales requires the trustees to prepare financial statements for each financial year which give a true and fair view of charity and of the incoming resources and application of resources of the charity for that year. In preparing these financial statements the trustees are required to:

select suitable accounting policies and then apply them consistently;

observe the methods and principles in the Charities SORP;

make judgements and estimates that are reasonable and prudent;

state whether applicable UK Accounting Standards have been followed, subject to any material departures disclosed and explained in the financial statements; and

prepare the financial statements on the going concern basis unless it is inappropriate to presume that the charity will continue in operation.

The trustees are responsible for keeping proper accounting records which disclose with reasonable accuracy at any time the financial position of the charity and enable them to ensure that the financial statements comply with the Charities Act 1993 and the Charity (Accounts and Reports) Regulations 2008. They are also responsible for safeguarding the assets of the charity and hence for taking reasonable steps for the prevention and detection of fraud and other irregularities.

On behalf of the Trustees

박정현

Jung Hyun Park

Trustee

SHEFFIELD KOREAN CHURCH

England & Wales - Charity number 1180549

Accounts

Sheffield Korean Church
Trustees' report and financial statements
for the year ended 31 December 2023

Charity number: 1180549

Structure, governance and management

Sheffield Korean Church is a registered charity and is governed by its own constitution. The operational management of the organisation's day to day activities are delegated to trustees.

Objectives and activities

The main object of the Company is:

To advance the Christianity religion in UK for the benefit of the public through the holding of prayer meeting, lectures, Worship and public celebration of religious festivals producing and distributing literature on Christianity to enlighten others about the Christianity.

Achievements and performance

The Charity has performed fairly well collecting £24347 during the year ended 31 Dec 2023. The charity organises Sunday worship services and emphasis was laid on increasing monthly donations and controlling costs.

Statement of trustees' responsibilities

The trustees are responsible for preparing the Trustees' Annual Report and the financial statements in accordance with applicable law and United Kingdom Accounting Standards (United Kingdom Generally Accepted Accounting Practice).

Law applicable to charities in England and Wales requires the trustees to prepare financial statements for each financial year which give a true and fair view of charity and of the incoming resources and application of resources of the charity for that year. In preparing these financial statements the trustees are required to:

select suitable accounting policies and then apply them consistently;

observe the methods and principles in the Charities SORP;

make judgements and estimates that are reasonable and prudent;

state whether applicable UK Accounting Standards have been followed, subject to any material departures disclosed and explained in the financial statements; and

prepare the financial statements on the going concern basis unless it is inappropriate to presume that the charity will continue in operation.

The trustees are responsible for keeping proper accounting records which disclose with reasonable accuracy at any time the financial position of the charity and enable them to ensure that the financial statements comply with the Charities Act 1993 and the Charity (Accounts and Reports) Regulations 2008. They are also responsible for safeguarding the assets of the charity and hence for taking reasonable steps for the prevention and detection of fraud and other irregularities.

On behalf of the Trustees

박정현

Jung Hyun Park

Trustee

SHEFFIELD KOREAN CHURCH

England & Wales - Charity number 1180549

Accounts

Sheffield Korean Church
Trustees' report and financial statements
for the year ended 31 December 2022
Charity number: 1180549

Structure, governance and management

Sheffield Korean Church is a registered charity and is governed by its own constitution. The operational management of the organisation's day to day activities are delegated to trustees.

Objectives and activities

The main object of the Company is:

To advance the Christianity religion in UK for the benefit of the public through the holding of prayer meeting, lectures, Worship and public celebration of religious festivals producing and distributing literature on Christianity to enlighten others about the Christianity.

Achievements and performance

The Charity has performed fairly well collecting £19497.16 during the year ended 31 Dec 2021. The charity organises Sunday worship services and emphasis was laid on increasing monthly donations and controlling costs.

Statement of trustees' responsibilities

The trustees are responsible for preparing the Trustees' Annual Report and the financial statements in accordance with applicable law and United Kingdom Accounting Standards (United Kingdom Generally Accepted Accounting Practice).

Law applicable to charities in England and Wales requires the trustees to prepare financial statements for each financial year which give a true and fair view of charity and of the incoming resources and application of resources of the charity for that year. In preparing these financial statements the trustees are required to:

select suitable accounting policies and then apply them consistently;

observe the methods and principles in the Charities SORP;

make judgements and estimates that are reasonable and prudent;

state whether applicable UK Accounting Standards have been followed, subject to any material departures disclosed and explained in the financial statements; and

prepare the financial statements on the going concern basis unless it is inappropriate to presume that the charity will continue in operation.

The trustees are responsible for keeping proper accounting records which disclose with reasonable accuracy at any time the financial position of the charity and enable them to ensure that the financial statements comply with the Charities Act 1993 and the Charity (Accounts and Reports) Regulations 2008. They are also responsible for safeguarding the assets of the charity and hence for taking reasonable steps for the prevention and detection of fraud and other irregularities.

On behalf of the Trustees

박정현

Jung Hyun Park

Trustee

2022 Annual Summary

Income

Category	January	February	March	April	May	June	July	August	September	October	November	December	2022 Total Income	2022 Income Budget	Income/Income Budget
Weekly regular collections	136.10	43.50	45.50	46.10	351.59	61.80	95.15	75.00	236.10	170.32	328.50	328.50	1,918.16	4,500.00	43%
Tithe	875.00	1,025.00	675.00	825.00	625.00	1,235.00	1,225.00	330.00	905.00	1,109.00	985.00	985.00	10,799.00	15,000.00	72%
Thank offering	435.00	205.00	310.00	340.00	1,161.00	435.00	648.00	120.00	633.00	300.00	510.00	510.00	5,607.00	5,500.00	102%
Mission offering	-	50.00	-	-	-	-	-	-	-	-	-	-	50.00	500.00	10%
Collection for flowers	-	-	-	-	-	-	-	-	-	-	-	-	-	130.00	0%
New year	-	-	-	-	-	-	-	-	-	-	-	-	-	150.00	0%
Easter	-	-	-	-	-	-	-	-	-	-	-	-	-	150.00	0%
Feast of Harvest	-	-	-	-	-	-	-	-	-	-	-	-	-	150.00	0%
Thanksgiving	-	-	-	-	-	-	-	-	-	-	-	-	-	150.00	0%
Christmas	-	-	-	-	-	-	-	-	-	-	-	-	-	150.00	0%
Bazaar	-	-	-	-	-	-	-	-	-	-	-	-	-	-	0%
Interst	-	-	-	-	-	-	-	-	-	-	-	-	-	-	0%
Others	-	-	-	-	-	-	-	1,000.00	123.00	-	-	-	1,123.00	-	0%
Total	1,446.10	1,323.50	1,030.50	1,211.10	2,137.59	1,731.80	1,968.15	1,525.00	1,897.10	1,579.32	1,823.50	1,823.50	19,497.16	26,380.00	74%

Expense

Salary

Category	January	February	March	April	May	June	July	August	September	October	November	December	2022 Total Expense	2022 Income Budget	Income/Income Budget
Salary for pastor	900.00	900.00	900.00	900.00	800.00	800.00	800.00	800.00	900.00	900.00	900.00	900.00	10,400.00	10,800.00	96%

Service

Category	January	February	March	April	May	June	July	August	September	October	November	December	2022 Total Expense	2022 Income Budget	Income/Income Budget
Lecture fee	-	-	-	-	-	-	-	-	-	-	-	-	-	300.00	0%
Flower decoration	15.00	15.00	15.00	15.00	15.00	15.00	15.00	15.00	15.00	15.00	15.00	15.00	180.00	180.00	100%
Sacraments preparation	-	-	-	-	-	-	-	-	-	-	-	-	-	50.00	0%
Ainnos team	-	-	-	-	-	-	-	-	-	-	-	-	-	200.00	0%
Translation team	-	-	-	-	-	-	-	-	-	-	-	-	-	-	#DIV/0!

Education/Training

Category	January	February	March	April	May	June	July	August	September	October	November	December	2022 Total Expense	2022 Income Budget	Income/Income Budget
Sunday school	-	-	-	-	-	-	-	-	-	-	-	-	-	700.00	0%
Youth	-	-	-	-	-	-	-	-	-	-	-	-	-	200.00	0%
Young adults	29.72	45.70	-	-	-	-	-	-	-	-	-	-	75.42	500.00	15%
Training for baptists	-	-	-	-	-	-	-	-	-	-	-	-	-	50.00	0%
Training for new comer	-	-	-	-	-	-	-	-	-	-	-	-	-	150.00	0%
One-to-one discipleship training	35.68	37.77	-	-	-	-	-	-	-	-	-	-	73.45	1,725.00	4%
Seminar for teachers	-	-	-	-	-	-	-	-	-	-	-	-	-	500.00	0%

Retreat

Category	January	February	March	April	May	June	July	August	September	October	November	December	2022 Total Expense	2022 Income Budget	Income/Income Budget
Transportation	-	-	-	-	-	-	-	-	-	-	-	-	-	500.00	0%
Accommodation	-	-	-	-	-	-	-	-	-	-	-	-	-	200.00	0%

Missionary works

Category	January	February	March	April	May	June	July	August	September	October	November	December	2022 Total Expense	2022 Income Budget	Income/Income Budget
Missionary expenses	-	-	-	-	-	-	-	-	-	-	-	-	-	500.00	0%
Relief expenses	-	-	-	-	-	-	-	-	-	-	-	-	-	200.00	0%

Events

Category	January	February	March	April	May	June	July	August	September	October	November	December	2022 Total Expense	2022 Income Budget	Income/Income Budget
Church seasonal events	-	-	-	-	-	-	-	-	-	-	-	-	-	200.00	0%
General events	-	-	-	-	-	-	-	-	-	-	-	-	-	500.00	0%
Church anniversary	-	-	-	-	-	-	-	-	-	-	-	-	-	100.00	0%

General management

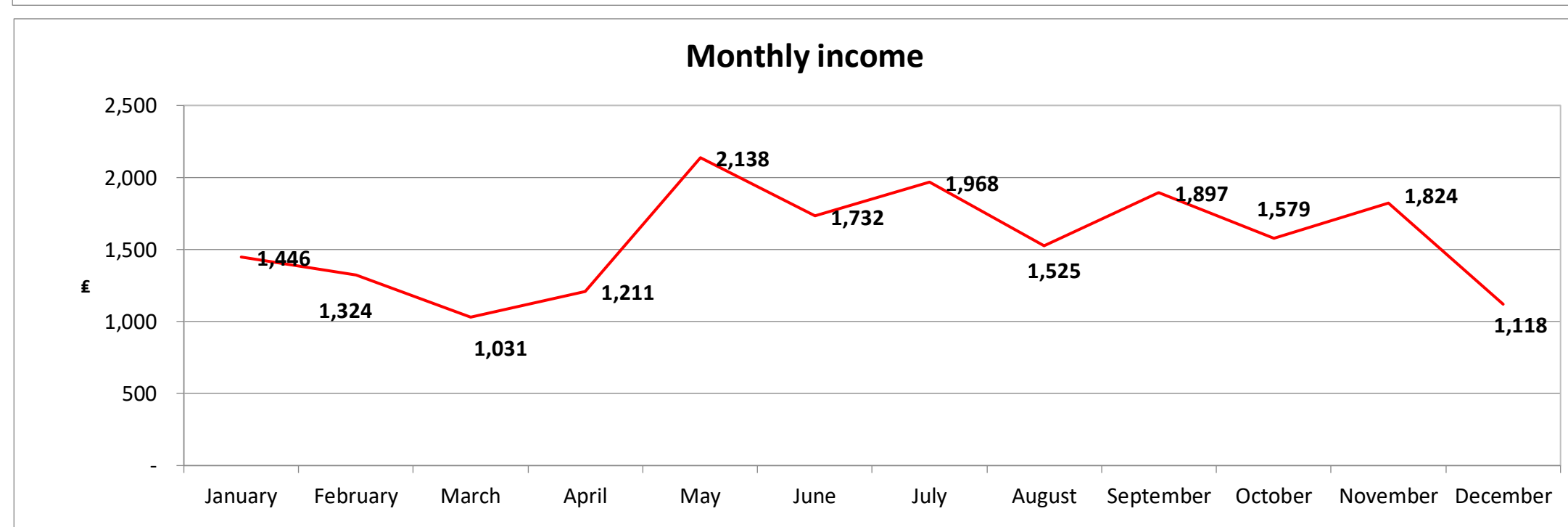
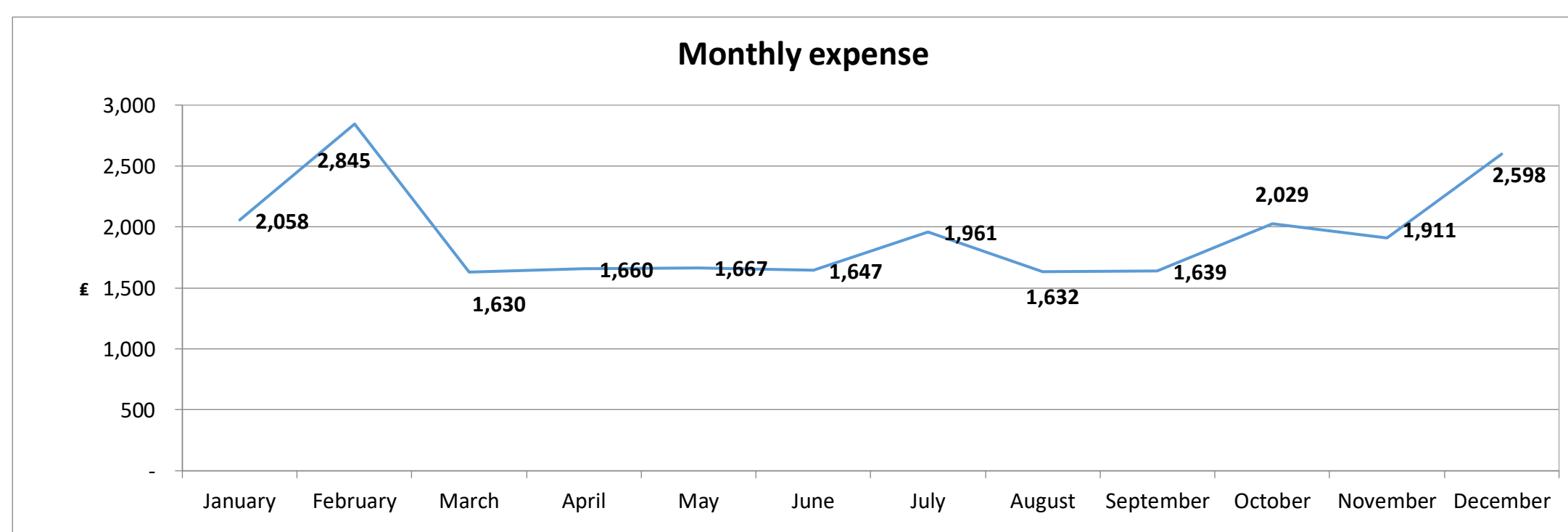
Category	January	February	March	April	May	June	July	August	September	October	November	December	2022 Total Expense	2022 Income Budget	Income/Income Budget
Rent fee	170.00	170.00	170.00	170.00	170.00	170.00	170.00	170.00	170.00	170.00	170.00	170.00	2,040.00	2,040.00	100%
Consumable supplies/equipment	-	5.25	-	-	-	-	-	-	7.80	-	279.89	279.89	572.83	300.00	191%
General management	31.75	21.07	5.00	34.79	41.63	21.72	6.47	7.00	5.86	298.39	6.54	8.30	488.52	500.00	98%
Cluster meeting	-	-	-	-	-	-	-	-	-	-	-	-	-	200.00	0%
Church committee	-	-	-	-	-	-	-	-	-	-	-	-	-	-	#DIV/0!

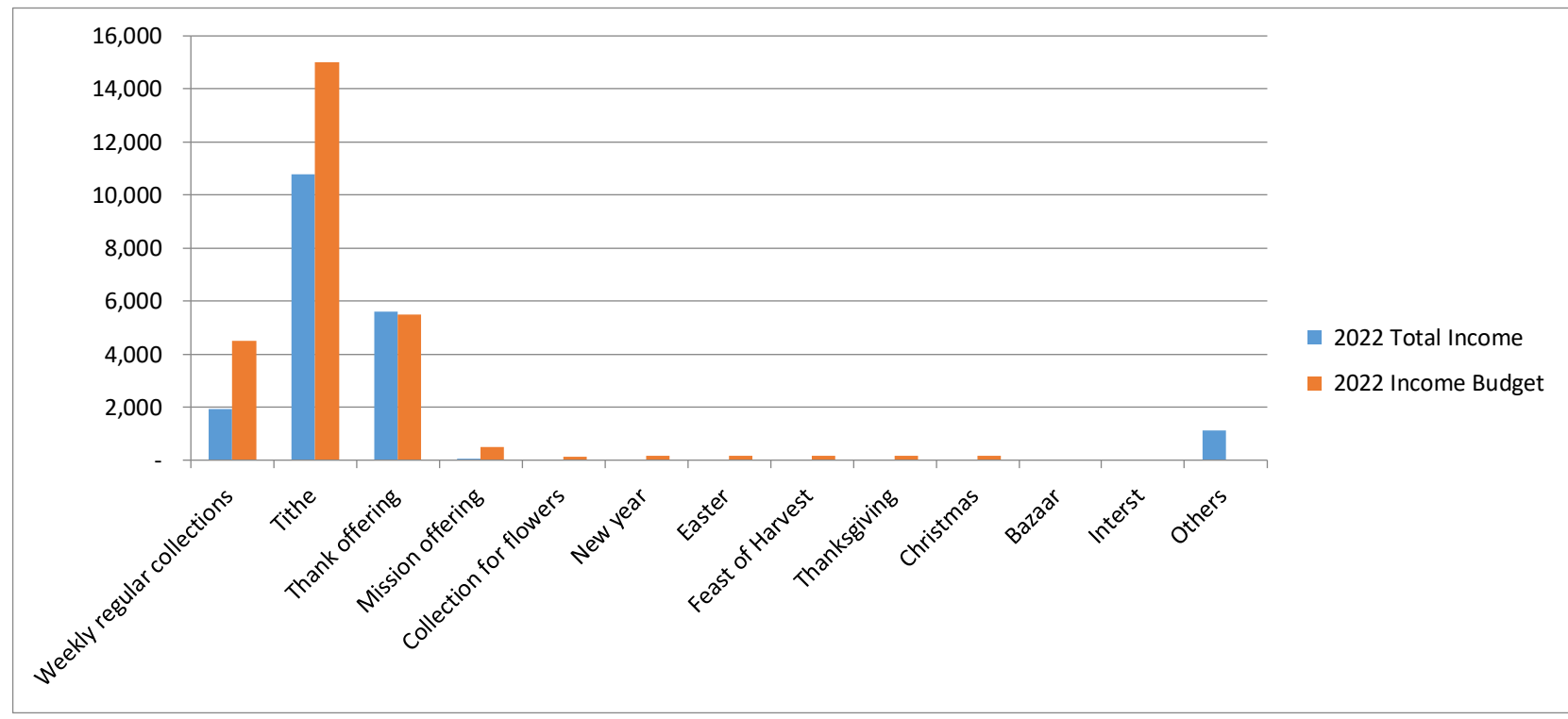
Socials

Category	January	February	March	April	May	June	July	August	September	October	November	December	2022 Total Expense	2022 Income Budget	Income/Income Budget
Condolence/congratulations/ott	-	-	-	-	-	-	-	-	-	105.52	-	-	105.52	300.00	35%

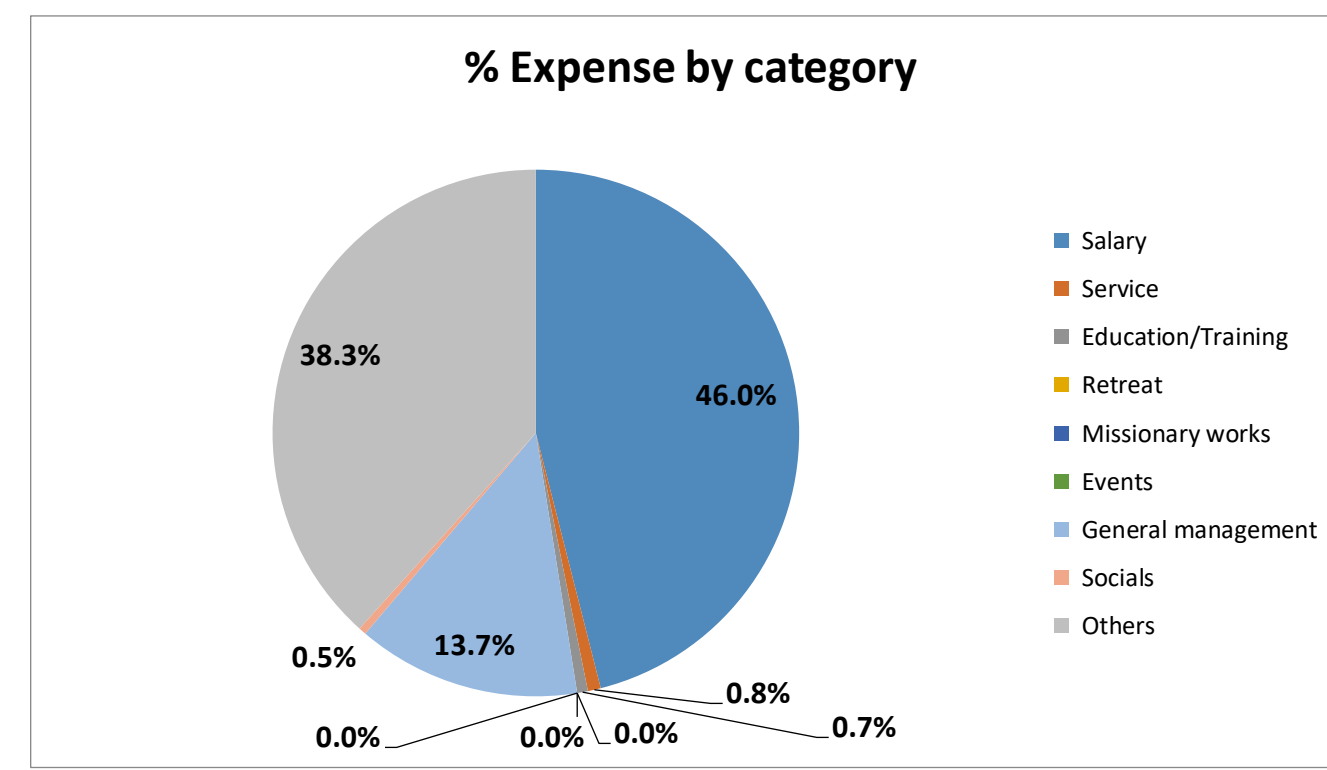
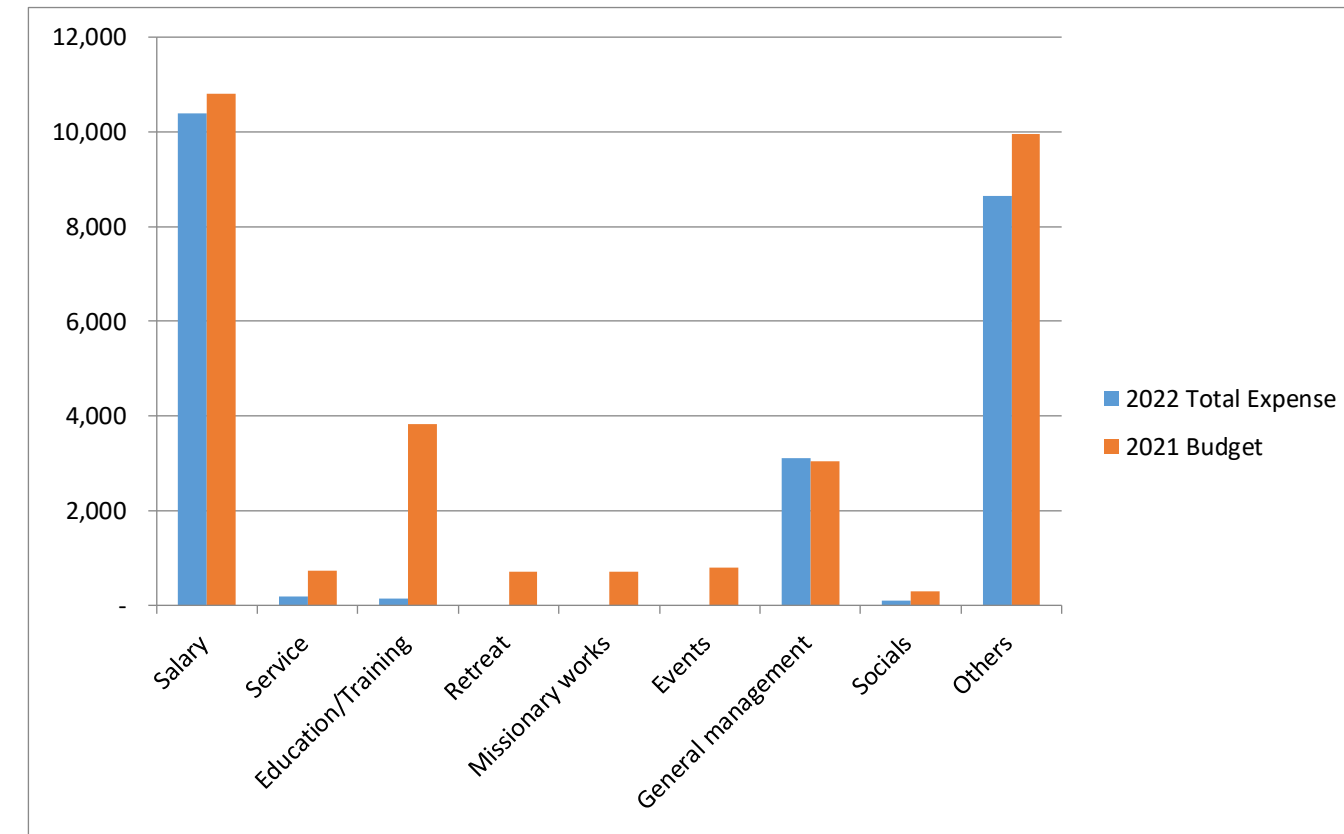
Others														2022 Total Expense	2022 Income Budget	Income/Income Budget
Category	January	February	March	April	May	June	July	August	September	October	November	December				
Evangelical Holiness Church me	-	150.00	-	-	-	-	-	-	-	-	-	-	-	150.00	150.00	100%
Korean-UK church membership	-	-	-	-	-	-	-	-	-	-	-	-	-	-	100.00	0%
Holiday bonus for pastor	-	-	-	-	-	-	-	-	-	-	-	-	-	-	500.00	0%
Rent support for pastor	350.00	350.00	350.00	350.00	350.00	350.00	350.00	350.00	350.00	350.00	350.00	350.00	350.00	4,200.00	4,200.00	100%
Car allowance	436.29	100.00	100.00	100.00	100.00	100.00	430.00	100.00	100.00	100.00	100.00	100.00	100.00	1,866.29	1,900.00	98%
Reserve for retirement allowanc	90.00	90.00	90.00	90.00	90.00	90.00	90.00	90.00	90.00	90.00	90.00	90.00	90.00	1,080.00	1,080.00	100%
Church insurance	-	-	-	-	-	-	-	-	-	-	-	-	-	-	100.00	0%
Accountant fee	-	960.00	-	-	-	-	-	-	-	-	-	-	-	960.00	1,000.00	96%
Money in reserve	-	-	-	-	100.00	100.00	100.00	100.00	-	-	-	-	-	400.00	917.91	44%
	2,058.44	2,844.79	1,630.00	1,659.79	1,666.63	1,646.72	1,961.47	1,632.00	1,638.66	2,028.91	1,911.43	1,913.19	22,592.03			

Total income and expense														Total	Budget	% Total/Budget	
Category	carried over from	January	February	March	April	May	June	July	August	September	October	November	December				
Monthly income	-	1,446.10	1,323.50	1,030.50	1,211.10	2,137.59	1,731.80	1,968.15	1,525.00	1,897.10	1,579.32	1,823.50	1,117.80	18,791.46	33,488.61	56%	
Monthly expense	-	2,058.44	2,844.79	1,630.00	1,659.79	1,666.63	1,646.72	1,961.47	1,632.00	1,638.66	2,028.91	1,911.43	2,598.32	23,277.16	33,488.61	70%	
														Total excluding the carried over	18,791.46	26,380.00	71%





	2022 Total Expense	2021 Budget	항목별 지출 %
Salary	10,400.00	10,800.00	46.0%
Service	180.00	730.00	0.8%
Education	148.87	3,825.00	0.7%
Retreat	-	700.00	0.0%
Missionar	-	700.00	0.0%
Events	-	800.00	0.0%
General n	3,101.35	3,040.00	13.7%
Socials	105.52	300.00	0.5%
Others	8,656.29	9,947.91	38.3%
Total	22,592.03	30,842.91	100.0%



Internal Audit
date 15 Jan 2022
Internal Audit
date 15 Jan 2022

박상도
김은주

Secretary of Church
Date on 17 Jan 2022
KUG HYON SONG

SHEFFIELD KOREAN CHURCH

England & Wales - Charity number 1180549

Accounts

Sheffield Korean Church
Trustees' report and financial statements
for the year ended 31 December 2021
Charity number: 1180549

Structure, governance and management

Sheffield Korean Church is a registered charity and is governed by its own constitution. The operational management of the organisation's day to day activities are delegated to trustees.

Objectives and activities

The main object of the Company is:

To advance the Christianity religion in UK for the benefit of the public through the holding of prayer meeting, lectures, Worship and public celebration of religious festivals producing and distributing literature on Christianity to enlighten others about the Christianity.

Achievements and performance

The Charity has performed fairly well collecting £18611.59 during the year ended 31 Dec 2021. The charity organises Sunday worship services and emphasis was laid on increasing monthly donations and controlling costs.

Statement of trustees' responsibilities

The trustees are responsible for preparing the Trustees' Annual Report and the financial statements in accordance with applicable law and United Kingdom Accounting Standards (United Kingdom Generally Accepted Accounting Practice).

Law applicable to charities in England and Wales requires the trustees to prepare financial statements for each financial year which give a true and fair view of charity and of the incoming resources and application of resources of the charity for that year. In preparing these financial statements the trustees are required to:

select suitable accounting policies and then apply them consistently;

observe the methods and principles in the Charities SORP;

make judgements and estimates that are reasonable and prudent;

state whether applicable UK Accounting Standards have been followed, subject to any material departures disclosed and explained in the financial statements; and

prepare the financial statements on the going concern basis unless it is inappropriate to presume that the charity will continue in operation.

The trustees are responsible for keeping proper accounting records which disclose with reasonable accuracy at any time the financial position of the charity and enable them to ensure that the financial statements comply with the Charities Act 1993 and the Charity (Accounts and Reports) Regulations 2008. They are also responsible for safeguarding the assets of the charity and hence for taking reasonable steps for the prevention and detection of fraud and other irregularities.

On behalf of the Trustees

박정현

Jung Hyun Park

Trustee

2021 Annual Summary

Income

Category	January	February	March	April	May	June	July	August	September	October	November	December	021 Total Income	21 Income Budget	Total Income/Income Budget
Weekly regular collections	15.00	20.00	20.00	26.00	37.00	27.00	22.00	188.90	190.20	138.13	91.50	42.80	818.53	4,500.00	18%
Tithe	670.00	405.00	405.00	190.00	960.00	710.00	200.00	1,280.00	455.00	370.00	505.00	715.00	6,865.00	15,000.00	46%
Thank offering	1,320.00	370.00	270.00	210.00	270.00	310.00	210.00	780.00	295.00	270.00	367.00	210.00	4,882.00	5,500.00	89%
Mission offering	-	-	-	-	-	-	-	-	-	-	-	-	-	500.00	0%
Collection for flowers	-	-	-	-	-	-	-	-	-	-	-	-	-	130.00	0%
New year	-	-	-	-	-	-	-	-	-	-	-	-	-	150.00	0%
Easter	-	-	-	130.00	-	-	-	-	-	-	-	-	130.00	150.00	87%
Feast of Harvest	-	-	-	-	-	-	-	-	121.20	-	-	-	121.20	150.00	81%
Thanksgiving	-	-	-	-	-	-	-	-	-	-	-	-	-	150.00	0%
Christmas	-	-	-	-	-	-	-	-	-	-	-	150.00	150.00	150.00	100%
Bazaar	-	-	-	-	-	-	-	-	-	-	-	-	-	-	0%
Interst	-	-	-	-	-	-	-	-	-	-	-	-	-	-	0%
Others	-	658.69	658.69	658.69	658.69	658.69	-	1,235.05	1,116.36	-	-	-	5,644.86	-	0%
Total	2,005.00	1,453.69	1,353.69	1,214.69	1,925.69	1,705.69	432.00	3,483.95	2,177.76	778.13	963.50	1,117.80	18,611.59	26,380.00	71%

Expense

Salary

Category	January	February	March	April	May	June	July	August	September	October	November	December	021 Total Expense	21 Income Budget	Total Income/Income Budget
Salary for pastor	900.00	900.00	900.00	900.00	900.00	900.00	900.00	900.00	900.00	900.00	900.00	900.00	10,800.00	10,800.00	100%

Service

Category	January	February	March	April	May	June	July	August	September	October	November	December	021 Total Expense	21 Income Budget	Total Income/Income Budget
Lecture fee	-	-	-	-	-	-	-	-	-	-	-	-	-	300.00	0%
Flower decoration	-	-	-	-	-	-	-	15.00	15.00	15.00	15.00	15.00	75.00	180.00	42%
Sacraments preparation	-	-	-	-	-	-	-	-	-	-	-	-	-	50.00	0%
Ainnos team	-	-	-	-	-	-	-	-	-	-	-	-	-	300.00	0%
Translation team	-	-	-	-	-	-	-	-	-	-	-	-	-	100.00	0%

Education/Training

Category	January	February	March	April	May	June	July	August	September	October	November	December	021 Total Expense	21 Income Budget	Total Income/Income Budget
Sunday school	-	-	-	-	-	-	-	-	-	68.31	-	88.40	156.71	1,000.00	16%
Youth	-	-	-	-	-	-	-	-	-	-	-	-	-	200.00	0%
Young adults	-	-	-	-	-	55.19	-	-	-	21.07	116.87	35.14	228.27	500.00	46%
Training for baptists	-	-	-	-	-	-	-	-	-	-	-	-	-	50.00	0%
Training for new comer	-	-	-	-	-	-	-	-	-	-	-	-	-	150.00	0%
One-to-one discipleship training	-	-	-	-	-	57.35	-	-	-	-	-	47.08	104.43	1,725.00	6%
Seminar for teachers	-	-	-	-	-	-	-	-	-	-	-	-	-	500.00	0%

Retreat

Category	January	February	March	April	May	June	July	August	September	October	November	December	021 Total Expense	21 Income Budget	Total Income/Income Budget
Transportation	-	-	-	-	-	-	-	-	-	-	-	-	-	500.00	0%
Accommodation	-	-	-	-	-	-	-	-	-	-	-	-	-	200.00	0%

Missionary works

Category	January	February	March	April	May	June	July	August	September	October	November	December	021 Total Expense	21 Income Budget	Total Income/Income Budget
Missionary expenses	-	-	-	-	-	-	-	-	-	-	-	-	-	1,000.00	0%
Relief expenses	-	-	-	-	-	-	-	-	-	-	-	30.06	30.06	200.00	15%

Events

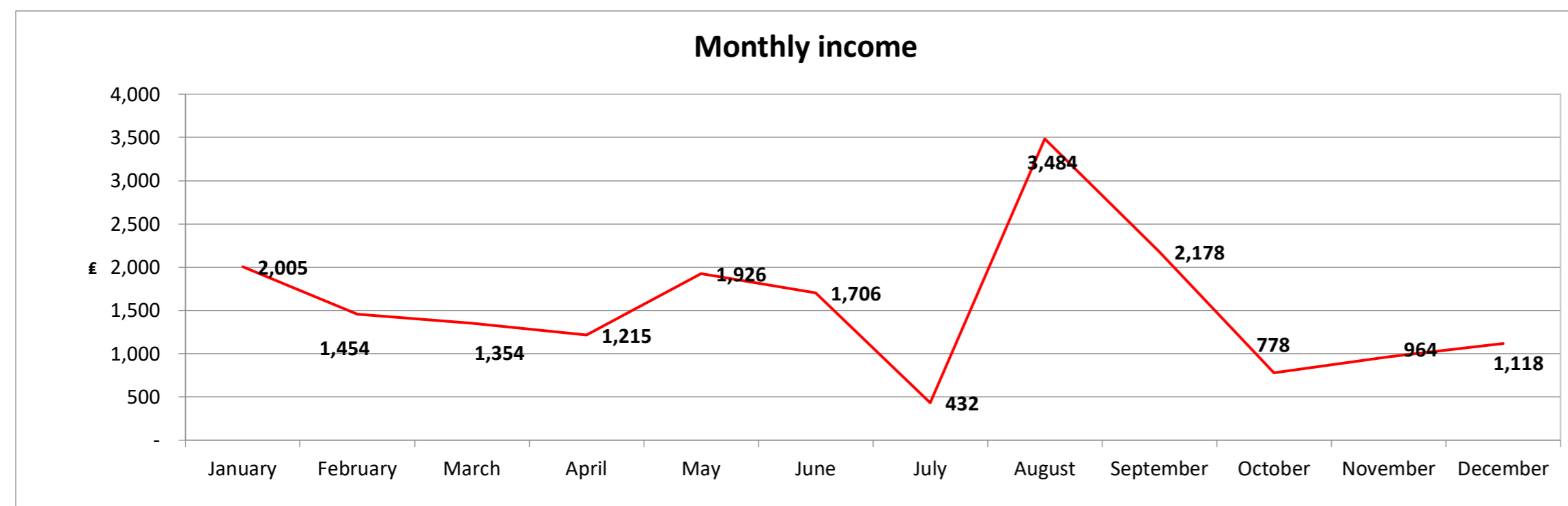
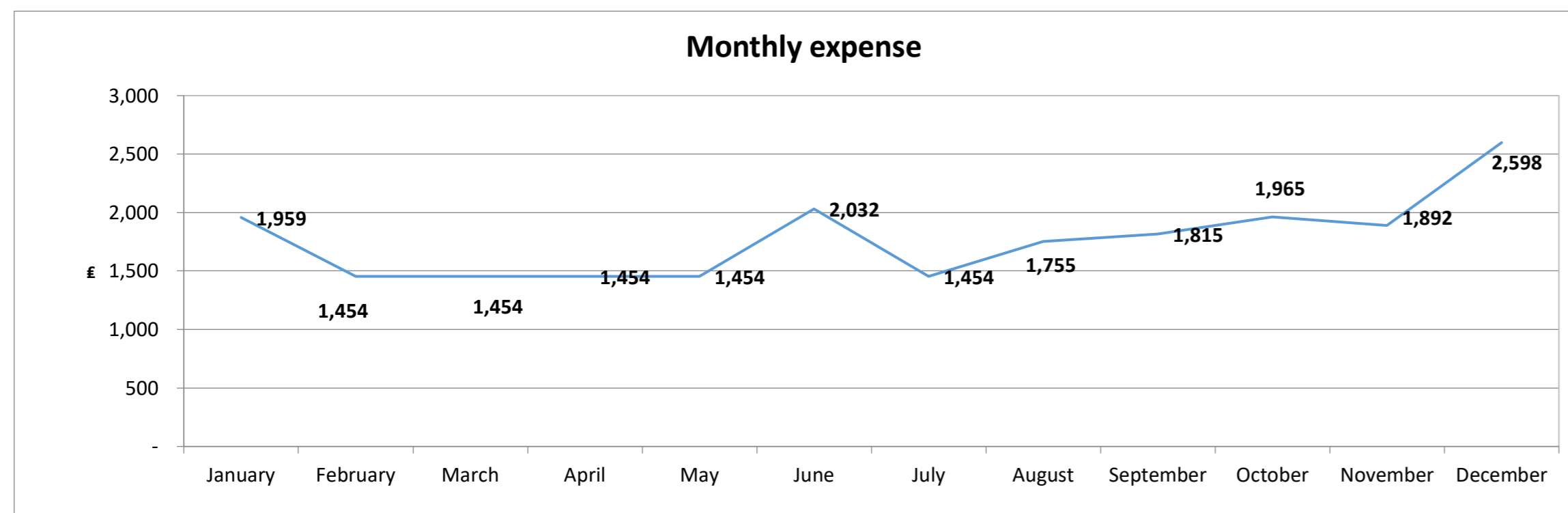
Category	January	February	March	April	May	June	July	August	September	October	November	December	021 Total Expense	21 Income Budget	Total Income/Income Budget
Church seasonal events	-	-	-	-	-	-	-	-	-	47.64	-	25.30	72.94	200.00	36%
General events	-	-	-	-	-	-	-	-	-	118.23	127.52	-	245.75	600.00	41%
Church anniversary	-	-	-	-	-	-	-	-	-	-	22.24	14.99	37.23	100.00	37%

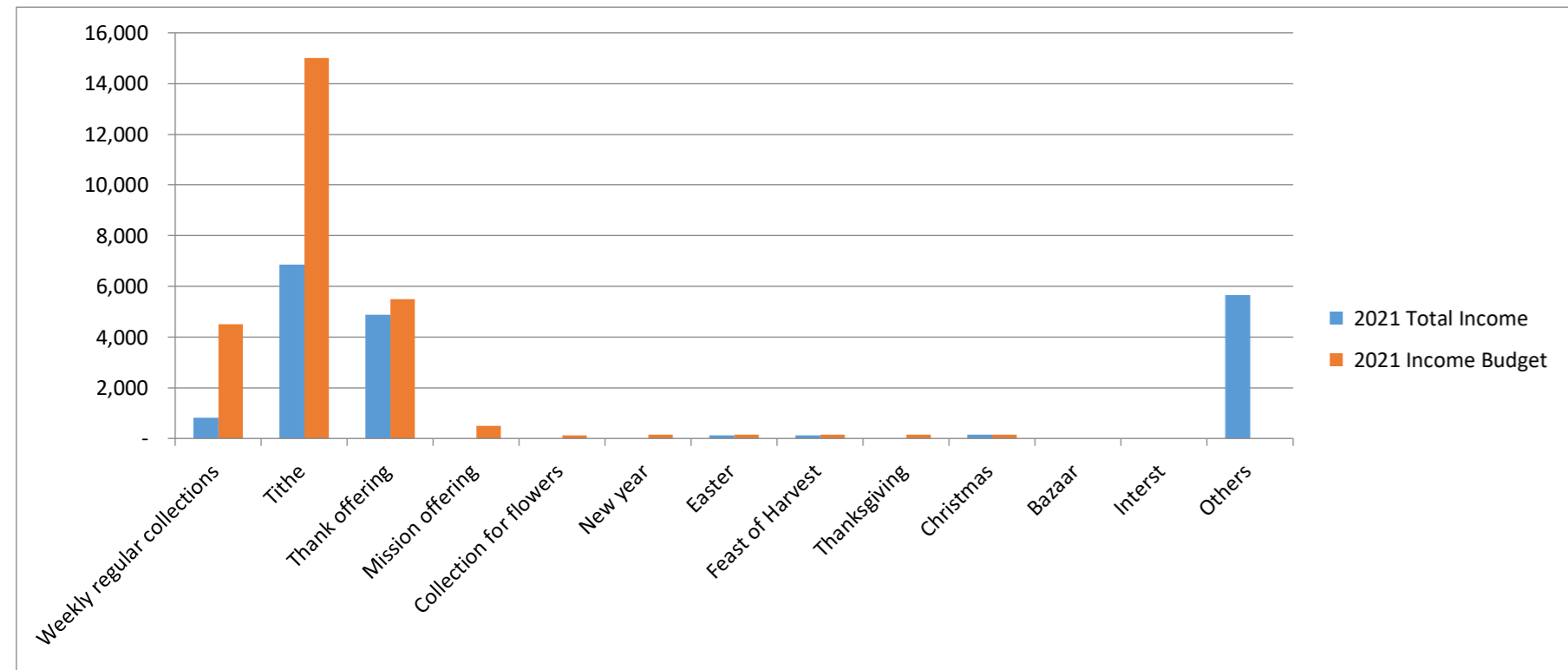
General management															
Category	January	February	March	April	May	June	July	August	September	October	November	December	021 Total Expend	21 Income Budget	Total Income/Income Budget
Rent fee	-	-	-	-	-	-	-	170.00	170.00	170.00	170.00	170.00	850.00	2,040.00	42%
Consumable supplies/equipment	-	-	-	-	-	-	-	-	26.25	-	-	6.45	32.70	300.00	11%
General management	14.39	14.39	14.39	14.39	14.39	14.39	14.39	-	164.07	84.68	-	125.90	475.38	500.00	95%
Cluster meeting	-	-	-	-	-	-	-	-	-	-	-	-	-	500.00	0%
Church committee	-	-	-	-	-	-	-	-	-	-	-	-	-	150.00	0%

Socials															
Category	January	February	March	April	May	June	July	August	September	October	November	December	021 Total Expend	21 Income Budget	Total Income/Income Budget
Condolence/congratulations/other	-	-	-	-	-	-	-	94.72	-	-	-	-	94.72	300.00	32%

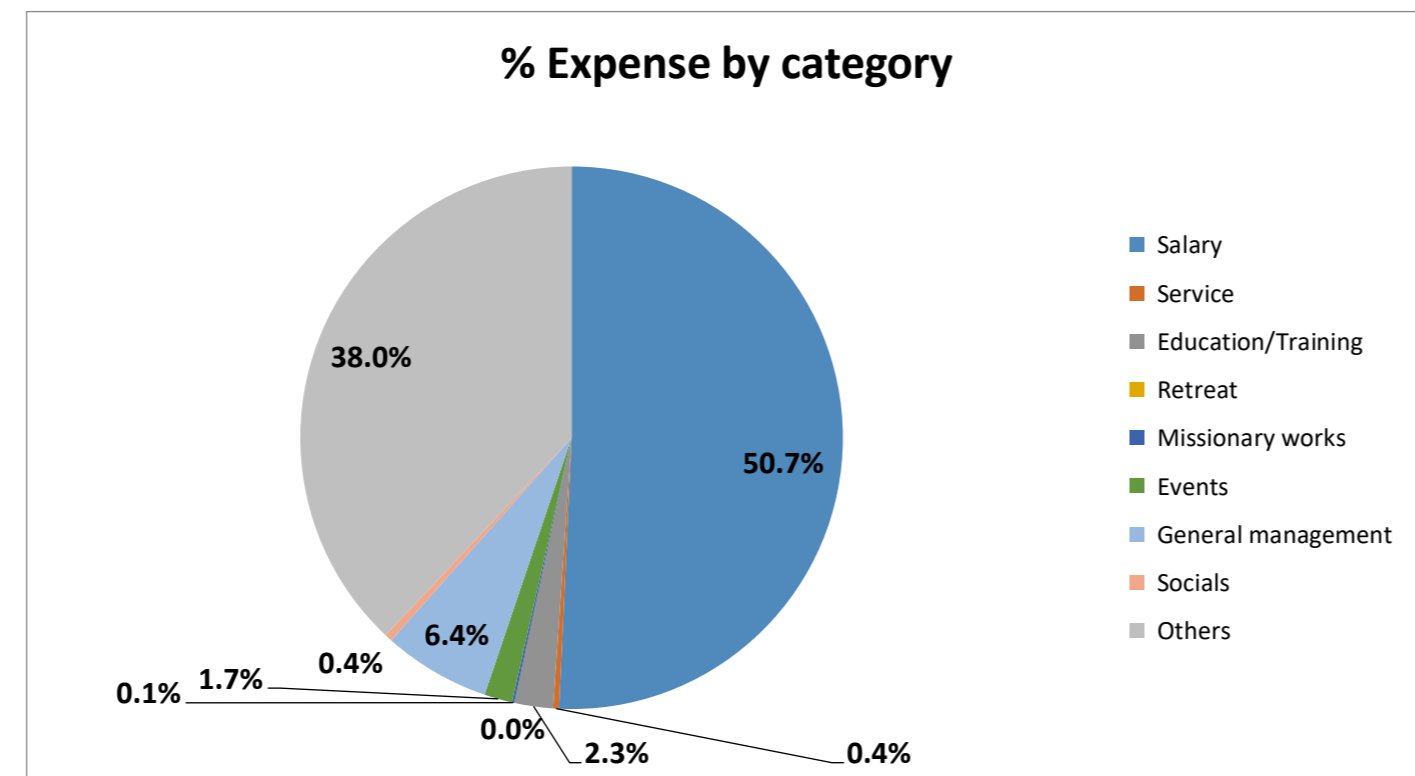
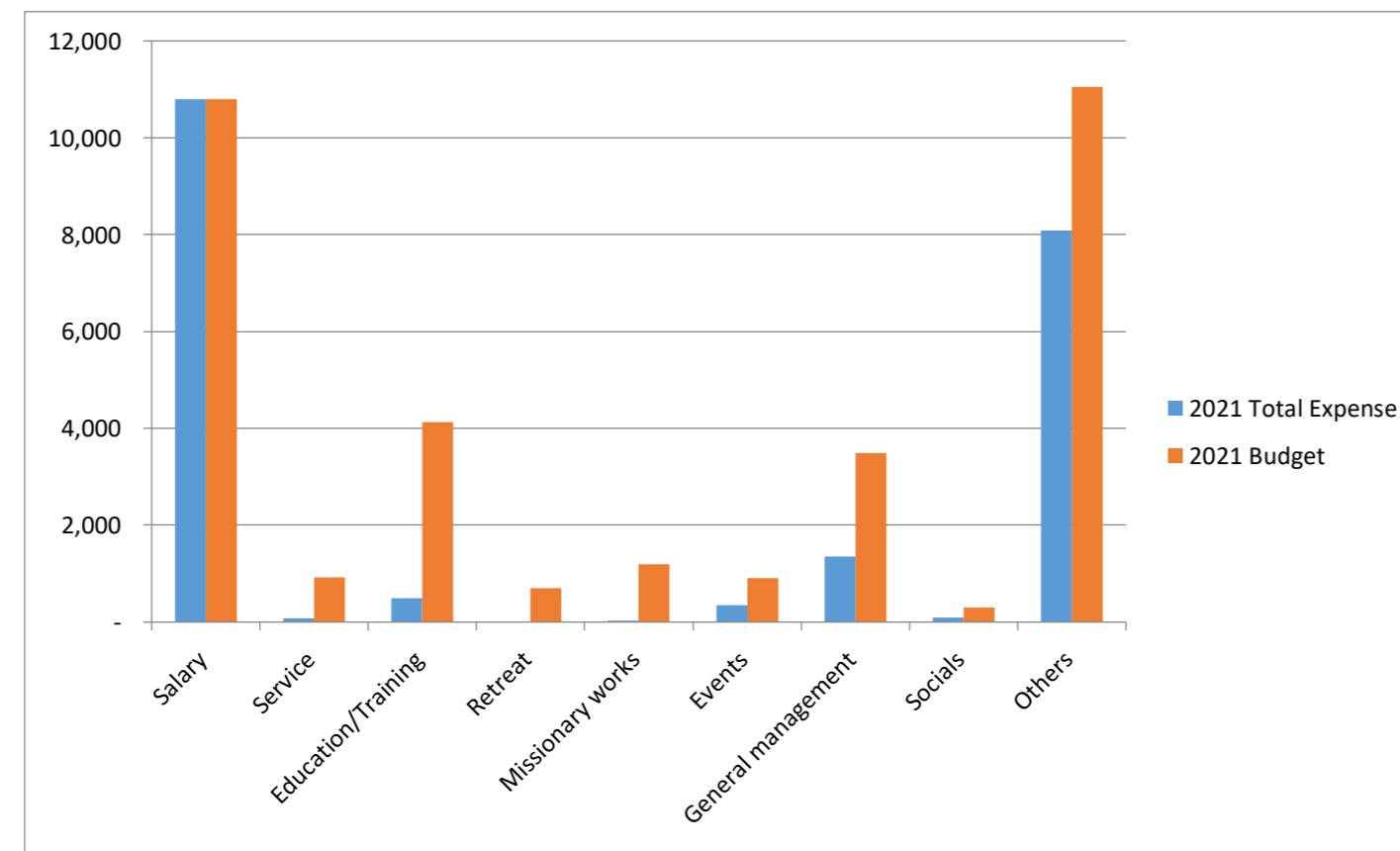
Others															
Category	January	February	March	April	May	June	July	August	September	October	November	December	021 Total Expend	21 Income Budget	Total Income/Income Budget
Evangelical Holiness Church mem	-	-	-	-	-	150.00	-	-	-	-	-	-	150.00	150.00	100%
Korean-UK church membership fee	100.00	-	-	-	-	-	-	-	-	-	-	100.00	200.00	100.00	200%
Holiday bonus for pastor	-	-	-	-	-	-	-	-	-	-	-	500.00	500.00	500.00	100%
Rent support for pastor	350.00	350.00	350.00	350.00	350.00	350.00	350.00	350.00	350.00	350.00	350.00	350.00	4,200.00	4,200.00	100%
Car allowance	412.42	100.00	100.00	100.00	100.00	415.00	100.00	100.00	100.00	100.00	100.00	100.00	1,827.42	1,900.00	96%
Reserve for retirement allowance	90.00	90.00	90.00	90.00	90.00	90.00	90.00	90.00	90.00	90.00	90.00	90.00	1,080.00	1,080.00	100%
Church insurance	-	-	-	-	-	-	-	35.38	-	-	-	-	35.38	442.90	8%
Accountant fee	-	-	-	-	-	-	-	-	-	-	-	-	-	1,000.00	0%
Money in reserve	91.80	-	-	-	-	-	-	-	-	-	-	-	91.80	1,670.71	5%
	1,958.61	1,454.39	1,454.39	1,454.39	1,454.39	2,031.93	1,454.39	1,755.10	1,815.32	1,964.93	1,891.63	2,598.32	21,287.79		

Total income and expense																	
Category	carried over fr	January	February	March	April	May	June	July	August	September	October	November	December	Total	Budget	% Total/Budget	
Monthly income	7,108.61	2,005.00	1,453.69	1,353.69	1,214.69	1,925.69	1,705.69	432.00	3,483.95	2,177.76	778.13	963.50	1,117.80	25,720.20	33,488.61	77%	
Monthly expense		1,958.61	1,454.39	1,454.39	1,454.39	1,454.39	2,031.93	1,454.39	1,755.10	1,815.32	1,964.93	1,891.63	2,598.32	21,287.79	33,488.61	64%	
														Total excluding the carried over	18,611.59	26,380.00	71%





	2021 Total Expense	2021 Budget	항목별 지출 %
Salary	10,800.00	10,800.00	50.7%
Service	75.00	930.00	0.4%
Education	489.41	4,125.00	2.3%
Retreat	-	700.00	0.0%
Missionary	30.06	1,200.00	0.1%
Events	355.92	900.00	1.7%
General m	1,358.08	3,490.00	6.4%
Socials	94.72	300.00	0.4%
Others	8,084.60	11,043.61	38.0%
Total	21,287.79	33,488.61	100.0%



Internal Audit
date 15 Jan 2022
Internal Audit
date 15 Jan 2022

박은희
김은주

Secretary of Church
Date on 17 Jan 2022

KUG HYON SONG

2021 Annual Summary

Income

Category	January	February	March	April	May	June	July	August	September	October	November	December	021 Total Income	21 Income Budget	Total Income/Income Budget
Weekly regular collections	15.00	20.00	20.00	26.00	37.00	27.00	22.00	188.90	190.20	138.13	91.50	42.80	818.53	4,500.00	18%
Tithe	670.00	405.00	405.00	190.00	960.00	710.00	200.00	1,280.00	455.00	370.00	505.00	715.00	6,865.00	15,000.00	46%
Thank offering	1,320.00	370.00	270.00	210.00	270.00	310.00	210.00	780.00	295.00	270.00	367.00	210.00	4,882.00	5,500.00	89%
Mission offering	-	-	-	-	-	-	-	-	-	-	-	-	-	500.00	0%
Collection for flowers	-	-	-	-	-	-	-	-	-	-	-	-	-	130.00	0%
New year	-	-	-	-	-	-	-	-	-	-	-	-	-	150.00	0%
Easter	-	-	-	130.00	-	-	-	-	-	-	-	-	130.00	150.00	87%
Feast of Harvest	-	-	-	-	-	-	-	-	121.20	-	-	-	121.20	150.00	81%
Thanksgiving	-	-	-	-	-	-	-	-	-	-	-	-	-	150.00	0%
Christmas	-	-	-	-	-	-	-	-	-	-	-	150.00	150.00	150.00	100%
Bazaar	-	-	-	-	-	-	-	-	-	-	-	-	-	-	0%
Interst	-	-	-	-	-	-	-	-	-	-	-	-	-	-	0%
Others	-	658.69	658.69	658.69	658.69	658.69	-	1,235.05	1,116.36	-	-	-	5,644.86	-	0%
Total	2,005.00	1,453.69	1,353.69	1,214.69	1,925.69	1,705.69	432.00	3,483.95	2,177.76	778.13	963.50	1,117.80	18,611.59	26,380.00	71%

Expense

Salary

Category	January	February	March	April	May	June	July	August	September	October	November	December	021 Total Expense	21 Income Budget	Total Income/Income Budget
Salary for pastor	900.00	900.00	900.00	900.00	900.00	900.00	900.00	900.00	900.00	900.00	900.00	900.00	10,800.00	10,800.00	100%

Service

Category	January	February	March	April	May	June	July	August	September	October	November	December	021 Total Expense	21 Income Budget	Total Income/Income Budget
Lecture fee	-	-	-	-	-	-	-	-	-	-	-	-	-	300.00	0%
Flower decoration	-	-	-	-	-	-	-	15.00	15.00	15.00	15.00	15.00	75.00	180.00	42%
Sacraments preparation	-	-	-	-	-	-	-	-	-	-	-	-	-	50.00	0%
Ainnos team	-	-	-	-	-	-	-	-	-	-	-	-	-	300.00	0%
Translation team	-	-	-	-	-	-	-	-	-	-	-	-	-	100.00	0%

Education/Training

Category	January	February	March	April	May	June	July	August	September	October	November	December	021 Total Expense	21 Income Budget	Total Income/Income Budget
Sunday school	-	-	-	-	-	-	-	-	-	68.31	-	88.40	156.71	1,000.00	16%
Youth	-	-	-	-	-	-	-	-	-	-	-	-	-	200.00	0%
Young adults	-	-	-	-	-	55.19	-	-	-	21.07	116.87	35.14	228.27	500.00	46%
Training for baptists	-	-	-	-	-	-	-	-	-	-	-	-	-	50.00	0%
Training for new comer	-	-	-	-	-	-	-	-	-	-	-	-	-	150.00	0%
One-to-one discipleship training	-	-	-	-	-	57.35	-	-	-	-	-	47.08	104.43	1,725.00	6%
Seminar for teachers	-	-	-	-	-	-	-	-	-	-	-	-	-	500.00	0%

Retreat

Category	January	February	March	April	May	June	July	August	September	October	November	December	021 Total Expense	21 Income Budget	Total Income/Income Budget
Transportation	-	-	-	-	-	-	-	-	-	-	-	-	-	500.00	0%
Accommodation	-	-	-	-	-	-	-	-	-	-	-	-	-	200.00	0%

Missionary works

Category	January	February	March	April	May	June	July	August	September	October	November	December	021 Total Expense	21 Income Budget	Total Income/Income Budget
Missionary expenses	-	-	-	-	-	-	-	-	-	-	-	-	-	1,000.00	0%
Relief expenses	-	-	-	-	-	-	-	-	-	-	-	30.06	30.06	200.00	15%

Events

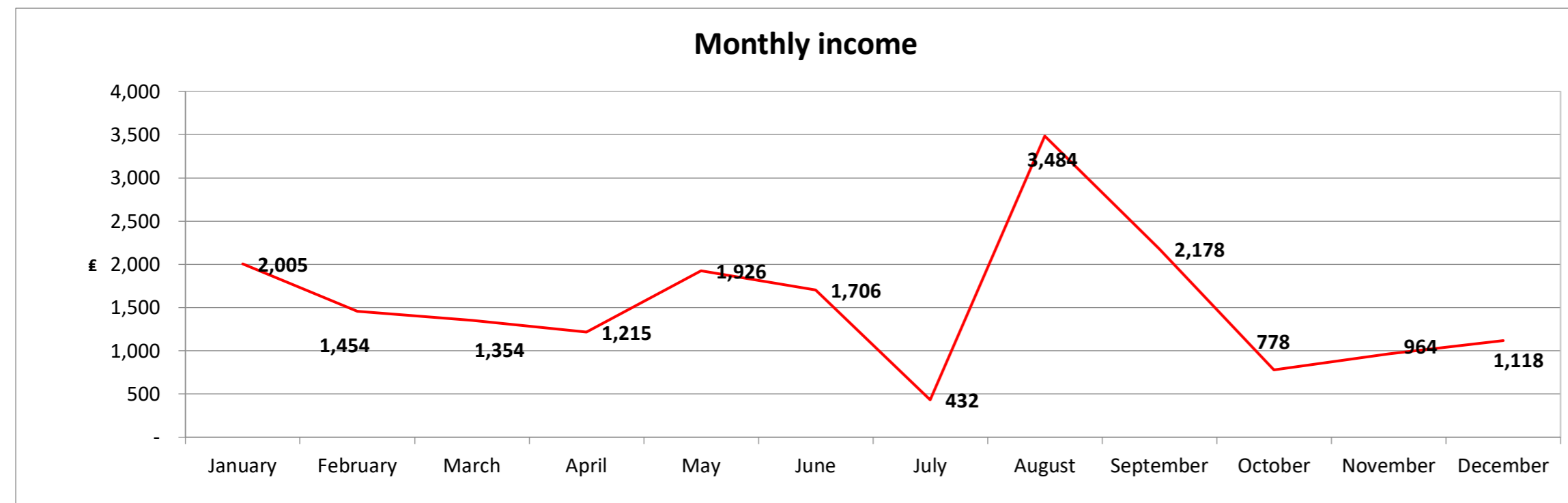
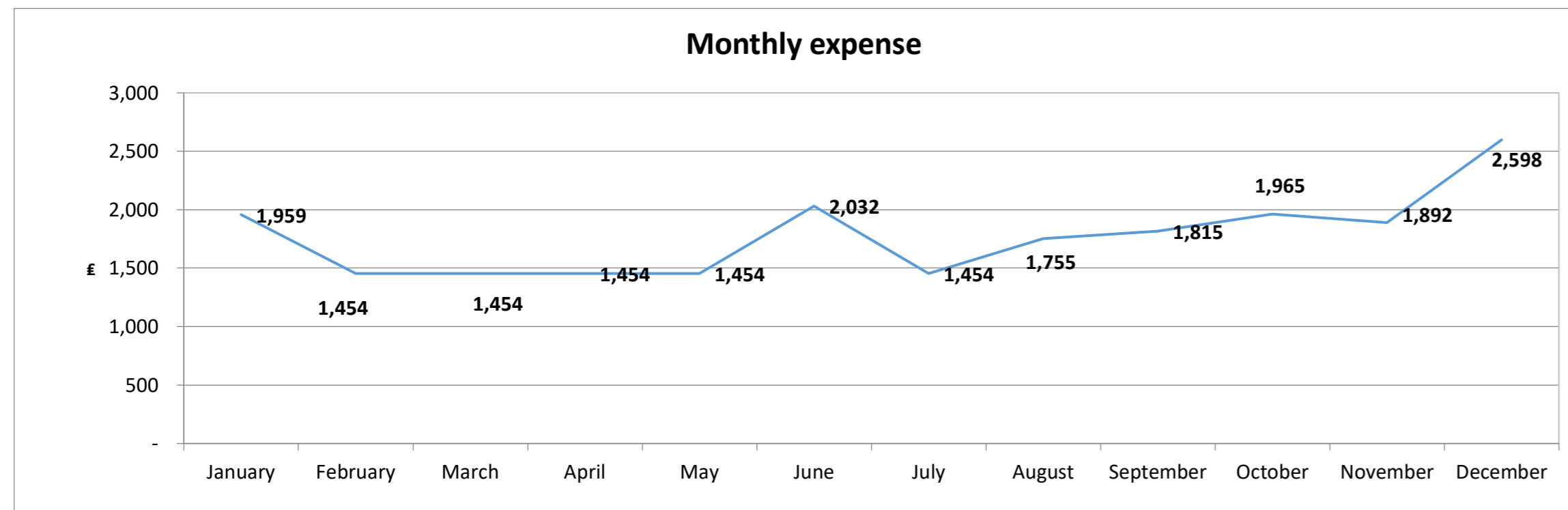
Category	January	February	March	April	May	June	July	August	September	October	November	December	021 Total Expense	21 Income Budget	Total Income/Income Budget
Church seasonal events	-	-	-	-	-	-	-	-	-	47.64	-	25.30	72.94	200.00	36%
General events	-	-	-	-	-	-	-	-	-	118.23	127.52	-	245.75	600.00	41%
Church anniversary	-	-	-	-	-	-	-	-	-	-	22.24	14.99	37.23	100.00	37%

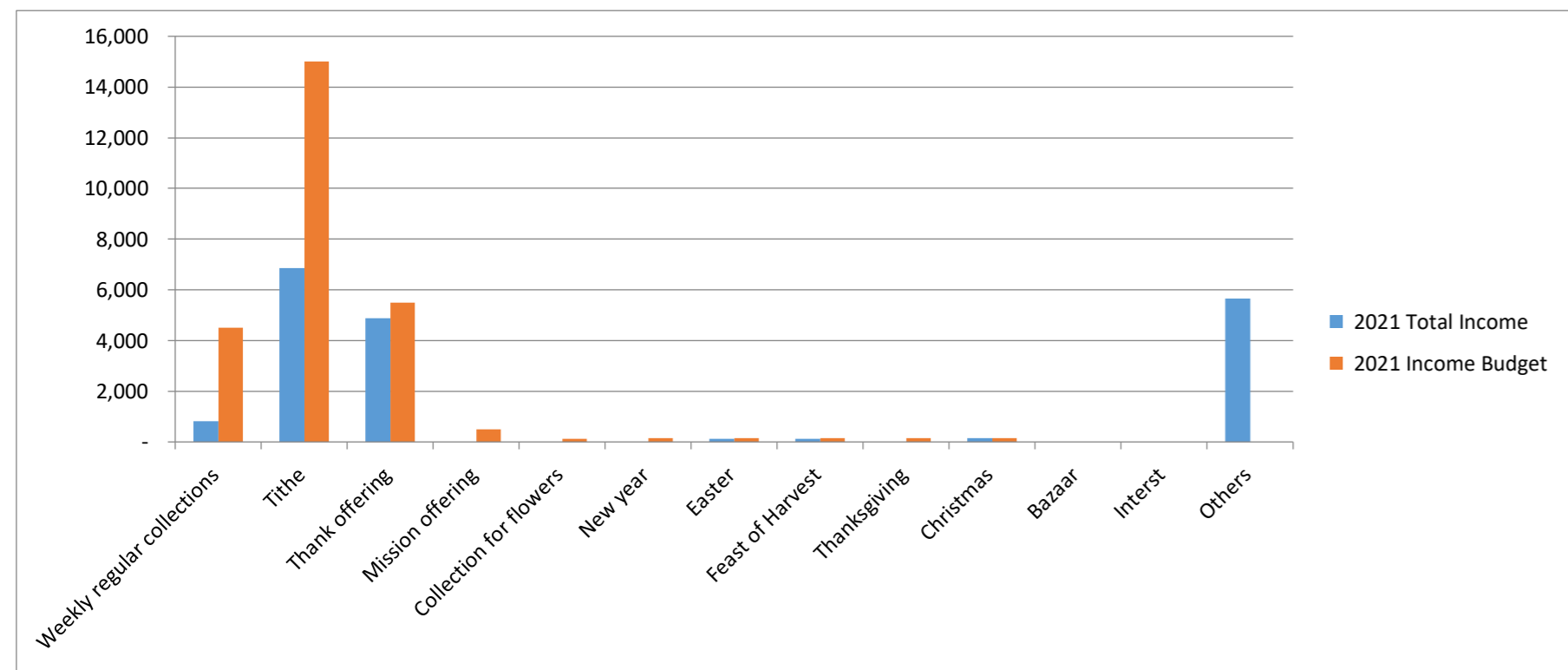
General management															
Category	January	February	March	April	May	June	July	August	September	October	November	December	021 Total Expend	21 Income Budget	Total Income/Income Budget
Rent fee	-	-	-	-	-	-	-	170.00	170.00	170.00	170.00	170.00	850.00	2,040.00	42%
Consumable supplies/equipment	-	-	-	-	-	-	-	-	26.25	-	-	6.45	32.70	300.00	11%
General management	14.39	14.39	14.39	14.39	14.39	14.39	14.39	-	164.07	84.68	-	125.90	475.38	500.00	95%
Cluster meeting	-	-	-	-	-	-	-	-	-	-	-	-	-	500.00	0%
Church committee	-	-	-	-	-	-	-	-	-	-	-	-	-	150.00	0%

Socials															
Category	January	February	March	April	May	June	July	August	September	October	November	December	021 Total Expend	21 Income Budget	Total Income/Income Budget
Condolence/congratulations/other	-	-	-	-	-	-	-	94.72	-	-	-	-	94.72	300.00	32%

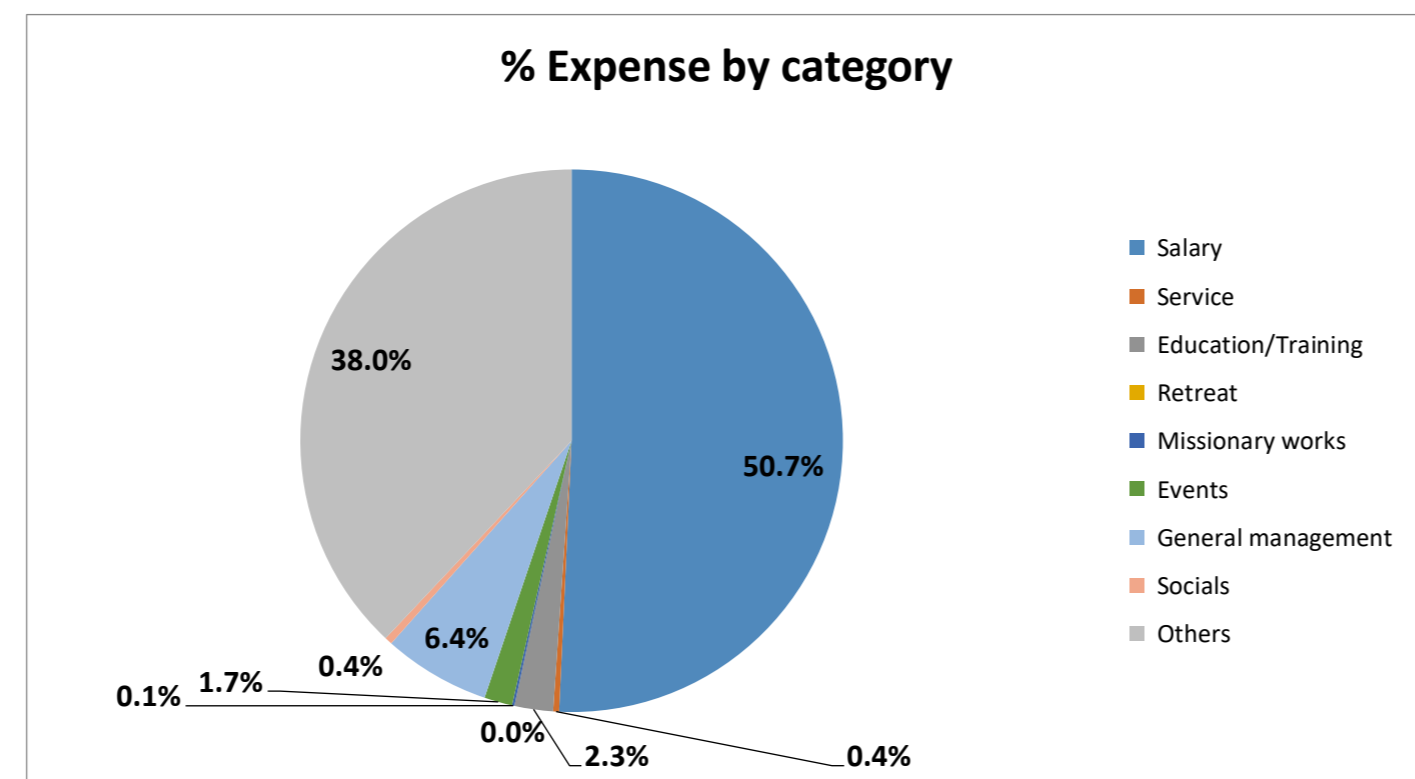
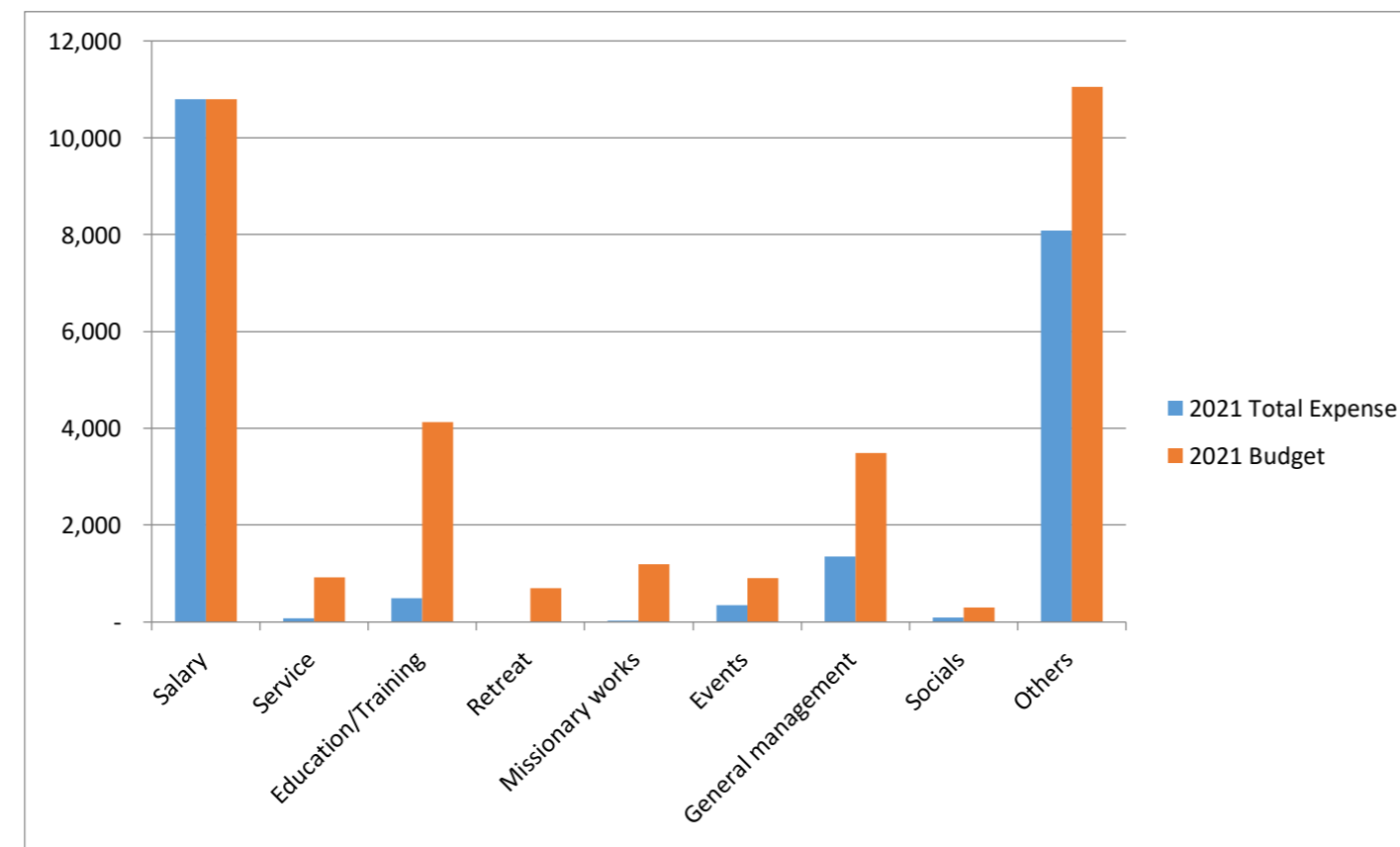
Others															
Category	January	February	March	April	May	June	July	August	September	October	November	December	021 Total Expend	21 Income Budget	Total Income/Income Budget
Evangelical Holiness Church mem	-	-	-	-	-	150.00	-	-	-	-	-	-	150.00	150.00	100%
Korean-UK church membership fee	100.00	-	-	-	-	-	-	-	-	-	-	100.00	200.00	100.00	200%
Holiday bonus for pastor	-	-	-	-	-	-	-	-	-	-	-	500.00	500.00	500.00	100%
Rent support for pastor	350.00	350.00	350.00	350.00	350.00	350.00	350.00	350.00	350.00	350.00	350.00	350.00	4,200.00	4,200.00	100%
Car allowance	412.42	100.00	100.00	100.00	100.00	415.00	100.00	100.00	100.00	100.00	100.00	100.00	1,827.42	1,900.00	96%
Reserve for retirement allowance	90.00	90.00	90.00	90.00	90.00	90.00	90.00	90.00	90.00	90.00	90.00	90.00	1,080.00	1,080.00	100%
Church insurance	-	-	-	-	-	-	-	35.38	-	-	-	-	35.38	442.90	8%
Accountant fee	-	-	-	-	-	-	-	-	-	-	-	-	-	1,000.00	0%
Money in reserve	91.80	-	-	-	-	-	-	-	-	-	-	-	91.80	1,670.71	5%
	1,958.61	1,454.39	1,454.39	1,454.39	1,454.39	2,031.93	1,454.39	1,755.10	1,815.32	1,964.93	1,891.63	2,598.32	21,287.79		

Total income and expense																	
Category	carried over fr	January	February	March	April	May	June	July	August	September	October	November	December	Total	Budget	% Total/Budget	
Monthly income	7,108.61	2,005.00	1,453.69	1,353.69	1,214.69	1,925.69	1,705.69	432.00	3,483.95	2,177.76	778.13	963.50	1,117.80	25,720.20	33,488.61	77%	
Monthly expense		1,958.61	1,454.39	1,454.39	1,454.39	1,454.39	2,031.93	1,454.39	1,755.10	1,815.32	1,964.93	1,891.63	2,598.32	21,287.79	33,488.61	64%	
														Total excluding the carried over	18,611.59	26,380.00	71%





	2021 Total Expense	2021 Budget	항목별 지출 %
Salary	10,800.00	10,800.00	50.7%
Service	75.00	930.00	0.4%
Education	489.41	4,125.00	2.3%
Retreat	-	700.00	0.0%
Missionary	30.06	1,200.00	0.1%
Events	355.92	900.00	1.7%
General m	1,358.08	3,490.00	6.4%
Socials	94.72	300.00	0.4%
Others	8,084.60	11,043.61	38.0%
Total	21,287.79	33,488.61	100.0%



Internal Audit
date 15 Jan 2022
Internal Audit
date 15 Jan 2022

박은희
김은주

Secretary of Church
Date on 17 Jan 2022

KUG HYON SONG

SHEFFIELD KOREAN CHURCH

England & Wales - Charity number 1180549

Accounts

Sheffield Korean Church
Trustees' report and financial statements
for the year ended 31 December 2020
Charity number: 1180549

Structure, governance and management

Sheffield Korean Church is a registered charity and is governed by its own constitution. The operational management of the organisation's day to day activities are delegated to trustees.

Objectives and activities

The main object of the Company is:

To advance the Christianity religion in UK for the benefit of the public through the holding of prayer meeting, lectures, Worship and public celebration of religious festivals producing and distributing literature on Christianity to enlighten others about the Christianity.

Achievements and performance

The Charity has performed fairly well collecting £19,883.68 during the year ended 31 Dec 2020. The charity organises Sunday worship services and emphasis was laid on increasing monthly donations and controlling costs. Funds generated via regular donations totaled £19,883.68 up to year ended 31 Dec 2020 which is 65% less than last year due to the Covid 19 Pandemic issue and reduced many Korean students and families.

There was a deficit during the current year of £2,177.46 Focus is to maintain and where possible to increase donation receipts.

Statement of trustees' responsibilities

The trustees are responsible for preparing the Trustees' Annual Report and the financial statements in accordance with applicable law and United Kingdom Accounting Standards (United Kingdom Generally Accepted Accounting Practice).

Law applicable to charities in England and Wales requires the trustees to prepare financial statements for each financial year which give a true and fair view of charity and of the incoming resources and application of resources of the charity for that year. In preparing these financial statements the trustees

are required to:

select suitable accounting policies and then apply them consistently;

observe the methods and principles in the Charities SORP;

make judgements and estimates that are reasonable and prudent;

state whether applicable UK Accounting Standards have been followed, subject to any material departures disclosed and explained in the financial statements; and

prepare the financial statements on the going concern basis unless it is inappropriate to presume that the charity will continue in operation.

The trustees are responsible for keeping proper accounting records which disclose with reasonable accuracy at any time the financial position of the charity and enable them to ensure that the financial statements comply with the Charities Act 1993 and the Charity (Accounts and Reports) Regulations 2008. They are also responsible for safeguarding the assets of the charity and hence for taking reasonable steps for the prevention and detection of fraud and other irregularities.

On behalf of the Trustees

박정현

Jung Hyun Park

Trustee



Receipts and payments accounts

CC16a

For the period from	01/01/2020	To	31/12/2020
---------------------	------------	----	------------

Section A Receipts and payments

	Unrestricted funds to the nearest £	Restricted funds to the nearest £	Endowment funds to the nearest £	Total funds to the nearest £	Last year to the nearest £
A1 Receipts					
	19,884	-	-	19,884	-
	-	-	-	-	-
	-	-	-	-	-
	-	-	-	-	-
	-	-	-	-	-
	-	-	-	-	-
	-	-	-	-	-
Sub total (Gross income for AR)	19,884	-	-	19,884	-
A2 Asset and investment sales, (see table).					
	-	-	-	-	-
	-	-	-	-	-
Sub total	-	-	-	-	-
Total receipts	19,884	-	-	19,884	-
A3 Payments					
	0	-	-	0	-
Wages, salaries and other staff costs	10,700.00	-	-	10,700.00	-
Car, van and travel expenses	705.00	-	-	705.00	-
Rent, rates, power and insurance costs	5,388.00	-	-	5,388.00	-
Repairs and renewals of property and	0.00	-	-	0.00	-
Telephone, fax, stationery and other of	612.17	-	-	612.17	-
Advertising and business entertainmen	0.00	-	-	0.00	-
Training & development	0.00	-	-	0.00	-
Equipment expensed	0.00	-	-	0.00	-
Subscription	880.14	-	-	880.14	-
Bank, credit card and other finance cha	0.00	-	-	0.00	-
PAYE taxes	107.92	-	-	107.92	-
Accountancy	594.00	-	-	594.00	-
Legal and other professional fees	0.00	-	-	0.00	-
Meals & subsistence	1,990.36	-	-	1,990.36	-
Savings set aside	1,197.55	-	-	1,197.55	-
	-	-	-	-	-
	-	-	-	-	-
	-	-	-	-	-
	-	-	-	-	-
Sub total	22,175	-	-	22,175	-
A4 Asset and investment purchases, (see table)					
	-	-	-	-	-
	-	-	-	-	-
Sub total	22,175	-	-	22,175	-
Total payments	0	-	-	0	-
Net of receipts/(payments)	0	-	-	0	-
A5 Transfers between funds	-	-	-	-	-
A6 Cash funds last year end	-	-	-	-	-
Cash funds this year end	2,291	-	-	2,291	-

Section B Statement of assets and liabilities at the end of the period

Categories	Details	Unrestricted funds to nearest £	Restricted funds to nearest £	Endowment funds to nearest £
B1 Cash funds		7,221	-	-
	SAVINGS SET ASIDE	829	-	-
	SAVINGS SET ASIDE THIS YEAR	1,198	-	-
	Total cash funds	9,248	-	-
	(agree balances with receipts and payments account(s))	Agreement Error	OK	OK
B2 Other monetary assets	Details	Unrestricted funds to nearest £	Restricted funds to nearest £	Endowment funds to nearest £
	BAND EQUIPMENT	1,580	-	-
		-	-	-
		-	-	-
		-	-	-
		-	-	-
		-	-	-
B3 Investment assets	Details	Fund to which asset belongs	Cost (optional)	Current value (optional)
			-	-
			-	-
			-	-
			-	-
B4 Assets retained for the charity's own use	Details	Fund to which asset belongs	Cost (optional)	Current value (optional)
			-	-
			-	-
			-	-
			-	-
			-	-
			-	-
			-	-
B5 Liabilities	Details	Fund to which liability relates	Amount due (optional)	When due (optional)
	ACCOUNTANCY FEE	960	-	
			-	
			-	
			-	
Signed by one or two trustees on behalf of all the trustees	Signature	Print Name	Date of approval	
	JUNGHYUN PARK	JUNGHYUN PARK	27/10/2021	