

CHILLAX

England & Wales · Charity number 1180536

Details

Status Registered

Legal form CIO

Registered 2018-11-02

Register [View on the Charity Commission register](#)

Contact

Address 35 Cwm Cottage Road
Abertillery
Gwent
NP13 1AT

Phone 01633881664

Activities

Objects: TO ADVANCE IN LIFE AND RELIEVE NEEDS OF YOUNG PEOPLE AGED 11 TO 16 THROUGH:(A) THE PROVISION OF RECREATIONAL AND LEISURE TIME ACTIVITIES PROVIDED IN THE INTEREST OF SOCIAL WELFARE, DESIGNED TO IMPROVE THEIR CONDITIONS OF LIFE;(B) PROVIDING SUPPORT AND ACTIVITIES WHICH DEVELOP THEIR SKILLS, CAPACITIES AND CAPABILITIES TO ENABLE THEM TO PARTICIPATE IN SOCIETY AS MATURE AND RESPONSIBLE INDIVIDUALS

Activities: At each session offered there is a range of activities to engage the children to cover all age ranges and abilities. All the activities offered encourage participation and social interaction for the children to have fun and feel safe. Chillax has had opportunities to carry out a range of fundraising activities to be able to provide specific trips to give the children lifelong learning opportunity

Classification

- **How:** Provides Buildings/facilities/open Space, Provides Services, Provides Advocacy/advice/information
- **What:** General Charitable Purposes, Other Charitable Purposes
- **Who:** Children/young People

Geography

- Blaenau Gwent

Finances

Period end	Income	Expenditure	Assets	Employees
2025-03-31	£39,460	£23,814	-	-
2024-03-31	£24,904	£17,495	-	-
2023-03-31	£13,832	£14,417	-	-
2022-03-31	£12,354	£13,171	-	-
2021-03-31	£9,150	£13,675	-	-

Trustees

Name	Role	Appointed
Keri Jones	Chair	2020-09-04
MALCOM DAY		2020-09-04
Tracey Jarvis		2024-03-07

CHILLAX

England & Wales - Charity number 1180536

Accounts

CHILLAX CHARITY



Overview

CHILLAX is a small charity that currently offers a breakfast and afterschool club based at Abertillery Learning Community secondary campus. The attendees are aged 11 to 16. There are two Youth Workers, who supervise the attendees and offer wellbeing support and other activities.

The breakfast club operates from 8am to 8.30am and there is cereal, toast and drinks available free of charge. The club is well attended, and the young people chat, use computers, board games and crafts to help them prepare for the start of the school day. The Youth Workers also identify anyone in crisis so that they can access support in the school.

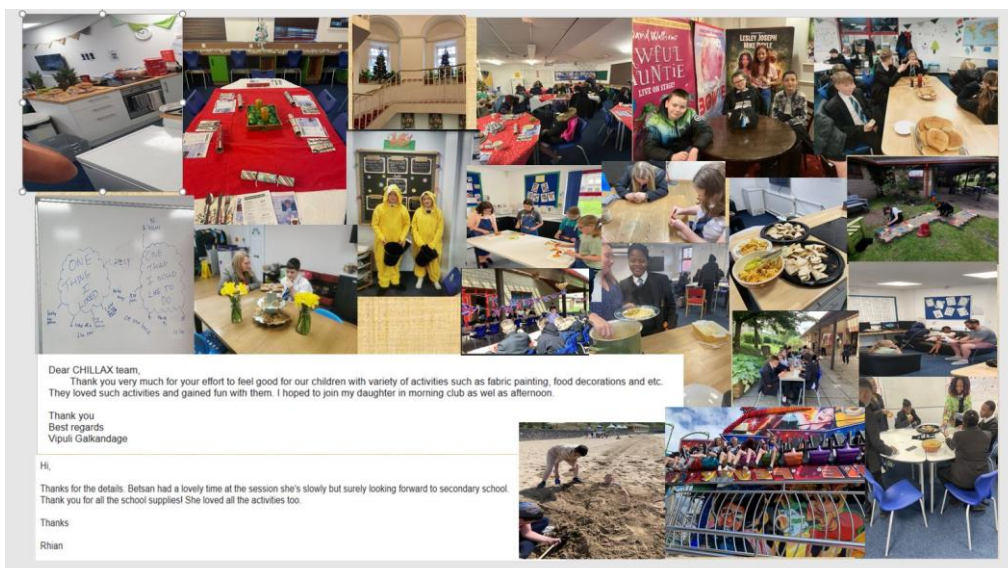
The after-school club runs from 2.50pm to 4.30pm. There are a range of activities in place such as board games, crafts, occasional cooking and gardening, computers and X-box games. There are snacks and drinks available.

There is a resources cupboard where attendees can access food, toiletries, sanitary products and other resources. CHILLAX currently supports a small number of families with resource parcels.

As an indicator, during March 2025, 120 young people accessed CHILLAX.

April 2024 to March 2025

Chillax continues to support a diverse range of young people and their families. There has been a noticeable increase in the number of new families, some relocating from Nigeria, requiring support with basic items to ensure the young people attend school ready to learn. There has been a greater focus on family engagement during this period as well as supporting transition from primary to secondary life. We remain committed to providing a safe and welcoming space for our young people and to supporting families experiencing hardship.



CHILLAX CHARITY



A slow cooker workshop created an opportunity for a community-based cooking initiative and was held for the learners of CNRB/Chillax, benefiting 10 families. It was a huge success, with each participant receiving a slow cooker, fresh ingredients, and a recipe sheet to take home and prepare a meal for their families. The workshop encouraged self-sufficiency and confidence in the kitchen. Parents were also given a tour of the vegetable plot and informed about our plans to grow our own food this year. Some parents even sent in photos of themselves cooking with their children at home!



Staffing

Two Youth Supervisors were employed with relevant safeguarding training; 1st aid arrangements and basic food hygiene arrangements in place.

Funding

The accounts are summarised below and Chillax remains very grateful to National Lottery Awards for All, local Councillors, Blackwood Engineering Trust, Abertillery and Llanhilleth Town Council, Tesco Groundworks, The Corner Club, the Community Food Partnership and to our families for their support.

CHILLAX CHARITY



RECEIPTS	UNRESTRICTED	RESTRICTED	TOTAL FUNDS.
TOWN COUNCIL GRANT.	£0.00	£3,000.00	£3,000.00
TESCO GROUND WORKS.	£0.00	£1,000.00	£1,000.00
LOCAL COUNCILLORS	£1,290.00	£0.00	£1,290.00
BLACKWOOD ENGINEERING	£0.00	£3,000.00	£3,000.00
LOTTERY GRANT.	£0.00	£20,000.00	£20,000.00
ALCC GRANT	£663.77	£0.00	£663.77
COMMUNITY FOOD DEVELOPMENT GRANT.	£0.00	£9,955.28	£9,955.28
CORNER CLUB ABERTILLERY.	£520.00	£0.00	£520.00
FUND RAISING	£31.13	£0.00	£31.13
	£2,504.90	£36,955.28	£39,460.18
PAYMENTS			
WAGES/ACCOUNTANT	£0.00	£11,457.62	£11,457.62
TRIPS SPECIAL EVENTS	£1,417.53	£0.00	£1,417.53
BREAKFAST FOOD	£0.00	2944.10	£2,944.10
INSURANCE/MEMBERSHIP	£415.51	0.00	£388.55
PROJECTS.	£0.00	£7,606.93	£7,606.93
CONTINGENCY.	6000.00	0.00	£0.00
NET	£7,833.04	£22,008.65	£23,814.73
BROUGHT FORWARD	£14,167.48	£1,554.65	£12,612.83
CARRIED FORWARD	£5,328.14	£14,946.63	£15,645.45
TOTAL NET ASSESTS	£8,839.34	£13,391.98	£28,258.28

CHILLAX CHARITY



Trustees and meetings

A programme of regular meetings was put in place and Mrs T Jarvis, Headteacher of Abertillery Learning Community joined as a Trustee, enabling Chillax to align with the needs of young people at the school. The meetings consisted of a panel of representatives from both Chillax and the school to ensure that Chillax was fulfilling its purpose of supporting young people. GAVO continued to offer valuable support and advice.

TRUSTEES CHILLAX CHARITY

December 2025

CHILLAX CHARITY





CHILLAX

England & Wales - Charity number 1180536

Accounts

CHILLAX CHARITY



Overview

CHILLAX is a small charity that currently offers a breakfast and afterschool club based at Abertillery Learning Community secondary campus. The attendees are aged 11 to 16. There are two Youth Workers, who supervise the attendees and offer wellbeing support and other activities.

The breakfast club operates from 8am to 8.30am and there is cereal, toast and drinks available free of charge. The club is well attended, and the young people chat, use computers, board games and crafts to help them prepare for the start of the school day. The Youth Workers also identify anyone in crisis so that they can access support in the school.

The after-school club runs from 2.50pm to 4.30pm. There are a range of activities in place such as board games, crafts, occasional cooking and gardening, computers and X-box games. There are snacks and drinks available.

There is a resources cupboard where attendees can access food, toiletries, sanitary products and other resources. CHILLAX currently supports a small number of families with resource parcels.

As an indicator, during March 2024, 260 young people accessed CHILLAX.

April 2023 to March 2024

Chillax continued to play a key role in supporting young people both during the breakfast and after school clubs. The focus over this year was to create a safe and well resourced space to support existing and new attendees. A summer club funded by the Moondance Foundation, provided a pathway for year 6 students to attend Chillax whilst familiarizing with the school environment. This project was targeted at those young people who were anxious about transition and keen to make friends. The project provided essential classroom resources for each attendee. Feedback from attendees and parents/carers was very positive.

The Youth Supervisors delivered a range of different activities including gardening and cookery. The young people were involved in the decisions about the activities on offer and the environment. The area has seen a number of new Nigerian families relocating. Chillax was key in supporting the families with supplies and resources as well as providing a welcoming space. The Youth Supervisors were keen to support them with integrating and making new friends. They delivered authentic cookery sessions based on national dishes to share cultural understanding. This ended with a Christmas community meal celebration that was very well attended.

Activities continued into 2024 with investment in IT, games and practical resources.

CHILLAX CHARITY



Staffing

Two Youth Supervisors were employed with relevant safeguarding training and 1st aid arrangements in place.

Funding

The Children in Need grant funded the staff during this period. Plans were in place to develop a longer term sustainable financial plan.

Blackwood Engineering Trust kindly donated £3,000 for food and resources so that breakfast, and healthy snacks could be provided each day. In addition, there were cookery events, celebrations and support offered for food parcels for families in need.

The local Councillors donated their levy £950 for resources that was used for the gardening and cooking projects.

CLEAN, a local environmental project, very kindly donated a grant of £8320 as unrestricted funding to support the Charity.

Fundraising by Chillax brought in £134.

All receipts, records and funds are administered by one of the Youth Supervisors as part of the job requirements.

The Trustees wish to record their sincere thanks for all funding for the project and the direct impact this has on the young people.

Trustees and meetings

A programme of monthly meetings was put in place and K Olsen (Deputy Headteacher at the school) was appointed as a Trustee. The meetings consisted of a panel of representatives from both Chillax and the school to ensure that Chillax was fulfilling its purpose of supporting young people.

TRUSTEES CHILLAX CHARITY
December 2024

CHILLAX CHARITY



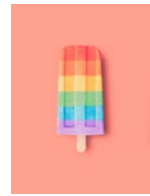


CHILLAX

England & Wales - Charity number 1180536

Accounts

CHILLAX CHARITY



Overview

CHILLAX is a small charity that currently offers a breakfast and afterschool club based at Abertillery Learning Community secondary campus. The attendees are aged 11 to 16. There are two Youth Workers, funded by Children in Need, who supervise the attendees and offer wellbeing support and other activities.

The breakfast club operates from 8am to 8.30am and there is cereal, toast and drinks available free of charge. The club is well attended, and the young people chat, use computers, board games and crafts to help them prepare for the start of the school day. The Youth Workers also identify anyone in crisis so that they can access support in the school.

The after-school club runs from 2.50pm to 4.30pm. There are a range of activities in place such as board games, crafts, occasional cooking and gardening, computers and X-box games. There are snacks and drinks available.

There is a resources cupboard where attendees can access food, toiletries, sanitary products and other resources. CHILLAX currently supports a small number of families with resource parcels.

As an indicator, during September 2022, 228 young people attended CHILLAX.

April 2022 to March 2023

During this period, Chillax focused on supporting vulnerable children to process the impact of the Covid pandemic on their wellbeing. In addition, there had been three very unfortunate incidents at the school where CHILLAX was able to offer specialized mental health support working alongside staff from the school.

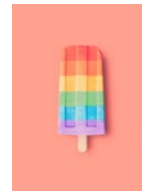
The Chillax club was relocated to an alternative room in the school, which is offered free of charge. The two Youth Supervisors worked with the young people to develop the new space into an appropriate after-school setting. As the school community became more diverse a map of the world was put on the wall so that the young people could talk about their countries, cultures and experiences.

There was a very successful pantomime trip to Cardiff which opened up a lot of new experiences to the young people, alongside activities such as upcycling, cooking and gardening.

Staffing

During this period, one Youth Supervisor resigned, and a replacement appointment was made. The salary levels were also reviewed to reflect the responsibility levels of the two staff members.

CHILLAX CHARITY



Funding

The Children in Need grant of £10000 funded the Youth Supervisors for their term time contracts

Blackwood Engineering Trust kindly donated £3,000 for food and resources so that breakfast, and healthy snacks could be provided each day. In addition, there were cookery events, celebrations and support offered for food parcels for families in need.

The local Councillors donated £832 for resources that was used for the gardening projects.

All receipts, records and funds are administered by one of the Youth Supervisors as part of the job requirements.

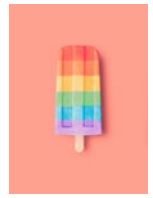
The Trustees wish to record their sincere thanks for all funding for the project and the direct impact this has on the young people.

Trustees and meetings

The Trustees met virtually in April and in September to discuss the plans for the year ahead; the funding streams and policy review. Two Trustees were actively involved in the work of the charity with regular visits. There was a recruitment process in August 2022 and three planning meetings took place with senior staff from the school.

TRUSTEES CHILLAX CHARITY

CHILLAX CHARITY





CHILLAX

England & Wales - Charity number 1180536

Accounts

BREAKFAST CLUB COSTING INPUT SHEET

Please complete this sheet by adding information. Once you have completed this, you can see the results in the Budget and Forecast Statement tab (bottom of page).

ATTENDANCE INFORMATION

Number of children attending per day

20

Cost per child per attendance

Staff cost
Lunchtime

COSTS

Daily food cost per child

£1.00

Hourly Staff rate

£8.50

Daily Total Staff Hours (paid)

16

ADDITIONAL INCOME SOURCES

Total School Contribution

Year 1

Total Local Authority Contribution

Total Grants and Donations

£10,000

Total other Income

Suggested
for the As
can be all
Year 3 fig
aggregate

Annual Associated Costs

Annual Advertising

Annual Administration

Volunteers Costs

Expenses

Miscellaneous

3 TOOL

into the yellow boxes.
sults by clicking on the
ge)

based on Direct.gov
e Supervisor hourly rate.

Year 2	Year 3
	00.00

d figures have been included
associated Costs. These costs
tered on this tab. Year 2 and
ures will be automatically
ed

TOTAL FUNDS

£5,000.00

£0.00

£9,150.00

£11,291.08

£361.53

£0.00

£0.00

£2,007.44

£14.99

£13,675.04

£11,857.38

£6,607.28

£6,607.28