

# NORTH WALSHAM AND DILHAM CANAL TRUST

England & Wales · Charity number 1180474

## Details

---

Status	Registered
Legal form	CIO
Registered	2018-10-29
Register	<a href="#">View on the Charity Commission register</a>

## Contact

---

**Address** Unit 4  
Anchor Road  
Spa Common  
North Walsham  
NR28 9AJ

**Phone** 07770661784

**Email** [secretary@nwdct.org](mailto:secretary@nwdct.org)

**Website** <http://nwdct.org/>

## Activities

---

**Objects:** TO PROMOTE, FOR THE BENEFIT OF THE PUBLIC, THE RESTORATION, CONSERVATION, PROTECTION AND IMPROVEMENT OF THE PHYSICAL AND NATURAL ENVIRONMENT OF THE NORTH WALSHAM AND DILHAM CANAL AND ITS CORRIDOR.

**Activities:** To promote, for the benefit of the public, the restoration, conservation, protection and improvement of the physical and natural environment of the North Walsham and Dilham Canal and its canal corridor.

## Classification

---

- **How:** Provides Buildings/facilities/open Space, Provides Advocacy/advice/information
- **What:** Arts/culture/heritage/science, Environment/conservation/heritage
- **Who:** The General Public/mankind

## Geography

- Norfolk

## Finances

Period end	Income	Expenditure	Assets	Employees
2025-05-31	£16,986	£26,080	-	-
2024-05-31	£59,176	£35,045	-	-
2023-05-31	£25,098	£18,788	-	-
2022-05-31	£18,478	£15,869	-	-
2021-05-31	£11,681	£18,911	-	-

## Trustees

Name	Role	Appointed
<b>Susan Kirrage</b>	Chair	2021-10-12
Andrew Fryer		2023-11-21
BARRY MOBBS		2019-10-29
Christopher Haddon Heath		2023-11-21
DAVID REVILL		2019-10-29
Darren Reeve		2023-12-12
ROGER HOPKINSON		2019-10-29
THOMAS WEBSTER		2019-10-29

**NORTH WALSHAM AND DILHAM CANAL TRUST**

England & Wales - Charity number 1180474

---

# Accounts

---



## 7th Annual General Meeting 16th October 2025

**North Walsham and Dilham Canal Trust**  
C.I.O No. 1180474

### Officers and Trustees annual reports

Trust Role	Name	Page
President	David Revill (Trustee)	2
Vice President	Roger Hopkinson (Trustee)	
Chair	Sue Kirrage (Trustee)	3
Treasurer	Barry Mobbs (Trustee) and Vice Chair	6
Projects Officer	Chris Heath (Trustee)	10
Fishing	Tom Webster (Trustee)	12
Walkways	Andrew Fryer (Trustee)	
Trustee	Darren Reeve (Trustee)	
Liaison	David Revill and Sue Kirrage	
Work Party Co-ordinator	Ian Hibbert - appointed Autumn 2024	
Membership Secretary	Melanie Steele - appointed September 2025	
Press and Quagmire Editor	Ben Pinsent - appointed September 2025	
Meetings Secretary	Hilary Lawler - appointed August 2025	
Wildlife	Bob Farndon - appointed August 2025	
<i>Administrator - vacant</i>	<i>Vacant role, temporary cover - Sue Kirrage</i>	
<i>Secretary - vacant</i>	<i>Vacant role, temporary cover - Sue Kirrage</i>	
<i>Events Officer - vacant</i>	<i>Vacant role, temporary cover - Sue Kirrage</i>	
<i>Grants Officer - vacant role</i>	<i>Vacant role, temporary cover - Sue Kirrage</i>	
<i>ICT Officer - vacant role</i>	<i>Vacant role</i>	
<i>Boating Officer - vacant role</i>	<i>Vacant role</i>	
<i>Education &amp; Training - vacant</i>	<i>Vacant role</i>	

# President's Report for 7th AGM 2025

## JULIE KELLEHER

Julie came to visit us way back in July 2009 at a work party at Bacton Wood Lock. Julie only came along to see 'what it's like', just like many have done, including me some 8 years earlier. With Julie came a lovely chap by the name of Rob and the pair complemented each other so much so that they appreciated our 'Green Gym' and together became an integral part of the Work Parties. The Work Parties at this time took place from Swafield Bridge downstream to Honing Lock and below.

We were saddened, but happy for the couple, when they emigrated to Downham Market. This move meant that we did not see them at Work Parties on a regular basis any more. But Julie did still attend the important Trust meetings, notwithstanding the additional cost to her. In 2008 had come the big change from a simple bunch of volunteers into the organised and more regulated North Walsham & Dilham Canal Trust and then again in 2018 to attain CIO status.

With this simple change of nomenclature came a huge change in paperwork or rather computer work. Julie, with her background in IT, took this extra work in her stride and relished the challenge of being on top of everything for the benefit of the Trust, with the Charities Commission.

Apart from this invaluable IT work, Julie took on so many other posts in the Trust such as secretary, membership secretary and organiser of the refreshment tent etc. at our, then, annual event at Ebridge Mill Pond, among other things.

### **Her work in all of this has been invaluable to the Trust.**

Personally, I have always been relieved to know that Julie was at the end of a telephone when I needed help or assistance in any way. She has always been very happy to help and, I feel, a privilege with whom to work.

Julie leaves us now that it is time to move on to other things.

I wish her well in whatever she wishes to do in the future.

David Revill  
President  
September 2025

>>>> <<<<

## Report by Chair for the year 2024/25 for the AGM

### Decisions requested

See AGM Agenda for membership voting requested - Membership fees, Quagmire distribution

### Key information to note - overview of Trust activity and achievements this year

- **Strategy and Annual Plan:** Constructive liaison with canal owners continues. No changes to strategy planned.
- **Financial:** sufficient monies to meet planned costs, with rigorous monitoring and control of expenditure continuing. Grant set aside for refurbishment and repair of the Trust trip boat.
- **Administration and organisation:** essential roles covered, some temporarily, need for more administrative and ICT volunteers
- **Personnel and Membership:** recruitment of volunteers has been a major focus since the previous AGM, with several newly inducted volunteers taking up roles. Personnel committee established.
- **Operationally:** embedding new Work Party Co-ordinator in his role and the development of the new Operational Delivery meetings. Work along all Pounds this year.
- **Projects:** Insurance review, 200cc planning, Trust leaflet, Role profiles format, Boating corner, Pound 2 surveys
- **Events:** both social and promotional, including two outings for the new Trust branded gazebo
- **Publicity:** new Press Officer to take this forward and I pass the Quagmire editorship to Ben

### Report

#### Strategy and Annual Plan

Some carefully surveyed and ecologically appropriate clearance of fallen trees from the navigation along Pound 2 has been agreed with NWCC for the Autumn/Winter. Some delays in re-watering Pound 5 noted, owing in part to the works around the Norfolk Vanguard project cables crossing the canal. Pound 4 navigation and banks have been maintained. Some conservation clearance of vegetation growth around locks 5 and 6. Progress with removal of weed and sunken trees along Pound 1 continues, with significant success controlling invasive species of Floating Pennywort - resulting in praise from Norfolk County Council.

No Strategy changes planned. Discussion at quarterly Trustees and Operational Delivery meetings ensures regular reviews, coordinated by the Projects Officer.

#### Financial

Planned costs have been budgeted for and bills paid. Contingency monies for equipment repair, replacement and maintenance are sufficient. If any Project work is envisaged with a significant cost factor that requires any element of matched funding or financial commitment, the Trust bank balance will need to be built through planned increase in fund-raising/grants.

We must heed the Treasurer's mandate to carefully monitor and control expenditure. The Trust Festival, if it is to run in 2026, to be aimed at fund-raising.

Although the May 2025 bank balance reads circa £16,000, please NOTE this includes a generous donation that has been made for over £6,000 which is to be set aside for the specific purpose of refurbishment, repair and safety certification of the Trust trip boat. Therefore the balance for May 2025 can be 'understood' as similar to May 2024, ie circa £10,000. A Grant this year has been received of £900 from the North Walsham Community Shop, following Hilary Lawler's application, towards the purchase of a projector and laptop for illustrated talks to community groups.

I commend the Treasurer's report and his work throughout the year in maintaining the financial records of the Trust and advising the Trustees.

### **Administrative needs and recommendation**

The focus for all volunteers, officers and trustees remains the same - which is the restoration aim, as well as maintaining progress to date towards this. The work parties remain the visible and vital core of this aim. However, it needs to be recognised and understood by all that the time and energy given towards the Trust's objectives means some volunteer officers and trustees have specific, time-consuming and equally vital organisational responsibilities. Not all volunteers join to undertake work parties.

With the retirement of Julie Kelleher from the many roles of Trust Secretary, Admin, Membership and ICT, various temporary arrangements have been made, which will include me taking up temporarily some of these roles. We will continue the search for volunteers to fill vacant roles.

**I strongly recommend** that the Trustees adopt an approach to future recruitment, which ensures that volunteers take up specific roles, rather than too many. Otherwise, the retirement or departure of a volunteer with many roles would leave too many responsibilities to be covered.

### **Personnel and Membership**

**Recruitment** - as a priority, this has absorbed much of my time this year as your chair. So much of this work is extremely pleasurable, since it includes induction of new volunteers and promoting the work of the Trust through the many contacts with third parties in the local community and further afield.

**Inductions** since the last AGM include 10 new volunteers. 6 of whom volunteer at work parties and in other projects - Amy Waters, Izzy Boyfield, Matt Higgins, Helen Lee-Smith, Emma Cooper and David Cove

5 volunteers have taken up officer roles since the previous AGM, 4 of them as new members and volunteers:

- Work Party Coordinator - Ian Hibbert
- Meetings secretary - Hilary Lawler
- Membership Secretary - Melanie Steele
- Press and Q Editor - Ben Pinsent
- Wildlife - Bob Farndon

**Personnel committee** has been established for formal or informal mediation and consultation should the need arise. The details remain confidential, but members of the committee have been involved with sensitive matters this year and advised the Trustees accordingly. The committee members include: Tom Webster, Barry Mobbs, Sue Kirrage, with others co-opted as required.

**Role profiles:** in order to recruit more volunteer help a small working party of myself with Julie Kelleher and Chris Heath met with Laura from Volunteer Norfolk to take some training and advice on volunteer recruitment. As an outcome, we wrote some profiles for Trust roles, which I then uploaded to the Get InVOLved website, which has resulted in 2 successful new appointments Ben - for Press Officer and Mel - for Membership Secretary.

When time permits, I aim to have profiles written for each of the roles in the Trust and advertise them more widely, including on our own website. If any member has experience or skills in this area, I would welcome your involvement please.

We also had a marvellous turnout of our own volunteers at the first North Walsham Volunteer Showcase, where we had the opportunity to chat with other organisations locally and members of the public who came with an interest in volunteering. From this event, Hilary offered her help with an aspect of administration and has been appointed as Meetings Secretary.

**Membership** figures remain similar, with new Life members joining this year and some generous donations from new members. A fuller report will be available next year as Mel takes up her new role, following Julie's retirement. We are fortunate that Andrea Lamyman (who established the Membermojo databased system for NWDCT) remains willing and available to support Mel and who also with Julie leading, hosted the training for Mel in taking up Membership Secretary.

### **Operations and Projects**

Chris Heath, Ian Hibbert and the Trust Work Party Leaders - Alan Bertram, Terry Willoughby, David Batley and Jonathan Parke are to be commended for their work over the last year along the canal and for establishing and developing the new quarterly Operational Delivery meetings. These are aimed at providing a constructive platform for the Work Party leaders to meet together to discuss and plan operational and equipment matters in detail and ensure consistency and compliance in Safety, Health and Environment procedures and practice across operations.

Discussions at Operational and Trustees meetings have considered rationalising equipment needs, resulting in sales, planned sales, scrapping, replacing and repairing equipment. This has linked with the insurance review and stocktake to have a rational approach to asset and equipment planning, linked to Strategy and Annual planning.

This year has seen the embedding of the Work Party Co-ordinator and the organising and tool racking in the equipment unit, including the new Boating corner. Recruitment of additional work party volunteers needs to continue. I commend the report of the Projects officer for details of this year's progress with projects and also for summarising the work party activity over the year.

## Events

Over the last year volunteers have enjoyed invites to picnics at Christmas and in June, and members were invited to the one in June. The new Trust branded gazebo has had two outings this year - at the Woolly Weekend in Dilham and at the Worstead Festival. Thanks to Bill LeGrice, Lynda Grice, Helen Lee-Smith, Izzy Boyfield, Richard Stowe, David and Christine Batley for promoting the work of the Trust in this way.

We celebrated the 200th Anniversary of the cutting of the first sod on 5th April 1825, with a costumed gathering of volunteers, members and family members in North Walsham market place on 5th April 2025, followed by a 'pie and a pint' at the Kings Arms, where the original investors had historically met. The celebrated knitted postbox topper had been out on display all that day and made it into the local press. This was the same day that an illustrated talk was given at the Wherry Maud Trust AGM. There have been 4 presentations this year to local community groups.

Discussions are underway for how best to mark the celebration next year of the 200th Anniversary of the completion of the construction of the canal, which was officially marked on August 29th 1826. Volunteers are needed to plan ahead.

## Publicity

In the absence of a Press Officer this year, there has been limited promotion of the Trust and the restoration through the various media. I re-wrote and submitted an updated entry for the North Walsham Town Guide and sent in for local free papers the April 5th event with photos of the postbox topper and volunteers in "navvy" costume. I continued to edit Quagmire and will now pass this on to Ben.

With Ben's appointment there are plans to increase social media coverage as well as reflect in local press any articles and news that might also appear in Quagmire. Ben has taken over the Quagmire editor role. All ideas please for publicity to [press@nwdct.org](mailto:press@nwdct.org), always copying in [secretary@nwdct.org](mailto:secretary@nwdct.org)

## JULIE KELLEHER

On a final note in my report I know you will all wish to join me in thanking Julie most sincerely for her 13+ years volunteering in many roles in the administration of the Trust.

We know that Julie hates a fuss being made and so we do not intend to embarrass you Julie. However, it is not possible to let you go without reminding everyone of your invaluable contributions over the years. Therefore, I invited David Revill, the Trust President, who has known Julie from the beginning of her involvement to write about Julie, as you will have read at the start of this Officer and Trustee reports document.

The Bottom and Top Gate trophies this year must go to Julie Kelleher. The Top Gate for having been an all-round superstar over a long time and the Bottom Gate - because you are leaving us (and we presented this to Ivan for the very same reason, on his retirement).

Sue Kirrage

Chair report for AGM

October 2025

>>>> <<<<

**FINANCIAL REPORTS FOR THE YEAR  
1st June 2024 to 31st May 2025**

**INCOME AND EXPENDITURE ACCOUNT  
FOR THE YEAR 1st June 2024 to 31st May 2025**

**Income**

Events	£ 2,137.94	
Grants	£ 8,302.70	
Donations	£ 3,215.08	
Subscriptions	£ 2,618.00	
New Member Packs	£ 55.00	
Trip Boats	£ 642.00	
Merchandise profit	<u>£ 15.50</u>	<b>£ 16,986.22</b>

**Expenditure**

Subscriptions	£ 228.88	
Rent	£ 3,000.00	
Rates	£ 294.72	
Insurance	£ 1,874.80	
Events	£ 1251.89	
Work Parties	£ 940.30	
Administration	£ 513.13	
Marketing	£ 632.60	
Machinery repairs & servicing	£ 800.24	
Plant & machinery purchases (small items)	£ 89.83	
Paypal fees	£ 105.07	
Audit	£ 92.39	
Merchandise stock write down	£ 96.50	
Depreciation	<u>£16,160.00</u>	<b><u>£ 26,080.35</u></b>

**Excess of Expenditure over Income** **£ 9004.13**

## BALANCE SHEET AT 31st May 2025

### Tangible (Fixed Assets)

At cost	£131,818.90		
Additions during year	£ 762.00	£132,580.90	
Less depreciation to 31 <sup>st</sup> May 2024	£ 48,242.90		
Less depreciation for year	£ 16,160.00	£ 64,402.90	£68,178.00

### Current Assets

Prepayment of Insurance	£ 908.70		
Prepayment of Rates	£ 249.50	£ 1,158.20	
Stock of Merchandise		£ 472.50	
Bank Current Account		£ 16,926.37	
		£ 18,557.07	
<u>Less Liabilities</u>		£ 0.00	£18,557.07

### Total Assets

**£86735.07**

### Represented By

General Fund at 1 <sup>st</sup> June 2024	£ 94,682.35	
Legal Fund at 1 <sup>st</sup> June 2024	£ 1,146.85	£95,829.20
Less excess of Expenditure over Income		£9,094.13
General Fund at 31 <sup>st</sup> May 2025	£ 85,588.22	
Legal fund at 31 <sup>st</sup> May 2025	£ 1,146.85	<b><u>£86,735.07</u></b>

### Merchandise Account

Stock at 1 <sup>st</sup> June 2023	£ 731.00
Stock at 31 <sup>st</sup> May 2024	£ 472.50
Cost of sales	£ 258.50
Less write down	£ 96.50
Cost of sales	£ 162.00
Sales for the year to 31 <sup>st</sup> May 2024	£ 177.50
Less cost of sales	£ 162.00
Profit on sales	£ 15.50

### Bank Reconciliation Statement

Bank statement at 31 <sup>st</sup> May 2025	£ 16,802.96
May Paypal not yet credited (credited on 2/6/25)	£ 123.41
Reconciled balance	£ <b><u>16926.37</u></b>

### Auditors Certificate

I have examined the books and vouchers of The North Walsham & Dilham Canal Trust for the year ended 31<sup>st</sup> May 2025 and certify that the above accounts are in accordance therewith.

Michael Segon ACIB

# TREASURER'S FINANCIAL STATEMENT

## FOR THE YEAR 1<sup>ST</sup> JUNE 2024 to 31<sup>ST</sup> MAY 2025

Bank Balance at 1<sup>st</sup> June 2024 - £9,967.01

Bank Balance at 31<sup>st</sup> May 2025 - £16,802.96

**Decision requested** The accounts for the year ending 31st May 2025 have been balanced and examined by the Trust's auditor Michael Segon A.C.I.B. **I would like to thank Mike for the work he has done and the help he has given me in the preparation of the audited accounts. I recommend that Mike continues as our auditor for the next financial year.**

The Income & Expenditure sheets together with the Balance Sheet can be found herewith.

During this year the total income was £16,986.22 and expenditure £26,080.35 leading to an excess of expenditure over income of £9004.13

As can be seen income was generated from various sources and by far the largest was the £8032.70 from grants.

Of the expenditure of £26,080.35. The major item was again depreciation at £16,160.00.

We ended the year 2024 to 2025 with funds at a healthier level than we had the previous year, which was influenced by the LCN project.

Our income and expenditure varies considerably from year to year. The tables below, comprising some of the main headings in our accounts, illustrate this variation.

<b>INCOME</b>	<b>2022-2023</b>	<b>2023-2024</b>	<b>2024-2025</b>
EVENTS	£1,067.98	£825.50	£2,137.94
GRANTS	£10,694.00	£49,583.50	£8,302.70
DONATIONS	£8,052.48	£2,878.00	£3,215.08
SUBSCRIPTIONS	£2,728.00	£2,806.00	£2,618.00
TRIP BOATS	£2,555.92	£3,025.00	£642.00

<b>EXPENDITURE</b>	<b>2022-2023</b>	<b>2023-2024</b>	<b>2024-2025</b>
SUBSCRIPTIONS	£129.00	£69.00	£228.88
RENT	£3,000.00	£3,000.00	£3,000.00
RATES	£169.44	£278.29	£294.72
INSURANCE	£1,403.73	£1,554.67	£1,874.80
EVENTS	£72.00	£1,835.93	£1,251.89
WORK PARTIES	£723.91	£618.52	£940.30

ADMINISTRATION	£331.01	£567.50	£513.13
MARKETING	£1,482.19	£959.70	£632.60
MACHINERY REPAIR	£1,257.51	£1,694.76	£800.24
PAYPAL FEES	£97.90	£82.77	£105.07
AUDIT	£79.85	£85.00	£92.39
DEPRECIATION	£6,283.92	£20,534.14	£16,160.00
TRIP BOATS	£2,394.65	£-	£-

**As always we must continue to ensure that all future projects are carefully budgeted for and that we have the funds available before commencing work. Costs must be rigorously controlled to ensure that budgets are not exceeded.**

Barry Mobbs  
Treasurer, North Walsham & Dilham Canal Trust

>>>> <<<<

## **Report of Projects Officer for the year 2024/25 for the AGM**

### **Decisions requested**

None

### **Key information to note**

The Strategy for the Trust for the period 2024/34 was finalised during the year and is now reviewed quarterly at the meetings of the Trust.

A quarterly Operational Delivery meeting has been introduced.

The Annual plan has been reviewed and updated for 2025/26

The work to get Light Craft Navigation along the length of the canal continues with the focus on upper section of Pound 2

A new promotional leaflet (trifold) was created for the Trust.

The annual insurance review effected a significant saving.

### **Report**

#### **Strategy (2024 – 2034)**

The current strategy was discussed with the Proprietors and adopted later in the year. The Trust's vision is that of a restored canal. A summary of the Strategy was promoted to all members in the Quagmire.

A review is being undertaken quarterly at the meeting of the Trustees so that any significant changes can be noted.

### **Operational delivery meeting**

An Operational Delivery meeting has been set up. It is attended by the Work Party leaders and is chaired by the Work Party Co-ordinator. It reviews operational delivery as well as Safety, Health, Environmental and various other compliance aspects. This meeting also considers the Annual Plan for future work by the work parties. It is held immediately prior to the Trust's quarterly meetings so any matters arising can be efficiently dealt with in a timely manner. The meeting is minuted with copies to those attending and to the Trustees

### **Annual Planning for work party activity**

This is an overall plan for work party activity in any financial year. It is thought sensible to look forward at what has to be done so that the right resources (people, equipment, materials, etc.) can be put in place.

The plan for the financial year (2024/25) was reviewed and updated during that period – a normal process as things change.

An annual plan was developed in the Spring of 2025 for the current financial year (2025/26). Matters will always arise that change plans – the Trust can only work in support of the Proprietors and it is primarily this that dictates what happens during any time period.

### **The Light Craft Navigation project**

The work parties continue to maintain the parts of the canal that are currently in water to ensure they are suitable for light craft navigation.

During the year the focus has been on the upper section of Pound 2 above Honing Staithe with survey work being undertaken to determine the condition of the canal channel and to consider ecological aspects that might be affected by any work.

### **NWDC leaflet**

A new trifold leaflet was created by the Trust. It is designed to encourage both visitors to the canal as well as new members and volunteers.

In order that it doesn't date, it encourages people to use the website for further information.

### **Insurance review**

The provision of insurance is reviewed annually by the Trust to ensure assets and activity have the right cover. The work this year focused on what is and isn't insured resulting in a considerable saving.

Aspects of compliance are reviewed quarterly at the Operational Delivery meeting with records of the meeting going to Trustees.

# Report on Work Party activity for the year 2024/25 for the AGM

## Decisions requested

None

## Key information to note

### **Pound 1 (Smallburgh)**

Channel maintained and improved – suitable for light craft navigation (LCN). Work on removing invasive species.

### **Pound 2 (Honing)**

Area around the lock and staithe and along the canal walk maintained with work on the channel between the staithe and the lock.

### **Pound 3 (Briggate)**

Maintenance of the area around the lock and mill pond only.

### **Pound 4 (Ebridge)**

Work in the channel (suitable for LCN, swimming etc), along the banks where accessible and around the lock.

### **Pound 5 (Bacton Wood Mill)**

Pound not in water. Work restricted to the area of the lock and limited work on certain parts of the banks only.

### **Pound 6/7 (Swafield)**

Conservation work only in the area of the upper and lower Swafield locks.

### **General**

Work to maintain Trust equipment and depot.

## Report

Further detail can be found in the individual work party reports on the web site.

Chris Heath

Projects Officer

September 2025

>>>> <<<<

## **Report by Fisheries Officer for the year 2024/25 for the AGM**

Another good year on the piscatorial front, lots of positive engagement work with visiting and regular anglers and catches of specimen fish continue to support the thriving ecosystem that restoration of the OCC pound for many years has created.

Our year-on-year trend of dead pike surfacing after winter continues to drop to only two last spring, neither of which had signs of angler mishandling, well done.

I still have my ongoing concern of silt at Spa Common. This presents a significant danger to the canal ecosystem and especially our fish stocks as it's a spawning ground.

A new role taken on the last year is myself with another Trustee is with taking the lead with the "personnel" subcommittee to support the human factors side of the trust and something I hope will continue to develop positively.

I urge all anglers to uptake a Membership of the trust during my engagement work and continue to promote the Trust on social media.

Tom Webster - Fisheries Officer 24/9/25

>>>> <<<<

**End of reports received**

**NORTH WALSHAM AND DILHAM CANAL TRUST**

England & Wales - Charity number 1180474

---

# Accounts

---



# 6<sup>th</sup> Annual General Meeting

## North Walsham and Dilham Canal Trust

*C.I.O. No. 1180474*

# Officer annual reports

### Contents:

<b>Trust Role:</b>	<b>Name</b>	<b>Page</b>
Chair	Sue Kirrage	2
Treasurer	Barry Mobbs	5
Secretary	Julie Kelleher	6
Projects Officer	Chris Heath	7
Membership Secretary	Julie Kelleher	9
Boating Officer	Darren Reeve	10
Fishing Officer	Tom Webster	11
ICT Officer	Julie Kelleher	11
<b>The Trust is seeking volunteers to fill the following vacant roles:</b>		
Education & Training Officer		
Events Officer		
Grants & Funding		
Meetings Secretary		
Press & Media Officer		
“Quagmire” Newsletter		
Wildlife & Natural Environment Officer		
Work Party Co-Ordinator		

## Chair's annual report for the year October 2023/24 for the AGM

### Key information to note - overview of Trust achievements this year:

- **Strategically:** the Trust Strategy, to guide decision-making, now in place
- **Administratively:** Trust's central point of contact, JK as Secretary, highly effective
- **Managerially:** annual review of insurance and equipment: revised SHE policy, enhanced induction, competence assessment and recording of work party and boating
- **Operationally:** work parties operated along the full length of the canal, in all six pounds of the seven, WP leaders in place. Ella II trip boat now operational again, winter service planned.
- **Projects:** successfully completed - Light Craft, Insurance & SHE, Strategy
- **Personnel:** three new Trustees, several new volunteers and members; sub-committees for: Insurance, Light Craft, Festival, Personnel,
- **Socially:** volunteers, members, canal proprietors and supporters enjoyed: a canal Ceilidh, fun at the Festival, Ivan's illustrated talk, and Christmas mince pies
- **Financially:** membership, fund-raising events, grants and donations maintained a bank balance, sufficient to meet planned costs
- **Trust public profile:** enhanced in interviews in press, social media photos, YouTube footage, Quagmire

### Report:

Since the 2023 AGM last October, when I was first elected as Chair, the volunteers and trustees have achieved much. The enthusiasm for the restoration of the canal remains in all of our sights.

- i. With reference to '**vision**', a major piece of work led by our Projects Officer this year has been to bring to fruition the **Trust Strategy**. Consultation with all four canal proprietors and the NW&DCT Trustees about priorities was our starting point. This has resulted in clarity about: **the vision, the mission and the policy**. Ratification of the Strategy at the AGM completes this project, subject to annual and interim reviews. I emphasise the importance of the Strategy in directing our resources of time, energy, finances and personnel, based on **rational and cohesive decision-making**.
- ii. Procedural improvement came from a Trust annual **Insurance and equipment review**. Julie Kelleher, with Chris Heath, (and initially Ralphy Miles) drove this for 2023/24. The review revealed the need for some procedures to be more rigorously recorded, competence assessment, through enhanced induction, to fully comply with the requirements of Trust Insurance. A stocktake and security marking of key items of equipment was completed.

### iii. **Safety, Health and the Environment**

The Trustees, led by the Chair, collectively hold the remit for Safety, Health and Environment performance for the Trust, with reference being made to external

bodies as required. Currently it is not believed that there have been any significant or reportable accidents or incidents in 2023/24 (or since the end of that period to date).

This is, of course, very good but not something to be complacent about.

Three things stand out:-

- The Trust must continue to plan all activity well
- Second all volunteers must be briefed on what is expected of them and only do what they are able to do
- Third - so much is about the choices people make; that is to say about people choosing to do the right thing and helping others to do so

iv. In December 2023 the implementation stage of the **Light Craft Navigation project** was completed and the Grant monies released. Such a terrific achievement! I informed membership at last year's October AGM of this major Grant award. To then complete the implementation of the project plan to budget and within a tight time-scale of just two months, by last Christmas, is a testament to the Project team, led by Ralphy Miles, Chris Heath and Sue K, admin by Julie K, with the dedicated work by volunteers in largely quite grim weather conditions. The Grant award and Project success is viewed as an excellent model, and was chosen as **a case study by North Norfolk District Council (NNDC)**, and a YouTube video has been made, showcasing this achievement.

v. **Personnel**

**Ralphy Miles:** we have written previously about our collective sadness at the untimely death of Ralphy in the spring. A much-missed Trustee and Officer.

**David Revill,** our Honorary President, has recovered well from treatment over the summer and we are delighted to see him with us once again at events and meetings.

Two of the new Trustees appointed through the year, Chris, Projects and Darren, Boating have contributed hugely to Trust development and are important additions to the leadership. A third new appointment, Andrew Fryer aims to produce an updated guide to walkways in the vicinity of the canal, working alongside David Revill.

**Recruitment** of new Trustees and Officers is a major priority for us this next year and developing further a collaborative, team approach along the length of the canal to ensure our future.

vi. **Canal Festival.** I have allocated this an item on its own, as it has absorbed many hours of work. I led and co-ordinated the planning and the sub-committee, but some key members must be mentioned. I could not have done it without Julie, who was with me at every step. Major contributions from: Barry, Darren and Carol, some help from Chris H, Tom W & David B and with generous support from the canal proprietor at Dilham, Luke and his team. The 33 volunteers, members and other helpers who all contributed before, during and after did a brilliant job and must be congratulated. About two thousand pounds raised as well.

vii. **Finances** - A donation from Duncan Baker's double marathon fund-raising has led to the purchase of a Trust branded gazebo for promotion purposes at events. A generous grant from the Buchanan Programme is targeted to support the service and re-fit of Ella II - our trip boat, over the winter. A review

of Trust finances is planned for this year as costs are rising and fund-raising, targeted at specific projects must be guided by Strategy.

- viii. **Membership and other support:** Attendance at the Ceilidh, the Festival and Ivan's final talk demonstrate a loyal membership and excellent local support. The requests for us to present talks at local groups continue to come in and creation of a standardised presentation is planned, following Ivan Cane's retirement from this role. Julie Kelleher manages the Membership database exceptionally well and contacts members regularly.
- ix. **Quagmire** I have temporarily taken over Editorship of our quarterly newsletter, (while still seeking an officer to take over this role) jointly with Julie Kelleher, who's excellent ICT skills mean that, as a team, we have been able to produce two high quality quarterly newsletters to date, full of news updates for our membership.
- x. **Policies and procedures:** sometimes viewed as the 'rules' of the organisation will be gathered into a cohesive management system in 2024/25

Sue Kirrage, Chair.



# NORTH WALSHAM AND DILHAM CANAL TRUST

## FINANCIAL REPORTS FOR THE YEAR 1ST June 2023 to 31st May 2024

### INCOME AND EXPENDITURE ACCOUNT FOR THE YEAR 1ST June 2023 to 31st May 2024

#### Income

Events	£ 825.50	
Grants	£ 6,000.50	
LCN Grant	£ 43,583.00	
Donations	£ 2,878.32	
Subscriptions	£ 2,806.00	
Trip Boats	£ 3,025.00	
Merchandise profit	<u>£ 57.75</u>	<b>£ 59,175.57</b>

#### Expenditure

Subscriptions	£ 69.00	
Rent	£ 3,000.00	
Rates	£ 278.29	
Insurance	£ 1,554.67	
Events	£ 1,835.93	
Training	£ 2,515.02	
Work Parties	£ 618.52	
Administration	£ 567.50	
Marketing	£ 959.70	
Brigate tree removal	£ 1,100.00	
Machinery repairs & servicing	£ 1,694.76	
Plant & machinery purchases	£ 149.39	
Paypal fees	£ 82.77	
Audit	£ 85.00	
Depreciation	<u>£ 20,534.14</u>	<b>£ 35,044.69</b>

**Excess of Income over Expenditure** **£ 24,130.88**

## BALANCE SHEET AT 31st May 2024

### Tangible (Fixed Assets)

At cost	£ 69,751.76		
Additions during year	<u>£ 62,067.14</u>	£131,818.90	
Less depreciation to 31 <sup>st</sup> May 2023	£ 27,708.76		
Less depreciation for year	<u>£ 20,534.14</u>	<u>£ 48,242.90</u>	£83,576.00

### Current Assets

Prepayment of Insurance	£ 1,310.37		
Prepayment of Rates	<u>£ 244.82</u>	£ 1,555.19	
Stock of Merchandise		£ 731.00	
Bank Current Account		<u>£ 9,967.01</u>	
		£ 12,253.20	
<u>Less Liabilities</u>		<u>£ 0.00</u>	<u>£12,253.20</u>

### Total Assets

**£ 95,829.20**

### Represented By

General Fund at 1 <sup>st</sup> June 2023	£ 70,551.47	
Legal Fund at 1 <sup>st</sup> June 2023	<u>£ 1,146.85</u>	£ 71,698.32
Add excess of Income over Expenditure		£ 24,130.88
General Fund at 31 <sup>st</sup> May 2024	£ 94,682.35	
Legal fund at 31 <sup>st</sup> May 2024	<u>£ 1,146.85</u>	<b><u>£ 95,829.20</u></b>

### Merchandise Account

Stock at 1 <sup>st</sup> June 2023	£ 944.25
Stock at 31 <sup>st</sup> May 2024	<u>£ 731.00</u>
Cost of sales	<u>£ 213.25</u>
Sales for the year to 31 <sup>st</sup> May 2024	£ 271.00
Less cost of sales	<u>£ 213.25</u>
Profit on sales	<u>£ 57.75</u>

### Auditors Certificate

I have examined the books and vouchers of the North Walsham & Dilham Canal Trust for the year ended 31<sup>st</sup> May 2024 and certify that the above accounts are in accordance therewith.

Michael Segon

**Barry Mobbs, Trust Treasurer.**

---

## Trust Administrators annual report for year 2023/24 for the AGM

Volunteering for the Trust Admin role is keeping me busy with all 3<sup>rd</sup> party dealings being managed and responded to in a timely manner. This includes invitations to provide talks about the canal and the canal Trust. We have a few presentations lined up for 2025 already.

Working with Sue, our Trust Chair, this last year has included complex arrangements helping to organise our 2024 Canal Festival. The process included creating a 'contacts' list, inviting these to participate which included the stall holders to complete an 'on-line' application form, this worked incredibly well. Thanks must go to Mrs Darren Rogers of Broadland Computers who created the 'Canal Festival Stallholder Application' online form where our Terms & Conditions were also available for download.

We then circulated 3 different bulletins keeping all canal festival participants up-to-date with the festival planning.

The event for me was a huge success and very well worth the time spent on my computer helping Sue with planning and ensuring all, including our Trust volunteers, were kept informed at all stages.

**Correspondence:**

Online email enquiries are received into [Secretary@nwdct.org](mailto:Secretary@nwdct.org) where if I'm not able to deal I pass to the relevant Trust Officer.

**Trust Insurance:**

This last year saw the Trust insurance agent insist on the Trust recording that all volunteers understand and comply with Health, Safety and Risk Assessment. This enhanced level of recording has led to a competence list update.

**PayPal & QR codes.**

Thank you to all who have used our QR Codes down at various canal locations. The monies collected are transferred to the Trust bank account at the end of each month, this includes your membership subscriptions paid into our online membership database system.

Julie Kelleher  
Trust Administrator

---

**Report of Projects Officer for the year 2023/24 for the AGM**

**Decisions requested**

Ratification of the update of the Strategy as circulated to members.

**Key information to note**

Projects completed include the Light Craft Navigation project, Insurance review with related changes to systems and the annual plan of work party activity (2023/24 and 2024/25)

There is work in process on the update of the Strategy for the Trust for the period 2024/34 and work has just been commenced to crystallise the approach of the Trust to its various activities in the form of a management system.

A formal review of Safety Health and Environmental matters has been introduced and is on the agenda of the monthly meetings of the Trust.

**Report :**

## **The Light Craft Navigation Project**

The concept of light, unpowered craft navigation on the canal has been mooted for many years as a way forward prior to a full restoration of the canal. In order to support the maintenance of those sections of the canal currently navigable by light craft, and to work on other sections that might be brought back into the water, the Trust needed to be suitably equipped, for which funding was required.

In the Autumn of 2023, the Trust was awarded a grant for 75% of the cost of the purchase of sectional pontoons and auxiliary equipment (eg trailer, outboards, tools). The sectional pontoons act as both work pontoons and a means of access for canal users and the Trust can reconfigure these and move them to various positions along the canal, either by road or by water.

This equipment is currently deployed on the canal and will continue to support the work of the Trust for years to come.

## **Insurance review**

The provision of insurance is reviewed annually by the Trust to ensure assets and activity have the right cover.

The work this year was to more formally set out and document how the Trust meets the requirements of the insurers. For example, the required level of competency was determined for various activities, including, where necessary, the need for certification. Records for all existing work party volunteers were updated and a new induction process introduced.

Other examples have included updating the planning and reporting by the work party leaders, recording the briefing of volunteers before work commences and refining other system documentation.

This has involved more paperwork for some but most of what has had to be done is simply common sense

## **Annual Planning for work party activity**

This is an overall plan for work party activity in any financial year. It is thought sensible to look forward at what has to be done so that the right resources (people, equipment, materials, etc) can be put in place. The plan for the financial year 2023/24 was reviewed and updated during that year – a normal process as things change.

An annual plan for 2024/25 was developed in the Spring of 2024 for the current financial year. Matters will always arise that change the best laid plans – an example is the recent work on the culvert at Ebridge Mill – an issue not known about when the initial planning was undertaken.

## **Strategy (2024 – 2025)**

A review of the current strategy was commenced in earlier in 2024 and a preliminary draft was developed.

The Trust's vision is that of a restored canal. It is also important to note that the Trust works in support of the Proprietors of the various sections of the canal.

Accordingly, this revision to the Strategy has been discussed and reviewed with the Proprietors as well as the Trustees. This does not guarantee that all agree with what is proposed – it hopefully represents something that is in line with the vision of the Trust that most can agree with.

A summary of the final draft of the 2024/34 strategy will be in the Autumn edition of the Quagmire and be available to members as part of the papers for the AGM.

### **Management system**

It is vital for the efficient running of the Trust that certain things are done in a consistent way. A management system formalises what is done through defining policy, processes, procedures, etc.

If it is done correctly the system can bring together a lot of what already exists. It will make it so much simpler when new people join the Trust and perhaps even make it easier for a few of the existing volunteers.

Chris Heath

Projects Officer

August 2024

---

### **Membership Secretary annual report for the 2023/2024 AGM**

Active memberships as at 29<sup>th</sup> September stand at 240 memberships with 322 records in total, the latter figure includes 'linked family' records.

The MemberMoJo database is working well for our members. Most seem to find it beneficial to be able to renew online. Nevertheless, there is still always the option to talk to a 'real person' should you need any information about your membership status, or prefer to renew another way! Call me on **07774 320068** or email [membership@nwdct.org](mailto:membership@nwdct.org)

**Looking toward 2026:** The Trust may need to consider increasing the membership annual subscription for late 2025 onwards due to the ever-increasing costs. You will be asked to vote and support this at our 2025 AGM if the Trustees give the go-ahead.

A small number of our members opt to receive Quagmire in physical format and are happy to donate a little extra to cover print and postage (we suggest £15 p.a. to cover this). Again, amending your preferred method of communication is something you can do online. Simply log into your membership record <https://membermojo.co.uk/NWDCT> and alter your preferred mailing option. You may also send an email to [membership@nwdct.org](mailto:membership@nwdct.org) or call me on the mobile number above where we can arrange this for you.

## Subscription payments:

The Trust prefers its members to renew their subscriptions when an automated system reminder is sent to you from MemberMoJo.

Making an online payment with a debit/credit card avoids any delay in activating your membership. For BACS payments I have to seek our latest statement from the trust treasurer then manually update your record within our membership database.

Do you know the difference between paying by BACS (Bank automated clearing system) and PAYPAL? For BACS or Standing Order subscriptions **only you can stop these payments with your bank**. If for some reason you are no longer able to support us and when you receive your MemberMoJo renewal request you may just ignore this payment reminder. Remember the Trust has no control over your BACS payments. Don't forget also, you do not need a PayPal account to pay for your membership subscription as payment can be completed with your debit/credit card.

Once again, very many thanks for your continued support for the canal restoration programme. Every penny counts and is very much appreciated allowing us to support the canal owners with maintenance and project work along the NW&D canal.

Julie Kelleher  
Membership Secretary

---

## Boating Officer report for the 2023/2024 AGM

1. The Weed Harvester (mounted on Sue B) operating at Pound 1, took some major damage after certain protocols were not carried out by the then work party leader and skipper.

Luke Paterson and his team generously repaired the harvester in their barn / workshop with the Trust supplying the required parts. This took three attempts to fix but the report back is that the harvester has been back in the water and is cutting well.

The Trust has put in place rigorous induction, briefing, training and competence assessment procedures in compliance with insurance and SHE requirements. These must be followed on all work parties, including those on water and when using Trust work boats. Competence records for each volunteer are regularly updated with the Projects Officer and Chair.

2. Ella II boat trips got back underway this year after four members of the Trust passed their RYA PB2 assessments, we are also aiming to recruit new skippers/crew.

Ella II needs some work to bring her up to a good standard. I am aiming to compile a list of works required for a winter project.

I have started to get the batteries and the outboard motors to be on all the same connectors - this will allow any motor to connect to any battery (24volt systems only) - this will give us the back up on all vessels if one item goes down.

Boating corner at the yard will be designed and proposed over the winter.

3. **Events activity report** After being the Events officer for just under a year, my sole purpose was to assist in the festival planning and set up. We have achieved this as a team effort and with various sub committees.

Now the Boating officer role has come up, I feel this is more suited to my skill set, so I will be stepping down as events officer as I only have time to cover one role.

Darren Reeve (commonly known as Captain Baldie) Boating Officer

---

### **Fishing Officer Annual Report**

We continue to see lots of wonderful catches of roach, rudd, bream, tench, pike, perch and dace, in what has become a popular finishing venue (Ebridge mill pond) for locals and particularly pleasing to see many youngsters trying the sport over these summer holidays.

I am pleased to receive many reports from other canal users that our anglers are amongst the friendliest they have come across, which in a popular stretch of water is a great credit to them.

Our year-on-year trend of dead pike surfacing after winter continues to drop, all credit to the anglers and the Trusts adopted fishing policies. Its pleasing to report numerous evidenced catches of specimen fish which is credit to the thriving ecosystem that restoration of the Ebridge section has created.

A concern is the causes of silt at Spa Common. This presents a significant danger to the canal ecosystem and especially our fish stocks as it's a spawning ground.

I urge all anglers to uptake a Membership of the trust during my engagement work and continue to promote the Trust on social media.

Tom Webster - Fisheries Officer

---

### **ICT Officers Annual Report for the 2023/2024 AGM**

**Website** – [www.nwdct.org](http://www.nwdct.org)

Not too much activity except I've created a 'quick link' on our homepage taking you to our most recently updated pages.

HELP is needed please! I could do with an assistant uploading work party reports to our WordPress website, if anyone is interested, full training will be provided.

### **Social Media**

Thank you to all Trust Facebook page & group Admins, for monitoring and posting relevant information for our FB 'group' readers.

The difference between our PAGE & GROUP is that our **group** is for the public to upload interesting posts & photos. Our **page** is for ADMINISTRATORS use only but allowing comment from all).

The social media stats below show a healthy increase of views over the years.

**Social Media stats over the years (to date 29/09/2024)**

<b>Social Media Stats</b>	<b>2015</b>	<b>2016</b>	<b>2017</b>	<b>2018</b>	<b>2019</b>	<b>2020</b>	<b>2021</b>	<b>2022</b>	<b>2024</b>
Facebook PAGE	600	937	1290	1671	2128	2333	2536	2841	3077
Facebook GROUP				213	407	894	1395	1938	2429
Twitter				91	125	150	167	170	166
Instagram				69	107	130	181	197	241

Facebook page: <https://facebook.com/NWDCT>  
 Facebook group: <https://facebook.com/groups/www.nwdct.org>  
 X: <https://x.com/NWDCTrust>  
 Instagram: <https://www.instagram.com/nwdcanaltrust/>

**FINALLY**

A huge thank you once again to Darren Rogers of Broadland Computers for hosting our website.

Julie Kelleher, ICT Officer

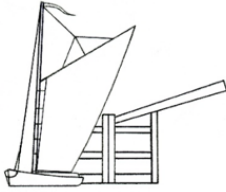
**NORTH WALSHAM AND DILHAM CANAL TRUST**

England & Wales - Charity number 1180474

---

# Accounts

---



**The North Walsham & Dilham Canal Trust**

Registered Charitable Incorporated Organisation No. 1180474

*Working to Secure Norfolk's Canal Heritage*

[www.nwdct.org](http://www.nwdct.org)

[secretary@nwdct.org](mailto:secretary@nwdct.org)

## **5<sup>th</sup> Annual General Meeting of the North Walsham and Dilham Canal Trust CIO**

To be held on Tuesday 17<sup>th</sup> October 2023 at 7pm.  
At North Walsham Methodist Church, Grammar School Rd.

### **Message from the Trust Chair**

For the AGM October 17<sup>th</sup> 2023

This has been quite a short 'year' between AGMs, but still quite a lot has taken place in that time.

Incoming funds have continued due to the hard work of our special team. It would appear, though, The Trust is currently in the process of applying for a rather large sum of funding and the result should be known by the end of the year

The annual 'Open Days' were replaced with a 'Canal Festival', which was held with the kind permission of Bindwell Ltd, proprietors of the lower, Pound 1 of the canal in Dilham. The very hard work put in by both the Bindwell Team and the NWDCT resulted in a wonderful event across the weekend of 9<sup>th</sup> & 10<sup>th</sup> September. We are not yet aware of the financial results as I write (22Sept) but the good will and resulting publicity will see the Trust well for the future. Talking of publicity, the Trust is in need of a Press Officer, so if you have an inkling toward this, please talk with our Administration Officer and help will be offered to you, if required.

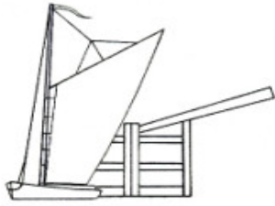
We are also seeking for more volunteers in both the suited (pen pushers – PC) and on the work-face workers (the Green Gym) so we look forward to welcoming you on board for these opportunities!

There have been a few changes in Post Holders/Trustees, which is not a bad thing in a relatively young and forward-looking organisation.

As I stand down from the Post of Chairman, I thank you all for your support, friendship and companionship in the over 20 years in which I have been involved with what is now called a CIO, but which started off as just a happy bunch of volunteers trying to bring nature to heel and attempting to see what lay beneath the bushes and trees of what was at one time the only working, sailing canal in Norfolk. It still is, but needs much more doing to it to make it 'work' again!

I wish you all well!

David Revill



**The North Walsham & Dilham Canal  
Trust**

*Working to save Norfolk's Canal Heritage*

[www.nwdct.org](http://www.nwdct.org)

[www.facebook.com/groups/www.nwdct.org/](https://www.facebook.com/groups/www.nwdct.org/)

## **FINANCIAL STATEMENT**

### **FOR THE YEAR 1<sup>ST</sup> JUNE 2022 to 31<sup>ST</sup> MAY 2023**

Bank Balance at 1<sup>st</sup> June 2022 - £25,658.87

Bank Balance at 31<sup>st</sup> May 2023 - £27,551.39

The accounts for the year ending 31st May 2023 have been balanced and examined by the Trust's auditor Michael Segon A.C.I.B. I would like to thank Mike for the work he has done and the help he has given me in the preparation of the audited accounts. I recommend that Mike continues as our auditor for the next financial year.

The Income & Expenditure sheets together with the Balance Sheet can be found herewith.

During this year the total income was £25,098.38 and expenditure £18,788.08 leading to an excess of income over expenditure of £6,310.30. This is an increase from the previous year when we were still recovering from the effects of Covid-19.

As can be seen income was generated from various sources the largest of which were grants followed by donations.

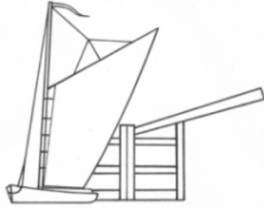
Of the expenditure of £18,788.08 the major item was again depreciation at £6,283.92 with the rent for the units following at £3000.00.

In this financial year 2022 to 2023 our financial situation has continued to recover from the effects of Covid-19 and grants have made a great contribution to our income.

Looking forward we must ensure that all future projects are carefully budgeted for and that we have the funds available before commencing work. Costs must be rigorously controlled to ensure that budgets are not exceeded.

Barry Mobbs

Treasurer, North Walsham & Dilham Canal Trust



## North Walsham and Dilham Canal Trust

Registered Charitable Incorporated Organisation No. 1180474

*Working to Secure Norfolk's Canal Heritage*

[www.nwdct.org](http://www.nwdct.org)

### **NORTH WALSHAM AND DILHAM CANAL TRUST** **FINANCIAL REPORTS FOR THE YEAR 1ST June 2022 to 31st May 2023**

#### **INCOME AND EXPENDITURE ACCOUNT** **FOR THE YEAR 1ST June 2022 to 31st May 2023**

##### **Income**

Events	£	1,067.98
Grants	£	10,694.00
Donations	£	8,052.48
Subscriptions	£	2,728.00
Trip Boats	£	2,555.92

##### **Total Income**

**£ 25,098.38**

##### **Expenditure**

Subscriptions	£	129.00
Rent	£	3,000.00
Rates	£	169.44
Insurance	£	1,403.73
Events	£	72.00
Merchandise - loss on sales	£	507.28
Training	£	330.00
Work Parties	£	723.91
Admin	£	331.01
Marketing	£	1,482.19
Trip Boat	£	2,394.65
Building Maintenance	£	44.63
Machinery Repairs & Servicing	£	1,257.51
Plant & Machinery purchased	£	481.06
Paypal Fees	£	97.90
Audit cost	£	79.85
Depreciation	£	6,283.92

##### **Total Expenditure**

**£ 18,788.08**

##### **Excess of Income over Expenditure**

**£ 6,310.30**

## BALANCE SHEET AT 31ST MAY 2023

### Tangible (Fixed) Assets

At cost	£58,921.84		
Additions during year	£10,829.92	£69,751.76	
Less Depreciation to 31 May 2022	£21,424.84		
Less Depreciation for year	£6,283.92	£27,708.76	<b>£42,043.00</b>

### Current Assets

Prepayment of insurance - 7 months	£930.51	
Prepayment of rates - 10 months	£229.17	
Stock of Merchandise	£944.25	
Bank Current Account	£27,551.39	
	<b>£29,655.32</b>	

<b>Less Liabilities</b>	<b>£0.00</b>	<b>£29,655.32</b>
<b>Total Assets</b>		<b>£71,698.32</b>

### Represented By

General Fund at 1 June 2022	£64,241.17	
Legal Fund at 1 June 2020	£1,146.85	£65,388.02
Add Excess of Income over Expenditure		£6,310.30

General Fund at 31 May 2023	£70,551.47	
Legal Fund at 31 May 2023	£1,146.85	<b>£71,698.32</b>

### Merchandise Account

Stock at 1 June 2022	£1,523.53	
Stock at 31 May 2023	£944.25	
<b>Cost of sales</b>	<b>£579.28</b>	
Sales for year to 31 May 2022	£72.00	
less cost of sales	£579.28	
<b>Loss on sales</b>	<b>£507.28</b>	

### AUDITORS CERTIFICATE

I have examined the books and vouchers of the The North Walsham & Dilham Canal Trust for the year ended 31st May 2023 and certify that the above accounts are in accordance therewith.

Michael R Segon ACIR 25th September 2023

**NORTH WALSHAM AND DILHAM CANAL TRUST**

England & Wales - Charity number 1180474

---

# Accounts

---



# North Walsham and Dilham Canal Trust

Registered Charitable Incorporated Organisation No. 1180474

*Working to secure Norfolk's Canal Heritage*

contact:secretary@nwdct.org

## Officer Reports for the

4<sup>th</sup> Annual General Meeting held on the  
Thursday 12<sup>th</sup> January 2023

at the **King's Arms Hotel, King's Arms Street, North Walsham, NR28 9JX**  
**7pm start**

### OFFICER ANNUAL REPORTS

CONTENTS			Page
David Revill	Trust Chair		2
Barry Mobbs	Trust Treasurer	Financial Statement	3
		Income & Expenditure	4
		Balance Sheet	5
Andrea Lamyman	Membership Secretary		6
Julie Kelleher	Trust Administrator		7
Graham Pressman	Boating Officer		8 - 9
David Batley	Funding Team Leader		10 – 11
Julie Kelleher	ICT Officer		12
Tom Webster	Fisheries Officer		13
Ivan Cane	"Quagmire" Editor		14
Ivan Cane	EAWA Archivist for Canal records		15

## **ANNUAL REPORT FROM THE TRUST CHAIR.**

Another year has passed in the life of the Trust and I must say that it has been a bit challenging.

On the positive side, I am very pleased with the substantial progress made and increasing potential for future developments along the canal in the R. Ant valley.

Meetings have been held with the proprietors of the middle and lower pounds, the North Walsham Canal Company and Bindwell Ltd, with a more positive idea of what can be mutually agreed in the restoration field.

A zoom meeting has been held, engaging our local MP, Duncan Baker, together with the Area and Local managers of the Environment Agency.

Our Work Party Leaders have all been working like Trojans through the year, in co-operation with Jeremy Cushion, Director of the Old Canal Company (OCC) but unfortunately with a reduced number of volunteers. This happens at times but in this case, I consider that it is a continuing result of the dreaded Covid-19 pandemic. Habitually the numbers have tended to increase again over a relatively short time.

I am impressed by the efforts and work inputs of the Trustees and Officers, who have progressed through a difficult year with a typical stiff upper lip!

The grounds, upon which fund raising through Grants, are being well laid for future income etc and the Open Days held in August 2022 were inspirational for many reasons, including financial but probably more important, communication with the general public, resulting in more folk joining us as members and volunteers appearing over the horizon.

During the past couple of months, two very important issues have been resolved – the planned lower lock gates for Ebridge and the contract dealing with the dredger “WEASEL”. Whilst the results have yet to be completed, the resolutions are agreed and I thank all who were involved in this matter.

I offer myself to be the Chair for the final time in this coming shorter year to the next AGM and look forwards to a much brighter and progressive year.

Stay true and believe in the cause!

David Revill  
Chairman  
6/12/22

## FINANCIAL STATEMENT

### FOR THE YEAR 1<sup>ST</sup> JUNE 2021 to 31<sup>ST</sup> MAY 2022

Bank Balance at 1<sup>st</sup> June 2021 - £18,462.66

Bank Balance at 31<sup>st</sup> May 2022 - £25,658.87

The accounts for the year ending 31st May 2022 have been balanced and examined by the Trust's auditor Michael Segon A.C.I.B. I would like to thank Mike for the work he has done and the help he has given me in the preparation of the audited accounts. I recommend that Mike continues as our auditor for the next financial year.

The Income & Expenditure sheets together with the Balance Sheet can be found herewith.

During this year the total income was £18,478.14 and expenditure £15,868.92 leading to an excess of income over expenditure of £2,609.22. This is a considerable improvement from the previous Covid-19 affected year when expenditure exceeded income by £7231.45.

As can be seen income was generated from various sources the largest of which were Donations and the Trip Boat. Subscriptions were increased from the previous year and the Ebridge event was again a major contributor.

Of the expenditure of £15,868.92 the major item was again depreciation at £4986.00 with the rent for the units following at £3000.00.

The value of our tangible assets reduced by £4986.00 this year to £37497.00.00 due to the effect of depreciation with no additions during the year.

In this financial year 2021 to 2022 things have started to return to something like normal. The trip boat and donations have made a significant contribution and we have once again been shown by others that an open day can be organised to be a major source of income.

Barry Mobbs  
Treasurer, North Walsham & Dilham Canal Trust

**NORTH WALSHAM AND DILHAM CANAL TRUST**  
**FINANCIAL REPORTS FOR THE YEAR 1st June 2021 to 31st May 2022**

**INCOME AND EXPENDITURE SHEET**  
**FOR THE YEAR 1st June 2021 to 31st May 2022**

**Income**

Events	£	2,088.47
Sales of merchandise	£	121.35
Grants	£	2,850.00
Donations	£	4,940.82
Subscriptions	£	3,569.00
Trip Boats	£	4,908.50

**Total Income** **£ 18,478.14**

**Expenditure**

Subscriptions	£	54.00
Rent	£	3,000.00
Rates	£	291.58
Insurance	£	949.53
Events	£	230.00
Merchandise	£	48.47
Training	£	687.16
Work Parties	£	925.47
Admin	£	1,264.68
Marketing	£	184.78
Trip Boat	£	50.86
Building Maintenance	£	439.54
Machinery Repairs & Servicing	£	2,271.58
Ebridge	£	366.58
Paypal fees	£	118.69
Depreciation	£	4,986.00

**Total Expenditure** **£ 15,868.92**

**Excess of Income over Expenditure** **£ 2,609.22**

## BALANCE SHEET AT 31ST MAY 2022

### Tangible (Fixed) Assets

At cost	£58,921.84		
Additions during year	£0.00	£58,921.84	
Less Depreciation to 31 May 2021	£16,438.84		
Less Depreciation for year	£4,986.00	£21,424.84	<b>£37,497.00</b>

### Current Assets

Prepayments - insurance June-December	£739.08		
Stock of Merchandise	£1,523.53		
Bank Current Account	£25,658.87	£27,921.48	

### Less Liabilities

Accruals - Rates April & May 2022		£30.46	<b>£27,891.02</b>
-----------------------------------	--	--------	-------------------

### Total Assets

**£65,388.02**

### Represented By

General Fund at 1 June 2021	£61,631.95		
Legal Fund at 1 June 2022	£1,146.85	<b>£62,778.80</b>	
Add Excess of Income over Expenditure			<b>£2,609.22</b>
General Fund at 31 May 2022	£64,241.17		
Legal Fund at 31 May 2022	£1,146.85		
			<b>£65,388.02</b>

### Merchandise Account

Stock at 1 June 2021	£1,523.53		
Stock at 31 May 2022	£1,523.53		
<b>Cost of sales</b>		<b>£0.00</b>	
Sales for year to 31 May 2022		£121.35	
less cost of sales (sales from previously written off stock)		<b>£0.00</b>	
<b>Profit on sales</b>		<b>£121.35</b>	

**AUDITOR'S CERTIFICATE** I have examined the books and vouchers of THE NORTH WALSHAM & DILHAM CANAL TRUST for the year ended 31st May 2022 and certify that the above accounts are in accordance therewith. Signed Michael R Segon ACIR 13 Sept 2022

## Membership Secretary AGM Report

As at 18<sup>th</sup> August 2021 total membership records stood at 260, comprising 321 individuals, as some are family memberships.

Memberships as at 4<sup>th</sup> December 2022, stand at 266, comprising 352 members. This reflects the fact that a number of single memberships have been converted to family memberships over the year, the loss of some single members, through natural attrition, and the overwhelming majority of new memberships this year being family memberships. A total of 79 new memberships, (some single, many family) have been created since my report to the AGM, last year. Recruitment is, therefore, in line with previous years. It is great to welcome so many new faces, and a few welcome returners!

Retention of members remains something on which we must focus.

The MemberMoJo database is now well bedded-in and seems pretty user-friendly for our members. It also makes the role of Membership Secretary far more streamlined. Most members seem to find it beneficial to be able to renew online. Nevertheless, there is still always the option to talk to a 'real person' should you need any information about your membership status, or prefer to renew another way!

An increasing number of our members are opting to receive Quagmire in physical format and are happy to donate a little extra to cover print and postage (we suggest £10 p.a. to cover this). Again, this is something you can do online. Simply log into your membership and alter the preferred mailing option - or drop [membership@nwdct.org](mailto:membership@nwdct.org) an email and we can arrange this for you.

Andrea Lamyman  
Membership Secretary, NW&DCT

Access to your personal online membership record is by the link below:  
<https://membermojo.co.uk/nwdct>

## **Trust Administrators Report for the AGM**

Volunteering for the 'Trust Admin' role meant learning quite quickly just how involved the role is. For my information and awareness, I collected the many different folders, files and papers that existed, sorting papers into relevant folder sections. Very interesting for me to read some of the papers from early 2000 that existed before I joined the canal trust.

Another job, especially after the installation of our Unit's new post box, was contacting various organisations advising of our new 'Registered Address' and our main contact email address of [secretary@nwdct.org](mailto:secretary@nwdct.org)

**Training Courses** arranged for this year and using the same providers were the:

- Chainsaw Maintenance, Cross-cutting and Felling refresher, a two-day course.
- Emergency First Aid at Work, a one-day course.

Very pleased to advise that all participants passed and have the certificates to prove.

### **Correspondence:**

Online email enquiries are regularly received into [Secretary@nwdct.org](mailto:Secretary@nwdct.org) which I also manage. I pass the enquiry to the Trust Officer if it's something I'm not able to deal with. We also receive enquiries via our social media accounts.

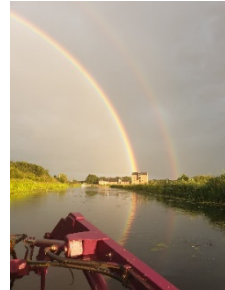
### **PayPal report:**

I administer the NWDC Trust PayPal account which was created in April of 2021. At the end of each month the monies received are transferred to the Trust bank account.

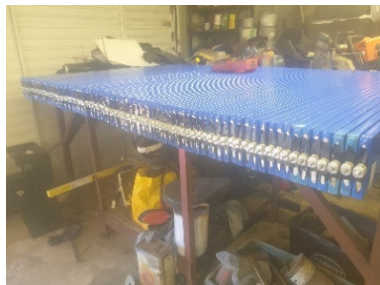
Julie Kelleher  
Trustee & Trust Administrator

## Boating Officer AGM Report

After the long 'Covid/proximity of people' problems, things are looking up this year from the passenger boat perspective. We will still only take bookings from groups, and not mix groups unless they are explicitly happy to do that. No doubt the financial report from Barry will give a clearer idea of what the boats have brought in. A large number of folk are now aware of the canal following trips. We have even had a few VIPs aboard. I took out a party of two from the Environment Agency, one person from Norfolk County Council and another of our own Trustees a few weeks ago. They all expressed pleasure at what The Trust is. Things like boat trips, certainly seem to help in these negotiations. They left the boat with a far better understanding of what we do by way of conservation for the benefit of the canal and its corridor and what the canal can provide for the welfare of the public.



We're approaching Boat Safety Certificate time, which we don't expect to pose any problems. Ella II is now on much more modern batteries. Whilst a large expense, they are expected to



last for around 20 years thus putting an end to the regular replacements which were needed. The long-term saving could be huge, and performance is like chalk and cheese compared with the old-fashioned lead ones! Added to that, these are recognised as being the safest currently on the market. No more Hydrogen for us! The solar panels are, of course, still producing all the power the boat needs. I did 5 trips on one day and 3 days later they were fully charged again despite having done 2 trips in between.

We have a wonderful addition to our crew in Ralph. He really has turned out to be a superb steerer, being safe, steady and a good speaker. Thanks for joining us Ralph! I only regret having to share your time with Broads Museums electric passenger boat. I hope that another, existing, steerer will be able to get back behind the tiller soon.

Our stalwart carpenter, David, has, with the help of others I think, painted Ella II in fleet Royal Purple and the WP's have kept her hull blacked up, for protection and appearance.



There is another boat in the background, which has cost nothing to The Trust, which is a 12-seater rib. There is work to be done before it can be used, but no need has yet arisen, so no hurry!

The Weedeater has performed excellent service again this year. It's had an engine service (main gasket set and injector overhaul), it's charging reliably and the hydraulics are working well. Seen here is Fleet Colours (a little worn now, so due for a further coat when there is time). There is some hope that we may be able to obtain grant funding for a Weed Harvester, which would deliver the cut aquatic weed directly ashore,. Raking takes at least 3 or 4 times as long as the



actual cutting. Paddlers and swimmers will find it a lot easier if we do manage to get one. The majority of the funding for that is already in place.

We have used Sue B a few times, when we have needed to carry parties of more than 12 and she has been used for some maintenance work.



On a personal note, I am quietly getting on with construction of 'The Newun', which is a steel replica of a clinker-built Northern River Wherry (original plans applied and made to fit) of the type which used to trade NWDC. It is expected that it will go on the lower canal between Wayford bridge and Honing (Dilham) lock. Whilst that's mine, no doubt when I become too old to operate it, the thing can be offered to The Trust as a gift, if they want it by then. In the meantime, I'll be happy to use it on Trust work if needed and there will be a wherry back on the canal after nearly 100 years. Oh! It's electrically powered.

**Graham Pressman**

Trustee and Boating Officer, North Walsham and Dilham Canal Trust.

## **FUNDING TEAM LEADER AGM Report**

After six months in the job, I have learned much and achieved little, I am still a team of one.

In the LONG TERM the canal navigation will return, as we shake off the excitement and confusion that is 2022 the National Funding that will produce improvements to infrastructure and “Levelling Up” will return and we must be ready.

The Trust’s liaison with the four canal owners is producing collaborative results; our neighbours such as the publican at the Crown in Trunch, the Worsted Weavers Guild and Ernest Doe machinery suppliers offer their enthusiastic support and discounts. We will need it as five of our six locks require serious attention where as six of the seven canal bridges are sound Royston Bridge is just a pipe.

I represented the Trust at the Canal and Rivers Trust/Inland Waterways Association national conference when the canal community was roundly chastised for not being prepared for the Governments financial initiatives. It was clear that canals that had won millions of pounds of funding were both unified and working as a team.

In the MEDIUM TERM there will be financial benefit for all our neighbours who can show that land bordering the canal’s green corridor is being managed in a carbon friendly manner. The Trust has already demonstrated its expertise at measuring flora and fauna.

Our relationship with the Broads Authority, the Internal Drainage Board, the Environment Agency and Norfolk Wildlife Trust must rest on scientific foundations which will enhance our relationship with the landowners who adjoin the canal.

At our recent Open Weekend, we met and talked with potential members and supporters many began by stressing the emotional benefits they gained by being close to water. Perhaps now, post-covid, we might consider being exhibitors at other local shows and festivals?

In the SHORT TERM we are seeking funding totaling some £50,000 for kit that will help the volunteer working parties to maintain the canal in an industrially safe environment. A 50hp tractor, a battery-operated trimmer and commercial lawnmower and a weed harvester that cuts, stores, transports, and deposits it’s load of aquatic vegetation.

I represented the Trust at the Cromer Volunteer Day, the North Walsham Men’s Shed, the North Walsham Vattenfall Funding Meeting and talked to the WRG’ies (‘Waterways Recovery Group’ they built Ebridge spillway) at the Ware Canal Festival and tagged along when Ivan Cane and Graham Pressman introduced the North Walsham Young Farmers to the canal.

The Vattenfall Norfolk Community Fund amounts to £15,000,000 over the 25-year life of the windfarms for local collaborative projects.

North Norfolk District Council are very responsive to our funding requests, I have yet to make successful contact with Norfolk County Council.

In the immediate future I believe we must all recognise that as volunteers the canal plays only a part in our lives. There are individuals out there in membership land who want to offer their skills to building the canals future, as trustees we have a responsibility to encourage their participation.

David Batley

**Funding report 2022 – David Batley**

<b>Fund</b>	<b>Amount</b>	<b>Capital Items</b>	<b>notes</b>
Sheringham Shoal administered by Norfolk Community Foundation	After 12% discount £3,674	STIHL Battery powered strimmer, mower and batteries	Will take delivery by early February 2023 from Ernest Doe and sons North Walsham
Geoffrey Watling Trust, Norwich	£5,000	Part funding of a weed harvesting vessel	Will be of value along the full length of the canal.
Nineveh Charitable Trust	£4,560 + VAT with a substantial discount	BCS 740 with finger mower attachment	Awaiting charity trustees meeting Feb/March 2023
Accord Energy Solutions Community fund administered by their secretary, nominated by an AES employee and North Walsham resident [REDACTED]	£2,000	Battery powered chain saw	Working party researching best purchase.
Blue Spaces living water administered Essex & Suffolk Water by their ecologist [REDACTED]	Max £25,000	Introduced to the trust by Rory Sanderson from the Environment Agency to compliment Nutrient Neutrality	A fund to encourage public access to the watery environment
Nutrient Neutrality created by Department of Environment, Farming and Rural Affairs administered by Natural England	People asking for planning permission for dwelling construction must show no pollution will result, hence nutrient neutrality, e.g. No pollutant fed algal bloom.	Nutrient sampling and analysis from the Ant catchment	Could this funding support canal restoration?
Several National and European funds associated with canal infrastructure			

## ICT Officers AGM Report

The Trust website – [www.nwdct.org](http://www.nwdct.org)

The website is updated frequently especially the EVENTS page and WORK PARTY information page. It's interesting to note that the WP reports go back to 2008 when the 'East Anglian Waterways Association' first managed the NW&D Canal work parties. There are some great photos of the canal BEFORE restoration work.

### Social Media

So glad to report that our FB group still receives a huge variety of wildlife and scenic photographs being posted. Thank you to all who post their beautiful photographs and interesting pieces of information.

Thank you to all Trust Facebook group Trustee Admins, for monitoring and posting relevant information for our FB 'group' supporters.

Facebook (META) has changed its rules where any profile can reply to a group members post, this has meant that some posts and replies go against our group rules. These 'spam' posts are deleted and the profile blocked. Thank you to those who report them.

I don't use Twitter or Instagram myself so if you're interested in managing these accounts for us, please contact me.

### Social Media stats over the years (to date 29<sup>th</sup> August 2022)

Social Media Stats	2014/2015	2016	2017	2018	2019	2020	2021	2022
Facebook PAGE	429/600	937	1290	1671	2128	2333	2536	2841
Facebook GROUP				213	407	894	1395	1938
Twitter				91	125	150	167	170
Instagram				69	107	130	181	197

### **FINALLY:**

A huge thank you once again to [REDACTED] Broadland Computers, Stalham. His patience in dealing with technical calls is endless, all of which is very much appreciated. A huge thank you from me Darren.

Julie Kelleher  
Trustee and ICT Officer

## **Fisheries Officer's Annual Report 2022**

We continue to have lots of catches of roach, rudd, bream, tench, pike, perch and dace, in what is now an upwards continuing year on year trend. Our year-on-year trend of dead pike surfacing after winter continues to drop, all credit to our anglers and the Trusts adopted fishing policies. It's very pleasing to be able report the numerous evidenced catches of specimen fish which is credit to the thriving ecosystem that restoration of the Ebridge section has created.

Still a concern is the silt levels and the causes of silt at Spa Common. This presents a significant danger to the canal ecosystem and especially our fish stocks as it's a spawning ground. I greatly support the Trust in trying to resolve this ongoing problem and causes with urgency.

Membership amongst our regular anglers is increasing and we continue to work to include anglers into the Trust and its work. I am pleased to receive many reports from other canal users that our anglers are amongst the friendliest they have come across.

I continue with my efforts to promote the canal on social media.

Tom Webster - Fisheries Officer

## **Quagmire Editor's Annual Report - August 2022**

*Quagmire* has continued to be an important communication between the Trust, its members and the community at large. The November 2021 (5.4), February and May 2022 (6.1 & 6.2) editions were edited by Ivan Cane, and, following his move to the more national restoration scene, the August 2022 (6.3) by Andrea Lamyman. We look forward to a new editor taking the helm in the coming year.

The quarterly magazine has continued to be available either in a hard edition (for which members are asked to contribute an extra £10 p.a. to cover printing, p&p), and an electronic version, which is issued both as a pdf and published on the ISSUU platform. The November edition covered the background and exciting planned future for Dilham Lake, February looked at Ebridge and the history of the Stop Notice whilst for his last edition, Ivan took the theme of "What Next" showing the challenges and opportunities for the Canal in the future. Andrea's August edition included articles on the new Trustees and officers, and the up-and-coming Open Weekend, as well as a focus on the weekend's venue – Ebridge Staithe. *Quagmires* have also given updates on the work party news, sadly, some obituaries of previous stalwart supporters of the Canal's restoration and a look at the wider world of restoration projects elsewhere.

*Q-Extra* has filled the intervening months, by keeping members up-to-date with the events of the past few weeks. Both publications have relied, heavily, on photographs and articles from the Trust's membership – and the editors have been most grateful for all their help. Further contributions and comments are always welcome.

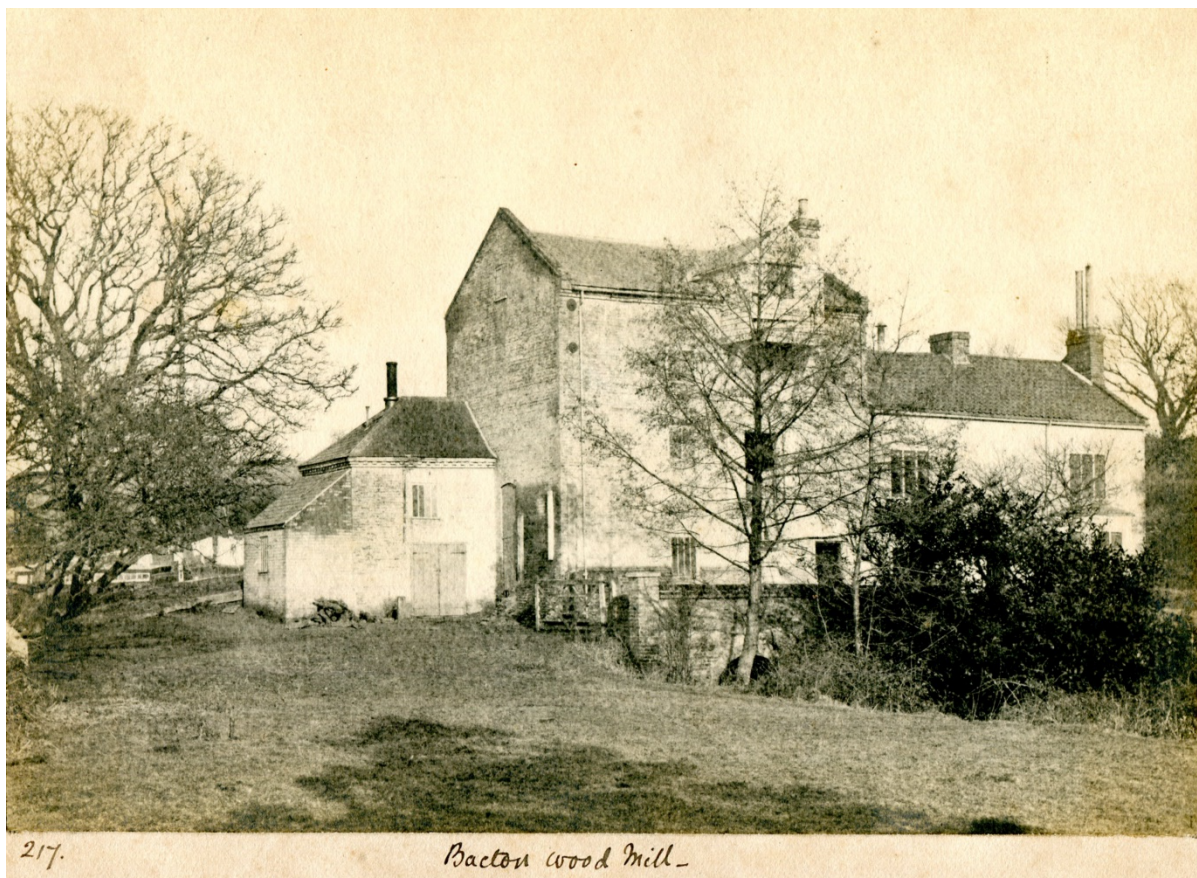
Ivan Cane

*Quagmire* Editor 2020-2022

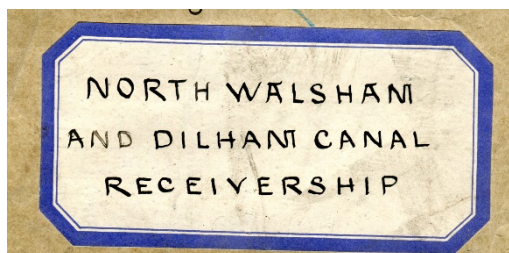
23 August 2022

## East Anglian Waterways Association's Archivist for the NW&DC Records

The discovery of older pictures, not seen before, is becoming a rarity. However, the archives were extremely lucky to have the Stanley Watt's Collection of original papers, relating to the Canal, donated by his grandson, Jon Watts. The July *Q-Extra Newsletter 10*, outlined the many documents that the collection held, including a new picture of Bacton Wood Mill, with the pleasure wherry in the background, complementing the well-known picture of the



wherry in the millpond. However, the main bundle concerns The Canal Company Ltd, of 13 Hanger Lane, Ealing, being taken into receivership by Walker and Walker. These court hearings lasted over a year (1913/14) and later involved the General Estates Company and seven of the Percy Family. This had previously been a "gap" in the Canal's history, and we are very grateful for Jon Watts to have rescued and handed them to the EAWA for safe keeping. These, like many other original documents, will, after scanning, be passed to the Norfolk Record Office for safekeeping.



On the other side of the coin, the archivist has received, and welcomed many enquiries for searches and information

The EAWA always welcomes the loan or gifts of any pictures or papers relating to the Canal. Please contact the Archivist at [archive@nwdct.org](mailto:archive@nwdct.org)

Ivan Cane  
EAWA Archivist for the NW&DC Records  
23 August 2022

**NORTH WALSHAM AND DILHAM CANAL TRUST**  
**FINANCIAL REPORTS FOR THE YEAR 1st June 2021 to 31st May 2022**

**INCOME AND EXPENDITURE SHEET**  
**FOR THE YEAR 1st June 2021 to 31st May 2022**

**Income**

Events	£	2,088.47
Sales of merchandise	£	121.35
Grants	£	2,850.00
Donations	£	4,940.82
Subscriptions	£	3,569.00
Trip Boats	£	4,908.50

**Total Income** **£ 18,478.14**

**Expenditure**

Subscriptions	£	54.00
Rent	£	3,000.00
Rates	£	291.58
Insurance	£	949.53
Events	£	230.00
Merchandise	£	48.47
Training	£	687.16
Work Parties	£	925.47
Admin	£	1,264.68
Marketing	£	184.78
Trip Boat	£	50.86
Building Maintenance	£	439.54
Machinery Repairs & Servicing	£	2,271.58
Ebridge	£	366.58
Paypal fees	£	118.69
Depreciation	£	4,986.00

**Total Expenditure** **£ 15,868.92**

**Excess of Income over Expenditure** **£ 2,609.22**

## BALANCE SHEET AT 31ST MAY 2022

### Tangible (Fixed) Assets

At cost	£58,921.84		
Additions during year	£0.00	£58,921.84	
Less Depreciation to 31 May 2021	£16,438.84		
Less Depreciation for year	£4,986.00	£21,424.84	<b>£37,497.00</b>

### Current Assets

Prepayments - insurance June-December	£739.08		
Stock of Merchandise	£1,523.53		
Bank Current Account	£25,658.87	£27,921.48	

### Less Liabilities

Accruals - Rates April & May 2022		£30.46	<b>£27,891.02</b>
-----------------------------------	--	--------	-------------------

### Total Assets

**£65,388.02**

### Represented By

General Fund at 1 June 2021	£61,631.95		
Legal Fund at 1 June 2022	£1,146.85	<b>£62,778.80</b>	
Add Excess of Income over Expenditure			<b>£2,609.22</b>
General Fund at 31 May 2022	£64,241.17		
Legal Fund at 31 May 2022	£1,146.85		
			<b>£65,388.02</b>

### Merchandise Account

Stock at 1 June 2021	£1,523.53		
Stock at 31 May 2022	£1,523.53		
<b>Cost of sales</b>		<b>£0.00</b>	
Sales for year to 31 May 2022		£121.35	
less cost of sales (sales from previously written off stock)		<b>£0.00</b>	
<b>Profit on sales</b>		<b>£121.35</b>	

**AUDITOR'S CERTIFICATE** I have examined the books and vouchers of THE NORTH WALSHAM & DILHAM CANAL TRUST for the year ended 31st May 2022 and certify that the above accounts are in accordance therewith. Signed Michael R Segon ACIR 13 Sept 2022

# **FINANCIAL STATEMENT**

**FOR THE YEAR 1<sup>ST</sup> JUNE 2021 to 31<sup>ST</sup> MAY 2022**

Bank Balance at 1<sup>st</sup> June 2021 - £18,462.66

Bank Balance at 31<sup>st</sup> May 2022 - £25,658.87

The accounts for the year ending 31st May 2022 have been balanced and examined by the Trust's auditor Michael Segon A.C.I.B. I would like to thank Mike for the work he has done and the help he has given me in the preparation of the audited accounts. I recommend that Mike continues as our auditor for the next financial year.

The Income & Expenditure sheets together with the Balance Sheet can be found herewith.

During this year the total income was £18,478.14 and expenditure £15,868.92 leading to an excess of income over expenditure of £2,609.22. This is a considerable improvement from the previous Covid-19 affected year when expenditure exceeded income by £7231.45.

As can be seen income was generated from various sources the largest of which were Donations and the Trip Boat. Subscriptions were increased from the previous year and the Ebridge event was again a major contributor.

Of the expenditure of £15,868.92 the major item was again depreciation at £4986.00 with the rent for the units following at £3000.00.

The value of our tangible assets reduced by £4986.00 this year to £37497.00.00 due to the effect of depreciation with no additions during the year.

In this financial year 2021 to 2022 things have started to return to something like normal. The trip boat and donations have made a significant contribution and we have once again been shown by others that an open day can be organised to be a major source of income.

Barry Mobbs  
Treasurer, North Walsham & Dilham Canal Trust

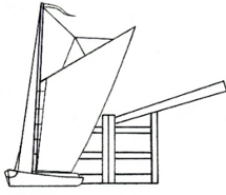
**NORTH WALSHAM AND DILHAM CANAL TRUST**

England & Wales - Charity number 1180474

---

# Accounts

---



**The North Walsham & Dilham Canal Trust**

Registered Charitable Incorporated Organisation No. 1180474

*Working to Secure Norfolk's Canal Heritage*

[www.nwdct.org](http://www.nwdct.org)

[secretary@nwdct.org](mailto:secretary@nwdct.org)

## Annual General Meeting held on the 12<sup>th</sup> October 2021

at the North Walsham Methodist Church.

### OFFICER ANNUAL REPORTS

Contents:	Page
Trust Chairman's	2
Treasurer's Financial	3
Membership Secretary	4
Boating Officer	6
Fishing Officer	7
Wildlife Officer	8
ICT Officer	9
Trust Newsletter "Quagmire" Editors	10
EAWA Archivist for the NW&D canal records	11

**NORTH WALSHAM & DILHAM CANAL TRUST**  
**CHAIRMAN'S ANNUAL REPORT TO THE ANNUAL GENERAL MEETING ON 12<sup>TH</sup> OCTOBER**  
**2021**

As chairman of your Trust, I must not only reflect on the debilitating effect the dreadful Covid 19 virus has caused to many sides of our work but also pay thanks to the steadfast work carried out by our officers and highly worthy volunteers throughout the past troubled times.

The structure of the Trust has been reliably built on a very firm base and is still evolving to include and cover the developing future plans and requirements of our ideology and strategy.

Some officers and Trustees have sailed onto pastures new in the past two years and I thank them for their input in all disciplines to the Trust, which has been well received and greatly appreciated. New members have joined the organising team and they have and are being welcomed and assisted in their journey with us. New posts are being created to relieve the pressure on some of the existing and we do need more good people to come forward to take up these posts. All will be fully supported, with help given when asked for or offered and the successful applicants would bring with them their own skills, ideas and experiences to the task, which would be well respected.

As can be seen from the annual financial report, the Trust has weathered this inclement climate considerably better than was expected when Covid 19 struck.

I have been duly impressed by the resilience and adaptability shown by our volunteers and their leaders on the 'work face', who have continued (subject always to the then current government regulations) with their work in all manner of conditions!

Much behind-the-scenes work has been and is being carried out with various authorities, such as NNDC, NCC, EA, NWT, NWTC and the four various proprietors of the North Walsham & Dilham Canal.

I would like to recognise and thank the many people, members, firms and companies who have contributed to our achievements over the past 24 months and in particular our Trustees and Officers.

Finally, with your support I look forward with optimism to the future when progress in our cause and work will be continued.

Thank you all, once again.



Chairman  
NW&DCT

**NORTH WALSHAM AND DILHAM CANAL TRUST**  
**FINANCIAL REPORTS FOR THE YEAR 1ST June 2020 to 31st May 2021**

**INCOME AND EXPENDITURE SHEET**  
**FOR THE YEAR 1ST June 2020 to 31st May 2021**

**Income**

Events	£	-
Sales of merchandise	£	38.00
Grants	£	1,510.00
Donations	£	6,028.36
Subscriptions	£	2,266.00
Trip Boats	£	1,320.00
NNDC Rate rebate	£	518.16

**Total Income**

**£ 11,680.52**

**Expenditure**

Subscriptions	£	54.00
Rent	£	3,000.00
Rates	£	217.60
Insurance	£	1,614.57
Security	£	70.16
Work Parties	£	2,145.51
Admin	£	451.16
Marketing	£	874.42
Trip Boat	£	160.42
Building Maintenance	£	60.00
Machinery Repairs & Servicing	£	3,585.32
Plant Machinery Tools	£	279.68
Ebridge Lock	£	317.45
Bacton Wood Lock	£	21.98
Depreciation	£	6,059.70

**Total Expenditure**

**£ 18,911.97**

**Excess of Expenditure over Income**

**£ 7,231.45**

## Membership Secretary's Report to the AGM 2021

A number of changes over the course of the last 18 months have made comparison with membership data from previous years less meaningful.

- Early in the covid pandemic we took the decision not to chase members for unpaid subscription fees, instead continuing to consider them members, even after subs had lapsed.
- In July of this year we went live with a new membership platform (MemberMoJo) which counts each associated member in a 'Family' membership, unlike our previous methodology in which we counted each 'Family' membership as 2 members.

As a consequence, our current numbers are not truly comparable with previous data.

There was an initial, anticipated drop in membership numbers shortly after taking the data live on the new database in July. Those members who had chosen to lapse over the covid period failed to engage and refresh their memberships and so there was a correction in terms of member numbers, which simply reflected natural attrition that we had not recorded in the prior year.

However, since going live in July with MemberMoJo we have gained 47 new members, the majority of which (with the exception of the 20 who joined at our Ebridge Open Event) have joined and paid online. It appears that the new system is already making it easier for people to join and start to enjoy the benefits of membership immediately.

New members get an immediate confirmation and welcome email and are instantly included in any member mail distributions.

Reminders of forthcoming renewal dates are automatically sent and members can opt out of these reminders, should they wish to (which they may wish to do, if they pay by standing order). Indeed, members are in complete control of email traffic and *can* opt out of all emails from MemberMoJo, although **I would advise caution** as we now use this platform to send out Quagmire, Q-extra and other communications!

Members can also log in and alter their own data - updating their contact details, amending their gift aid status, joining the Contact Directory or work party distributions etc.

MemberMoJo helps us to safeguard the data of our members and all emails are sent such that they appear in each member's mail box as if it is sent *just* to them. No string of email addresses, CCs or BCCs; no risk of mistakenly sharing email addresses with other members.

Conversely, it also allows us the opportunity to share data - should members opt in to the Contact Directory- fostering communication within our membership group.

New membership applications, so far this year, total 59 which is very healthy and perhaps reflects the growing number of users of the canal, counting in their number swimmers, paddle boarders, wildlife photographers and dog walkers. It is heartening that these users choose to join the NW&DCT to support the maintenance of this valuable community asset.

Total no. Memberships 260 (321 members) as at 18/8/2021.

Membership queries can, of course, still be directed to me at [membership@nwdct.org](mailto:membership@nwdct.org) and by post to:

Membership Secretary NW&DCT,



Please do feel free to feedback any comments you may have on the new database. We are constantly revising and updating it to get the most out of it for our members.



## **BOATING OFFICER ANNUAL REPORT 2021**

This year has been a challenge in terms of attracting Passenger Boat Customers, for rather obvious Covid reasons. We did organise various ways of reducing costs and increasing passenger numbers able to be on board safely. Non-the-less, passenger numbers have been very low. Just before the Open Weekend, there was an article by the EDP, promoting the service. This brought a wonderful response. Thereafter, there was a huge upsurge in passenger numbers. Come the end of School Holidays, that had dropped off to a significant extent, but customers do keep coming. As I have said for a couple of years now, I'm certain of a steep increase in customer numbers as soon as the upper pound is re-watered. Most, by far, of the visitors we've had over the past 3 years have expressed a firm intention to return as soon as that happens.

When we began, the whole Trip Boat project was done on a shoestring. We started with a petrol outboard we already had, cobbled the trip boat together at as low a cost as was possible. "Ella II" has done us proud and is now due for a renewal of her Boat Safety Certificate, a re-paint and general service. This year we have replaced the lead acid batteries and the electric outboard. The main set will last us a further 3-4 years, provided that all goes to plan. We shall need another pair for the Standby set next season, in all likelihood. I have further plans which can be revealed next year if they come to pass. These plans will not involve The Trust in any capital expenditure.

For reasons of both normal retirement due to advancing years and others around Covid causing alterations in crew members' personal and professional arrangements, we are rather short of crew for now. A hand has been extended asking for new crew members. By the time of this meeting, we are hoping to have improved numbers, but have not had to turn passengers away and certainly don't expect to have to. On the subject of crew, we are also in need of operators for both The Weedeater and Weasel, the dredger, in the foreseeable future.

The Weedeater was serviced over the winter and this summer we have been fortunate to be able to obtain a pair of wider cutting blades, which will be prepared over this winter and ready to use next season. The great benefit of these, apart from there now being a supply of parts, which will cover us long into the future at very low cost, as well as to give us an extra foot each side, the purpose of which is to stop damage to the valuable reed growing from the waters edge. The blade will extend beyond the width of the paddles, which is not the case with the original blade. Weed-cutting and raking has been performed at regular intervals throughout the season, whilst taking careful account of nesting birds etc.

Weasel, the dredger, has been leased from OCC for a 15 year period in exchange for giving it a major service, returning fully serviced at the end of the agreed period including changing the tired digger arm (supplied by Laurie) on the front, a thorough UHP cleansing of the hull, welding repairs by Daren Wright Fabrications of Dilham (50% of the time for that having been donated), replacing hydraulic lines and re-sealing rams as necessary, a thorough re-paint by our volunteers of the hull (which it is hoped will last up to 20 years) and superstructure and re-wiring of the electrical equipment. The other part of the agreement allows for OCC to use the craft, should the need arise.

Anybody wanting answers to any questions not mentioned in this report may contact the Boating Officer.

[REDACTED]

## **Fisheries Officer's Annual Report 2021**

We continue to have an abundance of recorded catches of roach, rudd, bream, tench, pike, perch and dace, in what is now an upwards continuing year on year trend. It's very pleasing to be able to report the numerous evidenced catches of specimen fish which is credit to the thriving ecosystem that restoration of the Ebridge section has created.

My number one concern is the silt levels and the causes of silt at Spa Common. This presents a significant danger to the canal ecosystem and especially our fish stocks as it's a spawning ground. I greatly support the Trust in trying to resolve this ongoing problem and causes with urgency.

Our year-on-year trend of dead pike surfacing after winter continues to drop, all credit to our anglers and the Trusts adopted fishing policies.

Membership amongst our regular anglers is increasing and we continue to work to include anglers into the Trust and its work. I am pleased to receive many reports from other canal users that our anglers are amongst the friendliest they have come across.

I continue with my efforts to promote the canal on social media.

 - Fisheries Officer

20/08/2021

## **WILDLIFE OFFICERS AGM REPORT - 2021**

13 Aug '21

**Rewatering: Wildlife Mitigation** I have been in email discussions with [REDACTED] Ecologist with the Internal Drainage Board-Water Management Alliance, about rewatering mitigation since spring '21. I then met him in June '21 to discuss this on site, and have sent his emailed comments to Trustees. Timing still seems to be the main factor to minimise harm to vulnerable wildlife, with early autumn seeming best.

**Canal a Wildlife Corridor/Possible County Wildlife Site** I and my Norfolk Flora Group colleague [REDACTED] re surveyed two County Wildlife Sites in the Canal corridor (Alder Carr, Spa Common) for the Norfolk Wildlife Trust, and plan to do more. I have written about this for Summer's Q.

**The Canal's Environs: Map of 2020 Survey of Adjacent Land** Beyond the back sokes, the Canal is bordered by a wide variety of habitats, most of which have developed on land not in active agricultural use. A survey undertaken by myself in 2020 revealed how much of the Canal does in fact border semi-natural/unmanaged land – probably over 95%. The site is therefore almost entirely enclosed in and buffered by zones of 'wilderness' of various widths and comprising a range of habitats (see article in spring '21 Q. This 'sleeve' obviously enhances the Canal's already considerable potential as a refuge and corridor for wildlife.

I am now working with [REDACTED] Work Party Coordinator, to produce a proper online map of these Canal environs (many thanks to [REDACTED] for his expert help with this). We should then be able to use this map in order to graphically illustrate the Canal's wildlife corridor status in discussions with the EA, NWT etc; and for other purposes eg potentially contacting frontagers to encourage them re their positive role in this 'sleeve'.

**Floating Pennywort.** I have continued to attend the FP Working Group's monthly online meetings, and to send their Minutes to Trustees/Officers.

**Wildlife Volunteers.** We continue to have enquiries – particularly from students wishing to gain some experience, and I have met with and walked round with them, plus briefed them on our suggested protocol for recording wildlife. Now they are 'free range', but encouraged to send in their records to me, and to the relevant County Recorders.

**Mini-meadow/[REDACTED]'s Meadow.** I wrote an update about the mini-meadow in Q of May '21. Strangely, I then revisited it on the morning of the day of [REDACTED] death, which was nearby that afternoon. Obviously not knowing what was to happen later, I was delighted to see that our earlier cutting and raking off of coarse species had had a positive effect, and that many attractive flowering plants had started blooming in the Meadow again. I was with a student, and I mentioned my idea of the Canal-side of the site being a nice spot for a picnic bench or seat – "Perhaps called the [REDACTED] Seat". How strange and sad it is that [REDACTED] met his end near there later that day. I continue to moot the idea of a seat/picnic bench on this spot if it's acceptable to [REDACTED] family and friends, and if access is possible; and understand that this is being looked into.

**Plant Recording** The Canal plant list total is now 420.

## **ICT Officers Report to the Trust Annual General Meeting**

WOW, what a year it has been and what changes the Trust has seen in regards to Information, Communications and Technology (ICT). As a Charity Trust we've definitely moved into the 21<sup>st</sup> century.

**Our website** – [www.nwdct.org](http://www.nwdct.org) – continues to be worked upon and the layout improved. The Trust welcomed [REDACTED] as not only our Press Officer but also as our second website administrator and it's through his ideas that the format on some website sections have changed.

We've introduced new 'DONATION' buttons to our website which link directly to PayPal. These have been added along with links and 'buttons' to our new MemberMoJo database, which again is a new system, very easy to use and makes managing the membership database so much easier for all.

The website being kept up-to-date is important for those who wish to support us with Grants and additional funding. The website is usually a first point-of-call to learn about what kind of a charity we are.

**Social Media** – [www.facebook.com/NWDCT/](https://www.facebook.com/NWDCT/) page and group, Twitter & Instagram. Whilst our Facebook **PAGE** has information posted by a couple of Officers our Facebook **GROUP** continues to grow with many, many photographs and memories being uploaded by our supporters. What amazes me are the variety, quantity and quality of the wildlife photographs that are posted by those who use the canal pathways. Not forgetting the photographs of the stunning and beautiful sunsets that dominate the late afternoon canal skies. You are all so lucky if you live local to the North Walsham and Dilham Canal enjoying its ambience and natural beauty.

### **Technology introductions this last year.**

The NWDC Trust created a PayPal account.

For new beginnings this saw the introduction of Canal-side posters with PayPal QR codes which brought in extra funds. (If you have a smartphone, you may install a QR reader app, point your smartphone camera on the QR code and follow the instructions, you may make a £3 minimum donation or an amount of your choice). I must say that the PayPal app has been worth its introduction.

Thank you to all who have used this new facility.

Along with our PayPal account we introduced a Trust 'Zettle' Card Reader machine which was definitely a benefit at our recent 'Ebridge Open Weekend', especially for those who, through the pandemic, have now got used to using their cards to pay for items rather than carrying cash.

### Social Media stats over the years (to date 17<sup>th</sup> August 2021)

Social Media Statistics	2014	2015	2016	2017	2018	2019	2020	2021
Facebook PAGE 'likes'	429	600	937	1290	1671	2128	2333	2536
Facebook GROUP					213	407	894	1395
Twitter followers					91	125	150	167
Instagram followers					69	107	130	181

Our Facebook PAGE has, to date, 2673 followers.

Website: <https://nwdct.org/>  
Facebook PAGE <https://facebook.com/NWDCT/>  
Facebook GROUP <https://facebook.com/groups/www.nwdct.org/>  
Twitter <https://twitter.com/NWDCTrust>  
Instagram <https://instagram.com/NWDCanalTrust/>

### **FINALLY**

A huge thank you once again to [REDACTED] Stalham. His patience in taking the odd 'password reset' or 'please create this for us' phone call or email is endless, all of which is very much appreciated from the Trustees and Officers, but especially me. Thank you [REDACTED].

[REDACTED] supports the work of the Canal Trust and charges the Trust a very reasonable annual fee for hosting our WordPress website. Last year the site became secure with the installation of an SSL certificate all of which [REDACTED] charges us a very reasonable fee for. [REDACTED] also created various Trust email accounts for use by Trustees and Officer. These will become available on a "Who's Who" website page very soon, along with Officer photographs so you'll know who is Who and their Trust role in detail.

[REDACTED]  
Trustee and ICT Officer  
Mob: [REDACTED]  
Email: [REDACTED]

## Quagmire Editor's Annual Report - August 2021

For Volume Five of *Quagmire*, publication dates were changed to the Months of February, May, August, and November. Monthly printed numbers have increased, reflecting the rise in membership requesting a hard copy, and the numbers required for the membership packs distributed to new members. In order to offset the cost of printing and posting, members are requested to donate an extra £10 p.a.

A *Quagmire* pdf is electronically sent to all members, and the magazine is also published on ISSUU. Printed copies are also sent to the Canal owners and stakeholders.

4.4 had featured two work party stalwarts, [REDACTED] plus items of tlc for *Weasel* and *Weedeater* on the Lower Canal. The 5.1 February edition featured twenty years of Volunteer Work Parties on the Canal. 5.2 looked more at the nature side of the waterway, including a tribute to Roy Webster and the *Boy Roy* Stories. 5.3 was dedicated to the late [REDACTED] and his work over twenty years on Bacton Wood Lock.

The Trustees felt there was a need for an interim report for Members, so, for June 2021, the first *Q-Extra*, online monthly news sheet, was launched, covering the other eight months of the year. Feedback has indicated that members appreciate the more regular updates on the Trust's work.

Contributions and comments are always welcome from members and volunteers.

[REDACTED]  
*Quagmire* Editor  
16 August 2021

## Archivist's Annual Report - August 2021

On the archival paperwork side, it has been a quiet year, although a few new photographs have come to light. In particular from the files held by [REDACTED], whose photos added to the those, already known, of a trip taken along the Canal by a group of young men in their Norfolk Restricted class dingy in 1914. It appears that they may have enlisted the services of the pleasure wherry *Elizabeth* to accompany them.



The most remarkable find was that of two long and heavy chains, that were dug from the silt of Ebridge Lock. These chains have a substantial piece of wooden post at one end, and a piece to fit the top of the centre lock post. Researching old photographs show that these in place at Bacton Wood and Briggate Locks. It can only be surmised that the weight of the chain helped to crack open the bottom gates, when the lone wherryman had emptied the lock and needed to pull the gates open from his vessel.

[REDACTED]  
*EAWA Archivist for the NW&DC Records*  
16 August 2021

