

SPIRITUAL CARE Annual Report

Registered Charity No.

2022-23 *“replacing ignorance with enlightenment”*

Working together with:



Table of Contents

Contents

The Vision _____	1
The Vision Continued _____	2
Financial Summary _____	3
Financial Statement _____	4
Regular & One-off Support _____	5
Bethel United Football Club _____	6

Statement of belief

We believe in the divine inspiration and sufficiency of the Holy Scriptures as originally given and recorded in the bible. These words are regarded as authoritative and should be always taken into consideration. They teach principles and truth, and yet each human being has a God given right to make decisions for themselves. One must choose to believe in God.

We believe in the oneness of GOD.

We believe in the amazing saving grace of the LORD and Saviour Jesus Christ. In accordance with John 3:16-17 we believe God loves the WORLD and sent Jesus NOT to condemn it, but rather to save it.

We believe that true love will conquer all.

We believe that we should do all we can to make our World a better place. This includes the environment, and we must take global warming and the pollution of the earth seriously.



*"Now unto him
that is able to do
exceedingly
abundantly
above all that we
ask or think..."
Ephesians 3:20*



" #replacing ignorance with enlightenment"

Overview

To create and maintain a sustainable church; a body of believers reflective of and effective in the community within which it serves. Using universal languages, being actively dedicated to the positive promotion of the teachings of Jesus Christ; replacing ignorance with enlightenment – spirited and Holy Spirit led. Recognising we all need spiritual care.

Financial Highlights

This church and charity is totally funded by free will offerings and volunteers' time. Our operation is constantly in need of additional funding and if you or yours would like to donate or leave something in your will to help continue the work, we would be extremely grateful. Pastor Joshua Wilson should receive a £500.00 per month stipend, which helps with petrol and day to day expenses. This year he has donated this monthly amount back to the church as well as many hours of labour not charged. The church does not currently own a building or grounds, but it does have a space it can call its own, leased from the Atrium Health Club Building related costs will come under the regular contribution given to The Atrium and other similar venues that support Spiritual Care events and its congregation(s). COVID 19 and its accompanying lockdowns have not made the survival of the charity any easier. Like all charities, in times like this – we must cut our cloth accordingly and do the best we can with very limited budgets. Nevertheless, in God has been good – we proclaim, "Forward Still!"

Operating Highlights

After 12 years under present leadership, we have been able to obtain and maintain charity status – registration number: 1180369. Links have been formed with the Atrium Health Club which enable us to cater for the footballers and their families with a great range of facilities. The Christian ethos and management of this large site provides future opportunities for growth and development. Watch this space. We are in very exciting times.

Looking Ahead

It would be a great help to strengthen the Board of Trustees with more people and a wider range of skill sets. We would like to take this opportunity to publicly thank those Trustees who have previously stepped up and helped to shoulder some of the responsibility to further progress the church and its charitable purposes. Last year Stuart Newton, Kimberly Chapman, Emma Walsh, Diane Wilson, Gregory Lyford and Sandra Wilson along with Pastor Joshua Wilson have been working being the scenes to safeguard the future of Spiritual Care and the Bethel United Football Club.

Mother Hyacinth Wilson continues to promote and drum up support for Spiritual Care as patron of this charity. Thank you for your continued unwavering support.

Charitable status now allows us to fund raise with and for other recognized charities. It also means we are now able to set ourselves up to claim gift aid. I



SPIRITUAL CARE

**“ And we know
that all things work
together for good to
them that love God,
to them who are
the called
according to his
purpose.**

**Romans 8:28
King James
Version (KJV)**

Ageing congregations and diminishing numbers of young people, present some logistical concerns that might better be addressed by a full-time pastor. Something we will seriously have to look at in the coming months. Making the most of technological advancements – Zoom / WhatsApp and MS Teams to mention but a few programs – we have concluded that services and meetings on digital platforms are here to stay. We look forward to moving ahead, embracing all the potential good that is now available to us with a little bit of experimentation and creativity.

Our young men who represent the church in Thames Valley Churches Football League – under banner of brotherly love in the name of Bethel United, continue to afford us greater opportunities for community engagement. We will be promoting Prostate Cancer awareness and Mental Illness awareness this season. Please get involved with activities and help us maximize our efforts.

Working with the Bethel United group of churches, identified as Bethel Nation at the July 2020 Holy Convocation, we are pleased to acknowledge another year’s journey in association with the International Bethesda Luton District of Churches – Bishop Overseer Dr. D. W. Lewin at the helm. Support has also been given other like-minded charities, and we are grateful to Norcot Mission Church, Reading Churches Together, Reading Street Pastors, The Salvation Army and the Methodist Church – Thames Valley Circuit for various elements of support which include preaching engagements, encouragement and inspiration.

Moving forward we wish to have a greater local impact. Areas for greater development include:

- Junior Church
- Messy Church
- Street Pastor Ministry
- Local Preachers’ Course
- Family Fitness Fun – the Wholesome Approach
- Chaplaincy
- Offender Rehabilitation Program
- Social Injustice – Advocacy
- Trustees - Training, retention & recruitment

On behalf of all who have benefited from the work of Spiritual Care, Pastor Joshua Wilson would like to thank the board of Trustees and Patron for all their hard work and support: A very big heartfelt ‘Thank You’ from all of us [Kimberly Chapman – Member](#)

Existing Trustees are:

- [Sandra Wilson – Member](#)
- Diane Wilson – Assistant Pastor
- Stuart Newton – BUFC Captain
- Emma Walsh – Member
- Gregory Lyford – Member

The above Trustees are supported by:

- Pastor Joshua Wilson – Senior Pastor



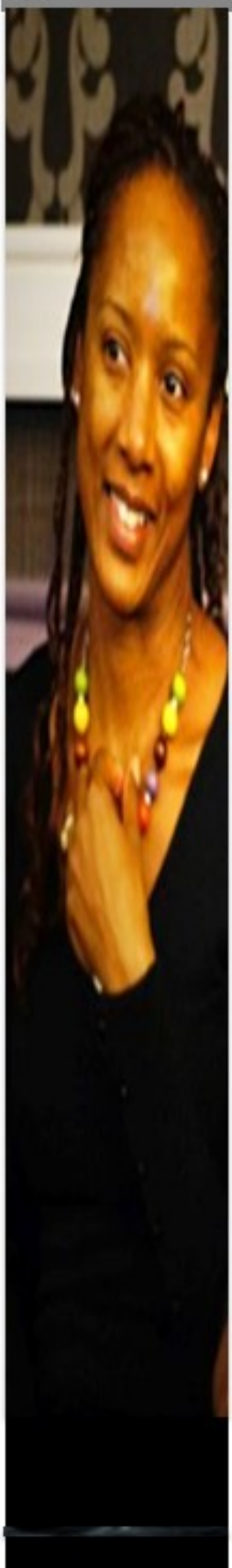
Balance held in Bank 01.04.2023 £ 540.55

Monthly outgoings remain relatively consistent – the major overheads are:

- Pastor's Stipend £500.00 / month.
- The Wellness Centre £500.00 / month.
- Public Liability Insurance £27.41 / month
- Building Security £65.76 / month

The general trend is that income is down and tithe offering giving is down. We do not have the administration support and structure yet to claim gift-aid, but we are hoping to make great strides in that direction and plan to make an announcement soon, should the LORD tarry.

Financial Summary		2023-2024		
Month	Income	Expenses		
Apr-23	315.15	-876.62		
May-23	2,034.74	-1,669.62		
Jun-23	1,462.56	-1,319.51		
Jul-23	482.44	-955.22		
Aug-23	1,577.50	-854.91		
Sep-23	930.22	-1,209.65		
Oct-23	707.77	-985.52		
Nov-23	1,098.59	-1,205.89		
Dec-23	1,148.20	-997.97		
Jan-24	1,431.81	-971.23		
Feb-24	1,625.34	-1,611.55		
Mar-24	1,145.18	-985.64		
	£13,959.50	-£13,643.33	£316.17	



Statement of Financial Position

- Liabilities: £1,133.25 / month

Pastor Stipend, hall hire & building contributions, admin, website maintenance and sundry expenses

- Statement of Financial Position: - **£316.17** for the year

Statement from Assistant Pastor and Patron

"Now therefore, our God, we thank thee, and praise thy glorious name."
1 Chronicles 29:13

Last year has been another difficult year for all of us, nevertheless we

have continued to give our support to community projects.

As Patron, I am a dedicated volunteer. I have helped in the service of Care

Hospitality for our Community in Reading. Communicating and interacting with the people as is necessary. Meals are prepared and served to senior citizens. I sometimes serve one day a week at the Golders' Lunch Club for senior citizens.

Hyacinth Wilson - The Patron

It has been a tough year and growth has been up and down. Some changes have been made, and some changes have been forced upon us. We are grateful for divine providence and trust we shall continue to make a positive impact locally. We have stepped out in faith and secured a building that we can call our own. Despite the difficulties we have acquired assets and made a strategic step forward towards our vision of sustainable growth. Prayer meetings and bible studies are in need of wider support – this is perhaps a general overall comment. Thank you to all who have successfully transitioned to online giving and worship. We would like to take this opportunity to thank one and all for your continued support and good wishes. It is not easy to operate a full-time ministry with only volunteers – we really wouldn't be a viable organisation without you and your help, support and prayers. Once again, thank you all.

Diane Wilson - Assistant Pastor



SPIRITUAL CARE

³³ Give, and it shall be given unto you; good measure, and shaken together, and running over...

Luke 6:38
King James Version

The Spiritual Care Foundation Apostolic Ministries

The Wellness Centre, Hope Corner, The Atrium Health Club,
Scours Lane, Reading, Berkshire, RG30 6AY

Tel: 01189 453 622

Mobile: **07366 391**

Website: www.spiritualcare.uk

Gifts in wills

Gifts in wills are an amazing way of continuing your support long into the future.

These come in all shapes and sizes, big and small - with gifts ranging from £200 to £200,000, from 1% of an estate to 100% or anything left over after other gifts have been made.

Being positioned to bless others who are not as fortunate as ourselves is a great blessing. Whilst it's perfectly understandable if you do not want to dwell on the thought of 'what happens after I am gone' - we encourage you from a scriptural and temporal point of view to think generationally. Moses divided land Israel didn't yet own for a generation born in the Wilderness - King David left substance for Solomon's Temple - which is in fact less about Solomon or David and all about God and his people.

By putting a gift in your will to Spiritual Care, you can make sure that we will be there for the people you love as and when they ever need us. The vision that takes us to uncharted waters requires finance and we humbly ask you to commit this request to prayer and let the Lord have his way.

Thank you to those of you who have already moved to online and electronic bank transfers for your donations / tithes and offerings. God bless you.

Regular contributions of any amount welcomed.

Did you know you can restrict the use of the funds you donate? For example if you would like to support our sensational football team, but not the religious activities of the church. Just specify on your donation - Restricted Funds - Football team only / Church ministry only.



Help us grow and keep up the good work
Thank you for your regular donation of any amount to:
The Spiritual Care Foundation Apostolic Ministries

Sort Code: 23-05-80

The Spiritual Care Foundation



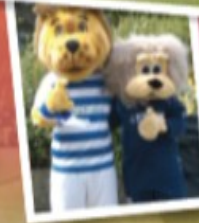
Bethel United FC is a Christian led community club based in Reading in the royal county of Berkshire. Spiritual leadership is given by Minister Joshua Wilson and the Spiritual Care Church. You can find them at Norcot Mission, Brockley Close, Tilehurst, Reading, Berkshire, RG30 4YP most Sunday evenings and I am confident a warm welcome awaits you.

The name 'Bethel' comes from Hebrew and is literally translated as 'House of God'; contextually it speaks of a place where the LORD will put his name. Committed to the vision and the realisation of a **sustainable church, effective in and reflective of the community in which it is based, dedicated to the positive promotion of the teachings of the LORD Jesus Christ**, Pastor Josh and his team actively use the universal language of sport to communicate Kingdom Principles and the Truth of God's word wherever and whenever they can. Their mission is to replace ignorance with enlightenment and win some football games along the way.

Since 2002 this team has competed in the **Thames Valley Churches League** winning some silverware along the way and the odd cup. They have competed on the international stage – travelling to Poland and now have their sights set for Jamaica.

Over the years the players of Bethel have demonstrated how Christians, Muslims, other faiths and none believers can come together under a banner of brotherly love for a common goal. With total commitment and uncompromising passion – There's a reason why you need a referee and the Bethel Boyz are not always saintly! Pastor Josh has gone on record with this quote, "No apologies for being spirited – our set-up is Holy Spirit led!". They pray before they play and over the years competitive ventures on and off the pitch has galvanised many life-changing relationships.

At Bethel United FC both players and supporters alike stand on a foundation which is the Word of God and football is just one of the things they are good at. The prevailing spirit of this club is one of excellence and strength – 'Where there is unity – you will find strength'. Bethel United in name – Bethel United in deed – win, lose or draw this team does it together.



SUPPORT THE CAUSE. BUY A CAP



This time of year will always have a commemorative ambiance for Bethel United FC.

THEY FORMED THE GUARD OF HONOUR FOR THE LATE SENIOR PASTOR – ELDER WILSON

He will not be forgotten. As we celebrate convocation – we remember all those who have gone on before us. The final analysis will state that we all need Spiritual Care.

For further information please contact
Pastor@SpiritualCare.uk

Thank you for your regular donation of any amount to:

The Spiritual Care Foundation
Apostolic Ministries

Metro Bank
Sort Code: 23-05-80
Account Number: 19821803



BETHEL UNITED
The Spiritual Care Foundation

2023 -



CHARITY COMMISSION
FOR ENGLAND AND WALES

Spiritual Care Foundation Apostolic Ministries Reading B No 1180369

CC16a

Receipts and payments accounts

For the period from	1-Apr-2023	To	31-Mar-2024
---------------------	------------	----	-------------

Section A Receipts and payments

	Unrestricted funds to the nearest £	Restricted funds to the nearest £	Endowment funds to the nearest £	Total funds to the nearest £	Last year to the nearest £
A1 Receipts					
	13,960	-	-	13,960	-
	-	-	-	-	-
	-	-	-	-	-
	-	-	-	-	-
	-	-	-	-	-
	-	-	-	-	-
	-	-	-	-	-
	-	-	-	-	-
Sub total (Gross income for AR)	13,960	-	-	13,960	-
A2 Asset and investment sales, (see table).					
	-	-	-	-	-
	-	-	-	-	-
Sub total	-	-	-	-	-
Total receipts	13,960	-	-	13,960	-

A3 Payments

INSURANCE	281	-	-	281	-
WEBSITE FEES & EXPENSES	116	-	-	116	-
SECURITY SERVICES	837	-	-	837	-
CATERING AND ENTERTAINMENT	3,204	-	-	3,204	-
ADVERTISING	60	-	-	60	-
DONATION GIFT	250	-	-	250	-
PROFESSIONAL FEES / BUILDING	1,644			1,644	
GENERAL EXPENSES	1,728			1,728	
RENT	5,000	-	-	5,000	-
SUBSCRIPTIONS & FEES	520	-	-	520	-
	-	-	-	-	-
Sub total	13,640	-	-	13,640	-

A4 Asset and investment purchases, (see table)					
	-	-	-	-	
	-	-	-	-	
Sub total	-	-	-	-	-

Total payments	13,640	-	-	13,640	-
-----------------------	---------------	----------	----------	---------------	----------

Net of receipts/(payments)	319	-	-	319	-
A5 Transfers between funds	-	-	-	-	-
A6 Cash funds last year end	-	-	-	-	-
Cash funds this year end	319	-	-	319	-

Section B Statement of assets and liabilities at the end of the period

Categories	Details	Unrestricted funds to nearest £	Restricted funds to nearest £	Endowment funds to nearest £
B1 Cash funds	BALANCE IN THE BANK	946	-	-
	BALANCE IN TOP UP BANK	50	-	-
		-	-	-

	Total cash funds	996	-	-
	(agree balances with receipts and payments account(s))	Agreement Error	OK	OK
		Unrestricted funds	Restricted funds	Endowment funds
	Details	to nearest £	to nearest £	to nearest £
B2 Other monetary assets		-	-	-
		-	-	-
		-	-	-
		-	-	-
		-	-	-
		-	-	-
B3 Investment assets	Details	Fund to which asset belongs	Cost (optional)	Current value (optional)
			-	-
			-	-
			-	-
			-	-
			-	-
B4 Assets retained for the charity's own use	Details	Fund to which asset belongs	Cost (optional)	Current value (optional)
			-	-
			-	-
			-	-
			-	-
			-	-

		-	-
		-	-
		-	-
		-	-

B5 Liabilities

Details	Fund to which liability relates	Amount due (optional)	When due (optional)
		-	
		-	
		-	
		-	
		-	

Signed by one or two trustees on behalf of all the trustees

Signature	Print Name	Date of approval