



The Spiritual Care Foundation

## SPIRITUAL CARE

# Annual Report

**2020-21** *“replacing ignorance with enlightenment”*

*Working together with:*



**BETHEL UNITED**  
The Spiritual Care Foundation

---

**The Spiritual Care Foundation Apostolic Ministries**

*Charity Registration No. 1180369*

**Tel:** 01189 453 622  
**Mob:** 07785 303 788

**Bethel Lodge,  
28 Spey Road,  
Reading, Berkshire,  
RG30 4DG**

[www.spiritualcare.uk](http://www.spiritualcare.uk)  
[info@spiritualcare.uk](mailto:info@spiritualcare.uk)

# Table of Contents

---

## Contents

The Vision _____	1
The Vision Continued _____	2
Financial Summary _____	3
Financial Statement _____	4
Regular & One-off Support _____	5
Bethel United Football Club _____	6

## Statement of belief

We believe in the divine inspiration and sufficiency of the Holy Scriptures as originally given. They are regarded as authoritative and should be taken into consideration in all things that we believe, say and do; both as individuals and as a local church.

We believe in the oneness of GOD.

We understand the 'Holy Trinity', as referred to by some, to be 3 manifestations of the same GOD; namely Father, Son and Holy Spirit. We believe in the deity of aforementioned and are not ashamed to say 'Jesus is God'.

We believe that the Son of God became fully man, being conceived by the Holy Spirit, and born of the Virgin Mary in Bethlehem of Judea.

We believe that the earthly life of Jesus was unique and sinless, and his death was a sacrifice to God, a propitiation for the remission of sins.

We believe that Jesus was raised from the dead, and was seen alive in his resurrection body by many witnesses.



***“Now unto him  
that is able to do  
exceedingly  
abundantly  
above all that we  
ask or think...”  
Ephesians 3:20***



## The Vision

### Overview

To create and maintain a sustainable church; a body of believers reflective of and effective in the community within which it serves. Using universal languages, being actively dedicated to the positive promotion of the teachings of Jesus Christ; replacing ignorance with enlightenment – spirited and Holy Spirit led. Recognising we all need spiritual care.

### Financial Highlights

This church and charity is totally funded by free will offerings and volunteers' time. Our operation is constantly in need of additional funding and if you or yours would like to make a donation or leave something in your will towards the cause, we would be extremely grateful. Pastor Joshua Wilson receives a £450.00 per month stipend, which helps with petrol and day to day expenses. The church does not currently own a building or its own grounds. Building related costs will come under the regular contribution given to Norcot Mission and other similar venues that support Spiritual Care events and its congregation(s). COVID 19 and its accompanying lockdowns has not made the survival of the charity any easier. Like all charities, in times like this – we must cut our cloth accordingly and do the best we can with very limited budgets.

### Operating Highlights

After 8 years under present leadership, we have been able to obtain and maintain charity status – registration number: 1180369. Links have been formed with the Atrium Health Club which enable us to cater for the footballers and their families with a great range of facilities. The Christian ethos and management of this large site will provide future opportunities for growth and development. Watch this space. We are in very exciting times.

### Looking Ahead

It would be a great help to strengthen the Board of Trustees with more people and a wider range of skill sets. We would like to take this opportunity to publicly thank all those who have previously stepped up and helped to shoulder some of the responsibility to further progress the church and its charitable purposes. Last year Stuart Newton, Kimberly Chapman, Emma Walsh, Diane Wilson, Gregory Lyford and Sandra Wilson along with Pastor Joshua Wilson have been working being the scenes to safeguard the future of Spiritual Care and the football team.

Mother Hyacinth Wilson continues to promote and drum up support for Spiritual Care as patron of this charity. Thank you for your continued unwavering support.

Charitable status now allows us to fund raise with and for other recognized charities. It also means we are now able to set ourselves up to claim gift aid. I think we need to strengthen the administrative arm of our organisation first and if you could help in this area – we would love to hear from you.



#### SPIRITUAL CARE

**28 And we know  
that all things work  
together for good to  
them that love God,  
to them who are  
the called  
according to his  
purpose.**

**Romans 8:28  
King James  
Version (KJV)**

Ageing congregations and diminishing numbers of young people, present some logistical concerns that might better be addressed by a full-time pastor. Something we will seriously have to look at in the coming months. Making the most of technological advancements – Zoom / WhatsApp and MS Teams to mention but a few programs – we have concluded that services and meetings on digital platforms are here to stay. We look forward to moving ahead, embracing all the potential good that is now available to us with a little bit of experimentation and creativity.

Our young men who represent the church in Thames Valley Churches Football League – under banner of brotherly love in the name of Bethel United, continue to afford us greater opportunities for community engagement. We will be promoting Prostate Cancer awareness and Mental Illness awareness this season. Please get involved with activities and help us maximize our efforts.

Working with the Bethel United group of churches, identified as Bethel Nation at the July 2020 Holy Convocation, we are pleased to acknowledge another year's journey in association with the International Bethesada Luton District of Churches – Bishop Designate, Overseer Dr. D. W. Lewin at the helm. Support has also been given other like-minded charities and we are grateful to Norcot Mission Church, Reading Churches Together, Reading Street Pastors and the Methodist Church – Thames Valley Circuit for various elements of support which include preaching engagements, encouragement and inspiration.

Moving forward we wish to have a greater local impact. Areas for greater development include:

- Junior Church
- Messy Church
- Street Pastor Ministry
- Local Preachers' Course
- Family Fitness Fun – the Wholesome Approach
- Chaplaincy
- Offender Rehabilitation Program
- Social Injustice – Advocacy
- Trustees - Training, retention & recruitment

On behalf of all who have benefited from the work of Spiritual Care, Pastor Joshua Wilson would like to thank the Trustees and Patron for all their hard work and support: A very big heartfelt 'Thank You' from all of us.

Existing Trustees are:

- |                                   |                             |
|-----------------------------------|-----------------------------|
| • Diane Wilson – Assistant Pastor | • Kimberly Chapman – Member |
| • Stuart Newton – BUFC Captain    | • Sandra Wilson – Member    |
| • Emma Walsh – Member             |                             |
| • Gregory Lyford – Member         |                             |

The above Trustees are supported by:

- Pastor Joshua Wilson – Senior Pastor
- Patron Hyacinth Wilson – Patron / Assistant Pastor

28 And we know  
that all things work  
together for good to  
them that love God,  
to them who are  
the called  
according to his  
purpose.

Romans 8:28

**King James  
Version (KJV)**

Romans 8:28  
King James  
Version (KJV)



## Financial Statement

### Statement of Financial Position

- Liabilities:  
Pastor Stipend, hall hire & building contributions, admin, website maintenance and sundry expenses
- Statement of Financial Position: - **£1,172.63 for the year**

### Statement from Assistant Pastors.

*"Now therefore, our God, we thank thee, and praise thy glorious name."* 1 Chronicles 29:13

Last year has been a difficult year for all of us, nevertheless we have continued to give our support to community projects. As Patron, I am a dedicated volunteer. I help in the service of Care Hospitality for our Community in Reading. Communicating and interacting with the people as is necessary. Meals are prepared and served to senior citizens I Serve one day a week at the Globe Lunch Club for senior citizens.



**Hyacinth Wilson.**

It has been a tough year and growth has been up and down. Some changes have been made and some changes have been forced upon us. We are grateful for divine providence and trust we shall continue to make a positive impact locally. **Prayer meetings** and **bible studies** are in need of wider support – this is perhaps a general overall comment. Thank you to all who have successfully transitioned to online giving and worship. We would like to take this opportunity to thank one and all for your continued support and good wishes. It is not easy to operate a full-time ministry with only volunteers – we really wouldn't be a viable organisation without you and your help, support and prayers. Once again, thank you all.

**Diane Wilson.**

#### SPIRITUAL CARE

<sup>28</sup> And we know that all things work together for good to them that love God, to them who are the called according to his purpose.

Romans 8:28  
King James Version

## The Spiritual Care Foundation Apostolic Ministries

**Bethel Lodge, 28 Spey Road, Reading, Berkshire, RG30 4DG**

**Tel: 01189 453 622**

**Mobile: 07785 303 788**

**Website: [www.spiritualcare.uk](http://www.spiritualcare.uk)**

### Gifts in wills

Gifts in wills are an amazing way of continuing your support long into the future.

These come in all shapes and sizes, big and small - with gifts ranging from £200 to £200,000, from 1% of an estate to 100% or anything left over after other gifts have been made.

Being positioned to bless others who are not as fortunate as ourselves is a great blessing. Whilst it's perfectly understandable if you do not want to dwell on the thought of 'what happens after I am gone' - we encourage you from a scriptural and temporal point of view to think generationally. Moses divided land Israel didn't yet own for a generation born in the Wilderness – King David left substance for Solomon's Temple – which is in fact less about Solomon or David and all about God and his people.

By putting a gift in your will to Spiritual Care, you can make sure that we will be there for the people you love as and when they ever need us. The vision that takes us to uncharted waters requires finance and we humbly ask you to commit this request to prayer and let the Lord have his way.

Thank you to those of you who have already moved to online and electronic bank transfers for your donations / tithes and offerings. God bless you.

### Regular contributions of any amount welcomed.

Did you know you can restrict the use of the funds you donate? For example if you would like to support our sensational football team, but not the religious activities of the church. Just specify on your donation – Restricted Funds – Football team only / Church ministry only.



### SPIRITUAL CARE

<sup>38</sup> Give, and it shall be given unto you; good measure, and shaken together, and running over...

**Luke 6:38**  
**King James Version**



The Spiritual Care Foundation

Help us grow and keep up the good work  
Thank you for your regular donation of any amount to:  
The Spiritual Care Foundation Apostolic Ministries

**Sort Code: 23-05-80**

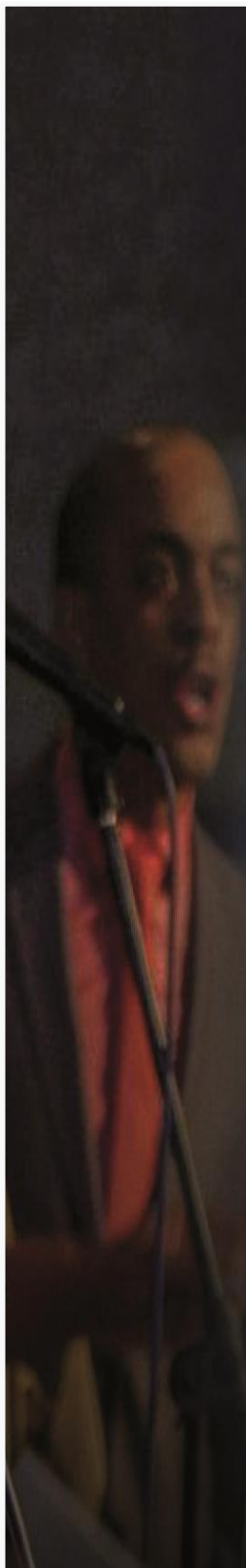
**Account Number: 19821803**

**Metro Bank**

For further information please contact [Pastor@SpiritualCare.uk](mailto:Pastor@SpiritualCare.uk)








# BETHEL UNITED FC

## THE SPIRITUAL CARE FOUNDATION

**B**ethel United FC is a Christian led community club based in Reading in the royal county of Berkshire. Spiritual leadership is given by Minister Joshua Wilson and the Spiritual Care Church. You can find them at Norcot Mission, Brockley Close, Tilehurst, Reading, Berkshire, RG30 4YP most Sunday evenings and I am confident a warm welcome awaits you.

The name 'Bethel' comes from Hebrew and is literally translated as 'House of God'; contextually it speaks of a place where the LORD will put his name. Committed to the vision and the realisation of a **sustainable church, effective in and reflective of the community in which it is based, dedicated to the positive promotion of the teachings of the LORD Jesus Christ**, Pastor Josh and his team actively use the universal language of sport to communicate Kingdom Principles and the Truth of God's word wherever and whenever they can. Their mission is to replace ignorance with enlightenment and win some football games along the way.

Since 2002 this team has competed in the **Thames Valley Churches League** winning some silverware along the way and the odd cup. They have competed on the international stage – travelling to Poland and now have their sights set for Jamaica.

Over the years the players of Bethel have demonstrated how Christians, Muslims, other faiths and none believers can come together under a banner of brotherly love for a common goal. With total commitment and uncompromising passion – There's a reason why you need a referee and the Bethel Boyz are not always saints! Pastor Josh has gone on record with this quote, "No apologies for being spirited – our set-up is Holy Spirit led!". They pray before they play and over the years competitive ventures on and off the pitch has galvanised many life-changing relationships.

At Bethel United FC both players and supporters alike stand on a foundation which is the Word of God and football is just one of the things they are good at. The prevailing spirit of this club is one of excellence and strength – 'Where there is unity – you will find strength'. Bethel United in name – Bethel United in deed – win, lose or draw this team does it together.





**SUPPORT THE CAUSE, BUY A CAP**



This time of year will always have a commemorative ambience for Bethel United FC.

**THEY FORMED THE GUARD OF HONOUR FOR THE LATE SENIOR PASTOR – ELDER WILSON**

He will not be forgotten. As we celebrate convocation – we remember all those who have gone on before us. The final analysis will state that we all need Spiritual Care.

For further information please contact  
Pastor@SpiritualCare.uk

**Thank you for your regular donation of any amount to:**

The Spiritual Care Foundation  
Apostolic Ministries

**Metro Bank**  
Sort Code: 23-05-80  
Account Number: 19821803





## Receipts and payments accounts

CC16a

For the period  
from

Apr-20

To

Mar-21

### Section A Receipts and payments

	Unrestricted funds	Restricted funds	Endowment funds	Total funds	Last year
	to the nearest £	to the nearest £	to the nearest £	to the nearest £	to the nearest £
<b>A1 Receipts</b>					
	8,014	-	-	8,014	-
	-	-	-	-	-
	-	-	-	-	-
	-	-	-	-	-
	-	-	-	-	-
	-	-	-	-	-
	-	-	-	-	-
<b>Sub total (Gross income for AR)</b>	8,014	-	-	8,014	-
<b>A2 Asset and investment sales, (see table).</b>					
	-	-	-	-	-
	-	-	-	-	-
<b>Sub total</b>	-	-	-	-	-
<b>Total receipts</b>	8,014	-	-	8,014	-
<b>A3 Payments</b>					
INSURANCE	262	-	-	262	-
WEBSITE FEES	60	-	-	60	-
RENT	1,295	-	-	1,295	-
WEBSITE EXPENSES	761	-	-	761	-
CHARITY GIFT	250	-	-	250	-
GENERAL EXPENSES	70	-	-	70	-
DEFIBRILATION MACHINE	939	-	-	939	-
PASTOR STIPEND	5,550	-	-	5,550	-
	-	-	-	-	-
<b>Sub total</b>	9,186	-	-	9,186	-
<b>A4 Asset and investment purchases, (see table)</b>					
	-	-	-	-	-
	-	-	-	-	-
<b>Sub total</b>	-	-	-	-	-
<b>Total payments</b>	9,186	-	-	9,186	-
<b>Net of receipts/(payments)</b>	- 1,173	-	-	- 1,173	-
<b>A5 Transfers between funds</b>	-	-	-	-	-
<b>A6 Cash funds last year end</b>	-	-	-	-	-
<b>Cash funds this year end</b>	- 1,173	-	-	- 1,173	-

## Section B Statement of assets and liabilities at the end of the period

Categories	Details	Unrestricted funds to nearest £	Restricted funds to nearest £	Endowment funds to nearest £
<b>B1 Cash funds</b>	BALANCE IN THE BANK	9,929	-	-
		-	-	-
		-	-	-
	<b>Total cash funds</b>	9,929	-	-
	(agree balances with receipts and payments account(s))	Agreement Error	OK	OK
<b>B2 Other monetary assets</b>	Details	Unrestricted funds to nearest £	Restricted funds to nearest £	Endowment funds to nearest £
		-	-	-
		-	-	-
		-	-	-
		-	-	-
		-	-	-
		-	-	-
<b>B3 Investment assets</b>	Details	Fund to which asset belongs	Cost (optional)	Current value (optional)
			-	-
			-	-
			-	-
			-	-
<b>B4 Assets retained for the charity's own use</b>	Details	Fund to which asset belongs	Cost (optional)	Current value (optional)
			-	-
			-	-
			-	-
			-	-
			-	-
			-	-
			-	-
			-	-
<b>B5 Liabilities</b>	Details	Fund to which liability relates	Amount due (optional)	When due (optional)
			-	
			-	
			-	
			-	
Signed by one or two trustees on behalf of all the trustees	Signature	Print Name	Date of approval	