

SPIRITUAL CARE FOUNDATION APOSTOLIC MINISTRIES READING BERKSHIRE UK

England & Wales · Charity number 1180369

Details

Status Registered

Legal form CIO

Registered 2018-10-18

Register [View on the Charity Commission register](#)

Contact

Address 28 Spey Road
Tilehurst
Reading
RG30 4DG

Phone 07785303788

Email info@spiritualcare.uk

Website www.spiritualCare.uk

Activities

Objects: TO ADVANCE THE CHRISTIAN FAITH FOR THE BENEFIT OF THE PUBLIC IN ACCORDANCE WITH THE STATEMENT OF BELIEF APPEARING IN THE SCHEDULE.TO PROMOTE FOR THE BENEFIT OF THE INHABITANTS OF BERKSHIRE AND THE SURROUNDING AREA THE PROVISION OF FACILITIES FOR RECREATION OR OTHER LEISURE TIME OCCUPATION OF INDIVIDUALS WHO HAVE NEED OF SUCH FACILITIES BY REASON OF THEIR YOUTH, AGE, INFIRMITY OR DISABLEMENT, FINANCIAL HARDSHIP OR SOCIAL AND ECONOMIC CIRCUMSTANCES OR FOR THE PUBLIC AT LARGE IN THE INTERESTS OF SOCIAL WELFARE AND WITH THE OBJECT OF IMPROVING THE CONDITION OF LIFE OF THE SAID INHABITANTS

Activities: To create, maintain a sustainable church, reflective of and effective in the community within which it is based. Using universal languages of the arts, sport and music

Classification

- **How:** Makes Grants To Individuals, Provides Services, Provides Advocacy/advice/information, Other Charitable Activities
- **What:** General Charitable Purposes, Education/training, The Advancement Of Health Or Saving Of Lives, Religious Activities, Amateur Sport, Human Rights/religious Or Racial Harmony/equality Or Diversity, Recreation
- **Who:** Children/young People, Elderly/old People, People With Disabilities, People Of A Particular Ethnic Or Racial Origin, Other Charities Or Voluntary Bodies, The General Public/mankind

Geography

- Canada
- India
- Jamaica
- Kenya
- United States
- Throughout England And Wales

Finances

Period end	Income	Expenditure	Assets	Employees
2025-03-31	£19,322	£20,190	-	-
2024-03-31	£8,546	£8,227	-	-
2023-03-31	£7,033	£12,062	-	-
2022-03-31	£5,016	£9,371	-	-
2021-03-31	£8,013	£9,186	-	-

Trustees

Name	Role	Appointed
REV. J. C. WILSON	Chair	2018-10-18
MR. G. LYFORD		2018-10-18
MR. N. NELSON		2018-10-18
MRS. D. P. WILSON		2018-10-18

SPIRITUAL CARE FOUNDATION APOSTOLIC MINISTRIES READING BERKSHIRE UK

England & Wales - Charity number 1180369

Accounts



Because
We care

"For God sent not his Son into the world to condemn the world; but that the world through him might be saved." (John 3:17)

SPIRITUAL CARE ANNUAL REPORT

Registered Charity No. 1180369

2024-25 *"replacing ignorance with enlightenment"*

Working together with:



Elder Joshua Wilson
Senior Pastor



- 0118 9453 622
- josh@spiritualcare.uk
- Bethel Apostolic Church Gloucester
98a High Street, Gloucester, Gloucesters
GL1 4TA
- The Spiritual Care Foundation,
The Wellness Centre, Hope Corner,
Scours Lane, Reading, Berkshire RG30 6A
- www.bethelunited.co.uk & www.spiritualcare.uk

Table of Contents

Contents

The Vision _____	1
The Vision Continued _____	2
Financial Summary _____	3
Financial Statement _____	4
Regular & One-off Support _____	5
Bethel United Football Club _____	6

Statement of belief

We believe in the divine inspiration and sufficiency of the Holy Scriptures as originally given and recorded in the bible. These words are regarded as authoritative and should be always taken into consideration. They teach principles and truth, and yet each human being has a God given right to make decisions for themselves. One must choose to believe in God.

We believe in the oneness of GOD.

We believe in the amazing saving grace of the LORD and Saviour Jesus Christ. In accordance with John 3:16-17 we believe God loves the WORLD and sent Jesus NOT to condemn it, but rather to save it.

We believe that true love will conquer all.

We believe that we should do all we can to make our World a better place. This includes the environment, and we must take global warming and the pollution of the earth seriously.



***“Now unto him
that is able to do
exceedingly
abundantly
above all that we
ask or think...”
Ephesians 3:20***



“ #replacing ignorance with enlightenment”

Overview

To create and maintain a sustainable church; a body of believers reflective of and effective in the community within which it serves. Using universal languages, being actively dedicated to the positive promotion of the teachings of Jesus Christ; replacing ignorance with enlightenment – spirited and Holy Spirit led. Recognising we all need spiritual care.

Financial Highlights

This church and charity is totally funded by free will offerings and volunteers' time. Our operation is constantly in need of additional funding and if you or yours would like to donate or leave something in your will to help continue the work, we would be extremely grateful. Pastor Joshua Wilson should receive a £500.00 per month stipend, which helps with petrol and day to day expenses. This year he has donated this monthly amount back to the church as well as many hours of labour not charged. The church does not currently own a building or grounds, but it does have a space it can call its own, leased from the Atrium Health Club Building related costs will come under the regular contribution given to The Atrium and other similar venues that support Spiritual Care events and its congregation(s). COVID 19 and its accompanying lockdowns have not made the survival of the charity any easier. Like all charities, in times like this – we must cut our cloth accordingly and do the best we can with very limited budgets. Nevertheless, in God has been good – we proclaim, “Forward Still!”

Operating Highlights

After 13 years under present leadership, we have been able to obtain and maintain charity status – registration number: 1180369. Links have been formed with the Atrium Health Club which enable us to cater for the footballers and their families with a great range of facilities. The Christian ethos and management of this large site provides future opportunities for growth and development. Watch this space. We are in very exciting times.

Looking Ahead

It would be a great help to strengthen the Board of Trustees with more people and a wider range of skill sets. We would like to take this opportunity to publicly thank those Trustees who have previously stepped up and helped to shoulder some of the responsibility to further progress the church and its charitable purposes. Last year Stuart Newton, Kimberly Chapman, Emma Walsh, Diane Wilson, Gregory Lyford and Sandra Wilson along with Pastor Joshua Wilson have been working being the scenes to safeguard the future of Spiritual Care and the Bethel United Football Club.

Mother Hyacinth Wilson continued to promote and drum up support for Spiritual Care as patron of this charity until her dying day. Thank you for your ceaseless contribution and unwavering practical and prayerful support.

Charitable status now allows us to fund raise with and for other recognized charities. It also means we are now able to set ourselves up to claim gift aid. I think we need to strengthen the administrative arm of our organisation first and if you could help in this area – we would love to hear from you.

Leonie Wilson – Director of Ministry Operations



Ageing congregations and diminishing numbers of young people, present some logistical concerns that might better be addressed by a full-time pastor. Something we will seriously have to look at in the coming months. Making the most of technological advancements – Zoom / WhatsApp and MS Teams to mention but a few programs – we have concluded that services and meetings on digital platforms are here to stay. We look forward to moving ahead, embracing all the potential good that is now available to us with a little bit of experimentation and creativity.

Our young men who represent the church in Thames Valley Churches Football League – under banner of brotherly love in the name of Bethel United, continue to afford us greater opportunities for community engagement. We will be promoting Prostate Cancer awareness and Mental Illness awareness this season. Please get involved with activities and help us maximize our efforts.

Working with the Bethel United group of churches, identified as Bethel Nation at the July 2020 Holy Convocation, we are pleased to acknowledge another year’s journey in association with the International Bethesda Luton District of Churches – Bishop Overseer Dr. D. W. Lewin at the helm. Support has also been given other like-minded charities, and we are grateful to Norcot Mission Church, Reading Churches Together, Reading Street Pastors, The Salvation Army and the Methodist Church – Thames Valley Circuit for various elements of support which include preaching engagements, encouragement and inspiration.

Moving forward we wish to have a greater local impact. Areas for greater development include:

- Junior Church
- Messy Church
- Street Pastor Ministry
- Local Preachers’ Course
- Family Fitness Fun – the Wholesome Approach
- Chaplaincy
- Offender Rehabilitation Program
- Social Injustice – Advocacy
- Trustees - Training, retention & recruitment

On behalf of all who have benefited from the work of Spiritual Care, Pastor Joshua Wilson would like to thank the board of Trustees and Patron for all their hard work and support: A very big heartfelt ‘Thank You’ from all of us.

Existing Trustees are:

- Diane Wilson – Assistant Pastor
- Stuart Newton – BUFC Captain
- Emma Walsh – Member
- Gregory Lyford – Member
- Kimberly Chapman – Member
- Sandra Wilson – Member

The above Trustees are supported by:

- Pastor Joshua Wilson – Senior Pastor
- Patron Hyacinth Wilson – Patron*

*Mother Hyacinth Delores Wilson was promoted to glory on 27th August 2025 – We thank God for faithful her life and her legacy.

SPIRITUAL CARE

“ And we know that all things work together for good to them that love God, to them who are the called according to his purpose.

**Romans 8:28
King James Version (KJV)**

Leonie Wilson – Director of Ministry Operations



Balance held in Bank 01.04.2024 **£ 1,061.75**

Monthly outgoings remain relatively consistent – the major overheads are:

- Pastor's Stipend £500.00 / month.
- The Wellness Centre £500.00 / month.
- Public Liability Insurance £27.41 / month
- Building Security £65.76 / month

The general trend is that income is down and tithe offering giving is down. We do not have the administration support and structure yet to claim gift-aid, but we are hoping to make great strides in that direction and plan to make an announcement soon, should the LORD tarry.

Financial Summary		2024-2025	
Month	Income	Expenses	
Apr-24	1144.8	912.25	
May-24	2396.39	2,882.03	
Jun-24	1063.84	1,481.44	
Jul-24	1469	1,463.39	
Aug-24	1362.62	1,165.54	
Sep-24	1503.8	943.07	
Oct-24	1728.87	2,153.24	
Nov-24	1127.09	1,096.26	
Dec-24	2727.27	2,980.99	
Jan-25	1855.69	1,245.46	
Feb-25	2235.92	2,883.95	
Mar-25	706.98	983.14	
	£19,322.27	£20,190.76	-£868.49

Financial Statement

Statement of Financial Position

- Liabilities: £1,133.25 / month

Pastor Stipend, hall hire & building contributions, admin, website maintenance and sundry expenses

- Statement of Financial Position: - **£868.49** for the year

Statement from Assistant Pastor and Patron

“Now therefore, our God, we thank thee, and praise thy glorious name.”

1 Chronicles 29:13

Last year has been another difficult year for all of us, nevertheless we have continued to give our support to community projects.

As Patron, I am a dedicated volunteer. I have helped in the service of Care Hospitality for our Community in Reading. Communicating and interacting with the people as is necessary. Meals are prepared and served to senior citizens. I sometimes serve one day a week at the Golders' Lunch Club for senior citizens.

Hyacinth Wilson – The Patron*

It has been a tough year and growth has been up and down. Some changes have been made, and some changes have been forced upon us. We are grateful for divine providence and trust we shall continue to make a positive impact locally. We have stepped out in faith and secured a building that we can call our own. Despite the difficulties we have acquired assets and made a strategic step forward towards our vision of sustainable growth. Prayer meetings and bible studies are in need of wider support – this is perhaps a general overall comment. Thank you to all who have successfully transitioned to online giving and worship. We would like to take this opportunity to thank one and all for your continued support and good wishes. It is not easy to operate a full-time ministry with only volunteers – we really wouldn't be a viable organisation without you and your help, support and prayers. Once again, thank you all.

Diane Wilson – Assistant Pastor

*Mother Hyacinth Delores Wilson was promoted to glory on 27th August 2025 – We thank God for her faithful life and her legacy.

The Spiritual Care Foundation Apostolic Ministries

The Wellness Centre, Hope Corner, The Atrium Health Club,
Scours Lane, Reading, Berkshire, RG30 6AY

Tel: 01189 453 622

Mobile: 07366 391 755

Website: www.spiritualcare.uk

Gifts in wills

Gifts in wills are an amazing way of continuing your support long into the future.

These come in all shapes and sizes, big and small - with gifts ranging from £200 to £200,000, from 1% of an estate to 100% or anything left over after other gifts have been made.

Being positioned to bless others who are not as fortunate as ourselves is a great blessing. Whilst it's perfectly understandable if you do not want to dwell on the thought of 'what happens after I am gone' - we encourage you from a scriptural and temporal point of view to think generationally. Moses divided land Israel didn't yet own for a generation born in the Wilderness – King David left substance for Solomon's Temple – which is in fact less about Solomon or David and all about God and his people.

By putting a gift in your will to Spiritual Care, you can make sure that we will be there for the people you love as and when they ever need us. The vision that takes us to unchartered waters requires finance and we humbly ask you to commit this request to prayer and let the Lord have his way.

Thank you to those of you who have already moved to online and electronic bank transfers for your donations / tithes and offerings. God bless you.

Regular contributions of any amount welcomed.

Did you know you can restrict the use of the funds you donate? For example if you would like to support our sensational football team, but not the religious activities of the church. Just specify on your donation – Restricted Funds – Football team only / Church ministry only.



SPIRITUAL CARE

38 Give, and it shall be given unto you; good measure, and shaken together, and running over...

Luke 6:38
King James Version



The Spiritual Care Foundation

Help us grow and keep up the good work
Thank you for your regular donation of any amount to:
The Spiritual Care Foundation Apostolic Ministries

Sort Code: 23-05-80

Account Number: 19821803

Metro Bank

For further information please contact pastor@spiritualcare.uk



Bethel United FC is a Christian led community club based in Reading in the royal county of Berkshire. Spiritual leadership is given by Minister Joshua Wilson and the Spiritual Care Church. You can find them at Norcot Mission, Brockley Close, Tilehurst, Reading, Berkshire, RG30 4YP most Sunday evenings and I am confident a warm welcome awaits you.

Since 2002 this team has competed in the **Thames Valley Churches League** winning some silverware along the way and the odd cup. They have competed on the international stage – travelling to Poland and now have their sights set for Jamaica.

At Bethel United FC both players and supporters alike stand on a foundation which is the Word of God and football is just one of the things they are good at. The prevailing spirit of this club is one of excellence and strength – 'Where there is unity – you will find strength'. Bethel United in name – Bethel United in deed – win, lose or draw this team does it together.

The name 'Bethel' comes from Hebrew and is literally translated as 'House of God'; contextually it speaks of a place where the LORD will put his name. Committed to the vision and the realisation of a **sustainable church, effective in and reflective of the community in which it is based, dedicated to the positive promotion of the teachings of the LORD Jesus Christ**, Pastor Josh and his team actively use the universal language of sport to communicate Kingdom Principles and the Truth of God's word wherever and whenever they can. Their mission is to replace ignorance with enlightenment and win some football games along the way.

Over the years the players of Bethel have demonstrated how Christians, Muslims, other faiths and none believers can come together under a banner of brotherly love for a common goal. With total commitment and uncompromising passion – There's a reason why you need a referee and the Bethel Boyz are not always saintly! Pastor Josh has gone on record with this quote, "No apologies for being spirited – our set-up is Holy Spirit led!". They pray before they play and over the years competitive ventures on and off the pitch has galvanised many life-changing relationships.



SUPPORT THE CAUSE. BUY A CAP



This time of year will always have a commemorative ambiance for Bethel United FC.

THEY FORMED THE GUARD OF HONOUR FOR THE LATE SENIOR PASTOR – ELDER WILSON

He will not be forgotten. As we celebrate convocation – we remember all those who have gone on before us. The final analysis will state that we all need Spiritual Care.

For further information please contact
Pastor@SpiritualCare.uk

Thank you for your regular donation of any amount to:

The Spiritual Care Foundation
Apostolic Ministries

Metro Bank
Sort Code: 23-05-80
Account Number: 19621803





Receipts and payments accounts

For the period from	4-Jan-2024	To	31/3/25
---------------------	------------	----	---------

Section A Receipts and payments

	Unrestricted funds to the nearest £	Restricted funds to the nearest £	Endowment funds to the nearest £	Total funds to the nearest £	Last year to the nearest £
A1 Receipts					
	19,322	-	-	19,322	-
	-	-	-	-	-
	-	-	-	-	-
	-	-	-	-	-
	-	-	-	-	-
	-	-	-	-	-
	-	-	-	-	-
Sub total(Gross income for AR)	19,322	-	-	19,322	-
A2 Asset and investment sales, (see table).					
	-	-	-	-	-
	-	-	-	-	-
Sub total	-	-	-	-	-
Total receipts	19,322	-	-	19,322	-
A3 Payments					
INSURANCE	294	-	-	294	-
WEBSITE FEES & EXPENSES	308	-	-	308	-
SECURITY SERVICES	851	-	-	851	-
CATERING AND ENTERTAINMENT	2,866	-	-	2,866	-
ADVERTISING	-	-	-	-	-
DONATION GIFT	280	-	-	280	-
PROFESSIONAL FEES / BUILDING WORKS	1,294	-	-	1,294	-
GENERAL EXPENSES	7,297	-	-	7,297	-
RENT	7,000	-	-	7,000	-
SUBSCRIPTIONS & FEES	-	-	-	-	-
	-	-	-	-	-
Sub total	20,190	-	-	20,190	-
A4 Asset and investment purchases, (see table)					
	-	-	-	-	-
	-	-	-	-	-
Sub total	-	-	-	-	-
Total payments	20,190	-	-	20,190	-
Net of receipts/(payments)	868	-	-	868	-
A5 Transfers between funds	-	-	-	-	-
A6 Cash funds last year end	-	-	-	-	-
Cash funds this year end	868	-	-	868	-

Section B Statement of assets and liabilities at the end of the period

Categories	Details	Unrestricted funds	Restricted funds	Endowment funds
------------	---------	--------------------	------------------	-----------------

B1 Cash funds

	to nearest £	to nearest £	to nearest £
BALANCE IN THE BANK	127	-	-
BALANCE IN TOP UP BANK	1	-	-
	-	-	-
Total cash funds	128	-	-

(agree balances with receipts and payments account (s))

Agreement Error OK OK

Unrestricted funds Restricted funds Endowment funds

B2 Other monetary assets

Details	to nearest £	to nearest £	to nearest £
	-	-	-
	-	-	-
	-	-	-
	-	-	-
	-	-	-
	-	-	-

B3 Investment assets

Details	Fund to which asset belongs	Cost (optional)	Current value (optional)
		-	-
		-	-
		-	-
		-	-
		-	-

B4 Assets retained for the charity's own use

Details	Fund to which asset belongs	Cost (optional)	Current value (optional)
		-	-
		-	-
		-	-
		-	-
		-	-
		-	-
		-	-
		-	-
		-	-

B5 Liabilities

Details	Fund to which liability relates	Amount due (optional)	When due (optional)
		-	
		-	
		-	
		-	
		-	

Signed by one or two trustees on behalf of all the trustees

Signature	Print Name	Date of approval

SPIRITUAL CARE FOUNDATION APOSTOLIC MINISTRIES READING BERKSHIRE UK

England & Wales - Charity number 1180369

Accounts

SPIRITUAL CARE Annual Report

Registered Charity No.

2022-23 *“replacing ignorance with enlightenment”*

Working together with:



Table of Contents

Contents

The Vision _____	1
The Vision Continued _____	2
Financial Summary _____	3
Financial Statement _____	4
Regular & One-off Support _____	5
Bethel United Football Club _____	6

Statement of belief

We believe in the divine inspiration and sufficiency of the Holy Scriptures as originally given and recorded in the bible. These words are regarded as authoritative and should be always taken into consideration. They teach principles and truth, and yet each human being has a God given right to make decisions for themselves. One must choose to believe in God.

We believe in the oneness of GOD.

We believe in the amazing saving grace of the LORD and Saviour Jesus Christ. In accordance with John 3:16-17 we believe God loves the WORLD and sent Jesus NOT to condemn it, but rather to save it.

We believe that true love will conquer all.

We believe that we should do all we can to make our World a better place. This includes the environment, and we must take global warming and the pollution of the earth seriously.



*“Now unto him
that is able to do
exceedingly
abundantly
above all that we
ask or think...”
Ephesians 3:20*



“ #replacing ignorance with enlightenment”

Overview

To create and maintain a sustainable church; a body of believers reflective of and effective in the community within which it serves. Using universal languages, being actively dedicated to the positive promotion of the teachings of Jesus Christ; replacing ignorance with enlightenment – spirited and Holy Spirit led. Recognising we all need spiritual care.

Financial Highlights

This church and charity is totally funded by free will offerings and volunteers' time. Our operation is constantly in need of additional funding and if you or yours would like to donate or leave something in your will to help continue the work, we would be extremely grateful. Pastor Joshua Wilson should receive a £500.00 per month stipend, which helps with petrol and day to day expenses. This year he has donated this monthly amount back to the church as well as many hours of labour not charged. The church does not currently own a building or grounds, but it does have a space it can call its own, leased from the Atrium Health Club Building related costs will come under the regular contribution given to The Atrium and other similar venues that support Spiritual Care events and its congregation(s). COVID 19 and its accompanying lockdowns have not made the survival of the charity any easier. Like all charities, in times like this – we must cut our cloth accordingly and do the best we can with very limited budgets. Nevertheless, in God has been good – we proclaim, “Forward Still!”

Operating Highlights

After 12 years under present leadership, we have been able to obtain and maintain charity status – registration number: 1180369. Links have been formed with the Atrium Health Club which enable us to cater for the footballers and their families with a great range of facilities. The Christian ethos and management of this large site provides future opportunities for growth and development. Watch this space. We are in very exciting times.

Looking Ahead

It would be a great help to strengthen the Board of Trustees with more people and a wider range of skill sets. We would like to take this opportunity to publicly thank those Trustees who have previously stepped up and helped to shoulder some of the responsibility to further progress the church and its charitable purposes. Last year Stuart Newton, Kimberly Chapman, Emma Walsh, Diane Wilson, Gregory Lyford and Sandra Wilson along with Pastor Joshua Wilson have been working being the scenes to safeguard the future of Spiritual Care and the Bethel United Football Club.

Mother Hyacinth Wilson continues to promote and drum up support for Spiritual Care as patron of this charity. Thank you for your continued unwavering support.

Charitable status now allows us to fund raise with and for other recognized charities. It also means we are now able to set ourselves up to claim gift aid. I



SPIRITUAL CARE

“ And we know that all things work together for good to them that love God, to them who are the called according to his purpose.

**Romans 8:28
King James Version (KJV)**

Ageing congregations and diminishing numbers of young people, present some logistical concerns that might better be addressed by a full-time pastor. Something we will seriously have to look at in the coming months. Making the most of technological advancements – Zoom / WhatsApp and MS Teams to mention but a few programs – we have concluded that services and meetings on digital platforms are here to stay. We look forward to moving ahead, embracing all the potential good that is now available to us with a little bit of experimentation and creativity.

Our young men who represent the church in Thames Valley Churches Football League – under banner of brotherly love in the name of Bethel United, continue to afford us greater opportunities for community engagement. We will be promoting Prostate Cancer awareness and Mental Illness awareness this season. Please get involved with activities and help us maximize our efforts.

Working with the Bethel United group of churches, identified as Bethel Nation at the July 2020 Holy Convocation, we are pleased to acknowledge another year’s journey in association with the International Bethesda Luton District of Churches – Bishop Overseer Dr. D. W. Lewin at the helm. Support has also been given other like-minded charities, and we are grateful to Norcot Mission Church, Reading Churches Together, Reading Street Pastors, The Salvation Army and the Methodist Church – Thames Valley Circuit for various elements of support which include preaching engagements, encouragement and inspiration.

Moving forward we wish to have a greater local impact. Areas for greater development include:

- Junior Church
- Messy Church
- Street Pastor Ministry
- Local Preachers’ Course
- Family Fitness Fun – the Wholesome Approach
- Chaplaincy
- Offender Rehabilitation Program
- Social Injustice – Advocacy
- Trustees - Training, retention & recruitment

On behalf of all who have benefited from the work of Spiritual Care, Pastor Joshua Wilson would like to thank the board of Trustees and Patron for all their hard work and support: A very big heartfelt ‘Thank You’ from all of us [Kimberly Chapman – Member](#)

Existing Trustees are:

- [Sandra Wilson – Member](#)
- Diane Wilson – Assistant Pastor
- Stuart Newton – BUFC Captain
- Emma Walsh – Member
- Gregory Lyford – Member

The above Trustees are supported by:

- Pastor Joshua Wilson – Senior Pastor



Balance held in Bank 01.04.2023 £ 540.55

Monthly outgoings remain relatively consistent – the major overheads are:

- Pastor’s Stipend £500.00 / month.
- The Wellness Centre £500.00 / month.
- Public Liability Insurance £27.41 / month
- Building Security £65.76 / month

The general trend is that income is down and tithe offering giving is down. We do not have the administration support and structure yet to claim gift-aid, but we are hoping to make great strides in that direction and plan to make an announcement soon, should the LORD tarry.

Financial Summary		2023-2024	
Month	Income	Expenses	
Apr-23	315.15	-876.62	
May-23	2,034.74	-1,669.62	
Jun-23	1,462.56	-1,319.51	
Jul-23	482.44	-955.22	
Aug-23	1,577.50	-854.91	
Sep-23	930.22	-1,209.65	
Oct-23	707.77	-985.52	
Nov-23	1,098.59	-1,205.89	
Dec-23	1,148.20	-997.97	
Jan-24	1,431.81	-971.23	
Feb-24	1,625.34	-1,611.55	
Mar-24	1,145.18	-985.64	
	£13,959.50	-£13,643.33	£316.17

Financial Statement

Statement of Financial Position

- Liabilities: £1,133.25 / month

Pastor Stipend, hall hire & building contributions, admin, website maintenance and sundry expenses

- Statement of Financial Position: - **£316.17** for the year

Statement from Assistant Pastor and Patron

“Now therefore, our God, we thank thee, and praise thy glorious name.”
1 Chronicles 29:13

Last year has been another difficult year for all of us, nevertheless we

have continued to give our support to community projects.

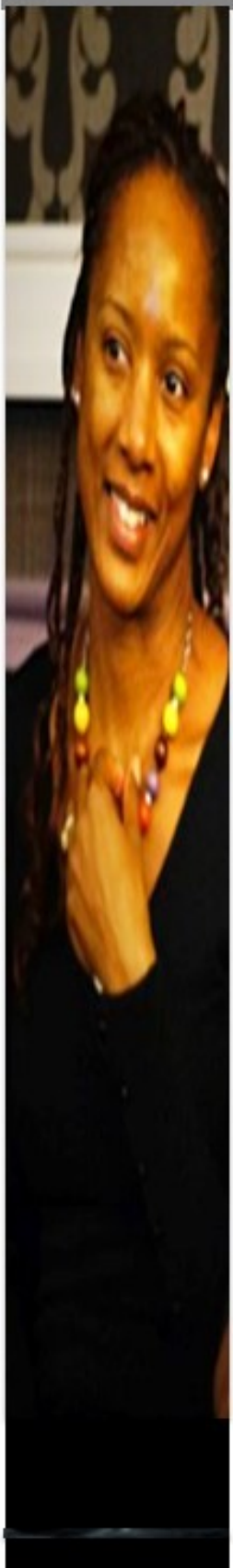
As Patron, I am a dedicated volunteer. I have helped in the service of Care

Hospitality for our Community in Reading. Communicating and interacting with the people as is necessary. Meals are prepared and served to senior citizens. I sometimes serve one day a week at the Golders' Lunch Club for senior citizens.

Hyacinth Wilson - The Patron

It has been a tough year and growth has been up and down. Some changes have been made, and some changes have been forced upon us. We are grateful for divine providence and trust we shall continue to make a positive impact locally. We have stepped out in faith and secured a building that we can call our own. Despite the difficulties we have acquired assets and made a strategic step forward towards our vision of sustainable growth. Prayer meetings and bible studies are in need of wider support - this is perhaps a general overall comment. Thank you to all who have successfully transitioned to online giving and worship. We would like to take this opportunity to thank one and all for your continued support and good wishes. It is not easy to operate a full-time ministry with only volunteers - we really wouldn't be a viable organisation without you and your help, support and prayers. Once again, thank you all.

Diane Wilson - Assistant Pastor



The Spiritual Care Foundation Apostolic Ministries

The Wellness Centre, Hope Corner, The Atrium Health Club,
Scours Lane, Reading, Berkshire, RG30 6AY

Tel: 01189 453 622

Mobile: **07366 391**

Website: www.spiritualcare.uk

Gifts in wills

Gifts in wills are an amazing way of continuing your support long into the future.

These come in all shapes and sizes, big and small - with gifts ranging from £200 to £200,000, from 1% of an estate to 100% or anything left over after other gifts have been made.

Being positioned to bless others who are not as fortunate as ourselves is a great blessing. Whilst it's perfectly understandable if you do not want to dwell on the thought of 'what happens after I am gone' - we encourage you from a scriptural and temporal point of view to think generationally. Moses divided land Israel didn't yet own for a generation born in the Wilderness - King David left substance for Solomon's Temple - which is in fact less about Solomon or David and all about God and his people.

By putting a gift in your will to Spiritual Care, you can make sure that we will be there for the people you love as and when they ever need us. The vision that takes us to unchartered waters requires finance and we humbly ask you to commit this request to prayer and let the Lord have his way.

Thank you to those of you who have already moved to online and electronic bank transfers for your donations / tithes and offerings. God bless you.

Regular contributions of any amount welcomed.

Did you know you can restrict the use of the funds you donate? For example if you would like to support our sensational football team, but not the religious activities of the church. Just specify on your donation - Restricted Funds - Football team only / Church ministry only.



SPIRITUAL CARE

33 Give, and it shall be given unto you; good measure, and shaken together, and running over...

**Luke 6:38
King James Version**



The Spiritual Care Foundation

*Help us grow and keep up the good work
Thank you for your regular donation of any amount to:
The Spiritual Care Foundation Apostolic Ministries*

Sort Code: 23-05-80



Bethel United FC is a Christian led community club based in Reading in the royal county of Berkshire. Spiritual leadership is given by Minister Joshua Wilson and the Spiritual Care Church. You can find them at Norcot Mission, Brockley Close, Tilehurst, Reading, Berkshire, RG30 4YP most Sunday evenings and I am confident a warm welcome awaits you.

Since 2002 this team has competed in the **Thames Valley Churches League** winning some silverware along the way and the odd cup. They have competed on the international stage – travelling to Poland and now have their sights set for Jamaica.

At Bethel United FC both players and supporters alike stand on a foundation which is the Word of God and football is just one of the things they are good at. The prevailing spirit of this club is one of excellence and strength – 'Where there is unity – you will find strength'. Bethel United in name – Bethel United in deed – win, lose or draw this team does it together.

The name 'Bethel' comes from Hebrew and is literally translated as 'House of God'; contextually it speaks of a place where the LORD will put his name. Committed to the vision and the realisation of a **sustainable church, effective in and reflective of the community in which it is based, dedicated to the positive promotion of the teachings of the LORD Jesus Christ**, Pastor Josh and his team actively use the universal language of sport to communicate Kingdom Principles and the Truth of God's word wherever and whenever they can. Their mission is to replace ignorance with enlightenment and win some football games along the way.

Over the years the players of Bethel have demonstrated how Christians, Muslims, other faiths and none believers can come together under a banner of brotherly love for a common goal. With total commitment and uncompromising passion – There's a reason why you need a referee and the Bethel Boyz are not always saintly! Pastor Josh has gone on record with this quote, "No apologies for being spirited – our set-up is Holy Spirit led!". They pray before they play and over the years competitive ventures on and off the pitch has galvanised many life-changing relationships.



SUPPORT THE CAUSE. BUY A CAP



This time of year will always have a commemorative ambiance for Bethel United FC.

THEY FORMED THE GUARD OF HONOUR FOR THE LATE SENIOR PASTOR – ELDER WILSON

He will not be forgotten. As we celebrate convocation – we remember all those who have gone on before us. The final analysis will state that we all need Spiritual Care.

For further information please contact
Pastor@SpiritualCare.uk

Thank you for your regular donation of any amount to:

The Spiritual Care Foundation
Apostolic Ministries

Metro Bank
Sort Code: 23-05-80
Account Number: 19821803





CHARITY COMMISSION
FOR ENGLAND AND WALES

Spiritual Care Foundation Apostolic Ministries Reading B No 1180369

CC16a

Receipts and payments accounts

For the period from	1-Apr-2023	To	31-Mar-2024
---------------------	------------	----	-------------

Section A Receipts and payments

	Unrestricted funds to the nearest £	Restricted funds to the nearest £	Endowment funds to the nearest £	Total funds to the nearest £	Last year to the nearest £
A1 Receipts					
	13,960	-	-	13,960	-
	-	-	-	-	-
	-	-	-	-	-
	-	-	-	-	-
	-	-	-	-	-
	-	-	-	-	-
	-	-	-	-	-
	-	-	-	-	-
Sub total (Gross income for AR)	13,960	-	-	13,960	-
A2 Asset and investment sales, (see table).					
	-	-	-	-	-
	-	-	-	-	-
Sub total	-	-	-	-	-
Total receipts	13,960	-	-	13,960	-

A3 Payments

INSURANCE	281	-	-	281	-
WEBSITE FEES & EXPENSES	116	-	-	116	-
SECURITY SERVICES	837	-	-	837	-
CATERING AND ENTERTAINMENT	3,204	-	-	3,204	-
ADVERTISING	60	-	-	60	-
DONATION GIFT	250	-	-	250	-
PROFESSIONAL FEES / BUILDING	1,644	-	-	1,644	-
GENERAL EXPENSES	1,728	-	-	1,728	-
RENT	5,000	-	-	5,000	-
SUBSCRIPTIONS & FEES	520	-	-	520	-
	-	-	-	-	-
Sub total	13,640	-	-	13,640	-

A4 Asset and investment purchases, (see table)					
	-	-	-	-	-
	-	-	-	-	-
Sub total	-	-	-	-	-

Total payments	13,640	-	-	13,640	-
-----------------------	---------------	----------	----------	---------------	----------

Net of receipts/(payments)	319	-	-	319	-
A5 Transfers between funds	-	-	-	-	-
A6 Cash funds last year end	-	-	-	-	-
Cash funds this year end	319	-	-	319	-

Section B Statement of assets and liabilities at the end of the period

Categories	Details	Unrestricted funds to nearest £	Restricted funds to nearest £	Endowment funds to nearest £
B1 Cash funds	BALANCE IN THE BANK	946	-	-
	BALANCE IN TOP UP BANK	50	-	-
		-	-	-

Total cash funds	996	-	-
-------------------------	------------	----------	----------

(agree balances with receipts and payments account(s))

Agreement Error	OK	OK
-----------------	----	----

Unrestricted funds to nearest £	Restricted funds to nearest £	Endowment funds to nearest £
---	---	--

B2 Other monetary assets

Details	Unrestricted funds to nearest £	Restricted funds to nearest £	Endowment funds to nearest £
	-	-	-
	-	-	-
	-	-	-
	-	-	-
	-	-	-
	-	-	-

B3 Investment assets

Details	Fund to which asset belongs	Cost (optional)	Current value (optional)
		-	-
		-	-
		-	-
		-	-
		-	-

B4 Assets retained for the charity's own use

Details	Fund to which asset belongs	Cost (optional)	Current value (optional)
		-	-
		-	-
		-	-
		-	-
		-	-

		-	-
		-	-
		-	-
		-	-

B5 Liabilities

Details	Fund to which liability relates	Amount due (optional)	When due (optional)
		-	
		-	
		-	
		-	
		-	

Signed by one or two trustees on behalf of all the trustees

Signature	Print Name	Date of approval

SPIRITUAL CARE FOUNDATION APOSTOLIC MINISTRIES READING BERKSHIRE UK

England & Wales - Charity number 1180369

Accounts



CHARITY COMMISSION
FOR ENGLAND AND WALES

Spiritual Care Foundation Apostolic Ministries Reading B No 1180369

CC16a

Receipts and payments accounts

For the period from	6-Apr-2022	To	5-Apr-2023
---------------------	------------	----	------------

Section A Receipts and payments

	Unrestricted funds to the nearest £	Restricted funds to the nearest £	Endowment funds to the nearest £	Total funds to the nearest £	Last year to the nearest £
A1 Receipts					
	7,034	-	-	7,034	-
	-	-	-	-	-
	-	-	-	-	-
	-	-	-	-	-
	-	-	-	-	-
	-	-	-	-	-
	-	-	-	-	-
	-	-	-	-	-
Sub total (Gross income for AR)	7,034	-	-	7,034	-
A2 Asset and investment sales, (see table).					
	-	-	-	-	-
	-	-	-	-	-
Sub total	-	-	-	-	-
Total receipts	7,034	-	-	7,034	-

A3 Payments

INSURANCE	275	-	-	275	-
WEBSITE FEES & EXPENSES	333	-	-	333	-
SECURITY SERVICES	530	-	-	530	-
CATERING AND ENTERTAINMENT	1,196	-	-	1,196	-
ADVERTISING	240	-	-	240	-
DONATION GIFT	150	-	-	150	-
PROFESSIONAL FEES / BUILDING	4,777	-	-	4,777	-
GENERAL EXPENSES	361	-	-	361	-
RENT	2,350	-	-	2,350	-
PASTOR STIPEND	1,850	-	-	1,850	-
	-	-	-	-	-
Sub total	12,062	-	-	12,062	-
A4 Asset and investment purchases, (see table)					
	-	-	-	-	-
	-	-	-	-	-
Sub total	-	-	-	-	-
Total payments	12,062	-	-	12,062	-
Net of receipts/(payments)	- 5,029	-	-	- 5,029	-
A5 Transfers between funds	-	-	-	-	-
A6 Cash funds last year end	-	-	-	-	-
Cash funds this year end	- 5,029	-	-	- 5,029	-

Section B Statement of assets and liabilities at the end of the period

Categories	Details	Unrestricted funds to nearest £	Restricted funds to nearest £	Endowment funds to nearest £
B1 Cash funds	BALANCE IN THE BANK	13	-	-
	BALANCE IN TOP UP BANK	91	-	-
		-	-	-

Total cash funds	104	-	-
(agree balances with receipts and payments account(s))	Agreement Error	OK	OK

Unrestricted funds to nearest £	Restricted funds to nearest £	Endowment funds to nearest £
---	---	--

B2 Other monetary assets

Details	Unrestricted funds to nearest £	Restricted funds to nearest £	Endowment funds to nearest £
	-	-	-
	-	-	-
	-	-	-
	-	-	-
	-	-	-
	-	-	-

B3 Investment assets

Details	Fund to which asset belongs	Cost (optional)	Current value (optional)
		-	-
		-	-
		-	-
		-	-
		-	-

B4 Assets retained for the charity's own use

Details	Fund to which asset belongs	Cost (optional)	Current value (optional)
		-	-
		-	-
		-	-
		-	-
		-	-

		-	-
		-	-
		-	-
		-	-

B5 Liabilities

Details	Fund to which liability relates	Amount due (optional)	When due (optional)
		-	
		-	
		-	
		-	
		-	

Signed by one or two trustees on behalf of all the trustees

Signature	Print Name	Date of approval

SPIRITUAL CARE FOUNDATION APOSTOLIC MINISTRIES READING BERKSHIRE UK

England & Wales - Charity number 1180369

Accounts

SPIRITUAL

Annual Report

2021-22 *“replacing ignorance with enlightenment”*

Working together with:



BETHEL UNITED
The Spiritual Care Fo

The Spiritual Care Foundation Apostolic Ministries

Charity Registration No. 1180369

The Spiritual Care Foundation Apostolic Ministries

Tel: 01189 453 622
Mob: 07785 303 788

The Atrium Health
Club,
Lodge, 28 Spey
Scours Lane,
Road

www.spiritualcare.uk
info@spiritualcare.uk

Tel 01189 453 622
Mob 07785 303 788

Bethel Lodge, 28 Spey
Scours Lane,
Road

www.spiritualcare.uk
info@spiritualcare.uk

Registered Charity No. 1180369



Table of Contents

Contents

The Vision _____

The Vision Continued _____

Financial Summary _____

Financial Statement _____

Regular & One-off Support _____

Bethel United Football Club _____

Statement of belief

work together for good to them that love God, to them who are the called according to his purpose.

Romans 8:28
King James Version (KJV)

“Now unto him that is able to do exceedingly abundantly above all that we ask or think...”
Ephesians 3:20

Pg. 1

“ #replacing ignorance with enlightenment”

Overview

To create and maintain a sustainable church; a body of believers reflective of and effective in the community within which it serves. Using universal languages, being actively dedicated to the positive promotion of the teachings of Jesus Christ; replacing ignorance with enlightenment – spirited and Holy Spirit led. Recognising we all need spiritual care.

Financial Highlights

This church and charity is totally funded by free will offerings and volunteers' time. Our operation is constantly in need of additional funding and if you or yours would like to make a donation or leave something in your will towards the cause, we would be extremely grateful. Pastor Joshua Wilson receives a £450.00 per month stipend, which helps with petrol and day to day expenses. The church does not currently own a building or its own grounds. Building related costs will come under the regular contribution given to Norcot Mission and other similar venues that support Spiritual Care events and its congregation(s). COVID 19 and its accompanying lockdowns has not made the survival of the charity any easier. Like all charities, in times like this – we must cut our cloth accordingly and do the best we can with very limited budgets.

Operating Highlights

After 8 years under present leadership, we have been able to obtain and maintain charity status – registration number: 1180369. Links have been formed with the Atrium Health Club which enable us to cater for the footballers and their families with a great range of facilities. The Christian ethos and management of this large site will provide future opportunities for growth and development. Watch this space. We are in very exciting times.

Looking Ahead

It would be a great help to strengthen the Board of Trustees with more people and a wider range of skill sets. We would like to take this opportunity to publicly thank all those who have previously stepped up and helped to shoulder some of the responsibility to further progress the church and its charitable purposes. Last year Stuart Newton, Kimberly Chapman, Emma Walsh, Diane Wilson, Gregory Lyford and Sandra Wilson along with Pastor Joshua Wilson have been working being the scenes to safeguard the future of Spiritual Care and the football team.

Mother Hyacinth Wilson continues to promote and drum up support for Spiritual Care as patron of this charity. Thank you for your continued unwavering support.

Charitable status now allows us to fund raise with and for other recognized charities. It also means we are now able to set ourselves up to claim gift aid. I think we need to strengthen the administrative arm of our organisation first and if you could help in this area - we would love to hear from you.

Ageing congregations and diminishing numbers of young people, present some logistical concerns that might better be addressed by a full-time pastor. Something we will seriously have to look at in the coming months. Making the most of technological advancements - Zoom / WhatsApp and MS Teams to mention but a few programs - we have concluded that services and meetings on digital platforms are here to stay. We look forward to moving ahead, embracing all the potential good that is now available to us with a little bit of experimentation and creativity.

Our young men who represent the church in Thames Valley Churches Football League - under banner of brotherly love in the name of Bethel United, continue to afford us greater opportunities for community engagement. We will be promoting Prostate Cancer awareness and Mental Illness awareness this season. Please get involved with activities and help us maximize our efforts.

Working with the Bethel United group of churches, identified as Bethel Nation at the July 2020 Holy Convocation, we are pleased to acknowledge another year's journey in association with the International Bethesda Luton District of Churches - Bishop Overseer Dr. D. W. Lewin at the helm. Support has also been given other like-minded charities and we are grateful to Norcot Mission Church, Reading Churches Together, Reading Street Pastors and the Methodist Church - Thames Valley Circuit for various elements of support which include preaching engagements, encouragement and inspiration.

Moving forward we wish to have a greater local impact. Areas for greater development include:

- Junior Church
- Messy Church
- Street Pastor Ministry
- Local Preachers' Course
- Family Fitness Fun - the Wholesome Approach
- Chaplaincy
- Offender Rehabilitation Program
- Social Injustice - Advocacy
- Trustees - Training, retention & recruitment

On behalf of all who have benefited from the work of Spiritual Care, Pastor Joshua Wilson would like to thank the Trustees and Patron for all their hard work and support: A very big heartfelt 'Thank You' from all of us.

Existing Trustees are:

- Diane Wilson - Assistant Pastor
- Stuart Newton - BUFC Captain
- Kimberly Chapman - Member
- Sandra Wilson - Member



SPIRITUAL CARE

28 And we know that all things work together for good to them that love God, to them who are called according to his purpose: 28

King James Version
8:28

- Emma Walsh - Member
- Gregory Lyford - Member

The above Trustees are supported by:

- Pastor Joshua Wilson - Senior Pastor
- Patron Hyacinth Wilson - Patron

Financial Summary

Balance held in Bank 01.04.2021 **£ 661.11**

Monthly outgoings remain relatively consistent – the major overheads are:

- Pastor's Stipend **£450.00 / month.**
- The Wellness Centre **£500.00 / month.**
- Public Liability Insurance **£27.41 / month**
- Building Security **£65.76 / month**

The general trend is that income is down and tithe offering giving is down. We do not have the administration support and structure yet to claim gift-aid yet, but we are hoping to make great strides in that direction. The saving from no longer having to pay for YMCA café will help moving forward.



SPIRITUAL CARE

²⁸ And we know that all things work together for good to them that love God, to them who are the called according to his purpose.

Romans

8:28

King James Version (KJV)

Financial Statement

Statement of Financial Position

- Liabilities: £1,047.00
Pastor Stipend, hall hire & building contributions, admin, website maintenance and sundry expenses
- Statement of Financial Position: - **£12,464.00 for the year**

Statement from Assistant Pastor and Patron

"Now therefore, our God, we thank thee, and praise thy glorious name." 1 Chronicles 29:13

Last year has been another difficult year for all of us, nevertheless we have continued to give our support to community projects. As Patron, I am a dedicated volunteer. I help in the service of Carers' Hospitality for our Community in Reading. Communicating and interacting with the people as is necessary. Meals are prepared and served to senior citizens. I Serve one day a week at the Golders' Lunch Club for senior citizens.

Hyacinth Wilson.

It has been a tough year and growth has been up and down. Some changes have been made and some changes have been forced upon us. We are grateful for divine providence and trust we shall continue to make a positive impact locally. We have stepped out in faith and secured a building that we can call our own. Despite the difficulties we have acquired assets and made a strategic step forward towards our vision of sustainable growth. **Prayer meetings and bible studies** are in need of wider support - this is perhaps a general overall comment. Thank you to all who have successfully transitioned to online giving and worship. We would like to take this opportunity to thank one and all for your continued support and good wishes. It is not easy to operate a full-time ministry with only volunteers - we really wouldn't be a viable organisation without you and your help, support and prayers. Once again, thank you all.

Diane Wilson.

SPIRITUAL CARE

²⁸ And we know that all things work together for good to them that love God, to them who are the called according

The Spiritual Care Foundation Apostolic Ministries

**The Wellness Centre, Hope Corner, The Atrium Health Club,
Scours Lane, Reading, Berkshire, RG30 6AY**

Tel: 01189 453 622

Mobile: 07785 303 788

Website: www.spiritualcare.uk

Gifts in wills

Gifts in wills are an amazing way of continuing your support long into the future.

These come in all shapes and sizes, big and small - with gifts ranging from £200 to £200,000, from 1% of an estate to 100% or anything left over after other gifts have been made.

Being positioned to bless others who are not as fortunate as ourselves is a great blessing. Whilst it's perfectly understandable if you do not want to dwell on the thought of 'what happens after I am gone' - we encourage you from a scriptural and temporal point of view to think generationally. Moses divided land Israel didn't yet own for a generation born in the Wilderness - King David left substance for Solomon's Temple - which is in fact less about Solomon or David and all about God and his people.

By putting a gift in your will to Spiritual Care, you can make sure that we will be there for the people you love as and when they ever need us. The vision that takes us to uncharted waters requires finance and we humbly ask you to commit this request to prayer and let the Lord have his way.

Thank you to those of you who have already moved to online and electronic bank transfers for your donations / tithes and offerings. God bless you.

Regular contributions of any amount welcomed.

Did you know you can restrict the use of the funds you donate? For example if you would like to support our sensational football team, but not the religious activities of the church. Just specify on your donation - Restricted Funds - Football team only / Church ministry only.



SPIRITUAL CARE

³⁸ Give, and it shall be given unto you; good measure, and shaken together, and running over...

Luke 6:38
King James
Version





receipts and payments accounts

CC16a

For the period from	Apr-21	To	Mar-22
---------------------	--------	----	--------

Section A Receipts and payments

	Unrestricted funds to the nearest £	Restricted funds to the nearest £	Endowment funds to the nearest £	Total funds to the nearest £	Last year to the nearest £
A1 Receipts					
	5,016	-	-	5,016	-
	-	-	-	-	-
	-	-	-	-	-
	-	-	-	-	-
	-	-	-	-	-
	-	-	-	-	-
	-	-	-	-	-
	-	-	-	-	-
Sub total (Gross income for AR)	5,016	-	-	5,016	-
A2 Asset and investment sales, (see table).					
	-	-	-	-	-
	-	-	-	-	-
Sub total	-	-	-	-	-
Total receipts	5,016	-	-	5,016	-
A3 Payments					
INSURANCE	269	-	-	269	-
WEBSITE FEES & EXPENSES	250	-	-	250	-
ADMIN SERVICES	60	-	-	60	-
TELEPHONE / INTERNET BUSINESS SERV	144	-	-	144	-

CHARITY GIFT	100	-	-	100	-
GENERAL EXPENSES	718	-	-	718	-
ENTERTAINMENT	1,150	-	-	1,150	-
SPONSORSHIP	1,000	-	-	1,000	-
MAINTENANCE EXPENSES	280	-	-	280	-
PASTOR STIPEND	5,400	-	-	5,400	-
	-	-	-	-	-
Sub total	9,371	-	-	9,371	-
A4 Asset and investment purchases, (see table)					
	-	-	-	-	-
	-	-	-	-	-
Sub total	-	-	-	-	-
Total payments	9,371	-	-	9,371	-
Net of receipts/(payments)	- 4,355	-	-	- 4,355	-
A5 Transfers between funds	-	-	-	-	-
A6 Cash funds last year end	-	-	-	-	-
Cash funds this year end	- 4,355	-	-	- 4,355	-

Section B Statement of assets and liabilities at the end of the period

Categories	Details	Unrestricted funds to nearest £	Restricted funds to nearest £	Endowment funds to nearest £
B1 Cash funds	BALANCE IN THE BANK	5,697	-	-
	BALANCE IN TOP UP BANK	284	-	-
		-	-	-
	Total cash funds	5,981	-	-
	(agree balances with receipts and payments account (s))	Agreement Error	OK	OK

	Unrestricted funds	Restricted funds	Endowment funds
Details	to nearest £	to nearest £	to nearest £
B2 Other monetary assets	-	-	-
	-	-	-
	-	-	-
	-	-	-
	-	-	-
	-	-	-

	Fund to which asset belongs	Cost (optional)	Current value (optional)
B3 Investment assets		-	-
		-	-
		-	-
		-	-
		-	-

	Fund to which asset belongs	Cost (optional)	Current value (optional)
B4 Assets retained for the charity's own use		-	-
		-	-
		-	-
		-	-
		-	-
		-	-
		-	-

		-	-
--	--	---	---

B5 Liabilities

Details	Fund to which liability relates	Amount due (optional)	When due (optional)
		-	
		-	
		-	
		-	
		-	

Signed by one or two trustees on behalf of all the trustees

Signature	Print Name	Date of approval

SPIRITUAL CARE FOUNDATION APOSTOLIC MINISTRIES READING BERKSHIRE UK

England & Wales - Charity number 1180369

Accounts

A
P
O
S
T
O
L
I
C



M
I
N
I
S
T
R
I
E
S

SPIRITUAL CARE

The Spiritual Care Foundation

Annual Report

2020-21 *“replacing ignorance with enlightenment”*

Working together with:



BETHEL UNITED
The Spiritual Care Foundation

The Spiritual Care Foundation Apostolic Ministries

Charity Registration No. 1180369

Tel: 01189 453 622
Mob: 07785 303 788

Bethel Lodge,
28 Spey Road,
Reading, Berkshire,
RG30 4DG

www.spiritualcare.uk
info@spiritualcare.uk

Table of Contents

Contents

The Vision _____	1
The Vision Continued _____	2
Financial Summary _____	3
Financial Statement _____	4
Regular & One-off Support _____	5
Bethel United Football Club _____	6

Statement of belief

We believe in the divine inspiration and sufficiency of the Holy Scriptures as originally given. They are regarded as authoritative and should be taken into consideration in all things that we believe, say and do; both as individuals and as a local church.

We believe in the oneness of GOD.

We understand the 'Holy Trinity', as referred to by some, to be 3 manifestations of the same GOD; namely Father, Son and Holy Spirit. We believe in the deity of aforementioned and are not ashamed to say 'Jesus is God'.

We believe that the Son of God became fully man, being conceived by the Holy Spirit, and born of the Virgin Mary in Bethlehem of Judea.

We believe that the earthly life of Jesus was unique and sinless, and his death was a sacrifice to God, a propitiation for the remission of sins.

We believe that Jesus was raised from the dead, and was seen alive in his resurrection body by many witnesses.



*“Now unto him
that is able to do
exceedingly
abundantly
above all that we
ask or think...”
Ephesians 3:20*



The Vision

Overview

To create and maintain a sustainable church; a body of believers reflective of and effective in the community within which it serves. Using universal languages, being actively dedicated to the positive promotion of the teachings of Jesus Christ; replacing ignorance with enlightenment – spirited and Holy Spirit led. Recognising we all need spiritual care.

Financial Highlights

This church and charity is totally funded by free will offerings and volunteers' time. Our operation is constantly in need of additional funding and if you or yours would like to make a donation or leave something in your will towards the cause, we would be extremely grateful. Pastor Joshua Wilson receives a £450.00 per month stipend, which helps with petrol and day to day expenses. The church does not currently own a building or its own grounds. Building related costs will come under the regular contribution given to Norcot Mission and other similar venues that support Spiritual Care events and its congregation(s). COVID 19 and its accompanying lockdowns has not made the survival of the charity any easier. Like all charities, in times like this – we must cut our cloth accordingly and do the best we can with very limited budgets.

Operating Highlights

After 8 years under present leadership, we have been able to obtain and maintain charity status – registration number: 1180369. Links have been formed with the Atrium Health Club which enable us to cater for the footballers and their families with a great range of facilities. The Christian ethos and management of this large site will provide future opportunities for growth and development. Watch this space. We are in very exciting times.

Looking Ahead

It would be a great help to strengthen the Board of Trustees with more people and a wider range of skill sets. We would like to take this opportunity to publicly thank all those who have previously stepped up and helped to shoulder some of the responsibility to further progress the church and its charitable purposes. Last year Stuart Newton, Kimberly Chapman, Emma Walsh, Diane Wilson, Gregory Lyford and Sandra Wilson along with Pastor Joshua Wilson have been working being the scenes to safeguard the future of Spiritual Care and the football team.

Mother Hyacinth Wilson continues to promote and drum up support for Spiritual Care as patron of this charity. Thank you for your continued unwavering support.

Charitable status now allows us to fund raise with and for other recognized charities. It also means we are now able to set ourselves up to claim gift aid. I think we need to strengthen the administrative arm of our organisation first and if you could help in this area – we would love to hear from you.



SPIRITUAL CARE

28 And we know that all things work together for good to them that love God, to them who are the called according to his purpose.

**Romans 8:28
King James
Version (KJV)**

Ageing congregations and diminishing numbers of young people, present some logistical concerns that might better be addressed by a full-time pastor. Something we will seriously have to look at in the coming months. Making the most of technological advancements – Zoom / WhatsApp and MS Teams to mention but a few programs – we have concluded that services and meetings on digital platforms are here to stay. We look forward to moving ahead, embracing all the potential good that is now available to us with a little bit of experimentation and creativity.

Our young men who represent the church in Thames Valley Churches Football League – under banner of brotherly love in the name of Bethel United, continue to afford us greater opportunities for community engagement. We will be promoting Prostate Cancer awareness and Mental Illness awareness this season. Please get involved with activities and help us maximize our efforts.

Working with the Bethel United group of churches, identified as Bethel Nation at the July 2020 Holy Convocation, we are pleased to acknowledge another year's journey in association with the International Bethesda Luton District of Churches – Bishop Designate, Overseer Dr. D. W. Lewin at the helm. Support has also been given other like-minded charities and we are grateful to Norcot Mission Church, Reading Churches Together, Reading Street Pastors and the Methodist Church – Thames Valley Circuit for various elements of support which include preaching engagements, encouragement and inspiration.

Moving forward we wish to have a greater local impact. Areas for greater development include:

- Junior Church
- Messy Church
- Street Pastor Ministry
- Local Preachers' Course
- Family Fitness Fun – the Wholesome Approach
- Chaplaincy
- Offender Rehabilitation Program
- Social Injustice – Advocacy
- Trustees - Training, retention & recruitment

On behalf of all who have benefited from the work of Spiritual Care, Pastor Joshua Wilson would like to thank the Trustees and Patron for all their hard work and support: A very big heartfelt 'Thank You' from all of us.

Existing Trustees are:

- Diane Wilson – Assistant Pastor
- Stuart Newton – BUFC Captain
- Emma Walsh – Member
- Gregory Lyford – Member
- Kimberly Chapman – Member
- Sandra Wilson – Member

The above Trustees are supported by:

- Pastor Joshua Wilson – Senior Pastor
- Patron Hyacinth Wilson – Patron / Assistant Pastor

Financial Summary

Balance held in Bank 01.04.2020 £ 11,152.34

Monthly outgoings remain relatively consistent – the major overheads are:

- Pastor's Stipend £400.00 / month.
- Norcot Mission Building contribution £125.00 / month.
- Public Liability Insurance £27.41 / month

The general trend is that income is down and tithes offering giving is down. We do not have the administration support and structure yet to claim gift-aid yet, but we are hoping to make great strides in that direction. The saving from no longer having to pay for YMCA café will help moving forward.



	Opening Balance:		11,152.34
Balance	Month	Income	Expenses
£11,281.81	Apr-20	602.54	473.07
£11,056.43	May-20	450.69	676.07
£11,361.05	Jun-20	730.69	426.07
£10,448.87	Jul-20	633.89	1,546.07
£11,104.01	Aug-20	681.21	26.07
£11,636.78	Sep-20	955.27	422.5
£11,957.59	Oct-20	720.81	400
£11,815.03	Nov-20	720.81	863.37
£12,077.51	Dec-20	750.77	488.29
£10,983.77	Jan-21	605.81	1,699.55
£11,356.11	Feb-21	660.63	288.29
£9,979.71	Mar-21	500.59	1,876.99
		£8,013.71	£9,186.34
			-£1,172.63

SPIRITUAL CARE

28 And we know that all things work together for good to them that love God, to them who are the called according to his purpose.

Romans 8:28
King James Version (KJV)

Financial Statement

Statement of Financial Position

- Liabilities:
Pastor Stipend, hall hire & building contributions, admin, website maintenance and sundry expenses
- Statement of Financial Position: - **£1,172.63 for the year**

Statement from Assistant Pastors.

"Now therefore, our God, we thank thee, and praise thy glorious name." 1 Chronicles 29:13

Last year has been a difficult year for all of us, nevertheless we have continued to give our support to community projects. As Patron, I am a dedicated volunteer. I help in the service of Care Hospitality for our Community in Reading. Communicating and interacting with the people as is necessary. Meals are prepared and served to senior citizens I Serve one day a week at the Globe Lunch Club for senior citizens.



Hyacinth Wilson.

It has been a tough year and growth has been up and down. Some changes have been made and some changes have been forced upon us. We are grateful for divine providence and trust we shall continue to make a positive impact locally. **Prayer meetings** and **bible studies** are in need of wider support – this is perhaps a general overall comment. Thank you to all who have successfully transitioned to online giving and worship. We would like to take this opportunity to thank one and all for your continued support and good wishes. It is not easy to operate a full-time ministry with only volunteers – we really wouldn't be a viable organisation without you and your help, support and prayers. Once again, thank you all.

Diane Wilson.

SPIRITUAL CARE

²⁸ And we know that all things work together for good to them that love God, to them who are the called according to his purpose.

Romans 8:28
King James Version

The Spiritual Care Foundation Apostolic Ministries

Bethel Lodge, 28 Spey Road, Reading, Berkshire, RG30 4DG

Tel: 01189 453 622

Mobile: 07785 303 788

Website: www.spiritualcare.uk

Gifts in wills

Gifts in wills are an amazing way of continuing your support long into the future.

These come in all shapes and sizes, big and small - with gifts ranging from £200 to £200,000, from 1% of an estate to 100% or anything left over after other gifts have been made.

Being positioned to bless others who are not as fortunate as ourselves is a great blessing. Whilst it's perfectly understandable if you do not want to dwell on the thought of 'what happens after I am gone' - we encourage you from a scriptural and temporal point of view to think generationally. Moses divided land Israel didn't yet own for a generation born in the Wilderness – King David left substance for Solomon's Temple – which is in fact less about Solomon or David and all about God and his people.

By putting a gift in your will to Spiritual Care, you can make sure that we will be there for the people you love as and when they ever need us. The vision that takes us to uncharted waters requires finance and we humbly ask you to commit this request to prayer and let the Lord have his way.

Thank you to those of you who have already moved to online and electronic bank transfers for your donations / tithes and offerings. God bless you.

Regular contributions of any amount welcomed.

Did you know you can restrict the use of the funds you donate? For example if you would like to support our sensational football team, but not the religious activities of the church. Just specify on your donation – Restricted Funds – Football team only / Church ministry only.



SPIRITUAL CARE

³⁸ Give, and it shall be given unto you; good measure, and shaken together, and running over...

Luke 6:38
King James Version



The Spiritual Care Foundation

Help us grow and keep up the good work
Thank you for your regular donation of any amount to:
The Spiritual Care Foundation Apostolic Ministries

Sort Code: 23-05-80

Account Number: 19821803

Metro Bank

For further information please contact Pastor@SpiritualCare.uk





BETHEL UNITED FC

THE SPIRITUAL CARE FOUNDATION

Bethel United FC is a Christian led community club based in Reading in the royal county of Berkshire. Spiritual leadership is given by Minister Joshua Wilson and the Spiritual Care Church. You can find them at Norcot Mission, Brockley Close, Tilehurst, Reading, Berkshire, RG30 4YP most Sunday evenings and I am confident a warm welcome awaits you.

Since 2002 this team has competed in the **Thames Valley Churches League** winning some silverware along the way and the odd cup. They have competed on the international stage – travelling to Poland and now have their sights set for Jamaica.

At Bethel United FC both players and supporters alike stand on a foundation which is the Word of God and football is just one of the things they are good at. The prevailing spirit of this club is one of excellence and strength – 'Where there is unity – you will find strength'. Bethel United in name – Bethel United in deed – win, lose or draw this team does it together.

Over the years the players of Bethel have demonstrated how Christians, Muslims, other faiths and none believers can come together under a banner of brotherly love for a common goal. With total commitment and uncompromising passion – There's a reason why you need a referee and the Bethel Boyz are not always saint! Pastor Josh has gone on record with this quote, "No apologies for being spirited – our set-up is Holy Spirit led!". They pray before they play and over the years competitive ventures on and off the pitch has galvanised many life-changing relationships.

The name 'Bethel' comes from Hebrew and is literally translated as 'House of God'; contextually it speaks of a place where the LORD will put his name. Committed to the vision and the realisation of a **sustainable church, effective in and reflective of the community in which it is based, dedicated to the positive promotion of the teachings of the LORD Jesus Christ**, Pastor Josh and his team actively use the universal language of sport to communicate Kingdom Principles and the Truth of God's word wherever and whenever they can. Their mission is to replace ignorance with enlightenment and win some football games along the way.

SUPPORT THE CAUSE, BUY A CAP

This time of year will always have a commemorative ambiance for Bethel United FC.

THEY FORMED THE GUARD OF HONOUR FOR THE LATE SENIOR PASTOR – ELDER WILSON

He will not be forgotten. As we celebrate convocation – we remember all those who have gone on before us. The final analysis will state that we all need Spiritual Care.

For further information please contact
Pastor@SpiritualCare.uk

Thank you for your regular donation of any amount to:

The Spiritual Care Foundation
 Apostolic Ministries

Metro Bank
 Sort Code: 23-05-80
 Account Number: 19821803

Annual Report 2020 – 2021

Receipts and payments accounts

CC16a

For the period from	Apr-20	To	Mar-21
---------------------	--------	----	--------

Section A Receipts and payments

	Unrestricted funds to the nearest £	Restricted funds to the nearest £	Endowment funds to the nearest £	Total funds to the nearest £	Last year to the nearest £
A1 Receipts					
	8,014	-	-	8,014	-
	-	-	-	-	-
	-	-	-	-	-
	-	-	-	-	-
	-	-	-	-	-
	-	-	-	-	-
	-	-	-	-	-
Sub total (Gross income for AR)	8,014	-	-	8,014	-
A2 Asset and investment sales, (see table).					
	-	-	-	-	-
	-	-	-	-	-
Sub total	-	-	-	-	-
Total receipts	8,014	-	-	8,014	-
A3 Payments					
INSURANCE	262	-	-	262	-
WEBSITE FEES	60	-	-	60	-
RENT	1,295	-	-	1,295	-
WEBSITE EXPENSES	761	-	-	761	-
CHARITY GIFT	250	-	-	250	-
GENERAL EXPENSES	70	-	-	70	-
DEFIBRILATION MACHINE	939	-	-	939	-
PASTOR STIPEND	5,550	-	-	5,550	-
	-	-	-	-	-
Sub total	9,186	-	-	9,186	-
A4 Asset and investment purchases, (see table)					
	-	-	-	-	-
	-	-	-	-	-
Sub total	-	-	-	-	-
Total payments	9,186	-	-	9,186	-
Net of receipts/(payments)	- 1,173	-	-	- 1,173	-
A5 Transfers between funds	-	-	-	-	-
A6 Cash funds last year end	-	-	-	-	-
Cash funds this year end	- 1,173	-	-	- 1,173	-

Section B Statement of assets and liabilities at the end of the period

Categories	Details	Unrestricted funds to nearest £	Restricted funds to nearest £	Endowment funds to nearest £
B1 Cash funds	BALANCE IN THE BANK	9,929	-	-
		-	-	-
		-	-	-
	Total cash funds	9,929	-	-
	(agree balances with receipts and payments account(s))	Agreement Error	OK	OK

Categories	Details	Unrestricted funds to nearest £	Restricted funds to nearest £	Endowment funds to nearest £
B2 Other monetary assets		-	-	-
		-	-	-
		-	-	-
		-	-	-
		-	-	-
		-	-	-

Categories	Details	Fund to which asset belongs	Cost (optional)	Current value (optional)
B3 Investment assets			-	-
			-	-
			-	-
			-	-
			-	-

Categories	Details	Fund to which asset belongs	Cost (optional)	Current value (optional)
B4 Assets retained for the charity's own use			-	-
			-	-
			-	-
			-	-
			-	-
			-	-
			-	-
			-	-

Categories	Details	Fund to which liability relates	Amount due (optional)	When due (optional)
B5 Liabilities			-	
			-	
			-	
			-	
			-	

Signed by one or two trustees on behalf of all the trustees

Signature	Print Name	Date of approval