

**CANDY'S HOUND RESCUE INTERNATIONAL
(Formerly known as Candy Cane Rescue)
Charitable Incorporated Organisation**

UNAUDITED

TRUSTEES' REPORT AND FINANCIAL STATEMENTS

FOR THE YEAR ENDED 31 DECEMBER 2024

CANDY'S HOUND RESCUE INTERNATIONAL

CONTENTS

	Page
Reference and administrative details of the Charity, its Trustees and advisers	1
Trustees' report	2 - 15
Independent examiner's report	16 - 17
Statement of financial activities	18
Balance sheet	19
Notes to the financial statements	20 - 29

CANDY'S HOUND RESCUE INTERNATIONAL

REFERENCE AND ADMINISTRATIVE DETAILS OF THE CHARITY, ITS TRUSTEES AND ADVISERS
FOR THE YEAR ENDED 31 DECEMBER 2024

Trustees	David Gibson Maura Berrini, Chair Benjamin Gothard Georgina Keenan
Charity registered number	1179928
Registered office	910 The Crescent Colchester Business Park Colchester Essex CO4 9YQ
Independent examiner	MHA Chartered Accountants 910 The Crescent Colchester Business Park Colchester Essex CO4 9YQ
Bankers	Lloyds Bank plc. 25 Gresham Street London EC2V 7HN



Contents

1. Structure, Governance and Management
 - a. Charity Constitution
 - b. Organisational Structure
 - c. Charity Advisors
 - d. Trustees
2. Objectives and Activities
 - a. The Aims of Candy Cane
 - b. The Process – Journey From Rescue to Forever Home
 - c. Strategies to Achieve Aims of Charity
 - d. Benchmark Criteria to Measure Success
 - e. Volunteers
 - f. Grant Funding
3. Achievements, Performance, Risks
 - a. Achievements
 - b. Principal Risks
4. Financial Review
5. Fundraising
6. Plans for Future Periods
7. Public Benefit

Financial Statements for Year Ended 31 December 2024



1. Structure, Governance and Management

a) Charity Constitution

Candy’s Hound Rescue International (CHRI), formerly Candy Cane Rescue, was founded in 2017 by Kerry Lawrence and registered as a Charitable Incorporated Organisation (CIO) on 14 September 2018, registration number 1179928, with a registered address of 910 The Crescent, Colchester Business Park, Colchester, Essex, CO4 9YQ.

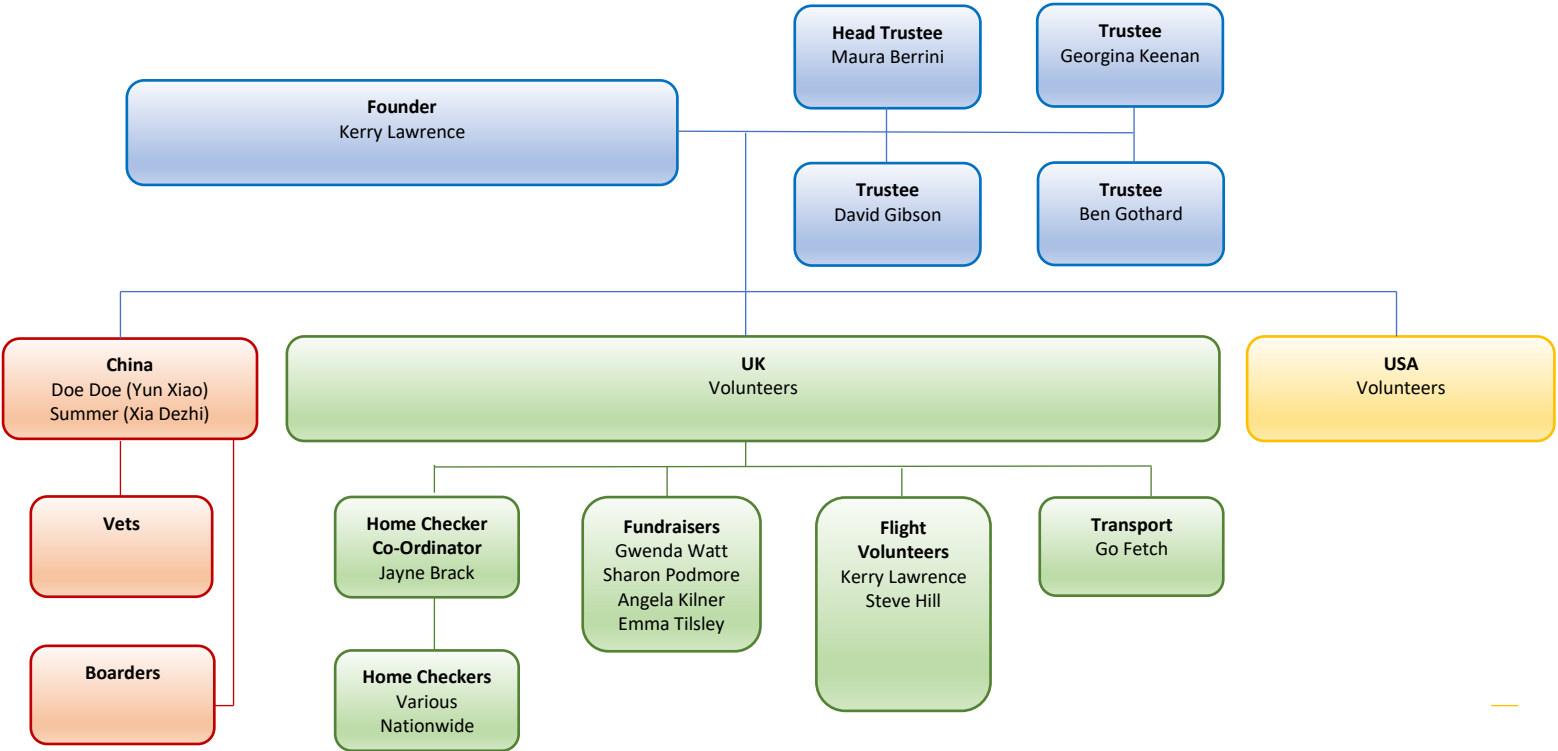
The objectives of the CIO, as per it’s constitution, are to promote humane behaviour towards and rescue dogs (primarily Greyhounds) from the meat trade in China by providing appropriate care, protection, treatment and security for dogs which are in need of care and attention by reason of sickness, maltreatment, poor circumstances or ill usage, in particular, by providing rescue homes or other facilities for the reception, care and treatment of such dogs.

Expansion of the charity has demanded a few rescues (less than 5% of total) from other regions including the Vietnamese and South Korean meat markets, galgos from Spain and some hounds from Cyprus, Romania and Russia.

Once Candy’s Hound Rescue have committed to rescuing a dog they travel to the nearest vet for treatment, health checks and vaccinations. Once healthy enough they then go into boarding with one of our boarding partners in China with the aim of getting them to Beijing as soon as possible. Once vaccinated the quarantine starts which is 3 months for the UK and 30 days for the US.

We work with rescue partners in the US and the UK which take the dogs on arrival and rehome them once assessed and ready.

b) Organisational Structure





1. Structure, Governance and Management (continued)

b) Organisational Structure (continued)

To help deliver the objectives of the charity we work with the following rescue partner organisations:

United Kingdom

East Midlands Dog Rescue

Pingle Farm
Seine Lane
Enderby
Leicestershire, LE19 4PD

Contact: Sandy McClusky & Lynne Simpson

Ravens Rescue

47 Birds Meadow
Pensnett
Brierley Hill, DY5 4TD

Contact: Sarah Price

Homes for Hounds

24 Butts Hill Crescent
Bugbrooke
Northants, NN7 3QP

Green Acres Animal Rescue

Ebbs Acres Farm
Talbenny
Haverfordwest
SA62 3XA

Contact: Mikey Lawlor

All Animal and Rehome

59 Grovelands Way
Grays
Essex
RM17 5YQ

Contact: Sarah Collins

United States of America

Motor City Greyhound Rescue

PO Box 14721
Detroit
Michigan, 48214

Contact: Jennifer Valdez & Amy Klettner
Covers Canada

Greyhound Friends of New Jersey

PO Box 4416
Cherry Hill
New Jersey, 08034-0669

Contact: Maria Lutz & Linda Lyman

National Borzoi Rescue Foundation

PO Box 231
Dix
Illinois, 62830

Contact: Ann Marie Wiseman & Barbara Lord



1. Structure, Governance and Management (continued)

b) Organisational Structure (continued)

United States of America (Continued)

Michigan Greyhound Connection
PO Box 725384
Berkley
Michigan, 48072-5384

Contact: Susan Bilsky & Ken Mitchell

Texas Italian Greyhound Rescue
Hollywood Feed
1415 E. Renner Road
Richardson
Texas, 75082

Contact: Robin Toula

Minnesota Greyhound Rescue
9159 Dalton Court
Inver Grove Heights
Minnesota, 55076

Contact: Jen Komatsu & Lloyd Komatsu

Fast Friends Greyhound Adoption
14 West Swanzey Road
Swanzey
New Hampshire, 03446

Contact: Sharron Thomas & Amy Roy

Harbin SHS Animal Rescue
4231 Balboa Avenue
1462
San Diego
California, 92117

Spain

Galgos Del Sol
Sierra Del Molar, No 2
San Javier
Murcia, 30730

Contact: Tina Solera

China

Plush Bears Shelter
Miaoyin Miaoshan Nursing Garden
Golden Tiger Village
Erlong Township
Taonan City
Baicheng City
Jilin Province

Contact: Lian Xiaodan



1. Structure, Governance and Management (continued)

c) Charity Advisors

Candy's Hound Rescue advisors are as follows:

Accountant	MHA 910 The Crescent Colchester Business Park Colchester Essex CO4 9YQ
-------------------	---

d) Trustees

Appointment of Trustees

The procedure to appoint Trustees is as follows:

- Identify skills, knowledge and skillsets required and agree number of trustees required
- Create shortlist of proposed trustees (no minimum or maximum number)
- Candidate to discuss the role with the trustees
- Carry out background checks on potential trustee to ensure meets guidelines set out in the Constitution
- Introduce new trustee to Chair, Treasurer and volunteers and provide a copy of the Constitution and the latest Trustee Annual Report and statement of accounts.

Decision Making

All decisions made by the trustees must be made either in person or electronically by email; the trustees are responsible for all decisions within the charity although have delegated the following roles to volunteers:

- Drafting of policies for operational matters such as dog walking and home checking.
- Administrative matters and social media posts
- Fundraising activities and strategy

All trustees decisions are undertaken on a majority vote basis; if there are an even number of trustees the Chair Trustee will have the deciding vote. All decision making is to be documented in writing.

Where a trustee is unable to fulfil their tasks, refuses to or repeatedly does not respond to the other trustees in a timely manner within a period of three months, without reasonable excuse, then the other trustees may raise the matter with the trustee in question and seek a resolution which may require that his or her office be vacated.

Arrangements for Setting Pay and Remuneration of Key Management

When setting the remuneration of the key staff the trustees benchmark against data provided in the Harris Hill Annual Salary Report. An annual review of all salaries is undertaken to ensure that the remuneration provided is fair and reflects the responsibility and role involved.



2. Objectives and Activities

a) The Aims of Candy's Hound Rescue International (CHRI)

The aim of the charity was originally to rescue as many dogs as possible from the Chinese meat market, initially in batches of 10, and being the only greyhound rescue in China there is significant supply. The charity, and its network of Partners, has grown exponentially, at a rate faster than anticipated, with rescues expanding beyond China to other Asian countries plus some European countries, although the Chinese operations continue to account for 95% of its operations.

Greyhounds are exported from Britain, Ireland and Australia by breeders and owners to race in China and are kept in the most awful conditions with no animal welfare laws. When they have outlived their usefulness many end up in the meat trade to be beaten, hung, boiled or skinned alive.

When the charity's namesake 'Candy' was killed by another dog in a rescue centre, just the day before she was due to fly to the UK to be rehomed, founder Kerry Lawrence decided she needed to have more control over their recovery and care and established Candy Cane Rescue, now called Candy's Hound Rescue International (CHRI).

In addition to the rescue, the charity is committed to providing the best veterinary care to help improve survival rates and also provide a support network for the dogs both whilst in the charity's care and also once they have been rehomed in places which can provide commitment and nurturing as required. The charity takes pride in ensuring that all dogs will realise a life that they had only been able to dream of before and educating fosters, adopters and the wider public on how to understand and care for the hounds.

These dogs are often traumatised and have suffered unimaginable abuse. They have never been shown love, are not toilet trained, have never walked on a lead, have never gone up stairs and do not understand day to day noises such as televisions and hoovers.

Hounds are also unique from other dogs; they have very little body fat, just one layer, and this makes it difficult for them to regulate their body temperatures. They feel the cold and also overheat when the weather gets warmer. Coats need to be worn when it is cold or wet cooling coats in the summer.

Hounds love their comfort; sadly the rescue hounds have come from situations where they have never had a bed and will quite often have poor coats due to how they have been living.

To mitigate stress for the dogs as much as possible Candy's Hound Rescue aim to improve the speed of re-homing, subject to quarantine rule restrictions; due to the reduced time to quarantine dogs for transfer to the US where possible most dogs will be rehomed in the US rather than the UK.



2. Objectives and Activities (continued)

a) The Process - Journey From Rescue to Forever Home

Rescue

The charity rescues dogs from meat markets, breeders, trucks, shelters, underground racetracks, ex police working dogs, strays or any other situations that a dog needs help from and although CHRI accommodates all dog breeds sighthounds are always rescued first.

Many of the dogs are sourced through local activists in China that request for help rescuing the dogs and are purchased at the slaughter houses and meat markets, with the price set according to weight; for smaller dogs (eg whippets) it's around £50 and a full size greyhound is £100.

Transfer to Safe Holding Shelter / Vets

As soon as dogs are put under CHRI they are sent to a safe holding shelter or to vets for care, depending where the dog is, and bloods are taken.

Health Check Ups

The dog travels to a vet as soon as possible where they will undergo a routine health check-up, vaccinations, spay/neuter, dental and any other treatment they need. Some of the hounds have injuries, skin problems, broken bones. Whatever their health problems CHRI will ensure that they are treated for their needs.

Routine health check-up includes

- Blood test
- Canine parvovirus Ag test
- Canine distemper Ag test
- Canine coronavirus Ag test
- Stool test (check for internal parasites)
- CDV/CPV/CCV antibodies test
- Physical examination

Vaccinations include

- Nobiva kennel cough vaccine x 1
- Vanguard plus 5/CV-L x 2
- Rabies vaccine
- Deworming

Spay/castration and dental care includes

- Pre operation examination
- Spay surgery for females
- Castration surgery for males
- Dental prophylaxis

All of this takes a minimum of 21 days boarding at the vets, sometimes longer if they have more serious health problems or injuries.



2. Objectives and Activities

b) The Process - Journey From Rescue to Forever Home (continued)

Transfer to Boarding in China

Once dogs have completed treatment and been given a clean bill of health, they then go into boarding and continue their quarantine:

Dogs travelling to UK	3 months quarantine
Dogs travelling to US	30 days quarantine

Once discharged from the vets care the dogs are matched with rescues that are best placed to continue their care and where to be repatriated, either UK, Europe or US. Whilst in China the dogs are trained to walk on a lead and are assessed as much as possible with people, children, other animals (such as cats), and around food and toys.

Transfer Abroad

- Flights booked for dogs ready to travel and also flight volunteers.
- Paperwork completed for dogs travelling.
- Day before travel dogs have vet check up to ensure they are fit and healthy to travel
- Dogs travel to Beijing airport where they meet flight volunteers who have travelled from the UK / US to China to escort the dogs back.
- Dogs being transferred to the UK via France or Spain where met by transport who will continue journey to UK.
- Travel through Eurotunnel to Folkestone where they make their way to Kerry Lawrence, then to their foster homes, to be vet checked and assessed until ready to be rehomed in the UK. For the dogs that go from China to the US the US rescues will arrange flight volunteers
- The dogs are assessed for behavioural characteristics and suitability for different families and environments before full adoption.

Sadly, not all the dogs that are rescued make it to their forever homes due to illness or injuries that cannot be treated. This is one of the hardest parts of our rescue. However, we take comfort from knowing they have passed away finally experiencing love and kindness, something most of them have never experienced in their lifetime.

c) Strategies to Achieve Aims of Charity

At the start of 2024 we had identified a significant number of points to address to improve both the operational efficiency and income generation of the charity:

- Continued data input for CRM system and links to Gift Aid reclaim
- Use and improve new kennel facilities
- Save more dogs locally in China
- Find new charity volunteers
- Source cheaper travel agent within China to move the dogs and arrange all paperwork
- Employ additional staff in China
- Further improve charity compliance and procedures
- Develop further database of all dogs in Candy's Hound Rescue and analyse further 'costs per dogs'
- Source new vets in China to work with the new kennel facility



2. Objectives and Activities (continued)

d) Benchmark Criteria to Measure Success

The main criteria to assess the success of the charity's activities is the number of dogs rescued, brought back to full health and rehomed. Throughout 2024 however the focus was solely on rehoming all 310 dogs under the charity's long term care.

e) Volunteers

CHRI, like any charity, prospers from its network of volunteers, both in the UK, China and through its partner rescues in the US and Europe.

Roles of volunteers in CHRI can vary from walking the dogs, carrying out fundraising activities, administration roles, updating social media, fostering, doing homechecks to verify suitability of a potential home for a dog and helping set out policies and guidelines. The time involved for each individual volunteer can differ depending on their role and location.

Flight Volunteer

The role of the flight volunteer is to escort the rescue dogs safely from the location they are in, to new destination. i.e. Beijing to UK and responsibilities and duties include the following:

- Ensure visa and passport are valid and in date to travel
- Arrange bookings for outward, return flights and accommodation, liaising with UK and Chinese volunteers to ensure dogs are ready to travel and can get on the flight
- Fly out to destination
- Liaise with Chinese volunteers
- Meet dogs and volunteers at airport where travelling from
- Check microchips match passports
- For dogs travelling in hold - Ensure crates are clean and comfortable for travel, water bottles are filled and secure and dogs are not wearing collars.
- For dogs travelling in cabin – ensure dogs are comfortable and secure in carry bags
- On arriving at destination, collect dogs travelling in hold and crates at oversized baggage
- Meet onwards transportation team and get dogs out of airport.
- Ensure all dogs have water available and taken to toilet and allow to stretch legs
- Ensure comfortable and safe for onward travel in van
- Exercise, feed, and water



2. Objectives and Activities (continued)

e) Volunteers (continued)

Dog Walking

In addition to providing exercise the role of the dog walker is to provide the dogs with an opportunity to socialise safely in an environment that is strange to them (new Country, house) and to allow the volunteers to assess the behaviour of the dogs, both when on their own and with other dogs, with the aim to assess their needs and ensure that their adoption profiles are accurate to enable them to be matched with the right family.

In agreeing to help walk Candy's Hound Rescue dogs whether as a volunteer dog walker or a foster family the following points are essential:

- Dog walkers must listen to the advice of the rescue and how a specific dog must be walked and must adhere to that advice
- Volunteers to be aware that when walking a rescue dog that they are also representing the rescue and must walk the dog in an appropriate manner so as not to bring concern or disrepute to the rescue
- Should there be any incidents where another dog attacks a rescue dog on a walk that the dog is taken straight to a vets and that the rescue is informed immediately.

Home Checker Co-Ordinator

The home checker co-ordinator must liaise with all home checkers nationwide and ensure a prompt and effective service and thereby reduce the time the dogs are waiting for their forever homes. The role of the home checker co-ordinator includes the following:

To carry out the home check role the following needs to take place:

- Contact potential adopters/ foster families
- Explain the process of a home check, what is required, and explain guidelines that must be adhered to
- Source a home checker to visit a potential foster and adopter home
- Review completed home checker reports and make recommendation including any changes, improvements

Once a home check appointment has been made the home checker is to visit the property, check for any potential concerns, complete the home checker questionnaire and return the completed document to the home checker co-ordinator. No recommendations to the potential adopting or foster family should be made during the property visit.

Subject to a successful home check the home checker will arrange a follow up visit 6-8 weeks after homing to check on the welfare of the dog and report back to the rescue on the findings including any concerns, if any.

This voluntary role is vital to ensure that we give our dogs and their new owners the best chance of success.

f) Grant Funding

No grant applications were made in 2024 but we will keep abreast of grant opportunities that may arise in the future.



3. Achievements, Performance, Risks

a) Achievements

A significant number of achievements and developments were made during the 12 months to 31 December 2024, summarised as follows:

- Developed and formalised improved administration procedures within the UK
- Rehomed 310 dogs to US & UK
- Changed strategy of moving dogs to further enhance their welfare during travel
- Identified new legacy donors
- Created linkedin account to raise awareness of charity to businesses
- Removed all legacy vet bills in China
- Increased salary of Chinese kennel worker to reflect dedication and service to charity
- Increased and improved social media platforms, focussing on flights of dogs
- Call for action added to all social media posts to enable donations to be made
- Created Instagram business account and link to FB
- Created Tik tok page
- Improved visibility of legacy button on website
- Updated GDPR processes
- Gift Aid now automated
- Casual worker employed to assist Kerry Lawrence
- Sourced new improved, leased kennels in China and moved all dogs, benefitting from particularly from larger outdoor running spaces, overnight accommodation for volunteers, improved security and a new grooming room
- Reallocated responsibilities for social media posts to improve content and regularity
- Sourced 2 new additional staff in China
- Reallocated finance and accounting roles within charity to assist with regulatory compliance
- Increased control on costs in China with direct invoicing to UK from China vets
- Funding raised for the new kennel premises through Go Funding and private donors

Number of Dogs Cared For

310 dogs were under of the care of the charity in China in January 2024 and all of them were successfully repatriated to new homes in the UK and US during the year.

b) Principal Risks

During the accounting period we have identified a number of risks to CHRI which need to be addressed in the next period. The risks identified are as follows:

Operational Costs in China

The need to both reduce the costs to the charity of caring for the dogs and repatriating them was prioritized through sourcing new premises, new contacts, new travel agents, improved procedures and new volunteers.



3. Achievements, Performance, Risks (continued)

b) Principal Risks (continued)

Succession Planning

Succession planning is a risk to the charity, notably the reliance on a small number of individuals within China. Direct links needed to be created between the UK operation and the veterinary practices in China to improve auditable channels for all correspondence such as invoicing.

In addition it was identified increased presence in China was required by Kerry Lawrence to ensure the activities of the charity were being successfully implemented as planned.

Discrediting by Pro-Racing Communities

Over the years Kerry Lawrence has been discredited for her tireless work in raising awareness of the plight of ex-racing dogs being sent to China from the UK. This campaigning, which is not carried out through CHRI, has led to false accusations of theft and being a liar, and although all incidents are reported to the police, continued social media posts spreading false information could be harmful to the charity and influence decisions of donors and adoptors, by association.



4. Financial Review & Reserves Policy

The total income generated during 2024 was as follows:

Unrestricted Funds	£693,141
Restricted Funds	£0
Total Funds	£693,141

Total expenditure for the year was £666,456 creating an operational profit of £26,685 for the year.

CHRI does not hold any investments or real estate assets. There are currently no reserves in place but as a charity our policy for reserves going forward is to ensure that we have two month’s worth of cash in the bank to cover immediate operational costs such as salaries, tax liabilities and consultant costs.

The total funds held as at 31 December 2024:

Unrestricted Funds	(£14,109)
Restricted Funds	£0
Total Funds	(£14,109)

Income has increased by over 89% compared to the 12 months to 31 December 2023.

The Financial Statement for period ending 31 December 2024 can be viewed at the end of this report.

5. Fundraising

All fundraising to date has been carried out by volunteers or members of the charity including Go Fund me, birthday fundraisers through Facebook, legacy donations, other Facebook donation posts specific to stories and dog rescues, volunteers carrying out sponsored events and also raising money through raffles, auctions, Greyt Unite events and the sale of CHRI merchandise.



6. Plans for Future Periods

The charity's prime concern in 2024 was the rehoming of all the dogs in the care of the charity which was accomplished. To help achieve continued success in the future we have identified a number of matters to address in 2025:

- Source new travel agent within China and reduce costs of caring for and repatriating dogs
- Create charity reserves
- Source new flight volunteers
- Develop further fundraising campaign and events programme, both in-person and on social media
- Restart rescuing dogs from within China
- Continue to improve the kennel facilities in China
- Continue to reduce risks to the charity such as succession planning and control of costs

7. Public Benefit

The trustees confirm that they have complied with their duty to have due regard to the guidance on public benefit published by the Charity Commission in exercising their powers and duties. The public benefit of the charity's activities are outlined under 'Objectives and Activities' above. All activities have been undertaken to further the charity's purpose as per its Constitution.

Approved by order of the members of the board of Trustees and signed on their behalf by:

Maura Berrini

Maura Berrini

Chair

Date: October 24, 2025

CANDY'S HOUND RESCUE INTERNATIONAL

INDEPENDENT EXAMINER'S REPORT FOR THE YEAR ENDED 31 DECEMBER 2024

Independent examiner's report to the Trustees of Candy's Hound Rescue International ('the Charity')

I report to the charity Trustees on my examination of the accounts of the Charity for the year ended 31 December 2024.

Responsibilities and basis of report

As the Trustees of the Charity you are responsible for the preparation of the accounts in accordance with the requirements of the Charities Act 2011 ('the 2011 Act').

I report in respect of my examination of the Charity's accounts carried out under section 145 of the 2011 Act and in carrying out my examination I have followed the applicable Directions given by the Charity Commission under section 145(5)(b) of the 2011 Act.

Independent examiner's statement

Since the Charity's gross income exceeded £250,000 your examiner must be a member of a body listed in section 145 of the 2011 Act. I confirm that I am qualified to undertake the examination because I am a member of the Association of Chartered Certified Accountants, which is one of the listed bodies.

Your attention is drawn to the fact that the Charity has prepared the accounts in accordance with Accounting and Reporting by Charities: Statement of Recommended Practice applicable to charities preparing their accounts in accordance with the Financial Reporting Standard applicable in the UK and Republic of Ireland (FRS 102) in preference to the Accounting and Reporting by Charities: Statement of Recommended Practice issued on 1 April 2005 which is referred to in the extant regulations but has been withdrawn.

I understand that this has been done in order for the accounts to provide a true and fair view in accordance with the Generally Accepted Accounting Practice effective for reporting periods beginning on or after 1 January 2015.

I have completed my examination. I confirm that no matters have come to my attention in connection with the examination giving me cause to believe that in any material respect:

1. accounting records were not kept in respect of the Charity as required by section 130 of the 2011 Act; or
2. the accounts do not accord with those records; or
3. the accounts do not comply with the applicable requirements concerning the form and content of accounts set out in the Charities (Accounts and Reports) Regulations 2008 other than any requirement that the accounts give a 'true and fair' view which is not a matter considered as part of an independent examination.

I have no concerns and have come across no other matters in connection with the examination to which attention should be drawn in this report in order to enable a proper understanding of the accounts to be reached.

CANDY'S HOUND RESCUE INTERNATIONAL

**INDEPENDENT EXAMINER'S REPORT (CONTINUED)
FOR THE YEAR ENDED 31 DECEMBER 2024**

Signed: *Cara Miller*

Dated: October 24, 2025

Cara Miller ACCA

MHA

Chartered Accountants
910 The Crescent
Colchester Business Park
Colchester
Essex
CO4 9YQ

MHA is the trading name of MHA Audit Services LLP, a limited liability partnership in England and Wales registered number OC455542).

CANDY'S HOUND RESCUE INTERNATIONAL

STATEMENT OF FINANCIAL ACTIVITIES
FOR THE YEAR ENDED 31 DECEMBER 2024

	Note	Unrestricted funds 2024 £	Total funds 2024 £	Total funds 2023 £
Income from:				
Donations	3	693,141	693,141	363,008
Total income		693,141	693,141	363,008
Expenditure on:				
Charitable activities	4	666,456	666,456	347,926
Total expenditure		666,456	666,456	347,926
Net movement in funds		26,685	26,685	15,082
Reconciliation of funds:				
Total funds brought forward	11	(40,794)	(40,794)	(55,876)
Net movement in funds	11	26,685	26,685	15,082
Total funds carried forward		(14,109)	(14,109)	(40,794)

The Statement of financial activities includes all gains and losses recognised in the year.

All income and expenditure derive from continuing activities.

The notes on pages 20 to 29 form part of these financial statements.

CANDY'S HOUND RESCUE INTERNATIONAL

BALANCE SHEET
AS AT 31 DECEMBER 2024

	Note	2024 £	2023 £
Fixed assets			
Tangible assets	8	-	302
		<hr/>	<hr/>
		-	302
Current assets			
Debtors	9	-	2,854
Cash at bank and in hand		6,876	12,387
		<hr/>	<hr/>
		6,876	15,241
Current liabilities			
Creditors: amounts falling due within one year	10	(20,985)	(56,337)
		<hr/>	<hr/>
Net current liabilities		(14,109)	(41,096)
		<hr/>	<hr/>
Total net liabilities		(14,109)	(40,794)
		<hr/> <hr/>	<hr/> <hr/>
Charity funds			
Restricted funds	11	-	-
Unrestricted funds	11	(14,109)	(40,794)
		<hr/>	<hr/>
Total funds		(14,109)	(40,794)
		<hr/> <hr/>	<hr/> <hr/>

The financial statements were approved and authorised for issue by the Trustees and signed on their behalf by:

Maura Berrini
.....
Maura Berrini
Chair

Date: October 24, 2025

The notes on pages 20 to 29 form part of these financial statements.

CANDY'S HOUND RESCUE INTERNATIONAL

NOTES TO THE FINANCIAL STATEMENTS FOR THE YEAR ENDED 31 DECEMBER 2024

1. General information

Candy's Hound Rescue International is a Charitable Incorporated Organisation ("CIO") and is registered with the Charity Commission (Charity Registered Number 1179928) and Registrar of Companies (Company Registered Number CE015123) in England and Wales. The address of the registered office is given in the Charity information on page 1 of these financial statements. The nature of the Charity's operations and principal activities are detailed in the Trustees Report.

2. Accounting policies

2.1 Basis of preparation of financial statements

The financial statements have been prepared in accordance with the Charities SORP (FRS 102) - Accounting and Reporting by Charities: Statement of Recommended Practice applicable to charities preparing their accounts in accordance with the Financial Reporting Standard applicable in the UK and Republic of Ireland (FRS 102) and the Charities Act 2011.

The financial statements have been prepared to give a 'true and fair' view and have departed from the Charities (Accounts and Reports) Regulations 2008 only to the extent required to provide a 'true and fair' view. This departure has involved following the Charities SORP (FRS 102) published in October 2019 rather than the Accounting and Reporting by Charities: Statement of Recommended Practice effective from 1 April 2005 which has since been withdrawn.

Candy's Hound Rescue International meets the definition of a public benefit entity under FRS 102. Assets and liabilities are initially recognised at historical cost or transaction value unless otherwise stated in the relevant accounting policy.

The financial statements are presented in sterling which is the functional currency of the Charity and rounded to the nearest pound.

The significant accounting policies applied in the preparation of these financial statements are set out below. These policies have been consistently applied to all years presented unless otherwise stated.

2.2 Going concern

The Trustees have considered the level of funds held and the expected level of income and expenditure for 12 months from authorising these financial statements. The Trustees acknowledge there is a deficit on general funds and have been working with their creditors to ensure that the Charity is able to continue its activities while meeting its liabilities in an orderly manner. The Trustees are pleased to report a surplus of income over expenditure in the year and forecast a similar surplus for future years which will eliminate this deficit. As a result of these matters, the Trustees consider the financial statements should be prepared on a going concern basis.

2.3 Income

All income is recognised once the Charity has entitlement to the income, it is probable that the income will be received and the amount of income receivable can be measured reliably.

For donations to be recognised the Charity will have been notified of the amounts and the settlement date in writing.

Other income is recognised in the period in which it is receivable and to the extent the goods have been provided or on completion of the service.

CANDY'S HOUND RESCUE INTERNATIONAL

NOTES TO THE FINANCIAL STATEMENTS FOR THE YEAR ENDED 31 DECEMBER 2024

2. Accounting policies (continued)

2.4 Expenditure

Expenditure is recognised once there is a legal or constructive obligation to transfer economic benefit to a third party, it is probable that a transfer of economic benefits will be required in settlement and the amount of the obligation can be measured reliably. Expenditure is classified by activity. The costs of each activity are made up of the total of direct costs and shared costs, including support costs involved in undertaking each activity. Direct costs attributable to a single activity are allocated directly to that activity. Shared costs which contribute to more than one activity and support costs which are not attributable to a single activity are apportioned between those activities on a basis consistent with the use of resources.

Expenditure on charitable activities is incurred on directly undertaking the activities which further the Charity's objectives, as well as any associated support costs.

All expenditure is inclusive of irrecoverable VAT.

2.5 Tangible fixed assets and depreciation

Tangible fixed assets costing £500 or more are capitalised and recognised when future economic benefits are probable and the cost or value of the asset can be measured reliably.

Tangible fixed assets are initially recognised at cost. After recognition, under the cost model, tangible fixed assets are measured at cost less accumulated depreciation and any accumulated impairment losses. All costs incurred to bring a tangible fixed asset into its intended working condition should be included in the measurement of cost.

Depreciation is charged so as to allocate the cost of tangible fixed assets less their residual value over their estimated useful lives, using the straight-line method.

Depreciation is provided on the following basis:

Fixtures and fittings	-	20% Straight-line
-----------------------	---	-------------------

2.6 Debtors

Trade and other debtors are recognised at the settlement amount after any trade discount offered. Prepayments are valued at the amount prepaid net of any trade discounts due.

2.7 Cash at bank and in hand

Cash at bank and in hand includes cash and short-term highly liquid investments with a short maturity of three months or less from the date of acquisition or opening of the deposit or similar account.

2.8 Liabilities and provisions

Liabilities are recognised when there is an obligation at the Balance sheet date as a result of a past event, it is probable that a transfer of economic benefit will be required in settlement, and the amount of the settlement can be estimated reliably.

Liabilities are recognised at the amount that the Charity anticipates it will pay to settle the debt or the amount it has received as advanced payments for the goods or services it must provide.

CANDY'S HOUND RESCUE INTERNATIONAL

**NOTES TO THE FINANCIAL STATEMENTS
FOR THE YEAR ENDED 31 DECEMBER 2024**

2. Accounting policies (continued)**2.9 Financial instruments**

The Charity only holds basic Financial Instruments. The financial assets and financial liabilities of the Charity are as follows:

Debtors - trade and other debtors (including accrued income) are basic financial instruments and are debt instruments measured at amortised cost as detailed in Note 9.

Cash at bank – is classified as a basic financial instrument and is measured at face value.

Liabilities – accruals and other creditors will be classified as financial instruments, and are measured at amortised cost as detailed in Note 10.

2.10 Pensions

The Charity operates a defined contribution pension scheme and the pension charge represents the amounts payable by the Charity to the fund in respect of the year.

2.11 Fund accounting

General funds are unrestricted funds which are available for use at the discretion of the Trustees in furtherance of the general objectives of the Charity and which have not been designated for other purposes.

Restricted funds are funds which are to be used in accordance with specific restrictions imposed by donors or which have been raised by the Charity for particular purposes. The costs of raising and administering such funds are charged against the specific fund. The aim and use of each restricted fund is set out in the notes to the financial statements.

2.12 Critical accounting estimates

In the application of the Charity's accounting policies, which are described above, the Trustees are required to make judgements, estimates and assumptions about the carrying amounts of assets and liabilities that are not readily apparent from other sources. The estimates and associated assumptions are based on historical experience and other factors that are considered to be relevant. Actual results may differ from these estimates.

The Trustees do not consider there are any critical judgements or sources of estimation uncertainty requiring disclosure beyond the accounting policies listed above.

CANDY'S HOUND RESCUE INTERNATIONAL

NOTES TO THE FINANCIAL STATEMENTS
FOR THE YEAR ENDED 31 DECEMBER 2024

3. Income from donations

	Unrestricted funds 2024 £	Total funds 2024 £	Total funds 2023 £
Donations	693,141	693,141	363,008

4. Analysis of expenditure by activities

	Activities undertaken directly 2024 £	Support costs 2024 £	Total funds 2024 £	Total funds 2023 £
Charitable activities	643,858	22,598	666,456	347,926
Total 2023	330,043	17,883	347,926	

Analysis of direct costs

	Charitable activities 2024 £	Total funds 2024 £	Total funds 2023 £
Staff costs	54,039	54,039	49,275
Fundraising costs	5,880	5,880	2,226
Cleaning	38	38	67
Repairs and maintenance	544	544	5,000
Vet fees	401,573	401,573	186,489
Dog expenses	134,175	134,175	77,111
Dog transport	24,953	24,953	8,820
Travel	22,656	22,656	1,055
	643,858	643,858	330,043

CANDY'S HOUND RESCUE INTERNATIONAL

NOTES TO THE FINANCIAL STATEMENTS
FOR THE YEAR ENDED 31 DECEMBER 2024

4. Analysis of expenditure by activities (continued)

Analysis of support costs

	Charitable activities 2024 £	Total funds 2024 £	Total funds 2023 £
Depreciation	302	302	304
Advertising and marketing	387	387	1,327
Bank fees	3,633	3,633	3,553
Insurance	463	463	185
Printing, stationery and postage	3,449	3,449	580
IT Software and consumables	1,339	1,339	1,361
Telephone and Internet	1,917	1,917	1,326
Governance costs	6,548	6,548	11,402
Foreign exchange movements	-	-	(4,209)
Sundry	4,560	4,560	2,054
	22,598	22,598	17,883

Included within Governance costs is independent examiners remuneration of £4,800 (2023: £4,500) as detailed in Note 5, and other accountancy fees of £1,748 (2023: £6,902).

5. Independent examiner's remuneration

	2024 £	2023 £
Fees payable to the Charity's independent examiner for the independent examination of the Charity's annual accounts	4,800	4,500
Bookkeeping fees	1,748	6,902

CANDY'S HOUND RESCUE INTERNATIONAL

NOTES TO THE FINANCIAL STATEMENTS
FOR THE YEAR ENDED 31 DECEMBER 2024

6. Staff costs

	2024 £	2023 £
Wages and salaries	52,088	47,324
Contribution to defined contribution pension schemes	1,951	1,951
	<u>54,039</u>	<u>49,275</u>

The average number of persons employed by the Charity during the year was as follows:

	2024 No.	2023 No.
Employees	<u>2</u>	<u>2</u>

No employee received remuneration amounting to more than £60,000 in either year.

CANDY'S HOUND RESCUE INTERNATIONAL

NOTES TO THE FINANCIAL STATEMENTS
FOR THE YEAR ENDED 31 DECEMBER 2024

7. Trustees' remuneration and expenses

During the year, no Trustees received any remuneration or other benefits (2023 - £NIL).

During the year ended 31 December 2024, no Trustee expenses have been incurred (2023 - £NIL).

8. Tangible fixed assets

	Fixtures and fittings £
Cost or valuation	
At 1 January 2024	1,518
At 31 December 2024	1,518
Depreciation	
At 1 January 2024	1,216
Charge for the year	302
At 31 December 2024	1,518
Net book value	
At 31 December 2024	-
At 31 December 2023	302

9. Debtors

	2024 £	2023 £
Due within one year		
Taxation and other social security	-	2,854
	-	2,854

CANDY'S HOUND RESCUE INTERNATIONAL

NOTES TO THE FINANCIAL STATEMENTS
FOR THE YEAR ENDED 31 DECEMBER 2024

10. Creditors: Amounts falling due within one year

	2024	2023
	£	£
Other loans	2,000	9,400
Trade creditors	2,710	4,800
Other taxation and social security	707	-
Other creditors	3,228	-
Accruals	12,340	42,137
	20,985	56,337

CANDY'S HOUND RESCUE INTERNATIONAL

**NOTES TO THE FINANCIAL STATEMENTS
FOR THE YEAR ENDED 31 DECEMBER 2024**

11. Statement of funds
Statement of funds - current year

	Balance at 1 January 2024 £	Income £	Expenditure £	Balance at 31 December 2024 £
Unrestricted funds				
General funds	(40,794)	693,141	(666,456)	(14,109)

The Dog Shelter restricted fund represents donations received to fund the purchase, refurbishment and running of a dog shelter in China.

During the year, it became apparent that the dog shelter in China was no longer viable, and the Trustees obtained permission from the Charities Commission to utilise the funds raised for similar dog related purposes, on expenditure such as boarding, vets bills etc.

Statement of funds - prior period

	Balance at 1 January 2023 £	Income £	Expenditure £	Transfers in/out £	Balance at 31 December 2023 £
Unrestricted funds					
General funds	(67,903)	363,008	(347,622)	11,723	(40,794)
Restricted funds					
Dog shelter	12,027	-	(304)	(11,723)	-
Total of funds	(55,876)	363,008	(347,926)	-	(40,794)

CANDY'S HOUND RESCUE INTERNATIONAL

NOTES TO THE FINANCIAL STATEMENTS
FOR THE YEAR ENDED 31 DECEMBER 2024

12. Analysis of net assets between funds

Analysis of net assets between funds - current period

	Unrestricted funds 2024 £	Total funds 2024 £
Current assets	6,876	6,876
Creditors due within one year	(20,985)	(20,985)
Total	(14,109)	(14,109)

Analysis of net assets between funds - prior period

	Unrestricted funds 2023 £	Total funds 2023 £
Tangible fixed assets	302	302
Current assets	15,241	15,241
Creditors due within one year	(56,337)	(56,337)
Total	(40,794)	(40,794)

13. Related party transactions

During the year, one of the Trustees, Maura Berrini, provided a short-term loan of £5,000 (2023: £10,000) to the Charity. The loan is unsecured, interest-free and repayable within one year. At the year end £2,000 (2023: £8,000) has been recognised as an outstanding liability.

Another short-term loan of £3,000 was also made to the Charity in the prior year by a close family member of a trustee. The balance of the loan at the year-end was £Nil (2023: £1,400). The loan was also unsecured, interest-free and repayable within one year.

There were no other related party transactions in either period.