

ELEPHANTS FOR AFRICA

England & Wales · Charity number 1179318

Details

Status Registered

Legal form CIO

Registered 2018-07-24

Register [View on the Charity Commission register](#)

Contact

Address Tithe Barn
Ridge Lane
Newnham
Hook
Hampshire
RG27 9AS

Phone 07756652031

Email info@elephantsforafrica.org

Website <http://www.elephantsforafrica.org>

Activities

Objects: THE ADVANCEMENT OF EDUCATION AND RESEARCH FOR THE BENEFIT OF THE PUBLIC IN THE CONSERVATION AND PROTECTION AND MONITORING OF ELEPHANTS IN PARTICULAR BUT NOT EXCLUSIVELY BY MONITORING THE DEMOGRAPHICS, ECOLOGY, BEHAVIOUR, DISEASES AND MOVEMENT OF AFRICAN ELEPHANTS.

Activities: We raise funds to support, and oversee, research and education programmes in Botswana working towards understanding the socio and ecological needs of African savannah elephants in the context of a human landscape to work towards human-wildlife coexistence and enable rural communities to benefit from wildlife. Additionally, we give educational talks to schools and interested parties globally.

Classification

- **How:** Provides Advocacy/advice/information, Sponsors Or Undertakes Research
- **What:** Animals, Environment/conservation/heritage

Geography

- Botswana

Finances

Period end	Income	Expenditure	Assets	Employees
2024-12-31	£204,642	£145,820	-	-
2023-12-31	£67,789	£108,407	-	-
2022-12-31	£172,752	£94,654	-	-
2021-12-31	£67,166	£76,795	-	-
2020-12-31	£67,166	£61,123	-	-

Trustees

Name	Role	Appointed
David Huw Matthias KC	Chair	2015-10-05
BRIAN COURTENAY		2011-06-27
Dr Karen Ross		2023-01-23
John Charles Graham		2018-12-17
Raoul Jean Jacques Bollen		2024-11-05

ELEPHANTS FOR AFRICA

England & Wales - Charity number 1179318

Accounts

REGISTERED COMPANY NUMBER: CE14721 (England and Wales)
REGISTERED CHARITY NUMBER: 1179318

REPORT OF THE TRUSTEES AND UNAUDITED
FINANCIAL STATEMENTS FOR THE YEAR
ENDED 31 DECEMBER 2024

FOR



LDP Luckmans
1110 Elliott Court
Coventry Business Park
Herald Avenue
Coventry
West Midlands
CV5 6UB

CONTENTS OF THE FINANCIAL STATEMENTS
for the year ended 31 December 2024

	Page
Report of the Trustees	1 to 15
Independent Examiner's Report	16
Statement of Financial Activities	17 to 18
Balance Sheet	19 to 20
Notes to the Financial Statements	21 to 28

**REPORT OF THE TRUSTEES
for the year ended 31 December 2024**

INTRODUCTION

The trustees, who are also directors of the charity for the purposes of the Companies Act 2006, present their report with the financial statements of the charity for the year ended 31 December 2024. The trustees have adopted the provisions of Accounting and Reporting by Charities: Statement of Recommended Practice applicable to charities preparing their accounts in accordance with the Financial Reporting Standard applicable in the UK and Republic of Ireland (FRS 102) (effective 1 January 2019).

Organisation

Elephants for Africa is a small charity registered as a CIO. The trustees delegate the day-to-day management to Dr Kate Evans.

OBJECTIVES AND ACTIVITIES

Objectives and Aims

The aims and objectives of Elephants for Africa (EFA), as set out in its Constitution, are the advancement of education and research for the benefit of the public in the conservation, protection, and monitoring of elephants (Photo 1). This is achieved in particular, though not exclusively, through the study of African savanna elephants (*Loxodonta africana*), focusing on their demographics, ecology, behaviour, diseases, and movements.



Photo 1: Male elephants observed in the Makgadikgadi Pans National Park during the zebra migration.

Our approach aims to go beyond conservation, adopting a holistic strategy that considers the needs of both elephants and local communities. By partnering with local stakeholders, we work towards fostering coexistence between people and elephants.

EfA promotes the conservation of African elephants through research in Botswana, advising research in South Africa, and delivering education programmes in schools and communities across Botswana. We also share our knowledge and insights globally through talks in schools and to interested audiences worldwide.

Significant Activities

Research

The aim is to increase our knowledge of the social and ecological requirements of male African savanna elephants for the benefit of human-elephant conflict resolution.

This aim is achieved through maintaining our long-term monitoring of the Makgadikgadi Pans National Park (MPNP) elephants through: i) identification study, their physical condition and group dynamics; ii) exploring the longevity and characteristics of male elephant groupings, and determining what attributes determine social associations, including factors such as age composition, relatedness, habitat, season and/or physical condition; and iii) investigating the spatial and temporal resource use by elephants in the MPNP and the surrounding community land and what mitigation tools can work to communicate to them where they are not welcome.

**REPORT OF THE TRUSTEES
for the year ended 31 December 2024**

Community Outreach- Community Coexistence Project (CCP)

Our community outreach work is delivered through the **Community Coexistence Project (CCP)**, which has two main aims:

- To build a citizenry that values live elephants as a natural resource and to increase local capacity for innovation in addressing human–elephant resource competition.
- To improve the livelihoods and safety of people living in areas adjacent to national parks.

We strive to achieve these aims by:

- Facilitating educational trips for community members into protected areas and national parks to foster appreciation, pride, and ownership of Botswana’s wildlife.
- Providing an education programme to engage local people with their wildlife.
- Collaborating with government initiatives and sharing relevant scientific knowledge with stakeholders, under the guidance of our NGO Board, to support the sustainability and welfare of rural communities.
- Delivering human–wildlife conflict mitigation measures to farmers around MNPNP, supporting them with education, practical assistance, and data on mitigation effectiveness.
- Encouraging farmers to become self-sufficient in mitigation practices, such as growing chilli, joining cooperatives for communal protection, and maintaining presence in fields during high-risk crop raiding periods.
- Improving knowledge of Human–Elephant Conflict (HEC) mitigation, boosting crop yields, and promoting cash-crop production to increase household income.
- Educating communities about elephant behaviour and safe responses to promote peaceful coexistence.
- Delivering workshops that support uptake of alternative income-generating activities, reducing reliance on crop farming in conflict-prone areas.
- Partnering with local and international experts to strengthen understanding of business and work practices, enabling community members to create enterprises and access employment opportunities.

Education in Botswana

There are four main aims:

1. Inspire the next generation of conservation leaders
2. Increase employment into the environmental sector for rural youth
3. Empower the youth of today to be the problem-solvers of tomorrow
4. Contribute to capacity building in Botswana in the environmental sector through mentoring, training and the supervision and training of Mtswana students.

**REPORT OF THE TRUSTEES
for the year ended 31 December 2024**



Photo 2: Environmental Education Club (EEC) members enjoying conservation materials with Elephants for Africa Education Officer.

Our school's education program runs through partnerships with the environmental education clubs in the primary schools in our region (Photo 2). The program seeks to improve the long-term survival of elephants and the sustainability of rural communities by creating the problem solvers and innovators of the future, increasing capacity for local youth, and leading to increased employment in the wildlife sector and knowledge about the importance of the environment and biodiversity.

We offer hands-on learning experiences through monthly activities and opportunities to meet local role models to broaden children's horizons for new opportunities and future careers.

We also welcome and encourage students at Botswana universities to intern or study with us.

Conservation Education Around the World

There are six main aims as follows:

1. Inspire the next generation of conservation leaders
2. Empower the youth of today to be the problem-solvers of tomorrow
3. Increase public awareness about elephant conservation and the challenges facing rural communities in Botswana
4. Communicate our findings to the public and increase knowledge about the challenges of elephant conservation.
5. Inform stakeholders of our findings
6. Contribute to capacity building in STEM and conservation through mentoring, training and the field supervision of international students

Through invitation and promotion, we provide educational and inspirational talks to schools, colleges, universities, zoological societies and at public events. Covering our work, conservation, biodiversity and women in science. We also communicate our findings and observations through social media channels, newsletters, websites, magazine and news articles, and radio and TV interviews.

Collaborating with universities worldwide, we offer the opportunity for students to conduct fieldwork with our team in Botswana and/or work on our historical data. Supervising and advising them before fieldwork, in the field and during their thesis write-up.

<https://www.facebook.com/elephantsforafrica/>

<https://www.instagram.com/elephantsforafrica/>

<http://www.Linkedin.com/elephantsforafrica/>

Public benefit

In formulating the objectives and planning activities for the year, the Trustees and our Founder have considered the Charity Commission's guidance on public benefit and addressed this through our education programme.

ACHIEVEMENT AND PERFORMANCE

Charitable activities

Working towards human-wildlife coexistence, our efforts are focused on the Boteti River region of the Makgadikgadi Pans National Park and surrounding areas (Figure 1). We conduct research to conserve the African savanna elephant by understanding the ecological and social requirements of male elephants and putting these into the context of human-wildlife conflict. We aim to understand the daily needs of elephants and humans and seek local solutions for local problems.

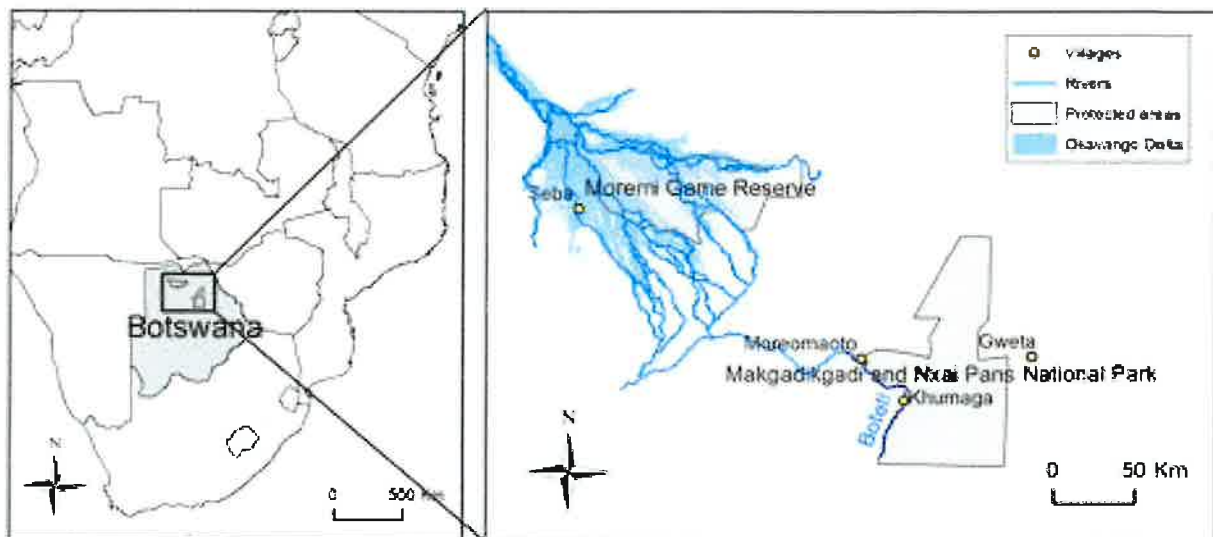


Figure 1: Figure 1: Elephants for Africa's focus area, the Makgadikgadi Pans National Park and surrounding area, Botswana. Map by Emily Bennett.

Research Summary

In 2024, Elephants for Africa (EfA) continued its commitment to advancing knowledge on the ecology, behaviour, and conservation needs of African savanna elephants in the Makgadikgadi and Nxai Pans National Park (MNPNP), and surrounding community areas. Our research programme integrated multiple projects: Feeding Ecology, Behavioural Ecology, Elephant Collaring, and Camera Trap Monitoring - each contributing to a broader understanding of elephant population dynamics, resource use, and the challenges posed by a changing climate.

Research activities were generously funded by The Memphis Zoo, The Maryland Zoo, Jacksonville Zoo and Gardens, Disney Conservation Fund, Natural Selections Conservation Fund and many private donors.

Feeding Ecology

The Feeding Ecology Study progressed throughout the year, with a particular focus on understanding whether mineral availability drives elephant movement and land use. Our team collected dung, soil, vegetation, and water samples at geophagy sites, water points, and feeding areas within MNPNP. Seasonal variation in feeding preferences was documented, revealing shifts in elephant diet linked to resource availability. While delays in sampling permits temporarily slowed collection, samples were dried and processed both at the EfA Research Camp and at the Okavango Research Institute, preparing them for detailed mineral analysis at the University of Nottingham. These findings will inform long-term insights into whether mineral deficiency contributes to elephants' ranging behaviours in the Boteti region.

**REPORT OF THE TRUSTEES
for the year ended 31 December 2024**

Behavioural Ecology



Photo 3: Male elephants observed in the Makgadikgadi Pans National Park during the Behavioural Ecology study.

The Behavioural Ecology Study continued (Photo 3), building on earlier feeding ecology work. Regular surveys recorded individual males, while anecdotal and formal observations highlighted notable shifts in elephant population dynamics. Breeding herds were encountered more frequently during daylight hours, showing reduced flight behaviour compared to previous years. Older males (36+) were observed leading younger bulls, underscoring their critical role in transmitting knowledge about resources and safe movement corridors. This study will continue to examine whether changes in the proportion of mature bulls influence the social structure and behaviour of younger males.

Collared Elephant Movements

EfA continued to monitor 10 bulls fitted with GPS satellite collars since 2022, providing valuable insights into elephant ranging patterns. Collars revealed that the bulls largely remained within the MNPNP throughout 2024, with movements concentrated in the northern Makgadikgadi and around the Boteti River. Occasional excursions into community areas near Khumaga and Phuduhudu were recorded, though unlike in 2023, no individuals crossed into Zimbabwe's Hwange National Park. Collar malfunctions, natural collar losses, and mortality events highlighted the challenges of long-term monitoring. Two collared elephants died during the year, with carcasses found intact and tusks present, ruling out poaching. Extreme heat and prolonged drought conditions in early 2024 likely contributed to these deaths, serving as a stark reminder of the impacts of climate change on elephant survival. By year's end, seven of the original ten collared males remained active in the study.

Camera Trap Studies

Camera trap research advanced significantly during the year. After initial setbacks due to technical issues with charging equipment, new deployments resumed, with 12 cameras strategically placed along key elephant highways in both protected areas and community lands (Photo 4). Camera traps contributed to the individual identification of elephants, supporting demographic studies on population size, structure, and social dynamics.

**REPORT OF THE TRUSTEES
for the year ended 31 December 2024**

A parallel project funded by the Conservation Leadership Programme (CLP) continued to analyse historic camera trap datasets (2021–2022), with Project Assistant Mr. Boemo Lekang leading image sorting. This initiative aimed to build local scientific capacity while investigating the frequency and use of elephant highways along MNPNP's western boundary.

EfA also expanded the use of advanced image analysis tools. Citizen science platforms such as Snapshot Safari and the ElephantID project engaged nearly 4,000 volunteers to assist with elephant identification, while AI-assisted platforms like Trap Tagger were introduced to streamline image sorting and species detection. To date, more than 91,000 images have been uploaded into Trap Tagger, contributing to one of the most comprehensive elephant photographic datasets in the region.



Photo 4: Elephants for Africa Project Assistant sets up a camera trap.

Key Findings and Outlook

Throughout 2024, EfA's research underscored the importance of water sources such as the Boteti River and community boreholes for sustaining elephant populations, particularly during periods of extreme heat and drought. The combined studies highlighted the resilience and adaptability of elephants while also revealing the vulnerabilities they face from climatic extremes, resource scarcity, and potential shifts in social structure.

By combining long-term monitoring with innovative technologies and citizen science, EfA continues to deepen understanding of elephant ecology while engaging both local communities and global supporters in conservation science. These research findings directly inform conservation strategies and reinforce our commitment to fostering coexistence between people and elephants in Botswana.

Student Research

Simon Isaksson. Movement patterns and social dynamics of male African savannah elephants (*Loxodonta africana*) following the steps of giants. Master's Thesis. University of Gothenburg, Sweden. Thesis available [here](#).

Mr Isaksson's study focused on some knowledge gaps about the male elephants of the MNPNP contributing knowledge of movement patterns and the social dynamics of males to better conserve the species and thus decrease human-wildlife conflicts (Photo 5).

Simon used our Mark and Recapture data on male elephants adding to this dataset during this time with us by identifying those yet to be identified in our dataset. He then used this data to track individuals in the Makgadikgadi and Nxai Pan National Park in Botswana to estimate how many days the bulls stayed inside and outside the park, and how these patterns differed between different age groups and seasons of the year, building on the previous work of Master's student Gus Pitfield (2017) through the expanded dataset. He also investigated the social dynamics of male associations increasing our knowledge of bull groups.

REPORT OF THE TRUSTEES
for the year ended 31 December 2024



Photo 5: Simon Isaksson (right) photographing elephants for photo identification for his research.

His findings showed that a bull, on average, stayed for 37 days (with confidence limits (CI) of 31-48 days) inside the park before leaving the park for 108 (CI 87-138) days. His findings also suggest that the youngest males (less than 20 years of age) stayed and left for shorter periods during both the wet and dry seasons compared to the oldest bulls (over 26 years of age). Both age groups stayed and left for longer periods during the dry season compared to the wet. The research supported our previous findings that bull association isn't random even though most relationships will be short-term.

His results indicated that elephant movement increased during the wet season and that bulls less than 20 years of age, moved more in and out of the park more frequently, increasing their risk of conflict with people living in the communities bordering the national park. The results supported previous research that male elephants have

preferred companions, and all these findings should be taken into consideration for the conservation of the species, particular if conservation measures include translocation.

Penny Downes - PhD student, Bangor University, Wales, United Kingdom

Quantifying Drivers of Human-Elephant Contact in an Arid Savanna Ecosystem by Penny Downes investigates the patterns and drivers of human-elephant interactions (HEI) around Makgadikgadi and Nxai Pans National Park (MNPNP), with the goal of informing targeted conflict mitigation and contributing to Botswana's National Spatial Plan (Photo 6). The research combines a systematic review of human-elephant conflict (HEC) studies across sub-Saharan Africa with field-based analysis of elephant and human movements. Using GPS collar data, camera traps, accelerometer data, environmental variables, and local ecological knowledge, Penny is mapping elephant resource use, movement corridors, and behavioural patterns. In parallel, she is investigating human resource use through interviews, observations, and mapping of firewood, water, and farmland access, capturing how communities interact with shared landscapes.

By overlaying these datasets, her thesis will identify where and when people and elephants are most likely to come into contact, highlighting seasonal and daily risk patterns. Penny is also modelling how climate change and land-use change could reshape these interactions, producing conflict risk maps and corridor projections to guide long-term coexistence strategies. The outcomes will include recommendations for dynamic land-use planning, conflict mitigation methods, and the designation of resilient elephant corridors, providing a framework that balances conservation with human livelihoods.



Photo 6: Penny Downes (bottom left) mapping water resources with her field assistants.

**REPORT OF THE TRUSTEES
for the year ended 31 December 2024**

Delphine Dubray - PhD student, Okavango Research Institute, Botswana

PhD student Delphine Dubray is researching the relationship between elephants and water availability. Her work focuses on how elephants use water sources in and around the MNPNP, exploring patterns of movement, habitat use, and the pressures elephants place on these limited and essential resources for wildlife and humans.

Her research aims to deepen understanding of the ecological role of elephants as large water-dependent herbivores, while also considering the implications for conservation and human-wildlife coexistence. By investigating how elephants' reliance on water shapes their behaviour and distribution, Delphine's work will contribute valuable insights for long-term management strategies in water-scarce landscapes.

Education

Our Schools Environmental Education Programme is central to promoting coexistence between people and wildlife. In 2024, we welcomed Ms. Kemoneetswe "Kay" Mphanyane as Education Officer (Photo 7). A dedicated teacher from the village of Moreomaoto, Kay brings local knowledge, passion, and strong community ties to the role. Since joining, she has supported our Community Outreach and Education Coordinator, co-led Environmental Education Classes (EECs) across our partner villages, and provided tutoring in her home community. She will soon take the lead on EEC delivery, enabling our Community Outreach and Education Coordinator to focus on expanding of our outreach.



Photo 7: Elephants for Africa's Education officer engaging students in Motopi.

Through interactive lessons, games, and workshops, the programme inspires children to value their environment and see the opportunities that wildlife offers. By nurturing curiosity and respect for nature, we aim to empower Botswana's youth to become the next generation of environmental stewards. This year a fifth school joined our program bringing our EEC membership to 475 students.

In addition to our regular Environmental Clubs, we have:

- Hosted a careers fair at Motopi Junior Secondary School – attended by at least 100 Students who had the opportunity to meet and be inspired by staff from Non-Government Organisations, the Police Force, tourist lodges and other potential employers in the region.
- Hosted a Coaching for Conservation football camp where 68 children and 35 youth received professional football coaching and engaged in key conservation messaging.
- We were invited to Botho Corps 3rd Annual Youth Wellness Camp, on the Boro River in Maun where we taught our Living with Elephants workshop for 70 children.

**REPORT OF THE TRUSTEES
for the year ended 31 December 2024**

Outreach

Local Interns

Since 2017, we have hosted students from the Botswana University of Agriculture and Natural Resources (BUAN) for their industrial internships, an important part of their degree programme. In 2024, five students joined us at Camp, but late notice meant we were unable to add them to our research permit, limiting their full participation in our programmes.

Despite this challenge, the students, studying Range Science and Wildlife Management, gained hands-on experience with our environmental education and farmer engagement programmes, visited farms around Khumaga, and learned about Problem Animal Control, learned research techniques (photo 8), government reimbursement schemes, and community-led conservation. They also explored sustainable practices within eco-tourism through an educational lodge visit.

We remain committed to providing such internships, which support conservation and capacity building while offering students valuable professional and academic growth.

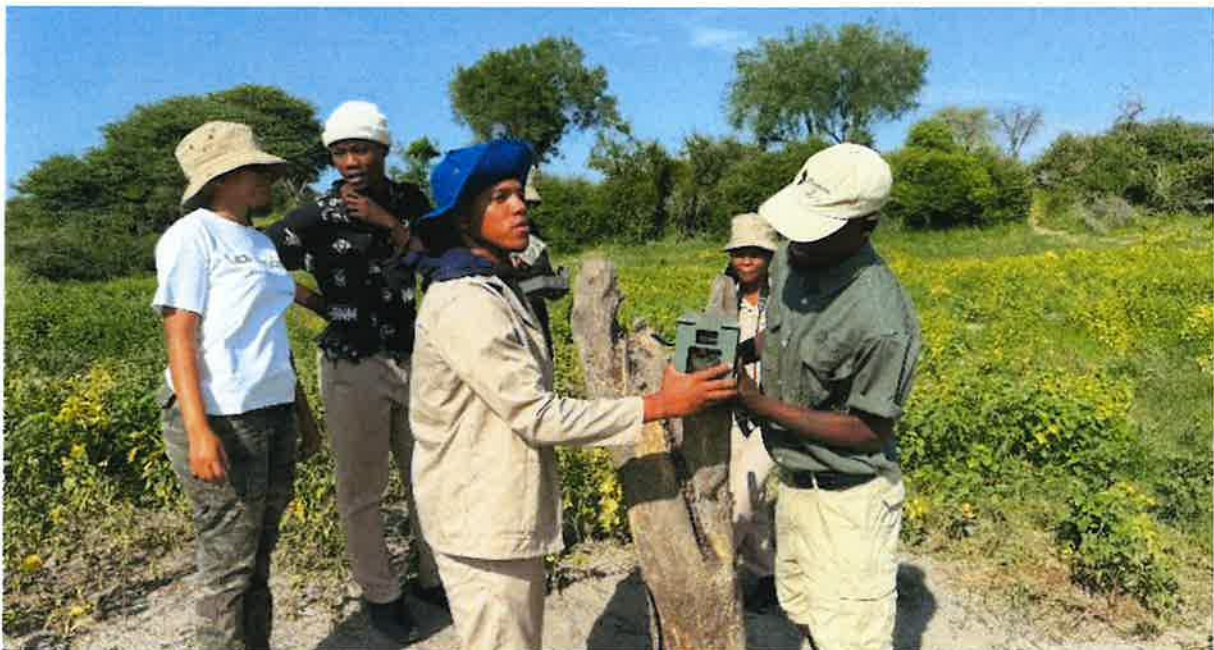


Photo 8: Botswana University of Agriculture and Natural Resources interns learning about camera traps.

Talks and Presentations

We continued to engage and educate the international community through our Social Media channels as well as online lectures and lessons, Q&A's, and in person lectures and talks. We are often invited to lecture students both in the field in Botswana, where visiting students from the University of Florida had the opportunity to learn about our work, alongside the trails and challenges of human-elephant conflict. Our Founder and CEO, Dr Kate Evans often engages with school children through [SkypeAScientist](#) and other platforms and this is the third year she has volunteered on this platform and reached pupils in the Jacksonville and Orange County, Florida, Kimpton in the UK, as well as the public through public lectures.

REPORT OF THE TRUSTEES
for the year ended 31 December 2024

Presentations and Meetings

- 21st March 2024. **Sehularo, W.** *Stakeholder Engagement*. Phuduhudu, Botswana
- 26th March 2024. **Sehularo, W.** *Stakeholder Engagement*. Motopi, Botswana
- 26th March 2024. **Sehularo, W.** *Stakeholder Engagement*. Moreomaoto, Botswana
- 28th March 2024. **Evans, K.** Skype A Scientist Educational talk about elephants, human elephant conflict and environmental education for St. Johns Country Day School, Jacksonville, Florida, USA
- 25th April 2024. **Evans, K.** Male elephants: myths, musth & mentors. Accenture Season of Impact 2024, Southern Hemisphere Employees
- 25th April 2024. **Evans, K.** Male elephants: myths, musth & mentors. Accenture Season of Impact 2024 Northern Hemisphere Employees
- 17th May 2024. **Kong, S.** *University of Florida Guest Lecturer*. SKL Campsite in MNP
- 7th June 2024. **Sehularo, W.** *Charity Bike Ride Guest Speaker*. Meno a Kwena Lodge, Botswana
- 8th June 2024. **Bosele, C. Ramakhubu, L.** *Donation ceremony to the Rakops Public Library*. Rakops, Botswana
- 13th June 2024. **Kong, S. Sehularo, W.** *Charity Bike Ride Guest Speakers*. Meno a Kwen Lodge, Moreomaoto, Botswana.
- 3rd July 2024. **Evans, K.** Elephants and me. Kimpton Primary School, United Kingdom, Zoom talk and Live Q&A
- 11th July 2024. **Sehularo, W.** Global Perspectives on Conservation, Guest speaker, Biodiversity in Western Sweden Course of the Gothenburg University Summer School for Sustainability
- 31st July – 2nd August. **Evans K.** Attendance of the International Elephant Foundation. Online Conference.
- 15th August 2024. **Motsentwa, T.** Botswana Elephant Management Consultation Meeting. Department of Wildlife and National Parks (DWNP), Rakops, Botswana
- 30th August 2024. **Evans K.** *In the Footsteps of Elephants*. Orange County Virtual School, Florida, USA. Skype a Scientist.
- 4th September 2024. **Kong, S. Sehularo, W., Evans, K (virtually).** NGO Board Meeting, Maun, Botswana
- 19th September 2024. **Evans K.** Males, Musth & Mankind. Conservation Graduate Program talk, Hunter Students. Online Lecture.
- 5th October 2024. **Evans K.** *Art for Elephants*. The Memphis Zoo
- 7th October 2024. **Evans K.** *The Push-Me Pull-You of male elephant movement*. Lunch time lecture. The Maryland Zoo in Baltimore Staff, USA.

Media

- 15th February 2024. **Evans, K.** Filming for Nordic EY Corporate Social Responsibility Zooniverse event, Stockholm, Sweden.
- 8th October 2024. **WBAL-TV 11 Baltimore Interview.**
 - <https://www.youtube.com/watch?v=KTQ2jUEUAMM>
- 8th October 2024. News Article Fox 24 News.
 - <https://www.foxbaltimore.com/news/local/maryland-zoo-honors-dr-kate-evans-withconservation-award-for-african-elephant-research>
- 8th October 2024. News Article Hoodline.
 - <https://hoodline.com/2024/10/maryland-zoo-honors-dr-kate-evans-with-conservation-award-for-african-elephant-research/>
- 30th September 2024. **Sehularo, W.** Interview with Kristin Palitza: Spotlight on Human-Elephant Interactions
- 13-14th of November 2024. **Kong S. Sehularo, W. Mosentwa, T.** Interview with the Australian Broadcasting Corporation

**REPORT OF THE TRUSTEES
 for the year ended 31 December 2024**

Community Coexistence Project (CCP)

2024 was a landmark year for our Community Coexistence Project. We successfully installed two new solar electric fences: the Makhi Cluster (1690 ha, 82 farmers, Photo 9), which built on a long-abandoned government project and funded by the Elephant Crisis Fund, and the Phuduhudu Cluster (226 ha, benefiting 50 residents), funded by the GoodPlanet Foundation. Both fences have significantly reduced human-elephant conflict, with Phuduhudu residents reporting no elephant incursions since installation and a renewed sense of security that has encouraged new homes and small businesses to emerge.



Photo 9: Makhi Cluster farmers celebrate the fence completion in late November.

Alongside fencing, our chili production initiative expanded to 22 local plots, producing an estimated 50 kg of chili. We also sourced 300 kg from local commercial farmers to ensure a sustainable supply for elephant mitigation.

Despite environmental challenges, farmers have shown resilience in maintaining their plots.

We also strengthened community knowledge through our Living with Elephants workshops (Photo 10), this year we brought them directly to remote cattle posts as well as adapted it for children, ensuring wider access to elephant safety education. To deepen local capacity, we held a Train the Trainers workshop in Rakops (funded by the Elephant Crisis Fund), empowering community leaders to deliver workshops themselves (Photo 11).

The workshop participants were selected from diverse and impactful stakeholder groups within the Boteti region. Attendees included the following:

- Crop Officers from the Ministry of Agriculture
- Animal Production Officers from the Ministry of Agriculture
- Agricultural Demonstrators from the Ministry of Agriculture
- Principal Technical Officer from the Department of Veterinary Services (DVS)
- Officers from the Department of Wildlife and National Parks (DWNP)
- Customer Services Assistant from the National Development BankCrop Production Interns in their Attachment Program
- Three EfA Community Officers from two communities
- EfA Project Assistant
- EfA Education Officer



Photo 10: Elephants for Africa's Education Officer teaching community members about elephant safety at a Living with Elephants workshop.

Together, these efforts highlight the impact of our strong community partnerships and the effectiveness of combining infrastructure, livelihood support, and education to foster safer coexistence between people and elephants.



Photo 11: Train the Trainers participants proudly display their certificates of workshop completion.

Camp Rebuild

After significant planning and logistics throughout the year, construction commenced in October, with the building team working to improve the long-term functionality and livability of the research camp (Photo 12). The first major task addressed was the replacement of tent decks, which had deteriorated significantly due to termite damage and the challenging climatic conditions of the Makgadikgadi environment. The damaged decks were removed and replaced with durable, weather-resistant materials designed to ensure stability and longevity.

By end of 2024, much of the project was completed including the construction of the ablution block, the repair of rotted wooden decking in the main area, installation of a monkey-proof refuse cage, securing of sewage and electrical systems, and the installation and stabilization of the modified shipping containers used for kitchen and storage facilities. The project will continue into 2025.



Photo 12: Staff accommodation before (left) and after (right).

**REPORT OF THE TRUSTEES
for the year ended 31 December 2024**

FINANCIAL REVIEW

Financial Position

The charity held reserves of £105,167 as of 31st December of 2024 (£46,345 as of 31st of December 2023), of which £2,000 is restricted (£35,498 as of 31st December 2023).

Reserves policy

Funds held at the year-end covers roughly nine months of running costs for the charity which is deemed to be sufficient and is in line with the charity policy.

PLANS FOR THE FUTURE

- Continue to follow the movement of the collared elephants and sample the vegetation, soil and water in their range.
- Continue to monitor the impact of the fence on elephant movement and human-elephant conflict
- Re-apply for Research Permits
- Uncollar all seven elephants
- Rebuild the Elephants for Africa Research Camp
- Get additional help for our communications through social media and marketing specialists
- On-board the Administrator
- Recruit new trustees
- Welcome and accommodate more students, interns and visitors to our camp
- Build additional cluster fences in areas of need
- Expand our educational outreach with our Education Officer
- Supervise and support students through their undergraduate and postgraduate degrees.
- We will continue to work with and advise other NGO scientists and interested parties and contribute actively to the Elephant Specialist Advisory Group of South Africa, the proposed KAZA Elephant Working Group and the Botswana Human-Wildlife Conflict Working Group

STRUCTURE, GOVERNANCE AND MANAGEMENT

Governing document

The charity is a company limited by guarantee governed in accordance its Memorandum and Articles of Association. The charity is a company governed by its governing document, a trust deed.

Recruitment and appointment of new trustees

The charity is constated by a board of trustees. All new appointments are elected by the board.

Induction and training of new trustees

All new trustees are given a copy of this constitution, any amendments made to it and a copy of the CIO's latest trustees' annual report and statement of accounts, last annual reports, budget, strategic plan and recent newsletters. Where possible board members meet new trustees in person to welcome them and address any questions they may have; where not possible due to the board members location, they meet virtually.

Leadership Transition

In 2024, we were pleased to begin the transition of Stephanie (Steph) Kong from her role as Project Manager to Managing Director of Elephants for Africa. During her time as Project Manager, Steph played a key role in strengthening our research, education, and community coexistence programmes, while also advancing partnerships and organizational growth. Her experience and commitment to conservation and proven leadership makes her exceptionally well-suited to guide Elephants for Africa into its next phase, ensuring the continued impact and sustainability of our mission.

**REPORT OF THE TRUSTEES
for the year ended 31 December 2024**

Fundraising and partnerships

Elephants for Africa is funded via a range of sources, including Trusts and Foundations, zoological societies, corporate sponsorship, individual donors, online initiatives, and fundraising events. Our CEO has reduced her working hours which has decreased our fundraising efforts. In response, we are exploring alternative fundraising strategies and considering the employment of an administrator to alleviate the administrative workload. This should allow the CEO to dedicate her available hours more effectively to donor stewardship, fundraising and research. The trustees would like to thank all who generously support our work. A huge thanks to all our staff and volunteers in Botswana and the UK who continue supporting and contributing to our work. Elephants for Africa works in close partnership with the Botswana registered NGO, Elephants for Africa.

Risk management

We acknowledge that it is the responsibility of the trustees to identify, assess and manage the risks to the charity's work. The risks we have identified are a) receiving less funding b) staff turnover c) impact of the global economic climate and the ongoing restrictions d) damage to its reputation.

- a) Staff changes has meant that our online budget, including income and potential income, which the trustees have access to, have not been updated as regularly as the planned monthly updates. Moving forward we will get back to the monthly updates.
- b) We have monthly metrics we measure ourselves against to highlight any areas we need to focus on and address.
- c) Whilst our director has remained constant throughout the charity's history, we have high turnover of our senior staff in Botswana, which have been historically recruited from outside of Botswana due to the lack of skilled personnel in Botswana. Since 2014 we have focused on capacity building to enable the staff to be predominantly Botswana (at the end of 2020 all field personnel were Botswana) and are increasing looking for funding to offer more training and development opportunities. In 2021 recruitment of a new Project Manager within Botswana and in 2022 we recruited an international Project Manager to fill this role, who joined the team in August after permits were secured.
- d) Satellite internet in camp as well as good mobile phone connections enables our director to have weekly meetings with senior staff in the field and be accessible to all staff members.
- e) We carry out diligence with any interested partners that may wish to highlight our work and/or corporate sponsors. We acknowledge that it is the responsibility of the trustees to identify, assess and manage the risks to the charity's work. The risks we have identified are a) receiving less funding b) staff turnover c) damage to its reputation.

Use of Volunteers

Elephants for Africa would not have been able to develop to where we are today without the dedication of many volunteers who offer their time and expertise. This year, we have been grateful to those supporters who have given their time to work on our elephant ID dataset, continue to develop our online presence and technical support. Without our volunteers, we simply could not have achieved all that we have. They are vital to the running of the CIO. We ensure that each volunteer feels valued by taking the time to regularly thank them in person, when possible, or via personal emails and letters.

REFERENCE AND ADMINISTRATIVE DETAILS

Registered Company number CE14721 (England and Wales)
Registered Charity number 1179318

Principal address

5 Balfour Road
London
N5 2HB

Trustees

J Graham
B Courtenay
D Matthias
M Henley

Independent examiner

LDP Luckmans
1110 Elliott Court
Coventry Business Park
Herald Avenue
Coventry
CV5 6UB

Approved by order of the board of trustees on 30th October 2025 and signed on its behalf by:


.....David Matthias(KC), Trustee & Chair

The financial statements were approved by the Board of Trustees and authorised for issue on 30th October 2025 and were signed on its behalf by:


.....David Matthias (KC), Trustee & Ch

**INDEPENDENT EXAMINER'S REPORT TO THE TRUSTEES OF
ELEPHANTS FOR AFRICA**

Independent examiner's report to the trustees of Elephants for Africa ('the Company')

I report to the charity trustees on my examination of the accounts of the Elephants for Africa (the Trust) for the year ended 31 December 2024.

Responsibilities and basis of report

As the charity's trustees of the Company (and also its directors for the purposes of company law) you are responsible for the preparation of the accounts in accordance with the requirements of the Companies Act 2006 ('the 2006 Act').

Having satisfied myself that the accounts of the Company are not required to be audited under Part 16 of the 2006 Act and are eligible for independent examination, I report in respect of my examination of your charity's accounts as carried out under section 145 of the Charities Act 2011 ('the 2011 Act'). In carrying out my examination I have followed the Directions given by the Charity Commission under section 145(5) (b) of the 2011 Act.

Independent examiner's statement

I have completed my examination. I confirm that no matters have come to my attention in connection with the examination giving me cause to believe:

1. accounting records were not kept in respect of the Company as required by section 386 of the 2006 Act; or
2. the accounts do not accord with those records; or
3. the accounts do not comply with the accounting requirements of section 396 of the 2006 Act other than any requirement that the accounts give a true and fair view which is not a matter considered as part of an independent examination; or
4. the accounts have not been prepared in accordance with the methods and principles of the Statement of Recommended Practice for accounting and reporting by charities (applicable to charities preparing their accounts in accordance with the Financial Reporting Standard applicable in the UK and Republic of Ireland (FRS 102)).

I have no concerns and have come across no other matters in connection with the examination to which attention should be drawn in this report in order to enable a proper understanding of the accounts to be reached.


M D Spafford
LDP Luckmans
1110 Elliott Court
Coventry Business Park
Herald Avenue
Coventry
West
Midlands
CV5 6UB

Date: 30th October 2025



Elephants for Africa

 Conservation through research and education

REPORT OF THE TRUSTEES

 for the year ended 31 December 2024



Charity Name: Elephants for Africa			Charity No (if any)	1179318	CC17a
Annual accounts for the period					
Period start date	01/01/2024	To	Period end date	31/12/2024	

Section A Statement of financial activities

Recommended categories by activity	Details of own analysis	Note	Unrestricted funds £	Restricted income funds £	Endowment funds £	Total this year £	Total last year £
			F01	F02	F03	F04	F05
Incoming resources from generated funds (Note 3)							
Donations & legacies		S01	134,889	69,102	-	203,991	66,968
Voluntary income		S02	-	-	-	-	-
Activities for generating funds		S03	-	-	-	-	-
Investment income		S04	426	-	-	426	366
Incoming resources from charitable activities		S05	225	-	-	225	821
Other incoming resources		S06	-	-	-	-	-
Total incoming resources			135,540	69,102	-	204,642	68,155
Costs of Generating Funds (Notes 4-5)							
Costs of generating voluntary income		S07	3,427	172	-	3,599	4,598
		S08	-	-	-	-	-
Fundraising trading costs		S09	-	-	-	-	-
Separate material item of expense		S10	-	-	-	-	-
Charitable activities		S11	41,830	98,915	-	140,745	102,635
Governance costs		S12	1,476	-	-	1,476	1,314
Other resources expended		S13	-	-	-	-	-
Total resources expended			46,733	99,087	-	145,820	108,547
Net incoming/(outgoing) resources before transfers			88,807	(29,985)	-	58,822	(40,392)
Gross transfers between funds			3,513	(3,513)	-	-	-
Net incoming/(outgoing) resources before other recognised gains/(losses)			92,320	(33,498)	-	58,822	(40,392)



Elephants for Africa

 Conservation through research and education

REPORT OF THE TRUSTEES

for the year ended 31 December 2024

Other recognised gains/(losses)

Gains and losses on revaluation of fixed assets for the charity's own use	S17	-	-	-	-	-
Pensions	S18	-	-	-	-	-
<i>Net movement in funds</i>	S19	92,320	(33,498)	-	58,822	(40,392)
Total funds brought forward	S20	10,847	35,498	-	46,345	86,737
<i>Total funds carried forward</i>	S21	103,167	2,000	-	105,167	46,345

The notes form part of these financial statements

Section B Balance sheet

	Note	Unrestricted funds £	Restricted income funds £	Endowment funds £	Total this year £	Total last year £
		F01	F02	F03	F04	F05
Fixed assets						
Tangible assets	B01	2,181	8,009	-	10,190	14,711
	B02	-	-	-	-	-
Investments	B03	-	-	-	-	-
Total fixed assets	B04	2,181	8,009	-	10,190	14,711
Current assets						
Stock and work in progress	B05	1,420	-	-	1,420	1,450
Debtors (Note 6)	B06	-	-	-	-	-
Other Debtors	B07	-	-	-	-	-
Cash at bank and in hand	B08	100,856	-1,356	-	99,500	32,417
Total current assets	B09	102,276	-1,356	-	100,920	33,867
Creditors: amounts falling due within one year (Note 7)	B10	1,290	4,653	-	5,943	2,233
Net current assets/(liabilities)	B11	100,986	-6,009	-	94,977	31,634
Total assets less current liabilities	B12	103,167	2,000	-	105,167	46,345
Creditors: amounts falling due after one year (Note 7)	B13	-	-	-	-	-
Provisions for liabilities and charges	B14	-	-	-	-	-
Net assets	B15	103,167	2,000	-	105,167	46,345
Funds of the Charity						
Unrestricted funds	B16	103,167	-	-	103,167	10,847
Surplus/ (Deficit)	B17	-	-	-	-	-
Restricted income funds (Note 8)	B18	-	2,000	-	2,000	35,498
Opening Balance Equity (Note 8)	B19	-	-	-	-	-
Total funds	B20	103,167	2,000	-	105,167	46,345

NOTES TO THE FINANCIAL STATEMENTS - CONTINUED
for the year ended 31 December 2024

The financial statements were approved by the Board of Trustees and authorised for issue on 30th October 2025 and were signed on its behalf by:



D Matthias - Trustee

The notes form part of these financial statements

NOTES TO THE FINANCIAL STATEMENTS - CONTINUED
for the year ended 31 December 2024

1. LIABILITY OF MEMBERS

The Charity is a company limited by guarantee. It does not have share capital and the liability of each member is limited to the guarantee given by that member which shall not exceed £1.

2. ACCOUNTING POLICIES

Basis of preparing the financial statements

The financial statements of the charitable company, which is a public benefit entity under FRS 102, have been prepared in accordance with the Charities SORP (FRS 102) 'Accounting and Reporting by Charities: Statement of Recommended Practice applicable to charities preparing their accounts in accordance with the Financial Reporting Standard applicable in the UK and Republic of Ireland (FRS 102) (effective 1 January 2019)', Financial Reporting Standard 102 'The Financial Reporting Standard applicable in the UK and Republic of Ireland' and the Companies Act 2006. The financial statements have been prepared under the historical cost convention.

At the time of approving the accounts, the trustees have a reasonable expectation that the trust has adequate resources to continue in operational existence for the foreseeable future. The trustees therefore continue to adopt the going concern basis of accounting in preparing the financial statements. In making this assessment, the trustees are required to consider a period of at least 12 months from the date of approval of the financial statements.

Financial reporting standard 102 - reduced disclosure exemptions

The charitable company has taken advantage of the following disclosure exemptions in preparing these financial statements, as permitted by FRS 102 'The Financial Reporting Standard applicable in the UK and Republic of Ireland':

- The requirements of Section 7 Statement of Cash Flows.

Income

All income is recognised in the Statement of Financial Activities once the charity has entitlement to the funds, it is probable that the income will be received, and the amount can be measured reliably.

Investment income and other income are included when receivable.

Expenditure

Resources expended are included in the Statement of Financial Activities on an accruals basis. Liabilities are recognised as resources expended as soon as there is a legal or constructive obligation committing the charity to the expenditure.

Charitable expenditure comprises those costs incurred by the charity in the delivery of its activities and services for its beneficiaries. It includes both costs that can be allocated directly to such activities and those costs of an indirect nature necessary to support them.

Expenditure which is directly attributable to specific activities has been included in these cost categories. Where costs are attributable to more than one activity they have been apportioned across the cost categories on a basis consistent with the use of these resources.

Governance costs include those costs associated with meeting the constitutional and statutory requirements of the charity and include the audit fees and costs linked to the strategic management of the company.

NOTES TO THE FINANCIAL STATEMENTS - CONTINUED
for the year ended 31 December 2024

Tangible fixed assets

Depreciation is provided at the following annual rates in order to write off each asset over its estimated useful life.

Plant and machinery -	20% on cost
Computer equipment -	33% on cost

Stocks

Stocks are valued at the lower of cost and net realisable value, after making due allowance for obsolete and slow moving items.

Taxation

The charity is exempt from tax on its charitable activities.

Fund accounting

Unrestricted funds can be used in accordance with the charitable objectives at the discretion of the trustees.

Restricted funds can only be used for particular restricted purposes within the objects of the charity. Restrictions arise when specified by the donor or when funds are raised for particular restricted purposes.

Further explanation of the nature and purpose of each fund is included in the notes to the financial statements.

Pension costs and other post-retirement benefits

The charitable company pension scheme was curtailed in 2020 to curtail costs, due to the pandemic – it is yet to be reinstated.

Contributions in respect of earnings paid by the charity to defined pension contribution schemes are charged to the Statement of Financial Activities in the year in which they are payable to the schemes.

2. TRUSTEES' REMUNERATION AND BENEFITS

There were no trustees' remuneration or other benefits for the year ended 31 December 2024.

Trustees' expenses

There were no trustees' expenses paid for the year ended 31 December 2024.

NOTES TO THE FINANCIAL STATEMENTS - CONTINUED
 for the year ended 31 December 2024

Section C
(cont)

Notes to the accounts

Note 3 Analysis of incoming resources

Incoming resources may be further analysed if this would help the reader of the accounts.

	Analysis	This year £	Last year £
Voluntary income	Donations and gifts	93,253	66,968
	Legacy	110,738	
	Total	203,991	66,968
Investment income	Interest	426	-
		-	-
		-	-
	Total	426	-
Incoming resources from charitable activities	Sales of Merchandise	225	821
	Total	225	821

NOTES TO THE FINANCIAL STATEMENTS - CONTINUED
 for the year ended 31 December 2024

Note 4 Analysis of resources expended

Resources expended may be further analysed if this would help the reader of the accounts.

	Analysis	This year £	Last year £
Costs of generating voluntary income	Incurring seeking donations	3,427	4,458
	Total	3,427	4,458

Fundraising trading costs		-	-
	Total	-	-

Separate material item of expense		-	-
	Total		

Charitable activities

Cost of Merchandise & other consumables	601	953
Donations to Botswana	87,302	47,953
Travel		177
Consultant & contractor	42,906	40,087
Computer & IT costs	251	475
Postage	12	96
Insurance		424
Utilities & consumables	1,337	1,057
Bank charges	292	327
Telephone & internet	950	662
Repairs & renewals		118
Research & data collection	1,496	5,582
Legal & Professional	728	241
Advertising	350	
Depreciation	4,520	4,483
Total	140,745	102,635

Governance Costs

Independent Examination fees	1,476	1,314
	-	-
Total	1,476	1,314

NOTES TO THE FINANCIAL STATEMENTS - CONTINUED
 for the year ended 31 December 2024

Note 5 **Paid employees**
Please complete this note if the charity has any employees.

5.1 Staff Costs

	This year £	Last year £
Gross wages, salaries and benefits in kind	-	-
Employer's National Insurance costs		
Pension costs	-	-
Total staff costs	-	-

5.2 Average number of full-time equivalent employees in the year

The parts of the charity in which the employees work

	This year Number	Last year Number
Fundraising	-	-
Charitable Activities	-	-
Governance	-	-
Other		
	-	-

There were no employees during the year that received employee benefits (excluding employer pension costs) of more than £60,000.

Note 6 **Tangible fixed assets**

	Plant and machinery £	Computer Equipment £	Totals £
COST			
At 1 st January 2024	18,712	2,335	21,046
Additions	-	-	-
At 31 st December 2024	<u>18,712</u>	<u>2,335</u>	<u>21,046</u>
DEPRECIATION			
At 1 st January 2024	5,557	778	6,335
Charge for the year	3,742	778	4,521
At 31 st December 2024	<u>9,299</u>	<u>1,556</u>	<u>10,856</u>
NET BOOK VALUE			
At 31 st December 2024	<u>9,412</u>	<u>778</u>	<u>10,190</u>
At 31 st December 2023	<u>13,155</u>	<u>1,556</u>	<u>14,711</u>

NOTES TO THE FINANCIAL STATEMENTS - CONTINUED
 for the year ended 31 December 2024

Note 7 Debtors and prepayments

Please complete this note if the charity has any debtors or prepayments.

Analysis of debtors	Amounts falling due within one year		Amounts falling due after more than one year	
	This year	Last year	This year	Last year
	£	£	£	£
Trade debtors	-	-	-	-
Amounts due from subsidiary and associated undertakings	-	-	-	-
Other debtors	-	-	-	-
Prepayments and accrued income	-	-	-	-
Total	-	-	-	-

Note 8 Creditors and accruals

Please complete this note if the charity has any creditors or accruals.

8.1 Analysis of creditors

	Amounts falling due within one year		Amounts falling due after more than one year	
	This year	Last year	This year	Last year
	£	£	£	£
Loans and overdrafts	-	-	-	-
Trade creditors	-	-	-	-
Amounts due to subsidiary and associated undertakings	-	-	-	-
Other creditors	-	-	-	-
Accruals and deferred income	5,943	2,233	-	-
Total	5,943	2,233	-	-

8.2 Security over assets

If any loan, overdraft or other creditor holds a charge or other security over any assets of the charity please provide details.

NOTES TO THE FINANCIAL STATEMENTS - CONTINUED
 for the year ended 31 December 2024

Note 9 Endowment and restricted income funds

Please complete this section if the charity has any endowment or restricted income funds.

9.1 Funds held

Please give a brief description of any of the following type of funds held by the charity:

- permanent endowment funds (PE);
- expendable endowment funds (EE); and
- restricted income funds, including special trusts, of the charity ®.

Fund Name	Type PE, EE or R	Purpose and Restrictions
Global Giving	R	Various donations to use for the following projects: Camp improvements, Elephants Responses to the return of hunting, Botswana's future environmental stewards, male elephants of Makgadikgadi and EfA Community Empowerments
Elephants Crisis Fund/Wildlife Conservation	R	Mitigating human-elephant conflict around wildlife corridors to secure future habitat options for elephants in Central Botswana
Jacksonville Zoo	R	To help fulfil an educator position, community officer position and vehicle maintenance and any remainder to be used to purchase a vehicle
Maryland Zoo	R	Conservation programme support
Memphis Zoo	R	Funding for GPS collars to support the continued monitoring of elephants
Country of Milwaukee Zoo	R	For elephant collars
Rhode Island Zoological	R	For elephant collars
Graham Marketing	R	Half page advert in newspaper
St Dierenham Park Amersfoort	R	To support the project 'Train the trainers workshop to empower indigenous Community Officers to host workshops to limit human-elephant conflict and increase resilience and sustainability in the village of Rakops bordering the Makgadikgadi Pans National Park in Botswana'
Ernst & Young	R	Travel from Gothenburg to Stockholm and Satellite GP Collars for elephants

NOTES TO THE FINANCIAL STATEMENTS - CONTINUED
for the year ended 31 December 2024

Section C **Notes to the accounts**
(cont)

9.2 Movements of major funds

Please give details of the movements of the major funds summarised in the restricted and endowment columns of the Statement of Financial Activities.

Fund names	Fund balances brought forward £	Incoming resources £	Outgoing resources £	Transfers £	Gains and losses £	Fund balances carried forward £
General Fund	10,847	135,540	(46,733)	3,513		103,167
Maryland Zoological Society	7,775	5,014	(12,789)	-	-	-
Memphis Zoo	-	3,793	(3,868)	75	-	-
Jacksonville Zoo	15,906	15,417	(34,266)	2,943	-	-
Global Giving	606	14,942	(14,942)	(606)	-	-
County of Milwaukee Zoo	1,370	-	(12)	(1,358)	-	-
Elephant Crisis Fund/Wildlife Conservation	9,001	23,267	(28,541)	(3,727)	-	-
Rhode Island Zoological	840	-	-	(840)	-	-
Graham Marketing	-	350	(350)	-	-	-
St Dierenham Park Amersfoort	-	4,147	(4,147)	-	-	-
Ernst & Young	-	2,172	(172)	-	-	2,000
Total Funds	46,345	204,642	(145,820)	-	-	105,167

NOTES TO THE FINANCIAL STATEMENTS - CONTINUED
 for the year ended 31 December 2024

9.3 Transfers between funds

Please give details of any transfers between funds.

From Fund (Name)	To Fund (Name)	Reason	Amount
General Fund	Jacksonville Zoo	To cover depreciation	2,943
General Fund	Memphis Zoo	To cover small overspend	75
Global Giving	General Fund	Money spent in previous year allocated to general fund	(606)
County of Milwaukee Zoo	General Fund	Money spent in previous year and depreciation charge allocated to general fund	(1358)
Elephant Crisis Fund/Wildlife Conservation	General Fund	Money spent in previous year allocated to general fund and to cover overspend of fund due to deferred income adjustment	(3,727)
Rhode Island Zoological	General Fund	Money spent in previous year and depreciation charge allocated to general fund	(840)

Note 10

Transactions with related parties

If the charity has any transactions with related parties (other than the trustee expenses explained in note 6) details of such transactions should be provided in this note. If there are no transactions to report, please enter "None" in the relevant boxes

**Section C
(cont)**

Notes to the accounts

10.1 Remuneration and benefits

Please give the amount of, and legal authority for, any remuneration or other benefits paid to a trustee or other related parties by the charity or any institution or company connected with it.

Name of trustee or connected party	Legal authority (eg order, governing document)	Amounts paid or benefit value	
		This year £	Last year £
None	None	None	None

10.2 Loans

Please give details of and amounts owing to or from the charity's trustees or other related parties by the charity at the year end.

	Name of trustee or connected party	Legal authority	Amount owing	
			This year £	Last year £
Due to trustees and related parties				
Due from trustees and related parties				

Please give details of any transaction undertaken by (or on behalf of) the charity in which a trustee or related party has a material interest.

Page 31

Name of the trustee or related party	Relationship to charity	Description of the transaction(s)	This year £	Last year £

Note 11 Additional Disclosures

The following are significant matters which are not covered in other notes and need to be included to provide a proper understanding of the accounts. If there is insufficient room here, please add a separate sheet.

ELEPHANTS FOR AFRICA

England & Wales - Charity number 1179318

Accounts

REGISTERED COMPANY NUMBER: CE14721 (England and Wales)
REGISTERED CHARITY NUMBER: 1179318

REPORT OF THE TRUSTEES AND UNAUDITED FINANCIAL STATEMENTS
FOR THE YEAR ENDED

31 DECEMBER 2023

FOR



LDP Luckmans
1110 Elliott Court
Coventry Business Park
Herald Avenue
Coventry
West Midlands
CV5 6UB

CONTENTS OF THE FINANCIAL STATEMENTS
for the year ended 31 December 2023

	Page
Report of the Trustees	1 to 17
Independent Examiner's Report	18
Statement of Financial Activities	19 to 20
Balance Sheet	21 to 22
Notes to the Financial Statements	23 to 32

The trustees, who are also directors of the charity for the purposes of the Companies Act 2006, present their report with the financial statements of the charity for the year ended 31 December 2023. The trustees have adopted the provisions of Accounting and Reporting by Charities: Statement of Recommended Practice applicable to charities preparing their accounts in accordance with the Financial Reporting Standard applicable in the UK and Republic of Ireland (FRS 102) (effective 1 January 2019).

Organisation

Elephants for Africa is a small charity registered as a CIO. The trustees delegate the day-to-day management to Dr Kate Evans.

OBJECTIVES AND ACTIVITIES

Objectives and aims

The aims and objectives of Elephants for Africa (Efa), as set out in its Constitution, are the advancement of education and research for the benefit of the public in the conservation and protection and monitoring of elephants in particular, but not exclusively by monitoring the demographics, ecology, behaviour, diseases and movement of African savanna elephants (*Loxodonta africana*).



Photo 1: Male elephants greeting

We aim to go beyond conservation through our holistic approach to understanding and supporting the needs of both elephants and local people. Partnering with local stakeholders, we are working towards coexistence.

We promote the conservation of African elephants through research in Botswana and advising research in Malawi and South Africa and through education in schools and communities in Botswana and through talks to schools and interested parties worldwide.

Significant activities

Research

The aim is to increase our knowledge of the social and ecological requirements of male African savanna elephants for the benefit of human-elephant conflict resolution.

This aim is achieved through maintaining our long-term monitoring of the Makgadikgadi Pans National Park (MPNP) elephants through identification study, their physical condition and group dynamics; Exploring the longevity and characteristics of male elephant groupings, and determining what attributes determine social associations, including factors such as age composition, relatedness, habitat, season and/or physical condition; investigating the spatial and temporal resource use by elephants in the MPNP and the surrounding community land and what mitigation tools can work to communicate to them where they are not welcome.

Community Outreach

Our community outreach work comes under the umbrella of our Community Coexistence Project (CCP)

There are two main aims as follows:

- Build a citizenry that values live elephants as a natural resource and increase local capacity for innovation to deal with human-elephant resource competition
- Improve the livelihoods and safety of people living in areas adjacent to national parks

We strive to achieve these aims by:

- Facilitating educational trips for local community members into protected areas and national parks to build a local appreciation, pride and ownership of Botswana's wildlife.
- Provide an education programme to engage local community members with their wildlife.
- Engage with government initiatives already operating in the area and disseminate relevant information from the scientific community to local stakeholders under the guidance and direction of our NGO Board to improve the sustainability and welfare of rural communities.
- Deliver human-wildlife conflict mitigation measures to farmers in the communities bordering the MPNP, continue educational activities, assist them with practical support, and provide data on mitigation effectiveness.
- Encouraging farmers to become self-sufficient with mitigation materials and practices, including growing chilli, joining cooperatives to protect their fields communally and remaining in the fields at increased crop raiding risk.
- Improving the knowledge of local community members in themes relating to Human Elephant Conflict (HEC) mitigation, improving crop yields and growing cash crops to increase their income through farming.
- Educating local people about elephant behaviour and how to act when faced with an elephant to encourage and enable peaceful and safe coexistence.
- Deliver workshops to rural communities that facilitate the uptake of income-generating activities that result in reduced human-wildlife conflict (e.g., non-cropping activities).
- Use collaborations with experts from local and international institutions to increase the knowledge and understanding of business and work practices, to enable them to create their own business, and/or find gainful employment.

Education Botswana

There are four main aims:

1. Inspire the next generation of conservation leaders
2. Increase employment into the environmental sector for rural youth
3. Empower the youth of today to be the problem-solvers of tomorrow
4. Contribute to capacity building in Botswana in the environmental sector through mentoring, training and the supervision and training of Botswana students



Photo 2: Environmental Club members participating in an Elephants for Africa led monthly activity

Our school's education program runs through partnerships with the environmental education clubs in the primary schools in our region. The program seeks to improve the long-term survival of elephants and the sustainability of rural communities by creating the problem solvers and innovators of the future, increasing capacity for local youth, and leading to increased employment in the wildlife sector and knowledge about the importance of the environment and biodiversity.

We offer hands-on learning experiences through monthly activities and opportunities to meet local role models to broaden children's horizons for new opportunities and future careers.

We also welcome and encourage students at Botswana universities to intern or study with us.

Linked to our outreach work with local communities, we offer educational opportunities for community members, such as visits to the National Park.

Education Worldwide

There are six main aims as follows:

1. Inspire the next generation of conservation leaders
2. Empower the youth of today to be the problem-solvers of tomorrow
3. Increase public awareness about elephant conservation and the challenges facing rural communities in Botswana
4. Communicate our findings to the public and increase knowledge about the challenges of elephant conservation.
5. Inform stakeholders of our findings
6. Contribute to capacity building in STEM and conservation through mentoring, training and the field supervision of international students

Through invitation and promotion, we provide educational and inspirational talks to schools, colleges, universities, zoological societies and at public events. Covering our work, conservation, biodiversity and women in science. We also communicate our findings and observations through social media channels, newsletters, websites, magazine and news articles, and radio and TV interviews.

Collaborating with universities worldwide, we offer the opportunity for students to conduct fieldwork with our team in Botswana and/or work on our historical data. Supervising and advising them before fieldwork, in the field and during their thesis write-up.

<https://www.facebook.com/elephantsforafrica/>

<https://x.com/E4Africa>

<https://www.instagram.com/elephantsforafrica/>

Public benefit

In formulating the objectives and planning activities for the year, the Trustees and our Founder have considered the Charity Commission's guidance on public benefit and addressed this through our education programme.

ACHIEVEMENT AND PERFORMANCE

Charitable activities

Working towards human-wildlife coexistence, our efforts are focused on the Boteti River region of the Makgadikgadi Pans National Park and surrounding areas (Figure 1). We conduct research to conserve the African savanna elephant by understanding the ecological and social requirements of male elephants and putting these into the context of human-wildlife conflict. We aim to understand the daily needs of elephants and humans and seek local solutions for local problems.

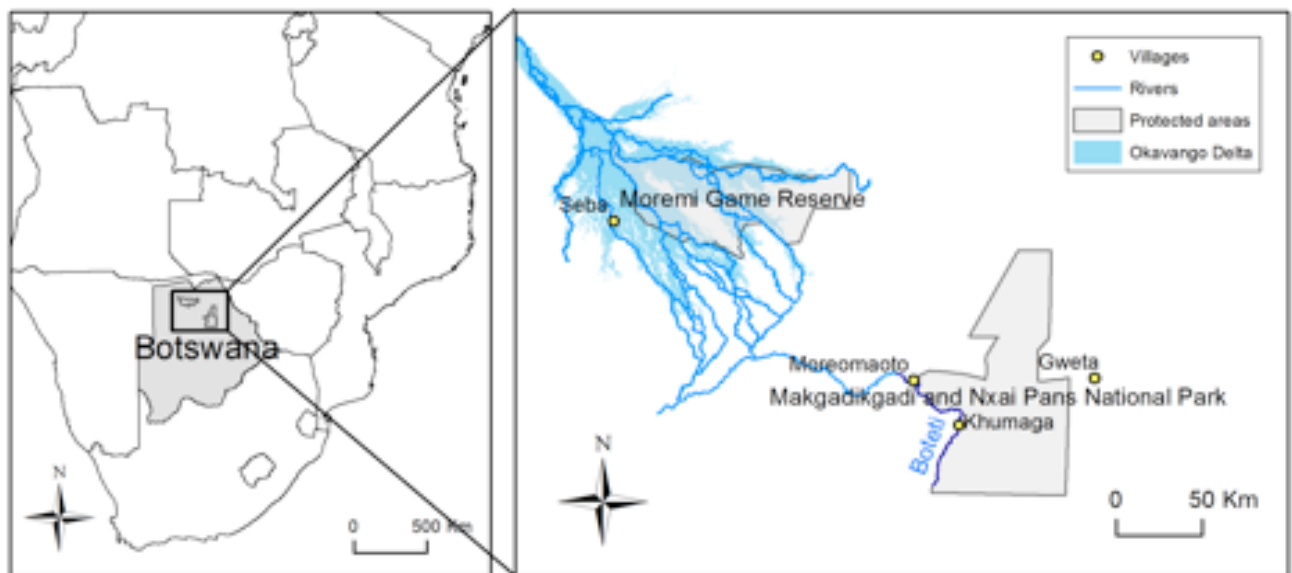


Figure 1: Figure 1: Elephants for Africa's focus area, the Makgadikgadi Pans National Park and surrounding area, Botswana. Map by Emily Bennett

Research - Long-term monitoring

This element of our work has continued but with decreased time allocated as we focus on the sampling for our study on the mineral drivers of elephant movement. However, we continue to believe that in a species as long-lived as the African savanna elephant, long-term monitoring gives us insight into some of the less apparent needs and/or behaviours, such as the social lives of male elephants. Since 2002, when our Founder began her pioneering research on male elephants in Botswana, our focus has consistently centred on these majestic animals. By leveraging our extensive long-term data sets, collaborating with universities, and hosting students, we aim to deepen our understanding of the social dynamics of male elephants. Our work continues to challenge outdated assumptions that male elephants are solitary creatures, revealing instead that they seek companionship, form meaningful friendships, and play vital roles in male elephant society as they age.



Photo 3: Young male elephants sparring

The conservation of biodiversity, including iconic species like the African savanna elephant, which serve as ambassadors for ecosystems and habitats, must also address their social needs. Conservation policies can no longer focus solely on population numbers to secure a future for African elephants in the wild. A holistic approach that includes understanding and supporting their social structures is essential for their long-term survival.

This work was funded by The Memphis Zoo, The Maryland Zoo, Jacksonville Zoo and Gardens, Mr & Mrs Travis, MuddyFace and many private donors.

Camera Trap Data

Given the limited infrastructure in the park and resources, we are utilising camera traps to gather data on the influx of females into the region, the impact on elephant utilisation of the park by the re-erection of the wildlife fence along the western boundary and group size and age. We use the [SnapShotSafari](#) system on the citizen science platform on [Zooniverse](#). Long-term, we are hoping that we will be able to ID elephants through this system and expand our mark-recapture database. We have partnered with ElephantID to use citizen science and ID to help with the massive job of identifying the elephants in our system.

Alongside elephants, we capture many of the other species that utilise this system, and we can report to the management about the diversity of herbivores. Whilst our focus remains on elephant usage of elephant highways on the western boundary of the MPNP and the impact of the re-erection of the fence, the camera traps have also documented the presence of many other species that use the elephant highways.



Photo 4-6: Camera trap images of from, L-R, aardvark (*Orycteropus afer*), wild dog (*Lycaon pictus*), and honey badger (*Mellivora capensis*)

Some of the rarer species that the camera traps captured include aardvark (*Orycteropus afer*), wild dog (*Lycyaon pictus*), and honey badger (*Mellivora capensis*) (Photos 4-6), giving us insight into some of the more elusive species that inhabit the MPNP and their usage of elephant highways.

Analyses of camera trap data from June 2014 until April 2017 by Relfson (2023) investigated the interaction between predators and herbivores and the influence of elephants on these interactions along eight elephant highways leading to the Boteti River. Only mammal species that were observed >100 times in the data set were included, which were the African savanna elephant (*Loxodonta africana*), impala (*Aepyceros melampus*), kudu (*Tragelaphus strepsiceros*), southern giraffe (*Giraffa giraffa*). The predators spotted where lion (*Panthera leo*), cheetah (*Acinonyx jubatus*), leopard (*Panthera pardus*), wild painted dog (*Lycyaon pictus*), spotted hyaena (*Crocuta crocuta*) and brown hyaena (*Hyaena brunnea*) and since Burchell's zebras (*Equus quagga burchellii*) and blue wildebeests (*Connochaetes taurinus*) are migratory species, they only reside in the MPNP periodically during the year. In terms of predator-prey interactions we found that the presence of giraffes and impala were never spotted when a predator had been observed on the highway in the previous or same 60-minute time interval, whilst there was just one occurrence for Kudu, showing a significant impact of predators on their utilisation of the highways and their avoidance behaviour for further details see the Student Research section for more details. In this section you will also learn about how camera traps were utilised to investigate the potential use of olfactory clues to direct elephant movement by student Vera Ruijs.

Elephant use of community lands

Whilst a fence continues to be erected along the western boundary of the Makgadikgadi Pans National Park, there are many elephants, and other wildlife, already utilising the community lands in this region and whilst there is discussion to move them into the national park to date no action has been taken. WE intensely monitored the crop raiding in 2020-2022, using this knowledge we are now focusing our efforts on the mitigation as well as applying our knowledge from the collar data.

Research - The push-me pull you of elephant movement.

With this project, we investigate whether the male elephants of the Makgadikgadi Pans National Park show significantly lower levels of trace minerals compared to zoo animals and wild elephants sampled elsewhere and that the availability of specific minerals in and around the park influences their movements to and through the national park and surrounding community lands.

Our objectives are:

- 1) To assess the mineral intake of male elephants in the park
- 2) To determine the concentration of minerals in the water, soil, and vegetation in the park
- 3) To identify possible links between seasonal fluctuations in the numbers of elephants and the availability of minerals in the environment
- 4) To compare the spatial distribution of elephants in the park to the spatial distribution of minerals in soil, water, and vegetation
- 5) Identify important foraging areas inside and outside the park (through collar data) and identify if these are mineral-rich areas.

We are utilising satellite tracking collars to help us answer these key questions. The ten adult male elephants collared in August 2022 are giving us great insight into the movement, habitat usage, and seasonal migration data. During the rainy season, their range increases significantly with elephants leaving the MPNP and Nxai Pan National Park complex; one elephant utilises Hwange National Park in Zimbabwe as part of his home range. As the region got dryer, all the collared bulls returned to the Boteti region (Figure 2).

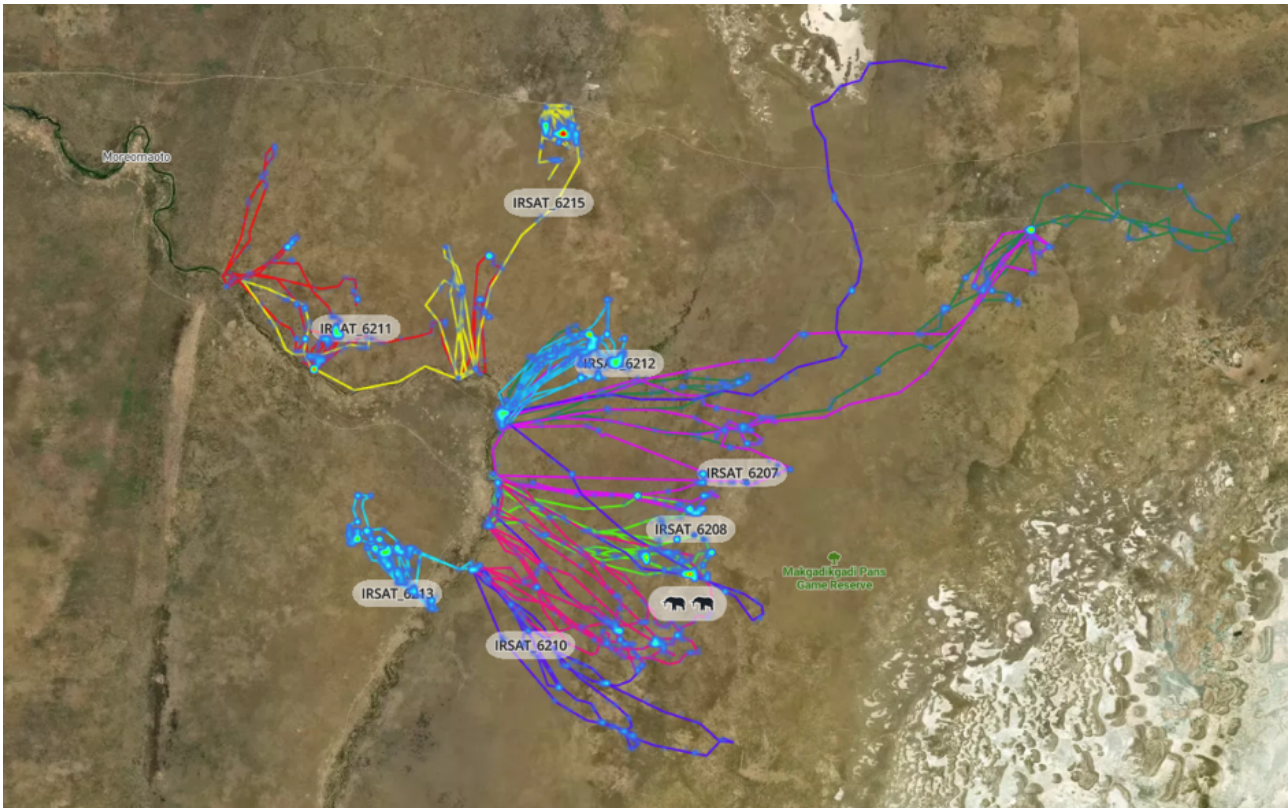


Figure 2: As rains became more infrequent, collared male elephants returned to the Makgadikgadi Pans National Park and Nxai Pan National Park complex.

Student research

This year, we welcomed PhD student Isabelle Endacott from the University of Liverpool, United Kingdom and Masters' students Vera Ruijs and Rebecka Relfsson from the University of Gothenburg, Sweden.

Isabelle's work looks at how the composition of wildlife and livestock species in a community affects parasite transmission dynamics and if wildlife species richness in a community affects parasite prevalence in livestock. She is also investigating whether community ecology relates to parasite prevalence and diversity in Botswana and if certain wildlife species influence parasite transmission (to livestock) more than others in a mixed system.

Vera's study investigated the potential of using olfactory cues in elephant pathway soil to re-direct elephant pathways away from crops and human settlements. To manipulate elephant movement, treatment of soil with olfactory cues was placed on the side that was initially less used in pathway branching events, aiming at stimulating the usage of these less-used sides. The 1500 elephant sightings, captured by camera traps on pathways towards the Boteti River in the Makgadikgadi Pans National Park, gave data for elephant pathway usage in the study. There was considerable variation in pathway usage by individual elephants and groups and usage during the day and night. A logistic regression in time series analyses revealed no significant immediate or sustained effect of the treatments on pathway usage. This could be due to the pre-existing olfactory cues on established pathways overshadowing the treatments, or elephants have a better understanding of the park than previously assumed.

Additionally, the elephants may have smelled the Boteti River water nearby, reducing their attention to the pathway treatments. Furthermore, the study found that elephants have an even greater preference for the initially more used pathways during darkness. This suggests that the elephants depend more on olfactory cues during the night.

We look forward to building on Vera's work, which has highlighted the need to better understand the factors influencing elephants' movement patterns on the macro and micro scale.

Rebecka utilised four years of data from our camera traps studies to investigate elephants' effects on other animal species and focused on how elephant presence on so-called elephant highways affects the presence of other herbivore species and predator species. Additionally, it examined if other herbivores use the elephants' presence as predation avoidance. The herbivore species included in the study were giraffe (*Giraffa camelopardalis*), greater kudu (*Tragelaphus strepsiceros*), and impala (*Aepyceros melampus*). The predators were investigated as a group (consisting of the five largest African predator species). Lions (*Panthera leo*) were also examined, separately from the other predators. Logistic regression models testing the presence of each of the herbivore species on the elephant highways against the presence of elephants and predators showed that elephants affected the presence of giraffes positively.

In contrast, the presence of kudu and impala were unaffected. The presence of predators was almost exclusively non-significant, although almost none of the herbivore species were caught on the camera traps close in time to a predator. Logistic regression models testing predator presence against elephant presence showed no significant effect of elephant presence on predator presence. The study indicates that larger herbivores such as giraffes tend to be drawn to elephants, but further studies should be done to investigate better the elephants' effect on the smaller herbivores and the predators.

Geke Woudsta finished up her Masters thesis at the Norwegian University of Life Sciences having conducted fieldwork with us in July-November 2022. Her work investigated the differences in feeding behaviour and species selection due to the difference in body size in male African savannah elephants. The main objective was to explore how body size influences the foraging strategy between male elephants. Differences in feeding behaviour, selection of woody plant species and feeding patch choices of male African savannah elephants, according to sex and physical condition, were examined during the dry season in Makgadikgadi Pans National Park in Botswana. Behavioural observations of feeding bouts were used to investigate the duration of the feeding bout, number of mouthfuls, the part of plant species eaten, foraging intensity index, feeding height and plant height. Vegetation sampling used both a feeding plot and a control plot to determine the woody species selection and the feeding patch choice. The youngest elephants (10-20 years) exhibited more selective feeding behaviour than older elephants (21-25 and 26+ years), as indicated by the lower foraging intensity index score, selection of smaller branches, browsing for a shorter amount of time, a lower number of mouthfuls, and a higher bite rate. The oldest males (26+ years) had the least diverse diet of woody plant species, with a small number of species dominating the diet, whereas the elephants 21-25 years of age had the widest range in their diet in terms of woody plant species and a positive selection for *Philenoptera violacea* and *Dichrostachys cinerea*. The oldest elephants (26+ years) selected patches that offered the highest density of edible species. In contrast, the younger elephants (10-20 and 21-25 years) focused on patches with the most significant number of preferred species and with a high richness of woody species present. These results suggest that body size is a vital factor in understanding dietary differences within male African savannah elephants in terms of feeding behaviour, selection of woody plant species as well as feeding patch choices. This is consistent with the foraging hypothesis, which states that a larger body size enables the consumption and digestion of higher quantities of low-quality forage while still obtaining sufficient nutritional benefits to match their energy demands.

In addition, using our initial satellite collar data, Jip Vader used historical data for her honours thesis to investigate the movement ecology of 10 adult male African savannah elephants and their habitat use in both protected and unprotected lands. She looked at daily patterns, hourly variations, monthly trends, temperature influences, individual preferences, feeding and resting patterns, ecological insights and the influence of musth. She found significant variation in the size of core home ranges and broader habitat utilisation across individual elephants. Highlighting the necessity for adaptable conservation strategies that consider the unique characteristics of each elephant's mobility patterns. The difference seen between the composition of available land and the actual use of habitats shows their selectivity of preferred habitat types. 584 This choice was consistent across the 10 males with specific habitat types, with selectivity for scrublands in protected areas and roads outside of protected areas whilst avoiding crops and open ground.

Research publications 2023

- **Relfsson, R** (2023). *African elephants' effect on the temporal use of elephant highways by predator and prey: Makgadikgadi Pans National Park*. Masters Thesis. University of Gothenburg, Sweden. Available [here](#).
- **Ruijs, V.** (2023). *Investigating the use of olfactory cues to re-direct African savannah elephant pathways: A potential conflict mitigation tool*. Masters Thesis. University of Gothenburg, Sweden. Available [here](#).
- **Woudstra, G.** (2023). *The influence of body size on the foraging strategy of the male African savannah elephant Elephant in Makgadikgadi Pans National Park, Botswana*. Masters Thesis. Norwegian University of Life Sciences, Norway. Available [here](#).
- **Vader, J.** (2023). *Preliminary Data on the Movement Ecology and Behaviour of Ten Adult Male African Savannah Elephants (Loxodonta africana) in Botswana and Zimbabwe*. MSc. Wildlife Biology & Conservation Thesis. Edinburgh Napier University, United Kingdom

Education

Monthly activities were delivered at our three partner primary schools Environmental Education Clubs. This year we had 70 students registered for at Khumaga Primary School, 19 students from Moreomaoto Primary School, and 38 students from Mogolokwane Primary School in Phuduhudu Village.

On the 8th of June, in partnership with Motopi Junior Secondary School, we hosted a conservation career fair to expose students to diverse and sustainable career opportunities (Photos 4-). EfA, alongside other NGOs like Wild Entrust Botswana and SAVE Wildlife Botswana, had booths to hold exhibits and discussions with the students. The career fair was organised by the school for the Form Three students who will be writing their Junior Certificate Examinations later this year. Over 100 students were in attendance as they rotated through each booth in groups (Photos 7-8).



Photo 7-8: Careers Fair at Motopi Junior Secondary School

Unfortunately, as in 2022 we were not able to give the children the opportunity to go on safari in the Makgadikgadi Pans National Park, as with the tourism industry still recovering from the devastating affects of the pandemic they were unable to help us with this endeavour. We certainly hope that recovery in this industry continues and that 2024 will see the return of this vital element of our school's education program.

Alongside many of our private funders, these activities are funded by Natural Selections Conservation Trust, The Memphis Zoo and Jacksonville Zoo and Gardens.

Talks and Presentations

We continued to engage and educate the international community through our Social Media channels as well as online lectures and lessons, Q&A's and in person lectures and talks. We are often invited to lecture students both in the field in Botswana, where visiting students from the University of Florida had the opportunity to learn about our work, alongside the trails and challenges of human-elephant conflict. Our Founder and CEO, Dr Kate Evans often engages with students through [SkypeAScientist](#) and this is the second year she has volunteered on this platform and reached pupils in the USA, Romania and the UK.

- **Evans, K.** *Beyond academia as a conservationist.* Lincoln University, United Kingdom
- **Kong, S & Sehularo, W.** *Future Research Priorities for Conservation Management of Natural Resources and Land-use in Northern Botswana.* Maun Lodge, Botswana
- **Evans, K & Sehularo, W.** *Male elephants: myths, musth, mentors & mankind.* Lunchtime Seminar, Bangor University, United Kingdom
- **Evans, K & Sehularo, W.** *Conservation in Practice.* Student Lecture, Bangor University, United Kingdom
- **Sehularo, W.** Attendance of the IUCN Human Wildlife Conflict and Coexistence conference and presentation during the interactive session, ***Rethinking Environmental Education*** during Oxford University, United Kingdom
- **Evans, K.** Spoke to 50+ 7–8-year-olds at Cambridge School of Bucharest, Romania for *Skype A Scientist* about her life as a zoologist
- **Kong, S, Sehularo, W,** spoke with cyclists from the Maun 200+ Charity Bike Ride to tell them about EfA and elephant conservation within the Boteti Region in partnership with Natural Selections and Meno a Kwena
- **Evans, K.** Was interviewed by five, 11- & 12-year-olds for their science project. Frankfurt International School, Germany for *Skype A Scientist*
- **Sehularo, W, Radinonyane, M, Motsentwa, T,** presented to visiting students from the University of Florida at the SKL Campsite in the Park
- **Evans, K.** *Male elephants: myths, musth, mentors & mankind.* Norwegian University of Life Sciences, Norway
- **Evans, K.** *In the footsteps of elephants: A journey from biologist to conservationist.* WIND, Lund University, Sweden
- **Sehularo, W, Radinonyane, M, Motsentwa, T, Bolekanye, T** participated in the Motopi Career Fair in partnership with Natural Selections
- **Sehularo, W, Radinonyane, M, Motsentwa, T, Bolekanye, T** spoke to donors at the Meno a Kwena lodge
- **Evans, K., Sehularo, W. Motsentwa, T.** Social Aspect of Conservation: Conservation in Practice. Summer Sustainability School, Gothenburg University, Sweden
- **Evans, K** *Cordials & Conservation.* Talk at the Jacksonville Zoo, Florida, United States of America
- **Evans K.** Art for Elephants Fundraiser, day of talks, activities, and public interactions with over 1000 people. Memphis Zoo, Memphis, United States of America
- **Evans, K.** *Discover the lives of male elephants.* Public Lecture. Phoenix Zoo, Arizona, United States of America
- **Evans, K.** *Elephants Conservation and Field Biology.* Staff talk, Phoenix Zoo, Arizona, United States of America

- **Evans, K.** Talk to visitor Service personnel of the Maryland Zoo, Baltimore, United States of America
- **Evans, K.** Staff Q&A session. Maryland Zoo, Baltimore, United States of America
- **Evans, K.** *The Push-me Pull-you of Botswana's elephants: what is driving range expansion?* Public Lecture Maryland Zoo, Baltimore, United States of America
- **Evans, K.** *Conserving elephants in a human world.* Lecture. Leahurst Veterinary College, University of Liverpool, Liverpool, United Kingdom
- **Evans, K (in person), Sehularo W, Motsentwa T (online).** Plenary speech *Beyond academia as a conservationist.* ACCE (Challenges of a Changing Environment Doctoral Training Partnership) Conference, University of Liverpool, United Kingdom
- **Evans K.** *Elephant Conservation and Research.* Oxfordshire Hospital School. Skype A Scientist School Talks, Online
- **Evans, K.** *Elefun: Environmental Education in Botswana.* Gothenburg Global Biodiversity Centre Annual Members Meeting, Gothenburg, Sweden

Meetings

In addition, we have participated in and contributed to many vital meetings

- **Kong, S, Sehularo, W, Radinonyane, M, Motsentwa, T, Lekang, B.** Management plan meeting with Dr. James Bradley and DWNP at the EfA camp
- **Radinonyane, M. & Bosele, C.** Human-Wildlife Conflict Meeting- Boteti Region, Rakops, Botswana
- **Sehularo. W. & Evans, K.** *Good Planet Workshop on Developing multi-thematic projects for a greater holistic impact.* Zoom
- **Sehularo, W.** Human Wildlife Conflict National Meeting, Gaborone, Botswana
- **Sehularo. W.** Khumaga Playgroup Graduation, Khumaga, Botswana
- **Sehularo, W. & Gabel, M.** Assisting Junior Rangers, Maun, Botswana
- **Kong, S. Sehularo, W. Gabel, M. & Bollen, R.** Junior Rangers Environmental Awareness Conference, Maun, Botswana
- **Evans, K.** Workshops invited expert. Advancing a comparative species perspective on adolescent development. National Institute of Health, Washington DC., United States of America
- **Radinonyane, M.,** discussed the poultry business proposal with the VDC of Khumaga.
- **Radinonyane, M.,** attended a VDC meeting to discuss project proposals before the arrival of the Vice President in September.
- **Radinonyane, M.,** attended a follow up meeting for the poultry business proposal with the VDC of Khumaga.
- **Sehularo, W, Radinonyane, M, Bolekanye, T** met with the Motopi VDC in a consultation meeting for the upcoming Motopi cluster fence
- **Sehularo, W, Radinonyane, M, Motsentwa, T, Bolekanye, T** participated in the Motopi Career Fair in partnership with Natural Selections
- **Kong, S, Sehularo, W, Motsentwa, T, Molosiwa, M, Lekang, B,** filmed for the Wilderness series with BBC
- **Sehularo, W, Radinonyane, M, Bolekanye, T, Lekang, B.** Phuduhudu Farmers Committee & Phuduhudu Village Development Committee to discuss cluster fencing, Phuduhudu
- **Radinonyane, M.** Khumaga Village Development Committee to discuss the proposed nursery project. Khumaga
- **Kong, S & Sehularo, W.** *Future Research Priorities for Conservation Management of Natural Resources and Land-use in Northern Botswana.* Maun Lodge, Botswana

- **Sehularo, W.** Attendance of the IUCN Human-Wildlife Conflict and Coexistence conference Oxford University, United Kingdom

Media

- **Evans, K.** WJZ TV live TV interview from the Maryland Zoo, Baltimore, United States of America
- **Kong, S, Sehularo, W, Motsentwa, T, Molosiwa, M, Lekang, B,** filmed for the Wilderness series with BBC and we feature in Wilderness with Simon Reeve, Series 1 Episode 4: Kalahari
<https://www.bbc.co.uk/programmes/m001tkgb>

Outreach – Community Coexistence Project (CCP)

We continue to focus on training and enabling communities to protect their crops and remain safe around elephants. This year we built another cluster fence in the village of Rakops (Photo 9), expanding our work and reach to another village and taking the number of farmers filed protected to 219 farmers' fields covering and thus protecting 2440.25 Hectares (Figure 3). Here, we employed two community officers, Miss Catherine Bosele and Mr Letshabo Ramakhubu; both works part-time and are being trained to work much more independently of our core team based in Khumaga and setting the standard for us to be able to extend our reach further as required and as permits and funding allow.



Photo 9: Efa Community Outreach and Education Coordinator, Mr Walona Sehularo, demonstrates connecting offset brackets to an electric fence.

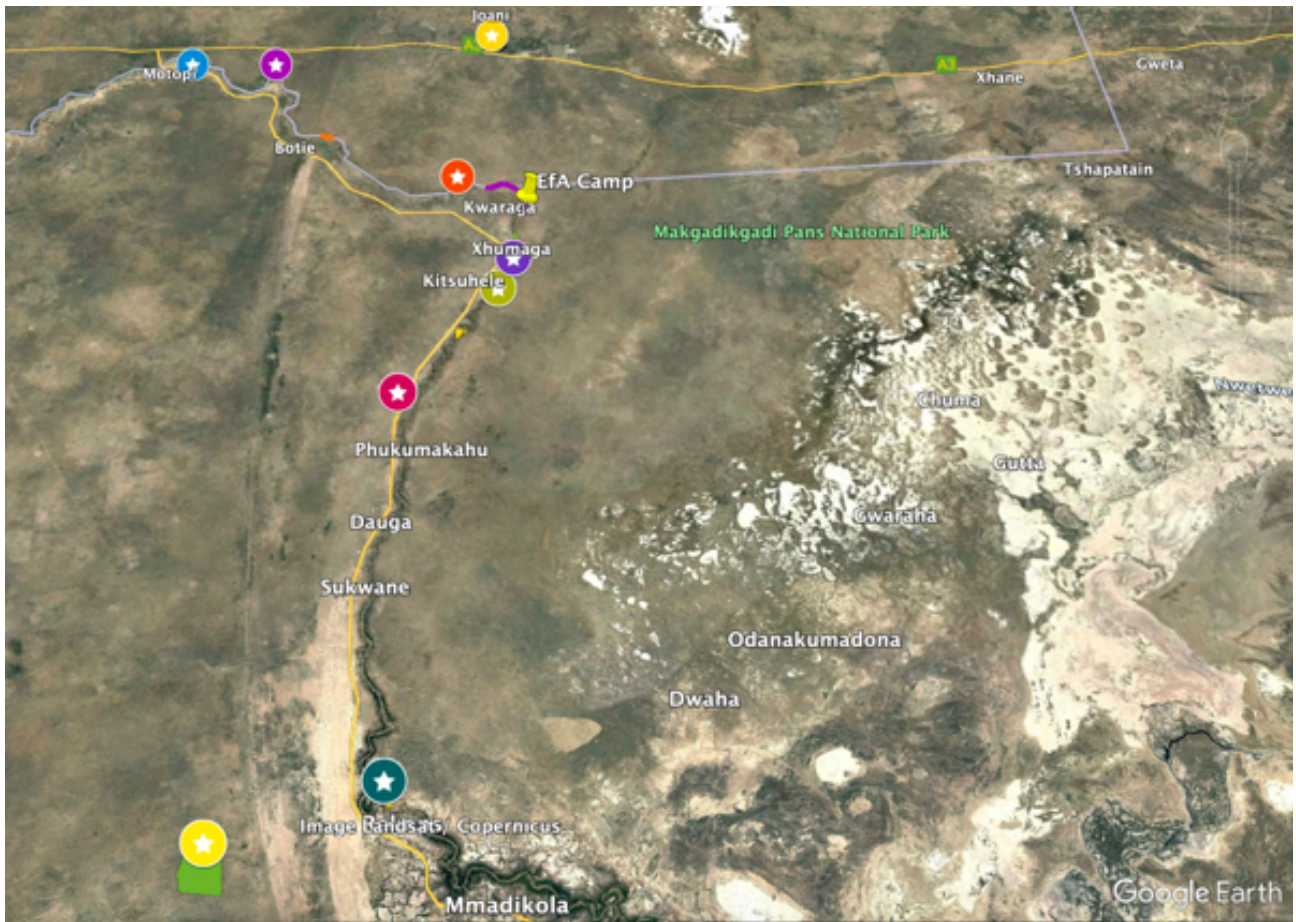


Figure 3: Google Earth map showing the location of the cluster fences (coloured stars), that we have funded and installed in the Boteti River region.

In addition, having received requests for assistance from four groups of farmers in the village of Motopi for a cluster fence, progress has been made towards selecting the location of a cluster fence, which we will assist with funding and building a solar-electric fence to protect its perimeter. The cluster will incorporate 20 farmers' fields, which have been heavily impacted by foraging elephants. While scouting the area and marketing the cluster farm's potential perimeter, elephant tracks and dung were frequently observed.

Through communications with community members, we understand that the people of Motopi are hopeful that this project will prove beneficial to their aims of returning to subsistence farming. We plan to construct the fence in 2024 and are working to secure additional funding to assist the other cluster farms that have come forward seeking assistance.

We have faced some challenges this year with the farmers in Moreoamato not maintaining their fence. These failures to do so resulted in the current flow being affected, and thus, the fence was not electrified, making it much easier for the elephants to access the fields. We are disappointed with the farmers' lack of effort and commitment and are investigating why initial enthusiasm and dedication has faded. Sadly, one of our cluster farms had two solar batteries, a charge controller, and an energiser stolen. These are essential for maintaining the security infrastructure protecting crops from elephants. The loss of this equipment has dealt a significant blow to the progress we've made towards coexistence, and the farmers are understandably devastated after much effort and time was put into the fences' planning, installation, and maintenance. Once our team was notified, EFA immediately reported the theft to the local authorities and provided the serial numbers of the equipment. To date the equipment has not been recovered.

We have been working hard to get permission from the North-West District Council (NWDC) to start the construction of a fence to protect a key water resource and farmers' fields in the village of Phuduhudu. The perimeter of the fence will span 6.66 kilometres, enclosing an area of 2.26 square kilometres or 226 hectares. Unfortunately, we have yet to receive a reply and thus, construction has been delayed. The aim is to electrify around a communal watering hole built by the NWDC that is intended for livestock but has however been utilised by elephants. As it is an area of high probability of human-elephant interactions, we hope to be able to help the community protect it and to live alongside elephants as much as possible (Photo 10).



Photo 10: Some of the farmers dependent on the Phuduhudu Communal Watering Hole have requested help from Elephants for Africa to fence with an electric fence to inhibit elephants from destroying this important infrastructure.

In conjunction with the cluster programme, it is important that the farmers utilise other mitigation tools and so we continue to:

- Source and deliver chilli to farmers and train them in its use for mitigation
- Source and distribute eye goggles, gas masks and rubber gloves (PPE) for the farmers to use whilst preparing chilli for mitigation
- 2 x Training workshops on the cultivation of chilli to the chilli plot owners
- Provision of chilli seedlings to chilli plot owners
- Host Living with Elephants workshops so that communities can learn how to interpret elephant behaviour and thus stay safe around elephants
- We have 13 tents, which we loan out to farmers during the farming seasons, enabling them to stay in their tents to maintain the mitigation, such as burning chilli dung bricks
- Hosted 3 annual farmers meetings to discuss with farmers the challenges we, and they, face in the administration of the programme to improve the programme.

With the cost of importing chilli from Zimbabwe and the closure of the Department of Wildlife and National Parks chilli plot in Khumaga, we had already invested in creating a local supply of chilli, the need for this was increased when the ban on the importation of capsicum came into effect in January 2022. To

support the farmers in doing this, we have built 22 chilli plots and are sourcing chilli from commercial farmers in Botswana.

Motopi Tree Nursery Project

With the recent loss of riverine forest due to the reconstruction of the wildlife fence on the western boundary of the Makgadikgadi Pans National Park, we have been trying to create a local tree nursery to replace the loss of this valuable resource. Initially, we identified Khumaga to be the best location; however, due to the inability to get a reliable water source, we have changed our focus to the village of Motopi, where the community is keen to support this initiative and approval has been given by the Motopi Village Development Committee to proceed with the tree nursery project..

This work was funded by the Elephant Crisis Fund. The Jacksonville Zoo and Gardens and Natural Selections Conservation Trust, alongside many of our private donors.

FINANCIAL REVIEW

Financial Position

The charity held reserves of £46, 3456 as of 31st December of 2023 (£86.737 as of 31st of December 2022), of which £35, 498 is restricted (£66,850 as of 31st December 2022).

Reserves policy

Funds held at the year-end cover three months of running costs for the charity which is deemed to be sufficient and is in line with the charity policy.

PLANS FOR THE FUTURE

- Continue to follow the movement of the collared elephants and sample the vegetation, soil and water in their range.
- Continue to monitor the impact of the fence on elephant movement and human-elephant conflict
- Employ an Education Officer that will be resident in either Motopi or Moreomaoto
- Get additional help for our communications through social media
- Welcome and accommodate more student, interns and visitors at our camp on the banks of the Boteti
- We will continue to work with and advise other NGO scientists and interested parties and contribute actively to the Elephant Specialist Advisory Group of South Africa, the proposed KAZA Elephant Working Group and the Botswana Human-Wildlife Conflict Working Group.
- Supervise and support students through their undergraduate and postgraduate degrees.
- Proceed with Motopi tree nursery
- Build cluster fence in Motopi

STRUCTURE, GOVERNANCE AND MANAGEMENT

Governing document

The charity is a company limited by guarantee governed in accordance its Memorandum and Articles of Association. The charity is a company governed by its governing document, a trust deed.

Recruitment and appointment of new trustees

The charity is constated by a board of trustees. All new appointments are elected by the board.

Induction and training of new trustees

All new trustees are given a copy of this constitution and any amendments made to it and a copy of the CIO's latest trustees' annual report and statement of accounts, last annual reports, budget, strategic plan and recent newsletters. Ideally the board meets up in person, nowadays virtually to welcome the new trustees and address any questions they may have.

Fundraising and partnerships

Elephants for Africa is funded via a range of sources, including Trusts and Foundations, zoological societies, corporate sponsorship, individual donors, online initiatives, and fundraising events. Our CEO has reduced her working hours in order to supplement her personal income, which has impacted our fundraising efforts. In response, we are exploring alternative fundraising strategies and considering the employment of an administrator to alleviate the administrative workload This should allow the CEO to dedicate her available hours more effectively to donor stewardship, fundraising and research. The trustees would like to thank all who generously support our work. A huge thanks to all our staff and volunteers in Botswana and the UK who continue supporting and contributing to our work. Elephants for Africa works in close partnership with the Botswana registered NGO, Elephants for Africa.

Risk management

We acknowledge that is the responsibility of the trustees to identify, assess and manage the risks to the charity's work. The risks we have identified are a) receiving less funding b) staff turnover c) impact of the global economic climate and the ongoing restrictions d) damage to its reputation.

- a) Staff changes has meant that our online budget, including income and potential income, which the trustees have access to, have not been updated as regularly as the planned monthly updates. Moving forward we will get back to the monthly updates.
- b) We have monthly metrics we measure ourselves against to highlight any areas we need to focus on and address.
- c) Whilst our director has remained constant throughout the charity's history, we have high turnover of our senior staff in Botswana, which have been historically recruited from outside of Botswana due to the lack of skilled personnel in Botswana. Since 2014 we have focused on capacity building to enable the staff to be predominantly Batswana (at the end of 2020 all field personnel were Batswana) and are increasing looking for funding to offer more training and development opportunities. In 2021 recruitment of a new Project Manager within Botswana and in 2022 we recruited an international Project Manager to fill this role, who joined the team in August after permits were secured.
- d) Satellite internet in camp as well as good mobile phone connections enables our Director to have weekly meetings with senior staff in the field and be accessible to all staff members.
- e) We carry out diligence with any interested partners that may wish to highlight our work and/or corporate sponsors. We acknowledge that is the responsibility of the trustees to identify, assess and manage the risks to the charity's work. The risks we have identified are a) receiving less funding b) staff turnover c) damage to its reputation.

Use of Volunteers

Elephants for Africa would not have been able to develop to where we are today without the dedication of many volunteers who offer their time and expertise. This year, we have been grateful to those supporters who have given their time to clear our ID dataset, continue to develop our online presence and technical support. Without our volunteers, we simply could not have achieved all that we have done. They are vital to the running of the CIO. We ensure that each volunteer feels valued by taking the time to regularly thank them in person, when possible, or via personal emails and letters.

**REPORT OF THE TRUSTEES
for the year end 31 December 2023**

REFERENCE AND ADMINISTRATIVE DETAILS

Registered Company number
CE14721 (England and Wales)

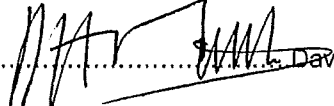
Registered Charity number
1179318

Principal address
Tithe Barn
Ridge Lane, Hook
Hampshire
RG27 9AS
United Kingdom

Trustees
J Graham
B Courtenay
D Matthias
M Henley

Independent examiner
LDP Luckmans
1110 Elliott Court
Coventry Business Park
Herald Avenue
Coventry
CV5 6UB

Approved by order of the board of trustees on 30th October 2024 and signed on its behalf by:


..... David Matthias Trustee

**INDEPENDENT EXAMINER'S REPORT TO THE TRUSTEES OF
ELEPHANTS FOR AFRICA**

Independent examiner's report to the trustees of Elephants for Africa ('the Company')

I report to the charity trustees on my examination of the accounts of the Elephants for Africa (the Trust) for the year ended 31 December 2023.

Responsibilities and basis of report

As the charity's trustees of the Company (and also its directors for the purposes of company law) you are responsible for the preparation of the accounts in accordance with the requirements of the Companies Act 2006 ('the 2006 Act').

Having satisfied myself that the accounts of the Company are not required to be audited under Part 16 of the 2006 Act and are eligible for independent examination, I report in respect of my examination of your charity's accounts as carried out under section 145 of the Charities Act 2011 ('the 2011 Act'). In carrying out my examination I have followed the Directions given by the Charity Commission under section 145(5) (b) of the 2011 Act.

Independent examiner's statement

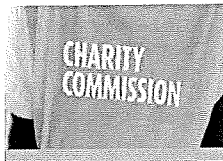
I have completed my examination. I confirm that no matters have come to my attention in connection with the examination giving me cause to believe:

1. accounting records were not kept in respect of the Company as required by section 386 of the 2006 Act; or
2. the accounts do not accord with those records; or
3. the accounts do not comply with the accounting requirements of section 396 of the 2006 Act other than any requirement that the accounts give a true and fair view which is not a matter considered as part of an independent examination; or
4. the accounts have not been prepared in accordance with the methods and principles of the Statement of Recommended Practice for accounting and reporting by charities (applicable to charities preparing their accounts in accordance with the Financial Reporting Standard applicable in the UK and Republic of Ireland (FRS 102)).

I have no concerns and have come across no other matters in connection with the examination to which attention should be drawn in this report in order to enable a proper understanding of the accounts to be reached.


M D Spafford
LDP Luckmans
1110 Elliott Court
Coventry Business Park
Herald Avenue
Coventry
West
Midlands
CV5 6UB

Date: 31st October 2024



Charity Name: Elephants for Africa			Charity No (if any)	1179318	CC17a
Annual accounts for the period					
Period start date	01/01/2023	To	Period end date	31/12/2023	

Section A Statement of financial activities

Recommended categories by activity	Details of own analysis	Note	Unrestricted funds £	Restricted income funds £	Endowment funds £	Total this year £	Total last year £
			F01	F02	F03	F04	F05
Incoming resources from generated funds (Note 3)							
Donations & legacies		S01	39,480	27,488	-	66,968	172,638
Voluntary income		S02	-	-	-	-	-
Activities for generating funds		S03	-	-	-	-	-
Investment income		S04	366	-	-	366	-
Incoming resources from charitable activities		S05	821	-	-	821	114
Other incoming resources		S06	-	-	-	-	-
Total incoming resources			40,667	27,488	-	68,155	172,752
Costs of Generating Funds (Notes 4-5)							
Costs of generating voluntary income		S07	4,458	140	-	4,598	3,465
		S08	-	-	-	-	-
Fundraising trading costs		S09	-	-	-	-	-
Separate material item of expense		S10	-	-	-	-	-
Charitable activities		S11	43,934	58,700	-	102,635	90,110
Governance costs		S12	1,314	-	-	1,314	1,080
Other resources expended		S13	-	-	-	-	-
Total resources expended			49,707	58,840	-	108,547	94,655
Net incoming/(outgoing) resources before transfers			(9,040)	(31,352)	-	(40,392)	78,097
Gross transfers between funds			-	-	-	-	-
Net incoming/(outgoing) resources before other recognised gains/(losses)			(9,040)	(31,352)	-	(40,392)	78,097

Other recognised gains/(losses)


Gains and losses on revaluation of fixed assets for the charity's own use	S17	-	-	-	-	-
Pensions	S18	-	-	-	-	-
<i>Net movement in funds</i>	S19	(9,040)	(31,352)	-	(40,392)	78,097
Total funds brought forward	S20	19,887	66,850	-	86,737	8,640
<i>Total funds carried forward</i>	S21	10,847	35,498	-	46,345	86,737

The notes form part of these financial statements

Section B

Balance sheet

	Note	Unrestricted funds £	Restricted income funds £	Endowment funds £	Total this year £	Total last year £
		F01	F02	F03	F04	F05
Fixed assets						
Tangible assets	B01	3,126	11,585	-	14,711	18,534
	B02	-	-	-	-	-
Investments	B03	-	-	-	-	-
<i>Total fixed assets</i>	B04	3,126	11,585	-	14,711	18,534
Current assets						
Stock and work in progress	B05	1,450	-	-	1,450	2,403
Debtors (Note 6)	B06	-	-	-	-	-
Other Debtors	B07	-	-	-	-	-
Cash at bank and in hand	B08	8,504	23,913	-	32,417	66,701
<i>Total current assets</i>	B09	9,954	23,913	-	33,867	69,104
Creditors: amounts falling due within one year (Note 7)	B10	2,233	-	-	2,233	900
<i>Net current assets/(liabilities)</i>	B11	7,721	23,913		31,634	68,204
<i>Total assets less current liabilities</i>	B12	10,847	35,498		46,345	86,737
Creditors: amounts falling due after one year (Note 7)	B13	-	-	-	-	-
Provisions for liabilities and charges	B14	-	-	-	-	-
<i>Net assets</i>	B15	10,847	35,498		46,345	86,737
Funds of the Charity						
Unrestricted funds	B16	10,847			10,847	19,887
Surplus/ (Deficit)	B17					
Restricted income funds (Note 8)	B18		35,498		35,498	66,850
Opening Balance Equity (Note 8)	B19					
<i>Total funds</i>	B20	10,847	35,498		46,345	86,737

Elephants *for* Africa 
Conservation through research and education
NOTES TO THE FINANCIAL STATEMENTS - CONTINUED
for the year ended 31 December 2023

The financial statements were approved by the Board of Trustees and authorised for issue on 30th October 2024 and were signed on its behalf by:



D Matthias - Trustee

The notes form part of these financial statements

NOTES TO THE FINANCIAL STATEMENTS - CONTINUED
for the year ended 31 December 2023

1. LIABILITY OF MEMBERS

The Charity is a company limited by guarantee. It does not have share capital and the liability of each member is limited to the guarantee given by that member which shall not exceed £1.

2. ACCOUNTING POLICIES

Basis of preparing the financial statements

The financial statements of the charitable company, which is a public benefit entity under FRS 102, have been prepared in accordance with the Charities SORP (FRS 102) 'Accounting and Reporting by Charities: Statement of Recommended Practice applicable to charities preparing their accounts in accordance with the Financial Reporting Standard applicable in the UK and Republic of Ireland (FRS 102) (effective 1 January 2019)', Financial Reporting Standard 102 'The Financial Reporting Standard applicable in the UK and Republic of Ireland' and the Companies Act 2006. The financial statements have been prepared under the historical cost convention.

At the time of approving the accounts, the trustees have a reasonable expectation that the trust has adequate resources to continue in operational existence for the foreseeable future. The trustees therefore continue to adopt the going concern basis of accounting in preparing the financial statements. In making this assessment, the trustees are required to consider a period of at least 12 months from the date of approval of the financial statements.

Financial reporting standard 102 - reduced disclosure exemptions

The charitable company has taken advantage of the following disclosure exemptions in preparing these financial statements, as permitted by FRS 102 'The Financial Reporting Standard applicable in the UK and Republic of Ireland':

- The requirements of Section 7 Statement of Cash Flows.

Income

All income is recognised in the Statement of Financial Activities once the charity has entitlement to the funds, it is probable that the income will be received, and the amount can be measured reliably.

Investment income and other income are included when receivable.


Expenditure

Resources expended are included in the Statement of Financial Activities on an accruals basis. Liabilities are recognised as resources expended as soon as there is a legal or constructive obligation committing the charity to the expenditure.

Charitable expenditure comprises those costs incurred by the charity in the delivery of its activities and services for its beneficiaries. It includes both costs that can be allocated directly to such activities and those costs of an indirect nature necessary to support them.

Expenditure which is directly attributable to specific activities has been included in these cost categories. Where costs are attributable to more than one activity they have been apportioned across the cost categories on a basis consistent with the use of these resources.

Governance costs include those costs associated with meeting the constitutional and statutory requirements of the charity and include the audit fees and costs linked to the strategic management of the company.

Elephants *for* Africa 
Conservation through research and education
NOTES TO THE FINANCIAL STATEMENTS - CONTINUED
for the year ended 31 December 2023

Tangible fixed assets

Depreciation is provided at the following annual rates in order to write off each asset over its estimated useful life.

Plant and machinery -	20% on cost
Computer equipment -	33% on cost

Stocks

Stocks are valued at the lower of cost and net realisable value, after making due allowance for obsolete and slow moving items.

Taxation

The charity is exempt from tax on its charitable activities.

Fund accounting

Unrestricted funds can be used in accordance with the charitable objectives at the discretion of the trustees.

Restricted funds can only be used for particular restricted purposes within the objects of the charity. Restrictions arise when specified by the donor or when funds are raised for particular restricted purposes.

Further explanation of the nature and purpose of each fund is included in the notes to the financial statements.

Pension costs and other post-retirement benefits

The charitable company pension scheme was curtailed in 2020 to curtail costs, due to the pandemic – it is yet to be reinstated.

Contributions in respect of earnings paid by the charity to defined pension contribution schemes are charged to the Statement of Financial Activities in the year in which they are payable to the schemes.

2. TRUSTEES' REMUNERATION AND BENEFITS

There were no trustees' remuneration or other benefits for the year ended 31 December 2023.

Trustees' expenses

There were no trustees' expenses paid for the year ended 31 December 2023.

NOTES TO THE FINANCIAL STATEMENTS - CONTINUED
 for the year ended 31 December 2023

Section C
(cont)

Notes to the accounts

Note 3

Analysis of incoming resources

Incoming resources may be further analysed if this would help the reader of the accounts.

	Analysis	This year £	Last year £
Voluntary income	Donations and gifts	66,968	172,638
	Total	66,968	172,638

Investment income		-	-
		-	-
	Total	-	-

Incoming resources from charitable activities	Sales of Merchandise	821	114
			-
			-
			-
	Total	821	114

NOTES TO THE FINANCIAL STATEMENTS - CONTINUED
 for the year ended 31 December 2023

Note 4 Analysis of resources expended

Resources expended may be further analysed if this would help the reader of the accounts.

Analysis	This year £	Last year £
Costs of generating voluntary income		
Incurring seeking donations	4,458	3,465
Total	4,458	3,465

Fundraising trading costs	-	-
	-	-
Total	-	-


Separate material item of expense		
	-	-
Total		

Charitable activities

Cost of Merchandise & other consumables	953	581
Donations to Botswana	47,953	54,263
Travel	177	-
Consultant & contractor	40,087	30,447
Computer & IT costs	475	1,186
Postage	96	96
Insurance	424	424
Utilities & consumables	1,057	21
Bank charges	327	233
Telephone & internet	662	579
Repairs & renewals	118	
Research & data collection	5,582	
Legal & Professional	241	427
Depreciation	4,483	1,852
Total	102,635	90,109

Governance Costs

Independent Examination fees	1,314	1,080
	-	-
Total	1,314	1,080


Elephants for Africa
 Conservation through research and education
NOTES TO THE FINANCIAL STATEMENTS - CONTINUED
 for the year ended 31 December 2023

Note 5 **Paid employees**
Please complete this note if the charity has any employees.

5.1 Staff Costs

	This year £	Last year £
Gross wages, salaries and benefits in kind	-	-
Employer's National Insurance costs		
Pension costs	-	-
Total staff costs	-	-

5.2 Average number of full-time equivalent employees in the year

The parts of the charity in which the employees work

	This year Number	Last year Number
Fundraising	-	-
Charitable Activities	-	-
Governance	-	-
Other		
	-	-

There were no employees during the year that received employee benefits (excluding employer pension costs) of more than £60,000.

Note 6 **Tangible fixed assets**

	Plant and machinery	Computer Equipment	Totals
	£	£	£
COST			
At 1 st January 2023	18,524	1,863	20,386
Additions	188	472	660
At 31 st December 2023	<u>18,712</u>	<u>2,335</u>	<u>21,046</u>
DEPRECIATION			
At 1 st January 2023	1,852	-	1,852
Charge for the year	3,705	778	4,483
At 31 st December 2023	<u>5,557</u>	<u>778</u>	<u>6,335</u>
NET BOOK VALUE			
At 31 st December 2023	<u>13,155</u>	<u>1,556</u>	<u>14,711</u>
At 31 st December 2022	<u>16,671</u>	<u>1,863</u>	<u>18,534</u>

NOTES TO THE FINANCIAL STATEMENTS - CONTINUED
 for the year ended 31 December 2023

Note 7 Debtors and prepayments

Please complete this note if the charity has any debtors or prepayments.

Analysis of debtors

	Amounts falling due within one year		Amounts falling due after more than one year	
	This year	Last year	This year	Last year
	£	£	£	£
Trade debtors	-	-	-	-
Amounts due from subsidiary and associated undertakings	-	-	-	-
Other debtors	-	-	-	-
Prepayments and accrued income	-	-	-	-
Total	-	-	-	-

Note 8 Creditors and accruals

Please complete this note if the charity has any creditors or accruals.

8.1 Analysis of creditors

	Amounts falling due within one year		Amounts falling due after more than one year	
	This year	Last year	This year	Last year
	£	£	£	£
Loans and overdrafts	-	-	-	-
Trade creditors	-	-	-	-
Amounts due to subsidiary and associated undertakings	-	-	-	-
Other creditors	-	-	-	-
Accruals and deferred income	2,233	900	-	-
Total	2,233	900	-	-

8.2 Security over assets

If any loan, overdraft or other creditor holds a charge or other security over any assets of the charity please provide details.

Note 9 Endowment and restricted income funds

Please complete this section if the charity has any endowment or restricted income funds.

9.1 Funds held

Please give a brief description of any of the following type of funds held by the charity:

- permanent endowment funds (PE);
- expendable endowment funds (EE); and
- restricted income funds, including special trusts, of the charity (R).

Fund Name	Type PE, EE or R	Purpose and Restrictions
Global Giving	R	Various donations to use for the following projects: Camp improvements, Elephants Responses to the return of hunting, Botswana's future environmental stewards 2022-23, male elephants of Makgadikgadi and EfA Community Empowerments
Elephants Crisis Fund	R	Mitigating human-elephant conflict around wildlife corridors to secure future habitat options for elephants in Central Botswana
David Matthias	R	Promotion of educational comics in South Africa Schools
Jacksonville Zoo	R	Field office work in Botswana

**Section C
(cont)**

Notes to the accounts

9.2 Movements of major funds

Please give details of the movements of the major funds summarised in the restricted and endowment columns of the Statement of Financial Activities.

Fund names	Fund balances brought forward £	Incoming resources £	Outgoing resources £	Transfers £	Gains and losses £	Fund balances carried forward £
Maryland Zoological Society	26,187		(18,412)	-	-	7,775
Memphis Zoo						
Jacksonville Zoo	21,464	13,945	(19,503)	-	-	15,906
Global Giving	7,362	10,543	(17,298)	-	-	606
County of Milwaukee Zoo	1,375		(5)	-	-	1,370
Elephant Crisis Fund	9,622		(621)	-	-	9,001
Rhode Island Zoological	840		-	-	-	840
David Matthias		3,000	(3,000)			-
Total Funds	66,850	27,488	(58,840)	-	-	35,498

9.3 Transfers between funds

Please give details of any transfers between funds.

From Fund (Name)	To Fund (Name)	Reason	Amount

Note 10 Transactions with related parties

If the charity has any transactions with related parties (other than the trustee expenses explained in note 6) details of such transactions should be provided in this note. If there are no transactions to report, please enter "None" in the relevant boxes

Section C (cont) Notes to the accounts

10.1 Remuneration and benefits

Please give the amount of, and legal authority for, any remuneration or other benefits paid to a trustee or other related parties by the charity or any institution or company connected with it.

Name of trustee or connected party	Legal authority (eg order, governing document)	Amounts paid or benefit value	
		This year	Last year
		£	£
None	None	None	None

10.2 Loans

Please give details of and amounts owing to or from the charity's trustees or other related parties by the charity at the year end.

Name of trustee or connected party	Legal authority	Amount owing	
		This year	Last year
		£	£
Due to trustees and related parties			
Due from trustees and related parties			

Please give details of any transaction undertaken by (or on behalf of) the charity in which a trustee or related party has a material interest.

ELEPHANTS FOR AFRICA

England & Wales - Charity number 1179318

Accounts

REGISTERED COMPANY NUMBER: CE14721 (England and Wales)
REGISTERED CHARITY NUMBER: 1179318

REPORT OF THE TRUSTEES AND UNAUDITED
FINANCIAL STATEMENTS FOR THE YEAR
ENDED 31 DECEMBER 2022

FOR



LDP Luckmans
1110 Elliott Court
Coventry Business Park
Herald Avenue
Coventry
West Midlands
CV5 6UB

CONTENTS OF THE FINANCIAL STATEMENTS
for the year ended 31 December 2022

	Page
Report of the Trustees	1 to 11
Independent Examiner's Report	12
Statement of Financial Activities	13 to 14
Balance Sheet	15 to 16
Notes to the Financial Statements	17 to 26

Elephants for Africa 
Conservation through research and education
REPORT OF THE TRUSTEES
for the year ended 31 December 2022

The trustees, who are also directors of the charity for the purposes of the Companies Act 2006, present their report with the financial statements of the charity for the year ended 31 December 2021. The trustees have adopted the provisions of Accounting and Reporting by Charities: Statement of Recommended Practice applicable to charities preparing their accounts in accordance with the Financial Reporting Standard applicable in the UK and Republic of Ireland (FRS 102) (effective 1 January 2019).

Organisation

Elephants for Africa is a small charity registered as a CIO. The trustees delegate the day-to-day management to Dr Kate Evans.

OBJECTIVES AND ACTIVITIES

Objectives and aims

The aims and objectives of Elephants for Africa (EfA), as set out in its Constitution are the advancement of education and research for the benefit of the public in the conservation and protection and monitoring of elephants in particular, but not exclusively by monitoring the demographics, ecology, behaviour, diseases and movement of African savannah elephants (*Loxodonta Africana*).



We aim to go beyond conservation, through our holistic approach to understanding and supporting the needs of both elephants and local people. Partnering with local stakeholders, we are working towards coexistence.

We promote the conservation of African elephants through research in Botswana and advising research in Malawi and South Africa and through education in schools and communities in Botswana and through talks to school and interested parties worldwide.

**REPORT OF THE TRUSTEES
for the year ended 31 December 2022**

SIGNIFICANT ACTIVITIES

Research

The aim is to increase our knowledge of the social and ecological requirements of male African savannah elephants for the benefit of human-elephant conflict resolution.

This aim is achieved through maintaining our long-term monitoring of the Makgadikgadi Pans National Park (MPNP) elephants through identification study, their physical condition and group dynamics; Exploring the longevity and characteristics of male elephant groupings, and determine what attributes determine social associations, including factors such as age composition, relatedness, habitat, season and/or physical condition; Investigating the spatial and temporal resource use by elephants in the MPNP and the surrounding community land and what mitigation tools can work to communicate to them where they are not welcome.

Community Outreach

Our community outreach work comes under the umbrella of our Community Coexistence Project (CCP)
There are two main aims as follows:

- Build a citizenry that values live elephants as a natural resource and increase local capacity for innovation to deal with human-elephant resource competition
- Improve the livelihoods and safety of people living in areas adjacent to national parks

We strive to achieve these aims by:

- Facilitating educational trips for local community members into protected areas and national parks to build a local appreciation, pride and ownership of Botswana's wildlife.
- Provide an education programme to engage local community members with their wildlife, supplement
- Government initiatives already operating in the area and disseminate relevant information from the scientific community to local stakeholders, under the guidance and direction of our NGO Board to improve the sustainability and welfare of rural communities.
- Deliver human-wildlife conflict mitigation measures to a targeted number of farmers in the communities bordering the MPNP, continuing educational activities, assisting them with practical support and providing data on mitigation effectiveness.
- Encouraging farmers to become self-sufficient with mitigation materials and practices, including growing chilli, and remaining in the fields at times of increased crop raiding risk.
- Improving the knowledge of local community members in themes relating to Human Elephant Conflict (HEC) mitigation, improving crop yields and growing cash crops to increase their income through farming.
- Educating local people about elephant behaviour, and how to act when faced with an elephant, to encourage and enable peaceful and safe coexistence.
- Delivering workshops to rural communities that facilitate the uptake of income generating activities that result in reduced human-wildlife conflict (e.g. non-cropping activities).
- Use collaborations with experts from local and international institutions to increase the local youth's understanding of business and work practices, to enable them to create their own business, and/or find gainful employment

**REPORT OF THE TRUSTEES
for the year end 31 December 2022**

Education Botswana

There are four main aims as follows:

1. Inspire the next generation of conservation leaders
2. Increase employment into the environmental sector for rural youth
3. Empower the youth of today to be the problem-solvers of tomorrow
4. Contribute to capacity building in Botswana in the environmental sector, through mentoring, training and the field supervision of Motswana students



Our school's education program is a collaboration between Elephants for Africa, local primary schools' environmental clubs and our local and international funding partners. The program seeks to improve the long-term survival of elephants and the quality of life of local communities by creating capacity-building opportunities for local youth leading to increased employment into the wildlife sector and knowledge about the importance of the environment and biodiversity.

Partnering with local primary schools, we offer hands-on learning experiences and opportunities to meet local role models to broaden children's horizons for new opportunities and future careers.

Working with local universities we aim to support local students through their postgraduate degrees and look for opportunities to train undergraduates when relevant degrees are offered locally.

Linked to our outreach work with local communities we offer educational opportunities for community members.

Education Worldwide

There are six main aims as follows:

1. Inspire the next generation of conservation leaders
2. Empower the youth of today to be the problem-solvers of tomorrow
3. Increase public awareness about elephant conservation and the challenges facing rural communities in Botswana
4. Communicate our findings to the public and increase knowledge about the challenges of elephant conservation.
5. Inform stakeholders of our findings
6. Contribute to capacity building in STEM and conservation, through mentoring, training and the field supervision of international students

Through invitation and promotion, we provide educational and inspirational talks to schools, colleges, universities, zoological societies and at public events. Covering our work, conservation, biodiversity and women in science. We also communicate our findings and observations through our social media channels, newsletter, website, magazine and news articles, radio and TV interviews.

Collaborating with universities throughout the world we offer the opportunity for students to conduct their field work with our team in Botswana and/or work on our historical data. Supervising and advising them prior to fieldwork, in the field and during their thesis write up.

**REPORT OF THE TRUSTEES
for the year end 31 December 2022**

Public benefit

In formulating the objectives and planning activities for the year, the Trustees, and our Founder have considered the Charity Commission's guidance on public benefit and address this through our education programme.

ACHIEVEMENT AND PERFORMANCE

Charitable activities

The charities key areas of activity during the year were:

Research - Long-term monitoring

Research was back up to full speed this year after the full out from the Covid Pandemic and 2022 marked the 10th year of our monitoring project on elephants in the Makgadikgadi Pans National Park (MPNP). Long-term monitoring of mammalian populations is important for many reasons, not least that it enables us to document responses to environmental change and thus assists us to adapt conservation actions. Twenty years ago, there were low numbers of elephants utilising the Boteti River region of the Makgadikgadi Pans National Park (MPNP), the large change with the flooding of the river again in 2009, drew them in, increasing elephant numbers. In 2012 we saw, and found no evidence of, females utilising the MPNP, in 2014 we started to see signs of females utilising the area, spoor of small herds going down to the river to drink at night, and so we employed camera traps to capture these elusive herds. This camera trap data, along with our observations, has shown us that there has been a significant growth in female activity in the Boteti River region over time, with a 6.4% average annual increase of females. Supporting the idea that male elephants are the explorers and risk takers, repopulating areas first, with females following afterwards, perhaps because they then know that it is safe to do so.

In a species as long lived as the African savanna elephant long-term monitoring also gives us insight into some of the less obvious needs and/or behaviours, such as the social lives of male elephants. Since 2002 when our Founder started her work on male elephants in Botswana, our focus remains on male elephants as we use our long-term data sets, collaborate with universities and host students to fully understand their social needs and debunk long held beliefs that male elephants are loners, that they do not require the company of other elephants, need friendships or indeed have a role to play in male society as they age.

The conservation of biodiversity and the many charismatic species, such as the African savanna elephant, that are often ambassadors for ecosystems and habitats, must include consideration for their social requirements, conservation policies can no longer just focus on numbers if we are to enable the African elephant to have a future in the wild.

This work was funded by, The Memphis Zoo, The Maryland Zoo, Jacksonville Zoo and Gardens, Mr & Mrs Travis, MuddyFace and many private donors.

**REPORT OF THE TRUSTEES
for the year end 31 December 2022**

Elephant use of community lands

The electric fence along the western boundary of the MPNP was made defunct in 2011, when the Boteti River started to flow again. Between July 2019 and August 2020, a non-lethal electric fence was erected from the northeast corner of the MPNP to just south of the village of Khumaga, with plans to continue south to the South-eastern corner of the park in 2023. The expectation of this action was that there would be a reduced number of human-wildlife conflict events in the communities bordering the western boundary. However, we have seen many elephants still utilising the community lands and several attempts by elephants to get back into the MPNP along the fence line.

Our community research project helps us to understand land utilization by elephants outside of the park, and thereby enables us to better support the communities. We have an arrangement with local farmers to report any elephant crop raiding incidents. We started this work in 2020, based on work established by previous PhD student, James Stevens. This year, we saw a return to high numbers of crop raiding reports after a steady decline in raids corresponding with the increased use of mitigation in the region; from a high of 4.2 raids per farmer per year down to 1.1 raid per year in 2021. Whilst there are many things to take into consideration, such as the number of farmers that ploughed which was also higher in 2022, we do have to consider that the re-erection of the fence is exacerbating the situation, with elephants 'trapped' on the community lands leading to higher levels of crop raiding for the communities near the new fence. Due to this escalation, we shall continue to monitor crop raiding in 2023.

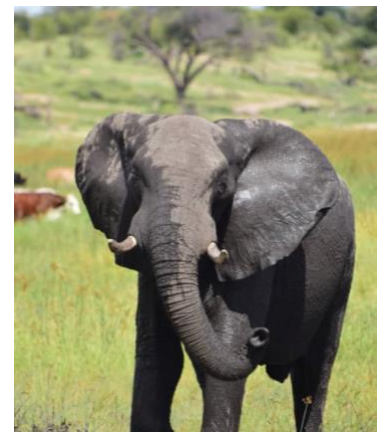


Photo 1: Elephant & cows share space on the Boteti River

One farmer from the village of Moreomato was crop raided 12 times, the highest ever to be recorded in a single cropping season. Her field is fenced by traditional poles and barbed wire, and she did burn chilli bricks on 10 of the 12 times her fields were raided, to protect her field. However, with the good rains' chilli burning methods failed at times, extinguishing the smoking process. Proper use of a mitigation tool like chilli burning helps to protect crops from elephants, communicating to the elephants that they are not welcome in those areas, and encouraging them to forage elsewhere.

The continued provision of mitigation materials to help farmers stop elephants from crop raiding, is key to building positive community: wildlife relationships and enable both species to thrive in this landscape.

This work was funded by Natural Selections Conservation Trust, The Memphis Zoo, GoodPlanet Foundation, The Addax and Oryx Foundation and various private funders.

Research - The push-me pull you of elephant movement.

Botswana has large male elephants but not the large tuskers people revere, where the tusks touch or almost touch the ground, as seen in Kenya and South Africa for example. It could simply be that they have all been poached or hunted for their large tusks, as alas there are fewer and fewer Big Tuskers throughout their remaining range, but we also noticed a high level of broken tusks in the population and given the nutrient poor Kalahari sands that is the basis of Botswana, perhaps trace minerals are a factor. Recent ecological shifts in Botswana, climate change and increasing elephant population (due to immigration alongside natural growth and relatively low poaching rates), has seen a rapid recolonisation of elephants throughout Botswana, their range having shrunk as the land became drier and uncontrolled hunting decreased their numbers and saw them restricted to the wetter areas in the north. They are now utilising areas they have not been seen in since the early 1900, meaning that communities have not had to deal with elephants, rapidly increasing conflict levels in many rural areas. This recolonisation is unlikely to stop and, like many countries, Botswana is facing the realities of a warming climate and thus many wildlife populations are having to use lands outside of protected areas.

**REPORT OF THE TRUSTEES
for the year end 31 December 2022**

Where will they go? Perhaps understanding if and how elephant movement is dependent on trace minerals, amongst other things, we can begin to map the areas they will need to access and being to build a land of human-wildlife coexistence to enable both humans and wildlife to thrive in a every changing and challenging environment.

In compliance with our collaring permit under research permit ENT/8/36/4 XXXXIII (88) on Monday the 22nd of August and Tuesday the 23rd August, 10 adult male elephant were collared with African Wildlife Tracking Satellite Radio collars, fitted with Technosmart accelerometers, to measure movement. The darting was carried out by Dr Rob Jackson of Maun, a Botswana registered vet.

We used a fixed wing plane to help us spot the elephants and a helicopter to dart the elephants from. Where possible a ground crew came in to assist with the collaring. Three of the elephants went down on their chests and therefore it was not safe for them to be down for very long, and thus we attached the collar as soon as possible and reversed the anaesthetic; for these very little data in the form of elephant measurements or samples were taken.

The collaring was funded by The Maryland Zoo, The Memphis Zoo, Jacksonville Zoo and Gardens, Milwaukee County Zoo and Natural Selections Conservation Trust. Additional funders supporting the on-going research utilising these collars are The Disney Conservation Trust and private funders.

As always, our research efforts are enhanced by visiting students and 2022 saw Masters student Geke Woudstra from the Norwegian University of Life Science, Ms Isabelle Endacott, PhD student at Liverpool University in the UK join the team at our Botswana field camp to carry out their field work on feeding habits and parasites respectively. Whilst Masters student Ana Sales of Universidade de Aveiro in Portugal, worked with students at a local primary school, investigating the use of dance as a conservation communication tool. Working remotely on our historical data, Masters students Josh Beeching, Victoria O'Sullivan and Kerry John-Davis investigated, spatial use, population dynamics the effect of the lunar cycle on activity patterns.

Research publications –

- **Sales, A.** (2022). *Dancing for Elephants*. Masters Thesis. Universidade de Aveiro, Portugal
- **Beeching, J.** (2022). *Investigating the Spatial Use of the Makgadikgadi Pans National Park by Loxodonta Africana*. Masters Thesis. University of Roehampton, United Kingdom
- **Victoria O'Sullivan.** (2022). *Elephant (Loxodonta Africana) population dynamics change following recolonisation of an area*. Masters Thesis. University of Roehampton, United Kingdom.
- **John-David, K.** (2022). *Understanding the use of 'Elephant Highways' in Makgadikgadi Pans National Park: Analysis of activity patterns and the effect of the lunar cycle on movements of male social groups and breeding herds of the African Savannah Elephant (Loxodonta Africana)*. Masters Thesis. University of Bristol, United Kingdom

**REPORT OF THE TRUSTEES
for the year end 31 December 2022**

Education

After almost two years of not being able to visit schools for our Monthly environmental club lessons due to the Covid 19 Pandemic, it was with great joy that we were able to resume our lessons in 2022 with our partner schools in the Boteti Region, namely Khumaga Primary School, Moreomaoto Primary School, Mogolokwane Primary School and Motopi Junior Secondary School.

We still observe Covid 19 protocols during our lessons, everyone attending wears a mask and hand sanitizers are readily available and, as always, we incorporated as much outdoor learning as possible. This year we had 50 students from Khumaga Primary School, 20 students from Moreomaoto Primary School, 20 students from Motopi Junior Secondary School and 50 students from Mogolokwane Primary School in Phuduhudu Village in the Schools Environmental Education Clubs.



Photo 2: Environmental Education Club students picking litter in the school premises during our Pollution lesson

There is a Setswana proverb “**lore lo ojwa le sale metsi**”, which means, “**Mould the plant while it is still young and supple for when it is older and hardened, it will break.**” and indeed we hope the moulding we do now will grow the conservation stewards of the future.

In 2022 we delivered five key topics in each school, covering ecosystems food chains and food webs, pollution, the concept of The Three R, s, Plant Adaptations.

Unfortunately, we were not able to give the children the opportunity to go on safari in the Makgadikgadi Pans National Park, as with the tourism industry still recovering from the devastating affects of the pandemic they were unable to help us with this endeavour. We certainly hope that recovery in this industry continues and that 2023 will see the return of this important element of our school’s education program.

Alongside many of our private funders, these activities are funded by Natural Selections Conservation Trust, The Memphis Zoo and Fresno Chafee Zoo.

We continued to engage and educate the international community through our Social Media channels as well as online lectures and lessons, Q&A’s and in person lectures and talks.

- **Evans, K.E.** *Cocktails for Conservation*. Memphis Zoo Fundraiser. In person
- **Evans, K.E.** *Conservation Conversation*. American Association of Zookeepers. Online live lecture..
- **Sehularo, W** was invited by the Knyphausen Stiftung (Junior Rangers) & StartUp4Kids Foundation to act as a panellist for their *Biodiversity on the Edge*. In person
- **Evans, K.** *The Realities of Human-Wildlife Conflict. Is Coexistence a Reality?* Summer Biodiversity School University of Gothenburg, Sweden. 26th July 2022. In person.

**REPORT OF THE TRUSTEES
for the year end 31 December 2022**

- **Evans, K.E.** Soap Box Scientist; *Women in Science*. Gothenburg, Sweden In person.
- **Evans, K.E & Sehularo, W.** *Discover the real lives of male elephants*. Internationella Vetenskapsfestivalen, Gothenburg, Sweden. In person/ Online live lecture..
- **Evans, K.E.** *Male elephants, the Makgadikgadi Pans National Park and working towards coexistence*. Kenyan Wildlife Training Institute: Online live presentation
- **Evans, K.E.** *The Push-Me Pull-You of Botswana's Elephants, what is driving range expansion*. Gothenburg Global Biodiversity Centre, Sweden. In person.
- **Evans, K.E.** *Beyond Academia as a Conservationist*. University of Lincoln, United Kingdom. Online live presentation
- **Evans, K.E.** *Funding Conservation*. University of Lincoln, United Kingdom. Online presentation
- **Sehularo, W.** *Applied research and community participation in conservation*. University of Lincoln, United Kingdom. Online live lecture. Online live lecture.
- **Evans, K.E.** *In the Footsteps of elephants*. University of Swansea Alumni Lecture Series in honour of International Women's Day. Online live lecture
- **Evans, K.E.** *Beyond Academia as a Conservationist*. University of Bristol, United Kingdom. Online live lecture

Outreach

2022 was an exciting year for Elephants for Africa, especially in the village of Moreomaoto. Sitting just 50km to the north of Khumaga, it is a sister village with many of the people in the two villages related and experiencing the same challenges. Back in 2020, we had begun a journey with the farmers giving them access to knowledge and tools about mitigation techniques they could apply to help protect their crops. In 2021, thanks to the support of longterm funder, Foundation GoodPlanet, we were able to begin building our first megaproject; a 150ha cluster field with sixty-two farmer's fields being protected, we have called the Moreomaoto Cluster.

Our Moreomaoto Community Officer, Mr Tathego Bolekanye, led the construction with farmers contributing their time, labour, and resources to ensure the ambitious project was completed. The farmers utilised indigenous trees for the pickets, which are hardy and cheap to replace instead of gum poles. This reduced the overall cost, key as the costs have increased substantial due to global unrest, whilst ensuring the farmers had invested resources in the project and thus had ownership. The cluster was split into two sections, separated by a dirt road allowing unrestricted movement in between.

Another cluster constructed this year was the Dikwalo cluster, a smaller cluster with five farmers and measuring roughly 10ha, funded by the Elephant Crisis Fund. The Dikwalo farms lie close to an area that from our surveys in 2020, showed a high intensity of elephant movement and thus identified as hotspot for potential conflict and devastatingly one person lost their life in 2020 due to an encounter with an elephant. Along with the commencement of our Living With workshops in this area in 2021, the cluster farm will help the community prosper safely, alongside elephants.



Photo 3: Efa Community Officer for Moreomaoto, Tathego Bolekanye, Installing an electric fence around a cluster farm.

**REPORT OF THE TRUSTEES
for the year end 31 December 2022**

It is important that other mitigation tools are used in conjunction with the electric fencing, and chilli bricks have been deployed with success in our area. Most of the chilli we have issued to farmers in the past has been imported from Zimbabwe, which is costly in both time and money due to a labourious import process, and so we have been encouraging farmers to produce their own chilli to add some resilience to the supply chain. This year, with the support from the Addax and Oryx Foundation and the Elephant Crisis Fund, we now have twenty new chilli plots ready to go. Building on our knowledge and experience we have doubled the size of our plots, going from 5m x 4m to a whopping 10m x 8m!

Thanks to the Addax and Oryx Foundation, Elephant Crisis Fund and Natural Selections Conservation Trust, alongside many of our private donors.

FINANCIAL REVIEW

Financial Position

The charity held reserves of £86,737 as of 31 December 2022 (£8,640 as of 31 December 2021), of which £66,850 is restricted (£NIL of 31 December 2021).

Reserves policy

Funds held at the year-end cover three months of running costs for the charity which is deemed to be sufficient and is in line with the charity policy.

PLANS FOR THE FUTURE

- Continue to follow the movement of the collared elephants and sample the vegetation, soil and water in their range.
- Continue to monitor the impact of the fence on elephant movement and human-elephant conflict
- We will launch a Corporate Campaign, to continue to diversify our income streams, which we have worked on this year.
- Welcome and accommodate more student, interns and visitors at our camp on the banks of the Boteti
- Host a Careers Fair at Motopi Junior Secondary School
- Expand our Community Coexistence Project to the community of Rakops.
- We will continue to work with and advise other NGO's scientists and interested parties and contribute actively to the Elephant Specialist Advisory Group of South Africa, proposed KAZA Elephant Working Group and the Botswana Human-Wildlife Conflict working group.
- Supervise and support students through their undergraduate and post graduate degrees.

STRUCTURE, GOVERNANCE AND MANAGEMENT

Governing document

The charity is a company limited by guarantee governed in accordance its Memorandum and Articles of Association. The charity is a company governed by its governing document, a trust deed.

Recruitment and appointment of new trustees

The charity is constated by a board of trustees. All new appointments are elected by the board.

Induction and training of new trustees

All new trustees are given a copy of this constitution and any amendments made to it and a copy of the CIO's latest trustees' annual report and statement of accounts, last annual reports, budget, strategic plan and recent newsletters. Ideally the board meets up in person, nowadays virtually to welcome the new trustees and address any questions they may have.

**REPORT OF THE TRUSTEES
for the year end 31 December 2022**

Fundraising and partnerships

Elephants for Africa is funded via a range of sources including Trusts and Foundations, zoological societies, corporate sponsorship, individual donors, online initiatives, and fundraising events. This year we have sustained and increased support from existing funders and secured funds from new sources. The trustees would like to thank all who generously support our work. A huge thanks to all our staff and volunteers in Botswana and in the UK who continue to support and contribute to our work. Elephants for Africa works in close partnership with the Botswana registered NGO, Elephants for Africa.

Risk management

We acknowledge that it is the responsibility of the trustees to identify, assess and manage the risks to the charity's work. The risks we have identified are a) receiving less funding b) staff turnover c) impact of the global economic climate and the ongoing restrictions d) damage to its reputation.

- a) Staff changes has meant that our online budget, including income and potential income, which the trustees have access to, have not been updated as regularly as the planned monthly updates. Moving forward we will get back to the monthly updates.
- b) We have monthly metrics we measure ourselves against to highlight any areas we need to focus on and address.
- c) Whilst our director has remained constant throughout the charity's history, we have high turnover of our senior staff in Botswana, which have been historically recruited from outside of Botswana due to the lack of skilled personnel in Botswana. Since 2014 we have focused on capacity building to enable the staff to be predominantly Botswana (at the end of 2020 all field personnel were Botswana) and are increasing looking for funding to offer more training and development opportunities. In 2021 recruitment of a new Project Manager within Botswana and in 2022 we recruited an international Project Manager to fill this role, who joined the team in August after permits were secured.
- d) Satellite internet in camp as well as good mobile phone connections enables our Director to have weekly meetings with senior staff in the field and be accessible to all staff members.
- e) We carry out diligence with any interested partners that may wish to highlight our work and/or corporate sponsors. We acknowledge that it is the responsibility of the trustees to identify, assess and manage the risks to the charity's work. The risks we have identified are a) receiving less funding b) staff turnover c) damage to its reputation.

Use of Volunteers

Elephants for Africa would not have been able to develop to where we are today without the dedicated of many volunteers, who offer their time and expertise. This year we have been grateful for those supporters that have given their time to develop our online presence, improve our PR, bring together our newsletters and reports, video production and technical support. Without our volunteers we simply could not achieve all that we do. They are vital to the running of the CIO. We ensure that each volunteer feels valued through taking the time to regularly thank them in person, when possible, or via personal emails and letters.

REPORT OF THE TRUSTEES
for the year ended 31 December 2022

Principal address

5 Balfour Road
London
N5 2HB

Trustees

J Graham

B Courtenay

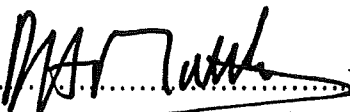
D Matthias

M Henley

Independent examiner

LDP Luckmans
1110 Elliott Court
Coventry Business Park
Herald Avenue
Coventry
CV5 6UB

Approved by order of the board of trustees on 30 Oct 2023 and signed on its behalf by:


..... David Matthias, Trustee & Chair

**INDEPENDENT EXAMINER'S REPORT TO THE TRUSTEES OF
ELEPHANTS FOR AFRICA**

Independent examiner's report to the trustees of Elephants for Africa ('the Company')

I report to the charity trustees on my examination of the accounts of the Elephants for Africa (the Trust) for the year ended 31 December 2022.

Responsibilities and basis of report

As the charity's trustees of the Company (and also its directors for the purposes of company law) you are responsible for the preparation of the accounts in accordance with the requirements of the Companies Act 2006 ('the 2006 Act').

Having satisfied myself that the accounts of the Company are not required to be audited under Part 16 of the 2006 Act and are eligible for independent examination, I report in respect of my examination of your charity's accounts as carried out under section 145 of the Charities Act 2011 ('the 2011 Act'). In carrying out my examination I have followed the Directions given by the Charity Commission under section 145(5) (b) of the 2011 Act.

Independent examiner's statement

I have completed my examination. I confirm that no matters have come to my attention in connection with the examination giving me cause to believe:

1. accounting records were not kept in respect of the Company as required by section 386 of the 2006 Act; or
2. the accounts do not accord with those records; or
3. the accounts do not comply with the accounting requirements of section 396 of the 2006 Act other than any requirement that the accounts give a true and fair view which is not a matter considered as part of an independent examination; or
4. the accounts have not been prepared in accordance with the methods and principles of the Statement of Recommended Practice for accounting and reporting by charities (applicable to charities preparing their accounts in accordance with the Financial Reporting Standard applicable in the UK and Republic of Ireland (FRS 102)).

I have no concerns and have come across no other matters in connection with the examination to which attention should be drawn in this report in order to enable a proper understanding of the accounts to be reached.


M D Spafford
LDP Luckmans
1110 Elliott Court
Coventry Business Park
Herald Avenue
Coventry
West
Midlands
CV5 6UB

Date: 31st October 2023



Charity Name: Elephants for Africa			Charity No (if any)	1179318	CC17a
Annual accounts for the period					
Period start date	01/01/2022	To	Period end date	31/12/2022	

Section A Statement of financial activities

Recommended categories by activity	Details of own analysis	Note	Unrestricted funds £	Restricted income funds £	Endowment funds £	Total this year £	Total last year £
			F01	F02	F03	F04	F05
Incoming resources from generated funds (Note 3)							
Donations & legacies		S01	49,736	122,902	-	172,638	67,871
Voluntary income		S02	-	-	-	-	-
Activities for generating funds		S03	-	-	-	-	-
Investment income		S04	-	-	-	-	-
Incoming resources from charitable activities		S05	114	-	-	114	255
Other incoming resources		S06	-	-	-	-	-
Total incoming resources			49,850	122,902		172,752	68,126
Costs of Generating Funds (Notes 4-5)							
Costs of generating voluntary income		S07	1,393	2,072		3,465	2,443
		S08					
Fundraising trading costs		S09					
Separate material item of expense		S10					
Charitable activities		S11	36,130	53,980		90,110	73,392
Governance costs		S12	1,080			1,080	960
Other resources expended		S13					
Total resources expended			38,603	56,052		94,655	76,795
Net incoming/(outgoing) resources before transfers			11,247	66,850	-	78,097	(8,669)
Gross transfers between funds			-	-	-	-	
Net incoming/(outgoing) resources before other recognised gains/(losses)			11,247	66,850	-	78,097	(8,669)

Other recognised gains/(losses)

Gains and losses on revaluation of fixed assets for the charity's own use	S17	-	-	-	-	-
Pensions	S18	-	-	-	-	-
<i>Net movement in funds</i>	S19	11,247	66,850	-	78,097	(8,669)
Total funds brought forward	S20	8,640	-	-	8,640	17,309
<i>Total funds carried forward</i>	S21	19,887	66,850	-	86,737	8,640

The notes form part of these financial statements

Section B

Balance sheet

	Note	Unrestricted funds £	Restricted income funds £	Endowment funds £	Total this year £	Total last year £
		F01	F02	F03	F04	F05
Fixed assets						
Tangible assets	B01	3,373	15,161	-	18,534	-
	B02	-	-	-	-	-
Investments	B03	-	-	-	-	-
<i>Total fixed assets</i>	B04	3,373	15,161	-	18,534	-
Current assets						
Stock and work in progress	B05	2,403	-	-	2,403	2,642
Debtors (Note 6)	B06	-	-	-	-	-
Other Debtors	B07	-	-	-	-	-
Cash at bank and in hand	B08	15,011	51,690	-	66,701	6,899
<i>Total current assets</i>	B09	17,414	51,690	-	69,104	9,541
Creditors: amounts falling due within one year (Note 7)	B10	900	-	-	900	900
<i>Net current assets/(liabilities)</i>	B11	16,514	51,690	-	68,204	8,640
<i>Total assets less current liabilities</i>	B12	19,887	66,850	-	86,737	8,640
Creditors: amounts falling due after one year (Note 7)	B13	-	-	-	-	-
Provisions for liabilities and charges	B14	-	-	-	-	-
<i>Net assets</i>	B15	19,887	66,850	-	86,737	8,640
Funds of the Charity						
Unrestricted funds	B16	19,887			19,887	8,640
Surplus/ (Deficit)	B17					
Restricted income funds (Note 8)	B18		66,850		66,850	
Opening Balance Equity (Note 8)	B19					
<i>Total funds</i>	B20	20,262	66,850		86,737	8,640

REPORT OF THE TRUSTEES
for the year ended 31 December 2022



The financial statements were approved by the Board of Trustees and authorised for issue on
..30..Oct..2023.. and were signed on its behalf by:

.....David Matthias, Trustee & Chair

1. LIABILITY OF MEMBERS

The Charity is a company limited by guarantee. It does not have share capital and the liability of each member is limited to the guarantee given by that member which shall not exceed £1.

2. ACCOUNTING POLICIES

Basis of preparing the financial statements

The financial statements of the charitable company, which is a public benefit entity under FRS 102, have been prepared in accordance with the Charities SORP (FRS 102) 'Accounting and Reporting by Charities: Statement of Recommended Practice applicable to charities preparing their accounts in accordance with the Financial Reporting Standard applicable in the UK and Republic of Ireland (FRS 102) (effective 1 January 2019)', Financial Reporting Standard 102 'The Financial Reporting Standard applicable in the UK and Republic of Ireland' and the Companies Act 2006. The financial statements have been prepared under the historical cost convention.

At the time of approving the accounts, the trustees have a reasonable expectation that the trust has adequate resources to continue in operational existence for the foreseeable future. The trustees therefore continue to adopt the going concern basis of accounting in preparing the financial statements. In making this assessment, the trustees are required to consider a period of at least 12 months from the date of approval of the financial statements.

Financial reporting standard 102 - reduced disclosure exemptions

The charitable company has taken advantage of the following disclosure exemptions in preparing these financial statements, as permitted by FRS 102 'The Financial Reporting Standard applicable in the UK and Republic of Ireland':

- The requirements of Section 7 Statement of Cash Flows.

Income

All income is recognised in the Statement of Financial Activities once the charity has entitlement to the funds, it is probable that the income will be received, and the amount can be measured reliably.

Investment income and other income are included when receivable.

Expenditure

Resources expended are included in the Statement of Financial Activities on an accruals basis. Liabilities are recognised as resources expended as soon as there is a legal or constructive obligation committing the charity to the expenditure.

Charitable expenditure comprises those costs incurred by the charity in the delivery of its activities and services for its beneficiaries. It includes both costs that can be allocated directly to such activities and those costs of an indirect nature necessary to support them.

Expenditure which is directly attributable to specific activities has been included in these cost categories. Where costs are attributable to more than one activity they have been apportioned across the cost categories on a basis consistent with the use of these resources.

Governance costs include those costs associated with meeting the constitutional and statutory requirements of the charity and include the audit fees and costs linked to the strategic management of the company.

Tangible fixed assets

Depreciation is provided at the following annual rates in order to write off each asset over its estimated useful life.

Plant and machinery -	20% on cost
Computer equipment -	33% on cost

Stocks

Stocks are valued at the lower of cost and net realisable value, after making due allowance for obsolete and slow moving items.

Taxation

The charity is exempt from tax on its charitable activities.

Fund accounting

Unrestricted funds can be used in accordance with the charitable objectives at the discretion of the trustees.

Restricted funds can only be used for particular restricted purposes within the objects of the charity. Restrictions arise when specified by the donor or when funds are raised for particular restricted purposes.

Further explanation of the nature and purpose of each fund is included in the notes to the financial statements.

Pension costs and other post-retirement benefits

The charitable company pension scheme was curtailed in 2020 to curtail costs, due to the pandemic – it is yet to be reinstated.

Contributions in respect of earnings paid by the charity to defined pension contribution schemes are charged to the Statement of Financial Activities in the year in which they are payable to the schemes.

2. TRUSTEES' REMUNERATION AND BENEFITS

There were no trustees' remuneration or other benefits for the year ended 31 December 2022.

Trustees' expenses

There were no trustees' expenses paid for the year ended 31 December 2022.

Section C **Notes to the accounts**
(cont)

Note 3 **Analysis of incoming resources**

Incoming resources may be further analysed if this would help the reader of the accounts.

	Analysis	This year £	Last year £
Voluntary income	Donations and gifts	172,638	67,871
	Total	172,638	67,871
Investment income		-	-
		-	-
	Total	-	-
Incoming resources from charitable activities	Sales of Merchandise	114	255
			-
			-
			-
	Total	114	255

Note 4 Analysis of resources expended

Resources expended may be further analysed if this would help the reader of the accounts.

	Analysis	This year £	Last year £
Costs of generating voluntary income	Incurring seeking donations	3,465	2,443
			-
			-
	Total	3,465	2,443

Fundraising trading costs		-	-
		-	-
	Total	-	-

Separate material item of expense			
		-	-
	Total		

Charitable activities

Cost of Merchandise and other consumables	581	3,278
Donations to Botswana	54,263	31,698
Donations to SACT	-	12,469
Consultant & contractor	30,447	23,853
Computer and IT costs	1,186	1,175
Postage	96	-
Insurance	424	-
Utilities	21	648
Bank charges	233	271
Telephone and internet	579	-
Legal & Professional	427	-
Depreciation	1,852	-
Total	90,109	73,392

Governance Costs

Independent Examination fees	1,080	960
	-	-
Total	1,080	600

Note 5 Paid employees

Please complete this note if the charity has any employees.

5.1 Staff Costs

	This year £	Last year £
Gross wages, salaries and benefits in kind	-	-
Employer's National Insurance costs		
Pension costs	-	-
Total staff costs	-	-

5.2 Average number of full-time equivalent employees in the year

The parts of the charity in which the employees work

	This year Number	Last year Number
Fundraising	-	-
Charitable Activities	-	-
Governance	-	-
Other		
	-	-

There were no employees during the year that received employee benefits (excluding employer pension costs) of more than £60,000.

Note 6 Tangible fixed assets

	Plant and machinery	Computer Equipment	Totals
	£	£	£
COST			
At 1 st January 2022	-	-	-
Additions	18,524	1,863	20,386
At 31 st December 2022	<u>18,524</u>	<u>1,863</u>	<u>20,386</u>
DEPRECIATION			
At 1 st January 2022	-	-	-
Charge for the year	1,852	-	1,852
At 31 st December 2022	<u>1,852</u>	=	<u>1,852</u>
NET BOOK VALUE			
At 31 st December 2022	<u>16,671</u>	<u>1,863</u>	<u>18,534</u>
At 31 st December 2021	=	=	=

Note 7 Debtors and prepayments

Please complete this note if the charity has any debtors or prepayments.

Analysis of debtors	Amounts falling due within one year		Amounts falling due after more than one year	
	This year £	Last year £	This year £	Last year £
Trade debtors	-	-	-	-
Amounts due from subsidiary and associated undertakings	-	-	-	-
Other debtors	-	-	-	-
Prepayments and accrued income	-	-	-	-
Total	-	-	-	-

Note 8 Creditors and accruals

Please complete this note if the charity has any creditors or accruals.

8.1 Analysis of creditors

Analysis of creditors	Amounts falling due within one year		Amounts falling due after more than one year	
	This year £	Last year £	This year £	Last year £
Loans and overdrafts	-	-	-	-
Trade creditors	-	-	-	-
Amounts due to subsidiary and associated undertakings	-	-	-	-
Other creditors	-	-	-	-
Accruals and deferred income	900	900	-	-
Total	900	900	-	-

8.2 Security over assets

If any loan, overdraft or other creditor holds a charge or other security over any assets of the charity please provide details.

NOTES TO THE FINANCIAL STATEMENTS - CONTINUED
 for the year ended 31 December 2022

Section C
(cont)

Notes to the accounts

9.2 Movements of major funds

Please give details of the movements of the major funds summarised in the restricted and endowment columns of the Statement of Financial Activities.

Fund names	Fund balances brought forward £	Incoming resources £	Outgoing resources £	Transfers £	Gains and losses £	Fund balances carried forward £
Maryland Zoological Society	-	37,187	(11,000)	-	-	26,187
Jacksonville Zoo	-	27,942	(6,478)	-	-	21,464
Global Giving	-	11,193	(3,831)	-	-	7,362
County of Milwaukee Zoo	-	1,381	(6)	-	-	1,375
Elephant Crisis Fund	-	39,359	(29,737)	-	-	9,622
Rhode Island Zoological	-	840	-	-	-	840
Open Gate	-	3,500	(3,500)	-	-	-
Kenilworth School	-	1,500	(1,500)	-	-	-
Total Funds	-	122,902	(56,052)	-	-	66,850

9.3 Transfers between funds

Please give details of any transfers between funds.

From Fund (Name)	To Fund (Name)	Reason	Amount

NOTES TO THE FINANCIAL STATEMENTS - CONTINUED
 for the year ended 31 December 2022

Note 10 Transactions with related parties

If the charity has any transactions with related parties (other than the trustee expenses explained in note 6) details of such transactions should be provided in this note. If there are no transactions to report, please enter "None" in the relevant boxes

Section C Notes to the accounts (cont)

10.1 Remuneration and benefits

Please give the amount of, and legal authority for, any remuneration or other benefits paid to a trustee or other related parties by the charity or any institution or company connected with it.

Name of trustee or connected party	Legal authority (eg order, governing document)	Amounts paid or benefit value	
		This year	Last year
		£	£
None	None	None	None

10.2 Loans

Please give details of and amounts owing to or from the charity's trustees or other related parties by the charity at the year end.

Name of trustee or connected party	Legal authority	Amount owing	
		This year	Last year
		£	£
Due to trustees and related parties			
Due from trustees and related parties			

Please give details of any transaction undertaken by (or on behalf of) the charity in which a trustee or related party has a material interest.

ELEPHANTS FOR AFRICA

England & Wales - Charity number 1179318

Accounts

REGISTERED COMPANY NUMBER: CE14721 (England and Wales)
REGISTERED CHARITY NUMBER: 1179318

REPORT OF THE TRUSTEES AND UNAUDITED
FINANCIAL STATEMENTS FOR THE YEAR
ENDED 31 DECEMBER 2021

FOR



LDP Luckmans
1110 Elliott Court
Coventry Business Park
Herald Avenue
Coventry
West Midlands
CV5 6UB

CONTENTS OF THE FINANCIAL STATEMENTS
for the year ended 31 December 2021

	Page
Report of the Trustees	1 to 10
Independent Examiner's Report	11
Statement of Financial Activities	12 to 13
Balance Sheet	14 to 15
Notes to the Financial Statements	16 to 23

Elephants for Africa 
Conservation through research and education
REPORT OF THE TRUSTEES
for the year ended 31 December 2021

The trustees, who are also directors of the charity for the purposes of the Companies Act 2006, present their report with the financial statements of the charity for the year ended 31 December 2021. The trustees have adopted the provisions of Accounting and Reporting by Charities: Statement of Recommended Practice applicable to charities preparing their accounts in accordance with the Financial Reporting Standard applicable in the UK and Republic of Ireland (FRS 102) (effective 1 January 2019).

Organisation

Elephants for Africa is a small charity registered as a CIO. The trustees delegate the day-to-day management to Dr Kate Evans.

OBJECTIVES AND ACTIVITIES

Objectives and aims

The aims and objectives of Elephants for Africa (EfA), as set out in its Constitution are the advancement of education and research for the benefit of the public in the conservation and protection and monitoring of elephants in particular, but not exclusively by monitoring the demographics, ecology, behaviour, diseases and movement of African savannah elephants (*Loxodonta africana*).



We aim to go beyond conservation, through our holistic approach to understanding and supporting the needs of both elephants and local people. Partnering with local stakeholders, we are working towards coexistence.

We promote the conservation of African elephants through research in Botswana and advising research in Malawi and South Africa and through education in schools and communities in Botswana and through talks to school and interested parties worldwide.

**REPORT OF THE TRUSTEES
for the year ended 31 December 2021**

SIGNIFICANT ACTIVITIES

Research

The aim is to increase our knowledge of the social and ecological requirements of male African savannah elephants for the benefit of human-elephant conflict resolution.

This aim is achieved through maintaining our long-term monitoring of the Makgadikgadi Pans National Park (MPNP) elephants through identification study, their physical condition and group dynamics; Exploring the longevity and characteristics of male elephant groupings, and determine what attributes determine social associations, including factors such as age composition, relatedness, habitat, season and/or physical condition; Investigating the spatial and temporal resource use by elephants in the MPNP and the surrounding community land and what mitigation tools can work to communicate to them where they are not welcome.

Community Outreach

Our community outreach work comes under the umbrella of our Community Coexistence Project, which two main aims as follows:

- Build a citizenry that values live elephants as a natural resource and increase local capacity for innovation to deal with human-elephant resource competition
- Improve the livelihoods and safety of people living in areas adjacent to national parks

We strive to achieve these aims by:

- Facilitating educational trips for local community members into protected areas and national parks to build a local appreciation, pride and ownership of Botswana's wildlife.
- Provide an education programme to engage local community members with their wildlife, supplement
- Government initiatives already operating in the area and disseminate relevant information from the scientific community to local stakeholders, under the guidance and direction of our NGO Board to improve the sustainability and welfare of rural communities.
- Deliver human-wildlife conflict mitigation measures to a targeted number of farmers in the communities bordering the MPNP, continuing educational activities, assisting them with practical support and providing data on mitigation effectiveness.
- Encouraging farmers to become self-sufficient with mitigation materials and practices, including growing chilli, and remaining in the fields at times of increased crop raiding risk.
- Improving the knowledge of local community members in themes relating to Human Elephant Conflict (HEC) mitigation, improving crop yields and growing cash crops to increase their income through farming.
- Educating local people about elephant behaviour, and how to act when faced with an elephant, to encourage and enable peaceful and safe coexistence.
- Delivering workshops to rural communities that facilitate the uptake of income generating activities that result in reduced human-wildlife conflict (e.g. non-cropping activities).
- Use collaborations with experts from local and international institutions to increase the local youth's understanding of business and work practices, to enable them to create their own business, and/or find gainful employment

**REPORT OF THE TRUSTEES
for the year end 31 December 2021**

Education Botswana

There are four main aims as follows:

1. Inspire the next generation of conservation leaders
2. Increase employment into the environmental sector for rural youth
3. Empower the youth of today to be the problem-solvers of tomorrow
4. Contribute to capacity building in Botswana in the environmental sector, through mentoring, training, and the field supervision of Mopswana students



Our school's education program is a collaboration between Elephants for Africa, local primary schools' environmental clubs and our local and international funding partners. The program seeks to improve the long-term survival of elephants and the quality of life of local communities by creating capacity-building opportunities for local youth leading to increased employment into the wildlife sector and knowledge about the importance of the environment and biodiversity.

Partnering with local primary schools, we offer hands-on learning experiences and opportunities to meet local role models to broaden children's horizons for new opportunities and future careers.

Working with local universities we aim to support local students through their postgraduate degrees and look for opportunities to train undergraduates when relevant degrees are offered locally.

Linked to our outreach work with local communities we offer educational opportunities for community members.

Education Worldwide

There are six main aims as follows:

1. Inspire the next generation of conservation leaders
2. Empower the youth of today to be the problem-solvers of tomorrow
3. Increase public awareness about elephant conservation and the challenges facing rural communities in Botswana
4. Communicate our findings to the public and increase knowledge about the challenges of elephant conservation.
5. Inform stakeholders of our findings
6. Contribute to capacity building in STEM and conservation, through mentoring, training and the field supervision of international students

Through invitation and promotion, we provide educational and inspirational talks to schools, colleges, universities, zoological societies and at public events. Covering our work, conservation, biodiversity and women in science. We also communicate our findings and observations through our social media channels, newsletter, website, magazine and news articles, radio and TV interviews.

Collaborating with universities throughout the world we offer the opportunity for students to conduct their field work with our team in Botswana and/or work on our historical data. Supervising and advising them prior to fieldwork, in the field and during their thesis write up.

**REPORT OF THE TRUSTEES
for the year end 31 December 2021**

Public benefit

In formulating the objectives and planning activities for the year, the Trustees, and our Founder have considered the Charity Commission's guidance on public benefit and address this through our education programme.

ACHIEVEMENT AND PERFORMANCE

Charitable activities

The charities key areas of activity during the year were:

Research

Our research output was again impacted by the Covid Pandemic this year and we worked around this as best we could, by the end of the year most restrictions were lifted, and we were able to increase our field work activities. Regardless of challenges we faced, we were able to conduct forty-seven research drives adding to our long-term data of elephants particularly the male elephants that utilise the Makgadikgadi area, both the national park and communal land. Once local restrictions were lifted, and we had access to the MPNP again we set up camera traps along eight elephant highways (tracks repeatedly used by elephants): four in the national park and four in the community area. Through the images we capture we aim at study group structure difference between inside and outside the MPNP.

This year part of the western boundary fence of the MPNP was rebuilt, having been partly destroyed when the river flooded again in 2009, whilst parts were maintained, the length of the fence was not restored. The fence zig zags across the Boteti River, separating the MPNP and the community lands to just south of the village of Khumaga, enabling access of this resource from both sides. This has impacted where elephants, and other wildlife, can access the river and we have observed newly established elephant's highways leading to where elephants can source water. The fence has left just two access points to the river where elephants can drink water on the north-western side of the national park, the Menoakwena area and Gwaraga (Khumaga) area and thus there is a concentration of elephant movement to and from these key areas.

Whilst the fence has yet to be breached, there are elephants on the community side, and we have observed points along the fence where elephants have tried to access the park. There are plans to continue the re-erection from Khumaga to the southern boundary in 2022.

Human-elephant conflict continues to be a concern in the region, and we are committed to continue sharing the knowledge and assisting farmers so that at the end they have better produce in their ploughing fields. This area of our research overlaps heavily with our community work, with our Living with Elephants workshops key access points for sharing our findings and giving community members access to information about how to remain safe living alongside wildlife.

During the crop raiding season, the harvest season of February – May, our Research Officer supported by a tracker, focuses his efforts on attending the crop raiding incidents. This year the team were able to attend all twenty-seven crop raiding incidents reported to our office,

collecting valuable data on the time of the raid, demographics of the elephants, mitigation tools used, and advising the farmer on what could be done to mitigate in the future. With some farmers now utilising solar powered electric fencing our observations have shown that wired fences with no solar power still have an impact in keeping elephants away from ploughing fields. We noticed that fields with wire lines not thorny bushes, which farmers often use as a fence, were avoided by elephants. We think that the elephants have learned that if they touch wiring, they may get an electric shock, and are thus avoiding all wire fencing.



**REPORT OF THE TRUSTEES
for the year end 31 December 2021**

As always, our research efforts are enhanced by visiting students and 2021 saw PhD student Connie Allen publish two papers. Unfortunately, restrictions have meant that students have not been able to conduct their field work and have either, postponed their field work or moved to a remote programme, utilising our historical data, and helping with analyses. Bristol University Masters Student Quim Agell utilised camera trap data to do his Masters degree.

Research publications

Allen, C. R. B., Brent, L. J. N., Motsentwa, T. & Croft, D. P. Field evidence supporting monitoring of chemical information on pathways by male African elephants. *Animal Behaviour* (2021) doi:[10.1016/j.anbehav.2021.04.004](https://doi.org/10.1016/j.anbehav.2021.04.004).

Allen, C. R. B., Croft, D. P., Testard, C. & Brent, L. J. N. Function of Trunk-Mediated “Greeting” Behaviours between Male African Elephants: Insights from Choice of Partners. *Animals* **11**, 2718 (2021).

Agell, Q. (2021) *Analysis of demographics, male social groups, breeding herds, and movements of the savannah elephants (Loxodonta africana) using camera traps in the Makgadikgadi Pans National Park, Botswana*. MSc Thesis Bristol Veterinary School, University of Bristol.

Education

Our in person EleFun activities with the schools continued to be paused throughout 2021. We also had to delay the launch of our partnership with the Junior Secondary school in Motopi, which will see the continuation of the Environmental Education of children in this region as most children go to this school from the primary schools we partner with. We are hopeful that January 2022 will see the schools able to welcome us back and considering this that we hired Mr Mogomotsi Radinonyane at the end of the year for the position of



Community Outreach Officer. Mr Radinonyane has extensive experience both as an outreach officer (at the Khama Rhino Sanctuary in Botswana) and as professional guide. Mr Radinonyane started with us in December and is now heading up the school environmental education programme as well as assisting with many aspects of our Community Coexistence Project. He is already hard at work assisting our Community Outreach and Education Coordinator in the completion of the Junior Secondary School Environmental Education Lesson Plans, which will be a 2-year programme focused on project development and presentation skills.

Whilst unable to hold face to face activities we were able to support the school through the provision of informative posters for classrooms and raised funds through our network to provide revision sets, hand sanitizers, masks and books to enable the students undertaking exams to have the resources they needed and to do so in a safe environment.

We continued to engage and education the international community through our Social Media channels as well as online lectures, Q&A's and talks as well as through news outlets, such as the BBC News at One.

18th February 2021. Dr Kate Evans gave a lecture ‘Funding Conservation’ to students at Lincoln University, United Kingdom

**REPORT OF THE TRUSTEES
for the year end 31 December 2021**

18th February 2021. Dr Kate Evans gave a lecture 'Beyond academia as a conservationist' to students at Lincoln University, United Kingdom

10th March 2021. Dr Kate Evans engaged students at Broadwater School Tooting on a 'Skype a scientist' call discussing elephants, Botswana and living alongside wildlife

16th March 2021. Dr Kate Evans did a lively Q&A with students at Hemyock Primary School about live as an elephant biologist

30th April 2021. Dr Kate Evans engaged students at a school in Oregon, USA, on a 'Skype a scientist' call discussing elephants, Botswana and living alongside wildlife

2-4th May 2021 attendance of the 'Restoring Africa's Dryland conference, Global Landscapers Forum. Online.

Outreach

Farmers

In total 34 farmers made use of the mitigation materials we provide. We delivered 520kg chilli to the 34 farmers as well as 12 solar beacons to four farmers. The solar beacons emit a random flash, and whilst they have not proven very successful for elephants, they have proven quite effective against other raiders, such as hippopotamus. Six farmers borrowed tents to enable them to stay in their fields overnight and maintain their mitigation. Our Community Officer (CO), Mr. Mankind Molosiwa collected some tents which were borrowed by the farmers in our study area towards the end of the year. This is done to keep them safer so that they can be used again for the next harvest season.



We can also report that farmers in the region have started to build permanent structures for them to occupy at the fields rather than using tents, an indication that the main theme behind the tents has been well received. In Botswana it is not common for the field(s) to be close to where the farmer lives and so in the past farmers have not been in their fields at night, which is when elephants mainly crop-raid.

Our Community Coexistence Project started in Khumaga and has now expanded to include the village of Moreomaoto and to support this expansion we employed a CO, Mr. Tathego Bolekanye, for the village. Mr. Bolekanye is from Moreomaoto and understands well the lifestyle of his community. He works with the community to enable our mission to come to fruition, mobilising people to actively participate on the projects we run. One of the projects which will require much of his attention is the conclusion of the cluster fencing for 42 farmers from this village. To enable this to happen we need the farmers to agree about the location and cooperative maintenance. We have meet with the farmers several times without conclusion, thus we hope Mr Bolekanye's addition to the team will lead to much success with these efforts.

We have created a cluster around the area of Marotobolo in Khumaga with 6 farmers whose fields are located on the riverbed fields allowing the farmers to gain a lot of productivity out of these fields without needing synthetic fertilizers; however, this does of course make them very attractive to elephants! Since completion there have been no reported elephant raids.

**REPORT OF THE TRUSTEES
for the year end 31 December 2021**

Workshops



In collaboration with the “These Hands” group, we held a 2-week-long workshop titled Creative Capacity Building workshop hosted by the Department of Wildlife and National Parks team in Khumaga. The workshop was held in April of 2021 with 20 local participants, the training focused on the participants to work with the design process and ways to use it effectively to solve daily problems. Each participant was actively involved in learning the process and the use of tools to ensure that everyone would be equally empowered. The innovations included a thrashing machine, chilli brick making

equipment and a fuel-efficient stove (FEC). It is the FEC which they will focus on in the coming year with an aim to build stoves for themselves, however the first they built was donated to a person living with disabilities in Khumaga. These stoves will reduce the amount of firewood people use, a valuable and limited resource in this desert environment, thus also reducing the frequency they need to forage for wood and therefore limit the encounters with wildlife that also utilise these resources.

Over the winter (June and July) we held a weeklong Basket Weaving training with a consultant from Shorobe Baskets. The aim of these workshops was to enhance the skills of local basket weavers and to train a new generation of weavers, so the art and tradition is not lost. They were taught new patterns of weaving, something they very much appreciated and wished the training could have been longer and more in-depth as they felt they were on just the tip of the iceberg in terms of weaving. Thirteen women (two of which were women living with disabilities) participated and it was held in conjunction with the Khumaga Community Development Officer and the Village Development Committee. We hope this workshop will not only improve the traditional knowledge and skills, but to also encourage more production such that they can sell them to passing tourists and nearby lodges.



In collaboration with the Ko Motjing Producers Cooperative Society from Maun, we held two weeklong beading workshops in the villages of Motopi and Phuduhudu. This was the first alternative livelihoods workshop we have held in Motopi, marking the beginning of what we hope will be a fruitful relationship as we expand our reach with this and our Environmental Education programme in their Junior Secondary School. There were 13 participants in the Motopi workshop including the Community Development Officer and an intern at the Community Development Office. There was one male participant with the rest being women and many of them being youth (18-30years).

In contrast the Phuduhudu workshop had many of the participants being elderly women and the 12 participants being all women. It was also a success, although supply challenges made it hard to gather all necessary items on time.

**REPORT OF THE TRUSTEES
for the year end 31 December 2021**

At the end of May, we held a weeklong wildlife photography workshop in collaboration with Wild Shots Outreach from South Africa, hosted by the Moreomaoto Public Library and Meno-A-Kwena Camp. It had been originally planned for last year but postponed due to Covid-19 lockdowns in 2020. Sixteen unemployed youth (12 women and 4 men) from the village attended the workshop and were taught the basics of photography and then taken into the park for a game drive and practise session. For almost all of them, this was their first time in the park and being up close with animals like elephants. Getting to see wildlife up close and through a different perspective gave them an appreciation of wildlife.



One participant, Khumo Mabego (30), said “*Seeing wildlife has never been interesting to me, until I saw them through a camera lens. Everything looked so beautiful – not just the animals but even the trees and grass.*”

Like our research programme our Community Coexistence Project is supported by students and this year Canadian student Stephanie Bell at the University of York, explored local elephant knowledge in the Boteti River Region working remotely with our team to collect questionnaire data for her Masters.

Bell, S (2021) *Exploring Local Ecological Knowledge as a Means of Mitigating Human-African Savanna Elephant (Loxodonta africana) Resource Competition in Botswana, Africa.* MSc Thesis, Environmental Science. York University, Toronto, Ontario, Canada

FINANCIAL REVIEW

Financial Position

The charity held reserves of £8,640 as at 31 December 2021 (£17,309 as of 31 December 2020), of which £NIL is restricted (£6,283 as at 31 December 2020).

Reserves policy

Funds held at the year-end covers less than one month of running costs for the charity. However, combined with the deferred income that will be released next year of £6,888 will cover two months of running costs deemed to be sufficient and is in line with the charity policy.

PLANS FOR THE FUTURE

- In 2022 we hope to finalise an MoU with the Botswana International University of Science and Technology.
- Monitor the impact of the fence on elephant movement and human-elephant conflict
- We will launch a Corporate Campaign which we have worked on this year.
- Our plans for this year to support more student, interns and visitors was curtailed by the pandemic and we hope that 2021/2022 will enable this to happen. In the meantime, we will recruit students to help with data analyses remotely.
- We will continue to work hard to engage our supporters and given our increase in Botswana followers, particularly on FaceBook, we will look to do updates and posts in Setswana.

**REPORT OF THE TRUSTEES
for the year end 31 December 2021**

- We will continue to work with and advise other NGO's scientists and interested parties and contribute actively to the Elephant Specialist Advisory Group of South Africa, proposed KAZA Elephant Working Group and the Botswana Human-Wildlife Conflict working group.

STRUCTURE, GOVERNANCE AND MANAGEMENT

Governing document

The charity is a company limited by guarantee governed in accordance its Memorandum and Articles of Association. The charity is a company governed by its governing document, a trust deed.

Recruitment and appointment of new trustees

The charity is constated by a board of trustees. All new appointments are elected by the board.

Induction and training of new trustees

All new trustees are given a copy of this constitution and any amendments made to it and a copy of the CIO's latest trustees' annual report and statement of accounts, last annual reports, budget, strategic plan and recent newsletters. Ideally the board meets up in person, nowadays virtually to welcome the new trustees and address any questions they may have.

Fundraising and partnerships

Elephants for Africa is funded via a range of sources including Trusts and Foundations, zoological societies, corporate sponsorship, individual donors, online initiatives and fundraising events. The trustees would like to thank all who generously support our work. A huge thanks to all our staff and volunteers in Botswana and in the UK who continue to support and contribute to our work. Elephants for Africa works in close partnership with the Botswana registered.

Risk management

We acknowledge that is the responsibility of the trustees to identify, assess and manage the risks to the charity's work. The risks we have identified are a) receiving less funding b) staff turnover c) impact of th global economic climate and the ongoing restrictions d) damage to its reputation.

- a) Our budget, including income and potential income are updated monthly, so all trustees are able to access the charity's current situation and projection. In addition, we have monthly metrics we measure ourselves against to highlight any areas we need to focus on and address.
- b) Whilst our director has remained constant throughout the charity's history, we have high turnover of our senior staff in Botswana, which have been historically recruited from outside of Botswana due to the lack of skilled personnel in Botswana. Since 2014 we have focused on capacity building to enable the staff to be predominantly Batswana (at the end of 2020 all field personnel were Batswana) and are increasing looking for funding to offer more training and development opportunities. In 2021 recruitment of a new Project Manager within Botswana was unsuccessful and next year we shall welcome an international Project Manager to fill this role with the vision that they will become Director of the Charity.
- c) Satellite internet in camp as well as good mobile phone connections enables our Director to have meet weekly with all senior staff in the field and be on accessible to all staff members.
- d) We carry out diligence with any interested partners that may wish to highlight our work and/or corporate sponsors. We acknowledge that is the responsibility of the trustees to identify, assess and manage the risks to the charity's work. The risks we have identified are a) receiving less funding b) staff turnover c) damage to its reputation.

**REPORT OF THE TRUSTEES
for the year end 31 December 2021**

Use of Volunteers

Elephants for Africa would not have been able to develop to where we are today without the dedicated of many volunteers, who offer their time and expertise. This year we have been grateful for those supporters that have given their time to develop our online presence, improve our PR, bring together our newsletters and reports, video production and technical support. Without our volunteers we simply could not achieve all that we do. They are vital to the running of the CIO. We ensure that each volunteer feels valued through taking the time to regularly thank them in person, when possible, or via personal emails and letters.

REFERENCE AND ADMINISTRATIVE DETAILS

Registered Company number

CE14721 (England and Wales)

Registered Charity number

1179318

Principal address

5 Balfour Road
London
N5 2HB

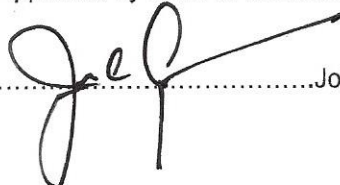
Trustees

B Courtenay
J Graham
M Henley
D Matthias

Independent examiner

LDP Luckmans
1110 Elliott Court
Coventry Business Park
Herald Avenue
Coventry
CV5 6UB

Approved by order of the board of trustees on 26th October 2022 and signed on its behalf by:



.....John Graham Trustee

**INDEPENDENT EXAMINER'S REPORT TO THE TRUSTEES OF
ELEPHANTS FOR AFRICA**

Independent examiner's report to the trustees of Elephants for Africa ('the Company')

I report to the charity trustees on my examination of the accounts of the Elephants for Africa (the Trust) for the year ended 31 December 2021.

Responsibilities and basis of report

As the charity's trustees of the Company (and also its directors for the purposes of company law) you are responsible for the preparation of the accounts in accordance with the requirements of the Companies Act 2006 ('the 2006 Act').

Having satisfied myself that the accounts of the Company are not required to be audited under Part 16 of the 2006 Act and are eligible for independent examination, I report in respect of my examination of your charity's accounts as carried out under section 145 of the Charities Act 2011 ('the 2011 Act'). In carrying out my examination I have followed the Directions given by the Charity Commission under section 145(5) (b) of the 2011 Act.

Independent examiner's statement

I have completed my examination. I confirm that no matters have come to my attention in connection with the examination giving me cause to believe:

1. accounting records were not kept in respect of the Company as required by section 386 of the 2006 Act; or
2. the accounts do not accord with those records; or
3. the accounts do not comply with the accounting requirements of section 396 of the 2006 Act other than any requirement that the accounts give a true and fair view which is not a matter considered as part of an independent examination; or
4. the accounts have not been prepared in accordance with the methods and principles of the Statement of Recommended Practice for accounting and reporting by charities (applicable to charities preparing their accounts in accordance with the Financial Reporting Standard applicable in the UK and Republic of Ireland (FRS 102)).

I have no concerns and have come across no other matters in connection with the examination to which attention should be drawn in this report in order to enable a proper understanding of the accounts to be reached.


M D Spafford
LDP Luckmans
1110 Elliott Court
Coventry Business Park
Herald Avenue
Coventry
West
Midlands
CV5 6UB

Date: 26th October 2022



Charity Name: Elephants for Africa		Charity No (if any)	1179318	CC17a
Annual accounts for the period				
Period start date	01/01/2021	To	Period end date	

Section A Statement of financial activities

Recommended categories by activity	Details of own analysis	Note	Unrestricted funds £	Restricted income funds £	Endowment funds £	Total this year £	Total last year £
			F01	F02	F03	F04	F05
Incoming resources from generated funds (Note 3)							
Donations & legacies		S01	30,187	37,684	-	67,871	67,020
Voluntary income		S02	-	-	-	-	-
Activities for generating funds		S03	-	-	-	-	-
Investment income		S04	-	-	-	-	-
Incoming resources from charitable activities		S05	255	-	-	255	146
Other incoming resources		S06	-	-	-	-	-
Total incoming resources			30,442	37,684		68,126	67,166
Costs of Generating Funds (Notes 4-5)							
Costs of generating voluntary income		S07	2,443	-		2,443	3,080
		S08					
Fundraising trading costs		S09					
Separate material item of expense		S10					
Charitable activities		S11	24,682	48,710		73,392	57,443
Governance costs		S12	960			960	600
Other resources expended		S13					
Total resources expended			28,085	48,710		76,795	61,123
Net incoming/(outgoing) resources before transfers			2,357	(11,026)	-	(8,669)	6,043
Gross transfers between funds			-	-	-	-	
Net incoming/(outgoing) resources before other recognised gains/(losses)			2,357	(11,026)	-	(8,669)	6,043

Other recognised gains/(losses)

Gains and losses on revaluation of fixed assets for the charity's own use	S17	-	-	-	-	-
Pensions	S18	-	-	-	-	-
<i>Net movement in funds</i>	S19	2,357	(11,026)	-	(8,669)	6,043
Total funds brought forward	S20	6,283	11,026	-	17,309	11,264
<i>Total funds carried forward</i>	S21	8,640	-	-	8,640	17,307

The notes form part of these financial statements

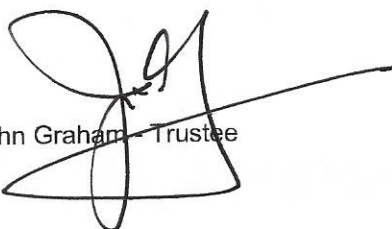
Section B

Balance sheet

	Note	Unrestricted funds £	Restricted income funds £	Endowment funds £	Total this year £	Total last year £
		F01	F02	F03	F04	F05
Fixed assets						
Tangible assets	B01	-	-	-	-	-
	B02	-	-	-	-	-
Investments	B03	-	-	-	-	-
Total fixed assets	B04	-	-	-	-	-
Current assets						
Stock and work in progress	B05	2,642	-	-	2,642	2,822
Debtors (Note 6)	B06	-	-	-	-	50
Other Debtors	B07	-	-	-	-	-
Cash at bank and in hand	B08	6,898	-	-	6,899	36,781
Total current assets	B09	9,540	-	-	9,541	39,653
Creditors: amounts falling due within one year (Note 7)	B10	900	-	-	900	22,344
Net current assets/(liabilities)	B11					
Total assets less current liabilities	B12					
Creditors: amounts falling due after one year (Note 7)	B13	-	-	-	-	-
Provisions for liabilities and charges	B14	-	-	-	-	-
Net assets	B15	8,640	-	-	8,640	17,309
Funds of the Charity						
Unrestricted funds	B16	8,640			8,640	6,283
Surplus/ (Deficit)	B17					
Restricted income funds (Note 8)	B18		-		-	11,026
Opening Balance Equity (Note 8)	B19					
Total funds	B20	8,640	-	-	8,640	17,309

Elephants for Africa 
Conservation through research and education
NOTES TO THE FINANCIAL STATEMENTS - CONTINUED
for the year ended 31 December 2021

The financial statements were approved by the Board of Trustees and authorised for issue on 28th October 2022 and were signed on its behalf by:


John Graham - Trustee

The notes form part of these financial statements

1. LIABILITY OF MEMBERS

The Charity is a company limited by guarantee. It does not have share capital and the liability of each member is limited to the guarantee given by that member which shall not exceed £1.

2. ACCOUNTING POLICIES

Basis of preparing the financial statements

The financial statements of the charitable company, which is a public benefit entity under FRS 102, have been prepared in accordance with the Charities SORP (FRS 102) 'Accounting and Reporting by Charities: Statement of Recommended Practice applicable to charities preparing their accounts in accordance with the Financial Reporting Standard applicable in the UK and Republic of Ireland (FRS 102) (effective 1 January 2019)', Financial Reporting Standard 102 'The Financial Reporting Standard applicable in the UK and Republic of Ireland' and the Companies Act 2006. The financial statements have been prepared under the historical cost convention.

At the time of approving the accounts, the trustees have a reasonable expectation that the trust has adequate resources to continue in operational existence for the foreseeable future. The trustees therefore continue to adopt the going concern basis of accounting in preparing the financial statements. In making this assessment, the trustees are required to consider a period of at least 12 months from the date of approval of the financial statements.

Financial reporting standard 102 - reduced disclosure exemptions

The charitable company has taken advantage of the following disclosure exemptions in preparing these financial statements, as permitted by FRS 102 'The Financial Reporting Standard applicable in the UK and Republic of Ireland':

- The requirements of Section 7 Statement of Cash Flows.

Income

All income is recognised in the Statement of Financial Activities once the charity has entitlement to the funds, it is probable that the income will be received, and the amount can be measured reliably.

Investment income and other income are included when receivable.

Expenditure

Liabilities are recognised as expenditure as soon as there is a legal or constructive obligation committing the charity to that expenditure, it is probable that a transfer of economic benefits will be required in settlement and the amount of the obligation can be measured reliably. Expenditure is accounted for on an accruals basis and has been classified under headings that aggregate all cost related to the category. Where costs cannot be directly attributed to particular headings they have been allocated to activities on a basis consistent with the use of resources.

Stocks

Stocks are valued at the lower of cost and net realisable value, after making due allowance for obsolete and slow moving items.

Taxation

The charity is exempt from tax on its charitable activities.

Fund accounting

Unrestricted funds can be used in accordance with the charitable objectives at the discretion of the trustees.

Restricted funds can only be used for particular restricted purposes within the objects of the charity. Restrictions arise when specified by the donor or when funds are raised for particular restricted purposes.

Further explanation of the nature and purpose of each fund is included in the notes to the financial statements.

2. TRUSTEES' REMUNERATION AND BENEFITS

There were no trustees' remuneration or other benefits for the year ended 31 December 2021.

Trustees' expenses

There were no trustees' expenses paid for the year ended 31 December 2021.

Section C (cont)	Notes to the accounts
-----------------------------	------------------------------

Note 3 Analysis of incoming resources

Incoming resources may be further analysed if this would help the reader of the accounts.

	Analysis	This year £	Last year £
Voluntary income	Donations and gifts	68,126	67,020
		-	
		-	
	Total	68,126	67,020
Investment income		-	-
		-	-
		-	-
	Total	-	-
Incoming resources from charitable activities	Sales of Merchandise	255	146
		-	-
		-	-
		-	-
	Total	255	146

Note 4 Analysis of resources expended

Resources expended may be further analysed if this would help the reader of the accounts.

	Analysis	This year £	Last year £
Costs of generating voluntary income	Incurring seeking donations	2,443	3,080
		-	-
		-	-
	Total	2,443	3,080

Fundraising trading costs		-	-
		-	-
	Total	-	-

Separate material item of expense			
		-	-
	Total		

Charitable activities

Cost of Merchandise and other consumables	3,278	95
Donations to Botswana	31,698	15,000
Donations to SACT	12,469	
Wages and other staff costs	-	2,675
Consultant & contractor	23,853	35,354
Computer and IT costs	1,175	2,692
Repairs	-	102
Insurance	-	480
Utilities	648	859
Bank charges	271	186
Total	73,392	57,443

Governance Costs

Independent Examination fees	960	600
	-	-
Total	960	600

Note 5 Paid employees

Please complete this note if the charity has any employees.

5.1 Staff Costs

	This year £	Last year £
Gross wages, salaries and benefits in kind	-	2,608
Employer's National Insurance costs		
Pension costs	-	67
Total staff costs	-	2,675

5.2 Average number of full-time equivalent employees in the year

The parts of the charity in which the employees work

	This year Number	This year Number
Fundraising	-	-
Charitable Activities	-	1
Governance	-	-
Other		
	-	1

There were no employees during the year that received employee benefits (excluding employer pension costs) of more than £60,000.

Note 6 Debtors and prepayments

Please complete this note if the charity has any debtors or prepayments.

Analysis of debtors	Amounts falling due within one year		Amounts falling due after more than one year	
	This year £	Last year £	This year £	Last year £
Trade debtors	-	-	-	-
Amounts due from subsidiary and associated undertakings	-	-	-	-
Other debtors	-	-	-	-
Prepayments and accrued income	-	50	-	-
Total	-	50	-	-

Note 7 Creditors and accruals

Please complete this note if the charity has any creditors or accruals.

7.1 Analysis of creditors

	Amounts falling due within one year		Amounts falling due after more than one year	
	This year £	Last year £	This year £	Last year £
Loans and overdrafts	-	-	-	-
Trade creditors	-	-	-	-
Amounts due to subsidiary and associated undertakings	-	-	-	-
Other creditors	-	-	-	-
Accruals and deferred income	900	22,344	-	-
Total	900	22,344	-	-

7.2 Security over assets

If any loan, overdraft or other creditor holds a charge or other security over any assets of the charity please provide details.

Note 8 Endowment and restricted income funds

Please complete this section if the charity has any endowment or restricted income funds.

8.1 Funds held

Please give a brief description of any of the following type of funds held by the charity:

- permanent endowment funds (PE);
- expendable endowment funds (EE); and
- restricted income funds, including special trusts, of the charity (R).

Fund Name	Type PE, EE or R	Purpose and Restrictions
Columbus Zoological	R	Community outreach programme
Boss	R	Education program
Global Giving	R	Community outreach programme
Cordor	R	South Africa Conservation Trust
Elephants Crisis Fund	R	Mitigating human-elephant conflict around wildlife corridors to secure future habitat options for elephants in Central Botswana
Elephant Managers Association	R	Elephants Responses to the Resumption of Hunting

**Section C
(cont)**

Notes to the accounts

8.2 Movements of major funds

Please give details of the movements of the major funds summarised in the restricted and endowment columns of the Statement of Financial Activities.

Fund names	Fund balances brought forward £	Incoming resources £	Outgoing resources £	Transfers £	Gains and losses £	Fund balances carried forward £
Columbus Zoological	2,261	-	2,261	-	-	-
Boss	8,764	-	8,764	-	-	-
Global Giving	-	3,596	3,596	-	-	-
Cordor	-	12,726	12,726	-	-	-
Elephants Crisis Fund	-	20,664	20,664	-	-	-
Elephant Managers Association	-	698	698	-	-	-
Total Funds	11,025	37,684	48,709	-	-	-

The Elephants Crisis Fund appears to be in deficit. This is due to the some of income received being deferred to the next period, whereas the funds have been spent in full in this year.

8.3 Transfers between funds

Please give details of any transfers between funds.

From Fund (Name)	To Fund (Name)	Reason	Amount

Note 9 Transactions with related parties

If the charity has any transactions with related parties (other than the trustee expenses explained in note 6) details of such transactions should be provided in this note. If there are no transactions to report, please enter "None" in the relevant boxes

Section C (cont)

Notes to the accounts

9.1 Remuneration and benefits

Please give the amount of, and legal authority for, any remuneration or other benefits paid to a trustee or other related parties by the charity or any institution or company connected with it.

Name of trustee or connected party	Legal authority (eg order, governing document)	Amounts paid or benefit value	
		This year £	Last year £
None	None	None	None

ELEPHANTS FOR AFRICA

England & Wales - Charity number 1179318

Accounts

REGISTERED COMPANY NUMBER: CE14721 (England and Wales)
REGISTERED CHARITY NUMBER: 1179318

REPORT OF THE TRUSTEES AND UNAUDITED
FINANCIAL STATEMENTS FOR THE YEAR
ENDED 31 DECEMBER 2020

FOR



LDP Luckmans
1110 Elliott Court
Coventry Business Park
Herald Avenue
Coventry
West Midlands
CV5 6UB

CONTENTS OF THE FINANCIAL STATEMENTS
for the year ended 31 December 2020

	Page
Report of the Trustees	1 to 9
Independent Examiner's Report	10
Statement of Financial Activities	11 to 12
Balance Sheet	13 to 14
Notes to the Financial Statements	15 to 22

Elephants for Africa 
Conservation through research and education
REPORT OF THE TRUSTEES
for the year ended 31 December 2020

The trustees who are also directors of the charity for the purposes of the Companies Act 2006, present their report with the financial statements of the charity for the year ended 31 December 2020. The trustees have adopted the provisions of Accounting and Reporting by Charities: Statement of Recommended Practice applicable to charities preparing their accounts in accordance with the Financial Reporting Standard applicable in the UK and Republic of Ireland (FRS 102) (effective 1 January 2019).

Organisation

Elephants for Africa is a small charity registered as a CIO. The trustees delegate the day-to-day management to Dr. Kate Evans.

OBJECTIVES AND ACTIVITIES

Objectives and aims

The aims and objectives of Elephants for Africa (EfA), as set out in its Constitution are the advancement of education and research for the benefit of the public in the conservation and protection and monitoring of elephants in particular but not exclusively by monitoring the demographics, ecology, behaviour, diseases and movement of African savannah elephants (*Loxodonta africana*).

We aim to go beyond conservation, through our holistic approach to understanding and supporting the needs of both elephants and local people. Partnering with local stakeholders, we are working towards coexistence.

We promote the conservation of African elephants through research in Botswana and advising research in Malawi and South Africa and through education in schools and communities in Botswana and through talks to school and interested parties worldwide.

Significant activities

Research

The aim is to increase our knowledge of the social and ecological requirements of male African savannah elephants for the benefit of human-elephant conflict resolution.

This aim is achieved through maintaining our long-term monitoring of the Makgadikgadi Pans National Park (MPNP) elephants through identification study, their physical condition and group dynamics; Exploring the longevity and characteristics of male elephant groupings, and determine what attributes determine social associations, including factors such as age composition, relatedness, habitat, season and/or physical condition; Investigating the spatial and temporal resource use by elephants in the MPNP and the surrounding community land and what mitigation tools can work to communicate to them where they are not welcome.

Community Outreach

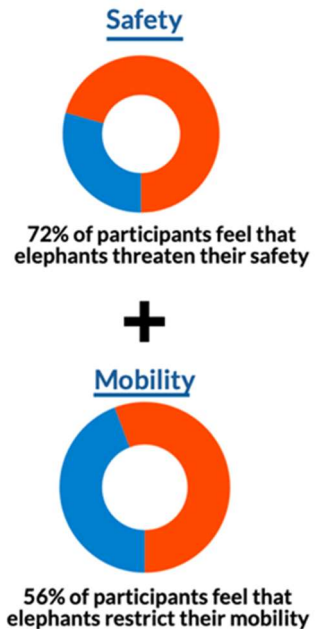
There are two main aims as follows:

1. Build a citizenry that values live elephants as a natural resource and increase local capacity for innovation to deal with human-elephant resource competition
2. Improve the livelihoods and safety of people living in areas adjacent to national parks

**REPORT OF THE TRUSTEES
for the year ended 31 December 2020**

We strive to achieve these aims by:

- facilitating educational trips for local community members into protected areas and national parks to build a local appreciation, pride and ownership of Botswana’s wildlife.
- provide an education programme to engage local community members with their wildlife, supplement
- government initiatives already operating in the area and disseminate relevant information from the scientific community to local stakeholders, under the guidance and direction of our NGO Board to improve the sustainability and welfare of rural communities.
- Deliver human-wildlife conflict mitigation measures to a targeted number of farmers in the communities bordering the MPNP, continuing educational activities, assisting them with practical support and providing data on mitigation effectiveness.
- Encouraging farmers to become self-sufficient with mitigation materials and practices, including growing chilli, and remaining in the fields at times of increased crop raiding risk.
- Improving the knowledge of local community members in themes relating to Human Elephant Conflict (HEC) mitigation, improving crop yields and growing cash crops to increase their income through farming.
- Educating local people about elephant behaviour, and how to act when faced with an elephant, to encourage and enable peaceful and safe coexistence.
- Delivering workshops to rural communities that facilitate the uptake of income generating activities that result in reduced human-wildlife conflict (e.g. non-cropping activities).
- Use collaborations with experts from local and international institutions to increase the local youth’s understanding of business and work practices, to enable them to create their own business, and/or find gainful employment.



Education Botswana

There are four main aims as follows:

1. Inspire the next generation of conservation leaders
2. Increase employment into the environmental sector for rural youth
3. Empower the youth of today to be the problem-solvers of tomorrow
4. Contribute to capacity building in Botswana in the environmental sector, through mentoring, training and the field supervision of Mtswana students



Our school’s education program is a collaboration between Elephants for Africa, local primary schools’ environmental clubs and our local and international funding partners. The program seeks to improve the long-term survival of elephants and the quality of life of local communities by creating capacity-building opportunities for local youth leading to increased employment into the wildlife sector and knowledge about the importance of the environment and biodiversity.

Partnering with local primary schools, we offer hands-on learning experiences and opportunities to meet local role models in order to broaden children’s horizons for new opportunities and future careers.

Working with local universities we aim to support local students through their postgraduate degrees and look for opportunities to train undergraduates when relevant degrees are offered locally.

Linked to our outreach work with local communities we offer educational opportunities for community members.

Education Worldwide

There are six main aims as follows:

1. Inspire the next generation of conservation leaders
2. Empower the youth of today to be the problem-solvers of tomorrow
3. Increase public awareness about elephant conservation and the challenges facing rural communities in Botswana
4. Communicate our findings to the public and increase knowledge about the challenges of elephant conservation.
5. Inform stakeholders of our findings
6. Contribute to capacity building in STEM and conservation, through mentoring, training and the field supervision of international students

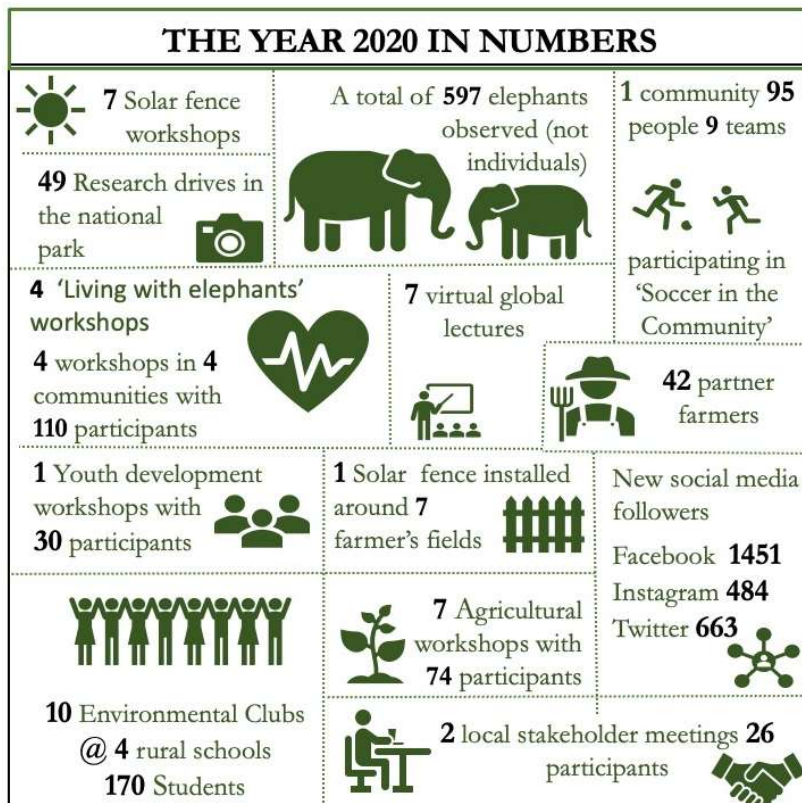
Through invitation and promotion, we provide educational and inspirational talks to schools, colleges, universities, zoological societies and at public events. Covering our work, conservation, biodiversity and women in science. We also communicate our findings and observations through our social media channels, newsletter, website, magazine and news articles, radio and TV interviews.

Collaborating with universities throughout the world we offer the opportunity for students to conduct their field work with our team in Botswana and/or work on our historical data. Supervising and advising them prior to fieldwork, in the field and during their thesis write up.

Public benefit

In formulating the objectives and planning activities for the year, the Trustees, and our Founder have considered the Charity Commission’s guidance on public benefit and address this through our education programme.

ACHIEVEMENT AND PERFORMANCE



**REPORT OF THE TRUSTEES
for the year end 31 December 2020**

Charitable activities

The charities key areas of activity during the year were:

Research

Our research continued to focus on the long-term monitoring programme of the male elephants in the Makgadikgadi Pans National Park (MPNP) and with the re- introduction of trophy hunting in Botswana we have added 'reaction indices' data to our collection protocols, this will enable us to monitor any changes to the way elephant reaction to humans in this landscape with this reintroduction. There was limited hunting throughout Botswana in 2020 due to the pandemic and its implications for travel, so we do not have any data to analyse at this stage.

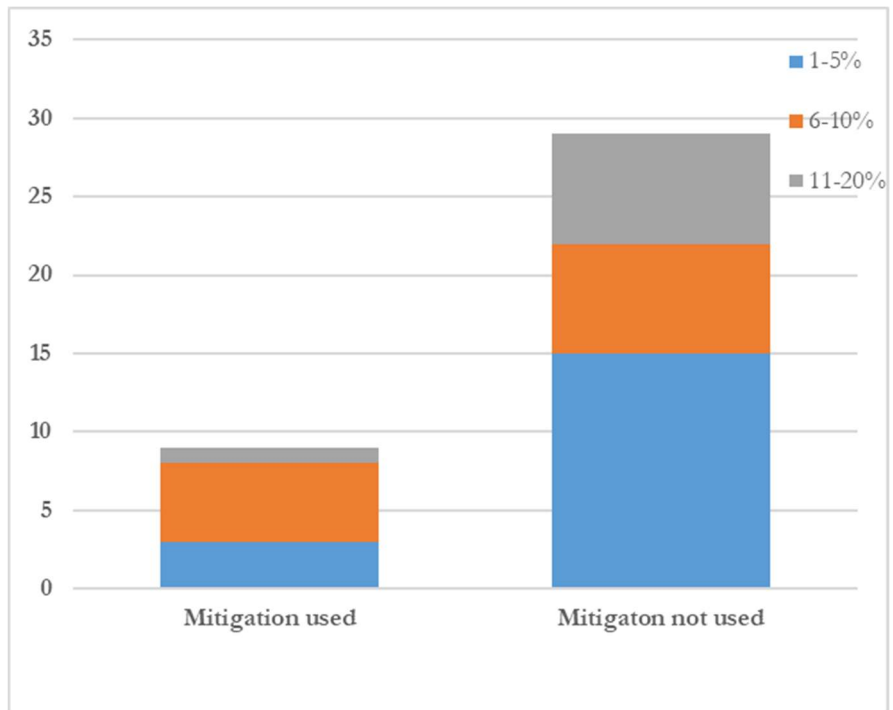


Figure 1: Percentage yield lost on crop raided fields where mitigation was and was not used

Our data on the crop-raiding behaviour of the elephants in the community land bordering the western boundary of the MPNP has shown the impact that farmer that use mitigation has on limiting crop raiding (Figure 1) and since 2018 we have seen a decrease from 4.2 raids/farmer to 2.1 raids/farmer. These findings are very encouraging, and we look forward to continuing to improve the sustainability, welfare and livelihoods of the farmers and therefore communities we work with.

PhD student Connie Allen is continuing to write up her thesis through the University of Exeter and has published the following paper.

Allen, C. R. B., Brent, L. J. N., Motsentwa, T., Weiss, M. N. & Croft, D. P. Importance of old bulls: leaders and followers in collective movements of all-male groups in African savannah elephants (*Loxodonta africana*). *Scientific Reports* 10, 13996 (2020).

Our local PhD student Masego Mokobela, studying at the Nelson Mandela University in South Africa has started her field work in 2020, but due to the pandemic has suffered various delays due to lock down and travel restrictions, but has managed to install 60 camera traps to better understand how male and female elephants are utilising the habitats of the MPNP and we look forward to learning more from her.



REPORT OF THE TRUSTEES
for the year end 31 December 2020

Education

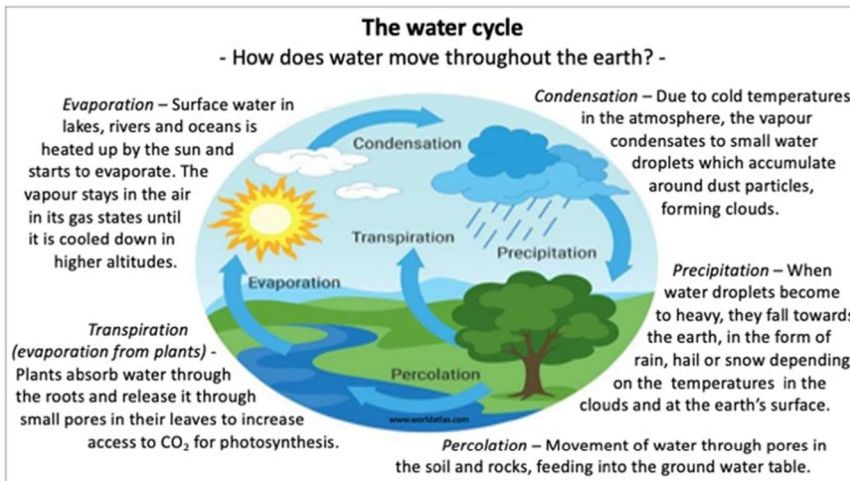
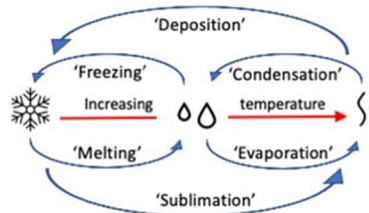
It was with great sadness that we and our partner schools elected to put on hold our monthly EleFun environmental club activities in April 2020. Prior to the national wide lockdown in April and May we had held 5 lessons across four school with 154 students enrolled on the programme at the start of the year. We were very excited to expand our schools programme this year, welcoming, Motopi Junior Secondary School as an Elephants for Africa partner schools alongside our established partnerships with Khumaga Primary School, Mogolokwane Primary School and Moreomaoto Primary School. The Motopi Junior Secondary School is the school to which the students at all the primary schools move on to and thus this new partnership ensures that their environmental education continues with their schooling. As for the primary schools we will work to a 2-year curriculum and focus on students in the first two years of their Junior Secondary education.



'WATER (METSİ)
 Environmental Education for Primary School Children

Water facts

- Water is the name for the **liquid** state of the element **H₂O**. Depending on temperature the element can take two additional states: ice (**solid**) and steam (vapour/**gas**)
- All life on earth depends on water
- Only 2.5% of the earth's water is freshwater
- 0.01% of the freshwater is renewed through the water cycle (hydrological cycle)



Important vocabularies

Evaporation; Ke fa metsi a tshubiwa ke letsatsi a be a tsamaya a ya kwa godimo, a ntse in a gas form e e bitswang **water vapour**.

Condensation; Ke fa dithoti tsa metsi di nna tsididi be a gatsela di kopanye di nna maru.

Transpiration; Ke fa dithare di nwa metsi go tswa mo mmung di dirisa medi ya tsona, be di a nstha ka matlhare ga di sena go dira dijo ka photosynthesis

Precipitation; Ke fa metsi a nna bokete be a wela fatshe a le in a solid or liquid form e le pula kana sefako.

Close tap after using it Plant a tree Compost your food waste

Collect rainwater

Only 1% of the world's freshwater is available for human consumption. To save the little we have you can:

Don't play with drinking water Recycle your rubbish Water crops in the evenings

Somarela thoti ngwe le ngwe - Save each and every drop.

Figure 1: The water cycle poster, one of many distributed to and used by our partner schools

The communities where are schools are situated have very little infrastructure or resources, electricity to charge phones and for lighting is sourced through car batteries or generators with very few children having access to computers and tablets and so when the schools closed formal education stopped. To support the teachers and students until we can return, we have created educational posters for the classrooms that can be used by all students, not just those in the environmental clubs (Figure 2).

With Motopi Junior Secondary School, we aim to focus more on research and outreach orientated topics. Over the course of two years students will attend lessons on how to write a scientific report, science communication and public speaking all to build even more competent environmental stewards who can not only understand research principles but carry out and disseminate that research work to help conserve resources in their communities. With most of students from the three partner primary schools attending Motopi Junior Secondary School, it will also offer us a longer-term outlook at how attending our EleFun programme at primary school and junior secondary impacts the students.

Outreach

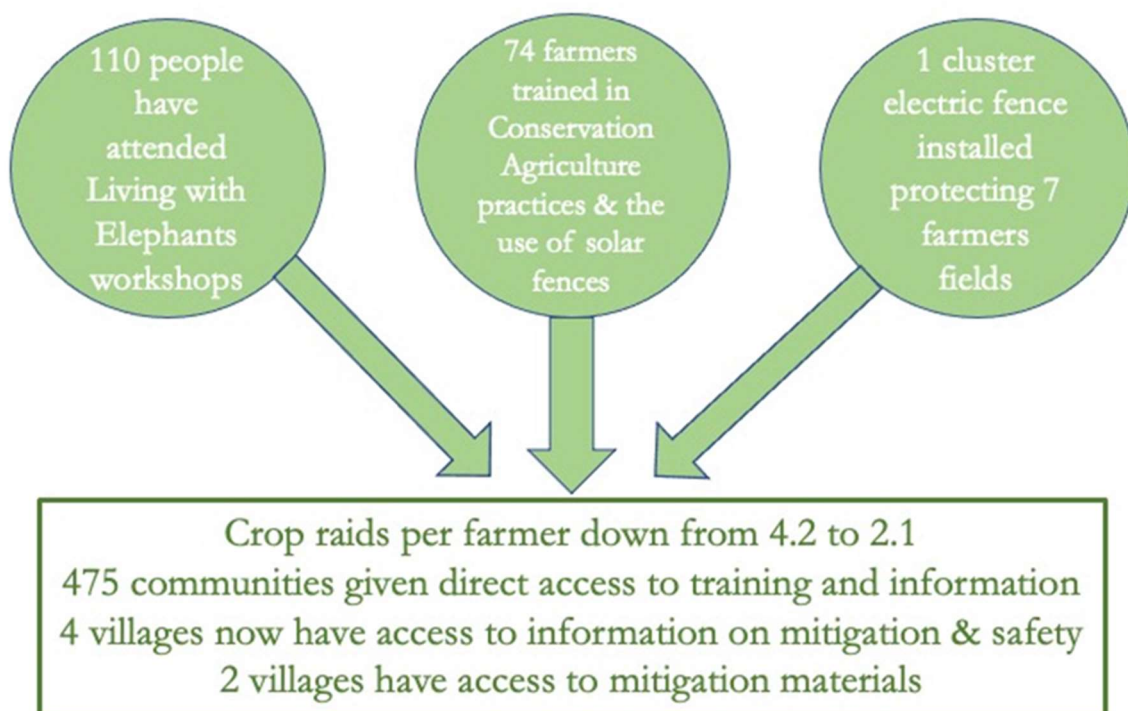


Figure 2: Summary of 2020 outreach activities

Despite a national wide lock down and ongoing restrictions to the size of public meetings and movement of people, we held a total of sixteen workshops and meetings; four Living With workshops, seven Solar Fencing workshops, two farmers meeting, two stakeholder engagement meeting, one youth jobs readiness workshop and one invitational meeting with the Boteti Rural Development Trust to offer our expertise. In total we reached 475 participants (Figure 3).

**REPORT OF THE TRUSTEES
for the year end 31 December 2020**

This year saw us expand our reach of our “Living With’ workshops to the community of Motopi and the neighbouring cattle post of RamoXHikiri. These workshops focus on how to remain safe around elephants, how to interpret their behaviour, when it is best to venture into the veld to collect resources and what to do should you see an elephant. Though hampered by COVID-19, the smaller format of workshops is allowing us to reach community members in more remote locations that may not be able to travel to the village for larger group meetings and we look forward to reaching more villages and cattle posts and engage with them to learn more about elephant behaviour and how to stay safe around them.

Solar fencing is very popular as a mitigation technique and used in conjunction with burning chilli and good maintenance plans is a good means to encourage elephants away from crops. Ideally using these around cluster fields (fields that are located together but owned by several farmers) ensure that elephants and other wildlife has space to move through community lands and a smaller investment in equipment. To help farmers understand what is involved, we hosted seven Solar Fencing Workshops to discuss with farmers how it is they could install solar fencing themselves, the costs and the benefits and drawbacks of the system compared to other mitigation measures. With word of mouth spreading throughout the region about how well farmers who EfA had installed solar fencing for are in mitigating crop raiding and harvesting well (to date we have installed 3 fences), we have noticed much more interest and these workshops were designed to equip farmers with the information they would need to make educated decisions on what was the best investment for them.

FINANCIAL REVIEW

Financial Position

The charity held reserves of £17,3078 as at 31 December 2020 (£11,264 as of 31 December 2019), of which £11,025 is restricted (£7,166 as at 31 December 2019).

Reserves policy

Funds held at the year-end cover three months of running costs for the charity which is deemed to be sufficient and is in line with the charity policy.

PLANS FOR THE FUTURE

- In 2021 we hope to finalise an MoU with the Botswana International University of Science and Technology.
- We will launch a Corporate Campaign which we have worked on this year.
- Our plans for this year to support more student, interns and visitors was curtailed by the pandemic and we hope that 2021/2022 will enable this to happen. In the meantime we will recruit students to help with data analyses remotely.
- We will continue to work hard to engage our supporters and given our increase in Botswana followers, particularly on Facebook, we will look to do updates and posts in Setswana.
- We will continue to work with and advise other NGO’s scientists and interested parties and contribute actively to the Elephant Specialist Advisory Group of South Africa, proposed KAZA Elephant Working Group and the Botswana Human-Wildlife Conflict working group.

**REPORT OF THE TRUSTEES
for the year end 31 December 2020**

STRUCTURE, GOVERNANCE AND MANAGEMENT

Governing document

The charity is a company limited by guarantee governed in accordance its Memorandum and Articles of Association. The charity is a company governed by its governing document, a trust deed.

Recruitment and appointment of new trustees

The charity is constated by a board of trustees. All new appointments are elected by the board.

Induction and training of new trustees

All new trustees are given a copy of this constitution and any amendments made to it and a copy of the CIO's latest trustees' annual report and statement of accounts, last annual reports, budget, strategic plan and recent newsletters. Ideally the board meets up in person, nowadays virtually to welcome the new trustees and address any questions they may have.

Fundraising and partnerships

Elephants for Africa is funded via a range of sources including Trusts and Foundations, zoological societies, corporate sponsorship, individual donors, online initiatives and fundraising events. This year we have sustained and increased support from existing funders and secured funds from new sources. The trustees would like to thank all who generously support our work. A huge thanks to all our staff and volunteers in Botswana and in the UK who continue to support and contribute to our work. Elephants for Africa works in close partnership with the Botswana registered.


Risk management

We acknowledge that is the responsibility of the trustees to identify, assess and manage the risks to the charity's work. The risks we have identified are a) receiving less funding b) staff turnover c) impact of a pandemic and the ongoing restrictions d) damage to its reputation.

- a) Our budget, including income, potential income are updated monthly, so all trustees are able to access the charity's current situation and projection. In addition, we have monthly metrics we measure ourselves against to highlight any areas we need to focus on and address.
- b) Whilst our director has remained constant throughout the charity's history, we have high turnover of our senior staff in Botswana, which have been historically recruited from outside of Botswana due to the lack of skilled personnel in Botswana. Since 2014 we have focused on capacity building to enable the staff to be predominantly Batswana (at the end of 2020 all field personnel were Batswana) and are increasing looking for funding to offer more training and development opportunities.
- c) We have had to adapt many of our workshops to incorporate government restrictions and Covid recommendations, we now offer small workshops and have on hand all the necessary equipment. Satellite internet in camp as well as good mobile phone connections enables our Director to have meet weekly with all senior staff in the field and be on accessible to all staff members.
- d) We carry out diligence with any interested partners that may wish to highlight our work and/or corporate sponsors. We acknowledge that is the responsibility of the trustees to identify, assess and manage the risks to the charity's work. The risks we have identified are a) receiving less funding b) staff turnover c) damage to its reputation.

Use of Volunteers

Elephants for Africa would not have been able to develop to where we are today without the dedicated of many volunteers, who offer their time and expertise. This year we have been grateful for those supporters that have given their time to develop our online presence, improve our PR, bring together our newsletters and reports, video production and technical support. Without our volunteers we simply could not achieve all that we do. They are vital to the running of the CIO. We ensure that each volunteer feels valued through taking the time to regularly thank them in person, when possible, or via personal emails and letters

Elephants *for* Africa 
Conservation through research and education
REPORT OF THE TRUSTEES
for the year end 31 December 2020

REFERENCE AND ADMINISTRATIVE DETAILS

Registered Company number
CE14721 (England and Wales)

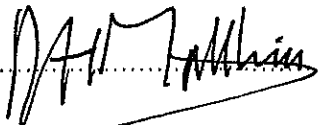
Registered Charity number
1179318

Principal address
5 Balfour Road
London
N5 2HB

Trustees
J Graham
B Courtenay
D Matthias
M Henley
K Ross (resigned 18th June 2020)

Independent examiner
LDP Luckmans
1110 Elliott Court
Coventry Business Park
Herald Avenue
Coventry
CV5 6UB

Approved by order of the board of trustees on 28/10/21 and signed on its behalf by:


..... David Matthias Trustee

**INDEPENDENT EXAMINER'S REPORT TO THE TRUSTEES OF
ELEPHANTS FOR AFRICA**

Independent examiner's report to the trustees of Elephants for Africa

I report to the charity trustees on my examination of the accounts of the Elephants for Africa (the Trust) for the year ended 31 December 2020.

Responsibilities and basis of report

As the charity trustees of the Trust you are responsible for the preparation of the accounts in accordance with the requirements of the Companies Act 2006 ('the 2006 Act').

Having satisfied myself that the accounts of the Company are not required to be audited under Part 16 of the 2006 Act and are eligible for independent examination, I report in respect of my examination of your charity's accounts as carried out under section 145 of the Charities Act 2011 ('the 2011 Act'). In carrying out my examination I have followed the Directions given by the Charity Commission under section 145(5) (b) of the 2011 Act.

Independent examiner's statement

I have completed my examination. I confirm that no matters have come to my attention in connection with the examination giving me cause to believe:

1. accounting records were not kept in respect of the Company as required by section 386 of the 2006 Act; or
2. the accounts do not accord with those records; or
3. the accounts do not comply with the accounting requirements of section 396 of the 2006 Act other than any requirement that the accounts give a true and fair view which is not a matter considered as part of an independent examination; or
4. the accounts have not been prepared in accordance with the methods and principles of the Statement of Recommended Practice for accounting and reporting by charities (applicable to charities preparing their accounts in accordance with the Financial Reporting Standard applicable in the UK and Republic of Ireland (FRS 102)).

I have no concerns and have come across no other matters in connection with the examination to which attention should be drawn in this report in order to enable a proper understanding of the accounts to be reached.


M D Spafford
LDP Luckmans
1110 Elliott Court
Coventry Business Park
Herald Avenue
Coventry
West Midlands
CV5 6UB

Date: 28 OCTOBER 2021



Charity Name: Elephants for Africa			Charity No (if any)	1179318	CC17a
Annual accounts for the period					
Period start date	01/01/2020	To	Period end date	31/12/2020	

Section A Statement of financial activities

Recommended categories by activity	Details of own analysis	Note	Unrestricted funds £	Restricted income funds £	Endowment funds £	Total this year £	Total last year £
			F01	F02	F03	F04	F05
Incoming resources from generated funds (Note 3)							
Donations & legacies		S01	47,506	19,514	-	67,020	75,381
Voluntary income		S02	-	-	-	-	-
Activities for generating funds		S03	-	-	-	-	-
Investment income		S04	-	-	-	-	-
Incoming resources from charitable activities		S05	146	-	-	146	1,112
Other incoming resources		S06	-	-	-	-	-
Total incoming resources			47,652	19,514		67,166	76,943
Costs of Generating Funds (Notes 4-5)							
Costs of generating voluntary income		S07	1,695	1,385		3,080	7,587
		S08					
Fundraising trading costs		S09					
Separate material item of expense		S10					
Charitable activities		S11	42,673	14,770		57,443	56,120
Governance costs		S12	600			600	1,160
Other resources expended		S13					
Total resources expended			44,968	16,155		61,123	64,867
Net incoming/(outgoing) resources before transfers			2,684	3,359	-	6,043	12,076
Gross transfers between funds			-	-	-	-	
Net incoming/(outgoing) resources before other recognised gains/(losses)			2,684	3,359	-	6,043	12,076

Other recognised gains/(losses)


Gains and losses on revaluation of fixed assets for the charity's own use	S17	-	-	-	-	-
Pensions	S18	-	-	-	-	812
<i>Net movement in funds</i>	S19	2,684	3,359	-	6,043	11,264
Total funds brought forward	S20	3,598	7,666	-	11,264	
<i>Total funds carried forward</i>	S21	6,282	11,025	-	17,307	11,264

The notes form part of these financial statements

Section B

Balance sheet

	Note	Unrestricted funds £	Restricted income funds £	Endowment funds £	Total this year £	Total last year £
		F01	F02	F03	F04	F05
Fixed assets						
Tangible assets	B01	-	-	-	-	-
	B02	-	-	-	-	-
Investments	B03	-	-	-	-	-
Total fixed assets	B04	-	-	-	-	-
Current assets						
Stock and work in progress	B05	2,820	-	-	2,820	1,550
Debtors (Note 6)	B06	50	-	-	50	1,046
Other Debtors	B07	-	-	-	-	-
Cash at bank and in hand	B08	4,312	32,469	-	36,781	20,018
Total current assets	B09	7,182	32,469	-	39,651	22,614
Creditors: amounts falling due within one year (Note 7)	B10	900	21,444	-	22,344	11,350
Net current assets/(liabilities)	B11					11,264
Total assets less current liabilities	B12					11,264
Creditors: amounts falling due after one year (Note 7)	B13	-	-	-	-	-
Provisions for liabilities and charges	B14	-	-	-	-	-
Net assets	B15	6,282	11,025	-	17,307	11,264
Funds of the Charity						
Unrestricted funds	B16	6,282			6,282	3,598
Surplus/ (Deficit)	B17					
Restricted income funds (Note 8)	B18		11,025		11,025	7,666
Opening Balance Equity (Note 8)	B19					
Total funds	B20	6,282	11,025		17,307	11,264

Elephants for Africa 
Conservation through research and education
NOTES TO THE FINANCIAL STATEMENTS - CONTINUED
for the year ended 31 December 2020

The financial statements were approved by the Board of Trustees and authorised for issue on
..... and were signed on its behalf by:

28/10/21



D Matthias - Trustee

The notes form part of these financial statements

1. LIABILITY OF MEMBERS

The Charity is a company limited by guarantee. It does not have share capital and the liability of each member is limited to the guarantee given by that member which shall not exceed £1.

2. ACCOUNTING POLICIES

Basis of preparing the financial statements

The financial statements of the charity, which is a public benefit entity under FRS 102, have been prepared in accordance with the Charities SORP (FRS 102) 'Accounting and Reporting by Charities: Statement of Recommended Practice applicable to charities preparing their accounts in accordance with the Financial Reporting Standard applicable in the UK and Republic of Ireland (FRS 102) (effective 1 January 2015)', Financial Reporting Standard 102 'The Financial Reporting Standard applicable in the UK and Republic of Ireland' and the Charities Act 2011. The financial statements have been prepared under the historical cost convention.

Income

All income is recognised in the Statement of Financial Activities once the charity has entitlement to the funds, it is probable that the income will be received, and the amount can be measured reliably.

Investment income and other income are included when receivable.

Expenditure

Resources expended are included in the Statement of Financial Activities on an accruals basis. Liabilities are recognised as resources expended as soon as there is a legal or constructive obligation committing the charity to the expenditure.

Charitable expenditure comprises those costs incurred by the charity in the delivery of its activities and services for its beneficiaries. It includes both costs that can be allocated directly to such activities and those costs of an indirect nature necessary to support them.

Expenditure which is directly attributable to specific activities has been included in these cost categories. Where costs are attributable to more than one activity they have been apportioned across the cost categories on a basis consistent with the use of these resources.

Governance costs include those costs associated with meeting the constitutional and statutory requirements of the charity and include the audit fees and costs linked to the strategic management of the company.

Stocks

Stocks are valued at the lower of cost and net realisable value, after making due allowance for obsolete and slow moving items.

Taxation

The charity is exempt from tax on its charitable activities.

Fund accounting

Unrestricted funds can be used in accordance with the charitable objectives at the discretion of the trustees.

Restricted funds can only be used for particular restricted purposes within the objects of the charity. Restrictions arise when specified by the donor or when funds are raised for particular restricted purposes.

Further explanation of the nature and purpose of each fund is included in the notes to the financial statements.

Pension costs and other post-retirement benefits

The charitable company operates a defined contribution pension scheme. Contributions payable to the charitable company's pension scheme are charged to the Statement of Financial Activities in the period to which they relate.

Contributions in respect of earnings paid by the charity to defined pension contribution schemes are charged to the Statement of Financial Activities in the year in which they are payable to the schemes.

2. TRUSTEES' REMUNERATION AND BENEFITS

There were no trustees' remuneration or other benefits for the year ended 31 December 2020.

Trustees' expenses

There were no trustees' expenses paid for the year ended 31 December 2020.

Section C **Notes to the accounts**
(cont)

Note 3 Analysis of incoming resources

Incoming resources may be further analysed if this would help the reader of the accounts.

	Analysis	This year £	Last year £
Voluntary income	Donations and gifts	67,020	75,831
		-	
	Total	67,020	75,831

Investment income		-	-
		-	-
	Total	-	-

Incoming resources from charitable activities	Sales of Merchandise	146	1,112
		-	-
		-	-
		-	-
	Total	146	1,112

Note 4 Analysis of resources expended

Resources expended may be further analysed if this would help the reader of the accounts.

	Analysis	This year £	Last year £
Costs of generating voluntary income	Incurring seeking donations	3,080	7,587
		-	-
		-	-
	Total	3,080	7,587

Fundraising trading costs		-	-
		-	-
	Total	-	-

Separate material item of expense			
		-	-
	Total		

Charitable activities

Cost of Merchandise/shrinkage/written off	95	4,728
Donations to Botswana	15,000	5,611
Wages and other staff costs	2,675	29,651
Consultant & contractor	35,354	14,859
Computer and IT costs	2,692	
Repairs	102	
Insurance	480	645
Utilities	859	430
Bank charges	186	196
Total	57,443	56,120

Governance Costs

Independent Examination fees	600	1,160
	-	
	-	
Total	600	1,160

Note 5 Paid employees

Please complete this note if the charity has any employees.

5.1 Staff Costs

	This year £	Last year £
Gross wages, salaries and benefits in kind	2,608	29,652
Employer's National Insurance costs		
Pension costs	67	812
Total staff costs	2,675	30,463

5.2 Average number of full-time equivalent employees in the year

The parts of the charity in which the employees work

	This year Number	Last year Number
Fundraising	-	-
Charitable Activities	1	2
Governance	-	-
Other		
Total	1	2

There were no employees during the year that received employee benefits (excluding employer pension costs) of more than £60,000.

Note 6 Debtors and prepayments

Please complete this note if the charity has any debtors or prepayments.

Analysis of debtors	Amounts falling due within one year		Amounts falling due after more than one year	
	This year £	Last year £	This year £	Last year £
Trade debtors	-	-	-	-
Amounts due from subsidiary and associated undertakings	-	-	-	-
Other debtors	-	-	-	-
Prepayments and accrued income	50	1,046	-	-
Total	50	1,046	-	-

Note 7 Creditors and accruals

Please complete this note if the charity has any creditors or accruals.

7.1 Analysis of creditors

	Amounts falling due within one year		Amounts falling due after more than one year	
	This year £	Last year £	This year £	Last year £
Loans and overdrafts	-	-	-	-
Trade creditors	-	-	-	-
Amounts due to subsidiary and associated undertakings	-	-	-	-
Other creditors	-	-	56	-
Accruals and deferred income	22,344	-	11,294	-
Total	22,344		11,350	-

7.2 Security over assets

If any loan, overdraft or other creditor holds a charge or other security over any assets of the charity please provide details.

Note 8 Endowment and restricted income funds

Please complete this section if the charity has any endowment or restricted income funds.

8.1 Funds held

Please give a brief description of any of the following type of funds held by the charity:

- permanent endowment funds (PE);
- expendable endowment funds (EE); and
- restricted income funds, including special trusts, of the charity (R).

Fund Name	Type PE, EE or R	Purpose and Restrictions
Columbus Zoological	R	Community outreach programme
Boss	R	Education program
Global Giving	R	Community outreach programme
Fresno Zoo	R	Education Program

**Section C
(cont)**

Notes to the accounts

8.2 Movements of major funds

Please give details of the movements of the major funds summarised in the restricted and endowment columns of the Statement of Financial Activities.

Fund names	Fund balances brought forward £	Incoming resources £	Outgoing resources £	Transfers £	Gains and losses £	Fund balances carried forward £
Columbus Zoological	-	7,538	5,277	-	-	2,261
Boss	8,764	8,996	8,996	-	-	8,764
Global Giving	-	1,882	1,882	-	-	-
Fresno Zoo	(1,098)	1,098	-	-	-	-
			-	-	-	-
	-			-	-	-
Total Funds	7,666	19,514	16,155	-	-	11,025

The Fresno Zoo fund appears to be in deficit. This is due to the majority of income received in the year being deferred to the next period and so the funds have been spent in full in this year.

8.3 Transfers between funds

Please give details of any transfers between funds.

From Fund (Name)	To Fund (Name)	Reason	Amount

Note 9 Transactions with related parties

If the charity has any transactions with related parties (other than the trustee expenses explained in note 6) details of such transactions should be provided in this note. If there are no transactions to report, please enter "None" in the relevant boxes

Section C (cont)

Notes to the accounts

9.1 Remuneration and benefits

Please give the amount of, and legal authority for, any remuneration or other benefits paid to a trustee or other related parties by the charity or any institution or company connected with it.

Name of trustee or connected party	Legal authority (eg order, governing document)	Amounts paid or benefit value	
		This year £	Last year £
None	None	None	None

9.2 Loans

Please give details of and amounts owing to or from the charity's trustees or other related parties by the charity at the year end.

	Name of trustee or connected party	Legal authority	Amount owing	
			This year £	Last year £
Due to trustees and related parties				
Due from trustees and related parties				

Please give details of any transaction undertaken by (or on behalf of) the charity in which a trustee or related party has a material interest.

Name of the trustee or related party	Relationship to charity	Description of the transaction(s)	This year £	Last year £

Note 10 Additional Disclosures

The following are significant matters which are not covered in other notes and need to be included to provide a proper understanding of the accounts. If there is insufficient room here, please add a separate sheet.