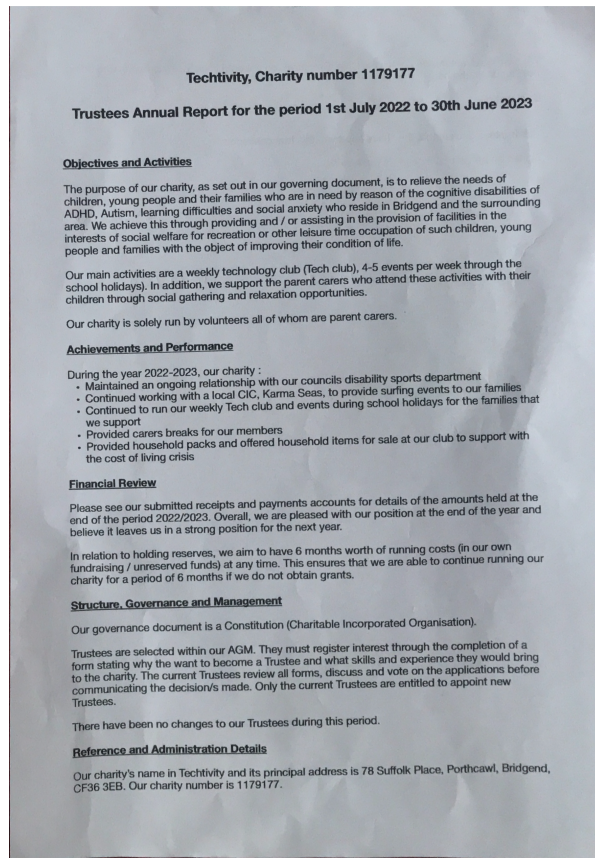


Scanned Documents



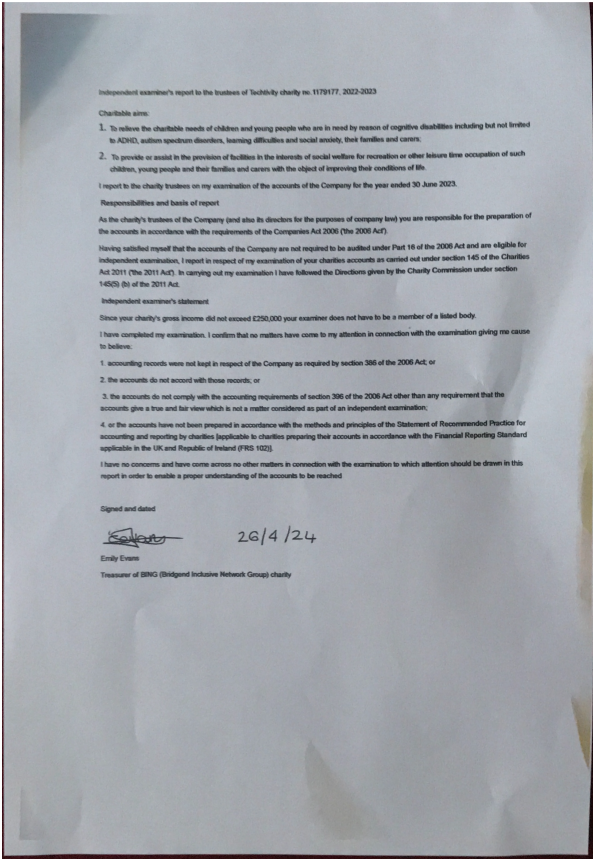
Caption

Receipts and payments accounts

CHARITY COMMISSION FOR ENGLAND AND WALES		Activity		1179177		CC16a
Receipts and payments accounts						
For the period from		1st July 2022		To		
				30th June 2023		
Section A Receipts and payments						
	Unrestricted funds	Restricted funds	Endowment funds	Total funds	Last year	
	to the nearest £	to the nearest £	to the nearest £	to the nearest £	to the nearest £	
A1 Receipts						
Grants		8,369		8,369		23,445
Fundraising	3,219			3,219		6,886
Payments for events from families supported and household items/packs		15,722		15,722		9,382
				-		-
				-		-
				-		-
				-		-
Sub total (Gross income for A1)	3,219	24,072	-	27,291		38,735
A2 Asset and investment sales, (see table)						
				-		-8
Sub total	-0	-0	-0	-		-0
Total receipts	3,219	24,072	-0	27,291		38,735
A3 Payments						
Payments for events organised and household items/packs		22,675		22,675		28,911
Insurance	480			480		377
Volunteer training & DBS	40			40		24
Volunteer expenses				-		-
Refunds to families supported for events				-		-
Subsidies to families supported for events		400		400		400
				-		-
				-		-
Sub total	480	23,075	-	23,554		30,712
A4 Asset and investment purchases, (see table)						
Tech purchases for weekly club				-		-
Sub total	-0	-0	-0	-		-0
Total payments	480	23,075	-0	23,554		30,712
Net of receipts/payments	2,739	997	-	3,727		8,023
A5 Transfers between funds						
A6 Cash funds last year end						
Cash funds this year end	2,739	997	-	3,727		8,023
Section B Statement of assets and liabilities at the end of the period						
Categories	Details	Unrestricted funds	Restricted funds	Endowment funds		
		to nearest £	to nearest £	to nearest £		
B1 Cash funds	Grants					
	Fundraising					

Caption

Scanned Documents



Caption