



Christmas Lunch staff & volunteers December 2023



Annual Report 2023

Charity Number 1178940

Thank you to our donors & partners!



We could not do it without all our marvellous donors & Supporters. Just a few pictured here: Great Yarmouth Pleasure Beach, Asda, Argos Great Yarmouth, Charter Academy, Great Yarmouth Road Runners,

CHAIR OF TRUSTEES REPORT

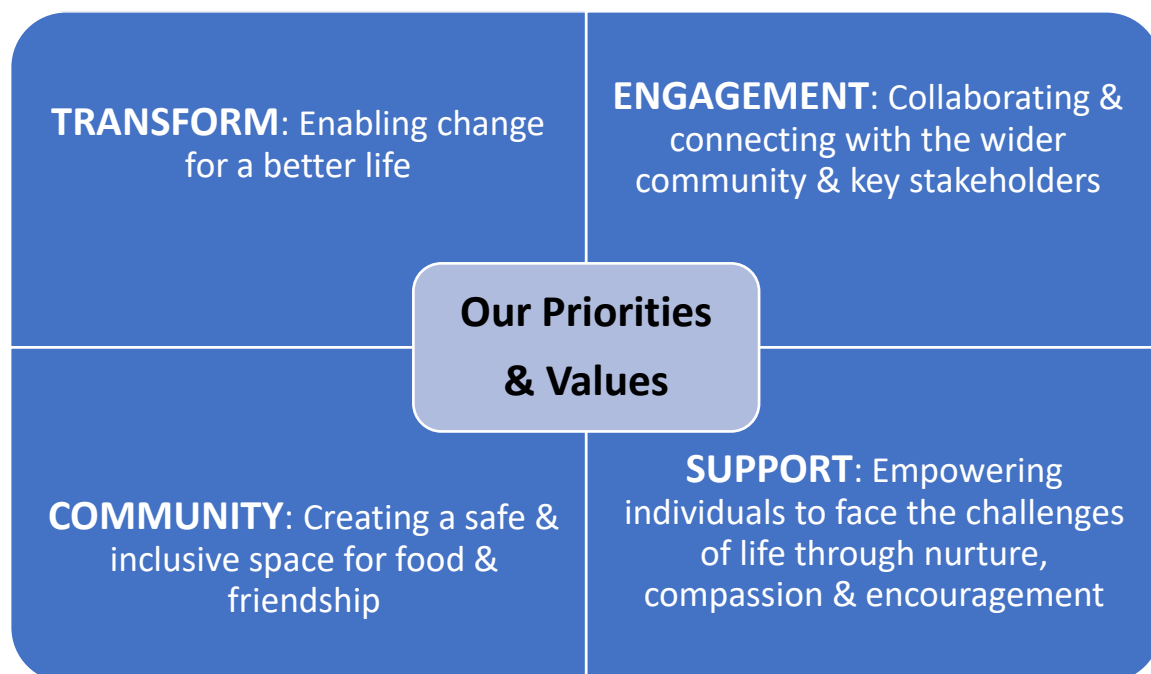
I find it fascinating when writing for the annual report to notice how the heart of Pathway remains the same and yet we have changed and grown so much. When I first encountered Pathway in my early days in the Parish of Great Yarmouth in 2017 it was in essence a simple community meal normally attended by about 30 to 50 people. I recall that felt like a big commitment! Now our doors are open and we feed about 100 people three days a week and have seen our growth as a Foodbank too.



The support and rigour derived from Trussell Trust has encouraged us to stretch ourselves, but also to take stock and evaluate where we have got to. Therefore, in late 2023, the Trustees embarked upon a couple of days of vision which was brilliantly facilitated by the kindly and impressive Julian, from Trust Advice. It is a vital for any organisation to take stock and re-evaluate where they are, what they stand for and what they are actually trying to achieve. It was therefore encouraging to emerge with a new vision statement: *Pathway: a transforming place of light, love and engagement for the community of Great Yarmouth to support those in need*. Emerging from there we considered our priorities and values which you can see in the diagram below

Pathway Vision Statement 2024

Pathway: a Transforming Place of Light, Love & Engagement for the Community of Great Yarmouth to Support Those in Need



This vision statement has been set before us along with a development plan to keep the trustees thinking about our development and how we continue to serve others. During 2023 it has been wonderful to see the evolving pastoral offer brought to Pathway by Mother Ashley. Week by week she has brought a depth of care and compassion to all of our clients and through her example and conversation has born witness to the love of God in Jesus Christ. It was really encouraging to see

baptism take place at the Minster Mission and a Pathway Carol Service in December. We look forward to seeing how this care develops.

Part of my role in this report is to express thanks on behalf of the trustees. We remain indebted day by day to the managerial skills of Jennifer King around whom everything happens with care and consistency. I also want to pay tribute to Michael Hewitt, our treasurer since the idea of Pathway first began in 2014. After nearly a decade of faithful service, Michael has indicated his intention to step down the end of this year we are enormously grateful to him in the commitment he has shown in a role which has grown beyond anyone's imagining.

I wanted to thank our magnificent staff and amazing volunteers who week by week give so much to serve other people. It really is a case of many hands working together to build something quite wonderful.

Great Yarmouth Pathway and Yarmouth and Magdalen Foodbank are ever conscious of the huge support given by members of the public and also the various trusts and foundations which give generously to allow all of this to happen. Whether you are reading this as a person who gave financial support or maybe just gave a few tins, we do thank you for your kindness.

I hope you enjoy reading this support and thank you for your interest in our work.

Revd Simon Ward

Chair of Trustees

MANAGER'S REPORT

2023 has been a fantastic year for Great Yarmouth Pathway, as we have continued to serve hot meals, working from the Minster Mission; every Monday, Wednesday and Friday and have also been delivering our weekly foodbank under the umbrella of Yarmouth&Magdalen Foodbank.

Great Yarmouth Pathway is a transforming safe space of light, welcome and engagement for the community of Great Yarmouth to support those in need. There are no criteria or restrictions, and no-one must justify their attendance. As a result, a very diverse group of people gathers, usually over 100 at each session. Some are there because they cannot afford to buy nutritious food, some because they like the company, some because it is warmer than the tent they are sleeping in, some because they are recognised and valued there, and some because it is the only time during the week they get to talk to anyone.



We currently have over 500 registered names on our database and served on average 90-100 guests each day across 2023. Great Yarmouth is ranked 150th out of the 12382 parishes in the country for general deprivation, where 1 is the most deprived (CUF lookup tool). The borough also contains three of the 225 wards in the country classified as 'left behind' due to the lack of social infrastructure (Local Trust report 2019/20). In reality this means that people are experiencing poverty of food and poverty of relationships and community.

The impact of the current economic climate on an area which is already deprived such as Great Yarmouth, is a deepening and spreading of need. Those who were already struggling financially find themselves at the bottom of an even deeper pit with no hope of climbing out. Added to that, more and more people who have never previously needed help or struggled with money are suddenly finding themselves in crisis and needing a safety net. The repercussions are already being witnessed at Great Yarmouth Pathway.

Great Yarmouth Pathway runs the Yarmouth & Magdalen Foodbank, which has had a 145% increase in parcel distribution since March 2022 (from 25 parcels on average a week to an average of 61 parcels). These parcels go to people who are struggling with crisis situations. We also have a separate warehouse where food is stored, sorted, packed and distributed. The warehouse has allowed us greater capacity to take larger donations and organise donations.

In 2023 welcomed 9 new volunteers to the team, in addition to the appointment of our new chef, Andy and warehouse coordinator Debbie. The difference these individuals have made to Great Yarmouth Pathway is significant and they continue to thrive in our organisation. Our volunteers, staff and customers are the heart of what we do and I am proud of everything we achieve and I would like to take this opportunity to thank them for all of the hard work and commitment across the year.

Our volunteers range in age from 20 through to late seventies and some have been previous Great Yarmouth Pathway customers who were keen to experience a volunteer opportunity. Volunteers gain confidence and develop practical skills within a catering environment; often for the first time. For some this acts as a stepping stone into paid employment which they previously didn't have the skills or confidence to consider. Great Yarmouth Pathway currently offers an induction course supported by the necessary training to achieve food hygiene, fire training and first aid qualifications. For our volunteers, there is also the opportunity to offer awareness raising courses in issues such as safeguarding and trafficking.

Great Yarmouth Pathway, in partnership with other agencies, also aims to help people to make positive life changes. Local agencies attend, offering advice and support to individuals. We have seen people make real progress because of this, for example moving into accommodation, attending training, getting jobs, accessing mental health support. Some have also felt able and willing to join our volunteer team.

The benefits our clients gain from attending Great Yarmouth Pathway are:

- **A Hot Meal:** Many of our clients live in one room without any, or with inadequate, cooking facilities due to being in temporary accommodation, which is rife in our borough due to lack of social housing. Many local people are placed in small B&Bs and hotels in the town, which do not have the essential facilities needed. For many Great Yarmouth Pathway is the only way to ensure a hot nutritious meal on several days a week and to help maintain their physical health.
- **Structure:** Time for many of our clients is fluid and irrelevant. Attending centres at a specific time and day gives an element of structure to the day-to-day lives of our customers. This is so important for mental wellbeing.

"I come to meet people...It breaks the monotony of staring at four walls and gives me company. Everyone's really friendly and if you don't know someone, you soon get to know them. The volunteers are very friendly too."

- **Friendship:** Through the café many friendship groups have been formed, and these relationships help form positive and protective support networks for our clients.

"I just wanted to thank you and all the team again, you've helped me more than you can ever imagine."

- **Support:** The Great Yarmouth Pathway offers signposting to outside agencies and offers clients support from our volunteers. We also employ a DIAL worker and MIND counsellor who are in house and can triage and take on cases immediately, so that our clients can bypass long waits for these essential services that they would face if they went directly to those charities.

- **A Breathing Space:** Many clients are subject to abuse, violence and a lack of respect on the streets and state that they do not feel safe at any time. At the Great Yarmouth Pathway everyone is equal and deserving of respect – at the café we find that respect breeds respect.

“You hear about it from the word on the street. It was a safe and warm place to come when I was on the streets.”

- **A food parcel:** An emergency parcel to carry client through a crisis period, coupled with substantial support and signposting to form resolutions to problems. Many clients are referred to other agencies to seek expert help.
- **A fuel bank:** In response to the current economic climate, we can offer short term financial support with gas and electricity for those facing fuel poverty.

As I reflect on 2023, I am proud of the profound difference we are making in our local community, to the lives of many, many people. We have cemented our place in the local landscape and have established a sustainable charity who continue to develop and adapt to meet the needs of those we serve. I am grateful for the team of volunteers and staff we have and thankful to all of those who have donated time, money, food and support across the year to us.

Jennifer King

Pathway Manager

STATISTICS 2022

For **Pathway Café**, a register is kept each time we serve food so that we can track the demographic of people attending our café for evaluation and fundraising purposes. Customers are asked to complete a basic registration form so we know a few essential details but we operate on an open policy: no referral is necessary and everyone is welcome. Café Meals Distributed:

Month	Meals served	New Customers
January	1029	18
February	980	12
March	874	5
April	935	24
May	976	9
June	1003	16
July	1098	21
August	1072	7
September	1059	27
October	1142	15
November	1266	11
December	1013	38
Total	12447	203

For **Yarmouth & Magdalen Foodbank**, all parcels are processed using the Trussell Trust database, where data is collated (all GDPR compliant and with consent) and reports are produced. Clients are referred using external agencies or our inhouse support coordinators and must qualify based on eligibility for a parcel. Food Parcels Distributed:

	No of vouchers fulfilled	No of parcels distributed
January	278	626
February	236	470
March	293	587
April	218	441
May	238	450
June	302	583
July	259	482
August	242	518
September	238	487
October	187	379
November	209	442
December	200	466
2023 Total	2900	5931



The Foodbank / Pathway van gets lots of use: At Mary Magdalen with Foodbank Warehouse Manager Debbie and outside the Minster with volunteer, Paul.

TREASURERS REPORT

I would like to start first by thanking all the staff, volunteers and various helpers for their marvellous efforts in what has been another exceptionally busy and challenging year. We still serve about 80/100 free hot meals on three days each week and operate a very busy Foodbank. We also now have a full year of a Food Bank accounts. The accounts are now designed to show separate details of both.

Thanks to a successful number of Grant Applications we obtained a working balance of £3303.79 in the year which is carried forward into 2024.

The total received in Income in the year was £201162.90 and £197859.11 was paid out. The main Donation of £20,000 from the Mercers Company which pays the Salary of The Manager. Norfolk Community Foundation has via various partners made a number of donations. Foodbank main donation was £81627.97 from The Trussell Trust and we thank all of them for their support of Gt. Yarmouth Pathway and Food Bank.

In addition to Fare Share and Thompson Foods we have been using other suppliers, especially for Food Bank while we try to grow our public donations. The on-line banking and debit cards both of which have proved very helpful. Also, we at present pay £200 per week (£50 for each of the four days we are open) to the PCC for the hire of the hall. This covers all the utilities we use.

This left us with a total of £77886.94 in cash and £5548.53 in assets to carry forward into 2024.

Again, I thank all our various donators for their contributions and also the Trustees for all the assistance given to me over year and in producing these accounts.

Michael Hewitt

Treasurer

This is Michael Hewitt's last set of annual accounts: Thank you Mike! You have given huge service to Pathway and Foodbank over the last decade. You've always remained cheerful even when it's been very hard work. On behalf of the Trustees and the whole Pathway & Foodbank community, THANK YOU!

Below: Great Yarmouth Freemasons kindly replaced our dishwasher.



Financial Summary 2023

Great Yarmouth Pathway		
Statement of Financial Activities	Year ending 31 st December 2023	
	2023	2022
INCOME		
Gift Aid donations	30.00	0.00
Fundraising	16279.72	99,075.25
Standing Order / Direct Debit/Stripe/Paypal	1136.50	2191.23
Churches	120.00	1122.17
Other Groups, companies or Charities	2821.71	670.00
Individuals and councillors	5685.00	3964.00
Grants from Trusts (recurring)	20000.00	20,000.00
Grants from Trusts	154949.97	38,300.00
Training	0.00	0.00
Sale of Goods	140.00	290.00
TOTAL INCOME	201162.90	165,612.65
EXPENDITURE		
Insurance	597.14	546.55
Catering Supplies and running expenses	9533.87	28,050.42
Cleaning Supplies & Refuse	1642.74	1910.08
FareShare	0.00	3015.20
Volunteer Expenses and petty cash	2752.50	5761.99
Training Costs	0.00	0.00
Rent to GY PCC	7800.00	8450.00
New Equipment	0.00	4673.81
Fund Raising Event	0.00	0.00
Foodbank (<i>detail on next page</i>)	132222.41	22,803.20
Centre management and admin.	8136.07	6031.64
Staff Wages: Manager	22586.05	20475.81
Staff Wages: Chef	10900.39	14,580.26
Staff Expenses	0.00	0.00
Van and running costs	1687.94	7253.45
TOTAL EXPENDITURE	197859.11	123,552.41
BALANCES BROUGHT FORWARD	74583.15	32,522.91
BALANCES CARRIED FORWARD	77886.94	74,583.15

FOOD BANK	2023	2022
<i>Activities directly relating to the work of the Food Bank</i>		
Staff Goods Obtained	765.80	1456.68
Amazon Goods	63.72	63.72
Warehouse (Managers Salary & Costs)	13080.82	1673.00
Payments to Mary Magdalene Church	51854.50	17532.64
Dial	23286.00	0.00
Utility Cards	0	100.00
Booker Limited	0	74.74
Fare Share	3744.17	0.00
All the Various Stores	33641.76	3422.82
Warehousing Equipment	0	1381.20
Premises Hire (Thursdays)	2600.00	650.00
Legal Advice	3185.64	0.00
	132222.41	26291.08

*A full set of accounts is available on request and is uploaded to the Charity Commission Register:
www.charitycommission.gov.uk*

The full accounts were independently examined and approved by Michael Muskett MBE on August 2024.



A joyful baptism took place at Pathway: Mother Ashley with Angela!

Great Yarmouth Pathway

Statement of Financial Activities

For the year ending 31st December 2023

		TOTAL 2023		TOTAL 2022
	Note	Restricted Funds £		£
INCOMING RESOURCES				
<i>incoming resources for Pathway</i>	2(a)	84225.21		82483.65
<i>incoming resources for Food Bank</i>	2(b)	116937.69		83129.00
<i>incoming resources from operating activities</i>				
- to further the Centres objects	2(c)	0		0.00
- to generate funds	2(d)	0		0.00
<i>Income fro investment</i>	2(e)			
<i>Other incoming resources</i>	2(f)			
TOTAL INCOMING RESOURCES		201162.90		165612.65
RESOURCES EXPENDED				
<i>Activities directly relating to the work of Pathway</i>	3(b)	65636.70		89863.29
<i>Activities directly relating to the work of Food Bank</i>	3(c)	132222.41		26291.08
				0.00
				0.00
TOTAL RESOURCES EXPENDED		197859.11		116154.37
NET INCOMING/(OUTGOING) RESOURCES		3303.79		49458.28
Depreciation of Goods		1849.51		0.00
NET MOVEMENT IN FUNDS		1454.28		49458.28
BALANCES BROUGHT FORWARD		81981.19		32522.91
BALANCES CARRIED FORWARD AT 31 December 2023		83435.47		81981.19

Gt. Yarmouth Pathway

Balance Sheet at 31 December 2023

	Note	31-Dec 2023 £	31-Dec 2022 £
FIXED ASSETS			
Tangible fixed assets	5(a)		
Investment assets	5(b)		
CURRENT ASSETS			
Van & Kitchen Equipment		5548.53	7398.04
Debtors	7		
Short term deposits			
Cash at bank and in hand (£0.00 in hand)		77886.94	74583.15
		<u>83435.47</u>	<u>81981.19</u>
LIABILITIES: AMOUNTS FALLING DUE WITHIN ONE YEAR		0.00	0.00
	8	<u> </u>	<u> </u>
NET CURRENT ASSETS		83435.47	81981.19
NET ASSETS		<u>83435.47</u>	<u>81981.19</u>
FUNDS			
	6		
Pathway Restricted Funds		41882.27	25143.27
Food Bank Restricted Funds		41553.20	56837.92
		<u>83435.47</u>	<u>81981.19</u>

Great Yarmouth Pathway

Notes to the Financial Statements (continued)

For the year ended 31 December 2023

RESOURCES EXPENDED		FUNDS 2023 Restricted to Pathway	FUNDS 2022
PATHWAY			
3(b)	<i>Activities directly relating to the work of the Pathway</i>		
2001	Centre - running expenses	2371.59	3770.62
2001	Centre - Hotel Catering	298.80	0.00
2001	Centre - Amazon	622.16	0.00
2002	Centre - running expenses Insurance	597.14	546.55
2003	Centre - running expenses Thompson	4029.16	10717.69
2004	Centre - running expenses KANDO	0	496.48
2005	Centre - running expenses Fare Share	0	3015.20
2006	Centre - running expenses Mangers S	22586.05	20475.81
2006	Centre - running expenses Chef Salar	10900.39	14580.26
2006	Centre - Running expenses Co-ordinator	738.51	0.00
2006	Centre - Pay Roll Costs	1024.00	0.00
2007	Centre - running expenses Bramfield I	692.16	1907.24
2008	Centre - running expenses Bookers	0	7992.33
2009	Centre - running expenses Petty Cash	2752.50	5761.99
2010	Centre - running expenses Norse Was	1642.74	1413.60
2011	Centre - running expenses HMRC	6265.56	6031.64
2012	Centre - running expenses Dishwashe	0	367.19
2013	Centre - running expenses Van	1687.94	1450.69
2014	Centre - running expenses Vouchers	1520.00	3000.00
2015	Centre - running expenses Stripe Fee:	108.00	36.00
2016	Centre - running expenses Hall Hire	7800	7800.00
2017	Centre - running expenses Cheque Return		500.00
		65636.70	0.00
			89863.29
FOOD BANK		Restricted to Foodbank	
3(c)	<i>Activities directly relating to the work of the Food Bank</i>		
3001	Staff Goods Obtained	765.80	1456.68
3001	Amazon Goods	63.72	63.72
3002	Warehouse (Managers Salary & Costs)	13080.82	1673.00
3003	Payments to Mary Magdalene Church	51854.50	17532.64
3003	Dial	23286.00	0.00
3004	Utility Cards		100.00
3005	Booker Limited		74.74
3005	Fare Share	3744.17	0.00
3006	All the Various Stores	33641.76	3422.82
3007	Bigdug Limited	0	1381.20
3008	Hall Hire on Tuesdays	2600.00	650.00
3009	Legal Advise	3185.64	0.00
		132222.41	0.00
			26291.08
		0.00	0.00
3000		0	0
		0.00	0.00
			0
3 (e)	<i>Major Capital Expenditure</i>		
		0.00	0.00
		0	0
	TOTAL RESOURCES EXPENDED	197859.11	116154.37

Great Yarmouth Pathway

Notes to the Financial Statements (continued)

For the year ended 31 December 2023

5	FIXED ASSETS FOR USE BY PATHWAY		Freehold land and buildings £	Centre equipment £	Total £
5(a)	<i>Tangible fixed assets</i>				
	ACTUAL/DEEMED COST	At 1 January 2023			
		Additions			
		At 31 December 2023			
	DEPRECIATION	At 1 January 2023		7398.04	7398.04
	(Year 2 of 5)	Charge for the year*		1849.51	1849.51
		At 31 December 2023		5548.53	5548.53
	NET BOOK VALUE	At 1 January 2023			
		At 31 December 2023			

(insert notes)

Charge based at 20%
£1849.51 each year

5(b) *Investment fixed assets*

Movements in year:

Market value - 1 January 2023

Purchases at cost, less disposals at carrying value

Net gains on disposals and annual revaluation

Market value - 31 December 2023

(insert notes)

6	ANALYSIS OF NET ASSETS BY FUND	Pathway Restricted Funds £	Foodbank Restricted Funds £	Total £
	Van & Kitchen Equipment	5548.53		5548.53
	Investment Fixed Assets			
	Current Assets	36333.74	41553.20	77886.94
	Current Liabilities			
	Fund balance	41882.27	41553.20	83435.47

Great Yarmouth Pathway

Notes to the Financial Statements (continued)

For the year ended 31 December 2023

7	DEBTORS	2023 £	2022 £
	Income tax recoverable		
	Prepayments and accrued interest (insurance)		
	Other debtors		
		<hr/>	<hr/>
		0	0
		<hr/>	<hr/>
8	LIABILITIES: AMOUNTS FALLING DUE WITHIN ONE YEAR	2023 £	2022 £
	Deferred income		
	Accruals of utility and other costs		
	Creditors for goods and services -		
	Other creditors		
		<hr/>	<hr/>
		0	0
		<hr/>	<hr/>
9	FUND DETAILS		

Great Yarmouth Pathway

Notes to the Financial Statements

For the year ended 31 December 2023

1	ACCOUNTING POLICIES	FUNDS 2023			FUNDS 2022
2	INCOMING RESOURCES	Restricted to Pathway £			£
2(a)	Pathway <i>Incoming resources from donors</i>				
101	Individuals and Councillors	5685.00			3964.00
102	Churches	120.00			1122.17
103	Companies	971.71			650.00
104	Grants	74322.00			58300.00
105	Freemasons Etc.	1850.00			13966.25
106	Stripe Donations & Pay Pal	1136.50			2191.23
107	Warm Space	0.00			2000.00
108	Sale of Goods	140.00			290.00
		<hr/>	<hr/>	<hr/>	<hr/>
		84225.21			82483.65
		<hr/>	<hr/>	<hr/>	<hr/>
2(b)	Food Bank <i>Incoming Resources from donors</i>	Restricted to Foodbank			
201	Norfolk Community Foundation	19000.00			20359.00
202	Donations	30.00			20.00
203	The Trussell Trust	81627.97			56750.00
204	G Watling Charity	0			6000.00
205	Crowdfunder	16279.72			0.00
		<hr/>	<hr/>	<hr/>	<hr/>
		116937.69			83129.00
		<hr/>	<hr/>	<hr/>	<hr/>
2(f)					
601					
602					
		<hr/>	<hr/>	<hr/>	<hr/>
		<hr/>	<hr/>	<hr/>	<hr/>
	TOTAL INCOMING RESOURCES	201162.90			165612.65
		<hr/>	<hr/>	<hr/>	<hr/>

Independent Examiner's Report to the Gt. Yarmouth Pathway

This report is based on the financial statements of the Great Yarmouth Pathway for the year ending 31st December 2023.

Respective responsibilities of Great Yarmouth Pathway Trustees and the examiner

As Trustee members you are responsible for the preparation of the financial statements. It is my responsibility to issue this report on these financial statements.

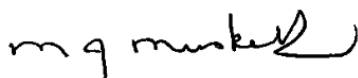
Basis of this report

My examination was carried out in accordance with the General Directions given by the Charity Commission. That examination includes a review of the accounting records kept by the Great Yarmouth Pathway and a comparison of the accounts with those records. It also includes considering any unusual items or disclosures in the financial statements and seeking explanations from the trustees concerning any such matters.

Independent examiner's statement

In connection with my examination, no matter has come to my attention:

- (1) Which gives me reasonable cause to believe that in any material respect the requirements
 - To keep accounting records in accordance with the Charity Act and
 - To prepare financial statements, which accord with the accounting records and comply with the Act have not been met; or
- (2) To which, in my opinion, attention should be drawn in order to enable a proper understanding of the accounts to be reached.

Signed: 

Date: 22 July 2024

Print: MICHAEL MUSKETT MBE