

# THE GREAT YARMOUTH PATHWAY

England & Wales · Charity number 1178940

## Details

---

**Other names** GREAT YARMOUTH PATHWAY

**Status** Registered

**Legal form** CIO

**Registered** 2018-06-26

**Register** [View on the Charity Commission register](#)

## Contact

---

**Address** Minster Mission  
Admiralty Road  
Great Yarmouth  
NR30 3DG

**Phone** 01493 543051

**Email** [pathwaygy@gmail.com](mailto:pathwaygy@gmail.com)

**Website** <https://gtyarmouthminster.org/pathway/>

## Activities

---

**Objects:** THE OBJECTS OF THE CIO ARE FOR THE PUBLIC BENEFIT IN THE BOROUGH OF GREAT YARMOUTH:(A)THE RELIEF OF POVERTY(B)THE PROMOTION OF SOCIAL INCLUSION BY PREVENTING PEOPLE FROM BECOMING SOCIALLY EXCLUDED, RELIEVING THE NEEDS OF THOSE PEOPLE WHO ARE SOCIALLY EXCLUDED AND ASSISTING THEM TO INTEGRATE INTO SOCIETY.FOR THE PURPOSE OF THIS CLAUSE 'SOCIALLY EXCLUDED' MEANS BEING EXCLUDED FROM SOCIETY, OR PART OF SOCIETY, AS A RESULT OF FOR THOSE WHO ARE EXPERIENCING DIFFICULTIES SUCH AS (BUT NOT LIMITED TO), DISPLACEMENT, HOMELESSNESS, ADDICTION, UNEMPLOYMENT, MENTAL HEALTH ISSUES AND ISOLATION.

**Activities:** The objects of the Great Yarmouth Pathway are the relief of poverty and social isolation for the public benefit in the borough of Great Yarmouth for those who are experiencing difficulties such as (but not limited to), displacement, homelessness, addiction, unemployment & mental health issues. This is chiefly done through the provision of a free, hot lunch three days a week.

## Classification

---

- **How:** Provides Services
- **What:** Disability, The Prevention Or Relief Of Poverty
- **Who:** Children/young People, Elderly/old People, People With Disabilities, The General Public/mankind

## Geography

---

- Norfolk

## Finances

---

Period end	Income	Expenditure	Assets	Employees
2024-12-31	£295,049	£206,874	-	-
2023-12-31	£201,162	£197,859	-	-
2022-12-31	£165,613	£123,552	-	-
2021-12-31	£58,254	£34,264	-	-
2020-12-31	£58,254	£34,264	-	-

## Trustees

---

Name	Role	Appointed
Stephen Taylor	Chair	2024-11-18
Michael Green		2022-07-11
Rev Richard Washington		2024-11-18
Rev Simon Ward		2018-06-01

**THE GREAT YARMOUTH PATHWAY**

England & Wales - Charity number 1178940

---

# Accounts

---



Great Yarmouth  
**Pathway**  
Cafe & Support Centre



*Pathway staff and volunteers celebrating 10 years of Great Yarmouth Pathway!*

# Annual Report 2024

**Charity Number 1178940**

## CHAIR OF TRUSTEES REPORT

Welcome to our Annual Report for Great Yarmouth Pathway Cafe and Support Centre for the year 2024.

Over 10 years ago a group of people in the Parish of Great Yarmouth, wondered what they could do to help people and build community. They had an idea to offer a community meal around an open table, which could gather people, offer food to those most in need and served with a warm welcome and genuine hospitality. They set out to offer a meal at the Minster Mission on Admiralty Road imagining it would be wonderful if maybe 20 to 30 people could be served once a week. The working title of 'Pathway Café' was adopted and soon they began.



When I arrived three years later in 2017 Pathway was often serving 50 to 60 people and opening three days a week. The number of people coming for meals grew and our operation and provision has needed to expand and adapt to be able to sustain this work. Today the service offered by Pathway far exceeds what could have been imagined years ago. However, I really hope that those who pioneered this work would recognise Pathway if they came through the doors today. The generous offer of food, a table is open to all, the warmth of hospitality backed by an ethos of service.

It was therefore an immense pleasure to celebrate and mark 10 years of Pathway in 2024. In saying that it does make me wonder what it could look like in 2034 when this charity marks 20 years of service to this community?

During 2024 we said farewell to two of people who have quietly played important roles in Pathway: Pat Stringer and David Pearson who both served as trustees we established as charity in 2018. As our first trustees and have given good service and championed the original vision of the Parish.

In the summer of 2024 we moved into the excellent new warehouse facility which has become the base of Foodbank operations. This exciting development was born out of our partnership with St Mary Magdalen Church, Gorleston, which meant that together we have been able to reach and support more people and share under the vital support of Trussell Trust. The progression towards adding Foodbank service to our offer has felt like a natural extension of what we stand for and what we aim to do and is a reminder of how partnerships can add value and scope.

None of this outstanding work would happen without the volunteers and staff who are the heart of our charity. There would be no food, no open doors, no tables prepared, no shelves stocked, no parcels packed without hours of dedicated time from a remarkable group of people who are determined to make a difference to others through acts of love and service. For all of that dedication, I am proud and immensely grateful.

I wish to single out our manager, Jennifer King, who continues to grow in capability alongside with the growth of the charity, which is a different proposition to that which she took on when she began a job as Charity Manager, five years ago. Jen provides more detail about what that looks like in her report.

I conclude this report, reflecting on another exciting and expansive year and a heart full of thanksgiving for all that has been done through the work of Pathway Café and Yarmouth & Magdalen and Foodbank

**Revd Simon Ward**  
**Chair of Trustees**

## MANAGER'S REPORT

Across 2024, Great Yarmouth Pathway ran Pathway café, who continued to serve hot meals every Monday, Wednesday and Friday, as well as operating Yarmouth&Magdalen Foodbank which worked across our site and St Mary Magdalene Church in Gorleston – providing food parcels to those in a crisis period. Our vision is to be a transforming safe space of light, welcome and engagement for the community of Great Yarmouth to support those in need is to provide a hot meal, combined with a warm welcome, support network and signposting service. We work in partnership with other charities and agencies across Great Yarmouth and Gorleston and regularly have representatives from partner agencies such as Dial on-site worker who supports our clients.



In our café, we have over 640 registered names on our database and served on average 95-110 customers each day across 2024. Our foodbank distributed parcels to 4822 individuals across 2024, which equated to 35,033kg of food.

We continued to offer a range of training opportunities for volunteers and welcomed 3 new volunteers to the team in 2024, in addition to the appointment of a volunteer coordinator. Every volunteer completes safeguarding training, food hygiene training and we also hold emergency first aid training courses for those interested. Our volunteers and clients are at the heart of what we do and I am proud of everything we achieve, and I would like to take this opportunity to thank them for all of the hard work and commitment across the year.

As I reflect on the last 12 months, the celebration of our 10-year anniversary has dominated my thoughts. Ten years of essential service in our community is a great achievement for our charity – which has consistently met the needs of the area. However, it also illustrates the ongoing hardship and deprivation in our town and the challenges we are facing, through an ever-changing climate. When reviewing past annual reports and paperwork, it is clear to see the development of our charity across the years, as we have continuously grown and reacted to the needs of our clients. A 10-year in house party for our clients and volunteers was a fantastic, celebratory event, attended by Ian, Bishop of Thetford. We also had a thanksgiving service at Great Yarmouth Minster, which was attended by volunteers, clients, congregation from across the Parish and some invited guests, like previous donors and supporters of our charity. It was wonderful to have over 100 people in church celebrating the work of our charity, and it was a proud time to reflect on the work that we have done in the past, and everything we have planned for the future.



In July we moved into our new warehouse unit. It is now a good time to give thanks to our previous premise owners, who were most generous to us across a (longer than expected) period of time that they hosted us with a temporary warehouse unit. The temporary warehouse allowed us to continue to meet the demands of the foodbank we were facing, whilst giving us the time to find a new permanent home for our foodbank warehouse stock. Our new unit will allow us to be able to store larger quantities of food, pack the parcels in a safe, organised manner and store our van in a secure facility. We had a 'formal opening' in September, which was attended by staff, volunteers, stakeholders, The Mayor of Great Yarmouth and Bishop Ian Bishop and was another momentous event for our charity.



Another highlight on the calendar in 2024, was the health and wellbeing event we hosted, in partnership with 'together for mental wellbeing'. This was a fabulous event, attended by over 100 local residents – where we had health and wellbeing services in house, information for discounted gym memberships, free haircuts, free massages, information on health checks, dental advice and much more!

Our local fundraiser this year, involved one of volunteers Paul – who completed a big challenge – by riding the Great Yarmouth Pleasure beach Rollercoaster non-stop all day! He rode the scenic railway 54 times (from opening until closing time) and still came off with a smile on his face. This fantastic fundraising challenge raised over £1200 for Great Yarmouth Pathway – and was a great day, where Paul featured on both local radio stations and the regional news channels, documenting his achievement.

In May we had to say goodbye to Mother Ashley Hines, our trustee and pastoral lead – who has contributed so much to our charity in her time in our Parish. I am personally so grateful for her love, commitment and service to our community and wish her all the best in her new parish. This did also mean, that in September we welcomed Revd Richard Washington as the new Team Vicar in the Great Yarmouth Team Ministry. He is also a new trustee at Great Yarmouth Pathway and will be providing pastoral care of our clients and support to myself. I am excited to work with Richard, to develop a new strategy for our charity and continue to build on the foundations that have been laid over the last few years.

**Jennifer King**  
**Charity Manager**

## TREASURERS REPORT

I would like to start first by thanking all the staff, volunteers and various helpers for their marvellous efforts in what has been another exceptionally busy and challenging year. We still serve about 80/100 free hot meals on three days each week and operate a very busy Foodbank from our new warehouse premises.

The total received in Income in the year was £295048.99 and £206874 was paid out.

We received many generous donations from individuals for Pathway including a fundraiser by one of our volunteers which involved riding a rollercoaster for the day raising £1182.09. Pathway also received several Grants from the Norfolk Community Foundation totalling £48849. Foodbank received its main funding from The Trussell Trust in the form of several grants totalling £185859.29 and we thank all of them for their support of Gt. Yarmouth Pathway and Food Bank.

In addition to Fare Share and Thompson Foods we have been using other suppliers, especially for Foodbank while we try to grow our public donations. The on-line banking and implementing of accountancy software have proved very helpful. Also, we at present pay £200 per week (£50 for each of the four days we are open) to the PCC for the hire of the hall. This covers all the utilities we use. We have additional premises costs for the new Foodbank Warehouse which opened this year of £10880.32. This left us with a total of £166061.93 in cash and £3699 in assets to carry forward into 2025. Again, I thank all our various donators for their contributions and also the Trustees for all the assistance given to me over year and in producing these accounts.

*Susan Murtha*  
*Treasurer*

Great Yarmouth Pathway Statement of Financial Activities Year ending 31 <sup>st</sup> December 2024		
INCOME	2023	2024
Gift Aid donations	30.00	0.00
Fundraising	16279.72	1182.09
Standing Order / Direct Debit/Stripe/Paypal	1136.50	2376.32
Churches	120.00	490.57
Other Groups, companies or Charities	2821.71	20730
Individuals and councillors	5685.00	26529.06
Grants from Trusts (recurring)	20000.00	0
Grants from Trusts	154949.97	243740.95
Training	0.00	0.00
Sale of Goods	140.00	0
<b>TOTAL INCOME</b>	<b>201162.90</b>	<b>295048.99</b>

<b>EXPENDITURE</b>	<b>2023</b>	<b>2024</b>
Insurance	597.14	1587
Catering Supplies and running expenses	9533.87	4399.37
Cleaning Supplies & Refuse	1642.74	2048.64
FareShare	0.00	0
Volunteer Expenses and petty cash	2752.50	777.95
Training Costs	0.00	0.00
Rent to GY PCC	7800.00	5850
New Equipment	0.00	0
Fund Raising Event	0.00	0.00
Foodbank <i>(detail on next page)</i>	132222.41	126570.38
Centres management and administration	8136.07	2160.85
Staff Wages: Manager	22586.05	32940
Staff Wages: Chef	10900.39	17550
Staff Expenses	0.00	403.20
Van and running costs	1687.94	2409.74
Tax NI		10176.87
<b>TOTAL EXPENDITURE</b>	<b>197859.11</b>	<b>206874</b>
BALANCES BROUGHT FORWARD	74583.15	77886.94
<b>BALANCES CARRIED FORWARD</b>	<b>77886.94</b>	<b>166061.93</b>

Great Yarmouth Pathway Statement of Financial Activities Year ending 31 <sup>st</sup> December 2024		
Activities directly relating to Foodbank		
EXPENDITURE	2023	2024
Staff Goods Obtained	765.80	0
Amazon Goods	63.72	0
Warehouse (Managers Salary & Costs)	13080.82	10103.75
Payments to Mary Magdalene Church	51854.50	35802.44
Dial	0	17882.60
Utility Cards	0.00	0.00
Fareshare	3744.17	5861.70
All the various stores	33641.76	30746.12
Premises Hire	2600	13480.32
Legal Advice	3185.64	8582
General Expenses		1236.77
Van Expenses		95
Staff Training		2505
Waste Collection		274.68
<b>TOTAL EXPENDITURE</b>	<b><u>132222.41</u></b>	<b><u>126570.38</u></b>

A full set of accounts is available on request and is uploaded to the Charity Commission Register:  
[www.charitycommission.gov.uk](http://www.charitycommission.gov.uk)

The full accounts were independently examined and approved by Muhammad Arfan, Anglian Accountants, 3 Deneside, Great Yarmouth, NR302HL on 19<sup>th</sup> August 2025.

## STATISTICS 2024

### Pathway café

A register is kept each time we serve a hot meal at our café food.

Month	Meals served	New Clients
January	1003	3
February	1087	2
March	992	1
April	989	5
May	1010	12
June	1198	14
July	1053	8
August	1224	4
September	1243	15
October	1551	9
November	1309	7
December	1411	17
<b>Total</b>	<b>14,070</b>	<b>97</b>

### Foodbank

- In 2024, parcels were distributed to 4822 individuals.
- 35,033kg of food was distributed in 2024.
- 1972 signposting referrals were made by our support coordinators.



We are hugely grateful to the following trusts & foundations for their generous support in 2024:

**Albert Hunt Trust      Community of All Hallows      Garfield Weston**  
**Geoffrey Watling Trust      Headley Trust      Lady Hind Trust**  
**Mickleham Trust      Norfolk Community Foundation**  
**RC Snelling Charitable Trust      Trussell Trust**

**Thank you to all our supporters, both great and small:  
We could not do it without you!**

THE GREAT YARMOUTH PATHWAY

# Annual Report and Accounts 2024

Registered Charity (England and Wales)

1178940

**Statement of financial activities (including summary income and expenditure account)**  
**For the year ended 31 December 2024**

Recommended categories by activity	Notes	Unrestricted funds	Restricted income funds	Endowmen t funds	Total funds	Prior year funds
		£ F01	£ F02	£ F03	£ F04	£ F05
<b>Income and endowments from:</b>						
Foodbank Grants	3	-	186,478	-	186,478	84,225
Pathway Grants		13,925	43,338		57,263	
Pathway - general Donations		50,817	-		50,817	116,938
PCC minister		491			491	
<b>TOTAL INCOME AND ENDOWMENTS</b>		65,233	229,816	-	295,049	201,163
<b>Expenditure on:</b>						
Direct Expenses	4	60,335	39,800		100,135	65,637
Admin cost			106,739		106,739	132,222
Accountancy fee	0	399			399	
<b>Total expenditure</b>		60,734	146,539	-	207,273	197,859
-						
<b>Net income/(expenditure) before tax for the</b>		4,499	83,277	-	87,776	3,304
Depreciation Of Goods		-	-	-	-	-
			1,850		1,850	1,850
<b>Net income/(expenditure) after tax for the</b>		4,499	81,427	-	85,926	1,454
<b>Reconciliation of funds:</b>						
Total funds brought forward		-	83,435	-	83,435	81,981
<b>Total funds carried forward</b>		4,499	164,862	-	169,361	83,435

**Balance sheet**  
**As at 31 December 2024**

	Notes	Unrestricted funds	Restricted income funds	Endowment funds	Total this year	Total last year
		£	£	£	£	£
		F01	F02	F03	F04	F05
<b>Fixed assets</b>						
Tangible assets	5	-	3,699	-	3,699	5,549
<i>Total fixed assets</i>		-	3,699	-	3,699	5,549
<b>Current assets</b>						
Cash at bank and in hand	8	4,499	160,322	-	164,821	77,887
other advance payments		-	1,241	-	1,241	-
<i>Total current assets</i>		4,499	161,563	-	166,062	77,887
<b>Creditors: amounts falling due within one year</b>	7	399	-	-	399	-
<i>Net current assets/(liabilities)</i>		4,100	161,563	-	169,361	77,887
<i>Total assets less current liabilities</i>		4,100	165,262	-	169,361	83,435
<b>Creditors: amounts falling due after one year</b>		-	-	-	-	-
<i>Total net assets or liabilities</i>		4,100	165,262	-	169,361	83,435
<b>Funds of the Charity funds</b>						
<i>Total funds</i>	9	4,100	165,262	-	169,361	83,435
		4,100	165,262	-	169,361	83,435

The company was entitled to exemption from audit under s477 of the Companies Act 2006 relating to small companies.

The members have not required the company to obtain an audit in accordance with section 476 of the Companies Act 2006.

The directors acknowledge their responsibilities for complying with the requirements of the Companies Act with respect to accounting

These accounts have been prepared in accordance with the provisions applicable to small companies subject to the small companies

Signed by one or two trustees/directors on behalf of all

Print Name	Date of approval dd/mm/yyyy
The Revd Canon Simon Ward	
Rev Richard Washington	
Steven Taylor	
Michael Green	

Signature of trustees authenticating accounts being sent

Signature	Date dd/mm/yyyy
<i>SWC Ward</i>	20.10.25

**Notes to the accounts**  
**For the year ended 31 Dec 2024**

**Note 3**                      **Income**

	Analysis of income	Unrestricted funds	Restricted income funds	Endowment funds	Total funds	Prior year
		£	£	£	£	£
Donations and legacies:	Donations and gifts	65,233	229,816	-	295,049	-
	<b>Total</b>	65,233	229,816	-	295,049	-
<b>TOTAL INCOME</b>		<b>65,233</b>	<b>229,816</b>	-	<b>295,049</b>	-

**Other information:**

All income in the prior year was unrestricted except for: (please provide description and amounts)

Not Applicable

Where any endowment fund is converted into income in the reporting period, please give the reason for the conversion.

Not Applicable

Where any endowment fund is converted into income in the prior period, please give the reason for the conversion.

Not Applicable

Within the income items above the following items are material: (please disclose the nature, amount and any prior year amounts)

Not Applicable

---



---



---



---

**This year: Where sums originally denominated in foreign currency have been included in income, explain the basis on which those sums have been translated into sterling (or the currency in which the accounts are drawn up).**

Not Applicable

**Last year: Where sums originally denominated in foreign currency have been included in income, explain the basis on which those sums have been translated into sterling (or the currency in which the accounts are drawn up).**

Not Applicable

**Note 4 Expenditure**

Analysis	This year			Last year	
	Unrestricted funds	Restricted income funds	Endowment funds	Total funds	Total funds
	£	£	£	£	£

**Expenditure on raising funds:**

Telephone and fax	-	954	-	954	-
Postage	-	34		34	-
Rent	-	19,330		19,330	-
other expenses	-	871		871	116,453
Printing &	-	149		149	-
Motor expenses	-	2,505	-	2,505	-
staff training	-	2,505	-	2,505	-
Repair and maintenace charges	-	442	-	442	-
Insurance	-	1,587	-	1,587	-
St Mary Magdalen		35,802		35,802	51,855
Light and heat	-	-	-	-	-
staff uniform	-	403		403	-
Legal Expenses		9,706		9,706	
hmrc tax		10,177		10,177	6,266
IT		227		227	
DIAL	-	17,882		17,882	23,286
Consulting		210		210	
advertisement		125		125	
Food		39,800		39,800	
subscription		60		60	
wages	60,335			60,335	
travel		321		321	
warehouse running cost		258		258	
Volunteer enrishment		562		562	
waste collection		2,323		2,323	
Accountancy fees See Note 5	399	306	-	704	-
<b>Total expenditure on raising funds</b>	<b>60,734</b>	<b>146,539</b>	<b>-</b>	<b>207,273</b>	<b>197,859</b>
<b>TOTAL EXPENDITURE</b>	<b>60,734</b>	<b>146,539</b>	<b>-</b>	<b>207,273</b>	<b>197,859</b>

**Note 5 Tangible fixed assets**

*Please complete this note if the charity has any tangible fixed assets*

**6.1 Cost or valuation**

	Freehold land & buildings	Other land & buildings	Plant, machinery and motor vehicles	Fixtures, fittings and equipment	Total
	£	£	£	£	£
At the beginning of the year	-	-	-	5,549	-
Additions	-	-	-	-	-
Revaluations	-	-	-	-	-
Disposals	-	-	-	-	-
Transfers *	-	-	-	-	-
At end of the year	-	-	-	5,549	5,549

**6.2 Depreciation and impairments**

<b>**Basis</b>	SL or RB (Straight Line or Reducing Balance)	SL or RB	SL or RB	SL or RB	SL or RB
<b>** Rate</b>					

At beginning of the year	-	-	-	-	-
Disposals	-	-	-	-	-
Depreciation	-	-	-	1,850	1,850
Impairment	-	-	-	-	-
Transfers*	-	-	-	-	-
At end of the year	-	-	-	1,850	1,850

**6.3 Net book value**

Net book value at the beginning of the year	-	-	-	5,549	-
Net book value at the end of the year	-	-	-	3,699	3,699

**6.4 Impairment:**

*This year: Please provide a description of the events and circumstances that led to the* Not Applicable

*Last year: Please provide a description of the events and circumstances that led to the* Not Applicable

**Note 7 Creditors and accruals**

*Please complete this note if the charity has any creditors or accruals.*

**7.1 Analysis of creditors**

	Amounts falling due within one year		Amounts falling due after more than one year	
	This year £	Last year £	This year £	Last year £
Free of interest loan	-	-	-	-
Accrued expenses	-	-	-	-
Trade creditors	-	-	-	-
<b>Total</b>	-	-	-	-

**Note 8 Cash at bank and in hand**

	This year £	Last year £
Cash at bank and on hand	164,821	77,887
<b>Total</b>	164,821	77,887

**Note 9 Charity funds**

**9.1 Details of material funds held and movements during the CURRENT reporting period**

*\* Key: PE - permanent endowment funds; EE - expendable endowment funds; R - restricted income funds, including special trusts, of*

Fund names	Type PE, EE R or UR *	Purpose and Restrictions	Fund balances brought forward £	Income £	Expenditure £	Transfers £	Gains and losses £	Fund balances carried forward £
Unrestricted income	UR		-	65,233	- 60,734	-	-	4,499
Restricted income	R		77,887	229,816	- 146,539			161,164
<b>Other funds (balancing figure)</b>	N/a	N/a	-	-	-	-	-	-
<b>Total Funds as per balance sheet</b>			<b>77,887</b>	<b>295,049</b>	<b>- 207,273</b>	<b>-</b>	<b>-</b>	<b>165,662</b>

Fund balances carried forward include assets and liabilities denominated in a foreign currency

Yes*	No*
	✓

<i>If yes, please state the basis on which the assets and/or liabilities have been</i>	Not Applicable
--	----------------



Section A

Independent Examiner's Report

Report to the trustees

THE GREAT YARMOUTH PATHWAY

On accounts for the year  
ended

31 December 2024

Charity no  
(if any)

1178940

Set out on pages

(1-12)

(remember to include the page numbers of additional sheets)

I report to the trustees on my examination of the accounts of the above charity ("the Trust") for the year ended 31/12/2024.

Responsibilities and  
basis of report

As the charity's trustees, you are responsible for the preparation of the accounts in accordance with the requirements of the Charities Act 2011 ("the Act").

I report in respect of my examination of the Trust's accounts carried out under section 145 of the 2011 Act and in carrying out my examination, I have followed all the applicable Directions given by the Charity Commission under section 145(5)(b) of the Act.

Independent  
examiner's statement

The charity's gross income exceeded £250,000 and I am qualified to undertake the examination by being a qualified member Association of Accounting Technicians (AAT).

I have completed my examination. I confirm that no material matters have come to my attention in connection with the examination which gives me cause to believe that in, any material respect:

- the accounting records were not kept in accordance with section 130 of the Charities Act; or
- the accounts did not accord with the accounting records; or
- the accounts did not comply with the applicable requirements concerning the form and content of accounts set out in the Charities (Accounts and Reports) Regulations 2008 other than any requirement that the accounts give a 'true and fair' view which is not a matter considered as part of an independent examination.

I have no concerns and have come across no other matters in connection with the examination to which attention should be drawn in this report in order to enable a proper understanding of the accounts to be reached.

\* Please delete the words in the brackets if they do not apply.

Signed:

Date:

19/08/2025

Name:

MUHAMMAD ARFAN

**Relevant professional qualification(s) or body (if any):**

Association of Accounting Technicians (AAT)  
20435035

**Address:**

3 Dene side, Great Yarmouth, NR30 2HL

**Section B Disclosure**

Only complete if the examiner needs to highlight material matters of concern (see CC32, Independent examination of charity accounts: directions and guidance for examiners).

**Give here brief details of any items that the examiner wishes to disclose.**

[Empty box for disclosure details]



**THE GREAT YARMOUTH PATHWAY**

England & Wales - Charity number 1178940

---

# Accounts

---



*Christmas Lunch staff & volunteers December 2023*



# Annual Report 2023

Charity Number 1178940

Thank you to our donors & partners!



We could not do it without all our marvellous donors & Supporters. Just a few pictured here: Great Yarmouth Pleasure Beach, Asda, Argos Great Yarmouth, Charter Academy, Great Yarmouth Road Runners,

## CHAIR OF TRUSTEES REPORT

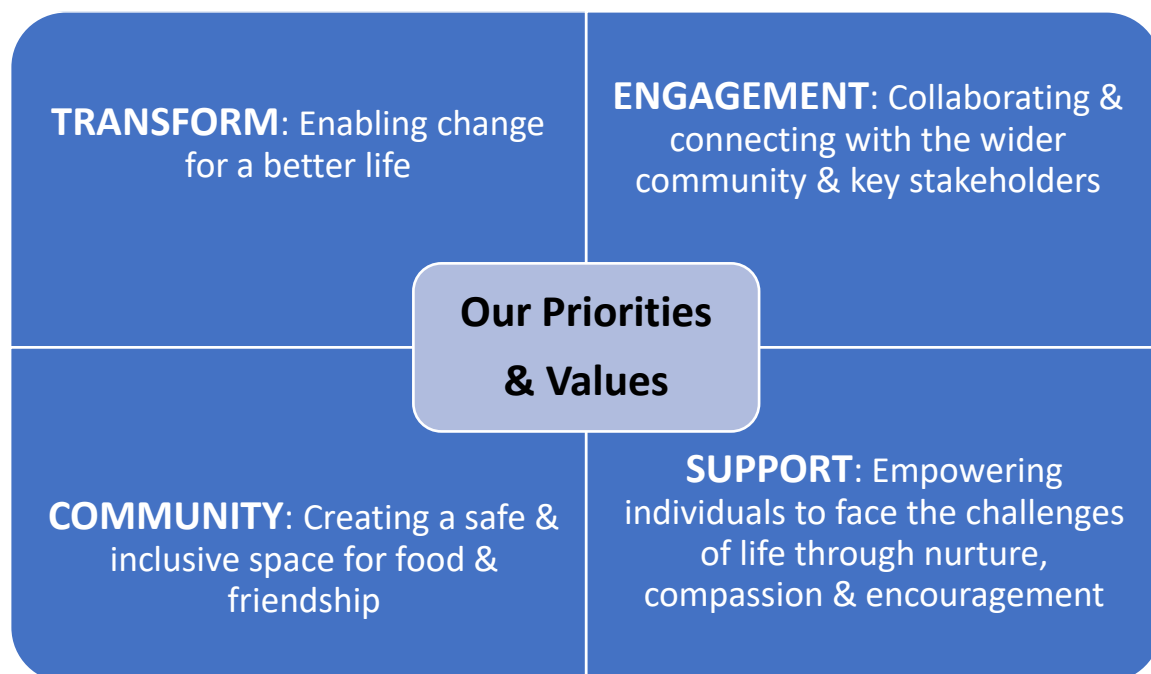
I find it fascinating when writing for the annual report to notice how the heart of Pathway remains the same and yet we have changed and grown so much. When I first encountered Pathway in my early days in the Parish of Great Yarmouth in 2017 it was in essence a simple community meal normally attended by about 30 to 50 people. I recall that felt like a big commitment! Now our doors are open and we feed about 100 people three days a week and have seen our growth as a Foodbank too.



The support and rigour derived from Trussell Trust has encouraged us to stretch ourselves, but also to take stock and evaluate where we have got to. Therefore, in late 2023, the Trustees embarked upon a couple of days of vision which was brilliantly facilitated by the kindly and impressive Julian, from Trust Advice. It is a vital for any organisation to take stock and re-evaluate where they are, what they stand for and what they are actually trying to achieve. It was therefore encouraging to emerge with a new vision statement: *Pathway: a transforming place of light, love and engagement for the community of Great Yarmouth to support those in need*. Emerging from there we considered our priorities and values which you can see in the diagram below

## Pathway Vision Statement 2024

Pathway: a Transforming Place of Light, Love & Engagement for the Community of Great Yarmouth to Support Those in Need



This vision statement has been set before us along with a development plan to keep the trustees thinking about our development and how we continue to serve others. During 2023 it has been wonderful to see the evolving pastoral offer brought to Pathway by Mother Ashley. Week by week she has brought a depth of care and compassion to all of our clients and through her example and conversation has born witness to the love of God in Jesus Christ. It was really encouraging to see

baptism take place at the Minster Mission and a Pathway Carol Service in December. We look forward to seeing how this care develops.

Part of my role in this report is to express thanks on behalf of the trustees. We remain indebted day by day to the managerial skills of Jennifer King around whom everything happens with care and consistency. I also want to pay tribute to Michael Hewitt, our treasurer since the idea of Pathway first began in 2014. After nearly a decade of faithful service, Michael has indicated his intention to step down the end of this year we are enormously grateful to him in the commitment he has shown in a role which has grown beyond anyone's imagining.

I wanted to thank our magnificent staff and amazing volunteers who week by week give so much to serve other people. It really is a case of many hands working together to build something quite wonderful.

Great Yarmouth Pathway and Yarmouth and Magdalen Foodbank are ever conscious of the huge support given by members of the public and also the various trusts and foundations which give generously to allow all of this to happen. Whether you are reading this as a person who gave financial support or maybe just gave a few tins, we do thank you for your kindness.

I hope you enjoy reading this support and thank you for your interest in our work.

***Revd Simon Ward***

***Chair of Trustees***

## **MANAGER'S REPORT**

2023 has been a fantastic year for Great Yarmouth Pathway, as we have continued to serve hot meals, working from the Minster Mission; every Monday, Wednesday and Friday and have also been delivering our weekly foodbank under the umbrella of Yarmouth&Magdalen Foodbank.

Great Yarmouth Pathway is a transforming safe space of light, welcome and engagement for the community of Great Yarmouth to support those in need. There are no criteria or restrictions, and no-one must justify their attendance. As a result, a very diverse group of people gathers, usually over 100 at each session. Some are there because they cannot afford to buy nutritious food, some because they like the company, some because it is warmer than the tent they are sleeping in, some because they are recognised and valued there, and some because it is the only time during the week they get to talk to anyone.

We currently have over 500 registered names on our database and served on average 90-100 guests each day across 2023. Great Yarmouth is ranked 150th out of the 12382 parishes in the country for general deprivation, where 1 is the most deprived (CUF lookup tool). The borough also contains three of the 225 wards in the country classified as 'left behind' due to the lack of social infrastructure (Local Trust report 2019/20). In reality this means that people are experiencing poverty of food and poverty of relationships and community.

The impact of the current economic climate on an area which is already deprived such as Great Yarmouth, is a deepening and spreading of need. Those who were already struggling financially find themselves at the bottom of an even deeper pit with no hope of climbing out. Added to that, more and more people who have never previously needed help or struggled with money are suddenly finding themselves in crisis and needing a safety net. The repercussions are already being witnessed at Great Yarmouth Pathway.



Great Yarmouth Pathway runs the Yarmouth & Magdalen Foodbank, which has had a 145% increase in parcel distribution since March 2022 (from 25 parcels on average a week to an average of 61 parcels). These parcels go to people who are struggling with crisis situations. We also have a separate warehouse where food is stored, sorted, packed and distributed. The warehouse has allowed us greater capacity to take larger donations and organise donations.

In 2023 welcomed 9 new volunteers to the team, in addition to the appointment of our new chef, Andy and warehouse coordinator Debbie. The difference these individuals have made to Great Yarmouth Pathway is significant and they continue to thrive in our organisation. Our volunteers, staff and customers are the heart of what we do and I am proud of everything we achieve and I would like to take this opportunity to thank them for all of the hard work and commitment across the year.

Our volunteers range in age from 20 through to late seventies and some have been previous Great Yarmouth Pathway customers who were keen to experience a volunteer opportunity. Volunteers gain confidence and develop practical skills within a catering environment; often for the first time. For some this acts as a stepping stone into paid employment which they previously didn't have the skills or confidence to consider. Great Yarmouth Pathway currently offers an induction course supported by the necessary training to achieve food hygiene, fire training and first aid qualifications. For our volunteers, there is also the opportunity to offer awareness raising courses in issues such as safeguarding and trafficking.

Great Yarmouth Pathway, in partnership with other agencies, also aims to help people to make positive life changes. Local agencies attend, offering advice and support to individuals. We have seen people make real progress because of this, for example moving into accommodation, attending training, getting jobs, accessing mental health support. Some have also felt able and willing to join our volunteer team.

The benefits our clients gain from attending Great Yarmouth Pathway are:

- **A Hot Meal:** Many of our clients live in one room without any, or with inadequate, cooking facilities due to being in temporary accommodation, which is rife in our borough due to lack of social housing. Many local people are placed in small B&Bs and hotels in the town, which do not have the essential facilities needed. For many Great Yarmouth Pathway is the only way to ensure a hot nutritious meal on several days a week and to help maintain their physical health.
- **Structure:** Time for many of our clients is fluid and irrelevant. Attending centres at a specific time and day gives an element of structure to the day-to-day lives of our customers. This is so important for mental wellbeing.

*"I come to meet people...It breaks the monotony of staring at four walls and gives me company. Everyone's really friendly and if you don't know someone, you soon get to know them. The volunteers are very friendly too."*

- **Friendship:** Through the café many friendship groups have been formed, and these relationships help form positive and protective support networks for our clients.

*"I just wanted to thank you and all the team again, you've helped me more than you can ever imagine."*

- **Support:** The Great Yarmouth Pathway offers signposting to outside agencies and offers clients support from our volunteers. We also employ a DIAL worker and MIND counsellor who are in house and can triage and take on cases immediately, so that our clients can bypass long waits for these essential services that they would face if they went directly to those charities.

- **A Breathing Space:** Many clients are subject to abuse, violence and a lack of respect on the streets and state that they do not feel safe at any time. At the Great Yarmouth Pathway everyone is equal and deserving of respect – at the café we find that respect breeds respect.

*“You hear about it from the word on the street. It was a safe and warm place to come when I was on the streets.”*

- **A food parcel:** An emergency parcel to carry client through a crisis period, coupled with substantial support and signposting to form resolutions to problems. Many clients are referred to other agencies to seek expert help.
- **A fuel bank:** In response to the current economic climate, we can offer short term financial support with gas and electricity for those facing fuel poverty.

As I reflect on 2023, I am proud of the profound difference we are making in our local community, to the lives of many, many people. We have cemented our place in the local landscape and have established a sustainable charity who continue to develop and adapt to meet the needs of those we serve. I am grateful for the team of volunteers and staff we have and thankful to all of those who have donated time, money, food and support across the year to us.

**Jennifer King**

**Pathway Manager**

## STATISTICS 2022

For **Pathway Café**, a register is kept each time we serve food so that we can track the demographic of people attending our café for evaluation and fundraising purposes. Customers are asked to complete a basic registration form so we know a few essential details but we operate on an open policy: no referral is necessary and everyone is welcome. Café Meals Distributed:

Month	Meals served	New Customers
January	1029	18
February	980	12
March	874	5
April	935	24
May	976	9
June	1003	16
July	1098	21
August	1072	7
September	1059	27
October	1142	15
November	1266	11
December	1013	38
<b>Total</b>	<b>12447</b>	<b>203</b>

For **Yarmouth & Magdalen Foodbank**, all parcels are processed using the Trussell Trust database, where data is collated (all GDPR compliant and with consent) and reports are produced. Clients are referred using external agencies or our inhouse support coordinators and must qualify based on eligibility for a parcel. Food Parcels Distributed:

	No of vouchers fulfilled	No of parcels distributed
January	278	626
February	236	470
March	293	587
April	218	441
May	238	450
June	302	583
July	259	482
August	242	518
September	238	487
October	187	379
November	209	442
December	200	466
2023 Total	2900	5931



The Foodbank / Pathway van gets lots of use: At Mary Magdalen with Foodbank Warehouse Manager Debbie and outside the Minster with volunteer, Paul.

## TREASURERS REPORT

I would like to start first by thanking all the staff, volunteers and various helpers for their marvellous efforts in what has been another exceptionally busy and challenging year. We still serve about 80/100 free hot meals on three days each week and operate a very busy Foodbank. We also now have a full year of a Food Bank accounts. The accounts are now designed to show separate details of both.

Thanks to a successful number of Grant Applications we obtained a working balance of £3303.79 in the year which is carried forward into 2024.

The total received in Income in the year was £201162.90 and £197859.11 was paid out. The main Donation of £20,000 from the Mercers Company which pays the Salary of The Manager. Norfolk Community Foundation has via various partners made a number of donations. Foodbank main donation was £81627.97 from The Trussell Trust and we thank all of them for their support of Gt. Yarmouth Pathway and Food Bank.

In addition to Fare Share and Thompson Foods we have been using other suppliers, especially for Food Bank while we try to grow our public donations. The on-line banking and debit cards both of which have proved very helpful. Also, we at present pay £200 per week (£50 for each of the four days we are open) to the PCC for the hire of the hall. This covers all the utilities we use.

This left us with a total of £77886.94 in cash and £5548.53 in assets to carry forward into 2024.

Again, I thank all our various donators for their contributions and also the Trustees for all the assistance given to me over year and in producing these accounts.

**Michael Hewitt**

**Treasurer**

This is Michael Hewitt's last set of annual accounts: Thank you Mike! You have given huge service to Pathway and Foodbank over the last decade. You've always remained cheerful even when it's been very hard work. On behalf of the Trustees and the whole Pathway & Foodbank community, THANK YOU!

*Below: Great Yarmouth Freemasons kindly replaced our dishwasher.*



## Financial Summary 2023

Great Yarmouth Pathway		
Statement of Financial Activities	Year ending 31 <sup>st</sup> December 2023	
	2023	2022
<b>INCOME</b>		
Gift Aid donations	30.00	0.00
Fundraising	16279.72	99,075.25
Standing Order / Direct Debit/Stripe/Paypal	1136.50	2191.23
Churches	120.00	1122.17
Other Groups, companies or Charities	2821.71	670.00
Individuals and councillors	5685.00	3964.00
Grants from Trusts (recurring)	20000.00	20,000.00
Grants from Trusts	154949.97	38,300.00
Training	0.00	0.00
Sale of Goods	140.00	290.00
<b>TOTAL INCOME</b>	<b>201162.90</b>	<b>165,612.65</b>
<b>EXPENDITURE</b>		
Insurance	597.14	546.55
Catering Supplies and running expenses	9533.87	28,050.42
Cleaning Supplies & Refuse	1642.74	1910.08
FareShare	0.00	3015.20
Volunteer Expenses and petty cash	2752.50	5761.99
Training Costs	0.00	0.00
Rent to GY PCC	7800.00	8450.00
New Equipment	0.00	4673.81
Fund Raising Event	0.00	0.00
Foodbank ( <i>detail on next page</i> )	132222.41	22,803.20
Centre management and admin.	8136.07	6031.64
Staff Wages: Manager	22586.05	20475.81
Staff Wages: Chef	10900.39	14,580.26
Staff Expenses	0.00	0.00
Van and running costs	1687.94	7253.45
<b>TOTAL EXPENDITURE</b>	<b>197859.11</b>	<b>123,552.41</b>
BALANCES BROUGHT FORWARD	74583.15	32,522.91
<b>BALANCES CARRIED FORWARD</b>	<b>77886.94</b>	<b>74,583.15</b>

<b>FOOD BANK</b>	<b>2023</b>	<b>2022</b>
<i>Activities directly relating to the work of the Food Bank</i>		
Staff Goods Obtained	765.80	1456.68
Amazon Goods	63.72	63.72
Warehouse (Managers Salary & Costs)	13080.82	1673.00
Payments to Mary Magdalene Church	51854.50	17532.64
Dial	23286.00	0.00
Utility Cards	0	100.00
Booker Limited	0	74.74
Fare Share	3744.17	0.00
All the Various Stores	33641.76	3422.82
Warehousing Equipment	0	1381.20
Premises Hire (Thursdays)	2600.00	650.00
Legal Advice	3185.64	0.00
	<b>132222.41</b>	<b>26291.08</b>

A full set of accounts is available on request and is uploaded to the Charity Commission Register:  
[www.charitycommission.gov.uk](http://www.charitycommission.gov.uk)

The full accounts were independently examined and approved by Michael Muskett MBE on August 2024.



A joyful baptism took place at Pathway: Mother Ashley with Angela!

# Great Yarmouth Pathway

## Statement of Financial Activities

For the year ending 31st December 2023

		TOTAL 2023		TOTAL 2022
	Note	Restricted Funds £		£
<b>INCOMING RESOURCES</b>				
<i>incoming resources for Pathway</i>	2(a)	84225.21		82483.65
<i>incoming resources for Food Bank</i>	2(b)	116937.69		83129.00
<i>incoming resources from operating activities</i>				
- to further the Centres objects	2( c )	0		0.00
- to generate funds	2(d)	0		0.00
<i>Income fro investment</i>	2(e)			
<i>Other incoming resources</i>	2(f)			
<b>TOTAL INCOMING RESOURCES</b>		<u>201162.90</u>		<u>165612.65</u>
<b>RESOURCES EXPENDED</b>				
<i>Activities directly relating to the work of Pathway</i>	3(b)	65636.70		89863.29
<i>Activities directly relating to the work of Food Bank</i>	3(c)	132222.41		26291.08
				0.00
				0.00
<b>TOTAL RESOURCES EXPENDED</b>		<u>197859.11</u>		<u>116154.37</u>
<b>NET INCOMING/(OUTGOING) RESOURCES</b>		3303.79		49458.28
<b>Depreciation of Goods</b>		1849.51		0.00
<b>NET MOVEMENT IN FUNDS</b>		<u>1454.28</u>		<u>49458.28</u>
<b>BALANCES BROUGHT FORWARD</b>		81981.19		32522.91
<b>BALANCES CARRIED FORWARD AT 31 December 2023</b>		<u>83435.47</u>		<u>81981.19</u>

## Gt. Yarmouth Pathway

### Balance Sheet at 31 December 2023

	Note	31-Dec 2023 £	31-Dec 2022 £
<b>FIXED ASSETS</b>			
Tangible fixed assets	5(a)		
Investment assets	5(b)		
<b>CURRENT ASSETS</b>			
Van & Kitchen Equipment		5548.53	7398.04
Debtors	7		
Short term deposits			
Cash at bank and in hand ( £0.00 in hand )		77886.94	74583.15
		<u>83435.47</u>	<u>81981.19</u>
<b>LIABILITIES: AMOUNTS FALLING DUE WITHIN ONE YEAR</b>			
	8	0.00	0.00
		<u>83435.47</u>	<u>81981.19</u>
<b>NET CURRENT ASSETS</b>			
		<u>83435.47</u>	<u>81981.19</u>
<b>NET ASSETS</b>			
		<u>83435.47</u>	<u>81981.19</u>
<b>FUNDS</b>			
	6		
Pathway Restricted Funds		41882.27	25143.27
Food Bank Restricted Funds		41553.20	56837.92
		<u>83435.47</u>	<u>81981.19</u>



# Great Yarmouth Pathway

## Notes to the Financial Statements (continued)

For the year ended 31 December 2023

5	<b>FIXED ASSETS FOR USE BY PATHWAY</b>	<b>Freehold land and buildings £</b>	<b>Centre equipment £</b>	<b>Total £</b>
5(a)	<i>Tangible fixed assets</i>			
	<b>ACTUAL/DEEMED COST</b>			
	At 1 January 2023			
	Additions			
	At 31 December 2023			
	<b>DEPRECIATION</b>			
	(Year 2 of 5)			
	At 1 January 2023		7398.04	7398.04
	Charge for the year*		1849.51	1849.51
	At 31 December 2023		5548.53	5548.53
	<b>NET BOOK VALUE</b>			
	At 1 January 2023			
	At 31 December 2023			
	(insert notes)			
	Charge based at 20%			
	£1849.51 each year			
5(b)	<i>Investment fixed assets</i>			
	Movements in year:			
	Market value - 1 January 2023			
	Purchases at cost, less disposals at carrying value			
	Net gains on disposals and annual revaluation			
	Market value - 31 December 2023			
	(insert notes)			
6	<b>ANALYSIS OF NET ASSETS BY FUND</b>	<b>Pathway Restricted Funds £</b>	<b>Foodbank Restricted Funds £</b>	<b>Total £</b>
	Van & Kitchen Equipment	5548.53		5548.53
	Investment Fixed Assets			
	Current Assets	36333.74	41553.20	77886.94
	Current Liabilities			
	<b>Fund balance</b>	<b>41882.27</b>	<b>41553.20</b>	<b>83435.47</b>

# Great Yarmouth Pathway

## Notes to the Financial Statements (continued)

For the year ended 31 December 2023

<b>7</b>	<b>DEBTORS</b>	<b>2023</b>	<b>2022</b>
		<b>£</b>	<b>£</b>
	Income tax recoverable		
	Prepayments and accrued interest (insurance)		
	Other debtors		
		<hr/>	<hr/>
		0	0
		<hr/>	<hr/>
<b>8</b>	<b>LIABILITIES: AMOUNTS FALLING DUE WITHIN ONE YEAR</b>	<b>2023</b>	<b>2022</b>
		<b>£</b>	<b>£</b>
	Deferred income		
	Accruals of utility and other costs		
	Creditors for goods and services -		
	Other creditors		
		<hr/>	<hr/>
		0	0
		<hr/>	<hr/>
<b>9</b>	<b>FUND DETAILS</b>		

# Great Yarmouth Pathway

## Notes to the Financial Statements

For the year ended 31 December 2023

<b>1</b>	<b>ACCOUNTING POLICIES</b>	<b>FUNDS</b>		<b>FUNDS</b>
		<b>2023</b>		<b>2022</b>
<b>2</b>	<b>INCOMING RESOURCES</b>	<b>Restricted</b>		
		<b>to Pathway</b>		
	Pathway	<b>£</b>		<b>£</b>
2(a)	<i>Incoming resources from donors</i>			
101	Individuals and Councillors	5685.00		3964.00
102	Churches	120.00		1122.17
103	Companies	971.71		650.00
104	Grants	74322.00		58300.00
105	Freemasons Etc.	1850.00		13966.25
106	Stripe Donations & Pay Pal	1136.50		2191.23
107	Warm Space	0.00		2000.00
108	Sale of Goods	140.00		290.00
		84225.21		82483.65
	Food Bank	<b>Restricted</b>		
2(b)	<i>Incoming Resources from donors</i>	<b>to Foodbank</b>		
201	Norfolk Community Foundation	19000.00		20359.00
202	Donations	30.00		20.00
203	The Trussell Trust	81627.97		56750.00
204	G Watling Charity	0		6000.00
205	Crowdfunder	16279.72		0.00
		116937.69		83129.00
2(f)				
601				
602				
	<b>TOTAL INCOMING RESOURCES</b>	201162.90		165612.65

## **Independent Examiner's Report to the Gt. Yarmouth Pathway**

This report is based on the financial statements of the Great Yarmouth Pathway for the year ending 31st December 2023.

### **Respective responsibilities of Great Yarmouth Pathway Trustees and the examiner**

As Trustee members you are responsible for the preparation of the financial statements. It is my responsibility to issue this report on these financial statements.

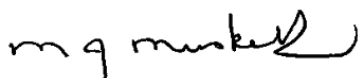
### **Basis of this report**

My examination was carried out in accordance with the General Directions given by the Charity Commission. That examination includes a review of the accounting records kept by the Great Yarmouth Pathway and a comparison of the accounts with those records. It also includes considering any unusual items or disclosures in the financial statements and seeking explanations from the trustees concerning any such matters.

### **Independent examiner's statement**

In connection with my examination, no matter has come to my attention:

- (1) Which gives me reasonable cause to believe that in any material respect the requirements
  - To keep accounting records in accordance with the Charity Act and
  - To prepare financial statements, which accord with the accounting records and comply with the Act have not been met; or
- (2) To which, in my opinion, attention should be drawn in order to enable a proper understanding of the accounts to be reached.

Signed: 

Date: 22 July 2024

Print: MICHAEL MUSKETT MBE

**THE GREAT YARMOUTH PATHWAY**

England & Wales - Charity number 1178940

---

# Accounts

---



*Bishop Graham dedicates our new van in March 2022*

# Annual Report 2022

**Charity Number 1178940**

## What our service users and volunteers say...

“Volunteering helps me to learn to be a team member, helps me support others and learn and helps me enjoy being there”

“Coming to Pathway 3 times a week is the highlight of my week. I enjoy the socialising and chatting as I live alone and coming to Pathway makes me feel much less lonely”

“The food is great and the only nutritious hot meal I get; I’m so very grateful”

“Pathway is wonderful. Thank you for everything!”

All of the volunteers are so lovely and friendly. It’s a wonderful place to come”

“When I retired, I was keen to ensure I that I still had lots of social interaction. Volunteering a couple of times a week at The Pathway provides this for me, the client group are very eclectic & I enjoy the mixture & variation of jobs to do combined with a little bit of chaos on some occasions. All of this provides structure to my week, as well as a sense of purpose.”

“The signposting I received at Foodbank enabled me to apply for benefits I didn’t even know I was entitled to. I can’t thank you enough. You have changed my life”

“Pathway is great. You all deserve a knighthood”

## CHAIR OF TRUSTEES REPORT

2022 proved to be a difficult and challenging year for many people. The socio-economic climate of the nation changed rapidly as a result of various global factors. These effects were felt by all people at all levels of society as people began to see their energy bills increase drastically and the cost of putting fuel in the car spiral to unprecedented levels. Lots of people in Great Yarmouth found 2022 a tough year and those financial and social challenges have undoubtedly run into 2023.



Pathway has been running for eight years now and an awful lot has changed over the years. At the heart our mission remains the same: to welcome all people and provide food, care and support.



*Volunteers Ian & Cathy in the kitchen*

Of all years, it could be argued that 2022 saw the most change. After extensive preparatory work by Jennifer King, our exceptional manager, a new era began at Pathway with the opening of Yarmouth & Magdalen Foodbank in association with Trussell Trust. As chair of trustees, I am enormously appreciative of the work done by Jen along with Anna Price (trustee and representative of St Mary Magdalene Church, Gorleston) who together have done a huge amount to develop the necessary infrastructure and governance to see this work happen. To the trustees this growth felt like a natural progression to see the work of Pathway evolve and adjust in order to meet the needs of those in our community, who find they are not able for whatever reason to feed themselves and their dependents.

Alongside the development of Foodbank has also been the enhancement of our support offer. Therefore, it has been really encouraging to see different groups and agencies having regular presence at Pathway to support people through times of need and crisis. Some of these developments in support have been made possible by our belonging to Trussell trust and Jennifer in her report explains a little bit more. We have a good board of trustees and has seen a few changes this year. We said goodbye to Glyn Williams as a trustee although he still volunteers with the project. We have also been glad to welcome Anna Price and Mike Green new trustees and also Reverend Ashley Hines.



*Opening of the new Foodbank by the Mayor of Great Yarmouth, March 2022*

Mother Ashley came to the Parish of Great Yarmouth in September 2022, and a very specific part of her role is to work at Pathway. The vision was to have a priest providing a consistent, regular pastoral presence among the Pathway community. This role has been made possible because the resources of the Great Yarmouth Team Ministry have increased as funding from the Church of England has been targeted in different ways with a particular focus on areas of deprivation. Since her arrival in the parish Mother Ashley has thrown herself into the life and outreach of Pathway where she is appreciated by all members of the Pathway community balancing her humour with an enormous capacity for love and pastoral care she has become a dependable Christian presence alongside those in need.

Thank you for reading our report and for your interest in our work. We are always glad to hear from our supporters and donors and pleased to welcome guests at Pathway if ever you want to come and visit.

***Revd Simon Ward***

***Chair of Trustees***

## MANAGER'S REPORT

Great Yarmouth Pathway has experienced considerable change and development throughout 2022 and I am so proud of how far we have come since the last time I submitted a manager's report for the AGM one year ago. Pathway café continued to serve hot meals three times a week, working from the Minster Mission every Monday, Wednesday and Friday. In March, we opened Yarmouth&Magdalen foodbank (in partnership with St Mary Magdalene Church, under the umbrella of the Trussell Trust). The Pathway Foodbank distributes parcels once a week, and there are deliveries, sorting and packing from our warehouse across 5 days a week.



Our mission has always been to offer a food provision, combined with a warm welcome, support network and signposting service. This continues to be our goal, and the work of the foodbank compliments all of our values and aims. We work in partnership with other similar charities across Great Yarmouth and Gorleston, and regularly have representatives from partner agencies such as GYROS, The Job Centre and Dial on-site who support our service users.



We currently have over 500 registered names on our database and served an average 100 hot meals to guests each day across 2022, and averaged over 50 parcels per week from our foodbank (an annual total of 13,600 meals and 2600 food parcels). We offer a range of training opportunities for volunteers and welcomed 16 new volunteers to the team in 2022. Volunteers have the opportunity to complete safeguarding, food hygiene and emergency first aid training courses as well as continuous on the job training.

*Volunteer Paul collecting donations from the Minster*

As I reflect on the last 12 months, I am very pleased that we have consolidated all of the work we have been doing, to ensure sustainability and longevity of the project; whilst moving forwards with a clear strategy. We have reacted to the needs of the community and current climate, so our services reflect the demands in our area at this present time, during unprecedented and ever-changing economic circumstances.

In February we were donated a van (as well as covering ongoing running costs), thanks to the exceptional fundraising efforts of The Freemasons in the area. This van has been absolutely invaluable to us, as it has given us the ability to take the opportunity of collecting donations that we weren't previously able to access, as well as the chance to offer delivery of our food parcels to vulnerable members of the community who are unable to collect from us. I am very grateful for everyone who contributed to this fundraising and cannot emphasise enough how useful this vehicle has been for us.



*Debbie with the van at St Mary Magdalen*

The Foodbank opened in March and by the summer we had already identified that our cabin we had purchased to store and pack the food would not be big enough, as we were experiencing much higher demand than we ever could have predicted. As a result, we fundraised for a warehouse facility and to employ a warehouse coordinator and this grant was successful. We were very generously gifted the free use of a local warehouse facility and after employing our coordinator, who has done a great job of building a wonderful team and processes to sort, pack and deliver parcels, the foodbank has managed to meet exceptional demand over the busy winter period.

Through the progressive work of the foodbank, we also took advantage of the 'financial inclusion' grant available at the Trussell Trust, which means we have been able to employ two additional

members of staff. One is our community link worker, who works across both the Pathway and St Mary Magdalen Foodbanks and does amazing support and signposting work and is making real differences to people's lives that come to us. We have also employed a Dial Multi-Disciplinary Support Worker, who attends café and foodbank sessions to provide expert advice and support to our clients.



*Volunteers & Staff ready for the Christmas lunch*

We have had many generous donations across 2022, which have allowed us to continue the work we do and I want to take this opportunity to thank every single person or organisation who has made any gesture, small or large because it would be impossible to do what we do without them. I would also like to extend my gratitude to my team of volunteers who give up their valuable time to come here and enable us to deliver everything we do, whilst also making it a thriving, enjoyable place for us all to be. Our volunteers and service users are the heart of what we do and I am proud of everything we achieve.

I would also like to thank our trustees for their ongoing support, guidance and expertise and also our treasurer, Michael, who continues to work very hard for us. As you will see from our accounts, our financial position has changed dramatically in recent years and this has massively increased the treasurer's workload.

Looking back on 2022, we have grown and developed so much across the year. We have consolidated our place in the community as a local charity meeting an array of needs and have worked hard to react to the unpredictable world we live in. Embracing 2023, we will continue to serve out clients tangibly and holistically and will welcome the challenges and opportunities that come our way.

*Jennifer King*

*Pathway Manager*

## STATISTICS 2022

A register is kept each time we serve hot meals and takeaways. Customers are asked to complete a basic registration form so we know a few essential details but we operate on an open policy: no referral is necessary.

Month	Meals served	New Customers
January	1093	7
February	1182	4
March	1032	12
April	1006	3
May	1178	6
June	1132	15
July	1050	8
August	1005	5
September	1201	2
October	1239	9
November	1264	10
December	1288	11
<b>Total</b>	<b>13,670</b>	<b>92</b>



## TREASURERS REPORT

I would like to start first by thanking all the staff, volunteers and various helpers for their marvellous efforts in what has been another exceptional difficult year because we were still affected by Covid-19. We still serve about 80-100 free hot meals on three days each week. We also give away other food items when available. Towards the end of the year we also opened a Food Bank. Because of the additional finances involved, I had to completely redesign the accounting process.

Thanks to a successful number of Grant Applications we obtained a working balance of £42060.24 in the year which is carried forward into 2023.

The total received in Income in the year was £165612.65 and £123552.41 was paid out. The main Donation of £20,000 from the Mercers Company which pays the Salary of The Manager. Norfolk Community Foundation has via various partners made a number of donations. Foodbank main donation was £56750 from The Trussell Trust and we thank all of them for their support of Gt. Yarmouth Pathway and Food Bank.

In addition to Fare Share and Thompson Foods we have been starting to use other suppliers especially for Food Bank. We now have on-line banking and debit cards both of which have proved very helpful. Also, we at present pay £150 per week to the PCC for the hire of the hall. This covers all the utilities we use.

This left us with a total of £74583.15 to carry forward into 2023, the majority of which is restricted to salaries and specific projects.

Again, I thank all our various donors for their contributions and also the Trustees and staff for all the assistance given to me over year and in producing these accounts.

**Michael Hewitt**

**Treasurer**



*The Lord Lieutenant of Norfolk presents a plaque acknowledging the commitment of Pathway during the Covid Pandemic*

## Financial Summary 2022

<b>Great Yarmouth Pathway</b>		
<b>Statement of Financial Activities</b>		
<b>Year ending 31<sup>st</sup> December 2022</b>		
	<b>2022</b>	<b>2021</b>
<b>INCOME</b>		
Gift Aid donations	0.00	0.00
Fundraising	99,075.25	1230.76
Standing Order / Direct Debit/Stripe/Paypal	2191.23	60.00
Churches	1122.17	735.00
Other Groups, companies or Charities	670.00	450.00
Individuals and councillors	3964.00	435.00
Grants from Trusts (recurring)	20,000.00	25,000.00
Grants from Trusts	38,300.00	35,743.74
Training	0.00	830.85
Sale of Goods	290.00	0.00
<b>TOTAL INCOME</b>	<b>165,612.65</b>	<b>64,485.35</b>
<b>EXPENDITURE</b>		
Insurance	546.55	556.60
Catering Supplies and running expenses	28,050.42	8,705.31
Cleaning Supplies & Refuse	1910.08	834.73
FareShare	3015.20	1,638.90
Volunteer Expenses and petty cash	5761.99	1,708.54
Training Costs	0.00	55.00
Rent to GY PCC	8450.00	7,800.00
New Equipment	4673.81	2,067.34
Fund Raising Event	0.00	526.00
Foodbank	22,803.20	6,294.00
Centres management and administration	6031.64	0.00
Staff Wages: Manager	20475.81	21,673.30
Staff Wages: Chef	14,580.26	11,707.40
Staff Expenses	0.00	138.98
Van and running costs	7253.45	0.00
<b>TOTAL EXPENDITURE</b>	<b>123,552.41</b>	<b>63,706.10</b>
BALANCES BROUGHT FORWARD	32,522.91	31,743.66
<b>BALANCES CARRIED FORWARD</b>	<b>74,583.15</b>	<b>32,522.91</b>

A full set of accounts is available on request and is uploaded to the Charity Commission Register:  
[www.charitycommission.gov.uk](http://www.charitycommission.gov.uk)

The full accounts were independently examined and approved by Michael Muskett MBE on 8<sup>th</sup> June 2023.

# Great Yarmouth Pathway

## Statement of Financial Activities

For the year ending 31st December 2022

		TOTAL 2022		TOTAL 2021
	Note	Restricted Funds £		£
<b>INCOMING RESOURCES</b>				
<i>incoming resources for Pathway</i>	2(a)	82483.65		64485.35
<i>incoming resources for Food Bank</i>	2(b)	83129.00		0.00
<i>incoming resources from operating activities</i>				
- to further the Centres objects	2( c )	0.00		
- to generate funds	2(d)	0.00		
<i>Income fro investment</i>	2(e)			
<i>Other incoming resources</i>	2(f)			
<b>TOTAL INCOMING RESOURCES</b>		<u>165612.65</u>		<u>64485.35</u>
<b>RESOURCES EXPENDED</b>				
<i>Activities directly relating to the work of Pathway</i>	3(b)	97261.33		63706.10
<i>Activities directly relating to the work of Food Bank</i>	3(c)	26291.08		0.00
		0.00		0.00
		0.00		0.00
<b>TOTAL RESOURCES EXPENDED</b>		<u>123552.41</u>		<u>63706.10</u>
<b>NET INCOMING/(OUTGOING) RESOURCES</b>		42060.24		779.25
<b>GAINS AND LOSSES ON INVESTMENTS</b>	5(b)	0.00		0.00
<b>NET MOVEMENT IN FUNDS</b>		<u>42060.24</u>		<u>779.25</u>
BALANCES BROUGHT FORWARD		32522.91		31743.66
<b>BALANCES CARRIED FORWARD AT 31 December 2022</b>		<u>74583.15</u>		<u>32522.91</u>

## Gt. Yarmouth Pathway

### Balance Sheet at 31 December 2022

	Note	31-Dec 2022 £	31-Dec 2021 £
<b>FIXED ASSETS</b>			
Tangible fixed assets	5(a)		
Investment assets	5(b)		
<b>CURRENT ASSETS</b>			
Stock			
Debtors	7		
Short term deposits			
Cash at bank and in hand ( £0.00 in hand )		74583.15	32522.91
		<u>74583.15</u>	<u>32522.91</u>
<b>LIABILITIES: AMOUNTS FALLING DUE WITHIN ONE YEAR</b>			
	8	0.00	0.00
		<u>0.00</u>	<u>0.00</u>
<b>NET CURRENT ASSETS</b>		74583.15	32522.91
		<u>74583.15</u>	<u>32522.91</u>
<b>NET ASSETS</b>		74583.15	32522.91
		<u>74583.15</u>	<u>32522.91</u>
<b>FUNDS</b>			
	6		
Pathway Restricted Funds		17745.23	32522.91
Food Bank Restricted Funds		56837.92	0.00
		<u>74583.15</u>	<u>32522.91</u>

# Great Yarmouth Pathway

## Notes to the Financial Statements

For the year ended 31 December 2022

<b>1</b>	<b>ACCOUNTING POLICIES</b>	<b>FUNDS 2022</b>		
<b>2</b>	<b>INCOMING RESOURCES</b>	<b>Restricted to Pathway £</b>		<b>FUNDS 2021 £</b>
2(a)	Pathway <i>Incoming resources from donors</i>			
101	Individuals and Councillors	3964.00		
102	Churches	1122.17		
103	Companies	650.00		
104	Grants	58300.00		
105	Freemasons Etc.	13966.25		
106	Stripe Donations & Pay Pal	2191.23		
107	Warm Space	2000.00		
108	Sale of Goods	290.00		
		82483.65		64485.35
2(b)	Food Bank <i>Incoming Resources from donors</i>	<b>Restricted to Foodbank</b>		
201	Norfolk Community Foundation	20359.00		
202	Donations	20.00		
203	The Trussell Trust	56750.00		
204	G Watling Charity	6000.00		
		83129.00		0.00
2(f)				
601				
602				
		165612.65		64485.35
	<b>TOTAL INCOMING RESOURCES</b>			

## Great Yarmouth Pathway

### Notes to the Financial Statements (continued)

For the year ended 31 December 2022

RESOURCES EXPENDED		FUNDS 2022 £		FUNDS 2021 £
			<b>Restricted to Pathway</b>	
		0.00		0.00
<b>PATHWAY</b>				
3(b)	<i>Activities directly relating to the work of the Pathway</i>			
2001	Centre - running expenses	3897.16		
2002	Centre - running expenses Insurance	546.55		
2003	Centre - running expenses Thompsons	10717.69		
2004	Centre - running expenses KANDO	496.48		
2005	Centre - running expenses Fare Share	3015.20		
2006	Centre - running expenses Mangers Salary	20475.81		
2006	Centre - running expenses Chef Salary	14580.26		
2007	Centre - running expenses Bramfield Meats	1907.24		
2008	Centre - running expenses Bookers	7992.33		
2009	Centre - running expenses Petty Cash	5761.99		
2010	Centre - running expenses Norse Waste	1413.60		
2011	Centre - running expenses HMRC	6031.64		
2012	Centre - running expenses Dishwasher	1835.93		
2013	Centre - running expenses Van	7253.45		
2014	Centre - running expenses ASDA Vouchers	3000.00		
2015	Centre - running expenses Stripe Fees	36.00		
2016	Centre - running expenses Hall Hire	7800.00		
2017	Centre - running expenses Cheque Return	500.00		
		97261.33		63706.10
			<b>Restricted to Foodbank</b>	
3(c)	<i>Activities directly relating to the work of the Food Bank</i>			
3001	Staff Goods Obtained	1456.68		
3002	Warehouse Managers Salary	1673.00		
3003	Payments to Mary Nagdalene Church	17532.64		
3004	Utility Cards	100.00		
3005	Booker Limited	74.74		
3006	All the Various Stores	3422.82		
3007	Bigdug Limited	1381.20		
3008	Hall Hire on Tuesdays	650.00		
		26291.08		0.00
		0.00		0.00
3000		0		0
		0.00		0
3 (e)	<i>Major Capital Expenditure</i>			
		0.00		0.00
2015	ALL New building work			
		0		0
		0		0
	<b>TOTAL RESOURCES EXPENDED</b>	<b>123552.41</b>		<b>63706.10</b>

# Great Yarmouth Pathway

## Notes to the Financial Statements (continued)

For the year ended 31 December 2022

5	FIXED ASSETS FOR USE BY PATHWAY	Freehold land and buildings £	Centre equipment £	Total £
5(a)	<i>Tangible fixed assets</i>			
	<b>ACTUAL/DEEMED COST</b>			
	At 1 January 2022			
	Additions			
	At 31 December 2022			
	<b>DEPRECIATION</b>			
	At 1 January 2022			
	Charge for the year*			
	At 31 December 2022			
	<b>NET BOOK VALUE</b>			
	At 1 January 2022			
	At 31 December 2022			
	(insert notes)			
5(b)	<i>Investment fixed assets</i>			
	Movements in year:			
	Market value - 1 January 2022			
	Purchases at cost, less disposals at carrying value			
	Net gains on disposals and annual revaluation			
	Market value - 31 December 2022			
	(insert notes)			
6	<b>ANALYSIS OF NET ASSETS BY FUND</b>	<b>Pathway Restricted Funds £</b>	<b>Foodbank Restricted Funds £</b>	<b>Total £</b>
	Fixed Assets for Centre use			
	Investment Fixed Assets			
	Current Assets	17745.23	56837.92	74583.15
	Current Liabilities			
	<b>Fund balance</b>	<b>17745.22</b>	<b>56837.92</b>	<b>74583.15</b>

# Great Yarmouth Pathway

## Notes to the Financial Statements (continued)

For the year ended 31 December 2022

<b>7</b>	<b>DEBTORS</b>	<b>2022</b>	<b>2021</b>
		<b>£</b>	<b>£</b>
	Income tax recoverable		
	Prepayments and accrued interest (insurance)		
	Other debtors		
		<hr/>	<hr/>
		0	0
		<hr/>	<hr/>
<b>8</b>	<b>LIABILITIES: AMOUNTS FALLING DUE WITHIN ONE YEAR</b>	<b>2022</b>	<b>2021</b>
		<b>£</b>	<b>£</b>
	Deferred income		
	Accruals of utility and other costs		
	Creditors for goods and services -		
	Other creditors		
		<hr/>	<hr/>
		0	0
		<hr/>	<hr/>
<b>9</b>	<b>FUND DETAILS</b>		

## Independent Examiner's Report to the Gt. Yarmouth Pathway

This report is based on the financial statements of the Great Yarmouth Pathway for the year ending 31st December 2022.

### Respective responsibilities of Great Yarmouth Pathway Trustees and the examiner

As Trustee members you are responsible for the preparation of the financial statements. It is my responsibility to issue this report on these financial statements.

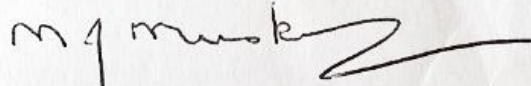
### Basis of this report

My examination was carried out in accordance with the General Directions given by the Charity Commission. That examination includes a review of the accounting records kept by the Great Yarmouth Pathway and a comparison of the accounts with those records. It also includes considering any unusual items or disclosures in the financial statements and seeking explanations from the trustees concerning any such matters.

### Independent examiner's statement

In connection with my examination, no matter has come to my attention:

- (1) Which gives me reasonable cause to believe that in any material respect the requirements
  - To keep accounting records in accordance with the Charity Act and
  - To prepare financial statements, which accord with the accounting records and comply with the Act have not been met; or
- (2) To which, in my opinion, attention should be drawn in order to enable a proper understanding of the accounts to be reached.

Signed: 

Date: 8th June 2023

Print: MICHAEL MUSKETT MBE

**THE GREAT YARMOUTH PATHWAY**

England & Wales - Charity number 1178940

---

# Accounts

---



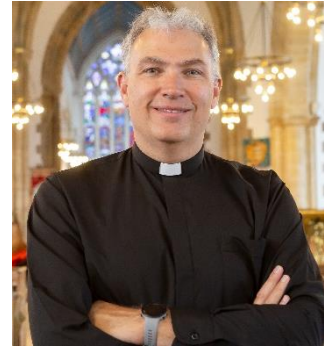
*Pathway staff and volunteers preparing for Christmas dinner*

# Annual Report 2021

**Charity Number 1178940**

## CHAIR OF TRUSTEES REPORT

Welcome to our Annual Report for Great Yarmouth Pathway Cafe and Support Centre for the year 2021. Looking back over that year an awful lot has happened as once again Pathway has continued to evolve and develop whilst ever keeping at its heart our core value: to serve those in need in this community of Great Yarmouth. This remains the very heart of what we stand for and what we do.



It is remarkable to think that at the start of 2021 we were extremely limited in what we could do as our nation continued to live with the implications of a global pandemic. This meant that we were still serving a takeaway meal which while good, wholesome and hearty sustenance, sadly left one key ingredient out. That key ingredient is the welcome and inclusion which is possible by open doors and a place at a table. Since Pathway was launched by the Parish of Great Yarmouth in 2014 welcome and inclusion have been our core values.

The objectives of our charity are stated very clearly in our constitution and on the charity commission website. First of all, it is *“for the relief of poverty”* and secondly *“the promotion of social inclusion by preventing people from becoming socially excluded, relieving the needs of those people who are socially excluded and assisting them to integrate into society”*. during the last year the manager and trustees have been reflecting on how to develop our work and outreach, particularly with regard to the second of our objectives. As levels of need and deprivation in the Parish of Great Yarmouth continue to present a challenge, Pathway and our partner agencies are committed to developing new ways to respond. Therefore, in the latter months of 2021 much work was put in to develop the opening of a foodbank alongside our existing service.

Such vision and development would not happen were it not for one of Pathway’s greatest assets, our manager Jennifer King. Jen continues to throw a huge amount of energy, commitment, resilience and care into her work frequently going above and beyond what is expected. One of Jen’s achievements is to develop a significant team of volunteers who support our work. We are indebted to those who give their time to serve other people: without your commitment it would not happen. You are the people who make it happen by turning up and peeling, chopping and packing and supporting chef, Luke Rikard, in his work. Volunteers have also continued to pick up donations from local outlets including M&S, Greggs, Tesco, Asda and Haven Seashore Holiday Park.

Thank you also to those in the community of Great Yarmouth, Norfolk and beyond who have given generous support to Great Yarmouth Pathway. These include The Mercers, Norfolk Community Foundation, WRAP, ASDA Foundation, Ellerdale Trust, Sainsbury’s, Nelson Ward Councillors, Great Yarmouth Borough Council, Great Yarmouth Lions Club, Great Yarmouth Rotary Club and many individual donors. To all who has donated generously whether you are a trust or foundation or an individual donor we can only offer our thanks and express our commitment and resolve to continue to serve those in need in this community. Please know that without your generosity we simply could not operate.

Thank you for reading our report and for your interest in our work. We are always glad to hear from our supporters and donors and pleased to welcome guests at Pathway if ever you want to come and visit.

**Revd Simon Ward**

**Chair of Trustees**

## MANAGER'S REPORT

Pathway continues to serve hot meals, working from the Minster Mission every Monday, Wednesday and Friday. Our mission is to provide a hot meal, combined with a warm welcome, support network and signposting service. We work in partnership with other similar charities across Great Yarmouth and Gorleston, and regularly have representatives from partner agencies such as Herring House and Dial on-site who support our customers.

We currently have over 400 registered names on our database and served on average 100-120 customers each day across 2021.

We offer a range of training opportunities for volunteers, and welcomed 7 new volunteers to the team in 2021, in addition to the appointment of a new chef. Every volunteer completes safeguarding training, food hygiene training and we also hold emergency first aid training courses for those interested. Our volunteers and customers are the heart of what we do and I am proud of everything we achieve and I would like to take this opportunity to thank them for all of the hard work and commitment across the year.

As I reflect on the last 12 months, it is clear to see how we ensured our foundations were firmly rooted and there is a clear strategy throughout 2021 that illustrates our developments, as they accumulated into where we are now.

In July we embarked on our largest local fundraiser, which raised both awareness for our work, and vital funds (over £1200). Luke Rickard and Nicola Cannon took on an intrepid challenge; a skydive! They did a wonderful job on the day and their bravery and contribution to our work must be noted.



We began 2021 still enduring the pandemic and the most exciting day from my time at Pathway came in September, when we reopened as a cafe! We had gradually changed from an outside takeaway, to an indoor takeaway in March, as restrictions eased, but the day we had all strived for was reopening as a cafe. This is what we are all about. Welcoming guests through the door, offering a friendly cup of tea, a hot meal with an opportunity to socialise. Although I'm very proud that we were able to remain open throughout the pandemic, at a time when the vulnerable were most at risk, it is being a cafe where we can offer our most holistic, wrap around support. We are able to welcome in representatives from local charities, who can provide valuable advice and create a real community venue.



The most progressive part of 2021 was the planning and preparations that began towards opening the Yarmouth & Magdalen foodbank. We spent the year having many meetings with Trussell Trust, making grant fundraising applications to fund the project and beginning to develop the plans for opening. In June, our portacabin was purchased and constructed at the rear of the premises. This unit is for the storage for all of the food we need for the parcels. Some local tradesmen generously donated their time, skills and resources to construct it free of charge, as well as building the wooden racking and installing the electrics.



Christmas was a wonderful, jubilant period for us. We had a beautifully decorated hall, with a new large tree and all the trimmings. We were able to host an amazing Christmas meal for all our guests, along with a present for ever client, that had generously been donated under the coordination of Sharon Boon. Pathway also entered a truly unique tree into the Great Yarmouth Christmas Tree festival at the Minster, where we won a 'highly commended' accolade from the Mayor. It was a lovely way to end a truly momentous year for Pathway, and all the new beginnings that were just buds at the start of the year, were fully blooming by the end of 2021 and ready to blossom in 2022.

***Jennifer King***

***Pathway Manager***



*Christmas time 2021: The tables are laid for dinner and the tree in the Minster Tree Festival*

## TREASURERS REPORT

I would like to start first by thanking all the staff, volunteers and various helpers for their marvellous efforts in what has been another exceptional difficult year thanks to Covid-19. Although at times we have not able to serve internal meals, we have continued by serving takeaways at the door. We still serve about 80/100 free hot meals on three days each week. We also give away other food items when available.

Thanks to a successful number of Grant Applications we obtained a small surplus of £779.25 which is carried forward into 2022.

The total received in Income in the year was £64,485.35 and £63,706.10 was paid out. The largest single donation of £20,000 from the Mercers Company which covers the salary of the manager. Norfolk Community Foundation has via various partners made donations totalling £20,000. Other donations ranged from £5 to £6983.68 and we thank all of them for their support of Gt. Yarmouth Pathway.

One major change has been the decision to start a Food Bank, additional grants were received and we will be looking for additional grants in 2022. In addition to Fare Share and Thompson Foods we have been starting to use other suppliers. Also, we at present pay £150 per week to the PCC for the hire of the hall which his covers all the utilities we use.

This left us with £32,522.91 to carry forward into 2022.

Again, I thank all our various donors for their contributions and also the Trustees for all the assistance given to me over year and in producing these accounts.

***Michael Hewitt***

***Treasurer***



*Laying foundations for the future: volunteers outside the new Foodbank portacabin*

## Financial Summary 2021

<b>Great Yarmouth Pathway</b>		
<b>Statement of Financial Activities</b>		
<b>Year ending 31<sup>st</sup> December 2021</b>		
	<b>2021</b>	<b>2020</b>
<b>INCOME</b>		
Gift Aid donations	0	0
Fundraising	1230.76	0
Churches	735	115
Other Groups or Charities	450	263.90
Individuals	435	520
Grants from Trusts (recurring)	25000	11200
Grants from Trusts	35743.74	458185
Training	830.35	337.500
<b>TOTAL INCOME</b>	<b>64,485.35</b>	<b>58,254.40</b>
<b>EXPENDITURE</b>		
Insurance	459.41	459.41
Catering Supplies	8381.75	8,381.75
Cleaning Supplies	549.85	549.85
FareShare	1110.70	1110.70
Volunteer Expenses	1699.45	1699.45
Training Costs	55	450.00
Rent to GY PCC	7800	7800
New Equipment	2067.34	5446.41
Centres management and administration		
Staff Wages: Manager	21,673.30	5327.95
Staff Wages: Chef	1708.540	2540.00
Staff Expenses	138.98	499.24
<b>TOTAL EXPENDITURE</b>	<b>63,706.10</b>	<b>34264.76</b>
BALANCES BROUGHT FORWARD	31743.66	7754.02
<b>BALANCES CARRIED FORWARD</b>	<b>32522.91</b>	<b>31743.66</b>

A full set of accounts is available on request and will be uploaded to the Charity Commission Register: [www.charitycommission.gov.uk](http://www.charitycommission.gov.uk)

The full accounts were independently examined and approved by Mrs Jane Freeman: 16<sup>th</sup> February 2022.

## STATISTICS 2021

A register is kept each time we serve food. Customers are asked to complete a basic registration form so we know a few essential details but we operate on an open policy: no referral is necessary.

Month	Meals served	New Customers
January	812	2
February	835	4
March	792	0
April	741	1
May	911	6
June	1002	8
July	1058	4
August	1125	0
September	1162	2
October	1131	5
November	1321	4
December	1137	8
<b>Total</b>	<b>12,027</b>	<b>44</b>



Thank you to all our supporters, both great and small:

We could not do it without you!

# Great Yarmouth Pathway

## Notes to the Financial Statements

For the year ended 31 December 2021

### 1 ACCOUNTING POLICIES

### 2 INCOMING RESOURCES

	Unrestricted Funds £	Restricted Funds £	TOTAL 2021 £	FUNDS 2020 £
2(a) <i>Incoming resources from donors</i>				
101 Gift Aid donations	0.00			0.00
102 Income tax recoverable				
103 Standing Orders/Direct Debits	60.00		60.00	0.00
104 Funds Raising (Sky Dive)	1230.76		1230.76	0.00
104 Churches	735.00		735.00	115.00
105 Other Groups or Charities	450.00		450.00	258.90
105 Individuals	435.00		435.00	520.00
105 pay Pal	0.00		0	5.00
	2910.76		2910.76	898.90
2(b) <i>Other voluntary incoming resources</i>				
201(a) Grants (recurring grants)	25000.00		25000.00	11200.00
201(b) Grants (non-recurring grants)	35743.74		35743.74	45818.00
	0.00			
	60743.74	0.00	60743.74	57018.00
2(c) <i>Income from operating activities: to further the Centre's objects</i>				
401				
402 Training (Trussel Trust)	830.85		830.85	337.50
403				
404				
500				
	830.85		830.85	337.50
2(d) <i>Income from operating activities:</i>				
203(a)	0.00		0.00	0.00
2(e) <i>Income from investment</i>				
301 Dividends and interest including				
302 any reclaimable tax				
2(f) <i>Other ordinary incoming resources</i>				
601				
602				
<b>TOTAL INCOMING RESOURCES</b>	64485.35	0.00	64485.35	58254.40



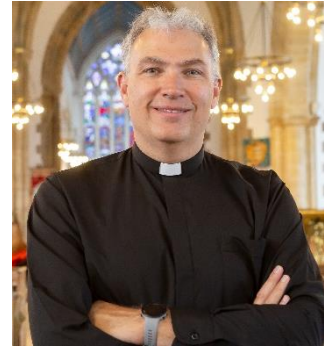
*Pathway staff and volunteers preparing for Christmas dinner*

# Annual Report 2021

**Charity Number 1178940**

## CHAIR OF TRUSTEES REPORT

Welcome to our Annual Report for Great Yarmouth Pathway Cafe and Support Centre for the year 2021. Looking back over that year an awful lot has happened as once again Pathway has continued to evolve and develop whilst ever keeping at its heart our core value: to serve those in need in this community of Great Yarmouth. This remains the very heart of what we stand for and what we do.



It is remarkable to think that at the start of 2021 we were extremely limited in what we could do as our nation continued to live with the implications of a global pandemic. This meant that we were still serving a takeaway meal which while good, wholesome and hearty sustenance, sadly left one key ingredient out. That key ingredient is the welcome and inclusion which is possible by open doors and a place at a table. Since Pathway was launched by the Parish of Great Yarmouth in 2014 welcome and inclusion have been our core values.

The objectives of our charity are stated very clearly in our constitution and on the charity commission website. First of all, it is *“for the relief of poverty”* and secondly *“the promotion of social inclusion by preventing people from becoming socially excluded, relieving the needs of those people who are socially excluded and assisting them to integrate into society”*. during the last year the manager and trustees have been reflecting on how to develop our work and outreach, particularly with regard to the second of our objectives. As levels of need and deprivation in the Parish of Great Yarmouth continue to present a challenge, Pathway and our partner agencies are committed to developing new ways to respond. Therefore, in the latter months of 2021 much work was put in to develop the opening of a foodbank alongside our existing service.

Such vision and development would not happen were it not for one of Pathway’s greatest assets, our manager Jennifer King. Jen continues to throw a huge amount of energy, commitment, resilience and care into her work frequently going above and beyond what is expected. One of Jen’s achievements is to develop a significant team of volunteers who support our work. We are indebted to those who give their time to serve other people: without your commitment it would not happen. You are the people who make it happen by turning up and peeling, chopping and packing and supporting chef, Luke Rikard, in his work. Volunteers have also continued to pick up donations from local outlets including M&S, Greggs, Tesco, Asda and Haven Seashore Holiday Park.

Thank you also to those in the community of Great Yarmouth, Norfolk and beyond who have given generous support to Great Yarmouth Pathway. These include The Mercers, Norfolk Community Foundation, WRAP, ASDA Foundation, Ellerdale Trust, Sainsbury’s, Nelson Ward Councillors, Great Yarmouth Borough Council, Great Yarmouth Lions Club, Great Yarmouth Rotary Club and many individual donors. To all who has donated generously whether you are a trust or foundation or an individual donor we can only offer our thanks and express our commitment and resolve to continue to serve those in need in this community. Please know that without your generosity we simply could not operate.

Thank you for reading our report and for your interest in our work. We are always glad to hear from our supporters and donors and pleased to welcome guests at Pathway if ever you want to come and visit.

**Revd Simon Ward**

**Chair of Trustees**

## MANAGER'S REPORT

Pathway continues to serve hot meals, working from the Minster Mission every Monday, Wednesday and Friday. Our mission is to provide a hot meal, combined with a warm welcome, support network and signposting service. We work in partnership with other similar charities across Great Yarmouth and Gorleston, and regularly have representatives from partner agencies such as Herring House and Dial on-site who support our customers.

We currently have over 400 registered names on our database and served on average 100-120 customers each day across 2021.

We offer a range of training opportunities for volunteers, and welcomed 7 new volunteers to the team in 2021, in addition to the appointment of a new chef. Every volunteer completes safeguarding training, food hygiene training and we also hold emergency first aid training courses for those interested. Our volunteers and customers are the heart of what we do and I am proud of everything we achieve and I would like to take this opportunity to thank them for all of the hard work and commitment across the year.

As I reflect on the last 12 months, it is clear to see how we ensured our foundations were firmly rooted and there is a clear strategy throughout 2021 that illustrates our developments, as they accumulated into where we are now.

In July we embarked on our largest local fundraiser, which raised both awareness for our work, and vital funds (over £1200). Luke Rickard and Nicola Cannon took on an intrepid challenge; a skydive! They did a wonderful job on the day and their bravery and contribution to our work must be noted.



We began 2021 still enduring the pandemic and the most exciting day from my time at Pathway came in September, when we reopened as a cafe! We had gradually changed from an outside takeaway, to an indoor takeaway in March, as restrictions eased, but the day we had all strived for was reopening as a cafe. This is what we are all about. Welcoming guests through the door, offering a friendly cup of tea, a hot meal with an opportunity to socialise. Although I'm very proud that we were able to remain open throughout the pandemic, at a time when the vulnerable were most at risk, it is being a cafe where we can offer our most holistic, wrap around support. We are able to welcome in representatives from local charities, who can provide valuable advice and create a real community venue.



The most progressive part of 2021 was the planning and preparations that began towards opening the Yarmouth & Magdalen foodbank. We spent the year having many meetings with Trussell Trust, making grant fundraising applications to fund the project and beginning to develop the plans for opening. In June, our portacabin was purchased and constructed at the rear of the premises. This unit is for the storage for all of the food we need for the parcels. Some local tradesmen generously donated their time, skills and resources to construct it free of charge, as well as building the wooden racking and installing the electrics.



Christmas was a wonderful, jubilant period for us. We had a beautifully decorated hall, with a new large tree and all the trimmings. We were able to host an amazing Christmas meal for all our guests, along with a present for ever client, that had generously been donated under the coordination of Sharon Boon. Pathway also entered a truly unique tree into the Great Yarmouth Christmas Tree festival at the Minster, where we won a 'highly commended' accolade from the Mayor. It was a lovely way to end a truly momentous year for Pathway, and all the new beginnings that were just buds at the start of the year, were fully blooming by the end of 2021 and ready to blossom in 2022.

***Jennifer King***

***Pathway Manager***



*Christmas time 2021: The tables are laid for dinner and the tree in the Minster Tree Festival*

## TREASURERS REPORT

I would like to start first by thanking all the staff, volunteers and various helpers for their marvellous efforts in what has been another exceptional difficult year thanks to Covid-19. Although at times we have not able to serve internal meals, we have continued by serving takeaways at the door. We still serve about 80/100 free hot meals on three days each week. We also give away other food items when available.

Thanks to a successful number of Grant Applications we obtained a small surplus of £779.25 which is carried forward into 2022.

The total received in Income in the year was £64,485.35 and £63,706.10 was paid out. The largest single donation of £20,000 from the Mercers Company which covers the salary of the manager. Norfolk Community Foundation has via various partners made donations totalling £20,000. Other donations ranged from £5 to £6983.68 and we thank all of them for their support of Gt. Yarmouth Pathway.

One major change has been the decision to start a Food Bank, additional grants were received and we will be looking for additional grants in 2022. In additional to Fare Share and Thompson Foods we have been starting to use other suppliers. Also, we at present pay £150 per week to the PCC for the hire of the hall which his covers all the utilities we use.

This left us with £32,522.91 to carry forward into 2022.

Again, I thank all our various donors for their contributions and also the Trustees for all the assistance given to me over year and in producing these accounts.

***Michael Hewitt***

***Treasurer***



*Laying foundations for the future: volunteers outside the new Foodbank portacabin*

## Financial Summary 2021

Great Yarmouth Pathway			
Statement of Financial Activities			
Year ending 31 <sup>st</sup> December 2021			
	2021	2020	
<b>INCOME</b>			
Gift Aid donations	0	0	
Fundraising	1230.76	0	
Churches	735	115	
Other Groups or Charities	450	263.90	
Individuals	435	520	
Grants from Trusts (recurring)	25000	11200	
Grants from Trusts	35743.74	458185	
Training	830.35	337.500	
<b>TOTAL INCOME</b>	<b>64,485.35</b>	<b>58,254.40</b>	
<b>EXPENDITURE</b>			
Insurance	459.41	459.41	
Catering Supplies	8381.75	8,381.75	
Cleaning Supplies	549.85	549.85	
FareShare	1110.70	1110.70	
Volunteer Expenses	1699.45	1699.45	
Training Costs	55	450.00	
Rent to GY PCC	7800	7800	
New Equipment	2067.34	5446.41	
Centres management and administration			
Staff Wages: Manager	21,673.30	5327.95	
Staff Wages: Chef	1708.540	2540.00	
Staff Expenses	138.98	499.24	
<b>TOTAL EXPENDITURE</b>	<b>63,706.10</b>	<b>34264.76</b>	
BALANCES BROUGHT FORWARD	31743.66	7754.02	
<b>BALANCES CARRIED FORWARD</b>	<b>32522.91</b>	<b>31743.66</b>	

A full set of accounts is available on request and will be uploaded to the Charity Commission Register: [www.charitycommission.gov.uk](http://www.charitycommission.gov.uk)

The full accounts were independently examined and approved by Mrs Jane Freeman: 16<sup>th</sup> February 2022.

## STATISTICS 2021

A register is kept each time we serve food. Customers are asked to complete a basic registration form so we know a few essential details but we operate on an open policy: no referral is necessary.

Month	Meals served	New Customers
January	812	2
February	835	4
March	792	0
April	741	1
May	911	6
June	1002	8
July	1058	4
August	1125	0
September	1162	2
October	1131	5
November	1321	4
December	1137	8
<b>Total</b>	<b>12,027</b>	<b>44</b>



Thank you to all our supporters, both great and small:

We could not do it without you!

**THE GREAT YARMOUTH PATHWAY**

England & Wales - Charity number 1178940

---

# Accounts

---



*Barbara Rowe's work being celebrated by the High Sheriff – February 2020*

# Annual Report 2020

**Charity Number 1178940**

## CHAIR OF TRUSTEES REPORT

It wasn't the year we expected but it turned out well in the end.

We stepped into the start of 2020 with a good team of volunteers, ably coordinated by Barbara Rowe as they served lunch three days each week. Numbers of customers were high at that time and the wheels turned well allowing Pathway to open, serve great food and give a warm welcome to those who came through the doors.

In February 2020 we had a lovely moment of celebration when The High Sheriff of Norfolk came and gave an award to Barbara in recognition of her service and dedication of those in need through the work of Pathway. All customers who were there joined in warm applause.

In late March Covid-19 lockdown came and we needed to think again. Swiftly we adapted to serve a takeaway meal. Often it was a sandwich and soup lunch and in early times of lockdown customer numbers dropped significantly. The other complicating factor was that a number of regular volunteers needed to shield due to personal health. This included Barbara Rowe and our chef, Brian Faulkner. Thanks are due to those who helped to keep things running through the spring and summer of 2020.

Events took another turn with news that Barbara Rowe was to move away to the West Country. In addition, Brian Faulkner also announced that he was to move away. Barbara was renowned for her dedication to the work of Pathway and her implicit compassion with those in need. Week after week she devoted hours to keeping everything running smoothly from organising volunteers, to ensuring collections happened, to maintaining standards and training for all concerned. Chiefly, she was appreciated most by the customers for her kindness and welcome. Brian was involved with Pathway from the very start and was renowned for his ability to make something tasty out of more or less anything! He gave many hours to Pathway and the heart of all we have done and stood for has always been based around a good meal. To Barbara and to Brian, words cannot adequately express gratitude for all you have given. One lingering sadness many of us felt was that we were not able to join together for a thank you and community send off in celebration of such outstanding work.

This left something of a quandary for the trustees and volunteers. Clearly there was a need for the work of Pathway but coping with the loss of the two mainstays was going to be hard. It was noted that the way Pathway had grown over time meant that the scope of the project far exceeded what was envisaged at the start. This placed huge burdens on key volunteers. In addition, if Pathway was going to develop and flex in order to serve those most in need, a new sustainable and funded approach was necessary.

The Trustees decided to secure funding to employ a Pathway Manager and also a Community Chef. Applications were successful to Norfolk Community Foundation (chef) and WRAP (The Waste and Resources Action Programme UK) for a 6-month pilot for a manager. Pathway is hugely grateful to both of these funders. Also, I must thank The Mercers' for their substantial contribution to core funding in 2019 and 2020. Without such funders, and more who are not named here, the work of Pathway cannot happen. Thanks also to GYBC staff for support with applications.



Pathway cannot happen without our amazing volunteers who have collected food, filled brown paper takeaway bags and filled sandwiches. Many helped throughout 2020 but the contribution of Luke Rickard and Nicola Cannon is especially appreciated who have both been dependable mainstays. Thanks also to the supermarkets who have partnered with us in 2020: M&S, Greggs, Tesco, Sainsbury, Lidl and also to FareShare. Help also came from the King's Arms on Northgate Street who helped us with food preparation and meals served from Kingsgate Community Church. We recruited an experienced chef in Peter Jones served many good meals and soon began to enjoy a new challenge.

Following recruitment in summer 2020, Jennifer King was appointed as Pathway Manager and began work in October 2020. Trustees have been delighted with the professional experience she has brought to the role and her energy in implementing new systems and helping us grow. Despite the challenges and changes of an extraordinary year, we know we are in good hands.

We can look back at 2020 as being a year of challenge and change from which Pathway has emerged stronger. We have grown as a charity as we look to become fundable and sustainable. We are putting human resources in place to help us grow in capacity and look to increase and diversify our offer. We have attracted good funders to support our work. We have continued to serve those in this community who are most in need and have an appetite to sustain and grow this work. We continue to reach out and serve those most in need with Christian love and compassion.

My heartfelt thanks to all who are a part of the Pathway community and to all those who give much of their time, energy and resources.

As I said at the start, it wasn't the year we expected but it turned out well in the end.

***Revd Simon Ward***

***Chair of Trustees***

## MANAGER'S REPORT



Pathway continued to operate throughout the national pandemic, working from the Minster Mission every Monday Wednesday and Friday. We had to serve a takeaway hot meal and lunch bag instead of our normal café service, alongside any surplus food we had donated, but I am proud that we didn't close our doors at any point

Our mission is to provide a hot meal, combined with a warm welcome, support network and signposting service.

We work in partnership with other similar charities across Great Yarmouth and Gorleston, and regularly have representatives from the likes of Herring House on-site who support our customers.

We currently have over 300 registered names on our database and serve on average 90-100 customers each day at this point in early 2021.

We offer a range of training opportunities for volunteers, and between September and December 2020 welcomed 4 new volunteers to the team, in addition to the newly appointed chef and my own appointment as charity manager. Every volunteer completes safeguarding training, food hygiene training and we also hold emergency first aid training courses for those interested. In November 2020 we held a fire safety and awareness course for all staff/volunteers and we support learning and encourage access development opportunities.

This year we have had several successful grant applications, most notably a £15,000 grant from the Norfolk Winter Resilience Fund. We are currently in a strong financial position, and our ongoing fundraising efforts will continue in order to secure our future. We are genuinely grateful for all the generosity of our benefactors and the continued support we receive from the Parish of Great Yarmouth.

Our volunteers and customers are the heart of what we do and I am proud of everything we achieve. My first 3 months have been an eye opening, welcoming and fulfilling time and I look forward to all the developments and progressions we will take in 2021.

***Jennifer King***

***Pathway Manager***

## **Pathway Statistics 2020**

We keep a record of names every time we serve to maintain an accurate representation of the numbers of meals we serve. When lockdown happened in late March, numbers initially fell. Many customers we did not see for some time before they returned hence a high number of “returns” in May 2020. Throughout 2020 we continually welcomed new customers, many of whom had been offered temporary accommodation in Great Yarmouth as a result of the pandemic.

<b>Month</b>	<b>Meals Served</b>	<b>Customers served per month</b>	<b>Returning Customers (after 3 months absence)</b>	<b>New Customers</b>
January	1102	230	3	2
February	1017	198	2	1
March	811	196	19	12
April	591	167	17	0
May	762	175	52	2
June	827	174	14	16
July	887	195	16	12
August <i>(2 week closure)</i>	467	157	12	15
September	825	197	35	22
October	839	204	37	18
November	839	188	26	18
December	708	159	16	5
<b>Totals for 2020</b>	<b>9675</b>	<i>Not applicable</i>	<b>249</b>	<b>124</b>

## TREASURERS REPORT

I would like to start first by thanking all the staff, volunteers and various helpers for their marvellous efforts in what has been an exceptional year due to Covid-19. Although we have not able to serve internal meals since April we have continued to serve takeaways at the door. We still serve about 80 free hot meals on three days each week. We also offer other food items when available.

The total income received in the year was £58,254.40 and £34,264.76 was paid out. The gift of £11,000 from the Mercers Company which is the second half of a two-year support to Pathway. Norfolk Community Foundation have via various partners made five donations totalling £39,068. Other donations ranged from £5 to £5000 and we thank all of them for their support of Gt. Yarmouth Pathway. The donations are both local and national with one from Australia.

One major change has been the appointment of a paid Manager. We have received a grant to cover that cost for a number of months and are looking at additional grants in 2021. In addition to Fare Share and Thompson Foods we have begun to use other suppliers and have increased our commitment to using donated food; saving on food waste. We pay £150 per week to the PCC for the hire of the hall. This covers all the utilities we use.

The total £31,743.66 was carried forward into 2021: Much of this earmarked for expenditure including core costs and salaries.

Again, I thank all our various donors for their contributions and also the Trustees for all the assistance given to me over year and in producing these accounts.

***Michael Hewitt***

***Treasurer***



*Chef Peter Jones pleased with the new cooker funded by NCF*

## Financial Summary 2020

<b>Great Yarmouth Pathway</b>			
<b>Statement of Financial Activities</b>			
<b>Year ending 31<sup>st</sup> December 2020</b>			
	<b>2020</b>		<b>2019</b>
<b>INCOME</b>			
Gift Aid donations	0		100.00
Fundraising	0		60.00
Churches	115		352.82
Other Groups or Charities	263.90		570.00
Individuals	520		50.00
Grants from Trusts (recurring)	11200		12300.00
Grants from Trusts	45818		8861.75
Training	337.50		0
<b>TOTAL INCOME</b>	<b><u>58,254.40</u></b>		<b><u>22294.57</u></b>
<b>EXPENDITURE</b>			
Insurance	459.41		207.88
Catering Supplies	8381.75		8,347.57
Cleaning Supplies	549.85		
FareShare	1110.70		1703.17
Volunteer Expenses	1699.45		1110.00
Training Costs	450.00		206.00
Rent to GY PCC	7800		7800.00
New Equipment	5446.41		2429.94
Centres management and administration			235.43
Staff Wages: Manager	5327.95		0
Staff Wages: Chef	2540.00		
Staff Expenses	499.24		
<b>TOTAL EXPENDITURE</b>	<b><u>34264.76</u></b>		<b><u>22039.99</u></b>
BALANCES BROUGHT FORWARD	7754.02		7499.44
<b>BALANCES CARRIED FORWARD</b>	<b>31743.66</b>		<b>7754.02</b>

A full set of accounts is available on request and will be uploaded to the Charity Commission Register:  
[www.charitycommission.gov.uk](http://www.charitycommission.gov.uk)

The full accounts were independently examined and approved by Mrs Jane Freeman: 16<sup>th</sup> February 2021.

# Great Yarmouth Pathway

## Statement of Financial Activities

For the year ending 31st December 2020

	Note	Unrestricted Funds £	Restricted Funds £	TOTAL 2020 £	TOTAL 2019 £
<b>INCOMING RESOURCES</b>					
<i>incoming resources from donors</i>	2(a)	898.90		898.90	1132.82
<i>Other voluntary incoming resources</i>	2(b)	47518.00	9500.00	57018.00	21161.75
<i>incoming resources from operating activities</i>					
- to further the Centres objects	2(c)	337.50		337.50	0.00
- to generate funds	2(d)	0.00		0.00	0.00
<i>Income from investment</i>	2(e)				
<i>Other incoming resources</i>	2(f)				
<b>TOTAL INCOMING RESOURCES</b>		<u>48754.40</u>	<u>9500.00</u>	<u>58254.40</u>	<u>22294.57</u>
<b>RESOURCES EXPENDED</b>					
<i>Grants</i>	3(a)				
<i>Activities directly relating to the work of the centre</i>	3(b)	22238.12	4500.00	26738.12	21804.56
<i>Centres management and administration</i>	3(c)	2526.64	5000.00	7526.64	235.43
<i>Cost of generating funds</i>	3(d)	0.00		0.00	0.00
<i>Major Capital Expenditure</i>	3(e)	0.00		0.00	0.00
<b>TOTAL RESOURCES EXPENDED</b>		<u>24764.76</u>	<u>9500.00</u>	<u>34264.76</u>	<u>22039.99</u>
<b>NET INCOMING/(OUTGOING) RESOURCES</b>		23989.64	0.00	23989.64	254.58
<b>GAINS AND LOSSES ON INVESTMENTS</b>	5(b)	0.00	0.00	0.00	0.00
<b>NET MOVEMENT IN FUNDS</b>		<u>23989.64</u>	<u>0.00</u>	<u>23989.64</u>	<u>254.58</u>
BALANCES BROUGHT FORWARD		7754.02	0.00	7754.02	7499.44
<b>BALANCES CARRIED FORWARD AT 31 December 2020</b>		<u>31743.66</u>	<u>0.00</u>	<u>31743.66</u>	<u>7754.02</u>

## Gt. Yarmouth Pathway

### Balance Sheet at 31 December 2020

	Note	31-Dec 2020 £	31-Dec 2019 £
<b>FIXED ASSETS</b>			
Tangible fixed assets	5(a)		
Investment assets	5(b)		
<b>CURRENT ASSETS</b>			
Stock			
Debtors	7		
Short term deposits			
Cash at bank and in hand ( £0.00 in hand )		31743.66	7754.02
		<u>31743.66</u>	<u>7754.02</u>
<b>LIABILITIES: AMOUNTS FALLING DUE WITHIN ONE YEAR</b>			
	8	0.00	0.00
		<u>0.00</u>	<u>0.00</u>
<b>NET CURRENT ASSETS</b>			
		31743.66	7754.02
		<u>31743.66</u>	<u>7754.02</u>
<b>NET ASSETS</b>			
		31743.66	7754.02
		<u>31743.66</u>	<u>7754.02</u>
<b>FUNDS</b>			
	6		
Unrestricted		31743.66	7754.02
Restricted		0.00	0.00
		<u>31743.66</u>	<u>7754.02</u>
		<u>31743.66</u>	<u>7754.02</u>

# Great Yarmouth Pathway

## Notes to the Financial Statements

For the year ended 31 December 2020

### 1 ACCOUNTING POLICIES

### 2 INCOMING RESOURCES

	Unrestricted Funds £	Restricted Funds £	TOTAL 2020 £	FUNDS 2019 £
2(a) <i>Incoming resources from donors</i>				
101 Gift Aid donations	0.00		0.00	100.00
102 Income tax recoverable				
103 Standing Orders/Direct Debits	0.00		0.00	0.00
104 Funds Raising	0.00		0.00	60.00
104 Churches	115.00		115.00	352.82
105 Other Groups or Charities	258.90		258.90	570.00
105 Individuals	520.00		520.00	50.00
105 pay Pal	5.00		5.00	0.00
	<u>898.90</u>		<u>898.90</u>	<u>1132.82</u>
2(b) <i>Other voluntary incoming resources</i>				
201(a) Grants (recurring grants)	11200.00		11200.00	12300.00
201(b) Grants (non-recurring grants)	36318.00	9500.00	45818.00	8861.75
	0.00			
	<u>47518.00</u>	<u>9500.00</u>	<u>57018.00</u>	<u>21161.75</u>
2(c) <i>Income from operating activities: to further the Centre's objects</i>				
401				
402 Training	337.50		337.50	0.00
403				
404				
500				
	<u>337.50</u>		<u>337.50</u>	<u>0.00</u>
2(d) <i>Income from operating activities:</i>				
203(a)				
	<u>0.00</u>		<u>0.00</u>	<u>0.00</u>
2(e) <i>Income from investment</i>				
301 Dividends and interest including				
302 any reclaimable tax				
2(f) <i>Other ordinary incoming resources</i>				
601				
602				
<b>TOTAL INCOMING RESOURCES</b>	<u>48754.40</u>	<u>9500.00</u>	<u>58254.40</u>	<u>22294.57</u>

## Great Yarmouth Pathway

### Notes to the Financial Statements (continued)

For the year ended 31 December 2020

3	RESOURCES EXPENDED	Unrestricted Funds £	Restricted Funds £	TOTAL 2020 £	FUNDS 2019 £
3(a)	<i>Grants</i> Charitable giving:				
1001/5	All Charity Giving	0.00		0.00	0.00
3(b)	<i>Activities directly relating to the work of the Centre</i>				
2001					
2002	Centre - running expenses Insurance	459.41		459.41	207.88
2003	Centre - running expenses Thompsons	6510.25		6510.25	7485.31
2004	Centre - running expenses KANDO	549.85		549.85	862.26
2005	Centre - running expenses Fare Share	1110.70		1110.70	1703.17
2006	Centre - running expenses Chef Expenses	2540.00		2540.00	1110.00
2007	Centre - running expenses Bramfield Meats	352.40		352.40	0.00
2008	Centre - running expenses Bookers	479.10		479.10	0.00
2009	Centre - running expenses HOPE	540.00	500.00	1040.00	0.00
2010					
2011	Training Costs	450.00		450.00	206.00
2016	Rent	7800.00		7800.00	7800.00
2017	Equipment Costs	1446.41	4000.00	5446.41	2429.94
		<u>22238.12</u>	<u>4500.00</u>	<u>26738.12</u>	<u>21804.56</u>
3(c)	<i>Centre management and administration</i>				
	Administration:				
4000	Manager Salary	327.95	5000.00	5327.95	0.00
4000	Managers Expenses for Items	499.24		499.24	21.50
4000	Volunteer Costs	1699.45		1699.45	213.93
		<u>2526.64</u>	<u>5000.00</u>	<u>7526.64</u>	<u>235.43</u>
3(d)	<i>Cost of generating funds</i>				
3000	Fund-raising events				
3000		0		0	
		<u>0</u>		<u>0</u>	<u>0</u>
3(e)	<i>Major Capital Expenditure</i>				
2012/14	Major repairs - Centre building	0.00		0.00	0.00
2015	ALL New building work				
		<u>0</u>		<u>0</u>	<u>0</u>
		<u>24764.76</u>	<u>9500.00</u>	<u>34264.76</u>	<u>22039.99</u>
	<b>TOTAL RESOURCES EXPENDED</b>				

# Great Yarmouth Pathway

## Notes to the Financial Statements (continued)

For the year ended 31 December 2020

5	FIXED ASSETS FOR USE BY PATHWAY	Freehold land and buildings £	Centre equipment £	Total £
5(a)	<i>Tangible fixed assets</i>			
	<b>ACTUAL/DEEMED COST</b>			
	At 1 January 2020			
	Additions			
	At 31 December 2020			
	<b>DEPRECIATION</b>			
	At 1 January 2020			
	Charge for the year*			
	At 31 December 2020			
	<b>NET BOOK VALUE</b>			
	At 1 January 2020			
	At 31 December 2020			

(insert notes)

### 5(b) *Investment fixed assets*

Movements in year:

Market value - 1 January 2020

Purchases at cost, less disposals at carrying value

Net gains on disposals and annual revaluation

Market value - 31 December 2020

(insert notes)

### 6 ANALYSIS OF NET ASSETS BY FUND

	Unrestricted Funds £	Restricted Funds £	Total £
Fixed Assets for Centre use			
Investment Fixed Assets			
Current Assets	31743.66	0	31743.66
Current Liabilities			
<b>Fund balance</b>	<u>31743.66</u>	<u>0</u>	<u>31743.66</u>

# Great Yarmouth Pathway

## Notes to the Financial Statements (continued)

For the year ended 31 December 2020

<b>7</b>	<b>DEBTORS</b>	<b>2020</b>	<b>2019</b>
		<b>£</b>	<b>£</b>
	Income tax recoverable		
	Prepayments and accrued interest (insurance)		
	Other debtors		
		<hr/>	<hr/>
		0	0
		<hr/>	<hr/>
<b>8</b>	<b>LIABILITIES: AMOUNTS FALLING DUE WITHIN ONE YEAR</b>	<b>2020</b>	<b>2019</b>
		<b>£</b>	<b>£</b>
	Deferred income		
	Accruals of utility and other costs		
	Creditors for goods and services -		
	Other creditors		
		<hr/>	<hr/>
		0	0
		<hr/>	<hr/>
<b>9</b>	<b>FUND DETAILS</b>		

## **Independent Examiner's Report to the Gt. Yarmouth Pathway**

This report is based on the financial statements of the Great Yarmouth Pathway for the year ending 31st December 2019.

### **Respective responsibilities of Great Yarmouth Pathway Trustees and the examiner**

As Trustee members you are responsible for the preparation of the financial statements. It is my responsibility to issue this report on these financial statements.

### **Basis of this report**

My examination was carried out in accordance with the General Directions given by the Charity Commission. That examination includes a review of the accounting records kept by the Great Yarmouth Pathway and a comparison of the accounts with those records. It also includes considering any unusual items or disclosures in the financial statements and seeking explanations from the trustees concerning any such matters.

### **Independent examiner's statement**

In connection with my examination, no matter has come to my attention:

- (1) Which gives me reasonable cause to believe that in any material respect the requirements
  - To keep accounting records in accordance with the Charity Act and
  - To prepare financial statements, which accord with the accounting records and comply with the Act have not been met; or
- (2) To which, in my opinion, attention should be drawn in order to enable a proper understanding of the accounts to be reached.

Signed: Jane Freeman

Date: 16/4/2020

Print: JANE FREEMAN