

Angel Trust - A Charity For The People
Financial Statements
For the year ending
30 June 2025

JANE ASCROFT ACCOUNTANCY LIMITED

Chartered accountants
Enterprise House
Harmire Enterprise Park
Barnard Castle
County Durham
DL12 8XP

Angel Trust - A Charity For The People

Financial Statements

Year ended 30 June 2025

	Page
Trustees' annual report	1
Independent examiner's report to the trustees	11
Statement of financial activities	12
Statement of financial position	13
Statement of cash flows	14
Notes to the financial statements	15

Angel Trust - A Charity For The People

Trustees' Annual Report

Year ended 30 June 2025

The trustees present their report and the unaudited financial statements of the charity for the year ended 30 June 2025.

Chair's report

As chair of trustees, I have prepared this statement as part of the annual report for July 2024-June 2025. This year saw the biggest year yet in terms of diversification for Angel Trust, as we expanded into new territories and avenues to further support our local community.

2024-2025 saw the launch of our Angel Trust Safe Hub, the first full year of our Angel Trust Emporium Charity Shop and the first few weeks trade of our Beehive Coffee Shop. Alongside this we welcomed our new in-house counselling service and also opened our Angel Trust premises up to multiple organisations to support our local community through their expertise. Recognising the changing economic climate we have reviewed and adjusted some of our revenue streams and will continue to do so into 2025-2026 as we look at the exciting launch of our next projects.

I am extremely proud and honoured as chair of trustees of how we continue to adapt and respond to the changing support required by our local community in County Durham and Darlington, whilst remaining loyal to our core values and policies. Our community pantry continues to serve hundreds of shoppers each week, providing a welcoming environment for shoppers but also a hub of navigation to the other services we offer, as well as external parties that we are working in close collaboration with. We continued for a second year to run school holiday clubs through the Durham County Council Fun and Food provision, providing school holiday activities for local young children.

We continue to fundraise via our popular events as Ladies Day and Tess on Tour, which has allowed us to continue to support local families with memorable experiences and the granting of wishes including those families who are experiencing terminal illness, the participation of a special tailored Christmas party and the Weardale Christmas train. We would also like to thank our ambassador John Adamson, for his support in choosing Angel Trust to be the nominated charity for a number of fundraising events at his venues.

Through collaborations and the relationships we have built with both local authorities, services and school provisions we have continued to provide support to vulnerable children and families with initiatives that include school uniform, as well as our hugely successful toy appeal and more ad hoc requests. We operate by the motto "you never know when you may need a helping hand" and our social media presence highlights just some of the work and projects we have got involved with and successfully delivered

We have been supported via fundraising through our events, donations from the local community, awards of grants and corporate donations which have made all of our work possible and we are extremely grateful for this support.

I would like to place on record my thanks to the board of trustees, the CEO, the staff and the volunteers for their resilience, loyalty and creativity and look forward to sharing the launch of our new projects in 2025-2026.

Beryl Anderson
Chairman for the Board of Trustees

Angel Trust - A Charity For The People

Trustees' Annual Report *(continued)*

Year ended 30 June 2025

Objectives and activities

Angel Trust was formed as a local charity for the people of Darlington and County Durham. We aim to support individuals and organisations in the community by providing financial support and services to those in need. We want to improve the local community and make life better for those living within it.

The objectives of the CIO are:

(a) To relieve the needs of the community in Darlington and County Durham by providing grants to individuals and/or charities or other organisations in such ways as the trustees see fit to enable; (i) The advancement of citizenship and community development (ii) The relief of financial hardship and;(iii) Other such charitable purposes as the trustees shall determine.

Established in April 2018 the Angel Trust was formed as a local charity and has rapidly become recognised as "The People's Charity". Operating throughout Darlington and all of County Durham, the boundaries defined within the Gaunless Gateway are firmly embedded within the aims and objectives of The Angel Trust.

The Trust operates under the stringent guidance of a registered board of trustees and a Senior Fundraiser /CEO. Within the skill set of the board there is a diverse representation of assets and professional impetus covering legal procedures, press, publicity and media marketing, health and safety management, building and structural planning, entertainment and choreography, business management, hotel and function property availability as well as financial accounting procedures.

The Angel Trust's ambition is to support individuals and organisations in the local community by providing financial support and services to those in need and are undergoing hardship. Our aim is to improve the local community and make life better for those living within it. The Angel Trust operates under a specified legal constitution within its governing document and is registered with the Charity Commission.

In setting objectives and planning for activities, the trustees have given due consideration to general guidance published by the Charity Commission relating to public benefit, including the guidance 'Public benefit: running a charity (PB2)'.

Angel Trust fundraises in the community using various methods; we host fundraising events, distribute collecting cans to local business and we have individual fundraisers which altogether enables us to achieve our objectives.

Activities undertaken to achieve objectives

There is a strong fundraising structure that appeals to our contrastive database of supporters, designed and marketed to attract their taste and appetite for leisure and entertainment. Angel Trust has established a reputation for a strong charitable standing in our community by providing much needed help and funds to individuals, organisations, schools and clubs across both The County of Durham and The Borough of Darlington. The Trust staff and volunteers have worked hard to spread the ethos "We may all need a helping hand at some point in our lives and the Angel Trust aims to be there to provide support where it is needed." As a result of this we now receive referrals from Macmillan, Social Workers, School Workers and many more. We are quickly becoming the charity that people turn to.

ANGEL TRUST SAFE NIGHT HUB



Winter 2024 saw an exciting development for Angel Trust as the Charity opened a Safe Night Hub, in partnership with Durham County Council. The Hub is the first of its kind in the county, providing emergency shelter, home-cooked meals and wrap-around care for homeless individuals within County Durham and Darlington.

The introduction of the Night Hub saw our services expand quickly, not only with night-time facilities but also day time support, with clients seeking advice and help from specially trained Navigators. Clients are supported with a range of issues, focusing on rehabilitation and rehousing, including mental health guidance and clothing support.

Many of the individuals we support also give back to the Trust through voluntary efforts, including cleaning, stocking shelves and helping with day to day tasks around the site. The care doesn't end at the door, support is still provided to clients after they leave the hub, including support with foodbank parcels and household goods.



BEEHIVE COFFEE SHOP



May 2025 saw the opening of our subsidiary, The Beehive Coffee Shop.

The Beehive has been created as an affordable coffee shop, offering a comfortable, accessible space for local residents to meet friends and family, whilst enjoying high-quality food and drinks.

The Coffee Shop has created several employment and volunteer roles since its opening, hiring local individuals who have since been given training on aspects such as food hygiene, manual handling and other relevant courses, creating a stronger workforce and aiding the local economy.

The Coffee Shop team also act as a first line of support, signposting customers to the wider Angel Trust service if they spot signs of distress. Local groups are also using the Beehive for clubs, including a monthly book club and a veterans support group that meet on a weekly basis to catch up over a slice of cake!



ANGEL TRUST COUNSELLING



Angel Trust continues to respond to the local community and identify opportunities to provide support. An area of support frequently requested was counselling services and wellbeing support, given the current waiting within the local authority. The County Durham area is ranked within the top 10 for suicide rates per year according to statistics published by the *ONS*

We are so proud that in 2024-2025 we launched our free in house counselling service, delivered by two specialists, we take referrals from the local community and also directly from our Safe Night Hub. The counsellors offer several sessions encompassing support for both suicide/self harm prevention and post trauma therapy.

With thanks to grant income ,we have developed two state-of-the-art counselling suites. Being able to support local people at often the most difficult time in their lives has been a very rewarding avenue for expansion.



COMMUNITY SUPPORT



Wish Granting -

Angel Trust continues to support the wider community through Wish Granting. Several families who are undergoing serious illnesses have received holiday vouchers and stays at a local spa hotel, offering much needed respite & time for families at their lowest time. We also supported a young lady who is undergoing chemotherapy by sending her to Fenwicks with a full makeup experience, on top of many more life-changing experiences for children and families.

Toy Appeal -

The Angel Trust continues its Toy Appeal after years of success, donating some 15,000 toys to local children. We received hundreds of referrals from local hospitals, social care and school settings for these gifts.

Christmas Party -

The Angel Trust offers a Christmas Party every year to vulnerable children and families, completely free of charge, the event encompasses the opportunity to meet Santa and enjoy a delicious meal with their family.



FUNDRAISING

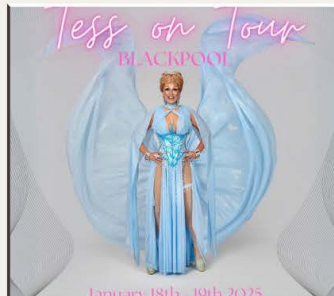


The Trust continues to run several large fundraising events across the year, and 2024-25 was no different!

We ran a Three Peaks Trek, where brave volunteers scaled mountains and fells to raise money for the Trust.

Tess On Tour remains famous amongst Angel Trust supporters, with hundreds of fans travelling to Blackpool for a wild weekend of Drag Entertainment and Laughter, all whilst raising funds for the Trust. Tickets continue to sell out year on year, with many loyal supporters booking several tickets for friends and families.

Ladies Day was another big success, working closely with Ramside Estates we held a brilliant fundraising day. The ladies looked fantastic and took part in games, entertainment and enjoyed luxury dining and drinks!



2024-25 IN REVIEW



The Trust has had a very successful 2024-25, with growth and expansion across the entire Charity.

The Emporium Charity Shop has celebrated its first year, and is proving very popular. We would like to say thank you for all customers for shopping with us, and for donating surplus clothes which are then sold in the store. The Trust have also received several large donations from Corporate donors, which has proved valuable.

The Community Pantry continues to support the region with affordable food and products, we would like to express a thank you to local supermarkets and the Auckland Project for donations of surplus products.

Finally, we would like to express our gratitude for our Trustees, Staff & Volunteers for their continued hardwork in supporting the Charity and helping us grow and flourish.



Angel Trust - A Charity For The People

Trustees' Annual Report *(continued)*

Year ended 30 June 2025

Financial review

The charity generated income of £943,900 (2024 - £454,315) during its seventh year and incurred expenditure of £844,739 (2024 - £407,348).

Reserves policy

Trustees aim to hold six months running costs as free reserves which currently equates to approximately £214,000. The charity's unrestricted reserves currently stand at £218,304 (2024 - £149,361) and the trustees are satisfied with this position.

Structure, governance and management

Constitution

The charity was incorporated as a Charitable Incorporated Organisation (registered charity number 1178926) on 26 June 2018.

Methods of appointment or election of trustees

The management of the charity is the responsibility of the trustees who are elected and co-opted under the terms of the Trust deed. Induction is provided for new trustees as required.

Organisational structure and decision-making policies

At the end of the year Angel Trust has a Board of 7 trustees comprised from various professional backgrounds. Appointments to the Board are made by the trustees, once elected, Trustees are given a copy of the Charities Commission Handbook and full verbal explanatory briefing from our charities solicitor on the expectations of being a trustee.

The charity also has a CEO who oversees the overall running of the charity including the charities Marketing and Fundraising Assistant. The trustees delegate day to day operations to the Chief Executive.

Angel Trust have a number of Ambassadors; Tess Tickle & The Dragettes, Mark Dunn, John Adamson, Gucci Gabore, Paul Simpson, Natalie Philips, Anderson Family and Samantha Atkinson who play a key role in promoting the charity to the local community and through the press. In addition to this we have a fantastic team of volunteers, without them we wouldn't be able to do the work we do.

Pay policy for key management personnel

The salary and benefits of the Chief Executive are set by the board of trustees, and reviewed annually.

Related party relationships

The charity has benefited from the support of the services of trustees in a number of ways.

Mark Boyes, one of our trustees, also provides professional entertainment services at discounted rates to some of our events, which further benefits the charity through his on-line presence on social media.

Financial risk management

The trustees have assessed the major risks to which the charity is exposed, in particular those related to the operations and finances of the charity, and are satisfied that systems and procedures are in place to mitigate our exposure to the major risks.

Angel Trust - A Charity For The People

Trustees' Annual Report *(continued)*

Year ended 30 June 2025

Reference and administrative details

Registered charity name Angel Trust - A Charity For The People

Charity registration number 1178926

Principal office Belvedere House
Kingsway
Bishop Auckland
County Durham
DL14 7JN

The trustees

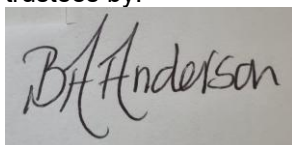
Beryl Anderson
Mark Boyes
Nicola Stephenson
Malcolm Cresswell (Resigned 3 June 2025)
Kathryn Stabler (Resigned 5 November 2025)
Michelle Telford
Luke Jones

Nicola Harmer was appointed as a Trustee on 20 January 2026.

Chief Executive Officer Clair McGregor

Independent examiner Jane Ascroft FCA MA(Cantab)
Enterprise House
Harmire Enterprise Park
Barnard Castle
County Durham
DL12 8XP

The trustees' annual report was approved on 30th April 2026 and signed on behalf of the board of trustees by:

A handwritten signature in black ink that reads "Beryl Anderson". The signature is written in a cursive style with the first letters of the first and last names being capitalized and prominent.

Beryl Anderson
Trustee

Angel Trust - A Charity For The People

Independent Examiner's Report to the Trustees of Angel Trust - A Charity For The People

Year ended 30 June 2025

I report to the trustees on my examination of the financial statements of Angel Trust - A Charity For The People ('the charity') for the year ended 30 June 2025.

Responsibilities and basis of report

As the trustees of the charity you are responsible for the preparation of the financial statements in accordance with the requirements of the Charities Act 2011 ('the Act').

I report in respect of my examination of the charity's financial statements carried out under section 145 of the 2011 Act and in carrying out my examination I have followed all the applicable Directions given by the Charity Commission under section 145(5)(b) of the Act.

Independent examiner's statement

Since the charity's gross income exceeded £250,000 your examiner must be a member of a body listed in section 145 of the 2011 Act. I confirm that I am qualified to undertake the examination because I am a member of the Institute of Chartered Accountants in England and Wales (ICAEW), which is one of the listed bodies.

I have completed my examination. I confirm that no material matters have come to my attention in connection with the examination giving me cause to believe that in any material respect:

1. accounting records were not kept in respect of the charity as required by section 130 of the Act; or
2. the financial statements do not accord with those records; or
3. the financial statements do not comply with the applicable requirements concerning the form and content of accounts set out in the Charities (Accounts and Reports) Regulations 2008 other than any requirement that the accounts give a 'true and fair' view which is not a matter considered as part of an independent examination.

I have no concerns and have come across no other matters in connection with the examination to which attention should be drawn in this report in order to enable a proper understanding of the accounts to be reached.



Jane Ascroft FCA MA(Cantab)
Independent Examiner

Enterprise House
Harmire Enterprise Park
Barnard Castle
County Durham
DL12 8XP

Angel Trust - A Charity For The People

Statement of Financial Activities

Year ended 30 June 2025

			2025		2024
	Note	Unrestricted funds £	Restricted funds £	Total funds £	Total funds £
Income and endowments					
Donations and legacies	4	119,239	314,688	433,927	173,102
Charitable activities	5	300,005	9,260	309,265	83,601
Other trading activities	6	189,457	–	189,457	190,314
Investment income	7	473	–	473	4
Other income	8	10,778	–	10,778	7,294
Total income		<u>619,952</u>	<u>323,948</u>	<u>943,900</u>	<u>454,315</u>
Expenditure					
Expenditure on raising funds:					
Costs of raising donations and legacies	9	230	–	230	132
Costs of other trading activities	10	154,716	–	154,716	176,051
Expenditure on charitable activities	11,12	396,063	293,730	689,793	231,165
Total expenditure		<u>551,009</u>	<u>293,730</u>	<u>844,739</u>	<u>407,348</u>
Net income and net movement in funds		<u>68,943</u>	<u>30,218</u>	<u>99,161</u>	<u>46,967</u>
Reconciliation of funds					
Total funds brought forward		149,361	–	149,361	102,394
Total funds carried forward		<u>218,304</u>	<u>30,218</u>	<u>248,522</u>	<u>149,361</u>

The statement of financial activities includes all gains and losses recognised in the year. All income and expenditure derive from continuing activities.

The notes on pages 15 to 27 form part of these financial statements.

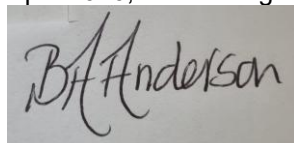
Angel Trust - A Charity For The People

Statement of Financial Position

30 June 2025

	Note	2025 £	2024 £
Fixed assets			
Tangible fixed assets	18	51,274	46,862
Investments	19	<u>2</u>	<u>2</u>
		51,276	46,864
Current assets			
Stocks	20	5,000	3,000
Debtors	21	110,468	13,447
Cash at bank and in hand		<u>262,566</u>	<u>158,175</u>
		378,034	174,622
Creditors: amounts falling due within one year	22	<u>149,121</u>	<u>72,125</u>
Net current assets		<u>228,913</u>	<u>102,497</u>
Total assets less current liabilities		280,189	149,361
Creditors: amounts falling due after more than one year	23	<u>31,667</u>	<u>—</u>
Net assets		<u>248,522</u>	<u>149,361</u>
Funds of the charity			
Restricted funds		30,218	—
Unrestricted funds		<u>218,304</u>	<u>149,361</u>
Total charity funds	26	<u>248,522</u>	<u>149,361</u>

These financial statements were approved by the board of trustees and authorised for issue on 30th April 2026, and are signed on behalf of the board by:



Beryl Anderson
Trustee

The notes on pages 15 to 27 form part of these financial statements.

Angel Trust - A Charity For The People

Statement of Cash Flows

Year ended 30 June 2025

	2025 £	2024 £
Cash flows from operating activities		
Net income	99,161	46,967
<i>Adjustments for:</i>		
Depreciation of tangible fixed assets	12,460	21,845
Other interest receivable and similar income	(473)	(4)
Interest payable and similar charges	2,708	–
Loss on disposal of heritage assets	3,472	–
Accrued expenses/(income)	1,363	(361)
<i>Changes in:</i>		
Stocks	(2,000)	–
Trade and other debtors	(97,021)	4,117
Trade and other creditors	65,633	8,014
Cash generated from operations	85,303	80,578
Interest paid	(2,708)	–
Interest received	473	4
Net cash from operating activities	<u>83,068</u>	<u>80,582</u>
Cash flows from investing activities		
Purchase of tangible assets	(21,544)	(3,832)
Proceeds from sale of tangible assets	1,200	–
Acquisition of subsidiaries	–	(1)
Net cash used in investing activities	<u>(20,344)</u>	<u>(3,833)</u>
Cash flows from financing activities		
Proceeds from borrowings	41,667	–
Net cash from financing activities	<u>41,667</u>	<u>–</u>
Net increase in cash and cash equivalents	104,391	76,749
Cash and cash equivalents at beginning of year	158,175	81,426
Cash and cash equivalents at end of year	<u>262,566</u>	<u>158,175</u>

The notes on pages 15 to 27 form part of these financial statements.

Angel Trust - A Charity For The People

Notes to the Financial Statements

Year ended 30 June 2025

1. General information

The charity is a public benefit entity and a registered charity in England and Wales and is unincorporated. The address of the principal office is Belvedere House, Kingsway, Bishop Auckland, County Durham, DL14 7JN.

2. Statement of compliance

These financial statements have been prepared in compliance with FRS 102, 'The Financial Reporting Standard applicable in the UK and the Republic of Ireland', the Statement of Recommended Practice applicable to charities preparing their accounts in accordance with the Financial Reporting Standard applicable in the UK and Republic of Ireland (FRS 102) (Charities SORP (FRS 102)) and the Charities Act 2011.

3. Accounting policies

Basis of preparation

The financial statements have been prepared on the historical cost basis, as modified by the revaluation of certain financial assets and liabilities and investments measured at fair value through income or expenditure.

The financial statements are prepared in sterling, which is the functional currency of the entity.

The entity is a Public Benefit Entity.

Going concern

There are no material uncertainties about the charity's ability to continue.

Judgements and key sources of estimation uncertainty

The preparation of the financial statements requires management to make judgements, estimates and assumptions that affect the amounts reported. These estimates and judgements are continually reviewed and are based on experience and other factors, including expectations of future events that are believed to be reasonable under the circumstances. The trustees consider that there are no significant estimates or judgements affecting these financial statements.

Fund accounting

Unrestricted funds are available for use at the discretion of the trustees to further any of the charity's purposes.

Designated funds are unrestricted funds earmarked by the trustees for particular future project or commitment.

Restricted funds are subjected to restrictions on their expenditure declared by the donor or through the terms of an appeal, and fall into one of two sub-classes: restricted income funds or endowment funds.

Angel Trust - A Charity For The People

Notes to the Financial Statements *(continued)*

Year ended 30 June 2025

3. Accounting policies *(continued)*

Income

All income is included in the statement of financial activities when the charity is entitled to the income, any performance related conditions attached have been met or are fully within the control of the charity, the income is considered probable and the amount can be quantified with reasonable accuracy. The following specific policies are applied to particular categories of income:

Donations and legacy income is received by way of donations, legacies, grants and gifts and is included in full in the Statement of Financial Activities when receivable. Where legacies have been notified to the charity but the criteria for income recognition have not been met, the legacy is treated as a contingent asset and disclosed if material. Grants, where entitlement is not conditional on the delivery of a specific performance by the charity, are recognised when the charity becomes unconditionally entitled to the grant.

Donated services and facilities are included at the value to the charity, being the amount the charity would have been willing to pay to obtain services or facilities of equivalent economic benefit on the open market. There has been a change in policy for the recognition of gifts in kind with donations of food, toys and easter eggs now being included within the accounts.

Investment income is included when receivable.

Income from charitable trading activity is accounted for when earned.

Income from grants, where related to performance and specific deliverables, are accounted for as the charity earns the right to consideration by its performance.

Expenditure

Expenditure is recognised on an accruals basis as a liability is incurred. Expenditure includes any VAT which cannot be fully recovered, and is reported as part of the expenditure to which it relates:

Costs of raising funds comprise the costs associated with attracting donations, grants and legacies and the costs of trading for fundraising purposes.

Charitable expenditure comprises those costs incurred by the charity in the delivery of its activities and services for its beneficiaries. It includes both costs that can be allocated directly to such activities and those costs of an indirect nature necessary to support them.

Other expenditure includes all expenditure that is neither related to raising funds for the charity nor part of its expenditure on charitable activities.

All costs are allocated between the expenditure categories of the SOFA on a basis designed to reflect the use of the resource. Costs relating to a particular activity are allocated directly, others are apportioned on an appropriate basis, as set out in the notes to the accounts.

Operating leases

Lease payments are recognised as an expense over the lease term on a straight-line basis. The aggregate benefit of lease incentives is recognised as a reduction to expense over the lease term, on a straight-line basis.

Angel Trust - A Charity For The People

Notes to the Financial Statements *(continued)*

Year ended 30 June 2025

3. Accounting policies *(continued)*

Tangible assets

Tangible assets are initially recorded at cost, and subsequently stated at cost less any accumulated depreciation and impairment losses.

Depreciation

Depreciation is calculated so as to write off the cost or valuation of an asset, less its residual value, over the useful economic life of that asset as follows:

Fixtures and fittings	-	10% - 20% Straight line
Motor vehicles	-	25% reducing balance
Equipment	-	10% - 25% Straight line
Kitchen equipment	-	25% reducing balance

Investments

Unlisted equity investments are initially recorded at cost, and subsequently measured at fair value. If fair value cannot be reliably measured, assets are measured at cost less impairment.

Listed investments are measured at fair value with changes in fair value being recognised in income or expenditure.

Impairment of fixed assets

A review for indicators of impairment is carried out at each reporting date, with the recoverable amount being estimated where such indicators exist. Where the carrying value exceeds the recoverable amount, the asset is impaired accordingly. Prior impairments are also reviewed for possible reversal at each reporting date.

Stocks

Stocks are measured at the lower of cost and estimated selling price less costs to complete and sell. Cost includes all costs of purchase, costs of conversion and other costs incurred in bringing the stock to its present location and condition.

Financial instruments

The charity only has financial assets and liabilities of a kind that qualify as basic financial instruments. Basic financial instruments are initially recognised at transaction value and subsequently measured at their settlement value.

Angel Trust - A Charity For The People

Notes to the Financial Statements *(continued)*

Year ended 30 June 2025

3. Accounting policies *(continued)*

Defined contribution plans

Contributions to defined contribution plans are recognised as an expense in the period in which the related service is provided. Prepaid contributions are recognised as an asset to the extent that the prepayment will lead to a reduction in future payments or a cash refund.

When contributions are not expected to be settled wholly within 12 months of the end of the reporting date in which the employees render the related service, the liability is measured on a discounted present value basis. The unwinding of the discount is recognised as an expense in the period in which it arises.

Trade debtors

Trade and other debtors are recognised at the settlement amount due after any trade discount offered. Prepayments are valued at the amount prepaid net of any trade discounts due.

Accrued income and tax recoverable is included at the best estimate of the amounts receivable at the balance sheet date.

Cash at Bank and in Hand

Cash at bank and cash in hand includes cash and short term highly liquid investments with a short maturity of three months or less from the date of acquisition or opening of the deposit or similar account.

Trade creditors

Creditors are recognised where the charity has a present obligation resulting from a past event that will probably result in the transfer of funds to a third party and the amount due to settle the obligation can be measured or estimated reliably. Creditors are normally recognised at their settlement amount after allowing for any trade discounts due.

Taxation

The company is considered to pass the tests set out in Paragraph 1 Schedule 6 of the Finance Act 2010 and therefore it meets the definition of a charitable company for UK corporation tax purposes. Accordingly, the company is potentially exempt from taxation in respect of income or capital gains received within categories covered by Chapter 3 Part 11 of the Corporation Tax Act 2010 or Section 256 of the taxation of Chargeable Gains Act 1992, to the extent that such income or gains are applied exclusively to charitable purposes.

Angel Trust - A Charity For The People

Notes to the Financial Statements *(continued)*

Year ended 30 June 2025

4. Donations and legacies

	Unrestricted Funds £	Restricted Funds £	Total Funds 2025 £
Donations			
Donations	50,231	—	50,231
Gift aid recoverable	9,619	—	9,619
Friends of Angel Trust	289	—	289
Corporate partners	1,500	—	1,500
Gifts in kind			
Venue hire	4,000	—	4,000
Car lease	600	—	600
Toy appeal	35,000	—	35,000
Easter Eggs	3,000	—	3,000
Foodbank donations	15,000	—	15,000
Grants			
Point North	—	55,625	55,625
DCC - Community Infrastructure	—	200,470	200,470
Key Fund	—	20,000	20,000
DCC - Admin Support	—	15,000	15,000
DCC - Refurbishment	—	15,593	15,593
DPC - Mental Health Support	—	8,000	8,000
	<u>119,239</u>	<u>314,688</u>	<u>433,927</u>
	Unrestricted Funds £	Restricted Funds £	Total Funds 2024 £
Donations			
Donations	61,825	—	61,825
Gift aid recoverable	8,222	—	8,222
Charities Trust	562	—	562
Friends of Angel Trust	404	—	404
Corporate partners	2,000	—	2,000
Gifts in kind			
Venue hire	4,000	—	4,000
Car lease	600	—	600
Grants			
DCC - Neighbourhood Budget	—	5,625	5,625
Point North	—	11,773	11,773
National Lottery Community Fund	—	63,091	63,091
Access Reach	—	9,000	9,000
Sainsburys	1,500	—	1,500
Amazon	2,500	—	2,500
Santander	2,000	—	2,000
	<u>83,613</u>	<u>89,489</u>	<u>173,102</u>

Angel Trust - A Charity For The People

Notes to the Financial Statements *(continued)*

Year ended 30 June 2025

5. Charitable activities

	Unrestricted Funds £	Restricted Funds £	Total Funds 2025 £
Community Pantry and Foodbank	82,505	–	82,505
Fun and Food	–	9,260	9,260
Commissioned Services	217,500	–	217,500
	<u>300,005</u>	<u>9,260</u>	<u>309,265</u>

	Unrestricted Funds £	Restricted Funds £	Total Funds 2024 £
Community Pantry and Foodbank	78,784	–	78,784
Fun and Food	–	4,817	4,817
	<u>78,784</u>	<u>4,817</u>	<u>83,601</u>

Angel Trust - A Charity For The People

Notes to the Financial Statements (continued)

Year ended 30 June 2025

6. Other trading activities

	Unrestricted Funds £	Total Funds 2025 £	Unrestricted Funds £	Total Funds 2024 £
Fundraising events	152,686	152,686	166,704	166,704
Merchandise income	694	694	1,413	1,413
Fundraising	11,342	11,342	11,600	11,600
Charity Shop	—	—	1,847	1,847
RAG	8,020	8,020	8,750	8,750
Catering and cookery classes	15,540	15,540	—	—
Room hire	1,175	1,175	—	—
	<u>189,457</u>	<u>189,457</u>	<u>190,314</u>	<u>190,314</u>

7. Investment income

	Unrestricted Funds £	Total Funds 2025 £	Unrestricted Funds £	Total Funds 2024 £
Bank interest receivable	<u>473</u>	<u>473</u>	<u>4</u>	<u>4</u>

8. Other income

	Unrestricted Funds £	Total Funds 2025 £	Unrestricted Funds £	Total Funds 2024 £
Employment allowance	10,678	10,678	6,339	6,339
Other income	<u>100</u>	<u>100</u>	<u>955</u>	<u>955</u>
	<u>10,778</u>	<u>10,778</u>	<u>7,294</u>	<u>7,294</u>

9. Costs of raising donations and legacies

	Unrestricted Funds £	Total Funds 2025 £	Unrestricted Funds £	Total Funds 2024 £
Costs of raising donations and legacies	<u>230</u>	<u>230</u>	<u>132</u>	<u>132</u>

10. Costs of other trading activities

	Unrestricted Funds £	Total Funds 2025 £	Unrestricted Funds £	Total Funds 2024 £
Costs of other trading activities	<u>154,716</u>	<u>154,716</u>	<u>176,051</u>	<u>176,051</u>

Angel Trust - A Charity For The People

Notes to the Financial Statements (continued)

Year ended 30 June 2025

11. Expenditure on charitable activities by fund type

	Unrestricted Funds £	Restricted Funds £	Total Funds 2025 £
Costs of charitable activities	243,463	284,562	528,025
Support costs	152,600	9,168	161,768
	<u>396,063</u>	<u>293,730</u>	<u>689,793</u>
	Unrestricted Funds £	Restricted Funds £	Total Funds 2024 £
Costs of charitable activities	28,831	94,306	123,137
Support costs	108,028	—	108,028
	<u>136,859</u>	<u>94,306</u>	<u>231,165</u>

12. Expenditure on charitable activities by activity type

	Activities undertaken directly £	Grant funding of activities £	Support costs £	Total funds 2025 £	Total fund 2024 £
Costs of charitable activities	280,115	247,910	160,382	688,407	229,774
Governance costs	—	—	1,386	1,386	1,391
	<u>280,115</u>	<u>247,910</u>	<u>161,768</u>	<u>689,793</u>	<u>231,165</u>

13. Analysis of grants

	2025 £	2024 £
Grants to institutions		
Angel Trust Coffee Shop	179,125	—
Grants to individuals		
Grants and donations to individuals and the community	68,785	15,901
Total grants	<u>247,910</u>	<u>15,901</u>

14. Net income

Net income is stated after charging/(crediting):

	2025 £	2024 £
Depreciation of tangible fixed assets	12,460	21,845
Loss on disposal of fixed assets	<u>3,472</u>	<u>—</u>

Angel Trust - A Charity For The People

Notes to the Financial Statements (continued)

Year ended 30 June 2025

15. Independent examination fees

	2025 £	2024 £
Fees payable to the independent examiner for: Independent examination of the financial statements	1,200	1,260

16. Staff costs

The total staff costs and employee benefits for the reporting period are analysed as follows:

	2025 £	2024 £
Wages and salaries	272,447	130,572
Social security costs	25,105	9,494
Employer contributions to pension plans	1,212	2,124
	<u>298,764</u>	<u>142,190</u>

The average head count of employees during the year was 16 (2024: 9).

No employee received employee benefits of more than £60,000 during the year (2024: Nil).

Key Management Personnel

Key management personnel include all persons that have authority and responsibility for planning, directing and controlling the activities of the charity. The total compensation paid to key management personnel for services provided to the charity was £56,464 (2024: £44,952).

17. Trustee remuneration and expenses

Trustees received no remuneration or expenses in the current and previous year.

18. Tangible fixed assets

	Fixtures and fittings £	Motor vehicles £	Equipment £	Kitchen equipment £	Total £
Cost					
At 1 July 2024	45,585	6,500	8,163	49,990	110,238
Additions	7,796	–	13,748	–	21,544
Disposals	–	(6,500)	–	–	(6,500)
At 30 June 2025	<u>53,381</u>	<u>–</u>	<u>21,911</u>	<u>49,990</u>	<u>125,282</u>
Depreciation					
At 1 July 2024	41,738	1,828	2,581	17,229	63,376
Charge for the year	1,660	–	2,610	8,190	12,460
Disposals	–	(1,828)	–	–	(1,828)
At 30 June 2025	<u>43,398</u>	<u>–</u>	<u>5,191</u>	<u>25,419</u>	<u>74,008</u>
Carrying amount					
At 30 June 2025	<u>9,983</u>	<u>–</u>	<u>16,720</u>	<u>24,571</u>	<u>51,274</u>
At 30 June 2024	<u>3,847</u>	<u>4,672</u>	<u>5,582</u>	<u>32,761</u>	<u>46,862</u>

Angel Trust - A Charity For The People

Notes to the Financial Statements *(continued)*

Year ended 30 June 2025

19. Investments

	Shares in group undertakings £
Cost or valuation	
At 1 July 2024 and 30 June 2025	<u>2</u>
Impairment	
At 1 July 2024 and 30 June 2025	<u>–</u>
Carrying amount	
At 30 June 2025	<u>2</u>
At 30 June 2024	<u>2</u>

All investments shown above are held at valuation.

The investments represent 1 £1 share in Angel Trust Trading Limited and 1 £1 share in Angel Trust Coffee Shop Limited.

At 30th June 2025 Angel Trust Trading Limited had capital of £1 and reserves of £12,522. It owed £22,558 to the charity at that date.

At 30th June 2025 Angel Trust Coffee Shop Limited had capital of £1 and negative reserves of £35,351. It owed £77,115 to the charity at that date.

20. Stocks

	2025 £	2024 £
Merchandise stock	<u>5,000</u>	<u>3,000</u>

21. Debtors

	2025 £	2024 £
Trade debtors	370	300
Amounts owed by group undertakings	99,673	7,291
Prepayments	997	5,804
Accrued grant income	7,125	–
Other debtors	<u>2,303</u>	<u>52</u>
	<u>110,468</u>	<u>13,447</u>

Angel Trust - A Charity For The People

Notes to the Financial Statements *(continued)*

Year ended 30 June 2025

22. Creditors: amounts falling due within one year

	2025 £	2024 £
Bank loans and overdrafts	10,000	–
Trade creditors	8,618	9,847
Accruals and deferred income	115,718	45,855
Social security and other taxes	11,043	2,247
Wages creditor	–	10,871
Pension creditor	1,103	–
Other creditors	2,639	3,305
	<u>149,121</u>	<u>72,125</u>

23. Creditors: amounts falling due after more than one year

	2025 £	2024 £
Bank loans and overdrafts	<u>31,667</u>	<u>–</u>

24. Deferred income

	2025 £	2024 £
At 1 July 2024	44,008	44,303
Amount released to income	(44,008)	(44,303)
Amount deferred in year	<u>112,508</u>	<u>44,008</u>
At 30 June 2025	<u>112,508</u>	<u>44,008</u>

Deferred income represents event income received in advance.

25. Pensions and other post retirement benefits

Defined contribution plans

The amount recognised in income or expenditure as an expense in relation to defined contribution plans was £1,212 (2024: £2,124).

26. Analysis of charitable funds

Unrestricted funds

	At 1 July 2024 £	Income £	Expenditure £	At 30 June 2025 £
General funds	<u>149,361</u>	<u>619,952</u>	<u>(551,009)</u>	<u>218,304</u>

	At 1 July 2023 £	Income £	Expenditure £	At 30 June 2024 £
General funds	<u>102,394</u>	<u>360,009</u>	<u>(313,042)</u>	<u>149,361</u>

Angel Trust - A Charity For The People

Notes to the Financial Statements *(continued)*

Year ended 30 June 2025

26. Analysis of charitable funds *(continued)*

Restricted funds

	At 1 July 2024	Income	Expenditure	At 30 June 2025
	£	£	£	£
Point North	–	54,125	(54,125)	–
DCC Fun & Food	–	9,260	(9,260)	–
DCC - Admin Support	–	15,000	(7,500)	7,500
DCC - Community Infrastructure	–	27,444	(27,444)	–
DCC - Community Infrastructure Volunteer Project	–	13,901	(13,901)	–
DCC - Community Infrastructure - Coffee Shop	–	179,125	(179,125)	–
DPC - Mental Health Support	–	8,000	(2,000)	6,000
Point North - Welcome Space	–	1,500	(375)	1,125
DCC - Refurbishment	–	15,593	–	15,593
	–	<u>323,948</u>	<u>(293,730)</u>	<u>30,218</u>

	At 1 July 2023	Income	Expenditure	At 30 June 2024
	£	£	£	£
National Lottery Community Fund	–	63,091	(63,091)	–
Point North	–	11,773	(11,773)	–
DCC Homeless Support	–	300	(300)	–
DCC Fun & Food	–	4,817	(4,817)	–
DCC Cook with Books	–	5,325	(5,325)	–
Access Reach	–	9,000	(9,000)	–
	–	<u>94,306</u>	<u>(94,306)</u>	<u>–</u>

Angel Trust - A Charity For The People

Notes to the Financial Statements (continued)

Year ended 30 June 2025

27. Analysis of net assets between funds

	Unrestricted Funds £	Restricted Funds £	Total Funds 2025 £
Tangible fixed assets	51,274	–	51,274
Investments	2	–	2
Current assets	347,816	30,218	378,034
Creditors less than 1 year	(149,121)	–	(149,121)
Creditors greater than 1 year	(31,667)	–	(31,667)
Net assets	218,304	30,218	248,522

	Unrestricted Funds £	Restricted Funds £	Total Funds 2024 £
Tangible fixed assets	46,862	–	46,862
Investments	2	–	2
Current assets	174,622	–	174,622
Creditors less than 1 year	(72,125)	–	(72,125)
Creditors greater than 1 year	–	–	–
Net assets	149,361	–	149,361

28. Analysis of changes in net debt

	At 1 Jul 2024 £	Cash flows £	At 30 Jun 2025 £
Cash at bank and in hand	158,175	104,391	262,566
Debt due within one year	–	(10,000)	(10,000)
Debt due after one year	–	(31,667)	(31,667)
	158,175	62,724	220,899

29. Operating lease commitments

The total future minimum lease payments under non-cancellable operating leases are as follows:

	2025 £	2024 £
Not later than 1 year	16,291	9,600
Later than 1 year and not later than 5 years	37,520	25,950
	53,811	35,550

30. Related parties

M Boyes is a trustee of the charity. During the year he was paid £12,050 (2024 - £14,210) in respect of services provided to run the charity's events.

K Stabler is also a trustee of the charity. She was paid £Nil during the year (2024 - £700) for the provision of training.