

ANGEL TRUST - A CHARITY FOR THE PEOPLE

England & Wales · Charity number 1178926

Details

Status Registered

Legal form CIO

Registered 2018-06-26

Register [View on the Charity Commission register](#)

Contact

Address Angel Trust
Belvedere House
Kingsway
Bishop Auckland
County Durham

Phone 01388737270

Email hello@angeltrust.co.uk

Website www.angeltrust.co.uk

Activities

Objects: (A) TO RELIEVE THE NEEDS OF THE COMMUNITY IN DARLINGTON AND COUNTY DURHAM PARTICULARLY BUT NOT EXCLUSIVELY BY PROVIDING GRANTS TO INDIVIDUALS AND/OR CHARITIES OR OTHER ORGANISATIONS IN SUCH WAYS AS THE TRUSTEES SEE FIT TO ENABLE; (I) THE ADVANCEMENT OF CITIZENSHIP AND COMMUNITY DEVELOPMENT (II) THE RELIEF OF FINANCIAL HARDSHIP AND; (III) OTHER SUCH CHARITABLE PURPOSES AS THE TRUSTEES SHALL DETERMINE.

Activities: Angel Trust was formed as a local charity for the local people of Darlington and County Durham. We aim to support individuals and organisations in the local community by providing financial support and services to those in need. Our aim is to improve the local community and make life better for those living within it.

Classification

- **How:** Makes Grants To Individuals, Makes Grants To Organisations, Provides Other Finance
- **What:** Disability, The Prevention Or Relief Of Poverty, Economic/community Development/employment
- **Who:** Other Charities Or Voluntary Bodies, Other Defined Groups

Geography

- Darlington
- Durham

Finances

Period end	Income	Expenditure	Assets	Employees
2025-06-30	£402,452	£844,739	£248,522	16
2024-06-30	£454,315	£407,348	-	-
2023-06-30	£369,183	£360,859	-	-
2022-06-30	£294,845	£287,330	-	-
2021-06-30	£124,600	£139,533	-	-
2020-06-30	£245,194	£226,849	-	-

Trustees

Name	Role	Appointed
BERYL ANDERSON	Chair	2018-04-01
Luke Jones		2022-07-11
MARK BOYES		2018-04-01
Michelle Telford		2022-11-07
Nicola Harmer		2026-01-20
Nicola Stephenson		2022-08-01

ANGEL TRUST - A CHARITY FOR THE PEOPLE

England & Wales - Charity number 1178926

Accounts

Angel Trust - A Charity For The People
Financial Statements
For the year ending
30 June 2025

JANE ASCROFT ACCOUNTANCY LIMITED

Chartered accountants
Enterprise House
Harmire Enterprise Park
Barnard Castle
County Durham
DL12 8XP

Angel Trust - A Charity For The People

Financial Statements

Year ended 30 June 2025

	Page
Trustees' annual report	1
Independent examiner's report to the trustees	11
Statement of financial activities	12
Statement of financial position	13
Statement of cash flows	14
Notes to the financial statements	15

Angel Trust - A Charity For The People

Trustees' Annual Report

Year ended 30 June 2025

The trustees present their report and the unaudited financial statements of the charity for the year ended 30 June 2025.

Chair's report

As chair of trustees, I have prepared this statement as part of the annual report for July 2024-June 2025. This year saw the biggest year yet in terms of diversification for Angel Trust, as we expanded into new territories and avenues to further support our local community.

2024-2025 saw the launch of our Angel Trust Safe Hub, the first full year of our Angel Trust Emporium Charity Shop and the first few weeks trade of our Beehive Coffee Shop. Alongside this we welcomed our new in-house counselling service and also opened our Angel Trust premises up to multiple organisations to support our local community through their expertise. Recognising the changing economic climate we have reviewed and adjusted some of our revenue streams and will continue to do so into 2025-2026 as we look at the exciting launch of our next projects.

I am extremely proud and honoured as chair of trustees of how we continue to adapt and respond to the changing support required by our local community in County Durham and Darlington, whilst remaining loyal to our core values and policies. Our community pantry continues to serve hundreds of shoppers each week, providing a welcoming environment for shoppers but also a hub of navigation to the other services we offer, as well as external parties that we are working in close collaboration with. We continued for a second year to run school holiday clubs through the Durham County Council Fun and Food provision, providing school holiday activities for local young children.

We continue to fundraise via our popular events as Ladies Day and Tess on Tour, which has allowed us to continue to support local families with memorable experiences and the granting of wishes including those families who are experiencing terminal illness, the participation of a special tailored Christmas party and the Weardale Christmas train. We would also like to thank our ambassador John Adamson, for his support in choosing Angel Trust to be the nominated charity for a number of fundraising events at his venues.

Through collaborations and the relationships we have built with both local authorities, services and school provisions we have continued to provide support to vulnerable children and families with initiatives that include school uniform, as well as our hugely successful toy appeal and more ad hoc requests. We operate by the motto "you never know when you may need a helping hand" and our social media presence highlights just some of the work and projects we have got involved with and successfully delivered

We have been supported via fundraising through our events, donations from the local community, awards of grants and corporate donations which have made all of our work possible and we are extremely grateful for this support.

I would like to place on record my thanks to the board of trustees, the CEO, the staff and the volunteers for their resilience, loyalty and creativity and look forward to sharing the launch of our new projects in 2025-2026.

Beryl Anderson
Chairman for the Board of Trustees

Angel Trust - A Charity For The People

Trustees' Annual Report *(continued)*

Year ended 30 June 2025

Objectives and activities

Angel Trust was formed as a local charity for the people of Darlington and County Durham. We aim to support individuals and organisations in the community by providing financial support and services to those in need. We want to improve the local community and make life better for those living within it.

The objectives of the CIO are:

(a) To relieve the needs of the community in Darlington and County Durham by providing grants to individuals and/or charities or other organisations in such ways as the trustees see fit to enable; (i) The advancement of citizenship and community development (ii) The relief of financial hardship and;(iii) Other such charitable purposes as the trustees shall determine.

Established in April 2018 the Angel Trust was formed as a local charity and has rapidly become recognised as "The People's Charity". Operating throughout Darlington and all of County Durham, the boundaries defined within the Gaunless Gateway are firmly embedded within the aims and objectives of The Angel Trust.

The Trust operates under the stringent guidance of a registered board of trustees and a Senior Fundraiser /CEO. Within the skill set of the board there is a diverse representation of assets and professional impetus covering legal procedures, press, publicity and media marketing, health and safety management, building and structural planning, entertainment and choreography, business management, hotel and function property availability as well as financial accounting procedures.

The Angel Trust's ambition is to support individuals and organisations in the local community by providing financial support and services to those in need and are undergoing hardship. Our aim is to improve the local community and make life better for those living within it. The Angel Trust operates under a specified legal constitution within its governing document and is registered with the Charity Commission.

In setting objectives and planning for activities, the trustees have given due consideration to general guidance published by the Charity Commission relating to public benefit, including the guidance 'Public benefit: running a charity (PB2)'.

Angel Trust fundraises in the community using various methods; we host fundraising events, distribute collecting cans to local business and we have individual fundraisers which altogether enables us to achieve our objectives.

Activities undertaken to achieve objectives

There is a strong fundraising structure that appeals to our contrastive database of supporters, designed and marketed to attract their taste and appetite for leisure and entertainment. Angel Trust has established a reputation for a strong charitable standing in our community by providing much needed help and funds to individuals, organisations, schools and clubs across both The County of Durham and The Borough of Darlington. The Trust staff and volunteers have worked hard to spread the ethos "We may all need a helping hand at some point in our lives and the Angel Trust aims to be there to provide support where it is needed." As a result of this we now receive referrals from Macmillan, Social Workers, School Workers and many more. We are quickly becoming the charity that people turn to.

ANGEL TRUST SAFE NIGHT HUB



Winter 2024 saw an exciting development for Angel Trust as the Charity opened a Safe Night Hub, in partnership with Durham County Council. The Hub is the first of its kind in the county, providing emergency shelter, home-cooked meals and wrap-around care for homeless individuals within County Durham and Darlington.

The introduction of the Night Hub saw our services expand quickly, not only with night-time facilities but also day time support, with clients seeking advice and help from specially trained Navigators. Clients are supported with a range of issues, focusing on rehabilitation and rehousing, including mental health guidance and clothing support.

Many of the individuals we support also give back to the Trust through voluntary efforts, including cleaning, stocking shelves and helping with day to day tasks around the site. The care doesn't end at the door, support is still provided to clients after they leave the hub, including support with foodbank parcels and household goods.



BEEHIVE COFFEE SHOP



May 2025 saw the opening of our subsidiary, The Beehive Coffee Shop.

The Beehive has been created as an affordable coffee shop, offering a comfortable, accessible space for local residents to meet friends and family, whilst enjoying high-quality food and drinks.

The Coffee Shop has created several employment and volunteer roles since its opening, hiring local individuals who have since been given training on aspects such as food hygiene, manual handling and other relevant courses, creating a stronger workforce and aiding the local economy.

The Coffee Shop team also act as a first line of support, signposting customers to the wider Angel Trust service if they spot signs of distress. Local groups are also using the Beehive for clubs, including a monthly book club and a veterans support group that meet on a weekly basis to catch up over a slice of cake!



ANGEL TRUST COUNSELLING



Angel Trust continues to respond to the local community and identify opportunities to provide support. An area of support frequently requested was counselling services and wellbeing support, given the current waiting within the local authority. The County Durham area is ranked within the top 10 for suicide rates per year according to statistics published by the *ONS*

We are so proud that in 2024-2025 we launched our free in house counselling service, delivered by two specialists, we take referrals from the local community and also directly from our Safe Night Hub. The counsellors offer several sessions encompassing support for both suicide/self harm prevention and post trauma therapy.

With thanks to grant income ,we have developed two state-of-the-art counselling suites. Being able to support local people at often the most difficult time in their lives has been a very rewarding avenue for expansion.



COMMUNITY SUPPORT



Wish Granting -

Angel Trust continues to support the wider community through Wish Granting. Several families who are undergoing serious illnesses have received holiday vouchers and stays at a local spa hotel, offering much needed respite & time for families at their lowest time. We also supported a young lady who is undergoing chemotherapy by sending her to Fenwicks with a full makeup experience, on top of many more life-changing experiences for children and families.

Toy Appeal -

The Angel Trust continues its Toy Appeal after years of success, donating some 15,000 toys to local children. We received hundreds of referrals from local hospitals, social care and school settings for these gifts.

Christmas Party -

The Angel Trust offers a Christmas Party every year to vulnerable children and families, completely free of charge, the event encompasses the opportunity to meet Santa and enjoy a delicious meal with their family.



FUNDRAISING

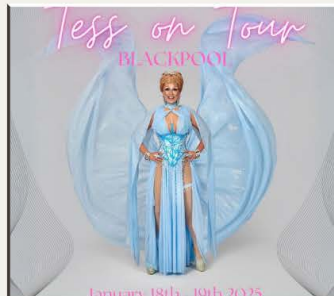


The Trust continues to run several large fundraising events across the year, and 2024-25 was no different!

We ran a Three Peaks Trek, where brave volunteers scaled mountains and fells to raise money for the Trust.

Tess On Tour remains famous amongst Angel Trust supporters, with hundreds of fans travelling to Blackpool for a wild weekend of Drag Entertainment and Laughter, all whilst raising funds for the Trust. Tickets continue to sell out year on year, with many loyal supporters booking several tickets for friends and families.

Ladies Day was another big success, working closely with Ramside Estates we held a brilliant fundraising day. The ladies looked fantastic and took part in games, entertainment and enjoyed luxury dining and drinks!



2024-25 IN REVIEW



The Trust has had a very successful 2024-25, with growth and expansion across the entire Charity.

The Emporium Charity Shop has celebrated its first year, and is proving very popular. We would like to say thank you for all customers for shopping with us, and for donating surplus clothes which are then sold in the store. The Trust have also received several large donations from Corporate donors, which has proved valuable.

The Community Pantry continues to support the region with affordable food and products, we would like to express a thank you to local supermarkets and the Auckland Project for donations of surplus products.

Finally, we would like to express our gratitude for our Trustees, Staff & Volunteers for their continued hardwork in supporting the Charity and helping us grow and flourish.



Angel Trust - A Charity For The People

Trustees' Annual Report *(continued)*

Year ended 30 June 2025

Financial review

The charity generated income of £943,900 (2024 - £454,315) during its seventh year and incurred expenditure of £844,739 (2024 - £407,348).

Reserves policy

Trustees aim to hold six months running costs as free reserves which currently equates to approximately £214,000. The charity's unrestricted reserves currently stand at £218,304 (2024 - £149,361) and the trustees are satisfied with this position.

Structure, governance and management

Constitution

The charity was incorporated as a Charitable Incorporated Organisation (registered charity number 1178926) on 26 June 2018.

Methods of appointment or election of trustees

The management of the charity is the responsibility of the trustees who are elected and co-opted under the terms of the Trust deed. Induction is provided for new trustees as required.

Organisational structure and decision-making policies

At the end of the year Angel Trust has a Board of 7 trustees comprised from various professional backgrounds. Appointments to the Board are made by the trustees, once elected, Trustees are given a copy of the Charities Commission Handbook and full verbal explanatory briefing from our charities solicitor on the expectations of being a trustee.

The charity also has a CEO who oversees the overall running of the charity including the charities Marketing and Fundraising Assistant. The trustees delegate day to day operations to the Chief Executive.

Angel Trust have a number of Ambassadors; Tess Tickle & The Dragettes, Mark Dunn, John Adamson, Gucci Gabore, Paul Simpson, Natalie Philips, Anderson Family and Samantha Atkinson who play a key role in promoting the charity to the local community and through the press. In addition to this we have a fantastic team of volunteers, without them we wouldn't be able to do the work we do.

Pay policy for key management personnel

The salary and benefits of the Chief Executive are set by the board of trustees, and reviewed annually.

Related party relationships

The charity has benefited from the support of the services of trustees in a number of ways.

Mark Boyes, one of our trustees, also provides professional entertainment services at discounted rates to some of our events, which further benefits the charity through his on-line presence on social media.

Financial risk management

The trustees have assessed the major risks to which the charity is exposed, in particular those related to the operations and finances of the charity, and are satisfied that systems and procedures are in place to mitigate our exposure to the major risks.

Angel Trust - A Charity For The People

Trustees' Annual Report *(continued)*

Year ended 30 June 2025

Reference and administrative details

Registered charity name Angel Trust - A Charity For The People

Charity registration number 1178926

Principal office Belvedere House
Kingsway
Bishop Auckland
County Durham
DL14 7JN

The trustees

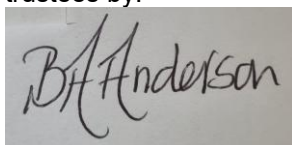
Beryl Anderson
Mark Boyes
Nicola Stephenson
Malcolm Cresswell (Resigned 3 June 2025)
Kathryn Stabler (Resigned 5 November 2025)
Michelle Telford
Luke Jones

Nicola Harmer was appointed as a Trustee on 20 January 2026.

Chief Executive Officer Clair McGregor

Independent examiner Jane Ascroft FCA MA(Cantab)
Enterprise House
Harmire Enterprise Park
Barnard Castle
County Durham
DL12 8XP

The trustees' annual report was approved on 30th April 2026 and signed on behalf of the board of trustees by:



Beryl Anderson
Trustee

Angel Trust - A Charity For The People

Independent Examiner's Report to the Trustees of Angel Trust - A Charity For The People

Year ended 30 June 2025

I report to the trustees on my examination of the financial statements of Angel Trust - A Charity For The People ('the charity') for the year ended 30 June 2025.

Responsibilities and basis of report

As the trustees of the charity you are responsible for the preparation of the financial statements in accordance with the requirements of the Charities Act 2011 ('the Act').

I report in respect of my examination of the charity's financial statements carried out under section 145 of the 2011 Act and in carrying out my examination I have followed all the applicable Directions given by the Charity Commission under section 145(5)(b) of the Act.

Independent examiner's statement

Since the charity's gross income exceeded £250,000 your examiner must be a member of a body listed in section 145 of the 2011 Act. I confirm that I am qualified to undertake the examination because I am a member of the Institute of Chartered Accountants in England and Wales (ICAEW), which is one of the listed bodies.

I have completed my examination. I confirm that no material matters have come to my attention in connection with the examination giving me cause to believe that in any material respect:

1. accounting records were not kept in respect of the charity as required by section 130 of the Act; or
2. the financial statements do not accord with those records; or
3. the financial statements do not comply with the applicable requirements concerning the form and content of accounts set out in the Charities (Accounts and Reports) Regulations 2008 other than any requirement that the accounts give a 'true and fair' view which is not a matter considered as part of an independent examination.

I have no concerns and have come across no other matters in connection with the examination to which attention should be drawn in this report in order to enable a proper understanding of the accounts to be reached.



Jane Ascroft FCA MA(Cantab)
Independent Examiner

Enterprise House
Harmire Enterprise Park
Barnard Castle
County Durham
DL12 8XP

Angel Trust - A Charity For The People

Statement of Financial Activities

Year ended 30 June 2025

		2025		2024	
	Note	Unrestricted funds £	Restricted funds £	Total funds £	Total funds £
Income and endowments					
Donations and legacies	4	119,239	314,688	433,927	173,102
Charitable activities	5	300,005	9,260	309,265	83,601
Other trading activities	6	189,457	–	189,457	190,314
Investment income	7	473	–	473	4
Other income	8	10,778	–	10,778	7,294
Total income		<u>619,952</u>	<u>323,948</u>	<u>943,900</u>	<u>454,315</u>
Expenditure					
Expenditure on raising funds:					
Costs of raising donations and legacies	9	230	–	230	132
Costs of other trading activities	10	154,716	–	154,716	176,051
Expenditure on charitable activities	11,12	396,063	293,730	689,793	231,165
Total expenditure		<u>551,009</u>	<u>293,730</u>	<u>844,739</u>	<u>407,348</u>
Net income and net movement in funds		<u>68,943</u>	<u>30,218</u>	<u>99,161</u>	<u>46,967</u>
Reconciliation of funds					
Total funds brought forward		149,361	–	149,361	102,394
Total funds carried forward		<u>218,304</u>	<u>30,218</u>	<u>248,522</u>	<u>149,361</u>

The statement of financial activities includes all gains and losses recognised in the year. All income and expenditure derive from continuing activities.

The notes on pages 15 to 27 form part of these financial statements.

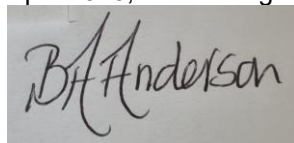
Angel Trust - A Charity For The People

Statement of Financial Position

30 June 2025

	Note	2025 £	2024 £
Fixed assets			
Tangible fixed assets	18	51,274	46,862
Investments	19	<u>2</u>	<u>2</u>
		51,276	46,864
Current assets			
Stocks	20	5,000	3,000
Debtors	21	110,468	13,447
Cash at bank and in hand		<u>262,566</u>	<u>158,175</u>
		378,034	174,622
Creditors: amounts falling due within one year	22	<u>149,121</u>	<u>72,125</u>
Net current assets		<u>228,913</u>	<u>102,497</u>
Total assets less current liabilities		280,189	149,361
Creditors: amounts falling due after more than one year	23	<u>31,667</u>	<u>–</u>
Net assets		<u>248,522</u>	<u>149,361</u>
Funds of the charity			
Restricted funds		30,218	–
Unrestricted funds		<u>218,304</u>	<u>149,361</u>
Total charity funds	26	<u>248,522</u>	<u>149,361</u>

These financial statements were approved by the board of trustees and authorised for issue on 30th April 2026, and are signed on behalf of the board by:



Beryl Anderson
Trustee

The notes on pages 15 to 27 form part of these financial statements.

Angel Trust - A Charity For The People

Statement of Cash Flows

Year ended 30 June 2025

	2025 £	2024 £
Cash flows from operating activities		
Net income	99,161	46,967
<i>Adjustments for:</i>		
Depreciation of tangible fixed assets	12,460	21,845
Other interest receivable and similar income	(473)	(4)
Interest payable and similar charges	2,708	–
Loss on disposal of heritage assets	3,472	–
Accrued expenses/(income)	1,363	(361)
<i>Changes in:</i>		
Stocks	(2,000)	–
Trade and other debtors	(97,021)	4,117
Trade and other creditors	65,633	8,014
Cash generated from operations	85,303	80,578
Interest paid	(2,708)	–
Interest received	473	4
Net cash from operating activities	<u>83,068</u>	<u>80,582</u>
Cash flows from investing activities		
Purchase of tangible assets	(21,544)	(3,832)
Proceeds from sale of tangible assets	1,200	–
Acquisition of subsidiaries	–	(1)
Net cash used in investing activities	<u>(20,344)</u>	<u>(3,833)</u>
Cash flows from financing activities		
Proceeds from borrowings	41,667	–
Net cash from financing activities	<u>41,667</u>	<u>–</u>
Net increase in cash and cash equivalents	104,391	76,749
Cash and cash equivalents at beginning of year	158,175	81,426
Cash and cash equivalents at end of year	<u>262,566</u>	<u>158,175</u>

The notes on pages 15 to 27 form part of these financial statements.

Angel Trust - A Charity For The People

Notes to the Financial Statements

Year ended 30 June 2025

1. General information

The charity is a public benefit entity and a registered charity in England and Wales and is unincorporated. The address of the principal office is Belvedere House, Kingsway, Bishop Auckland, County Durham, DL14 7JN.

2. Statement of compliance

These financial statements have been prepared in compliance with FRS 102, 'The Financial Reporting Standard applicable in the UK and the Republic of Ireland', the Statement of Recommended Practice applicable to charities preparing their accounts in accordance with the Financial Reporting Standard applicable in the UK and Republic of Ireland (FRS 102) (Charities SORP (FRS 102)) and the Charities Act 2011.

3. Accounting policies

Basis of preparation

The financial statements have been prepared on the historical cost basis, as modified by the revaluation of certain financial assets and liabilities and investments measured at fair value through income or expenditure.

The financial statements are prepared in sterling, which is the functional currency of the entity.

The entity is a Public Benefit Entity.

Going concern

There are no material uncertainties about the charity's ability to continue.

Judgements and key sources of estimation uncertainty

The preparation of the financial statements requires management to make judgements, estimates and assumptions that affect the amounts reported. These estimates and judgements are continually reviewed and are based on experience and other factors, including expectations of future events that are believed to be reasonable under the circumstances. The trustees consider that there are no significant estimates or judgements affecting these financial statements.

Fund accounting

Unrestricted funds are available for use at the discretion of the trustees to further any of the charity's purposes.

Designated funds are unrestricted funds earmarked by the trustees for particular future project or commitment.

Restricted funds are subjected to restrictions on their expenditure declared by the donor or through the terms of an appeal, and fall into one of two sub-classes: restricted income funds or endowment funds.

Angel Trust - A Charity For The People

Notes to the Financial Statements *(continued)*

Year ended 30 June 2025

3. Accounting policies *(continued)*

Income

All income is included in the statement of financial activities when the charity is entitled to the income, any performance related conditions attached have been met or are fully within the control of the charity, the income is considered probable and the amount can be quantified with reasonable accuracy. The following specific policies are applied to particular categories of income:

Donations and legacy income is received by way of donations, legacies, grants and gifts and is included in full in the Statement of Financial Activities when receivable. Where legacies have been notified to the charity but the criteria for income recognition have not been met, the legacy is treated as a contingent asset and disclosed if material. Grants, where entitlement is not conditional on the delivery of a specific performance by the charity, are recognised when the charity becomes unconditionally entitled to the grant.

Donated services and facilities are included at the value to the charity, being the amount the charity would have been willing to pay to obtain services or facilities of equivalent economic benefit on the open market. There has been a change in policy for the recognition of gifts in kind with donations of food, toys and easter eggs now being included within the accounts.

Investment income is included when receivable.

Income from charitable trading activity is accounted for when earned.

Income from grants, where related to performance and specific deliverables, are accounted for as the charity earns the right to consideration by its performance.

Expenditure

Expenditure is recognised on an accruals basis as a liability is incurred. Expenditure includes any VAT which cannot be fully recovered, and is reported as part of the expenditure to which it relates:

Costs of raising funds comprise the costs associated with attracting donations, grants and legacies and the costs of trading for fundraising purposes.

Charitable expenditure comprises those costs incurred by the charity in the delivery of its activities and services for its beneficiaries. It includes both costs that can be allocated directly to such activities and those costs of an indirect nature necessary to support them.

Other expenditure includes all expenditure that is neither related to raising funds for the charity nor part of its expenditure on charitable activities.

All costs are allocated between the expenditure categories of the SOFA on a basis designed to reflect the use of the resource. Costs relating to a particular activity are allocated directly, others are apportioned on an appropriate basis, as set out in the notes to the accounts.

Operating leases

Lease payments are recognised as an expense over the lease term on a straight-line basis. The aggregate benefit of lease incentives is recognised as a reduction to expense over the lease term, on a straight-line basis.

Angel Trust - A Charity For The People

Notes to the Financial Statements *(continued)*

Year ended 30 June 2025

3. Accounting policies *(continued)*

Tangible assets

Tangible assets are initially recorded at cost, and subsequently stated at cost less any accumulated depreciation and impairment losses.

Depreciation

Depreciation is calculated so as to write off the cost or valuation of an asset, less its residual value, over the useful economic life of that asset as follows:

Fixtures and fittings	-	10% - 20% Straight line
Motor vehicles	-	25% reducing balance
Equipment	-	10% - 25% Straight line
Kitchen equipment	-	25% reducing balance

Investments

Unlisted equity investments are initially recorded at cost, and subsequently measured at fair value. If fair value cannot be reliably measured, assets are measured at cost less impairment.

Listed investments are measured at fair value with changes in fair value being recognised in income or expenditure.

Impairment of fixed assets

A review for indicators of impairment is carried out at each reporting date, with the recoverable amount being estimated where such indicators exist. Where the carrying value exceeds the recoverable amount, the asset is impaired accordingly. Prior impairments are also reviewed for possible reversal at each reporting date.

Stocks

Stocks are measured at the lower of cost and estimated selling price less costs to complete and sell. Cost includes all costs of purchase, costs of conversion and other costs incurred in bringing the stock to its present location and condition.

Financial instruments

The charity only has financial assets and liabilities of a kind that qualify as basic financial instruments. Basic financial instruments are initially recognised at transaction value and subsequently measured at their settlement value.

Angel Trust - A Charity For The People

Notes to the Financial Statements *(continued)*

Year ended 30 June 2025

3. Accounting policies *(continued)*

Defined contribution plans

Contributions to defined contribution plans are recognised as an expense in the period in which the related service is provided. Prepaid contributions are recognised as an asset to the extent that the prepayment will lead to a reduction in future payments or a cash refund.

When contributions are not expected to be settled wholly within 12 months of the end of the reporting date in which the employees render the related service, the liability is measured on a discounted present value basis. The unwinding of the discount is recognised as an expense in the period in which it arises.

Trade debtors

Trade and other debtors are recognised at the settlement amount due after any trade discount offered. Prepayments are valued at the amount prepaid net of any trade discounts due.

Accrued income and tax recoverable is included at the best estimate of the amounts receivable at the balance sheet date.

Cash at Bank and in Hand

Cash at bank and cash in hand includes cash and short term highly liquid investments with a short maturity of three months or less from the date of acquisition or opening of the deposit or similar account.

Trade creditors

Creditors are recognised where the charity has a present obligation resulting from a past event that will probably result in the transfer of funds to a third party and the amount due to settle the obligation can be measured or estimated reliably. Creditors are normally recognised at their settlement amount after allowing for any trade discounts due.

Taxation

The company is considered to pass the tests set out in Paragraph 1 Schedule 6 of the Finance Act 2010 and therefore it meets the definition of a charitable company for UK corporation tax purposes. Accordingly, the company is potentially exempt from taxation in respect of income or capital gains received within categories covered by Chapter 3 Part 11 of the Corporation Tax Act 2010 or Section 256 of the taxation of Chargeable Gains Act 1992, to the extent that such income or gains are applied exclusively to charitable purposes.

Angel Trust - A Charity For The People

Notes to the Financial Statements *(continued)*

Year ended 30 June 2025

4. Donations and legacies

	Unrestricted Funds £	Restricted Funds £	Total Funds 2025 £
Donations			
Donations	50,231	–	50,231
Gift aid recoverable	9,619	–	9,619
Friends of Angel Trust	289	–	289
Corporate partners	1,500	–	1,500
Gifts in kind			
Venue hire	4,000	–	4,000
Car lease	600	–	600
Toy appeal	35,000	–	35,000
Easter Eggs	3,000	–	3,000
Foodbank donations	15,000	–	15,000
Grants			
Point North	–	55,625	55,625
DCC - Community Infrastructure	–	200,470	200,470
Key Fund	–	20,000	20,000
DCC - Admin Support	–	15,000	15,000
DCC - Refurbishment	–	15,593	15,593
DPC - Mental Health Support	–	8,000	8,000
	<u>119,239</u>	<u>314,688</u>	<u>433,927</u>
	Unrestricted Funds £	Restricted Funds £	Total Funds 2024 £
Donations			
Donations	61,825	–	61,825
Gift aid recoverable	8,222	–	8,222
Charities Trust	562	–	562
Friends of Angel Trust	404	–	404
Corporate partners	2,000	–	2,000
Gifts in kind			
Venue hire	4,000	–	4,000
Car lease	600	–	600
Grants			
DCC - Neighbourhood Budget	–	5,625	5,625
Point North	–	11,773	11,773
National Lottery Community Fund	–	63,091	63,091
Access Reach	–	9,000	9,000
Sainsburys	1,500	–	1,500
Amazon	2,500	–	2,500
Santander	2,000	–	2,000
	<u>83,613</u>	<u>89,489</u>	<u>173,102</u>

Angel Trust - A Charity For The People

Notes to the Financial Statements *(continued)*

Year ended 30 June 2025

5. Charitable activities

	Unrestricted Funds £	Restricted Funds £	Total Funds 2025 £
Community Pantry and Foodbank	82,505	–	82,505
Fun and Food	–	9,260	9,260
Commissioned Services	217,500	–	217,500
	<u>300,005</u>	<u>9,260</u>	<u>309,265</u>

	Unrestricted Funds £	Restricted Funds £	Total Funds 2024 £
Community Pantry and Foodbank	78,784	–	78,784
Fun and Food	–	4,817	4,817
	<u>78,784</u>	<u>4,817</u>	<u>83,601</u>

Angel Trust - A Charity For The People

Notes to the Financial Statements (continued)

Year ended 30 June 2025

6. Other trading activities

	Unrestricted Funds £	Total Funds 2025 £	Unrestricted Funds £	Total Funds 2024 £
Fundraising events	152,686	152,686	166,704	166,704
Merchandise income	694	694	1,413	1,413
Fundraising	11,342	11,342	11,600	11,600
Charity Shop	–	–	1,847	1,847
RAG	8,020	8,020	8,750	8,750
Catering and cookery classes	15,540	15,540	–	–
Room hire	1,175	1,175	–	–
	<u>189,457</u>	<u>189,457</u>	<u>190,314</u>	<u>190,314</u>

7. Investment income

	Unrestricted Funds £	Total Funds 2025 £	Unrestricted Funds £	Total Funds 2024 £
Bank interest receivable	<u>473</u>	<u>473</u>	<u>4</u>	<u>4</u>

8. Other income

	Unrestricted Funds £	Total Funds 2025 £	Unrestricted Funds £	Total Funds 2024 £
Employment allowance	10,678	10,678	6,339	6,339
Other income	<u>100</u>	<u>100</u>	<u>955</u>	<u>955</u>
	<u>10,778</u>	<u>10,778</u>	<u>7,294</u>	<u>7,294</u>

9. Costs of raising donations and legacies

	Unrestricted Funds £	Total Funds 2025 £	Unrestricted Funds £	Total Funds 2024 £
Costs of raising donations and legacies	<u>230</u>	<u>230</u>	<u>132</u>	<u>132</u>

10. Costs of other trading activities

	Unrestricted Funds £	Total Funds 2025 £	Unrestricted Funds £	Total Funds 2024 £
Costs of other trading activities	<u>154,716</u>	<u>154,716</u>	<u>176,051</u>	<u>176,051</u>

Angel Trust - A Charity For The People

Notes to the Financial Statements (continued)

Year ended 30 June 2025

11. Expenditure on charitable activities by fund type

	Unrestricted Funds £	Restricted Funds £	Total Funds 2025 £
Costs of charitable activities	243,463	284,562	528,025
Support costs	152,600	9,168	161,768
	<u>396,063</u>	<u>293,730</u>	<u>689,793</u>

	Unrestricted Funds £	Restricted Funds £	Total Funds 2024 £
Costs of charitable activities	28,831	94,306	123,137
Support costs	108,028	–	108,028
	<u>136,859</u>	<u>94,306</u>	<u>231,165</u>

12. Expenditure on charitable activities by activity type

	Activities undertaken directly £	Grant funding of activities £	Support costs £	Total funds 2025 £	Total fund 2024 £
Costs of charitable activities	280,115	247,910	160,382	688,407	229,774
Governance costs	–	–	1,386	1,386	1,391
	<u>280,115</u>	<u>247,910</u>	<u>161,768</u>	<u>689,793</u>	<u>231,165</u>

13. Analysis of grants

	2025 £	2024 £
Grants to institutions		
Angel Trust Coffee Shop	179,125	–
Grants to individuals		
Grants and donations to individuals and the community	68,785	15,901
Total grants	<u>247,910</u>	<u>15,901</u>

14. Net income

Net income is stated after charging/(crediting):

	2025 £	2024 £
Depreciation of tangible fixed assets	12,460	21,845
Loss on disposal of fixed assets	3,472	–

Angel Trust - A Charity For The People

Notes to the Financial Statements (continued)

Year ended 30 June 2025

15. Independent examination fees

	2025 £	2024 £
Fees payable to the independent examiner for: Independent examination of the financial statements	1,200	1,260

16. Staff costs

The total staff costs and employee benefits for the reporting period are analysed as follows:

	2025 £	2024 £
Wages and salaries	272,447	130,572
Social security costs	25,105	9,494
Employer contributions to pension plans	1,212	2,124
	<u>298,764</u>	<u>142,190</u>

The average head count of employees during the year was 16 (2024: 9).

No employee received employee benefits of more than £60,000 during the year (2024: Nil).

Key Management Personnel

Key management personnel include all persons that have authority and responsibility for planning, directing and controlling the activities of the charity. The total compensation paid to key management personnel for services provided to the charity was £56,464 (2024:£44,952).

17. Trustee remuneration and expenses

Trustees received no remuneration or expenses in the current and previous year.

18. Tangible fixed assets

	Fixtures and fittings £	Motor vehicles £	Equipment £	Kitchen equipment £	Total £
Cost					
At 1 July 2024	45,585	6,500	8,163	49,990	110,238
Additions	7,796	–	13,748	–	21,544
Disposals	–	(6,500)	–	–	(6,500)
At 30 June 2025	<u>53,381</u>	<u>–</u>	<u>21,911</u>	<u>49,990</u>	<u>125,282</u>
Depreciation					
At 1 July 2024	41,738	1,828	2,581	17,229	63,376
Charge for the year	1,660	–	2,610	8,190	12,460
Disposals	–	(1,828)	–	–	(1,828)
At 30 June 2025	<u>43,398</u>	<u>–</u>	<u>5,191</u>	<u>25,419</u>	<u>74,008</u>
Carrying amount					
At 30 June 2025	<u>9,983</u>	<u>–</u>	<u>16,720</u>	<u>24,571</u>	<u>51,274</u>
At 30 June 2024	<u>3,847</u>	<u>4,672</u>	<u>5,582</u>	<u>32,761</u>	<u>46,862</u>

Angel Trust - A Charity For The People

Notes to the Financial Statements *(continued)*

Year ended 30 June 2025

19. Investments

	Shares in group undertakings £
Cost or valuation	
At 1 July 2024 and 30 June 2025	2
Impairment	
At 1 July 2024 and 30 June 2025	–
Carrying amount	
At 30 June 2025	2
At 30 June 2024	2

All investments shown above are held at valuation.

The investments represent 1 £1 share in Angel Trust Trading Limited and 1 £1 share in Angel Trust Coffee Shop Limited.

At 30th June 2025 Angel Trust Trading Limited had capital of £1 and reserves of £12,522. It owed £22,558 to the charity at that date.

At 30th June 2025 Angel Trust Coffee Shop Limited had capital of £1 and negative reserves of £35,351. It owed £77,115 to the charity at that date.

20. Stocks

	2025 £	2024 £
Merchandise stock	5,000	3,000

21. Debtors

	2025 £	2024 £
Trade debtors	370	300
Amounts owed by group undertakings	99,673	7,291
Prepayments	997	5,804
Accrued grant income	7,125	–
Other debtors	2,303	52
	<u>110,468</u>	<u>13,447</u>

Angel Trust - A Charity For The People

Notes to the Financial Statements (continued)

Year ended 30 June 2025

22. Creditors: amounts falling due within one year

	2025	2024
	£	£
Bank loans and overdrafts	10,000	–
Trade creditors	8,618	9,847
Accruals and deferred income	115,718	45,855
Social security and other taxes	11,043	2,247
Wages creditor	–	10,871
Pension creditor	1,103	–
Other creditors	2,639	3,305
	<u>149,121</u>	<u>72,125</u>

23. Creditors: amounts falling due after more than one year

	2025	2024
	£	£
Bank loans and overdrafts	<u>31,667</u>	<u>–</u>

24. Deferred income

	2025	2024
	£	£
At 1 July 2024	44,008	44,303
Amount released to income	(44,008)	(44,303)
Amount deferred in year	<u>112,508</u>	<u>44,008</u>
At 30 June 2025	<u>112,508</u>	<u>44,008</u>

Deferred income represents event income received in advance.

25. Pensions and other post retirement benefits

Defined contribution plans

The amount recognised in income or expenditure as an expense in relation to defined contribution plans was £1,212 (2024: £2,124).

26. Analysis of charitable funds

Unrestricted funds

	At 1 July 2024	Income	Expenditure	At 30 June 2025
	£	£	£	£
General funds	<u>149,361</u>	<u>619,952</u>	<u>(551,009)</u>	<u>218,304</u>
	At 1 July 2023	Income	Expenditure	At 30 June 2024
	£	£	£	£
General funds	<u>102,394</u>	<u>360,009</u>	<u>(313,042)</u>	<u>149,361</u>

Angel Trust - A Charity For The People

Notes to the Financial Statements *(continued)*

Year ended 30 June 2025

26. Analysis of charitable funds *(continued)*

Restricted funds

	At 1 July 2024 £	Income £	Expenditure £	At 30 June 2025 £
Point North	–	54,125	(54,125)	–
DCC Fun & Food	–	9,260	(9,260)	–
DCC - Admin Support	–	15,000	(7,500)	7,500
DCC - Community Infrastructure	–	27,444	(27,444)	–
DCC - Community Infrastructure Volunteer Project	–	13,901	(13,901)	–
DCC - Community Infrastructure - Coffee Shop	–	179,125	(179,125)	–
DPC - Mental Health Support	–	8,000	(2,000)	6,000
Point North - Welcome Space	–	1,500	(375)	1,125
DCC - Refurbishment	–	15,593	–	15,593
	<u>–</u>	<u>323,948</u>	<u>(293,730)</u>	<u>30,218</u>

	At 1 July 2023 £	Income £	Expenditure £	At 30 June 2024 £
National Lottery Community Fund	–	63,091	(63,091)	–
Point North	–	11,773	(11,773)	–
DCC Homeless Support	–	300	(300)	–
DCC Fun & Food	–	4,817	(4,817)	–
DCC Cook with Books	–	5,325	(5,325)	–
Access Reach	–	9,000	(9,000)	–
	<u>–</u>	<u>94,306</u>	<u>(94,306)</u>	<u>–</u>

Angel Trust - A Charity For The People

Notes to the Financial Statements (continued)

Year ended 30 June 2025

27. Analysis of net assets between funds

	Unrestricted Funds £	Restricted Funds £	Total Funds 2025 £
Tangible fixed assets	51,274	–	51,274
Investments	2	–	2
Current assets	347,816	30,218	378,034
Creditors less than 1 year	(149,121)	–	(149,121)
Creditors greater than 1 year	(31,667)	–	(31,667)
Net assets	<u>218,304</u>	<u>30,218</u>	<u>248,522</u>

	Unrestricted Funds £	Restricted Funds £	Total Funds 2024 £
Tangible fixed assets	46,862	–	46,862
Investments	2	–	2
Current assets	174,622	–	174,622
Creditors less than 1 year	(72,125)	–	(72,125)
Creditors greater than 1 year	–	–	–
Net assets	<u>149,361</u>	<u>–</u>	<u>149,361</u>

28. Analysis of changes in net debt

	At 1 Jul 2024 £	Cash flows £	At 30 Jun 2025 £
Cash at bank and in hand	158,175	104,391	262,566
Debt due within one year	–	(10,000)	(10,000)
Debt due after one year	–	(31,667)	(31,667)
	<u>158,175</u>	<u>62,724</u>	<u>220,899</u>

29. Operating lease commitments

The total future minimum lease payments under non-cancellable operating leases are as follows:

	2025 £	2024 £
Not later than 1 year	16,291	9,600
Later than 1 year and not later than 5 years	<u>37,520</u>	<u>25,950</u>
	<u>53,811</u>	<u>35,550</u>

30. Related parties

M Boyes is a trustee of the charity. During the year he was paid £12,050 (2024 - £14,210) in respect of services provided to run the charity's events.

K Stabler is also a trustee of the charity. She was paid £Nil during the year (2024 - £700) for the provision of training.

ANGEL TRUST - A CHARITY FOR THE PEOPLE

England & Wales - Charity number 1178926

Accounts

Angel Trust - A Charity For The People
Financial Statements
For the year ending
30 June 2024

JANE ASCROFT ACCOUNTANCY LIMITED

Chartered accountants
Enterprise House
Harmire Enterprise Park
Barnard Castle
County Durham
DL12 8XP

Angel Trust - A Charity For The People

Financial Statements

Year ended 30 June 2024

	Page
Trustees' annual report	1
Independent examiner's report to the trustees	9
Statement of financial activities	10
Statement of financial position	11
Notes to the financial statements	12
The following pages do not form part of the financial statements	
Detailed statement of financial activities	25

Angel Trust - A Charity For The People

Trustees' Annual Report

Year ended 30 June 2024

The trustees present their report and the unaudited financial statements of the charity for the year ended 30 June 2024.

Chair's report

As chair of trustees, I have prepared this statement as part of the annual report for July 2023-June 2024. This year saw us celebrate our 5th birthday, a 5th year which saw us expand into new territories and to support more and more of our local community in various ways.

2023-2024 has seen the start of some exciting changes and diversifying projects for Angel Trust, building the foundations that will be launched throughout 2024-2025.

2024-2025 sees the launch of our Angel Trust Night Hub, as well as the opening of our Angel Trust Emporium Charity Shop. Towards the latter part of 2024 we accomplished the foundation work for our Beehive Coffee Shop

I am extremely proud and honoured as chair of trustees of how we continue to adapt and respond to the changing support required by our local community in County Durham and Darlington. Whilst remaining loyal to our core values and policies we have had our first full financial year operating our food bank and community pantry, providing a welcoming environment for shoppers but also a hub of navigation to the other services we offer, as well as external parties that we are working in close collaboration with. For the first time, we have run school holiday clubs through the Durham County Council Fun and Food provision, providing school holiday activities for local young children.

We continue to fundraise via our popular events such as Ladies Day and Tess on Tour, which has allowed us to continue to support local families with memorable experiences and the granting of wishes. A number of these families and other members of the local community were invited to a special tailored Christmas party and Weardale Christmas train ride.

Through collaborations and the relationships we have built with both local authorities, services and school provisions we have continued to provide support to vulnerable children and families with initiatives that include school uniform, as well as our hugely successful toy appeal and more ad hoc requests. We operate by the motto "You never know when you may need a helping hand" and our social media presence highlights just some of the work and projects we have got involved with and successfully delivered

We have been supported via fundraising through our events, donations from the local community, awards of grants and corporate donations which have made all of our work possible and we are extremely grateful for this support.

I would like to place on record my thanks to the board of trustees, the CEO, the staff and the volunteers, for their resilience, loyalty and creativity and look forward to sharing the launch of our new projects in 2024-2025.

Beryl Anderson
Chairman for the Board of Trustees

Angel Trust - A Charity For The People

Trustees' Annual Report *(continued)*

Year ended 30 June 2024

Objectives and activities

Angel Trust was formed as a local charity for the people of Darlington and County Durham. We aim to support individuals and organisations in the community by providing financial support and services to those in need. We want to improve the local community and make life better for those living within it.

The objectives of the CIO are:

(a) To relieve the needs of the community in Darlington and County Durham by providing grants to individuals and/or charities or other organisations in such ways as the trustees see fit to enable; (i) The advancement of citizenship and community development (ii) The relief of financial hardship and;(iii) Other such charitable purposes as the trustees shall determine.

Established in April 2018 the Angel Trust was formed as a local charity and has rapidly become recognised as "The People's Charity". Operating throughout Darlington and all of County Durham, the boundaries defined within the Gaunless Gateway are firmly embedded within the aims and objectives of The Angel Trust.

The Trust operates under the stringent guidance of a registered board of trustees and a Senior Fundraiser /CEO. Within the skill set of the board there is a diverse representation of assets and professional impetus covering legal procedures, press, publicity and media marketing, health and safety management, building and structural planning, entertainment and choreography, business management, hotel and function property availability as well as financial accounting procedures.

The Angel Trust's ambition is to support individuals and organisations in the local community by providing financial support and services to those in need and are undergoing hardship. Our aim is to improve the local community and make life better for those living within it. The Angel Trust operates under a specified legal constitution within its governing document and is registered with the Charity Commission.

In setting objectives and planning for activities, the trustees have given due consideration to general guidance published by the Charity Commission relating to public benefit, including the guidance 'Public benefit: running a charity (PB2)'.

Angel Trust fundraises in the community using various methods; we host fundraising events, distribute collecting cans to local business and we have individual fundraisers which altogether enables us to achieve our objectives.

Activities undertaken to achieve objectives

There is a strong fundraising structure that appeals to our contrastive database of supporters, designed and marketed to attract their taste and appetite for leisure and entertainment. Angel Trust has established a reputation for a strong charitable standing in our community by providing much needed help and funds to individuals, organisations, schools and clubs across both The County of Durham and The Borough of Darlington. The Trust staff and volunteers have worked hard to spread the ethos "We may all need a helping hand at some point in our lives and the Angel Trust aims to be there to provide support where it is needed." As a result of this we now receive referrals from Macmillan, Social Workers, School Workers, Refuges and many more. We are quickly becoming the charity that people turn to.

Christmas 2023-2024



Christmas is a magical time at the Angel Trust hub, with multiple deliveries an hour and our busy elves operating around the clock to make sure there is smiles on the faces of hundreds of local children and families come Christmas morning.

A massive thank you to everyone who donated toys to our Toy Appeal, we received thousands of gifts from individuals and corporate donors. These gifts allowed us to support children and families referred to us via social services, schools and children's homes, as well as support the local children's wards at hospital.

As part of the referral applications, we identified specific gifts children would like and issued these via gift tags to donors. This allowed our team of staff and volunteers to pick personalised bags of gifts which were delivered across County Durham and Darlington by trustees and ambassadors.

We also ran a special trip on the Weardale Christmas train for local families, this included a special guest! Some of these families were also special guests at our Christmas Party which was held at Hardwick Hall.

Not forgetting others in local community, we also delivered Christmas afternoon teas to nominated individuals.

Please follow our Facebook page for information on any events and nominations!



Make someones
Christmas



PANTRY & FOOD BANK

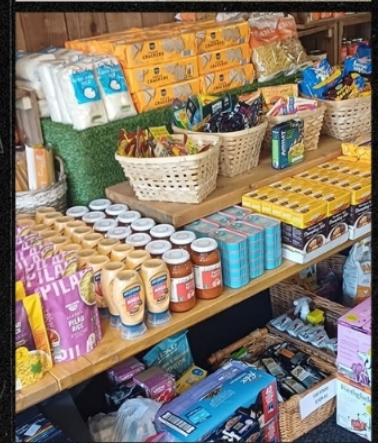
2023-2024

2023-2024 saw the first full year of our food bank and community pantry. We have welcomed thousands of people through the door via referrals for our food bank provision or shoppers for our community pantry. The farm shop environment has been widely welcomed by all involved.

Our community pantry allows shoppers to pay £5 for a shop including fresh fruit and vegetables, cupboard staples and refrigerated goods. We also offer weekly meal deals for a family of 4 at a low cost, as well as freshly baked products.

Through this service we have also been able to offer mobile phone credits, as well as support with gas and electricity. We have referred our service users to other pathways such as citizens advice, homegroup and counselling provisions. The uptake on these services has led us to further expand our inhouse offerings to support those in need. Watch out for an update on this in 2024-2025.

We would like to thank the local supermarkets, individual and corporate donors for their ongoing donations of food and supplies.



OUR YEAR 2023-2024



Wimbledon Packs

We supported local care homes with Wimbledon packs, allowing them to come together and enjoy the Tennis.

Willy Wonka

We held a brilliant party for local children themed around Willy Wonka. There were some amazing costumes and the entertainment team provided a brilliant afternoon for all involved.

Fun and Food

This year we collaborated with Durham County Council and local sports provider Robert Proud to offer Fun and Food Holiday sessions to local primary school children.

Letters to Heaven

Following a request we were proud to fund a letters to heaven postbox at the Bishop Auckland Town Cemetery. Bringing comfort to those who have lost loved ones.

Clothing Collections

2023-2024 was our first full year of collecting collections. Our service collects from homes and clothes are used for our Angel Trust Emporium shop which launched in 2024-2025, but are also used to clothe the homeless and to provide any specific requests from local schools.



Wish Granting 2023-2024

Granting wishes is still at the heart of our charity. With trustees and staff visiting families, hospitals, schools, clubs and groups on a regular basis surprising them with gifts, holidays and much more. Some of these applications are for children and families going a difficult time with illness and deserve a special trip. Others are for housing equipment such as washing machines, flooring and beds.

The board of Trustees review applications and award funds to make these wishes happen. It is always lovely paying personal visits and meeting special people.

This year we met Lottie who was knocked over outside her home. Her accident shocked the local community and she was nominated for a special surprise. We visited Lottie with a pamper hamper, a pamper party and wished her well in her recovery.

We also met Luke, Luke loves the Harlem Globetrotters, so Luke (one of our trustees) and our CEO Clair surprised him with a trip to Newcastle Arena, a stay in Newcastle and a special chauffeured journey.

Angel of the Month

We also have "Angel of the Month" where members of the public can nominate an individual who has gone above and beyond in the community. They will receive a surprise doorstep delivery.



Angel Trust - A Charity For The People

Trustees' Annual Report *(continued)*

Year ended 30 June 2024

Financial review

The charity generated income of £454,315 (2023 - £369,183) during its sixth year and incurred expenditure of £407,348 (2023 - £360,859).

Reserves policy

Trustees aim to hold six months running costs as free reserves. The charity's unrestricted reserves currently stand at £149,361 (2023 - £102,394), representing around eight months routine expenditure, and the trustees are satisfied with this position.

Structure, governance and management

Constitution

The charity was incorporated as a Charitable Incorporated Organisation (registered charity number 1178926) on 26 June 2018.

Methods of appointment or election of trustees

The management of the charity is the responsibility of the trustees who are elected and co-opted under the terms of the Trust deed. Induction is provided for new trustees as required.

Organisational structure and decision-making policies

At the end of the year Angel Trust has a Board of 7 trustees comprised from various professional backgrounds. Appointments to the Board are made by the trustees, once elected, Trustees are given a copy of the Charities Commission Handbook and full verbal explanatory briefing from our charities solicitor on the expectations of being a trustee.

The charity also has a CEO who oversees the overall running of the charity including the charities Marketing and Fundraising Assistant. The trustees delegate day to day operations to the Chief Executive.

Angel Trust have a number of Ambassadors; Tess Tickle & The Dragettes, Mark Dunn, John Adamson, Gucci Gabore, Paul Simpson and Natalie Phillips who play a key role in promoting the charity to the local community and through the press. In addition to this we have a fantastic team of volunteers, without them we wouldn't be able to do the work we do.

Pay policy for key management personnel

The salary and benefits of the Chief Executive are set by the board of trustees, and reviewed annually.

Related party relationships

The charity has benefited from the support of the services of trustees in a number of ways.

Mark Boyes, one of our trustees, also provides professional entertainment services at discounted rates to some of our events, which further benefits the charity through his on-line presence on social media.

Kathryn Stabler, another trustee, provides training and HR support.

Financial risk management

The trustees have assessed the major risks to which the charity is exposed, in particular those related to the operations and finances of the charity, and are satisfied that systems and procedures are in place to mitigate our exposure to the major risks.

Angel Trust - A Charity For The People

Trustees' Annual Report *(continued)*

Year ended 30 June 2024

Reference and administrative details

Registered charity name Angel Trust - A Charity For The People

Charity registration number 1178926

Principal office Belvedere House
Kingsway
Bishop Auckland
County Durham
DL14 7JN

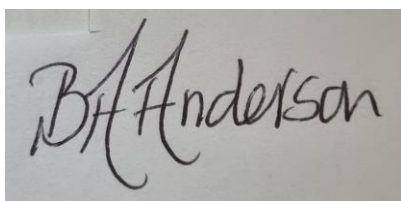
The trustees

Beryl Anderson
Mark Boyes
Nicola Stephenson
Kathryn Stabler
Malcolm Cresswell (Appointed 7 September 2023)
Michelle Telford
Luke Jones

Chief Executive Officer Clair McGregor

Independent examiner Jane Ascroft FCA MA(Cantab)
Enterprise House
Harmire Enterprise Park
Barnard Castle
County Durham
DL12 8XP

The trustees' annual report was approved on 25 April 2025 and signed on behalf of the board of trustees by:

A photograph of a handwritten signature in black ink on a light-colored background. The signature reads 'Beryl Anderson' in a cursive script.

Beryl Anderson
Trustee

Angel Trust - A Charity For The People

Independent Examiner's Report to the Trustees of Angel Trust - A Charity For The People

Year ended 30 June 2024

I report to the trustees on my examination of the financial statements of Angel Trust - A Charity For The People ('the charity') for the year ended 30 June 2024.

Responsibilities and basis of report

As the trustees of the charity you are responsible for the preparation of the financial statements in accordance with the requirements of the Charities Act 2011 ('the Act').

I report in respect of my examination of the charity's financial statements carried out under section 145 of the 2011 Act and in carrying out my examination I have followed all the applicable Directions given by the Charity Commission under section 145(5)(b) of the Act.

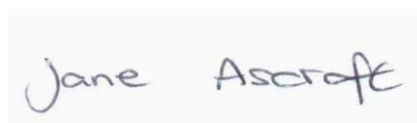
Independent examiner's statement

Since the charity's gross income exceeded £250,000 your examiner must be a member of a body listed in section 145 of the 2011 Act. I confirm that I am qualified to undertake the examination because I am a member of the Institute of Chartered Accountants in England and Wales (ICAEW), which is one of the listed bodies.

I have completed my examination. I confirm that no material matters have come to my attention in connection with the examination giving me cause to believe that in any material respect:

1. accounting records were not kept in respect of the charity as required by section 130 of the Act; or
2. the financial statements do not accord with those records; or
3. the financial statements do not comply with the applicable requirements concerning the form and content of accounts set out in the Charities (Accounts and Reports) Regulations 2008 other than any requirement that the accounts give a 'true and fair' view which is not a matter considered as part of an independent examination.

I have no concerns and have come across no other matters in connection with the examination to which attention should be drawn in this report in order to enable a proper understanding of the accounts to be reached.



Jane Ascroft FCA MA (Cantab)
Independent Examiner

Enterprise House
Harmire Enterprise Park
Barnard Castle
County Durham
DL12 8XP

Angel Trust - A Charity For The People

Statement of Financial Activities

Year ended 30 June 2024

		2024	2023		
		Unrestricted funds	Restricted funds	Total funds	Total funds
	Note	£	£	£	£
Income and endowments					
Donations and legacies	4	83,613	89,489	173,102	94,670
Charitable activities	5	78,784	4,817	83,601	50,093
Other trading activities	6	190,314	–	190,314	219,423
Investment income	7	4	–	4	39
Other income	8	7,294	–	7,294	4,958
Total income		<u>360,009</u>	<u>94,306</u>	<u>454,315</u>	<u>369,183</u>
Expenditure					
Expenditure on raising funds:					
Costs of raising donations and legacies	9	16,033	–	16,033	16,384
Costs of other trading activities	10	176,051	–	176,051	213,725
Expenditure on charitable activities	11,12	120,958	94,306	215,264	130,750
Total expenditure		<u>313,042</u>	<u>94,306</u>	<u>407,348</u>	<u>360,859</u>
Net income and net movement in funds		<u>46,967</u>	<u>–</u>	<u>46,967</u>	<u>8,324</u>
Reconciliation of funds					
Total funds brought forward		102,394	–	102,394	94,070
Total funds carried forward		<u>149,361</u>	<u>–</u>	<u>149,361</u>	<u>102,394</u>

The statement of financial activities includes all gains and losses recognised in the year. All income and expenditure derive from continuing activities.

The notes on pages 12 to 23 form part of these financial statements.

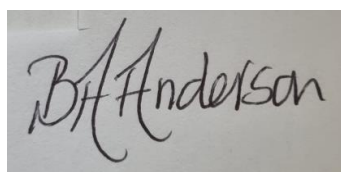
Angel Trust - A Charity For The People

Statement of Financial Position

30 June 2024

	Note	2024 £	2023 £
Fixed assets			
Tangible fixed assets	17	46,862	64,875
Investments	18	2	1
		<u>46,864</u>	<u>64,876</u>
Current assets			
Stocks	19	3,000	3,000
Debtors	20	13,447	17,564
Cash at bank and in hand		158,175	81,426
		<u>174,622</u>	<u>101,990</u>
Creditors: amounts falling due within one year	21	<u>72,125</u>	<u>64,472</u>
Net current assets		<u>102,497</u>	<u>37,518</u>
Total assets less current liabilities		<u>149,361</u>	<u>102,394</u>
Net assets		<u>149,361</u>	<u>102,394</u>
Funds of the charity			
Unrestricted funds		<u>149,361</u>	<u>102,394</u>
Total charity funds	24	<u>149,361</u>	<u>102,394</u>

These financial statements were approved by the board of trustees and authorised for issue on 25 April 2025, and are signed on behalf of the board by:



Beryl Anderson
Trustee

The notes on pages 12 to 23 form part of these financial statements.

Angel Trust - A Charity For The People

Notes to the Financial Statements

Year ended 30 June 2024

1. General information

The charity is a public benefit entity and a registered charity in England and Wales and is unincorporated. The address of the principal office is Belvedere House, Kingsway, Bishop Auckland, County Durham, DL14 7JN.

2. Statement of compliance

These financial statements have been prepared in compliance with FRS 102, 'The Financial Reporting Standard applicable in the UK and the Republic of Ireland', the Statement of Recommended Practice applicable to charities preparing their accounts in accordance with the Financial Reporting Standard applicable in the UK and Republic of Ireland (FRS 102) (Charities SORP (FRS 102)) and the Charities Act 2011.

3. Accounting policies

Basis of preparation

The financial statements have been prepared on the historical cost basis, as modified by the revaluation of certain financial assets and liabilities and investments measured at fair value through income or expenditure.

The financial statements are prepared in sterling, which is the functional currency of the entity.

The entity is a Public Benefit Entity.

Going concern

There are no material uncertainties about the charity's ability to continue.

Judgements and key sources of estimation uncertainty

The preparation of the financial statements requires management to make judgements, estimates and assumptions that affect the amounts reported. These estimates and judgements are continually reviewed and are based on experience and other factors, including expectations of future events that are believed to be reasonable under the circumstances. The trustees consider that there are no significant estimates or judgements affecting these financial statements.

Fund accounting

Unrestricted funds are available for use at the discretion of the trustees to further any of the charity's purposes.

Designated funds are unrestricted funds earmarked by the trustees for particular future project or commitment.

Restricted funds are subjected to restrictions on their expenditure declared by the donor or through the terms of an appeal, and fall into one of two sub-classes: restricted income funds or endowment funds.

Angel Trust - A Charity For The People

Notes to the Financial Statements *(continued)*

Year ended 30 June 2024

3. Accounting policies *(continued)*

Income

All income is included in the statement of financial activities when the charity is entitled to the income, any performance related conditions attached have been met or are fully within the control of the charity, the income is considered probable and the amount can be quantified with reasonable accuracy. The following specific policies are applied to particular categories of income:

Donations and legacy income is received by way of donations, legacies, grants and gifts and is included in full in the Statement of Financial Activities when receivable. Where legacies have been notified to the charity but the criteria for income recognition have not been met, the legacy is treated as a contingent asset and disclosed if material. Grants, where entitlement is not conditional on the delivery of a specific performance by the charity, are recognised when the charity becomes unconditionally entitled to the grant.

Donated services and facilities are included at the value to the charity, being the amount the charity would have been willing to pay to obtain services or facilities of equivalent economic benefit on the open market.

Investment income is included when receivable.

Income from charitable trading activity is accounted for when earned.

Income from grants, where related to performance and specific deliverables, are accounted for as the charity earns the right to consideration by its performance.

Expenditure

Expenditure is recognised on an accruals basis as a liability is incurred. Expenditure includes any VAT which cannot be fully recovered, and is reported as part of the expenditure to which it relates:

Costs of raising funds comprise the costs associated with attracting donations, grants and legacies and the costs of trading for fundraising purposes.

Charitable expenditure comprises those costs incurred by the charity in the delivery of its activities and services for its beneficiaries. It includes both costs that can be allocated directly to such activities and those costs of an indirect nature necessary to support them.

Other expenditure includes all expenditure that is neither related to raising funds for the charity nor part of its expenditure on charitable activities.

All costs are allocated between the expenditure categories of the SOFA on a basis designed to reflect the use of the resource. Costs relating to a particular activity are allocated directly, others are apportioned on an appropriate basis, as set out in the notes to the accounts.

Operating leases

Lease payments are recognised as an expense over the lease term on a straight-line basis. The aggregate benefit of lease incentives is recognised as a reduction to expense over the lease term, on a straight-line basis.

Angel Trust - A Charity For The People

Notes to the Financial Statements *(continued)*

Year ended 30 June 2024

3. Accounting policies *(continued)*

Tangible assets

Tangible assets are initially recorded at cost, and subsequently stated at cost less any accumulated depreciation and impairment losses.

Depreciation

Depreciation is calculated so as to write off the cost or valuation of an asset, less its residual value, over the useful economic life of that asset as follows:

Fixtures and fittings	-	10% - 20% Straight line
Motor vehicles	-	25% reducing balance
Equipment	-	10% - 25% Straight line
Kitchen equipment	-	25% reducing balance

Investments

Unlisted equity investments are initially recorded at cost, and subsequently measured at fair value. If fair value cannot be reliably measured, assets are measured at cost less impairment.

Listed investments are measured at fair value with changes in fair value being recognised in income or expenditure.

Impairment of fixed assets

A review for indicators of impairment is carried out at each reporting date, with the recoverable amount being estimated where such indicators exist. Where the carrying value exceeds the recoverable amount, the asset is impaired accordingly. Prior impairments are also reviewed for possible reversal at each reporting date.

Stocks

Stocks are measured at the lower of cost and estimated selling price less costs to complete and sell. Cost includes all costs of purchase, costs of conversion and other costs incurred in bringing the stock to its present location and condition.

Financial instruments

The charity only has financial assets and liabilities of a kind that qualify as basic financial instruments. Basic financial instruments are initially recognised at transaction value and subsequently measured at their settlement value.

Angel Trust - A Charity For The People

Notes to the Financial Statements *(continued)*

Year ended 30 June 2024

3. Accounting policies *(continued)*

Defined contribution plans

Contributions to defined contribution plans are recognised as an expense in the period in which the related service is provided. Prepaid contributions are recognised as an asset to the extent that the prepayment will lead to a reduction in future payments or a cash refund.

When contributions are not expected to be settled wholly within 12 months of the end of the reporting date in which the employees render the related service, the liability is measured on a discounted present value basis. The unwinding of the discount is recognised as an expense in the period in which it arises.

Trade debtors

Trade and other debtors are recognised at the settlement amount due after any trade discount offered. Prepayments are valued at the amount prepaid net of any trade discounts due.

Accrued income and tax recoverable is included at the best estimate of the amounts receivable at the balance sheet date.

Cash at Bank and in Hand

Cash at bank and cash in hand includes cash and short term highly liquid investments with a short maturity of three months or less from the date of acquisition or opening of the deposit or similar account.

Trade creditors

Creditors are recognised where the charity has a present obligation resulting from a past event that will probably result in the transfer of funds to a third party and the amount due to settle the obligation can be measured or estimated reliably. Creditors are normally recognised at their settlement amount after allowing for any trade discounts due.

Taxation

The company is considered to pass the tests set out in Paragraph 1 Schedule 6 of the Finance Act 2010 and therefore it meets the definition of a charitable company for UK corporation tax purposes. Accordingly, the company is potentially exempt from taxation in respect of income or capital gains received within categories covered by Chapter 3 Part 11 of the Corporation Tax Act 2010 or Section 256 of the taxation of Chargeable Gains Act 1992, to the extent that such income or gains are applied exclusively to charitable purposes.

Angel Trust - A Charity For The People

Notes to the Financial Statements *(continued)*

Year ended 30 June 2024

4. Donations and legacies

	Unrestricted Funds £	Restricted Funds £	Total Funds 2024 £
Donations			
Donations	61,825	–	61,825
Gift aid recoverable	8,222	–	8,222
Charities Trust	562	–	562
Food Bank Sponsorship	–	–	–
Friends of Angel Trust	404	–	404
Corporate partners	2,000	–	2,000
Gifts			
Gifts in kind - Venue hire	4,000	–	4,000
Gifts in kind - Car lease	600	–	600
Grants			
DCC Neighbourhood Budget	–	5,625	5,625
County Durham Community Foundation	–	11,773	11,773
National Lottery Community Fund	–	63,091	63,091
Access Reach	–	9,000	9,000
Sainsburys	1,500	–	1,500
Amazon	2,500	–	2,500
Santander	2,000	–	2,000
	<u>83,613</u>	<u>89,489</u>	<u>173,102</u>
	Unrestricted Funds £	Restricted Funds £	Total Funds 2023 £
Donations			
Donations	35,687	–	35,687
Gift aid recoverable	12,100	–	12,100
Charities Trust	5,328	–	5,328
Food Bank Sponsorship	3,500	–	3,500
Friends of Angel Trust	792	–	792
Corporate partners	1,502	–	1,502
Amazon	115	–	115
Gifts			
Gifts in kind - Venue hire	4,000	–	4,000
Gifts in kind - Car lease	1,200	–	1,200

Angel Trust - A Charity For The People

Notes to the Financial Statements *(continued)*

Year ended 30 June 2024

4. Donations and legacies *(continued)*

	Unrestricted Funds £	Restricted Funds £	Total Funds 2023 £
Grants			
BUPA	6,000	–	6,000
South Durham Enterprise Agency	–	11,000	11,000
DCC Neighbourhood Budget	–	13,446	13,446
	<u>70,224</u>	<u>24,446</u>	<u>94,670</u>

Gifts in kind comprise venue hire worth £4,000 and a vehicle lease worth £600.

5. Charitable activities

	Unrestricted Funds £	Restricted Funds £	Total Funds 2024 £
Community Pantry	78,784	–	78,784
Fun and Food	–	4,817	4,817
	<u>78,784</u>	<u>4,817</u>	<u>83,601</u>

	Unrestricted Funds £	Restricted Funds £	Total Funds 2023 £
Community Pantry	50,093	–	50,093
	<u>50,093</u>	<u>–</u>	<u>50,093</u>

6. Other trading activities

	Unrestricted Funds £	Total Funds 2024 £	Unrestricted Funds £	Total Funds 2023 £
Fundraising events	166,704	166,704	174,488	174,488
Merchandise income	1,413	1,413	3,330	3,330
Fundraising	11,600	11,600	33,303	33,303
Charity Shop	1,847	1,847	4,482	4,482
RAG	8,750	8,750	3,820	3,820
	<u>190,314</u>	<u>190,314</u>	<u>219,423</u>	<u>219,423</u>

Angel Trust - A Charity For The People

Notes to the Financial Statements (continued)

Year ended 30 June 2024

7. Investment income

	Unrestricted Funds	Total Funds 2024	Unrestricted Funds	Total Funds 2023
	£	£	£	£
Bank interest receivable	4	4	39	39

8. Other income

	Unrestricted Funds	Total Funds 2024	Unrestricted Funds	Total Funds 2023
	£	£	£	£
Employment allowance	6,339	6,339	4,958	4,958
Other income	955	955	–	–
	<u>7,294</u>	<u>7,294</u>	<u>4,958</u>	<u>4,958</u>

9. Costs of raising donations and legacies

	Unrestricted Funds	Total Funds 2024	Unrestricted Funds	Total Funds 2023
	£	£	£	£
Costs of raising donations and legacies	16,033	16,033	16,384	16,384

10. Costs of other trading activities

	Unrestricted Funds	Total Funds 2024	Unrestricted Funds	Total Funds 2023
	£	£	£	£
Cost of fundraising events	176,051	176,051	213,725	213,725

11. Expenditure on charitable activities by fund type

	Unrestricted Funds	Restricted Funds	Total Funds 2024
	£	£	£
Costs of charitable activities	12,930	94,306	107,236
Support costs	108,028	–	108,028
	<u>120,958</u>	<u>94,306</u>	<u>215,264</u>

	Unrestricted Funds	Restricted Funds	Total Funds 2023
	£	£	£
Costs of charitable activities	54,688	–	54,688
Support costs	76,062	–	76,062
	<u>130,750</u>	<u>–</u>	<u>130,750</u>

Angel Trust - A Charity For The People

Notes to the Financial Statements (continued)

Year ended 30 June 2024

12. Expenditure on charitable activities by activity type

	Activities undertaken directly	Support costs	Total funds 2024	Total fund 2023
	£	£	£	£
Costs of charitable activities	107,236	106,637	213,873	129,360
Governance costs	–	1,391	1,391	1,390
	<u>107,236</u>	<u>108,028</u>	<u>215,264</u>	<u>130,750</u>

13. Net income

Net income is stated after charging/(crediting):

	2024	2023
	£	£
Depreciation of tangible fixed assets	<u>21,845</u>	<u>15,675</u>

14. Independent examination fees

	2024	2023
	£	£
Fees payable to the independent examiner for: Independent examination of the financial statements	<u>1,260</u>	<u>1,260</u>

15. Staff costs

The total staff costs and employee benefits for the reporting period are analysed as follows:

	2024	2023
	£	£
Wages and salaries	130,572	87,810
Social security costs	9,494	6,808
Employer contributions to pension plans	<u>2,124</u>	<u>2,832</u>
	<u>142,190</u>	<u>97,450</u>

The average head count of employees during the year was 9 (2023: 9).

No employee received employee benefits of more than £60,000 during the year (2023: Nil).

Key Management Personnel

Key management personnel include all persons that have authority and responsibility for planning, directing and controlling the activities of the charity. The total compensation paid to key management personnel for services provided to the charity was £44,952 (2023:£41,000).

16. Trustee remuneration and expenses

Trustees received no remuneration or expenses in the current and previous year.

Angel Trust - A Charity For The People

Notes to the Financial Statements (continued)

Year ended 30 June 2024

17. Tangible fixed assets

	Fixtures and fittings £	Motor vehicles £	Equipment £	Kitchen equipment £	Total £
Cost					
At 1 July 2023	45,585	6,500	4,331	49,990	106,406
Additions	–	–	3,832	–	3,832
At 30 June 2024	<u>45,585</u>	<u>6,500</u>	<u>8,163</u>	<u>49,990</u>	<u>110,238</u>
Depreciation					
At 1 July 2023	33,328	271	1,623	6,309	41,531
Charge for the year	8,410	1,557	958	10,920	21,845
At 30 June 2024	<u>41,738</u>	<u>1,828</u>	<u>2,581</u>	<u>17,229</u>	<u>63,376</u>
Carrying amount					
At 30 June 2024	<u>3,847</u>	<u>4,672</u>	<u>5,582</u>	<u>32,761</u>	<u>46,862</u>
At 30 June 2023	<u>12,257</u>	<u>6,229</u>	<u>2,708</u>	<u>43,681</u>	<u>64,875</u>

18. Investments

	Shares in group undertakings £
Cost or valuation	
At 1 July 2023	1
Additions	1
At 30 June 2024	<u>2</u>
Impairment	
At 1 July 2023 and 30 June 2024	<u>–</u>
Carrying amount	
At 30 June 2024	<u>2</u>
At 30 June 2023	<u>1</u>

All investments shown above are held at valuation.

The investments represent 1 £1 share in Angel Trust Trading Limited and 1 £1 share in Angel Trust Coffee Shop Limited.

At 30th June 2024 Angel Trust Trading Limited had total capital of £1 and negative reserves of £7,333. It owed £5,918 to the charity at that date.

At 30th June 2024 Angel Trust Coffee Shop Limited had total capital of £1 and negative reserves of £1,508. It owed £1,374 to the charity at that date.

Angel Trust - A Charity For The People

Notes to the Financial Statements *(continued)*

Year ended 30 June 2024

19. Stocks

	2024	2023
	£	£
Merchandise stock	3,000	3,000

20. Debtors

	2024	2023
	£	£
Trade debtors	300	155
Amounts owed by group undertakings	7,291	11
Prepayments and accrued income	5,804	3,952
Accrued grant income	–	13,446
Other debtors	52	–
	<u>13,447</u>	<u>17,564</u>

21. Creditors: amounts falling due within one year

	2024	2023
	£	£
Trade creditors	9,847	17,186
Accruals and deferred income	45,855	46,511
Social security and other taxes	2,247	–
Wages creditor	10,871	50
Other creditors	3,305	725
	<u>72,125</u>	<u>64,472</u>

22. Deferred income

	2024	2023
	£	£
At 1 July 2023	44,303	49,640
Amount released to income	(44,303)	(49,640)
Amount deferred in year	44,008	44,303
At 30 June 2024	<u>44,008</u>	<u>44,303</u>

Deferred income represents event income received in advance.

23. Pensions and other post retirement benefits

Defined contribution plans

The amount recognised in income or expenditure as an expense in relation to defined contribution plans was £2,124 (2023: £2,832).

Angel Trust - A Charity For The People

Notes to the Financial Statements (continued)

Year ended 30 June 2024

24. Analysis of charitable funds

Unrestricted funds

	At 1 July 2023	Income	Expenditure	Transfers	At 30 June 2024
	£	£	£	£	£
General funds	<u>102,394</u>	<u>360,009</u>	<u>(313,042)</u>	<u>–</u>	<u>149,361</u>

	At 1 July 2022	Income	Expenditure	Transfers	At 30 June 2023
	£	£	£	£	£
General funds	<u>94,070</u>	<u>344,737</u>	<u>(360,859)</u>	<u>24,446</u>	<u>102,394</u>

Restricted funds

	At 1 July 2023	Income	Expenditure	Transfers	At 30 June 2024
	£	£	£	£	£
National Lottery Community Fund County Durham Community Foundation (Point North)	–	63,091	(63,091)	–	–
DCC Homeless Support	–	11,773	(11,773)	–	–
DCC Fun & Food	–	300	(300)	–	–
DCC Cook with Books	–	4,817	(4,817)	–	–
Access Reach	–	5,325	(5,325)	–	–
	<u>–</u>	<u>9,000</u>	<u>(9,000)</u>	<u>–</u>	<u>–</u>
	<u>–</u>	<u>94,306</u>	<u>(94,306)</u>	<u>–</u>	<u>–</u>

	At 1 July 2022	Income	Expenditure	Transfers	At 30 June 2023
	£	£	£	£	£
South Durham Enterprise Agency	–	11,000	–	(11,000)	–
DCC Neighbourhood Budget	–	13,446	–	(13,446)	–
	<u>–</u>	<u>24,446</u>	<u>–</u>	<u>(24,446)</u>	<u>–</u>

Angel Trust - A Charity For The People

Notes to the Financial Statements (continued)

Year ended 30 June 2024

24. Analysis of charitable funds (continued)

The restricted grants were for the following purposes:

National Lottery Community Fund - Running costs
County Durham Community Foundation (now Point North)
Access Reach - Business planning consultancy
DCC Cook with Books - School holiday activities/Food
DCC Homeless Support - Homeless support
DCC Fun & Food - School holiday activities/Food

25. Analysis of net assets between funds

	Unrestricted Funds £	Total Funds 2024 £
Tangible fixed assets	46,862	46,862
Investments	2	2
Current assets	174,622	174,622
Creditors less than 1 year	(72,125)	(72,125)
Net assets	149,361	149,361

	Unrestricted Funds £	Total Funds 2023 £
Tangible fixed assets	64,875	64,875
Investments	1	1
Current assets	101,990	101,990
Creditors less than 1 year	(64,472)	(64,472)
Net assets	102,394	102,394

26. Operating lease commitments

The total future minimum lease payments under non-cancellable operating leases are as follows:

	2024 £	2023 £
Not later than 1 year	9,600	4,560
Later than 1 year and not later than 5 years	25,950	12,600
	<u>35,550</u>	<u>17,160</u>

27. Related parties

M Boyes is a trustee of the charity. During the year he was paid £14,210 (2023 - £14,232) in respect of services provided to run the charity's events.

K Stabler is also a trustee of the charity. She was paid £700 during the year (2023 - Nil) for the provision of training.

Angel Trust - A Charity For The People

Management Information

Year ended 30 June 2024

The following pages do not form part of the financial statements.

Angel Trust - A Charity For The People

Detailed Statement of Financial Activities

Year ended 30 June 2024

	2024 £	2023 £
Income and endowments		
Donations and legacies		
Donations	61,825	35,687
Gift aid recoverable	8,222	12,100
Charities Trust	562	5,328
Food Bank Sponsorship	–	3,500
Friends of Angel Trust	404	792
Corporate partners	2,000	1,502
Amazon	–	115
Gifts in kind - Venue hire	4,000	4,000
Gifts in kind - Car lease	600	1,200
BUPA	–	6,000
South Durham Enterprise Agency	–	11,000
DCC Neighbourhood Budget	5,625	13,446
County Durham Community Foundation	11,773	–
National Lottery Community Fund	63,091	–
Access Reach	9,000	–
Sainsburys	1,500	–
Amazon	2,500	–
Santander	2,000	–
	<u>173,102</u>	<u>94,670</u>
Charitable activities		
Community Pantry	78,784	50,093
Fun and Food	4,817	–
	<u>83,601</u>	<u>50,093</u>
Other trading activities		
Fundraising events	166,704	174,488
Merchandise income	1,413	3,330
Fundraising	11,600	33,303
Charity Shop	1,847	4,482
RAG	8,750	3,820
	<u>190,314</u>	<u>219,423</u>
Investment income		
Bank interest receivable	4	39
Other income		
Employment allowance	6,339	4,958
Other income	955	–
	<u>7,294</u>	<u>4,958</u>
Total income	<u>454,315</u>	<u>369,183</u>

Angel Trust - A Charity For The People

Detailed Statement of Financial Activities *(continued)*

Year ended 30 June 2024

	2024 £	2023 £
Expenditure		
Costs of raising donations and legacies		
Costs of raising donations and legacies	16,033	16,384
Cost of fundraising events		
Wages	40,340	37,271
Employer's NIC	3,506	3,346
Pension costs	2,124	2,832
Cost of fundraising events	116,956	147,444
Advertising and marketing	3,707	3,523
Merchandise costs	3,509	4,488
Community Fundraiser	–	11,999
Other fundraising costs	5,909	2,822
	<u>176,051</u>	<u>213,725</u>
Expenditure on charitable activities		
Activities undertaken directly		
Wages	66,791	30,919
Employer's NIC	4,243	1,881
Equipment expense and hire	2,739	–
Motor vehicle expenses	7,352	4,582
Community Pantry costs	23,858	17,306
Fun and Food costs	2,253	–
	<u>107,236</u>	<u>54,688</u>
Support costs		
Wages	23,441	19,620
Employer's NIC	1,745	1,581
Rent	12,450	8,483
Light and heat	7,479	4,125
Insurance	1,467	864
Other premises costs	7,213	7,582
Travel and subsistence	2,045	4,613
Consultancy fees	13,400	–
Telephone & IT	4,890	3,946
Other office costs	5,363	3,439
Depreciation	21,845	15,675
Online transaction costs	2,583	2,335
Other costs	2,716	2,409
	<u>106,637</u>	<u>74,672</u>
Governance costs		
Accountancy fees	1,200	1,260
Bank charges and interest	191	130
	<u>1,391</u>	<u>1,390</u>
Expenditure on charitable activities	<u>215,264</u>	<u>130,750</u>
Total expenditure	<u>407,348</u>	<u>360,859</u>
Net income	<u>46,967</u>	<u>8,324</u>

ANGEL TRUST - A CHARITY FOR THE PEOPLE

England & Wales - Charity number 1178926

Accounts

Charity Registration Number: 1178926

Angel Trust - A Charity For The People
Financial Statements
For the year ending
30 June 2023

JANE ASCROFT ACCOUNTANCY LIMITED

Chartered accountants
Enterprise House
Harmire Enterprise Park
Barnard Castle
County Durham
DL12 8XP

Angel Trust - A Charity For The People

Financial Statements

Year ended 30 June 2023

	Page
Trustees' annual report	1
Independent examiner's report to the trustees	9
Statement of financial activities	10
Statement of financial position	11
Notes to the financial statements	12
The following pages do not form part of the financial statements	
Detailed statement of financial activities	25

Angel Trust - A Charity For The People

Trustees' Annual Report

Year ended 30 June 2023

The trustees present their report and the unaudited financial statements of the charity for the year ended 30 June 2023.

Chair's report

As chair of trustees, I have prepared this statement as part of the annual report for July 2022-June 2023.

Coming off the back of the covid 19 pandemic we are in a different place and I am extremely proud and honoured as chair of trustees. As a board, CEO, team of staff and volunteers we have further diversified the support and help provided to individuals and families within County Durham and Darlington.

Whilst remaining loyal to our core values and policies we have expanded our charity, following the recognition of the environment and requirements of those around us. We are now operating a food bank and a community pantry which provide more routine and regular support. In developing this area we made a welcoming more farm shop environment and alongside this have provided meeting space for outside organisations to provide support and advice to those around us. On the back of this we have become a hub of support for the homeless community, providing hot drinks, food and refreshments, as well as clothing and advice.

Following the pandemic we have reintroduced our popular events such as Ladies Day and Tess on Tour but have also continued supporting local families with experiences and the granting of wishes including the Weardale Christmas train and a Christmas party. We have continued to recognise those around us with our Angel of the Month campaign and supported with ad hoc requests from social services and other local provisions to provide necessary support whether this be in the form of clothing, food and toys for example via our toy appeal.

We have been supported via fundraising through our events, donations from the local community, awards of grants and corporate donations which have made all of our work possible and we are extremely grateful for this support. Through the introduction of our food bank, community pantry and the establishment of our children's holiday club for example we have been able to expand our services and look forward to further expansion in 2023-2024 which I look forward to sharing with you in the future.

Beryl Anderson
Chairman for the Board of Trustees

Angel Trust - A Charity For The People

Trustees' Annual Report *(continued)*

Year ended 30 June 2023

Objectives and activities

Angel Trust was formed as a local charity for the people of Darlington and County Durham. We aim to support individuals and organisations in the community by providing financial support and services to those in need. We want to improve the local community and make life better for those living within it.

The objectives of the CIO are:

(a) To relieve the needs of the community in Darlington and County Durham by providing grants to individuals and/or charities or other organisations in such ways as the trustees see fit to enable; (i) The advancement of citizenship and community development (ii) The relief of financial hardship and;(iii) Other such charitable purposes as the trustees shall determine.

Established in April 2018 the Angel Trust was formed as a local charity and has rapidly become recognised as "The People's Charity". Operating throughout Darlington and all of County Durham, the boundaries defined within the Gaunless Gateway are firmly embedded within the aims and objectives of The Angel Trust.

The Trust operates under the stringent guidance of a registered board of trustees and a Senior Fundraiser /CEO. Within the skill set of the board there is a diverse representation of assets and professional impetus covering legal procedures, press, publicity and media marketing, health and safety management, building and structural planning, entertainment and choreography, business management, hotel and function property availability as well as financial accounting procedures.

The Angel Trust's ambition is to support individuals and organisations in the local community by providing financial support and services to those in need and are undergoing hardship. Our aim is to improve the local community and make life better for those living within it. The Angel Trust operates under a specified legal constitution within its governing document and is registered with the Charity Commission.

In setting objectives and planning for activities, the trustees have given due consideration to general guidance published by the Charity Commission relating to public benefit, including the guidance 'Public benefit: running a charity (PB2)'.

Angel Trust fundraises in the community using various methods; we host fundraising events, distribute collecting cans to local business and we have individual fundraisers which altogether enables us to achieve our objectives.

Activities undertaken to achieve objectives

There is a strong fundraising structure that appeals to our contrastive database of supporters, designed and marketed to attract their taste and appetite for leisure and entertainment. During its first year Angel Trust has established a reputation for a strong charitable standing in our community by providing much needed help and funds to individuals, organisations, schools and clubs across both The County of Durham and The Borough of Darlington. The Trust staff and volunteers have worked hard to spread the ethos "We may all need a helping hand at some point in our lives and the Angel Trust aims to be there to provide support where it is needed." As a result of this we now receive referrals from Macmillan, Social Workers, School Workers, Refuges and many more. We are quickly becoming the charity that people turn to.

Angel Trust - A Charity For The People

Trustees' Annual Report *(continued)*

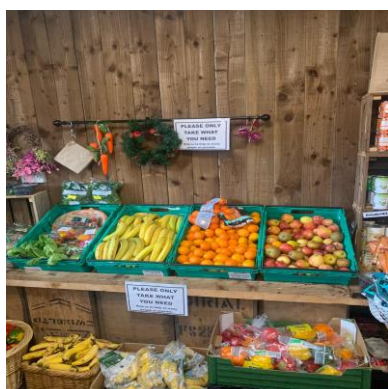
Year ended 30 June 2023

Food Bank & Community Pantry



The highlight of the year has to be the opening of our Community Pantry & Foodbank. After Covid we realised that our local area was suffering with food poverty & deprivation. With no food bank in Bishop Auckland people had nowhere to turn. We had teachers coming in asking us for food to give to families and for the first time ever homeless people coming to our door. Our board decided to tackle these issues by diversifying the charity to open a community pantry and join forces with Trussell Trust to launch Auckland Food Bank. At the end of this year, we hit 1,000 members which shows that demand is high.

We set to work opening the back area of our building, appealing to our community with an amazing help from builders and plasterers, as well as pubs donating tills, fridges etc. Within 2 weeks our community pantry was ready to open its doors. Members of the public can come along to the pantry and fill a basket of fresh fruit and veg, store cupboard items and much more for a £5 donation. Teams of staff and volunteers go out on an evening collecting the food surplus from supermarkets and display the goods attractively in the pantry.



Staff underwent the vigorous training needed from Trussell Trust to achieve the required skills to enable us to open the first official Foodbank in Bishop Auckland. Service users are greeted by a trained member of staff who can offer support and provide direction for other support resources. We offer food, gas, electric, tents, sleeping bags, sim cards and much more.

We have services based here on various days to which we can refer clients: -

- Rough Sleeping Team Durham County Council
- Home Group
- Employability
- Citizens Advice
- Debt Management

We have quickly become a hub for people in need. Within 6 months our food bank was the second busiest Trussell Trust food bank in the North East. It has been a huge learning curve for staff having to adapt quickly and address safety measure and staffing ratios. We are extremely proud of the staff and volunteers who run the pantry and food bank which is always a lovely bubbly friendly place. Without them we couldn't provide this service to our clients.

Angel Trust - A Charity For The People

Trustees' Annual Report *(continued)*

Year ended 30 June 2023

Christmas Toy Appeal



Our toy appeal goes from strength to strength, we receive thousands of toys from local businesses and individuals to help us grant the wishes of children in our area. We receive referrals from schools, social services, Macmillan, young carers, nurses, children's homes, homeless teenage centres to name just a few.

Our team of volunteers then pick a personalised bag of gifts which are delivered to the child's home. Trustees and Ambassadors visit children's wards, hospitals, women's refuges etc delivering huge boxes of gifts, selection boxes and more



A massive thank you to everyone who donated and put a smile on lots of children's faces!!

Angel Trust - A Charity For The People

Trustees' Annual Report *(continued)*

Year ended 30 June 2023

Clothing Collections



At the end of the year we started our Angel Trust clothing collections, this allows people in the local community to book a collection slot for their unwanted clothes and textiles.

We use these donations to support with clothing requests from schools, the homeless and for fundraising.



We have big forward plans for expanding this element of our charity!

Angel Trust - A Charity For The People

Trustees' Annual Report *(continued)*

Year ended 30 June 2023

Wishes we have granted



Granting wishes is still at the heart of our charity. With trustees and staff visiting families, hospitals, clubs and groups on a regular basis surprising them with gifts, holidays and much more.

The board of Trustees review applications and award funds to make these wishes happen. It is always lovely paying personal visits and meeting special people.

We also have “Angel of the Month” where members of the public can nominate an individual who has gone above and beyond in the community. They will receive a surprise doorstep delivery.



Angel Trust - A Charity For The People

Trustees' Annual Report *(continued)*

Year ended 30 June 2023

Financial review

The charity generated income of £369,183 (2022 - £294,845) during its fifth year and incurred expenditure of £360,859 (2022 - £287,330).

Reserves policy

Trustees aim to hold six months running costs as free reserves. The charity's unrestricted reserves currently stand at £102,394 (2022 - £94,070), representing around nine months routine expenditure, and the trustees are satisfied with this position.

Structure, governance and management

Constitution

The charity was incorporated as a Charitable Incorporated Organisation (registered charity number 1178926) on 26 June 2018.

Methods of appointment or election of trustees

The management of the charity is the responsibility of the trustees who are elected and co-opted under the terms of the Trust deed. Induction is provided for new trustees as required.

Organisational structure and decision-making policies

At the end of the year Angel Trust has a Board of 4 trustees comprised from various professional backgrounds. Appointments to the Board are made by the trustees, once elected, Trustees are given a copy of the Charities Commission Handbook and full verbal explanatory briefing from our charities solicitor on the expectations of being a trustee.

The charity also has a CEO who oversees the overall running of the charity including the charities Marketing and Fundraising Assistant. The trustees delegate day to day operations to the Chief Executive.

Angel Trust have two Ambassadors; Beau Stevens and The Dragettes, who play a key role in promoting the charity to the local community and through the press. In addition to this we have a fantastic team of volunteers, without them we wouldn't be able to do the work we do.

Pay policy for key management personnel

The salary and benefits of the Chief Executive are set by the board of trustees, and reviewed annually.

Related party relationships

The charity has benefited from the support of the services of trustees in a number of ways. John Adamson, through Ramside Estates, has provided accommodation and other gifts in kind to allow the charity to operate. Where the charity has run events at any of the Ramside Estates properties, these events have been charged at normal commercial rates. As the nominated charity of Ramside Estates the Trust has also benefitted from social media coverage, enhancing ticket sales and donations.

Mark Boyes, one of our trustees, also provides professional entertainment services at discounted rates to some of our events, which further benefits the charity through his on-line presence on social media.

Financial risk management

The trustees have assessed the major risks to which the charity is exposed, in particular those related to the operations and finances of the charity, and are satisfied that systems and procedures are in place to mitigate our exposure to the major risks.

Angel Trust - A Charity For The People

Trustees' Annual Report *(continued)*

Year ended 30 June 2023

Reference and administrative details

Registered charity name Angel Trust - A Charity For The People

Charity registration number 1178926

Principal office Belvedere House
Kingsway
Bishop Auckland
County Durham
DL14 7JN

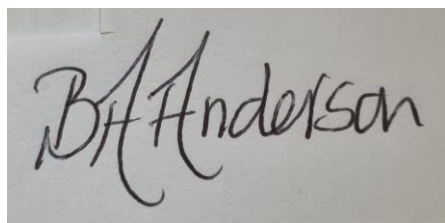
The trustees

Beryl Anderson
Mark Boyes
Nicola Stephenson (Appointed 1 August 2022)
Kathryn Mortimer (Appointed 11 July 2022)
Michelle Telford (Appointed 7 November 2022)
Luke Jones (Appointed 11 July 2022)

Chief Executive Officer Clair McGregor

Independent examiner Jane Ascroft FCA MA(Cantab)
Enterprise House
Harmire Enterprise Park
Barnard Castle
County Durham
DL12 8XP

The trustees' annual report was approved on and signed on behalf of the board of trustees by:

A photograph of a handwritten signature in black ink on a light-colored surface. The signature reads 'Beryl Anderson' in a cursive, flowing script.

Beryl Anderson
Trustee

Angel Trust - A Charity For The People

Independent Examiner's Report to the Trustees of Angel Trust - A Charity For The People

Year ended 30 June 2023

I report to the trustees on my examination of the financial statements of Angel Trust - A Charity For The People ('the charity') for the year ended 30 June 2023.

Responsibilities and basis of report

As the trustees of the charity you are responsible for the preparation of the financial statements in accordance with the requirements of the Charities Act 2011 ('the Act').

I report in respect of my examination of the charity's financial statements carried out under section 145 of the 2011 Act and in carrying out my examination I have followed all the applicable Directions given by the Charity Commission under section 145(5)(b) of the Act.

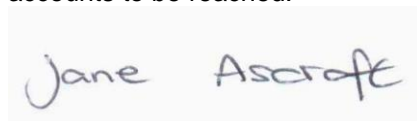
Independent examiner's statement

Since the charity's gross income exceeded £250,000 your examiner must be a member of a body listed in section 145 of the 2011 Act. I confirm that I am qualified to undertake the examination because I am a member of the Institute of Chartered Accountants in England and Wales (ICAEW), which is one of the listed bodies.

I have completed my examination. I confirm that no material matters have come to my attention in connection with the examination giving me cause to believe that in any material respect:

1. accounting records were not kept in respect of the charity as required by section 130 of the Act; or
2. the financial statements do not accord with those records; or
3. the financial statements do not comply with the applicable requirements concerning the form and content of accounts set out in the Charities (Accounts and Reports) Regulations 2008 other than any requirement that the accounts give a 'true and fair' view which is not a matter considered as part of an independent examination.

I have no concerns and have come across no other matters in connection with the examination to which attention should be drawn in this report in order to enable a proper understanding of the accounts to be reached.



Jane Ascroft FCA MA (Cantab)
Independent Examiner

Enterprise House
Harmire Enterprise Park
Barnard Castle
County Durham
DL12 8XP

Angel Trust - A Charity For The People

Statement of Financial Activities

Year ended 30 June 2023

		Unrestricted funds	2023 Restricted funds	Total funds	2022 Total funds
	Note	£	£	£	£
Income and endowments					
Donations and legacies	4	70,224	24,446	94,670	62,850
Charitable activities	5	50,093	–	50,093	–
Other trading activities	6	219,423	–	219,423	227,446
Investment income	7	39	–	39	9
Other income	8	4,958	–	4,958	4,540
Total income		<u>344,737</u>	<u>24,446</u>	<u>369,183</u>	<u>294,845</u>
Expenditure					
Expenditure on raising funds:					
Costs of raising donations and legacies	9	16,384	–	16,384	25,199
Costs of other trading activities	10	213,725	–	213,725	196,623
Expenditure on charitable activities	11,12	130,750	–	130,750	65,508
Total expenditure		<u>360,859</u>	<u>–</u>	<u>360,859</u>	<u>287,330</u>
Net income		<u>(16,122)</u>	<u>24,446</u>	<u>8,324</u>	<u>7,515</u>
Transfers between funds		24,446	(24,446)	–	–
Net movement in funds		8,324	–	8,324	7,515
Reconciliation of funds					
Total funds brought forward		94,070	–	94,070	86,555
Total funds carried forward		<u>102,394</u>	<u>–</u>	<u>102,394</u>	<u>94,070</u>

The statement of financial activities includes all gains and losses recognised in the year. All income and expenditure derive from continuing activities.

The notes on pages 12 to 23 form part of these financial statements.

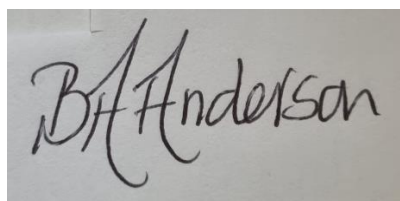
Angel Trust - A Charity For The People

Statement of Financial Position

30 June 2023

	Note	2023 £	2022 £
Fixed assets			
Tangible fixed assets	18	64,875	23,367
Investments	19	1	—
		<u>64,876</u>	<u>23,367</u>
Current assets			
Stocks	20	3,000	1,650
Debtors	21	17,564	5,349
Cash at bank and in hand		81,426	120,217
		<u>101,990</u>	<u>127,216</u>
Creditors: amounts falling due within one year	22	<u>64,472</u>	<u>56,513</u>
Net current assets		<u>37,518</u>	<u>70,703</u>
Total assets less current liabilities		<u>102,394</u>	<u>94,070</u>
Net assets		<u>102,394</u>	<u>94,070</u>
Funds of the charity			
Unrestricted funds		<u>102,394</u>	<u>94,070</u>
Total charity funds	25	<u>102,394</u>	<u>94,070</u>

These financial statements were approved by the board of trustees and authorised for issue on, and are signed on behalf of the board by:



Beryl Anderson
Trustee

The notes on pages 12 to 23 form part of these financial statements.

Angel Trust - A Charity For The People

Notes to the Financial Statements

Year ended 30 June 2023

1. General information

The charity is a public benefit entity and a registered charity in England and Wales and is unincorporated. The address of the principal office is Belvedere House, Kingsway, Bishop Auckland, County Durham, DL14 7JN.

2. Statement of compliance

These financial statements have been prepared in compliance with FRS 102, 'The Financial Reporting Standard applicable in the UK and the Republic of Ireland', the Statement of Recommended Practice applicable to charities preparing their accounts in accordance with the Financial Reporting Standard applicable in the UK and Republic of Ireland (FRS 102) (Charities SORP (FRS 102)) and the Charities Act 2011.

3. Accounting policies

Basis of preparation

The financial statements have been prepared on the historical cost basis, as modified by the revaluation of certain financial assets and liabilities and investments measured at fair value through income or expenditure.

The financial statements are prepared in sterling, which is the functional currency of the entity.

The entity is a Public Benefit Entity.

Going concern

There are no material uncertainties about the charity's ability to continue.

Judgements and key sources of estimation uncertainty

The preparation of the financial statements requires management to make judgements, estimates and assumptions that affect the amounts reported. These estimates and judgements are continually reviewed and are based on experience and other factors, including expectations of future events that are believed to be reasonable under the circumstances. The trustees consider that there are no significant estimates or judgements affecting these financial statements.

Fund accounting

Unrestricted funds are available for use at the discretion of the trustees to further any of the charity's purposes.

Designated funds are unrestricted funds earmarked by the trustees for particular future project or commitment.

Restricted funds are subjected to restrictions on their expenditure declared by the donor or through the terms of an appeal, and fall into one of two sub-classes: restricted income funds or endowment funds.

Angel Trust - A Charity For The People

Notes to the Financial Statements *(continued)*

Year ended 30 June 2023

3. Accounting policies *(continued)*

Income

All income is included in the statement of financial activities when the charity is entitled to the income, any performance related conditions attached have been met or are fully within the control of the charity, the income is considered probable and the amount can be quantified with reasonable accuracy. The following specific policies are applied to particular categories of income:

Donations and legacy income is received by way of donations, legacies, grants and gifts and is included in full in the Statement of Financial Activities when receivable. Where legacies have been notified to the charity but the criteria for income recognition have not been met, the legacy is treated as a contingent asset and disclosed if material. Grants, where entitlement is not conditional on the delivery of a specific performance by the charity, are recognised when the charity becomes unconditionally entitled to the grant.

Donated services and facilities are included at the value to the charity, being the amount the charity would have been willing to pay to obtain services or facilities of equivalent economic benefit on the open market.

Investment income is included when receivable.

Income from charitable trading activity is accounted for when earned.

Income from grants, where related to performance and specific deliverables, are accounted for as the charity earns the right to consideration by its performance.

Expenditure

Expenditure is recognised on an accruals basis as a liability is incurred. Expenditure includes any VAT which cannot be fully recovered, and is reported as part of the expenditure to which it relates:

Costs of raising funds comprise the costs associated with attracting donations, grants and legacies and the costs of trading for fundraising purposes.

Charitable expenditure comprises those costs incurred by the charity in the delivery of its activities and services for its beneficiaries. It includes both costs that can be allocated directly to such activities and those costs of an indirect nature necessary to support them.

Other expenditure includes all expenditure that is neither related to raising funds for the charity nor part of its expenditure on charitable activities.

All costs are allocated between the expenditure categories of the SOFA on a basis designed to reflect the use of the resource. Costs relating to a particular activity are allocated directly, others are apportioned on an appropriate basis, as set out in the notes to the accounts.

Operating leases

Lease payments are recognised as an expense over the lease term on a straight-line basis. The aggregate benefit of lease incentives is recognised as a reduction to expense over the lease term, on a straight-line basis.

Angel Trust - A Charity For The People

Notes to the Financial Statements *(continued)*

Year ended 30 June 2023

3. Accounting policies *(continued)*

Tangible assets

Tangible assets are initially recorded at cost, and subsequently stated at cost less any accumulated depreciation and impairment losses.

Depreciation

Depreciation is calculated so as to write off the cost or valuation of an asset, less its residual value, over the useful economic life of that asset as follows:

Fixtures and fittings	-	10% - 20% Straight line
Motor vehicles	-	25% reducing balance
Equipment	-	10% - 25% Straight line
Kitchen equipment	-	25% reducing balance

Investments

Unlisted equity investments are initially recorded at cost, and subsequently measured at fair value. If fair value cannot be reliably measured, assets are measured at cost less impairment.

Listed investments are measured at fair value with changes in fair value being recognised in income or expenditure.

Impairment of fixed assets

A review for indicators of impairment is carried out at each reporting date, with the recoverable amount being estimated where such indicators exist. Where the carrying value exceeds the recoverable amount, the asset is impaired accordingly. Prior impairments are also reviewed for possible reversal at each reporting date.

Stocks

Stocks are measured at the lower of cost and estimated selling price less costs to complete and sell. Cost includes all costs of purchase, costs of conversion and other costs incurred in bringing the stock to its present location and condition.

Financial instruments

The charity only has financial assets and liabilities of a kind that qualify as basic financial instruments. Basic financial instruments are initially recognised at transaction value and subsequently measured at their settlement value.

Angel Trust - A Charity For The People

Notes to the Financial Statements *(continued)*

Year ended 30 June 2023

3. Accounting policies *(continued)*

Defined contribution plans

Contributions to defined contribution plans are recognised as an expense in the period in which the related service is provided. Prepaid contributions are recognised as an asset to the extent that the prepayment will lead to a reduction in future payments or a cash refund.

When contributions are not expected to be settled wholly within 12 months of the end of the reporting date in which the employees render the related service, the liability is measured on a discounted present value basis. The unwinding of the discount is recognised as an expense in the period in which it arises.

Trade debtors

Trade and other debtors are recognised at the settlement amount due after any trade discount offered. Prepayments are valued at the amount prepaid net of any trade discounts due.

Accrued income and tax recoverable is included at the best estimate of the amounts receivable at the balance sheet date.

Cash at Bank and in Hand

Cash at bank and cash in hand includes cash and short term highly liquid investments with a short maturity of three months or less from the date of acquisition or opening of the deposit or similar account.

Trade creditors

Creditors are recognised where the charity has a present obligation resulting from a past event that will probably result in the transfer of funds to a third party and the amount due to settle the obligation can be measured or estimated reliably. Creditors are normally recognised at their settlement amount after allowing for any trade discounts due.

Taxation

The company is considered to pass the tests set out in Paragraph 1 Schedule 6 of the Finance Act 2010 and therefore it meets the definition of a charitable company for UK corporation tax purposes. Accordingly, the company is potentially exempt from taxation in respect of income or capital gains received within categories covered by Chapter 3 Part 11 of the Corporation Tax Act 2010 or Section 256 of the taxation of Chargeable Gains Act 1992, to the extent that such income or gains are applied exclusively to charitable purposes.

Angel Trust - A Charity For The People

Notes to the Financial Statements *(continued)*

Year ended 30 June 2023

4. Donations and legacies

	Unrestricted Funds £	Restricted Funds £	Total Funds 2023 £
Donations			
Donations	35,687	–	35,687
Gift aid recoverable	12,100	–	12,100
Charities Trust	5,328	–	5,328
Food Bank Sponsorship	3,500	–	3,500
Friends of Angel Trust	792	–	792
Corporate partners	1,502	–	1,502
Amazon	115	–	115
Gifts			
Gifts in kind - Venue hire	4,000	–	4,000
Gifts in kind - Car lease	1,200	–	1,200
Grants			
BUPA	6,000	–	6,000
South Durham Enterprise Agency	–	11,000	11,000
DCC Neighbourhood Budget	–	13,446	13,446
	<u>70,224</u>	<u>24,446</u>	<u>94,670</u>
	Unrestricted Funds £	Restricted Funds £	Total Funds 2022 £
Donations			
Donations	52,370	–	52,370
Gifts			
Gifts in kind - Venue hire	8,000	–	8,000
Gifts in kind - Car lease	1,800	–	1,800
Grants			
Grants receivable	–	680	680
	<u>62,170</u>	<u>680</u>	<u>62,850</u>

Gifts in kind comprise venue hire worth £4,000 and a vehicle lease worth £1,200.

Angel Trust - A Charity For The People

Notes to the Financial Statements (continued)

Year ended 30 June 2023

5. Charitable activities

	Unrestricted Funds £	Total Funds 2023 £	Unrestricted Funds £	Total Funds 2022 £
Community Pantry	<u>50,093</u>	<u>50,093</u>	<u>—</u>	<u>—</u>

6. Other trading activities

	Unrestricted Funds £	Total Funds 2023 £	Unrestricted Funds £	Total Funds 2022 £
Fundraising events	174,488	174,488	225,169	225,169
Merchandise income	3,330	3,330	2,277	2,277
Fundraising	33,303	33,303	—	—
Charity Shop	4,482	4,482	—	—
RAG	3,820	3,820	—	—
	<u>219,423</u>	<u>219,423</u>	<u>227,446</u>	<u>227,446</u>

7. Investment income

	Unrestricted Funds £	Total Funds 2023 £	Unrestricted Funds £	Total Funds 2022 £
Bank interest receivable	<u>39</u>	<u>39</u>	<u>9</u>	<u>9</u>

8. Other income

	Unrestricted Funds £	Total Funds 2023 £	Unrestricted Funds £	Total Funds 2022 £
Employment allowance	<u>4,958</u>	<u>4,958</u>	<u>4,540</u>	<u>4,540</u>

9. Costs of raising donations and legacies

	Unrestricted Funds £	Total Funds 2023 £	Unrestricted Funds £	Total Funds 2022 £
Costs of raising donations and legacies	<u>16,384</u>	<u>16,384</u>	<u>25,199</u>	<u>25,199</u>

10. Costs of other trading activities

	Unrestricted Funds £	Total Funds 2023 £	Unrestricted Funds £	Total Funds 2022 £
Cost of fundraising events	<u>213,725</u>	<u>213,725</u>	<u>196,623</u>	<u>196,623</u>

Angel Trust - A Charity For The People

Notes to the Financial Statements (continued)

Year ended 30 June 2023

11. Expenditure on charitable activities by fund type

	Unrestricted Funds £	Restricted Funds £	Total Funds 2023 £
Costs of charitable activities (see page xx)	50,106	–	50,106
Support costs	80,644	–	80,644
	<u>130,750</u>	<u>–</u>	<u>130,750</u>

	Unrestricted Funds £	Restricted Funds £	Total Funds 2022 £
Costs of charitable activities (see page xx)	15,007	680	15,687
Support costs	49,821	–	49,821
	<u>64,828</u>	<u>680</u>	<u>65,508</u>

12. Expenditure on charitable activities by activity type

	Activities undertaken directly £	Support costs £	Total funds 2023 £	Total fund 2022 £
Costs of charitable activities (see page xx)	<u>50,106</u>	<u>80,644</u>	<u>130,750</u>	<u>65,508</u>

13. Net income

Net income is stated after charging/(crediting):

	2023 £	2022 £
Depreciation of tangible fixed assets	<u>15,675</u>	<u>8,669</u>

14. Independent examination fees

	2023 £	2022 £
Fees payable to the independent examiner for: Independent examination of the financial statements	<u>1,260</u>	<u>3,120</u>

15. Staff costs

The total staff costs and employee benefits for the reporting period are analysed as follows:

	2023 £	2022 £
Wages and salaries	87,810	56,562
Social security costs	6,808	5,557
Employer contributions to pension plans	2,832	236
	<u>97,450</u>	<u>62,355</u>

Angel Trust - A Charity For The People

Notes to the Financial Statements (continued)

Year ended 30 June 2023

15. Staff costs (continued)

The average head count of employees during the year was 9 (2022: 3).

No employee received employee benefits of more than £60,000 during the year (2022: Nil).

Key Management Personnel

Key management personnel include all persons that have authority and responsibility for planning, directing and controlling the activities of the charity. The total compensation paid to key management personnel for services provided to the charity was £41,000 (2022:£38,667).

16. Trustee remuneration and expenses

Trustees received no remuneration or expenses in the current and previous year.

17. Transfers between funds

During the year £24,336 was transferred between restricted and unrestricted funds. This represented capital items purchased with restricted funds.

18. Tangible fixed assets

	Fixtures and fittings £	Motor vehicles £	Equipment £	Kitchen equipment £	Total £
Cost					
At 1 July 2022	44,949	–	3,794	480	49,223
Additions	636	6,500	537	49,510	57,183
At 30 June 2023	<u>45,585</u>	<u>6,500</u>	<u>4,331</u>	<u>49,990</u>	<u>106,406</u>
Depreciation					
At 1 July 2022	24,928	–	928	–	25,856
Charge for the year	8,400	271	695	6,309	15,675
At 30 June 2023	<u>33,328</u>	<u>271</u>	<u>1,623</u>	<u>6,309</u>	<u>41,531</u>
Carrying amount					
At 30 June 2023	<u>12,257</u>	<u>6,229</u>	<u>2,708</u>	<u>43,681</u>	<u>64,875</u>
At 30 June 2022	<u>20,021</u>	<u>–</u>	<u>2,866</u>	<u>480</u>	<u>23,367</u>

Angel Trust - A Charity For The People

Notes to the Financial Statements *(continued)*

Year ended 30 June 2023

19. Investments

	Shares in group undertakings £
Cost or valuation	
At 1 July 2022	–
Additions	1
At 30 June 2023	<u>1</u>
Impairment	
At 1 July 2022 and 30 June 2023	–
Carrying amount	
At 30 June 2023	<u>1</u>
At 30 June 2022	<u>–</u>

All investments shown above are held at valuation.

The investment represents 1 £1 share in Angel Trust Trading Limited. At 30th June 2023 Angel Trust Trading Limited had total capital of £1 and negative reserves of £12.

20. Stocks

	2023 £	2022 £
Merchandise stock	<u>3,000</u>	<u>1,650</u>

21. Debtors

	2023 £	2022 £
Trade debtors	155	829
Amounts owed by group undertakings	11	–
Prepayments	3,952	4,051
Accrued grant income	13,446	–
Other debtors	–	469
	<u>17,564</u>	<u>5,349</u>

22. Creditors: amounts falling due within one year

	2023 £	2022 £
Trade creditors	17,186	3,107
Accruals and deferred income	46,511	51,723
Social security and other taxes	–	94
Other creditors	775	1,589
	<u>64,472</u>	<u>56,513</u>

Angel Trust - A Charity For The People

Notes to the Financial Statements (continued)

Year ended 30 June 2023

23. Deferred income

	2023	2022
	£	£
At 1 July 2022	49,640	62,008
Amount released to income	(49,640)	(62,008)
Amount deferred in year	<u>44,303</u>	<u>49,640</u>
At 30 June 2023	<u><u>44,303</u></u>	<u><u>49,640</u></u>

Deferred income represents event income received in advance.

24. Pensions and other post retirement benefits

Defined contribution plans

The amount recognised in income or expenditure as an expense in relation to defined contribution plans was £2,832 (2022: £236).

25. Analysis of charitable funds

Unrestricted funds

	At				At
	1 July 2022	Income	Expenditure	Transfers	30 June 2023
	£	£	£	£	£
General funds	<u>94,070</u>	<u>344,737</u>	<u>(360,859)</u>	<u>24,446</u>	<u>102,394</u>

	At				At
	1 July 2021	Income	Expenditure	Transfers	30 June 2022
	£	£	£	£	£
General funds	<u>86,555</u>	<u>294,165</u>	<u>(286,650)</u>	<u>—</u>	<u>94,070</u>

Angel Trust - A Charity For The People

Notes to the Financial Statements *(continued)*

Year ended 30 June 2023

25. Analysis of charitable funds *(continued)*

Restricted funds

	At 1 July 2022 £	Income £	Expenditure £	Transfers £	At 30 June 2023 £
South Durham Enterprise Agency	–	11,000	–	(11,000)	–
DCC Neighbourhood Budget	–	<u>13,446</u>	–	(13,446)	–
	<u>–</u>	<u>24,446</u>	<u>–</u>	<u>(24,446)</u>	<u>–</u>

	At 1 July 2021 £	Income £	Expenditure £	Transfers £	At 30 June 2022 £
BUPA	–	<u>680</u>	<u>(680)</u>	–	–
	<u>–</u>	<u>680</u>	<u>(680)</u>	<u>–</u>	<u>–</u>

The grants from South Durham Enterprise Agency and the DCC Neighbourhood Budget were towards kitchen development and were spent in full during the year on capital items.

26. Analysis of net assets between funds

	Unrestricted Funds £	Total Funds 2023 £
Tangible fixed assets	64,875	64,875
Investments	1	1
Current assets	101,990	101,990
Creditors less than 1 year	<u>(64,472)</u>	<u>(64,472)</u>
Net assets	<u>102,394</u>	<u>102,394</u>

	Unrestricted Funds £	Total Funds 2022 £
Tangible fixed assets	23,367	23,367
Investments	–	–
Current assets	127,216	127,216
Creditors less than 1 year	<u>(56,513)</u>	<u>(56,513)</u>
Net assets	<u>94,070</u>	<u>94,070</u>

Angel Trust - A Charity For The People

Notes to the Financial Statements *(continued)*

Year ended 30 June 2023

27. Operating lease commitments

The total future minimum lease payments under non-cancellable operating leases are as follows:

	2023	2022
	£	£
Not later than 1 year	4,560	4,320
Later than 1 year and not later than 5 years	<u>12,600</u>	<u>360</u>
	<u><u>17,160</u></u>	<u><u>4,680</u></u>

28. Related parties

M Boyes is a trustee of the charity. During the year he was paid £14,232 (2022 - £12,682) in respect of services provided to run the charity's events.

Angel Trust - A Charity For The People

Management Information

Year ended 30 June 2023

The following pages do not form part of the financial statements.

Angel Trust - A Charity For The People

Detailed Statement of Financial Activities

Year ended 30 June 2023

	2023 £	2022 £
Income and endowments		
Donations and legacies		
Donations	35,687	52,370
Gift aid recoverable	12,100	–
Charities Trust	5,328	–
Food Bank Sponsorship	3,500	–
Friends of Angel Trust	792	–
Corporate partners	1,502	–
Amazon	115	–
Gifts in kind - Venue hire	4,000	8,000
Gifts in kind - Car lease	1,200	1,800
Grants receivable	–	680
BUPA	6,000	–
South Durham Enterprise Agency	11,000	–
DCC Neighbourhood Budget	13,446	–
	<u>94,670</u>	<u>62,850</u>
Charitable activities		
Community Pantry	50,093	–
Other trading activities		
Fundraising events	174,488	225,169
Merchandise income	3,330	2,277
Fundraising	33,303	–
Charity Shop	4,482	–
RAG	3,820	–
	<u>219,423</u>	<u>227,446</u>
Investment income		
Bank interest receivable	39	9
Other income		
Employment allowance	4,958	4,540
Total income	<u><u>369,183</u></u>	<u><u>294,845</u></u>

Angel Trust - A Charity For The People

Detailed Statement of Financial Activities *(continued)*

Year ended 30 June 2023

	2023 £	2022 £
Expenditure		
Costs of raising donations and legacies		
Costs of raising donations and legacies	16,384	25,199
Costs of other trading activities		
Wages	37,271	29,498
Employer's NIC	3,346	2,753
Pension costs	2,832	236
Cost of fundraising events	147,444	149,122
Advertising and marketing	3,523	3,536
Merchandise costs	4,488	3,012
Community Fundraiser	11,999	5,636
Other fundraising costs	2,822	2,830
	<u>213,725</u>	<u>196,623</u>
Expenditure on charitable activities		
<i>Activities undertaken directly</i>		
Wages	30,919	12,889
Employer's NIC	1,881	1,402
Community Pantry costs	17,306	1,396
	<u>50,106</u>	<u>15,687</u>
<i>Support costs</i>		
Wages	19,620	14,175
Employer's NIC	1,581	1,402
Rent	8,483	4,435
Light and heat	4,125	2,296
Insurance	864	1,410
Other premises costs	7,582	2,228
Travel and subsistence	9,195	3,746
Legal and professional fees	1,390	3,120
Office costs	7,385	4,835
Depreciation	15,675	8,669
Online transaction costs	2,335	2,071
Other costs	2,409	1,434
	<u>80,644</u>	<u>49,821</u>
Expenditure on charitable activities	<u>130,750</u>	<u>65,508</u>
Total expenditure	<u>360,859</u>	<u>287,330</u>
Net income	<u>8,324</u>	<u>7,515</u>

ANGEL TRUST - A CHARITY FOR THE PEOPLE

England & Wales - Charity number 1178926

Accounts

Angel Trust - A Charity For The People
Financial Statements
For the year ending
30 June 2022

JANE ASCROFT ACCOUNTANCY LIMITED

Chartered accountants
Enterprise House
Harmire Enterprise Park
Barnard Castle
County Durham
DL12 8XP

Angel Trust - A Charity For The People

Financial Statements

Year ended 30 June 2022

	Page
Trustees' annual report	1
Independent examiner's report to the trustees	10
Statement of financial activities	11
Statement of financial position	12
Notes to the financial statements	13
The following pages do not form part of the financial statements	
Detailed statement of financial activities	24

Angel Trust - A Charity For The People

Trustees' Annual Report

Year ended 30 June 2022

The trustees present their report and the unaudited financial statements of the charity for the year ended 30 June 2022.

Chair's report

As chair of Angel Trust trustees, I have prepared this statement as part of the Annual Report for July 2021 to June 2022.

Looking back I have always been able to report that Angel Trust has seen much improvement with exciting prospects for our future. This financial year however saw the effects that struck worldwide with the devastating consequences of "Covid" and the impact on us moving forward to encompass our aims and objectives and more importantly, an events program that at times was totally stagnant and in operational terms was governed to be virtually impossible

Angel Trust had an established reputation for the breadth and quality of services provided to individuals, families, organisations schools, and clubs across The County of Durham and Darlington Borough and never was it now more needed to serve the people of this community.

Through the strength of our trustees, volunteers and the generosity of donors, we were able to ensure a proactive schedule of support and diverse intervention.

We addressed the issues with the board by updating one another via zoom, emails, what's app and calls. Finally, in September 2021 we were able to celebrate the exodus from covid with a long-awaited "ladies' day event" with euphoric community support.

The strong stability of Angel trust has gained us even more familiarity within our community, and I put that down to the support and empathy we show and serve as we continue to stay true to our values and policies.

It is indeed with a great sense of pride and privilege to Chair this organisation and thank my fellow trustees, ambassadors volunteers, staff and CEO for their moral strength and ongoing commitment.

Beryl Anderson
Chairman for the Board of Trustees

Angel Trust - A Charity For The People

Trustees' Annual Report *(continued)*

Year ended 30 June 2022

Objectives and activities

Angel Trust was formed as a local charity for the people of Darlington and County Durham. We aim to support individuals and organisations in the community by providing financial support and services to those in need. We want to improve the local community and make life better for those living within it.

The objectives of the CIO are:

(a) To relieve the needs of the community in Darlington and County Durham by providing grants to individuals and/or charities or other organisations in such ways as the trustees see fit to enable; (i) The advancement of citizenship and community development (ii) The relief of financial hardship and;(iii) Other such charitable purposes as the trustees shall determine.

Established in April 2018 the Angel Trust was formed as a local charity and has rapidly become recognised as "The People's Charity". Operating throughout Darlington and all of County Durham, the boundaries defined within the Gaunless Gateway are firmly embedded within the aims and objectives of The Angel Trust.

The Trust operates under the stringent guidance of a registered board of trustees and a Senior Fundraiser /CEO. Within the skill set of the board there is a diverse representation of assets and professional impetus covering legal procedures, press, publicity and media marketing, health and safety management, building and structural planning, entertainment and choreography, business management, hotel and function property availability as well as financial accounting procedures.

The Angel Trust's ambition is to support individuals and organisations in the local community by providing financial support and services to those in need and are undergoing hardship. Our aim is to improve the local community and make life better for those living within it. The Angel Trust operates under a specified legal constitution within its governing document and is registered with the Charity Commission.

In setting objectives and planning for activities, the trustees have given due consideration to general guidance published by the Charity Commission relating to public benefit, including the guidance 'Public benefit: running a charity (PB2)'.

Angel Trust fundraises in the community using various methods; we host fundraising events, distribute collecting cans to local business and we have individual fundraisers which altogether enables us to achieve our objectives.

Activities undertaken to achieve objectives

There is a strong fundraising structure that appeals to our contrastive database of supporters, designed and marketed to attract their taste and appetite for leisure and entertainment. During its first year Angel Trust has established a reputation for a strong charitable standing in our community by providing much needed help and funds to individuals, organisations, schools and clubs across both The County of Durham and The Borough of Darlington. The Trust staff and volunteers have worked hard to spread the ethos "We may all need a helping hand at some point in our lives and the Angel Trust aims to be there to provide support where it is needed." As a result of this we now receive referrals from Macmillan, Social Workers, School Workers, Refuges and many more. We are quickly becoming the charity that people turn to.

Angel Trust - A Charity For The People

Trustees' Annual Report *(continued)*

Year ended 30 June 2022

Achievements and performance

Angel Trust is back up and running and we have made it through the past 2 years of Covid stipulations which hasn't been easy. With our CEO and many of our staff contracting Covid, it has been a very hard time for the Trust. Despite all of this, our team continued to grant wishes, deliver meals, provide boredom packs, create food hampers, and so much more. We would like to take the time to thank all our staff and volunteers who have helped us through the past 2 years, without the staff, volunteers, and supporters, there simply is no Angel Trust.

We continue to have a huge presence in the local community and have become the charity that the people of County Durham turn too. Referrals come in from Social Services, Job Centres, Midwives, and MacMillan, to name just a few. Our motto of "you never know when you might need a helping hand" is very true, and we have helped so many people over the past year in some very sad situations.

Here are a few highlights of wishes we have granted this year:



We have sent families to the Treehouse at Ramside Hall throughout the year, many families who have a terminally ill family member and just need some quality time away to create memories in a magical place. We tailor the experience to the specific family with add-ons like Beamish Museum trips, spa trips for mam, golf for dad, cinema visits, and bowling, to create the perfect experience.



These images show some inspirational families who have been through very hard times; including Emma, who lost sight in one eye, got diagnosed with breast cancer, and found out her son had diabetes; 'Betty The Brave', who was born with a brain injury called Hypoxic Ischemic Encephalopathy; Julie, who was diagnosed with cancer and had the heart-breaking news that it was untreatable; Dominic, who was diagnosed with terminal grade 4 glioblastoma on his frontal right lobe of the brain, which meant that he had to undergo surgery to remove 2 tumours, and is having treatment to stop it from spreading; and Connor, who has had a very long journey with acute lymphoblastic leukaemia, after being diagnosed at just 13 years old and suffering from many serious side effects, including a blood clot in his brain, paralysis to his legs, appendicitis, and sepsis.



Angel Trust - A Charity For The People

Trustees' Annual Report *(continued)*

Year ended 30 June 2022



We have given away a few holidays to CenterParcs, but 2 stories that stick in our mind are those of Alan and Hugo.

Unfortunately, Alan's wife, Michelle, passed away after contracting Covid whilst nursing through the pandemic. We wanted to create some family fun time for Alan and his two young children, who are all very sporty. We also helped Alan with Christmas presents after Alan told us that he "didn't know where to start". The family often pop-in to see us and always say that they will be eternally grateful.

When we visited 2-year-old Hugo and his family to present them with their holiday voucher, the family said that they were 'overwhelmed that someone had taken their time to nominate them'. They had a great weekend and were able to create some lasting memories with Hugo, who suffers from a rare epileptic condition, brain damage, hip displacement, breathing difficulties, and other disabilities. After a challenging few years with Hugo having to undergo a life-saving surgery, Angel Trust allowed the family some time to relax and have fun.



Angel Trust - A Charity For The People

Trustees' Annual Report *(continued)*

Year ended 30 June 2022



Sometimes, the requests we receive are a task in themselves to create. We received a letter from a family member of twins, Poppy & Lucy, telling us that their mam had sadly passed away very quickly due to cancer. She was the main carer for the girls, as their dad worked away on the oil rigs. The request we received was asking us if we could help the girls bond with their dad and build their relationship.

We put on our thinking caps and decided to deliver Poppy & Lucy a box with 12 envelopes in, labelled with the months of the year. Inside each envelope was an adventure that they could experience and enjoy with their dad, for example, October was pumpkin picking, and December was a pantomime. We received photos from the family each month, telling us how much they enjoyed the experiences.



Angel Trust - A Charity For The People

Trustees' Annual Report *(continued)*

Year ended 30 June 2022



Another one of our calls to action was to save our local phone box, which in itself seemed like an easy task. However, this took months of solicitor's time and mountains of red tape to jump through. We asked the public on social media what they wanted us to do with the phone box, and it was unanimous that the community wanted a defibrillator. We purchased the defibrillator, and in this year alone it has been out 14 times and used 3 times. I beam with pride every time I drive past the phone box. It's amazing what a community can do when we come together. Our story about the phone box also appeared in The Northern Echo, which you can read about here:

<https://tinyurl.com/angeltrustphonebox>



Many times throughout the year, we host parties and events for groups of both children and adults. For some of these parties, we give out golden tickets to families asking them to attend, which makes them feel very privileged and special. Our 'Mad Hatters Easter Tea Party' was a great addition to our events calendar, with 300 special local people attending Hardwick Hall for a sumptuous afternoon tea with the Mad Hatter and other Alice In Wonderland characters. We played lots of games and gave out gifts to the attendees. The laughter in the room will stay with us forever.

Angel Trust - A Charity For The People

Trustees' Annual Report *(continued)*

Year ended 30 June 2022



At Christmas time, we had 100 guests onboard our Christmas Train ride with Santa, after asking for nominations of special families on social media. We had Santa handing out hand-picked sacks of toys to each family, hot chocolate in our PJs, singing Christmas carols, and much more. The families who attended said that it was so special and some were even reduced to tears.

Our Toy Appeal grows every year, it takes 2 members of staff two months to plan and a tribe of volunteers to orchestrate the picking packing and delivery routes.

Financial review

The charity generated income of £294,845 (2021 - £124,600) during its fourth year and incurred expenditure of £287,330 (2021 - £139,533).

Reserves policy

Trustees aim to hold six months running costs as free reserves. The charity's unrestricted reserves currently stand at £94,070 (2021: £86,555), representing around seven and a half months routine expenditure, and the trustees are satisfied with this position.

Angel Trust - A Charity For The People

Trustees' Annual Report *(continued)*

Year ended 30 June 2022

Structure, governance and management

Constitution

The charity was incorporated as a Charitable Incorporated Organisation (registered charity number 1178926) on 26 June 2018.

Methods of appointment or election of trustees

The management of the charity is the responsibility of the trustees who are elected and co-opted under the terms of the Trust deed. Induction is provided for new trustees as required.

Organisational structure and decision-making policies

At the end of the year Angel Trust has a Board of 4 trustees comprised from various professional backgrounds. Appointments to the Board are made by the trustees, once elected, Trustees are given a copy of the Charities Commission Handbook and full verbal explanatory briefing from our charities solicitor on the expectations of being a trustee.

The charity also has a CEO who oversees the overall running of the charity including the charities Marketing and Fundraising Assistant. The trustees delegate day to day operations to the Chief Executive.

Angel Trust have two Ambassadors; Beau Stevens and The Dragettes, who play a key role in promoting the charity to the local community and through the press. In addition to this we have a fantastic team of volunteers, without them we wouldn't be able to do the work we do.

Pay policy for key management personnel

The salary and benefits of the Chief Executive are set by the board of trustees, and reviewed annually.

Related party relationships

The charity has benefited from the support of the services of trustees in a number of ways. John Adamson, through Ramside Estates, has provided accommodation and other gifts in kind to allow the charity to operate. Where the charity has run events at any of the Ramside Estates properties, these events have been charged at normal commercial rates. As the nominated charity of Ramside Estates the Trust has also benefitted from social media coverage, enhancing ticket sales and donations.

Mark Boyes, one of our trustees, also provides professional entertainment services at discounted rates to some of our events, which further benefits the charity through his on-line presence on social media.

Financial risk management

The trustees have assessed the major risks to which the charity is exposed, in particular those related to the operations and finances of the charity, and are satisfied that systems and procedures are in place to mitigate our exposure to the major risks.

Angel Trust - A Charity For The People

Trustees' Annual Report *(continued)*

Year ended 30 June 2022

Reference and administrative details

Registered charity name Angel Trust - A Charity For The People

Charity registration number 1178926

Principal office Belvedere House
Kingsway
Bishop Auckland
County Durham
DL14 7JN

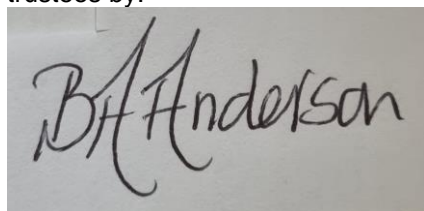
The trustees

Beryl Anderson
John Adamson
Mark Boyes
Paul Anderson
Nicola Stephenson (Appointed 1 August 2022)
Kathryn Mortimer (Appointed 11 July 2022)
Steven Robson (Appointed 11 July 2022)

Chief Executive Officer Clair McGregor

Independent examiner Jane Ascroft FCA MA(Cantab)
Enterprise House
Harmire Enterprise Park
Barnard Castle
County Durham
DL12 8XP

The trustees' annual report was approved on 24 March 2023 and signed on behalf of the board of trustees by:

A photograph of a handwritten signature in black ink on a light-colored surface. The signature reads 'Beryl Anderson' in a cursive script.

Beryl Anderson
Trustee

Angel Trust - A Charity For The People

Independent Examiner's Report to the Trustees of Angel Trust - A Charity For The People

Year ended 30 June 2022

I report to the trustees on my examination of the financial statements of Angel Trust - A Charity For The People ('the charity') for the year ended 30 June 2022.

Responsibilities and basis of report

As the trustees of the charity you are responsible for the preparation of the financial statements in accordance with the requirements of the Charities Act 2011 ('the Act').

I report in respect of my examination of the charity's financial statements carried out under section 145 of the 2011 Act and in carrying out my examination I have followed all the applicable Directions given by the Charity Commission under section 145(5)(b) of the Act.

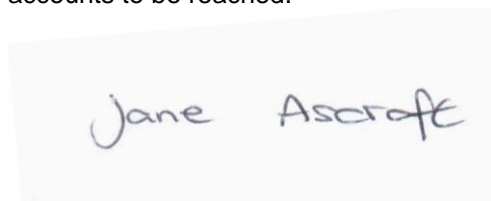
Independent examiner's statement

Since the charity's gross income exceeded £250,000 your examiner must be a member of a body listed in section 145 of the 2011 Act. I confirm that I am qualified to undertake the examination because I am a member of the Institute of Chartered Accountants in England and Wales (ICAEW), which is one of the listed bodies.

I have completed my examination. I confirm that no material matters have come to my attention in connection with the examination giving me cause to believe that in any material respect:

1. accounting records were not kept in respect of the charity as required by section 130 of the Act; or
2. the financial statements do not accord with those records; or
3. the financial statements do not comply with the applicable requirements concerning the form and content of accounts set out in the Charities (Accounts and Reports) Regulations 2008 other than any requirement that the accounts give a 'true and fair' view which is not a matter considered as part of an independent examination.

I have no concerns and have come across no other matters in connection with the examination to which attention should be drawn in this report in order to enable a proper understanding of the accounts to be reached.



Jane Ascroft FCA MA (Cantab)
Independent Examiner

Enterprise House
Harmire Enterprise Park
Barnard Castle
County Durham
DL12 8XP

Angel Trust - A Charity For The People

Statement of Financial Activities

Year ended 30 June 2022

		2022	2021		
		Unrestricted funds	Restricted funds	Total funds	Total funds
	Note	£	£	£	£
Income and endowments					
Donations and legacies	4	62,170	680	62,850	47,978
Other trading activities	5	227,446	–	227,446	42,571
Investment income	6	9	–	9	–
Other income	7	4,540	–	4,540	34,051
Total income		<u>294,165</u>	<u>680</u>	<u>294,845</u>	<u>124,600</u>
Expenditure					
Expenditure on raising funds:					
Costs of raising donations and legacies	8	25,199	–	25,199	10,929
Costs of other trading activities	9	196,623	–	196,623	56,022
Expenditure on charitable activities	10,11	64,828	680	65,508	72,581
Total expenditure		<u>286,650</u>	<u>680</u>	<u>287,330</u>	<u>139,532</u>
Net income/(expenditure) and net movement in funds					
		<u>7,515</u>	<u>–</u>	<u>7,515</u>	<u>(14,932)</u>
Reconciliation of funds					
Total funds brought forward		<u>86,555</u>	<u>–</u>	<u>86,555</u>	<u>101,487</u>
Total funds carried forward		<u>94,070</u>	<u>–</u>	<u>94,070</u>	<u>86,555</u>

The statement of financial activities includes all gains and losses recognised in the year. All income and expenditure derive from continuing activities.

The notes on pages 13 to 22 form part of these financial statements.

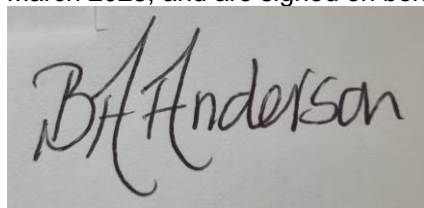
Angel Trust - A Charity For The People

Statement of Financial Position

30 June 2022

	Note	2022 £	2021 £
Fixed assets			
Tangible fixed assets	16	23,367	30,007
Current assets			
Stocks	17	1,650	–
Debtors	18	5,349	8,201
Cash at bank and in hand		120,217	120,093
		<u>127,216</u>	<u>128,294</u>
Creditors: amounts falling due within one year	19	56,513	71,746
Net current assets		<u>70,703</u>	<u>56,548</u>
Total assets less current liabilities		<u>94,070</u>	<u>86,555</u>
Net assets		<u>94,070</u>	<u>86,555</u>
Funds of the charity			
Unrestricted funds		94,070	86,555
Total charity funds	22	<u>94,070</u>	<u>86,555</u>

These financial statements were approved by the board of trustees and authorised for issue on 24 March 2023, and are signed on behalf of the board by:



Beryl Anderson
Trustee

The notes on pages 13 to 22 form part of these financial statements.

Angel Trust - A Charity For The People

Notes to the Financial Statements

Year ended 30 June 2022

1. General information

The charity is a public benefit entity and a registered charity in England and Wales and is unincorporated. The address of the principal office is Belvedere House, Kingsway, Bishop Auckland, County Durham, DL14 7JN.

2. Statement of compliance

These financial statements have been prepared in compliance with FRS 102, 'The Financial Reporting Standard applicable in the UK and the Republic of Ireland', the Statement of Recommended Practice applicable to charities preparing their accounts in accordance with the Financial Reporting Standard applicable in the UK and Republic of Ireland (FRS 102) (Charities SORP (FRS 102)) and the Charities Act 2011.

3. Accounting policies

Basis of preparation

The financial statements have been prepared on the historical cost basis, as modified by the revaluation of certain financial assets and liabilities and investments measured at fair value through income or expenditure.

The financial statements are prepared in sterling, which is the functional currency of the entity.

The entity is a Public Benefit Entity.

Going concern

There are no material uncertainties about the charity's ability to continue.

Judgements and key sources of estimation uncertainty

The preparation of the financial statements requires management to make judgements, estimates and assumptions that affect the amounts reported. These estimates and judgements are continually reviewed and are based on experience and other factors, including expectations of future events that are believed to be reasonable under the circumstances. The trustees consider that there are no significant estimates or judgements affecting these financial statements.

Fund accounting

Unrestricted funds are available for use at the discretion of the trustees to further any of the charity's purposes.

Designated funds are unrestricted funds earmarked by the trustees for particular future project or commitment.

Restricted funds are subjected to restrictions on their expenditure declared by the donor or through the terms of an appeal, and fall into one of two sub-classes: restricted income funds or endowment funds.

Angel Trust - A Charity For The People

Notes to the Financial Statements *(continued)*

Year ended 30 June 2022

3. Accounting policies *(continued)*

Income

All income is included in the statement of financial activities when the charity is entitled to the income, any performance related conditions attached have been met or are fully within the control of the charity, the income is considered probable and the amount can be quantified with reasonable accuracy. The following specific policies are applied to particular categories of income:

Donations and legacy income is received by way of donations, legacies, grants and gifts and is included in full in the Statement of Financial Activities when receivable. Where legacies have been notified to the charity but the criteria for income recognition have not been met, the legacy is treated as a contingent asset and disclosed if material. Grants, where entitlement is not conditional on the delivery of a specific performance by the charity, are recognised when the charity becomes unconditionally entitled to the grant.

Donated services and facilities are included at the value to the charity, being the amount the charity would have been willing to pay to obtain services or facilities of equivalent economic benefit on the open market.

Investment income is included when receivable.

Income from charitable trading activity is accounted for when earned.

Income from grants, where related to performance and specific deliverables, are accounted for as the charity earns the right to consideration by its performance.

Expenditure

Expenditure is recognised on an accruals basis as a liability is incurred. Expenditure includes any VAT which cannot be fully recovered, and is reported as part of the expenditure to which it relates:

Costs of raising funds comprise the costs associated with attracting donations, grants and legacies and the costs of trading for fundraising purposes.

Charitable expenditure comprises those costs incurred by the charity in the delivery of its activities and services for its beneficiaries. It includes both costs that can be allocated directly to such activities and those costs of an indirect nature necessary to support them.

Other expenditure includes all expenditure that is neither related to raising funds for the charity nor part of its expenditure on charitable activities.

All costs are allocated between the expenditure categories of the SOFA on a basis designed to reflect the use of the resource. Costs relating to a particular activity are allocated directly, others are apportioned on an appropriate basis, as set out in the notes to the accounts.

Operating leases

Lease payments are recognised as an expense over the lease term on a straight-line basis. The aggregate benefit of lease incentives is recognised as a reduction to expense over the lease term, on a straight-line basis.

Angel Trust - A Charity For The People

Notes to the Financial Statements *(continued)*

Year ended 30 June 2022

3. Accounting policies *(continued)*

Tangible assets

Tangible assets are initially recorded at cost, and subsequently stated at cost less any accumulated depreciation and impairment losses.

Depreciation

Depreciation is calculated so as to write off the cost or valuation of an asset, less its residual value, over the useful economic life of that asset as follows:

Fixtures and fittings	-	10% - 20% Straight line
Equipment	-	10% - 25% Straight line

Impairment of fixed assets

A review for indicators of impairment is carried out at each reporting date, with the recoverable amount being estimated where such indicators exist. Where the carrying value exceeds the recoverable amount, the asset is impaired accordingly. Prior impairments are also reviewed for possible reversal at each reporting date.

Stocks

Stocks are measured at the lower of cost and estimated selling price less costs to complete and sell. Cost includes all costs of purchase, costs of conversion and other costs incurred in bringing the stock to its present location and condition.

Financial instruments

The charity only has financial assets and liabilities of a kind that qualify as basic financial instruments. Basic financial instruments are initially recognised at transaction value and subsequently measured at their settlement value.

Defined contribution plans

Contributions to defined contribution plans are recognised as an expense in the period in which the related service is provided. Prepaid contributions are recognised as an asset to the extent that the prepayment will lead to a reduction in future payments or a cash refund.

When contributions are not expected to be settled wholly within 12 months of the end of the reporting date in which the employees render the related service, the liability is measured on a discounted present value basis. The unwinding of the discount is recognised as an expense in the period in which it arises.

Angel Trust - A Charity For The People

Notes to the Financial Statements *(continued)*

Year ended 30 June 2022

Trade debtors

Trade and other debtors are recognised at the settlement amount due after any trade discount offered. Prepayments are valued at the amount prepaid net of any trade discounts due.

Accrued income and tax recoverable is included at the best estimate of the amounts receivable at the balance sheet date.

Cash at Bank and in Hand

Cash at bank and cash in hand includes cash and short term highly liquid investments with a short maturity of three months or less from the date of acquisition or opening of the deposit or similar account.

Trade creditors

Creditors are recognised where the charity has a present obligation resulting from a past event that will probably result in the transfer of funds to a third party and the amount due to settle the obligation can be measured or estimated reliably. Creditors are normally recognised at their settlement amount after allowing for any trade discounts due.

Taxation

The company is considered to pass the tests set out in Paragraph 1 Schedule 6 of the Finance Act 2010 and therefore it meets the definition of a charitable company for UK corporation tax purposes. Accordingly, the company is potentially exempt from taxation in respect of income or capital gains received within categories covered by Chapter 3 Part 11 of the Corporation Tax Act 2010 or Section 256 of the taxation of Chargeable Gains Act 1992, to the extent that such income or gains are applied exclusively to charitable purposes.

4. Donations and legacies

	Unrestricted Funds £	Restricted Funds £	Total Funds 2022 £
Donations			
Donations	52,370	–	52,370
Gifts			
Gifts in kind - Venue hire	8,000	–	8,000
Gifts in kind - Car lease	1,800	–	1,800
Grants			
Grants receivable	–	680	680
	<u>62,170</u>	<u>680</u>	<u>62,850</u>

Angel Trust - A Charity For The People

Notes to the Financial Statements (continued)

Year ended 30 June 2022

4. Donations and legacies (continued)

	Unrestricted Funds £	Restricted Funds £	Total Funds 2021 £
Donations			
Donations	33,617	–	33,617
Gifts			
Gifts in kind - Venue hire	12,336	–	12,336
Gifts in kind - Car lease	–	–	–
Grants			
Grants receivable	2,025	–	2,025
	<u>47,978</u>	<u>–</u>	<u>47,978</u>

5. Other trading activities

	Unrestricted Funds £	Total Funds 2022 £	Unrestricted Funds £	Total Funds 2021 £
Fundraising events	225,169	225,169	39,909	39,909
Merchandise income	2,277	2,277	2,662	2,662
	<u>227,446</u>	<u>227,446</u>	<u>42,571</u>	<u>42,571</u>

6. Investment income

	Unrestricted Funds £	Total Funds 2022 £	Unrestricted Funds £	Total Funds 2021 £
Bank interest receivable	9	9	–	–
	<u>9</u>	<u>9</u>	<u>–</u>	<u>–</u>

7. Other income

	Unrestricted Funds £	Total Funds 2022 £	Unrestricted Funds £	Total Funds 2021 £
Durham County Council - Covid support	–	–	12,336	12,336
HMRC Job Retention Scheme	–	–	21,715	21,715
Employment allowance	4,540	4,540	–	–
	<u>4,540</u>	<u>4,540</u>	<u>34,051</u>	<u>34,051</u>

Angel Trust - A Charity For The People

Notes to the Financial Statements *(continued)*

Year ended 30 June 2022

8. Costs of raising donations and legacies

	Unrestricted Funds £	Total Funds 2022 £	Unrestricted Funds £	Total Funds 2021 £
Costs of raising donations and legacies	25,199	25,199	10,929	10,929

9. Costs of other trading activities

	Unrestricted Funds £	Total Funds 2022 £	Unrestricted Funds £	Total Funds 2021 £
Cost of fundraising events	196,623	196,623	56,022	56,022

10. Expenditure on charitable activities by fund type

	Unrestricted Funds £	Restricted Funds £	Total Funds 2022 £
Costs of charitable activities (see page 25)	15,007	680	15,687
Support costs	49,821	–	49,821
	<u>64,828</u>	<u>680</u>	<u>65,508</u>

	Unrestricted Funds £	Restricted Funds £	Total Funds 2021 £
Costs of charitable activities (see page 25)	18,514	–	18,514
Support costs	54,067	–	54,067
	<u>72,581</u>	<u>–</u>	<u>72,581</u>

11. Expenditure on charitable activities by activity type

	Activities undertaken directly £	Support costs £	Total funds 2022 £	Total fund 2021 £
Costs of charitable activities (see page 25)	15,687	49,821	65,508	72,581

12. Net income/(expenditure)

Net income/(expenditure) is stated after charging/(crediting):

	2022 £	2021 £
Depreciation of tangible fixed assets	<u>8,669</u>	<u>8,508</u>

Angel Trust - A Charity For The People

Notes to the Financial Statements (continued)

Year ended 30 June 2022

13. Independent examination fees

	2022	2021
	£	£
Fees payable to the independent examiner for: Independent examination of the financial statements	<u>3,120</u>	<u>3,000</u>

14. Staff costs

The total staff costs and employee benefits for the reporting period are analysed as follows:

	2022	2021
	£	£
Wages and salaries	56,562	53,978
Social security costs	5,557	14
Employer contributions to pension plans	236	–
	<u>62,355</u>	<u>53,992</u>

The average head count of employees during the year was 3 (2021: 2).

No employee received employee benefits of more than £60,000 during the year (2021: Nil).

Key Management Personnel

Key management personnel include all persons that have authority and responsibility for planning, directing and controlling the activities of the charity. The total compensation paid to key management personnel for services provided to the charity was £38,667 (2021: £37,000).

15. Trustee remuneration and expenses

Trustees received no remuneration or expenses in the current and previous year.

16. Tangible fixed assets

	Fixtures and fittings £	Equipment £	Total £
Cost			
At 1 July 2021	44,949	2,245	47,194
Additions	480	1,549	2,029
At 30 June 2022	<u>45,429</u>	<u>3,794</u>	<u>49,223</u>
Depreciation			
At 1 July 2021	16,645	542	17,187
Charge for the year	8,283	386	8,669
At 30 June 2022	<u>24,928</u>	<u>928</u>	<u>25,856</u>
Carrying amount			
At 30 June 2022	<u>20,501</u>	<u>2,866</u>	<u>23,367</u>
At 30 June 2021	<u>28,304</u>	<u>1,703</u>	<u>30,007</u>

Angel Trust - A Charity For The People

Notes to the Financial Statements *(continued)*

Year ended 30 June 2022

17. Stocks

	2022	2021
	£	£
Merchandise stock	1,650	–

18. Debtors

	2022	2021
	£	£
Trade debtors	829	–
Prepayments and accrued income	4,051	6,602
Other debtors	469	1,599
	<u>5,349</u>	<u>8,201</u>

19. Creditors: amounts falling due within one year

	2022	2021
	£	£
Trade creditors	3,107	200
Accruals and deferred income	51,723	68,908
Social security and other taxes	94	2,638
Other creditors	1,589	–
	<u>56,513</u>	<u>71,746</u>

20. Deferred income

	2022	2021
	£	£
At 1 July 2021	62,008	5,194
Amount released to income	(62,008)	(5,194)
Amount deferred in year	49,640	62,008
At 30 June 2022	<u>49,640</u>	<u>62,008</u>

21. Pensions and other post retirement benefits

Defined contribution plans

The amount recognised in income or expenditure as an expense in relation to defined contribution plans was £236 (2021: £Nil).

Angel Trust - A Charity For The People

Notes to the Financial Statements *(continued)*

Year ended 30 June 2022

22. Analysis of charitable funds

Unrestricted funds

	At 1 July 2021	Income	Expenditure	At 30 June 2022
	£	£	£	£
General funds	86,555	294,165	(286,650)	94,070

	At 1 July 2020	Income	Expenditure	At 30 June 2021
	£	£	£	£
General funds	101,487	124,600	(139,532)	86,555

Restricted funds

	At 1 July 2021	Income	Expenditure	At 30 June 2022
	£	£	£	£
BUPA	—	680	(680)	—

	At 1 July 2020	Income	Expenditure	At 30 June 2021
	£	£	£	£
BUPA	—	—	—	—

The BUPA grant was towards the foodbank.

23. Analysis of net assets between funds

	Unrestricted Funds	Total Funds
	£	2022
	£	£
Tangible fixed assets	23,367	23,367
Current assets	127,216	127,216
Creditors less than 1 year	(56,513)	(56,513)
Net assets	<u>94,070</u>	<u>94,070</u>

	Unrestricted Funds	Total Funds
	£	2021
	£	£
Tangible fixed assets	30,007	30,007
Current assets	128,294	128,294
Creditors less than 1 year	(71,746)	(71,746)
Net assets	<u>86,555</u>	<u>86,555</u>

Angel Trust - A Charity For The People

Notes to the Financial Statements *(continued)*

Year ended 30 June 2022

24. Operating lease commitments

The total future minimum lease payments under non-cancellable operating leases are as follows:

	2022	2021
	£	£
Not later than 1 year	4,320	4,320
Later than 1 year and not later than 5 years	360	4,680
	<u>4,680</u>	<u>9,000</u>

25. Related parties

B Anderson is a trustee of the charity. During the year she was reimbursed £876 on behalf of the charity for items purchased for donation/event costs. £167 had been overpaid in the previous year which was refunded in September 2021.

J Adamson is a trustee of the charity and a director of Ramside Leisure Limited. During the year payments of £75,909 (2021 - £17,389) were made to Ramside Leisure Limited at market value in respect of fundraising costs.

M Boyes is a trustee of the charity. During the year he was paid £12,682 (2021 - £3,870) in respect of services provided to run the charity's events.

Angel Trust - A Charity For The People

Management Information

Year ended 30 June 2022

The following pages do not form part of the financial statements.

Angel Trust - A Charity For The People

Detailed Statement of Financial Activities

Year ended 30 June 2022

	2022 £	2021 £
Income and endowments		
Donations and legacies		
Donations	52,370	33,617
Gifts in kind - Venue hire	8,000	12,336
Gifts in kind - Car lease	1,800	–
Grants receivable	680	2,025
	<u>62,850</u>	<u>47,978</u>
Other trading activities		
Fundraising events	225,169	39,909
Merchandise income	2,277	2,662
	<u>227,446</u>	<u>42,571</u>
Investment income		
Bank interest receivable	9	–
Other income		
Durham County Council - Covid support	–	12,336
HMRC Job Retention Scheme	–	21,715
Employment allowance	4,540	–
	<u>4,540</u>	<u>34,051</u>
Total income	<u><u>294,845</u></u>	<u><u>124,600</u></u>

Angel Trust - A Charity For The People

Detailed Statement of Financial Activities *(continued)*

Year ended 30 June 2022

	2022 £	2021 £
Expenditure		
Costs of raising donations and legacies		
Costs of raising donations and legacies	25,199	10,929
Cost of fundraising events		
Wages	29,498	18,580
Employer's NIC	2,753	–
Pension costs	236	–
Cost of fundraising events	149,122	32,293
Advertising and marketing	3,536	2,652
Merchandise costs	3,012	1,210
Other fundraising costs	8,466	1,287
	<u>196,623</u>	<u>56,022</u>
Expenditure on charitable activities		
<i>Activities undertaken directly</i>		
Wages	12,889	18,500
Employer's NIC	1,402	14
Foodbank costs	1,396	–
	<u>15,687</u>	<u>18,514</u>
<i>Support costs</i>		
Wages	14,175	16,898
Employer's NIC	1,402	–
Rent	4,435	4,352
Light and heat	2,296	1,853
Insurance	1,410	610
Other premises costs	2,228	–
Travel and subsistence	3,746	185
Legal and professional fees	3,120	3,085
Office costs	4,835	4,485
Depreciation	8,669	8,508
Gifts in kind	–	12,336
Online transaction costs	2,071	1,755
Other costs	1,434	–
	<u>49,821</u>	<u>54,067</u>
Expenditure on charitable activities	<u>65,508</u>	<u>72,581</u>
Total expenditure	<u>287,330</u>	<u>139,532</u>
Net income/(expenditure)	<u>7,515</u>	<u>(14,932)</u>

ANGEL TRUST - A CHARITY FOR THE PEOPLE

England & Wales - Charity number 1178926

Accounts

Angel Trust - A Charity for the People

**Annual report
Year ended 30 June 2021**

Angel Trust - A Charity for the People

Contents

	Page
Reference and administrative details	1
Trustees' report	2 - 5
Trustees' responsibilities statement	6
Independent examiner's report	7
Statement of financial activities	8
Balance sheet	9
Notes to the financial statements	10 - 19

Angel Trust - A Charity for the People

Reference and administrative details Year ended 30 June 2021

Trustees	Beryl Anderson, Chair John Adamson Mark Boyes Paul Anderson
Charity registered number	1178926
Principal office	Belvedere House Kingsway Bishop Auckland County Durham DL14 7JN
Chief executive officer	Clair McGregor
Accountants	UNW LLP Chartered Accountants St James' Boulevard Newcastle upon Tyne NE1 4JE
Bankers	Barclays Jenkins House Bob Hardisty Drive Bishop Auckland DL14 7TH

Angel Trust - A Charity for the People

Trustees' report Year ended 30 June 2021

The trustees present their annual report together with the financial statements of the charity for the 1 July 2020 to 30 June 2021.

Objectives and activities

• Policies and objectives

Angel Trust was formed as a local charity for the people of Darlington and County Durham. We aim to support individuals and organisations in the community by providing financial support and services to those in need. We want to improve the local community and make life better for those living within it.

In setting objectives and planning for activities, the trustees have given due consideration to general guidance published by the Charity Commission relating to public benefit, including the guidance 'Public benefit: running a charity (PB2)'.

• Strategies for achieving objectives

Angel Trust fundraises in the community using various methods; we host fundraising events, distribute collecting cans to local business and we have individual fundraisers which altogether enables us to achieve our objectives.

The objectives of the CIO are:

- (a) To relieve the needs of the community in Darlington and County Durham by providing grants to individuals and/or charities or other organisations in such ways as the trustees see fit to enable;
- (i) The advancement of citizenship and community development
- (ii) The relief of financial hardship and;
- (iii) Other such charitable purposes as the trustees shall determine.

Established in April 2018 the Angel Trust was formed as a local charity and has rapidly become recognised as "The People's Charity". Operating throughout Darlington and all of County Durham, the boundaries defined within the Gaunless Gateway are firmly embedded within the aims and objectives of The Angel Trust.

The Trust operates under the stringent guidance of a registered board of trustees and a Senior Fundraiser /CEO. Within the skill set of the board there is a diverse representation of assets and professional impetus covering legal procedures, press, publicity and media marketing, health and safety management, building and structural planning, entertainment and choreography, business management, hotel and function property availability as well as financial accounting procedures.

The Angel Trust's ambition is to support individuals and organisations in the local community by providing financial support and services to those in need and are undergoing hardship. Our aim is to improve the local community and make life better for those living within it. The Angel Trust operates under a specified legal constitution within its governing document and is registered with the Charity Commission

• Activities undertaken to achieve objectives

There is a strong fundraising structure that appeals to our contrastive database of supporters, designed and marketed to attract their taste and appetite for leisure and entertainment. During its first year Angel Trust has established a reputation for a strong charitable standing in our community by providing much needed help and funds to individuals, organisations, schools and clubs across both The County of Durham and The Borough of Darlington. The Trust staff and volunteers have worked hard to spread the ethos "We may all need a helping hand at some point in our lives and the Angel Trust aims to be there to provide support where it is needed." As a result of this we now receive referrals from Macmillan, Social Workers, School Workers, Refuges and many more. We are quickly becoming the charity that people turn to.

Angel Trust - A Charity for the People

Trustees' report (continued) Year ended 30 June 2021

Achievements and performance

- **Main achievements of the charity and activities undertaken to further the charity's purposes for the public benefit**

Covid Operational Plan

Angel Trust was significantly adjusted to meet the regional needs of the Community and our new covid timetable and programme included:

- 1,500 Easter Eggs to Key Workers, Care Homes, Nursing Practitioners, Blue Light Services, Individual Carers, Hospitals and many more.
- Children were rewarded with boredom packs due to the stay-at-home policy.
- Angel Trust saw the need for PPE particularly in care homes and within weeks did an extensive distribution of masks to care homes and the reignition of business openings to allow staff to be protected due to the worldwide shortage of protective clothing.
- We became a financial key partner to a county wide scheme for the distribution of frozen packed meals. During that period 21,700 meals were distributed and Angel Trust was heavily involved in the delivery and logistics of 300 meals per week. Over and above the frozen meals we, as an individual Charity, also distributed 1,000 food hampers to the vulnerable and key isolators.

Mascot Day

Angel Trust's profile was significantly lifted when we were selected to be the nominee for a key mascot day at Newcastle United thanks to the fantastic donation from Mr & Mrs Anderson. Our logo and profile were emblazoned on the electronic score board to capacity crowds. The selected nominee has a life limiting illness and the support we received through his family and friends resulted in massive coverage via press and social media.

Toy Appeal

During the turbulent lockdown we were still able to process our "Toy Appeal." We had an amazing response from individuals and both retail and business sectors and, with careful planning, successfully secured a delivery system from our donors via Amazon. The previous year saw over 900 toys being distributed and this year a massive increase to more than 3,000 items made it a very special Christmas for over 920 individuals ranging from 2 to 15 years.

Christmas Party

To keep costs to a minimum we worked alongside our Corporate Partner Hardwick Hall to introduce a festive Angel Trust Christmas Party to 300 members of the local community who were nominated via social media. The party was a great success and will become an annual event in our calendar.

Financial review

- **Going concern**

After making appropriate enquiries, the trustees have a reasonable expectation that the charity has adequate resources to continue in operational existence for the foreseeable future. For this reason, they continue to adopt the going concern basis in preparing the financial statements. Further details regarding the adoption of the going concern basis can be found in the accounting policies.

Angel Trust - A Charity for the People

Trustees' report (continued) Year ended 30 June 2021

- **Reserves policy**

Trustees aim to hold six months running costs as free reserves. The charity's unrestricted reserves currently stand at £86,555 (2020: £101,487), representing around seven and a half months routine expenditure, and the trustees are satisfied with this position.

- **Financial position**

The charity generated income of £124,600 (2020: £245,194) during its third year and incurred expenditure of £139,533 (2020: £226,849).

Structure, governance and management

- **Constitution**

The charity was incorporated as a Charitable Incorporated Organisation (registered charity number 1178926) on 26 June 2018.

- **Methods of appointment or election of trustees**

The management of the charity is the responsibility of the trustees who are elected and co-opted under the terms of the Trust deed. Induction is provided for new trustees as required.

- **Organisational structure and decision-making policies**

At the end of the year Angel Trust has a Board of 4 trustees comprised from various professional backgrounds. Appointments to the Board are made by the trustees, once elected, Trustees are given a copy of the Charities Commission Handbook and full verbal explanatory briefing from our charities solicitor on the expectations of being a trustee.

The charity also has a CEO who oversees the overall running of the charity including the charities Marketing and Fundraising Assistant. The trustees delegate day to day operations to the Chief Executive.

Angel Trust have two Ambassadors; Beau Stevens and The Draquettes, who play a key role in promoting the charity to the local community and through the press. In addition to this we have a fantastic team of volunteers, without them we wouldn't be able to do the work we do.

- **Pay policy for key management personnel**

The salary and benefits of the Chief Executive are set by the board of trustees, and reviewed annually.

- **Related party relationships**

The charity has benefited from the support of the services of trustees in a number of ways. John Adamson, through Ramside Estates, has provided accommodation and other gifts in kind to allow the charity to operate. Where the charity has run events at any of the Ramside Estates properties, these events have been charged at normal commercial rates. As the nominated charity of Ramside Estates the Trust has also benefitted from social media coverage, enhancing ticket sales and donations.

Mark Boyes, one of our trustees, also provides professional entertainment services at discounted rates to some of our events, which further benefits the charity through his on-line presence on social media.

Angel Trust - A Charity for the People

Trustees' report (continued) Year ended 30 June 2021

Structure, governance and management (continued)

• Financial risk management

The trustees have assessed the major risks to which the charity is exposed, in particular those related to the operations and finances of the charity, and are satisfied that systems and procedures are in place to mitigate our exposure to the major risks.

Plans for future periods

In 2021, Angel Trust had to diversify to the needs of the community during COVID-19. We distributed over 2,000 meals to vulnerable members of the community, delivered boredom packs to children in isolation, provided over 1,000 food hampers to families in need, refreshments and food hampers were delivered to key workers including doctors and hospitals. We provided over 3,000 specialist face masks to nursing homes that were not able to access PPE. We also provided face visors free of charge to local businesses that were reopening after the initial lockdown.

All of this had an impact on the Trust's financial reserves as no funds were raised during this period, due to all of our event's calendar being cancelled from March 2020 onwards.

Angel Trust have collated a 2022/2023 financial forecast and fundraising plan. The plan has now been approved by the Board of Trustees and we have taken a cautious approach to the remainder of 2022 due to us coming out of COVID-19 restrictions and the possible impact of another wave.

However, once fundraising can recommence, we have exciting plans to improve our premises which will enhance the local community and will seek to recommence our grant making activities. These plans include first aid classes, aromatherapy, counselling and computer skills to be added to our varied programme.

Approved by order of the members of the board of trustees on 27 April 2022 and signed on their behalf by:



Beryl Anderson
(Chair of Trustees)

Angel Trust - A Charity for the People

Statement of trustees' responsibilities Year ended 30 June 2021

The trustees are responsible for preparing the trustees' report and the financial statements in accordance with applicable law and United Kingdom Accounting Standards (United Kingdom Generally Accepted Accounting Practice).

The law applicable to charities in England & Wales requires the trustees to prepare financial statements for each financial year which give a true and fair view of the state of affairs of the charity and of its incoming resources and application of resources, including its income and expenditure, for that period. In preparing these financial statements, the trustees are required to:

- select suitable accounting policies and then apply them consistently;
- observe the methods and principles of the Charities SORP (FRS 102);
- make judgments and accounting estimates that are reasonable and prudent;
- state whether applicable UK Accounting Standards (FRS 102) have been followed, subject to any material departures disclosed and explained in the financial statements;
- prepare the financial statements on the going concern basis unless it is inappropriate to presume that the charity will continue in business.

The trustees are responsible for keeping adequate accounting records that are sufficient to show and explain the charity's transactions and disclose with reasonable accuracy at any time the financial position of the charity and enable them to ensure that the financial statements comply with the Charities Act 2011, the Charity (Accounts and Reports) Regulations 2008 and the provisions of the Trust deed. They are also responsible for safeguarding the assets of the charity and hence for taking reasonable steps for the prevention and detection of fraud and other irregularities.

Approved by order of the members of the board of trustees on 27 April 2022 and signed on its behalf by:



Beryl Anderson
(Chair of Trustees)

Independent examiner's report Year ended 30 June 2021

Independent examiner's report to the trustees of Angel Trust - A Charity for the People ('the charity')

I report to the charity trustees on my examination of the accounts of the charity for the year ended 30 June 2021.

Responsibilities and basis of report

As the trustees of the charity you are responsible for the preparation of the accounts in accordance with the requirements of the Charities Act 2011 ('the 2011 Act').

I report in respect of my examination of the charity's accounts carried out under section 145 of the 2011 Act and in carrying out my examination I have followed the applicable Directions given by the Charity Commission under section 145(5)(b) of the 2011 Act.

Independent examiner's statement

Your attention is drawn to the fact that the charity has prepared the accounts in accordance with Accounting and Reporting by Charities: Statement of Recommended Practice applicable to charities preparing their accounts in accordance with the Financial Reporting Standard applicable in the UK and Republic of Ireland (FRS 102) in preference to the Accounting and Reporting by Charities: Statement of Recommended Practice issued on 1 April 2005 which is referred to in the extant regulations but has been withdrawn.

I understand that this has been done in order for the accounts to provide a true and fair view in accordance with the Generally Accepted Accounting Practice effective for reporting periods beginning on or after 1 January 2015.

I have completed my examination. I confirm that no matters have come to my attention in connection with the examination giving me cause to believe that in any material respect:

1. accounting records were not kept in respect of the charity as required by section 130 of the 2011 Act; or
2. the accounts do not accord with those records; or
the accounts do not comply with the applicable requirements concerning the form and content of accounts set out in the Charities (Accounts and Reports) Regulations 2008 other than any requirement that the accounts give a 'true and fair' view which is not a matter considered as part of an independent examination.

I have no concerns and have come across no other matters in connection with the examination to which attention should be drawn in this report in order to enable a proper understanding of the accounts to be reached.

This report is made solely to the charity's trustees, as a body, in accordance with Part 4 of the Charities (Accounts and Reports) Regulations 2008. My work has been undertaken so that I might state to the charity's trustees those matters I am required to state to them in an independent examiner's report and for no other purpose. To the fullest extent permitted by law, I do not accept or assume responsibility to anyone other than the charity and the charity's trustees as a body, for my work or for this report.

Signed: 

Dated: 27 April 2022

Anne Hallowell

BSc FCA DChA

UNW LLP
Newcastle upon Tyne

Angel Trust - A Charity for the People

Statement of financial activities Year ended 30 June 2021

	Note	Unrestricted funds 2021 £	Total funds 2021 £	Total funds 2020 £
Income from:				
Donations and legacies	4	60,314	60,314	138,366
Other trading activities	5	64,286	64,286	106,828
Total income		124,600	124,600	245,194
Expenditure on:				
Raising funds	6	66,951	66,951	111,590
Charitable activities	7	72,582	72,582	115,259
Total expenditure		139,533	139,533	226,849
Net movement in funds		(14,933)	(14,933)	18,345
Reconciliation of funds:				
Total funds brought forward		101,487	101,487	83,142
Net movement in funds		(14,933)	(14,933)	18,345
Total funds carried forward		86,554	86,554	101,487

The Statement of financial activities includes all gains and losses recognised in the year.

The notes on pages 10 to 19 form part of these financial statements.

Angel Trust - A Charity for the People

Balance sheet At 30 June 2021

	Note	2021 £	2020 £
Fixed assets			
Tangible assets	9	30,007	38,515
		<u>30,007</u>	<u>38,515</u>
Current assets			
Debtors	10	8,201	6,595
Cash at bank and in hand		120,093	74,096
		<u>128,294</u>	<u>80,691</u>
Creditors: amounts falling due within one year	11	(71,746)	(17,719)
		<u>56,548</u>	<u>62,972</u>
Net current assets		<u>56,548</u>	<u>62,972</u>
Total assets less current liabilities		<u>86,555</u>	<u>101,487</u>
Net assets excluding pension asset		<u>86,555</u>	<u>101,487</u>
Total net assets		<u>86,555</u>	<u>101,487</u>
Charity funds			
Unrestricted funds	12	86,555	101,487
		<u>86,555</u>	<u>101,487</u>
Total funds		<u>86,555</u>	<u>101,487</u>

The financial statements were approved and authorised for issue by the trustees on 27 April 2022 and signed on their behalf by:

Beryl Anderson
(Chair of Trustees)



The notes on pages 10 to 19 form part of these financial statements.

Angel Trust - A Charity for the People

Notes to the financial statements Year ended 30 June 2021

1. General information

This charity is a company limited by guarantee incorporated in the United Kingdom. The members of the company are the trustees named on page 1. In the event of the charity being wound up, the liability in respect of the guarantee is limited to £1 per member of the charity.

2. Accounting policies

2.1 Basis of preparation of financial statements

The financial statements have been prepared in accordance with the Charities SORP (FRS 102) - Accounting and Reporting by Charities: Statement of Recommended Practice applicable to charities preparing their accounts in accordance with the Financial Reporting Standard applicable in the UK and Republic of Ireland (FRS 102) (effective 1 January 2019), the Financial Reporting Standard applicable in the UK and Republic of Ireland (FRS 102) and the Charities Act 2011.

The financial statements have been prepared to give a 'true and fair' view and have departed from the Charities (Accounts and Reports) Regulations 2008 only to the extent required to provide a 'true and fair' view. This departure has involved following the Charities SORP (FRS 102) published on 16 July 2014 rather than the Accounting and Reporting by Charities: Statement of Recommended Practice effective from 1 April 2005 which has since been withdrawn.

Angel Trust - A Charity for the People meets the definition of a public benefit entity under FRS 102. Assets and liabilities are initially recognised at historical cost or transaction value unless otherwise stated in the relevant accounting policy.

The accounts are presented in pounds sterling and are rounded to the nearest £1.

2.2 Going concern

The trustees have assessed the balance sheet and likely future cash flows at the date of approving these financial statements. The charity has a strong unrestricted reserves position at £83,555 (2020: £101,487) with high levels of cash at £120,093 (2020: £74,096). Grants are only awarded subsequent to fundraising having taken place.

As such, the trustees have a reasonable expectation that the charity will continue to operate in its current form for at least 12 months from the signing of this report and consequently have prepared the financial statements on a going concern basis.

2.3 Income

All income is recognised once the charity has entitlement to the income, it is probable that the income will be received and the amount of income receivable can be measured reliably.

Grants are included in the statement of financial activities on a receivable basis. The balance of income received for specific purposes but not expended during the period is shown in the relevant funds on the balance sheet. Where income is received in advance of entitlement of receipt, its recognition is deferred and included in creditors as deferred income. Where entitlement occurs before income is received, the income is accrued.

Gifts in kind are included in the statement of financial activities at a reasonable estimate of their value at the time they are utilised by the charity, with an equivalent amount recognised as charitable expenditure. No amounts are included in the financial statements for services donated by volunteers.

Angel Trust - A Charity for the People

Notes to the financial statements Year ended 30 June 2021

2. Accounting policies (continued)

2.4 Expenditure

Expenditure is recognised once there is a legal or constructive obligation to transfer economic benefit to a third party, it is probable that a transfer of economic benefits will be required in settlement and the amount of the obligation can be measured reliably. All expenditure is accounted for on an accruals basis and has been included under expense categories that aggregate all costs for allocation to activities. Where costs cannot be directly attributed to particular activities they have been allocated on a basis consistent with the use of resources.

Expenditure on raising funds includes all expenditure incurred by the charity to raise funds for its charitable purposes and includes costs of all fundraising activities events and non-charitable trading.

Expenditure on charitable activities is incurred on directly undertaking the activities which further the charity's objectives, as well as any associated support costs.

Grants payable are charged in the year when the offer is made except in those cases where the offer is conditional, such grants being recognised as expenditure when the conditions attaching are fulfilled. Grants offered subject to conditions which have not been met at the year end are noted as a commitment, but not accrued as expenditure.

All expenditure is inclusive of irrecoverable VAT.

2.5 Tangible fixed assets and depreciation

Tangible fixed assets costing £500 or more are capitalised and recognised when future economic benefits are probable and the cost or value of the asset can be measured reliably.

Tangible fixed assets are initially recognised at cost. After recognition, under the cost model, tangible fixed assets are measured at cost less accumulated depreciation and any accumulated impairment losses. All costs incurred to bring a tangible fixed asset into its intended working condition should be included in the measurement of cost.

Depreciation is charged so as to allocate the cost of tangible fixed assets less their residual value over their estimated useful lives, on the following bases:

Fixtures and fittings	-	10-20%
Office equipment	-	10%

2.6 Debtors

Trade and other debtors are recognised at the settlement amount after any trade discount offered. Prepayments are valued at the amount prepaid net of any trade discounts due.

2.7 Cash at bank and in hand

Cash at bank and in hand includes cash and short-term highly liquid investments with a short maturity of three months or less from the date of acquisition or opening of the deposit or similar account.

Angel Trust - A Charity for the People

Notes to the financial statements Year ended 30 June 2021

2. Accounting policies (continued)

2.8 Liabilities and provisions

Liabilities are recognised when there is an obligation at the balance sheet date as a result of a past event, it is probable that a transfer of economic benefit will be required in settlement, and the amount of the settlement can be estimated reliably.

Liabilities are recognised at the amount that the charity anticipates it will pay to settle the debt or the amount it has received as advanced payments for the goods or services it must provide.

3. Critical accounting estimates and areas of judgement

Estimates and judgments are continually evaluated and are based on historical experience and other factors, including expectations of future events that are believed to be reasonable under the circumstances.

In preparing these financial statements the directors do not consider there were any significant estimates or areas of judgment that were required in applying the company's accounting policies as set out above

4. Income from donations and legacies

	Unrestricted funds 2021 £	Total funds 2021 £
Donations	33,617	33,617
Grants	14,361	14,361
Gifts in kind	12,336	12,336
Total 2021	<u>60,314</u>	<u>60,314</u>

	Unrestricted funds 2020 £	Total funds 2020 £
Donations	102,557	102,557
Grants	23,209	23,209
Gifts in Kind	12,600	12,600
Total 2020	<u>138,366</u>	<u>138,366</u>

Donations have fallen by £69k due to a reduction in events held as a result of COVID-19 restrictions. See the trustees report for further details on the impact of COVID-19 on the trust.

Angel Trust - A Charity for the People

Notes to the financial statements Year ended 30 June 2021

5. Income from other trading activities

Income from fundraising events

	Unrestricted funds 2021 £	Total funds 2021 £
Fundraising events	64,286	64,286

	Unrestricted funds 2020 £	Total funds 2020 £
Fundraising events	106,444	106,444
Charity shop	384	384
Total 2020	<u>106,828</u>	<u>106,828</u>

6. Expenditure on raising funds

Costs of raising voluntary income

	Unrestricted funds 2021 £	Total funds 2021 £
Fundraising events	45,719	45,719
Marketing costs	2,652	2,652
Wages and salaries	18,580	18,580
Total 2021	<u>66,951</u>	<u>66,951</u>

Angel Trust - A Charity for the People

Notes to the financial statements Year ended 30 June 2021

6. Expenditure on raising funds (continued)

Costs of raising voluntary income (continued)

	Unrestricted funds 2020 £	Total funds 2020 £
Fundraising events	92,633	92,633
Wages and salaries	18,957	18,957
Total 2020	<u>111,590</u>	<u>111,590</u>

7. Analysis of expenditure by activities

	Activities undertaken directly 2021 £	Support costs 2021 £	Total funds 2021 £
Provision of charitable activities	<u>18,514</u>	<u>54,068</u>	<u>72,582</u>

	Activities undertaken directly 2020 £	Grant funding of activities 2020 £	Support costs 2020 £	Total funds 2020 £
Provision of charitable activities	<u>18,956</u>	<u>31,992</u>	<u>64,311</u>	<u>115,259</u>

Angel Trust - A Charity for the People

Notes to the financial statements Year ended 30 June 2021

7. Analysis of expenditure by activities (continued)

Analysis of support costs

	Total funds 2021 £	Total funds 2020 £
Staff costs	16,898	19,966
Depreciation	8,508	8,508
Rent	4,352	5,456
Electricity	1,853	894
Travel and subsistence	185	317
Online transaction fees	1,755	-
Postage and stationary	1,858	4,688
IT costs	2,127	6,643
Office costs	501	1,390
Insurance	610	588
Legal and professional fees	85	261
Independent examination fees	3,000	3,000
Gifts in kind	12,336	12,600
Total 2021	54,068	64,311

8. Staff costs

	2021 £	2020 £
Wages and salaries	53,978	57,423
NI costs	14	456
	53,992	57,879

The average number of persons employed by the charity during the year was as follows:

	2021 No.	2020 No.
Administration	2	3

Angel Trust - A Charity for the People

Notes to the financial statements Year ended 30 June 2021

8. Staff costs (continued)

The average headcount expressed as full-time equivalents was:

	2021 No.	2020 No.
Administration	2	3

No employee received remuneration amounting to more than £60,000 in either year.

The charity considers its key management personnel to comprise of the trustees and the Chief Executive. The total employee benefits of the key management personnel were £37,000 (2020: £37,000).

During the year, no trustees received any remuneration or reimbursement of expenses.

9. Tangible fixed assets

	Fixtures and fittings £	Office equipment £	Total £
Cost			
At 1 July 2020	44,949	2,245	47,194
At 30 June 2021	44,949	2,245	47,194
Depreciation			
At 1 July 2020	8,362	317	8,679
Charge for the year	8,283	225	8,508
At 30 June 2021	16,645	542	17,187
Net book value			
At 30 June 2021	28,304	1,703	30,007

Angel Trust - A Charity for the People

Notes to the financial statements Year ended 30 June 2021

10. Debtors

	2021 £	2020 £
Other debtors	1,599	1,595
Prepayments and accrued income	6,602	5,000
	<u>8,201</u>	<u>6,595</u>

11. Creditors: Amounts falling due within one year

	2021 £	2020 £
Bank overdrafts	-	46
Trade creditors	200	-
Other taxation and social security	2,638	6,479
Deferred income	62,008	-
Accruals and deferred income	6,900	11,194
	<u>71,746</u>	<u>17,719</u>

	2021 £	2020 £
Deferred income at 1 July 2020	5,194	12,350
Resources deferred during the year	62,008	5,194
Amounts released from previous periods	(5,194)	(12,350)
	<u>62,008</u>	<u>5,194</u>

The deferred income for the current financial year relates to income for events that were cancelled in the year and postponed to future periods.

Angel Trust - A Charity for the People

Notes to the financial statements Year ended 30 June 2021

12. Statement of funds

Statement of funds - current year

	Balance at 1 July 2020 £	Income £	Expenditure £	Balance at 30 June 2021 £
Unrestricted funds				
General funds	101,487	124,601	(139,533)	86,555

Statement of funds - prior year

	Balance at 1 July 2019 £	Income £	Expenditure £	Transfers in/out £	Balance at 30 June 2020 £
Unrestricted funds					
General funds	67,142	245,194	(226,849)	16,000	101,487
Restricted funds					
Office refurbishment	16,000	-	-	(16,000)	-
Total of funds	83,142	245,194	(226,849)	-	101,487

Transfers between funds during the prior year represent spend on tangible fixed assets, which was the purpose of the restricted fund held. The assets acquired are free from ongoing restrictions.

13. Operating lease commitments

At 30 June 2021 the charity had commitments to make future minimum lease payments under non-cancellable operating leases as follows:

	2021 £	2020 £
Not later than 1 year	4,320	4,320
Later than 1 year and not later than 5 years	4,680	9,000
	9,000	13,320

Angel Trust - A Charity for the People

Notes to the financial statements Year ended 30 June 2021

14. Related party transactions

B Anderson is a trustee of the charity. During the period, payments of £95 (2020: £790) were made for reimbursement of expenses made on behalf of the charity. These were in respect of projects for the charity and the purchase of supplies.

J Adamson is a trustee of the charity and a director of Ramside Leisure Limited. During the period, payments of £17,389 (2020: £27,412) were made to Ramside Leisure Limited at market value in respect of fundraising costs.

M Boyes is a trustee of the charity. During the period, payments of £3,870 (2020: £8,530) in respect of services provided to run the charity's events.