

CANCER CARE DIASPORA

England & Wales · Charity number 1178766

Details

Status Registered

Legal form CIO

Registered 2018-06-13

Register [View on the Charity Commission register](#)

Contact

Address Command Prayer Centre
Richmond House
11 Richmond Grove
Manchester
M13 0LN

Phone +447885732781

Email info@cancercarediaspora.org

Website www.cancercarediaspora.org

Activities

Objects: TO PROMOTE AND PROTECT THE HEALTH OF THE PUBLIC THROUGH PROVISION OF INFORMATION AND RAISING OF PUBLIC UNDERSTANDING OF THE NATURE, CAUSES, DIAGNOSIS, PREVENTION, TREATMENT AND CURE OF ALL FORMS OF CANCER AND IN FURTHERANCE OF THAT PRIMARY OBJECT, TO PROMOTE RESEARCH INTO SUCH MATTERS AND TO PROVIDE PRACTICAL SUPPORT TO PEOPLE AFFECTED BY CANCER.

Activities: Creating awareness of different kinds of cancers to the general public, encouraging increased screening uptake in BAME communities and caring for cancer patients and their families or carers.

Classification

- **How:** Makes Grants To Organisations, Provides Other Finance, Provides Services, Provides Advocacy/advice/information, Sponsors Or Undertakes Research
- **What:** The Advancement Of Health Or Saving Of Lives
- **Who:** Children/young People, Elderly/old People, People Of A Particular Ethnic Or Racial Origin, Other Charities Or Voluntary Bodies, The General Public/mankind

Geography

- Nigeria
- Scotland
- Throughout England And Wales

Finances

Period end	Income	Expenditure	Assets	Employees
2025-06-30	£178,990	£178,692	-	-
2024-06-30	£129,986	£118,985	-	-
2023-06-30	£87,485	£87,130	-	-
2022-06-30	£72,270	£73,161	-	-
2021-06-30	£59,000	£66,000	-	-

Trustees

Name	Role	Appointed
ABIGAIL OMOYE ABARA	Chair	2016-05-02
Christabel Abraham		2024-09-30
Dr Amara Ajaegbu		2021-04-13
Kadie Conteh		2026-02-25

CANCER CARE DIASPORA

England & Wales - Charity number 1178766

Accounts

CANCER CARE DIASPORA

ANNUAL REPORT & FINANCIAL STATEMENTS

30 JUNE 2025

Charity Number 1178766

CONTENTS	PAGE
Trustees Annual Report & Community projects	5-13
Statement of Financial Activities (incorporating the Income and expenditure account	14
Balance sheet	15
Notes to the financial statement	17 - 19
Independent Examiners Report	20

CANCER CARE DIASPORA

REFERENCE AND ADMINISTRATIVE DETAILS

Registered charity name CANCER CARE DIASPORA

Charity registration number 1178766

Principal office Command Prayer Centre, Richmond House,
11 Richmond Grove Longsight, M13 0LN

Registered office Command Prayer Centre, Richmond House,
11 Richmond Grove Longsight, M13 0LN

THE TRUSTEES
Abigail Omoye Abara
Dr Amara Ajaegbu
Christabel Abraham

Independent Examiner SRT Accounting Services Ltd
83 Heathbank Rd
Manchester
M9 0WB

Bankers Lloyds Bank
Market Street
Manchester



...Committed to fighting cancer, one life at a time

Charity No. 1178766

Weekly support group sessions

Support group for individuals, families and carers of people affected by cancer in Manchester and Greater Manchester. Funded by the National Lottery Community Fund.

**Foodbank available every Friday
From 11am**



Tuesdays

**Transformation community
centre, 11 Richmond Grove
Longsight. M13 0LN
10:30am to 12:00pm**

Fridays

**Harpurhey children's centre.
Upper conran street,
Manchester. M9 4DA
10:30am to 12:00pm**

Phone: 07885 732781

Email: info@cancercarediaspora.org

Website: www.cancercarediaspora.org



1. Executive Summary

The charity has made a significant impact in the community by providing free food parcels on a weekly basis. These food parcels are distributed to three distinct groups: individuals affected by cancer, their dedicated caregivers, and the broader community. The charity operates out of two key centres, Harpurhey Children's Centre and Transformation Community Resource Centre in Manchester.

This initiative not only addresses the immediate needs of those battling cancer and their caregivers but also extends its reach to the general community, offering vital support to individuals who may be facing food insecurity or financial hardship. By providing regular access to nutritious food, the charity has played a crucial role in improving the overall well-being and quality of life for its beneficiaries, while fostering a sense of community and solidarity among residents. We have also introduced a third midweek session to the Moston community and a standalone foodbank in Harpurhey on Saturdays.

2. Our Impact

Cancer Care Diaspora, a charitable organisation, has made significant strides in raising awareness and support for cancer-related issues within the general community. Their achievements include:

Awareness and Education: The charity has successfully educated the community about cancer, its causes, early detection, prevention, and the importance of regular screenings. This knowledge empowers individuals to take proactive steps towards cancer prevention and early intervention.

Weekly Food Support: Cancer Care Diaspora provides vital support to individuals living with cancer and their caregivers through weekly free food parcels. This practical assistance helps alleviate the financial burden and nutritional challenges often faced by these individuals.

Community Engagement: The charity operates from two centres, Harpurhey Children's Centre and Transformation Community Resource Centre Longsight, where we engage the community actively. We hand out food parcels at these centres, deliver to those home bound thereby fostering a sense of community and support among those affected by cancer.

Holistic Support: In addition to food support, Cancer Care Diaspora conducts relaxation exercises and support group sessions at both centres. These activities promote mental and emotional well-being among cancer patients and their caregivers, creating a holistic support system.

Overall, Cancer Care Diaspora has made a substantial impact by not only providing practical assistance but also creating a supportive and informed community that is better equipped to address the challenges posed by cancer.

3. Transparency and Accountability

The governing body of the charity is comprised of three Trustees: Dr Amara Ajaegbu, Christabel Abraham, and Chairperson Abigail Abara. These Trustees play a crucial role in the organization, as they are responsible for making key decisions, ensuring the proper management of funds, and overseeing the allocation of the charity's resources. The charity appointed Laura Urhobo as Chief Executive Officer in January 2024 to oversee the day to day running of the charity and report back to the board of trustees during regular board meetings. The role of the Board of Trustees include:

Decision-Making: The trustees, led by Abigail Abara, are responsible for making important decisions regarding the charity's operations, programs, and initiatives. They collectively determine the strategic direction and policies of the organisation.

Financial Oversight: One of the primary responsibilities of the trustees is to oversee the financial aspects of the charity. This includes approving budgets, monitoring expenses, and ensuring that funds are used efficiently and in accordance with the charity's mission.

Resource Allocation: The trustees oversee allocating the charity's resources, including funds, personnel, and assets, to various programs and activities. They make informed decisions on how to best utilize these resources to achieve the charity's goals and benefit its beneficiaries.

Compliance and Governance: The trustees ensure that the charity operates in compliance with all legal and regulatory requirements. They also uphold high standards of governance and ethical conduct within the organisation.

4. Diversity and Inclusion

The charity's commitment to complying with an inclusion and diversity policy is commendable, especially given that its users come from diverse racial and ethnic backgrounds. Inclusion and diversity policies are essential in ensuring that all individuals, regardless of their race, ethnicity, or background, have equal access to the charity's services and resources.

By actively promoting inclusion and diversity, the charity:

Ensures Equal Access: It creates an environment where people from all racial and ethnic backgrounds feel welcome and have equal access to the charity's services, including food support and other resources.

Celebrates Differences: The charity recognizes and celebrates the unique cultural backgrounds and experiences of its users. This can help foster a sense of belonging and pride among the beneficiaries.

Addresses Unique Needs: Inclusion and diversity policies allow the charity to address the unique needs of individuals from different backgrounds, ensuring that its services are culturally sensitive and relevant.

Promotes Unity: By embracing diversity, the charity promotes unity and social cohesion within the community. It sends a powerful message that everyone, regardless of their background, is valued and supported.

Complies with Legal and Ethical Standards: It ensures that the charity complies with legal requirements related to diversity and inclusion, promoting fairness and non-discrimination.

Overall, the charity's commitment to inclusion and diversity not only aligns with ethical and legal standards but also enhances its ability to effectively serve a diverse group of beneficiaries, ultimately strengthening its impact in the community.

5. Looking Ahead

Cancer Care Diaspora's expansion plans and its commitment to reaching diverse communities are commendable. Here's an overview of our goals and needs:

5.1 Expansion Plans

Cancer Care Diaspora aims to expand its reach throughout the United Kingdom over the next five years. This expansion will allow the charity to provide essential support and services to a broader audience of individuals and communities affected by cancer.

5.2 Funding and Support

To achieve its expansion goals, the charity is actively seeking more funders who are willing to support our mission. Increasing donations and financial support will enable us to expand operations, reach more community members, and enhance the impact of our programs.

5.3 Youth Eat and Play Project

Cancer Care Diaspora has recently initiated the Youth Eat and Play Project, which is a promising endeavour aimed at addressing the unique needs of young individuals or children who have a parent or guardian affected by cancer. To effectively run and sustain this project, additional resources, including funding and support are needed.

By garnering more financial support and engaging with new funders especially Local Authority and BBC Children in Need, Cancer Care Diaspora can work towards expanding its footprint and making a meaningful difference in the lives of cancer patients, caregivers, the youth and the community at large. This growth will enable us to provide vital services and support to a more extensive and diverse group of beneficiaries throughout the United Kingdom.

Testimonials

This section of the report provides some feedback from service users.

Each service user feedback journey demonstrates the benefits of collaboration and partnership with other stakeholders so that our service users can be signposted to other services. The testimonial and case study below indicate the gratitude that service users have shown and is reflective of the feedback we have received during year 3. Service users are keen to continue the collaboration with other agencies and are benefitting from a holistic service of support services they are empowered to use.

Feedback from Mwaka*

I would like to Express my gratitude thanks to Cancer Care Diaspora Support Group for everything they have done for me. Food and financial and exercise it's helpful for me to reduce my stress and now I can walk better and I have confidence now I was in a Tangerine Project and I learn a lot of things like food to eat and how to cook it and eat healthy foods it's helping me a lot I really appreciate and to meet different people we talk we laugh I enjoy the conversation and it's nice to be part of Cancer Care Diaspora thanks very much

Case Study – Elizabeth*

Elizabeth and her family accessed various projects delivered by CCD and share the impact of the provisions on her and her family between January to August 2024. She started volunteering and now feel very much a part of the CCD family.

I have witnessed firsthand the profound impact that CCD has had on the lives of individuals and families affected by cancer over the past year. This report reflects my experiences and observations from January to August 2024, showcasing the various ways our community has come together to provide support.

Support Group Meetings - One of the most transformative aspects of our work has been the support group meetings. These gatherings have created a nurturing environment where individuals can share their personal journeys, fears, and triumphs. Participants often leave feeling uplifted and empowered, knowing that they are not alone in their fight. The connections formed here have fostered a strong sense of community, reminding everyone that they have a network of support.

Exercise Sessions - These exercise sessions have been another highlight. Encouraging physical activity has proven to be essential for both physical and mental well-being. It has been inspiring to see participants engage in these sessions, often reporting increased energy and improved mood. Expressing this in a line; “these sessions have helped me regain my strength and confidence.”

Home Visits – These visits have allowed us to reach individuals who may not be able to attend group sessions. These visits are often filled with heartfelt conversations, providing emotional support and practical assistance tailored to each

family's needs. I recall visiting a family who expressed how our support helped them feel less isolated during a challenging time. Moments like these reinforce the importance of our work.

Family and Individual Support - Our commitment to providing personalized family and individual support has made a tangible difference. We have been able to address specific needs, whether it be counselling, resource referrals, or simply a listening ear. This tailored approach has allowed families to navigate their challenges with greater ease.

Foodbank and Cost of Living Support - The foodbank initiative, especially with a focus on African foodstuffs, has been a lifeline for many families facing food insecurity. Knowing they can access culturally appropriate food has been crucial for their well-being. Recipients have shared their gratitude, highlighting how this support has alleviated some of their financial burdens.

Financial Support - Financial assistance has also played a vital role in alleviating the stress associated with medical expenses. By providing this support, we have enabled families to prioritize their health without the added worry of financial strain. It is rewarding to see the relief on their faces when they receive help.

Holiday Club for Children - The holiday club for children has been a delightful addition to our community offerings. By engaging children in fun and educational activities, we have provided them with a sense of normalcy and joy. Parents have reported that their children returned home with smiles and new friendships, which is heartwarming to witness.

Research Participation - Encouraging community involvement in research has been crucial for enhancing cancer care. Participants have expressed their willingness to contribute to studies, understanding that their experiences can help shape future treatments and support systems.

Community Event with Doctors - Our community event featuring two doctors discussing cancer signs and symptoms was a significant success. The doctors provided invaluable information, empowering attendees to recognize early warning signs and fostering a proactive approach to health. The positive feedback from participants emphasized the importance of such educational initiatives.

Overall project impact

Cancer Care Diaspora is an organisation that promotes the health of the public through provision of information and raising of awareness on the causes, diagnosis, prevention and cure of all forms of cancer and we provide practical support to children, young people and adults affected by cancer including their carers. We are passionate about providing healthy meals for the community which is why we run a Food bank that supplies food items every Tuesday at Longsight, Wednesday at Moston and Friday at Harpurhey.

In August 2024, Cancer care Diaspora collaborated with organisations such as Cancer Research UK, NHS Greater Manchester Cancer Alliance, Greater Manchester Integrated Care Partnership on Topic: Cancer Signs & Symptoms

Community Awareness and Themes – Spotting Cancer signs and Symptoms Early at North City Family & Fitness Centre in Harpurhey. We had several well-equipped speakers talk extensively on the Topic. Speakers include Dr Barbara Ogendegbe GP from Manchester and Dr Omotola Omotoso also a GP from Manchester. The event was hosted by our CEO Laura Urhobo and major focus was on everything community members need to know to detect cancer early.

On 22nd November 2024, we hosted a Lung Cancer Awareness session with Lung Cancer nurses Lauren Carrol & Abigail Afolabi from MFT NHS North Manchester General Hospital & Macmillan Cancer Support, they lectured our group in Harpurhey about the signs and symptoms of Lung Cancer and what screening services are available on the NHS.

We wrapped up the year with our end of year Health Awareness event which was held on a Saturday 21st December 2024 at Manchester Communication Academy Harpurhey with Dr Edmond Edi-Osagie (Consultant Gynaecologist Alexandra Hospital Cheadle), Specialist Nurse Tolani Balogun- Akinjide (Pelvic Floor Practitioner Manchester Royal Infirmary) and Dr, Omotola Omotoso GP & GP Trainer Village Surgery, West Timperley) all experts in their field. We received funding from NHS Greater Manchester Cancer Alliance and Partnered with Manchester Integrated Care Partnership and Macc (Manchester Local voluntary & community sector support Organisation).

During Easter, our holiday food programme HAF was a significant event for our organisation, we had in attendance over 45 children and young people from diverse backgrounds from 5yrs-16yrs including Special Education Needs children (SEND). Our staff and volunteers who are well trained implemented appropriate safeguarding measures and supervision during the event, we have colleagues who are equipped with the knowledge and skills to engage, and support SEND children. Our young people were excited to participate in the Art and Crafts session delivered by one of our partners Afrocats, Sports and Physical activities like hockey and football delivered by trained coaches, indoor games and book club with lots of exciting books donated by Read Mcr and Manchester Libraries.

The Holiday Activity Fund has helped reduce the likelihood of children experiencing social isolation because children from all ethnicities and backgrounds had access to nutritious meals, fruits and vegetables and lots of fun activities at no cost. We were able to keep the young people engaged and entertained, encouraging positive interactions which promoted a sense of belonging and responsibility thereby reducing antisocial behaviour amongst our teenagers.

Parents and Carers were excited about the sessions especially as the timing was fixed at 9.30am-3pm which took off the stress of them worrying about breakfast for their children since we had a breakfast club and parents and carers were able to go about their normal daily activities or work after drop off. The children of some of our service users who are undergoing cancer treatment were able to participate in the activities giving their parent's time to recuperate.

The Charity also hosted an exciting litter picking community project in May 2025 for 10-16year olds encouraging the young people to embrace a good culture in keeping their environment clean and tidy, up to 10bags of rubbish and litter were gathered by our team.

Harpuhey Parade is a yearly free family funfair aimed at families to come and unwind and have fun with free food, drinks, ice cream and free fun activities such as climbing tree, bouncy bungee, face painting, magician, circus skills and a whole lot of fun activities. We had a stand to reach out and interact with people and discuss early detection of cancer, prevention and other useful information we shared. We ended the financial year on a high note and are very proud of the positive impact we are making in our community.

Our social impact at a glance

650 or more People supported weekly
17,881 Meals collected
0.09 tonnes non-food collected
27tco2e CO2 saved

Impact through our partnership with Fareshare GM

Food Moved KG 6,379.03 Food Moved Meal 15,188.47 CMs Served CM
Beneficiaries Value of food (E) £18,527.63

Impact through our partnership with Fareshare GM

Food Moved KG 6,379.03 Food Moved Meal 15,188.47 CMs Served CM
Beneficiaries Value of food (E) £18,527.63

Our focus is on Young people (15-24), Older people (60+),

Parents and guardians of children, Families,

Racial, ethnic or national communities, People with disabilities,

Adults (25-59), Migrants, Young children (5-9) & Children (10-14).

<https://www.neighbourly.com/project/65bb7dda5d0cce337aaa2e63> 15/09/2025,
12:56

Page 3 of 9 Top supporters (Surplus)

ALDI 6.73 tonnes

Sainsbury's 0.869 tonnes

Top supporters (Financial)

Sainsbury's £4500

Top supporter figures are 'all-time' donations by the companies shown and can relate to different time-frames

Impact data refreshes every day

On behalf of our Trustees, we would also like to say a big thank you to all our funders and donors this financial year including Mr Michael Osemede who donated £500 to support our community work, Costco Manchester Trafford and Oldham stores who both sent us cheques to support our community foodbank, Neighbourly for the great partnership we have formed this financial year and through this partnership we not only receive supermarket surplus donations every day from their partner stores but they also facilitated a grant of £4,500 from Sainsbury's Good food for All fund for us in March 2025. Our biggest funder still remains the National Lottery Community Fund (Reaching Communities Grant) who have been very kind in supporting our organisation's core cost and development this financial year.

CANCER CARE DIASPORA

Conclusion

Reflecting on the past year, Cancer Care Diaspora has made a meaningful difference in the lives of many. The dedication of all staff, volunteers, and participants is commendable, and I feel honoured to be part of such an impactful organisation. As we continue to support our community, I am excited to see how we can further expand our reach and effectiveness in all of the communities we cover.

Recommendations:

Enhancing Client Impact:

- Understanding the Journey: Map the client experience from initial contact to post-service engagement, identifying pain points and optimising the process.
- Tailored Support: Develop culturally specific programs, ensuring accessibility and effectiveness.

Building Knowledge and Influence:

- Sharing Evidence: Disseminate research and ways to engage Black communities, informing policy and practice.
- Championing Equity: Advocate for culturally competent mental health services and address disparities in access, driving lasting change.

Strengthening Operations:

- Sustainable Growth: Increase volunteer capacity and secure funding strategically to meet growing demand while upholding quality standards.
- Streamlined Systems: Implement a robust CRM system and prepare for geographical expansion, ensuring operational efficiency and scalability.
- Data-Driven Decisions: Enhance data collection and analysis to address funding concerns, track progress, and inform decisions for optimal service delivery.
- Building Resilience: Secure sustainable funding and explore strategies to reduce reliance on grants ensuring long-term financial stability.
- Phased Growth: Implement a clear, incremental scaling plan with defined milestones, demonstrating a strategic direction to funders and stakeholders.

STATEMENT OF FINANCIAL ACTIVITIES (INCORPORATING THE INCOME AND EXPENDITURE ACCOUNT) YEAR ENDED 30 JUNE 2025

	Note	Total Funds 2025 £	Total Funds 2024 £
INCOMING RESOURCES			
Incoming resources from generating funds:			
Voluntary Donations		1,050	11,337
Investment Income		0	0
Grants		177,940	118,649
TOTAL INCOMING RESOURCES		<u>178,990</u>	<u>129,986</u>
RESOURCES EXPENDED			
Charitable activities		168,417	111,134
Support costs		5,775	3,351
Fundraising & Legal Cost		4,500	4,500
TOTAL RESOURCES EXPENDED		<u>178,692</u>	<u>118,985</u>
NET INCOMING RESOURCES FOR THE YEAR		298	11,001
RECONCILIATION OF FUNDS			
Total funds brought forward		<u>15,466</u>	<u>4,465</u>
TOTAL FUNDS CARRIED FORWARD		<u>15,764</u>	<u>15,466</u>

The Statement of Financial Activities includes all gains and losses in the year and therefore a statement of total recognized gains and losses has not been prepared. All the above amounts relate to continuing activities.

BALANCE SHEET AS AT 30 JUNE 2025					
	Note	2025		2024	
		£	£	£	£
TANGIBLE FIXED ASSESTS					
Motor vehicles	2		14,950		29,900
INVESTMENT					
Unlisted Investment					
CURRENT ASSETS					
Debtors		5,000		4,465	
Prepayments		10,794			
Cash & Cash equivalents		149		1	
		-----		-----	
		15,913		4,466	
CREDITORS					
Amount falling due within one year		(12,100)		(18,900)	
NET CURRENT ASSETS					
			3,813		(14,434)
NET ASSETS					
			<u>18,763</u>		<u>15,466</u>
FUNDS					
Restricted			18,763		15,466
Unrestricted			0		0
TOTAL FUNDS					
			<u>18,763</u>		<u>15,466</u>

The accompanying notes are an integral part of this balance sheet

The trustees are satisfied that the charity is entitled to exemption from the requirement to obtain an audit/independent examination under section 144(2) of the Charities Act 2011 (the 2011 Act).

The trustees of the charity have not required the charity to obtain an independent examination in accordance with section 144(2) of the Act.

The trustees acknowledge their responsibilities for complying with the requirements of the Charity Act 2011 with respect to accounting records and the preparation of accounts. On behalf of the Trustees, I present this financial report in my capacity as Chief Executive Officer and member of the management board.

Laura Omonze Urhobo

Laura Urhobo (Chief
Executive Officer)

Approved by the Board of Trustees on 30/09/2025

CANCER CARE DIASPORA

1. ACCOUNTING POLICIES

Accounting Convention

The financial statements have been prepared under the historical cost convention and in accordance with the Financial Reporting Standards for Smaller Entities (Effective January 2015), The Charities Act 2011, and the requirements of statements of recommended practice, Accounting and Reporting by Charities (issued July 2014).

Incoming Resources

All incoming resources are included in the statements of financial activities when the charity is legally entitled to the income, and the amount can be quantified with reasonable accuracy

Resources expended

Expenditure is accounted for on an accrual basis, and have been classified under headings that aggregate all cost related to the category. Where costs cannot be directly attributed to particular headings they have been allocated to activities on a basis consistent with the use of resources.

2. Fixed assets

Fixed assets are recorded at cost less depreciation

Depreciation

Depreciation is calculated so as to write off the cost of an asset, less its estimated residual value, over the useful economic life of that asset as follows:

Motor Vehicles - 25% on straight line basis

NOTES TO THE FINANCIAL STATEMENTS YEAR ENDED 30 JUNE 2025

INCOME

	Restricted Funds £	Unrestricted Funds £	Total Funds 2025 £	Total Funds 2024 £
Donations				
Voluntary Donations		1,050	1,050	11,337
Investment Interest				
Grants	<u>177,940</u>		<u>177,940</u>	<u>118,649</u>
Total	<u>177,940</u>	<u>1,050</u>	<u>178,990</u>	<u>129,986</u>

3. COSTS OF CHARITABLE ACTIVITIES BY FUND TYPE

	Unrestricted funds	Restricted funds	Total funds 2025	Total funds 2024
	£	£	£	£
Community Advancement		168,417	168,417	111,134
Support costs		5,775	5,775	3,351
Fundraising & Legal cost		4,500	4,500	4,500
		----- 178,692 -----	----- 178,692 -----	----- 118,985 -----

NOTES TO THE FINANCIAL STATEMENTS YEAR ENDED 30 JUNE 2025

Cancer Care Diaspora

Independent Examiner's Report

Independent examiner's report to the trustees of Cancer Care Diaspora for the year ended 30 June 2025

I report to the trustees on my examination of the accounts of Cancer Care Diaspora ("the Trust") for the year ended 30 June 2025.

As the charity's trustees, you are responsible for the preparation of the accounts in accordance with the requirements of the Charities Act 2011 ("the Act").

I report in respect of my examination of the Trust's accounts carried out under section 145 of the 2011 Act and in carrying out my examination, I have followed all the applicable Directions given by the Charity Commission under section 145(5)(b) of the Act.

The charity's gross income exceeded £25,000 and I am qualified to undertake the examination by being a qualified member of Association of Chartered Certified Accountants (ACCA).

I have completed my examination. I confirm that no material matters have come to my attention in connection with the examination which gives me cause to believe that in, any material respect:

1. the accounting records were not kept in accordance with section 130 of the Charities Act; or
2. the accounts did not accord with the accounting records; or
3. the accounts did not comply with the applicable requirements concerning the form and content of accounts set out in the Charities (Accounts and Reports) Regulations 2008 other than any requirement that the accounts give a 'true and fair' view which is not a matter considered as part of an independent examination.



Date: 30/09/2025

Olaniyi Isaiyah Oladejo (FCCA/FFA)
83 Heathbank Road
Manchester
M9 0WB

CANCER CARE DIASPORA

England & Wales - Charity number 1178766

Accounts

CANCER CARE DIASPORA

ANNUAL REPORT & FINANCIAL STATEMENTS

30 JUNE 2024

Charity Number 1178766

**CANCER CARE DIASPORA
FINANCIAL STATEMENTS FOR YEAR ENDED 30 JUNE 2024**

CONTENTS	PAGE
Trustees Annual Report	5 - 8
Reaching Communities 3-Year (2024) Project Report	9-15
Statement of Financial Activities (incorporating the Income and expenditure account)	16
Balance sheet	17
Notes to the financial statements	18 - 19
Independent Examiners Report	20

REFERENCE AND ADMINISTRATIVE DETAILS

Registered charity name CANCER CARE DIASPORA

Charity registration number 1178766

Principal office 83 Ducie Street Manchester M1 2JQ

Registered office 83 DUCIE STREET MANCHESTER M1 2JQ

THE TRUSTEES Abigail Omoye Abara
 Dr Amara Ajaegbu
 Christabel Abraham

Independent Examiner Nii Otu Quaye FFA/FICA
 11 Louvaine Close
 Manchester
 M18 8SJ

Bankers **Lloyds Bank**
 Market Street
 Manchester



...Committed to fighting cancer, one life at a time

Charity No. 1178766

Weekly support group sessions

Support group for individuals, families and carers of people affected by cancer in Manchester and Greater Manchester. Funded by the National Lottery Community Fund.

**Foodbank available every Friday
From 11am**

Tuesdays

**Transformation community
centre, 11 Richmond Grove
Longsight. M13 0LN
10:30am to 12:00pm**

Fridays

**Harpurhey children's centre.
Upper conran street,
Manchester. M9 4DA
10:30am to 12:00pm**

Phone: 07885 732781

Email: info@cancercarediaspora.org

Website: www.cancercarediaspora.org



1. Executive Summary

The charity has made a significant impact in the community by providing free food parcels on a weekly basis. These food parcels are distributed to three distinct groups: individuals affected by cancer, their dedicated caregivers, and the broader community. The charity operates out of two key centres, Harpurhey Children's Centre and Transformation Community Resource Centre in Manchester.

This initiative not only addresses the immediate needs of those battling cancer and their caregivers but also extends its reach to the general community, offering vital support to individuals who may be facing food insecurity or financial hardship. By providing regular access to nutritious food, the charity has played a crucial role in improving the overall well-being and quality of life for its beneficiaries, while fostering a sense of community and solidarity among residents. We have also introduced a third midweek session to the Moston community and a standalone foodbank in Harpurhey on Saturdays.

2. Our Impact

Cancer Care Diaspora, a charitable organisation, has made significant strides in raising awareness and support for cancer-related issues within the general community. Their achievements include:

Awareness and Education: The charity has successfully educated the community about cancer, its causes, early detection, prevention, and the importance of regular screenings. This knowledge empowers individuals to take proactive steps towards cancer prevention and early intervention.

Weekly Food Support: Cancer Care Diaspora provides vital support to individuals living with cancer and their caregivers through weekly free food parcels. This practical assistance helps alleviate the financial burden and nutritional challenges often faced by these individuals.

Community Engagement: The charity operates from two centres, Harpurhey Children's Centre and Transformation Community Resource Centre Longsight, where we engage the community actively. We hand out food parcels at these centres, deliver to those home bound thereby fostering a sense of community and support among those affected by cancer.

Holistic Support: In addition to food support, Cancer Care Diaspora conducts relaxation exercises and support group sessions at both centres. These activities promote mental and emotional well-being among cancer patients and their caregivers, creating a holistic support system.

Overall, Cancer Care Diaspora has made a substantial impact by not only providing practical assistance but also creating a supportive and informed community that is better equipped to address the challenges posed by cancer.

3. Transparency and Accountability

The governing body of the charity is comprised of three Trustees: Dr Amara Ajaegbu, Christabel Abraham, and Chairperson Abigail Abara. These Trustees play a crucial role in the organization, as they are responsible for making key decisions, ensuring the proper management of funds, and overseeing the allocation of the charity's resources. The charity appointed Laura Urhobo as Chief Executive Officer in January 2024 to oversee the day to day running of the charity and report back to the board of trustees during regular board meetings. The role of the Board of Trustees include:

Decision-Making: The trustees, led by Abigail Abara, are responsible for making important decisions regarding the charity's operations, programs, and initiatives. They collectively determine the strategic direction and policies of the organisation.

Financial Oversight: One of the primary responsibilities of the trustees is to oversee the financial aspects of the charity. This includes approving budgets, monitoring expenses, and ensuring that funds are used efficiently and in accordance with the charity's mission.

Resource Allocation: The trustees oversee allocating the charity's resources, including funds, personnel, and assets, to various programs and activities. They make informed decisions on how to best utilize these resources to achieve the charity's goals and benefit its beneficiaries.

Compliance and Governance: The trustees ensure that the charity operates in compliance with all legal and regulatory requirements. They also uphold high standards of governance and ethical conduct within the organisation.

4. Diversity and Inclusion

The charity's commitment to complying with an inclusion and diversity policy is commendable, especially given that its users come from diverse racial and ethnic backgrounds. Inclusion and diversity policies are essential in ensuring that all individuals, regardless of their race, ethnicity, or background, have equal access to the charity's services and resources.

By actively promoting inclusion and diversity, the charity:

Ensures Equal Access: It creates an environment where people from all racial and ethnic backgrounds feel welcome and have equal access to the charity's services, including food support and other resources.

Celebrates Differences: The charity recognizes and celebrates the unique cultural backgrounds and experiences of its users. This can help foster a sense of belonging and pride among the beneficiaries.

Addresses Unique Needs: Inclusion and diversity policies allow the charity to address the unique needs of individuals from different backgrounds, ensuring that its services are culturally sensitive and relevant.

Promotes Unity: By embracing diversity, the charity promotes unity and social cohesion within the community. It sends a powerful message that everyone, regardless of their background, is valued and supported.

Complies with Legal and Ethical Standards: It ensures that the charity complies with legal requirements related to diversity and inclusion, promoting fairness and non-discrimination.

Overall, the charity's commitment to inclusion and diversity not only aligns with ethical and legal standards but also enhances its ability to effectively serve a diverse group of beneficiaries, ultimately strengthening its impact in the community.

5. Looking Ahead

Cancer Care Diaspora's expansion plans and its commitment to reaching diverse communities are commendable. Here's an overview of our goals and needs:

5.1 Expansion Plans

Cancer Care Diaspora aims to expand its reach throughout the United Kingdom over the next five years. This expansion will allow the charity to provide essential support and services to a broader audience of individuals and communities affected by cancer.

5.2 Funding and Support

To achieve its expansion goals, the charity is actively seeking more funders who are willing to support our mission. Increasing donations and financial support will enable us to expand operations, reach more community members, and enhance the impact of our programs.

5.3 Youth Eat and Play Project

Cancer Care Diaspora has recently initiated the Youth Eat and Play Project, which is a promising endeavour aimed at addressing the unique needs of young individuals or children who have a parent or guardian affected by cancer. To effectively run and sustain this project, additional resources, including funding and support are needed.

By garnering more financial support and engaging with new funders especially Local Authority and BBC Children in Need, Cancer Care Diaspora can work towards expanding its footprint and making a meaningful difference in the lives of cancer patients, caregivers, the youth and the community at large. This growth will enable us to provide vital services and support to a more extensive and diverse group of beneficiaries throughout the United Kingdom.

6. Thank you

Expressing gratitude to The National Lottery Community Fund (TNLCF), Manchester City Council, Warburtons, BBC Children In Need, Nurturing Foundations, Manchester BME Network, Caribbean & African Network (CAHN), Afrocats and all other partners. Cancer Care Diaspora acknowledges the support and contributions of staff and volunteers that have made our impactful work possible this financial year. Recognizing these partners and individuals not only shows appreciation but also highlights the collaborative effort that has allowed the charity to make a positive impact to the lives of those affected by cancer, their families, carers, and the community at large.

Our ambitions to collaborate with more partners in the future would expand our reach beyond England, a demonstration of our commitment to continuing our mission and serving even more communities. Building strong partnerships and collaborations can indeed help extend the charity's influence and further its goal of making a difference in the lives of individuals and families facing the challenges of cancer.

TNLCF Reaching Communities 3-Year Project Report

Aim

To support Black, Asians and other minority ethnic groups affected by Cancer by enabling them to offer support that will enhance the health and wellbeing of those with cancer.

Objectives

- i. Provide individuals, carers and families with Information & Advice and signposting.
- ii. Organise weekly fitness sessions for people recovering from cancer and their carers.
- iii. Organise events, conferences and workshops to raise awareness, promote proactive self-test and encourage early presentation.
- iv. Provide practical support for people living with cancer including home visits, help with shopping, provision of food parcels, budgeting, etc.
- v. Work with other organisations, churches, mosques and statutory agencies.

Summary Report – Year 1

Year 1 consisted of 12 months of activities providing us with opportunities to work with our service users to meet our objectives. During the year we were able to gather feedback from users to understand how they were responding and benefitting from the services that were provided.

Feedback was gathered using a quantitative and qualitative methodology from n=12 responses out of n=30 people who have been using the services. We were able to gather feedback from the remaining service users who either expressed their inability to complete the digital survey or n=9 who did answer the survey and wanted to expand on their feedback. Informal interviews allowed participants and volunteers to speak about their involvement.

From the feedback:

- Service users were enjoying the activities however they wanted the activities to increase further.
- The activities and engagement with each other through peer-to-peer support encouraged participation, improved physical and mental wellbeing.

For this to be enacted it would require more collaborative working with partners who cater for the Black African and Caribbean community. We recruited two full-time volunteers to support the increased activities and increased referrals into the service

CANCER CARE DIASPORA
TRUSTEES ANNUAL REPORT YEAR ENDED 30 JUNE 2024

and we were able to focus on capacity building to ensure that the service could be sustained over the longer term.



Weekly session at Transformation Community Resource Centre



Summary Report – Year 2

Year 1 evaluation told us that service users wanted more services to be available to allow them to get the support they needed to improve their mental health and physical wellbeing. The opportunities for services users to come together in a safe place to get the advice, education and support was central to the success of the programme.

We achieved our priorities and goals during year 2 and this involved:

- Provision of culturally appropriate food via CCD's Food Bank – this continued to be a significant source of support especially for those who were unable to work through their diagnosis and treatment. It was also helpful for volunteers who were not able to earn but who had a lived experience of cancer that was helpful to those using the service.
- Delivery health education by creating a learning environment where users were empowered to undertake some self-care and self-management of their health.
- CCD worked with other Black led organisations to deliver awareness raising talks. We also co-designed and co-delivered events where we were able to benefit our service users enabling them to engage with others from across different communities as well as engage with clinicians and other professionals. During the events we also had the opportunity to have stalls to promote awareness of cancer and recruit more service users and volunteers.
- An addition to partnering and working with Black led organisations CCD collaborated with NHS and others to raise awareness of early screening and detection of cancer. These awareness raising sessions provided us with the platform to engage across generations including working for 6 months with young people affected by cancer.

Overall feedback and impact

We undertook some interviews with service users to gather feedback on the activities and how we have engaged people to achieve our objectives. The overall feedback concludes that service users are engaged with the activities that are supporting their needs. This is evidenced in the attendance during the year which grew significantly and was sustained. Some of this was due to the engagements events we were involved in or developed as CCD.

- CCD staff and volunteers attended workshops which helped to guide our strategy development. These sessions helped us to find ways to innovate and become more sustainable.

Summary Report – Year 3

CCD delivered a significant number of activities during year 3 of the project. The project has continued to build traction among the Black African and Caribbean community regarding the activities we have engaged people in to improve their mental and physical wellbeing.

Several areas have been strengthened during the last 3 years and this has been evidenced through the regular and sustained engagement from regular attendees at events and in our activities, overall, we have had 90 regular attendees across the different activities. We have continued to attract volunteers especially those with lived experience of cancer whether that they have been diagnosed with or those that have family members or friends they have cared for.

Service users and providers of services have been grateful for the opportunity to partner and engage with CCD either through the opportunity to refer service users to use our services to gain the support they need following their diagnosis or service users themselves having a safe place they can go to for ongoing support.

The project objectives have been maintained throughout the life cycle with regular review and evaluation to ensure that we remained on track to deliver the objectives.

Testimonials

This section of the report provides some feedback from service users.

Each service user feedback journey demonstrates the benefits of collaboration and partnership with other stakeholders so that our service users can be signposted to other services. The testimonial and case study below indicate the gratitude that service users have shown and is reflective of the feedback we have received during year 3. Service users are keen to continue the collaboration with other agencies and are benefitting from a holistic service of support services they are empowered to use.

Feedback from Mwaka*

I would like to Express my gratitude thanks to Cancer Care Diaspora Support Group for everything they have done for me. Food and financial and exercise it's helpful for me to reduce my stress and now I can walk better and I have confidence now I was in a Tangerine Project and I learn a lot of things like food to eat and how to cook it and eat healthy foods it's helping me a lot I really appreciate and to meet different people we talk we laugh I enjoy the conversation and it's nice to be part of Cancer Care Diaspora thanks very much

Case Study – Elizabeth*

Elizabeth and her family accessed various projects delivered by CCD and share the impact of the provisions on her and her family between January to August 2024. She started volunteering and now feel very much a part of the CCD family.

I have witnessed firsthand the profound impact that CCD has had on the lives of individuals and families affected by cancer over the past year. This report reflects my experiences and observations from January to August 2024, showcasing the various ways our community has come together to provide support.

Support Group Meetings - One of the most transformative aspects of our work has been the support group meetings. These gatherings have created a nurturing environment where individuals can share their personal journeys, fears, and triumphs. Participants often leave feeling uplifted and empowered, knowing that they are not alone in their fight. The connections formed here have fostered a strong sense of community, reminding everyone that they have a network of support.

Exercise Sessions - These exercise sessions have been another highlight. Encouraging physical activity has proven to be essential for both physical and mental well-being. It has been inspiring to see participants engage in these sessions, often reporting increased energy and improved mood. Expressing this in a line; “these sessions have helped me regain my strength and confidence.”

Home Visits – These visits have allowed us to reach individuals who may not be able to attend group sessions. These visits are often filled with heartfelt conversations, providing emotional support and practical assistance tailored to each family's needs. I recall visiting a family who expressed how our support helped them feel less isolated during a challenging time. Moments like these reinforce the importance of our work.

Family and Individual Support - Our commitment to providing personalized family and individual support has made a tangible difference. We have been able to address specific needs, whether it be counselling, resource referrals, or simply a listening ear. This tailored approach has allowed families to navigate their challenges with greater ease.

Foodbank and Cost of Living Support - The foodbank initiative, especially with a focus on African foodstuffs, has been a lifeline for many families facing food insecurity. Knowing they can access culturally appropriate food has been crucial for their well-being. Recipients have shared their gratitude, highlighting how this support has alleviated some of their financial burdens.

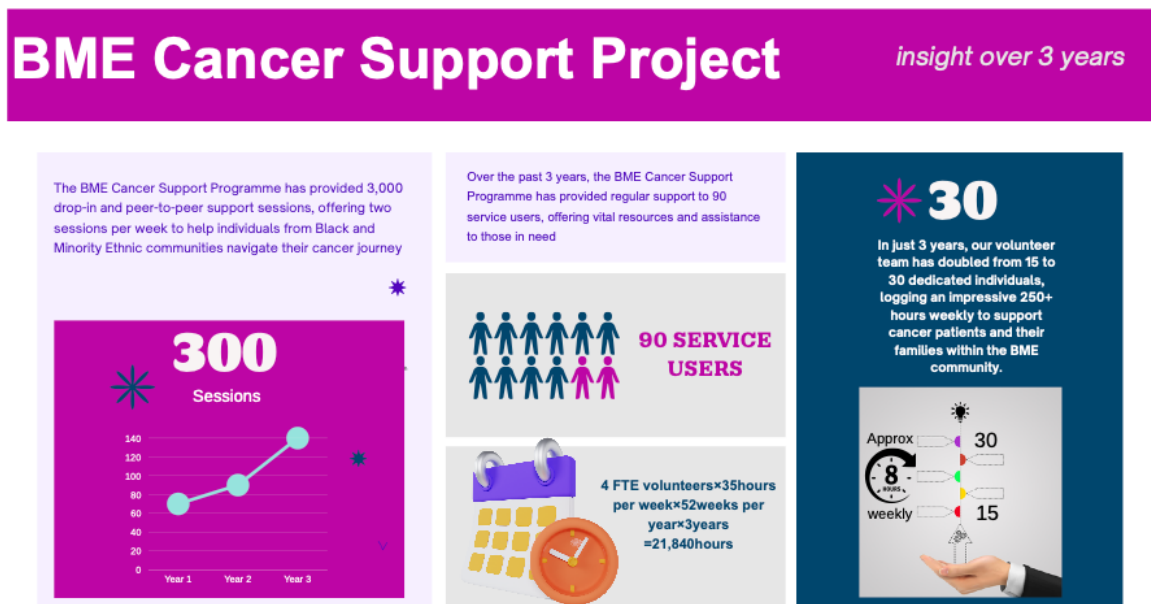
Financial Support - Financial assistance has also played a vital role in alleviating the stress associated with medical expenses. By providing this support, we have enabled families to prioritize their health without the added worry of financial strain. It is rewarding to see the relief on their faces when they receive help.

Holiday Club for Children - The holiday club for children has been a delightful addition to our community offerings. By engaging children in fun and educational activities, we have provided them with a sense of normalcy and joy. Parents have reported that their children returned home with smiles and new friendships, which is heartwarming to witness.

Research Participation - Encouraging community involvement in research has been crucial for enhancing cancer care. Participants have expressed their willingness to contribute to studies, understanding that their experiences can help shape future treatments and support systems.

Community Event with Doctors - Our community event featuring two doctors discussing cancer signs and symptoms was a significant success. The doctors provided invaluable information, empowering attendees to recognize early warning signs and fostering a proactive approach to health. The positive feedback from participants emphasized the importance of such educational initiatives.

Overall Project Impact



Conclusion

Reflecting on the past year, Cancer Care Diaspora has made a meaningful difference in the lives of many. The dedication of all staff, volunteers, and participants is commendable, and I feel honoured to be part of such an impactful organisation. As we continue to support our community, I am excited to see how we can further expand our reach and effectiveness in all of the communities we cover.

Recommendations

Enhancing Client Impact:

- Understanding the Journey: Map the client experience from initial contact to post-service engagement, identifying pain points and optimising the process.
- Tailored Support: Develop culturally specific programs, ensuring accessibility and effectiveness.

Building Knowledge and Influence:

- Sharing Evidence: Disseminate research and ways to engage Black communities, informing policy and practice.
- Championing Equity: Advocate for culturally competent mental health services and address disparities in access, driving lasting change.

Strengthening Operations:

- Sustainable Growth: Increase volunteer capacity and secure funding strategically to meet growing demand while upholding quality standards.
- Streamlined Systems: Implement a robust CRM system and prepare for geographical expansion, ensuring operational efficiency and scalability.
- Data-Driven Decisions: Enhance data collection and analysis to address funding concerns, track progress, and inform decisions for optimal service delivery.
- Building Resilience: Secure sustainable funding and explore strategies to reduce reliance on grants ensuring long-term financial stability.
- Phased Growth: Implement a clear, incremental scaling plan with defined milestones, demonstrating a strategic direction to funders and stakeholders.

CANCER CARE DIASPORA
STATEMENT OF FINANCIAL ACTIVITIES (INCORPORATING THE INCOME AND EXPENDITURE ACCOUNT)
YEAR ENDED 30 JUNE 2024

	Total Funds	Total Funds
Note	2024	2023
	£	£
INCOMING RESOURCES		
Incoming resources from generating funds:		
Voluntary Donations	11,337	4,000
Investmeny Income		
Grants	<u>118,649</u>	<u>83,485</u>
TOTAL INCOMING RESOURCES	<u>129,986</u>	<u>87,485</u>
RESOURCES EXPENDED		
Charitable activities	111,134	72,177
Support costs	3,351	10,453
Fundraising & Legal Cost	<u>4,500</u>	<u>4,500</u>
TOTAL RESOURCES EXPENDED	<u>118,985</u>	<u>87,130</u>
NET INCOMING RESOURCES FOR THE YEAR	11,001	355
RECONCILIATION OF FUNDS		
Total funds brought forward	<u>4,465</u>	<u>4,110</u>
TOTAL FUNDS CARRIED FORWARD	<u><u>15,466</u></u>	<u><u>4,465</u></u>

The Statement of Financial Activities includes all gains and losses in the year and therefore a statement of total recognised gains and losses has not been prepared. All of the above amounts relate to continuing activities.

The notes on pages 18 to 19 form part of these financial statements.

CANCER CARE DIASPORA
BALANCE SHEET AS AT 30 JUNE 2024

	Note	2024 £	£	2023 £
FIXED ASSETS				
Tangible assets		29,900	29,900	
INVESTMENT				
Unlisted Investment				
CURRENT ASSETS				
Debtors		4,465		
4,110				
Cash and cash equivalents		1		355
		<hr style="width: 100%;"/>		<hr style="width: 100%;"/>
		4,466		4,465
CREDITORS:				
Amounts falling due within one year		(18,900)		
NET CURRENT ASSETS				
			(14,434)	4,465
NET ASSETS				
			<hr style="width: 100%;"/> 15,466	4,465
FUNDS				
Restricted			0	0
Unrestricted income funds			15,466	4,465
			<hr style="width: 100%;"/>	
TOTAL FUNDS			15,466	4,465
			<hr style="width: 100%;"/>	

These financial statements were approved by the members of the committee on March 31, 2025 and signed on their behalf by:

Abigail Abara

Abigail Omoye Abara
(Chairperson, Board of Trustees)
31st March 2025

The notes on pages 18 to 19 form part of these financial statements.

1. ACCOUNTING POLICIES

Basis of accounting

The financial statements of CCD have been prepared under the historical cost convention and in accordance with applicable United Kingdom accounting standards, the Statement of Recommended Practice "Accounting and Reporting by Charities" issued in March 2005 (SORP 2005) using the Receipts and Payment basis.

Cash flow statement

The trustees have taken advantage of the exemption in Financial Reporting Standard No 1 (revised) from including a cash flow statement in the financial statements on the grounds that the company is small.

Fixed assets

All fixed assets are initially recorded at cost.

Depreciation

Depreciation is calculated so as to write off the cost of an asset, less its estimated residual value, over the useful economic life of that asset as follows:

Equipment	-	25% WDV
Building work	-	25% WDV
Motor Vehicles	-	25% WDV

2. INCOME

	Restricted Funds £	Unrestricted Funds £	Total Funds 2024 £	Total Funds 2023 £
Donations				
Voluntary Donations		11,337	11,337	4,000
Investment Interest				
Grants	110,500	8,149	118,649	69,324
Total	<u>110,500</u>	<u>19,486</u>	<u>129,986</u>	<u>572,270</u>

3. COSTS OF CHARITABLE ACTIVITIES BY FUND TYPE

Unrestricted	Restricted	Total	Total
Funds	Funds	Funds	Funds
	£	2024	2023
	£	£	£
Community Advancement	111,134	111,134	33,249
Support costs	7,8541	7,851	38,928
	<u>118,982</u>	<u>118,982</u>	72,117
	<u><u>118,982</u></u>	<u><u>118,982</u></u>	

Independent Examiner's Report to the members of CCD Trustees

To the trustees and members of Cancer Care Diaspora with Charity number 1178766. I report on the accounts for the year ended 30 June 2024, which are set out on pages 16 to 19.

The members of the charity's trustees are responsible for the preparation of the accounts. The charity's trustees consider that an audit is not required for this year under section 144(2) of the Charities Act 2011 (the 2011 Act) and that an independent examination is needed.

It is my responsibility to:

- examine the accounts under section 145 (5)(b) of the 2011 Act,
- to follow the procedures laid down in the general Directions given by the Charity Commission and
- to state whether particular matters have come to my attention.

My examination was carried out in accordance with general Directions given by the Charity Commission. An examination includes a review of the accounting records kept by the charity and a comparison of the accounts presented with those records. It also includes consideration of any unusual items or disclosures in the accounts, and seeking explanations from the trustees concerning any such matters. The procedures undertaken do not provide all the evidence that would be required in an audit, and consequently no opinion is given as to whether the accounts present a 'true and fair' view and the report is limited to those matters set out in the statement below.

In connection with my examination, no matter has come to my attention;

1. which gives me reasonable cause to believe that in, any material respect, the requirements:

- to keep accounting records in accordance with section 41 of the 1993 Act; and
- to prepare accounts which accord with the accounting records and comply with the accounting requirements of the 1993 Act have not been met.

2. To which, in my opinion, attention should be drawn in order to enable a proper understanding of the accounts to be reached.



Nii Otu Quaye FCCA FFA
11 Louvain Close
Manchester
Lancashire
M18 8SJ
31st March 2025

CANCER CARE DIASPORA

England & Wales - Charity number 1178766

Accounts

CANCER CARE DIASPORA

ANNUAL REPORT & FINANCIAL STATEMENTS

30 JUNE 2023

Charity Number 1178766

**CANCER CARE DIASPORA
FINANCIAL STATEMENTS FOR YEAR ENDED 30 JUNE 2023**

CONTENTS	PAGE
Trustees Annual Report	5 - 8
Statement of Financial Activities (incorporating the Income and expenditure account)	9
Balance sheet	10
Notes to the financial statements	11 - 12
Independent Examiners Report	13

REFERENCE AND ADMINISTRATIVE DETAILS

Registered Charity Name CANCER CARE DIASPORA

Charity Registration Number 1178766

Principal Office 83 Ducie Street
Manchester
M34 5YT

Registered Office 83 Ducie Street
Manchester
M1 2JQ

THE TRUSTEES Abigail Omoye Abara
Dr Amara Ajaegbu
Mercy Eriamhatoe

Independent Examiner Nii Otu Quaye FFA/FICA
11 Louvaine Close
Manchester
M18 8SJ

Bankers **Lloyds Bank**
Market Street Manchester



...Committed to fighting cancer, one life at a time

Weekly support group sessions

Support group for individuals, families and carers of people affected by cancer in Manchester and Greater Manchester. Funded by the National Lottery Community Fund .

**Foodbank available every Friday
From 11am**

Tuesdays

**Transformation community
centre, 11 Richmond Grove
Longsight. M13 0LN
10:30am to 12:00pm**

Fridays

**Harpurhey children's centre.
Upper conran street,
Manchester. M9 4DA
10:30am to 12:00pm**

Phone: 07885 732781

Email: info@cancercarediaspora.org

Website: www.cancercarediaspora.org



Charity No. 1178766



Trustees Report Contents

1. **Executive Summary**
2. **Our Impact**
3. **Transparency and Accountability**
4. **Diversity and Inclusion**
5. **Looking Ahead**
6. **Thank you**

1. **Executive Summary**

The charity has made a significant impact in the community by providing free food parcels on a weekly basis. These food parcels are distributed to three distinct groups: individuals affected by cancer, their dedicated caregivers, and the broader community. The charity operates out of two key centres, Harpurhey Children's Centre and Transformation Community Resource Centre in Longsight.

This initiative not only addresses the immediate needs of those battling cancer and their caregivers but also extends its reach to the general community, offering vital support to individuals who may be facing food insecurity or financial hardship. By providing regular access to nutritious food, the charity has played a crucial role in improving the overall well-being and quality of life for its beneficiaries, while fostering a sense of community and solidarity among residents.

2. **Our Impact**

Cancer Care Diaspora, a charitable organisation, has made significant strides in raising awareness and support for cancer-related issues within the general community. Their achievements include:

Awareness and Education: The charity has successfully educated the community about cancer, its causes, early detection, prevention, and the importance of regular screenings. This knowledge empowers individuals to take proactive steps towards cancer prevention and early intervention.

Weekly Food Support: Cancer Care Diaspora provides vital support to individuals living with cancer and their caregivers through weekly free food parcels. This practical assistance helps alleviate the financial burden and nutritional challenges often faced by these individuals.

Community Engagement: The charity operates from two centres, Harpurhey Children's Centre and Transformation Community Resource Centre Longsight, where we engage the community actively. We hand out food parcels at these centres, deliver to those home bound thereby fostering a sense of community and support among those affected by cancer.

Holistic Support: In addition to food support, Cancer Care Diaspora conducts relaxation exercises and support group sessions at both centres. These activities promote mental and emotional well-being among cancer patients and their caregivers, creating a holistic support system. Julia and Hans Rausing Trust Ethnic Food Bank made a substantial impact during its sponsorship for the charity between January and June 2023. During this six-month period, the charity distributed over 1500 food parcels to more than 180 families. This initiative provided significant relief to the food budgets of the recipients, as expressed by users like A Irozuru and M Mckenzie, who both confirmed feeling the alleviation of financial pressure during this time.

Furthermore, the sponsorship was especially valuable to newcomers like Christabel, who had recently moved to Manchester. She appreciated the fact that she could access ethnic food supplies without any cost during this period. This not only supported the physical well-being of these families but also demonstrated the importance of community support and inclusivity, ensuring that people from diverse backgrounds had access to culturally relevant food items. The sponsorship by Julia and Hans Rausing and the National Lottery Community Fund Foodbank Fund had a positive and lasting impact on the charity's mission to provide essential food support to those in need.

Overall, Cancer Care Diaspora has made a substantial impact by not only providing practical assistance but also creating a supportive and informed community that is better equipped to address the challenges posed by cancer.

3. Transparency and Accountability

The governing body of the charity is comprised of three trustees: Dr Amara Ajaegbu, Mercy Eriamiatoe, and Chairperson Abigail Abara. These trustees play a crucial role in the organization, as they are responsible for making key decisions, ensuring the proper management of funds, and overseeing the allocation of the charity's resources. Their roles include:

Decision-Making: The trustees, led by Abigail Abara, are responsible for making important decisions regarding the charity's operations, programs, and initiatives. They collectively determine the strategic direction and policies of the organisation.

Financial Oversight: One of the primary responsibilities of the trustees is to oversee the financial aspects of the charity. This includes approving budgets, monitoring

expenses, and ensuring that funds are used efficiently and in accordance with the charity's mission.

Resource Allocation: The trustees oversee allocating the charity's resources, including funds, personnel, and assets, to various programs and activities. They make informed decisions on how to best utilize these resources to achieve the charity's goals and benefit its beneficiaries.

Compliance and Governance: The trustees ensure that the charity operates in compliance with all legal and regulatory requirements. They also uphold high standards of governance and ethical conduct within the organisation.

4. Diversity and Inclusion

The charity's commitment to complying with an inclusion and diversity policy is commendable, especially given that its users come from diverse racial and ethnic backgrounds. Inclusion and diversity policies are essential in ensuring that all individuals, regardless of their race, ethnicity, or background, have equal access to the charity's services and resources.

By actively promoting inclusion and diversity, the charity:

Ensures Equal Access: It creates an environment where people from all racial and ethnic backgrounds feel welcome and have equal access to the charity's services, including food support and other resources.

Celebrates Differences: The charity recognizes and celebrates the unique cultural backgrounds and experiences of its users. This can help foster a sense of belonging and pride among the beneficiaries.

Addresses Unique Needs: Inclusion and diversity policies allow the charity to address the unique needs of individuals from different backgrounds, ensuring that its services are culturally sensitive and relevant.

Promotes Unity: By embracing diversity, the charity promotes unity and social cohesion within the community. It sends a powerful message that everyone, regardless of their background, is valued and supported.

Compliance with Legal and Ethical Standards: It ensures that the charity complies with legal requirements related to diversity and inclusion, promoting fairness and non-discrimination.

Overall, the charity's commitment to inclusion and diversity not only aligns with ethical and legal standards but also enhances its ability to effectively serve a diverse group of beneficiaries, ultimately strengthening its impact in the community.

5. Looking Ahead

Cancer Care Diaspora's expansion plans and its commitment to reaching diverse communities are commendable. Here's an overview of our goals and needs:

Expansion Plans:

Cancer Care Diaspora aims to expand its reach throughout the United Kingdom over the next five years. This expansion will allow the charity to provide essential support and services to a broader audience of individuals and communities affected by cancer.

Funding and Support:

To achieve its expansion goals, the charity is actively seeking more funders who are willing to support our mission. Increasing donations and financial support will enable us to expand operations, reach more community members, and enhance the impact of our programs.

Youth Eat and Play Project:

Cancer Care Diaspora has recently initiated the Youth Eat and Play Project, which is a promising endeavour aimed at addressing the unique needs of young individuals or children who have a parent or guardian affected by cancer. To effectively run and sustain this project, additional resources, including funding and support are needed.

By garnering more financial support and engaging with new funders especially local authority and BBC Children in Need, Cancer Care Diaspora can work towards expanding its footprint and making a meaningful difference in the lives of cancer patients, caregivers, the youth and the community at large. This growth will enable us to provide vital services and support to a more extensive and diverse group of beneficiaries throughout the United Kingdom.

6. Thank you

Expressing gratitude to The National Lottery Community Fund, Manchester City Council, Julia and Hans Rausing Trust, BBC Children In Need, Warburtons Foundation, Salford CVS, Caribbean & African Health Network, Greater Manchester BME Network, Dr Gbenga Ogunbadejo of Abicare Health and all the sponsors and volunteers is a wonderful way for Cancer Care Diaspora to acknowledge the support and contributions that have made our work possible this financial year. Recognizing these partners and individuals not only shows appreciation but also highlights the collaborative effort that has allowed the charity to make a positive impact to the lives of those affected by cancer, their families and carers and the community at large.

Furthermore, expressing the desire to have more partners in the future to expand our reach beyond the United Kingdom demonstrates the charity's commitment to continuing its mission and serving even more communities. Building strong partnerships and collaborations can indeed help extend the charity's influence and further its goal of making a difference in the lives of individuals and families facing the challenges of cancer.

CANCER CARE DIASPORA
STATEMENT OF FINANCIAL ACTIVITIES (INCORPORATING THE INCOME AND EXPENDITURE ACCOUNT)
YEAR ENDED 30 JUNE 2023

	Total Funds	Total Funds
	2023	2022
Note	£	£
INCOMING RESOURCES		
Incoming resources from generating funds:		
Voluntary Donations	4,000	2,946
Investment Income		
Grants	<u>83,485</u>	<u>69,324</u>
TOTAL INCOMING RESOURCES RESOURCES EXPENDED	<u>87,485</u>	<u>72,270</u>
Charitable activities	72,177	62,124
Support costs	10,453	9,537
Fundraising & Legal Cost	<u>4,500</u>	<u>1,500</u>
TOTAL RESOURCES EXPENDED	<u>87,130</u>	<u>73,161</u>
NET INCOMING RESOURCES FOR THE YEAR RECONCILIATION OF FUNDS	355	(891)
Total funds brought forward	<u>4,110</u>	<u>5,001</u>
TOTAL FUNDS CARRIED FORWARD	<u><u>4,465</u></u>	<u><u>4,110</u></u>

The Statement of Financial Activities includes all gains and losses in the year and therefore a statement of total recognised gains and losses has not been prepared. All of the above amounts relate to continuing activities.

The notes on pages 11 to 12 form part of these financial statements.

**CANCER CARE DIASPORA
BALANCE SHEET AS AT 30 JUNE 2022**

	Note	2023 £	£	2022 £
FIXED ASSETS				
Tangible assets				
INVESTMENT				
Unlisted Investment				
CURRENT ASSETS				
Debtors		4,110		4,110
Cash and cash equivalents		355		0
		4,465		4,110
CREDITORS:				
Amounts falling due within one year				
NET CURRENT ASSETS			4,465	4,110
NET ASSETS			4,465	4,110
FUNDS				
Restricted			0	0
Unrestricted income funds			4,465	4,110
TOTAL FUNDS			4,465	4,110

These financial statements were approved by the members of the committee on the 13th April 2024 and signed on their behalf by:

Abigail Abara

Abigail Omoye Abara
(Chairman of Board of Trustees)
13th April 2024

The notes on pages 11 to 12 form part of these financial statements.

1. ACCOUNTING POLICIES

Basis of accounting

The financial statements of CCD have been prepared under the historical cost convention and in accordance with applicable United Kingdom accounting standards, the Statement of Recommended Practice "Accounting and Reporting by Charities" issued in March 2005 (SORP 2005) using the Receipts and Payment basis.

Cash flow statement

The trustees have taken advantage of the exemption in Financial Reporting Standard No 1 (revised) from including a cash flow statement in the financial statements on the grounds that the company is small.

Fixed assets

All fixed assets are initially recorded at cost.

Depreciation

Depreciation is calculated so as to write off the cost of an asset, less its estimated residual value, over the useful economic life of that asset as follows:

Equipment	- 25% WDV
Building work	- 25% WDV
Motor Vehicles	- 25% WDV

2. INCOME

	Restricted Funds £	Unrestricted Funds £	Total Funds 2023 £	Total Funds 2022 £
Donations				
Voluntary Donations		4,000	4,000	2,946
Investment Interest Grants				
Total	<u>83,485</u>	<u>4,000</u>	<u>87,485</u>	<u>69,324</u>
	<u>83,485</u>	<u>4,000</u>	<u>87,485</u>	<u>572,270</u>

3. COSTS OF CHARITABLE ACTIVITIES BY FUND TYPE

	Unrestricted Funds	Restricted Funds	Total Funds 2023	Total Funds 2022
		£	£	£
Community Advancement		33,249	33,249	62,124
Support costs		38,928	38,928	9,537
		<hr/> 72,177 <hr/>	<hr/> 72,177 <hr/>	71,661

Independent Examiner's Report to the members of CCD Trustees

To the trustees and members of Cancer Care Diaspora with Charity number 1178766. I report on the accounts for the year ended 30 June 2023, which are set out on pages 9 to 12.

The members of the charity's trustees are responsible for the preparation of the accounts. The charity's trustees consider that an audit is not required for this year under section 144(2) of the Charities Act 2011 (the 2011 Act) and that an independent examination is needed.

It is my responsibility to:

- examine the accounts under section 145 (5)(b) of the 2011 Act,
- to follow the procedures laid down in the general Directions given by the Charity Commission and
- to state whether particular matters have come to my attention.

My examination was carried out in accordance with general Directions given by the Charity Commission. An examination includes a review of the accounting records kept by the charity and a comparison of the accounts presented with those records. It also includes consideration of any unusual items or disclosures in the accounts, and seeking explanations from the trustees concerning any such matters. The procedures undertaken do not provide all the evidence that would be required in an audit, and consequently no opinion is given as to whether the accounts present a 'true and fair' view and the report is limited to those matters set out in the statement below.

In connection with my examination, no matter has come to my attention;

1. which gives me reasonable cause to believe that in, any material respect, the requirements:

- to keep accounting records in accordance with section 41 of the 1993 Act; and
- to prepare accounts which accord with the accounting records and comply with the accounting requirements of the 1993 Act have not been met.

2. To which, in my opinion, attention should be drawn in order to enable a proper understanding of the accounts to be reached.

Nii Otu Quaye FCCA FFA
Chartered Certified Accountant
11 Louvain Close
Manchester
M18 8SJ

10th April 2024

CANCER CARE DIASPORA

England & Wales - Charity number 1178766

Accounts

CANCER CARE DIASPORA

ANNUAL REPORT & FINANCIAL STATEMENTS

30 JUNE 2022

Charity Number 1178766

CONTENTS	PAGE
Trustees Annual Report	3 - 6
Statement of Financial Activities (incorporating the Income and expenditure account)	7
Balance sheet	8
Notes to the financial statements	9 - 10
Independent Examiners Report	11

REFERENCE AND ADMINISTRATIVE DETAILS

Registered charity name CANCER CARE DIASPORA

Charity registration number 1178766

Principal office 83 Ducie Street
Manchester
M1 2JQ

Registered office 83 DUCIE STREET
Manchester
M1 2JQ

THE TRUSTEES Abigail Omoye Abara
Mercy Eriamiatoe
Dr Amara Ajaegbu

Independent Examiner Nii Otu Quaye FFA/FICA
Chartered Certified Accountant
11 Louvaine Close
Manchester
M18 8SJ

Bankers Lloyds Bank

The trustees have the pleasure to present their report and the unaudited financial statement of the charity for the period ended 30th June 2022.

STRUCTURE, GOVERNANCE AND MANAGEMENT

Cancer Care Diaspora is a registered charity and is governed by the trust deed. The Charity was registered as charity with the Charity Commission on June 13, 2018.

The charity is governed by the trust deeds which states that the appointment of new trustees is at the discretion of the spiritual leadership of the church. Trustees retire from office at each Annual General Meeting and are automatically eligible for re-election. An election is held with Trustees required to receive a simple majority of those present to be elected. New trustees with the necessary skills to contribute to the charity's management and development are nominated by members of the board of Trustees, interviewed by a panel and appointed by a resolution taken by the trustees. When new trustees are appointed they are given an introduction to the work of the Charity and provided with the information they need to fulfil their roles, which includes information about the role of trustees and charity law.

The Board of Trustees administers the charity, meeting . The Chief Executive is appointed by the trustees to manage the day to day operations of the charity, reporting on the performance against the strategic plans of the establishment.

RISK MANAGEMENT

The Trustees consider the risk affecting the Charity and its activities as part of its short and long term planning procedures. These are renewed regularly and plans amended accordingly to mitigate those risks. The Risk Register we have created helps us consider the level of risk being faced and to reduce the higher risks to a level acceptable to Cancer Care Diaspora governing body. In assessing risk, the trustees recognise that some areas of our work require the acceptance and management of risk if our key objectives are to be achieved.

OBJECTIVES AND ACTIVITIES

The objects of the charity are for public benefit:

1. To advance the wellbeing of the the local community
- 2.To relieve sickness and financial hardship and to promote and preserve good health by the provision of funds, goods or services of any kind, including the provision of counselling and support in such parts of the United Kingdom and the world as the trustees from time to time may think fit; and
- 3.To advance the welfare of the community the trustees from time to time may think fit.

The trustees' objectives for each year are determined by reference to the overall objects.

ACHIEVEMENTS AND PERFORMANCE

We continued to serve the community by ensuring provision of a safe space for regular exercise twice a week online and gradually reintroduced face to face sessions with funding (£15,000) received from Comic Relief & partners through the Global Majority Fund disbursed by the Caribbean & African Health Network. The funding also enabled us to support young persons in primary and secondary schools across Greater Manchester (with a parent or guardian undergoing cancer treatment) through online tutoring and homework support. The project was successful and we received a lot of positive feedback from the schools through the families we supported. Our trained online tutors also gave a lot of feedback on the children and highlighted how the funded sessions helped the children to achieve more in their learning. We were also able to give out culturally appropriate food parcels to our service users for one year with the help of this grant.

We also received a grant of £4,974 from We Love Mcr charity for our face to face support group meeting, refreshments and part venue hire, including volunteers and sessional staff support.

In September 2021 we were awarded Lottery funding up to £150,000 for three years for organisational core funding for staff salaries, volunteer transport, weekly fitness sessions, office rent, accountant and other consultancy fees and evaluation.

We are very grateful to these funders who constantly support our community projects yearly enabling us to reach out to communities that have seen a lot of marginalisation, health inequalities and poor outcomes of cancer over the years and sadly very poor outcomes of the Covid 19 pandemic.

FINANCIAL REVIEW

Voluntary unrestricted income totalled £3,520 (2020 was £3,268) and has been achieved through the efforts of staff and volunteers. The significant inadequacy in income has allowed us to review our income generating activities and our out-going operations to relieve financial hardship on the organisation. The charity did receive a grant of £56,394 (2020 was £44,472) to promote cancer awareness in the year under review. Moving forward, we have to establish gift aid management to enhance future incoming activities by engaging our accountants to help with a well established process of making the gift aid claims. It is expected that the financial position will increase over the subsequent years. Also, the charity is pursuing strict budgetary and prudent ways of reducing the cost of running the charity.

It is the Trustees objective to build up sufficient reserves to cover one year's expenditure. In the Trustees opinion, it will take a number of years to achieve this objective.

PLANS FOR FUTURE PERIODS

As in previous years, we will continue to build our capacity and financial position in furtherance of our objectives. The Board and Senior Management Team will carry regular reviews and where appropriate make necessary improvements in our activities

and services in our bid to offer more tailored activities and services that will suit our service users' needs.

RESPONSIBILITIES OF THE TRUSTEES

The trustees (who are also the directors of CCD for the purposes of company law) are responsible for preparing the Trustees Annual Report and the financial statements in accordance with applicable law and United Kingdom Accounting Standards (United Kingdom Generally Accepted Accounting Practice).

Charity Commission law requires the trustees to prepare financial statements for each financial year which give a true and fair view of the state of affairs of the charity and of the incoming resources and application of resources, including the income and expenditure, of the charitable organisation for that period. In preparing these financial statements, the trustees are required to:

- select suitable accounting policies and then apply them consistently;
- observe the methods and principles in the Charities SORP;
- make judgements and estimates that are reasonable and prudent;
- state whether applicable UK Accounting Standards have been followed, subject to any material departures disclosed and explained in the financial statements;
- prepare the financial statements on the going concern basis unless it is inappropriate to presume that the charitable company will continue in operation.

The trustees are responsible for keeping proper accounting records that disclose with reasonable accuracy at any time the financial position of the charitable company and enable them to ensure that the financial statements comply with the Companies Act 2006. The trustees are also responsible for safeguarding the assets of the charitable company and hence for taking reasonable steps for the prevention and detection of fraud and other irregularities.

Volunteers

We would like to thank all volunteers who have and continue to support our work.

CANCER CARE DIASPORA
STATEMENT OF FINANCIAL ACTIVITIES (INCORPORATING THE INCOME AND EXPENDITURE ACCOUNT)
YEAR ENDED 30 JUNE 2022

	Total Funds 2022 £	Total Funds 2021 £
Note		
INCOMING RESOURCES		
Incoming resources from generating funds:		
Voluntary Donations	2,946	3,520
Investmeny Income		
Grants	<u>69,324</u>	<u>56,394</u>
TOTAL INCOMING RESOURCES	<u>72,270</u>	<u>59,914</u>
RESOURCES EXPENDED		
Charitable activities	62,124	39,705
Support costs	9,537	22,061
Fundraising Cost	<u>1,500</u>	<u>5,194</u>
TOTAL RESOURCES EXPENDED	<u>73,161</u>	<u>66,960</u>
NET INCOMING RESOURCES FOR THE YEAR	(891)	(7,046)
RECONCILIATION OF FUNDS		
Total funds brought forward	<u>5,001</u>	<u>12,047</u>
TOTAL FUNDS CARRIED FORWARD	<u>4,110</u>	<u>5,001</u>

The Statement of Financial Activities includes all gains and losses in the year and therefore a statement of total recognised gains and losses has not been prepared. All of the above amounts relate to continuing activities.

The notes on pages 9 to 10 form part of these financial statements.

**CANCER CARE DIASPORA
BALANCE SHEET AS AT 30 JUNE 2022**

	Note	2022 £	£	2021 £
FIXED ASSETS				
Tangible assets				
INVESTMENT				
Unlisted Investment				
CURRENT ASSETS				
Debtors		4,110		5,000
Cash and cash equivalents		0		1
		4,110		5,001
CREDITORS:				
Amounts falling due within one year				
NET CURRENT ASSETS			4,110	5,001
NET ASSETS			4,110	5,001
FUNDS				
Restricted			0	0
Unrestricted income funds			4,110	5,001
TOTAL FUNDS			4,110	5,001

These financial statements were approved by the members of the committee on the 28th February 2023 and signed on their behalf by:

(Chairman of Board of Trustees)

24th April 2023

The notes on pages 9 to 10 form part of these financial statements.

1. ACCOUNTING POLICIES

Basis of accounting

The financial statements of CCD have been prepared under the historical cost convention and in accordance with applicable United Kingdom accounting standards, the Statement of Recommended Practice "Accounting and Reporting by Charities" issued in March 2005 (SORP 2005) using the Receipts and Payment basis.

Cash flow statement

The trustees have taken advantage of the exemption in Financial Reporting Standard No 1 (revised) from including a cash flow statement in the financial statements on the grounds that the company is small.

Fixed assets

All fixed assets are initially recorded at cost.

Depreciation

Depreciation is calculated so as to write off the cost of an asset, less its estimated residual value, over the useful economic life of that asset as follows:

Equipment	-	25% WDV
Building work	-	25% WDV
Motor Vehicles	-	25% WDV

2. INCOME

	Restricted Funds £	Unrestricted Funds £	Total Funds 2022 £	Total Funds 2021 £
Donations				
Voluntary Donations		2,946	2,946	3,520
Investment Interest				
Grants	<u>69,324</u>		<u>69,324</u>	<u>56,394</u>
Total	<u><u>69,324</u></u>	<u><u>2,946</u></u>	<u><u>72,270</u></u>	<u><u>59,914</u></u>

3. COSTS OF CHARITABLE ACTIVITIES BY FUND TYPE

	Unrestricted Funds	Restricted Funds	Total Funds 2022	Total Funds 2021
		£	£	£
Community Advancement		62,124	62,124	39,705
Support costs		9,537	9,537	27,255
		71,661	71,661	66,960
		71,661	71,661	

Independent Examiner's Report to the members of CCD Trustees

To the trustees and members of Cancer Care Diaspora with Charity number 1178766. I report on the accounts for the year ended 30 June 2021, which are set out on pages 7 to 9.

The members of the charity's trustees are responsible for the preparation of the accounts. The charity's trustees consider that an audit is not required for this year under section 144(2) of the Charities Act 2011 (the 2011 Act) and that an independent examination is needed.

It is my responsibility to:

- examine the accounts under section 145 (5)(b) of the 2011 Act,
- to follow the procedures laid down in the general Directions given by the Charity Commission and
- to state whether particular matters have come to my attention.

My examination was carried out in accordance with general Directions given by the Charity Commission. An examination includes a review of the accounting records kept by the charity and a comparison of the accounts presented with those records. It also includes consideration of any unusual items or disclosures in the accounts, and seeking explanations from the trustees concerning any such matters. The procedures undertaken do not provide all the evidence that would be required in an audit, and consequently no opinion is given as to whether the accounts present a 'true and fair' view and the report is limited to those matters set out in the statement below.

In connection with my examination, no matter has come to my attention;

1. which gives me reasonable cause to believe that in, any material respect, the requirements:

- to keep accounting records in accordance with section 41 of the 1993 Act; and
- to prepare accounts which accord with the accounting records and comply with the accounting requirements of the 1993 Act have not been met.

2. To which, in my opinion, attention should be drawn in order to enable a proper understanding of the accounts to be reached.

Nii Otu Quaye FCCA FFA
Chartered Certified Accountant
11 Louvain Close
Manchester
Lancashire
M18 8SJ
20th April 2023

CANCER CARE DIASPORA

England & Wales - Charity number 1178766

Accounts

CANCER CARE DIASPORA

ANNUAL REPORT & FINANCIAL STATEMENTS

30 JUNE 2021

Charity Number 1178766

**CANCER CARE DIASPORA
FINANCIAL STATEMENTS FOR YEAR ENDED 30 JUNE 2021**

CONTENTS	PAGE
Trustees Annual Report	3 - 6
Statement of Financial Activities	7
Balance sheet	8
Notes to the financial statements	9 - 10
Independent Examiners Report	11

REFERENCE AND ADMINISTRATIVE DETAILS

Registered charity name CANCER CARE DIASPORA

Charity registration number 1178766

Principal office 83 Ducie Street
Manchester
M1 2JQ

Registered office 83 Ducie Street
Manchester
M1 2JQ

THE TRUSTEES Abigail Omoye Abara (Chair)
Mercy Eriamiatoe
Dr Cynthia Ajaegbu

Independent Examiner Nii Otu Quaye FFA/FICA
Chartered Certified Accountant
11 Louvaine Close
Manchester
M18 8SJ

Bankers Lloyds Bank
Market Street
Manchester

The trustees have the pleasure to present their report and the unaudited financial statement of the charity for the period ended 30th June 2021.

STRUCTURE, GOVERNANCE AND MANAGEMENT

Cancer Care Diaspora is a registered charity and is governed by the trust deed dated February 26, 2017. The Charity was registered as charity with the Charity Commission on June 13, 2018.

Trustees retire from office at each Annual General Meeting and are automatically eligible for re-election. An election is held with Trustees required to receive a simple majority of those present to be elected. New trustees with the necessary skills to contribute to the charity's management and development are nominated by members of the board of Trustees, interviewed by a panel and appointed by a resolution taken by the trustees. When new trustees are appointed they are given an introduction to the work of the Charity and provided with the information they need to fulfil their roles, which includes information about the role of trustees and charity law.

The Board of Trustees administers the charity, meeting . The Chief Executive is appointed by the trustees to manage the day to day operations of the charity, reporting on the performance against the strategic plans of the establishment.

RISK MANAGEMENT

The Trustees consider the risk affecting the Charity and its activities as part of its short and long term planning procedures. These are renewed regularly and plans amended accordingly to mitigate those risks. The Risk Register we have created helps us consider the level of risk being faced and to reduce the higher risks to a level acceptable to Cancer Care Diaspora governing body. In assessing risk, the trustees recognise that some areas of our work require the acceptance and management of risk if our key objectives are to be achieved.

OBJECTIVES AND ACTIVITIES

The objects of the charity are for public benefit:

1. To advance the wellbeing of the the local community

2.To relieve sickness and financial hardship and to promote and preserve good health by the provision of funds, goods or services of any kind, including the provision of counselling and support in such parts of the United Kingdom and the world as the trustees from time to time may think fit; and

3.To advance the welfare of the community the trustees from time to time may think fit.

The trustees' objectives for each year are determined by reference to the overall objects.

ACHIEVEMENTS AND PERFORMANCE

We continued to provide support for the African community during the corona virus pandemic with grant received from the National Lottery Community Fund from April to October 2020.

In October 2020, we received a grant of £49,394 from The National Lottery Community Fund to continue to provide much needed support in the African community adversely affected by the pandemic.

We delivered over 300 food parcels during that time to over 40 families spread all over Manchester and some parts of Scotland. We paid staff and supported 15 volunteers to deliver food parcels to these families while we carried out a lot of publicity and online campaigns to encourage people to stay at home, wear face coverings if they go out and keep generally safe out in the communities. We also received £2000 from We love MCR charities to deliver healthy cooked meals to our service users for a period of 6months and a further £5000 from Forever Manchester in March 2021 to engage our community online in exercise and online cooking discussions/ support group to encourage a healthy lifestyle and prevent loneliness among service users who mostly live alone especially during the National Lockdown.

We also paid monthly rent for our office space and monthly mail box rental.

Manchester city council gave us a grant of £2000 in April 2021 for corona virus public health messaging publicity and in June 2021 we received £5,418 from Macmillan charity to resume face to face support group meetings in the community, provide our service users with healthy packed lunch when they attend meetings and for personal protective equipment and cleaning resources while we learn to live with the corona virus as safe as we can.

FINANCIAL REVIEW

Voluntary unrestricted income totalled £3,520 (2020 was £3,268) and has been achieved through the efforts of the trustees. The significant inadequacy in income has allowed us to review our income generating activities and our out-going operations to relieve financial hardship on the organisation. The charity did receive a grant of £56,394 (2020 was £44,472) to promote cancer Care in the year under review. Moving forward, we have to established gift aid management to enhance future incoming activities by engaging our accountants to help with a well established process of making the gift aid claims. It is expected that the financial position will increase over the subsequent years. Also, the charity is pursuing strict budgetary and prudent ways of reducing the cost of running the charity.

It is the Trustees objective to build up sufficient reserves to cover one year's expenditure. In the Trustees opinion, it will take a number of years to achieve this objective.

PLANS FOR FUTURE PERIODS

As in previous years, we will continue to build our capacity for spiritual, numerical and financial growth in furtherance of the above objectives. The Leadership will carry regular reviews and where appropriate make necessary improvements in our activities and services in our bid to offer more tailor-made activities and services that will suit our members' needs.

RESPONSIBILITIES OF THE TRUSTEES

The trustees (who are also the directors of CCD for the purposes of company law) are responsible for preparing the Trustees Annual Report and the financial statements in accordance with applicable law and United Kingdom Accounting Standards (United Kingdom Generally Accepted Accounting Practice).

Charity Commission law requires the trustees to prepare financial statements for each financial year which give a true and fair view of the state of affairs of the charity and of the incoming resources and application of resources, including the income and expenditure, of the charitable organisation for that period. In preparing these financial statements, the trustees are required to:

- select suitable accounting policies and then apply them consistently;
- observe the methods and principles in the Charities SORP;
- make judgements and estimates that are reasonable and prudent;
- state whether applicable UK Accounting Standards have been followed, subject to any material departures disclosed and explained in the financial statements;
- prepare the financial statements on the going concern basis unless it is inappropriate to presume that the charitable company will continue in operation.

The trustees are responsible for keeping proper accounting records that disclose with reasonable accuracy at any time the financial position of the charitable company and enable them to ensure that the financial statements comply with the Companies Act 2006. The trustees are also responsible for safeguarding the assets of the charitable company and hence for taking reasonable steps for the prevention and detection of fraud and other irregularities.

Volunteers

The Trustees and members of CCD would like to thank all the volunteers for their weekly sacrifice to make our community organisation a home indeed.

CANCER CARE DIASPORA
STATEMENT OF FINANCIAL ACTIVITIES (INCORPORATING THE INCOME AND EXPENDITURE ACCOUNT)
YEAR ENDED 30 JUNE 2021

	Total Funds 2021 £	Total Funds 2020 £
INCOMING RESOURCES		
Incoming resources from generating funds:		
Voluntary Donations	3,520	3,268
Investmeny Income		
Grants	<u>56,394</u>	<u>44,472</u>
TOTAL INCOMING RESOURCES	<u>59,914</u>	<u>47,740</u>
RESOURCES EXPENDED		
Charitable activities	39,705	33,657
Support costs	22,061	2,050
Fundraising Cost	<u>5,194</u>	<u>1,000</u>
TOTAL RESOURCES EXPENDED	<u>66,960</u>	<u>36,707</u>
NET INCOMING RESOURCES FOR THE YEAR	(7,046)	11,033
RECONCILIATION OF FUNDS		
Total funds brought forward	<u>12,047</u>	<u>1,014</u>
TOTAL FUNDS CARRIED FORWARD	<u><u>5,001</u></u>	<u><u>12,047</u></u>

The Statement of Financial Activities includes all gains and losses in the year and therefore a statement of total recognised gains and losses has not been prepared. All of the above amounts relate to continuing activities.

The notes on pages 9 to 10 form part of these financial statements.

**CANCER CARE DIASPORA
BALANCE SHEET AS AT 30 JUNE 2021**

	Note	2021 £	£	2020 £
FIXED ASSETS				
Tangible assets				
INVESTMENT				
Unlisted Investment				
CURRENT ASSETS				
Debtors				
		5,000		
Cash and cash equivalents		1		12,047
		5,001		12,047
CREDITORS:				
Amounts falling due within one year				
NET CURRENT ASSETS		12,047		12,047
NET ASSETS		12,047		12,047
FUNDS				
Restricted		0		7,365
Unrestricted income funds		5,001		4,682
TOTAL FUNDS		5,001		12,047

These financial statements were approved by the members of the committee on the 19th February 2021 and signed on their behalf by:

Abigail Abara
(Chairman of Board of Trustees)

29th April 2022

The notes on pages 9 to 10 form part of these financial statements.

1. ACCOUNTING POLICIES

Basis of accounting

The financial statements of CCD have been prepared under the historical cost convention and in accordance with applicable United Kingdom accounting standards, the Statement of Recommended Practice "Accounting and Reporting by Charities" issued in March 2005 (SORP 2005) using the Receipts and Payment basis.

Cash flow statement

The trustees have taken advantage of the exemption in Financial Reporting Standard No 1 (revised) from including a cash flow statement in the financial statements on the grounds that the company is small.

Fixed assets

All fixed assets are initially recorded at cost.

Depreciation

Depreciation is calculated so as to write off the cost of an asset, less its estimated residual value, over the useful economic life of that asset as follows:

Equipment	-	25% WDV
Building work	-	25% WDV
Motor Vehicles	-	25% WDV

2. INCOME

	Restricted Funds £	Unrestricted Funds £	Total Funds 2021 £	Total Funds 2020 £
Donations				
Voluntary Donations		3,520	3,520	3,268
Investment Interest				
Grants	<u>56,394</u>		<u>56,394</u>	<u>44,472</u>
Total	<u><u>56,394</u></u>	<u><u>3,520</u></u>	<u><u>59,914</u></u>	<u><u>47,740</u></u>

3. COSTS OF CHARITABLE ACTIVITIES BY FUND TYPE

	Unrestricted Funds	Restricted Funds £	Total Funds 2021 £	Total Funds 2020 £
Community Advancement		39,705	39,705	33,657
Support costs	3,201	24,054	27,255	3,050
		63,759	66,960	
	3,201	63,759	66,960	36,707

Independent Examiner's Report to the members of CCD Trustees

To the trustees and members of Cancer Care Diaspora with Charity number 1178766. I report on the accounts for the year ended 30 June 2021, which are set out on pages 7 to 9.

The members of the charity's trustees are responsible for the preparation of the accounts. The charity's trustees consider that an audit is not required for this year under section 144(2) of the Charities Act 2011 (the 2011 Act) and that an independent examination is needed.

It is my responsibility to:

- examine the accounts under section 145 (5)(b) of the 2011 Act,
- to follow the procedures laid down in the general Directions given by the Charity Commission and
- to state whether particular matters have come to my attention.

My examination was carried out in accordance with general Directions given by the Charity Commission. An examination includes a review of the accounting records kept by the charity and a comparison of the accounts presented with those records. It also includes consideration of any unusual items or disclosures in the accounts, and seeking explanations from the trustees concerning any such matters. The procedures undertaken do not provide all the evidence that would be required in an audit, and consequently no opinion is given as to whether the accounts present a 'true and fair' view and the report is limited to those matters set out in the statement below.

In connection with my examination, no matter has come to my attention;

1. which gives me reasonable cause to believe that in, any material respect, the requirements:

- to keep accounting records in accordance with section 41 of the 1993 Act; and
- to prepare accounts which accord with the accounting records and comply with the accounting requirements of the 1993 Act have not been met.

2. To which, in my opinion, attention should be drawn in order to enable a proper understanding of the accounts to be reached.



Nii Otu Quaye FCCA FFA
Chartered Certified Accountant
11 Louvain Close
Manchester
Lancashire
M18 8SJ
29th April 2022