



THE CHARITABLE TRUST  
OF THE BEAR CHURCH  
**u&er.**

# **THE DEPTFORD RAGGED TRUST**

## **ANNUAL REPORT AND UNAUDITED**

### **FINANCIAL STATEMENTS**

FOR THE YEAR ENDED 31 MARCH 2024



# EXTENDING THE LEGACY

---

# BUILDING FOR THE FUTURE

---

# CREATING SPACE TO FLOURISH



# CONTENTS

---

<b>OBJECTIVES AND ACTIVITIES .....</b>	<b>7</b>
<b>REVIEW OF THE YEAR .....</b>	<b>8</b>
<b>CHURCH .....</b>	<b>12</b>
SERVICES	
CHURCH SMALL GROUPS	
<b>SERVING THE COMMUNITY .....</b>	<b>15</b>
BEAR CUBS	
ESOL CLASSES	
EVEYLYN COMMUNITY STORE	
DEPTFORD RAGGED SCHOOL ARCHIVE	
FILM FESTIVAL	
<b>BUILDING UPDATE .....</b>	<b>19</b>
FUNDRAISING FOR THE RAGGED PROJECT	
<b>RISK.....</b>	<b>20</b>
POLICY	
ASSESSMENT	
<b>TRUSTEES REPORT .....</b>	<b>22</b>
<b>INDEPENDENT EXAMINER'S REPORT .....</b>	<b>24</b>

**The trustees present their annual report and financial statements for the year ended 31 March 2024.**

The financial statements have been prepared in accordance with the accounting policies set out in the financial statements and comply with the Charity's governing document, the Charities Act 2011 and "Accounting and Reporting by Charities: Statement of Recommended Practice applicable to charities preparing their accounts in accordance with the Financial Reporting Standard applicable in the UK and Republic of Ireland FRS 102" (effective 01 January 2019).

**It's been another fantastic year for The Deptford Ragged Trust and The Bear Church.**

Our building is taking shape with huge thanks to our partners J49, Tek, Lewisham and the GLA, and the many people and organisations who have donated money and given their time and effort. Reading the activities and the impact on people's lives set out in this report shows how important our community is to those in and around Deptford, I hope you will be inspired too. Finally, huge thanks to the staff team and the volunteers who give so much and make all of this possible.

If you want to get involved, give or come and join us - we'd love to hear from you

Blessings



Hugh Stickland

***Chair of Trustees***

28th November 2024







# OBJECTIVES AND ACTIVITIES

---

## **The Deptford Ragged Trust, the charitable arm of The Bear Church, is dedicated to extending the legacy of fostering community and addressing the impact of poverty on people's lives.**

We provide a space for refuge, learning, worship, and entertainment to local people in South East London.

### **Our vision**

To build a home in the heart of Deptford where people can grow, feel safe, be creative and take responsibility for both local and global communities. We seek to love God and love each other as we work out our mission to alleviate poverty, isolation, inequality, hardship, distress, homelessness, and sickness.

### **Our history**

The Deptford Ragged Trust's roots trace back to 1844, when The Deptford Ragged School was founded, 27 years before the state provided education for all children. Established by eight Christian men and women in a loft above a Deptford cowshed, the school aimed to teach children to read and write, often also providing food. The school was dedicated to "ragged children," so named for their worn clothing and bare feet who endured harsh conditions.

In 1944, the Ragged School Union became the Shaftesbury Society, and The Deptford Ragged School evolved into the Shaftesbury Christian Centre. In 2007, it merged with The Bear Church, and in February 2018, The Deptford Ragged Trust CIO was formed to continue supporting those in need in Deptford, and is registered with the Charity Commission under number 1177319.

### **Today**

We are radically transforming our site to serve Deptford with affordable housing for 18 to 30-year-olds, a community kitchen/cafe, a museum archive, and a new home for the church and our activities. It will provide a dynamic, multi-use community hub that serves the diverse needs of Deptford, fostering connection, creativity, and support for local residents.

### **Principle Activities**

The overall main activity of the CIO consists of operating The Bear Church.

### **The aims of the charity are:**

1. To advance Christian faith and mission in and around Deptford in the London Borough of Lewisham, and also elsewhere in London, the UK and the rest of the world at the discretion of the trustees.
2. To relieve poverty, hardship, distress, homelessness and sickness in Deptford and the surrounding area, and also elsewhere at the discretion of the trustees.
3. To further or benefit the residents of Deptford and the surrounding area by associating together the said residents and the local authorities, voluntary and other organisations in a common effort to advance education, and to organise community activities and provide facilities in the interests of social welfare for recreation and leisure time occupation with the objective of improving conditions of life for the residents.
4. To fulfil other charitable purposes for the benefit of the people of Deptford and the surrounding area, and also across London and elsewhere at the discretion of the trustees. The trustees have paid due regard to guidance issued by the Charity Commission in deciding what activities the Charity should undertake. The trustees have paid due regard to guidance issued by the Charity Commission in deciding what activities the Charity should undertake.

See [www.thebear.tv](http://www.thebear.tv) for more.

# REVIEW OF THE YEAR

**The last 18 months have felt somewhat nomadic, nevertheless, the trustees are delighted to report a community growing in number and depth.**

## Locations

During this financial year, we conducted our activities in four separate locations across the borough while our site was being redeveloped.

Bear Cubs, English Fridays and Offices – Leander Centre, Deptford

Sunday mornings – Church of the Ascension, Blackheath

Sunday evening – Evelyn Community Centre, Deptford

Storage – Olive Tree Lock-up, Lee

We anticipated a decline in attendance due to moving venues, changing the meeting time of our Sunday morning services, and a transition in leadership. However, our community has grown, and we've enjoyed welcoming and beginning relationships with new people.

## Leadership

In May, Bex Keer was confirmed as the leader of The Bear Church, and Paul Adlington was thanked as he stepped down. In Paul's 25 years of service as a leader, he was greatly respected and loved for his humility, vision and countless building initiatives – be it a pantomime set, a bar which we gathered around whenever in the building, a prop for a Sunday service or leading the way in the redevelopment of our site. Paul's leadership has a remarkable non-anxious presence, which brought stability, endurance, faith and hope to the community.

The leadership transition was about addressing new, broad, and sustainable leadership. We want to create a pathway for growing leaders to advance the vision by taking responsibility for and serving the wider community.

## Inclusion Statement

This year, following consultation with members of the church, the leadership published a statement of inclusion and belonging in the newsletter and on the Bear Church website - <https://www.thebear.tv/aboutus>.

As part of the Inclusivity Review

1. Two members of the leadership team and two members of the Church attended a 6-week course titled **Refocusing Faithfulness** - Exploring a Biblical basis for LGBTQ+ inclusion in the Church.
2. We invited Growing Hope, a charity which provides free therapy for children and young people with additional needs in partnership with local churches across the UK, to run training on accessibility in the Church and speak to the whole Church on the theme of 'everyone being welcome'.
3. We marked World Refugee Day by inviting the charity Imix to talk about their aim to change the conversation about migration and refugees to "create a more welcoming society".



Evelyn  
Community  
Centre





The Bear  
building  
project

Leander  
Centre

Church  
of the  
Ascension



# REVIEW OF THE YEAR



**34**  
years  
of The Bear  
Church

**20**  
years  
of Evening  
Service

**25**  
years  
of Bear  
Cubs



**The Deptford Ragged  
School Archive**  
Education, social  
change and innovation  
in Deptford *since 1844*



**£10.5m**  
building  
redevelopment



**33**  
new homes  
provided



**94%**  
funded



**1,550**  
meals served  
to alleviate  
food poverty



**£4,200**  
donated to provide  
fruit and vegetables to  
the Evelyn Community  
Store (social  
supermarket)

**54 hours**

of ESOL classes  
in the year

Participants from:



**6,065**

contacts with with  
children, parents  
and carers

**93**

new families  
registered

**152**

sessions  
averaging 42  
people per session

# THANKS

**We are deeply grateful for the unwavering support of our generous funders and all who are part of The Bear Church community.**

Your contributions - whether through grants, sponsorships, monthly giving, in-kind donations, or the gift of time - have enabled us to sustain and expand our efforts, allowing us to make a lasting impact.

We extend our heartfelt thanks to the more than 200 volunteers who have made it possible for us to achieve all that we have this year.

Finally, we extend our heartfelt thanks to all who have contributed anonymously to Bear Cubs, The Ragged Project (redevelopment), and The Bear Church. Your generosity and dedication inspire us every day.

Significant investments from the following grants and trusts have been pivotal in helping us realise our goals:

## For the Ragged Project (site redevelopment)



**£100,000** from the Beatrice Laing Trust



**£18,499.99** from the Lewisham NCIL Grant

**LandAid**

**£42,750** from LandAid

## For English Fridays (ESOL Classes):



**£4,255** from the Lee Charity of William Hatcliffe



# CHURCH SERVICES

---

## We have two 'congregations'.

On Sunday mornings, we studied the gospel of Luke and its overarching theme that everyone is welcome. We were interested in Jesus's use of parables, a form of telling ordinary stories which challenged the culture in which they were told. In *The Contemplative Pastor*, Eugene Peterson describes how Jesus threw odd stories down alongside ordinary lives – para “alongside”, bole “thrown” and walked away without explanation or an alter call. The listener wonders what they mean. The stories got behind the listener's defences, lodged in their imaginations and then' like a time bomb, exploded in their hearts. The listener of the parables was left to see the connections, God connections, life connections, and eternity connections. The parable didn't do the work; it put the listener's imagination to work. Peterson says

***“God does not impose his reality from without; he grows [it] from within.”***

And this was our hope for our church in 2023-2024.

The gospel of Luke is often referred to as the gospel of meals. So, in January 2024, we introduced hospitality as our year's theme. Luke shows us that the hospitality of God is for the stranger, for the sick, for the person outside the circle of privilege, and it was also for the disciples, those who followed Jesus.

***As we fundraised, prayed over and redeveloped our new site, our vision was not just to have a new building that would be fit for purpose but to offer hospitality by which we embody God's grace and enact God's mission.***

On Sunday evenings, we prepare and serve a meal for a diverse group of individuals including people who experience social isolation and loneliness, homelessness, drug and alcohol dependencies, long-term complex mental health conditions and the complexities of irregular migration. This diversity underscores our commitment to providing inclusive services.

Sunday morning service at Church of the Ascension



**Louise (not her real name) has been attending the Evening Service for many, many years.**

She is an elderly lady with 6 children, numerous grandchildren and 2 great grandchildren. When we first knew Louise she was angry, bitter, upset with the world and very quick to take offence. She regularly fell out with family, friends and bore grudges. On one occasion she wouldn't speak to the team for several months because they asked for her telephone number during the 'bad old days' of Covid when we needed to contact people if they had potentially been in contact with someone infected and she was very suspicious of our motives.

Louise continued to come along to the Evening Service, and trust began to develop. She always asked us to pray for her numerous family members by name and gradually she began to respond to the content of the short messages particularly the teaching about the need to forgive and ask for forgiveness. She softened towards the team and acknowledged when she had taken and caused offence.

Louise now prays, asks for forgiveness and forgives others. This has greatly increased her ability to maintain relationships with friends and family and build new relationships.

During the year, we held several other services:



Our Easter Sunday outdoor service in Giffin Square was followed by a meal of bread and fish together. It was wonderful to be back on Deptford High Street, a few metres away from

our usual site on Frankham Street, where our building project continues. We also spent some time after the service visiting the site, hearing about the progress, and praying over the land.

May – 'passing the baton on,' confirmation service for Bex Keer as the new leader of The Bear Church and blessing and releasing Paul Adlington after 25 years of service.

In June, we marked World Refugee Day. We heard from Guest Speaker Katherine Maxwell-Rose, who works for Imix, a charity that aims to change the conversation about migration and refugees to 'create a more welcoming society'.



Summer Sunday adventures included Psalms and Stretches in Greenwich Park, an anchor treasure hunt in Deptford, a service and picnic by the sea in

Tankerton, church camp in Frinton-on-Sea and brunch at one of the leadership team's gardens.



In October, we marked World Mental Health Day. We launched a new Directory for Support Services. (live on [www.thebear.tv](http://www.thebear.tv) under pastoral care).

We held a Christingle service in Giffin Square in December.

# CHURCH SMALL GROUPS

---

## **Our small groups are to share life and grow in faith together.**

Alongside the tradition house groups and a bible study group, we have;

- A book group
- Two podcast groups
- A group for 16- 18-year-olds
- A group that visits a different restaurant each month on Deptford High Street
- A craftivist group which explores and implements creative ways to generate social change through craft and making.



Our craftivism group embellished prints from the Deptford Ragged School Archive



# SERVING THE COMMUNITY

**Serving the surrounding neighbourhoods and residents is an essential part of our faith being lived in Deptford just as it was in 1844.**

## **Bear Cubs**

Bear cubs has continued to offer early years education through four play sessions a week for under-fives and their parents/carers. The three indoor, and one outdoor sessions provide the opportunity to learn through play, make friends, and receive support.

The Thursday morning outdoor sessions are now a fixed part of our timetable as they have been such a success. We go to a different local green space each week and provide many outdoor activities. Families have benefited from finding community and friendship in parks and commented on how helpful the outdoor sessions have been in introducing them to local green spaces in the area which they weren't aware of. We have also continued our 'Build a Bear' weeks, which now happen a few times a term. We switch from

the usual toy set-up and play with boxes, fabric and whatever other interesting things we can find.

We have done four library trips where we ran activities, storytime, and songs. In the summer holidays, we did some extra outdoor sessions and a trip to Charlton Lido. In the Spring term, we took a group of families to an interactive exhibition all about Play.

We have run two in-person parenting courses with 23 parents taking part and 23 children in the creche. During the year, we had 6,065 contacts with children, parents and carers across 152 sessions, averaging 40 people a session. This year, we have had 93 new families register with us. The majority of these hear about us through word of mouth. Still, we have seen an increase in those discovering us online or meeting us through outdoor sessions.

For more details on Bear Cubs activities, please see <https://bit.ly/4fdXWOG>



## Elaine's story

I started attending Bear Cubs this year and it has become an extension of my support system. I'm a single mother with a history of domestic abuse by my child's father. At Bear Cubs I was made to feel welcome, supported and safe, often having comforting chats regarding my experiences, both past and present.

Bear Cubs offered a Positive Parenting Course which I found invaluable. It showed different approaches to parenting as well as an understanding of how children can think. I was made to feel comfortable to express my views and found it a great opportunity to talk to other parents about their experiences with children especially as there were a few first-time parents like myself in the group.

At Bear Cubs, over time, my child has been able to develop very close bonds with Emily and Kelly as well as other volunteers which has really helped them come out of their shell. My child is suspected by experts to have autism and the staff have been nothing short of a God-send. They have been patient, kind, accommodating, informative and very inclusive for me and my child which has allowed them to often be confident and comfortable to express and understand their needs and feelings in the world around them. The staff often reassure my child that its ok to not like loud noises or to be overwhelmed by many people in a room and they give them a quiet space when needed. Those are just to name a couple of the wonderful things Bear Cubs do.

The world is a complex place even for adults, but Bear Cubs has created a space for my child to feel free, safe and happy as well as myself to which I could never be any more thankful for.



## ESOL English Classes

We have continued our English classes predominantly attended by asylum seekers, refugees and new arrivals in the country. We see new students week to week. Attendance has generally been between 5 and 15 people from different countries, including Chad, Afghanistan, Iran, Turkey, Vietnam, Brazil, South Korea, Somalia, Nigeria, Morocco, Sri-Lanka, India and Peru, most of whom are settling into the local area and some who have lived here for longer but want to improve their English. There is usually a mix of ages and abilities, and many bring their pre-school age children. The class has two teachers who teach Beginner and Advanced Levels in two groups. We now have 4 regular volunteers who support the learners or help with the children. We are very grateful that The Lee Charity of William Hatcliffe granted us all the funds we needed to pay our two teachers this year. We continued working closely with social services (family workers refer and accompany vulnerable women and their children) and the Refugee Council. We have continued to have students and their children from Stay City in Deptford, a facility used by the Home Office to house asylum seekers.



We organised a trip to Margate in July 2023 with the Point, Catford and 20 of our students/their children enjoyed a day out at the beach together.

ESOL students and their children have gained English speaking, reading, and writing skills, helping them access training, education, and employment. Students without contact with other English speakers were exposed to new situations and gained self-esteem and confidence. Through our classes they have also been able to access other help they need, such as sources of legal advice, help with writing letters to the Home Office and their MP and so on.

### Parvis's story

Parvis left Iran six years ago in fear of his life. He tried to settle in Germany but was refused asylum twice, so travelled to the UK, crossing the channel with a crowd of others on a boat. Housed in a hotel in Greenwich, he found our class and became a regular. His thirst for knowledge and love for an English idiom knew no bounds. He became part of our community, loving to help at our free meals on Sunday evenings. Moved twice by the Home Office, far away from here, he was accepted as a refugee, and given a tiny studio flat room in Harrow, a good two-hour journey by public transport from Deptford. His dream is to work again as a software engineer, rent his own flat, and begin to live a 'normal life' again. This summer he will travel to Turkey with his brand-new travel document and be reunited with his 5 sisters and parents for the first time in 6 years.

### Evelyn Community Store

We have continued supporting the Evelyn Community Store, which exists to alleviate food poverty in the local community, and to run our soup kitchen on Sunday evenings. This year, we have donated £100 per week in fruit and vegetables to the Evelyn Community Store, £4,200 in total. The High Street grocer Phil continued to sell us fruit and vegetables at wholesale prices.





## Deptford Ragged School Archive (DRSA)

The Deptford Ragged School Archive (DRSA) is a heritage outreach project with an archive collection of objects which tell the history of the Deptford Ragged School and the part it has played in the community of Deptford since 1844.

DRSA aims and values, informed by the history of the Deptford Ragged School, are to use the archive to inspire community arts projects in Deptford, and to advocate for children whose education is impacted by poverty.

The project leader runs the DRSA with a committed group of volunteers, who are documenting and cataloguing the archive material researching stories to support the delivery of community activities. The projects enabled the local community to explore the history of Deptford and learn how the Deptford Ragged School shaped the Deptford we know today. Evaluation has shown that this gives local people a sense of community and pride of place, as they uncover stories that happened where they live and go to school and the streets they walk down every day.

The collection is documented on **www.ehive.com** under **Deptford Ragged School Archive**.

For the financial year 2023-24 the DRSA leader also delivered the following community activities to 66 children, 113 adults and worked with 13 volunteers:

DRSA Exploring our Heritage service at the Bear Church.

Two Community heritage workshops at Deptford Christmas Market and Deptford Community Day run by London Borough of Lewisham.

Attended; Lewisham Creative Summit 2023 at The Albany LEAN (Lewisham Arts Education Network) event addressing Joined-up working to develop a cultural strategy for Lewisham.

DRSA Website: [www.deptfordraggedschoolarchive.org.uk](http://www.deptfordraggedschoolarchive.org.uk)

Social media Twitter: @DeptfordRaggedS

Instagram: @deptford\_ragged\_school\_archive

## Film festival

We hosted and supported the NXDFF Film Festival in April. We were hosted by Goldsmiths University - screening *Getting It Back: The Story of Cymande*. The British group Cymande are unsung heroes whose message of peace, love and funk sailed beyond Britain's shores and helped shape music for five decades. Long after they stopped playing, the music played on, so they returned to play some more. In this film their story is told on screen for the first time, with tributes from a galaxy of musicians and producers influenced and enthralled by their music, including Mark Ronson, Norman Jay, Jazzie B, DJ Maseo of De La Soul, Jim James and Louie Vega."

# BUILDING UPDATE

**In 2017, the previous freeholders of our site gave notice of their intention to sell up. To save the land for the people of Deptford and continue the legacy of 180 years of service to the local community, we raised £756,000 with help from family, friends, other churches, and grant-making trusts to buy the freehold.**

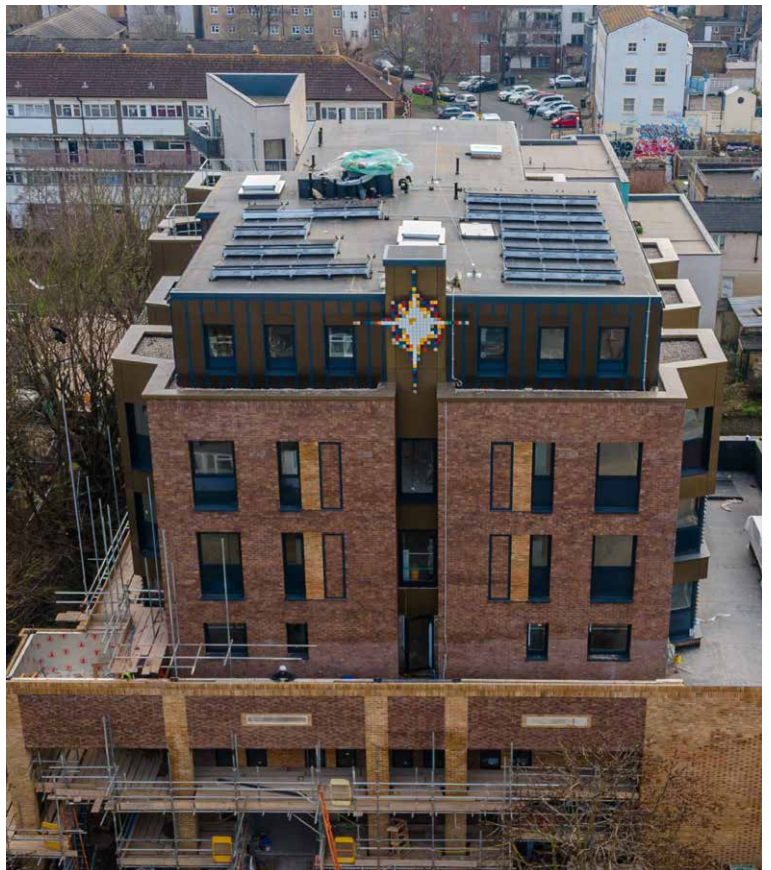
It is a mark of how much local people value the support we provide through a wide range of activities.

In 2022, the old building was demolished, and construction began to build a 6-storey, low-carbon-emission building ready to house an integrated church and community centre with 33 flats for socially affordable rent, a community kitchen, outdoor space, community arts studio/workshop, raised-bed vegetable gardens, and a home for the Deptford Ragged Trust archive.

During 2023-2024, the construction work for the redevelopment continued while we ran our activities from four sites across the borough. The Trust's role this year in the building redevelopment has been to continue our fundraising efforts to contribute £ 1.1 million to the new building's shell and core (bricks and mortar).

We are incredibly grateful to J49 for their unceasing work to complete the project.

The partnership model we've created with J49 (a newly formed pioneering housing association [www.j49.space](http://www.j49.space)), Lewisham Council, the Greater London Authority, and the local community is key to achieving the outcomes. We are learning how community and faith groups can unite with local and regional government to solve social problems. Imagination, empathy and social responsibility are combined with the worlds of policy, planning, management and finance to build something profoundly impactful..



# RISK

---

## The trustees review the risks of the Charity under five headings:

### 1. Regulatory

Includes, but is not limited to safeguarding of children and vulnerable adults, health & safety, data protection and employment law;

### 2. Financial

Includes, but is not limited to fraud, loss of data or expertise and viability;

### 3. Operational

Includes, but is not limited to food hygiene and maintenance;

### 4. Organisational

Includes, but is not limited to management of resources and processes;

and

### 5. Insurable

Includes, but is not limited to property and accident.

In terms of both likelihood and impact, the key risks are regulatory and financial, and relevant policies are reviewed annually, with a person or management group designated to give detailed oversight of each.

Financial controls are specified to give accountability with diversity and confidentiality. Contingency plans are in place to ensure continuity of finance management and financial reports are made for every 'finance meeting' and forwarded to The Bear Leadership Team and the trustees for comment and approval. The Budget is agreed by the end of January each year, in time for the financial year to begin on 1st April.

Safe procedures are established for day-to-day activities, and risk assessments carried out for non-standard, one-off programmes such as weekends away or community events.

The Charity Commission's Big Board Talk checklist provides a helpful set of 15 questions for the trustees

to consider, reflect and respond to, with the aim of reducing risks as much as possible.

## Risk Assessment

The trustees have carried out a risk assessment in relation to the charity's activities and have concluded that the main risks for 2024/25 will be:

### 1. Financial Stability and Economic Pressures

The ongoing cost of living crisis and economic uncertainty have significantly impacted our congregation's ability to donate. As a church heavily reliant on gifts and donations, predominantly from those attending our Sunday services, we face a considerable risk if income levels drop. To mitigate this, we aim to maintain a reserve of at least three months' essential operating costs and have a plan in place to respond swiftly should our income decrease.

### 2. Fundraising for the Building Project

At the close of this financial year, a significant challenge is the need to raise over £600,000 to complete the fit-out of our church and community space. This is essential to enable us to resume operations and activities at the site. The successful completion of this fundraising is critical to our future ability to move back into our building and serve the community effectively.

### 3. Staffing and Recruitment Challenges

Our dedicated and competent staff team is changing as members transition to new opportunities outside the church. Given past recruitment challenges, there is a risk that we may face difficulties in filling the necessary roles. We are committed to conducting a thorough recruitment process and will regularly review our staffing needs. If necessary, we will reallocate tasks within the existing team and suspend or discontinue certain activities if we cannot secure the required staffing. We will also continue prioritising a healthy work-life balance and mental wellbeing within our working culture to retain and support our team.



# LOOKING TO 2024/2025 AND BEYOND

---

## **Our aspiration for the coming year is to finish the building redevelopment so that we can move back in and open the doors.**

Our plans for an integrated church and community centre are coming together as we enter the home stretch of what is, for us, a once-in-a-lifetime project. In our new building, we will nurture the local community and provide practical support and engagement activities for local families, children and young people, mothers, refugees and asylum seekers, homeless people, and others in need. Our community services positively impact the lives of under-resourced people living in Deptford (in the bottom 10% on the Indices of Deprivation) and South East London.

Once completed, The Deptford Ragged Trust/The Bear Church will facilitate the services we currently offer and extend our offer to provide opportunities for learning, enterprise, play, creativity, personal development, improvements in wellbeing, and fostering a greater sense of belonging.

The Bear will have indoor and outdoor spaces where local people can connect, receive information, advice, and guidance, and participate in spiritual activities. Above the vibrant community centre and church will be 33 flats for Lewisham residents facing the greatest housing need.

1. New multi-purpose auditorium – seating 200 for The Bear Church and community use.
2. Ragged Café – a social meeting place for the community offering skills training and work experience, commercial catering facilities and good quality healthy food.
3. The Evening Service – soup kitchen for those who are hungry and socially isolated.
4. From plant to plate - raised garden beds community food growing project.
5. New facilities for The Bear Cubs Pre-School and Parent and Toddler groups.
6. English Fridays – language education.
7. Entertainment facilities – for Bear Live to showcase live music, film, art and theatre.
8. Wellbeing sessions – Psalms & Stretches, fitness classes, parenting support.
9. Deptford Ragged School Museum and Archives – charting the social history of the Ragged Schools with education and outreach programmes.
10. 33 socially affordable flats for young people in severe housing need.
11. We will continue to employ one full-time and nine part-time staff members for the coming year.

# TRUSTEES REPORT

---

**The trustees of The Deptford Ragged Trust/ The Bear Church are a dedicated group of individuals who bring diverse skills, experience, and commitment to their roles. They are responsible for overseeing the church's strategic direction and governance, ensuring that we remain true to our charitable objectives while operating effectively and sustainably.**

Over the past year, the trustees have focused on steering the organisation through the redevelopment of our site. During a period of significant economic challenge, they have prioritised financial stability and supported the church's mission to serve our community.

The trustees meet regularly to review the progress of the redevelopment, legal requirements, and the church's activities, assess risks, and make informed decisions that align with our mission and values. Their commitment to transparency, accountability, and ethical governance underpins all of their work, and they continue to work closely with the leadership team to navigate the opportunities and challenges ahead.

During this financial year, Darryl Veldtman and Shane Urquhart informed the board of their intention to step down after their respective terms. The leadership team, on behalf of the entire church, extends heartfelt gratitude to both for their voluntary dedication and significant contributions to the trust's governance.

In anticipation of these departures, the board conducted a comprehensive skills audit to assess the necessary expertise and experience required to recruit new trustees effectively.

1. Hugh Stickland (Chair)
2. Dr. Rachel Thomas
3. Darryl Veldtman (resigned 27.02.2024)
4. Sheree Urquhart (resigned 13.06.24)
5. Katy Nyman (appointed 27.02.24)
6. Philippe Granger (appointed 04.06.2024)

The governing document/constitution is provided to all trustees and made available to others on request.

The company's current policy concerning the payment of trade creditors is to follow the CBI's Prompt Payers Code (copies are available from the CBI, Centre Point, 103 New Oxford Street, London WC1A 1DU).

The company's current policy concerning the payment of trade creditors is to:

- settle the terms of payment with suppliers when agreeing the terms of each transaction.
- ensure that suppliers are made aware of the terms of payment by inclusion of the relevant terms in contracts; and
- pay in accordance with the company's contractual and other legal obligations.

Each year, after reviewing the budget, the trustees delegate the running of the church and trust to the leadership teams:

The Bear Leadership Team. Led by the church leader (de facto CEO), and including one member of the trustees, to oversee the day-to-day running of all aspects of the church, including the finances, activities, building, employment and safeguarding.

The Bear leadership team delegates powers to the finance team, the buildings team, the services teams, and each of the teams that run activities.

Notably: Bear Cubs, English Fridays, Deptford Ragged School Archive, Global (overseas missions team) and Bear live.

The board of trustees is thankful for the commitment and hard work of staff and the 200+ volunteers who often go beyond the call of duty to serve others in this community. The board recognises the invaluable financial support from members of the church and other donors who have contributed generously to this work.

Employees

Staff have been employed during the year in the following roles: Church Leader, Assistant Church Leader, Church Operations Manager, Finance Officer, Digital Content Officer, Cleaner, Bear Cubs Manager, Bear Cubs Project Worker, Bear Cubs Administrator All contracted Staff are employed under The Deptford Ragged Trust Pay and Pensions Policy. The Church Leader is employed at 40 hours per week, all other staff have been employed on a pro rata, part-time basis. We also pay two teachers term-time for the English Fridays classes. Part-time hours of contracted and English Fridays staff equate to 98.5 hrs per week, which with the church leader equates to 3.5 employees in regular employment. We also pay sessional creche workers for Bear Cubs biannual Parenting Courses. All staff contracted or sessional are employed at or above the London Living Wage.

Public Benefit: The trustees have complied with the duty imposed by Section 4 of the Charities Act 2006 to have due regard to the public benefit guidance published by the Charity Commission in December 2008.

Statement of trustees’ responsibilities

The trustees are responsible for preparing the Trustees’ Report and the financial statements in accordance with applicable law and United Kingdom Accounting Standards ( United Kingdom Generally Accepted Accounting Practice).

The law applicable to charities in England and Wales requires the trustees to prepare financial statements for each financial year which give a true and fair view of the state of affairs of the Charity and of the incoming resources and application of resources of the Charity for that year.

In preparing these financial statements, the trustees are required to:

- Select suitable accounting policies and then apply them consistently.
- Observe the methods and principles in the Charities SORP.
- Make judgements and estimates that are reasonable and prudent.
- State whether applicable accounting standards have been followed, subject to any material departures disclosed and explained in the financial statements; and
- Prepare the financial statements on the going concern basis unless it is inappropriate to presume that the charity will continue in operation.

The trustees are responsible for keeping sufficient accounting records that disclose with reasonable accuracy at any time the financial position of the Charity and enable them to ensure that the financial statements comply with the Charities Act 2011, the Charity (Accounts and Reports) Regulations 2008 and the provisions of the trust deed. They are also responsible for safeguarding the assets of the Charity and hence for taking reasonable steps for the prevention and detection of fraud and other irregularities.

The Trustees’ report was approved by the Board of Trustees, 28 Nov 2024.

.....  
Mr. Hugh Stickland  
Chair of Trustees



# INDEPENDENT EXAMINER'S REPORT

---

## Independent examiner's report to the trustees of The Deptford Ragged Trust

I report to the charity trustees on my examination of the accounts of The Deptford Ragged Trust (the Trust) for the year ended 31 March 2024.

### Responsibilities and basis of report

As the charity trustees of the Trust you are responsible for the preparation of the accounts in accordance with the requirements of the Charities Act 2011 ('the Act').

I report in respect of my examination of the Trust's accounts carried out under Section 145 of the Act and in carrying out my examination I have followed all applicable Directions given by the Charity Commission under Section 145(5)(b) of the Act.

### Independent examiner's statement

Since your charity's gross income exceeded £250,000 your examiner must be a member of a listed body. I can confirm that I am qualified to undertake the examination because I am a member of the Institute of Chartered Accountants in England and Wales, which is one of the listed bodies.

I have completed my examination. I confirm that no material matters have come to my attention in connection with the examination giving me cause to believe that in any material respect:

1. accounting records were not kept in respect of the Trust as required by Section 130 of the Act; or
2. the accounts do not accord with those records; or
3. the accounts do not comply with the applicable requirements concerning the form and content of accounts set out in the Charities (Accounts and Reports) Regulations 2008 other than any requirement that the accounts give a true and fair view which is not a matter considered as part of an independent examination.

I have no concerns and have come across no other matters in connection with the examination to which attention should be drawn in this report in order to enable a proper understanding of the accounts to be reached.

James Foskett BSc, FCA, DChA

DUX Advisory Limited  
Chartered Accountants  
Kennel Club House  
Gatehouse Way  
Aylesbury  
Buckinghamshire  
HP19 8DB

18th December 2024

# The Deptford Ragged Trust

## Statement of Financial Activities for the Year Ended 31 March 2024

		Unrestricted funds £	Restricted funds £	31.3.24 Total funds £	31.3.23 Total funds £
	Notes				
<b>INCOME AND ENDOWMENTS FROM</b>					
Donations and legacies	2	154,513	405,702	560,215	796,579
<b>Charitable activities</b>	4				
Charitable activities		26,319	45,620	71,939	29,219
Investment income	3	-	590	590	215
<b>Total</b>		<u>180,832</u>	<u>451,912</u>	<u>632,744</u>	<u>826,013</u>
<b>EXPENDITURE ON</b>					
<b>Charitable activities</b>	5				
Charitable activities		<u>173,805</u>	<u>73,620</u>	<u>247,425</u>	<u>301,419</u>
<b>NET INCOME</b>		7,027	378,292	385,319	524,594
<b>RECONCILIATION OF FUNDS</b>					
Total funds brought forward		<u>43,570</u>	<u>1,356,651</u>	<u>1,400,221</u>	<u>875,627</u>
<b>TOTAL FUNDS CARRIED FORWARD</b>		<u><u>50,597</u></u>	<u><u>1,734,943</u></u>	<u><u>1,785,540</u></u>	<u><u>1,400,221</u></u>

The notes form part of these financial statements



# The Deptford Ragged Trust

## Balance Sheet 31 March 2024

	Notes	Unrestricted funds £	Restricted funds £	31.3.24 Total funds £	31.3.23 Total funds £
<b>FIXED ASSETS</b>					
Tangible assets	9	27,700	1,685,754	1,713,454	1,269,838
<b>CURRENT ASSETS</b>					
Debtors	10	23,552	-	23,552	3,133
Cash at bank		<u>8,828</u>	<u>49,189</u>	<u>58,017</u>	<u>136,214</u>
		32,380	49,189	81,569	139,347
<b>CREDITORS</b>					
Amounts falling due within one year	11	(9,483)	-	(9,483)	(8,964)
<b>NET CURRENT ASSETS</b>		<u>22,897</u>	<u>49,189</u>	<u>72,086</u>	<u>130,383</u>
<b>TOTAL ASSETS LESS CURRENT LIABILITIES</b>		<u>50,597</u>	<u>1,734,943</u>	<u>1,785,540</u>	<u>1,400,221</u>
<b>NET ASSETS</b>		<u>50,597</u>	<u>1,734,943</u>	<u>1,785,540</u>	<u>1,400,221</u>
<b>FUNDS</b>	12				
Unrestricted funds				50,597	43,570
Restricted funds				<u>1,734,943</u>	<u>1,356,651</u>
<b>TOTAL FUNDS</b>				<u>1,785,540</u>	<u>1,400,221</u>

The financial statements were approved by the Board of Trustees and authorised for issue on 28th November 2024 and were signed on its behalf by:



Hugh Stickland,  
**Chair of Trustees**

# The Deptford Ragged Trust

## Cash Flow Statement for the Year Ended 31 March 2024

	Notes	31.3.24 £	31.3.23 £
<b>Cash flows from operating activities</b>			
Cash generated from operations	1	<u>380,094</u>	<u>540,556</u>
Net cash provided by operating activities		<u>380,094</u>	<u>540,556</u>
<b>Cash flows from investing activities</b>			
Purchase of tangible fixed assets		(458,881)	(556,167)
Interest received		<u>590</u>	<u>215</u>
Net cash used in investing activities		<u>(458,291)</u>	<u>(555,952)</u>
<b>Change in cash and cash equivalents in the reporting period</b>		(78,197)	(15,396)
<b>Cash and cash equivalents at the beginning of the reporting period</b>		<u>136,214</u>	<u>151,610</u>
<b>Cash and cash equivalents at the end of the reporting period</b>		<u>58,017</u>	<u>136,214</u>



The Deptford Ragged Trust

Notes to the Cash Flow Statement  
for the Year Ended 31 March 2024

1. RECONCILIATION OF NET INCOME TO NET CASH FLOW FROM OPERATING ACTIVITIES

	31.3.24 £	31.3.23 £
<b>Net income for the reporting period (as per the Statement of Financial Activities)</b>	385,319	524,594
<b>Adjustments for:</b>		
Depreciation charges	15,266	15,266
Interest received	(590)	(215)
Increase in debtors	(20,420)	(80)
Increase in creditors	519	991
<b>Net cash provided by operations</b>	<u>380,094</u>	<u>540,556</u>

2. ANALYSIS OF CHANGES IN NET FUNDS

	At 1.4.23 £	Cash flow £	At 31.3.24 £
<b>Net cash</b>			
Cash at bank	<u>136,214</u>	<u>(78,197)</u>	<u>58,017</u>
	<u>136,214</u>	<u>(78,197)</u>	<u>58,017</u>
<b>Total</b>	<u>136,214</u>	<u>(78,197)</u>	<u>58,017</u>

The notes form part of these financial statements

## The Deptford Ragged Trust

### Notes to the Financial Statements for the Year Ended 31 March 2024

#### 1. ACCOUNTING POLICIES

##### **Basis of preparing the financial statements**

The financial statements of the charity, which is a public benefit entity under FRS 102, have been prepared in accordance with the Charities SORP (FRS 102) 'Accounting and Reporting by Charities: Statement of Recommended Practice applicable to charities preparing their accounts in accordance with the Financial Reporting Standard applicable in the UK and Republic of Ireland (FRS 102) (effective 1 January 2019)', Financial Reporting Standard 102 'The Financial Reporting Standard applicable in the UK and Republic of Ireland' and the Charities Act 2011. The financial statements have been prepared under the historical cost convention.

The financial statements have departed from the Charities (Accounts and Reports) Regulations 2008 only to the extent required to provide a true and fair view. This departure has involved following the Statement of Recommended Practice for charities applying FRS 102 rather than the version of the Statement of Recommended Practice which is referred to in the Regulations but which has since been withdrawn.

The financial statements are presented in sterling (£).

The trustees consider that there are no material uncertainties about the Charity's ability to continue as a going concern.

##### **Significant judgments and estimates**

In the application of the charity's accounting policies, management is required to make judgments, estimates and assumptions about the carrying values of assets and liabilities that are not readily apparent from other sources. The estimates and underlying assumptions are based on historical experience and other factors that are considered to be relevant. Actual results may differ from these estimates.

The estimates and underlying assumptions are reviewed on an on going basis. Revisions to accounting estimates are recognized in the period in which the estimate is revised if the revision affects only that period, or in the period of the revision and future periods if the revision affects both current and future periods.

##### **Income**

All income is recognised in the Statement of Financial Activities once the charity has entitlement to the funds, it is probable that the income will be received and the amount can be measured reliably.

##### **Expenditure**

Liabilities are recognised as expenditure as soon as there is a legal or constructive obligation committing the charity to that expenditure, it is probable that a transfer of economic benefits will be required in settlement and the amount of the obligation can be measured reliably. Expenditure is accounted for on an accruals basis and has been classified under headings that aggregate all cost related to the category. Where costs cannot be directly attributed to particular headings they have been allocated to activities on a basis consistent with the use of resources.

##### **Charitable funds**

Unrestricted funds are available for use at the discretion of the trustees in furtherance of their charitable objectives.

Restricted funds are subject to specific conditions by donors as to how they may be used. The purposes and uses of the restricted funds are set out in the notes to the financial statements.

##### **Tangible fixed assets**

Tangible fixed assets are initially measured at cost and subsequently measured at cost or valuation, net of depreciation and any impairment losses.

**Notes to the Financial Statements - continued  
for the Year Ended 31 March 2024**

**1. ACCOUNTING POLICIES - continued**

**Tangible fixed assets**

Gifts in kind of fixed assets are capitalized at their estimated market value and depreciated in accordance with the policy for that particular class of asset.

Depreciation is recognised so as to write off the cost or valuation of assets less their residual values over their useful lives on the following bases:

Freehold land and buildings	50 years of Useful Life
-----------------------------	-------------------------

The gain or loss arising on the disposal of an asset is determined as the difference between the sale proceeds and the carrying value of the asset, and is recognised in the statement of financial activities.

**Taxation**

The charity is an exempt charity within the meaning of schedule 3 of the Charities Act 2011 and is considered to pass the tests set out in Paragraph 1 Schedule 6 Finance Act 2010 and therefore it meets the definition of a charitable company for UK corporation tax purposes.

Value Added Tax is not recoverable by the charity, and is therefore included in the relevant costs in the Statement of Financial Activities.

**Fund accounting**

Unrestricted funds can be used in accordance with the charitable objectives at the discretion of the trustees.

Restricted funds can only be used for particular restricted purposes within the objects of the charity. Restrictions arise when specified by the donor or when funds are raised for particular restricted purposes.

Further explanation of the nature and purpose of each fund is included in the notes to the financial statements.

**Foreign currencies**

Assets and liabilities in foreign currencies are translated into sterling at the rates of exchange ruling at the balance sheet date. Transactions in foreign currencies are translated into sterling at the rate of exchange ruling at the date of transaction. Exchange differences are taken into account in arriving at the operating result.

**Pension costs and other post-retirement benefits**

The charity operates a defined contribution pension scheme. Contributions payable to the charity's pension scheme are charged to the Statement of Financial Activities in the period to which they relate.

**Cash and cash equivalents**

Cash and cash equivalents comprise cash on hand and call deposits, and other short-term highly liquid investments that are readily convertible to a known amount of cash and are subject to an insignificant risk of change in value.



# The Deptford Ragged Trust

## Notes to the Financial Statements - continued for the Year Ended 31 March 2024

### 2. DONATIONS AND LEGACIES

	31.3.24	31.3.23
	£	£
Gift aided one off and standing orders and donations	224,160	278,157
Non gift aided one off and standing order donations	296,111	448,338
Income tax recoverable on standing orders and gift aid	<u>39,944</u>	<u>70,084</u>
	<u>560,215</u>	<u>796,579</u>

### 3. INVESTMENT INCOME

	31.3.24	31.3.23
	£	£
Interest receivable	<u>590</u>	<u>215</u>

### 4. INCOME FROM CHARITABLE ACTIVITIES

	Activity	31.3.24	31.3.23
		£	£
Ancillary trading income	Charitable activities	<u>71,939</u>	<u>29,219</u>

### 5. CHARITABLE ACTIVITIES COSTS

	Direct Costs £
Charitable activities	<u>247,425</u>

Direct costs include fees of £2,350 (2023: £2,289) for the independent examination and £1,500 (2023: £981) for other professional services.

### 6. TRUSTEES' REMUNERATION AND BENEFITS

There were no trustees' remuneration or other benefits for the year ended 31 March 2024 nor for the year ended 31 March 2023.

### 7. STAFF COSTS

	31.3.24	31.3.23
	£	£
Wages and salaries	125,141	127,633
Social security costs	2,086	2,516
Other pension costs	<u>11,341</u>	<u>10,996</u>
	<u>138,568</u>	<u>141,145</u>

## The Deptford Ragged Trust

### Notes to the Financial Statements - continued for the Year Ended 31 March 2024

#### 7. STAFF COSTS - continued

The average monthly number of employees during the year was as follows:

	31.3.24	31.3.23
Average number in the year	9	8
Full Time Equivalent	<u>4</u>	<u>4</u>
	<u>13</u>	<u>12</u>

No employees received emoluments in excess of £60,000.

#### 8. COMPARATIVES FOR THE STATEMENT OF FINANCIAL ACTIVITIES

	Unrestricted funds £	Restricted funds £	Total funds £
<b>INCOME AND ENDOWMENTS FROM</b>			
Donations and legacies	138,444	658,135	796,579
<b>Charitable activities</b>			
Charitable activities	23,985	5,234	29,219
Investment income	<u>215</u>	<u>-</u>	<u>215</u>
<b>Total</b>	<u>162,644</u>	<u>663,369</u>	<u>826,013</u>
<b>EXPENDITURE ON</b>			
<b>Charitable activities</b>			
Charitable activities	<u>180,605</u>	<u>120,814</u>	<u>301,419</u>
<b>NET INCOME/(EXPENDITURE)</b>	(17,961)	542,555	524,594
<b>RECONCILIATION OF FUNDS</b>			
Total funds brought forward	<u>61,532</u>	<u>814,095</u>	<u>875,627</u>
<b>TOTAL FUNDS CARRIED FORWARD</b>	<u>43,571</u>	<u>1,356,650</u>	<u>1,400,221</u>

The Deptford Ragged Trust

Notes to the Financial Statements - continued  
for the Year Ended 31 March 2024

9. TANGIBLE FIXED ASSETS

	Freehold property £
<b>COST</b>	
At 1 April 2023	1,319,452
Additions	<u>458,881</u>
At 31 March 2024	<u>1,778,333</u>
<b>DEPRECIATION</b>	
At 1 April 2023	49,614
Charge for year	<u>15,265</u>
At 31 March 2024	<u>64,879</u>
<b>NET BOOK VALUE</b>	
At 31 March 2024	<u>1,713,454</u>
At 31 March 2023	<u>1,269,838</u>

10. DEBTORS: AMOUNTS FALLING DUE WITHIN ONE YEAR

	31.3.24	31.3.23
	£	£
Gift Aid Receivable	23,552	2,008
Prepayments and accrued income	<u>-</u>	<u>1,125</u>
	<u>23,552</u>	<u>3,133</u>

11. CREDITORS: AMOUNTS FALLING DUE WITHIN ONE YEAR

	31.3.24	31.3.23
	£	£
Taxation and social security	4,498	5,424
Other creditors	<u>4,985</u>	<u>3,540</u>
	<u>9,483</u>	<u>8,964</u>



# The Deptford Ragged Trust

## Notes to the Financial Statements - continued for the Year Ended 31 March 2024

### 12. MOVEMENT IN FUNDS

	At 1.4.23 £	Net movement in funds £	At 31.3.24 £
<b>Unrestricted funds</b>			
General fund	43,570	7,027	50,597
<b>Restricted funds</b>			
Bear Cubs Fund	39,052	991	40,043
Building project fund	1,308,472	381,931	1,690,403
English friday fund	1,196	(238)	958
DRSA projects fund	3,188	(417)	2,771
Social projects fund	4,743	(3,975)	768
	<u>1,356,651</u>	<u>378,292</u>	<u>1,734,943</u>
<b>TOTAL FUNDS</b>	<u>1,400,221</u>	<u>385,319</u>	<u>1,785,540</u>

Net movement in funds, included in the above are as follows:

	Incoming resources £	Resources expended £	Movement in funds £
<b>Unrestricted funds</b>			
General fund	180,832	(173,805)	7,027
<b>Restricted funds</b>			
Bear Cubs Fund	45,578	(44,587)	991
Building project fund	401,736	(19,805)	381,931
English friday fund	4,373	(4,611)	(238)
DRSA projects fund	-	(417)	(417)
Social projects fund	225	(4,200)	(3,975)
	<u>451,912</u>	<u>(73,620)</u>	<u>378,292</u>
<b>TOTAL FUNDS</b>	<u>632,744</u>	<u>(247,425)</u>	<u>385,319</u>

The Deptford Ragged Trust

Notes to the Financial Statements - continued  
for the Year Ended 31 March 2024

12. MOVEMENT IN FUNDS - continued

Comparatives for movement in funds

	At 1.4.22 £	Net movement in funds £	At 31.3.23 £
<b>Unrestricted funds</b>			
General fund	61,532	(17,962)	43,570
<b>Restricted funds</b>			
Bear Cubs Fund	40,431	(1,379)	39,052
Building project fund	759,285	549,187	1,308,472
English friday fund	1,712	(516)	1,196
DRSA projects fund	4,822	(1,634)	3,188
Social projects fund	<u>7,845</u>	<u>(3,102)</u>	<u>4,743</u>
	<u>814,095</u>	<u>542,556</u>	<u>1,356,651</u>
<b>TOTAL FUNDS</b>	<u><u>875,627</u></u>	<u><u>524,594</u></u>	<u><u>1,400,221</u></u>

Comparative net movement in funds, included in the above are as follows:

	Incoming resources £	Resources expended £	Movement in funds £
<b>Unrestricted funds</b>			
General fund	162,643	(180,605)	(17,962)
<b>Restricted funds</b>			
Bear Cubs Fund	38,234	(39,613)	(1,379)
Building project fund	620,275	(71,088)	549,187
English friday fund	3,450	(3,966)	(516)
DRSA projects fund	-	(1,634)	(1,634)
Social projects fund	<u>1,411</u>	<u>(4,513)</u>	<u>(3,102)</u>
	<u>663,370</u>	<u>(120,814)</u>	<u>542,556</u>
<b>TOTAL FUNDS</b>	<u><u>826,013</u></u>	<u><u>(301,419)</u></u>	<u><u>524,594</u></u>

# The Deptford Ragged Trust

## Notes to the Financial Statements - continued for the Year Ended 31 March 2024

### 12. MOVEMENT IN FUNDS - continued

A current year 12 months and prior year 12 months combined position is as follows:

	At 1.4.22 £	Net movement in funds £	At 31.3.24 £
<b>Unrestricted funds</b>			
General fund	61,532	(10,935)	50,597
<b>Restricted funds</b>			
Bear Cubs Fund	40,431	(388)	40,043
Building project fund	759,285	931,118	1,690,403
English friday fund	1,712	(754)	958
DRSA projects fund	4,822	(2,051)	2,771
Social projects fund	7,845	(7,077)	768
	<u>814,095</u>	<u>920,848</u>	<u>1,734,943</u>
<b>TOTAL FUNDS</b>	<u>875,627</u>	<u>909,913</u>	<u>1,785,540</u>

A current year 12 months and prior year 12 months combined net movement in funds, included in the above are as follows:

	Incoming resources £	Resources expended £	Movement in funds £
<b>Unrestricted funds</b>			
General fund	343,475	(354,410)	(10,935)
<b>Restricted funds</b>			
Bear Cubs Fund	83,812	(84,200)	(388)
Building project fund	1,022,011	(90,893)	931,118
English friday fund	7,823	(8,577)	(754)
DRSA projects fund	-	(2,051)	(2,051)
Social projects fund	1,636	(8,713)	(7,077)
	<u>1,115,282</u>	<u>(194,434)</u>	<u>920,848</u>
<b>TOTAL FUNDS</b>	<u>1,458,757</u>	<u>(548,844)</u>	<u>909,913</u>



**Notes to the Financial Statements - continued  
for the Year Ended 31 March 2024**

**13. RELATED PARTY DISCLOSURES**

Expenses are on occasion reimbursed to the Trustees and key management personnel in the instance that such expenses are incurred wholly on the Church's behalf. Reimbursement of expenses to Trustees and Key Management Personnel amounted to £ 42,367 (2023: £30,677).

The Trustees, key management personnel and their families also contribute to the Church's income through donations. These are unrestricted in nature and are considered confidential by the Church. The cumulative contributions by trustees, key management personnel, their family and other related parties to the Church's general fund in the year amounted to £47,410.(2023: £46,210).

The Church also pays a housing allowance in respect of the housing of the Church Leader as she is required to be living within the pastoral catchment area of the Bear Church. The amounts are payable monthly and are set out within the Pastoral Pay Policy, which are agreed by the Trustees. The Church has paid rent of £1,700 per month (£20,400 per annum) (2023: £20,400) for Church Leader's accommodation (see Note 13 above). However, the Church Leader contributed £642 per month for 12 months (£7,756 per annum) (2023:£8,310 per annum) to the Church in respect of the rent.



---

THE CHARITABLE TRUST  
OF THE BEAR CHURCH



**The Deptford Ragged Trust**

The Shaftesbury Christian Centre,  
Frankham Street,  
London,  
SE8 4RN

**Charity No. 1177319**