



Annual Report 2019/20

Message from the Chair

Rosie's Rainbow Pantry was set up late August 2017 as a legacy to Rosie Abbott who died from cancer in January 2017.

Looking back over our first few years it has been incredible the amount of support that we have had from people within the Coventry and Warwickshire area.

We are delighted that our small charity is now getting recognised both on a local level but also on a national level. We were so pleased to work in further partnership with Together for Short lives where we have been supporting some families referred to us.

This year once again we have been so grateful to Domestic and General as the majority of our funds have been generated by their efforts.

This year none of us could of imagined a covid world, where overnight our lives changed. This has had a major impact on the charity, both with our fundraising but also with our ability to support families. Due to the demand of safe shopping we could not fulfil using Tesco deliveries due to the lack of availability.

This said we held a wonderful annual ball just before lock down. We continue though to want to make a difference to families lives in memory of our gorgeous Rosie who we all miss so dearly.



Rev'd Claire McArthur
Chair of Trustees

Charity Organisation and Governance

The charity is set up as a CIO.

Trustees

Rev'd Claire McArthur (Chair)

Mrs Sarah Robertson (Treasurer)

Miss Honor Hackett (Treasurer)

Mrs Catherine Darragh

Mrs Sophie Hall

Mrs Dawn Viner

Mrs Faye Clark

Executive Directors

Hilary Hackett (Fundraising)

Louise Abbott (Care Provision)

The charity is managed purely by volunteers with have no paid.

Financial Information Accounts

Managed by Trustees and verified by R and A Burns Limited
181-183 Summer Road
Erdington
Birmingham
West Midlands
B23 6DX

Banking

A community bank account, with three appointed Trustees as signatories
has been set up with Barclays 25 High Street, Coventry CV1 5RE

Charity Partners

Together for Short Lives

Trustees' Report

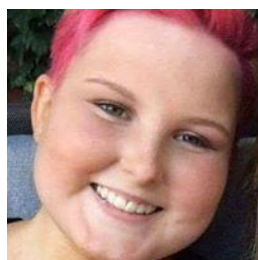
Objective

The main aim of the charity is to provide food and provisions for families whose children are receiving end of life care in their own homes, in a hospice or in hospital. The charity is a much needed resource in the community to address the need for immediate practical support for extremely vulnerable families. The charity is aiming to complement the community palliative multidisciplinary team who go above and beyond their job specifications to ensure the family remember to eat and drink during their darkest days.

“Parents are in an impossible position. While trying to care and anticipate the needs of their dying child, they can feel guilty and torn in many directions about not being able to meet everybody’s needs”

With permission from Children’s Cancer and Leukaemia Group (CCLG) taken from Facing the death of your child publication (2015)

Background information



The charity is being set up as a legacy to Rosie Abbott, who sadly passed away after an incredible 5 year brave and courageous battle with high grade fast growing cancerous brain tumours. Rosie was winner of The Pride of Coventry and Warwickshire 2015 - Child of Courage and also the winner of BBC Radio 1’s Teen Hero Awards 2015.

Rosie endured far more than anyone should have to go through and her fortitude in the face of cruel adversity was truly inspirational. Rosie put her illness aside and spearheaded multiple fundraising campaigns.

“It makes me happy to help others”

Rosie Abbott (2015)

Rosie achieved so much in her short life. Rosie lived until her body wouldn't allow it anymore. Rosie, beautiful, inspirational, and courageous fell asleep forever, aged just 15 in January 2017.



Rosie was a truly inspirational young girl who achieved an incredible amount in her short life. Whilst battling cancer she managed to raise over £20,000.00 for multiple charities.

Rosie's Rainbow Pantry has been set up to support families who are spending their last few days/ weeks together. Unfortunately Rosie's family discovered first hand during those last few precious weeks the last thing on their minds was heading out to the supermarket and picking up provisions for their family. They were fortunate that they had a very strong network of family and friends who provided the family with home cooked meals and ensured their fridge and freezer and cupboards were well stocked.

Rosie's Rainbow Pantry will provide food hampers to families looking after a child during end of life care, each hamper will be stocked with groceries, essentials and a few luxuries.

Care Provision



The Charity aims to provide food hampers to families whose children are receiving end of life care. Each hamper contains groceries and fresh produce enough for the family for 7 days. A list has been created of essential items required and the family will complete an application form to confirm their requirements.

Contact with the family is made through the community palliative multidisciplinary team of Coventry and Warwickshire NHS Trust, Police Liaison Officers, local hospices and through Together for Shortlives.

Aims



We have continued to meet our aims and we have supported families over the last year.

We have been overwhelmed by the food collected and we've supplied food to Ronald McDonald House, Birmingham to stock their communal kitchen areas.

We have had so many donations of food that we set up a food hub in the grounds of the Haven Care Home.

We continue to use Tesco Click and Collect service and delivery for supporting our families.

“We've just received an unexpected giant food hamper and goodies from yourselves , overwhelmed, surprised, grateful . A massive thank you”

Fundraising and Donations

Corporate Sponsors

We have been lucky to have been supported by the following companies...

West Orchards Shopping Centre

Domestic and General Bedworth Branch

Barclays Bank (Match funding)

Haven Care Home

Earlsdon Football Club

Gateway Ladies Club

Individual Supporters

It is great that individual supporters have raised money for us over the last year. We cannot name all our supporters in our annual report but a big thank you from all the Trustees of the charity.

This said a massive thank you to Peyton, her amazing courage and transformation has raised £425.00 for us!



Charity Activities

November 2019 Thank you to everyone who came along to Rosie's Rainbow Pantry first **Halloween Party!**

Special thanks to Mitchell Potatoes who supplied us with Jacket Spuds and Corley Cricket Club for hosting and manning the bar for the parents!



January Supported well by our local **Tescos**.
2020



January **Rosie's Annual Ball**
2020

Rosie's Rainbow Pantry held their annual ball in memory of Rosie. Those who attended raised an amazing £5000. The charity would like to thank everyone who attended the ball for your generous support. This means we can continue to support family that need our help.



February 2020 A massive thank you to the **Gateway Ladies Club** who raised £1,630 for us!



September 2020 Awareness Raising at **Earlsdon Rugby Football Club**



Annual Accounts 12 months ending September 2020

ROSIE'S RAINBOW PANTRY

FINANCIAL ACCOUNTS FOR THE
YEAR ENDED 30TH SEPTEMBER 2020

R & A BURNS LIMITED
CHARTERED CERTIFIED ACCOUNTANTS

ROSIE'S RAINBOW PANTRY
FINANCIAL ACCOUNTS
FOR THE YEAR ENDED 30TH SEPTEMBER 2020

CONTENTS

1. Accountants' Report
2. Trading and Profit and Loss
Account
3. Balance Sheet

ROSIE'S RAINBOW PANTRY
FINANCIAL ACCOUNTS
FOR THE YEAR ENDED 30TH SEPTEMBER 2020

ACCOUNTANTS' REPORT

In accordance with your instructions, we have compiled, without carrying out an audit, the attached trading and profit and loss account and balance sheet from the accounting records and information and explanations supplied to us.

R & A Burns Limited
Chartered Certified Accountants
181-183 Summer Road
Edlington
Birmingham
B23-6DX

ROSIE'S RAINBOW PANTRYTRADING AND PROFIT AND LOSS ACCOUNT
FOR THE YEAR ENDED 30TH SEPTEMBER 2020

	<u>2020</u>	<u>2019</u>
	£	£
Donations Received	12,039	23,675
<u>COST OF SALES</u>		
Charity Merchandise	-	1,702
Just Giving Donations	216	216
Food Supplies	3,572	2,570
Event Misc	-	137
Hire	100	500
	<u>3,888</u>	<u>5,125</u>
<u>GROSS PROFIT</u>	8,151	18,550
<u>LESS OVERHEADS</u>		
Repairs and Renewals	-	356
Web	99	114
Insurance	205	205
Accountancy Charges	264	258
	<u>568</u>	<u>933</u>
<u>NET PROFIT FOR THE YEAR</u>	<u>£ 7,583</u>	<u>£ 17,617</u>

ROSIE'S RAINBOW PANTRYBALANCE SHEET AS AT 30TH SEPTEMBER 2020

	<u>2020</u>		<u>2019</u>	
	£	£	£	£
<u>CURRENT ASSETS</u>				
Bank Account	44,914		37,331	
<u>NET CURRENT ASSETS</u>		44,914		37,331
		<u>£ 44,914</u>		<u>£ 37,331</u>
<u>REPRESENTED BY:</u>				
<u>CAPITAL ACCOUNT</u>				
Opening Capital		37,331		19,714
Net Profit for the year		7,583		17,617
		<u>44,914</u>		<u>37,331</u>
		<u>£ 44,914</u>		<u>£ 37,331</u>
Approved <u>CMA</u>				