



OXFORDSHIRE BREASTFEEDING SUPPORT

Annual Report 2020/21: Pandemic response



Contents

Contents	1
Administrative information	2
Introduction from the Chair of Trustees	3
Aims and objectives	4
Achievements and performance	4
Drop-in breastfeeding support sessions: 2020 Plan B!	4
Antenatal breastfeeding education sessions	6
A closed, closely moderated Facebook breastfeeding support group	7
Low-cost loan of breast pumps	8
Peer supporter training	8
Skills development for volunteers & health professionals	10
Observation placements	10
Coordination and advocacy at a strategic level	11
Widening access to breastfeeding support	11
Supporting research	14
All about our service users	14
Financial report	16
Donors	17
Risks 2020-21	18
Looking towards 2021-22	19

Administrative information

Registered name Oxfordshire Breastfeeding Support

Registered address 21 Complins Close, Oxford, OX2 6PZ

Email team@oxbreastfeedingsupport.org

Registered charity no. 1176948

Trustees

Dr Juliet Rayment (Chair of trustees)
Dr Ilana Levene (Deputy Chair of trustees)
Louise Ellis ACA (Treasurer)
Elizabeth Horwell
Wanja Knighton
Sev Gunes-Lasnet
Danielle Beaumont-Orr (Secretary)

Contracted facilitators

Jayne Joyce (Project Lead)
Lisa Mansour
Charlotte Gilman
Catriana McKie
Julie Gallegos
Emily Tammam

Introduction from the Chair of Trustees



As for everyone, 2020 did not turn out how we expected. We started 2020 celebrating our new grant from the National Lottery Community Fund and then faced a pandemic which drastically disrupted the support available to new mothers.

We are tremendously proud of the way we have been able to completely transform our operations, our care model and our ways of working. As a consequence we have been able to continue delivering breastfeeding support to even more of the county than we did before the pandemic. We have achieved all this without once meeting face to face!

In response to the rise of the Black Lives Matter movement in the Summer, we kickstarted our action to improve support for *all* families, beyond our original plan for 2020 to help make the biggest impact on supporting our communities during the pandemic and into the future.

This year we welcomed Danielle Beaumont-Orr as a Trustee and Kawther Alfasi as our Operations Lead. We are looking forward to reopening our face to face services during 2021. This is an exciting time for OBS - we have embraced many aspects of our new way of working and the next year offers us a chance to reassess how and where we work, to offer families in Oxfordshire the support they need.

A handwritten signature in cursive script that reads "Juliet Rayment".

Juliet Rayment, Chair of Trustees, April 2021

Aims and objectives

OBS aims to increase breastfeeding, provision of breastmilk and responsive feeding for babies in Oxfordshire by:

- Educating and empowering Oxfordshire families to define and achieve their feeding goals.
- Taking a lead role in developing an integrated network of breastfeeding support throughout Oxfordshire, so that all parents can access skilled, timely, local breastfeeding help.

The services we delivered prior to the Covid-19 pandemic to achieve this mission are listed [here](#).

Achievements and performance

Drop-in breastfeeding support sessions: 2020 Plan B!

At the start of 2020, we had big plans for developing new partnerships, opportunities to engage new communities and to open new face to face sessions. Then at the start of March we quickly embarked on '2020 Plan B' because of the Covid-19 pandemic. On March 16th we suspended all our face-to-face work and diverted all funding from our six drop-in sessions to 1:1 consultations by Zoom or telephone.

*"During lockdown, at home, I was able to access 1:1 support from a smiling OBS face. She gave me encouragement that I was doing the right things, along with expert advice, tips and reassurance that it *would* get better. The true value is that nearly 6 months later, I still see that morning's zoom call as a turning point in our feeding journey. It did get better." (Rebecca, Sept 2020)*

OBS in 2020

850 online consultations

356 Zoom Group attendances

955 new service users

900 more Facebook members

14% more families

38% more visits

than 2019



www.oxbreastfeedingsupport.org

Registered charity 1176948

We were delighted to partner with Didcot Baby Monday and Botley Bridges to offer support to 198 people at their new Zoom groups. Then in June 2020, we launched our **own OBS Zoom Group** and we have been very pleased at the positive response. Our group combines skilled feeding support with social support rooms hosted by volunteers, and breakout rooms on topics such as sleep and complementary foods. 96% of users who responded to our 2021 Impact Survey felt welcome at the online group.

"Just wanted to thank the team for organizing the Sleep session today. Found it extremely helpful and highly recommend it to all mommies!"



(Yasmine El Masri, March 2021)

Virtual breastfeeding support group

New



New

Thursdays ★ 12:30 - 1:30pm on Zoom

OBS
OXFORDSHIRE
BREASTFEEDING
SUPPORT

★ **OBS Group** ★

Register at bit.ly/OBSgroup

Registered Charity 1176948



Antenatal breastfeeding education sessions

OBS
OXFORDSHIRE
BREASTFEEDING
SUPPORT
Supporting your family from pregnancy to weaning

**150 families came
to our online
antenatal groups**



**1/3 came back
after having their
baby**



www.oxbreastfeedingsupport.org
Registered charity 1176948

A closed, closely moderated Facebook breastfeeding support group

Our Facebook group increased rapidly in size and activity from the start of the pandemic, from 1600 members to 2500.

We received additional funding to support the rapid increase in our online workload. Our peer supporter volunteers stepped up to take more responsibility on Facebook, including producing information threads about issues such as sleep.

Jayne, Project Lead, wrote an [article](#) for the AIMS (Association for Improvements in the Maternity Services) magazine about supporting breastfeeding on Facebook.

94% of users who responded to our 2021 Impact Survey found the Facebook group helpful. They found searching special information threads and previous posts particularly useful. The Facebook group is a deep vein of expertise through experience for anyone to use.

“The Facebook group bolstered my mental health as a sometimes pretty scared first time mum. Just being able to scroll through other peoples’ posts and replies made me aware, at any time of day or night, that I was not alone”. (Jozie, Facebook group member, Sept 2020)

Other social media platforms have helped us to stay engaged with our service users throughout the pandemic.



Facebook Live broadcasts (April to August)

Facebook “Happy Hours”.

Live Q&As incorporating our volunteers.



Regular social media posting on Facebook, Instagram and Twitter,

Emails to our list

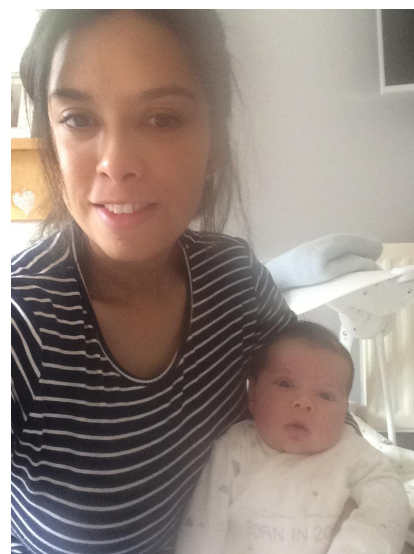


A podcast for Black Breastfeeding Week (August 2020), and more to mark Disability History Month.

Low-cost loan of breast pumps

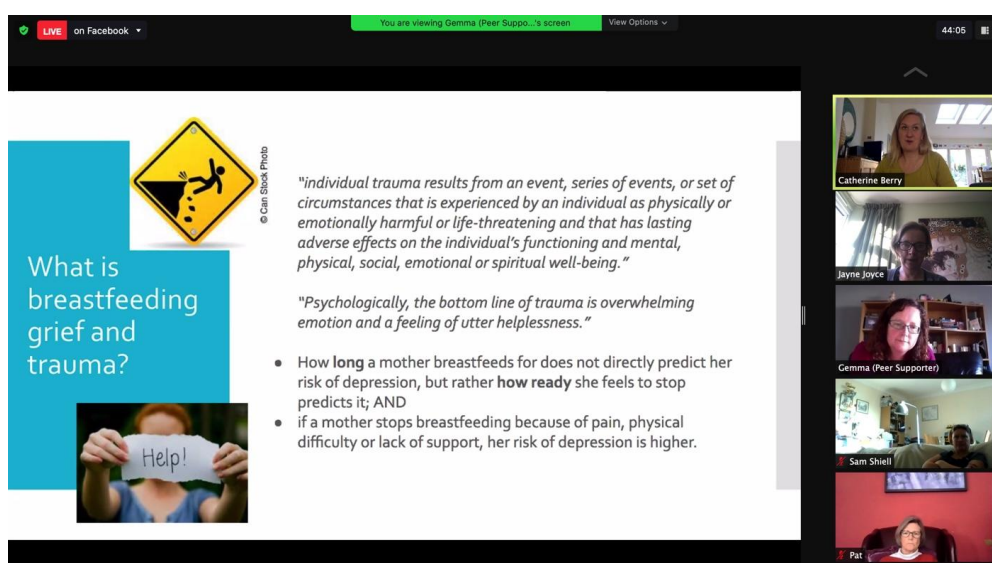


We continued our breast pump loan service, run by volunteer Sam Sheill, throughout the pandemic. We loaned 56 times in the year 2020-21, using some of our Lottery funding to increase our stock of pumps in order to meet the new demand.



Peer supporter training

Our peer supporters have taken on more roles and responsibilities since the start of 2020, helping to shape and improve our services. Online meetings have allowed them to connect with each other in a way that wasn't always feasible when volunteering at different drop in sessions. The peer supporters have also taken opportunities in their termly supervision sessions to develop each others' skills, and knowledge of areas like breastfeeding grief and trauma.



What is breastfeeding grief and trauma?

© Can Stock Photo

"individual trauma results from an event, series of events, or set of circumstances that is experienced by an individual as physically or emotionally harmful or life-threatening and that has lasting adverse effects on the individual's functioning and mental, physical, social, emotional or spiritual well-being."

"Psychologically, the bottom line of trauma is overwhelming emotion and a feeling of utter helplessness."

- How long a mother breastfeeds for does not directly predict her risk of depression, but rather **how ready** she feels to stop predicts it; AND
- if a mother stops breastfeeding because of pain, physical difficulty or lack of support, her risk of depression is higher.

Participants visible in the Zoom window:

- Catherine Berry
- Jayne Joyce
- Gemma (Peer Supporter)
- Sam Sheill
- Pat

OBS peer supporters Cathy & Gemma leading a Zoom training session for our volunteers, Dec 2020

Three new peer supporters, plus two midwives, an IBCLC/neonatal nurse, have joined our volunteers this year and all have been involved in Facebook and the OBS Group.

"All the peer supporters have such helpful, positive, encouraging, respectful responses."
(Facebook group member)

Madi, a graduate student, is our first volunteer working beyond direct breastfeeding support and she now helps us with social media.

Skills development for volunteers & health professionals



The infographic features the OBS logo (Oxfordshire Breastfeeding Support) with the tagline 'Supporting your family from pregnancy to weaning'. To the right of the logo are three stylized hands in purple, pink, and teal. The main title 'OBS' volunteers in 2020' is in large purple font. Below it, the text 'Our peer supporters have given:' is followed by two bullet points: '> 300 hours to online groups' and '> 2500 hours to the Facebook group.' Below these, it states 'Other volunteers have given over 300 hours to OBS too.' The bottom right corner contains the website 'www.oxbreastfeedingsupport.org' and 'Registered charity 1176948'.

OBS' volunteers in 2020

Our peer supporters have given:

- > **300 hours** to online groups
- > **2500 hours** to the Facebook group.

Other volunteers have given over 300 hours to OBS too.

www.oxbreastfeedingsupport.org
Registered charity 1176948

Several of our peer supporters are extending their breastfeeding support skills through additional training through the Association of Breastfeeding Mothers and La Leche League. We are delighted that one of our peer supporters has taken on a new paid role as a Maternity Support Worker.

Observation placements

Our relationships with local universities and health visitors have grown during this year. Virtual working has provided many more opportunities for student midwives to observe our practice and observations have increased a third from the previous year. OBS facilitators were also invited to speak at two virtual midwifery feeding study days at Oxford Brookes University.

Health Visiting service staff have observed in several different settings and consulted OBS facilitators on issues such feeding beyond a year and how to identify online resources for parents with specific needs.

Coordination and advocacy at a strategic level

OBS reconvened the Oxfordshire Countywide Breastfeeding Strategy group and has initiated a revision of the joint 2016 guideline on faltering growth. OBS has brought a GP service user onto the strategy group, which is a major new strength.

We have worked with Abingdon Baby Cafe to support their transition to online working - for example supporting them to set up their own Zoom group, with production of publicity materials, creating a basic online data collection system and training their team to use it.

As a key partner in Oxfordshire Baby Friendly Alliance, OBS was very pleased to hear about the progress that Oxford University Hospitals (OUH) NHS Trust have made towards both Maternity and Neonatal Stage 3 accreditation.

OBS has also recruited milk donors for the OUH milk bank, collected images and videos for a maternity infant feeding team video project and attended the Oxfordshire Children & Young People's Forum.

Widening access to breastfeeding support

Supporting Black communities

In response to calls from the Black Lives Matter movement to act on disparities in health outcomes for Black families, we have brought forward much of the work we had planned for the next few years to improve access to our services for Black families and others who might otherwise feel OBS was not for them.

As an urgent response, we contacted all local healthcare professionals encouraging proactive, early referral to feeding support for families experiencing racism. We have worked to further increase the diversity of our facilitators, and think carefully about the language and images we use in our social media and our website.

Our first [Black Breastfeeding Week campaign](#) in August saw us platform stories from four local breastfeeding mothers



OBS facilitator Lisa Mansour has taken on the role of OBS Equality, Diversion & Inclusion Lead and she wrote about her [personal journey to becoming a Lactation Consultant](#)

“...sometimes with nothing more than bold determination (I was a single mother, had no higher education, earned a low wage and am the daughter of an exiled refugee Egyptian father). The system itself is very much skewed towards those with more money and education than I had.”

Black Breastfeeding Week also saw the production of our first [OBS podcast](#) by Trustees Wanja Knighton and Juliet Rayment. We followed that up with a [Disability History Month campaign](#) later in 2020.

Our new EDI Working Group includes service users and professionals representing a range of underserved communities including parents with disabilities, neurodiverse parents, and Muslim women. Group member Dr Marie Tidball made some short videos for our new [YouTube channel](#) about her experience of breastfeeding as a parent with physical disabilities. This working group has suggested key areas to focus on, including representation (in terms of facilitators, volunteers and images) and disability supportive technology.

They were particularly excited to hear that OBS trustees Wanja Knighton and Ilana Levene have helped to found a national collaboration called Spectrum, which is working to set up an open access library of images of the lactating breast in diverse skin tones.



The Family Nurse Partnership

One of the most exciting consequences of the pandemic has been a new programme of work with young parents who are supported by Family Nurse Partnership. We have worked with 7 FNP families so far, initially for an antenatal consultation, usually with

their nurses. We then provide flexible postnatal support via WhatsApp, Zoom etc. We are expecting this work to expand during 2021-2.

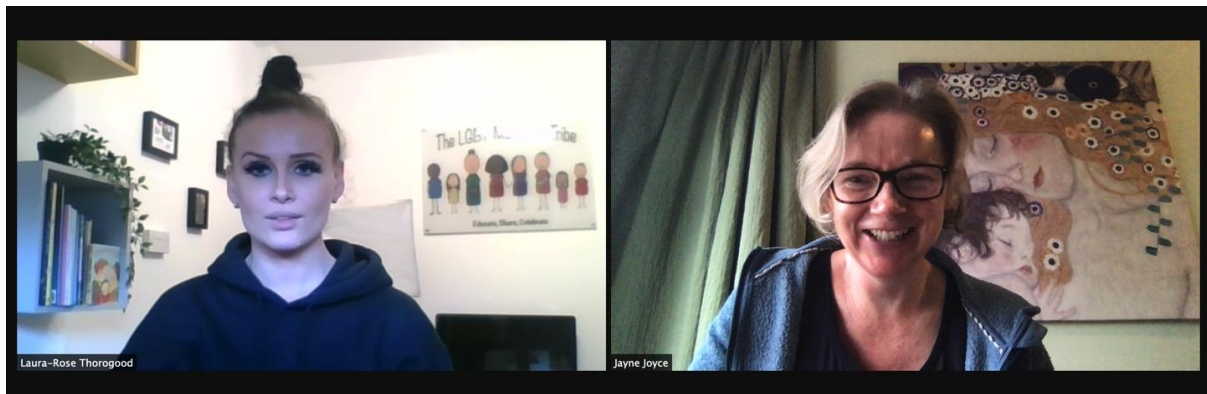
“With help from OBS and Charlotte I have been able to breastfeed [my son], I have been supported fully and will continue to breastfeed. An amazing charity helping me with something beautiful.” (FNP service user, Dec 2020)

“I just wanted to say thank you for such a lovely call! [My client] felt so relaxed with you and she said she feels so much more confident now she knows how to ask for help when the baby comes. We really appreciate the work your team does”.
(FNP nurse, June 2020)

We have continued to use [Language Line](#) and have found other flexible solutions for service users' communication needs, for example connecting families with breastfeeding counsellors who speak their first language, and providing email support for a deaf parent who doesn't use BSL.

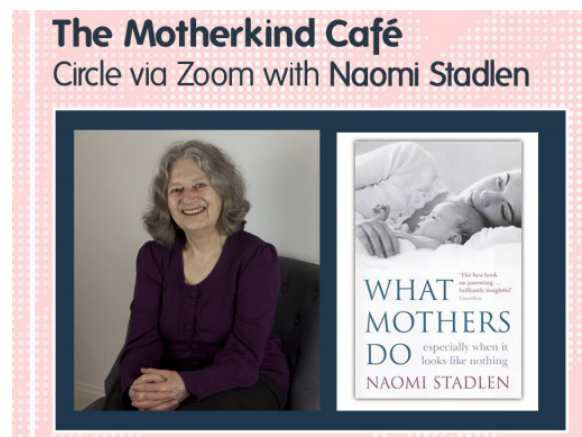
LGBT Service Users

OBS service users from the **LGBT community** introduced OBS to [The LGBT Mummies' Tribe](#), a grassroots organisation that supports LGBT parents and advocates for better care from health professionals and other services. We introduced LGBTMT to [La Leche League GB](#) who are going to co-produce resources on feeding for LGBT families.



Project Lead Jayne meeting with Laura-Rose Thorogood, founder of LGBT Mummies Tribe, Nov 2020

The MotherKind Cafe



This year we connected [MotherKind](#) postnatal mental health support group with bestselling author and psychotherapist (and breastfeeding counsellor) Naomi Stadlen. Naomi led an online [discussion](#) for MotherKind. OBS continued to support the MotherKind team with strategy after they secured their first grant funding.

Our partnership has restarted in 2021 with two joint MotherKind/OBS virtual sessions for families on “feeding grief and loss”. This is a topic on which our facilitators and volunteers have received training during this year and we plan to do more joint sessions with MotherKind.

“It has been a really positive connection, and one that I hope has benefitted mothers to feel less isolated, and stigmatised for seeking support with their mental health after having a baby”. (Emily, Coordinator, MotherKind Cafe)

Supporting research

We have continued to support good research by disseminating surveys online. A Midwifery Masters student at Oxford Brookes University has carried out a project on infant sleep location, which was originally suggested by one of our facilitator team.

All about our service users

Since the start of the pandemic, we have seen an increase in the number of families coming to us and from a far greater area. OBS service users now come from across the county (Figure 1) and unlike in previous years, only 44% of users came from Oxford city this year, a large drop from 84% in 2019.

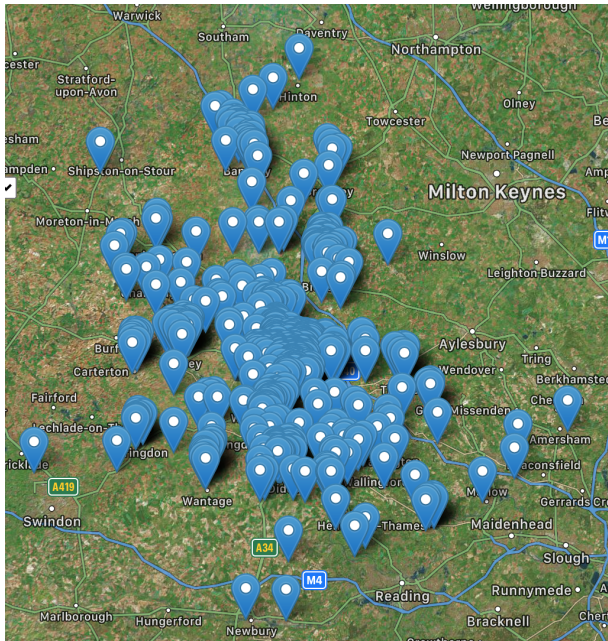
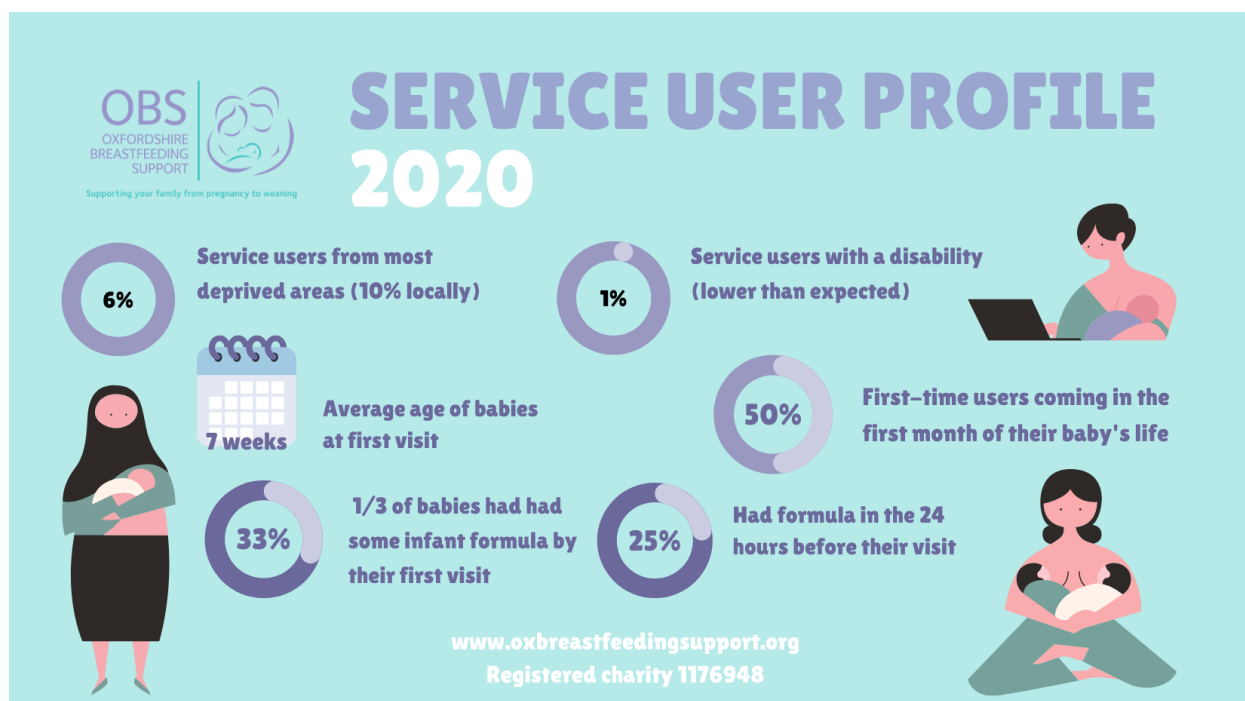


Figure 1: OBS first visitor postcodes in 2020.



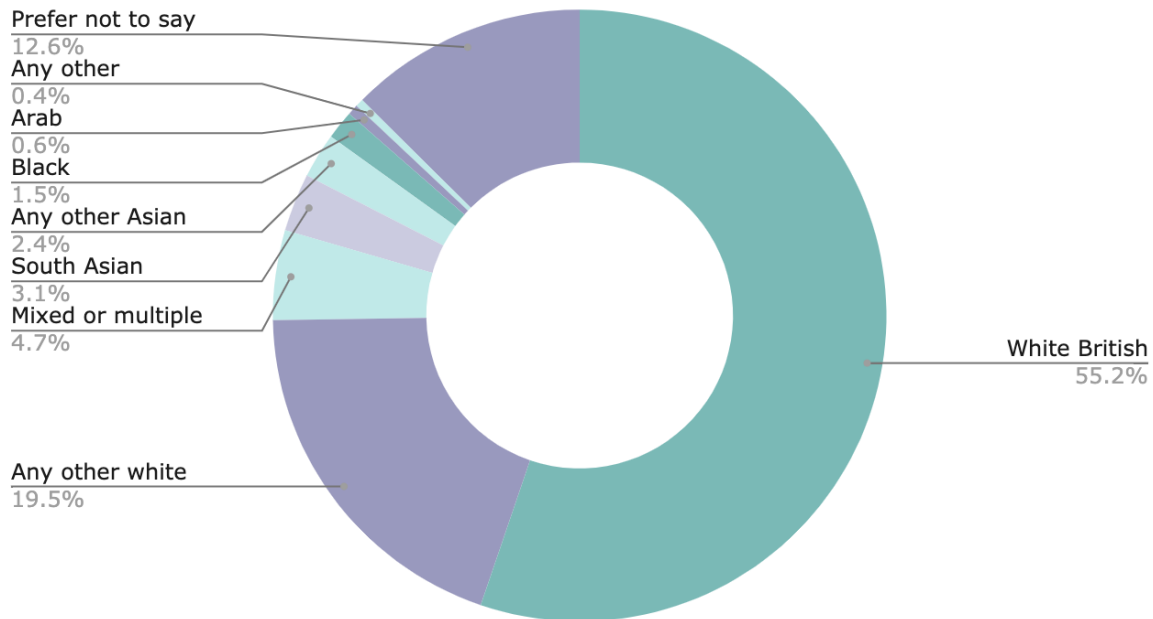


Figure 2: Ethnicity of first time visitors 2020

We are now seeing more younger women, with a greater parity between the age of OBS users and the age of women who are booking their pregnancy locally ('OUH' in figure 3).

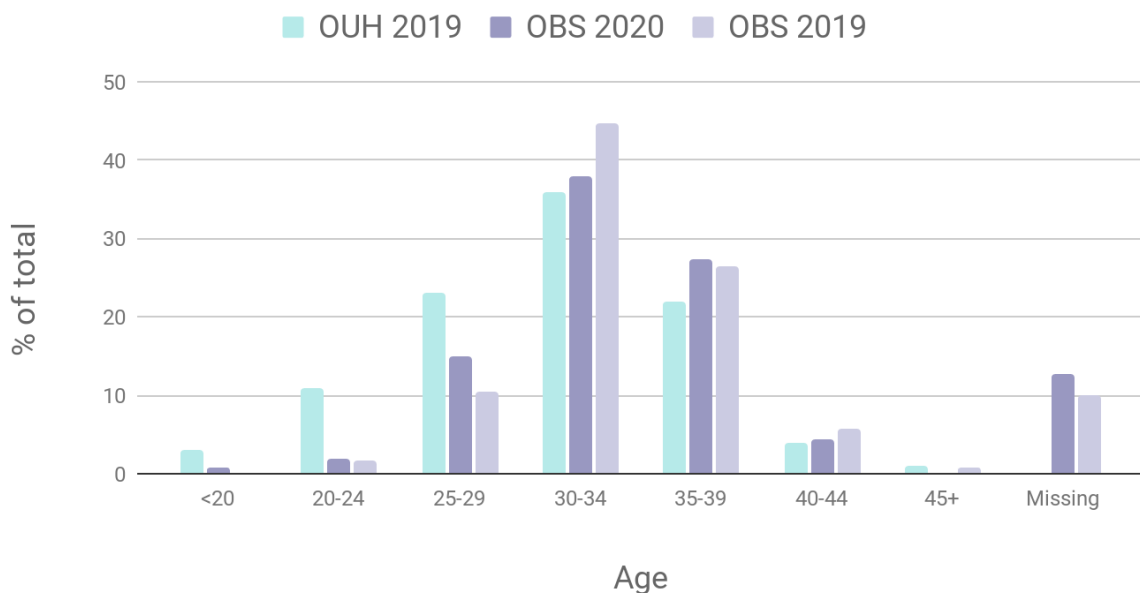


Figure 3: Comparison of age of first visitors

People came to see us for many reasons: most commonly pain, infant behaviour and antenatal preparation. Many more people came to us for help with sleep than in 2019 (12% vs 2% - probably because of the special OBS Group sessions on sleep). The number of people asking about a tongue tie was about half what it was last year (6% vs 12%).

We made fewer referrals to other services this year due to the reduction in the services available outside OBS.

Financial report

This year saw a sudden refocus on applying for emergency funding to ensure that the organisation could respond promptly to the challenges faced by the pandemic. These successful funding bids to OCF and the Lottery, and the opportunity to present our work at The Funding Network's "[Oxford Gives](#)" crowdfunding event in November enabled OBS to reinvent itself as an online provider and helped to ensure that there was no break in the service delivered.

As a result of receiving funding to cover the additional costs of our COVID response the existing funding streams were able to be used towards our core service provision, although the delivery of service changed from face to face to online.

During the next financial year, we have already secured a grant from OCF to assist in the transition from a fully online service to once again holding face to face sessions as restrictions allow.

We are able to continue expanding our service, using the long term funding awarded by the Lottery and also from the continued support of several individuals who are again generously providing significant donations to us for the forthcoming financial year.

[Find the full 2020/21 accounts here.](#)

During 2020/21 a surplus of £9,707 was recorded (2019/20 deficit £10,026), due to general donation income being higher than expected, as well being able to secure all additional funding needed to meet the increased running costs of our COVID response.

Income for the year was £88,213 (2019/20 £47,568)

Included in this figure is £15,293 of COVID response funding and £35,132 Lottery grant funding. This Lottery funding has been put towards maintaining and increasing the number of sessions we offer as well as investing in new service streams. These areas have been invested in according to our 5 year plan.

Expenses during the year were £78,506 (prior year £57,594).

£15,293 of these expenses were directly related to the COVID response. The majority of costs are allocated to facilitator time running sessions and managing the organisation, including providing breastfeeding support via our closed Facebook group and communicating with health professionals.

Other running costs, which relate to insurance, fees and other expenses have remained broadly in line with the prior year.

A [reserves policy](#) has been agreed by Trustees and is reviewed annually to ensure that the appropriate levels of reserves are maintained and OBS is able to continue to fund its activities without unnecessary disruption.

Donors

- Lottery Covid Response grant: £9,903
- Oxford Gives: £1,400 in this financial year; further £2,923 to be spent in 2021/22
- Local giving /DCMS Covid response: £1,451
- OCF Covid set up costs grant: £5,390
- MidCounties Co op grant for peer supporter training: £570
- Donations from current service users and the community: £9,522
- Two anonymous major donors

As well as Year 2 funding from the Lottery grant of £35,132



Louise Ellis, ACA, OBS Treasurer

Risks 2020-21

The major risks in the next financial year centre on the uncertainty of restrictions on face to face support caused by the ongoing Covid-19 pandemic. Restrictions are likely to continue to fluctuate with recurrent surges of infection. Getting things wrong risks our facilitators and users being unnecessarily exposed to infection, and has a reputational risk. Running a purely virtual service is the simplest option, but our service users are telling us how much they need and value face to face support. We will need to build a resilient and flexible face to face offering and decide how to balance this with some virtual services.

In a similar vein, OBS will need to decide whether to pursue the expansion plan to Banbury during these uncertain times, when collaborating with stakeholders on the ground is more difficult. Our service users have emphasised that the North of the county

requires a better service, but our virtual provision has already made a big difference to our geographical reach. An expansion that falls flat would be a reputational risk for OBS. Although we have strong links with local NHS and Health Visiting teams, there is a risk that the service they can offer families in Oxfordshire will reduce because of pandemic related pressures. Access to GP services has also become more variable and families' health seeking behaviours have changed according to their perception of risk. This could mean that more babies with medical problems are seen and discussed within OBS. We need to ensure we are identifying these and referring them appropriately.

The political climate is changing at a rapid pace in relation to the field of infant feeding - ['The Best Start for Life: A Vision for the 1,001 Critical Days'](#), the *Becoming Breastfeeding Friendly* project and the division of Public Health England will all be very important to OBS and may have an impact on funding sources.

Further deterioration of the economic health of the UK will also be an important factor for OBS' financial health, with potentially less funding for charities available and strain on the disposable income of our users who currently show us such generosity.

Previously identified risks such as safeguarding incidents, families disappointed or unhappy with their experience and inaccessibility to some families remain on our radar.

Looking towards 2021-22

As we move into the new year, we are looking forward to starting to provide face to face services once again. This is a turning point for the charity, as the pandemic has radically changed the reach and access of our services and how we support people.

We will be looking to reopen drop-ins in new parts of the county, in response to the findings from our impact assessment about where our service users really need us to be. We will also be integrating virtual support with face to face services in a way we haven't before. Our plans to reopen face to face services have been fraught with uncertainty, but we are in the process of liaising with potential new venues and making a timetable for us to reopen. We now look forward to opening our Banbury drop-in in Spring 2022.

The next year will see us continuing and expanding our Lottery funded programme to improve access to our services for families who may not see OBS as for them - particularly those who experience racism, LGBT+ service users and those with disabilities. We will continue to provide support to young parents alongside the Family Nurse Partnership and look forward to restarting our work with Motherkind Cafe.

The trustees declare that they have approved the trustees' report above.

Signed on behalf of the charity's trustees:

Signature(s) 

Full name(s) Juliet Rayment

Position: Chair of Trustees

Independent Examiner's Report to the Trustees of Oxfordshire Breastfeeding Support

I report to the trustees on my examination of the accounts of the Oxfordshire Breastfeeding Support (The Charitable Incorporated Organisation, or CIO) for the year ended 31 March 2021.

Responsibilities and basis of report

As the charity trustees of the CIO you are responsible for the preparation of the accounts in accordance with the requirements of the Charities Act 2011 ('the Act'). I report in respect of my examination of the CIO's accounts carried out under section 145 of the 2011 Act and in carrying out my examination I have followed all the applicable Directions given by the Charity Commission under section 145(5)(b) of the Act.

Independent examiner's statement

I have completed my examination. I confirm that no material matters have come to my attention in connection with the examination giving me cause to believe that in any material respect:

1. accounting records were not kept in respect of the CIO as required by section 130 of the Act; or
2. the accounts do not accord with those records; or
3. the accounts do not comply with the applicable requirements concerning the form and content of accounts set out in the Charities (Accounts and Reports) Regulations 2008 other than any requirement that the accounts give a 'true and fair' view which is not a matter considered as part of an independent examination.

I have no concerns and have come across no other matters in connection with the examination to which attention should be drawn in this report in order to enable a proper understanding of the accounts to be reached.

Signed: 

Name: Charlotte Morley

Relevant professional qualification or membership of professional bodies (if any):

Address: 55 Sinclair Avenue, Banbury, OX16 1BG

Date: 28 July 2021



Oxfordshire Breastfeeding Support		Charity No (if any)	1176948
Annual accounts for the period			
Period start date	01.04.2020	To	Period end date 31.03.2021

Section A Statement of financial activities

Recommended categories by activity

Incoming resources (Note 3)

Income and endowments from:

Donations and legacies

Charitable activities

Other trading activities

Investments

Separate material item of income

Other

Total

Resources expended (Note 6)

Expenditure on:

Raising funds

Charitable activities

Separate material item of expense

Other

Total

Net income/(expenditure) before investment gains/(losses)

Net gains/(losses) on investments

Net income/(expenditure)

Extraordinary items

Transfers between funds

Other recognised gains/(losses):

Gains and losses on revaluation of fixed assets for the charity's own use

Other gains/(losses)

Net movement in funds

Reconciliation of funds:

Total funds brought forward

Total funds carried forward

Guidance Notes

	Unrestricted funds £ F01	Restricted income funds £ F02	Endowment funds £ F03	Total funds £ F04	Prior year funds £ F05
S01	25,623	60,096	-	85,719	38,856
S02	1,050	-	-	1,050	920
S03	1,444	-	-	1,444	7,792
S04	-	-	-	-	-
S05	-	-	-	-	-
S06	-	-	-	-	-
S07	28,117	60,096	-	88,213	47,568
S08	2,592	-	-	2,592	3,108
S09	14,043	56,529	-	70,572	50,610
S10	-	-	-	-	-
S11	1,771	3,567	-	5,338	3,877
S12	18,406	60,096	-	78,502	57,595
S13	9,711	-	-	9,711	- 10,027
S14	-	-	-	-	-
S15	9,711	-	-	9,711	- 10,027
S16	-	-	-	-	-
S17	-	-	-	-	-
S18	-	-	-	-	-
S19	-	-	-	-	-
S20	9,711	-	-	9,711	- 10,027
S21	36,997	-	-	36,997	47,024
S22	46,708	-	-	46,708	36,997

Section B Balance sheet

		Guidance Notes	Unrestricted funds £ F01	Restricted income funds £ F02	Endowment funds £ F03	Total this year £ F04	Total last year £ F05
Fixed assets							
Intangible assets	(Note 15)	B01	-	-	-	-	-
Tangible assets	(Note 14)	B02	-	-	-	-	-
Heritage assets	(Note 16)	B03	-	-	-	-	-
Investments	(Note 17)	B04	-	-	-	-	-
Total fixed assets		B05	-	-	-	-	-
Current assets							
Stocks	(Note 18)	B06	-	-	-	-	-
Debtors	(Note 19)	B07	509	-	-	509	1,013
Investments	(Note 17.4)	B08	-	-	-	-	-
Cash at bank and in hand	(Note 24)	B09	70,647	-	-	70,647	49,582
Total current assets		B10	71,156	-	-	71,156	50,595
Creditors: amounts falling due within one year	(Note 20)	B11	24,448	-	-	24,448	13,598
Net current assets/(liabilities)		B12	46,708	-	-	46,708	36,997
Total assets less current liabilities		B13	46,708	-	-	46,708	36,997
Creditors: amounts falling due after one year	(Note 20)	B14	-	-	-	-	-
Provisions for liabilities		B15	-	-	-	-	-
Total net assets or liabilities		B16	46,708	-	-	46,708	36,997
Funds of the Charity							
Endowment funds	(Note 27)	B17	-	-	-	-	-
Restricted income funds	(Note 27)	B18	-	-	-	-	-
Unrestricted funds		B19	46,708	-	-	46,708	36,997
Revaluation reserve		B20	-	-	-	-	-
Total funds		B21	46,708	-	-	46,708	36,997
Signed by one or two trustees on behalf of all the trustees			Signature		Print Name		Date of approval dd/mm/yyyy

Section C**Notes to the accounts****Note 1 Basis of preparation**

This section should be completed by all charities.

1.1 Basis of accounting

These accounts have been prepared under the historical cost convention with items recognised at cost or transaction value unless otherwise stated in the relevant note(s) to these accounts.

The accounts have been prepared in accordance with:

• and with*

✓

the Statement of Recommended Practice: Accounting and Reporting by Charities preparing their accounts in accordance with the Financial Reporting Standard applicable in the UK and Republic of Ireland (FRS 102) issued on 16 July 2014

• and with*

✓

the Financial Reporting Standard applicable in the United Kingdom and Republic of Ireland (FRS 102)

• and with the Charities Act 2011.

The charity constitutes a public benefit entity as defined by FRS 102.*

✓

* -Tick as appropriate

1.2 Going concern

If there are material uncertainties related to events or conditions that cast significant doubt on the charity's ability to continue as a going concern, please provide the following details or state "Not applicable", if appropriate:

An explanation as to those factors that support the conclusion that the charity is a going concern;

The charity is holding around 7 months of expenditure in reserves, which is line with the stated reserves policy, and has grant funding agreed for the next 3 years so the Trustees consider the charity to be a going concern

Disclosure of any uncertainties that make the going concern assumption doubtful;

Not applicable

Where accounts are not prepared on a going concern basis, please disclose this fact together with the basis on which the trustees prepared the accounts and the reason why the charity is not regarded as a going concern.

Not applicable

1.3 Change of accounting policy

The accounts present a true and fair view and the accounting policies adopted are those outlined in note { }.

Yes*

✓

No*

✓

* -Tick as appropriate

Please disclose:

(i) the nature of the change in accounting policy;

<i>(ii) the reasons why applying the new accounting policy provides more reliable and more relevant information; and</i>	
<i>(iii) the amount of the adjustment for each line affected in the current period, each prior period presented and the aggregate amount of the adjustment relating to periods before those presented, 3.44 FRS 102 SORP.</i>	

1.4 Changes to accounting estimates

No changes to accounting estimates have occurred in the reporting period (3.46 FRS 102 SORP).

Yes*	<input checked="" type="checkbox"/>	* -Tick as appropriate
No*	<input checked="" type="checkbox"/>	

Please disclose:

<i>(i) the nature of any changes;</i>	
<i>(ii) the effect of the change on income and expense or assets and liabilities for the current period; and</i>	
<i>(iii) where practicable, the effect of the change in one or more future periods.</i>	

1.5 Material prior year errors

No material prior year error have been identified in the reporting period (3.47 FRS 102 SORP).

Yes*	<input checked="" type="checkbox"/>	* -Tick as appropriate
No*	<input checked="" type="checkbox"/>	

Please disclose:

<i>(i) the nature of the prior period error;</i>	
<i>(ii) for each prior period presented in the accounts, the amount of the correction for each account line item affected; and</i>	
<i>(iii) the amount of the correction at the beginning of the earliest prior period presented in the accounts.</i>	

Note 2 Accounting policies

Please complete this note when first reporting under FRS2102. Section 35 of FRS102, requires 3 reconciliations to be presented, if all are applicable.

2.1 RECONCILIATION WITH PREVIOUS GENERALLY ACCEPTED ACCOUNTING PRACTICE

Please provide a description of the nature of each change in accounting policy

Not applicable , no changes to accounting policies

Reconciliation of funds per previous GAAP to funds determined under FRS 102

	Start of period	End of period
	£	£
Fund balances as previously stated		
<i>Adjustments:</i>		

Fund balance as restated _____

Reconciliation of net income/(net expenditure) per previous GAAP to net income/(net expenditure) under FRS 102

	End of period
	£
Net income/(expenditure) as previously stated	
<i>Adjustments:</i>	

Previous period net income/(expenditure) as restated _____

Note 2 Accounting policies

2.2 INCOME

This standard list of accounting policies has been applied by the charity except for those ticked "No" or "N/a". Where a different or additional policy has been adopted then this is detailed in the box below.

Recognition of income	These are included in the Statement of Financial Activities (SoFA) when: < the charity becomes entitled to the resources; · it is more likely than not that the trustees will receive the resources; and < the monetary value can be measured with sufficient reliability.	Yes <input checked="" type="checkbox"/>	No <input checked="" type="checkbox"/>	N/a <input checked="" type="checkbox"/>
Offsetting	There has been no offsetting of assets and liabilities, or income and expenses, unless required or permitted by the FRS 102 SORP or FRS 102.	Yes <input checked="" type="checkbox"/>	No <input checked="" type="checkbox"/>	N/a <input checked="" type="checkbox"/>
Grants and donations	Grants and donations are only included in the SoFA when the general income recognition criteria are met (5.10 to 5.12 FRS102 SORP).	Yes <input checked="" type="checkbox"/>	No <input checked="" type="checkbox"/>	N/a <input checked="" type="checkbox"/>
Legacies	In the case of performance related grants, income must only be recognised to the extent that the charity has provided the specified goods or services as entitlement to the grant only occurs when the performance related conditions are met (5.16 FRS 102 SORP). Legacies are included in the SOFA when receipt is probable, that is, when there has been grant of probate, the executors have established that there are sufficient assets in the estate and any conditions attached to the legacy are either within the control of the charity or have been met.	Yes <input checked="" type="checkbox"/>	No <input checked="" type="checkbox"/>	N/a <input checked="" type="checkbox"/>
Government grants	The charity has received government grants in the reporting period	Yes <input checked="" type="checkbox"/>	No <input checked="" type="checkbox"/>	N/a <input checked="" type="checkbox"/>
Tax reclaims on donations and gifts	Gift Aid receivable is included in income when there is a valid declaration from the donor. Any Gift Aid amount recovered on a donation is considered to be part of that gift and is treated as an addition to the same fund as the initial donation unless the donor or the terms of the appeal have specified otherwise.	Yes <input checked="" type="checkbox"/>	No <input checked="" type="checkbox"/>	N/a <input checked="" type="checkbox"/>
Contractual income and performance related grants	This is only included in the SoFA once the charity has provided the related goods or services or met the performance related conditions.	Yes <input checked="" type="checkbox"/>	No <input checked="" type="checkbox"/>	N/a <input checked="" type="checkbox"/>
Donated goods	Donated goods are measured at fair value (the amount for which the asset could be exchanged) unless impractical to do so. The cost of any stock of goods donated for distribution to beneficiaries is deemed to be the fair value of those gifts at the time of their receipt and they are recognised on receipt. In the reporting period in which the stocks are distributed, they are recognised as an expense at the carrying amount of the stocks at distribution. Donated goods for resale are measured at fair value on initial recognition, which is the expected proceeds from sale less the expected costs of sale, and recognised in 'Income from other trading activities' with the corresponding stock recognised in the balance sheet. On its sale the value of stock is charged against 'Income from other trading activities' and the proceeds from sale are also recognised as 'Income from other trading activities'. Goods donated for on-going use by the charity are recognised as tangible fixed assets and included in the SoFA as incoming resources when receivable. Gifts in kind for use by the charity are included in the SoFA as income from donations when receivable.	Yes <input checked="" type="checkbox"/>	No <input checked="" type="checkbox"/>	N/a <input checked="" type="checkbox"/>
Donated services and facilities	Donated services and facilities are included in the SOFA when received at the value of the gift to the charity provided the value of the gift can be measured reliably. Donated services and facilities that are consumed immediately are recognised as income with an equivalent amount recognised as an expense under the appropriate heading in the SOFA.	Yes <input checked="" type="checkbox"/>	No <input checked="" type="checkbox"/>	N/a <input checked="" type="checkbox"/>
Support costs	The charity has incurred expenditure on support costs.	Yes <input checked="" type="checkbox"/>	No <input checked="" type="checkbox"/>	N/a <input checked="" type="checkbox"/>
Volunteer help	The value of any voluntary help received is not included in the accounts but is described in the trustees' annual report.	Yes <input checked="" type="checkbox"/>	No <input checked="" type="checkbox"/>	N/a <input checked="" type="checkbox"/>

Income from interest, royalties and dividends	This is included in the accounts when receipt is probable and the amount receivable can be measured reliably.
Income from membership subscriptions	<p>Membership subscriptions received in the nature of a gift are recognised in Donations and Legacies.</p> <p>Membership subscriptions which gives a member the right to buy services or other benefits are recognised as income earned from the provision of goods and services as income from charitable activities.</p>
Settlement of insurance claims	Insurance claims are only included in the SoFA when the general income recognition criteria are met (5.10 to 5.12 FRS102 SORP) and are included as an item of other income in the SoFA.
Investment gains and losses	This includes any realised or unrealised gains or losses on the sale of investments and any gain or loss resulting from revaluing investments to market value at the end of the year.

Yes	No	N/a
<input checked="" type="checkbox"/>	<input checked="" type="checkbox"/>	<input checked="" type="checkbox"/>
Yes	No	N/a
<input checked="" type="checkbox"/>	<input checked="" type="checkbox"/>	<input checked="" type="checkbox"/>
Yes	No	N/a
<input checked="" type="checkbox"/>	<input checked="" type="checkbox"/>	<input checked="" type="checkbox"/>
Yes	No	N/a
<input checked="" type="checkbox"/>	<input checked="" type="checkbox"/>	<input checked="" type="checkbox"/>
Yes	No	N/a
<input checked="" type="checkbox"/>	<input checked="" type="checkbox"/>	<input checked="" type="checkbox"/>

2.3 EXPENDITURE AND LIABILITIES

Liability recognition	Liabilities are recognised where it is more likely than not that there is a legal or constructive obligation committing the charity to pay out resources and the amount of the obligation can be measured with reasonable certainty.
Governance and support costs	<p>Support costs have been allocated between governance costs and other support. Governance costs comprise all costs involving public accountability of the charity and its compliance with regulation and good practice.</p> <p>Support costs include central functions and have been allocated to activity cost categories on a basis consistent with the use of resources, eg allocating property costs by floor areas, or per capita, staff costs by the time spent and other costs by their usage.</p>
Grants with performance conditions	Where the charity gives a grant with conditions for its payment being a specific level of service or output to be provided, such grants are only recognised in the SoFA once the recipient of the grant has provided the specified service or output.
Grants payable without performance conditions	Where there are no conditions attaching to the grant that enables the donor charity to realistically avoid the commitment, a liability for the full funding obligation must be recognised.
Redundancy cost	The charity made no redundancy payments during the reporting period.
Deferred income	No material item of deferred income has been included in the accounts.
Creditors	The charity has creditors which are measured at settlement amounts less any trade discounts
Provisions for liabilities	A liability is measured on recognition at its historical cost and then subsequently measured at the best estimate of the amount required to settle the obligation at the reporting date
Basic financial instruments	The charity accounts for basic financial instruments on initial recognition as per paragraph 10.7 FRS102 SORP. Subsequent measurement is as per paragraphs 11.17 to 11.19, FRS102 SORP.

Yes	No	N/a
<input checked="" type="checkbox"/>	<input checked="" type="checkbox"/>	<input checked="" type="checkbox"/>
Yes	No	N/a
<input checked="" type="checkbox"/>	<input checked="" type="checkbox"/>	<input checked="" type="checkbox"/>
Yes	No	N/a
<input checked="" type="checkbox"/>	<input checked="" type="checkbox"/>	<input checked="" type="checkbox"/>
Yes	No	N/a
<input checked="" type="checkbox"/>	<input checked="" type="checkbox"/>	<input checked="" type="checkbox"/>
Yes	No	N/a
<input checked="" type="checkbox"/>	<input checked="" type="checkbox"/>	<input checked="" type="checkbox"/>
Yes	No	N/a
<input checked="" type="checkbox"/>	<input checked="" type="checkbox"/>	<input checked="" type="checkbox"/>
Yes	No	N/a
<input checked="" type="checkbox"/>	<input checked="" type="checkbox"/>	<input checked="" type="checkbox"/>
Yes	No	N/a
<input checked="" type="checkbox"/>	<input checked="" type="checkbox"/>	<input checked="" type="checkbox"/>
Yes	No	N/a
<input checked="" type="checkbox"/>	<input checked="" type="checkbox"/>	<input checked="" type="checkbox"/>

2.4 ASSETS

Tangible fixed assets for use by charity	<p>These are capitalised if they can be used for more than one year, and cost at least <input type="text"/></p> <p>They are valued at cost.</p> <p>The depreciation rates and methods used are disclosed in note 9.2.</p>
Intangible fixed assets	<p>The charity has intangible fixed assets, that is, non-monetary assets that do not have physical substance but are identifiable and are controlled by the charity through custody or legal rights. The amortisation rates and methods used are disclosed in note 9.5</p> <p>They are valued at cost.</p>
Heritage assets	<p>The charity has heritage assets, that is, non-monetary assets with historic, artistic, scientific, technological, geophysical or environmental qualities that are held and maintained principally for their contribution to knowledge and culture. The depreciation rates and methods used as disclosed in note 9.6.1.4.</p> <p>They are valued at cost.</p>

Yes	No	N/a
<input checked="" type="checkbox"/>	<input checked="" type="checkbox"/>	<input checked="" type="checkbox"/>
Yes	No	N/a
<input checked="" type="checkbox"/>	<input checked="" type="checkbox"/>	<input checked="" type="checkbox"/>
Yes	No	N/a
<input checked="" type="checkbox"/>	<input checked="" type="checkbox"/>	<input checked="" type="checkbox"/>
Yes	No	N/a
<input checked="" type="checkbox"/>	<input checked="" type="checkbox"/>	<input checked="" type="checkbox"/>
Yes	No	N/a
<input checked="" type="checkbox"/>	<input checked="" type="checkbox"/>	<input checked="" type="checkbox"/>

Investments	Fixed asset investments in quoted shares, traded bonds and similar investments are valued at initially at cost and subsequently at fair value (their market value) at the year end. The same treatment is applied to unlisted investments unless fair value cannot be measured reliably in which case it is measured at cost less impairment.	Yes	No	N/a
		<input checked="" type="checkbox"/>	<input checked="" type="checkbox"/>	<input checked="" type="checkbox"/>
	Investments held for resale or pending their sale and cash and cash equivalents with a maturity date of less than 1 year are treated as current asset investments	Yes	No	N/a
		<input checked="" type="checkbox"/>	<input checked="" type="checkbox"/>	<input checked="" type="checkbox"/>
Stocks and work in progress	Stocks held for sale as part of non-charitable trade are measured at the lower or cost or net realisable value.	Yes	No	N/a
		<input checked="" type="checkbox"/>	<input checked="" type="checkbox"/>	<input checked="" type="checkbox"/>
	Goods or services provided as part of a charitable activity are measured at net realisable value based on the service potential provided by items of stock.	Yes	No	N/a
		<input checked="" type="checkbox"/>	<input checked="" type="checkbox"/>	<input checked="" type="checkbox"/>
	Work in progress is valued at cost less any foreseeable loss that is likely to occur on the contract.	Yes	No	N/a
		<input checked="" type="checkbox"/>	<input checked="" type="checkbox"/>	<input checked="" type="checkbox"/>
Debtors	Debtors (including trade debtors and loans receivable) are measured on initial recognition at settlement amount after any trade discounts or amount advanced by the charity. Subsequently, they are measured at the cash or other consideration expected to be received.	Yes	No	N/a
		<input checked="" type="checkbox"/>	<input checked="" type="checkbox"/>	<input checked="" type="checkbox"/>
Current asset investments	The charity has investments which it holds for resale or pending their sale and cash and cash equivalents with a maturity date less than one year. These include cash on deposit and cash equivalents with a maturity date of less than one year held for investment purposes rather than to meet short term cash commitments as they fall due.	Yes	No	N/a
		<input checked="" type="checkbox"/>	<input checked="" type="checkbox"/>	<input checked="" type="checkbox"/>
	They are valued at fair value except where they qualify as basic financial instruments.	Yes	No	N/a
		<input checked="" type="checkbox"/>	<input checked="" type="checkbox"/>	<input checked="" type="checkbox"/>

**POLICIES ADOPTED
ADDITIONAL TO OR
DIFFERENT FROM
THOSE ABOVE**

Note 3

Analysis of income

		Unrestricted funds	Restricted income funds	Endowment funds	Total funds £	Prior year £
Analysis						
Donations and legacies:	Donations and gifts	25,153	1,451	-	26,604	26,366
	Gift Aid	470	-	-	470	624
	Legacies	-	-	-	-	-
	General grants provided by government/other charities	-	58,645	-	58,645	11,866
	Membership subscriptions and sponsorships which are in substance donations	-	-	-	-	-
	Donated goods, facilities and services	-	-	-	-	-
	Other	-	-	-	-	-
	Total	25,623	60,096	-	85,719	38,856
Charitable activities:		-	-	-	-	-
	Breast pump hire	1,050	-	-	1,050	920
		-	-	-	-	-
	Other	-	-	-	-	-
	Total	1,050	-	-	1,050	920
Other trading activities:	Fundraising	1,444	-	-	1,444	7,792
		-	-	-	-	-
		-	-	-	-	-
	Other	-	-	-	-	-
	Total	1,444	-	-	1,444	7,792
Income from investments:	Interest income	-	-	-	-	-
	Dividend income	-	-	-	-	-
	Rental and leasing income	-	-	-	-	-
	Other	-	-	-	-	-
	Total	-	-	-	-	-
Separate material item of income:		-	-	-	-	-
		-	-	-	-	-
		-	-	-	-	-
	Total	-	-	-	-	-
Other:	Conversion of endowment funds into income	-	-	-	-	-
	Gain on disposal of a tangible fixed asset held for charity's own use	-	-	-	-	-
	Gain on disposal of a programme related investment	-	-	-	-	-
	Royalties from the exploitation of intellectual property rights	-	-	-	-	-
	Other	-	-	-	-	-
	Total	-	-	-	-	-
TOTAL INCOME		28,117	60,096	-	88,213	47,568

Other information:

All income in the prior year was unrestricted except for: (please provide description and amounts)

OCF COVID set up costs £5,390; OCF Barton sessions £2,250; Tampon Tax Donnington sessions £5,400; National Lottery Grant existing and expanded sessions £35,132; National Lottery grant COVID reponse £9,903; Mid Counties Coop Peer Supporter training £570

Where any endowment fund is converted into income in the reporting period, please give the reason for the conversion.

Within the income items above the following items are material:
(please disclose the nature, amount and any prior year amounts)

Note 4

Analysis of receipts of government grants

	Description	This year £	Last year £
Government grant 1		-	-
Government grant 2		-	-
Government grant 3		-	-
Other		-	-
	Total	-	-

Please provide details of any unfulfilled conditions and other contingencies attaching to grants that have been recognised in income.

Not applicable

Please give details of other forms of government assistance from which the charity has directly benefited.

Not applicable

Note 5

Donated goods, facilities and services

	This year £	Last year £
Seconded staff	-	-
Use of property	-	-
Other	-	-
	-	-

Please provide details of the accounting policy for the recognition and valuation of donated goods, facilities and services.

Not applicable

Please provide details of any unfulfilled conditions and other contingencies attaching to resources from donated goods and services not recognised in income.

Not applicable

Please give details of other forms of other donated goods and services not recognised in the accounts, eg contribution of unpaid volunteers.

Peer support is provided at drop in sessions by volunteers. As well as assisting in talking to families about the normal course of breastfeeding, referring to facilitators where complex issues arise , peer supporters help with ensuring appropriate session record keeping is maintained, setting up and tidying the room and making refreshments. Volunteers also orgainse fundraising events, help fill in grant applications, help attract donors and run the breast pump hire scheme. During the year all sessions were delivered virtually and peer supporters attended group sessions to help with welcome and discussion; lead break out rooms on specific topics; and helped with support given on Facebook groups

Note 6	Analysis of expenditure
--------	-------------------------

	Analysis	Unrestricted funds	Restricted income funds	Endowment funds	Total funds £	Prior year £
Expenditure on raising funds:	Incurred seeking donations	2,592	-	-	2,592	2,592
	Incurred seeking legacies	-	-	-	-	-
	Incurred seeking grants					
	Operating membership schemes and social lotteries					
	Staging fundraising events	-			-	516
	Fudraising agents					
	Operating charity shops					
	Operating a trading company undertaking non-charitable trading activity					
	Advertising, marketing, direct mail and publicity	-	-	-	-	-
	Start up costs incurred in generating new source of future income	-	-	-	-	-
	Database development costs	-	-	-	-	-
	Other trading activities					
	Investment management costs:	-	-	-	-	
	Portfolio management costs	-	-	-	-	-
	Cost of obtaining investment advice	-	-	-	-	-
	Investment administration costs	-	-	-	-	-
	Intellectual property licencing costs	-	-	-	-	-
	Rent collection, property repairs and maintenance charges	-	-	-	-	-
		-	-	-	-	-
	Total expenditure on raising funds	2,592	-	-	2,592	3,108
Expenditure on charitable activities	Facilitator session fees	6,564	33,804	-	40,368	29,280
	Facilitator project running costs	6,811	20,212	-	27,023	19,440
	Antenatal and peer support sessions	668	2,513	-	3,181	1,891
		-	-	-	-	-
	Total expenditure on charitable activities	14,043	56,529	-	70,572	50,611
Separate material item of expense		-	-	-	-	-
		-	-	-	-	-
		-	-	-	-	-
		-	-	-	-	-
	Total	-	-	-	-	-

Other

Insurance	76	182	-	258	258
Equipment	368	500	-	868	-
Administration	1,333	2,885	-	4,218	3,568
Volunteer expenses	-	-	-	-	-
Trustee expenses	-	-	-	-	51
Total other expenditure	1,777	3,567	-	5,344	3,877

TOTAL EXPENDITURE

18,412	60,096	-	78,508	57,596
--------	--------	---	--------	--------

Other information:

Analysis of expenditure on charitable activities

Activity or programme	Activities undertaken directly	Grant funding of activities	Support Costs	Total this year	Total prior year
	£	£	£	£	£
Sessions	Drop ins and online support	62047	5344	67391	48720
Training	Antenatal sessions and peer support training	3181		3181	1891
Other					
Total		65228	5344	70572	50611

Prior year expenditure on charitable activities can be analysed as follows:

Charitable activities last year were split between grant funding £50,611 and support costs £3,876

Within the expenditure items above the following items are material: (please disclose the nature, amount and any prior year amounts)

Material items of expenditure are facilitator direct session costs and project management costs. 2020/21 £67,391 (2019/20 £48,720)

Section C	Notes to the accounts	(cont)
------------------	------------------------------	---------------

Note 7 Extraordinary items

Please explain the nature of each extraordinary item occurring in the period.

	Description	This year £	Last year £
Extraordinary item 1	Not applicable	-	-
Extraordinary item 2		-	-
Extraordinary item 3		-	-
Extraordinary item 4		-	-
Total extraordinary items		-	-

Section C

Notes to the accounts

Note 8

Funds received as agent

8.1 Please complete this note if the charity has agreed to administer the funds of another entity as its agent. Note: If a charity is acting as an agent, it should not recognise the income in the Statement of Financial Activities or the Balance Sheet.

Description/name of party	Related party (Yes or No)	Amount received		Amount paid out		Balance held at period end	
		This year	Last year	This year	Last year	This year	Last year
		£	£	£	£	£	£
Not applicable		-	-	-	-	-	-
		-	-	-	-	-	-
		-	-	-	-	-	-
		-	-	-	-	-	-
		-	-	-	-	-	-
		-	-	-	-	-	-
Total		-	-	-	-	-	-

8.2 Where a consortia or similar arrangement exists whereby 2 or more charities co-operate to achieve economies in the purchase of goods or services, please disclose details of any balances outstanding between any participating members.

Description/name of party	Balance held at period end	
	This year	Last year
	£	£
	-	-
	-	-
	-	-
	-	-
	-	-
Total	-	-

Section C	Notes to the accounts
------------------	------------------------------

Note 9 Support Costs

Please complete this note if the charity has analysed its expenses using activity categories and has support costs.

Support cost (examples)	Raising funds	Drop in sessions/online support	Peer support/Antenatal		Grand total	Basis of allocation (Describe method)
	£	£	£	£	£	
Governance	-	-		-	-	
Insurance	-	250	8	-	258	Time spent
Website and other fees	-	2,895	57	-	2,952	
	-	-		-	-	
Other	-	2,101	33	-	2,134	Time spent
	-	5,246	98	-	5,344	
Total						

Please provide details of the accounting policy adopted for the apportionment of costs between activities and any estimation techniques used to calculate their apportionment.

The organisation has identified it's support costs and allocated them between the 2 main activities undertaken based on an estimate of time allocated per month to the different activitiy sessions. Governance costs at present relate to time spent by Trustees on charity management. No costs are incurred for this.

Section C	Notes to the accounts
-----------	-----------------------

Note 10 Details of certain items of expenditure

10.1 Fees for examination of the accounts

Please provide details of the amount paid for any statutory external scrutiny of accounts and other services provided by your independent examiner. If nothing was paid please enter '0' in the appropriate box(es).

Independent examiner's fees

Assurance services other than audit or independent examination

Tax advisory fees

Other fees (for example: financial advice, consultancy, accountancy services) paid to the independent examiner

This year £	Last year £
0	0
0	0
0	0
0	0

Note 11 **Paid employees**
Please complete this note if the charity has any employees.

11.1 Staff Costs

	This year £	Last year £
Salaries and wages	-	-
Social security costs	-	-
Pension costs (defined contribution scheme)	-	-
Other employee benefits	-	-
Total staff costs	-	-

Please provide details of expenditure on staff working for the charity whose contracts are with and are paid by a related party

None noted

Please give details of the number of employees whose total employee benefits (excluding employer pension costs) fell within each band of £10,000 from £60,000 upwards. If there are no such transactions, please enter 'true' in the box provided.

No employees received employee benefits (excluding employer pension costs) for the reporting period of more than £60,000

None noted

Band	Number of employees
£60,000 to £69,999	None
£70,000 to £79,999	None
£80,000 to £89,999	None
£90,000 to £99,999	None
£100,000 to £109,999	None

Please provide the total amount paid to key management personnel (includes trustees and senior management) for their services to the charity

No employees. No payments made to Trustees for services.

11.2 Average head count in the year

The parts of the charity in which the employees work

	This year Number	Last year Number
Fundraising	-	-
Charitable Activities	-	-
Governance	-	-
Other	-	-
Total	-	-

11.3 Ex-gratia payments to employees and others (excluding trustees)
Please complete if an ex-gratia payment is made.

Please explain the nature of the payment

None

Please state the legal authority or reason for making the payment

n/a

Please state the amount of the payment (or value of any waiver of a right to an asset)

n/a

11.4 Redundancy payments

Please complete if any redundancy or termination payment is made in the period.

Total amount of payment

None

The nature of the payment (cash, asset etc.)

n/a

The extent of redundancy funding at the balance sheet date

n/a

Please state the accounting policy for any redundancy or termination payments

n/a

Section C	Notes to the accounts	(cont)
------------------	------------------------------	---------------

Note 12 **Defined contribution pension scheme or defined benefit scheme accounted for as a defined contribution scheme.**

12.1 Please complete this note if a defined contribution pension scheme is operated.

<p>Amount of contributions recognised in the SOFA as an expense</p>	<p>Not applicable</p>
<p>Please explain the basis for allocating the liability and expense of defined contribution pension scheme between activities and between restricted and unrestricted funds.</p>	

12.2 Please complete this section where the charity participates in a defined benefit pension plan but is unable to ascertain its share of the underlying assets and liabilities.

<p>Please confirm that although the scheme is accounted for as a defined contribution plan, it is a defined benefit plan.</p>	
<p>Please provide such information as is available about the plan's surplus or deficit and the implications, if any, for the reporting charity</p>	

12.3 Please complete this section where the charity participates in a multi-employer defined benefit pension plan that is accounted for as a defined contribution plan.

<p>Describe the extent to which the charity can be liable to the plan for other entities' obligations under the terms and conditions of the multi-employer plan</p>	

Section C	Notes to the accounts	(cont)
------------------	------------------------------	---------------

Note 13 Grantmaking

Please complete this note if the charity made any grants or donations which in aggregate form a material part of the charitable activities undertaken.

Not applicable

13.1 Analysis of grants paid (included in cost of charitable activities)

Analysis	Grants to institutions	Grants to individuals	Support costs	Total
Activity or project 1			£	£
Activity or project 2			-	-
Activity or project 3			-	-
Activity or project 4			-	-
Total	-	-	-	-

Please enter "Nil" if the charity does not identify and/or allocate support costs.

13.2 Grants made to institutions

My charity has made grants to particular institutions that are material in the context of its grantmaking. Details of the institution supported, purpose of the grant and total paid to each institution is available on the charity's web site.

Yes	<i>Please provide details of charity's URL.</i>
No	<i>Provide details below</i>

Names of institution	Purpose	Total amount of grants paid £
		-
		-
		-
		-
		-
		-
		-
		-
		-
		-
Total grants to institutions in reporting period		-
Other unanalysed grants		-
TOTAL GRANTS PAID		-

Note 14 Tangible fixed assets

Please complete this note if the charity has any tangible fixed assets n/a

14.1 Cost or valuation

	Freehold land & buildings	Other land & buildings	Plant, machinery and motor vehicles	Fixtures, fittings and equipment	Total
	£	£	£	£	£
At the beginning of the year	-	-	-	-	-
Additions	-	-	-	-	-
Revaluations	-	-	-	-	-
Disposals	-	-	-	-	-
Transfers *	-	-	-	-	-
At end of the year	-	-	-	-	-

14.2 Depreciation and impairments

**Basis	SL or RB	SL or RB	SL or RB	SL or RB	SL or RB	Straight Line ("SL") or Reducing Balance ("RB")
** Rate						

At beginning of the year	-	-	-	-	-
Disposals	-	-	-	-	-
Depreciation	-	-	-	-	-
Impairment	-	-	-	-	-
Transfers*	-	-	-	-	-
At end of the year	-	-	-	-	-

14.3 Net book value

Net book value at the beginning of the year	-	-	-	-	-
Net book value at the end of the year	-	-	-	-	-

14.4 Impairment

Please provide a description of the events and circumstances that led to the recognition or reversal of an impairment loss.

14.5 Revaluation

If an accounting policy of revaluation is adopted, please provide:

<i>the effective date of the revaluation</i>	
<i>the name of independent valuer, if applicable</i>	
<i>the methods applied and significant assumptions</i>	
<i>the carrying amount that would have been recognised had the assets been carried under the cost model.</i>	

14.6 Other disclosures

<i>(i) Please state the amount of borrowing costs, if any, capitalised in the construction of tangible fixed assets and the capitalisation rate used.</i>	
<i>(ii) Please provide the amount of contractual commitments for the acquisition of tangible fixed assets.</i>	
<i>(iii) Details of the existence and carrying amounts of property, plant and equipment to which the charity has restricted title or that are pledged as security for liabilities.</i>	

* The "transfers" row is for movements between fixed asset categories.

** Please indicate the method of depreciation by deleting the method not applicable (SL = straight line; RB

Note 15 Intangible assets*Please complete this note if the charity has any intangible assets n/a***15.1 Cost or valuation**

	Research & development	Patents and trademarks	Other	Total
	£	£	£	£
At beginning of the year	-	-	-	-
Additions	-	-	-	-
Disposals	-	-	-	-
Revaluations	-	-	-	-
Transfers *	-	-	-	-
At end of the year	-	-	-	-

15.2 Amortisation and impairments

**Basis	SL or RB	SL or RB	SL or RB	SL or RB	Straight Line ("SL") or Reducing Balance ("RB")
** Rate					

At beginning of the year	-	-	-	-
Disposals	-	-	-	-
Amortisation	-	-	-	-
Impairment	-	-	-	-
Transfers*	-	-	-	-
At end of year	-	-	-	-

15.3 Net book value

Nat book value at the beginning of the year	-	-	-	-
Net book value at the end of the year	-	-	-	-

15.4 Accounting policy*Please disclose the accounting policy for intangible fixed assets including:**Reasons for choosing amortisation rates*

Policies for the recognition of any capital development

--

15.5 Impairment

Please provide a description of the events and circumstances that led to the recognition or reversal of an impairment loss.

--

15.6 Revaluation

If an accounting policy of revaluation is adopted, please provide:

the effective date of the revaluation

the name of independent valuer, if applicable

the methods applied

the carrying amount that would have been recognised had the assets been carried under the cost model.

15.7 Other disclosures

(i) If your intangible asset was acquired by way of grant, provide value on initial recognition and carrying amount of the asset.

(ii) Details of the carrying amounts of any intangible assets to which the charity has restricted title or that are pledged as security for liabilities.

(iii) Please provide the amount of contractual commitments for the acquisition of intangible assets.

(iv) State the amount of research and development expenditure recognised as expenditure in the year.

(vi) Please detail the headings in the SOFA in which a charge for amortisation of intangible assets is included.

(vii) For any material intangible assets, please provide a description, its carrying amount and any remaining amortisation period.

* The "transfers" row is for movements between fixed asset categories.

** Please indicate the method of depreciation by deleting the method not applicable (SL = straight line; RB = reducing balance). Also please indicate the rate of depreciation: for straight line, what is the anticipated life of the asset (in years); for reducing balance, what is the percentage annual deduction.

Note 16 **Heritage assets** n/a

Please complete this note if the charity has heritage assets

16.1 General disclosures for all charities holding heritage assets

(i) Explain the nature and scale of heritage assets held.

--

(ii) Explain the policy for the acquisition, preservation, management and disposal of heritage assets.

--

16.2 Cost or valuation

	Heritage asset 1	Heritage asset 2	Heritage asset 3	Heritage asset 4	Total
	£	£	£	£	£
At beginning of the year	-	-	-	-	-
Additions	-	-	-	-	-
Disposals	-	-	-	-	-
Revaluations	-	-	-	-	-
Transfers *	-	-	-	-	-
At end of the year	-	-	-	-	-

16.3 Depreciation and impairments

**Basis						Straight Line ("SL") or Reducing Balance ("RB")
** Rate						

At beginning of the year	-	-	-	-	-
Disposals	-	-	-	-	-
Depreciation	-	-	-	-	-
Impairment	-	-	-	-	-
Transfers*	-	-	-	-	-
At end of year	-	-	-	-	-

16.4 Net book value

Nat book value at the beginning of the year	-	-	-	-	-
Net book value at the end of the year	-	-	-	-	-

16.5 Impairment

Please provide a description of the events and circumstances that led to the recognition or reversal of an impairment loss.

--

16.6 Revaluation

If an accounting policy of revaluation is adopted, please provide:

the effective date of the revaluation

the name of independent valuer, if applicable

qualifications of independent valuer

the methods applied and significant assumptions

any significant limitations on the valuation

16.7 Analysis of heritage assets by class or group distinguishing those at cost and those at valuation

	At valuation Group A	At cost Group B	Total
	£	£	£
Carrying amount at the beginning of the period	-	-	-
Additions	-	-	-
Disposals	-	-	-
Depreciation/impairment	-	-	-
Revaluation	-	-	-
Carrying amount at the end of period	-	-	-

16.8 Heritage assets (where heritage assets are not recognised on the balance sheet)

(i) Explain the reason why heritage assets have not been recognised on the balance sheet.

(ii) Describe the significance and nature of heritage assets.

(iii) Disclose information that is helpful in assessing the value of heritage assets.

(iv) Explain the reason why it is not practicable to obtain a valuation of heritage assets.

16.9 Five year summary of heritage assets transactions

	2015	2014	2013	2012	2011
	£	£	£	£	£
Purchases					
Group A	-	-	-	-	-
Group B	-	-	-	-	-
Group C	-				
Other	-				
Donations					

Group A	-	-	-	-	-
Group B	-	-	-	-	-
Group C	-	-	-	-	-
Other	-	-	-	-	-
Total additions	-	-	-	-	-
Charge for impairment					
Group A	-	-	-	-	-
Group B	-	-	-	-	-
Group C	-	-	-	-	-
Other	-	-	-	-	-
Total charge for impairment	-	-	-	-	-
Disposals					
Group A - carrying amount	-	-	-	-	-
Group B - carrying amount	-	-	-	-	-
Group C	-	-	-	-	-
Other	-	-	-	-	-
Total disposals	-	-	-	-	-

Note 17 **Investment assets**

n/a

Please complete this note if the charity has any investment assets.

17.1 Fixed assets investments (please provide for each class of investment)

	Cash & cash equivalents	Listed investments	Investment properties	Social investments	Other	Total
Carrying (fair) value at beginning of period	-	-	-	-	-	-
Add: additions to investments during period*	-	-	-	-	-	-
Less: disposals at carrying value	-	-	-	-	-	-
Less: impairments	-	-	-	-	-	-
Add: Reversal of impairments	-	-	-	-	-	-
Add/(deduct): transfer in/(out) in the period	-	-	-	-	-	-
Add/(deduct): net gain/(loss) on revaluation	-	-	-	-	-	-
Carrying (fair) value at end of year	-	-	-	-	-	-

***Please specify additions resulting from acquisitions through business combinations, if any.**

Please note that Fair Value in this context is the amount for which an asset could be exchanged between knowledgeable and willing parties in an arm's length transaction. For traded securities, the fair value is the value of the security quoted on the London Stock Exchange Daily Official List or equivalent. For other assets where there is no market price on a traded market, it is the trustees' or valuers' best estimate of fair value.

17.2 Please provide a breakdown of investments shown above agreeing with the balance sheet row B04 differentiating between those held at fair value and those held at cost less impairment.

Analysis of investments

Analysis of investments		
	Fair value at year end	Cost less impairment
	£	£
Cash or cash equivalents	-	-
Listed investments	-	-
Investment properties	-	-
Social investments	-	-
Other investments	-	-
Total	-	-
Grand total (Fair value at year end+Cost less impairment)		

17.3 If your charity holds investment properties, please complete the following note:

(i) Explain the methods and significant assumptions in determining the fair value of investment property held by the charity

(ii) Name or independent valuer, if applicable, and relevant qualifications

(iii) Provide details of any restrictions on the ability to realise investment property or on the remittance of income or disposal proceeds

(iv) Explain any contractual obligations for the purchase, construction or development of investment property or for repairs, maintenance or enhancements

17.4 Please provide a breakdown of current asset investments, if applicable, agreeing with the balance sheet.

Analysis of current asset investments

Cash or cash equivalents
Listed investments
Investment properties
Social investments
Other investments
Total

This year	Last year
£	£
-	-
-	-
-	-
-	-
-	-
-	-

17.5 Guarantees

Please provide details and amount of any guarantee made to or on behalf of a third party

Name of the entity or entities benefitting from those guarantees

Please explain how the guarantee furthers the charity's aims

17.6 Concessionary loans

Amount of concessionary loans made (*Multiple loans made may be disclosed in aggregate provided that such aggregation does not obscure significant information*).

Description	This year £	Last year £
Total		

Amount of concessionary loans received (*Multiple loans received may be disclosed in aggregate provided that such aggregation does not obscure significant information*).

Description	This year £	Last year £
Total		

Terms and conditions eg interest rate, security provided

--

Value of any concessionary loans which have been committed but not taken up at the reporting date

Amounts payable within 1 year

Amounts payable after more than 1 year

Amounts receivable within 1 year

Amounts receivable after more than 1 year

17.7 Additional information

Please provide information about the significance of investments to the charity's financial position or performance eg. terms and conditions of loans or the use of hedging to manage financial risk.

For all investments measured at fair value, the basis for determining the value, including any assumptions applied when using a valuation technique.

Where a charity has provided financial assets as a form of security, the carrying amount of the financial asset pledged as security and the terms and conditions relating to its pledge.

Note 18

Stocks

n/a

Please complete this note if the charity holds any stock items

18.1 Please state the carrying amount of stock and work in progress analysed between activities.

	Stock		Donated goods		Work in progress
	For distribution	For resale	For distribution	For resale	
	£	£	£	£	£
Charitable activities:					
<i>Opening</i>	-	-	-	-	-
<i>Added in period</i>	-	-	-	-	-
<i>Expensed in period</i>	-	-	-	-	-
<i>Impaired</i>	-	-	-	-	-
<i>Closing</i>	-	-	-	-	-
Other trading activities:					
<i>Opening</i>	-	-	-	-	-
<i>Added in period</i>	-	-	-	-	-
<i>Expensed in period</i>	-	-	-	-	-
<i>Impaired</i>	-	-	-	-	-
<i>Closing</i>	-	-	-	-	-
Other:					
<i>Opening</i>	-	-	-	-	-
<i>Added in period</i>	-	-	-	-	-
<i>Expensed in period</i>	-	-	-	-	-
<i>Impaired</i>	-	-	-	-	-
<i>Closing</i>	-	-	-	-	-
Total this year	-	-	-	-	-
Total previous year	-	-	-	-	-

18.2 Please specify the carrying amount of any stocks pledged as security for liabilities

--

Section C	Notes to the accounts	(cont)
------------------	------------------------------	---------------

Note 19 Debtors and prepayments

Please complete this note if the charity has any debtors or prepayments.

19.1 Analysis of debtors

Trade debtors

Prepayments and accrued income

Other debtors

Total

This year	Last year
£	£
-	-
39.0	167.0
470.0	846.0
509.0	1,013.0

Please complete 19.2 where a material debtor is recoverable more than a year after the reporting date.

19.2 Analysis of debtors recoverable in more than 1 year (included in debtors above)

Trade debtors

Prepayments and accrued income

Other debtors

This year	Last year
£	£
-	-
-	-
-	-
-	-
Total	-

Section C	Notes to the accounts	(cont)
-----------	-----------------------	--------

Note 20 **Creditors and accruals**

Please complete this note if the charity has any creditors or accruals.

20.1 Analysis of creditors

	Amounts falling due within one year		Amounts falling due after more than one year	
	This year £	Last year £	This year £	Last year £
Accruals for grants payable	-	-	-	-
Bank loans and overdrafts	-	-	-	-
Trade creditors	-	-	-	-
Payments received on account for contracts or performance-related grants	-	-	-	-
Accruals and deferred income	24,448	13,598	-	-
Taxation and social security	-	-	-	-
Other creditors	-	-	-	-
Total	24,448	13,598	-	-

20.2 Deferred income

Please complete this note if the charity has deferred income.

Please explain the reasons why income is deferred.

Donation income received in March 2019 with condition that expenditure would only take place from 2019/2020 onwards was released to income during the current year

Movement in deferred income account

Balance at the start of the reporting period
 Amounts added in current period
 Amounts released to income from previous periods
 Balance at the end of the reporting period

This year £	Last year £
7,650	-
17,513	1,173
- 7,650	-
17,513	1,173

Section C	Notes to the accounts	(cont)
------------------	------------------------------	---------------

Note 21 Provisions for liabilities and charges

Please complete this note if you have included in charity expenditure any provisions. A provision is made when the charity has a liability of uncertain timing or amount.

21.1 Please provide:

- a brief description of any obligations on the balance sheet and the expected amount and timing of resulting payments;
- an indication of the uncertainties about the amount or timing of those outflows; and
- the amount of any expected reimbursement, stating the amount of any asset that has been recognised for that expected reimbursement.

<i>Not applicable</i>

21.2 Movements in recognised provisions and funding commitment during the period

Balance at the start of the reporting period
 Amounts added in current period
 Amounts charged against the provision in the current period
 Unused amounts reversed during the period
 Balance at the end of the reporting period

This year £	Last year £
-	-
-	-
-	-
-	-
-	-

21.3 For any funding commitment that is not recognised as a liability or provision, provide details of commitment made, the time frame of that commitment, any performance-related conditions and details of how the commitment will be funded (with contracts for capital expenditure separately identified).

--

21.4 Where unrestricted funds have been designated to a fund commitment, please disclose the nature of any amounts designated and the likely timing of that expenditure.

--

Section C	Notes to the accounts	(cont)
-----------	-----------------------	--------

Note 22 Other disclosures for debtors, creditors and other basic financial instruments

22.1 Please provide information about the significance of financial instruments (eg. debtors, creditors, investments etc) to the charity's financial position or performance, for example, the terms and conditions of loans or the use of hedging to manage financial risk.	Not applicable
22.2 If the charity has provided financial assets as a form of security, the carrying amount of the financial assets pledged as security and the terms and conditions related to its pledge should be given here.	

Section C	Notes to the accounts	(cont)
------------------	------------------------------	---------------

Note 23 Contingent liabilities and contingent assets n/a

23.1 Contingent liabilities

Where the charity has contingent liabilities, please complete the following section unless the possibility of their existence is remote.

Description of item including its legal nature. Please describe any security provided in connection to the liability.	Estimate of financial effect

23.2 Contingent assets

Where the charity has contingent assets, please complete the following section when their existence is probable

Description of item	Estimate of financial effect

23.4 Other disclosures for contingent assets and/or liabilities

Please provide the following information where practicable:

Explain any uncertainties relating to the amount or timing of settlement; and the possibility of any reimbursement

Where it is not practical to make one or more of these disclosures, please state this fact

Section C	Notes to the accounts	(cont)
-----------	-----------------------	--------

Note 24 **Cash at bank and in hand**

Short term cash investments (less than 3 months maturity date)
Short term deposits
Cash at bank and on hand
Other
Total

This year £	Last year £
-	-
-	-
70,647	49,585
-	-
70,647	49,585

Section C	Notes to the accounts	(cont)
------------------	------------------------------	---------------

Note 25	Fair value of assets and liabilities	n/a
----------------	---	------------

25.1 Please provide details of the charity's exposure to credit risk (the risk of incurring a loss due to a debtor not paying what is owed) , liquidity risk (the risk of not being able to meet short term financial demands) and market risk (the risk that the value of an investment will fall due to changes in the market) arising from financial instruments to which the charity is exposed at the end of the reporting period and explain how the charity manages those risks.

--

25.2 Please give details of the amount of change in the fair value of basic financial instruments (debtors, creditors, investments (see section 11, FRS 102 SORP)) measured at fair value through the SoFA that is attributable to changes in credit risk.

--

Section C	Notes to the accounts	(cont)
-----------	-----------------------	--------

<p>Note 26</p> <p>Events after the end of the reporting period</p> <p>n/a</p> <p><i>Please complete this note events (not requiring adjustment to the accounts) have occurred after the end of the reporting period but before the accounts are authorised which relate to conditions that arose after the end of the reporting period.</i></p>	
--	--

<p>Please provide details of the nature of the event</p>	
--	--

<p>Provide an estimate of the financial effect of the event or a statement that such an estimate cannot be made</p>	
---	--

Section C	Notes to the accounts	(cont)
-----------	-----------------------	--------

Note 27 **Charity funds**

27.1 Details of material funds held and movements during the CURRENT reporting period

Please give details of the movements of material individual funds in the reporting period together with a balancing figure for 'Other funds'. The 'Total funds' figure below should reconcile to 'Total funds' in the balance sheet.

** Key: PE - permanent endowment funds; EE - expendible endowment funds; R - restricted income funds, including special trusts, of the charity; and U - unrestricted funds*

Fund names	Type PE, EE R or UR *	Purpose and Restrictions	Fund balances brought forward £	Income £	Expenditure £	Transfers £	Gains and losses £	Fund balances carried forward £
OCF COVID response	R	Additional COVID expenses	-	5,390	- 5,390	-	-	-
Lottery grant fund	R	To run extra sessions and projects as per Lottery funding bid	-	35,132	- 35,132	-	-	-
Tampon tax fund	R	To run Donnington sessions	-	5,400	- 5,400	-	-	-
OCF Barton fund	R	To run new Barton sessions	-	2,250	- 2,250	-	-	-
Lottery COVID response	R	Additional COVID expenses	-	9,903	- 9,903	-	-	-
Mid Counties	R	Peer Support training	-	570	- 570	-	-	-
Localgiving	R	Additional COVID expenses	-	1,451	- 1,451	-	-	-
General fund	U	unrestricted	37,001	28,117	- 18,409	-	-	46,709
			-	-	-	-	-	-
			-	-	-	-	-	-
			-	-	-	-	-	-
			-	-	-	-	-	-
Other funds	N/a	N/a	-	-	-	-	-	-
Total Funds			37,001	88,213	- 78,505	-	-	46,709

Section C	Notes to the accounts	(cont)
-----------	-----------------------	--------

Note 27 **Charity funds (cont)**

27.2 Details of material funds held and movements during the PREVIOUS reporting period

Please give details of the movements of material individual funds in the reporting period together with a balancing figure for 'Other funds'. The 'Total funds' figure below should reconcile to 'Total funds' in the balance sheet.

** Key: PE - permanent endowment funds; EE - expendible endowment funds; R - restricted income funds, including special trusts, of the charity; and U - unrestricted funds*

Fund names	Type PE, EE R or UR *	Purpose and Restrictions	Fund balances brought forward £	Income £	Expenditure £	Transfers £	Gains and losses £	Fund balances carried forward £
OCF antenatal fund	R	To run monthly antenatal sessions and yearly peer support sessions	595	-	- 595	-	-	-
Lottery grant fund	R	To run extra sessions and projects as per Lottery funding bid	-	8,536	- 8,536	-	-	-
Tampon tax fund	R	To run Donnington sessions	-	1,080	- 1,080	-	-	-
OCF Barton fund	R	To run new Barton sessions	-	2,250	- 2,250	-	-	-
SOFR fund	R	To run SOFR sessions	-	4,605	- 4,605	-	-	-
General fund	U	unrestricted	46,429	31,097	- 40,525	-	-	37,001
			-	-	-	-	-	-
			-	-	-	-	-	-
			-	-	-	-	-	-
			-	-	-	-	-	-
Other funds	N/a	N/a	-	-	-	-	-	-
Total Funds			47,024	47,568	- 57,591	-	-	37,001

Section C	Notes to the accounts	(cont)
------------------	------------------------------	---------------

Note 27 **Charity funds (cont)**

27.3 Transfers between funds

	Reason for transfer and where endowment is converted to income, legal power for its conversion	Amount
Between unrestricted and restricted funds		
Between endowment and restricted funds		
Between endowment and unrestricted funds		

27.4 Designated funds

Planned use	Purpose of the designation	Amount

Note 28 Transactions with trustees and related parties

If the charity has any transactions with related parties (other than the trustee expenses explained in guidance notes) details of such transactions should be provided in this note. If there are no transactions to report, please enter "True" in the box or "False" if there are transactions to report.

28.1 Trustee remuneration and benefits

None of the trustees have been paid any remuneration or received any other benefits from an employment with their charity or a related entity (True or False)

None

In the period the charity has paid trustees remuneration and benefits. Please give the amount of, and legal authority for, any remuneration or other benefits paid to a trustee by the charity or any institution or company connected with it.

Name of trustee	Legal authority (eg order, governing document)	Amounts paid or benefit value				
		This year				Last year
		Remuneration	Pension contribution	Redundancy (including loss of office)/ex gratia	Other	TOTAL
		£	£		£	£

Please give details of why remuneration or other employment benefits were paid.

Not applicable

 Not applicable

Where an ex gratia payment has been made to a trustee, provide an explanation of the nature of the payment.

28.2 Trustees' expenses

If the charity has paid trustees expenses for fulfilling their duties, details of such transactions should be provided in this note. If there are no transactions to report, please enter "True" in the box below. If there are transactions to report, please enter "False".

No trustee expenses have been incurred (True or False)

Type of expenses reimbursed	This year	Last year
	£	£
Travel		
Subsistence		
Accommodation		
Other (please specify): Training	0	51
TOTAL	0	51

Please provide the number of trustees reimbursed for expenses or who had expenses paid by the charity

0

28.3 Transaction(s) with related parties

Please give details of any transaction undertaken by (or on behalf of) the charity in which a related party has a material interest, including where funds have been held as agent for related parties. If there are no such transactions, please enter 'true' in the box provided.

There have been no related party transactions in the reporting period (True or False)

TRUE

Name of the trustee or related party	Relationship to charity	Description of the transaction(s)	Amount	Balance at period end	Provision for bad debts at period end	Amounts written off during reporting period
			£	£	£	£

In relation to the transactions above, please provide the terms and conditions, including any security and the nature of any payment (consideration) to be provided in settlement.

For any related party, please provide details of any guarantees given or received.

Section C	Notes to the accounts	(cont)
Note 29	Additional Disclosures	
The following are significant matters which are not covered in other notes and need to be included to provide a proper understanding of the accounts. If there is insufficient room here, please add a separate sheet.		
<p>Reserves policy: OBS will review the level of reserves held, both restricted and unrestricted, at each Trustee meeting. The charity relies on donations from individuals, grants and fundraising to fund the majority of its charitable activities. The nature of these income streams are that funds are not certain to be received and are not evenly spread throughout the year. As future income from donations is uncertain and would be affected by the wider economic conditions then holding reserves allows the charity time to plan the best way to reduce services or investigate other sources of funding. The charity has been awarded some long term grant funding, most notably £114k over 4 years from the National Lottery. This has meant that the charity feels more confident in holding a reduced level of reserves compared to the prior years and use this money to invest in the sessions that aren't funded by the grants.</p> <p>At present the drop in sessions are held online, however as the transition is made back to face to face then extra costs may be incurred and the Trustees believe it is reasonable to hold cash reserves to enable rental payments to be made. Also with operating conditions likely to be uncertain for the foreseeable future the Trustees believe that it is prudent to hold enough reserves to provide a buffer for any emergency expenses, as well as to ensure that funds are available in a timely manner to continue to expand our level and nature of service provision.</p> <p>The charity is now holding an increasing number of sessions a week, and in order to assist in the planning of future service levels and to enable giving notice to both service users and facilitators of any reductions in service levels because of lack of funds, the Trustees consider it is reasonable to hold around 9 months of expenditure in reserve. Unrestricted reserves at the end of the year were £47k which represents about 8 months of expenditure, along with an additional £17k of deferred grant income which has been earmarked for future activities.</p>		

Independent Examiner's Report to the Trustees of Oxfordshire Breastfeeding Support

I report to the trustees on my examination of the accounts of the Oxfordshire Breastfeeding Support (The Charitable Incorporated Organisation, or CIO) for the year ended 31 March 2021.

Responsibilities and basis of report

As the charity trustees of the CIO you are responsible for the preparation of the accounts in accordance with the requirements of the Charities Act 2011 ('the Act'). I report in respect of my examination of the CIO's accounts carried out under section 145 of the 2011 Act and in carrying out my examination I have followed all the applicable Directions given by the Charity Commission under section 145(5)(b) of the Act.

Independent examiner's statement

I have completed my examination. I confirm that no material matters have come to my attention in connection with the examination giving me cause to believe that in any material respect:

1. accounting records were not kept in respect of the CIO as required by section 130 of the Act; or
2. the accounts do not accord with those records; or
3. the accounts do not comply with the applicable requirements concerning the form and content of accounts set out in the Charities (Accounts and Reports) Regulations 2008 other than any requirement that the accounts give a 'true and fair' view which is not a matter considered as part of an independent examination.

I have no concerns and have come across no other matters in connection with the examination to which attention should be drawn in this report in order to enable a proper understanding of the accounts to be reached.

Signed: 

Name: Charlotte Morley

Relevant professional qualification or membership of professional bodies (if any):

Address: 55 Sinclair Avenue, Banbury, OX16 1BG

Date: 28 July 2021

Oxfordshire Breastfeeding Support		Charity No (if any)	1176948
Annual accounts for the period			
Period start date	01.04.2020	To	Period end date 31.03.2021

Section A Statement of financial activities

Recommended categories by activity

Incoming resources (Note 3)

Income and endowments from:

Donations and legacies

Charitable activities

Other trading activities

Investments

Separate material item of income

Other

Total

Resources expended (Note 6)

Expenditure on:

Raising funds

Charitable activities

Separate material item of expense

Other

Total

Net income/(expenditure) before investment gains/(losses)

Net gains/(losses) on investments

Net income/(expenditure)

Extraordinary items

Transfers between funds

Other recognised gains/(losses):

Gains and losses on revaluation of fixed assets for the charity's own use

Other gains/(losses)

Net movement in funds

Reconciliation of funds:

Total funds brought forward

Total funds carried forward

Guidance Notes

	Unrestricted funds £ F01	Restricted income funds £ F02	Endowment funds £ F03	Total funds £ F04	Prior year funds £ F05
S01	25,623	60,096	-	85,719	38,856
S02	1,050	-	-	1,050	920
S03	1,444	-	-	1,444	7,792
S04	-	-	-	-	-
S05	-	-	-	-	-
S06	-	-	-	-	-
S07	28,117	60,096	-	88,213	47,568
S08	2,592	-	-	2,592	3,108
S09	14,043	56,529	-	70,572	50,610
S10	-	-	-	-	-
S11	1,771	3,567	-	5,338	3,877
S12	18,406	60,096	-	78,502	57,595
S13	9,711	-	-	9,711	- 10,027
S14	-	-	-	-	-
S15	9,711	-	-	9,711	- 10,027
S16	-	-	-	-	-
S17	-	-	-	-	-
S18	-	-	-	-	-
S19	-	-	-	-	-
S20	9,711	-	-	9,711	- 10,027
S21	36,997	-	-	36,997	47,024
S22	46,708	-	-	46,708	36,997

Section B Balance sheet

		Guidance Notes	Unrestricted funds £ F01	Restricted income funds £ F02	Endowment funds £ F03	Total this year £ F04	Total last year £ F05
Fixed assets							
Intangible assets	(Note 15)	B01	-	-	-	-	-
Tangible assets	(Note 14)	B02	-	-	-	-	-
Heritage assets	(Note 16)	B03	-	-	-	-	-
Investments	(Note 17)	B04	-	-	-	-	-
Total fixed assets		B05	-	-	-	-	-
Current assets							
Stocks	(Note 18)	B06	-	-	-	-	-
Debtors	(Note 19)	B07	509	-	-	509	1,013
Investments	(Note 17.4)	B08	-	-	-	-	-
Cash at bank and in hand	(Note 24)	B09	70,647	-	-	70,647	49,582
Total current assets		B10	71,156	-	-	71,156	50,595
Creditors: amounts falling due within one year	(Note 20)	B11	24,448	-	-	24,448	13,598
Net current assets/(liabilities)		B12	46,708	-	-	46,708	36,997
Total assets less current liabilities		B13	46,708	-	-	46,708	36,997
Creditors: amounts falling due after one year	(Note 20)	B14	-	-	-	-	-
Provisions for liabilities		B15	-	-	-	-	-
Total net assets or liabilities		B16	46,708	-	-	46,708	36,997
Funds of the Charity							
Endowment funds	(Note 27)	B17	-	-	-	-	-
Restricted income funds	(Note 27)	B18	-	-	-	-	-
Unrestricted funds		B19	46,708	-	-	46,708	36,997
Revaluation reserve		B20	-	-	-	-	-
Total funds		B21	46,708	-	-	46,708	36,997
Signed by one or two trustees on behalf of all the trustees			Signature		Print Name		Date of approval dd/mm/yyyy

Section C**Notes to the accounts****Note 1 Basis of preparation**

This section should be completed by all charities.

1.1 Basis of accounting

These accounts have been prepared under the historical cost convention with items recognised at cost or transaction value unless otherwise stated in the relevant note(s) to these accounts.

The accounts have been prepared in accordance with:

- and with*

✓

the Statement of Recommended Practice: Accounting and Reporting by Charities preparing their accounts in accordance with the Financial Reporting Standard applicable in the UK and Republic of Ireland (FRS 102) issued on 16 July 2014

- and with*

✓

the Financial Reporting Standard applicable in the United Kingdom and Republic of Ireland (FRS 102)

- and with the Charities Act 2011.

The charity constitutes a public benefit entity as defined by FRS 102.*

✓

* -Tick as appropriate

1.2 Going concern

If there are material uncertainties related to events or conditions that cast significant doubt on the charity's ability to continue as a going concern, please provide the following details or state "Not applicable", if appropriate:

An explanation as to those factors that support the conclusion that the charity is a going concern;

The charity is holding around 7 months of expenditure in reserves, which is line with the stated reserves policy, and has grant funding agreed for the next 3 years so the Trustess consider the charity to be a going concern

Disclosure of any uncertainties that make the going concern assumption doubtful;

Not applicable

Where accounts are not prepared on a going concern basis, please disclose this fact together with the basis on which the trustees prepared the accounts and the reason why the charity is not regarded as a going concern.

Not applicable

1.3 Change of accounting policy

The accounts present a true and fair view and the accounting policies adopted are those outlined in note { }.

Yes*

✓

No*

✓

* -Tick as appropriate

Please disclose:

(i) the nature of the change in accounting policy;

<i>(ii) the reasons why applying the new accounting policy provides more reliable and more relevant information; and</i>	
<i>(iii) the amount of the adjustment for each line affected in the current period, each prior period presented and the aggregate amount of the adjustment relating to periods before those presented, 3.44 FRS 102 SORP.</i>	

1.4 Changes to accounting estimates

No changes to accounting estimates have occurred in the reporting period (3.46 FRS 102 SORP).

Yes*	<input checked="" type="checkbox"/>	* -Tick as appropriate
No*	<input checked="" type="checkbox"/>	

Please disclose:

<i>(i) the nature of any changes;</i>	
<i>(ii) the effect of the change on income and expense or assets and liabilities for the current period; and</i>	
<i>(iii) where practicable, the effect of the change in one or more future periods.</i>	

1.5 Material prior year errors

No material prior year error have been identified in the reporting period (3.47 FRS 102 SORP).

Yes*	<input checked="" type="checkbox"/>	* -Tick as appropriate
No*	<input checked="" type="checkbox"/>	

Please disclose:

<i>(i) the nature of the prior period error;</i>	
<i>(ii) for each prior period presented in the accounts, the amount of the correction for each account line item affected; and</i>	
<i>(iii) the amount of the correction at the beginning of the earliest prior period presented in the accounts.</i>	

Note 2 Accounting policies

Please complete this note when first reporting under FRS2102. Section 35 of FRS102, requires 3 reconciliations to be presented, if all are applicable.

2.1 RECONCILIATION WITH PREVIOUS GENERALLY ACCEPTED ACCOUNTING PRACTICE

Please provide a description of the nature of each change in accounting policy

Not applicable , no changes to accounting policies

Reconciliation of funds per previous GAAP to funds determined under FRS 102

	Start of period	End of period
	£	£
Fund balances as previously stated		
<i>Adjustments:</i>		

Fund balance as restated _____

Reconciliation of net income/(net expenditure) per previous GAAP to net income/(net expenditure) under FRS 102

	End of period
	£
Net income/(expenditure) as previously stated	
<i>Adjustments:</i>	

Previous period net income/(expenditure) as restated _____

Note 2 Accounting policies

2.2 INCOME

This standard list of accounting policies has been applied by the charity except for those ticked "No" or "N/a". Where a different or additional policy has been adopted then this is detailed in the box below.

Recognition of income	These are included in the Statement of Financial Activities (SoFA) when: < the charity becomes entitled to the resources; · it is more likely than not that the trustees will receive the resources; and < the monetary value can be measured with sufficient reliability.	Yes <input checked="" type="checkbox"/>	No <input checked="" type="checkbox"/>	N/a <input checked="" type="checkbox"/>
Offsetting	There has been no offsetting of assets and liabilities, or income and expenses, unless required or permitted by the FRS 102 SORP or FRS 102.	Yes <input checked="" type="checkbox"/>	No <input checked="" type="checkbox"/>	N/a <input checked="" type="checkbox"/>
Grants and donations	Grants and donations are only included in the SoFA when the general income recognition criteria are met (5.10 to 5.12 FRS102 SORP).	Yes <input checked="" type="checkbox"/>	No <input checked="" type="checkbox"/>	N/a <input checked="" type="checkbox"/>
Legacies	In the case of performance related grants, income must only be recognised to the extent that the charity has provided the specified goods or services as entitlement to the grant only occurs when the performance related conditions are met (5.16 FRS 102 SORP). Legacies are included in the SOFA when receipt is probable, that is, when there has been grant of probate, the executors have established that there are sufficient assets in the estate and any conditions attached to the legacy are either within the control of the charity or have been met.	Yes <input checked="" type="checkbox"/>	No <input checked="" type="checkbox"/>	N/a <input checked="" type="checkbox"/>
Government grants	The charity has received government grants in the reporting period	Yes <input checked="" type="checkbox"/>	No <input checked="" type="checkbox"/>	N/a <input checked="" type="checkbox"/>
Tax reclaims on donations and gifts	Gift Aid receivable is included in income when there is a valid declaration from the donor. Any Gift Aid amount recovered on a donation is considered to be part of that gift and is treated as an addition to the same fund as the initial donation unless the donor or the terms of the appeal have specified otherwise.	Yes <input checked="" type="checkbox"/>	No <input checked="" type="checkbox"/>	N/a <input checked="" type="checkbox"/>
Contractual income and performance related grants	This is only included in the SoFA once the charity has provided the related goods or services or met the performance related conditions.	Yes <input checked="" type="checkbox"/>	No <input checked="" type="checkbox"/>	N/a <input checked="" type="checkbox"/>
Donated goods	Donated goods are measured at fair value (the amount for which the asset could be exchanged) unless impractical to do so. The cost of any stock of goods donated for distribution to beneficiaries is deemed to be the fair value of those gifts at the time of their receipt and they are recognised on receipt. In the reporting period in which the stocks are distributed, they are recognised as an expense at the carrying amount of the stocks at distribution. Donated goods for resale are measured at fair value on initial recognition, which is the expected proceeds from sale less the expected costs of sale, and recognised in 'Income from other trading activities' with the corresponding stock recognised in the balance sheet. On its sale the value of stock is charged against 'Income from other trading activities' and the proceeds from sale are also recognised as 'Income from other trading activities'. Goods donated for on-going use by the charity are recognised as tangible fixed assets and included in the SoFA as incoming resources when receivable. Gifts in kind for use by the charity are included in the SoFA as income from donations when receivable.	Yes <input checked="" type="checkbox"/>	No <input checked="" type="checkbox"/>	N/a <input checked="" type="checkbox"/>
Donated services and facilities	Donated services and facilities are included in the SOFA when received at the value of the gift to the charity provided the value of the gift can be measured reliably. Donated services and facilities that are consumed immediately are recognised as income with an equivalent amount recognised as an expense under the appropriate heading in the SOFA.	Yes <input checked="" type="checkbox"/>	No <input checked="" type="checkbox"/>	N/a <input checked="" type="checkbox"/>
Support costs	The charity has incurred expenditure on support costs.	Yes <input checked="" type="checkbox"/>	No <input checked="" type="checkbox"/>	N/a <input checked="" type="checkbox"/>
Volunteer help	The value of any voluntary help received is not included in the accounts but is described in the trustees' annual report.	Yes <input checked="" type="checkbox"/>	No <input checked="" type="checkbox"/>	N/a <input checked="" type="checkbox"/>

Income from interest, royalties and dividends	This is included in the accounts when receipt is probable and the amount receivable can be measured reliably.
Income from membership subscriptions	<p>Membership subscriptions received in the nature of a gift are recognised in Donations and Legacies.</p> <p>Membership subscriptions which gives a member the right to buy services or other benefits are recognised as income earned from the provision of goods and services as income from charitable activities.</p>
Settlement of insurance claims	Insurance claims are only included in the SoFA when the general income recognition criteria are met (5.10 to 5.12 FRS102 SORP) and are included as an item of other income in the SoFA.
Investment gains and losses	This includes any realised or unrealised gains or losses on the sale of investments and any gain or loss resulting from revaluing investments to market value at the end of the year.

Yes	No	N/a
<input checked="" type="checkbox"/>	<input checked="" type="checkbox"/>	<input checked="" type="checkbox"/>
Yes	No	N/a
<input checked="" type="checkbox"/>	<input checked="" type="checkbox"/>	<input checked="" type="checkbox"/>
Yes	No	N/a
<input checked="" type="checkbox"/>	<input checked="" type="checkbox"/>	<input checked="" type="checkbox"/>
Yes	No	N/a
<input checked="" type="checkbox"/>	<input checked="" type="checkbox"/>	<input checked="" type="checkbox"/>
Yes	No	N/a
<input checked="" type="checkbox"/>	<input checked="" type="checkbox"/>	<input checked="" type="checkbox"/>

2.3 EXPENDITURE AND LIABILITIES

Liability recognition	Liabilities are recognised where it is more likely than not that there is a legal or constructive obligation committing the charity to pay out resources and the amount of the obligation can be measured with reasonable certainty.
Governance and support costs	<p>Support costs have been allocated between governance costs and other support. Governance costs comprise all costs involving public accountability of the charity and its compliance with regulation and good practice.</p> <p>Support costs include central functions and have been allocated to activity cost categories on a basis consistent with the use of resources, eg allocating property costs by floor areas, or per capita, staff costs by the time spent and other costs by their usage.</p>
Grants with performance conditions	Where the charity gives a grant with conditions for its payment being a specific level of service or output to be provided, such grants are only recognised in the SoFA once the recipient of the grant has provided the specified service or output.
Grants payable without performance conditions	Where there are no conditions attaching to the grant that enables the donor charity to realistically avoid the commitment, a liability for the full funding obligation must be recognised.
Redundancy cost	The charity made no redundancy payments during the reporting period.
Deferred income	No material item of deferred income has been included in the accounts.
Creditors	The charity has creditors which are measured at settlement amounts less any trade discounts
Provisions for liabilities	A liability is measured on recognition at its historical cost and then subsequently measured at the best estimate of the amount required to settle the obligation at the reporting date
Basic financial instruments	The charity accounts for basic financial instruments on initial recognition as per paragraph 10.7 FRS102 SORP. Subsequent measurement is as per paragraphs 11.17 to 11.19, FRS102 SORP.

Yes	No	N/a
<input checked="" type="checkbox"/>	<input checked="" type="checkbox"/>	<input checked="" type="checkbox"/>
Yes	No	N/a
<input checked="" type="checkbox"/>	<input checked="" type="checkbox"/>	<input checked="" type="checkbox"/>
Yes	No	N/a
<input checked="" type="checkbox"/>	<input checked="" type="checkbox"/>	<input checked="" type="checkbox"/>
Yes	No	N/a
<input checked="" type="checkbox"/>	<input checked="" type="checkbox"/>	<input checked="" type="checkbox"/>
Yes	No	N/a
<input checked="" type="checkbox"/>	<input checked="" type="checkbox"/>	<input checked="" type="checkbox"/>
Yes	No	N/a
<input checked="" type="checkbox"/>	<input checked="" type="checkbox"/>	<input checked="" type="checkbox"/>
Yes	No	N/a
<input checked="" type="checkbox"/>	<input checked="" type="checkbox"/>	<input checked="" type="checkbox"/>
Yes	No	N/a
<input checked="" type="checkbox"/>	<input checked="" type="checkbox"/>	<input checked="" type="checkbox"/>
Yes	No	N/a
<input checked="" type="checkbox"/>	<input checked="" type="checkbox"/>	<input checked="" type="checkbox"/>

2.4 ASSETS

Tangible fixed assets for use by charity	<p>These are capitalised if they can be used for more than one year, and cost at least <input type="text"/></p> <p>They are valued at cost.</p> <p>The depreciation rates and methods used are disclosed in note 9.2.</p>
Intangible fixed assets	<p>The charity has intangible fixed assets, that is, non-monetary assets that do not have physical substance but are identifiable and are controlled by the charity through custody or legal rights. The amortisation rates and methods used are disclosed in note 9.5</p> <p>They are valued at cost.</p>
Heritage assets	<p>The charity has heritage assets, that is, non-monetary assets with historic, artistic, scientific, technological, geophysical or environmental qualities that are held and maintained principally for their contribution to knowledge and culture. The depreciation rates and methods used as disclosed in note 9.6.1.4.</p> <p>They are valued at cost.</p>

Yes	No	N/a
<input checked="" type="checkbox"/>	<input checked="" type="checkbox"/>	<input checked="" type="checkbox"/>
Yes	No	N/a
<input checked="" type="checkbox"/>	<input checked="" type="checkbox"/>	<input checked="" type="checkbox"/>
Yes	No	N/a
<input checked="" type="checkbox"/>	<input checked="" type="checkbox"/>	<input checked="" type="checkbox"/>
Yes	No	N/a
<input checked="" type="checkbox"/>	<input checked="" type="checkbox"/>	<input checked="" type="checkbox"/>
Yes	No	N/a
<input checked="" type="checkbox"/>	<input checked="" type="checkbox"/>	<input checked="" type="checkbox"/>

Investments	Fixed asset investments in quoted shares, traded bonds and similar investments are valued at initially at cost and subsequently at fair value (their market value) at the year end. The same treatment is applied to unlisted investments unless fair value cannot be measured reliably in which case it is measured at cost less impairment.	Yes	No	N/a
		<input checked="" type="checkbox"/>	<input checked="" type="checkbox"/>	<input checked="" type="checkbox"/>
Stocks and work in progress	Investments held for resale or pending their sale and cash and cash equivalents with a maturity date of less than 1 year are treated as current asset investments	Yes	No	N/a
		<input checked="" type="checkbox"/>	<input checked="" type="checkbox"/>	<input checked="" type="checkbox"/>
	Stocks held for sale as part of non-charitable trade are measured at the lower or cost or net realisable value.	Yes	No	N/a
		<input checked="" type="checkbox"/>	<input checked="" type="checkbox"/>	<input checked="" type="checkbox"/>
Debtors	Goods or services provided as part of a charitable activity are measured at net realisable value based on the service potential provided by items of stock.	Yes	No	N/a
		<input checked="" type="checkbox"/>	<input checked="" type="checkbox"/>	<input checked="" type="checkbox"/>
	Work in progress is valued at cost less any foreseeable loss that is likely to occur on the contract.	Yes	No	N/a
		<input checked="" type="checkbox"/>	<input checked="" type="checkbox"/>	<input checked="" type="checkbox"/>
Current asset investments	Debtors (including trade debtors and loans receivable) are measured on initial recognition at settlement amount after any trade discounts or amount advanced by the charity. Subsequently, they are measured at the cash or other consideration expected to be received.	Yes	No	N/a
		<input checked="" type="checkbox"/>	<input checked="" type="checkbox"/>	<input checked="" type="checkbox"/>
	The charity has investments which it holds for resale or pending their sale and cash and cash equivalents with a maturity date less than one year. These include cash on deposit and cash equivalents with a maturity date of less than one year held for investment purposes rather than to meet short term cash commitments as they fall due.	Yes	No	N/a
		<input checked="" type="checkbox"/>	<input checked="" type="checkbox"/>	<input checked="" type="checkbox"/>
	They are valued at fair value except where they qualify as basic financial instruments.	Yes	No	N/a
		<input checked="" type="checkbox"/>	<input checked="" type="checkbox"/>	<input checked="" type="checkbox"/>

**POLICIES ADOPTED
ADDITIONAL TO OR
DIFFERENT FROM
THOSE ABOVE**

Note 3

Analysis of income

		Unrestricted funds	Restricted income funds	Endowment funds	Total funds £	Prior year £
Analysis						
Donations and legacies:	Donations and gifts	25,153	1,451	-	26,604	26,366
	Gift Aid	470	-	-	470	624
	Legacies	-	-	-	-	-
	General grants provided by government/other charities	-	58,645	-	58,645	11,866
	Membership subscriptions and sponsorships which are in substance donations	-	-	-	-	-
	Donated goods, facilities and services	-	-	-	-	-
	Other	-	-	-	-	-
	Total	25,623	60,096	-	85,719	38,856
Charitable activities:		-	-	-	-	-
	Breast pump hire	1,050	-	-	1,050	920
	Other	-	-	-	-	-
	Total	1,050	-	-	1,050	920
Other trading activities:	Fundraising	1,444	-	-	1,444	7,792
		-	-	-	-	-
	Other	-	-	-	-	-
	Total	1,444	-	-	1,444	7,792
Income from investments:	Interest income	-	-	-	-	-
	Dividend income	-	-	-	-	-
	Rental and leasing income	-	-	-	-	-
	Other	-	-	-	-	-
	Total	-	-	-	-	-
Separate material item of income:		-	-	-	-	-
		-	-	-	-	-
		-	-	-	-	-
	Total	-	-	-	-	-
Other:	Conversion of endowment funds into income	-	-	-	-	-
	Gain on disposal of a tangible fixed asset held for charity's own use	-	-	-	-	-
	Gain on disposal of a programme related investment	-	-	-	-	-
	Royalties from the exploitation of intellectual property rights	-	-	-	-	-
	Other	-	-	-	-	-
	Total	-	-	-	-	-
TOTAL INCOME		28,117	60,096	-	88,213	47,568

Other information:

All income in the prior year was unrestricted except for: (please provide description and amounts)

OCF COVID set up costs £5,390; OCF Barton sessions £2,250; Tampon Tax Donnington sessions £5,400; National Lottery Grant existing and expanded sessions £35,132; National Lottery grant COVID reponse £9,903; Mid Counties Coop Peer Supporter training £570

Where any endowment fund is converted into income in the reporting period, please give the reason for the conversion.

Within the income items above the following items are material:
(please disclose the nature, amount and any prior year amounts)

Note 4

Analysis of receipts of government grants

	Description	This year £	Last year £
Government grant 1		-	-
Government grant 2		-	-
Government grant 3		-	-
Other		-	-
	Total	-	-

Please provide details of any unfulfilled conditions and other contingencies attaching to grants that have been recognised in income.

Not applicable

Please give details of other forms of government assistance from which the charity has directly benefited.

Not applicable

Note 5 Donated goods, facilities and services

	This year £	Last year £
Seconded staff	-	-
Use of property	-	-
Other	-	-
	-	-

Please provide details of the accounting policy for the recognition and valuation of donated goods, facilities and services.

Not applicable

Please provide details of any unfulfilled conditions and other contingencies attaching to resources from donated goods and services not recognised in income.

Not applicable

Please give details of other forms of other donated goods and services not recognised in the accounts, eg contribution of unpaid volunteers.

Peer support is provided at drop in sessions by volunteers. As well as assisting in talking to families about the normal course of breastfeeding, referring to facilitators where complex issues arise, peer supporters help with ensuring appropriate session record keeping is maintained, setting up and tidying the room and making refreshments. Volunteers also organise fundraising events, help fill in grant applications, help attract donors and run the breast pump hire scheme. During the year all sessions were delivered virtually and peer supporters attended group sessions to help with welcome and discussion; lead break out rooms on specific topics; and helped with support given on Facebook groups

Note 6

Analysis of expenditure

	Analysis	Unrestricted funds	Restricted income funds	Endowment funds	Total funds £	Prior year £
Expenditure on raising funds:	Incurred seeking donations	2,592	-	-	2,592	2,592
	Incurred seeking legacies	-	-	-	-	-
	Incurred seeking grants					
	Operating membership schemes and social lotteries					
	Staging fundraising events	-			-	516
	Fundraising agents					
	Operating charity shops					
	Operating a trading company undertaking non-charitable trading activity					
	Advertising, marketing, direct mail and publicity	-	-	-	-	-
	Start up costs incurred in generating new source of future income	-	-	-	-	-
	Database development costs	-	-	-	-	-
	Other trading activities					
	Investment management costs:	-	-	-	-	
	Portfolio management costs	-	-	-	-	-
	Cost of obtaining investment advice	-	-	-	-	-
	Investment administration costs	-	-	-	-	-
	Intellectual property licencing costs	-	-	-	-	-
	Rent collection, property repairs and maintenance charges	-	-	-	-	-
		-	-	-	-	-
	Total expenditure on raising funds	2,592	-	-	2,592	3,108
Expenditure on charitable activities	Facilitator session fees	6,564	33,804	-	40,368	29,280
	Facilitator project running costs	6,811	20,212	-	27,023	19,440
	Antenatal and peer support sessions	668	2,513	-	3,181	1,891
		-	-	-	-	-
	Total expenditure on charitable activities	14,043	56,529	-	70,572	50,611
Separate material item of expense		-	-	-	-	-
		-	-	-	-	-
		-	-	-	-	-
		-	-	-	-	-
	Total	-	-	-	-	-

Other

Insurance	76	182	-	258	258
Equipment	368	500	-	868	-
Administration	1,333	2,885	-	4,218	3,568
Volunteer expenses	-	-	-	-	-
Trustee expenses	-	-	-	-	51
Total other expenditure	1,777	3,567	-	5,344	3,877

TOTAL EXPENDITURE

18,412	60,096	-	78,508	57,596
--------	--------	---	--------	--------

Other information:

Analysis of expenditure on charitable activities

Activity or programme	Activities undertaken directly	Grant funding of activities	Support Costs	Total this year	Total prior year
	£	£	£	£	£
Sessions	Drop ins and online support	62047	5344	67391	48720
Training	Antenatal sessions and peer support training	3181		3181	1891
Other					
Total		65228	5344	70572	50611

Prior year expenditure on charitable activities can be analysed as follows:

Charitable activities last year were split between grant funding £50,611 and support costs £3,876

Within the expenditure items above the following items are material: (please disclose the nature, amount and any prior year amounts)

Material items of expenditure are facilitator direct session costs and project management costs. 2020/21 £67,391 (2019/20 £48,720)

Section C	Notes to the accounts	(cont)
-----------	-----------------------	--------

Note 7 **Extraordinary items**

Please explain the nature of each extraordinary item occurring in the period.

	Description	This year £	Last year £
Extraordinary item 1	Not applicable	-	-
Extraordinary item 2		-	-
Extraordinary item 3		-	-
Extraordinary item 4		-	-
Total extraordinary items		-	-

Section C

Notes to the accounts

Note 8

Funds received as agent

8.1 Please complete this note if the charity has agreed to administer the funds of another entity as its agent. Note: If a charity is acting as an agent, it should not recognise the income in the Statement of Financial Activities or the Balance Sheet.

Description/name of party	Related party (Yes or No)	Amount received		Amount paid out		Balance held at period end	
		This year	Last year	This year	Last year	This year	Last year
		£	£	£	£	£	£
Not applicable		-	-	-	-	-	-
		-	-	-	-	-	-
		-	-	-	-	-	-
		-	-	-	-	-	-
		-	-	-	-	-	-
		-	-	-	-	-	-
Total		-	-	-	-	-	-

8.2 Where a consortia or similar arrangement exists whereby 2 or more charities co-operate to achieve economies in the purchase of goods or services, please disclose details of any balances outstanding between any participating members.

Description/name of party	Balance held at period end	
	This year	Last year
	£	£
	-	-
	-	-
	-	-
	-	-
	-	-
Total	-	-

Section C
Notes to the accounts
Note 9 Support Costs

Please complete this note if the charity has analysed its expenses using activity categories and has support costs.

Support cost (examples)	Raising funds	Drop in sessions/online support	Peer support/Antenatal		Grand total	Basis of allocation (Describe method)
	£	£	£	£	£	
Governance	-	-		-	-	
Insurance	-	250	8	-	258	Time spent
Website and other fees	-	2,895	57	-	2,952	Time spent
	-	-		-	-	
Other	-	2,101	33	-	2,134	Time spent
Total	-	5,246	98	-	5,344	

Please provide details of the accounting policy adopted for the apportionment of costs between activities and any estimation techniques used to calculate their apportionment.

The organisation has identified it's support costs and allocated them between the 2 main activities undertaken based on an estimate of time allocated per month to the different activity sessions. Governance costs at present relate to time spent by Trustees on charity management. No costs are incurred for this.

Section C	Notes to the accounts
-----------	-----------------------

Note 10 **Details of certain items of expenditure**

10.1 Fees for examination of the accounts

Please provide details of the amount paid for any statutory external scrutiny of accounts and other services provided by your independent examiner. If nothing was paid please enter '0' in the appropriate box(es).

Independent examiner's fees

Assurance services other than audit or independent examination

Tax advisory fees

Other fees (for example: financial advice, consultancy, accountancy services) paid to the independent examiner

This year £	Last year £
0	0
0	0
0	0
0	0

Note 11 **Paid employees**
Please complete this note if the charity has any employees.

11.1 Staff Costs

	This year £	Last year £
Salaries and wages	-	-
Social security costs	-	-
Pension costs (defined contribution scheme)	-	-
Other employee benefits	-	-
Total staff costs	-	-

Please provide details of expenditure on staff working for the charity whose contracts are with and are paid by a related party

None noted

Please give details of the number of employees whose total employee benefits (excluding employer pension costs) fell within each band of £10,000 from £60,000 upwards. If there are no such transactions, please enter 'true' in the box provided.

No employees received employee benefits (excluding employer pension costs) for the reporting period of more than £60,000

None noted

Band	Number of employees
£60,000 to £69,999	None
£70,000 to £79,999	None
£80,000 to £89,999	None
£90,000 to £99,999	None
£100,000 to £109,999	None

Please provide the total amount paid to key management personnel (includes trustees and senior management) for their services to the charity

No employees. No payments made to Trustees for services.

11.2 Average head count in the year

The parts of the charity in which the employees work

	This year Number	Last year Number
Fundraising	-	-
Charitable Activities	-	-
Governance	-	-
Other	-	-
Total	-	-

11.3 Ex-gratia payments to employees and others (excluding trustees)
Please complete if an ex-gratia payment is made.

Please explain the nature of the payment

None

Please state the legal authority or reason for making the payment

n/a

Please state the amount of the payment (or value of any waiver of a right to an asset)

n/a

11.4 Redundancy payments

Please complete if any redundancy or termination payment is made in the period.

Total amount of payment

None

The nature of the payment (cash, asset etc.)

n/a

The extent of redundancy funding at the balance sheet date

n/a

Please state the accounting policy for any redundancy or termination payments

n/a

Section C	Notes to the accounts	(cont)
------------------	------------------------------	---------------

Note 12 **Defined contribution pension scheme or defined benefit scheme accounted for as a defined contribution scheme.**

12.1 Please complete this note if a defined contribution pension scheme is operated.

Amount of contributions recognised in the SOFA as an expense	Not applicable
Please explain the basis for allocating the liability and expense of defined contribution pension scheme between activities and between restricted and unrestricted funds.	

12.2 Please complete this section where the charity participates in a defined benefit pension plan but is unable to ascertain its share of the underlying assets and liabilities.

Please confirm that although the scheme is accounted for as a defined contribution plan, it is a defined benefit plan.	
Please provide such information as is available about the plan's surplus or deficit and the implications, if any, for the reporting charity	

12.3 Please complete this section where the charity participates in a multi-employer defined benefit pension plan that is accounted for as a defined contribution plan.

Describe the extent to which the charity can be liable to the plan for other entities' obligations under the terms and conditions of the multi-employer plan	

Section C	Notes to the accounts	(cont)
------------------	------------------------------	---------------

Note 13 Grantmaking

Please complete this note if the charity made any grants or donations which in aggregate form a material part of the charitable activities undertaken.

Not applicable

13.1 Analysis of grants paid (included in cost of charitable activities)

Analysis	Grants to institutions	Grants to individuals	Support costs	Total
Activity or project 1			£	£
Activity or project 2			-	-
Activity or project 3			-	-
Activity or project 4			-	-
Total	-	-	-	-

Please enter "Nil" if the charity does not identify and/or allocate support costs.

13.2 Grants made to institutions

My charity has made grants to particular institutions that are material in the context of its grantmaking. Details of the institution supported, purpose of the grant and total paid to each institution is available on the charity's web site.

Yes	<i>Please provide details of charity's URL.</i>
No	<i>Provide details below</i>

Names of institution	Purpose	Total amount of grants paid £
		-
		-
		-
		-
		-
		-
		-
		-
		-
		-
Total grants to institutions in reporting period		-
Other unanalysed grants		-
TOTAL GRANTS PAID		-

Note 14 Tangible fixed assets

Please complete this note if the charity has any tangible fixed assets n/a

14.1 Cost or valuation

	Freehold land & buildings	Other land & buildings	Plant, machinery and motor vehicles	Fixtures, fittings and equipment	Total
	£	£	£	£	£
At the beginning of the year	-	-	-	-	-
Additions	-	-	-	-	-
Revaluations	-	-	-	-	-
Disposals	-	-	-	-	-
Transfers *	-	-	-	-	-
At end of the year	-	-	-	-	-

14.2 Depreciation and impairments

**Basis	SL or RB	SL or RB	SL or RB	SL or RB	SL or RB	Straight Line ("SL") or Reducing Balance ("RB")
** Rate						

At beginning of the year	-	-	-	-	-
Disposals	-	-	-	-	-
Depreciation	-	-	-	-	-
Impairment	-	-	-	-	-
Transfers*	-	-	-	-	-
At end of the year	-	-	-	-	-

14.3 Net book value

Net book value at the beginning of the year	-	-	-	-	-
Net book value at the end of the year	-	-	-	-	-

14.4 Impairment

Please provide a description of the events and circumstances that led to the recognition or reversal of an impairment loss.

14.5 Revaluation

If an accounting policy of revaluation is adopted, please provide:

- the effective date of the revaluation*
- the name of independent valuer, if applicable*
- the methods applied and significant assumptions*
- the carrying amount that would have been recognised had the assets been carried under the cost model.*

14.6 Other disclosures

- (i) Please state the amount of borrowing costs, if any, capitalised in the construction of tangible fixed assets and the capitalisation rate used.*
- (ii) Please provide the amount of contractual commitments for the acquisition of tangible fixed assets.*
- (iii) Details of the existence and carrying amounts of property, plant and equipment to which the charity has restricted title or that are pledged as security for liabilities.*

* The "transfers" row is for movements between fixed asset categories.

** Please indicate the method of depreciation by deleting the method not applicable (SL = straight line; RB

Note 15 Intangible assets*Please complete this note if the charity has any intangible assets n/a***15.1 Cost or valuation**

	Research & development	Patents and trademarks	Other	Total
	£	£	£	£
At beginning of the year	-	-	-	-
Additions	-	-	-	-
Disposals	-	-	-	-
Revaluations	-	-	-	-
Transfers *	-	-	-	-
At end of the year	-	-	-	-

15.2 Amortisation and impairments

**Basis	SL or RB	SL or RB	SL or RB	SL or RB	Straight Line ("SL") or Reducing Balance ("RB")
** Rate					

At beginning of the year	-	-	-	-
Disposals	-	-	-	-
Amortisation	-	-	-	-
Impairment	-	-	-	-
Transfers*	-	-	-	-
At end of year	-	-	-	-

15.3 Net book value

Nat book value at the beginning of the year	-	-	-	-
Net book value at the end of the year	-	-	-	-

15.4 Accounting policy*Please disclose the accounting policy for intangible fixed assets including:**Reasons for choosing amortisation rates*

Policies for the recognition of any capital development

--

15.5 Impairment

Please provide a description of the events and circumstances that led to the recognition or reversal of an impairment loss.

--

15.6 Revaluation

If an accounting policy of revaluation is adopted, please provide:

the effective date of the revaluation

the name of independent valuer, if applicable

the methods applied

the carrying amount that would have been recognised had the assets been carried under the cost model.

15.7 Other disclosures

(i) If your intangible asset was acquired by way of grant, provide value on initial recognition and carrying amount of the asset.

(ii) Details of the carrying amounts of any intangible assets to which the charity has restricted title or that are pledged as security for liabilities.

(iii) Please provide the amount of contractual commitments for the acquisition of intangible assets.

(iv) State the amount of research and development expenditure recognised as expenditure in the year.

(vi) Please detail the headings in the SOFA in which a charge for amortisation of intangible assets is included.

(vii) For any material intangible assets, please provide a description, its carrying amount and any remaining amortisation period.

* The "transfers" row is for movements between fixed asset categories.

** Please indicate the method of depreciation by deleting the method not applicable (SL = straight line; RB = reducing balance). Also please indicate the rate of depreciation: for straight line, what is the anticipated life of the asset (in years); for reducing balance, what is the percentage annual deduction.

Note 16 **Heritage assets** n/a

Please complete this note if the charity has heritage assets

16.1 General disclosures for all charities holding heritage assets

(i) Explain the nature and scale of heritage assets held.

--

(ii) Explain the policy for the acquisition, preservation, management and disposal of heritage assets.

--

16.2 Cost or valuation

	Heritage asset 1	Heritage asset 2	Heritage asset 3	Heritage asset 4	Total
	£	£	£	£	£
At beginning of the year	-	-	-	-	-
Additions	-	-	-	-	-
Disposals	-	-	-	-	-
Revaluations	-	-	-	-	-
Transfers *	-	-	-	-	-
At end of the year	-	-	-	-	-

16.3 Depreciation and impairments

**Basis						Straight Line ("SL") or Reducing Balance ("RB")
** Rate						

At beginning of the year	-	-	-	-	-
Disposals	-	-	-	-	-
Depreciation	-	-	-	-	-
Impairment	-	-	-	-	-
Transfers*	-	-	-	-	-
At end of year	-	-	-	-	-

16.4 Net book value

Nat book value at the beginning of the year	-	-	-	-	-
Net book value at the end of the year	-	-	-	-	-

16.5 Impairment

Please provide a description of the events and circumstances that led to the recognition or reversal of an impairment loss.

--

16.6 Revaluation

If an accounting policy of revaluation is adopted, please provide:

the effective date of the revaluation

the name of independent valuer, if applicable

qualifications of independent valuer

the methods applied and significant assumptions

any significant limitations on the valuation

16.7 Analysis of heritage assets by class or group distinguishing those at cost and those at valuation

	At valuation Group A	At cost Group B	Total
	£	£	£
Carrying amount at the beginning of the period	-	-	-
Additions	-	-	-
Disposals	-	-	-
Depreciation/impairment	-	-	-
Revaluation	-	-	-
Carrying amount at the end of period	-	-	-

16.8 Heritage assets (where heritage assets are not recognised on the balance sheet)

(i) Explain the reason why heritage assets have not been recognised on the balance sheet.

(ii) Describe the significance and nature of heritage assets.

(iii) Disclose information that is helpful in assessing the value of heritage assets.

(iv) Explain the reason why it is not practicable to obtain a valuation of heritage assets.

16.9 Five year summary of heritage assets transactions

	2015	2014	2013	2012	2011
	£	£	£	£	£
Purchases					
Group A	-	-	-	-	-
Group B	-	-	-	-	-
Group C	-				
Other	-				
Donations					

Group A	-	-	-	-	-
Group B	-	-	-	-	-
Group C	-	-	-	-	-
Other	-	-	-	-	-
Total additions	-	-	-	-	-
Charge for impairment					
Group A	-	-	-	-	-
Group B	-	-	-	-	-
Group C	-	-	-	-	-
Other	-	-	-	-	-
Total charge for impairment	-	-	-	-	-
Disposals					
Group A - carrying amount	-	-	-	-	-
Group B - carrying amount	-	-	-	-	-
Group C	-	-	-	-	-
Other	-	-	-	-	-
Total disposals	-	-	-	-	-

Note 17 **Investment assets**

n/a

Please complete this note if the charity has any investment assets.

17.1 Fixed assets investments (please provide for each class of investment)

	Cash & cash equivalents	Listed investments	Investment properties	Social investments	Other	Total
Carrying (fair) value at beginning of period	-	-	-	-	-	-
Add: additions to investments during period*	-	-	-	-	-	-
Less: disposals at carrying value	-	-	-	-	-	-
Less: impairments	-	-	-	-	-	-
Add: Reversal of impairments	-	-	-	-	-	-
Add/(deduct): transfer in/(out) in the period	-	-	-	-	-	-
Add/(deduct): net gain/(loss) on revaluation	-	-	-	-	-	-
Carrying (fair) value at end of year	-	-	-	-	-	-

***Please specify additions resulting from acquisitions through business combinations, if any.**

Please note that Fair Value in this context is the amount for which an asset could be exchanged between knowledgeable and willing parties in an arm's length transaction. For traded securities, the fair value is the value of the security quoted on the London Stock Exchange Daily Official List or equivalent. For other assets where there is no market price on a traded market, it is the trustees' or valuers' best estimate of fair value.

17.2 Please provide a breakdown of investments shown above agreeing with the balance sheet row B04 differentiating between those held at fair value and those held at cost less impairment.

Analysis of investments

Analysis of investments		
	Fair value at year end	Cost less impairment
	£	£
Cash or cash equivalents	-	-
Listed investments	-	-
Investment properties	-	-
Social investments	-	-
Other investments	-	-
Total	-	-
Grand total (Fair value at year end+Cost less impairment)		

17.3 If your charity holds investment properties, please complete the following note:

(i) Explain the methods and significant assumptions in determining the fair value of investment property held by the charity

(ii) Name or independent valuer, if applicable, and relevant qualifications

(iii) Provide details of any restrictions on the ability to realise investment property or on the remittance of income or disposal proceeds

(iv) Explain any contractual obligations for the purchase, construction or development of investment property or for repairs, maintenance or enhancements

17.4 Please provide a breakdown of current asset investments, if applicable, agreeing with the balance sheet.

Analysis of current asset investments

Cash or cash equivalents
Listed investments
Investment properties
Social investments
Other investments
Total

This year	Last year
£	£
-	-
-	-
-	-
-	-
-	-
-	-

17.5 Guarantees

Please provide details and amount of any guarantee made to or on behalf of a third party

Name of the entity or entities benefitting from those guarantees

Please explain how the guarantee furthers the charity's aims

17.6 Concessionary loans

Amount of concessionary loans made (*Multiple loans made may be disclosed in aggregate provided that such aggregation does not obscure significant information*).

Description	This year £	Last year £
Total		

Amount of concessionary loans received (*Multiple loans received may be disclosed in aggregate provided that such aggregation does not obscure significant information*).

Description	This year £	Last year £
Total		

Terms and conditions eg interest rate, security provided

--

Value of any concessionary loans which have been committed but not taken up at the reporting date

Amounts payable within 1 year

Amounts payable after more than 1 year

Amounts receivable within 1 year

Amounts receivable after more than 1 year

17.7 Additional information

Please provide information about the significance of investments to the charity's financial position or performance eg. terms and conditions of loans or the use of hedging to manage financial risk.

For all investments measured at fair value, the basis for determining the value, including any assumptions applied when using a valuation technique.

Where a charity has provided financial assets as a form of security, the carrying amount of the financial asset pledged as security and the terms and conditions relating to its pledge.

Note 18

Stocks

n/a

Please complete this note if the charity holds any stock items

18.1 Please state the carrying amount of stock and work in progress analysed between activities.

	Stock		Donated goods		Work in progress
	For distribution	For resale	For distribution	For resale	
	£	£	£	£	£
Charitable activities:					
<i>Opening</i>	-	-	-	-	-
<i>Added in period</i>	-	-	-	-	-
<i>Expensed in period</i>	-	-	-	-	-
<i>Impaired</i>	-	-	-	-	-
<i>Closing</i>	-	-	-	-	-
Other trading activities:					
<i>Opening</i>	-	-	-	-	-
<i>Added in period</i>	-	-	-	-	-
<i>Expensed in period</i>	-	-	-	-	-
<i>Impaired</i>	-	-	-	-	-
<i>Closing</i>	-	-	-	-	-
Other:					
<i>Opening</i>	-	-	-	-	-
<i>Added in period</i>	-	-	-	-	-
<i>Expensed in period</i>	-	-	-	-	-
<i>Impaired</i>	-	-	-	-	-
<i>Closing</i>	-	-	-	-	-
Total this year	-	-	-	-	-
Total previous year	-	-	-	-	-

18.2 Please specify the carrying amount of any stocks pledged as security for liabilities

--

Section C	Notes to the accounts	(cont)
------------------	------------------------------	---------------

Note 19 Debtors and prepayments

Please complete this note if the charity has any debtors or prepayments.

19.1 Analysis of debtors

Trade debtors

Prepayments and accrued income

Other debtors

Total

This year	Last year
£	£
-	-
39.0	167.0
470.0	846.0
509.0	1,013.0

Please complete 19.2 where a material debtor is recoverable more than a year after the reporting date.

19.2 Analysis of debtors recoverable in more than 1 year (included in debtors above)

Trade debtors

Prepayments and accrued income

Other debtors

This year	Last year
£	£
-	-
-	-
-	-
-	-
Total	-

Section C	Notes to the accounts	(cont)
------------------	------------------------------	---------------

Note 20 **Creditors and accruals**

Please complete this note if the charity has any creditors or accruals.

20.1 Analysis of creditors

	Amounts falling due within one year		Amounts falling due after more than one year	
	This year £	Last year £	This year £	Last year £
Accruals for grants payable	-	-	-	-
Bank loans and overdrafts	-	-	-	-
Trade creditors	-	-	-	-
Payments received on account for contracts or performance-related grants	-	-	-	-
Accruals and deferred income	24,448	13,598	-	-
Taxation and social security	-	-	-	-
Other creditors	-	-	-	-
Total	24,448	13,598	-	-

20.2 Deferred income

Please complete this note if the charity has deferred income.

Please explain the reasons why income is deferred.

Donation income received in March 2019 with condition that expenditure would only take place from 2019/2020 onwards was released to income during the current year

Movement in deferred income account

Balance at the start of the reporting period
Amounts added in current period
Amounts released to income from previous periods
Balance at the end of the reporting period

This year £	Last year £
7,650	-
17,513	1,173
- 7,650	-
17,513	1,173

Section C	Notes to the accounts	(cont)
------------------	------------------------------	---------------

Note 21 Provisions for liabilities and charges

Please complete this note if you have included in charity expenditure any provisions. A provision is made when the charity has a liability of uncertain timing or amount.

21.1 Please provide:

- a brief description of any obligations on the balance sheet and the expected amount and timing of resulting payments;
- an indication of the uncertainties about the amount or timing of those outflows; and
- the amount of any expected reimbursement, stating the amount of any asset that has been recognised for that expected reimbursement.

<i>Not applicable</i>

21.2 Movements in recognised provisions and funding commitment during the period

Balance at the start of the reporting period
 Amounts added in current period
 Amounts charged against the provision in the current period
 Unused amounts reversed during the period
 Balance at the end of the reporting period

This year £	Last year £
-	-
-	-
-	-
-	-
-	-

21.3 For any funding commitment that is not recognised as a liability or provision, provide details of commitment made, the time frame of that commitment, any performance-related conditions and details of how the commitment will be funded (with contracts for capital expenditure separately identified).

--

21.4 Where unrestricted funds have been designated to a fund commitment, please disclose the nature of any amounts designated and the likely timing of that expenditure.

--

Section C	Notes to the accounts	(cont)
-----------	-----------------------	--------

Note 22 Other disclosures for debtors, creditors and other basic financial instruments

22.1 Please provide information about the significance of financial instruments (eg. debtors, creditors, investments etc) to the charity's financial position or performance, for example, the terms and conditions of loans or the use of hedging to manage financial risk.	Not applicable
22.2 If the charity has provided financial assets as a form of security, the carrying amount of the financial assets pledged as security and the terms and conditions related to its pledge should be given here.	

Section C	Notes to the accounts	(cont)
------------------	------------------------------	---------------

Note 23 Contingent liabilities and contingent assets n/a

23.1 Contingent liabilities

Where the charity has contingent liabilities, please complete the following section unless the possibility of their existence is remote.

Description of item including its legal nature. Please describe any security provided in connection to the liability.	Estimate of financial effect

23.2 Contingent assets

Where the charity has contingent assets, please complete the following section when their existence is probable

Description of item	Estimate of financial effect

23.4 Other disclosures for contingent assets and/or liabilities

Please provide the following information where practicable:

Explain any uncertainties relating to the amount or timing of settlement; and the possibility of any reimbursement

Where it is not practical to make one or more of these disclosures, please state this fact

Section C	Notes to the accounts	(cont)
-----------	-----------------------	--------

Note 24 **Cash at bank and in hand**

Short term cash investments (less than 3 months maturity date)
Short term deposits
Cash at bank and on hand
Other
Total

This year £	Last year £
-	-
-	-
70,647	49,585
-	-
70,647	49,585

Section C	Notes to the accounts	(cont)
-----------	-----------------------	--------

Note 25	Fair value of assets and liabilities	n/a
---------	--------------------------------------	-----

25.1 Please provide details of the charity's exposure to credit risk (the risk of incurring a loss due to a debtor not paying what is owed) , liquidity risk (the risk of not being able to meet short term financial demands) and market risk (the risk that the value of an investment will fall due to changes in the market) arising from financial instruments to which the charity is exposed at the end of the reporting period and explain how the charity manages those risks.

--

25.2 Please give details of the amount of change in the fair value of basic financial instruments (debtors, creditors, investments (see section 11, FRS 102 SORP)) measured at fair value through the SoFA that is attributable to changes in credit risk.

--

Section C	Notes to the accounts	(cont)
-----------	-----------------------	--------

<p>Note 26</p> <p>Events after the end of the reporting period</p> <p>n/a</p> <p><i>Please complete this note events (not requiring adjustment to the accounts) have occurred after the end of the reporting period but before the accounts are authorised which relate to conditions that arose after the end of the reporting period.</i></p>	
--	--

<p>Please provide details of the nature of the event</p>	
--	--

<p>Provide an estimate of the financial effect of the event or a statement that such an estimate cannot be made</p>	
---	--

Section C	Notes to the accounts	(cont)
-----------	-----------------------	--------

Note 27 **Charity funds**

27.1 Details of material funds held and movements during the CURRENT reporting period

Please give details of the movements of material individual funds in the reporting period together with a balancing figure for 'Other funds'. The 'Total funds' figure below should reconcile to 'Total funds' in the balance sheet.

** Key: PE - permanent endowment funds; EE - expendible endowment funds; R - restricted income funds, including special trusts, of the charity; and U - unrestricted funds*

Fund names	Type PE, EE R or UR *	Purpose and Restrictions	Fund balances brought forward £	Income £	Expenditure £	Transfers £	Gains and losses £	Fund balances carried forward £
OCF COVID response	R	Additional COVID expenses	-	5,390	- 5,390	-	-	-
Lottery grant fund	R	To run extra sessions and projects as per Lottery funding bid	-	35,132	- 35,132	-	-	-
Tampon tax fund	R	To run Donnington sessions	-	5,400	- 5,400	-	-	-
OCF Barton fund	R	To run new Barton sessions	-	2,250	- 2,250	-	-	-
Lottery COVID response	R	Additional COVID expenses	-	9,903	- 9,903	-	-	-
Mid Counties	R	Peer Support training	-	570	- 570	-	-	-
Localgiving	R	Additional COVID expenses	-	1,451	- 1,451	-	-	-
General fund	U	unrestricted	37,001	28,117	- 18,409	-	-	46,709
			-	-	-	-	-	-
			-	-	-	-	-	-
			-	-	-	-	-	-
			-	-	-	-	-	-
Other funds	N/a	N/a	-	-	-	-	-	-
Total Funds			37,001	88,213	- 78,505	-	-	46,709

Section C	Notes to the accounts	(cont)
-----------	-----------------------	--------

Note 27 **Charity funds (cont)**

27.2 Details of material funds held and movements during the PREVIOUS reporting period

Please give details of the movements of material individual funds in the reporting period together with a balancing figure for 'Other funds'. The 'Total funds' figure below should reconcile to 'Total funds' in the balance sheet.

** Key: PE - permanent endowment funds; EE - expendible endowment funds; R - restricted income funds, including special trusts, of the charity; and U - unrestricted funds*

Fund names	Type PE, EE R or UR *	Purpose and Restrictions	Fund balances brought forward £	Income £	Expenditure £	Transfers £	Gains and losses £	Fund balances carried forward £
OCF antenatal fund	R	To run monthly antenatal sessions and yearly peer support sessions	595	-	- 595	-	-	-
Lottery grant fund	R	To run extra sessions and projects as per Lottery funding bid	-	8,536	- 8,536	-	-	-
Tampon tax fund	R	To run Donnington sessions	-	1,080	- 1,080	-	-	-
OCF Barton fund	R	To run new Barton sessions	-	2,250	- 2,250	-	-	-
SOFR fund	R	To run SOFR sessions	-	4,605	- 4,605	-	-	-
General fund	U	unrestricted	46,429	31,097	- 40,525	-	-	37,001
			-	-	-	-	-	-
			-	-	-	-	-	-
			-	-	-	-	-	-
			-	-	-	-	-	-
Other funds	N/a	N/a	-	-	-	-	-	-
Total Funds			47,024	47,568	- 57,591	-	-	37,001

Section C	Notes to the accounts	(cont)
------------------	------------------------------	---------------

Note 27 **Charity funds (cont)**

27.3 Transfers between funds

	Reason for transfer and where endowment is converted to income, legal power for its conversion	Amount
Between unrestricted and restricted funds		
Between endowment and restricted funds		
Between endowment and unrestricted funds		

27.4 Designated funds

Planned use	Purpose of the designation	Amount

Please give details of any transaction undertaken by (or on behalf of) the charity in which a related party has a material interest, including where funds have been held as agent for related parties. If there are no such transactions, please enter 'true' in the box provided.

There have been no related party transactions in the reporting period (True or False)

TRUE

Name of the trustee or related party	Relationship to charity	Description of the transaction(s)	Amount	Balance at period end	Provision for bad debts at period end	Amounts written off during reporting period
			£	£	£	£

In relation to the transactions above, please provide the terms and conditions, including any security and the nature of any payment (consideration) to be provided in settlement.

For any related party, please provide details of any guarantees given or received.

Note 29 Additional Disclosures

The following are significant matters which are not covered in other notes and need to be included to provide a proper understanding of the accounts. If there is insufficient room here, please add a separate sheet.

Reserves policy: OBS will review the level of reserves held, both restricted and unrestricted, at each Trustee meeting. The charity relies on donations from individuals, grants and fundraising to fund the majority of its charitable activities. The nature of these income streams are that funds are not certain to be received and are not evenly spread throughout the year. As future income from donations is uncertain and would be affected by the wider economic conditions then holding reserves allows the charity time to plan the best way to reduce services or investigate other sources of funding. The charity has been awarded some long term grant funding, most notably £114k over 4 years from the National Lottery. This has meant that the charity feels more confident in holding a reduced level of reserves compared to the prior years and use this money to invest in the sessions that aren't funded by the grants.

At present the drop in sessions are held online, however as the transition is made back to face to face then extra costs may be incurred and the Trustees believe it is reasonable to hold cash reserves to enable rental payments to be made. Also with operating conditions likely to be uncertain for the foreseeable future the Trustees believe that it is prudent to hold enough reserves to provide a buffer for any emergency expenses, as well as to ensure that funds are available in a timely manner to continue to expand our level and nature of service provision.

The charity is now holding an increasing number of sessions a week, and in order to assist in the planning of future service levels and to enable giving notice to both service users and facilitators of any reductions in service levels because of lack of funds, the Trustees consider it is reasonable to hold around 9 months of expenditure in reserve. Unrestricted reserves at the end of the year were £47k which represents about 8 months of expenditure, along with an additional £17k of deferred grant income which has been earmarked for future activities.