

South Shields FC  
Foundation Limited

# Annual Report & Social Accounts

Year End  
30.06.2022



South Shields FC  
Foundation

Harton Welfare  
Low Lane  
South Shields  
NE34 0NA

Company  
Number:  
10257450  
Charity  
Number:  
1176894

Welcome to our 2021/2022 Annual Report.

It covers the period 1 July 2021 to 30 June 2022, A year where our normal services have begun to recover (albeit not completely) from the pandemic.

It has been largely a year of consolidation, ensuring we delivered as much of an impact as we could to the wide beneficiary group we work with. It's also been a year to regroup and begin to re-grow our activities and impact to their pre pandemic levels.

I want to say a big thank you to the hundreds of people who help us either financially, by offering their time and skills or supporting our activity programmes. You are helping us to achieve our purpose of improving the health and wellbeing of our fantastic community.

Special thanks again to Port of Tyne our Official Community Activity Partner who continued to offer support.

We enjoy terrific support from South Shields FC and Chairman Geoff Thompson who has provided both business acumen and financial support to the Foundation

**Steve Camm**  
Foundation Manager  
South Shields FC



THE 5 WAYS TO WELLBEING

	BE PHYSICALLY ACTIVE	
GIVE TO OTHERS	LEARN NEW SKILLS	PAY ATTENTION TO THE PRESENT
	CONNECT WITH OTHER PEOPLE	

The Foundation is a Registered Charity, its charitable purpose is to support health and wellbeing.

We choose to co-design and deliver our services and activities to make a difference to the five things that we know contribute to people's health and wellbeing.



## CHARITABLE PURPOSE

**WE**  
work with others  
**TO**  
improve the  
health &  
wellbeing  
**OF**  
people living in  
some of the most  
deprived parts of  
England.

- **Making New Friends**  
Interacting socially with others.
- **Physical Activity**  
Taking part in regular physical activity.
- **Taking Notice**  
Understanding what's happening around you and staying focused on the present rather than the past (especially what has gone wrong) or the future (especially what could go wrong).
- **Giving/Volunteering**  
Giving something back whether that's time or money.
- **Learning a new skill**  
Doing something that supports personal learning and development.

South Shields FC Foundation was incorporated in 2017 and operates a social enterprise business model. We registered as a charity in 2018.

There are some critical features to our business model:

### 1. A Charitable Purpose

Having a charitable purpose, in our case to support health and wellbeing in a former coalfield community, means it drives everything we do.

### 2. Social Impact

We publish social accounts alongside our financial accounts to demonstrate our social impact as well as our financial viability. They are equally important.

### 3. Social Enterprise

We have a social purpose, generate most of our income from traded activities and reinvest profit in our charitable purpose. We are not grant dependent. Think of us as a business but where communities benefit not individual owners or shareholders.

### 4. Financial Sustainability

Our impact is connected to our income which needs to be diverse to be resilient to one or more income streams failing. We rely on fundraising & donations; activity programmes (schools and other activities); bars, events & functions; rental income from facilities; grant support in key areas (mainly for capital works).

### 5. Social and Commercial Decision Making

Not everything we do can make a profit especially if this is a barrier to engagement and participation. So, we constantly balance social and commercial decisions. Too many of either means we narrow our impact or go out of business.

### 6. Partnership Delivery

We work with others and add value. We don't seek to duplicate what would have happened anyway (deadweight) or replace something that already exists (displacement).



## BUSINESS MODEL

We are a Social Enterprise, which means...

We have a charitable purpose.

Most of our income comes from trading (we are not grant dependent).

All profit is reinvested in our charitable purpose.



## COMMUNITY ANCHOR

It's important to us that the more we grow the more we become an organisation that is rooted in its community. Organisations like the NHS are examples of Community Anchor Organisations. Because they are rooted in their communities (and unlikely to relocate) they can support local wealth creation as well as delivering social impact locally. For us that means:

### Workforce Strategy

We seek to widen access to higher quality work by creating local employment and volunteering opportunities that provide pathways to employment including for those people who are currently furthest away from employment.

### Asset Management

We seek to widen community access to our facilities, where we can repurposing existing community facilities.

### Procurement

We seek to create more local social and value by spending where we can locally.

### Partnerships

Our preference is to collaborate with existing local partners, adding value to what they do.

### Environment

We seek to reduce our environmental impact.



## Company Structure

South Shields FC Foundation Limited is a Charitable Company (Number 10257450) and a Registered Charity (Number 1176894).

Trustees:

- **Geoff Thompson**  
Chairman South Shields FC
- **Keith Finnigan**  
Finance Director
- **Gary Crutwell**  
Facilities Director
- **Ernest Gibson**  
Chair Harton & Westoe Miners Welfare
- **Stephen Taylor**  
SSFC Foundation Youth
- **Martin Urwin**  
Safeguarding Director



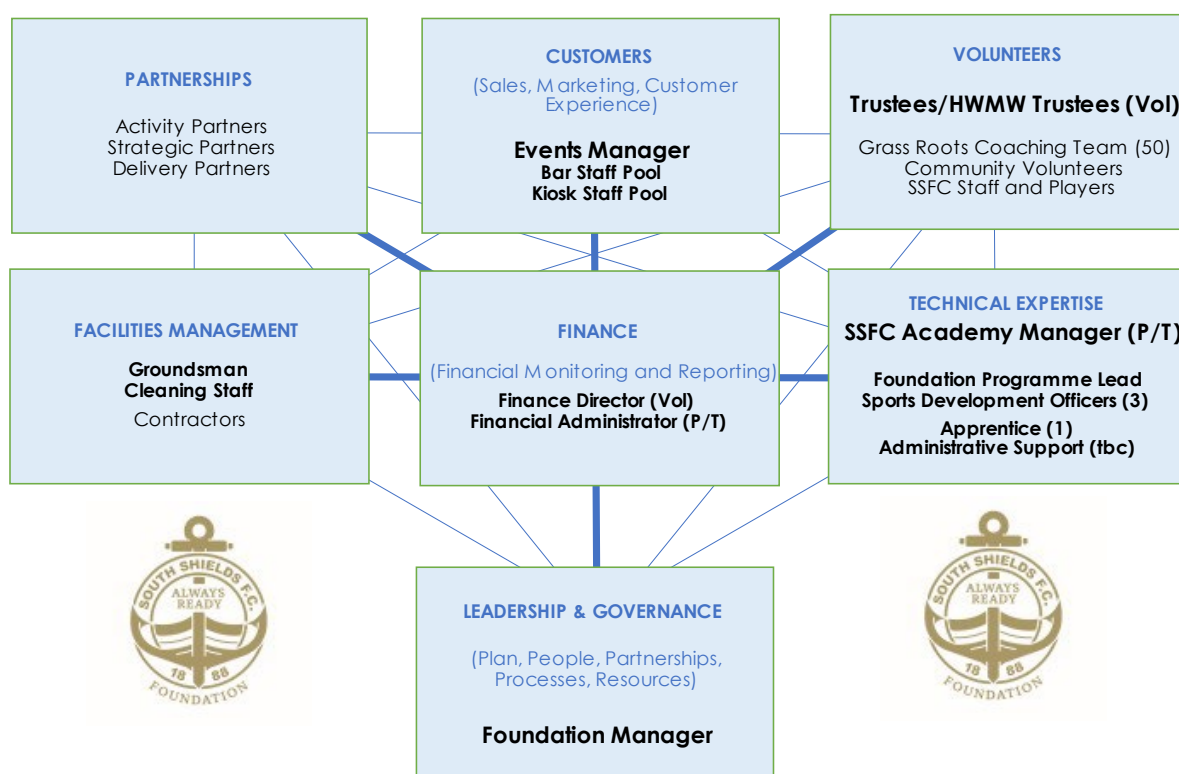
## LEGAL STRUCTURE

The Foundation has a wholly owned Trading Company SSFCF 2017 Limited (Number 12718209). It manages income from the bars and events at Harton & Westoe Miners Welfare. Profits from this company must be reinvested in the Foundation or the facilities at Harton & Westoe Miners Welfare.

Trustees:

- **Geoff Thompson**  
Chairman South Shields FC
- **Keith Finnigan**  
Finance Director
- **Steve Camm**  
South Shields FC Foundation Manager
- **Ernest Gibson**  
Chair Harton & Westoe Miners Welfare

The Foundation has a 25 year Partnership Agreement (established 2019) with Harton & Westoe Miners Welfare (Charity Number 520812) to operate the facility at Harton Welfare. Under the agreement the Foundation takes full management responsibility for the site on behalf of the Miners Welfare (which retains land ownership), including all the financial risk which is now vested in the Trading Company. The Foundation pays a monthly licence fee to Harton & Westoe Miners Welfare.



## Organisational Structure

The Foundation Manager is responsible for the leadership and governance of the Charity and the performance of the Trading Company.

The Trustees of the Charity (and Directors of the Trading Company) have a responsibility for ensuring the companies are financially viable and fulfilling their charitable purpose.

We operate a model which borrows from a distributed leadership approach which, in its simplest terms, means that the leader is whoever is “leading on a task” in their functional area. Their responsibility is for the successful **completion of their task** and the **communication, participation, and engagement of others**.

In this way individual tasks and activities stay connected to wider organisational purpose and allow the skills & experience of others to make a corporate contribution that is wider than their individual task.



## PROJECT BENEFICIARIES

According to the Office For National Statistics South Tyneside has many communities that are considered to be amongst the most deprived in the county when measured using the Indices of Multiple Deprivation.

This national data set can be scrutinised allowing a number of South Tyneside specific challenges to be identified that begin to shape the design of our programmes, including those we deliver with others. So, we should improve:

### 1. Transport & Accessibility

Not everyone has a car, impacting on their ability to access services and activities. The design of our programmes recognises this so we don't unintentionally exclude those who might need our help.

### 2. Health inequalities

Too few adults are in good/very good health and die prematurely, especially females, because of where they live. Mortality rates from cancer and circulatory disease are too high. Obesity, binge drinking and smoking are particular challenges. Some of those things we can directly impact on. Others we can use the Foundation brand to raise awareness and engage people.

### 3. Participation in physical activity

Not enough adults exercise for 30 minutes five times a week. Too many children are obese, especially at ages 5 and 11. Clearly this is an area of strength for us.

### 4. Employability & skills

Not enough people are economically active and the



pathways into work are long and difficult. Too many have no qualifications and the number of 16-18 year olds not in education, employment or training is too high. Creating learning and volunteering opportunities with pathways to employment is a key area for us.

#### 5. Community safety

More people than in other areas are worried about crime and community safety. We can raise awareness and provide diversionary activities for young people and adults.

#### 6. Meeting the needs of an older population

There is a predicted growth in the number of older people putting pressure on support services.

Our target beneficiaries include (but are not limited to):

- Anyone with a postcode that identifies them as living within an area that falls within the worst 5% of local authority wards according to the Office for National Statistics Indices of Multiple Deprivation.
- Young people aged 3-18 and their families.
- Older people especially those facing challenges including social isolation.
- Anyone from an under-represented group especially those where service design precludes their inclusion.
- People, especially young people, at risk of offending or re-offending.
- Those furthest away from employment.



## HISTORY

Est. 2017

### Early Days

The South Shields FC Foundation brand is strong in the community and supports engagement. **Our Model** is about how, once engaged, we retain people in activities and progress them to others.

We started in 2017 with a physically activity programme largely based around **grass roots football** for young people aged 6-17 years.

We've always been clear though that our programmes (and our social impact) should not just be around football nor should they just be aimed at young people.

### The first signs of growth

The first development came with the creation of a **Physical Social Health and Economic Programme in Schools** in 2018. This programme uses PE as the mechanism for engagement but is actually about **Learning**. These programmes combine movement and physical literacy with numeracy, literacy and social & emotional development. Whilst still aimed at young people (Primary and Nursery settings) they illustrate the diversification away from just football.

On the back of that came a **Match Day Experience** programme developed in partnership with the Club

and The National Centre for the Written Word (The Word). This involved us taking first team players into primary schools and inviting children and an accompanying adult to experience a game at 1<sup>st</sup> Cloud Arena as our guests. Some of the children acted as flag bearers before the game, some went on to write and film a match report as part of a literacy project with The Word. All **enjoyed family social time and made new friends.**

Our grassroots football programme, like all clubs, is hugely reliant on a **volunteer adult workforce.** Our volunteers give up countless hours to give something back to others. We seek to support our volunteers to learn and grow and have been able to offer a progression route into employment creating **full time employment** and **apprenticeships** with the Club, the Foundation or the Academy.

A further example of the development of our pathway in recent years is our contribution to help people take notice of what is happening around them. This has been using the Club and Foundation brand to **raise awareness of societal issues** like mental health, race equality and most latterly in 2021 as a Covid Community Champion.

#### A watershed moment

A transformational moment for us was the creation of a partnership in 2019 with Harton & Westoe Miners Welfare. Saving this incredible community resource from closure and establishing the Foundation with a base from which it has stabilised its business model and **grown & diversified its social impact.** Bowls, boxing, fitness, dance, wellbeing activities, walking football, social groups, music and charitable events championing (and raise much needed funds) for local good causes are all safeguarded by the partnership at the Harton & Westoe site.

With the support of our Activity Partners **Port of Tyne, CFS** and the **Police and Crime Commissioner** we added projects that support some of our most vulnerable young people.

## Public Benefit

The Trustees have complied with their duty to have regard to the Charity Commission's public benefit guidance when exercise their powers in relation to the activities of the charity.

## Financial Performance

Like most other charities and businesses we have overcome significant challenges to continue to trade solvently and deliver our charitable purpose over the last two to three years..

Some elements of our business model were impacted more than others. **Hospitality (via our trading company)**, a key ingredient to make our finances work, was hit hard and had not fully recovered to pre covid levels by June 2022).

Our **Schools** programmes, another traded activity, whilst recovering more quickly still performed below what they would have otherwise done.

Our **grass roots football** and **community programmes** performed better and we expect to see some growth from September 2022.

With government support tapering out the end of the year (and for that matter the rest of 2022) will remain a challenge whilst trading levels recover fully. During this time a strategy of controlled growth will be required as the social enterprise business model we operate means the charity does not have cash reserves.

We managed to maintain a positive trading position for the year. Around 80% (£197k) of income came from fundraising and donations, the other 20% (£52k) from traded activity which is not the normal split of income. During this period the hospitality business was transferred to a wholly owned trading company, the receipts from which are reported under donations.

Main areas of expenditure were on the delivery of our charitable activities programme (£166k), staffing (£30k) and the licence fee payable to Harton & Westoe Miners Welfare (£40k).

A full breakdown of 2021/22 financial performance can be found in the year end accounts

## Results

### Healthy Activities

#### Community Activity Programmes

THINKERS & MOVERS	<b>17</b>	sign ups
Our weekly programme aimed at boys and girls aged 3-5 years	<b>680</b>	contacts
MINI MARINERS		
A weekly programme aimed at boys and girls aged 6 looking to progress into teams.	<b>26</b>	sign ups
	<b>1040</b>	contacts
GOALKEEPER		
A weekly programme specially for goalkeepers aged 6-12 years	<b>13</b>	sign ups
	<b>520</b>	contacts
FUTSAL		
A newly introduced specialist indoor futsal programme for ages 6-12	<b>16</b>	sign ups
	<b>640</b>	contacts
FRIDAY NIGHT FOOTBALL		
A weekly programme focusing on developing technical skills in young players aged 6-12	<b>60</b>	sign ups
	<b>2400</b>	contacts
<b>Total</b>	<b>132</b>	sign ups
	<b>5280</b>	contacts
	(104 boys)	
	(26 girls)	
	(1 SEN)	

## Schools Programmes

Our programmes, designed and developed in house, are designed to maximise learning and encourage cross-curricular links within Early Years Foundation Stage PE. It has three key programmes, all connected to national/school curriculum, which offer schools bespoke provision suited to the children within each setting:

**“Monkey Movements”** – a movement-based programme which focuses on key motor control skills and the fundamentals of movement. This is achieved through freedom-based activity and structured play

**“Polly Phonics”** – a literacy programme which combines an EYFS literacy lesson into a fun, active and engaging PE lesson

**“Matey’s Maths”** – a numeracy-based programme which includes EYFS mathematics curriculum within a PE lesson

In addition we deliver the following programmes in schools:

**Multi-sport/Multi-skills Key Stage 1** (Year 1,2,3) – a multi-sport curriculum with a scheme of work that emphasises KS1 key social and psychological skills, particularly focusing on an introduction to team sport and team play.

**Multi-sport/future skills Key Stage 2** (Year 4,5,6) – a range of different sports and games focusing on physical literacy. All lessons have learning objectives based around the development of an individual person whether this is the social, physiological or technical development

**Year 5/6 PSHE Programme:** A programme preparing the KS2 child for secondary education through the power of sport. This physical education programme links closely with core PSHE principles. In these sessions we openly encourage creativity and responsibility, and place pupils in scenarios where they may lead, support or even be taught by their peers.

**Dance** – a programme offering dance as part of an enriched curriculum delivered by a specialist coach.

Bespoke programmes are created with individual schools and usually run for 39 weeks during the school year.

	Unique No's	Total Contacts
<b>Boys</b>		
In School	331	4,100
Extra Curricular	126	4,165
<b>Girls</b>		
In School	344	5,600
Extra Curricular	112	3,540
<b>SEN</b>		
Boys	46	506
Girls	44	594

In 2021/22 we had **18,505** contacts with routine participants in our schools and community activities programmes. More than 75% were children living in an area ranked in the worst 5% for deprivation in England according to the Office for National Statistics.

### Grass Roots Football Programme

The grass roots football programme continues to grow, engaging more young people aged 6-17 in regular healthy activities **participating in one of our 35 junior teams.**

Since 2017 we have worked with **918** different boys and girls aged 7-17 in our grass roots football programme.

	Unique No's	Total Contacts
<b>Participants</b>		
Junior Players	86	8600

## Adult Football

	Unique No's	Total Contacts
<b>Participants</b>		
Over 40's	20	200
Veterans FC	20	200
Adult 5 a side	150	1500

## Boxing

Harton & Westoe Miners Welfare is home to Harton & Westoe Boxing and Fitness.

	Unique No's	Total Contacts
<b>Participants</b>		
Fitness	30	3000
Boxing	60	9

## Giving Something Back

The bedrock of our grass roots football programme lies in the efforts of a dedicated group of staff and volunteers. Volunteers lead our grass roots football programme providing on average **120 coaching hours per coach** per year (in a normal year. With an average squad size of 12 that's **1440 contacts** per team per year (in a normal year).

In 2021/22 we had **68 active** volunteers, 62 in active coaching roles and 6 in committee or administrative support roles.

in 2021/22 we achieved the following results:

	Unique No's	Total Hours
<b>Volunteers</b>		
Coaching	8	1200
Other	2	300



Our annual **February Fundraiser** this year saw junior players, first team players, academy players, staff, families and supporters aim to complete a 17 hour football match. The challenge was completed raising over £6700 to support the Foundation's work in the community.

## Awareness Raising

South Shields FC and South Shields Fc Foundation brands are strong and trusted within the community. We use that position to independently provide information that helps people understand issues going on around them. We know that increased awareness can have a positive impact on mental health.

We use our social media presence and match day programmes to draw attention to campaigns, with our community and health partners, that are important within our community. These include but are not limited to:

Show Racism the Red Card  
LGBT Pride  
Mental Health Awareness  
Anti Bullying Week  
World Book Day  
Autism Awareness  
international Disability Day  
Suicide Prevention

Since 2020 we have partnered with **KOOTH**, an online community offering support and activities for young people..

In 2020 we became a **Covid Community Champion**, helping to impartially communicate key information about the pandemic,

## Learning a new skill

Participation in learning activities is a key area for us. We are delighted to have formed in 2021/22 a strategic partnership with Epinay School, a local school for children with special educational needs.

In March 2022 we delivered a highly innovative work experience project for Year 11 students to help them in their transition to the world of work. The project, entitled the “Epinay Takeover” saw the Club and Foundation hand over the running of parts of our operation in the week building up to match day.

Around 30 students participated in the following activities:

1. Horticulture students worked with the ground staff to prepare the facilities for match day and build and planted a number of planting boxes at Harton Welfare.
2. Life Skills students helped prepare the dressing rooms for match day and supported matchday stewards at a figure covered by BBC Football Focus.
3. Hospitality students took over breakfast service for the first team players in the lead up to match day.
4. Students also participated in a number of activities designed to increase their understanding of the job roles at the football club from hospitality to retail and accountancy to PR.
5. All students from the school were guests of the club and enjoyed a full match day experience including match day play park and flag bearers ahead of kick off.

## Social interaction

Harton Welfare is proud to host the Harton & Westoe Miners Welfare Banner Group and Harton & Westoe Brass Band. Both groups play a significant role in keeping the history and heritage of our mining

communities alive. They also provide regular opportunities for social interaction.

	Unique No's	Total Contacts
Brass Band	30	2400
Banner Group	50	200

## Social Impact Calculation

We reinvest in activities that strengthen our community and create positive social impact.

We have always tried to take a wider view of what impacts on people's health and wellbeing (The NHS **Five Ways to Wellbeing**).

### Key Results – Outcomes. Wellbeing Valuation Approach

Since 2017 we have used a Wellbeing Valuation Approach to measuring and recording our social impact.

Wellbeing Valuation is in the Treasury's Green Book, the UK's core guide to policy evaluation. The methodology was developed by Daniel Fujiwara (London School of Economics), Affinity Sutton, Catalyst Housing and the Housing Associations Charitable Trust. It works by isolating the particular factors that affect health and wellbeing e.g. playing a sport, getting a job or socialising with friends.

It then attributes an equivalent financial value to each of these factors. This is the amount of cash that would be needed to increase someone's wellbeing by the same amount.

*e.g. playing a sport regularly over a two month period would have the same impact on health and wellbeing as being given £10,767.*

**It's a one off calculation**, so once a benefit has been calculated and attributed to a particular year the continuation of the activity does not keep adding to the total. We like this because, whilst we want to retain people in activities, to add to our impact we must constantly engage NEW people.

Using the Wellbeing Valuation methodology, we have now broken through the £14m marker as a result of our activities in the last 5 years.

2017/2018	£1,110,803
2018/2019	£2,229,585
2020 (part)	£1,129,466
2020/2021	£5,693,334
2021/2022	£4,217,565

<b>Total</b>	<b>£14,380,753</b>
--------------	--------------------

Expenditure over the period is £1.04m producing a social return on investment **of £14 for every £1 we spend.**

2017/2018	£	55,286
2018/2019	£	353,561
2020 (part)	£	143,658
2020/2021	£	238,076
2021/2022	£	252,109

<b>Total</b>	<b>£1,042,690</b>
--------------	-------------------

Ends.

.



Charity number: 1176894

Company number: 10257450

(England and Wales)

South Shields FC Foundation Limited

Report of the Trustees and Unaudited Financial Statements

For the year ended 30 June 2022

South Shields FC Foundation Limited  
Contents Page  
For the year ended 30 June 2022

Report of the Trustees	1
Independent Examiner's Report to the Trustees	2
Statement of Financial Activities	3
Statement of Financial Position	4
Notes to the Financial Statements	5 to 10
Detailed Statement of Financial Activities	11 to 12



**South Shields FC Foundation Limited**  
**Report of the Trustees**  
**For the year ended 30 June 2022**

The Trustees, who are also directors for the purposes of company law, have pleasure in presenting their report and the financial statements for the charitable company for the year ended 30 June 2022. The Trustees have adopted the provisions of Accounting and Reporting by Charities: Statement of Recommended Practice applicable to charities preparing their accounts in accordance with the Financial Reporting Standard applicable in the UK and the Republic of Ireland (FRS 102) (effective 1 January 2015).

**OBJECTIVES AND ACTIVITIES**

**Objectives and aims**

The trustees have considered the Charity Commission's guidance on public benefit, including the guidance 'public benefit: running a charity (PB2)'.

**REFERENCE AND ADMINISTRATIVE INFORMATION**

<b>Name of Charity</b>	South Shields FC Foundation Limited
<b>Charity registration number</b>	1176894
<b>Company registration number</b>	10257450
<b>Principal address</b>	Mariners Park Shaftesbury Avenue South Shields Tyne and Wear NE323UP

**Trustees**

The trustees and officers serving during the year and since the year end were as follows:

Gary Crutwell  
Stephen David Taylor  
Martin Ronald Urwin  
Keith Finnigan  
John Watson  
(Resigned: 27 December 2021)  
Geoff Thompson  
(Appointed: 01 July 2021)

<b>Independent examiner</b>	Beach Accountants Limited Chartered Certified Accountants 10 Blue Sky Way Monkton Business Park South South Tyneside NE31 2EQ
-----------------------------	--

Approved by the Board of Trustees and signed on its behalf by

DocuSigned by:

*Mr Gary Crutwell*

D48C6A63E769454...

30 June 2023

Gary Crutwell

South Shields FC Foundation Limited  
Independent Examiners Report to the Trustees  
For the year ended 30 June 2022

I report to the trustees on my examination of the accounts of the charitable company for the year ended 30 June 2022.

**Responsibilities and basis of report**

As the charity Trustees, who are also directors for the purposes of company law, are responsible for the preparation of the accounts in accordance with the requirements of the Companies Act 2006 ('the 2006 Act').

Having satisfied myself that the accounts of the Company are not required to be audited under Part 16 of the 2006 Act and are eligible for independent examination, I report in respect of my examination of your charity's accounts carried out under section 145 of the Charities Act 2011 ('the 2011 Act'). In carrying out my examination I have followed the Directions given by the Charity Commission under section 145(5)(b) of the 2011 Act.

**Independent examiners statement**

Since the Charitable company's gross income exceeded £250,000, your examiner must be a member of a body listed in section 145 of the 2011 Act. I confirm that I am qualified to undertake the examination by virtue of my membership of , which is one of the listed bodies.

I have completed my examination. I confirm that no matters have come to my attention in connection with the examination giving me cause to believe that in any material respect:

1. accounting records were not kept in respect of the Company as required by section 386 of the 2006 Act; or
2. the accounts do not accord with those records; or
3. the accounts do not comply with the requirements of section 396 of the 2006 Act other than any requirement that the accounts give a 'true and fair view' which is not a matter considered as part of an independent examination; or
4. the accounts have not been prepared in accordance with the methods and principles of the Statement of Recommended Practice for accounting and reporting by charities applicable to charities preparing their accounts in accordance with the Financial Reporting Standard applicable in the UK and Republic of Ireland (FRS 102).

I have no concerns and have come across no other matters in connection with the examination to which attention should be drawn in this report in order to enable a proper understanding of the accounts to be reached.

DocuSigned by:

*Gavin Spencer*

E7789DD5DB0540C...

Beach Accountants Limited  
Chartered Certified Accountants  
10 Blue Sky Way  
Monkton Business Park South  
South Tyneside  
NE31 2EQ

30 June 2023

South Shields FC Foundation Limited  
Statement of Financial Activities (including Income and Expenditure Account)  
For the year ended 30 June 2022

	Notes	Unrestricted funds £	2021 £
<b>Income and endowments from:</b>			
Donations and legacies	2	181,895	129,740
Charitable activities	3	42,912	14,798
Other trading activities	4	17,677	(9,926)
Other income		10,000	-
<b>Total</b>		<b>252,484</b>	<b>134,612</b>
<b>Expenditure on:</b>			
Raising funds	5/6	(70,231)	(106,104)
Charitable activities	7	(181,878)	(103,165)
<b>Total</b>		<b>(252,109)</b>	<b>(209,269)</b>
<b>Net income/expenditure</b>		<b>375</b>	<b>(74,657)</b>
<b>Reconciliation of funds</b>			
Total funds brought forward		(66,512)	8,145
<b>Total funds carried forward</b>		<b>(66,137)</b>	<b>(66,512)</b>

South Shields FC Foundation Limited  
Statement of Financial Position  
As at 30 June 2022

	Notes	2022 £	2021 £
<b>Fixed assets</b>			
Tangible assets	13	28,170	22,084
		<b>28,170</b>	<b>22,084</b>
<b>Current assets</b>			
Debtors	14	36,725	7,018
Cash at bank and in hand		4,497	50,380
		<b>41,222</b>	<b>57,398</b>
<b>Creditors: amounts falling due within one year</b>	15	(106,362)	(106,827)
<b>Net current assets</b>		<b>(65,140)</b>	<b>(49,429)</b>
<b>Total assets less current liabilities</b>		<b>(36,970)</b>	<b>(27,345)</b>
<b>Creditors: amounts falling due after more than one year</b>		(29,167)	(39,167)
<b>Net assets</b>		<b>(66,137)</b>	<b>(66,512)</b>
<b>The funds of the charity</b>			
Unrestricted income funds	16	(66,137)	(66,512)
<b>Total funds</b>		<b>(66,137)</b>	<b>(66,512)</b>

For the year ended 30 June 2022 the company was entitled to exemption from audit under section 477 of the Companies Act 2006 relating to small companies.

- The members have not required the company to obtain an audit of its accounts for the year in question in accordance with section 476,
- The trustees acknowledge their responsibilities for complying with the requirements of the Act with respect to accounting records and the preparation of accounts. These accounts have been prepared in accordance with the provisions applicable to companies subject to the small companies' regime.

The financial statements were approved and authorised for issue by the Board and signed on its behalf by:

DocuSigned by:

*Mr Gary Crutwell*

D48C6A63E769454.....

Gary Crutwell  
Trustee

30 June 2023

South Shields FC Foundation Limited  
Notes to the Financial Statements  
For the year ended 30 June 2022

## 1. Accounting Policies

### Basis of accounting

The financial statements have been prepared under the historical cost convention, except for investments which are included at market value and the revaluation of certain fixed assets and in accordance with the Charities SORP (FRS 102) 'Accounting and Reporting by Charities: Statement of Recommended Practice applicable to charities preparing their accounts in accordance with the Financial Reporting Standard applicable in the UK and Republic of Ireland (FRS 102) (effective 1 January 2015)', Financial Reporting Standard 102 the Financial Reporting Standard applicable in the UK and Republic of Ireland (FRS 102), and the Companies Act 2006.

South Shields FC Foundation Limited meets the definition of a public benefit entity under FRS 102. Assets and liabilities are initially recognised at historical cost or transaction value unless otherwise stated in the relevant accounting policy note(s).

### Going concern

The Trustees have assessed the financial viability of the Charity and have concluded that there is no reason why the Charity will not continue operating for at least 12 months following the year ending 30th June 2022. For this reason the financial accounts have been prepared on a going concern basis.

## 2. Income from donations and legacies

	2022	2021
	£	£
<b>Unrestricted funds</b>		
Donations received	149,917	93,459
Grants received	27,178	36,281
Sponsorships received	4,800	-
	<u>181,895</u>	<u>129,740</u>

## 3. Income from charitable activities

	2022	2021
	£	£
<b>Unrestricted funds</b>		
<i>Football camps and Activities</i>		
Income from charitable activities	42,912	14,798

## 4. Income earned from other activities

	2022	2021
	£	£
<b>Unrestricted funds</b>		
Fund raising events	16,917	4,934
Shop income	760	(14,860)
	<u>17,677</u>	<u>(9,926)</u>

South Shields FC Foundation Limited  
Notes to the Financial Statements Continued  
For the year ended 30 June 2022

**5. Expenditure on generating donations and legacies**

	<b>2022</b>	<b>2021</b>
	£	£
<b>Unrestricted funds</b>		
Donations	29,130	66,718
Subscriptions	871	1,780
	<b>30,001</b>	<b>68,498</b>

**6. Expenditure on other trading activities**

	<b>2022</b>	<b>2021</b>
	£	£
<b>Unrestricted funds</b>		
Fund raising events	40,230	37,606
	<b>40,230</b>	<b>37,606</b>

**7. Costs of charitable activities by fund type**

	<b>2022</b>	<b>2021</b>
	£	£
<b>Unrestricted funds</b>		
Grant Income	6,793	224
Fundraising	158,264	90,737
Support costs	16,821	12,204
	<b>181,878</b>	<b>103,165</b>

**8. Analysis of support costs**

	<b>2022</b>	<b>2021</b>
	£	£
<b>Governance costs</b>		
Accountancy fees	6,359	3,990
Premises costs	11	1,559
Motor and travel expenses	1,874	272
Other finance costs	4,909	3,608
Bank loan interest	3,020	1,440
Printing	253	322
Advertising	395	1,013
	<b>16,821</b>	<b>12,204</b>

South Shields FC Foundation Limited  
Notes to the Financial Statements Continued  
For the year ended 30 June 2022

**9. Net income/(expenditure) for the year**

This is stated after charging/(crediting):

	<b>2022</b>	<b>2021</b>
	<b>£</b>	<b>£</b>
Depreciation of owned fixed assets	25,324	28,538
Accountancy fees	6,359	3,990
Staff pension contributions	591	281
	<u>          </u>	<u>          </u>

**10. Staff costs and emoluments**

Total staff costs for the year ended 30 June 2022 were:

	<b>2022</b>	<b>2021</b>
	<b>£</b>	<b>£</b>
Salaries and wages	28,308	66,437
Pension costs	591	281
	<u>          </u>	<u>          </u>
	<b>28,899</b>	<b>66,718</b>
	<u>          </u>	<u>          </u>

	<b>2022</b>	<b>2021</b>
Total staff	12	13
	<u>          </u>	<u>          </u>
	<b>12</b>	<b>13</b>
	<u>          </u>	<u>          </u>

**11. Trustee remuneration and related party transactions**

There are no disclosable transactions with related parties in the year.

**12. Comparative for the Statement of Financial Activities**

The comparative year values on the Statement of Financial Activities are for unrestricted funds.

South Shields FC Foundation Limited  
Notes to the Financial Statements Continued  
For the year ended 30 June 2022

**13. Tangible fixed assets**

Cost or valuation	Sports equipment and Kit £	Computer Equipment £	Total £
At 01 July 2021	85,174	2,530	87,704
Additions	31,110	300	31,410
At 30 June 2022	<b>116,284</b>	<b>2,830</b>	<b>119,114</b>
<b>Depreciation</b>			
At 01 July 2021	64,375	1,246	65,620
Charge for year	24,818	506	25,324
At 30 June 2022	<b>89,192</b>	<b>1,752</b>	<b>90,944</b>
<b>Net book values</b>			
At 30 June 2022	<b>27,091</b>	<b>1,078</b>	<b>28,170</b>
At 30 June 2021	<b>20,800</b>	<b>1,284</b>	<b>22,084</b>

**14. Debtors**

	2022 £	2021 £
<b>Amounts due within one year:</b>		
Trade debtors	11,370	4,425
Other debtors	25,355	2,593
	<b>36,725</b>	<b>7,018</b>

**15. Creditors: amounts falling due within one year**

	2022 £	2021 £
Loans and overdrafts	10,000	10,000
Trade creditors	3,150	15,746
Other creditors	82,888	62,284
Accruals and deferred income	10,324	18,797
	<b>106,362</b>	<b>106,827</b>



South Shields FC Foundation Limited  
Notes to the Financial Statements Continued  
For the year ended 30 June 2022

**16. Movement in funds**

**Unrestricted Funds**

	Balance at 01/07/2021 £	Incoming resources £	Outgoing resources £	Balance at 30/06/2022 £
<i>General</i>				
General	(66,512)	252,484	(252,109)	(66,137)
	<u>(66,512)</u>	<u>252,484</u>	<u>(252,109)</u>	<u>(66,137)</u>

**Unrestricted Funds - Previous year**

	Balance at 01/07/2020 £	Incoming resources £	Outgoing resources £	Balance at 30/06/2021 £
<i>General</i>				
General	8,145	134,612	(209,269)	(66,512)
	<u>8,145</u>	<u>134,612</u>	<u>(209,269)</u>	<u>(66,512)</u>

**Purpose of unrestricted Funds**

General

To fund the general objectives of the charity.

**Purpose of restricted funds**

Sponsorship

To fund specific areas of the charities general objectives.

**17. Analysis of net assets between funds**

	Tangible fixed assets £	Net current assets / (liabilities) £	Creditors > one year £	Net Assets £
<b>Unrestricted funds</b>				
<i>General</i>				
General	28,170	(65,140)	(29,167)	(66,137)
	<u>28,170</u>	<u>(65,140)</u>	<u>(29,167)</u>	<u>(66,137)</u>

South Shields FC Foundation Limited  
Notes to the Financial Statements Continued  
For the year ended 30 June 2022

**Previous year**

	<b>Tangible fixed assets</b>	<b>Net current assets / (liabilities)</b>	<b>Creditors &gt; one year</b>	<b>Net Assets</b>
	<b>£</b>	<b>£</b>	<b>£</b>	<b>£</b>
<b>Unrestricted funds</b>				
<i>General</i>				
General	22,084	(49,429)	(39,167)	(66,512)
	<b>22,084</b>	<b>(49,429)</b>	<b>(39,167)</b>	<b>(66,512)</b>

South Shields FC Foundation Limited  
Detailed Statement of Financial Activities  
For the year ended 30 June 2022

	2022	2021
	£	£
<b>INCOME AND ENDOWMENT</b>		
<b>Donations and legacies</b>		
Donations	149,917	93,459
Grants receivable	27,178	36,281
Sponsorships	4,800	-
	<b>181,895</b>	<b>129,740</b>
<b>Charitable activities</b>		
Income from charitable activities (Football camps and Activities)	42,912	14,798
	<b>42,912</b>	<b>14,798</b>
<b>Other trading activities</b>		
Fund raising events	16,917	4,934
Merchandise sales	760	1,699
Harton welfare sales	-	(16,559)
	<b>17,677</b>	<b>(9,926)</b>
<b>Other income</b>		
Insurance claims income	10,000	-
	<b>10,000</b>	<b>-</b>
<b>Total incoming resources</b>	<b>252,484</b>	<b>134,612</b>
<b>EXPENDITURE</b>		
<b>Raising donations and legacies</b>		
Staff costs - wages & salaries	(28,308)	(66,437)
Staff costs - pension contributions	(591)	(281)
Training costs	(231)	-
Subscriptions	(871)	(1,780)
	<b>(30,001)</b>	<b>(68,498)</b>
<b>Other trading activities</b>		
Fund raising events	(1,019)	(530)
Harton welfare rent	(39,211)	(37,076)
	<b>(40,230)</b>	<b>(37,606)</b>
<b>Charitable activities</b>		
Cost of grant funded charitable activity (Grant Income)	(6,793)	(224)
Depreciation - owned assets (Fundraising)	(25,324)	(28,538)
League fines (Fundraising)	(409)	(339)
League fees (Fundraising)	(5,691)	(7,852)
Referee fees (Fundraising)	(11,265)	(5,488)
Venue hire (Fundraising)	(57,851)	(15,414)
Small sports equipment (Fundraising)	-	(746)
Coaching fees (Fundraising)	(56,282)	(31,893)
Trophies (Fundraising)	(1,442)	(467)
	<b>(165,057)</b>	<b>(90,961)</b>
<b>SUPPORT COSTS</b>		

South Shields FC Foundation Limited  
Detailed Statement of Financial Activities Continued  
For the year ended 30 June 2022

<b>Governance costs</b>		
Insurance (Grant Income)	(1,092)	(350)
Accountancy fees (Administration costs)	(6,359)	(3,990)
Motor and travel expenses (Administration costs)	(1,874)	(272)
Professional fees (Administration costs)	(813)	(984)
Printing (Administration costs)	(253)	(322)
Advertising (Administration costs)	(395)	(1,013)
Premises costs (Administration costs)	(11)	(1,559)
Other finance costs (Administration costs)	(4,909)	(3,608)
Bank loan interest (Administration costs)	(1,115)	(106)
	<b>(16,821)</b>	<b>(12,204)</b>
<b>Total resources expended</b>	<b>(252,109)</b>	<b>(209,269)</b>
<b>Net Income</b>	<b>375</b>	<b>(74,657)</b>

Charity number: 1176894

Company number: 10257450

(England and Wales)

South Shields FC Foundation Limited

Report of the Trustees and Unaudited Financial Statements

For the year ended 30 June 2022

South Shields FC Foundation Limited  
Contents Page  
For the year ended 30 June 2022

Report of the Trustees	1
Independent Examiner's Report to the Trustees	2
Statement of Financial Activities	3
Statement of Financial Position	4
Notes to the Financial Statements	5 to 10
Detailed Statement of Financial Activities	11 to 12

**South Shields FC Foundation Limited**  
**Report of the Trustees**  
**For the year ended 30 June 2022**

The Trustees, who are also directors for the purposes of company law, have pleasure in presenting their report and the financial statements for the charitable company for the year ended 30 June 2022. The Trustees have adopted the provisions of Accounting and Reporting by Charities: Statement of Recommended Practice applicable to charities preparing their accounts in accordance with the Financial Reporting Standard applicable in the UK and the Republic of Ireland (FRS 102) (effective 1 January 2015).

**OBJECTIVES AND ACTIVITIES**

**Objectives and aims**

The trustees have considered the Charity Commission's guidance on public benefit, including the guidance 'public benefit: running a charity (PB2)'.

**REFERENCE AND ADMINISTRATIVE INFORMATION**

<b>Name of Charity</b>	South Shields FC Foundation Limited
<b>Charity registration number</b>	1176894
<b>Company registration number</b>	10257450
<b>Principal address</b>	Mariners Park Shaftesbury Avenue South Shields Tyne and Wear NE323UP

**Trustees**

The trustees and officers serving during the year and since the year end were as follows:

Gary Crutwell  
 Stephen David Taylor  
 Martin Ronald Urwin  
 Keith Finnigan  
 John Watson  
 (Resigned: 27 December 2021)  
 Geoff Thompson  
 (Appointed: 01 July 2021)

<b>Independent examiner</b>	Beach Accountants Limited Chartered Certified Accountants 10 Blue Sky Way Monkton Business Park South South Tyneside NE31 2EQ
-----------------------------	--

Approved by the Board of Trustees and signed on its behalf by

DocuSigned by:

*Mr Gary Crutwell*

D48C6A63E769454...

30 June 2023

Gary Crutwell

South Shields FC Foundation Limited  
Independent Examiners Report to the Trustees  
For the year ended 30 June 2022

I report to the trustees on my examination of the accounts of the charitable company for the year ended 30 June 2022.

**Responsibilities and basis of report**

As the charity Trustees, who are also directors for the purposes of company law, are responsible for the preparation of the accounts in accordance with the requirements of the Companies Act 2006 ('the 2006 Act').

Having satisfied myself that the accounts of the Company are not required to be audited under Part 16 of the 2006 Act and are eligible for independent examination, I report in respect of my examination of your charity's accounts carried out under section 145 of the Charities Act 2011 ('the 2011 Act'). In carrying out my examination I have followed the Directions given by the Charity Commission under section 145(5)(b) of the 2011 Act.

**Independent examiners statement**

Since the Charitable company's gross income exceeded £250,000, your examiner must be a member of a body listed in section 145 of the 2011 Act. I confirm that I am qualified to undertake the examination by virtue of my membership of , which is one of the listed bodies.

I have completed my examination. I confirm that no matters have come to my attention in connection with the examination giving me cause to believe that in any material respect:

1. accounting records were not kept in respect of the Company as required by section 386 of the 2006 Act; or
2. the accounts do not accord with those records; or
3. the accounts do not comply with the requirements of section 396 of the 2006 Act other than any requirement that the accounts give a 'true and fair view' which is not a matter considered as part of an independent examination; or
4. the accounts have not been prepared in accordance with the methods and principles of the Statement of Recommended Practice for accounting and reporting by charities applicable to charities preparing their accounts in accordance with the Financial Reporting Standard applicable in the UK and Republic of Ireland (FRS 102).

I have no concerns and have come across no other matters in connection with the examination to which attention should be drawn in this report in order to enable a proper understanding of the accounts to be reached.

DocuSigned by:

*Gavin Spencer*

E7789DD5DB0540C...

Beach Accountants Limited  
Chartered Certified Accountants  
10 Blue Sky Way  
Monkton Business Park South  
South Tyneside  
NE31 2EQ

30 June 2023



South Shields FC Foundation Limited  
Statement of Financial Activities (including Income and Expenditure Account)  
For the year ended 30 June 2022

	Notes	Unrestricted funds £	2021 £
<b>Income and endowments from:</b>			
Donations and legacies	2	181,895	129,740
Charitable activities	3	42,912	14,798
Other trading activities	4	17,677	(9,926)
Other income		10,000	-
<b>Total</b>		<b>252,484</b>	<b>134,612</b>
<b>Expenditure on:</b>			
Raising funds	5/6	(70,231)	(106,104)
Charitable activities	7	(181,878)	(103,165)
<b>Total</b>		<b>(252,109)</b>	<b>(209,269)</b>
<b>Net income/expenditure</b>		<b>375</b>	<b>(74,657)</b>
<b>Reconciliation of funds</b>			
Total funds brought forward		(66,512)	8,145
<b>Total funds carried forward</b>		<b>(66,137)</b>	<b>(66,512)</b>

South Shields FC Foundation Limited  
Statement of Financial Position  
As at 30 June 2022

	Notes	2022 £	2021 £
<b>Fixed assets</b>			
Tangible assets	13	28,170	22,084
		<b>28,170</b>	<b>22,084</b>
<b>Current assets</b>			
Debtors	14	36,725	7,018
Cash at bank and in hand		4,497	50,380
		<b>41,222</b>	<b>57,398</b>
<b>Creditors: amounts falling due within one year</b>	15	(106,362)	(106,827)
<b>Net current assets</b>		<b>(65,140)</b>	<b>(49,429)</b>
<b>Total assets less current liabilities</b>		<b>(36,970)</b>	<b>(27,345)</b>
<b>Creditors: amounts falling due after more than one year</b>		(29,167)	(39,167)
<b>Net assets</b>		<b>(66,137)</b>	<b>(66,512)</b>
<b>The funds of the charity</b>			
Unrestricted income funds	16	(66,137)	(66,512)
<b>Total funds</b>		<b>(66,137)</b>	<b>(66,512)</b>

For the year ended 30 June 2022 the company was entitled to exemption from audit under section 477 of the Companies Act 2006 relating to small companies.

- The members have not required the company to obtain an audit of its accounts for the year in question in accordance with section 476,
- The trustees acknowledge their responsibilities for complying with the requirements of the Act with respect to accounting records and the preparation of accounts. These accounts have been prepared in accordance with the provisions applicable to companies subject to the small companies' regime.

The financial statements were approved and authorised for issue by the Board and signed on its behalf by:

DocuSigned by:

*Mr Gary Crutwell*

D48C6A63E769454.....

Gary Crutwell  
Trustee

30 June 2023

South Shields FC Foundation Limited  
Notes to the Financial Statements  
For the year ended 30 June 2022

## 1. Accounting Policies

### Basis of accounting

The financial statements have been prepared under the historical cost convention, except for investments which are included at market value and the revaluation of certain fixed assets and in accordance with the Charities SORP (FRS 102) 'Accounting and Reporting by Charities: Statement of Recommended Practice applicable to charities preparing their accounts in accordance with the Financial Reporting Standard applicable in the UK and Republic of Ireland (FRS 102) (effective 1 January 2015)', Financial Reporting Standard 102 the Financial Reporting Standard applicable in the UK and Republic of Ireland (FRS 102), and the Companies Act 2006.

South Shields FC Foundation Limited meets the definition of a public benefit entity under FRS 102. Assets and liabilities are initially recognised at historical cost or transaction value unless otherwise stated in the relevant accounting policy note(s).

### Going concern

The Trustees have assessed the financial viability of the Charity and have concluded that there is no reason why the Charity will not continue operating for at least 12 months following the year ending 30th June 2022. For this reason the financial accounts have been prepared on a going concern basis.

## 2. Income from donations and legacies

	2022	2021
	£	£
<b>Unrestricted funds</b>		
Donations received	149,917	93,459
Grants received	27,178	36,281
Sponsorships received	4,800	-
	<u>181,895</u>	<u>129,740</u>

## 3. Income from charitable activities

	2022	2021
	£	£
<b>Unrestricted funds</b>		
<i>Football camps and Activities</i>		
Income from charitable activities	42,912	14,798

## 4. Income earned from other activities

	2022	2021
	£	£
<b>Unrestricted funds</b>		
Fund raising events	16,917	4,934
Shop income	760	(14,860)
	<u>17,677</u>	<u>(9,926)</u>

South Shields FC Foundation Limited  
Notes to the Financial Statements Continued  
For the year ended 30 June 2022

**5. Expenditure on generating donations and legacies**

	<b>2022</b>	<b>2021</b>
	<b>£</b>	<b>£</b>
<b>Unrestricted funds</b>		
Donations	29,130	66,718
Subscriptions	871	1,780
	<b>30,001</b>	<b>68,498</b>

**6. Expenditure on other trading activities**

	<b>2022</b>	<b>2021</b>
	<b>£</b>	<b>£</b>
<b>Unrestricted funds</b>		
Fund raising events	40,230	37,606
	<b>40,230</b>	<b>37,606</b>

**7. Costs of charitable activities by fund type**

	<b>2022</b>	<b>2021</b>
	<b>£</b>	<b>£</b>
<b>Unrestricted funds</b>		
Grant Income	6,793	224
Fundraising	158,264	90,737
Support costs	16,821	12,204
	<b>181,878</b>	<b>103,165</b>

**8. Analysis of support costs**

	<b>2022</b>	<b>2021</b>
	<b>£</b>	<b>£</b>
<b>Governance costs</b>		
Accountancy fees	6,359	3,990
Premises costs	11	1,559
Motor and travel expenses	1,874	272
Other finance costs	4,909	3,608
Bank loan interest	3,020	1,440
Printing	253	322
Advertising	395	1,013
	<b>16,821</b>	<b>12,204</b>

South Shields FC Foundation Limited  
Notes to the Financial Statements Continued  
For the year ended 30 June 2022

**9. Net income/(expenditure) for the year**

This is stated after charging/(crediting):

	<b>2022</b>	<b>2021</b>
	<b>£</b>	<b>£</b>
Depreciation of owned fixed assets	25,324	28,538
Accountancy fees	6,359	3,990
Staff pension contributions	591	281
	<u>          </u>	<u>          </u>

**10. Staff costs and emoluments**

Total staff costs for the year ended 30 June 2022 were:

	<b>2022</b>	<b>2021</b>
	<b>£</b>	<b>£</b>
Salaries and wages	28,308	66,437
Pension costs	591	281
	<u>          </u>	<u>          </u>
	<b>28,899</b>	<b>66,718</b>
	<u>          </u>	<u>          </u>

	<b>2022</b>	<b>2021</b>
Total staff	12	13
	<u>          </u>	<u>          </u>
	<b>12</b>	<b>13</b>
	<u>          </u>	<u>          </u>

**11. Trustee remuneration and related party transactions**

There are no disclosable transactions with related parties in the year.

**12. Comparative for the Statement of Financial Activities**

The comparative year values on the Statement of Financial Activities are for unrestricted funds.

South Shields FC Foundation Limited  
Notes to the Financial Statements Continued  
For the year ended 30 June 2022

**13. Tangible fixed assets**

Cost or valuation	Sports equipment and Kit £	Computer Equipment £	Total £
At 01 July 2021	85,174	2,530	87,704
Additions	31,110	300	31,410
At 30 June 2022	<b>116,284</b>	<b>2,830</b>	<b>119,114</b>
<b>Depreciation</b>			
At 01 July 2021	64,375	1,246	65,620
Charge for year	24,818	506	25,324
At 30 June 2022	<b>89,192</b>	<b>1,752</b>	<b>90,944</b>
<b>Net book values</b>			
At 30 June 2022	<b>27,091</b>	<b>1,078</b>	<b>28,170</b>
At 30 June 2021	<b>20,800</b>	<b>1,284</b>	<b>22,084</b>

**14. Debtors**

	2022 £	2021 £
<b>Amounts due within one year:</b>		
Trade debtors	11,370	4,425
Other debtors	25,355	2,593
	<b>36,725</b>	<b>7,018</b>

**15. Creditors: amounts falling due within one year**

	2022 £	2021 £
Loans and overdrafts	10,000	10,000
Trade creditors	3,150	15,746
Other creditors	82,888	62,284
Accruals and deferred income	10,324	18,797
	<b>106,362</b>	<b>106,827</b>

South Shields FC Foundation Limited  
Notes to the Financial Statements Continued  
For the year ended 30 June 2022

**16. Movement in funds**

**Unrestricted Funds**

	Balance at 01/07/2021 £	Incoming resources £	Outgoing resources £	Balance at 30/06/2022 £
<i>General</i>				
General	(66,512)	252,484	(252,109)	(66,137)
	<u>(66,512)</u>	<u>252,484</u>	<u>(252,109)</u>	<u>(66,137)</u>

**Unrestricted Funds - Previous year**

	Balance at 01/07/2020 £	Incoming resources £	Outgoing resources £	Balance at 30/06/2021 £
<i>General</i>				
General	8,145	134,612	(209,269)	(66,512)
	<u>8,145</u>	<u>134,612</u>	<u>(209,269)</u>	<u>(66,512)</u>

**Purpose of unrestricted Funds**

General

To fund the general objectives of the charity.

**Purpose of restricted funds**

Sponsorship

To fund specific areas of the charities general objectives.

**17. Analysis of net assets between funds**

	Tangible fixed assets £	Net current assets / (liabilities) £	Creditors > one year £	Net Assets £
<b>Unrestricted funds</b>				
<i>General</i>				
General	28,170	(65,140)	(29,167)	(66,137)
	<u>28,170</u>	<u>(65,140)</u>	<u>(29,167)</u>	<u>(66,137)</u>

South Shields FC Foundation Limited  
Notes to the Financial Statements Continued  
For the year ended 30 June 2022

**Previous year**

	<b>Tangible fixed assets</b>	<b>Net current assets / (liabilities)</b>	<b>Creditors &gt; one year</b>	<b>Net Assets</b>
	<b>£</b>	<b>£</b>	<b>£</b>	<b>£</b>
<b>Unrestricted funds</b>				
<i>General</i>				
General	22,084	(49,429)	(39,167)	(66,512)
	<b>22,084</b>	<b>(49,429)</b>	<b>(39,167)</b>	<b>(66,512)</b>



South Shields FC Foundation Limited  
Detailed Statement of Financial Activities  
For the year ended 30 June 2022

	2022	2021
	£	£
<b>INCOME AND ENDOWMENT</b>		
<b>Donations and legacies</b>		
Donations	149,917	93,459
Grants receivable	27,178	36,281
Sponsorships	4,800	-
	<b>181,895</b>	<b>129,740</b>
<b>Charitable activities</b>		
Income from charitable activities (Football camps and Activities)	42,912	14,798
	<b>42,912</b>	<b>14,798</b>
<b>Other trading activities</b>		
Fund raising events	16,917	4,934
Merchandise sales	760	1,699
Harton welfare sales	-	(16,559)
	<b>17,677</b>	<b>(9,926)</b>
<b>Other income</b>		
Insurance claims income	10,000	-
	<b>10,000</b>	<b>-</b>
<b>Total incoming resources</b>	<b>252,484</b>	<b>134,612</b>
<b>EXPENDITURE</b>		
<b>Raising donations and legacies</b>		
Staff costs - wages & salaries	(28,308)	(66,437)
Staff costs - pension contributions	(591)	(281)
Training costs	(231)	-
Subscriptions	(871)	(1,780)
	<b>(30,001)</b>	<b>(68,498)</b>
<b>Other trading activities</b>		
Fund raising events	(1,019)	(530)
Harton welfare rent	(39,211)	(37,076)
	<b>(40,230)</b>	<b>(37,606)</b>
<b>Charitable activities</b>		
Cost of grant funded charitable activity (Grant Income)	(6,793)	(224)
Depreciation - owned assets (Fundraising)	(25,324)	(28,538)
League fines (Fundraising)	(409)	(339)
League fees (Fundraising)	(5,691)	(7,852)
Referee fees (Fundraising)	(11,265)	(5,488)
Venue hire (Fundraising)	(57,851)	(15,414)
Small sports equipment (Fundraising)	-	(746)
Coaching fees (Fundraising)	(56,282)	(31,893)
Trophies (Fundraising)	(1,442)	(467)
	<b>(165,057)</b>	<b>(90,961)</b>
<b>SUPPORT COSTS</b>		

South Shields FC Foundation Limited  
Detailed Statement of Financial Activities Continued  
For the year ended 30 June 2022

<b>Governance costs</b>		
Insurance (Grant Income)	(1,092)	(350)
Accountancy fees (Administration costs)	(6,359)	(3,990)
Motor and travel expenses (Administration costs)	(1,874)	(272)
Professional fees (Administration costs)	(813)	(984)
Printing (Administration costs)	(253)	(322)
Advertising (Administration costs)	(395)	(1,013)
Premises costs (Administration costs)	(11)	(1,559)
Other finance costs (Administration costs)	(4,909)	(3,608)
Bank loan interest (Administration costs)	(1,115)	(106)
	<b>(16,821)</b>	<b>(12,204)</b>
<b>Total resources expended</b>	<b>(252,109)</b>	<b>(209,269)</b>
<b>Net Income</b>	<b>375</b>	<b>(74,657)</b>