

Charity number: 1176544

HOLY TRINITY CHURCH ROEHAMPTON

FINANCIAL STATEMENTS

FOR THE YEAR ENDED 31 DECEMBER 2022

HOLY TRINITY CHURCH ROEHAMPTON

CONTENTS

Reference and administrative details of the charity, its trustees and advisers	3
PCC members' report	4
Independent examiner's report	10
Statement of financial activities	11
Balance sheet	12
Notes to the financial statements	13

HOLY TRINITY CHURCH ROEHAMPTON

REFERENCE AND ADMINISTRATIVE DETAILS OF THE CHARITY, ITS TRUSTEES AND ADVISERS FOR THE YEAR ENDED 31 DECEMBER 2022

PCC members

The Revd Joshua Rey	Vicar (appointed 29 th September 2020)
The Revd Claire Whitmore	Curate (appointed 25 th June 2022)
Mrs M. Woodroffe	Reader (appointed by APCM)
Ms J. Bishop	Reader (appointed by APCM), Parish Safeguarding Officer
Mr C. Enyiorji	Elected member
Ms R. Ferguson	Churchwarden and Deanery Synod (ex officio)
Mrs E. Leech	Churchwarden (ex officio)
Mr A. Housden	Elected member
Mr T. Kemoh	Elected member
Mrs S. Melhuish	Elected member
Mrs P. Harris	Elected member
Mrs A. Quinteros	Elected member, Treasurer
Mrs A. Rey	Elected member
Mrs P. Smiter	Elected member, Electoral Roll Officer
Mrs J. Vincett	Elected member

Charity registered number

1176544

Principal office

7 Ponsonby Road
London
SW15 4LA

Independent Examiner

Richard Holman FCA

HOLY TRINITY CHURCH ROEHAMPTON
PCC MEMBERS' REPORT
FOR THE YEAR ENDED 31 DECEMBER 2022

The PCC members present their annual report together with the financial statements of the charity Holy Trinity Roehampton (the church) from 1 January 2022 to 31 December 2022. The PCC members confirm that the Annual Report and financial statements of the church comply with the current statutory requirements, the Church Representation Rules and the provisions of the Statement of Recommended Practice (SORP), applicable to charities preparing their accounts in accordance with the Financial Reporting Standard applicable in the UK and Republic of Ireland (FRS 102) (effective 1 January 2015).

Mission and Worship

a. Aims and purposes

The PCC of Holy Trinity Roehampton is responsible for sustaining and growing the Parish Church of Roehampton.

b. Mission Action Plan

In July 2022 after a long period of prayer, reflection and deliberation, the PCC formally adopted its new Mission Action Plan. This determines the current objectives and activities of the Church. The full MAP is available as an annex to this report. In summary,

We are the Parish Church of Roehampton:

- This place needs a Parish Church
- This involves a thorough commitment to the place, and to the continuity of our community and worship
- Being that, the best we can, will ensure we all flourish

Thus we simply continue to build up

- Welcoming culture of loving relationships
- Engagement with young people, and nurturing disciples
- Empowerment of all to lead and do, with effective structures
- Committed spirituality and inspiring worship services
- Holistic small groups

Thematically our focus will be in the areas of

- Worship and prayer
- Children and young people
- Welcome, hospitality, and social events
- Festivals and community service

The mission statement “we are the Parish Church of Roehampton”, albeit that it may seem at first blush somewhat obvious, in reality says a good deal that is quite specific about this Church:

- It says who we aspire to be. Our tradition is in the broad middle of the Church of England. There is a classic quality to what we aspire to be. The building reinforces this: ask a child to draw a church and he or she will draw our building.
- It speaks to the missional needs and opportunities. Roehampton is isolated and deprived, and needs roots and heart. Unflashy, patient and dependable ministry of presence has a good impact in an estate context such as this, where a man in clericals will often be addressed as ‘Father’ and people turn to the Church at times of crisis (I have taken three huge funerals of local young men in the last year).

HOLY TRINITY CHURCH ROEHAMPTON

PCC MEMBERS' REPORT

FOR THE YEAR ENDED 31 DECEMBER 2022

- It gives us a good framework for choosing where to put time, energy and money. Our focus in the MAP is on (i) Worship and prayer (ii) Children and young people (iii) Welcome, hospitality, and social events (iv) Festivals and community service: the core business of a Parish Church. The aim is to concentrate on the simple and obvious, but to be intentional about doing it well, always recognising the need to draw people in.

Within this framework we are adopting some insights in Eric Ries, *The Lean Startup*, commended to us by the diocesan Director of Pioneering. We operate in uncertainty and change: South London in 2023, and a *fortiori* working with the Holy Spirit. We cannot work a five year plan. What we need is (1) a culture of risk taking and fast movement (2) a tight focus on the themes of the activities we do (3) a rigorous process of review.

At the end of the MAP is the format we are using to keep ourselves honest. To start a project we have to say which theme area it serves, and how this helps us be the Parish Church of Roehampton. At the review date we either (a) close down, and record lessons learnt, (b) continue development, (c) start to multiply, or (d) recognise it is taking off. We have yet to get to (d) with any of our projects, but in the next two years I hope one or more will become a self-sustaining ministry with its own team and resources. But by then the graveyard of abandoned projects should also be filling up. The mindset is that of a venture capital fund: we don't expect everything to flourish; backing some that fail is the cost of finding the winners. These are the projects on the go at present:

<i>Project</i>	<i>Status</i>	<i>Comments</i>
Christmas market stall	(b)	Low resource impact, seemed to bear some fruit: do again next year.
Christmas story time at the library	(b)	Has become a monthly event – continue to review whether a good use of resources.
Coffee Mondays (offering a cup of coffee outside the Church school)	(c)	Definitely worth pursuing; already seeing fruitful relationships develop; next level is a tea bike to take it round other schools in the Parish.
Nativity trail	(a)	A wonderful idea that unfathomably didn't get any traction at all: impact readily measurable by attendance at Crib Service, and nobody who attended was there because of the trail.
Pilgrim Course	(c)	First one had three attendees; second has six; a welcome / nurture group has to be core business.
Sheltered Accommodation Carols	(a)	Low take up, high opportunity cost to get it going.
Epiphany Stars (distributing symbols of hope in the Parish)	(b)	Worth doing next year as impact hard to gauge until we engage with people in the same way again.
Christmas Campfire	(c)	Has become a roughly monthly occurrence, pegged to events in the Calendar. Growing and gaining a modest following; more than two dozen (half of them children) turned out for Shrove Tuesday; not without its challenges but clearly worth pursuing.
Cosy Corner (a warm space)	(b)	Contract with the Local Authority commits us up to Christmas; a good service but so far quite time hungry and relatively low impact missionally; key decision point is end Nov: up or out at that point.
Mindful Music (monthly)	(c)	Gaining a following of reflective community minded people not yet committed to Church
125 th anniversary exhibitions / concerts	na	Hoping to get lots of parishioners through the doors in June, but not yet able to assess.
Saturday morning homework club	na	Recently started at the initiative of one of the parents at the school (possibly emboldened by Coffee Mondays); no assessment yet.
Women's Bible Study (fortnightly)	na	Hasn't run long enough for a meaningful review

HOLY TRINITY CHURCH ROEHAMPTON
PCC MEMBERS' REPORT
FOR THE YEAR ENDED 31 DECEMBER 2022

Team

Ministry in Roehampton is a big job that needs many hands and many complementary outlooks: the work cannot be done by the Vicar alone. The required team is beginning to come together. There is growing willingness among lay people to get involved in mission. Since Petertide 2022 we have had a very able Curate, The Revd Claire Whitmore, a person of great energy and imagination, and spiritual warmth and depth. She is on the Pioneer track, and has a very incarnational sense of mission, rooted in place and people, so she fits very well with what we are trying to achieve.

We are putting together a package to recruit a Children and Young People Missioner. We have three year commitments of grant funding for a modest salary and a deal with Mission Housing, a charity that helps Key Christian Workers to buy or rent an affordable home in London. They aim to assemble capital from sympathetic lenders, buy a flat, and rent it to us well under the market rate so we can offer a package not far off what a Curate gets. This would have been in place by now, except for the debacle of the Truss premiership which has made it impossible for Mission Housing to get any of their deals done this year.

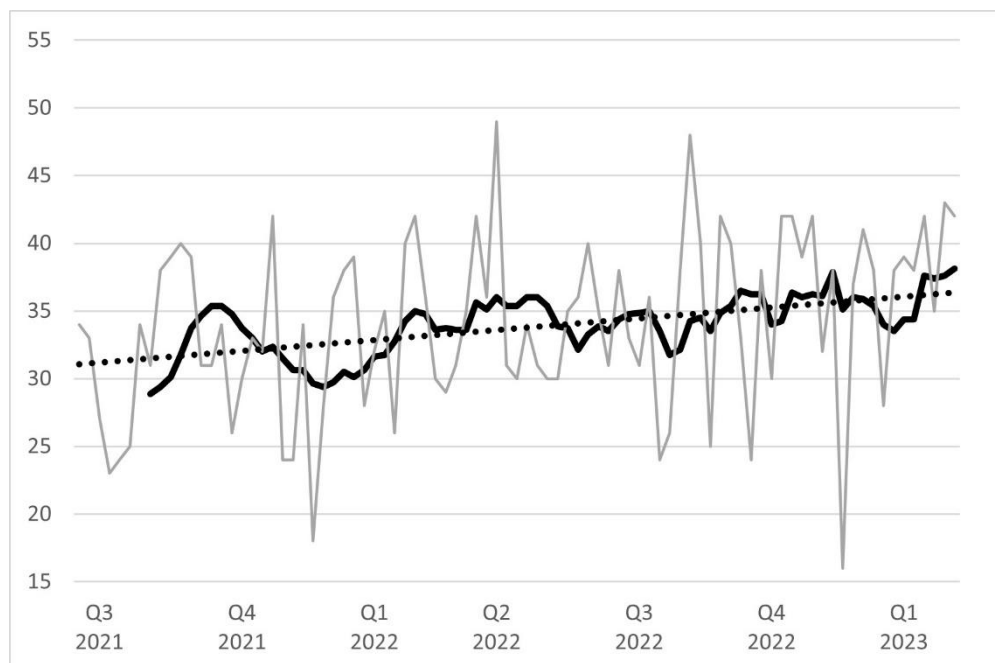
We still have two readers, both actively engaged in different ways on the PCC, preaching, singing, taking funerals and so on. The Chaplain of Whitelands College is often in our Pulpit, and collaborates on seasonal activities. One of our lay people is now preaching. One or two retired priests are made very welcome when they come to preach and preside.

Ministry in the Parish Church

All this has to rest on a foundation of a worshipping community that is prayerful, engaged, and energetic. Much energy goes into nurturing this: an end in itself, and also a means to an end: our mission depends on us being a community people want to join.

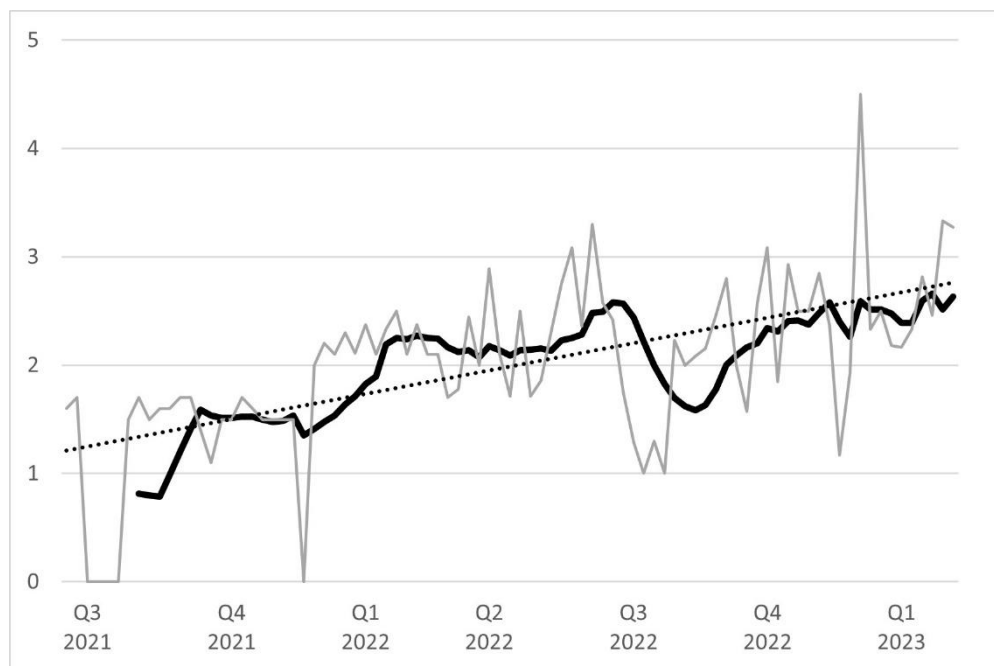
The core of this is the daily and weekly prayer and worship. We share the Sacraments every Sunday and Wednesday, pray Morning and Evening Prayer daily. We sing Evening Prayer, using the Common Worship Psalter set to the psalm tones of Caldey Abbey, and a growing number of people from within and beyond the regular congregation drop in from time to time to sing the office or pray in the Nave – occasionally now in double figures. The congregation on a Sunday morning has also continued to grow slowly. We are sometimes close to the critical mass at which the Church feels full and warm, and people have the confidence to worship.

This chart shows Communicants on a Sunday, from the date of the final end of COVID restrictions in 2021, with an eight week rolling average and trend line:



HOLY TRINITY CHURCH ROEHAMPTON
PCC MEMBERS' REPORT
FOR THE YEAR ENDED 31 DECEMBER 2022

This shows weekly average attendance at the daily offices for the same period:



We have of course also kept up the usual round of festival services, sometimes supported by a nascent Festival Choir of local professionals and semi-professionals. Remembrance is particularly well supported locally with a brass band last year. The Church was candlelit for evening services in Advent, Christmas and Epiphany, which draws our neighbours in.

The work of the Parish goes on as ever with the usual round of baptisms, weddings and funerals. We now keep the Church open during the day. There is much interaction with the Church School. Concerts, educational visits, public meetings, polling stations and so on draw people in: we want the building to be a community asset. Visiting and hospitality continues.

Planned giving is still disappointing and below the level needed for long term stability. The PCC has adopted a Giving Strategy: this is slow work as the giving culture of the Church has not been historically strong and it is among the very lowest contributors to diocesan funds (less than 15% of the cost of providing ministry here, even without the additional benefit of a Curate). A copy of the Giving Strategy is annexed to this report.

The Building is sound, but will need mid-level remedial works in this Quinquennium. Funds were raised during 2022 for a ring of eight bells which will be installed in 2023, thanks to the generosity of a number of bell-ringing enthusiasts in the wider community. Further plans (which have to some degree come to fruition already in 2023) were laid to clear out a redundant room that has been full of the detritus of the old organ since it was remodelled forty years ago, which will free up meeting space and make room for better toilets; to make some pews movable, creating flexible space at the West end for festivities; to update our sound system.

Highlights of the Year

- Choral Evensong was sung by candlelight for Candlemas
- With some sorrow, but joyful thanks for a long and fruitful ministry, we celebrated the retirement of M Woodroffe after 36 years as Director of Music
- The Standard of the London Branch of the Aircrew Association was committed to the Vicar for safekeeping by former WO2 Bill Richardson, and laid up in perpetuity in the Parish Church, above the Second World War memorial board, at a ceremony on Sunday March 6th attended by our MP, and by 82 Squadron Air Cadets.
- We lit the Church tower in yellow and blue and established a regular pattern of ecumenical Prayers for Ukraine
- A Lent Group read *Beginning to Pray* by Anthony Bloom

HOLY TRINITY CHURCH ROEHAMPTON

- The ecumenical Good Friday Walk of Witness was re-established and well-supported
- We hosted a hustings and a polling station for the Local Elections in May
- A Pilgrim Course was run in the Vicarage over the Summer for a handful of people interested in deepening their faith, some of whom were anticipating Confirmation.
- We held some very joyful celebratory events for the Platinum Jubilee of HM Queen Elizabeth including a wonderful variety concert
- We enjoyed a bring and share picnic on the Heath after our Patronal Festival in June
- Our new Curate was Licensed to the Parish upon her Ordination to the Diaconate at Petertide
- Mindful Music continued to draw a goodly number from the congregation and wider local community to enjoy some well chosen recorded music on the first Wednesday of the month.
- We hosted the annual meeting of the Commons Conservators in August
- We did what the Parish Church needed to do in the period of mourning for our late Queen: a good, and well attended, memorial service the Sunday after the death was announced; Church open all week for private prayer and signing the Book of Condolence; another well attended service on the eve of the Funeral; a good gathering to watch the funeral on the big screen in the North Transept. May she rest in peace and rise in glory.
- The Church building hosted "The Monodrama of Macbeth" in September, and a good crowd turned out to enjoy this compelling drama.
- A memorable Harvest festival was kept
- Our Act of Remembrance on Sunday November 13th, supported by the Putney and Wimbledon Brass Band, was attended by many from the local congregation
- The Christmas campfire started off what is becoming a recurring Campfire Church
- Christmas services were well attended and enhanced by yet more glorious candlelight.
- A Worship Committee was constituted which has met regularly and done good work to tighten up and resource our worship together, revising our order of service and selecting a new and more accessible Mass setting
- We received a generous anonymous donation of £30,000 which the PCC has designated as the Growth Fund, establishing a Growth Committee to make recommendations about its use, which has had several productive meetings

Above all we have worshipped together in spirit and truth, and prayed daily.

Financial review

A summary of our accounts for 2022 is as follows:

Total income in 2022	£92,234	(2021: £36,485)
Total expenditure in 2022	£50,655	(2021: £49,463)

a. Going concern

After making appropriate enquiries, the trustees have a reasonable expectation that the charity has adequate resources to continue in operational existence for the foreseeable future. For this reason they continue to adopt the going concern basis in preparing the financial statements. Further details regarding the adoption of the going concern basis can be found in the Accounting Policies.

b. Principal risks and uncertainties

The core risks to the church remain:

- falling congregation which leads to lower levels of unrestricted income and critical lack of 'manpower' for outreach and to sustain the church
- essential but costly building repairs
- losing our volunteer expertise

c. Reserves policy

The PCC aims to have three months running costs in reserves at any given time.

HOLY TRINITY CHURCH ROEHAMPTON
PCC MEMBERS' REPORT
FOR THE YEAR ENDED 31 DECEMBER 2022

Structure, governance and management

a. Constitution

Holy Trinity Church is situated in Ponsonby Road, Roehampton. It is part of the Diocese of Southwark within the Church of England. The correspondence address is Holy Trinity Church, Ponsonby Road, Roehampton SW15 4LA. The PCC is a body corporate (PCC Powers Measure 1956, Church Representation Rules 2006) and a charity who registered with the Charity Commission in January 2018 with the charity number 1176544.

b. Method of appointment or election of PCC members


The method of appointment of PCC members is set out in the Church Representation Rules.

c. Organisation structure and decision making

At Holy Trinity the membership of the PCC normally consists of the incumbent, churchwardens, the reader, deanery synod reps and members elected by those members of the congregation who are on the Electoral Roll of the church. All those who attend our services / members of the congregation are encouraged to register on the Electoral Roll and stand for election to the PCC.

The PCC members are responsible for making decisions on all matters of general concern and importance to the parish including deciding on how the funds of the PCC are to be spent. The full PCC met eight times during the year. Given its wide responsibilities, the PCC has a separate sub-committee for finance – this is responsible to the PCC and reports back to it regularly with updates from the meetings being received by the full PCC and salient points and decisions discussed as necessary.

This report was approved on behalf of the APCM by the PCC on 18th July 2023, exercising an authority delegated to it by the APCM on 21st May 2023, and signed on behalf of the PCC by:


.....
The Revd Joshua Rey, Vicar


.....
Mrs Rose Ferguson, Churchwarden

HOLY TRINITY CHURCH ROEHAMPTON

INDEPENDENT EXAMINER'S REPORT TO THE PCC MEMBERS OF HOLY TRINITY CHURCH ROEHAMPTON (THE 'CHARITY')

I report to the charity PCC members on my examination of the accounts of the charity for the year ended 31 December 2022.

This report is made solely to the charity's PCC members, as a body, in accordance with Part 4 of the Charities (Accounts and Reports) Regulations 2008. My work has been undertaken so that I might state to the charity's PCC members those matters I am required to state to them in an Independent examiner's report and for no other purpose. To the fullest extent permitted by law, I do not accept or assume responsibility to anyone other than the charity and the charity's PCC members as a body, for my work or for this report.

Responsibilities and basis of report

As the PCC members of the charity you are responsible for the preparation of the accounts in accordance with the requirements of the Charities Act 2011 ('the 2011 Act').

I report in respect of my examination of the charity's accounts carried out under section 145 of the 2011 Act and in carrying out my examination I have followed all the applicable Directions given by the Charity Commission under section 145(5)(b) of the 2011 Act.

Independent examiner's statement

Your attention is drawn to the fact that the charity has prepared the accounts in accordance with Accounting and Reporting by Charities: Statement of Recommended Practice applicable to charities preparing their accounts in accordance with the Financial Reporting Standard applicable in the UK and Republic of Ireland (FRS 102) in preference to the Accounting and Reporting by Charities: Statement of Recommended Practice issued on 1 April 2005 which is referred to in the extant regulations but has been withdrawn.

I understand that this has been done in order for the accounts to provide a true and fair view in accordance with the Generally Accepted Accounting Practice effective for reporting periods beginning on or after 1 January 2015.

I have completed my examination. I can confirm that no matters have come to my attention in connection with the examination giving me cause to believe that in any material respect:

1. accounting records were not kept in respect of the charity as required by section 130 of the 2011 Act; or
2. the accounts do not accord with those records; or
3. the accounts do not comply with the applicable requirements concerning the form and content of accounts set out in the Charities (Accounts and Reports) Regulations 2008 other than any requirement that the accounts give a 'true and fair' view which is not a matter considered as part of an independent examination.

I have no concerns and have come across no other matters in connection with the examination to which attention should be drawn in this report in order to enable a proper understanding of the accounts to be reached.

Signed:

Dated: 18th July 2023



Richard Holman FCA
Chartered Accountant

HOLY TRINITY CHURCH ROEHAMPTON

STATEMENT OF FINANCIAL ACTIVITIES
FOR THE YEAR ENDED 31 DECEMBER 2022

		Unrestricted & Designated funds	Restricted funds	Total funds	Unrestricted & Designated Funds	Restricted funds	Total funds
	Note	2022 £	2022 £	2022 £	2021 £	2021 £	2021 £
£							
Income from:							
Donations and legacies	2	62,537	25,369	87,906	31,669	2,547	34,216
Charitable activities	3	3,124	1,077	4,201	4,201	-	2,259
Investments	4	127	-	127	10	-	10
Total income		65,788	26,446	92,234	33,938	2,547	36,485
Expenditure on:							
Charitable activities		43,104	7,551	50,655	35,370	14,093	49,463
Total expenditure	5	43,104	7,551	50,655	35,370	14,093	49,463
Transfers between funds		(1,570)	1,570	-	-	-	-
Net income / (expenditure) before other recognised gains and losses		21,114	20,465	41,579	(1,432)	(11,546)	(12,978)
(Loss) / Gain on investments		(36)	-	(36)	253	-	253
Net movement in funds		21,078	20,465	41,543	(1,179)	(11,546)	(12,725)
Reconciliation of funds:							
Total funds brought forward		27,012	27,062	54,074	28,191	38,608	66,799
Total funds carried forward		48,090	47,527	95,617	27,012	27,062	54,074

The notes on pages 13 to 23 form part of these financial statements.

HOLY TRINITY CHURCH ROEHAMPTON

**BALANCE SHEET
AS AT 31 DECEMBER 2022**

	Note	2022	2021
		£	£
Fixed Assets			
Tangible Assets	12	6,464	8,261
Investments		1,009	1,045
			9,306
Current assets			
Debtors	13	7,202	8,886
Inventory		72	84
Cash at bank and in hand		86,571	38,973
		93,845	47,944
Creditors: amounts falling due within one year	14	(5,701)	(3,175)
Net current assets		88,144	44,769
Net assets		95,617	54,074
Charity Funds			
Restricted funds	15	46,449	27,062
Unrestricted funds	15	49,168	27,012
Total funds		95,617	54,074

The notes on pages 13 to 23 form part of these financial statements.

The financial statements were approved by the PCC on 18th July 2023 on behalf of the APCM, pursuant to a resolution of the APCM on 21st May 2023 and signed on behalf of the meeting, by:


The Revd Joshua Rey, Vicar


Mrs Rose Ferguson, Churchwarden

HOLY TRINITY CHURCH ROEHAMPTON
NOTES TO THE FINANCIAL STATEMENTS
FOR THE YEAR ENDED 31 DECEMBER 2022

1. Accounting policies

1.1 Basis of preparation of financial statements

The financial statements have been prepared to give a 'true and fair' view and have departed from the Charities (Accounts and Reports) Regulations 2008 only to the extent required to provide a 'true and fair' view. This departure has involved following the Charities SORP (FRS 102) published on 16 July 2014 rather than the Accounting and Reporting by Charities: Statement of Recommended Practice effective from 1 April 2005 which has since been withdrawn.

The financial statements have been prepared under the historical cost convention with items recognised at cost or transaction value unless otherwise stated in the relevant notes to these accounts. The financial statements have been prepared in accordance with the Statement of Recommended Practice: Accounting and Reporting by Charities preparing their accounts in accordance with the Financial Reporting Standard applicable in the UK and Republic of Ireland (FRS 102) issued on 16 July 2014 and Financial Reporting Standard applicable in the United Kingdom and Republic of Ireland (FRS 102) and Charities Act 2011.

Holy Trinity Church Roehampton constitutes a public benefit entity as defined by FRS 102.

1.2 Income

All income is recognised once the charity has entitlement to the income, it is probable that the income will be received and the amount of income receivable can be measured reliably.

For legacies, entitlement is taken as the earlier of the date on which either: the charity is aware that probate has been granted, the estate has been finalised and notification has been made by the executor(s) to the Trust that a distribution will be made, or when a distribution is received from the estate. Receipt of a legacy, in whole or in part, is only considered probable when the amount can be measured reliably and the charity has been notified of the executor's intention to make a distribution. Where legacies have been notified to the charity, or the charity is aware of the granting of probate, and the criteria for income recognition have not been met, then the legacy is treated as a contingent asset and disclosed if material.

Gifts in kind donated for distribution are included at valuation and recognised as income when they are distributed to the projects. Gifts donated for resale are included as income when they are sold. Donated facilities are included at the value to the charity where this can be quantified and a third party is bearing the cost. No amounts are included in the financial statements for services donated by volunteers.

Income tax recoverable in relation to donations received under Gift Aid or deeds of covenant is recognised at the time of the donation.

Other income is recognised in the period in which it is receivable and to the extent the goods have been provided or on completion of the service.

HOLY TRINITY CHURCH ROEHAMPTON
NOTES TO THE FINANCIAL STATEMENTS
FOR THE YEAR ENDED 31 DECEMBER 2022

1. Accounting policies (continued)

1.3 Expenditure

Expenditure is recognised once there is a legal or constructive obligation to transfer economic benefit to a third party, it is probable that a transfer of economic benefits will be required in settlement and the amount of the obligation can be measured reliably. Expenditure is classified by activity. The costs of each activity are made up of the total of direct costs and shared costs, including support costs involved in undertaking each activity. Direct costs attributable to a single activity are allocated directly to that activity. Shared costs which contribute to more than one activity and support costs which are not attributable to a single activity are apportioned between those activities on a basis consistent with the use of resources.

Support costs are those costs incurred directly in support of expenditure on the objects of the charity. Governance costs are those incurred in connection with administration of the charity and compliance with constitutional and statutory requirements.

Charitable activities and Governance costs are costs incurred on the charity's educational operations, including support costs and costs relating to the governance of the charity apportioned to charitable activities.

Grants payable are charged in the year when the offer is made except in those cases where the offer is conditional, such grants being recognised as expenditure when the conditions attaching are fulfilled. Grants offered subject to conditions which have not been met at the year end are noted as a commitment, but not accrued as expenditure.

All expenditure is inclusive of irrecoverable VAT.

1.4 Capital expenditure

Expenditure on church and office plant and equipment in excess of £500, net of recoverable VAT, is capitalized and written off over the expected useful life of the asset by the straight line method. Depreciation rates applied in 2022 were:

Church plant (boiler)	10% p.a.
Office equipment	25% p.a.

1.5 Interest receivable

Interest on funds held on deposit is included when receivable and the amount can be measured reliably by the charity; this is normally upon notification of the interest paid or payable by the Bank.

1.6 Quoted Investments

Quoted investments are shown at market value as at 31st December 2022.

1.7 Debtors

Trade and other debtors are recognised at the settlement amount. Prepayments are valued at the amount prepaid.

1.8 Cash at Bank and in hand

Cash at bank and in hand includes cash and short term highly liquid investments with a short maturity of three months or less from the date of acquisition or opening of the deposit or similar account.

HOLY TRINITY CHURCH ROEHAMPTON

NOTES TO THE FINANCIAL STATEMENTS
FOR THE YEAR ENDED 31 DECEMBER 2022

1. Accounting policies (continued)

1.9 Liabilities and provisions

Liabilities are recognised when there is an obligation at the Balance sheet date as a result of a past event, it is probable that a transfer of economic benefit will be required in settlement, and the amount of the settlement can be estimated reliably. Liabilities are recognised at the amount that the charity anticipates it will pay to settle the debt or the amount it has received as advanced payments for the goods or services it must provide.

1.10 Financial instruments

The charity only has financial assets and financial liabilities of a kind that qualify as basic financial instruments. Basic financial instruments are initially recognised at transaction value and subsequently measured at their settlement value with the exception of bank loans which are subsequently measured at amortised cost using the effective interest method.

1.11 Pensions

The charity operates a defined contribution pension scheme and the pension charge represents the amounts payable by the charity to the fund in respect of the year.

1.12 Fund accounting

General funds are unrestricted funds which are available for use at the discretion of the PCC members in furtherance of the general objectives of the charity and which have not been designated for other purposes.

Designated funds comprise unrestricted funds that have been set aside by the PCC members for particular purposes. The aim and use of each designated fund is set out in the notes to the financial statements.

Restricted funds are funds which are to be used in accordance with specific restrictions imposed by donors or which have been raised by the charity for particular purposes. The costs of raising and administering such funds are charged against the specific fund. The aim and use of each restricted fund is set out in the notes to the financial statements.

2. Income from donations and legacies

	<i>Unrestricted funds</i>	<i>Designated funds</i>	<i>Restricted Funds</i>	<i>Total funds</i>	<i>Total funds</i>
	2022	2022	2022	2022	2021
	£				£
<i>Donations, congregational giving & special collections</i>	30,137	30,000	20,969	81,106	<i>29,045</i>
<i>Grants</i>	1,400	-	2,400	3,800	<i>5,171</i>
<i>Legacies</i>	1,000	-	2,000	3,000	-
<i>Total donations and legacies</i>	32,537	30,000	25,369	87,906	<i>34,216</i>
<i>Total 2021</i>	<i>31,669</i>	-	<i>2,547</i>	<i>34,216</i>	

HOLY TRINITY CHURCH ROEHAMPTON

**NOTES TO THE FINANCIAL STATEMENTS
FOR THE YEAR ENDED 31 DECEMBER 2021**

3. Income from charitable activities

	Unrestricted funds	Restricted funds	Total Funds	Total funds
	2022 £	2022	2022	2021 £
Wedding and Funeral fees	902	-	902	1,168
Letting income	1,550	-	1,550	900
Votive candles	279	-	279	111
VAT reclaim and sundry income	349	1,077	1,077	-
Christmas cards	44	-	44	80
	3,124	1,077	4,201	2,259
<i>Total 2021</i>	<i>2,259</i>	<i>-</i>	<i>2,259</i>	

4. Investment income

	Unrestricted funds	Restricted funds	Total funds	Total funds
	2022 £	2022	2022	2021
Dividends and bank interest receivable	127	-	127	10
	10	-	10	
<i>Total 2021</i>	<i>10</i>	<i>-</i>	<i>10</i>	

5. Analysis of Expenditure by type

	Staff costs 2022 £	Other costs 2022 £	Total 2022 £	Total 2021 £
Diocesan Parish Support Fund	-	10,000	10,000	10,000
Church running costs	-	27,585	27,585	21,501
Ministry costs	-	5,585	5,585	5,578
Support costs	-	6,985	6,985	12,143
Grants	-	500	500	240
Charitable activities	-	50,655	50,655	49,462
Expenditure on governance	-	-	-	-
	-	50,655	50,655	49,462
<i>Total 2021</i>	<i>8,397</i>	<i>41,065</i>	<i>49,462</i>	

HOLY TRINITY CHURCH ROEHAMPTON

NOTES TO THE FINANCIAL STATEMENTS

FOR THE YEAR ENDED 31 DECEMBER 2021

6. Analysis of expenditure by activities

	Activities undertaken directly 2022 £	Grant funding of activities 2022	Support costs 2022	Total 2022	Total 2021
Diocesan parish share	10,000	-	-	10,000	6,333
Church running costs	21,501	-	12,143	33,644	67,322
Ministry costs	5,578	240	-	5,818	4,512
Governance costs	-	-	-	-	-
Total 2021	37,079	240	12,143	49,462	78,167
Total 2020	54,416	214	23,537	78,167	

7. Direct costs

	Parish Support Fund	Church Running Expense	Ministry costs	Total 2021	Total 2021
	£	£	£	£	£
Diocesan Parish Support Fund	10,000	-	-	10,000	10,000
Utilities	-	7,850	-	7,850	3,890
Insurance	-	8,179	-	8,179	7,719
Church licences	-	161	-	161	80
Repairs and maintenance	-	1,577	-	1,577	3,207
Depreciation of boiler	-	1,078	-	1,078	1,078
Renewal of Lighting	-	6,462	-	6,462	1,156
Bell fund	-	-	-	-	430
Audiovisual and IT	-	44	-	44	821
Cleaning	-	19	-	19	-
Flowers	-	-	-	-	156
Gifts	-	386	-	386	1,569
Hospitality	-	740	-	740	54
Subscriptions and Training	-	8	-	8	62
Advertising	-	1,081	-	1,081	1,279
Organist, choir, music	-	-	3,359	3,359	4,000
Church supplies	-	-	1,770	1,770	373
Diocesan fees	-	-	-	-	894
Other ministry costs	-	-	456	456	311
	10,000	27,585	5,585	43,170	37,079
Total 2021	10,000	21,501	5,578	37,079	

HOLY TRINITY CHURCH ROEHAMPTON

NOTES TO THE FINANCIAL STATEMENTS
FOR THE YEAR ENDED 31 DECEMBER 2021

8. Analysis of grants

	Grants	Total	<i>Total</i>
	2022	2022	<i>2021</i>
	£	£	<i>£</i>
Donations to individuals	500	500	-
Donations to institutions	-	-	240
<i>Total 2021</i>	<i>240</i>	<i>240</i>	

9. Support costs

	Church running costs	Total	<i>Total</i>
	costs	2022	<i>2021</i>
	£	£	<i>£</i>
Clergy expenses	317	317	223
Curate's Housing	3,125	3,125	-
Postage and carriage	75	75	267
Office expenses, printing and stationery	785	785	614
Bank fees and other administration expenses	720	720	563
Internet and telephone costs	820	820	913
Software licence	33	33	97
Website	391	391	202
Office equipment depreciation	719	719	719
Payroll costs	-	-	148
Administrator salary	-	-	8,267
Pension cost	-	-	130
	6,985	6,985	<i>12,143</i>
<i>Total 2021</i>	<i>12,143</i>	<i>12,143</i>	

HOLY TRINITY CHURCH ROEHAMPTON

NOTES TO THE FINANCIAL STATEMENTS
FOR THE YEAR ENDED 31 DECEMBER 2022

10. Remuneration and Benefits

During the year, no PCC members received any remuneration (2021 - £NIL).

During the year, no PCC members received any benefits in kind (2021 - £NIL).

11. Staff costs

Staff costs were as follows:

	2022 £	2021 £
Wages and salaries	-	8,267
Social security costs	-	-
Other pension costs	-	130
	<u>-</u>	<u>8,397</u>

The average number of persons employed by the charity during the year was as follows:

2022 *2021*

Nil *Nil*

12. Fixed assets

	Unrestricted £	Restricted £	Total £	2021 £
<u>Cost</u>				
At 1 st January 2022	2,876	10,776	13,652	13,652
Additions during the year	-	-	-	-
At 31st December 2022	<u>2,876</u>	<u>10,776</u>	<u>13,652</u>	<u>13,652</u>
	Unrestricted £	Restricted £	Total £	2020 £
<u>Depreciation</u>				
At 1 st January 2022	2,157	3,234	5,391	3,594
Charge for the year	719	1,078	1,797	1,797
At 31st December 2022	<u>2,876</u>	<u>4,312</u>	<u>7,188</u>	<u>5,391</u>
<u>Net book value</u>				
At 31st December 2022	<u>-</u>	<u>6,464</u>	<u>6,464</u>	<u>8,261</u>
At 31st December 2021	<u>719</u>	<u>7,542</u>	<u>8,261</u>	<u>10,058</u>

HOLY TRINITY CHURCH ROEHAMPTON

**NOTES TO THE FINANCIAL STATEMENTS
FOR THE YEAR ENDED 31 DECEMBER 2022**

13. Debtors

	2022 £	2021 £
Prepayments and accrued income	1,487	570
Tax recoverable	5,715	8,316
	<u>7,202</u>	<u>8,886</u>

14. Creditors: Amounts falling due within one year

	2022 £	2021 £
Other creditors	1,572	2,075
Accruals	4,129	1,100
	<u>5,701</u>	<u>3,175</u>

15. Statement of funds

Statement of funds - current year

	Balance at 1 January			Transfers between Funds	Unrealised Gains / (Losses)	Balance at 31 December 2022
	2022 £	Income £	Expenditure £	£	£	£
Designated funds						
Growth fund	-	30,000	(3,815)	-	-	26,185
Fabric fund	9,925	-	(51)	(1,570)	-	8,304
	<u>9,925</u>	<u>30,000</u>	<u>(3,866)</u>	<u>(1,570)</u>	<u>-</u>	<u>34,489</u>
General funds						
General Fund	13,677	35,788	(38,160)	-	(36)	11,269
Other General funds	3,410	-	-	-	-	3,410
	<u>17,087</u>	<u>35,788</u>	<u>(38,160)</u>	<u>-</u>	<u>(36)</u>	<u>14,679</u>
Total Unrestricted funds	<u>27,012</u>	<u>65,788</u>	<u>(42,026)</u>	<u>(1,570)</u>	<u>(36)</u>	<u>49,168</u>
Restricted funds						
Boiler fund (formerly Development fund)	12,263	-	(1,078)	-	-	11,185
Sunday School fund	518	-	(182)	-	-	336
Administration Support fund	10,169	-	-	-	-	10,169
McKinney Memorial fund	1,446	-	-	-	-	1,446
Audiovisual and IT grant	124	-	(40)	-	-	84
Vicar's Discretionary Fund	727	1,400	(600)	-	-	1,527
Bell Fund	-	20,702	-	-	-	20,702
Youth Missioner	-	1,000	-	-	-	1,000
Spire lighting	1,815	3,077	(6,462)	1,570	-	-
	<u>27,062</u>	<u>26,179</u>	<u>(8,362)</u>	<u>1,570</u>	<u>-</u>	<u>46,449</u>
Total of Funds	<u>54,074</u>	<u>91,967</u>	<u>(50,388)</u>	<u>-</u>	<u>(36)</u>	<u>95,617</u>

HOLY TRINITY CHURCH ROEHAMPTON

NOTES TO THE FINANCIAL STATEMENTS
FOR THE YEAR ENDED 31 DECEMBER 2022

Designated funds:

The Fabric fund represents the funds held for the fabric of the church. These funds are designated for major repairs and development as and when required.

Restricted funds:

Funds for boiler maintenance and eventual replacement (Boiler fund) and administration costs (Administration Support fund) have been provided by the Roehampton Parish Trust.

The Sunday School funds are carried forward to utilise as and when required. The McKinney Memorial fund will be used to improve the church.

Statement of funds - prior year	<i>Balance at 1 Jan 2022</i>	<i>Income</i>	<i>Expenditure</i>	<i>Unrealised Gains/(Losses)</i>	<i>Balance at 31 Dec 2022</i>
	£	£	£	£	£
Designated funds					
Fabric fund	9,925	-	-	-	9,925
General funds					
General fund	14,856	33,938	(35,370)	253	13,677
Other general funds	3,410	-	-	-	3,410
	<u>18,266</u>	<u>33,938</u>	<u>(35,370)</u>	<u>253</u>	<u>17,087</u>
Total Unrestricted funds	<u>28,191</u>	<u>33,938</u>	<u>(35,370)</u>	<u>253</u>	<u>27,012</u>
Restricted funds					
Development fund	14,163	-	(1,900)		12,263
Sunday School fund	448	70			518
Bell fund	21,051	-	(10,882)	-	10,169
McKinney Memorial Fund	1,446	-	-	-	1,446
Spire Lighting	-	2,007	(192)	-	1,815
Projector grant	1,000	-	(876)	-	124
Vicar's Discretionary Fund	500	470	(243)	-	727
Total Restricted Funds	<u>38,608</u>	<u>2,547</u>	<u>(14,093)</u>	<u>-</u>	<u>27,062</u>
Total of funds	<u>66,799</u>	<u>36,485</u>	<u>(49,463)</u>	<u>253</u>	<u>54,074</u>

HOLY TRINITY CHURCH ROEHAMPTON

NOTES TO THE FINANCIAL STATEMENTS
FOR THE YEAR ENDED 31 DECEMBER 2022

16. Analysis of net assets between funds

Analysis of net assets between funds - current year	Unrestricted funds 2022 £	Restricted funds 2022	Total funds 2022
Fixed assets	-	6,464	6,464
Investments	1,009	-	1,009
Current assets	53,860	39,985	93,845
Creditors due within one year	(5,701)	(-)	(5,701)
	49,168	46,449	95,617

<i>Analysis of net assets between funds - prior year</i>	<i>Unrestricted funds 2021 £</i>	<i>Restricted funds 2021</i>	<i>Total funds 2021</i>
Fixed assets	-	8,261	8,261
Investments	1,045	-	1,045
Current assets	29,142	18,801	47,943
Creditors due within one year	(3,175)	(-)	(3,175)
	27,012	27,062	54,074

HOLY TRINITY CHURCH ROEHAMPTON
NOTES TO THE FINANCIAL STATEMENTS
FOR THE YEAR ENDED 31 DECEMBER 2022

17. Pension commitments

The church did not employ any staff during 2022 and therefore incurred no pension costs. The church had no pension scheme liabilities at the end of 2022.

18. Related party transactions

Key management personnel, as defined by FRS 102, consist of the board of trustees. No consideration was paid to key management personnel in the year (2021 - the same).

Associated charities include:

Roehampton Parish Trust (charity no. 1165257). The Trust was originally formed on 25 July 1911 to own and manage the Parish Hall and, following the sale of the Hall in 2015, the trusts were amended by a Scheme of the Charity Commission dated 9 November 2015. It now has wide charitable objects for the benefit of the residents of the Ecclesiastical Parish of Roehampton and the neighbouring ecclesiastical parishes. The trustees are the Vicar and six members of the Parish. During the year, the church received £Nil (2021 - £Nil) from this connected charity.