

Annual Report Yearbook 2024



**What's been happening
in the Parish?**



**Parish of
Holcombe &
Hawkshaw**

Loving God, loving neighbours; sharing Jesus with you.

This year the Yearbook and the Annual Report,
will be formally presented at the

Annual Parochial Church Meeting

Emmanuel Church Centre,
Longsight Road,
Holcombe Brook,
Bury
BL8 4DB
7.30pm for 8.00pm.

28th April 2025

Vision Statement

“In our Parish:

- We will welcome others and serve the community through our love and care.
- We want to provide inspirational worship in various styles to meets the needs of all.
- Our teaching, based on the authority of the Bible, aims to connect faith to daily life, sustaining, encouraging and challenging everyone.
- We aim to have welcoming and warm buildings that enable us to worship, glorify God and aid mission.
- We seek to reach out through God’s love of all people, sharing the joy and wonder of the faith we have in our daily life with Jesus and growing his worldwide church in faith, hope and love.

The Parochial Church Council

Updated: 1st February, 2014

This booklet gives information about the activities of the various Parish Organisations and the Parish Annual Report.

Once again it is the product of teamwork by many people. Sincere thanks go to contributors who responded so promptly and made this Report possible.

We hope you will find the contents both interesting and informative.

Any errors are the responsibility of contributors/editor.



**Parish of
Holcombe &
Hawkshaw**

Contents

Annual Report 2024

Yearbook 2024

Annual Report	4	Yearbook	32
Team Reports	8	Photographs	32
Review of year	13	Soup Company	36
Safeguarding Report	15	Drop In	36
Safeguarding Policy	16	Hall Things Bright . . .	37
Fabric Report	17	Emmanuel Choir	38
Deanery Synod	18	St. Mary Primary	39
Mission Giving	20	Emmanuel Primary	40
Pastoral Care Report	21	Warm Spaces	42
Children and Families	22	Afternoon Fellowship	42
BBR Trust	26	Pilgrim Group	43
Financial Statement	27	ECC Prayer Group	43
		10 th Ramsbottom Guides	44
		19 th Ramsbottom Brownies	44
		Open the Book	45
		Canon Lewis Hall -	
		Adult and pre-school	46
		Mothers' Union	47

Annual Report & Financial Statement 2024

The Parish of Holcombe and Hawkshaw

Emmanuel Church, Holcombe.

and

Emmanuel Church Centre,
Longsight Road, Holcombe Brook.

and

St. Mary, Hawkshaw.

In the Deanery of Bury and Rossendale,
Mission Community 3: Ramsbottom and Tottington,
The Diocese of Manchester.

Annual Report and Financial Statements of the Parochial Church Council For the year ended 31st December, 2024.

Rector & Mission Community Leader:

The Rev'd. Paul H. Sumsion,
The Vicarage,
Bolton Road,
Hawkshaw,
Bury.
BL8 4JN.

Bank: Royal Bank of Scotland

Insurers: Ecclesiastical Insurance.

Honorary Treasurer: David Lomax.

Gift Aid Secretary: Pam Jones.

Independent Examiner: Stuart Moulton.

Annual Report for 2024

Statement:

The PCC of the Parish of Holcombe and Hawkshaw has the responsibility of co-operating with the incumbent, the Rev'd. Paul Sumsion, in promoting in the ecclesiastical parish the whole mission of the Church, pastoral, evangelical, social and ecumenical. It also has maintenance responsibility for St Mary, Hawkshaw, Emmanuel Church, Holcombe and Emmanuel Church Centre and Canon Lewis Hall, Longsight Road, Holcombe Brook.

Membership of the PCC:

Members of the PCC are either ex officio or elected by the Annual Parochial Church Meeting in accordance with the Church Representation Rules.

During the year the following served as members of the PCC:

Incumbent: The Rev'd. Paul Sumsion, *Chairman & Rector*.

Associate Ministers: The Rev'd. Vic. Fletcher.

Curate: Rev'd. Matthew Brinicombe,
(from 6th March 2023).

Ex Officio Members:

Wardens: Mr. Peter Hardcastle, *from May 2021*,

Mr. Stephen Newhouse, *from May 2019, (Lay Vice-Chairman of PCC)*.

Representatives on the Deanery Synod: *until 2026*

From Emmanuel and Emmanuel Church Centre:

Jo Venn *from May 2023* and Stephen Newhouse.

From St Mary's, Hawkshaw: Keith Jones and Jean Houghton.

Elected Members:

Fourteen members are elected at the Annual Parochial Church Meeting.

Those elected at the APCM. in April 2024, were:

Jane Fletcher (to May 2024), Penny Hanley, Judith Horrocks, David Lomax, Edward Slattery, Jo. Sumsion, Liz. Webber and Stuart Wilkinson,
Rev. Robert Airey, Rosemary Artley, Claire Carsley, Cath Lansdale (to May 2024),
Sheila Partridge, Julie Smale and Steven Richardson.

*Readers and Deputy Wardens are not ex officio members of the PCC,
but are able to stand for election at the APCM.*

Readers:

Mr. Michael Burton,
Mr. Richard Byrom,
Mrs. Ethel Houghton,
Mrs. Jane Fletcher,
Mrs. Jo Sumsion, *(also elected to the PCC and has been Children and
Families Ministry Facilitator from September 2021).*

Deputy Church Wardens

Emmanuel Church Holcombe:

Susan Nuttall with *one vacancy*.

Emmanuel Church Centre:

Julie Smale and Jo. Venn.

St. Mary's Hawkshaw:

Eddie Slattery and Ray Houghton.

Structure:

(1) Standing Committee/Leadership Teams:

We are required by law, not only to have a Parochial Church Council, duly elected to represent our parishioners, but also a Standing Committee, which can attend to urgent parish business between PCC meetings, if necessary.

In between PCC meetings the Parish Leadership Team, (of which the Standing Committee is part), Emmanuel, Holcombe Leadership Team, Emmanuel Church Centre Leadership Team and St. Mary, Hawkshaw Leadership Team meet regularly. Each Leadership Team organises working groups within their own church.

Standing Committee: *Rev. P. Sumsion, Wardens: Peter Hardcastle & Stephen Newhouse, Treasurer: David Lomax and PCC Secretary: Penny Hanley.*

The Parish Leadership Team:

Rev. P. Sumsion, Rev. R. Airey, Barbara Atkin, Peter Hardcastle, Michael Burton, Rev. Vic. Fletcher, Ethel Houghton, David Lomax, Stephen Newhouse, Jo Venn, Rev. Matthew Brinicombe, Penny Hanley (PCC Secretary) and Jo Sumsion, (as Children and Families Ministry Facilitator).

Emmanuel Holcombe Team Report 2024

The Emmanuel, Holcombe Team met five times during the year. We continue to have Health and Safety and the Quinquennial Inspection as agenda items at each of our meetings.

Building

- Leaks to the clock tower and intermittent leaks in other area continue to be a concern. Several leaks to the roof were mended and quotes obtained for work to the tower. Grants may be available for this work.
- We continue to consider CCTV/streaming services (with resulting improvements to security) Plans are in hand to install WiFi using the School network so services can be streamed and a card reader used for donations.

Funding Work

- We continue to look at ways of improving the building, several items for the Faculty from 2023, are still outstanding as Funds do not allow progress. Grants may be available.
- Repair work has been identified which will again require substantial fund: Pointing to some outside walls and chimney, repairs to clock tower floor, bird proofing tower, replacement of damaged toilet door.
- Stephen and Barbara held three Quizzes at ECC, which were very well supported, (with thanks to those who

helped with running the evenings and provided food). Around £1800 has been raised from the Quizzes.

The Way forward

- **Breakfast Before Church** (four this year) with Bacon butties, etc. (with thanks to Matthew). Thanks to regular congregation and especially the choir for supporting these services. We will continue to try to make our worship appropriate to a range of parishioners.
- **A School Celebration Service** (Previously Sermons Sunday), was held in February with 102 adults and 72 children attending. In September we held a New Headteacher Celebration Service when Amy Longstaff was commissioned, with representatives from the Community, Diocese, Parish and School contributing.
- **Parade Services** continue to be poorly attended.
- **Sidespeople Meeting in June:** Sidespeople again met in June. We discussed how we do things and made several suggested several ways of improving our welcome. We also looked at paperwork and how that should be completed. We decided that it would be good to repeat yearly and enjoyed a social time together.
- **Focal Leader:** The PCC approved Stephen Newhouse as Focal Leader for Emmanuel, (an application was submitted early in 2025).

- **Mission community walk:**

28th September, Emmanuel was open from 11am until 1pm providing a rest place and refreshments which were greatly appreciated.

- **A Crib Service** was again well attended and great fun for children and adults attending. More helpers needed next year.

- **The Annual Ellen Strange Walk** took place in July (Saturday this year). We opened the church to the walkers, providing refreshments and a space for those who couldn't do the walk to wait, (during this time some crafts were done). A Ukulele band entertained after lunch. Thanks to volunteers who served refreshments and made everyone welcome.

- **Annual Cycle Hill Climb.** We once again host the annual hill climb in October, following the service, (which stated at 10am) we provided refreshment and a quiet place for competitors and spectators.

- **Weekly Coffee Morning.** Jo Sumsion, with the help of Margaret Cockcroft, continues the Weekly Coffee mornings for parents and carers of our School children on Wednesday at 9am, which continues to attract around 8 or 9 adults and a couple of toddlers each week.

- **Eco Church.** We have continued to work to make progress with our Eco Church status, Pat Lainton is our "Eco Champion" In September we were

awarded our Bronze certificate. We now must plan to jointly with our two other centres to make progress towards the Silver award.

- **Caretaker: Unfortunately,** Tony had to retire due to ill health, his work was covered by members of the congregation, but we are actively looking to employ someone in the New Year.

- **Several Working Parties** were held in the church and church yard tidying and doing minor repairs.

- **Opening Church**

We experimented with opening the building following Sunday services, but people coming into church were low. Perhaps look at this again next year.

Comment

As always, we are extremely grateful to the number of people who contribute to the upkeep and life of our church, by giving their time, money, advice and prayers. We continue to have monthly working parties which are supported by as dedicated team of about eight people from all over the parish. cleaning, tidying and clearing and mending

Membership:

Rev. Paul Sumsion, Rev. Robert Airey, Claire Baggoley, Michael Burton and Stephen Newhouse, Jo Sumsion and this year we welcomed: Pat Lainton, Cathryn Lansdale, Margaret Cockcroft, Rosemary Artley and Matthew Brinicombe to our team.

St. Mary, Hawkshaw Team Report 2024

The Hawkshaw team met six times during the year and addressed the following:

New eco heating project: Throughout the year the heating sub-committee met, taking professional advice, with the aim of coming up with the optimum solution for updating our ageing and unreliable heating system. The centre team was regularly kept informed of progress. The complete replacement of our heating system will be broken down into different phases, each requiring a monumental fundraising effort. Cake stalls were held on a regular basis, specifically for the purpose of raising awareness of the project and enabling people to play a small part where they could.

Welcome: An overhaul of the entrance area to make it less cluttered and more welcoming resulted in the display table being reorganised, unnecessary furniture removed, flowers placed in the porch and doors fully opened in good weather. Training took place for welcomers with lanyards to be worn by those on duty. A wheelchair was purchased in case of need and new fluffy blankets provided.

Building improvements: The flooring in both toilets, the kitchen and rear vestibule was replaced. Some of the lights were replaced with LEDs. A new television screen was installed to the south side of the chancel giving a much sharper, clearer picture than that

produced using the projector. The communion rails and kneelers were removed as people receiving communion now do so standing up. A decision was also made not to replace the broken water heater in the kitchen for safety reasons.

Building repairs: Several slates came loose on the church roof and work was carried out clearing gutters and putting the roof back in good order.

Communication: During the year a rolling PowerPoint presentation of notices was introduced to reduce, if not negate, the need for reading out a list of notices at the beginning of each service. This also included a prayer of thanks for the offering.

Churchyard: Railings between the church and the school were installed very efficiently. A handrail by the steps down onto the grass at the back of church was erected and the churchyard bench was refurbished. Unfortunately the council treated the grass around the graves with weed killer in early summer which left an unsightly mess through until late autumn, upsetting many – and rightly so. A problem was identified with low branches threatening to damage the west perimeter wall and a tree surgeon was contacted for advice. During the year plans were made to maximise the grave space and incorporate a memorial garden.

Health and Safety: A new fire plan was drawn up and published and all electrical items were PAT tested.

Community links: No gala took place in Hawkshaw in 2024. However the church hosted the village bonfire which was very well attended and safely stewarded by a team of volunteers.

School links and children's

activities: We ran our holiday club just after Easter and a "Go Wild" after-school 6-week course during the summer term. In the October half term break we held a fun day and a light party. School were keen to rekindle links with church and invited us to attend their Harvest service.

Eco Church: Hawkshaw Church managed to secure a Bronze award by the end of the year thanks to our Eco Champion Jennie Ringer who organised a final push with a team to plant bulbs and install bird boxes and feeders.

Penny Hanley

On behalf of the Hawkshaw Team

Membership

Peter Hardcastle, Paul Sumsion, Eddie Slattery, Jean Houghton, Ray Houghton, Ethel Houghton, Richard Byrom, Matthew Brinicombe, Eric Shortt, Jennie Ringer, Vic Fletcher, Jo Sumsion, Jane Fletcher, Stuart Wilkinson and Penny Hanley.

Emmanuel Church Centre Team Report 2024

We are so very lucky at the ECC to have such a wonderful loving group of people who not only worship God together, but enjoy each others company in and out of the church throughout the week.

Sadly, there are some who can no longer join us on a Sunday but aim to come to a Thursday communion, others remain part of our fellowship either through home communion or at Hewlett Court or other Residential homes from members of the Pastoral Team .

We have so many helpers who keep an eye on our maintenance, health and safety and cleaning at the centre as well as those who make cakes, take bookings, give out books, count money . We are often told that we are a welcoming community and although we have sadly lost valuable members over the year who have gone to be with Jesus we have also welcomed new friends who have got fully involved.

Thanks to all who lead our services from the other two worship centres and thank you to Sheila and Christine who faithfully lead our music.

Emmanuel Church Centre reflects its Christian presence, not just on a Sunday, but every day of the week and involves many many people coming through our doors.

Our Golden Jubilee Renovation Fund

has raised nearly £10,000 towards refurbishing the toilets and bringing the

building up to standard before 2026.
Thank you to all who have donated to this and to Gloria who has made gorgeous cards for sale to boost this fund.

Services: This year as well as having our regular services we have had our Taizé services, Quiet mornings as well as hosting World Day of Prayer and Mission Community and Churches Together in Ramsbottom services. We host Campfire Church in our garden and welcome many families who thoroughly enjoy these services.

Work on building: During the year we have continued to maintain the building and new UPVC Cladding replaced the old wooden structure. We were lucky to gain a lottery grant for this.

We also replaced the entrance doors with up to date fire doors and had a new outside kitchen door.

Social events: Throughout the year we have had many social and fund raising events including a Fashion Show, Car Boot sales, Last Night of the Proms, Drop in Lunches, Words and Music and lots of raffles. We have celebrated lots of BIG birthdays with the obligatory delicious cake from Annette and fizz.

Thank you to all who sign up to read or lead the Intercessions.

D-Caff have now been in our building for over 12 months and are going from strength to strength.

Garden: There are many times and services that include reflection and the Garden continues to bring peace and joy to so many and we are heartily grateful to Barbara, Steve, Christine and Phil for their constant attention and hard work to continue to keep it looking beautiful throughout the year.

Working Parties: We hold monthly working parties inside and out of the building and welcome newcomers to join our merry little group.

Thanks and Invitation: A big thank you to Gloria, Romey and Alan who have been faithful members of our team for many years and thank them for all they have done as they step down from our committee. If you would like to join us you would be more than welcome.

The team is:

Paul Sumsion Matthew Brinicombe, Stephen Newhouse Julie Smale, Claire Carsley, Barbara Atkin, Geoff Clare, Gwen Barnes, Sheila Partridge, Ann Milius and Jo Venn.

PCC Review of the Year 2024

The PCC met six times throughout 2024 with an average of 14 members attending each meeting with the Parish Leadership Team (PLT) meeting in the intervening weeks. At all PCC meetings the financial position of the parish was discussed and reports were received from each of our three worship centres.

The following matters were addressed:

Parish Finances: During 2024 the PCC was able to approve the payment of our Parish Share in full which will enable the parish to apply for grants as the need arises. The PCC agreed that 10% of disposable funds should go to mission. The money raised by the Sumsion family to fund their work with Tearfund, subsequently cancelled due to Covid, was also discussed. The family decided that £500 of that should go to mission and the rest for bursaries for young people. A stewardship campaign entitled "Giving in Grace" was launched in May and June with the intention of encouraging greater participation in the work of the parish and an increase in free will offering.

Mission: This included: continued support for the provision of Warm Spaces during the winter months; the hosting of a team from Capernwray Bible College to do outreach within the parish; a "Go Wild" after-school 6-week course during the summer term; introduction of Intergenerational Praying Friends whereby mature Christians within the church would

support a child or young person in prayer and vice versa; preparations for #doyouknowHim?2 with Churches Together in Ramsbottom.

Our Church Primary Schools: The year opened with the PCC approving the move towards St Mary's CE Primary School in Hawkshaw becoming part of Sycamore Multi Academy Trust. The PCC was pleased to learn that Amy Longstaff was appointed Head Teacher at Holcombe Emmanuel CE Primary School. Foundation governors at both schools were reappointed by the PCC as their terms of office came up for renewal.

Buildings: During the autumn the wall on the north side of Canon Lewis Hall started to bow out and investigations ensued in an attempt to find the cause. The wall was boarded up inside the hall to allow these to proceed, and for the hall to continue to be functional.

Mission Action Plan: The focus of this was to explore new ways to grow the church by encouraging younger members and families. It also required that we look at the welcome we provide in our buildings, our use of social media and general communication. A Stepping Stones for Growth course was organised in the late spring.

Mission Community: The selection and appointment of Focal Leaders was discussed and Holcombe Church nominated Stephen Newhouse as their Focal Leader, endorsed by the PCC. A Mission Community walk was organised in September, the route

taking in all eight churches and finishing with a barbecue at ECC.

each centre should take responsibility for the first aid kit.

Authorised Lay Ministry: Judith Horrocks undertook the necessary training and was authorised as a Lay Minister during the year with Barbara Atkin being re-authorised.

Rev Robert Airey: We celebrated 25 years since Robert was ordained at the end of June. His status as OLM in the parish changed when he turned 70 and he now continues to officiate with the permission of the Bishop, being licensed to the Diocese and specifically to the Mission Community.

*Penny Hanley
PCC Secretary*

Eco Church: Jennie Ringer took on the role of Eco Champion for Hawkshaw Church, joining Claire Carsley for ECC and Pat Lainton for Holcombe Church. All three centres achieved the bronze award. The PCC looked into the viability of installing an electric vehicle charging point in the car park at ECC. Matthew Brinicombe took on the job of researching various options. This process is still ongoing.



Safeguarding: Liz Webber served as Safeguarding Officer throughout 2024 during which time she kept the PCC updated on new directives including a requirement for all members to undertake training on domestic abuse. Digital reporting forms were also introduced.

Health and Safety: During November a first aid course was arranged which was attended by a good number from the church and wider community with a list of qualified First Aiders now available at each worship centre. It was agreed that a nominated person at

Safeguarding Report 2024

Policies and Practice

The clergy and PCC of the Parish of Holcombe and Hawkshaw continue to meet the requirements issued by the House of Bishops on matters relating to the safeguarding of children and vulnerable adults. Safeguarding remains a standing item on every PCC agenda.

Safeguarding policies are reviewed and approved annually by the PCC. They are fully aligned with the House of Bishops' Safeguarding Policy and Practice Guidance, meeting statutory requirements while remaining relevant to our local context.

In November 2023, the PCC adopted a Junior Leaders Policy to ensure that our young leaders are appropriately safeguarded. Junior leaders, who can be aged 16 up until their 18th birthday, are still considered children from a safeguarding perspective. However, we also recognise the importance of equipping them with an understanding of safeguarding relevant to their role. I am pleased to report that since last year's AGM, all our current Junior Leaders have now completed the required safeguarding training. The Junior Leaders Policy will continue to be reviewed annually by the PCC.

Safer Recruitment

All volunteers requiring DBS clearance have obtained one within the last three years, in accordance with diocesan requirements. Thank you to everyone who has willingly engaged with this process, it is much appreciated and reinforces our commitment to making our church community as safe as possible. This also highlights our recognition that the safety

and wellbeing of all children and vulnerable adults in our parish remain of utmost importance.

Training

The Church of England continues its commitment to creating a church that is safer for everyone. As such, safeguarding training is mandatory for all individuals who work with children, young people, and/or vulnerable adults in any role within the church including all PCC members as they directly oversee this work. This training must be renewed every three years although it must be noted that there has been some delay in updating some Leadership Training due to lack of availability at these courses.

Anyone who is required to complete safeguarding training but has not yet done so is removed from rotas until they are able to fulfil this essential requirement. I am pleased to report that the overwhelming majority complete their training promptly and enthusiastically. Thank you all for your cooperation, it demonstrates our shared commitment to safeguarding in our parish.

Safeguarding Concerns and Incidents

Since the last APCM, four safeguarding concerns have been raised. Each concern was reported to the Manchester Diocese Safeguarding Team within the required time frame and logged appropriately on their system. All necessary actions were taken.

I would like to extend my gratitude to everyone for your collective effort in making our churches as safe as possible. Your commitment to safeguarding is vital and deeply appreciated.

Liz Webber
14.03.25

Safeguarding Policy

The following policy was agreed at the Parochial Church Council (PCC) meeting held on **17th March 2025**.

In accordance with the Church of England Safeguarding Policy our church is committed to:

- Promoting a safer environment and culture.
- Safely recruiting and supporting all those with any responsibility related to children, young people and vulnerable adults within the church.
- Responding promptly to every safeguarding concern or allegation.
- Caring pastorally for victims/survivors of abuse and other affected persons.
- Caring pastorally for those who are the subject of concerns or allegations of abuse and other affected persons.
- Responding to those that may pose a present risk to others.

The Parish will:

- Create a safe and caring place for all.
- Have a named Parish Safeguarding Officer (PSO) to work with the incumbent and the PC Safely recruit, train and support all those with any responsibility for children, young people and adults to have the confidence and skills to recognise and respond to abuse.
- Ensure that there is appropriate insurance cover for all activities involving children and adults undertaken in the name of the parish.
- Display in church premises and on the Parish website the details of who to contact if there are safeguarding concerns or support needs.
- Listen to and take seriously all those who disclose abuse.
- Take steps to protect children and adults when a safeguarding concern of any kind arises, following House of Bishops guidance, including notifying the Diocesan Safeguarding Adviser (DSA) and statutory agencies immediately.
- Offer support to victims/survivors of abuse regardless of the type of abuse, when or where it occurred.
- Care for and monitor any member of the church community who may pose a risk to children and adults whilst maintaining appropriate confidentiality and the safety of all parties.
- Ensure that health and safety policy, procedures and risk assessments are in place and that these are reviewed annually.
- Review the implementation of the Safeguarding Policy, Procedures and Practices at least annually.

Each person who works within this church community will agree to abide by this policy and the guidelines established by this church.

This church appoints **Mrs. Liz Webber** as the Parish Safeguarding Officer

Incumbent: **Reverend Paul Sumsion**.

Churchwardens: **Mr. Peter Hardcastle & Mr. Stephen Newhouse**.

Date: **17th March 2025**

Fabric Report 2024

We can report that the buildings, fittings and items belonging to the Parish are generally in good repair, although certain areas have been identified which will require attention soon, with resulting expenditure. All portable electrical equipment has been PAT tested.

Emmanuel Church, Holcombe

We continue to investigate ways of improving the building. Several leaks were identified and some repairs made, and gutters cleared. Quotes were obtained for other work bird proofing the tower and repairing higher level floor and improving drainage.

Damage to toilet door needs attention and the need to point several areas of outside wall has been identified.

Several Working Parties were held in the church and church yard tidying and doing minor repairs.

There are still outstanding sections of the last Faculty which require completing.

Emmanuel Church Centre

Our Golden Jubilee Renovation Fund has raised nearly £10,000 towards refurbishing the toilets and bringing the building up to standard before 2026. Thank you to all who have donated to this and to Gloria who has made gorgeous cards for sale to boost this fund.

During the year we have continued to maintain the building and new uPVC Cladding replaced the old wooden structure. We were lucky to gain a lottery grant for this.

We also replaced the entrance door and outside kitchen door with up to date exit doors.

In late 2024 we discovered that the

outside wall (north side, to petrol station), was slipping on the damp proof course. A temporary supporting partition was built, whilst investigations took place. We took advice from our architect and employed a Structural Engineer. It was hoped that the fault may be covered by our insurance. Subsequently the insurers advised the work would not be covered. We are looking at solutions and possible available grants.

St Mary's, Hawkshaw

Church is used every day except school holidays, so apart from general wear and tear and some cosmetic touches it is in reasonable order.

Two 3-phase power sockets have been installed as an emergency measure in case of a heating system failure.

An annual contract has been taken out for the high level maintenance of all gutters and down pipes, to ensure they are free from debris and flowing correctly, and to repair/replace any slipped/defective slates. (12 slipped or missing slates were repaired during the August visit). An essential repair was carried out in August on the south-east elevation of the vestry to mitigate water ingress. The north entrance roof (bell tower) covering is nearing the end of its life after numerous patch-ups. A re-roof of this area will be needed in the near future.

The boundary wall on the west side by the brook is being damaged by overhanging heavy limbs of a tree. This will need attention. One of the entrance gate posts is in a poor condition and will need a partial rebuild. There are two badly bowed leaded lights to the north elevation, these will need removing and re-leading in the near future.

Unfortunately over summer the council sprayed around the gravestones and other areas instead of strimming, leaving it rather unsightly. We are grateful to Eric for his work in maintaining the rest of the grounds.

With regards to our two projects, heating and kitchen/toilet: a faculty has already been approved for the kitchen/toilet; the faculty for the new heating system is being prepared.

General Comments

We thank everyone who works quietly behind the scenes cleaning, washing the linen, cleaning the brass and silver, flower arranging or sound, PA and streaming technicians, Deputy Wardens, lesson readers, those who prepare prayers each week, etc. and last, but not least, the sidemen and women who play such an important role in welcoming people to our services.

The practical help and financial assistance of many people from across the parish continues to play a major part in the care of the buildings, and our grateful thanks go to everyone who has contributed in any way.

*Peter Hardcastle,
Stephen Newhouse.
Churchwardens March 2025*

Deanery Synod 2024

the Deanery of Bury and Rossendale

The meetings of Synod give representatives valuable opportunities to meet and discuss matters with members of other parishes across the deanery. Each parish is entitled to representation according to their size. Our Electoral Roll entitled us to four members, who serve a three year term of office.

The Deanery Synod met four times this year.

In February we met via Zoom

Ima Lomax opened the meeting with prayers and a hymn.

Eco Church

Kath Pollard had recently visited St John the Baptist, Bircle, to talk about eco matters.

The Eco tips fact sheet was to be sent out again to help everyone to continue to recycle and renew. Kath reminded everyone about the monthly Eco Champions meeting; all are welcome to attend.

Revitalisation Fund

Ima Lomax, our Deanery Transformation Officer, spoke about the Revitalisation Fund and its availability to all churches. A grant of up to £3000, can be given to fund schemes/events.

Communication

Gemma Gardiner our Diocese Communications Team Manager, stressed how good communication in all its forms is vital for reaching those who are not yet part of our congregations. We needed to think about where our audience comes from and where people find us and engage with the church today. The most accessible platform is ACNY, (A Church Near You).

Social media is vital for growth in our churches

Gemma stressed the need to share news and photos to get our stories out there.

She encouraged us all to sign up to the Diocese, weekly E-news.

In May we met at St George's Church, Unsworth

Ima Lomax sang to the congregation and Rev'd Steph Mahwinney led the prayers.

Eco Church

Kath reported that the following churches had received Eco Awards:

Silver Award - St Peter's, Bury

Bronze Award – St John the Baptist, Bircle; St Mary the Virgin, Bury; St Andrew's, Hillock and Emmanuel Church Centre.

Kath stressed the continued importance of pushing Eco matters in our churches, especially considering the many natural disasters around the world.

Group Discussion

Donna Williams, (Area Dean) introduced the session with reference to the recent clergy course on 'Growing Younger.' She encouraged us to look at the 'PRAY' booklet –

P-practising

A-adapt

R- resourcing

Y- you

The Mission Communities then broke into discussion groups who reported back with progress made so far.

In September we met at St Paul's, Kersal Moor

Donna Williams introduced Amelia Brummitt (Assistant Deanery Enabler.) Amelia had just been appointed and was setting up a Deanery Hub for youth workers.

Dan Mullaney led our opening worship.

Eco Church

Kath Pollard gave us an update.

St Mary's Radcliffe had attained a Bronze award.

She remarked that some churches were observing 'Creationtide'.

Keith Watkinson and Kath were going to run a 'Eco Stepping Stones' event at St Mary's, Radcliffe. Other courses by Kath and Donna Williams may in the New Year.

In November we met at St. Mary's Church, Rawtenstall

Our opening worship was led by Rod Bevan.

Eco Matters

Kath Pollard gave us an update. An Eco stepping stones event will take place in June at St John's House. She reminded us that all churches need an Eco Champion and needed to be in place as soon as possible. We were all encouraged to push towards Silver awards.

Emmanuel, Holcombe and St. Anne's, Tottington had gained Bronze awards and Christ Church, Ainsworth have reached Silver.

Growing

Donna Williams shared targets for 2030 and compared them with where we are now (data from her recent questionnaire).

	2024	2030
Focal Leaders	12	41
Mission communities with map	5	5
New church plants	2	3
Pre school-congregations	3	10
Fresh expression congregations	3	8
Revitalisation of small churches	1	3
No of Churches closed	2	4
No of enquirers courses	3	7
No of life events	399	550
(Marriage and funerals only)		

There will be money from Church Commissioners to achieve these goals.

Several events were being planned to help with this growth. A Clergy Vision Day with Archdeacon Rachel and the Lay Leaders Conference on March.2025.

Donna referred to her Questionnaire on Growing, Nurturing & Serving.

She stressed the ongoing need for growth and was pleased with the growing number of groups for children and young people and their link to worship. The deanery Hubs will help with this. Growth in church attendance is also important. We need to increase by 6 people a year in each worship centre! There are positive signs of growth and we needed to pray this continues.

The session concluded with Breakout Groups in Mission Communities.

Q – ‘Where are there signs of growth in our churches’

*Keith Jones, Jean Houghton,
Stephen Newhouse and Jo Venn .*

Mission Giving Committee

Every year we as a parish aim to give 10% of our offerings to charity as our Mission Giving. This is as well as supporting charities individually such as Transforming Lives for Good and Compassion and parish giving to the Children’s Society through the boxes, Bury Hospice in lieu of sending Christmas cards and our weekly donations to the Porch Project.

At present we give to local ,national and international charities to express our Mission at Home and our Mission Abroad. These have included South American Missionary Society, Church Missionary Society, Philippine Outreach Centre, Wycliffe Bible College, as well as supporting the Schwartz family, Christian Aid, Scripture Union and the Church Army.

*Vic Fletcher
Mike Burton
Ethel Houghton
Jo Venn*

Parish Pastoral Care Team 2024

As we try to do each year, the Pastoral Team have met on three occasions since the last APCM. Our main focus is to see that the ongoing pastoral care of people within our parish is met in some way and we try to ensure, if possible, that nobody gets overlooked. Pastoral care is not however, just the sole responsibility of the pastoral team or clergy, but it is every Christian's responsibility, as we were called by Jesus to care particularly for people in need, of any kind, as well as for each other. So please, if you are visiting someone, or phoning someone, or are in contact in any other way with anyone in need of being shown the love of Jesus by our Parish, will you please let one of the pastoral team know, so that we can get a better picture about whether pastoral needs are being met in some way or not.

Thank you.

- Home communion can also be arranged if that is what someone requests and one of our ALMs would be responsible for seeing that this happens.
- The Pastoral Team is also responsible for seeing that the Mothering Sunday flower distribution happens, as well as that of the plants and cards that go out in the name of the Parish at Harvest time.
- We also arrange for the annual "Remembering Loved Ones Service", in November. The service is held in the garden at ECC so that bereaved people in the Parish are able to remember their loved ones.
- Holy Communion is celebrated in Hewlett Court once a month by members of the team.

Much of what we do often seems to centre around the older members of our Parish, as many of the needs of our younger parishioners are met through the work of Jo Sumsion, our Children and Families Ministry Facilitator and you will find a report of her work elsewhere in this report.

Trying to see that the Parish's data base of contact details is maintained and that the funeral list is up-dated regularly, as well as seeing that anyone, who is housebound and no longer able to worship with us in person, is remembered at particular times of the year. We try to achieve this by sending an appropriate card.

All these are part of what we do, along with trying to keep abreast of developments in the ways we might become better able to meet the pastoral needs of the people in the Parish's care.

From time-to-time, there are many other things that we pick up, to see that they are done and members of the team are involved in seeing that Warm Spaces happen in the wintertime, which is part of Drop-In at ECC and that the monthly Sizzlers group happens at St.Mary's. We have contact with various hospital chaplaincies and care homes, as well as links with some bereavement support charities.

If you want any further information about any of this or if you feel you could help with pastoral care within our Parish, please contact any one of the team:-

Jean Houghton and Jen Hardcastle, (St.Mary's); Susan Nuttall and Robert Airey (Holcombe); Romey Simpson and Barbara Atkin (ECC); Rev. Paul Sumsion and Rev. Matthew Brinicombe.

Children and Families Ministry Report

Campfire Church

Campfire Church is now an established new worshipping community with a core group of regular members.



We continued to learn about Jesus' miracles from January to July and since September we have based our sessions on the Lord's Prayer.

We have had a variety of visits from Deanery Enablers from other deaneries and folk involved in the Children Changing Places project in Bolton Deanery. These have been with the aim of finding out what we do in order to see how Campfire Church would work in other contexts.

Yorkshire Camps



In February we took KS3 children to Yorkshire camps; many had been when they were younger, so it was good to be able to extend to this older age group.

In March we made a return trip with our KS2 children. Both weekends were full of fun, activities, Bible teaching and games.

Capernwray

In March we hosted a team of five students from Capernwray Bible College.

They visited Drop In and



Warm Spaces, led Prayer Spaces and collective worship in both schools, led a Sunday evening service, shared their stories in morning worship around the parish and joined in with Open the Book, Campfire Church and youth activities. Thank you to Jean and Alan, Jo and Rob, Vic and Jane for hosting and the many people who provided meals for them.

Holiday club

We held our annual holiday club

during the school Easter holidays. The

theme was the events following

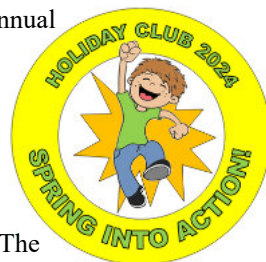
the resurrection: The Road to Emmaus, the

Second Miraculous Catch of Fish,

Ascension and Pentecost. The attendance

levels were just as good as 2023 and close to a manageable limit for the number of

volunteers.



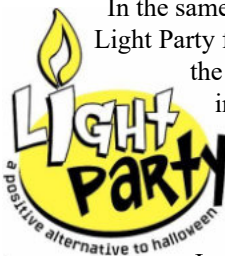
Fun Day

We held a fun day during the October half term. The morning ran a very similar schedule to a holiday club morning, but children brought a packed lunch and then chose two activities for the afternoon from craft, Lego, games, board games, blindfold trail and fire lighting. 35 children attended.

A message from one parent:

"I just wanted to send a message to thank you and everyone who made yesterday a fantastic time for the children! C.. had a really great time and he was telling me all about his day when he came home. He liked all the activities and being with his friends too. The fire lighting and marshmallows were a big hit!"

Light Party



In the same week, we hosted a Light Party for all children in the church family and invited all children in both schools. There were light themed games and craft, teaching on Jesus as the Light of the World, hot dogs and jelly for tea and some spectacular donut bobbing! A fun time was had by all!

Hawkshaw on Sundays

A highlight for all the church family was celebrating baptisms by full immersion with four of our children and young people as they declared their faith in Christ as their own.

We also prepared three children to be admitted to communion before confirmation.

Children and youth groups at Hawkshaw continue to meet twice a month in school (preschool – Year 5) and in the Cellar (Year 6 and up) during the morning service. Numbers are consistent, with 25 children on the registers.

We continue to promote intergenerational worship on the other two Sundays each month, providing a space where people of all ages benefit from worshipping together and all can be involved as part of the church family.

We have introduced a system of 'Praying Friends' where families with children and older folk can be linked up to pray for and offer support to each other across the generations. Those who have taken up this opportunity have benefitted from it.

Schools work Collective worship

We continue to lead whole school collective worship in both of our church schools each week. We lead special services in the respective churches for both schools at Harvest, Christmas Easter and the end of the school year.

Open the Book (See separate report)

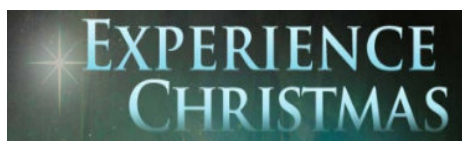
Celebration Sunday

Continues to be an important date in the diary for February in the annual cycle of events of Emmanuel School. The children of Emmanuel school are becoming well versed in introducing the service, leading the liturgy, prayers, Bible reading, drama and singing. It's so good to see our church and school families joining together to celebrate in worship in this way.

Experience Easter and Christmas

Was all ready to run for Holcombe Brook Primary, when it had to be cancelled due to a last minute local authority inspection at the school.

Thank you to all the volunteers who had done so much to prepare for the event. Efforts were not wasted as some of the stations were used for the Quiet Morning and the Easter services at Emmanuel Church Centre.



Experience Christmas went ahead much more successfully, (on the days of their actual Ofsted inspection!)

We received letters of thanks from the children:

"I wanted to say a big thank you for the amazing experience at your church last week. It was such a special day to me and my friends."

"Thank you for being so welcoming to us all. Thank you for all of your time and effort."

"My favourite part I enjoyed was creating the presents for baby Jesus and learning that God gave Jesus as a gift to us."

Prayer Spaces



We have continued to run Prayer Spaces in both church schools during the year; firstly with the Capernwray team on the theme of Lent, then for Advent. Each session takes a year group of around 16 children in small groups around four activities enabling them to engage in prayer in a variety of ways.

Go Wild!



We ran the "Go Wild!" outdoor after school club based on Scripture Union material for six weeks in the summer term. 11 children from St Mary's (out of a maximum 12 we could cater for) took part. Activities including den building, orienteering, blindfold trails and fire lighting helped us to explore Jesus' teaching.

Transition work

Transition

In July we held sessions for the Year 6 pupils at St. Mary's and Emmanuel schools on their transition to secondary school. We did this using four Prayer Spaces activities.

We presented Year 6 leavers with a holding cross and a card at their leavers' services. The card contained the words of the Numbers 6 blessing which were prayed over the children at the end of the services.

Bibles

Once again, Bibles were presented to all Year 3 children at Emmanuel and St. Mary's, and those in higher years who had joined the schools since the previous presentations, at the school harvest services.



New headteacher commissioning service

We are delighted to welcome Mrs. Amy Longstaff to her post as substantive head teacher of Emmanuel school. Children, staff, governors, members of the community and representatives of the diocese were involved in her commissioning service at Emmanuel Holcombe on Sunday 29th September.

Coffee mornings

The weekly coffee mornings for parents and carers at St Mary's and Emmanuel have continued throughout the year. The numbers are small, but the support and friendship within these groups is appreciated by all those involved.



Thank you!

None of our ministry with children and families could take place without the vast number of volunteers involved. Thank you to all of you who 'do' and all who pray.

My prayer for all of us, and all those we minister to, is:

"that out of his glorious riches he may strengthen you with power through his Spirit in your inner being, so that Christ may dwell in your hearts through faith. And I pray that you, being rooted and established in love, may have power, together with all the Lord's holy people, to grasp how wide and long and high and deep is the love of Christ, and to know this love that surpasses knowledge—that you may be filled to the measure of all the fullness of God."

Ephesians 3:16-19

Report for the Bridge, Bentley and Ramsbottom Trust for 2024.

The work of the Trust has continued during the year with Trustees actively looking for ways to help those in need. Please read the promotional information below and if we can help anyone in need please let them know about the Trust.

The Expenditure for the year was £6,003.99.

Grants were awarded in the following ways:

(16) Welfare, and (2) Educational grants.

The Bridge, Bentley, Ramsbottom Trust was created as an amalgamation of the John T. Bridge and three other smaller charitable trusts in 2002.

Small grants available for all ages

Do you, or anyone you know, live within the following post codes: all BL0 or all BL8 or these parts of BL9: BL9 5, BL9 6, BL9 7 or BL9 0

Struggling to pay for a much needed item, e.g. Stair lift, walking frame, specially adapted prams, etc.?

We have helped families with school uniform costs.

We can help with the cost of training courses.

We can help with Further and Higher Educational one off grants for: books/equipment, field trips, travel costs, etc.

Can we make life a little easier? Let us know if you are in need.

The Bridge Bentley Ramsbottom Trust has small grants available to those living within post codes BL0, BL8 or the following parts of BL9: BL9 5, BL9 6, BL9 7 or BL9 0.

Financial Statements of the Parochial Church Council

For the year ended
31st December, 2024.

Holcombe and Hawkshaw Parochial Church Council

STATEMENT OF INCOME FOR THE YEAR ENDED 31 DECEMBER 2024

	Holcombe and Hawkshaw 2024	
	£	£
Voluntary Income		
Planned Giving - Gift Aid	66,689.53	
Planned Giving - Un-gifted	2,568.78	
One off Gift Aid	2,900.34	
Cash/Collections	5,873.35	
Income tax recovered	18,803.60	
Fund Raising Events	3,201.70	
Magazine	480.60	
Use of Church Buildings	7,335.46	
		107,853.36
Other Ordinary Income		
Dividends and Interest	1,334.42	
Fees to PCC	10,099.10	
		11,433.52
Extraordinary Income		
Restricted Donations	10,018.29	
(i) Grants	20,988.64	
Special Appeals	434.00	
		31,440.93
Total Income 2024		150,727.81
Income 2023		170,226.91

Notes

- (i) £19,000.00 Grant received for ECC Cladding
1988.64 revitalisation funding grant

Holcombe and Hawkshaw Parochial Church Council

STATEMENT OF EXPENDITURE FOR THE YEAR ENDED 31 DECEMBER 2024

	2024	
	£	£
The Ministry		
Ministry Expenses	9,445.82	
Support & Education	2,776.22	
		12,222.04
The Church and Services		
Energy	17,071.38	
Water	1,456.56	
Cleaning	380.00	
Insurance	8,203.05	
Upkeep of Services	8,268.57	
Church Maintenance	11,600.52	
Churchyard	6,914.03	
		53,894.11
Other Ordinary Expenditure		
Wages	13,611.47	
Magazine	-	
Fund Raising costs	480.00	
Verger/Organist	1,527.99	
		15,619.46
The Diocese		
Parish Share	43,000.00	
Other Diocese costs	5,002.00	
		48,002.00
Payments to Missions/Charities		
Mission/Charities	1,765.00	
		1,765.00
Extraordinary Expenditure		
Energy Savings Fund	-	
ECC Golden Jubilee Renovation Fund	23,277.60	
Holcombe Building Fund	507.11	
Hawkshaw Building Fund	350.00	
Hawkshaw Heating Fund	6,525.00	
Mission Funding	500.00	
		31,159.71
		162,662.32
Total Expenditure 2024		
Expenditure 2023		197,964.58

YEAR END STATEMENT 2024

Bank Balances 31 December 2024	Total
Current Account	-
Deposit Account	56,737.99
Direct Giving Accounts	2,874.97
Restricted Funds Account	844.46
Cash	-
	<hr/> 60,457.42
Less Unpresented cheques	-
Year End Total	<hr/> 60,457.42 <hr/>

Restricted/Designated Funds

Energy Savings	5,000.00
ECC Golden Jubilee Renovation	6,327.74
Holcombe	7,420.13
Hawkshaw	656.00
Hawkshaw Heating	42,097.69
Mission and Christian Camp (ex Malawi)	1,431.64
	<hr/> 62,933.20 <hr/>

Working Balance (i) 6,062.82

Notes (i)

2024 2nd half Gift Aid received in January.

Gift Aid required to pay Parish Share and Rector Expenses & Parish Expenditure

STATEMENT OF ASSETS AT 31 DECEMBER 2024

	Balance 31/12/2023	Balance 31/12/2024
<u>Investments</u>		
Santander Shares	313.11	456.12
CCLA Investment	4,127.76	4,221.01
CCLA - Restricted Holcombe Endowments	1,011.18	1,061.72
	5,452.05	5,738.85
<u>Bank Accounts</u>		
Current Acc	-	-
Deposit Acc	77,013.27	56,737.99
Direct Giving Acc	3,084.87	2,874.97
Restricted Acc	832.39	844.46
Cash Not banked	-	-
	80,930.53	60,457.42
<u>Adjustments</u>		
2024 Gift Aid return	-	11,416.35
Rector Parish Expenditure	-	872.05
Rector Expenses	-	2,005.70
	-	8,538.60
TOTALS	86,382.58	74,734.87

Notes

2024 2nd half Gift Aid received in January.

Gift Aid required to pay Parish Share and Rector Expenses & Parish Expenditure

Yearbook 2024



Drop in /Open the Book meal.

Saturday 12th May
10.00am to 2.00pm
Emmanuel Church
Canon Lewis Hall
Car Park
Longsight Road
Holcombe Brook
BL8 4DB

Saturday 11th May
10.00am to 2.00pm
Emmanuel Church Centre
Canon Lewis Hall
Car Park
Longsight Road,
Holcombe Brook
BL8 4DB

Car boot Sale

Cars: £10 Vans £15
In advance please
No trade
Set up from 8.00am

Cheques made payable to "Parish of Holcombe and Hawkshaw P.C.C."
For more information email carboot@holcombeandhawkshaw.org
Consent granted by Bury Council

Cars: £10 Vans £15
In advance please
No trade
Set up from 8.00am

Cheques made payable to "Parish of Holcombe and Hawkshaw P.C.C."
For more information email carboot@holcombeandhawkshaw.org
Consent granted by Bury Council



'Remembering Loved Ones'

Sunday 3 November

2 – 3pm in the garden at Emmanuel Church Centre or inside if it is wet.

An opportunity for anyone to remember their loved ones who have died whenever that has occurred.

There will be a short act of worship at 2pm and again at 3pm and an opportunity for the laying of flowers or stones at the foot of the cross in the garden if anyone wishes to do that as an act of remembrance. Come at any time from 2pm to 3pm and Stay for as long as you want

It is also hoped to have a short prayer walk with prayer stations to aid reflection around bereavement that will be set up in the Church Centre.

Remembrance Sunday is on Sunday 10th November, when there will be the usual acts of Remembrance at each Centre at or during morning worship.



Thank you

Your House Box Network is bringing hope to young people. Your box collection has raised

£ 750

Cake Stall

St. Mary, Hawkshaw

After Service (about

12noon)

7th July

Towards New Heating

System.

Saturday 16th November

7 for 7.30pm



£6 per person

includes supper, tea/coffee (BYOB)

Emmanuel Church Centre
Canon Lewis Hall,
Longsight Road,
Holcombe Brook,
BL8 4DB

**Teams:
two to six
(max.)**

Tickets at each worship centre
or speak to Stephen Newhouse 01706 412657

stephen.newhouse@sky.com

Proceeds to Holcombe Building Fund



**Saturday
24th February**

7 for 7.30pm

Emmanuel Church Centre,
Canon Lewis Hall,
Longsight Road,
Holcombe Brook
BL8 4DB



**Teams:
two to six (max).
£5 per person
includes supper
and tea/coffee (BYOB)**



Tickets: at each worship centre
or speak to Stephen Newhouse 01706 412657;

stephen.newhouse@sky.com

Proceeds to Emmanuel, Holcombe Building Fund

There is to be a

Mission Community Walk.

Calling at each of the churches in the Community
Below are the times for the walk
on Saturday 28th September.



The walk covers approximately
10 miles in total.

Come and walk it all or join in for a section.

We expect that walkers will be departing from each church at some point while it is open.

Sign up sheets at each Worship Centre or email Paul
paul@holcombehawkshaw.org

Maps will be available at each church.

	Walk commences at 10am	Open from for chat/rest/refreshments
1	Edenfield	9-11am
2	St Philip's Stubbins	10.15-11.15
3	St Paul's Ramsbottom	10am-12noon
4	St Andrew's Ramsbottom	11am-12.30pm
5	Emmanuel Holcombe	11.15-1pm
6	St Mary's Hawkshaw	12.15-2pm
7	St Anne's Tottington	1.30-3.30pm
8	Emmanuel Church Centre	3-7pm BBQ starts at 4pm

29th September
6.30pm Mission Community
Evening Worship
at Emmanuel Church Centre

FRAUD AWARENESS

Come along to our fraud awareness talk to know the latest scams and how to protect yourself and others.

WHAT WE WILL DISCUSS:

- Latest scams/frauds
- Keeping safe from scams
- Famous stories/cases
- Online safety
- Free materials
- How to report fraud

A joint meeting by Mothers' Union and Bury North Trefoil, but open to all.

Tuesday 4th June at 2.00pm

£3 inc. Refreshments#
Emmanuel Church Centre
Longsight Road, BL8 4DB



ActionFraud
100% confidential & secure online
actionfraud.police.uk

Words and Music for Christmas



Words and Music for Christmas



Half-term holiday events in Hawkshaw Church



FUN DAY ~ Tuesday 22 October: 9.30am till 3pm
Bring a packed lunch

LIGHT PARTY ~ Thursday 24 October: 4pm till 6pm

Booking required – email: Jo@holcombehawkshaw.org

**Monday
22nd April**

Fashion Show by Fizz



Parish of
Holcombe &
Hawkshaw

Ladies fashions for all
ages and sizes.

Tickets: £5
(inc. glass of fizz)

Clothes bought on the night
(cash, cheque, debit/credit cards.)

Fizz fashion

Doors open
7.15pm for 7.45pm start.

Emmanuel Church Centre
Longsight Road
Holcombe Brook
BL8 4NB

Contact: Jo 07921517063
Sheila 01204 882459

**Saturday
7th December**

*The
Joy of
Christmas*

Reception with mince pies
and mulled wine

7.00pm for 7.30pm



Parish of
Holcombe &
Hawkshaw

Words and Music for Christmas

Entertainment for the
Christmas period.

A Parish Event
Everyone welcome

£5.00

Canon Lewis Hall
Emmanuel Church Centre

Tickets at each Worship Centre

Spring in the garden



Quiz



Car boot sale



World Day of Prayer



Soup Company

Once again this year has brought in record numbers for our Soup Company on the second Thursday of every month especially just before Christmas for the Hall Users Christmas Carol Service that followed the December one.



Children from Emmanuel Holcombe School made everyone cards and decorations.

Sadly Romey hung up her apron, but we thank her for the many years of service. Everyone misses her delicious Chicken and Sweetcorn Soup, Meringues and Trifle.

The soups available, continue to be varied whether Pumpkin, Broccoli and Stilton or Pea and Ham, there are always at least eight to choose from and vegetarians, vegans and lactose intolerant are always catered for.

Many arrive from 12 noon to enjoy each others company and after Soup and Garlic Bread, go on to enjoy Annette's delicious puddings, such as: Tiramisu and gorgeous cakes. Christine also provides fruit pies each month.

Thank you, to all our helpers and guests. Donations are given to church funds and last year this raised over £600. We meet every month except August.

If you haven't yet experienced the soup lunch, come along as you would be made very welcome indeed.

Jo Venn



Another year of great fellowship, good company, conversation and of course tea, coffee, biscuits and often cake made by Annette.

We meet at Canon Lewis Hall on Monday mornings 1.00am - 12 noon.

We have a lunch twice a year, which we share with Open the Book team, who rehearse at the same time in the church, bible stories to present to the children at Holcombe Brook School each Wednesday.

Still carrying on from last year, 'Warm Spaces' following on from 'Drop - in', a simple soup lunch which is enjoyed by all with further company until mid afternoon.

I wish to thank Diane and Pauline for taking over from me while I was absent (on sick leave!).

We are open to anyone who would enjoy the company, why not come and try the friendship, any Monday morning between 10.00am and 12 noon.

Ann Millius



Hall Things Bright and Beautiful

We continue to maintain the Reflective Garden at the rear of the Hall, and it continues to be a very popular sanctuary for many people and a useful place for many different groups.

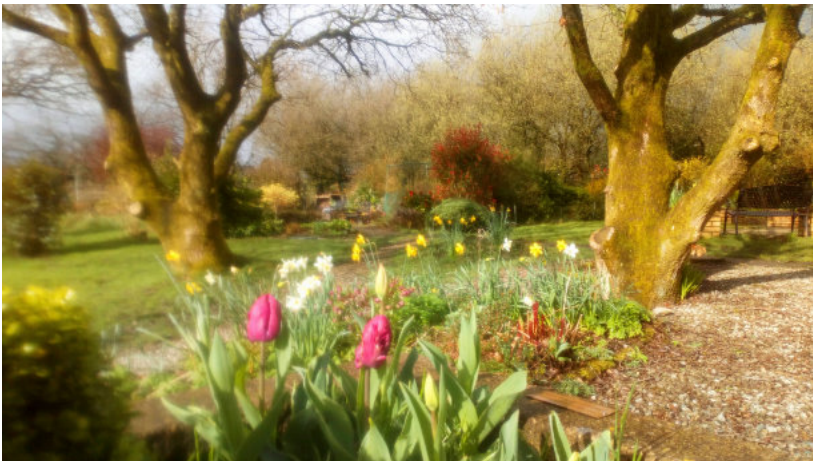
This year we would especially like to thank all the helpers who carried on with the work while Barbara was unable to assist due to a broken ankle. Everything was made ready for winter by planting bulbs and cutting back bushes – it looks great, thanks to everyone.



During the year, amongst other work, we added one more bench, re-laid one of the paths and tidied up the front four boxes. Our main job now is to keep the area colourful and welcoming for visitors.

The work is funded by the sale of jam, marmalade and cards, so please keep buying them so that we can ensure a lovely spot for the future.

*For the Hall Things Bright and
Beautiful Team.
Barbara Newhouse*



Emmanuel Holcombe Choir

The autumn and early winter were marked for us by sad events with the deaths of Pauline Howker and Richard Carr. Both had sung with Holcombe Choir for many years, and Pauline was still attending choir practices only a couple of weeks before she died. We remember them with affection and miss them greatly.

Good Friday was very early in 2024 – before the start of British Summer Time. This may have been one of the reasons for the low attendance at our service on that day. It was a good service, and as usual we welcomed Naomi Jahoda who sang ‘He was despised’ from ‘The Messiah’. We hope that this year the lighter evening will encourage more people to be present. On Easter Day 2024 our anthem ‘God so loved the world’ was appreciated by members of the congregation.

After quite a lot of preparation, in June we sang ‘Thou wilt keep Him in perfect peace’ by Herbert Sumson, Paul’s grandfather. It was the first time Holcombe Choir had sung it since 2010. One or two extra singers joined us for this, including Paul himself. We were grateful to Geoff Stokes for supporting Robert singing tenor.

This year the ‘Come and Sing’ Choral Evensong took place in September to avoid any impact of holidays. Again, our anthem was one which required much revision: Bairstow’s ‘Save us, O Lord, waking.’ It would be good to sing it again before we forget it! As in June we persuaded extra singers to help with the tenor part. This was most beneficial.

In November we repeated the Remembrance anthem (David Ogden’s

‘We will remember them’) which we first sang in 2023, singing it as a hymn during the administration of communion and as an anthem at Choral Evensong.

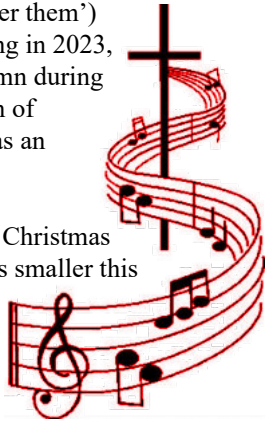
Our children’s Christmas singing group was smaller this year, but all were keen singers and did well. I could hear every voice when they sang at the Carol Service. As last year we had distributed flyers at the carol singing round the tree in Holcombe, and attendance was good.

We have been pleased that Marcia Hollis has been able to sing with us on several occasions and has attended many of our choir practices.

The 3pm timing of Choral Evensong in the winter is clearly helpful. That of severe winter weather and illness has been much less so, and we lost two choir practices soon after Christmas. We are hoping that the worst is now over for this winter!

As always I would like to thank John Fairclough, who plays for the Carol Service, Choral Evensong and the Good Friday service, and to Brian and Jill Hunt who have brought him to services and practices when it has been dark. Thanks are also due to several members who contribute in various ways to the smooth running of the choir.

Rosemary Artley
5.3.2025



St. Mary's Church of England Primary School

St Mary's CEP School, at the heart of the community!

St Mary's CEP School is so fortunate to be at the heart of a wonderful community. Hawkshaw is such a beautiful village. We have been working with Community Buds and the Village Forum to build even stronger relationships. To celebrate Harvest our families donated items for Kindness Packs which were then distributed by our children to nominated neighbours. Our choir loved performing at the Methodist Christmas Tree Festival and Sizzling Senior's Christmas Party. To support Ramsbottom Pantry we continually collect food and toiletries. In addition we had a cereal box domino rally. This provided 100 full boxes of cereal for the charity. We also supported Red Nose Day and Children in Need. Our children appreciate that they are very fortunate and love to help others in Bury and beyond. We have raised vital funds for the LEARN charity which supports Shree Gyanjyoti Community School in Nepal. We had a Sweet Treat Tombola and a Musical Evening allowing a large number of children to share their amazing talents whilst raising money and awareness for the charity.

The staff also enjoy supporting other schools. Mrs Falshaw is a SATs Writing Moderator for Bury LA. Mrs Clark is a SIAMS Inspector for the North West and a Diocesan Hub Leader. I continue to be a Head Teacher Mentor for recently appointed Head Teachers. We recently invited all the Sycamore Trust Senior Leaders to our Wider Curriculum

Showcase. All teachers shared with pride the impressive personal development opportunities provided for our children. In May we

organised a very exciting Cross Country Championship for all the Sycamore Trust schools. We benefit from being situated next to a challenging Cross Country Course.

This year we have received a variety of awards including the SACRE Award for Widening Achievement in Religious Education. We were deemed to be the second best school in Bury based on a wide range of criteria including Ofsted reports, parental views and achievement by School Guide. We had the highest attendance of all primary schools in Bury. Children clearly love coming to our happy and loving school.

After 20 years of being the proud Head Teacher of St Mary's CEP School and a forty one years of being a teacher in Bury, it is now the right time to fully retire at Easter 2025. It has been a privilege to help nurture so many delightful children. I have been so fortunate to enjoy working with so many wonderful families feeling trusted and appreciated. The staff teams I have worked in have all been passionate about providing excellent care and quality teaching. It has been so wonderful to watch children grow and develop from their first day at St Mary's to leaving ready for High School. I have had a career bursting with happy memories. Thank you to everyone who has supported St Mary's over the last twenty years.



Mrs Skinner

Head Teacher

Emmanuel Holcombe Church of England Primary

Growing together in love and learning, through faith, family and friendship.

"Live a life filled with love, following the example of Christ."

The Emmanuel Holcombe school and church family is a flourishing community. In the year 2024-25, we have had much to celebrate!

Church Links

School truly thrives when the links

between our school family and our church family are strong. In February the pupils led our



'Celebration Sunday' service, which was enjoyed by all. We focused on one of our Christian values – forgiveness. In March, we welcomed the Capernwray Bible College students into school. Our new friends led worship and helped to run the 'Prayer Spaces' project in school. At the beginning of April, pupils enjoyed spending time in church for 'Experience Easter' and participated in our Easter Service.

Faith Ambassadors

Our Faith Ambassadors have an important role in school, leading



Monday Worship and helping lead on the Christian distinctiveness of our school. They have also participated in an Inter Faith Day in Bury, learning about World Faiths, and the importance of tolerance and understanding.

Supporting Charities

Our charitable work is very important to us at Emmanuel Holcombe and this year we asked our parents to not buy staff Christmas gifts but instead



donate to Ramsbottom Pantry. Our Year 5 and 6 pupils walked down with our donations and spent the afternoon,

learning about how the pantry works. We also supported Children in Need and 'Wear it Pink for Breast Cancer' – a charity very close to our hearts at Emmanuel.

Rich Curriculum

We have worked hard to ensure that our pupils



experience a rich and varied curriculum, which includes a wide range of trips, visitors, workshops and residentials. Oak Class had a 2-day Anne Frank workshop in school, linked to their English unit; KS2 went to the Bridgewater Hall to watch the Raga Jyoti performance, based on Indian Music; Beech class participated in a bowling and a cricket tournament and an Egyptian workshop at Bolton Museum; pupils from Year 4 – Year 6 performed with Young Voices at the Coop Live Area.

days and weeks for our pupils. This year all children participated in Citizens of the World Theme Week and a Christmas Theme Week based on Dickens 'A Christmas Carol.' In February all pupils participated in a music theme week, culminating in a performance of 'Music Throughout the ages.'

Sending our love and prayers to you all.
Amy Longstaff
Headteacher



Theme Weeks

We love to organise a range of theme



Warm Spaces

'Share with the Lord's people who are in need'

Romans 12:13



Warm Spaces has met on Monday lunch times as a continuation of Drop-In since 28th October 2024, except for two weeks over the Christmas holiday period and when there has been a 'Drop-In' meal. We will continue to meet until 17th March and restart, with the approval of PCC, and sufficient support from volunteers, on 27th October 2025 after the clocks change, (BST ends).

Ten volunteers are on the rota, providing a simple soup lunch and some sweet treats.

We are regularly serving 17 – 22 portions of soup. Most participants are staying on after 'Drop – In,' but we have seen some new faces.

The session is always well appreciated and provides a warm and social gathering for those for whom the dark, cold, winter days may be challenging.

Thank you to all the volunteers and to all who have joined us for lunch this winter. A special thank you to Annette, who has volunteered every week and usually provides the delicious cake.

*Jean Houghton
February 2025*

Afternoon Fellowship 2024



The group still continues, although the members are fewer, but it has still been an enjoyable year.

• **January**
Jo talk and pictures on her

pilgrimage to Assisi.

- **February** - Claire talk and pictures on her holiday to Mexico
- **March** - Veterans Choir which was our fellowships birthday celebration
- **April** - Roberts Rambles
- **May** - The Kellingtons who showed us a film titled The Yorkshire Coast
- **June** - Robert again helped out with a talk about Scottish Gardens
- **July** - cancelled
- **August** - no meeting
- **September** - Musical afternoon given by our resident pianist, Sheila, music, songs and readings in dialect.

Then bad news; it was decided to close perhaps for six months due to my surgery.

As you all know, I am recovering well, so just watch out for our re-opening 28th April at 2pm. Our meetings are on the 4th Monday of the month at 2pm Emmanuel Church Centre, we would welcome new members.

If you are interested in joining us, please phone:--

Mrs Pauline Keighley 01204 884476

Mrs Ann Milius 01204 880677

Afternoon Pilgrim Group



Have you ever been part of a House Group either in our parish or a previous one? Was it useful? Did it help to explore your faith and read parts of the Bible that you hadn't read before?

That is what our Pilgrim groups throughout the Parish do. There are daytime and evening meetings. (Please ask if you need more details).

The ECC Pilgrim group usually meet on a Tuesday afternoon from 2pm and there are on average 12 to 14, as we were delighted to have some new members this year, even if the winter months and illness meant that a few regulars couldn't attend. It is a very inclusive group of men and women and we have studied the Bible Society material during the year and Romans linking in with the sermons before and after Christmas.

Linda prepares appropriate prayers for the start and finish of the meeting and refreshments and Annette's delicious cake completes an enjoyable, thought provoking and spirit led afternoon.

If you would like to join us speak to one of us.

Jo and Linda

ECC Prayer Group

We meet every Monday morning at



9.00 am. There is generally someone from each of the three churches and thereby

including all the prayer needs of our parish and numbers vary from one person to about ten, we never miss a week.

We use the Iona Morning Prayer leaflet; someone leads and the rest of us join in with written responses.

We begin with worship:

O God You summon the day to dawn..... Great is your name, Great is your Love, etc.

Then Confession:

Lord, bring new life where we are worn and tired., New love where we have turned hard hearted, Forgiveness where we feel hurt and where we have wounded, And the joy and freedom of your Holy Spirit where we are prisoners of ourselves. God pronounces pardon and grants us the right to be begin again.

We share two readings and a moments reflection, then time for open prayer. Mainly for the week's activities. The members who are ill or bereaved.

We join together in a prayer for ourselves appealing for wisdom, understanding and sensitivity:

Bring us to the days ending blessed through having shared the day's beginning.

We say the Lord's prayer and then have a blessing.

In all, it is a very good way to start the week.

10th Ramsbottom Guides

2024 has been another busy year for the Guides, and has seen the Unit grow as we've welcomed several new members.



The girls continue to follow the Girlguiding program and have earned Theme Awards and Skills Builders as well as completing countless Unit Meeting Activities from Robot Building and Bowled Over to Paper Pilots and Splatter.

We've been creative making boxes from recycled Christmas cards, painted elephant money boxes, made and played jelly baby table football and enjoyed winter Olympics themed evenings to name a few.

We've also contributed to the new Guide uniform design project by adding our ideas, cooked pancakes on tin cans, had a film night, played games, dodged doughnuts, and been crafty making Fimo friends, paper bowls and weather forecasters.

As ever the summer saw us enjoying the great outdoors, with a water themed night, wide games and the obligatory evenings of fire lighting and campfire cooking.

It has been lovely to welcome new members in the year, and we've waved goodbye to others who have moved on.

As ever, we couldn't do this without the help of our volunteers, so it's 'Thank You!' for everything they do.

Guider: Susan Watson

19th Ramsbottom Brownies

Brownies is still very enjoyable; we have about 20 girls who have achieved great things this year and had some great times in the meetings and elsewhere.



Unfortunately, due to family pressures, Lisa has taken time out but happily we have been lucky enough to welcome Sophie as a temporary leader. We also welcomed back Mary who has finished her university studies and joined us again as a Leader. Without them we would be struggling, please volunteer to be a Guider if you are at all interested in giving opportunities to young girls.

As usual, the girls have completed themes, badges and awards. The pinnacle is achieving Gold, and we are pleased that so many of our girls do get there. We have worked on environmental issues, had campfires, crafted, played games, giggled and laughed and one of the most favourite things to do is go in the kitchen and make the refreshments – a simple task but highly prized!

St. John Ambulance came to teach the Brownies First Aid, and the summer term ended with a visit to Ski Rossendale for a tubing session.

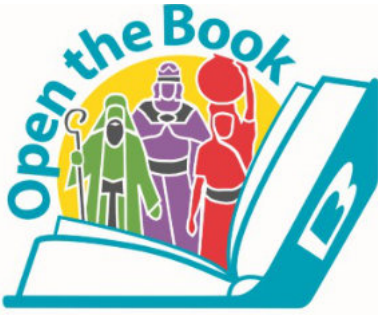
Girls come into the pack at 7 and leave us for Guides at 10, hopefully during that time they have grown in their confidence and will then continue keeping their promise for the rest of their lives.

19th Ramsbottom Brownies.Guiders:

Lisa Fildes Coulborn,

Mary Souter, Sophie Whitham and

Barbara Newhouse.



I was on the bus into Bury the other day and a small child(year 2) called Lily said to her mummy”I know that lady she dresses up and comes into our school and tells us about Jesus. I like it”

Her mum looked at me and smiled wondering whether her daughter or I had delusions. “She is right” I said and explained that we are part of the team called Open the Book that come in every Wednesday from our parish. To prove it I signed good morning to her daughter and good morning friends and explained that it was 2 way learning. If this is not mission I don’t know what is. I then invited them to come over sometime for campfire church.

Behind this chance encounter are all the rehearsals on a Monday morning which are great fun. Sheila.Cath and Stephen have always prepared well and keep us on our toes. It is great fun and fellowship and we enjoy a coffee both before and then afterwards with Drop In . One week you might be a narrator or reading the Introduction, the next week



you may be acting out a part or a person in the crowd. We have wonderful children volunteers who are rewarded with a sticker if they have taken part. Their acting is often better than ours and certainly better than mine.

Why not come and join us on a

Monday morning between 10 and 12 noon and see if it is for you?

We have also been involved in Experience Christmas and Experience Easter and get to meet all the pupils in the three schools in our parish.

Who knows what seeds we may be sowing?

What we lack in Dramatic ability, we make up for in enthusiasm, so why not join us you will not regret it. Contact Sheila if you would like to give it a try, come and have a look any Monday morning, from 10am until 12 noon in term time.



Canon Lewis Hall (Adult and pre- school(0-4years) Playgroup

(March 2023 – March 2024)

How to describe last year – perhaps one of change! You may have already noticed the heading of our report. Yes, after much thought we are no longer known as Traveller's but as Canon Lewis Hall Playgroup. We took this decision when numbers were low after October ½ term and people were telling us that they thought you had to be part of the travelling community to come along (we inherited the name when we took over approximately 25 years ago).

Despite the name change it's been business as usual. The year's flown by, we've met 35 times and we can honestly say that no two weeks are the same. Though the children are always full of energy and imagination. The playdough table is still the favourite and it's amazing where the playdough ends up at the end of the afternoon! (Did you know dinosaurs and dolls like eating it and then we had the mystery of the 4 missing rolling pins, later to be found posted through the petrol



tank flap on the Little Tike car!)

We raised £40 for BBC Children-In-Need in November, then in December Father Christmas took time to come and visit us.



Throughout the year, we have had various craft sessions making lamb shaped Easter Cards, Gonk fridge magnets, snowman masks and more. Samples of craft activities along with details of when we meet and lots of photos can be found on our notice board in the hall. We now also have a dedicated email address, so people are free to contact us at any time for further information.

canonlewishallplaygroup@gmail.com



In the last couple of months both of us have become Grandparents for the first time. After talking to grandparents and other adults who come along, we now fully appreciate how important such groups are not only for the children, but also for the adults! Everyone's welcome so please come along!

Kathryn Fry & Julia Grant

Mothers' Union.



Firstly, can I congratulate our member Gwyneth on her 70th Mothers' Union. Secondly, a "big Thank You" to our church members and friends for supporting our musical fund-raising events and helping us raise £516 to help families in need.

During the last year we have travelled from one side of the world to the other with Jo Venn sharing her stories about a trip down Route 66 in America and Julie Smaile sharing her stories of her trip to India. We have enjoyed different musical events with the Bury Veterans Choir and the Strummers with live music and our great friend Richard Hall sharing part of his music collection with us. We also joined with the Trefoil Guild when Peter McAvoy came to talk to us about fraud scams and gave us lots of useful advice. A talk with a difference was given to us by Sally Hilditch who told us about weaving with demonstrations.

On the social side, we have enjoyed Afternoon Tea during the summer and a Christmas Lunch, both at Park Farm. We have also met with other Mothers' Union groups at our Deanery festivals during the year.

Although we are a small branch of the Mothers' Union, we are in good heart and looking forward to our meetings this year with a variety of speakers and fund raising events.

Robert Airey
Correspondence Secretary.

Rector: Rev. Paul Sumsion,
The Vicarage,
Bolton Road,
Hawkshaw,
Bury,
BL8 4JN
01204 888060.



Associate Ministers:

Rev. Robert Airey	01706 224743
Rev. Vic. Fletcher	01204 882750
Curate:	
Rev. Matthew Brinicombe	07447 976308

Readers:

Mr. Michael Burton,	01706 822664.
Mr. Richard Byrom,	01204 883110.
Mrs. Ethel Houghton	01254 704758.
Mrs. Jane Fletcher	01204 882750.
Mrs. Jo Sumsion	01204 888060

Children and Families' Ministry Facilitator:

Mrs. Jo Sumsion	01204 888060
-----------------	--------------

Church Wardens:

Mr. Stephen Newhouse (Lay Chair PCC).	
	01706 412657.
Mr. Peter Hardcastle	01204 853999

Why not visit our website:

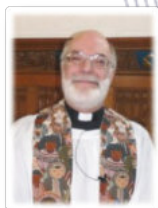
www.holcombehawkshaw.org

Each Sunday There is a service at each worship centre and the 10.45am service at St. Mary, Hawkshaw is "streamed live" on YouTube and is available all week, so you can watch it at any time.

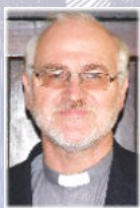
Just visit our website www.holcombehawkshaw.org.

We have also been sending out regular e-mails with news updates, so if you haven't received those please email a request to

stephen.newhouse@sky.com



Rev. Robert Airey



Rev. Vic. Fletcher



Rev.
Matthew Brinicombe

Annual Report and Yearbook 2024



Holcombe and Hawkshaw Parochial Church Council

STATEMENT OF INCOME FOR THE YEAR ENDED 31 DECEMBER 2024

	Holcombe and Hawkshaw 2024	
	£	£
Voluntary Income		
Planned Giving - Gift Aid	66 689 53	
Planned Giving - Un-gifted	2 568 78	
One off Gift Aid	2 900 34	
Cash/Collections	5 873 35	
Income tax recovered	18 803 60	
Fund Raising Events	3 201 70	
Magazine	480 60	
Use of Church Buildings	7 335 46	
		107 853 36
Other Ordinary Income		
Dividends and Interest	1 334 42	
Fees to PCC	10 099 10	
		11 433 52
Extraordinary Income		
Restricted Donations	10 018 29	
(i) Grants	20 988 64	
Special Appeals	434 00	
		31 440 93
Total Income 2024		150 727 81
Income 2023		170 226 91

Notes

- (i) £19,000.00 Grant received for ECC Cladding
1988.64 revitalisation funding grant

Holcombe and Hawkshaw Parochial Church Council

STATEMENT OF EXPENDITURE FOR THE YEAR ENDED 31 DECEMBER 2024

	2024	
	£	£
The Ministry		
Ministry Expenses	9 445 82	
Support & Education	2 776 22	
		12 222 04
The Church and Services		
Energy	17 071 38	
Water	1 456 56	
Cleaning	380 00	
Insurance	8 203 05	
Upkeep of Services	8 268 57	
Church Maintenance	11 600 52	
Churchyard	6 914 03	
		53 894 11
Other Ordinary Expenditure		
Wages	13 611 47	
Magazine	-	
Fund Raising costs	480 00	
Verger/Organist	1 527 99	
		15 619 46
The Diocese		
Parish Share	43 000 00	
Other Diocese costs	5 002 00	
		48 002 00
Payments to Missions/Charities		
Mission/Charities	1 765 00	
		1 765 00
Extraordinary Expenditure		
Energy Savings Fund	-	
ECC Golden Jubilee Renovation Fund	23 277 60	
Holcombe Building Fund	507 11	
Hawkshaw Building Fund	350 00	
Hawkshaw Heating Fund	6 525 00	
Mission Funding	500 00	
		31 159 71
		162 662 32
Total Expenditure 2024		
Expenditure 2023		197 964 58

YEAR END STATEMENT 2024

Bank Balances 31 December 2024

	Total
Current Account	-
Deposit Account	56 737 99
Direct Giving Accounts	2 874 97
Restricted Funds Account	844 46
Cash	-
	<hr/>
	60 457 42
Less Unpresented cheques	-
Year End Total	<hr/> 60 457 42 <hr/>

Restricted/Designated Funds

Energy Savings	5 000 00
ECC Golden Jubilee Renovation	6 327 74
Holcombe	7 420 13
Hawkshaw	656 00
Hawkshaw Heating	42 097 69
Mission and Christian Camp (ex Malawi)	1 431 64
	<hr/>
	62 933 20 <hr/>

Working Balance (i) 6 062 82

Notes (i)

2024 2nd half Gift Aid received in January.

Gift Aid required to pay Parish Share and Rector Expenses & Parish Expenditure

STATEMENT OF ASSETS AT 31 DECEMBER 2024

	Balance 31/12/2023	Balance 31/12/2024
<u>Investments</u>		
Santander Shares	313 11	456 12
CCLA Investment	4 127 76	4 221 01
CCLA - Restricted Holcombe Endowments	1 011 18	1 061 72
	5 452 05	5 738 85
<u>Bank Accounts</u>		
Current Acc	-	-
Deposit Acc	77 013 27	56 737 99
Direct Giving Acc	3 084 87	2 874 97
Restricted Acc	832 39	844 46
Cash Not banked	-	-
	80 930 53	60 457 42
<u>Adjustments</u>		
2024 Gift Aid return	-	11 416 35
Rector Parish Expenditure	-	- 872 05
Rector Expenses	-	- 2 005 70
	-	8 538 60
TOTALS	86 382 58	74 734 87

Share Price	Shares
362	126
2029 33	208

Notes
2024 2nd half Gift Aid received in January.
Gift Aid required to pay Parish Share and Rector Expenses & Parish Expenditure



CHARITY COMMISSION
FOR ENGLAND AND WALES

Independent examiner's report on the accounts

Section A

Independent Examiner's Report

Report to the trustees/
members of

Parish of Holcombe & Hawkshaw, Lancashire

On accounts for the year
ended

31/12/2024

Charity no
(if any)

Set out on pages

Trace Sep 25 B1,B2,B3,A1,A2,A3 & Summary of Traceability

I report to the trustees on my examination of the accounts of the above charity ("the Trust") for the year ended **31/12/2024**

Responsibilities and
basis of report

As the charity's trustees, you are responsible for the preparation of the accounts in accordance with the requirements of the Charities Act 2011 ("the Act").

I report in respect of my examination of the Trust's accounts carried out under section 145 of the 2011 Act and in carrying out my examination, I have followed all the applicable Directions given by the Charity Commission under section 145(5)(b) of the Act.

Independent examiner's statement

I have completed my examination. I confirm that no material matters have come to my attention in connection with the examination (other than that disclosed below *) which gives me cause to believe that in, any material respect:

- the accounting records were not kept in accordance with section 130 of the Charities Act; or
- the accounts did not accord with the accounting records; or
- the accounts did not comply with the applicable requirements concerning the form and content of accounts set out in the Charities (Accounts and Reports) Regulations 2008 other than any requirement that the accounts give a 'true and fair' view which is not a matter considered as part of an independent examination.

I have no concerns and have come across no other matters in connection with the examination to which attention should be drawn in this report in order to enable a proper understanding of the accounts to be reached.

** Please delete the words in the brackets if they do not apply.*

Signed:

Date:

29/9/2025

Name:

Stuart Moul

Relevant professional
qualification(s) or body
(if any):

AAT membership number: 20269328

Address:

9 Hunstanton Drive, Bury. BL8 1EG

Section B**Disclosure**

Only complete if the examiner needs to highlight material matters of concern (see CC32, Independent examination of charity accounts: directions and guidance for examiners).

Give here brief details of any items that the examiner wishes to disclose.

I have carried out the independent examination

I have noted an increase in Direct On-Line banking payment and have followed some transactions but not selected – all found to be accurate and traceable. I found that there is now very little direct Cheques issued (7 within 2024). As this is the case Cheque book stubs were not given to verify 'paper copy' but traces were completed without Cheque book stubs with no cause for concern.

I have cross referenced financial statements with links back to accounting records: - Bank statements, Receipts, Bank Details & Summary (held by Treasurer), Invoices.

I have selected various sample receipts & payments and traced back through all accounting sheets including Bank Statements. Details of one sample – see **'Trace Sept 25 B1, B2 & B3'**.

I have selected various sample payments on Bank Statements and traced back through all accounting sheets Receipts. Details of one sample – see **'Trace Sept 25 A1, A2 & A3'**.

I have selected various Incomes and follow back 'Direct Giving' money transfers and 'Weekly Giving' and am satisfied that these accounts give no cause for concern.

See **'Summary of Traceability'**

I have reviewed the minutes of the PCC and I have obtained background information on the PCC, how it is organised. The parish includes St. Mary's Hawkshaw & Emmanuel Holcombe and within the Parish there are 3 churches - St. Mary's (Hawkshaw), Emmanuel Church (Holcombe Village) & Emmanuel Church Centre (Holcombe).

7 sheets attached: -

Trace Sept 24 B1, B2, B3

Trace Sept 24 A1, A2 & A3

Summary of Traceability