



HOLIDAY CLUB FOR AGES 5-11
ST MARY'S CHURCH HAWKSHAW
 25-29 JULY 2022 : 9.30-12.30
 CONTACT PENNY HANLEY: 07870 578 632
 INFO@HOLCOMBEHAWKSHAW.ORG
 DONATIONS OF £3 PER DAY APPRECIATED

Saturday 8th October
10.00am to 2.00pm
 Emmanuel Church Centre
 Canon Lewis Hall
 Car Park
 Longlight Road,
 Holcombe Brook
 BL5 4BB

Car: £10, Van: £15
 No Road
 No Fuel
 No Food & Drink

Chapman made payable to 'Parish of Holcombe and Hawkshaw P.O.C.'
 For more information email: info@holcombehawkshaw.org
 Consent granted by Holy Council

Fashion Show
by Fizz

Monday
21st November

Emmanuel Church Centre
 Longlight Road
 Holcombe Brook
 BL5 4BB

Doors open 7.00pm
 Ladies fashions for all
 ages and sizes

Tickets: £5
 (inc. Glass of wine)
 Available from
 9.00am
 9.00am

Buy on the night
 (cash, cheque debit/credit cards.)



Alternative
Last Night of the Proms

Another opportunity to see the
 world-famous Proms
Saturday 10th September
 Emmanuel Church Centre
 Canon Lewis Hall
 Longlight Road
 Holcombe Brook
 BL5 4BB

Tickets £7
 at our meeting Centre
 at 10.00am
 01782 432027
info@holcombehawkshaw.org

Parish of
Holcombe &
Hawkshaw

Annual Report and Yearbook 2022



What's been happening
in the Parish?

Loving God, loving neighbours; sharing Jesus with you.

This year the Yearbook and the Annual Report,
will be formally presented at the

Annual Parochial Church Meeting

Emmanuel Church Centre,
Longsight Road,
Holcombe Brook,
Bury
BL8 4DB
7.30pm for 8.00pm.

2nd May 2023

Vision Statement

“In our Parish:

- We will welcome others and serve the community through our love and care.
- We want to provide inspirational worship in various styles to meets the needs of all.
- Our teaching, based on the authority of the Bible, aims to connect faith to daily life, sustaining, encouraging and challenging everyone.
- We aim to have welcoming and warm buildings that enable us to worship, glorify God and aid mission.
- We seek to reach out through God’s love of all people, sharing the joy and wonder of the faith we have in our daily life with Jesus and growing his worldwide church in faith, hope and love.

The Parochial Church Council
Updated: 1st February, 2014

This booklet gives information about the activities of the various Parish Organisations and the Parish Annual Report.

Once again it is the product of teamwork by many people. Sincere thanks go to contributors who responded so promptly and made this Report possible.

We hope you will find the contents both interesting and informative.

Any errors are the responsibility of contributors/editor.



**Parish of
Holcombe &
Hawkshaw**

Contents

Annual Report 2022

Yearbook 2022

Minutes of APCM	4
Annual Report	10
Team Reports	12
Review of year	16
Safeguarding Report	18
Deanery Synod	20
Fabric Report	22
BBR Trust Report	23
Statement of Accounts	24

Yearbook	29
Soup Company	30
Drop In	30
St. Mary Primary	31
Emmanuel Primary	32
Mothers' Union	34
Afternoon Fellowship	35
ECC Prayer Group	35
Emmanuel Choir	36
Music at Hawkshaw	37
Hall Things Bright . . .	38
Open the Book	39
Pilgrim Group	40
19 th Ramsbottom Brownies	41
10 th Ramsbottom Guides	41
Children & Families	42
Sizzling Seniors	45
Cellar/Youth	47
Travellers	46
Cellar and Youth	47



Parish of Holcombe & Hawkshaw

Annual Parochial Church Meeting Minutes

Emmanuel Church Centre, Monday 25th May 2022 at 8pm

Present:

Three Clerks in Holy Office,

Rev. Paul Sumsion, Rev. Robert Airey and Rev. Ian Fleming.

And the following lay members of the parish:

S. Partridge, J. Burton, P. Hanley, J. M. Venn, M. Burton, C. Baggoley, S. Newhouse, B. Newhouse, S. Wilkinson, J. Houghton, J. Sumsion, S. Byrom, R. Byrom, B. Atkin, J. Smale, P. Jones, J. Smale, C. Holt, A. Millius, G. Goldsmith, J. Horrocks, G. Booth, G. Metcalfe, L. Jackson, P. Hardcastle and E. Slattery.

PART A: A Meeting of Parishioners (Vestry Meeting)

1 Opening Prayer: The Rev. Paul Sumsion opened the meeting with prayer.

2 Chairman's Remarks: Pastoral Schemes and 'former' parishes

The Rev. Paul Sumsion said that in 2009 the scheme was not ratified by Bishops Council, he considered the informal scheme we have now was a good way to work with the rule book to fall back on. The view of the PCC is that it is important that there is representation from each centre of worship aiming for at least two from each centre at PCC.

Agreed by members.

3 Election of two Church Wardens, (one from each former parish)

The nominations for Church wardens were Peter Hardcastle and Stephen Newhouse, there were no other nominations, and they were both duly elected

All agreed.

PART B APCM

4 Apologies for Absence received from:

Rosemary Artley, David Lomax, Muriel Warburton, Neville Holt, Glenis Lomax, Martin Lomax, Keith Jones, Dot Yardley, Ethel Houghton, David Horrocks, Peter Hardcastle, Geoff Clare and Pauline Clare.

5 Minutes of last year's meeting of parishioners and APCM

There was one amendment: the Rector's report regarding Quiet Mornings should read Gloria Metcalfe not Romey Simpson.

The amendment was agreed and it was proposed by Jenny Burton seconded by Rev. Ian Fleming that the minutes be received and accepted.

All agreed.

6 Presentation of the revised church electoral roll by Sheila Partridge.

Total of 193, two people have been added and one removed.

7 Presentation of Annual Reports and Accounts for Holcombe and Hawkshaw 2021

There was one amendment the reference to St. Mary's Tottington should read St. Anne's Tottington in the paragraph New Deanery.

Agreed with amendment and accepted unanimously.

8 Election of Church Officers

a. Deputy Church Wardens (2 for each centre of worship)

St. Mary, Hawkshaw:

Eddie Slattery & Ray Houghton

Emmanuel Church Centre:

Jo Venn & Julie Smale, (was nominated by Jo Venn, seconded by
Sheila Partridge).

Emmanuel, Holcombe:

Susan Nuttall & Mike Burton, (was nominated by Jenny Burton seconded
by Robert Airey).

All elected unopposed.

b. Representatives of the laity to the Deanery Synod

from Holcombe: Claire Baggoley and Stephen Newhouse

from Hawkshaw: Jean Houghton and Keith Jones.

Agreed unanimously.

c. Representatives of the laity on the PCC

Richard Byrom, Stuart Wilkinson, Liz Webber, Ethel Houghton, Penny Hanley, Eddie Slattery, Jo Sumsion, David Lomax, Jo Venn, Michael Burton, Rosemary Artley and Sheila Partridge.

Julie Smale was nominated by Jo Venn seconded by Sheila Partridge.

Tim Webber was nominated by Jean Houghton seconded by Jo Venn.

All duly elected.

9 Appointment of an Independent Examiner

Stuart Moulton from St. Anne's Church, Tottington was nominated as the independent examiner .

Proposed by Stephen Newhouse, seconded by Jenny Burton.

Agreed unanimously.

10 Rectors Report

Looking Back

The Rector reflected that there has been a year of hard work in the last year and a lot of uncertainty, however much has restarted and been re-envisioned.

People

He remembered that sadly we have lost Margaret Rothwell, Michael Booth, Pam Fawcett, Marjorie Worrall, Stella Slater, Phyllis Hope, Philip France and Colin Gaskell.

The Rector extended thanks to the Church Wardens: Stephen and Peter, the Deputy Wardens: Gwen, Jo, Michael, Susan, Ray and Eddie and also Robert, Vic., Ian and the Readers: Michael, Richard, Ethel, and Jane and from last summer Jo Sumsion, who was newly licensed as a reader, and has been employed as Children and Families Ministry Facilitator.

The Rector also thanked all those who help in admin, maintenance, finance and hospitality, schools engagement and so much more.

Worship

The Rector reflected that worship is still a little bit different, there is still some social spacing and the common cup is still not shared. Covid rates are still high, but worship has been offered on line as well as in person. Some resources have been available by post or email which has enabled better connection including creativity for Christmas and the Churches Together in Ramsbottom sermon series for Lent. There has also been outdoor worship at various points. However, the choir are back, the music group are gathering, sound and video are in use, prayers are being said, people are meeting with God and the Gospel is being preached and taught.

Mission

The Rector reported that Camp Fire Church has started and there are connections with church schools with Experience Christmas, Experience Easter and Open the Book. There are Sunday school groups and a fresh focus on effective All age worship.

There are also Quiet Mornings, a marriage preparation course, Bereavement care, Drop in, Sizzling Seniors, Soup company, Mothers Union and Afternoon Fellowship.

The Rector said that he knew he had missed out a lot and urged people to look in the annual report to see more! He thanked Stephen for his exemplary work on the annual report and the magazine.

Looking forward

The Rector stated that the values agreed by the PCC to be behind all we do are Generous Hospitality, Growing Faith, Worshipful, Recognising and Responding to need, Compassionate, Bible-based teaching and Missional, all giving a framework of values to measure ourselves against – does what we do look and feel like an expression of Christian Community, reaching out with the love of Jesus to our wider community and the world?

Mission Communities

The Rector explained that this is a Manchester Diocese initiative, supported by the Church Commissioners, to see us working together better with those in the immediate area of our parish, Ramsbottom and Edenfield Team Ministry and Tottington parish. The Rector announced that the Bishop had appointed him as Mission Community Leader. In Ramsbottom the Mission Community is already strong, due to an excellent Churches Together group.

He advised that we are looking to find Focal Leaders for each church, and that we may look for ways of making this a shared role, but the aim is to have a ‘go-to’ person, to be there each week for a congregation. The wider aim is to see our congregations grow in faith, depth and number.

The hope is to look for the places where there is good practice and to encourage each worship centre to flourish in a few things, rather than to try to be all things to all people.

Worship

The Rector continued by saying that the small groups would be restarting soon, in church buildings for the time being.

Mission

The Rector reiterated that mission needs to continue to be at the heart of what we do. We are tasked with building up the kingdom of God in this place. It is God’s mission in which we share. Where there are barriers we hope to overcome them together. Our buildings should serve this mission, not the other way round. The three buildings need significant work and there is a real challenge financially. We will look for grants to help, but we will also need to look at our giving as individuals, to see if we can contribute more from all that God has given to us, Paul added that there will be a letter sent out to parishioners regarding this soon. The financial challenge is also around energy use; the rising costs of energy has hit us harder than some, due to our energy supplier at Holcombe going bust, the gas bill was £5000 for February for the three centres. But it is time to look at how we use our energy, in order to play our part in bringing down our carbon footprint, greater efficiency in heating and lighting are needed, this too is part of the mission of God as we look after the world God has given us as stewards. And lastly we have a challenge of people; –Thank God for each of the people here – each of you

are unique, called by God and valued by Him and us. But please pray that God would send us more people with the time and energy to help this vision become reality.

The Rector observed that we still sometimes struggle with communication too, however he, Stuart and the PCC have been working on an intranet to help with this, and we are moving back to printed news sheets being available as well as magazines.

The Rector concluded that under God each of our centres of worship can have a place in His plans and a future, if we will play our parts in making that happen...

Our response is encapsulated in our mission statement:

Loving God, Loving Neighbours; sharing Jesus with you.

11 Matters of general parochial interest

- A question was asked from the floor about Focal Leaders.

The Rector replied that this has been tried in rural locations where in each church someone, (either lay or ordained) is in church week by week and growth happened.

It is hoped to appoint the focal leaders within six months to a year.

- A question was asked about time scales when intranet would be available.

The Rector replied that it would be rolled out to the PCC first and training would be available.

- A question was asked if there was a time scale for the common cup to be used at communion.

The Rector replied that this would need to be approved by the Bishop.

12 Notices and thanks from the chair

The Archdeacons visitation for Bury & Rossendale Deanery 2022

Choose from: Tuesday 7th June. St. Nicholas, Newchurch 7pm.

or: Wednesday 8th June. All Saints, Stand 7.30pm.

Next PCC: Monday 16th May 2022 7.15pm for 7.30pm.

The Rector thanked everyone for attending, Stephen Newhouse thanked Paul, Jo and their family for their work over the past 12 months.

13 Closing prayer and Blessing

Paul closed the meeting with the collect for the 24th April and a blessing.

The Parish of Holcombe and Hawkshaw

Emmanuel Church, Holcombe.

and

Emmanuel Church Centre,

Longsight Road,

Holcombe Brook.

and

St. Mary, Hawkshaw.

In the Deanery of Bury, the Diocese of Manchester.

Annual Report

and

Financial Statements

of the

Parochial Church Council

For the year ended 31st December, 2022.

Rector:

The Rev'd. Paul H. Sumsion,
The Vicarage,
Bolton Road,
Hawkshaw,
Bury.
BL8 4JN.

Bank: Royal Bank of Scotland

Insurers: Ecclesiastical Insurance.

Honorary Treasurer: David Lomax.

Gift Aid Coordinator: Judith Horrocks.

Independent Examiner: Stuart Moulton.

Annual Report for 2022

Statement:

The PCC of the Parish of Holcombe and Hawkshaw has the responsibility of co-operating with the incumbent, the Rev'd. Paul Sumsion, in promoting in the ecclesiastical parish the whole mission of the Church, pastoral, evangelical, social and ecumenical. It also has maintenance responsibility for S^t Mary, Hawkshaw, Emmanuel Church, Holcombe and Emmanuel Church Centre and Canon Lewis Hall, Longsight Road, Holcombe Brook.

Membership of the PCC.:

Members of the PCC are either ex officio or elected by the Annual Parochial Church Meeting in accordance with the Church Representation Rules.

During the year the following served as members of the PCC:

Incumbent: The Rev'd. Paul Sumsion, *Chairman & Rector*.

Associate Ministers: The Rev'd. Robert. W. Airey.

The Rev'd. Vic. Fletcher.

Curate: Rev'd. Ian Fleming, *(to September 2022)*.

Ex Officio Members:

Wardens: Mr. Peter Hardcastle, *from May 2021*,

Mr. Stephen Newhouse, *from May 2019, (Lay Vice-Chairman of PCC)*.

Representatives on the Deanery Synod: *until 2023*

From Emmanuel and Emmanuel Church Centre:

Claire Baggoley and Stephen Newhouse.

From S^t Mary's, Hawkshaw: Keith Jones and Jean Houghton.

Elected Members:

Fourteen members are elected at the Annual Parochial Church Meeting, (seven from the congregations of Emmanuel, Holcombe or Emmanuel Church Centre and seven from the congregation of Hawkshaw, S^t. Mary).

Those elected at the A,P.C.M in April 2022, were:

from S^t Mary's Hawkshaw:

Richard Byrom, Penny Hanley, Ethel Houghton, Edward Slattery, Jo. Sumsion, Liz. Webber, Tim Webber *from May 2022* and Stuart Wilkinson.

from Emmanuel, Holcombe and Emmanuel Church Centre were:

Rosemary Artley, Michael Burton, David Lomax, Sheila Partridge, Julie Smale *from May 2022* and Jo Venn.

*Readers and Deputy Wardens are not ex officio members of the PCC,
but are able to stand for election at the APCM.*

Readers:

Mr. Michael Burton, *(also Deputy Warden, (Emmanuel) and elected to PCC).*

Mr. Richard Byrom, *(and elected to the PCC).*

Mrs. Ethel Houghton, *(also elected to the PCC).*

Mrs. Jane Fletcher, *(also elected to the PCC).*

Mrs. Jo Sumsion, *(also elected to the PCC and has been Children and
Families Ministry Facilitator from September 2021).*

Deputy Church Wardens

Emmanuel Church Holcombe:

Michael Burton and Susan Nuttall,

Emmanuel Church Centre:

Julie Smale *from May 2022* and Jo. Venn.

St. Mary's Hawkshaw:

Eddie Slattery and Ray Houghton.

Structure:

(1) Standing Committee/Leadership Teams:

We are required by law, not only to have a Parochial Church Council, duly elected to represent our parishioners, but also a Standing Committee, which can attend to urgent parish business between PCC meetings, if necessary.

In between PCC meetings the Parish Leadership Team, (of which the Standing Committee is part), Emmanuel, Holcombe Leadership Team, Emmanuel Church Centre Leadership Team and St. Mary, Hawkshaw Leadership Team meet.

Each Leadership Team organises working groups within their own church.

The Parish Leadership Team:

*Rev. P. Sumsion, Rev. R. Airey, Barbara Atkin, Peter Hardcastle, Michael Burton,
Rev. Vic. Fletcher, Ethel Houghton, David Lomax, Stephen Newhouse, Jo Venn, Rev.
Ian Fletcher to July 2021 and Jo Sumsion as Children and Families Ministry
Facilitator.*

Emmanuel Holcombe Team Report 2022

The Emmanuel, Holcombe Team met three times during the year.

We continue to work our way through the list of required work from the last Quinquennial Inspection. In addition to general building work, at each meeting we consider Health and Safety concerns, we held our first “practice evacuation” during a service this year to identify any concerns in the safe and speedy evacuation in the event of a fire. Minor items were noted and acted upon.

Covid 19 Restrictions

In effect restrictions were removed by mid-year, although we continue to offer Communion in one type to those who prefer not to take the wine.

Building work

Our plans for building work were approved by the DAC early in the year, detailed drawings were prepared and quotations obtained for the Toilet and South Aisle Area, whilst we have some money in the Building Fund, quite a large sum will need to be raised through donations, grants and fundraising, etc. to enable the full implementation of our plans.

There have been numerous minor repairs throughout the year including refinishing the clergy vestry outer door and the “hidden” north side door. The path was partially re-pointed with plans to complete in the spring/summer of 2023. Repairs were made to the flower boxes in the Lych gate.

Services

Agreed Service pattern:

1st Sunday 11am - All Age Worship at which most Baptisms would be performed.

3rd Sunday 11am - Parade about six per year, others will be All Age Services

2nd and 4th Sunday 11am - Holy Communion.

3rd Sunday 6.30pm - Choral Evensong 1662 with about four Choral Holy Communions throughout the year.

In an effort to reinvigorate the attendance at Parade Services the May, July and September Parades were held at ECC as part of the Campfire Church Service, with more than normal attending. Uniformed groups were invited to lead prayers and take part in the Lesson reading, (Brownies volunteered to perform a dramatized reading).

Family and Children Provision

Jo Sumsion with the help of Margaret Cockcroft, continues the Weekly Coffee mornings for parents and carers of our School children on Wednesday at 9am, (also Tuesday at St. Mary's), which has been successful in attracting around 8 or 9 adults and a couple of toddlers each week.

Eco Church

We have started to consider our response to achieve Eco Church status, having drafted our survey answers, we are working on raising awareness in the congregation and improving areas which are stopping us achieving an award.

Comment

Our thanks go to the numerous people who offer their time, skills, advice and support to all of the work at Emmanuel, Holcombe, we are extremely grateful.

Membership:

Rev. Paul Sumsion, Rev. Robert Airey, Claire Baggoley, Jennifer Burton, Michael Burton and Stephen Newhouse.

Emanuel Church Centre Team Report 2022

We are delighted to report that we at the Centre are bucking the trend of the Church of England in terms of growth. We may still be small in number, but such is the warmth of fellowship at the Centre our newcomers have felt very welcome and joined in our faith, prayer life, and worship as well as providing valuable help with activities and jobs.

We have been glad to have had our full year of services, as well as special Taizé services and midweek communions. We also held a Remembering Service in November. There are many activities at the Hall which are well supported by Church members.

Resurfacing car park

Our major project this year has been raising money for the resurfacing of the Car Park which still remains our biggest accessibility problem. Despite numerous bids for grants which have only brought in £1500 we have built on George's legacy and are now up to £26500.

We still have some way to go, but the two Car Boot Sales held at the Centre, the superb Fashion Show and Words and Music have helped bring in much needed cash as well as providing good fun.

Events

Talking of fun, we celebrated the late Queen's Platinum Jubilee with 70 guests enjoying an Afternoon Cream tea and bubbly together with some film footage and singing.

We are delighted that our congregation are so willing to get involved with reading the lesson, leading prayers, being sidespeople, arranging flowers and providing hospitality.

Garden

The garden continues to give great pleasure to all who visit as well as providing the home for Campfire Church which brings families down to the Centre. Thanks to Barbara and Stephen and the Hall Things Bright and Beautiful Team for their continuous work and for arranging the Working parties to maintain the continual growth and colour whether it is leaf collecting or bulb planting.

The Centre has seen new curtains in the Hall provided by Drop In and some much needed Tidy ups.

People

Sadly we have lost valuable Church members in Martin, Wilson and George B this year, but it was good to hold celebrations for their lives involving the Centre and see their names on our memory board for the future.

Alex has now moved to Epworth Grange, but we keep in touch and thank her and so many others for all that they have done to make our present Centre what it is today.

Thanks to John for all his maintenance, Tony for caretaking, Geoff and Pauline for bookings and Sheila and Christine for our lovely music and any I have not named including our Church leaders for their support and contribution.

Comment

With Drop In, Quiet mornings, Soup Company, Travellers, Pilgrim Group, Prayer Time and Warm Spaces there is something for everyone and not just on a Sunday, to live and grow your faith and commitment to God and your neighbour.

Members: Rev. Paul Sumsion, Gwen Barnes, Geoff Clare, Alan Goldsmith, Ann Milius, Sheila Partridge, Romey Simpson, Gloria Metcalfe, and Jo Venn.

St. Mary, Hawkshaw Team Report 2022

Hawkshaw team met twice during 2022.

The following items were addressed:

- **Covid:** As levels of Covid diminished so the measures put in place in church were relaxed. It was agreed to continue to provide hand sanitizer and reconsider arrangements should Covid levels increase.
- **Church rotas:** Penny volunteered to send texts each week to remind people when it was their turn to do prayers, read, or serve coffee, etc, during the service on Sunday mornings.
- **Cleaning:** Rather than pay for a cleaner it was decided that a few volunteers would do the cleaning in church between them.
- **Village matters:** Jubilee celebrations – the church was involved in plans for "Hawkshaw in Bloom" and street parties, and a picnic lunch took place in church on the Sunday.
- **Hawkshaw Gala** 8 and 9 July – we ran the barbecue on Saturday afternoon and held a morning service in the marquee on Sunday.
- **Bonfire night** – this was held behind the church and was free to the public.
- **Christmas lights** – an illuminated angel and shepherds adorned the church, with a star over the entrance, and wise men and a camel lit up the side of the vicarage. A singing group led carols at the Wagon and Horses.

Repairs:

- **Decorating** – the window sills and walls underneath were redecorated.
- **Gateposts** – prices were obtained for repairing the gateposts at the entrance to the church yard. After inspection it was agreed that they did not present an immediate risk of collapse.
- **Bell tower** – the leak in the roof needed repairing.
- **Gutters** – these needed unblocking and resealing.
- **New kitchen plans:** The congregation was invited to view and comment on the plans for the proposed kitchen and toilet refurbishment. The cost of this was estimated to be around £100,000.
- **New toilet:** As an immediate improvement it was decided that the existing toilet should be replaced with a more eco-friendly dual flush model at a cost of approximately £350.
- **Heating system:** The heating system in church is urgently in need of replacing. There is money available for this in the short term but specialist advice needed to be sought in order to ensure the most appropriate and green system was chosen.
- **Arrangements for Advent:** As in previous years chairs were set out in the round during Advent.
- **Holy communion:** As many people were still wary of sharing the common

cup at communion it was suggested that individual cups of non-consecrated juice be made available as an alternative, albeit not as part of the Eucharist itself. This has proved popular.

- **Prayer ministry:** Following a break due to Covid, prayer ministry during Holy Communion was reintroduced in the autumn.
- **Hawkshaw Church USP:** With the introduction of Mission Communities each church was to identify its strengths and, therefore, the specific contribution it could make within the Community. In Hawkshaw our focus was thought to be on families and children's ministry, with lively, informal worship.
- **Eco-church:** It was agreed we should look into Eco-Church registration as a way of improving our green credentials.
- **Fire drill:** The deputy Church Wardens were appointed Fire Wardens with fire safety/escape training required for all sides people. A fire drill was not required for the congregation. However details of escape routes and a plan for evacuation were.
- **Health and safety re serving coffee:** The team considered the practicalities of serving coffee after the service and allowing safe access to the toilet. Changes were made to the position of the table and bins accordingly.
- **Stacking of chairs:** In order that the chair legs do not scratch the paintwork

when chairs are stacked against the wall it was decided to stress the need to use the trolley and leave a gap of six inches. Notices were posted to this effect.

- **Wheelie bins:** It was decided to look into the possibility of having an additional bin. The cost has since been found to be prohibitive.
- **Storage of gas cylinders:** It was agreed to purchase an open cage in which to house gas cylinders (for the barbecue) safely. This was to be sited in the church yard, behind the church, against the west perimeter wall.

Penny Hanley

PCC Review of the Year 2022

The PCC met 6 times during 2022 with an average of 17 members attending each meeting. In addition, the Parish Leadership Team (PLT) met in the intervening weeks with delegated authority to approve or initiate certain measures where necessary.

The following subjects were discussed by the PCC during 2022.

Treasurer's Report:

The PCC received regular updates on the parish's financial position. It was clear that meeting our financial obligations would be a challenge during 2022 and the PCC considered ways of reducing outgoings, improving income and encouraging greater giving where possible. These included being more energy efficient, getting a card reader for one-off donations, revisiting charges for the use of Canon Lewis Hall and having a focus on stewardship as a teaching theme.

Mission Communities:

Paul was appointed Mission Community Leader for Mission Community 3 in the Deanery of Bury and Rossendale with each worship centre within the Community having its own Focal Leader (yet to be appointed). He discussed his intention to convene a group with representatives from each parish whose skills complement each other, and also identify existing strengths and particular ministries within each church. Examples would include work with young people, quiet/reflective worship, traditional or lively worship, community

projects etc.

During the year The Ramsbottom and Edenfield team said goodbye to Andy Lindop, and Ian Fleming was seconded as curate in charge to this team. The PCC was also informed of the future move of Hugh Bearn from St. Anne's Tottington.

Covid:

During the course of the year the influence of Covid 19 receded and thus fewer precautions were observed in the church buildings. However it was agreed to be mindful of those still nervous of busy gatherings. Holy Communion returned to being available in two kinds and wafers replaced by bread. It was agreed to offer non-consecrated juice in individual cups to serve as a reminder of Christ's blood for those not wishing to drink from a shared cup.

Lay training:

Jean Houghton and Keith Jones undertook "Prayer and Spirituality" training module and Melanie Fielding undertook a "Children and Families" module.

PCC Tonight:

During the year the PCC worked through a training course in the form of 6 sessions covering subjects including the purpose and function of a PCC plus various aspects of church life. The material was found to be very useful.

Living in Love and Faith:

This was a course open to all adults in the church looking at a Christian response to matters of sex and relationships. The general consensus and feelings of those who attended were fed back to the Diocese and onward to the General Synod. Approximately 20 people took part.

Intranet:

In order to improve communications and enable people to access any information relevant to them an Intranet has gradually been developed. This will allow for greater connectivity across the parish.

Safeguarding:

This has been given top priority in terms of ensuring that all members of the parish who take responsibility for young people and vulnerable adults have the appropriate DBS and have completed safeguarding training.

Team reports:

The PCC received regular up-dates from each worship centre.

Eco-church:

It was agreed that we should aim towards gaining an Eco-church award. This would require a commitment to reducing our carbon footprint wherever possible, recognising the challenges presented by our old buildings. It was considered to be a worthwhile exercise if only to encourage better practice across the parish. Various questionnaires require completing covering the different areas of church life, worship, buildings and stewardship.

Energy audits:

These were carried out at the end of 2022.

Building improvements:

Proposals for improvements to Hawkshaw Church continue to make slow progress through the relevant Diocesan committee and approval for work at Holcombe Church has been received. Information on building projects is given

in the Fabric Report. Other issues addressed during the year include the pump to the septic tank at ECC, roof repairs at Holcombe and at Hawkshaw and the heating system at Hawkshaw.

Capernwray students:

The parish welcomed a team of 4 young people from Capernwray Bible College for 7 days at the beginning of March. They were able to engage with schools and in parish activities and their visit served as a great witness.

Pre-ordination placement:

In April we were joined by Bob May from St. Andrew's Church, Radcliffe, prior to his ordination in July. We wish him well in his continued ministry.

Jubilee celebrations:

Various activities were arranged for the Jubilee weekend. An afternoon tea took place at ECC and a picnic lunch after morning service at Hawkshaw Church. A choral evensong was held at Holcombe where the choir was joined by several others to sing Zadok the Priest.

Warm spaces: As part of the Churches Together in Ramsbottom initiative in December we began inviting people to enjoy a soup lunch at ECC on Mondays following Drop-in. Publicity for this was a little delayed but it is now advertised widely in the Ramsbottom area where there is a warm space open in one of the churches 6 days a week.

*Penny Hanley,
PCC Secretary*

Safeguarding Report 2022

Policies and Practice

The clergy and PCC of the Parish of Holcombe and Hawkshaw continue to meet the requirement issued by the House of Bishops on matters relating to the safeguarding of children and vulnerable adults. Safeguarding continues to be a standing item on every agenda of the PCC meetings.

All safeguarding policies are reviewed and approved by PCC annually. They are all in line with the House of Bishops' Safeguarding Policy and Practice Guidance and meet statutory requirements whilst remaining relevant to our particular context.

We have recently added posters at each of our church buildings which have very clear contact details and instructions on what to do should anyone be concerned about a child or vulnerable adult within our Parish. These posters contain photos of both Paul Sumsion and myself, Liz Webber, to ensure it's very clear to everyone who should be approached should any concern arise.

Safer Recruitment

All volunteers who require DBS clearance have had one within the last three years, as per the diocesan requirements. Thank you to everyone for their willingness to go through this process, your cooperation has been much appreciated and goes a long way in helping to give out the message that we strive to be as safe as possible in all that we do. It also shows that we recognise

that the safety and wellbeing of all the children and vulnerable adults in our Parish is of upmost importance.

Training

In April 2021, the Church of England published a new Safeguarding Learning and Development Framework. The focus of this framework is on developing a positive culture of safeguarding within the church, rather than simply focusing on process. Training must be updated every three years in order to satisfy Diocesan requirements.

I'm pleased to report that all, but two volunteers have completed their training modules and again want to thank everyone for their willingness in playing their part in making our Parish a safer place.

Safeguarding Concerns and Incidents

There have been four Safeguarding concerns raised since the last APCM. All concerns were passed on to the Manchester Diocese Safeguarding Team within the required time frame and logged on their system. All appropriate action was taken.

I want to finish by saying thank you to everyone for the collective effort in making our churches as safe as we can.

Liz Webber
9th March 2023

SAFEGUARDING POLICY

PROMOTING A SAFER CHURCH

The following policy was agreed at the Parochial Church Council (PCC) meeting held on 13th March 2023 .

In accordance with the Church of England Safeguarding Policy our church is committed to:

- Promoting a safer environment and culture.
- Safely recruiting and supporting all those with any responsibility related to children, young people and vulnerable adults within the church.
- Responding promptly to every safeguarding concern or allegation.
- Caring pastorally for victims/survivors of abuse and other affected persons.
- Caring pastorally for those who are the subject of concerns or allegations of abuse and other affected persons.
- Responding to those that may pose a present risk to others.

The Parish will:

- Create a safe and caring place for all.
- Have a named Parish Safeguarding Officer (P.S.O.) to work with the incumbent and the PCC to implement policy and procedures.
- Safely recruit, train and support all those with any responsibility for children, young people and adults to have the confidence and skills to recognise and respond to abuse.
- Ensure that there is appropriate insurance cover for all activities involving children and adults undertaken in the name of the parish.
- Display in church premises and on the Parish website the details of who to contact if there are safeguarding concerns or support needs.
- Listen to and take seriously all those who disclose abuse.
- Take steps to protect children and adults when a safeguarding concern of any kind arises, following House of Bishops guidance, including notifying the Diocesan Safeguarding Adviser (D.S.A.) and statutory agencies immediately.
- Offer support to victims/survivors of abuse regardless of the type of abuse, when or where it occurred.
- Care for and monitor any member of the church community who may pose a risk to children and adults whilst maintaining appropriate confidentiality and the safety of all parties.
- Ensure that health and safety policy, procedures and risk assessments are in place and that these are reviewed annually.
- Review the implementation of the Safeguarding Policy, Procedures and Practices at least annually.

Each person who works within this church community will agree to abide by this policy and the guidelines established by this church.

This church appoints: Mrs. Liz Webber as the Parish Safeguarding Officer

Incumbent: *Reverend Paul Sumsion.*

Churchwardens: *Mr. Peter Hardcastle & Mr. Stephen Newhouse.*

Date: 13th March, 2023

Deanery Synod

2022 - the Deanery of Bury and Rossendale

The meetings of Synod gives representatives valuable opportunities to meet and discuss matters with members of other parishes across the deanery. Each parish is entitled to representation according to their size. Our Electoral Roll entitled us to four members.

The Deanery Synod met three this year.

In February we met via Zoom.

Canon Rachel Mann led a short act of worship.

Main Business was – ‘Stepping Stones for Growth’ led by Mike Starkey

Mike is Head of Church Growth and his talk was a resume of the Zoom course he had led during lockdown. The course is available on YouTube and the Diocese Website, which outlines in detail, the six steps to growth.

There is suspicion around church growth and people traditionally find it hard to talk about it. He is working on two key themes for growth – ‘Fresh & Refresh.’

‘Fresh’ is setting up new initiatives and congregations, satisfying local needs.

‘Refresh’ is helping existing parishes to grow and draw in new people in a simple attainable way.

He explained, the key is to try new ventures and to match the requirements of parishes with the local needs of the community. Initiatives must be easy to achieve and support is available from teams from churches where growth is happening. Mission Communities were being set up to encourage sharing and growing for the future.

In June we met at Bury Parish Church

Canon Rachel Mann (Area Dean) welcomed everyone to our first face to face meeting of the year. Rev’d Julian Heaton led

an Evening Prayer for the Feast of Justin the Martyr.

Main Business was - Eco Church

The main topic was ‘How Deaneries Can Engage with the Diocese Eco Strategy,’ which was led by Rev’d Clive Hamilton.

The Eco Strategy

1. Eco Church.
 2. Energy Footprint Engagement (EFT)
 3. Net Zero Journey by 2030.
- The Five Themes of Eco Church.
- a) Worship and teaching.
 - b) Management of church buildings.
 - c) Management of church land.
 - d) Community and Global engagement.
 - e) Lifestyle.

Rev’d Clive talked us through the Eco Church website and used this as the basis of his talk.

www.ecochurch.arocha.org.uk

He encouraged all churches to sign up and achieve an Eco award.

Rev’d Clive talked about reducing our carbon footprint and again referred us to the Church of England website where there is a section on ‘Environment & Climate Change.’

He suggested that each Mission Community might like to appoint an ‘Environment/Eco Champion’.

In October we met at St. John & St. Mark Church, Bury

Evening prayer was led by Ian Banks (Reader at St. John & St. Mark’s).

Main Business was - Deanery Mission Action Plan .

Rachel Mann made a visual presentation of the emerging Deanery Mission Action Plan (DMAP) (2026).

Rachel stressed that it was a working/living document which will be reviewed regularly. She outlined the challenges and opportunities within the Deanery and related them to this document.

At the heart of the DMAP are the Mission goals of Growth, Nurturing, Serving and

Sustainability. Rachel looked at the headings in turn, displaying statistics and examples/ideas to achieve each goal.

The DMAP was positively received by members.

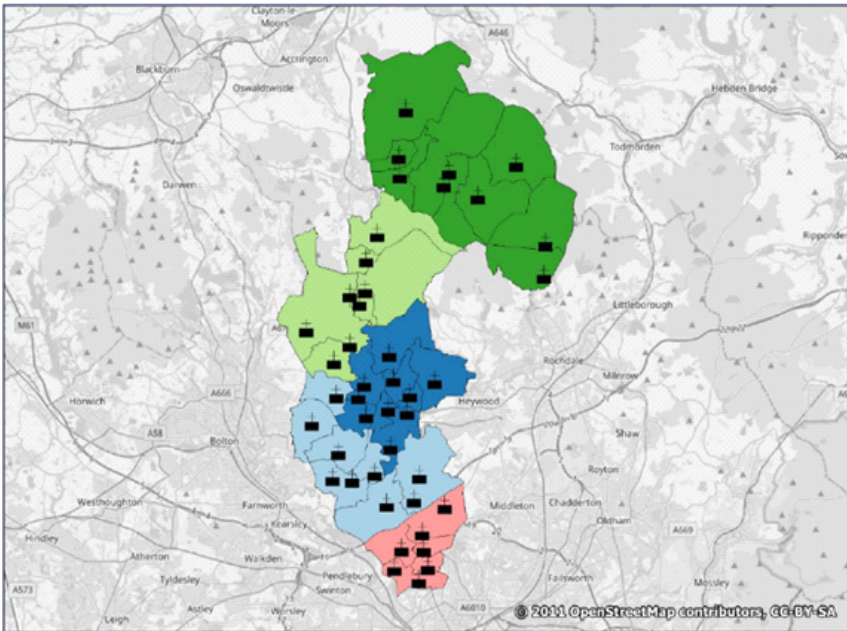
Mission Communities have been finalised and leaders appointed:

Mission Community 1 Rev'd Donna Williams
Mission Community 2 Rev'd Julian Heaton
Mission Community 3 Rev'd Paul Sumsion
Mission Community 4 Rev'd Rod Bevan
Mission Community 5 Rev'd Shaun Conlon

Parish Representatives on the Deanery Synod

*Claire Baggoley, Keith Jones,
Jean Houghton and Stephen Newhouse.
March 2023*

Bury & Rossendale Deanery



Contains Ordnance Survey data. © Crown copyright and database right 2020.

Mission Community	Population 2020	Total All Age Average Weekly Attendance 2019	Target Stipendiary Allocation 2026
1	69,461	813	4
2	62,513	994	3
3	28,058	597	2
4	48,966	507	3
5	43,157	448	2.5
Total	252,155	3,359	14.5

Fabric Report 2022

A great deal of work is undertaken by members of the different congregations, and without their efforts the Parish would have to meet bills of ever-increasing size, and the thanks of all of us are due to these workers. We are pleased to report that the buildings, fittings and items belonging to the Parish are generally in good repair, although certain areas continue to require ongoing attention.

Emmanuel Church, Holcombe

The DAC have at last approved the Faculty for the work to Kitchen, Toilet, South Aisle, Projection screen and De-stratification fans. Our architect has drawn up detailed drawings and we have received quotations for much of the work. Some of which may be completed by ourselves.

A problem with rain leaking into the church from the clock tower and also through lead flashing on the south aisle, was partially solved, but more extensive work will be required. Repairs to the pointing of the path, repairs to the Lych gate, refinishing the Clergy vestry door and the “hidden” door have been completed.

Emmanuel Church Centre

The building and surrounding gardens are in a generally good state of repair, due in no small part to the dedicated work of volunteers and regular working parties. The focus of our efforts this year have of course been the re-surfacing of the car park. Fundraising, a small grant and a legacy have contributed to the fund, but much is still required before the project can commence.

St Mary's, Hawkshaw

The building is in a reasonable condition. Roof repairs took place in June and we await repairs to the south facing roof from the January storm.

Inside church the north and south lower walls of the nave were repaired and redecorated in August. The rear toilet walls have been repaired and redecorated (Aug 22) and a new dual flush eco friendly toilet has been fitted (February 2023).

An electrical inspection was passed in November. The fire extinguishers were certified in December. The boiler was serviced and passed in August. An energy audit took place at the end of November and has highlighted areas of the church that will help us to become more energy efficient and provide a sustainable and comfortable environment to support the continual use of our church.

General Comments

Much of the planned projects, at all three buildings, will be dependent upon obtaining funding from donations and outside sources.

We thank everyone who works quietly behind the scenes cleaning, washing the linen, cleaning the brass and silver, flower arranging or sound, PA and streaming technicians, Deputy Wardens and last, but not least, the sidemen and women who play such an important role in welcoming people to our services.

The practical help and financial assistance of many people continues to play a major part in the care of the buildings, and our grateful thanks go to everyone who has contributed in any way.

*Peter Hardcastle, Stephen Newhouse.
Churchwardens March 2023*

Report for the Bridge, Bentley and Ramsbottom Trust for 2022.

The work of the Trust has continued during the year with Trustees actively looking for ways to help those in need. Please read the promotional information below and if we can help anyone in need please let them know about the Trust.

The Expenditure for the year was £3,466.

Grants were awarded in the following ways:

- (1) 'One off' book grants to University students, (14) Welfare.

The Bridge, Bentley, Ramsbottom Trust was created as an amalgamation of the John T. Bridge and three other smaller charitable trusts in 2002.

**The five Trustees treat each application in strictest confidence.
Applications are welcomed from people of any faith or none.**

Small grants available for all ages

Do you, or anyone you know, live within the following post codes: all BL0 or all BL8 or these parts of BL9: BL9 5, BL9 6, BL9 7 or BL9 0

Struggling to pay for a much needed item, e.g. Stair lift, walking frame, specially adapted prams, etc.?

We have helped families with school uniform costs.

We can help with the cost of training courses.

We can help with Further and Higher Educational one off grants for: books/equipment, field trips, travel costs, etc.

Can we make life a little easier? Let us know if you are in need.

The Bridge Bentley Ramsbottom Trust has small grants available to those living within post codes BL0, BL8 or the following parts of BL9: BL9 5, BL9 6, BL9 7 or BL9 0.

Financial Statements of the Parochial Church Council

For the year ended
31st December, 2022.

Holcombe and Hawkshaw Parochial Church Council

STATEMENT OF INCOME FOR THE YEAR ENDED 31 DECEMBER 2022

	Holcombe and Hawkshaw 2022		
	£	£	£
Voluntary Income			
Planned Giving - Gift Aid	61,689.33		
Planned Giving - Un-gifted	2,058.54		
One off Gift Aid	1,275.00		
Cash/Collections	6,873.77		
Income tax recovered	23,616.93		
Fund Raising Events	3,892.53		
Magazine	241.30		
Use of Church Buildings	6,562.00		
		106,209.40	
Other Ordinary Income			
Dividends and Interest	1,088.51	(includes £2,013 fees	
Fees to PCC	9,259.00	paid to Diocese)	
		10,347.51	116,556.91
Extraordinary Income			
Restricted Donations	15,127.83		
Yorshire camps	150.00		
Diocesan Grants	4,500.00		
Special Appeals	452.54		
		20,230.37	136,787.28
Total Income 2022			136,787.28
Income 2021			132,440.04

Holcombe and Hawkshaw Parochial Church Council

STATEMENT OF EXPENDITURE FOR THE YEAR ENDED 31 DECEMBER 2022

	2022		
	£	£	£
The Ministry			
Ministry Expenses	7,061.59		
Support & Education	2,551.08		
		9,612.67	
The Church and Services			
Energy	19,625.23		
Water	1,051.84		
Cleaning	0.00		
Insurance	7,536.76		
Upkeep of Services	6,080.40		
Minor Repairs, Fire Inspection	9,593.88		
Churchyard	723.60		
		44,611.71	
Other Ordinary Expenditure			
Wages	17,711.09		
Magazine	0.00		
Fund Raising costs	2,806.90		
Verger/Organist	1,560.00		
		22,077.99	
The Diocese			
Parish Share	30,000.00		
Other Diocese costs	2,864.20		
		32,864.20	
Payments to Missions/Charities			
Mission/Charities	2,003.44		
		2,003.44	111,170.01
Extraordinary Expenditure			
ECC Car Park	1,830.00		
ECC	0.00		
Holcombe Church	2,742.54		
Hawkshaw	949.00		
Hawkshaw Heating	0.00		
		5,521.54	116,691.55
Total Cash Expenditure 2022			116,691.55
Expenditure 2021			106,443.86

Bank Balances 31 December 2022	Total
Current Account	-
Deposit Account	92,230.36
Direct Giving Accounts	12,615.39
Restricted Funds Account	822.45
Cash	-
	<hr/> 105,668.20
Less Unpresented cheques	
Year End Total	<hr/> 105,668.20 <hr/>

Restricted/Designated Funds

Gardening (ECC)	-
ECC Car park	26,270.39
Holcombe	27,993.45
Hawkshaw	1,326.00
Hawkshaw Heating	36,250.00
Malawi	1,931.64
	<hr/> 93,771.48 <hr/>

STATEMENT OF ASSETS AT 31 DECEMBER 2022

	Balance 31/12/2021	Balance 31/12/2022
Santander Shares	351.54	313.11
Esther Martha Greenhalgh Charity Fund		3,780.38
CCLA - Restricted Holcombe Endowments	985.45	985.45
<u>Bank Accounts</u>		
Current Acc	-	-
Deposit Acc	69,395.50	92,230.36
Direct Giving Acc	15,356.32	12,615.39
Restricted Acc	820.65	822.45
Cash Not banked		-
	86,909.46	110,747.14
Less Cheques unrepresented	-	-
	86,909.46	110,747.14

Yearbook *2022*

Soup Company



This year we have been back to normal with Soup Company meeting every month except August on the 2nd Thursday. Our numbers have grown reaching the dizzy heights of 40 at our Christmas lunch in December which was followed by the Users of the Hall Carol Service instead of the normal Holy Communion which we have. The ladies from Afternoon Fellowship provided us with delicious festive refreshments after the Carol Service.

We have had as many as 11 different varieties of soup on offer including some new ones like Game soup and Chicken Leek and Potato as well as our old favourites so there really is something for everyone and a wide choice for vegetarians and Vegans.

We officially start at 12.30pm., but people arrive for an early cuppa and a chat. This year we have had several visitors from other churches to see how we do it with a view to starting their own. Our Home made Garlic Bread is very popular as are Romey and Annette's cakes, Truffles and especially Lemon Meringue Pie.

Thanks to all who make soup and particularly those who attend and share Fellowship together.

In these days of austerity and cost of living difficulties you can be sure of a warm welcome and a satisfying lunch and we welcome the donations given which go to Church funds to help maintain our buildings.

If you have not yet tried it come along.

Jo Venn



We have welcomed new members over the last twelve months and sadly said our farewells to others.

The fellowship continues. We always seek a friendly environment in which people can meet informally over a cuppa – conversation is constant!

It is over these regular get-togethers that, some old acquaintances are renewed and new friendships formed. It was lovely to welcome the Capernwray students recently and our new curate Matthew.

The 'Warm Spaces' endeavour is a continuation of the Monday morning session and it is good to have help from Emmanuel and St. Mary's in providing a warm soup lunch for our guests.

We also enjoy the company of the 'Open The Book' team; they are back to rehearsing on Mondays in the church behind the screen. Our Winter Lunch on March 20th will be shared with them and as ever our culinary efforts are much appreciated and the preparations beforehand enjoyed by all taking part.

We always look forward to seeing new faces and never close unless circumstances are exceptional. The late Queen Elizabeth's state funeral being one where almost all wanted it acknowledged in their own homes.

Hopefully we keep going and prayerfully extend a welcome to anyone wanting a bit of company and a brew – there's biscuits too!

Gloria Metcalfe

St. Mary's Church of England Primary School

It's been another happy year at St. Mary's Primary School. We have been able to share lots of whole school activities both in, and beyond school. We all topped up our cultural capital by watching the Snow White pantomime at Victoria Halls. All the children enjoyed the longstanding Christmas tradition. The children then confidently performed 'Humph the Camel' and 'The Greatest Showman' to very appreciative audiences.

Earlier in the year the older children and Mrs. Jolley had the chance to work with Bury Music service and two other schools to perform Engelbert Humperdinck's 'Hansel and Gretel' at Bury Met. It was a great introduction to opera and a wonderful opportunity for the children to perform at a professional theatre. Long lasting memories were made!

Our quality music curriculum enabled us to achieve the Music Mark. All the children in KS2 are taught percussion by Bury Music Service staff. They have performed impressively the glockenspiel, djembe drums and samba at church services. Our choir has also sung beautifully at a range of events throughout the year. I'd like to thank Jo Sumsion for the support she gives to Mrs. Marfell-Cadman who leads our school choir.

I have personally been delighted to reduce my working week by 20%. Each Friday Mrs. Clark is the head teacher giving her a fabulous opportunity, which in turn facilitates succession planning. Mrs. Clark is doing a great job and has been strongly supported by staff and parents. In

addition, Mrs. Clark has successfully completed her training to be a School

Inspection of Anglican and Methodist Schools inspector.

The staff have been expertly led by Mr. Butt to develop a new website. We have been busy preparing the documents for the web pages. We will be so excited to launch the new website very soon.

Our strong Science Curriculum is led by Mrs. Falshaw. She enthusiastically provides opportunities for the children to investigate and gain first hand experiences. She has organised educational trips to The Great Science Share at Manchester University, and a river study at Bolton Environmental Centre. The children share a great interest in the World of Science with Mrs. Falshaw.

After 48 years John Ratcliffe is retiring from St. Mary's Governing Board. John has been a conscientious and passionate governor who contributed significantly to the ongoing success of St. Mary's. He took his responsibilities seriously and served with integrity. I would like to thank him sincerely for his dedication to the children and staff at St. Mary's.

Kind regards

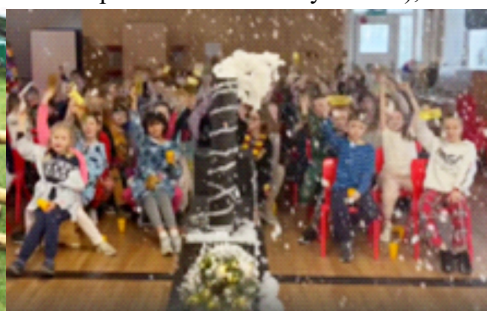
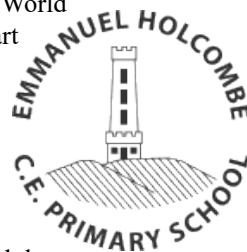
Geraldine Woodward
Head Teacher



The Emmanuel Holcombe school and church family is a thriving community. Together, we have achieved so much this year and we are delighted to share some of the highlights.

We always strive to provide a rich and varied curriculum for our pupils, which includes a wide range of trips, visitors, workshops and residentials. Year 5 and 6 pupils spent two nights on their residential at Waddow Hall; our choir performed the

we have celebrated World Book Day; had an art week; held a 'Polar Express' whole school book week; organised anti-bullying sessions; enjoyed a week of 'Music from Around the World', led by Katie Geelan, (you may have spotted us in the Bury Times!);



youth opera 'Hansel and Gretel' at Bury MET and performed Christmas Carols within the community; our school council visited the Mayor and her chambers; Key Stage Two watched the Hallé Orchestra at the Bridgewater Hall; Year 3 and 4 pupils visited Bolton Museum and children across the school enjoyed workshops on the Vikings, Space and Rocks and Soils.

organised 'Well-being Wednesdays', with whole school walks up Holcombe Hill; and participated in an Easter Week, with 'Experience Easter' workshops led by members of the Parish. Key Stage Two pupils also enjoyed 'Prayer Spaces', led by Reverend Paul Sumsion and Jo Sumsion.



We love to organise a range of Theme days and weeks for our pupils. This year

Our Faith Ambassadors have an increasingly prominent role in school, leading Monday Worship once a fortnight.



We also enjoyed a lovely picnic at the Emmanuel Centre with Gloria and Betty!

Our charitable work is very important to us at Emmanuel Holcombe and this year we asked our parents to not buy us Christmas gifts, but instead donate to the Ramsbottom Pantry. Our Year 5 and 6 pupils then walked down with our donations and learned about how food banks operate. We have also supported Children in Need, Comic Relief and Jeans for Genes.



Sending our love and prayers to you.

*Amy Longstaff Acting
Headteacher
Emmanuel Holcombe CE Primary
School*





After our short meeting season, we started 2022 with our regular meetings and in good heart.

We started off the New Year looking at the Mothers' Union theme of "Transformation Now", looking at what we have done, what we are doing and what we would like to do in the future, with several plans being made.

On a musical note, with other members of the Parish, we had an entertaining and informative time with Richard Hall, when he presented "Banned by the BBC", songs that the BBC have not played over the years, which proved a surprising variety. Again, with friends and members of the Parish we had a wonderful sing-a-long with "The Strummers" and we all proved to be in reasonably good voice.

In May, Ian Fleming came to talk to us about his journey of faith and his work as a Curate in the Parish. The Summer months saw us having an afternoon tea at Summerseat Garden Centre and joining with Greenmount W. I. for an Afternoon Tea and Quiz to celebrate the Jubilee of our Queen.

During the Autumn we celebrated Holy Communion at our September meeting and then celebrated the 80th birthday of one of our members with an Afternoon Tea. We had our usual Christmas Lunch in December at the Sykeside Restaurant, which was greatly enjoyed. We also hosted the Bury Deanery Mother's Union Advent

Service at the Emmanuel Church Centre, where we were joined by members from all over the Bury area.

In the early part of this year, we joined with the Lent Course for two of our meetings and shared in "The Journey to The Cross" with them.

A sad part of the last year was when two of our members Colleen and Kath passed away, two long-standing and much loved members of our Branch and, along with their families, we miss them being with us.

We hold our meetings on the first Tuesday of each month at 2pm., in the Emmanuel Church Centre and all are welcome, have a look at the parish magazine and news sheet for details of our meetings and feel free to come and join us.

*Robert Airey
Correspondence Officer.*

Afternoon Fellowship 2022

We have had a varied program throughout the year,

January: The Kellingtons film show

February: Elfie talk on Austria.

March: Bessie talk Exchange Holiday.

April: Ian Fleming "My life as a Curate during lockdown".

May: Robert (stepped in) a very interesting talk about the "Sea Cadets"

June: Jo Venn 'My home in France' which was enjoyed by all, lovely photos and details of the area, along with stories of her family and guests.

August: Robert talk "Robert's Rambles"

September: Sheila "Musical Afternoon", music and some amusing readings, a lovely afternoon, as usual.

October: Gloria entertaining us with her own written poems, which were very good, as always.

November: Mary "Presentation on costumes, design and making" a very interesting behind the scenes talk,

December: Carol Service for "All Hall Users" well attended, followed after with Christmas tea.

We still have very few members and managing to keep going with the help of members and church friends, thank you everyone.

If anybody would be interested in joining please contact:--

Mrs Pauline Keighley 01204 884476

Mrs Ann Milius 01204 880677



ECC Prayer Group

The Group continues to prepare and deliver Quiet Mornings on the 3rd Tuesday of each month, (except July and December).

These offer time and space for personal prayer and reflection, with theme-based words and music, presenting an opportunity to step out of the busyness of life and meet with God in a way that is meaningful and unique to each individual.



Attendances have continued to increase, averaging 22 people, and as well as people from our own parish, we regularly welcome folk from other churches in Ramsbottom, Rossendale, Radcliffe and Bolton. The accompanying booklets are also sent out to a growing number of people, who are not able to attend for various reasons, and a total of around 60 people now have access to the Quiet Morning material.

As usual, the ECC was open on Good Friday, this year from 10.00a.m to 12 noon. Prayer stations based on John Pritchard's exploration of "Symbols of the Crucifixion" provided the focus for personal prayer and reflection.

Five "Taizé Prayer" services were held in 2022 in the usual Sunday morning worship slot.

A warm invitation is extended to anyone who would like to join us in any of these times of prayer and reflection.

Emmanuel Holcombe Choir

A year ago I commented that life had been full of surprises. The trend has continued!

Last March, we were delighted to hold our Good Friday meditation in person for the first time since 2019. We were sorry that Beryl was away, but it was nonetheless good to welcome Naomi back to sing for us. It is a service which is much valued by the participants.

On the same evening I was approached by Robert and Mike who had had a good idea. (People in our parish and especially the choir are full of them, as will become apparent.) To celebrate Queen Elizabeth's Platinum Jubilee they suggested that a special additional service of Choral Evensong would be appropriate. The choir, when consulted, approved wholeheartedly. We had begun to learn a short anthem – Creation's Hymn by Beethoven, which is a joyful celebration and, conveniently, not too difficult.

Not long after this, a member of the choir said at our practice: 'We could sing 'Zadok the Priest''. I pointed out our small numbers and thought that was the end of the matter. Then an email arrived with a copy of 'Zadok the Priest' attached. Again my first thought was that it was impossible, but I began to wonder if a 'Come and Sing' event, a bit like a small-scale version of the 'Messiah' Singing



Day might be feasible. At choir practice I pointed out the difficulties of singing 'Zadok the Priest'. Then came the suggestion: it could be a 'Come and Sing' occasion. Several people seemed independently to have had the same idea. Paul agreed to it, Stephen produced an attractive flyer and we started publicising it. In the end we had a choir of about 28 singers, Mel Plumley played the organ for us, and I did my best to keep everyone together. We invited the visiting singers to a choir practice and provided all of them with the music for the hymns, chants and two anthems. The choristers brought along additional members of the congregation, and it was a lovely occasion, appropriately rounded off by a loyal toast and the opportunity to chat. I am grateful to all those who contributed in so many different ways. Good ideas really do enrich our lives.

After this excitement life returned to a more normal routine. We have sung Choral Evensong most months, and we had our traditional Carol Service in

December. The children who sang with us were, I think, the youngest on average who have ever been part of this service, but they were good musicians who sang well from the start. We were again grateful to Keith Ball for augmenting our tenor section.

We have learned some more new music since last June, and I hope other pieces will follow. Brian Hunt now sings regularly with us. He has also rescued some very damaged hymn books, making them safe to use again. In our February Choral Evensong we were joined by Marcia Hollis, a friend of Jill Hunt, who seems to know everyone at Holcombe! We hope she will be able to sing Choral Evensong with us regularly.

I would like to thank John Fairclough, who plays for the Carol Service and Choral Evensong, and I am grateful to several members, who contribute in various ways to the smooth running of the choir.

*Rosemary Artley
1.3.2023*

Music at Hawkshaw

Our year of music at St. Mary's during 2022 was one of a general return to a cautious normality.

We now have a settled team of myself, Jo and Caleb Sumsion as leaders with Dot, Jane, Loraine, Susan, David, Keith and Isaac with Sue adding organ on occasion.

Thanks to each of them for everything they contribute.

Highlights from the year included another set of outdoor services during the summer months. These always include more demand in setting up technology so a special thanks to David, Stuart and Rob who have become pros at outdoor broadcasting. The sermon series on females from the Bible also allowed us a spot of lyric writing with a challenge set to write more verses for 'All Through History' to incorporate each female we studied in the series.

At Christmas, the carol service music was again organised by Jo. Thanks to the musicians and singers involved. December also included a Campfire Church with carols and a special treat of Caleb Sumsion on accordion!

We also continue to welcome St. Mary's School choir to participate in leading songs on a regular basis. Many of us will have felt joy at seeing a large group of children joining the musicians at the front of church, waving flags and shaking percussion and singing.

Finally, it leaves me to say that if anyone is reading this and feels a tug to get involved in the musical worship life of the church, please don't hesitate to let someone know. We will sadly be losing Caleb in the autumn so our team will always benefit from fresh faces.

Tim Webber

Hall Things Bright and Beautiful

There have not been any major changes within the area, one or two extra decorative animals have appeared, some commemorative bushes have been planted plus lots more bulbs for the Spring.



I am glad that the garden continues to be used by many people, including the uniformed organisations. It is also good to see the children running around and enjoying the space at Campfire Church meetings along with the chance to toast goodies around the campfire afterwards.

I hope the garden will continue to give to us all, for many years to come.

Barbara Newhouse

*For the Hall Things Bright and
Beautiful Team.*

Nature never stops!

You can't stop the progress of nature, so during this year the garden has matured and given us, yet again, a changing, but still wonderful place of peace and an area for activities.

As things mature, the garden changes, the bushes need more trimming and thinning, paths disappear as the edges encroach, the moles send up numerous piles of earth and the weeds manage to come through the matting! So thank you to everyone who comes along at various times and to our monthly garden working parties to keep on top of what nature throws at us.





We are now fully back in school after the Pandemic and welcome the new Headteacher Mr. Westerby to Holcombe Brook Primary School. The team continue to bring Bible stories to life and take them in to the school each week.

The team have grown in number and we welcome our two Pats, (Law and Lainton) as well as Julie Smale and Claire Carsley. At present we are rehearsing on Mondays followed by a cuppa and performing on Wednesdays, but great fun is had by all. Sadly we lost one of our number Colin Gaskell this year, who had added a great deal to our team.

The children enjoy taking part and chanting as appropriate with us. The stories are rich and varied and we thank Sheila and Cath for leading us and keeping us in order each week. The team have also been involved in Experience Christmas and Experience Easter for all our schools in the parish ensuring that our Christian traditions and heritage are brought to life for the children.

In order that maximum coverage of the stories are given for use in schools Stephen has videoed them as well, they can be seen via YouTube.

If you would like to be involved in any way see Sheila. You will be sure of a warm welcome.



Afternoon Pilgrim Group



We have continued to hold our Afternoon Pilgrim group at the Church Centre this year and are delighted that we have maintained our numbers with some joining us for the first time, as others have not managed to come from time to time. We have been studying the 'I am' sayings which went well and we covered a lot of ground. Our latest course has been the Prayer Course with 8 sessions from 'Why Pray?' to 'Spiritual Warfare', with Adoration, Petition, Intercession, Unanswered Prayer, Contemplation and Listening in between.

The group gives us time together to grow in faith and to discuss with each other aspects of our own lives.

We discussed what made the Pilgrim group valuable to us and these were some of the answers. Names withheld to protect the innocent!!!

- It allows people to open up about their own lives as they are among friends.
- We develop as Christians.
- I like the prayers they always seem to hit the spot.

So there you have it, why not join one of the groups at a time that suits you best? You will be sure of a warm welcome, as well as a cuppa and even a piece of Annette's delicious cake, as long as there is a cup of tea for laddie.

Linda and Jo

- Its value 2/6p which was a lot of money in our youth.
- It gives us a different view point from Sunday Worship.
- It is good to share experiences.
- I enjoy listening to other people.
- The group helps with cohesion between services.
- It encourages your faith.
- It allows you to ask questions without feeling silly as you know you won't be considered dumb.
- You can voice your opinion and know it will be listened to.
- It is important to make time to come to the group at busy times.

19th Ramsbottom Brownies

We are happy to report that we have a lovely thriving pack of 23

Brownies, who enjoy our varied meetings, which aim to have fun while developing individual and team skills.

During the year we have been extremely pleased that our girls gained 10 Bronze, 5 Silver and 2 Gold Awards. That is such an achievement and special congratulations go to Amelie Fildes Coulborn and Katie Tunbridge, to achieve Gold is “super special”.

To gain these awards and other badges, the Brownies took part in games, campfires, craft, performances, community and other challenges. We had a lovely evening making our own pizzas, at the Campsite in Edenfield with a little archery as well.

Congratulations to Lisa who has qualified as a Brownie Leader and now takes charge of our Pack, we are so fortunate to have her. Thanks to all our Leaders for their dedication to Brownies.

Sadly, we have lost one of our leaders, Janet Halliwell-Sandiford, who died on New Year’s Eve. She will be greatly missed by us all.

We have been able to pass on some of our girls to the Guide Section and look forward to another exciting year, with new Brownies on the waiting list to join us in 23. We hope to fill the year with fun adventures.

*Guiders: Lisa Fildes Coulborn,
Mary Souter, Julie Ringer and
Barbara Newhouse.*



10th Ramsbottom Guides

The year began with the Guides continuing where they left off in

2021, meeting virtually by Zoom, enjoying games, origami, hedgehog themed evenings and craft. We celebrated Thinking Day with a quiz, treasure hunt and Passport game.

In July, we ended the term by meeting face to face for the first time in over two years, enjoying outdoor games and a campfire with marshmallows, s’mores.

The end of September saw us return to the Hall and our normal weekly ‘real’ meetings.

The girls have followed the Girlguiding program completing Unit Meeting Activities and Skills Builders, making butter, learning about banking, sound effects, as well as Cow and Polar Bear challenge badges. We’ve had a film night, played games, including duster hockey, dodged doughnuts, and been crafty painting silk and decorating buns.

We’ve welcomed new members in the year, and others have retired, but very sadly also lost one of our Leaders, Janet, who passed away unexpectedly at the end of the year.

As ever, we couldn’t do this without the help of our volunteers, so it’s ‘Thank You!’ for everything they do.

Guider: Susan Watson



Children and Families Ministry Facilitator

Church based work Campfire Church

In the depths of January we began a new fresh expression of church. We meet one Sunday a



month around the fire in the garden of Emmanuel Church Centre for teaching, worship and games in a context that suits some better than a formal church service. We drink hot chocolate and often cook snacks on the campfire. From January to July we based our sessions on the 'I am' statements of Jesus and since September we have been looking at Jesus' parables. Our aim is to build a new worshipping community and develop the faith of every individual.

Thank you to Paul, Ian, Layna, Stephen, Barbara, Jo, Pat, Claire, Loraine, Robert and Isaac for planning, leading, lighting fires, lifting and shifting and, of course, the hot chocolate.

Marriage Preparation Course

In February we ran a marriage preparation course for couples, using Care for the Family's 'Built to Last' material. Four couples attended and appreciated the course.

Thank you to Robert, Romey, Jen and Barbara for hosting.

Capernwray

In March, we hosted a team of four students from Capernwray Bible College. They visited



various groups around the parish: Drop In, Soup Company and the parents' coffee mornings. They shared their stories at Sunday morning services, led evening worship at Hawkshaw, and spoke at Cellar. They helped in classes and led collective worship in both schools. A family games night was very well attended with 80-90 participants and it was encouraging to see a good number of new faces from our school connections.

Thank you to Penny, for organising the games night and so many others for meals!

Yorkshire Camps

Also in March, we took a group of 14 children



age from 8 -13 to Yorkshire Camps for a weekend of Bible teaching, outdoor activities and lots of fun and games.

Thank you to Layna for giving up your weekend.

Holiday Club

The theme of holiday club this year was 'Fired Up,' exploring passages in the Bible where God appears through fire. (Moses, Daniel, Elijah, Pentecost.) Having done all the planning and preparation, Penny was out



of action with Covid, which was very disappointing for her and a challenge for the rest of the team! We had 35 children each day and 80 people for the Thursday evening celebration and service.

Our biggest thanks to Penny who did everything beforehand, then couldn't be there. To Paul, Ian, Layna, Peter, Jen, Geraldine, Yvonne, Dot, Jean, Loraine, Callum, Caleb, Isaac and Sydney for being there and still smiling at the end of the week. And to Tom, Alan and the BBQ team.

Hawkshaw on Sundays

Sunday school at Hawkshaw continues to meet twice a month in school (preschool – Year 5) and in the Cellar (Year 6 and up) during the morning service. There are 26 children registered.

Thank you to Barbara, Jannine, Rachael, Hannah, Suzanne, Kim, Darren, Penny and Becky for the love you show for the children in your care.

The other Sundays in the month at Hawkshaw are All Age services. Developing intergenerational worship continues to be a priority for the team leading the services. We have welcomed six new families to the church community during 2022 and we are delighted to have them worshipping with us.

Thank you to our service leaders, clergy, lay ministers, pray-ers, Bible readers, musicians, tech team, welcomers and coffee brewers, who help us to provide inspiring worship and real community to draw people to Jesus.

Schools work Collective Worship

We continue to lead whole school collective worship in both church schools each week. Paul, Ian (until September), Robert and Jo Dolman (Bolton circuit Methodist youth worker), are all involved. Each week, I have continued to lead class worship at Emmanuel, for a different class each half term.

The Open the Book group have finally been able to return to live performance – see their separate report – what an amazing team! Thank you all!

Easter in Schools

We took part in the Easter theme week at Emmanuel. Class by class, the whole school came to church and were led through the Easter story from Palm Sunday to the resurrection, (using the Lion Storyteller Bible) and joined in prayer activities for each part of the narrative.

Thank you to Robert, Penny, Stephen, Barbara and Jo V who made it happen in my Covid absence.

Experience Easter for Holcombe Brook Primary school was initially postponed due to snow! However, we were able to reschedule for the first week of term after Easter and had much better weather. 150 children from the school came over two afternoons, to take part in activities enabling them to reflect on the Easter story.

Thank you to Paul, Ian, Robert, Mike, Claire, Pat, Sheila, Stephen, Barbara, Penny, Gwen, Ann, Linda and Dot for giving the children this opportunity to hear the Good News of Jesus.



Celebration Sunday

After a gap of three years due to Covid, we were able to reintroduce an annual joint school and church service. ‘Sermons Sunday’ was relaunched as ‘Celebration Sunday’, which took place on 26th June at Holcombe. The children of Emmanuel school introduced the service, leading the liturgy, prayers, Bible reading, drama and singing.

Thank you to Rosemary, the choir, Caleb and Isaac for leading worship.

We have also held special services for our schools at harvest and Christmas.

Transition Work

In July, we held sessions for the Year 6 pupils at St. Mary’s, Emmanuel and Holcombe Brook Primary schools, using the ‘It’s Your Move’ material from Scripture Union, to help them to prepare for the transition to secondary school. As usual, we presented each Year 6 student from Emmanuel and St Mary’s with a copy of the Bible, at their Leavers’ Services.

St. Mary’s School Choir

I have continued to be involved with St. Mary’s choir. Some families have continued to join us to sing at All Age worship. In the lead up to Christmas we also performed at Sizzling Seniors and Hawkshaw Christmas tree festival. Children also joined us for the church carol service.

Thank you to Sarah Marfell-Cadman, (assistant head at St. Mary’s) for your support and time given in this joint venture.

Christmas in Schools

Having had plans thwarted by Covid last year, we were able to do Experience Christmas for Holcombe Brook Primary School over two days at Emmanuel Church Centre. 165 children explored the Christmas story, through the interactive stations.

Thanks to Paul, Robert, Mike, Stephen, Barbara, Penny, Claire, Cath, Jo V, Pat, Pat, Loraine, Dot, Linda, and Ann, again, for being so willing to dress up.

Prayer Spaces In Schools is a 24:7 Prayer Movement initiative to enable children and young people, of all faiths and none, to explore life’s questions, spirituality and faith in a safe, creative and interactive way. In December, we were able to set up a prayer space at Emmanuel School for the Key Stage 2 children to reflect on Advent. We had four stations inside our big green Campfire Church gazebo (our Prayer Space) inside the school hall, with themes of Preparing Hearts, Rejoice, Hopes and Dreams, Christmas Journey. We were able to leave aspects of the stations in each class and communal worship areas for further reflection and prayer.

Thanks to Paul, Jen, Peter and Loraine for joining me in a new thing.

Coffee Mornings

The weekly coffee mornings for parents and carers at St. Mary’s and Emmanuel have continued throughout the year. There is a small, but regular uptake of the offering of good coffee and even better cake! Relationships are being built and the support and friendship within these groups is appreciated by all those involved.

Thank you to Yvonne and Penny (Hawkshaw), and Margaret (Holcombe) for turning out faithfully each week, whatever the weather and getting alongside our parents and carers.

Final thanks

As you can see, there are a large number of people involved in our children and families' ministry. A big thank you to Liz Webber, our parish safeguarding officer, who is never (seemingly!) flustered when I send her another list of people who need training and checks and so patiently supports and guides volunteers through the process.

We would not be able to carry out any of this ministry with children and families without having DBS checks and safeguarding training in place.

The cases of historic sexual abuse uncovered in the Church of England show that, sadly, the church was not always a safe place to be. With openness and a willingness for scrutiny, we can ensure that there is no place in the church for abuse to hide.

Thank you to everyone for all you do to make ours a safer church.

Finally - the biggest thanks goes to God, who gives us new life and hope through the death and resurrection of his Son, our Saviour Jesus Christ, and who is the reason we do everything we do.

*Jo Sumsion
January 2023*

Sizzling Seniors

We continue to meet on the 1st Thursday of every month, except August, at St. Mary's with a fairly stable attendance of around 20, men and women! We enjoy a good chat over tea, coffee and yummy cake, not forgetting the toasted teacakes, which remain a firm favourite even in the heat of summer!!



Many love a crossword to figure out together, along with Bird bingo some weeks, or dominoes and a very low key raffle! We aim to have a different theme most months, with a 'Pause for thought' – a short Christian reflection along the same lines! A different theme gives variety to our activities – with talk of holidays past over afternoon tea, soup and festive puddings for a Christmas flavoured gathering. We've planted bulbs in spring and have all gone home with chocolate hearts and candles as we've reflected on God's amazing love for Valentines Day!

If anyone can't get to the group any week we try to call and take them something from our get together, so they know they are not forgotten!

If anyone would like to join us you'd be most welcome!

The Sizzlers Team
Jane, Jen, Jean and Ethel.

Traveller's (Adult and Toddler Group)

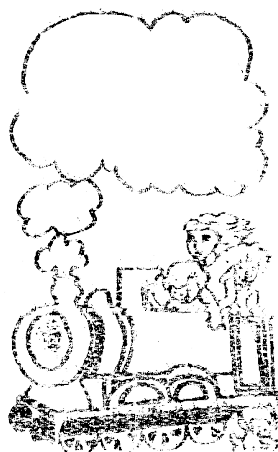
Annual Report (March 2022 – February 2023)

“Bless their little hearts” was a comment made by a visitor, as she watched the children playing happily in the hall. Some weeks we are busy, other weeks less so, that’s the nature of running such a group. But we hope that we create happy memories, not only for the children, but for the adults as well, (we encourage parents to pop back and let us know how the children are doing, once they’ve started school). One family who had been coming along to Traveller’s for over 8 years, starting with her eldest son, told us that whenever they drive past the hall her daughter waves!



We continue to alternate the toys, bikes one week then play tents the next, however, the playdough is out every week as it is a firm favourite.

The children don’t need to be persuaded to take part in any of the craft sessions. Some of the items we made last year included Easter Crowns, Jubilee windmills (for our Jubilee Party), flowers,



Pudsey masks, (for our Pudsey Bear afternoon), Christmas character masks which impressed Father Christmas when he visited us! Items made are displayed along with the dates

we meet and lots of photographs and information on our notice Board at Canon Lewis Hall.

We are looking forward to yet another busy year. If you’ve never been why not come along and join us on Wednesday afternoons (term time only) from 1.30pm to 3.00pm.



Kathryn Fry & Julia Grant

Cellar and Youth at Hawkshaw

The cellar at Hawkshaw Church is the perfect space for our youth club, equipped with pool, table tennis, football and air hockey tables, not to mention coffee tables, plus a few sofas on which to chill out. Of course we also have plenty of space for games in the church and grass for outside activities.

We are open to years 7 – 9 on Thursday evenings during term time. We are so grateful for these facilities and the opportunity to welcome young people to meet up with each other and, if they wish to do so, meet up with Jesus too. Ian and Layna have led this ministry brilliantly, and continue to do so despite Ian's secondment to the Ramsbottom and Edenfield Team.

Each session includes a time when we sit round and explore some aspect of Christian faith, sometimes using bible passages or perhaps hearing testimonies. There are also The Big Questions! The inevitable difficult questions asked by inquiring minds. It has been very encouraging to see young people engage so enthusiastically and Ian has risen to the challenge with some inspiring answers.



The numbers attending have fluctuated during 2022, but perhaps between 10 and 15 young people have come regularly. Whilst it is always encouraging to have standing room only, slightly smaller, more manageable numbers can sometimes offer a more relaxed atmosphere. However, there are many attractions and choices out there for young people and it's up to us as a church to seek ways to offer an exciting alternative. Ideas on a postcard please ... !

We are blessed with a fantastic team of leaders, namely: Ian, Layna, Callum, Geoff, Anne (finished her tour of duty in the summer), Eddie, Tim, Isaac, Liam, Tony (doing D of E) and me. Thanks to all.

Penny Hanley

Rector: Rev. Paul Sumsion,
The Vicarage,
Bolton Road,
Hawkshaw,
Bury,
BL8 4JN
01204 888060.



Associate Ministers:

Rev. Robert Airey	01706 224743
Rev. Vic. Fletcher	01204 882750

Readers:	Mr. Michael Burton,	01706 822664.
	Mr. Richard Byrom,	01204 883110.
	Mrs. Ethel Houghton	01254 704758.
	Mrs. Jane Fletcher	01204 882750.
	Mrs. Jo Sumsion	01204 888060

Children and Families' Ministry Facilitator:

Mrs. Jo Sumsion 01204 888060

Church Wardens:

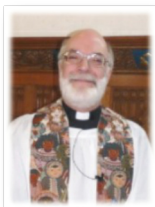
Mr. Stephen Newhouse (Lay Chair PCC).
01706 412657.

Mr. Peter Hardcastle 01204 853999

Why not visit our website: www.holcombehawkshaw.org

Each Sunday There is a service at each worship centre and the 10.45am service at St. Mary, Hawkshaw is "streamed live" on YouTube and is available all week, so you can watch it at any time. Just visit our website www.holcombehawkshaw.org.

We have also been sending out regular e-mails with news updates, so if you haven't received those please email a request to stephen.newhouse@sky.com



Rev. Robert Airey



Rev. Vic. Fletcher



Rev.
Matthew Brinicombe

Annual Report and Yearbook 2022



Holcombe and Hawkshaw Parochial Church Council

STATEMENT OF INCOME FOR THE YEAR ENDED 31 DECEMBER 2022

	Holcombe and Hawkshaw 2022		
	£	£	£
Voluntary Income			
Planned Giving - Gift Aid	61,689.33		
Planned Giving - Un-gifted	2,058.54		
One off Gift Aid	1,275.00		
Cash/Collections	6,873.77		
Income tax recovered	23,616.93		
Fund Raising Events	3,892.53		
Magazine	241.30		
Use of Church Buildings	6,562.00		
		###	
Other Ordinary Income			
Dividends and Interest	1,088.51		
Fees to PCC	9,259.00		(includes £2,013 fees
		10,347.51	116,556.91
Extraordinary Income			
Restricted Donations	15,127.83		
Yorshire camps	150.00		
Diocesan Grants	4,500.00		
Special Appeals	452.54		
		20,230.37	136,787.28
Total Income 2022			136,787.28
Income 2021			132,440.04

paid to Diocese)

Holcombe and Hawkshaw Parochial Church Council

STATEMENT OF EXPENDITURE FOR THE YEAR ENDED 31 DECEMBER 2022

	2022		
	£	£	£
The Ministry			
Ministry Expenses	7,061.59		
Support & Education	2,551.08		
		9,612.67	
The Church and Services			
Energy	19,625.23		
Water	1,051.84		
Cleaning	0.00		
Insurance	7,536.76		
Upkeep of Services	6,080.40		
Minor Repairs, Fire Inspection	9,593.88		
Churchyard	723.60		
		44,611.71	
Other Ordinary Expenditure			
Wages	17,711.09		
Magazine	0.00		
Fund Raising costs	2,806.90		
Verger/Organist	1,560.00		
		22,077.99	
The Diocese			
Parish Share	30,000.00		
Other Diocese costs	2,864.20		
		32,864.20	
Payments to Missions/Charities			
Mission/Charities	2,003.44		
		2,003.44	111,170.01
Extraordinary Expenditure			
ECC Car Park	1,830.00		
ECC	0.00		
Holcombe Church	2,742.54		
Hawkshaw	949.00		
Hawkshaw Heating	0.00		
		5,521.54	116,691.55
Total Cash Expenditure 2022			116,691.55
Expenditure 2021			106,443.86

YEAR END STATEMENT 2022

Bank Balances 31 December 2022

Total

Current Account	-
Deposit Account	92,230.36
Direct Giving Accounts	12,615.39
Restricted Funds Account	822.45
Cash	-
	<hr/> 105,668.20
Less Unpresented cheques	
Year End Total	<hr/> 105,668.20 <hr/>

Restricted/Designated Funds

Gardening (ECC)	-
ECC Car park	26,270.39
Holcombe	27,993.45
Hawkshaw	1,326.00
Hawkshaw Heating	36,250.00
Malawi	1,931.64
	<hr/> 93,771.48 <hr/>

Working Balance	11,896.72
-----------------	------------------

STATEMENT OF ASSETS AT 31 DECEMBER 2022

	Balance 12/31/2021	Balance 12/31/2022
Santander Shares	351.54	313.11
Esther Martha Greenhalgh Charity Fund		3,780.38
CCLA - Restricted Holcombe Endowments	985.45	976.34
<u>Bank Accounts</u>		
Current Acc	-	-
Deposit Acc	69,395.50	92,230.36
Direct Giving Acc	15,356.32	12,615.39
Restricted Acc	820.65	822.45
Cash Not banked		-
	86,909.46	110,738.03
Less Cheques unrepresented	-	-
	86,909.46	110,738.03
TOTALS	86,909.46	110,738.03

Notes

Ester Martha Greenhalgh Charity Fund re-assigned to the Parish

No recent valuation received for Holcombe Endowments



CHARITY COMMISSION
FOR ENGLAND AND WALES

Independent examiner's report on the accounts

Section A

Independent Examiner's Report

Report to the trustees/
members of

Parish of Holcombe & Hawkshaw, Lancashire

On accounts for the year
ended

31/12/2022

Charity no
(if any)

Set out on pages

Trace Aug 23 - A1, Trace Aug 23 - B1 (2 pgs), Trace Aug – B2, Summary of Traceability

I report to the trustees on my examination of the accounts of the above charity ("the Trust") for the year ended **31/12/2022**

Responsibilities and
basis of report

As the charity's trustees, you are responsible for the preparation of the accounts in accordance with the requirements of the Charities Act 2011 ("the Act").

I report in respect of my examination of the Trust's accounts carried out under section 145 of the 2011 Act and in carrying out my examination, I have followed all the applicable Directions given by the Charity Commission under section 145(5)(b) of the Act.

Independent
examiner's statement

I have completed my examination. I confirm that no material matters have come to my attention in connection with the examination (other than that disclosed below *) which gives me cause to believe that in, any material respect:

- the accounting records were not kept in accordance with section 130 of the Charities Act; or
- the accounts did not accord with the accounting records; or
- the accounts did not comply with the applicable requirements concerning the form and content of accounts set out in the Charities (Accounts and Reports) Regulations 2008 other than any requirement that the accounts give a 'true and fair' view which is not a matter considered as part of an independent examination.

I have no concerns and have come across no other matters in connection with the examination to which attention should be drawn in this report in order to enable a proper understanding of the accounts to be reached.

** Please delete the words in the brackets if they do not apply.*

Signed:

Date:

30/8/2023

Name:

Stuart Moulton

Relevant professional
qualification(s) or body
(if any):

AAT membership number: 20269328

Address: 9 Hunstanton Drive, Bury. BL8 1EG

Section B

Disclosure

Only complete if the examiner needs to highlight material matters of concern (see CC32, Independent examination of charity accounts: directions and guidance for examiners).

Give here brief details of any items that the examiner wishes to disclose.

I have carried out the independent examination.
I have noted an increase in Direct On-Line banking payment and have followed some transactions but not selected – all found to be accurate and traceable.
Any issues have been noted below.

I have cross referenced financial statements with links back to accounting records: - Bank statements, Receipts, Bank Details & Summary (held by Treasurer), Invoices.

I have selected various sample receipts & payments and traced back through all accounting sheets including Bank Statements. Details of one sample – see **'Trace Aug23 B2'**. I could not locate Invoice/Receipt for the 'Fire Extinguisher Rental' for this transaction – this may be a yearly agreement and so not noted in the mth Chq dated.

I have selected various sample receipts & payments, bank transfers and traced back through all accounting sheets including Bank Statements. Details of one sample – see **'Trace Aug B1'**. Although all items correspond a note for continuity :- if continuing to provide printout of 'Bank Transfers' with accounts ALL bank transfers should be presented in the accounts. I could not find a print out of the part Bank transfer of a payment (£85) but this is found & noted in all other documented evidence & Bank Statements

I have selected various sample payments on Bank Statements and traced back through all accounting sheets Receipts. Details of one sample – see **'Trace Aug 23 A1'**.

I have selected various Incomes and follow back 'Direct Giving' money transfers and 'Weekly Giving' and am satisfied that these accounts give no cause for concern.

See 'Summary of Traceability'

I have reviewed the minutes of the PCC and I have obtained background information on the PCC, how it is organised. The parish includes St. Mary's Hawkshaw & Emmanuel Holcombe and within the Parish there are 3 churches - St. Mary's (Hawkshaw), Emmanuel Church (Holcombe Village) & Emmanuel Church Centre (Holcombe).

Three sheets attached: -

Trace Aug A1, Trace Aug23 B2, Trace Aug23 B1.
Summary of Traceability