



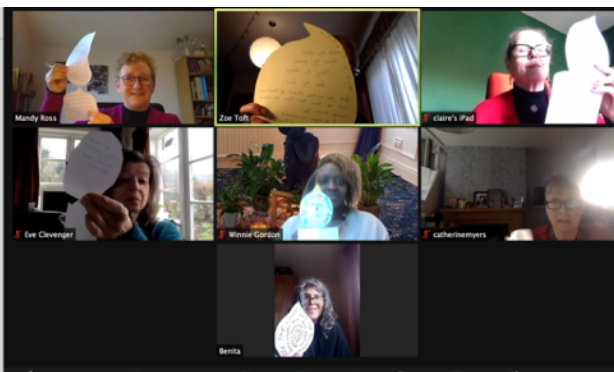
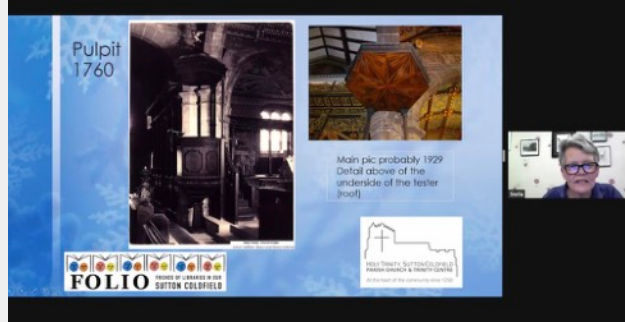
# FOLIO

FRIENDS OF LIBRARIES IN OUR  
SUTTON COLDFIELD

## Annual Report 2020-2021



### Telling Sutton's Stories - the Map



Registered Charity (No. 1175929, registered in England and Wales).  
Registered address: 28 Goldieslie Road, Sutton Coldfield, B73 5PQ

Welcome to the 2020-2021 Annual Report for FOLIO Sutton Coldfield.

2020-2021 was a demanding year for FOLIO, with Sutton Coldfield Libraries largely shut during this period due to the Covid pandemic. However we rose to the challenge using the time to do considerable work on governance of our charity, and adapting to offering events online and at distance, delivering resources and support to members of the groups we run, even if we were, for the most part, not able to meet in person. We worked hard to promote online library resources and services, such as order and collect, e-books and online research databases, making sure that our local community was aware of all the library service had to offer even if the buildings were shut.

Between 1 July 2020 and 30 June 2021 we held 25 events directly reaching 1100 people. We continued to support our Elderberries group with telephone calls and deliveries of afternoon tea and treats to reduce their sense of isolation. As part of a Fun Palace, and also at Christmas time, we created craft packs which we delivered out to families. A series of online local interest talks were extremely successful, with several events having audiences of almost 200. A collaboration with the commemorative Holocaust arts engagement body, Echo Eternal as part of their Horizons Festival and our own celebrations of Black History Month and LGBT History Month were purposeful decisions to engage with our wider community as a response to the new mission, vision and values we adopted as part of our Governance overhaul during the year. These are worth highlighting here in full:

Our **vision** is to help create an inspired and cohesive local community, passionate about reading and learning, which enjoys and engages with library services.

Our **mission** is to offer inspirational and transformational activities for the community to learn, interact and thrive, through engagement with local library services.

Our **values** are that we will be:

Welcoming:

- We reach out and welcome people in
- We are respectful and inclusive
- We engage fully with participants, funders and partners

Imaginative:

- We provide activities/events which are meaningful for the participants
- We offer activities/events which enrich library services
- We create a “wow” factor

Community-focused:

- We involve our local community and the wider community
- We collaborate with a diverse group of stakeholders to deliver a variety of activities/events together
- We offer a wide range of activities/events that will appeal to different sections of our community

I'm enormously grateful to the volunteers who helped us to deliver our online and distance events and to my Board of Trustees who worked so hard to ensure FOLIO ended the year in a stronger position than it started despite all the complexities the past year. I'm proud that our organisation has been able to contribute to our community during these difficult months.



Zoe Toft, Chair - FOLIO Sutton Coldfield

## Events 2020-2021

As one response to lockdown and library buildings be closed we created craft packs and delivered them to local families. We did this twice, once tying in with the nationwide Fun Palaces festival, and again at Christmas time. In addition to distributing our packs to our followers, we provided additional packs for distribution via a local food bank, and Homestart North Birmingham



Merry Christmas from all at FOLIO Sutton Coldfield!

We hope you have a wonderful Christmas and enjoy making these decorations. If you can send us a picture of the decorations you make we'd love to see them up and brightening your homes!



1. A sparkly bauble



2. Good old fashioned paper chains



3. A 3-D round bauble



3. A strip bauble



4. Chocolate books to hang on your tree

"Thank you for our craft activity pack. The children have had lots of fun trying out new activities at home over the weekends. We really appreciate having new things to do."

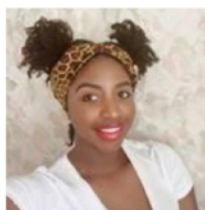
"Thank you so much for the Christmas art pack. It's absolutely lovely. We really appreciated it."



Another response to being unable to meet in person was an increased online engagement with our supporters, particularly through inviting them to contribute to our celebration of Black History Month and LGBT History month.



## Black History Month – connecting with our supporters (5)



Today, as part of Black History Month, we've book recommendations from Miss Randall (photographed), a library supporter, primary school teacher in Sutton Coldfield and YouTube children's storyteller on 'Storytime with Miss Randall'.

Here's what Miss Randall wanted to share with us all:

"Children's books can act as mirrors, to reflect the readers' own identity and lives, but also as windows so readers can learn about, understand and appreciate the lives of others. They can shape how young readers from varied backgrounds see themselves as well as how readers from a more dominant culture see and understand the complexity of diversity. I believe that it's vital that all children have

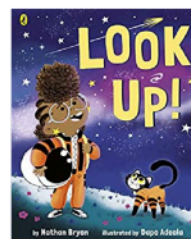
access to diverse books featuring black and brown characters at the forefront, stories that have positive role models, inspire and empower.

My first recommendation is Look up! By Nathan Byron, Winner of the Waterstones Children's Book Prize and the number 1 debut picture book of 2019.

As a big fan of stargazing myself, this book was an instant hit for me!

'All I know is that one day I'm going to be the greatest astronaut, star catcher, space traveler who has ever lived like Mae Jemison, the first African- American woman in space' –Rocket

Rocket loves to look up at the stars. She wants to be an astronaut after all, just like her hero Mae Jemison, the first African-American woman in space. Packed with fun facts about meteors and space to satisfy those curious minds, this charming picture book is laden with gorgeous illustrations that will convince children to get excited



## LGBT History Month PRIDE FLAGS



TRANSGENDER



NON-BINARY



LGBT PRIDE



PANSEXUAL



ASEXUAL



INTERSEX



BISEXUAL



GENDER FLUID



LESBIAN



FOLIOSuttonColdfield  
14 October 2020 · 🌐

As you may know it is Black History Month, and here at FOLIO we've been having really interesting conversations with some of our supporters who are Black or who have African and/or Caribbean heritage about great books they'd like to recommend

Today we have some recommendations from Myke. As well as those titles in the picture below, he'd like to suggest Things Fall Apart by Nigerian author Chinua Achebe. This novel, depicting 1890's pre-colonial Igbo life (there are about 45 million Igbo people currently living in Nigeria, and also in Equatorial Guinea and Cameroon), was recently adapted for Radio 4 and you can listen to it here: <https://www.bbc.co.uk/programmes/m000mstv>

Myke says, "I recommend Things Fall Apart because it's a book from my childhood aged 5 to 8, growing up in an African village. Life in Ghana, west Africa was a culture shock: being called Kofi; learning French at school; and meeting so many relatives. And of course, the title is from a WB Yeats poem: Things fall apart, the centre cannot hold. So apt for these Covid-19 times."

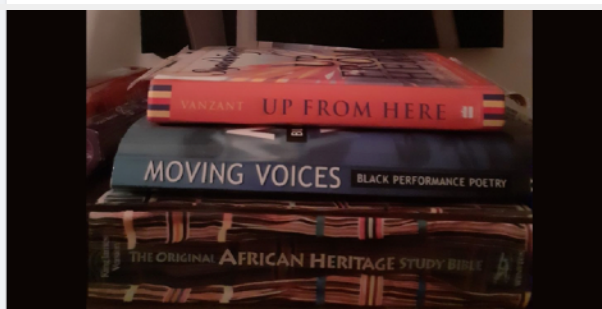
Things Fall Apart is available as an E-book if you have a Birmingham libraries card. There is also a copy in Boldmere library which you can reserve to collect from Boldmere.

The books pictured are additional books Myke would recommend:

Up from here by Iyanla Vanzant  
Moving Voices – Black Performance Poetry, edited by Asher Hoyles  
The Original African Heritage Study Bible

Copies of Moving Voices can be found in Kings Heath, Spring Hill and Tower Hill Libraries, though at the moment they cannot be ordered through to any library in Sutton.

Whilst we're all in favour of libraries, you might be interested to know about a specialist bookshop in Birmingham, <https://mybookbasket.com/>: "We have books from across the African diaspora; Britain, America, the Caribbean, Africa, and beyond and we believe that everyone, regardless of cultural background, will find something to fall in love with." You'll find My Book Basket at Legacy Centre (formerly The Drum) 144 Potters Lane, Birmingham B6 4UU



Cecille Edgar, Suzanne Poynton and 9 others

3 comments

Like

Comment

Share

Oldest ▾



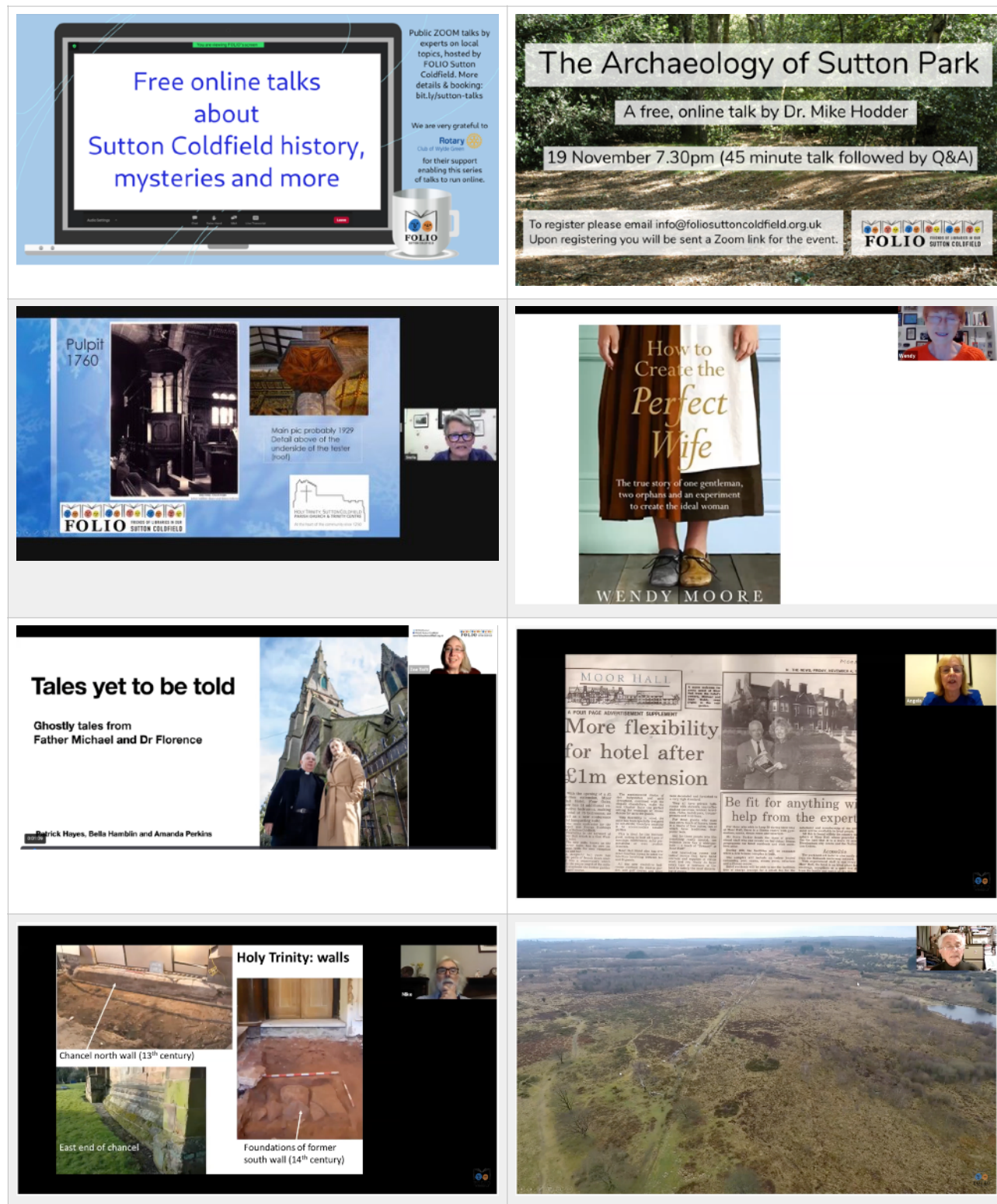
Myke

I'm beyond grateful Zoe & FolioSuttonColdfield for highlighting Black History Month. There's so much for all of us to learn. Because knowing our collective history [the good, bad & ugly] can help us all to acknowledge the past; navigate the present and ... See more

3



Our online local interest talks proved very popular. All were recorded and are available to view on our YouTube channel: <https://www.youtube.com/watch?v=xnKilcatBi4&list=PLZ3g60j-LMPa87xgig3blohRVubgA79Cp> We are extremely grateful to a private donor at the Wylde Green Rotary Club for funding our improved Zoom subscription which enabled us to host our large audiences at these events.

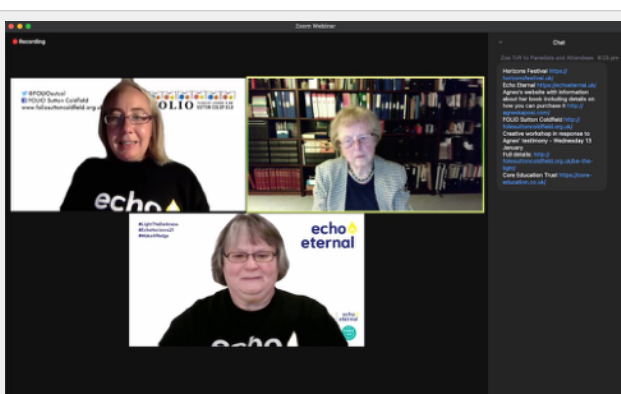
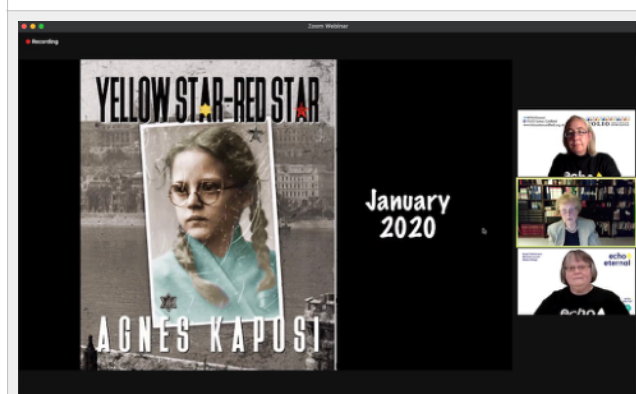
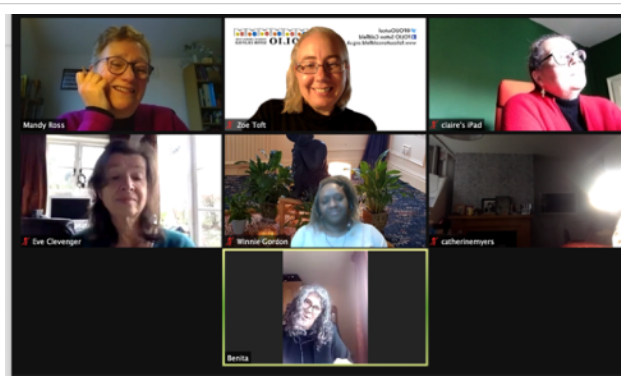


"Many thanks - and much appreciation of all you are doing through Folio."

"It was a really good evening and a great way to spend the evening"

"I really enjoyed the talk last night, especially the way it was portrayed as a play, mental stimulation is so important, and more so during these COVID times."

Our collaboration with Echo Eternal saw us kick off an ongoing relationship with Holocaust survivor Agnes Kaposi with a live online interview, two creative workshops inspired her testimony and the lighting up of Sutton Coldfield Town Hall with excerpts of her testimony and the poetry which was the result of our creative workshops.



"Thank you and Mandy for a great workshop. It was a privilege to participate with such wonderful women. If this awful pandemic has done anything good at all, it is bringing people together worldwide using the new technology of zoom."


Watch our interview with Agnes: <https://youtu.be/y46IF2Ctpwc>

Listen to our collaborative poem inspired by Agnes's testimony: <https://youtu.be/q2RYPklvDKg>






During 2020-2021 we developed a new project called Telling Sutton's Stories, <http://foliosuttoncoldfield.org.uk/map> . This is an interactive, collaborative map project exploring people's connections with Sutton Coldfield, highlighting the local history resources available through the library service. Thanks to a grant from Sutton Coldfield Neighbourhood Network Scheme we were able to host a series of online local history events exploring the archive photos held by Sutton Coldfield Library.



A project from FOLIO

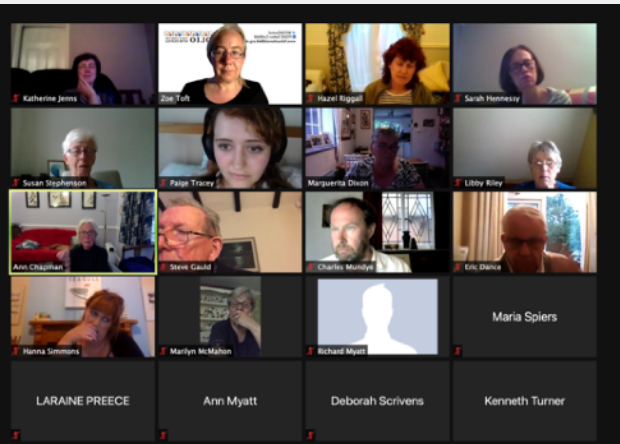


2

WEDNESDAY, 2 JUNE 2021 FROM 19:30 UTC+01:20:30 UTC+01


**Exploring Sutton's history through food and drink!**

Free - Online event



LARAIN PREECE Ann Myatt Deborah Scrivers Kenneth Turner

Telling Sutton's Stories - the Map




Sign in Telling Sutton's Stories

A place of magic and work  
Exquisite poetry  
Conventaria  
Entertainment  
Farms  
Mysteries to solve  
Parks and open spaces  
Places of worship  
Public Buildings  
Pubs  
Scattered Sutton Coldfield  
Schools  
Sports  
Streets

Google

About the project How to... This month's highlights Inspire map Project events Feedback/comments




17

THURSDAY, 17 JUNE 2021 FROM 19:30 UTC+01:20:30 UTC+01

**Exploring Sutton's history through music**

Free - Online event




19

WEDNESDAY, 19 MAY 2021 FROM 19:30 UTC+01:20:30 UTC+01

**Telling Sutton's Stories - Sutton Park part 2**

Free - Online event




24

SATURDAY, 24 APRIL 2021 FROM 14:00 UTC+01:15:00 UTC+01

**Telling Sutton's Stories - Mill Street**

Free - Online event



15

THURSDAY, 15 APRIL 2021 AT 19:30 UTC+01

**Telling Sutton's Stories - The Parade**

Free - Online event

“That was really interesting. Thank you for organising. Really appreciated it”  
 ““Really informative, professional, and enlightening.””



Throughout the year we kept in close contact with our Elderberries (older members of the community who we hosted regularly in Sutton Coldfield Library pre-pandemic) through a mixture of socially distanced meetings, resources and treats delivered to individuals' homes and telephone calls.



## Governance



Liz Parry - temporary  
Secretary



Noran Flynn - Lead on  
volunteering and  
safeguarding



Zoe Toft - Chair



Jenny Wilkinson -  
Treasurer

FOLIO's Board of Trustees continued to meet monthly throughout 2020-2021, albeit over Zoom. Separate monthly meetings were held to focus solely on strategic development, enabling our Trustee meetings to focus on the day-to-day running of the charity.

Unfortunately 4 colleagues stepped back from working on FOLIO's board during 2020-2021. We are extremely grateful for the rigour, creativity and passion that John Cooper, Daksh Gupta, Cassie O'Boyle and Clare Rumble brought to our Board and we wish them all the very best.

## Volunteers

Whilst many of our previously regular volunteers were unable to support the work of FOLIO due to pandemic we are very grateful to those who volunteered in new ways, making telephone calls, delivering resources and supporting FOLIO's work online. In particular we are grateful to Alan Cameron Wills who, with support of Geraint Pickard-Skeats, developed the bespoke software for Telling Sutton's Stories, donating over 100 hours of their time to do so.

## Plans for 2021-2022

Following an extremely challenging year, in 2021-2022 we plan to recruit new trustees to ensure our Board remains robust and flexible. We are exploring ways in which to appoint a paid project manager, delivering on a strategic commitment we made last year.

As circumstances allow us we look forward to returning to in-person events.

## Communications

One area we were able to grow considerably during 2020-2021 was in terms of our online support and newsletter mailing list. We now have 1665 followers on Facebook, 1132 followers on Twitter and 709 newsletter subscribers.

### Our Accounts for 2020-2021\*

|                   |           |
|-------------------|-----------|
| Opening balance   | 5,113.05  |
| Income            | 16,814.13 |
| Expenditure       | 5,329.02  |
| Closing balance   | 16,598.16 |
| Of which:         |           |
| Reserves          | 1,250.00  |
| Restricted funds  | 9,033.59  |
| Available balance | 6,314.57  |

FOLIO's annual operating costs are assessed to amount to c. £2,500. FOLIO's Board of Trustees considers it prudent to maintain a level of reserves in order to cover ongoing costs in the event that insufficient income is generated through activities such as fundraising and grants. The Trustees consider it appropriate to hold sufficient reserves to cover operating costs for a six-month period. FOLIO Sutton Coldfield therefore maintains a reserves balance of £1,250.

\*At the time of preparing this report these figures had not been independently reviewed.

### Thank you to our funders 2020-2021

Our activities in the year 2020-2021 were generously supported by grants from the following bodies:



This grant enabled us to support our Elderberries group.



A donation from a private benefactor from the Rotary Club of Wylde Green enabled us to upgrade our Zoom subscription to deliver online talks.





A grant from the Sutton Coldfield Neighbourhood Network Scheme enabled us to deliver online activities as part of the Telling Sutton's Stories project, and to plan for in-person activities in 2021-2022.

Thank you to the following funders who also awarded us grants:

The Thousandth Man - Richard Burns Charitable Trust (Squire Patton Boggs)





## Receipts and payments accounts

|                        |          |    |           |
|------------------------|----------|----|-----------|
| For the period<br>from | 1-Jul-20 | To | 30-Jun-21 |
|------------------------|----------|----|-----------|

### Section A Receipts and payments

|   | Unrestricted<br>funds<br>to the nearest<br>£ | Restricted<br>funds<br>to the nearest £ | Endowment<br>funds<br>to the nearest £ | Total funds<br>to the nearest £ |
|---|--|---|--|---------------------------------|
| <b>A1 Receipts</b>  |  |   |  |                                 |
| Grants  | 250  | 11,520                                  | -                                      | 11,770                          |
| Donations   | 4,412  | -                                       | -                                      | 4,412                           |
| Fundraising   | 553  | -                                       | -                                      | 553                             |
| Event bookings  | -  | -                                       | -                                      | -                               |
| Fees  | -  | -                                       | -                                      | -                               |
| Gift Aid  | 79   | -                                       | -                                      | 79                              |
|   | -  | -                                       | -                                      | -                               |
| <b>Sub total</b> (Gross income for AR)                    | 5,294  | 11,520                                  | -                                      | 16,814                          |
| <b>A2 Asset and investment sales,<br/>(see table).</b>    |  |   |  |                                 |
|   | -  | -                                       | -                                      | -                               |
|   | -  | -                                       | -                                      | -                               |
| <b>Sub total</b>  | -  | -                                       | -                                      | -                               |
| <b>Total receipts</b>                                     | 5,294  | 11,520                                  | -                                      | 16,814                          |
| <b>A3 Payments</b>  |  |   |  |                                 |
| Printing  | 153  | -                                       | -                                      | 153                             |
| Equipment   | -  | -                                       | -                                      | -                               |
| Speakers and event providers                              | 175  | -                                       | -                                      | 175                             |
| Refreshments  | 118  | 500                                     | -                                      | 618                             |
| Digital   | 142  | 1,492                                   | -                                      | 1,634                           |
| Stationery  | -  | -                                       | -                                      | -                               |
| Training  | -  | 112                                     | -                                      | 112                             |
| Phone   | -  | 91                                      | -                                      | 91                              |
| Postage   | -  | -                                       | -                                      | -                               |
| Consultancy fees  | 1,440  | -                                       | -                                      | 1,440                           |
| Insurance   | -  | 220                                     | -                                      | 220                             |
| Accountancy   | 210  | -                                       | -                                      | 210                             |
| Fees  | 34   | -                                       | -                                      | 34                              |
| Sundry  | 106  | 536                                     | -                                      | 642                             |
| <b>Sub total</b>  | 2,378  | 2,951                                   | -                                      | 5,329                           |
| <b>A4 Asset and investment<br/>purchases, (see table)</b> |  |   |  |                                 |
| <b>Equipment</b>  | -  | -                                       | -                                      | -                               |
|   | -  | -                                       | -                                      | -                               |
| <b>Sub total</b>  | -  | -                                       | -                                      | -                               |
| <b>Total payments</b>                                     | 2,378  | 2,951                                   | -                                      | 5,329                           |
| <b>Net of receipts/(payments)</b>                         | 2,916  | 8,569                                   | -                                      | 11,485                          |
| <b>A5 Transfers between funds</b>                         | 43   | # - 43                                  | -                                      | -                               |
| <b>A6 Cash funds last year end</b>                        | 4,605  | 508                                     | -                                      | 5,113                           |
| <b>Cash funds this year end</b>                           | 7,564  | 9,034                                   | -                                      | 16,598                          |

## Section B Statement of assets and liabilities at the end of the period

| Categories  | Details  | Unrestricted funds<br>to nearest £         | Restricted funds<br>to nearest £         |
|---|--|--|--|
| <b>B1 Cash funds</b>                                | Bank   | 7,513                                      | 9,034                                    |
|   | Petty cash   | 51   | -  |
|   |  | -  | -  |
|   | <b>Total cash funds</b>                                | <b>7,564</b>                               | <b>9,034</b>                             |
|   | (agree balances with receipts and payments account(s)) | OK   | OK                                       |
| <b>B2 Other monetary assets</b>                     | <b>Details</b>   | <b>Unrestricted funds<br/>to nearest £</b> | <b>Restricted funds<br/>to nearest £</b> |
|   |  | -  | -  |
|   |  | -  | -  |
|   |  | -  | -  |
|   |  | -  | -  |
|   |  | -  | -  |
|   |  | -  | -  |
| <b>B3 Investment assets</b>                         | <b>Details</b>   | <b>Fund to which asset belongs</b>         | <b>Cost (optional)</b>                   |
|   |  |  | -  |
|   |  |  | -  |
|   |  |  | -  |
|   |  |  | -  |
|   |  |  | -  |
| <b>B4 Assets retained for the charity's own use</b> | <b>Details</b>   | <b>Fund to which asset belongs</b>         | <b>Cost (optional)</b>                   |
|   | Lego and storage units                                 |  | -  |
|   | Seating  |  | -  |
|   | IT equipment   |  | -  |
|   | Display equipment                                      |  | -  |
|   |  |  | -  |
|   |  |  | -  |
|   |  |  | -  |
|   |  |  | -  |
|   |  |  | -  |
| <b>B5 Liabilities</b>                               | <b>Details</b>   | <b>Fund to which liability relates</b>     | <b>Amount due (optional)</b>             |
|   |  |  | -  |
|   |  |  | -  |
|   |  |  | -  |
|   |  |  | -  |
|   |  |  | -  |

### Notes

- Transfers from restricted to unrestricted funds have been made with the consent of grant providers.



Signed by one or two trustees on  
behalf of all the trustees

Signature

A handwritten signature in black ink, consisting of a stylized 'J' followed by a long horizontal stroke.

Print Name

|                 |
|-----------------|
| Jenny Wilkinson |
|                 |

## CC16a

Last year

to the nearest £

|       |
|-------|
| 3,480 |
| 1,283 |
| 221   |
| 323   |
| 1,120 |
| -     |
| -     |
| 6,427 |

|   |
|---|
|   |
| - |
| - |

|       |
|-------|
| 6,427 |
|-------|

|        |
|--------|
| 221    |
| 39     |
| 5,700  |
| 906    |
| 50     |
| 26     |
| 331    |
| 202    |
| 15     |
| 2,600  |
| 274    |
| 210    |
| 28     |
| 606    |
| 11,208 |

|     |
|-----|
| 628 |
|     |
| 628 |

|        |
|--------|
| 11,836 |
|--------|

|         |
|---------|
| - 5,409 |
| -       |
| 10,522  |
| 5,113   |



**Endowment  
funds**  
to nearest £

|   |
|---|
| - |
| - |
| - |
| - |

OK

**Endowment  
funds**  
to nearest £

|   |
|---|
| - |
| - |
| - |
| - |
| - |
| - |

**Current value  
(optional)**

|   |
|---|
| - |
| - |
| - |
| - |
| - |

**Current value  
(optional)**

|   |
|---|
| - |
| - |
| - |
| - |
| - |
| - |
| - |
| - |
| - |

**When due  
(optional)**

|  |
|--|
|  |
|  |
|  |
|  |
|  |



| Date of approval |
|------------------|
| 4/20/2022        |
|                  |