

# RIVER OAKS CHARITY

England & Wales · Charity number 1175908

## Details

---

**Other names** RIVER OAKS RESIDENTS ASSOCIATION, RORA

**Status** Registered

**Legal form** CIO

**Registered** 2017-11-23

**Register** [View on the Charity Commission register](#)

## Contact

---

**Address** 26 Marlcroft Drive  
Aigburth  
Liverpool  
Liverpool  
Merseyside  
L17 6ER

**Phone** 07714751032

**Email** [riveroakscharity@gmail.com](mailto:riveroakscharity@gmail.com)

**Website** [www.riveroakscharity.co.uk](http://www.riveroakscharity.co.uk)

## Activities

---

**Objects:** TO FURTHER OR BENEFIT THE RESIDENTS OF SOUTH LIVERPOOL AND THE NEIGHBOURHOOD, WITHOUT DISTINCTION OF SEX, SEXUAL ORIENTATION, RACE OR OF POLITICAL, RELIGIOUS OR OTHER OPINIONS BY ASSOCIATING TOGETHER THE SAID RESIDENTS AND THE LOCAL AUTHORITIES, VOLUNTARY AND OTHER ORGANISATIONS IN A COMMON EFFORT TO ADVANCE EDUCATION AND TO PROVIDE FACILITIES IN THE INTERESTS OF SOCIAL WELFARE FOR RECREATION AND LEISURE TIME OCCUPATION WITH THE OBJECTIVE OF IMPROVING THE CONDITIONS OF LIFE FOR THE RESIDENTS.

**Activities:** Caring for the environment by regenerating and improving a sizeable estate pond and surrounding borders/grass. Raising finance to completely renew a toddler's play area. Regular cleaning parties in an estate's woodland. Fundraising events with both residents and non-residents. Monthly newsletter to residents and non-residents. Neighbourhood watch with reporting via a Mail2Group.

## Classification

- **How:** Provides Buildings/facilities/open Space, Provides Services
- **What:** Environment/conservation/heritage, Recreation
- **Who:** The General Public/mankind

## Geography

- **Area of benefit:** SOUTH LIVERPOOL
- Liverpool City

## Finances

Period end	Income	Expenditure	Assets	Employees
2025-03-31	£13,425	£7,754	-	-
2024-03-31	£13,158	£20,345	-	-
2023-03-31	£21,378	£25,595	-	-
2022-03-31	£50,083	£44,781	-	-
2021-03-31	£46,277	£43,511	-	-

## Trustees

Name	Role	Appointed
<b>Michael Edward Thwaite</b>	Chair	2023-04-24
Faye Cody		2025-10-29
GRACE RUTH PULMAN		2018-03-28
Heather Thwaite		2023-04-24
Judith Clare Dyer		2023-10-12
Martin Stuart Foster		2019-07-26
PATRICIA KENNICK		2017-11-27
Professor Peter Shirlow		2020-08-12
Rebecca Bernice Humphries		2025-10-28
VICTORIA HUGHES		2017-11-23

**RIVER OAKS CHARITY**

England & Wales - Charity number 1175908

---

# Accounts

---

## RIVER OAKS CHARITY ANNUAL REPORT APRIL 2024 – MARCH 2025

### Trustee Update

We have 9 trustees as of 31.03.2025. During the year Mike Thwaite kindly agreed to step up as Chair and Pat Kennick took over as the main point of contact for Charity Commission purposes.

### Pond Area Update

Terry Jones raised concerns that gardener was having trouble mowing certain areas around the sides of the pond due to the increasing slope as the banks have settled over the years. After a review of the situation and further discussion we decided to take no further action as this point, and will consider additional sympathetic landscaping work in the future should maintenance of the affected areas prove impossible with the aid of grant funding.

During the year the pond fountain stopped working, Martin Foster and Mike Thwaite managed to get it working again, and the lights were replaced as well. There were some concerns that the water level in the pond keeps dropping, Mike bought and installed a device to help auto control the water level.

A family of ducks came to stay with us for the spring and summer, they proved to be a talking point amongst residents and encouraged lots of new visitors to the pond.

### Defibrillator

After an incident on the field with a visitor who suffered a cardiac episode, we became aware of the need for a defibrillator on the estate. A fundraising campaign and grant application were launched led by Heather Thwaite and Vicky Hughes started discussions with the Oliver King Foundation. The brick electricity cupboard by the pond was chosen as the best site for the equipment. The cost of the equipment was £2100 including training for up to 12 volunteers. Councillor Dave Antrobus gave us a substantial contribution from his community fund to help us achieve the target.

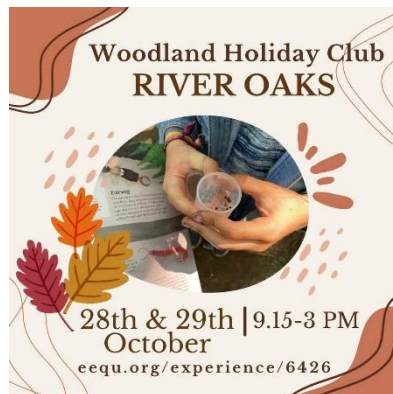
On the 1<sup>st</sup> December the training was held with the OKF and the defibrillator handed over, a very good example of ROC creating community.



## Woodland Area Update

We were advised by an arborist that to preserve the health of the trees in the woods we should try and cut back the ivy growth on the trunks, which a small team managed successfully over a few months.

The Forest School that began with Laura last year continues to grow in popularity during school holidays, volunteers have continued to work on clearance and improvement of the area used by the children, thanks to Judy Dyer for her lead on this. Judy also made contact with a local company who provided wood chippings for the forest school area as the ground was becoming muddy and eroded.



In February 2025 the Forestry Commission approved the Woodland Management plan submitted last year, trustees will look at the implications of this and next steps throughout 2025. Thanks go to Martin Foster for his perseverance with the FC.

Clean up days were held on 11<sup>th</sup> May, 28<sup>th</sup> September and 2<sup>nd</sup> March attendance ranged from 6 trustees and volunteers up to 15 with the focus on cutting back tree ivy, clearing pathways and overhanging bushes and brambles together with litter picking.



## Wild Flower Meadow

We decided this year not to actively manage the WFM but wait and see what regrowth comes up without intervention.

## Play Area

We held 2 clean up sessions in the play area to ensure it remains a safe and welcoming place for families. The annual RoSPA inspection threw up a few minor issues the main one being the trip hazard presented by shrinking and lifting of some of the soft surfaces. Contact was made with the company who installed the flooring but they were unwilling to help fix the problem. We will continue to monitor the situation and take further action when required.

Unfortunately, the play area continues to be a focus for anti-social behaviour in the area, one of the 2 picnic benches suffered fire damage, some of which was repaired by a volunteer.

The mound in the play area continues to present a challenge from both a safety and maintenance point of view, we plan to address this in 2025. Thanks to Mike Thwaite for his work contacting contractors and getting prices. The plan is to seed the area once the mound has gone and plant a tree in keeping with our environmental ethos.

## Events

On October 31<sup>st</sup> we had the annual Halloween competition with prizes for the best 3 decorated houses and gardens. In Spring we held an Easter event on 29<sup>th</sup> March 2024. This annual EEH this year was switched to an Easter egg trail as the usual site for the hunt was too muddy. Once again, the event was well attended and all the children came away with an Easter Egg.



The Summer Event we had planned for 6<sup>th</sup> July was cancelled due to bad weather, it being an outdoor event. We did still hold a raffle which raised over £200 for the charity.

We held our annual Christmas event on Saturday 7<sup>th</sup> December, with pizza and drinks, the evening was well attended and appreciated by the local community. Santa was there again and the children were each given a selection box. We organised some

festive drinks hampers with contributions from residents and raffled them off before the event to raise funds for the charity.



## Finance and Fundraising

Our key recurrent (year-on-year) expenses in 2024/25 included £1,915 on ongoing maintenance of the pond area, £1,031 on insurance, £739 on Sam Ibbotson's modest expenses for the grass cuts (significantly more affordable than previous costs), and £538 on energy.

Our key one-off costs included £1,066 on new pond fountain parts and lights, and £2,170 on installation and training for our new defibrillator (£1,700 of which was kindly funded by the Council, as above).

Key income included £2,433 from a multi-year Gift Aid claim undertaken in this period, and £1,583 raised from our July fundraising event (raffle etc).

The balance in our general fund/reserves was healthy as at 31<sup>st</sup> March 2025, with £9,148 available. The sum of £2,672 also remained in our Wild Flower Meadow fund, to pay for future WFM (and aligned) expenses.

Thank you to all local supporters who donate either regularly or as a one-off to enable the charity to continue fulfilling its objectives.

## Future Plans

During 2025/26 we aim to start drawing up a plan for implementing the recommendations of the Woodland Management Plan.

We will also continue to reach out to other communities and groups in the area to help support the work of the charity.

Storage continues to be an issue as we do not have any premises. Currently we own very little in the way of tools and equipment to help maintain and improve the estate and Trustees agree that it would be good to have some secure storage to house these.

Anti-social behaviour is an ever-present problem. Residents are quick to clamp down on groups who gather around the pond or play area and report it to the police, but we cannot keep an eye on everything, the woods in particular. Next year we will consider options to address this.

**And finally....**

Big thanks to all our supporters and volunteers and the resources they provide without which we would not be able to continue and build on the work of the charity. Trustees would like to thank Sam Ibbotson for his tireless work cutting the extensive meadow land around the estate.



**Section A**

**Independent Examiner's Report**

**Report to the trustees/  
members of**

Charity Name  
River Oaks Charity

**On accounts for the year  
ended**

31<sup>st</sup> March 2025

**Charity no  
(if any)**

1175908

**Set out on pages**

1 and 2

I report to the trustees on my examination of the accounts of the above charity for the year ended 31<sup>st</sup> March 2025.

**Responsibilities and  
basis of report**

As the charity trustees, you are responsible for the preparation of the accounts in accordance with the requirements of the Charities Act 2011 ("the Act").

I report in respect of my examination of the charity's accounts carried out under section 145 of the 2011 Act and in carrying out my examination, I have followed the applicable Directions given by the Charity Commission under section 145(5)(b) of the Act.

**Independent  
examiner's statement**

I have completed my examination. I confirm that no material matters have come to my attention in connection with the examination which gives me cause to believe that in, any material respect:

- accounting records were not kept in accordance with section 130 of the Act or
- the accounts do not accord with the accounting records

I have no concerns and have come across no other matters in connection with the examination to which attention should be drawn in order to enable a proper understanding of the accounts to be reached.

**Signed:**

*K. J. Owen*

**Date:**

30<sup>th</sup> November 2025

**Name:**

Mr Keri J H Owen

**Relevant professional  
qualification(s) or body  
(if any):**

**Address:**

15 Handley Court

Liverpool

L19 3QS

**Section B**

**Disclosure**

Only complete if the examiner needs to highlight matters of concern (see CC32, Independent examination of charity accounts: directions and guidance for examiners).

**Give here brief details of any items that the examiner wishes to disclose.**

NONE.



CHARITY COMMISSION  
FOR ENGLAND AND WALES

Charity Name  
River Oaks Charity

No (if any)  
1175908

## Receipts and payments accounts

CC16a

For the period  
from

Period start date  
01/04/2024

To

Period end date  
31/03/2025

### Section A Receipts and payments

	Unrestricted funds to the nearest £	Restricted funds to the nearest £	Endowment funds to the nearest £	Total funds to the nearest £	Last year to the nearest £
<b>A1 Receipts</b>					
General donations	6,320	-	-	6,320	8,136
Donations box	17	-	-	17	104
Defibrillator	-	2,097	-	2,097	-
Fountain	-	750	-	750	-
Raffle & Summer event	1,582	-	-	1,582	-
Fundraising	226	-	-	226	246
Gift Aid	2,433	-	-	2,433	-
Amazon	-	-	-	-	42
Pond clearance	-	-	-	-	4,630
	-	-	-	-	-
<b>Sub total (Gross income for AR)</b>	<b>10,578</b>	<b>2,847</b>	<b>-</b>	<b>13,425</b>	<b>13,158</b>
<b>A2 Asset and investment sales, (see table).</b>					
	-	-	-	-	-
	-	-	-	-	-
<b>Sub total</b>	<b>-</b>	<b>-</b>	<b>-</b>	<b>-</b>	<b>-</b>
<b>Total receipts</b>	<b>10,578</b>	<b>2,847</b>	<b>-</b>	<b>13,425</b>	<b>13,158</b>
<b>A3 Payments</b>					
Garden & pond maintenance	1,915	-	-	1,915	1,945
Fields maintenance	-	-	-	-	2,406
Defibrillator	-	2,097	-	2,097	-
Fountain	-	750	-	750	-
Wildflower meadow	-	739	-	739	4,800
Woods & trees maintenance	-	-	-	-	4,252
Events & fundraising	302	-	-	302	289
Printing & postage	20	-	-	20	185
Energy	538	-	-	538	260
Insurance	1,031	-	-	1,031	951
Equipment	73	-	-	73	284
Website	56	-	-	56	57
Regulatory fees	35	-	-	35	-
Sundry other expenses	45	-	-	45	48
Play area	116	37	-	153	90
Pond clearance	-	-	-	-	4,778
	-	-	-	-	-
<b>Sub total</b>	<b>4,131</b>	<b>3,623</b>	<b>-</b>	<b>7,754</b>	<b>20,345</b>
<b>A4 Asset and investment purchases, (see table)</b>					
	-	-	-	-	-
	-	-	-	-	-
<b>Sub total</b>	<b>-</b>	<b>-</b>	<b>-</b>	<b>-</b>	<b>-</b>
<b>Total payments</b>	<b>4,131</b>	<b>3,623</b>	<b>-</b>	<b>7,754</b>	<b>20,345</b>
<b>Net of receipts/(payments)</b>	<b>6,447</b>	<b>- 776</b>	<b>-</b>	<b>5,671</b>	<b>- 7,187</b>
<b>A5 Transfers between funds</b>	<b>-</b>	<b>-</b>	<b>-</b>	<b>-</b>	<b>-</b>
<b>A6 Cash funds last year end</b>	<b>2,701</b>	<b>3,448</b>	<b>-</b>	<b>6,149</b>	<b>13,336</b>
<b>Cash funds this year end</b>	<b>9,148</b>	<b>2,672</b>	<b>-</b>	<b>11,820</b>	<b>6,149</b>

**Section B Statement of assets and liabilities at the end of the period**

Categories	Details	Unrestricted funds to nearest £	Restricted funds to nearest £	Endowment funds to nearest £
<b>B1 Cash funds</b>	Bank current account	9,148	2,672	-
		-	-	-
		-	-	-
	<b>Total cash funds</b>	<b>9,148</b>	<b>2,672</b>	<b>-</b>
	(agree balances with receipts and payments account(s))	OK	OK	OK

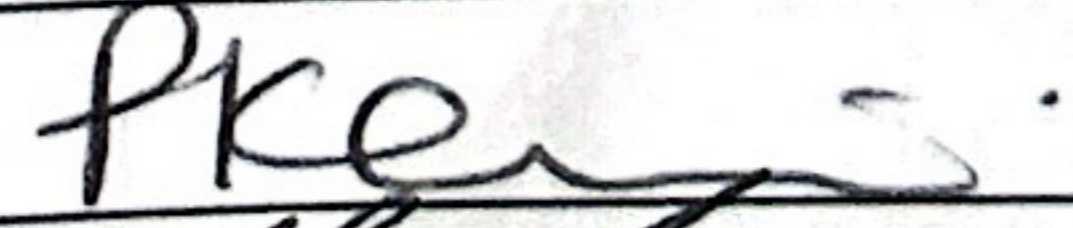
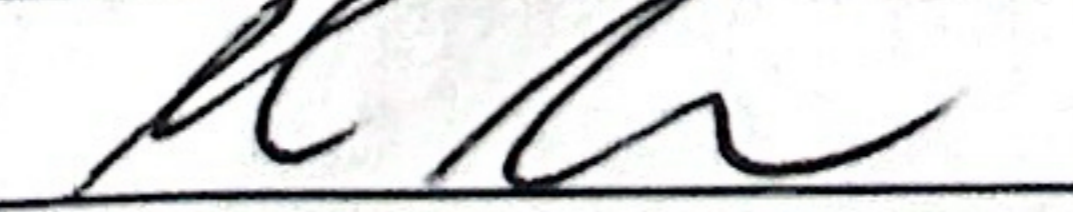
Categories	Details	Unrestricted funds to nearest £	Restricted funds to nearest £	Endowment funds to nearest £
<b>B2 Other monetary assets</b>		-	-	-
		-	-	-
		-	-	-
		-	-	-
		-	-	-
		-	-	-

Categories	Details	Fund to which asset belongs	Cost (optional)	Current value (optional)
<b>B3 Investment assets</b>			-	-
			-	-
			-	-
			-	-
			-	-

Categories	Details	Fund to which asset belongs	Cost (optional)	Current value (optional)
<b>B4 Assets retained for the charity's own use</b>			-	-
			-	-
			-	-
			-	-
			-	-
			-	-
			-	-
			-	-
			-	-

Categories	Details	Fund to which liability relates	Amount due (optional)	When due (optional)
<b>B5 Liabilities</b>			-	
			-	
			-	
			-	
			-	

Signed by one or two trustees on behalf of all the trustees

Signature	Print Name	Date of approval
	PAT KENNICK	7/12/25
	MARTIN FOSTER	9/12/25

**RIVER OAKS CHARITY**

England & Wales - Charity number 1175908

---

# Accounts

---



## **RIVER OAKS CHARITY - ANNUAL REPORT April 2023 - March 2024**

### ***Executive Summary,***

***Another year ROC has continued to evolve and grow in its community reach. We have welcomed new trustees to the team which has helped bring fresh ideas and energy to build on the great team we have. We have continued our focus on sustaining our wonderful local environment and building on the community strength***

### **Trustee Update**

We welcomed, Heather and Michael Thwaite along with Judy Dyer to the team. Vicky Hughes stepped down as secretary after 14 years in the role however remains as a trustee. The secretary role is now being shared by trustees. Heather has led as a very effective external communication lead. Peter extended his term as a trustee for another three years. We continue to operate without a formalised chairperson however the team pull together. We are grateful to our Treasurer Martin who continues to ably lead us financially.

### **Pond Area Update**

Our beautiful pond area continues to be our central focal point, where passers-by stop to admire the fountain, smell the roses and relax in peace and tranquillity. We work hard to maintain the area with the support of our gardener Kasia.

In early 2024, the Trustees obtained grant funding from the Duchy of Lancaster to pay for a professional clearance and cut-back of the pond area. This will enable us to maintain the space ourselves more easily in the coming months and years.

### **Woods Area Update**

When we originally set out on our ROC journey our vision was to get the woods area to a position where our community of all ages could enjoy the area. This also would naturally discourage any anti-social behaviour we have experienced for a number of years. In 2023 we took a very exciting step forward as we launched our first Forest School. Colin led the way on this, working closely with Laura who provides during school holidays the opportunity for local children to take part in the school set in our woods. Activities include fire building, food preparation and cooking and tent building. This has been very popular and has returned on a number of school holidays. Our plan is to continue to work with Laura to provide this great opportunity for the children in our community.

The charity continues to host “woods clean-up” days, encouraging the local community to enjoy and take pride in the woods, helping us cut them back and picking up litter.

Longer term, the Trustees have taken professional advice on how best to manage the woods, which has experienced generations of neglect and is visibly in decline – with overgrown, dying trees and poor visibility. The resulting woodland management plan has been submitted to the Forestry Commission by the ROC trustees for consideration. If approved, this plan would enable us to care for and develop the woods in a more strategic way, protecting it for future generations by taking action now.

### **Wild Flower Meadow**

This year we decided to manage our wild flower independently, in order to save money and to experiment with different approaches. We enlisted the help of a local farmer who ploughed part of the meadow and seeded the area. The result was not as spectacular as previous years but we had lot of learnings for future years.

### **Play Area**

Our play area remains popular with children of all ages. Our local residents maintain the area, including organised events to cut it back, tidy it up and keep it safe. Longer term this is an area we would like to look at developing further with some landscaping work to be done.

### **Events**

We had our usual Easter Egg hunt lead by Grace which as always was engaging for all ages.



Halloween fun was had with the best dressed house competition. Christmas was the best ever - with our first community Christmas Party held by our wonderful pond area, which had been decorated with incredible lights beforehand by a happy task force of local supporters. This consisted of great carols, pizza

supplied by Gavin's Mobile Pizza Oven, and a mobile bar supplied by the Dog House Pub in Wavertree providing refreshments, plus a craft stall to support our charity fundraising. Members of the community joined us and it was most enjoyable, and helped strengthen relationships within the community.

Heather and Michael organised for another local charity who provide a Christmas Float to drive through the estate to give our younger residents a sneaky view of Santa whilst we supported a collection for the floats chosen charity.

## **Finance and Fundraising**

In 2023/24 we have worked hard to stabilise and improve the charity's immediate financial position and long-term sustainability. This has been achieved in no small part by working with a local supporter to cut the grass on our fields at a far lower cost. The healthier reserves we have been able to build up already will enable us to confront those unforeseen 'rainy day' costs, like the urgent felling of dangerous trees, with more confidence. It will also allow us to invest in capital expenditure such as tools and kit, and to pay our deposit shares on future grant funding for larger-scale projects.

In October 2023 the Trustees held a special meeting to identify and rank our long-term fundraising priorities - one-off items that need attention, and funding, with varying degrees of urgency. The Trustees will use this list to decide which grant opportunities we may wish to take advantage of, and in what order, in addition to managing our bread-and-butter local fundraising efforts.

Regular giving from local supporters remains limited and challenging - however the Trustees have been working hard over social media and newsletters to communicate the charity's ongoing funding needs. They have also set up a SumUp account and card reader in order to diversify and simplify the ways in which local supporters can donate.

## **Future**

Hopefully this annual report highlights the charity's growth and community involvement. Our trustee team are incredibly passionate about the future of the charity and making the right choices to continue to deliver our mission of *creating community and caring for the environment*.



**CHARITY COMMISSION**  
FOR ENGLAND AND WALES

Charity Name  
**River Oaks Charity**

No (if any)  
**1175908**

## Receipts and payments accounts

CC16a

For the period from	Period start date	To	Period end date
	01/04/2023		31/03/2024

### Section A Receipts and payments

	Unrestricted funds to the nearest £	Restricted funds to the nearest £	Endowment funds to the nearest £	Total funds to the nearest £	Last year to the nearest £
<b>A1 Receipts</b>					
General donations	8,136	-	-	8,136	8,269
Donations box	104	-	-	104	126
Amazon	42	-	-	42	59
Events & fundraising	246	-	-	246	-
Gift Aid	-	-	-	-	-
Woodland pathway	-	-	-	-	-
Pond clearance	-	4,630	-	4,630	12,924
Wildflower meadow	-	-	-	-	-
<b>Sub total (Gross income for AR)</b>	<b>8,528</b>	<b>4,630</b>	<b>-</b>	<b>13,158</b>	<b>21,378</b>
<b>A2 Asset and investment sales, (see table).</b>					
	-	-	-	-	-
<b>Sub total</b>	<b>-</b>	<b>-</b>	<b>-</b>	<b>-</b>	<b>-</b>
<b>Total receipts</b>	<b>8,528</b>	<b>4,630</b>	<b>-</b>	<b>13,158</b>	<b>21,378</b>
<b>A3 Payments</b>					
Garden & pond maintenance	1,945	-	-	1,945	1,360
Fields maintenance	2,406	-	-	2,406	199
Woods & trees maintenance	4,252	-	-	4,252	4,550
Events & fundraising	289	-	-	289	-
Printing & postage	185	-	-	185	65
Energy	260	-	-	260	178
Insurance	951	-	-	951	930
Equipment	284	-	-	284	-
Website	57	-	-	57	48
Sundry	48	-	-	48	84
Play area	-	90	-	90	284
Woodland pathway	-	-	-	-	-
Pond clearance	-	4,778	-	4,778	12,931
Jubilee event	-	-	-	-	887
Wildflower meadow	-	4,800	-	4,800	1,400
<b>Sub total</b>	<b>10,677</b>	<b>9,668</b>	<b>-</b>	<b>20,345</b>	<b>25,595</b>
<b>A4 Asset and investment purchases, (see table)</b>					
	-	-	-	-	-
<b>Sub total</b>	<b>-</b>	<b>-</b>	<b>-</b>	<b>-</b>	<b>-</b>
<b>Total payments</b>	<b>10,677</b>	<b>9,668</b>	<b>0</b>	<b>20,345</b>	<b>25,595</b>
<b>Net of receipts/(payments)</b>	<b>(2,149)</b>	<b>(5,038)</b>	<b>0</b>	<b>(7,187)</b>	<b>(4,217)</b>
<b>A5 Transfers between funds</b>	<b>0</b>	<b>0</b>	<b>0</b>	<b>0</b>	<b>0</b>
<b>A6 Cash funds last year end</b>	<b>4,850</b>	<b>8,486</b>	<b>0</b>	<b>13,336</b>	<b>17,552</b>
<b>Cash funds this year end</b>	<b>2,701</b>	<b>3,448</b>	<b>0</b>	<b>6,149</b>	<b>13,335</b>

**Section B Statement of assets and liabilities at the end of the period**

Categories	Details	Unrestricted funds	Restricted funds	Endowment funds
		to nearest £	to nearest £	to nearest £
<b>B1 Cash funds</b>	Bank account	2,701	3,448	-
		-	-	-
		-	-	-
	<b>Total cash funds</b>	<b>2,701</b>	<b>3,448</b>	-
	(agree balances with receipts and payments account(s))	OK	OK	OK
		Unrestricted funds	Restricted funds	Endowment funds
		to nearest £	to nearest £	to nearest £



Categories	Details	Unrestricted funds	Restricted funds	Endowment funds
		to nearest £	to nearest £	to nearest £
<b>B2 Other monetary assets</b>		-	-	-
		-	-	-
		-	-	-
		-	-	-
		-	-	-
		-	-	-

Categories	Details	Fund to which asset belongs	Cost (optional)	Current value (optional)
<b>B3 Investment assets</b>			-	-
			-	-
			-	-
			-	-
			-	-

Categories	Details	Fund to which asset belongs	Cost (optional)	Current value (optional)
<b>B4 Assets retained for the charity's own use</b>			-	-
			-	-
			-	-
			-	-
			-	-
			-	-
			-	-
			-	-
			-	-
			-	-

Categories	Details	Fund to which liability relates	Amount due (optional)	When due (optional)
<b>B5 Liabilities</b>			-	
			-	
			-	
			-	
			-	

Signed by one or two trustees on behalf of all the trustees

Signature	Print Name	Date of approval
	PAT KENNICK	10/1/25
	MARTIN FOSTER	10/1/25

**RIVER OAKS CHARITY**

England & Wales - Charity number 1175908

---

# Accounts

---



## **RIVER OAKS CHARITY – ANNUAL REPORT April 2022 – March 2023**

### ***Executive Summary***

***Another busy year for ROC, with the reintroduction of our community events and ongoing development of the charity.***

### **Trustee Update**

There have been no major changes to trustees this year. We continue to operate without a chairperson. The team pull together and the Trustees meetings are led by the ROC secretary.

### **Pond Area**

In early 2022 our beautiful pond area was updated with new decking, the area is a peaceful environment where people can spend time close to nature. We have had lots of continued positive feedback on this area and we have developed the planted area further. We planted up a red, white and blue theme in preparation for the Queen's Jubilee celebrations.

Overall the pond arena has matured year on year with a stunning array of roses along with a very eclectic mix of trees, shrubs and annual planting.

### **Wild Flower Meadow**

In partnership with Scouse Flower House, we ploughed and seeded the 2-acre wild flower meadow for the third year. Some 40 adults and children helped with the sizeable area seeding along with Richard Scott and friends from SFH. It was a real encouragement to see so many children throwing seed and planting copious Sun Flowers. A grant from the Community Lottery enabled us to purchase a lot more seed this year.



(photo of the wild flower meadow)

## **Woods**

ROC applied to VET again in 2021 and were given a £37,000 grant to renew 407 metres of pathway across the field and through the woodland with a durable Rhino Pave surface. This not only allows greater and safer disabled, cycle and walker access, but, for the first time, will allow the severely disabled students at Palmerston Special Needs School to access all areas of the ROC site. The school, with both able bodied and severely impaired students, are regular visitors to the pond. With the support of the Head, Alison Wheeler, they produced a two-minute video, expressing how much ROC facilities meant to them.



(photo of the new path)

Our trustees have continued to try and secure a Gating Order to close the main access at night times with the objective of reducing anti-social behaviour, which is a significant issue. Unfortunately, this was not supported by Liverpool City Council. Merseyside Police also tried to support ROC with increased police presence in the woods. Trustees continue to look at alternative options to minimise the anti-social behaviour.

One such option being the encouragement of positive behaviour in the area by establishing a Forest School. Trustees have spent time discussing this with potential forest school providers and hope to implement this as a next step soon, subject to appropriate risk assessments.

The woods have also had an environmental assessment to understand how healthy the area is. We now have a Woodland Report which is very clear on work that will need to be completed. Trustees are reviewing next steps on this.

## **Events**

After two barren years without our customary annual events it was a real joy to renew our 'legendary' Easter Egg extravaganza! From 15 attendees in 2009 we now attract, from over South Liverpool, around 100+ adults and children. The theme this year was Bumblebees, Ladybirds and Butterflies. As usual three teams, dressed appropriately with suitably decorated wheelbarrows, led the participants through a carefully choreographed programme, always tinged with chaos, confusion and much hilarity!



(photo of one of Easter Egg Event)

We were also able to celebrate the Queens Jubilee event in partnership with Long Lane Church. This was a marvellous event with lots of families joining together on our field to celebrate this milestone occasion.



(flier advertising the event)

'Carols by the pond' was back in December, where the community joined together in carols with mulled wine and mince pies. We also decorated the pond area with Christmas lights and a Christmas tree which was a beautiful sight.

## Fundraising

As detailed above, several non-recurrent projects this year have been funded via grant funding – with expenditure restricted to those initiatives (e.g. woodland pathway, wild flower meadow). Such income must be applied for in advance, based on pre-identified need/opportunity.

ROC's regular day-to-day expenditure – for items such as grass cuts, gardening, insurance and tree inspections/felling – can only be funded through charitable fundraising. This includes a modest amount of income from events and calendar sales etc, but mainly comprises income from regular and one-off donations from local supporters. Such donations – as modest as they often are – are the life-blood of our charity and our work will not be possible without them.

This year ROC just about delivered a balanced budget – but this was in part thanks to a very generous one-off donation of £2,000 from a supporter via ShareGift. Such a finely balanced budget does present the risk of ROC being unable to afford additional, unforeseen one-off expenses such as tree-felling for the safety of residents and local property. Increasing annual income, and/or finding recurrent cost savings, will be a priority of the charity going forwards.

## **Future**

This year has demonstrated that there are so many opportunities moving forward for our charity to continue to deliver on our mission of *creating community and caring for the environment*. However, the key challenge we face is resource. Resource both in terms of income but also in terms of people's time to deliver action. We will continue however to be as passionate as ever about our charity and will look for ways to improve the resource position.



CHARITY COMMISSION  
FOR ENGLAND AND WALES

River Oaks Charity

1175908

**Receipts and payments accounts**

**CC16a**

For the period from

01/04/2022

To

31/03/2023

**Section A Receipts and payments**

	Unrestricted funds to the nearest £	Restricted funds to the nearest £	Endowment funds to the nearest £	Total funds to the nearest £	Last year to the nearest £
<b>A1 Receipts</b>					
General donations	8,269	-	-	8,269	4,445
General grants	-	-	-	-	1,750
Donations box	126	-	-	126	219
Amazon	59	-	-	59	25
Calendars	-	-	-	-	770
Events & fundraising	-	-	-	-	225
Gift Aid	-	-	-	-	1,069
Woodland pathway	-	12,924	-	12,924	27,278
Pond terrace	-	-	-	-	1,307
Jubilee event	-	-	-	-	1,400
Wildflower meadow	-	-	-	-	11,595
<b>Sub total (Gross income for AR)</b>	<b>8,454</b>	<b>12,924</b>	<b>-</b>	<b>21,378</b>	<b>50,083</b>
<b>A2 Asset and investment sales, (see table).</b>					
	-	-	-	-	-
<b>Sub total</b>	<b>-</b>	<b>-</b>	<b>-</b>	<b>-</b>	<b>-</b>
<b>Total receipts</b>	<b>8,454</b>	<b>12,924</b>	<b>-</b>	<b>21,378</b>	<b>50,083</b>
<b>A3 Payments</b>					
Garden & pond maintenance	1,360	-	-	1,360	1,596
Fields maintenance	199	-	-	199	1,821
Woods & trees maintenance	4,550	-	-	4,550	264
Calendars	-	-	-	-	287
Events & fundraising	-	-	-	-	43
Printing & postage	65	-	-	65	123
Energy	178	-	-	178	238
CCTV	-	-	-	-	696
Mileage	-	-	-	-	43
Insurance	930	-	-	930	864
Equipment	-	-	-	-	-
Website	48	-	-	48	42
Sundry	84	-	-	84	125
Play area	-	284	-	284	250
Woodland pathway	7	12,924	-	12,931	27,710
Pond terrace	-	887	-	887	9,874
Jubilee event	-	1,400	-	1,400	-
Wildflower meadow	-	2,679	-	2,679	805
<b>Sub total</b>	<b>7,421</b>	<b>18,174</b>	<b>-</b>	<b>25,595</b>	<b>44,781</b>
<b>A4 Asset and investment purchases, (see table)</b>					
	-	-	-	-	-
<b>Sub total</b>	<b>-</b>	<b>-</b>	<b>-</b>	<b>-</b>	<b>-</b>
<b>Total payments</b>	<b>7,421</b>	<b>18,174</b>	<b>0</b>	<b>25,595</b>	<b>44,781</b>
<b>Net of receipts/(payments)</b>	<b>1,033</b>	<b>(5,250)</b>	<b>0</b>	<b>(4,217)</b>	<b>5,302</b>
A5 Transfers between funds	0	0	0	0	0
A6 Cash funds last year end	3,816	13,736	0	17,552	12,250
<b>Cash funds this year end</b>	<b>4,849</b>	<b>8,486</b>	<b>0</b>	<b>13,335</b>	<b>17,552</b>

**Give here brief details of any items that the examiner wishes to disclose.**

NONE.

A large, empty rectangular box with a thin black border, occupying the right two-thirds of the page. It is intended for the user to provide details as requested in the text to the left.



**Section A**

**Independent Examiner's Report**

**Report to the trustees/  
members of**

River Oaks Charity

**On accounts for the year  
ended**

31<sup>st</sup> March 2023

**Charity no  
(if any)**

1175908

**Set out on pages**

1 and 2

I report to the trustees on my examination of the accounts of the above charity for the year ended 31<sup>st</sup> March 2023.

**Responsibilities and  
basis of report**

As the charity trustees, you are responsible for the preparation of the accounts in accordance with the requirements of the Charities Act 2011 ("the Act").

I report in respect of my examination of the charity's accounts carried out under section 145 of the 2011 Act and in carrying out my examination, I have followed the applicable Directions given by the Charity Commission under section 145(5)(b) of the Act.

**Independent  
examiner's statement**

I have completed my examination. I confirm that no material matters have come to my attention in connection with the examination which gives me cause to believe that in, any material respect:

- accounting records were not kept in accordance with section 130 of the Act or
- the accounts do not accord with the accounting records

I have no concerns and have come across no other matters in connection with the examination to which attention should be drawn in order to enable a proper understanding of the accounts to be reached.

**Signed:**

*K. J. H. Owen*

**Date:**

20<sup>th</sup> November 2023

**Name:**

Mr Keri J H Owen

**Relevant professional  
qualification(s) or body  
(if any):**

**Address:**

15 Handley Court

Liverpool

L19 3QS

**Section B**

**Disclosure**

Only complete if the examiner needs to highlight matters of concern (see CC32, Independent examination of charity accounts: directions and guidance for examiners).

Section B Statement of assets and liabilities at the end of the period

Categories	Details	Unrestricted funds	Restricted funds	Endowment funds
		to nearest £	to nearest £	to nearest £
B1 Cash funds	Bank account	4,849	8,486	-
		-	-	-
		-	-	-
	<b>Total cash funds</b>	<b>4,849</b>	<b>8,486</b>	<b>-</b>

(agree balances with receipts and payments account(s))


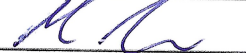
Categories	Details	Unrestricted funds	Restricted funds	Endowment funds
		to nearest £	to nearest £	to nearest £
B2 Other monetary assets		-	-	-
		-	-	-
		-	-	-
		-	-	-
		-	-	-
		-	-	-

Categories	Details	Fund to which asset belongs	Cost (optional)	Current value (optional)
B3 Investment assets			-	-
			-	-
			-	-
			-	-
			-	-

Categories	Details	Fund to which asset belongs	Cost (optional)	Current value (optional)
B4 Assets retained for the charity's own use			-	-
			-	-
			-	-
			-	-
			-	-
			-	-
			-	-
			-	-

Categories	Details	Fund to which liability relates	Amount due (optional)	When due (optional)
B5 Liabilities			-	
			-	
			-	
			-	
			-	

Signed by one or two trustees on behalf of all the trustees

Signature	Print Name	Date of approval
	PAT KENNICK	20.01.24
	MARTIN FOSTER	20.01.24

**RIVER OAKS CHARITY**

England & Wales - Charity number 1175908

---

# Accounts

---



## **RIVER OAKS CHARITY - ANNUAL REPORT April 2020 - March 2021**

### ***Executive Summary***

***2020 was a year of unprecedented change, not only did we have to face into the challenges Covid -19 forced upon us but our chair person also retired after setting the charity up and leading passionately over ten years. However with this challenge came great support from trustees to continue the good work Terry had done.***

### **Trustee Update**

In October 2020 Terry Jones (Chair Person) retired. It was Terry's vision that was the original driving force for setting up River Oaks Residents Association, his passionate lead also moved the Association onto Charity Status, during his time Terry achieved many things not just various awards but has become a much loved and valued member of the community. We honoured Terry's retirement with various thank you speeches and gifts and hope to mark our appreciation when we can safely do so with the wider community.

We have not been able to recruit a chair person to replace Terry yet, we are currently working on a rotation basis for chairing of meetings.

In August we also gained two new trustees, Helen Stephens and Peter Shirlow. Helen has been a valued member of our local community and brought with her a wealth of expertise in communication which has been a much welcome skillset to the trustee group. Peter has been instrumental in our local ecological focus and has been able to lead on this area as a trustee even more so developing our wonderful wild flower meadow.

### **Wild Flower Meadow**

In 2020 we decided to go ahead and use a portion of the land that was available to us to cultivate a wild flower meadow. We did this with the support of local sources of advice from Scouse Flower House. The wild flower meadow turned out to be spectacular and we couldn't have timed it better as it served as a much needed outdoor location during lockdown where people could come and walk around or simply sit and admire the wonderful wild flowers and view of the River Mersey. We received so much positive feedback on this and it really was so valuable to people's well being.

### **Pond Area**

Our pond area has always been the central point to the charity over the years and has served us well. Unfortunately the decking area had seen better days and for safety reasons we took the decision to remove the decking and start fund raising for a replacement. We used various contacts to help us understand potential costs for this. We then had various fund raising events and raised £10,000 for a replacement. We are working with several sources to get a replacement terrace designed and installed.

### **Play Area**

During lock down the play area had to unfortunately be closed for covid restrictions. However once we were able to reopen, we installed Covid safety signs and hand sanitizer dispensers to allow a safe environment for children to enjoy.

### **Fence Line**

As a result of grant awards we were able to replace 128 meters of fence line to the perimeter of the land that we own - this was installed in the summer of 2020.

### **Woods**

We also continued with our woods clear ups, approximately twice in 2020.

### **Communications**

Helen's wealth of experience brought a breath of fresh air to our website, the website was redesigned and updated and we have received positive feedback on this.

Helen has also been able to set up an electronic mailing list which has made circulation of our newsletter not only covid safe but no longer are we posting paper copies to our followers.

### **Community Events**

Sadly, we could not host our usual annual events such as Easter Egg Hunt or Christmas Carols instead we got creative and for Easter 2020 we had Easter themed window displays with the best window winning an Easter Goodie selection.

We followed a similar concept at Halloween with 'scary' windows and Halloween activities for children

At Christmas we had our Advent Trail, each day in December another house decorated their windows for people to go and view.

## **Fundraising**

We were really proud to produce a 2021 calendar for sale, the calendar contained photos for each month of various areas of the beauty that surrounds us, we were really pleased with how much this raised. (£700)

## **Trustee Trainings**

Trustees Martin Foster and Vicky Hughes underwent Trustee Training, to help us understand better our responsibilities on governance and risk. This now forms part of our monthly meeting agenda.

## **Future**

As Terry retired, trustees rallied around to push on with the Charity and continue Terry's great work plus shape our vision that was fit for the future. As things stand Trustees meet more frequently (once per month), we have an exciting agenda and look forward to continuing to build on ***creating community and caring for the environment.***



CHARITY COMMISSION  
FOR ENGLAND AND WALES

Charity Name  
**River Oaks Charity**

No (if any)  
**1175908**

## Receipts and payments accounts

<b>For the period from</b>	Period start date 4/1/2020	<b>To</b>	Period end date 3/31/2021
----------------------------	-------------------------------	-----------	------------------------------

### Section A Receipts and payments

	<b>Unrestricted funds</b> to the nearest £	<b>Restricted funds</b> to the nearest £	<b>Endowment funds</b> to the nearest £	<b>Total funds</b> to the nearest £
<b>A1 Receipts</b>				
General donations	4,353	7,671		12,024
Donations box	45	0		45
Grant awards	0	33,028		33,028
Gift Aid repayments	1,154	0		1,154
Fundraising events	0	0		0
Bank interest	0	0		0
Other	25	0		25
<b>Sub total</b> (Gross income for AR)	<b>5,577</b>	<b>40,699</b>	<b>0</b>	<b>46,276</b>
<b>A2 Asset and investment sales, (see table).</b>				
<b>Sub total</b>	<b>0</b>	<b>0</b>	<b>0</b>	<b>0</b>
<b>Total receipts</b>	<b>5,577</b>	<b>40,699</b>	<b>0</b>	<b>46,276</b>
<b>A3 Payments</b>				
Pond maintenance	256	0		256
Pond terrace	0	388		388
Garden maintenance	3,540	0		3,540
Woods & fields maintenance	0	36,193		36,193
Play area	0	723		723
Plants	110	0		110
Events & Fundraising expenses	138	0		138
Printing & postage	154	0		154
Energy	252	0		252
Mileage	33	0		33
Insurance	938	0		938
Equipment	287	0		287
Sundry other expenses	499	0		499
<b>Sub total</b>	<b>6,207</b>	<b>37,304</b>	<b>0</b>	<b>43,511</b>
<b>A4 Asset and investment purchases, (see table)</b>				
<b>Sub total</b>	<b>0</b>	<b>0</b>	<b>0</b>	<b>0</b>
<b>Total payments</b>	<b>6,207</b>	<b>37,304</b>	<b>0</b>	<b>43,511</b>
<b>Net of receipts/(payments)</b>	<b>(630)</b>	<b>3,395</b>	<b>0</b>	<b>2,765</b>
<b>A5 Transfers between funds</b>				
<b>A6 Cash funds last year end</b>	<b>2,617</b>	<b>6,868</b>	<b>0</b>	<b>9,485</b>
<b>Cash funds this year end</b>	<b>1,987</b>	<b>10,263</b>	<b>0</b>	<b>12,250</b>

## Section B Statement of assets and liabilities at the end of the period

Categories	Details	Unrestricted funds to nearest £	Restricted funds to nearest £
<b>B1 Cash funds</b>	Bank accounts	1,987	10,263
		-	-
		-	-
	<b>Total cash funds</b>	<b>1,987</b>	<b>10,263</b>
	(agree balances with receipts and payments account(s))	OK	OK

Categories	Details	Unrestricted funds to nearest £	Restricted funds to nearest £
<b>B2 Other monetary assets</b>		-	-
		-	-
		-	-
		-	-
		-	-
		-	-
		-	-

Categories	Details	Fund to which asset belongs	Cost (optional)
<b>B3 Investment assets</b>			-
			-
			-
			-
			-

Categories	Details	Fund to which asset belongs	Cost (optional)
<b>B4 Assets retained for the charity's own use</b>			-
			-
			-
			-
			-
			-
			-
			-

Categories	Details	Fund to which liability relates	Amount due (optional)
<b>B5 Liabilities</b>			-
			-
			-
			-
			-

Signed by one or two trustees on behalf of all the trustees

Signature

Print Name

--	--

--	--

# CC16a

Last year

to the nearest £

6,355
0
22,131
1,463
825
6
0
<b>30,780</b>

<b>0</b>

<b>30,780</b>
---------------

1,719
0
0
4,699
33,785
692
892
274
314
83
1,257
869
986
<b>45,570</b>

<b>0</b>

<b>45,570</b>
---------------

<b>(14,790)</b>
24,275
<b>9,485</b>



**Endowment funds**

to nearest £

-
-
-
-

OK

**Endowment funds**

to nearest £

-
-
-
-
-
-

**Current value (optional)**

-
-
-
-
-

**Current value (optional)**

-
-
-
-
-
-
-
-

**When due (optional)**


Date of approval
