

# KIPSAINA EDUCATION AND ENVIRONMENT PARTNERSHIP (KEEP)

England & Wales · Charity number 1175806

## Details

---

Other names	KEEP KENYA
Status	Registered
Legal form	CIO
Registered	2017-11-20
Register	<a href="#">View on the Charity Commission register</a>

## Contact

---

**Address** 4 The Square  
Greta Bridge  
Barnard Castle  
County Durham  
DL12 9SD

**Phone** 07749051748

**Email** [admin@KEEPKenya.org](mailto:admin@KEEPKenya.org)

**Website** [www.keepkenya.org](http://www.keepkenya.org)

## Activities

---

**Objects:** THE OBJECTS OF THE CIO ARE1. FOR THE PUBLIC BENEFIT, THE CONSERVATION, PROTECTION AND IMPROVEMENT OF WETLANDS IN WESTERN KENYA, IN PARTICULAR, BUT NOT EXCLUSIVELY, THE SAIWA SWAMP ECOSYSTEM AND SURROUNDING AREA.2. THE ADVANCEMENT OF EDUCATION FOR CHILDREN LIVING IN THE SAIWA SWAMP ECOSYSTEM AND SURROUNDING AREA, IN PARTICULAR, BUT NOT EXCLUSIVELY, AT THE KIPSAINA PRIMARY SCHOOL, BY IMPROVING THEIR PHYSICAL LEARNING ENVIRONMENT AND BY PROMOTING ENVIRONMENTAL AWARENESS.

**Activities:** Conservation, protection and improvement of wetlands in western Kenya, in particular but not exclusively, the Saiwa Swamp ecosystem and surrounding area.Advancement of education for children living in the Saiwa Swamp ecosystem and surrounding area, in particular but not exclusively, at Kipsaina Primary School, by improving the physical learning environment and promoting environmental awareness.

## Classification

- **How:** Makes Grants To Organisations, Provides Other Finance, Other Charitable Activities
- **What:** Education/training, The Advancement Of Health Or Saving Of Lives, Disability, The Prevention Or Relief Of Poverty, Environment/conservation/heritage
- **Who:** Children/young People, Other Charities Or Voluntary Bodies, The General Public/mankind

## Geography

- Kenya

## Finances

Period end	Income	Expenditure	Assets	Employees
2024-11-30	£2,929	£2,857	-	-
2023-11-30	£1,930	£2,138	-	-
2022-11-30	£3,346	£4,654	-	-
2021-11-30	£10,460	£10,077	-	-
2020-11-30	£15,994	£14,547	-	-

## Trustees

Name	Role	Appointed
<b>SAMUEL FORSYTH</b>	Chair	2017-11-20
Esia Marie Forsyth		2024-10-26
Heidi Varley		2024-10-26
<b>MARY CHARRINGTON</b>		2017-11-20

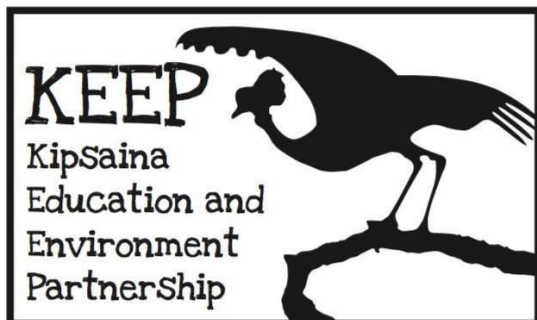
**KIPSAINA EDUCATION AND ENVIRONMENT PARTNERSHIP (KEEP)**

England & Wales - Charity number 1175806

---

# Accounts

---



Kipsaina Education and Environment Partnership  
(KEEP)

Trustees' Annual Report and Accounts

For the year ending 30 November 2024

Charity number: 1175806

[www.keepkenya.org](http://www.keepkenya.org)

## Kipsaina Education and Environment Partnership (KEEP)

### Trustees' Annual Report and Accounts

For the year ending 30 November 2024

Charity number: 1175806

[www.keepkenya.org](http://www.keepkenya.org)

---

## Reference and Administrative Information

- Charity Name: Kipsaina Education and Environment Partnership (KEEP)
- Legal Status: Charitable Incorporated Organisation
- Charity Number: 1175806 (Registered 20 November 2017)
- Principal Address:
  - 4 The Square
  - Greta Bridge
  - Barnard Castle
  - County Durham DL12 9SD
- Trustees:
  - Sam Forsyth (SSF)
  - Rubel Quader (RKQ)
  - Mary Charrington (MC)
- Bank:
  - HSBC
  - 1 Prospect Place
  - Darlington, County Durham DL3 7LQ

---

## Overview

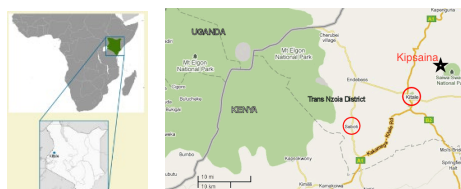
KEEP exists to support long-term conservation and community development in and around Kipsaina, a small village at the headwaters of the Saiwa Swamp ecosystem in Western Kenya.

We continue to operate on a lean budget and aim to punch well above our weight, brokering international partnerships, supporting frontline delivery of education and environmental restoration, and using funds as effectively as possible.

The 2023–2024 cycle was a pivotal year for KEEP's long-standing partnership with the Kipsaina Crane and Wetland Conservation Group (KCWCG) led by Maurice Wanjala Sitoko (MWS) in Western Kenya. This year saw the consolidation of our efforts to transition from traditional donor-based conservation to a long-term model focused on sustainable livelihoods, ecological restoration, and regenerative income generation.

Our core work continued to focus on supporting environmental education, wetland and forest protection, and sustainable development in and around Kipsaina village, upstream of the Saiwa Swamp National Park. However, in response to both community needs and the climate crisis, a major priority throughout the year was the development of a community-led social enterprise model to embed environmental protection within community prosperity.

Our close collaboration with KCWCG allows us to maximise impact through decades of community trust and local knowledge. We are proud of our growing role as a connector between UK-based expertise, global fundraising, and Kenyan fieldwork.

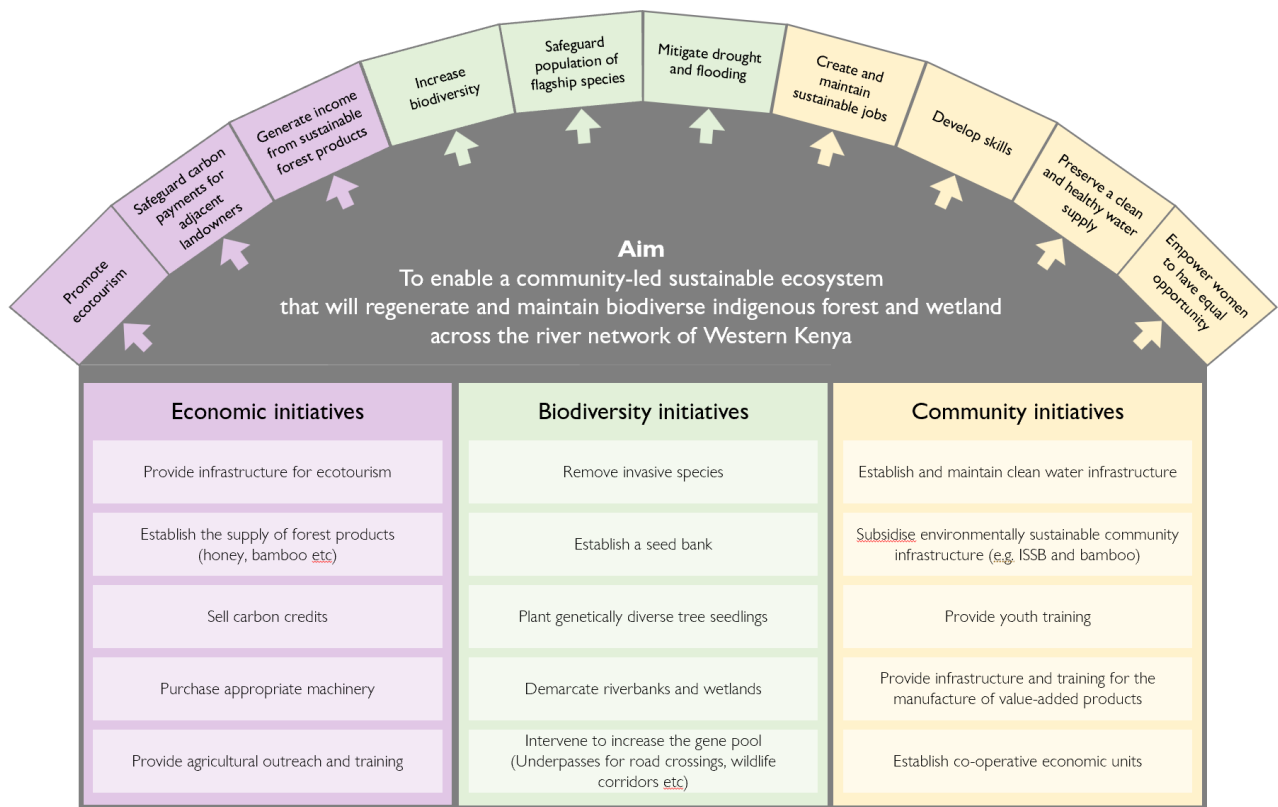


## Framework for understanding KEEP and KCWCG’s activities

In the last cycle, MC and SSF worked with MSW and UK collaborators to produce the following schematic explaining the drivers and outputs for KCWCG. As KEEP works to facilitate the work of KCWCG, this “Theory of Change” diagram gives a clear directive to understanding our shared aims.

### Kipsaina Crane and Wetland Conservation Group (KCWCG)

Theory of Change



Where we are	Our purpose	Where we want to be
An experienced community conservation CBO (est 1991) recognized internationally (Disney Conservation Hero 2021)	To equip and enable community-led regeneration and maintenance of a healthy, diverse ecosystem	A sustainable, biodiverse indigenous forest and wetland that spans the river network of Western Kenya to the benefit of its communities

Drivers

1 Local economy	2 Biodiversity	3 Community development
Generate income from sustainable forest products	Mitigate drought and flooding	Preserve a clean and healthy water supply
Safeguard carbon payments for adjacent landowners	Safeguard population of flagship species	Develop skills
Promote ecotourism	Increase biodiversity	Create and maintain sustainable jobs, with women empowered by equal opportunity

## Contents

### Objects

### Governance

### Fundraising and donations

### Framework for understanding KEEP and KCWCG's activities

### Achievements and performance

#### A. Education and exchange

#### B. Environmental and infrastructure projects

1. Rain water harvesting tanks
2. Guest house completion

#### C. Support for sitatunga riparian corridor restoration

#### D. Support for social enterprise development

### Institutional partnerships and research engagement

### Forward look

### Financial review

### Risk management

### Receipts and payments year ended November 2024

---

## Trustees' Annual Report

This report covers the 12-month period ending 30 November 2024 and highlights KEEP's growth in advocacy, education, infrastructure delivery, and support for the development of a community-led social enterprise.

---

### Governance

The trustees meet regularly (twice in this cycle) to oversee strategic planning and fundraising priorities. Decision-making is informed by ongoing dialogue with our Kenyan partners and a growing network of international collaborators.

---

## Fundraising and Donations

This year KEEP was proud to manage several successful donations and legacy gifts:



- £500 raised in memory of Nicholas Perkins. This was donated for the completion of two interlocking stabilised soil block (ISSB) guesthouses at the KCWCG Tree Nursery, providing accommodation for visiting students and eco-volunteers.
- £2035 raised by Barnard Castle School from leaving party for out-going headmaster Tony Jackson plus a non-uniform day. This was donated for ISSB rain-water harvesting tanks, specifically at St Christopher's Girls School.
- Ongoing donations through CAF Donate and from Barnard Castle School camping fees for Duke of Edinburgh expeditions at Greta Bridge (£250) have enabled further investment in tree nursery expansion, agroforestry outreach, and school clean water initiatives.

---

## Achievements and Performance

### A. Education and Exchange

Barnard Castle School Industry Day 2024 – Partnership Impact Summary

In October 2024, Barnard Castle School hosted its 14th annual Industry Day, the second themed around sustainability and inspired by the school's 25-year partnership with KEEP.

Sixth-form students were challenged to develop sustainable product ideas and marketing strategies that would benefit water, wealth, and wildlife—aligning with KEEP's mission of wetland conservation and community development in Western Kenya.

The day opened with a video message from Maurice Wanjala, Director of KCWCG, and his daughter Sharon Neron who praised the school's role in supporting reforestation, school rebuilding, and agroforestry work in the Saiwa River catchment. He challenged the students to think big and design products that made a difference.

Y12 Students worked in teams, mentored by local business professionals, to pitch ideas ranging from mango butter cosmetics, tropical fruit juice healthy drinks, and sustainable haircare. The winning entry, "Maca Hair", proposed a shampoo made using locally sourced macadamia nuts—highlighting both environmental benefit and commercial viability.

This event strengthened the international educational partnership and gave UK students a chance to contribute entrepreneurial ideas to real-world conservation and development

---

## B. Environmental and Infrastructure Projects



*KCWCG Tree Nursery team with KEEP ISSB Water tank with logos of major donors Barnard Castle School and Teesdale Rotary Eco*

### B. 1 Rain-water harvesting tanks

In February 2024, Barnard Castle School demonstrated its long-standing commitment to KEEP's community work through two significant fundraising events. A non-uniform day held by students and a collection made at the retirement celebration of former Deputy Head, Mr Tony Jackson, together raised £2,035, which was allocated directly to the construction of two ISSB rainwater harvesting tanks (to be completed in the next cycle). The first 20,000 litre tank will serve St Christopher's Girls Secondary School just outside Kipsaina, and a larger tank (80,000 litres) will serve a newly planted high-value avocado seedling nursery, providing clean water for irrigation and community use.



*KCWCG Trainee Builder Team: Stephen, Fred, Dan, Francis and Lewis with tank foundation*

### B. 2 Guest House Completion

The two ISSB guesthouses initiated in the previous cycle were completed at the KCWCG Tree Nursery, allowing the site to host eco-tourists, researchers, and school delegations. This was made possible through the generosity of the £500 collection made at former Mt Elgon resident, Nicholas Perkin's, funeral.



*Guest Houses before Nicholas Perkins Donation*



*Guest Houses in relation to KEEP supported KCWCG HQ Community Building*



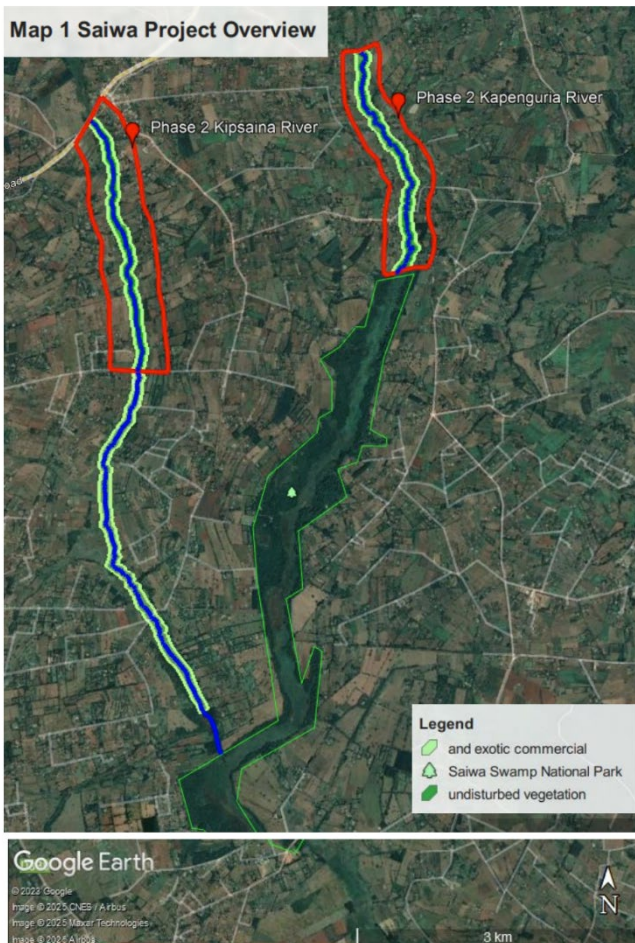
*Finishing the gables*



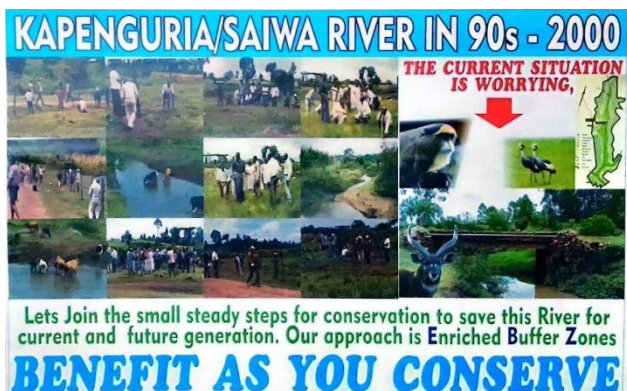
*Completed Guest Houses*

- Supported by KEEP, annual seedling production in the KCWCG nursery reached 1 million, including for agroforestry, fruit, and indigenous trees.
- Continued support was provided for the multi-purpose community vehicle (funded by KEEP in 2020), used for tree deliveries, eco-tours, and health support.

### C. Support for Sitatunga Riparian Corridor Restoration



- A major milestone in 2024 was the support KEEP provided to KCWCG in preparation for the Sitatunga Corridor Restoration Project, focused on reforesting 17 km of riparian buffer zones on the Kapenguria and Kipsaina Rivers.
- The initial aim focuses on a pilot totalling 5km on the two rivers upstream of Saiwa Swamp National Park.
- KEEP supported KCWCG to clarify landowner engagement approaches and align project methodology with Kenya’s national 30-metre riparian buffer policy under National Environment Management Agency (NEMA) and Water Resources Authority (WRA).
- KEEP supported KCWCG to conduct initial stakeholder work with key local farmers and landowners along both the rivers. These key farmers were introduced to the concept of participation in the scheme in return for access to training, inputs (such as avocado trees, beehives, fruit trees, and goats), and participation in long-term conservation incentives.
- Farmers would be organised into around twenty co-operatives, each of twelve farmers,, with purchase of raw agricultural products and value addition to be carried out centrally by KipAgro (see below).
- This restoration is designed to protect biodiversity and flood control while enabling alternative livelihoods.



KCWCG Flyer

## D. Support for Social Enterprise Development

During 2023–24, KEEP continued to provide technical and partnership support to the emerging Kipsaina Agroforest (KipAgro) community social enterprise, developed in close collaboration with KCWCG.

KipAgro aims to unite smallholder farmers in organic agroforestry cooperatives and research and develop local value addition for sustainable products, including:

- Avocado and associated value added products
- Honey and wax-based goods
- Other plant oils such as croton seed oil
- Fruit products including custard apple, mango and tamarillo
- Dried flowers and decorative seed pods
- Medicinal barks and teas
- Bamboo packaging
- Biochar and compost-based fertiliser

In 2025, the enterprise will incorporate the product line of “Nzoia Forest Farms”, building on groundwork laid this year.

---

## Institutional Partnerships & Research Engagement



*Heidi Varley of Pink's Flower Farm demonstrating potential decorative crops*

- KEEP facilitated new research connections, including conversations with Oxford University, Swansea University, Coventry University, and other academic partners around potential studies in invasive species, mycorrhizal fungi, and sustainable dried flower production.
- Following discussions with UK flower grower Heidi Varley (Pink's Flower Farm), we developed initial links with flower sustainability expert Prof David Bek (Coventry University) to explore dried flower and ornamental grass markets. Prof Bek's research and his Sustainable Flowers Project are helping frame this product line in ways that make it attractive to environmentally conscious buyers. KEEP anticipates that a carefully curated product list (seed pods, ornamental grasses, dried flowers) combined with a strong story of **community conservation, women's empowerment, and rewilding of wetlands and riverbanks** could make this a flagship export stream for the KipAgro value chain.

This partnership represents a key knowledge and market development link for KEEP's long-term aims of creating **climate-resilient livelihoods** for Western Kenya's riverine communities.

## Forward Look

KEEP's priorities for 2024–2025 include:

- Supporting the successful pilot phase of the Sitatunga Wildlife Corridor with financial support from Ecosia (securing a second, larger, contract after the successful completion of “Forest Block 3”).
- Backing the full-scale launch of KipAgro with the product line “Nzoia Forest Farms”, a values-led social enterprise driving reforestation and sustainable product development.
- Continuing collaboration with UK and Kenyan schools (revitalising the Rotary Digital Bridges project), universities and donors to support training, infrastructure and livelihoods.
- Exploring new markets for dried flowers and ornamental grasses, with expert input from floriculture specialists in the UK.
- Facilitating student research projects into biodiversity, agroecology, and carbon draw-down through new university partnerships.



---

## Financial Review

KEEP continued to operate with no debts, fully documented fund transfers, and excellent value for donor funds. All projects delivered were within budget and aligned to our charitable objectives.

## Risk Management

Our risk register was reviewed and updated. All partners signed the safeguarding code of conduct. All data is managed in compliance with GDPR.

---

## Declaration

The Trustees declare that they have approved the Trustees' Report above.

Signed on behalf of the Trustees:

Sam Forsyth  
Trustee



Dated: 18 November 2025

Mary Charrington  
Trustee



Dated: 18 November 2024

**KEEP**

**RECEIPTS AND PAYMENTS ACCOUNTS**

**YEAR ENDED 30 NOVEMBER 2023**

		<b>2024</b>	<b>2024</b>	<b>2023</b>
	<b>Unrestricted Funds</b>	<b>Restricted Funds</b>	<b>Total Funds</b>	<b>Total Funds</b>
			<b>£</b>	<b>£</b>
<b>Receipts (Donations)</b>				
Barnard Castle School	2275		2275	<b>0</b>
Barnard Castle Rotary Club	0		0	<b>0</b>
Private Donations	654		654	<b>1,930</b>
<b>Total Receipts</b>	<b>2,929</b>	<b>0</b>	<b>2,929</b>	<b>1,930</b>
<b>Payments</b>				
Charitable activities - general	0		0	<b>350</b>
Charitable activities – ISSB	2514		2514	<b>1,500</b>
Bank charges	165		165	<b>34</b>
Administration	178		178	<b>254</b>
<b>Total payments</b>	<b>2857</b>	<b>0</b>	<b>2857</b>	<b>2,138</b>
<b>Net receipts / (payments)</b>			<b>72</b>	<b>-208</b>
Cash funds b/f			604	813
<b>Cash funds c/f</b>			<b>677</b>	<b>604</b>

Period from 01 December 2023 to 30 November 2024

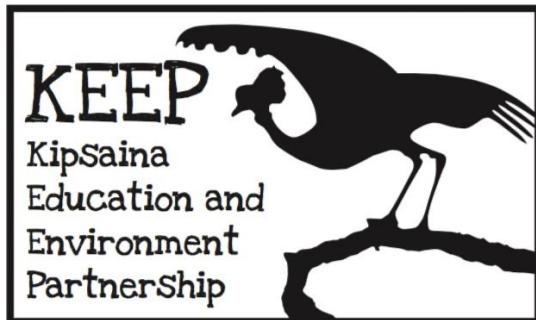
**KIPSAINA EDUCATION AND ENVIRONMENT PARTNERSHIP (KEEP)**

England & Wales - Charity number 1175806

---

# Accounts

---



**Kipsaina Education and Environment Partnership  
(KEEP)**

**Trustees' Annual Report and Accounts**

**For the year ending 30 November 2023**

Charity number: 1175806

[www.keepkenya.org](http://www.keepkenya.org)

**Reference and administrative information for the period ended 30 November 2023**

<b>Charity Name</b>	Kipsaina Education and Environment Partnership (KEEP)
<b>Legal Status</b>	Charitable Incorporated Organisation
<b>Governing Document</b>	Constitution
<b>Registered Charity number</b>	1175806
<b>Date registered with Charity Commission</b>	20 November 2017
<b>Principal address</b>	4 The Square Greta Bridge Barnard Castle County Durham DL12 9SD
<b>Trustees</b>	Sam Forsyth Rubel Quader Mary Charrington
<b>Bank</b>	HSBC 1 Prospect Place Darlington County Durham DL3 7LQ

**KEEP  
TRUSTEES' ANNUAL REPORT  
Contents**

**Objects**

**Governance**

**Fundraising and donations**

**Framework for understanding KEEP and KCWCG's activities**

**Achievements and performance**

A. Social, economic and educational impact

1. Interlocking Stabilised Soil Block (ISSB) construction
2. Continued support of the community car (Toyota Fielder)
3. Beekeeping and honey production
4. Agroforestry demo plot development
5. Rotary Digital Bridges

B. Environmental impact through tree planting

1. Tree nursery report
2. Research into reducing the use of plastic 'polytube'
3. Research into forest soil replacement
4. Water pump purchase
5. Lobbying for an off-grid seedbank
6. Carbon credits
7. Large scale tree planting
  - i. The current Ecosia deal
  - ii. Future plans · Ecosia Phase 2 funding (once Phase 1 signed off)

C. Social enterprise (Kipsaina Agroforestry) development

**Future plans**

**Financial review and reserves policy**

**Risk management**

**Receipts and payments year ended November 2023**

**Appendix:**

Proposed "Sitatunga Corridor" pilot project

## KEEP TRUSTEES' ANNUAL REPORT

Kipsaina Education and Environment Partnership (henceforth “KEEP”) presents its sixth Trustees’ Annual Report. The charity was registered with the Charity Commission on 20 November 2017. It operates as a Charitable Incorporated Organisation (CIO), which provides protection for the charity, trustees and volunteers and helps the charity be sustainable.

This report sets out a summary of the activities and achievements of the charity in its sixth year of operation, to the period ending 30 November 2023.

As a small charity, the year’s financial performance is presented on a Receipts and Payments basis which appears at the end of this document. A summary of the sixth year’s finances is presented in the financial review section.

To the best of the trustees’ knowledge, the prepared financial statements comply with current statutory requirements, the charity's Constitution and the Statement of Recommended Practice - Accounting and Reporting by Charities (SORP).

### Objects

The objects of KEEP as set out in its Constitution are twofold:

1. *For the public benefit, the conservation, protection and improvement of wetlands in western Kenya, in particular, but not exclusively, the Saiwa Swamp ecosystem and surrounding area.*
2. *The advancement of education for children living in the Saiwa Swamp ecosystem and surrounding area, in particular, but not exclusively, at the Kipsaina Primary School, by improving their physical learning environment and by promoting environmental awareness.*

KEEP is the result of a long-standing friendship, now stretching to over 30 years, between UK filmmaker turned biology teacher Sam Forsyth (SSF), and Kenyan environmentalist, educator and community activist Maurice Wanjala (MSW). KEEP works closely, though not exclusively, with Maurice’s locally based NGO Kipsaina Crane and Wetland Conservation Group (KCWCG) - registered as a Community Based Organisation (CBO) in Kenya - to provide enhanced educational opportunities for children in the Kipsaina area, and to promote the conservation and improvement of the local wetlands. These wetlands provide protected nesting sites for up to six pairs of Crowned Cranes and are a habitat for the Sitatunga, a rare aquatic antelope, as well as a range of other wetland species.



*Sam Forsyth and  
Maurice Wanjala*

## **Governance**

KEEP is administered and managed by a board of three trustees who manage the charity on a voluntary basis. As set out in the charity's Constitution, the three founding trustees were initially appointed for 4 years (Sam Forsyth – referred to as SSF in this document), 3 years (Rubel Quader) and 2 years (Mary Charrington).

Subsequently all trustees will be re-elected or appointed anew for a 3-year term by a resolution passed at a properly convened meeting of the charity trustees, with due regard given to the skill, knowledge and experience required for the effective administration of the KEEP CIO. The charity must have a minimum of three trustees at all times. If the number falls below this minimum then the remaining trustee(s) may act only to call a meeting of the charity trustees in order to appoint a new trustee(s). All three trustees have been subsequently re-elected in order to continue as KEEP trustees, most recently Mary Charrington in November 2022 and Rubel Quader in November 2023.

In the sixth year of its operation, the KEEP trustees held 2 trustee meetings. Decisions are made by the approval of a majority of the trustees. The trustees have ensured that all charitable activities and approval of its future operational plans have been undertaken with regard to the Charity Commission's guidance on public benefit and in accordance with KEEP's Constitution and Objects.

Trustees are required to familiarise themselves with the charity's regulatory requirements and to that end have attended the Charity Commission's seminars for charities working in high-risk areas, as well as undertaking a course on data protection. In addition, they follow advice from specialist organisations on safeguarding

## **Fundraising and donations**

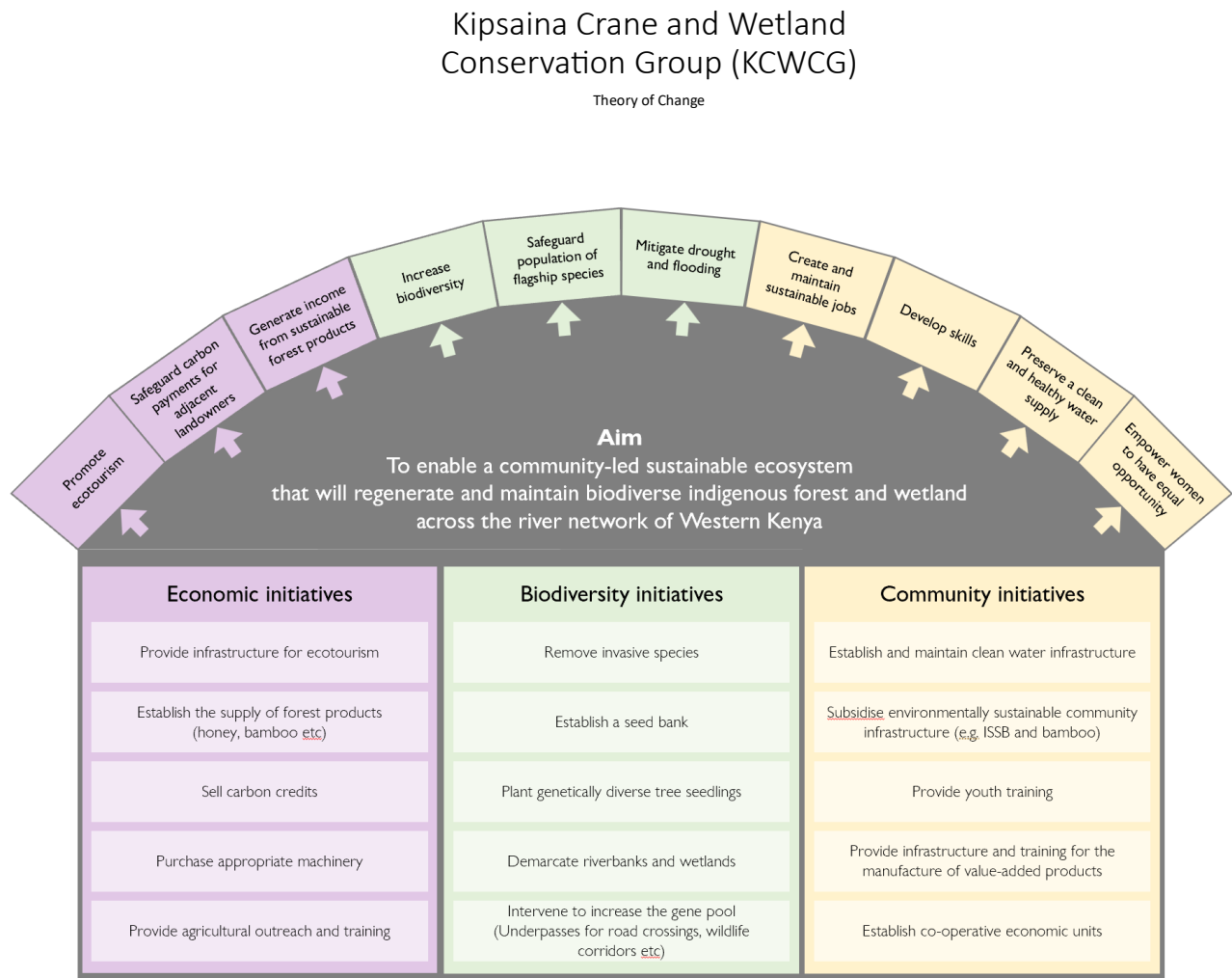
Fundraising this year has been limited, comprising **£1,930** raised from private donations, including Gift Aid.

It was agreed by the trustees in 2019 that, rather than acting solely as a direct fundraiser, KEEP, as a small charity, should focus a large part of its efforts on advocating for and brokering partnerships with larger charities and NGOs. Such partnerships should always operate for the benefit of Kipsaina and its surrounding communities and environment in accordance with KEEP's charitable Objects.

The largest of these direct collaborations, as facilitated by KEEP, over the period of the sixth annual report has been an ongoing tree-planting contract between our partner KCWCG and the Dutch/German social business Ecosia ([www.ecosia.org](http://www.ecosia.org)), an "eco" search engine which devotes all its profits to tree planting across the globe. Ecosia maintains its commitment to its partnership with KCWCG. KEEP is continuing to explore the potential and viability of carbon credit trading as a source of income.

## Framework for understanding KEEP and KCWCG’s activities

MC and SSF have worked with MSW and UK collaborators to produce the following schematic explaining the drivers and outputs for KEEP’s activities in partnership with KCWCG.



Where we are	Our purpose	Where we want to be
An experienced community conservation CBO (est 1991) recognized internationally (Disney Conservation Hero 2021)	To equip and enable community-led regeneration and maintenance of a healthy, diverse ecosystem	A sustainable, biodiverse indigenous forest and wetland that spans the river network of Western Kenya to the benefit of its communities

*Drivers*

1 Local economy	2 Biodiversity	3 Community development
Generate income from sustainable forest products	Mitigate drought and flooding	Preserve a clean and healthy water supply
Safeguard carbon payments for adjacent landowners	Safeguard population of flagship species	Develop skills
Promote ecotourism	Increase biodiversity	Create and maintain sustainable jobs, with women empowered by equal opportunity

## Achievements and performance

August 2023 saw SSF visit Kipsaina (on a self-funded basis) to support Maurice Wanjala and KCWCG in its capacity building and explore new international networking opportunities. Many of the activities and future opportunities detailed in this report are as a direct result of this visit.



In its sixth year of operation, KEEP has carried out the following activities which are all directly aligned with the charity's social, environmental and educational objects.

### A. Social, economic and educational impact

#### 1. Interlocking Stabilised Soil Block (ISSB) construction

##### *Completion of KCWCG Office*

A new building made of ISSB to act as the KCWCG office and Community Centre in Kipsaina village was completed during the year (main construction was within the previous reporting cycle). The building will act as a prototype for further community buildings including plans for a primary health centre. This building consolidates KCWCG's activities on the tree-nursery site, replacing a smaller office that had been built ten years previously away from the tree-planting operation in the main section of the village. This building, as well as being a prototype for further community construction, will act as a centrepiece for future KCWCG activities and enhance the ability to hold large functions within the tree nursery space.

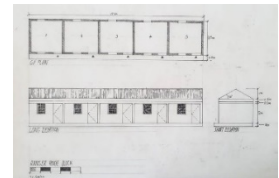


**Student / Tourist Accommodation Block**

Construction has begun on an accommodation block at the KCWCG Nursery site, to form an operational unit alongside the completed KCWCG Office and Community Centre. This accommodation block will provide a male and female dormitory for visiting agroforestry students. This is vital to the continued development of the tree nursery and agroforestry demo plot (see below). There is also potential to generate revenue from ecotourism.

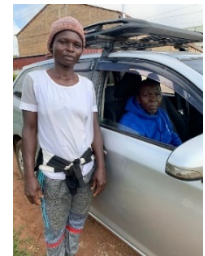


Additional plans were developed by SSF and MSW in August 2023, at the invitation of Kenya Forest Service for ISSB-constructed barracks for KFS rangers. Although unsuccessful on this occasion, the proposal demonstrates the potential for further construction once an ISSB building company has been established.



**2. Continued support of the community car (Toyota Fielder)**

KEEP purchased a community car for KCWCG use in 2020. This car has been used for training, hospital visits, and tree nursery support work, including collection of seeds from women’s cooperatives and smaller scale tree seedling transport. The picture shows MSW in the community car Aug 2023 with Topista Wafula, the KCWCG Forest Block 3 tree planting Team Leader.



**3. Beekeeping and honey production**

KEEP is looking at ways to support the expansion KCWCG’s existing honey production. Bee-keeping (for honey and wax) will be developed as an important sustainable income generator, as the integrated agroforestry model is developed (see below).

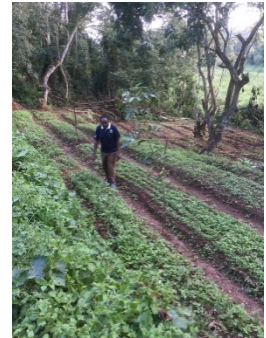


Whilst SSF was in Kipsaina in August, he and MSW’s son, Collins Wanjala, developed a novel prototype beehive using sections of giant bamboo (grown in the KCWCG tree-nursery from plants donated by Barney School in 2018). Collins went on to demonstrate the viability of this prototype. A cheaply produced hive such as this would increase the rate of honey production. In contrast, the cost of conventional larger, plank-built hives is a bar to production, and traditional hollow-log hives are time-consuming to manufacture. “Bambee” honey, the name given to the honey produced in the new hive, could become a key income generator for future collective marketing schemes.



#### 4. Agroforestry demo plot development

A key element in KEEP’s partnership with KCWCG is assisting with the development of their organic agroforestry demo-plot (shown in the images below and to the right). This is a two acre site within Kipsaina adjacent to the main tree nursery. The aim is to develop methods that can be used in partnership with local farmers, allowing them to continue to produce crops under and between trees. This is a vital component of the plans for an integrated agroforestry model in all future planting schemes.



Whilst SSF was in Kenya August 2023, he and MSW visited Forest Foods at the Brackenhurst complex in Limuru near Nairobi (shown in the images below). This was followed by a further visit that included facilitating travel from Kipsaina to Limuru for four farmers with farms adjacent to Kipsaina and Kapenguria Rivers (who are stakeholders in the proposed Ecosia Phase 2 Sitatunga Corridor planting scheme - see below). Forest Foods staff were hugely welcoming and informative, and the Kipsaina farmers left with a strong understanding of the principles of the “Syntropic” farming system which KCWCG wishes to adopt. Syntropic Farming is a system based on the inclusion of large quantities of biomass into the planting beds. The biomass is generated from harvesting branches from the rows of trees and wild banana grown between the growing beds as well as from the removal of woody invasive species from nearby indigenous forest/wetlands. The biomass is generated using a wood-chipper (see below for the Honda chipper being used at the Forest Foods site). The inter-spaced rows can also be used to house mobile chicken or goat units – KCWCG are currently looking at construction of these using bamboo.



## 5. Rotary Digital Bridges

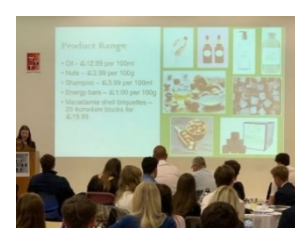
Rotary Digital Bridges (RDB) evolved from an idea of SSF that KEEP could recruit new schools to become fundraising hubs. It has led to a positive development in the KEEP-KCWCG partnership, aligning with their joint aims of promoting educational opportunities. Initial approaches were successfully made to two schools in the town of Barnard Castle in the North of England where the KEEP is based. As a result, two RDBs have been set up, the first between Barnard Castle School (where SSF teaches) and Kipsaina High School; the second between Teesdale School and St Christopher’s High School for Girls near Kipsaina. One live link-up was held during this reporting cycle which, due to logistical reasons was between Barnard Castle School and St Christopher’s. The aim was to foster international links and to encourage school journalism. It is planned that this link will be revisited and expanded in the coming year.



These images show the celebration event held in 2023 at the new KCWCG HQ for teenagers from Kipsaina High School and St Christopher’s Girls’ School as well as the Certificate of Achievement given to each of the Kenyan participants in the scheme.

### *Barnard Castle School Industry Day*

As part of the RDB scheme, Barnard Castle School held an “Industry Day” competition for the Lower Sixth. Nine teams of eight pupils took the brief of developing a potential product for the newly created social enterprise Kipsaina Agroforestry (KipAgro). These included honey, beeswax, macadamia nuts, sweet potatoes, bamboo, mango, arrowroot, avocado and ecotourism. This event will be replicated in future and used as a model for other schools in the UK and Kenya.



## B. Environmental impact through tree planting

KEEP continued to support KCWCG’s tree planting activities during 2022-23 including:

### 1. Tree nursery support

Sustaining Kipsaina Tree Nursery throughout 2022-23 in order to produce up to 1 million seeds for planting in 2024.



### 2. Research into reducing the use of plastic “Polytube”

KEEP continues to research methodologies to reduce and replace the use “polytubes” in the tree planting cycle.



Polytubes (see right) remain one of the few single-use plastic items allowed by the Kenyan government, which has banned all other plastic bags. It is probable that polytubes will be banned in the near future; the only current prevention of a ban being the lack of a viable alternative. KCWCG is experimenting with various alternatives, including producing planters made from recycled plastic drinks bottles and with different bamboo-based solutions. KEEP is looking at ways in which it can support KCWCG in developing these and other potential replacement technologies, including sourcing international funds which focus on recycling and reducing the use of plastic.



### 3. Research into forest soil replacement

Encouragement towards sustainable and effective replacement of “forest soil”.

Forest soil (containing vital fungal mycelium) is scraped from the forest floors of existing indigenous forests and added in significant quantities to the potting mix. KCWCG used over 80 tonnes of this product to add to the polytube potting mixture in 2022-23. The scale of forest soil usage (indicated in the images

below from the KCWCG nursery site) poses environmental challenges to the biodiversity of the collection sites, as well as significant transport costs. This has led to discussions, with author Merlin Sheldrake and with Oxford University, to explore the potential for international collaboration on a research programme. Practical experimentation is taking place within the KCWCG tree-nursery and agroforestry site (see above for more detail on the agroforestry plot).



#### 4. Water pump purchase

Further Development of Kipsaina WASH+ included the purchase of a water pump to service the ISSB water-tanks constructed during the previous Annual Report period. This pump allowed the continued watering of the KCWCG tree nursery throughout the dry season (the previous water pump having been on loan and no longer available). The only alternative to a pump is the arduous routine of taking water from the river, watering-can by watering-can, leaving the nursery staff with no time to carry out other work.



#### 5. Lobbying for an off-grid seed bank

In August 2023, SSF and MSW visited the Brackenhurst branch of the Centre for Ecosystem Restoration Kenya (CERK). The Terraformation ([Terraformation | Native Biodiverse Reforestation](#)) off-grid seed bank they operate was of particular interest. The images below show Maurice Wanjala discussing the operation of the unit with CERK botanist Victor Otieno. SSF and MSW put a bid together to partner with CERK and install a seed-bank unit at Kipsaina. This bid has not yet been successful, but we are hopeful that either this or another partnership will lead to us securing such a facility in the future.



## 6. Carbon credits

Whilst SSF was in Kenya with Maurice in Aug 2023, SSF arranged a visit to KCWCG operations by Mike O’Brien (pictured right with one of the dairy goats provided by KCWCG), Africa Director of the Carbon Credit organisation Nature 4 Justice (N4J) <https://www.nature4justice.earth/>



After very positive feedback from Mike O’Brien and a number of supportive Zoom meetings with the full international N4J team, SSF and Maurice wrote a large-scale funding bid to N4J.

The main funder had a requirement for a minimum project scale of 9,000 hectares, an order of magnitude above current KCWCG planting. To this end, the proposal was based on a very extensive planting proposal for the re-establishment of the riparian buffer forest for the entire Western Kenyan river system, to include more extensive planting around 18 major wetland margins.

Although in hindsight, this project was too extensive for KEEP and KCWCG to deliver in this form (based as it was on nearly 1800km of river-side planting), a huge amount of positive learning resulted from the funding bid process:

1. Development of the integrated “Syntropic” agroforestry model to be utilised in all future developments.
2. GIS skill-set development (through collaboration between KCWCG and Barnard Castle School) and Google Earth KML files which will be invaluable in future mapping requirements for ongoing proposals.
3. Development of an achievable smaller scale, indigenous, riparian wetland forest pilot project, based on the two feeder rivers for Saiwa Swamp National Park, that will be re-versioned for future bids.
4. A wide-ranging list of “risk-reduction” community benefits, including a much wider range of sustainable income generation projects than KCWCG has previously developed.

## 7. Large scale tree planting

### i. The current Ecosia Deal

In September 2021, KEEP negotiated a €59,431 tree planting contract with Eco-search engine Ecosia, whose profits are channelled into tree-planting projects internationally. The initial approach to Ecosia was made by SSF in May 2021 and the final agreement was signed in Sept 2021.



The Ecosia planting was carried out on Kenyan Government land managed by Kenya Forest Service (KFS), namely Kitale Forest Block 3, a peri-urban degraded eucalyptus plantation of roughly 100 acres. KEEP provided support and advocacy to KCWCG in proposing a 200,000 tree planting target as part of the KFS “Adopt a Forest” project. This included a further series of high-level stakeholder Zoom meetings to ensure the vital support of KFS.



The completion of this planting scheme has been delayed by over two years (due to a number of factors beyond the control of KCWCG). KEEP has supported KCWCG in their management of

the Ecosia relationship throughout this delay. It is likely that Ecosia will continue to back KCWCG in future planting, in spite of this extended delay, as evidenced by supportive communications from Edmund Muller at Ecosia throughout the period.

ii. Future plans · Ecosia Phase 2 funding (once Phase 1 signed off)

Future planting will be away from the Kitale forest blocks and along river and wetland margins

The proposal is to plant 250,000 trees along the two water courses, Kipsaina River and Kapenguria River. The planting will start at the sources of the rivers including in the Cherang'any Hills, helping to secure the water-flow in these threatened rivers, vital to the continued existence of the biodiverse Saiwa Swamp ecosystem. KCWCG is planning this in collaboration with the National Environment Management Agency (NEMA), building on existing good relationships.

*See Appendix for the proposed future implementation of this plan to include Carbon Credit incentives for the landowners involved. (Appendix: Sitatunga Wildlife Corridor proposal)*

C. Social enterprise Kipsaina Agroforestry development

“Kipsaina Agroforest” (KipAgro) has been registered as a named Kenyan Social Enterprise. KEEP’s collaborative activities in Kenya are limited by the Kenyan Government’s restriction on “for profit” activities by Community Based Organisations (CBO). As KEEP intends to support enterprises that will generate profit - such as carbon trading, large scale tree seed and seedling sales and ISSB building – SSF and MSW are taking active steps to finalise the creation of a new Kenyan Social Enterprise. Governance of this entity will be at an arm’s length from KEEP. The constitution of the new social enterprise will stipulate that all profits generated will be channelled into initiatives consistent with the funding aims of KEEP in Kenya.

The Current Directors are MSW and his daughter Sharon Neron. Paul Easton of Barnard Castle School has stepped aside as a potential director and SSF is in the process of finding a suitable replacement UK director, independent of KEEP. KipAgro still needs incorporation, which will be carried out in the next reporting cycle.

## Future Plans

1. KEEP continues to work with Barnard Castle School and KCWCG to help turn Kipsaina Primary School into a flagship eco-school and sustainable agriculture training facility. This school improvement work is extending to plans for rainwater harvesting tanks in other schools local to Kipsaina (Kipsaina High School being the first beneficiary of this scheme) and in Nandi County. We hope to instigate ISSB building of rainwater harvesting in schools and classroom blocks during 2023/24 (in addition to the two tanks built in 2022 at the KCWCG tree nursery).
2. The KCWCG tree nursery remains the single biggest potential economic driver for all the other planned activities. The intention is to extend the contract with Ecosia – still in the pipeline until the successful completion of Phase One planting.
3. KEEP is exploring ways in which it can help KCWCG tap into the Carbon Credit market, learning lessons from previous bids. In particular it seeks to collaborate with other carbon credit organisations and to support expansion of KCWCG activities to eventually plant along riparian corridors in all twelve counties of Western Kenya. (see Appendix for the proposed “Sitatunga Corridor” pilot project)
4. Support for the continued development of KipAgro social enterprise.
5. Tree-Nursery Sustainability Research  
The following areas of research will continue. The purpose of this research is to increase the environmental and economic sustainability of KCWCG’s tree nursery operations. Areas of research include:
  - i) Replacement of plastics in the tree nursery - sustainable alternatives to the polytubes currently used for seedling production, use of which is now tightly regulated by the Kenyan Government.
  - ii) Funding and design of “tree seed banks”, with a view to construction of such a facility at the Kipsaina Tree Nursery. Viable seed storage is a major challenge to any tree planting operation. Establishing such a facility would facilitate the supply of seeds to all KCWCG operations, as well as the option of selling surplus seeds to other growers, potentially creating a large additional income stream.
  - iii) KEEP continues to look for ways to sustain research into potential replacement of the hundreds of tonnes of “forest soil” required for the successful germination of indigenous tree seed (forest soil having the necessary fungal hyphae growth required for successful seed germination and seedling growth). Purchase and transport of this soil is a considerable expense to the KCWCG nursery operation, as well as being environmentally degrading to the forests it is gathered from. If successful, this could become a breakthrough process, transforming tree nursery operations across East Africa.

## Financial review and reserves policy

In KEEP's sixth year of operation, the policy of the trustees remains to maintain a positive bank balance at all times without recourse to borrowing or usage of overdraft facilities. As a small charity the trustees seek to initiate projects only once the full estimated amount, with at least a 10% contingency buffer, has been raised and is available in the charity's CIO bank account for deployment.

Funding for projects is provided to local partners in staged payments, rather than in one go, and is conditional on them furnishing KEEP with a comprehensive breakdown of spend (including receipts for materials and services purchased) at regular intervals.

## Risk management

The trustees have attended a Charity Commission course on managing risks and maintain a risk register which is reviewed annually. In addition, the charity has a Safeguarding Policy in place which it requires all partners and contractors to sign up and adhere to. The policy was written in consultation with SAFE (Safer Activities for Everyone), a not-for-profit community interest company established in 1987 which is dedicated to raising child and adult safeguarding standards both in the UK and overseas.

KEEP has a data protection policy in line with GDPR requirements, and a Privacy Policy available on request.

The trustees declare that they have approved the trustees' report above. Signed on behalf of the charity's trustees

Signed on behalf of the charity's trustees



.....  
Sam Forsyth  
Trustee

30<sup>th</sup> August 2024



.....  
Mary Charrington  
Trustee

30<sup>th</sup> August 2024

**KEEP**

**RECEIPTS AND PAYMENTS ACCOUNTS**

**YEAR ENDED 30 NOVEMBER 2023**

Period from 01 December 2022 to 30 November 2023

	2023 Unrestricted funds £	2023 Restricted funds £	<b>2023 Total Funds £</b>	2022 Total Funds £
<b>Receipts (Donations)</b>				
Barnard Castle School			<b>0</b>	0
Barnard Castle Rotary Club			<b>0</b>	3,235
Private Donations	1,930		<b>1,930</b>	111
<b>Total Receipts</b>	<b>1,930</b>	<b>0</b>	<b>1,930</b>	<b>3,346</b>
<b>Payments</b>				
Charitable activities - general	350		<b>350</b>	1,000
Charitable activities – ISSB	1,500		<b>1,500</b>	3,181
Bank charges for international money transfers	34		<b>34</b>	84
Administration	254		<b>254</b>	389
<b>Total payments</b>	<b>2,138</b>	<b>0</b>	<b>2,138</b>	<b>4,654</b>
<b>Net receipts / (payments)</b>			<b>-208</b>	<b>-1,308</b>
Cash funds b/f			813	2,121
<b>Cash funds c/f</b>			<b>604</b>	<b>813</b>

*Differences in totals due to rounding*

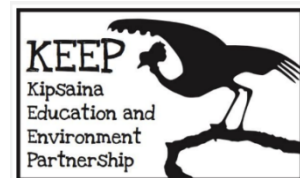
## APPENDIX

### Proposed “Situnga Wildlife Corridor” pilot project



**DRAFT Proposal Upper Saiwa River, Sitatunga Wildlife Corridor Project**  
(Growing Trees for Water, Wealth and Wildlife)  
Uguzaji wa miti kwa maji, mali na wanyama pori

**Delivery Partner Organisation:** Kipsaina Crane and Wetland Conservation Group (<https://kcwcg.org>):



*KCWCG Intro Film (from 2019)*

KCWCG Founder and Director, Maurice Wanjala: [Maurice\\_wanjala@yahoo.com](mailto:Maurice_wanjala@yahoo.com)  
Maurice Wanjala, named as one of the 2021 Disney Global Conservation Heroes, has developed an integrated model of native tree production, with related livelihoods, sustainable since 1991 in Western Kenya. He currently is planting 200,000 indigenous trees for Ecosia.



*KCWCG Director and Project Manager Maurice Wanjala tree planting with school children Credit: KCWCG*

**UK Funding coordination partner** Kipsaina Education and Environment Partnership (KEEP)

Contact: Sam Forsyth [Sam@keepkenya.org](mailto:Sam@keepkenya.org)

**Kenyan Government Agency Stakeholders:** National Environment Management Agency (NEMA) and Water Resources Authority (WRA)

**Tree-planting funder:** Ecosia

**Carbon Credit Organisation:** (TBD)



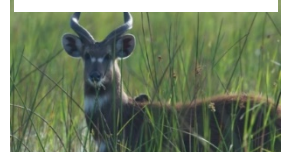
**Project Need:** Kenya is recognised by the UN as a severely water-stressed nation with only half of the required water per capita. Key wetlands and surrounding forests are subject to major degradation and this is increasing water insecurity. We are seeing increased flash flooding and polluted watercourses, made worse by the demands for building and non-sustainable agriculture. Iconic wildlife species are on the brink of extinction and reforestation is often using non-native trees upsetting the balance of the ecosystem. With limited economic opportunities, our natural environment is being eroded along with the opportunity to return the value of that natural capital to the community.

**Project Coverage:** Total of 17km stretching up both the Kipsaina and Kapenguria rivers up stream of Saiwa Swamp National Park, Trans Nzoia Western Kenya.



*Crowned Crane*

**Project Aim:** To work with landowners and communities to sustainably re-establish a continuous riparian strip of indigenous forest and associated wetland vegetation along the feeder rivers to Saiwa Swamp, the smallest National Park in Kenya. This will act as a wildlife corridor linking existing and previous breeding sites for the three “flagship” wetland species sitatunga (aquatic antelope), De Brazza’s monkey and the grey crowned crane. It will also help sustain dry-season flow of water feeding the biodiversity of the National Park and help prevent flash-flooding downstream.



*Sitatunga aquatic antelope*

## Objectives

1. To plant an indigenous forestry buffer zone ranging from 10 m minimum (at steep bank sections) and 30m maximum from the demarcated flood line (to be established and pegged by National Environment Management Agency (NEMA) and WRA).
2. To engage 600 farmers with land adjacent to the two rivers.
3. To enhance local economic conditions through carbon credits and support for sustainable alternative livelihoods (including honey production, and where suitable, tilapia fish-farming) that make support for planting and maintaining the riparian corridor a logical decision for local landowners and other local stakeholders.
4. To work with as many of the farmers as possible to extend the canopy planting zone beyond the minimum to include economically active agroforestry fruit and nut trees as well as structural giant bamboo species.
5. To train and support farmers (through establishment of small, 10 farmer ultra-local cooperatives and wider collective, value-added processing and marketing of products) in inter-cropping of organic vegetable, goat and chicken production in between the belts of agroforestry planting.
6. To provide clean water sources (through provision of protected springs outside the planted zone) and ISSB rainwater harvesting tanks. This will reduce encroachment into the wetland for water extraction and reduce incidence of water born disease.

This project is to be seen as a proof of concept for a wider project to eventually encompass all the rivers and wetlands of the Trans Nzoia River basin (from the twin Water-Towers of Cherang'any Hills and Mt Elgon to Lake Victoria).

We propose the following alongside our reforestation and tree production activity:

1. Using GIS to plan and track large scale tree planting and aftercare to at least ten years post planting using community data input and accreditation of this by international partners.
2. Integrating the interlocking stabilised soil block technology (ISSB) into all infrastructure created for the project - and build capacity for wide ranging school infrastructure to include WASH with rainwater harvesting. ISSB technology removes a very large percentage of carbon dioxide from the building supply chain by removing the wood burning involved in locally produced brick.
3. Construction of solar-power micro-grids to power the following:
  - a) Water purification (removing carbon dioxide from heating water for sterilisation)
  - b) LED lighting for public spaces, public buildings and homes
  - c) Electric vehicles for the forestry teams
  - d) Solar powered water pumps for tree nursery and vegetation propagation.
4. Construction and sale of fuel-efficient cooking stoves and solar cookers removing carbon dioxide and wood from cooking.



*Fuel efficient stove KCWCG*



*Traditional brick firing using tree trunks Credit:KEEP*

*ISSB Rainwater Tank construction. Credit: www.hyuganda.com*

Costing and Staffing

Overall Costings are still being worked on, but this is an initial guide as to staffing and other set up costs.

Staffing Requirements (in KES)

- Tree nursery staff.20@10500/person/Months /12= 2,520000.
- Project Manager @40,000×12= 480,000
- Assistant @ 20,000 × 12 Months= 240,000
- Admin Support @20,000 x 12 months = 240.000
- Agricultural outreach support workers x 2 @20,000 (each) x 12 = 480.000
- Tree nursery Foreman @ 15000 ×12 =180,000

Equipment

- 2 (polytunnel type) greenhouses for bamboo propagation and other seedling propagation.
- 2 wood chippers
- 2 chainsaws
- Wheelbarrow x 5
- shovel x 10
- slashers
- gumboots and protective clothing

To start the new project:

- Organise and hold 8 sensitisation meetings, 4 on each river (costs TBD).
- 8 training events including 2 for the technical teams (costs TBD).
- T shirt printing and one road show (Costs TBD).

SDG-Aligned Impact:

**CORE SDGS**



**ADDITIONAL SDGS**



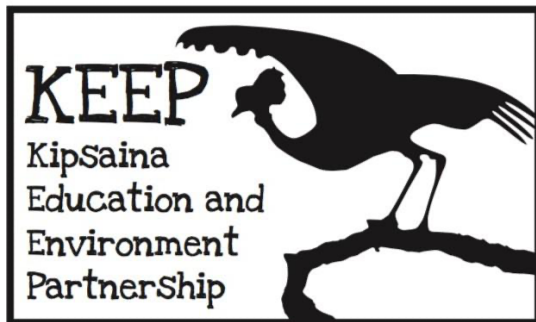
**KIPSAINA EDUCATION AND ENVIRONMENT PARTNERSHIP (KEEP)**

England & Wales - Charity number 1175806

---

# Accounts

---



**Kipsaina Education and Environment Partnership  
(KEEP)**

**Trustees' Annual Report and Accounts**

**For the year ending 30 November 2022**

Charity number: 1175806

[www.keepkenya.org](http://www.keepkenya.org)

**Reference and administrative information for the period ended 30 November 2022**

<b>Charity Name</b>	Kipsaina Education and Environment Partnership (KEEP)
<b>Legal Status</b>	Charitable Incorporated Organisation
<b>Governing Document</b>	Constitution
<b>Registered Charity number</b>	1175806
<b>Date registered with Charity Commission</b>	20 November 2017
<b>Principal address</b>	Flat 3 Rokeby Hall Greta Bridge Barnard Castle County Durham DL12 9RZ
<b>Trustees</b>	Sam Forsyth Rubel Quader Mary Charrington
<b>Bank</b>	HSBC 1 Prospect Place Darlington County Durham DL3 7LQ

## **KEEP TRUSTEES' ANNUAL REPORT**

Kipsaina Education and Environment Partnership (henceforth "KEEP") presents its fifth Trustees' Annual Report. The charity was registered with the Charity Commission on 20 November 2017. It operates as a Charitable Incorporated Organisation (CIO), which provides protection for the charity, trustees and volunteers and helps the charity be sustainable.

This report sets out a summary of the activities and achievements of the charity in its fifth year of operation, to the period ending 30 November 2022.

As a small charity, the year's financial performance is presented on a Receipts and Payments basis which appears at the end of this document. A summary of the fifth year's finances is presented in the financial review section.

To the best of the trustees' knowledge, the prepared financial statements comply with current statutory requirements, the charity's Constitution and the Statement of Recommended Practice - Accounting and Reporting by Charities (SORP).

### **Objects**

The objects of KEEP as set out in its Constitution are twofold:

1. *For the public benefit, the conservation, protection and improvement of wetlands in western Kenya, in particular, but not exclusively, the Saiwa Swamp ecosystem and surrounding area.*
2. *The advancement of education for children living in the Saiwa Swamp ecosystem and surrounding area, in particular, but not exclusively, at the Kipsaina Primary School, by improving their physical learning environment and by promoting environmental awareness.*

KEEP is the result of a long-standing friendship, now stretching to 30 years, between UK filmmaker turned biology teacher Sam Forsyth, and Kenyan environmentalist, educator and community activist Maurice Wanjala. KEEP works closely, though not exclusively, with Maurice's locally based NGO Kipsaina Crane and Wetland Conservation Group (KCWCG) - registered as a Community Based Organisation (CBO) in Kenya - to provide enhanced educational opportunities for children in the Kipsaina area, and to promote the conservation and improvement of the local wetlands. These wetlands provide protected nesting sites for up to six pairs of Crowned Cranes and are a habitat for the Sitatunga, a rare aquatic antelope, as well as a range of other wetland species.

### **Governance**

KEEP is administered and managed by a board of three trustees who manage the charity on a voluntary basis. As set out in the charity's Constitution, the three founding trustees were initially appointed for 4 years (Sam Forsyth – *for brevity referred to as SSF in this document*), 3 years (Rubel Quader) and 2 years (Mary Charrington).

Subsequently all trustees will be re-elected or appointed anew for a 3-year term by a resolution

passed at a properly convened meeting of the charity trustees, with due regard given to the skill, knowledge and experience required for the effective administration of the KEEP CIO. The charity must have a minimum of three trustees at all times; if the number falls below this minimum then the remaining trustee(s) may act only to call a meeting of the charity trustees in order to appoint a new trustee(s). Mary Charrington, Rubel Quader and SSF were re-elected as KEEP trustees for 3 years each in November 2019, November 2020 and November 2021 respectively after their initial tenures came to an end. Subsequently Mary Charrington was re-elected to serve for a further 3 years in November 2022.

In the fifth year of its operation, the trustees of KEEP held 2 trustee meetings. Decisions are made by the approval of a majority of the trustees. The trustees have ensured that all charitable activities and approval of its future operational plans have been undertaken with regard to the Charity Commission's guidance on public benefit and in accordance with KEEP's Constitution and Objects.

Trustees are required to familiarise themselves with the charity's regulatory requirements and to that end have attended the Charity Commission's seminars for charities working in high-risk areas, as well as undertaking a course on data protection. In addition, they follow advice from specialist organisations on safeguarding.

## **Fundraising and Donations**

Fundraising this year has been limited but includes the following.

- £111 raised in private donations, including Gift Aid
- A further £3,235 donated by Barnard Castle Rotary Club and other Rotary organisations across the Northeast of England, specifically for KEEP's Interlocking Stabilized Soil Bricks (ISSB) and Rotary Digital Bridges projects (details below)

As of November 2021, Virgin Money Giving was no longer in operation. As a result, KEEP's online fundraising platform has been moved to the Charities Aid Foundation (CAF).

As noted in the last two annual reports, KEEP has evolved from an organisation based purely around direct fundraising from the public, to one that aims over the medium to long term to raise funds and support from larger NGOs and grant-giving bodies for larger projects. In parallel, KEEP is increasingly acting as an advocate by introducing the Kipsaina community to such bodies in order to facilitate direct collaborations. KEEP has been aided in this function through the pro-bono guidance of Felicity Jones of Thinking Philanthropy (TP). Felicity offered her help having been introduced to SSF and the work of KEEP through Richard Joy of Innovate UK. The largest of these direct collaborations, as facilitated by KEEP, over the period of the fifth annual report has been a tree-planting contract between our partner KCWCG and the Dutch/German social business Ecosia ([www.ecosia.org](http://www.ecosia.org)), an "eco" search engine which devotes all its profits to tree planting across the globe.

## **Achievements and Performance**

It was agreed by the trustees in 2019 that, rather than acting solely as a direct fundraiser, KEEP, as a small charity, should focus a large part of its efforts on advocating for and brokering partnerships with larger charities and NGOs. Such partnerships should always be operating for the benefit of Kipsaina and its surrounding communities and environment.

In its fifth year of operation – the year to 30<sup>th</sup> November 2022 - KEEP carried out the following activities which were all directly aligned with the charity’s social, environmental and educational objects:

**A. Social and Educational Impact**

1. Further Development of Kipsaina WASH+ to include the building of two 20,000 litre water tanks in the KCWCG tree nursery.

This has allowed the Kipsaina team to gain valuable experience in ISSB water tank construction which will be applied to rainwater harvesting tanks once funds allow. It has also added to the resilience of the KCWCG tree nursery as it allows the storage of water during the dry season to enable regular watering of the tree seedlings.



2. Further Training for KCWCG Building team in Interlocking Stabilized Soil Bricks (ISSB) building techniques from Haileybury Youth Trust Uganda. The training of the KCWCG teams enabled the construction of the water tanks detailed above as well as the setting up of the team to construct the KCWCG office building described below.

3. The construction, as a pilot project, of a new building made out of ISSB to act as the KCWCG office and Community Centre in Kipsaina village.

This will act as a prototype for further community buildings including plans for a primary health centre. This building consolidates KCWCG’s activities on the tree-nursery site, replacing a smaller office that had been built ten years previously away from the tree-planting operation in the main section of the village. This building, as well as being a prototype for further community construction, will act as a centre-piece for future KCWCG activities and enhance its ability to hold large functions within the tree nursery space.



4. Continued support of the community car (Toyota Fielder), which KEEP purchased in 2020, has enabled it to be used for training, hospital visits, and tree nursery support work, including collection of seeds from women’s cooperatives and smaller-scale tree seedling transport.

5. *Rotary Digital Bridges*

Rotary Digital Bridges (RDB) evolved from an idea of SSF that KEEP could recruit new schools to become fundraising hubs. This has led to a positive development in the KEEP-KCWCG partnership, aligning with their joint aims of promoting educational opportunities. Initial approaches were successfully made to two schools in the town of Barnard Castle in the North of England where the KEEP charity is based. As a

result, two RDBs have been set up, the first between Barnard Castle School (where SSF teaches) and Kipsaina High School, the second between Teesdale School and St Christopher's High School for Girls near Kipsaina.

A Zoom event was organised to link Barnard Castle School with St Christopher's High School. Microsoft Office "Sway" software was also installed on the computers at St Christopher's and Kipsaina High School with a view to co-editing an interactive newsletter in the future. Similarly, relations and linkages between students at Teesdale and St Christopher's have been developing in parallel and the schools are looking to expand activities in the future.

## **B. Environmental Impact through Tree Planting**

1. KEEP provided support and advocacy to KCWCG in delivering on a 200,000-tree planting target for Kitale Forest Block 3 as part of the Kenya Forest Service's "Adopt a Forest" project; this included a further series of high-level stakeholder Zoom meetings to ensure the vital support of Kenya Forest Service (KFS).

### *2. The Ecosia Deal*

In September 2021, KEEP negotiated a €59,431 tree planting contract with Eco-search engine Ecosia, whose profits are channelled into tree-planting projects internationally. The initial approach to Ecosia was made by SSF in May 2021 and the final agreement was signed in Sept 2021.

Building on this achievement, KEEP supported KCWCG during 2022 in the following activities:

- Completion of an environmental and community impact assessment
- Completion of land clearance of existing eucalyptus and other exotic secondary growth focusing initially on the area around the watercourse
- New planting to maximise biodiversity, to include the creation of a biodiverse wetland
- Planting of 150,000 indigenous trees of suitable diversity produced by Kipsaina Tree Nursery
- Sustaining Kipsaina Tree Nursery to maximum production of 1 million seeds for planting in 2023

## **Future Plans**

1. KEEP continues to work with Barnard Castle School and KCWCG to help turn Kipsaina Primary School into a flagship eco-school and sustainable agriculture training facility. This school improvement work is extending to plans for rainwater harvesting tanks in other schools local to Kipsaina (Kipsaina High School being the first beneficiary of this scheme) and in Nandi County. We hope to instigate ISSB building of rainwater harvesting in schools and classroom blocks during 2023/24 (in addition to the two tanks built this year at the KCWCG tree nursery).
2. The KCWCG tree nursery remains the single biggest potential economic driver for all the other planned activities. The intention is to extend the contract with Ecosia – hopefully enabling KCWCG to sign a 20-year agreement and thereby plan sustainable growth year on year.
3. KEEP is exploring ways in which it can help KCWCG tap into the Carbon Credit market, in particular collaborating with Nature 4 Justice and seeking to massively expand KCWCG activities to plant along riparian corridors in all twelve counties of Western Kenya.

4. KEEP is also looking to develop further international partnerships with support and advice from Thinking Philanthropy. As well as Nature 4 Justice and another large and influential NGO in the region with whom discussions have been initiated, a key partner might be Brackenhurst (based in Limuru, Kenya) with whom KEEP could potentially collaborate to obtain a Terraformation off grid tree seed bank project (see below) enabling KCWCG to manage the supply of a broad range of indigenous tree seeds for both its own use and for sale to third parties.
5. KEEP's collaborative activities in Kenya are limited by the Kenyan Government's restriction on "for profit" activities by Community Based Organisations (CBO). As KEEP intends to support enterprises that will generate profit – through activities such as tree seed sales and ISSB building - SSF, Felicity Jones (TP) and Maurice Wanjala (KCWCG) are taking active steps to create a new Kenyan Social Enterprise. Governance of this entity would be arms-length from KEEP. Maurice Wanjala and his daughter Sharon Neron Wanjala would become directors of this social enterprise, as would Paul Easton of Barnard Castle School. The constitution of the new social enterprise would stipulate that all profits generated will be channelled into initiatives consistent with the charitable objects of KEEP in Kenya.
6. *Tree-Nursery Sustainability Research*  
The following areas of research initiated in 2021 have been rolled over into 2023/24. In this KEEP continues to be aided by Felicity Jones of Thinking Philanthropy. The purpose of this research is to increase the environmental and economic sustainability of KWCWG's tree nursery operations. Areas of research include:
  - i) Replacement of plastics in the tree nursery - sustainable alternatives to the poly-tubes currently used for seedling production, use of which is now tightly regulated by the Kenyan Government. See below for future plans.
  - ii) Funding and design of "tree seed banks", with a view to construction of such a facility at the Kipsaina Tree Nursery and, if successful, across new tree nursery sites at wetlands in the 12 counties of Western Kenya. A bid to Terraformation (see [Seed Bank terraformation.com](https://terraformation.com)) for a self-contained shipping container-based seed bank unit was not successful, but there are plans to jointly bid for one with Brackenhurst in 2023/24. Viable seed storage is a major challenge for any tree planting operation. Establishing such a facility would enable the supply of seeds to all KCWCG operations, as well as the option of selling surplus seeds to other growers, potentially creating a large additional income stream.
  - iii) Research into potential replacement of the hundreds of tonnes of "forest soil" required for the successful germination of indigenous tree seed (forest soil having the necessary fungal hyphae growth required for successful seed germination and seedling growth). Purchase and transport of this soil is a considerable expense to the KCWCG nursery operation as well as being environmentally degrading to the forests it is gathered from. If successful, this could become a breakthrough process, transforming tree nursery operations across East Africa.

## **Financial Review and Reserves Policy**

In KEEP's fifth year of operation, the policy of the trustees remains to maintain a positive bank balance at all times without recourse to borrowing or usage of overdraft facilities. As a small charity the trustees seek to initiate projects only once the full estimated amount, with at least a 10% contingency buffer, has been raised and is available in the charity's CIO bank account for deployment.

Funding for projects is provided to local partners in staged payments, rather than in one go, and is conditional on them furnishing KEEP with a comprehensive breakdown of spend (including receipts for materials and services purchased) at regular intervals.

## Risk Management

The trustees have attended a Charity Commission course on managing risks and maintain a risk register which is reviewed annually. In addition, the charity has a Safeguarding Policy in place which it requires all partners and contractors to sign up and adhere to. The policy was written in consultation with SAFE (Safer Activities for Everyone), a not-for-profit community interest company established in 1987 which is dedicated to raising child and adult safeguarding standards both in the UK and overseas.

KEEP has a data protection policy in line with GDPR requirements, and a Privacy Policy available on request.

The trustees declare that they have approved the trustees' report above.

Signed on behalf of the charity's trustees



.....  
Sam Forsyth  
Trustee

30<sup>th</sup> September 2023



.....  
Rubel Quader  
Trustee

30<sup>th</sup> September 2023

**KEEP**

**RECEIPTS AND PAYMENTS ACCOUNTS**  
**YEAR ENDED 30 NOVEMBER 2022**

Period from 01 December 2021 to 30 November 2022

	2022 Unrestricted funds £	2022 Restricted funds (ISSB) £	2022 Total Funds £	2021 Total Funds £
<b>Receipts (Donations)</b>				
Barnard Castle School			0	8769
Barnard Castle Rotary Club		3,235	3,235	1050
Private Donations	111		111	641
<b>Total Receipts</b>	<b>111</b>	<b>3,235</b>	<b>3,346</b>	<b>10,460</b>
<b>Payments</b>				
Charitable activities - general	1,000		1,000	8,706
Charitable activities – ISSB		3,181	3,181	
Charitable activities – car purchase			0	966
Bank charges for international money transfers		84	84	174
Administration	389		389	231
<b>Total payments</b>	<b>1,389</b>	<b>3,266</b>	<b>4,654</b>	<b>10,077</b>
<b>Net receipts / (payments)</b>	<b>-1,277</b>	<b>-31</b>	<b>-1,308</b>	<b>383</b>
Cash funds b/f	2,121	0	2,121	1,738
<b>Cash funds c/f</b>	<b>843</b>	<b>-31</b>	<b>813</b>	<b>2,121</b>

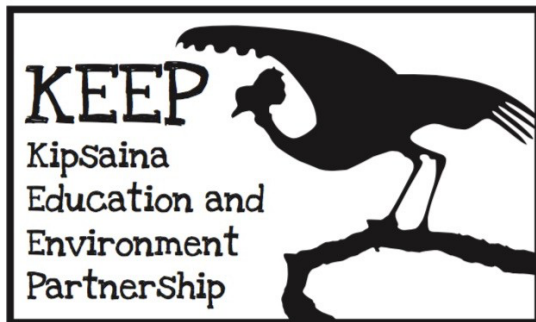
**KIPSAINA EDUCATION AND ENVIRONMENT PARTNERSHIP (KEEP)**

England & Wales - Charity number 1175806

---

# Accounts

---



**Kipsaina Education and Environment Partnership  
(KEEP)**

**Trustees' Annual Report and Accounts**

**For the year ending 30 November 2021**

Charity number: 1175806

[www.keepkenya.org](http://www.keepkenya.org)

**Reference and administrative information for the period ended 30 November 2021**

<b>Charity Name</b>	Kipsaina Education and Environment Partnership (KEEP)
<b>Legal Status</b>	Charitable Incorporated Organisation
<b>Governing Document</b>	Constitution
<b>Registered Charity number</b>	1175806
<b>Date registered with Charity Commission</b>	20 November 2017
<b>Principal address</b>	Brooklea Cotherstone Barnard Castle County Durham DL12 9PQ
<b>Trustees</b>	Sam Forsyth Rubel Quader Mary Charrington
<b>Bank</b>	HSBC 1 Prospect Place Darlington County Durham DL3 7LQ

## **KEEP TRUSTEES' ANNUAL REPORT**

Kipsaina Education and Environment Partnership (henceforth “KEEP”) presents its fourth Trustees’ Annual Report. The charity was registered with the Charity Commission on 20 November 2017. It operates as a Charitable Incorporated Organisation (CIO), which provides protection for the charity, trustees and volunteers and helps the charity be sustainable.

This report sets out a summary of the activities and achievements of the charity in its fourth year of operation, to the period ending 30 November 2021.

As a small charity, the year’s financial performance is presented on a Receipts and Payments basis which appears at the end of this document. A summary of the fourth year’s finances is presented in the financial review section.

To the best of the trustees’ knowledge the prepared financial statements comply with current statutory requirements, the charity's Constitution and the Statement of Recommended Practice - Accounting and Reporting by Charities (SORP).

### **Objects**

The objects of KEEP as set out in its Constitution are twofold:

- 1. For the public benefit, the conservation, protection and improvement of wetlands in western Kenya, in particular, but not exclusively, the Saiwa Swamp ecosystem and surrounding area.*
- 2. The advancement of education for children living in the Saiwa Swamp ecosystem and surrounding area, in particular, but not exclusively, at the Kipsaina Primary School, by improving their physical learning environment and by promoting environmental awareness.*

KEEP is the result of a long-standing friendship, now stretching to over 25 years, between UK filmmaker turned biology teacher Sam Forsyth, and Kenyan environmentalist, educator and community activist Maurice Wanjala. KEEP works closely, though not exclusively, with Maurice’s locally based NGO Kipsaina Crane and Wetland Conservation Group (KCWCG) - registered as a Community Based Organisation (CBO) in Kenya - to provide enhanced educational opportunities for children in the Kipsaina area, and to promote the conservation and improvement of the local wetlands. These wetlands provide protected nesting sites for up to six pairs of Crowned Cranes and are a habitat for the Sitatunga, a rare aquatic antelope, as well as a range of other wetland species.

### **Governance**

KEEP is administered and managed by a board of three trustees who manage the charity on a voluntary basis. As set out in the charity’s Constitution, the three founding trustees were initially appointed for 4 years (Sam Forsyth – referred to as SSF in this document), 3 years (Rubel Quader) and 2 years (Mary Charrington).

Subsequently all trustees will be re-elected or appointed anew for a 3-year term by a resolution

passed at a properly convened meeting of the charity trustees, with due regard given to the skill, knowledge and experience required for the effective administration of the KEEP CIO. The charity must have a minimum of three trustees at all times; if the number falls below this minimum then the remaining trustee(s) may act only to call a meeting of the charity trustees in order to appoint a new trustee(s). Mary Charrington, Rubel Quader and SSF were re-elected as KEEP trustees for 3 years each in November 2019, November 2020 and November 2021 respectively after their initial tenures came to an end.

In the fourth year of its operation, the trustees of KEEP held 2 trustee meetings. Decisions are made by the approval of a majority of the trustees. The trustees have ensured that all charitable activities and approval of its future operational plans have been undertaken with regard to the Charity Commission's guidance on public benefit and in accordance with KEEP's Constitution and Objects.

Trustees are required to familiarise themselves with the charity's regulatory requirements and to that end have attended the Charity Commission's seminars for charities working in high-risk areas, as well as undertaking a course on data protection. In addition, they follow advice from specialist organisations on safeguarding

## **Fundraising and Donations**

In its fourth year KEEP managed to raise **£10,460** in donations, including Gift Aid.

£8,769 was donated by Barnard Castle School (BCS or "Barney"), an independent sector co-ed school of some 660 pupils ages 4 to 18, reflecting another year of outstanding charitable activity on the part of the school's pupils and staff in 2021. The bulk of the funds raised by BCS this year - some £7,124 - was in relation to a "Masks for Kenya" campaign initiated by KEEP (details below).

A further £1,050 was donated by Barnard Castle Rotary Club and other Rotary organisations across the Northeast of England.

The remaining £641 of funds was raised was from private donations, donated either directly to the charity or online via our Virgin Money Giving page. As of November 2021 Virgin Money Giving is no longer in operation and we will be moving our online fundraising platform to the Charities Aid Foundation (CAF).

As was the case last year, this excellent fundraising result was achieved despite the impact of the global Covid situation which inevitably impacted our ability to fundraise (primarily in the UK) and also our ability to initiate long term projects on the ground in Kipsaina. Fundraising highlights from the year include the following:

1. As previously reported, due to the global Covid situation the summer trip to Kipsaina by Barnard Castle School pupils planned for July 2020 was cancelled. However, BCS used the period of Covid lockdown to involve the whole school in the KEEP initiative "Masks for Kenya". Masks for Kenya was a response to a request received by KEEP, via our partner KCWCG, from the Principal of St Anthony's School for the Deaf in Bungoma County Western Kenya for PPE (personal protective equipment) aid in order to enable his school to reopen in the midst of the ongoing Covid pandemic. Headmaster Tony Jackson of BCS agreed to support our campaign as a focus for Barney pupils through the UK lockdown, This was a remarkable joint

and individual fundraising effort, raising a total of £7,124. A large majority of BCS pupils took part in one or more sponsored physical activities ranging from climbing the height of Mount Kenya on the school stairs to walking marathons and cycling the distance to Kenya on exercise bikes. There were also other events such as ice-bucket challenges and bingo nights.

2. The Kipsaina WASH+ project has continued to develop and evolve as the Covid situation changed. Barnard Castle Rotary have remained very active in their support of this aspect of KEEP's work, in particular, pledging the purchase of two Interlocking Stabilised Soil Block (ISSB) presses as well as money for initial training in their use.
3. As noted in last year's report, KEEP has evolved from an organisation based purely around direct fundraising from the public, to one that aims over the medium to long term to raise funds and support from larger NGOs and grant-giving bodies for larger projects. In parallel, KEEP is increasingly acting as an advocate by introducing the Kipsaina community to such bodies in order to facilitate direct collaborations. KEEP have been aided in this function through the pro-bono guidance of Felicity Jones of Thinking Philanthropy (TP). Felicity offered her help having been introduced to SSF and the work of KEEP through Richard Joy of Innovate UK. The largest of these direct collaborations, as facilitated by KEEP, over the period of the fourth annual report has been a tree-planting contract between our partner KCWCG and the Dutch/German social business Ecosia ([www.ecosia.org](http://www.ecosia.org)), an "eco" search engine which devotes all its profits to tree planting across the globe.
4. We facilitated a social loan of £8,000 on behalf of KCWCG, enabling KCWCG to purchase a 4 x 4 Bedford Truck for the bulk transport of soil, sand and tree seedlings, which has in part enabled them to deliver the large-scale Ecosia contract.
5. We instigated and operated a new national initiative Rotary Digital Bridges (RDB), a digital link between schools in the UK and schools in Kenya.

Going forward, KEEP continues to raise funds from private donations and by undertaking fundraising events in addition to looking to apply for formal grants from private and public grant-giving bodies.

## Achievements and Performance

It was agreed by the trustees in 2019 that, as a small charity, we should focus a large part of our efforts on advocating for and brokering partnerships with larger charities and NGOs for the benefit of Kipsaina and its surrounding communities and environment, rather than solely directly fundraising ourselves. Much of the efforts the last two years have been to further these aims. In particular, during 2021, the focus has been on successfully building partnerships with a number of organisations including

- *The Rotary Club* – collaborating on both the WASH+ ISSB work and Rotary Digital Bridges
- *Thinking Philanthropy (TP)* – providing guidance on all partnership work on an ongoing basis; this initially will be pro-bono, but will evolve to the point TP covers its expenses through the money it brings into the partnership
- *Haileybury Youth Trust Uganda (HYT Uganda)* – offering practical and technical support on ISSB)
- *Ecosia* – collaborating on and funding tree planning initiatives

This year's activities continued to be impacted by COVID in the UK and in Kenya, both countries

being subject to various lockdowns and travel bans. Notwithstanding the impact of COVID, in its fourth year of operation KEEP has carried out the following activities which are all directly aligned with the charity's social, environmental and educational objects:

### **Social and Educational Impact**

1. *"Masks for Kenya"* delivering Covid PPE needs for schools in Western Kenya: over 15,000 washable face masks delivered to 13 schools and other community organisations and construction of 46 foot-pedal operated hand-washing stations, enabling those local primary and secondary schools to reopen or remain open in the midst of the pandemic.
2. Development of *Kipsaina WASH+* to include the sustainable building technology of *ISSB* with the support of HYT Uganda and with a particular focus on installing rainwater harvesting tanks in schools.
3. Initiation of *Rotary Digital Bridges*: a school twinning scheme based on digital communications

### **Environmental Impact through Tree Planting**

1. Brokering a €59k,000 pilot contract with *Ecosia* for KCWCG to *plant 200,000 trees*.
2. Support for KCWCG in its bid to deliver on a 200,000 tree planting target for Kitale Forest Block 3 as part of the Kenya Forest Service's *"Adopt a Forest"* project; this included a series of high-level stakeholder Zoom meetings to ensure the vital support of Kenya Forest Service.
3. Facilitated the delivery of 3,000 trees planted by KCWCG for the UK charity *Sustainable Global Gardens (SGG)* with ongoing funding to the participating farmers to ensure survival of the trees up to at least five years. These were all planted along the riparian marginal land around the Saiwa Swamp ecosystem.
4. Continued support of *KCWCG* as it scaled up tree seedling production towards a goal of 1,000,000 seedlings for 2022.
5. Brokered a £8000 *"social loan"* to cover the cost of purchase of a 1986 4x4 Bedford Truck to be used in the bulk transport of tree-planting materials.
6. With the help of Felicity Jones from Thinking Philanthropy, SSF has initiated research into the following three areas that could lead to increased financial and environmental sustainability for our tree nursery work: (i) plastic growing tube replacement in the tree nursery, (ii) tree seed banks and (iii) *"forest-soil"* replacement from the growing medium used in the tree nursery.

## Detail of 2020 Activities: Social and Educational

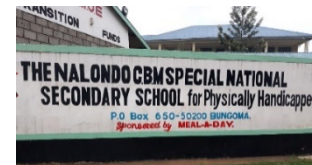
### 1. MASKS FOR KENYA



This project came about after Mr Khakina, the headteacher of St Anthony School for the Deaf in Bungoma County, Western Kenya, requested help from Maurice Wanjala of KCWCG with the provision of masks and handwashing stations to enable his school to continue to operate safely through the Covid epidemic. The Kenyan Government had set minimum PPE requirements for schools to operate, but had not offered any financial assistance to enable this to be implemented. In addition to masks, handwashing facilities were needed. The initial target was to help two schools – Nalondo School for the Physically Handicapped being the second. We estimated this would cost around £1,000. However, as reported above, Barnard Castle School responded magnificently to this appeal, raising £7,124. This allowed us to achieve the following:



- 15,790 masks distributed to 13 schools (including 3 special needs schools), 3 health centres and 3 further community organisations
- 46 hand washing stations distributed to 12 schools, a health centre and Kipsaina church
- 42 Soap dispensers and 12 x 5 litre refill bottles of soap



The masks were produced by 3 local Kenyan tailoring cooperatives who produced the masks for the disabled schools at a rate of 3 for the price of 2.



The handwashing stations were designed by Maurice Wanjala and constructed locally, initially in Kitale (24 stations) and later in Kipsiana (22 stations).



### 2. KIPSAINA WASH+ AND ISSB BUILDING

Over 2021 it became apparent that the previous plans for Kipsaina WASH+ were not sustainable – either financially (being based on the construction of large concrete tanks requiring external building skills) or environmentally (again because of the large-scale use of concrete). Through discussions between SSF and the charity Haileybury Youth Trust (Uganda) (<https://hytuganda.com/>) it became clear that moving towards Interlocking Stabilised Soil Block (ISSB) technology based on locally sourced sub-soil and skilling up local builders would provide a far more sustainable solution. We also realised that, were we to set up such a team, other ISSB structures could be constructed which would have the added benefit of reducing deforestation (by avoiding the firing of traditional bricks) and creating much needed jobs. The following is the flyer produced to promote the ISSB version of Kipsaina WASH+ for Rotary events.



*Rainwater Harvesting:  
Credit: www.hytuganda.com*



*ISSB Brick press  
Credit: www.hytuganda.com*



*ISSB Rainwater Tank construction  
Credit: www.hytuganda.com*



*20,000 litre ISSB rainwater tank  
Credit: www.hytuganda.com*



*Traditional brick firing using tree trunks  
Credit:KEEP*



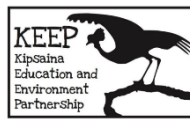
*Current Kipsaina water supply contaminated during wet season  
Credit:KEEP*

# Rotary Barnard Castle



## Kipsaina WASH+

### Water, Sanitation and Hygiene plus Environmental Impact



BARNARD CASTLE SCHOOL



*KEEP Handwashing Stations  
St Anthony School for the Deaf  
Credit: KCWCG*



*Foot-pedal Handwashing Station  
manufactured locally to our  
design Credit: KCWCG*

We aim to work with KCWCG community group to provide schools across Western Kenya with self-sufficiency in water supplies, increased hand-washing capacity; so reducing water poverty and water-borne diseases.

A key component will be local skills development, youth training and job creation through social enterprise.

Utilising environmentally sustainable Interlocking Stabilised Soil Block (ISSB) technology. The production of durable blocks from compressed sub-soil and a small quantity of cement, ISSB technology is transforming the impact of construction on the African environment, removing the need for traditional bricks that require large numbers of trees to be felled to fire them.

Manufacturing dual foot-pedal operated hand-washing stations, using locally available materials and technologies.

Planting Agroforestry “food groves” of fruit and nut trees within school grounds, adding to biodiversity and food security. Paying an incentive to school children to “adopt” and water the trees for five years until they are established.

With our delivery partners Kipsaina Crane and Wetland Conservation Group (KCWCG) and Kipsaina Education and Environment Partnership (KEEP), funding partner, Barnard Castle School and training partners, Haileybury Youth Trust (HYT), IDEALLY, BC Rotary will sponsor an initial set of 3 teams of 3 builders and 1 team of 3 welders (each 3-person team to include a school leaver) to be trained in the construction of ISSB water-tanks and handwashing stations, with 8 rainwater tanks built in 8 schools in water poverty. **However, this is a project that can be scaled as we raise money.**



*KCWCG Director and Project Manager, Maurice Wanjala delivering KEEP Handwashing stations  
Credit: KCWCG*



*KCWCG Director and Project Manager Maurice Wanjala tree planting with school children  
Credit: KCWCG*



*KCWCG Tree Nursery where fruit and nut tree seedlings will be grown  
Credit: KCWCG*

Individual Costs

Costs will be allocated piecemeal as we receive sponsorship (unless we can find a corporate sponsor to back our ideal scenario below!).

• Sponsoring 1 handwashing station manufacture:	£20
• Sponsoring antiseptic liquid soap for 1 handwashing station for 1 year:	£10
• Sponsoring purchase of 1 water purification filter system:	TBD
• Sponsoring the training of 1 builder:	£150
• Sponsoring the purchase of a welding kit:	£250
• Sponsoring the training of 1 welder:	£100
• Sponsoring the purchase of 1 ISSB brick press:	£450
• Sponsoring the construction of a 20,000 litre Rainwater Tank and plumbing:	£1,850
• Sponsoring 20 fruit and nut trees + vegetable intercropping in school grounds + 5 years of care:	£60

IDEAL SCENARIO: Phase 1: Pilot and Training Period

3 x Curved brick press @ £450	£1,345
3 x Straight brick press @ £450	£1,345
8 x Water tanks @ £1850	£14,800
9 x Trainee Builders Living costs at @ £10 a day for 4 weeks	£2,520
1 x Master welder @	£200
3 x Trainee welder (local) costs @ £8 a day for two weeks	£240
8 x Agroforestry trees and set-up costs @ £60	£480
4 x 8 Handwashing stations @ £20	£640
4 x 8 Soap supplies @ £10	£320
Kenyan (KCWCG) Project Management	£2,000
<b>Sub total</b>	<b>£23,890</b>
10% Contingency	£2,400
<b>Final Total</b>	<b>£26,290</b>

### 3. ROTARY DIGITAL BRIDGES

Rotary Digital Bridges (RDB) came from an idea of SSF that KEEP could recruit new schools to become fundraising hubs. In the event, the initial idea has evolved into an interesting development in the KEEP-KCWCG partnership which aligns with our joint aims of promoting educational opportunities. In essence, two RDBs have been set up, the first between Barnard Castle School and Kipsaina High School, the second between Teesdale Comprehensive and St Christopher’s High School for Girls near Kipsaina.

#### *RDB Overview*

A Digital Bridge would be a self-governing partnership between two schools and their local Rotary Clubs. Each Digital Bridge would be free to develop in a way acceptable to both parties. This partnership would benefit from access to wider support from the Digital Bridge Network, including Rotary Clubs locally and nationally and a partnership of NGOs and smaller community-based organisations (CBOs) in each host East African country. Such a decentralised network would create a very wide fundraising base - and could respond to local needs.

A key challenge will be creating a reliable communication infrastructure with the Kenyan schools and communities. We are currently in discussions to establish an IT partner NGO working in East Africa. Any suggestions for organisations to approach would be very welcome.

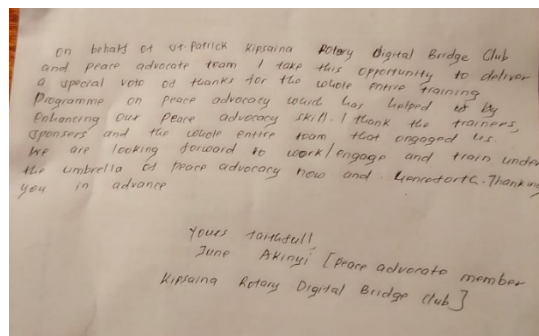
At its most simple, the idea is to use digital communications to build sustainable personal relationships between the school communities. This would include relationships between teachers and school pupils - from email and text messaging (within strict safeguarding guidelines) through to joint Interact club meetings and learning sessions. This could include joint arts projects or say joint vegetable growing schemes – building on our links to The Papillon Project in the UK, Manor House and KEEP in Kenya, and Stichting Learning 4 Life in Uganda.



With funding support from Barnard Castle Rotary Club and wider Rotary support from the region we have facilitated the purchase of computers, digital routers and big screens for Kipsaina High School and St Christopher’s High School for Girls. This has allowed us to establish Zoom communications between our schools. A digital Zoom link now exists between BCS and Kipsaina High School and between Teesdale School and St Christopher’s.

These were screen shots from the joint Peace Advocacy Training Zoom sessions between Barney School and Kipsaina High School in October 2021. These sessions were led by Keith and Jean Best from the UN award-winning Peace Advocates organisation and focused on conflict resolution skills. This led to the formation of the “Youth Peace Collaborators”. The exciting next stage for the Youth Peace Collaborators will be to develop a collaborative online magazine.

*This was the vote of thanks written by June Akinyi from Kipsaina High School after the Peace Advocacy training sessions.*



The following was a report written up for the National Rotary magazine:

*Barnard Castle's Satellite e-club have recently kickstarted their Rotary Digital Bridges (RDB) initiative – an education and sustainable development project linking two of our Interact Clubs with two schools in Kitale, Kenya. Barnard Castle School got the chance to connect online with St Patrick's Kipsaina High School and Teesdale School and Sixth Form connected with St Christopher's Girls Secondary School.*

*The aim of the initiative is that, as the schools and pupils build their mutual understanding and trust, they will be encouraged to investigate shared environmental concerns and potential solutions.*

*The first part of this collaboration is being initiated by Jean and Keith Best of the Peace Advocate Project who are delivering joint conflict resolution training.*

*Speaking of the project, Dr Simon Henderson of Teesdale School said:*

*"This term has seen the return of the Rotary Interact group who are working on a project with a school in Kenya ... and promises to lead to an exciting sustainability project in the future.*

*Our students really enjoyed the Peace Advocacy Project and following the materials and engaging in the activities alongside the students from Kenya was particularly rewarding.*

*Sharing ideas and discussing issues that were similarly important to both sets of students even though they are separated by such a large geographical distance really captured the essence of connecting classrooms."*

Link to RDB Press Release:

[Rotary builds digital bridges across the world - Rotary in Great Britain and Ireland \(rotarygbi.org\)](https://www.rotary.org/uk/en/rotary-builds-digital-bridges-across-the-world)

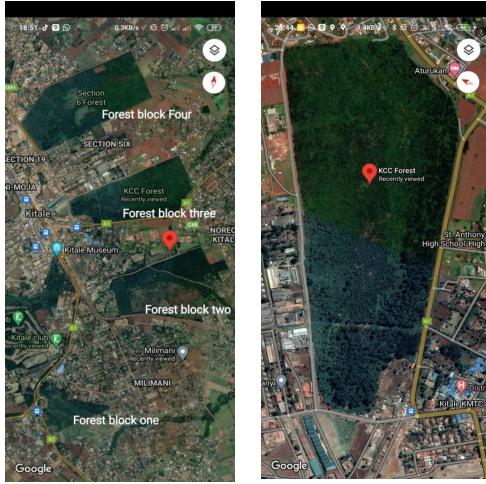
## **Detail of 2020 Activities: Environmental impact through Tree Planting**

### **1. BROKERING ECOSIA DEAL**

KEEP negotiated a €59,431 tree planting contract with Eco-search engine Ecosia, whose profits are channeled into tree-planting projects internationally. The initial approach to Ecosia was made by SSF in May 2021 and the final agreement was signed in Sept 2021. The negotiation involved a detailed initial proposal, business plan writing and various drafts of the final project proposal as well as a number of Zoom conference calls. In this we were aided by Felicity Jones from Thinking Philanthropy ([Thinking Philanthropy – Home | Facebook](#)). This is a massive scaling up of our tree planting partnership with KCWCG – with the initial target of 200,000 trees planted by the end of 2021 in Kitale Forest Block 3 (see "Adopt a Forest" below). If all goes well, this should lead on to much larger contracts involving millions of trees with the potential for a 20 year commitment from Ecosia. Activities include:

- Conduct environmental and community impact assessment
- Begin the land clearance of existing eucalyptus and other exotic secondary growth focusing initially on area around watercourse
- Planning of new planting to maximise biodiversity, to include the creation of a biodiverse wetland
- Planting 200,000 indigenous trees of a suitable diversity produced by Kipsaina Tree Nursery.
- Expansion of Kipsaina Tree Nursery to maximum production of 1 million for 2022 planting

## 2. SUPPORTING KCWCG IN “ADOPT A FOREST” BID



Location for tree planting with Ecosia, Google Maps showing Forest Block 3 and its relation to the other urban forest blocks in Kitale – all of which we aim to help KCWCG adopt in time.

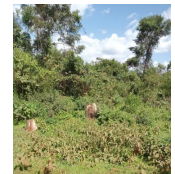
Currently these blocks are degraded eucalyptus plantation with invasive species secondary growth. Forest Block 3 has little primary growth left and limited biodiversity, livelihood or amenity value. There is no wetland buffer zone around current water course.

SSF attended two Zoom meetings with Local and regional chiefs of Kenya Forset Service at

the request of Mauric Wanjala in support of KCWCG’s successful bid to “adopt” the management of Forset Block 3.



The future aims for this project include sustainable community development, including commercial activities such as beekeeping, intercropping of leguminous plants, provision of social housing in the surrounding community and a primary health clinic.



## 3. SUPPORTING KCWCG IN ITS DELIVERY OF 3,000 TREES PLANTED FOR SUSTAINABLE GLOBAL GARDENS (SGG) ALONG THE SAIWA SWAMP RIPARIAN MARGINS



KEEP has continued working with third party organisations to deliver revenue-generating projects for the local community at Kipsaina in order to make wetlands conservation activities sustainable. This planting initiative furthers the core aims of both KEEP and KCWCG in focusing on the deforested buffer zone around the threatened Saiwa Swamp ecosystem.

SSF initiated contact with Paul Keeley of SGG through mutual involvement in the Sustainability and Environment Rotary Action Group (ESRAG) as reported in the 2020 KEEP Annual Report.



This has resulted in an ongoing relationship between KCWCG and SGG (see <https://www.sustainableglobalgardens.org.uk>).

The initial planting contract was for 3,000 trees, and this was extended to 15,000 trees over 2021 – 2022. The total number of trees planted to date has been 7,000. The benefit of this planting is that there is provision for a staggered SGG payment to the farmers/landowners to be paid over five years if the planted trees survive and prosper. KEEP continues to assist KCWCG in developing their relationship with SGG.

#### **4. SCALING UP OF KCWCG TREE NURSERY TO 1 MILLION SEEDLINGS FOR PLANTING IN 2022**

Over the 2021 reporting period KEEP supported KCWCG in scaling up its tree seedling production capacity towards a target of 1 million seedlings in 2022. Tree planting is a core pillar of our shared aims, and the income generated from the sale of these trees is projected to be a major contributor to future projects. KCWCG currently employs 15 full-time nursery staff, up from the 7 full time staff employed at the last KEEP Annual Report.



A key component of this support has been the negotiation of the “social loan” allowing the purchase of the 4x4 Bedford Truck (see below). KEEP is also continually looking for large-scale tree-buying clients.

#### **5. BROKERING £8000 “SOCIAL LOAN” FOR THE PURCHASE OF A 1986 BEDFORD TRUCK**



KEEP acted as intermediary to facilitate a social loan from a private individual in the UK to KCWCG, enabling the purchase of the pictured truck. The loan will only be repaid if and when KCWCG’s income exceeds £80,000 p.a. and in on affordable terms. The truck has been used for the bulk transport of soil, sand and tree seedlings vital for the delivery of the Ecosia contract, as well as mass transport of workers and materials for ISSB building works.

#### **6. TREE-NURSERY SUSTAINABILITY RESEARCH**

SSF has initiated research into the following three areas over the course of 2021. In this he has been aided by Felicity Jones of Thinking Philanthropy. The purpose of this research is to increase the environmental and economic sustainability of KWCWG’s tree nursery operations.

- i) Plastic replacement in tree nursery (sustainable alternatives to the poly-tubes currently used for seedling production – use of which is now tightly regulated by the Kenyan Government). SSF has had initial discussions with a Material Science graduate and is monitoring developments in this area with Ecosia partners.
- ii) Funding and design of “tree seed banks”, with a view to construction of such a facility at the Kipsaina Tree Nursery, and if successful across new tree nursery sites at wetlands in the 12 counties of Western Kenya. This has led to a bid to Terraformation ([Seed Bank \(terraformation.com\)](https://terraformation.com)) for a self-contained shipping container-based seed bank unit. Viable seed storage is a major challenge to any tree planting operation, and if we were able to establish such a facility then not only could we supply seeds to all KCWCG operations, but also sell surplus seeds to other growers creating a large additional income stream.
- iii) Research into potential replacement of the hundreds of tonnes of “forest soil” required for the successful germination of indigenous tree seed (forest soil having the necessary fungal hyphae growth required for successful seed germination and seedling growth). Purchase and transport of this soil is a considerable expense to the KCWCG nursery operation as well as being environmentally degrading to the forests it is gathered from. SSF is involved in ongoing discussions with Martyn Dickson of Edinburgh Botanical Gardens and is seeking guidance on compost-based solutions. If successful, this could become a breakthrough process, transforming tree nursery operations across East Africa.

## Future Plans

1. KEEP continues to work with BCS and KCWCG to help turn Kipsaina Primary School into a flagship eco-school and sustainable agriculture training facility. This school improvement work is extending to plans for rainwater harvesting tanks in other schools local to Kipsaina (Kipsaina High School being the first beneficiary of this scheme) and in Nandi County. Whilst our plans had to be postponed as we diverted funds and attention to Covid related issues and the Ecosia planting project, we hope to instigate ISSB building of rainwater harvesting and classroom blocks during 2022/23. We have currently developed an active partnership with Haileybury Youth Trust (<https://hytuganda.com/>) to provide Interlocking Stabilised Soil Brick Technology (ISSB) training to local people in Kipsaina.
2. KEEP has plans to support the development of a KCWCG website to be built with the help of Thinking Philanthropy and maintained and updated by Sharon Neron and Maurice Wanjala from KCWCG.
3. The KCWCG tree nursery remains the single biggest potential economic driver for all the other activities we are aiming to carry out. To this end we are looking to extend the contract with Ecosia – hopefully enabling KCWCG to sign a 20-year agreement and thereby plan sustainable growth year on year. We are also looking for ways in which we can help KCWCG tap into the Carbon Credit market, and both KEEP and Thinking Philanthropy are in discussions with Ecosia to see if we can collaboratively solve this tricky issue. If it can be done for KCWCG, then it can be replicated for Ecosia’s other planting partners and could make a huge difference to communities living around their multiple planting sites across the world.
4. KEEP is also looking to develop further international partnerships with support and advice from TP. A key partner might be Terraformation with whom we are hoping to develop a tree seed bank project enabling KCWCG to manage the supply of a broad range of indigenous tree seeds for both its own use and for sale to third parties.
5. One of the limitations of our joint activities in Kenya has been the Kenyan Government’s restriction on “for profit” activities by Community Based Organisations (CBO). As we are looking to support enterprise that will generate profit - such as tree seed sales and ISSB building - SSF, Felicity Jones (TP) and Maurice Wanjala (KCWCG) are taking active steps to create a new Kenyan Social Enterprise. Governance of this entity would be arms-length from KEEP. SSF and Maurice Wanjala would become directors of this social enterprise, the constitution of which would stipulate that all profits generated will be channeled to initiatives consistent with the funding aims of KEEP in Kenya.

## Financial Review and Reserves Policy

In KEEP’s fourth year of operation, the policy of the trustees remains to maintain a positive bank balance at all times without recourse to borrowing or usage of overdraft facilities. As a small charity the trustees seek to initiate projects only once the full estimated amount, with at least a 10% contingency buffer, has been raised and is available in the charity’s CIO bank account for deployment.

Funding for projects is provided to our local partners in staged payments, rather than in one go, and is conditional on them furnishing KEEP with a comprehensive breakdown of spend (including receipts for materials and services purchased) at regular intervals.

## Risk Management

The trustees have attended a Charity Commission course on managing risks and maintain a risk register which is reviewed annually. In addition, the charity has a Safeguarding Policy in place which it requires all partners and contractors to sign up and adhere to. The policy was written in consultation with SAFE (Safer Activities for Everyone), a not-for-profit community interest company established in 1987 which is dedicated to raising child and adult safeguarding standards both in the UK and overseas.

KEEP has a data protection policy in line with GDPR requirements, and a Privacy Policy available on request.

The trustees declare that they have approved the trustees' report above. Signed on behalf of the charity's trustees

Signed on behalf of the charity's trustees



.....  
Sam Forsyth  
Trustee

22<sup>nd</sup> September 2022



.....  
Rubel Quader  
Trustee

22<sup>nd</sup> September 2022

**KEEP**

**RECEIPTS AND PAYMENTS ACCOUNTS**

**YEAR ENDED 30 NOVEMBER 2021**

Period from 01 December 2020 to 30 November 2021

	2021 Unrestricted funds £	2021 Campaigns: Mask for Kenya £	2021 Total Funds £	2020 Total Funds £
<b>Receipts (Donations)</b>				
Barnard Castle School	1,645	7,124	8769	6,653
Barnard Castle Rotary Club	1,050		1050	
Private Donations	641		641	9,341
<b>Total Receipts</b>	<b>3,336</b>	<b>7,124</b>	<b>10,460</b>	<b>15,994</b>
<b>Payments</b>				
Charitable activities - general	1,684	7,022	8,706	4,311
Charitable activities – car purchase <sup>(1)</sup>	966		966	10,010
Bank charges for international money transfers	123	51	174	73
Administration	231		231	154
<b>Total payments</b>	<b>3,004</b>	<b>7,073</b>	<b>10,077</b>	<b>14,547</b>
<b>Net receipts / (payments)</b>	<b>332</b>	<b>51</b>	<b>383</b>	<b>1,447</b>
Cash funds b/f	1,738	0	1,738	291
<b>Cash funds c/f</b>	<b>2,070</b>	<b>51</b>	<b>2,121</b>	<b>1,738</b>

*(1) Final payment for purchase of car for KCWCG (as discussed in 2020 Annual Report) made in Dec 2020*

*Note: The charity had no endowment funds, nor asset / investments sales or purchases*

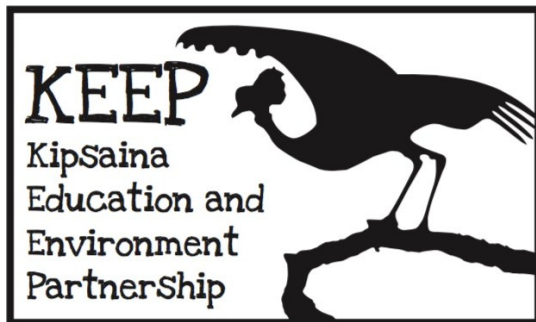
**KIPSAINA EDUCATION AND ENVIRONMENT PARTNERSHIP (KEEP)**

England & Wales - Charity number 1175806

---

# Accounts

---



**Kipsaina Education and Environment Partnership  
(KEEP)**

**Trustees' Annual Report and Accounts**

**For the year ending 30 November 2020**

Charity number: 1175806

[www.keepkenya.org](http://www.keepkenya.org)

**Reference and administrative information for the period ended 30 November 2020**

<b>Charity Name</b>	Kipsaina Education and Environment Partnership (KEEP)
<b>Legal Status</b>	Charitable Incorporated Organisation
<b>Governing Document</b>	Constitution
<b>Registered Charity number</b>	1175806
<b>Date registered with Charity Commission</b>	20 November 2017
<b>Principal address</b>	Brooklea Cotherstone Barnard Castle County Durham DL12 9PQ
<b>Trustees</b>	Sam Forsyth Rubel Quader Mary Charrington
<b>Bank</b>	HSBC 1 Prospect Place Darlington County Durham DL3 7LQ

## **KEEP TRUSTEES' ANNUAL REPORT**

Kipsaina Education and Environment Partnership (henceforth "KEEP") presents its third Trustees' Annual Report. The charity was registered with the Charity Commission on 20 November 2017. It operates as a Charitable Incorporated Organisation (CIO), which provides protection for the charity, trustees and volunteers and helps the charity be sustainable.

This report sets out a summary of the activities and achievements of the charity in its third year of operation, to the period ending 30 November 2020.

As a small charity, the year's financial performance is presented on a Receipts and Payments basis which appears at the end of this document. A summary of the third year's finances is presented in the financial review section.

To the best of the trustees' knowledge the prepared financial statements comply with current statutory requirements, the charity's Constitution and the Statement of Recommended Practice - Accounting and Reporting by Charities (SORP).

### **Objects**

The objects of KEEP as set out in its Constitution are twofold:

- 1. For the public benefit, the conservation, protection and improvement of wetlands in western Kenya, in particular, but not exclusively, the Saiwa Swamp ecosystem and surrounding area.*
- 2. The advancement of education for children living in the Saiwa Swamp ecosystem and surrounding area, in particular, but not exclusively, at the Kipsaina Primary School, by improving their physical learning environment and by promoting environmental awareness.*

KEEP is the result of a long-standing friendship, now stretching to over 25 years, between UK filmmaker turned biology teacher Sam Forsyth, and Kenyan environmentalist, educator and community activist Maurice Wanjala. KEEP works closely, though not exclusively, with Maurice's locally based NGO Kipsaina Crane and Wetland Conservation Group (KCWCG) - registered as a Community Based Organisation (CBO) in Kenya - to provide enhanced educational opportunities for children in the Kipsaina area, and to promote the conservation and improvement of the local wetlands. These wetlands provide protected nesting sites for up to six pairs of Crowned Cranes and are a habitat for the Sitatunga, a rare aquatic antelope, as well as a range of other wetland species.

### **Governance**

KEEP is administered and managed by a board of three trustees who manage the charity on a voluntary basis. As set out in the charity's Constitution, the three founding trustees were initially appointed for 4 years (Sam Forsyth), 3 years (Rubel Quader) and 2 years (Mary Charrington). Subsequently all trustees will be re-elected or appointed anew for a 3-year term by a resolution

passed at a properly convened meeting of the charity trustees, with due regard given to the skill, knowledge and experience required for the effective administration of the KEEP CIO. The charity must have a minimum of three trustees at all times; if the number falls below this minimum then the remaining trustee(s) may act only to call a meeting of the charity trustees in order to appoint a new trustee(s). Mary Charrington and Rubel Quader were re-elected as KEEP trustees for 3 years each in November 2019 and November 2020 respectively after their initial tenures came to an end.

In the third year of its operation, the trustees of KEEP held 4 trustee meetings. Decisions are made by the approval of a majority of the trustees. The trustees have ensured that all charitable activities and approval of its future operational plans have been undertaken with regard to the Charity Commission's guidance on public benefit and in accordance with KEEP's Constitution and Objects.

Trustees are required to familiarise themselves with the charity's regulatory requirements and to that end have attended the Charity Commission's seminars for charities working in high risk areas, as well as undertaking a course on data protection. In addition, they follow advice from specialist organisations on safeguarding

## **Fundraising and Donations**

In its third year KEEP managed to raise **£15,994** in donations, including Gift Aid, which exceeded the previous highest in-year amount of £13,608 raised in the first year of the charity's operation (y/e 30th Nov 2018).

Of this, £9,341 was received from private donations. About half was donated directly to the charity and half online via our Virgin Money Giving page as the charity continues to recruit, and gain traction with, supporters and benefactors in the UK for its work in Western Kenya.

The remaining £6,653 was donated by Barnard Castle School (BCS, an independent sector co-ed school of some 660 pupils ages 4 to 18) at the start of November 2019, reflecting another year of outstanding charitable activity on the part of the school's pupils and staff in 2019.

This excellent fundraising result was achieved despite the impact of the global Covid situation which inevitably impacted our ability to fundraise (primarily in the UK) and also our ability to initiate long term projects on the ground in Kipsaina.

1. Due to the global Covid situation the summer trip to Kipsaina by Barnard Castle School pupils planned for July 2020 was cancelled (these trips being scheduled to take place every 2 years, the first having taken place in the summer of 2018). Although some of the fundraising efforts that were to be undertaken by BCS pupils in relation to the summer trip were cancelled, many of these had been completed before Covid shut things down (see Christmas Card sales and 12 hour Sportathon below).
2. Covid has given added impetus to the trustees' efforts to reorient KEEP, as it has evolved and gained a track record of delivery, from an organization based purely around direct fundraising from the public, to one that aims over the medium to long term to raise funds and support from larger NGOs and grant-giving bodies for larger projects. In parallel, KEEP is increasingly acting as an advocate in introducing the Kipsaina community to such bodies in order to facilitate direct collaborations. An example of this has been the development of

the Kipsaina WASH+ Project in collaboration with Barnard Castle Rotary Club.

Going forward, KEEP continues to raise funds from private donations and by undertaking fundraising events in addition to looking to apply for formal grants from private and public grant-giving bodies.

As alluded to above, it has been agreed by the trustees that, as a small charity, a large part of our efforts should be focused on advocating for and brokering partnerships with larger charities and NGOs for the benefit of Kipsaina and its surrounding communities and environment, rather than directly fundraising ourselves.

This was agreed in 2019, and much of the efforts this year have been to further these aims. In particular during 2020, the focus has been on building potential partnerships with organizations such as the Rotary Club, Sustainable Global Gardens and SDG Changemakers. This work follows that done last year by KEEP to successfully foster an ongoing tree-planting collaboration between the Kipsaina community, in the form of KCWCG, with the International Tree Foundation.

In the period to the end of April 2020 we also initiated the process of finding potential funding partners for large scale tree planting schemes – with a view to eventually capitalizing on the growing Carbon Capture/ Carbon Credit market. As an example, two organisations we have started discussions with are Ecosia and Plan Vivo.

## **Achievements and Performance**

The year's planned activities were subject to change due to the impact of COVID in the UK and in Kenya, both countries being subject to strict lockdowns and travel bans. In Kenya, schools were closed completely for over half of this reporting period which severely restricted operations. Notwithstanding the impact of COVID, in its third year of operation, KEEP has carried out the following activities:

1. Completed the replacement of the girls' toilet block at Kipsaina Primary School after the old one was destroyed by flooding.
2. Coordinated a major fundraising initiative at Barnard Castle School culminating in an overnight "Sportathon". This raised funds for the community work planned for the cancelled July 2020 school trip. However, these funds were repurposed for other KEEP projects and initiatives with the School's agreement
3. Writing a proposal for Kipsaina WASH+, a large-scale rainwater harvesting scheme combined with sustainable agricultural training involving four local schools, in collaboration with Africa Water Bank (AWB) and the Rotary Clubs of Barnard Castle and Kitale. This included the production of a promotional film for Kipsaina WASH+.
4. Continued support of KCWCG as it scaled up tree seedling production towards a goal of 600,000 for the 2021 planting season and delivery of its pilot contract with International Tree Foundation as arranged with the assistance of KEEP.
5. Completed the brokering of an MOU between KCWCG and UK charity Sustainable Global Gardens (SGG) for an initial planting of 3,000 trees with ongoing funding to the participating farmers to ensure survival of the trees up to at least five years.
6. Purchased a car for use by KCWCG to ensure the safe travel of key personnel during COVID as well as for wider community purposes, including as a community ambulance.

## Detail of 2020 Activities

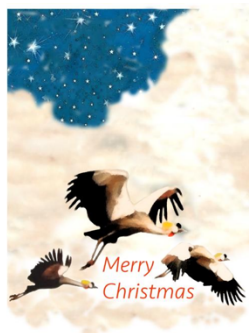
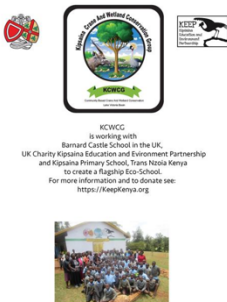
1. Completed a replacement of the girls' toilet block at Kipsaina Primary School after the old one was destroyed by flooding.



Pictures show the flood-damaged previous latrine, the construction process, the finished latrine block and handover to the Headmaster of Kipsaina Primary School. This toilet block has six units and has ensured that the girls at Kipsaina Primary feel safe.

The school has reported a positive impact on school attendance. Although a Primary School, the oldest children can be as old as fourteen years, so menstruation and the privacy to deal with it is an issue in school attendance.

2. Fundraising at Barnard Castle School



3.

The fundraising included the sale of Christmas Cards, letter writing to all school suppliers and a 12 hour overnight "Sportathon" completed by nearly 90 pupils as well as individual fundraising efforts by the pupils booked onto the cancelled 2020 trip. The purpose of this fundraising provisionally was to fund the rainwater harvesting at Kipsaina High School to be completed during the July 2020 school trip. However, in the light of COVID this money was repurposed for other KEEP initiatives including the purchase of the car for KCWCG and the wider community.

4. Kipsaina WASH+ Proposal and Kipsaina WASH+ Film



A lot of our time in 2020 was spent working on what became the Kipsaina WASH+ proposal (WASH+ standing for



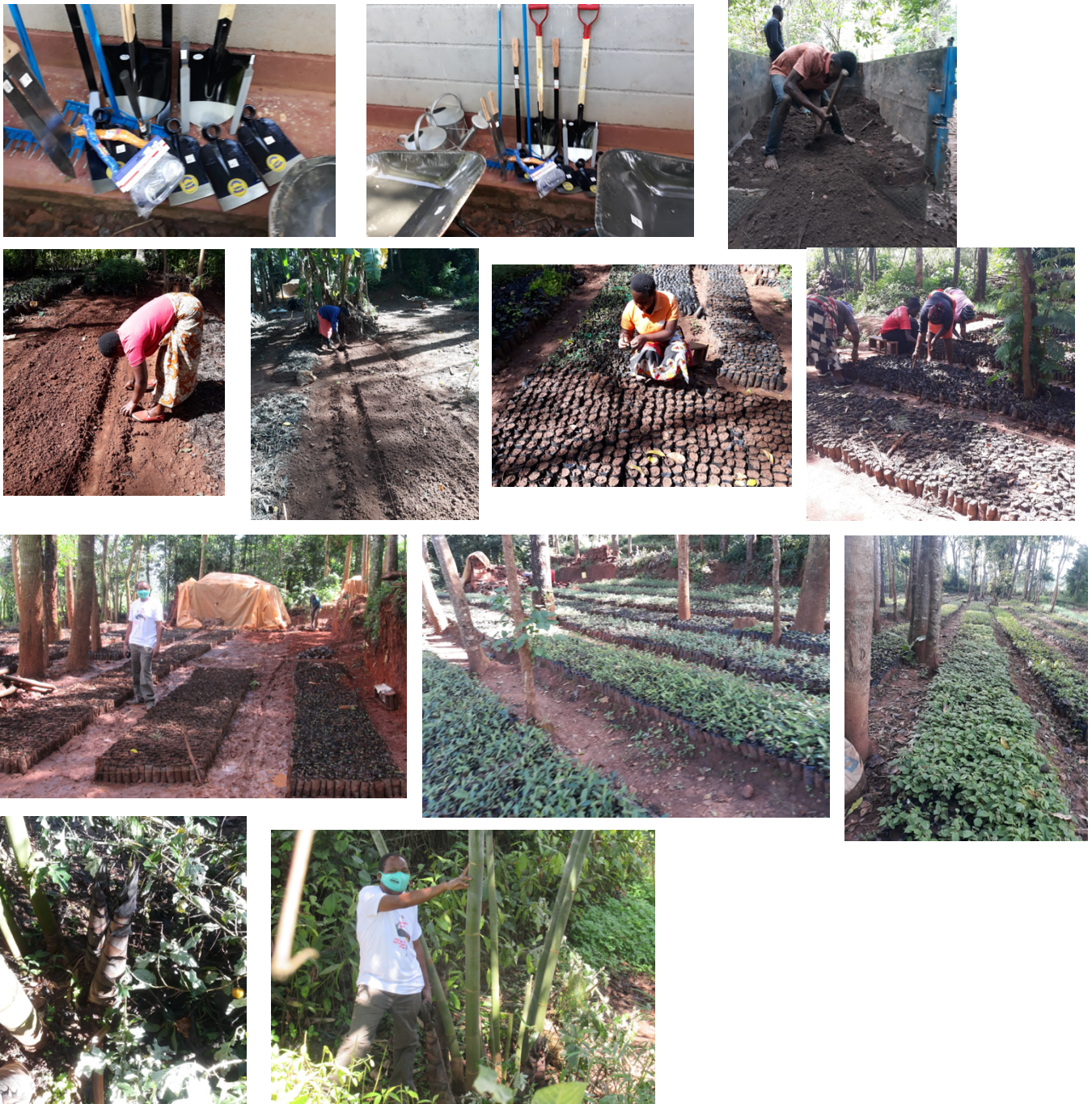
Water Sanitation and Hygiene plus environment). This is a proposal to link together large-scale rainwater harvesting and sustainable agricultural training. Although Kipsaina WASH+ is yet to be delivered, it is very much a live project and one that has evolved substantially from the initial conception.

Our initial proposal was for a very large budget project (c. US\$250K) – following the advice of AWB who have carried out similar, Rotary-funded projects. This was to incorporate up to six large 300,000 litre tanks, a community water kiosk and four school-based sustainable agricultural training plots. However, as COVID took effect (post this current reporting period) we have subsequently repurposed Kipsaina WASH+ to be smaller in scale, replicable and based on local skills acquisition and utilizing eco-friendly Interlocking Stabilised Soil Block (ISSB) technology.

*Key stakeholders in the Initial Proposal (subsequently this list has changed)*

1. Africa Water Bank (AWB): <https://www.facebook.com/www.africawaterbank.org/>
2. The Rotary Clubs of Kitale in Kenya and Barnard Castle in the UK

5. Scaling up of KCWCG tree nursery to 600,000 seedlings for planting in 2021



Over the 2020 reporting period KEEP supported KCWCG in scaling up its tree seedling production capacity to 600,000. Tree planting is a core pillar of our shared aims, and the income generated from the sale of these trees is projected to be a major contributor to future projects. KCWCG also had its first success in growing giant bamboo, which we hope is going to play a large part in the future success of our joint projects. KCWCG currently employs 7 full-time nursery staff.

5. Advocacy / consultancy for brokering partnership funding for KCWCG with Sustainable Global Gardens (SGG)

KEEP has continued working with third party organisations to deliver revenue-generating projects to the local community at Kipsaina in order to make wetlands conservation activities sustainable. This has resulted in a MOU and an ongoing relationship between KCWCG and SGG (see <https://www.sustainableglobalgardens.org.uk>).

The initial planting contract was for 3,000 trees, with the prospect of thousands more over the next few years. Whilst this is initially a small-scale contract, the benefit of this planting is that there is provision for a staggered SGG payment to the farmers/landowners to be paid over five years if the planted trees survive and prosper.

We have included the MOU drawn up by SGG to manage the relationship between the landowners/farmers with KCWCG and SGG, as it is an interesting document reflecting the evolution towards a more sustainable way of planting trees – something that we will look to build on as we investigate Carbon Trading and how to balance the financial claims of various stakeholders going forwards.

**MEMORANDUM OF UNDERSTANDING [MOU]**  
between  
**KIPSAINA CRANE & WETLAND CONSERVATION GROUP [KCWCG]**

and  
[Farmer Name] \_\_\_\_\_ of [CBO/village/location] \_\_\_\_\_

This is an agreement between Kipsaina Crane & Wetland Conservation Group, hereinafter called KCWCG, and

[Farmer name] \_\_\_\_\_

**I. PURPOSE & SCOPE**

The purpose of this MOU is to clearly identify the roles and responsibilities of each party as they relate to planting and maintenance of trees for the Sustainable Global Gardens [SGG] carbon capture project.

In particular, this MOU is intended to:

- identify responsibility of farmers/landowners;
- identify responsibility of KCWCG;
- clarify rewards and penalties.

**II. BACKGROUND**

The UK-registered development group SGG is currently promoting the planting of trees for the purpose of carbon capture in order to reduce the dangers of climate change to both African small-scale farmers and the global population in general. In order to encourage such tree-planting SGG is looking to maintain several partnerships in different locations across Africa South of the Sahara for the purpose of carbon capture tree-planting. In 2021 SGG is establishing a partnership with KCWCG in order to promote the planting of indigenous tree species in locations close to and surrounding various wetlands in West Kenya. KCWCG's concern is primarily to maintain and increase the biodiversity associated with West Kenya wetlands, whereas SGG's focus is to promote carbon capture through tree-planting.

A particular aspect of trees for carbon capture is that the trees within this project should be allowed to grow beyond maturity without undue disturbance by the farmers, on whose land the trees are growing. Both KCWCG and SGG recognize that this growing of trees over a prolonged period represents a loss of space for the farmers' other necessary activities. Thus, it is agreed by SGG and KCWCG that the farmer concerned should receive some compensation for the environmental services which benefit both the local community but also the wider world. This MOU not only clarifies the roles of the various stakeholders, but also sets out what may be adequate compensation for the farmers participating in this scheme. It should be emphasized here that, whatever the financial support available for this scheme the trees and their products remain the property of the people on whose land they are planted.

Farmers and individuals who wish to join this scheme must agree to the responsibilities below.

**III. KCWCG RESPONSIBILITIES UNDER THIS MOU**

KCWCG shall undertake the following activities:

- produce seedlings and transport to the planting site;
- provide SGG with information giving the farm location, and how many trees & which species have been planted. A photograph may be useful additional information, but it is not required for every planting site. KCWCG shall maintain records for this purpose;
- perform any monitoring, recording tasks and evaluation required by SGG;
- assist SGG with the final remuneration to farmer households

**IV. INDIVIDUAL FARMER RESPONSIBILITIES UNDER THIS MOU**

\_\_\_\_\_ shall undertake the following activities:

- plant and take care of the trees especially watering and weeding in first two years;
- allow SGG and KCWCG representatives access to the planting site at all times for recording and monitoring purposes;
- replace any tree that fails within the first 5 years with two trees of the same species;
- maintain the tree for at least 10 years

**V. IT IS MUTUALLY UNDERSTOOD AND AGREED BY THE PARTIES CONCERNED THAT:**

1. This is primarily an MOU between KCWCG and an individual farmer, but it will also have the confirmatory signature of SGG. SGG's role in this project is to liaise between KCWCG and overseas sponsors as SGG searches for funding to support the project. The project will ultimately depend upon SGG's capacity to raise funding for carbon capture trees.
2. Costs and prices for tree-planting can vary over a prolonged period. However, the agreed prices for this scheme are – Ksh15/- per seedling to the KCWCG nursery, Ksh10/- for the farmer following SGG's initial field visit, Ksh75/- to the farmer 5 years after transplanting for surviving trees only.
3. Failure to comply with the responsibilities will lead to the farmer, landowner or institution being dropped from the scheme.

**VI. EFFECTIVE DATE AND SIGNATURE**

This MOU shall be in effect for 5 years after the dated signatures of all 3 stakeholder parties. Those parties indicate their agreement with the MOU by their signatures.

KCWCG Signature & date \_\_\_\_\_

Farmer Signature & date \_\_\_\_\_

SGG Signature & date \_\_\_\_\_

## 6. Purchase of KCWCG Car



Towards the end of this current reporting period, KEEP trustees, with the agreement of Barnard Castle School (where a large amount of the money had been raised in connection with the cancelled Summer 2020 School trip), agreed that KEEP should purchase a suitable vehicle for the use of KCWCG members. This decision was driven firstly by the withdrawal of the previous vehicle for the use of Maurice Wanjala and KCWCG (due to refocusing of resources by The International Crane Foundation) and secondly, by the fear that Maurice and other KCWCG personnel would otherwise have to take the COVID risk of travelling on public transport. It has transformed the operations of the tree nursery, allowing them to expand reforestation activities including field trips to purchase wild tree seed directly from the women's cooperatives. It will also be used for wider community purposes - including as a community ambulance.

The purchase of this vehicle also required a substantial personal donation from KEEP trustee Sam Forsyth and his family. Whilst we acknowledge that this is not a sustainable funding pathway, it was felt that the risk, both to Maurice and his team from exposure to Covid on public transport, and to the continued operation of KCWCG warranted this exceptional solution.

KEEP's criteria for making this investment was as follows:

### *Need and fit with our objects*

- In addition to the need to protect Maurice Wanjala's health by reducing his need to use public transport in the context of the current Covid situation, there is also a clear requirement for Maurice and KCWCG to be mobile in order to carry out the existing and future projects detailed above, all designed to advance the objects of KEEP.
- This is clearly aligned with the objects of KEEP. Although perhaps not as direct or tangible an investment into the wellbeing of the local community and wetlands as the trustees would ideally envisage, it is the most pressing priority for KEEP's resources.
- An MOU is in place with KCWCG, handing ownership and responsibility for maintenance and upkeep of the car to KCWCG, but specifying its usage primarily as a community asset – largely for the furtherance of KEEP and KCWCG's environmental and educational aims but also to include emergency medical trips and other non-core educational and environmental journeys. Furthermore, any future sale or disposal of this vehicle must be done in consultation with and with the agreement of KEEP.

The challenge was to find a vehicle that was within KEEP's price range that would be tough enough to survive the Kenyan roads and spacious enough to carry out smaller-scale transportation of materials. After much research we chose a two-wheel drive Toyota Fielder. This was then given as many adaptations to the Kenyan road conditions as possible, including heavy duty shock absorbers, suspension spacers, a sump reinforcement plate, riveting of all potentially removable parts and the installation of a satellite tracking anti-theft system.

\* \* \*

## Future Plans

KEEP continues to work with BCS and KCWCG to help turn Kipsaina Primary School into a flagship eco- school and sustainable agriculture training facility. Sadly, the international Covid situation curtailed the BCS trip scheduled for July 2020 which had knock-on effects on fundraising in the UK for our core long-term educational and environmental objectives in Kipsaina. However, towards the end of the year we were able to pivot to our Masks4Kenya fundraising initiative which resulted in KEEP providing much needed immediate funds to local schools, enabling them to re-open in the Spring of 2021.

Fundraising aside, Covid has not prevented KEEP from continuing to develop a WASH+ scheme for Kipsaina and surrounding communities. We are currently looking at a partnership with Haileybury Youth Trust (HYT - <https://hytuganda.com/>) to provide Interlocking Stabilised Soil Brick Technology (ISSB) training to local people in Kipsaina, and with Manor House (<https://manorhouse.or.ke>) on the sustainable agricultural component.

KEEP is also looking to develop further international partnerships with support and advice from Felicity Jones, CEO of SDGChangemakers (<https://www.sdgchangemakers.today/>) and founder of Thinking Philanthropy.

Key to this future development is the drive to scale up the KCWCG Tree Nursery output. The tree nursery remains the single biggest potential economic driver for all the other activities we are aiming to carry out. To this end we are looking to find a funding partner such as Ecosia or Plan Vivo. The idea being to allow the eventual adoption of a number of Kenya Forest Service owned forest blocks (through the “Adopt a Forest” scheme). These forest blocks would initially be the Kitale Forest Blocks (peri-urban degraded eucalyptus plantations within the town boundaries of Kitale – total area of around 1,000 hectares) and then subsequently forest blocks within the Cherangani Hills Water-Tower.

## Financial Review and Reserves Policy

In KEEP’s third year of operation, the policy of the trustees remains to maintain a positive bank balance at all times without recourse to borrowing or usage of overdraft facilities. As a small charity the trustees seek to initiate projects only once the full estimated amount, with at least a 10% contingency buffer, has been raised and is available in the charity’s CIO bank account for deployment.

Funding for projects is provided to our local partners in staged payments, rather than in one go, and is conditional on them furnishing KEEP with a comprehensive breakdown of spend (including receipts for materials and services purchased) at regular intervals.

## Risk Management

The trustees have attended a Charity Commission course on managing risks and maintain a risk register which is reviewed annually. In addition, the charity has a Safeguarding Policy in place which it requires all partners and contractors to sign up and adhere to. The policy was written in consultation with SAFE (Safer Activities for Everyone), a not-for-profit community interest company established in 1987 which is dedicated to raising child and adult safeguarding standards both in the UK and overseas.

KEEP has a data protection policy in line with GDPR requirements, and a Privacy Policy available on request.

The trustees declare that they have approved the trustees' report above. Signed on behalf of the charity's trustees

Signed on behalf of the charity's trustees



.....  
Sam Forsyth  
Trustee

30<sup>th</sup> August 2021



.....  
Rubel Quader  
Trustee

30<sup>th</sup> August 2021

**KEEP**

**RECEIPTS AND PAYMENTS ACCOUNTS**

**YEAR ENDED 30 NOVEMBER 2020**

Period from 01 December 2019 to 30 November 2020

	2020 Unrestricted funds £	2020 Restricted funds £	2020 Total Funds £	2019 Total Funds £
<b>Receipts</b>				
Donations – Barnard Castle School	6,653		6,653	2,000
Private Donations	9,341		9,341	464
<b>Total Receipts</b>	<b>15,994</b>		<b>15,994</b>	<b>2,464</b>
<b>Payments</b>				
Charitable activities - general	4,311		4,311	3,447
Charitable activities – car purchase	10,010		10,010	
Bank charges for international money transfers	73		73	65
Administration	154		154	162
<b>Total payments</b>	<b>14,547</b>		<b>14,547</b>	<b>3,674</b>
<b>Net receipts / (payments)</b>	<b>1,447</b>		<b>1,447</b>	<b>(1,210)</b>
Cash funds b/f	291		291	1,500
<b>Cash funds c/f</b>	<b>1,738</b>		<b>1,738</b>	<b>291</b>

*Note: The charity had no endowment funds, nor asset / investments sales or purchases*