

Rotherham Abuse Counselling Service



Financial statements

For the year ended 31 March 2021

Registered charity number: 1175142



The Spectrum, Coke Hill, Rotherham, S60 2HX
Tel: 01709 829821 Fax: 01709 829822
Email: admin@varotherham.org.uk Web: www.varotherham.org.uk

**Rotherham Abuse Counselling Service
Contents**

Contents	Page
Legal and administrative information	1
Trustees' annual report	2- 14
Independent examiner's report	16
Statement of financial activities	17
Balance sheet	18
Notes to the accounts	19-25

Rotherham Abuse Counselling Service
Legal and administrative information

Committee

Chair	Faye Batho - resigned as Chair 9 July 2020
Chair	Catherine Cooper - Chair from 9 July 2020
Treasurer	Laraine Bisby Wendy Peake Eileen Brookes
Secretary	Alexa Wortley - Secretary from 9 July 2020 Jacqueline Rigby Rob Ashton - appointed 10 December 2020

Service Manager Angela Toulson

Date of registration 12th October 2017

Registered Office 38 Moorgate Road
Rotherham
South Yorkshire
S60 2AG

Registered charity number 1175142

Bankers Unity Trust Bank
Nine Brindley Place
Birmingham
B1 2HB

Independent Examiner Faye Hazlehurst FMAAT
Voluntary Action Rotherham
Community Accountancy
The Spectrum
Coke Hill
Rotherham
S60 2HX

**Rotherham Abuse Counselling Service
Trustees' annual report
for the year ending 31 March 2021**

Objectives and activities

The charity's objectives are:

- 1) To preserve and protect the physical and mental health of individuals in Rotherham and the surrounding area who have suffered any form of sexual violence, sexual abuse, domestic abuse or harassment. In particular, but not exclusively by the following means:
 - a) The provision of a confidential face to face and telephone counselling service
 - b) By referring with permission those clients needing help of a more specialist nature.
- 2) To advance the education of the public in the subject of sexual abuse and undertake research and disseminate the results to the public.
- 3) 3) Nothing in this constitution shall authorise an application of the property of the CIO for purposes which are not charitable in accordance with section 7 of the Charities and Trustee Investment (Scotland) Act 2005 or section 2 of the Charities Act (Northern Ireland) 2008.

Structure, governance and management

The charity is a charitable incorporated organisation formed on 12 October 2017. The charity is managed by a board of trustees, who are responsible for ensuring financial stability and providing professional and strategic advice on policy and resource management.

To manage this a subgroup and responsibilities structure is in place with three decision making sub groups: finance, communications and working differently, each bounded by their own terms of reference for group members. Terms of reference provide clear levels of responsibility for each group and reporting mechanisms to full board. Minutes of each meeting are recorded and made available for all members to access.

In addition to membership of a sub group, a number of trustees oversee key areas of the charity, namely health and safety and safeguarding. Annually the trustee representing this area audits the service to ensure compliance and meeting of legal requirements.

Trustees have seen no resignations this year but have appointed a new trustee Rob Ashton on the 10th December 2020 bringing project management expertise to the board of trustees.

**Rotherham Abuse Counselling Service
Trustees' annual report - continued
for the year ending 31 March 2021**

Structure, governance and management continued

The trustees are appointed in accordance with the terms of the Articles of Association.

Trustees can be nominated at the annual general meeting or co-opted during the year by the board for their special skills or expertise but must be appointed by resolution at a properly convened meeting of trustees. None of the trustees have any beneficial interest in the company. The trustees are responsible for the overall management and control of the charity and receive regular reports from staff and managers. All matters and powers of strategic management and control are vested in the board. The trustees have assessed the major risks to which the charity is exposed and are satisfied that systems are in place to mitigate exposure to the major risks.

Chairs report

It is with some relief that we can report a successful end to the 20-21 year with the resilience of management and staff allowing the service to adapt to the situation presented to us by the Covid pandemic.

Organisation and management

Rothacs continues to work as a Charitable Incorporated Organisation governed by its constitution with regular meetings of the Board of Trustees, supporting and supported by the Senior Management Team and supplemented by subcommittees.

We aim to provide free accessible therapeutic counselling to adults and young people aged 13 and over who have suffered sexual or domestic abuse, alongside more general support, onward referral where appropriate and develop wider awareness with the public and other organisations.

Activities

Demand for the service fortunately levelled off during the pandemic but lists increased due to the time lost in setting up and training for offering a remote service. Some service users unable to undertake remote work had to be placed on a suspended list and now that restrictions have been eased there has been a big surge in referrals both of which have had a negative impact on the waiting times. We have been greatly helped by the Covid funding support received from both our local and national funders but the organisation continues to have to look for future funding to support the service. We were successful last year in being awarded the contract for part of the RMBC post CSE service and now look to reapplying for National Lottery funding and applying to continue to provide the TRS service, both of which contracts end in 2022.

**Rotherham Abuse Counselling Service
Trustees' annual report - continued
for the year ending 31 March 2021**

Chairs report continued

In the last year we have continued to deliver our service via a number of platforms but largely by remote working both by telephone and Zoom calls. They are:

- Face to face 1 to 1 therapeutic counselling delivered by Zoom for anyone aged 13+. Rothacs offers a maximum of 20 counselling sessions with safeguards around safe space and confidentiality for clients to identify, explore and find strategies to cope with the issues causing them distress. This time is spent developing new coping strategies with the client gaining insights and confidence building to make independent choices and move forward in their recovery journey.
- Telephone based therapeutic counselling as above for those unable or unwilling to undertake video calls.
- Telephone welfare support calls for those unable or unwilling to continue therapeutic counselling remotely
- Women's group sessions – normally this group provides an opportunity to explore issues in a supportive, confidential environment. We recognise this type of therapy is not for everyone, therefore specific assessments are completed before this is offered and sessions are delivered in a safe secure environment. Sadly this year,
- Men's group sessions – were also suspended during the pandemic and our plan is to review the effectiveness of these and look at other possibilities as part of a consultation process before restarting.
- Pre-therapy course – this 6-week course is for women aged 17+ who may benefit from additional support prior to entering counselling. During this reporting period pre-therapy had also had to be suspended due to government regulations, however this has now re-started and will be reported on in next year's report.
- Drop in sessions – also had to be discontinued during the lockdown and will be re-evaluated for the forthcoming year

In addition to counselling we have continued to deliver Rotherham's Independent Sexual Violence Service (ISVA) funded by the Police and Crime Commissioner and are part of the South Yorkshire ISVA consortium.

**Rotherham Abuse Counselling Service
Trustees' annual report - continued
for the year ending 31 March 2021**

Chairs report continued

The ISVA worker supports victims to make an informed decision on whether they want to report the incident(s) to the police. If they decide not to report the matter, they can still access the service. If a victim does decide to report the matter, the ISVA worker will help them through the whole process, including working with the police and the rest of the criminal justice system. ISVAs advocate on behalf of someone who has been a victim of sexual violence, independently supporting them to access the services they need depending on their choice of action. In the last year work has had to be done remotely or in outdoor spaces and the inevitable delays in court cases have both increased the number of service users and the amount of telephone support needed by service users.

This year the Trauma Resilience Service (TRS) funded by the Stovewood Project via RDASH, is now well established although it has reached capacity necessitating overspill to be taken on as part of the mainstream Rothacs service.

We are grateful to the financial contributions from National Lottery, RMBC, MOJ, Stovewood, RDASH, Lloyds, BRELMS, Tudor Trust and Children in Need. Unfortunately, the recurrent donations from Henry Smith and the Tudor Trust have now come to an end and as we have only one more year of National Lottery Funding we are actively seeking new funding.

Our external communication has been of even more importance in the last year and our new social media platforms of Facebook, Twitter and Instagram accounts alongside the new website have been very successful. Changes necessitated by requirements for a Covid secure environment have meant that we have also been able to make internal improvements to our premises as well as long-planned work on the outside space.

Staff and Volunteers

All team members have continued to work flexibly to provide both extended hours of work and a remote service. A lot of work has gone into ensuring both the safety of remote working and the safety of the premises on our temporary return from lockdown last summer thanks to the input of our Senior Management Team. They have continued to work with other agencies in South Yorkshire.

We have been able to take on new staff in the last year with the success of the RMBC bid and we continue to be ably supported by bank staff, volunteers and placement workers.

**Rotherham Abuse Counselling Service
Trustees' annual report - continued
for the year ending 31 March 2021**

Chairs report continued

Going Forward

We have been able to undertake a phased return to office based working this year but continue to offer a mixed service with remote and on site working. The plan is to continue to do this which should give us some flexibility of hours offered and also, if funding allows, to offer more sessions as we won't be restricted by availability of office space. Alexa Wortley has successfully developed her role as secretary on the board and we have been pleased to welcome a new trustee, Rob Ashton, to the board and, with his experience of project management, are already benefitting from his skills.

We are grateful to have received grants from NHS, MOJ, PCC and Tudor Trust to help with the changes necessitated by Covid 19 - both setting up remote working and making the premises suitable for a safe return to work in the near future. Sadly, Covid-19 has also meant that we have been unable to use the bank and volunteer staff as we did and this, along with the time setting up the remote service, has resulted in loss of counselling sessions. We have now recruited a new counsellor and with the imminent return to onsite working, more bank staff will be brought in to rectify the deficit.

We know that an urgent priority for the future is to find ways to deal with the demand the service is experiencing. We are determined to persevere with securing funding and looking for new ways of dealing with the needs of our service users alongside one to one counselling in order to offer as much accessible support as possible. We are only able to do this thanks to the loyal support and enthusiasm of our staff and funders.

Catherine Cooper

Chair of the board

Rotherham Abuse Counselling Service (Rothacs)

Rotherham Abuse Counselling Service
Trustees' annual report - continued
for the year ending 31 March 2021

Basis and Value

The trustees review our aims and objectives each year looking at what we achieved and the outcomes of our work throughout the year. The board has considered the success of each key activity and the benefits they have brought to those groups of people we are set up to help. Particularly this has been evidenced through the use of an outcome framework which uses evidence-based tools such as PHQ and bespoke methods. The review also helps us ensure our aims, objectives and activities remain focused on our stated purposes. We have referred to the guidance contained in the Charity Commission's general guidance on public benefit when reviewing our aim and objectives and in planning our future activities. In particular, the trustees consider how planned activities will contribute to the aims and objectives they have set and submit the following report and accounts for the accounting period ending 31st March 2021.

Staff and Volunteers

The trustees would like to acknowledge and thank all the commitment and care that has been given by staff, students, bank staff and volunteers during this particularly difficult and challenging year. None of what follows would have been possible without their efforts especially in the unknown world of the Covid-19 pandemic. The effects of the pandemic changed Rothacs shape, delivery methods, income and focus but in spite all this our staff and volunteers supported service users and one another through the world-wide crisis to maintain contact with our service users and support them through the unknown.

This year saw a number of forced changes particularly with the number of volunteers Rothacs were able to support during the height of the pandemic. As we were able to work from home the government funded furlough scheme was not used, all core and bank staff were able to remain with Rothacs, some volunteers left to manage their own personal circumstances, however some have returned and new ones have been appointed.

At the end of the financial year – 31.03.2021 Rothacs delivery team consisted of:

- 1 Executive Officer
- 1 Clinical Lead
- 1 Senior Counsellor
- 1 Senior administrator
- 6 employed counsellors
- 5 bank counsellors
- 5 qualified volunteers
- 2 placement counsellors

We also have:

- 3 ISVAS
- 1 ISVA support worker
- 1 Finance officer
- 1 Volunteer

**Rotherham Abuse Counselling Service
Trustees' annual report - continued
for the year ending 31 March 2021**

Basis and Value continued

In addition, Rothacs saw the following team members leave Rothacs for their own personal development:

- 3 bank counsellors
- 5 qualified volunteers

One bank counsellor successfully applied for an employed role within Rothacs as a CSE

Activities for the Public Benefit

The trustees can confirm that they have complied with the duty in Section 17 of the Charities Act 2011 to have due regard to public benefit guidance published by the Commission in reporting on how we are achieving our charitable objects.

Achievements and performance

This report outlines our key achievements and the challenges we continue to face as a small charity.

Throughout 2020-2021, Rotherham Abuse Counselling Service (Rothacs) has continued to provide free specialist therapeutic counselling support for women, men and young people aged 13 and over who have experienced abuse. The pandemic however, changed delivery methods for the year. Pre-covid Rothacs delivered face to face sessions only, therefore being forced to work from home and deliver sessions on a telephone and online basis meant a change of venue, equipment, policies and procedures, safeguarding and health and safety protocol in a short space of time. To manage this initially counselling sessions were replaced by welfare calls to maintain contact and support whilst new procedures were agreed. A number of service users were unable to continue support either online or via the telephone due to a number of reasons:- children at home, unsafe environment or just unable to cope with the pandemic and trauma counselling sessions at that time. Therefore we made the decision to suspend these clients and come back to them later rather than exit from the service.

Rothacs followed strict government guidance and all staff worked from home during the first National Lockdown with a brief return in September. It was clear however, that this was not suitable for Rothacs at that time and alongside a second and third national lockdown, Rothacs staff returned to home working continuing to deliver sessions online and on the telephone.

As a service we are now returning to the office on a staggered and Covid safe format protecting our staff and service users with Covid protocol and delivery of face to face sessions. Priority to return to face to face work was given to the suspended clients and most have taken the opportunity to return to traditional face to face sessions.

We have taken a Covid lessons-learnt approach and have re-shaped our service delivery package to include face to face, online and telephone sessions in the future to increase availability, options and flexibility for all our service users and staff alike.

**Rotherham Abuse Counselling Service
Trustees' annual report - continued
for the year ending 31 March 2021**

Achievements and performance continued

In addition to the counselling provision, Rothacs delivers a parallel service for the Independent Sexual Violence Advocates (ISVA) across a South Yorkshire Partnership supporting victims of sexual abuse to navigate their way through the criminal justice system. This service also followed the same protocol as counselling during Covid and all sessions were held remotely with all staff working from home and no home visits. Challenges to this service in particular related to the criminal justice system and how this was affected during and after the height of the pandemic. With courts closing, a shortage of police, isolation rules and limited client contact this affected our clients with increased waiting times for the criminal justice system and considerable delays in decision making. As a result, this service has not necessarily seen an increase in referrals but has seen a significant increase in the time clients spend with the ISVA often reaching two/three years.

In the past year Rotherham Abuse Counselling Service has received 470 counselling referrals, delivered 739 online counselling sessions, 109 face to face counselling sessions, 949 telephone counselling sessions and 419 telephone counselling assessments and an additional 1199 contact sessions throughout the year. In addition, our ISVA service received 266 referrals and have made contact with 329 clients to support them through their recovery journey.

Demand for both services continues to grow and our waiting time over the year has remained at high level due to demand levels exceeding funding availability and the effects of the pandemic. A number of temporary Covid funding grants were gratefully received enabling Rothacs to quickly change service delivery methods. However numbers are now continuing to grow as we pass the height of the pandemic and demand for both services rises, increasing waiting times further. We are constantly addressing this issue and are investing in a new online package of support to increase trauma support for people whilst they are waiting for support from either service, during sessions or when sessions end to create a wider, more sustainable service delivery package. However, all of this comes at a cost and, with a number of significant funds ending in the next financial year, applications for funding whilst managing this increased demand will be the primary concern for Rothacs this coming year.

Our team is working hard to manage increased demand, secure restricted and unrestricted funding and support our staff through the pandemic as all our personal and working lives continue to change and adapt to the virus.

Rotherham Abuse Counselling Service
Trustees' annual report - continued
for the period ending 31 March 2021

Achievements and performance continued

Service Data

During the period of this report the following achievements and data has been recorded for the charity.

Counselling service:

Number of referrals received	470
------------------------------	-----

In comparison to 2019/2020 this shows a reduction in referrals to the project however this is unsurprising as this is the Covid year reporting period and for the period of April 2020 until we were in a position to be able to deliver safe online and telephone counselling sessions the Board of Trustees took the decision to temporarily close the waiting list. This was for a period of five weeks reopening to new referrals when existing clients had all been contacted. After this period Rothacs received referrals every week averaging 9 a week for the remaining reporting period. Since that point referrals have increased over time and are now at a regular rate of over 15 a week.

Of the number of referrals received our assessments were:

Offered	465
Attended	419

In comparison to 2019/2020 the number attended is a significant higher attendance rate for 40% last year to 90% this. Our assessments are all now completed on the telephone and this will continue due to the increased attendance rate. This is a positive effect of Covid which we believe relates to availability during the lockdown.

Counselling sessions delivered this period are:

Online	739
Telephone	949
Face to Face	109
Welfare/contact sessions	1199

This year, a like for like comparison cannot be made for counselling sessions. The whole reporting period relates to major service delivery changes in response to Covid-19 and therefore only the above can be reported. As we will be continuing to deliver all styles of sessions however in the 2021/2022 period next year like for like comparisons can be made.

**Rotherham Abuse Counselling Service
Trustees' annual report - continued
for the year ending 31 March 2021**

Achievements and performance continued

Additional service delivery

Unfortunately, due to Covid restrictions imposed by central government, all additional service delivery normally reported such as Women's group, Men's group, drop-in and pre-therapy had to be cancelled as they were unsuitable for delivery online and, at the time of the reporting period, restrictions mean that group work outside the imposed bubbles could not be completed. However next year we will be offering most of these services and re-modelling others, therefore reporting can return during the next financial year.

Outcomes

The PHQ9 and GAD7 remain the recognised impact measuring tools Rothacs uses when measuring the impact counselling has made with our service users. In addition, our own bespoke measuring tool WATCH measures each impact by rating the improvement rather than just scoring mental health at a moment in time. Our outcomes for 2020-2021 are represented below:

The WATCH workbook provides a score system the client works towards measuring improvements they aim to make in their lives. Scores are based between 0 and 10 and are gathered from the people who end counselling and complete the required workbook.

Please note comparisons from the previous year must all take into account the effects of Covid-19 across this period in time. The pandemic has no doubt changed everyone's lives and for the people accessing our service at the time of the report they were having to cope with their trauma management and the unknown of the pandemic especially in the early part of the year.

Rotherham Abuse Counselling Service
Trustees' annual report - continued
for the year ending 31 March 2021

Achievements and performance continued

	Improvement	Previous year comparison
Mental Health and wellbeing	55%	Improvement rates reduced slightly from the previous year. However we believe this still to be a creditable outcome when taking into account the unknowns and fears of Covid-19 which has impacted on the mental health of the nation
Self-esteem and confidence	39%	As above, this has been a lower outcome this year, however the unknown will have effected people's self-belief and self confidence
Trauma symptoms	56%	Although less than the previous year this is still a high number of people who feel they can now better manage their trauma symptoms such as flash-backs and nightmares
Risk of harm	12%	A similar percentage to previous years showing 12% of people felt they could now better manage the risk of harm to themselves. This in a global pandemic is a more impactful increase than maybe shown, these people may have attempted to take their own life and therefore needed medical care impacting on the NHS during a time of medical crisis
Physical/ medical symptoms of abuse	16%	Similar to other outcomes a 16% improvement during a time of national medical crisis is a help to the wider medical landscape
Coping strategies	39%	Similar to previous year's 39% showed an increase their personal ability to cope
Social engagement	25%	During this time of the pandemic we were all unable to socialise and therefore a 25% improvement although down from previous years is a positive outcome. Social isolation was and still is a major impact on the country and the way people live their lives
Relationships and support	11%	A similar percentage increase shows despite the pandemic our work impacted on relationships and not just the single person involved.

The clinically used GAD7 and PHQ9 are also used by Rothacs to measure levels of depression and anxiety using a score system of 0-5 shows mild and 15 and above severe. The results of these are:

PHQ9 - improvement of 41%

GAD7 - improvement of 42%

**Rotherham Abuse Counselling Service
Trustees' annual report - continued
for the year ending 31 March 2021**

Financial Review

The organisation offers a free service to people who live or work in the Rotherham area and is totally dependent on funding from grants, statutory authorities, personal donations and donations from smaller organisations.

We would like to thank all our funders for the support given during this last year. Due to the Covid-19 pandemic we had to radically adjust our ways of working and many of our present and past supporters offered financial assistance to enable us to work towards alternative means of service delivery and ensure we were equipped to make those necessary changes.

Fundraising and Funding

We would like to say a big thank you to our supporters, many who donate privately through 'Local Giving' and also to our major funders for their support and continued belief in the service we provide. Due to the Covid-19 pandemic we had to radically adjust our ways of working and many of our present and past supporters offered financial assistance to enable change and equipment to make those necessary changes.

Our main sources of income came from the following organisations for which we are very grateful:

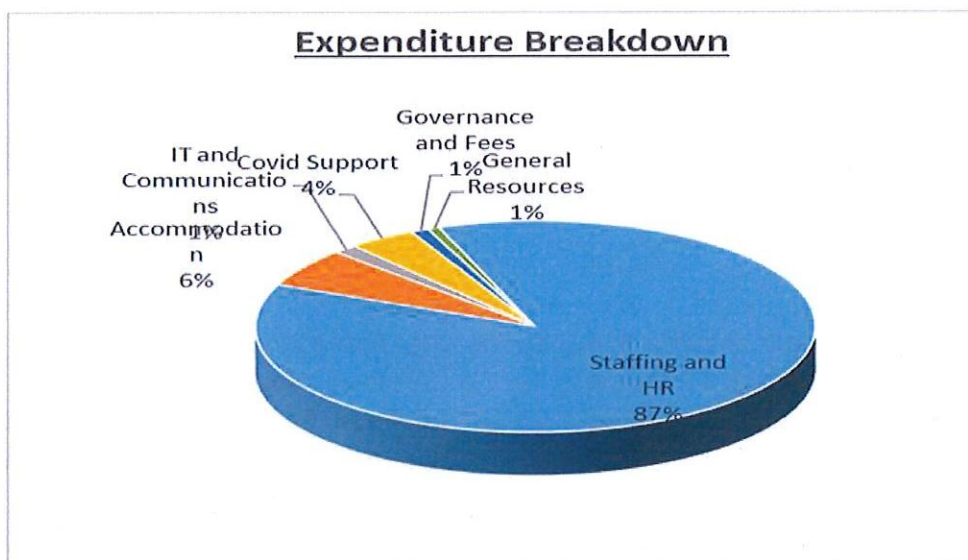
Big Lottery, Tudor Trust, Ministry of Justice, RDASH, Police and Crime Commissioner, Brelms Trust, Rotherham MBC and Lloyds. We also received additional funding to address our Covid-19 impact from RDASH, PCC, Ministry of Justice, Tudor Trust and a donation from Soroptomist International through their fundraising efforts.

Our income for the year was £430,173 and expenditure was £367,365.

**Rotherham Abuse Counselling Service
Trustees' annual report - continued
for the year ending 31 March 2021**

Financial Review continued

See the final accounts for more detail but the chart below shows a breakdown of how we spent our income.



The funds at the year-end stand at £168,878 (2020: £106,070). Funds consist of fixed assets to the value of £4,102 (2020: £1,010), balances remaining on restricted funding of £97,814 (2020: £50,569), designated funds of £4,764 (2020: £nil) and general reserve of £61,536 (2020: £55,501).

Reserves Policy

The trustees have designated an amount of £60,000 to cover two months running costs for closure and statutory redundancy payments should the remaining operational reserves deplete to a level that is no longer sustainable. This reflects the current increase in staffing levels.

Operational reserves are monitored monthly through management reports which help determine the level of additional funding required through grant application processes. The trustees are aware of the shortfall and are planning to increase unrestricted funds to manage the shortfall as required.

**Rotherham Abuse Counselling Service
Trustees' annual report - continued
for the year ending 31 March 2021**

Governance

The trustees have sought to discharge their responsibilities by the implementation of strong recruitment and supervision policies, and by regular and rigorous reviews of policy, ensuring that they are fully implemented by all staff and volunteers. An annual safeguarding report is required by the trustees, who have all received appropriate safeguarding training. The trustees also regularly review the financial situation to ensure the continued viability of Rothacs.

During this period no trustees have received expenses or financial payment from Rothacs. One trustee is a member of a political party but it has been agreed that this does not impact on the trustee role.

Future plans

Rothacs will continue to make plans in line with its Objectives and Mission Statement. We continue to face strong challenges in the current environment and expect that Trustees need to continue to be vigilant and creative in responding to threats from reduced income and the strategic priorities of the public sector and funding bodies.

Our financial monitoring group regularly manages the budgets for the charity highlighting any future known concerns in time to minimize their effects in relation to long term funding.

We continue to manage and apply for funding from numerous funding bodies alongside fundraising and awareness raising to increase the possibility of sustainability for both restricted and unrestricted funds.

Approved and signed on behalf of the board of trustees:

Signed: 

Date: 18/11/21

Print Name: CATHERINE ANNE COOPER

Trustee

**Independent Examiner's report to the trustees of
Rotherham Abuse Counselling Service (the charity)**

I report to the trustees on my examination of the accounts of Rotherham Abuse Counselling service ("the Charity") for the period ended 31 March 2021.

Responsibilities and basis of report

As the charity trustees you are responsible for the preparation of the accounts in accordance with the requirements of the Charities Act 2011 ('the Act').

I report in respect of my examination of the Charity's accounts carried out under section 145 of the 2011 Act and in carrying out my examination I have followed all the applicable directions given by the Charity Commission under section 145(5)(b) of the Act.

Independent examiner's statement

Since the Charity's gross income exceeded £250,000 your examiner must be a member of a body listed in section 145 of the 2011 Act. I can confirm that I am qualified to undertake the examination because I am a member of Association of Accounting Technician, which is one of the listed bodies.

I have completed my examination. I can confirm that no material matters have come to my attention in connection with the examination giving me cause to believe that in any material respect:

- [1] accounting records were not kept in respect of the Trust as required by section 130 of the Act; or
- [2] the accounts do not accord with those records; or
- [3] the accounts do not comply with the applicable requirements concerning the form and content of accounts set out in the Charities (Accounts and Reports) Regulations 2008 other than any requirement that the accounts give a 'true and fair' view which is not a matter considered as part of an Independent examination.

Signed:  -

Date: 29 November 2021

F Hazlehurst FMAAT
Voluntary Action Rotherham Ltd
Community Accountancy service
The Spectrum, Coke Hill
Rotherham
S60 2HX

Rotherham Abuse Counselling Service
Statement of Financial Activities
(Incorporating the Income and expenditure account)
for the year ending 31 March 2021

		Unrestricted Funds	Restricted Funds	Total 2021	Unrestricted Funds	Restricted Funds	Total 2020
		£	£	£	£	£	£
Income from:							
Donations and grants	2	13,305	415,037	428,342	5,784	357,929	363,713
Charitable Activities	3	1,728	-	1,728	1,040	-	1,040
Bank Interest		103	-	103	392	-	392
Total Income		15,136	415,037	430,173	7,216	357,929	365,145
Expenditure on:							
Charitable Activities	4	7,227	360,138	367,365	946	335,455	336,401
Total expenditure		7,227	360,138	367,365	946	335,455	336,401
Net income/expenditure		7,909	54,899	62,808	6,270	22,474	28,744
Transfers between funds		7,654	(7,654)	-	-	-	-
Net movement in funds		15,563	47,245	62,808	6,270	22,474	28,744
Total funds brought forward		55,501	50,569	106,070	49,231	28,095	77,326
Total funds carried forward		71,064	97,814	168,878	55,501	50,569	106,070

Rotherham Abuse Counselling Service
Balance Sheet
as at 31 March 2021

		Total 2021 £	Total 2020 £
Fixed Assets	7	4,102	1,010
Current Assets			
Debtors	8	37,698	23,133
Cash at Bank and in hand		144,037	91,705
		<u>181,735</u>	<u>114,838</u>
Liabilities			
Creditors - amounts due within one year	9	(16,959)	(9,778)
Net current assets		164,776	105,060
Net assets		<u>168,878</u>	<u>106,070</u>
Funds of the company			
Unrestricted Funds		66,300	55,501
Designated Funds	10	4,764	-
Restricted Funds	11	97,814	50,569
Total funds		<u>168,878</u>	<u>106,070</u>

Approved and signed by the board of trustees on:

Signed: 

Date: 18/11/21

(Print name): CATHERINE ANNE COOPER,
Trustee

Rotherham Abuse Counselling Service
Notes to the financial statement
for the year ending 31 March 2021

Accounting policies

Basis of preparation of the accounts

These financial statements have been prepared in accordance with Accounting and Reporting by Charities: Statement of Recommended Practice applicable to charities preparing their accounts in accordance with the Financial Reporting Standard applicable in the UK and Republic of Ireland (FRS102) (effective 1 January 2019). - (Charities SORP (FRS102)).

Rotherham Abuse Counselling Service meets the definition of a public benefit entity under FRS102. Assets and liabilities are initially recognised at historical cost or transaction value, unless otherwise stated in the relevant accounting policy note(s).

Going Concern Note

The financial statements have been prepared on a going concern basis as the trustees believe that no material uncertainties exist. The trustees have considered the level of funds held and the expected level of income and expenditure for 12 months from authorising these financial statements. The budgeted income and expenditure is sufficient with the level of reserves for the charity to be able to continue as a going concern.

Incoming resources

Income is recognised in the SOFA when the charity has entitlement to the funds, any performance conditions attached to the monies have been met, the receipt of the income is probable and its amount can be reliably measured.

No amount is included in the financial statement for volunteer time in line with the SORP (FRS102).

Income from government and other grants, whether 'capital' grants or 'revenue' grants, is recognised when the charity has entitlement to the funds, any performance conditions attached to the grants have been met, it is probable that the income will be received and the amount can be measured reliably and is not deferred. If entitlement is not met, then these amounts are deferred. These grants and voluntary income are included in incoming resources when these are receivable and allocated appropriately between unrestricted and restricted income depending upon restrictions imposed.

Donations and legacies are accounted for when they are receivable.

Rotherham Abuse Counselling Service
Notes to the financial statement continued
for the year ending 31 March 2021

Resources expended

All expenditure is accounted for on an accruals basis and has been classified under headings that aggregate all costs related to the category. Expenditure is recognised where there is a legal or constructive obligation to make payments to third parties, it is probable that the settlement will be required and the amount of the obligation can be measured reliably.

Bank Interest

Bank Interest is recognised as an incoming resource when it is credited to the bank statement. All bank interest is treated as unrestricted income.

Support cost allocation

Support costs are those that assist the work of the charity but do not directly represent charitable activities and include the cost of governance and administrative payroll costs. Given that support costs are less than 5% of total costs, they are allocated directly to expenditure on charitable activities.

Tangible fixed assets

Items of expenditure are capitalised if the cost is in excess of £500 and the item is estimated to have a life of at least 3 years.

Depreciation is calculated to write down the cost or valuation, less estimated residual value of all tangible fixed assets over their expected useful lives on a straight line basis.

Depreciation rates applicable are:

Furniture	25%
IT Equipment	33%

Debtors and creditors receivable/payable within one year

Debtors and creditors with no stated interest rate and receivable or payable within one year are recorded at transaction price. Any losses arising from impairment are recognised in expenditure.

Pension costs and other post-retirement benefits

The charity operates a defined contribution pension scheme for employees. Pension costs charged to the Statement of Financial Activities represent the contributions payable by the charity in the year.

Tax

The charity is exempt from corporation tax on income from its charitable activities.

Rotherham Abuse Counselling Service
Notes to the financial statements continued
for the year ending 31 March 2021

2 Donations and grants	Unrestricted Funds	Restricted Funds	Total 2021	Total 2020
	£	£	£	£
The Big Lottery Fund	-	104,414	104,414	95,700
RMBC	-	36,000	36,000	33,000
Brelms Trust	-	5,000	5,000	5,000
RDASH	6,000	46,500	52,500	34,500
Tudor Trust	-	3,300	3,300	30,000
Awards for All	-	-	-	9,965
South Yorkshire Sexual Violence Partnership	-	103,897	103,897	92,164
The Henry Smith Charity	-	-	-	20,600
The Ministry of Justice	-	79,012	79,012	32,000
Royal London	-	-	-	5,000
Health Education England	-	-	-	2,020
Lloyds Bank Foundation	-	33,000	33,000	-
Police Crime Commision	-	3,914	3,914	-
Co-op Community	2,264	-	2,264	-
Donations	5,041	-	5,041	3,764
	13,305	415,037	428,342	363,713

Income received from donations and grants was £428,342 (2020: £363,713) of which £13,305 (2020: £5,784) was attributable to unrestricted funds and £415,037 (2020: £357,929) was attributable to restricted funds.

3 Income from charitable activities	Unrestricted Funds	Restricted Funds	Total 2021	Total 2020
	£	£	£	£
General fundraising	-	-	-	250
Other income	1,728	-	1,728	90
Training	-	-	-	500
Girls Day School Trust	-	-	-	200
	1,728	-	1,728	1,040

All income on charitable activities in 2020 and 2019 were received into unrestricted funds.

Rotherham Abuse Counselling Service
Notes to the financial statements continued
for the year ending 31 March 2021

4 Expenditure on charitable activities

		Unrestricted Funds	Restricted Funds	Total 2021	Total 2020
		£	£	£	£
Salary costs	5	-	281,336	281,336	257,556
Sessional staff		-	30,979	30,979	31,030
Payroll/HR service		-	3,515	3,515	3,202
Bank charges & giving fees		-	242	242	159
External supervision		-	920	920	1,075
Staff/volunteer expenses		-	4,976	4,976	5,992
Client access fund		-	-	-	732
Covid related costs		4,332	3,945	8,277	-
Rent and rates		-	15,809	15,809	16,653
Maintenance		-	427	427	1,513
Training and conference		-	1,100	1,100	860
Office costs and equipment		-	4,236	4,236	2,806
Insurance		-	2,558	2,558	2,151
Telephone and internet		-	3,092	3,092	1,823
Professional Fees		-	1,100	1,100	2,238
Printing, postage and stationery		-	-	-	3,396
Subscription		-	1,630	1,630	552
Depreciation		2,895	167	3,062	1,010
Utilities		-	3,608	3,608	3,606
Sundry expenditure		-	499	499	47
		7,227	360,138	367,365	336,401

Expenditure on charitable activities is £367,365 (2020: £336,401) of which £7,227 (2020: £946) was attributable to unrestricted funds and £360,138 (2020: £335,455) was attributable to restricted funds.

	Total 2021	Total 2020
	£	£
5 Staff Costs		
Salaries	245,521	225,310
Employers National Insurance	19,347	16,063
Employers allowance	(4,000)	(3,000)
Employers pension	20,498	19,183
	281,366	257,556

The average number of employees during the period is 13 (2020: 13)

No person received emoluments of more than £60,000 in the year.

6 Trustees and key management remuneration, benefits and expenses

There were no payments, remuneration or expenses made to trustees during the period (2020: £nil).

Rotherham Abuse Counselling Service
Notes to the financial statements continued
for the year ending 31 March 2021

7 Tangible Fixed Assets

	Equipment	Total 2021
Cost	£	£
At 31 March 2020	3,031	3,031
Additions	6,154	6,154
at 31 March 2021	<u>9,185</u>	<u>9,185</u>
Depreciation		
at 31 March 2020	2,021	2,021
Charge this period	3,062	3,062
Disposals	-	-
at 31 March 2021	<u>5,083</u>	<u>5,083</u>
Net book value at 31 March 2021	<u>4,102</u>	<u>4,102</u>
Net book value at 31 March 2020	<u>1,010</u>	<u>1,010</u>

	2021 £	2020 £
8 Debtors		
Debtor	5,000	-
Accrued income	31,023	22,430
Prepayments	1,675	703
	<u>37,698</u>	<u>23,133</u>

	2021 £	2020 £
9 Creditors: amounts falling due within one year		
Accruals	9,908	6,106
HMRC liabilities	7,051	3,672
	<u>16,959</u>	<u>9,778</u>

10 Designated Funds

	Opening balance	Incoming resources	Resources expended	Transfers	Closing balance
	£	£	£	£	£
Fixed Asset Fund	-	-	2,890	6,154	3,264
Ministry of Justice	-	-	-	1,500	1,500
	<u>-</u>	<u>-</u>	<u>2,890</u>	<u>7,654</u>	<u>4,764</u>

Rotherham Abuse Counselling Service
Notes to the financial statements continued
for the year ending 31 March 2021

11 Movement on Funds Restricted	Brought forward	Incoming Resources	Expended Resources	Transfers	Carried forward
	£	£	£	£	£
The Big Lottery Fund	5,131	104,414	94,545	-	15,000
Brelms Trust	2,500	5,000	5,000	-	2,500
Ministry of Justice	-	79,012	77,512	(1,500)	-
South Yorkshire Sexual Violence Partnerships	12,548	103,897	93,098	-	23,347
RDASH	7,187	46,500	30,569	-	23,118
Awards for All	4,845	-	4,845	-	-
Royal London	2,435	-	2,435	-	-
RMBC	15,925	36,000	36,324	-	15,601
Lloyds bank Foundation	-	33,000	14,750	-	18,250
Tudor Trust	-	3,300	458	(2,842)	-
Police Crime Commissioner	-	3,914	602	(3,312)	-
	50,569	415,037	360,138	(7,654)	97,814

Funds transfer

The transfer of £1,500 from Ministry of Justice into designated funds is to cover the costs of improving the outside area. This improvement was unable to take place during the pandemic and the transfer has been agreed with the funder.

The transfer of £6,154 from the Tudor Trust and Police Crime Commissioner into a designated fixed asset fund for the purchase of ICT. The remaining balance will be used to write down the value over the useful life of the asset.

prior year	Brought forward	Incoming Resources	Expended Resources	Transfers	Carried forward
	£	£	£	£	£
The Big Lottery Fund	-	95,700	90,569	-	5,131
Brelms Trust	2,500	5,000	5,000	-	2,500
Ministry of Justice	-	32,000	32,000	-	-
South Yorkshire Sexual Violence Partnerships	6,475	92,164	86,092	-	12,548
RDASH	-	34,500	27,313	-	7,187
The Henry Smith Charity	-	20,600	20,600	-	-
The Tudor Trust	-	30,000	30,000	-	-
Awards for All	-	9,965	5,120	-	4,845
Royal London	-	5,000	2,565	-	2,435
RMBC	19,120	33,000	36,195	-	15,925
	28,095	357,929	335,455	-	50,569

Rotherham Abuse Counselling Service
Notes to the financial statements continued
for the year ending 31 March 2021

12 Analysis of net assets by fund	Unrestricted Funds £	Restricted Funds £	Total £
Fixed assets	4,102	-	4,102
Current assets	66,962	114,773	181,735
Current liabilities	-	(16,959)	(16,959)
	<u>71,064</u>	<u>97,814</u>	<u>168,878</u>

prior year

	Unrestricted Funds £	Restricted Funds £	Total £
<i>Fixed assets</i>	843	167	1,010
<i>Current assets</i>	54,658	60,180	114,838
<i>Current liabilities</i>	-	(9,778)	(9,778)
	<u>55,501</u>	<u>50,569</u>	<u>106,070</u>

13 Related Party Transactions

During the period there were no related party transactions (2019: 1 trustee - £260).

