

Northumberland Community Enterprise Limited Trustees Annual Report and Accounts

Aim and Purposes

NCEL operates various initiatives and projects to better the lives of disadvantaged people living within neighbourhoods of Southeast Northumberland which are identified to be deprived (by the Indices of Multiple Deprivation) with poor statistics on crime, education, skills, health and household income. Primarily targeting the centre's immediate community of Stobhill. Known locally by our centre name 'The Stobhill Link' our services are open to all age ranges and run from our Community Hub. We offer volunteer opportunities and address local issues aiming to relieve unemployment, promote social inclusion amongst the elderly and/disabled, relieve financial hardship, develop capacity and skills and to help young people develop their capacity through leisure time activities.

Objectives and Activities

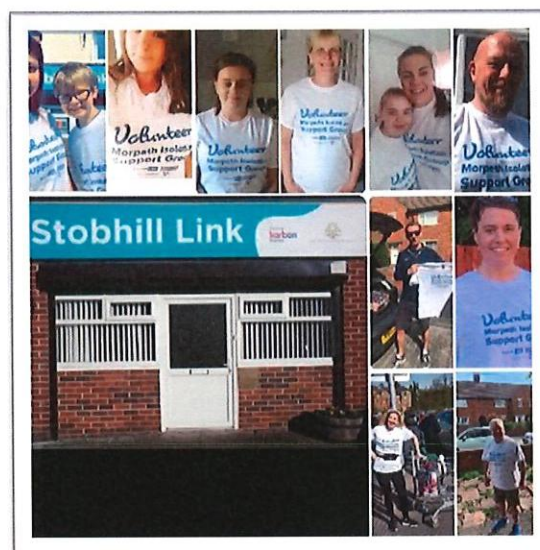
NCEL is committed to engaging with as many people as possible effected by deprivation to offer means and opportunities to overcome barriers in their lives. We encourage participation by our service users in the design and planning of our work, offer volunteer opportunities across all of our projects and encourage leadership, ownership and passion for the work required to meet our goals.

In planning our work for the year, we have considered the Commissions guidance on public benefit and have ensured that our services be available to all people attempting to access them.

The objects of NCEL are:

- (1) the relief of unemployment for the benefit of the public in such ways as may be thought fit, including assistance to find employment;
- (2) to promote social inclusion for the public benefit among elderly persons who are socially excluded from society, or parts of society as a result of their age, relieving the needs of those people and assisting them to integrate into society;
- (3) the relief of financial hardship among people living or working in South East Northumberland but also wherever our services are requested through Northumberland and Tyneside, by providing such persons with services and advice which they could not otherwise afford through lack of means or that are not otherwise available to them through lack of opportunity;
- (4) to develop the capacity and skills of the members of socially, economically and disadvantaged communities of South East Northumberland but also wherever our services are requested through Northumberland and Tyneside in such a way that they are better able to identify, and help meet their needs and to participate more fully in society;
- (5) to help young people, especially but not exclusively through leisure time activities, so as to develop their capabilities that they may grow to full maturity as individuals and members of society.

During the course of our work no harm has arose from the purposes. Our beneficiaries are the general public and locally-based community and voluntary organisations. No private benefit arises from these purposes.



Achievements and Performance

During the 2022-2023 year we have continued to offer a wide variety of services which are outlined in this report. We have included in these services wrap around support tackling food and fuel poverty, low household incomes, debt, unemployment, energy efficiency and awareness, social isolation and health and wellbeing. Our network of professional contacts has grown due to the variety of issues we have endeavoured to tackle, and this has helped to support our volunteers and staff with project delivery. Our team collaborates with local charities, services and stakeholders such as youth and community groups, Stobhill and Morpeth churches and voluntary sector organisations to make opportunities and services available to our beneficiaries.

We have continued to work with Fare Share to secure surplus food waste from supermarkets and businesses which is re-distributed through our community fridge, freezer and pantry. We have also continued our work with Community Repaint, a National charity acting as an umbrella body to ensure the redistribution of thousands of litres of household paint to individuals and charitable groups. Much of our work was designed through established need amongst our beneficiaries, it was developed and intended to help many people in need unable to afford not only luxuries but basic provisions to get by. We have continually increased our customer base and recognise the large impact much of the re-distribution has had by helping to sustain the environment for future generations. We have noted the stigma that food poverty can carry and encourage our team to focus on the message of preventing food waste which relieves apprehension/stigma beneficiaries may have when accessing our centre to request support.

Community Food Pantry – Community Fridge

(In Strategic Partnership with Northumberland County Council), Working With FareShare, The Bread and Butter Thing and local Food Distributors.

During the last financial year our team began work to develop the community food pantry into a community fridge model. This is supported and funded by Hubbub and the Cooperative. We have moved forward from emergency food support to a model designed by the cooperative partnership which we are witnessing to support long term sustainability, reduce stigma and promote choice whilst offering more nutrient dense options and being accessible to all of our beneficiaries. We continue to refer to the Wansbeck Valley Foodbank for access in an emergency for individuals in crisis, however these referrals are now greatly reduced owing to our ability to promote other, more innovative solutions to food needs. Our Organisation leads for Morpeth on the Nourish Northumberland Partnership with Northumberland County Council. Our network in Morpeth focuses on sustainable food solutions and innovative projects offering food, growing, cooking etc. We collaborate with local voluntary groups to initiate likeminded projects, promote the community fridge model and develop strategy towards access to food and food waste. We have supported The Pegswood Hub, Calmer Therapy and The Morpeth Allotment to improve upon their food models and address food insecurity with their own participants.

2022-2023 -

- 18 referrals to Foodbanks
- provided 843 food parcels to beneficiaries
- are currently saving 102kg of food waste per week (at our current rate we estimate to total 5.3 tons annually).

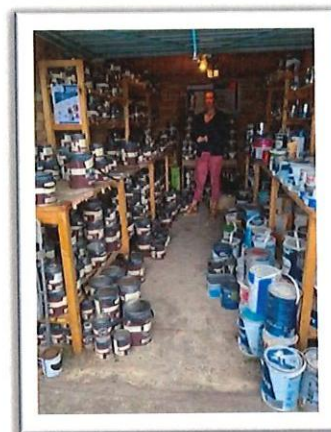
Free School Uniform Bank (Regional Partnership)

Partnered with Northumberland County Council's Regional Network of School Uniform Banks. We built one of the first school uniform banks in the North East and are now part of a regional network of seven distributors of School Uniform. We share clothing, learning and experiences within our network to achieve best practice. Stocking branded uniform for 5 local schools, we see on average 35 service users per week (1820 families per year), recycling an estimated 6 tons of clothing annually.



Paint Recycling (Partnered with Community Repaint)

Surplus household paint is donated to NCEL from retailers, manufacturers and local traders. This is stored and resold to the public at £1 per litre. Priority is reserved for low income families, social services and voluntary organisations. We recycled more than 3000 litres in 2022-2023.



Pre- Employment Support

Work experience can be gained at NCEL through volunteering. Volunteer programmes are tailor made to suit each individual, work references are provided, support with CV's, applications and interview techniques, we also provide suits and workwear for interviews.

Hardship Support

(In collaboration with Northumberland County Council – Communities Together Hubs)

Referrals to professional bodies can be made both formally and informally for people in financial crisis as well as for those at risk of harm. Hardship grant applications for individuals are made to a wide array of charitable trusts and local giving groups. We secure household furniture, clothing, warm coats, toys, baby equipment both physically and in the form of grants towards purchase. Our local authority set up the communities together hub in 2020 which we most often refer into for access to support services. Links are available through our vast network to charities such as Talking Matters, Domestic Abuse Services, Women's Aid and The Northumberland Recovery Partnership. We make approximately 55 referrals annually of this kind.

Community Garden

Development of our Stobhill Community garden has led to the creation of the Stobhill Gardening Club. This group offers social opportunities, learning, knowledge transfer, shared skills, plot to plate cooking, Spring Summer activities and events and allows for visits to the garden from external groups. Autumn and Winter involve planning, crafts and indoor activities as well as day trips. The Garden is currently supported by a core group of 12 volunteers, Gardening Club currently has 10 members and the garden has welcomed over 300 visitors in the past year.



Community Allotments

Allotment sites are held in Bedlington and Morpeth. Each are supported by Core Groups of volunteers. Visitors are welcomed throughout Spring and Summer, these range from Care Homes, the general public, Sensory Gardening Groups and Mind Active. 400 individuals benefitted from visits to our allotments during 2022-2023.



Social Groups

NCEL offer a friendly weekly cuppa club to all service users. Coffee, cakes and a friendly welcome bring people into the centre where staff and volunteers engage, signpost and enjoy some social time with others. Often the group enjoy a quiz, armchair yoga, board games and puzzles. This first contact provides an opportunity for effective engagement, building trusted professional relationships and information signposting, information sharing and a route through to our other projects.



Reserves Policy

It is NCEL policy to maintain a balance on unrestricted funds (if possible), which equates to at least three months unrestricted payments, equivalent to £15,000, to cover emergency situations that may arise from time to time.

Volunteers

We would like to thank all the volunteers who work so hard to make the Stobhill Link the lively and vibrant hub that it is. In particular we wish to mention our Core Volunteers who have worked so tirelessly on our behalf to prop up the services, as well as all the other members of our organisation for their valuable contribution to our charity and for keeping the organisation running.

Structure Governance and Management

The board of NCEL consists of five trustees responsible for making collective decisions, managing NCEL, managing risks and finances. The board members are responsible for making decisions on all matters of general concern and importance to the charity including on how the funds are to be spent in line with the terms and conditions of all grant funding. The board are too responsible for strategy and future planning. A Managing Director is employed to oversee the day-to-day running of NCEL. The Manager communicates between Project staff and the board on general issues, reporting to and updating the board regularly. The Manager sets and delegates duties, identifies, problems or concerns, suggests problem solving strategies and operates on the direction of the board. The Managing Director networks within the voluntary sector, identifies social need in the community, collects statistical information and presents to the board. Project staff deliver projects, monitor and record statistics, keep and update administrative files, report directly to the Managing Director. Project Staff work closely with volunteers delegating work and planning future work with volunteers.

During 2022-2023 there were two project staff employed by NCEL as well as one manager. We enrolled 32 volunteers in various roles.

Financial Review

In the last financial year our income reduced by £12000, our reserves have dropped in accordance with this. The year has been a hard one for funding and indicates that next year will be pressing again.

Administrative Information

The full board of trustees of NCEL meet bi-monthly six times per year with an average level of attendance of 80%. It is the board's role to ensure that decisions are made collectively and that there are named people working together to manage the organisation, manage risk, finances and future plans so that the charity may meet its objectives. Our trustees bring with them a mix of skills and expertise that compliment the charity and ensure its objects are met for public benefit.

List of Trustees:

David Weatherhead – Chairman

Ann Purvis – Secretary

Derek Thompson

John Beynon Northumberland County Council

Independent Examiner's Report to the trustees/ members of Northumberland Community Enterprise Limited

I report on the accounts for the year end 31st March 2023 set out within this document.

Respective responsibilities of trustees and examiner

The charity's trustees consider that an audit is not required for this year (under section 43(2) of the Charities Act 1993 (the Act)) and that an independent examination is needed.

It is my responsibility to:

examine the accounts (under section 43 of the Act),

to follow the procedures laid down in General Directions given by the Charity Commission (under section 43 (7)(b) of the Act), and

to state whether particular matters have come to my attention.

Basis of independent examiner's report

My examination was carried out in accordance with General Directions given by the Charity Commission. An examination includes a review of the accounting records kept by the charity and comparison of the accounts presented with those records. It also includes consideration of any unusual items or disclosures in the accounts, and seeking explanations from your as trustees concerning any such matters. The procedures undertaken do not provide all the evidence that would be required in an audit, and consequently no opinion is given as to whether the accounts present a 'true and fair' view and the report is limited to those matters set out in the statement below.

Independent examiner's statement


In the course of my examination, no matter has come to my attention:

1. Which gives me reasonable cause to believe that in, any material respect, the requirements:
 - to keep accounting records in accordance with section 41 of the Act; and
 - to prepare accounts which accord with the accounting records and comply with the accounting requirements of the 1993 Act; have not been met; or
2. to which, in my opinion, attention should be drawn to enable a proper understanding of the accounts to be reached.

Name

Address

Date


34 Shields Road, Newcastle
30/11/2024

Registered number
6537591

Charity number
1174831

Northumberland Community Enterprise Ltd

Reports and Accounts

31st March 2023

Northumberland Community Enterprise Ltd
Report and Accounts as at 31st March 2023
Contents

	Page
Company information	1
Contents	2
Company information	3
Directors' report	4
Statement of financial activities	5
Balance sheet	6
Notes to the accounts	7
Notes to the accounts continued	8
Notes to the accounts continued	9
Profit and loss account	10
Detailed profit and loss	11
Grants and donations received	12

Northumberland Community Enterprise Ltd
Company Information
At 31st March 2023

Directors

J Beyon
M Haswell
A Purvis
D Thompson
D Weatherhead

Registered office

37 Shields Road
Stobhill
Morpeth
Northumberland
NE61 2SA

Registered number

6537591

Charity number

1174831

Northumberland Community Enterprise Ltd

Registered number:

6537591

Charity number

1174831

Directors' report

for the year ended 31st March 2023

The directors present their report and accounts for the year ended 31st March 2023

Principal activities

The company's principal activity during the year continued to be that of an enterprise concern. The main aim of the company is to improve the life style of the disabled and disadvantaged people living in the area.

Directors

The following persons served as directors during the year:

J Beyon
M Haswell
A Purvis
D Thompson
D Weatherhead

Small company provisions

This report has been prepared in accordance with the provisions in Part 15 of the Companies Act 2006 applicable to companies subject to the small companies regime.

This report was approved by the board on



D Weatherhead
Director
25.09.2023

Northumberland Community Enterprise Ltd
Statement of financial activities
for the year ended 31st March 2023

	2023 £	2022 £
Incoming resources	76,567	88,920
	<hr/> 76,567	<hr/> 88,920
Resources expended	-88,331	-88,609
Net incoming resources before transfers	<hr/> -11,764	<hr/> 311
Adjustments	0	0
Profit or loss for the financial	<hr/> -11,764	<hr/> 311
Total funds b/fwd	31,720	31,409
	<hr/> 19,956	<hr/> 31,720

Northumberland Community Enterprise Ltd
Balance sheet
at 31st March 2023

	Notes	2023	2022
Fixed assets			
Tangible assets	1	2,946	3,885
Current assets			
Debtors		554	561
Others		7,519	28,833
Cash at bank and in hand		<u>15,581</u>	<u>17,573</u>
		23,654	46,967
Total current assets;		26,600	50,852
Current liabilities			
Creditors: amount falling due within one year	2	-2,209	-6,068
Loan -PSA		-3,239	-4,209
Other creditors		-1,196	-8,856
		-6,644	-19,133
Total assets less current liabilities		19,956	31,719
Adjustment		<u>0</u>	<u>1</u>
Net assets		19,956	31,720
Capital and reserves			
Called up share capital	3	31,709	31,398
Profit and loss account		-11,764	311
Shareholder's funds		11	11
	4	<u>19,956</u>	<u>31,720</u>

The directors are satisfied that the company is entitled to exemption from the requirement to obtain an audit under section 477 of the Companies Act 2006.

The member has not required the company to obtain an audit in accordance with section 476 of the Act.

The directors acknowledge their responsibilities for complying with the requirements of the Companies Act 2006 with respect to accounting records and the preparation of accounts.

The accounts have been prepared in accordance with the provisions in part 15 of the Companies Act 2006 applicable to companies subject to the small companies regime.

M Haswell

M Haswell
Director
25.09.23

Northumberland Community Enterprise Ltd
Notes to the accounts
for the year ended 31st March 2023

1 Accounting policies

Basis of preparation

The financial statements are prepared under the historical cost convention and in accordance with the Financial Reporting Standard for smaller Entities (effective June 2002) and follow the recommendations in "Accounting and Reporting by Charities: Statement of Recommended practice" issued in October 2000.

Incoming resources

Voluntary income is received by way of donations and gifts and is included in full in the Statement of Financial Activities when receivable. Gifts donated for resale are included as income when they are sold. Donated assets are included at cost value to the company where this can be quantified and a third party is bearing the cost. The value of the services provided by volunteers has not been included.

Fund Accounting

General funds are unrestricted funds which are available for use at the discretion of the trustees in furtherance of the general objectives of the charity and which have not been designated for other purposes.

Restricted funds are funds which are to be used in accordance with specific restrictions imposed by the donors or which have been raised by the charity for particular purposes. The cost of each fund is set out in the notes to the financial statements.

Resources expended

Resources expended are recognised in the year in which they are incurred.

Management and administration costs are those incurred in connection with administration of the company and compliance with constitutional and statutory requirements.
234567890

2 Creditors: amounts falling due within one year				2023	2022
				£	£
Trade creditors				2,209	6,068
Other creditors				1,196	0
				<u>3,405</u>	<u>6,068</u>
3 Share capital				2023	2022
	Nominal value	Number		£	£
Allotted, called up and fully paid					
Ordinary shares		£1 each		<u>11</u>	<u>11</u>

Northumberland Community Enterprise Ltd
Notes to the accounts continued
for the year ended 31 March 2023

4 Analysis of net assets between funds	2023	2022 £
Fund balances		
Fixed assets	2,946	3,885
Current assets	23,654	46,967
Current liabilities	-6,644	-19,133
	<u>19,956</u>	<u>31,719</u>

5 Tangible assets	2023 £		2023 £ Total
	Building	Furniture & Fittings	
Cost			
At 1 April 2022	5,250	6,882	12,132
Additions		0	0
Disposal	<u>5,250</u>	<u>6,882</u>	<u>12,132</u>
Depreciation at 1 April 2022	-3,520	-4,727	-8,247
Charge for year	-777	-162	-939
At the 31st March 2023	<u>-4,297</u>	<u>-4,889</u>	<u>-9,186</u>
Net book value as at the 31 March 2023	<u>953</u>	<u>1,993</u>	<u>2,946</u>

Northumberland community Enterprise Ltd
Notes to the accounts continued
for the year ended 31st March 2023

8 Unrestricted funds	01-Apr-22 £	Incoming £	Outgoing £	Transfers £	31-Mar-23 £
General fund	19,068	38,917	-50,344		7,641

Purposes of unrestricted fund

The purpose of the general fund is to further the aims and objectives of the charity

9 Restricted funds	01-Apr-22 £	Incoming £	Outgoing £	Transfers £	31-Mar-23 £
Restricted fund	12,652	37,650	-37,987		12,315

Purposes of restricted funds

The aim of the charity funds is to provide training for staff and volunteers and manage other services to benefit the local community.

Total	31,720	76,567	-88,331		19,956
--------------	---------------	---------------	----------------	--	---------------

Northumberland Community Enterprise Ltd
Profit and Loss account
for the year ended 31st March 2023

	2023 £	2022 £
Incoming resources		
Sales	663	918
Donations	1,166	946
Grants	73,907	85,718
Other incoming resources	831	1,338
	<u>76,567</u>	<u>88,920</u>
 Resources expended	 -88,331	 -88,609
Net resources	<u>-11,764</u>	<u>311</u>

Northumberland Community Enterprise Ltd
Detailed profit and loss account
for the year ended 2023

	Unrestricted funds £	Restricted funds £	2023 £	2022 £
Incoming resources				
Sales	663		663	918
Donations	1,166		1,166	946
Grants	36,257	37,650	73,907	85,718
Other incoming resources	831		831	1,338
	38,917	37,650	76,567	88,920
Resources expended				
Materials	129	0	129	828
Advertising and marketing	0	42	42	500
Wages and national insurance	11,772	31,083	42,855	36,373
Training	0	0	0	885
Rent and rates	286	300	586	54
Utilities	727	888	1,615	3,261
Vehicle costs	999	0	999	2,105
Travel expenses	0	2,415	2,415	2,583
Computer costs	1,958	0	1,958	1,296
Telephone and internet	664	811	1,475	1,517
Printing, postage and stationery	271	332	603	328
Leasing	5,950	1,065	7,015	8,003
Repairs, renewals and cleaning	1,595	0	1,595	2,141
Interest and bank charges	399	0	399	166
Administration costs	17,250	0	17,250	11,550
Accountancy costs	6,100	0	6,100	7,350
Depreciation	940	0	940	939
Insurance	860	1,051	1,911	1,768
Refreshments	39	0	39	149
Donations	125	0	125	135
Sundry expenses	224	0	224	5,802
Professional fees	56	0	56	876
	50,344	37,987	88,331	88,609
Profit or loss for current year	-11,427	-337	-11,764	311

Northumberland Community Enterprise Ltd
Appendix to the accounts
for the year ended 31st March 2023

for the year ended 31st March 2023		2023	
Grants and donations received	Unrestricted	Restricted	Total
	£	£	
Asda Foundation	960		
Ballinger Charity		12,500	
The Barbour Foundation	500		
Coalfields Regent	2,000		
Community Fund Fridge Project		4,000	
The Finnis Scott Foundation	400		
The Forrester Family Trust		5,000	
Evolution Morpeth LLP	1,000		
Greatham Hospital Hospital of God	2,000		
Greggs Foundation	90		
Albert Hunt SP	2,000		
Inner Wheel club of Morpeth	60		
Jewson	33		
The Joicey Trust	1,100		
Leathersellers	2,500		
Leeds Building Society	917		
The Lions Club of Morpeth	500		
Magic Little Grants	500		
Maps	150		
Morpeth Rotary Club	2,150		
Morpeth Town Council	4,891		
The Morrisons Foundation	2,710		
National Allotment Garden Trust	399		
The National Lottery Community Fund		7,900	
Neighbourly	1,000		
Northumberland County Council		3,250	
Northumberland Police	653		
Open Reach	211		
Three Rivers	200		
Ridley Family Charity	4,400		
Celia Towers	4,933		
Garfield Western Foundation		5,000	
Cash Donations	1,166		
Sales etc	1,494		
	<hr/>	<hr/>	
	38,917	37,650	76,567