

NORTHUMBERLAND COMMUNITY ENTERPRISE LIMITED

England & Wales · Charity number 1174831

Details

Status Registered

Legal form Charitable company

Company number [06537591](#)

Registered 2017-09-25

Register [View on the Charity Commission register](#)

Contact

Address 37 Shields Road
Morpeth
NE61 2SA

Phone 01670519575

Email enquiries@ncenterprise.org.uk

Website www.ncenterprise.org.uk

Activities

Objects: (1) THE RELIEF OF UNEMPLOYMENT FOR THE BENEFIT OF THE PUBLIC IN SUCH WAYS AS MAY BE THOUGHT FIT, INCLUDING ASSISTANCE TO FIND EMPLOYMENT; (2) TO PROMOTE SOCIAL INCLUSION FOR THE PUBLIC BENEFIT AMONG ELDERLY PERSONS WHO ARE SOCIALLY EXCLUDED FROM SOCIETY, OR PARTS OF SOCIETY AS A RESULT OF THEIR AGE, RELIEVING THE NEEDS OF THOSE PEOPLE AND ASSISTING THEM TO INTEGRATE INTO SOCIETY;(3) THE RELIEF OF FINANCIAL HARDSHIP AMONG PEOPLE LIVING OR WORKING IN SOUTH EAST NORTHUMBERLAND BUT ALSO WHEREVER OUR SERVICES ARE REQUESTED THROUGH NORTHUMBERLAND AND TYNESIDE, BY PROVIDING SUCH PERSONS WITH SERVICES AND ADVICE WHICH THEY COULD NOT OTHERWISE AFFORD THROUGH LACK OF MEANS OR THAT ARE NOT OTHERWISE AVAILABLE TO THEM THROUGH LACK OF OPPORTUNITY;(4) TO DEVELOP THE CAPACITY AND SKILLS OF THE MEMBERS OF SOCIALLY, ECONOMICALLY AND DISADVANTAGED COMMUNITIES OF SOUTH EAST NORTHUMBERLAND BUT ALSO WHEREVER OUR SERVICES ARE REQUESTED THROUGH NORTHUMBERLAND AND TYNESIDE IN SUCH A WAY THAT THEY ARE BETTER ABLE TO IDENTIFY, AND HELP MEET THEIR NEEDS AND TO PARTICIPATE MORE FULLY IN SOCIETY;(5) TO HELP YOUNG PEOPLE, ESPECIALLY BUT NOT EXCLUSIVELY THROUGH LEISURE TIME ACTIVITIES, SO AS TO DEVELOP THEIR CAPABILITIES THAT THEY MAY GROW TO FULL MATURITY AS INDIVIDUALS AND MEMBERS OF SOCIETY.

Activities: NCEL operates various initiatives and projects to better the lives of disadvantaged people living within Stobhill and throughout South East Northumberland. Our services are open to all age ranges and run from our Stobhill Link Community Hub. We offer volunteer opportunities and address local issues such as health and wellbeing, unemployment, skills building, horticulture and social inclusion.

Classification

- **How:** Provides Buildings/facilities/open Space, Provides Services, Provides Advocacy/advice/information
- **What:** General Charitable Purposes, Education/training, Disability, Economic/community Development/employment, Recreation
- **Who:** Children/young People, Elderly/old People, People With Disabilities, The General Public/mankind

Geography

- Northumberland

Finances

Period end	Income	Expenditure	Assets	Employees
2025-03-31	£79,251	£82,963	-	-
2024-03-31	£70,689	£76,486	-	-
2023-03-31	£76,567	£88,331	-	-
2022-03-31	£88,920	£88,609	-	-
2021-03-31	£65,826	£63,664	-	-

Trustees

Name	Role	Appointed
DAVID WEATHERHEAD	Chair	2017-02-13
ANN PURVIS		2020-06-16
Derek Thompson		2021-10-14
John Beynon		2021-10-14
MARJORIE HASWELL		2016-03-01

NORTHUMBERLAND COMMUNITY ENTERPRISE LIMITED

England & Wales - Charity number 1174831

Accounts

Stobhill Link

Managed by: Northumberland Community Enterprise Limited
Trustees Annual Report and Accounts April 2024-March 2025

Registered Office:

37 Shields Road
Morpeth
Northumberland
NE61 2PA

The trustees present their annual report together with the financial statements of Northumberland Community Enterprise Limited for the year ended 31 March 2025.

Objectives and Activities

Northumberland Community Enterprise Limited (NCEL) exists to improve the quality of life of people experiencing disadvantage across South East Northumberland, with a primary focus on the Stobhill area of Morpeth. The communities served experience persistent challenges linked to deprivation, including low income, poor health outcomes, unemployment, food insecurity and social isolation.

Operating from its community hub, known locally as **The Stobhill Link**, NCEL delivers accessible, community-led services for people of all ages. Activities aim to relieve financial hardship, promote social inclusion, improve health and wellbeing, support people into employment and develop individual and community capacity.

In planning activities during the year, the trustees have had due regard to the Charity Commission's guidance on public benefit and have ensured that services are available to those who seek support.

Public Benefit

The trustees confirm that they have complied with their duty under section 17 of the Charities Act 2011 to have due regard to the Charity Commission's guidance on public benefit when exercising powers or duties relevant to the charity's purposes.

Achievements and Performance

During 2024–2025, demand for NCEL’s services remained consistently high, reflecting the ongoing impact of the cost-of-living crisis. The charity continued to prioritise the delivery of core services while responding flexibly to emerging needs within the community.

Work throughout the year focused on early intervention and practical support, addressing food and fuel poverty, low household income, unemployment, mental health challenges and social isolation. Strong partnerships with statutory agencies, voluntary organisations and faith groups enabled effective referrals, safeguarding responses and improved outcomes for beneficiaries.

Community Food and Food Waste Reduction

NCEL continued to operate its community fridge model in partnership with Northumberland County Council, FareShare, The Bread and Butter Thing and local food distributors. The service promotes dignity, choice and sustainability, reducing reliance on crisis food provision while supporting long-term access to nutritious food.

Emergency foodbank referrals remain available where required; however, reliance on external foodbanks has reduced due to the availability of local, preventative solutions. The programme continues to divert significant quantities of surplus food from landfill, contributing to environmental sustainability.

Lunch Club and Social Support

The Lunch Club remains a core preventative service, providing nutritious meals alongside social contact, advice and safeguarding support. Delivered by a committed team of volunteers, the Lunch Club acts as an early-intervention point for identifying hardship, deteriorating health and social isolation.

Throughout the year, staff and volunteers supported individuals to access health services, benefits advice, housing support and adult social care, with several safeguarding concerns successfully addressed.

Free School Uniform Bank

NCEL continues to operate a well-established school uniform bank as part of Northumberland County Council’s regional network. The service supports families facing financial pressure while reducing textile waste. Demand remained high throughout the year, reflecting continued financial strain on households.

Paint Recycling Programme

Through its partnership with Community RePaint, NCEL redistributed surplus household paint at low cost, prioritising low-income households, voluntary organisations and social care services. This programme supports environmental objectives while enabling households to maintain and improve their homes affordably.

Volunteering and Pre-Employment Support

Volunteering remains central to NCEL's delivery model. Opportunities are offered across all projects, supported by tailored input including work experience, references, CV support and interview preparation. Several volunteers progressed into employment, training or education during the year.

Hardship and Crisis Support

Working in collaboration with Northumberland County Council's Communities Together Hubs, NCEL provided targeted hardship support to individuals and families experiencing financial crisis. Support included identifying grant opportunities, access to essential household items and referrals to specialist services including mental health, domestic abuse and recovery services.

Community Garden, Allotments and Social Groups

The Stobhill Community Garden, Gardening Club and community allotments in Morpeth and Bedlington continued to provide inclusive spaces for wellbeing, learning and social connection. Weekly social groups, including the cuppa club, remained an important gateway into wider support services.

Financial Review

Total income for the year ended 31 March 2025 was **£79,251** (2024: £70,689). Total expenditure amounted to **£82,963** (2024: £76,486), resulting in a **net deficit of £3,712** (2024: deficit £5,797).

At 31 March 2025, total funds carried forward were **£10,457** (2024: £14,159), comprising:

- **Unrestricted funds:** £6,543
- **Restricted funds:** £3,914

The trustees consider the charity to be a going concern and remain confident that the charity is able to meet its obligations as they fall due.

Reserves Policy

The trustees aim to maintain unrestricted reserves at a level sufficient to support continuity of services and manage financial risk. Reserves are reviewed regularly in light of forecast expenditure and funding commitments.

Structure, Governance and Management

Northumberland Community Enterprise Limited is a charitable company limited by guarantee and governed by its Memorandum and Articles of Association. The trustees are responsible for strategic direction, governance, financial oversight and risk management.

Day-to-day operations are delegated to the Managing Director, supported by staff and volunteers. Trustees meet bi-monthly and receive regular financial and operational reports.

Trustees

The trustees serving during the year were:

- **David Weatherhead** – Chair
- **Ann Purvis** – Secretary
- **Derek Thompson**
- **John Beynon** (Northumberland County Council)

Statement of Trustees' Responsibilities

The trustees are responsible for preparing the trustees' annual report and financial statements in accordance with applicable law and regulations.

Registered number
6537591

Charity number
1174831

Northumberland Community Enterprise Ltd

Reports and Accounts

31st March 2025

**Northumberland Community Enterprise Ltd
Report and Accounts as at 31 March 2025
Contents**

	Page
Company information	1
Contents	2
Company information	3
Directors' report	4
Statement of financial activities	5
Balance sheet	6
Notes to the accounts	7
Notes to the accounts continued	8
Notes to the accounts continued	9
Profit and loss account	10
Detailed profit and loss	11
Grants and donations received	12

**Northumberland Community Enterprise Ltd
Company Information
At 31st March 2025**

Directors

J Beyon
M Haswell
A Purvis
D Thompson
D Weatherhead

Registered office

37 Shields Road
Stobhill
Morpeth
Northumberland
NE61 2SA

Registered number

6537591

Charity number

1174831

Northumberland Community Enterprise Ltd

Registered number:

6537591

Charity number

1174831

Directors' report

For the year ended 31st March 1925

The directors present their report and accounts for the year ended 31st March 1925

Principal activities

The company's principal activity during the year continued to be that of an enterprise concern. The main aim of the company is to improve the life style of the disabled and disadvantaged people living in the area.

Directors

The following persons served as directors during the year:

J Beyon
M Haswell
A Purvis
D Thompson
D Weatherhead

Small company provisions

This report has been prepared in accordance with the provisions in Part 15 of the Companies Act 2006 applicable to companies subject to the small companies regime.

this report was approved by the board

17.12.2025



D Weatherhead
Director

Northumberland Community Enterprise Ltd
Statement of financial activities
For the year ended 31st March 1925

	2025	2024
	£	£
Incoming resources	79,251	70,689
	<u>79,251</u>	<u>70,689</u>
Resources expended	-82,963	-76,486
Net incoming resources before transfers	<u>-3,712</u>	<u>-5,797</u>
Adjustments	10	0
Profit or loss for the financial	<u>-3,702</u>	<u>-5,797</u>
Total funds b/fwd	14,159	19,956
	<u>10,457</u>	<u>14,159</u>

Northumberland Community Enterprise Ltd
Balance sheet
at 31st March 1925

	Notes	2025	2024
		£	£
Fixed assets			
Tangible assets	1	8,132	11,006
Current assets			
Debtors		2,435	317
Others		642	1,622
Cash at bank and in hand		<u>3,676</u>	<u>10,898</u>
		6,753	12,837
Total current assets;		14,885	23,843
Current liabilities			
Creditors: amount falling due within one year	2	-477	-2,317
Loan -PSA		-1,223	-2,243
Other creditors		-2,728	-5,124
		-4,428	-9,684
Total assets less current liabilities		10,457	14,159
Net assets		<u>10,457</u>	<u>14,159</u>
Capital and reserves			
Called up share capital	3	14,159	19,945
Profit and loss account		-3,713	-5,797
Sharefolder's funds		11	11
	4	<u>10,457</u>	<u>14,159</u>

The directors are satisfied that the company is entitled to exemption from the requirement to obtain an audit under section 477 of the Companies Act 2006.

The member has not required the company to obtain an audit in accordance with section 476 of the Act.

The directors acknowledge their responsibilities for complying with the requirements of the Companies Act 2006 with respect to accounting records and the preparation of accounts.

The accounts have been prepared in accordance with the provisions in part 15 of the Companies Act 2006 applicable to companies subject to the small companies regime.

M Haswell

M Haswell

Director

Approved by the board

17.12.2025

Northumberland Community Enterprise Ltd
Notes to the accounts
for the year ended 31st March 2025

1 Accounting policies

Basis of preparation

The financial statements are prepared under the historical cost convention and in accordance with the Financial Reporting Standard for smaller Entities (effective June 2002) and follow the recommendations in "Accounting and Reporting by Charities: Statement of Recommended practice" issued in October 2000.

Incoming resources

Voluntary income is received by way of donations and gifts and is included in full in the Statement of Financial Activities when receivable. Gifts donated for resale are included as income when they are sold. Donated assets are included at cost value to the company where this can be quantified and a third party is bearing the cost. The value of the services provided by volunteers has not been included.

Fund Accounting

General funds are unrestricted funds which are available for use at the discretion of the trustees in furtherance of the general objectives of the charity and which have not been designated for other purposes.

Restricted funds are funds which are to be used in accordance with specific restrictions imposed by the donors or which have been raised by the charity for partifulare purposes. The cost of raising and administering such funds are charged against the specific funds. The aim and use of each fund is set out in the notes to the financial statements.

Resources expended

Resources expended are recognised in the year in which they are incurred.

Management and administration costs are those incurred in connection with administration of the company and compliance with constittional and statutory requirements.

2 Creditors: amounts falling due within one year		2025	2024
		£	£
Trade creditors		477	2,317
Other creditors		<u>2,728</u>	<u>5,124</u>
		3,205	7,441
		<hr/>	<hr/>
3 Share capital	Nominal	2025	2024
	value	£	£
	Number		
Allotted, called up and fully paid			
Ordinary shares	£1 each	<u>11</u>	<u>11</u>

Northumberland Community Enterprise Ltd
Notes to the accounts continued
For the year ended 31st March 2025

4 Analysis of net assets between funds	2025	2024
	£	£
Fund balances		
Fixed assets	8,132	11,006
Current assets	6,753	12,837
Current liabilities	-4,428	-9,684
	<u>10,457</u>	<u>14,159</u>

5 Tangible assets	2025		2025
	£	£	£
	Building	Furniture & Fittings	Total
Cost			
	15,250	6,882	22,132
Additions		0	0
Disposal			
	<u>15,250</u>	<u>6,882</u>	<u>22,132</u>
Depreciation	-6,074	-5,052	-11,126
Charge for year	-2712	-162	-2,874
At the 31 March 2024	<u>-8,786</u>	<u>-5,214</u>	<u>-14,000</u>
Net book value as at the 31 March 2025	<u>6,464</u>	<u>1,668</u>	<u>8,132</u>

Northumberland community Enterprise Ltd
Notes to the accounts continued
For the year ended 31st March 2025

8 Unrestricted funds	01-Apr-24	Incoming	Outgoing	Transfers	31-Mar-25
	£	£	£	£	£
General fund	-4,513	24,549	-26,579	0	-6,543

Purposes of unrestricted fund

The purpose of the general fund is to further the aims and objectives of the charity

9 Restricted funds	01-Apr-25	Incoming	Outgoing	Transfers	31-Mar-25
	£	£	£	£	£
Restricted fund	11,031	54,702	-56,384	0	9,349

Purposes of restricted funds

The aim of the charity funds is to provide training for staff and volunteers and manage other service to benefit the local community.

	£	£	£	£	£
Total	6,518	79,251	-82,963	0	2,806

Northumberland Community Enterprise Ltd
Profit and Loss account
For the year ended 31 March 2025

	2025	2024
	£	£
Incoming resources		
Sales	767	903
Donations	536	315
Grants	76,391	66,557
Other incoming resources	1,557	2,914
	<u>79,251</u>	<u>70,689</u>
Resources expended	-82,963	-76,486
Net resources	<u><u>-3,712</u></u>	<u><u>-5,797</u></u>

Northumberland Community Enterprise Ltd
Detailed profit and loss account
For the year ended 31st March 2025

	Unrestricted funds	Restricted funds	2025	2024
	£	£	£	£
Incoming resources				
Sales	770		770	904
Donations	536		536	314
Grants	21,689	54,702	76,391	66,557
Other incoming resources	1,554		1,554	2,914
	24,549	54,702	79,251	70,689
Resources expended				
Materials	118	288	406	379
Wages and national insurance	12,733	26,648	39,381	47,914
Rent and rates	413	1,010	1,423	490
Utilities	1,251	3,064	4,315	1,877
Vehicle costs	503	1,230	1,733	937
Travel expenses	797	1,951	2,748	2,996
Computer costs	157	385	542	1,914
Telephone and internet	904	2,214	3,118	1,956
Printing, postage and stationery	152	372	524	394
Leasing	1,606	3,932	5,538	3,866
Repairs, renewals and cleaning	188	460	648	1,442
Interest and bank charges	49	120	169	246
Administration costs	3,084	7,552	10,636	0
Accountancy costs	3,132	3,503	6,635	6,000
Depreciation	832	2,041	2,873	1,946
Insurance	613	1,503	2,116	2,035
Refreshments	2	6	8	60
Donations	0	0	0	1,037
Sundry expenses	17	37	54	944
Professional fees	28	68	96	53
	26,579	56,384	82,963	76,486
Profit or loss for current year	-2,030	-1,682	-3,712	-5,797

Northumberland Community Enterprise Ltd
Appendix to the accounts
For the year ended 31st March 2025

			2025
Grants and donations received	Unrestricted	Restricted	Total
	£	£	
The Archer Trust	1,500		1,500
The Asda Foundation		1,000	1,000
The Ballinger Charity	12,500		12,500
The Barbour Foundation		1,000	1,000
The Percy Bilton		750	750
Charities - Coke	5,000		5,000
Arnold Clark		2,500	2,500
Co-operative Local Community		1,716	1,716
Hadrian Trust		1,700	1,700
Albert Hunt		3,000	3,000
Inner Wheel Club Morpeth	100		100
Karbon Homes Ltd		1,500	1,500
Allen Lane Foundation	1,462		1,462
Leech		5,000	5,000
Lions Club	150		150
Morpeth Garden Club	255		255
Morpeth Rotary Club	233		233
Morpeth Town Council		1,687	1,687
Morrisons Foundation		2,152	2,152
Northumberland County Council		23,981	23,981
North East Humanist	489		489
Rank Foundation		1,500	1,500
Sainsbury's Grant		3,216	3,216
The 29th May 1961 Charitable Trust		4,000	4,000
Cash Donation	536		536
			-
	22,225	54,702	76,927

Independent Examiner's Report

to the trustees/members of

Northumberland Community Enterprise Limited

I report on the accounts of the charity for the **year ended 31 March 2025**, which are set out within this document.

Respective responsibilities of trustees and examiner

The charity's trustees consider that an audit is not required for this year (under section 477 of the Companies Act 2006) and that an independent examination is required.

It is my responsibility to:

- examine the accounts under section 145 of the Charities Act 2011;
- follow the procedures laid down in the Charity Commission's General Directions given under section 145(5)(b) of the Act; and
- state whether particular matters have come to my attention.

Basis of independent examiner's report

My examination was carried out in accordance with the Charity Commission's General Directions. An examination includes a review of the accounting records kept by the charity and a comparison of the accounts presented with those records. It also includes consideration of any unusual items or disclosures in the accounts and seeking explanations from the trustees concerning any such matters.

The procedures undertaken do not provide all the evidence that would be required in an audit, and consequently no opinion is given as to whether the accounts present a true and fair view. The report is limited to those matters set out in the statement below.

Independent examiner's statement

In the course of my examination, no matter has come to my attention:

1. which gives me reasonable cause to believe that, in any material respect, the requirements:
 - to keep accounting records in accordance with section 386 of the Companies Act 2006; and

- to prepare accounts which accord with the accounting records and comply with the accounting requirements of the Companies Act 2006 have not been met; or
2. to which, in my opinion, attention should be drawn in order to enable a proper understanding of the accounts to be reached.

Name: David Weatherhead

Address: Fir Tree Cottage, Old Swarland, Northumberland, NE659HU

Date: 25th November 2026

A handwritten signature in black ink, appearing to read 'D Weatherhead', written in a cursive style.

NORTHUMBERLAND COMMUNITY ENTERPRISE LIMITED

England & Wales - Charity number 1174831

Accounts

Stobhill Link

Managed by: Northumberland Community Enterprise Limited
Trustees Annual Report and Accounts April 2023- March 2024



Northumberland Community Enterprise Ltd

Aim and Purposes

NCEL operates various initiatives and projects to better the lives of disadvantaged people living within neighbourhoods of Southeast Northumberland which are identified to be deprived (by the Indices of Multiple Deprivation) with poor statistics on crime, education, skills, health and household income. Primarily targeting the centre's immediate community of Stobhill. Known locally by our centre name 'The Stobhill Link' our services are open to all age ranges and run from our Community Hub. We offer volunteer opportunities and address local issues aiming to relieve unemployment, promote social inclusion amongst the elderly and/disabled, relieve financial hardship, develop capacity and skills and to help young people develop their capacity through leisure time activities.

Objectives and Activities

NCEL is committed to engaging with as many people as possible effected by deprivation to offer means and opportunities to overcome barriers in their lives. We encourage participation by our service users in the design and planning of our work, offer volunteer opportunities across all or our projects and encourage leadership, ownership and passion for the work required to meet our goals.

In planning our work for the year, we have considered the Commissions guidance on public benefit and have ensured that our services be available to all people attempting to access them.

The objects of NCEL are:

(1) the relief of unemployment for the benefit of the public in such ways as may be thought fit, including assistance to find employment;

(2) to promote social inclusion for the public benefit among elderly persons who are socially excluded from society, or parts of society as a result of their age, relieving the needs of those people and assisting them to integrate into society;

(3) the relief of financial hardship among people living or working in South East Northumberland but also wherever our services are requested through Northumberland and Tyneside, by providing such persons with services and advice which they could not otherwise afford through lack of means or that are not otherwise available to them through lack of opportunity;

(4) to develop the capacity and skills of the members of socially, economically and disadvantaged communities of South East Northumberland but also wherever our services are requested through Northumberland and Tyneside in such a way that they are better able to identify, and help meet their needs and to participate more fully in society;

(5) to help young people, especially but not exclusively through leisure time activities, so as to develop their capabilities that they may grow to full maturity as individuals and members of society.

During the course of our work no harm has arose from the purposes. Our beneficiaries are the general public and locally-based community and voluntary organisations. No private benefit arises from these purposes.

Achievements and Performance



During the 2023-2024 year we have continued to offer a wide variety of services which are outlined in this report. We have included in these services wrap around support tackling food and fuel poverty, low household incomes, debt, unemployment, energy efficiency and awareness, social isolation and health and wellbeing. Our network of professional contacts continues to grow due to the variety of issues we have endeavoured to tackle, and this has helped to support our volunteers and staff with project delivery. Our team collaborates with local charities, services and stakeholders such as youth and community groups, Stobhill and Morpeth churches and voluntary sector organisations to make opportunities and services available to our beneficiaries.

We have continued to work with Fare Share to secure surplus food waste from supermarkets and businesses which is re-distributed through our community fridge and Lunch Club. We have also continued our work with Community Repaint, a National charity acting as an umbrella body to ensure the redistribution of thousands of litres of household paint to individuals and charitable groups. Much of our work was designed through established need amongst our beneficiaries, it was developed and intended to help many people in need unable to afford not only luxuries but basic provisions to get by. We have continually increased our customer base and recognise the large impact much of the re-distribution has had by helping to sustain the environment for future generations. We have noted the stigma that food poverty can carry and encourage our team to focus on the message of preventing food waste which relieves apprehension/stigma beneficiaries may have when accessing our centre to request support.



Community Food Pantry – Community Fridge

(In Strategic Partnership with Northumberland County Council), Working With FareShare, The Bread and Butter Thing and local Food Distributors.

Our team has developed a community food pantry into a community fridge model. We have moved forward from emergency food support to a model designed by the cooperative partnership which we are witnessing to support long term sustainability, reduce stigma and promote choice whilst offering more nutrient dense options and being accessible to all of our beneficiaries. We continue to refer to the Wansbeck Valley Foodbank for access in an emergency for

individuals in crisis, however these referrals are greatly reduced owing to our ability to provide and other, more local and sustainable solutions to food needs. Our network in Morpeth focuses on sustainable food solutions and innovative projects offering food, growing, cooking etc. We collaborate with local voluntary groups to initiate likeminded projects, promote the community fridge model and develop strategy towards access to food and food waste. We have supported The Morpeth and Bedlington Community Allotments to improve upon their food models and address food insecurity with their own participants.

2023 - 2024

- 15 referrals to Foodbanks
- provided 895 food parcels to beneficiaries
- are currently saving 140kg of food waste per week (at our current rate we estimate to total 7 tonnes annually).

Lunch Club – Social Support Group

Our team has developed a Lunch Club which acts as a social support group, a frontline response to safeguarding in the community and a food insecurity prevention programme. A team of dedicated volunteers cook hearty, healthy meals for members whilst our staff and social support volunteers network and discuss solutions to social issues. They provide 1:1 advice and support, highlight common themes and issues around food and fuel poverty and accommodate speakers from professional organisations which initiates the creation of referral processes. Many volunteers are also older people who benefit from the advice, information and hearty meal on a weekly basis. On several occasions our team have been able to safeguard members of the public, access services on their behalf and initiate care plans. This project has the potential to develop further in the future.

Free School Uniform Bank (Regional Partnership)

Partnered with Northumberland County Council's Regional Network of School Uniform Banks. We built one of the first school uniform banks in the North East and are part of a regional network of seven distributors of School Uniform. We share clothing, learning and experiences within our network to achieve best practice. Stocking branded uniform for 5 local schools, we see on average 40 service users per week (2000+ families per year), recycling an estimated 6-7 tonnes of clothing annually.



Summer holidays 2023 activities



Paint Recycling (Partnered with Community Repaint)

Surplus household paint is donated to NCEL from retailers, manufacturers and local traders. This is stored and resold to the public at £1 per litre. Priority is reserved for low-income families, social services and voluntary organisations. We recycled more than 3000 litres in 2023-2024.

Pre- Employment Support

Work experience can be gained at NCEL through volunteering. Volunteer programmes are tailor made to suit everyone, work references are provided, support with CV's, applications and interview techniques, we also provide suits and workwear for interviews.

Hardship Support

(In collaboration with Northumberland County Council – Communities Together Hubs)

Referrals to professional bodies can be made both formally and informally for people in financial crisis as well as for those at risk of harm. Hardship grant applications for individuals are made to a wide array of charitable trusts and local giving groups. We secure household furniture, clothing, warm coats, toys, baby equipment both physically and in the form of grants towards purchase. Links are available through our vast network to charities such as Talking Matters, Domestic Abuse Services, Women's Aid and The Northumberland Recovery Partnership. We make approximately 55 referrals annually of this kind.

Community Garden

Development of our Stobhill Community Garden led to the creation of the Stobhill Gardening Club. This group offers social opportunities, learning, knowledge transfer, shared skills, plot to plate cooking, Spring Summer activities and events and allows for visits to the garden from external groups. Autumn and Winter involve planning, crafts and indoor activities as well as day trips. The Garden is currently supported by a core group of 12 volunteers, Gardening Club currently has 10 members and the garden welcomes an estimated 300 visitors per year.

Community Allotments

Allotment sites are held in Bedlington and Morpeth. Each are supported by Core Groups of volunteers. Visitors are welcomed throughout Spring and Summer, these range from Care Homes, the general public, Sensory Gardening Groups and Mind Active.

Social Groups

NCEL offer a friendly weekly cuppa club to all service users. Coffee, cakes and a friendly welcome bring people into the centre where staff and volunteers engage, signpost and enjoy some social time with others. Often the group enjoy a quiz, armchair yoga, board games and puzzles. This first contact provides an opportunity for effective engagement, building trusted professional relationships and information signposting, information sharing and a route through to our other projects.

Reserves Policy

It is NCEL policy to maintain a balance on unrestricted funds (if possible), which equates to at least three months unrestricted payments, equivalent to £15,000, to cover emergency situations that may arise from time to time.

Volunteers

We would like to thank all the volunteers who work so hard to make the Stobhill Link the lively and vibrant hub that it is. We wish to mention our Core Volunteers who have worked so tirelessly on our behalf to prop up the services, as well as all the other members of our organisation for their valuable contribution to our charity and for keeping the organisation running.

Structure Governance and Management

The board of NCEL consists of five trustees responsible for making collective decisions, managing NCEL, managing risks and finances. The board members are responsible for making decisions on all matters of general concern and importance to the charity including on how the funds are to be spent in line with the terms and conditions of all grant funding. The board are too responsible for strategy and future planning. A Managing Director is employed to oversee the day-to-day running of NCEL. The Manager communicates between Project staff and the board on general issues, reporting to and updating the board regularly. The Manager sets and delegates duties, identifies, problems or concerns, suggests problem solving strategies and operates on the direction of the board. The Managing Director networks within the voluntary sector, identifies social need in the community, collects statistical information and presents to the board. Project staff deliver projects, monitor and record statistics, keep and update administrative files, report directly to the Managing Director. Project Staff work closely with volunteers delegating work and planning future work with volunteers.

During 2023-2024 there were two project staff employed by NCEL as well as one manager. We enrolled 18 new volunteers in various roles.

Financial Review

The charity is still recovering from the downturn of Covid, but the shoots of recovery are starting to emerge. We made a loss in the financial year of £5797 but with promises of new financial backing, things are improving.

Administrative Information

The full board of trustees of NCEL meet bi-monthly six times per year with an average level of attendance of 80%. It is the board's role to ensure that decisions are made collectively and that there are named people working together to manage the organisation, manage risk, finances and future plans so that the charity may meet its objectives. Our trustees bring with them a mix of skills and expertise that complement the charity and ensure its objects are met for public benefit.

List of Trustees:

David Weatherhead – Chairman

Ann Purvis – Secretary

Derek Thompson

John Beynon Northumberland County Council

Independent Examiner's Report to the trustees/ members of Northumberland Community Enterprise Limited

I report on the accounts for the year end 31st March 2023 set out within this document.

Respective responsibilities of trustees and examiner

The charity's trustees consider that an audit is not required for this year (under section 43(2) of the Charities Act 1993 (the Act)) and that an independent examination is needed.

It is my responsibility to:

examine the accounts (under section 43 of the Act),

to follow the procedures laid down in General Directions given by the Charity Commission (under section 43 (7)(b) of the Act), and

to state whether particular matters have come to my attention.

Basis of independent examiner's report

My examination was carried out in accordance with General Directions given by the Charity Commission. An examination includes a review of the accounting records kept by the charity and comparison of the accounts presented with those records. It also includes consideration of any unusual items or disclosures in the accounts, and seeking explanations from your as trustees concerning any such matters. The procedures undertaken do not provide all the evidence that would be required in an audit, and consequently no opinion is given as to whether the accounts present a 'true and fair' view and the report is limited to those matters set out in the statement below.

Independent examiner's statement

In the course of my examination, no matter has come to my attention:

1. Which gives me reasonable cause to believe that in, any material respect, the requirements:
 - to keep accounting records in accordance with section 41 of the Act; and
 - to prepare accounts which accord with the accounting records and comply with the accounting requirements of the 1993 Act; have not been met; or
2. to which, in my opinion, attention should be drawn to enable a proper understanding of the accounts to be reached.

Name

David Weatherhead

Address

37 Shields Rd, Morpeth, NE61 2SA

Date

28/01/2025

Registered number
6537591

Charity number
1174831

Northumberland Community Enterprise Ltd

Reports and Accounts

31st March 2024

**Northumberland Community Enterprise Ltd
Report and accounts as t 31st March 2024
Contents**

	Page
Company information	1
Contents	2
Company information	3
Directors' report	4
Statement of financial activities	5
Balance sheet	6
Notes to the accounts	7
Notes to the accounts continued	8
Notes to the accounts continued	9
Profit and loss account	10
Detailed profit and loss	11
Grants and donations received	12

Northumberland Community Enterprise Ltd
Company Information
At 31 March 2024

Directors

J Beyon
M Haswell
A Purvis
D Thompson
D Weatherhead

Registered office

37 Shields Road
Stobhill
Morpeth
Northumberland
NE61 2SA

Registered number

6537591

Charity number

1174831

Northumberland Community Enterprise Ltd

Registered number:

6537591

Charity number

1174831

Directors' report

For the year ended 31st March 2024

The directors present their report and accounts for the year ended 31st March 2024

Principal activities

The company's principal activity during the year continued to be that of an enterprise concern. The main aim of the company is to improve the life style of the disabled and disadvantaged people living in the area.

Directors

The following persons served as directors during the year:

J Beyon
M Haswell
A Purvis
D Thompson
D Weatherhead

Small company provisions

This report has been prepared in accordance with the provisions in Part 15 of the Companies Act 2006 applicable to companies subject to the small companies regime.

This report was approved by the board on the 2nd December 2024



D Weatherhead
Director

Northumberland Community Enterprise Ltd
Statement of financial activities
For the year ended 31st March 2024

	2024	2023
	£	£
Incoming resources	70,689	76,567
	<u>70,689</u>	<u>76,567</u>
Resources expended	-76,486	-88,331
Net incoming resources before transfers	<u>-5,797</u>	<u>-11,764</u>
Adjustments	0	0
Profit or loss for the financial	<u>-5,797</u>	<u>-11,764</u>
Total funds b/fwd	19,956	31,720
	<u>14,159</u>	<u>19,956</u>

Northumberland Community Enterprise Ltd
Balance sheet
at 31st March 2023

	Notes	2024		2023	
		£		£	
Fixed assets					
Tangible assets	1	11,006		2,946	
Current assets					
Debtors		317		554	
Others		1,622		7,519	
Cash at bank and in hand		10,898		15,581	
			12,837		23,654
Total current assets;			23,843		26,600
Current liabilities					
Creditors: amount falling due within one year	2	-2,317		-2,209	
Loan -PSA		-2,243		-3,239	
Other creditors		-5,124	-9,684	-1,196	-6,644
Total assets less current liabilities			14,159		19,956
Net assets			14,159		19,956
Capital and reserves					
Called up share capital	3	19,945		31,709	
Profit and loss account		-5,797		-11,764	
Sharefolder's funds		11		11	
	4	14,159		19,956	

The directors are satisfied that the company is entitled to exemption from the requirement to obtain an audit under section 477 of the Companies Act 2006.

The member has not required the company to obtain an audit in accordance with section 476 of the Act.

The directors acknowledge their responsibilities for complying with the requirements of the Companies Act 2006 with respect to accounting records and the preparation of accounts.

The accounts have been prepared in accordance with the provisions in part 15 of the Companies Act 2006 applicable to companies subject to the small companies regime.

M Haswell

M Haswell

Director

Approved by the board

02.12.2024

Northumberland Community Enterprise Ltd
Notes to the accounts
For the year ended 31st March 2024

1 Accounting policies

Basis of preparation

The financial statements are prepared under the historical cost convention and in accordance with the Financial Reporting Standard for smaller Entities (effective June 2002) and follow the recommendations in "Accounting and Reporting by Charities: Statement of Recommended practice" issued in October 2000.

Incoming resources

Voluntary income is received by way of donations and gifts and is included in full in the Statement of Financial Activities when receivable. Gifts donated for resale are included as income when they are sold. Donated assets are included at cost value to the company where this can be quantified and a third party is bearing the cost. The value of the services provided by volunteers has not been included.

Fund Accounting

General funds are unrestricted funds which are available for use at the discretion of the trustees in furtherance of the general objectives of the charity and which have not been designated for other purposes.

Restricted funds are funds which are to be used in accordance with specific restrictions imposed by the donors or which have been raised by the charity for partifulare purposes. The cost of raising and administering such funds are charged against the specific funds. The aim and use of each fund is set out in the notes to the financial statements.

Resources expended

Resources expended are recognised in the year in which they are incurred.

Management and administration costs are those incurred in connection with administration of the company and compliance with constittional and statutory requirements.

2 Creditors: amounts falling due within one year

	2024	2023
	£	£
Trade creditors	2,317	2,209
Other creditors	5,124	1,196
	<u>7,441</u>	<u>3,405</u>

3 Share capital

	Nominal value	Number	2024	2023
			£	£
Allotted, called up and fully paid Ordinary shares		£1 each	<u>11</u>	<u>11</u>

Northumberland Community Enterprise Ltd
Notes to the accounts continued
For the year ended 31 March 20204

4 Analysis of net assets between funds	2024 £	2023 £
Fund balances		
Fixed assets	11,006	2,946
Current assets	12,837	23,654
Current liabilities	-9,684	-6,644
	<u>14,159</u>	<u>19,956</u>

5 Tangible assets	2024 £		2024 £
	Building	Furniture & Fittings	Total
Cost			
	5,250	6,882	12,132
Additions	10,000	0	10,000
Disposal			
	<u>15,250</u>	<u>6,882</u>	<u>22,132</u>
Depreciation	-4290	-4,890	-9,180
Charge for year	-1784	-162	-1,946
At the 31 March 2024	<u>-6,074</u>	<u>-5,052</u>	<u>-11,126</u>
Net book value as at the 31 March 2024	<u>9,176</u>	<u>1,830</u>	<u>11,006</u>

Northumberland community Enterprise Ltd
Notes to the accounts continued
for the year ended 31st March 2023

8 Unrestricted funds	01-Apr-23	Incoming	Outgoing	Transfers	31-Mar-24
	£	£	£	£	£
General fund	7,641	32,960	-37,473	0	3,128

Purposes of unrestricted fund

The purpose of the general fund is to further the aims and objectives of the charity

9 Restricted funds	01-Apr-23	Incoming	Outgoing	Transfers	31-Mar-24
	£	£	£	£	£
Restricted fund	12,315	37,729	-39,013	0	11,031

Purposes of restricted funds

The aim of the charity funds is to provide training for staff and volunteers and manage other services to benefit the local community.

	£	£	£	£	£
Total	19,956	70,689	-76,486	0	14,159

Northumberland Community Enterprise Ltd
Profit and Loss account
For the year ended 31 March 2024

	2024	2023
	£	£
Incoming resources		
Sales	903	663
Donations	315	1,166
Grants	66,557	73,907
Other incoming resources	<u>2,914</u>	<u>831</u>
	<u>70,689</u>	<u>76,567</u>
Resources expended	-76,486	-88,331
Net resources	<u><u>-5,797</u></u>	<u><u>-11,764</u></u>

Northumberland Community Enterprise Ltd
Detailed profit and loss account
For the year ended 31 March 2024

	Unrestricted funds	Restricted funds	2024	2023
	£	£	£	£
Incoming resources				
Sales	904		904	663
Donations	314		314	1,166
Grants	28,828	37,729	66,557	73,907
Other incoming resources	2,914		2,914	831
	32,960	37,729	70,689	76,567
Resources expended				
Materials	379		379	129
Advertising	0	0	0	42
Wages and national insurance	20,603	27,311	47,914	42,855
Rent and rates	211	279	490	586
Utilities	807	1,070	1,877	1,615
Vehicle costs	937	0	937	999
Travel expenses	2,996	0	2,996	2,415
Computer costs	824	1,090	1,914	1,958
Telephone and internet	841	1,115	1,956	1,475
Printing, postage and stationery	170	224	394	603
Leasing	1,662	2,204	3,866	7,015
Repairs, renewals and cleaning	1,442	0	1,442	1,595
Interest and bank charges	246	0	246	399
Administration costs	0	0	0	17,250
Accountancy costs	2,580	3,420	6,000	6,100
Depreciation	836	1,110	1,946	940
Insurance	875	1,160	2,035	1,911
Refreshments	60	0	60	39
Donations	1,037	0	1,037	125
Sundry expenses	944	0	944	224
Professional fees	23	30	53	56
	37,473	39,013	76,486	88,331
Profit or loss for current year	-4513	-1284	-5797	-11764

Northumberland Community Enterprise Ltd
Appendix to the accounts
for the year ended 31st March 2024

2024

Grants and donations received

	Unrestricted	Restricted	Total
	£	£	
AbbVie	2,000		2,000
Awards For All	3,751	7,129	10,880
Ballinger		12,500	12,500
The Barbour Foundation		1,000	1,000
Barchester Health	500		500
The Catherine Cookson Charitable Trust	500		500
Co-operative	1,038		1,038
WG Edwards		1,200	1,200
Ford British Trust	248		248
Hubbub Foundation	1,000		1,000
Inner Wheel Club Morpeth	200		200
Karbon Homes	1,624		500
J Knott	500		1,624
Lidl Community Fund	500		500
Magic Little Grants	500		500
RW Mann Trust	1,400		500
Microgrants	500		500
Morpeth Rotary Club	500		1,400
Morpeth Town Council	4,628		4,628
Nineveh Trust		2,600	2,600
Northumberland County Council		2,000	2,000
Northumberland Estates	2,439		2,439
Rothley Trust	1,000		1,000
The 29th May 1961 Charitable Trust		2,000	2,000
Ridley Family Charity	5,000		5,000
Warburtons	400		400
Wellbank Foundation		9,300	9,300
Woodward Trust	600		600
Cash donations	315		315
Sales etc	3,817		3,817
	32,960	37,729	70,689

NORTHUMBERLAND COMMUNITY ENTERPRISE LIMITED

England & Wales - Charity number 1174831

Accounts

Northumberland Community Enterprise Limited Trustees Annual Report and Accounts

Aim and Purposes

NCEL operates various initiatives and projects to better the lives of disadvantaged people living within neighbourhoods of Southeast Northumberland which are identified to be deprived (by the Indices of Multiple Deprivation) with poor statistics on crime, education, skills, health and household income. Primarily targeting the centre's immediate community of Stobhill. Known locally by our centre name 'The Stobhill Link' our services are open to all age ranges and run from our Community Hub. We offer volunteer opportunities and address local issues aiming to relieve unemployment, promote social inclusion amongst the elderly and/disabled, relieve financial hardship, develop capacity and skills and to help young people develop their capacity through leisure time activities.

Objectives and Activities

NCEL is committed to engaging with as many people as possible effected by deprivation to offer means and opportunities to overcome barriers in their lives. We encourage participation by our service users in the design and planning of our work, offer volunteer opportunities across all or our projects and encourage leadership, ownership and passion for the work required to meet our goals.

In planning our work for the year, we have considered the Commissions guidance on public benefit and have ensured that our services be available to all people attempting to access them.

The objects of NCEL are:

- (1) the relief of unemployment for the benefit of the public in such ways as may be thought fit, including assistance to find employment;
- (2) to promote social inclusion for the public benefit among elderly persons who are socially excluded from society, or parts of society as a result of their age, relieving the needs of those people and assisting them to integrate into society;
- (3) the relief of financial hardship among people living or working in South East Northumberland but also wherever our services are requested through Northumberland and Tyneside, by providing such persons with services and advice which they could not otherwise afford through lack of means or that are not otherwise available to them through lack of opportunity;
- (4) to develop the capacity and skills of the members of socially, economically and disadvantaged communities of South East Northumberland but also wherever our services are requested through Northumberland and Tyneside in such a way that they are better able to identify, and help meet their needs and to participate more fully in society;
- (5) to help young people, especially but not exclusively through leisure time activities, so as to develop their capabilities that they may grow to full maturity as individuals and members of society.

During the course of our work no harm has arose from the purposes. Our beneficiaries are the general public and locally-based community and voluntary organisations. No private benefit arises from these purposes.



Achievements and Performance

During the 2022-2023 year we have continued to offer a wide variety of services which are outlined in this report. We have included in these services wrap around support tackling food and fuel poverty, low household incomes, debt, unemployment, energy efficiency and awareness, social isolation and health and wellbeing. Our network of professional contacts has grown due to the variety of issues we have endeavoured to tackle, and this has helped to support our volunteers and staff with project delivery. Our team collaborates with local charities, services and stakeholders such as youth and community groups, Stobhill and Morpeth churches and voluntary sector organisations to make opportunities and services available to our beneficiaries.

We have continued to work with Fare Share to secure surplus food waste from supermarkets and businesses which is re-distributed through our community fridge, freezer and pantry. We have also continued our work with Community Repair, a National charity acting as an umbrella body to ensure the redistribution of thousands of litres of household paint to individuals and charitable groups. Much of our work was designed through established need amongst our beneficiaries, it was developed and intended to help many people in need unable to afford not only luxuries but basic provisions to get by. We have continually increased our customer base and recognise the large impact much of the re-distribution has had by helping to sustain the environment for future generations. We have noted the stigma that food poverty can carry and encourage our team to focus on the message of preventing food waste which relieves apprehension/stigma beneficiaries may have when accessing our centre to request support.

Community Food Pantry – Community Fridge

(In Strategic Partnership with Northumberland County Council), Working With FareShare, The Bread and Butter Thing and local Food Distributors.

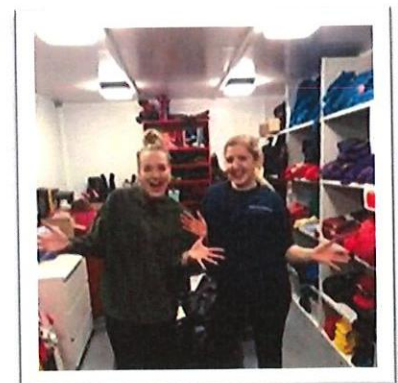
During the last financial year our team began work to develop the community food pantry into a community fridge model. This is supported and funded by Hubbub and the Cooperative. We have moved forward from emergency food support to a model designed by the cooperative partnership which we are witnessing to support long term sustainability, reduce stigma and promote choice whilst offering more nutrient dense options and being accessible to all of our beneficiaries. We continue to refer to the Wansbeck Valley Foodbank for access in an emergency for individuals in crisis, however these referrals are now greatly reduced owing to our ability to promote other, more innovative solutions to food needs. Our Organisation leads for Morpeth on the Nourish Northumberland Partnership with Northumberland County Council. Our network in Morpeth focuses on sustainable food solutions and innovative projects offering food, growing, cooking etc. We collaborate with local voluntary groups to initiate likeminded projects, promote the community fridge model and develop strategy towards access to food and food waste. We have supported The Pegswood Hub, Calmer Therapy and The Morpeth Allotment to improve upon their food models and address food insecurity with their own participants.

2022-2023 -

- 18 referrals to Foodbanks
- provided 843 food parcels to beneficiaries
- are currently saving 102kg of food waste per week (at our current rate we estimate to total 5.3 tons annually).

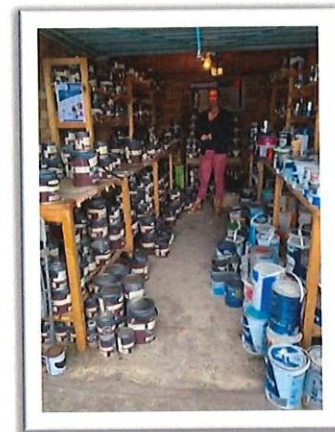
Free School Uniform Bank (Regional Partnership)

Partnered with Northumberland County Council's Regional Network of School Uniform Banks. We built one of the first school uniform banks in the North East and are now part of a regional network of seven distributors of School Uniform. We share clothing, learning and experiences within our network to achieve best practice. Stocking branded uniform for 5 local schools, we see on average 35 service users per week (1820 families per year), recycling an estimated 6 tons of clothing annually.



Paint Recycling (Partnered with Community Repaint)

Surplus household paint is donated to NCEL from retailers, manufacturers and local traders. This is stored and resold to the public at £1 per litre. Priority is reserved for low income families, social services and voluntary organisations. We recycled more than 3000 litres in 2022-2023.



Pre- Employment Support

Work experience can be gained at NCEL through volunteering. Volunteer programmes are tailor made to suit each individual, work references are provided, support with CV's, applications and interview techniques, we also provide suits and workwear for interviews.

Hardship Support

(In collaboration with Northumberland County Council – Communities Together Hubs)

Referrals to professional bodies can be made both formally and informally for people in financial crisis as well as for those at risk of harm. Hardship grant applications for individuals are made to a wide array of charitable trusts and local giving groups. We secure household furniture, clothing, warm coats, toys, baby equipment both physically and in the form of grants towards purchase. Our local authority set up the communities together hub in 2020 which we most often refer into for access to support services. Links are available through our vast network to charities such as Talking Matters, Domestic Abuse Services, Women's Aid and The Northumberland Recovery Partnership. We make approximately 55 referrals annually of this kind.

Community Garden

Development of our Stobhill Community garden has led to the creation of the Stobhill Gardening Club. This group offers social opportunities, learning, knowledge transfer, shared skills, plot to plate cooking, Spring Summer activities and events and allows for visits to the garden from external groups. Autumn and Winter involve planning, crafts and indoor activities as well as day trips. The Garden is currently supported by a core group of 12 volunteers, Gardening Club currently has 10 members and the garden has welcomed over 300 visitors in the past year.



Community Allotments

Allotment sites are held in Bedlington and Morpeth. Each are supported by Core Groups of volunteers. Visitors are welcomed throughout Spring and Summer, these range from Care Homes, the general public, Sensory Gardening Groups and Mind Active. 400 individuals benefitted from visits to our allotments during 2022-2023.



Social Groups

NCEL offer a friendly weekly cuppa club to all service users. Coffee, cakes and a friendly welcome bring people into the centre where staff and volunteers engage, signpost and enjoy some social time with others. Often the group enjoy a quiz, armchair yoga, board games and puzzles. This first contact provides an opportunity for effective engagement, building trusted professional relationships and information signposting, information sharing and a route through to our other projects.



Reserves Policy

It is NCEL policy to maintain a balance on unrestricted funds (if possible), which equates to at least three months unrestricted payments, equivalent to £15,000, to cover emergency situations that may arise from time to time.

Volunteers

We would like to thank all the volunteers who work so hard to make the Stobhill Link the lively and vibrant hub that it is. In particular we wish to mention our Core Volunteers who have worked so tirelessly on our behalf to prop up the services, as well as all the other members of our organisation for their valuable contribution to our charity and for keeping the organisation running.

Structure Governance and Management

The board of NCEL consists of five trustees responsible for making collective decisions, managing NCEL, managing risks and finances. The board members are responsible for making decisions on all matters of general concern and importance to the charity including on how the funds are to be spent in line with the terms and conditions of all grant funding. The board are too responsible for strategy and future planning. A Managing Director is employed to oversee the day-to-day running of NCEL. The Manager communicates between Project staff and the board on general issues, reporting to and updating the board regularly. The Manager sets and delegates duties, identifies, problems or concerns, suggests problem solving strategies and operates on the direction of the board. The Managing Director networks within the voluntary sector, identifies social need in the community, collects statistical information and presents to the board. Project staff deliver projects, monitor and record statistics, keep and update administrative files, report directly to the Managing Director. Project Staff work closely with volunteers delegating work and planning future work with volunteers.

During 2022-2023 there were two project staff employed by NCEL as well as one manager. We enrolled 32 volunteers in various roles.

Financial Review

In the last financial year our income reduced by £12000, our reserves have dropped in accordance with this. The year has been a hard one for funding and indicates that next year will be pressing again.

Administrative Information

The full board of trustees of NCEL meet bi-monthly six times per year with an average level of attendance of 80%. It is the board's role to ensure that decisions are made collectively and that there are named people working together to manage the organisation, manage risk, finances and future plans so that the charity may meet its objectives. Our trustees bring with them a mix of skills and expertise that compliment the charity and ensure its objects are met for public benefit.

List of Trustees:

David Weatherhead – Chairman

Ann Purvis – Secretary

Derek Thompson

John Beynon Northumberland County Council

Independent Examiner's Report to the trustees/ members of Northumberland Community Enterprise Limited

I report on the accounts for the year end 31st March 2023 set out within this document.

Respective responsibilities of trustees and examiner

The charity's trustees consider that an audit is not required for this year (under section 43(2) of the Charities Act 1993 (the Act)) and that an independent examination is needed.

It is my responsibility to:

examine the accounts (under section 43 of the Act),

to follow the procedures laid down in General Directions given by the Charity Commission (under section 43 (7)(b) of the Act), and

to state whether particular matters have come to my attention.

Basis of independent examiner's report

My examination was carried out in accordance with General Directions given by the Charity Commission. An examination includes a review of the accounting records kept by the charity and comparison of the accounts presented with those records. It also includes consideration of any unusual items or disclosures in the accounts, and seeking explanations from your as trustees concerning any such matters. The procedures undertaken do not provide all the evidence that would be required in an audit, and consequently no opinion is given as to whether the accounts present a 'true and fair' view and the report is limited to those matters set out in the statement below.

Independent examiner's statement


In the course of my examination, no matter has come to my attention:

1. Which gives me reasonable cause to believe that in, any material respect, the requirements:
 - to keep accounting records in accordance with section 41 of the Act; and
 - to prepare accounts which accord with the accounting records and comply with the accounting requirements of the 1993 Act; have not been met; or
2. to which, in my opinion, attention should be drawn to enable a proper understanding of the accounts to be reached.

Name

Address

Date


34 Shields Road, Morpeth
30/11/2024

Registered number
6537591

Charity number
1174831

Northumberland Community Enterprise Ltd

Reports and Accounts

31st March 2023

Northumberland Community Enterprise Ltd
Report and Accounts as at 31st March 2023
Contents

	Page
Company information	1
Contents	2
Company information	3
Directors' report	4
Statement of financial activities	5
Balance sheet	6
Notes to the accounts	7
Notes to the accounts continued	8
Notes to the accounts continued	9
Profit and loss account	10
Detailed profit and loss	11
Grants and donations received	12

**Northumberland Community Enterprise Ltd
Company Information
At 31st March 2023**

Directors

J Beyon
M Haswell
A Purvis
D Thompson
D Weatherhead

Registered office

37 Shields Road
Stobhill
Morpeth
Northumberland
NE61 2SA

Registered number

6537591

Charity number

1174831

Northumberland Community Enterprise Ltd
Registered number:
Charity number
Directors' report
for the year ended 31st March 2023

6537591
1174831

The directors present their report and accounts for the year ended 31st March 2023

Principal activities

The company's principal activity during the year continued to be that of an enterprise concern. The main aim of the company is to improve the life style of the disabled and disadvantaged people living in the area.

Directors

The following persons served as directors during the year:

J Beyon
M Haswell
A Purvis
D Thompson
D Weatherhead

Small company provisions

This report has been prepared in accordance with the provisions in Part 15 of the Companies Act 2006 applicable to companies subject to the small companies regime.

This report was approved by the board on



D Weatherhead
Director
25.09.2023

Northumberland Community Enterprise Ltd
Statement of financial activities
for the year ended 31st March 2023

	2023 £	2022 £
Incoming resources	76,567	88,920
	<u>76,567</u>	<u>88,920</u>
Resources expended	-88,331	-88,609
Net incoming resources before transfers	<u>-11,764</u>	<u>311</u>
Adjustments	0	0
Profit or loss for the financial	<u>-11,764</u>	<u>311</u>
Total funds b/fwd	31,720	31,409
	<u>19,956</u>	<u>31,720</u>

Northumberland Community Enterprise Ltd
 Balance sheet
 at 31st March 2023

	Notes	2023	2022
Fixed assets			
Tangible assets	1	2,946	3,885
Current assets			
Debtors		554	561
Others		7,519	28,833
Cash at bank and in hand		<u>15,581</u>	<u>17,573</u>
		23,654	46,967
Total current assets;		26,600	50,852
Current liabilities			
Creditors: amount falling due within one year	2	-2,209	-6,068
Loan -PSA		-3,239	-4,209
Other creditors		-1,196	-8,856
		-6,644	-19,133
Total assets less current liabilities		19,956	31,719
Adjustment		<u>0</u>	<u>1</u>
Net assets		<u>19,956</u>	<u>31,720</u>
Capital and reserves			
Called up share capital	3	31,709	31,398
Profit and loss account		-11,764	311
Shareholder's funds		11	11
	4	<u>19,956</u>	<u>31,720</u>

The directors are satisfied that the company is entitled to exemption from the requirement to obtain an audit under section 477 of the Companies Act 2006.

The member has not required the company to obtain an audit in accordance with section 476 of the Act.

The directors acknowledge their responsibilities for complying with the requirements of the Companies Act 2006 with respect to accounting records and the preparation of accounts.

The accounts have been prepared in accordance with the provisions in part 15 of the Companies Act 2006 applicable to companies subject to the small companies regime.

M Haswell

M Haswell
 Director
 25.09.23

Northumberland Community Enterprise Ltd
Notes to the accounts
for the year ended 31st March 2023

1 Accounting policies

Basis of preparation

The financial statements are prepared under the historical cost convention and in accordance with the Financial Reporting Standard for smaller Entities (effective June 2002) and follow the recommendations in "Accounting and Reporting by Charities: Statement of Recommended practice" issued in October 2000.

Incoming resources

Voluntary income is received by way of donations and gifts and is included in full in the Statement of Financial Activities when receivable. Gifts donated for resale are included as income when they are sold. Donated assets are included at cost value to the company where this can be quantified and a third party is bearing the cost. The value of the services provided by volunteers has not been included.

Fund Accounting

General funds are unrestricted funds which are available for use at the discretion of the trustees in furtherance of the general objectives of the charity and which have not been designated for other purposes.

Restricted funds are funds which are to be used in accordance with specific restrictions imposed by the donors or which have been raised by the charity for particular purposes. The cost of each fund is set out in the notes to the financial statements.

Resources expended

Resources expended are recognised in the year in which they are incurred.

Management and administration costs are those incurred in connection with administration of the company and compliance with constitutional and statutory requirements.

234567890

2 Creditors: amounts falling due within one year	2023	2022
	£	£
Trade creditors	2,209	6,068
Other creditors	1,196	0
	<u>3,405</u>	<u>6,068</u>

3 Share capital	Nominal value	Number	2023	2022
			£	£
Allotted, called up and fully paid				
Ordinary shares	£1 each		<u>11</u>	<u>11</u>

Northumberland Community Enterprise Ltd
Notes to the accounts continued
for the year ended 31 March 2023

4 Analysis of net assets between funds	2023	2022 £
Fund balances		
Fixed assets	2,946	3,885
Current assets	23,654	46,967
Current liabilities	-6,644	-19,133
	19,956	31,719

5 Tangible assets	2023 £		2023 £
	Building	Furniture & Fittings	Total
Cost			
At 1 April 2022	5,250	6,882	12,132
Additions		0	0
Disposal	5,250	6,882	12,132
Depreciation at 1 April 2022	-3,520	-4,727	-8,247
Charge for year	-777	-162	-939
At the 31st March 2023	-4,297	-4,889	-9,186
Net book value as at the 31 March 2023	953	1,993	2,946

Northumberland community Enterprise Ltd
Notes to the accounts continued
for the year ended 31st March 2023

8 Unrestricted funds	01-Apr-22	Incoming	Outgoing	Transfers	31-Mar-23
	£	£	£	£	£
General fund	19,068	38,917	-50,344		7,641

Purposes of unrestricted fund

The purpose of the general fund is to further the aims and objectives of the charity

9 Restricted funds	01-Apr-22	Incoming	Outgoing	Transfers	31-Mar-23
	£	£	£	£	£
Restricted fund	12,652	37,650	-37,987		12,315

Purposes of restricted funds

The aim of the charity funds is to provide training for staff and volunteers and manage other services to benefit the local community.

Total	31,720	76,567	-88,331		19,956
--------------	---------------	---------------	----------------	--	---------------

Northumberland Community Enterprise Ltd
 Profit and Loss account
 for the year ended 31st March 2023

	2023 £	2022 £
Incoming resources		
Sales	663	918
Donations	1,166	946
Grants	73,907	85,718
Other incoming resources	831	1,338
	<u>76,567</u>	<u>88,920</u>
Resources expended	-88,331	-88,609
Net resources	<u>-11,764</u>	<u>311</u>

Northumberland Community Enterprise Ltd
Detailed profit and loss account
for the year ended 2023

	Unrestricted funds £	Restricted funds £	2023 £	2022 £
Incoming resources				
Sales	663		663	918
Donations	1,166		1,166	946
Grants	36,257	37,650	73,907	85,718
Other incoming resources	831		831	1,338
	38,917	37,650	76,567	88,920
Resources expended				
Materials	129	0	129	828
Advertising and marketing	0	42	42	500
Wages and national insurance	11,772	31,083	42,855	36,373
Training	0	0	0	885
Rent and rates	286	300	586	54
Utilities	727	888	1,615	3,261
Vehicle costs	999	0	999	2,105
Travel expenses	0	2,415	2,415	2,583
Computer costs	1,958	0	1,958	1,296
Telephone and internet	664	811	1,475	1,517
Printing, postage and stationery	271	332	603	328
Leasing	5,950	1,065	7,015	8,003
Repairs, renewals and cleaning	1,595	0	1,595	2,141
Interest and bank charges	399	0	399	166
Administration costs	17,250	0	17,250	11,550
Accountancy costs	6,100	0	6,100	7,350
Depreciation	940	0	940	939
Insurance	860	1,051	1,911	1,768
Refreshments	39	0	39	149
Donations	125	0	125	135
Sundry expenses	224	0	224	5,802
Professional fees	56	0	56	876
	50,344	37,987	88,331	88,609
Profit or loss for current year	-11,427	-337	-11,764	311

Northumberland Community Enterprise Ltd
Appendix to the accounts
for the year ended 31st March 2023

2023

Grants and donations received	Unrestricted	Restricted	Total
	£	£	
Asda Foundation	960		
Ballinger Charity		12,500	
The Barbour Foundation	500		
Coalfields Regent	2,000		
Community Fund Fridge Project		4,000	
The Finnis Scott Foundation	400		
The Forrester Family Trust		5,000	
Evolution Morpeth LLP	1,000		
Greatham Hospital Hospital of God	2,000		
Greggs Foundation	90		
Albert Hunt SP	2,000		
Inner Wheel club of Morpeth	60		
Jewson	33		
The Joicey Trust	1,100		
Leathersellers	2,500		
Leeds Building Society	917		
The Lions Club of Morpeth	500		
Magic Little Grants	500		
Maps	150		
Morpeth Rotary Club	2,150		
Morpeth Town Council	4,891		
The Morrisons Foundation	2,710		
National Allotment Garden Trust	399		
The National Lottery Community Fund		7,900	
Neighbourly	1,000		
Northumberland County Council		3,250	
Northumberland Police	653		
Open Reach	211		
Three Rivers	200		
Ridley Family Charity	4,400		
Celia Towers	4,933		
Garfield Western Foundation		5,000	
Cash Donations	1,166		
Sales etc	1,494		
	<u>38,917</u>	<u>37,650</u>	<u>76,567</u>

NORTHUMBERLAND COMMUNITY ENTERPRISE LIMITED

England & Wales - Charity number 1174831

Accounts

Northumberland Community Enterprise Limited Trustees Annual Report and Accounts

Aim and Purposes

NCEL operates various initiatives and projects to better the lives of disadvantaged people living within neighbourhoods of South East Northumberland which are identified to be deprived (by the Indices of Multiple Deprivation) with poor statistics on crime, education, skills, health and household income. Primarily targeting the centre's immediate community of Stobhill. Known locally by our centre name 'The Stobhill Link' our services are open to all age ranges and run from our Community Hub. We offer volunteer opportunities and address local issues aiming to relieve unemployment, promote social inclusion amongst the elderly and/disabled, relieve financial hardship, develop capacity and skills and to help young people develop their capacity through leisure time activities

Objectives and Activities

NCEL is committed to engaging with as many people as possible effected by deprivation in order to offer means and opportunities to overcome barriers in their lives. We encourage participation by our service users in the design and planning of our work, offer volunteer opportunities across all or our projects and encourage leadership, ownership and passion for the work required to meet our goals.

In planning our work for the year, we have considered the Commissions guidance on public benefit and have ensured that our services be available to all people attempting to access them.

The objects of NCEL are:

- (1) the relief of unemployment for the benefit of the public in such ways as may be thought fit, including assistance to find employment;
- (2) to promote social inclusion for the public benefit among elderly persons who are socially excluded from society, or parts of society as a result of their age, relieving the needs of those people and assisting them to integrate into society;
- (3) the relief of financial hardship among people living or working in South East Northumberland but also wherever our services are requested through Northumberland and Tyneside, by providing such persons with services and advice which they could not otherwise afford through lack of means or that are not otherwise available to them through lack of opportunity;
- (4) to develop the capacity and skills of the members of socially, economically and disadvantaged communities of South East Northumberland but also wherever our services are requested through Northumberland and Tyneside in such a way that they are better able to identify, and help meet their needs and to participate more fully in society;
- (5) to help young people, especially but not exclusively through leisure time activities, so as to develop their capabilities that they may grow to full maturity as individuals and members of society.

During the course of our work no harm has arose from the purposes. Our beneficiaries are the general public and locally-based community and voluntary organisations. No private benefit arises from these purposes.



Achievements and Performance

During the 2021-2022 year we have continued to offer a wide variety of services which are outlined in this report. We have included in these services wrap around support tackling food and fuel poverty, low household incomes, debt, unemployment, energy efficiency and awareness, social isolation and health and wellbeing. Our network of professional contacts has grown due to the variety of issues we have endeavoured to tackle and this has helped to support our volunteers and staff with project delivery. Our team collaborates with local stakeholders such as youth and community groups, Stobhill and Morpeth churches and voluntary sector organisations to make opportunities and services available to our beneficiaries.

We have worked with Fare Share to secure surplus food waste from supermarkets and businesses which is re-distributed through our community pantry. We have also continued our work with Community Repaint a National charity acting as an umbrella body to ensure the redistribution of thousands of litres of household paint to individuals and charitable groups. Much of our work was designed through established need amongst our beneficiaries, it was developed and intended to help many people in need unable to afford not only luxuries but basic provisions to get by. We have increased our customer base and recognise the large impact much of the re-distribution has had by helping to sustain the environment for future generations. We have noted the stigma that food poverty can carry and encourage our team to focus on the message of preventing food waste which relieves apprehension/stigma beneficiaries may have when accessing our centre to request support.

Community Food Pantry – Community Fridge

(In Partnership with Northumberland County Council)

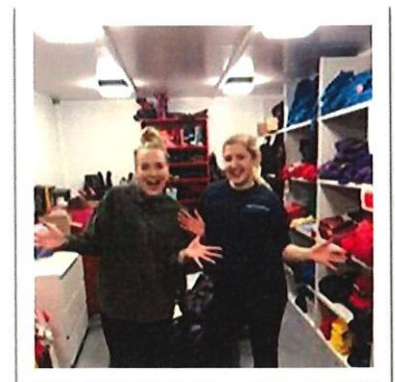
During the early months of this financial year our team began work to develop the community food pantry into a community fridge model. This is supported and funded by Hubbub and the Cooperative. We have begun to move forward from emergency food support to a model designed by the cooperative partnership which we hope will ensure long term sustainability, reduce stigma and promote choice whilst offering more nutrient dense options and being accessible to all of our beneficiaries. We continue to refer to the Wansbeck Valley Foodbank for access in an emergency for individuals in crisis. Our Organisation leads for Morpeth on the Nourish Northumberland Partnership with Northumberland County Council. Our network in Morpeth focuses on sustainable food solutions and innovative projects offering food, growing, cooking etc. We collaborate with local voluntary groups to initiate like minded projects, promote the community fridge model and develop strategy towards access to food and food waste.

2021-2022 -

- 60 referrals to Foodbanks
- provided 520 food parcels to beneficiaries
- are currently saving 75kg of food waste per week (at our current rate we estimate to total 3.9 tons annually, although this will likely increase as the new project develops).

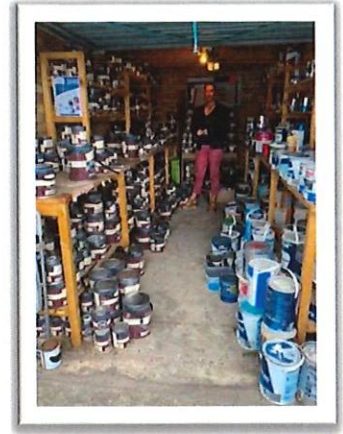
Free School Uniform Bank (Regional Partnership)

Partnered with Northumberland County Council's Regional Network of School Uniform Banks. We built one of the first school uniform banks in the North East and are now part of a regional network of seven. We share clothing, learning and experiences within our network to achieve best practice. Stocking branded uniform for 5 local schools, we see on average 25 service users per week (1300 families per year), recycling an estimated 5 tons of clothing annually.



Paint Recycling (Partnered with Community Repair)

Surplus household paint is donated to NCEL from retailers, manufacturers and local traders. This is stored and resold to the public at £1 per litre. Priority is reserved for low income families, social services and voluntary organisations. We recycled more than 3000 litres in 2021-2022.



Pre- Employment Support

Work experience can be gained at NCEL through volunteering. Volunteer programmes are tailor made to suit each individual, work references are provided, support with CV's, applications and interview techniques, we also provide suits and workwear for interviews.

Hardship Support

(In collaboration with Northumberland County Council – Communities Together Hubs)

Referrals to professional bodies can be made both formally and informally for people in financial crisis as well as for those at risk of harm. Hardship grant applications for individuals are made to a wide array of charitable trusts and local giving groups. We secure household furniture, clothing, warm coats, toys, baby equipment both physically and in the form of grants towards purchase. Our local authority set up the communities together hub in 2020 which we most often refer into for access to support services. Links are available through our vast network to charities such as Talking Matters, Domestic Abuse Services, Women's Aid and The Northumberland Recovery Partnership. We make approximately 50 referrals annually of this kind.

Community Garden

Development of our Stobhill Community garden has led to the creation of the Stobhill Gardening Club. This group offers social opportunities, learning, knowledge transfer, shared skills, plot to plate cooking, Spring Summer activities and events and allows for visits to the garden from external groups. Autumn and Winter involve planning, crafts and indoor activities as well as day trips. The Garden is currently supported by a core group of 12 volunteers, Gardening Club currently has 8 members and the garden has welcomed over 300 visitors in the past year.



Community Allotments

Allotment sites are held in Bedlington and Morpeth. Each are supported by Core Groups of volunteers. Visitors are welcomed throughout Spring and Summer, these range from Care Homes, the general public, Sensory Gardening Groups and Mind Active. 420 individuals benefitted from visits to our allotments during 2021-2022.



Friendly Calls & Befriending

A team of volunteers offer friendly calls to isolated older residents who register for the service. Meet ups are encouraged and arranged regularly at our centre during picnics, open days, craft sessions and seasonal events. Day trips, walks and shopping trips are arranged by our team and befrienders. Beneficiaries are signposted through to our Cuppa Club and other groups should they be interested. During 2021-2022 we have 31 beneficiaries registered to receive friendly calls.

Social Groups

NCEL offer a friendly weekly cuppa club to all service users. Coffee, cakes and a friendly welcome bring people into the centre where staff and volunteers engage, signpost and enjoy some social time with others. Often the group enjoy a quiz, armchair yoga, board games and puzzles. This first contact provides an opportunity for effective engagement, building trusted professional relationships and information signposting, information sharing and a route through to our other projects.



Reserves Policy

It is NCEL policy to maintain a balance on unrestricted funds (if possible), which equates to at least three months unrestricted payments, equivalent to £15,000, to cover emergency situations that may arise from time to time.

Volunteers

We would like to thank all the volunteers who work so hard to make the Stobhill Link the lively and vibrant hub that it is. In particular we wish to mention our Core Volunteers who have worked so tirelessly on our behalf to prop up the services, as well as all the other members of our organisation for their valuable contribution to our charity and for keeping the organisation running.

Structure Governance and Management

The board of NCEL consists of five trustees responsible for making collective decisions, managing NCEL, managing risks and finances. The board members are responsible for making decisions on all matters of general concern and importance to the charity including on how the funds are to be spent in line with the terms and conditions of all grant funding. The board are also responsible for strategy and future planning. A Managing Director is employed to oversee the day-to-day running of NCEL. The Manager communicates between Project staff and the board on general issues, reporting to and updating the board regularly. The Manager sets and delegates duties, identifies problems or concerns, suggests problem solving strategies and operates on the direction of the board. The Managing Director networks within the voluntary sector, identifies social need in the community, collects statistical information and presents to the board.

Project staff deliver projects, monitor and record statistics, keep and update administrative files, report directly to the Managing Director. Project Staff work closely with volunteers delegating work and planning future work with volunteers.

During 2021-2022 there were two project staff employed by NCEL as well as one manager. We enrolled 42 volunteers in various roles.

Financial Review

During the financial year our turnover increased by £23,094, this was offset with increased costs of £24,000. These costs were incurred mainly by Administration accountancy and trainers' costs which was ring-fenced by income for direct training from outside sources. In general, the year although trying has been a year of reconciliation for the charity.

We are pushing on with the plans to build an extension as our headquarters are too small for the amount of footfall we have. The work we need to carry this out will cost £30,000 and to date we have pledges of £10,000 from Northumberland County Council and £5000 from The Bernard Sunley Foundation.

With life returning to normal some of our volunteers have moved on and it is vital that we maintain levels to carry out our charitable work.

Administrative Information

The full board of trustees of NCEL meet bi-monthly six times per year with an average level of attendance of 80%. It is the board's role to ensure that decisions are made collectively and that there are named people working together to manage the organisation, manage risk, finances and future plans so that the charity may meet its objectives. Our trustees bring with them a mix of skills and expertise that compliment the charity and ensure its objects are met for public benefit.

List of Trustees:

David Weatherhead – Chairman

Ann Purvis – Secretary

Derek Thompson

John Beynon Northumberland County Council

Independent Examiner's Report to the trustees/ members of Northumberland Community Enterprise Limited

I report on the accounts for the year end 31st March 2022 set out within this document.

Respective responsibilities of trustees and examiner

The charity's trustees consider that an audit is not required for this year (under section 43(2) of the Charities Act 1993 (the Act)) and that an independent examination is needed.

It is my responsibility to:

examine the accounts (under section 43 of the Act),

to follow the procedures laid down in General Directions given by the Charity Commission (under section 43 (7)(b) of the Act), and

to state whether particular matters have come to my attention.

Basis of independent examiner's report

My examination was carried out in accordance with General Directions given by the Charity Commission. An examination includes a review of the accounting records kept by the charity and comparison of the accounts presented with those records. It also includes consideration of any unusual items or disclosures in the accounts, and seeking explanations from your as trustees concerning any such matters. The procedures undertaken do not provide all the evidence that would be required in an audit, and consequently no opinion is given as to whether the accounts present a 'true and fair' view and the report is limited to those matters set out in the statement below.

Independent examiner's statement

In the course of my examination, no matter has come to my attention:

1. Which gives me reasonable cause to believe that in, any material respect, the requirements:
 - to keep accounting records in accordance with section 41 of the Act; and
 - to prepare accounts which accord with the accounting records and comply with the accounting requirements of the 1993 Act; have not been met; or
2. to which, in my opinion, attention should be drawn in order to enable a proper understanding of the accounts to be reached.

Name

D. Westwood

Address

37 Swards Road

Date

March

NE61 2SA

23/9/22

Registered number
6537591

Charity number
1174831

Northumberland Community Enterprise Ltd

Reports and Accounts

31st March 2022

**Northumberland Community Enterprise Ltd
Report and Accounts as at 31st March 2022
Contents**

	Page
Company information	1
Contents	2
Company information	3
Directors' report	4
Statement of financial activities	5
Balance sheet	6
Notes to the accounts	7
Notes to the accounts continues	8
Notes to the accounts continues	9
Profit and loss account	10
Detailed profit and loss account	11
Grants and donations received	12

**Northumberland Community Enterprise Ltd
Company Information
At 31st March 2022**

Directors

J Beyon
M Haswell
A Purvis
D Thompson
D Weatherhead

Registered office

37 Shields Road
Stobhill
Morpeth
Northumberland
NE61 2SA

Registered number

6537591

Charity number

1174831

Northumberland Community Enterprise Ltd

Registered number:

6537591

Charity number

1174831

Directors' report

for the year ended 31st March 2022

The directors present their report and accounts for the year ended 31st March 2022

Principal activities

The company's principal activity during the year continued to be that of an enterprise concern. The main aim of the company is to improve the life style of the disabled and disadvantaged people living in the area.

Directors

The following persons served as directors during the year:

J Beyon
M Haswell
A Purvis
D Thompson
D Weatherhead

Small company provisions

This report has been prepared in accordance with the provisions in Part 15 of the Companies Act 2006 applicable to companies subject to the small companies regime.

This report was approved by the board on 23/05/2022



D Weatherhead
Director

Northumberland Community Enterprise Ltd
Statement of financial activities
for the year ended 31st March 2022

	2022 £	2021 £
Incoming resources	88,920	65,826
	<u>88,920</u>	<u>65,826</u>
Resources expended	-88,609	-63,664
Net incoming resources before transfers	<u>311</u>	<u>2,162</u>
Adjustments	0	0
Profit or loss for the financial	<u>311</u>	<u>2,162</u>
Total funds b/fwd	31,409	29,247
	<u>31,720</u>	<u>31,409</u>

Northumberland Community Enterprise Ltd
Balance sheet
at the 31st March 2022

	Notes	2022	2021
Fixed assets			
Tangible assets	1	3,885	4,825
Current assets			
Debtors		561	554
Others		28,834	38,953
Cash at bank and in hand		<u>17,573</u>	<u>53,822</u>
		46,968	93,329
Total current assets;		50,853	98,154
Current liabilities			
Creditors: amount falling due within one year	2	-6,068	-2,889
Loan -PSA		-4,209	-5,000
Others		-8,856	-58,856
		-19,133	-66,745
Total assets less current liabilities		31,720	31,409
Net assets		<u>31,720</u>	<u>31,409</u>
Capital and reserves			
Called up share capital	3	31,398	29,236
Profit and loss account		311	2,162
Shareholder's funds		11	11
	4	<u>31,720</u>	<u>31,409</u>

The directors are satisfied that the company is entitled to exemption from the requirement to obtain an audit under section 477 of the Companies Act 2006.

The member has not required the company to obtain an audit in accordance with section 476 of the Act.

The directors acknowledge their responsibilities for complying with the requirements of the Companies Act 2006 with respect to accounting records and the preparation of accounts.

The accounts have been prepared in accordance with the provisions in part 15 of the Companies Act 2006 applicable to companies subject to the small companies regime.



M Haswell
 Director

Approved by the board

Northumberland Community Enterprise Ltd
Notes to the accounts
for the year ended 31st March 2022

1 Accounting policies

Basis of preparation

The financial statements are prepared under the historical cost convention and in accordance with the Financial Reporting Standard for smaller Entities (effective June 2002) and follow the recommendations in "Accounting and Reporting by Charities: Statement of Recommended practice" issued in October 2000.

Incoming resources

Voluntary income is received by way of donations and gifts and is included in full in the Statement of Financial Activities when receivable. Gifts donated for resale are included as income when they are sold. Donated assets are included at cost value to the company where this can be quantified and a third party is bearing the cost. The value of the services provided by volunteers has not been included.

Fund Accounting

General funds are unrestricted funds which are available for use at the discretion of the trustees in furtherance of the general objectives of the charity and which have not been designated for other purposes.

Restricted funds are funds which are to be used in accordance with specific restrictions imposed by the donors or which have been raised by the charity for particular purposes. The cost of raising and administering such funds are charged against the specific funds. The aim and use of each fund is set out in the notes to the financial statements.

Resources expended

Resources expended are recognised in the year in which they are incurred.

Management and administration costs are those incurred in connection with administration of the company and compliance with constitutional and statutory requirements.

2 Creditors: amounts falling due within one year		2022	2021
		£	£
Trade creditors		6,068	2,890
		<u>6,068</u>	<u>2,890</u>
			0
			<u>2,890</u>
3 Share capital	Nominal	2022	2021
	value	£	£
Allotted, called up and fully paid	Number		
Ordinary shares	£1 each	<u>11</u>	<u>11</u>

Northumberland Community Enterprise Ltd
Notes to the accounts continued
for the year ended 31st March 2022

4 Analysis of net assets between funds	2022	2021
	£	£
Fund balances		
Fixed assets	3,885	4,825
Current assets	46,968	93,329
Current liabilities	-19,133	-66,745
	<u>31,720</u>	<u>31,409</u>

5 Tangible assets	2022			2021
	£			£
	Building	Furniture & Fittings	Motor Vehicle	Total
Cost				
At the 1 April 2021	5,250	6,882	6,521	18,653
Adjustment			-1	-1
	<u>5,250</u>	<u>6,882</u>	<u>6,520</u>	<u>18,652</u>
Depreciation				
At the 1 April 2021	-2743	-4,565	-6,520	-13,828
Charge for year	-777	-162	0	-939
At the 31 March 2022	<u>-3,520</u>	<u>-4,727</u>	<u>-6,520</u>	<u>-14,767</u>
Net book value as at the 31 March 2022	<u>1,730</u>	<u>2,155</u>	<u>0</u>	<u>0</u>
				<u>3,885</u>

7 Employees	2022	2021
Number of employees		
The average monthly number of employees during the year were:		
Management and project staff	3	3
Volunteers	50	57

Northumberland Community Enterprise Ltd
Notes to the accounts continued
for the year ended 31st March 2022

8 Unrestricted funds	01-Apr-21	Incoming	Outgoing	Transfers	31-Mar-22
	£	£	£	£	£
General fund	31,409	48,694	-61,035		19,068

Purposes of unrestricted fund

The purpose of the general fund is to further the aims and objectives of the charity.

9 Restricted funds	01-Apr-21	Incoming	Outgoing	Transfers	31-Mar-22
	£	£	£	£	£
Restricted fund		40,226	-27,574		12,652
	31,409	88,920	-88,609	0	31,720

Purposes of restricted funds

Restricted funding from Northumberland County Council will be used to develop Nourish Northumberland, a strategic partnership with our local authority and Voluntary Sector partners, which aims to break the cycle of dependency in relation to food assistance, eliminate food insecurity, encourage positive behaviour and change around food, whilst promoting compassion and dignity.

In Northumberland we want a future that delivers safe, healthy and affordable food solutions for our communities; regardless of where they live or how much they earn, as we build upon resilient and sustainable solutions.

Northumberland Community Enterprise Ltd
Profit and Loss account
for the year ended 31st March 2022

	2022	2021
	£	£
Incoming resources		
Sales	918	2,504
Donations	946	1,085
Grants	85,718	43,591
Other incoming resources	1,338	18,646
	<u>88,920</u>	<u>65,826</u>
Resources expended	-88,609	-63,664
Net resources	<u>311</u>	<u>2,162</u>

Northumberland Community Enterprise Ltd
Detailed profit and loss account
for the year ended 31st March 2022

	2022	2021
	£	£
Incoming resources		
Sales	918	2,504
Donations	946	1,085
Grants	85,718	43,591
Other incoming resources	1,338	18,646
	88,920	65,826
Resources expended		
Materials	828	2,097
Advertising and marketing	500	0
Wages and national insurance	36,373	35,409
Training	885	0
Rent	54	52
Utilities	3,261	1,744
Vehicle costs	2,105	1,444
Travel expenses	2,583	2,760
Computer costs	1,296	2,460
Telephone and internet	1,517	1,961
Printing, postage and stationery	328	295
Leasing	8,003	8,309
Repairs, renewals and cleaning	2,141	1,460
Interest and bank charges	166	351
Administration costs	11,550	
Accountancy cost	7,350	
Depreciation	939	2,703
Insurance	1,768	1,730
Refreshments	149	25
Donations	135	0
Sundry expenses	5802	391
Professional fees	876	473
	88,609	63,664
	311	2,162
Profit or loss for current year		

Northumberland Community Enterprise Ltd
Appendix to the accounts
for the year ended 31st March 2022

Grants and donations received			2022	TOTAL
	Unrestricted	Restricted	Total	
BROUGHT FORWARD	35,856	23,000	58856	
BALLINGER		7,500	7,500	
ARNOLD CLARKE		1,000	1,000	
DP GROUP		360	360	
FORD BRITISH		238	238	
HADRIAN TRUST		1,500	1,500	
HUBBUB	3,000		3,000	
JEWSON	850		850	
RW MANN		1,000	1,000	
MORPETH ROTARY	500		500	
MORPETH SPORTS	200		200	
MORPETH TOWN COUNCIL		4,628	4,628	
NEIGHBOURLY		1,000	1,000	
NORTHUMBERLAND COUNTY COUNCIL	2,036		2,036	
NCC - LOCAL GIVING	500		500	
ROTHLEY TRUST	1,500		1,500	
JULES THORN	1,000		1,000	
THREE RIVERS	50		50	
TOTAL	45,492	40,226	85718	

NORTHUMBERLAND COMMUNITY ENTERPRISE LIMITED

England & Wales - Charity number 1174831

Accounts

Registered number
0537591

Charity number
1174831

Northumberland Community Enterprise Ltd

Reports and Accounts

31st March 2021

**Northumberland Community Enterprise Ltd
Report and Accounts as at 31st March 2021
Contents**

	Page
Company information	1
Contents	2
Company information	3
Directors' report	4
Statement of financial activities	5
Balance sheet	6
Notes to the accounts	7
Notes to the accounts continues	8
Profit and loss account	9
Detailed profit and loss account	10
Grants and donations received	11

Northumberland Community Enterprise Ltd
Company Information
At 31st March 2021

Directors

M Haswell
A Purvis
D Weatherhead

Registered office

37 Shields Road
Stobhill
Morpeth
Northumberland
NE31 2SA

Registered number

6537591

Charity number

1174831

Northumberland Community Enterprise Ltd
Registered number:
Charity number
Directors' report
for the year ended 31st March 2021

8537591
1174831

The directors present their report and accounts for the year ended 31 March 2021

Principal activities

The company's principal activity during the year continued to be that of an enterprise concern. The main aim of the company is to improve the life style of the disabled and disadvantaged people living in the area.

Directors

The following persons served as directors during the year:

M Haswell
A Purvis
D Weatherhead

Small company provisions

This report has been prepared in accordance with the provisions in Part 15 of the Companies Act 2006 applicable to companies subject to the small companies regime.

This report was approved by the board on 9 July 2021



D Weatherhead
Director

Northumberland Community Enterprise Ltd
Statement of financial activities
for the year ended 31st March 2021

	2021 £	2020 £
Incoming resources	65,826	81,859
	<u>65,826</u>	<u>81,859</u>
Resources expended	-63,664	-81,326
Net incoming resources before transfers	<u>2,162</u>	<u>533</u>
Adjustments		100
Profit or loss for the financial	<u>2,162</u>	<u>633</u>
Total funds b/fwd	29,247	28,614
	<u>31,409</u>	<u>29,247</u>

Northumberland Community Enterprise Ltd
Balance sheet
at 31st March 2021

	Notes	2021	2020
Fixed assets			
Tangible assets	1	4,825	7,528
Current assets			
Debtors		554	915
Others		38,953	27,514
Cash at bank and in hand		<u>53,822</u>	<u>8,636</u>
		93,329	35,065
Total current assets;		98,154	42,593
Current liabilities			
Creditors: amount falling due within one year	2	-2,889	-7,984
Loan -PSA		-5,000	-1,227
Other Creditors			-4,235
Prepayments		-58,856	-66,745
Total assets less current liabilities		31,409	29,147
Net assets		<u>31,409</u>	<u>29,147</u>
Capital and reserves			
Called up share capital	3	29,236	28,603
Profit and loss account		2,162	533
Shareholder's funds		11	11
	4	<u>31,409</u>	<u>29,147</u>

The directors are satisfied that the company is entitled to exemption from the requirement to obtain an audit under section 477 of the Companies Act 2006.
The member has not required the company to obtain an audit in accordance with section 476 of the Act.

The directors acknowledge their responsibilities for complying with the requirements of the Companies Act 2006 with respect to accounting records and the preparation of accounts.
The accounts have been prepared in accordance with the provisions in part 15 of the Companies Act 2006 applicable to companies subject to the small companies regime.

M Haswell

M Haswell
Director
Approved by the board

9 July 2021

Northumberland Community Enterprise Ltd
Notes to the accounts
for the year ended 31st March 2021

1 Accounting policies

Basis of preparation

The financial statements are prepared under the historical cost convention and in accordance with the Financial Reporting Standard for smaller Entities (effective June 2002) and follow the recommendations in "Accounting and Reporting by Charities: Statement of Recommended practice" issued in October 2000.

Incoming resources

Voluntary income is received by way of donations and gifts and is included in full in the Statement of Financial Activities when receivable. Gifts donated for resale are included as income when they are sold. Donated assets are included at cost value to the company where this can be quantified and a third party is bearing the cost. The value of the services provided by volunteers has not been included.

Fund Accounting

General funds are unrestricted funds which are available for use at the discretion of the trustees in furtherance of the general objectives of the charity and which have not been designated for other purposes.

Restricted funds are funds which are to be used in accordance with specific restrictions imposed by the donors or which have been raised by the charity for particular purposes. The cost of raising and administering such funds are charged against the specific funds. The aim and use of each fund is set out in the notes to the financial statements.

Resources expended

Resources expended are recognised in the year in which they are incurred.

Management and administration costs are those incurred in connection with administration of the company and compliance with constitutional and statutory requirements.

2 Creditors: amounts falling due within one year	2021	2020
	£	£
Trade creditors	2,890	7,984
Others	0	5,462
	<u>2,890</u>	<u>13,446</u>

3 Share capital	2021	2020
Nominal value	Number	£
Allotted, called up and fully paid Ordinary shares	£1 each <u>11</u>	<u>11</u>

Northumberland Community Enterprise Ltd
Notes to the accounts continued
for the year ended 31st March 2021

4 Analysis of net assets between funds	2021 £	2020 £
Fund balances		
Fixed assets	4,825	7,528
Current assets	93,329	35,065
Current liabilities	-66,745	-13,446
	<u>31,409</u>	<u>29,147</u>

5 Tangible assets	2021 £			2021 £ Total
	Building	Furniture & Fittings	Motor Vehicle	
Cost				
At the 1st April 2020	5,250	6,882	6,520	18,652
Adjustment			1	1
Disposal	<u>5,250</u>	<u>6,882</u>	<u>6,521</u>	<u>18,653</u>
Depreciation at the 1st April 2020	1966	4,269	4,890	11,125
Charge for year	777	296	1,630	2,703
At 31st March 2021	<u>2,743</u>	<u>4,565</u>	<u>6,520</u>	<u>13,828</u>
Net book value as at 31st March 2021	<u>2,507</u>	<u>2,317</u>	<u>1</u>	<u>0</u> <u>4,825</u>

Northumberland Community Enterprise Ltd
Profit and Loss account
for the year ended 31st March 2021

	2021 £	2020 £
Incoming resources		
Sales	2,504	1,188
Donations	1,085	237
Grants	43,591	78,984
Other incoming resources	<u>18,646</u>	<u>1,450</u>
	65,826	81,859
Resources expended	-63,664	-81,326
Net resources	<u>2,162</u>	<u>533</u>

Northumberland Community Enterprise Ltd
Detailed profit and loss account
for the year ended 31st March 2021

	2021 £	2020 £
Incoming resources		
Sales	2,504	1,188
Donations	1,085	237
Grants	43,591	78,984
Other incoming resources	18,646	1,450
	<u>65,826</u>	<u>81,859</u>
Resources expended		
Materials	2,097	200
Advertising and Marketing	0	51
Wages and national insurance	35,409	44,907
Rent	52	50
Utilities	1,744	2,263
Vehicle costs	1,444	603
Travel expenses	2,760	11,285
Computer costs	2,460	1,901
Telephone and internet	1,981	1,833
Printing, postage and stationery	295	1,731
Leasing	8,309	6,353
Repairs, renewals and cleaning	1,460	2,398
Interest and bank charges	351	399
Administration costs		700
Depreciation	2,703	3,765
Insurance	1,730	1,631
Refreshments	25	165
Sundry expenses	391	714
Professional fees	473	579
	<u>63,664</u>	<u>81,326</u>
Profit or loss for current year	<u>2,162</u>	<u>533</u>

Northumberland Community Enterprise Ltd
Appendix to the accounts
for the year ended 31st March 2021

	2021
Grants and donations received	
BARBOUR	550
COALFIELDS	9,663
COMMUNITY FOUNDATION	4,835
CATHERINE COOKSON	300
FREEMASONS	1,000
GIVING	891
GOSLIN	3,000
GREGGS	100
KARBON	9,900
MORPETH ROTARY	550
MORPETH TOWN COUNCIL	1,500
NATIONAL LOTTERY	9,600
NATIONWIDE BUILDING SOCIETY	11,818
NINEVEJ TRUST	4,680
NORTHUMBERLAND COUNTY COUNCIL	39,568
ROTHLEY TRUST	900
SKIPTON BUILDING SOCIETY	2,342
JULES THORN	1,000
THREE RIVERS	250
HMRC - FURLOUGH GRANT	18,646
CASH DONATIONS	1,085
	<hr/> 122,178
Less Prepayments	- 58,856
	<hr/> 63,322 <hr/>

The last 12 months like all charities due to Covid worldwide have put great strains on most organisations. We suffered a downturn in footfall due to people isolating however this did not negatively impact on demand for our services. Telephone support as well as doorstep deliveries of essentials and befriending became for a time our main priority as we served those most vulnerable in order that they have access to the outside world. This has led to the development of our projects and our organisation as a whole.

Financially we have managed to continue with little to no negative impact to our finances with the support of grants which were available but difficulties arose due to the Covid-19 Pandemic with staff working from home and an increase in demand for support in the community. The charity has relied very much on our volunteer-based helpers and these have significantly grown in number over the year.

It was with great sadness we lost one of our Trustees and original founder member Celia Towers to the virus during this financial year. Celia was the bedrock of our organisation, having dedicated much of her life to supporting charities, she will be sadly missed by staff, volunteers and members of the community alike.

The way forward is going to be a challenge and I expect the new financial year to be a period of stabilisation with funding being harder to accomplish. To navigate this period we will be controlling costs and relying more on volunteer support of time in kind as we have benefited a great deal from the kindness of the public wishing to serve a greater purpose within their communities, resulting in the creation and improvement of valuable services offering enabling, befriending and enhanced mental health and wellbeing.

We have constantly adapted to the ongoing pandemic adjusting our services and delivery methods in line with government guidelines. Although challenging, we have met our milestones and served our community well.

New Extension

The fund is now being addressed to raise £30,000 to complete a proposed extension to our buildings. All permissions have been granted as we proceed in an effort to raise funds. We have received a pledge of £10,000 from our local county councillor from his member's fund.

We welcomed a new volunteer coordinator. This role has improved our volunteer programme and resulted in the recruitment of almost 100 volunteers throughout the year. New services during this period include but are not limited to Shopping and Enabling for the elderly and extremely vulnerable in our community, collection and delivery of prescription, Telephone, doorstep and face to face Befriending, Gardening Club, Cuppa Club and a new programme of social groups and clubs with further proposals to initiate further social groups next year.

Much praise, appreciation and thanks to our wonderful team of staff and volunteers whom have worked tirelessly and selflessly during the Pandemic, lockdowns and year round.

David Weatherhead
Director
Dated: 12 June 2021

