

cancer52

the common voice for
rare & less common cancers

Cancer52 is registered as
a charity in England and Wales,
Charity No. 1174569 and as a
company limited by guarantee
in England and Wales,
Company No. 07994413

Annual Review & Financial Statements

1 Apr 2023 – 31 Mar 2024

cancer52.org.uk

Contents

LET’S MAKE SOME NOISE	3	FUNDING	19
Foreword	3	The National Lottery Community Fund	19
Welcome to our Annual Review 2023–2024	4	The value of support	20
STRENGTH IN UNITY: OUR PRINCIPLES	5	Voluntary member donations	20
Our core principles	5	Support from industry	20
UNITING WITH ONE VOICE: WHO WE ARE	6	FUTURE PLANS	21
The Cancer52 team	6	THE ACOUSTICS:	
Our charity members	6	STRUCTURE AND CONSTITUTION	22
PARTNERSHIP: REPRESENTATION AND		Structure and governance	22
ADVOCACY IN POLICY	7	Purpose	22
MAKING THE CANCER52 VOICE HEARD	8	Public benefit	22
Informing, advising and supporting		Board and management operations	
our members	8	and structure	23
PARTNERSHIP: COLLABORATION ON		MONEY TALKS: FINANCIAL REVIEW	25
BEHALF OF PATIENTS	14	INDEPENDENT EXAMINER’S REPORT	
Informing our stakeholders	14	TO THE TRUSTEES OF CANCER52	26
MAKING THE VOICE OF PEOPLE WITH		Section A	28
RARE AND LESS COMMON CANCERS		Section B	29
HEARD: OUR HEADLINE ACHIEVEMENTS		Section C	30
FOR 2023–2024	18	INDEPENDENT EXAMINER’S REPORT	
Partnership	18	ON THE ACCOUNTS	26
Policy	18	ADMINISTRATIVE DETAILS	40
Patients	18	LIST OF CHARITY MEMBERS 2023–2024	41

Let's make some noise:



Trustees Annual Report and Directors Report
for the year ended 31st March 2023

Foreword

Rare and less common cancers* may sound as though they represent a small proportion of the cancer burden, yet these cancers account for 47% of all cancer diagnoses and a staggering 55% of cancer deaths in the UK each year. The large numbers and the disparity in outcomes highlight the urgent need for increased focus and funding.

Cancer52 is dedicated to the mission of providing a strong, unified voice for rare and less common cancer organisations. This financial year, we were grateful to have been awarded a substantial grant from The National Lottery Community Fund. This funding presents an exciting opportunity for **Cancer52** to have secure three-year funding to deliver on our ambitions to improve health inequalities, change policy and support our members.

Progress towards **Cancer52**'s aim to improve diagnosis, treatment and outcomes for patients with rare and less common cancers has been led by our CEO, Jane Lyons, and a small but dedicated and very capable team. They work with the incredible support of dedicated member organisations and our wider collaborators. Together, as a strong and determined alliance, we amplify the call for improvements in cancer services, ensuring that the needs of those with rare and less common cancers are not overlooked. I would like to thank Jane, the entire team and all our partners for their dedication, hard work, and ambition. Together, we will continue to make a difference to all those diagnosed with rare and less common cancers.

Anne MacDowell



Anne MacDowell,
Chair of the Board

*defined as all cancers except breast, bowel, lung and prostate

Welcome to our Annual Review 2023–2024

I'm proud to introduce our Annual Review for the financial year 2023-2024. It was a seismic year – with the development and delivery of the Big Cancer52 Conversation concept; a landscape changing award from The National Lottery Community Fund and the resultant introduction of new team members to build on our work, particularly in the fields of policy and health inequalities.

The Big Cancer52 Conversations are face to face events where Cancer52 through its unique collaborating and convening power, brings together charities, industry, key decision makers and external stakeholders to work together on initiatives that help deliver a better deal for people with rare and less common cancers. Feedback from the events clearly demonstrates that these conversations are the first of their kind and that they are pushing positive agendas faster and further.

The grant from The National Lottery Community Fund helped us set clear outcomes for policy and health inequalities work. Our policy work moved at speed and with influence in the latter half of 2023 and the first quarter of 2024, working with cancer policy thought leaders and member charities to carry out a wide-ranging review of our policy priorities and then craft and deliver a well-received Manifesto, ready to be launched at a Parliamentary event. The Manifesto remains a driving force of policy challenges for us with the new government.

My thanks to interim chair Rebecca Porta for her support in the earlier part of the year, and to Anne MacDowell who joined the charity as Chair in the Autumn of 2023. Finally though, my thanks as ever to the Cancer52 team, and to all the fantastic 115 member charities and their teams. We are truly stronger working together.

Jane Lyons



Jane Lyons, CEO

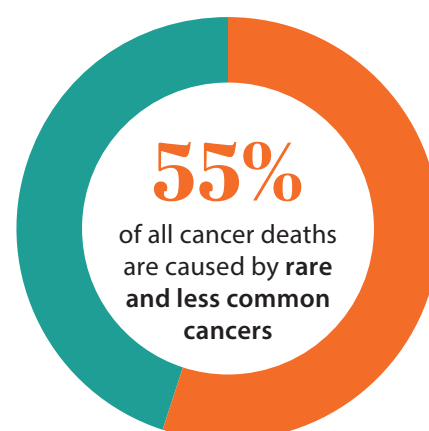
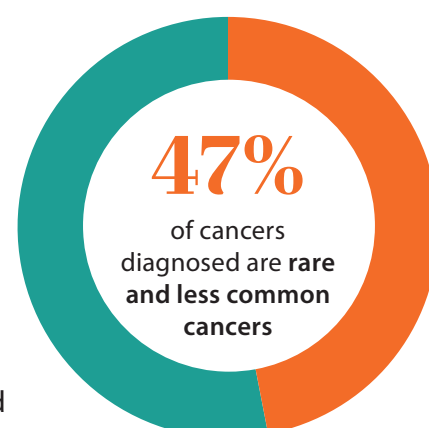
Strength in unity: our principles

Cancer52 is a national organisation, created in 2007 and registered as a charity in England and Wales in September 2017.

We are the unifying body for charitable and not-for-profit organisations working in the field of rare and less common cancers. We represent, currently 115, predominantly small, patient-support and research-focused cancer charities and organisations.

Cancer52 gets its name from when rare and less common cancers accounted for 52% of all cancer deaths in the UK, when only 47% of cancers diagnosed in England are of this type.¹ In 2020, this shifted to 47% of diagnoses and 55% of cancer deaths.²

Our member charities and organisations are united in seeking a better future for everyone affected by rare and less common cancers. We provide a collective voice to champion earlier diagnosis, better treatment, better representation, funding and support for people with cancers other than the four most common cancers (breast, lung, bowel and prostate). **Cancer52** ensures the voices of people with rare and less common cancers do not go unheard.



Our core principles

Our aim

Cancer52's primary aim is to promote improved diagnosis, treatment and support for those affected by rare and less common cancers.

Our mission

Cancer52's mission is to provide a strong, unified voice for rare and less common cancer organisations by representing, informing, sharing and involving our members in achieving our vision.

Our vision

Cancer52's vision is to end inequalities in diagnosis, treatment and patient outcomes experienced by those with rare and less common cancers compared with the four most common cancers.

Our values

Everything **Cancer52** does is underpinned by the aim to be:
ambitious | outcome-focused | collaborative | evidence-based | influential and to behave with honesty and integrity.

Uniting with one voice: who we are

Cancer52 aims to better represent people with rare and less common cancers at a senior policy and decision-making level. Sourcing and bringing together the knowledge and expertise of our many members makes this possible.

The Cancer52 team

During the year ending 31 March 2024, the CEO of **Cancer52** was:

- **Jane Lyons** who was responsible for the overall running of the charity.

Jane was supported by an excellent team of part-time contractual staff, who each provide expertise in their area:

- **Ainsley Taylor, Operations Consultant:** Responsible for overseeing all operational aspects of the organisation. Supporting the CEO in managing financial reporting, fundraising, policy and governance work, operational tasks, and administration duties, including the co-ordination of membership donations, recruitment and supporting the Board of Trustees.
- **Sasha Daly, Policy Lead:** Working with members and external stakeholders to direct the policy work of **Cancer52**.
- **Jen Harrison, Health Inequalities Lead:** Driving health inequalities work and other policy-related activities.
- **Stephanie Judycki, Communications Executive:** Leading on internal and external communications including member e-bulletins, **Cancer52** website and social media.
- **Ambika Chadda, Executive Assistant:** Providing administrative support to the team, and co-ordinating our membership, meetings and events administration.

As well as the immediate team of contractors, **Cancer52** also enlist specialists in the area of accounting and fundraising as required during the financial year:

Jason Dennis coordinated our financial agreements and obligations.

Lesley Hynes coordinated our fundraising.

Our Board of Trustees is listed on page 27.

Thanks to you all for your hard work and dedication.

Our charity members

Cancer52's members are united in their determination to improve treatment and outcomes for their individual patient groups.

The majority of **Cancer52's** member organisations are small - 65% have an annual income of less than £1 million – with 57% of those having an income less than £500,000, and 25% an income of less than £100,000. Almost all of our members offer patient support and over two-thirds invest in research.³

The full list of **Cancer52's** members at time of going to press can be seen on page 29.

Cancer52's active membership continues to grow. During the 2023-24 financial year, we happily welcomed **Odyssey, The Ruth Strauss Foundation, Swallows Head & Neck Cancer Charity, The Bottom Line, The Leanne Pero Foundation, Worldwide Cancer Research, and Young Tongues.**

We hugely value and appreciate our members' ongoing dedication and commitment to **Cancer52**.

Partnership: Representation and advocacy in policy

Cancer52 represents its members at the highest policy and decision-making levels, acting as a conduit to organisations that need to hear the patient voices of those with rare and less common cancers. As a strong and determined alliance, we amplify the call for improvements in cancer services, including those supported by our member charities.

Central to **Cancer52**'s policy work is the Policy and Public Affairs Steering Group (PPASG), which met frequently to exchange information and help formulate **Cancer52**'s policy asks. The group informed responses to several NICE consultations, Major Conditions Strategy response and Health and Social Care Select Committee inquiry. During 2023-2024, the group was chaired by Chris Walden, **Cancer52** Trustee, and Charlotte Crowley, Policy and Evidence Manager at Leukaemia Care. Bradley Price, previously Policy and Public Affairs Manager of Sarcoma UK acted as vice chair until 2023, when Rachel Downing, Head of Policy and Campaigns at Target Ovarian Cancer took on the role. Our incoming policy lead, Sasha Daly, manages the relationships with the Chair and Vice-Chair and members of the Group as well as agrees agendas and facilitates the functioning, outputs and reporting.

House of Commons Health and Social Care Select Committee

Cancer52 submitted a response to the inquiry into Future Cancer, focusing on innovations. Jane Lyons, CEO, was pleased to also provide oral evidence to the committee on 21st June 2023. The full session is available on Parliamentlive.tv.⁵ See full session.



National Strategies on Health and Cancer

The year 2023 proved to be a time of rapid political and policy change but **Cancer52** and its membership remained agile and responsive. The Department of Health and Social Care (DHSC) announced that instead of the 10-Year Cancer Plan a Major Conditions Strategy would launch covering six major conditions, including cancer.^{6,7} **Cancer52**'s pan member response that included insights from over 250 patients for the 10-Year Cancer Plan consultation was submitted as evidence for the

new strategy.⁸ Furthermore a response to the Major Conditions Strategy was submitted by **Cancer52**.⁹

Cancer52 also met with then Cancer Minister Helen Whately MP and participated in Major Conditions Strategy roundtables to ensure that rare and less common cancers remain a priority. Helen Whately MP also attended an All Member Meeting, spoke to members and took questions.



Making the Cancer52 voice heard

Cancer52 works tirelessly to support people with rare and less common cancers and to ensure a strong presence in this community.

- We are represented at the highest level on boards and taskforces.
- We value close teamwork and collaboration.
- We use a range of skills and methods within a flexible structure to help members support patients.

Informing, advising and supporting our members

Meeting with our members

Virtual meetings continue to play an important part in our work as they allow our member charities and organisations from across the country to voice their concerns, connect, quickly and easily share information and hear from thought leaders in the field of rare and less common cancers. We also recognise the huge value in meeting face-to-face and hosted two large, in-person events in London in June and November 2023, each attended by circa 100 people.



587

individuals attended all Member Meetings, an increase of 28% on the previous year



100

people attended each in-person event in June and November 2023



181

people attended our eight CEO meetings.

Sharing

We want everyone with rare and less common cancers to have the chance to be best supported and make informed choices. We consistently encourage our members to exchange knowledge so that even those supported by charities with limited resources have access to a continuing flow of useful information. People with cancer are best supported when charities collaborate to make the most of the resources available and not duplicate efforts. We know that a collaborative voice is a stronger voice.

Regular members' e-bulletin

Throughout this financial year, our weekly e-bulletin updated our members on:

- Developments in Government and NHS policy pertinent to cancer
- Responses Cancer52 have made to official consultations
- Relevant meetings of member charities or national organisations
- Information for patients
- Opportunities to get involved with projects that support people with rare and less common cancers
- Patient surveys
- Projects where members wanted to share learning or to raise awareness
- Member and NHS Cancer Programme job opportunities
- Training courses
- NHS and other cancer charity webinars

The average open rate for our e-bulletin increased slightly from an already high average of 59% to 60% in March 2024. This is over double the market open rate average (27%) for newsletter emails.⁴ It is clear that our members prize our bulletins as a useful and efficient way of informing their patients of critical events and developments.

Cancer52 All Member Meetings

Fortnightly virtual meetings continued throughout the financial year. They offered crucial networking opportunities and the chance to help patients by learning from interesting and thought-provoking speakers. Meetings were well attended and warmly welcomed.

'You are doing such great work for us smaller charities representing rare and less common cancers, and we really enjoy belonging to a larger group where we can get our voices heard by government and policy makers - thank you!'

Sharon Deveson Kell, Action Kidney Cancer

CEO Calls

Monthly virtual meetings provide member CEOs direct access to their peers. Started during the COVID-19 pandemic, these meetings have continued to offer incredibly valuable opportunities to raise problems, talk through ideas, share best practice and offer peer support.

'Thank you for arranging this morning's meeting. As seems to be the norm with Cancer52, it was relevant and absorbing, giving me much food for thought.'

Dr Michele Afif, The Brain Tumour Charity

The meetings are great relationship builders and boost the profile of people with rare and less common cancers.

'A great Cancer52 is a great rare and less common cancer community'

Fiona Hazell, Leukaemia UK

Big Cancer52 Conversation

On 14th June 2023, **Cancer52** held the first in-person **Big Cancer52 Conversation** event in Canary Wharf, London. **The Big Cancer52 Conversation** helped to foster cross-sector collaborations with the aim of improving outcomes for those affected with rare and less common cancers.

Key speakers were **David Fitzgerald, Director – Policy and Strategy, NHS Cancer Programme, NHSE**; **Richard Torbett, Chief Executive of the ABPI**; and **Tony Colville, MD of the Cancer Awareness Trust**. Several member CEOs, **Rebecca Porta (The Urology Foundation and Trustee)**, **Nic Puntis (GIST Cancer UK and Trustee)** and **Liz Darlison (Mesothelioma UK)**, **Brad Gudger (Alike)**, and **Victoria Clare (Ovacome)** all took part as chairs or panellists. Alongside **Dr Max Brodermann (Haematology Registrar and Trustee)**. The event was a huge success and received enormously positive feedback. Three new workstreams were created from the event, and the existing health inequalities workstream bolstered.

Following on from this success, the second **Big Cancer52 Conversation** was held on 15th November 2023. The Autumn Gathering provided an opportunity to regroup people following our inaugural **Big Cancer52 Conversation**, review shared progress, welcome newcomers to the conversation and transform conversation into action. Two member charities – **Bottom Line** and **Solving Kids’ Cancer** – who attended our inaugural **Big Cancer52 Conversation** in June, returned to share their success stories of how the first event helped them to progress their work in rare and less common cancers.

CEO, **Jane Lyons**, hosted a conversation with a panel of representatives from key stakeholder organisations, including: **David Fitzgerald, Director of Policy and Strategy for the NHS Cancer Programme, NHS England**; **Brian Duggan, Strategic Partnership Policy Director, ABPI**; **Dr Max Brodermann, Haematology Registrar and Cancer52 Trustee**. In line with our planning for 2024, and to keep the momentum with **Big Cancer52 Conversation**, a further meeting was planned for June 2024. We are grateful for the support of **The Cancer Awareness Trust** and **Canary Wharf Group**, which enabled us to hold these events.



The key workstreams arising from the **Big Cancer52 Conversation** are:

Charities and industry working better together, focused on helping our member charities to develop best practice on engagement with industry to benefit patients. This has included exploring opportunities to draw on ABPI's support to develop tools and resources for members.

Improving access to clinical trials, focused on addressing barriers faced by people affected by rare and less common cancers. This theme will be explored in the **Cancer52** patient survey, and we have also engaged with clinical trials services such as RareCan to explore opportunities for collaboration.

Proxy staging measures for blood and brain cancers, focused on ensuring that data is inclusive of all cancers, including those that cannot be staged or are difficult to stage. This includes work to identify a proxy measure, in lieu of staging data, to take to policymakers.

Health inequalities, focused on sharing and developing best practice and working together to address inequalities in diagnosis, treatment, care and outcomes for people living with rare and less common cancers. We conducted a health inequalities survey with members, which will form the basis of our work in 2024.

Cancer52 Member Working Groups

These four key workstreams are now working groups and join other **Cancer52** working groups that help members who face similar challenges in supporting people with cancer. This year, working groups examined cancer-related menopause, irritable bowel syndrome (IBS) by way of misdiagnosis and the NHS website cancer pages.



Identifying Cancer52's policy priorities with members

Throughout September and October **Cancer52** undertook its own consultation with members to clarify the most important policy issues to the community and develop **Cancer52's** policy strategy. This work was led by our CEO and policy lead working with a policy think tank with long standing expertise in cancer and health. Work included an audit of **Cancer52's** policy position over

the last 10 years, a survey of members and a half-day workshop of **Cancer52** members and Board members in order to develop **Cancer52's** policy and public affairs strategy. From this, **Cancer52** developed a well received strategy with input from the Policy Public Affairs Steering Group (PPASG), agreeing a work plan for 2024.



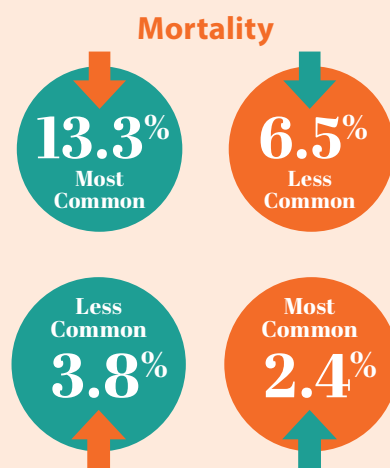
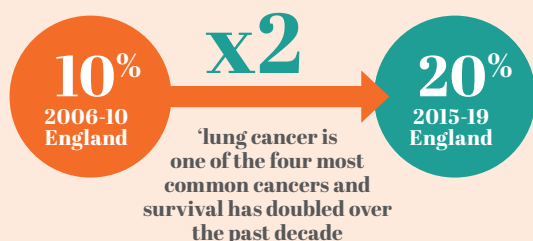
A Manifesto for Rare and Less Common Cancers

At the start of 2024, and with Lottery funding in place, our policy lead took on the work to develop a manifesto to engage key stakeholders and increase the voice of Cancer52 and its members, leading into the General Election expected later in the year.¹⁰ This work involved more member engagement to identify the priorities, a workshop with the Policy and Public Affairs Steering Group to refine the priorities, a review of other relevant charity manifestos and identification of key collaborative partners. Cancer Research UK provided statistical input to the priority areas which provided a new evidence base on rare and less common cancers. A launch event was then planned to engage members, their patient representative, key stakeholders and politicians.

In the manifesto 'The Other Half. A manifesto to transform outcomes for people with rare and less common cancers', Cancer52 outlined three key priorities.

Priority 1

Reduce the number of deaths from rare and less common cancers by 15% by 2040, saving 80,000 lives*, and address health inequalities that contribute to poorer outcomes



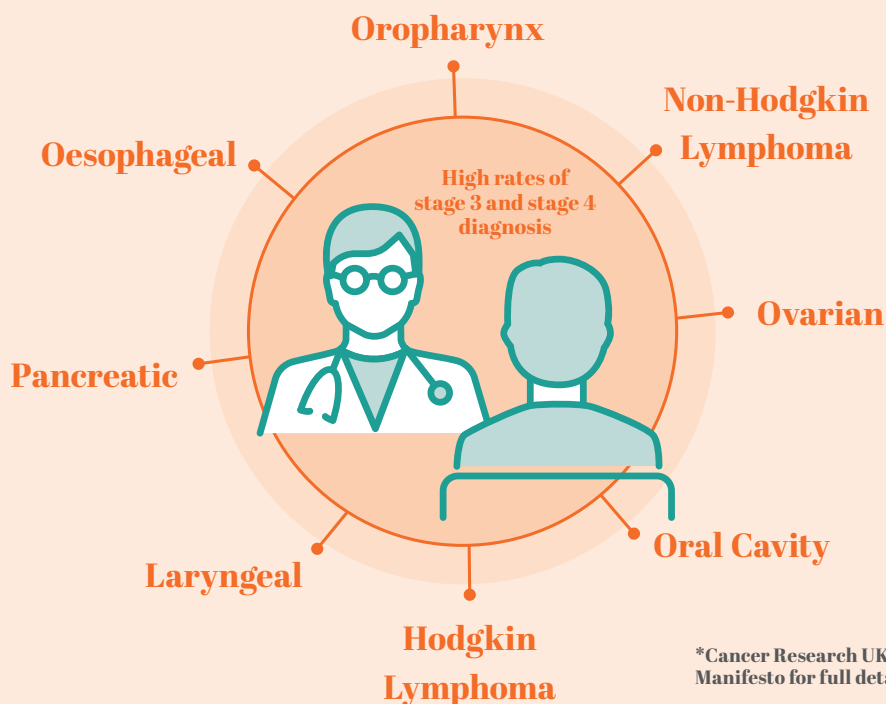
Incidence

Mortality and survival rate improvements have been lower, while incidence rate increases have been higher in rare and less common cancers compared to the four common cancers.

Priority 2

Increase early diagnosis of rare and less common cancers which will improve patient experience, quality of life and help save more lives

The rare and less common cancer types with highest proportion of patients diagnosed at stage 3 and 4 include*:



*Cancer Research UK data, see Cancer52 Manifesto for full details: <https://bit.ly/442jyeS>

Priority 3

A new national mission on rare and less common cancers with patient involvement at its core



Partnership: Collaboration on behalf of patients

Working collaboratively across the NHS

WORKING WITH THE NHS CANCER PROGRAMME

NHSE National Cancer Board

Alongside Cancer Research UK and Macmillan Cancer Support, **Cancer52** has a place on the NHSE National Cancer Board. Together we provide strategic leadership across the healthcare sector in delivering the cancer ambitions inside the NHS Long Term Plan.¹¹

During 2023–2024, **Cancer52** participated in several NHS England (NHSE) boards and groups, where its influence was used to oversee, advise on and implement changes for those affected by cancer:

- Cancer Campaigns and Oversight Group
- Cancer Campaigns Community of Practice
- Early Detection and Screening Task and Finish Group
- The Cancer Patient Experience Survey Advisory Group
- The Cancer Patient Experience Survey Reporting Sub Group
- NHSE Quarterly Cancer Charity Forum
- Cancer Data and Analytics Advisory Group (CDAAG)

Working collaboratively to improve health inequalities in cancer

Cancer52 has continued to develop its health inequalities agenda, including creating an overarching delivery plan with an active Health Inequalities Working Group and wider **Cancer52** membership. A health inequalities members' survey was also conducted to inform ongoing work.

Cancer52's profile in health inequalities is continuing to grow. This year National Voices asked **Cancer52** to collaborate in leading a coalition of health and social care charities in England. **Cancer52** has also supported its members to develop, share and champion their own work on health inequalities, like Team Margot's work into diversity among organ donors and OUTpatients' work to address anti-trans hostility. Alongside this, **Cancer52** is supporting members from blood and brain cancer charities to ensure that early diagnosis measures are inclusive of all cancers.

Cancer52 has also received funding from The National Lottery Community Fund (TNLCF) for work with Cancer Alliances to deliver best practice/knowledge-sharing events in London and Manchester in November 2024. The **Cancer52** workplan includes publication of a two-year progress update to **Cancer52's** health inequalities report, and a health inequalities toolkit and resource library for **Cancer52** members. Alongside this, we are working to build relationships with other policy and system partners; including the Office for Health Improvement and Disparities (OHID) and health inequalities leads at Macmillan, Cancer Research UK and other voluntary, community, and social enterprise (VCSE) organisations.

Working collaboratively across the wider cancer community

To maximise impact for people living with cancer, **Cancer52** collaborates with relevant organisations and multiple charities outside its direct membership.

Charities Medicines Access Coalition

Cancer52 is a member of the Charities Medicines Access Coalition (CMAC), which works to find long-term solutions to the challenges that can delay or prevent patient access to new and innovative medicines. This coalition has established relationships with decision-makers including NHS England, the National Institute for Health and Care Excellence (NICE) and the Association of the British Pharmaceutical Industry (ABPI). **Cancer52** led responses to NICE strategy consultations during 2023 and into 2024 on working with people and communities and responded to the ABPI consultation on its code of practice. **Cancer52** also worked with CMAC to raise issues on behalf of its member charities. Finally, **Cancer52** engaged with and consulted on the agreement between the DHSC, NHSE and the ABPI on the voluntary scheme for branded medicines pricing, access and growth.

NICE VCSE Forum Steering Group

Cancer52 sits on NICE Voluntary and Community Sector (VCSE) Forum's steering group to help oversee the forum's work and engage its members. The NICE VCSE Forum has an important role in ensuring the people affected by NICE's work can be heard in the decision making process.

The Cancer Data Collaborative

Cancer52 collaborated with Cancer Research UK and Macmillan in data sharing. Data collaboratives are an emerging form of collaboration in which data held by an entity can be leveraged in partnership with another entity (from the public sector, civil society and/or academia) for public good.

Improving the data landscape on cancer inequalities

Cancer52 engaged with Cross-Charity Commissioned Research alongside Breast Cancer Now, Prostate Cancer UK, Bowel Cancer UK, Macmillan and Cancer Research UK and carried out by the Big Data Institute at Oxford University. The key questions for this research are:

What is the evidence available related to inequalities in cancer incidence, care and outcome across the UK?

What data is available, or potentially available, to investigate cancer inequalities and inequities across the UK, what are the strengths and weaknesses of these data, and what barriers exist to their use?

Fair Market Value for patients' and charities' time and expertise

Cancer52 worked with the Patient Information Forum (PIF) and the National Rheumatoid Arthritis Society (NRAS) to conduct a survey with charities.¹² This work developed into a project to produce guidance for charities on charging fair rates when working in partnership with industry, research bodies and public bodies. See survey findings.

Signposting across patient information

Cancer52 has led work that helps patients and their loved ones to access patient information and patient support that is relevant to their cancer type. **Cancer52** has worked with both the NHS and Macmillan Cancer Support to initiate new links with their online patient information to signpost to smaller charities focused on rare and less common cancers.

One Cancer Voice

One Cancer Voice (OCV) consists of 50 charities working together on fundamental policy asks, such as a governmental cancer plan. This alliance was increasingly active leading up to the expected general election in 2024 and **Cancer52** played a key role on the OCV steering group to shape the agenda and calls to action as well as engage our members in OCV's public facing activities.

Children and young people with cancer

Many of our member charities support children and young people with cancer and these charities have together formed the Children and Young People's Cancer Coalition. **Cancer52** sits on the steering group and supports the work of charities in this field.

Healthcare charities

National Voices is a wide-ranging coalition of healthcare charities that helps **Cancer52** engage in topics particularly relevant to people with rare and less common cancers.

Rare cancers

The Specialised Healthcare Alliance campaigns on behalf of those with rare and complex conditions. **Cancer52** is a member and attends briefings on wider topics affecting people with rare cancers.

HPV Coalition

Human papillomavirus (HPV) is the name of a common virus which is linked to several rare and less common cancers. **Cancer52** is part of the HPV coalition, an expert advisory group that comes together to inform and advance the UK's journey towards the elimination of HPV-related cancers.

ABPI Patient Advisory Council

Cancer52's CEO sat on the Association of the British Pharmaceutical Industry (ABPI) Patient Advisory Council and **Cancer52** joined the Patient Organisation Forum briefings, alongside other larger, well-known charities, and sat on the steering group that plans the meetings and organises speakers. In 2023 **Cancer52** worked with the ABPI on a further Anti-Microbial Resistance campaign specific to people living with rare and less common cancers called Together for Antibiotics.^{13,14}

Travel insurance for cancer patients

Cancer52 has been supporting member charity, Planets, in their work to improve travel insurance options for people who have had a cancer diagnosis, and often face prohibitive costs that do not necessarily reflect the risk. One part of the work is collaborating with Verisk, a company that provides the health risk data (including for rare and less common cancers) for up to 90% of the UK Insurance industry, on reviewing risk assessments for individual rare and less common cancers.

Informing our stakeholders

As an organisation, and also as our members' representative, **Cancer52** is in ongoing communication with members of other charities, NHS professionals and administrators and anyone else who has influence in the rare and less common cancer field.

Website

The **Cancer52** website links to all member organisations, plus the sponsors and groups **Cancer52** collaborates with, offering a useful portal for sharing information between members, patients and the general public. It includes a webpage listing all rare and less common cancers with links to relevant patient support and research organisations. **Cancer52** posted reports on its activities during the year and featured a news stream of prominent issues.

Website users can access reports together with informative videos, contact and donation opportunities.

Social media

Cancer52 has been especially active this year on LinkedIn, X (formerly Twitter) and Facebook. The organisation has created a substantial increase in followers, including an increase of more than 40% on LinkedIn within one financial year. **Cancer52** uses social media to communicate with members and the wider public, to raise awareness of the organisation, and to distribute new information and react to events that impact the rare and less common cancer community.



Cancer52 CEO, Jane Lyons, participated in a podcast on innovation in cancer care alongside Pfizer UK Oncology Lead, Stefan Podesta and Dr Ellie Cannon.

Making the voice of people with rare and less common cancers heard: our headline achievements for 2023–2024

Partnership

Informing, sharing with, and empowering our members

Cancer52 membership and engagement levels have increased in 2023–2024. We are grateful for the significant positive feedback from our members. This confirms that efforts invested in establishing the Big **Cancer52** Conversation events have been successful in facilitating partnership.

Policy

Responding collectively to the changing political cancer priorities

Cancer52 continues to work alongside the NHSE Cancer Programme to improve outcomes for those with rare and less common cancers and to meet the early diagnosis target of diagnosing 75% of all cancers at stage I and II by 2028. **Cancer52**'s previous collaborative work with its members and patients will now be used to input to the Government's Major Conditions Strategy. **Cancer52** also secured funding especially to expand policy work and has developed a manifesto and initiated in-person policy events.

Patients

Advocating for those affected by rare and less common cancers through collaboration

Cancer52 continues to take patient voice and experiences to influencers and policy decision makers. Highlights include feeding the patient voice into the Major Conditions Strategy where **Cancer52** provided oral evidence at the Health and Social Care Committee on Future Cancer. **Cancer52** is proud of its work with our members in health inequalities striving to ensure an equitable experience of cancer care.



Funding

The National Lottery Community Fund



In 2023–2024, Cancer52 successfully secured substantial three-year funding from The National Lottery Community Fund (TNLCF), the largest community funder in the UK. Cancer52 was delighted to receive this funding as recognition of its achievements alongside its members for the rare and less common cancer community. The funding will provide, over three years, scope to increase staffing resources to further grow capacity and sustainability, and has three key target outcomes:

Outcome 1:

Policy advances for rare and less common cancer

Outcome 2:

Addressing patient health inequalities

Outcome 3:

Increasing member engagement

Expanding Cancer52's work means the impact of this funding will benefit Cancer52 itself, charity members, people with rare and less common cancers, and the wider rare and less common cancer community.

Cancer52 also continued to receive funding via donations from members, individual donations, and support from pharmaceutical companies. These funds are vital to the ongoing delivery of core work and relevant projects that are of benefit to the rare and less common cancer community.

The value of support

The valuable time, expertise and energy generously donated by members is hugely appreciated.

Cancer52 is incredibly grateful to every donor and supporter for their financial support which helps propel us towards achieving our objectives. This includes financial support from charity members.

Voluntary member donations

A significant amount of **Cancer52**'s financial support comes from member charities who make a voluntary donation aligned to their income.

In this financial year, membership donations totalled a record £47,800 from 49 member charities. **Cancer52** asked members with an annual income over £100,000 to pay a donation where possible but, as always, were considerate of those smaller charities encountering the rising cost of living. Membership donations for 2023/24 exceeded those of 2022/23 by **30%** following a membership donation review by the Board of Trustees. The purpose of the review was to consider the benefits of **Cancer52** membership and to create a fairer and more structured approach to the membership donations. Membership donations remain based on charity income level, but are now spread out across more income bands, to place a more appropriate level at either end of the spectrum.

Individual donations

Donations are welcome from any individuals or organisations who recognise the value of **Cancer52**'s contribution in supporting people with rare and less common cancers.

During the financial year 2023-24, **Cancer52** received over £21,000 from a variety of platforms and individuals. Of particular note, thanks go to the families and friends of Louise Marshall, Alex Sekouras, Lucien Seller, and to Trustee, Dr Max Brodermann for his support in running the Chelmsford Marathon in October 2023.

Support from industry

In 2023–2024 we received support from Astra Zeneca, BMS, Gilead, GSK, Ipsen, Janssen, Merck, MSD, Novartis, Pfizer, Roche, and Takeda, who all benefited from membership to **Cancer52**'s Corporate Supporter Programme.

Cancer52 has a clearly written policy to guide its work with the pharmaceutical industry and also follows industry guidelines.¹⁵ Some 52.4% of our funding in 2023/24 came from pharmaceutical companies and comprises support for specific projects as well as unrestricted support.

Cancer52 believes all its industry partners recognise the value of working with an umbrella organisation that channels one voice for rare and less common cancers.



Future plans

Cancer52 is proud of its achievements during this year, its major objectives prevail and will be taken forward into 2024–2025.

Cancer52 will provide a strong, unified voice to promote improved diagnosis, treatment and support for those affected by rare and less common cancers so that we see an end to inequalities in diagnosis, treatment and patient outcomes experienced by those with these challenging diseases.

As part of its three-year strategy, Cancer52 has made progress in its plans to:

Be a well-resourced organisation making the voice of rare and less common cancers heard through securing TNLCF funding over three years

Retain its market leadership position, build its thought leadership and through The Big Cancer52 Conversation and other projects, increase its collaborative work with the wider rare and less common cancer community

Retain its focus on its aim, mission and values

Place reducing inequalities at the heart of everything it does and making this a key workstream of the **Big Cancer52 Conversation**.

In the next year, Cancer52 will continue to progress the plans listed above and in addition, will take steps to:

Review its target audience and messaging and, if necessary, be ready to make changes.

The acoustics: structure and constitution

Structure and Governance

Cancer52 is incorporated as a charitable company limited by guarantee and is a registered charity in England and Wales. It is governed by its Memorandum and Articles of Association, and its work, management, finances and strategy are overseen by a Board of Trustees, who are also the company directors. The Trustees who held office during the financial year and at the date of the report are set out on page 41.

Under the Articles of Association, a minimum of three trustees and a maximum of twelve trustees {directors} can be in office.

The Board has agreed that the usual term of tenure for trustees should be a maximum of two terms of three years each (six years in total), with review and approval by the Board at the end of each term of tenure. In exceptional circumstances, and in order not to lose important or valuable skills, experience and expertise, trustees may serve for a third term of tenure, subject to the approval of the Board. Trustees do not receive remuneration for their duties.

Public benefit

Cancer52 encourages and facilitates interaction and collaboration between members and other stakeholders. This support in turn aids members' provision of information and support to people diagnosed with, treated for or living with a rare or less common cancer. Outcomes for people with rare or less common cancers also improve when we drive change and enhancements in the cancer system.



Purpose

The charity's purposes are set out in its Memorandum and Articles of Association as follows:

To promote and protect the health of people with rare and less common cancers by:

1. Advancing and promoting understanding, awareness, research and learning about rare and less common cancers;
2. Acting as a collective voice and advocating for the needs of individuals affected by a rare or less common cancer in order to improve diagnosis, treatment and long-term support outcomes
3. Supporting, representing and empowering not-for-profit organisations working in the field of rare and less common cancers.

As part of the business planning processes, **Cancer52's** aims and objectives are reviewed each year. This includes looking at how those groups of people we were set up to help have benefited and what has been achieved in previous years. The Charity Commission's general guidance on public benefit was referred to when reviewing **Cancer52's** aims and objectives and also in the planning work for the future.

Board and management operations and structure

Board of Trustees

The Board of Trustees meets at least four times a year to review **Cancer52's** work, finances and services, and to agree strategic goals for the charity. In-person board meetings resumed in 2023-24 with a virtual option, and meetings invited the Chief Executive and the Operations Consultant and others as appropriate.

The Chair and other trustees with financial expertise also meet separately with the Chief Executive, Operations Consultant, and **Cancer52's** accountant on a quarterly basis to monitor and scrutinise the financial strategy and operations and make any necessary recommendations to the full Board of Trustees.

Recruitment and appointment of new Trustees

Anne MacDowell was recruited as the new Chair of the Board in October 2023. Anne replaces Rebecca Porta, CEO of The Urology Foundation and a long-standing Board Member, who served as Interim Chair, with the support of Helen Morement, CEO of AMMF and also a long-standing Board Member.

Related parties

Related parties are considered to be the trustees and those connected with the trustees, including their close families, business and other charity interests. There have been no transactions with related parties, other than the reimbursement of reasonable travel expenses for the purposes of attendance at Board meetings and other relevant organisational activities.

Risk assessment and management

The Board of Trustees and the Chief Executive maintain a risk register and assess risk on an annual basis. The trustees are satisfied that major risks to the organisation have been accurately identified and that appropriate systems and procedures for managing those risks are in place.

Safeguarding

Cancer52 has a strong commitment to protecting and promoting the health, wellbeing and safety of all engaged in its work. While not a patient representative charity, **Cancer52** still adheres to good safeguarding practice. The Safeguarding Policy is reviewed each year and is accessible on the Governance section of **Cancer52's** website. Each year, all staff and contractors are required to participate in a full day safeguarding training course, provided by an external organisation to ensure everyone is up to date with the latest safeguarding requirements.

Cancer52 has sought to strengthen its risk management training this year and all staff and contractors are required to take General Data Protection Regulation (GDPR) training.

Annual review

The Annual Review 2023–2024 was completed and disseminated, with thanks to the Board nominees Nic Puntis and Helen Morement.



cancer52

the common voice for
rare & less common cancers



Money talks: financial review 2023–2024

Financial statement

As shown in the statement of financial activities on the following pages, in the year 2023–2024

- Reserves brought forward from 2022–2023 were £88,835.
- Income for the financial year was £230,779.
- Expenditure for the current financial year was £268,701, resulting in an anticipated deficit of £37,922.
- Reserves of £50,913 were available at the end of the 2023–2024 financial year.

Reserves policy

The Board of Trustees’ strategy on reserves is for the organisation to maintain sufficient funds to cover the operational running costs in the event of a major setback. This means that we aim to hold approximately six months’ annual expenditure in reserve.

At the end of the 2023–2024 financial year, Cancer52’s reserves stood at £50,913 which covers the six months running expenses not covered directly by the National Lottery.

The Company has taken advantage of the small companies’ exemption in preparing this report. The trustees declare that they have approved the trustees’ report (including directors’ report) above.

Signed on behalf of the charity’s trustees/directors

Signature _____

Anne MacDowell

Trustee / Director

Date _____

Signature _____

Nic Puntis

Trustee / Director

Date _____



Section A

Independent Examiner's Report

Report to the
trustees/directors/
members of

Cancer 52

On accounts for the year
ended

31st March 2024

Charity no.:

1174569

Company no.:

07994413

Set out on pages

28

To

40

I report to the charity trustees on my examination of the accounts of the Company for the year ended **31st March 2024**.

Responsibilities and
basis of report

As the charity's trustees of the Company (who are also the directors of the company for the purposes of company law), you are responsible for the preparation of the accounts in accordance with the requirements of the Companies Act 2006 ("the 2006 Act").

Having satisfied myself that the accounts of the Company are not required to be audited for this year under Part 16 of the 2006 Act and are eligible for independent examination, I report in respect of my examination of your charity's accounts as carried out under section 145 of the Charities Act 2011 ("the 2011 Act"). In carrying out my examination, I have followed the Directions given by the Charity Commission (under section 145(5)(b) of the 2011 Act).

Independent
examiner's statement

I have completed my examination. I confirm that no material matters have come to my attention (other than that disclosed below *) which gives me cause to believe that:

- accounting records were not kept in accordance with section 386 of the Companies Act 2006; or
- the accounts do not accord with such records; or
- the accounts do not comply with relevant accounting requirements under section 396 of the Companies Act 2006 other than any requirement that the accounts give a 'true and fair' view which is not a matter considered as part of an independent examination; or
- the accounts have not been prepared in accordance with the Charities SORP (FRS102).

Name: Jason Dennis

Relevant professional qualification(s) or body (if any): AAT - Association of Accounting Technicians
ATT – Association of Taxation Technicians

Address: 31 Clover Way, Paddock Wood, Tonbridge, Kent TN12 6BQ

Section B **Disclosure**

Only complete if the examiner needs to highlight material matters of concern (see CC32, Independent examination of charity accounts: directions and guidance for examiners).

Give here brief details of any items that the examiner wishes to disclose.

Section A

Statement of financial activities
(including summary income and expenditure account)

Recommended categories by activity	Guidance Note	Unrestricted funds	Restricted income funds	Endowment funds	Total funds	Prior year funds
		£	£	£	£	£
		F01	F02	F03	F04	F05
Income (Note 3)						
Income and endowments from:						
Donations and legacies	S01	193,836	36,943	-	230,779	176,598
Total	S07	193,836	36,943	-	230,779	176,598
Expenditure (Notes 4)						
Expenditure on:						
Raising funds	S08	20,493	-	-	20,493	23,566
Charitable activities	S09	206,161	36,047	-	242,208	171,486
Other	S11	6,000	-	-	6,000	3,000
Total	S12	232,654	36,047	-	268,701	198,052
Net income/(expenditure) before tax for the reporting period						
Tax payable	S13	(38,818)	896	-	(37,922)	(21,454)
	S14	-	-	-	-	-
Net income/(expenditure) after tax before investment gains/(losses)						
Net gains/(losses) on investments	S15	(38,818)	896	-	(37,922)	(21,454)
	S16	-	-	-	-	-
Net income/(expenditure) Extraordinary items						
Transfers between funds	S17	(38,818)	896	-	(37,922)	(21,454)
Other recognised gains/(losses):	S18	-	-	-	-	-
Gains and losses on revaluation of fixed assets for the charity's own use	S19	12,583	(12,583)	-	-	-
Other gains/(losses)						
	S20	-	-	-	-	-
	S21	-	-	-	-	-
Net movement in funds	S22	(26,235)	(11,687)	-	(37,922)	(21,454)
Reconciliation of funds:						
Total funds brought forward	S23	76,252	12,583	-	88,835	110,289
Total funds carried forward	S24	50,017	896	-	50,913	88,835

Section B

Balance sheet (as at 31st March 2024)

	Guidance Note	Unrestricted funds £	Restricted income funds £	Endowment funds £	Total this year £	Total last year £
Current assets						
Cash at bank and in hand (Note 9)	B09	111,651	-	-	111,651	92,205
Total current assets	B10	111,651	-	-	111,651	92,205
Creditors and deferred income : amounts falling due within one year (Note 8)						
	B11	60,738	-	-	60,738	3,370
Net current assets/(liabilities)	B12	50,913	-	-	50,913	88,835
Total assets less current liabilities	B13	50,913	-	-	50,913	88,835
Total net assets or liabilities	B16	50,913	-	-	50,913	88,835
Funds of the Charity						
Endowment funds	B17	-			-	-
Restricted income funds (Note 11)	B18		896		896	12,583
Unrestricted funds	B19	50,017		-	50,017	76,252
Revaluation reserve	B20				-	
Fair value reserve	B21					
Total funds	B22	50,017	896	-	50,913	88,835

The company was entitled to exemption from audit under s477 of the Companies Act 2006 relating to small companies.

The members have not required the company to obtain an audit in accordance with section 476 of the Companies Act 2006.

The directors acknowledge their responsibilities for complying with the requirements of the Companies Act with respect to accounting records and the preparation of accounts.

These accounts have been prepared in accordance with the provisions applicable to small companies subject to the small companies regime and in accordance with FRS102 SORP.

Signed by one or two trustee/directors on behalf of all the trustees/directors

Name	Signature	Date of approval dd/mm/yyyy
Anne MacDowell		
Nic Puntis		

Signature of Chair authenticating accounts being sent to Companies House

Name	Signature	Date of approval dd/mm/yyyy
Anne MacDowell		

Section C

Notes to the accounts

NOTE 1: Basis of preparation

1.1 Basis of accounting

These accounts have been prepared under the historical cost convention with items recognised at cost or transaction value unless otherwise stated in the relevant note(s) to these accounts.

The accounts have been prepared in accordance with:

- and with*

✓

 the Statement of Recommended Practice: Accounting and Reporting by Charities preparing their accounts in accordance with the Financial Reporting Standard applicable in the UK and Republic of Ireland (FRS 102) issued on 16 July 2014
- and with*

✓

 the Financial Reporting Standard applicable in the United Kingdom and Republic of Ireland (FRS 102)
- and with the Charities Act 2011.

The charity constitutes a public benefit entity as defined by FRS 102.*

✓

* -Tick as appropriate

1.2 Going concern

If there are material uncertainties related to events or conditions that cast significant doubt on the charity's ability to continue as a going concern, please provide the following details or state "Not applicable", if appropriate:

An explanation as to those factors that support the conclusion that the charity is a going concern;

Not applicable

Disclosure of any uncertainties that make the going concern assumption doubtful;

Not applicable

Where accounts are not prepared on a going concern basis, please disclose this fact together with the basis on which the trustees prepared the accounts and the reason why the charity is not regarded as a going concern.

Not applicable

1.3 Change of accounting policy

The accounts present a true and fair view and no changes have been made to the accounting policies adopted in note { }.

Yes*	<input checked="" type="checkbox"/>	* -Tick as appropriate
No*	<input type="checkbox"/>	

Please disclose:

(i) the nature of the change in accounting policy;	Not applicable
(ii) the reasons why applying the new accounting policy provides more reliable and more relevant information; and	Not applicable
(iii) the amount of the adjustment for each line affected in the current period, each prior period presented and the aggregate amount of the adjustment relating to periods before those presented, 3.44 FRS102 SORP.	Not applicable

1.4 Changes to accounting estimates

No changes to accounting estimates have occurred in the reporting period (3.46 FRS102 SORP).

Yes*	<input checked="" type="checkbox"/>	* -Tick as appropriate
No*	<input type="checkbox"/>	

Please disclose:

(i) the nature of any changes;	Not applicable
(ii) the effect of the change on income and expense or assets and liabilities for the current period; and	Not applicable
(iii) where practicable, the effect of the change in one or more future periods.	Not applicable

1.5 Material prior year errors

No material prior year error have been identified in the reporting period (3.47 FRS102 SORP).

Yes*	<input checked="" type="checkbox"/>	* -Tick as appropriate
No*	<input type="checkbox"/>	

Please disclose:

(i) the nature of the prior period error;	Not applicable
(ii) for each prior period presented in the accounts, the amount of the correction for each account line item affected; and	Not applicable
(iii) the amount of the correction at the beginning of the earliest prior period presented in the accounts.	Not applicable

NOTE 2: Accounting policies

2.1 INCOME

Recognition of income

These are included in the Statement of Financial Activities (SoFA) when:

- the charity becomes entitled to the resources;
- it is more likely than not that the trustees will receive the resources;
- the monetary value can be measured with sufficient reliability.

Yes*	No*	N/a*
<input checked="" type="checkbox"/>	<input type="checkbox"/>	<input type="checkbox"/>

Offsetting

There has been no offsetting of assets and liabilities, or income and expenses, unless required or permitted by the FRS 102 SORP or FRS 102.

Yes*	No*	N/a*
<input checked="" type="checkbox"/>	<input type="checkbox"/>	<input type="checkbox"/>

Grants and donations

Grants and donations are only included in the SoFA when the general income recognition criteria are met (5.10 to 5.12 FRS102 SORP).

Yes*	No*	N/a*
<input checked="" type="checkbox"/>	<input type="checkbox"/>	<input type="checkbox"/>

In the case of performance related grants, income must only be recognised to the extent that the charity has provided the specified goods or services as entitlement to the grant only occurs when the performance related conditions are met (5.16 FRS 102 SORP).

Yes*	No*	N/a*
<input type="checkbox"/>	<input type="checkbox"/>	<input checked="" type="checkbox"/>

Legacies

Legacies are included in the SoFA when receipt is probable, that is, when there has been grant of probate, the executors have established that there are sufficient assets in the estate and any conditions attached to the legacy are either within the control of the charity or have been met.

Yes*	No*	N/a*
<input checked="" type="checkbox"/>	<input type="checkbox"/>	<input type="checkbox"/>

Government grants

The charity has received government grants in the reporting period

Yes*	No*	N/a*
<input checked="" type="checkbox"/>	<input type="checkbox"/>	<input type="checkbox"/>

Tax reclaims on donations and gifts

Gift Aid receivable is included in income when there is a valid declaration from the donor. Any Gift Aid amount recovered on a donation is considered to be part of that gift and is treated as an addition to the same fund as the initial donation unless the donor or the terms of the appeal have specified otherwise.

Yes*	No*	N/a*
<input checked="" type="checkbox"/>	<input type="checkbox"/>	<input type="checkbox"/>

Contractual income and performance related grants

This is only included in the SoFA once the charity has provided the related goods or services or met the performance related conditions.

Yes*	No*	N/a*
<input type="checkbox"/>	<input type="checkbox"/>	<input checked="" type="checkbox"/>

Donated goods

Donated goods are measured at fair value (the amount for which the asset could be exchanged) unless impractical to do so.

Yes*	No*	N/a*
<input checked="" type="checkbox"/>	<input type="checkbox"/>	<input type="checkbox"/>

The cost of any stock of goods donated for distribution to beneficiaries is deemed to be the fair value of those gifts at the time of their receipt and they are recognised on receipt. In the reporting period in which the stocks are distributed, they are recognised as an expense at the carrying amount of the stocks at distribution.

Yes*	No*	N/a*
<input type="checkbox"/>	<input type="checkbox"/>	<input checked="" type="checkbox"/>

Donated goods for resale are measured at fair value on initial recognition, which is the expected proceeds from sale less the expected costs of sale, and recognised in 'Income from other trading activities' with the corresponding stock recognised in the balance sheet. On its sale the value of stock is charged against 'Income from other trading activities' and the proceeds from sale are also recognised as 'Income from other trading activities'.

Yes*	No*	N/a*
<input type="checkbox"/>	<input type="checkbox"/>	<input checked="" type="checkbox"/>

Goods donated for on-going use by the charity are recognised as tangible fixed assets and included in the SoFA as incoming resources when receivable.

Yes*	No*	N/a*
<input type="checkbox"/>	<input type="checkbox"/>	<input checked="" type="checkbox"/>

Gifts in kind for use by the charity are included in the SoFA as income from donations when receivable.

Yes*	No*	N/a*
<input checked="" type="checkbox"/>	<input type="checkbox"/>	<input type="checkbox"/>

Donated services and facilities

Donated services and facilities are included in the SoFA when received at the value of the gift to the charity provided the value of the gift can be measured reliably.

Yes*	No*	N/a*
<input type="checkbox"/>	<input type="checkbox"/>	<input checked="" type="checkbox"/>

Donated services and facilities that are consumed immediately are recognised as income with an equivalent amount recognised as an expense under the appropriate heading in the SoFA.

Yes*	No*	N/a*
<input type="checkbox"/>	<input type="checkbox"/>	<input checked="" type="checkbox"/>

Support costs	The charity has incurred expenditure on support costs.	Yes	No	N/a
			✓	
Volunteer help	The value of any voluntary help received is not included in the accounts but is described in the trustees' annual report.	Yes*	No*	N/a*
		✓		
Income from interest, royalties and dividends	This is included in the accounts when receipt is probable and the amount receivable can be measured reliably.	Yes*	No*	N/a*
		✓		
Income from membership	Membership subscriptions received in the nature of a gift are recognised in Donations	Yes*	No*	N/a*

2.2 EXPENDITURE AND LIABILITIES

Liability recognition	Liabilities are recognised where it is more likely than not that there is a legal or constructive obligation committing the charity to pay out resources and the amount of the obligation can be measured with reasonable certainty.	Yes*	No*	N/a*
		✓	✓	✓
Governance and support costs	Support costs have been allocated between governance costs and other support. Governance costs comprise all costs involving public accountability of the charity and its compliance with regulation and good practice. Support costs include central functions and have been allocated to activity cost categories on a basis consistent with the use of resources, eg allocating property costs by floor areas, or per capita, staff costs by the time spent and other costs by their usage.	Yes*	No*	N/a*
				✓
Grants with performance conditions	Where the charity gives a grant with conditions for its payment being a specific level of service or output to be provided, such grants are only recognised in the SoFA once the recipient of the grant has provided the specified service or output.	Yes*	No*	N/a*
				✓
Grants payable without performance conditions	Where there are no conditions attaching to the grant that enables the donor charity to realistically avoid the commitment, a liability for the full funding obligation must be recognised.	Yes*	No*	N/a*
				✓
Redundancy cost	The charity made no redundancy payments during the reporting period.	Yes*	No*	N/a*
		✓		
Deferred income	No material item of deferred income has been included in the accounts.	Yes*	No*	N/a*
			✓	
Creditors	The charity has creditors which are measured at settlement amounts less any trade discounts	Yes*	No*	N/a*
				✓
Provisions for liabilities	A liability is measured on recognition at its historical cost and then subsequently measured at the best estimate of the amount required to settle the obligation at the reporting date	Yes*	No*	N/a*
				✓
Basic financial instruments	The charity accounts for basic financial instruments on initial recognition as per paragraph 10.7 FRS102 SORP. Subsequent measurement is as per paragraphs 11.17 to 11.19, FRS102 SORP.	Yes*	No*	N/a*
				✓

2.3 ASSETS

Tangible fixed assets for use by charity

These are capitalised if they can be used for more than one year, and cost at least

They are valued at cost.

The depreciation rates and methods used are disclosed in note 14.

£2,500		
Yes*	No*	N/a*
		✓

Intangible fixed assets

The charity has intangible fixed assets, that is, non-monetary assets that do not have physical substance but are identifiable and are controlled by the charity through custody or legal rights. The amortisation rates and methods used are disclosed in note 15.

They are valued at cost.

Yes*	No*	N/a*
		✓

Yes*	No*	N/a*
		✓

Heritage assets

The charity has heritage assets, that is, non-monetary assets with historic, artistic, scientific, technological, geophysical or environmental qualities that are held and maintained principally for their contribution to knowledge and culture. The depreciation rates and methods used as disclosed in note 16.

They are valued at cost.

Yes*	No*	N/a*
		✓

Yes*	No*	N/a*
		✓

Investments

Fixed asset investments in quoted shares, traded bonds and similar investments are valued at initially at cost and subsequently at fair value (their market value) at the year end. The same treatment is applied to unlisted investments unless fair value cannot be measured reliably in which case it is measured at cost less impairment.

Investments held for resale or pending their sale and cash and cash equivalents with a maturity date of less than 1 year are treated as current asset investments

Yes*	No*	N/a*
		✓

Yes*	No*	N/a*
		✓

Stocks and work in progress

Stocks held for sale as part of non-charitable trade are measured at the lower or cost or net realisable value.

Goods or services provided as part of a charitable activity are measured at net realisable value based on the service potential provided by items of stock.

Work in progress is valued at cost less any foreseeable loss that is likely to occur on the contract.

Yes*	No*	N/a*
		✓

Yes*	No*	N/a*
		✓

Yes*	No*	N/a*
		✓

Debtors

Debtors (including trade debtors and loans receivable) are measured on initial recognition at settlement amount after any trade discounts or amount advanced by the charity. Subsequently, they are measured at the cash or other consideration expected to be received.

Yes*	No*	N/a*
		✓

Current asset investments

The charity has investments which it holds for resale or pending their sale and cash and cash equivalents with a maturity date less than one year. These include cash on deposit and cash equivalents with a maturity of less than one year held for investment purposes rather than to meet short-term cash commitments as they fall due.

They are valued at fair value except where they qualify as basic financial instruments.

Yes*	No*	N/a*
		✓

Yes*	No*	N/a*
		✓

POLICIES ADOPTED ADDITIONAL TO OR DIFFERENT FROM THOSE ABOVE

--

NOTE 3: Income

Analysis of income		Unrestricted funds	income funds	Endowment funds	Total funds	Prior year
					£	£
Donations	Donations and gifts	136,179	-	-	136,179	143,648
	General grants provided by government - TNLCF (National Lottery Community Fund)	-	36,943	-	36,943	-
	Membership subscriptions and sponsorships which are in substance donations	57,657	-	-	57,657	32,950
	Total	193,836	36,943	-	230,779	176,598
TOTAL INCOME		193,836	36,943	-	230,779	176,598

NOTE 4: Analysis of receipts of government grants

	Description	£
Government grant 1	The National Lottery Community Fund - Funding for Core expenditure	36,943
	Total	36,943

£73,886 was received in January 2024 for the period January to June 2024. Therefore 3 months has been deferred £36,943.

NOTE 5: Expenditure

Analysis	This year				Last year			
	Unrestricted funds	Restricted income funds	Endowment funds	Total funds	Unrestricted funds	Restricted income funds	Endowment funds	Total funds
Expenditure on raising funds	£				£			
Fundraising consultant services	20,493	-	-	20,493	23,566	-	-	23,566
Total expenditure on raising funds	20,493	-	-	20,493	23,566	-	-	23,566
Expenditure on charitable activities:								
All Member Meetings, Steering Group Meetings, Room Hire, Venue Costs, Conference expenses	4,716	-	-	4,716	5,586	-	-	5,586
Showcase Project	-	-	-	-	-	10,307	-	10,307
Fundraising Platform Website materials (Gift in kind)	-	-	-	-	10,899	-	-	10,899
Merchandise	121	-	-	121	376	-	-	376
Call for Evidence Project	-	-	-	-	2,775	-	-	2,775
Inequalities report	11,565	-	-	11,565	8,980	-	-	8,980
TNLCF - National Lottery funded expenditure	-	36,047	-	36,047	-	-	-	-
NCRI Project	401	-	-	401	1,480	-	-	1,480
Big Cancer 52 Events	17,089	-	-	17,089	-	-	-	-
Pfizer Project Support	186	-	-	186	-	-	-	-
Impact Reporting and Annual Review	1,805	-	-	1,805	1,869	-	-	1,869
Telephone	302	-	-	302	219	-	-	219
Registered Office Change	119	-	-	119	-	-	-	-
IT and Computer running expenses and Website mtce	1,380	-	-	1,380	1,300	-	-	1,300
Policy consultants - Policy Support and Report	33,441	-	-	33,441	21,375	-	-	21,375
Policy Workshop	15,000	-	-	15,000	-	-	-	-
Subscriptions	2,632	-	-	2,632	1,622	-	-	1,622
Operations Management Services	33,146	-	-	33,146	20,861	-	-	20,861
Other Administration Support Services	14,348	-	-	14,348	8,739	-	-	8,739
Insurance	574	-	-	574	556	-	-	556
Parliamentary Event	2,261	-	-	2,261	-	-	-	-
Salaries and Ers NI and Pensions (Non-TNLCF Funded)	47,518	-	-	47,518	65,396	-	-	65,396
Training	866	-	-	866	-	-	-	-
Communications and PR Services	15,767	-	-	15,767	8,803	-	-	8,803
Bank and credit fees	216	-	-	216	216	-	-	216
Trustees/Directors Travel	608	-	-	608	105	-	-	105
Other Travel and Subsistence	563	-	-	563	-	-	-	-
Trustee Recruitment costs and expenses	491	-	-	491	-	-	-	-
Other Recruitment costs	1,046	-	-	1,046	22	-	-	22
Total expenditure on charitable activities	206,161	36,047	-	242,208	161,179	10,307	-	171,486
Other								
Independent Examiner	6,000	-	-	6,000	3,000	-	-	3,000
Total other expenditure	6,000	-	-	6,000	3,000	-	-	3,000
TOTAL EXPENDITURE	232,654	36,047	-	268,701	187,745	10,307	-	198,052

NOTE 6: Details of certain types of expenditure

Note 6.1 Fees for examination of the accounts

Please provide details of the amount paid for any statutory external scrutiny of accounts and other services provided by your independent examiner. If nothing was paid please enter '0' in the appropriate box(es).

Independent examiner's fees

This year £	Last year £
6,000	3,000

NOTE 7: Paid Employees

7.1 Staff Costs

Salaries and wages
Social security costs
Pension costs (defined contribution scheme)
Other employee benefits

	This year £	Last year £
Salaries and wages	60,000	60,000
Social security costs	2,029	2,396
Pension costs (defined contribution scheme)	3,000	3,000
Other employee benefits	-	-
Total staff costs	65,029	65,396

Please note £15,000 Salaries and Wages ; £1,761.35 Social security costs and £750 Pension costs were funded by the The National Lottery Community Fund and are included in the TNLCF - National Lottery Funded Expenditure line in Note 4 instead of Salaries, Employers NI and Pensions.

Please give details of the number of employees whose total employee benefits (excluding employer pension costs) fell within each band of £10,000 from £60,000 upwards. If there are no such transactions, please enter 'true' in the box provided.

No employees received employee benefits (excluding employer pension costs) for the reporting period of more than £60,000

TRUE

Band	Number of employees	
	This year	Last year
£60,000 to £69,999	1	1

Please provide the total amount paid to key management

This year £	Last year £
60,000	60,000

6.2 Average head count in the year

The parts of the charity in which the employees work

	This year Number	Last year Number
Fundraising	-	-
Charitable Activities	-	-
Governance	1	1
Other	-	-
Total	1	1

NOTE 8: Creditors, deferred income and accruals

Please complete this note if the charity has any creditors or accruals.

8.1 Analysis of creditors, deferred income and accruals

	Amounts falling due within one year		Amounts falling due after more than one year	
	This year £	Last year £	This year £	Last year £
Accruals	23,425	3,000	-	-
Deferred income	36,943	-	-	-
Other creditors	370	370	-	-
Total	60,738	3,370	-	-

NOTE 9: Cash at bank and in hand

	This year £	Last year £
Cash at bank and on hand	111,651	92,205
Total	111,651	92,205

NOTE 10: Fair value of assets and liabilities

10.1 Please provide details of the charity's exposure to credit risk (the risk of incurring a loss due to a debtor not paying what is owed) , liquidity risk (the risk of not being able to meet short term financial demands) and market risk (the risk that the value of an investment will fall due to changes in the market) arising from financial instruments to which the charity is exposed at the end of the reporting period and explain how the charity manages those risks.	Credit risk is low due to income being in the form of donations. Cash is the only investment so market risk is low on investment values falling. Liquidity risk is low as costs are managed in relation to income received.	Credit risk is minimal due to income being in the form of donations and there are extensions of credit. Cash is the only investment which is placed in standard bank current and depoist accounts, so market risk is low on investment values falling. Liquidity risk is low as cost expenditures are managed in relation to income received.
10.2 Please give details of the amount of change in the fair value of basic financial instruments (debtors, creditors, investments (see section 11, FRS 102 SORP)) measured at fair value through the SoFA that is attributable to changes in credit risk.	Not applicable	Not applicable

NOTE 11: Charity funds

11.1 Details of material funds held and movements during the CURRENT reporting period

Please give details of the movements of material individual funds in the reporting period together with a balancing figure for 'Other funds' (which should include revaluation reserve and fair value reserve, if applicable). The 'Total funds' figure below should reconcile to 'Total funds' in the balance sheet.

* Key: PE - permanent endowment funds; EE - expendable endowment funds; R - restricted income funds, including special trusts, of the charity; and U - unrestricted funds

Fund names	Type PE, EE R or UR *	Purpose and Restrictions	Fund balances brought forward £	Income £	Expenditure £	Transfers £	Gains and losses £	Fund balances carried forward £
General Fund	UR	General all purpose no restrictions	76,252	193,836	(232,654)	12,583	-	50,017
Restricted Fund	R	TNLCF - National Lottery Community Fund. Funding for Core Expenditure	-	36,943	(36,047)	-	-	896
Restricted Fund	R	Restricted for Showcase Project	12,583	-	-	(12,583)	-	-
Total Funds as per balance sheet			88,835	230,779	(268,701)	-	-	50,913

Fund balances carried forward include assets and liabilities denominated in a foreign currency

Yes*☒

No*☒

If yes, please state the basis on which the assets and/or liabilities have been translated into sterling (or the currency in which the accounts are drawn up).

11.2 Details of material funds held and movements during the PREVIOUS reporting period

Please give details of the movements of material individual funds in the reporting period together with a balancing figure for 'Other funds' (which should include revaluation reserve and fair value reserve, if applicable). The 'Total funds' figure below should reconcile to 'Total funds' in the balance sheet.

* Key: PE - permanent endowment funds; EE - expendable endowment funds; R - restricted income funds, including special trusts, of the charity; and U - unrestricted funds

Fund names	Type PE, EE R or UR *	Purpose and Restrictions	Fund balances brought forward £	Income £	Expenditure £	Transfers £	Gains and losses £	Fund balances carried forward £
General Fund	UR	General all purpose no restrictions	110,289	153,708	(187,745)	-	-	76,252
Restricted Fund	R	Restricted for Showcase Project	-	22,890	(10,307)	-	-	12,583
Total Funds as per balance sheet			110,289	176,598	(198,052)	-	-	88,835

Fund balances carried forward include assets and liabilities denominated in a foreign currency

Yes*☒

No*☒

NOTE 12: Transactions with trustees and relates parties

If the charity has any transactions with related parties (other than the trustee expenses explained in guidance notes) details of such transactions should be provided in this note. If there are no transactions to report, please enter "True" in the box or "False" if there are transactions to report.

12.1 Trustee remuneration and benefits

This year

None of the trustees have been paid any remuneration or received any other benefits from an employment with their charity or a related entity (True or False)

TRUE

12.2 Trustees' expenses

If the charity has paid trustees expenses for fulfilling their duties, details of such transactions should be provided in this note. If there are no transactions to report, please enter "True" in the box below. If there are transactions to report, please enter "False".

No trustee expenses have been incurred (True or False)

TRUE

Type of expenses reimbursed	This year	Last year
	£	£
Travel	608	-
TOTAL	608	-

Please provide the number of trustees reimbursed for expenses or who had expenses paid by the charity

2

0

12.3 Transaction(s) with related parties

Please give details of any transaction undertaken by (or on behalf of) the charity in which a related party has a material interest, including where funds have been held as agent for related parties. If there are no such transactions, please enter 'true' in the box provided.

This year

There have been no related party transactions in the reporting period (True or False)

TRUE

Last year

There have been no related party transactions in the reporting period (True or False)

TRUE



Administrative details

TRUSTEES		EXECUTIVE OFFICERS	
Anne MacDowell	Chair	Baroness Delyth Morgan	President
Rebecca Porta	Vice Chair	Jane Lyons	Chief Executive
	(until 25th September 2024)		(until 15th July 2024)
REGISTERED OFFICE			
Cancer52, 124 City Road, London, EC1V 2NX			
WEBSITE			
www.cancer52.org.uk			
BANKERS			
Co-operative Bank			



References

¹ National Cancer Registration and Analysis Service (NCRAS) by Public Health England figures. May 2019

² Cancer Statistics for the UK. Cancer Research UK. Available: <https://www.cancerresearchuk.org/health-professional/cancer-statistics-for-the-uk#heading-Zero>.

³ Cancer52 membership research, conducted April 2019

⁴ 2024 Email marketing statistics compilation including open rates, clickthrough rates and click-to-open rates. Smart Insights. Available: <https://www.smartinsights.com/email-marketing/email-communications-strategy/statistics-sources-for-email-marketing/#q4>

⁵ Health and Social Care Select Committee - Future Cancer. Parliamentlive.tv. 21st June 2023. <https://parliamentlive.tv/Event/Index/5530cf3b-17c4-4142-a647-8600c7172409>

⁶ 10-Year Cancer Plan. Call for Evidence. Available: <https://www.gov.uk/government/consultations/10-year-cancer-plan-call-for-evidence>

⁷ Major Conditions Strategy. Call for Evidence. DHSC. <https://www.gov.uk/government/calls-for-evidence/major-conditions-strategy-call-for-evidence/major-conditions-strategy-call-for-evidence>

⁸ 10-Year Cancer Plan. Cancer52 response to the Call for Evidence. Available: [e22361_40a4fd86b9f64b2a8eba5697a4b07c51.pdf](https://www.cancer52.org.uk/single-post/cancer52-response-to-the-major-conditions-strategy-strategic-framework) (usrfiles.com)

⁹ Cancer52 Response to Major Conditions Strategy Framework. September 2023. Available: <https://www.cancer52.org.uk/single-post/cancer52-response-to-the-major-conditions-strategy-strategic-framework>

¹⁰ Cancer52. The Other Half. A manifesto to transform outcomes for people with rare and less common cancers. Available: [https://e2236186-a9de-45db-b8f6-3f2d6db40cb4.usrfiles.com/ugd/e22361_754a20aff7d14b7bab33be31fdb06b3b.pdf](https://www.cancer52.org.uk/single-post/cancer52-response-to-the-major-conditions-strategy-strategic-framework)

¹¹ NHS Long Term Plan. Available: <https://www.longtermplan.nhs.uk/areas-of-work/cancer/>

¹² PIF, Cancer52 and NRAS. Fair Market Survey 2023. Available: <https://pifonline.org.uk/resources/publications/fair-market-value-survey-findings/>

¹³ Together for Antibiotics. ABPI. Available: https://www.togetherforantibiotics.org.uk/resources/?3b293f58a0d649e6a204d1476bc6a631_cat=Cancer52&3b293f58a0d649e6a204d1476bc6a631_page=1

¹⁴ ABPI AMR: Resources (togetherforantibiotics.org.uk). Available: <https://www.togetherforantibiotics.org.uk/>

List of charity members 2023/24

Act for Cancer
www.actforcancer.org.uk

Action Against Heartburn
www.actionagainstheartburn.org.uk

Action Bladder Cancer UK
www.actionbladdercanceruk.org

Action Kidney Cancer
www.kcsn.org.uk

Action on Womb Cancer
www.actiononwombcancer.org.uk

Alike
www.alike.org.uk

ALK Positive Lung Cancer
www.alkpositive.org.uk

AMMF – The Cholangiocarcinoma Charity
www.ammf.org.uk

Anthony Nolan
www.anthonynolan.org

Association for Multiple Endocrine Neoplasia Disorders (AMEND)
www.amend.org.uk

Baggy Trousers UK
www.baggytrousersuk.org

Balls to Cancer
www.ballstocancer.co.uk

Barrett's Oesophagus UK
www.barrettscampaign.org.uk

Blood Cancer UK
www.bloodcancer.org.uk

Bone Cancer Research Trust
www.bcrtr.org.uk

Bowel Research UK
www.bowelresearchuk.org

Brain Tumour Research
www.braintumourresearch.org

Brain Tumour Research Campaign (Wayahead)
www.btrc-charity.org

Brainstrust
www.brainstrust.org.uk

British Lymphology Society (BLS)
www.thebls.com

British Thyroid Foundation (BTF-thyroid)
www.btf-thyroid.org

Butterfly Thyroid Cancer Trust (BTCT)
www.butterfly.org.uk

Cancer Laryngectomy Trust
www.cancerlt.org

Cancer of Unknown Primary (CUP)
Foundation – Jo's friends
www.cupfoundjo.org

Cancer Support UK
www.cancersupportuk.org

Childhood Eye Cancer Trust (CHECT)
www.checht.org.uk

Children's Cancer and Leukaemia Group (CCLG)
www.cclg.org.uk

Chordoma UK
www.chordoma-uk.org

Chris Lucas Trust
www.chrislucastrust.com

Chronic Myeloid Leukaemia (CML) Support Group UK
www.cmlsupport.org.uk

CLL Support Association
www.clisupport.org.uk

Debbie Fund
www.debbiefund.org

East Kent Cancer Cafe

EHE Rare Cancer Charity (UK)
www.ehercc.org.uk

Ellen MacArthur Cancer Trust
www.ellenmacarthurcancertrust.org

Fight Bladder Cancer
www.fightbladdercancer.co.uk

GIST Cancer UK
www.gistcancer.org.uk/

Grace Kelly Childhood Cancer Trust
www.gkcct.org/

GUTS Charity
www.gutscharity.org.uk

Heartburn Cancer UK
www.heartburncanceruk.org

HLRCC Family Alliance
www.hlrccinfo.org

ICPV Independent Cancer Patients' Voice
www.icpv.org.uk

International Brain Tumour Alliance (IBTA)
www.theibta.org

It's In The Bag Cancer Support Ltd
www.itsinthebag.org.uk

It's on the Ball
www.itsontheball.org

Jo's Cervical Cancer Trust
www.jostrust.org.uk

Kidney Cancer UK
www.kcuk.org.uk

Live Through This
www.livethroughthis.co.uk

Leukaemia CARE
www.leukaemiacare.org.uk

Leukaemia UK
www.leukaemiauk.org.uk

London Asbestos Support Awareness Group
www.lasag.org.uk/

Lymphoedema Support Network
www.lymphoedema.org

Lymphoma Action
www.lymphoma-action.org.uk

Maggie's Cancer Caring Centres – Maggie's Centres
www.maggiescentres.org

MDS (Myelodysplastic Syndromes) UK Patient Support Group
www.mdspatientsupport.org.uk

Melanoma Focus
www.melanomafocus.com

Melanoma UK
www.melanomauk.org.uk

Mesothelioma UK
www.mesothelioma.uk.com

Mind Over Cancer
www.mindovercancer.org.uk/

MPN Voice
www.mpnvoice.org.uk

Mummy's Star
www.mummysstar.org

Myeloma UK
www.myeloma.org.uk

Neuroblastoma UK
www.neuroblastoma.org.uk

Neuroendocrine Cancer UK (NCUK)
www.neuroendocrinecancer.org.uk

North West Cancer Research
www.nwcr.org

OcuMel UK
www.ocumeluk.org

Odyssey
www.odyssey.org.uk

Oracle Cancer Trust
www.oraclecancertrust.org

Orchid Cancer Appeal
www.orchid-cancer.org.uk

OUTpatients
<https://outpatients.org.uk/>

Ovacome
www.ovacome.org.uk

Ovarian Cancer Action
www.ovarian.org.uk

Pancreatic Cancer Action
www.pancreaticcanceraction.org

Pancreatic Cancer UK (PCUK)
www.pancreaticcancer.org.uk

Peaches Womb cancer Trust
www.peachestrust.org/

Pelvic Radiation Disease Association PRDA
www.prda.org.uk

Penny Brohn UK
www.pennybrohn.org.uk

PLANETS
www.planetscharity.org

Pseudomyxoma Survivor
www.pseudomyxomasurvivor.org

Ruth Strauss Foundation
www.ruthstraussfoundation.com/

Salivary Gland Cancer UK
www.salivaryglandcancer.uk

Sarcoma UK
www.sarcoma.org.uk

Shine Cancer Support
www.shinecancersupport.org

Solving Kids' Cancer
www.solvingkidscancer.org.uk

Swallows Head & Neck Cancer Charity
www.theswallows.org.uk

Target Ovarian Cancer
www.targetovariancancer.org.uk

Team Margot Foundation
www.teammargot.com

Teenage Cancer Trust (TCT)
www.teenagecancertrust.org

The Bottom Line
<https://bottomlinecharity.com/>

The Brain Tumour Charity
www.thebraintumourcharity.org

The Charley Ashton Foundation

The Ella Dawson Foundation
<https://www.elladawsonfoundation.org.uk/>

The Eve Appeal
www.eveappeal.org.uk

The Leanne Pero Foundation
www.theleanneperofoundation.com

The Myrovlytis Trust
www.myrovlytistrust.org

The Northern Ireland Rare Disease Partnership
www.nirdp.org.uk

The Robin Cancer Trust
www.therobincancertrust.org

The Urology Foundation
www.theurologyfoundation.org

ThymicUK
www.thymicuk.org/

Thyroid Cancer Support Group Wales
www.thyroidsupportwales.co.uk

Tom Bowdidge Youth Cancer Foundation
www.tombowdidgefoundation.org

Trekstock
www.trekstock.com

UCARE
www.ucare-cancer.org.uk

UK Masto
www.ukmasto.org

Urostomy Association
www.urostomyassociation.org.uk

VHL UK/Ireland
www.vhl-uk-ireland.org

Wellbeing of Women
www.wellbeingofwomen.org.uk

WMUK
www.wmuk.org.uk

Womb Cancer Info
www.wombcancerinfo.wixsite.com/home

Womb Cancer Support UK
www.wombcancersupportuk.weebly.com

Worldwide Cancer Research
www.worldwidecancerresearch.org

Yorkshire Cancer Community
www.yorkshirecancercommunity.co.uk

Young Lives Vs. Cancer
www.younglivesvscancer.org.uk

Young Tongues
www.youngtonguesglobal.com



Cancer52 is registered as a charity in England and Wales, **Charity No. 1174569** and as a company limited by guarantee in England and Wales, **Company No. 07994413**

If we **work together**
we can make as much noise as the big four



cancer52.org.uk

email: info@cancer52.org.uk