



cancer52

Annual Review

& Financial Statements

1 Apr 2022 – 31 Mar 2023

Cancer52 is registered as
a charity in England and Wales,
Charity No. 1174569 and as a
company limited by guarantee
in England and Wales,
Company No. 07994413

**THE COMMON VOICE FOR
RARE & LESS COMMON CANCERS**

cancer52.org.uk

Contents

LET'S MAKE SOME NOISE	3	FUNDING	14
Foreword	3	The value of our support	14
Welcome to our Annual Review 2022–2023	3	Voluntary member donations	14
		Support from industry	14
STRENGTH IN UNITY: OUR PRINCIPLES	4	FUTURE PLANS	15
Our core principles	4		
UNITING WITH ONE VOICE: WHO WE ARE	5	THE ACOUSTICS: STRUCTURE AND CONSTITUTION	16
The Cancer52 team	5	Structure and governance	16
Our charity members	5	Purpose	16
		Public benefit	16
MAKING THE CANCER52 VOICE HEARD	6	Board and management operations and structure	17
Informing, advising and supporting our members	6		
PARTNERSHIP: REPRESENTATION AND ADVOCACY IN POLICY	8	MONEY TALKS: FINANCIAL REVIEW	19
PARTNERSHIP: COLLABORATION ON BEHALF OF PATIENTS	10	INDEPENDENT EXAMINER'S REPORT TO THE TRUSTEES OF CANCER52	20
Informing our stakeholders	12	Section A	22
		Section B	23
		Section C	24
MAKING THE VOICE OF PEOPLE WITH RARE AND LESS COMMON CANCERS HEARD: OUR HEADLINE ACHIEVEMENTS FOR 2022–2023	13	INDEPENDENT EXAMINER'S REPORT ON THE ACCOUNTS	20
Partnership	13	ADMINISTRATIVE DETAILS	35
Policy	13		
Patients	13	LIST OF CHARITY MEMBERS 2022–2023	37

Let's make some noise:

Trustees Annual Report and Directors Report
for the year ended 31st March 2023



Foreword

Investment and improvement in cancer prevention, diagnosis, treatment and public education programmes has radically changed the outlook for so many patients and their families. Yet despite these important advances, 55% of all UK cancer deaths are from rare and less common cancers. These cancers continue to remain severely under-represented and under-funded across all areas, including policy, services and research.

Cancer52 is committed to driving change and to improving the outlook for patients and their families. Together with our 111 member charities, policy and decision makers, industry, and those with an interest in rare and less common cancers, we have worked tirelessly during the year to deliver our plans and ambitions for further expansion, widening influence and driving change.

We are incredibly proud of the progress we have made during the year from providing opportunities for our members to showcase their work to participating in strategies on the future of cancer care. Building on these achievements, we look forward to an exciting year ahead.

Our work and progress is only possible because of the support of our rare and less common cancer community. The Trustees and I would like to thank everyone who has contributed towards our efforts and success and in particular our CEO, Jane Lyons and the team for their dedication and commitment.

Rebecca Porta



Rebecca Porta,
Interim Chair

Welcome to our Annual Review 2022–2023

I'm proud to introduce our Annual Review for the financial year 2022–2023. Throughout the year, the charity has continued to grow, both in terms of its membership and influence. The organisation has used this influence to work with a widening group of stakeholders to deliver ever more ambitious projects.

Core to **Cancer52's** work are the three Ps: **Patients** – building the voice of people affected by rare and less common cancer, **Policy** – ensuring that, together we are heard at the highest level, and **Partnership** – ensuring that we meet challenges and take the opportunities that cross-working enables. It is **Cancer52's** successful collaborations that have allowed it to adapt to new and shifting challenges.

This year, tackling inequalities became essential in everything we set out to do. We know that having a rare or less common cancer is an inequality in itself. Yet people with rare and less common cancers can experience further inequalities based on factors such as age, region, socioeconomic group, ethnicity, and sexual orientation.

With the help of our many members – currently 111 – we will continue to deliver projects and activities that help reduce the inequalities faced by people with a rare or less common cancer.

Jane Lyons



Jane Lyons, CEO

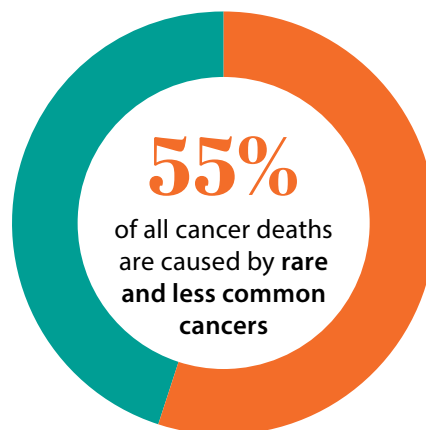
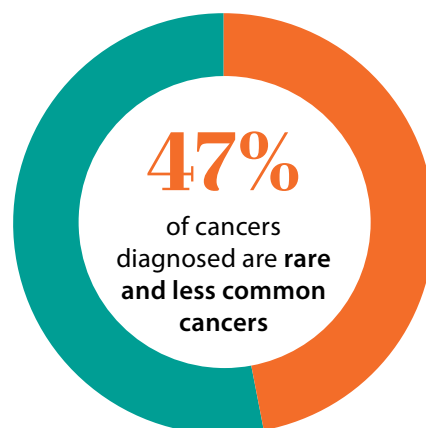
Strength in unity: our principles

Cancer52 is a national organisation, created in 2007 by Professor Sir Mike Richards, CBE, then National Clinical Director for Cancer, and registered as a charity in England and Wales in September 2017.

We are the unifying body for charitable and not-for-profit organisations working in the field of rare and less common cancers. Currently we represent 111, predominantly small, patient-support and research-focused cancer charities and organisations.

Cancer52 gets its name from when rare and less common cancers accounted for 52% of all cancer deaths in the UK, despite the fact that only 47% of cancers diagnosed in England are of this type.¹ In 2020, this shifted to 47% of diagnoses yet 55% of cancer deaths.²

Our member charities and organisations are united in seeking a better future for everyone affected by rare and less common cancers. We provide a collective voice to champion earlier diagnosis, better treatment, better representation, funding and support for people with cancers other than the four most common cancers (breast, lung, bowel and prostate). **Cancer52** ensures the voices of people with less common cancers do not go unheard.



Our core principles

Our aim

Cancer52's primary aim is to promote improved diagnosis, treatment and support for those affected by rare and less common cancers.

Our mission

Cancer52's mission is to provide a strong, unified voice for rare and less common cancer organisations by representing, speaking, informing, sharing and involving our members in achieving our vision.

Our vision

Cancer52's vision is to end inequalities in diagnosis, treatment and patient outcomes experienced by those with rare and less common cancers compared with the four most common cancers.

Our values

Everything **Cancer52** does is underpinned by the aim to be:

- ambitious | outcomes-focused |
- collaborative | evidence-based | influential
- and to behave with honesty and integrity.

Uniting with one voice: who we are

Cancer52 aims to better represent people with rare and less common cancers at a senior policy and decision-making level. Sourcing and bringing together the knowledge and expertise of our many members makes this possible.

The Cancer52 team

During the year ending 31 March 2023, the core team consisted of:

- **Jane Lyons, CEO:** Responsible for the overall running of the charity.
- **Ainsley Taylor, Operations Manager:** Supporting the CEO on governance, finance, fundraising, administration and the co-ordination of membership donations, recruitment, and supporting the Trustees.
- **Stephanie Judycki, Communications Executive:** Leads on internal and external communications including member e-bulletins, Cancer52 website, and social media.

Our Board of Trustees is listed on page 27.

Brighter Together Consulting worked for Cancer52 on policy and Jason Dennis was our Accountant.

Thanks to you all for your hard work and dedication.

Our charity members

Cancer52's members are united in their determination to improve treatment and outcomes for their individual patient groups.

The majority of **Cancer52's** member organisations are small – 65% have an annual income of less than £1 million – with 57% of those having an income of £500,000 and 25% an income of less than £100,000. Almost all our members offer patient support and over two-thirds invest in research.³

The full list of **Cancer52's** members at time of going to press can be seen on page 37.

Cancer52's active membership continues to grow. During the 2022–23 financial year, we happily welcomed Mind Over Cancer, London Asbestos Support Awareness Group, Cancer Support UK, East Kent Cancer Café, and Peaches Womb Cancer Trust.

We hugely value and appreciate our members' ongoing dedication and commitment to **Cancer52**.

Making the Cancer52 voice heard

Cancer52 works tirelessly to support people with rare and less common cancers and to ensure a strong presence in this community.

- We are represented at the highest level on boards and taskforces.
- We value close teamwork and collaboration.
- We use a range of skills and methods within a flexible structure to help members support patients.

Informing, advising and supporting our members

Meeting with our members

Virtual meetings continue to play an important part in our work as they allow our member charities and organisations from across the country to voice their concerns, connect, quickly and easily share information and **hear from thought leaders in the field of rare and less common cancers.**



459

individuals attended All Member Meetings, an increase of 22% on the previous year



183

attended a working group meeting



200+

attendance at our monthly CEO meetings

All figures represent steady increases on the previous year.

Sharing

We want everyone with rare and less common cancers to have the chance to be best supported and make informed choices. We consistently encourage our members to exchange knowledge so that even those supported by charities with limited resources have access to a continuing flow of useful information.

People with cancer are best supported when charities collaborate to make the most of the resources available and do not duplicate efforts. We know that a collaborative voice is a stronger voice.

Regular members' e-bulletin

- Developments in Government and NHS policy pertinent to cancer
- Dates and details of Cancer52 meetings and meetings of member charities or national organisations
- Information for patients
- Opportunities to get involved with projects that support people with rare and less common cancers
- Patient surveys
- Projects where members wanted to share learning or to raise awareness
- Member and NHS Cancer Programme job opportunities
- Training courses
- NHS and other cancer charity webinars

The open rate for our e-bulletin increased from an already high average of 43% to 59% in March 2023. This is nearly three times more than the market average open rate for newsletter emails.⁴ It is clear that our members prize our bulletins as a useful and efficient way of informing their patients of critical events and developments.

Cancer52 All Member Meetings

Fortnightly virtual meetings continued throughout the financial year. They offered crucial networking opportunities and the chance to help patients by learning from a fantastic calibre of interesting and thought-provoking speakers. Meetings were well attended and warmly welcomed.

'Thank you for everything you do to bring our community together.'

Lydia Makaroff, CEO, Fight Bladder Cancer

The meetings are great relationship builders and boost the profile of people with rare and less common cancers.

'We are very grateful for all the work that you do in shining the light on rare cancers.'

Karen Ruddock, Founder, ThymicUK

CEO Calls and Meetings

Monthly video calls provide member CEOs direct access to their peers. Started during the COVID-19 pandemic, these meetings have continued to be incredibly valuable opportunities to raise problems, talk through ideas, share best practice and offer peer support.

Working Groups

Cancer52's working groups help members who face similar challenges in supporting people with cancer.

'I've really been so super impressed with the amount of activity generated from Cancer52 which I know comes from you and your small team. Whereas to begin with I struggled a bit to find the relevance and applicability to my charity given we're childhood cancer focused, and further still, disease specific within that – I've experienced a shift and change there and so much of what you are doing is both relatable and helpful to me in my role as CEO and to my wider charity.'

Gail Jackson, CEO, Solving Kids' Cancer

New groups examined cancer-related menopause, health inequalities, irritable bowel syndrome (IBS) by way of misdiagnosis, and the NHS website cancer pages.

The Showcase Video project

The Showcase Video project was inspired by the incredible commitment Cancer52's members showed in pulling out all the stops to meet the needs of the people they supported during the COVID-19 pandemic. The video shared:

- The pandemic's impact on members' work
- How they rose to the challenge
- How they used these solutions to improve their way of working post pandemic

Using grants awarded by Pfizer UK and Ipsen, 26 members were interviewed and filmed to showcase how their organisations pivoted to overcome challenges and better support those affected by rare and less common cancers.

Cancer52 wanted to show what has and continues to be achieved, and so inspire others in the cancer community.

Cancer52 produced a full **30 minute video**, plus **three minute video** including all participant charities.⁵ Furthermore there were individual personalised video clips for each charity to share with their patients, supporters and funders.

On 14th September 2022, the **Cancer52** team was delighted to host a screening of the full 30 minute Showcase Video in Soho, London, bringing together all who had been involved to celebrate what had been achieved for patients.



Partnership: Representation and advocacy in policy

Cancer52 represents its members at the highest policy and decision-making level and acts as a conduit to organisations that need to hear the patient voice of people with rare and less common cancers. As a strong and determined alliance, we can make more noise about the need for improvements in cancer services, including those supported by our member charities.

During 2022–2023, **Cancer52** was invited to sit on several NHS England (NHSE) boards and groups where we used our influence to oversee, advise on and implement changes for those affected by cancer.

House of Commons Health and Social Care Select Committee

Cancer52 responded to two Health and Social Care Select Committee Inquiries: Cancer Services, and Clearing the Backlog Caused by the Pandemic.⁶ **Cancer52's** CEO, Jane Lyons,

contributed evidence at an oral hearing of the inquiry into cancer services. The Committee's report into Cancer Services made key recommendations using **Cancer52's** evidence, including calling for an action plan for rare and less common cancers.^{7,8}

10-Year Cancer Plan

Early in 2022, the Department of Health and Social Care (DHSC) launched a call for evidence for the 10-Year Cancer Plan.⁹

Cancer52 led the pan cancer charity collaboration, worked with members (including surveying members online) and other charities to help draft a response and attended various evidence-gathering meetings hosted by the DHSC. To bring the views of people with rare and less common cancers into the spotlight, we commissioned a patient survey and incorporated the findings from 259 patients into the **Cancer52** response.¹⁰

On 24th January 2023, the Department announced that instead of the 10-Year Cancer Plan, a Major Conditions Strategy, would cover six major conditions, including cancer.¹¹ Fortunately, the original Cancer Plan call for evidence responses will be absorbed and taken into account in this new Strategy. In early 2023, **Cancer52** met the then Cancer Minister Helen Whately MP; and took part in Major Conditions Strategy roundtables to ensure that rare and less common cancers did not slip down the priority list as the health system looks at six major conditions under one plan.

Cancer charities

In order to maximise impact for people living with cancer, **Cancer52** also works collaboratively with many charities outside its direct membership.

A key example of this is the One Cancer Voice (OCV) initiative where over 50 charities work together on fundamental policy asks, such as investing in the workforce that helps people with cancer, and increasing spend on diagnostics. **Cancer52** sits on the steering group, instigated and provided the structure and pro bono time to develop the 10-Year Cancer Plan call for evidence, which is now helping to inform the current Major Conditions Strategy.¹²

Cancer52 Policy and Public Affairs Steering Group

Cancer52's Policy and Public Affairs Steering Group (PPASG) met frequently to exchange information and help formulate **Cancer52's** policy asks. They helped to inform responses to the 10-Year Cancer Plan call for evidence and Health and Social Care Select Committee inquiries. During 2022–2023 this group was chaired by Chris Walden, **Cancer52** Trustee and Deputy Director of Policy, Campaigns and Engagement at Blood Cancer UK, with vice chair Bradley Price, Policy and Public Affairs Manager of Sarcoma UK.

Cancer52 Access to Medicines Working Group

The objective of **Cancer52's** Access to Medicines Working Group is to ensure the role patients play in The National Institute for Health and Care Excellence (NICE) processes and the patient voice is heard at NICE.

This group convenes whenever there are issues that have an impact on **Cancer52** members.

Partnership: Collaboration on behalf of patients

Working collaboratively across the NHS

WORKING WITH THE NHS CANCER PROGRAMME

NHSE National Cancer Board

Alongside Cancer Research UK and Macmillan Cancer Support, **Cancer52** has a place on the NHSE National Cancer Board. Together we provide strategic leadership across the healthcare sector in delivering the cancer ambitions inside the NHS Long Term Plan.¹³

Cancer52 also holds a place on the following NHSE cancer programme groups:

- Cancer Campaigns Oversight Group
- Early Detection Task and Finish Group
- The Cancer Patient Experience Survey Advisory Group
- The Cancer Patient Experience Survey Reporting Sub Group
- Cancer Data and Analytics Advisory Group (CDAAG)
- and chairs the quarterly NHSE Cancer Charity Forum

NHSE Cancer Psychosocial Support

Cancer52 recognises the importance of improving psychosocial support for cancer patients. In addition to contributing to the NHSE Cancer Psychosocial Task Force, **Cancer52** spoke at, ran sessions and had a stand at a large one-day NHSE Cancer Psychosocial Task Force Conference in London on 6th December 2022.

The conference worked to improve psychosocial support for cancer patients by linking up the NHS Cancer Alliances to the support provided by charities. Member charities that were provided

with a platform at the event via **Cancer52** were: Neuroendocrine Cancer UK, Pancreatic Cancer UK, Jo's Cervical Cancer Trust, Young Lives vs Cancer, Kidney Cancer UK, Brainstrust, Mesothelioma UK, Cancer Support UK, and Ovacom.



Dr Helen Bulbeck,
Co-founder, Brainstrust.

NHSE's national *Help Us, Help You* Campaign

In order to boost symptom awareness, **Cancer52** led on a programme to extend the impact of *Help Us, Help you* by working with member charities to target traditionally hard-to-reach communities and areas of high deprivation. Working to raise awareness of potential symptoms of urinal and abdominal cancers, with the aim of improving diagnosis rates, groups from member charities – including The Urology Foundation, Target Ovarian Cancer, Ovacom, UCARE, and Wellbeing of Women – ran successful events with co-branded NHS and charity assets at locations such as gyms, libraries, mosques and shopping centres.



Working collaboratively across the wider cancer community

Cancer52 worked closely with the UK cancer community to amplify the voice of people with rare and less common cancers.

Charity Medicines Access Coalition (CMAC)

Many people need quicker access to new and innovative medicines. The CMAC, an umbrella group of charities, works to find a long-term solution to this problem. A key achievement was setting out a shared vision voluntary scheme for branded medicines pricing and access (VPAS).

Cancer52 joined forces with CMAC and the Blood Cancer Alliance with the aim of ensuring people and communities benefit from new treatments, the NHS makes best use of its budget and the UK is an attractive location for global life science research investment. Together nearly 200 charities were represented and a call made for six key tests to be met under the next VPAS scheme within the 'Voluntary scheme for branded medicines pricing and access (VPAS) – charity joint statement'.¹⁴



Children and Young People Cancer Coalition

Many of our member charities support children and young people with cancer and these charities have together formed the Children and Young People Cancer Coalition. **Cancer52** sits on the steering group and supports the work of charities in this field.

National Voices

This wide-ranging coalition of healthcare charities helps **Cancer52** engage where topics are particularly relevant to people with rare and less common cancers.

Specialised Healthcare Alliance

This Alliance campaigns on behalf of those with rare and complex conditions. **Cancer52** is a member and attends briefings on wider topics affecting people with rare cancers.

The Association of the British Pharmaceutical Industry (ABPI)

Cancer52's CEO sat on the Advisory Council for the first 18 months of its inception. The CEO also sat on the steering group that plans the meetings and organises speakers for the Patient Organisation Forum briefings.

In 2022 **Cancer52** worked with the ABPI on a further Anti-Microbial Resistance campaign specific to people living with rare and less common cancers called Together for Antibiotics.^{14,15}

Signposting across patient information

Cancer52 has led work that helps patients and their loved ones to access patient information and patient support that is relevant to their cancer type. **Cancer52** has worked with both the NHS and Macmillan Cancer Support to initiate new links with their online patient information to signpost to smaller charities focused on rare and less common cancers.

Informing our stakeholders

As an organisation, and also as our members' representatives, **Cancer52** is in ongoing communication with members of other charities, NHS professionals and administrators, and anyone who has influence in the rare and less common cancer field.

Cancer52 Annual Stakeholder Event

The Annual All Stakeholder Event took place on 12th October 2022, in central London with the theme of inequalities – *Taking Action on Inequalities in Rare and Less Common Cancers*. Following an inspiring keynote speech by Professor Bola Owolabi, Director of Health Inequalities at NHS England and NHS Improvement, Yaser Martini of member charity, Team Margot, gave a deeply personal account of inequalities in care as he spoke of his late daughter, Margot's experience.

Will Quince MP, Minister of State at DHSC and the Government lead for cancer also joined the event where **Cancer52** members Ovacom, Young Lives vs Cancer and Trekstock provided informative case studies on reducing inequalities. Jodie Moffat, Deputy Director – Policy and Strategy, from NHSE Cancer Programme also spoke. Our thanks to our Inequalities Working Group chair, Sonia Malik, Head of Policy and Influencing at Young Lives vs Cancer who chaired the day long event.

Website

The **Cancer52** website acts as a central point for information and spreads the message that patient experience, treatment and outcomes will only improve with more time, money and effort focused on coping with rare and less common cancers.

The website links to all member organisations, plus the sponsors and groups **Cancer52** collaborates with, offering a useful portal for sharing information between members, patients, and the general public. **Cancer52** posted reports on its activities during the year and featured a news stream of prominent issues.

Website users can access reports together with informative videos, contact and donation opportunities.

Social media

Cancer52 has been especially active this year on Facebook and Twitter, and has added a LinkedIn page, gathering over 3,000 followers across these social media channels. **Cancer52** uses social media to communicate with members and the wider public, to distribute new information and to react to events that impact the rare and less common cancer community.



Professor Bola Owolabi



Will Quince MP



Yaser Martini



Making the voice of people with rare and less common cancers heard: our headline achievements for 2022–2023

Partnership

Informing, sharing with, and empowering our members

Cancer52 membership and engagement levels have increased significantly in 2022–2023. We are grateful for the engagement and significant positive feedback from our members. This confirms that our redoubled efforts to improve our communications through our e-bulletins, All Member Meetings, CEO calls and meetings, group meetings, patient surveys, CEO survey and CEO briefings have been well received.

Policy

Responding collectively to the changing political cancer priorities

Cancer52 continues to work alongside the NHSE Cancer Programme to improve outcomes for those with rare and less common cancers and to meet the early diagnosis target of diagnosing 75% of all cancers at stage I and II by 2028. We also worked collaboratively with our members and the wider cancer charity community to respond effectively to the Government's 10-year Cancer Plan Call for Evidence, which will now be used to input into the Government's Major Conditions Strategy.

Patients

Advocating for those affected by rare and less common cancers through collaboration

Cancer52 continues to consistently take the shared patient voice to influencers and policy decision makers. In communities we facilitated work to provide information on lesser known cancer symptoms to people within areas of high socioeconomic deprivation, with the aim of improving earlier diagnosis rates for groups that traditionally can be harder to reach.



Funding

In 2022–2023, **Cancer52** received funding from a variety of sources: donations from members; individual donations; and support from pharmaceutical companies.

The value of our support

We appreciate the valuable time, expertise and energy generously donated by our members.

Cancer52 is hugely grateful to every donor and supporter for their financial support which helps propel us towards achieving our objectives. Our charity members represent a very significant contribution in terms of the number and variety of organisations that support **Cancer52** financially.

Voluntary member donations

The vast majority of our financial supporters are our member charities from whom we request a voluntary donation aligned to their income.

In this financial year membership donations totalled a record £33,280 from 62 member charities. **Cancer52** asked all members to pay a donation where possible but were considerate of those smaller charities encountering the lasting impact of the Covid-19 pandemic and the rising cost of living. Membership donations for 2022/23 exceeded those of 2021/22.

Individual donations

Donations are welcome from any individuals or organisations who recognise the value of our contribution to supporting people with rare and less common cancers.

During the financial year 2022–23, **Cancer52** received almost £18,000 from a variety of platforms and individuals. Of particular note we thank the family and friends of Lucien Seller for their fundraising in Cardiff and Swansea, and Minister Will Quince MP for running the Brighton Marathon on behalf of **Cancer52**.

Support from industry

In 2022–2023 we received support from Abbvie, Gilead, GSK, Janssen, Merck, Roche, Sanofi and Takeda, who all all joined **Cancer52**'s Corporate Supporter Programme.

Cancer52 has a clear, written policy to guide its work with the pharmaceutical industry and also abides by industry guidelines.¹⁵ Some 58.9% of our funding comes from pharmaceutical companies and comprises support for specific projects as well as unrestricted support.

Cancer52 believes all our industry partners recognise the value of working with an umbrella body that channels one voice for rare and less common cancers.



Future plans

Cancer52 is proud of its achievements during this year, our major objectives prevail and we will take them forward into 2023–2024.

We will provide a strong, unified voice to promote improved diagnosis, treatment and support for those affected by rare and less common cancers so that we see an end to inequalities in diagnosis, treatment and patient outcomes experienced by those with these challenging diseases.

As part of its three-year strategy, Cancer52 has made progress in its plans to:

Retain its market leadership position, build its thought leadership and increase its collaborative work with the wider rare and less common cancer community.

Retain its focus on its aim, mission and values

Place reducing inequalities at the heart of everything it does.

Be a well-resourced organisation making the voice of rare and less common cancers heard wherever decisions are taken on the treatment and care of people with these cancers.

The acoustics: structure and constitution

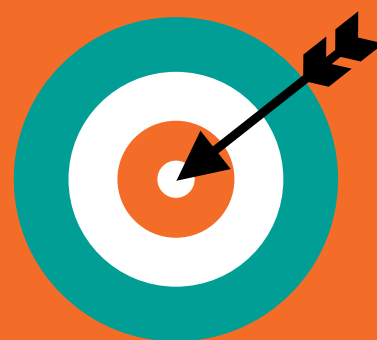


Structure and governance

Cancer52 is incorporated as a charitable company limited by guarantee and is a registered charity in England and Wales. It is governed by its Memorandum and Articles of Association, and its work, management, finances and strategy are overseen by a Board of Trustees, who are also the company directors. The Trustees who held office during the financial year and at the date of the report are set out on page 35.

Under the Articles of Association, a minimum of three trustees and a maximum of twelve trustees can be in office. At Annual General Meetings, one-third of the existing directors must retire by rotation based on the longest serving directors retiring first. Retiring directors may be re-appointed at Annual General Meetings by the vote of existing directors. New directors may only be appointed at Annual General Meetings where the notice and approval requirements set out in the Articles of Association have been satisfied.

The Board has agreed that the usual term of tenure for trustees should be a maximum of two terms of three years each (six years in total), with review and approval by the Board at the end of each term of tenure. In exceptional circumstances, and in order not to lose important or valuable skills, experience and expertise, trustees may serve for a third term of tenure, subject to the approval of the Board. Trustees do not receive remuneration for their duties.



Purpose

The charity's purposes are set out in its Memorandum and Articles of Association as follows:

To promote and protect the health of people with rare and less common cancers by:

1. Advancing and promoting understanding, awareness, research and learning about rare and less common cancers;
2. Acting as a collective voice and advocating for the needs of individuals affected by a rare or less common cancer in order to improve diagnosis, treatment and long-term support outcomes
3. Supporting, representing and empowering not-for-profit organisations working in the field of rare and less common cancers.

Public benefit

Interaction and collaboration between **Cancer52's** members delivers public benefit by providing information and support to people diagnosed with, treated for or living with a rare or less common cancer. Outcomes for people with rare or less common cancers are also improved when we drive change and enhancements in the cancer system.

As part of our business planning processes, we review our aims and objectives each year. This includes looking at how we benefited those groups of people we were set up to help and what we achieved in previous years. We refer to the Charity Commission's general guidance on public benefit when reviewing our aims and objectives and in planning our work for the future.

Board and management operations and structure

Board of Trustees

The Board of Trustees meets at least four times a year to review **Cancer52's** work, finances and services, and to agree strategic goals for the charity. In-person board meetings resumed in 2022–23 with a virtual option, and meetings invited the Chief Executive and the Operations Manager and others as appropriate.

The Chair and other trustees with financial expertise also meet separately with the Chief Executive, Operations Manager, and **Cancer52's** accountant on a quarterly basis to monitor and scrutinise the financial strategy and operations and make any necessary recommendations to the full Board of Trustees.

Recruitment and appointment of new Trustees

Jonathan Pearce, Chair of the Board for over seven years stood down at the start of the financial year, whilst continuing to act as Trustee. Rebecca Porta, CEO of The Urology Foundation and a long-standing Board Member, stepped in as Interim Chair, with the support of Helen Morement, CEO of AMMF and also a long-standing Board Member. A replacement Chair is being recruited.

Related parties

Related parties are considered to be the trustees and those connected with the trustees, including their close families, business and other charity interests. There have been no transactions with

related parties, other than the reimbursement of reasonable travel expenses for the purposes of attendance at Board meetings and other relevant organisational activities.

Risk assessment and management

The Board of Trustees and the Chief Executive maintain a risk register and assess risk on an annual basis. The trustees are satisfied that major risks to the organisation have been accurately identified and that appropriate systems and procedures for managing those risks are in place.

Safeguarding

Cancer52 has a strong commitment to protecting and promoting the health, wellbeing and safety of all engaged in our work. While we are not a patient representative charity, we still adhere to good safeguarding practice. Our Safeguarding Policy is reviewed each year and is accessible on the Governance section of our website. All new staff and volunteers are required to participate in a full day safeguarding training course, provided by an external organisation, and this is undertaken annually to ensure staff and volunteers are up to date with training.

Cancer52 has sought to strengthen our risk management training this year and all employees are required to take General Data Protection Regulation (GDPR) training.

Annual review

The Annual Review 2022–2023 was completed and disseminated, with thanks to the Board nominees Chris Walden and Helen Morement.



cancer52

the common voice for
rare & less common cancers



Money talks: financial review 2022–2023

Financial statement

As shown in the statement of financial activities on the following pages, in the year 2022–2023

- Reserves brought forward from 2021–2022 were £110,289.
- Income for the financial year was £176,598.
- Expenditure for the current financial year was £198,052, resulting in an anticipated deficit of £21,454.
- Reserves of £88,835 were available at the end of the 2022–2023 financial year.

Reserves policy

The Board of Trustees' strategy on reserves is for the organisation to maintain sufficient funds to cover the operational running costs in the event of a major setback. This means that we aim to hold approximately six months' annual expenditure in reserve.

At the end of the 2022–2023 financial year, our reserves stood at £88,835, which adequately covers the six months required.

The Company has taken advantage of the small companies' exemption in preparing this report. The trustees declare that they have approved the trustees' report (including directors' report) above.

Signed on behalf of the charity's trustees/directors

Signature _____

Rebecca Porta

Trustee / Director

Date _____

Signature _____

Nic Puntis

Trustee / Director

Date _____



Section A

Independent Examiner's Report

Report to the
trustees/directors/
members of

Cancer 52

On accounts for the year
ended

31st March 2023

Charity no.:

1174569

Company no.:

07994413

Set out on pages

22 To 34

Responsibilities and
basis of report

I report to the charity trustees on my examination of the accounts of the Company for the year ended **31st March 2023**.

As the charity's trustees of the Company (who are also the directors of the company for the purposes of company law), you are responsible for the preparation of the accounts in accordance with the requirements of the Companies Act 2006 ("the 2006 Act").

Having satisfied myself that the accounts of the Company are not required to be audited for this year under Part 16 of the 2006 Act and are eligible for independent examination, I report in respect of my examination of your charity's accounts as carried out under section 145 of the Charities Act 2011 ("the 2011 Act"). In carrying out my examination, I have followed the Directions given by the Charity Commission (under section 145(5)(b) of the 2011 Act).

Independent
examiner's statement

I have completed my examination. I confirm that no material matters have come to my attention (other than that disclosed below *) which gives me cause to believe that:

- accounting records were not kept in accordance with section 386 of the Companies Act 2006; or
- the accounts do not accord with such records; or
- the accounts do not comply with relevant accounting requirements under section 396 of the Companies Act 2006 other than any requirement that the accounts give a 'true and fair' view which is not a matter considered as part of an independent examination; or
- the accounts have not been prepared in accordance with the Charities SORP (FRS102).

Name: Jason Dennis

Relevant professional qualification(s) or body (if any): AAT - Association of Accounting Technicians
ATT – Association of Taxation Technicians

Address: 31 Clover Way, Paddock Wood, Tonbridge, Kent TN12 6BQ

Section B Disclosure

Only complete if the examiner needs to highlight material matters of concern (see CC32, Independent examination of charity accounts: directions and guidance for examiners).

Give here brief details of any items that the examiner wishes to disclose.

Section A

Statement of financial activities

(including summary income and expenditure account)

Recommended categories by activity	Guidance	Unrestricted funds	Restricted income funds	Endowment funds	Total funds	Prior year funds
		£ F01	£ F02	£ F03	£ F04	£ F05
Income (Note 3)						
Income and endowments from:						
Donations and legacies	S01	153,708	22,890	-	176,598	144,709
Total	S07	153,708	22,890	-	176,598	144,709
Expenditure (Notes 4)						
Expenditure on:						
Raising funds	S08	23,566	-	-	23,566	-
Charitable activities	S09	161,179	10,307	-	171,486	148,750
Other	S11	3,000	-	-	3,000	2,400
Total	S12	187,745	10,307	-	198,052	151,150
Net income/(expenditure) before tax for the reporting period	S13	(34,037)	12,583	-	(21,454)	(6,441)
Tax payable	S14	-	-	-	-	-
Net income/(expenditure) after tax before investment gains/(losses)	S15	(34,037)	12,583	-	(21,454)	(6,441)
Net gains/(losses) on investments	S16	-	-	-	-	-
Net income/(expenditure)	S17	(34,037)	12,583	-	(21,454)	(6,441)
Extraordinary items	S18	-	-	-	-	-
Transfers between funds	S19	-	-	-	-	-
Other recognised gains/(losses):						
Gains and losses on revaluation of fixed assets for the charity's own use	S20	-	-	-	-	-
Other gains/(losses)	S21	-	-	-	-	-
Net movement in funds	S22	(34,037)	12,583	-	(21,454)	(6,441)
Reconciliation of funds:						
Total funds brought forward	S23	110,289	-	-	110,289	116,730
Total funds carried forward	S24	76,252	12,583	-	88,835	110,289

Section B

Balance sheet (as at 31st March 2023)

	Guidance	Unrestricted funds £	Restricted income funds £	Endowment funds £	Total this year £	Total last year £
Current assets						
Cash at bank and in hand (Note 8)	B09	79,622	12,583	-	92,205	135,949
Total current assets	B10	79,622	12,583	-	92,205	135,949
Creditors: amounts falling due within one year (Note 7)	B11	3,370	-	-	3,370	25,660
Net current assets/(liabilities)	B12	76,252	12,583	-	88,835	110,289
Total assets less current liabilities	B13	76,252	12,583	-	88,835	110,289
Total net assets or liabilities	B16	76,252	12,583	-	88,835	110,289
Funds of the Charity						
Endowment funds	B17	-	-	-	-	-
Restricted income funds (Note 10)	B18	-	12,583	-	12,583	-
Unrestricted funds	B19	76,252	-	-	76,252	110,289
Revaluation reserve	B20	-	-	-	-	-
Fair value reserve	B21	-	-	-	-	-
Total funds	B22	76,252	12,583	-	88,835	110,289

The company was entitled to exemption from audit under s477 of the Companies Act 2006 relating to small companies.

The members have not required the company to obtain an audit in accordance with section 476 of the Companies Act 2006.

The directors acknowledge their responsibilities for complying with the requirements of the Companies Act with respect to accounting records and the preparation of accounts.

These accounts have been prepared in accordance with the provisions applicable to small companies subject to the small companies regime and in accordance with FRS102 SORP.

Signed by one or two trustee/directors on behalf of all the trustees/directors

Name	Signature	Date of approval dd/mm/yyyy
Rebecca Porta		
Nic Puntis		

Signature of director authenticating accounts being sent to Companies House

Name	Signature	Date of approval dd/mm/yyyy
Rebecca Porta		

Section C

Notes to the accounts

NOTE 1: Basis of preparation

1.1 Basis of accounting

These accounts have been prepared under the historical cost convention with items recognised at cost or transaction value unless otherwise stated in the relevant note(s) to these accounts.

The accounts have been prepared in accordance with:

- and with*

✓

 the Statement of Recommended Practice: Accounting and Reporting by Charities preparing their accounts in accordance with the Financial Reporting Standard applicable in the UK and Republic of Ireland (FRS 102) issued on 16 July 2014
- and with*

✓

 the Financial Reporting Standard applicable in the United Kingdom and Republic of Ireland (FRS 102)
- and with the Charities Act 2011.

The charity constitutes a public benefit entity as defined by FRS 102.*

✓

* -Tick as appropriate

1.2 Going concern

If there are material uncertainties related to events or conditions that cast significant doubt on the charity's ability to continue as a going concern, please provide the following details or state "Not applicable", if appropriate:

An explanation as to those factors that support the conclusion that the charity is a going concern;

Not applicable

Disclosure of any uncertainties that make the going concern assumption doubtful;

Not applicable

Where accounts are not prepared on a going concern basis, please disclose this fact together with the basis on which the trustees prepared the accounts and the reason why the charity is not regarded as a going concern.

Not applicable

1.3 Change of accounting policy

The accounts present a true and fair view and no changes have been made to the accounting policies adopted in note { }.

Yes*	✓	* -Tick as appropriate
No*		

Please disclose:

(i) the nature of the change in accounting policy;	Not applicable
(ii) the reasons why applying the new accounting policy provides more reliable and more relevant information; and	Not applicable

<i>(iii) the amount of the adjustment for each line affected in the current period, each prior period presented and the aggregate amount of the adjustment relating to periods before those presented, 3.44 FRS102 SORP.</i>	<i>Not applicable</i>
--	-----------------------

1.4 Changes to accounting estimates

No changes to accounting estimates have occurred in the reporting period (3.46 FRS102 SORP).

Yes*	<input checked="" type="checkbox"/>	* -Tick as appropriate
No*	<input type="checkbox"/>	

Please disclose:

<i>(i) the nature of any changes;</i>	<i>Not applicable</i>
<i>(ii) the effect of the change on income and expense or assets and liabilities for the current period; and</i>	<i>Not applicable</i>
<i>(iii) where practicable, the effect of the change in one or more future periods.</i>	<i>Not applicable</i>

1.5 Material prior year errors

No material prior year error have been identified in the reporting period (3.47 FRS102 SORP).

Yes*	<input checked="" type="checkbox"/>	* -Tick as appropriate
No*	<input type="checkbox"/>	

Please disclose:

<i>(i) the nature of the prior period error;</i>	<i>Not applicable</i>
<i>(ii) for each prior period presented in the accounts, the amount of the correction for each account line item affected; and</i>	<i>Not applicable</i>
<i>(iii) the amount of the correction at the beginning of the earliest prior period presented in the accounts.</i>	<i>Not applicable</i>

NOTE 2: Accounting policies

Note 2

2.1 INCOME

Recognition of income

These are included in the Statement of Financial Activities (SoFA) when:

- the charity becomes entitled to the resources;
- it is more likely than not that the trustees will receive the resources;
- the monetary value can be measured with sufficient reliability.

Yes*	No*	N/a*
<input checked="" type="checkbox"/>	<input type="checkbox"/>	<input type="checkbox"/>

Offsetting

There has been no offsetting of assets and liabilities, or income and expenses, unless required or permitted by the FRS 102 SORP or FRS 102.

Yes*	No*	N/a*
<input checked="" type="checkbox"/>	<input type="checkbox"/>	<input type="checkbox"/>

Grants and donations

Grants and donations are only included in the SoFA when the general income recognition criteria are met (5.10 to 5.12 FRS102 SORP).

Yes*	No*	N/a*
<input checked="" type="checkbox"/>	<input type="checkbox"/>	<input type="checkbox"/>

In the case of performance related grants, income must only be recognised to the extent that the charity has provided the specified goods or services as entitlement to the grant only occurs when the performance related conditions are met (5.16 FRS 102 SORP).

Yes*	No*	N/a*
<input type="checkbox"/>	<input type="checkbox"/>	<input checked="" type="checkbox"/>

Legacies

Legacies are included in the SoFA when receipt is probable, that is, when there has been grant of probate, the executors have established that there are sufficient assets in the estate and any conditions attached to the legacy are either within the control of the charity or have been met.

Yes*	No*	N/a*
<input checked="" type="checkbox"/>	<input type="checkbox"/>	<input type="checkbox"/>

Government grants

The charity has received government grants in the reporting period

Yes*	No*	N/a*
<input type="checkbox"/>	<input checked="" type="checkbox"/>	<input type="checkbox"/>

Tax reclaims on donations and gifts

Gift Aid receivable is included in income when there is a valid declaration from the donor. Any Gift Aid amount recovered on a donation is considered to be part of that gift and is treated as an addition to the same fund as the initial donation unless the donor or the terms of the appeal have specified otherwise.

Yes*	No*	N/a*
<input checked="" type="checkbox"/>	<input type="checkbox"/>	<input type="checkbox"/>

Contractual income and performance related grants

This is only included in the SoFA once the charity has provided the related goods or services or met the performance related conditions.

Yes*	No*	N/a*
<input type="checkbox"/>	<input type="checkbox"/>	<input checked="" type="checkbox"/>

Donated goods

Donated goods are measured at fair value (the amount for which the asset could be exchanged) unless impractical to do so.

Yes*	No*	N/a*
<input type="checkbox"/>	<input type="checkbox"/>	<input checked="" type="checkbox"/>

The cost of any stock of goods donated for distribution to beneficiaries is deemed to be the fair value of those gifts at the time of their receipt and they are recognised on receipt. In the reporting period in which the stocks are distributed, they are recognised as an expense at the carrying amount of the stocks at distribution.

Yes*	No*	N/a*
<input type="checkbox"/>	<input type="checkbox"/>	<input checked="" type="checkbox"/>

Donated goods for resale are measured at fair value on initial recognition, which is the expected proceeds from sale less the expected costs of sale, and recognised in 'Income from other trading activities' with the corresponding stock recognised in the balance sheet. On its sale the value of stock is charged against 'Income from other trading activities' and the proceeds from sale are also recognised as 'Income from other trading activities'.

Yes*	No*	N/a*
<input type="checkbox"/>	<input type="checkbox"/>	<input checked="" type="checkbox"/>

Goods donated for on-going use by the charity are recognised as tangible fixed assets and included in the SoFA as incoming resources when receivable.

Yes*	No*	N/a*
<input type="checkbox"/>	<input type="checkbox"/>	<input checked="" type="checkbox"/>

Gifts in kind for use by the charity are included in the SoFA as income from donations when receivable.

Yes*	No*	N/a*
<input checked="" type="checkbox"/>	<input type="checkbox"/>	<input type="checkbox"/>

Donated services and facilities	Donated services and facilities are included in the SoFA when received at the value of the gift to the charity provided the value of the gift can be measured reliably.	Yes*	No*	N/a*
		<input type="checkbox"/>	<input type="checkbox"/>	<input checked="" type="checkbox"/>
	Donated services and facilities that are consumed immediately are recognised as income with an equivalent amount recognised as an expense under the appropriate heading in the SoFA.	Yes*	No*	N/a*
		<input type="checkbox"/>	<input type="checkbox"/>	<input checked="" type="checkbox"/>
Support costs	The charity has incurred expenditure on support costs.	Yes*	No*	N/a*
		<input type="checkbox"/>	<input checked="" type="checkbox"/>	<input type="checkbox"/>
Volunteer help	The value of any voluntary help received is not included in the accounts but is described in the trustees' annual report.	Yes*	No*	N/a*
		<input checked="" type="checkbox"/>	<input type="checkbox"/>	<input type="checkbox"/>
Income from interest, royalties and dividends	This is included in the accounts when receipt is probable and the amount receivable can be measured reliably.	Yes*	No*	N/a*
		<input checked="" type="checkbox"/>	<input type="checkbox"/>	<input type="checkbox"/>
Income from membership subscriptions	Membership subscriptions received in the nature of a gift are recognised in Donations and Legacies.	Yes*	No*	N/a*
		<input checked="" type="checkbox"/>	<input type="checkbox"/>	<input type="checkbox"/>
	Membership subscriptions which gives a member the right to buy services or other benefits are recognised as income earned from the provision of goods and services as income from charitable activities.	Yes*	No*	N/a*
		<input type="checkbox"/>	<input type="checkbox"/>	<input checked="" type="checkbox"/>
Settlement of insurance claims	Insurance claims are only included in the SoFA when the general income recognition criteria are met (5.10 to 5.12 FRS102 SORP) and are included as an item of other income in the SoFA.	Yes*	No*	N/a*
		<input type="checkbox"/>	<input type="checkbox"/>	<input checked="" type="checkbox"/>
Investment gains and losses	This includes any realised or unrealised gains or losses on the sale of investments and any gain or loss resulting from revaluing investments to market value at the end of the year.	Yes*	No*	N/a*
		<input type="checkbox"/>	<input type="checkbox"/>	<input checked="" type="checkbox"/>

2.2 EXPENDITURE AND LIABILITIES

Liability recognition	Liabilities are recognised where it is more likely than not that there is a legal or constructive obligation committing the charity to pay out resources and the amount of the obligation can be measured with reasonable certainty.	Yes*	No*	N/a*
		<input checked="" type="checkbox"/>	<input type="checkbox"/>	<input type="checkbox"/>
Governance and support costs	Support costs have been allocated between governance costs and other support. Governance costs comprise all costs involving public accountability of the charity and its compliance with regulation and good practice.	Yes*	No*	N/a*
		<input type="checkbox"/>	<input type="checkbox"/>	<input checked="" type="checkbox"/>
	Support costs include central functions and have been allocated to activity cost categories on a basis consistent with the use of resources, eg allocating property costs by floor areas, or per capita, staff costs by the time spent and other costs by their usage.	Yes*	No*	N/a*
		<input type="checkbox"/>	<input type="checkbox"/>	<input checked="" type="checkbox"/>
Grants with performance conditions	Where the charity gives a grant with conditions for its payment being a specific level of service or output to be provided, such grants are only recognised in the SoFA once the recipient of the grant has provided the specified service or output.	Yes*	No*	N/a*
		<input type="checkbox"/>	<input type="checkbox"/>	<input checked="" type="checkbox"/>
Grants payable without performance conditions	Where there are no conditions attaching to the grant that enables the donor charity to realistically avoid the commitment, a liability for the full funding obligation must be recognised.	Yes*	No*	N/a*
		<input type="checkbox"/>	<input type="checkbox"/>	<input checked="" type="checkbox"/>
Redundancy cost	The charity made no redundancy payments during the reporting period.	Yes*	No*	N/a*
		<input checked="" type="checkbox"/>	<input type="checkbox"/>	<input type="checkbox"/>
Deferred income	No material item of deferred income has been included in the accounts.	Yes*	No*	N/a*
		<input type="checkbox"/>	<input type="checkbox"/>	<input checked="" type="checkbox"/>
Creditors	The charity has creditors which are measured at settlement amounts less any trade discounts	Yes*	No*	N/a*
		<input type="checkbox"/>	<input type="checkbox"/>	<input checked="" type="checkbox"/>
Provisions for liabilities	A liability is measured on recognition at its historical cost and then subsequently measured at the best estimate of the amount required to settle the obligation at the reporting date	Yes*	No*	N/a*
		<input type="checkbox"/>	<input type="checkbox"/>	<input checked="" type="checkbox"/>
Basic financial instruments	The charity accounts for basic financial instruments on initial recognition as per paragraph 10.7 FRS102 SORP. Subsequent measurement is as per paragraphs 11.17 to 11.19, FRS102 SORP.	Yes*	No*	N/a*
		<input type="checkbox"/>	<input type="checkbox"/>	<input checked="" type="checkbox"/>

2.3 ASSETS

Tangible fixed assets for use by charity

These are capitalised if they can be used for more than one year, and cost at least

They are valued at cost.

The depreciation rates and methods used are disclosed in note 14.

£2,500		
Yes*	No*	N/a*
		✓

Intangible fixed assets

The charity has intangible fixed assets, that is, non-monetary assets that do not have physical substance but are identifiable and are controlled by the charity through custody or legal rights. The amortisation rates and methods used are disclosed in note 15.

They are valued at cost.

Yes*	No*	N/a*
		✓

Yes*	No*	N/a*
		✓

Heritage assets

The charity has heritage assets, that is, non-monetary assets with historic, artistic, scientific, technological, geophysical or environmental qualities that are held and maintained principally for their contribution to knowledge and culture. The depreciation rates and methods used as disclosed in note 16.

They are valued at cost.

Yes*	No*	N/a*
		✓

Yes*	No*	N/a*
		✓

Investments

Fixed asset investments in quoted shares, traded bonds and similar investments are valued at initially at cost and subsequently at fair value (their market value) at the year end. The same treatment is applied to unlisted investments unless fair value cannot be measured reliably in which case it is measured at cost less impairment.

Investments held for resale or pending their sale and cash and cash equivalents with a maturity date of less than 1 year are treated as current asset investments

Yes*	No*	N/a*
		✓

Yes*	No*	N/a*
		✓

Stocks and work in progress

Stocks held for sale as part of non-charitable trade are measured at the lower of cost or net realisable value.

Goods or services provided as part of a charitable activity are measured at net realisable value based on the service potential provided by items of stock.

Work in progress is valued at cost less any foreseeable loss that is likely to occur on the contract.

Yes*	No*	N/a*
		✓

Yes*	No*	N/a*
		✓

Yes*	No*	N/a*
		✓

Debtors

Debtors (including trade debtors and loans receivable) are measured on initial recognition at settlement amount after any trade discounts or amount advanced by the charity. Subsequently, they are measured at the cash or other consideration expected to be received.

Yes*	No*	N/a*
		✓

Current asset investments

The charity has investments which it holds for resale or pending their sale and cash and cash equivalents with a maturity date less than one year. These include cash on deposit and cash equivalents with a maturity of less than one year held for investment purposes rather than to meet short-term cash commitments as they fall due.

They are valued at fair value except where they qualify as basic financial instruments.

Yes*	No*	N/a*
		✓

Yes*	No*	N/a*
		✓

POLICIES ADOPTED ADDITIONAL TO OR DIFFERENT FROM THOSE ABOVE

--	--	--	--	--	--	--

NOTE 3: Income

Analysis of income		Unrestricted funds	Restricted income funds	Endowment funds	Total funds £	Prior year £
Donations	Donations and gifts	120,758	22,890	-	143,648	114,755
	Membership subscriptions and sponsorships which are in substance donations	32,950	-	-	32,950	29,954
	Total	153,708	22,890	-	176,598	144,709
TOTAL INCOME		153,708	22,890	-	176,598	144,709

NOTE 4: Expenditure

Analysis	This year				Last year			
	Unrestricted funds	Restricted income funds	Endowment funds	Total funds	Unrestricted funds	Restricted income funds	Endowment funds	Total funds
Expenditure on raising funds				£				£
Fundraising consultants	23,566	-	-	23,566	-	-	-	-
Total expenditure on raising funds	23,566	-	-	23,566	-	-	-	-
Expenditure on charitable activities:								
All Member Meetings, Steering Group Meetings, Room Hire, Venue Costs	5,586	-	-	5,586	600	-	-	600
Showcase Project	-	10,307	-	10,307	-	-	-	-
Fundraising Platform Website materials (Gift in kind)	10,899	-	-	10,899	-	-	-	-
Merchandise	376	-	-	376	-	-	-	-
Call for Evidence Project	2,775	-	-	2,775	-	-	-	-
Inequalities report	8,980	-	-	8,980	-	-	-	-
Patient Survey Project	-	-	-	-	7,326	-	-	7,326
NCRI Project	1,480	-	-	1,480	-	-	-	-
Pfizer Project Support	-	-	-	-	10,020	-	-	10,020
Impact Reporting and Annual Review	1,869	-	-	1,869	1,505	-	-	1,505
Telephone	219	-	-	219	74	-	-	74
IT and Computer running expenses	1,300	-	-	1,300	443	-	-	443
Policy consultants - Policy Support	21,375	-	-	21,375	19,605	-	-	19,605
Policy Report	-	-	-	-	2,175	-	-	2,175
Subscriptions	1,622	-	-	1,622	1,384	-	-	1,384
Secretarial expenses	29,600	-	-	29,600	31,855	-	-	31,855
Insurance	556	-	-	556	556	-	-	556
Management and Administration	-	-	-	-	4,000	-	-	4,000
Salaries and Employers NI and Pensions	65,396	-	-	65,396	66,060	-	-	66,060
Communications and PR	8,803	-	-	8,803	2,000	-	-	2,000
Bank and credit fees	216	-	-	216	216	-	-	216
Trustees/Directors Travel	105	-	-	105	162	-	-	162
Trustee Recruitment costs and expenses	-	-	-	-	319	-	-	319
Non-Trustee Recruitment	22	-	-	22	450	-	-	450
Total expenditure on charitable activities	161,179	10,307	-	171,486	148,750	-	-	148,750
Other								
Independent Examiner	3,000	-	-	3,000	2,400	-	-	2,400

NOTE 5: Details of certain types of expenditure

Note 5.1 Fees for examination of the accounts

Please provide details of the amount paid for any statutory external scrutiny of accounts and other services provided by your independent examiner. If nothing was paid please enter '0' in the appropriate box(es).

Independent examiner's fees

This year £	Last year £
3,000	2,400

NOTE 6: Paid Employees

6.1 Staff Costs

	This year £	Last year £
Salaries and wages	60,000	60,000
Social security costs	2,396	3,060
Pension costs (defined contribution scheme)	3,000	3,000
Other employee benefits	-	-
Total staff costs	65,396	66,060

Please give details of the number of employees whose total employee benefits (excluding employer

No employees received employee benefits (excluding employer

Band	Number of employees	
	This year	Last year
£60,000 to £69,999	1	1

	This year £	Last year £
Please provide the total amount paid to key management	60,000	60,000

6.2 Average head count in the year

The parts of the charity in which the employees work

	This year Number	Last year Number
Fundraising	-	-
Charitable Activities	-	-
Governance	1	1
Other	-	-
Total	1	1

NOTE 7: Creditors and accruals

7.1 Analysis of creditors

	Amounts falling due within one year		Amounts falling due after more than one year	
	This year £	Last year £	This year £	Last year £
Accruals and deferred income	3,000	25,290	-	-
Other creditors	370	370	-	-
Total	3,370	25,660	-	-

NOTE 8: Cash at bank and in hand

Cash at bank and on hand
Total

This year £	Last year £
92,205	135,949
92,205	135,949

NOTE 9: Fair value of assets and liabilities

	This year	Last year
<p>9.1 Please provide details of the charity's exposure to credit risk (the risk of incurring a loss due to a debtor not paying what is owed) , liquidity risk (the risk of not being able to meet short term financial demands) and market risk (the risk that the value of an investment will fall due to changes in the market) arising from financial instruments to which the charity is exposed at the end of the reporting period and explain how the charity manages those risks.</p>	<p>Credit risk is low due to income being in the form of donations. Cash is the only investment so market risk is low on investment values falling. Liquidity risk is low as costs are managed in relation to income received.</p>	<p>Credit risk is minimal due to income being in the form of donations and there are extensions of credit. Cash is the only investment which is placed in standard bank current and deposit accounts, so market risk is low on investment values falling. Liquidity risk is low as cost expenditures are managed in relation to income received.</p>
<p>9.2 Please give details of the amount of change in the fair value of basic financial instruments (debtors, creditors, investments (see section 11, FRS 102 SORP)) measured at fair value through the SoFA that is attributable to changes in credit risk.</p>	<p>Not applicable</p>	<p>Not applicable</p>

NOTE 10: Charity funds

10.1 Details of material funds held and movements during the CURRENT reporting period

Please give details of the movements of material individual funds in the reporting period together with a balancing figure for 'Other funds' (which should include revaluation reserve and fair value reserve, if applicable). The 'Total funds' figure below should reconcile to 'Total funds' in the balance sheet.

* Key: PE - permanent endowment funds; EE - expendable endowment funds; R - restricted income funds, including special trusts, of the charity; and U - unrestricted funds

Fund names	Type PE, EE R or UR *	Purpose and Restrictions	Fund balances brought forward £	Income £	Expenditure £	Transfers £	Gains and losses £	Fund balances carried forward £
General Fund	UR	General all purpose no restrictions	110,289	153,708	(187,745)	-	-	76,252
Restricted Fund	R	Restricted for Showcase Project	-	22,890	(10,307)	-	-	12,583
Total Funds as per balance sheet			110,289	176,598	(198,052)	-	-	88,835

Yes* ☐ No* ☒

Fund balances carried forward include assets and liabilities denominated in a foreign currency

If yes, please state the basis on which the assets and/or liabilities have been translated into sterling (or the currency in which the accounts are drawn up).	
--	--

10.2 Details of material funds held and movements during the PREVIOUS reporting period

Please give details of the movements of material individual funds in the reporting period together with a balancing figure for 'Other funds' (which should include revaluation reserve and fair value reserve, if applicable). The 'Total funds' figure below should reconcile to 'Total funds' in the balance sheet.

* Key: PE - permanent endowment funds; EE - expendable endowment funds; R - restricted income funds, including special trusts, of the charity; and U - unrestricted funds

Fund names	Type PE, EE R or UR *	Purpose and Restrictions	Fund balances brought forward £	Income £	Expenditure £	Transfers £	Gains and losses £	Fund balances carried forward £
General Fund	UR	General all purpose no restrictions	116,730	144,709	(151,150)	-	-	110,289
Total Funds as per balance sheet			116,730	144,709	(151,150)	-	-	110,289

Yes* ☐ No* ☒

Fund balances carried forward include assets and liabilities denominated in a foreign currency

NOTE 11: Transactions with trustees and relates parties

If the charity has any transactions with related parties (other than the trustee expenses explained in guidance notes) details of such transactions should be provided in this note. If there are no transactions to report, please enter "True" in the box or "False" if there are transactions to report.

11.1 Trustee remuneration and benefits

This year

None of the trustees have been paid any remuneration or received any other benefits from an employment with their charity or a related entity (True or False)

TRUE

11.2 Trustees' expenses

If the charity has paid trustees expenses for fulfilling their duties, details of such transactions should be provided in this note. If there are no transactions to report, please enter "True" in the box below. If there are transactions to report, please enter "False".

No trustee expenses have been incurred (True or False)

TRUE

Type of expenses reimbursed	This year	Last year
	£	£
Travel	-	-
TOTAL	-	-

Please provide the number of trustees reimbursed for expenses or who had expenses paid by the charity

0

0

11.3 Transaction(s) with related parties

Please give details of any transaction undertaken by (or on behalf of) the charity in which a related party has a material interest, including where funds have been held as agent for related parties. If there are no such transactions, please enter 'true' in the box provided.

This year

There have been no related party transactions in the reporting period (True or False)

TRUE

Last year

There have been no related party transactions in the reporting period (True or False)

TRUE



Administrative details

TRUSTEES

Rebecca Porta	Interim Chair
Helen Morement	Supporting Interim Chair
Jonathan Pearce	
Nic Puntis	
Christopher Walden	
Anna Evans	
Dr Max Brodermann	
Michael Draeger	
Sophie Davies	

EXECUTIVE OFFICERS

Baroness Delyth Morgan	President
Jane Lyons	Chief Executive
Jonathan Pearce	Company secretary

REGISTERED OFFICE

c/o Teenage Cancer Trust 3rd Floor,
93 Newman Street, London W1T 3EZ

WEBSITE

www.cancer52.org.uk

BANKERS

Co-operative Bank



References

- ¹ National Cancer Registration and Analysis Service (NCRAS) by Public Health England figures. May 2019
- ² Cancer Statistics for the UK. Cancer Research UK. Available: <https://www.cancerresearchuk.org/health-professional/cancer-statistics-for-the-uk#heading-Zero>.
- ³ Cancer52 membership research, conducted April 2019
- ⁴ Average email open rates for 2022. Smart Insights. Available: <https://www.smartinsights.com/email-marketing/email-communications-strategy/statistics-sources-for-email-marketing/#q4>
- ⁵ Showcase video. Available: <https://www.cancer52.org.uk/single-post/showcase-video>
- ⁶ Health and Social Care Committee. Clearing the backlog caused by the pandemic. Date Published 14 December 2021. Available: <https://publications.parliament.uk/pa/cm5802/cmselect/cmhealth/599/report.html>
- ⁷ Health and Social Care Committee Report on Cancer services. Published 5 April 2022 Available: <https://publications.parliament.uk/pa/cm5802/cmselect/cmhealth/551/report.html>
- ⁸ Health and Social Care Committee Report on Cancer services. Cancer52 response. Available: https://e2236186-a9de-45db-b8f6-3f2d6db40cb4.usrfiles.com/ugd/e22361_78e510b0dba74c90b10311257319e8d5.pdf
- ⁹ 10-Year Cancer Plan. Call for Evidence. Available: <https://www.gov.uk/government/consultations/10-year-cancer-plan-call-for-evidence>
- ¹⁰ 10-Year Cancer Plan. Cancer52 response to the Call for Evidence. Available: e22361_40a4fd86b9f64b2a8eba5697a4b07c51.pdf (usrfiles.com)
- ¹¹ Major Conditions Strategy. Call for Evidence. DHSC. <https://www.gov.uk/government/calls-for-evidence/major-conditions-strategy-call-for-evidence/major-conditions-strategy-call-for-evidence>
- ¹² 10-Year Cancer Plan. One Cancer Voice (OCV) response to the Call for Evidence. Available: <https://www.cancer52.org.uk/single-post/10-year-cancer-plan-one-cancer-voice-consensus-statement>
- ¹³ NHS Long Term Plan. Available: <https://www.longtermplan.nhs.uk/areas-of-work/cancer/>
- ¹⁴ Cancer52, Charity Medicines Access Coalition (CMAC), and the Blood Cancer Alliance Voluntary scheme for branded medicines pricing and access (VPAS) – charity joint statement. Available: e22361_8374e284269e4137955c466115800d57.pdf (usrfiles.com)
- ¹⁵ Together for Antibiotics. ABPI. Available: https://www.togetherforantibiotics.org.uk/resources/?3b293f58a0d649e6a204d1476bc6a631_cat=Cancer52&3b293f58a0d649e6a204d1476bc6a631_page=1
- ¹⁶ ABPI AMR: Resources (togetherforantibiotics.org.uk). Available: <https://www.togetherforantibiotics.org.uk/>

List of charity members 2022/23

ACLT (African Caribbean Leukaemia Trust)

www.aclt.org

Act for Cancer

www.actforcancer.org.uk

Action Against Heartburn

www.actionagaintheartburn.org.uk

Action Bladder Cancer UK

www.actionbladdercanceruk.org

Action Kidney Cancer

www.kcsn.org.uk

Action on Womb Cancer

www.actiononwombcancer.org.uk

Alike

www.alike.org.uk

ALK Positive Lung Cancer

www.alkpositive.org.uk

AMMF – The Cholangiocarcinoma Charity

www.ammf.org.uk

Anthony Nolan

www.anthonynolan.org

Association for Multiple Endocrine Neoplasia Disorders (AMEND)

www.amend.org.uk

Baggy Trousers UK

www.baggytrousersuk.org

Balls to Cancer

www.ballstocancer.co.uk

Barrett's Oesophagus UK

www.barrettscampaign.org.uk

Blood Cancer UK

www.bloodcancer.org.uk

Bone Cancer Research Trust

www.bcrct.org.uk

Bowel Research UK

www.bowelresearchuk.org

Brain Tumour Research

www.braintumourresearch.org

Brain Tumour Research Campaign (Wayahead)

www.btrc-charity.org

Braintrust

www.braintrust.org.uk

British Lymphology Society (BLS)

www.thebls.com

British Thyroid Foundation (BTF-thyroid)

www.btf-thyroid.org

Butterfly Thyroid Cancer Trust (BTCT)

www.butterfly.org.uk

Cancer Laryngectomy Trust

www.cancerlt.org

Cancer of Unknown Primary (CUP) Foundation – Jo's friends

www.cupfoundjo.org

Cancer Support UK

www.cancersupportuk.org

Childhood Eye Cancer Trust (CHECT)

www.checht.org.uk

Children's Cancer and Leukaemia Group (CCLG)

www.cclg.org.uk

Chordoma UK

www.chordoma-uk.org

Chris Lucas Trust

www.chrislucastrust.com

Chronic Myeloid Leukaemia (CML) Support Group UK

www.cmlsupport.org.uk

CLL Support Association

www.clisupport.org.uk

Debbie Fund

www.debbiefund.org

DKMS

www.dkms.org.uk

East Kent Cancer Cafe

EHE Rare Cancer Charity (UK)
www.ehercc.org.uk

Ellen MacArthur Cancer Trust
www.ellenmacarthurcancertrust.org

Fight Bladder Cancer
www.fightbladdercancer.co.uk

GIST Cancer UK
www.gistcancer.org.uk/

Grace Kelly Childhood Cancer Trust
www.gkcct.org/

GUTS Charity
www.gutscharity.org.uk

Heartburn Cancer UK
www.heartburncanceruk.org

HLRCC Family Alliance
www.hlrccinfo.org

ICPV Independent Cancer Patients' Voice
www.icpv.org.uk

International Brain Tumour Alliance (IBTA)
www.theibta.org

It's In The Bag Cancer Support Ltd
www.itsinthebag.org.uk

It's on the Ball
www.itsontheball.org

Jo's Cervical Cancer Trust
www.jostrust.org.uk

Kidney Cancer UK
www.kcuk.org.uk

Live Through This
www.livethroughthis.co.uk

Leukaemia CARE
www.leukaemiacare.org.uk

Leukaemia UK
www.leukaemiauk.org.uk

London Asbestos Support Awareness Group
www.lasag.org.uk/

Lymphoedema Support Network
www.lymphoedema.org

Lymphoma Action
www.lymphoma-action.org.uk

Maggie's Cancer Caring Centres – Maggie's Centres
www.maggiescentres.org

MDS (Myelodysplastic Syndromes) UK Patient Support Group
www.mdspatientsupport.org.uk

Melanoma Focus
www.melanomafocus.com

Melanoma UK
www.melanomauk.org.uk

Mesothelioma UK
www.mesothelioma.uk.com

Mind Over Cancer
www.mindovercancer.org.uk/

MPN Voice
www.mpnvoice.org.uk

Mummy's Star
www.mummysstar.org

Myeloma UK
www.myeloma.org.uk

Neuroblastoma UK
www.neuroblastoma.org.uk

Neuroendocrine Cancer UK (NCUK)
www.neuroendocrinecancer.org.uk

North West Cancer Research
www.nwcr.org

OcuMel UK
www.ocumeluk.org

Oracle Cancer Trust
www.oraclecancertrust.org

Orchid Cancer Appeal
www.orchid-cancer.org.uk

Ovacome
www.ovacome.org.uk

Ovarian Cancer Action
www.ovarian.org.uk

Pancreatic Cancer Action
www.pancreaticcanceraction.org

Pancreatic Cancer UK (PCUK)
www.pancreaticcancer.org.uk

Paul's Cancer Support Centre
www.pauls.org.uk

Peaches Womb cancer Trust
www.peachestrust.org/

Pelvic Radiation Disease Association PRDA
www.prda.org.uk

Penny Brohn UK
www.pennybrohn.org.uk

PLANETS
www.planetscharity.org

Pseudomyxoma Survivor
www.pseudomyxomasurvivor.org

Salivary Gland Cancer UK
www.salivaryglandcancer.uk

Sarcoma UK
www.sarcoma.org.uk

Shine Cancer Support
www.shinecancersupport.org

Solving Kids' Cancer
www.solvingkidscancer.org.uk

Swallows Head & Neck Cancer Charity
www.theswallows.org.uk

Target Ovarian Cancer
www.targetovariancancer.org.uk

Team Margot Foundation
www.teammargot.com

Teenage Cancer Trust (TCT)
www.teenagecancertrust.org

The Brain Tumour Charity
www.thebraintumourcharity.org

The Charley Ashton Foundation

The Eve Appeal
www.eveappeal.org.uk

The Mavis Nye Foundation
www.mavisnyefoundation.com

The Myrovlytis Trust
www.myrovlytistrust.org

The Northern Ireland Rare Disease Partnership
www.nirdp.org.uk

The Robin Cancer Trust
www.therobincancertrust.org

The Urology Foundation
www.theurologyfoundation.org

ThymicUK
www.thymicuk.org/

Thyroid Cancer Support Group Wales
www.thyroidsupportwales.co.uk

Tom Bowdidge Youth Cancer Foundation
www.tombowdidgefoundation.org

Trekstock
www.trekstock.com

UCARE
www.ucare-cancer.org.uk

UK Masto
www.ukmasto.org

Urostomy Association
www.urostomyassociation.org.uk

VHL UK/Ireland
www.vhl-uk-ireland.org

Wellbeing of Women
www.wellbeingofwomen.org.uk

Wendy Gough Cancer Awareness Foundation
www.wgcaf.com

WMUK
www.wmuk.org.uk

Womb Cancer Info
www.wombcancerinfo.wixsite.com/home

Womb Cancer Support UK
www.wombcancersupportuk.weebly.com

Yorkshire Cancer Community
www.yorkshirecancercommunity.co.uk

Young Lives Vs. Cancer
www.younglivesvscancer.org.uk



Cancer52 is registered as a charity in England and Wales, **Charity No. 1174569** and as a company limited by guarantee in England and Wales, **Company No. 07994413**

If we **work together**
we can make as much noise as the big four

