

# COMMUNARTY

England & Wales · Charity number 1174406

## Details

---

**Status** Registered

**Legal form** CIO

**Registered** 2017-08-29

**Register** [View on the Charity Commission register](#)

## Contact

---

**Address** The Plex  
Beech House  
Margaret Street  
Wakefield  
West Yorkshire  
WF1 2DQ

**Phone** 01924580959

**Email** [communarty1@gmail.com](mailto:communarty1@gmail.com)

**Website** [www.communarty.org.uk](http://www.communarty.org.uk)

## Activities

---

**Objects:** 1) TO PROMOTE THE REHABILITATION OF OFFENDERS BY THE PROVISION OF ARTS ACTIVITIES DESIGNED TO PROMOTE THE CREATIVE ENTERPRISE OF PRISONERS AT HMP WAKEFIELD. 2) TO ADVANCE EDUCATION IN THE ARTS AMONG THE PRISONERS AT HM PRISON WAKEFIELD, THEIR FAMILIES AND PRISON STAFF BY THE PROVISION OF CLASSES AND ACTIVITIES IN THE PARTICIPATORY ARTS. 3) TO PROMOTE OR CONDUCT RESEARCH INTO THE IMPACT WHICH THE ARTS HAVE ON THE REHABILITATION OF THOSE WITHIN THE CRIMINAL JUSTICE SYSTEM AND TO PUBLISH THE USEFUL RESULTS FOR THE PUBLIC BENEFIT.

**Activities:** CommunARTy is a Yorkshire based charity established to raise awareness of, and support for, the arts as a form of prisoner rehabilitation, and, encourage different groups within the local community to engage with each other through a shared interest in the arts.

## Classification

---

- **How:** Provides Services, Provides Advocacy/advice/information
- **What:** Education/training, Arts/culture/heritage/science
- **Who:** Other Defined Groups

## Geography

---

- City Of Wakefield

## Finances

---

Period end	Income	Expenditure	Assets	Employees
2024-12-31	£29,148	£29,627	-	-
2023-12-31	£27,824	£26,987	-	-
2022-12-31	£26,285	£25,953	-	-
2021-12-31	£7,898	£7,680	-	-
2020-12-31	£424	£330	-	-

## Trustees

---

Name	Role	Appointed
<b>Simon Ruding</b>	Chair	2017-08-19
AMIE NAYLOR		2017-08-19
CARL NAYLOR		2017-08-19
CAROLYN LUND		2017-08-19
LINDA HAIGH		2017-08-19
Professor ABIGAIL HARRISON - MOORE		2017-08-19

**COMMUNARTY**

England & Wales - Charity number 1174406

---

# Accounts

---

# CommunARTy

Annual Report

For the year ended 31<sup>st</sup> December 2024



## CONTENTS

1. Reference and Administrative Details
2. Summary of Governing Document
3. Annual Report
4. Financial Statement
5. Independent Examiner Statement

## 1. REFERENCE AND ADMINISTRATIVE DETAILS

Charity Number: 10547364

Registered 4<sup>th</sup> January 2017

### REGISTERED ADDRESS

The Plex  
15 Margaret Street  
Wakefield  
WF1 2DQ

### TRUSTEES

Dr Simon Ruding  
Professor Abigail Harrison-Moore  
Carolyn Lund  
Linda Haigh  
Carl Naylor  
Amie Naylor

### INDEPENDENT EXAMINER

C W Dix Limited  
Accountants & Business Advisors  
4 Silkwood Court  
Wakefield  
WF5 9TP

## 2. SUMMARY OF GOVERNING DOCUMENT

### CHARITABLE PURPOSES

- The advancement of education for prisoners, prison staff, their families and the community of Wakefield through the participatory arts.
- To assist in the provision of arts activities, in the interest of social welfare for recreation, for the community in and around HMP Wakefield including: prisoners, staff and their families.
- To promote the creative enterprise of prisoners at HMP Wakefield.
- To promote and facilitate research into the impacts for the arts for those within the criminal justice system and to publish any useful results for the public benefit with a view to aiding rehabilitation.

### CHARITY ACTIVITIES

#### Activities in the prison

Access to these will be available to prisoners through the application process in place for allocation to activities or by referral from a member of staff.

Some activities may be offered specifically to certain prisoner groups when identified by the prison as being particularly at risk of social exclusion eg. over 60's or those usually unable to work as a result of mental health issues as a way of improving their sense of wellbeing and reduce levels of isolation they may feel.

#### Activities for staff

All activities and events for staff and their families will be advertised throughout the prison via posters and the internal email systems.

Where limited spaces are available, they will always be allocated on a first come first served basis.

#### Community events

Will be available to everyone. All events will be advertised on social media and via posters at arts venues around Wakefield.

### PUBLIC BENEFIT

As an organisation CommunARTy aims to benefit society by:-

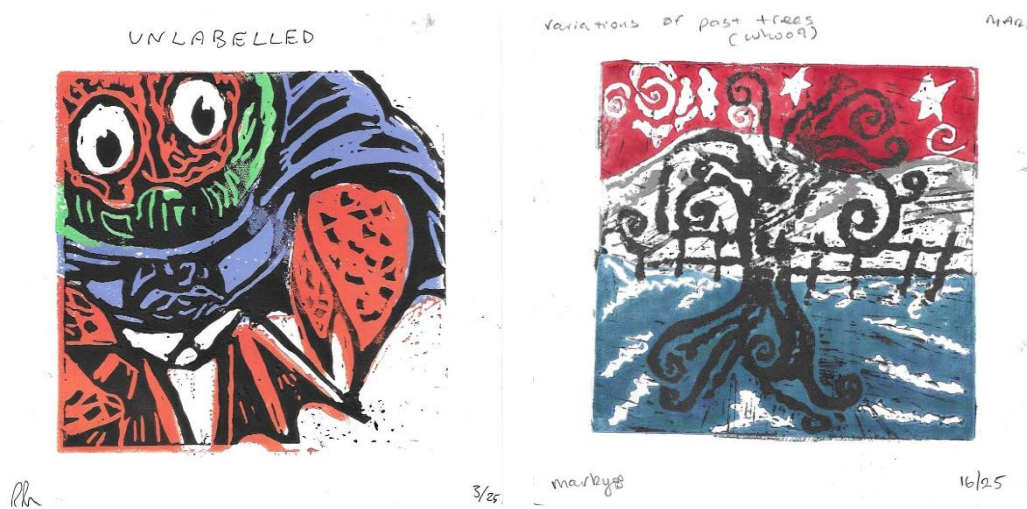
- Contributing to the rehabilitation of prisoners at HMP Wakefield and reducing the chances of future reoffending.
- working to embed the prison into the community of Wakefield. This will help to:-
  - raise awareness of and support for the arts as a form of rehabilitation.
  - help to make prison staff feel as though they are recognised as providing a valued service.
  - help to encourage different groups within the local community to engage with each other through a shared interest in the arts.
- Facilitating and sharing research carried out through project and events to contribute to the wider study of the impact of the arts in criminal justice.

### 3. ANNUAL REPORT

This year we have continued working as a partner with TiPP at the CFO Activity Hubs across Yorkshire. This was a year of transition and change with the end of the original contract and start of the new CFO Evolution contract coming starting in August 2024. During the last few months of the original contract, we continued exploring creative and original group projects, however this unfortunately slowed at the start of the new contract with all the upheaval caused as Hubs spent time changing locations and adapting to new staff roles.

That being said we have continued to strengthen the collaborative relationships established last year with outside organisations.

Learning from some of the challenges last year we changed our approach to the Print Exchange this year. We provided more sessions for participants to develop their designs but overall submitted less entries. This seemed to add value to the experience so would be an approach to continue going forward. 12 participants created a set of prints and 3 facilitators.



Print exchange entries from Leeds Hub

The Yarndale Worldwide project this year was all about flowers.

This was a much more accessible project for participants at Sheffield Hub. They created 100 Flowers which were all exhibited in the 'flower meadow' at the Yarndale Show Weekend in September.



Example of Flowers from Sheffield Hub and a section of the Flower Meadow at Yarndale

We had an amazing year at Koestler! We submitted 13 group entries across a range of categories from lego animation, to punch knitting and even a painting that's playable as a musical instrument. Of these entries we were awarded 4 Commended Awards, 1 Highly Commended, 3 Bronze Awards, 1 Silver Award and a 1 Platinum Award.



Punch Knitted Welcome Sign from Leeds Hub

Our 'Blind Date with a Book' fundraiser has continued this year. We have explored additional ways of selling these including larger Craft Fair events and Etsy. The larger craft fairs have worked well, but as of yet the Etsy store hasn't been too successful. Tiktok shop seems to be recommended as the newest platform to broaden reach but as of yet it doesn't seem to be set up for registration from CIO's so this could be an option in the future if this changes.



Blind Date with a Book set up at The Ridings

This year has felt quite solid with activities started previously feeling like they are becoming core aspects of work. Now that is in place the focus going forward will be on using these successes to build a regular provision of activities at HMP Wakefield.

## 4. FINANCIAL REPORT



CHARITY COMMISSION  
FOR ENGLAND AND WALES

Charity Name  
**CommunARTy**

No (if any)  
1174406

### Receipts and payments accounts

**CC16a**

For the period  
from

01/01/2024

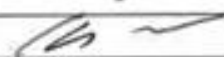
To

31/12/2024

### Section A Receipts and payments

	Unrestricted funds to the nearest £	Restricted funds to the nearest £	Endowment funds to the nearest £	Total funds to the nearest£	Last year to the nearest £
<b>A 1 Receipts</b>					
TIPP - Project Managing	26,595	-	-	26,595	22,280
TiPP - materials budget	1,195	-	-	1,195	4,575
ETSY	3	-	-	3	-
craft fairs/books sales	1,065	-	-	1,065	679
DONATIONS - just giving	290	-	-	290	290
		-	-	-	-
		-	-	-	-
<b>Sub total (Gross income for AR)</b>	<b>29,148</b>	<b>-</b>	<b>-</b>	<b>29,148</b>	<b>27,824</b>
<b>A 2 Asset and investment sales, (see table).</b>					
	-	-	-	-	-
	-	-	-	-	-
<b>Sub total</b>	<b>-</b>	<b>-</b>	<b>-</b>	<b>-</b>	<b>-</b>
<b>Total receipts</b>	<b>29,148</b>	<b>-</b>	<b>-</b>	<b>29,148</b>	<b>27,824</b>
<b>A 3 Payments</b>					
RENT BUSINESS ADDRESS	504	-	-	504	504
WEBSITE	134	-	-	134	113
Materials - TIPP	2,355	-	-	2,355	3,793
Craft fairs fees	270	-	-	270	132
postage	29	-	-	29	-
staff pay	26,335	-	-	26,335	22,445
		-	-	-	-
<b>Sub total</b>	<b>29,627</b>	<b>-</b>	<b>-</b>	<b>29,627</b>	<b>26,987</b>
<b>A 4 Asset and investment purchases, (see table)</b>					
	-	-	-	-	-
	-	-	-	-	-
<b>Sub total</b>	<b>-</b>	<b>-</b>	<b>-</b>	<b>-</b>	<b>-</b>
<b>Total payments</b>	<b>29,627</b>	<b>-</b>	<b>-</b>	<b>29,627</b>	<b>26,987</b>
<b>Net of receipts/(payments)</b>	<b>- 478</b>	<b>-</b>	<b>-</b>	<b>478</b>	<b>837</b>
A 5 Transfers between funds	-	-	-	-	-
A 6 Cash funds last year end	1,579	-	-	1,579	742
<b>Cash funds this year end</b>	<b>1,101</b>	<b>-</b>	<b>-</b>	<b>1,101</b>	<b>1,579</b>

## Section B Statement of assets and liabilities at the end of the period

Categories	Details	Unrestricted funds to nearest £	Restricted funds to nearest £	Endowment funds to nearest £
<b>B1 Cash funds</b>	Cash at Bank - Netted	1,101	-	-
		-	-	-
		-	-	-
	<b>Total cash funds</b>	<b>1,101</b>	<b>-</b>	<b>-</b>
	(see entries with assets and payments accounts)	0	0	0
<b>B2 Other monetary assets</b>	Details	-	-	-
		-	-	-
		-	-	-
		-	-	-
		-	-	-
<b>B3 Investment assets</b>	Details	Fund to which asset belongs	Cost (optional)	Current value (optional)
			-	-
			-	-
			-	-
<b>B4 Assets retained for the charity's own use</b>	Details	Fund to which asset belongs	Cost (optional)	Current value (optional)
			-	-
			-	-
			-	-
			-	-
			-	-
			-	-
<b>B5 Liabilities</b>	Details	Fund to which liability relates	Amount due (optional)	Wtd due (optional)
			-	
			-	
			-	
			-	
Signed by one or two trustees on behalf of all the trustees	Signature	Print Name	Date of approval	
		CARL NAYLOR	22/10/25	

## 5. INDEPENDENT EXAMINERS REPORT



**CHARITY COMMISSION  
FOR ENGLAND AND WALES**

**Independent examiner's  
report on the accounts**

**Section A Independent Examiner's Report**

**Report to the trustees/  
members of** Charity Name  
CommumARTy

**On accounts for the year  
ended** 31 December 2024 **Charity no  
(if any)** 10547364

**Set out on pages** 6 to 7 (remember to include the page numbers of additional sheets)

I report to the trustees on my examination of the accounts of the above charity ("the Trust") for the year ended 31/12/2024

**Responsibilities and  
basis of report** As the charity trustees of the Trust, you are responsible for the preparation of the accounts in accordance with the requirements of the Charities Act 2011 ("the Act").

I report in respect of my examination of the Trust's accounts carried out under section 145 of the 2011 Act and in carrying out my examination, I have followed the applicable Directions given by the Charity Commission under section 145(5)(b) of the Act.

**Independent  
examiner's statement**

I have completed my examination. I confirm that no material matters have come to my attention in connection with the examination which gives me cause to believe that in, any material respect:

- accounting records were not kept in accordance with section 130 of the Act or
- the accounts do not accord with the accounting records

I have no concerns and have come across no other matters in connection with the examination to which attention should be drawn in order to enable a proper understanding of the accounts to be reached.

**Signed:**  **Date:** 29/10/2025

**Name:** Christopher Dix

**Relevant professional  
qualification(s) or body  
(if any):** ICAEW

**Address:** 4 Silkwood Court  
Wakefield  
WF5 9TP

**Section B Disclosure**

Only complete if the examiner needs to highlight matters of concern (see CC32, Independent examination of charity accounts: directions and guidance for examiners).

**COMMUNARTY**

England & Wales - Charity number 1174406

---

# Accounts

---

# CommunARTy

Annual Report

For the year ended 31<sup>st</sup> December 2023



## CONTENTS

1. **Reference and Administrative Details**
2. **Summary of Governing Document**
3. **Annual Report**
4. **Financial Statement**
5. **Independent Examiner Statement**

## 1. REFERENCE AND ADMINISTRATIVE DETAILS

Charity Number: 10547364

Registered 4<sup>th</sup> January 2017

### REGISTERED ADDRESS

The Plex  
15 Margaret Street  
Wakefield  
WF1 2DQ

### TRUSTEES

Dr Simon Ruding  
Professor Abigail Harrison-Moore  
Carolyn Lund  
Linda Haigh  
Carl Naylor  
Amie Naylor

### INDEPENDENT EXAMINER

C W Dix Limited  
Accountants & Business Advisors  
4 Silkwood Court  
Wakefield  
WF5 9TP

## 2. SUMMARY OF GOVERNING DOCUMENT

### CHARITABLE PURPOSES

- The advancement of education for prisoners, prison staff, their families and the community of Wakefield through the participatory arts.
- To assist in the provision of arts activities, in the interest of social welfare for recreation, for the community in and around HMP Wakefield including: prisoners, staff and their families.
- To promote the creative enterprise of prisoners at HMP Wakefield.
- To promote and facilitate research into the impacts for the arts for those within the criminal justice system and to publish any useful results for the public benefit with a view to aiding rehabilitation.

### CHARITY ACTIVITIES

#### Activities in the prison

Access to these will be available to prisoners through the application process in place for allocation to activities or by referral from a member of staff.

Some activities may be offered specifically to certain prisoner groups when identified by the prison as being particularly at risk of social exclusion eg. over 60's or those usually unable to work as a result of mental health issues as a way of improving their sense of wellbeing and reduce levels of isolation they may feel.

#### Activities for staff

All activities and events for staff and their families will be advertised throughout the prison via posters and the internal email systems.

Where limited spaces are available, they will always be allocated on a first come first served basis.

#### Community events

Will be available to everyone. All events will be advertised on social media and via posters at arts venues around Wakefield.

### PUBLIC BENEFIT

As an organisation CommunARTy aims to benefit society by:-

- Contributing to the rehabilitation of prisoners at HMP Wakefield and reducing the chances of future reoffending.
- working to embed the prison into the community of Wakefield. This will help to:-
  - raise awareness of and support for the arts as a form of rehabilitation.
  - help to make prison staff feel as though they are recognised as providing a valued service.
  - help to encourage different groups within the local community to engage with each other through a shared interest in the arts.
- Facilitating and sharing research carried out through project and events to contribute to the wider study of the impact of the arts in criminal justice.

### 3. ANNUAL REPORT

This year we have continued working as a partner with TiPP at the CFO Activity Hubs across Yorkshire. So many combined arts projects have been created from using conductive paint to play sounds, to podcasts and knitted bunting.

Through the collaboration with TiPP we have been able to create new partnership working with other organisations and projects.

We have registered as a print worked for the 20:20 Print Exchange for 2023. Lots of lessons have been learned about the best way to run this logistically in the future, but across all hubs we submitted 25 entries. This was open to staff and participants – 7 facilitators and hub staff joined and 18 participants.

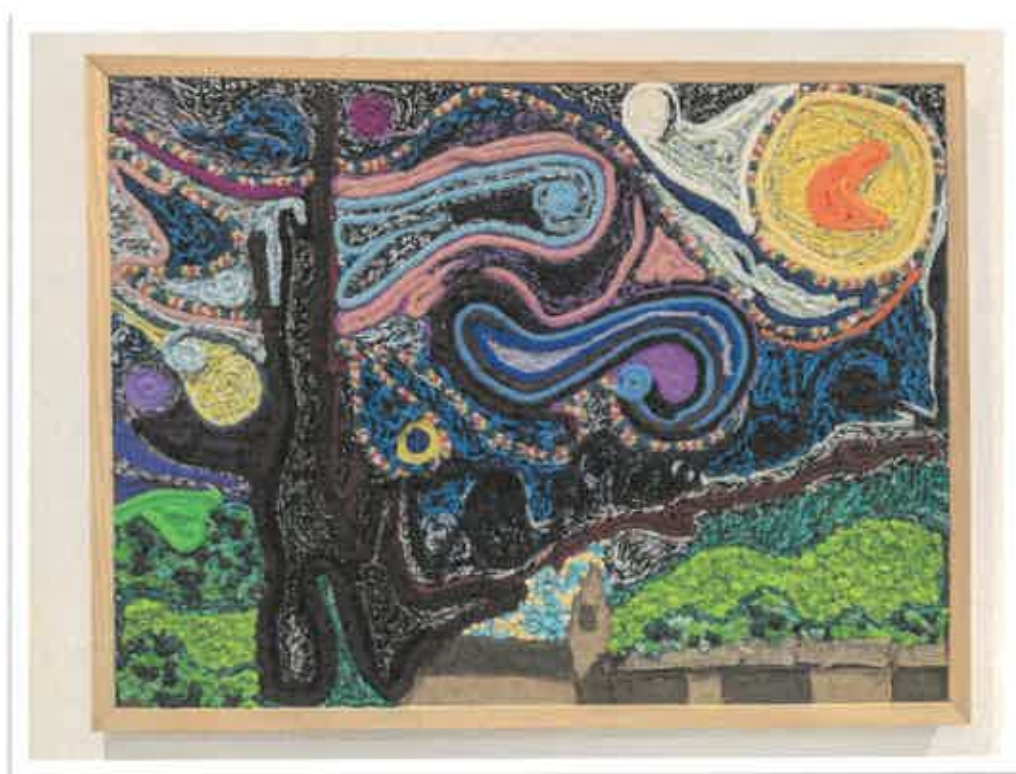
Another new collaboration this year was with the Yarndale Worldwide Project. Participants at Sheffield Hub created knitted and crocheted bunting for the exhibition in support of this year's chosen charity Oxfam.

We had another successful year of Koestler winners (although we submitted less entries overall) with 1 Silver and 2 Commended Awards. This continues to be a good way to showcase projects beyond the walls of the hub.

Our 'Blind Date with a Book' fundraiser has continued this year. There are multiple benefits from this. We have been able to train participants to wrap the books as part of their charity work. At the craft fairs we are able to raise our profile and engage with members of the community as well as receive more donations of books. Going forward it will be the aim to look into how this project can engage directly with HMP Wakefield – either through running sessions to wrap books or through selling them/donating them through visits/family days.

Despite changes to the structure of the Wakefield Artwalk, we were still able to exhibit at the July event – the conductive paint music piece was the highlight, alongside the French knitted Starry Night piece.

The last two years feel like something of an evidence building process to test projects, and make connections with new and relevant organisations. With all this we can start looking forward and begin to apply for funding opportunities to build on these initial successes.



## 4. FINANCIAL REPORT



**CHARITY COMMISSION  
FOR ENGLAND AND WALES**

Charity Name <b>CommunARTy</b>	No (if any) 1174406
-----------------------------------	------------------------

CC16a



### Receipts and payments accounts

For the period from	01/01/2023	To	31/12/2023
------------------------	------------	----	------------

#### Section A Receipts and payments

	Unrestricted funds to the nearest £	Restricted funds to the nearest £	Endowment funds to the nearest £	Total funds to the nearest £	Last year to the nearest £
<b>A1 Receipts</b>					
DONATIONS just giving	290	-	-	290	411
Craft fairs/books	679	-	-	679	141
INTEREST		-	-	-	-
DONATION OTHER		-	-	-	
TIPP Project Managing	22,280	-	-	22,280	23,760
TIPP materials budget	4,575	-	-	4,575	1,973
		-	-	-	-
<b>Sub total (Gross income for AR)</b>	<b>27,824</b>	<b>-</b>	<b>-</b>	<b>27,824</b>	<b>26,285</b>
<b>A2 Asset and investment sales, (see table).</b>					
	-	-	-	-	-
	-	-	-	-	-
<b>Sub total</b>	<b>-</b>	<b>-</b>	<b>-</b>	<b>-</b>	<b>-</b>
<b>Total receipts</b>	<b>27,824</b>	<b>-</b>	<b>-</b>	<b>27,824</b>	<b>26,285</b>
<b>A3 Payments</b>					
RENT BUSINESS ADDRESS	504	-	-	504	360
WEBSITE	113	-	-	113	113
PROJECT MATERIALS	3,793	-	-	3,793	2,001
STAFF PAY	22,445	-	-	22,445	23,479
Craft fair fees	132	-	-	132	-
		-	-	-	
<b>Sub total</b>	<b>26,987</b>	<b>-</b>	<b>-</b>	<b>26,987</b>	<b>25,953</b>
<b>A4 Asset and investment purchases, (see table)</b>					
	-	-	-	-	-
	-	-	-	-	-
<b>Sub total</b>	<b>-</b>	<b>-</b>	<b>-</b>	<b>-</b>	<b>-</b>
<b>Total payments</b>	<b>26,987</b>	<b>-</b>	<b>-</b>	<b>26,987</b>	<b>25,953</b>
<b>Net of receipts/(payments)</b>	<b>837</b>	<b>-</b>	<b>-</b>	<b>837</b>	<b>332</b>
<b>A5 Transfers between funds</b>	<b>-</b>	<b>-</b>	<b>-</b>	<b>-</b>	<b>-</b>
<b>A6 Cash funds last year end</b>	<b>742</b>	<b>-</b>	<b>-</b>	<b>742</b>	<b>410</b>
<b>Cash funds this year end</b>	<b>1,579</b>	<b>-</b>	<b>-</b>	<b>1,579</b>	<b>742</b>

## Section B Statement of assets and liabilities at the end of the period

Categories	Details	Unrestricted funds to nearest £	Restricted funds to nearest £	Endowment funds to nearest £
<b>B1 Cash funds</b>	Cash at Bank - Natwest	1,579	-	-
		-	-	-
		-	-	-
	<b>Total cash funds</b>	<b>1,579</b>	<b>-</b>	<b>-</b>
(agree balances with receipts and payments account(s))				
<b>B2 Other monetary assets</b>	Details	Unrestricted funds to nearest £	Restricted funds to nearest £	Endowment funds to nearest £
		-	-	-
		-	-	-
		-	-	-
		-	-	-
		-	-	-
		-	-	-
<b>B3 Investment assets</b>	Details	Fund to which asset belongs	Cost (optional)	Current value (optional)
			-	-
			-	-
			-	-
			-	-
<b>B4 Assets retained for the charity's own use</b>	Details	Fund to which asset belongs	Cost (optional)	Current value (optional)
			-	-
			-	-
			-	-
			-	-
			-	-
			-	-
			-	-
<b>B5 Liabilities</b>	Details	Fund to which liability relates	Amount due (optional)	When due (optional)
			-	
			-	
			-	
			-	
Signed by one or two trustees on behalf of all the trustees	Signature	Print Name	Date of approval	
	 	CARL NAYLOR Simon Ruding	28/10/24 28/10/24	

## 5. INDEPENDENT EXAMINERS REPORT



**CHARITY COMMISSION  
FOR ENGLAND AND WALES**

**Independent examiner's  
report on the accounts**

**Section A Independent Examiner's Report**

<b>Report to the trustees/ members of</b>	CommumARTy		
<b>On accounts for the year ended</b>	31 December 2023	<b>Charity no (if any)</b>	10547364
	<b>Set out on pages</b> 1 to 4		

I report to the trustees on my examination of the accounts of the above charity ("the Trust") for the year ended 31/08/2023.

**Responsibilities and basis of report** As the charity trustees of the Trust, you are responsible for the preparation of the accounts in accordance with the requirements of the Charities Act 2011 ("the Act").

I report in respect of my examination of the Trust's accounts carried out under section 145 of the 2011 Act and in carrying out my examination, I have followed the applicable Directions given by the Charity Commission under section 145(5)(b) of the Act

**Independent examiner's statement** I have completed my examination. I confirm that no material matters have come to my attention in connection with the examination which gives me cause to believe that in, any material respect.

- accounting records were not kept in accordance with section 130 of the Act or
- the accounts do not accord with the accounting records

I have no concerns and have come across no other matters in connection with the examination to which attention should be drawn in order to enable a proper understanding of the accounts to be reached

**Signed:** **Date:** 14/10/2024

**Name:** Christopher Dix

**Relevant professional qualification(s) or body (if any):** ICAEW

**Address:** 4 Silkwood Court  
Wakefield  
WF5 9TP

**Section B Disclosure**

Only complete if the examiner needs to highlight matters of concern (see CC32, Independent examination of charity accounts: directions and guidance for examiners)

**Give here brief details of any items that the examiner wishes to disclose.**

A large, empty rectangular box with a thin black border, intended for the user to provide details as requested in the text to the left.

**COMMUNARTY**

England & Wales - Charity number 1174406

---

# Accounts

---



CHARITY COMMISSION  
FOR ENGLAND AND WALES

Charity Name <b>CommunARTy</b>	No (if any) 1174406
-----------------------------------	------------------------

**CC16a**

## Receipts and payments accounts

For the period from	01/01/2022	To	31/12/2022
------------------------	------------	----	------------

### Section A Receipts and payments

	Unrestricted funds to the nearest £	Restricted funds to the nearest £	Endowment funds to the nearest £	Total funds to the nearest £	Last year to the nearest £
<b>A1 Receipts</b>					
DONATIONS just giving	411	-	-	411	410
Craft fairs/books	141	-	-	141	
INTEREST	-	-	-	-	-
DONATION OTHER		-	-	-	70
TiPP Project Managing	23,760	-	-	23,760	7,400
ETSY		-	-	-	18
TiPP materials budget	1,973	-	-	1,973	-
	-	-	-	-	-
<b>Sub total (Gross income for AR)</b>	<b>26,285</b>	<b>-</b>	<b>-</b>	<b>26,285</b>	<b>7,898</b>
<b>A2 Asset and investment sales, (see table).</b>					
	-	-	-	-	
	-	-	-	-	-
<b>Sub total</b>	<b>-</b>	<b>-</b>	<b>-</b>	<b>-</b>	<b>-</b>
<b>Total receipts</b>	<b>26,285</b>	<b>-</b>	<b>-</b>	<b>26,285</b>	<b>7,898</b>
<b>A3 Payments</b>					
RENT BUSINESS ADDRESS	360	-	-	360	360
WEBSITE	113	-	-	113	113
PROJECT MATERIALS	2,001	-	-	2,001	772
STAFF PAY	23,479	-	-	23,479	6,435
CHARITABLE ACTIVITIES - PRIZES		-	-	-	
	-	-	-	-	-
	-	-	-	-	-
	-	-	-	-	-
<b>Sub total</b>	<b>25,953</b>	<b>-</b>	<b>-</b>	<b>25,953</b>	<b>7,680</b>
<b>A4 Asset and investment purchases, (see table)</b>					
	-	-	-	-	
	-	-	-	-	-
<b>Sub total</b>	<b>-</b>	<b>-</b>	<b>-</b>	<b>-</b>	<b>-</b>
<b>Total payments</b>	<b>25,953</b>	<b>-</b>	<b>-</b>	<b>25,953</b>	<b>7,680</b>
<b>Net of receipts/(payments)</b>	<b>332</b>	<b>-</b>	<b>-</b>	<b>332</b>	<b>218</b>
A5 Transfers between funds	-	-	-	-	-
A6 Cash funds last year end	410	-	-	410	192
<b>Cash funds this year end</b>	<b>742</b>	<b>-</b>	<b>-</b>	<b>742</b>	<b>410</b>

## Section B Statement of assets and liabilities at the end of the period

Categories	Details	Unrestricted funds to nearest £	Restricted funds to nearest £	Endowment funds to nearest £
<b>B1 Cash funds</b>	Cash at Bank - Natwest	742	-	-
		-	-	-
		-	-	-
	<b>Total cash funds</b>	<b>742</b>	<b>-</b>	<b>-</b>
	(agree balances with receipts and payments account(s))	OK	OK	OK
<b>B2 Other monetary assets</b>	<b>Details</b>	Unrestricted funds to nearest £	Restricted funds to nearest £	Endowment funds to nearest £
		-	-	-
		-	-	-
		-	-	-
		-	-	-
		-	-	-
<b>B3 Investment assets</b>	<b>Details</b>	Fund to which asset belongs	Cost (optional)	Current value (optional)
			-	-
			-	-
			-	-
			-	-
<b>B4 Assets retained for the charity's own use</b>	<b>Details</b>	Fund to which asset belongs	Cost (optional)	Current value (optional)
			-	-
			-	-
			-	-
			-	-
			-	-
			-	-
			-	-
<b>B5 Liabilities</b>	<b>Details</b>	Fund to which liability relates	Amount due (optional)	When due (optional)
			-	
			-	
			-	
			-	
Signed by one or two trustees on behalf of all the trustees	Signature	Print Name	Date of approval	

**COMMUNARTY**

England & Wales - Charity number 1174406

---

# Accounts

---



CHARITY COMMISSION  
FOR ENGLAND AND WALES

Charity Name  
**CommunARTy**

No (if any)  
**1174406**

## Receipts and payments accounts

For the period from	1/1/2021	To	12/31/2021
------------------------	----------	----	------------

### Section A Receipts and payments

	Unrestricted funds to the nearest £	Restricted funds to the nearest £	Endowment funds to the nearest £	Total funds to the nearest £
<b>A1 Receipts</b>				
DONATIONS just giving	410	-	-	410
DONATIONSEasy Fundraising	-	-	-	-
INTEREST	-	-	-	-
DONATION OTHER	70	-	-	70
TiPP Project Managing	7,400	-	-	7,400
ETSY	18	-	-	18
	-	-	-	-
	-	-	-	-
<b>Sub total</b> (Gross income for AR)	<b>7,898</b>	<b>-</b>	<b>-</b>	<b>7,898</b>
<b>A2 Asset and investment sales, (see table).</b>				
	-	-	-	-
	-	-	-	-
<b>Sub total</b>	<b>-</b>	<b>-</b>	<b>-</b>	<b>-</b>
<b>Total receipts</b>	<b>7,898</b>	<b>-</b>	<b>-</b>	<b>7,898</b>
<b>A3 Payments</b>				
RENT BUSINESS ADDRESS	360	-	-	360
WEBSITE	113	-	-	113
CHARITABLE ACTIVITIES - PRIZES	-	-	-	-
PROJECT MATERIALS	772	-	-	772
STAFF PAY	6,435	-	-	6,435
	-	-	-	-
	-	-	-	-
	-	-	-	-
<b>Sub total</b>	<b>7,680</b>	<b>-</b>	<b>-</b>	<b>7,680</b>
<b>A4 Asset and investment purchases, (see table)</b>				
	-	-	-	-
	-	-	-	-
<b>Sub total</b>	<b>-</b>	<b>-</b>	<b>-</b>	<b>-</b>
<b>Total payments</b>	<b>7,680</b>	<b>-</b>	<b>-</b>	<b>7,680</b>
<b>Net of receipts/(payments)</b>	<b>218</b>	<b>-</b>	<b>-</b>	<b>218</b>
<b>A5 Transfers between funds</b>	<b>-</b>	<b>-</b>	<b>-</b>	<b>-</b>
<b>A6 Cash funds last year end</b>	<b>192</b>	<b>-</b>	<b>-</b>	<b>192</b>
<b>Cash funds this year end</b>	<b>410</b>	<b>-</b>	<b>-</b>	<b>410</b>

# Section B Statement of assets and liabilities at the end of the period

Categories	Details	Unrestricted funds to nearest £	Restricted funds to nearest £
<b>B1 Cash funds</b>		-	-
		-	-
		-	-
	<b>Total cash funds</b>	-	-
	(agree balances with receipts and payments account(s))	Agreement Error	OK

	Details	Unrestricted funds to nearest £	Restricted funds to nearest £
<b>B2 Other monetary assets</b>		-	-
		-	-
		-	-
		-	-
		-	-
		-	-

	Details	Fund to which asset belongs	Cost (optional)
<b>B3 Investment assets</b>			-
			-
			-
			-
			-

	Details	Fund to which asset belongs	Cost (optional)
<b>B4 Assets retained for the charity's own use</b>			-
			-
			-
			-
			-
			-
			-
			-
			-

	Details	Fund to which liability relates	Amount due (optional)
<b>B5 Liabilities</b>			-
			-
			-
			-
			-

Signed by one or two trustees on behalf of all the trustees

Signature	Print Name
Carl Naylor	Carl Naylor

**CC16a**



**Last year**

**to the nearest £**

<b>388</b>
<b>16</b>
-
<b>20</b>
-
-
-
-
-
<b>424</b>

-
-

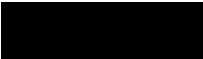
<b>424</b>
------------

<b>180</b>
<b>113</b>
<b>37</b>
-
-
-
-
-
-
-
<b>330</b>

-

<b>330</b>
------------

<b>94</b>
-
<b>98</b>
<b>192</b>



**Endowment funds**

to nearest £

-
-
-
-

OK

**Endowment funds**

to nearest £

-
-
-
-
-
-

**Current value (optional)**

-
-
-
-
-

**Current value (optional)**

-
-
-
-
-
-
-
-
-

**When due (optional)**


Date of approval

10/30/2022

**COMMUNARTY**

England & Wales - Charity number 1174406

---

# Accounts

---



## Receipts and payments accounts

For the period from	Jan-20	To	Dec-20
------------------------	--------	----	--------

### Section A Receipts and payments

	Unrestricted to the nearest £	Restricted to the nearest £	Endowment to the nearest £	Total funds to the nearest £	Last year to the nearest £
<b>A1 Receipts</b>					
DONATIONS just giving	387.93	-	-	388	462
DONATION Easy Fundraising	16	-	-	16	48
INTEREST	-	-	-	-	-
DONATION OTHER	20	-	-	20	-
	-	-	-	-	-
	-	-	-	-	-
	-	-	-	-	-
	-	-	-	-	-
<b>Sub total (Gross income for</b>	<b>424</b>	<b>-</b>	<b>-</b>	<b>424</b>	<b>510</b>
<b>A2 Asset and investment sales,</b>					
	-	-	-	-	-
	-	-	-	-	-
<b>Sub total</b>	<b>-</b>	<b>-</b>	<b>-</b>	<b>-</b>	<b>-</b>
<b>Total receipts</b>	<b>424</b>	<b>-</b>	<b>-</b>	<b>424</b>	<b>510</b>
<b>A3 Payments</b>					
RENT BUSINESS ADDRESS	180	-	-	180	540
WEBSITE	113	-	-	113	34
CHARITABLE ACTIVITIES - PRIZES	37	-	-	37	17
	-	-	-	-	-
	-	-	-	-	-
	-	-	-	-	-
	-	-	-	-	-
	-	-	-	-	-
<b>Sub total</b>	<b>330</b>	<b>-</b>	<b>-</b>	<b>330</b>	<b>591</b>
<b>A4 Asset and investment</b>					
	-	-	-	-	-
	-	-	-	-	-
<b>Sub total</b>	<b>-</b>	<b>-</b>	<b>-</b>	<b>-</b>	<b>-</b>

<b>Total payments</b>	<b>330</b>	<b>-</b>	<b>-</b>	<b>330</b>	<b>591</b>
<b>Net of receipts/(payments)</b>	<b>93</b>	<b>-</b>	<b>-</b>	<b>93</b>	<b>- 81</b>
<b>A5 Transfers between funds</b>	<b>-</b>	<b>-</b>	<b>-</b>	<b>-</b>	<b>-</b>
<b>A6 Cash funds last year end</b>	<b>98</b>	<b>-</b>	<b>-</b>	<b>98</b>	<b>-</b>
<b>Cash funds this year end</b>	<b>192</b>	<b>-</b>	<b>-</b>	<b>192</b>	<b>- 81</b>

# Section B Statement of assets and liabilities at the end of the period

Categories	Details	Unrestricted to nearest £	Restricted to nearest £	Endowment to nearest £
<b>B1 Cash funds</b>	CASH AT BANK - NATWEST	98	-	-
		-	-	-
		-	-	-
	<b>Total cash funds</b>	<b>98</b>	<b>-</b>	<b>-</b>

(agree balances with receipts and payments account(s))

Agreement Error	OK	OK
-----------------	----	----

Categories	Details	Unrestricted funds to nearest £	Restricted funds to nearest £	Endowment funds to nearest £
<b>B2 Other monetary assets</b>		-	-	-
		-	-	-
		-	-	-
		-	-	-
		-	-	-
		-	-	-

Categories	Details	Fund to which asset belongs	Cost (optional)	Current value (optional)
<b>B3 Investment assets</b>			-	-
			-	-
			-	-
			-	-
			-	-

Categories	Details	Fund to which asset belongs	Cost (optional)	Current value (optional)
<b>B4 Assets retained for the charity's own use</b>			-	-
			-	-
			-	-
			-	-
			-	-

		-	-
		-	-
		-	-
		-	-

**B5 Liabilities**

Details	Fund to which	Amount due	When due
		-	
		-	
		-	
		-	
		-	

Signed by one or two trustees on

Signature	Print Name	Date of
Carl Naylor (by email)	Carl Naylor	17/10/2021