

THE GUILDFORD SOCIETY

England & Wales · Charity number 1174395

Details

Other names	GSOC
Status	Registered
Legal form	CIO
Registered	2017-08-25
Register	View on the Charity Commission register

Contact

Address	92 Wodeland Avenue Guildford GU2 4LD
Phone	01483503172
Email	info@guildfordsociety.org.uk
Website	www.guildford society.org.uk

Activities

Objects: THE SOCIETY IS ESTABLISHED FOR THE PUBLIC BENEFIT AND FOR THE FOLLOWING PURPOSES IN THE AREA COMPRISING THE BOROUGH OF GUILDFORD:1. TO PROTECT AND ENHANCE ITS BEAUTY AND AMENITY, AND TO STIMULATE PUBLIC INTEREST THEREIN.2. TO PROMOTE HIGH STANDARDS OF PLANNING AND ARCHITECTURE.3. TO SECURE THE PRESERVATION, PROTECTION, DEVELOPMENT AND IMPROVEMENT OF FEATURES OF HISTORIC OR PUBLIC INTEREST.4. TO PURSUE THESE PURPOSES BY MEANS OF MEETINGS, EXHIBITIONS, LECTURES, PUBLICATIONS, OTHER FORMS OF INSTRUCTION AND PUBLICITY, AND PROMOTION OF SCHEMES OF A CHARITABLE NATURE.

Activities: Meetings, talks and exhibitions held for members and the public. Makes occasional grants to other organisations.Helps conserve the heritage buildings and environment of the town. Informs members of developments in the town and surrounding area and comments on these to the Borough Council and participates in consultations.Produces an annual magazine and issues newsletters via the website

Classification

- **How:** Makes Grants To Organisations, Provides Advocacy/advice/information
- **What:** Environment/conservation/heritage, Economic/community Development/employment, Other Charitable Purposes

Geography

- Surrey

Finances

Period end	Income	Expenditure	Assets	Employees	
2025-03-31		£3,918	£3,913	-	-
2024-03-31		£6,610	£6,686	-	-
2023-03-31		£4,059	£5,833	-	-
2022-03-31		£5,943	£4,414	-	-
2021-03-31		£2,679	£13,077	-	-

Trustees

Name	Role	Appointed
Alistair Dermot Smith	Chair	2018-06-07
Barry Charles Williams		2020-10-06
GILLIAN MARY CAMERON		2017-06-01
John Adney Baylis		2020-10-06
John Harbor		2024-06-01
Nicholas Clive Allen		2020-10-06
Peter John Coleman		2018-06-07
ROSEMARY ELIZABETH NAPP		2017-06-01

THE GUILDFORD SOCIETY

England & Wales - Charity number 1174395

Accounts



The Guildford Society

Annual Report 2024-2025

89th Annual General Meeting

www.guildfordsociety.org.uk

Intentionally Left Blank

Guildford Society
Annual Report 2020
87th Annual General Meeting

87th Annual General Meeting
March 2026

Agenda

1. Apologies for absence
2. Minutes of the AGM held 6th October 2020
3. Matters arising
4. Chairman Report
5. Honorary Treasurer's report
6. Election of Trustees
7. Any other business

Note Meeting had to be rescheduled from a planned earlier date.

Minutes of 85th AGM Meeting

88th Annual General Meeting Annual General Meeting 19:00hrs 19th June 2024 Dapdune Wharf

The Chairman, Alistair Smith, welcomed the 32 members who signed into the meeting.

Apologies none received.

Minutes of the 84th AGM held on 7th June, 2018 were approved.

Matter's arising: There were none.

Chairman's and Group Reports: These were incorporated into the Annual Report which was sent to all members, either by post or electronically to those for whom the Society holds email addresses. The previous year's Minutes were also included.

Chairman's Address:

The Chairman expanded on the main points in the Annual Report, highlighting The Society continued to try and influence preservation of Heritage and improve the Quality of New Development.

The Chair highlighted the volume of development that was going on in the Borough and said he would cover some of these in the presentation after the AGM.

The Chair also highlighted the need to strengthen the various Working Groups and the Executive of The Society. It was critical to ensure that the Society could be an effective non-political voice for the future of the area that our Executive and Workgroups had new members.

Honorary Treasurer's Report and Accounts: These were available at the meeting and subsequently on the Society's website. They had been independently verified by Mr Keith McPherson, an accredited Independent Examiner. There were no questions arising.

Election of Trustees: No nominations for new trustees had been received. Those standing for re-election were approved.

Any other business: No other matters were raised, so the meeting was closed at 8pm.

Chairman's Report 2024-2025

The Civic Society for Guildford

The Society serves as Guildford's Civic Trust, offering a non-political forum to guide the town's development while preserving its heritage and natural landscapes. To stay relevant, we seek new members who can bring fresh perspectives. Our goal is to contribute informed ideas that help Guildford balance economic vitality, heritage conservation, environmental protection, and quality spaces for living, working, and recreation.

New Government

A new government was elected in July. The government is implementing major changes to Planning Policies and Local Government.

The government has proposed major changes to the planning system in its quest to build 1.5 Million new dwellings in the country.

These changes include a revised NPPF and the imposition of Mandatory Housing targets. The Housing targets have resulted in Guildford Borough having to provide twice as many new dwellings as in the current Local Plan. This will have a major impact on Guildford.

In addition the government is implementing major changes to Local Government.

The UK government's English devolution white paper of 16 December 2024 proposed reorganising two-tier local government in England into fewer unitary authorities, each serving at least 500,000 residents. This process is referred to as Local Government Reorganisation (LGR). New council elections are planned for 6 May 2027 with operations starting 1 April 2028; Surrey will move faster, with elections on 7 May 2026 and operational councils from 1 April 2027.

All District and Borough Councils including Guildford Borough Council and Surrey County Council will cease to exist. Surrey will be restructured around two or Three Unitary authorities will ultimate an elected Surrey Mayor overseeing the entire County.

Key Issues in Guildford

Economy

The current economic situation means that Guildford is operating in a challenging environment, although we remain a successful town.

The borough has experienced the departure of several major companies. Fortunately, at least two significant firms are now considering relocating to the area, which could bring many high-tech jobs. The loss of two major stores—Debenhams and, more recently, House of Fraser—from the town centre has diminished Guildford's appeal as a retail destination. In contrast, neighbouring towns such as Reading and Woking continue to attract businesses and offer strong retail options for residents.

The Society believes that the town needs to provide employment of all types to attract and keep the population in the town and avoid Guildford becoming solely viewed as a commuter centre.

'Shaping Guildford's Future'

This comprehensive initiative aims to develop an adopted masterplan for the Town that will provide strategic guidance for future development. SGF has been commissioned by GBC, reflecting the council's objective to revitalise the town through enhanced access to the riverside, reduced congestion, improvements in alternative, sustainable, and affordable transportation, and efforts to make the town centre a more attractive destination for residents, workers, and visitors.

The Society has submitted feedback on the proposals presented thus far, and its members have participated in consultation meetings. However, progress to date has been less than satisfactory.

It appears that the work undertaken on Shaping Guildford's Future may inform the forthcoming Local Plan Update, which is scheduled to advance in 2025. Consultations are anticipated to commence in early 2026.

Strengthening Planning Policies

Concerns about the effects of the Local Plan 2019 and its inadequate policies have unfortunately become reality. The Society, together with others, advocated for stronger Development Management Policies to

complete the Local Planning process; however, only minimal adjustments were made. Now, the Society is collaborating with partners to encourage the council to establish a comprehensive heights policy for Guildford Town. Many local election candidates supported the idea of such a policy. Currently, the council is preparing a Heights Policy for public consultation and future adoption, which is expected to be released soon.

Enhancing Design Quality

Maintaining quality in new developments, streets, and older buildings is essential for Guildford's urban landscape and visitor appeal. The Design and Heritage Group has promoted the value of good design through various initiatives. As buildings last many years and sustainability concerns rise, re-use is increasingly important. However, some recent estate housing lacks quality, and major projects often suffer from uninspired planning and design.

Conserving our Heritage

We have continued to support the Heritage Open Days. A major topic during this year have been the proposals from the National Trust to restore Clandon House. This is referred to more fully in the report from the D&H Group below.

Caring for our Environment

The Environment is an issue that is of vital importance, as a Society we have contributed across the Work Groups to issues such as why not Redevelop rather than Rebuild on various sites, protecting the Greenbelt, enabling active travel.

The new government has revised planning regulations related to siting Solar Farms. The first major application in the Borough was from the University to place a Solar farm on the edge of the AONB/SHNL on the Hogs Back

Future of the Society

Ensuring that the Society continues to prosper and meet Guildford's needs remains a significant challenge. We recognise three key areas to prioritise:

Membership Growth

Unfortunately, like many other local organisations, our Society is experiencing a decline in membership. We've benefitted from a period when many people retired early and had plenty of active years to participate. However,

individuals in their 30s and 40s are harder to reach, as they're typically busy with careers and family responsibilities.

Expertise

Our Society is fortunate to have members with diverse expertise, developed through their professional lives or involvement in working groups. It's important that we maintain this depth of knowledge and keep it relevant for the future.

Funding

The Society faces various expenses, including website and email costs, as well as resources needed to support events like public meetings and professional consultations. It is essential to sustain a healthy financial position through subscriptions, donations, and paid activities.

Engagement with others

We have been active in strengthening our relationship with Guildford Borough Council (GBC), in particular interacting with the new senior officers who have been appointed over the last two to three years. We are especially interested in being able to comment and advise at the early stages of design for the strategic projects in the borough.

We have good relations with other Guildford Groups e.g. Guildford Residents Association, Guildford Environment Forum and value having joint positions on certain topics.

We are also a member of Campaign to Protect Rural England (CPRE), London Green Belt Council and Civic Voice

Communications

We continue to update our Website

We also update our Facebook page, we are aware it is not reaching as wide an audience as possible. We continue to review our use of Social Media particularly the resources required to manage it really effectively.

Executive

During the past two years the Executive Membership has remained as
Alistair Smith Chair
Peter Coleman Deputy Chair and Chair of D&H
Gillian Cameron Secretary
John Baylis

Nic Allen
Rosemary Napp
Barry Williams

The Executive recognise that we need to strengthen the Executive. We are actively looking for new members to join the executive and hope to appoint new members over the coming months.

All the current Executive are standing again for re-election but in several cases we anticipate that they will not serve their full term being replaced by others.

Thanks

Thank you all for your ongoing support—we truly couldn't run the society without you. Looking ahead to 2026, I'd like to ask everyone to help by recruiting a new member or encouraging someone to subscribe to our newsletter. It's now even simpler to become a supporter with our updated website.

Alistair Smith
Chair Guildford Society

Page Left Blank Intentionally

Working Groups

Many thanks is given to the members of our working groups who have been as usual fully engaged in looking at their various areas of interest as you will see from the group reports.

We have tried to create a viable Local Strategy and Economy Group but this has proven very difficult and is the group is currently in abeyance. We continue to believe we should have a group considering the Guildford Area meeting 3-4 times a year.

Local Strategy & Economy Group

Although there is no Working Group, we continue to monitor relevant strategies and reports. Guildford faces economic challenges but remains a successful town. The Society supports providing diverse employment to attract and retain residents, preventing Guildford from becoming purely a commuter centre. Building on our mixed economy—Professional Services, Education, Retail, and hi-tech industries—is essential. Many residents commute to London or Heathrow via rail and congested roads.

Design and Heritage

The Design and Heritage group has had a busy year.

Architecture Lectures - The group is consistently attempting to improve design, unfortunately we still see too many uninspired designs.

The D&H group continues to run a Annual Architecture Lecture in partnership with the University of Surrey.

The 2024 lecture with the title of 'Housing to Benefit the Environment and Public' was delivered in October by Cany Ash and Robert Sakula the two co-founding partners of Ash Sakula Architects, one of the UK's leading housing and regeneration architects.

Cany and Robert described their evolving approach over years, referencing completed schemes in Bordon, Southwold, and Newcastle, as well as a new project in Lewes that has received planning permission as part of The Phoenix Project—see the link below for more details. Their method focuses on creating strong communities and friendly neighbourhoods through people-centered design.

Guildford Design Awards

2024 was a year where no awards were made as the Society in conjunction with our co-sponsor has decided to run the wards every two years. In 2024 we held an exhibition of the winners in 2023 on two occasions in the Town Centre. This kept the awards in the minds of the general public, and attracted a high level of interest.

Heritage and Environment.

We have not been as active as we might have been due to lack of resources and impact of dealing with several major developments in the borough. However, we are looking at instituting a series of visits/ and walks to interesting New Buildings outside the borough and The society has continued to support Heritage Open Days (HODs) acting as guides for opened buildings

Clandon House

A major site that has attracted considerable comment and debate is the National Trusts plan to restore in an innovative way Clandon Park, seriously damaged by fire in 2015. The D&H group combined with the Planning group to discuss the proposals and also engaged in discussions with the National Trust Team responsible for the proposals. This work culminated in The Society agreeing to the proposed restoration and speaking in support of the planning application. The Planning Application was agreed at the end of March 2025, but immediately the Ministry of Housing Communities and local Government requested final approval be delayed whilst they reviewed the application. This process is not an official call in but MHCLG reassuring themselves on this important site.

Planning Policy

The D&H group are extremely concerned that we have a weak Local Plan particularly as the Development Management Policies failed to make any mention of Height restrictions in the town. We are reliant on Town Centre Views Document which although it has commendable aspects fails to protect streetscape and has many limitations.

The group created a summary of Height Policies from other boroughs which has been discussed with the Borough Council. This summary shows how a Heights Policy can be developed using the experience of other councils. Guildford Borough are now in the process of finalising a draft heights policy for the town centre.

Overdevelopment is also a critical concern where Buildings are put into sites that are too small and fail to provide space for Public Realm.

Visits & Walks The group has held walks and visits to new developments of interest elsewhere e.g. Cambridge. The group recognises that we can do more in this area.

Planning Group

The Planning Group has met regularly every 3 weeks to review new planning applications. The group reviews applications that

- Impact Heritage Buildings
- Are for Major Developments over 15 Dwellings, and/or major redevelopment of existing buildings.
- Permitted Development Applications in the Town Centre
- Infrastructure Improvements
- Smaller applications particularly in the Town Centre if they are judged to be of significance e.g. Change of use of buildings in the High Street.

Planning Policy

The group has taken time to review and comment on aspects of the revised National Planning Policy Framework (NPPF). We are also very concerned at the revision of Housing Numbers imposed by the Standard Method with Guildford Borough now

required to move from delivering 562 units to 1,155 dwellings per annum.

Flood Alleviation Scheme (FAS)

The Society has engaged with Stakeholder discussions of the provision of a Flood Scheme to protect the Town Centre. Modelling is still underway to determine the Flood Protection required. Solving Flooding is necessary to unlock several sites in the Town Centre which currently have usage restrictions.

The Planning Group, with as required guidance from the Design and Heritage Group have had to deal with several Major applications including:

Clandon house – Referred too above

The Solar Farm proposed for the Hogs Back

This raised several issues related to using agricultural land and impact on the views from the Hogs Back.

Wisley Airfield.

The Society has participated in consultations with the developers Taylor Wimpey. The Society has noted that the site is a Strategic Site in the Local Plan 2019 and we have confined our comments to, in particular, the lack of transport infrastructure to support the scheme.

Riverview

We participated in discussions with the developers on this scheme to convert the current light industrial park to a mixed use site. Creating a viable scheme whilst implementing flood protection measures is a major issue.

Magnet Woodbridge Road

We objected to this redevelopment of the Magnet site at the North Ends of Woodbridge road as we considered the design was of exceptionally poor quality on what is a gateway to Guildford.

Gosden Hill

Initial discussions have been held on proposals for Gosden Hill at Burpham. We await final proposals for consideration.

The Planning Group remains concerned that there are schemes coming forward which are of poor quality and represent overdevelopment on sites. Several in-fill schemes have been particularly poor.

Transport Group

The Transport Group has met regularly, normally every 4 to 6 weeks.

The Group brought together many of its ideas into a document published in April 2022 “ *A Manifesto for Change - Guildford Transport - Improving and Supporting the Borough*”.

It was agreed to refresh and revise this document and a this is being worked upon at present.

We have a need to re-energise the Transport Group as several important members have retired. The Group is important as creating Sustainable Sites in Guildford required proper provision of Transport links. Too often we have sites dependent on a already overloaded road network

Membership Secretary's Report

Our membership has remained broadly constant. We have concluded a review of our membership list which has resulted a number of lapsed members being deleted from our list.

We currently have:-

Group	Total
Membership Single & Joint	131
Joint Memebrship	65
Total membership	261
Corporate Membership	3
<i>Signed up for our Newsletter</i>	245

It would be appreciated if existing Members would publicise the Society to friends and neighbours to increase the membership.

Treasurer's Report and Accounts

As reported at the last AGM a new treasurer had been appointed, who very sadly has then had to relinquish the role as he has serious health issues. We are now searching for a suitable candidate and hope to appoint a new treasurer shortly. The new treasurer will be a member of the Executive.

Comments on financial Statement

The financial statement has yet to be reviewed by a qualified accountant. This is not an audit, which is not required due to our small size under charity commission rules, but is a verification for the executive that accounts have been properly administered and reflect a proper view of the society's affairs. A set of accounts is presented for 2024-2025. The Society has financial year starting 1st April stretching to 31st March.

The Executive reviews finances at every meeting.

Accounts have been lodged with the Charities commission for 2024-2025.

Annual Accounts Ending March 2025

INCOME

Subscriptions	£3,031.55	
Donations	£9.82	
Architecture Lecture	£265.64	
GDA Income (inc Deposits)	£0.00	
Society Social Events Income	£0.00	
GDA Donations	£200.00	
AGM Income	£366.97	
Book Sales	£45.00	
—		
Cumulative Income YTD		£3,918.98

OUTGOINGS

Postage	£0.00	
Print & Publicity	£486.58	
Outgoing Subscriptions	£46.00	
Website	£300.00	
Refreshments	£116.88	
Insurance	£294.59	
Lectures and Events. Etc	£0.00	
Guildford Design Awards Expenses	£1,403.28	
Architecture Lecture Expenses	£894.61	
Society Social Events Expenses	£0.00	
Hire of Meeting Rooms for Groups	£372.00	
Culmulative Expenses		£3,913.94
Cashflow over Year		£5.04
Deposit Account (773)		£12,603.67
Current Accounts		
Bank Balance (701)		£461.50
Bank Balance (326)		£1,615.01
Total Funds		£14,680.18

Group Membership

Design and Heritage

Peter Coleman Chair
Rosemary Napp Secretary
Nic Allen
Niels Laub
Anna Hummel
Gerry Lytle

Planning

Alistair Smith (Acting Chairman),
Peter Coleman,
John Harrison
Amanda Mullarkey
David Ogilvie
Nic Allen
Alastair Atkinson

Transport Members

Alistair Smith - Chair
Barry Williams
Hugh Anscombe
Keith Chesterton
Doug Clare
Trevor Jones
Chris Blow
Alan McCulloch
Colin Selvin, now a Corresponding Member
Maurice Barham, now a Corresponding Member

Contact List

Chair

Alistair Smith

chair@guildfordsociety.org.uk

Hon.Secretary

Position vacant

secretaryguildfordsociety.org.uk

Hon. Treasurer

Position vacant

Contact via The Chairman

Work Groups & Leaders:

Planning Group

Alistair Smith

planning@guildfordsociety.org.uk

Transport Group

Alistair Smith

transport@guildfordsociety.org.uk

Design & Heritage Group

Peter Coleman

design@guildfordsociety.org.uk

Membership Secretary

Position vacant

membership@guildfordsociety.org.uk

Website - www.guildfordsociety.org.uk

Intentionally Blank

***The Guildford Society.
C.I.O reg. Number 1174395.
Registered Office: 24 Bury Fields, Guildford GU2 4AZ***



Access The Society Website



See our Key Sites Map of Development in Guildford



THE GUILDFORD SOCIETY

England & Wales - Charity number 1174395

Accounts



The Guildford Society
Annual Report 2023-2024
88th Annual General Meeting
www.guildfordsociety.org.uk

Guildford Society
Annual General Meeting
Dapdune wharf
Guildford
19:00hrs 19th June 2024
88th Annual General Meeting

Agenda

1. Apologies for absence
2. Minutes of the AGM held 6th December
3. Matters arising
4. Chairman Report
5. Honorary Treasurer's report
6. Election of Trustees
7. Any other business

Minutes of 87th AGM Meeting

4th December 2023 St Nicholas Parish Hall

Forty members attended the meeting, and 7 apologies were received.

The Chairman welcomed everyone to the AGM.

Minutes of the last AGM were approved by the attendees and signed by the Chairman.

Matters Arising – none were raised.

Chairman's and Group Reports:

The Chairman noted that the report covered TWO years as for a variety of reasons it had proved impossible to schedule as AGM in 2022 for which he apologised. He clarified:

- The 86th Meeting held in December 2021 in the Guildhall covered the year April 2019 to March 2020.
- The current meeting the 87th covered two years, April 2021 to March 2022, and April 2022 to March 2023

The Chairman expanded on some of the details of his report and those of the sub-Groups, printed in the AGM booklet and on the website. He also presented the Financial Accounts and report, which were approved by the meeting, having been proposed by Barry Williams and seconded by Gillian Cameron.

It had proved impossible to find anyone willing to stand for the position of Honorary Treasurer, Alistair Smith and Gillian Cameron were willing to continue to act as such, and this was approved.

In the absence of any other volunteers, Gillian Cameron agreed to stand for re-election to the post of Honorary Secretary and was duly elected.

A third of trustees should resign each year, but this had not happened through the difficult Covid years, so all the trustees resigned this year, but were willing to stand for re-election. There were no other nominations. The meeting unanimously approved their re-election.

The Chairman invited questions and comments, but there were none, so he declared the meeting closed.

Page Intentionally Left Blank

Chairman's Report 2023-2024

The Society

The Society is the Civic Trust for the Guildford Area. Historically our focus has been on the Guildford Town Centre and Urban Area. We also review broader borough considerations, notably the impact of large developments, and we have, as necessary, commented on developments across the borough.

The Society is a non-political group that can contribute to the continuous debate as to how Guildford evolves to meet future challenges; whilst preserving its Heritage and areas of Natural Landscape that make it such an attractive area to live.

Our Aims and objectives can be found at page 22.

Key Issues

There has been a lot of change in Guildford in the 2023 to 2024 period, including a major change in the political complexion of the Local Government in 2023. Key issues that the Society is currently engaged upon include:

Heritage and Environment

Guildford and its surrounding countryside are unique, and as well as making for an attractive environment for residents, also provides economic benefits. We damage heritage assets and the quality of our countryside at our peril.

Planning

Local Plan - The Society strongly objected to the Local Plan 2019 at its examination, together with other local groups. We didn't press for a judicial review, in 2019, as our professional advice was an appeal had very little chance of success, which sadly turned out to be the case.

We continue to maintain the Local Plan and associated Development Management Policies are badly developed, which are harming the borough. Effort is continuing to try and mitigate the worst effects of the Local Plan.

The society supports a local plan update, as it an element in correcting the issues with the local plan. It is likely to be a lengthy process (3 Years?) and has its risks.

Housing numbers/targets are a risk related to the local plan update. The existing local plan is deficient in managing potential windfall sites, as well as identified sites, due to incomplete and weak policies.

A fully updated evidence base is critical in providing the information to debate effectively with central government on housing targets. The Society believes that the borough is approaching the limit of major new development, if the character of the borough is to be

preserved, but we need the evidence to support this.

On balance we believe it best to manage the debate on housing numbers through a robust plan update based on an updated full evidence base. See footnote.¹

The emerging issues in Cambridge, where lack of investment in infrastructure, particularly water supplies, is impacting plans for the area, is a warning to Guildford that it cannot just continue to build housing in a badly planned and unconstrained manner.

Supplementary Policies

The production of Supplementary policies which could be Supplementary Planning Documents (SPD's), Design Guides or Area Action Plans for larger sites and areas carry weight, even if not formally adopted, can start now. Guildford cannot afford to wait for the long-winded Local Plan Update Process. Draft policies would provide a measure of control to stop overbidding on sites, with the result that affordable and social housing disappearing due to viability arguments. Developed policies can be 'Written into' an Updated local Plan

¹ (Note GBC have a forward supply of deliverable housing sites of 6.29 years well in excess of the five years demanded in the NPPF. The Local Plan policy made a provision of 'at least 10,678 homes to 2034. The LPSS identifies that a potential of 14,602 homes exists over the plan period. Source Appeal Decision APP/Y3615/W/23/3330618 Stag Hill)

The current site policies provide, in practice, guidance only; with developers realising that with sufficient legal firepower they can achieve more on a site. (A recent example is a LPSS site allocated for 160 Dwellings, where we are now aware that a proposal for 350 Dwellings has come forward) It would also help avoid use of prime sites for Student Housing that might best be used for Guildford long term residents – with students located elsewhere.

We are actively promoting an SPD for Height's policies see the D&H Group Review. We can think of other that are required. GOOD POLICIES ARE REQUIRED NOW

Sustainability

The Society supports efforts to make the existing and future built environment more sustainable. New development, and where possible existing buildings, should adopt the highest possible standards for insulation and heating.

Transport links especially to new developments must allow for modal shift, enabled by good, simple to use, public transport and Active Travel links.

Critical Infrastructure (Power Water, & Sewage) also needs to be upgraded to the comply with environmental concerns.

Quality Design

Quality of new development and respecting and maintaining older

buildings is critical. to Guildford to improve the urban landscape and to maintain its attractiveness to visitors.

As you will read below the Design and Heritage Group has been active in various initiatives to improve awareness of the impact of good design.

Town Centre

The Town Centre and Urban Area can accept new housing, which is why the Society has supported the 'Shaping Guildford's Future (SGF)' (See Footnote²) exercise as it provides a way to define sites in the Town centre that can be developed in a balanced way to provide housing, commercial space and the infrastructure needed to support this.

The SGF plan needs to be completed, with proper public consultation, shows that the Town Centre could provide, in a sustainable location, 2500 to 3000 dwellings equivalent to one of the Local Plan Strategic sites, provided infrastructure is upgraded e.g. Sewage, Medical Facilities.

A critical enabler is the Flood Alleviation Scheme (See Footnote³) which will 'unlock' several Town Centre sites. Flood

² Shaping Guildford's Future
<https://www.guildfordsociety.org.uk/SGFDE C23.html>

³ Flooding
<https://www.guildfordsociety.org.uk/Floodpr evention.html>

alleviation has been subject to many years of debate.

There are probably a further 2-3 large sites in the town that can contribute housing and commercial space, but these may be prohibitively expensive to implement.

Current proposed, and on-going Town Centre development, part of which is unplanned windfall, is not of good quality, with several sites having been overdeveloped and providing limited housing types.

The Town Centre is currently ahead of the allocation proposed for it in the Local Plan, but with minimal Infrastructure investment which is an increasing issue.

The Wider Borough

The Town Centre and Urban area is unlikely to deliver all the extra dwellings required in the borough; providing family housing is a particular challenge. In principle developments that extend the town such as the one proposed at Gosden Hill could have fewer downsides, as in part they can use existing Town facilities, provided good sustainable transport links and other infrastructure (Schools, Medical Facilities, Rail Stations etc) are provided, and they are built to good modern design to the highest environmental standards.

A real concern is that Weyside Urban Village fails to address providing proper transport links,

failing to set a standard for the future.

Regarding development along the A3, we objected to the proposals at Wisley particularly on sustainability grounds, being a car-based development despite protestations to the contrary. We also objected to the poor quality of development in Ash and at Garlicks Arch. Garlicks Arch exhibits the issues with poor planning being dependent on car use, has poor design and provides little or no affordable/social housing. Although the A3 is being 'improved' at Junction 10 other improvements appear to have been delayed or quietly cancelled.

We also continue to object to what we believe is overdevelopment and poor quality on many of the smaller infill sites.

Local Strategy & Economy

We have tried to create a viable Local Strategy and Economy Group but this has proven very difficult and the group is currently in abeyance. We continue to believe we should have a group considering the Guildford Area meeting 3-4 times a year.

The current economic situation means that Guildford is operating in a challenging environment, although we remain a successful town.

The borough has seen several major companies leave the area e.g. Sanofi, Alexander Dennis and the closure of Debenhams, and

recently House of Fraser, in the town centre.

Neighbouring towns like Reading and Woking remain very attractive to businesses and provide a good retail offer to inhabitants.

Despite no Working Group we have continued to monitor relevant Strategies and Reports notably Guildford Borough Council (GBC) produced Guildford's Economic Strategy in early 2023 that we commented upon⁴ and that we view as an important contribution on consideration of the economic future of the borough.

The Society believes that the town needs to provide employment of all types to attract and keep the population in the town and avoid Guildford becoming solely viewed as a commuter centre. We need to build upon the mixed economy based on Professional Services (Legal, Accountancy), Education (University etc.), Retail, and the businesses fostered by the Research Park and Pirbright.

It should not be forgotten that many in Guildford also commute to jobs in London and elsewhere (e.g. Heathrow) using the reasonable rail links to London and creaking road network.

The Election

The major national parties appear to want to target new housing at a

Economy Report⁴
<https://www.guildfordsociety.org.uk/Economyreport1.html>

level, of circa 300,000 dwellings per annum. The planning system is heavily criticised for hindering slow economic growth, ignoring the lack of national infrastructure investment, and lack of Planning Resources in Local governments.

The Labour Party have a major desire to allow development on what is called 'Brown/Greybelt land which is defined as low quality Greenbelt areas. How this impacts Guildford is uncertain.

Society Matters Communications

We continue to update our Website, including keeping our Key Sites in the Borough updated See Map at Link⁵

We are also revising the Website to provide more information on our letters related to planning applications.

Although we update our Facebook page, we are aware it is not reaching as a wide an audience as possible. We need expertise to support a proper social media presence.

Engagement with others

We have been active in strengthening our relationship with Guildford Borough Council (GBC), in particular interacting with the new senior officers, including the new CEO Pedro Wrobel who have been appointed over the last two to

three years. We are especially interested in being able to comment and advise at the early stages of design for the strategic projects in the borough.

Executive

During the past year the Executive Membership has remained as

Alistair Smith - Chair
Peter Coleman - Deputy Chair and Chair of D&H
Gillian Cameron - Secretary
Barry Williams - Transport & Temporary Membership Secretary
John Baylis - Planning
Nic Allen - D&H and Planning
Rosemary Napp - D&H

We are pleased to have recruited John Harbor to the executive to act as our Treasurer. John is currently taking over management of the Society's financial affairs.

After many years devoted service to the Society Gillian Cameron is stepping down as Secretary. She remains on the Executive for the present.

We urgently need to strengthen the Executive. We are actively looking for new members to join the executive.

All the current Executive are standing again for re-election but in several cases, we anticipate that they will not serve their full term being replaced by others.

Key Sites in the Borough ⁵
<https://www.guildfordsociety.org.uk/Keysites.html>

Future of the Society

Ensuring the Society continues to thrive and respond to the needs of Guildford is a challenge. We are very aware that we must continue to focus on three areas:

1. Build up our Membership.

Like a lot of other local societies is losing membership. We need to recognise we have benefited from an era where many retired relatively early and had many active years to get involved. The segment of the population in their 30-40's are difficult to engage with partly as they are busy at the peak of their working and family lives.

2. Expertise

We are incredibly lucky to have access to members who have a wide variety of expertise, often gained in their working careers, or gathered on our working groups. We need to keep this expertise current and in sufficient depth for the future.

3. Funding

The Society does have costs to cover ranging from Website, E-Mail costs to having funds to support activities e.g. Public Meetings, Professional Advice.

The Executive consider we have a challenge with ensuring the Society remains a viable organisation. *We are probably about 12-18 months from having to make some very difficult decisions as active membership declines and ages.*

90th Anniversary

Next year the Society in its present form reaches its 90th anniversary. We are exploring options on how to mark this event. Currently, a favoured option is to donate 90 trees to mark 90 years to the borough. Discussions are ongoing on the feasibility of this option.

Thanks

Finally, thanks to all for your continued support. We could not operate the society without you.

I would ask you all for one action to support the society in 2024, please try to recruit a new member or subscriber to our newsletter.

Alistair Smith

Chair Guildford Society

Working Groups

Many thanks are given to the members of our working groups who have been as usual fully engaged in looking at their various areas of interest as you will see from the group reports.

Design and Heritage Group

The Design and Heritage group has had a busy year.

Quality of new development and maintaining streets and older buildings is critical to Guildford to improve the urban landscape and to maintain its attractiveness to visitors.

It is particularly important as new Buildings may have a long life, as concern grows on embodied Carbon prompting re-use. Unfortunately, we are seeing some very poor estate houses being produced and major schemes are showing unimaginative plans and design.

Design Quality - New development should be of quality design, built to high environmental standards using ideally reused and/or sustainable materials and have access to facilities for relaxation, retail, education and medical resources. Too many local developments are still using vast quantities of concrete, often using gas heating etc.

An example of better development that Guildford could aspire to, is the recently consented Phoenix Project in Lewes (See Link Below⁶) This scheme is being developed

by an organisation which is not one of the big developers.

We were fortunate to have the Phoenix project present at a public meeting the society organised in the autumn of last year.

Architecture Lectures - The 2023 Architecture Lecture was held at the University of Surrey on the 4th October.

The Society with our partners the University of Surrey welcomed two leading architects Peter Barber and Simon Hudspith to discuss '*The challenges of achieving good design for high density housing within urban settings*'. Both are respected and innovative architects who have successfully completed award winning urban housing which is unique to the location and provides healthy liveable space.

Both lecturers provided thought providing lectures with relevance to Guildford Town Centre which is under pressure to build large dense housing developments. North Street, The Plaza and St Marys Wharf match the density of schemes being built in London. The Lectures can be viewed on the Society's Website⁷.

⁶ The Phoenix Project
<https://www.guildfordsociety.org.uk/ThePhoenixSuccess.html>

⁷ Architecture Lecture videos
<https://www.guildfordsociety.org.uk/AL2023Videos.html>

Guildford Design Awards - The awards were held in 2023 as a joint exercise with the Guildford Borough Council. A judging panel of Society Members, Guildford Borough Council representatives, and invitees was assembled, worked together to review a long list and then visit a short list of entrants. See Details ⁸

Design Review Panels - The group has been exploring how the Design Panel Process operates. Currently the Design South East Panel reviews major developments for design quality. This panel is composed of independent architects who come from outside the borough.

The D&H group wish to see more local input into design decisions and have been discussing with GBC and Design South East options as how this can best be achieved. We hope to announce an agreed approach shortly.

Visits, Walks & Talks - The group has held, walks on the on Heritage and Architecture in Guildford and visits to new developments of interest elsewhere e.g. Cambridge. The group recognises that we can do more in this area.

The group has also held a meeting for members to allow the National Trust to provide details on their

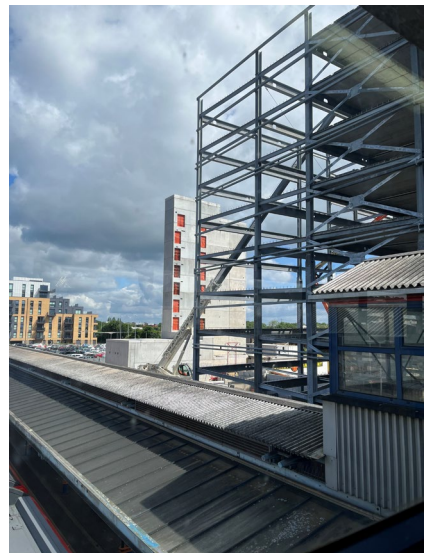
evolving plans for the preservation of Clandon House.

Planning Policy – Building Heights

The D&H group are extremely concerned that we have a weak Local Plan and Development Management Policies. There is a failure to make any mention of Height restrictions in the town.

A critical SPD for the Town Centre is one to manage Height of new buildings which would ensure new buildings have some relationship as far as height and mass is concerned with their surroundings.

The current Town Centre Views SPD has limitations, particularly in not managing how developments appear at a street level. Sadly, the current Guildford station development shows what we can expect on several other consented sites in the future. See Picture



⁸ Guildford Design Awards
2023 [https://www.guildfordsociety.org.uk/GDWinners2023.html#Heritage and Environment](https://www.guildfordsociety.org.uk/GDWinners2023.html#Heritage%20and%20Environment).

The D&H Group has analysed other Cities and Town Heights policies and have produced a summary of how Guildford might create a heights policy (See Footnote⁹)

We also contend that well-constructed SPD's would help the council manage more effectively the pressure for development, and save money both for the council and the development community by providing clarity at pre-application stage on what is considered appropriate for sites.

Overdevelopment is also a critical concern where Buildings are put into sites that are too small and fail to provide space for Public Realm.

Heritage

The origins of the Society are in protecting heritage buildings. We are concerned at the damage to heritage buildings due to inappropriate development on nearby and/or adjoining sites. In addition, we are looking at locally listed buildings to see if any might merit consideration for improved protection. We have improved linkage on Heritage matters between D&H and Planning groups recently.

The Society has continued to support Heritage Open Days (HODs) acting as guides for opened buildings.

We are also considering whether to review the list of locally listed buildings to see if the lists need additions.

⁹ Height Policy Analysis
<https://www.guildfordsociety.org.uk/GuildfordHeightSPD.html>

Planning Applications Team

The Planning Team has met regularly every 3 weeks to review new planning applications. The group reviews applications that

- Impact on Heritage Buildings
- Are for Major Developments over 15 Dwellings, and/or major redevelopment of existing buildings.
- Permitted Development Applications in the Town Centre
- Infrastructure Improvements e.g. the Multi Storey Car Built at the Royal Surrey County Hospital.

The Planning Team, with aid from members of the Design and Heritage Group have had to deal with several major applications.

St Mary's/Debenhams Site - The society viewed this site as one of the best in the South of England. The consented scheme on which development has started in early in 2024 on current plans, we still contend is a missed opportunity, with a overscale mundane design, providing a little public benefit.

North Street - After many failures to develop the site over decades St Edwards proposed a scheme that was consented in modified form in October 2023. It is anticipated work on site will start mid 2024 with the first phase including a revised bus station and North Street modifications.

Wisley Airfield - The Society has participated in consultations with the developers Taylor Wimpey. The Society has noted that the site

is a Strategic Site in the Local Plan 2019 and we have confined our comments to, in particular, the lack of transport infrastructure to support the scheme.

The Planning Group remains concerned that there are schemes coming forward which are of poor quality and represent overdevelopment on sites. Several in-fill schemes have been particularly poor.

Solar Farms. - An emerging issue is the applications for Solar Farms. Most of these have been for small domestically sized arrays in parts of fields/garden but often situated in sensitive landscape areas. Recently the University has applied for a large Solar Farm at Blackwells Farm. The society has objected to this latest application.

The society feels that a policy needs production to guide how to plan for Solar Farms. The society accepts solar power arrays are a component of the move to net-zero. There needs to be policies to guide development.

Heritage - Recently the group has been joined by Niels Laub who focusses on applications for Listed Buildings. We are already benefiting from his expertise.

Transport Group

The Transport Group has met regularly, every 4 to 6 weeks.

The Group bought together many of its ideas into a document published in April 2022 “ *A Manifesto for Change - Guildford Transport - Improving and Supporting the Borough*”.

This document is currently being updated, to reflect changes. A element of this will be a full review of the ideas on traffic presented in the draft material from Shaping Guildford's Future.

Current report is at footnote¹⁰

The group has reviewed and commented on a diverse range of subjects including:

Rail Services - Post Covid rail services have been slow to be re-established e.g. only 3 not 4 fast services to London. The new trains proposed for the line have failed to materialise. South West Rail don't appear to be on top of the issues of upgrading services and encouraging rail usage.

Local Plan - We hope the local Plan will revise policies to strengthen the need to provide sustainable transport links. A indicator of the authorities resolve in this matter will be the provision

of rail stations at Gosden Hill and Blackwells Farm proposed developments.

Bus Services - The group has been interested to see Surrey County Council extend its On Demand 'Connect' bus network to areas around Guildford. It will be interesting to see how this service is adopted by the local community.

Bike Lanes / Active Travel - This subject has been subject of considerable debate with the proposed London Road Active travel scheme causing considerable concern locally. The scheme is going forward in a more limited form.

The Bike Hire Scheme is due to arrive in Guildford in mid 2024. Although we support the moves to encourage all forms of active travel we remain very concerned that Cycling faces a moajor issue in that the Guildford Gyratory is really not suitable for cycling. SCC needs to do more to bring forward good plans for cycling.

Air Quality - The transport network imposes high levels of pollution in areas of Guildford. As an example, monitoring has shown that the A3 at Guildford suffers from some of the highest levels of nitrogen dioxide on the national road network. The section from Manor Way to the Wooden Bridge junction.

The Department of Transport are making slow progress in bringing forward proposals for the A3.

¹⁰ Transport Report

<https://www.guildfordsociety.org.uk/2021-4-Transport-in-Guildford-manifesto-for-change.pdf>

Page Intentionally Left Blank

Membership Secretary's Report

Our membership has remained broadly constant. We have concluded a review of our membership list. The numbers below are as at the 16th June 2024.

We currently have:-

Group	Total
Membership	309
<i>Signed up for our Newsletter</i>	210

It would be appreciated if existing Members would publicise the Society to friends and neighbours to increase the membership.

Treasurer's Report and Accounts

We have a recently appointed Treasurer John Harbor who is in the process of taking over all aspects of the Society's financial matters.

Comments on financial Statement

The financial statement has yet to be reviewed by a qualified accountant. This is not an audit, which is not required due to our small size under charity commission rules, but is a verification for the executive that accounts have been properly administered and reflect a proper view of the society's affairs.

The Executive reviews finances at every meeting.

Accounts have been lodged with the Charities commission for 2023 -2024.

Statement of Income and Expenditure for the year to 31st March 2023

INCOME	2022-2024		2023-2024	
Subscriptions	£2,579.11		£2,973.35	
Donations	£98.46		£692.80	
Architecture Lecture	£771.61		£44.24	
GDA Deposit Rtn	£250.00		£2,650.00	
Society Social Events	£306.64		£50.51	
GDA Donations	£0.00		£200.00	
Other	£54.03		£0.00	
Total Income		£4,059.85		£6,610.90
OUTGOINGS				
Postage	£0.00		£129.36	
Print & Publicity	£72.00		£105.00	
Outgoing Subscriptions	£358.00		£308.50	
Website	£300.00		£762.00	
Refreshments	£0.00		£87.82	
Insurance	£394.66		£394.66	
Lectures and Events. Etc	£20.00		£596.00	
GDA Outgoings	£3,082.90		£3,092.07	
Architecture Lecture	£1,390.76		£363.60	
Society Social Events	£199.82		£497.00	
Other			£350.00	
Total Outgoings		£5,818.14		£6,686.01
Cumulative Balance		-£1,758.29		-£75.11
Bank Cash at Year End				£14,386.16

Group Membership as at June 2024

Design and Heritage

Peter Coleman Chair

Rosemary Napp Secretary

Nic Allen

Niels Laub

Anna Hummel

Gerry Lytle

Mike Loates Taylor

Planning

Alistair Smith (Acting Chairman),

John Baylis (Secretary),

John Harrison

Amanda Mullarkey

David Ogilvie

Niels Laub

Nic Allen

Peter Coleman (Corresponding Member)

Transport Members

Alistair Smith - Chair

Barry Williams - Secretary

Hugh Anscombe

Keith Chesterton

Doug Clare

Trevor Jones

Chris Blow, (Corresponding Member)

Colin Selvin, (Corresponding Member)

Maurice Barham, (Corresponding Member)

Contact List

Chair

Alistair Smith

chair@guildfordsociety.org.uk

Hon.Secretary

Vacant

secretaryguildfordsociety.org.uk

Hon. Treasurer

John Harbor

Contact via The Chairman

Work Groups & Leaders:

Planning Applications Team

Temporary Chairman Alistair Smith

planning@guildfordsociety.org.uk

Transport Group

Position Vacant

transport@guildfordsociety.org.uk

Design & Heritage Group

Peter Coleman

design@guildfordsociety.org.uk

Membership Secretary

Barry Williams on a Temporary Basis

membership@guildfordsociety.org.uk

Website - www.guildfordsociety.org.uk

Society Aims and Objectives

- Conserving the best of Guildford town, urban area, villages and countryside
- Promoting high standards of planning and architecture
- Influencing the pace and type of development
- Responding to increasing challenges relating to the environment (including risks to the AONB and Greenbelt) and local economy.
- Identifying, integrating and considering matters that impact across the borough, such as transport flows, and the balance between development in the Town and Countryside.
- Raising public awareness on these issues and promoting informed debate.

The society is a member of Civic Voice, the national charity for the civic movement in England.

Two of the Winning Entries from the Guildford Design Awards 2023



Boathouse, Millbrook



Bankside, Walnut Tree Close



Access The Society Website



See our Key Sites Map of Development in Guildford



***The Guildford Society.
C.I.O reg. Number 1174395.
Registered Office: 24 Bury Fields, Guildford GU2 4AZ***

THE GUILDFORD SOCIETY

England & Wales - Charity number 1174395

Accounts



The Guildford Society
Annual Report 2021-2022
Annual Report 2022-2023
86th Annual General Meeting
www.guildfordsociety.org.uk

Guildford Society
Annual Report 2020
86th Annual General Meeting

86th Annual General Meeting
Monday 4th December 2023

Agenda

1. Apologies for absence
2. Minutes of the AGM held 6th October 2020
3. Matters arising
4. Chairman Report
5. Honorary Treasurer's report
6. Election of Trustees
7. Any other business

Minutes of 85th AGM Meeting

6th October 2020 7:00PM

Conducted by Zoom Call due to the pandemic restrictions.

The Chairman, Alistair Smith, welcomed the 32 members who signed into the meeting.

Apologies none received.

Minutes of the 84th AGM held on 7th June, 2018 were approved.

Matter's arising: There were none.

Chairman's and Group Reports: These were incorporated into the Annual Report which was sent to all members, either by post or electronically to those for whom the Society holds email addresses. The previous year's Minutes were also included.

Chairman's Address:

The Chairman discussed the main points in the Annual Report highlighting that the Pandemic had made normal Society activities more complex. The Chair noted that the use of Video conferencing was enabling the Executive and Workgroups to continue to be active.

Like other Towns the impact of the Pandemic is unclear, but it has certainly impacted the Retail environment severely. Guildford is also losing major employers to other towns e.g. Reading.

The Chair highlighted the changes in the Executive and at Group level detailed in the Annual report.

The Society has refined its objectives, and these have been added to the Website.

A change that will be seen shortly is the launch of a new website with a crisper design and new logo. We hope this will make the website more relevant to our members and other users.

Honorary Treasurer's Report and Accounts: These were available at the meeting and subsequently on the Society's website. They had been independently verified by Mr Keith McPherson, an accredited Independent Examiner. There were no questions arising.

Election of Trustees: No nominations for new trustees had been received. Those standing for re-election were approved.

Any other business: No other matters were raised, so the meeting was closed at 8pm.

Chairman's Report 2021-2022 & 2022-2023

Due to several factors we failed to conduct an Annual General Meeting in 2022 and are thus covering two years in this report.

Why the Society is Important

The Society is the Civic Trust for the Guildford Area. As such it provides a non-political group that can contribute to the continuous debate as to how Guildford evolves to meet future challenges; whilst preserving its Heritage and areas of Natural Landscape that make it such an attractive area to live.

Keeping the Society relevant to Guildford is a constant challenge, as we need to refresh the Society with new active members who keep our ideas relevant.

The society needs to provide effective and informed input into the necessary debates to ensure Guildford optimises the balance between Economic Vibrancy, protecting our Heritage and Environment, and providing well designed dwellings and space to live, work and play.

Key Issues in Guildford

Economy

The current economic situation means that Guildford is operating in a challenging environment, although we remain a successful town.

The borough has seen a number of major companies leave the area e.g. Sanofi, Alexander Dennis and the closure of Debenhams, and recently House of Fraser, in the town centre. Neighbouring towns like Reading and Woking remain very attractive to businesses and provide a good retail offer to inhabitants.

The Society believes that the town needs to provide employment of all types to attract and keep the population in the town and avoid Guildford becoming solely viewed as a commuter centre.

GBC produced Guildford's Economic Strategy in early 2023 that we commented upon¹ and that we view as an important contribution on consideration of the economic future of the borough.

Completing 'Shaping Guildford's Future'

This is a wide-ranging program to develop an adopted masterplan for the Town which will guide development in the future. It is part of what has been termed the Guildford Economic Regeneration program (GERP), the Guildford Economic Strategy is part of this. SGF has been commissioned by GBC which states the council's ambition is to breathe new life into the town by opening up the riverside, reducing congestion, improving alternative, sustainable and affordable transportation as well as making the centre a more attractive place to live, work and visit.

The Society has commented on the proposals made so far and members have attended consultation meetings. Progress has been very disappointing despite interim Stage 2 proposals being presented to the Council in September 2022, which gave the council confidence to endorse the report and allocated a further funding allocation of £3 million for stage 3.

Since that time, there has been a change of council administration and little has been heard from councillors or officers within GBC. The Society is concerned that given the council's financial situation that this project is now very much on the back burner.

The Society's detailed views have been made known to GBC. We argue there is insufficient information about alternative

Economy Report¹

<https://www.guildfordsociety.org.uk/Economyreport1.html>

public transport options, no mention of connectivity for rail services, that by taking out sections of the road network it might reduce town-centre resilience and that overall, we have a feeling that the boundaries for the scheme are drafted rather narrowly without sufficient study of how traffic affects outlying areas and villages. [Our Comments see Footnote²](#)

Strengthening Planning Policies

Our fears about the impact of the Local Plan 2019 with its poor policies have sadly come to pass.

The Society argued, with others, for some of these policies to be strengthened in the Development Management Policies that complete the Local Planning. Sadly, only very minor changes were achieved.

The Society is now working with others to persuade the council to develop a proper heights policy for Guildford Town. Many of the candidates at the recent local elections supported the concept of height policy.

The Society will be meeting a working group of councillors, shortly, to discuss how the borough can learn from other authorities which have clear policies to manage height.

Enhancing Design Quality

Quality of new development and maintaining streets and older buildings is critical to Guildford to improve the urban landscape and to maintain its attractiveness to visitors.

As you will read below the Design and Heritage Group has been active in various initiatives to improve awareness of the impact of good design.

It is particularly important as new Buildings may have a long life, as concern grows on embodied Carbon prompting re-use. Unfortunately, we are seeing some very poor estate houses being produced and major schemes are showing unimaginative plans and design.

Conserving our Heritage

Shaping Guildford's Future ²

https://www.guildfordsociety.org.uk/Shaping_Guildford_Future_Critique_v2_1-23.pdf

We have continued to support the Heritage Open Days.

Caring for our Environment

The Environment is an issue that is of vital importance, as a Society we have contributed across the Work Groups to issues such as why not Redevelop rather than Rebuild on various sites, protecting the Greenbelt, enabling active travel.

Future of the Society

Ensuring the Society continues to thrive and respond to the needs of Guildford is a challenge. We are very aware that we must continue to focus on three areas:

1. Build up our Membership.

Sadly, the Society like a lot of other local societies is losing membership. We need to recognise that like others we have benefited from an era where many retired relatively early and had many active years to get involved. The segment of the population in their 30-40's are difficult to engage with partly as they are busy at the peak of their working and family lives.

2. Expertise

We are incredibly lucky to have access to members who have a wide variety of expertise often gained in their working careers or gathered after engagement with our working groups. We need to be careful to keep this expertise current and in sufficient depth for the future.

3. Funding

The Society does have costs to cover ranging from Website, E-Mail costs to having funds to support activities e.g. Public Meetings, Professional Advice. We need to keep our funds at a reasonable level via subscriptions, donations, and paid for activities.

Engagement with others

We have been active in strengthening our relationship with Guildford Borough Council (GBC), in particular interacting with the new senior officers who have been appointed over the last two to three years. We are especially interested in being able to comment and advise at the early stages of design for the strategic projects in the borough.

We have good relations with other Guildford Groups e.g. Guildford Residents Association, Guildford Environment Forum and value having joint positions on certain topics.

Communications

We continue to update our Website. A significant change in early 2023 was the addition of a interactive map of the borough showing pictures and short summaries of recent and proposed developments in the borough. This is fully compliant with smart phones so can be used on whilst walking past sites or new builds. [See Map at Link³](#) as we are very aware the society's demographic doesn't match that of the area. We are exploring how to make our communications more relevant to busier and younger members of the population.

We are also going to revise the Website to provide more information on our letters related to planning applications in the near future.

Although we update our Facebook page, we are aware it is not reaching as a wide an audience as possible. We are planning on rectifying our use of social media shortly.

Executive

During the past two years the Executive Membership has remained as

Alistair Smith Chair

Peter Coleman Deputy Chair and Chair of D&H

Gillian Cameron Secretary

John Shorto Membership Secretary

John Baylis

Nic Allen

Rosemary Napp

Barry Williams

John Shorto is retiring at this AGM and we thank him for his contribution to the Society over the past years.

The Executive recognise that we need to strengthen the Executive. We are actively looking for new members to join the

executive and hope to appoint new members over the coming months.

All the current Executive are standing again for re-election but in several cases we anticipate that they will not serve their full term being replaced by others.

Thanks

Finally, thanks to all for your continued support. We could not operate the society without you.

I would ask you all for one action to support the society in 2024, please try to recruit a new member or subscriber to our newsletter. We have made it easier to become a supporter on the new website.

Alistair Smith

Chair Guildford Society

Key Sites in the Borough ³

<https://www.guilfordsociety.org.uk/Keysites.html>

Working Groups

Many thanks is given to the members of our working groups who have been as usual fully engaged in looking at their various areas of interest as you will see from the group reports.

We have tried to create a viable Local Strategy and Economy Group but this has proven very difficult and is the group is currently in abeyance. We continue to believe we should have a group considering the Guildford Area meeting 3-4 times a year.

Local Strategy & Economy Group

Despite no Working Group we have continued to monitor relevant Strategies and Reports notably Guildford Borough Council (GBC produced Guildford's Economic Strategy in early 2023 that we commented upon⁴ and that we view as an important contribution on consideration of the economic future of the borough.

The current economic situation means that Guildford is operating in a challenging environment, although we remain a successful town.

The borough has seen a number of major companies leave the area e.g. Sanofi, Alexander Dennis and the closure of Debenhams, and recently House of Fraser, in the town centre. Neighbouring towns like Reading and Woking remain very attractive to businesses and provide a good retail offer to inhabitants.

The Society believes that the town needs to provide employment of all types to attract and keep the population in the town and avoid Guildford becoming solely viewed as a commuter centre. We need to build upon the mixed economy based on Professional Services (Legal, Accountancy), Education (University etc.), Retail, and a group of hi tech industries fostered by the Research Park and Pirbright.

It should not be forgotten that many in Guildford also commute to jobs in London and elsewhere (e.g. Heathrow) using the reasonable rail links to London and creaking road network.

Economy Report⁴
<https://www.guildfordsociety.org.uk/Economyreport1.html>

Design and Heritage

The Design and Heritage group has had a busy two years.

Architecture Lectures - The group is consistently attempting to improve design, unfortunately we still see too many uninspired designs. The D&H group have been instrumental in running two Architecture lectures.

- 'Sustainable Design in Housing, addressing the Climate and Energy crisis' given by Justin Bere and Alex Clifford in 2022 See Full Details at Footnote⁵

and

- Multiple Housing - Best Practice for the Future? given by Jason Cornish and Glen Howells in 2021 See Full Details at Footnote⁶

Guildford Design Awards The awards were held in 2021 as a joint exercise with the GBC. A judging panel of Society Members, GBC representatives, and invitees was assembled to form the judging panel.

The Guildford Design awards were not held in 2022, due to the lack of new buildings due to the Covid pandemic, instead a series of Exhibitions of past winners was shown in various village halls across the Borough with a final two-day event in the Guildhall.

Heritage and Environment. - We have not been as active as we might have been due to lack of resources and impact of dealing with several major developments in the borough. However, we are looking at

2022 Architecture Lecture 5
<https://www.guildfordsociety.org.uk/AL2022Videos.html>

2021 Architecture Lecture 6
<https://www.guildfordsociety.org.uk/AL2021Videos.html>

instituting a series of visits/ and walks to interesting New Buildings outside the borough and

The society has continued to support Heritage Open Days (HODs) acting as guides for opened buildings and also in 2022 having a exhibit in the old Dennis Factory on the gyratory system,

Planning Policy - The D&H group are extremely concerned that we have a weak Local Plan particularly as the Development Management Policies failed to make any mention of Height restrictions in the town. We are reliant on Town Centre Views Document which although it has commendable aspects fails to protect streetscape and has many limitations.

Overdevelopment is also a critical concern where Buildings are put into sites that are too small and fail to provide space for Public Realm.

Visits & Walks The has held Walks e.g. walks on Heritage and Architecture in the Centre of Guildford and visits to new developments of interest elsewhere e.g. Cambridge. The group recognises that we can do more in this area.

Planning Group 2023-2023:

The Planning Group has met regularly every 3 weeks to review new planning applications. The group reviews applications that

- Impact Heritage Buildings
- Are for Major Developments over 15 Dwellings, and/or major redevelopment of existing buildings.
- Permitted Development Applications in the Town Centre
- Infrastructure Improvements e.g. the Multi Storey Car Built at the Royal Surrey County Hospital.

The Planning Group, with aid from members of the Design and Heritage Group have had to deal with several Major applications.

Weyside Urban Village - This is the redevelopment of the Sewage Treatment Site in Slyfield. This is a large scheme promoted by Guildford Borough Council. As noted the D&H Group participated in the Design Workshops to create a Design Guide for the development. The Society expressed concerns that the site had inadequate sustainable transport links, and that the spine road running through the site could have been routed to make for a more open and pleasing riverside.

St Mary's/Debenhams Site The society viewed this site as one of the best in the South of England. The consented scheme on which development will start in 2024 on current plans we still contend is a missed opportunity, with a overscale mundane design, providing a little public benefit.

North Street - After many failures to develop the site over decades St Edwards proposed a scheme that was consented in modified form in October 2023.

Wisley Airfield - The Society has participated in consultations with the developers Taylor Wimpey. The Society has noted that the site is a Strategic Site in the Local Plan 2019 and we have confined our comments to, in particular, the the lack of transport infrastructure to support the scheme.

The Planning Group remains concerned that there are schemes coming forward

which are of poor quality and represent overdevelopment on sites. Several in-fill schemes have been particularly poor.

Transport Group

The Transport Group has met regularly, normally every 4 to 6 weeks.

The Group bought together many of its ideas into a document published in April 2022 “ *A Manifesto for Change - Guildford Transport - Improving and Supporting the Borough*”. Note: - This document will be updated in the near future to reflect changes. See Link to Report at footnote 7.

The group has reviewed and commented on a diverse range of subjects including:

North Street Scheme - The impact due to the scheme proposing to stop up two roads to improve the bus station layout, pedestrianisation of mid to upper North Street, mobility hubs etc. We identified safety concerns on proposals to make Leapale Road two-way for bus movement and for HGV and taxi movement back onto the gyratory system from the lower end of North Street.

Rail Services - A demand for electrification and / or hybrid train operation on the North Downs to improve services and air quality. A need for faster and more frequent services on the Portsmouth line and a return to pre-covid schedules at least; plus the renewed interest in a southern rail link to Heathrow Airport from Guildford

A3 National Highways - Addressing our local MP's demands for tunnelling or widening A3 through Guildford. We agree there is a need to separate out long distance through traffic from the town-centre, albeit there may be more cost-effective ways to do this
Air Quality Management Plan - for the town centre

Local Plan - Transport implications for housing developments within the Local Plan that are car dependent or have no local bus system built in.

Bus Services – Responded to Surrey County Council's (SCC) BSIP – Bus Service Improvement Programme by studying demand for cross-town routing, expanding Park and Ride sites, expanding On Demand bus services, suggesting ideas for a Guildford Travel Card for all transport modes, asking why the new bus station does not incorporate opportunity charging for electric buses

Bike Lanes / Active Travel - Expanding the Sustainable Movement Corridors and greater use of bike lanes and the pros and cons of the planned e-bike hire share scheme to be rolled out in Guildford in 2024

Town Centre - Air Quality Management Areas – AQMA - In October 2021, GBC declared an AQMA which should consider the area where potential current exposure is located or may be in the very near future, i.e. Millbrook, Commercial Road, and the Park Street, Bridge Street/Onslow Road sections of the Gyratory. There appears to have been no progress in instituting measures to improve air quality in this AQMA or in others Shalford and Compton.

15 Minute Towns - The Transport Group has held discussions with representatives of the Department for Transport on our views for 15-minute towns.

Transport Report 7

https://www.guilfordsociety.org.uk/2021-4_Transport_in_Guildford_manifesto_for_change.pdf

Membership Secretary's Report

Our membership has remained broadly constant. We are concluding a review of our membership list. The numbers below are as at the 24th November.

We currently have:-

Group	Total
Membership Single	167
Membership Joint	99
Total Membership	266
Corporate Membership	1
<i>Signed up for our Newsletter</i>	195

This is certainly true for the Guildford Society. It would be appreciated if existing Members would publicise the Society to friends and neighbours to increase the membership.

Treasurer's Report and Accounts

We have yet to appoint a new treasurer. We have now identified a suitable candidate and hope to appoint a new treasurer shortly. The new treasurer will be a member of the Executive.

Comments on financial Statement

The financial statement has yet to be reviewed by a qualified accountant. This is not an audit, which is not required due to our small size under charity commission rules but is a verification for the executive that accounts have been properly administered and reflect a proper view of the society's affairs. Two Summary set of accounts are presented for years 2022-2023 and 2022-2023.

The Executive reviews finances at every meeting.

Accounts have been lodged with the Charities commission for both 2021-2022 and 2022-2023

THE GUILDFORD SOCIETY

**Statement of Income and Expenditure
for the year to 31st March 2022**

	2021-2022	2020-2021
INCOME		
Subscriptions & Donation	£3,033.45	£2,632.12
Donations	£61.00	£47.00
Architecture Lecture Income	£0.00	£0.00
Christmas Social	£2448.88	£0.00
Town Bridge Market	£300.00	£0.00
Other	£0.00	£0.00
TOTAL RECEIPTS	5,943.33	£2,679.12
EXPENDITURE		
Postage	£88.00	£55.60
Print & Publicity	£168.00	£116.30
Subscriptions	£426.00	£406.00
Website & e-mail	£600.23	£10,169.98
Refreshments	£0.0	£0.00
Insurance	£285.36	£285.36
Lectures and Events	£120.00	£1,768.80
Guildford Design Awards expenses	£2,715.12	£0.00
XMAS Social		£243.00
Other	£40.00	£32.95
TOTAL PAYMENTS	£4,454.48	£13,077.99
NET RECEIPTS	£1,528.85	-£10,398.87
Total Funds in Bank	£17,929.85	£16,349.85

THE GUILDFORD SOCIETY

**Statement of Income and Expenditure
for the year to 31st March 2023**

	2022 - 2023	2021-2022
INCOME		
Subscriptions & Donation	£2,579.11	£3,033.45
Donations	£98.46	£61.00
Architecture Lecture Income	£771.61	£0.00
Christmas Social	£250.00	£2448.88
Town Bridge Market	£306.64	£300.00
Other	£54.03	£0.00
TOTAL RECEIPTS	£4,059.85	5,943.33
EXPENTIDURE		
Postage	£0.0	£88.00
Print & Publicity	£72.34	£168.00
Subscriptions	£358.00	£426.00
Website & e-mail	£300.40	£600.23
Refreshments	£0.00	£0.0
Insurance	£394.66	£285.36
Lectures and Events	£20.00	£120.00
Guildford Design Award	£3,083.90	£2,715.12
Architecture Lecture	£1,390.76	£40.00
Society Social Events	£199.82	
Other	£50.00	
TOTAL PAYMENTS	£5,833.14	£4,454.48
NET RECEIPTS	-£1,773.29	£1,528.85
Total Funds in Bank	£16,349.00	£17,929.59

Group Membership

Design and Heritage

Peter Coleman Chair
Rosemary Napp Secretary
Nic Allen
Niels Laub
Anna Hummel
Gerry Lytle

Planning

Alistair Smith (Acting Chairman),
John Baylis (Secretary),
Peter Coleman,
John Harrison
Amanda Mullarkey
David Ogilvie
Nic Allen.

Transport Members

Alistair Smith - Chair
Barry Williams - Secretary
Hugh Anscombe
Keith Chesterton
Doug Clare
Trevor Jones
Chris Blow
Colin Selvin, now a Corresponding Member
Maurice Barham, now a Corresponding Member

Contact List

Chair

Alistair Smith

chair@guildfordsociety.org.uk

Hon.Secretary

Gillian Cameron

tel. 01483 503172

secretaryguildfordsociety.org.uk

Hon. Treasurer

Position vacant

Contact via The Chairman

Work Groups & Leaders:

Planning Group

Temporary Chairman Alistair Smith

planning@guildfordsociety.org.uk

Transport Group

Position Vacant

transport@guildfordsociety.org.uk

Design & Heritage Group

Peter Coleman

design@guildfordsociety.org.uk

Membership Secretary

Barry Williams on a Temporary Basis

membership@guildfordsociety.org.uk

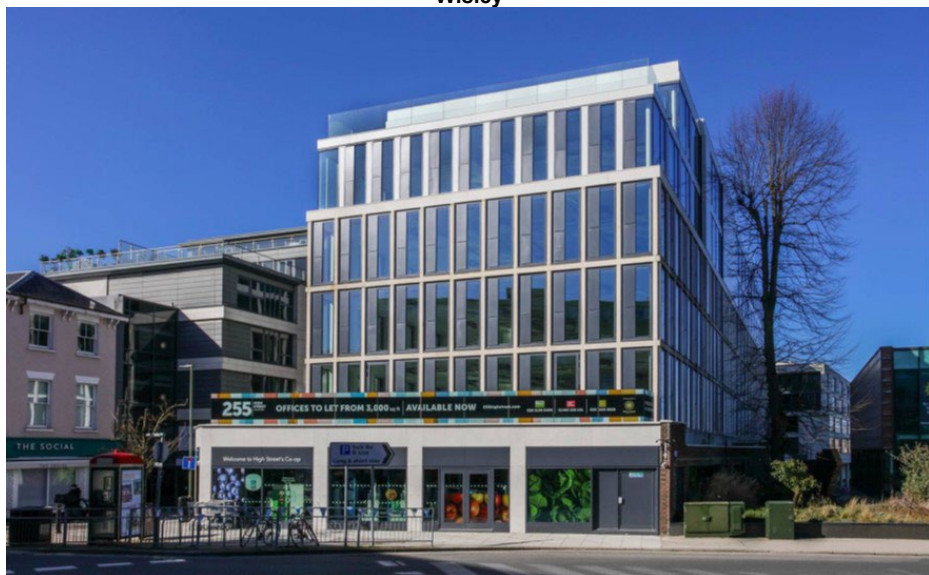
Website - www.guildfordsociety.org.uk

Intentionally Blank

Two of the Winning Entries from the Guildford Design Awards 2021



**RHS Hilltop
Wisley**



255 High Street Guildford.

***The Guildford Society.
C.I.O reg. Number 1174395.
Registered Office: 24 Bury Fields, Guildford GU2 4AZ***



Access The Society Website



See our Key Sites Map of Development in Guildford



THE GUILDFORD SOCIETY

England & Wales - Charity number 1174395

Accounts

Guildford Society Annual Report

April 2021 to March 2022

The Covid pandemic eased during the year and the Society resumed physical meetings for its workgroups together with Zoom events. Sadly, an upsurge in Covid cases caused us to cancel our Christmas social event, but by Easter the pandemic had eased to allow the holding of meeting and social events.

Guildford has continued to suffer due to Covid-19 pandemic, particularly the retail sector in the Town Centre.

The government made life difficult as the planning system was subject to much proposed change, not helped by a number of ministerial appointments during a turbulent time in UK politics. The status of the Planning for the Future White Paper has been subject to a number of major revisions.

The Local Plan that is based on assumptions related to Infrastructure notably A3 upgrades which have been delayed which impacts the ability to build on Strategic Sites thus impacting the fulfilment of housing targets in the Local Plan. It looks as if the M25/A3 junction will finally be consented.

Pressure continues to consent building on smaller plots in the countryside due to villages in part being removed from the Green Belt.

As a Society we continue to try and provide effective and informed input into the necessary debates to ensure Guildford optimises the balance between Economic Vibrancy, protecting our Heritage and Environment, and providing well designed space to live, work and play.

Working Groups

Much thanks is given to the members of our working groups who have been as usual fully engaged in looking at their various areas of interest as you will see from their respective reports.

The **Design and Heritage Group** (D&H) organised a successful Guildford Design Awards Exhibition in conjunction with Guildford Borough council for the first time. The awards were presented at the Guildford Baptist Church (one of the winners) in November. Interviews with the winners were made and have been placed on the Website. Sadly it became obvious that due to the low levels of completion it was not viable to hold a Design Award process in 2022. The plan is to hold a 2022 – 2023 design awards event in 2023. We are looking at holding a Design Awards Exhibition to fill the gap in later in 2022.

Finally, we were very grateful to attract sponsorship for the awards which helped defray the costs of holding the event.

The Architecture Lecture took place in the autumn where we had two architects speaking on Multiple Housing. Providing quality multiple housing has a special importance for Guildford with several large new developments planned in the Town Centre, Weyside, Wisley, Blackwell Farm and Gosden Hill. The Society is keen to see the design quality of multiple housing schemes improved in the Borough.

We were fortunate to have two engaging and interesting lectures, Jason Cornish, Partner at Feilden Clegg Bradley Studios (FCBStudios), and Glenn Howells, Managing Partner at Glenn Howells Associates.

Jason and Glenn discussed a wide range of issues related to Multiple Housing, illustrated by solutions they had adopted in various schemes. Areas covered included, Sustainability, Housing Forms, Landscape, Dealing with Transport, and Building Communities. They answered questions from the audience at the end of the two talks. We videoed both talks and after editing published these on our website.

The **Planning Group** met regularly to comment as required on planning applications. The group also collaborated with D&H on major applications. The group kept three major schemes under review during the year Stag Hill, North Street, St Mary's Wharf ex Debenhams, and Wisley Airfield. These are all due to come up for determination late in 2022 or early 2023. In addition comments were made on the Local Plan part 2 Development Management Policies. Our key concern with the DMP was the lack of robust policies to manage Height and Density of development.

The **Transport Group** produced a comprehensive paper on its ideas for Transport in Guildford covering all modes of transport (Published on the 13th April 2022). The Group also responded to the strategy proposed for Transport for the Southeast. The North Street scheme, referred to above, also includes a totally revised bus station and changes to road layout. The transport group commented on these changes via the Planning Group.

Shaping Guildford's Future

The Borough Council has embarked on a programme Shaping Guildford Future which is aimed at re-establishing the towns standing in Surrey and across the wider region. The focus is to solve issues with traffic congestion, poor air quality, flooding, poor architecture and public realm. The Council believes that Guildford needs a "resilience and growth" plan to defend itself against becoming a secondary centre in Surrey.

The Society has contributed views to the initial fact finding and consultation papers. We will be interested to see the outputs from this important work..

The Society

We have welcomed new members during the year but could always do with more.

We depend on being able to access a wide variety of expertise within our membership base, gained in their working careers or gathered after engagement with our working groups. We need to maintain this expertise for the future. We are thus always pleased to have members agree to join our working groups and also value members who have links to other groups within the area.

Our Website has continued to be regularly updated and we have been gratified by response to the news items we have placed on the site.

Finances

Our accounts are attached.

THE GUILDFORD SOCIETY		
Statement of Income and Expenditure for the year to 31 st March 2022		
INCOME		
GSoc Subscription	£3,033.45	
Donations	£61.00	
Architecture Lecture Income		
Guildford Design Awards Income	£ 2548.88-	
Xmas Social Income	£ -	
Town Bridge Market	£ 300.00	
Other	£ -	
Cumulative Income YTD		£5,943.33
OUTGOINGS		
Postage	£88.00	
Print & Publicity	£168.30	
Outgoing Subscriptions	£426.00	
Website E-Mail etc.	£600.00	
Refreshments	£ -	
Insurance	£285.36	
Lectures and Events. Etc	£120.00	
Guildford Design Awards Expenses	£ 2,715.12	
Xmas Social	£ -	
Other	£40.00	
Cumulative Payments YTD		£4,414.48
Cumulative Net Receipts		£1,528.85
Banking Balance at end of the Year		
Deposit Account (773)		£13,316.86
Current Accounts		
Bank Balance (701)		£1,512.00
Bank Balance (326)		£3,100.99
Total Funds		£17,929.85

Thanks

Finally, thanks to all of you for your continued support. We could not operate the society without you.

I would ask you all for one action to support the society in 2021-22, please try to recruit a new member or subscriber via our website where we have made it far easier to sign up to be a supporter.

Alistair Smith

Chair Guildford Society

Chair@guildfordsociety.org.uk

www.guildfordsociety.org.uk

October 2022

THE GUILDFORD SOCIETY

England & Wales - Charity number 1174395

Accounts

Guildford Society Annual Report

April 2020 to March 2021



Chairman's Report 2020 - 2021

The year was dominated by the Covid pandemic which restricted activity for the society. Our executive and workgroups switched to using Zoom for meetings effectively. We cancelled several public events including the annual architecture lecture and our Christmas social.

One casualty was the Town Bridge Market which couldn't operate for months, and we reluctantly decided to stop its operation. The Town Bridge Market on a modest scale paved the way for the larger craft events now held on the High Street; so it has been a success in enlivening the town. We thank all the stall holders who have contributed over the years.

Executive Changes

The Executive sadly lost two members during the year.

Gordon Bridger a stalwart of the society and a much-valued member of our executive, died peacefully at home 27th November 2020, he was 92. Gordon was a member of The Guildford Society for 50 years, during that time he was an active and influential member of the Society, still attending as a member of our executive committee until his recent short illness.

Doug Scott resigned from the executive and sadly died recently after a short illness. Doug was a valued member of the Guildford Society Executive, and Design and Heritage work group for many years. He was also well known as a speaker at Heritage Open days where he provided lively lectures. He was a talented photographer and supported many Society events with photographs of Guildford and its surroundings.

Working Groups

Much thanks is given to the members of our working groups who have been as usual fully engaged in looking at their various areas of interest as you will see from their respective reports. It is worth highlighting two developments, the D&H group has been revised under the new chairmanship of Peter Coleman, and that we have restarted the Local Economy Group with new members as a Local Strategy and Economy Group.

The D&H group managed to run the Guildford Design awards by visiting the properties in a short period as Covid restrictions eased. The award ceremony was held virtually supplemented by excellent videos of interviews with the winners. In addition, each of the winners has been presented with a Plaque that can be attached to the winning building. (See Front Cover)

The Society is Relevant

In the last annual report I highlighted the importance of the society. Sadly, several of the issues identified have become more apparent in the last 12 months

The Local Plan that is based on assumptions related to Infrastructure notably A3 upgrades which have been delayed which impacts the ability to build on Strategic Sites thus impacting the fulfilment of housing targets in the Local Plan. There has also been big pressure to build on smaller plots in the countryside due to villages in part being removed from the Green Belt.

Sectors of the local economy continue to suffer due to Covid-19 pandemic, particularly the retail sector in the Town Centre.

The government is consulting on its major change to planning laws as published in the Planning for the Future White Paper plus associated proposals for Design Codes and centralised determination of Housing Numbers. The year has also seen major changes to legislation related to Permitted Development Rights which make it far easier to change the use of buildings and add extra stories.

The plans to make Surrey become one (or more) unitary authority appears to have been delayed.

The Society continues to believe we need to provide effective and informed input into the necessary debates to ensure Guildford optimises the balance between Economic Vibrancy, protecting our Heritage and Environment, and providing well designed space to live, work and play.

The Society

Ensuring the Society continues to thrive has been a challenge over the past year. We look forward to the Covid restrictions easing and the ability to run normal meetings.

Our membership has reduced slightly during the year, but we have welcomed new members as our revised website has proven effective.

We remain able to access a wide variety of expertise often gained in their working careers or gathered after engagement with our working groups. We need to maintain this expertise for the future. We are thus always pleased to have members agree to join our working groups and also value members who have links to other groups within the area.

Our new Brand, Website and Communications

We managed to relaunch our website during the summer. The website now works on Mobile devices correctly as well as Lap and Desktops.

To complement this new website the Executive have also decided upon a new logo which is crisper in appearance and more suited to appearing electronic devices such as mobile phones.

Finances

Our accounts are attached. We have invested heavily in the revised website in the belief it will pay dividends over the years to come.

THE GUILDFORD SOCIETY		
Statement of Income and Expenditure for the year to 31 st March 2021		
INCOME		
GSoc Subscription	£2,632.12	
Donations	£47.00	
Architecture Lecture Income		
Guildford Design Awards Income	£ -	
Xmas Social Income	£ -	
Town Bridge Market	£ -	
Other	£ -	
Cumulative Income YTD		£2,679.12
OUTGOINGS		
Postage	£55.60	
Print & Publicity	£116.30	
Outgoing Subscriptions	£406.00	
Website E-Mail etc.	£10,169.98	
Refreshments	£ -	
Insurance	£285.36	
Lectures and Events. Etc	£ -	
Guildford Design Awards Expenses	£ 1,768.80	
Xmas Social	£243.00	
Other	£32.95	
Cumulative Payments YTD		£13,077.99
Cumulative Net Receipts		-£10,398.87
Banking Balance at end of the Year		
Deposit Account (773)		£13,315.41
Current Accounts		
Bank Balance (701)		£564.14
Bank Balance (326)		£2,470.30
Total Funds		£16,349.85

Thanks

Finally, thanks to all of you for your continued support. We could not operate the society without you.

I would ask you all for one action to support the society in 2021-22, please try to recruit a new member or subscriber via our website where we have made it far easier to sign up to be a supporter.

Alistair Smith

Chair Guildford Society

Chair@guildfordsociety.org.uk

www.guildfordsociety.org.uk

June 2021