

# **Ruxley Church**

## **Reports for**

### **Annual General Meeting**

#### **15<sup>th</sup> May 2022**



## MINISTERS' REPORT

We are pleased once again to have the opportunity to reflect on what and how the Lord's been on a journey with us in the last year. God's grace has enabled us (from the youngest in FISH CLUB and Catalyst to all the adults) to slowly come out of lockdown and now, beginning to find our feet again in ministry, we want to say thank you to Jesus. The pandemic has created different challenging circumstances both as a church and as individuals however, we are finding ways forward in being church and working through the Church's Mission Action Plan which will become our focus from now. To live out our vision and mission we will have to work with our core values and prioritise our Mission Action Plan.

Some members of Stoneleigh Methodist Church continue to join in the Thursday Morning Prayers on zoom (started in lockdown) and it's so encouraging to have between 12 and 16 participants weekly to come together to pray.

On a Pastoral Note – it was an emotional service in July last year, saying goodbye to Sheila and Brian Fisher, when they made the decision to move closer to their daughter Joanna.

In sympathy, we give God thanks for the lives of Mrs Ruth Butcher and Dr Neville Barley. May they Rest in Peace. We celebrate the fact that a number of people have been drawn to Ruxley Church and found it a place of welcome and worship. With wedding celebrations once again being permitted, it has been a joy to welcome every one of the 6 couples, and their families, to services where their banns were published. My thanks (from Fiona) to Sophie for designing a beautiful motif for a prayer card given to each couple. Each of them has noted how touched they have felt by this gesture. A number have returned to attend some of the seasonal services.

Recalling the theme of our twentieth church anniversary celebration – “we are one in Christ”, may the bond of unity reflect in all that we share in the work of the Lord. We wish to offer a huge thanks to all who serve in the various areas of ministry here at Ruxley Church and we want to especially thank the leadership team who work closely with us.

On a personal note (from Emma) I want to thank Robin Ellingham for freely offering his talents as a trained chef, whenever needed.

Every blessing,

*Revs Emma Cusack & Fiona Ellingham*

## **LEADERSHIP TEAM**

The group met monthly and also had two “away” mornings for some strategic thinking. The focus is on how our activities implement our Mission Action Plan. Most day-to-day tasks are now with sub-groups which report back, releasing the Leadership team to look at strategic thinking. Topics covered during the year included:

- New Together@10 service and Church Anniversary
- Regular Services and live streaming
- Lent and Advent courses and small group activities
- Risk assessments and Covid protocols
- Stewardship, gifts & talents and legacies
- Links with Riverview School
- Web-site and communications
- New software for administration and bookings
- Regular reports on Safeguarding; Finance; Building Rectification; Worship & Spirituality
- HR management and salary reviews
- Future of ECC sub-groups
- Possible intern to work with young people

The focus of the group is now on how to relate our activities and initiatives to our Mission Action Plan. The two away mornings in particular helped clarify ways forward. As a result, we are focusing on three priorities: Work with Children (0 -11); Building relationships in the local community; Developing the life of the church family.

We experienced a warm glow of satisfaction of keeping the ship afloat as we tried to discern and follow God’s guidance.

*Dave Searle*

## **ECUMENICAL CHURCH COUNCIL**

A busy 20<sup>th</sup> Anniversary year for the members of ECC, who met for six scheduled meetings in May, July, September, November, January and March, as well as two additional extraordinary meetings. The majority of these were held via Zoom due to the continuing Covid restrictions. Members also attended an online Diocesan Big PCC Awayday, which proved very useful in shaping our Mission Action Plan priorities.

## **People and Posts**

We are grateful to those who took on additional duties this year: Dave Searle (Electoral Roll Officer), Val Proctor (Circuit Representative), Jenny Meineck (Church Administrator), Valerie Bradfield (Safeguarding Team), and Hugh Proctor (Riverview Governor). The ECC were pleased to endorse Judy Quaife's Occasional Preacher's training, and we're delighted to hear that Emma has accepted the re-invitation to serve for a further 5 years with effect from September 2021. We were unsuccessful in our application for a New Wine Discipleship Year Placement Student (the subject of June's extraordinary meeting) but we hope this year to be able to welcome a student.

## **Compliance**

Safeguarding features prominently on every agenda. We are grateful to Phil James, Marion Parsons and Valerie Bradfield for all they do to ensure our church is a safe place for all who attend, and also to Dave Searle for ensuring that we are GDPR compliant. A variety of risk assessments were examined and agreed, including buildings and activities, Beating the Bounds, Young People's events, Coffee Morning restart, Tuesday Fellowship (now Tuesday Friendship Club) and 20<sup>th</sup> Anniversary events. Following the signing of Schedule 14a we were able to welcome back the Korean congregation. An LEP Review is planned and the memorandum relating to clause 6 of our Sharing Agreement indicating the resulting percentages of contribution by the Church of England and Methodist Church was ratified.

## **Riverview**

The Instrument of Governorship of Riverview School was approved, as was the funding of holding crosses and an information pack for Riverview School leavers. We hope to make an official visit to view the new premises soon, Covid restrictions permitting.

## **Finance**

New mandate and banking arrangements and a Reserves Policy were agreed. Charitable Giving was discussed along with its impact on our lettings and hirers. Most recently the ECC agreed to match donations in aid of Ukraine in response to the distressing news of the war. It is good that the memory of those of our community we have loved in our own community live on, most notably with a bequest from our brother Richard Watson.

Our response to the request to assist in the rectification of the Methodist Pension Fund deficit was agreed. Steve Kendall has continued the process, started pre-pandemic requesting the diocese to consider removal of our parish share deficit.

ECC declined the diocesan offer to parishes of £1,000 to offset unplanned pandemic impact costs.

The ECC are indebted to Steve Kendall and his team for their tireless efforts from which the ECC has repeatedly benefited.

### **Building Rectification and Premises**

The sterling efforts of Brian Cockram and Derek Eade and their Building Rectification Team colleagues were given fresh impetus by the addition of Geoff Quaife, whose expertise has proved invaluable. His Rectification Update was the main topic at the January extraordinary meeting, and members of the Rectification Team are working together on priority planning.

Another huge body of work to be acknowledged is that of Steve and the Hall Hire Team - Chris Meineck, Jenny Meineck, Brian Cockram, Robin Willes and Derek Eade - for all the work they are doing to refine our processes and engagement with those who use our building.

Some of our ECC members are due to complete their term of office by the May 2022 AGM. In recognition of these extraordinary times, it was agreed that ECC members would be offered the opportunity to extend this, to be ratified at the May AGM.

ECC members would be enormously grateful for the continuing prayers of the wider congregation as we seek to be true to our new Vision Statement:

**An inclusive worshipping community united in Christ, serving others.**

*Paulette Withycombe  
ECC Secretary*

### **SAFEGUARDING**

As last year, thankfully this area has been very quiet. Training has now started to return to face to face, rather than via Zoom, which is much better; seeing and interacting with others really is the best way to do things.

I have attended a couple of refresher safeguarding lead training sessions organised through the diocese which were extremely interesting, particularly the new 'Safeguarding Dashboard' which was introduced. This allows a church to work towards overall improvements of their safeguarding and by working through its simple-to-use questionnaires, it generates guidance for next steps. We are currently at the bronze stage.

Valerie Bradfield has now taken on the sub-area of overseeing the training and updating the log, which is kept centrally and securely on the church's cloud-based

system. Marion continues to do sterling work, ensuring all the appropriate members who work in any way for our church have the correct and up-to-date Disclosure & Barring Services (DBS) check in place.

In my role as Safeguarding Officer, I have ensured the newly-written risk assessments for church events have followed guidance.

As mentioned above, thankfully there have been very few safeguarding issues that have had to be dealt with over the year. Where an issue had to be dealt with, our processes worked well and as a church it reinforced that we are identifying promptly and following safe and correct practice and procedures at Ruxley.

We continue to run as a safe community, where the church community are able to feel safe and are aware that there are structures in place should an issue arise. The church officers are well-trained to support those in need or have appropriate contacts to signpost people to, so they can avail of any more specialist guidance.

*Philip James*

## **SAFETY**

I am pleased to report that during the past year there have been no reportable accidents or potentially loss-making incidents on the Ruxley site.

Please continue to be vigilant and comply with regulations and safe practices.

*Robin Willes  
Safety Officer*

## **WORSHIP AND SPIRITUAL DEVELOPMENT GROUP**

The W&SD Group continues to prayerfully consider and resource the spiritual needs of Ruxley Church, and how best to meet those needs not only for the existing membership, but also for the benefit of those in our local community, as enshrined in the Mission Action Plan (MAP) and Vision Statement. During the May 2021 meeting it was noted that church should in some part allow:

- all ages to come together
- the utilisation of talents
- the building of community
- development of the art of celebration

The current membership has been stable for some time and comprises Rev. Emma Cusack, Revd Fiona Ellingham, Pauline Heycock, Barbara Meineck, Diana Pinchin, Judy Quaife and Paulette Withycombe (convenor). The group met 7 times in 2021-22 in May, June, July, September, November, January, and February.

Our concerns back in May were largely to do with recovering well whilst Covid restrictions were beginning to lift. We rejoiced to be back together in person to pray and sing together, even through masks. We continue to marvel at the technical wizardry of the Ruxley Tech Team, especially Dave and Malcolm, who resource our hybrid services for the benefit of those who prefer an online format.

Quarterly planning has allowed for a variety of worship experiences to be explored. The evening service pattern has been refreshed; Ruxley has engaged in whole-church activities three times this year, followed up in Small Group study; we looked at our stewardship in September and October, celebrating our community and people's contributions and exploring how we are prompted to use our 'treasure'. We acknowledged the losses in our community at the Memorial Service in October, and were also delighted to welcome baptism families back. We listened to our young people articulating the need to see the relevance of faith to their everyday lives; we launched a new family-friendly second-Sunday format, *Together @ Ten* in September. We shared fish and chips after Beating the Bounds around the parish, and a meal together with Rev. Dr Mark Wakelin, Bishop Jo and other guests after an uplifting Ruxley 20<sup>th</sup> Anniversary Service in January. We look forward to marking Maundy Thursday with a Seder Supper and celebrating the Queen's Platinum Jubilee with the wider community in June.

Our links with Riverview School have been celebrated by way of engagement with the Leavers' Service, Harvest Festival, Christmas and Easter Services. We were disappointed that the Christingle service was cancelled due to a new Covid variant, but grateful that we were still able to celebrate Christmas together, albeit with restrictions back in place which did have an impact on attendance.

We continue to give thanks to God for the wisdom and enthusiasm of our ministers Fiona and Emma, for the dedication and support of the Leadership Team, and the creativity of our leaders of worship and our Emmaus musicians - Gill, Val, Lesley, Judy, Robin, Hugh, Dave, Malcolm and Paulette.

We meet next in May to begin to shape our planning for Advent and Christmas, and to continue to consider how to bring the Ruxley MAP and Vision Statement to life through our patterns of worship.

*Let us hold unswervingly to the hope we profess, for he who promised is faithful.*  
Heb. 10:23

*Paulette Withycombe*

## **PASTORAL GROUPS**

We have continued to meet regularly through the year. There are currently 12 pastoral leaders who oversee the pastoral needs of approximately 80 members. Discussions have focused on ensuring that everyone who wants to be included in a pastoral group has that opportunity. We are particularly conscious of making that offer to new worshippers.

Over the past year we are pleased to report that our pastoral leadership has been stable and that we have had positive responses from members of our groups which has given us a feeling of worth.

*Hugh Proctor*

## **CATALYST**

God's grace has enabled the very many young people who are part of Catalyst to meet again.

I say "very many" as from the church I came from with a membership of over 170, there were only 2 young people over the age of 11.

It was incredibly insightful and illuminating to gather some 10 young people together in June 2021 to hear their thoughts on what Catalyst and Ruxley Church means to them and the direction to take to help them grow in their knowledge, love and service of Jesus.

What was shared, with an emphasis on using discussion on topics relevant to living life post-pandemic, has been core to each week.

To support this request, the team of leaders and helpers (aged 16 – 70+), numbering about 12, have been able to benefit from the input of the Diocese of Guildford Mission Enabler team for Children and Youth (Alastair Etheridge and Emma Coy). This was in a 2-part training course designed specifically for Ruxley Church. We enjoyed the first part in February, starting with breakfast together and will be gathering again early next month for part 2.

We are now blessed to see three of our young people serving by helping to lead in Fish Club.

With the reports of the pandemic significantly impacting young people's mental wellbeing we have used a programme called "Rooted", developed by Scripture Union, to support the mental, physical and spiritual wellbeing of Catalyst members. The evaluation recently completed, indicated that the programme had helped them



think more deeply about topics as well as helping to build their confidence and to realise the importance of not keeping things bottled up.

As we look to the coming year, we are now planning to bring in a broader and deeper biblical perspective to the discussions using materials from a variety of sources: Youth For Christ, Alpha and how best to prepare members of Catalyst and the wider church family for Confirmation in the near future.

It has also been wonderful to see the involvement of all members of catalyst partnering with other members of the church family to lead activities and be involved in the celebration time at TOGETHER@10 each month.

Two members are part of the TOGETHER@10 team and they always bring creative and thought-provoking ideas that offer fresh thinking to the biblical theme of each event.

*Rev Fiona Ellingham*

### **FISH CLUB**

At last, in November, some of the Fish Club children returned, following the pandemic!

To begin with, we looked at some parables, followed by the Christmas story, Adam and Eve, Noah, some parables, and stories leading up to Easter.

Our top highlights - before the pandemic we only had one young child.  
We now have four! Plus one potential little girl who is given the weekly story and activities at home.

We also have two new helpers, who come alternate weeks and are learning to know the children and take a share in their teaching.

NB These two have been coming along since they were about three years old !

Please remember to pray for our work with the children, that they will enjoy coming to church, and will learn to love Jesus as their friend and saviour.

*Pauline Heycock*

## **COMMUNICATION AND ADMINISTRATION GROUP**

We have met spasmodically during the year to discuss communication in general and advertising for significant events. Discussions have concentrated on how to make communication more effective without repetition.

Generally, members feel that they receive the information they require.

The Group has been able to clarify who is responsible for different aspects of communication.

*Hugh Proctor*

### **Ruxley Star**

The Ruxley Star comes out every other month but is now only accessible online. Very few people now contribute anything to the Star and with the advent of different forms of communication elsewhere the emphasis has been much more on sharing articles of general and topical interest alongside Ruxley news. The Star still contains essential information such as future services.

It was something that could easily be accessed during times of isolation.

*Hugh Proctor*

### **Publicity**

Jenny continues to post messages on Facebook, but with less regularity due to other commitments, giving priority to seasonal church worship and Together@10 [being a new initiative]. It's good to have Fiona writing content and for Chris Morley to post his short videos periodically.

Pam passed over website admin to Robin Ellingham who is mainly updating worship information, and now Dave Searle is working on the website overall.

There hasn't been activity out to local newspapers or magazines that come to households, although the right medium must be chosen for the type of content. We should be promoting our Easter and Christmas services. Anyone arranging an event needs to give the information 2 months ahead for the local magazines.

For any event to be publicised the organising group needs to at least jot down the what/where/when/why/charge/where any funds raised are going etc. if they would like the Comms Team to promote said event, arrange posters or banners. Other people need to write content for the weekly sheet/Star/Facebook.

A good thing about this year is that we now have access to CANVA, which is a design program to make good posters/other documents. This has resulted in more attractive documents e.g. posters/flyers on the café tables and so on.

*Jenny Meineck*

## **Website**

This year has been one of change. The person who was looking after the website stood down in August 2021 so I agreed to maintain it. Bar a few minor changes, the website has been largely the same for the year and just been in maintenance for that period.

Towards the end of the year, the leadership team asked for a review of the website and Dave Searle will be undertaking that. I look forward to working with Dave to work out how we can best develop the site to support the Mission Action Plan and the communication to bring the light of Christ to Ruxley's communities.

Being the sad person that I am, I revel in statistics. Here are a few key ones from the website and the year on year comparison with the previous year: (see attachment 1).

Looking at the return visits to the website, I'd say that the key difference that the website has made is that it has enabled members and those looking for more information to find out what is happening and when so they can attend.

*Robin Ellingham*

## **PREMISES TEAM**

Since the last AGM we now have regular hirers back on board, new ones have joined us or are in the process of joining us, and there have been many ad hoc party hires. We did lose 5 regular hirers. NCT were slow to return, due to being very cautious about covid. However, we do have bookings still being cancelled at the last minute due to people having covid.

Allowing bouncy castles to be set up in the Main Hall has been a real bonus, since nearly all the children's party requests also include having bouncy castles or soft play inflatables.

Annual maintenance has been carried out and is being organised for the coming school holidays. A group of us have been trained in 'At Height Safety' so that we know how to use the harnesses when we are required to go on the roof (usually related to the boiler in the furthest plant room). This training includes carrying out safety checks on the harnesses, safety checks on ladders, correct use of

ladders/steps. We have removed some of the excess chairs in the upstairs store in order to make room to store new ladders/equipment that is needed. A group of chairs that we offered to charities will be going to Tanzania in June!

Whole building window cleaning has resumed.

There is a new 'Fault Log' reporting system in operation, which enables problems with the premises to be reported and stored digitally.

I'd like to thank the volunteers who come and open up/close for our hirers. Our income depends upon your continued help. Also, thanks to our gardening/mowing/litter picking volunteers.

I would like to give many thanks to the wonderful team who support me in so many ways, keep me on my toes with regards to projects that need attention, help make thoughtful decisions, come and regularly do the physical work: Robin W, Chris M, Brian C, Steve K and Derek E.

The Premises Team still meet regularly on Zoom, now dropped down to monthly. We really could do with a few more helpers for a wide variety of tasks; come and have a chat!

*Jenny Meineck*

## **BUILDING RECTIFICATIONS TEAM**

The last twelve months has seen us work together to work out the most appropriate options open to us. We are currently awaiting decisions from the lawyers at the diocese following their recent letter to the builder and a decision on the best way forward to replace broken windows. We are planning on giving the church family an update on the way forward, once outcomes of these are known.

With Geoff Quaife having joined the team in early 2021, this has created fresh impetus, whose expertise has proved invaluable in helping outline what the options might be.

Rev Fiona and Geoff have been working hard to build and gain the support of Andrew Johnson (Diocese of Guildford Head of Property), who joined shortly before Geoff and Rev Fiona's arrival. Whilst this has taken some time, predominantly due to repeated lockdowns, Andrew has been very supportive in lobbying on our behalf and providing helpful introductions to the specific legal contacts who have knowledge of the Design and Build Contract of the Church Building, which we are needing to secure.

Alongside this, we are hoping to be able to report soon on the way forward to replace the broken and absent windows and removal of the barriers installed in 2020 following the last window breakages.

Being patient and prayerful has been the order of the day over the last 12 months and we are incredibly grateful to Geoff for applying his knowledge and expertise in helping us to outline not just the priorities but the order that these might take.

The formation and working of this group and its diligence in exploring the way forward, has released the leadership team and the ECC to focus more of its energies on the mission and direction God is leading us in to.

Please continue to pray for its members; Derek, Brian, Steve, Geoff and Rev Fiona as they seek to continue to maintain relationships with both our denominations, the lawyers, the suppliers and all parties that provide input to the process.

*Rev. Fiona Ellingham*

### **MEMORIAL PROJECT**

The Garden of Reflection and Labyrinth were dedicated in a special service on 23<sup>rd</sup> May, 2021. Only a few people were able to attend, but numbers were swelled by those watching via video technology. Those present included the Worshipful Mayor and Lady Mayoress of Epsom and Ewell, the headteacher of Riverview School and Rev Stuart Thomas. Some of those gathered (including members of Catalyst) helped mount the first Memorial plaque on each of the three wooden pillars. It was a wonderful celebration and the intimacy of the Garden was a delight appreciated by all.

Since the Gardens dedication we have mounted memorial plaques on several subsequent occasions led by our ministers and with members of families present. A brochure promoting the opportunity to do this has been produced, encouraging our congregation and those in our local community to purchase a plaque on behalf of a loved one and perhaps helping us to build relationships with these people going forward.

We are now exploring other avenues of how God wants Ruxley Church to continue and develop this exciting new mission.

*Steve Kendall*

### **EMMAUS**

Since our return to worship in church, Emmaus have provided the music for congregational singing on the majority of occasions.

The group is currently reduced in size due to various reasons but a return to 'full strength' is hoped for, as the congregation numbers rise.

The band's flexibility in repertoire and ability to play in any part of the building adds to their value.

*Robin Willes*

### **LADIES' GROUP**

After our enforced covid break, the group met to discuss the future format of our meetings in view of our significantly reduced numbers and the reluctance of members to go out in the evenings. It was decided that we should cease our twice monthly meetings on the church premises and instead meet weekly on a Wednesday afternoon for a walk around Ewell Court Park if dry.

Once a month we will meet at the local garden centre for afternoon tea and cake. Those members who are able will walk, and others will drive. In this way we will be able to maintain contact with each other and provide the support and fellowship which has been such an important part of our Group. We still intend to visit the theatre or go out for meals on occasion.

*Marion Parsons*

### **MEN'S GROUP**

After something of a hiatus we have recommenced monthly meetings at the Hogsmill Tavern in Worcester Park. Attendance is normally about 12 to 15 including some who do not regularly come to Ruxley.

Conversation covers a wide range of topics and is both profound and stimulating – once in a blue moon! New members are always welcome.

Members are grateful for the opportunity to meet and chat in a non-church environment.

*Hugh Proctor*

### **TUESDAY FRIENDSHIP GROUP**

Another very unusual year, with no meetings since 5<sup>th</sup> March 2020, we returned in September 2021 – a total of 18 months when although we were not meeting much changed.

As a group we were 34 in total and now 29. The changes during that time were: sadly 6 have died, 6 moved away and 2 are no longer able to come due to ill health. A total of 14.

‘But the good news is that since coming back last September we are now 32, 27 members and 5 regular visitors which is wonderful. We must be doing something right.

The contact during lockdown and the opportunity to meet in Anne and Brian’s garden for a BBQ and cream tea kept us in touch.

We have enjoyed visits from Rev Fiona, The Children’s Society, Flower Arranging, Robin’s Music, Trinity house, Quizzes, Apples, Apples, a history with Cider Tasting, and a shared Christmas Lunch with our friends from Stoneleigh, a total of 60.

For some time, there has been a feeling that the name ‘Tuesday Fellowship’ was not very welcoming or up to date and so there was an opportunity to put forward new names. A vote was held and a new name was chosen. We are now ‘The Tuesday Friendship Club’

We now look forward to another year of interest and fun.’

*Jacky Panter*

### **SMALL GROUPS**

Approximately 32 people have met in five small groups throughout the year and have used a variety of material to facilitate discussion. As in previous years, during Lent all the groups have been using the same material –‘God has no favourites’ produced by York. Due to small numbers in one group, two groups have joined together during lent and a small group of people have met on a Sunday evening.

We haven’t asked individual group members what effect or benefit small groups make to them. Informal feedback from facilitators suggests that people value the opportunity to meet together and discuss issues of faith in greater depth.

*Val Proctor*

### **THURSDAY COFFEE MORNINGS**

Following our enforced covid break, coffee mornings recommenced last September. In order that we could comply with the then current restrictions we provided table service for our customers. Attendance has gradually built up to pre-covid levels and we continue to enjoy providing hot drinks and home-made cakes to members of the congregation and friends from the community.

I would like to thank my willing band of helpers who give up their time to make cakes and serve our customers. We all feel that this is such a good way to engage with the local community and hopefully encourage our visitors to join in other church activities.

We held a special fund-raising morning for MacMillan, albeit on a smaller scale than usual, but we were pleased to be able to send a sizable donation to the charity. We continue to support the church and local charities from our profits.

We feel that staff and customers alike benefit from this time of fellowship and in May this year we will be celebrating the tenth anniversary of our opening! Time flies when you are having fun and hopefully, with everyone's support, we can continue in this way for many more years.

*Marion Parsons*

### **CATERING**

Due to Covid many of our activities had to be cancelled, but fortunately we were able to celebrate our 20th anniversary of being an LEP. We had a lovely lunch prepared by our great Chef Robin Ellingham to whom we give our grateful thanks for all his hard work. Thanks also to all those who helped in many ways to make the event so lovely.

*Yvonne Feast*

### **CHURCH FLOWERS**

The Flowers in Church remind us of the beauty, colour and variety of God's Creation. I would like to thank all those who provide the flowers and if anyone else wishes to join the rota and give money for a special Sunday or an anniversary please see Sheila Stracy who has now taken over from me as I have only been doing this since 1968! Her phone number is 020 8224 0738. Thank you.

*Barbara Meineck*

### **PRAYER CHAIN**

Fifteen people are on the Prayer Chain via email or phone. This ensures that requests for Prayer are quickly passed on. Many people have felt this prayer support in difficult times.

Please see me, or get in touch via the church office, if you would like to know more about the chain or request prayer.

*Barbara Meineck*



## **BAPTISMS**

With services starting again in the building, after a time of closure because of Covid, we were able to start baptisms again. Six children, including four from one family, have been baptised at Ruxley Church since reopening. Parents are asked to come to church for several weeks and all baptisms take place during Sunday morning services.

*Beverley Rowlands*

## **RUXLEY BABY AND TODDLER GROUP**

The group reopened on Wednesday 6th October 2021. All our pre-covid regular attendees had moved on to nursery and even reception school. As we didn't have the continuation of children and families attending, we had to seek ways to get the community to be aware we were running again. We had a few weeks of little or no attendees but now we have a group of 10-12 regular children attending with their parent, grandparent or child minder. It has been a joy to see children playing and interacting as well as the adults engaging in conversations again. We have a couple of members who are also new to the area and have benefitted in finding out about other activities available. Looking forward to the group being able to grow this year.

*Donna Jones*

## **EWELL ECUMENICAL LADIES**

EEL's continue to meet for fellowship, prayer and bible study each week. We now have only six members, and due to different circumstances, we are finding it easier at present to continue to meet on Zoom. However, we still greatly value our time shared together and with God.

*Pam Eade*

## **RIVERVIEW SCHOOL**

For much of the past year the school has been affected by Covid-19 restrictions and ever-changing regulations. The staff of the school and the Family Centre have done a great job. Rev. Fiona has regularly visited the school, taking assemblies every other week, and offering pastoral support to staff. Along with a few church members she has also been to the school to help with the Prayer Space days. Some classes have been able to entertain our Tuesday Friendship Club, with presentations about what they have been learning.

Classes have visited the church to learn about some of the symbolic features of Christianity. Fiona helped with the role playing of baptising "baby George", for example. The school has used the church for some special services, to which parents

have been invited. Emerald class (year 4) led a wonderful school Harvest service on the theme of water. About 24 parents watched from the outer worship area, with a few church members, and joined in the singing.

Last Summer's leavers' service, for Gold class, had to be held at the school rather than the church. Fiona was there and was impressed with the children's comments about their time at Riverview, reflecting on how they had been helped to embrace the school's values of Love; Respect; Trust; Forgiveness; Hope. This year Ruxley Church will again be funding a leaving gift for year 6 pupils of an engraved holding cross, as well as supporting the transition to High School as the school uses the Scripture Union programme "It's Your Move".

Meetings of the school governors have continued to be mainly via Zoom, but we were able to join with staff for a lively INSET day in early September last year. The Board of Governors were pleased to recently welcome Hugh Proctor as a PCC Foundation Governor.

The school's weekly e-newsletter to parents includes any relevant church news items such as Together @10 services. The school are looking to increase their profile within the local community and are now on Instagram (search riverviewcofe).

Involvement of PCC governors and church members has supported the school in developing and maintaining its Christian Distinctiveness. This has been demonstrated in the school adopting the "It's Your Move" programme as well as by having regular presence in the school; pupils are approaching Rev Fiona with deeper questions about Jesus, thereby supporting their individual spiritual development.

*Valerie Bradfield*

### **DEANERY SYNOD**

The Group met on three occasions and had speakers from within the Diocese. The group was also kept up to date with movements and activities within the Deanery

There were three good speakers on a varied range of relevant subjects: Living in Love and Faith; Engaging with Schools in a post pandemic landscape; and Embracing Diversity.

The Group was provided with useful suggestions and resources to take back to their parishes.

*Dave Searle*

## **CHURCHES TOGETHER IN EWELL**

Churches Together in Ewell has still not met again from before Covid times. There have been some communications regarding starting up HOPE again at Bourne Hall, but a small team needs to form either with joint leadership or one person to take the lead in Paula Smith's absence. Also due to the Queen's Jubilee it was decided not to pursue this, for 2022. Paula Smith still sends messages to the whole group from time to time. I still send out messages on behalf of Paula and any of the churches who wish to promote their activities, as well as usual events or activities from Churches Together in Epsom and Churches Together in England, and keep the Contact List up to date. The website is also being updated by Barrie Barnes (SMC connection) if churches send information to him.

Other activities through the year (pre-covid) were becoming less well supported. I feel this is an important ministry to maintain because 'together is better'. It would be a shame if the HOPE event ceases: it offers free family activity, is ecumenical, demonstrates churches in action for their community, and had started to be recognised as a really good local initiative that has been built up over the last 10 years (pre covid).

*Jenny Meineck*

## **FOOD BANK**

Epsom and Ewell Food Bank will be ten years old this year and Ruxley Church has been supporting it for the whole time. The Church has given the Food Bank free accommodation for all that time and nine church members have manned the Distribution Centre, six of them from the very beginning to the present day. Church members have been very generous in donating food and money for all that time and the Food Bank is very grateful for all your support.

You may be surprised to know that Food Bank not only supplies food for their clients but also cat and dog food, nappies, toiletries, kitchen chemicals, presents for children at Christmas, furniture, white goods, counselling, cooking lessons, vouchers for gas and electricity, financial advice, classes on budgeting and benefits advice. It also supports refugees and is looking at how it can support those from the Ukraine.

Although still affiliated to the Trussell Trust, the Epsom and Ewell Foodbank is, as of the 1<sup>st</sup> April, now registered as 'The Good Company (Surrey)' as a new charitable entity. This change is because Food Bank wanted to indicate that it is now about a great deal more than just food.

We hope that you will continue to support us, the need is so much greater in these inflationary times.

*Anne Cockram*

## **FINANCE GROUP**

As you will see from the Annual accounts, the finances of Ruxley Church at the end of August 2021 were more robust than we dared hope given the difficulties presented by the pandemic and resultant lockdowns and restrictions. Moreover, things have continued to improve since then and currently our reserves are about where they should be (approximately £60,000).

We give thanks for increased giving from many of our congregation, improved receipts from hall hire and for a grant of £14,000 received from Epsom & Ewell Borough Council in lieu of hall hire earnings. Repairs and maintenance costs have been somewhat reduced; the building continues to be kept to an excellent standard.

We have been pleased to increase the salaries of our administrator and cleaner. There will be increasing expenditure on utilities in the next few months and likely that other costs of materials will rise as the cost-of-living increases. The repairs to windows and other rectifications are yet to happen and the cost of some of these may need to be borne by Ruxley Church. However, the amount is likely to be considerably less than the amount projected in last year's annual report (please see Rectification report for more details).

Ruxley Church has made donations to charities as listed below. This amount is rather less than in previous years due to closures of the church and cafe; we hope to be able to give more next year. There has been consideration giving to our donations to denominational charities and the result is that an equal amount is now given to each.

Ruxley Church will be making contributions to the Methodist Minister's Pension Fund as requested at Methodist Conference. This will be paid in three instalments over a three-year period to reflect any fluctuations in church finances. This year's amount is £1,145.

Many of our congregation may have heard of a generous bequest from our former member and good friend, Richard Watson. At the time of writing this bequest has not been received, but we will share details of it as and when we receive payment.

Finally, I can report that a request will be made to the diocese Bishop's Council with respect to the removal of the remaining Parish Share deficit that sits in the accounts at Ruxley Church (see page 2 C5 'Liabilities'). This is an historic shortfall that was reduced by approximately half some years ago and is now £30,463. Ecumenical Church Council has agreed to the suggestion that we contribute 10% of this amount and we pray the Bishop's Council will now write off the remainder.

We thank God for his wonderful provision through a difficult year and we look forward to using the resources He has provided for the building of His Kingdom here at Ruxley Church and in our local community.

*Steve Kendall, Treasurer*

**RUXLEY CHURCH GIVING**

Here is a list of donations (£) made to external groups since the last Annual Report.

Money has been raised from special collections in services,  
events / activities, and the regular coffee mornings.

*Thank you for your support.*

50	Epsom & Ewell - the Mayor's Charity Fund.	Church donation	21.5.21
130	Sudbury School	Church Collection	26.6.21
150	Riverview C of E Primary	Church donation	15.7.21

	and Nursery School		
125	MHA	Church Collection	31.7.21
500	Bishop of Guildford's Communities Fund	Annual church donation	13.8.21
125	MHA	Annual church donation	13.8.21
125	Mission in Britain Fund	Annual church donation	13.8.21
125	World Mission Fund	Annual church donation	13.8.21
125	Methodist Church Fund (MCF)	Annual church donation	13.8.21
100	Epsom Division Campsite Fundraising	Social charity donation	20.11.21
195	The Royal Marsden Cancer Charity	Social charity donation	14.12.21
130	Action for Children	Church Collection	16.1.22
100	British Heart Foundation	Social charity donation	20.1.22
100	Ewell Floral Art	Social charity donation	25.2.22
1979	DEC Ukraine Humanitarian Appeal	Church Collection (including hall hirers) and donation	8.4.22

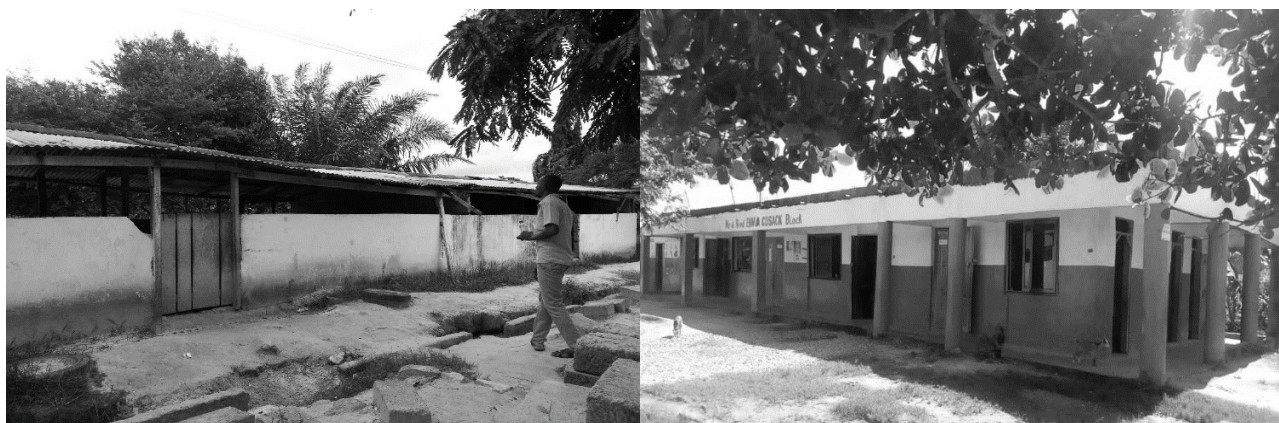
Running Total £4,160

For Annual Accounts see attachment 2.

### **SUDBURY SCHOOL – Aprembo, Ghana**

Dear friends,

It is always important for me as a reminder, to share how the school was and how it looks now. This is all through your efforts so thank you to everyone for your continued support of Sudbury School in Ghana.



Following my return from August 2021 holiday, I prayerfully appealed (during the 2021 gift Service at SMC) that if each person could save a pound (£1) a week towards the building of the project we would be able to complete it quickly. Apologies to Ruxley congregation not to have had a suitable Sunday to offer the same appeal for the £1 a week however I want to acknowledge that Ruxley had a fundraising quiz night with fish and chips on Saturday 22<sup>nd</sup> January 2022 as part of the anniversary celebration and £382.99 was raised towards the Sudbury School ICT and Library Building Project. Big Thank You to everyone.

Advance Notice - On Sunday 26<sup>th</sup> June 2022, the focus for the joint service at Stoneleigh Methodist, will be celebrating how far we have come with this project and there will be a special offering for the project. The photographs below are the most recent since my last holiday in August 2021.

### 2021 July-August Update on Sudbury School ICT and Library Building Project



To recap, the foundation of the ICT building project had been cast from the funds raised in 2020 and therefore this is how the foundation look like as at the time I travelled to Ghana in August 2021. Between the 5th of January - June 2021 the following donations were received and transferred to the school.

**£250** from Stoneleigh Methodist Church (Annual Church Grant donation)

**£20** from a Stoneleigh member

**£130** from Ruxley Church which makes up a £100 personal donation from one of the members) and the £30 from the church.

**£200** was also received from another Ruxley member.

Total of the above money (**£600**), paid for the following listed below to build a section of the wall which stopped people from the community using it as a short cut



into the town centre. I have only included the churches' receipts in this report and passed on the individuals' receipts to them as they were personal donations.



1. 300pcs 6" blocks	- 1300 gh
2. Sand	- 700 gh
3. Stones	- 800 gh
4. Cements 25bags	- 1175 gh
5. Workmanship	- 1200 gh
6. Transportation.	- 100 gh
<b>Total</b>	<b>- 5275 gh</b>

#### **TOTAL AMOUNT RECEIVED**

**5282 GH** (This is the Equivalent in Ghanaian Currency)

**TOTAL AMOUNT USED = 5275 GH**

**AMOUNT LEFT (Eqv. to £1) = 7 GH**

May the Lord continue to bless you all

*Rev Emma Cusack*

*(On behalf of the Sudbury School)*



**THE METHODIST CHURCH**

**STANDARD FORM OF ACCOUNTS**  
**(SHORT FORM)**

Ruxley Church

FOR THE YEAR ENDED

31 August 2022

Wimbledon Circuit

Circuit no

35/26

**Registered Charity - Charity Registration number**

1174096

If not a registered charity **Her Majesty's Revenue and Customs**  
**Gift Aid number**

XR76413

(The HMRC number is equivalent to a registered charity number in terms of evidence of charitable status and may be used to give to donors or grant funders wishing to see evidence of the organisation's charitable status. Methodist charities in England and Wales that are not registered charities are excepted from registration under Statutory Instrument 2014 No.242)

Ministers:

Rev. Emma Cussack   Rev. Fiona Ellingham

Church Stewards:

Jacky Panter

Valerie Proctor

Robin Ellingham

Treasurer:

Christopher Meineck

<b>Ruxley Church</b>	<b>Church - Short Form</b>
----------------------	----------------------------

# **ACCOUNTS FOR THE YEAR ENDED 31 AUGUST 2022**

SECTION A		This year's amount to the nearest £	Last year's amount to the nearest £
a1	<b>RECEIPTS</b>	<b>£</b>	<b>£</b>
a2	Offerings and Tax recovered	49,790	47,623
a3	Bank and CFB interest & investment income	96	31
a4	Lettings	66,174	29,079
a5	Other receipts	18,546	24,332
a6	<b>TOTAL RECEIPTS</b>	<b>134,606</b>	<b>101,065</b>
SECTION B			
b1	<b>PAYMENTS</b>		
b2	Circuit Assessment or Share	49,133	52,230
b3	Donations	4,138	1,130
b4	Repairs and Maintenance	11,884	16,705
b5	Utilities (Insurances, water charges, heating & lighting)	10,783	9,412
b6	Other payments	32,771	18,659
b7	<b>TOTAL PAYMENTS</b>	<b>108,709</b>	<b>98,136</b>
SECTION C			
c1	<b>NET RECEIPTS/PAYMENTS FOR THE YEAR</b> (a6 - b7)	<b>25,897</b>	<b>2,929</b>
c2	Total funds brought forward from last year	70,163 (c7)	67,219
c3	<b>TOTAL FUNDS AT END OF YEAR</b> (c1 + c2)	<b>96,060</b>	<b>70,148 (c7)</b>
c4	State here the total of any other assets of the Church		
c5	State here the total of any liabilities of the Church		<b>30,463</b>
c6	State here the insured value of the Church premises and contents	5,910,000	5,800,000
SECTION D ANALYSIS OF FUNDS			
d1	Balances held at TMCP at 31 August	4,526	4,512
d2	Balances held at CFB at 31 August	22,721	22,593
d3	Bank and cash balances at 31 August	69,016	40,585
d4	<b>TOTAL (= Box c3)</b>	<b>96,263</b>	<b>67,690</b>
SECTION E			
<b>FOR INFORMATION ONLY: MONEY RECEIVED AND PASSED ON TO EXTERNAL ORGANISATIONS</b>			
<b>(these amounts are not to be included in total receipts/payments figures above)</b>			
e1	Balance brought forward from last year	395	439
e2	Offerings/Gifts - received for external organisations	1,486	125
e3	Offerings/Gifts - passed to external organisations	1,677	169
e4	<b>BALANCE STILL TO BE PAID</b> (e1+e2-e3)	204	395

Name of Church .....Ruxley Church

Circuit number 35/26

## Declarations and Scrutiny

I confirm that these Receipt and Payment based accounts for the year to 31 August 2022 have been prepared from the records of the Church and that they include all funds under the control of the Church trustees.

Signature of treasurer ..... Date.....

Name and address of treasurer .....

..... Post Code.....

### Presentation to the Church trustees

I confirm that the annual report and accounts for the year ended 31 August 2022 were/will be\* presented to the meeting of the Church trustees held on .....

Signature of the Chair of the meeting .....

Name of the Chair of the meeting ..... Date .....

## Independent Examiner's Report to the Trustees of the

.....Church

Charity Number .....

### Responsibilities and basis of report

I report to the trustees on my examination of the accounts of the ..... Church for the year ended 31 August 2022 set out on pages ... to .... As the Church's trustees, you are responsible for the preparation of the accounts in accordance with the requirements of the Charities Act 2011 ('the Act').

I report in respect of my examination of the Church's accounts carried out under section 145 of the Act and, in carrying out my examination, I have followed all the applicable Directions given by the Charity Commission under section 145(5)(b) of the Act.

\* delete or circle as appropriate

Name of Church ..... No .....

### Independent Examiner's Statement

I have completed my examination. I confirm that no material matters have come to my attention in connection with the examination (other than that disclosed below\*) which give me cause to believe that in, any material respect:

- the accounting records were not kept in accordance with section 130 of the Act; or
- the accounts do not accord with the accounting records.

I have no concerns and have come across no other matters in connection with the examination to which attention should be drawn in this report in order to enable a proper understanding of the accounts to be reached.

I have/have not\* obtained independent verification of all investments with the Trustees for Methodist Church Purposes or held in other trusts, bank balances and funds at the Central Finance Board of the Methodist Church which are individually in excess of £10,000 (ten thousand pounds) at the balance sheet date.

Signature of independent examiner .....

Name of independent examiner .....

Relevant professional qualification of independent examiner .....

Name of firm (where appropriate) .....

Address .....

..... Post Code .....

Date .....

\* delete or circle as appropriate

Sep-21

**THE METHODIST CHURCH**  
**STANDARD FORM OF ACCOUNTS**  
**(SHORT FORM)**

Ruxley Church

FOR THE YEAR ENDED

31 August 2022

Wimbledon Circuit

Circuit no

35/26

**Registered Charity - Charity Registration number**

1174096

If not a registered charity **Her Majesty's Revenue and Customs  
Gift Aid number**

XR76413

(The HMRC number is equivalent to a registered charity number in terms of evidence of charitable status and may be used to give to donors or grant funders wishing to see evidence of the organisation's charitable status. Methodist charities in England and Wales that are not registered charities are excepted from registration under Statutory Instrument 2014 No.242)

Ministers:

Rev. Emma Cussack   Rev. Fiona Ellingham

Church Stewards:

Jacky Panter

Valerie Proctor

Robin Ellingham

Treasurer:

Christopher Meineck

<b>Ruxley Church</b>	<b>Church - Short Form</b>
----------------------	----------------------------

# ACCOUNTS FOR THE YEAR ENDED 31 AUGUST 2022

SECTION A		This year's amount to the nearest £	Last year's amount to the nearest £
	Note	£	£
a1	<b>RECEIPTS</b>		
a2	Offerings and Tax recovered	49,790	47,623
a3	Bank and CFB interest & investment income	96	31
a4	Lettings	66,174	29,079
a5	Other receipts	18,546	24,332
a6	<b>TOTAL RECEIPTS</b>	<b>134,606</b>	<b>101,065</b>
SECTION B			
b1	<b>PAYMENTS</b>		
b2	Circuit Assessment or Share	49,133	52,230
b3	Donations	4,138	1,130
b4	Repairs and Maintenance	11,884	16,705
b5	Utilities (Insurances, water charges, heating & lighting)	10,783	9,412
b6	Other payments	32,771	18,659
b7	<b>TOTAL PAYMENTS</b>	<b>108,709</b>	<b>98,136</b>
SECTION C			
c1	<b>NET RECEIPTS/PAYMENTS FOR THE YEAR</b> (a6 - b7)	<b>25,897</b>	<b>2,929</b>
c2	Total funds brought forward from last year	70,163 (c7)	67,219
c3	<b>TOTAL FUNDS AT END OF YEAR</b> (c1 + c2)	<b>96,060</b>	<b>70,148 (c7)</b>
c4	State here the total of any other assets of the Church		
c5	State here the total of any liabilities of the Church		30,463
c6	State here the insured value of the Church premises and contents	5,910,000	5,800,000
SECTION D ANALYSIS OF FUNDS			
d1	Balances held at TMCP at 31 August	4,526	4,512
d2	Balances held at CFB at 31 August	22,721	22,593
d3	Bank and cash balances at 31 August	69,016	40,585
d4	<b>TOTAL (= Box c3)</b>	<b>96,263</b>	<b>67,690</b>
SECTION E			
<b>FOR INFORMATION ONLY: MONEY RECEIVED AND PASSED ON TO EXTERNAL ORGANISATIONS</b>			
(these amounts are not to be included in total receipts/payments figures above)			
e1	Balance brought forward from last year	395	439
e2	Offerings/Gifts - received for external organisations	1,486	125
e3	Offerings/Gifts - passed to external organisations	1,677	169
e4	<b>BALANCE STILL TO BE PAID</b> (e1+e2-e3)	<b>204</b>	<b>395</b>

Name of Church ..... Ruxley Church

Circuit number 35/26

## Declarations and Scrutiny

I confirm that these Receipt and Payment based accounts for the year to 31 August 2022 have been prepared from the records of the Church and that they include all funds under the control of the Church trustees.

Signature of treasurer ..... *Chris Meineck* ..... Date *28<sup>th</sup> September 2022*

Name and address of treasurer *Chris Meineck, 37 Amberley Gardens*  
*Stoneleigh Epsom* ..... Post Code *KT19 0NQ*

### Presentation to the Church trustees

I confirm that the annual report and accounts for the year ended 31 August 2022 were/will be\* presented to the meeting of the Church trustees held on *28-9-2022*

Signature of the Chair of the meeting ..... *Emma Cusack* .....

Name of the Chair of the meeting *Rev. Emma Cusack* ..... Date *28.9.2022*

### Independent Examiner's Report to the Trustees of the

*RUXLEY*

..... Church

Charity Number .....

### Responsibilities and basis of report

I report to the trustees on my examination of the accounts of the *RUXLEY* ..... Church for the year ended 31 August 2022 set out on pages *2* to .... As the Church's trustees, you are responsible for the preparation of the accounts in accordance with the requirements of the Charities Act 2011 ('the Act').

I report in respect of my examination of the Church's accounts carried out under section 145 of the Act and, in carrying out my examination, I have followed all the applicable Directions given by the Charity Commission under section 145(5)(b) of the Act.

\* delete or circle as appropriate

Name of Church ..... RUXLEY CHURCH ..... No 35/26

### Independent Examiner's Statement

I have completed my examination. I confirm that no material matters have come to my attention in connection with the examination (other than that disclosed below\*) which give me cause to believe that in, any material respect:

- the accounting records were not kept in accordance with section 130 of the Act; or
- the accounts do not accord with the accounting records.

[the [the

I have no concerns and have come across no other matters in connection with the examination to which attention should be drawn in this report in order to enable a proper understanding of the accounts to be reached.

I have/have not\* obtained independent verification of all investments with the Trustees for Methodist Church Purposes or held in other trusts, bank balances and funds at the Central Finance Board of the Methodist Church which are individually in excess of £10,000 (ten thousand pounds) at the balance sheet date.

Signature of independent examiner ..... K A Mallett

Name of independent examiner ..... KEVIN A. MALLETT

Relevant professional qualification of independent examiner ..... FCA - ICAEW

Name of firm (where appropriate) ..... L & F ACCOUNTING LTD

Address ..... 18 THE BROADWAY, STONELEIGH

..... EPSOM SURREY ..... Post Code ..... KT17 2HU

Date ..... 14 / 12 / 2022

\* delete or circle as appropriate

Sep-21