

**Annual Charity Commission report of Ruxley Church (charity number 1174096)
for the Year ending 31st August 2021**

Ruxley Church, Ruxley Lane, West Ewell, Epsom, Surrey KT19 0JG

Methodist Minister: Rev. Emma Cusack

Anglican Minister: Rev. Fiona Ellingham

Mission Statement Summary

Ruxley Church is an ecumenical partnership between Ruxley Methodist Church and the Anglican parish of St Francis of Assisi, Ewell, established in 2002. We worship God as one family drawing strength from both our traditions.

God is in the centre of our ministry here at Ruxley Church, making us a welcoming; friendly community as we spread the love of Jesus by celebrating in worship; developing our spiritual life as individuals and as a church; ministry to the community; sharing in witness and loving service.

The Vision Statement of Ruxley Church is being “An inclusive worshipping community; united in Christ, serving others”.

Introduction

We have been richly blessed this year by the appointment of a new Anglican Minister, Rev. Fiona Ellingham who joined us at the beginning of 2021 and now works in an exciting partnership with Rev Emma Cusack. Together, we try to discern what God wants for our church, its congregation and the communities in which we live. We continue to ensure that the resources that we have been blessed with – people, property and money – are well cared for and utilised for the building up of the body of Christ and for the furtherance of God’s kingdom.

The report that you are about to read looks at various aspects of our life together as Ruxley Church during 2020 and 2021. As with so many aspects of the nation’s life, the continuation of the pandemic has meant Ruxley Church having to adapt in all sorts of ways. This has been very challenging, but by the grace of God and strengthened by His Spirit we have pulled together and made progress as well as sustaining our worship and our work. That said, many of the activities that we would normally report on have been greatly reduced and some simply haven’t happened this year, including Toddlers Group, Tuesday Fellowship, Ruxley Singers and the Men’s Group. However, nearly all of these will recommence in the Autumn of 2021.

Aims and Purposes

Ruxley Church engages in a range of activities, either on its own or with others, including:

- a) the celebration of public worship;
- b) the teaching of the Christian faith;
- c) mission and evangelism;
- d) pastoral work, including visiting the sick and the bereaved;

e) the provision of facilities with a Christian ethos for the local community, including (but not restricted to) the elderly, the young and other groups with special needs; and

f) the support of other charities in the UK and overseas.

Impact of the Ruxley Church activities

The report details the variety of activities. However, the key impact these activities have had over the 12 months in relation to the above aims are as follows:

a) The celebration of public worship

A range of worship services centred on a number of festivals (which are promoted through social media) involving the local community and engagement on our social media channels.

b) The teaching of the Christian faith

Small groups continued to meet and the congregation had access to a variety of services and resources in the Methodist and Church of England linking from our website. Thus teaching of the Christian Faith continued at and through Ruxley Church.

c) Mission and evangelism

Links with Riverview School were further promoted with visits to the school and plans made for the children to make regular visits to the church.

d) Pastoral work, including visiting the sick and the bereaved

The ministers have been supported by the church's pastoral assistant and the pastoral team. Regular contact was made to members of the congregation helping maintain the mental and spiritual well-being of all. The Garden of Reflection was completed and dedicated and is now regularly visited by members of the congregation and community. Memorial plaques have now started to be installed, bringing comfort to the bereaved.

e) The provision of facilities with a Christian ethos for the local community, including (but not restricted to) the elderly, the young and other groups with special needs

The number of external hall-hirers with their various community-focussed activities was much reduced through the year. During lockdown the preschool operated in a COVID-secure environment. Other hall hirers began returning in the summer of 2021.

f) The support of other charities in the UK and overseas

The Sudbury school in Ghana, along with other charities in this report have benefited from charitable donations totalling £1455 this year.

Activities through the year

Ruxley church has been blessed by the leadership of Rev. Emma Cusack and Rev. Fiona Ellingham. They have been assisted by the leadership team and members working in the various sub-groups. Prior to the start of the pandemic, Ruxley church held a service each Sunday morning and most Sunday evenings, with communion being given each week. The morning services were attended by an average seventy persons

each week, with visitors always being made very welcome. Prayer groups took place through the week and the chapel was available for private reflection. In this past year these activities have been maintained on-line and then, when possible re-introduced in COVID secure environments.

Worship and Spiritual Development (W&SD)

During the first lockdown, churches across the Circuit were encouraged to join Christ Church's live-streamed 10am service. The W&SD Group met in September to start planning for a return to services at Ruxley. All were delighted to learn that the Ecumenical Church Council would be meeting with the Archdeacon of Dorking to discuss the appointment of a part-time vicar, subsequently confirmed for the end of January.

A specialist team was identified to research technical aspects of live-streaming Ruxley services. Sunday evening Zoom services began at the end of September and were well supported. Zoom and YouTube accounts were set up for Ruxley and a Tech team researched for our needs going forward. We benefited from a share in the £5,000 allocated to the Circuit by the Methodist Church to aid a post-Covid return to services.

Churches across the Circuit were given the go-ahead to welcome an in-house congregation from 1st November. Ruxley decided to simultaneously live-stream via Zoom for the benefit of those who were still shielding. At the October meeting a great deal of consideration was given to arrangements to compliment and comply with the Covid safety protocols which had been carefully drawn up by the Leadership Team over the summer. Young people's involvement was discussed, as was the possible provision of communion, and ongoing technical requirements.

At the November meeting thought was given to services for the remainder of that month and also Advent and Christmas services. Much work followed in preparation. However' and with no little dismay we were back in lockdown in mid-December and Christmas services were once again adjusted to comply with the prevailing guidelines.

Arrangements were made for Rev. Fiona Ellingham's Licensing Service allowing for both an online and also an in-house service (it was not at all clear how things would pan out at that stage). An invitation and list of invitees was drawn up and dignitaries contacted. It was good to welcome the Bishop of Dorking, Area Dean and Archdeacon as well as Rev. Fiona Ellingham and her husband to Ruxley in person. Online the service was attended by congregation on Zoom and later on YouTube. Zoom welcomes were given live by the Mayor of Epsom and Ewell, the Dean of Guildford Cathedral and Chris Grayling MP, to name but a few.

Along with welcoming Rev. Fiona, the Group wished Rev. Emma every blessing for a refreshing sabbatical leave. The Sabbatical Support Group, convened to confirm arrangements for cover and pastoral support.

At the February meeting it was good to note that forty-one people had asked to join groups for the Lent Course, about twenty-five percent for the first time. Rev. Fiona outlined her detailed planning for services for Lent, Holy Week and Easter, including the Mothering Sunday all-age service. A card was distributed rather than the usual posy, a beautiful custom design by one of our members.

Planning for Holy Week and Easter was made difficult by the Covid restrictions and once again provision needed to be made for largely online services. Rev. Fiona's Maundy Thursday service included a spiritual communion. An activity bag was created and collated in advance of the Good Friday Service. Easter

Sunday commenced with a spiritual communion and a chance for people to re-journey through the narrative of Holy Week and Easter.

In April, Rev. Fiona shared her insights into a transition phase ('Response – Re-orientate – Recovery') and its application to the Ruxley Mission Action Plan. Rev. Fiona identified four core areas:

Celebrating in Worship – prayer, preaching and music, including our newly acquired online skills and resources

Developing our spiritual life as individuals and as a church – back to basics, e.g. Holy Habits, talents and stewardship

Ministering to the Community – developing school relationships, advertising, connecting with those who use the building and finding what's appropriate for them in church

Sharing in witness and loving service – garden of reflection, including the dedication service and perhaps extending this into other areas of bereavement support.

On-site worshippers were welcomed back to church on 25th April. Services continued to be relayed to the on-line congregation. Since then, worship has been held in church each Sunday following government guidelines on creating a Covid secure environment. This has included separating seating in church and the encouragement to wear masks and insistence on that when singing.

Planning is in place for a new style of worship which is to be called 'Together@10' and will be an exciting venture aimed at reaching families and children. We are moving forward.

Even in our wildest imagination we could not have envisaged the range of challenges that we have encountered in the last twelve months. In common with our sister churches across the Circuit and Diocese, we have needed to seek creative solutions to a range of issues presenting in a variety of ways. We give thanks to God for the wisdom and enthusiasm of our ministers, for the ongoing support and hard work of the Leadership Team, to the creativity of Virtual Emmaus and particular thanks to our tireless Tech Team. The landscape of our worship and fellowship may be very different to what it was a year ago, but wherever we journey, and whether the landscape is rough or smooth, our God continues to go with us and before us, our inspiration and our guide.

'Behold!' says he, 'I make all things new!' Amen! Thanks be to God.

The Tech team



The Tech Team was formed to co-ordinate streaming of online worship, initially using Zoom and then YouTube. We started by using Zoom for Sunday evening services whilst following Christchurch with St Philip on Facebook for morning services. Once we agreed to re-open the church, we obtained a video camera and new laptop (funded by a grant from the District). We can now use the existing sound desk and projectors through the

Church's AV system as well as streaming out to the community.

The YouTube Channel enables those outside the church family to join in the services. It also allows us to build up a back catalogue of recordings which can be watched at any time.

As the system settles down, we are beginning to train up new operators for the various roles, to give some resilience and spread the workload. The Church owes the team a huge vote of thanks for their

tremendous efforts in both getting the streaming to work so effectively and also in producing Virtual Emmaus's music videos.

Emmaus

Although Emmaus was unable to play 'live' for many months, several musicians and singers were recorded and blended together to provide music for the Services. 'Recorded Emmaus' was a regular feature of Ruxley's on line worship and this continues to be a tremendous resource for the church. Emmaus is now live again in church and accompanies solo singing or the masked congregation.

Pastoral Group

We have a pastoral network in place with twelve pastoral leaders whose role it is to look out for the well-being of members of the congregation. We must not forget that some of our church family are now getting frailer; we continue to hold these people in our prayers, especially those who are now unable to get to church to worship. We are sad to have lost several of our members who have moved away this year to be nearer their families, and even sadder to have said goodbye to others who have moved on to be with the Lord. We thank God for all they have meant to us over the years.

Prayer Chain

Fourteen people are on the Prayer Chain via e-mail or phone. This ensures that requests for prayer are quickly passed on. Many people have felt supported through these prayers in these difficult times.

Small Groups

Small groups adapted and continued to meet on Zoom during the lockdowns providing an opportunity for regular fellowship, prayer and bible study. Groups resumed meeting in the same space during the summer of 2021. A variety of resources were used throughout the year. During Lent new people joined existing groups or a newly formed group and along with the wider church family shared together in exploring the 'Holy Habits' material by Andrew Roberts. It is great to be able to report that some of the groups have new members.

Baptisms

One child was baptised at Ruxley Church during the last twelve months. Baptisms took place during all-age worship morning services. Parents are now asked to attend church for at least three months before their child is baptised.

Young People and Families

We did not run specific activities at church for the children during the past year. However, there were a number of things that took place apart from attending church.

Louise kindly went round delivering Easter eggs to all the children. The younger children also had a 'fun' book of Luke's gospel.

One leader sent to the parents of the older young people, various teachings they could access on line.

Throughout the year, each child received their birthday card (together with a bar of chocolate), and when it was Louise's 21st birthday all of them were asked to write or draw something to go in a birthday card for her. I believe she was really delighted with the result.

In the autumn all the children were asked if they would like to take part in the All-Age Services, and some did, which was lovely! Also, some came along to one of the two services we managed to hold at the

church. At Christmas time, small Christmas gifts were delivered to the homes of each child and at Easter, of course it was Easter eggs.

It was lovely to see one or two of the children, either on zoom or in reality, or to speak on the phone, and they said they missed coming to church, and were looking forward to the time when they could come again.

We also undertook a "listening" exercise with the young people in June 2021. This enabled us to hear first-hand how best to meet the needs of group as restrictions lifted.

...And we continued to pray for the children and their families, that God would bless and protect each one of them, and bring them back to our church, keen to learn more about their loving heavenly Father.

Riverview Church of England Primary and Nursery School

Due to Covid-19 restrictions, church members have not been able to visit the school to help with the usual activities such as Prayer Space days, the Christmas Fair and Summer fun day. Also, the school children have not been able to visit the Tuesday Fellowship group or use the church for special services. Instead of the usual Christingle service, church members provided oranges and materials, so the children could make their Christingles at school, plus explanatory content which was used for an assembly.

Meetings of the school governors have been via Zoom. The Board of Governors were pleased to welcome Rev Fiona as an ex-officio governor and we continue to strengthen the links between the church and the school community. The governors were saddened to learn of the death of Richard Watson (a governor from Ruxley Church), whom they described as kind, thoughtful, conscientious and a valued colleague.

The school staff have done a great job in difficult circumstances over the past year, keeping the children safe and enabling online as well as classroom learning. Parents have been given weekly updates and encouragement. We continue to pray for all involved in our church school community.

At Easter a group distributed forty hand painted wooden egg shapes, with a biblical message, in the neighbourhood for children to find, with an emphasis on the Riverview School area. This was an outward message to the community and gave our church's Facebook address for people to find out more about us and to engage with us if they so wish.

The Leavers festival in July 2021 was sadly not able to take place in church. In its place, Rev Fiona Ellingham took part at an event at the school, presenting each child with an engraved holding cross for them to take with them as they moved on to High School. A reminder was given that Jesus goes with them.

Tuesday Fellowship

Another year has passed with many members of fellowships lives changing. Everyone has been contacted by phone fortnightly and spirits are generally positive. Those now in nursing homes are also glad of a call with no visits allowed for so long. Three have moved away to live with their families and are very happy. Sadly, two have passed away.

At Christmas everyone was given or sent a box of biscuits, and at Easter a home-made card and bunch of flowers.

However, despite everything, some of our members are beginning to get fed up! Everyone is looking forward to the autumn and the possibility of meeting again.

Ladies' Group

Because of the covid lockdown it has not been possible for the Ladies Group to meet in the normal way. We have kept in touch with each other by telephone, however when permitted by government guidelines, several of our members have met on a Wednesday afternoon for a walk around Ewell Court park.

It has been good to meet up, if only briefly, and we look forward to resuming our normal evening meetings when possible.

EEL'S (Ewell Ecumenical Ladies)

EEL's are a group of ladies, from different churches in the area, who have met on a Wednesday morning for fellowship for many years. Although our numbers have diminished, we are strong in our faith and greatly value the times of worship, prayer and bible study we share together, and the support we give each other. During this past year six of us have continued to meet weekly on Zoom and in the summer, when both the weather and any restrictions permitted, we valued meeting socially distanced outside in gardens.

Thursday Coffee Mornings

We were obliged to close our Thursday coffee mornings in March 2020. Since then the group met virtually (on Zoom), each Thursday morning for an hour after morning prayers. This was invaluable in enabling us to stay in contact with each other. Some of our volunteers demonstrated other skills by helping produce Christmas angels which were distributed in the local area, and also getting involved in painting wooden Easter eggs and knitting Easter chicks which were given to the pre-school children. We are looking forward to reviving our baking skills when we are able to re-open and hope all our regulars will return to enjoy our efforts.

Food Bank



Owing to Covid 19 all the Food Bank Centres were closed in March 2020 but the demand has trebled for the same reason. The Food Bank Centre at *Generation* has therefore become the hub of activity with volunteers wearing masks and social distancing, packing supplies into cardboard boxes and putting them in an outside shed where volunteers collect them and deliver to those in need all over Epsom, Ewell, Leatherhead, Fetcham, Tadworth, Kingswood and everywhere between.

Several of our church members have been involved in this rewarding if heavy work.

The trebling in demand has meant that we have needed much more food etc but thanks to the Supermarkets being very generous and donations still coming in from Churches such as Ruxley we have kept up with demand.

The Foodbank Centre at Ruxley was able to re-open in July.

Memorial Project

The Garden of Reflection and Labyrinth were constructed in February 2020, and of course just a month later the country went into the first lock-down. Plans to continue preparing and 'opening' the Garden had to be put on hold again and again. It was possible in due course to do the planting of borders and we have fixed wall signs pointing to the Garden and to the Chapel.

The Dedication Service took place on 23rd May 2021 with guests including the mayor of Epsom and Ewell, ministers, past and present and the head-teacher at Riverview School. The event was shared on Zoom as only a small number of our congregation were able to attend.

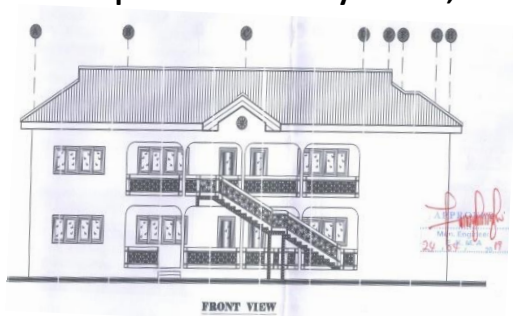
None-the-less, it was a wonderful celebration and indeed a quiet intimacy to the day may have been more appropriate at the current time of pandemic.

With the Garden dedicated, work continues on mounting memorial plaques on the three wooden pillars for those wishing to remember loved ones. A brochure promoting the opportunity has been produced and we are reaching out to the local community and hoping to build connections going forward.

Some of the monies raised are held in a dedicated fund and these will be used to pay for maintenance and administration. We are also looking into possible ways in which Ruxley Church might be able to provide help for those who have suffered bereavement. No doubt there will be other avenues for mission themselves as the project continues.



Update on Sudbury School, Ghana - HRS Library and ICT Centre from August 2020



The work on the Library and ICT Centre was commissioned during 2019 holiday in Ghana and Emma shared with the church in September 2019 how our donations had contributed towards the work on the profiling of the foundation.

It is important to be reminded that this is a joint project of both Stoneleigh Methodist Church and Ruxley Church which is code named - the “minister’s project” and has been supported annually by both Churches through fundraising efforts. There are also individuals who have personally supported this project financially as well as donating educational materials. Since March 2020, we haven’t actively as a church, engaged in our usual fundraising activities to support the school. However, donations have continued to be made both of clothing and of money.



Since the lockdown in March 2020, the government in Ghana allowed nurseries, primary, secondary schools, and universities to reopen across the country for the first time from the second week of January 2021. They continue to follow strict Covid-19 protocols.

Putting the Covid protocols in place at the school (especially social distancing), made it was an urgent need for Sudbury school to raise funds, to build and complete one classroom on the first floor. This extension allowed one of the year groups to spread out properly.



Tuesday Evening Prayers

Prayer support have continued throughout the year, sometimes on different days, due to other meetings being on a Tuesday and most of the time via Zoom. A few times, when allowed and socially distanced, we met on warm evenings in the Garden of Reflection at church.

As a group of around six, we share if anyone has asked for prayer, sometimes a bible passage, or music, then quiet or open prayer.

Social and Community Engagement Group

Owing to the Covid crisis this group was not operational. However, the work continued through others (mentioned elsewhere) who prayed for people in the community, painted wooden Easter Eggs, made crosses with bible verses and knitted angels which were left where school children could find them.

In particular we would like to thank Jen Eade for her paintings which have a humorous and Christian message. These have appeared on our notice boards, in the church vestibule where they could be seen by passers-by and played a great part in our You Tube services.



Thanks Jen, you cheered us up when we most needed it.

Ruxley Star

The Star is now produced every other month to 'fit in' with our sister church at Stoneleigh. During the pandemic, articles have been considerably supplemented by Parish Pump. We remain, however, very grateful to the small but loyal number of 'homegrown' contributors. What lockdown has shown is that most people can now access the Star online suggesting that the number of printed paper copies can be reduced significantly.

Publicity Report

The Ruxley church website and Ruxley Church Facebook page were regularly up-dated with fresh material to interest our church congregation and our local community.

At times during the past year, things were changing daily, so the information on the website had to be quickly up-dated. New pages were added to help people during this difficult time, including 'Church at home' featured material for different age groups and 'God's presence in these hard times' enabled offerings of prayers, words of encouragement and Bible verses. We promoted the Art and Spirituality monthly Zoom sessions with Deacon Dawn and are pleased to highlight 'Take Five', daily reflections on YouTube by Rev. Chris Morley (a member of our congregation). We had no Church Notices for most of the time, so a 'Keeping in Touch' page, with news from the Leadership Team was also added. 'Latest News' also continued to keep visitors up-to-date with happenings, and the Ruxley Star has been available on the website. It has been interesting to see that more people have visited the website at particular periods of the pandemic as well as Christmas. Visits to the website increased by almost 20% during these periods.

On Facebook our viewers and engagement figures kept increasing throughout the year. The posts that gained most interest were those where we were creative and showed action. Posts at Advent and Lent were particularly well liked.

Communications and Administration Group

Although did not have group meetings we were in contact by e-mail and made the changes necessary because of Covid. The weekly Service sheet and News Sheet were sent to most people by e-mail; the few that we were not able to reach in that way were hand-delivered by a member of the congregation.

Financial Review of the Year

The financial position is not as robust as we would like; in normal times we would hope to have reserves in the order of £60,000 and at times during the past year they have been about half that. None-the-less we hope we can continue to ride out the next few months of restrictions and look to rebuild after that.

There are several key reasons why the finances have not been in quite so perilous state as might have been. Firstly, we were able to take advantage of the furlough scheme so that whilst our cleaner was paid, we were able to re-coup 80% of the salary. Secondly, our administrator very generously agreed to work at reduced salary. Thirdly, the Ruxley Pre-school remained open for most of the period; not only did this give a significant income, but we were very grateful that nursery staff did the work of cleaning (allowing the furlough to happen). Other factors included the help given by our denominations, income from the Epsom & Ewell Railway Club for their storage hire, a grant from All Churches Trust to assist with costs for window filming and a grant from the Circuit which has paid for technical equipment for the filming of services in the church. Some reductions in utility costs and repairs and maintenance and in general running of the church and services are also factors.

Special mention must now be given to our congregation. We received tremendous ongoing support through the last year, with many people finding ways to contribute through online banking in addition to those who had already set up standing orders. Other friends presented the treasurer with cheques and cash – all have been duly banked and accounted for. We had anticipated running a Stewardship campaign to consider how we give to the church, but this was suspended from June 2020 to January 2021 and then again to June 2021; finally the service took place in October 2021. Meanwhile some of our congregation have already felt it right to increase their giving and to these people we give further thanks. We must also give thanks to those who contributed financially to the re-decoration of the vicarage and to those who worked there (a major saving on what we would have had to pay for professional services).

As mentioned above, there have been significant expenditures along the way. The filming of windows and erection of safety barriers (this cost nearly £6000), making the church COVID safe, emergency light replacements (this cost over £3000) and other ongoing repairs and maintenance. These are necessary expenditures, but none-the-less somewhat frustrating.

We must also report on the potential liability that exists with regard to building rectifications. Work of the Leadership and subsequently the Rectifications group suggests that the cost of these could be substantial. Ecumenical Church Council has been kept informed of the ongoing situation, as have the parent denominations from whom we have sought and received help and advice.

Money spent on the ministry of the church is more heartening. Though we would all have preferred to be in church, the delivery of services via the internet has been a tremendous step forward and demanded a huge effort from the team involved. It was wonderful to receive a grant to help with this and thereby to be able to provide the equipment needed. Somewhat similarly, the Memorial Project has sent a signal that we are “still in business” and the Garden of Reflection has now been planted and signage positioned. Memorial Plaques are already being purchased and it will be a wonderful day when the Garden is dedicated.

The work of our church continues and He provides for its needs.

Figures and their explanation:

Total receipts on the general unrestricted funds were £101,065 of which £39,863 was unrestricted voluntary donations (continued giving by the congregation) and a further £7,760 was from Gift Aid. £6,683 of other receipts included a generous, one-off donation by a member of the congregation. £17,117 was received from non-recurring grants (Epsom & Ewell Borough Council gave major support to the church for loss of earnings during the year). Hall lettings contributed £29,079 –considerably reduced on previous years due to the pandemic.

£1,130 was donated to charities. £52,230 was spent to provide Christian Ministry through payment of the Parish Share (£29,458) and Circuit Assessment (£22,772). Repairs and maintenance costs were £15,685 and utilities payments were £9,412. £11,957 was spent on salaries of the administrator and cleaner (please note that the church received reimbursement of some salary costs through the government furlough scheme). £1,932 was paid towards the Memorial Project, drawing down funds raised in previous years.

Net incoming resources on the general fund were **+£2929** leaving a balance carried forward of £70,148. Please note that the balance held in the various banks by the church exceeds the 'book balance' by £411. This discrepancy is due to the agency balance of £395 being held in the same account as the general fund. Our Independent Examiner is aware of the discrepancy and we anticipate making the correction of £16 during the coming year.

£125 was received for, and £169 passed on to external charitable organisations. These figures are greatly reduced due to the congregation not meeting in church and therefore the usual envelope collections not taking place this year. The church was able to make donations to the Methodist and Anglican charities, albeit again reduced on previous years. Total giving was £1,145.

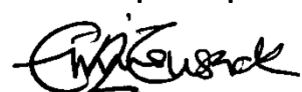
The outstanding Parish Share is £30,463. With an Anglican minister now in post we hope to negotiate with the diocese as to how this figure can be reduced.

Charitable Giving 1.9.20 – 31.8.21

Epsom & Ewell - the Mayor's Charity Fund.	Donation	50
Sudbury School fund	Church collection	130
Riverview School leavers crosses	Church donation	150
Methodist Homes (MHA)	Church donation	125
Bishop of Guildford's Communities Fund	Church donation	500
Methodist Homes (MHA)	Church donation	125
Mission in Britain Fund	Church donation	125
World Mission Fund	Church donation	125
Methodist Church Fund (MCF)	Church donation	125

Total: £1,455

Report prepared May 2022 by Stephen Kendall (former Treasurer) in conjunction with Ruxley Church Leadership Group.



Revd Emma Cusack, (Minister) signed on behalf of the ECC on 22nd June 2022

THE METHODIST CHURCH
STANDARD FORM OF ACCOUNTS
(SHORT FORM)

Ruxley Church

FOR THE YEAR ENDED

31 August 2021

Wimbledon Circuit

Circuit no

35/26

Registered Charity - Charity Registration number

1174096

If not a registered charity **Her Majesty's Revenue and Customs**
Gift Aid number

XR76413

(The HMRC number is equivalent to a registered charity number in terms of evidence of charitable status and may be used to give to donors or grant funders wishing to see evidence of the organisation's charitable status. Methodist charities in England and Wales that are not registered charities are excepted from registration under Statutory Instrument 2014 No.242)

Ministers:

Rev. Emma Cussack Rev. Fiona Ellingham

Church Stewards:

Jacky Panter

Valerie Proctor

Church Warden

Dave Searle

Treasurer:

Stephen Kendall

Ruxley Church

Church - Short
Form

ACCOUNTS FOR THE YEAR ENDED 31 AUGUST 2021

SECTION A

a1	RECEIPTS	Note
a2	Offerings and Tax recovered	
a3	Bank and CFB interest & investment income	
a4	Lettings	
a5	Other receipts	
a6	TOTAL RECEIPTS	

This year's amount
to the nearest £

£
47,623
46
29,079
24,332
101,080

Last year's amount to
the nearest £

£
52,412
195
47,273
15,966
115,846

SECTION B

b1	PAYMENTS	
b2	Circuit Assessment or Share	
b3	Donations	
b4	Repairs and Maintenance	
b5	Utilities (Insurances, water charges, heating & lighting)	
b6	Other payments	
b7	TOTAL PAYMENTS	

52,230
1,130
16,705
9,412
18,659
98,136

48,967
2,601
13,742
10,992
36,751
113,053

SECTION C

c1	NET RECEIPTS/PAYMENTS FOR THE YEAR	(a6 - b7)
c2	Total funds brought forward from last year	
c3	TOTAL FUNDS AT END OF YEAR	(c1 + c2)
c4	State here the total of any other assets of the Church	
c5	State here the total of any liabilities of the Church	
c6	State here the insured value of the Church premises and contents	

2,944
67,219 (c7)
70,163
30,463
5,800,000

2,793
64,426
67,219 (c7)
30,463
5,800,000

SECTION D ANALYSIS OF FUNDS

d1	Balances held at TMCP at 31 August	
d2	Balances held at CFB at 31 August	
d3	Bank and cash balances at 31 August	
d4	TOTAL (= Box c3)	

4,518
22,625
43,416
70,559

4,512
22,593
40,585
67,690

SECTION E

FOR INFORMATION ONLY: MONEY RECEIVED AND PASSED ON TO EXTERNAL ORGANISATIONS

(these amounts are not to be included in total receipts/payments figures above)

e1	Balance brought forward from last year	220	292
e2	Offerings/Gifts - received for external organisations	345	2,311
e3	Offerings/Gifts - passed to external organisations	169	2,383
e4	BALANCE STILL TO BE PAID	396	220

Name of Church Ruxley Church

Circuit number 35/26

Declarations and Scrutiny

I confirm that these Receipt and Payment based accounts for the year to 31 August 2021 have been prepared from the records of the Church and that they include all funds under the control of the Church trustees.

Signature of treasurer Stephen Kendall Date 18.11.2021

Name and address of treasurer STEPHEN KENDALL, 91 AMIS AVENUE,
EPSOM, SURREY Post Code KT19 9HY

Presentation to the Church trustees

I confirm that the annual report and accounts for the year ended 31 August 2021 were ~~will be~~ presented to the meeting of the Church trustees held on 24.11.2021

Signature of the Chair of the meeting Emma Cusack

Name of the Chair of the meeting Revd. Emma Cusack Date 24.11.2021

Independent Examiner's Report to the Trustees of the

..... RUXLEY Church

Charity Number 1174096

Responsibilities and basis of report

I report to the trustees on my examination of the accounts of the Ruxley Church for the year ended 31 August 2021 set out on pages 2 to As the Church's trustees, you are responsible for the preparation of the accounts in accordance with the requirements of the Charities Act 2011 ('the Act').

I report in respect of my examination of the Church's accounts carried out under section 145 of the Act and, in carrying out my examination, I have followed all the applicable Directions given by the Charity Commission under section 145(5)(b) of the Act.

* delete or circle as appropriate

Name of Church Ruxley Church

35/26

Independent Examiner's Statement

I have completed my examination. I confirm that no material matters have come to my attention in connection with the examination which give me cause to believe that in, any material respect:

- the accounting records were not kept in accordance with section 130 of the Act; or
- the accounts do not accord with the accounting records.

I have no concerns and have come across no other matters in connection with the examination to which attention should be drawn in this report in order to enable a proper understanding of the accounts to be reached.

I have obtained independent verification of all investments with the Trustees for Methodist Church Purposes or held in other trusts, bank balances and funds at the Central Finance Board of the Methodist Church which are individually in excess of £10,000 (ten thousand pounds) at the balance sheet date.

Signature of independent examiner *K Mallett*

Name of independent examiner Kevin Mallett

Relevant professional qualification of independent examiner FCA

Name of firm (where appropriate) L & F ACCOUNTING LTD

Address 18 The Broadway, Stoneleigh, Epsom, Surrey KT17 2HU

Date 29 December 2021

Sep-21

THE METHODIST CHURCH
STANDARD FORM OF ACCOUNTS
(SHORT FORM)

Ruxley Church

FOR THE YEAR ENDED

31 August 2021

Wimbledon Circuit

Circuit no

35/26

Registered Charity - Charity Registration number

1174096

If not a registered charity **Her Majesty's Revenue and Customs**
Gift Aid number

XR76413

(The HMRC number is equivalent to a registered charity number in terms of evidence of charitable status and may be used to give to donors or grant funders wishing to see evidence of the organisation's charitable status. Methodist charities in England and Wales that are not registered charities are excepted from registration under Statutory Instrument 2014 No.242)

Ministers:

Rev. Emma Cussack Rev. Fiona Ellingham

Church Stewards:

Jacky Panter

Valerie Proctor

Church Warden

Dave Searle

Treasurer:

Stephen Kendall

Ruxley Church

Church - Short
Form

ACCOUNTS FOR THE YEAR ENDED 31 AUGUST 2021

SECTION A

a1	RECEIPTS	Note
a2	Offerings and Tax recovered	
a3	Bank and CFB interest & investment income	
a4	Lettings	
a5	Other receipts	
a6	TOTAL RECEIPTS	

This year's amount
to the nearest £

£
47,623
46
29,079
24,332
101,080

Last year's amount to
the nearest £

£
52,412
195
47,273
15,966
115,846

SECTION B

b1	PAYMENTS	
b2	Circuit Assessment or Share	
b3	Donations	
b4	Repairs and Maintenance	
b5	Utilities (Insurances, water charges, heating & lighting)	
b6	Other payments	
b7	TOTAL PAYMENTS	

52,230
1,130
16,705
9,412
18,659
98,136

48,967
2,601
13,742
10,992
36,751
113,053

SECTION C

c1	NET RECEIPTS/PAYMENTS FOR THE YEAR	(a6 - b7)
c2	Total funds brought forward from last year	
c3	TOTAL FUNDS AT END OF YEAR	(c1 + c2)
c4	State here the total of any other assets of the Church	
c5	State here the total of any liabilities of the Church	
c6	State here the insured value of the Church premises and contents	

2,944
67,219 (c7)
70,163
30,463
5,800,000

2,793
64,426
67,219 (c7)
30,463
5,800,000

SECTION D ANALYSIS OF FUNDS

d1	Balances held at TMCP at 31 August	
d2	Balances held at CFB at 31 August	
d3	Bank and cash balances at 31 August	
d4	TOTAL (= Box c3)	

4,518
22,625
43,416
70,559

4,512
22,593
40,585
67,690

SECTION E

FOR INFORMATION ONLY: MONEY RECEIVED AND PASSED ON TO EXTERNAL ORGANISATIONS

(these amounts are not to be included in total receipts/payments figures above)

e1	Balance brought forward from last year	220	292
e2	Offerings/Gifts - received for external organisations	345	2,311
e3	Offerings/Gifts - passed to external organisations	169	2,383
e4	BALANCE STILL TO BE PAID	396	220

Name of Church Ruxley Church

Circuit number 35/26

Declarations and Scrutiny

I confirm that these Receipt and Payment based accounts for the year to 31 August 2021 have been prepared from the records of the Church and that they include all funds under the control of the Church trustees.

Signature of treasurer Stephen Kendall Date 18.11.2021

Name and address of treasurer STEPHEN KENDALL, 91 AMIS AVENUE,
EPSOM, SURREY Post Code KT19 9HY

Presentation to the Church trustees

I confirm that the annual report and accounts for the year ended 31 August 2021 were ~~will be~~ presented to the meeting of the Church trustees held on 24.11.2021

Signature of the Chair of the meeting Emma Cusack

Name of the Chair of the meeting Revd. Emma Cusack Date 24.11.2021

Independent Examiner's Report to the Trustees of the

..... RUXLEY Church

Charity Number 1174096

Responsibilities and basis of report

I report to the trustees on my examination of the accounts of the Ruxley Church for the year ended 31 August 2021 set out on pages 2 to As the Church's trustees, you are responsible for the preparation of the accounts in accordance with the requirements of the Charities Act 2011 ('the Act').

I report in respect of my examination of the Church's accounts carried out under section 145 of the Act and, in carrying out my examination, I have followed all the applicable Directions given by the Charity Commission under section 145(5)(b) of the Act.

* delete or circle as appropriate

Name of Church Ruxley Church

35/26

Independent Examiner's Statement

I have completed my examination. I confirm that no material matters have come to my attention in connection with the examination which give me cause to believe that in, any material respect:

- the accounting records were not kept in accordance with section 130 of the Act; or
- the accounts do not accord with the accounting records.

I have no concerns and have come across no other matters in connection with the examination to which attention should be drawn in this report in order to enable a proper understanding of the accounts to be reached.

I have obtained independent verification of all investments with the Trustees for Methodist Church Purposes or held in other trusts, bank balances and funds at the Central Finance Board of the Methodist Church which are individually in excess of £10,000 (ten thousand pounds) at the balance sheet date.

Signature of independent examiner *K Mallett*

Name of independent examiner Kevin Mallett

Relevant professional qualification of independent examiner FCA

Name of firm (where appropriate) L & F ACCOUNTING LTD

Address 18 The Broadway, Stoneleigh, Epsom, Surrey KT17 2HU

Date 29 December 2021

Sep-21