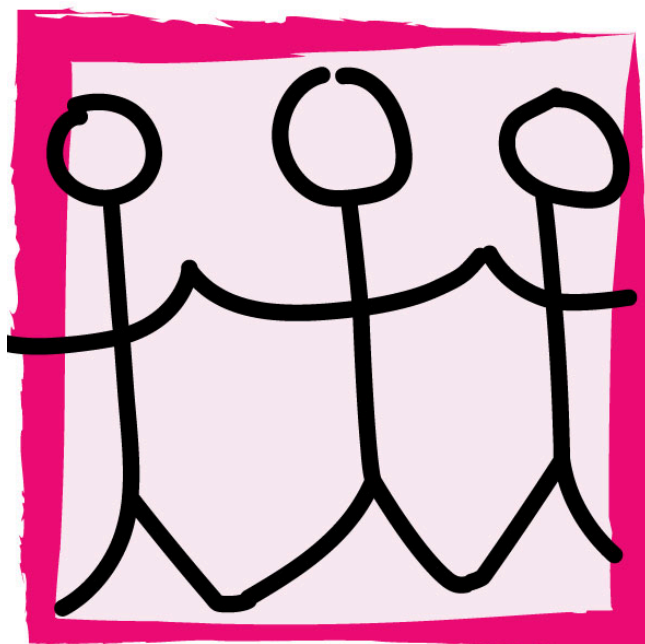




**Annual Report
Year End 2023
(31.07.22-01.09.23)**



Listen-Hear!

Registered Charity Number: 1173906

Registered Address:

c/o Beacon Academy, North Beeches Lane, Crowborough, TN6 2AS

Trustees:

Sandra Andrew

Steven Curtis

Rosemary Jones

Project Manager:

Angela Kirby

Project Manager Comment

Wow! What a year.....

With the world still reeling from Covid, and the new social norms, this year has seen a colossal increase in young people's anxiety (and adult's anxiety).

The last 2 years seem to have had a profound effect on the emotional and social development of the youngsters we have seen.

Schools have been desperate for support services, and alternate options for the students that they are desperately trying to support.

Attendance has taken a massive hit, with Emotional Based School Refusal becoming a 'hot potato'.

We have been busy working with Schools, parents and local authorities trying to look at how to best meet the varying needs of the young people within the community.

Demand for support has far outweighed the supply on offer. We are busy looking at arising needs and how we can collaborate with community partners to offer meaningful support to those young people we work with.

This year has seen some great alternate provisions piloted and a lot of thinking 'outside the box'

Huge thanks to our community partners and sponsors.

Ange Kirby

Trustees Comments

As ever, the trustees would like to thank the team of staff and volunteers who have worked tirelessly with the young people and families they work with.

The year has brought many challenges to light with so many young people. The overriding reason for referrals has been anxiety/mental health. Our team have been busy working with Schools, parents, and young people in assessing needs and trying to offer bespoke support for those in need.

Schools have been keen to purchase buy-in services to support the increasing demand for their students.

The team has trialed off-site activities for some cohorts to offer alternate activities and an opportunity for more young people to be successful in their day to day lives.

The project continues to try and be autonomous, and to this end continues to try and be self-sufficient, with only small amounts of funding/grant bids.

We have been grateful to receive funding this financial year from Chalk Cliff Trust.
We are grateful to still be benefitting from the initial support received from Rag 'n' Bone Man

The team is busy making plans for next year and looking at further developing alternate provisions for students who struggle to access a mainstream curriculum. The next year looks very exciting....challenging but exciting.

We, as always would like to thank the team for their continued efforts to make the service relevant to the ever-changing needs of young people, parents and organisations within the community.

Steven, Rose & Sandra

Listen-Hear is a CIO founded in July 2017 and is governed by a constitution.

Summary of Objects (as set out in governing document)

- To act as a resource for young people and families living in Wealden
- The promotion of social inclusion among parents and their children socially excluded from society
- To relieve the mental and physical sickness/pain of young people and parents resident in Wealden suffering from mental health issues by the provision of counselling and support for such persons

Main Activities this year

- Support services to schools.1:1 drop-in sessions for students
Issues addressed have included; mental health and wellbeing, substance misuse, sexual health, self harm, family breakdown, sexuality, depression, education, behaviour, fostering, social skills, sexual health, anxiety, Covid related issues and budgeting
- Approximately 45 young people have been referred termly, with many families/young people being supported with wrap-around, 52-week provision. There have been over 2800 interventions during the reporting period
- The team delivered services to 3 Secondary Schools, the community locality and 2 Local Authorities
- Outdoor alternate provision piloted

- Bespoke 1:1 alternate provision carried out with KCC
- Forest School/Outdoor provision agreed to be piloted in collaboration with Two Muddy Boots
- A second people carrier purchased to support alternate activities for young people struggling with mainstream school

- Parent support
- Advocacy support for parents in formal settings such as school meetings. 1:1 support sessions, parenting support work, signposting to services.

Approximately 30 families have been supported with over 100 interventions

- This year has seen an increase in parents struggling with their child's mental health/anxiety. The team has responded to over 200 emails/texts/calls from parents/carers about their child's mental health. It has been noted that self-harm has become a more regular concern with parents/carers as has concerns around suicidal thoughts. The team are looking at resources for parents around mental health and wellbeing education

Financial Statement

(Reserve prior to gaining charitable status £10,000 on loan/gift basis, with a further £20,000 on loan basis over 3 years (unpaid) and not accounted for in income & Expenditure.)

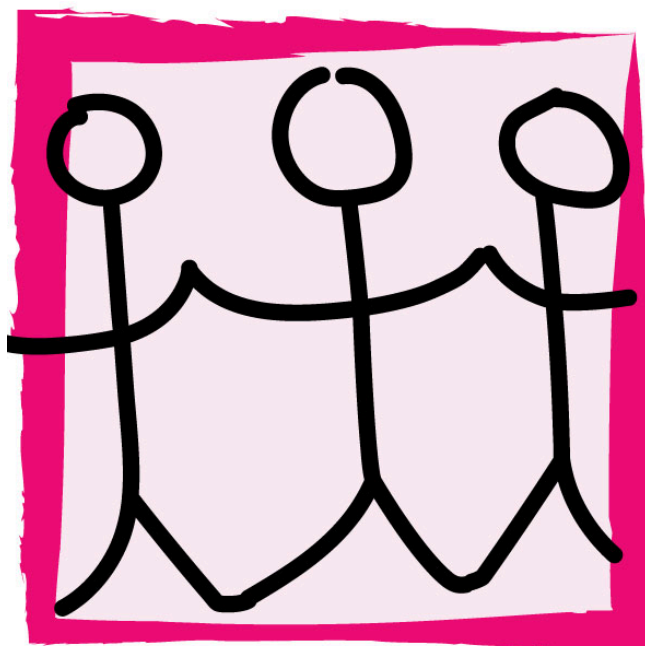
Income: £ 86,092

Expenditure: £84,189

Accounts and annual report were approved at the Trustees Meeting 1st May 2024



**Annual Report
Year End 2023
(31.07.22-01.09.23)**



Listen-Hear!

Registered Charity Number: 1173906

Registered Address:

c/o Beacon Academy, North Beeches Lane, Crowborough, TN6 2AS

Trustees:

Sandra Andrew

Steven Curtis

Rosemary Jones

Project Manager:

Angela Kirby

Project Manager Comment

Wow! What a year.....

With the world still reeling from Covid, and the new social norms, this year has seen a colossal increase in young people's anxiety (and adult's anxiety).

The last 2 years seem to have had a profound effect on the emotional and social development of the youngsters we have seen.

Schools have been desperate for support services, and alternate options for the students that they are desperately trying to support.

Attendance has taken a massive hit, with Emotional Based School Refusal becoming a 'hot potato'.

We have been busy working with Schools, parents and local authorities trying to look at how to best meet the varying needs of the young people within the community.

Demand for support has far outweighed the supply on offer. We are busy looking at arising needs and how we can collaborate with community partners to offer meaningful support to those young people we work with.

This year has seen some great alternate provisions piloted and a lot of thinking 'outside the box'

Huge thanks to our community partners and sponsors.

Ange Kirby

Trustees Comments

As ever, the trustees would like to thank the team of staff and volunteers who have worked tirelessly with the young people and families they work with.

The year has brought many challenges to light with so many young people. The overriding reason for referrals has been anxiety/mental health. Our team have been busy working with Schools, parents, and young people in assessing needs and trying to offer bespoke support for those in need.

Schools have been keen to purchase buy-in services to support the increasing demand for their students.

The team has trialed off-site activities for some cohorts to offer alternate activities and an opportunity for more young people to be successful in their day to day lives.

The project continues to try and be autonomous, and to this end continues to try and be self-sufficient, with only small amounts of funding/grant bids.

We have been grateful to receive funding this financial year from Chalk Cliff Trust.
We are grateful to still be benefitting from the initial support received from Rag 'n' Bone Man

The team is busy making plans for next year and looking at further developing alternate provisions for students who struggle to access a mainstream curriculum. The next year looks very exciting....challenging but exciting.

We, as always would like to thank the team for their continued efforts to make the service relevant to the ever-changing needs of young people, parents and organisations within the community.

Steven, Rose & Sandra

Listen-Hear is a CIO founded in July 2017 and is governed by a constitution.

Summary of Objects (as set out in governing document)

- To act as a resource for young people and families living in Wealden
- The promotion of social inclusion among parents and their children socially excluded from society
- To relieve the mental and physical sickness/pain of young people and parents resident in Wealden suffering from mental health issues by the provision of counselling and support for such persons

Main Activities this year

- Support services to schools.1:1 drop-in sessions for students
Issues addressed have included; mental health and wellbeing, substance misuse, sexual health, self harm, family breakdown, sexuality, depression, education, behaviour, fostering, social skills, sexual health, anxiety, Covid related issues and budgeting
- Approximately 45 young people have been referred termly, with many families/young people being supported with wrap-around, 52-week provision. There have been over 2800 interventions during the reporting period
- The team delivered services to 3 Secondary Schools, the community locality and 2 Local Authorities
- Outdoor alternate provision piloted

- Bespoke 1:1 alternate provision carried out with KCC
- Forest School/Outdoor provision agreed to be piloted in collaboration with Two Muddy Boots
- A second people carrier purchased to support alternate activities for young people struggling with mainstream school

- Parent support
- Advocacy support for parents in formal settings such as school meetings. 1:1 support sessions, parenting support work, signposting to services.

Approximately 30 families have been supported with over 100 interventions

- This year has seen an increase in parents struggling with their child's mental health/anxiety. The team has responded to over 200 emails/texts/calls from parents/carers about their child's mental health. It has been noted that self-harm has become a more regular concern with parents/carers as has concerns around suicidal thoughts. The team are looking at resources for parents around mental health and wellbeing education

Financial Statement

(Reserve prior to gaining charitable status £10,000 on loan/gift basis, with a further £20,000 on loan basis over 3 years (unpaid) and not accounted for in income & Expenditure.)

Income: £ 86,092

Expenditure: £84,189

Accounts and annual report were approved at the Trustees Meeting 1st May 2024



CHARITY COMMISSION
FOR ENGLAND AND WALES

Independent examiner's
report on the accounts

Section A

Independent Examiner's Report

Report to the trustees/
members of

Charity Name

LISTEN - HEAR!

On accounts for the year
ended

31/07/2022 - 01/09/2023

Charity no
(if any)

1173906.

Set out on pages

(remember to include the page numbers of additional sheets)

I report to the trustees on my examination of the accounts of the above
charity ("the Trust") for the year ended DD/MM/YYYY.

Responsibilities and
basis of report

As the charity trustees of the Trust, you are responsible for the preparation
of the accounts in accordance with the requirements of the Charities Act
2011 ("the Act").

Independent
examiner's statement

I report in respect of my examination of the Trust's accounts carried out
under section 145 of the 2011 Act and in carrying out my examination, I
have followed the applicable Directions given by the Charity Commission
under section 145(5)(b) of the Act.

I have completed my examination. I confirm that no material matters have
come to my attention (other than that disclosed below *) in connection with
the examination which gives me cause to believe that in, any material
respect:

- accounting records were not kept in accordance with section 130 of
the Act or
- the accounts do not accord with the accounting records

I have no concerns and have come across no other matters in connection
with the examination to which attention should be drawn in order to enable a
proper understanding of the accounts to be reached.

* Please delete the words in the brackets if they do not apply.

Signed:

M. Spier

Date:

10/04/2024.

Name:

MICHAELA SPES.

Relevant professional
qualification(s) or body
(if any):

ADVANCED APOLAR FINANCIAL PLANNING
CERTIFIED FINTECH PRACTITIONER
FINANCE GOVERNOR
CHARTERED INSURANCE INSTITUTE.

Address:

GLENDHURST FARM COTTAGE
ROWLEY LANE
HIGHT HURSTWOOD T222 4BG.

Section B**Disclosure**

Only complete if the examiner needs to highlight matters of concern (see CC32, Independent examination of charity accounts: directions and guidance for examiners).

Give here brief details of any items that the examiner wishes to disclose.