

SAMARITANS

Winchester & District

**Whatever
you're facing**
We're here to listen

Annual Report 2024–25

CONTENTS

	Page
Vision, Mission and Values	3
Annual Report	4-13
Report of the Trustees	14-16
Independent Examiner's Report	17
Statement of Financial Activities	18
Balance Sheet	19
Notes to the Accounts	20-26

Our vision



Every life lost to suicide is a tragedy, and our vision is that fewer people die by suicide.

Our mission



To be there for anyone who needs someone. To give people ways to cope and be there for others. And to campaign to make suicide prevention a priority.

Our values



Listening

Exploring feelings alleviates distress and helps people to reach a better understanding of their situation and the options open to them.

Confidentiality

If people feel safe, they are more likely to be open about their feelings.

Non-judgmental

We want people to be able to talk to us without fear of prejudice or rejection.

People making their own decisions

We believe that people have the right to find their own solution and that telling people what to do takes responsibility away from them.

Human contact

Giving people time, undivided attention and empathy meets a fundamental emotional need and reduces distress and despair.

DIRECTOR'S REPORT

On behalf of the Trustees, and the Joint Leadership team, I want to thank everyone for another exceptional year at our branch. This has been a year of transition and strong commitment to our vision, and it's only been possible because of the incredible dedication shown by our volunteering team.

Our rota has remained strong throughout the year, even through the summer holiday dips and challenging national disruptions. We continued to run over 95% of scheduled duties, with our brilliant Day Leader team ensuring volunteers were well supported.

A huge thank you to our volunteers for maintaining a high level of service and care. It was especially heartening to receive praise from the Central Quality Team for a call described as "exceptional quality". I was very proud to receive feedback from a grateful caller that our Listener "saved his life". A powerful reminder of the profound impact each conversation can have.

During the year, branch volunteers answered 18,754 calls which was 6% more than last year and gave 5,616 hours of listening time to people in need of our support – 247 hours more than last period.

We are particularly proud that 34% of our listening hours on the phone (1,911 hrs) were carried out during the hours-of-need – twilight (23:00-02:00) & overnight (02:00-06:00). Throughout the year we maintained an average of 96 active listening volunteers.

As part of our continued strong Outreach presence in the community, we also launched the Winchester Workplace Wellbeing Network (WWWN) for local businesses and have received a great response.

Our extended family of Prison Listeners in HM Winchester Prison, supported by the Prison Team, had 1,127 contacts with callers, totalling over 832 hrs. Top concerns were mental health, family and self-harm.

We were delighted to participate in the 2024 Volunteer Voice Survey, with over half our branch responding. The results were amazing. Respondents reported a 100% engagement score. 100% Winchester Samaritans respondents said they:

- Are proud to volunteer with Samaritans
- Would recommend it to others
- Intend to still be with us in 12 months

Our branch scored above the national average across the board, with strong results for leadership confidence, training quality, and communication.

This was a year of significant operational change:

- The IT team carried out vital work moving us from the old BT analogue lines to broadband, to enable a successful shift to VoIP to underpin the transition to the new Listening Centre
- Our transition to the new Listening Centre platform was a major milestone. This significantly improved audio quality with clearer caller experiences. Any technical hiccups but were expertly handled by Peter 1050 and the IT team (Lee 1840, and Howard 1619) to ensure a seamless transition. The feedback from volunteers has been overwhelmingly positive.
- Enhanced DBS checks were completed for all volunteers, with exceptional support and care from Carol 1578
- The branch implemented the new national Email Service Level Agreement (SLA) to support the new service strategy
- The On-Going Mentoring process was smoothly delivered, with strong engagement, led by the amazing Penny 1550
- Compliance and Governance were maintained to a high standard. Thanks to Michael 1770, Peter 1050, and Chris 1612 for their significant efforts.

Our branch off-site day, centred around the Branch Renovation Project, confirmed our direction. However, progress has been frustratingly slow due to our focus on operational changes and challenges in engaging building contractors to cost the proposed work. Addressing the issues with the operations room environment remains a priority.

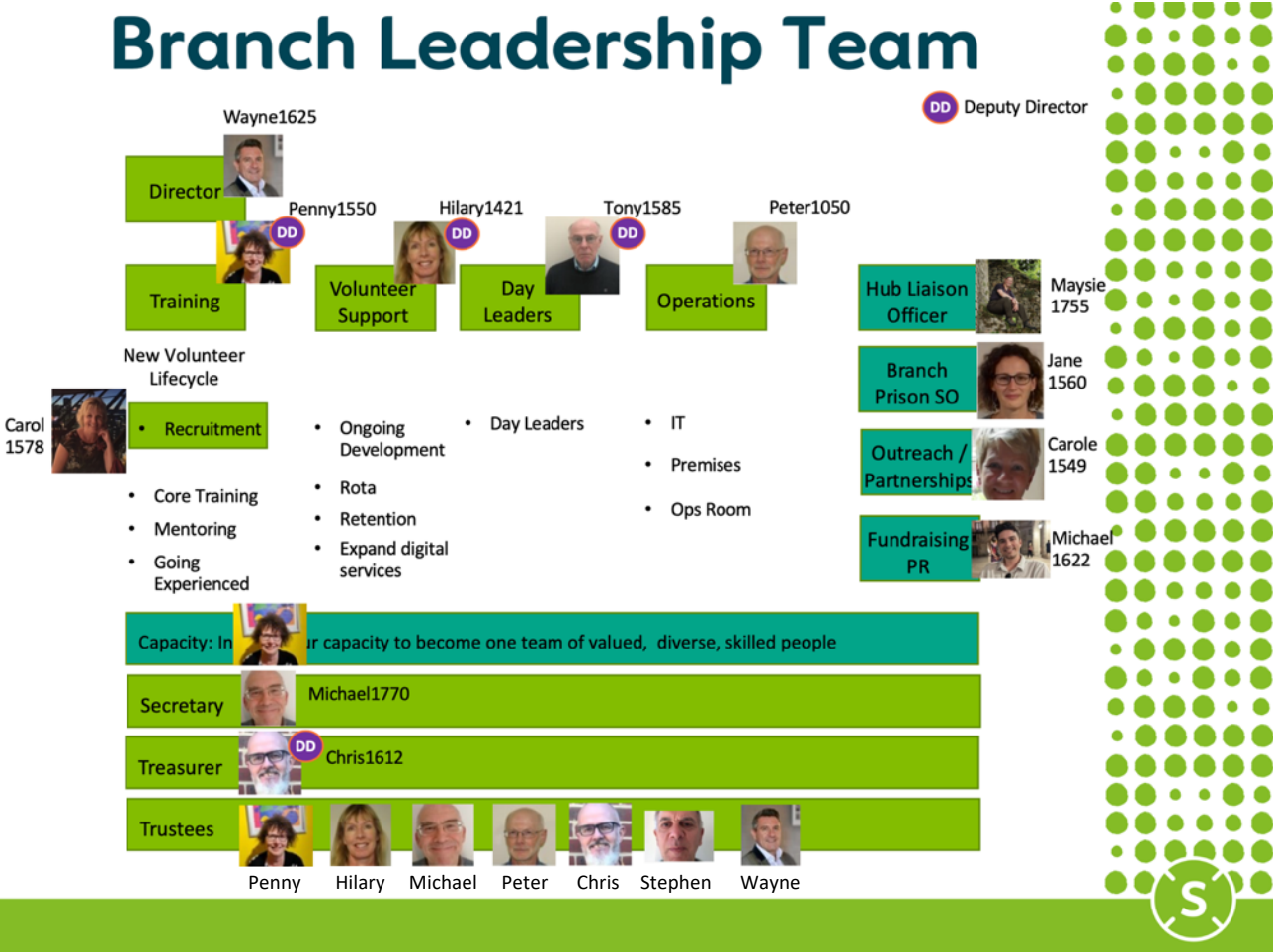
This year has shown how deeply committed and capable our branch is. Every volunteer, whether Listening or Supporting, plays a vital role. A heartfelt thank you to our Joint Leadership Team who have remained strong, steady, and unwavering in their support throughout this year of change.

Finally, I'd like to recognise and honour the Samaritans that we have sadly lost and thank those who moved on during the year.

Thank you for your unwavering support and your commitment to our vision.

Wayne 1625

Branch Leadership Team



TREASURY REPORT

During the reporting period we have:

- Maintained a smooth-running Treasury function, processing over 480 payments during the financial year
- Renegotiated the branch gas and electricity supply from British Gas to EDF saving over £1,400 in the first year
- Terminated the long-standing Vodafone contract following adoption of the new listening centre VOIP service which will save approximately £2,000 a year
- Managed the Branch investments ensuring maturing bonds are reinvested appropriately to maximise returns

Winchester and District Branch of Samaritans is an affiliated branch. Responsibility for managing the branch finances rests with the branch trustees, to ensure the branch has sufficient funds to be able to provide the Samaritan service to callers now and in the future.

As a branch, we rely on the generosity of our donors, the work of our fundraisers, income from our flat rental and deposit interest. We have no regular income other than the flat rental and we therefore hold cash reserves so that the branch can continue to operate now and in the future.

Fundraising and Income Generation

We are extremely grateful for the donations we have received from generous donors including many Winchester Samaritans who have supported the branch with donations, kindly contributed expenses back to the branch or covered expenditures incurred by the branch. Thanks also goes to the Winchester Samaritans who have conducted fundraising activities for the branch raising over £10,700 and the 27 donors who make recurring monthly donations. We ran a successful Carol Concert in December that generated a profit of over £2,000.

We were fortunate to receive donations from some high value donors, local churches and trusts. We are particularly grateful to the Catholic Women's League, the Emilienne Charitable Trust, St Lawrence with St Swithuns Church, St Luke's Church and St Barnabas Church for the kind support. In addition we received grants to continue running our prison listening scheme at Winchester Prison. We would also like to say a special thank you to the donors who wished to remain anonymous but gave very generously to support our branch activities.

Overall donated income increased by 28% over the prior year to £30,972. Whilst higher value income from major donors and grant-makers declined, there was an increase in lower value donations and support for fundraising activities. Unfortunately we were forced to cancel a planned dragon boat race fundraising event due to a lack of response from local

businesses to participate. Rental income increased to £14,787. Overall, we generated £51,400, representing a 27% increase over the prior year.

Expenditure

Analysis of expenditure shows the branch spent £55,034 in FY24/25, a -8% reduction over the prior year. This reduction is driven by:

- Reduced fundraising costs due to the cancellation of the dragon boat race. We received refunds in FY 2024/25 for fundraising expenses incurred in the prior financial year. This has had the effect of reducing our fundraising expenditure this year.
- Renegotiated gas and electricity supply costs moving our account from British Gas to EDF
- Reduced telephone and broadband costs due to the cancellation of Vodafone contracts when VOIP connections were installed as part of the new Samaritans Listening Centre
- Flat maintenance work being deferred to align with the branch renovation project taking place in FY 2025/26

Volunteer expenses accounted for 32% of branch expenditure. The branch has a large footprint and many volunteers make round trips of more than 30 miles to conduct a duty. This has an impact on mileage claims. Winchester Council provides some free parking permits for evening duties and this has helped reduce the amount of expense claims covering parking charges.

We also make an annual payment to the Central Charity (SCC) by way of the New Branch Contribution (NBC) which will be £7,521 (£4,985 in FY23/24). The increased NBC is due to increased levels of income and reduced branch expenditures which increases our required contribution.

Chris 1612

Summarised Statement of Financial Activities

	2024/25 £	2023/24 £
Prison Grant, Donations, Legacies, In Memoriam	13,248	18,451
Other Charitable Activities - Fundraising	17,724	5,772
Investment Income-Rent and Deposit Interest	20,428	16,284
TOTAL INCOME	51,400	40,507
Costs of Raising Funds	116	2,144
Expenditure on Charitable Activities	54,918	57,896
TOTAL EXPENDITURE	55,034	60,040
NET EXPENDITURE FOR THE PERIOD	-3,634	-19,533
TOTAL FUNDS carried forward	694,855	714,388
Unrestricted Funds – General Fund	534,636	538,270
Revaluation Reserve	156,585	156,585
TOTAL CHARITY RESERVES	691,221	694,855

TRAINING REPORT

In 2024/5 we welcomed 18 new Samaritans in to the Branch, out of 23 who started Core Training. This was the lowest number within memory and reflects an increasingly challenging climate nationally to recruit and retain new volunteers. I am very grateful to all the new volunteers who completed the training. The energy, enthusiasm and different perspectives of new Listeners really benefits the whole branch.

Core Training continues to be delivered as a hybrid model with:

- Face-to-face sessions at the beginning, middle and end of the course
- Weekly online sessions facilitated over 2 months

I am hugely grateful to all the Training Team for their commitment and time in delivering Core Training, Embedding Training and supporting other training activities. This year these included train-the-trainer sessions for the Prison team and continuous development on mental health.

Thanks also to our incredible team of role players who continue to provide the highlight of the training experience for our new Listeners!

In addition, during the year I trained an enthusiastic group of Student Well-being Hub volunteers at Winchester University in October, building on the strong relationship already established there.

We monitored the successful completion of Equity, Diversity and Inclusion online learning and coordinated the successful completion of On-Going Mentoring by all active Listeners in the Branch.

Penny 1550

OUTREACH REPORT



We continued to build on our Outreach work, ensuring Winchester & District Samaritans remains visible and present in our community.

Through strong partnerships, local events, and a growing team of committed volunteers, we have extended our reach to new audiences and deepened our support in familiar places.

Outreach Events Supported

- **Probus Presentation – The Flower Pots:** (30 attendees)
 - Chris1612 delivered an Introduction to Samaritans and the power of listening
- **Workplace Workshop – DWP Job Centre Winchester:** (20 attendees)
 - Wayne1625 presented an Introduction to Samaritans and the power of listening



- **Jobs and Opportunities Fair**
 - Invited by Winchester City Council, we hosted a stall and made key contacts with Peter Symonds College, the Probation Service, and Citizens Advice
- **Mela Festival**
 - We returned to this vibrant community event in Eastleigh, speaking to diverse audiences and strengthening inclusion in our outreach



- **Hampshire Foster Carers Network:** (25 attendees)
 - Wayne1625 delivered an Introduction to Samaritans and the power of listening

- **Winchester University – Recharge Days and Wellbeing Café:** (200 attendees)
 - Across the year we attended two Recharge Days and engaged in ongoing discussions with the Students’ Union
- **Pies & Puds Group:** (25 attendees)
 - Wayne1625 gave an awareness talk at St Peter’s
- **Michaelmas Fair**
 - Our first appearance at this event allowed us to promote who we are and encourage new volunteers
- **Carol Concert**
 - Our much-loved annual Carol Concert at St Peter’s Church brought together around 120 people, including our new MP Danny Chambers and Honorary Samaritans President, Felicity Varah-Harding
- **Brew Monday – Winchester Train Station:** (160 attendees)
 - Carole1549 and team engaged with around 164 people, gave out branded tea bags, lollipops, pens, and Samaritans literature
- **Small Talk Saves Lives**
 - For the first time, we extended our activity beyond Winchester to include Alton station. Both events were well received by passengers and staff
- **Winchester Workplace Wellbeing Network (WWWN)**
 - We hosted the first WWWN attended by 20 businesses and organisations in the Winchester area to discuss mental health issues in the workplace
- **Winchester University Nursing Students Seminar**
 - For the third year, we ran a seminar for nursing students to discuss approaches to supporting people struggling to cope emotionally



Our collaboration with Network Rail at Winchester station has now evolved into something new: following an incident in March, we provided on-site emotional support, which was so appreciated that we will begin a regular monthly presence at the station; our new “Feet on the Platform” initiative.

A huge thank you to this special group of volunteers who are committed to reaching out to our people in the community.

Wayne 1625 & Carole 1549

HMP Winchester Prison

Our partnership with HMP Winchester remains a vital and highly dedicated part of our Outreach. Our Prison Team provide on-going training and support for prisoner Listeners, enabling them to offer peer support on the prison wings.

Between 1 April 2024 and 31 March 2025 there were 1,127 contacts between Listeners and Callers, totalling 832 hours and 44 minutes of listening time. The top concerns raised were mental health (22%), family (21%) and self-harm (14%).

We ran three training courses during the year—training four Listeners in July, 13 in September, and 11 in February. This reflects the high turnover at Winchester Prison as a remand prison. At the time of writing, there are 15 trained Listeners. Hugh 1368 continues to do a fantastic job of organising and running the training programme.

Our Branch Prison Team is made up of nine core volunteers with two more supporting the training programme. We are also pleased to have volunteers from further afield, including Basingstoke and Southampton branches, contributing to this vital work.

Jane 1560

Samaritans - Winchester and District Branch

Report of the Trustees for the year ended 31 March 2025

The Trustees present their Report and Accounts for the year ended 31 March 2025.

Registered Charity number

1173634 under the Governing Document dated 30 June 2017

Trustees

The Trustees who served as a trustee in the reporting period were:

- S. Allen (appointed October 2024)
- H. Byford
- A. Diver
- W. Fletcher
- W. Giles
- P. Walker
- C. Washington-Sare

Objects and Activities of the Charity

The purposes of the charity as set out in its governing document

In accordance with the objectives set out in the constitution of the charity, the charity has the following objects:

- To work for the assistance of persons who are suicidal, despairing or in distress by providing a service primarily intended for the benefit of persons in Winchester and the surrounding area to enable persons to receive immediate help, compassion and befriending from members of the Charity.
- To support the national Samaritans Charity in the aid and establishment of new and other branches.
- To advance education by providing society with a better understanding of suicide; suicidal behaviour and the value of expressing feelings that may lead to suicide.

Structure, Governance and Management of the Charity

The Methods Used to Recruit and Appoint new Charity Trustees

The Trustee Committee members are elected at an Annual General Meeting. The Trustee Committee consists of the following members:

- Elected members, who must be Samaritans, other than ex-officio members
- Ex-officio members who shall be the Director, a Deputy Director (appointed by the Director), the Secretary, the Publicity Officer, the Treasurer and the Chair of the Friends of Winchester and District Branch of Samaritans
- Co-opted members up to a maximum of one third of the committee (excluding co-opted members)

The Policies and Procedures for the Induction and Training of Trustees

- All trustees are trained in house, with each receiving a copy of the Charity Commission guidance booklet on trusteeship and its responsibilities, so that they are aware of the commitment and duties they are undertaking.
- The Trustee Committee meets regularly, at least 4 times per year.
- All trustees receive regular financial reports throughout the year.
- Any queries that trustees may have, are aired at the Trustee Committee meetings and resolved appropriately.
- The training of trustees is on an informal basis and is on-going throughout the period of their office.
- No trustee is paid.

The Charity's Organisational and Decision-Making Structure

Elected members, excluding ex-officio members, comprise a majority of the Trustee Committee and are entitled to vote at meetings. All questions at any meeting are determined by simple majority votes cast by members present, with each member (except co-opted members) having one vote. In any event of an equality of votes, the Chair may exercise a second vote as a casting vote. Elected Trustee Committee members may not serve on the committee for more than three consecutive years.

The Charity as a Part of a Wider Network

The charity falls under the umbrella organisation of the Samaritans nationally. The national organisation provides a model constitution, advice and support.

Policies on Reserves

The trustees have resolved to keep a sufficient level of resources to provide for future activities. The policy on reserves is that the existing assets are retained to produce income which is wholly utilised to support existing activities. There is no intention in the long term to either increase or reduce the capital significantly. The policy is justified in that it is necessary to preserve income at the present levels in order to maintain the activities of the charity.

Approved by order of the board of trustees on 10 September 2025 and signed on its behalf by:



W. Fletcher

Director and Chairman of Trustees

Independent Examiner's Report to the Trustees of the Winchester and District Branch of Samaritans on the Financial Statements for the Year Ended 31 March 2025

The charity's trustees are responsible for the preparation of the accounts. The charity's trustees consider that an audit is not required for this year under section 144 of the Charities Act 2011 ("the Charities Act") and that an independent examination is needed and I am qualified to undertake the examination by being a qualified member of the association of accounting technicians.

It is my responsibility to:

- Examine the accounts under section 145 of the Charities Act
- To follow the procedures laid down in the General Directions given by the Charity Commission (under section 145(5)(b) of the Charities Act
- To state whether particular matters have come to my attention.

My examination was carried out in accordance with General Directions given by the Charity Commission. An examination includes a review of the accounting records kept by the charity and a comparison of the accounts presented with those records. It also includes consideration of any unusual items or disclosures in the accounts, and seeking explanations from the trustees concerning any such matters. The procedures undertaken do not provide all the evidence that would be required in an audit, and consequently no opinion is given as to whether the accounts present a 'true and fair' view and the report is limited to those matters set out in the statement below.

In connection with my examination, no matter has come to my attention

1. which gives me reasonable cause to believe that in, any material respect, the requirements:
 - to keep accounting records in accordance with section 130 of the Charities Act; and
 - to prepare accounts which accord with the accounting records and comply with the accounting requirements of the Charities Act have not been met; or
2. to which, in my opinion, attention should be drawn in order to enable a proper understanding of the accounts to be reached.

Kenneth John Stratton FMAAT
Kimball Smith Limited
Brewery House, High Street
Twyford, Winchester SO21 1RG

10 September 2025

Samaritans - Winchester and District

Statement of Financial Activities

for the year ended 31 March 2025

(Incorporating an Income and Expenditure Account)

	Notes	Unrestricted £	Restricted £	2025 Total funds £	2024 Total funds £
Income					
Donations legacies and prison grant	2	13,248	-	13,248	18,451
Other activities	3	17,724	-	17,724	5,772
Rental income		14,787	-	14,787	13,465
Interest receivable		5,641	-	5,641	2,819
Total Income		<u>51,400</u>	<u>-</u>	<u>51,400</u>	<u>40,507</u>
Expenditure on:					
Raising funds		116	-	116	2,144
Charitable activities:					
Expenditure on Charitable Activities		54,918	-	54,918	57,896
Total Expenditure		<u>55,034</u>	<u>-</u>	<u>55,034</u>	<u>60,040</u>
Net Income/ (Expenditure)		<u>(3,634)</u>	<u>-</u>	<u>(3,634)</u>	<u>(19,533)</u>
Transfers between funds		-	-	-	-
Gain on revaluation of investment assets		-	-	-	-
Net movement in funds		<u>(3,634)</u>	<u>-</u>	<u>(3,634)</u>	<u>(19,533)</u>
Reconciliation of funds					
Total funds brought forward	9	694,855	-	694,855	714,388
Total funds carried forward		<u>691,221</u>	<u>-</u>	<u>691,221</u>	<u>694,855</u>

Samaritans - Winchester and District

Balance Sheet

As at 31 March 2025

				2025	2024
	Notes	Unrestricted £	Restricted £	Total funds £	Total funds £
Fixed assets					
Tangible assets	6	556,632	-	556,632	564,825
		<u>556,632</u>	<u>-</u>	<u>556,632</u>	<u>564,825</u>
Current assets					
Debtors	7	1,416	-	1,416	1,220
Cash at bank and in hand		142,826	-	142,826	137,415
		<u>144,242</u>	<u>-</u>	<u>144,242</u>	<u>138,635</u>
Creditors: amounts falling due within one year	8	(9,653)	-	(9,653)	(8,605)
Net current assets		<u>134,589</u>	<u>-</u>	<u>134,589</u>	<u>130,030</u>
Net assets		<u>691,221</u>	<u>-</u>	<u>691,221</u>	<u>694,855</u>
Funds of the Charity	9				
Unrestricted funds:					
General fund				534,636	538,270
Revaluation reserve				156,585	156,585
				<u>691,221</u>	<u>694,855</u>
Restricted funds				-	-
Total funds				<u>691,221</u>	<u>694,855</u>

The charitable company is entitled to exemption from audit under Section 145 of the Charities Act 2011 for the year ended 31 March 2023.

The members have not required the charitable company to obtain an audit in accordance with Section 144 of the Charities Act 2011.

The trustees acknowledge their responsibilities for complying with the requirements of Section 130 of the Charities Act 2011 with respect to accounting records and the preparation of accounts.



C Washington-Sare
Treasurer

Approved by the board of Trustees 10 September 2025

Notes to the Financial Statements

For the year ended 31 March 2025

1. Accounting policies

Basis of preparation

The accounts have been prepared in accordance with Accounting and Reporting by Charities: Statement of Recommended Practice applicable to charities preparing their accounts in accordance with the Financial Reporting Standard applicable in the UK and Republic of Ireland (FRS 102) (effective 1 January 2015) - (Charities SORP (FRS 102)), the Financial Reporting Standard applicable in the UK and Republic of Ireland (FRS 102) and the Charities Act 2011.

The charity meets the definition of the public benefit entity under FRS102. Assets and liabilities are initially recognised at historical cost or transaction value unless otherwise stated in the relevant accounting policy.

Going concern

The accounts have been prepared on a going concern basis. There are no material uncertainties about the charities ability to continue.

Income

Recognition of Income

These are included in the Statement of Financial Activities (SoFA) when:

- the charity becomes entitled to the resources;
- it is more likely than not that the trustees will receive the resources; and
- the monetary value can be measured with sufficient reliability.

Offsetting

There has been no offsetting of assets and liabilities, or income and expenses, unless required or permitted by the FRS 102 SORP or FRS 102.

Grants and donations

Grants and donations are only included in the SoFA when the general income recognition criteria are met (5.10 to 5.12 FRS102 SORP).

In the case of performance related grants, income must only be recognised to the extent that the charity has provided the specified goods or services as entitlement to the grant only occurs when the performance related conditions are met (5.16 FRS 102 SORP).

Notes to the Financial Statements

For the year ended 31 March 2025

Legacies

Legacies are included in the SoFA when receipt is probable, that is, when there has been grant of probate, the executors have established that there are sufficient assets in the estate and any conditions attached to the legacy are either within the control of the charity or have been met.

Tax reclaims on donations and gifts

Gift Aid receivable is included in income when there is a valid declaration from the donor. Any Gift Aid amount recovered on a donation is considered to be part of that gift and is treated as an addition to the same fund as the initial donation unless the donor or the terms of the appeal have specified otherwise.

Contractual income and performance related grants

This is only included in the SoFA once the charity has provided the related goods or services or met the performance related conditions.

Volunteer help

The value of any voluntary help received is not included in the accounts but is described in the trustees' annual report.

Income from interest, royalties and dividends

This is included in the accounts when receipt is probable and the amount receivable can be measured reliably.

Investment gains and losses

This includes any realised or unrealised gains or losses on the sale of investments and any gain or loss resulting from revaluing investments to market value at the end of the year.

Expenditure and liabilities

Liability recognition

Liabilities are recognised where it is more likely than not that there is a legal or constructive obligation committing the charity to pay out resources and the amount of the obligation can be measured with reasonable certainty.

Notes to the Financial Statements

For the year ended 31 March 2025

Governance costs

Governance costs include those incurred in the governance of the charity and its assets and are primarily associated with constitutional and statutory requirements.

Taxation

The charity is exempt from corporation tax on its charitable activities.

Creditors

The charity has creditors which are measured at settlement amounts less any trade discounts.

Provisions for liabilities

A liability is measured on recognition at its historical cost and then subsequently measured at the best estimate of the amount required to settle the obligation at the reporting date.

Assets

Tangible fixed assets for use by charity

Tangible fixed assets are measured at cost less accumulative depreciation and any accumulative impairment losses. Depreciation is provided on all tangible fixed assets, other than freehold land and rental property, at rates calculated to write off the cost, less estimated residual value, of each asset evenly over its expected useful life, as follows:

- Land and Buildings 2% straight line
- Furniture & Fittings 25% straight line

Investments

Fixed asset investments in quoted shares, traded bonds and similar investments are valued initially at cost and subsequently at fair value (their market value) at the year end. The same treatment is applied to unlisted investments unless fair value cannot be measured reliably in which case it is measured at cost less impairment.

Notes to the Financial Statements

For the year ended 31 March 2025

Debtors

Debtors (including trade debtors and loans receivable) are measured on initial recognition at settlement amount after any trade discounts or amount advanced by the charity. Subsequently, they are measured at the cash or other consideration expected to be received.

Fund accounting

Unrestricted funds can be used in accordance with the charitable objectives at the discretion of the trustees.

Restricted funds can only be used for particular restricted purposes within the objects of the charity. Restrictions arise when specified by the donor or when funds are raised for particular restricted purposes.

Further explanation of the nature and purpose of each fund is included in the notes to the financial statements.

2 Donations and legacies	2025	2024
	£	£
Donations and legacies and prison grant	11,832	17,324
Gift Aid	1,416	1,127
	<u>13,248</u>	<u>18,451</u>
3 Other activities	2025	2024
	£	£
Fundraising & events	<u>17,724</u>	<u>5,772</u>
4 Fees for examination of accounts	2025	2024
	£	£
Independent Examiner's fees	<u>1,440</u>	<u>1,440</u>

5 Trustees remuneration and benefits

Trustees or persons connected with them did not receive any remuneration from the charity. Some trustees were reimbursed for expenses incurred on behalf of the charity.

Notes to the Financial Statements
For the year ended 31 March 2025

6 Tangible fixed assets

	Land and buildings £	Investment Property £	Furniture, fittings & office equipment £	Total £
Cost				
At 1 April 2024	452,715	220,586	2,433	675,734
Additions	-	-	-	-
At 31 March 2025	<u>452,715</u>	<u>220,586</u>	<u>2,433</u>	<u>675,734</u>
Depreciation				
At 1 April 2024	108,611	-	2,298	110,909
Charge for the year	8,193	-	-	8,193
At 31 March 2025	<u>116,804</u>	<u>-</u>	<u>2,298</u>	<u>119,102</u>
Net book value				
At 31 March 2025	<u>335,911</u>	<u>220,586</u>	<u>135</u>	<u>556,632</u>
At 31 March 2024	<u>344,104</u>	<u>220,586</u>	<u>135</u>	<u>564,825</u>

The historical cost of the charitable use freehold buildings is £296,130. The investment property is shown at cost of £220,586

Charitable use property is included at the Trustees' informal valuation, some years ago, and the split between this charitable use property and the investment flat, all at 13 and 13 a Upper High Street, Winchester is on the basis of their relative areas. This valuation of the charitable use freehold building creates the revaluation reserve of £156,585.

7 Debtors

	2025 £	2024 £
Debtors	-	93
Prepayments	-	-
Gift aid receivable	<u>1,416</u>	<u>1,127</u>
	<u>1,416</u>	<u>1,220</u>

Notes to the Financial Statements

For the year ended 31 March 2025

8 Creditors: amounts falling due within one year	2025	2024
	£	£
Creditors	2,132	3,620
Samaritans Central Charity	7,521	4,985
	<u>9,653</u>	<u>8,605</u>

9 Movement in funds				
Current Year				
	At 1 April	Net	Transfers	At 31 March
	2024	movement in	between	2025
	£	funds	funds	£
Unrestricted funds				
General fund	538,270	(3,634)	-	534,636
Revaluation reserve	156,585	-	-	156,585
	<u>694,855</u>	<u>(3,634)</u>	<u>-</u>	<u>691,221</u>
Restricted funds				
Restricted funds		-	-	-
Total funds	<u>694,855</u>	<u>(3,634)</u>	<u>-</u>	<u>691,221</u>

Net movement in funds, included in the above are as follows:

	Incoming	Resources	Gains and	Movement
	resources	expended	losses	in funds
	£	£	£	£
Unrestricted funds				
General fund	51,400	(55,034)	-	(3,634)
Revaluation reserve	-	-	-	-
	<u>51,400</u>	<u>(55,034)</u>	<u>-</u>	<u>(3,634)</u>
Restricted funds				
Restricted funds	-	-	-	-
Total funds	<u>51,400</u>	<u>(55,034)</u>	<u>-</u>	<u>(3,634)</u>

Notes to the Financial Statements

For the year ended 31 March 2025

Comparative Year

	At 1 April 2023 £	Net movement in funds £	Transfers between funds £	At 31 March 2024 £
Unrestricted funds				
General fund	557,803	(19,533)	-	538,270
Revaluation reserve	156,585	-	-	156,585
	<u>714,388</u>	<u>(19,533)</u>	<u>-</u>	<u>694,855</u>
Restricted funds				
Restricted funds	-	-	-	-
Total funds	<u>714,388</u>	<u>(19,533)</u>	<u>-</u>	<u>694,855</u>

Net movement in funds, included in the above are as follows:

	Incoming resources £	Resources expended £	Gains and losses £	Movement in funds £
Unrestricted funds				
General fund	40,507	(60,040)	-	(19,533)
Revaluation reserve	-	-	-	-
	<u>40,507</u>	<u>(60,040)</u>	<u>-</u>	<u>(19,533)</u>
Restricted funds				
Restricted funds	-	-	-	-
Total funds	<u>40,507</u>	<u>(60,040)</u>	<u>-</u>	<u>(19,533)</u>

10 Other information

Samaritans - Winchester and District is a Charitable Incorporated Organisation (CIO) incorporated in England. Its registered office is:

13 Upper High street
Winchester
SO23 8UT

We're here to listen

Call free day or night on

116 123

Email

jo@samaritans.org

Web

samaritans.org/winchester

Write to us

Freepost SAMARITANS LETTERS

SAMARITANS