

CIANNA'S SMILE

England & Wales - Charity number 1173030

Details

Status Registered

Legal form CIO

Registered 2017-05-12

Register [View on the Charity Commission register](#)

Contact

Address 10 Eaton Place
Reading
RG1 7LP

Phone 07538919357

Email info@ciannassmile.co.uk

Website www.ciannassmile.co.uk

Activities

Objects: 1. THE PRESERVATION AND PROTECTION OF GOOD HEALTH AND THE RELIEF OF SICKNESS OF PEOPLE WHO SUFFER FROM SICKLE CELL ANAEMIA IN THE THAMES VALLEY AREA BY SUCH MEANS AS THE TRUSTEES THINK FIT INCLUDING BUT NOT LIMITED TO THE PROVISION OF INFORMATION, SUPPORT, COMFORT, SERVICES, FACILITIES AND SOCIAL EVENTS 2. TO ADVANCE THE EDUCATION OF THE PUBLIC IN ALL AREAS RELATING TO SICKLE CELL ANAEMIA

Activities: Supporting families affected by Sickle cell in the Thames Valley area and raising awareness of Sickle Cell through our fundraising and awareness events.

Classification

- **How:** Provides Advocacy/advice/information
- **What:** The Advancement Of Health Or Saving Of Lives
- **Who:** Children/young People

Geography

- Bracknell Forest
- Buckinghamshire
- Kent
- Milton Keynes
- Oxfordshire
- Reading
- Slough
- Surrey
- West Berkshire
- Wiltshire

Finances

Period end	Income	Expenditure	Assets	Employees
2025-04-05	£77,923	£75,464	-	-
2024-04-05	£34,803	£69,304	-	-
2023-04-05	£150,828	£57,362	-	-
2022-04-05	£46,551	£4,601	-	-
2021-04-05	£1,334	£627	-	-

Trustees

Name	Role	Appointed
HAYLEY KING	Chair	2017-05-12
Charity Prudencia Afiavi Sena Lantonkpode		2026-03-20
Leo Knight Williams		2026-03-20
Miss M Connor		2018-07-12

CIANNA'S SMILE

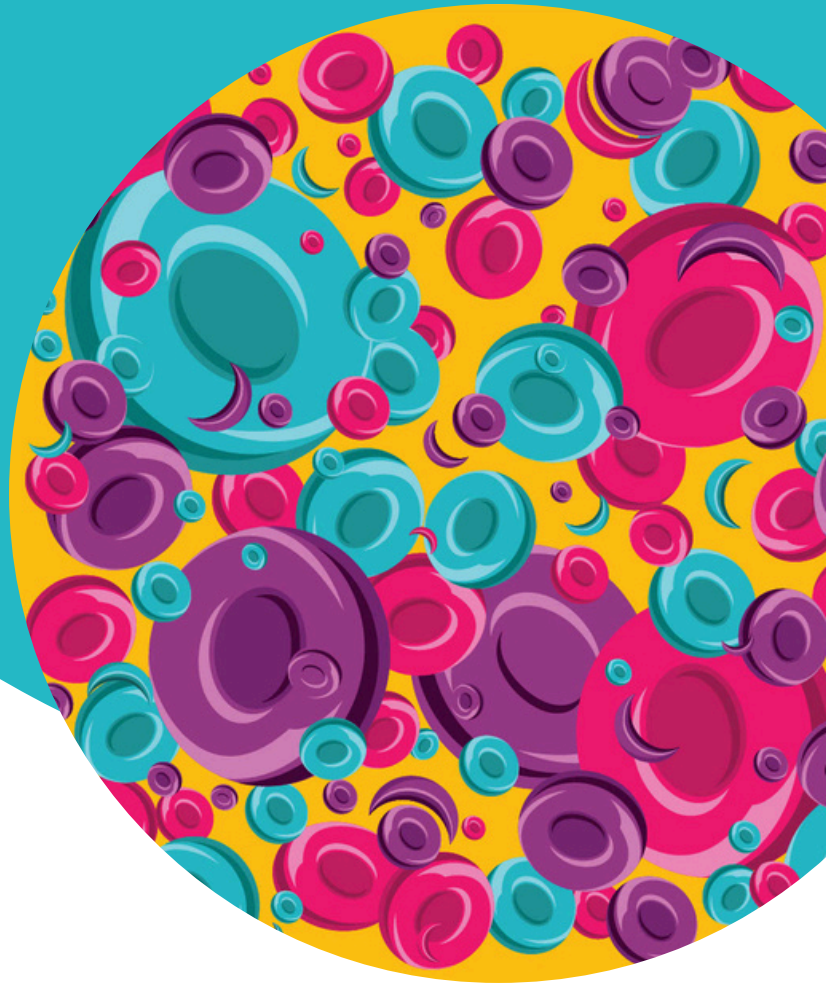
England & Wales - Charity number 1173030

Accounts

APRIL 2025



CIANNA'S
Smile



Cianna's Smile annual Trustee's Report

Year 2024/2025

Charity information

Charity name: Cianna's Smile

Charity registration number: 1173030

Address: 10 Eaton Place, Reading, RG1 7LP

Website: www.ciannasmile.co.uk

Contact email: info@ciannasmile.co.uk

Trustees for the Reporting Year:

Hayley King

Melissa Connor

Ashleigh Alli

Independent Examiner/Auditor:

Holybrook Accounting

Structure, Governance, and Management

Governing Document:

Cianna's Smile is governed by its Constitution.

Trustee Recruitment and Appointment:

Through interview and nomination.



Trustee

Statements

Hayley King

On behalf of the Board of Trustees, I am proud to present the Annual Report for Cianna's Smile.

This year has been one of growth, reflection and continued determination to ensure that individuals and families impacted by sickle cell are seen, heard and supported. However, it has also been a year shaped by significant external pressures. The ongoing cost of living crisis in the UK continues to have a profound impact on the families we support, increasing financial hardship and insecurity. As a result, we have seen a growing demand for emergency support and essential services, including emergency food bundles and household support packages, to help families meet their most basic needs during times of crisis.

Alongside these financial challenges, our work has continued to highlight serious and ongoing concerns within healthcare settings. Between 2020 and 2025, Cianna's Smile recorded the highest number of confirmed negative experiences during hospital admissions than ever before. These experiences reinforce what families have been telling us for years: there remains an urgent and critical need for improved training, education, and resources for healthcare professionals involved in the care of people living with sickle cell.

This need extends beyond healthcare alone. Teachers, community workers, youth professionals and others who play a key role in the lives of children and families impacted by sickle cell must also be equipped with the knowledge, understanding and confidence to provide appropriate support. Education and awareness remain central to improving experiences, outcomes, dignity, and equity for those living with the condition.

In response to these challenges, and in order to protect the quality and integrity of our work, the trustees made a strategic decision during 2024 and 2025 to concentrate on delivering projects and services that the families we support felt were crucial to supporting them. This ensured that Cianna's Smile continued to operate to a high standard, met all funding deliverables, and provided consistent, reliable support to the families who depend on us.

Looking ahead, we have committed to increasing our focus on resource development, training, awareness and education. By strengthening these areas, we aim to directly improve the experiences of children, young people and families supported by Cianna's Smile — particularly within hospital settings and schools — where understanding and appropriate responses can make a life-changing difference.

As trustees, we are continually inspired by the resilience of the families and young people we support, and by the dedication of our staff, volunteers, and partners. We are deeply grateful to our funders and supporters whose generosity enables this work to continue.

With a clear vision, strong governance, and a renewed focus on sustainable impact, we remain confident in Cianna's Smile's ability to be a trusted voice and source of support within the sickle cell community. Thank you to everyone who has supported our journey this year.



Trustee

Statements

Melissa Connor

As a trustee of Cianna's Smile, I am privileged to have supported the organisation over a number of years and to work alongside a committed and highly effective leadership team. The charity continues to deliver significant impact through its strategic approach to raising awareness of sickle cell and providing practical, targeted support to families across the UK.

Having seen Cianna's Smile's work first-hand, I am continually inspired by the depth and quality of its delivery. Through direct engagement with families and young people supported by the charity, it is clear that the activities and projects delivered are not only well designed, but genuinely life changing. The feedback shared consistently demonstrates the positive difference these services make to confidence, wellbeing, understanding and long-term outcomes.

Cianna's Smile operates with a strong sense of purpose and responsiveness, often going beyond standard service expectations to ensure families receive timely and appropriate support. This commitment, combined with a clear focus on quality and accountability, has enabled the charity to build trust within the community and sustain its work over many years.

The organisation's longevity reflects the strength of its leadership, governance and values. I am confident in Cianna's Smile's strategic direction and look forward to continuing to support the charity as it builds on its achievements and extends its impact for the families and communities it serves.



Trustee

Statements

Ashleigh Alli

As a Trustee, I am pleased to provide an overview of Cianna's Smiles' decision-making and strategic oversight during this reporting period.

The reporting period has taken place against a challenging external environment, including sustained economic pressures and increased demand for charitable services. The Board has remained focused on ensuring that Cianna's Smile operates in a financially responsible, well-governed and resilient manner, while continuing to deliver meaningful impact for individuals and families impacted by sickle cell.

Throughout 2024 and 2025, the Board has exercised careful oversight of organisational performance, risk management and compliance. In response to capacity and funding considerations, trustees agreed a strategic approach that prioritised the delivery of existing, funded projects and services that were most needed by the families we support. This decision was taken to ensure consistent service quality, fulfilment of funding obligations and effective use of charitable resources.

The Board has also reviewed evidence highlighting ongoing systemic challenges affecting the sickle cell community, including gaps in understanding across health, education and community settings. These findings have influenced the charity's strategic direction and reinforced the importance of targeted training, education and resource development as key levers for long-term improvement.

Looking ahead, the Board has agreed to increase its strategic focus on education, awareness and professional development initiatives aimed at improving experiences for families within hospitals, schools and wider community environments. This approach aligns with the charity's objectives to influence practice, strengthen systems, and support sustainable change beyond direct service delivery.

I would like to thank my fellow trustees for their professionalism, commitment and constructive challenge throughout the year. The Board also acknowledges the work of the staff and volunteers in delivering services in line with agreed objectives and standards, as well as the continued support of funders and partners.

The trustees remain committed to maintaining high standards of governance, accountability and transparency and to ensuring that Cianna's Smile is well positioned to manage risk, respond to need and deliver its charitable purposes effectively.



Charitable Objectives

Raise Awareness:

Educate the public and professionals about Sickle Cell and the importance of ethnically matched blood donations through events, campaigns and resources.

Support Families:

Provide emotional and practical support, addressing mental health needs and creating safe spaces for those impacted by Sickle Cell.

Increase Blood Donations:

Launch campaigns to recruit new donors, especially from underrepresented groups, and collaborate with partners to improve accessibility and retention.

Empower Youth and Communities:

Develop leadership and entrepreneurial skills through initiatives like the Youth Entrepreneur Club and Coalition for Change, while fostering cultural and educational connections.

Build Partnerships:

Collaborate with healthcare providers, educational institutions, and community leaders to expand reach and resources.

Promote Research and Innovation:

Advocate for research addressing nutritional needs and healthcare gaps for individuals with Sickle Cell.

Ensure Sustainability: Secure funding through events and adapt programmes based on community feedback to maximise impact.

Mission

At Cianna's Smile, our mission is to improve the lives of children, young people and families impacted by Sickle Cell conditions. We are dedicated to raising awareness, providing support, and advocating for better healthcare and social understanding of this life-altering condition.

Through education, empowerment, and community engagement, we strive to reduce the stigma associated with Sickle Cell and ensure that those living with the condition have the resources and opportunities they need to thrive.

We believe in the power of community, the importance of representation, and the strength of a collective voice.

Our initiatives focus on Health Education, Mental Well-being, and Creative expression, offering a safe and inclusive space for individuals impacted by Sickle Cell to share their experiences and connect with others. We are committed to driving positive change in society, advocating for improved services, and inspiring future generations to be changemakers in the fight against the inequalities experienced by those impacted by Sickle Cell.

Together, we aim to create a world where no one is defined by their condition, but rather empowered to live their fullest and most vibrant lives.

Public Benefit:

In planning our activities, the trustees have had regard to the Charity Commission's guidance on public benefit. All activities undertaken during the year align with our charitable purposes.



Achievements and Performance

Key Activities and Outcomes: Over the past year, Cianna's Smile delivered the following impactful programmes and events:

Family support initiatives

- Online focus groups and workshops for young people and their carers addressing mental health provided a safe space for individuals to learn, connect and share experiences.
- Support Tour Family Fun Days in Manchester, Kent, West London and Reading offered opportunities for family bonding, respite, community inclusion and enjoyment.

Advocacy and awareness

- Workshops and talks, including our participation at University of Reading and multiple University African Caribbean Societies, increasing understanding of Sickle Cell and educating diverse audiences on the challenges.
- Awareness events within Aylesbury, Reading, London and campaigns, such as our Youth Coalition for Change, reached over 5000, highlighting the importance of blood donation and understanding Sickle Cell.

Youth engagement

- Activities such as the African and Caribbean Culture Club and Entrepreneur Club empowered young people with real-world skills in business, leadership, and creative problem-solving, building motivation and encouraging innovation.
- Creative workshops such as CAD and AI photo editing art introduced young people to creative digital skills and encouraged confidence.

Community events

- Family Fun Days and trips to Spa Valley Polar Express provided safe inclusive spaces for families and helped build their peer support networks with other families impacted by Sickle Cell.
- Attending various community events such as Matt's BBQ, raising understanding about Sickle Cell, uniting communities and engaging with an audience of over 10,000 individuals with cultural and health information.

2024 to 2025 Activities

The following activities were carried out between April 2024 and April 2025, demonstrating our commitment to supporting individuals with Sickle Cell, their families and caregivers while promoting awareness and advocacy. Each event provided opportunities for connection, education, and enjoyment for our beneficiaries.

April 2024

- **8th April- African and Caribbean Culture Youth Club:** 3D printing workshop, Caribbean cooking class and carers pamper session in Reading.
- **11th April- Online Carers Focus Group:** A virtual session gathering input from participants to guide future programming and address community needs.

May 2024

- **9th May- Carers workshop: How to support young people affected by mental health challenges:** A workshop aimed at equipping carers with tools and understanding to better support young people facing mental health issues.
- **10th May- Haematology patient and carers congress:** An informative event bringing together patients and carers to discuss developments and experiences in haematology care.
- **15th May- Online Training Workshop and Sickle Cell Talk with Reading Borough Council Care Staff:** Training session for Reading Borough Council care staff focused on Sickle Cell awareness and care strategies for clients.
- **24th May- African and Caribbean Culture Youth Club:** Creative youth session exploring fashion through Caribbean cultural expression by designing personal outfits.
- **31st May- Art Workshop With Akacia School:** Interactive art workshop to inspire creativity and self-expression among students at Akacia School.



June 2024

- **1st June- Reading Children's Festival:** Fun, hands-on Caribbean-themed arts and crafts activities for children in our community as part of Reading's annual children's festival.
- **10th June- Youth Entrepreneur Club:** Guest speaker and published author Maria spoke to participants of the Entrepreneur Club, sharing insights, a story writing workshop and meet the author.
- **5th June- Carers Workshop: Supporting Young People Impacted By Mental Health Challenges:** A 2nd workshop offering practical support and guidance for carers helping young people with mental health needs whilst looking after their own mental health.
- **14th - 16th June- Family Respite Break:** A family respite break in Birmingham offering a fun and relaxing experience, including seeing Black Ballet Heroes and visits to Cadbury World and the Sea Life Centre.
- **17th June- Youth Entrepreneur Club:** An insightful session updating us on the progress of the tasks they were set during the previous club session on story writing.
- **18th June- Langley College Fundraiser:** Student-led fundraising event supporting sickle cell awareness and our charity causes.
- **21st June- Life In Your Blood Screening:** Special premier of our documentary, Life In Your Blood (LIYB) highlighting stories and awareness around sickle cell, held at The Reading Biscuit Factory.
- **22nd- Matt's BBQ Event stall:** Community outreach stall at Matt's BBQ, raising awareness and engaging attendees with cultural and health information.
- **28th- African and Caribbean Culture Youth Club: Art Workshop:** Creative session for young people focused on Caribbean-inspired art and cultural expression.

July 2024

- **1st July- Youth Entrepreneur Club:** Youth Club session concluding the sessions on story writing progress of the tasks they were set during the previous club sessions.
- **8th July- Youth Entrepreneur Club:** Youth Club session focused on developing ideas, building confidence, and learning practical skills to support young people on their entrepreneurial journey.
- **15th July- Youth Entrepreneur Club:** Youth Club session focused on developing ideas, building confidence, and learning practical skills to support young people on their entrepreneurial journey.
- **18th July- Online Focus Group:** A virtual session gathering input from participants to guide future programming and address community needs and what they would like Cianna's Smile to be.
- **27th July- Support Tour Manchester Family Fun Day:** A vibrant family event with entertainment, activities, and support resources for the community, held in Manchester as well as screening of Life in Your blood short film on Sickle Cell.
- **29th July- Youth Entrepreneur Club:** Youth Club session focused on developing ideas, building confidence, and learning practical skills to support young people on their entrepreneurial journey.

August 2024

- **5th August- Youth club:** An engaging session for young people with games, discussions and creative activities in a safe, social space.
- **7th August- Youth club:** A fun-filled day trip to Chessington World of Adventures for youth club members to enjoy rides, attractions and bonding time.
- **10th August- Support Tour Family Fun Day in Kent:** A vibrant family event with entertainment, activities, and support resources for the community, held in Kent as well as screening of Life in Your blood and filming for The BBC Children In Need appeal show.
- **12th August Youth Entrepreneur Club:** Youth Club session focused on exploring innovative ideas and practical solutions for creating and improving computer-aided design.
- **14th August- Support Tour Family Fun Day in Bristol:** A vibrant family event with entertainment, activities, and support resources for the community, held in Bristol as well as screening of Life in Your blood short film in collaboration with OSCAR Bristol.
- **15th August- Online Focus Group:** A virtual session gathering input from participants to guide future activities, events, projects and support.
- **21st August- Support Tour Family Fun Day in Oxford:** A vibrant family event with entertainment, activities, and support resources for the community, held in Oxford as well as screening of Life in Your blood short film.
- **28th August- Kings Award Celebration Event:** Invitation to attend the King's Award event, celebrating our outstanding achievements and contributions from the winners of The Kings Award for Voluntary Action certificate.

September 2024

- **1st September- Steps for Sickle Cell Challenge Launch:** fundraising campaign launch day for sickle cell supporters to raise awareness, engage the community, and generate vital funds for family support.
- **4th September- Catford Pure Gym:** Collaboration with Pure Gym in Catford to raise awareness about sickle cell and promote blood donation through an interactive information stand engaging with the gym members/general public.
- **9th September- Awareness and Blood Donation Talk Reading Borough Council Chambers:** Educational talk to raise awareness about sickle cell and the importance of blood donation, hosted at the council chambers.
- **11th September- Sydenham Pure Gym:** Collaboration with Pure Gym in Sydenham to raise awareness about sickle cell and promote blood donation through an interactive information stand engaging with the gym members/general public.
- **Saturday 14th September- Sponsored Hike with Summit Seekrs-** Location: A 20.8 km hike around Henley on Thames and Marlow. An opportunity for supporters to raise awareness, hike and chat. With an incredible almost £2000 raised by the group.
- **19th September- Focus Group and Volunteer Meeting (Online):** A planning session to gather feedback from families and strengthen volunteer involvement.
- **23rd September- Blood Donation and Awareness Aylesbury:** A local event promoting blood donation and sickle cell awareness within the Aylesbury community.

- **25th September- Woolwich Pure Gym:** Collaboration with Pure Gym in Woolwich to raise awareness about sickle cell and promote blood donation through an interactive information stand engaging with the gym members/general public.
- **26th September- Sickle Cell Advocacy Training Webinar:** online webinar, inviting the community, supporters, beneficiaries, and those impacted to join an educational and informative session about sickle cell.
- **29th September- Family Fun Day Reading Fundraiser:** A lively community fundraiser with family-friendly activities, supporting sickle cell awareness and local initiatives at Beansheaf Community Centre.

October 2024

- **1st October- Youth Art Exhibition:** Held at Reading Biscuit Factory, showcasing our youth group's paintings alongside an exhibition of blood donation posters to recruit donors and provide information across their community space for the duration of Black History Month.
- **2nd October – Awareness Talk for Healthcare students:** An online session focusing on student healthcare awareness, understanding what patients with Sickle Cell face, how to be a better healthcare professional and improve patient experience.
- **5th October – Kids Literary Festival:** Children's literature festival held at Aylesbury Library
- **7th October – Awareness and Blood Donation Day:** Sickle Cell awareness and blood donation event at the Biscuit Factory.
- **8th October – Coffee Morning and Art Workshop:** A social morning with creative activities at the Reading Biscuit Factory.
- **9th October – Screening, Community Talk, and Meal:** An engaging community event with discussions, food, and a screening at the Reading Biscuit Factory.
- **12th October – Literary Festival:** Festival celebrating literature, held at the Reading Biscuit Factory featuring meet the author session, book signings and workshops.
- **13th October - Screening and Talk at The Globe, Reading:** Life In Your Blood screening and talk at The Globe Church in a collaborative community event.
- **16th October – Careers Fair (Reading University):** Information and engagement fair at Reading University to recruit volunteers and community outreach.
- **17th October – Focus Group:** Online focus group session for feedback and discussion.
- **19th October – Health Awareness Community Event:** Blood donation stand and community awareness event at Hilltop Community Centre, spreading information about sickle cell.
- **21st October- Youth Entrepreneur Club:** Youth Club session focused on exploring innovative ideas and practical solutions for creating and improving computer-aided design.
- **29th October – Parent Q&A Session:** Toddler Talk event at Aylesbury Community Library, featuring book readings, arts and crafts, and activities open to the community.

November 2024

- **4th November – Youth entrepreneur club:** Online digital skills workshop for youth focusing on business skills
- **7th November – Volunteer Meeting:** Recurring online meeting for volunteers.
- **9th November – Polar Express at Spa Valley:** Festive family event in Kent aboard the Polar Express.
- **13th November – Youth entrepreneur club:** Online digital skills workshop for youth focusing on business skills
- **16th November – Carers Dads Club Lunch:** Support and networking event for dads.
- **20th November – Youth entrepreneur club:** Online digital skills workshop for youth focusing on business skills
- **21st November – Focus Group:** Online discussion and feedback group session.
- **27th November – Youth entrepreneur club:** Online digital skills workshop for youth focusing on business skills
- **30th November – Xmas Party:** Families impacted by Sickle Cell and action group members Christmas celebration, brunch with Santa.

December 2024

- **2nd December – Awareness and Blood Donation Day:** Sickle Cell awareness and blood donation awareness event in Swindon.
- **4th, 11th and 14th December – Youth Entrepreneur club**
- **14th December – Caribbean Culture Youth Club:** Family Action Group Kahoot quiz night



January 2025

- **2nd to 5th January– Awareness at Winter by the river, Southbank Xmas Cabin:** Fundraising event held at the Southbank Christmas cabin.
- **6th January– Youth Entrepreneur Club:** Akanji Studios introduction to the Youth Entrepreneur Club on his journey with founding Akanji Studios.
- **8th January– Youth Coalition Meeting:** Youth coalition session to plan and coordinate activities.
- **9th January– Advocacy Training-** Public Training session focused on advocacy skills and support.
- **13th, 20th and 27th January– Youth Entrepreneur Club:** Workshops on how to use Canva and develop marketing materials for business
- **31st January – Caribbean Youth Culture Club:** Family Action Group's online event, Caribbean carnival mask making

February 2025

- **10th February – Youth Entrepreneur club: Creative Writing:** Creative writing session for youth empowerment.
- **19th February – Careers Fair Setup at Reading University:** Preparation for the careers fair event.
- **24th February – Youth Entrepreneur club: Podcasting Session:** First podcasting workshop for youth teaching them skills on filming, editing and techniques.
- **25th February – King's Award for Voluntary Service celebratory event:** Cianna's Smile was invited to attend the event to receive their prestigious Kings Award for Voluntary Service from Andrew Try, His Majesty's Lord-Lieutenant of the Royal County of Berkshire

March 2025

- **2nd March – Carib and Co Brunch at Box park, Wembley:** International Women's Day stall event. Raising awareness of Sickle Cell and recruiting new blood donors. Screening LIYB throughout the event.
- **3rd, 10th and 24th March – Youth Entrepreneur Club Illustration:** Youth creative session focusing on illustration and logo design.
- **7th March – ACS Sheffield Online Event:** Short film screening and Q&A session with the African and Caribbean Society at the University of Sheffield.
- **26th March – ACS Bristol Online Event:** Online talk and screening of short film with the African and Caribbean Society at the University of Bristol.
- **28th March – Book Club and Caribbean Culture Club:** Community event, cooking recipes from our new recipe book and nutritional guide.

Beneficiaries Feedback

We attended a family fun day event and a job well done – it was a lovely atmosphere and such a pleasure to connect with other families. The day was filled with warmth, laughter, and meaningful conversations. Events like this make a real difference, helping us feel supported, seen, and part of a caring community.

Thank you all for helping me, I appreciate the opportunity to create and share a positive atmosphere within the Cianna Smile community.

It's always a wonderful way to end a fantastic year by coming together to celebrate our community.

Cianna Smile has brought my family closer than ever. We create wonderful memories together, making me feel supported in this journey and giving me the chance to hear others' experiences.

We really appreciated the chance to join a community and mix with other families, whose children have sickle cell.

I am grateful for the wonderful and enjoyable experiences they * Cianna's Smile have given us.

Cianna's Smile has enabled me to be a part of a community with families that are experiencing similar challenges like my own. To be able to connect, share and learn from others has been invaluable.

The family days out and respite breaks have also been fantastic in creating more positive memories for my son with sickle cell.

My daughter was very happy to see other people living with sickle cell and she feels so comfortable to relate.

It's very good. Excellent to meet other families in person. To be able to chat and talk about issues. It cuts out some of the anxiety and worries, the problems of getting help and help being available. Being able to share and keep in contact with people. To know that above all there are other people out there. The fact that Cianna's smile is out there is so nice.

It was a lot of fun. It was great as a parent to a child with sickle cell to be able to speak with other parents. Form friendships and learn from parents with older children. It was great for my son to meet other sickle cells parents and for his brother to see he's not alone, that their are other siblings who have to adapt their life for their family members with sickle cell.

When asked: Being part of Cianna's Smile has helped me to behave more.....

“ I feel braver and more confident because I shared my story as part of a documentary *Life in Your Blood and public speaking.

My child has become engaged with others which translates to more positive behaviour at school. He has had entrepreneurial training and he enjoys the new experiences that I could not financially provide. Most importantly he comes away from the activities smiling happy and more confident.”

“ Positive. I can help my sister more and become an advocate for her and others impacted by Sickle Cell.

Am confident and able to support other parents especially new ones as there isn't much support out there for us.”

“ More aware of advocating for children with sickle cell needs and more knowledgeable of others experience with sickle cell.

Eager to learn more about sickle cell and spread sickle cell awareness.”



When asked: If I was not a member of Cianna's Smile, I would.....

- ♥ Without Cianna's Smile, I would feel much more alone in navigating the complexities of life with Sickle Cell.
- ♥ I'd likely feel isolated—possibly avoiding conversations about Sickle Cell altogether—because I wouldn't have a safe, understanding community to turn to. Without this support, it would be harder to stay positive, both for myself and for my child.
- ♥ We wouldn't have access to the incredible trips that bring joy, build confidence, and teach life skills. Those shared experiences not only help us bond as a family, but also remind us that we are more than a diagnosis.
- ♥ I would miss out on vital opportunities to connect with others who understand, and we would be without the thoughtful support that truly makes a difference during difficult times.
- ♥ I wouldn't feel confident recommending others to get involved and find their support circle.
- ♥ My child might feel like they're the only one living with this condition.
- ♥ I'd struggle to help my daughter see that she is more than her diagnosis.
- ♥ My mental health would suffer without a space where people truly "get it."
- ♥ I'd miss the chance to connect, ask for advice, and be uplifted by a caring network.
- ♥ We wouldn't laugh as much. We wouldn't have as much fun together.
- ♥ I might feel lost.
- ♥ Anxious about my child's future and wellbeing
- ♥ Frustrated by the lack of opportunities to build confidence and social skills
- ♥ Unsupported in advocating for my family's needs
- ♥ Lacking in motivation without a positive community to encourage me
- ♥ Less confident in helping my child feel proud of their identity
- ♥ Sad about missing quality family time and bonding experiences

24/25 Report Findings:

We conducted our own research to explore the experiences of individuals impacted by Sickle Cell regarding their mental health. We would like to share the key findings and insights gathered from this important study.

Severity and Impact:

83.3% of respondents rated the impact of Sickle Cell on their daily life as 5 out of 5 (extremely impactful), with the remaining 16.7% rating it 4 out of 5.

All participants (100%) rated Sickle Cell as a 5 out of 5 in terms of severity as a health condition.

Daily Challenges Reported:

- Respondents described a wide range of significant challenges, including:
- Emotional strain and worry for their child's health and family wellbeing.
- Financial burdens due to treatment costs, hospital visits, and increased household expenses (e.g., heating).
- Disruption of daily routines caused by frequent medical emergencies, hospital admissions, and caregiving demands.
- Educational setbacks for affected children due to missed school days and related cognitive difficulties.
- Social isolation and stigma impacting family interactions and support networks.
- Constant vigilance needed to prevent crises, such as medication management, avoiding overexertion, and staying hydrated.
- Limitations on physical activities and lifestyle compared to siblings and peers.
- The toll on caregivers balancing health needs with other family responsibilities.

When asked how often does the person living with Sickle Cell experience fatigue due to Sickle Cell?

50 % said daily, 16.7% said once per month and 33.3% said at least once per week

When asked how often does the person living with Sickle Cell experience mild to moderate pain due to Sickle Cell?

33.3% said daily, 33.3 % said at least once per fortnight and 33.3% said once per month or less.

When asked how often does the person living with Sickle Cell experience severe pain due to Sickle Cell?

16.7% said daily, 16.7% said every other day, 16.7% said once per fortnight, 16.7 % said less than once per year, 33.3 % said once every 1 to 6 months.

Report Findings: Continued

When asked how often does the person living with Sickle Cell have to take precautions to prevent Sickle Cell symptoms?

100% said daily

When asked how often does having/caring for someone living with Sickle Cell impact your family?

100% said daily

When asked to explain how Sickle Cell impacts their family. Some responses were as follows:

"It impacts on every aspect of life really. Like I said before, we can't just get up and do anything without proper planning. We must always " be prepared" in case of a crisis. Anywhere we go we must know where the nearest hospital is and then we worry if they would even know how to care for a child with sickle cell. Our son has an older sister and although she understands what is going on, she does feel left out a lot because "everything is about R" (My son with Sickle Cell)

"We cannot take my daughter everywhere and she's also restricted in doing some activities like her siblings."

"

"As a family our lives revolve around my son's sickle cell disease. Managing his pain. Maintaining his safety. It affects him holistically"

"Emotional Strain: The constant worry and uncertainty surrounding my child's health can be emotionally draining. Sickle cell disease often requires frequent hospital visits, which can disrupt family routines and lead to feelings of anxiety and stress".

"Financial Burden: Managing sickle cell disease involves additional expenses, including childcare for other siblings while in hospital, travel to, regular check-ups, and this has a strain on family finances and impacts long-term financial planning".

"Social Isolation: Sickle cell disease is still so misunderstood and sometimes we experience social isolation due to the need to prioritise health over social engagements. This can impact family relationships and social interactions. People underestimate how serious a condition it can be, even in a healthcare setting. There is an onus on us to explain the condition medically".

"My family has to separate when she is in hospital. I cannot leave her on her own in the hospital and I cannot leave her 2 younger siblings on their own. They become young carers when she is poorly. They worry and cry about their sister at school. We all suffer. I live in constant worry. Spending money on hospital stays for my food and travel often have an impact financially."

Report Findings: Continued

When asked what do you believe can help improve the lives of those impacted by Sickle Cell people said:

- Sickle Cell being recognised as a serious illness and given as much attention & funding as others conditions.
- Professionals listening to patients and/ or carers.
- More awareness & knowledge on it. Sickle cell should be taught at school like any other conditions.
- More media coverage.
- :Sickle cell patients should not be afraid to go to hospital when in a crisis. They must receive appropriate care and medical attention. They must be respected & valued as human beings and individuals. They are nor drug addicts.
- Free mediation for adults.
- More & better moral support.
- Give them priority and create avenues to help them get better.
- Greater awareness, empathy. It feels as if No one is listening
- I believe Improving the lives of those impacted by sickle cell disease can be achieved through a combination of approaches, starting with the government approving this treatment .
- Increased Awareness and Education**: Promoting awareness about sickle cell disease to reduce stigma, increase understanding, and encourage early detection and intervention.
- Making sickle cell disease training for all clinicians compulsory



Financial Review

During the 2023/24 financial year, Cianna's Smile achieved a record level of fundraising income, as reflected in the figures submitted to the Charity Commission. This strong income performance enabled the charity to secure funding in advance for a number of core projects and services aligned with its charitable objectives.

In the 2024/25 financial year, the trustees took a deliberate and strategic decision to reduce fundraising activity in order to prioritise the delivery of projects funded in earlier periods. This approach resulted in lower income for the year; however, it ensured that the charity met its contractual and funding obligations, maintained high standards of service delivery and used charitable funds in accordance with their intended purpose. The trustees consider this to be a prudent and responsible approach to financial management.

The charity's financial position reflects the nature of its funding model, whereby income is typically secured prior to the commencement of projects. As a result, there can be timing differences between when income is recognised and when expenditure is incurred. The trustees monitor these timing differences carefully and consider this approach to be effective in managing financial risk, ensuring sustainability and avoiding unfunded commitments.

The trustees have reviewed the charity's financial resilience and continue to manage reserves in line with the charity's Reserves Policy. Cianna's Smile aims to hold unrestricted reserves equivalent to approximately six months of core operating expenditure. These reserves are intended to provide financial stability, support cash flow, manage short-term income fluctuations and mitigate key operational risks, including funding delays and unexpected increases in demand for services.

Financial risks, including reliance on grant funding and fluctuations in income, are identified and monitored as part of the charity's wider Risk Management Framework. The trustees regularly review financial performance against budget and take appropriate action to manage risk and ensure responsible management of finances.

Looking ahead, the trustees are satisfied that Cianna's Smile is financially well managed and appropriately resourced to continue delivering its charitable activities. With a strong financial foundation, clear strategic priorities, and robust governance arrangements, the charity is well positioned to maintain sustainability, respond to need, and pursue future funding opportunities in line with its charitable aims.

Main source of income: Grants

Key areas of expenditure: Activities and support for beneficiaries, salary and blood donation campaign.

Reserves Policy: The charity aims to maintain reserves sufficient to cover 6 months of operating costs to ensure sustainability.



Plans for Future Periods

Looking ahead, the trustees have identified a number of key priorities that will guide Cianna's Smile's work over the coming period. These plans are informed by evidence gathered through service delivery, feedback from families and young people and the charity's ongoing commitment to improving outcomes for those impacted by sickle cell.

Supporting Schools through teacher training and advocacy

The charity plans to expand its work with schools by delivering targeted teacher training and advocacy initiatives. This will include the development of detailed educational resources and accessible infographics aimed at increasing understanding of sickle cell, supporting inclusion and improving the educational experience and quality of life for students living with the condition.

Development of new creative and connection-based youth provision

Cianna's Smile plans to launch new creative initiatives, including the Create & Connect Club, providing a dedicated space for young people aged 11 and over to explore art, music and nature-based activities. These sessions are intended to support self-expression, independence, confidence-building and peer connection.

Expansion of youth support for older young People and young adults

The trustees recognise a gap in provision for older young people and young adults and plan to expand support for those aged 16–18 and 18–25. This will include the development of safe, age-appropriate spaces focused on personal development, life skills, emotional wellbeing, and peer support, delivered through initiatives such as a monthly art club and regular wellness walks.

Increasing Awareness and Advocacy

The charity plans to deliver focused awareness and advocacy campaigns to improve public understanding of sickle cell and sickle cell trait, while continuing to highlight the urgent need for new back heritage blood donors. These campaigns will seek to engage diverse communities and promote informed, inclusive conversations.

Strengthening Community Support and Local Reach

Cianna's Smile plans to strengthen and extend its community support services, with a particular focus on reaching more families across the Thames Valley. This will include the provision of tailored resources and practical support to respond to ongoing and emerging needs within the community.

These plans demonstrate the trustees' commitment to delivering meaningful, sustainable impact and to ensuring that Cianna's Smile continues to respond effectively to the needs of individuals, families and communities affected by sickle cell.



Acknowledgements

The trustees wish to place on record their sincere appreciation to all those who have contributed to the work and impact of Cianna's Smile during the reporting period.

The trustees extend their gratitude to the charity's volunteers, donors and fundraisers, whose generosity of time, skills and financial support continues to make the delivery of the charity's work possible. Their commitment plays a vital role in enabling Cianna's Smile to respond to need, sustain its services, and reach individuals and families affected by sickle cell across the communities it serves.

The trustees also wish to acknowledge and thank partner organisations, funders and sponsors for their collaboration, confidence and continued support. Through strong partnerships and shared objectives, Cianna's Smile has been able to enhance the quality, reach and effectiveness of its programmes. The trustees greatly value these relationships and recognise the importance of collaborative working in achieving lasting and systemic change.

The trustees are particularly grateful to the families, children and young people supported by the charity. Their openness in sharing lived experiences, insights and feedback continues to inform the charity's work and strategic direction. Their resilience and determination remain a constant source of inspiration and serve as a powerful reminder of the importance and purpose of Cianna's Smile's mission.

To our funders, the trustees would like to express their sincere thanks for your continued belief in and support of the charity's work. Your investment has enabled Cianna's Smile to raise awareness, educate professionals and communities and deliver meaningful support to young people and families impacted by sickle cell throughout the 2024/25 financial year. Your ongoing commitment not only underpins current activity but also strengthens the charity's ability to plan sustainably and pursue its strategic vision as it moves into 2026 and beyond.

The trustees recognise that the charity's achievements would not be possible without the collective efforts of all those who support Cianna's Smile. We remain deeply appreciative of this continued support and look forward to working together to further advance our charitable objectives.

Contact





CIANNA'S SMILE		1173030	
Annual accounts for the period			
Period start date	06/04/2024	To	Period end date 05/04/2025

Section A Statement of financial activities

Recommended categories by activity	Unrestricted funds £ F01	Restricted income funds £ F02	Endowment funds £ F03	Total funds £ F04	Prior year funds £ F05
Incoming resources (Note 3)					
Income and endowments from:					
Donations and legacies	17,345	60,578		77,923	34,803
Charitable activities	-				
Other trading activities	-				
Investments	-	-			
Separate material item of income	-	-	-		
Other	-	-	-		
Total	17,345	60,578	-	77,923	34,803
Resources expended (Note 4)					
Expenditure on:					
Raising funds	9,100	-	-	9,100	4,682
Charitable activities	194	64,368	-	64,561	63,431
Separate material item of expense	-	-	-	-	-
Governance	1,803	-	-	1,803	1,191
Total	11,096	64,368	-	75,464	69,304
Net income/(expenditure) before investment gains/(losses)	6,248	- 3,790	-	2,459	- 34,501
Net gains/(losses) on investments	-	-	-	-	-
Net income/(expenditure)	6,248	- 3,790	-	2,459	- 34,501
Extraordinary items	-	-	-	-	-
Transfers between funds	17,401	- 17,401	-	-	-
Other recognised gains/(losses):					
Gains and losses on revaluation of fixed assets for the charity's own use	-	-	-	-	-
Other gains/(losses)	-	-	-	-	-
Net movement in funds	23,650	- 21,191	-	2,459	- 34,501
Reconciliation of funds:					
Total funds brought forward	63,045	53,760	-	116,806	153,214
Total funds carried forward	86,695	32,569	-	119,265	118,713

Section B

Balance sheet

	Unrestricted funds	Restricted income funds	Endowment funds	Total this year	Total last year
	£	£	£	£	£
	F01	F02	F03	F04	F05
Fixed assets					
Tangible assets (Note 7)	5,422		-	5,422	6,741
Total fixed assets	5,422	-	-	5,422	6,741
Current assets					
Debtors (Note 8)	3,078		-	3,078	-
Cash at bank and in hand	85,677	32,569	-	118,247	111,740
Total current assets	88,755	32,569	-	121,324	111,740
Creditors: amounts falling due within one year (Note 9)	7,481	-	-	7,481	1,675
Net current assets	81,274	32,569	-	113,843	110,065
Total assets less current liabilities	86,695	32,569	-	119,265	116,806
Total net assets	86,695	32,569	-	119,265	116,806
Funds of the Charity					
Restricted income funds (Note 10)		32,569		32,569	53,760
Unrestricted funds	86,695		-	86,695	63,045
Revaluation reserve				-	-
Total funds	86,695	32,569	-	119,265	116,806
Signed on behalf of the trustee body					
	Signature	Print Name		Date of approval dd/mm/yyyy	

Section C**Notes to the accounts****Note 1 Basis of preparation**

This section should be completed by all charities .

1.1 Basis of accounting

These accounts have been prepared under the historical cost convention with items recognised at cost or transaction value unless otherwise stated in the relevant note(s) to these accounts.

The accounts have been prepared in accordance with:

- and with* the Statement of Recommended Practice: Accounting and Reporting by Charities preparing their accounts in accordance with the Financial Reporting Standard applicable in the UK and Republic of Ireland (FRS 102) issued on 16 July 2014
- and with* the Financial Reporting Standard applicable in the United Kingdom and Republic of Ireland (FRS 102)
- and with the Charities Act 2011.

The charity constitutes a public benefit entity as defined by FRS 102.*

* -Tick as appropriate

1.2 Going concern

There are no material uncertainties related to events or conditions that cast significant doubt on the charity's ability to continue as a going concern.

1.3 Change of accounting policy

The accounts present a true and fair view and the accounting policies adopted are those outlined in note 2.

1.4 Changes to accounting estimates

No changes to accounting estimates have occurred in the reporting period (3.46 FRS 102 SORP).

1.5 Material prior year errors

No material prior year error have been identified in the reporting period (3.47 FRS 102 SORP).

Note 2 Accounting policies**2.2 INCOME**

This standard list of accounting policies has been applied by the charity except for those ticked "No" or "N/a". Where a different or additional policy has been adopted then this is detailed in the box below.

Recognition of income	<p>These are included in the Statement of Financial Activities (SoFA) when:</p> <ul style="list-style-type: none"> • the charity becomes entitled to the resources; • it is more likely than not that the trustees will receive the resources; and • the monetary value can be measured with sufficient reliability.
Offsetting	<p>There has been no offsetting of assets and liabilities, or income and expenses, unless required or permitted by the FRS 102 SORP or FRS 102.</p>
Grants and donations	<p>Grants and donations are only included in the SoFA when the general income recognition criteria are met (5.10 to 5.12 FRS102 SORP).</p>
Legacies	<p>In the case of performance related grants, income must only be recognised to the extent that the charity has provided the specified goods or services as entitlement to the grant only occurs when the performance related conditions are met (5.16 FRS 102 SORP).</p> <p>Legacies are included in the SOFA when receipt is probable, that is, when there has been grant of probate, the executors have established that there are sufficient assets in the estate and any conditions attached to the legacy are either within the control of the charity or have been met.</p>
Government grants	<p>The charity has not received government grants in the reporting period</p>
Tax reclaims on donations and gifts	<p>Gift Aid receivable is included in income when there is a valid declaration from the donor. Any Gift Aid amount recovered on a donation is considered to be part of that gift and is treated as an addition to the same fund as the initial donation unless the donor or the terms of the appeal have specified otherwise.</p>
Contractual income and performance related grants	<p>This is only included in the SoFA once the charity has provided the related goods or services or met the performance related conditions.</p>
Donated goods	<p>Donated goods are measured at fair value (the amount for which the asset could be exchanged) unless impractical to do so.</p> <p>The cost of any stock of goods donated for distribution to beneficiaries is deemed to be the fair value of those gifts at the time of their receipt and they are recognised on receipt. In the reporting period in which the stocks are distributed, they are recognised as an expense at the carrying amount of the stocks at distribution.</p> <p>Donated goods for resale are measured at fair value on initial recognition, which is the expected proceeds from sale less the expected costs of sale, and recognised in 'Income from other trading activities' with the corresponding stock recognised in the balance sheet. On its sale the value of stock is charged against 'Income from other trading activities' and the proceeds from sale are also recognised as 'Income from other trading activities'.</p> <p>Goods donated for on-going use by the charity are recognised as tangible fixed assets and included in the SoFA as incoming resources when receivable.</p> <p>Gifts in kind for use by the charity are included in the SoFA as income from donations when receivable.</p>
Donated services and facilities	<p>Donated services and facilities are included in the SOFA when received at the value of the gift to the charity provided the value of the gift can be measured reliably.</p> <p>Donated services and facilities that are consumed immediately are recognised as income with an equivalent amount recognised as an expense under the appropriate heading in the SOFA.</p>
Support costs	<p>The charity has incurred expenditure on support costs.</p>
Volunteer help	<p>The value of any voluntary help received is not included in the accounts but is described in the trustees' annual report.</p>
Income from interest, royalties and dividends	<p>This is included in the accounts when receipt is probable and the amount receivable can be measured reliably.</p>
Income from membership subscriptions	<p>Membership subscriptions received in the nature of a gift are recognised in Donations and Legacies.</p> <p>Membership subscriptions which gives a member the right to buy services or other</p>

benefits are recognised as income earned from the provision of goods and services as income from charitable activities.

Settlement of insurance claims

Insurance claims are only included in the SoFA when the general income recognition criteria are met (5.10 to 5.12 FRS102 SORP) and are included as an item of other income in the SoFA.

Investment gains and losses

This includes any realised or unrealised gains or losses on the sale of investments and any gain or loss resulting from revaluing investments to market value at the end of the year.

2.3 EXPENDITURE AND LIABILITIES

Liability recognition

Liabilities are recognised where it is more likely than not that there is a legal or constructive obligation committing the charity to pay out resources and the amount of the obligation can be measured with reasonable certainty.

Governance and support costs

Support costs have been allocated between governance costs and other support. Governance costs comprise all costs involving public accountability of the charity and its compliance with regulation and good practice.

Support costs include central functions and have been allocated to activity cost categories on a basis consistent with the use of resources, eg allocating property costs by floor areas, or per capita, staff costs by the time spent and other costs by their usage.

Grants with performance conditions

Where the charity gives a grant with conditions for its payment being a specific level of service or output to be provided, such grants are only recognised in the SoFA once the recipient of the grant has provided the specified service or output.

Grants payable without performance conditions

Where there are no conditions attaching to the grant that enables the donor charity to realistically avoid the commitment, a liability for the full funding obligation must be recognised.

Redundancy cost

The charity made no redundancy payments during the reporting period.

Deferred income

No material item of deferred income has been included in the accounts, other than a grant received in advance in accordance with the policies above.

Creditors

The charity has creditors which are measured at settlement amounts less any trade discounts

Provisions for liabilities

A liability is measured on recognition at its historical cost and then subsequently measured at the best estimate of the amount required to settle the obligation at the reporting date

Basic financial instruments

The charity accounts for basic financial instruments on initial recognition as per paragraph 11.7 FRS102 SORP. Subsequent measurement is as per paragraphs 11.17 to 11.19, FRS102 SORP.

2.4 ASSETS

Tangible fixed assets for use by charity

These are capitalised if they can be used for more than one year, and cost at least £500



They are valued at cost.

The depreciation rates and methods used are disclosed in note 9.2.

Intangible fixed assets

The charity has intangible fixed assets, that is, non-monetary assets that do not have physical substance but are identifiable and are controlled by the charity through custody or legal rights. The amortisation rates and methods used are disclosed in note 9.5

They are valued at cost.

Heritage assets

The charity has heritage assets, that is, non-monetary assets with historic, artistic, scientific, technological, geophysical or environmental qualities that are held and maintained principally for their contribution to knowledge and culture. The depreciation rates and methods used as disclosed in note 9.6.1.4.

They are valued at cost.

Investments

Fixed asset investments in quoted shares, traded bonds and similar investments are valued at initially at cost and subsequently at fair value (their market value) at the year end. The same treatment is applied to unlisted investments unless fair value cannot be measured reliably in which case it is measured at cost less impairment.

Investments held for resale or pending their sale and cash and cash equivalents with a maturity date of less than 1 year are treated as current asset investments

Stocks and work in progress

Stocks held for sale as part of non-charitable trade are measured at the lower or cost or net realisable value.

Goods or services provided as part of a charitable activity are measured at net realisable value based on the service potential provided by items of stock.

Work in progress is valued at cost less any foreseeable loss that is likely to occur on the contract.

Debtors

Debtors (including trade debtors and loans receivable) are measured on initial recognition at settlement amount after any trade discounts or amount advanced by the charity. Subsequently, they are measured at the cash or other consideration expected to be received.

Current asset investments

The charity has investments which it holds for resale or pending their sale and cash and cash equivalents with a maturity date less than one year. These include cash on deposit and cash equivalents with a maturity date of less than one year held for investment purposes rather than to meet short term cash commitments as they fall due.

They are valued at fair value except where they qualify as basic financial instruments.

**POLICIES ADOPTED
ADDITIONAL TO OR
DIFFERENT FROM
THOSE ABOVE**

--

Note 3 Analysis of income

		Unrestricted funds	Restricted income funds	Endowment funds	Total funds £	Prior year £
Analysis						
Donations and legacies:	Donations and gifts	6,070	-	-	6,070	2,419
	Ball income (fundraising)			-	-	-
	Legacies			-	-	-
	Grants	11,275	60,578	-	71,853	32,384
	Total	17,345	60,578	-	77,923	34,803
TOTAL INCOME		17,345	60,578	-	77,923	34,803

Section C **Notes to the accounts** **(cont)**

Note 4 **Analysis of expenditure**

Analysis	This year			Last year		
	Unrestricted funds	Restricted income funds	Total funds	Unrestricted funds	Restricted income funds	Total funds
Expenditure on raising funds:			£			£
Direct costs	15	-	15	-	-	-
Event costs	9,085	-	9,085	4,682	-	4,682
Total expenditure on raising funds	9,100	-	9,100	4,682	-	4,682
Expenditure on charitable activities:						
Support Group	-	8,919	8,919	-	-	11
Bank fees	17	-	17	-	11	11
Bereavement costs	-	2,677	2,677	-	-	
Carer Lunches	-	400	400	-	-	
Cost of living crisis	-	920	920	-	250	250
Depreciation Expense	-	2,574	2,574	2,409	-	2,409
Family Support	-	-	-	-	17,999	17,999
Focus Group	-	120	120	-	40	40
Hospital project	-	-	-	-	270	270
Insurance	-	212	212	-	196	196
IT software and consumables	-	421	421	-	322	322
Kids Book club	-	883	883	-	3,956	3,956
Light, Power, Heating	-	1,602	1,602	-	2,528	2,528
Marketing	-	3,259	3,259	-	1,383	1,383
NHSBT Project	-	8,140	8,140	-	4,989	4,989
Office equipment (non fixed asset)	-	1,466	1,466	-	709	709
Pension costs	-	-	-	-	94	94
Postage, Freight & Courier	-	349	349	-	686	686
Printing & Stationery	-	89	89	-	-	-
Public Awareness	-	1,597	1,597	-	510	510
Publications	-	1,494	1,494	-	600	600
Rates	-	204	204	-	-	
Rent	-	902	902	-	-	
Salaries	-	18,772	18,772	7,281	8,935	16,216
Subscriptions	-	1,066	1,066	-	209	209
Sundry Payments	-	623	623	-	267	267
Telephone & Internet	-	1,735	1,735	-	1,151	1,151
Training	-	48	48	-	-	
Travel - National	-	985	985	-	466	466
Volunteer Expenses	-	1,594	1,594	-	2,186	2,186
Website	176	152	328	-	287	287
Wellness Day	-	-	-	-	56	56
YAP	-	-	-	-	2,931	2,931
Youth Digital 1	-	3,165	3,165	-	2,710	2,710
	-	-	-	-	-	
Restricted funds needs allocating	0	0	-	-	-	
Total expenditure on charitable activities	194	64,368	64,561	9,689	53,742	63,431
Governance costs						
Audit & Accountancy fees	1,803	-	1,803	1,191	-	1,191
	-	-	-	-	-	-

	-	-		-	-	-
Total	1,803	-	1,803	1,191	-	1,191

	11,096	64,368	75,464
	18,693 -	56,771	75463.84
	7,597	7,597	75,464
			-

Section C**Notes to the accounts****Note 5 Details of certain items of expenditure****10.1 Fees for examination of the accounts**

	This year £	Last year £
Independent examiner's fees	456	360
Assurance services other than audit or independent examination	720	624
Other fees (for example: financial advice, consultancy, accountancy services) paid	507	-

The Independent Examiners' firm also provided the support with accounts preparation £720 including VAT (2023 - £624) and other services includ

Note 6 Paid employees

The charity had and average of 2 paid part time employees(previous year - 2)

11.1 Staff Costs

	This year £	Last year £
Salaries and wages	18,772	16,216
Social security costs	-	-
Pension costs (defined contribution scheme)		
Other employee benefits	-	-
Total staff costs	18,772	16,216

No employees received employee benefits (excluding employer pension costs) for the reporting period of more than £60,000 (prior year none)

Section C

Notes to the accounts

(cont)

Note 7 Tangible fixed assets*Please complete this note if the charity has any tangible fixed assets***14.1 Cost or valuation**

	Freehold land & buildings	Other land & buildings	Computer equipment	Fixtures, fittings and equipment	Total
	£	£	£	£	£
At the beginning of the year	-	-	1,803	9,433	11,236
Additions	-	-	1,255	-	1,255
Revaluations	-	-	-	-	-
Disposals	-	-	-	-	-
Transfers *	-	-	-	-	-
At end of the year	-	-	3,057	9,433	12,491

14.2 Depreciation and impairments

**Basis	SL or RB (Straight Line or Reducing Balance)	SL or RB	Straight Line	Straight Line	Straight Line
** Rate	20%		33%	20%	

At beginning of the year	-	-	1,086	3,408	4,495
Disposals	-	-	-	-	-
Depreciation	-	-	729	1,845	2,574
Impairment	-	-	-	-	-
Transfers*	-	-	-	-	-
At end of the year	-	-	1,816	5,253	7,069

14.3 Net book value

Net book value at the beginning of the year	-	-	716	6,025	6,741
Net book value at the end of the year	-	-	1,242	4,180	5,422

14.4 Impairment

This year: Please provide a description of the events and circumstances that led to the recognition or reversal of an impairment loss.

--

Last year: Please provide a description of the events and circumstances that led to the recognition or reversal of an impairment loss.

--

14.5 Revaluation

If an accounting policy of revaluation is adopted, please provide:

the effective date of the revaluation

the name of independent valuer, if applicable

the methods applied and significant assumptions

the carrying amount that would have been recognised had the assets been carried under the cost model.

This year	Last year
-	-

14.6 Other disclosures

(i) Please state the amount of borrowing costs, if any, capitalised in the construction of tangible fixed assets and the capitalisation rate used.

(ii) Please provide the amount of contractual commitments for the acquisition of tangible fixed assets.

(iii) Details of the existence and carrying amounts of property, plant and equipment to which the charity has restricted title or that are pledged as security for liabilities.

This year	Last year
£	£
-	-
-	-

* The "transfers" row is for movements between fixed asset categories.

** Please indicate the method of depreciation by deleting the method not applicable (SL = straight line; RB = reducing balance). Also please indicate the rate of depreciation: for straight line, what is the anticipated life of the asset (in years); for reducing balance, what is the percentage annual deduction.

Section C **Notes to the accounts** **(cont)**

Note 8 **Debtors and prepayments**

Analysis of debtors

Prepayments and accrued income

Total

This year	Last year
£	£
3,077.7	-
3,077.7	-

Note 10

Creditors and accruals

	Amounts falling due within one year		Amounts falling due after more than one year	
	This year £	Last year £	This year £	Last year £
Payments received in advance for fundraiser	4,838	-	-	-
Accruals and deferred income	1,104	984	-	-
Taxation and social security	-	-	-	-
Other creditors	1,540	691	-	-
Total	7,481	1,675	-	-

Note 10 Charity funds**27.1 Details of material funds held and movements during the CURRENT reporting period**

Please give details of the movements of material individual funds in the reporting period together with a balancing figure for 'Other funds'. The 'Total cen

Fund names	Type	Purpose and Restrictions	Fund balances brought forward £	Income £	Expenditure £	Transfers £	Fund balances carried forward £
Global Blood Therapeutics	Restricted	3 publications and general costs - transferred to unrestricted	7,296			- 7,296	-
Novo Nordisk	Restricted	Core funding - transferred to unrestricted	9,524			- 9,524	-
Children In Need	Restricted	youth worker salary , days out and overheads	2,747		- 2,747		-
D'Oyle Carte	Restricted	art therapy boxes, ceramic cafe activity, art boxes, music therapy	801		- 801		-
Earley Charity	Restricted	contribution to respite break, book club	193		- 193		-
Albert Hunt	Restricted	Core funding	1,672		- 1,672		-
DWF	Restricted	kids book club	278		- 278		-
Childwick trust	Restricted	core	30		- 30		-
Matrix Causes Fund	Restricted	resource development	13		- 13		-
Astor foundation	Restricted	overheads	2		- 2		-
Mobbs Memorial Trust	Restricted	office furniture and equipment	4		- 4		-
Comic Relief	Restricted	days out, youth worker, boxes	- 5		5		-
HDH Wills 1965 Charitable Trust	Restricted	hospital stays	403		- 403		-
Foundation	Restricted	beneficiary recruitment in swindon	120		- 120		-
Joan Wilkinson Charitable Trust	Restricted	educational resources	335		- 335		-
Berkshire Masonic Charity	Restricted	hospital support in berkshire	1,282		- 701	- 581	-
Sovereign #iwill Fund	Restricted	youth project	913		- 913		-
Tesco Community Grants - voting	Restricted	kids books	4		- 4		-
Grand Plan	Restricted	carers books	23		- 23		-
Wokingham Residents Equality Forum	Restricted	youth project	386		- 386		-

UK Youth Digital Access Fund made possible by Osborne Clarke	Restricted	youth digital project	1,361	-	1,361	-	
British Humane Association	Restricted	hospital support	1,515	-	1,515	-	
Heart of Bucks - Health Equity Fund	Restricted	outreach in buckinghamshire	1,114	-	1,114	-	
Costco United Way	Restricted	book club	1,500	-	1,292	208	
NHS Blood and Transfusion	Restricted	theatre project	9,852	-	9,852	-	
Comic Relief - an extra £500	Restricted	cost of living support	443	-	443	-	
Postcode Lottery Trust	Restricted	core	352	-	352	-	
Earley Town Council	Restricted	contribution to local activities	500	-	500	-	
Childwick Trust 3	Restricted	overall objectives and school supplies	3,000	-	3,000	-	
UK Youth 2	Restricted	youth digital project	1,873	-	1,873	-	
Prince of Wales charity	Restricted	respite break 2024	3,000	-	3,000	-	
NHS Berkshire West	Restricted	youth project	1,229	-	1,229	-	
Matrix 2	Restricted	resource development	2,000	-	1,763	237	
bbccin 3	restricted	youth worker salary , days out and overheads		10,000	-	9,051	949
NHSBT 3	restricted	NHSBT project 24/25		14,178	-	2,536	11,642
uk youth grant 3	restricted	youth difgital project and tech for kids		5,000	-	3,369	1,631
THE MULBERRY TRUST	Restricted	overall objectives to support young people impacted by sickle cell		2,000	-	2,000	-
BERKS COMMUNITY Foundation	restricted	winter utilities		900	-	900	-
CHILDWICK TRUST	restricted	respite break 2025 and summer boxes		3,000	-	3,000	-
GARFIELD WESTON FOUNDATION	restricted	core costs		10,000	-	1,053	8,947
KENT COMMUNITY FOUNDATION	restricted	wellness day and carers lunch in kent only		2,000	-	-	2,000
PRISM THE GIFT FUND MATRIX	restricted	resource development		2,000	-	1,494	506
Vertex Pharma	restricted	gala sponorsrhip		5,000	-	5,000	-
COLYER-FERGUSON CHARITABLE TRUST P5373	restricted	wellness day and caresr lunch in kent only		2,000	-	50	1,950
GREENH GRANT	restricted	respite break		2,500	-	-	2,500
BRIAN MURTAGH CHARITABLE TRUST NO REF	restricted	African and Caribbean Culture Club		1,500	-	-	1,500
STANTON	restricted	support for families in oxford		500	-	-	500
			-	-	-	-	-

			-	-	-	-	-
	-		-	-	-	-	-
			-	-	-	-	-
			-	-	-	-	-
			-	-	-	-	-
Unrestricted Funds	Unrestricted	Unrestricted	63,045	17,345	-	11,096	17,401
		Total Funds	116,806	77,923	-	75,464	-
							86,695
							119,265

Transfers between funds were as a result of funders approving the release of remaining funds to unrestricted expenditure

- - - - -

Section C

Notes to the accounts

(cont)

Note 10 Charity funds

27.1 Details of material funds held and movements during the CURRENT reporting period

Please give details of the movements of material individual funds in the reporting period together with a balancing figure for 'Other funds'.

* Key: PE - permanent endowment funds; EE - expendible endowment funds; R - restricted income funds, including special trusts, of the

Fund names	Type	Purpose and Restrictions	Fund balances brought forward £	Income £	Expenditure £	Fund balances carried forward £
Global Blood Therapeutics	Restricted	3 publications and general costs	7,296		- 3,994	3,302
Novo Nordisk	Restricted	Core funding	10,000		- 476	9,524
Peter Harrison Foundation	Restricted	helpline	3,995		-	-
Children In Need	Restricted	youth worker salary , days out and overheads	10,672		- 7,925	2,747
D'Oyle Carte	Restricted	art therapy boxes, ceramic cafe activity, art boxes, music therapy	1,061		- 260	801
Earley Charity	Restricted	contribution to respite break, book club	970		- 777	193
Albert Hunt	Restricted	Core funding	1,672		-	1,672
DWF	Restricted	kids book club	2,108		- 1,830	278
NHSBT	Restricted	3 x blood drives	2,475			-
Syder Foundation	Restricted	office equipment	14		- 14	0
Clothworkers	Restricted	office equipment including capital spend	79		- 79	0
Childwick trust	Restricted	core	165		- 136	30
Matrix Causes Fund	Restricted	resource development	13		-	13
Astor foundation	Restricted	overheads	1,000		- 998	2
Berkshire Community Foundation	Restricted	salary, office, promotion	80		- 80	-
Mobbs Memorial Trust	Restricted	office furniture and equipment	1,944		- 1,941	4
Comic Relief	Restricted	days out, youth worker, boxes	3,846		- 3,851	5
HDH Wills 1965 Charitable Trust	Restricted	hospital stays	500		- 97	403
Foundation	Restricted	beneficiary recruitment in swindon	1,455		- 1,335	120
Joan Wilkinson Charitable Trust	Restricted	educational resources	500		- 165	335
Heathrow Community Trust	Restricted	outreach salary, coffee morning, beneficiary recruitment	1,952			-
Berkshire Masonic Charity	Restricted	hospital support in berkshire	1,500		- 218	1,282
Sovereign #iwill Fund	Restricted	youth project	5,081		- 4,167	913

Tesco Community Grants - voting	Restricted	kids books	940		- 937	4
Grand Plan	Restricted	carers books	389		- 366	23
Wokingham Residents Equality Forum	Restricted	youth project	500		- 114	386
NHS Berkshire West Mental Health Community Grant via Reading Voluntary Action	Restricted	contribution to overall objectives for local families	200		- 200	-
Lions Wokingham	Restricted	POC machine	1,000		- 1,000	-
UK Youth Digital Access Fund made possible by Osborne Clarke	Restricted	youth digital project	5,000		- 3,639	1,361
Childwick Trust	Restricted	overall objectives and respite break	1,385		- 1,385	-
British Humane Association	Restricted	hospital support	1,515		-	1,515
Heart of Bucks - Health Equity Fund	Restricted	outreach in buckinghamshire	3,304		- 2,190	1,114
Costco United Way	Restricted	book club	1,500		-	1,500
Comic Relief- Winter Campaign cost of living fund	Restricted	office utilities bill, cost of living support	379		- 379	-
NHS Blood and Transfusion	Restricted	theatre project	18,700		- 8,848	9,852
Comic Relief - an extra £500	Restricted	cost of living support	500		- 57	443
Postcode Lottery Trust	Restricted	core		5,000	- 4,648	352
Earley Town Council	Restricted	contribution to local activities		500	-	500
Hay's Travel Foundation	Restricted	poc machine		2,410	- 2,410	-
Childwick Trust 3	Restricted	overall objectives and school supplies		3,000	-	3,000
UK Youth 2	Restricted	youth digital project		5,000	- 3,127	1,873
Sovereign Housing	Restricted	youth project celebration party		250	- 250	-
Prince of Wales charity	Restricted	respite break 2024		3,000	-	3,000
NHS Berkshire West	Restricted	youth project		2,980	- 1,751	1,229
Matrix 2	Restricted	resource development		2,000	-	2,000
			-	-	-	-
			-	-	-	-
			-	-	-	-
			-	-	-	-
			-	-	-	-
			-	-	-	-
			-	-	-	-
			-	-	-	-
			-	-	-	-

			-	-	-	-	
Unrestricted Funds	Unrestricted	Unrestricted	59,523	10,663	-	9,661	63,275
		Total Funds	153,214	34,803	-	69,304	113,042

Note that the expenditure figure on the restricted funds does not match the SOFA due to some of the spend being on capital items that were transferred to the unrestrict

Note 11 Transactions with trustees and related parties**This year**

None of the trustees have been paid any remuneration or received any other benefits from an employment with their charity or a related entity.

Last year

None of the trustees have been paid any remuneration or received any other benefits from an employment with their charity or a related entity.

CIANNA'S SMILE

England & Wales - Charity number 1173030

Accounts



CIANNA'S
Smile



Cianna's Smile annual Trustee's Report

Year 2023/2024

Charity information

Charity name: Cianna's Smile

Charity registration number: 1173030

Address: 10 Eaton Place, Reading, RG1 7LP

Website: www.ciannassmile.co.uk

Contact email: info@ciannassmile.co.uk

Trustees for the Reporting Year:

Hayley King
Melissa Connor
Ashleigh Alli
Rosalind Slade

Independent Examiner/Auditor:

Holybrook Accounting

Structure, Governance, and Management

Governing Document:

Cianna's Smile is governed by its Constitution.

Trustee Recruitment and Appointment:

Through interview and nomination.



Trustee

Statements

Hayley King

As the founder of Cianna's Smile, I am immensely proud of the strides we have made in 2023-2024. This year has been a testament to the power of collaboration, resilience, and community spirit as we continue to advocate for individuals and families impacted by Sickle Cell.

We expanded our outreach through impactful campaigns and events. Our initiatives, such as the Youth Entrepreneur Club provided young people with tools to build their confidence, skills, and leadership capabilities. Through these programmes, we are creating a generation of empowered advocates ready to drive meaningful change.

We developed tailored educational resources for young people, parents, healthcare professionals, schools, and community groups, raising awareness and empathy for the challenges faced by those living with Sickle Cell. Our work in this area ensures that individuals receive better care and support across various settings.

We inspired more individuals to donate blood, directly benefiting those reliant on life-saving blood exchanges and transfusions. Despite challenges, such as limited local appointments, we persisted in spreading this critical message.

This year, we strengthened partnerships with universities, businesses, and healthcare organisations, enabling us to reach more people and secure vital resources.

Looking ahead, I am confident that Cianna's Smile will continue to grow in impact and reach. Together, we are breaking barriers, raising awareness and creating a brighter future for individuals impacted by Sickle Cell.

Thank you to our supporters, volunteers, funders and partners who make this journey possible.



Trustee

Statements

Melissa Connor

As the Charity Secretary of Cianna's Smile, it has been a privilege to witness and contribute to the incredible work our organisation has achieved this year. From engaging directly with families to supporting events, my role has allowed me to see the profound impact we have on the lives of those impacted by Sickle Cell.

One of the highlights of my work has been connecting with teachers and parents, encouraging them to explore the resources and support we offer. These conversations have opened doors for better understanding and collaboration, ensuring that children and young people living with Sickle Cell feel supported both at home and in educational settings.

I've had the honour of helping out at our events, including our awareness and action group activities. These occasions not only spread awareness but also provide a sense of community for families, showing them they are not alone in their journey. Seeing the positive reactions from attendees and hearing their feedback has been both rewarding and motivating.

Through my role, I've also focused on improving connections between schools, community groups, and our charity. These partnerships are vital in expanding our reach.

As we look ahead, I am excited to continue supporting Cianna's Smile in its mission to raise awareness, provide support, and inspire action. It is heartening to know that our efforts are making a real difference, and I am deeply grateful to everyone who has contributed to this journey.



Trustee

Statements

Ashleigh Alli

As a trustee of Cianna's Smile, it has been an honour to contribute to the charity's incredible progress this year by offering guidance on employment, strategy, growth, and resource development.

Supporting an organisation with such a vital mission has been both professionally fulfilling and personally rewarding.

This year, my focus has been on helping Cianna's Smile develop clear strategies for sustainable growth. By aligning our goals with measurable outcomes, we've strengthened our ability to expand our reach and deliver impactful initiatives. These strategies have been instrumental in ensuring the charity remains on a steady path to long-term success.

Providing operational advice around employment has helped Cianna's Smile establish a strong foundation for managing staff and volunteers.

Clear policies and procedures have enabled the team to focus on delivering exceptional programmes while being a supportive and collaborative working environment.

As I reflect on this year, I am incredibly proud of what Cianna's Smile has achieved and grateful to have played a part in its success. I look forward to continuing to support the charity as it grows, ensuring we are well-equipped to meet future challenges and expand our impact.



Trustee

Statements

Rosiland Slade

As a trustee of Cianna's Smile, it has been a joy to contribute my expertise in marketing and social media to help the charity grow its presence and reach. This year has been filled with meaningful experiences, and I'm proud to have supported an organisation making such a positive impact on individuals and families impacted by Sickle Cell.

I've focused on helping the charity develop and refine its marketing efforts, ensuring that our campaigns effectively communicate the importance of our mission. It has been rewarding to see how these strategies have engaged and inspired action within our community.

Through targeted social media guidance, we've been able to connect with diverse audiences, sharing powerful stories, educational content, and updates on our work. Social media has become an essential tool for amplifying our message and fostering a sense of community among supporters and I've enjoyed being part of this process.

Beyond the work itself, I've truly enjoyed collaborating with the passionate team at Cianna's Smile. Witnessing the dedication of everyone involved has been inspiring and it's been a privilege to contribute to the charity's growth and success.

Charitable Objectives

Raise Awareness:

Educate the public and professionals about Sickle Cell and the importance of ethnically matched blood donations through events, campaigns and resources.

Support Families:

Provide emotional and practical support, addressing mental health needs and creating safe spaces for those impacted by Sickle Cell.

Increase Blood Donations:

Launch campaigns to recruit new donors, especially from underrepresented groups, and collaborate with partners to improve accessibility and retention.

Empower Youth and Communities:

Develop leadership and entrepreneurial skills through initiatives like the Youth Entrepreneur Club and Coalition for Change, while fostering cultural and educational connections.

Build Partnerships:

Collaborate with healthcare providers, educational institutions, and community leaders to expand reach and resources.

Promote Research and Innovation:

Advocate for research addressing nutritional needs and healthcare gaps for individuals with Sickle Cell.

Ensure Sustainability: Secure funding through events and adapt programmes based on community feedback to maximise impact.



Mission

At Cianna's Smile, our mission is to improve the lives of children, young people and families impacted by Sickle Cell conditions. We are dedicated to raising awareness, providing support, and advocating for better healthcare and social understanding of this life-altering condition.

Through education, empowerment, and community engagement, we strive to reduce the stigma associated with Sickle Cell and ensure that those living with the condition have the resources and opportunities they need to thrive.

We believe in the power of community, the importance of representation, and the strength of a collective voice.

Our initiatives focus on Health Education, Mental Well-being, and Creative expression, offering a safe and inclusive space for individuals impacted by Sickle Cell to share their experiences and connect with others. We are committed to driving positive change in society, advocating for improved services, and inspiring future generations to be changemakers in the fight against the inequalities experienced by those impacted by Sickle Cell.

Together, we aim to create a world where no one is defined by their condition, but rather empowered to live their fullest and most vibrant lives.

Public Benefit:

In planning our activities, the trustees have had regard to the Charity Commission's guidance on public benefit. All activities undertaken during the year align with our charitable purposes.



Achievements and Performance

Key Activities and Outcomes: Over the past year, Cianna's Smile delivered the following impactful programmes and events:

Family support initiatives:

- Coffee mornings in Reading, Slough, Swindon, Oxford and High Wycombe, provided a safe space for families to connect, share experiences, and access resources.
- Respite breaks in Wales and Sussex offered opportunities for relaxation, bonding, and stress relief.

Advocacy and awareness

- Awareness campaigns, such as together we are stronger, reached over 5000 people, highlighting the importance of blood donation and understanding Sickle Cell.
- Workshops and talks, including our participation at University of Reading ACS event, educating diverse audiences on the challenges faced by individuals living with Sickle Cell.

Youth engagement

- Activities such as the Youth Theatre Project and Entrepreneur Club empowered young people with skills, confidence, and a platform to advocate for change.
- Creative workshops such as video editing and photoshop nurtured talents and encouraged self-expression.

Community events

- Family Fun Days and trips to Whipsnade Zoo, Go Karting and our first pool party provided entertainment and support for families navigating the challenges of Sickle Cell.
- Cultural celebrations, such as learning about the Caribbean history and food, reinforced community pride and understanding.

2023 to 2024 Activities

The following activities were carried out between April 2023 and April 2024, demonstrating our commitment to supporting individuals with Sickle Cell, their families and caregivers while promoting awareness and advocacy. Each event provided opportunities for connection, education, and enjoyment for our beneficiaries.

April 2023

- **2nd April- Carers Spa Day and Afternoon Tea:** A day of relaxation and socialising for carers, designed to promote well-being and provide respite from caregiving responsibilities.
- **5th April- Book Club Meeting:** A regular gathering for members to connect over shared reading experiences, promoting literacy and community.
- **10th April- Family Trip to Gulliver's Land:** A fun-filled day at the theme park, offering families impacted by Sickle Cell a chance to bond and enjoy themselves.
- **15th April- Climbing Centre Activity, Wokingham:** A physical activity session aimed at fostering confidence and teamwork among participants.



May 2023

- **3rd May- Book Club Meeting:** Continued literary engagement and social connection for participants.
- **10th May- Online Youth Advocacy Project:** Content Creation Session: A creative workshop where young people learned to produce impactful content advocating for Sickle Cell awareness.
- **17th May- Online TikTok Workshop with Nathan Connor:** A dynamic session teaching TikTok strategies to amplify advocacy campaigns and engage with wider audiences.
- **27th May- Filming Day for Youth Campaign:** A filming session to empower youth to share their stories and advocate for change through video content.

June 2023

- **3rd June- Virtual Cooking Class** (Red Velvet Cookies and Pizzas) A fun and interactive online cooking session bringing families together to learn new skills and share experiences.
- **7th June- Book Club Meeting:** Continued exploration of literature to encourage social interaction and cultural discussion.
- **13th June- Coffee Morning in Swindon:** A relaxed gathering for families and carers to connect, share experiences, and learn more about available support.
- **24th June- Family Trip to Whipsnade Zoo:** A day of adventure and discovery at the zoo, providing families with a break from daily challenges and fostering connections.
- **27th June- Coffee Morning in Slough:** Another opportunity for community engagement and support for those impacted by Sickle Cell.



July 2023

- **5th July- Book Club Meeting:** A continued opportunity to share insights and enjoy discussions around selected books.
- **8th July- Family Trip to Thorpe Park:** An exciting day out at the amusement park, offering fun and relaxation for families and individuals impacted by Sickle Cell.
- **11th July- Coffee Morning in Slough:** A supportive environment for individuals and families to connect and discuss challenges related to Sickle Cell.
- **11th July- Online Focus Group:** A virtual session gathering input from participants to guide future programming and address community needs.
- **21st–23rd July- Respite Break in Wales:** A multi-day retreat at the YHA featuring an art workshop, a ride on the Snowdon Railway, a visit to Conwy Castle, and a beach outing on the big wheel. This provided a rejuvenating experience for families, blending education and relaxation.
- **25th July- Coffee Morning in High Wycombe:** Another gathering to increase community connections and share resources for those living with or impacted by Sickle Cell.

August 2023

- **1st August- Coffee Morning in Slough:** Continued support for families and carers to reduce isolation and share advice.
- **2nd August- Book Club Meeting:** A monthly space for shared literary enjoyment and discussion.
- **8th August- Coffee Morning in Reading:** A local gathering to support the Reading community impacted by Sickle Cell.
- **22nd August- Coffee Morning in High Wycombe:** Bringing families and carers together to strengthen support networks.
- **23rd August- Pool Party in Beaconsfield:** A fun summer event encouraging relaxation and enjoyment for families and individuals living with Sickle Cell.
- **30th–1st August- Respite Break in Sussex:** A three-day retreat providing a restorative break with tailored activities to support families impacted by Sickle Cell.



September 2023

- **2nd September- Book Club Meeting:** A space to explore literature and increase community connections through shared reading.
- **5th September- Coffee Morning in Slough:** A chance for individuals and families to connect, exchange ideas, and share experiences.
- **9th September- Family Fun Day in Slough:** A vibrant event with activities and entertainment designed to bring families together and create memorable experiences.
- **16th September- Youth Theatre Project:** A creative session encouraging self-expression and building confidence through theatre.
- **19th September- Coffee Morning in High Wycombe:** Providing support and fostering connections among the local community impacted by Sickle Cell.
- **21st September- Focus Group and Volunteer Meeting (Online):** A planning session to gather feedback and strengthen volunteer involvement.
- **22nd September- Matilda London Theatre Trip:** A cultural outing offering families a chance to enjoy the magic of live theatre.
- **25th September- Digital Workshop on Using Photoshop:** A skill-building session teaching practical digital design skills to support advocacy and creativity.
- **27th September- Awareness Day at the University of Reading Co-Op Store:** An awareness campaign promoting Sickle Cell education and advocacy within the university community.
- **30th: Youth First Aid Training Workshop:** A valuable workshop equipping young people with essential first aid skills to enhance safety and preparedness.



October 2023

- **3rd October- Virtual Coffee Morning:** An online gathering to provide support and reduce isolation for families and carers.
- **4th October- Book Club Meeting:** Continuing to promote literacy and connection through shared reading experiences.
- **5th October- Volunteer Meeting:** A planning session to organise and plan strategies for volunteer activities for the coming months.
- **9th October- Digital Workshop:** Furthering participants' digital skills to empower them in their creative and advocacy endeavours.
- **14th October- Go-Karting in Maidenhead:** A thrilling activity promoting fun and team building for families and young individuals.
- **16th October- Digital Project Session:** A collaborative workshop for participants to work on digital advocacy and creative projects.
- **19th October- Focus Group and Volunteer Meeting:** A forum to discuss feedback and strengthen volunteer initiatives.
- **21st October- Theatre Project Workshop:** An engaging session exploring creative expression through acting and theatre.
- **23rd October- Digital Project Session:** A follow-up workshop continuing work on creative digital campaigns.
- **28th October- Online Entrepreneur Club:** A session covering financial literacy, starting a business, drafting a business plan, growing revenue and sharing stories of how others have started a business to inspire young entrepreneurs.
- **30th October- Digital Project Session:** Finalising digital creations to showcase participant skills and advocacy work.



November 2023

- **1st November- Book Club Meeting:** Continued literary engagement for members to discuss and enjoy shared readings.
- **2nd November- Volunteer Meeting (Online):** A virtual session to draft strategies and engage volunteers in ongoing and upcoming projects.
- **8th November- In-Person Theatre Workshop:** A dynamic session fostering creativity and self-expression through performance arts.
- **14th November- Virtual Coffee Morning:** An opportunity for individuals and carers to connect and reduce feelings of isolation.
- **15th, 22nd, and 29th November- Theatre Sessions:** A series of workshops designed to build skills and confidence in acting and performance.
- **18th November- Family Christmas Party Dinner:** A festive event featuring food, entertainment, and community celebration at the Sandmartins golf club in Wokingham.
- **30th November- Online Carers Workshop on Managing Burnout:** A session focused on providing carers with strategies to maintain their well-being while supporting others delivered by Dear Girls Ltd.

December 2023

- **6th December- Book Club Meeting/Theatre Session:** A combined session offering engagement in both literary discussions and creative expression.
- **9th December- Community Lunch and Blood Donation Talk in High Wycombe:** A community gathering to raise awareness about blood donation and its importance for Sickle Cell patients.
- **13th December- Theatre Session:** The final workshop in the series, showcasing participants' growth and confidence.



January 2024

- **26th January- Caribbean Youth Club – Carnival Masks Workshop:** A creative activity exploring Caribbean culture and traditions through art.
- **27th January- Filming Day for Life In Your Blood docudrama:** A session empowering participants to share their stories and advocate through video production.

February 2024

- **15th February- Online Carers Workshop on Self-Care:** A session teaching carers the importance of self-care and practical methods to incorporate it into their lives.
- **27th February- Community Lunch in Aylesbury – Sickle Cell Talk and Art Workshop:** A gathering combining education and creative expression to support and empower the community.
- **29th February- Talk at Reading University – Why We Need More Black Blood Donors:** An impactful presentation to encourage blood donation and raise awareness about its life-saving significance.

March 2024

- **9th March- Family Games and Movie Night in Reading:** A fun-filled evening fostering family connections and community spirit.
- **13th March- Coffee Morning in High Wycombe:** A supportive gathering to share experiences and provide resources to those impacted by Sickle Cell.
- **17th March- Fundraising Clothes Sale:** A community event to raise funds for Cianna's Smile initiatives.
- **23rd March- Filming Day for a Short Film:** A follow-up session continuing work on advocacy-driven video projects.
- **27th March- Stand at Royal Berkshire Hospital:** An outreach effort to engage with the public and raise awareness about Sickle Cell and support Cianna's Smile provides.



Beneficiaries Feedback

When asked: Joining Cianna's Smile has made me feel.....

Part of a caring and supportive community that truly understands the challenges families like mine face. It has been a lifeline in making us feel valued and less isolated

So grateful. I love being a member of this great charity as all I was looking for when my little boy was first diagnosed, I found it. Cianna's smile feels like family.

Confident that I'm not on my own, confident to share honest experiences, confident to ask for help when needed

Having my confidence seeing my self and the journey i've been through, keeps me appreciating charity organisations like Cianna's smile it creates the feeling in me that I am not alone and pushes me to continue to advocate for sickle cell. The group workshops were great and I've come a long way to where I am today. Having Cianna's smile it gives me strength especially seeing the young children in the group and reminds me don't let your condition define you, thank you Cianna's smile

To relax so that I'm not alone. A very good supportive network with other families going through my situation.

Enlightened about sickle cell. It made me feel good that my little sister has a community.

Continued

Like we have a big family to that understands our worries and concerns and able to support us

That they're a lot more people in the world that have sickle cell. And how it affects the body and how to deal with pain. Cianna's Smile has shown me all this and how I can help my brothers, and understand how it is for them.

Like I am part of a community, where I can get support from people who understand my needs and situation. I feel blessed to have come across this group.

Happy as I am amongst people who understand the challenges of living with sickle cell.

Like we are understood and no longer feel like I am the only one facing challenges and trying to juggle life a parent of a child with a serious health condition

Joining Cianna's Smile has made me feel supported, especially by Hayley who I can trust when I'm struggling. I feel like I am part of a network and community of people who understand what I am going through as a parent of a child with Sickle Cell.

I am happy and excited to embark on new adventures and meet new people.

Seen, connected and better informed.

When asked: Being part of Cianna's Smile has helped me to behave more.....



Proactively and positively, especially in advocating for my son. It's encouraged our strength on this journey, while also giving me the tools and inspiration to uplift him during difficult times



Positively towards my daughter's condition. I'm able to talk to her school/peers/siblings/extended family about sickle cell and how it affects her. This has allowed her to become comfortable talking about it as a teenager.



I am confident in speaking out about my condition and creating awareness through public speaking, being part of the documentary To understand the struggle of those with sickle cell more.



To be brave and to better advocate for my child



To understand more about sickle cell in so many different areas. Made me more confident in being able to manage my son's condition. Advocate for my son. Hopefully for the future



More open about advocating for sickle cell and become more positive about the future



More confident, positive about the future and have fun



Cianna Smile has boosted my confidence in sharing my story as a mother of a child with a sickle cell condition. I no longer feel ashamed to advocate for the best care for my daughter. This experience has allowed me to look beyond the pain and struggles we face, giving us opportunities to find joy. It has also helped me create magical memories with my children and build lasting relationships with other parents who have children with sickle cell conditions

When asked to complete the sentence- Through Cianna's Smile, I've experienced.....

New opportunities and explored more of the UK. I was initially hesitant to leave London because I was concerned about my daughter's health. I felt a lot of anxiety about leaving home to engage in anything beyond work or school for her, which led me to decline any leisure activities.

New skills such as Photoshop and video making. New experiences such as Chessington, Thorpe Park and many more fun trips.

Joy within the sickle cell community which otherwise could have been isolating.

Moments of joy and relief amidst the challenges. The thoughtful gestures like books and art boxes make an incredible difference, particularly when my son is unwell in hospital. These small acts of kindness have a huge impact on both of us, reminding us that we are not alone

Happiness because we visit new places I haven't been to before. I get competitive during challenges because I want to win but it is always super fun.

Connecting with family who understand what your going through and can still smile is wonderful

Continued

Fun, adventures,
friendships

Loads of fun activities and adventures, also learning about sickle cell and they've built my understanding of it.

Days out and trips away where I can make new friends and my children have activities to do.

Belonging
and so
much fun

Community, and a
place where I do not
feel judged

Love and
friendships

Self Confidence

Togetherness,
inclusivity and
positivity about
the future

So many new parts of the UK
I have never visited.

The train ride up Snowdon
was a memorable experience.

The lion king backstage workshop amazing.

The winter survival package is invaluable.
Thank you for the heated blanket. It costs so
much to heat our home

Meet up with
good people

Connecting with other
parents, greater
understanding
through others
experience and fun

When asked: If I was not a member of Cianna's Smile, I would.....

- ♥ Feel much more alone in navigating the complexities of life with Sickle Cell. My son would miss out on opportunities to connect with others and benefit from the thoughtful support that makes such a difference during tough times
- ♥ Feel isolated and probably not talking about sickle cell
- ♥ If I am not a member of Cianna's Smile , I will feel isolated and lonely and think I am the only one with the condition.
- ♥ I would not be able to go on amazing trips and experience important life skills.
- ♥ Not be able to always recommend sickle cell warriors to get engaged in the group
- ♥ Be lost...
- ♥ Not have as much fun as a family
- ♥ Wouldn't be as confident living with sickle cell
- ♥ Not be as positive about my sister having sickle cell
- ♥ Not meet other people with sickle cell
- ♥ I would struggle to see beyond the challenges of living with sickle cell disease. I fear that I would define our identity by this condition rather than emphasising that it is just one aspect of who we are. I would find it difficult to encourage my daughter to recognise that she is more than her condition. Without Cianna's Smile, I wouldn't have a community to share my thoughts and feelings with. This support is vital for maintaining my mental health, as it provides a space where others truly understand what I'm going through. I don't have to over-explain my situation, and I can seek advice freely.
- ♥ I will be sad because my mom wouldn't let me out of the house unless it was summer. I will miss opportunities to develop a better relationship with my brother during our trips.
- ♥ I don't want to think about it!
- ♥ Feel alone
- ♥ Unsure of how my state of mind would be, because Cianna's Smile is a great charity supporting parents like me. We have a platform to share thoughts and also to ask advice from other warriors and parents which is very useful.
- ♥ Not be able to meet people like me

Continued

- ♥ Feel isolated in dealing and managing my son's condition.
- ♥ Life would be lonely and isolating. Pre Cianna's Smile I hardly knew anybody living with Sickle Cell.
- ♥ I had no support network and no one to reach out to.
- ♥ Thank you for being there Cianna's smile
- ♥ I have met lifelong friends who care about me and my kids. I would not have Hayley to call when things are getting bad and I need someone to talk to. Especially during hospital admissions, when I feel helpless.
- ♥ Not know how to help my sister
- ♥ Be Missing a lot of things I suppose to know about my son
- ♥ Not having the support on this journey can be lonely since many people do not understand it.
- ♥ Still be looking for answers to help me better take care of my son, and would be looking for more support
- ♥ Not be so aware of issues that may arise/as educated
- ♥ Miss out on a lot
- ♥ Never have discovered why and how sickle cell pain affects somebody living with it and I wouldn't have been able to help my brothers.



Financial Review

Cianna's Smile had a record-breaking year in fundraising during the 2022/23 financial year, as reflected in our report to the Charities Commission. In 2023/24, we strategically reduced our fundraising efforts to focus on delivering the projects funded in previous periods. While this approach impacted our financial results for the year, it allowed us to fulfil our commitments and ensure the successful implementation of key initiatives for our beneficiaries.

Our financials reflect a predictable ebb and flow in income and expenditure due to our prudent approach. Cianna's Smile secures funding before commencing projects, which sometimes results in timing differences between income and expenditure. This careful strategy ensures the sustainability and effectiveness of our programmes while safeguarding the charity's financial health.

A notable development in 2023/24 is the employment of two part-time staff (equivalent to 0.8 FTE), enhancing our capacity to deliver impactful services and projects.

Cianna's Smile remains committed to maintaining financial resilience through its reserve policy, which targets six months of unrestricted reserves. These reserves provide flexibility to manage temporary income shortfalls, cover core operational costs, and maintain adequate working capital.

As we move forward, we are excited to deepen the impact of our activities and services in the new financial year. With a strong foundation, we are well-positioned to continue supporting our beneficiaries while remaining sustainable and prepared for future opportunities.

Main source of income: Grants

Key areas of expenditure: Activities and support for beneficiaries, Salary and blood donation campaign.

Reserves Policy: The charity aims to maintain reserves sufficient to cover 6 months of operating costs to ensure sustainability.



Plans for Future Periods

Expand Community Support:

Broaden our reach to support more families across Berkshire, Oxfordshire, Buckinghamshire and Kent, providing tailored services and resources to those impacted by Sickle Cell.

Raise Awareness:

Launch targeted campaigns to increase understanding of Sickle Cell, Sickle Cell trait and the urgent need for new blood donors, engaging diverse communities in the conversation.

Advocate for Policy Change: Intensify efforts to drive long-term policy changes that address inequalities in care standards for individuals and families impacted by Sickle Cell, ensuring equitable healthcare access.

Support Schools: Introduce training and resources for teachers to enhance the quality of life for students with Sickle Cell by ensuring they receive proper support in educational settings.

Empower Youth and Promote Mental Health: Develop new programmes focused on youth empowerment and mental health, addressing critical needs and building resilience among young people affected by Sickle Cell.

These plans reflect our commitment to creating meaningful, lasting change for individuals, families, and communities impacted by Sickle Cell.



Acknowledgements

The trustees would like to extend their heartfelt gratitude to:

- Our volunteers, donors, and fundraisers whose support makes our work possible.
- Partner organisations, funders and sponsors for their collaboration and generosity.
- The families and individuals we serve for inspiring us every day.

To our funders:

Thank you for your continued support and commitment to believing in our mission, which empowers us to continue to raise awareness, educate communities, and drive meaningful change for young people and families impacted by Sickle Cell in the 2023/24 financial year.

Contact



info@ciannassmile.co.uk



www.ciannassmile.co.uk



[@ciannassmile.co.uk](https://www.instagram.com/ciannassmile.co.uk)





CHARITY COMMISSION
FOR ENGLAND AND WALES

CIANNA'S SMILE			
Annual accounts for the period			
Period start date	6/4/2023	To	5/4/2024

Section A Statement of financial activities

Recommended categories by activity	Unrestricted funds	Restricted income funds	Total funds	Prior year funds
	£	£	£	£
	F01	F02	F04	F05
Incoming resources (Note 3)				
Income and endowments from:				
Donations and legacies	10,663	24,140	34,803	150,778
Charitable activities	-	-	-	-
Other trading activities	-	-	-	-
Investments	-	-	-	-
Separate material item of income	-	-	-	-
Other	-	-	-	50
Total	10,663	24,140	34,803	150,828
Resources expended (Note 4)				
Expenditure on:				
Raising funds	4,682	-	4,682	10,871
Charitable activities	9,689	53,742	63,431	45,160
Separate material item of expense	-	-	-	-
Governance	1,191	-	1,191	1,602
Total	15,562	53,742	69,304	57,632
Net income/(expenditure) before investment gains/ (losses)	- 4,900	- 29,602	- 34,501	91,208
Net gains/(losses) on investments	-	-	-	-
Net income/(expenditure)	- 4,900	- 29,602	- 34,501	91,208
Extraordinary items	-	-	-	-
Transfers between funds	8,422	- 8,422	-	-
Other recognised gains/(losses):				
Gains and losses on revaluation of fixed assets for the charity's own use	-	-	-	-
Other gains/(losses)	-	-	-	-
Net movement in funds	3,522	- 38,024	- 34,501	91,208
Reconciliation of funds:				
Total funds brought forward	57,536	95,678	153,214	61,001
Total funds carried forward	61,058	57,654	118,713	152,210


- 3,894

Section B

Balance sheet

	Unrestricted funds £ F01	Restricted income funds £ F02	Endowment funds £ F03	Total this year £ F04	Total last year £ F05
Fixed assets					
Tangible assets (Note 7)	6,741		-	6,741	9,150
Total fixed assets	6,741	-	-	6,741	9,150
Current assets					
Debtors (Note 8)			-	-	-
Cash at bank and in hand	57,979	53,760	-	111,740	145,048
Total current assets	57,979	53,760	-	111,740	145,048
Creditors: amounts falling due within one year (Note 9)	1,675	-	-	1,675	984
Net current assets	56,304	53,760	-	110,065	144,064
Total assets less current liabilities	63,045	53,760	-	116,806	153,214
Total net assets	63,045	53,760	-	116,806	153,214
Funds of the Charity					
Restricted income funds (Note 10)		53,760		53,760	93,691
Unrestricted funds	63,045		-	63,045	59,523
Revaluation reserve				-	-
Total funds	63,045	53,760	-	116,806	153,214

Signed on behalf of the trustee body

Signature	Print Name	Date of approval dd/mm/yyyy
	Hayley King	31/1/2025
<i>Melissa Connor</i>	Melissa Connor	31/1/2025

Section C**Notes to the accounts****Note 1 Basis of preparation**

This section should be completed by all charities.

1.1 Basis of accounting

These accounts have been prepared under the historical cost convention with items recognised at cost or transaction value unless otherwise stated in the relevant note(s) to these accounts.

The accounts have been prepared in accordance with:

- and with*

ü

 the Statement of Recommended Practice: Accounting and Reporting by Charities preparing their accounts in accordance with the Financial Reporting Standard applicable in the UK and Republic of Ireland (FRS 102) issued on 16 July 2014
- and with*

ü

 the Financial Reporting Standard applicable in the United Kingdom and Republic of Ireland (FRS 102)
- and with the Charities Act 2011.

The charity constitutes a public benefit entity as defined by FRS 102.*

Yes

* -Tick as appropriate

1.2 Going concern

There are no material uncertainties related to events or conditions that cast significant doubt on the charity's ability to continue as a going concern.

1.3 Change of accounting policy

The accounts present a true and fair view and the accounting policies adopted are those outlined in note 2.

1.4 Changes to accounting estimates

No changes to accounting estimates have occurred in the reporting period (3.46 FRS 102 SORP).

1.5 Material prior year errors

No material prior year error have been identified in the reporting period (3.47 FRS 102 SORP).

Section C Notes to the accounts (cont)

Note 2 Accounting policies

2.2 INCOME

This standard list of accounting policies has been applied by the charity except for those ticked "No" or "Yes". Where a different or additional policy has been adopted then this is detailed in the box below.

Recognition of income	These are included in the Statement of Financial Activities (SoFA) when: <ul style="list-style-type: none"> - the charity becomes entitled to the resources; - it is more likely than not that the trustees will receive the resources; and - the monetary value can be measured with sufficient reliability.
Offsetting	There has been no offsetting of assets and liabilities, or income and expenses, unless required or permitted by the FRS 102 SORP or FRS 102.
Grants and donations	Grants and donations are only included in the SoFA when the general income recognition criteria are met (5.10 to 5.12 FRS102 SORP).
Legacies	In the case of performance related grants, income must only be recognised to the extent that the charity has provided the specified goods or services as entitlement to the grant only occurs when the performance related conditions are met (5.16 FRS 102 SORP). Legacies are included in the SoFA when receipt is probable, that is, when there has been grant of probate, the executors have established that there are sufficient assets in the estate and any conditions attached to the legacy are either within the control of the charity or have been met.
Government grants	The charity has not received government grants in the reporting period.
Tax reliefs on donations and gifts	Gift Aid receivable is included in income when there is a valid declaration from the donor. Any Gift Aid amount recovered on a donation is considered to be part of that gift and is treated as an addition to the same fund as the initial donation unless the donor or the terms of the appeal have specified otherwise.
Contractual income and performance related grants	This is only included in the SoFA once the charity has provided the related goods or services or met the performance related conditions.
Donated goods	Donated goods are measured at fair value (the amount for which the asset could be exchanged) unless impractical to do so. The cost of any stock of goods donated for distribution to beneficiaries is deemed to be the fair value of those gifts at the time of their receipt and they are recognised on receipt. In the reporting period in which the stocks are distributed, they are recognised as an expense at the carrying amount of the stocks at distribution. Donated goods for resale are measured at fair value on initial recognition, which is the expected proceeds from sale less the expected costs of sale, and recognised in 'income from other trading activities' with the corresponding stock recognised in the balance sheet. On its sale the value of stock is charged against 'income from other trading activities' and the proceeds from sale are also recognised as 'income from other trading activities'. Goods donated for on-going use by the charity are recognised as tangible fixed assets and included in the SoFA as incoming resources when receivable. Gifts in kind for use by the charity are included in the SoFA as income from donations when receivable.
Donated services and facilities	Donated services and facilities are included in the SoFA when received at the value of the gift to the charity provided the value of the gift can be measured reliably. Donated services and facilities that are consumed immediately are recognised as income with an equivalent amount recognised as an expense under the appropriate heading in the SoFA.
Support costs	The charity has incurred expenditure on support costs.
Volunteer help	The value of any voluntary help received is not included in the accounts but is described in the trustees' annual report.
Income from interest, royalties and dividends	This is included in the accounts when receipt is probable and the amount receivable can be measured reliably.
Income from membership subscriptions	Membership subscriptions received in the nature of a gift are recognised in Donations and Legacies. Membership subscriptions which gives a member the right to buy services or other benefits are recognised as income earned from the provision of goods and services as income from charitable activities.
Settlement of insurance claims	Insurance claims are only included in the SoFA when the general income recognition criteria are met (5.10 to 5.12 FRS102 SORP) and are included as an item of other income in the SoFA.
Investment gains and losses	This includes any realised or unrealised gains or losses on the sale of investments and any gain or loss resulting from revaluing investments to market value at the end of the year.
2.3 EXPENDITURE AND LIABILITIES	
Liability recognition	Liabilities are recognised where it is more likely than not that there is a legal or constructive obligation committing the charity to pay out resources and the amount of the obligation can be measured with reasonable certainty.
Governance and support costs	Support costs have been allocated between governance costs and other support. Governance costs comprise all costs involving public accountability of the charity and its compliance with regulation and good practice. Support costs include central functions and have been allocated to activity cost categories on a basis consistent with the use of resources, eg allocating property costs by floor areas, or per capita, staff costs by the time spent and other costs by their usage.
Grants with performance conditions	Where the charity gives a grant with conditions for its payment being a specific level of service or output to be provided, such grants are only recognised in the SoFA once the recipient of the grant has provided the specified service or output.
Grants payable without performance conditions	Where there are no conditions attaching to the grant that enables the donor charity to realistically avoid the commitment, a liability for the full funding obligation must be recognised.
Redundancy cost	The charity made no redundancy payments during the reporting period.
Deferred income	No material item of deferred income has been included in the accounts.
Creditors	The charity has creditors which are measured at settlement amounts less any trade discounts.
Provisions for liabilities	A liability is measured on recognition at its historical cost and then subsequently measured at the best estimate of the amount required to settle the obligation at the reporting date.
Basic financial instruments	The charity accounts for basic financial instruments on initial recognition as per paragraph 11.7 FRS102 SORP. Subsequent measurement is as per paragraphs 11.17 to 11.19, FRS102 SORP.
2.4 ASSETS	
Tangible fixed assets for use by charity	These are capitalised if they can be used for more than one year, and cost at least <input type="text"/> . They are valued at cost.
Intangible fixed assets	The depreciation rates and methods used are disclosed in note 9.2. The charity has intangible fixed assets, that is, non-monetary assets that do not have physical substance but are identifiable and are controlled by the charity through custody or legal rights. The amortisation rates and methods used are disclosed in note 9.5. They are valued at cost.
Heritage assets	The charity has heritage assets, that is, non-monetary assets with historic, artistic, scientific, technological, geo-physical or environmental qualities that are held and maintained principally for their contribution to knowledge and culture. The depreciation rates and methods used as disclosed in note 9.6.1.4. They are valued at cost.
Investments	Fixed asset investments in quoted shares, traded bonds and similar investments are valued at initially at cost and subsequently at fair value (their market value) at the year end. The same treatment is applied to unlisted investments unless fair value cannot be measured reliably in which case it is measured at cost less impairment. Investments held for resale or pending their sale and cash and cash equivalents with a maturity date of less than 1 year are treated as current asset investments.
Stocks and work in progress	Stocks held for sale as part of non-charitable trade are measured at the lower or cost or net realisable value. Goods or services provided as part of a charitable activity are measured at net realisable value based on the service potential provided by items of stock. Work in progress is valued at cost less any foreseeable loss that is likely to occur on the contract.
Debtors	Debtors (including trade debtors and loans receivable) are measured on initial recognition at settlement amount after any trade discounts or amount advanced by the charity. Subsequently, they are measured at the cash or other consideration expected to be received.
Current asset investments	The charity has investments which it holds for resale or pending their sale and cash and cash equivalents with a maturity date less than one year. These include cash on deposit and cash equivalents with a maturity date of less than one year held for investment purposes rather than to meet short term cash commitments as they fall due. They are valued at fair value except where they qualify as basic financial instruments.

POLICIES ADOPTED ADDITIONAL TO OR DIFFERENT FROM THOSE ABOVE

Note 6

Analysis of expenditure

Analysis	This year			Last year		
	Unrestricted funds	Restricted income funds	Total funds	Unrestricted funds	Restricted income funds	Total funds
Expenditure on raising funds:			£			£
Event costs	4,682	-	4,682	8,871	-	8,871
Total expenditure on raising funds	4,682	-	4,682	8,871	-	8,871
Expenditure on charitable activities:						
Bank fees	-	11	11	-	-	-
Blood drive	-	-	-	-	1,570	1,570
Book Club	-	3,956	3,956	-	1,407	1,407
Carers	-	-	-	-	1,062	1,062
Consultancy	-	-	-	-	300	300
Cost of living crisis	-	250	250	-	1,252	1,252
Depreciation	2,409	-	2,409	-	1,694	1,694
Employment checks	-	-	-	-	153	153
Entertainment - 0%	-	-	-	-	183	183
Family Support	-	17,999	17,999	-	17,135	13,802
Focus Group	-	40	40	-	45	45
Helpline	-	-	-	-	981	981
Hospital project	-	270	270	-	200	200
Insurance	-	196	196	-	96	96
IT software and consumables	-	322	322	-	-	-
Light Power Heating	-	2,528	2,528	-	-	-
Marketing	-	1,383	1,383	-	156	156
Morning meetings	-	-	-	-	88	88
Music Therapy Instruments	-	-	-	-	184	184
NHSBT Project	-	4,989	4,989	-	-	-
Office Costs	-	709	709	-	4,231	4,231
Pension costs	-	94	94	-	-	-
Postage and stationery	-	686	686	-	558	558
Public Awareness	-	510	510	-	-	-
Publications	-	600	600	-	-	-
Respite	-	-	-	-	3,333	3,333
Staff salaries and National insurance	7,281	8,935	16,216	-	7,307	7,307
Subscriptions	-	209	209	-	-	-
Summer boxes	-	-	-	-	680	680
Sundry Payments	-	267	267	-	204	204
Telephone and Internet	-	1,151	1,151	-	-	-
Training	-	-	-	-	236	236
Travel	-	466	466	-	529	529
volunteer expenses	-	2,186	2,186	-	702	702
Website	-	287	287	-	193	193
Wellness Day	-	56	56	-	914	914
XMAS party for young people	-	-	-	-	1,357	1,357
YAP	-	2,931	2,931	-	1,511	1,511
Youth Digital 1	-	2,710	2,710	-	-	-
Transfer of capital spend to unrestricted	-	-	-	-	-	-
	-	-	-	-	-	-
Total expenditure on charitable activities	9,689	53,742	63,431	-	48,262	Cross Add Error
Governance costs						
Accountancy fees	1,191	-	1,191	624	-	624
	-	-	-	-	-	-
	-	-	-	-	-	-
Total	1,191	-	1,191	624	-	624

Section C**Notes to the accounts****(cont)****Note 3****Analysis of income**

		Unrestricted funds	Restricted income funds	Endowment funds	Total funds £	Prior year £
Analysis						
Donations and legacies:	Donations and gifts	2,419	-	-	2,419	5,722
	Ball income (fundraising)			-	-	7,172
	Legacies			-	-	-
	Grants	8,244	24,140	-	32,384	137,933
	Total	10,663	24,140	-	34,803	150,828
TOTAL INCOME		10,663	24,140	-	34,803	150,828

Section C**Notes to the accounts****Note 10** Details of certain items of expenditure**10.1 Fees for examination of the accounts****Independent examiner's fees**

This year £	Last year £
360	-

The Independent Examiners' firm also provided the support with accounts preparation £624 including VAT (2022 - £624)

Section C

Notes to the accounts

(cont)

Note 11

Paid employees

The charity had 2 paid part time employees in 2022 (previous year - nil)

Note 14 Tangible fixed assets*Please complete this note if the charity has any tangible fixed assets***14.1 Cost or valuation**

	Freehold land & buildings	Other land & buildings	Computer equipment	Fixtures, fittings and equipment	Total
	£	£	£	£	£
At the beginning of the year	-	-	-	2,097	2,097
Additions	-	-	1,803	7,337	9,139
Revaluations	-	-	-	-	-
Disposals	-	-	-	-	-
Transfers *	-	-	-	-	-
At end of the year	-	-	1,803	9,433	11,236

14.2 Depreciation and impairments

**Basis	SL or RB (Straight Line or Reducing Balance)	SL or RB	Straight Line	Straight Line	Straight Line
** Rate	20%		33%	20%	

At beginning of the year	-	-	-	392	392
Disposals	-	-	-		-
Depreciation	-	-	462	1,232	1,694
Impairment	-	-	-	-	-
Transfers*	-	-	-	-	-
At end of the year	-	-	462	1,624	2,086

14.3 Net book value

Net book value at the beginning of the year	-	-	-	1,704	1,704
Net book value at the end of the year	-	-	1,340	7,809	9,150

14.4 Impairment

This year: Please provide a description of the events and circumstances that led to the recognition or reversal of an impairment loss.

--

Last year: Please provide a description of the events and circumstances that led to the recognition or reversal of an impairment loss.

--

14.5 Revaluation

If an accounting policy of revaluation is adopted, please provide:

the effective date of the revaluation

the name of independent valuer, if applicable

the methods applied and significant assumptions

the carrying amount that would have been recognised had the assets been carried under the cost model.

	This year	Last year
	-	-

14.6 Other disclosures

This year	Last year
£	£

(i) Please state the amount of borrowing costs, if any, capitalised in the construction of tangible fixed assets and the capitalisation rate used.

(ii) Please provide the amount of contractual commitments for the acquisition of tangible fixed assets.

(iii) Details of the existence and carrying amounts of property, plant and equipment to which the charity has restricted title or that are pledged as security for liabilities.

-	-
-	-

* The "transfers" row is for movements between fixed asset categories.

** Please indicate the method of depreciation by deleting the method not applicable (SL = straight line; RB = reducing balance). Also please indicate the rate of depreciation: for straight line, what is the anticipated life of the asset (in years); for reducing balance, what is the percentage annual deduction.

Section C**Notes to the accounts****(cont)****Note 19 Debtors and prepayments****19.1 Analysis of debtors****Trade debtors****Prepayments and accrued income****Other debtors****Total**

This year	Last year
£	£
-	-
-	-
-	2,000.0
-	2,000.0

Section C**Notes to the accounts****(cont)**

Note 20

Creditors and accruals

20.1 Analysis of creditors

	Amounts falling due within one year		Amounts falling due after more than one year	
	This year £	Last year £	This year £	Last year £
Payments received in advance for fundraiser	-	2,485	-	-
Accruals and deferred income	984	624	-	-
Total	984	3,109	-	-

Note 27 Charity funds

27.1 Details of material funds held and movements during the CURRENT reporting period

Please give details of the movements of material individual funds in the reporting period together with a balancing figure for 'Other funds'. The 'Total funds' figure below should reconcile to 'Total funds' in the balance sheet.

* Key: PE - permanent endowment funds; EE - expendible endowment funds; R - restricted income funds, including special trusts, of the charity; and U - unrestricted funds

Fund names	Type	Purpose and Restrictions	Fund balances brought forward £	Income £	Expenditure £	Transfers £	Fund balances carried forward £
Global Blood Therapeutics	Restricted	3 publications and general costs	7,296		-	-	7,296
Novo Nordisk	Restricted	Core funding	10,000		- 476	-	9,524
Peter Harrison Foundation	Restricted	helpline	3,995		-	- 3,995	-
Children In Need	Restricted	youth worker salary , days out and overheads	10,672		- 7,925	-	2,747
D'Oyle Carte	Restricted	art therapy boxes, ceramic cafe activity, art boxes, music therapy	1,061		- 260	-	801
Earley Charity	Restricted	contribution to respite break, book club	970		- 777	-	193
Albert Hunt	Restricted	Core funding	1,672		-	-	1,672
DWF	Restricted	kids book club	2,108		- 1,830	-	278
NHSBT	Restricted	3 x blood drives	2,475		-	- 2,475	-
Syder Foundation	Restricted	office equipment	14		- 14	-	0
Clothworkers	Restricted	office equipment including capital spend	79		- 79	-	0
Childwick trust	Restricted	core	165		- 136	-	30
Matrix Causes Fund	Restricted	resource development	13		-	-	13
Astor foundation	Restricted	overheads	1,000		- 998	-	2
Berkshire Community Foundation	Restricted	salary, office, promotion	80		- 80	-	-
Mobbs Memorial Trust	Restricted	office furniture and equipment	1,944		- 1,941	-	4
Comic Relief	Restricted	days out, youth worker, boxes	3,846		- 3,851	-	5
HDH Wills 1965 Charitable Trust	Restricted	hospital stays	500		- 97	-	403
Wiltshire Community Foundation	Restricted	beneficiary recruitment in swindon	1,455		- 1,335	-	120
Joan Wilkinson Charitable Trust	Restricted	educational resources	500		- 165	-	335
Heathrow Community Trust	Restricted	outreach salary, coffee morning, beneficiary recruitment	1,952		-	- 1,952	-
Berkshire Masonic Charity	Restricted	hospital support in berkshire	1,500		- 218	-	1,282
Sovereign #iwill Fund	Restricted	youth project	5,081		- 4,167	-	913
Tesco Community Grants - voting	Restricted	kids books	940		- 937	-	4
Grand Plan	Restricted	carers books	389		- 366	-	23
Wokingham Residents Equality Forum	Restricted	youth project	500		- 114	-	386
NHS Berkshire West Mental Health Community Grant via Reading Voluntary Action	Restricted	contribution to overall objectives for local families	200		- 200	-	-
Lions Wokingham	Restricted	POC machine	1,000		- 1,000	-	-
UK Youth Digital Access Fund made possible by Osborne Clarke	Restricted	youth digital project	5,000		- 3,639	-	1,361
Mark Farman Childwick Trust personal allocation	Restricted	overall objectives and respite break	1,385		- 1,385	-	-
British Humane Association	Restricted	hospital support	1,515		-	-	1,515
Heart of Bucks - Health Equity Fund	Restricted	outreach in buckinghamshire	3,304		- 2,190	-	1,114
Costco United Way	Restricted	book club	1,500		-	-	1,500
Comic Relief- Winter Campaign cost of living fund	Restricted	office utilities bill, cost of living support	379		- 379	-	-
NHS Blood and Transfusion	Restricted	theatre project	18,700		- 8,848	-	9,852
Comic Relief - an extra £500	Restricted	cost of living support	500		- 57	-	443
Postcode Lottery Trust	Restricted	core		5,000	- 4,648	-	352
Earley Town Council	Restricted	contribution to local activities		500	-	-	500
Hay's Travel Foundation	Restricted	poc machine		2,410	- 2,410	-	-
Childwick Trust 3	Restricted	overall objectives and school supplies		3,000	-	-	3,000
UK Youth 2	Restricted	youth digital project		5,000	- 3,127	-	1,873
Sovereign Housing	Restricted	youth project celebration party		250	- 250	-	-
Prince of Wales charity	Restricted	respite break 2024		3,000	-	-	3,000
NHS Berkshire West	Restricted	youth project		2,980	- 1,751	-	1,229
Matrix 2	Restricted	resource development		2,000	-	-	2,000
Unrestricted Funds	Unrestricted	Unrestricted	59,523	10,663	- 13,656	8,422	64,952
		Total Funds	153,214	34,803	- 69,304	-	118,713

Note 27 Charity funds

27.1 Details of material funds held and movements during the previous reporting period

Please give details of the movements of material individual funds in the reporting period together with a balancing figure for 'Other funds'. The 'Total funds' figure below should reconcile to 'Total funds' in the balance sheet.

* Key: PE - permanent endowment funds; EE - expendible endowment funds; R - restricted income funds, including special trusts, of the charity; and U - unrestricted funds

Fund names	Type	Purpose and Restrictions	Fund balances brought forward £	Income £	Expenditure £	Fund balances carried forward £
Lottery grant, 2019 b/f	Restricted	Covid - allowed spend on core costs	3,274		- 3,274	-
Global Blood Therapeutics	Restricted	3 publications and general costs	7,296		-	7,296
Novo Nordisk	Restricted	Core funding	10,000			10,000
Peter Harrison Foundation	Restricted	helpline	5,000		- 1,005	3,995
Children In Need	Restricted	youth worker salary , days out and overheads	10,000	10,000	- 9,328	10,672
D'Oyle Carte	Restricted	art therapy boxes, ceramic cafe activity, art boxes, music therapy	2,643		- 1,582	1,061
Earley Charity	Restricted	contribution to respite break, book club	3,790		- 2,820	970
Albert Hunt	Restricted	Core funding	2,000		- 328	1,672
Abbvie	Restricted	Resource development	-	-	-	-
DWF	Restricted	kids book club	-	2,500	- 392	2,108
NHSBT	Restricted	3 x blood drives	-	3,975	- 1,500	2,475
Garfield Weston	Restricted	core	-	5,000	- 5,000	-
Syder Foundation	Restricted	office equipment	-	2,000	- 1,986	14
Clothworkers	Restricted	office equipment including capital spend	-	7,000	- 6,921	79
Childwick trust	Restricted	core	-	1,000	- 835	165
Matrix Causes Fund	Restricted	resource development	-	2,000	- 1,987	13
Astor foundation	Restricted	overheads	-	1,000	-	1,000
Berkshire Community Foundation	Restricted	salary, office, promotion	-	2,000	- 1,920	80
Mobbs Memorial Trust	Restricted	office furniture and equipment	-	2,000	- 56	1,944
Comic Relief	Restricted	days out, youth worker, boxes	-	10,000	- 6,154	3,846
HDH Wills 1965 Charitable Trust	Restricted	hospital stays	-	500	-	500
Wiltshire Community Foundation	Restricted	beneficiary recruitment in swindon	-	1,500	- 45	1,455
Joan Wilkinson Charitable Trust	Restricted	educational resources	-	500	-	500
Heathrow Community Trust	Restricted	outreach salary, coffee morning, beneficiary recruitment	-	1,952	-	1,952
Berkshire Masonic Charity	Restricted	hospital support in berkshire	-	1,500	-	1,500
Sovereign #iwill Fund	Restricted	youth project	-	7,950	- 2,869	5,081
Tesco Community Grants - voting	Restricted	kids books	-	1,000	- 60	940
Grand Plan	Restricted	carers books	-	1,000	- 611	389
Wokingham Residents Equality Forum	Restricted	youth project	-	500	-	500
NHS Berkshire West Mental Health Community Grant via Reading Voluntary Action	Restricted	contribution to overall objectives for local families	-	1,650	- 1,450	200
Lions Wokingham	Restricted	POC machine	-	1,000	-	1,000
UK Youth Digital Access Fund made possible by Osborne Clarke	Restricted	youth digital project	-	5,000	-	5,000
Mark Farmar Childwick Trust personal allocation	Restricted	overall objectives and respite break	-	2,000	- 615	1,385
British Humane Association	Restricted	hospital support	-	2,000	- 485	1,515
Heart of Bucks - Health Equity Fund	Restricted	outreach in buckinghamshire	-	3,304	-	3,304
Costco United Way	Restricted	book club	-	1,500	-	1,500
Comic Relief- Winter Campaign cost of living fund	Restricted	office utilities bill, cost of living support	-	2,000	- 1,621	379
NHS Blood and Transfusion	Restricted	theatre project	-	18,700	-	18,700
Comic Relief - an extra £500	Restricted	cost of living support	-	500	-	500
			-	-	-	-
			-	-	-	-
			-	-	-	-
Unrestricted Funds	Unrestricted	Unrestricted	14,171	48,297	- 2,945	59,523
		Total Funds	58,174	150,828	- 55,788	153,214

Section C**Notes to the accounts****(cont)****Note 28 Transactions with trustees and related parties****This year**

None of the trustees have been paid any remuneration or received any other benefits from an employment with their charity or a related entity.

Last year

None of the trustees have been paid any remuneration or received any other benefits from an employment with their charity or a related entity.



**Report to the trustees/
members of**

Cianna's Smile

**On accounts for the year
ended**

5th April 2024

**Charity no
(if any)**

1173030

Set out on pages

1-2

**Respective
responsibilities of
trustees and examiner**

The charity's trustees are responsible for the preparation of the accounts. The charity's trustees consider that an audit is not required for this year under section 144 of the Charities Act 2011 (the Charities Act) and that an independent examination is needed.

It is my responsibility to:

- examine the accounts under section 145 of the Charities Act,
- to follow the procedures laid down in the general Directions given by the Charity Commission (under section 145(5)(b) of the Charities Act, and
- to state whether particular matters have come to my attention.

**Basis of independent
examiner's statement**

My examination was carried out in accordance with general Directions given by the Charity Commission. An examination includes a review of the accounting records kept by the charity and a comparison of the accounts presented with those records. It also includes consideration of any unusual items or disclosures in the accounts, and seeking explanations from the trustees concerning any such matters. The procedures undertaken do not provide all the evidence that would be required in an audit, and consequently no opinion is given as to whether the accounts present a 'true and fair' view and the report is limited to those matters set out in the statement below.

**Independent
examiner's statement**

In connection with my examination, no material matters have come to my attention which gives me cause to believe that in, any material respect,:

- the accounting records were not kept in accordance with section 130 of the Charities Act other than that disclosed below; or
- the accounts did not accord with the accounting records; or
- the accounts did not comply with the applicable requirements concerning the form and content of accounts set out in the Charities (Accounts and Reports) Regulations 2008 other than any requirement that the accounts give a 'true and fair' view which is not a matter considered as part of an independent examination.

I have come across no other matters in connection with the examination to which attention should be drawn in this report in order to enable a proper understanding of the accounts to be reached.

Signed:

Rachel Eden

Date: 31st January 2025

Name: Rachel Eden

Relevant professional
qualification(s) or body
(if any):

FCMA (Fellow of the Chartered Institute of Management Accountants)

Address: Holy Brook Associates, Curious Lounge, 1st Floor, Pinnacle Building,
Tudor Road, Reading, England,
RG1 1NH

CIANNA'S SMILE

England & Wales - Charity number 1173030

Accounts



**Advocating for a world
aware of Sickle Cell**

WWW.CIANNASSMILE.CO.UK



Table of Contents

1. Our Trustees
2. Objectives
3. Achievements
4. Projects and Activities
5. What We Said We'd Do
6. What We Have Achieved
7. 2022/2023 Summary
8. Feedback from Our Beneficiaries
9. The Difference We Made
10. Challenges We Have Faced
11. What We Have Planned Next
12. Goals
13. Acknowledgements
14. Financial Review
15. Accounts



Our trustees:

Hayley King
Melissa Connor
Rosalind Slade
Ashleigh Alli
Lizzie Giblin-Cook

Over the past year, our organisation has experienced tremendous growth, leading to an increase in beneficiaries using our services and an expansion of our geographical project delivery. Despite such rapid growth, we've encountered some challenges in filling staff vacancies with individuals who possess an understanding of Sickle Cell and the challenges faced by those we serve. This has led to some delays in project delivery. However, we're proud to have delivered more projects than ever before, supported the highest number of service users in our organisation's history, formed new partnerships and networks with professionals and other non-profit organisations, seen a steady increase in volunteers, and secured the most significant engagement from our local and regional community members.

Despite our successes, we recognise that there is still a significant disparity in the care, education, and support received by those affected by Sickle Cell. Therefore, we aim to focus more on education and advocacy to improve the quality of care and daily support received by individuals impacted by Sickle Cell.


I eagerly anticipate the future progress of our charity and am immensely proud of the hard work and commitment our team has put forth to make positive changes in the lives of families and children impacted by Sickle Cell. As the founder and chair of this organisation, it is one of the highlights of my work.

Hayley King **Founder and Trustee**

Volunteering as a trustee for this amazing charity is also an honour. The impact of our work on people affected by Sickle Cell is remarkable. Witnessing first hand how much our work positively affects the lives of those we serve is incredibly rewarding. The families we support are amazing, and our charity provides them with a safe space to express how they feel about the impact of Sickle Cell on their lives. This wouldn't have been possible without the dedication and support of Hayley King, our founder and chair, who brings her invaluable lived experience of caring for a child with Sickle Cell and supports all the families. Hayley is always on call 24 hours a day and is there whenever they need her, which is inspiring, particularly when she has her own family to support.

The charity continues to do amazing work, organising a wide range of activities to support parents and children impacted by Sickle Cell. I am proud to be a part of such a wonderful organisation.

Melissa Connor **Trustee**



I have been volunteering for over 5 years now and am in my 3rd year as a trustee. I was originally, and continue to be, inspired by what the charity is able to achieve despite it being a small organisation. The number of people that it is able to directly impact and support is incredible, and this is the main reason for wanting to volunteer. At Cianna's Smile, there is a very direct connection with beneficiaries – you are able to see very clearly how volunteering or money raised helps support people living with sickle cell. The charity is ambitious and delivers tailored and holistic services that are truly informed by the needs of our beneficiaries – lots of our volunteers have a direct or indirect relationship with sickle cell, which helps us to deliver the services that our beneficiaries really need with understanding and empathy for the impact of the condition. We are also working hard to raise awareness of the condition alongside our direct services.

I am so proud of what Cianna's Smile has achieved since it was established and I am looking forward to what's to come for the organisation and the incredible people we support.

Ashleigh Alli
Trustee

Cianna's Smile is a charity that always has, and continues to, overachieve. Despite being a small charity, it has proven to consistently have the capacity and capability to positively impact the lives of everyone who needs it in incredibly varied ways.

A confident and ever-evolving charity, Cianna's Smile is constantly reflecting on successes and limitations, listening to all voices, and adapting to continue to best serve its community. The variety of services, experiences, and support provided is outstanding and really proves that a lot can be done with a little.

Direct communication promotes familiarity and trust in relationships between Hayley, Cianna's Smile's staff and trustees, and beneficiaries and their families. All trustees have had personal contact with beneficiaries, and thus decisions are made with heightened awareness and empathy, which also provides volunteers, trustees, and staff with a real sense of the positive impact that the charity has and can have on lives.

I have been attached to Cianna's Smile, either as a volunteer or a trustee, for a decade now, and in that time, in addition to attending a number of different and varied events, all providing different valuable support and information to beneficiaries, I have also been able to expand my own education. Cianna's Smile has made it possible for those volunteering, for trustees, and for employees to have advocacy training, attend various medical awareness seminars, receive training related to charity best practices, and more. These, above all, further our ability to empathise, understand, and remain aware of the limitations of our understanding, while also strengthening our ability to function effectively.

I remain in awe of just how much Cianna's Smile has been able to grow and diversify. I am incredibly proud of its achievements so far and excited to see what the future holds.

Rosalind Slade
Trustee

Objectives



Mission:

Our aim is to provide hope and support for individuals with Sickle Cell (SC) who feel isolated, while simultaneously dismantling the myths and stigmas surrounding Sickle Cell. We strive to educate and increase public awareness of Sickle Cell, and offer a voice that is heard.

Vision:

Our vision is to raise awareness of SC in the UK, promoting empathy, support, and understanding for those affected by it. We aim to ensure that individuals with SC are treated efficiently and receive the necessary resources and empowerment from friends, family, education providers, employers, and healthcare professionals.

Values:

We believe that every individual deserves to be treated with empathy and respect, regardless of their background, religion, or ethnicity. We value the resources entrusted to us and aim to preserve and protect good health while providing relief for individuals who suffer from SC.

Charitable Objectives:

- 1.To provide information, support, comfort, services, facilities, and social events for those who suffer from SC, as deemed appropriate by the trustees, to preserve and protect good health and relieve sickness.
- 2.To advance public education in all areas relating to SC.

Projects and activities



**Focus groups
and resources**

Respite

**Free days out for
families affected by
Sickle Cell**



**Art therapy boxes.
Winter wellness
boxes.
Summer activity
boxes.**

Wellness days



Support

What we said we would do

Here's the final list of proposed actions:

- Establish a book club for children and their parent/caregivers.
- Initiate a pen pal program for young people.
- Organize an annual respite weekend.
- Develop a youth advocacy program.
- Conduct focus groups in new areas.
 - Host carers' lunches.
 - Create new resources.
- Facilitate workshops for parents.



New Services:

- A helpline for parents and caregivers
- Assistance with school correspondence

The following projects and services will continue as usual:

- Days Out
- Virtual Coffee Mornings
- Parent/Carers WhatsApp Group

What we achieved

424

Books
posted

4

Carers
events

15

Families
attended
our summer
respite
break

42

Families received
wellness packages

81

Children
received art
Therapy
boxes

441

Tickets were
purchased for
beneficiary days
out

116

Attendees
enjoyed our
Annual Ball

21

Families
received cost of
living bundles

2022/2023

In May of 2022, our organisation successfully hosted its annual Charity Ball, which was well-attended by esteemed guests such as donors, funders, members of the public, and numerous beneficiaries. The event was a great triumph, raising over £5000 in donations, with the Shanly Foundation pledging a generous grant of £2000 towards our cause.

The monies raised were used to organise a respite break for 15 families

August 2022 marked a momentous occasion for our organisation as we welcomed our inaugural paid employee, Matthew Burke, who has Sickle Cell and will serve as our Youth Outreach Officer. We eagerly anticipate the positive impact Matthew will have on our mission.

Moreover, we facilitated an unforgettable outing to the Lyceum Theatre to witness the musical "The Lion King." Over 35 of our beneficiaries, accompanied by their family members, participated in a dance workshop with the theatre stage team.

We also hosted a parent and carers' luncheon at Turtle Bay in Ealing. The event was highly successful, and we are delighted to have provided these meaningful experiences.

June 2022 proved to be a milestone month for Cianna's Smile. We successfully established our new headquarters in Wokingham, which serves as our central operational hub. The office is an excellent fit for our team, and we're eager to explore its potential for the numerous exciting projects and workshops we have planned.

Additionally, we curated an unforgettable experience for our beneficiaries with a delightful boat ride down the River Thames in Reading. We eagerly anticipate more exciting adventures in the coming months.

2022/2023

In September 2022, we undertook various initiatives to support families. One such effort involved organising a weekend break to Butlins in Minehead, benefitting 15 families.

Furthermore, Hayley and Matthew attended an NHSBT conference in London alongside representatives from other charities. The conference aimed at discussing the challenges associated with blood and organ donation in the United Kingdom, exploring potential improvements in the service and future changes.



In October 2022, we organised a wellness day at Finchampstead Baptist Church, specifically catering to families. The event proved to be a resounding success, offering a wide range of activities aimed at promoting holistic well-being. Attendees had access to relaxation and breathing workshops, healthy food and nutrition choices, and children's yoga, among other activities. The feedback received from the attendees was overwhelmingly positive, with many expressing gratitude for the opportunity to prioritise their physical and mental health. Of the various sessions offered, the mindfulness training was the most popular, with attendees receiving guidance through meditation exercises that helped them feel centred and present in the moment. Another popular offering was the healthy eating workshop, which featured a local nutritionist providing practical tips for creating balanced meals and snacks. The Wellness Day's success has inspired us to plan for next year's event and continue providing opportunities for our community to prioritise self-care and wellness.

We believe that taking care of our well-being is essential for us to care for others and are committed to providing relevant events like the Wellness Day.

2022/2023

In November 2022, we organised a festive Christmas party for families of beneficiaries in Slough. We were thrilled to have a surprise guest who presented over 60 children with a present. These gifts were generously donated by Spotlight UK, and we were deeply grateful for their support.

The party was a joyous occasion, filled with laughter and merriment. The children were thrilled to receive their presents, and the parents were appreciative of the opportunity to come together and celebrate the holiday season. It was heartwarming to witness the community come together and support one another during this festive time of the year. Spotlight UK's generous donation had a profound impact on the families and children who attended the event. Their kindness and benevolence brought smiles to many faces and made the holiday season all the more special.

In December 2022, we attended the Cinderella pantomime at the Hayes Theatre, which was a delightful experience.

To cap off the year, we visited Lighttopia, a mesmerising light display at Crystal Palace Park. The festival of lights was a spectacle to behold, with vibrant displays of glowing flowers, animals, and an impressive giant dragon that created a magical atmosphere. As we strolled through the park, we were captivated by the enchanting sights and sounds of the illuminated wonderland. The opportunity to end the year in such a joyful and magical way was a blessing. Lighttopia was a truly spectacular event that brought light and happiness to all who attended.

In January 2023 we organised a memorable Family outing to visit the Excel Centre in London for the Jurassic World exhibition. This proved to be a captivating and thrilling experience that exceeded our expectations. All of the young people were impressed by the life like Jurassic creatures and were in awe of how the interactive experience was just like the film.



2022/2023

In February 2023 we organised Art and Music Therapy Workshops which gave attendees the opportunity to learn new crafts and have fun.

2023 also saw the launch of our first Youth Advocacy program. The program included informative sessions and advocacy training on Sickle Cell awareness, an accredited youth First Aid course, cooking workshop, and nutrition, empowering attendees to discover their inner strength and take the first step towards a brighter future.

In March 2023, our organisation launched the Parent and Carers Book Club, distributing almost 150 books to parents and caregivers. The primary objective of this book club is to create a platform for parents and caregivers to engage in meaningful discussions on various books. The feedback we have received from our members throughout the year has been very positive, with many describing the discussions as both insightful and thought-provoking. The Parent and Carers Book Club has been a resounding success, and we hope to continue providing this valuable activity to our community in the coming years.

We are grateful for the funding from Comic Relief, which enabled us to launch a cost-of-living support project. This initiative assisted beneficiaries by providing a variety of support, including: baby toiletry bundles with nappies and wipes, grocery bundles with household essentials, heated blankets, air fryers, and slow cookers to reduce energy costs, and supermarket vouchers for emergency food supplies.

Feedback from our beneficiaries



“Cianna's Smile charity has been such a blessing so far. To know that there is such a charity specifically to support families that have been affected by sickle cell is amazing. I have felt less isolated and alone in this journey as a mother with a child with sickle cell; knowing that there are others who experience the same journey is very reassuring. 'Cianna's Smile' has been able to create such a platform. There isn't much support or awareness out there about sickle cell, so Cianna's Smile charity is very precious to those who are affected by sickle cell. Thank you.”

Benice

Lola says: "Hayley is selfless and has helped us to overcome the fear of the diagnosis. Every time I call on her, she's always there to give me advice - even if it's the middle of the night. I trust her so much. She's never let me down."

“Cianna's Smile is an amazing charity with a growing family of supporting members upholding the value of sharing and hands-on caring for each other in so many valuable ways.

Nothing is too big or small, always open for a chat and a call back, and amazing sourcing of info and outreach.

Thank you for being a real difference in the fight for Sickle Cell”.

Angie.

Feedback from our beneficiaries

"It was epic. The Lion King show was so good because I got ice cream and VIP treatment."



"I love the Cianna's Smile book club. It is really exciting to see what new book is going to come. It feels like Christmas because I get to open a parcel. I like talking about the books at the meetings and seeing people I have met on the days out."



"Like an eye-opener to a new world. I really like the activities and meeting new friends. They are fun, and I get to try new things. My favourite day out was the Lion King. I felt really special because I got to dance with people from Disney, and I loved the show. The whole day was really special. I have always wanted to go."



"Being a parent of a child with this awful disease can be very lonely and isolating. It was wonderful to meet up and enjoy a relaxing time with parents in similar positions."



Feedback

"It is great to spend time with other families affected by sickle cell. It is nice that my child gets to see other people with the condition and how they also have to pace their activity levels in the same way. I think this was the first time my child ever spent time with other children with sickle cell. They absolutely love it! My child was initially shy at the days out but came out of their shell and has thrived. It was so lovely to see all of the children happy and interacting with each other. Their own mini happy support network. It is amazing for my children to make these memories and it pushes them to get out and engage with other families and not just stay in the house as a form of sheltering them from a Sickle Cell crisis. The outings have confirmed to me that as long as I dress her well and take all the precautions needed, we can enjoy life and make meaningful memories."



The difference we've made



Respite Holidays provides families with an invaluable opportunity to escape the challenges of everyday life and reconnect with each other. Thanks to this funding, numerous families have been able to enjoy a vacation this year that they may not have been able to afford otherwise.

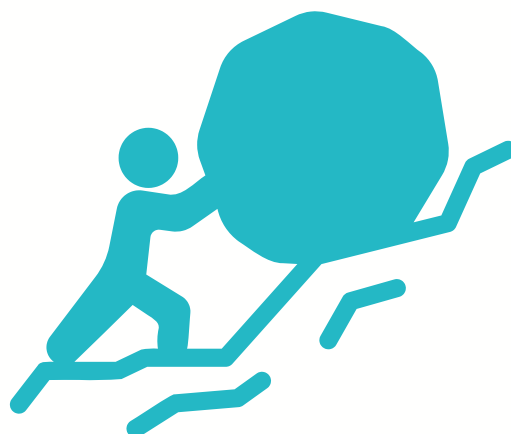
Providing Joy to Families Affected by Sickle Cell

The winter season and the ongoing pandemic have posed significant challenges for many families, especially those impacted by Sickle Cell. In response, we curated an exceptional collection of items for our wellness, art therapy, and summer activity boxes to keep these families entertained. The response was overwhelmingly positive, with children expressing their delight upon receiving the packages. We are immensely grateful for your generous support, as projects like these make a significant difference to the young people we support.



Challenges we have faced

- Due to increased activity costs, we have had to limit the number of tickets we can offer per activity.
- Parents have expressed a need for more support as they face burnout and feelings of overwhelm.
- Financial difficulties have affected parents who are caring for children with Sickle Cell due to taking time off to attend their child's hospital appointments, admissions and time to recover. We have been able to provide some assistance but would like to be able to provide more.
- Some parents are unable to afford travel costs associated with attending our activities.
- We have lost several volunteers who have had to prioritise earning income over volunteering.
- As we have experienced rapid growth, we require additional funding to cover core costs, such as salaries, to facilitate the necessary support. However, securing funding has been challenging.
- As Sickle Cell predominantly affects ethnic groups, which we primarily support, the limitation of grants aimed at supporting these groups has had an adverse impact on our organisation.
- Due to the niche nature of Sickle Cell, only a limited number of staff and volunteers can deliver talks and other events, which puts significant pressure on them. We are working hard to address this issue with more training sessions and approaching those that have a good knowledge of living with the condition.
- The loss of volunteers hugely impacted project delivery. In some circumstances we were not able to deliver the projects we had planned due to being short of volunteers.



What we have planned next...

Our upcoming outings include Thorpe Park, Whipsnade Zoo, and a viewing of Matilda the Musical.

We have planned for two respite breaks - one in Wales and the other in Sussex.

Educational sessions discussing Sickle Cell disease in schools.

We are planning a family Christmas party.

A virtual cooking class has been scheduled to take place.

A theatre project and a red carpet screening event are being proposed to promote blood donation.

One suggestion is to incorporate youth advocacy training and increase the number of youth-led projects.

Hosting family wellness day

Goals

In addition to continuing our support for families, we aim to broaden our scope of beneficiaries. Here are our proposed actions:

Short-term initiatives:

- Expand our geographical coverage
- Transition to a more youth-led organisation
- Provide mental health support for young people and parents/caregivers
- Establish a hub for families and a secure "drop-in" space
- Offer bookable lectures for schools, colleges, and universities
- Focus on education and awareness initiatives
- Implement a carers' buddy system for new parents
- Develop more resources
- Introduce a guide for parents of children newly diagnosed with a Sickle Cell condition
- Increase the number of beneficiaries by 30%
- Develop a family nutritional guide and recipe book for families impacted by Sickle Cell
- Create a transition guide for young people moving from paediatric to adult care
- Develop resources for children, young people, parents/caregivers, teachers, and professionals
- Recruit 20 new regular volunteers
- Hire an additional youth engagement worker
- Employ two part-time administration staff to support front-line service delivery
- Increase the number of beneficiaries in Oxford, Milton Keynes, Slough, and Swindon
- Raise £5000 to fund a respite weekend in summer 2023
- Foster relationships with paediatric haematology teams at five NHS Trusts
- Organize six activities/projects per year for 12-16-year-olds

Mid-term initiatives:

- Launch a regional ambassadors programme
- Employ three full-time staff members
-

Long-term initiatives:

- Within five years, acquire a building for beneficiaries to meet, host events, and serve as a base for volunteers
- Expand our geographical coverage to become a national charity
- Educate individuals on the prevention of symptoms and the importance of self-care
- Research the impact of nutritionists on Sickle Cell management
- Finance an annual one-week respite break for families.



THE APP OR VISIT ONE OF OUR BOOKING POINTS ON R



Acknowledgements

We extend our heartfelt gratitude to all those who have contributed to Cianna's Smile, including our trustees, volunteers, funders, and beneficiaries. Your support has been invaluable.



We thank you for your continued support in our programs.

Cianna's Smile

www.Ciannassmile.co.uk

Financial review

Financial review

The charity ensures that all funds are responsibly used and policies are in place to continually monitor the charity's assets. The charity ensures that we can meet unexpected expenses and take advantage of change and opportunities for development when they arise. This is achieved by setting aside income, when the charity can afford it, as a reserve earmarked for specific future purposes rather than used immediately for the charity's aims.

The trustees regularly assess the appropriate level of reserves to be held in order to avoid putting the charity's solvency, future development or activities at risk.

This means the trustees:

- Consider whether the charity needs to keep reserves – the trustees' primary consideration is the wellbeing of the beneficiaries Cianna's Smile has been set up to help
- Have a reserves policy which explains the levels of reserves to be kept and how they can be used
- Review their reserves policy on a regular basis to take account of changing financial circumstances and new operating and financial conditions
- Comply with the annual reporting requirements to set out the charity's reserves policy in order to show the level of reserves the charity holds and to explain why it needs to retain them at that level
- Identify which of the charity's funds have restrictions on their use, i.e. reserve funds that are freely available to spend are distinguished from funds that may have restrictions on their use set by their donors
- Consider whether and how reserve funds should be invested
- Plan for future development and sustainability when looking at levels of reserves, i.e. designating funds for use on future projects if appropriate as a way of setting aside and building up funds separated from the charity's general reserves



CIANNA'S SMILE		1173030	
Annual accounts for the period			
Period start date	4/6/2022	To	Period end date 4/5/2023

Section A Statement of financial activities

Recommended categories by activity	Unrestricted funds £ F01	Restricted income funds £ F02	Endowment funds £ F03	Total funds £ F04	Prior year funds £ F05
Incoming resources (Note 3)					
Income and endowments from:					
Donations and legacies	48,297	102,531		150,828	46,339
Charitable activities	-				212
Other trading activities	-				-
Investments	-	-			-
Separate material item of income	-	-	-		-
Other	-	-	-		-
Total	48,297	102,531	-	150,828	46,551
Resources expended (Note 4)					
Expenditure on:					
Raising funds	10,871	-	-	10,871	-
Charitable activities	-	45,160	-	45,160	3,977
Separate material item of expense	-	-	-	-	-
Governance	-	1,602	-	1,602	624
Total	10,871	46,762	-	57,632	4,601
Net income/(expenditure) before investment gains/(losses)	37,426	55,769	-	93,196	41,950
Net gains/(losses) on investments	-	-	-	-	-
Net income/(expenditure)	37,426	55,769	-	93,196	41,950
Extraordinary items	-	-	-	-	-
Transfers between funds - capital spend	820	-	820	-	-
Other recognised gains/(losses):					
Gains and losses on revaluation of fixed assets for the charity's own use	-	-	-	-	-
Other gains/(losses)	-	-	-	-	-
Net movement in funds	38,246	54,949	-	93,196	41,950
Reconciliation of funds:					
Total funds brought forward	19,289	40,729	-	60,018	18,068
Total funds carried forward	57,535	95,678	-	153,214	60,018
	0	-	0	-	0

Section B

Balance sheet

	Unrestricted funds £ F01	Restricted income funds £ F02	Endowment funds £ F03	Total this year £ F04	Total last year £ F05
Fixed assets					
Tangible assets (Note 7)	9,150		-	9,150	1,704
Total fixed assets	9,150	-	-	9,150	1,704
Current assets					
Debtors (Note 8)			-	-	2,000
Cash at bank and in hand	49,370	95,678	-	145,048	59,423
Total current assets	49,370	95,678	-	145,048	61,423
Creditors: amounts falling due within one year (Note 9)	984	-	-	984	3,109
Net current assets	48,386	95,678	-	144,064	58,314
Total assets less current liabilities	57,536	95,678	-	153,214	60,018
Total net assets	57,536	95,678	-	153,214	60,018
Funds of the Charity					
Restricted income funds (Note 10)		95,678		95,678	40,729
Unrestricted funds	57,536		-	57,536	19,289
Revaluation reserve				-	-
Total funds	57,536	95,678	-	153,214	60,018
Signed on behalf of the trustee body	Signature		Print Name		Date of approval dd/mm/yyyy

Section C**Notes to the accounts****Note 1 Basis of preparation**

This section should be completed by all charities .

1.1 Basis of accounting

These accounts have been prepared under the historical cost convention with items recognised at cost or transaction value unless otherwise stated in the relevant note(s) to these accounts.

The accounts have been prepared in accordance with:

- and with* the Statement of Recommended Practice: Accounting and Reporting by Charities preparing their accounts in accordance with the Financial Reporting Standard applicable in the UK and Republic of Ireland (FRS 102) issued on 16 July 2014
- and with* the Financial Reporting Standard applicable in the United Kingdom and Republic of Ireland (FRS 102)
- and with the Charities Act 2011.

The charity constitutes a public benefit entity as defined by FRS 102.*

* -Tick as appropriate

1.2 Going concern

There are no material uncertainties related to events or conditions that cast significant doubt on the charity's ability to continue as a going concern.

1.3 Change of accounting policy

The accounts present a true and fair view and the accounting policies adopted are those outlined in note 2.

1.4 Changes to accounting estimates

No changes to accounting estimates have occurred in the reporting period (3.46 FRS 102 SORP).

1.5 Material prior year errors

No material prior year error have been identified in the reporting period (3.47 FRS 102 SORP).

Note 2 Accounting policies

2.2 INCOME

This standard list of accounting policies has been applied by the charity except for those ticked "No" or "N/a". Where a different or additional policy has been adopted then this is detailed in the box below.

Recognition of income	<p>These are included in the Statement of Financial Activities (SoFA) when:</p> <ul style="list-style-type: none"> • the charity becomes entitled to the resources; • it is more likely than not that the trustees will receive the resources; and • the monetary value can be measured with sufficient reliability.
Offsetting	<p>There has been no offsetting of assets and liabilities, or income and expenses, unless required or permitted by the FRS 102 SORP or FRS 102.</p>
Grants and donations	<p>Grants and donations are only included in the SoFA when the general income recognition criteria are met (5.10 to 5.12 FRS102 SORP).</p>
Legacies	<p>In the case of performance related grants, income must only be recognised to the extent that the charity has provided the specified goods or services as entitlement to the grant only occurs when the performance related conditions are met (5.16 FRS 102 SORP).</p> <p>Legacies are included in the SOFA when receipt is probable, that is, when there has been grant of probate, the executors have established that there are sufficient assets in the estate and any conditions attached to the legacy are either within the control of the charity or have been met.</p>
Government grants	<p>The charity has not received government grants in the reporting period</p>
Tax reclaims on donations and gifts	<p>Gift Aid receivable is included in income when there is a valid declaration from the donor. Any Gift Aid amount recovered on a donation is considered to be part of that gift and is treated as an addition to the same fund as the initial donation unless the donor or the terms of the appeal have specified otherwise.</p>
Contractual income and performance related grants	<p>This is only included in the SoFA once the charity has provided the related goods or services or met the performance related conditions.</p>
Donated goods	<p>Donated goods are measured at fair value (the amount for which the asset could be exchanged) unless impractical to do so.</p> <p>The cost of any stock of goods donated for distribution to beneficiaries is deemed to be the fair value of those gifts at the time of their receipt and they are recognised on receipt. In the reporting period in which the stocks are distributed, they are recognised as an expense at the carrying amount of the stocks at distribution.</p> <p>Donated goods for resale are measured at fair value on initial recognition, which is the expected proceeds from sale less the expected costs of sale, and recognised in 'Income from other trading activities' with the corresponding stock recognised in the balance sheet. On its sale the value of stock is charged against 'Income from other trading activities' and the proceeds from sale are also recognised as 'Income from other trading activities'.</p> <p>Goods donated for on-going use by the charity are recognised as tangible fixed assets and included in the SoFA as incoming resources when receivable.</p> <p>Gifts in kind for use by the charity are included in the SoFA as income from donations when receivable.</p>
Donated services and facilities	<p>Donated services and facilities are included in the SOFA when received at the value of the gift to the charity provided the value of the gift can be measured reliably.</p> <p>Donated services and facilities that are consumed immediately are recognised as income with an equivalent amount recognised as an expense under the appropriate heading in the SOFA.</p>
Support costs	<p>The charity has incurred expenditure on support costs.</p>
Volunteer help	<p>The value of any voluntary help received is not included in the accounts but is described in the trustees' annual report.</p>
Income from interest, royalties and dividends	<p>This is included in the accounts when receipt is probable and the amount receivable can be measured reliably.</p>
Income from membership subscriptions	<p>Membership subscriptions received in the nature of a gift are recognised in Donations and Legacies.</p> <p>Membership subscriptions which gives a member the right to buy services or other benefits are recognised as income earned from the provision of goods and services as income from charitable activities.</p>

Settlement of insurance claims Insurance claims are only included in the SoFA when the general income recognition criteria are met (5.10 to 5.12 FRS102 SORP) and are included as an item of other income in the SoFA.

Investment gains and losses This includes any realised or unrealised gains or losses on the sale of investments and any gain or loss resulting from revaluing investments to market value at the end of the year.

2.3 EXPENDITURE AND LIABILITIES

Liability recognition Liabilities are recognised where it is more likely than not that there is a legal or constructive obligation committing the charity to pay out resources and the amount of the obligation can be measured with reasonable certainty.

Governance and support costs Support costs have been allocated between governance costs and other support. Governance costs comprise all costs involving public accountability of the charity and its compliance with regulation and good practice.

Support costs include central functions and have been allocated to activity cost categories on a basis consistent with the use of resources, eg allocating property costs by floor areas, or per capita, staff costs by the time spent and other costs by their usage.

Grants with performance conditions Where the charity gives a grant with conditions for its payment being a specific level of service or output to be provided, such grants are only recognised in the SoFA once the recipient of the grant has provided the specified service or output.

Grants payable without performance conditions Where there are no conditions attaching to the grant that enables the donor charity to realistically avoid the commitment, a liability for the full funding obligation must be recognised.

Redundancy cost The charity made no redundancy payments during the reporting period.

Deferred income No material item of deferred income has been included in the accounts.

Creditors The charity has creditors which are measured at settlement amounts less any trade discounts

Provisions for liabilities A liability is measured on recognition at its historical cost and then subsequently measured at the best estimate of the amount required to settle the obligation at the reporting date

Basic financial instruments The charity accounts for basic financial instruments on initial recognition as per paragraph 11.7 FRS102 SORP. Subsequent measurement is as per paragraphs 11.17 to 11.19, FRS102 SORP.

2.4 ASSETS

Tangible fixed assets for use by charity These are capitalised if they can be used for more than one year, and cost at least

They are valued at cost.

The depreciation rates and methods used are disclosed in note 9.2.

Intangible fixed assets The charity has intangible fixed assets, that is, non-monetary assets that do not have physical substance but are identifiable and are controlled by the charity through custody or legal rights. The amortisation rates and methods used are disclosed in note 9.5

They are valued at cost.

Heritage assets The charity has heritage assets, that is, non-monetary assets with historic, artistic, scientific, technological, geophysical or environmental qualities that are held and maintained principally for their contribution to knowledge and culture. The depreciation rates and methods used as disclosed in note 9.6.1.4.

They are valued at cost.

Investments Fixed asset investments in quoted shares, traded bonds and similar investments are valued at initially at cost and subsequently at fair value (their market value) at the year end. The same treatment is applied to unlisted investments unless fair value cannot be measured reliably in which case it is measured at cost less impairment.

Investments held for resale or pending their sale and cash and cash equivalents with a maturity date of less than 1 year are treated as current asset investments

Stocks and work in progress Stocks held for sale as part of non-charitable trade are measured at the lower or cost or net realisable value.

Goods or services provided as part of a charitable activity are measured at net realisable value based on the service potential provided by items of stock.

Work in progress is valued at cost less any foreseeable loss that is likely to occur on the contract.

Debtors Debtors (including trade debtors and loans receivable) are measured on initial recognition at settlement amount after any trade discounts or amount advanced by the charity. Subsequently, they are measured at the cash or other consideration expected to be received.

Current asset investments The charity has investments which it holds for resale or pending their sale and cash and cash equivalents with a maturity date less than one year. These include cash on deposit and cash equivalents with a maturity date of less than one year held for investment purposes rather than to meet short term cash commitments as they fall due.

They are valued at fair value except where they qualify as basic financial instruments.

**POLICIES ADOPTED
ADDITIONAL TO OR
DIFFERENT FROM
THOSE ABOVE**

--

Note 3 Analysis of income

	Unrestricted funds	Restricted income funds	Endowment funds	Total funds £	Prior year £
Analysis					
Donations and legacies:					
Donations and gifts	5,722		-	5,722	2,360
Ball income (fundraising)	7,172		-	7,172	-
Legacies			-	-	-
Grants	31,415	102,531	-	133,946	43,979
Total	44,309	102,531	-	146,840	46,339
Charitable activities:					
	-	-	-	-	-
Family Days	-	-	-	-	844
Art Therapy Box		-	-	-	351
Other	-	-	-	-	-
Total	-	-	-	-	1,195
TOTAL INCOME	44,309	102,531	-	146,840	47,534

- 3,988

	-	-	-	-		-	-	-
	-	-	-	-		-	-	-
	-	-	-	-		-	-	-
	-	-	-	-		-	-	-
	-	-	-	-		-	-	-
Total expenditure on charitable activities	-	44,928	-	44,928	3,104	873	-	3,977
Governance costs								
Accountancy fees		1,602	-	1,602	624	-	-	624
	-	-	-	-	-	-	-	-
	-	-	-	-	-	-	-	-
Total	-	1,602	-	1,602	624	-	-	624

-53800.83
- 7,271

Section C**Notes to the accounts****Note 10** Details of certain items of expenditure**10.1 Fees for examination of the accounts****Independent examiner's fees**

This year £	Last year £
360	-

The Independent Examiners' firm also provided the support with accounts preparation £624 including VAT (2022 - £624)

Section C**Notes to the accounts****(cont)****Note 11****Paid employees**

The charity had 2 paid part time employees in 2022 (previous year - nil)

Note 14 Tangible fixed assets*Please complete this note if the charity has any tangible fixed assets***14.1 Cost or valuation**

	Freehold land & buildings	Other land & buildings	Computer equipment	Fixtures, fittings and equipment	Total
	£	£	£	£	£
At the beginning of the year	-	-	-	2,097	2,097
Additions	-	-	1,803	7,337	9,139
Revaluations	-	-	-	-	-
Disposals	-	-	-	-	-
Transfers *	-	-	-	-	-
At end of the year	-	-	1,803	9,433	11,236

14.2 Depreciation and impairments

	**Basis	SL or RB	Straight Line	Straight Line	Straight Line
	SL or RB (Straight Line or Reducing Balance)	SL or RB	Straight Line	Straight Line	Straight Line
** Rate	20%		33%	20%	
At beginning of the year	-	-	-	392	392
Disposals	-	-	-	-	-
Depreciation	-	-	462	1,232	1,694
Impairment	-	-	-	-	-
Transfers*	-	-	-	-	-
At end of the year	-	-	462	1,624	2,086

14.3 Net book value

Net book value at the beginning of the year	-	-	-	1,704	1,704
Net book value at the end of the year	-	-	1,340	7,809	9,150

14.4 Impairment

This year: Please provide a description of the events and circumstances that led to the recognition or reversal of an impairment loss.

--

Last year: Please provide a description of the events and circumstances that led to the recognition or reversal of an impairment loss.

--

14.5 Revaluation

If an accounting policy of revaluation is adopted, please provide:

the effective date of the revaluation

the name of independent valuer, if applicable

the methods applied and significant assumptions

the carrying amount that would have been recognised had the assets been carried under the cost model.

This year	Last year
-	-

14.6 Other disclosures

(i) Please state the amount of borrowing costs, if any, capitalised in the construction of tangible fixed assets and the capitalisation rate used.

(ii) Please provide the amount of contractual commitments for the acquisition of tangible fixed assets.

(iii) Details of the existence and carrying amounts of property, plant and equipment to which the charity has restricted title or that are pledged as security for liabilities.

This year	Last year
£	£
-	-
-	-

* The "transfers" row is for movements between fixed asset categories.

** Please indicate the method of depreciation by deleting the method not applicable (SL = straight line; RB = reducing balance). Also please indicate the rate of depreciation: for straight line, what is the anticipated life of the asset (in years); for reducing balance, what is the percentage annual deduction.

Section C**Notes to the accounts****(cont)****Note 19 Debtors and prepayments****19.1 Analysis of debtors**

Trade debtors

Prepayments and accrued income

Other debtors

Total

This year	Last year
£	£
-	-
-	-
-	2,000.0
-	2,000.0

Section C**Notes to the accounts****(cont)****Note 20****Creditors and accruals****20.1 Analysis of creditors**

	Amounts falling due within one year		Amounts falling due after more than one year	
	This year £	Last year £	This year £	Last year £
Payments received in advance for fundraiser	-	2,485	-	-
Accruals and deferred income	984	624	-	-
Total	984	3,109	-	-

Section C

Notes to the accounts

(cont)

Note 27

Charity funds

27.1 Details of material funds held and movements during the CURRENT reporting period

Please give details of the movements of material individual funds in the reporting period together with a balancing figure for 'Other funds'.

* Key: PE - permanent endowment funds; EE - expendible endowment funds; R - restricted income funds, including special trusts, of the

Fund names	Type	Purpose and Restrictions	Fund balances brought forward £	Income £	Expenditure £	Fund balances carried forward £
Lottery grant, 2019 b/f	Restricted	Covid - allowed spend on core costs	3,274		- 3,274	-
Global Blood Therapeutics	Restricted	3 publications and general costs	7,296		-	7,296
Novo Nordisk	Restricted	Core funding	10,000			10,000
Peter Harrison Foundation	Restricted	helpline	5,000		- 1,005	3,995
Children In Need	Restricted	youth worker salary , days out and overheads	10,000	10,000	- 9,328	10,672
D'Oyle Carte	Restricted	art therapy boxes, ceramic cafe activity, art boxes, music therapy	2,643		- 1,582	1,061
Earley Charity	Restricted	contribution to respite break, book club	3,790		- 2,820	970
Albert Hunt	Restricted	Core funding	2,000		- 328	1,672
Abbvie	Restricted	Resource development	-	-	-	-
DWF	Restricted	kids book club	-	2,500	- 392	2,108
NHSBT	Restricted	3 x blood drives	-	3,975	- 1,500	2,475
Garfield Weston	Restricted	core	-	5,000	- 5,000	-
Syder Foundation	Restricted	office equipment	-	2,000	- 1,986	14
Clothworkers	Restricted	office equipment including capital spend	-	7,000	- 6,921	79
Childwick trust	Restricted	core	-	1,000	- 835	165
Matrix Causes Fund	Restricted	resource development	-	2,000	-	2,000
Astor foundation	Restricted	overheads	-	1,000	-	1,000
Berkshire Community Foundation	Restricted	salary, office, promotion	-	2,000	- 1,920	80
Mobbs Memorial Trust	Restricted	office furniture and equipment	-	2,000	- 56	1,944
Comic Relief	Restricted	days out, youth worker, boxes	-	10,000	- 6,154	3,846
HDH Wills 1965 Charitable Trust	Restricted	hospital stays	-	500	-	500
Wiltshire Community Foundation	Restricted	beneficiary recruitment in swindon	-	1,500	- 45	1,455

helpline

Joan Wilkinson Charitable Trust	Restricted	educational resources	-	500	-	500
Heathrow Community Trust	Restricted	outreach salary, coffee morning, beneficiary recruitment	-	1,952	-	1,952
Berkshire Masonic Charity	Restricted	hospital support in berkshire	-	1,500	-	1,500
Sovereign #iwill Fund	Restricted	youth project	-	7,950	- 2,869	5,081
Tesco Community Grants - voting	Restricted	kids books	-	1,000	- 60	940
Grand Plan	Restricted	carers books	-	1,000	- 611	389
Wokingham Residents Equality Forum	Restricted	youth project	-	500	-	500
NHS Berkshire West Mental Health Community Grant via Reading Voluntary Action	Restricted	contribution to overall objectives for local families	-	1,650	- 1,450	200
Lions Wokingham	Restricted	POC machine	-	1,000	-	1,000
UK Youth Digital Access Fund made possible by Osborne Clarke	Restricted	youth digital project	-	5,000	-	5,000
Mark Farmar Childwick Trust personal allocation	Restricted	overall objectives and respite break	-	2,000	- 615	1,385
British Humane Association	Restricted	hospital support	-	2,000	- 485	1,515
Heart of Bucks - Health Equity Fund	Restricted	outreach in buckinghamshire	-	3,304	-	3,304
Costco United Way	Restricted	book club	-	1,500	-	1,500
Comic Relief- Winter Campaign cost of living fund	Restricted	office utilities bill, cost of living support	-	2,000	- 1,621	379
NHS Blood and Transfusion	Restricted	theatre project	-	18,700	-	18,700
Comic Relief - an extra £500	Restricted	cost of living support	-	500	-	500
					-	-
					-	-
			-	-	-	-
Unrestricted Funds	Unrestricted	Unrestricted	14,171	48,297	- 2,945	59,523
		Total Funds	58,174	150,828	- 53,801	155,201

1,988

Note that the expenditure figure on the restricted funds does not match the SOFA due to some of the spend being on capital items that were transferred to the unrestricted funds.

Section C **Notes to the accounts** **(cont)**

Note 27 **Charity funds**

27.2 Details of material funds held and movements during the PREVIOUS reporting period

Fund names	Type	Purpose and Restrictions	Fund balances brought forward £	Income £	Expenditure £	Fund balances carried forward £
Lottery grant, 2019 b/f	Restricted	Covid - allowed spend on core costs	3,897	-	623	3,274
Global Blood Therapeutics	Restricted	3 publications and general costs	-	7,546	250	7,296
Novo Nordisk	Restricted	Core funding	-	10,000	-	10,000
Peter Harrison Foundation	Restricted	helpline	-	5,000	-	5,000
Children In Need	Restricted		-	10,000	-	10,000
D'Oyle Carte	Restricted	art therapy boxes, ceramic cafe activity, art house music therapy	-	2,643	-	2,643
Earley Charity	Restricted	contribution to respite break, book club	-	3,790	-	3,790
Albert Hunt	Restricted	Core funding	-	2,000	-	2,000
			-	-	-	-
Unrestricted Funds	Unrestricted	Unrestricted	14,171	48,297	10,871	51,597
		Total Funds	18,068	89,276	11,744	95,601

57,613

Section C**Notes to the accounts****(cont)****Note 28 Transactions with trustees and related parties****This year**

None of the trustees have been paid any remuneration or received any other benefits from an employment with their charity or a related entity.

Last year

None of the trustees have been paid any remuneration or received any other benefits from an employment with their charity or a related entity.



Independent examiner's report on the accounts

Section A

Independent Examiner's Report

Report to the trustees/ members of

Cianna's Smile

On accounts for the year ended

5th April 2023

Charity no (if any)

1173030

Set out on pages

1-2

Respective responsibilities of trustees and examiner

The charity's trustees are responsible for the preparation of the accounts. The charity's trustees consider that an audit is not required for this year under section 144 of the Charities Act 2011 (the Charities Act) and that an independent examination is needed.

It is my responsibility to:

- examine the accounts under section 145 of the Charities Act,
- to follow the procedures laid down in the general Directions given by the Charity Commission (under section 145(5)(b) of the Charities Act, and
- to state whether particular matters have come to my attention.

Basis of independent examiner's statement

My examination was carried out in accordance with general Directions given by the Charity Commission. An examination includes a review of the accounting records kept by the charity and a comparison of the accounts presented with those records. It also includes consideration of any unusual items or disclosures in the accounts, and seeking explanations from the trustees concerning any such matters. The procedures undertaken do not provide all the evidence that would be required in an audit, and consequently no opinion is given as to whether the accounts present a 'true and fair' view and the report is limited to those matters set out in the statement below.

Independent examiner's statement

In connection with my examination, no material matters have come to my attention which gives me cause to believe that in, any material respect,:

- the accounting records were not kept in accordance with section 130 of the Charities Act other than that disclosed below; or
- the accounts did not accord with the accounting records; or
- the accounts did not comply with the applicable requirements concerning the form and content of accounts set out in the Charities (Accounts and Reports) Regulations 2008 other than any requirement that the accounts give a 'true and fair' view which is not a matter considered as part of an independent examination.

I have come across no other matters in connection with the examination to which attention should be drawn in this report in order to enable a proper understanding of the accounts to be reached.

Signed:



31st January 2024

Date:

Rachel Eden

Name:

Relevant professional qualification(s) or body (if any):
ACMA (Chartered Institute of Management Accountants)

Address:
Holy Brook Associates, Curious Lounge, 1st Floor, Pinnacle Building,
Tudor Road, Reading, England,
RG1 1NH

Section B

Disclosure

CIANNA'S SMILE

England & Wales - Charity number 1173030

Accounts



CIANNA'S SMILE

ANNUAL REPORT

2021/2022

CIO

Website: www.ciannasmile.co.uk
Email: info@ciannasmile.co.uk
Charity Registration number 1173030
Address: First floor right, 4 the courtyard,
Denmark street, Wokingham, RG40 2AZ



CIANNA'S
Smile

Our trustees:

Hayley King
Melissa Connor
Rosiland Slade
Ashleigh Alli
Lizzie Giblin-Cook

A word from our trustees

Hayley King

Founder and chair

We have had a phenomenal 12 months! The amount of families we have been able to support has increased significantly and thanks to our wonderful team we have been able to deliver these much needed services.

There is still a long way to go with the improvement of care received from medical providers but we are confident with the increased awareness and support that things will change for the better and families affected by Sickle Cell will receive the care they rightfully deserve.

We are grateful that we have been given an opportunity to assist the change needed and organising memorable days out and experiences for children with Sickle Cell and their loved ones to cherish.

We believe that the next 12 months will be just as great and look forward to offering more projects and services to support children, young people and families affected by Sickle Cell.

Melissa Connor

It has been wonderful witnessing the growth and achievements of Cianna's Smile this past year.

To know that the organisation is making such a positive difference for families affected by Sickle Cell is something I am extremely proud to be a part of.

We aim to deliver more projects next year and increase the number of beneficiaries we can support.





Objectives:

Our mission

To give hope to those with Sickle Cell (SC) who feel isolated to continue breaking the myths and stigmas attached to SC, educating all about SC and offering a voice that is heard to increase awareness and empathy towards those affected by SC

Our vision

To make SC a condition that is understood and heard of in the UK. To ensure that people with SC are treated efficiently and receive empathy, support, empowerment and understanding from friends, family, education providers, employers and healthcare professionals.

Our values

Everyone deserves the right to be treated with empathy and understanding. No matter what a person's background, religion or ethnicity, we should all be treated with respect. We value and preserve the resources entrusted to us.

Our charitable objectives

1. The preservation and protection of good health and the relief of sickness of people who suffer from SC by such means as the trustees think fit including, but not limited to the provision of information, support, comfort, services, facilities and social events.
2. To advance the education of the public in all areas relating to SC.



Projects and activities

**Free days out for
families affected by
Sickle Cell**

Respite

**Focus groups
and resources**

**Art therapy boxes
Winter wellness
boxes
summer activity
boxes**

Support

Wellness days

How we have helped



April 2021

Increased our virtual coffee mornings from monthly to fortnightly on request of attendees to help reduce the feeling of isolation

June 2021

Delivered a World Sickle Cell awareness day webinar which included a series of videos to empower and inform people about Sickle Cell, how to deal with mental health challenges, advocating for yourself and loved one and how Sickle Cell affects people. We interviewed industry experts and inspirational speakers such as Nova Reid.

Our founder and trustee Hayley King was a guest on Danyl Johnsons podcast Little Help talking about Sickle Cell and the work of the charity.

July 2021

We organised a successful raffle to raise funds for summer wellness boxes and raised **£472**

August 2021

We posted summer activity boxes to children with Sickle Cell for themselves and their siblings to enjoy to relieve distress and reduce isolation felt by the children.



September 2021

We celebrated Sickle Cell awareness month with a month long awareness campaign to help achieve our goal towards advocating for a world aware of Sickle Cell.

Cianna took part in the NHSBT campaign to help recruit more black blood donors.

We held 3 focus groups to help gain a better understanding from our beneficiaries of what was needed from us.

October 2021

We organised 2 blood drives in Reading to help increase the number of black blood donors in the UK.

We took 34 people to Legoland Windsor. The feedback was amazing and everyone that attended had a magical time.

November 2021

Our 2 charity ambassadors joined the team Michael Sprott and Julia Titus.

December 2021

We kindly received gift donations from Spotlight UK. This enabled us to deliver 38 gifts to children affected by Sickle Cell for Christmas.

January 2022

We posted art therapy boxes to children affected by Sickle Cell.

February 2022

Raised awareness and provided information on mental health challenges during Children's mental health week.

March 2022

Launched our Cianna's Smile book club project. Give a Book kindly sponsored 1000 book across the year for the project and the books were greatly received by the families we support.

We received the keys to our very first office and have moved in.

From April 21 to March 22 we have

Increased our network and the number of charity partners we work with

Launched 10 new projects and services

Increased the number of beneficiaries by over 30%

Received over £40,000 in grants

Sent over 70 boxes of art therapy and wellness packages to children with Sickle Cell

Sent 48 books to children affected by Sickle Cell in our first book club

Took 28 children and carers to Legoland Windsor

Increased social media engagement and followers

Achievements



Image source <https://www.thesun.co.uk/news/rce>

2021/2022

May 2021 nominated for Thames Valley business awards charity of the year

June 2021 Interviewed on BBC radio Berkshire

July/August 2021 nominated for the sun who cares wins awards

Worked with 4 teams from our local NCS programme whom helped raise awareness and funds to help support our beneficiaries.

February 2022 featured in the Media Planet Rare diseases campaign in the Guardian newspaper.

The next 12 months

New Projects

- Book club kids and parent/carers
- Pen pal programme for young people
- Annual respite weekend
- Youth advocacy programme
- Focus groups in new areas
- Carers lunches
- New resources
- Parent workshops

New Services

- Parent and carers helpline
- School correspondence support

Existing projects and services that will continue

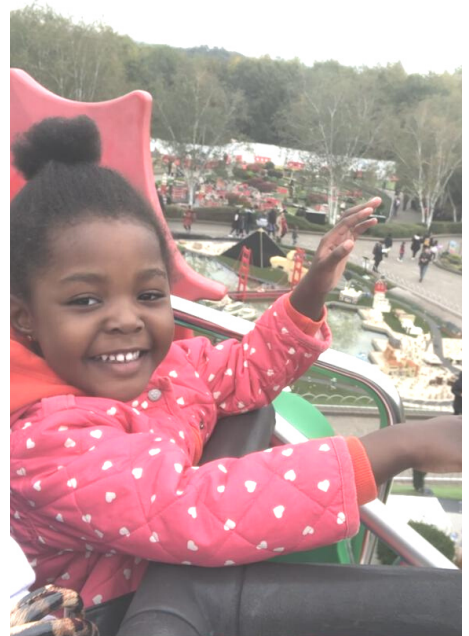
- Days out
- Virtual coffee mornings
- Parent/carers WhatsApp group

Objectives

- Increase the number of beneficiaries
- Increase the number of regular volunteers
- Increase public engagement and awareness
- Increase event attendees

Our mission

To give hope to those with Sickle Cell (SC) who feel isolated to continue breaking the myths and stigmas attached to SC, educating all about SC and offering a voice that is heard to increase awareness and empathy towards those affected by SC.





Feedback from our beneficiaries

Cianna's Smile charity has been such a blessing so far. To know that there is such a charity specifically to support families that have been affected by sickle cell is amazing. I have felt less isolated and alone in this journey as a mother with a child with sickle cell; to know that there are others who experience the same journey is very reassuring and 'Cianna's Smile' has been able to create such a platform. There isn't much support or awareness out there about sickle cell, so Cianna's Smile charity is very precious to those who are affected by sickle cell. Thank you.

Benice

Lola says: "Hayley is selfless and has helped us to overcome the fear of the diagnosis. "Every time I call on her, she's always there to give me advice - even if it's the middle of the night. I trust her so much. She's never let me down."

Cianna's Smile is an amazing charity with a growing family of supporting members upholding the value of sharing and hands on caring for each other in so many valuable ways.

Nothing too big or small, always open for a chat and a call back and amazing sourcing of info and outreach.

Thank you for being a real difference in the fight for Sickle Cell.

Angie.

Goals



Short term

- Increase the number of beneficiaries by 40%
- Develop a family nutritional guide and recipe book for Sickle Cell
- Develop a transition guide for young people moving from paediatric to adult care
- Develop resources for children, young people, parents and carer's, teachers and professionals
- Recruit 20 new regular volunteers
- Employ a youth engagement worker
- Employ 2 part time administration staff to support delivery of front line services
- Increase beneficiaries in Milton Keynes, Slough and Swindon
- Raise £5000 to fund a respite weekend in summer 2022
- Develop relationships with 5 NHS Trust paediatric haematology teams
- Have 6 activities/projects per year for 12 to 16 year old

Mid term

- Increase the number of Cianna's Smile branches in the south east of England
- Employ 3 full time members of staff

Long term

- In 5 years have our own building for beneficiaries to meet, hold events and a base for volunteers to work from
- Increase geographical area, ultimately become a national charity
- Educate people into how they can prevent symptoms and the importance of taking care of themselves
- Research into how nutritionists can help with Sickle Cell
- Fund counselling sessions for people affected by Sickle Cell
- Fund an annual 1 week respite break for families

Financial review

The charity ensures that all funds are responsibly used and policies are in place to continually monitor the charity's assets. The charity ensures that we can meet unexpected expenses and take advantage of change and opportunities for development when they arise. This is achieved by setting aside income, when the charity can afford it, as a reserve earmarked for specific future purposes rather than used immediately for the charity's aims.

The trustees regularly assess the appropriate level of reserves to be held in order to avoid putting the charity's solvency, future development or activities at risk.

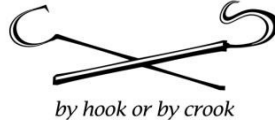
This means the trustees:

- Consider whether the charity needs to keep reserves – the trustees' primary consideration is the wellbeing of the beneficiaries Cianna's Smile has been set up to help
- Have a reserves policy which explains the levels of reserves to be kept and how they can be used
- Review their reserves policy on a regular basis to take account of changing financial circumstances and new operating and financial conditions
- Comply with the annual reporting requirements to set out the charity's reserves policy in order to show the level of reserves the charity holds and to explain why it needs to retain them at that level
- Identify which of the charity's funds have restrictions on their use, i.e. reserve funds that are freely available to spend are distinguished from funds that may have restrictions on their use set by their donors
- Consider whether and how reserve funds should be invested
- Plan for future development and sustainability when looking at levels of reserves, i.e. designating funds for use on future projects if appropriate as a way of setting aside and building up funds separated from the charity's general reserves

Thank you to our sponsors



The Earley Charity



Thank you to

Global blood therapeutics for sponsoring the development of 3 books to help improve the lives of families affected by Sickle Cell.

Leathersellers' company charitable fund for granting our organisation funds towards general running costs.

Novo Nordisk for contributing towards our overall core costs enabling our charity to continue delivering the much needed support to our beneficiaries

National Lottery Community fund for funding 3 days out for families affected by Sickle Cell, a wellness day, carer's lunches, coffee mornings, focus groups, parent workshops, art therapy boxes and more.

T K Maxx and Home Sense Foundation for funding a day out for 25 people

Give a book for donating 1000 books for our children's book club

Peter Harrison Foundation for funding a part time helpline operative for one year.

Albert Hunt Trust for contributing towards our general running costs.

D'oyly Carte Charitable Trust for funding 50 art therapy boxes, a music therapy workshop, an art therapy day and ceramics café workshop for families.

The Earley Charity for contributing a percentage towards the costs of our Pen Pal programme Book Club Wellness Day, Wellness boxes, Art Therapy boxes, Children's and family days out, Summer respite break, Carer's lunches, Coffee mornings and Focus groups for families we support in Berkshire.

Cianna's Smile volunteers for all of your support, hard work and dedication to making the lives of the families we support that much easier.



CIANNA'S SMILE		1173030		
Annual accounts for the period				
Period start date	06/04/2021	To	Period end date	05/04/2022

Section A Statement of financial activities

Recommended categories by activity	Unrestricted funds £ F01	Restricted income funds £ F02	Endowment funds £ F03	Total funds £ F04	Prior year funds £ F05
Incoming resources (Note 3)					
Income and endowments from:					
Donations and legacies	5,360	40,979	-	46,339	297
Charitable activities	212	-	-	212	1,663
Other trading activities	-	-	-	-	-
Investments	-	-	-	-	-
Separate material item of income	-	-	-	-	-
Other	-	-	-	-	-
Total	5,572	40,979	-	46,551	1,961
Resources expended (Note 4)					
Expenditure on:					
Raising funds	-	-	-	-	27
Charitable activities	-	3,977	-	3,977	627
Separate material item of expense	-	-	-	-	-
Governance	454	170	-	624	-
Total	454	4,147	-	4,601	654
Net income/(expenditure) before investment gains/(losses)	5,118	36,832	-	41,950	1,307
Net gains/(losses) on investments	-	-	-	-	-
Net income/(expenditure)	5,118	36,832	-	41,950	1,307
Net movement in funds	5,118	36,832	-	41,950	1,307
Reconciliation of funds:					
Total funds brought forward	14,171	3,897	-	18,068	16,761
Total funds carried forward	19,289	40,729	-	60,018	18,068

Section B Balance sheet

		Unrestricted	Restricted	Endowment	Total this	Total last
		funds	income	funds	year	year
		£	£	£	£	£
		F01	F02	F03	F04	F05
Fixed assets						
Tangible assets	(Note 7)	1,704	-	-	1,704	1,962
Total fixed assets		1,704	-	-	1,704	1,962
Current assets						
Debtors	(Note 8)	2,000	-	-	2,000	1,240
Cash at bank and in hand		18,694	40,729	-	59,423	14,866
Total current assets		20,694	40,729	-	61,423	16,106
Creditors: amounts falling due within one year	(Note 9)	3,109	-	-	3,109	-
Net current assets		17,585	40,729	-	58,314	16,106
Total assets less current liabilities		19,289	40,729	-	60,018	18,068
Total net assets		19,289	40,729	-	60,018	18,068
Funds of the Charity						
Restricted income funds	(Note 10)		40,729		40,729	3,897
Unrestricted funds		19,289		-	19,289	14,171
Revaluation reserve					-	
Total funds		19,289	40,729	-	60,018	18,068
Signed on behalf of the trustee body						
		Signature	Print Name		Date of approval dd/mm/yyyy	

Note 1 **Basis of preparation**

This section should be completed by all charities .

1.1 Basis of accounting

These accounts have been prepared under the historical cost convention with items recognised at cost or transaction value unless otherwise stated in the relevant note(s) to these accounts.

The accounts have been prepared in accordance with:

- and with* the Statement of Recommended Practice: Accounting and Reporting by Charities preparing their accounts in accordance with the Financial Reporting Standard applicable in the UK and Republic of Ireland (FRS 102) issued on 16 July 2014
- and with* the Financial Reporting Standard applicable in the United Kingdom and Republic of Ireland (FRS 102)
- and with the Charities Act 2011.

The charity constitutes a public benefit entity as defined by FRS 102.*

Yes

* -Tick as appropriate

1.2 Going concern

There are no material uncertainties related to events or conditions that cast significant doubt on the charity's ability to continue as a going concern.

1.3 Change of accounting policy

The accounts present a true and fair view and the accounting policies adopted are those outlined in note 2.

1.4 Changes to accounting estimates

No changes to accounting estimates have occurred in the reporting period (3.46 FRS 102 SORP).

1.5 Material prior year errors

No material prior year error have been identified in the reporting period (3.47 FRS 102 SORP).

Note 2 Accounting policies**2.2 INCOME**

This standard list of accounting policies has been applied by the charity except for those ticked "No" or "N/a". Where a different or additional policy has been adopted then this is detailed in the box below.

Recognition of income	<p>These are included in the Statement of Financial Activities (SoFA) when:</p> <ul style="list-style-type: none"> • the charity becomes entitled to the resources; • it is more likely than not that the trustees will receive the resources; and • the monetary value can be measured with sufficient reliability.
Offsetting	<p>There has been no offsetting of assets and liabilities, or income and expenses, unless required or permitted by the FRS 102 SORP or FRS 102.</p>
Grants and donations	<p>Grants and donations are only included in the SoFA when the general income recognition criteria are met (5.10 to 5.12 FRS102 SORP).</p>
Legacies	<p>In the case of performance related grants, income must only be recognised to the extent that the charity has provided the specified goods or services as entitlement to the grant only occurs when the performance related conditions are met (5.16 FRS 102 SORP). Legacies are included in the SOFA when receipt is probable, that is, when there has been grant of probate, the executors have established that there are sufficient assets in the estate and any conditions attached to the legacy are either within the control of the charity or have been met.</p>
Government grants	<p>The charity has not received government grants in the reporting period</p>
Tax reclaims on donations and gifts	<p>Gift Aid receivable is included in income when there is a valid declaration from the donor. Any Gift Aid amount recovered on a donation is considered to be part of that gift and is treated as an addition to the same fund as the initial donation unless the donor or the terms of the appeal have specified otherwise.</p>
Contractual income and performance related grants	<p>This is only included in the SoFA once the charity has provided the related goods or services or met the performance related conditions.</p>
Donated goods	<p>Donated goods are measured at fair value (the amount for which the asset could be exchanged) unless impractical to do so.</p> <p>The cost of any stock of goods donated for distribution to beneficiaries is deemed to be the fair value of those gifts at the time of their receipt and they are recognised on receipt. In the reporting period in which the stocks are distributed, they are recognised as an expense at the carrying amount of the stocks at distribution.</p> <p>Donated goods for resale are measured at fair value on initial recognition, which is the expected proceeds from sale less the expected costs of sale, and recognised in 'Income from other trading activities' with the corresponding stock recognised in the balance sheet. On its sale the value of stock is charged against 'Income from other trading activities' and the proceeds from sale are also recognised as 'Income from other trading activities'.</p> <p>Goods donated for on-going use by the charity are recognised as tangible fixed assets and included in the SoFA as incoming resources when receivable.</p> <p>Gifts in kind for use by the charity are included in the SoFA as income from donations when receivable.</p>
Donated services and facilities	<p>Donated services and facilities are included in the SOFA when received at the value of the gift to the charity provided the value of the gift can be measured reliably.</p> <p>Donated services and facilities that are consumed immediately are recognised as income with an equivalent amount recognised as an expense under the appropriate heading in the SOFA.</p>
Support costs	<p>The charity has incurred expenditure on support costs.</p>
Volunteer help	<p>The value of any voluntary help received is not included in the accounts but is described in the trustees' annual report.</p>
Income from interest, royalties and dividends	<p>This is included in the accounts when receipt is probable and the amount receivable can be measured reliably.</p>
Income from membership subscriptions	<p>Membership subscriptions received in the nature of a gift are recognised in Donations and Legacies.</p> <p>Membership subscriptions which gives a member the right to buy services or other benefits are recognised as income earned from the provision of goods and services as income from charitable activities.</p>
Settlement of insurance claims	<p>Insurance claims are only included in the SoFA when the general income recognition criteria are met (5.10 to 5.12 FRS102 SORP) and are included as an item of other income in the SoFA.</p>

Investment gains and losses This includes any realised or unrealised gains or losses on the sale of investments and any gain or loss resulting from revaluing investments to market value at the end of the year.

2.3 EXPENDITURE AND LIABILITIES

Liability recognition Liabilities are recognised where it is more likely than not that there is a legal or constructive obligation committing the charity to pay out resources and the amount of the obligation can be measured with reasonable certainty.

Governance and support costs Support costs have been allocated between governance costs and other support. Governance costs comprise all costs involving public accountability of the charity and its compliance with regulation and good practice.

Support costs include central functions and have been allocated to activity cost categories on a basis consistent with the use of resources, eg allocating property costs by floor areas, or per capita, staff costs by the time spent and other costs by their usage.

Grants with performance conditions Where the charity gives a grant with conditions for its payment being a specific level of service or output to be provided, such grants are only recognised in the SoFA once the recipient of the grant has provided the specified service or output.

Grants payable without performance conditions Where there are no conditions attaching to the grant that enables the donor charity to realistically avoid the commitment, a liability for the full funding obligation must be recognised.

Redundancy cost The charity made no redundancy payments during the reporting period.

Deferred income No material item of deferred income has been included in the accounts.

Creditors The charity has creditors which are measured at settlement amounts less any trade discounts

Provisions for liabilities A liability is measured on recognition at its historical cost and then subsequently measured at the best estimate of the amount required to settle the obligation at the reporting date

Basic financial instruments The charity accounts for basic financial instruments on initial recognition as per paragraph 11.7 FRS102 SORP. Subsequent measurement is as per paragraphs 11.17 to 11.19, FRS102 SORP.

2.4 ASSETS

Tangible fixed assets for use by charity These are capitalised if they can be used for more than one year, and cost at least

They are valued at cost.

The depreciation rates and methods used are disclosed in note 9.2.

Intangible fixed assets The charity has intangible fixed assets, that is, non-monetary assets that do not have physical substance but are identifiable and are controlled by the charity through custody or legal rights. The amortisation rates and methods used are disclosed in note 9.5

They are valued at cost.

Heritage assets The charity has heritage assets, that is, non-monetary assets with historic, artistic, scientific, technological, geophysical or environmental qualities that are held and maintained principally for their contribution to knowledge and culture. The depreciation rates and methods used as disclosed in note 9.6.1.4.

They are valued at cost.

Investments Fixed asset investments in quoted shares, traded bonds and similar investments are valued at initially at cost and subsequently at fair value (their market value) at the year end. The same treatment is applied to unlisted investments unless fair value cannot be measured reliably in which case it is measured at cost less impairment.

Investments held for resale or pending their sale and cash and cash equivalents with a maturity date of less than 1 year are treated as current asset investments

Stocks and work in progress Stocks held for sale as part of non-charitable trade are measured at the lower or cost or net realisable value.

Goods or services provided as part of a charitable activity are measured at net realisable value based on the service potential provided by items of stock.

Work in progress is valued at cost less any foreseeable loss that is likely to occur on the contract.

Debtors Debtors (including trade debtors and loans receivable) are measured on initial recognition at settlement amount after any trade discounts or amount advanced by the charity. Subsequently, they are measured at the cash or other consideration expected to be received.

Current asset investments The charity has investments which it holds for resale or pending their sale and cash and cash equivalents with a maturity date less than one year. These include cash on deposit and cash equivalents with a maturity date of less than one year held for investment purposes rather than to meet short term cash commitments as they fall due.

They are valued at fair value except where they qualify as basic financial instruments.

**POLICIES ADOPTED
ADDITIONAL TO OR
DIFFERENT FROM
THOSE ABOVE**

--

Note 3

Analysis of income

		Unrestricted funds	Restricted income funds	Endowment funds	Total funds £	Prior year £
Analysis						
Donations and legacies:	Donations and gifts	2,360	-	-	2,360	297
	Gift Aid	-	-	-	-	-
	Legacies	-	-	-	-	-
	Grants	3,000	40,979	-	43,979	-
	Total	5,360	40,979	-	46,339	297
Charitable activities:		-	-	-	-	-
	Family Days	212	-	-	212	-
	Art Therapy Box	-	-	-	-	1,063
	Other	-	-	-	-	-
	Total	212	-	-	212	1,063
TOTAL INCOME	5,572	40,979	-	46,551	1,361	

-

Section C **Notes to the accounts**

Note 6 **Analysis of expenditure**

This year

Analysis	Unrestricted funds	Restricted income funds	Endowment funds	Total funds
Expenditure on raising funds:				
Event costs	-	-	-	-
Total expenditure on raising funds	-	-	-	-
Expenditure on charitable activities:				
Beneficiary Support		1,540	-	1,540
Publications		250	-	250
Training		25	-	25
Public Awareness		711	-	711
Sundry Payments		494	-	494
Postage and stationery		154	-	154
Marketing		223	-	223
Insurance		96	-	96
Website		91	-	91
Depreciation		392	-	392
		-	-	-
		-	-	-
		-	-	-
		-	-	-
		-	-	-
		-	-	-
Total expenditure on charitable activities	-	3,977	-	3,977
Governance costs				
Accountancy fees	454	170	-	624
	-	-	-	-
	-	-	-	-
Total	454	170	-	624

| -

Section C**Notes to the accounts****Note 10** **Details of certain items of expenditure****10.1 Fees for examination of the accounts****Independent examiner's fees**

This year £	Last year £
240	-

No other fees were payable to the Independent Examiner (2021 - nil)

Section C **Notes to the accounts** **(cont)**

Note 11 **Paid employees**

The charity had no paid employees in 2022 (previous year - nil)

Section C**Notes to the accounts****Note 14 Tangible fixed assets***Please complete this note if the charity has any tangible fixed assets***14.1 Cost or valuation**

	Fixtures, fittings and equipment	Total
	£	£
At the beginning of the year	1,962	1,962
Additions	134	134
Revaluations	-	-
Disposals	-	-
Transfers *	-	-
At end of the year	2,097	2,097

14.2 Depreciation and impairments

**Basis	Straight Line	Straight Line
** Rate	20%	

At beginning of the year	-	-
Disposals		-
Depreciation	392	392
Impairment	-	-
Transfers*	-	-
At end of the year	392	392

14.3 Net book value

Net book value at the beginning of the year	1,962	1,962
Net book value at the end of the year	1,704	1,704

14.4 Impairment

This year: Please provide a description of the events and circumstances that led to the recognition or reversal of an impairment loss.

--

Last year: Please provide a description of the events and circumstances that led to the recognition or reversal of an impairment loss.

--

14.5 Revaluation

If an accounting policy of revaluation is the effective date of the revaluation

	This year	Last year
<i>the name of independent valuer, if applicable</i>		
<i>the methods applied and significant assumptions</i>		
<i>the carrying amount that would have been recognised had the assets been carried under the cost model.</i>	-	-

14.6 Other disclosures

- (i) Please state the amount of borrowing costs, if any, capitalised in the construction of***
- (ii) Please provide the amount of contractual commitments for the acquisition of tangible***
- (iii) Details of the existence and carrying amounts of property, plant and equipment to which the charity has restricted title or that are pledged as security for liabilities.***

	This year	Last year
	£	£
	-	-
	-	-

* The "transfers" row is for movements between fixed asset categories.

** Please indicate the method of depreciation by deleting the method not applicable (SL = straight line; RB = reducing balance). Also please indicate the rate of depreciation: for straight line, what is the anticipated life of the asset (in years); for reducing balance, what

Section C **Notes to the accounts** **(cont)**

Note 19 **Debtors and prepayments**

19.1 **Analysis of debtors**

Trade debtors
Prepayments and accrued income
Other debtors

Total

This year	Last year
£	£
-	-
-	-
2,000.0	2,000.0
2,000.0	2,000.0

Section C **Notes to the accounts** **(cont)**

Note 20 **Creditors and accruals**

20.1 Analysis of creditors

	Amounts falling due within one year		Amounts falling due after more than one year	
	This year £	Last year £	This year £	Last year £
Payments received in advance for fundraiser	2,485	760	-	-
Accruals and deferred income	624	-	-	-
Total	3,109	760	-	-

Section C

Notes to the accounts

(cont)

Note 27

Charity funds

27.1 Details of material funds held and movements during the CURRENT reporting period

Please give details of the movements of material individual funds in the reporting period together with a balancing figure for 'Other funds'. The 'Total funds' figure below should reconcile to 'Total funds' in the balance sheet.

* Key: PE - permanent endowment funds; EE - expendible endowment funds; R - restricted income funds, including special trusts, of the charity; and U - unrestricted funds

Fund names	Type	Purpose and Restrictions	Fund balances brought forward £	Income £	Expenditure £	Fund balances carried forward £
Lottery grant, 2019 b/f	Restricted	Training, days out, art therapy bags, wellness	3,897	-	- 3,897	-
Global Blood Therapeutics	Restricted	3 publications	-	7,546	- 250	7,296
Novo Nordisk	Restricted	Overall objectives and core costs	-	10,000	-	10,000
Peter Harrison Foundation	Restricted	Helpline operative salary	-	5,000	-	5,000
National lottery 2022	Restricted	Days out, youth worker salary, overheads	-	10,000	-	10,000
D'Oyle Carte	Restricted	Art therapy, music therapy and wellness	-	2,643	-	2,643
Earley Charity	Restricted	Beneficiary support in local area	-	3,790	-	3,790
Albert Hunt	Restricted	Overall objectives and core costs	-	2,000	-	2,000
			-	-	-	-
Unrestricted Funds	Unrestricted	Unrestricted	14,171	5,572	- 454	19,289
		Total Funds	18,068	46,551	- 4,601	60,018



Section A

Independent Examiner's Report

**Report to the trustees/
members of**

Charity Name
Cianna's Smile

**On accounts for the year
ended**

5 April 2022

**Charity no
(if any)**

1173070

Set out on pages

1-2

(remember to include the page numbers of additional sheets)

I report to the trustees on my examination of the accounts of the above charity ("the Trust") for the year ended 31/05/2022.

**Responsibilities and
basis of report**

As the charity's trustees, you are responsible for the preparation of the accounts in accordance with the requirements of the Charities Act 2011 ("the Act").

I report in respect of my examination of the Trust's accounts carried out under section 145 of the 2011 Act and in carrying out my examination, I have followed all the applicable Directions given by the Charity Commission under section 145(5)(b) of the Act.

**Independent
examiner's statement**

I have completed my examination. I confirm that no material matters have come to my attention in connection with the examination (other than that disclosed below *) which gives me cause to believe that in, any material respect:

- the accounting records were not kept in accordance with section 130 of the Charities Act; or
- the accounts did not accord with the accounting records; or
- the accounts did not comply with the applicable requirements concerning the form and content of accounts set out in the Charities (Accounts and Reports) Regulations 2008 other than any requirement that the accounts give a 'true and fair' view which is not a matter considered as part of an independent examination.

I have no concerns and have come across no other matters in connection with the examination to which attention should be drawn in this report in order to enable a proper understanding of the accounts to be reached.

* Please delete the words in the brackets if they do not apply.

Signed:

Gisela Sharpe

Date:

30/01/2023

Name:

Gisela Sharpe FCCA

**Relevant professional
qualification(s) or body
(if any):**

FCCA

Address:

16 Lincoln Gardens

Twyford

Berkshire RG10 9HU

Section B

Disclosure

Only complete if the examiner needs to highlight material matters of concern (see CC32, Independent examination of charity accounts: directions and guidance for examiners).

Give here brief details of any items that the examiner wishes to disclose.

[Empty box for disclosure details]

CIANNA'S SMILE

England & Wales - Charity number 1173030

Accounts



Cianna's Smile annual trustee report April 2020 to
April 2021

Contents

Page 3- administration

Page 4- About us

Page 5- Objectives

Page 6 and 7- Activities

Page 8- Achievements and performance

Page 8- Financial review

Page 9- Our 12 month strategy

Administration



Charity registration number 1173030

Charitable incorporated organisation

Charity registration date: 12th May 2017

Address: Wykeham Road, Earley, Reading, RG6 1PN

Charity trustees:

Chairperson: Hayley King

Treasurer: Roger Williams

Secretary: Melissa Connor

Committee members

Joyce Connor

Ashleigh Ali

Richard Ryan

Elizabeth Giblin-Cook

Sarah Jane Grant

Ashton Massey

Denise Philips

About us



Cianna's Smile is a registered charity that offers information, support, activities and advocates for children in the Thames Valley with Sickle Cell, a lifelong inherited debilitating health condition. People with Sickle Cell often find themselves excluded because of this hereditary life-threatening genetic blood disorder which results in most circumstances with at least one parent being a full time carer and children missing many days of school due to hospital admissions.

Our aims are to reduce the isolation felt by families who are affected by SC and to raise awareness of the condition and to educate both healthcare professionals and members of our community to help better understand the condition.

The organisation was founded by Hayley King in July 2012 and named after Hayley's daughter Cianna who has Sickle Cell Anaemia. The charity became registered in May 2017 and has gradually progressed and become a familiar name within the community.

Objectives



Our mission

To give hope to those with Sickle Cell (SC) who feel isolated to continue breaking the myths and stigmas attached to SC, educating all about SC and offering a voice that is heard to increase awareness and empathy towards those affected by SC.

Our vision

To make SC a condition that is understood and heard of in the UK. To ensure that people with SC are treated efficiently and receive empathy, support, empowerment and understanding from friends, family, education providers, employers and healthcare professionals.

Our values

Everyone deserves the right to be treated with empathy and understanding. No matter what a person's background, religion or ethnicity, we should all be treated with respect. We value and preserve the resources entrusted to us.

Our charitable objectives

1. The preservation and protection of good health and the relief of sickness of people who have SC by such means as the trustees think fit including, but not limited to the provision of information, support, comfort, services, facilities and social events.
2. To advance the education of the public in all areas relating to SC.

Activities



Cianna's Smile activities have been severely impacted by the pandemic, however, we have still continued to support families and even with face to face activities being postponed we have continued to stay in touch, provide virtual meetings and post activity boxes. Our main priority was to keep everyone safe and we limited activities to mostly the distribution of our wellness boxes.

April 2020

We distributed PPE to beneficiaries including face masks, gloves and hand sanitisers. These were greatly received as many of our service users still needed attend hospital appointments.

Posted NHS Parents Guide to managing sickle cell books to parents/carers who wanted to learn more about caring for a child with Sickle Cell.

June 2020

Art therapy box fundraiser. We successfully raised £1896.00 to fund art therapy boxes for children with Sickle Cell.

October 2020

Art therapy boxes were distributed to over 30 people. Each box contained age appropriate art supplies The recipients were absolutely over the moon and s grateful as art therapy plays

a huge part in distracting from the challenges people with Sickle Cell face and a therapy that we encourage people to try.

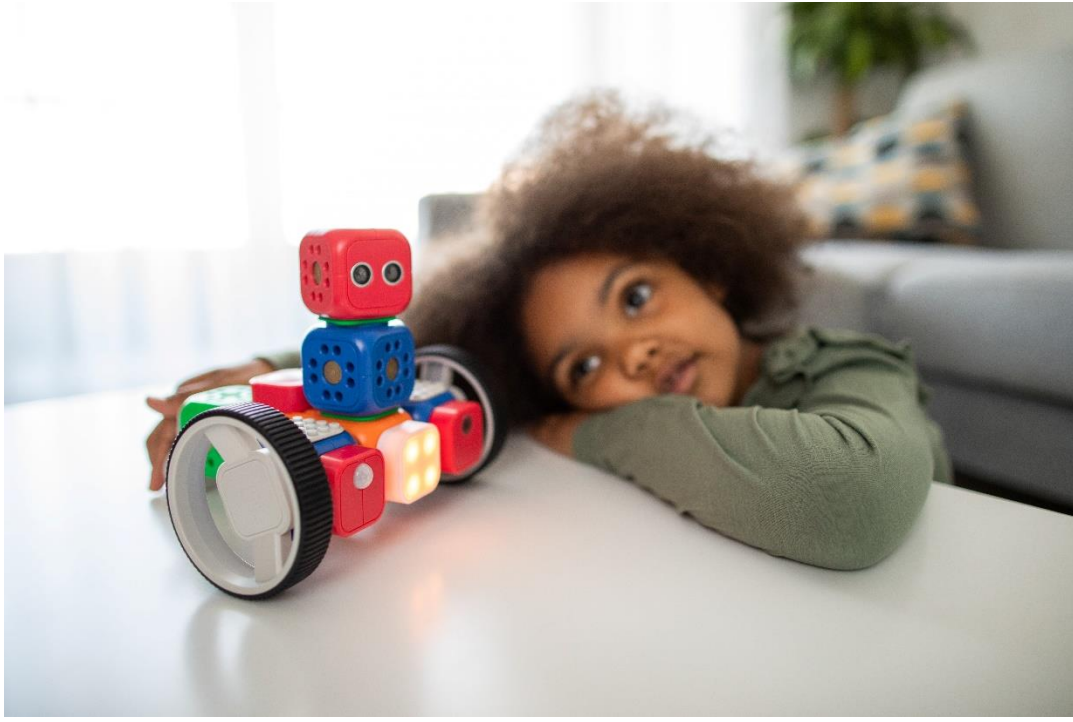
December

Online aromatherapy oils class. We organised an virtual beginners class with a qualified homeopathic practitioner to teach people with Sickle Cell how to use aromatherapy oils safely for pain relief and wellbeing

Taster Pilates class. We organised monthly virtual Pilates classes with a qualified instructor to help people with Sickle explore the possibilities of gentle exercises to help with general wellbeing and encourage confidence when exercising.

January

Winter wellness boxes. We distributed 18 winter care boxes to families. Comprising gloves, bath salts, essential oils, stationary and a few winter comforts as requested by the children we support such as hot chocolate were distributed to beneficiaries of the charity, to help them cope with the complications triggered by the cold weather and provide a small amount of comfort to them.



Achievements and performance

Due to limitations during the pandemic many events were cancelled. We still managed to continue to raise awareness and send out lots of activities for families to enjoy at home safely.

As we see our organisation grow we have started the process of applying for various grants to enable us to carry out our future planned activities. Some of these have now been received, and we are in the process of carrying out those plans. We will be reporting on their progress in future reports.

Achievements

Roald dahl charity interview in June 2020

Berkshire Living magazine article in July 2020

Painless universal interview with Lady Ann Welsh in July 2020

Melan magazine interview in September 2020

Pride of Britain award winner in October 2020

Shortlisted for the Thames Valley awards for charity of the year March 2020

Financial review

The charity ensures that all funds are responsibly used and policies are in place to continually monitor the charity's assets. The charity provides for unexpected expenses and takes advantage of changes and opportunities for development when they arise. This is achieved by setting aside income, when the charity can afford it, which is allocated to a reserve earmarked for specific future purposes rather than for use immediately for the charity's aims.

The trustees regularly assess the appropriate level of reserves to be held in order to avoid putting the charity's solvency, future development or activities at risk.

This means the trustees:

- Consider whether the charity needs to keep reserves – the trustees' primary consideration is the wellbeing of the beneficiaries that Cianna's Smile has been set up to help.
- Have a reserves policy which explains the levels of reserves to be kept and how they can be used.
- Review their reserves policy on a regular basis. This is done to take account of changing financial circumstances and new operating and financial conditions in order to comply with the annual reporting requirements. The trustees consider the level of reserves the charity holds and why it needs to retain them at that level.
- Identify which of the charity's funds have restrictions on their use, i.e. reserve funds that are freely available to spend are distinguished from funds that may have restrictions on their use set by their donors. The trustees consider whether and how reserve funds should be invested, and plan for future development and sustainability.
- Designate funds for use on future projects where appropriate as a way of setting aside and building up funds separated from the charity's general reserves.

12 month strategy

- Provide six Sickle Cell Action Group recreational activities for families affected by Sickle Cell to increase companionship amongst people affected by SC.
- To obtain funding to provide additional educational and alternative support to those affected by SC such as nutritional advice, self-care plans, counselling, transition support for paediatric patients moving to adult care and alternative therapies.
- To employ three individuals to work on the charity's programmes including development and improvement of the website and our social media presence. Our plan is to recruit one person under the Government's Kickstart scheme, and two others preferably from families who care for someone with SC. That way, they will bring their experience to the work of the charity, and we will be helping them further by providing an income to the family.
- Improve community engagement via fundraising activities and educational talks.
- Gain further volunteers to help with the running of the organisation and events.
- To further educate and raise awareness to members of the public by offering two advocacy training days annually and an annual Black History Month talk on SC.
- To network and form partnerships with more existing SC organisations in the UK.
- To build on our impact within the community by inviting guests to participate in events and social media.
- To use the grant of £7,546 recently received to provide a book for children about SC, develop a transitioning handbook for young adults transitioning from paediatric to adult healthcare teams, and a nutritional guide and recipe book to educate families of the importance of diet and nutrition to reduce and manage SC symptoms.
- To arrange our annual fund raising Ball.
- To reinstate the family action group days which we were not able to host last year.

Cianna's Smile

Income and expenditure account for the year ended

5 April 2021

£

Income:

Donations		297.24
Gift Aid on donations		0.00
Grants		0.00
Events: Ball	loss	0.00
Family days	expenditure	(26.94)
Art Therapy box	profit	1,063.35

1,036.41

1,333.65

Sundry receipts

0.00

1,333.65

Expenses:

Sundry payments	42.80
Postage & stationery	63.33
Marketing	0.00
Insurance	0.00
Website	108.34
Care boxes	291.18
Gifts to SC sufferers	121.16

(626.81)

706.84

Less: expenditure met from restricted funds

600.00

Net income for year

1,306.84



R. WILLIAMS
TREASURER

27 April 2021

Cianna's Smile

Balance sheet as at

5 April 2021

	£	£
Fixed Assets:		
Equipment		1,962.37
Current assets:		
Bank account	14,865.90	
Debtors and prepayments	1,240.00	
	<u>16,105.90</u>	
Net current assets		16,105.90
		<hr/>
Total net assets		<u><u>18,068.27</u></u>
Represented by:		
Accumulated funds brought forward		12,864.17
Profit for period		<u>1,306.84</u>
Unrestricted funds		14,171.01
Restricted Funds		<u>3,897.26</u>
Total funds carried forward		<u><u>18,068.27</u></u>

R. Williams

R. WILLIAMS

TREASURER

27 April 2021

Cianna's Smile

Notes to the accounts

1 Restricted Funds:

Received **Balance
At yr end**

Restricted funds can only be used to meet the categories of expenditure for which the grant was made. The relevant categories of expenditure are:

Lottery grant: March 2019	£	
Training	180	180
Public awareness campaign	2,254	2,254
Sickle Cell Action group	623	623
Art Therapy bag appeal	600	0
Holistic therapy day	370	370
Marketing	0	0
Running costs	0	0
Black history month talk	470	470
Lottery grant unspent	<u>4,497</u>	<u>3,897</u>
Total restricted funds	<u><u>4,497.26</u></u>	<u><u>3,897.26</u></u>

2 Debtors and prepayments

Ball tickets purchased in advance	(760.00)
Ball 2021 - expenditure in advance	<u>2,000.00</u>
	<u><u>1,240.00</u></u>

R. Williams

R. WILLIAMS

TREASURER

27 April 2021