



AWARE 2025 Annual Impact Report



Table of contents

03	Welcome and introduction	17	Fundraising, grants and donations
05	Membership summary	19	School talks
07	Mission statement	20	World Autism Acceptance Day
09	Objectives	21	Clubs
13	Great Minds Together Award	25	Parent Education and Support
14	A family's journey through AWARE	29	Quotes
15	What AWARE means to us		

Introduction – Project Manager, Rachel Miller



My Five Highlights of the Year

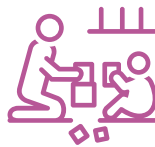
Our **BEAT (Bradford Early Advice Team)** pre-diagnosis programme has seen a huge hike in numbers this year.



We are so proud to offer the BEAT course in both English and Urdu language!



We were absolutely elated to secure funding for a **new parent carer support group** from Bingley Bubble Community Partnership. We asked our members where and when they would like a new group and went with what the majority voted for.



Another outcome of our member surveys was that people wanted a new **holiday session** aimed at younger children in the Keighley area and we were pleased to launch this with great success!



Due to the huge popularity of our BEAT WhatsApp group, we decided to launch a new **post-diagnosis WhatsApp group**, which has proved extremely popular.



We held our now-annual **World Autism Acceptance Day Event** at Bradford City, which just gets bigger and better every year and is the only event of its type in Bradford.

Letter from Geoff Winnard

Chair of AWARE

Welcome

I hope you will enjoy reading our annual report and agree that it gives a great overview of all the different ways that AWARE continues to work to support families with autistic children and young people. It continues to be a privilege for me personally to be associated with such a fantastic local charity.



In October 2024, AWARE celebrated its **25th Birthday**, and what a fantastic journey it has been since it started. It is remarkable how the charity has developed and grown over the years but has continued retain its special ethos as a parent-led charity.

I must say a huge **thank you to Rachel Miller, Nikki Pickles and the fantastic staff team and volunteers** who work so enthusiastically for AWARE and help to deliver all the various activities as well as looking for those all-important fundraising opportunities. Also, **thanks to my fellow trustees** of the charity who meet regularly to ensure that the charity is governed properly and is financially sustainable. We remain a small charity and must never stop looking to raise funds – thanks to all the businesses and other organisations for their continued support.



I should also take the opportunity to note the **retirement in January of our longsting colleague and friend Margaret Nash**, who had made such an enormous contribution to the work of AWARE over many years – we wish her a long and happy retirement.



It's reassuring to see the continued positive feedback AWARE continues to receive from parents and professionals – but we will always welcome ideas suggestions for how we can do things better. I look forward to another successful year of AWARE!

Membership summary*

*As of April 2025

1,768

adult
members

1,507

family
(parent/carer
or other)
members

261

professional
and support
group
members

2,916

total number
of children
who are
members

1,600

children who
attend our
clubs and
activities

30

staff and
volunteer
members

Children and Young People



877 female



1,795 male



35 non-binary

352

BEAT families up from
304 the year before

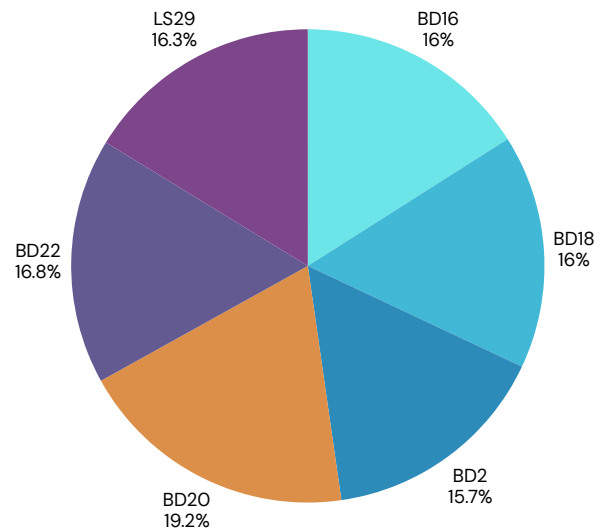
Membership summary*

*As of April 2025

Total number of
postcode areas
including Bradford,
Leeds, Calderdale and
Wakefield

54

Top postcodes



Staff summary

7

part-time
members of staff

35

volunteers in
our database

9

trustees

How did we fulfil our mission statement:

to support and equip autistic individuals and their families to move towards independence

and thrive

Mums' Evening Meet-Up Group

We have been pleased to help some of our female carers create their own evening meet-up group, which is self-run by them with support from AWARE staff when they need it.

Dads' Group

Now a few years old, our Dads' Group continues to meet every few months, enjoying much-needed peer support, usually over food or a drink.



Children and Young People

We are delighted when we see young people who have known each other for several years from AWARE groups start to form strong friendships and meet up independently of our sessions.

New Groups

We have forged relationships with a group of approximately 60 Bradford-based mums from minority cultures who have been actively involved with our services. A core group of these members have gone on to create their own SEND community, Bradford Stronger Together, with which we actively work in partnership.

How do our members say we help encourage independence?



“

“The residentials are not just fun; they teach my son confidence and life skills too.”

“

“Last week’s session helped me sort a lot of things out at home and in my life. I am more prepared for what life throws at me. Since the Zoom about wills I have made a will and planned for my children’s future, setting up trusts. I couldn’t have done anything without AWARE pointing me in the right direction.”



“

“It was good to hear my son was independently ordering his food on the AWARE trip.”

How did AWARE meet its objectives this year?

1

Valuing
the
individual

Feedback from our surveys told us some of you – who can't attend daytime events – wanted a mums' version of the dads' group with evening meet ups. As a result, AWARE staff supported some of our members with the creation of a new, member-run AWARE Mums' Meet-Up Group!



NEW!

We have recently announced two new AWARE sessions; due to popular demand, and to reflect the needs of different members: a new Bingley-based parent support group and a Stay and Play in Keighley for younger children



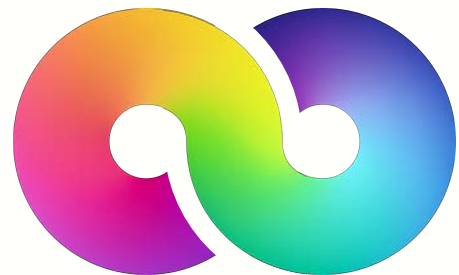
2

A place to belong and be understood

We have run two residential, which allowed young people – some of whom had never been away from home before – to have an adventure in a supportive, understanding environment



With a growing number of parent carers being diagnosed themselves, we have held Zoom information and support sessions to help neurodivergent parents and made sure we reflect autistic people's voices – including those of our adult members – in everything we do



Our BEAT pre-diagnosis WhatsApp group proved so popular as a sub-community of AWARE, that we created a brand new post-diagnosis WhatsApp group, for parent carers to continue gaining support and seeking advice

It is really important to us at AWARE that our children and young people grow up knowing they can take a full part in the community and both our Moving On and Trip Clubs are an amazing way for members to go out on trips with the support of our staff and their peers



We have really boosted partnership working this year, and were very excited to be invited to the Yorkshire Cricket Awards Evening!



3

Being in the
community is
important

We have been thrilled to connect with influential local people – including Anna Dixon, MP for Shipley – who came along to our 25-year anniversary celebration!



There is ALWAYS more to learn for all of us and we have welcomed several AWARE parents who are also professionals onto our Zooms and we have learnt something new from all of them!



We've been truly impressed this year by members who first joined AWARE through the BEAT programme a few years ago, now giving back by supporting other members and volunteering at our events. What a brilliant example of growth and community spirit!

We have seen some lovely peer support amongst our young people, with some older children helping out younger children at our Stay and Play sessions in both official unofficial capacities



4

Learning from each other

Great Minds Together award

Nikki was awarded 'Inspirational
Professional 2024'



“

“Her genuine care is there every step of the way. We’ve laughed together, she’s helped me find strength when I had nothing left to give. Her support has been steady, wholehearted, life-changing.

Nikki is a superstar — not all heroes wear capes — she will always hold a special place in my heart. I truly admire her.”

“

“Nikki has been a listening ear for me when I needed it most. She has suggested support, helped me unpick complex disabilities, guided me through conversations with professionals. Quite honestly, she’s kept my sanity. She has virtually wiped my tears, sat with me in the hard moments, reminded me I wasn’t alone.”

A family's journey through AWARE!



Complete BEAT course and get support from keyworker and WhatsApp group



Join our BEAT programme while on the waiting list. Come along to Saturday Club and Stay and Play



Join post-diagnosis WhatsApp group. Get support from our staff and outside agencies at our face-to-face groups and Zooms



Use your experience to support other AWARE members! Volunteer at fundraising events



Children come along to Youth Club and Cook Club. Complete further parent training



Young people gain independence, come to our residentials and Trip Club



Young people join Moving On Club. Parents continue to use AWARE for peer support and information on further education as well as transition to adulthood

What AWARE means to us

Tammy,
mum of Rupert, 8



We started out with BEAT then completed EarlyBird, which helped us understand autism more and how neurodiverse our whole family is. Having the parent groups and meet ups has helped with feeling less isolated.

"AWARE has helped me find joy and understanding not just with regards to my children but also myself"



We attend Stay and Play, allowing my son to play in a safe environment with other children where I can chat to other parents. Rupert's favourite activity is when the cycling guy comes. It's helped massively with strengthening his leg muscles, core muscles and confidence.



As a parent carer, I enjoy attending the Girlington parent/carer group, mums meals, AGM and Christmas party. My husband also attends the Dads' Group. To show my appreciation and to help AWARE, I volunteer at WAAD and the Ilkley Half Marathon.

"By sharing our experiences we can help each other and lobby for better support for our children. We all know our children are individuals but we find commonality in a diagnosis."

What AWARE means to us

Rachel, mum of Dylan, aged 13

"AWARE staff have always been brilliant with Dylan. He has known them for most of his life and they understand him."



I found out about AWARE when we were going through the diagnosis process when Dylan was three years old. I was a single mum and was really overwhelmed...we decided to start coming to Saturday Club and Stay and Plays it was lovely meeting so many different families going through the same process. AWARE staff helped me when I needed advice. I always found the answers and support we needed.



"I didn't feel supported elsewhere...AWARE staff and other parents are like our family. We cannot thank them all enough for their love and support - thank you."



Without the trips and the groups Dylan would be lost and just at home - he has made many friends he can play with without judgement. We have also done volunteering at the Ilkley Half Marathon. AWARE is the only group he feels comfortable enough to go out without me and be independent. We have tried other places but he did not feel safe or that he could stay with others



We attended a family residential and went caving - that was brilliant - we also stayed at Nell Bank with another family for the weekend. Dylan is now 13 and attends Trip Club, Cooking Club and Youth Club every Friday.

Giving something back



Parents, carers and other AWARE supporters joined us volunteering at Ilkley Beer Festival, helping raise funds for charities such as AWARE



We were delighted to be named the main benefactor of Ilkley Carnival 2024 and our members helped us repay this by helping sell carnival tickets and setting up the carnival



Funding highlights

donations and Fundraisers

£563

raised by
Karen
Mitchell's
tombolas and
raffles

£1109

raised by Paul
Higson running
the Great North
Run

£900

from Laura Talbot
running the London
Marathon

£223

from Give as you
Live and
Easyfundraising

£2099

donations
made via
Localgiving

£2044

from One Lottery
and Don't Send me
a Card

£565

of donations
via other
members'
fundraising

Grants

£

Universal Live

£

Bingley Bubble
Community Partnership

£

Co Op

£

Ilkley Carnival

£

The Harry and
Mary Foundation

£

TNL Awards for All

£

Ilkley Round Table

£

Tk Maxx

£

Sovereign

£

NHS

Spotlight on...

School Talks



"So glad that you came into school, didn't know that there was any help out there even when we don't have a diagnosis. I'm really grateful."

"So helpful, I didn't really know what I didn't know. We have a lot to learn, but I know you are going to really help us!"

"You described my child completely, it's like you really understand him. Thank you!"

192

school parents engaged with
between January-May 2025

16

schools visited between
January-May 2025

Spotlight on...

World Autism Acceptance Day

46

stalls

350

attendees

100%

of attendees would
recommend the event to
others

“

“Last year gave me the info I needed that helped me out of a really rough patch I didn't know was coming. That's why I had to come this year.”

“

“A lovely place for parents/carers and professionals to meet and network”



Spotlight on...

Trip Club

Project	Details	Outcome
Trip Club	Encourage young people's confidence and independence	Attendees say our trips are the only time they feel confident to go out without their parents. They look forward to them and feel more independent due to attending.



Feedback from parent carers

"These trips are not just fun, they teach life skills and confidence too"

"The trips really help boost my son's self esteem confidence"

Impact Snapshot

8

Trips undertaken

61

Young people
attended

We asked our young people to describe trip club in three words:

FUN
INTERESTING
FREEING
FRIENDLY
CHALLENGING
SAFE
INTERESTING
USEFUL
GOOD
EXCITING
FRIENDLY
FREEDOM
ENJOYMENT

100%

of our young people said Trip Club helps them be more independent and said they felt supported by AWARE staff

We want time away from the oldies!

I don't usually use the bus but I did it and I even went upstairs. I'm not with my parents which makes me more independent

I really like Trip Club as I can't do anything mainstream

The staff explain things lots of times when I don't understand. They always help me to be calm

I wouldn't have gone to Gootopia without trip club because I don't have any siblings or a friend who I can ask

Spotlight on...

Stay and Play

Project	Details	Outcome
Stay and Play	Help families get out in the community during school holidays, feel accepted, understood and valued as individuals	Families have told us it is the only place they can relax and have fun together out of the house, where their children can just be themselves

“

Rachel from AWARE was one of the first people to accept my daughter in own her right (she's now on the pathway) without her diagnosed brother.

”



Impact Snapshot

21 Sessions held **497** Children attended

Spotlight on...

Stay and Play

“

My daughter adores the staff; they're so good with her.

”



of attendees said they were very happy with the welcome and support from our staff



of parents who attended with their children said they were likely or very likely to attend again

It's such a supportive, welcoming environment run by lovely people!

It's nice to go somewhere where it doesn't matter if we have a meltdown

My daughter would go every day of the week if she could!

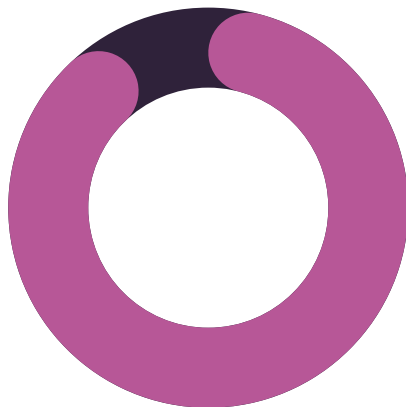
We love all the staff, especially Alfie the volunteer. He has the patience of a saint and I'd like to thank him so much for playing with my daughter

Parent support snapshot



80%

Number of AWARE members using our WhatsApp groups who would turn to AWARE first if they had a quick question about autism or SEN



92%

This figure rose to 92% for members of our closed Facebook group and our post-diagnosis WhatsApp group!



Out of 21 choices given, AWARE provided the second-highest amount of parent carers' information on SEND, according to data collated by the Parents' Forum of Bradford and Airedale, coming second only to school SENCOs.

"Nikki is my go to person for advice; she's a superstar.. She's really helped me understand the process."

Parent support snapshot



100%

Of members who attend our Girlington Support Group said they feel more supported and better able to help their child/young person due to the group. All agreed they feel a sense of belonging.

Staff offer you support and provide advice on where you can get more support for your individual needs

We all support each other through our various experiences

I feel always feel welcome at the sessions and less isolated due to the community atmosphere



Impact Snapshot

1,244

questions asked and answered on our BEAT WhatsApp group

869

questions asked and answered on our general closed Facebook group

505

questions asked and answered on our education closed Facebook group

500

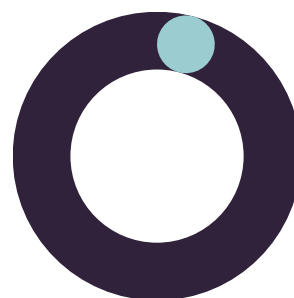
one-to-one appointments giving support on areas such as schooling behaviour

Parent education snapshot



12%

of attendees of our BEAT course had a good understanding of neurodiversity before attending the course



95%

of attendees of our BEAT course had at least a good understanding of neurodiversity after attending the course



To our knowledge, we remain the **ONLY** organisation providing pre-diagnosis training and support in Urdu in the Bradford and Craven districts

“

“There were a wealth of resources from now and next, daily timetables, zones of regulation to sensory support”

“

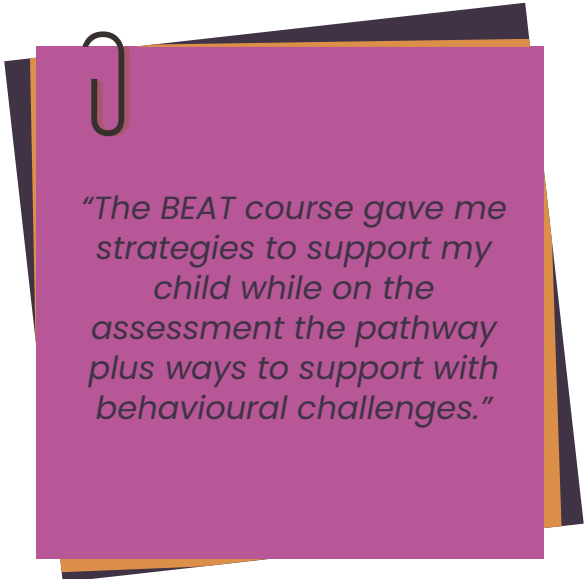
“Javaria and Rakshshah were amazing!”

Parent education snapshot



36

Families, as well as accompanying school staff, have taken part in EarlyBird and EarlyBird Plus parent training this year, learning strategies for helping their children young people



"The BEAT course gave me strategies to support my child while on the assessment the pathway plus ways to support with behavioural challenges."



“

"The course has massively helped me take a step back and try to be more patient and empathetic"

“

"EarlyBird has literally transformed my understanding of the girls - their needs, wants and how their minds work.

My understanding of neurodiversity especially autism has grown exponentially I feel more armed with the tools to help my daughters navigate life"

“

"The course content was all explained in terms that we could understand and could unpick the parts suitable for our child/children"

What do our families say about AWARE?

“

(After her son attended a residential): “It is clear that my son enjoyed the freedom, independence and spending time in a safe community with peers and we enjoyed the opportunity for quality time together with other family. Really appreciated and valued”

“

“Thank you so much for organising Trip Club - my son has such a great time!”

“

“I cannot recommend the EarlyBird course highly enough and feel very lucky to have been able to participate. As mentors you were both fantastic in your knowledge, experience and kind caring manner in which you gave us the information and helped problem solve”

“

“The World Autism Acceptance Day Event provided lots of support and useful information”

“

“The residential weekend was the highlight of my child’s year, as always!!”

What do professionals say about AWARE?

“

“AWARE have played a very active role in shaping policy on parental engagement, SEND provision and the future of alternative provisions. Through this the AWARE team, and the parents supported by AWARE, have actively shaped national decision-making on key issues, and have enabled much-needed change.”

Centre for Social Justice

“

“It's great to share your newsletter with the children's team here at Airedale so they can spread the word to the families we work with”

NHS Staff Member

“

(About our World Autism Acceptance Day Event):

“It is a one-stop-shop for service and support for parents....They can meet people who understand what they are going through and feel they are not alone”

Professional who attended







LOTTERY FUNDED



**NATIONAL
LOTTERY FUNDED**

 **Sovereign**
Health
Care



BINGLEY BUBBLE COMMUNITY PARTNERSHIP



Airedale and Wharfedale Autism Resource

Charity number 1172753

Annual Report and Financial Statements for the year ended 31 March 2025



Airedale and Wharfedale Autism Resource

Annual Report and Financial Statements for the year ended 31 March 2025

Contents	Page
Trustees' report	2 to 3
Examiner's report	4
Receipts and payments account	5
Statement of assets and liabilities	6
Notes to the accounts	7 to 9

Prepared by West Yorkshire Community Accountancy Service CIO

Airedale and Wharfedale Autism Resource

Trustees' report for the year ended 31 March 2025

Reference and administrative details of the charity, its trustees and advisors

The trustees during the financial year and up to and including the date the report was approved were:

Name	Position	Dates
Geoff Winnard	Chair	
Catharine Worsley Tomlinson	Treasurer	
Lorna Gray		
Nathan Randell		
Laura Bolton		
Ann McKerchar		
Jas Baxter		
Jill Cook		
Rebecca Cooper		Appointed 21 October 2025
Fiorella Duran-Robinson		Appointed 21 October 2025

Charity number 1172753 Registered in England and Wales

Registered and principal address

2 Royd House Way
Keighley
BD21 4TY

Bankers

CAF Bank	Virgin Money plc	Shawbrook Bank Ltd
25 Kings Hill Avenue	Jubilee House	Warley Hill Business Park
Kings Hill	Gosforth	Great Warley
West Malling	Newcastle upon Tyne	Brentwood
ME19 4JQ	NE3 4PL	Essex CM13 3BE

Independent examiner

Alan Dodd FCCA

West Yorkshire Community Accountancy Service CIO

Stringer House
34 Lupton Street
Leeds
LS10 2QW

Structure, governance and management

The charity is a Charitable Incorporated Organisation (CIO) association formed on 25 April 2017 and is governed by a constitution.

Method of recruitment and appointment of trustees

The trustees of the charity are appointed by the members at the AGM.

Airedale and Wharfedale Autism Resource

Trustees' report (continued) for the year ended 31 March 2025

Objectives and activities

The charity's objects

The objects of the CIO are:

The relief of need and the advancement of the health and wellbeing of people of all ages who have an autistic spectrum condition (and who may suffer from related conditions), whether or not formally diagnosed, and their families and carers; in particular, but not exclusively, by the provision of support and social opportunities.

The advancement of education, in particular, but not exclusively by:

(a) Increasing public awareness of the needs and challenges of people with an autistic spectrum condition (and who may suffer from related conditions) and their families and carers; and

(b) By providing information and training opportunities to individuals with an autistic spectrum condition, and to people working with or supporting individuals with an autistic spectrum condition.

The charity's main activities

To relieve people of all ages who are diagnosed with an autistic spectrum disorder and in particular by the provision of support and assistance to such persons and their families and their carers.

To increase public awareness regarding the problems and circumstances of people with autistic spectrum disorders and their families and carers and to encourage acceptance in the community.

Public benefit statement

In setting our objectives and planning our activities our trustees have given serious consideration to the Charity Commission's general guidance on public benefit and in particular the support of families and children living with autism in the Airedale and Wharfedale areas.

Achievements and performance

See the attached AWARE 2025 Annual Impact Report

Financial review

The net receipts for the year were £9,087, including net receipts of £3,049 on unrestricted funds and net payments of £-6,038 on restricted funds.

Reserves policy

The charity's free reserves, at the year end were £79,665.

The trustees of the charity consider it prudent to keep a certain level of financial reserves to ensure that main operations can continue and to avoid closure if funding difficulties were to occur. They have set the level of reserves at running costs for a period of three months with an additional two months' salary costs, they estimate this figure to be approximately £68,000.

Approved by the board of trustees on 20/11/2025

Geoffrey Winnard (Trustee)

Airedale and Wharfedale Autism Resource

Independent examiner's report to the trustees of Airedale and Wharfedale Autism Resource

I report to the charity trustees on my examination of the accounts of the CIO for the year ended 31 March 2025, which are set out on pages 5 to 9.

Responsibilities and basis of report

As the charity trustees of the CIO you are responsible for the preparation of the accounts in accordance with the requirements of the Charities Act 2011 ('the Act').

I report in respect of my examination of the CIO's accounts as carried out under section 145 of the 2011 Act. In carrying out my examination I have followed all the applicable Directions given by the Charity Commission under section 145(5)(b) of the Act.

Independent examiner's statement

I have completed my examination. I confirm that no material matters have come to my attention in connection with the examination giving me cause to believe that in any material respect:

- 1 accounting records were not kept in respect of the charity as required by section 130 of the Charities Act;
- 2 the accounts do not accord with those records.

I have no concerns and have come across no other matters in connection with the examination to which attention should be drawn in this report in order to enable a proper understanding of the accounts to be reached.

Alan Dodd FCCA

21/11/2025

West Yorkshire Community Accountancy Service CIO

Stringer House
34 Lupton Street
Leeds
LS10 2QW

Airedale and Wharfedale Autism Resource
Receipts and payments account
for the year ended 31 March 2025

	Notes	2025 Unrestricted funds £	2025 Restricted funds £	2025 Total funds £	2024 Total funds £
Receipts					
Grants and donations	(2)	11,793	152,360	164,153	175,731
Fees and subscriptions		16,920	930	17,850	19,594
Fundraising		4,582	40	4,622	5,468
Bank interest		1,236	-	1,236	1,228
Total receipts		34,531	153,330	187,861	202,021
Payments					
Staff costs		7,506	123,925	131,431	133,276
Travel and other staff costs		923	748	1,671	1,508
Staff training		75	-	75	-
Volunteer and committee expenses		91	-	91	463
Rent and office space		1,541	-	1,541	1,638
Administration, postage and stationery		498	73	571	1,183
Telephone and broadband		1,015	760	1,775	1,777
Insurance		1,146	-	1,146	1,130
Books, publications and subscriptions		2,614	312	2,926	3,374
Independent examination		1,584	-	1,584	1,200
Equipment and materials		382	-	382	262
Activities and events		11,907	6,119	18,026	23,368
Health and safety		-	-	-	32
IT costs		954	47	1,001	2,119
Business development		172	-	172	331
Training		486	15,246	15,732	20,500
DBS checks		202	62	264	431
Bank charges		135	-	135	73
Recruitment costs		-	-	-	15
Repayment of grants		251	-	251	-
Total payments		31,482	147,292	178,774	192,680
Net receipts / (payments)		3,049	6,038	9,087	9,341
Transfers between funds		6,750	(6,750)	-	-
Net movement in funds		9,799	(712)	9,087	9,341
Fund balances brought forward		69,866	70,382	140,248	130,907
Fund balances carried forward	(3)	79,665	69,670	149,335	140,248

Airedale and Wharfedale Autism Resource

Statement of assets and liabilities

as at 31 March 2025

	2025	2025	2025	2024
	Unrestricted	Restricted	Total	Total
	£	£	£	£
Cash funds				
Cash at bank	79,439	69,670	149,109	139,965
Cash in hand	226	-	226	283
Total cash funds	<u>79,665</u>	<u>69,670</u>	<u>149,335</u>	<u>140,248</u>

Debtors and prepayments

	2025
	£
Prepayments	1,410
Accrued income	<u>2,427</u>
	<u>3,837</u>

Assets retained for the charity's own use

The charity retains a full list of all equipment and resources

Liabilities

	2025
	£
Accruals	2,256
Taxation and social security	3,074
Other creditors	<u>422</u>
	<u>5,752</u>

The financial statements were approved by the board of trustees on 20/11/2025

Geoffrey Winnard (Trustee)

Airedale and Wharfedale Autism Resource

Notes to the accounts

for the year ended 31 March 2025

1 Accounting policies

Basis of accounting

The trustees have taken advantage of section 133 of the Charities Act 2011 and have prepared the accounts on a receipts and payments basis.

There has been no change to the accounting policies since last year.

No changes have been made to the accounts for previous years.

Taxation

As a charity the organisation benefits from rates relief and is generally exempt from income tax and capital gains tax but not from VAT. Irrecoverable VAT is included in the cost of those items to which it relates.

Fund accounting

Unrestricted funds are available for use at the discretion of the trustees in furtherance of the general objectives of the charity.

Restricted funds are subjected to restrictions on their expenditure imposed by the donor or through the terms of an appeal.

Further explanation of the nature and purpose of each fund is included in the notes to the accounts.

Airedale and Wharfedale Autism Resource

Notes to the accounts continued

for the year ended 31 March 2025

2 Grants and donations	2025 Unrestricted funds £	2025 Restricted funds £	2025 Total funds £	2024 Total funds £
Bradford MDC	-	2,340	2,340	9,645
Bradford VCS Alliance	-	2,200	2,200	-
Co-op Silsden	-	10,157	10,157	2,817
Ilkley Round Table	-	4,820	4,820	8,000
National Lottery Community Fund	-	80,000	80,000	80,000
NHS Pre-Diagnosis (BEAT)	-	38,323	38,323	41,818
The Harry & Mary Foundation	-	3,000	3,000	-
TK Maxx - Homesense Foundation	-	500	500	-
Awards for All	-	-	-	15,316
Sovereign Healthcare	-	-	-	4,980
Health Champions Network	-	-	-	400
Airedale Enterprises	-	-	-	444
Ilkley Carnival	-	11,000	11,000	-
Other donations	11,793	20	11,813	12,311
	<u>11,793</u>	<u>152,360</u>	<u>164,153</u>	<u>175,731</u>

3 Restricted funds	Balance b/f £	Incoming £	Outgoing £	Transfers £	Balance c/f £
NHS Pre-Diagnosis (BEAT)	35,101	38,323	39,339	(6,750)	27,335
Co-op Silsden	2,720	10,157	2,363	-	10,514
BMDC - Early Years grant	20,902	2,400	6,820	-	16,482
TK Maxx - Homesense Foundation	-	500	36	-	464
Bingley Parent Group	-	2,200	105	-	2,095
Ilkley Round Table	4,841	4,820	3,173	-	6,488
Sovereign Healthcare	1,347	-	1,347	-	-
Reaching Communities	-	80,000	80,000	-	-
Awards for All	5,471	930	2,477	-	3,924
Ilkley Carnival	-	11,000	10,950	-	50
The Harry & Mary Foundation	-	3,000	682	-	2,318
	<u>70,382</u>	<u>153,330</u>	<u>147,292</u>	<u>(6,750)</u>	<u>69,670</u>

Fund name

NHS Pre-Diagnosis (BEAT)

Co-op Silsden

BMDC - Early Years grant

TK Maxx - Homesense Foundation

Bingley Parent Group

Ilkley Round Table

Sovereign Healthcare

Reaching Communities

Awards for All

Ilkley Carnival

The Harry & Mary Foundation

Purpose of restriction

To fund pre-diagnosis support for parents and carers. The transfer represents the cost of free memberships provided from this funding.

Towards the Cook Club.

Run EarlyBird training course for parents.

Staff costs for Moving On Club.

To run parent groups for families in the Bingley area, funded via the Bingley Bubble Community Partnership.

To provide EarlyBird+ training for parents.

Towards the costs of residential.

Running costs and salaries.

Towards the costs of residential.

For residential breaks for children.

To provide trips out for children, improve life skills.

Airedale and Wharfedale Autism Resource
Notes to the accounts continued
for the year ended 31 March 2025

4 Related party transactions

Trustee expenses

No trustee received any expenses during this year or the previous year.

Trustee remuneration and benefits

No trustee received any remuneration or benefit during this or the previous year.

Airedale and Wharfedale Autism Resource

Observations and recommendations for the accounting period 1 April 2024 to 31 March 2025.

Please take some time at your next meeting to consider the following issues arising from our work.

Priority 1 issues must be addressed promptly, providing evidence that they have been actioned provided for the next accounting year.

Priority 2 issues are good practice and will improve your organisation's financial management systems.

Priority 3 issues are for your information or requests from WYCAS.

Support to action any of these points is available from WYCAS.

Issue	Recommendation / Tips for improvement	Priority (1=High)
Approval and signing the accounts - As trustees you are required to approve and sign the accounts, including the trustees annual report.	Please have a careful read through the accounts and make sure you are happy with the text and the figures. We encourage you to pay particular attention to the balances on the restricted funds note (if there is one) and also on the commentary about the reserves in the trustees annual report.	3
Pages to sign	Please sign pages 3 and 6 in black ink	
Compliance with your governing document - Whilst there are no specific issues arising from the independent examination, we are using this opportunity to remind trustees to have an understanding of their own charity's rules - ie. the constitution, trust deed or memorandum and articles of association. Please ask your fellow trustees if you have not had access to the governing document.	If you are thinking about any significant change in your activities or engaging a trustee or a close relative to do some work for the charity, the governing document is the first place to check to see what is possible. We would also encourage trustees to refer to the Charity Commission's guidance for more general information about your responsibilities. This is a really helpful guide and is very user friendly. It can be found here:	3
	The Essential Trustee - Charity Commission Guidance	
	I am aware that the trustees have approved changes to the objects clause in the constitution, but you now need to forward these to the Charity Commission for publication. These accounts contain the original approved wording.	
Filing deadline for CIOs. As the organisation is a CIO you must complete an online annual return and upload pdf accounts via the Charity Commission website by the date shown opposite. Do not scan your signed accounts, please use the pdf accounts that we sent you after the accounts were approved which show the name of the person who signed the accounts and the date signed.	31 January 2026	

Please remember to update the Charity Commission when trustees join or leave the charity.	The charity register details must be up-to-date at all times.	1
Mobile phone contributions.	I am pleased to note that actual costs are now being submitted, rather than the previous practice of making round sum payments.	
Accounting for restricted funds.	The issues raised in the previous year's accounts were fully addressed and resolved, thank you.	
Please remember to complete the WYCAS online survey.	See link on management letter or request a printed copy from your community accountant.	3