

# BUDDY'S FOR CHILDREN WITH AUTISM

England & Wales · Charity number 1172216

## Details

---

**Status** Registered

**Legal form** Other

**Registered** 2017-03-23

**Register** [View on the Charity Commission register](#)

## Contact

---

**Address** 23 Berkshire Court  
Bury  
Lancashire  
BL9 9HD

**Phone** 07703353029

**Email** [Info@buddys.org.uk](mailto:Info@buddys.org.uk)

**Website** [www.buddys.org.uk](http://www.buddys.org.uk)

## Activities

---

**Objects:** TO RELIEVE THE NEEDS OF CHILDREN WITH AUTISTIC SPECTRUM CONDITIONS AND THEIR CARERS BY PROVIDING SUPPORT, EDUCATION AND PRACTICAL ADVICE AND RECREATIONAL AND LEISURE TIME ACTIVITIES PROVIDED IN THE INTEREST OF SOCIAL WELFARE, DESIGNED TO IMPROVE THEIR CONDITIONS OF LIFE AND WHICH DEVELOP THEIR SKILLS, CAPACITIES AND CAPABILITIES.

**Activities:** The prevention or relief of isolation of people who experience Autism living in Greater Manchester area who are socially excluded, in particular by providing opportunities to integrate and provide them with an opportunity to build capacity by establishing and growing friendship, employability and training/learning opportunities to relieve their needs and help them to integrate into society.

## Classification

---

- **How:** Provides Services, Provides Advocacy/advice/information, Acts As An Umbrella Or Resource Body
- **What:** General Charitable Purposes, Education/training, Disability, The Prevention Or Relief Of Poverty, Economic/community Development/employment
- **Who:** Children/young People, People With Disabilities, Other Defined Groups

## Geography

- Bury

## Finances

Period end	Income	Expenditure	Assets	Employees
2025-05-31	£19,494	£19,494	-	-
2024-05-31	£23,556	£21,992	-	-
2023-05-31	£22,124	£17,455	-	-
2022-05-31	£45,322	£27,582	-	-
2021-05-31	£24,151	£25,861	-	-

## Trustees

Name	Role	Appointed
<b>JANE ANN LORD Ms</b>	Chair	2016-09-04
Claire Piper		2026-03-26
REBECCA JANE LORD		2016-09-04
Scott Richardson		2019-09-20
Sharon Nuttall		2019-09-20

**BUDDY'S FOR CHILDREN WITH AUTISM**

England & Wales - Charity number 1172216

---

# Accounts

---



**BUDDY'S FOR CHILDREN WITH AUTISM  
TRUSTEE'S REPORT AND AUDITED ACCOUNTS  
FOR THE YEAR ENDING MAY 2022**

## Information about the Charity

Buddy's for Children with Autism provides parent carers, siblings and young people on the autism spectrum with support and services in and around Bury Lancashire. Buddy's was initially founded to assist other parents fundraise to train their own service dog.



Buddy's amended their remit to include much needed local support for parent carers and children and adults on the autism spectrum.

### **Our Aim and Buddy's Mission Statement:**

*"To relieve the needs of children with autistic spectrum conditions and their carers by providing support, education and practical advice and recreational and leisure time activities provided in the interest of social welfare, designed to improve their conditions of life and which develop their skills, capacities and capabilities."*

### **Trustees:**

Jane Lord-Founder

Scott Richardson-Treasurer

Stephanie Corrigan-Trustee

Rebecca Lord-Trustee

Yvonne-Marie Lee-Secretary

Sharon Nuttall-Trustee

**Charity Number:**

1172216

**Charity Address:**

C/o 52 Pickup Street, Clayton-le-moors, Accrington Lancashire BB5 5NS

**Independent examiner and Accountant**

Simple Accounting  
4 Blackburn Road  
Accrington  
BB5 1HD

**Contents:**

**Page:**

Trustees' report	1-18
Achievements and Performance	10
Charitable Activities	11-16
Buddy's Continue to Raise Autism Awareness	17
Financial Review	18
Plans for the Future	18
Independent examiners report and Accounts	Attached separately

**Trustees' Report for the year ending May 2022**

The Trustees' present their report and accounts for the year ending May 2022.

The accounts have been prepared in accordance with the accounting policies set out in note 1 to the accounts and comply with the charity's Governing document and the Statement of Recommended Practice, "Accounting and Reporting by Charities", issued in March 2015.

**Structure, governance and management**

**Governing Document**

ADOPTED ON: 03/08/2014

**Name**

Buddy's for Children with Autism

**Charitable Purpose-Aims**

**The aims of the Group shall be to:**

*"To relieve the needs of children with autistic spectrum conditions and their carers by providing support, education and practical advice and recreational and leisure time activities provided in the interest of social welfare, designed to improve their conditions of life and which develop their skills, capacities and capabilities."*

**For the purpose of this clause:**

*'Socially excluded' means: being excluded from society or part of society as a result of being a member of a socially and economically deprived community."*

**Powers-Outcomes**

**In order to achieve charitable purpose-aims the Group may:**

- a. Raise money
- b. Open bank accounts
- c. Take out insurance
- d. Employ staff
- e. Acquire and manage buildings

- f. Organise courses and events
- g. Work with other groups and exchange information
- h. Do anything that is lawful which will help it to fulfil its aims

### **Benefits-Outcomes**

*“The prevention or relief of isolation of people who experience Autism living in Greater Manchester area who are socially excluded, in particular by providing opportunities to integrate and provide them with an opportunity to build capacity by establishing and growing friendship, employability and training/learning opportunities to relieve their needs and help them to integrate into society”.*

### **For the purpose of this clause:**

*“To promote social inclusion for the public benefit by preventing people with Autism from becoming socially excluded, relieving the needs of those people who are socially excluded and assisting them to integrate into society”.*

### **For the purpose of this clause:**

- 1) *‘Socially excluded’ means being excluded from society, or parts of society, as a result of one or more of the following factors: unemployment; financial hardship; youth or old age; ill health (physical or mental); substance abuse or dependency including alcohol and drugs; discrimination on the grounds of sex, race, disability, ethnic origin, religion, belief, creed, sexual orientation or gender re-assignment; poor educational or skills attainment; relationship and family breakdown; poor housing (that is housing that does not meet basic habitable standards; crime (either as a victim of crime or as an offender rehabilitating into society).”*
- 2) *“To promote social inclusion for the public benefit by preventing people from becoming socially excluded, relieving the needs of those people who are socially excluded and assisting them to integrate into society”.*
- 3) *“To promote social inclusion for the public benefit by working with people experiencing Autism in Lancashire who are socially excluded on the grounds of their disability ethnic origin, and to relieve the needs of such people and assist them to integrate into society, in particular by:*
  - a. *Providing a local network group that encourages and enables members that experience Autism and their families to participate more effectively with the wider community;*
  - b. *Increasing, or co-coordinating opportunities for members that experience Autism and their families within the community to engage with service providers, to enable those providers to adapt services to better meet the needs of that community.”*
- 4) *“The promotion of social inclusion for the public benefit amongst people between the ages of 0 to 60 who are socially excluded by providing them with an opportunity to build capacity by establishing and growing a business to relieve the needs of those people and assist them to integrate into society”.*

**For the purposes of this clause:**

*'Socially excluded' means 'people between the ages of 0 to 60 years of age who are excluded from society, or parts of society, as a result of one or more of the following factors: unemployment; financial hardship; race; gender; poor educational or skills attainment; disability; ethnic origin; or who are within, or have experienced, the public care or penal system'.*"

- 5) *"The promotion of social inclusion among parents and their children who are socially excluded from society, or parts of society, as a result of their family member experiencing Autism by:*
- a. Providing education and information to support and enable parents of children with Autism to maximise educational opportunities for their children;*
  - b. Raising public awareness of the issues affecting parents and their children who experience Autism, both generally and in relation to their social exclusion;*
  - c. Providing workshops, forums, advocacy and general support;*
  - d. Providing recreational facilities and opportunities for people who experience Autism and their families."*

**Membership**

- (a) Membership of the Group shall be three Trustees over 18 years living or located in the Greater Manchester area who is interested in helping the Group to achieve its aims, willing to abide by the rules of the Group and willing to pay any subscription agreed by the Management Committee.
- (b) Membership shall be available to anyone without regard to gender, race, nationality, disability, sexual preference, religion or belief.
- (c) Every individual member shall have one vote at General Meetings.
- (d) The membership of any member may be terminated for good reason by the Management Committee but the member has a right to be heard by the Management Committee before a final decision is made.
- (e) Each Trustee shall appoint a representative to attend meetings of the Group and notify the Group's Secretary of that person's name.

**Management**

- (a) The Group shall be administered by a Management Committee of Trustee's at the Group's Annual General Meeting (AGM).
- (b) The Officers of the Management Committee shall be: the Chairperson, the Treasurer and the Secretary.

- (c) The Management Committee shall meet at least twice a year.
- (d) The Chairperson shall Chair all meetings of the Group.
- (e) The quorum for Management Committee meetings shall be three members.
- (f) Voting at Management Committee meetings shall be by show of hands. If there is a tied vote then the Chairperson shall have a second vote.
- (g) The Management Committee may by a two-thirds majority vote and for a good and proper reason removes any Committee member, provided that person has the right to be heard before a final decision is made.
- (h) The Management Committee may appoint another member of the Group as a Committee member to fill a vacancy provided the maximum number is not exceeded.

## **Duties of the Officers:**

### **(a) The duties of the Chairperson are to:**

- *Chair meetings of the Committee and the Group*
- *Represent the Group at functions/meetings that the Group has been invited to*
- *Act as spokesperson for the Group when necessary*

### **(b) The duties of the Secretary are to:**

- *Take and keep minutes of meetings*
- *Prepare the agenda for meetings of the Committee and the Group in consultation with the Chairperson*
- *Maintain the Trustee list*
- *Deal with correspondence*
- *Collect and circulate any relevant information within the Group*

### **(c) The duties of the Treasurer are to:**

- *Supervise the financial affairs of the Group*
- *Keep proper accounts that show all monies collected and paid out by the Group*

## **Finance:**

- (a) Any money obtained by the Group shall be used only for the Group.
- (b) Any bank accounts opened for the Group shall be in the name of the Group.
- (c) Any cheques issued shall be signed by the Treasurer and one other nominated official.

## **Annual General Meeting:**

- (a) The Group shall hold an Annual General Meeting (A.G.M.) in the month of August each year.
- (b) All Trustees shall be given at least fourteen days' notice of the A.G.M. and shall be entitled to attend and vote. The quorum for an AGM shall be three members.
- (c) The business of the A.G.M. shall include:
  - (i) Receiving a report from the Chairperson on the Group's activities over the year
  - (ii) Receiving a report from the Treasurer on the finances of the Group

- (iii) Electing a new Management Committee
- (iv) Considering any other matter as may be decided.

### **Special General Meeting:**

A Special General Meeting may be called by the Management Committee to discuss an urgent matter. The Secretary shall give all Trustees fourteen days' notice of any Special General Meeting together with notice of the business to be discussed. All Trustees shall be entitled to attend and vote.

### **Alterations to the Governing/Constitution Document:**

Any changes to this Governing/Constitution Document must be agreed by at least two-thirds of the Trustees present and voting at any General Meeting.

### **Dissolution:**

The Group may be wound up at any time if agreed by two-thirds of the Trustees present and voting at any General Meeting. In the event of winding up, any assets remaining after all debts have been paid shall be given to another Group with similar aims.

This Governing/Constitution Document was adopted at a general meeting of the Group on the 18<sup>th</sup> day of December 2015 and amended accordingly on 20<sup>th</sup> day of May 2022

**Achievements and Performance:**

From May 2021 to May 2022 with the amazing help of donators and volunteers, we continued to support families by donating goods for example; holidays/short breaks to our static caravan, an oven, a tablet, a bike, a washing machine, sensory equipment, clothing, health/hygiene and cleaning products.

Lots of advice, support and services was given in the following areas; Education, Law and benefit services and by completing forms.

Sadly in September 2018 we had to close the charity shop and groups due to the extortionate running costs of a high street location. That said, and since the closure of our charity shop in September, Buddy's for Children with Autism went mobile.

Our advice is still available and free of charge and contact can be made via our website: <http://buddys.org.uk/>

Or via our Face Book group and page: <https://www.facebook.com/janelord02>

Now that we are mobile we set up a new friendship group for children over 7 years and up to 17 years. The friendship group takes place every Monday evening:

**Buddy's Friendship Group**

Our Friendship Group is held every Monday at

The Roc Centre, Westminster Ave, Radcliffe, M26 3WD

6pm - 8pm

£10 per session - from age 7yrs onwards.

We provide precious respite for you, whilst providing  
2 hours of safe, creative fun, refreshments and new  
friendships for your superstar

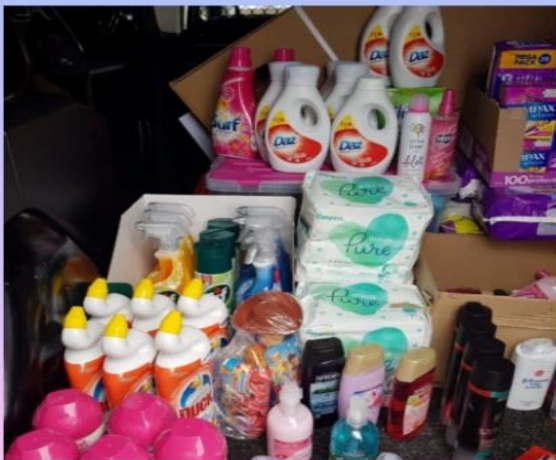
To book, please pop us a message to secure a place.

Buddy's for  
Children  
with Autism

Unfortunately due to the covid pandemic in March 2019 our friendship group had to close and as yet we have not re-instated it. The re-opening of a friendship group will be discussed at our next Annual General Meeting (AGM), due in August 2022.

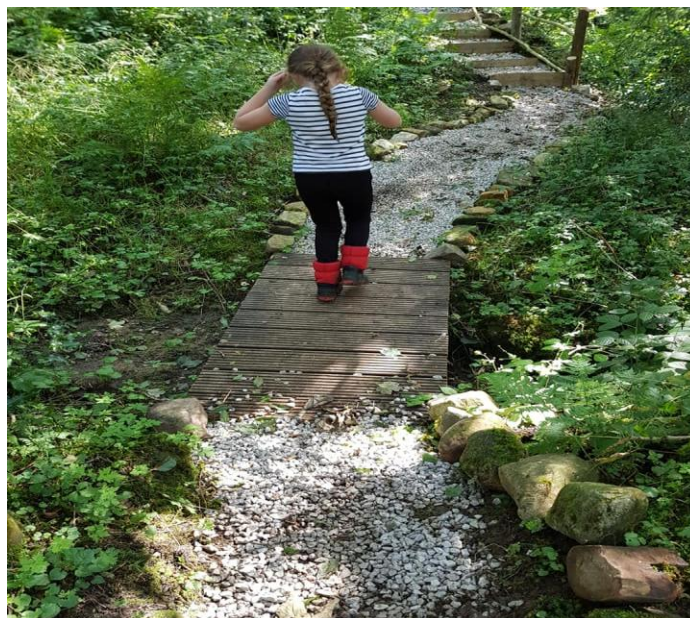
**Charitable Activities:**

The covid 19 pandemic caused a shock to the world economy, disrupting supply chains and contributing to major delays in shipping. Therefore, we continued throughout the pandemic to deliver much needed supplies of cleaning products, hand sanitizer, hygiene products as well as food items to lots of families and, this will be continued. Due to the rise in the cost of living and according to the Bank of England (2022), families will see a rise in inflation and interest rates alongside a huge increase in energy costs. The increase in living costs could put many families into financial crisis especially families that experience disabilities for example, autism. With the help of our donators and volunteers, Buddy's intend to continue the distribution of goods to those families.



## Charitable Activities continued:

Throughout 2020/21 twenty families enjoyed respite breaks in our static caravan at Bowland Fell Holiday Park based in Tosside near Skipton Yorkshire.



We are hoping 2022-2023 will be similar with lots of new families enjoying a well deserved break.

## Charitable Activities continued:

Throughout the year many of our families have enjoyed days out to the cinema, bowling and especially Tree Top Treking in Manchester.



As you can see, a great day was had by all

**Charitable Activities continued:**

We distributed lots of sensory bundles and each child that went to the caravan for a mini break received one of these packs to help reduce their anxiety.



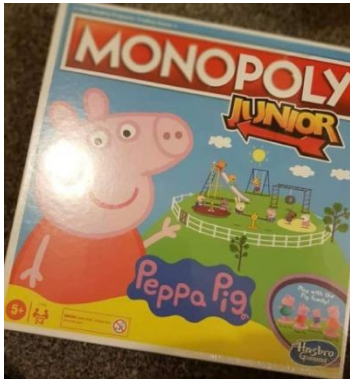
Throughout the year we gifted lots of Lego sets to keep the children busy during the half term holidays.

**CHRISTMAS**

158 children received Christmas gifts; here are some examples of the many that we delivered.

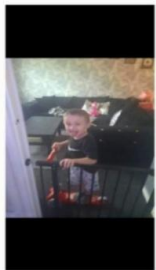


Charitable Activities continued:



Four children received micro scooters and here are the reviews

Lucas has autism he is 4years old, we live in a flat so this scooter will be brilliant for use in the house x



Thank you so much for liams scooter he is 11 and has Asperger's syndrome. One of liams favourite things to do is go round the woodlands so this is going to be well used x



This is a message to thank you all from the bottom of my heart for my two donations of items for my children  
 One being an age appropriate scooter for my youngest daughter.  
 I would never have been able to afford such a good scooter for her being a single mum of five  
 I receive help due to my son having autism and always goes on the essential and daily things we need for him. My two older children get time and help with the young careers service so it was beautiful to be gifted such a nice gift for my youngest  
 And for the donation of the awesome Lego set  
 My son whom is nearly nine is on the autism spectrum  
 And for him to have this huge box of Lego to build a character in one of his favourite films is awesome  
 It helps him calm by concentrating on step by step instructions  
 Once again I can't thank you all enough for the gifts  
 It honestly means the world  
 So thank you x



Hi everyone at Buddy's,  
 Thank you so much for the donation of toys especially, the microscooter.  
 My children were delighted on Christmas morning.  
 Honestly, we can't thank you enough.

NO PHOTO AVAILABLE

## Charitable Activities continued:

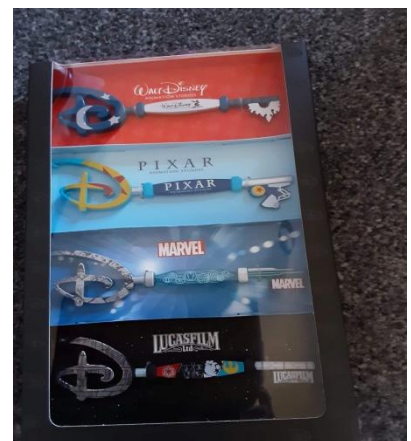
### RALPH LAUREN CLOTHING

Approximately 400 items of clothing were distributed and here is a selection of some of those items.



### EASTER

Over 100 Easter gifts were distributed.



Overall, Buddy's have worked really hard to distribute lots of items and supported some lovely children and their families. This could not be possible without the help of wonderful donators and volunteers so, a massive thank you to all involved.

## Buddy's continues to Raise Autism Awareness

Buddy's were awarded the 'Hate Crime Awareness' award in 2018, although we no longer operate from the charity shop, hate crime can still be reported via our website or the Face book groups or page.



In England and Wales, hate crimes are any crimes that are targeted because of hostility or prejudice in relation to:

- disability
- race or ethnicity
- religion or belief
- sexual orientation
- transgender identity
- alternative sub-culture hate crime

## **Financial Review:**

Reserves policy...

The charity aims to hold an amount in reserves of at least £10,000 so that it is able to meet its overheads for a minimum of three months as well as meet any call for charitable assistance as required.

## **Plans for the Future:**

Buddy's are extremely proud of their achievements and will continue our charitable work into our 9<sup>th</sup> year. We aim to make a difference too many more families and people who experience Autism alongside our future projects.

## **On behalf of the board of trustees':**

X

---

Jane Lord  
CEO

**BUDDY'S FOR CHILDREN WITH AUTISM  
FINANCIAL STATEMENTS  
FOR THE YEAR ENDED 31 MAY 2022**

Simple Accounting NW Ltd

4 Blackburn Road  
Accrington  
Lancashire  
BB5 1HD

**Buddy's For Children With Autism  
Financial Statements  
For The Year Ended 31 May 2022**

---

**Contents**

	<b>Page</b>
Company Information	1
Accountants' Report	2
Income and Expenditure Account	3
Balance Sheet	4
The following pages do not form part of the statutory accounts:	
Detailed Income and Expenditure Account	5

**Buddy's For Children With Autism  
Company Information  
For The Year Ended 31 May 2022**

---

**Director**

Ms Jane Lord

**Accountants**

Simple Accounting NW Ltd  
4 Blackburn Road  
Accrington  
Lancashire  
BB5 1HD

**Buddy's For Children With Autism  
Accountants' Report  
For The Year Ended 31 May 2022**

---

In accordance with the engagement letter dated , and in order to assist you to fulfil your duties, we have compiled the financial statements of the company from the accounting records and information and explanations you have given to us.

This report is made to the director in accordance with the terms of our engagement. Our work has been undertaken to prepare for approval by the director the financial statements that we have been engaged to compile, to report to the director that we have done so, and to state those matters that we have agreed to state to them in this report and for no other purpose. To the fullest extent permitted by law, we do not accept or assume responsibility to anyone other than the Company and the Company's director for our work or for this report.

You have acknowledged on the balance sheet as at year ended 31 May 2022 your duty to ensure that the company has kept proper accounting records and to prepare financial statements that give a true and fair view. You consider that the company is exempt from the statutory requirement for an audit for the year.

We have not been instructed to carry out an audit of the financial statements. For this reason, we have not verified the accuracy or completeness of the accounting records or information and explanations you have given to us and we do not, therefore, express any opinion on the financial statements.

Signed

-----  
**Simple Accounting NW Ltd**

7 June 2022

Simple Accounting NW Ltd  
4 Blackburn Road  
Accrington  
Lancashire  
BB5 1HD

**Buddy's For Children With Autism  
Income and Expenditure Account  
For The Year Ended 31 May 2022**

---

	<b>2022</b>	<b>2021</b>
	<b>£</b>	<b>£</b>
<b>TURNOVER</b>	45,322	24,151
Cost of raw materials and consumables	(27,582)	(14,933)
Depreciation and other amounts written off assets	(2,562)	(2,562)
Other charges	(3,105)	(8,366)
	<hr/>	<hr/>
<b>NET SURPLUS/(DEFICIT)</b>	<u>12,073</u>	<u>(1,710)</u>

**Buddy's For Children With Autism  
Balance Sheet  
As at 31 May 2022**

---

	<b>2022</b>	<b>2021</b>
	<b>£</b>	<b>£</b>
Fixed assets	2,833	5,395
Current assets	25,543	12,236
Creditors: Amounts Falling Due Within One Year	(195)	(1,013)
<b>NET CURRENT ASSETS</b>	<u>25,348</u>	<u>11,223</u>
<b>TOTAL ASSETS LESS CURRENT LIABILITIES</b>	<u>28,181</u>	<u>16,618</u>
Accruals and deferred income	-	(510)
<b>NET ASSETS</b>	<u><u>28,181</u></u>	<u><u>16,108</u></u>
<b>RESERVES</b>	<u><u>28,181</u></u>	<u><u>16,108</u></u>

Notes

**1. Average Number of Employees**

Average number of employees, including directors, during the year was as follows: 1 (2021: 1)

**2. Company limited by guarantee**

The charity is registered

**3. General Information**

Buddy's For Children With Autism is a charity, The England & Wales, charity registered number .

For the year ending 31 May 2022 the company was entitled to exemption from audit under section 477 of the Companies Act 2006 relating to small companies.

The member has not required the company to obtain an audit in accordance with section 476 of the Companies Act 2006.

The director acknowledges her responsibilities for complying with the requirements of the Act with respect to accounting records and the preparation of accounts.

These accounts have been prepared in accordance with the micro-entity provisions.

On behalf of the board

-----

Ms Jane Lord

Director

7 June 2022

**Buddy's For Children With Autism  
Detailed Income and Expenditure Account  
For The Year Ended 31 May 2022**

	<b>2022</b>		<b>2021</b>	
	£	£	£	£
<b>TURNOVER</b>				
Donations received	30,747		27,578	
Caravan rental income	850		2,079	
Surplus/Deficent - Funds	-		(5,506)	
Buddys	13,725		-	
		45,322		24,151
<b>COST OF RAW MATERIALS AND CONSUMABLES</b>				
Donation expenses	10,584		12,781	
Caravan expenses	3,473		441	
Buddy's Space	13,525		1,711	
		(27,582)		(14,933)
<b>DEPRECIATION AND OTHER AMOUNTS WRITTEN OFF ASSETS</b>				
Depreciation	2,562		2,562	
		(2,562)		(2,562)
<b>OTHER CHARGES</b>				
<i>Other distribution costs:</i>				
Administration and support costs	95		-	
<i>Premises expenses:</i>				
Rent	-		6,300	
Repairs and maintenance	-		23	
Cleaning	-		192	
	-		6,515	
<i>General administration costs:</i>				
Vehicle running costs	1,879		480	
Computer software costs	300		275	
Printing, postage and stationery	372		181	
Telecommunications	332		-	
Accountancy fees	-		916	
Sundry expenses	127		(1)	
	3,010		1,851	
		(3,105)		(8,366)
<b>NET SURPLUS/(DEFICIT)</b>		<b>12,073</b>		<b>(1,710)</b>

**BUDDY'S FOR CHILDREN WITH AUTISM  
FINANCIAL STATEMENTS  
FOR THE YEAR ENDED 31 MAY 2022**

Simple Accounting NW Ltd

4 Blackburn Road  
Accrington  
Lancashire  
BB5 1HD

**Buddy's For Children With Autism  
Financial Statements  
For The Year Ended 31 May 2022**

---

**Contents**

	<b>Page</b>
Company Information	1
Accountants' Report	2
Income and Expenditure Account	3
Balance Sheet	4
The following pages do not form part of the statutory accounts:	
Detailed Income and Expenditure Account	5

**Buddy's For Children With Autism  
Company Information  
For The Year Ended 31 May 2022**

---

**Director**

Ms Jane Lord

**Accountants**

Simple Accounting NW Ltd  
4 Blackburn Road  
Accrington  
Lancashire  
BB5 1HD

**Buddy's For Children With Autism  
Accountants' Report  
For The Year Ended 31 May 2022**

---

In accordance with the engagement letter dated , and in order to assist you to fulfil your duties, we have compiled the financial statements of the company from the accounting records and information and explanations you have given to us.

This report is made to the director in accordance with the terms of our engagement. Our work has been undertaken to prepare for approval by the director the financial statements that we have been engaged to compile, to report to the director that we have done so, and to state those matters that we have agreed to state to them in this report and for no other purpose. To the fullest extent permitted by law, we do not accept or assume responsibility to anyone other than the Company and the Company's director for our work or for this report.

You have acknowledged on the balance sheet as at year ended 31 May 2022 your duty to ensure that the company has kept proper accounting records and to prepare financial statements that give a true and fair view. You consider that the company is exempt from the statutory requirement for an audit for the year.

We have not been instructed to carry out an audit of the financial statements. For this reason, we have not verified the accuracy or completeness of the accounting records or information and explanations you have given to us and we do not, therefore, express any opinion on the financial statements.

Signed

-----

**Simple Accounting NW Ltd**

7 June 2022

Simple Accounting NW Ltd  
4 Blackburn Road  
Accrington  
Lancashire  
BB5 1HD

**Buddy's For Children With Autism  
Income and Expenditure Account  
For The Year Ended 31 May 2022**

---

	<b>2022</b>	<b>2021</b>
	<b>£</b>	<b>£</b>
<b>TURNOVER</b>	45,322	24,151
Cost of raw materials and consumables	(27,582)	(14,933)
Depreciation and other amounts written off assets	(2,562)	(2,562)
Other charges	(3,105)	(8,366)
	<hr/>	<hr/>
<b>NET SURPLUS/(DEFICIT)</b>	<u>12,073</u>	<u>(1,710)</u>

**Buddy's For Children With Autism  
Balance Sheet  
As at 31 May 2022**

---

	<b>2022</b>	<b>2021</b>
	<b>£</b>	<b>£</b>
Fixed assets	2,833	5,395
Current assets	25,543	12,236
Creditors: Amounts Falling Due Within One Year	(195)	(1,013)
<b>NET CURRENT ASSETS</b>	<u>25,348</u>	<u>11,223</u>
<b>TOTAL ASSETS LESS CURRENT LIABILITIES</b>	<u>28,181</u>	<u>16,618</u>
Accruals and deferred income	-	(510)
<b>NET ASSETS</b>	<u>28,181</u>	<u>16,108</u>
<b>RESERVES</b>	<u>28,181</u>	<u>16,108</u>

Notes

**1. Average Number of Employees**

Average number of employees, including directors, during the year was as follows: 1 (2021: 1)

**2. Company limited by guarantee**

The charity is registered

**3. General Information**

Buddy's For Children With Autism is a charity, The England & Wales, charity registered number .

For the year ending 31 May 2022 the company was entitled to exemption from audit under section 477 of the Companies Act 2006 relating to small companies.

The member has not required the company to obtain an audit in accordance with section 476 of the Companies Act 2006.

The director acknowledges her responsibilities for complying with the requirements of the Act with respect to accounting records and the preparation of accounts.

These accounts have been prepared in accordance with the micro-entity provisions.

On behalf of the board

-----

Ms Jane Lord

Director

7 June 2022

**Buddy's For Children With Autism  
Detailed Income and Expenditure Account  
For The Year Ended 31 May 2022**

	2022		2021	
	£	£	£	£
<b>TURNOVER</b>				
Donations received	30,747		27,578	
Caravan rental income	850		2,079	
Surplus/Deficent - Funds	-		(5,506)	
Buddys	13,725		-	
		45,322		24,151
<b>COST OF RAW MATERIALS AND CONSUMABLES</b>				
Donation expenses	10,584		12,781	
Caravan expenses	3,473		441	
Buddy's Space	13,525		1,711	
		(27,582)		(14,933)
<b>DEPRECIATION AND OTHER AMOUNTS WRITTEN OFF ASSETS</b>				
Depreciation	2,562		2,562	
		(2,562)		(2,562)
<b>OTHER CHARGES</b>				
<i>Other distribution costs:</i>				
Administration and support costs	95		-	
<i>Premises expenses:</i>				
Rent	-		6,300	
Repairs and maintenance	-		23	
Cleaning	-		192	
			6,515	
<i>General administration costs:</i>				
Vehicle running costs	1,879		480	
Computer software costs	300		275	
Printing, postage and stationery	372		181	
Telecommunications	332		-	
Accountancy fees	-		916	
Sundry expenses	127		(1)	
	3,010		1,851	
		(3,105)		(8,366)
<b>NET SURPLUS/(DEFICIT)</b>				
		12,073		(1,710)