



Autism | ADHD
Neurodiverse Conditions

2024

ANNUAL REPORT AND ACCOUNTS

SUMMARY OF THE YEAR FROM OUR EXECUTIVE TEAM

**KAREN SPENCER, NICKY CHAPERLIN
(SENIOR MANAGEMENT TEAM) AND LYN
HEATHCOTE SHARIF - CHAIR OF THE
BOARD OF TRUSTEES**

In 2023-24, SPACE empowered and supported over 9,700 families with neurodivergent children and young people (autism, ADHD, dyslexia and other neurodiverse conditions) – an increase of 2,200 families compared to the previous year. This growth demonstrates not only the ever-increasing demand for our services but also our commitment to meet these needs.

As a needs-led charity we remain 100% committed to ensuring our vital family support services remain free to all at the point of access. Our impact continues to span a range of free essential services and programmes, including our expanding bespoke SEND family support service, Lending SPACE Community Hub, in-person support groups, dynamic Facebook community and workshops and courses. We have also continued to expand our inclusive activities tailored for neurodivergent children, their siblings, and their families.

This year, we also made significant strides in further strengthening the financial sustainability of SPACE through the rapid growth of our paid-for professional services which enable us to support families as well as the NHS and the education system. By providing pre-diagnostic and diagnostic

services, we help families access needs-led support and faster referrals - bridging critical gaps in the system.

Our Alternative Provision Services, commissioned by Hertfordshire County Council and also available for private commissioning, are instrumental in supporting young people with complex needs and those awaiting special school placements. These services underscore our strategic commitment to evolving alongside the needs of our families whilst diversifying our income to support our charitable objectives.

In addition to local authority tenders and services income, we have been privileged to receive funding from the National Lottery Community Fund, trusts, foundations, companies, and individual supporters. Their generosity has enabled us to continue to grow whilst stabilising our operations and increasing our impact across our programmes and initiatives. This year, we expanded our team to 16 PAYE staff members. We are proud to be a Living Wage employer that embraces inclusivity, employing both parent-carers and neurodivergent individuals with diverse skills and abilities. Half of our team identify as neurodivergent and collectively parent 24 neurodivergent children. Their lived experiences bring unparalleled empathy and commitment to our mission.

We are equally grateful to our network of over 15 ad hoc support staff and regular volunteers, whose dedication is supported by ongoing training and development. Together, they form the backbone of our efforts to meet the ever-growing demand for our services.



LOOKING INTO THE FUTURE

The coming year promises to be both challenging and exciting as SPACE continues to grow and innovate. Whether families need light-touch support or complex, multi-agency assistance, we are uniquely positioned to deliver comprehensive, end-to-end solutions that empower neurodivergent children, young people, and their families to thrive. With a clear strategic vision, robust governance, and the tireless dedication of our staff and volunteers, we remain steadfast in our mission to be there when families need us most.

We extend our heartfelt thanks to our trustees, colleagues, and volunteers for their hard work, passion, and commitment to SPACE. Your support ensures that we can continue to make a meaningful difference in the lives of so many.

Karen Spencer

Nicky Chaperlin

Lyn Heathcote Sharif

2023-24 AT A GLANCE

We're here to empower and support local families with neurodivergent children and young people. We will listen to and help them however they need us to - no matter how big or small.

306



We hosted 306 events and activities in inclusive settings



4,352

Lending SPACE supported loans of 4,352 items from our library of resources.

162

Our Training team ran a total of 162 workshops and courses



1,031

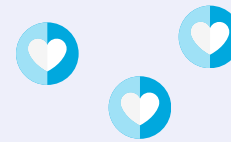
1,031 families of neurodivergent children and young people received 1:1 support from our dedicated Family Support team



448

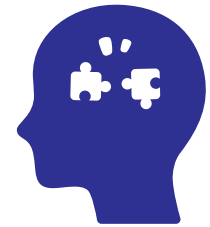


Parents and carers booked to attend a SPACE Hertfordshire support group



9,700⁺

The 'SPACE Hertfordshire' private Facebook Support Group enables over 9,700 parents and carers to get peer-based support from other families in Hertfordshire.



140

140 families accessed our Diagnostic Services including QbChecks, Dyslexia Screenings, Educational Psychology Consultations and Speech and Language Consultations



1,955

1,955 families accessed individual advice appointments

67



Our Alternative Provision service supported 67 families

EVENTS AND ACTIVITIES

We create safe spaces to allow our children and young people to be their authentic selves through delivering an activities programme brimming with opportunities accessible to those who might not have access otherwise. These exclusive events are designed to enhance learning, social interaction, and physical activity whilst having fun!

We hosted over 25 inclusive activities on a regular basis across Hertfordshire, ranging from sports to creative activities - siblings are welcome to take part, and many of the activities can be enjoyed by the whole family.

This year, we expanded our offerings to meet the growing demand by introducing new activities and bringing back some family favourites such as Doughnutting and Bell boating - working with Herts Disability Sports Foundation, Wellbeing Walks, Therapeutic farming, Roller Skating and Indoor Climbing.

We also continued our successful collaborations with the Hertfordshire Fire Service through their SEND open days and Hertfordshire Libraries with inclusive live theatre events hosted in their venues.



OUR 2024 EVENTS IN NUMBERS



306

events hosted
in inclusive
settings



3,175

bookings
were made



357

hours of group
events and
activities were
facilitated



Based on demand for holiday
activities, we ran a programme
of events over the summer
holidays for the first time

658

children and young
people attended in total



EVENTS AND ACTIVITIES

OUTCOMES AND IMPACT



Parents and carers

100%

find our events and activities safe environments for their family to be themselves

97%

feel they contribute to their emotional wellbeing and support

98%

feel they help them feel part of a community

95%

feel less isolated



Children and young people

92%

feel more optimistic about the future

97%

increased confidence

98%

increased self-esteem

85%

reduced anxiety

86%

increased independence

97%

increased general wellbeing

90%

improved family relationships

EVENTS AND ACTIVITIES

THIS YEAR WE...



Partnered with the Herts and Middlesex Wildlife Trust to bring a series of outdoor events focused on connecting with nature and the natural environment to our families including wildlife walks, fire lighting, and animal mosaics.



Responded to a fast growing number of young people unable to attend school due to anxiety, overwhelm and unmet needs. We initiated wellbeing walks for them during the school day in partnership with a clinical psychologist.



Collaborated with a skilled art therapist to successfully introduce subsidised group art therapy sessions for some of our vulnerable parents and carers. The positive outcomes experienced by participants have led us to expand the programme with 6-week courses.

SHORT BREAK LOCAL OFFER



2,061

hours of SBLO activities were delivered

We were recommissioned by Hertfordshire County Council as a Short Break Local Offer (SBLO) provider. The children and young people who signed up to SPACE SBLO enjoyed group activities such as graffiti, aerial gymnastics and watersports and towards the end of the year an expanded offer which included 1:1 activities such as cooking, art, yoga, driving and mixed martial arts.

1:1 ACTIVITIES



1,255

sessions of 1:1 therapeutic activities were delivered

There continues to be a strong demand for our online and in-person 1:1 activities, designed to boost confidence and self-esteem in children and young people with SEND. These sessions help them transition into our inclusive group activities, encouraging social skills, new interests, and friendship. Sessions included 1:1 therapeutic yoga, art, cooking and martial arts.

PARENT / CARER ACTIVITIES



10

parent / carer activities hosted

At SPACE, we understand the highs and lows, the challenges and joys because we also live with and love children and young people who are neurodivergent. Recognising the need for parent/carers to have respite, a supportive environment, and opportunities to connect with others on a similar journey - we organised craft sessions, art therapy, and comedy nights with Joe Wells.

AN ACTIVITY FOR EVERYONE

Our event schedule includes:

- Aerial Gymnastics
- Pottery Painting
- Outdoor Play at The Patch
- Lego Club
- Online Lego Club
- Paddle Sports
- Indoor Climbing Experience
- Introduction to Roller Skating
- Stand Up Paddle Boarding
- Bell Boating
- Booster Cushion Theatre
- Little City Role Play
- Therapeutic Farming
- Waterways Boat Trip
- Animal Encounters
- Virtual Zoo
- Parent/Carer Art Therapy
- Online Art
- Online Cooking
- Jump City

New additions for 2024:

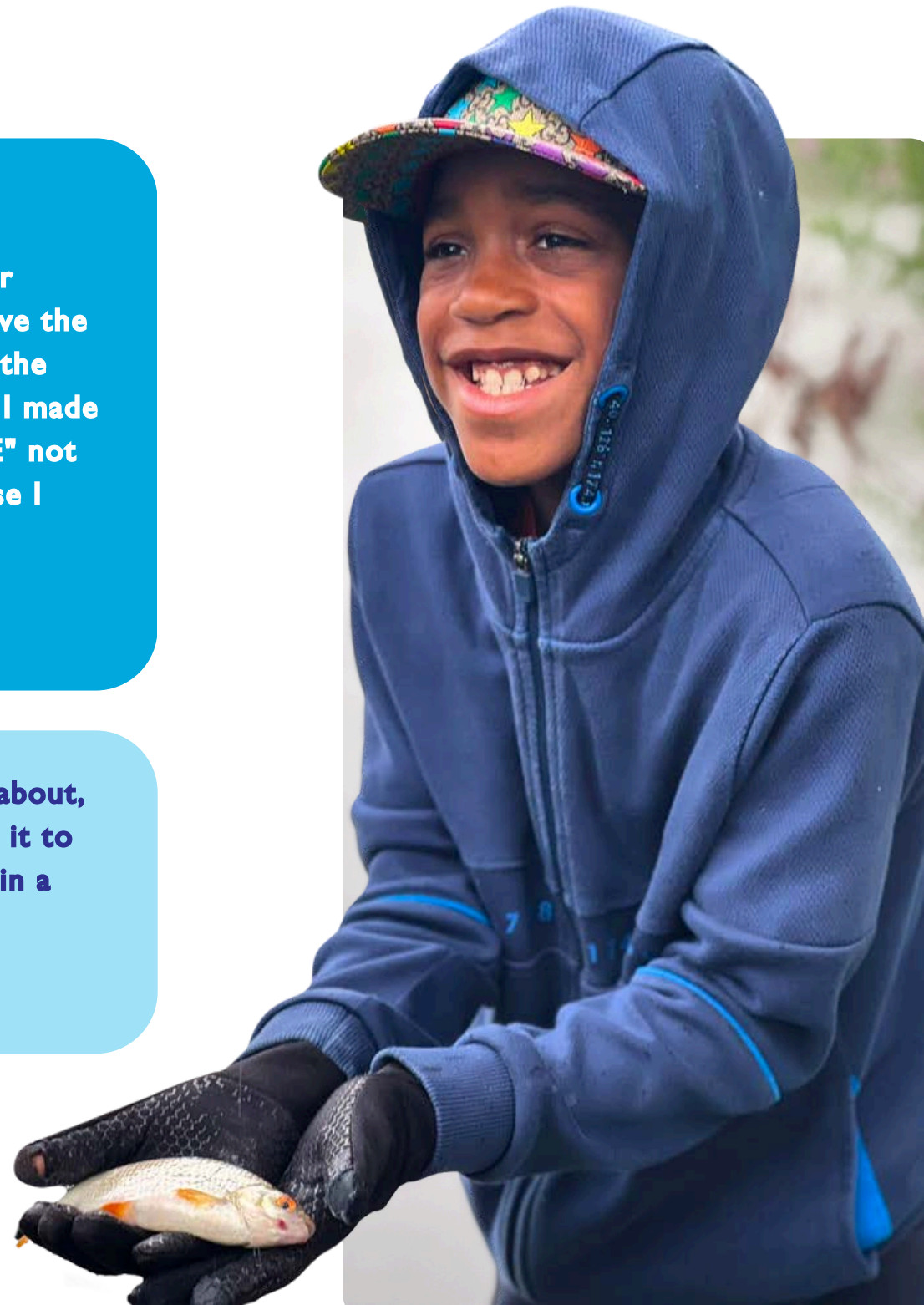
- Breakfast with Santa
- Christmas Craft Workshop
- Joe Wells Comedy Show
- Mosaic Animals with Herts Wildlife Trust
- Parent/Carer Craft Session
- SPACE to Grow
- Tweens and Teens Craft Session
- Wellbeing Walk

“When attending SPACE activities we know we will be welcomed and included. Activities are set up to allow our children to participate as well as ensuring the parents have the opportunity to socialise if they want to. Through one of the groups my daughter has made a friend, and subsequently I made friends with the other Mum. SPACE created that "SPACE" not just for my child but for me too - I don't know where else I could have found that. Thank you SPACE.”

Parent/Carer

“Really amazing opportunity to get the children out and about, which can be difficult but we have not yet failed to make it to their space activities! Thank you for this genuine lifeline in a really tricky time for our family!”

Parent/Carer



YOUR SPACE

We were recommissioned by Hertfordshire County Council by the Transforming Care Team to run Your SPACE – a social care project supporting some of the most vulnerable children in our community. This is a project designed to enable children and young people on Hertfordshire's Dynamic Support Register (DSR) to access recreational activities to meet their complex needs.

Using a highly tailored, person-centred, therapeutic approach, since launch in October 2021 SPACE has received:

58

referrals to date

609

hours of bespoke 1:1 activity respite has been successfully delivered to young people on the DSR with over

162

planned hours of delivery

YOUNG PERSON B

Child B was referred to Your SPACE after her discharge from a CAMHS inpatient facility. In the initial meeting it was stated that Child B presented with severe anxiety, low mood, and self-harming behaviours (cutting and burning). She was electively mute, rarely speaking to family for over 3 years. She self-isolated in her bedroom, lacked motivation, had a poor appetite, and was not attending school. Her key worker stressed that any transition into activities required careful planning due to her anxiety and difficulties in engaging with others.

A transition meeting was held with key staff to discuss Child B's needs, preferences, and communication preferences where it was agreed she would initially communicate through text on her mobile phone. Child B attended a CathARTic taster session, where she felt safe, comfortable, and understood to the point of verbally communicating with staff. During a subsequent inpatient stay at CAMHS, she expressed a desire to continue accessing CathARTic and on looking at the wider Your SPACE offer also showed interest in attending Therapeutic Hooves.

Outcomes (ongoing)

- Upon discharge, Child B resumed attending CathARTic and is also now attending Therapeutic Hooves.
- The 1:1 nature of the activities has provided a safe and supportive environment for Child B to engage and build trust.
- Child B has continued to verbally communicate with key staff.
- She is responding positively to having meaningful structure and support after this discharge.



LENDING SPACE

Our Lending SPACE, commissioned by Hertfordshire County Council, serves as a Community Hub for SPACE families. Open three times a week for drop-in sessions, it offers parents and carers the opportunity to borrow equipment, enjoy a cup of tea, let children play, and connect with other parents. Our staff and volunteers provide advice, support, and a listening ear. To accommodate working families, we are also open on Saturday mornings. Additionally, our SPACE van is used to deliver equipment to families unable to visit in person. The hub welcomes our community and professionals, providing a versatile space for various family interventions.

“The Lending Space has been fantastic and saved us so much money too. Kids love the things we’ve been trialling and of course having the novelty factor as we can change them also is a big bonus. Thanks from the whole family.”

This year Lending SPACE supported loans of

4,352

items from our library of resources.



- Families tell us that their children feel safe and happy at Lending SPACE, which is essential for their wellbeing.
- The provision of sensory items and advice has enabled families to engage in activities like dining out and taking trips, which were previously challenging.
- The ability to try out resources has helped children prepare for important events, such as exams, with tools like weighted jackets.





LENDING SPACE - IMPACT ON FAMILIES

Community, Emotional and Financial Support

- Lending SPACE provides a community where parent/carers can share experiences and strategies, making them feel understood and less isolated.
- Parents and carers have the opportunity to meet others facing similar challenges, fostering a supportive network.
- The ability to borrow and try expensive sensory items before purchasing has significantly helped families make informed decisions, saving money and reducing stress.

100%

agree it provides a safe environment for their family to be themselves

100%

have tried resources that support their child's needs

98%

have saved money by being able to try resources

96%

feel support from staff has made them more confident supporting their child's needs

91%

have gone on to buy resources they initially borrowed from Lending SPACE

1,383

families visited Lending SPACE over the course of the year (3,108 individuals)

120

deliveries and collections were made to families otherwise unable to access Lending SPACE to all areas of Hertfordshire

50+

professionals including children's centre family support teams, health visitors, social practitioners, SENCOs, nursery nurses and wheelchair services visited Lending SPACE

WORKSHOPS AND COURSES FOR PARENTS AND CARERS

We were recommissioned by Hertfordshire County Council to run workshops for parents and carers of neurodivergent children and young people, we also fund our own programme of workshops and courses so we are able to quickly respond to the current and changing needs of our families.

During this period we ran a total of

162 workshops and courses

For over

11,000 parent / carer bookings

We ran workshops on

32 different topics

designed to support parents and carers better understand and support the needs of their children and young people.

“SPACE workshops have been a game changer, not only have they helped myself and my husband understand our children better but we've been able to pass on that knowledge to extended family. It's helped us understand his sensory needs in school, and placed us better able to communicate and affirm those needs to the school.”

LIVE RECORDINGS

We have made our online workshops more accessible by recording them and making them available for 7 days to any parent/carers who registered and then weren't able to attend live. Since November 2023 these have been watched 1.7k times.



WORKSHOPS AND COURSES FOR PARENTS AND CARERS

Our workshops and courses have a big impact on the parents and carers who attend them and on their children and young people, including:

98%

use tools and strategies at home to support their child/young person

96%

better understand their child/young person's neurodiverse condition

94%

feel better able to prioritise the needs of their child/young person

96%

feel more empowered to advocate for the needs of their child/young person with friends and family

98%

feel more confident discussing their child's neurodiverse condition with others

96%

feel more empowered to advocate for the needs of their young person at their school or setting

TRAINING FOR PROFESSIONALS



SPACE works with schools, settings and corporate clients to help support the needs of children, young people and adults with neurodiverse conditions. Our training is tailored to link in with the parent programmes we deliver and so brings a person-centered outcome. This year, we delivered 18 training sessions including to many private schools in Hertfordshire and a rolling training programme for Hertfordshire Libraries.

HERE ARE A FEW OF THE TOPICS INCLUDED:

- Navigating the SEND World
- Navigating the SEND World Post 16
- Autistic Girls
- Anxiety & SEND
- ADHD in Girls and Women
- Understanding Autism
- Understanding ADHD
- Anger & Conflict
- Sensory, Signs, Signals and Solutions
- Sleep Workshop
- Understanding and Supporting Executive Functioning
- Understanding Specific Literacy Difficulties Including Dyslexia
- Understanding Dual Diagnosis: Autism and ADHD
- Puberty and SEND
- Understanding and Supporting Emotional Regulation
- Access Arrangements

- No Two Brains Are the Same. What is Neuro Diversity?
- Navigating the SEND World
- Understanding Behaviour as Communication: A Therapeutic Approach
- Tourettes
- EHCP - New Applications
- EHCP - Annual Reviews
- EHCP - Submission to Finalisation
- Navigating the SEND World (Beginning the Journey)
- Talking SENSE
- First Steps
- Sleep tight

AND MORE!

BESPOKE, FREE 1:1 FAMILY SUPPORT

Our SEND Family Support team has continued to grow and adapt to meet the increasing and changing needs of our families. Our work now includes home visits, formal casework, intensive family support over extended periods, and the implementation of person-centred support plans tailored to family need.

We have strong working relationships with other agencies enabling multi-agency support to identified families with clear responsibilities shared between SPACE and specialist services.

We also deliver SEND Champion work supporting and upskilling other Family Support Services including Hertfordshire's Intensive Family Support Team, Social Workers, School Support Workers.

1,031

families supported

1,955

individual advice appointments

39

families supported through formal casework



Our family support team won 'Partner of the Year' from CHEXS, a family support charity covering the Broxbourne area of Hertfordshire

First STEPS

Early intervention for neurodivergent children and supporting them during this critical stage of development is essential for their holistic development as well as their long-term mental health and wellbeing.

Responding to a 50% increase in the number of parents and carers of children under 5 contacting our Family Support team and the challenges they outlined, we developed and piloted our new 6 week First Steps course in October.

Questionnaires were issued 12 weeks later, to assess impact.

100%

of participants strongly agreed that the course helped them to: better understand their child's neurodiverse condition, sensory needs, and communication preferences; and feel better equipped to support difficult behaviours.

We have now run 4 First Steps courses in different areas of Hertfordshire empowering 76 parent/carers.

"I don't think it's any exaggeration to say First Steps has transformed my relationship with my daughter. I understand her so much more and have a whole bucket load of ideas to help support her which I've also shared with her nursery and they have commented how helpful it's been too. Nothing was too much for the trainers with lots of individual advice and perspective. I couldn't recommend it more."

Whilst being supported by our support workers, families remain at the centre of all planning and decision making. Here are some examples of the tailored 1:1 support families received from the team during this period:

- Practical advice, including help with paperwork and claiming the benefits they are entitled to
- Support to navigate the pathway for Autism & ADHD diagnosis
- Information & signposting to additional services
- Emotional support and a listening ear
- Advice and suggestions on supporting and modelling interactions, interventions, and strategies
- Help to understand and support behaviours
- Advocacy to ensure the family's specific needs are understood
- Making direct referrals & following up with agencies to access support required quickly, this includes successful referrals to all levels of Hertfordshire's mental health services (PALMS, CAMHS, Step 2)
- Support at meetings with other stakeholders including school and Child In Need Meetings
- Support to access the wider SPACE offer

Other stakeholders the team has worked with during this period:

- | | |
|---|--|
| • Intensive Family Support Team (Hertfordshire County Council) | • CHEXS |
| • Integrated Services for Learning (Hertfordshire County Council) | • HABS |
| • Special Needs Health Visitors | • Families First Partnerships |
| • Health Visitors | • PALMS |
| • School Nurses | • CAHMS |
| • Social Prescribers | • Other statutory services including the NHS |
| | • Police |
| | • Schools (Public and Private sector) |

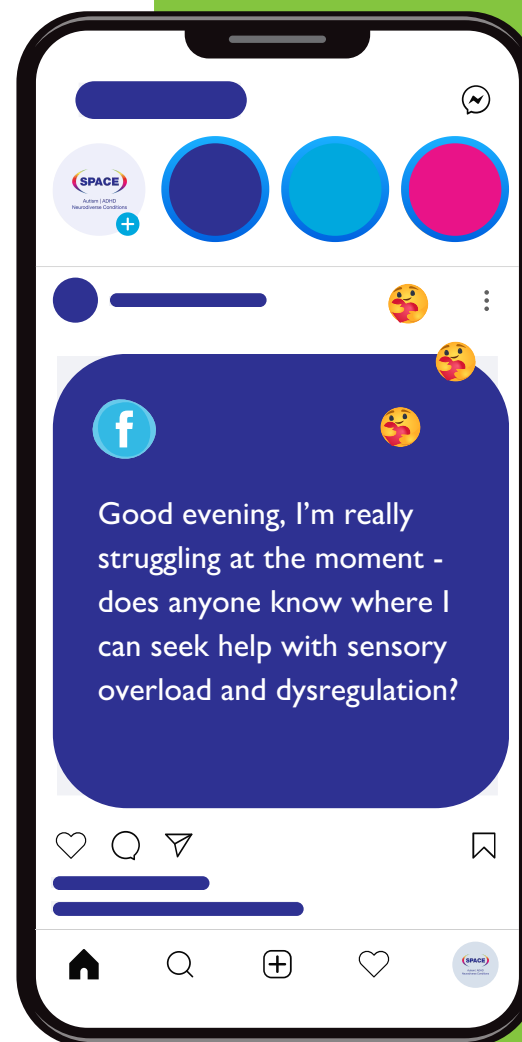
FACEBOOK SUPPORT GROUP

The 'SPACE Hertfordshire' private Facebook Support Group enables parents and carers to get peer-based support from other families in Hertfordshire.

9,700+ members

It remains the biggest online SEND support group in the county with over 9,700 members and brings parent/carers and professionals together to share experience and support, increase understanding and reduce social isolation.

During the year we had over **2,000** members post on the group which includes sharing successes, asking questions, looking for advice or simply looking to offload, and over **28,000** supportive peer-to-peer responses.



SUPPORTING FAMILIES

Child L, 13 years old

Child L and their older sibling had both been waiting for autism/ADHD diagnoses for over 27 months, with no appointment in sight. Child L was experiencing mental health issues, school avoidance (EBSA), self-care difficulties, and challenging behaviours, including a restricted diet and controlling behaviours at home. Mum and dad struggled to get child L to attend school or engage socially with friends or family. Family relationships were deteriorating, with no external support from school or services. The family had previously accessed SPACE's support, but challenges resurfaced after Christmas.

Actions taken by SPACE Family Support:

- Regular telephone and email support tailored to the family's needs.
- Development of action plans addressing key challenges.
- Provided parents with information and strategies for understanding and managing their child's behaviours, including de-escalation techniques.
- Referrals made to CAMHS, PALMS, Children's Services (IFST), and ARC interventions for specialized support.
- Helped the family develop strategies to re-engage the child with the community at their own pace.
- Participated in multi-agency meetings to develop a plan for mental health support and liaised with various health and service professionals to expedite the family's needs.
- Provided emotional support to the mother.

Outcomes after support

- An Education, Health, and Care Plan (EHCP) is now in process.
- The mother feels more confident and empowered to manage difficult situations.
- The family has had successful experiences that help them prepare for future challenges.
- The mother has engaged in workshops and courses to better understand her child's needs.
- Carer's assessment is in progress, and mentoring support has been commissioned to help the CYP access school and community activities.
- The family is now receiving Disability Living Allowance (DLA) and enjoying more positive moments together.
- SPACE continues to support the family alongside the IFST team.

"I cannot thank you enough for helping us when we really needed it. You really supported me especially and have always been right by our side! Your support has been our lifeline. We felt like bad parents but now we realise there was a reason and are able to put things in place to support our child." - Parent/Carer

FAMILY SUPPORT SURVEY OUTCOMES

Aspect of the Family Support service parents and carers have found the most useful are:

81%

Practical advice and strategies

76%

Emotional support

76%

Signposting and access to resources and services

57%

Information about neurodiversity

100%

say support from the Family Support team has helped me...

- Improve my understanding of neurodiversity
- Get practical information and advice on how to support my ND CYP
- Feel more empowered to embrace neurodiversity
- Feel more confident managing challenges relating to neurodiversity in my family
- Feel less isolated

100%

agree support from the Family Support team has positively impacted emotional wellbeing

100%

agree family relationships have improved thanks to advice and support from the family support team

"We are an immigrant family. My wife and I are going through a very stressful time. It is not an easy situation. At first we were overwhelmed but the team has given us a lot of support. We felt lost before we began involving with SPACE. Now we have a place to go to and ask questions and get advice. We are confident the assistance we get from SPACE will have a positive effect on our child's life." - Parent/Carer

"The Family support worker offered us tips on how we can request help from the school. The information she gave me has been amazing and the suggestions she gave have now been out in place at my child's school." - Parent/Carer

"Our Family support worker was amazing in the support she provided. She helped me change my perspective and to understand my son. She provided very tailored advice and helped me to problem solve. She was able to reassure me and provided real life examples and encouragement. She did not dismiss our concerns or experiences." - Parent/Carer

"It was so lovely to speak to someone who completely understands what we are going through. The positivity about what I had done to support my son so far and the acknowledgment that I was doing everything I could for the stage we are at. I have felt like a failure as a mum so many times in the last few years so it was just what I needed to reenergise me to keep going and thinking more positively for the future." - Parent/Carer

SUPPORT GROUPS

Our three in-person support groups that run monthly across the county in Croxley Green, Welwyn Garden City and Hoddesdon, provide safe, nurturing environments for parents and carers to connect, share experiences, and access valuable resources. As well as providing practical peer-based advice and support their primary purpose is often to support the mental health and wellbeing of these caregivers. During this period we have had

448

parents and carers book on to these groups.

The impact on the mental health and wellbeing of parent/carers who attend the support groups is clear. Feedback has shown:

**Feel less
isolated**

69%

Strongly agree

31%

Agree

**Positive
impact on
mental
health**

75%

Strongly agree

25%

Agree

**Feel heard
and
understood**

63%

Strongly agree

37%

Agree



“The SPACE support workers who attend are wonderful and really help you through any difficult times you are having. Some of the monthly speakers are really informative and give guidance for help that I didn't know was available for my child.”

BUILDING CONFIDENCE AND TOGETHERNESS IN OUR LOCAL COMMUNITY

As we work with neurodivergent children and young people, providing safe and inclusive community based initiatives is of great importance to SPACE.

This year we have launched SPACE to Grow, our new allotment project providing activities and horticultural therapy. After a successful pilot and with support from volunteers, families and local businesses we have transformed a neglected, overgrown plot that we took on in March 2023.

We have installed a shed, greenhouse, and compostable toilet. Picnic tables, seating, a fire pit and a gazebo create social space. We have created flower and vegetable beds and a pumpkin patch. Raised beds accommodate wheelchair users. A sensory garden with windchimes, fragrant plants, and colourful garden decorations is a calm area, whilst our mud kitchen is a fun play space for neurodiverse children and their siblings.

We also participated in Feel Good Week focused on mental health and connection with the outdoors running a conservation and irrigation session on the allotment for children and young people not currently able to attend school.



INVESTING IN OUR VOLUNTEERS

We have maintained our team of regular event and Lending SPACE volunteers at 14 and focused on their development and increasing their voluntary time with SPACE.

In total just under 50% of all staff hours at our events and activities was donated by volunteers equating to a saving of £2,200 for the charity over the course of the year.

We have developed an ongoing programme of 'litebite' training for volunteers to support them in their own 'professional development' – professional boundaries, safeguarding, managing tricky situations and photography. We have had 70% attendance at these sessions.

We have started to work with our community to source more specialist skills where required for example working with a local printer as their Charity of the Year so they produce all our flyers and other marketing materials (such as running vests) at cost.

We have 6 volunteer 'caretaker' families for our SPACE to Grow allotment and have 4 additional regular volunteers working purely on the allotment making things, fixing things and advising us.

We have built opportunities for local businesses to volunteer on our allotment and have had corporate volunteering days donated from ASOS, Schneider Electric and Volker Fitzpatrick.



"I'm just blown away by SPACE, we only heard about you in the summer when meeting a doctor for testing our son for ADHD but since then we've been on a boat trip with other families, tried golf and been on a few courses and it is amazing. The people who run the courses are so knowledgeable, create a friendly open approach and we learn so much and feel "no longer alone". You guys are amazing."

ADDING OUR VOICE TO ENSURE THE NEEDS OF OUR COMMUNITY ARE HEARD AND REFLECTED

This year, we regularly attended group meetings and conferences to give a voice to our community and ensure their needs are met.

- Early Years Network meetings
- Early Years SEND Conference
- DSPL meetings
- Cluster meetings

We continue to be particularly focused on strengthening our relationships with local schools and have attended many school coffee mornings to talk with parent/carers about SPACE as well as being actively involved in Hertfordshire's Autism in Schools Programme.

ON THE ROAD

The team have visited Family Centres, Homestart sessions, schools, colleges and play groups to speak with staff and parents about SPACE and offer support to individuals experiencing challenges.

EDUCATING LOCAL COMMUNITIES

We take pride in being an active member of our community. By participating in SENCo forums, we ensure that schools are aware of SPACE and can direct parents accordingly. We attended information stands organised by the local authority, DSPL's (Delivering specialist provision locally) community halls and local businesses such as Tesco, participated in Purple Tuesday in Welwyn Garden City, worked with local councils to deliver Neurodiversity Celebration Week campaigns and delivered presentations to Rotary clubs, community interest groups, and local residents groups to provide the local community with information about SPACE and neurodiversity.

To build on collaborative opportunities to support our community, we also attended events organised by other community interest groups and charities.

THIS YEAR, OUR COMMUNITY OUTREACH WAS ACCESSED BY PROFESSIONALS, INCLUDING:

- AJM Healthcare
- Autism in schools
- Carters - usually six weekly visits
- CHEXS
- Community Nursery Nurse (North Herts)
- Daisy chains - monthly visits
- Family Support Amwell View
- Family Support Children's Centre
- Family Support (Welwyn and Hatfield)
- Hatfield Family Centre
- Health Visitors (North)
- Health Visitors (East)
- OT - Private and NHS
- Social Practitioners
- Watford Fire Station
- SENCOs

Outreach

- Wheelchair services engaged in a Q&A session at Lending SPACE and returned for a second visit
- Engaged in SEND quiet hour at Watford fire station open day
- Visited Daisychains 4 times this year with future visits planned
- Took Lending SPACE to Southfields School and connected with 6 new families who now use our services.

BUILDING BETTER LINKS WITH COMMUNITIES

We have made significant strides in enhancing access to our Lending SPACE resources. Through our outreach efforts, we are able to extend our support to a wider audience, reaching more families and professionals. This allows them to recommend us to parents/carers who need us. This year, we have made

120

deliveries and collections to

17

different areas - new areas reached include: Bengeo, Broxbourne, Croxley, Hatfield and Royston



ALTERNATIVE PROVISION

In its first year of operation, SPACE Hertfordshire's Alternative Provision has grown from strength to strength, firmly establishing itself as a trusted resource for families in need of tailored educational support. At the heart of everything we do are children and young people, with every decision made focused on what is best for them. By putting families at the centre of all decisions, we ensure a bespoke package of support is created to meet each child or young person's individual needs.

Our dedicated Specialist Alternative Provision team works closely with families, taking a flexible approach to design child-centred plans that aim to achieve the best and most consistent outcomes. Through open communication, we ensure that families are involved every step of the way, offering a solution tailored to each unique situation.

ALTERNATIVE PROVISION SERVICES

- Tutoring for children with SEND
- Speech and Language Therapy
- 1-1 Therapeutic and Therapy sessions
- 1-1 activities
- Individual Support (mentoring)



THIS YEAR ALTERNATIVE PROVISION HAVE...

Supported

67 families

Delivered

1,896 sessions

Equating to

3,461 hours

- Worked intensively with 11 children and young people, each accessing over 100 hours of support.
- Two of the families supported are refugees, both facing learning difficulties and navigating the English education system.
- Delivered support across a range of Special Educational Needs (SEN), including Severe Learning Difficulties (SLD), Moderate Learning Difficulties (MLD), Social, Emotional and Mental Health (SEMH) challenges, and an increasing number of children and young people experiencing Emotional Based School Avoidance (EBSA).
- Sessions primarily focused on tutoring or re-engagement, tailored to the appropriate level for each child or young person, in alignment with professional reports, Education, Health and Care Plans (EHCPs), etc.
- Most sessions were commissioned by Hertfordshire County Council
- We are looking to expand our therapy services to provide more holistic support for children and young people.
- Therapeutic and therapy options currently offered include Therapeutic Farming, Drawing and Talking Therapy, Mentoring (for primary-age children), Music Therapy, Therapeutic Music, Golf, and Fishing.

ALTERNATIVE PROVISION

Young Person A, Year 7

Young person A transitioned to secondary school with her peers in year 7 and initially seemed to adjust well. However, by the second half of the Autumn Term, A began struggling, and her school attendance dropped sharply. By Christmas, she was unable to attend school at all. A was on the autism pathway and although she was performing academically, she was unable to cope with the larger school environment. Her mum reported that she had previously been in a small primary school that tried to meet her needs. However, in secondary school, A isolated herself, struggling to engage with the outside world at all - even with her favourite activity, horse riding.

Actions Taken by our Alternative Provision Team

We began working with A and her family in February, starting with a home visit from our Alternative Provision (AP) manager and the Specialist Teacher (ST) who would be delivering our re-engagement programme. The goal was to establish a trusted adult relationship that could potentially support A's transition back to school or whatever other suitable path felt right in the future. A was at the centre of all planning and decisions. Sessions were tailored around A's needs and interests, with the ST taking her lead on activities. Together, they worked on various hands-on projects, including:

- Origami, following written instructions.
- Creating a business plan, with website and material design ideas.
- Planning a gardening project in her family's garden.
- Baking many cakes and cookies, including researching recipes and ideas and visiting a local shop for ingredients.

The ST allowed A to dictate the pace and duration of each session, focusing on projects that encouraged engagement and confidence. Initially, her family funded one hour per week of sessions, which increased to two hours due to progress. We also supported the family with a school meeting to request session funding while A's Education, Health, and Care Needs Assessment (EHCNA) was in process, providing detailed reports and guidance. Funding was secured just before the summer holidays.

Outcomes, which are ongoing

A is now accessing two hours of support weekly. Since the summer break, she has started engaging with some age-appropriate maths and is exploring other areas of academic work - a significant breakthrough. Her EHCP is expected to be finalised soon. This progress marks a considerable achievement in A's journey toward re-engagement and independence.

DIAGNOSTIC SERVICES

As we continue to secure the ongoing financial stability of the charity we are developing our professional services that support families as well as the NHS and the Education system.

In our first full year of providing these services 140 families accessed our QB Checks, Dyslexia Screenings, Speech and Language or Educational Psychology Consultations

All our assessments and consultations are followed up with a comprehensive report from our specialists.

DIAGNOSTIC SERVICES IN NUMBERS

75

QBChecks

26

Educational Psychology Consultations

17

Dyslexia Screenings

22

Speech and Language Consultations

QBCHECKS

We were accredited to run QbCheck – an ADHD assessment tool - in 2023.

Administered by clinical psychologists, this service launched in March 2023 and 75 individuals completed the QbCheck in 2023/24.

“It was a calm and peaceful setting which enabled my son to feel quickly at ease and relax. The toys made it feel it was a space designed for him. I am really glad I used SPACE for the QB test.”

“It has given us a better understanding of the difficulties experienced and also provided evidence for a formal diagnosis to take place.”

“It also made me think about other neurodiverse conditions that might be at play. Helped me understand how co-existing conditions can occur.”

“We shared the report with my son’s University to provide support while waiting for full ADHD assessment, which was very helpful.”

OUR FUNDRAISING

#TEAMSPACE

The work we do wouldn't be possible without our supporters. Our diverse fundraising portfolio encompasses corporate donors, grant funding and community fundraising initiatives.

SPACE'S PRINCIPLE SOURCES OF FUNDING:

- CLA Charitable Trust
- Groundwork UK Tesco
- Hanbury Manor Golf Club
- Hertfordshire Community Foundation
- Hertfordshire County Council
- Postcode Places Trust
- St James's Place Charitable Foundation
- The National Lottery Community Fund
- The Speech, Language and Hearing Foundation



Michell raised
£1,232

25K, 50K, 100K...

Michell went the extra mile(s) for SPACE, quite literally. In April, Michell completed a 25k walk around Windsor... two months later she stormed her way through a 50k hike, taking on the hills of the Lake District and super boosted her fundraising with a tremendous 100k trek from Putney to Henley-on-Thames in September.



Millie and
Freddie raised
£1.17k

WALKING FOR SPACE

Millie and Freddie are both neurodivergent and they and their families have accessed lots of SPACE events and activities. It was their own idea to raise some money! The money raised was kindly triple-matched by Cazenove Capital.

Leonie raised £507



THE BIG HALF

Just 10 days out from the race - Leonie and her friend, Lauren, set out on a fundraising mission for SPACE. The duo trained super hard together and what a journey it was - they flew past their fundraising target, raising over double of the original target.



Jose raised
£1.05k

ROYAL PARKS HALF MARATHON

Joss: "I am running the Royal Parks Half Marathon in support of SPACE. My daughter and family have received so much support and I would like to show my appreciation."



Hanbury Manor
raised £11,250

HANBURY MANOR GOLF CLUB

Hanbury Manor Golf Club hits another hole-in-one! Member swung into action, raising an astounding amount of money. A further £500 was match-funded by wealth management company, Cazenove Capital, bumping the total figure up to £11,750.



From The Top,
a capella vocal
group raised
£311.35

CHOIR RAISES THE ROOF AND FUNDS

The a cappella vocal group presented 'Mamma Mia' with songs and words for Mother's Day including poetry reading and folksongs.



Rotary Club
raised £1,000

ROTARIANS ROLL OUT SANTA SUIT AND SLEIGH

Families were on the lookout for Santa Claus, thanks to the Rotary Satellite Club of Welwyn Garden City, which brought festive cheer and raised funds through a Santa sleigh tour and collections in November and December.

SUPPORTER SPOTLIGHT

TRACTORS ON TOUR

Tractors on Tour supported SPACE through a special 'Tractors on Tour' road trip - the fundraiser revved up a brilliant £1,823.29 for SPACE on New Year's Eve!

39 tractors of all colours and sizes were raring to go with their SPACE-coloured balloons, rosettes, and logos for the tour across Brickendon, Hoddesdon, Stanstead Abbots, and Ware.

There was tremendous excitement in our neighbouring towns, with the SPACE colours paraded proudly and huge smiles on our community's faces.

The day ended perfectly with a raffle as drivers and supporters enjoyed food and drink at the Farmers Boy pub, soaking up New Year's Eve festivities.

We were overwhelmed by the support from Tractors on Tour, their families, our families, and community members who showed up along the route or at one of the pub stop-offs.

A special thank you to Tractors on Tour for selecting SPACE as their charity of the year, and a huge thank you to everyone for making this event possible - The Jolly Fisherman, The Farmers Boy, our staff, and volunteers.



Principle 1a

Reduction in social isolation of vulnerable families through:

- Bespoke carefully orchestrated social opportunities and activities, online and in-person, throughout the year for children, young people and the whole family to attend.
- Monthly support groups promoting and facilitating a peer support network.
- Online community support through a closed administrated Facebook Group and Public page.
- Bespoke online and face to face support, guidance and signposting including home visits from our Family Support Team.
- Raising the profile of the charity and awareness of families' needs within the local community and helping to shape future provisions.
- Supporting local businesses and services to promote inclusion.

Improving and advancing the knowledge, understanding and skills of parent/carers and professionals.

- Online and in-person monthly support groups which may be attended by a guest speaker/ service operating in the field of Special Educational Needs and disabilities (SEND)
- Themed Conferences for both parent/carers and professionals delivered by SPACE and experts within that field.
- Online and in-person workshops and courses on a variety of topics throughout the year.
- Sharing information and resources through a variety of mediums and organisations.
- Forging links with other service providers, organisations and charities to educate and instil confidence in working with families that have children and young people with SEND.

Principle 1b

The public benefits of the organisation closely reflect and adheres to the charity's Aims, Objects and Constitution. The trustees ensure the charity remains focused on these principles in all decision making.

Principle 1c

The charity benefits are balanced against detriment or harm. The trustees are fully aware of the need and demand from the public on the charity's services therefore the charity must grow to meet this demand. However, the trustees must ensure this pace of growth is realistic and not be in detriment of the team and volunteers running the organisation. SPACE Registered Charity England and Wales no: 117 2178 Supporting Families in Hertfordshire - Autism ADHD and other Neurodiverse Conditions.

Principle 2a

The direct beneficiaries of the charity are Hertfordshire families with children and young people on the autistic spectrum and/or ADHD and other neurodiverse conditions either with or without diagnosis. Other beneficiaries include the wider community, extended families and professionals also working within the SEND field. The beneficiaries of the charity are in direct keeping with the charity's aims, objectives and constitution.

Principle 2b

The section of the public that can benefit are not unreasonably restricted by geographic location. Although the organisation is a Hertfordshire-based charity as stated in the constitution, the trustees considered the following to ensure maximum accessibility.

- All support groups are not geographically restricted to the area they are hosted in.
- The support groups are spread over various Hertfordshire locations and on various days and times to maximise accessibility.
- There are online support groups that remove geographical restrictions completely, giving access to all of Hertfordshire.
- An appropriate video conferencing platform has been selected that supports a wide range of hardware, including mobile phones. The platform does not have a high barrier to entry from an account, pricing, or accessibility perspective.
- The organisation is mindful to hold events and socials in a variety of Hertfordshire locations subject to venues, opportunities, and cost implications.

Principle 2c

People in poverty are not excluded from the opportunity to benefit.

- There are no joining, membership or subscription fees.
- All support groups, online community and face to face support are free.
- All online activities, courses and workshops are free and involve no travel costs.
- All projects that have received specific funding are offered to families at a nominal charge, this is to ensure their commitment in attendance.
- The charity subsidises activities wherever possible to maximise accessibility.
- Larger events and conferences carry a charge to attend. The trustees will investigate whether this can be offered as concessions in relation to poverty in the future.

Principle 2d

Any private benefits are incidental.

Declaration: The trustees are satisfied that there has been regard to the guidance issued by the Charity Commission on Public Benefit in decision making and organisation performance.

SPACE FINANCIAL STATEMENTS

For the Year Ending 31 March 2024

STATEMENT OF FINANCIAL
ACTIVITIES YEAR ENDED 31st
MARCH 2024

	NOTES	<u>RESTRICTED</u> £	<u>UNRESTRICTED</u> £	<u>2024</u> £	<u>2023</u> £
<u>INCOMING RESOURCES</u>					
Total income for the period	2	<u>409,988.50</u>	<u>412,659.51</u>	<u>822,648.01</u>	<u>456,085.33</u>
TOTAL INCOMING RESOURCES		<u>409,988.50</u>	<u>412,659.51</u>	<u>822,648.01</u>	<u>456,085.33</u>
<u>RESOURCES EXPENDED</u>					
Administration, Management, Cost of Activities etc.		<u>362,482.21</u>	<u>360,762.91</u>	<u>723,245.12</u>	<u>425,676.01</u>
TOTAL RESOURCES EXPENDED		<u>362,482.21</u>	<u>360,762.91</u>	<u>723,245.12</u>	<u>425,676.01</u>
NET INCOMING RESOURCES FOR THE YEAR		47,506.29	51,896.60	99,402.89	30,409.32
ADJUSTMENT		0.00	0.00	0.00	0.00
FUNDS BROUGHT FORWARD		<u>72,760.30</u>	<u>135,672.80</u>	<u>208,433.10</u>	<u>178,023.78</u>
FUNDS CARRIED FORWARD	6, 7, 8	<u>120,266.59</u>	<u>187,569.40</u>	<u>307,835.99</u>	<u>208,433.10</u>

	NOTES	2024 £	2023 £
<u>FIXED ASSETS</u>			
Tangible Fixed Assets	3	7,554.47	12,154.07
<u>CURRENT ASSETS</u>			
Total Current Assets	4	410,130.33	289,525.50
		410,130.33	289,525.50
<u>CREDITORS</u>			
Amounts falling due within one year	5	109,848.81	93,246.47
NET CURRENT ASSETS (LIABILITIES)		300,281.52	196,279.03
NET ASSETS		307,835.99	208,433.10
<u>FUNDS</u>			
Unrestricted Funds	6	187,569.40	135,672.80
Restricted Funds	7	120,266.59	72,760.30
TOTAL FUNDS		307,835.99	208,433.10

1 ACCOUNTING POLICIES**a) Basis of Preparation and Assessment of Going Concern**

The accounts (financial statements) have been prepared under the historical cost convention with items recognised at cost or transaction value unless otherwise stated in the relevant note(s) to these accounts. The financial statements have been prepared in accordance with the Statement of Recommended Practice: Accounting and Reporting by Charities preparing their accounts in accordance with the Financial Reporting Standard applicable in the UK and Republic of Ireland (FRS 102) issued on 16 July 2014 and the Financial Reporting Standard applicable in the United Kingdom and Republic of Ireland (FRS 102), the Charities and Trustee Investment (Scotland) Act 2005 and the Charities Accounts (Scotland) Regulations 2006 (as amended).

The charity constitutes a public benefit entity as defined by FRS 102.

The trustees consider that there are no material uncertainties about the charity's ability to continue as a going concern.

b) Income and Expenditure

Income and Expenditure is recorded on the accruals basis.

c) Depreciation

Depreciation is calculated on the straight line basis at rates which are intended to write off the cost of the assets over their estimated useful lives, and is itemised as follows:

Plant and machinery and office equipment	33%
Fixtures and fittings	33%
Motor vehicles	33%

d) Leases

Rental costs under operating leases are charged to the income and expenditure account in equal annual instalments covering the period of the leases.

e) Fund Accounting

Grants and similar income which are subjected to restrictions by the donors are shown as restricted funds and any expenditure incurred will be set off against this fund. All other income and expenditure is shown as unrestricted.

2 FUNDING RECEIVABLE (INCLUDING GRANTS)

	2024 £	2023 £
Total funding income received	<u>419,698.50</u>	<u>331,828.60</u>
Total	<u>419,698.50</u>	<u>331,828.60</u>

3 FIXED ASSETS

	Furniture and Fixtures £	Office Equip £	Motor Vehicles £	Plant and Machinery £	Total £
Cost					
At 1 April 2023	0.00	2,166.76	32,695.50	200.00	35,062.26
Additions	4,610.74	6,021.00	0.00	0.00	10,631.74
Disposals	<u>0.00</u>	<u>0.00</u>	<u>0.00</u>	<u>0.00</u>	<u>0.00</u>
At 31 March 2024	<u>4,610.74</u>	<u>8,187.76</u>	<u>32,695.50</u>	<u>200.00</u>	<u>45,694.00</u>
Depreciation					
At 1 April 2023	0.00	977.85	21,797.00	133.34	22,908.19
Charge for the year	1,536.91	2,729.27	10,898.50	66.66	15,231.34
Depreciation on disposals	<u>0.00</u>	<u>0.00</u>	<u>0.00</u>	<u>0.00</u>	<u>0.00</u>
At 31 March 2024	<u>1,536.91</u>	<u>3,707.12</u>	<u>32,695.50</u>	<u>200.00</u>	<u>38,139.53</u>
Net book value					
At 31 March 2024	<u>3,073.83</u>	<u>4,480.64</u>	<u>0.00</u>	<u>0.00</u>	<u>7,554.47</u>
At 31 March 2023	<u>0.00</u>	<u>1,188.91</u>	<u>10,898.50</u>	<u>66.66</u>	<u>12,154.07</u>

4 CURRENT ASSETS - Cash & Bank Balances & Debtors**2024****2023****£****£**

Cash and Bank Balance

323,380.21

286,226.50

Debtors, Prepayments & Accrued Income

86,750.12

3,299.00

Total**410,130.33****289,525.50****5 CREDITORS - Amounts Falling Due Within One Year****2024****2023****£****£**

Trade Creditors

1,225.22

716.66

Accruals and Deferred Income

108,623.59

92,529.81

PAYE, Social Security and Other Taxes

0.00

0.00

109,848.81**93,246.47****6 UNRESTRICTED FUND****2024****2023****£****£**

Opening Balance

135,672.80

72,805.89

Surplus (Deficit) for the Year

51,896.60

62,866.91

Revaluation adjustment

-

-

Closing Balance**187,569.40****135,672.80**

7	<u>RESTRICTED FUND</u>	2024 £	2023 £
	Opening Balance	72,760.30	105,217.89
	Surplus (Deficit) for the Year	47,506.29	(32,457.59)
	Revaluation adjustment	-	-
	Closing Balance	<u>120,266.59</u>	<u>72,760.30</u>

8	<u>ANALYSIS OF NET FUNDS</u>	Restricted £	Unrestricted £	Total £
	Tangible Fixed Assets	299.99	7,254.48	7,554.47
	Net Current Assets	<u>119,966.60</u>	<u>180,314.92</u>	<u>300,281.52</u>
	Total	<u>120,266.59</u>	<u>187,569.40</u>	<u>307,835.99</u>

INCOME AND EXPENDITURE ACCOUNT YEAR ENDED 31 MARCH 2024

		2024		2023
	Restricted	Unrestricted	Total	Total
	£	£	£	£
Incoming Resources				
Funding	409,988.50	9,710.00	419,698.50	331,828.60
Donations	0.00	61,553.27	61,553.27	44,211.80
Event Income	0.00	38,706.85	38,706.85	50,229.01
Other Services Income	0.00	302,689.39	302,689.39	29,815.92
	<u>409988.50</u>	<u>412659.51</u>	<u>822648.01</u>	<u>456085.33</u>
Outgoing Resources				
Bank Charges	0.00	191.46	191.46	229.93
Bookkeeping and Accounting	392.00	3,219.00	3,611.00	3,652.00
Core Costs	27,301.41	6,224.17	33,525.58	28,812.39
Equipment	8,211.85	2,065.26	10,277.11	3,934.16
Event Costs	92,157.83	16,999.94	109,157.77	94,628.25
Cost of Other Services	0.00	167,026.37	167,026.37	21,473.98
General Expenses	0.00	0.00	0.00	0.00
Insurance	2,112.27	3,498.39	5,610.66	4,800.06
IT Software and Consumables	734.88	8,188.14	8,923.02	2,633.27
Motor Vehicle Expenses	320.00	0.00	320.00	290.00
Other Costs	1,213.47	1,756.36	2,969.83	2,421.25
Printing, Postage, Stationary	706.83	1,009.41	1,716.24	1,334.50
Refreshments	556.72	2,219.98	2,776.70	2,173.61
Removal costs	0.00	0.00	0.00	1,185.60
Rent & Rates	27,384.84	14,678.98	42,063.82	27,063.38
Repairs & Maintenance	0.00	0.00	0.00	0.00
Salaries	171,523.38	105,670.30	277,193.68	194,413.10
Pension Costs	3,218.92	2,376.97	5,595.89	3,317.81
Employers NIC	9,351.20	7,681.78	17,032.98	8,175.50
Staff Training	980.00	1,444.60	2,424.60	360.00
Subscriptions	0.00	3,044.50	3,044.50	1,663.95
Telephone & Internet	0.00	3,834.62	3,834.62	2,497.66
Travel Costs	4,862.52	5,855.43	10,717.95	8,928.19
Depreciation Expense	11,454.09	3,777.25	15,231.34	11,687.42
	<u>362,482.21</u>	<u>360,762.91</u>	<u>723,245.12</u>	<u>425,676.01</u>
Surplus / (Deficit)	<u>47,506.29</u>	<u>51,896.60</u>	<u>99,402.89</u>	<u>30,409.32</u>
Funds				
Opening balance	72,760.30	135,672.80	208,433.10	178,023.78
Surplus / (Deficit) for year	<u>47,506.29</u>	<u>51,896.60</u>	<u>99,402.89</u>	<u>30,409.32</u>
Closing balance	<u>120,266.59</u>	<u>187,569.40</u>	<u>307,835.99</u>	<u>208,433.10</u>

REFERENCE AND ADMINISTRATION DETAILS

CHARITY NAME: SPACE

Registered charity number: 1172178

Charity's principal address: Unit 5 The Maltings Business Centre
Stanstead Abbots
Ware, Herts
SG12 8HG

Names of the charity trustees who manage the charity:

Lyn Heathcote Sharif (Chair)

Mark Wilson (Treasurer)

Dr Sharmishtha Sarkar

Donna Chamberlain

Victoria Kemp

Polly Kerr

Type of governing document: Constitution

SPACE is constituted by CIO with voting members other than charity trustees. The trustee selection method is elected by trustees and voting members.

Financial review: Statement of the charity's policy on reserves

Reserves are held exclusively for the furtherance of the Charitable Objectives. None of the Charity's reserves may be paid or transferred directly or indirectly by way of dividend, bonus or otherwise by way of profit to any member of the Charity. The Charity will hold a minimum of 4 months in way of reserve.

Declaration: The trustees declare that they have approved the trustees' report above - signed on behalf of the charity's trustees



Lyn Heathcote Sharif



Mark Wilson



Dr Sharmishtha Sarkar



Donna Chamberlain



Victoria Kemp



Polly Kerr

SPACE

Financial Statements

For the Year Ending 31 March 2024

**SPACE is a registered charity:
Registration number 1172178**

SPACE

INDEX TO THE FINANCIAL STATEMENTS

YEAR ENDED 31st MARCH 2024

CONTENTS	PAGE
Statement of Financial Activities	1
Balance Sheet	2
Notes to the Financial Statements	3-5

SPACE

STATEMENT OF FINANCIAL ACTIVITIES

YEAR ENDED 31st MARCH 2024

	NOTES	<u>RESTRICTED</u>	<u>UNRESTRICTED</u>	<u>2024</u>	<u>2023</u>
		<u>£</u>	<u>£</u>	<u>£</u>	<u>£</u>
<u>INCOMING RESOURCES</u>					
Total income for the period	2	<u>409,988.50</u>	<u>412,659.51</u>	<u>822,648.01</u>	<u>456,085.33</u>
TOTAL INCOMING RESOURCES		<u>409,988.50</u>	<u>412,659.51</u>	<u>822,648.01</u>	<u>456,085.33</u>
 <u>RESOURCES EXPENDED</u>					
Administration, Management, Cost of Activities etc.		<u>362,482.21</u>	<u>360,762.91</u>	<u>723,245.12</u>	<u>425,676.01</u>
TOTAL RESOURCES EXPENDED		<u>362,482.21</u>	<u>360,762.91</u>	<u>723,245.12</u>	<u>425,676.01</u>
NET INCOMING RESOURCES FOR THE YEAR		<u>47,506.29</u>	<u>51,896.60</u>	<u>99,402.89</u>	<u>30,409.32</u>
ADJUSTMENT		<u>0.00</u>	<u>0.00</u>	<u>0.00</u>	<u>0.00</u>
FUNDS BROUGHT FORWARD		<u>72,760.30</u>	<u>135,672.80</u>	<u>208,433.10</u>	<u>178,023.78</u>
FUNDS CARRIED FORWARD	6, 7, 8	<u>120,266.59</u>	<u>187,569.40</u>	<u>307,835.99</u>	<u>208,433.10</u>

SPACE

BALANCE SHEET AS AT 31st MARCH 2024

	NOTES	2024 £	2023 £
<u>FIXED ASSETS</u>			
Tangible Fixed Assets	3	7,554.47	12,154.07
<u>CURRENT ASSETS</u>			
Total Current Assets	4	<u>410,130.33</u>	<u>289,525.50</u>
		410,130.33	289,525.50
<u>CREDITORS</u>			
Amounts falling due within one year	5	<u>109,848.81</u>	<u>93,246.47</u>
NET CURRENT ASSETS (LIABILITIES)		300,281.52	196,279.03
NET ASSETS		<u>307,835.99</u>	<u>208,433.10</u>
<u>FUNDS</u>			
Unrestricted Funds	6	187,569.40	135,672.80
Restricted Funds	7	120,266.59	72,760.30
TOTAL FUNDS		<u>307,835.99</u>	<u>208,433.10</u>

The accompanying notes form an integral part of the accounts

SPACE

NOTES TO THE FINANCIAL STATEMENTS

YEAR ENDED 31st MARCH 2024

1 ACCOUNTING POLICIES

a) Basis of Preparation and Assessment of Going Concern

The accounts (financial statements) have been prepared under the historical cost convention with items recognised at cost or transaction value unless otherwise stated in the relevant note(s) to these accounts. The financial statements have been prepared in accordance with the Statement of Recommended Practice: Accounting and Reporting by Charities preparing their accounts in accordance with the Financial Reporting Standard applicable in the UK and Republic of Ireland (FRS 102) issued on 16 July 2014 and the Financial Reporting Standard applicable in the United Kingdom and Republic of Ireland (FRS 102), the Charities and Trustee Investment (Scotland) Act 2005 and the Charities Accounts (Scotland) Regulations 2006 (as amended).

The charity constitutes a public benefit entity as defined by FRS 102.

The trustees consider that there are no material uncertainties about the charity's ability to continue as a going concern.

b) Income and Expenditure

Income and Expenditure is recorded on the accruals basis.

c) Depreciation

Depreciation is calculated on the straight line basis at rates which are intended to write off the cost of the assets over their estimated useful lives, and is itemised as follows:

Plant and machinery and office equipment	33%
Fixtures and fittings	33%
Motor vehicles	33%

d) Leases

Rental costs under operating leases are charged to the income and expenditure account in equal annual instalments covering the period of the leases.

e) Fund Accounting

Grants and similar income which are subjected to restrictions by the donors are shown as restricted funds and any expenditure incurred will be set off against this fund. All other income and expenditure is shown as unrestricted.

SPACE**NOTES TO THE FINANCIAL STATEMENTS****YEAR ENDED 31st MARCH 2024****2 FUNDING RECEIVABLE (INCLUDING GRANTS)**

	2024	2023
	£	£
Total funding income received	<u>419,698.50</u>	<u>331,828.60</u>
Total	<u>419,698.50</u>	<u>331,828.60</u>

3 FIXED ASSETS

	Furniture and Fixtures	Office Equip	Motor Vehicles	Plant and Machinery	Total
	£	£	£	£	£
Cost					
At 1 April 2023	0.00	2,166.76	32,695.50	200.00	35,062.26
Additions	4,610.74	6,021.00	0.00	0.00	10,631.74
Disposals	<u>0.00</u>	<u>0.00</u>	<u>0.00</u>	<u>0.00</u>	<u>0.00</u>
At 31 March 2024	<u>4,610.74</u>	<u>8,187.76</u>	<u>32,695.50</u>	<u>200.00</u>	<u>45,694.00</u>
Depreciation					
At 1 April 2023	0.00	977.85	21,797.00	133.34	22,908.19
Charge for the year	1,536.91	2,729.27	10,898.50	66.66	15,231.34
Depreciation on disposals	<u>0.00</u>	<u>0.00</u>	<u>0.00</u>	<u>0.00</u>	<u>0.00</u>
At 31 March 2024	<u>1,536.91</u>	<u>3,707.12</u>	<u>32,695.50</u>	<u>200.00</u>	<u>38,139.53</u>
Net book value					
At 31 March 2024	<u>3,073.83</u>	<u>4,480.64</u>	<u>0.00</u>	<u>0.00</u>	<u>7,554.47</u>
At 31 March 2023	<u>0.00</u>	<u>1,188.91</u>	<u>10,898.50</u>	<u>66.66</u>	<u>12,154.07</u>

4 CURRENT ASSETS - Cash & Bank Balances & Debtors

	2024	2023
	£	£
Cash and Bank Balance	323,380.21	286,226.50
Debtors, Prepayments & Accrued Income	<u>86,750.12</u>	<u>3,299.00</u>
Total	<u>410,130.33</u>	<u>289,525.50</u>

5 CREDITORS - Amounts Falling Due Within One Year

	2024	2023
	£	£
Trade Creditors	1,225.22	716.66
Accruals and Deferred Income	108,623.59	92,529.81
PAYE, Social Security and Other Taxes	<u>0.00</u>	<u>0.00</u>
	<u>109,848.81</u>	<u>93,246.47</u>

SPACE**NOTES TO THE FINANCIAL STATEMENTS**
YEAR ENDED 31st MARCH 2024

6	<u>UNRESTRICTED FUND</u>	2024	2023
		£	£
	Opening Balance	135,672.80	72,805.89
	Surplus (Deficit) for the Year	51,896.60	62,866.91
	Revaluation adjustment	-	-
	Closing Balance	<u>187,569.40</u>	<u>135,672.80</u>
7	<u>RESTRICTED FUND</u>	2024	2023
		£	£
	Opening Balance	72,760.30	105,217.89
	Surplus (Deficit) for the Year	47,506.29	(32,457.59)
	Revaluation adjustment	-	-
	Closing Balance	<u>120,266.59</u>	<u>72,760.30</u>
8	<u>ANALYSIS OF NET FUNDS</u>	Restricted	Unrestricted
		£	£
	Tangible Fixed Assets	299.99	7,254.48
	Net Current Assets	<u>119,966.60</u>	<u>180,314.92</u>
	Total	<u>120,266.59</u>	<u>187,569.40</u>
9	<u>STAFF NUMBERS</u>	2024	2023
		£	£
	Total Staff Costs for the Year	<u>299,822.55</u>	<u>205,906.41</u>
		2024	2023
	Average Number of Paid Staff	14	12

SPACE
INCOME AND EXPENDITURE ACCOUNT
YEAR ENDED 31 MARCH 2024

	Restricted £	2024 Unrestricted £	Total £	2023 Total £
Incoming Resources				
Funding	409,988.50	9,710.00	419,698.50	331,828.60
Donations	0.00	61,553.27	61,553.27	44,211.80
Event Income	0.00	38,706.85	38,706.85	50,229.01
Other Services Income	0.00	302,689.39	302,689.39	29,815.92
	<u>409988.50</u>	<u>412659.51</u>	<u>822648.01</u>	<u>456085.33</u>
Outgoing Resources				
Bank Charges	0.00	191.46	191.46	229.93
Bookkeeping and Accounting	392.00	3,219.00	3,611.00	3,652.00
Core Costs	27,301.41	6,224.17	33,525.58	28,812.39
Equipment	8,211.85	2,065.26	10,277.11	3,934.16
Event Costs	92,157.83	16,999.94	109,157.77	94,628.25
Cost of Other Services	0.00	167,026.37	167,026.37	21,473.98
General Expenses	0.00	0.00	0.00	0.00
Insurance	2,112.27	3,498.39	5,610.66	4,800.06
IT Software and Consumables	734.88	8,188.14	8,923.02	2,633.27
Motor Vehicle Expenses	320.00	0.00	320.00	290.00
Other Costs	1,213.47	1,756.36	2,969.83	2,421.25
Printing, Postage, Stationary	706.83	1,009.41	1,716.24	1,334.50
Refreshments	556.72	2,219.98	2,776.70	2,173.61
Removal costs	0.00	0.00	0.00	1,185.60
Rent & Rates	27,384.84	14,678.98	42,063.82	27,063.38
Repairs & Maintenance	0.00	0.00	0.00	0.00
Salaries	171,523.38	105,670.30	277,193.68	194,413.10
Pension Costs	3,218.92	2,376.97	5,595.89	3,317.81
Employers NIC	9,351.20	7,681.78	17,032.98	8,175.50
Staff Training	980.00	1,444.60	2,424.60	360.00
Subscriptions	0.00	3,044.50	3,044.50	1,663.95
Telephone & Internet	0.00	3,834.62	3,834.62	2,497.66
Travel Costs	4,862.52	5,855.43	10,717.95	8,928.19
Depreciation Expense	11,454.09	3,777.25	15,231.34	11,687.42
	<u>362,482.21</u>	<u>360,762.91</u>	<u>723,245.12</u>	<u>425,676.01</u>
Surplus / (Deficit)	<u>47,506.29</u>	<u>51,896.60</u>	<u>99,402.89</u>	<u>30,409.32</u>
Funds				
Opening balance	72,760.30	135,672.80	208,433.10	178,023.78
Surplus / (Deficit) for year	<u>47,506.29</u>	<u>51,896.60</u>	<u>99,402.89</u>	<u>30,409.32</u>
Closing balance	<u>120,266.59</u>	<u>187,569.40</u>	<u>307,835.99</u>	<u>208,433.10</u>



Section A

Independent Examiner's Report

**Report to the trustees/
members of**

SPACE

**On accounts for the year
ended**

31/03/2024

**Charity no
(if any)**

1172178

Set out on pages

1-5

**Respective
responsibilities of
trustees and examiner**

The charity's trustees are responsible for the preparation of the accounts in accordance with the requirements of the Charities Act 2011 ("the Act").

The charity's trustees consider that an audit is not required for this year under section 144 of the Act and that an independent examination is needed.

It is my responsibility to:

- examine the accounts under section 145 of the Charities Act,
- to follow the applicable Directions given by the Charity Commission (under section 145(5)(b) of the Act, and
- to state whether particular matters have come to my attention

**Basis of independent
examiner's statement**

My examination was carried out in accordance with general Directions given by the Charity Commission. An examination includes a review of the accounting records kept by the charity and a comparison of the accounts presented with those records. It also includes consideration of any unusual items or disclosures in the accounts, and seeking explanations from the trustees concerning any such matters. The procedures undertaken do not provide all the evidence that would be required in an audit, and consequently no opinion is given as to whether the accounts present a 'true and fair' view and the report is limited to those matters set out in the statement below.

**Independent
examiner's statement**

In connection with my examination, no material matters have come to my attention which gives me cause to believe that in, any material respect:

- accounting records were not kept in accordance with section 130 of the Charities Act or
- the accounts do not accord with the accounting records

I have no concerns and have come across no other matters in connection with the examination to which attention should be drawn in order to enable a proper understanding of the accounts to be reached.

Signed:

Date: 19/11/2024

Name:

KEITH JONES

Relevant professional
qualification(s) or body
(if any):

--

Address:

46 CROSSWAY

WELWYN GARDEN CITY

AL8 7EE

Section B

Disclosure

Only complete if the examiner needs to highlight matters of concern (see CC32, Independent examination of charity accounts: directions and guidance for examiners).

Give here brief details of
any items that the
examiner wishes to
disclose.

--