



STITCHES IN TIME

ANNUAL REPORT AND FINANCIAL STATEMENTS

Year ending 31 March 2025

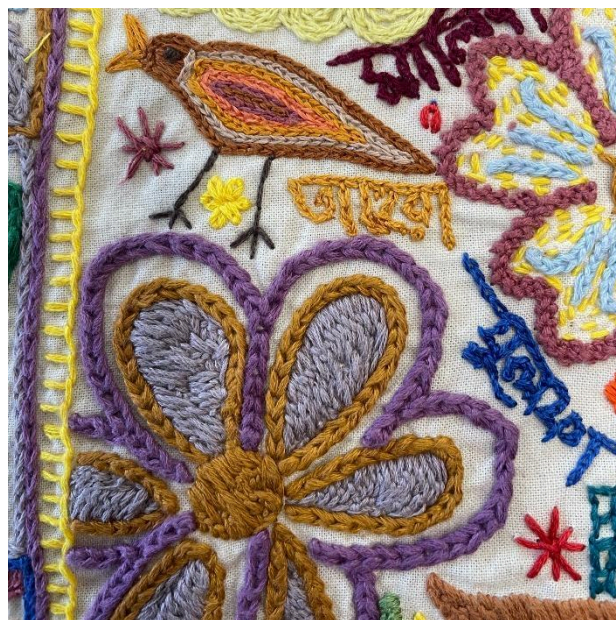
Charity no. 1172056 - Company no. 10515657



Limehouse Town Hall, 646 Commercial Road, London, E14 7HA
Tel: 020 7987 6164

CONTENTS

Reference and Administrative Information	3
Trustees' Report	4
Independent Examiner's Report	18
Statement of Financial Activities	20
Balance Sheet	21
Notes to the Accounts	22



REFERENCE AND ADMINISTRATIVE INFORMATION

Trustee list

Hendrika Santer Bream (Chair)
Teresa Hare Duke (Vice Chair)
Annie Gargya (Secretary)
Margaret Mitchell
Syeda Jeba Maleque (Treasurer)

Premises

Limehouse Town Hall
646 Commercial Road
London E14 7HA

Charity & Company number

Charity no. 1172056
Company no. 10515657



Independent Examiner

Ian Price
10 Kent Close
Westoning
Bedfordshire
MK45 5LW

Bankers

Co-operative Bank
PO Box 250
Delf House
Southway
Skelmersdale
WN8 6WT



Trustees' report

The Trustees present their report and accounts for the year ending 31 March 2025.

Objectives and activities

The Charity's formal aims and objectives are

- 1) to advance education particularly but not by way of limitation in all aspects of arts, crafts and applied arts particularly but not by way of limitation that of tapestry and needlework.
- 2) to provide or assist in the provision of facilities for recreation and other leisure time occupation, in particular the provision of facilities for arts and crafts, in the interests of social welfare with the object of improving the conditions of life, and
- 3) Thereby to encourage good race relations for the benefit of the public by drawing together all members of the community irrespective of race, religion, gender or political beliefs in the pursuit of these objects.



Context and overview

The charity is based in Limehouse Old Town Hall and operates mostly in the East London Borough of Tower Hamlets. As of the 2021 Census, Tower Hamlets is the most densely populated borough in England and Wales having grown by 22% since 2011. The borough contains stark contrasts: despite including the wealth of Canary Wharf, widespread poverty, overcrowded housing, and inequality persist. These manifest strongly in high child and elder deprivation, unemployment, economic inactivity, and substantial ethnic disparities, especially within the Bangladeshi and Somali communities.

Tower Hamlets is home to a substantial Bangladeshi community with 34.6 % of the borough's population (around 107,300 residents) identifying as Bangladeshi. 51 % of Tower Hamlets Bangladeshi women aged 16–64 were economically inactive at the time of the 2021 Census, which was more than double the rate for White British women (24 %).

The cost of living crisis and the pandemic exacerbated the challenges facing residents and simultaneously created a more challenging fundraising climate.



We are proud to continue to

- Provide a forum to enable culturally diverse groups to work together
- Run educational programmes to raise levels of achievement and routes into employment
- Raise levels of confidence, skills-based learning and opportunities for women and older people
- Build partnerships in the voluntary, statutory and private sectors.



Working creatively with our partners and donors, we have continued to respond and adapt to changing needs, to keep our important frontline services going and to ensure local communities have access to support.

Often we are a first port of call for help, and many people we work with experience barriers to accessing other support services. We have continued to do our work through a mixture of innovative creative activities, support for complex issues, and referral to other services.

We are developing our commercial enterprise, FabricWorks, which provides employment, training and volunteering opportunities for our beneficiaries whilst starting to generate income for the charity.

We have been working to bring people together for over 30 years, and are one of the longest-standing arts and educational organisations in the borough, delivering valuable results through our work year on year.

Some key statistics from our participants

101 women have enrolled on our Sewing Support Network.

95% report they feel less isolated, have a greater support system and can access support if needed and feel less stressed and anxious and more confident in their abilities.

33 women undertook volunteering placements and **91%** report they feel they have contributed positively to their local community, are more confident with the public and more likely to volunteer on other projects.

10 women have progressed into accredited and non-accredited education.

11 women have progressed into employment.

Data taken from the Sewing Support Network 2024-25

Our core work includes:

- Our 'Sewing Support Network', combining 'English for Sewing' classes with personal support for Bangladeshi and other long-term unemployed women with English as a second language. Through sewing and conversation they improve their skills, confidence, English and employability.
- Confidential 1-to-1 advice services, accredited to the Matrix Standard for Information, Advice, and Guidance.
- Sewing Social classes, Makers Meets and Elders Stitch Club, offering the chance for isolated women to meet and sew together.
- Varied volunteer programmes supporting women into roles increasing confidence, skills and aspirations.
- Our FabricWorks textile social enterprise, creating textile commissions that provide employment, training and industry experience to marginalised women. We continue to develop this enterprise strand to increase the financial sustainability of the charity.
- Community textile and visual art projects ranging from a week to two years, working with diverse communities to make and exhibit socially engaged artwork.
- Developing an archive of our textile projects, including the Millennium Tapestries, our founding project created with over 3000 participants.

"I enjoy these sewing classes so much, this is a new world for me - I feel so happy it's a break from everything as I suffer with poor health mentally and physically - I can't believe I can sew now... it's given me mental exercise and challenged me which I like...this is a life line" - **class participant**

Highlights of the year 2024 - 25

Our main themes this year have been using craft skills and textiles to tell and share stories, and increase our visibility. The *By You Tapestry* combined embroidered contributions from around the globe to share experiences of the pandemic. It was seen by hundreds at one of London's most visited tourist attractions. On a different scale, the Women and Asthma project used craft to help women speak of their experiences, and drew together those experiences with women from other parts of the UK. FabricWorks reached out to new audiences with community workshops, and shared stories of how training and employment can change lives through panel discussions.

In the sections below, we share some brief points about different aspects of this year's work, and the impact it has had.

The *By You Tapestry* Exhibition

We were honoured to exhibit our 26-metre *By You Tapestry - Remembering our shared history of the coronavirus pandemic* at the Tower of London over the summer of 2024, which was visited by hundreds of people, some of whom participated in workshops led by our team.



The tapestry included 275 stitched contributions from the UK and around the world depicting makers' personal stories and experiences of daily life during the pandemic. We completed the tapestry in partnership with community groups and artists from across Tower Hamlets. The stories powerfully resonated with visitors and provided a point of vital reflection at a time when we were collectively experiencing many other hardships.

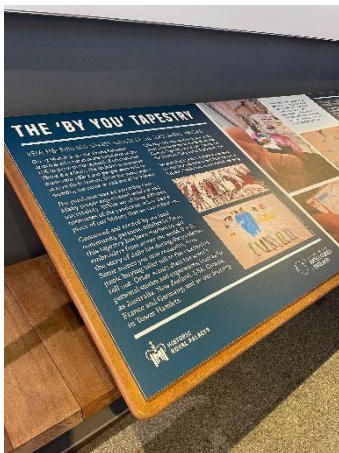


Paul Garayo, CEO of Stitches in Time said:

"We have partnered with Historic Royal Palaces, the independent charity that looks after six important historical sites across the UK, including the Tower of London, to share this work with the public. We are thrilled to be able to communicate the powerful stories captured in this shared artwork with people from all over the globe. We are immensely proud of and grateful to all participants, makers, and artists that we can

present this collective experience and provide space for others to share and reflect on their own stories."

Kim Klug, Communities Partnerships Manager at Historic Royal Palaces said: “The Tower of London is a place where history has been made for almost 1,000 years and where it continues to unfold to this day. Stitches in Time’s remarkable community led work, the By You Tapestry, captures the power of sharing stories and finding common ground in times of unprecedented challenges and change. We’re thrilled to partner with them to present this work in our Schools & Communities Space to explore and interact with.”



“It was wonderful to come along today, meet the people behind the project - suddenly, we’d all been brought together over a project we did in isolation. Amazing job, all of you - it looks fabulous.”

- By You tapestry contributor

“On my behalf can you please thank your extended team and organisation, all the contributors from across the world and to all who played a part in realising the finished work for their very hard work to bring it to The Tower of London. It is magnificent, a true work of art, and you cannot know how proud I am that my tiny embroidery is part of such a legacy.” - By You tapestry

contributor

“This is absolutely incredible work - a slice of history”
- By You exhibition visitor

“A beautiful tribute to the loss and suffering that happened through the pandemic.” - By You exhibition visitor

“Beautiful, inspiring, authentic and it makes you stop and think.”
- By You exhibition visitor



We were supported in this work in the year 2023-24 by The National Lottery Awards for All.



FabricWorks

FabricWorks has continued to grow, expanding our team, training, and employment opportunities for local women, while contributing to the creative industries in the East End.



Grant funding has helped us develop *Sewing Pathways to Work* into a core programme, enabling our beneficiaries to see clear potential routes into employment. We piloted, evaluated, and refined the model, and now offer a 10-week training course followed by a 5-week production placement. This increase in training hours improves standards, provides learning continuity and work readiness, supports professional development and boosts our capacity for income-generating projects with external partners.

We reorganised our studio and acquired some new equipment to increase our number of workstations. As we grow, this development of skills and capacity will secure a sustainable future for both the women we support and the organisation.

Funding for a Sewing Production Supervisor has raised workforce skill levels, while a Learning and Development Mentor Officer role responds to the need for mentoring alongside skills training. Beyond sewing, beneficiaries receive tailored 1-to-1 support on issues like finances, job applications, wellbeing, and confidence, plus signposting to specialist services.

We use the creative arts as an accessible way for excluded women to engage, helping them progress by overcoming barriers.

“Since taking part in our specialist training programme, T has developed a wide range of advanced technical skills. She is now producing a range of high-quality garments for herself, her friends, and her family, and has built a completely new wardrobe from scratch. Crucially, the training has enabled her to begin taking on paid sewing commissions with FabricWorks, giving her a regular monthly income for the first time.



“The impact has been significant: her confidence has grown tremendously, and we’ve witnessed a remarkable transformation in both her self-belief and ambition. T’s expectations of what she can achieve have soared. She now sees sewing not just as a hobby, but as a viable and empowering career pathway. She has already contributed to three commissioned workshops, something she would have previously felt too anxious or underqualified to attempt.”

In her own words: “This is a dream come true. I never thought I would receive education or training like this, especially in my passion – sewing – and I can’t wait to keep progressing. Before I started classes here I would only leave my home to do the school run, it had been like that for 15 years.”



Over the year, we secured service-level agreements and contracts with Tower Hamlets Recovery College, Imperial College, and Historic Royal Palaces. Our training is recognised for engaging hard-to-reach communities, leading to partnerships with Recovery College and the Bangladeshi British Fashion Council and creating a valuable income stream. Many of our class tutors are graduates of our programmes, leading to further development opportunities.

Our FabricWorks London revenue model focuses on bespoke textile production, particularly small-batch projects that align with our capacity and mission, and is funded through sales revenue, grants, and donations. We have also developed further workshop offers, either one-off paid sessions at our studios or at client locations, and a series of workshops offering the public classes teaching in sewing and mending

We thank The Fore, The London Community Foundation and The Grocer’s Charity for their grant support for our social enterprise.



WEN programme and performance

A group of our attendees took part in a programme of workshops in collaboration with Women’s Environment Network - “Climate Sisters” over 6 months. This programme explored the women’s relationship with the environment and climate crisis, and developed leadership skills to make changes personally and in their wider communities. The programme

culminated in a showcase performance “Where Are Women’s Voices in The Climate Arena?” filled with poetry, dance and discussion, highlighting how the climate crisis intersects with our daily lives, cultural heritage and diasporic histories.



“Stitches was working on a project on climate and I discovered that although I know that drought and flooding affected Bangladesh, the actual cause of it was climate change. As a group, we wrote a play based on this, where I performed as the lead role. This is something that I had never imagined myself doing, when I performed it was liberating.”

- Project participant

Hampton Court tapestry



In the spring we were commissioned by Historic Royal Palaces to create a tapestry for the reopening of their Wolsey Rooms, the oldest part of the palace, to represent and reinterpret an iconic collection of Tudor art and artefacts. The project forms part of Historic Royal Palaces' wider strategic vision to put accessibility and untold, inclusive stories at its heart. We undertook workshops with our makers about Bangladeshi motifs, stitches and colours to create a collaborative hanging. This will be on permanent display at Hampton Court Palace as a piece of modern embroidery in a section entitled 'Women as Creators', identifying how female craftspeople produced extraordinary textiles and materials in the 1500s, and female craftspeople continue to produce high-quality art today.

Women and Asthma - Imperial College London, funded by the Wellcome Collection

We undertook the second year of our project work on this 3-year collaboration with researchers, creative community organisations across the UK and Lived Experience participants. Women and Asthma is a creative project that uses craft as a common language to share stories and experiences about asthma. The aim is to deepen understanding and awareness of the relationship between women and asthma, partially inspired by the Asthma and Lung UK report 'Asthma is Worse for Women'. Over 30 participants, women affected by asthma,

either directly or as carers, and researchers at Imperial College London investigating the biology of asthma, engaged in a creative exchange process, sharing their stories and experiences through craft. We further developed deeper relationships within each community through a series of community workshops and activities in all three of the project's locations (Birmingham, Skelmersdale and Tower Hamlets). As part of this, we worked with the project to run a free drop-in public craft workshop to coincide with World Health Day at the IDEA store at nearby Watney Market.



"[I] enjoyed sewing, socialising, meeting people and talking about asthma" - community day workshop attendee



"[I] gained lots of knowledge about asthma" - community day workshop attendee

"Lots of advice on asthma, how it affects your airways and lungs"
- community day workshop attendee

"The sewing and stitching helped describing the lungs in a way that it could be affected and to improve" - community day workshop attendee

Archive work

We have continued to attend to our legacy, in particular the Millennium Tapestries, created by thousands of local people as part of the Millennium celebrations. The tapestries tell stories from Roman times to the year 2000. We are carefully and systematically sorting, recording and preserving the record of the creative processes and the tapestries themselves. This will enable us, in the summer of 2025, to display some of the pieces in a retrospective at St Anne's Limehouse, the neighbouring church, as part of the Hawksmoor300 Campaign.

The Henry Smith Charity

We are in our 4th year of funding from the Henry Smith Charity for our **Sewing Support Network**. Our extensive Sewing Support Network provides weekly safe spaces for local women to meet as a group, learn and to practice English, develop sewing skills and access additional individual support as requested.

- **Our English for Sewing classes**, in four locations across Tower Hamlets, provide a structured, practised English syllabus, taught by two experienced, bilingual female tutors. Content is informed by the areas of learning relevant to the participants' day-to-day lives and so adapts to what is most needed.
- **Our Beginners Sewing class and Makers Meet** drop in sessions are run by local women in our professional textile studio at Limehouse Town Hall. Women from the local community are taught how to use specialist equipment, learn manufacturing and sewing techniques, develop ideas, and come together to make and socialise.
- **Travel for Independence** sessions offer small groups of women the chance to build confidence and experience in navigating London independently. Participants choose destinations together and are supported by bilingual tutors to plan routes and develop key practical skills, such as using cash machines and Oyster card terminals. These trips have proven highly effective in boosting confidence, while revealing previously unrecognised needs which allows us to offer targeted one-to-one guidance.

- **We offer volunteer opportunities** within our organisation, our social enterprise and with partner organisations to build skills, employability and experience of working, raising individual aspirations through meeting other women from marginalised communities. Women make connections outside their local area, widening their peer group and support network.
- All our activities coexist with on-demand access to non-advertised **Information, Advice and Guidance**, and referral support to our advisory partners, delivered by a bilingual female trained advisor. We provide further support for women, to meet their needs, overcome difficulties and increase their confidence.

“Prior to joining Stitches I felt I was alone and had no support system, I didn't have people I could talk to or rely on. Day after day, the less important I felt, a lonely housewife who was not valued, that's the opinion I had of myself and I thought it would always be.

“I joined the class and was able to share my talent for crochet, given materials to make things and improve my skills. Aspiration, motivation and hope, all these positive feelings started to appear. Day by day I became more determined to learn and prosper. On days my friend didn't attend I was keen and eager to come to every session, so I built up courage and learnt how to travel alone.

“Joining Stitches has enabled me to learn new skills as well as giving me a chance to share my skills amongst the trustworthy, friendly people I've met. It was truly a life changing experience, I've become confident, strong and finally feel valued. I'm no longer afraid to join a new organisation and seek help.

“I've miraculously transformed into an ambitious person with goals. They always remained friendly and supported me so much, and never put pressure on me, I was able to trust them with things I could not tell anyone else.

- participant

Looking forward to in 2025-26

We are excited that September 2025 will bring the culmination of our Women and Asthma collaboration with Imperial College with a weekend of public engagement events, **Women and Asthma: Stories of Breath**. This free immersive experience to be hosted in Tower Hamlets Town Hall will allow the public to step into a multi-sensory world where stories unfold through imagery, sound, touch, and hands-on making.



We're also looking forward to hosting more **FabricWorks workshops and open studio events**. This includes a Meet the Makers, See the Process, Join the Conversation open studio and panel discussion in the spring and an Upcycled Shirt Workshop in the summer.

We look forward to the **Millennium Tapestry retrospective** at St Anne's Limehouse.

Strategic Development

We continue our successful organisational development strategy that reflects the environment we work in. Underpinning this are our core directives:

- A - Better evidence
- B - More visibility
- C - Strengthen local partnerships
- D - Become more secure as an organisation

We have made good progress with these aims, in a challenging time.



A - Better evidence

Through our Sewing Support Network and advocacy work, we've gathered rich data on the circumstances and needs of our beneficiaries. This helps us adapt our services and assess what works. In March 2024, we were reaccredited with the Matrix Quality Standard, which highlighted our strong evidence base and effective use of data to shape and improve our support.

B - More visibility

While much of the work we do is with individuals in marginalised communities and therefore not naturally very visible, we continue to have good engagement and support from our funders and some of our projects contain more opportunity for external engagement and raising awareness.

The *By You Tapestry* has been our most visible project of recent years, and we were delighted to be given a further display opportunity at Hampton Court Palace. The Women's Equality Network climate project and the Women in Asthma project mentioned in earlier sections also have their externally facing elements, and we continue to offer open studio events and workshops for the public.

C - Strengthen local partnerships

Partnership working has always been part of Stitches in Time, from our founding project, the Millennium Tapestry, onwards.

We continue to work in partnership with local organisations including Stepney City Farm and the Locksley Estate Tenants and Residents Association to provide our activities in different local venues in the borough.

Through our social enterprise, FabricWorks, we have again worked with local designers and brands to deliver sustainable and ethical fabric production, through whom we also gain visibility and opportunities through associated marketing. In addition, we have worked in close partnership with organisations already mentioned earlier such as the Women's Equality Network, the Henry Smith Foundation and the Historic Royal Palaces.

D - Become more secure as an organisation

During the year, our long-standing CEO, Paul Garayo, stepped down from his role. His departure prompted the Trustees to reflect on the organisation's leadership needs and review our management structure. Following this review, we implemented a new model with two dedicated senior roles: a Director of Programmes, Services, and Engagement managing Stitches in Time, and a Director of Enterprise and Training managing FabricWorks. This approach allows each strand of our work to benefit from focused leadership, while also strengthening organisational resilience through a collaborative senior team with oversight of the charity as a whole. The new structure reflects our growth and ensures that both core areas of our work continue to thrive with clear strategic direction.

Our leadership team combines deep expertise in community engagement, training, and sustainable enterprise.

- **The Director of Enterprise and Training** brings 12 years' experience with hard-to-reach communities and women's enterprise. She uses textile manufacturing as a tool for social change, supporting FabricWorks' growth through training, outreach, and partnerships with ethical brands.
- **The Director of Programmes, Services, and Engagement** leads the strategic development of trauma-informed, person-centred services. With a background in counselling, wellbeing, and craft, she ensures our work supports both personal growth and professional development.
- Our **trustees** bring essential expertise in social enterprise, the arts, charity leadership, mental health, and sustainable fashion—providing strong governance and strategic direction.



As a women-led organisation, many of our team share lived experience with the women we support. We understand the realities of balancing work, care, and systemic barriers to inclusion. This insight shapes our flexible approach, designed to fit women's lives and remove barriers to participation.

By centring women's voices and combining lived experience with professional expertise, we foster a safe, nurturing environment where women can build confidence, overcome challenges, and achieve lasting change.

Structure, governance and management

The Charitable Trust is constituted by Trust Deed. All necessary procedures have been completed for us to become a company limited by guarantee in addition to our existing registered charity status from 1st April 2018. The organisation is a charitable company limited by guarantee as defined by the Companies Act 2006 and registered as a charity with the Charity Commission. The Company was established under a Memorandum and Articles of Association which established the objects and powers of the Charitable Company and is governed by its Articles of Association. It was established on 7 December 2016 and the company remained dormant until the new financial year on 1 April 2018.

The Charity aims to have a diverse Board of Trustees and consults and co-produces with service users constantly, using varied methods, to inform our work. Central to Stitches in Time's ethos is that participants play an essential role in the running and leading of the organisation e.g. running social events and group activities, and introducing new participants.

Risk Statement: The Trustees have recognised their duty to identify and review the risks to which the charity is exposed, and to ensure that appropriate controls are in place to provide reasonable assurance against fraud and error. The Charity ensures its financial procedures, health and safety policy and safeguarding procedures are reviewed periodically to reflect changing legislation and to refresh knowledge and practice.

Exemptions from disclosure

Stitches in Time does not claim any exemptions from disclosing the names of Trustees, the charity's address, or other information normally included in a Trustees' annual report.

Funds held as custodian trustee on behalf of others

No funds were held as a custodian trustee on behalf of others during the year.

Acknowledgement and thanks

As a small but ambitious charity, we are proud to have played a meaningful role for over thirty years in enabling individuals and communities in the East End, and beyond, to thrive. Through our work in sewing, creative arts, and community engagement, we support people to build confidence, learn new skills, and create lasting connections. We are especially proud of all those who have grown with us, gaining skills and confidence and contributing to stronger, more inclusive communities.

The Trustees would like to formally acknowledge and thank our staff for their hard work, creativity, and dedication over the past year, often in the face of significant and complex challenges. Their vision, energy and creativity are the driving force behind the welcoming, supportive environment that defines Stitches in Time and FabricWorks. It is their efforts and insights that enable so many to flourish and that shape the future of our organisation.

We also wish to recognise the vital contribution of our volunteers. Their generosity, goodwill, and hands-on support are invaluable to our work, and we are grateful for the time and commitment they bring. In addition, we wish to thank those who have offered their specialist pro-bono expertise. Your support has strengthened our capacity and reach.

Stitches in Time could not continue without the generous support of our funders and donors. We thank every individual and organisation who has contributed through financial support or pro-bono expertise, for recognising the value of our work and for your continued sponsorship.

In particular we wish to thank

- The Henry Smith Foundation
- The Fore
- The London Community Foundation
- The Grocer's Charity
- The Merchant Taylors' Foundation
- Alexandra Jolly - formerly Head of Partnerships and Insight, the Forward Institute
- Clare Wood - Sustainable Investing and Portfolio Specialist - Stewart Investors

Your belief in our work enables us to keep making a difference, creatively, collaboratively, and with lasting impact.

Approval

This report was approved by the Trustees on 11th July 2025, and signed on their behalf.



.....
Trustees





CHARITY COMMISSION
FOR ENGLAND AND WALES

Independent examiner's report on the accounts

Section A

Independent Examiner's Report

Report to the trustees

STITCHES IN TIME

On accounts for the year
ended

31 MARCH 2025

Charity no
(if any)

1172056

Set out on pages

20-26

(remember to include the page numbers of additional sheets)

I report to the trustees on my examination of the accounts of the above charity ("the Trust") for the year ended **31/03/2025**

Responsibilities and
basis of report

As the charity's trustees, you are responsible for the preparation of the accounts in accordance with the requirements of the Charities Act 2011 ("the Act").

I report in respect of my examination of the Trust's accounts carried out under section 145 of the 2011 Act and in carrying out my examination, I have followed all the applicable Directions given by the Charity Commission under section 145(5)(b) of the Act.

Independent
examiner's statement

~~The charity's gross income exceeded £250,000 and I am qualified to undertake the examination by being a qualified member of [insert name of applicable listed body]. Delete [] if not applicable.~~

I have completed my examination. I confirm that no material matters have come to my attention in connection with the examination ~~(other than that disclosed below *)~~ which gives me cause to believe that in, any material respect:

- ~~the accounting records were not kept in accordance with section 130 of the Charities Act; or~~
- ~~the accounts did not accord with the accounting records; or~~
- ~~the accounts did not comply with the applicable requirements concerning the form and content of accounts set out in the Charities (Accounts and Reports) Regulations 2008 other than any requirement that the accounts give a 'true and fair' view which is not a matter considered as part of an independent examination.~~

I have no concerns and have come across no other matters in connection with the examination to which attention should be drawn in this report in order to enable a proper understanding of the accounts to be reached.

* Please delete the words in the brackets if they do not apply.

Signed:

Date:

04/07/25

Name:

IAN HENRY PRICE

Relevant professional
qualification(s) or body

ACMA CGMA

(if any):

--

Address:

10 KENT CLOSE

WESTONING

BEDFORDSHIRE	MK45 5LW
--------------	----------

Section B

Disclosure

Only complete if the examiner needs to highlight material matters of concern (see CC32, Independent examination of charity accounts: directions and guidance for examiners).

Give here brief details of any items that the examiner wishes to disclose.

--

**STATEMENT OF FINANCIAL ACTIVITIES FOR THE YEAR
ENDING MARCH 31, 2025**

	Notes	Unrestricted Funds £	Restricted Funds £	Total Funds 2025 £	Total Funds 2024 £
Incoming Resources					
Generated funds:					
Voluntary income: Grants	4	32,270	97,600	129,870	130,461
Donations		1,980	-	1,980	7,728
Bank interest, gross		-	-	-	-
Charitable activities:					
Service Level Agreements		-	-	-	-
Fees and sales		63,764	-	63,764	142,915
Surplus on sale of assets		-	-	-	-
Total Incoming Resources		98,014	97,600	195,614	281,103
Resources Expended					
Charitable activities	5	141,593	97,600	239,193	227,351
Governance		-	-	-	59
Total Resources Expended		141,593	97,600	239,193	227,410
Net Incoming/(Outgoing)					
Resources for the year		(43,579)	-	(43,579)	53,694
Reconciliation of Funds:					
Total Funds brought forward		83,091	-	83,091	29,397
Total funds carried forward		39,512	-	39,512	83,091

The Statement of Financial Activities includes all gains and losses in the year and therefore a statement of total recognised gains and losses has not been prepared.

All of the above amounts relate to continuing activities.

The notes on pages 22 - 26 form part of these accounts.

BALANCE SHEET AS AT MARCH 31, 2025

	Notes	2025 £	2024 £
FIXED ASSETS			
Tangible Assets	6	1,870	2,805
CURRENT ASSETS			
Debtors	7	22,781	24,594
Cash at Bank		74,306	103,947
Cash in hand		17	366
		<u>97,104</u>	<u>128,907</u>
LIABILITIES			
Amounts falling due within one year	8	<u>59,464</u>	<u>48,623</u>
TOTAL CURRENT ASSETS LESS LIABILITIES		<u>37,640</u>	<u>80,284</u>
NET ASSETS		<u>39,511</u>	<u>83,091</u>
Represented by:			
FUNDS			
Unrestricted		39,511	83,091
Restricted	9	<u>-</u>	<u>-</u>
TOTAL FUNDS		<u>39,511</u>	<u>83,091</u>

Approved by the Trustees on 11th July 2025, and signed on their behalf by:



.....
Trustees



The notes on pages 22 - 26 form part of these accounts

NOTES TO THE ACCOUNTS, MARCH 31, 2025**1. STATUS**

The organisation is an unincorporated registered charity and successor to the unincorporated association of the same name.

2. ACCOUNTING POLICIES

(a) The financial statements have been prepared under the historical cost convention, and in accordance with applicable United Kingdom accounting standards, the Statement of Recommended Practice 'Accounting and Reporting by Charities' issued in March 2005 (SORP 2005) and the Charities Act 2011.

(b) Tangible Fixed Assets: Capital expenditure on items £250 or over is depreciated at rates designed to write off the costs over the estimated useful lives of the assets, calculated on the straight line method, less any residual value.

(c) Incoming Resources

All incoming resources are included in the statement of financial activities when the charity is entitled to the income and the amount can be quantified with reasonable accuracy. The following specific policies are applied to particular categories of income:

- Voluntary income is received by way of grants, donations and gifts and is included in full in the Statement of Financial Activities when receivable. Grants, where entitlement is not conditional on the delivery of a specific performance by the charity, are recognised when the charity becomes unconditionally entitled to the grant. Such income is deferred when the donor specifies that the grant or donation must only be used in future accounting periods.
- Donated services and facilities are included at the value to the charity where this can be quantified. The value of services provided by volunteers has not been included in these accounts.
- Investment income is included when receivable.
- Incoming resources from charitable trading activity are accounted for when earned.
- Incoming resources from grants, where related to performance and specific deliverables, are accounted for as the charity earns the right to consideration by its performance.

(d) Resources expended

Expenditure is recognised on an accrual basis as a liability is incurred. Expenditure includes any VAT which cannot be fully recovered, and is reported as part of the expenditure to which it relates:

- Charitable expenditure comprises those costs incurred by the charity in the delivery of its activities and services for its beneficiaries. It includes both costs that can be allocated directly to such activities and those costs of an indirect nature necessary to support them.
- Governance costs include those costs associated with meeting the constitutional and statutory requirements of the charity and include the audit fees and costs linked to the strategic management of the charity.

(e) Fund accounting

Funds held by the charity are either:

- unrestricted general funds: these are funds which can be used in accordance with the charitable objects at the discretion of the trustees;
- restricted funds: these are funds which can only be used for particular restricted purposes within the objects of the charity; restrictions arise when specified by the donor or when funds are raised for particular restricted purposes.

(f) Stock and work in progress

Stock and work in progress are valued at cost. Cost includes all direct expenditure and overheads based on the normal level of activity.

3. TAXATION

The charity is provisionally exempt from tax on income and gains to the extent that These are applied to its charitable objects. No tax charges have arisen in the Charity.

4. GRANTS

	Total Grants 2025 £	Total Grants 2024 £
Restricted:		
London Health and Equity Partnership	-	5,000
Henry Smith	97,600	54,337
Ashley Family Foundation	-	7,875
Total Restricted	97,600	67,213
Unrestricted:		
The Fore	7,500	20,000
The London Community Fund	19,820	18,448
Awards for All	-	9,900
Wakefield and Tetley	-	5,950
Canary Wharf Group	-	8,950
The Grocers Foundation	4,950	-
Total Unrestricted	32,270	63,248
Total Grants	129,870	130,461

5. CHARITABLE ACTIVITIES

	Notes	Unrestricted Funds £	Restricted Funds £	Total Funds 2025 £	Total Funds 2024 £
Salaries & NI		18,929	79,134	98,063	112,183
Average number of employees: FTEs 8.4 (2023/24: 3.6)					
Fees		92,378	7,816	100,194	84,721
Projects		717	4,000	4,717	7,174
Depreciation	6	935	-	935	935
Rent		11,525	5,800	17,325	16,436
Telecommunications		320	500	820	731
Postage, stationery and photocopying		1,271	-	1,271	1,179
Insurance		355	350	705	662
Travel and subsistence		997	-	997	1,189
Equipment:					
minor purchases		1,578	-	1,578	546
maintenance		431	-	431	347
Administrative support		-	-	-	-
Memberships		1,320	-	1,320	583
Publicity		623	-	623	665
Charges		6,607	-	6,607	2
Receivable Write Off		3,658	-	3,658	-
		141,643	97,600	239,243	227,351

6. FIXED ASSETS

	Computer equipment £	Production equipment £	Total £
At cost:			
at 1.4.24	-	3,740	3,740
additions	-	-	-
disposals	-	-	-
	<hr/>	<hr/>	<hr/>
at 31.3.25	-	3,740	3,740
Depreciation:			
at 1.4.24	-	(953)	(953)
25% per annum	-	(953)	(953)
disposals	-	-	-
	<hr/>	<hr/>	<hr/>
at 31.3.25	-	(1,906)	(1,906)
	<hr/>	<hr/>	<hr/>
Net Book Value, 31.3.25	-	1,834	1,834
	<hr/>	<hr/>	<hr/>
Net Book Value, 31.3.24	-	2,805	2,805
	<hr/>	<hr/>	<hr/>

7. DEBTORS

	2025 £	2024 £
Debtors, trade	22,145	23,958
Grants Receivable	-	-
Pre-payments	-	-
Deposit, rent	636	636
	<hr/>	<hr/>
	22,781	24,594
	<hr/>	<hr/>

8. CURRENT LIABILITIES, AMOUNTS FALLING DUE WITHIN ONE YEAR

	2025 £	2024 £
Creditors	-	-
Refundable deposits	165	165
Salary Control	23,524	16,583
Grants in Advance		
Henry Smith	32,775	31,875
Merchant Taylors' Foundation	3,000	-
	59,464	48,623

9. RESTRICTED FUNDS

	Balance at April 1, 2024 £	Movement in Resources		Balance at March 31, 2025 £
		Incoming £	Outgoing £	
Henry Smith	-	97,600	(97,600)	-
	-	97,600	(97,600)	-

Project funds: All of the above provide revenue and/or capital funding for projects.

10. TRUSTEE REMUNERATION AND RELATED PARTY TRANSACTIONS

One trustee received remuneration during the year for project work. No other trustees receive remuneration (2024: £1800). There were no expenses reimbursed to, or paid on behalf of, members of the Management Committee.

No trustees or other persons related to the charity had any personal interest in any contract or transaction entered into by the charity during the year (2024: £nil).

