

FROYLE WILDLIFE

England & Wales · Charity number 1171997

Details

Status Registered

Legal form CIO

Registered 2017-03-10

Register [View on the Charity Commission register](#)

Contact

Address Braemore
Husseys Lane
Lower Froyle
Alton
GU34 4LX

Phone 0142023520

Website www.froylewildlife.co.uk

Activities

Objects: THE OBJECTS OF THE CIO ARE:(A) TO PROMOTE FOR THE BENEFIT OF THE PUBLIC RESIDENT IN AND AROUND THE VILLAGES OF UPPER FROYLE AND LOWER FROYLE, HAMPSHIRE THE CONSERVATION, PROTECTION AND IMPROVEMENT OF THE LOCAL PHYSICAL AND NATURAL ENVIRONMENT, IN PARTICULAR BUT NOT EXCLUSIVELY BY IDENTIFYING AND RECORDING SPECIES OF FLORA AND FAUNA IN THE LOCAL AREA;(B) TO ADVANCE THE EDUCATION OF THE PUBLIC RESIDENT IN AND AROUND THE VILLAGES OF UPPER FROYLE AND LOWER FROYLE, HAMPSHIRE IN THE CONSERVATION, PROTECTION AND IMPROVEMENT OF THE LOCAL PHYSICAL AND NATURAL ENVIRONMENT.

Activities: Nature conservation, protection, recording; studying local flora and fauna around Upper and Lower Froyle in Hampshire.

Classification

- **How:** Other Charitable Activities
- **What:** Environment/conservation/heritage
- **Who:** The General Public/mankind

Geography

- Hampshire
- Surrey

Finances

Period end	Income	Expenditure	Assets	Employees
2025-08-31	£1,010	£1,153	-	-
2024-08-31	£599	£662	-	-
2023-08-31	£932	£834	-	-
2022-08-31	£1,343	£1,484	-	-
2021-08-31	£431	£1,178	-	-

Trustees

Name	Role	Appointed
BARRY PETER CLARK	Chair	2017-03-03
ALAN FRANK DYOS		2017-03-03
Deborah Addison		2025-10-24
JAYNE KAREN FISHER		2017-03-03
Mark Crisp		2025-10-24
SUE CLARK		2017-03-03

FROYLE WILDLIFE

England & Wales - Charity number 1171997

Accounts

FROYLE WILDLIFE

Trustees' Report for the period 1 September 2024 to 31 August 2025



The trustees of Froyle Wildlife present their Report and Accounts for the period 1 September 2024 to 31 August 2025.

1. Reference and administrative details

Froyle Wildlife is a Charitable Incorporated Organisation, registered charity number 1171997. Its registered address is:

Braemore
Husseys Lane
Lower Froyle
Alton GU34 4LX.

The trustees of Froyle Wildlife throughout the period were:

Barry Clark (chairman)
Susan Clark
Alan Dyos (secretary)
Jayne Fisher
Nigel Hughes
Jenny Matthews
Jonathan Pickering (treasurer)

At each annual general meeting of the members of the CIO, one-third of the charity trustees shall retire from office. Any person who retires as a charity trustee by rotation is eligible for re-election.

Jonathan Pickering and Nigel Hughes have indicated that they plan to retire in 2025 and not stand for re-election. Deborah Addison and Mark Crisp are proposed as their replacements.

Governance, management and trustee recruitment

Froyle Wildlife is run by its trustees, who meet as often as required during the year to manage its affairs. They also arrange the events which Froyle Wildlife puts on in the village, and recruit and manage volunteers to assist with the upkeep and maintenance of the Froyle Park pond and the two wildflower areas on Froyle Recreation Ground.

The trustees of Froyle Wildlife share an interest in local wildlife and the natural environment, and the importance of its conservation and protection. Potential new trustees are sought from the residents of the local area who share the values and objectives of Froyle Wildlife.

2. Objectives and activities

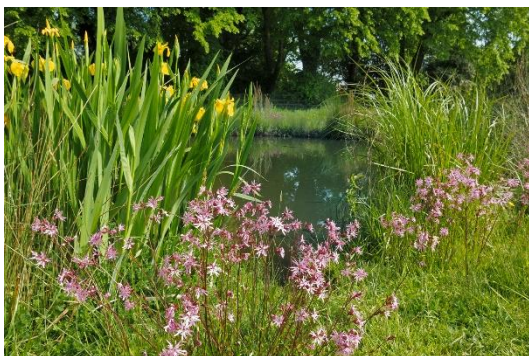
The objectives of Froyle Wildlife are:

(a) to promote for the benefit of the public resident in and around the villages of Upper Froyle and Lower Froyle, Hampshire the conservation, protection and improvement of the local physical and natural environment, in particular but not exclusively by identifying and recording species of flora and fauna in the local area;

(b) to advance the education of the public resident in and around the villages of Upper Froyle and Lower Froyle, Hampshire in the conservation, protection and improvement of the local physical and natural environment.

During the period Froyle Wildlife (FW) continued to arrange a programme of activities. The trustees confirm that activities have had regard to the Charity Commission's guidance on public benefit. Our plan is to carry out the following activities, either separately or in conjunction with each other:

1. Providing talks, preferably illustrated, by relevant knowledgeable individuals on aspects of species, local wildlife conservation, protection and natural environmental improvement;
2. Providing guided walks in the local countryside, led by relevant knowledgeable individuals, to observe and where possible record various elements of the local flora, fauna and, if appropriate, related topography;
3. Offering opportunities to participate in the development, maintenance, upkeep and renewal of local natural facilities including, but not limited to, the wildlife pond and meadow area in Froyle Park, and the wildflower areas on the Froyle Recreation Ground;
4. Providing forums in which interested people can meet to discuss and share experiences, observations and opinions relating to local flora, fauna and conservation matters generally, all of which will be open to members of the public at an appropriate modest entrance fee, generally £3 (designed to cover both staging and general operating expenses) and free for members.



Froyle Park Pond area May 2025



Wildflowers on Froyle Rec. June 2025

3. Achievements and performance

Froyle Wildlife arranges 'walks and talks' that support our purposes and form part of a year on year programme, see our website for more information

<https://froylewildlife.co.uk/news/past-events/>. We continued to look after the wildflower areas on Froyle Recreation Ground and the wildlife pond area near Gid Lane with volunteers.

Last October Ben Hamlin gave a talk 'Why We Need Trees' at a joint event with Froyle Gardening Club. The talk covered topics including 'why we need trees' (for our health and wellbeing, for wildlife habitats, to clean our air and to help prevent soil erosion are some) and 'what is the problem?' Only 13% of the UK has tree cover, only 2% of Britain is ancient woodland with only 15% of that being protected, and a half of our ancient woodland has been lost or damaged since the 1930's.



*Knapweed broomrape
near a Froyle footpath*

In November Isobel Girvan gave a fascinating talk on the 'Wildflowers of Froyle', updating a survey originally carried out in 1952 and done again in 1991. Two particular highlights were the white helleborine, a rare orchid which grows under beech trees, and toothwort - an ancient woodland indicator. On our chalk grasslands species recorded included bee orchid, pyramidal orchid, knapweed broomrape and quaking grass. Even in the arable and hedgerow habitat there was a rich variety of plants, from teasels to musk mallow and dog rose, as there was also in the walls and banks. The number and range of wild plants in Froyle is an indicator of the rich flora we enjoy and need to foster.

We appreciated a talk in February about 'Wildlife Photography' by Jon Hawkins, an award-winning professional photographer who has a passion for wildlife. He was a knowledgeable speaker who entertainingly shared his approach, photographic technique, and a host of brilliant photos. Tips for successful images included: getting up early, knowing and respecting the animals' habits and feeding patterns, staying downwind, camouflage (including using a hide), investing in high quality photographic equipment, and being prepared to wait for hours for one successful picture.

An informative and entertaining talk about 'Understanding birds and how they live' in March was presented by Keith Betton. We heard that 382 bird species were observed in Hampshire in 2024. Birds have been on earth for about 150 million years whereas humans only about 1 million – and most of the decline in the bird population is attributable to human activity, in particular industrialisation and climate change, which has



Understanding birds talk in village hall

changed the temperature in birds' habitats, altered their food supplies and caused habitat loss. About 2,000 bird species migrate, principally in search of food and also to avoid extreme cold, so as to maximise their chances of survival, including the arctic tern and bar-tailed godwit.

In June we visited Noar Hill SSSI to see wildflowers at these medieval chalk workings. Over hundreds of years the mounds and hollows have been colonised by a great variety of beautiful chalk downland flowers now rare in the wider countryside. There were numerous orchids including pyramidal, musk, fragrant and common spotted along with common broomrape and twayblades. Other plants included: yellow wort, clustered bellflower, fairy flax, marjoram and ladies bedstraw.



Pyramidal orchids at Noar Hill



White Admiral at Abbots Wood

Warm sunshine in July was ideal for a walk in Alice Holt forest for woodland butterflies. We enjoyed seeing the variety and numbers of butterflies at Abbots Wood along with close encounters while they were nectaring. The 17 species spotted included Silver Washed Fritillary, Red Admiral, Brimstone, Ringlet, Comma, Large Skipper, White Admiral, Speckled Wood and Purple Hairstreak. We had not seen as many Silver Washed Fritillaries for several years and it was lovely to witness their courtship flights as well.

At the wildlife pond area and meadow we had drizzle in the morning during the drop-in day in July, after weeks of hot dry weather. It brightened in the afternoon for the dragonflies and butterflies to start flitting among the wonderful wildflower meadow that surrounds the pond. There were numerous butterflies including Gatekeeper, Meadow Brown, Common Blue, Comma and Small Copper. Odonata seen included Emperor dragonfly, Blue-tailed damselfly, Common darter, Small Red-eyed damselfly, along with bees, ladybirds and hoverflies. Among the vegetation was a metallic green Rose Chafer beetle, a wasp spider and a Turnip sawfly.

Community involvement:

We assisted the Froyle tree warden to obtain disease resistant elm trees from a Hampshire County Council scheme. In January eight bare rooted trees of the species *Ulmus 'Ademuz'* were planted in Froyle by volunteers at three locations. Froyle once had majestic elm trees along hedges and fields. Suckers from old elms

do still grow locally usually for 10-20 years before succumbing to Dutch elm disease. Elm trees provide habitats for wildlife, including birds, butterflies and fungi, supporting local biodiversity. Elm is the sole larval foodplant of the White Letter Hairstreak butterfly, with Froyle's last record in 1997.



Planting disease resistant elm trees



New perennial wildflower area on rec.

The wildflower areas on Froyle recreation ground provide nectar for bees and other pollinators as well as a colourful display for the community. Last September we changed the cornfield annuals area to perennials by sowing perennial seeds. A mixture of British native species that are different to the original wildflower area have started to grow thus increasing diversity and flowering times for next year. Seeds were also grown in pots to supplement those sown directly in the ground. About 50 pot grown wildflowers were also planted out by volunteers.

In Spring we trimmed the willow dome on Froyle recreation ground and tied in new growth to maintain a compact structure. In July the perennial wildflower plot had its annual cut by traditional scything and rake up of cuttings as part of the maintenance plan. Many locals enjoyed seeing the colourful wildflowers and using the willow dome, achieved with the help of 14 volunteers involved for 72 hours work.

We encourage local people to send us their wildlife sightings in Froyle with photos if possible: these included Slow worm, Jersey tiger moth, Silver-washed fritillary, 6-spot burnet moth and caddisfly larva. In addition to our website www.froylewildlife.co.uk, we also publish monthly articles in the Froyle Village magazine to inform about local wildlife. Our Instagram page [#froylewildlife](https://www.instagram.com/froylewildlife) has 78 followers and our events are also posted on Facebook in the Froyle Residents group. We had a display of local wildlife information at the Froyle Fete in July and at the Froyle Gardens Open event in June 2025.



Froyle Wildlife stand at Froyle fete



Pulling horsetail weeds on pond edge

Managing the wildflower meadow surrounding Froyle Park Pond has involved 17 volunteers for 229 hours of hands on work to maintain the habitat. With this effort, the wildflowers have thrived and the pond continues to support breeding amphibians, dragonflies and damselflies. Work included removing perennial weeds (especially field horsetail); cutting paths to enable access for visitors; and removing excess pond and stream vegetation. In addition we replaced a 40m length of broken fence and posts to prevent sheep from straying into Ryebidge stream, where hemlock water dropwort grows. The high number of plants, insects and amphibians that would otherwise be absent from the area is due to our management which includes selective cutting and sheep grazing in winter months.



Pond dipping for families July 2025



Sheep grazing at pond area

Several families enjoyed a lovely morning of pond dipping in July at the wildlife pond. Due to the lack of rain, the pond level had dropped by 80 cm, so children could only reach the water with the long handled net. We collected a range of tiny creatures and examined them using our new portable wireless microscope. The microscope proved very popular with the children who quickly learnt how to use it to view water beetles, boatmen, dragonfly nymphs and young newts in greater detail. The water was teeming with life and we also saw dragonflies and damselflies. Also the children and adults were amazed to see a 'wasp spider' with its long legs and vivid black and yellow stripes.

Species recording:

Observations have been made to record what species are present in the local area throughout the seasons. These add to the information from previous years, accessible from our website <http://froylewildlife.co.uk/recording/species-lists/>.

We held two moth identification evenings after dark in Froyle during May. One was held in a Lower Froyle garden and recorded 25 species including Poplar Hawk-moth, Iron Prominent and Brimstone moth. The second was held in the wildflower meadow that surrounds the pond near Gid Lane and recorded 27 species including White Ermine, Nut-tree Tussock and Scorched Wing. Most of the moths were photographed for conclusive identification of the species. These records were then submitted to the National Moth Recording Scheme via the Hampshire County Recorder. Moths and butterflies are indicator species for the health of our natural environment.



White Ermine moth

We have informally monitored the habitat at the wildlife pond and wildflower meadow and our records include: 19 species of dragonfly/damselfly; 4 species of amphibian; 26 species of butterfly; 137 species of moth and 117 species of flowering plants. Records at the pond area for the first time this year include: Grey wagtail, Red bartsia, Turnip sawfly, Emerald damselfly and a Silver grass-miner moth.



Turnip sawfly



Red bartsia



Emerald damselfly

The wildlife pond has a good population of Great Crested Newts (GCN) with recorded presence every year since 2016. Evidence of breeding was confirmed again in 2025 with newt larvae observed of both GCN and Smooth Newt.

Surveying continued this summer in Froyle's disused quarry (SINC site), a habitat with naturally regenerating chalk grassland. At this private site Froyle Wildlife volunteers also assisted with habitat management of scrub and non-native buddleia.

4. Financial performance

Froyle Wildlife's opening funds were £1,405 none of which were restricted. During the year it received no grants from either East Hants District or Froyle Parish councils. Overall there was a deficit of income over expenditure of £143 (compared with the previous year's deficit of £63). Closing funds were £1,262, none of which are restricted. Froyle Wildlife has no debts.

The trustees manage Froyle Wildlife to allow the purchase of essential items of equipment or consumables to enable it to carry on its conservation activities, and aim to maintain a small positive cash balance as working capital to enable the production of local events. The subscription amount is set at a level to meet these objectives: the trustees do not consider it is necessary or appropriate to generate significant reserves to be held by the charity.

Other matters

Froyle Wildlife holds no funds as custodian trustee, and has not taken advantage of any exemptions from disclosure.

FROYLE WILDLIFE ACCOUNTS FOR THE YEAR ENDED 31 AUGUST 2025

Income & expenditure statement

	Year ended 31 August	
	2025	2024
	£	£
Income		
Subscriptions	430	370
Donations	427	90
Refreshment receipts	126	118
Door entries	27	21
	<hr/>	<hr/>
Total income	1,010	599
Expenditure		
Maintenance	513	51
Donations to speakers	238	145
Insurance	173	170
Sundries	36	82
Hall hire	115	90
Food & drink	78	48
Planting		76
	<hr/>	<hr/>
Total expenditure	1,153	662
(Deficit)/Surplus of income over expenditure	£(143)	£(63)

**FROYLE WILDLIFE
ACCOUNTS FOR THE YEAR ENDED 31 AUGUST 2025**

Balance sheet at 31 August 2025

	31 August	
	2024	2023
	£	£
Current assets		
Cash at bank	953	1,184
Petty cash	309	221
Net current assets	<u>1,262</u>	<u>1,405</u>
 TOTAL FUNDS	 <u>£1,262</u>	 <u>£1,405</u>
 Represented by:		
Capital introduced	<u>53</u>	<u>53</u>
Opening reserves	1,352	1,415
(Deficit)/Surplus	<u>(143)</u>	<u>(63)</u>
Closing reserves	1,209	1,352
 TOTAL FUNDS	 <u>£1,262</u>	 <u>£1,405</u>

Approved on behalf of the Committee by:

Barry Clark

Jonathan Pickering

Date: 8 September 2025

**FROYLE WILDLIFE
ACCOUNTS FOR THE YEAR ENDED 31 AUGUST 2025
NOTES TO THE ACCOUNTS**

1. Froyle Wildlife is a Charitable Incorporated Organisation (no.1171997) which took over the the activities of Froyle Nature Conservation Group (FNCG).
2. The accounts cover the year ended 31 August 2025.
3. The accounts have been prepared on a Receipts and Payments basis, as agreed by the Trustees.
4. In accordance with recommended practice, the gross income and expenditure for various ancillary activities have been shown in the accounts, rather than the net figures, which are as follows:

	Refreshments
	£
Receipts	126
Costs	<u>(78)</u>
Net proceeds	<u>£48</u>

FROYLE WILDLIFE

England & Wales - Charity number 1171997

Accounts

FROYLE WILDLIFE

Trustees' Report for the period 1 September 2023 to 31 August 2024



The trustees of Froyle Wildlife present their Report and Accounts for the period 1 September 2023 to 31 August 2024.

1. Reference and administrative details

Froyle Wildlife is a Charitable Incorporated Organisation, registered charity number 1171997. Its registered address is:

Braemore
Husseys Lane
Lower Froyle
Alton GU34 4LX.

The trustees of Froyle Wildlife throughout the period were:

Barry Clark (chairman)
Susan Clark
Alan Dyos (secretary)
Jayne Fisher
Nigel Hughes
Jenny Matthews
Jonathan Pickering (treasurer)

At each annual general meeting of the members of the CIO, one-third of the charity trustees shall retire from office. Any person who retires as a charity trustee by rotation is eligible for re-election.

Susan Clark and Jenny Matthews have indicated they will retire and seek re-election.

Governance, management and trustee recruitment

Froyle Wildlife is run by its trustees, who meet as often as required during the year to manage its affairs. They also arrange the events which Froyle Wildlife puts on in the village, and recruit and manage volunteers to assist with the upkeep and maintenance of the Froyle Park pond and the two wildflower areas on Froyle Recreation Ground.

The trustees of Froyle Wildlife share an interest in local wildlife and the natural environment, and the importance of its conservation and protection. Potential new trustees are sought from the residents of the local area who share the values and objectives of Froyle Wildlife.

2. Objectives and activities

The objectives of Froyle Wildlife are:

(a) to promote for the benefit of the public resident in and around the villages of Upper Froyle and Lower Froyle, Hampshire the conservation, protection and improvement of the local physical and natural environment, in particular but not exclusively by identifying and recording species of flora and fauna in the local area;

(b) to advance the education of the public resident in and around the villages of Upper Froyle and Lower Froyle, Hampshire in the conservation, protection and improvement of the local physical and natural environment.

During the period Froyle Wildlife (FW) continued to arrange a programme of activities. The trustees confirm that activities have had regard to the Charity Commission's guidance on public benefit. Our plan is to carry out the following activities, either separately or in conjunction with each other:

1. Providing talks, preferably illustrated, by relevant knowledgeable individuals on aspects of species, local wildlife conservation, protection and natural environmental improvement;
2. Providing guided walks in the local countryside, led by relevant knowledgeable individuals, to observe and where possible record various elements of the local flora, fauna and, if appropriate, related topography;
3. Offering opportunities to participate in the development, maintenance, upkeep and renewal of local natural facilities including, but not limited to, the wildlife pond and meadow area in Froyle Park, and the wildflower areas on the Froyle Recreation Ground;
4. Providing forums in which interested people can meet to discuss and share experiences, observations and opinions relating to local flora, fauna and conservation matters generally, all of which will be open to members of the public at an appropriate modest entrance fee, generally £3 (designed to cover both staging and general operating expenses) and free for members.



Froyle Park Pond area July 2024



Wildflowers on Froyle Rec. July 2024

3. Achievements and performance

Froyle Wildlife arranges 'walks and talks' that support our purposes and form part of a year on year programme, see our website for more information

<http://froylewildlife.co.uk/news/past-events/>. We continued to look after the wildflower area on Froyle Recreation Ground and the wildlife pond area near Gid Lane with volunteers.

Last September Rosemary Webb stunned us with a slide display of 200 of her beautiful photographs during her talk 'Fabulous Fungi in Hampshire'. Although fungi are maligned because some are poisonous, they in fact perform an essential service in breaking down dead plant material into a form that provides nutrients for living plants and trees. Without them, years of leaf litter and the remains of dead trees would pile over our heads rather than enrich the soil. Some common names include: bird's nest, stag's horn, orange peel, red elf cap, jelly ear, beefsteak, turkey tail and King Alfred's cakes.



Fabulous fungi talk

Last November we were treated to a presentation by Barry Clark entitled 'The story of Froyle wildlife pond' that is located near Gid Lane. After construction in 2016, the first Great Crested Newt appeared within three months followed by toads and frogs, and by 2018 Great Crested Newts were breeding there (a recent count showed 28). There is a huge variety of insect life including water boatmen, pond skaters and great diving beetles, seventeen species of dragonfly and damselfly and a large variety of butterflies and moths in the surrounding wildflower meadow. There are 'pond-dipping' days where children under supervision can investigate what creatures live in the pond.

Anita Ebdon, professional falconer and owner of Hampshire Hawk Walks joined us in



Falconry talk

the village hall in March to give a fascinating and enjoyable talk on falconry, accompanied by four of her feathered friends. Anita's first experience of birds of prey at a falconry experience day then lead her to adopt a Harris's Hawk. She now has 9 birds and admits it is a full-time job looking after them. This includes weighing each bird every morning to maintain their ideal flying weight. All her birds are allowed to hunt as this is their natural behaviour.



Guided bird walk in Froyle



Hawkins Wood bluebells

Our guided bird walk in Froyle in April was lead by Keith Betton, chair of Hampshire Ornithological Society. Thanks to his observations we were able to see and/or hear twenty eight different species of birds. We also learnt various characteristics of their life and behaviour. We were fortunate to see a Tree pipit, with its unusual characteristic behaviour of singing while it 'parachuted' down to the ground . This is a red listed bird that will have migrated back to the UK this year from Central Africa, and is not commonly seen. Thanks to Froyle Estate we were able to explore Hawkins Wood, with its carpets of bluebells to admire.



Marbled White

At the wildlife pond area drop-in day in July, visitors stayed for several hours to enjoy the numerous species at this biodiversity hotspot plus a display of photos taken in Froyle. The meadow surrounding the pond looked splendid with wildflowers such as knapweed, birds-foot trefoil, musk mallow, lady's bedstraw and teasels. We saw 11 species of butterfly on the day including Marbled White, Gatekeeper and Comma as well seven-spot ladybird, soldier beetle and hoverflies.

Around the pond we were delighted by the aerial acrobatics of Emperor Dragonfly, Common Darter, Azur and Blue-tailed Damselfly. Several birds visited such as Goldfinch, Blackcap and overhead Red Kite.

Community involvement:

In Spring we trimmed the willow dome on Froyle recreation ground and tied in new growth to maintain a compact structure. We sowed an area of cornfield annuals on Froyle recreation ground although the wet spring delayed efforts to cultivate the ground. The annuals still flowered well in the summer with corn marigolds, cornflowers, corn camomile and poppies. In July the adjacent perennial wildflower plot had its annual cut and rake up as part of the maintenance plan. Many locals enjoyed seeing the colourful wildflowers and using the willow dome, achieved with the help of 14 volunteers involved for 75 hours work.



Preparing the ground for annuals April 2024



Cornfield annuals on Froyle rec. July 2024

Managing the wildflower meadow surrounding Froyle Park Pond has involved 11 volunteers for 155 hours of hands on work to maintain the habitat. With this effort, the wildflowers have thrived and the pond continues to support breeding amphibians, dragonflies and damselflies. Work included removing perennial weeds (especially field horsetail); cutting paths to enable access for visitors; and removing excess pond vegetation. The high number of plants, insects and amphibians that would otherwise be absent from the area is due to our management which includes selective cutting and sheep grazing in winter months.



Pond dipping for families July 2024



Scythes to cut vegetation at pond area

Adults and children enjoyed a lovely few hours in July pond dipping at the wildlife pond in Upper Froyle. It was sunny weather and we were able to find a great variety of pond life. The identification charts helped to name the tiny creatures that the pond supports. Ted Matthews (aged 6) said, "I like pond dipping. You get to find extraordinary creatures and find out what they are. My favourite were the newts." Rosie & Seb said "We thoroughly enjoyed the pond dipping at Froyle wildlife pond. Seb learnt all about the different species of insects living in the pond, dragonflies plus fauna & flora surrounding the pond. Seb was taught how to use the net to gently collect boatman, newts and dragonfly nymphs".

We encourage local people to send us their wildlife sightings in Froyle with photos if possible: these included Emperor dragonfly, Old lady moth, wasp spider, 6-spot burnet moth and thick legged flower beetle. In addition to our website

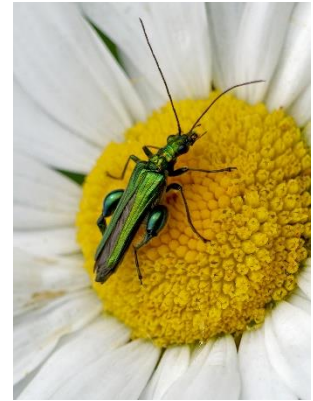
www.froylewildlife.co.uk, we also publish monthly articles in the Froyle Village magazine to inform about local wildlife. Our Instagram page #froylewildlife has 76 followers and our events are also posted on Facebook in the Froyle Residents group. We had a display of local wildlife information at the Froyle Fete in July and at the Froyle Gardens Open event in June 2024.



Display Froyle Gardens Open event



Six-spot burnet moth



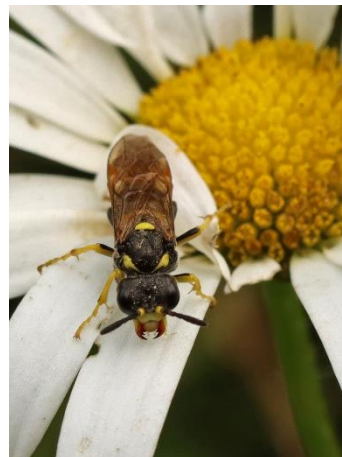
Thick legged flower beetle

Species recording:

Observations have been made to record what species are present in the local area throughout the seasons. These add to the information from previous years, accessible from our website <http://froylewildlife.co.uk/recording/species-lists/>. We have informally monitored the habitat at the wildlife pond and wildflower meadow and our records include: 18 species of dragonfly/damselfly; 4 species of amphibian; 26 species of butterfly; 103 species of moth and 116 species of flowering plants. Records at the pond area for the first time this year include: Blackcap, Alderfly larva, mating Willow emerald damselflies and a rare sawfly (*tenthredo schafferi*).



Alderfly larva



Sawfly tenthredo schafferi



Willow emerald damselflies

The larvae of *tentrando schafferi* feed on either Tufted Vetch or Field Scabious both of which grow in Froyle Wildlife's meadow and there is only one record in Hampshire for this sawfly species. One small insect can be significant as an indicator of habitat health and biodiversity. The food plants of this sawfly were once common in the

wider countryside but now tufted vetch and field scabious are scarce in our field edges and hedgerow bottoms.

The wildlife pond has a good population of Great Crested Newts (GCN) with recorded presence every year since 2016. Evidence of breeding was confirmed again in 2024 with newt larvae observed of both GCN and Smooth Newt.



Great Crested Newt seen in Lower Froyle



Smooth Newt in a Lower Froyle pond

Froyle Wildlife asked Pete West (from Hampshire Amphibian and Reptile Conservation) again to survey selected ponds in April with landowner permission. Three ponds were visited in Lower Froyle that have been built in the last 12 years. Great Crested Newts were seen in one pond and Smooth Newts in all three. One garden pond was teeming with approximately 70 Smooth Newts. These records add to the four ponds surveyed last year. Unusual croaking noises from another pond were characterised from audio recording as one of the non-native pool frogs, most likely the southern clade pool frog, *Pelophylax lessonae*. It is unknown whether this non-native species will have an adverse effect on native amphibians.

Surveying continued this summer in Froyle's disused quarry (SINC site), a habitat with naturally regenerating chalk grassland. At this private site Froyle Wildlife volunteers also assisted with habitat management of scrub and non-native buddleia.

4. Financial performance

Froyle Wildlife's opening funds were £1,468 none of which were restricted. During the year it received no grants from either East Hants District or Froyle Parish councils. Overall however there was a small deficit of income over expenditure of £63 (compared with the previous year's surplus of £98). Closing funds were £1,405, none of which are restricted. Froyle Wildlife has no debts.

The trustees manage Froyle Wildlife to allow the purchase of essential items of equipment or consumables to enable it to carry on its conservation activities, and aim to maintain a small positive cash balance as working capital to enable the production of local events. The subscription amount is set at a level to meet these objectives: the trustees do not consider it is necessary or appropriate to generate

significant reserves to be held by the charity.

Other matters

Froyle Wildlife holds no funds as custodian trustee, and has not taken advantage of any exemptions from disclosure.

FROYLE WILDLIFE ACCOUNTS FOR THE YEAR ENDED 31 AUGUST 2024

Income & expenditure statement

	Year ended 31 August	
	2024	2023
	£	£
Income		
Subscriptions	370	440
Donations	90	349
Refreshment receipts	118	107
Door entries	21	36
	<hr/>	<hr/>
Total income	599	932
Expenditure		
Planting	76	90
Hall hire	90	90
Food & drink	48	58
Donations to speakers	145	130
Insurance	170	130
Sundries	82	253
Maintenance	51	83
	<hr/>	<hr/>
Total expenditure	662	834
(Deficit)/Surplus of income over expenditure	£(63)	£98

**FROYLE WILDLIFE
ACCOUNTS FOR THE YEAR ENDED 31 AUGUST 2024**

Balance sheet at 31 August 2024

	31 August	
	2024	2023
	£	£
Current assets		
Cash at bank	1,184	1,150
Petty cash	221	318
Net current assets	<u>1,405</u>	<u>1,468</u>
 TOTAL FUNDS	 <u>£1,405</u>	 <u>£1,468</u>
 Represented by:		
Capital introduced	<u>53</u>	<u>53</u>
Opening reserves	1,415	1,317
(Deficit)/Surplus	<u>(63)</u>	<u>98</u>
Closing reserves	1,352	1,415
 TOTAL FUNDS	 <u>£1,405</u>	 <u>£1,468</u>

Approved on behalf of the Committee by:

Barry Clark

Jonathan Pickering

Date: 12 September 2024

FROYLE WILDLIFE
ACCOUNTS FOR THE YEAR ENDED 31 AUGUST 2024
NOTES TO THE ACCOUNTS

1. Froyle Wildlife is a Charitable Incorporated Organisation (no.1171997) which took over the the activities of Froyle Nature Conservation Group (FNCG).
2. The accounts cover the year ended 31 August 2024.
3. The accounts have been prepared on a Receipts and Payments basis, as agreed by the Trustees.
4. In accordance with recommended practice, the gross income and expenditure for various ancillary activities have been shown in the accounts, rather than the net figures, which are as follows:

	Refreshments
	£
Receipts	118
Costs	<u>(48)</u>
Net proceeds	<u>£70</u>

FROYLE WILDLIFE

England & Wales - Charity number 1171997

Accounts

FROYLE WILDLIFE

Trustees' Report for the period 1 September 2022 to 31 August 2023



The trustees of Froyle Wildlife present their Report and Accounts for the period 1 September 2022 to 31 August 2023.

1. Reference and administrative details

Froyle Wildlife is a Charitable Incorporated Organisation, registered charity number 1171997. Its registered address is:

Braemore
Husseys Lane
Lower Froyle
Alton GU34 4LX.

The trustees of Froyle Wildlife throughout the period were:

Barry Clark (chairman)
Susan Clark
Alan Dyos (secretary)
Jayne Fisher
Nigel Hughes
Jenny Matthews
Jonathan Pickering (treasurer)

At each annual general meeting of the members of the CIO, one-third of the charity trustees shall retire from office. Any person who retires as a charity trustee by rotation is eligible for re-election.

Barry Clark and Jonathan Pickering have indicated they will retire and seek re-election.

Governance, management and trustee recruitment

Froyle Wildlife is run by its trustees, who meet as often as required during the year to manage its affairs. They also arrange the events which Froyle Wildlife puts on in the village, and recruit and manage volunteers to assist with the upkeep and maintenance of the Froyle Park pond and the two wildflower areas on Froyle Recreation Ground.

The trustees of Froyle Wildlife share an interest in local wildlife and the natural environment, and the importance of its conservation and protection. Potential new trustees are sought from the residents of the local area who share the values and objectives of Froyle Wildlife.

2. Objectives and activities

The objectives of Froyle Wildlife are:

(a) to promote for the benefit of the public resident in and around the villages of Upper Froyle and Lower Froyle, Hampshire the conservation, protection and improvement of the local physical and natural environment, in particular but not exclusively by identifying and recording species of flora and fauna in the local area;

(b) to advance the education of the public resident in and around the villages of Upper Froyle and Lower Froyle, Hampshire in the conservation, protection and improvement of the local physical and natural environment.

During the period Froyle Wildlife (FW) continued to arrange a programme of activities. The trustees confirm that activities have had regard to the Charity Commission's guidance on public benefit. Our plan is to carry out the following activities, either separately or in conjunction with each other:

1. Providing talks, preferably illustrated, by relevant knowledgeable individuals on aspects of species, local wildlife conservation, protection and natural environmental improvement;
2. Providing guided walks in the local countryside, led by relevant knowledgeable individuals, to observe and where possible record various elements of the local flora, fauna and, if appropriate, related topography;
3. Offering opportunities to participate in the development, maintenance, upkeep and renewal of local natural facilities including, but not limited to, the wildlife pond and meadow area in Froyle Park, and the wildflower areas on the Froyle Recreation Ground;
4. Providing forums in which interested people can meet to discuss and share experiences, observations and opinions relating to local flora, fauna and conservation matters generally, all of which will be open to members of the public at an appropriate modest entrance fee, generally £3 (designed to cover both staging and general operating expenses) and free for members.



Froyle Park Pond area June 2023



Wildflowers on Froyle Rec. July 2023

3. Achievements and performance

Froyle Wildlife arranges 'walks and talks' that support our purposes and form part of a year on year programme, see our website for more information

<http://froylewildlife.co.uk/news/past-events/>. We continued to look after the wildflower area on Froyle Recreation Ground and the wildlife pond area near Gid Lane with volunteers.

At our talk last October, we were treated to the gorgeous Barn and Tawny Owls that Kim Boog from the Barn Owl Project Hampshire had brought along. The Barn Owl has a third ear, cannot see well in daylight and its head is not completely symmetrical. Kim spoke passionately about these serene creatures and the work she performs to rehabilitate the birds brought into her hospital so that they can be returned to the wild.



Barn Owl talk

Dave Williams from the Surrey Dormouse Group gave a fascinating talk last November. The hazel dormouse is arboreal, living in both trees and hedgerows and particularly likes hazel coppice. They usually build their nests in hedgerows, hibernate from December to March, and also sleep for half the time while not hibernating. They eat berries, insects, nectar, pollen, and of course hazelnuts. Apart from predators such as stoats, weasels, tawny owls and cats, the main cause of their decline is loss of habitat, lack of connectivity and woodland clearance.

Our talk in March about the life stages of butterflies found in Froyle, by Peter Eeles from Butterfly Conservation was very informative by someone who has spent years studying butterflies. We all learned something new about these amazing insects that are indicators of the health of our natural environment. A list of the 36 butterfly species found in Froyle were grouped into their taxonomic families. All butterflies go through four main stages: egg, to caterpillar, to chrysalis, to adult. The adults generally live for a few weeks, but some, such as Small Tortoiseshells, Peacocks, and Brimstones overwinter and can reach a year old.



Small Tortoiseshell on Knapweed



Duke of Burgundy sighting at Noar Hill

We were delighted to see 9 species of butterfly on our walk at Noar Hill, SSSI in May. With the sun shining most of the time, Holly Blues flitted about the bushes and on short vegetation we caught sight of Dingy Skipper. The solitary bee *Osmia Bicolor* was observed flying with small pieces of debris to put on its snail shell nest for camouflage. We found several Duke of Burgundy perching on cowslips after only having fleeting glimpses of them flying past earlier. Other butterflies seen on the day were Brimstone, Orange Tip, Small Blue, Comma and Red Admiral while one person also spotted Green Hairstreak and Speckled Wood.



Black-tailed Skimmer female

Our 'Drop-in' Day in July at the wildlife pond area and meadow started with pouring rain, then the weather warmed up and a string of visitors arrived. The sun brought out the insects, the most numerous and colourful were the butterflies with 17 species noted including Small Copper, Brown Argus, Small Tortoiseshell and Painted Lady. Other species spotted included Dark Bush-cricket, Roesel's Bush-cricket, 14-spot Ladybird, Tawny Longhorn beetles, Spotted Longhorn beetles, Dock

Bug and of course dragonflies.

A bat and moth evening jointly with Alton Natural History Society met at Froyle Church in July and then moved on to the Wildlife Pond area in clear chilly weather. Using bat detectors, we heard and saw bats with good aerobatic display of several Pipistrelles (both Common and Soprano) and the characteristic zipping noise as they found insects to eat. We also heard Noctule and bats from the *Myotis* family. After dark a moth lamp had been set up to attract moths to a trap for identification and later release. Considering the temperature started at 14°C and went down to 12°C it was good that we saw as many moths as we did. The list of 19 species included Black Arches, Mother of Pearl, Nut-tree Tussock, Swallow-tailed and Ghost Moths.



Black Arches at moth evening

Community involvement:

In Spring we trimmed the willow dome and sowed an area of cornfield annuals on Froyle recreation ground. The annuals flowered well in early summer with corn marigolds, cornflowers, corn camomile and poppies. In July the adjacent perennial wildflower plot had its annual cut and rake up as part of the maintenance plan. Many locals enjoyed seeing the colourful wildflowers and using the willow dome, achieved with 11 volunteers involved for 89 hours work.



Trimming willow dome on Froyle rec. Feb 2023



Cornfield annuals on Froyle rec. July 2023

Managing the wildflower meadow surrounding Froyle Park Pond has involved 14 volunteers for 185 hours of hands on work to maintain the habitat. With this effort, the wildflowers have thrived and the pond continues to support breeding amphibians, dragonflies and damselflies. Work included removing perennial weeds (especially field horsetail); cutting paths to enable access for visitors; and removing excess pond vegetation. The high number of plants, insects and amphibians that would otherwise be absent from the area is due to our management which includes selective cutting and sheep grazing in winter months.



Viewing the pond dippings Aug 2023



Scything vegetation at pond area

We held four pond-dipping sessions over two mornings in August at the wildlife pond. About 25 people attended in all and enjoyed using the nets to see what they could find in the water. Key organisms of note were lesser water boatmen, great crested newts, smooth newts, a water scorpion and numerous dragonfly nymphs, diving beetles and ramshorn snails. Children and adults seemed to really enjoy being around the pond, which was surrounded by a colourful display of wildflowers. Ted Matthews said, 'The pond dipping was good because lots of people helped me to find different creatures.' Feddy Boote said, 'I liked using the nets and finding the newts.' Henny Boote said, 'The water scorpion breathes through its bottom.' Now in its seventh year, the pond really is teeming with life, in the water and above.

We encourage local people to send us their wildlife sightings in Froyle with photos if possible: these included Sparrowhawk, Hedgehog, Grass Snake, Common Spotted and Pyramidal Orchids, Knapweed Broomrape, Large Red Damselfly, Broad-bodied

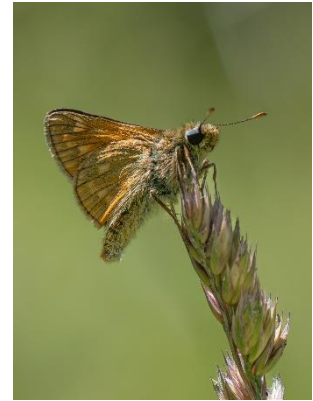
Chaser, Plume moth, Hummingbird Hawkmoth, Meadow Brown and Large Skipper. In addition to our website www.froylewildlife.co.uk, we also publish monthly articles in the Froyle Village magazine to inform about local wildlife. We had a display of local wildlife information at the Froyle Fete in July and at the Froyle Gardens Open event in June 2023.



Part of the display at Froyle Fete



Knapweed Broomrape



Large Skipper

Species recording:

Observations have been made to record what species are present in the local area throughout the seasons. These add to the information from previous years, accessible from our website <http://froylewildlife.co.uk/recording/species-lists/>. We have informally monitored the habitat at the wildlife pond and wildflower meadow and our records include: 17 species of dragonfly/damselfly; 4 species of amphibian; 26 species of butterfly; 103 species of moth and 116 species of flowering plants. Records at the pond area for the first time this year include: Pied Shieldbug, Common Broomrape and Dotted Bee-fly.



Pied Shieldbug



Common Broomrape



Dotted Bee-fly mating

Surveying continued this summer in Froyle's disused quarry (SINC site), a habitat with naturally regenerating chalk grassland. At this private site we also assisted with habitat management of scrub and non-native buddleia.

Flora recording this year around Froyle was led by botanist Isobel Girvan and visited 1km map squares that had not been recently recorded. This ongoing update to a 1991 survey of flora in the Parish is planned to be published next year.

The wildlife pond near Gid Lane has a good population of Great Crested Newts (GCN) that also breed there. The number of newts has increased substantially since the pond was constructed in 2016 when the first newt was recorded there. By 2021 a professional survey using bottle trapping recorded a maximum count of 28 Great Crested Newts and 23 Smooth Newts. This year 2023, we counted 35 GCN larvae on a warm day in June that were close enough to the water surface for identification with perhaps ten times that number out of sight while hiding in the pond vegetation.



Great Crested Newt eggs on water mint



Great Crested Newt larvae

In the last 12 years there have been a number of newly constructed ponds in Froyle with some in gardens and fields. Froyle Wildlife asked Pete West (from Hampshire Amphibian and Reptile Conservation) to survey selected ponds in April with landowner permission. Smooth Newts and Great Crested Newts were seen in all four ponds surveyed with evidence of breeding in two ponds at Upper Froyle. Unlike frogs and toads, newt eggs are laid singly on submerged vegetation wrapped in a folded leaf (Water Mint is a favourite). The Great Crested Newt previously had no records from Lower Froyle but it is now found there as well.



Male Great Crested Newt

4. Financial performance

Froyle Wildlife's opening funds were £1,370 none of which were restricted. During the year it received no grants from either East Hants District or Froyle Parish councils. Overall however there was a small surplus of income over expenditure of £98 (an improvement over the previous year's deficit of £141). Closing funds were £1,468, none of which are restricted. Froyle Wildlife has no debts.

The trustees manage Froyle Wildlife to allow the purchase of essential items of equipment or consumables to enable it to carry on its conservation activities, and aim to maintain a small positive cash balance as working capital to enable the production of local events. The subscription amount is set at a level to meet these objectives: the trustees do not consider it is necessary or appropriate to generate significant reserves to be held by the charity.

Other matters

Froyle Wildlife holds no funds as custodian trustee, and has not taken advantage of any exemptions from disclosure.

FROYLE WILDLIFE
ACCOUNTS FOR THE YEAR ENDED 31 AUGUST 2023

Income & expenditure statement

	Year ended 31 August 2023			Year ended 31 August 2022		
	General	Restricted	Total	General	Restricted	Total
	funds	funds	funds	funds	funds	funds
	£	£	£	£	£	£
Income						
Grants				850		850
Subscriptions	440		440	370		370
Donations	349		349	42		42
Refreshment receipts	107		107	77		77
Door entries	36		36	3		3
Total income	932		932	1,342		1,342
Expenditure						
Contractors				350		350
Planting	90		90	110		110
Hall hire	90		90	30		30
Meeting equipment hire				29		29
Food & drink	58		58	45		45
Donations to speakers	130		130	180		180
Printing & stationery				376		376
Insurance	130		130	134		134
Sundries	253		253	81		81
Maintenance	83		83	24	124	148
						-
Total expenditure	834		834	1,359	124	1,483
Surplus/(deficit) of income over expenditure	£98		£98	£(17)	£(124)	£(141)

**FROYLE WILDLIFE
ACCOUNTS FOR THE YEAR ENDED 31 AUGUST 2023**

Balance sheet at 31 August 2023

	31 August 2023			31 August 2022		
	£ General funds	£ Restricted funds	£ Total funds	£ General funds	£ Restricted funds	£ Total funds
Current assets						
Cash at bank	1,150		1,150	1,183		1,183
Petty cash	318		318	188		188
Net current assets	<u>1,468</u>	<u>-</u>	<u>1,468</u>	<u>1,370</u>	<u>-</u>	<u>1,370</u>
TOTAL FUNDS	<u>£1,468</u>	<u>-</u>	<u>£1,468</u>	<u>£1,370</u>	<u>-</u>	<u>£1,370</u>
Represented by:						
Capital introduced	<u>53</u>		<u>53</u>	<u>53</u>		<u>53</u>
Opening reserves	1,317		1,317	1,368	90	1,458
Surplus/(Deficit)	<u>98</u>	<u>-</u>	<u>98</u>	<u>(17)</u>	<u>(124)</u>	<u>(141)</u>
Closing reserves	1,415	-	1,415	1,351	(34)	1,317
Transfer to general fund				(34)	34	
	<u>1,415</u>	<u>-</u>	<u>1,415</u>	<u>1,317</u>	<u>-</u>	<u>1,317</u>
TOTAL FUNDS	<u>£1,468</u>	<u>-</u>	<u>£1,468</u>	<u>£1,370</u>	<u>-</u>	<u>£1,370</u>

Approved on behalf of the Committee by:

Barry Clark

Jonathan Pickering

Date: 12 September 2023

**FROYLE WILDLIFE
ACCOUNTS FOR THE YEAR ENDED 31 AUGUST 2023**

1. Froyle Wildlife is a Charitable Incorporated Organisation (no.1171997) formed to take over the activities of Froyle Nature Conservation Group (FNCG).
2. The accounts cover the year ended 31 August 2023.
3. The accounts have been prepared on a Receipts and Payments basis, as agreed by the Trustees.
4. The restricted funds represented the balance of grants from East Hampshire District Council for the creation of a wildlife pond on the Froyle Park Estate remaining after the expenditure incurred to date. During the prior year the remaining funds were used for maintenance, upkeep and improvement of the wildlife pond. With no restricted funds remaining, from 2023 all activities relating to the pond will be charged to the general fund.
5. In accordance with recommended practice, the gross income and expenditure for various ancillary activities have been shown in the accounts, rather than the net figures, which are as follows:

	Refreshments
	£
Receipts	107
Cost of sales	<u>(58)</u>
Net proceeds	<u>£49</u>

FROYLE WILDLIFE

England & Wales - Charity number 1171997

Accounts

FROYLE WILDLIFE

Trustees' Report for the period 1 September 2021 to 31 August 2022



The trustees of Froyle Wildlife present their Report and accounts for the period 1 September 2021 to 31 August 2022.

1. Reference and administrative details

Froyle Wildlife is a Charitable Incorporated Organisation, registered charity number 1171997. Its registered address is:

Braemore
Husseys Lane
Lower Froyle
Alton GU34 4LX.

The trustees of Froyle Wildlife throughout the period were:

Barry Clark (chairman)
Susan Clark
Alan Dyos (secretary)
Jayne Fisher
Nigel Hughes
Jenny Matthews
Jonathan Pickering (treasurer)

At each annual general meeting of the members of the CIO, one-third of the charity trustees shall retire from office. Any person who retires as a charity trustee by rotation is eligible for re-election.

Alan Dyos and Jayne Fisher have indicated they will retire and seek re-election.

Governance, management and trustee recruitment

Froyle Wildlife is run by its trustees, who meet as often as required during the year to manage its affairs. They also arrange the events which Froyle Wildlife puts on in the village, and recruit and manage volunteers to assist with the upkeep and maintenance of the Froyle Park pond and the wildflower meadow on Froyle Recreation Ground.

The trustees of Froyle Wildlife share an interest in local wildlife and the natural environment, and the importance of its conservation and protection. Potential new trustees are sought from the residents of the local area who share the values and objectives of Froyle Wildlife.

2. Objectives and activities

The objectives of Froyle Wildlife are:

(a) to promote for the benefit of the public resident in and around the villages of Upper Froyle and Lower Froyle, Hampshire the conservation, protection and improvement of the local physical and natural environment, in particular but not exclusively by identifying and recording species of flora and fauna in the local area;

(b) to advance the education of the public resident in and around the villages of Upper Froyle and Lower Froyle, Hampshire in the conservation, protection and improvement of the local physical and natural environment.

During the period Froyle Wildlife (FW) arranged its programme of activities to comply with Covid-19 restrictions. The trustees confirm that activities have had regard to the Charity Commission's guidance on public benefit. Our plan is to carry out the following activities, either separately or in conjunction with each other:

1. Providing talks, preferably illustrated, by relevant knowledgeable individuals on aspects of species, local wildlife conservation, protection and natural environmental improvement;
2. Providing guided walks in the local countryside, led by relevant knowledgeable individuals, to observe and where possible record various elements of the local flora, fauna and, if appropriate, related topography;
3. Offering opportunities to participate in the development, maintenance, upkeep and renewal of local natural facilities including, but not limited to, the wildlife pond and meadow area in Froyle Park, and the wildflower areas on the Froyle Recreation Ground;
4. Providing forums in which interested people can meet to discuss and share experiences, observations and opinions relating to local flora, fauna and conservation matters generally, all of which will be open to members of the public at an appropriate modest entrance fee, generally £3 (designed to cover both staging and general operating expenses) and free for members.



Froyle Park Pond area June 2022



Wildflowers on Froyle Rec. July 2022

3. Achievements and performance

Froyle Wildlife arranged our 'walks and talks' with most talks back in Froyle Village Hall after the easing of Covid restrictions. These supported our purposes and form part of a year on year programme, see our website for more information <http://froylewildlife.co.uk/news/past-events/>. We continued to look after the wildflower area on Froyle Recreation Ground and the wildlife pond area near Gid Lane with volunteers.

We heard a fascinating talk last October by Tom Mabbett from Naturetrek, on 'My Favourite British Wildlife Locations'. Lavishly illustrated with an impressive range of bird and animal photographs, Tom took us on a tour starting with the Ardnamurchan Peninsula and finishing closer to his home the Forest of Dean. Along the way we heard about Spurn Point, the Somerset Levels (wonderful starling murmurations) and more locally Alresford Pond.



The tiny Wren a has loud song

Hampshire's County Bird Recorder Keith Betton gave an informative and chirpy talk on 'Bird Song Around Froyle' in March. Birds sing to establish and maintain a territory, and to attract a female. Recordings illustrated the songs of birds likely to be seen and heard locally. For example the rich 'chocolatey' song of the Blackbird, the note and phrase repeats delivered by the Song Thrush, and the powerful, loud and fast song of the tiny Wren.

An enjoyable talk about 'Attracting Wildlife to your Garden' in April was presented by Susan Simmonds of Hampshire and IOW Wildlife Trust. Native plants are well-liked by pollinators (dandelions, germander speedwell), or are good for butterflies to lay their eggs on (nettles, garlic mustard), or provide nesting places for birds and hibernation sites for butterflies (brambles and ivy). If you leave some lawn uncut it can be surprising what springs up. Garden ponds should have a shallow edge or 'beach' for easy access by amphibians and marginal plants.

Our guided walk in May was led by reserve officer Mike Coates at RSPB Farnham Heath. In 2003 the area had been restored by clearing over 300 acres of commercial conifer plantation. The restored heathland vegetation has now attracted back a wide variety of flora and fauna. Birds we spotted included tree pipit and woodlark, plus the distant song of a Dartford Warbler. The walk also took us to where we were fortunate to hear chirping Field Crickets, a species found in only 8 UK sites in Sussex and Hampshire.



Woodlark sighting Farnham Heath



Gatekeeper on marjoram

Sunny weather was excellent for the ‘drop-in’ day in July at the wildlife pond area. During the day we saw 15 species of butterfly including Marbled White, Gatekeeper and Comma. The mesmerising aerial displays of dragonflies and damselflies over the pond are always a delight to witness, with 8 species recorded such as Broad-bodied Chaser, Banded Demoiselle and Small Red-eyed Damselfly. The wildflower meadow surrounding the pond also hosts a variety of hoverflies, bees, ladybirds and beetles.

Old Winchester Hill NNR provided our walk in early August and did not disappoint with wonderful views, wildflowers and butterflies. The south slope had numerous Chalkhill Blue butterflies flitting over the hot vegetation among their caterpillar foodplant Horseshoe Vetch. We spotted the delicate flowers of the rare Round-headed Rampion growing in the poor chalky soil along with species such as Harebell, Squinancywort and Small Scabious. Well worth a visit at any time of the year, we enjoyed some of the best of Hampshire’s countryside.



Round-headed Rampion

Community involvement:

Last November 2 new wild cherry trees were planted on Froyle recreation ground adding to the 6 trees planted previously. This was done by two families with children. Although the 8 trees were mulched, this summer’s drought necessitated watering on four occasions with volunteers having to carry watering cans.



Tree planting on Froyle rec. Nov 2021



New cedar log seat from fallen tree

A local landmark on a hilltop field in Froyle was the Cedar of Lebanon that stood there for over 150 years as a sentinel tree. The cedar fell during gales in 2020 and an 8ft long section of trunk was kindly donated by Belpport in April 2022. Froyle Wildlife arranged for a local chainsaw artist to carve out a wonderful new seat from

the log. A grant from East Hampshire District Council covered our costs for this community project.

We commissioned the design of an illustrated trifold leaflet with information and photographs about Froyle Wildlife and local flora and fauna. The colourful leaflet will be delivered to all households in Froyle.



In Spring we trimmed the willow dome and sowed an area of cornfield annuals on Froyle recreation ground. The annuals flowered well in early summer despite the drought with corn marigolds, cornflowers, corn camomile and poppies. In July the adjacent perennial wildflower plot had its annual cut and rake up as part of the maintenance plan. Many locals enjoyed seeing the colourful wildflowers and using the willow dome, created by 17 volunteers involved for 98 hours work.



Ground prepared for annuals on rec. April 2022



Thinning bulrush Froyle Park Pond 2022

Managing the wildflower meadow surrounding Froyle Park Pond has involved volunteers for 118 hours of hands on work to maintain the habitat. With this effort, the wildflowers have thrived and the pond continues to support breeding amphibians, dragonflies and damselflies. Work included removing perennial weeds; cutting paths to enable access for visitors; and removing excess pond vegetation. The high number of plants, insects and amphibians that would otherwise be absent from the area is due to our management which includes selective cutting and sheep grazing in winter months.

We encourage local people to send us their wildlife sightings in Froyle with photos if possible: these included Bee Fly, Scarlet Tiger moth, Wasp Spider, Knotgrass caterpillar, Emperor Dragonfly exuvia, Slow Worm, Barn Owl and Sparrowhawk. In addition to our website www.froylewildlife.co.uk, we also publish monthly articles in the Froyle Village magazine to inform about local wildlife. We had a display of local wildlife information at the Froyle Festival last September and at the Froyle Gardens Open event in June 2022.



Display at Froyle Festival



Sparrowhawk in a Froyle garden

Species recording:

Observations have been made to record what species are present in the local area throughout the seasons. These add to the information from previous years accessible from our website <http://froylewildlife.co.uk/recording/species-lists/>. We have informally monitored the habitat at the wildlife pond and wildflower meadow and records now include: 17 species of dragonfly/damselfly; 4 species of amphibian; 27 species of butterfly; 103 species of moth and 115 species of flowering plants. The breeding population of Great Crested Newts continues to thrive. Records at the pond area for the first time this year include: Willow Emerald damselfly, Purple Hairstreak butterfly, Meadowsweet and Water Avens.



Willow Emerald Damselfly



Water Avens near pond edge

Surveying continued this summer in Froyle's disused quarry (SINC site), a habitat with naturally regenerating chalk grassland. Good numbers of the Small Blue butterfly that breeds there were seen as well as other species.

Flora recording in May 2022 around Froyle was led by botanist Isobel Girvan. This joint project with Alton Natural History Society recording plant species in Froyle started in 2021 as an update to a previous survey in 1991. The list of 89 flora seen on the day included Yellow Archangel, Hairy St. John's-wort, Beaked Hawk's-beard and White Helleborine (a wild orchid).

We ran a moth lamp twice at the meadow surrounding the wildlife pond near Gid Lane, Upper Froyle. The first evening in June recorded 15 species under a clear cold sky. The second in July 2022 with ideal weather conditions recorded an amazing 68 species under overcast sky with a temperature of 21°C at midnight. These included the colourful Elephant Hawk-moth and our largest British species the Privet Hawk-moth. Hardly any of the hundreds of individual moths attracted would be seen in daylight.



Elephant Hawk-moth July 2022

4. Financial performance

Froyle Wildlife's opening funds were £1,511 of which £90 were restricted to use in the development, maintenance and upkeep of the pond. During the year it received grants of £850, of which £500 were to help with funding its general activities and £350 were to fund the creation of a bench from the trunk of a fallen cedar tree. As a result of a continued lower level of activity following the Covid-19 pandemic, overall there was a surplus of expenditure over income of £141 (an improvement over the previous year's deficit of £747). Closing funds were £1,370, none of which are restricted. Froyle Wildlife has no debts.

The trustees manage Froyle Wildlife to allow the purchase of essential items of equipment or consumables to enable it to carry on its conservation activities, and aim to maintain a small positive cash balance as working capital to enable the production of local events. The subscription amount is set at a level to meet these objectives: the trustees do not consider it is necessary or appropriate to generate significant reserves to be held by the charity.

Other matters

Froyle Wildlife holds no funds as custodian trustee, and has not taken advantage of any exemptions from disclosure.

FROYLE WILDLIFE
ACCOUNTS FOR THE YEAR ENDED 31 AUGUST 2022

Income & expenditure statement

	Year ended 31 August 2022			Year ended 31 August 2021		
	General funds	Restricted funds	Total funds	General funds	Restricted funds	Total funds
	£	£	£	£	£	£
Income						
Grants	850.00		850.00			
Subscriptions	370.00		370.00	366.00		366.00
Donations	42.23		42.23	45.00		45.00
Refreshment receipts	77.00		77.00			-
Door entries	3.00		3.00	20.00		20.00
Total income	1,342.23	-	1,342.23	431.00	-	431.00
Expenditure						
Contractors	350.00		350.00			
Planting	109.98		109.98	423.12		423.12
Hall hire	30.00		30.00	-		-
Meeting equipment hire	28.78		28.78	57.56		57.56
Food & drink	44.95		44.95	-		-
Donations to speakers	180.00		180.00	225.00		225.00
Printing & stationery	376.41		376.41	7.04		7.04
Insurance	133.66		133.66	95.96		95.96
Sundries	81.47		81.47	32.50		32.50
Maintenance	23.95	123.99	147.94	-		-
Depreciation			-	313.76	22.94	336.70
Total expenditure	1,359.20	123.99	1,483.19	1,154.94	22.94	1,177.88
Surplus of income over expenditure	(£16.97)	(£123.99)	(£140.96)	(£723.94)	(£22.94)	(£746.88)

**FROYLE WILDLIFE
ACCOUNTS FOR THE YEAR ENDED 31 AUGUST 2022**

Balance sheet at 31 August 2022

	31 August 2022			31 August 2021		
	£ General funds	£ Restricted funds	£ Total funds	£ General funds	£ Restricted funds	£ Total funds
Current assets						
Cash at bank	1,182.72		1,182.72	1,349.97	89.93	1,439.90
Petty cash	187.72		187.72	71.50		71.50
Net current assets	<u>1,370.44</u>	<u>-</u>	<u>1,370.44</u>	<u>1,421.47</u>	<u>89.93</u>	<u>1,511.40</u>
TOTAL FUNDS	<u>£1,370.44</u>	<u>-</u>	<u>£1,370.44</u>	<u>£1,421.47</u>	<u>£89.93</u>	<u>£1,511.40</u>

Represented by:

Capital introduced	<u>53.50</u>		<u>53.50</u>	<u>53.50</u>		<u>53.50</u>
Opening reserves	1,367.97	89.93	1,457.90	2,091.91	112.87	2,204.78
Surplus/(deficit)	<u>(16.97)</u>	<u>(123.99)</u>	<u>(140.96)</u>	<u>(723.94)</u>	<u>(22.94)</u>	<u>(746.88)</u>
Closing reserves	1,351.00	(34.06)	1,316.94	1,367.97	89.93	1,457.90
Transfer to general fund	<u>(34.06)</u>	<u>34.06</u>				
	<u>1,316.94</u>	<u>-</u>	<u>1,316.94</u>			
TOTAL FUNDS	<u>£1,370.44</u>	<u>-</u>	<u>£1,370.44</u>	<u>£1,421.47</u>	<u>£89.93</u>	<u>£1,511.40</u>

Approved on behalf of the Committee by:

Barry Clark

Jonathan Pickering

Date: 4 September 2022

**FROYLE WILDLIFE
ACCOUNTS FOR THE YEAR ENDED 31 AUGUST 2022**

1. Froyle Wildlife is a Charitable Incorporated Organisation (no.1171997) formed to take over the activities of Froyle Nature Conservation Group (FNCG).
2. The accounts cover the year ended 31 August 2022.
3. The accounts have been prepared on a Receipts and Payments basis, as agreed by the Trustees.
4. The restricted funds represented the balance of grants from East Hampshire District Council for the creation of a wildlife pond on the Froyle Park Estate remaining after the expenditure incurred to date. During the year the remaining funds were used for maintenance, upkeep and improvement of the wildlife pond. All pond-related activities have been treated as on capital account.
5. In accordance with recommended practice, the gross income and expenditure for various ancillary activities have been shown in the accounts, rather than the net figures, which are as follows:

	Refreshments
	£
Receipts	77.00
Cost of sales	<u>(44.95)</u>
Net proceeds	<u>£32.05</u>

6. All the fixed assets acquired from FNCG were written off in the previous year. In line with the Receipts and Payments basis of accounting, acquisitions of fixed assets in the future will be written off on acquisition.

7. **Fixed assets**

	31 August 2022			31 August 2021		
	£ General funds	£ Restricted funds	£ Total funds	£ General funds	£ Restricted funds	£ Total funds
<i>Cost</i>						
Opening balance				1,070.00	989.85	2,059.85
Acquisitions						-
Closing balance				<u>1,070.00</u>	<u>989.85</u>	<u>2,059.85</u>
<i>Depreciation</i>						
Opening balance				756.24	966.91	1,723.15
Charge for year				<u>313.76</u>	<u>22.94</u>	<u>336.70</u>
Closing balance				<u>1,070.00</u>	<u>989.85</u>	<u>2,059.85</u>
Opening net book value				<u>313.76</u>	<u>22.94</u>	<u>336.70</u>
Closing net book value				<u>-</u>	<u>-</u>	<u>-</u>

FROYLE WILDLIFE

England & Wales - Charity number 1171997

Accounts

FROYLE WILDLIFE

Trustees' Report for the period 1 September 2020 to 31 August 2021



The trustees of Froyle Wildlife present their Report and accounts for the period 1 September 2020 to 31 August 2021.

1. Reference and administrative details

Froyle Wildlife is a Charitable Incorporated Organisation, registered charity number 1171997. Its registered address is:

Braemore
Husseys Lane
Lower Froyle
Alton GU34 4LX.

The trustees of Froyle Wildlife throughout the period were:

Barry Clark (chairman)
Susan Clark
Alan Dyos
Jayne Fisher
Nigel Hughes
Jenny Matthews
Jonathan Pickering

At each annual general meeting of the members of the CIO, one-third of the charity trustees shall retire from office. Any person who retires as a charity trustee by rotation is eligible for re-election.

Nigel Hughes and Jenny Mathews have indicated they will retire and seek re-election.

Governance, management and trustee recruitment

Froyle Wildlife is run by its trustees, who meet as often as required during the year to manage its affairs. They also arrange the events which Froyle Wildlife puts on in the village, and recruit and manage volunteers to assist with the upkeep and maintenance of the Froyle Park pond and the wildflower meadow on Froyle Recreation Ground.

The trustees of Froyle Wildlife share an interest in local wildlife and the natural environment, and the importance of its conservation and protection. Potential new trustees are sought from the residents of the local area who share the values and objectives of Froyle Wildlife.

2. Objectives and activities

The objectives of Froyle Wildlife are:

(a) to promote for the benefit of the public resident in and around the villages of Upper Froyle and Lower Froyle, Hampshire the conservation, protection and improvement of the local physical and natural environment, in particular but not exclusively by identifying and recording species of flora and fauna in the local area;

(b) to advance the education of the public resident in and around the villages of Upper Froyle and Lower Froyle, Hampshire in the conservation, protection and improvement of the local physical and natural environment.

During the period Froyle Wildlife (FW) arranged its programme of activities to comply with Covid-19 restrictions. The trustees confirm that activities have had regard to the Charity Commission's guidance on public benefit. Our plan is to carry out the following activities, either separately or in conjunction with each other:

1. Providing talks, preferably illustrated, by relevant knowledgeable individuals on aspects of species, local wildlife conservation, protection and natural environmental improvement;
2. Providing guided walks in the local countryside, led by relevant knowledgeable individuals, to observe and where possible record various elements of the local flora, fauna and, if appropriate, related topography;
3. Offering opportunities to participate in the development, maintenance, upkeep and renewal of local natural facilities including, but not limited to, the wildlife pond and meadow area in Froyle Park, and the wildflower areas on the Froyle Recreation Ground;
4. Providing forums in which interested people can meet to discuss and share experiences, observations and opinions relating to local flora, fauna and conservation matters generally, all of which will be open to members of the public at an appropriate modest entrance fee, generally £3 (designed to cover both staging and general operating expenses) and free for members.



Froyle Park Pond area June 2021



Wildflowers on Froyle Recreation Ground

3. Achievements and performance

Froyle Wildlife arranged our 'walks and talks' in 2021 taking account of Covid-19 restrictions and lockdown so talks were held as virtual meetings via Zoom. These supported our purposes and form part of a year on year programme, see our website for more information <http://froylewildlife.co.uk/news/past-events/>. We continued to look after the wildflower area on Froyle Recreation Ground and the wildlife pond area near Gid Lane, with volunteers who were outdoors and socially distanced.

Last October a talk by Keith Betton about the 'Birds of the Falklands, South Georgia and Antarctica' took us through some of the amazing birds seen. He explained how the wildlife of these areas fits together in a very challenging environment.

Nature photographer Mike Read presented 'Hampshire - Nature in Trust'. He visited Hampshire Wildlife Trust reserves to record the scenery and wildlife. From Farlington Marshes to Broughton Down, the wide spread of locations produced a broad variety of habitats and inspired us to visit more of Hampshire's natural gems.

We enjoyed a talk in March by Paul Reynolds, Hospital Manager of HART Wildlife Rescue. Located near Alton, HART runs a wildlife hospital, providing a rescue, treatment and rehabilitation service for wildlife. Over 3,000 animals were treated last year including hedgehogs, wild birds, foxes, owls, ducks, rabbits and mice.

A beautifully illustrated presentation by Stephen Powles in April was about 'Wildlife Photography Tips and Experiences'. There was something for all levels and with no need for expensive kit. The photographer's imagination is the most important piece of equipment along with composition, focusing and camera angle.

On a cool July morning, a small group visited Bentley Station Meadow our nearest SSSI. We had close views of butterflies and other insects at rest including Ringlet, Gatekeeper, Roesel's Bush-cricket and Shaded Broad-bar moth. Hidden in the lush vegetation we also spotted Herb-paris, an indicator species for ancient woodlands.



Roesel's Bush-cricket



Marbled White

At the two 'drop-in' days at the wildlife pond area in July, the wildflowers were splendid and butterflies seen included Marbled White, Meadow Brown and Gatekeeper. Of the 8 dragonfly and damselfly species seen the Emperors stole the show with their aerial chases. Some of the 36 visitors sent us photos taken; these included, Large Skipper, Mint moth, Banded Demoiselle and Four-spotted Chaser. Certainly an amazing hotspot for local biodiversity since construction five years ago.

Community involvement:



Last November volunteers planted 6 new trees with enthusiasm on Froyle recreation ground (plan approved by Froyle Parish Council). This was done with one household per tree, using their own tools and with social distancing to others. The standard trees were 2 each of Whitebeam, Cherry and Rowan, 2.4m to 3.0m tall and locally grown in Hampshire.

In February volunteers put up 12 bird nest boxes on trees in Froyle; around the recreation ground and near the wildlife pond area. These will provide more nesting opportunities for small birds such as blue tits, great tits, robins and wrens.

In Spring we trimmed the willow dome and sowed an area of cornfield annuals on Froyle recreation ground. The annuals flowered well in summer with corn marigolds, cornflowers, corn camomile and poppies. In July the adjacent perennial wildflower plot had its annual cut and rake up (socially distanced) as part of the maintenance plan. Many locals enjoyed seeing the colourful wildflowers, the newly planted trees and using the willow dome, created by 19 volunteers involved for 97 hours work.



Wildflowers and dome on Froyle rec. June 2021



Wildflower meadow scything

Managing the wildflower meadow surrounding Froyle Park Pond has involved 12 volunteers for 173 hours of hands on work to maintain the habitat. With this effort, the wildflowers have thrived and the pond continues to support breeding amphibians, dragonflies and damselflies. Work included removing perennial weeds; cutting paths to enable access for visitors; and removing excess pond vegetation. The high number of plants, insects and amphibians that would otherwise be absent from the area is due to our management such as selective cutting and sheep grazing in winter months.

We encourage local people to send us their wildlife sightings in Froyle with photos if possible. In addition to our website, our social networking on Instagram at www.instagram.com/froylewildlife/ had posts including Hare, Greater Spotted

Woodpecker, Sweet Violet, Great Crested Newt, Blue-tailed Damselfly and Brown Hairstreak butterfly. We also publish monthly articles in the Froyle Village magazine to inform about local wildlife.



Blue-tailed damselfly



Great Crested Newt

Several families had a wonderful time pond dipping at the wildlife pond in August. As well as searching for Froyle's tiniest aquatic creatures, the children delightedly roamed through the towering, butterfly and bee-covered wildflowers. Many juvenile newts and pond-skaters, diving beetles, water boatmen, numerous Ramshorn snails and dragonfly nymphs were found. One of the most interesting finds was a Water Scorpion that breathes underwater through its snorkel-like tail. Enjoyed by all, it was a great way to spend time in nature.



Pond dipping

Species recording:

Observations have been made to record what species are present in the local area throughout the seasons. These add to the information from previous years accessible from our website <http://froylewildlife.co.uk/recording/>. We have informally monitored the habitat at the wildlife pond and wildflower meadow and records now include: 16 species of dragonfly/damselfly; 4 species of amphibian; 26 species of butterfly; 103 species of moth and 113 species of flowering plants. The population of newts has increased as shown by professional surveys that recorded peak counts of 28 Great Crested Newts and 23 Smooth Newts in 2021. Records at the pond area for the first time this year include: Red-eyed damselfly, White helleborine and a nationally scarce hoverfly *Callicera aurata*.



Hoverfly (Callicera aurata)



Small Blue and Kidney Vetch

Surveying started this summer in Froyle's disused quarry (SINC site), a habitat with naturally regenerating chalk grassland. Highlights included a variety of orchids and the Small Blue butterfly that breeds there on kidney vetch.

A joint project with Alton Natural History Society to record plant species in Froyle started in 2021 as an update to a previous survey in 1991. The variety of locations surveyed includes roadside verges, field edges and woods that are accessible from public rights of way as well as some areas with landowner's permission.

We ran a moth lamp one evening in August 2021 at the meadow surrounding the wildlife pond and recorded 15 species even though it was cool and breezy. These included Straw Underwing, Flame Shoulder and Spectacle moths. An evening in September at a Froyle garden had ideal weather conditions with 33 species including Maidens Blush, Ruby Tiger and Light Emerald. Butterflies and moths are useful indicator species for the health of our environment.

4. Financial performance

Froyle Wildlife's opening funds were £2,258 of which £113 were restricted to use in the development, maintenance and upkeep of the pond. During the year it received no grants to help with funding its general activities or with specific projects and funded the cost of planting of the trees on the Recreation Ground (£432) out of its own resources. As a result of these factors, the reduction in activity and the suspension of collection of membership subscriptions in the Covid-19 pandemic, overall there was a surplus of expenditure over income of £747. Closing funds were £1,511 of which £90 are restricted. Froyle Wildlife has no debts.

The trustees manage Froyle Wildlife to allow the purchase of essential items of equipment or consumables to enable it to carry on its conservation activities, and aim to maintain a small positive cash balance as working capital to enable the production of local events. The subscription amount is set at a level to meet these objectives: the trustees do not consider it is necessary or appropriate to generate significant reserves to be held by the charity.

Other matters

Froyle Wildlife holds no funds as custodian trustee, and has not taken advantage of any exemptions from disclosure.

FROYLE WILDLIFE
ACCOUNTS FOR THE YEAR ENDED 31 AUGUST 2021

Income & expenditure statement

	Year ended 31 August 2021			Year ended 31 August 2020		
	General	Restricted	Total	General	Restricted	Total
	funds	funds	funds	funds	funds	funds
	£	£	£	£	£	£
Income						
Grants				550.00		550.00
Subscriptions	366.00		366.00	244.00		244.00
Donations	45.00		45.00	219.53		219.53
Refreshment receipts				56.20		56.20
Raffle takings				27.00		27.00
Calendars and seeds				245.00		245.00
Door entries	20.00		20.00	46.00		46.00
Total income	431.00	-	431.00	1387.73		1387.73
Expenditure						
Planting	423.12		423.12			
Hall hire				60.00		60.00
Meeting equipment hire	57.56		57.56	5.00		5.00
Food & drink				89.35		89.35
Donations to speakers	225.00		225.00	80.00		80.00
Stationery	7.04		7.04	19.75		19.75
Insurance	95.96		95.96	117.60		117.60
Sundries	32.50		32.50	50.84		50.84
Maintenance					25.49	25.49
Calendar costs				242.00		242.00
Depreciation	313.76	22.94	336.70	356.67	329.95	686.62
Total expenditure	1,154.94	22.94	1,177.88	1021.21	355.44	1376.65
Surplus/(deficit) of income over expenditure	(£723.94)	(£22.94)	(£746.88)	£366.52	(£355.44)	£11.08

**FROYLE WILDLIFE
ACCOUNTS FOR THE YEAR ENDED 31 AUGUST 2021**

Balance sheet at 31 August 2021

	31 August 2021			31 August 2020		
	£ General funds	£ Restricted funds	£ Total funds	£ General funds	£ Restricted funds	£ Total funds
Fixed assets						
Plant & equipment	1,070.00	989.85	2,059.85	1,070.00	989.85	2,059.85
Less: depreciation	(1,070.00)	(989.85)	(2,059.85)	(756.24)	(966.91)	(1,723.15)
Net book value	-	-	-	313.76	22.94	336.70
Total fixed assets	-	-	-	313.76	22.94	336.70
Current assets						
Cash at bank	1,349.97	89.93	1,439.90	1,785.15	89.93	1,875.08
Petty cash	71.50		71.50	46.50		46.50
Net current assets	1,421.47	89.93	1,511.40	1,831.65	89.93	1,921.58
TOTAL FUNDS	£1,421.47	£89.93	£1,511.40	£2,145.41	£112.87	£2,258.28
Represented by:						
Capital introduced	53.50		53.50	53.50		53.50
Opening reserves	2,091.91	112.87	2,204.78	1,725.39	468.31	2,193.70
Surplus/(deficit)	(723.94)	(22.94)	(746.88)	366.52	(355.44)	11.08
Closing reserves	1,367.97	89.93	1,457.90	2,091.91	112.87	2,204.78
TOTAL FUNDS	£1,421.47	£89.93	£1,511.40	£2,145.41	£112.87	£2,258.28

Approved on behalf of the Committee by:

Barry Clark

Barry Clark

Jonathan Pickering

Jonathan Pickering

Date:

30 September 2021

FROYLE WILDLIFE

ACCOUNTS FOR THE YEAR ENDED 31 AUGUST 2021

1. Froyle Wildlife is a Charitable Incorporated Organisation (no.1171997) formed to take over the activities of Froyle Nature Conservation Group (FNCG).
2. The accounts cover the year ended 31 August 2021.
3. The accounts have been prepared on a Receipts and Payments basis, as agreed by the Trustees.
4. The restricted funds represent the balance of grants from East Hampshire District Council for the creation of a wildlife pond on the Froyle Park Estate remaining after the expenditure incurred to date. The remaining funds may only be used for the future maintenance, upkeep and improvement of the wildlife pond. All pond-related activities have been treated as on capital account.
5. Fixed assets acquired from FNCG are stated at their value on acquisition from FNCG as shown in FNCG's accounts. The original acquisition cost of fixed assets was written off over a three year period on a straight line basis. In line with the Receipts and Payments basis of accounting, in the future, the trustees have decided to write off the cost of fixed assets in the year of acquisition.

6. Fixed assets

	31 August 2021			31 August 2020		
	£	£	£	£	£	£
	General funds	Restricted funds	Total funds	General funds	Restricted funds	Total funds
<i>Cost</i>						
Opening balance	1,070.00	989.85	2,059.85	740.48	810.29	1,550.77
Acquisitions				329.52	179.56	509.08
Closing balance	<u>1,070.00</u>	<u>989.85</u>	<u>2,059.85</u>	<u>1,070.00</u>	<u>989.85</u>	<u>2,059.85</u>
<i>Depreciation</i>						
Opening balance	756.24	966.91	1,723.15	399.57	636.96	1,036.53
Charge for year	313.76	22.94	336.70	356.67	329.95	686.62
Closing balance	<u>1,070.00</u>	<u>989.85</u>	<u>2,059.85</u>	<u>756.24</u>	<u>966.91</u>	<u>1,723.15</u>
Opening net book value	<u>313.76</u>	<u>22.94</u>	<u>336.70</u>	<u>340.91</u>	<u>173.33</u>	<u>514.24</u>
Closing net book value	<u>-</u>	<u>-</u>	<u>-</u>	<u>£313.76</u>	<u>£22.94</u>	<u>£336.70</u>