

# Younger People With Dementia CIO

England & Wales · Charity number 1171720

## Details

---

Other names	YOUNGER PEOPLE WITH DEMENTIA (BERKSHIRE), YOUNGER PEOPLE WITH DEMENTIA (BERKSHIRE) CIO
Status	Registered
Legal form	CIO
Registered	2017-02-21
Register	<a href="#">View on the Charity Commission register</a>

## Contact

---

Address	The Tithe Barn Parfitts Farm Eversley Cross RG27 0NT
---------	---

Phone	0118 207 2880
-------	---------------

Email	<a href="mailto:contact@ypwd.info">contact@ypwd.info</a>
-------	--

Website	<a href="http://www.ypwd.info">www.ypwd.info</a>
---------	--

## Activities

---

**Objects:** TO PROMOTE AND PROTECT THE PHYSICAL AND MENTAL HEALTH OF PEOPLE DIAGNOSED WITH EARLY ONSET DEMENTIA, AND ALSO OF THEIR FAMILIES AND CARERS, IN THE ADMINISTRATIVE DISTRICTS OF WOKINGHAM, READING , WEST BERKSHIRE, BRACKNELL, WINDSOR AND MAIDENHEAD AND SLOUGH THROUGH THE PROVISION OF SUPPORT, EDUCATION AND GENERAL ADVICE.TO ADVANCE THE EDUCATION OF THE GENERAL PUBLIC IN ALL AREAS RELATING TO EARLY ONSET DEMENTIA.

**Activities:** We provide workshops and 1:1 support to those with young onset dementia. Examples of our workshops are: choir, cycling, running, katakanuing, art, walking, gardening and drama. 1:1 support is tailored to the interests of the individual e.g. shopping, bowling, swimming, dog walking. We also provide an education course to those with young onset dementia and their family and carers.

## Classification

---

- **How:** Provides Services, Provides Advocacy/advice/information, Sponsors Or Undertakes Research
- **What:** Disability
- **Who:** People With Disabilities, The General Public/mankind

## Geography

---

- Bracknell Forest
- Reading
- Slough
- Surrey
- West Berkshire
- Windsor And Maidenhead
- Wokingham

## Finances

---

Period end	Income	Expenditure	Assets	Employees
2025-03-31	£933,417	£724,663	£630,872	17
2024-03-31	£622,973	£602,357	£422,119	15
2023-03-31	£422,814	£432,183	-	-
2022-03-31	£337,817	£392,335	-	-
2021-03-31	£422,222	£311,437	-	-

## Trustees

Name	Role	Appointed
Alain Wilkes AW		2016-11-29
DAVID MICHAEL FISHER		2016-12-16
Dr Jacqueline Hussey		2019-05-22
Helen Single		2025-11-25
KATHRYN MARY TAYLOR		2016-11-29
Lisa Mooney		2020-02-17
Mike O'Donovan		2026-01-01
Rachelle Barnett		2026-05-01

**Younger People With Dementia CIO**

England & Wales - Charity number 1171720

---

# Accounts

---

# ANNUAL REPORT

## *Section 1: Achievements, Impacts, Governance*



**For the year ending  
31st March, 2025**

# REPORT CONTENTS

## Section 1

### Introductions

---

Introduction from Chair of Trustees 4

Introduction from Director of Clinical & Operational Services 6

### Our Vision, Achievements & Impact

---

Our Core Values, Mission Statement and Vision 8

Our Impact and Highlights from the Year 9

Celebration of our Workshops in Pictures 10

Notable Events 12

A Year of Fundraising 18

Making Memories Scheme 20

Impact Stories: Evie, Janet & John 22

### Grants, Goals & Governance

---

Major Grant Recognition 24

Strategic Goals 25

Governance and Leadership 26

Governance Statement 27

### Contact Us

---

About us and How to Get in Touch 32

## Section 2

### Financial Review

---

Charity Financial Statements ?



# INTRODUCTION

**LISA MOONEY**

CHAIR OF THE BOARD OF TRUSTEES,  
YOUNGER PEOPLE WITH DEMENTIA



It is my great privilege to introduce this year's Annual Report for Younger People with Dementia (YPWD).

This has been another year of both challenge and achievement. As a charity, our mission remains clear: to provide meaningful support, opportunities and hope for people diagnosed with young onset dementia and their families. Every activity we deliver, every connection we make, and every story we hear, reminds us why YPWD exists - to ensure that younger people with dementia are not forgotten, but instead empowered to live with dignity, purpose and joy.

We could not do this without the dedication of our staff, volunteers, trustees and of course the families who place their trust in us. Their resilience, creativity and compassion continue to inspire us. We are also deeply grateful to the Integrated Care Boards of Berkshire, Oxfordshire and Buckinghamshire (BOB) and to Frimley, our supporters, donors and partners whose funding and generosity makes our work possible.

Over the past year, YPWD has delivered a broad range of engaging age-appropriate and meaningful activities for those with a diagnosis of dementia, education courses, support groups and social events. These achievements not only reflect the hard work of our team but also demonstrate the growing recognition of the unique needs of younger people living with dementia.



As we look ahead, our focus is firmly on sustainability and growth. We know the demand for our services continues to rise and we are determined to meet that need with the same energy, compassion and innovation that have defined YPWD from the start.

On behalf of the Board of Trustees, I want to thank everyone who has been part of our journey this year. Together, we are building a community of support and understanding where younger people with dementia and their families can thrive.

Thank you for your continued support and engagement.

Yours sincerely,

*Lisa Mooney*

*Chair of the Board of Trustees,  
Younger People With Dementia*

# INTRODUCTION FROM DIRECTORS OF CLINICAL & OPERATIONAL SERVICES

We are so pleased to share with you this year's Annual Report for Younger People with Dementia (YPWD).

This past year has once again highlighted both the importance of our work and the incredible resilience of the people we support. Living with young onset dementia presents unique challenges, not only for the individual but also for their families and carers. Our goal at YPWD is to support people on that journey, offering practical support, meaningful activities and a strong sense of community.

Over the past year, we have been proud to continue providing vital services for those living with young onset dementia. We were also delighted at the recognition received within the film circuit and charity awards of our award-winning film 'If Not Now, When?', which shares the powerful story of a woman diagnosed with young onset dementia. This film will play a central role in the training arm of our charity, serving as a catalyst for greater understanding and change.

The delivery and development of our services continue to be guided by the voices of those directly affected. Their feedback ensures that what we offer remains age-appropriate, meaningful, compassionate and truly effective.

We are also proud of the partnerships we have built with the Integrated Care Boards of Frimley and Berkshire, Oxfordshire and Buckinghamshire, local authorities, healthcare providers, funders,

community organisations and companies that have selected us as their charity of choice. Collaboration has been key in strengthening the support available to younger people with dementia and it is something we will continue to prioritise.

As Lisa has said, none of this would be possible without the extraordinary commitment from our staff, volunteers, trustees and supporters. We are really appreciative of their energy, creativity and belief in our vision and mission. To our donors, funders and those who have selected us as charity of choice, your generosity sustains our work and allows us to reach more people each year, thank you.

Looking ahead, we recognise that demand for our services will continue to grow, not only within the areas we currently support, but also in surrounding regions and across the UK. Our priority will be to ensure the long-term sustainability of YPWD, enabling us to meet this growing need with compassion and innovation. At the same time, we will explore opportunities to expand into other parts of the country where we know our services can make a meaningful difference.

*Caroline Blanchette & Charlie Draper*

*Joint Directors of Clinical and Operational Services*



# OUR VISION, MISSION, VALUES AND STRATEGY

Our Vision is to influence a world where Younger People with Dementia are included and involved in every aspect of life without discrimination or stigma.

Our Mission is to provide meaningful activity and respite for younger people with dementia, their families and carers. We work alongside other statutory provision, across the working week with the aim of giving individuals the best life they can with dementia.

## OUR CORE VALUES



**Innovative**



**Supportive**



**Enabling**



**Inclusive**



# IMPACT & HIGHLIGHTS



During the year we have delivered...

**611** Activity based workshops

Our activity-based workshops have included yoga, fitness, cooking, equine therapy, art, gardening and wall climbing, to name only a few. These sessions ran across Berkshire, Surrey Heath, North East Hampshire, Farnham and Woking

**167** One to one support sessions

We offer one to one support sessions for a limited time period to ease the transition for those we support into a group setting, helping to build confidence & trust. Following an increase in referrals, this year we offered over double the amount of one to ones

**72** Micro group sessions

**14** Carer support groups

**2** Education courses

Our team also supported **14 support groups for rarer dementias** and delivered bite size training across the year. We are proud to have hosted **9 social events**, which you can read more about on page 12.

# CELEBRATION OF OUR WORKSHOPS IN PICTURES

Our specialist team provide activity-based workshops for people diagnosed with young onset dementia. Our workshops run through the working week, Monday to Friday, and are run in programmes of 6 weeks. This means that the activities offered are always changing to reflect the needs and interests of our service users, with the exception of our young onset dementia choirs which run consecutively throughout the year.



Circus Skills



Waltham Place Farm



Art & Crafts



Gardening



Dance



Animal Therapy



Equine Therapy



Sunshine Choir





## NOTABLE EVENTS

Introduced to bring together everyone we support and their loved ones, our All Together Now events have quickly become cherished highlights. From April 2024 to March 2025, we hosted a spring afternoon tea, a summer BBQ and barn dance, and a festive Christmas dinner. At Christmas time, more than 60 families from Berkshire, Surrey Heath, North-East Hampshire and Farnham joined us, reflecting the growth and reach of our services.



Afternoon Tea



Barn Dance

## WOKING PILOT PROJECT LAUNCH

In April 2024, we proudly launched our pilot project in Woking with music, workshops and a networking lunch. The day began with a presentation from our Director, Caroline Blanchette, followed by a performance from the Sunshine Choir in the town square. Clare, our Surrey Area Manager, then led a reminiscence taster workshop, giving a flavour of our activity-based approach. The event closed with a networking lunch, bringing together professionals and our team to explore future collaboration.

## THE ALZHEIMER'S & DEMENTIA SHOW

Across two days in June, our team proudly represented YPWD at the Alzheimer's & Dementia Show, sharing our work with healthcare professionals and the public. We delivered talks, provided a reminiscence workshop using our new book and showcased Stronger Together, a collaborative project supporting children and young people with a parent living with young onset dementia.



We were delighted to be joined by long-term partners Philippa Heath from the Museum of English Rural Life and Professor Arleen Austell from the University of Reading. These events highlight our passion for raising awareness and strengthening support for people living with dementia and their carers.

## WORLD ALZHEIMER'S DAY PERFORMANCES

On World Alzheimer's Day, September 21st, our young onset dementia choirs, Harmony and Sunshine, were honoured to perform at Windsor Castle in the stunning Moat Garden and St George's Hall. Despite the rain, the Sunshine Choir and Singing in Harmony lit up the day with music and joy, raising awareness of living well with dementia.

A heartfelt thank you to the Royal Collection Trust for their wonderful support and hospitality, as always!





## ANNUAL CHRISTMAS CONCERT 2024

Our annual Christmas Concert, featuring our two dementia choirs, Sunshine and Harmony, was a resounding success. Tickets sold out weeks in advance, and the Whitty Theatre was filled with festive cheer, helped along by hot chocolate, mulled wine and Prosecco. The highlight of the evening was four moving speeches from those we support, leaving barely a dry eye in the house.

We're so grateful to everyone who attended, donated raffle prizes and made the night so special. We can't wait to see you all at the 2025 concert on Tuesday 9th December at Norden Farm Centre for the Arts!

A special thank you goes to the FSP Foundation, whose generous sponsorship – our first ever for this event – made a lasting impact on the people at the heart of our charity.

The  
**FSP**  
Foundation





## CHILDREN'S PROJECT

Following previous years of success, we were proud to run the third series of the Together Stronger Children's project, supporting children with a parent living with young onset dementia, in collaboration with The Museum of English Rural Life (MERL), Reading University, Berkshire Healthcare Foundation Trust and Dementia UK.

This series, co-created with the children themselves, focused on textile art, culminating in an installation at MERL. The project's work was later showcased as best practice at conferences in London and Coventry, including the Alzheimer's Show and the UK Dementia Congress. It also received wider recognition through a feature on BBC Berkshire Radio.



University of  
**Reading**



**DementiaUK**



**Berkshire Healthcare**  
NHS Foundation Trust



## OUTREACH AND COMMUNITY WORK

Through recognising the need to reach a wider cultural audience and encourage people from diverse backgrounds to access our services, we have progressed our Community Outreach work. February saw the launch of a new initiative in Slough, a singing and dancing group open to anyone, regardless of age or diagnosis. This group provides a safe space to raise awareness of dementia, reduce stigma, dispel myths, and foster open conversations.

In January 2025, we also launched a monthly dementia group in collaboration with the Indian Community Centre, offering opportunities to ask questions about brain health and cognition, meet others, engage in activities, and access education through translated materials and guest speakers from local university researchers to clinicians from memory services. Ongoing networking, presentations, and meetings with other culturally diverse organisations have been key to developing links and raising awareness.

The project has benefitted greatly from shared learning, skills and collaboration. In parallel, we are running a research project, approved by Northumbria University ethics, to better understand what encourages people to engage in health-seeking behaviours.





# A YEAR OF FUNDRAISING

**35** Fundraising events completed

Over the year, 35 incredible fundraisers supported our charity, each making a difference & creating unforgettable moments along the way.



## WALKING THE ST JAMES WAY PILGRIMAGE

In April 2024, a team of 11 fundraisers, including our amazing staff, volunteers and supporters, took on the 70 mile St James Way Pilgrimage from Reading to Southampton in just three days. Together they raised nearly £9,000 while building lasting memories. A special thank you goes to Dan from Elite Adventures for guiding the team, and to Gary for providing transport and support throughout the journey.



## THE FORD RIDE LONDON CHALLENGE

In May, six fundraisers bravely tackled the Ford Ride London challenge, cycling 60 and 100 miles across London and Essex. Two rode in honour of parents and grandparents supported by our charity, raising over £3,000. The group raised over £6,000 which will go towards support services for younger families living with young onset dementia.

## TAKING ON THE TWILIGHT RUNWAY

In September, Angela, Mark, Laurie, and Ros completed the Twilight Runway Challenge at Blackbushe Airport. Mark, recently diagnosed with young onset Alzheimer's, attends our creative workshops and says he "loves all of the groups." Their family wanted to give something back, raising an amazing £500 with Gift Aid in support of Younger People with Dementia.



### FUNDRAISER SPOTLIGHT

Our star fundraiser, Harry Boyle, not only ran the Brighton Marathon in April 2024, raising over £500, but he also took on the Barcelona Marathon in March 2025, raising more than £1,000. As a former YPWD volunteer, Harry's commitment to our cause shines through every step he takes. Thank you, Harry, you're a true superstar.



Our charity relies on donations and grants to continue providing our support services for families diagnosed with dementia under the age of 65, so we couldn't do what we do without our incredible fundraisers.



## Making Memories Scheme

Launched in June 2023 with seed funding from Bearwood Lakes Golf Club, our Making Memories scheme helps people with young onset dementia and their families to enjoy unique, once in a lifetime experiences.

Between April 2024 and May 2025, 12 unforgettable Memory Making wishes came true, including:

- A luxury Champagne Afternoon Tea at The Ritz
- Tickets to the England vs Scotland Six Nations at Twickenham
- A two-day trip to York with travel and experiences included
- A family day trip to Edinburgh
- A deluxe spa day for two best friends
- Tickets and accommodation to see ABBA Voyage in London

These moments created lasting joy and treasured memories for individuals and families alike.



Afternoon tea at the spa



England vs Scotland



A day trip to London



## A Valentine's Day to Remember

Mark was our September 2024 winner. He requested to have Afternoon Tea at The Ritz with his wife, which we arranged for them to celebrate on Valentine's Day 2025. Their experience included Champagne Afternoon Tea tickets and a return taxi trip from Aldershot to London.



Thanks to the Making Memories Scheme, Mark and I had Afternoon Tea at the Ritz. On February 14th we got dressed up and waited for our taxi which took us door to door.

Once there we were shown to our table where the delights of the afternoon were beautifully served from amazing sandwiches and warm scones to cakes and pastries. All of this was washed down with proper tea and pink champagne. Needless to say we needed a doggie bag (well a beautiful box) to bring home.

In the words of Mark, we were treated in a quintessential old fashioned English way. The staff were amazing.

We had the most memorable afternoon thanks to Bearwood Lakes Golf Club for their amazing generosity and to the lovely Amy from YPWD for organising the experience and checking we were ok.

Thanking you all,

*Karen and Mark x*



# IMPACT STORIES

## Evie, Janet & John

When John was diagnosed with young onset dementia at the young age of 56, his wife Janet and three children were left devastated and had to adapt to the some very sudden changes. Their youngest daughter Evie was just 14 when her dad was diagnosed with dementia.



Janet begins, "Before receiving a young onset dementia diagnosis, John was working full time and really enjoyed socialising. He especially loved family holidays and we were a close family unit enjoying life. John was diagnosed with young onset dementia in 2018 after almost a year of unexplained behaviour, which we initially put down to stress and anxiety at work. I noticed that he was no longer able to use the computer and he was not able to tell me the time or date. He also continuously forgetting appointments and was often irritable and losing things. I felt so relieved when **John was diagnosed with dementia as I could justify the way he was acting**; it made me feel less cross with him and I could be more understanding of the situation. It also made us focus on the future and what we needed to do as a family. I hoped that tablets might help him to cope with the symptoms, but I was still devastated by the word 'dementia' and what we read online. I felt devastated about our future which we had so many plans for. It was a hugely stressful time for us coming to terms with the fact that the main financial provider could not work or drive anymore."

Evie adds, "Before dad was diagnosed with young onset dementia, we would do everything together. He would always be making me



laugh and he loved being around family. One day dad started acting a little odd and out of character, our conversations suddenly weren't the same and he would be very quiet. It's like he couldn't understand what I was saying. To find out he had dementia was a big shock, as I was only 14. He couldn't drive anymore, and we couldn't have the same conversations. I immediately started thinking about the future; how bad is it going to get? Is he still going to be there for big family moments?"

Janet continues, "I learned about YPWD and their services through Surrey Heath Mental Health Services. John now participates in everything that he can - he loves the groups and his whole life seems to now revolve around the great activities they run. John now joins in activities you would never have expected him to try. Give him any excuse and he will be up dancing! The support of YPWD has been everything to John and words to describe his experience are **"fun, friendship, support, laughter, confidence and purpose."** Evie and I feel the same, adding educational to the list of words, and we have really appreciated the carer support.

Life is much better when he is attending the workshops with YPWD and he always really wants to go and see the friends he has made there. The charity has given him purpose, he feels needed by the group and he almost views himself as a helper, like it is a job. When there is a break in activities, he is lost without them. Thank you."

# MAJOR GRANT RECOGNITION

We couldn't do the work we do with the generous support we get through grants. We are so pleased to share the names of those who have provided us with grants during the reporting period:

Altor Foundation

AWBS

Berkshire Community Foundation

Berkshire Nurses Trust

Berkshire West Integrated Care Board

Cadburys Local Charity donation

Community Foundation Surrey

D'Oyly Carte

Frimley Integrated Care Board

FSP Law Foundation

Global Charities

Global Make Some Noise

Hurst Horticultural Society

James Cowper Kreston

Masonic Foundation

National Lottery Awards for All

Newbury Building Society

Power of Music

Project Giveaway (RHS Flower Show)

Spar

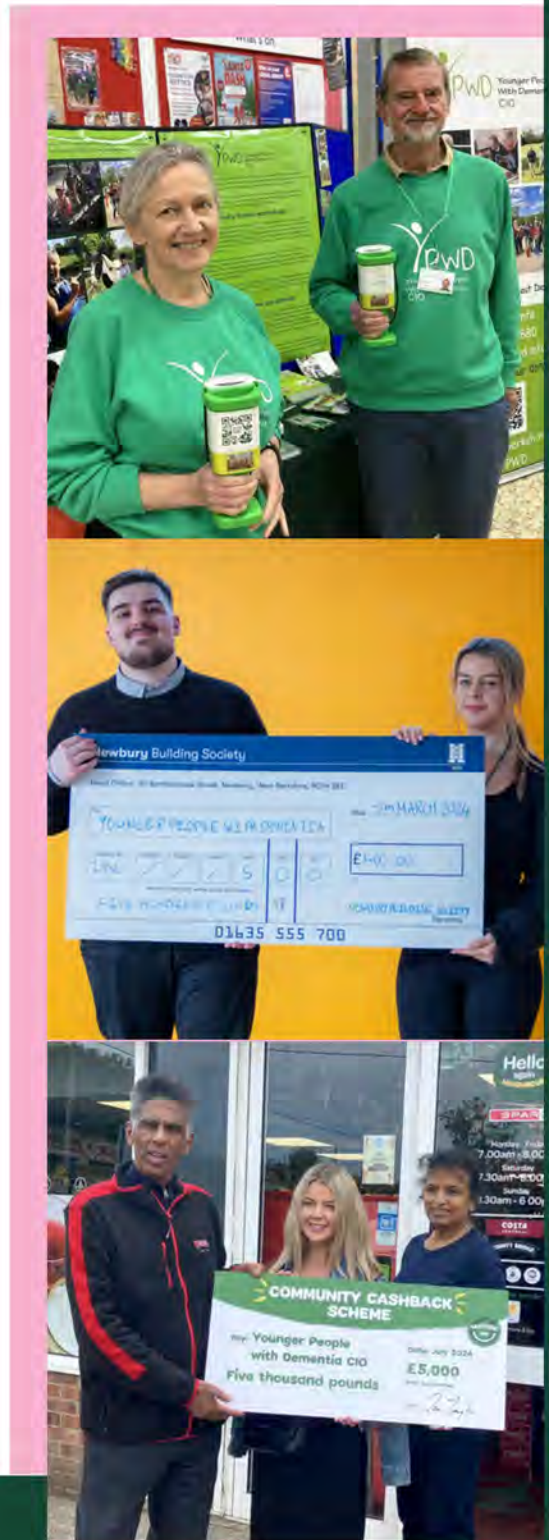
Sportive Red Kite Ride

Strategic Solutions

Tesco Blue Tokens Scheme

The Childwick Trust

West Berks Community Fund



**Thank you for your support!**

# CHARITY OF THE YEAR

We wanted to say a huge thank you to the amazing organisations who supported us throughout 2024 and 2025, choosing our charity as their Charity of the Year. Each of these organisations fundraised in aid of YPWD or made donations which allowed us to continue providing our vital support services for families living with young onset dementia. You are all amazing, thank you.



In 2024, team members from Xtrac's Newbury office volunteered at our gardening workshop. Natalie and Rick said that it was "great to get out of the office" and to meet the people we support, directly seeing the impact of the money they have raised.

In January 2025 Amy, our Marketing, Fundraising and Social Media Lead, visited the Home Instead office in Farnborough to record an exciting podcast with Lauren, their Business Development Manager as just one of our exciting collaborations.



# STRATEGIC GOALS

Our charity has continued to work on our strategic goals. These goals include:

## Service Delivery

Continuously deliver and expand our existing workshops, one to one support, micro-groups, education groups and carer support groups

## Community Outreach

Engage within our wider community to reduce health inequalities and ensure that every family is receiving the support they deserve

## Children's Project

Develop services for children living with a parent with young onset dementia, providing support for the entire family

## Impact Report

Develop and regularly report on key performance indicators (KPIs) to measure and communicate the charity's impact to stakeholders



## Financial Sustainability

Strengthen financial sustainability through diversifying funding sources. Launch specific fundraising campaigns throughout the year and seek to increase individual and corporate donations, grants, and develop sustainable revenue-generating initiatives.

## Capacity Building

Invest in staff and trustee development, training, and infrastructure to ensure the charity's long-term effectiveness and efficiency

## Volunteer Engagement

Increase the recruitment and much valued involvement of volunteers to support our services

## Collaboration

Foster strategic partnerships and collaborations with other nonprofits, government agencies, health bodies and community organisations to leverage resources and expertise

## Expansion

Expand the charity's reach to other regions to address similar issues on a broader scale

## Awareness

Raise awareness and recognition of young onset dementia and engage in efforts to influence dementia friendly practices within our wider community

**Younger People with Dementia is dedicated to achieving these strategic goals, in line with our vision, mission and core values.**



# GOVERNANCE AND LEADERSHIP



## **Our board of Trustees during this period:**

Lisa Mooney, Chair of Trustees

Dr Jacqui Hussey, Deputy Chair of Trustees

Radhika Modha, Treasurer

David Fisher, Board Member

Alain Wilkes, Board Member

Kathy Taylor, Board Member

Raja Badrakalimuthu, Board Member

## **Our Leadership Team are:**

Caroline Blanchette, Joint Director of Clinical and Operational Services

Charlie Draper, Joint Director of Clinical and Operational Services

Clare Lynskey, Area Manager, Surrey Heath, NE Hants and Farnham

Jenny Vertigan, Area Manager, Berkshire West

Karen Ive, Area Manager, East Berkshire

Julie Vernon, Office Manager





# GOVERNANCE STATEMENT

As a charity we are committed to maintaining the highest standards of governance to achieve our vision, mission, values and strategy, maintain the trust of our supporters and ensure the effective use of resources.

## Board of Trustees

Our Board of Trustees are responsible for the overall governance and strategic direction of the charity. The board consists of dedicated individuals who bring diverse skills and expertise to the charity. It meets regularly to make decisions on key matters, ensuring the charity's activities align with its charitable objectives. Our Trustees act in a voluntary capacity and receive no remuneration.

## Governance Structure

Our charity is structured and operates in accordance with our governing document, which outlines our charitable objectives and guiding principles. We adhere to all relevant legal and regulatory requirements and report to the appropriate authorities.

## Financial Management

Our charity is committed to sound financial management and transparency. We maintain proper financial records and regularly review financial performance. Annual financial statements are independently audited and the results are presented in this annual report. We ensure that funds are used for their intended purposes and strive for cost-effective operations.

The charity has a reserves policy to maintain unrestricted funds, which are the free reserves of the charity, at a sufficient level which enables the charity to operate in the short term (6 months). The remainder of the charity's reserves are distributed in accordance with its objectives.

The total reserves at the year-end date were £630,872 of which an amount of £13,286 was held in restricted funds, with £468,446 in designated funds and £149,140 in free reserves. **The trustees consider the state of the charity to be satisfactory, and that it is achieving its objectives.**

## **Risk Management**

Trustees have a duty to identify and review the risks to which the charity is exposed and to ensure appropriate controls are in place to provide reasonable assurance against fraud and error. **We have a comprehensive risk management framework in place to identify and manage risks that may impact our charity's operations.** The Trustees recognise the charity's reliance on the NHS for funding and actively look to broaden the sources of financial support. These additional sources of income included applications to charitable trusts and foundations and fundraising activities.

## **Transparency and Accountability**

**Our charity is dedicated to transparency and accountability.** We provide regular updates to our stakeholders through reports, meetings and communications. We comply with all reporting requirements. Trustees and the staff team of our charity are required to disclose any conflicts of interest promptly. Any conflicts are managed with transparency and integrity.

## **Equal Opportunities and Diversity**

We are committed to providing equal opportunities and promoting diversity in all our activities. **We do not discriminate** based on age, disability, gender reassignment, marriage and civil partnership, pregnancy and maternity, race (including colour, nationality and ethnic or national origin), religion or belief, sex or sexual orientation.

**We are committed to upholding the highest standards of governance to ensure the efficient and effective operation of the charity. We are grateful for the support and trust of our funders, donors, fundraisers and stakeholders.**

*Lisa Mooney*

# ABOUT US AND HOW TO CONTACT US



## **Registered Office:**

The Tithe Barn, Parfitts Farm,  
Eversley Cross, RG27 0NT

## **Bankers:**

Co-operative Bank, PO Box 250,  
Skelmersdale, WN8 6WT

## **Independent Examiner:**

Sue Jackson FCCA, Working Numbers Limited,  
12 St Mary's Road, Mortimer Common, RG7 3UE

*Find us on social media for up to date news...*

**Facebook & LinkedIn:** Younger People with Dementia

**Instagram & YouTube:** @youngerpeoplewithdementia

*Contact us via email, call our office or visit our website:*



[contact@ypwd.info](mailto:contact@ypwd.info)



0118 207 2880



[www.ypwd.info](http://www.ypwd.info)

# FINANCIAL REVIEW

## *Section 2: Consolidated financial statements*



**For the year ending  
31st March, 2025**

Charity Registration number 1171720

**Younger People with Dementia CIO  
Report and Financial Statements  
For Period Ending 31 March 2025**

Younger People with Dementia CIO  
Report and Financial Statements  
For Period Ending 31 March 2025

Contents

Trustees and professional advisors (Page 36)

Independent Examiner's report (Page 37)

Statement of Financial Activity (Page 38)

Balance sheet (Page 39)

Notes to the Accounts (Pages 40-45)

Younger People with Dementia (Berkshire) CIO Trustees  
and Professional advisers  
For 12 Months Ending 31 March 2025

Trustees

Ms Lisa Mooney	Chair
Dr Jacqueline Hussey Ms	Vice Chair
Radhika Modha	Treasurer
Mrs Kathryn Taylor	
Mr Alain Wilkes	
Mr David Fisher	
Dr Raja Badrakalimuthu	

Registered Office

First Floor  
Unit 9 Indigo House  
Fishponds Road  
Wokingham  
RG41 2GY

Bankers

HSBC  
160 Crockhamwell Road  
Woodley  
Berkshire  
RG5 3JJ

The Co-operative Bank p.l.c.  
1 Balloon Street  
Manchester  
M4 4BE

Metro Bank  
One Southampton Row  
London  
WC1B 5HA

Independent Examiner

Sue Jackson FCCA  
Working Numbers Limited  
12 St Mary's Road  
Mortimer Common  
RG7 3UE

**Younger People with Dementia CIO**  
**Registered Charity no. 1171720**  
**Independent Examiner's Report**  
**For Period Ending 31 March 2025**

**Responsibilities and basis of report**

I report to the trustees on my examination of the accounts of the above charity ("the Charity") for the year ended 31/03/2025.

As the charity's trustees, you are responsible for the preparation of the accounts in accordance with the requirements of the Charities Act 2011 ("the Act").

**Independent examiner's statement**

I report in respect of my examination of the Charity's accounts carried out under section 145 of the 2011 Act and in carrying out my examination, I have followed all the applicable Directions given by the Charity Commission under section 145(5)(b) of the Act.

The charity's gross income exceeded £250,000 and I am qualified to undertake the examination by being a qualified member of the Association of Chartered Certified Accountants (ACCA).

An examination includes a review of the accounting records kept by the charity and a comparison of the accounts prepared with those records. It also includes consideration of any unusual items or disclosures in the accounts and seeking explanations from the officers concerning such matters.

The procedures undertaken do not provide all the evidence that would be required in an audit, and consequently no opinion is given as to whether the accounts present a 'true and fair' view, and the report is limited to those matters set out in the statement below.

I have completed my examination. I confirm that no material matters have come to my attention in connection with the examination which gives me cause to believe that in, any material respect:

- the accounting records were not kept in accordance with section 130 of the Charities Act; or
- the accounts did not accord with the accounting records; or
- the accounts did not comply with the applicable requirements concerning the form and content of accounts set out in the Charities (Accounts and Reports) Regulations 2008 other than any requirement that the accounts give a 'true and fair' view which is not a matter considered as part of an independent examination.

I have no concerns and have come across no other matters in connection with the examination to which attention should be drawn in this report in order to enable a proper understanding of the accounts to be reached.

*SM Jackson*

SM Jackson FCCA  
WORKING NUMBERS LIMITED  
12 St Mary's Road  
Mortimer Common  
Reading  
RG7 3UE

Date: 15 December 2025

Younger People with Dementia CIO  
Statement of Financial Activity  
12 months ending 31 March 2025

	Note	Unrestricted Funds 2025 £	Restricted Funds 2025 £	Total Funds 2025 £	Total Funds 2024 £
<b>Income:</b>					
Donations and Legacies (including Grants)	3, 4	532,611	386,083	918,694	612,677
Charitable Activities		9,824	-	9,824	6,338
Other trading activities		-	-	-	-
Investments		4,899	-	4,899	3,958
Other income					
<b>Total Income</b>		<b>547,334</b>	<b>386,083</b>	<b>933,417</b>	<b>622,973</b>
<b>Expenditure:</b>					
Raising funds	5	32,165	949	33,114	20,628
Charitable Activities	5	264,347	426,806	691,153	581,334
Governance Costs	5	396	-	396	396
<b>Total Expenditure</b>		<b>296,908</b>	<b>427,756</b>	<b>724,663</b>	<b>602,357</b>
Net income/(Expenditure)		250,426	(41,673)	208,754	20,616
Transfer between funds		-	-	-	-
Net movement in Funds	13	250,426 -	41,673	208,754	20,616
Funds Brought forwards		367,160	54,959	422,119	401,503
<b>Total Funds Carried Forward</b>		<b>617,586</b>	<b>13,286</b>	<b>630,872</b>	<b>422,119</b>

Younger People with Dementia (Berkshire) CIO.  
Balance Sheet  
As at 31 March 2025

		2025	2025	2025	2024
	Note	Unrestricted funds £	Restricted income funds £	TOTAL £	TOTAL £
<b>Fixed Assets</b>					
Tangible Assets	9	2,295	-	2,295	4,147
<b>Total Fixed Assets</b>		<b>2,295</b>	<b>-</b>	<b>2,295</b>	<b>4,147</b>
<b>Current Assets</b>					
Debtors	10	404		404	6,370
Cash at bank and in hand		621,970	13,286	635,256	421,080
<b>Total Current Assets</b>		<b>622,373</b>	<b>13,286</b>	<b>635,660</b>	<b>427,450</b>
<b>Liabilities</b>					
Creditors falling due within one year	11	7,083	-	7,083	9,478
		7,083	-	7,083	9,478
<b>Net Current Assets</b>		<b>615,290</b>	<b>13,286</b>	<b>628,577</b>	<b>417,971</b>
<b>Net Assets</b>		<b>617,586</b>	<b>13,286</b>	<b>630,872</b>	<b>422,119</b>
<b>The Funds of the charity:</b>					
Unrestricted Income Funds	13	149,140		149,140	259,646
Designated funds		468,446		468,446	107,514
Restricted Income Funds		-	13,286	13,286	54,959
<b>Total Charity Funds</b>		<b>617,586</b>	<b>13,286</b>	<b>630,872</b>	<b>422,119</b>

These accounts were approved by the Trustees on 15 December 2025 and signed on their behalf by: Lisa Mooney, Chair of Trustees

Signature *Lisa Mooney* Name Lisa Mooney

Date 15/12/2025

Younger People with Dementia CIO  
Notes to the Unaudited Accounts  
12 Months Ending 31 March 2025

Note

1. **Accounting background**

Background

Younger People with Dementia Charitable Incorporated Organisation (Charity Number 1171720) was set up in February 2017. This replaced the registered Charity of the same name (Charity number 1147290).

2. **Accounting Policies**

Basis of Accounting

These accounts have been prepared under the historical cost convention with items recognised at cost or transaction value unless otherwise stated in the relevant note(s) to these accounts. The accounts have been prepared in accordance with the Statement of Recommended Practice: Accounting and Reporting by Charities preparing their accounts in accordance with the Financial Reporting Standard applicable in the UK and Republic of Ireland (FRS 102) (effective 1 January 2015) (Charities SORP (FRS102)), the Financial Reporting Standard applicable in the UK and Republic of Ireland (FRS 102), and the Charities Act 2011.

Basis of preparing the Financial statements

The Financial Statements have been prepared under the going concern basis. The Charity has secured funding to secure the immediate future of the Charity for the next 18 months to 2 years on this basis Trustees view the Charity as a going concern.

Incoming resources

All Incoming resources are included on the statement of Financial Activities when the Charity is legally entitled to the income and the amount can be quantified.

Resources expended

Expenditure is accounted for on an accruals basis and has been classified under headings that aggregate all costs related to the category. Where costs cannot be directly attributed to a particular heading they have been allocated to activities on a basis consistent with the use of resources.  
Irrecoverable VAT is charged as a cost against the activity for which the expenditure is incurred.

Taxation

The Charity is exempt from corporation tax on its charitable activities.

Fund Accounting

Unrestricted funds can be used in accordance with the charitable objectives at the discretion of the Trustees.

Restricted Funds can be used for the particular restricted purposes within the objects of the Charity.

Restriction arise when specified by the donor or when funds are raised for a particular restricted purpose.

Fixed Assets

Depreciation has been provided on a straight line basis at a rate estimated to write off the value of the asset over its useful life.

Office Equipment	4 Years
Computer Equipment	4 Years

**Younger People with Dementia CIO**  
**Notes to the Unaudited Accounts**  
**12 Months Ending 31 March 2023**

Note

3. Analysis of Income

		Unrestricted funds 2025 £	Restricted income funds 2025 £	Total funds 2025 £	Total funds 2024 £
Donations and legacies:	Donations and gifts	63,959	-	63,959	75,277
	Gift Aid	9,838	-	9,838	5,534
	Legacies	364,773	-	364,773	-
	Grants	94,042	386,083	480,124	531,866
	<b>Total</b>	<b>532,611</b>	<b>386,083</b>	<b>918,694</b>	<b>612,677</b>
Charitable activities:	Events	5,495	-	5,495	973
	Other charitable activities	4,329	-	4,329	5,364
	<b>Total</b>	<b>9,824</b>	<b>-</b>	<b>9,824</b>	<b>6,338</b>
Income from investments:	Interest income	4,899	-	4,899	3,958
	<b>Total</b>	<b>4,899</b>	<b>-</b>	<b>4,899</b>	<b>3,958</b>
<b>TOTAL INCOME</b>		<b>547,334</b>	<b>386,083</b>	<b>933,417</b>	<b>622,973</b>

4. Government Grant funding

There were no government grants in 2025 (2024 - none)

**Notes to the Unaudited Accounts**  
**12 Months Ending 31 March 2023**

5. Analysis of expenditure

Analysis	Unrestricted funds 2025 £	Restricted income funds 2025 £	Total funds 2025 £	Total funds 2024 £
<b>Expenditure on raising funds:</b>				
Incurring seeking donations	32,165	949	33,114	20,628
<b>Total expenditure on raising funds</b>	<b>32,165</b>	<b>949</b>	<b>33,114</b>	<b>20,628</b>
<b>Expenditure on charitable activities:</b>				
Cost of products sold	245	-	245	5,934
Transaction costs	67	-	67	-
Operational staffing	21,281	332,154	353,435	291,735
Direct costs of provision	14,319	91,291	105,610	77,952
Client welfare	-	-	-	-
Accountancy and bookkeeping	6,667	-	6,667	6,112
Staffing	146,370	- 10	146,360	126,198
Bank charges	182	-	182	145
Business rates	669	-	669	1,195
Computer costs	18,446	-	18,446	8,884
Depreciation	2,332	-	2,332	2,424
General expenses	4,280	83	4,362	1,632
Health and Safety consumables	-	-	-	-
HR	2,500	2,000	4,500	1,398
Insurances	3,318	-	3,318	3,063
Legal fees	-	-	-	795
Marketing	8,548	335	8,884	13,500
Office costs	20,351	496	20,847	21,808
Printing, Postage & Stationery	3,313	8	3,322	5,147
Subscriptions	854	15	869	680
Telephone Costs	9,576	-	9,576	8,644
Travel costs	360	293	653	2,128
Trustee and Volunteer costs	669	140	809	1,963
<b>Total expenditure on charitable activities</b>	<b>264,347</b>	<b>426,806</b>	<b>691,153</b>	<b>581,334</b>
<b>Governance costs</b>				
Independent Examiners fee	396	-	396	396
<b>Total other expenditure</b>	<b>396</b>	<b>-</b>	<b>396</b>	<b>396</b>
<b>TOTAL EXPENDITURE</b>	<b>296,908</b>	<b>427,756</b>	<b>724,663</b>	<b>602,357</b>

6. Trustees Remuneration and Benefits

During the period the total Trustees Remuneration was £nil (2024:£nil)

Other than reimbursement for costs incurred on behalf of the charity there were no trustee expenses (2024: £

7. Staff costs and employee benefits

	2025 £	2024 £
Wages and salaries	442,243	372,855
Social security costs	35,254	26,285
Pension costs	12,860	10,212
<b>Total</b>	<b>490,357</b>	<b>409,352</b>

**Notes to the Unaudited Accounts**  
**12 Months Ending 31 March 2023**

	<b>2025</b>	<b>2024</b>
Average head count during the year was:	17	15

No employees received employee benefits (excluding employer pension costs) for the reporting period of more than £60,000 (previous year also nil).

**8. Independent Examiner's fee**

The charity has accrued for an independent examiners fee of £396 (2024: £396)

**9. Fixed assets**

**Cost**

Cost as at 31st March 2024	13,287
Additions during the year	480
Disposal during the year	-
Cost as at 31st March 2025	13,767

**Accumulated Depreciation**

Balance as at 31st March 2024	9,140
Disposal during the year	-
Charge for the year	2,332
Balance as at 31st March 2025	11,471

<b>Net Book Value at 31 March 2025</b>	<b>2,295</b>
Net Book Value at 31 March 2024	4,147

**10. Debtors falling due within one year**

	<b>2025</b>	<b>2024</b>
	<b>£</b>	<b>£</b>
Trade debtors	404	-
Accrued income	-	6,370
Prepayments	-	-
<b>Total Debtors</b>	<b>404</b>	<b>6,370</b>

**11. Creditors falling due within one year**

	<b>2025</b>	<b>2024</b>
	<b>£</b>	<b>£</b>
Trade Creditors	29	849
Accruals	4,380	5,075
Taxation and social security	2,674	3,554
<b>Total Creditors</b>	<b>7,083</b>	<b>9,478</b>

**12. Movement in Funds**

	<b>Unrestricted</b>	<b>Designated</b>	<b>Restricted</b>	<b>TOTAL</b>
	<b>2025</b>	<b>2025</b>	<b>2025</b>	
	<b>£</b>	<b>£</b>	<b>£</b>	
As at 1st April 2024	259,646	107,514	54,959	422,119
Additions during the year	182,561	364,773	386,083	933,417
Expenditure During year	- 293,067	- 3,840	- 427,756	- 724,663
Transfer between funds	-	-	-	-
<b>As at 31st March 2025</b>	<b>149,140</b>	<b>468,446</b>	<b>13,286</b>	<b>630,872</b>
	-	-	-	-

## Movement in Funds - prior year comparison

	Unrestricted	Designated	Restricted	TOTAL
	2024	2024	2024	
	£	£	£	
As at 1st April 2023	263,463	84,400	53,640	401,503
Additions during the year	186,566		436,406	622,973
Expenditure During year	- 190,383	- 17,785	- 394,189	- 602,357
Transfer between funds	-	40,899	- 40,899	-
<b>As at 31st March 2024</b>	<b>259,646</b>	<b>107,514</b>	<b>54,959</b>	<b>422,119</b>

The transfers between funds reflect the categorisation of 'Als Place' and the 'Legacy' fund as designated funds  
This follows a review of the original terms of gift

**Notes to the Unaudited Accounts**  
**12 Months Ending 31 March 2023**

13. Charity funds

Fund names	Fund type	Fund balances brought forward £	Transfers between funds	Income £	Expenditure £	Fund balances carried forward £
ICB BOB West Berkshire	R	-		86,118	86,118	-
ICB Funds (Frimley)	R	-		280,000	280,000	-
Equestrian	R	-		4,965	4,965	-
Carers Support Group Costs	R	-		15,000	15,000	-
Stronger Together	R	211			211	-
Surrey Heath	R	25,000			25,000	-
Transport costs	R	722			70	652
Alliance medical - children's project	R	4,024			3,801	223
Cognitive Stimulation Therapy Group	R	9,880			2,186	7,694
Harmony Choir	R	4,000			4,000	-
Making memories	R	11,120			6,403	4,717
Ethnic Minority Project	U	67,481			3,596	63,885
Legacy unrestricted - for building	U	39,757		364,773		404,529
All Together Now (Al's place)	U	858			245	613
<b>Other funds</b>	U	259,065		182,561	293,068	148,559
<b>TOTAL FUNDS</b>		<b>422,119</b>	<b>-</b>	<b>933,417</b>	<b>724,663</b>	<b>630,872</b>

R = Restricted Fund

U = Unrestricted/General Fund

Prior year comparison

Fund names	Fund	Fund balances brought forward £	Transfers between funds	Income £	Expenditure £	Fund balances carried forward £
ICB BOB West Berkshire	R	-	-	86,689	86,689	-
ICB Funds (Frimley)	R	-	-	280,631	280,631	-
Equestrian	R	-	-		-	-
Legacy	R	39,757	39,757	-	-	-
Stronger Together	R	301	-	-	90	211
Get Berkshire Active	R	-	-	4,938	4,938	-
Surrey Heath	R	-	-	25,000	-	25,000
Reminiscence / Unicorn	R	5,440	-	-	5,440	0.00
Transport costs	R	2,000	-	-	1,278	722
Alliance medical - children's project	R	5,000	-	-	976	4,024
Cognitive Stimulation Therapy Group	R	-	-	10,000	120	9,880
D'Oyly Carte	R	-	-	5,489	5,489	-
Harmony Choir	R	-	-	5,000	1,000	4,000
Making memories	R	-	-	15,660	4,539	11,120
Welford Park West Berkshire	R	-	-	3,000	3,000	-
Ethnic Minority Project	U	84,400	-	-	16,919	67,481
Legacy unrestricted - for building project	U		39,757			39,757
All Together Now (Al's place)	U	1,142	-	582	866	858
<b>Other funds</b>	U	263,463	-	185,985	190,382	259,065
<b>TOTAL FUNDS</b>		<b>401,503</b>	<b>-</b>	<b>622,973</b>	<b>602,357</b>	<b>422,119</b>

**Younger People With Dementia CIO**

England & Wales - Charity number 1171720

---

# Accounts

---

# ANNUAL REPORT

## *Section 1: Achievements, Impacts, Governance*



***For the year ending  
31st March, 2024***

# CONTENTS

## ***Section 1: Introductions***

---

Introduction from Chair of Trustees	4
Introduction from Director of Clinical & Operational Services	6

## ***Our Vision, Achievements and Impact***

---

Our Core Values, Mission Statement and Vision	8
Our Impact and Highlights from the Year	9
Celebration of our Workshops in Pictures	10
Notable Events	12
A Year of Fundraising	15
Making Memories & The Children's Project	16
Impact Stories: Meet Rob and Becky	18

## ***Grants, Looking Forward & Governance***

---

Major Grant Recognition	20
Strategic Goals	22
Governance and Leadership	24
Governance Statement	26

## ***Contact Us***

---

About Us and How to Contact Us	28
--------------------------------	----

## ***Section 2: Financial Review***

---

Charity financial statements	1-11
------------------------------	------



# INTRODUCTION FROM OUR CHAIR OF TRUSTEES, LISA MOONEY



Dear Supporters and Stakeholders,

Once again, I am pleased to be speaking to you as Chair of Trustees and presenting our annual report and accounts for the year April 2023 to March 2024.

This report reflects a year of significant accomplishments, challenges overcome, and ongoing commitment to our vision, mission and values.

It has been a wonderful year which has seen us build our provision to include Cognitive Stimulation Therapy, a series of activities to support children of those with a parent with young onset dementia and a pilot of our model commencing in Woking, Surrey, in February. These successes reflect our continued goal to deliver quality driven, meaningful services to those we support.

Our financial position remains sound in what was a challenging year. We are continually thankful to the Integrated Care Boards of Frimley and Berkshire West who provide much needed funding, but we continue to apply for grants, seek donations and fundraise in what is an increasingly competitive market. Our current financial position has enabled us to continue delivering high-quality services and to invest in our future.



As we look to the future, our focus remains continuing to deliver and improve our service provision supporting those living with young onset dementia.

I extend my deepest gratitude to our trustees, staff, volunteers and supporters. Your dedication and support are vital to our success and inspire us every day. Together, we look forward to another year of making a meaningful difference.

Thank you for your continued support and engagement.

Yours sincerely,

*Lisa Mooney*

*Chair of the Board of Trustees,  
Younger People With Dementia CIO*

# INTRODUCTION FROM DIRECTORS OF CLINICAL & OPERATIONAL SERVICES

Wow, what a year it has been.

We have seen the growth in services provided with expansion through a pilot project into the Woking area, the first step of what we hope will be an expansion to incorporate our services within North-West Surrey. We were also awarded a three-year contract with Frimley Integrated Care Board (ICB) to enable us to embed a full-time service within the area as well as recruit an Admiral Nurse. Berkshire West ICB also confirmed a one-year contract, reviewable at the end of March 2025.

We saw the launch of our Making Memories Scheme in June 2023 thanks to the seed funding of Bearwood Lakes Golf Club. You can read more about the amazing experiences that have taken place during the year within this report.

We have continued to work on reducing health inequalities within the community, initiatives including presentations at events and conferences, as well as hosting our own events.

In conjunction with Admiral Nurses, we continued our partnership with the Museum of English Rural Life (MERL) and Reading University, to deliver the second phase of the project in supporting children who have a parent living with young onset dementia. There were 9 participants in the sessions over the summer who were aged between 6-20 years old. We will undertake the third phase of this project in 2024.

We were pleased to note that during the period NHS England started reporting those with a formal diagnosis of young onset dementia on the GP Quality and Outcomes Framework (QOF) register for the first time. Previously this was only reported for older adults. This is a great step forward.

We saw the launch of another of our range of reminiscence books, "Working All Hours", which is available via our website or the Bell Bookshop in Henley.

We were also delighted to be able to share at a private viewing of the much awaited award winning film "If Not Now, When?" starring BAFTA winning actor Kate Dickie. The film tells the story of a woman diagnosed with young onset Alzheimer's disease. It is a hard hitting, absorbing and memorable film that seeks to bring awareness, reduce stigma, and foster understanding of the unique emotional and practical challenges faced by those affected. We were honoured to have worked with the film team through its journey to production.

In conclusion, we welcome you to our Annual Report and Accounts for the charity for the financial year ending 31 March 2024. This report provides an overview of our performance, achievements and our on-going strategic direction.

Once again, we thank you for your ongoing support – we really couldn't do it without you.

*Caroline Blanchette & Charlie Draper*

*Joint Directors of Clinical and Operational Services,  
Younger People With Dementia CIO*

# OUR MISSION STATEMENT

*Our Vision is to influence a world where Younger People with Dementia are included and involved in every aspect of life without discrimination or stigma.*

*Our Mission is to provide meaningful activity and respite for younger people with dementia and their families and carers.*

*We work alongside other statutory provision, across the working week with the aim of giving individuals the best life they can with dementia.*

## OUR CORE VALUES



**Innovative**



**Supportive**



**Enabling**



**Inclusive**

# OUR IMPACT & HIGHLIGHTS



During the year we have delivered...

**638** Activity based workshops

Our activity-based workshops have included art, animal therapy, archery, climbing and racket sports. These ran across Berkshire & Surrey Heath.

**72** One to one support sessions

We offer one to one support sessions for a limited time period to ease the transition for those we support into a group setting, helping build confidence & trust.

## TRAIN JOURNEY DAY TRIPS

From June to July 2023 our team in Berkshire planned and delivered six weeks of train journey workshops, offering a day out for the people we support. Each week we boarded the train from Wokingham and visited a museum, including Aldershot Military Museum, Farnborough Air Sciences Museum and the Oxford Natural History Museum.

**26** Micro group sessions

**17** Carer support groups

**2** Education Courses

Our team also delivered a Cognitive Stimulation Therapy course for people living with young onset dementia, which ran for 14 sessions. You can find out more about all of the events we ran from page 12.

# CELEBRATION OF OUR WORKSHOPS IN PICTURES

Our specialist team provide activity-based workshops for people diagnosed with young onset dementia. Our workshops run through the working week, Monday to Friday, and are run in programmes of 6 weeks. This means that the activities offered are always changing to reflect the needs and interests of our service users, with the exception of our young onset dementia choirs which run consecutively throughout the year.



Sunshine Choir



Shooting Range



Archery



Katakanuig



Gardening



Climbing



Equine Therapy



Animal Therapy



# NOTABLE EVENTS

“All Together Now” events were first introduced in the charity with the aim of bringing together our service users and their loved ones. Our charity ran a number of events in 2023 and 2024 which included a barn dance, a 1970’s disco, a Christmas meal and pantomime trip and a beach trip to Boscombe.



Dementia Action Week



Barn Dance



Boscombe Beach Trip



Community Festival

## SINGING FOR DEMENTIA ACTION WEEK

**May 2023**

On Tuesday 16th May 2023 in aid of Dementia Action Week, Dementia Friendly Wokingham and partner charities hosted an information event in central Wokingham. The event offered dementia friendly taster activity sessions and gave people the opportunity to talk to representatives from local charities, Dementia Care Advisors, Wokingham Borough Council and emergency services. Our YPWD Harmony Choir were lucky enough to sing in Peach Place as part of the event, led by our Choir Lead Sabrina Findlay.

## COMMUNITY FESTIVAL AT THE UNIVERSITY OF READING

**May 2023**

Our staff and volunteers enjoyed a wholesome day at the Community Festival at the University of Reading on Saturday 13th May. We ran an inclusive flag activity for families which was enjoyed by all, it was so lovely to see such a variety of flags and some great artists. We had everything from Pokémon to the Underground Tube sign.

Amy, Karen, Peter, Sue & Caroline really enjoyed speaking to people about what the charity does and raising awareness of young onset dementia.

# TUTU'S COMMUNITY EVENT

## October 2023

We always try to ensure that no one is left behind, adopting an inclusive approach whilst addressing young onset dementia in diverse communities. In support of this we held a celebration of heritage event on 9th October 2023 at Tutu's Ethiopian Table.

Attendees included healthcare professionals, community leaders, policy makers and individuals who helped us in fostering dialogue, sharing experiences and collaborating on solutions that address the diverse needs of our communities.



Speaking at Tutu's



Our Area Managers

# 'IF NOT NOW, WHEN?'

## FILM SCREENING

### October 2023

We helped to produce the award-winning film 'If Not Now, When?' with a group of amazing filmmakers. This groundbreaking short film was written and directed by Nick Tree, and stars BAFTA winning actor Kate Dickie.

'If Not Now, When?' follows the life of a woman living alone with young onset dementia. We were pleased to host a private film screening of the film on the 11th October at Everyman Cinema, Wokingham, which was followed by a special Q&A session. This was chaired by Lisa Mooney, Chair of Trustees, with Nick Tree, writer and director, Andrew Rawson, producer, Neil Edson, producer, Adel Nodeh-Farahani, director of photography, Tom Keech, composer of original score and Dr. Jacqui Hussey, Trustee of YPWD.

The film is currently within the film festival circuit, and we are looking forward to sharing this with you all in the near future.



Everyman Cinema



Q&A with filmmakers

# WORKING ALL HOURS BOOK LAUNCH *November 2023*

We were really excited to launch the charity's third reminiscence book for people living with young onset dementia. The launch of "Working All Hours" took place at the Bell Bookshop, Henley on Thames, with a prosecco reception. Previous books we have produced have been "British Seaside" and "Around the World in Many Ways." Across studies, reminiscence therapy has been shown to positively influence people living with dementia and can provide a sense of overall life satisfaction and coping skills and may also help to ameliorate the symptoms of depression and dementia.



Our new book



The Bell Bookshop

# ANNUAL CHRISTMAS CONCERT *December 2023*

Our annual Christmas Concert took place on Tuesday the 12th of December at the Whitty Theatre in Wokingham, featuring our YPWD choirs from Berkshire and Surrey. The Harmony and Sunshine Choirs sounded amazing and were excited to showcase what they had been working on. Songs included an Elvis Presley medley and an original song composed and performed by the Sunshine Choir.

We were also very lucky to hear from beneficiaries of our charity, who spoke about the support they have received from our team. We would like to thank them for sharing and can confirm that there was not a dry eye in the theatre. In the interval, we offered a complimentary glass of prosecco, mulled wine, or a hot drink – the hit of the night was a hot chocolate with cream. The raffle prizes included art sets, experience day tickets, bottles of alcohol and much more.

We can't wait to see you all at the 2024 concert!



Sunshine Choir



Front of House



Our Dementia Choirs

# A YEAR OF FUNDRAISING

# 28

**Fundraising  
events  
completed**



We had an amazing 28 people fundraise for us from April 2023 to 2024. Here are some of our fundraising highlights...

## LONDON MARATHON

On the 23rd April 2023, Sian ran the London Marathon in memory of her uncle. Our charity provided support for John throughout his young onset dementia diagnosis. The total amount raised including Gift Aid was an amazing £2752.75! Sian says... "My uncle, John, had been living with Alzheimer's for ten years since being diagnosed in his early 60s. John was a wonderful man who loved a laugh, and YPWD gave him a LOT of laughter over those ten years. Sadly, John passed away last September. I can't think of a better way to celebrate him than to raise money for this wonderful charity."

## BANANA TRIATHLON

On the 1st July 2023 we had five participants taking part in triathlon events at Dorney Lake including the Super Sprint, Sprint, Challenge and Olympic events. We also had twelve amazing people taking part in team relays and duathlons. These amazing participants raised an incredible £7,493.00 including Gift Aid.



London Marathon



Banana Triathlon



London to Brighton



Knitting for donations

## LONDON TO BRIGHTON CYCLE RIDE

On the 9th October 2023 Lisa, Leesa, Senthil & Anand took part in the London to Brighton Cycle Ride, cycling 55 miles for YPWD, raising 1,708.67 including Gift Aid.

## KNITTING FOR A GOOD CAUSE

Linda spent all of 2023 knitting to create an array of handmade Christmas decorations which she then sold to raise money. In December at Cove Ivy Leaf Club, Linda raised over £500.00 from selling her beautifully knitted goods.

# LAUNCHING THE MAKING MEMORIES SCHEME

In June of 2023 we launched the Making Memories Scheme, which was made possible by the support of seed funding from Bearwood Lakes Golf Club. Making Memories funds wishes that help people with a young onset dementia diagnosis to enjoy a unique experience of a lifetime. From June 2023 to March 2024, we granted one wish a month to a person that we support, up to the value of £500. Experiences included a 4x4 Off Road Challenge & Rally Stage Passenger Experience, a VIP visit to Millwall's football stadium and tickets to a game, a weekend away to the Isle of Wight and tickets for the whole family to Longleat Safari Park.



Millwall F.C.



Blenheim Palace



Silverstone Rally School



The Tank Museum

## THE CHILDREN'S PROJECT

Having secured further funding from Research England, we were pleased to be able to run activity sessions for children with a parent with young onset dementia in conjunction with The Museum of English Rural Life, Reading University and Berkshire Healthcare NHS Foundation Trust. In this second series the focus was on building upon the skills developed previously with creativity, craft and arts dominating our work together. The programme involved various activities inspired by the museum's collections and spaces including willow weaving, painting, sketching and nature tiles. There was noted growth in confidence, self-esteem, creativity and skills. At the end of the programme the work produced was shared at the Museum as a pop up and again at the museum's Youth Manifesto Launch event. We are looking forward to the third series next year.



# IMPACT STORIES: ROB AND BECKY

*“The support and sense of family that there is with the other attendees, volunteers & staff is incredible.”*



Rob and his daughters

We noticed subtle changes in our dad starting around 7 years ago. He started to have trouble understanding instructions and found this frustrating. Forgetting things and repeating himself. To start with we thought this was down to stress at work but when it continued after he left his job, we realised that the stress at work was caused by his new frustrations. It took some convincing to get him to go and see the doctor but we're very glad that he did as it eventually got him involved in the Younger People with Dementia (YPWD) charity that has been an absolute support over the first year he was diagnosed but even more so in the past months.

Our Mum died in June 2022 and understandably it hit the family incredibly hard. We can't even imagine how it has felt to Dad who was also dealing with this scary change in his life at the same time. He had been signed up for activities with YPWD but didn't want to attend anything and had trouble with wanting to leave the house or be around anyone that weren't immediate family.

A new set of workshops were released and we signed him up for golf. We think he was nervous to attend but he did, and we were very proud of him for going. The support and sense of family that there is with the other attendees, volunteers & staff is incredible.



Over the next few weeks, we saw our dad grow in confidence and want to go to the workshops. They cared on a deeper level about a man who not only has young onset dementia but also has just lost his wife. We are incredibly grateful for this.

Over 18 months on and dad is now part of the charity's choir, he enjoys the bowling, walking and craft workshops. He has made friends and looks forward to each week meeting up with them. This is all down to the amazing work that the charity does, not only with those that attend but also their families and those supporting the person with dementia.

We don't know where Dad would be without this support and different focus. We are forever grateful for the continued work that they do."

# MAJOR GRANT RECOGNITION

We couldn't do the work we do with the generous support we get through grants. We are so pleased to share the names of those who have provided us with grants during the reporting period:

## SSL

**Tesco**

**Waitrose**

**D'Oyly Carte**

**Postcode Lottery**

**Altor Foundation**

**Shanly Foundation**

**Anton Jurgens Trust**

**Global's Make Some Noise**

**Integrated Care Board of Frimley**

**Berkshire Community Foundation**

**Utley Foundation - Power of Music**

**Integrated Care Board of Berkshire West**

# CHARITY OF THE YEAR

We wanted to say a huge thank you to the amazing organisations who supported us throughout 2023 and 2024, choosing our charity as their Charity of the Year. Each of these organisations fundraised in aid of YPWD or made donations which allowed us to continue providing our vital support services for families living with young onset dementia. You are all amazing, thank you.





# STRATEGIC GOALS

We have continued to work on our strategic goals, which include:

## **Service Delivery and Education**

Continuously deliver and expand our existing workshops, time-limited one to one support, micro-groups, education groups and carer support groups to better serve beneficiaries.

## **Community Outreach**

Engage within our wider community to reduce health inequalities.

## **Children's Project**

Develop services for children living with a parent with young onset dementia.

## **Impact Report**

Develop and regularly report on key performance indicators (KPIs) to measure and communicate the charity's impact to stakeholders.

## **Financial Sustainability**

Strengthen financial sustainability through diversifying funding sources. Launch specific fundraising campaigns throughout the year and seek to increase individual and corporate donations, grants, and develop sustainable revenue-generating initiatives.

## **Awareness**

Raise awareness and recognition of young onset dementia and engage in efforts to influence dementia friendly practices within our wider community.

# STRATEGIC GOALS

## Capacity Building

Invest in staff and trustee development, training, and infrastructure to ensure the charity's long-term effectiveness and efficiency.

## Volunteer Engagement

Increase the recruitment and much valued involvement of volunteers to support our services.

## Collaboration

Foster strategic partnerships and collaborations with other nonprofits, government agencies, health bodies and community organisations to leverage resources and expertise.

## Expansion

Expand the charity's reach to other regions to address similar issues on a broader scale.

**Younger People with Dementia is dedicated to achieving these strategic goals, in line with our vision, mission and core values.**

## WHAT OUR CARERS SAY...

“What you & your colleagues do for us is **above & beyond.**”

Our charity provides support for not only the person living with young onset dementia, but their carers and families as well.

# GOVERNANCE AND LEADERSHIP

Meet our leadership team who govern and lead the charity.

## Our board of Trustees during this period:

Lisa Mooney, Chair of Trustees | Alain Wilkes, Deputy Chair of Trustees  
David Fisher | Dr Jacqueline Hussey | Dr Buchi Reddy | Kathy Taylor  
Radhika Modha, Treasurer

## Our Leadership Team are:

Caroline Blanchette, Joint Director of Clinical and Operational Services  
Charlie Draper, Joint Director of Clinical and Operational Services  
Clare Lynskey, Area Manager, Surrey Heath, NE Hants and Farnham  
Jenny Vertigan, Area Manager, Berkshire West  
Karen Ive, Area Manager, East Berkshire  
Julie Vernon, Office Manager





# GOVERNANCE STATEMENT

**As a charity we are committed to maintaining the highest standards of governance to achieve our vision, mission, values and strategy, maintain the trust of our supporters and ensure the effective use of resources.**

## Board of Trustees

Our Board of Trustees are responsible for the overall governance and strategic direction of the charity. The board consists of dedicated individuals who bring diverse skills and expertise to the charity. It meets regularly to make decisions on key matters, ensuring the charity's activities align with its charitable objectives. Our Trustees act in a voluntary capacity and receive no remuneration.

## Governance Structure

Our charity is structured and operates in accordance with our governing document, which outlines our charitable objectives and guiding principles. We adhere to all relevant legal and regulatory requirements and report to the appropriate authorities.

## Financial Management

Our charity is committed to sound financial management and transparency. We maintain proper financial records and regularly review financial performance. Annual financial statements are independently audited and the results are presented in this annual report. We ensure that funds are used for their intended purposes and strive for cost-effective operations.

The charity has a reserves policy to maintain unrestricted funds, which are the free reserves of the charity, at a sufficient level which enables the charity to operate in the short term (6 months). The remainder of the charity's reserves are distributed in accordance with its objectives. The total reserves at the year-end date were £401,503 of which an amount of £52,289 was held in restricted funds, with £84,400 in designated funds and £264,814 in free reserves. The trustees consider the state of the charity to be satisfactory, and that it is achieving its objectives.

# GOVERNANCE STATEMENT

## Risk Management

Trustees have a duty to identify and review the risks to which the charity is exposed and to ensure appropriate controls are in place to provide reasonable assurance against fraud and error. We have a comprehensive risk management framework in place to identify and manage risks that may impact our charity's operations. The Trustees recognise the charity's reliance on the NHS for funding and actively look to broaden the sources of financial support. These additional sources of income included applications to charitable trusts and foundations and fundraising activities.

## Transparency and Accountability

Our charity is dedicated to transparency and accountability. We provide regular updates to our stakeholders through reports, meetings and communications. We comply with all reporting requirements.

Conflicts of Interest: Trustees and the staff team of our charity are required to disclose any conflicts of interest promptly. Any conflicts are managed with transparency and integrity.

## Equal Opportunities and Diversity

We are committed to providing equal opportunities and promoting diversity in all our activities. We do not discriminate based on age, disability, gender reassignment, marriage and civil partnership, pregnancy and maternity, race (including colour, nationality and ethnic or national origin), religion or belief, sex or sexual orientation.

**We are committed to upholding the highest standards of governance to ensure the efficient and effective operation of the charity. We are grateful for the support and trust of our funders, donors, fundraisers and stakeholders.**

*Lisa Mooney*

*Chair of the Board of Trustees  
Younger People with Dementia CIO*

# ABOUT US AND HOW TO CONTACT US



## **Registered Office:**

First Floor, Unit 9 Indigo House,  
Fishponds Road, Wokingham, RG41 2GY.

## **Bankers:**

HSBC, 160 Crockhamwell Road,  
Woodley, Berkshire, RG5 3JJ.

## **Independent Examiner:**

Sue Jackson FCCA, Working Numbers Limited,  
12 St Mary's Road, Mortimer Common, RG7 3UE.

## ***Find us on social media...***

**Facebook & LinkedIn:** Younger People with Dementia

**Instagram & YouTube:** @youngerpeoplewithdementia

**X:** @YPWD

***Contact us via email, call our office or visit our website:***



**contact@ypwd.info**



**0118 207 2880**



**www.ypwd.info**

# FINANCIAL REVIEW

## *Section 2: Consolidated financial statements*



Younger People  
With Dementia  
CIO

***For the year ending  
31st March, 2024***

**Younger People with Dementia (Berkshire) CIO  
Trustees and Professional advisers  
For the year ending 31 March 2024**

Trustees

Ms Lisa Mooney	Chair
Mr Alain Wilkes	Vice Chair
Miss Radhika Modha	Treasurer
Mrs Kathy Taylor	
Dr Jacqueline Hussey	
Mr David Fisher	
Dr Buchi Reddy	

Registered Office

First Floor  
Unit 9 Indigo House  
Fishponds Road  
Wokingham  
RG41 2GY

Bankers

HSBC  
160 Crockhamwell Road  
Woodley  
Berkshire  
RG5 3JJ

Independent Examiner

Sue Jackson FCCA  
Working Numbers Limited  
12 St Mary's Road  
Mortimer Common  
RG7 3UE

**Younger People with Dementia  
CIO  
Report of the Trustees  
For the year ending 31 March 2024**

**Structure, Governance and Management**

**Governing Document**

The Charity is controlled by its governing document.

**Recruitment and appointment of Trustees**

The Trustees give their time voluntarily and receive no benefit from the Charity.

**Risk Management**

The Trustees have a duty to identify and review the risks to which the charity is exposed and to ensure appropriate controls are in place to provide reasonable assurance against fraud and error. The Trustees recognise the charity's reliance on the NHS for Funding and actively look to broaden the sources of financial support.

**Objectives and Activities**

Young Onset Dementia affects adults under the age of 65 and nationally there are known to be just over 70,800 living with this diagnosis. Traditional services are designed to meet the needs and expected therapeutic out-comes of older adults and subsequently, access to activities appropriate for younger adults with dementia is limited. The Objective of the charity is to promote and protect the physical and mental health of people diagnosed with early onset dementia and also of their families and carers in the administrative districts of Wokingham, Reading, West Berkshire, Bracknell, Windsor and Maidenhead, Slough, Surrey Heath, North East Hampshire and Farnham through the provision of support, education and general advice. During the period we have also commenced a pilot of our services in the area of Woking.

**Charitable Activities**

During the period we have provided age-appropriate and meaningful workshops, micro-groups, 1:1 support, social events, Admiral Nurses to support carers and education courses.

**Reserves Policy**

The reserves policy of the charity is to maintain free reserves, at a sufficient level which enables the charity to operate in the short term (6 Months), based on a core monthly spend of £50,000 this would be £300,000. The remainder of the Charity's reserves are distributed in accordance with its objectives. The total reserves at the year end date were £422,119 of which an amount of £54,959 was held in restricted funds, with £107,514 in designated funds and £259,646 in free reserves. The trustees consider the state of the charity to be satisfactory, and that it is achieving its objectives.

A Detailed Report for Activities in year ending March 2024 is available on the Charity Commission site.

Signed            Lisa Mooney

Date              19/11/2024

**Younger People with Dementia CIO  
Registered Charity no. 1171720**

**Independent Examiner's Report  
For the year ending 31 March 2024**

**Responsibilities and basis of report**

I report to the trustees on my examination of the accounts of the above charity ("the Charity") for the year ended 31/03/2024.

As the charity's trustees, you are responsible for the preparation of the accounts in accordance with the requirements of the Charities Act 2011 ("the Act").

**Independent examiner's statement**

I report in respect of my examination of the Charity's accounts carried out under section 145 of the 2011 Act and in carrying out my examination, I have followed all the applicable Directions given by the Charity Commission under section 145(5)(b) of the Act.

The charity's gross income exceeded £250,000 and I am qualified to undertake the examination by being a qualified member of the Association of Chartered Certified Accountants (ACCA).

I have completed my examination. I confirm that no material matters have come to my attention in connection with the examination which gives me cause to believe that in, any material respect:

- the accounting records were not kept in accordance with section 130 of the Charities Act; or
- the accounts did not accord with the accounting records; or
- the accounts did not comply with the applicable requirements concerning the form and content of accounts set out in the Charities (Accounts and Reports) Regulations 2008 other than any requirement that the accounts give a 'true and fair' view which is not a matter considered as part of an independent examination.

I have no concerns and have come across no other matters in connection with the examination to which attention should be drawn in this report in order to enable a proper understanding of the accounts to be reached.

*SM Jackson*

SM Jackson FCCA  
WORKING NUMBERS LIMITED  
12 St Mary's Road  
Mortimer Common  
Reading  
RG7 3UE

Date: 19/11/2024

**Younger People with Dementia (Berkshire) CIO.**  
**Balance Sheet**  
**For the year ending 31 March 2024**

		2024	2024	2024	2023
		Unrestricted funds	Restricted income funds	TOTAL	TOTAL
	Note	£	£	£	£
<b>Fixed Assets</b>					
Tangible Assets	9	4,147	-	4,147	3,690
<b>Total Fixed Assets</b>		<u>4,147</u>	<u>-</u>	<u>4,147</u>	<u>3,690</u>
<b>Current Assets</b>					
Debtors	10	6,370		6,370	235
Cash at bank and in hand		366,121	54,959	421,080	404,169
<b>Total Current Assets</b>		<u>372,491</u>	<u>54,959</u>	<u>427,450</u>	<u>404,404</u>
<b>Liabilities</b>					
Creditors falling due within one year	11	9,478	-	9,478	6,591
		<u>9,478</u>	<u>-</u>	<u>9,478</u>	<u>6,591</u>
<b>Net Current Assets</b>		<u>363,012</u>	<u>54,959</u>	<u>417,971</u>	<u>397,813</u>
Net Assets		<u>367,160</u>	<u>54,959</u>	<u>422,119</u>	<u>401,503</u>
<b>The Funds of the charity:</b>					
Unrestricted Income Funds	13	259,646	-	259,646	263,463
Designated funds		107,514		107,514	84,400
Restricted Income Funds		-	54,959	54,959	53,639
<b>Total Charity Funds</b>		<u>367,160</u>	<u>54,959</u>	<u>422,119</u>	<u>401,503</u>

These accounts were approved by the Trustees on 19 November 2024 and signed on their behalf by:

Signature Lisa Mooney, Chair of Trustees

Date 19/11/2024

**Younger People with Dementia CIO**  
**Statement of Financial Activity**  
**For the year ending 31 March 2024**

	Unrestricted	Restricted	Total Funds	Total Funds	
	Funds	Funds	2024	2023	
	2024	2024	2024	2023	
	£	£	£	£	
Note					
<b>Income:</b>					
Donations and Legacies (including Grants)	3, 4	176,501	436,176	612,677	416,908
Charitable Activities		6,107	231	6,338	4,936
Other trading activities		-	-	-	-
Investments		3,958	-	3,958	970
Other income					
<b>Total Income</b>		<b>186,566</b>	<b>436,407</b>	<b>622,973</b>	<b>422,814</b>
<b>Expenditure:</b>					
Raising funds	5	19,627	1,000	20,627	10,073
Charitable Activities	5	188,145	393,189	581,334	421,660
Governance Costs	5	396	-	396	450
<b>Total Expenditure</b>		<b>208,168</b>	<b>394,189</b>	<b>602,357</b>	<b>432,183</b>
Net income/(Expenditure)		(21,602)	42,218	20,616	(9,369)
Transfer between funds		40,899	(40,899)	-	
Net movement in Funds	13	19,297	1,319	20,616	(9,369)
Funds Brought forwards		347,863	53,640	401,503	410,872
<b>Total Funds Carried Forward</b>		<b>367,160</b>	<b>54,959</b>	<b>422,119</b>	<b>401,503</b>

**Younger People with Dementia CIO  
Notes to the Unaudited Accounts  
For the year ending 31 March 2024**

**Note**

**1. Accounting background**

Background

Younger People with Dementia Charitable Incorporated Organisation (Charity Number 1171720) was set up in February 2017. This replaced the registered Charity of the same name (Charity number 1147290).

**2. Accounting Policies**

Basis of Accounting

These accounts have been prepared under the historical cost convention with items recognised at cost or transaction value unless otherwise stated in the relevant note(s) to these accounts. The accounts have been prepared in accordance with the Statement of Recommended Practice: Accounting and Reporting by Charities preparing their accounts in accordance with the Financial Reporting Standard applicable in the UK and Republic of Ireland (FRS 102) (effective 1 January 2015) (Charities SORP (FRS102)), the Financial Reporting Standard applicable in the UK and Republic of Ireland (FRS 102), and the Charities Act 2011.

Basis of preparing the Financial statements

The Financial Statements have been prepared under the going concern basis. The Charity has secured funding to secure the immediate future of the Charity for the next 18 months to 2 years on this basis Trustees view the Charity as a going concern.

Incoming resources

All Incoming resources are included on the statement of Financial Activities when the Charity is legally entitled to the income and the amount can be quantified.

Resources expended

Expenditure is accounted for on an accruals basis and has been classified under headings that aggregate all costs related to the category. Where costs cannot be directly attributed to a particular heading they have been allocated to activities on a basis consistent with the use of resources.

Irrecoverable VAT is charged as a cost against the activity for which the expenditure is incurred.

Taxation

The Charity is exempt from corporation tax on its charitable activities.

Fund Accounting

Unrestricted funds can be used in accordance with the charitable objectives at the discretion of the Trustees.

Restricted Funds can be used for the particular restricted purposes within the objects of the Charity.

Restriction arise when specified by the donor or when funds are raised for a particular restricted purpose.

Fixed Assets

Depreciation has been provided on a straight line basis at a rate estimated to write off the value of the asset over its useful life.

Office Equipment	4 Years
Computer Equipment	4 Years

## Younger People with Dementia CIO

### Notes to the Unaudited Accounts

For the year ending 31 March 2024

**Note**

**3. Analysis of Income**

	Unrestricted funds 2024 £	Restricted income funds 2024 £	Total funds 2024 £	Total funds 2023 £
<b>Donations and legacies:</b>	Donations and gifts	63,646	11,631	75,277
	Gift Aid	3,586	1,948	5,534
	Legacies	-	-	-
	Grants	109,269	422,597	531,866
	<b>Total</b>	<b>176,501</b>	<b>436,176</b>	<b>612,677</b>
<b>Charitable activities:</b>	Events	973	-	973
	Other charitable activities	5,134	231	5,364
	<b>Total</b>	<b>6,107</b>	<b>231</b>	<b>6,338</b>
<b>Income from investments:</b>	Interest income	3,958	-	3,958
	<b>Total</b>	<b>3,958</b>	<b>-</b>	<b>3,958</b>
<b>TOTAL INCOME</b>	<b>186,566</b>	<b>436,407</b>	<b>622,973</b>	<b>422,814</b>

**4. Government Grant funding**

There were no government grants in 2024 (2023 - none)

**Notes to the Unaudited Accounts  
For the year ending 31 March 2024**

**5. Analysis of expenditure**

Analysis	Unrestricted funds 2024 £	Restricted income funds 2024 £	Total funds 2024 £	Total funds 2023 £
<b>Expenditure on raising funds:</b>				
Incurring seeking donations	19,627	1,000	20,627	10,073
<b>Total expenditure on raising funds</b>	<b>19,627</b>	<b>1,000</b>	<b>20,627</b>	<b>10,073</b>

**Expenditure on charitable activities:**

Cost of products sold	5,934	-	5,934	-
Transaction costs	-	-	-	184
Operational staffing	(6,662)	298,396	291,735	205,331
Workshop costs	(6,234)	84,186	77,952	51,848
Client welfare	-	-	-	2,747
Accountancy and bookkeeping	6,112	-	6,112	4,545
Staffing	118,281	7,916	126,198	77,438
Bank charges	145	-	145	308
Business rates	1,195	-	1,195	594
Computer costs	8,884	-	8,884	6,853
Depreciation	2,424	-	2,424	2,359
General expenses	1,076	556	1,632	1,403
HR	1,398	-	1,398	3,054
Insurances	3,063	-	3,063	2,464
Legal fees	795	-	795	18
Marketing	13,480	20	13,500	28,983
Office costs	21,714	94	21,808	19,414
Printing postage and Stationary	4,777	369	5,147	3,677
Subscriptions	680	-	680	265
Telephone costs	8,544	100	8,644	6,026
Travel costs	791	1,337	2,128	2,517
Trustee and Volunteer costs	1,749	214	1,963	1,628
<b>Total expenditure on charitable activities</b>	<b>188,145</b>	<b>393,189</b>	<b>581,334</b>	<b>421,660</b>

**Governance costs**

Independent Examiners fee	396	-	396	450
<b>Total other expenditure</b>	<b>396</b>	<b>-</b>	<b>396</b>	<b>450</b>

<b>TOTAL EXPENDITURE</b>	<b>208,168</b>	<b>394,189</b>	<b>602,357</b>	<b>432,183</b>
--------------------------	----------------	----------------	----------------	----------------

**6. Trustees Remuneration and Benefits**

During the period the total Trustees Remuneration was £nil (2023: £nil)

Other than reimbursement for costs incurred on behalf of the charity there were no trustee expenses (2023: £Nil)

**7. Staff costs and employee benefits**

	2024 £	2023 £
Wages and salaries	372,855	253,930
Social security costs	26,285	17,071
Pension costs	10,212	7,083
<b>Total</b>	<b>409,352</b>	<b>278,084</b>

	2024	2023
Average head count during the year was:	15	12

No employees received employee benefits (excluding employer pension costs) for the reporting period of more than £60,000 (previous year also nil).

**8. Independent Examiner's fee**

The charity has accrued for an independent examiners fee of £396 (2023: £450)

No other fees were payable to the examiner or their firm in either year

**Notes to the Unaudited Accounts  
For the year ending 31 March 2024**

**9. Fixed assets**

<b>Cost</b>	<b>£</b>
Cost as at 31st March 2023	10,406
Additions during the year	2,881
Disposal during the year	-
Cost as at 31st March 2024	<u>13,287</u>
<b>Accumulated Depreciation</b>	
Balance as at 31st March 2023	6,716
Disposal during the year	-
Charge for the year	2,424
Balance as at 31st March 2024	<u>9,140</u>
<b>Net Book Value at 31 March 2024</b>	<u><u>4,147</u></u>

**10. Debtors falling due within one year**

	<b>2024</b>	<b>2023</b>
	<b>£</b>	<b>£</b>
Trade debtors	-	50
Accrued income	6,370	-
Prepayments	-	185
<b>Total Debtors</b>	<u><u>6,370</u></u>	<u><u>235</u></u>

**11. Creditors falling due within one year**

	<b>2024</b>	<b>2023</b>
	<b>£</b>	<b>£</b>
Trade Creditors	849	-
Accruals	5,075	5,221
Taxation and social security	3,554	1,370
<b>Total Creditors</b>	<u><u>9,478</u></u>	<u><u>6,591</u></u>

**12. Movement in Funds**

	<b>Unrestricted</b>	<b>Designated</b>	<b>Restricted</b>	<b>TOTAL</b>
	<b>2024</b>	<b>2024</b>	<b>2024</b>	
	<b>£</b>	<b>£</b>	<b>£</b>	
As at 1st April 2023	263,463	84,400	53,640	401,503
Additions during the year	186,566		436,407	622,973
Expenditure During year	(190,383)	(17,785)	(394,189)	(602,357)
Transfer between funds	-	40,899	(40,899)	-
<b>As at 31st March 2024</b>	<u><u>259,646</u></u>	<u><u>107,514</u></u>	<u><u>54,959</u></u>	<u><u>422,119</u></u>

The transfers between funds reflect the categorisation of 'Als Place' and the 'Legacy' fund as designated funds  
This follows a review of the original terms of gift

**Movement in Funds - prior year comparison**

	<b>Unrestricted</b>	<b>Designated</b>	<b>Restricted</b>	<b>TOTAL</b>
	<b>2023</b>	<b>2023</b>	<b>2023</b>	
	<b>£</b>	<b>£</b>	<b>£</b>	
As at 1st April 2022	302,381		108,491	410,872
Additions during the year	159,492		263,322	422,814
Expenditure During year	(109,060)	(5,600)	(317,523)	(432,183)
Transfer between funds	(89,350)	90,000	(650)	-
<b>As at 31st March 2023</b>	<u><u>263,463</u></u>	<u><u>84,400</u></u>	<u><u>53,640</u></u>	<u><u>401,503</u></u>

**Younger People With Dementia CIO**

England & Wales - Charity number 1171720

---

# Accounts

---

# ANNUAL REPORT 2022

---

**FOR THE YEAR  
ENDED 31  
MARCH 2023**



# CONTENTS

## *Introductions*

---

Introduction from Chair of Trustees	4
Introduction from Director of Clinical & Operational Services	6

## *Our Vision, Achievements and Impact*

---

Our Core Values, Mission Statement and Vision	8
Our Impact and Highlights from the Year	9
Celebration of our Workshops in Pictures	10
Notable Events	12
Impact Stories: Richard and Lynne	16
Volunteer Spotlight: Stuart	17
Impact Stories: Mike and Sylvia	18

## *Grants, Looking Forward and Governance*

---

Major Grant Recognition	20
Future Strategic Goals	22
Governance and Leadership	24
Governance Statement	26

## *Contact Us*

---

About Us and How to Contact Us	28
--------------------------------	----

**Our financial review will be highlighted in a separate document.**



# INTRODUCTION FROM OUR CHAIR OF TRUSTEES

---



Dear Supporters and Stakeholders,

I am delighted to present our annual report for the year 2022-2023, and it is my privilege to serve as the Chair of Trustees for Younger People With Dementia CIO (YPWD). This document is a testament to the hard work, dedication, and unwavering commitment of our charity to fulfil our mission and meet the needs of the communities we serve.

Over the past year, within which we enjoyed celebrating being in operation for ten years, YPWD has continued to navigate through uncharted waters, facing unprecedented challenges while pursuing our vision to influence a world where younger people with dementia are included and involved in every aspect of life without discrimination or stigma. It is during such times that the true strength of our charity and our collective resolve become most apparent. In the following pages, you will find an overview of our achievements, milestones and the impact we've made on the lives of those we exist to support. Our mission is not a solitary journey but a collective effort, and it is our belief in the power of community and collaboration that drives us forward.

As Chair of Trustees, I am immensely proud of our dedicated board, staff, volunteers, and our ever-supportive donor community. The work we do would be impossible without the expertise, passion, and commitment of all those involved.



In this report, you will also find a transparent account of our financial performance and the prudent use of resources, reflecting our commitment to accountability and good governance. We take our responsibilities seriously and continue to refine our governance processes to ensure that we are a model of transparency and efficiency.

As we look to the future, we remain focused on our mission and the positive impact we aim to create. The challenges before us may be great, but so is our determination to overcome them. Together, with your continued support and partnership, we are poised to make even greater strides toward our vision.

On behalf of the entire board of trustees, I extend our deepest appreciation to our donors, volunteers, partners and all who have contributed to our journey. Your support is the bedrock upon which we build a better tomorrow.

Thank you for your trust in us and for joining us in our drive to make a difference to the lives of those living with young onset dementia.

Yours sincerely,

**Lisa Mooney**

*Chair of the Board of Trustees,  
Younger People With Dementia CIO*

# INTRODUCTION FROM DIRECTOR OF CLINICAL & OPERATIONAL SERVICES

We are pleased to present to you the Annual Report of Younger People With Dementia CIO (YPWD) for the financial year ending 31 March 2023. This report provides an overview of our performance, achievements and our future strategic direction.

Having entered our eleventh year of operation, it is still humbling to see the impact that our services have on those living with young onset dementia. The team have been excellent at ensuring that we continue to work on our mission to support those living with young onset dementia through meaningful activity, respite, education and support groups. The year has also included us working in partnership with a film company about the story of someone living with young onset dementia “If Not Now, When?”, written by Nick Tree, it has seen us embrace the challenge of reducing health inequalities and also recognise and start to address the challenges faced by children of a parent with young onset dementia.

As with all charities, it has been a challenging financial year, but we have maintained our service delivery and indeed expanded our reach. Our thanks go out to our funders, corporate sponsors, donors and fundraisers which have made this possible.

As we move forward, we remain dedicated to our core values, our mission, and our vision for the future. Our strategic plan for the coming year is ambitious, and we are excited to share this with you in this report. Once again, we thank you for your ongoing support – we really couldn’t do it without you.

Yours sincerely,

***Caroline Blanchette & Charlie Draper***

*Joint Director of Clinical and Operational Services,  
Younger People With Dementia CIO*



# OUR MISSION STATEMENT

*Our Vision is to influence a world where Younger People with Dementia are included and involved in every aspect of life without discrimination or stigma.*

*Our Mission is to provide meaningful activity and respite for younger people with dementia and their families and carers.*

*We work alongside other statutory provision, across the working week with the aim of giving individuals the best life they can with dementia.*

## OUR CORE VALUES



**Innovative**



**Supportive**



**Enabling**



**Inclusive**

# OUR IMPACT & HIGHLIGHTS



During the year we have delivered...

**562** Activity-based Workshops

Our activity-based workshops have included art & crafts, furniture restoration, golf, photography and racket sports. These ran across Berkshire and Surrey Heath.

**131** One to one Support Sessions

Our charity offer one to one support sessions for a limited time period to ease the transition for those we support into a group setting, helping to build confidence & trust.

## NATIONAL TRUST DAY TRIPS

From June to July (22), our team in Berkshire planned six weeks of day trips to National Trust venues. Each week our support workers welcomed attendees at our office base in Wokingham, where we all boarded a minibus to each location. Visits included Greenham Common located in West Berkshire, Cliveden House in Taplow, Saville Gardens in Virginia Water, The Vyne in Basingstoke, Hughenden Manor in Buckinghamshire and Basildon Park.

Our Trustee David who volunteered his support these day trips commented: *“For me the reward comes from seeing the enjoyment of the group, the real pleasure of being in the open air, enjoying good company and helping attendees to get the most that they can from these activities. Lovely people having a lovely time with no inhibitions or sense of isolation.”*

**2** Micro Group Sessions

**3** Education Courses

**8** Social Events

# CELEBRATION OF OUR WORKSHOPS IN PICTURES

---





# NOTABLE EVENTS

“All Together Now” events were first introduced in the charity with the aim of bringing together our service users and their loved ones. Our charity ran a number of events in 2022 and 2023 which included an afternoon tea, beach trip, visit to Windsor, Halloween Party and Christmas Concert. We also attended a pantomime together.



## COLOUR RUSH RUN

*May 2022*

Some of our team in Berkshire, Amy, Debbie, Erin, Jenny, Jess & Karen were joined by Caitlin and Sarah to complete the Colour Rush Obstacle Course to raise funds for YPWD. They had a blast participating in the 5K event at Windsor Racecourse.



## 10 YEAR ANNIVERSARY

*June 2022*

2022 marked our 10-year anniversary and to celebrate this milestone, the charity put on a public, family-friendly event at the Museum of English Rural Life in Reading, with the aim of bringing together all of our supporters.



The event consisted of performances from our Berkshire and Surrey Heath dementia choirs and offered taster workshops and refreshments. Alongside this we put together an art gallery, showcasing the amazing artwork of those we support. There were also information stands and talks led by our Admiral Nurses.



# NOTABLE EVENTS

## BBC VISIT

June 2022

### Appearance on 'Our Dementia Choir'

Line of Duty star Vicky McClure came to visit South Street Theatre in Reading, where our Berkshire choir practice each week. They were also joined by the YPWD Surrey Heath choir this week, showcasing the charity as a whole. We then appeared in the first episode of BBC's 'Our Dementia Choir Sings Again' which aired on Monday 10th of October 2022. During the episode, Vicky McClure spoke to YPWD staff and highlighted what *"a brilliant system is in place. This is changing people's lives. The fact that they are supported by the NHS... is the obvious thing we need."*



## CONNECTING CARERS

December 2022

In every break week from our programme of activity-based workshops, YPWD run connecting carers groups which gives carers an opportunity to come together with shared experiences. While their group takes place, our team of support workers deliver an activity for their loved one with dementia. An example of one of these took place in December, we brought these two groups together to run a Christmas celebration. Our team delivered jacket potatoes for each attendee with their choice of toppings and sides, hot chocolates with cream and marshmallows and ran Christmas quizzes. It was lovely to get together and get into the Christmas spirit, singing Christmas songs and wearing Christmas jumpers.



# NOTABLE EVENTS

## CHRISTMAS CONCERT

*December 2022*

Our first Christmas Concert since before the COVID-19 pandemic was a success, and featured guest performances from Rocket Kings & Bill Buckley from BBC Radio Berkshire.

The YPWD Berkshire (Harmony) and YPWD Surrey Heath (Sunshine) Choirs sounded amazing and were excited to showcase what they had been working on. In the interval, we offered a glass of complimentary prosecco, mulled wine, or a hot drink.

The raffle prizes included tickets to Windsor Castle, an Afternoon Tea, some lovely toiletry sets and bottles of bubbly. We had many happy winners of these donated prizes.



## VALENTINE'S MEAL

*February 2023*

Our first social event of the year was a Mexican themed event including a three-course meal for 50 people. Our team were kitted out in full Mexican gear to add to the aesthetics of the evening, wearing sombreros, colourful ponchos and the biggest of moustaches. Guests were welcomed and photographed at the photo booth station. There was a vast choice of props and moustaches to play around with before moving on to the drinks station. Entertainment for the evening was provided by the amazing band Good Company who played a choice of popular songs which got everybody up and dancing. Guests were serenaded by our team using guitars and ukeleles, dressed as Mariachis head to toe.



# NOTABLE EVENTS

## CHILDREN'S PROJECT

### *Throughout 2022-23*

Working alongside The Museum of English Rural Life and Admiral Nurses we delivered support for children with a parent that has been diagnosed with young onset dementia. Sessions were delivered on a regular basis to children aged between 6 and 20 years of age. Each session had an activity included within it, from willow weaving to art. The sessions enabled children that are living in similar situations to come together and access peer support in a safe environment. This project has been and will continue to be researched by the University of Reading. The research element enables us to understand what works, what doesn't and how to ensure the sustainability of the project.



## FILM PROJECT

### *Throughout 2023*

During the period we were proud to be a part of the making of the film, "If Not Now, When?", starring Kate Dickie. This was filmed in February 2023 on location on the Island of Easdale. Nick Tree, Writer and Director, shared that writing this film about a woman living with young onset dementia was very close to his heart, as his grandfather lived with dementia himself. It was very important to the film crew that the portrayal of somebody living with a young onset dementia diagnosis was executed accurately and with care, which is where our charity came in to help support the film project. We are very much looking forward to seeing the results on our film screens later on in the year.



# IMPACT STORIES: RICHARD AND LYNNE

---

*“A lot of the things he’s done at the workshops, he would never have tried before dementia.”*



Richard is one of the beneficiaries of the activity-based workshops run by Younger People with Dementia (YPWD). Over the past year he has attended katanuing, golf, choir, day trips to National Trusts, visits to Windsor Castle, farm visits which included cooking, walking and animal therapy. Below his wife Lynne talks about Richard’s diagnosis and outlines the benefits of the support they have received from our charity.

“We’ve been part of YPWD for the last three years and we’ve been married 50 years. Richard was diagnosed three and a half years ago, but I predicted that Richard had dementia a long time before he was diagnosed. Richard retired at 60 and very soon after that, I noticed that there was something not right. He’d be doing silly things like hiding things, putting things in different places, forgetting things and repeating things a lot. He was getting frustrated all the time, and so it was little things like that, which on their own don’t seem like much. I never thought it would happen to us. Richard was getting more and more anxious over stuff, forgetting where he’d put keys, and it was just a series of very small things. I made a couple of trips to our doctor to talk about it and they said I needed to persuade Richard to come in with me, but he was very resistant because he remembered what happened to his mum and grandma, who both lived with young onset dementia. Eventually we did go to the doctor, they did some memory tests, and they said they thought we should go along to the memory clinic. Richard was diagnosed there and then. It wasn’t a shock and yet it was, to have somebody actually say it to you.

We were then introduced to YPWD and we’ve been with them ever since. I got to meet all of the other carers in the same situation, which was great because you feel isolated, you feel like the bottom has dropped out of your world, as you really don’t know what’s going to happen. YPWD has been a saviour to us both. Richard goes to a lot of workshops; he’s been in the choir from the beginning and now he does all sorts of things. He loves all the physical activities but some of the other things he would never have tried, and he really has enjoyed them. YPWD, I’d recommend it to anyone. I think in a strange way we’re very lucky people because so many people going through this have got no support. We just want to say thank you very much to YPWD for everything, it’s our life-line.”

# VOLUNTEER SPOTLIGHT: STUART

*“During my wife's illness, she and I received much support from YPWD. I now want to give back.”*



Our long-time supporter Stuart has been volunteering for our organisation for a number of years, helping our team in supporting people with a young onset dementia diagnosis at workshops around Berkshire and Surrey Heath.

*“During my wife's illness, she and I received much support from YPWD and from its current staff before it was formally a charity. I now want to help as much as I can, volunteering and raising money. I will be eternally grateful to those staff and to the charity for the help and support they provided over many years. So having experienced first-hand the benefits that the charity offers, I have a great interest in helping it to succeed and prosper. Being a volunteer means that I can help with that in a small way, it also helps me to say thank you.”*

Stuart has also participated in multiple events over the years, pushing himself to the limit to raise money for our charity. In October 2022, Stuart ran in the London Marathon, raising an amazing £1,000 for YPWD. Below he talks about his experience completing this fundraiser, highlighting the benefits of getting involved for future participants.

*“There are few feelings so great as crossing the finish line of a marathon. A huge feeling of personal satisfaction and pride in one's achievement. All the pain and suffering of the 26 miles is forgotten. You can stop running, pause the watch, collect the all-important medal, get a drink, soak up the praises from spectators and other runners, and start thinking about the next one. All the training of the previous few months has been worth it. My advice is just go running. It does not have to be a full marathon; a half is good, as is a 10k and even a 5k Park Run on a Saturday morning. The personal benefits are great and if you can raise money for YPWD along the way, all well and good. I want to see us succeed now and in the future, and that means getting in the necessary funds to enable us to continue our work. If we do not do that, we cannot continue to help those who need our help.”*

We cannot thank Stuart enough for the work he has done for our charity, in volunteering and in his fundraising work.

# IMPACT STORIES: MIKE AND SYLVIA

---

*“The friends I have made through YPWD keep me going through the difficult days.”*



Mike is one of the beneficiaries of the activity-based workshops run by our charity. Over the years Mike has attended multiple different activities with our organisation, including circus skills, choir, walking groups and arts & crafts. His wife Sylvia also receives support at our Connecting Carers Groups and the couple enjoy attending our social events.

Below Sylvia talks about how they met, life before and after Mike’s dementia diagnosis and the support they have received from our charity.

“Mike & I grew up in opposite corners of the same cul-de-sac but weren’t aware of each other until I was about 18. He was my first boyfriend and we soon discovered we were soulmates. In 1978 we bought our first house and got engaged, planning to fix up the house before getting married in 1980. However, tragedy struck in 1979 when Mike had an horrific motorcycle accident. He suffered major head trauma and had to undergo an emergency operation to release a blood clot on the brain. It was touch and go for a while, but he made a miraculous recovery, surprising all the medical staff who expected him to be permanently incapacitated even if he survived the operation. One year on, apart from some spectacular scars and minor eyesight issues, there were no noticeable aftereffects.

We had many very happy years of marriage, but Mike was never able to hold down a job for very long which with hindsight was almost certainly down to the unseen damage done by the accident. Around 2015 he started losing the ability to do things like DIY, starting projects as he had always done but not being able to finish them and making silly mistakes. He also had short term memory lapses, such as forgetting to pick me up from the station after work. It started so gradually that I didn’t really notice the changes until other people started commenting on his behaviour.



After a stressful few months, I managed to persuade him to go with me to our GP. The first visit was pretty useless with him saying he was fine and the doctor taking his word for it! I came away feeling dismissed as a neurotic wife but eventually I managed to get him a referral to the Wokingham Memory Clinic. It was there that Mike was diagnosed with Mild Cognitive Impairment which was later upgraded to Mixed Dementia (Vascular & Alzheimer's). Although very distressed by the diagnosis I felt some element of relief that we at last had an explanation for his symptoms which I then realised were not his fault.

At the memory clinic I was referred to the YPWD which was the best thing ever! I no longer felt alone and since joining the group Mike has benefited from at least 2 activities every week. He particularly enjoys katanuing, equine therapy and snooker together with anything that involves creating something which he can take home. He still enjoys cooking but needs supervision as left on his own we often get some weird & wonderful combinations of ingredients!

Luckily Mike has remained pretty stable since his diagnosis so I feel very lucky compared to some who have had some terrible challenges. Of course there are times when I feel sad for days gone by but the friends I have made through YPWD are truly uplifting and keep me going through the difficult days. Unlike our other friends they understand exactly the experiences we are all going through and being able to talk, laugh & cry together is something I value more than I can say. Sometimes I feel that dementia has robbed us of our golden years together but mostly we just take one day at a time and try to get the best out of the time still have left.

I cannot thank YPWD enough for giving me that lifeline.”

# MAJOR GRANT RECOGNITION

Major grants received during the period included **Frimley ICB** (incorporating East Berkshire, Surrey Heath, NE Hants and Farnham) and **Berkshire West ICB**.

## Grants were also received from:

Age UK Berkshire

Alliance Medical Ltd

Arnold Clark Community Fund

AWBS (American Women's Business Society)

Berkshire Nurses and Relief in Sickness Trust

Crossroads

Crowdfunder (Aviva Community Fund)

Garfield Weston Foundation

Greenham Grant (Miss Lawrence Trust)

Payne-Gallwey PGCT

Tesco Community Fund

Scottish and Southern Electricity Networks Resilient Communities Fund

Spectris Foundation

The Altor Foundation

The Edward Gostling Foundation

The National Lottery Community Fund

Waitrose and Partners

Wokingham United Charities





# FUTURE STRATEGIC GOALS

Below we have given an overview of the charity's strategic direction, upcoming projects and goals for the next financial year and beyond.

## ***Service Delivery and Education***

Continuously deliver and expand our existing workshops, time-limited one to one support, micro-groups, education groups and carer support groups to better serve beneficiaries.

## ***Community Outreach***

Engage within our wider community to reduce health inequalities.

## ***Children's Project***

Develop services for children living with a parent with young onset dementia.

## ***Impact Report***

Develop and regularly report on key performance indicators (KPIs) to measure and communicate the charity's impact to stakeholders.

## ***Financial Sustainability***

Strengthen financial sustainability through diversifying funding sources. Launch specific fundraising campaigns throughout the year and seek to increase individual and corporate donations, grants, and develop sustainable revenue-generating initiatives.

***Carer Quote:*** When my husband was diagnosed, I couldn't understand a word he said and he just wanted to stay in bed. Since YPWD I can't emphasise the difference in him. He's got motivation and skills I didn't even know interested him.”

# FUTURE STRATEGIC GOALS

## *Awareness*

Raise awareness and recognition of young onset dementia and engage in efforts to influence dementia friendly practices within our wider community.

## *Capacity Building*

Invest in staff and trustee development, training, and infrastructure to ensure the charity's long-term effectiveness and efficiency.

## *Volunteer Engagement*

Increase the recruitment and involvement of volunteers to support our services.

## *Collaboration*

Foster strategic partnerships and collaborations with other nonprofits, government agencies, health bodies and community organisations to leverage resources and expertise.

## *Expansion*

Expand the charity's reach to other regions to address similar issues on a broader scale.



# GOVERNANCE AND LEADERSHIP

*Meet our team who govern and lead the charity.*

---

## ***Our board of Trustees are:***

Lisa Mooney, Chair of Trustees  
Alain Wilkes, Vice-Chair of Trustees  
Radhika Modha, Treasurer

David Fisher  
Dr Jacqueline Hussey  
Dr Buchi Reddy  
Kathy Taylor

## ***Our Leadership Team are:***

Caroline Blanchette, Joint Director of Clinical and Operational Services  
Charlie Draper, Joint Director of Clinical and Operational Services

Clare Lynskey, Area Manager, Surrey Heath, NE Hants and Farnham  
Jenny Vertigan, Area Manager, Berkshire West  
Karen Ive, Area Manager, East Berkshire

Julie Vernon, Office Manager



# GOVERNANCE STATEMENT

**As a charity we are committed to maintaining the highest standards of governance to achieve our vision, mission, values and strategy, maintain the trust of our supporters and ensure the effective use of resources.**

## ***Board of Trustees***

Our Board of Trustees are responsible for the overall governance and strategic direction of the charity. The board consists of dedicated individuals who bring diverse skills and expertise to the charity. It meets regularly to make decisions on key matters, ensuring the charity's activities align with its charitable objectives. Our Trustees act in a voluntary capacity and receive no remuneration.

## ***Governance Structure***

Our charity is structured and operates in accordance with our governing document, which outlines our charitable objectives and guiding principles. We adhere to all relevant legal and regulatory requirements and report to the appropriate authorities.

## ***Financial Management***

Our charity is committed to sound financial management and transparency. We maintain proper financial records and regularly review financial performance. Annual financial statements are independently audited and the results are presented in this annual report. We ensure that funds are used for their intended purposes and strive for cost-effective operations.

The charity has a reserves policy to maintain unrestricted funds, which are the free reserves of the charity, at a sufficient level which enables the charity to operate in the short term (6 Months). The remainder of the charity's reserves are distributed in accordance with its objectives. The total reserves at the year-end date were £401,503 of which an amount of £52,289 was held in restricted funds, with £84,400 in designated funds and £264,814 in free reserves. The trustees consider the state of the charity to be satisfactory, and that it is achieving its objectives.

# GOVERNANCE STATEMENT

## ***Risk Management***

Trustees have a duty to identify and review the risks to which the charity is exposed and to ensure appropriate controls are in place to provide reasonable assurance against fraud and error. We have a comprehensive risk management framework in place to identify and manage risks that may impact our charity's operations. The Trustees recognise the charity's reliance on the NHS for funding and actively look to broaden the sources of financial support. These additional sources of income included applications to charitable trusts and foundations and fundraising activities.

## ***Transparency and Accountability***

Our charity is dedicated to transparency and accountability. We provide regular updates to our stakeholders through reports, meetings and communications. We comply with all reporting requirements.

Conflicts of Interest: Trustees and the staff team of our charity are required to disclose any conflicts of interest promptly. Any conflicts are managed with transparency and integrity.

## ***Equal Opportunities and Diversity***

We are committed to providing equal opportunities and promoting diversity in all our activities. We do not discriminate based on age, disability, gender reassignment, marriage and civil partnership, pregnancy and maternity, race (including colour, nationality and ethnic or national origin), religion or belief, sex or sexual orientation.

**We are committed to upholding the highest standards of governance to ensure the efficient and effective operation of the charity. We are grateful for the support and trust of our funders, donors, fundraisers and stakeholders.**

## ***Lisa Mooney***

*Younger People with Dementia CIO*  
Registered Charity No. 1171720

# ABOUT US AND HOW TO CONTACT US

---



## **Registered Office:**

First Floor, Unit 9 Indigo House,  
Fishponds Road, Wokingham, RG41 2GY

## **Bankers:**

HSBC, 160 Crockamwell Road,  
Woodley, Berkshire, RG5 3JJ

## **Independent Examiner:**

Sue Jackson FCCA, Working Numbers Limited,  
12 St Mary's Road, Mortimer Common, RG7 3UE

## **Find us on social media...**

**Facebook:** YPWD Berkshire

**Instagram:** @ypwdberkshire

**X:** @YPWD

**Contact us via email, call our office or visit our website.**



[contact@ypwd.info](mailto:contact@ypwd.info)



0118 207 2880



[www.ypwd.info](http://www.ypwd.info)

Charity Registration number 1171720

**Younger People with Dementia CIO  
Report and Financial Statements  
For Period Ending 31 March 2023**

**Younger People with Dementia CIO  
Report and Financial Statements  
For Period Ending 31 March 2023**

	Page
Contents	1
Trustees and professional advisors	2
Report of Trustees	3
Independent Examiner's report	4
Balance sheet	5
Statement of Financial Activity	6
Notes to the Accounts	7 to 11

**Younger People with Dementia (Berkshire) CIO  
Trustees and Professional advisers  
For 12 Months Ending 31 March 2023**

Trustees

Ms Lisa Mooney	Chair
Mr Alain Wilkes	Vice Chair
Mrs Radhika Modha	Treasurer
Mrs Kathy Taylor	
Dr Jacqueline Hussey	
Mrs Caroline Blanchette	Until August 2022
Mr David Fisher	
Dr Buchi Reddy	

Registered Office

First Floor  
Unit 9 Indigo House  
Fishponds Road  
Wokingham  
RG41 2GY

Bankers

HSBC  
160 Crockhamwell Road  
Woodley  
Berkshire  
RG5 3JJ

Independent Examiner

Sue Jackson FCCA  
Working Numbers Limited  
12 St Mary's Road  
Mortimer Common  
RG7 3UE

**Younger People with Dementia  
CIO  
Report of the Trustees  
For Period Ending 31 March 2023**

**Structure, Governance and Management**

**Governing Document**

The Charity is controlled by its governing document.

**Recruitment and appointment of Trustees**

The Trustees give their time voluntarily and receive no benefit from the Charity.

**Risk Management**

Trustees have a duty to identify and review the risks to which the charity is exposed and to ensure appropriate controls are in place to provide reasonable assurance against fraud and error. We have a comprehensive risk management framework in place to identify and manage risks that may impact our charity's operations. The Trustees recognise the charity's reliance on the NHS for funding and actively look to broaden the sources of financial support. These additional sources of income included applications to charitable trusts and foundations and fundraising activities.

**Objectives and Activities**

Young Onset Dementia affects adults under the age of 65 and nationally there are known to be just over 70,800 living with this diagnosis. Traditional services are designed to meet the needs and expected therapeutic out-comes of older adults and subsequently, access to activities appropriate for younger adults with dementia is limited. The Objective of the charity is to promote and protect the physical and mental health of people diagnosed with early onset dementia and also of their families and carers in the administrative districts of Wokingham, Reading, West Berkshire, Bracknell, Windsor and Maidenhead and Slough through the provision of support, education and general advice. During the period we have continued our pilot of our services in the area of Surrey Heath.

**Charitable Activities**

During the period our services were delivered face to face and on-line as required. This support included age-appropriate and meaningful workshops, micro-groups, 1:1 support, social events, Admiral Nurses to support carers and education courses.

**Reserves Policy**

The charity has a reserves policy to maintain unrestricted funds, which are the free reserves of the charity, at a sufficient level which enables the charity to operate in the short term (6 Months). The remainder of the charity's reserves are distributed in accordance with its objectives. The total reserves at the year-end date were £401,503 of which an amount of £53,640 was held in restricted funds, with £84,400 in designated funds and £263,463 in free reserves. The trustees consider the state of the charity to be satisfactory, and that it is achieving its objectives.

A Detailed Report for Activities in 2023 is available on the Charity Commission site.

Signed Lisa Mooney

Date 10 January 2024

**Younger People with Dementia CIO  
Registered Charity no. 1171720**

**Independent Examiner's Report  
For Period Ending 31 March 2023**

**Responsibilities and basis of report**

I report to the trustees on my examination of the accounts of the above charity ("the Charity") for the year ended 31/03/2023.

As the charity's trustees, you are responsible for the preparation of the accounts in accordance with the requirements of the Charities Act 2011 ("the Act").

**Independent examiner's statement**

I report in respect of my examination of the Charity's accounts carried out under section 145 of the 2011 Act and in carrying out my examination, I have followed all the applicable Directions given by the Charity Commission under section 145(5)(b) of the Act.

The charity's gross income exceeded £250,000 and I am qualified to undertake the examination by being a qualified member of the Association of Chartered Certified Accountants (ACCA).

I have completed my examination. I confirm that no material matters have come to my attention in connection with the examination which gives me cause to believe that in, any material respect:

- the accounting records were not kept in accordance with section 130 of the Charities Act; or
- the accounts did not accord with the accounting records; or
- the accounts did not comply with the applicable requirements concerning the form and content of accounts set out in the Charities (Accounts and Reports) Regulations 2008 other than any requirement that the accounts give a 'true and fair' view which is not a matter considered as part of an independent examination.

I have no concerns and have come across no other matters in connection with the examination to which attention should be drawn in this report in order to enable a proper understanding of the accounts to be reached.

*SM Jackson*

SM Jackson FCCA  
WORKING NUMBERS LIMITED  
12 St Mary's Road  
Mortimer Common  
Reading  
RG7 3UE

Date: 1/12/2023

**Younger People with Dementia (Berkshire) CIO**  
**Balance Sheet**  
**As at 31 March 2023**

		2023	2023	2023	2022
	Note	Unrestricted funds £	Restricted income funds £	TOTAL £	TOTAL £
<b>Fixed Assets</b>					
Tangible Assets	9	3,690	-	3,690	4,555
<b>Total Fixed Assets</b>		<u>3,690</u>	<u>-</u>	<u>3,690</u>	<u>4,555</u>
<b>Current Assets</b>					
Debtors	10	235		235	1,337
Cash at bank and in hand		350,529	53,640	404,169	412,234
<b>Total Current Assets</b>		<u>350,764</u>	<u>53,640</u>	<u>404,404</u>	<u>413,571</u>
<b>Liabilities</b>					
Creditors falling due within one year	11	6,591	-	6,591	7,254
		<u>6,591</u>	<u>-</u>	<u>6,591</u>	<u>7,254</u>
<b>Net Current Assets</b>		<u>344,173</u>	<u>53,640</u>	<u>397,813</u>	<u>406,317</u>
Net Assets		<u>347,863</u>	<u>53,640</u>	<u>401,503</u>	<u>410,872</u>
<b>The Funds of the charity:</b>					
Unrestricted Income Funds	13	263,463	-	263,463	302,381
Designated funds		84,400		84,400	
Restricted Income Funds		-	53,640	53,640	108,491
<b>Total Charity Funds</b>		<u>347,863</u>	<u>53,640</u>	<u>401,503</u>	<u>410,872</u>

These accounts were approved by the Trustees on 10th January 2023 and signed on their behalf by:

Signature Lisa Mooney Name Lisa Mooney

Date 10/01/2023

**Younger People with Dementia CIO**  
**Statement of Financial Activity**  
**12 months ending 31 March 2023**

	Unrestricted Funds 2023 £	Restricted Funds 2023 £	Total Funds 2023 £	Total Funds 2022 £
<b>Income:</b>				
Donations and Legacies (including Grants)	154,158	262,750	<b>416,908</b>	335,480
Charitable Activities	4,364	572	<b>4,936</b>	2,310
Investments	970	-	<b>970</b>	27
<b>Total Income</b>	<b>159,492</b>	<b>263,322</b>	<b>422,814</b>	<b>337,817</b>
<b>Expenditure:</b>				
Raising funds	10,024	49	<b>10,073</b>	6,345
Charitable Activities	104,186	317,474	<b>421,660</b>	385,555
Governance Costs	450	-	<b>450</b>	435
<b>Total Expenditure</b>	<b>114,660</b>	<b>317,523</b>	<b>432,183</b>	<b>392,335</b>
Net income/(Expenditure)	44,832	(54,201)	<b>(9,369)</b>	(54,518)
Transfers between funds	650	(650)	-	-
Net movement in Funds	45,482	(54,851)	(9,369)	(54,518)
Funds Brought forwards	302,381	108,491	<b>410,872</b>	465,390
Total Funds Carried Forward	<b>347,863</b>	<b>53,640</b>	<b>401,503</b>	410,872

**Younger People with Dementia CIO**  
**Notes to the Unaudited Accounts**  
**12 Months Ending 31 March 2023**

**Note**

**1. Accounting background**

Background

Younger People with Dementia Charitable Incorporated Organisation (Charity Number 1171720) was set up in February 2017. This replaced the registered Charity of the same name (Charity number 1147290).

**2. Accounting Policies**

Basis of Accounting

These accounts have been prepared under the historical cost convention with items recognised at cost or transaction value unless otherwise stated in the relevant note(s) to these accounts. The accounts have been prepared in accordance with the Statement of Recommended Practice: Accounting and Reporting by Charities preparing their accounts in accordance with the Financial Reporting Standard applicable in the UK and Republic of Ireland (FRS 102) (effective 1 January 2015) (Charities SORP (FRS102)), the Financial Reporting Standard applicable in the UK and Republic of Ireland (FRS 102), and the Charities Act 2011.

Basis of preparing the Financial statements

The Financial Statements have been prepared under the going concern basis. The Charity has secured funding to secure the immediate future of the Charity for the next 18 months to 2 years on this basis Trustees view the Charity as a going concern.

Incoming resources

All Incoming resources are included on the statement of Financial Activities when the Charity is legally entitled to the income and the amount can be quantified.

Resources expended

Expenditure is accounted for on an accruals basis and has been classified under headings that aggregate all costs related to the category. Where costs cannot be directly attributed to a particular heading they have been allocated to activities on a basis consistent with the use of resources.

Irrecoverable VAT is charged as a cost against the activity for which the expenditure is incurred.

Taxation

The Charity is exempt from corporation tax on its charitable activities.

Fund Accounting

Unrestricted funds can be used in accordance with the charitable objectives at the discretion of the Trustees.

Restricted Funds can be used for the particular restricted purposes within the objects of the Charity.

Restriction arise when specified by the donor or when funds are raised for a particular restricted purpose.

Fixed Assets

Depreciation has been provided on a straight line basis at a rate estimated to write off the value of the asset over its useful life.

Office Equipment	4 Years
Computer Equipment	4 Years

**Younger People with Dementia CIO**  
**Notes to the Unaudited Accounts**  
**12 Months Ending 31 March 2023**

Note

**3. Analysis of Income**

	Unrestricted funds 2023 £	Restricted income funds 2023 £	Total funds 2023 £	Total funds 2022 £
<b>Donations and legacies:</b>				
Donations and gifts	38,498	4,714	43,212	34,714
Gift Aid	6,478	749	7,227	3,720
Legacies	-	-	-	1,517
General grants provided by government/other charities	110,699	257,287	367,986	297,046
<b>Total</b>	<b>154,158</b>	<b>262,750</b>	<b>416,908</b>	<b>335,480</b>
	-			
<b>Charitable activities:</b>				
Events	2,043	562	2,605	785
Other charitable activities	2,322	10	2,332	1,525
<b>Total</b>	<b>4,364</b>	<b>572</b>	<b>4,936</b>	<b>2,310</b>
<b>Income from investments:</b>				
Interest income	970	-	970	27
<b>Total</b>	<b>970</b>	<b>-</b>	<b>970</b>	<b>27</b>
<b>TOTAL INCOME</b>	<b>159,492</b>	<b>263,322</b>	<b>422,814</b>	<b>337,817</b>

**4. Government Grant funding**

	2023 £	2022 £
<b>DWP resource funding</b>		
Funding for staff member	-	1,748
<b>Total</b>	<b>-</b>	<b>1,748</b>

There were no unfulfilled conditions relating to this grant

**Notes to the Unaudited Accounts**  
**12 Months Ending 31 March 2023**

**5. Analysis of expenditure**

Analysis	Unrestricted funds 2023 £	Restricted income funds 2023 £	Total funds 2023 £	Total funds 2022 £
<b>Expenditure on raising funds:</b>				
Incurring seeking donations	10,024	49	10,073	6,345
<b>Total expenditure on raising funds</b>	<b>10,024</b>	<b>49</b>	<b>10,073</b>	<b>6,345</b>
<b>Expenditure on charitable activities:</b>				
Cost of products sold	-	-	-	37
Transaction costs	130	54	184	377
Operational staffing	9,030	196,301	205,331	187,497
Workshop costs	10,987	62,835	51,848	44,575
Client welfare	2,747	-	2,747	-
Accountancy and bookkeeping	4,545	-	4,545	3,076
Staffing	47,594	29,844	77,438	95,765
Bank charges	313	-	313	34
Business rates	535	59	594	1,382
Computer costs	6,353	500	6,853	6,433
Depreciation	2,359	-	2,359	3,003
General expenses	1,268	134	1,402	1,439
Health and Safety consumables	-	-	-	302
HR	3,054	-	3,054	406
Insurances	2,464	-	2,464	2,066
Legal fees	18	-	18	2,400
Marketing	2,291	26,692	28,983	1,175
Office costs	18,780	634	19,414	23,105
Printing postage and Stationary	3,622	55	3,677	4,476
Subscriptions	265	-	265	264
Telephone costs	6,026	-	6,026	5,837
Travel costs	2,418	99	2,517	1,405
Trustee and Volunteer costs	1,362	266	1,628	500
<b>Total expenditure on charitable activities</b>	<b>104,186</b>	<b>317,474</b>	<b>421,660</b>	<b>385,555</b>
<b>Governance costs</b>				
Independent Examiners fee	450	-	450	435
<b>Total governance costs</b>	<b>450</b>	<b>-</b>	<b>450</b>	<b>435</b>
<b>TOTAL EXPENDITURE</b>	<b>114,660</b>	<b>317,523</b>	<b>432,183</b>	<b>392,335</b>

**6. Trustees Remuneration and Benefits**

During the period the total Trustees Remuneration was £nil (2022:£nil)

Two trustees claimed Expenses for costs incurred on behalf of the charity totaling £88.90 (2022: £nil)

**7. Staffing**

No employees received employee benefits (excluding employer pension costs) for the reporting period of more than £60,000 (2022: £nil).

	2023	2022
Average head count during the year was:	12	11

**8. Independent Examiner's fee**

The charity has accrued for an independent examiners fee of £450 (2022 - £435)

No other fees were payable to the examiner or their firm in either year

**Notes to the Unaudited Accounts**  
**12 Months Ending 31 March 2023**

**9. Fixed assets**

<b>Cost</b>	<b>£</b>
Cost as at 31st March 2022	10,566
Additions during the year	1,495
Disposal during the year	(1,655)
Cost as at 31st March 2023	<u>10,406</u>
<b>Accumulated Depreciation</b>	
Balance as at 31st March 2022	6,012
Disposal during the year	(835)
Charge for the year	1,540
Balance as at 31st March 2023	<u>6,716</u>
<b>Net Book Value at 31 March 2023</b>	<b><u>3,690</u></b>

**10. Debtors falling due within one year**

	<b>2023</b>	<b>2022</b>
	<b>£</b>	<b>£</b>
Trade debtors	50	-
Prepayments	185	1,337
<b>Total Debtors</b>	<b><u>235</u></b>	<b><u>1,337</u></b>

**11. Creditors falling due within one year**

	<b>2023</b>	<b>2022</b>
	<b>£</b>	<b>£</b>
Trade Creditors	-	4,774
Other Creditors	1,370	1,420
Accruals	5,221	1,060
<b>Total Creditors</b>	<b><u>6,591</u></b>	<b><u>7,254</u></b>

**12. Movement in Funds**

	<b>Unrestricted</b>	<b>Designated</b>	<b>Restricted</b>	<b>TOTAL</b>
	<b>2023</b>	<b>2023</b>	<b>2023</b>	
	<b>£</b>	<b>£</b>	<b>£</b>	
As at 1st April 2022	302,381	-	108,491	410,872
Additions during the year	159,492		263,322	422,814
Expenditure during the year	(109,060)	(5,600)	(317,523)	(432,183)
Transfer between funds	(89,350)	90,000	(650)	-
<b>As at 31st March 2023</b>	<b><u>263,463</u></b>	<b><u>84,400</u></b>	<b><u>53,640</u></b>	<b><u>401,503</u></b>

**Notes to the Unaudited Accounts  
12 Months Ending 31 March 2023**

**Charity funds**

<b>Fund names</b>	<b>Fund</b>	<b>Fund balances brought forward £</b>	<b>Transfers between funds</b>	<b>Income £</b>	<b>Expenditure £</b>	<b>Fund balances carried forward £</b>
ICB Funds (previously called CCG)	R	9,856		203,094	(212,950)	-
Equestrian	R	4,113		-	(4,113)	-
Katakanuing	R	2,092		-	(2,092)	-
Legacy	R	66,065		-	(26,306)	39,759
Library	R	550	(550)	-	-	-
Stronger Together	R	300		-	-	300
Get Berkshire Active	R	1,022		2,622	(3,644)	-
Gosling Foundation	R	7,975		-	(7,975)	-
Former Employee	R	100	(100)	-	-	-
Big Issue	R	4,000		-	(4,000)	-
Wokingham United Charities	R	10,000		-	(10,000)	-
Surrey Heath	R	(1,775)		33,193	(31,418)	-
Padworth	R	3,452		-	(3,452)	-
Reminiscence / Unicorn	R	599		5,000	(159)	5,440
Volunteer driver costs	R	1,000		1,000	-	2,000
Alliance medical - Surrey Pilot	R	-		10,000	(10,000)	-
Alliance medical - children's project	R	-		5,000	-	5,000
All Together Now (AI's place)	R	(858)		3,413	(1,413)	1,142
Ethnic Minority Project	D	-	90,000	-	(5,600)	84,400
<b>Other funds</b>	U	302,381	89,350	159,492	(109,060)	263,463
<b>TOTAL FUNDS</b>		<b>410,872</b>	<b>-</b>	<b>422,814</b>	<b>(432,183)</b>	<b>401,503</b>

R = Restricted Fund

U = Unrestricted/General Fund

D = Unrestricted/Designated

Charity Registration number 1171720

**Younger People with Dementia CIO  
Report and Financial Statements  
For Period Ending 31 March 2023**

**Younger People with Dementia CIO  
Report and Financial Statements  
For Period Ending 31 March 2023**

	Page
Contents	1
Trustees and professional advisors	2
Report of Trustees	3
Independent Examiner's report	4
Balance sheet	5
Statement of Financial Activity	6
Notes to the Accounts	7 to 11

**Younger People with Dementia (Berkshire) CIO  
Trustees and Professional advisers  
For 12 Months Ending 31 March 2023**

Trustees

Ms Lisa Mooney	Chair
Mr Alain Wilkes	Vice Chair
Mrs Radhika Modha	Treasurer
Mrs Kathy Taylor	
Dr Jacqueline Hussey	
Mrs Caroline Blanchette	Until August 2022
Mr David Fisher	
Dr Buchi Reddy	

Registered Office

First Floor  
Unit 9 Indigo House  
Fishponds Road  
Wokingham  
RG41 2GY

Bankers

HSBC  
160 Crockhamwell Road  
Woodley  
Berkshire  
RG5 3JJ

Independent Examiner

Sue Jackson FCCA  
Working Numbers Limited  
12 St Mary's Road  
Mortimer Common  
RG7 3UE

**Younger People with Dementia  
CIO  
Report of the Trustees  
For Period Ending 31 March 2023**

**Structure, Governance and Management**

**Governing Document**

The Charity is controlled by its governing document.

**Recruitment and appointment of Trustees**

The Trustees give their time voluntarily and receive no benefit from the Charity.

**Risk Management**

Trustees have a duty to identify and review the risks to which the charity is exposed and to ensure appropriate controls are in place to provide reasonable assurance against fraud and error. We have a comprehensive risk management framework in place to identify and manage risks that may impact our charity's operations. The Trustees recognise the charity's reliance on the NHS for funding and actively look to broaden the sources of financial support. These additional sources of income included applications to charitable trusts and foundations and fundraising activities.

**Objectives and Activities**

Young Onset Dementia affects adults under the age of 65 and nationally there are known to be just over 70,800 living with this diagnosis. Traditional services are designed to meet the needs and expected therapeutic out-comes of older adults and subsequently, access to activities appropriate for younger adults with dementia is limited. The Objective of the charity is to promote and protect the physical and mental health of people diagnosed with early onset dementia and also of their families and carers in the administrative districts of Wokingham, Reading, West Berkshire, Bracknell, Windsor and Maidenhead and Slough through the provision of support, education and general advice. During the period we have continued our pilot of our services in the area of Surrey Heath.

**Charitable Activities**

During the period our services were delivered face to face and on-line as required. This support included age-appropriate and meaningful workshops, micro-groups, 1:1 support, social events, Admiral Nurses to support carers and education courses.

**Reserves Policy**

The charity has a reserves policy to maintain unrestricted funds, which are the free reserves of the charity, at a sufficient level which enables the charity to operate in the short term (6 Months). The remainder of the charity's reserves are distributed in accordance with its objectives. The total reserves at the year-end date were £401,503 of which an amount of £53,640 was held in restricted funds, with £84,400 in designated funds and £263,463 in free reserves. The trustees consider the state of the charity to be satisfactory, and that it is achieving its objectives.

A Detailed Report for Activities in 2023 is available on the Charity Commission site.

Signed Lisa Mooney

Date 10 January 2024

**Younger People with Dementia CIO  
Registered Charity no. 1171720**

**Independent Examiner's Report  
For Period Ending 31 March 2023**

**Responsibilities and basis of report**

I report to the trustees on my examination of the accounts of the above charity ("the Charity") for the year ended 31/03/2023.

As the charity's trustees, you are responsible for the preparation of the accounts in accordance with the requirements of the Charities Act 2011 ("the Act").

**Independent examiner's statement**

I report in respect of my examination of the Charity's accounts carried out under section 145 of the 2011 Act and in carrying out my examination, I have followed all the applicable Directions given by the Charity Commission under section 145(5)(b) of the Act.

The charity's gross income exceeded £250,000 and I am qualified to undertake the examination by being a qualified member of the Association of Chartered Certified Accountants (ACCA).

I have completed my examination. I confirm that no material matters have come to my attention in connection with the examination which gives me cause to believe that in, any material respect:

- the accounting records were not kept in accordance with section 130 of the Charities Act; or
- the accounts did not accord with the accounting records; or
- the accounts did not comply with the applicable requirements concerning the form and content of accounts set out in the Charities (Accounts and Reports) Regulations 2008 other than any requirement that the accounts give a 'true and fair' view which is not a matter considered as part of an independent examination.

I have no concerns and have come across no other matters in connection with the examination to which attention should be drawn in this report in order to enable a proper understanding of the accounts to be reached.

*SM Jackson*

SM Jackson FCCA  
WORKING NUMBERS LIMITED  
12 St Mary's Road  
Mortimer Common  
Reading  
RG7 3UE

Date: 1/12/2023

**Younger People with Dementia (Berkshire) CIO**  
**Balance Sheet**  
**As at 31 March 2023**

	Note	2023		2023	2022
		Unrestricted funds £	Restricted income funds £	TOTAL £	TOTAL £
<b>Fixed Assets</b>					
Tangible Assets	9	3,690	-	3,690	4,555
<b>Total Fixed Assets</b>		<u>3,690</u>	<u>-</u>	<u>3,690</u>	<u>4,555</u>
<b>Current Assets</b>	10				
Debtors		235		235	1,337
Cash at bank and in hand		350,529	53,640	404,169	412,234
<b>Total Current Assets</b>		<u>350,764</u>	<u>53,640</u>	<u>404,404</u>	<u>413,571</u>
<b>Liabilities</b>	11				
Creditors falling due within one year		6,591	-	6,591	7,254
		<u>6,591</u>	<u>-</u>	<u>6,591</u>	<u>7,254</u>
<b>Net Current Assets</b>		<u>344,173</u>	<u>53,640</u>	<u>397,813</u>	<u>406,317</u>
Net Assets		<u>347,863</u>	<u>53,640</u>	<u>401,503</u>	<u>410,872</u>
<b>The Funds of the charity:</b>	13				
Unrestricted Income Funds		263,463	-	263,463	302,381
Designated funds		84,400		84,400	
Restricted Income Funds		-	53,640	53,640	108,491
<b>Total Charity Funds</b>		<u>347,863</u>	<u>53,640</u>	<u>401,503</u>	<u>410,872</u>

These accounts were approved by the Trustees on 10th January 2023 and signed on their behalf by:

Signature Lisa Mooney Name Lisa Mooney

Date 10/01/2023

**Younger People with Dementia CIO**  
**Statement of Financial Activity**  
**12 months ending 31 March 2023**

	Unrestricted Funds 2023 £	Restricted Funds 2023 £	Total Funds 2023 £	Total Funds 2022 £
<b>Income:</b>				
	<b>Note</b>			
Donations and Legacies (including Grants)	3, 4	154,158	262,750	<b>416,908</b>
Charitable Activities		4,364	572	2,310
Investments		970	-	27
<b>Total Income</b>		<b>159,492</b>	<b>263,322</b>	<b>422,814</b>
<b>Expenditure:</b>				
Raising funds	5	10,024	49	<b>10,073</b>
Charitable Activities	5	104,186	317,474	<b>421,660</b>
Governance Costs	5	450	-	435
<b>Total Expenditure</b>		<b>114,660</b>	<b>317,523</b>	<b>392,335</b>
Net income/(Expenditure)		44,832	(54,201)	<b>(9,369)</b>
Transfers between funds		650	(650)	-
Net movement in Funds	13	45,482	(54,851)	(9,369)
Funds Brought forwards		302,381	108,491	<b>410,872</b>
<b>Total Funds Carried Forward</b>		<b>347,863</b>	<b>53,640</b>	<b>401,503</b>

**Younger People with Dementia CIO**  
**Notes to the Unaudited Accounts**  
**12 Months Ending 31 March 2023**

**Note**

**1. Accounting background**

Background

Younger People with Dementia Charitable Incorporated Organisation (Charity Number 1171720) was set up in February 2017. This replaced the registered Charity of the same name (Charity number 1147290).

**2. Accounting Policies**

Basis of Accounting

These accounts have been prepared under the historical cost convention with items recognised at cost or transaction value unless otherwise stated in the relevant note(s) to these accounts. The accounts have been prepared in accordance with the Statement of Recommended Practice: Accounting and Reporting by Charities preparing their accounts in accordance with the Financial Reporting Standard applicable in the UK and Republic of Ireland (FRS 102) (effective 1 January 2015) (Charities SORP (FRS102)), the Financial Reporting Standard applicable in the UK and Republic of Ireland (FRS 102), and the Charities Act 2011.

Basis of preparing the Financial statements

The Financial Statements have been prepared under the going concern basis. The Charity has secured funding to secure the immediate future of the Charity for the next 18 months to 2 years on this basis Trustees view the Charity as a going concern.

Incoming resources

All Incoming resources are included on the statement of Financial Activities when the Charity is legally entitled to the income and the amount can be quantified.

Resources expended

Expenditure is accounted for on an accruals basis and has been classified under headings that aggregate all costs related to the category. Where costs cannot be directly attributed to a particular heading they have been allocated to activities on a basis consistent with the use of resources.

Irrecoverable VAT is charged as a cost against the activity for which the expenditure is incurred.

Taxation

The Charity is exempt from corporation tax on its charitable activities.

Fund Accounting

Unrestricted funds can be used in accordance with the charitable objectives at the discretion of the Trustees.

Restricted Funds can be used for the particular restricted purposes within the objects of the Charity.

Restriction arise when specified by the donor or when funds are raised for a particular restricted purpose.

Fixed Assets

Depreciation has been provided on a straight line basis at a rate estimated to write off the value of the asset over its useful life.

Office Equipment	4 Years
Computer Equipment	4 Years

**Younger People with Dementia CIO**  
**Notes to the Unaudited Accounts**  
**12 Months Ending 31 March 2023**

Note

**3. Analysis of Income**

	Unrestricted funds 2023 £	Restricted income funds 2023 £	Total funds 2023 £	Total funds 2022 £
<b>Donations and legacies:</b>				
Donations and gifts	38,498	4,714	43,212	34,714
Gift Aid	6,478	749	7,227	3,720
Legacies	-	-	-	1,517
General grants provided by government/other charities	110,699	257,287	367,986	297,046
<b>Total</b>	<b>154,158</b>	<b>262,750</b>	<b>416,908</b>	<b>335,480</b>
	-			
<b>Charitable activities:</b>				
Events	2,043	562	2,605	785
Other charitable activities	2,322	10	2,332	1,525
<b>Total</b>	<b>4,364</b>	<b>572</b>	<b>4,936</b>	<b>2,310</b>
<b>Income from investments:</b>				
Interest income	970	-	970	27
<b>Total</b>	<b>970</b>	<b>-</b>	<b>970</b>	<b>27</b>
<b>TOTAL INCOME</b>	<b>159,492</b>	<b>263,322</b>	<b>422,814</b>	<b>337,817</b>

**4. Government Grant funding**

	2023 £	2022 £
<b>DWP resource funding</b>		
Funding for staff member	-	1,748
<b>Total</b>	<b>-</b>	<b>1,748</b>

There were no unfulfilled conditions relating to this grant

**Notes to the Unaudited Accounts**  
**12 Months Ending 31 March 2023**

**5. Analysis of expenditure**

Analysis	Unrestricted funds 2023 £	Restricted income funds 2023 £	Total funds 2023 £	Total funds 2022 £
<b>Expenditure on raising funds:</b>				
Incurring seeking donations	10,024	49	10,073	6,345
<b>Total expenditure on raising funds</b>	<b>10,024</b>	<b>49</b>	<b>10,073</b>	<b>6,345</b>
<b>Expenditure on charitable activities:</b>				
Cost of products sold	-	-	-	37
Transaction costs	130	54	184	377
Operational staffing	9,030	196,301	205,331	187,497
Workshop costs	10,987	62,835	51,848	44,575
Client welfare	2,747	-	2,747	-
Accountancy and bookkeeping	4,545	-	4,545	3,076
Staffing	47,594	29,844	77,438	95,765
Bank charges	313	-	313	34
Business rates	535	59	594	1,382
Computer costs	6,353	500	6,853	6,433
Depreciation	2,359	-	2,359	3,003
General expenses	1,268	134	1,402	1,439
Health and Safety consumables	-	-	-	302
HR	3,054	-	3,054	406
Insurances	2,464	-	2,464	2,066
Legal fees	18	-	18	2,400
Marketing	2,291	26,692	28,983	1,175
Office costs	18,780	634	19,414	23,105
Printing postage and Stationary	3,622	55	3,677	4,476
Subscriptions	265	-	265	264
Telephone costs	6,026	-	6,026	5,837
Travel costs	2,418	99	2,517	1,405
Trustee and Volunteer costs	1,362	266	1,628	500
<b>Total expenditure on charitable activities</b>	<b>104,186</b>	<b>317,474</b>	<b>421,660</b>	<b>385,555</b>
<b>Governance costs</b>				
Independent Examiners fee	450	-	450	435
<b>Total governance costs</b>	<b>450</b>	<b>-</b>	<b>450</b>	<b>435</b>
<b>TOTAL EXPENDITURE</b>	<b>114,660</b>	<b>317,523</b>	<b>432,183</b>	<b>392,335</b>

**6. Trustees Remuneration and Benefits**

During the period the total Trustees Remuneration was £nil (2022:£nil)

Two trustees claimed Expenses for costs incurred on behalf of the charity totaling £88.90 (2022: £nil)

**7. Staffing**

No employees received employee benefits (excluding employer pension costs) for the reporting period of more than £60,000 (2022: £nil).

	2023	2022
Average head count during the year was:	12	11

**8. Independent Examiner's fee**

The charity has accrued for an independent examiners fee of £450 (2022 - £435)

No other fees were payable to the examiner or their firm in either year

**Notes to the Unaudited Accounts**  
**12 Months Ending 31 March 2023**

**9. Fixed assets**

<b>Cost</b>	<b>£</b>
Cost as at 31st March 2022	10,566
Additions during the year	1,495
Disposal during the year	(1,655)
Cost as at 31st March 2023	<u>10,406</u>
<b>Accumulated Depreciation</b>	
Balance as at 31st March 2022	6,012
Disposal during the year	(835)
Charge for the year	1,540
Balance as at 31st March 2023	<u>6,716</u>
<b>Net Book Value at 31 March 2023</b>	<b><u><u>3,690</u></u></b>

**10. Debtors falling due within one year**

	<b>2023</b>	<b>2022</b>
	<b>£</b>	<b>£</b>
Trade debtors	50	-
Prepayments	185	1,337
<b>Total Debtors</b>	<b><u>235</u></b>	<b><u>1,337</u></b>

**11. Creditors falling due within one year**

	<b>2023</b>	<b>2022</b>
	<b>£</b>	<b>£</b>
Trade Creditors	-	4,774
Other Creditors	1,370	1,420
Accruals	5,221	1,060
<b>Total Creditors</b>	<b><u>6,591</u></b>	<b><u>7,254</u></b>

**12. Movement in Funds**

	<b>Unrestricted</b>	<b>Designated</b>	<b>Restricted</b>	<b>TOTAL</b>
	<b>2023</b>	<b>2023</b>	<b>2023</b>	
	<b>£</b>	<b>£</b>	<b>£</b>	
As at 1st April 2022	302,381	-	108,491	410,872
Additions during the year	159,492		263,322	422,814
Expenditure during the year	(109,060)	(5,600)	(317,523)	(432,183)
Transfer between funds	(89,350)	90,000	(650)	-
<b>As at 31st March 2023</b>	<b><u>263,463</u></b>	<b><u>84,400</u></b>	<b><u>53,640</u></b>	<b><u>401,503</u></b>

**Notes to the Unaudited Accounts  
12 Months Ending 31 March 2023**

**Charity funds**

<b>Fund names</b>	<b>Fund</b>	<b>Fund balances brought forward £</b>	<b>Transfers between funds</b>	<b>Income £</b>	<b>Expenditure £</b>	<b>Fund balances carried forward £</b>
ICB Funds (previously called CCG)	R	9,856		203,094	(212,950)	-
Equestrian	R	4,113		-	(4,113)	-
Katakanuing	R	2,092		-	(2,092)	-
Legacy	R	66,065		-	(26,306)	39,759
Library	R	550	(550)	-	-	-
Stronger Together	R	300		-	-	300
Get Berkshire Active	R	1,022		2,622	(3,644)	-
Gosling Foundation	R	7,975		-	(7,975)	-
Former Employee	R	100	(100)	-	-	-
Big Issue	R	4,000		-	(4,000)	-
Wokingham United Charities	R	10,000		-	(10,000)	-
Surrey Heath	R	(1,775)		33,193	(31,418)	-
Padworth	R	3,452		-	(3,452)	-
Reminiscence / Unicorn	R	599		5,000	(159)	5,440
Volunteer driver costs	R	1,000		1,000	-	2,000
Alliance medical - Surrey Pilot	R	-		10,000	(10,000)	-
Alliance medical - children's project	R	-		5,000	-	5,000
All Together Now (AI's place)	R	(858)		3,413	(1,413)	1,142
Ethnic Minority Project	D	-	90,000	-	(5,600)	84,400
<b>Other funds</b>	U	302,381	89,350	159,492	(109,060)	263,463
<b>TOTAL FUNDS</b>		<b>410,872</b>	<b>-</b>	<b>422,814</b>	<b>(432,183)</b>	<b>401,503</b>

R = Restricted Fund

U = Unrestricted/General Fund

D = Unrestricted/Designated

**Younger People With Dementia CIO**

England & Wales - Charity number 1171720

---

# Accounts

---

## **2021-2022 Annual Trustee Report**



**Thinking Differently About Dementia  
YOUNGER PEOPLE WITH DEMENTIA (BERKSHIRE) CIO**

# ANNUAL REPORT FOR CHARITY COMMISSION (1 April 2021 to 31 March 2022)

## Introduction and purpose

Young onset dementia affects adults before the age of 65. Nationally there are estimated to be at least 70,800 younger people with dementia which means 92 in every 100,000 of the population are living with young onset dementia. According to the Journal of Dementia Care Report (Carter and Jackson *June 2022 Vol 30 No 3*), 7.5% of all people with dementia developed it under the age of 65. In Berkshire, there are an estimated 679 people living with young onset dementia and 900 in Surrey.

The traditional support services provided for those with dementia are designed to meet the needs and expected therapeutic outcomes of older adults and subsequently, access to activities appropriate for younger adults with dementia continues to be limited locally, regionally and nationally. The YPWD model encourages carer respite throughout the working week, giving all carers the chance to take a break. In a national study focusing on post-diagnostic support for those living with young onset dementia and their carers The Angela Project reported that 69% of carers reported there was no service that provided care for their relative to allow them to take a break<sup>1</sup>.

The charity's model is integrated with local healthcare provision meaning that there is, to the patient and carer, a seamless service from diagnosis to referral into the charity. Services include age-appropriate and meaningful workshops, 1:1 support, micro-groups, education courses, Admiral Nurses for carers, support groups and through the local Memory Clinic, access to a Dementia Care Advisor. This model reflects several key needs that The Angela Project highlighted for people with young onset dementia including access to young onset specific advice, information and support to remain independent, supported age-appropriate activity, support to maintain physical and mental health as well as possible<sup>2</sup>.

Our integrated model has developed through an ongoing open dialogue with health and social care professionals to champion the needs of those with young onset dementia and their carers. As a result of the charity's services and the integration with health and social care, significant savings have been made on healthcare budgets because of reduced health crises in patients and carers and delayed entry into care. Key recommendations from The Angela Project relating to service design and development cited both the need to build capacity and ownership of young onset dementia services within, and between, organisations and to provide specialist or shared care, rather than care from a GP alone<sup>3</sup>.

---

<sup>1</sup> Angela Project team, 'Good Practice in Young Onset Dementia: improving diagnosis and support for younger people with dementia – Results from the Angela Project – a study on young onset dementia', Young Dementia Network, March 2020, [TAP---Good-Practice-in-YOD-document-FINAL.pdf \(bradford.ac.uk\)](https://www.bradford.ac.uk/~tap/good-practice-in-yod-document-final.pdf), p7

<sup>2</sup> Angela Project team, 'Good Practice in Young Onset Dementia: improving diagnosis and support for younger people with dementia – Results from the Angela Project – a study on young onset dementia', Young Dementia Network, March 2020, [TAP---Good-Practice-in-YOD-document-FINAL.pdf \(bradford.ac.uk\)](https://www.bradford.ac.uk/~tap/good-practice-in-yod-document-final.pdf), p8

<sup>3</sup> Angela Project team, 'Good Practice in Young Onset Dementia: improving diagnosis and support for younger people with dementia – Results from the Angela Project – a study on young onset dementia', Young Dementia Network, March 2020, [TAP---Good-Practice-in-YOD-document-FINAL.pdf \(bradford.ac.uk\)](https://www.bradford.ac.uk/~tap/good-practice-in-yod-document-final.pdf), p8

## Coming out of the pandemic

During the period our services returned to a semblance of normality following the global health pandemic, with support being delivered not only on-line, but also face to face.

## Key charity information

The Trustees of YPWD (Berkshire) CIO present their annual report and audited accounts for the year ended 31 March 2022 and confirm they comply with the requirements of the Charities Act 2011, the trust deed and the Charities SORP (FRS 102).

<b>Charity name:</b>	Younger People With Dementia (Berkshire) CIO
<b>Registered charity number:</b>	1171720
<b>Charity's principal address:</b>	Indigo House, First Floor, Unit 9, Fishponds Road, Wokingham, RG41 2GY
<b>Trustees:</b>	
Ms Lisa Mooney	Chair of Trustees
Mrs Kathy Taylor	
Dr Jacqueline Hussey	
Mrs Caroline Blanchette	
Mr David Fisher	
Miss Radhika Modha	
Dr Buchi Reddy	
Mr Alain Wilkes	Vice Chair
<b>Bankers:</b>	HSBC, 160 Crockhamwell Road, Woodley, Berkshire RG5 3JJ
<b>Independent Examiner:</b>	Sue Jackson FCCA, CTA (Working Numbers Ltd)
<b>Staffing and volunteers:</b>	Five full-time staff Five part-time staff One clinical consultant (sitting on the board) Sixteen volunteers (including Trustees)

## Finances, Governance, Structure and Management

### Financial Year

The twelve months to 31 March 2022 have been challenging as a result of the covid-19 pandemic. Specifically, this left the charity without the option to raise funds through business support or event challenges, leaving a projected deficit in our budget. We initiated a trust and foundation application strategy that led to the closure of some of this deficit, but income versus expenditure led to a shortfall of £54,518.

The expenditure of the charity is mainly comprised of staff costs and premises.

### Our Finances: income and expenditure

The total income for the charity was: £337,817 with the total expenditure coming to £392,335.

### Reserves Policy

The reserves policy of the charity is to maintain unrestricted funds, which are the free reserves of the charity, at a sufficient level which enables the charity to operate in the short term (6 Months). The remainder of the Charity's reserves are distributed in accordance with its objectives. The total reserves at the year-end date were £410,872 of which an amount of £108,491 was held in restricted funds. The trustees consider the state of the charity to be satisfactory, and that it is achieving its objectives.

### Governing Document

The charity is controlled by its governing document.

### Recruitment and appointment of Trustees

The charity must appoint a minimum of six Trustees. Apart from the first charity Trustees, every Trustee must be appointed for a term of three years by a resolution passed at a properly convened meeting of the charity Trustees.

Trustees must have regard to the skills, knowledge and experience needed for the effective administration of the CIO. Trustees are co-opted to the board by a quorum of at least four Trustees.

The Trustees give their time voluntarily and receive no benefit from the Charity.

### Risk Management

The Trustees have a duty to identify and review the risks to which the charity is exposed and to ensure appropriate controls are in place to provide reasonable assurance against fraud and error. The Trustees recognise the charity's reliance on the NHS for funding and actively look to broaden the sources of financial support. These additional sources of income included applications to charitable trusts and foundations and fundraising activities.

## Covid-19

The charity has reviewed and adjusted its working practices in line with Government guidelines to provide on-going services. The charity did not use the Government's furlough scheme and retained all staff.

## Management

The charity is run on a day-to-day basis by the Charity Director, who reports directly to the Chair of Trustees. Charity services are overseen by the Services Delivery Manager, who reports to the Charity Director and services are delivered by a team of Young Dementia Project Workers across Berkshire.

During the period a pilot project has been running in Surrey Heath, working in partnership with Surrey and Borders Partnership NHS Foundation Trust. This service provides two workshops a week, micro-groups, 1:1 support where appropriate and education courses. The service is run under the management of Trustees, with the team comprising one Lead and Young Dementia Project Worker.

## Description of Services Provided

During the pandemic we moved our entire operation online and developed a range of services and support. We were pleased to move back to our previous face—to-face model during this period which was well received by our clients.

Our service offers respite to carers through the provision of a number of different workshops for younger people with dementia throughout the working week and/or 1:1 support/micro-groups. A prospectus of the different workshops is produced regularly and people with dementia can access up to 5 workshops through the week in Berkshire, and 2 in Surrey Heath (who are offering a pilot part-time model), thus offering clear choice for a group who previously had very limited choice and a flexible approach to respite for carers.

## Workshops

Workshops generally run in six-week blocks and are run throughout the working week at various community locations. They are selected on the basis of current evidence of therapeutic benefit, following requests specifically by people with dementia and from carers' feedback. This approach instils confidence in the carer that their loved one will be engaged in meaningful activity, thus reducing anxiety when leaving them. This provides beneficial respite but also provides improved outcomes for people with dementia.

## Micro-groups

We appreciate that it can be overwhelming for those with young onset dementia to join a large group of people at the outset of referral to our services, so we offer the opportunity to meet a couple of people in an activity based micro-group. This enables them to develop friendships and gain confidence prior to joining the workshops. This is also supported by our 1:1 support service.

### 1:1 Support

It is recognised that not all people wish to participate in group activities or are able to access a group. We therefore also provide 1:1 support to those with young onset dementia. During these sessions people are encouraged to choose an activity that is of personal interest which can be carried out with the support of the respite worker. Examples would be walks, going out for coffee or lunch, swimming, board games and attending local community projects. The 1:1 support has facilitated some individuals to volunteer for other charities, thus promoting the individual's sense of purpose but also enabling reciprocal support and learning.

### Education Course

Working in partnership with health and social care professions from Memory Clinics across Berkshire, we assist in the delivery of a twice-yearly education course for those diagnosed with young onset dementia and their relatives.

The education course typically covers the following topics:

- What is dementia?
- Activities
- Carers'/Patients' Perspective
- Legal Aspects
- Memory and Communication
- New Behaviours
- Looking After Your Health
- Research

### Carer Support

**Admiral Nurses** - The Admiral Nurses provide a robust nursing assessment and work to address the needs of the carer; this can be through providing emotional and/or practical support. Intervention can be for 3 visits or many years; this is dependent on the individual. The Admiral Nurse will work with other members of the YPWD team, for example day respite or dementia support, as well as the local mental health and social care teams.

In addition, we provide support groups for carers of those diagnosed with young onset dementia. These include:

**Connecting Carers Group** - We have carers who would like to spend time getting to know other carers and we offer a six-weekly Connecting Carers Group throughout the year. This is an informal group with carers sharing their experiences, helping and supporting one another. We arrange external speakers to attend who provide appropriate services and support.

**The Frontotemporal Dementia (FTD) and Posterior Cortical Atrophy (PCA) Carer Group** - We have a number of carers looking after someone with a rarer dementia, such as FTD or PCA. We offer a dedicated regional support group for carers with a loved one with either of these rarer dementias and we collaborate closely with University College London's Dementia Research Centre.

**The Stronger Together Group** - When carers reach the stage where their loved one with Young Onset Dementia has either had to enter long term care or has passed away the Stronger Together Group is there to provide support, through social gatherings and regular activities during the year. This group has been kindly funded by the Berkshire Carers Service since it began.

**The YPWD Carer Group on Facebook** - This is a private online group hosted on Facebook and exclusively for carers of a loved one with young onset dementia. It offers the chance for carers to post questions, support one another and be part of a like-minded group of people going through a shared experience.

### **Impact on those with dementia and their carers as a result of using our services**

Throughout the year we regularly ask carers who support their loved one with young onset dementia to complete a short survey to inform the charity about the quality of its services and support. The findings below represent feedback in September 2021 when we were providing a combination of face-to-face and on-line support as we came out of the pandemic.

- 77% of carers rated the quality of our services as 'Excellent'
- 92% of carers said that our services had a medium or high impact in reducing the feeling of isolation for their loved one
- 77% of carers said that our services had a medium or high impact in reducing the feeling of isolation for them
- 60% of carers felt that as a result of our services their loved one's mood improved leading to less anxiety or sadness
- 56% of carers felt that as a result of our services their mood improved leading to less anxiety or sadness



## Objectives set for the year

### Objectives for the year ahead

- To raise awareness, provide education and training
- To increase diagnosis and referral rates of young onset dementia
- To meet changing needs e.g., work with the BAME communities in the east
- To provide greater income diversity
- To progress the tailored pathway

## Achievements during the period reported against our objectives

### Raise awareness, provide education and training

During the year we have delivered two education courses to carers and those diagnosed with dementia. We have also worked on and enhanced our social media presence with a dedicated team providing regular updates. Our website was reviewed and updated. We have also raised the profile of our model within a wider area than Berkshire, with a pilot project running in Surrey Health in conjunction with Surrey and Borders Partnership NHS Foundation Trust. This pilot replicates services available in Berkshire, albeit on a smaller scale. If successful, we would be looking for on-going funding to be secured to enable it to grow and develop.

### Increase diagnosis and referral rates

We chair the YPWD Forum which brings together representatives from the six Berkshire localities, including memory services, dementia care advisors and Admiral Nurses. It offers a platform to be able to share good practice and to make sure that patients living with young onset dementia and their families are receiving an equitable service regardless of where they live in Berkshire. During the period a young onset dementia pathway has been proposed and is near finalisation.

We continue to engage with colleagues across the six memory clinics in Berkshire, and now Surrey Heath. This allows the charity to discuss patients that use our services while also highlighting what we are currently offering and encouraging referrals/engagement with our services.

### Meet changing needs: BAME communities, rarer dementia support, children

Two of our Trustees have worked on a strategy document during the period to enable us to develop BAME services within the county. The initial focus is aimed to be on Slough, then expanding thereafter. As part of this strategy we anticipate recruiting to the post of Community Outreach Manager who will lead on this element of our strategy.

As outlined in the services we offer, we continued to deliver two rare dementia support groups throughout the year. One group offers support to carers whose loved one is diagnosed with Posterior Cortical Atrophy (PCA), the other group for carers whose loved one is diagnosed with Frontotemporal dementia (FTD).

In conjunction with MERL and Reading University, we commenced delivery of a pilot project to support and promote strength, resilience and connectivity for families and young people impacted by young onset dementia (Children's Support Project).

### Income generation

The charity have been active in applications to charitable trusts and foundations to solicit funds and narrow our income deficit. To assist us in doing these, we have taken on a consultant bid writer.

### Progress the 'tailored pathway' for the people we support with a diagnosis of Young Onset Dementia

Where possible, the charity has continued to support people with a young onset diagnosis that are heavily progressed in their dementia. Where we would normally signpost people to more appropriate services, it has been found that there is a lack of appropriate provision (e.g. day services and care facilities). We continue to work with colleagues and allied services, as well as Clinical Commissioning Groups, to fill this gap in provision.

### Some quotes about our services over the past year

*My husband accesses ypwd it's been a real turn around for him his confidence has grown.*

**Carer**

*The excellent variety of workshops offered is enthusiastically looked forward to and much appreciated. The YPWD team are most caring and always very approachable engendering a great environment for participation.*

**Carer**

*The services received from YPWD team has been excellent. We cannot fault them. They are there to support, chat and ensure everyone is safe. Would not cope without them. Thankyou.*

**Carer**

*The weekly workshops, now being face to face and in real life, have benefitted and have been fun. There is no substitute for human interaction and getting to know the teams.*

**Carer**

*I very much enjoyed my visit to the YPWD workshop that was held in Newbury last month. It was obvious to me that the YPWD charity is well run and extremely worthwhile. I enjoyed meeting the staff and the volunteers as well as those whom they were helping. It is obvious that those needing help were very appreciative and cheerful which is a sure sign that the charity is doing a good job. I wish all concerned well.*

**Lord Lieutenant James Puxley**

## Future plans for 2022-2023

A strategy day including Trustees and the Director of Clinical and Operational Services was held in January 2021. Outcomes from this meeting included the agreement of our Vision, Mission and Values, together with a one-page plan of targets for the year.

### **Our Vision:**

To influence a world where Younger People with Dementia are included and involved in every aspect of life without discrimination or stigma

### **Our Mission:**

We provide meaningful activity and respite for younger people living with dementia and their families and carers. We work alongside other statutory provision, across the working week, with the aim of giving individuals the best life they can have with dementia.

### **Our Values:**

Innovative  
Supportive  
Enabling  
Inclusive

**Our objectives:**

<b>Core Areas</b>	<b>Objectives for 2022</b>	<b>Deliverables</b>
YPWD Service Delivery	Meet contractual obligations to funders	Deliver workshops, 1:1s, MGs, Design and deliver education courses and Carer Groups. Clear outcome measures and timely reporting Collaborative working with NHS and partners Provide clinical expertise and advice in YOD
	Fundraising	Fund raise 40% of running costs Marketing & PR to raise awareness Involvement at conferences including sharing best practice
Project Delivery	Support and deliver programmes for BAME	Gather research from the community and BAME connections and provide trial support in Slough. Maybe seek external funding.
	Support for Children	Project underway and funding secured for first series of sessions. Funding from Medical Alliance ringfenced for future work.
	Pilot YPWD in Surrey	Continue pilot for 2022
	Geographical expansion	Explore option of widening offering outside of Berkshire, Surrey and borders.
People & Culture (Staff, Trustees and Volunteers)	Staff engagement and culture	Continue to build a high performing team with a focus on team engagement and culture Engagement survey with clear action plan
	Developing our people	Implement robust performance appraisal process Integrated Talent management approach Clear Learning and Development approach and personal development plans
	Volunteers	Develop and embed a comprehensive volunteer strategy and mindset to develop a pool of volunteers to support with the ongoing work of the charity
	Trustees	Continue to build a high performing team of trustees with a focus on clarity of roles and ongoing professional development

The above to be underpinned by ensuring a compassionate, collaborative and well managed Exit Strategy linked to holistic care plans as well as strong financial management.

**Younger People with Dementia (Berkshire) CIO  
Trustees and Professional advisers  
For 12 Months Ending 31 March 2022**

Trustees

Ms Lisa Mooney	Chair
Mr Alain Wilkes	Vice Chair
Miss Radhika Modha	Treasurer
Mrs Kathy Taylor	
Dr Jacqueline Hussey	
Mrs Caroline Blanchette	
Mr David Fisher	
Dr Buchi Reddy	

Registered Office

First Floor  
Unit 9 Indigo House  
Fishponds Road  
Wokingham  
RG41 2GY

Bankers

HSBC  
160 Crockhamwell Road  
Woodley  
Berkshire  
RG5 3JJ

Independent Examiner

Sue Jackson FCCA  
Working Numbers Limited  
12 St Mary's Road  
Mortimer Common  
RG7 3UE

**Younger People with Dementia (Berkshire) CIO  
Report of the Trustees  
For Period Ending 31 March 2022**

**Structure, Governance and Management**

**Financial Year**

The twelve months to 31 March 2022 have been challenging as a result of the covid-19 pandemic. Specifically this left the charity without the option to raise funds through business support or event challenges, leaving a projected deficit in our budget. We initiated a trust and foundation application strategy that led to the closure of some of this deficit, but income verse expenditure lead to a shortfall of £54,518. The expenditure of the charity is mainly comprised of Staff costs and Premises.

**Governing Document**

The Charity is controlled by its governing document.

**Recruitment and appointment of Trustees**

The Trustees give their time voluntarily and receive no benefit from the Charity.

**Risk Management**

The Trustees have a duty to identify and review the risks to which the charity is exposed and to ensure appropriate controls are in place to provide reasonable assurance against fraud and error. The Trustees recognise the charity's reliance on the NHS for Funding and actively look to broaden the sources of financial support.

**Objectives and Activities**

Young Onset Dementia affects adults under the age of 65 and nationally there are known to be just over 70,800 living with this diagnosis. Traditional services are designed to meet the needs and expected therapeutic out-comes of older adults and subsequently, access to activities appropriate for younger adults with dementia is limited. The Objective of the charity is to promote and protect the physical and mental health of people diagnosed with early onset dementia and also of their families and carers in the administrative districts of Wokingham, Reading, West Berkshire, Bracknell, Windsor and Maidenhead and Slough through the provision of support, education and general advice. During the period we have also undertaken a pilot of our services in the area of Surrey Heath.

**Charitable Activities**

During the period our services returned to a semblance of normality following the global health pandemic, with support being delivered not only on-line, but also face to face. This support included age-appropriate and meaningful workshops, micro-groups, 1:1 support, Admiral Nurses to support carers and education courses.

**Reserves Policy**

The reserves policy of the charity is to maintain unrestricted funds, which are the free reserves of the charity, at a sufficient level which enables the charity to operate in the short term (6 Months). The remainder of the Charity's reserves are distributed in accordance with its objectives. The total reserves at the year end date were £410,872 of which an amount of £108,491 was held in restricted funds. The trustees consider the state of the charity to be satisfactory, and that it is achieving its objectives.

A Detailed Report for Activities in 2022 is available on the Charity Commission site.

Signed                      Lisa Mooney    Print Name                      Lisa Mooney

Date                              27 January 2023

Younger People with Dementia (Berkshire) CIO  
Registered Charity no. 1171720

Independent Examiner's Report  
For Period Ending 31 March 2022

**Responsibilities and basis of report**

I report to the trustees on my examination of the accounts of the above charity ("the Charity") for the year ended 31/03/2022..

As the charity's trustees, you are responsible for the preparation of the accounts in accordance with the requirements of the Charities Act 2011 ("the Act").

**Independent examiner's statement**

I report in respect of my examination of the Charity's accounts carried out under section 145 of the 2011 Act and in carrying out my examination, I have followed all the applicable Directions given by the Charity Commission under section 145(5)(b) of the Act.

The charity's gross income exceeded £250,000 and I am qualified to undertake the examination by being a qualified member of the Association of Chartered Certified Accountants (ACCA).

I have completed my examination. I confirm that no material matters have come to my attention in connection with the examination which gives me cause to believe that in, any material respect:

- the accounting records were not kept in accordance with section 130 of the Charities Act; or
- the accounts did not accord with the accounting records; or
- the accounts did not comply with the applicable requirements concerning the form and content of accounts set out in the Charities (Accounts and Reports) Regulations 2008 other than any requirement that the accounts give a 'true and fair' view which is not a matter considered as part of an independent examination.

I have no concerns and have come across no other matters in connection with the examination to which attention should be drawn in this report in order to enable a proper understanding of the accounts to be reached.

*SM Jackson*

SM Jackson FCCA  
WORKING NUMBERS LIMITED  
12 St Mary's Road  
Mortimer Common  
Reading  
RG7 3UE

Date: 23 January 2023

**Younger People with Dementia (Berkshire) CIO**  
**Balance Sheet**  
**As at 31 March 2022**

		2022	2022	2022	2021
		Unrestricted funds	Restricted income funds	TOTAL	TOTAL
	Note	£	£	£	£
<b>Fixed Assets</b>					
Tangible Assets	9	4,555	-	4,555	1,954
<b>Total Fixed Assets</b>		<u>4,555</u>	<u>-</u>	<u>4,555</u>	<u>1,954</u>
<b>Current Assets</b>					
Debtors	10	1,337		1,337	261
Cash at bank and in hand		303,743	108,491	412,234	464,548
<b>Total Current Assets</b>		<u>305,080</u>	<u>108,491</u>	<u>413,571</u>	<u>464,809</u>
<b>Liabilities</b>					
Creditors falling due within one year	11	7,254	-	7,254	1,373
		<u>7,254</u>	<u>-</u>	<u>7,254</u>	<u>1,373</u>
<b>Net Current Assets</b>		<u>297,826</u>	<u>108,491</u>	<u>406,317</u>	<u>463,436</u>
<b>Net Assets</b>		<u>302,381</u>	<u>108,491</u>	<u>410,872</u>	<u>465,390</u>
<b>The Funds of the charity:</b>					
Unrestricted Income Funds	13	302,381	-	302,381	280,135
Restricted Income Funds		-	108,491	108,491	185,255
<b>Total Charity Funds</b>		<u>302,381</u>	<u>108,491</u>	<u>410,872</u>	<u>465,390</u>

These accounts were approved by the Trustees on 27 January 2023 and signed on their behalf by:

Signature Lisa Mooney Name Lisa Mooney

Date 27 January 2023

**Younger People with Dementia (Berkshire) CIO**  
**Statement of Financial Activity**  
**12 months ending 31 March 2022**

		Unrestricted Funds 2022 £	Restricted Funds 2022 £	Total Funds 2022 £	Total Funds 2021 £
	<b>Note</b>				
<b>Income:</b>					
Donations and Legacies (including Grants)	3, 4	91,417	244,063	<b>335,480</b>	420,197
Charitable Activities		1,549	761	<b>2,310</b>	1,903
Investments		27	-	<b>27</b>	122
<b>Total Income</b>		<b>92,993</b>	<b>244,824</b>	<b>337,817</b>	<b>422,222</b>
<b>Expenditure:</b>					
Raising funds	5	6,334	11	<b>6,345</b>	9
Charitable Activities	5	63,978	321,577	<b>385,555</b>	310,993
Governance Costs	5	435	-	<b>435</b>	435
<b>Total Expenditure</b>		<b>70,747</b>	<b>321,588</b>	<b>392,335</b>	<b>311,437</b>
Net income/(Expenditure)		22,246	(76,764)	<b>(54,518)</b>	110,785
Net movement in Funds	13	22,246	(76,764)	<b>(54,518)</b>	110,785
Funds Brought forwards		280,135	185,255	<b>465,390</b>	354,605
<b>Total Funds Carried Forward</b>		<b>302,381</b>	<b>108,491</b>	<b>410,872</b>	<b>465,390</b>

**Younger People with Dementia (Berkshire) CIO**  
**Notes to the Unaudited Accounts**  
**12 Months Ending 31 March 2022**

**Note**

**1. Accounting background**

Background

Younger People with Dementia (Berkshire) Charitable Incorporated Organisation (Charity Number 1171720) was set up in February 2017. This replaced the registered Charity of the same name (Charity number 1147290).

**2. Accounting Policies**

Basis of Accounting

These accounts have been prepared under the historical cost convention with items recognised at cost or transaction value unless otherwise stated in the relevant note(s) to these accounts. The accounts have been prepared in accordance with the Statement of Recommended Practice: Accounting and Reporting by Charities preparing their accounts in accordance with the Financial Reporting Standard applicable in the UK and Republic of Ireland (FRS 102) (effective 1 January 2015) (Charities SORP (FRS102)), the Financial Reporting Standard applicable in the UK and Republic of Ireland (FRS 102), and the Charities Act 2011.

Basis of preparing the Financial statements

The Financial Statements have been prepared under the going concern basis. The Charity has secured funding to secure the immediate future of the Charity for the next 18 months to 2 years on this basis Trustees view the Charity as a going concern.

Incoming resources

All Incoming resources are included on the statement of Financial Activities when the Charity is legally entitled to the income and the amount can be quantified.

Resources expended

Expenditure is accounted for on an accruals basis and has been classified under headings that aggregate all costs related to the category. Where costs cannot be directly attributed to a particular heading they have been allocated to activities on a basis consistent with the use of resources. Irrecoverable VAT is charged as a cost against the activity for which the expenditure is incurred.

Taxation

The Charity is exempt from corporation tax on its charitable activities.

Fund Accounting

Unrestricted funds can be used in accordance with the charitable objectives at the discretion of the Trustees.

Restricted Funds can be used for the particular restricted purposes within the objects of the Charity.

Restriction arise when specified by the donor or when funds are raised for a particular restricted purpose.

Fixed Assets

Depreciation has been provided on a straight line basis at a rate estimated to write off the value of the asset over its useful life.

Office Equipment	4 Years
Computer Equipment	4 Years

Younger People with Dementia (Berkshire) CIO  
Notes to the Unaudited Accounts  
12 Months Ending 31 March 2022

Note

3. Analysis of Income

	Unrestricted funds 2022 £	Restricted income funds 2022 £	Total funds 2022 £	Total funds 2021 £
Donations and legacies:	Donations and gifts	30,463	4,251	34,714
	Gift Aid	3,700	20	3,720
	Legacies			36,065
	General grants provided by government/other charities	57,254	239,792	297,046
	<b>Total</b>	<b>91,417</b>	<b>244,063</b>	<b>335,480</b>
Charitable activities:	Events	24	761	785
	Other charitable activities	1,525		1,525
	<b>Total</b>	<b>1,549</b>	<b>761</b>	<b>2,310</b>
Income from investments:	Interest income	27	-	27
	<b>Total</b>	<b>27</b>	<b>-</b>	<b>27</b>
<b>TOTAL INCOME</b>	<b>92,993</b>	<b>244,824</b>	<b>337,817</b>	<b>422,222</b>

4. Government Grant funding

	2022 £	2021 £	
DWP resource funding	Funding for staff member	1,748	-
	<b>Total</b>	<b>1,748</b>	<b>-</b>

There were no unfulfilled conditions relating to this grant

**Younger People with Dementia (Berkshire) CIO**  
**Notes to the Unaudited Accounts**  
**12 Months Ending 31 March 2022**

**5. Analysis of expenditure**

Analysis	Unrestricted funds 2022 £	Restricted income funds 2022 £	Total funds 2022 £	Total funds 2021 £
<b>Expenditure on raising funds:</b>				
Incurring seeking donations	6,334	11	6,345	9
<b>Total expenditure on raising funds</b>	<b>6,334</b>	<b>11</b>	<b>6,345</b>	<b>9</b>
<b>Expenditure on charitable activities:</b>				
Cost of products sold	37	-	37	-
Transaction costs	372	5	377	411
Operational staffing	1,676	185,822	187,497	151,976
Workshop costs	1,869	42,707	44,575	20,947
Accountancy and bookkeeping	2,860	216	3,076	1,898
Staffing	26,597	69,168	95,765	83,517
Bank charges	34	-	34	-
Business rates	1,382	-	1,382	1,382
Computer costs	6,028	405	6,433	4,763
Depreciation	3,003	-	3,003	1,045
General expenses	1,379	59	1,438	418
Health and Safety consumables	302	-	302	567
HR	406	-	406	252
Insurances	2,066	-	2,066	1,928
Legal fees	2,400	-	2,400	-
Marketing	798	384	1,182	1,380
Office costs	618	22,487	23,105	28,562
Printing postage and Stationary	4,415	62	4,477	4,845
Subscriptions	257	-	257	591
Telephone costs	5,837	-	5,837	5,164
Travel costs	1,237	168	1,405	663
Trustee and Volunteer costs	406	94	500	685
<b>Total expenditure on charitable activities</b>	<b>63,978</b>	<b>321,577</b>	<b>385,555</b>	<b>310,993</b>
<b>Governance costs</b>				
Independent Examiners fee	435	-	435	435
<b>Total other expenditure</b>	<b>435</b>	<b>-</b>	<b>435</b>	<b>435</b>
<b>TOTAL EXPENDITURE</b>	<b>70,747</b>	<b>321,588</b>	<b>392,335</b>	<b>311,437</b>

**6. Trustees Remuneration and Benefits**

During the period the total Trustees Remuneration was £nil (2021:£nil)  
Trustees Expenses for 2022 were £nil (2021: £nil)

**7. Staffing**

No employees received employee benefits (excluding employer pension costs) for the reporting period of more than £60,000 (previous year also nil).

Average head count during the year was: 11

**8. Independent Examiner's fee**

The charity has accrued for an independent examiners fee of £435 (2021 - £435)  
No other fees were payable to the examiner or their firm in either year

9. Fixed assets

<b>Cost</b>	<b>£</b>
Cost as at 31st March 2021	4,963
Additions during the year	5,604
Cost as at 31st March 2022	<u>10,567</u>
<b>Accumulated Depreciation</b>	
Balance as at 31st March 2021	3,009
Charge for the year	3,003
Balance as at 31st March 2022	<u>6,012</u>
<b>Net Book Value at 31 March 2022</b>	<u><u>4,555</u></u>

10. Debtors falling due within one year

	<b>2022</b>	<b>2021</b>
	<b>£</b>	<b>£</b>
Prepayments	1,337	261
<b>Total Debtors</b>	<u><u>1,337</u></u>	<u><u>261</u></u>

11. Creditors falling due within one year

	<b>2022</b>	<b>2021</b>
	<b>£</b>	<b>£</b>
Trade Creditors	4,774	938
Other Creditors	1,420	-
Accruals	1,059	435
<b>Total Creditors</b>	<u><u>7,253</u></u>	<u><u>1,373</u></u>

12. Movement in Funds

	<b>Unrestricted</b>	<b>Restricted</b>	<b>Total 2022</b>
	<b>2022</b>	<b>2022</b>	<b>2022</b>
	<b>£</b>	<b>£</b>	<b>£</b>
As at 1st April 2021	280,135	185,255	465,390
Additions during the year	92,993	244,824	337,817
Expenditure During year	70,747	321,588	392,335
Transfer between funds	-	-	-
<b>As at 31st March 2022</b>	<u><u>302,381</u></u>	<u><u>108,491</u></u>	<u><u>410,872</u></u>

**Younger People with Dementia (Berkshire) CIO**  
**Notes to the Unaudited Accounts**  
**12 Months Ending 31 March 2022**

13. **Charity funds**

Fund names	Fund	Purpose and Restrictions	Fund balances brought forward £	Income £	Expenditure £	Fund balances carried forward £
CCG Funds	R	Provide workshops, 1:1's, micro-groups, education course	73,230	203,094	(266,468)	9,856
Equestrian	R	Workshop costs	4,113	-	-	4,113
Katakanuing	R	Workshop costs	2,092	-	-	2,092
Legacy	R	Strategic development/enhancement of charity	66,065	-	-	66,065
Library	R	Mobile library of dementia education and support books	655	-	(105)	550
Stronger Together	R	Support group for ex-carers	961	-	(660)	301
Get Berkshire Active	R	Workshop costs	3,095	1,332	(3,405)	1,022
Gosling Foundation	R	Workshop costs	7,975	-	-	7,975
Former Employee	R	Employment costs	100	-	-	100
Big Issue	R	Operational costs	10,000	-	(6,000)	4,000
Wokingham United Charities	R	General operations	10,000	-	-	10,000
Surrey Heath	R	Provide workshops, 1:1's, micro-groups, education course	6,969	33,193	(41,937)	- 1,775
All Together Now (Al's place)	R	For social activities/events	-	555	(1,413)	- 858
Padworth	R	Workshop costs	-	4,500	(1,048)	3,452
Reminiscence / Unicorn	R	Workshop costs	-	1,150	(551)	599
Volunteer driver costs	R	Volunteer driver expenses	-	1,000	-	1,000
<b>Other funds</b>	U	General Fund	280,135	92,993	(70,747)	302,381
<b>TOTAL FUNDS</b>			<b>465,390</b>	<b>337,817</b>	<b>(392,335)</b>	<b>410,872</b>

R = Restricted Fund

U = Unrestricted/General Fund

**Younger People With Dementia CIO**

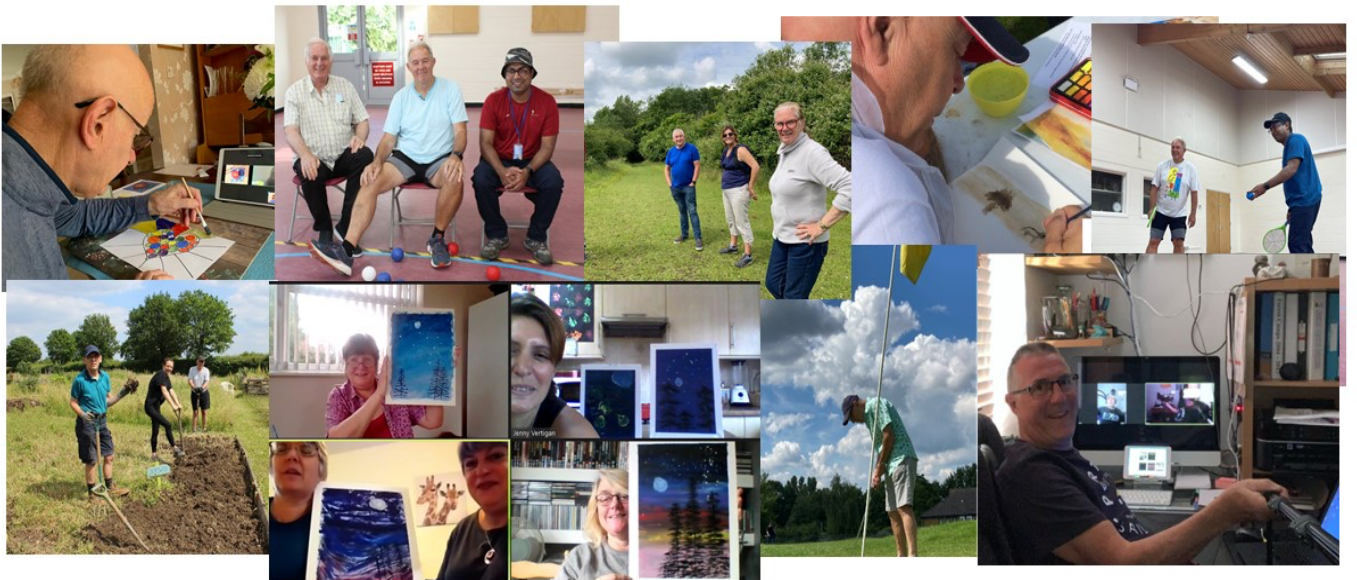
England & Wales - Charity number 1171720

---

# Accounts

---

## 2020-2021 Annual Trustee Report



**Living Better with Dementia**  
**YOUNGER PEOPLE WITH DEMENTIA (BERKSHIRE)**

# ANNUAL REPORT FOR CHARITY COMMISSION (1 April 2020 to 31 March 2021)

## Introduction and purpose

The charity's purpose is to operate across Berkshire supporting carers of people diagnosed with young onset dementia and their loved one with young onset dementia, helping them to live well after diagnosis.

Young onset dementia affects adults between the ages of 30-64. It has a reported prevalence rate of between 54 and 260 cases per 100,000 and nationally there are about 42,000 younger people with dementia. In Berkshire alone there are estimated to be more than 500 people living with young onset dementia (based on Delphi consensus Dementia UK Update 2<sup>nd</sup> Ed 2014).

The traditional support services provided for those with dementia are designed to meet the needs and expected therapeutic outcomes of older adults and subsequently, access to activities appropriate for younger adults with dementia continues to be limited locally, regionally and nationally. The YPWD model encourages carer respite throughout the working week, giving all carers the chance to take a break. In a national study focusing on post-diagnostic support for those living with young onset dementia and their carers The Angela Project reported that 69% of carers reported there was no service that provided care for their relative to allow them to take a break<sup>1</sup>.

The charity's model is integrated with local healthcare provision meaning that there is, to the patient and carer, a seamless service from diagnosis to referral into the charity, to Admiral Nurse and Dementia Care Advisor to local memory clinic. This model reflects several key needs that The Angela Project highlighted for people with young onset dementia including access to young onset specific advice, information and support to remain independent, supported age-appropriate activity, support to maintain physical and mental health as well as possible<sup>2</sup>.

Our integrated model has developed through an ongoing open dialogue with health and social care professionals to champion the needs of those with young onset dementia and their carers. As a result of the charity's services, and the integration with health and social care significant savings have been made on healthcare budgets because of reducing health crises in patients and carers and delaying entry into care. Key recommendations from The Angela Project relating to service design and development cited both the need to build capacity and ownership of young onset dementia services within, and between, organisations and to provide specialist or shared care, rather than care from a GP alone<sup>3</sup>.

---

<sup>1</sup> Angela Project team, 'Good Practice in Young Onset Dementia: improving diagnosis and support for younger people with dementia – Results from the Angela Project – a study on young onset dementia', Young Dementia Network, March 2020, [TAP---Good-Practice-in-YOD-document-FINAL.pdf \(bradford.ac.uk\)](https://www.bradford.ac.uk/~tap/good-practice-in-yod-document-final.pdf), p7

<sup>2</sup> Angela Project team, 'Good Practice in Young Onset Dementia: improving diagnosis and support for younger people with dementia – Results from the Angela Project – a study on young onset dementia', Young Dementia Network, March 2020, [TAP---Good-Practice-in-YOD-document-FINAL.pdf \(bradford.ac.uk\)](https://www.bradford.ac.uk/~tap/good-practice-in-yod-document-final.pdf), p8

<sup>3</sup> Angela Project team, 'Good Practice in Young Onset Dementia: improving diagnosis and support for younger people with dementia – Results from the Angela Project – a study on young onset dementia', Young Dementia Network, March 2020, [TAP---Good-Practice-in-YOD-document-FINAL.pdf \(bradford.ac.uk\)](https://www.bradford.ac.uk/~tap/good-practice-in-yod-document-final.pdf), p8

## Our response to the pandemic

Throughout this reporting period the charity was operating in a global health pandemic. Our objective has been to continue to maintain contact with carers and their loved ones living with a young onset diagnosis as safely as possible, and to provide meaningful services that will alleviate isolation and loneliness while operating within government guidelines.

To do this we moved our services online and onto the telephone, we provided regular activity boxes, and when we were able to, we offered face to face services. More detail of our pandemic services and impact are on page seven.

We felt it was important to highlight the feelings that some people have expressed to us directly about our support during this pandemic and the impact it has had on them in the past year:

*"All workshops have been greatly received and the team are constantly trying new things. Taking into account the problems people with dementia have when trying the zoom workshops. There has been a good variety of workshops and our loved ones would have been lost without them and so would their carers."*

**Carer**

*"In my opinion YPWD do a fantastic job of trying to engage the person with Dementia (whatever stage they are at). It is great to know they are there at the end of the phone too if you need someone. In the first 3 months we have only been taking zoom calls with one other from YPWD which we have looked forward to. Has been a lot of fun. Don't know what we would do without them. Thank you."*

**Carer**

*"YPWD zoom sessions have provided a very welcome routine and focal point to our week - a regular 'social event' in very lonely and difficult times. Thank you for keeping us connected and able to interact with others 'in the same boat'."*

**Carer**

## Key charity information

The Trustees of YPWD (Berkshire) CIO present their annual report and audited accounts for the year ended 31 March 2021 and confirm they comply with the requirements of the Charities Act 2011, the trust deed and the Charities SORP (FRS 102).

<b>Charity name:</b>	Younger People With Dementia (Berkshire) CIO
<b>Registered charity number:</b>	1171720
<b>Charity's principal address:</b>	Indigo House, First Floor, Unit 9, Fishponds Road, Wokingham, RG41 2GY
<b>Trustees:</b>	
Ms Lisa Mooney	Chair of Trustees
Mrs Kathy Taylor	
Dr Jacqueline Hussey	
Mrs Caroline Blanchette	
Mr David Fisher	
Dr Buchi Reddy	
Mrs Alison Richardson	Resigned 30 September 2020
Mr Peter Watson	Resigned 16 March 2021
Mr Alain Wilkes	Vice Chair
<b>Bankers:</b>	HSBC, 160 Crockhamwell Road, Woodley, Berkshire RG5 3JJ
<b>Independent Examiner:</b>	Sue Jackson FCCA, CTA (Working Numbers Ltd) Six full-time staff Five part-time staff
<b>Staffing and volunteers:</b>	One clinical consultant (sitting on the board) One Public Health consultant (sitting on the board) Seven volunteers (including seven Trustees)

## Finances, Governance, Structure and Management

### Financial Year

The twelve months to 31 March 2021 have been challenging as a result of the covid-19 pandemic. Specifically, this left the charity without the option to raise funds through business support or event challenges, leaving a projected deficit in our budget. We initiated a trust and foundation application strategy that led to the closure of this deficit. At year end our reserves had increased by £100K. The expenditure of the charity is mainly comprised of Staff costs and Premises with a reduction in expenditure on activity as all services moved online for the year.

### Our Finances: income and expenditure

The total income for the charity was: £422,222 with the total expenditure coming to £311,437.

### Reserves Policy

The reserves policy of the charity is to maintain unrestricted funds, which are the free reserves of the charity, at a sufficient level which enables the charity to operate in the short term (6 Months). The remainder of the Charity's reserves are distributed in accordance with its objectives. The total reserves at the year-end date were £465,390 of which an amount of £185,255 was held in restricted funds. The trustees consider the state of the charity to be satisfactory, and that it is achieving its objectives.

### Governing Document

The charity is controlled by its governing document.

### Recruitment and appointment of Trustees

The charity must appoint a minimum of six trustees. Apart from the first charity trustees, every trustee must be appointed for a term of three years by a resolution passed at a properly convened meeting of the charity trustees.

Trustees must have regard to the skills, knowledge and experience needed for the effective administration of the CIO. Trustees are co-opted to the board by a quorum of at least four trustees.

The trustees give their time voluntarily and receive no benefit from the Charity.

### Risk Management

The trustees have a duty to identify and review the risks to which the charity is exposed and to ensure appropriate controls are in place to provide reasonable assurance against fraud and error. The Trustees recognise the charity's reliance on the NHS for Funding and actively look to broaden the sources of financial support. In this difficult year the charity has been able to raise a significant proportion of its funds from charitable trusts and foundations.

### Covid-19

The charity has reviewed and adjusted its working practices to provide services throughout the pandemic. The charity has worked closely with funders to ensure their continued support. Keeping staff and clients safe has been the trustees' primary consideration during this period and planning is ongoing to ensure a safe return to work later in 2021. The charity has not used the government's furlough scheme and retained all staff on full pay.

## Management

The charity is run on a day-to-day basis by the Charity Director, who reports directly to the Chair of Trustees. Charity services are overseen by the Services Delivery Manager, who reports to the Charity Director and services are delivered by a team of Young Dementia Project Workers across Berkshire.

## Description of Services Offered during the Covid-19 pandemic

During the pandemic we moved our entire operation online and developed a range of services and support throughout the year which continued to engage people living in Berkshire with young onset dementia.

Our services usually run in six-week blocks, seven times a year. In between are break weeks where our team of Young Dementia Project Workers plan the next block of services, undertake training and take their leave. From April 2020 to September 2020 the charity provided weekly services only initiating the six-week services model during September. This was as a result of the extraordinary times that we were operating in and was a commitment on the part of the charity to make sure all our vulnerable clients continued to be engaged.

### Live Video Workshops (online)

Before the pandemic our workshop services were run throughout the working week at locations in local communities across Berkshire. Workshops are selected based on current evidence of therapeutic benefit, following requests specifically by people with dementia and from carers' feedback. This approach instils confidence in the carer that their loved one will be engaged in meaningful activity, thus reducing anxiety when leaving them. This provides beneficial respite for carers and provides improved outcomes for people with dementia, including positive mental health and wellbeing.

As a result of the first national lockdown, it meant that operating physically was going to be impossible. With that in mind our team initiated live, online video workshops within the first two weeks.

Examples of the range of online workshops offered include:

- Wildlife in the Garden
- Choir
- Art
- Well-Being and Massage
- Reader Group
- Windsor Castle (collaborating with Royal Collection Trust)
- Taster sessions (including – calligraphy, Zumba and film club)
- Musical Reminiscence
- Hark Back to the 1970s
- Exercise and Meditation
- Dogs for Good
- Reminiscence with the Museum of English Rural Life

### Telephone calls for carer support

The launch of this service happened within the first week. Our team were given their own list of carers to contact either on a weekly or fortnightly basis. This was an opportunity to offer carers an ear to listen, and a chance to break up their day even if for only an hour. Our team were able to identify any problems and report to colleagues in other services if there was concern. The carer lists were regularly changed so that the team and carers were able to have fresh conversations with different people every few weeks.

### 1:1 Support and garden visits

As the lockdown restrictions were eased on and off during the year the charity was able to provide garden visits to clients and carers. These visits usually lasted up to 90 minutes and involved a member of team meeting the client and carer in their garden, socially distanced.

We provided 1:1 sessions too (which included hour long walks) with those people with dementia that were happy to participate. These sessions involved a member of team walking with the person with dementia around the local area. As parks re-opened during the year these sessions were then moved to parks and open spaces.

In addition to these services, we also provided 1:1 live video calls to those with dementia who did not want to engage in the live video workshops.

### Activity packs

Throughout the year we offered our carers activity packs. These were popular during the lockdown periods, and particularly during the first lockdown. The packs contained a range of amenities including games, jigsaws, colouring, quiz books and treats to help ease the challenge of being indoors for so long. In the phone calls to carers our team were able to offer new amenities, and these were delivered or sent by post.

At Christmas in 2020 and Easter in 2021 the team created festive packs for all carers and clients and distributed them across Berkshire.

### Pre-recorded workshops

To be able to alleviate the challenge of lockdown outside office hours a number of team members pre-recorded a range of workshops/activities and uploaded them to our YouTube channel. These were then highlighted to carers during the regular calls and links provided in email campaigns during the first lockdown.

Examples of some of the pre-recorded workshops include:

- Poetry
- Art
- Movement and exercise
- Hand and arm massage
- Life in the garden
- Baking
- Rhythm and music
- The Night Sky

## Impact on those with dementia and their carers as a result of using our services

Throughout the year we regularly ask carers who support their loved one with young onset dementia to complete a short survey to inform the charity about the quality of its services and support. The findings below represent feedback in March 2021 a year after the pandemic services were put into place, and as we were coming out of the third national lockdown.

**79%**

Of carers rated the quality of our services as 'Excellent'

**87%**

Of carers said that our services had a medium or high impact in reducing the feeling of isolation for their loved one

**75%**

Of carers said that our services had a medium or high impact in reducing the feeling of isolation for them

**67%**

Of carers felt that as a result of our services their mood improved leading to less anxiety or sadness

## Objectives set for the year

We continued to deliver our five-year strategy during this challenging year, focusing on the following key areas:

- Raise awareness, provide education and training
- Increase diagnosis and referral rates of young onset dementia
- Meet changing needs: work with BAME communities in the east of the county, provide rarer dementia support
- Provide greater income diversity:
- Progress the 'tailored pathway' for the people we support with a diagnosis of young onset dementia

## Achievements during the period reported against our objectives

### Raise awareness, provide education and training

During the year we furthered our commitment to digital communications and established a plan of action for social media leading to an increase of 60% in the numbers of people following the organisation through Facebook, Twitter and Instagram against the previous year. This action plan included commitment to regular posting and focusing on human interest as a theme to engage a broader audience with our work.

In addition to the development of our social media we also made the decision to send our digital newsletters monthly, rather than every other month. We did this to be able to reduce the size of the newsletter to make it more appealing, and to be able to have more regular contact with our subscribers.

As part of our planning following the impact of the pandemic, it had been recognised that the charity should embrace digital platforms to raise funds. To do this we focused on using Facebook and YouTube to host an online concert (in lieu of our annual Christmas concert) that live streamed on each platform to encourage donations through these channels.

A combined result from the digital output listed above to raise awareness of the organisation led to a 66% year on year increase in the number of people searching for the charity on Google.

An agreement was made in the year to commit the charity to build a new website and to agree to ongoing technical web support from a professional web development company. A new site will improve the charity's presence on Google, which in turn will increase traffic to the site further, and the user experience too. The current website had become visually unappealing and from a technical perspective was difficult for staff to maintain without professional support, it was also unsecure and the platform it had been built on was out of date. A small working group involving staff, trustees, carers and the web developer was established to plan and deliver the new site.

In collaboration with the Wokingham Memory Clinic, we pioneered the development, build and delivery of an online Understanding Dementia course specifically for people recently diagnosed with young onset dementia from across Berkshire. Our talented team, and colleagues from health and social care hosted weekly, online sessions for the person with dementia with the schedule including four sessions: *Getting to Know Each Other*, *Understanding Your Symptoms*, *How Others Can Support You* and *How to Look After Yourself*. A total of nine people signed up to participate.

As a result of our new way of delivering services the YPWD team embraced the opportunity throughout the year to provide engaging and meaningful content. This involved the collaboration with a number of other organisations to be able to do this. A few of these include the Dogs for Good charity, the Museum of English Rural Life, Waltham Place, musician Arthur Brown, author Jamie Stonebridge and Royal Collection Trust. There was a willingness from all those involved to create something enjoyable and relevant for our audience, while also creating the opportunity to make what was being done sustainable. With that in mind the work with Royal Collection Trust (RCT) led to the development of RCT online resources for people with dementia and schools giving them the chance to reach audiences even though Windsor Castle was closed to the public. The outcome of collaborating with Jamie Stonebridge was the development of a dedicated puzzle and games compendium for people with young onset dementia, with Jamie donating half the profit from each sale to YPWD.

In October the BBC Radio Berkshire Breakfast Show focused on YPWD throughout the programme, with the aim to raise awareness among the audience of young onset dementia, while also highlighting

the support that continued to be offered during the pandemic from a local charity. We were especially grateful to three of our carers and three of our people diagnosed with young onset dementia who participated in the show by being interviewed very early in the morning.

Towards the end of the year the charity was nominated for a Berkshire High Sheriff Award, eventually being shortlisted in the category of 'Supporting the Isolated' during the pandemic. While we didn't win, the recognition alone from the shortlisting was a huge acknowledgement of the commitment and hard work of our team.

Following many months of discussion and planning the charity were awarded funding by the Frimley CCG to launch a 12-month pilot service for people living in Surrey Heath with a young onset dementia diagnosis. This began in November 2021, and it has been warmly received, and had an enormous amount of interest.

### **Increase diagnosis and referral rates**

We maintained membership and regular meetings of the YPWD Network Forum throughout the year. This forum brings together representatives from the six Berkshire localities, including memory services, dementia care advisors and Admiral Nurses. It offers a platform to be able to share good practice and to make sure that patients living with young onset dementia and their families are receiving an equitable service regardless of where they live in Berkshire. In year one of the senior members of team from Berkshire Healthcare Foundation Trust became chair of the forum. This has given the forum a greater sense of gravitas and has encouraged regular participation and representation from all localities. Towards the end of the year the forum began a review of the current young onset dementia pathway to make sure that it will meet patient and carer needs going forward. This will be fully reported on in our next Annual Report.

Throughout the year we continued to engage with colleagues across the six memory clinics in Berkshire. This allows the charity to discuss patients that use our services while also highlighting what we are currently offering. As we were unable to meet face to face the six weekly supervision sessions were hosted on video. Over the year we met 39 times.

We were invited to participate in the Berkshire West Dementia Forum. This forum brings together a number of NHS and third sector partners supporting those with dementia and their loved ones in Berkshire West. During the year the forum operated to understand what impact on services the pandemic had had and to hear what services were available. It was an opportunity to share good practice, identify gaps and to look at how services will recover.

### **Meet changing needs: BAME communities, rarer dementia support**

We participated in a project being led by the Museum of English Rural Life and Age UK Berkshire, funded by Reading Borough Council to better understand the barriers that the local communities in Reading face when accessing services. Our interest centred on those from BAME communities. As the pandemic progressed the project had to pivot away from physical delivery, eventually using live and pre-recorded video to engage local communities. A key point that came out of the project was that in providing online services it made it much easier for these communities to access them and to feel involved. For those from BAME communities there was an uplift in representation at 10%. We can now use this information to help inform the next stage of our own dedicated project.

The charity made contact with Feyi Raimi-Abraham, an entrepreneur who founded the Black Dementia Company as a result of her experience caring for her mother who had a dementia diagnosis. She noticed that there were no materials relevant to the heritage of black people, so she created them. We approached her to ask if she'd be open to participating, in an advisory capacity, as we developed our BAME project plan of action, and she agreed to this.

The charity attended the BAME Health Inequalities Event being hosted on live video in July 2020. This brought together a range of organisations (including BHFT) to discuss and offer ideas as to how we could all make sure that BAME groups felt able to access the services on offer.

We maintained two rare dementia support groups throughout the year. One group offers support to carers whose loved one is diagnosed with Posterior Cortical Atrophy (PCA), the other group for carers whose loved one is diagnosed with Frontotemporal dementia (FTD).

In the February 2021 the FTD support group hosted 25 health and social care professionals onto the session to understand more about this rare dementia. They were given a dedicated presentation by Dr Jacqui Hussey from the Wokingham Memory Clinic and YPWD Trustee.

Our small working group continued to develop services for children that have a parent with YOD. This included the identification of an online resource that has now been highlighted to young people called Kooth.com. This live, online service provides dedicated advisors who can support children aged 11 and over with any issues they are currently experiencing. A member of team from Kooth.com also sits on the working group, and our plan going forward will be to develop the knowledge base of the Kooth team to have a broader understanding of young onset dementia and the impact that it has on families.

As a result of the pandemic, we launched a private online carer group on Facebook to give carers an opportunity to talk to one another, offer advice and peer support. This has become a well-used resource particularly during the lock downs. To date we have 35 members using the group.

### Income generation

As has been recognised by the board the charity's largest contributor of income comes from the two Clinical Commissioning Group contracts each year. The board has recognised the need to identify and utilise new income streams to supplement these contracts. During the pandemic the charity lost a significant level of income as companies furloughed staff, closed-down or moved to home working. This meant that any staff fundraising was unable to take place. Along with this all fundraising challenge events, including marathons, bike rides, walking events were cancelled meaning that there were no members of the public fundraising for YPWD either.

In response to this the charity activated a trust and foundation strategy to solicit funds and close the income deficit. This was a definitive shift towards systemising this type of fundraising at YPWD. We collaborated closely with colleagues at Involve Services in Bracknell who were able to identify a range of charitable trusts and foundations for us to approach during the year. The positive news is that we were able to secure grants totalling £144k from 13 different trusts and foundations in the year. This has now given the charity the confidence to continue with this method of fundraising going forward.

We also embraced upcycling too and collaborated with a local non-profit organisation called Alzh Place. Alzh Place have made YPWD one of their selected charities and have been upcycling furniture and other products with the income generated being donated to YPWD and other local dementia charities. This will give YPWD a small, but regular income from this organisation.

The pandemic also encouraged the charity to identify new ways to embrace digital technology and platforms to raise donations in the year. This included an entirely digital music concert featuring our choir master as she played well-known songs for audiences watching on YouTube and on Facebook. In total 200 people joined online to watch this concert. At the same time members of the YPWD team were on hand on the live chat feature to encourage donations and to highlight facts about young onset dementia. This concert raised £3,000 through Facebook, text and online donations.

### **Progress the 'tailored pathway' for the people we support with a diagnosis of Young Onset Dementia**

The charity has continued to support people with a young onset diagnosis that are heavily progressed in their dementia. Where able, we have sign posted to other services, however during the pandemic the impact on other services, such as day centres and care facilities, has left many shut down or limiting numbers, this has left many with only YPWD to support them. We continue to collaborate with colleagues across health and social care including Admiral Nurses and Dementia Care Advisors. We have also raised this situation within our regular reports to colleagues in the CCGs.

One of the outputs of the YPWD Network Forum during the year has included a review of the pathway that is used by health and social care professionals across the county. To date, all those sitting on this forum have provided feedback about the current pathway to be considered. It is hoped that a final, updated version can be agreed later in the year.

The charity initiated a dedicated carer forum for those whose loved ones have progressed to a point where mainstream workshops were no longer viable for them. This forum allowed these carers to express their current situation among an understanding peer group, and to help find solutions for one another where they could. We were also able to share their experiences with one of YPWD's former trustees, Peter Watson, who very kindly took these experiences to the Dementia Partnership Board that he sits on.

Carer group Stronger Together, which is targeted at carers who have a loved one in long-term care, or a loved one who has passed away, put together a photo book to highlight what they do and why they do it to help broaden awareness. Copies of this book have been given to the Admiral Nurse and the charity has a copy to take to workshops and other carer groups once face to face services begin again.

Headline charity statistics for the year

**81** People with YOD supported in year

**300** Live video workshops

**1,864** Live video attendances

**962** Support phone calls

**122** One to one walking sessions

**21** Garden visits

**5** Carer support group sessions

**4** Rare dementia support sessions

**24** New referrals

**11** Staff

**7** Trustees

**7** Volunteers

**1,168** Social media followers

**10,485** Found us on Google

## Selected quotes about our services from carers and professionals over the past year

*They have adapted amazingly well and still managed to retain the relationship with N. I am impressed with their innovation and hard work.*

**Carer**

*'YPWD are an invaluable service. It is extremely beneficial to have a charity that focuses on support for the younger person with dementia. We often receive good feedback from people that attend activities and events. Carers also provide positive feedback on the support offered to them. As an organisation, they are eager to engage with health and social care colleagues to enhance collaborative working and to develop and improve services. Individual workers within YPWD are also approachable, warm and friendly. It is a pleasure to work alongside them'.*

**Community Mental Health Team**

*It has been incredibly reassuring to still be able to link into regular workshops (e.g., Harmony choir) and chat to YPWD staff and other carers (weekly Zoom meetings). At this time even more than usual, contact with others and a sense of routine and belonging have been vital. Huge thanks to you all for your ongoing support!*

**Carer**

*YPWD is a charity that I recommend to any patients that are appropriate to receive support from them. Their warmth, caring and understanding nature is what makes them stand out from other charities. The staff team are always on hand to provide any advice or support whenever I have needed any for the patients that I refer onto them.*

**Dementia Advisor**

*On behalf of my sister who is diagnosed with vascular dementia. YPWD have been very supportive with sending regular updates via emails and one of their colleagues calls on a regular basis with regards to the well-being of my sister. They have provided excellent support and have taken on board my sister's interests and very kindly organised sending out some postcards and books, which have been of great interest. On behalf of my sister, I would like to take this opportunity to congratulate YPWD on their outstanding support they have given, not only during the Covid-19 pandemic but since my sister first was introduced to them in 2018.*

**Carer**

*My experience of the YPWD charity is of a very friendly, caring and supportive service to younger people with dementia and their families, as well as to other professionals that partner with them.*

**Occupational Therapist**

YPWD have done an incredible job in these very strange times. They have provided some excellent workshops online which has definitely had an impact on both our moods. To have interaction with others even if it's not in person is great. I don't think people understand what a wonderful life-line the charity is, it gives hope to the person with dementia that they can live a happy and fulfilled life with help from the fantastic charity like YPWD and the incredibly dedicated, caring and happy people who work for them. WELL DONE

**Carer**

*The YPWD team has made great efforts to keep continuity during the pandemic and have come up with some innovative and creative measures to do this. As a carer I particularly appreciated the weekly call from a team member, and the use of the excellent Facebook group.*

**Carer**

*I support people living across the country and in contrast to other local regions I work with, who typically have limited if any services for young people, YPWD provide holistic support, positive risk-management, go way above and beyond what is required and truly increase the quality of life of those they work with. As well as excellent multi-disciplinary working which provides cohesion across a range of services*

**Senior Admiral Nurse, Imperial College Healthcare Trust**

## Future plans for 2021-2022

### Working towards service delivery as it was before the pandemic

The board and team are fully committed to providing services as they were before the pandemic. While our outputs have been very strong, there is no doubt that physical services can never be fully replaced by digital services. Our commitment for the next 12 months will continue to be the delivery of our services as the pandemic continues and to realise our strategic plan.

### Objectives for the year ahead

We are committed to delivering our five-year strategy, our day-to-day work and collaborations to enable those in Berkshire, affected by young onset dementia and their carers and families, to live better with their dementia.

The end of forthcoming year and the beginning of the next will see the charity enter its tenth year. We have plans to mark this with distinct fundraising and communications activity. This will be bolstered by the significant foundation work already undertaken through digital during this year.

Specifically, we will continue to commit to building on the work already done under the headings below:

- To raise awareness, provide education and training
- To increase diagnosis and referral rates of young onset dementia
- To meet changing needs e.g., work with the BAME communities in the east
- To provide greater income diversity
- To progress the tailored pathway

**Younger People with Dementia (Berkshire) CIO  
Report and Financial Statements  
For Period Ending 31 March 2021**

**Younger People with Dementia (Berkshire) CIO  
Report and Financial Statements  
For Period Ending 31 March 2021**

	Page
Contents	1
Trustee and professional advisors	2
Report of Trustees	3
Independent Examiners report	4
Balance sheet	5
Statement of Financial Activity	6
Notes to the Accounts	7

**Younger People with Dementia (Berkshire) CIO**  
**Trustees and Professional advisers**  
**For 12 Months Ending 31 March 2021**

**Trustees**

Ms Lisa Mooney	Chair
Mrs Kathy Taylor	
Dr Jacqueline Hussey	
Mrs Caroline Blanchette	
Mr David Fisher	
Dr Buchi Reddy	
Mrs Alison Richardson	Resigned 30 September 2020
Mr Peter Watson	Resigned 16 March 2021
Mr Alain Wilkes	Vice Chair

**Registered Office**

First Floor  
Unit 9 Indigo House  
Fishponds Road  
Wokingham  
RG41 2GY

**Bankers**

HSBC  
160 Crockhamwell Road  
Woodley  
Berkshire  
RG5 3JJ

**Independent Examiner**

Sue Jackson FCCA, CTA  
Working Numbers Limited  
12 St Mary's Road  
Mortimer Common  
RG7 3UE

**Younger People with Dementia (Berkshire) CIO  
Report of the Trustees  
For Period Ending 31 March 2021**

**Structure, Governance and Management**

**Financial Year**

The twelve months to 31 March 2021 have been challenging as a result of the covid-19 pandemic. Specifically this left the charity without the option to raise funds through business support or event challenges, leaving a projected deficit in our budget. We initiated a trust and foundation application strategy that led to the closure of this deficit. At year end our reserves had increased by £100K. The expenditure of the charity is mainly comprised of Staff costs and Premises with a reduction in expenditure on activity as all services moved online for the year.

**Governing Document**

The Charity is controlled by its governing document.

**Recruitment and appointment of Trustees**

The Trustees give their time voluntarily and receive no benefit from the Charity.

**Risk Management**

The Trustees have a duty to identify and review the risks to which the charity is exposed and to ensure appropriate controls are in place to provide reasonable assurance against fraud and error. The Trustees recognise the charity's reliance on the NHS for Funding and actively look to broaden the sources of financial support.

**Objectives and Activities**

**Charitable objectives and Aims**

Young Onset Dementia affects adults under the age of 65 and nationally there are known to be just over 42,000. Traditional services are designed to meet the needs and expected therapeutic out-comes of older adults and subsequently, access to activities appropriate for younger adults with dementia is limited. The Objective of the charity is to promote and protect the physical and mental health of people diagnosed with early onset dementia and also of their families and carers in the administrative districts of Wokingham, Reading, West Berkshire, Bracknell, Windsor and Maidenhead and Slough through the provision of support, education and general advice.

**Charitable Activities**

As a result of the pandemic and the social restrictions that were put into place the charity adapted quickly and moved all services online and on the telephone. Virtual workshops were offered throughout the working week, calls to carers were offered every one to two weeks and when able (as a result of restrictions changing) the charity provided garden visits and one to one walks.

**Workshops** - The Charity offers respite to carers through the provision of a number of different workshops for younger people with dementia throughout the working week. A prospectus of the workshops is produced every few months and people with dementia can access a variety of workshops through the week, thus offering clear choice and a flexible approach to respite for carers.

**1:1 support** - People are encouraged to choose an activity that is of personal interest to them that can be carried out with the support of one of our respite workers.

**Reserves Policy**

The reserves policy of the charity is to maintain unrestricted funds, which are the free reserves of the charity, at a sufficient level which enables the charity to operate in the short term (6 Months). The remainder of the Charity's reserves are distributed in accordance with its objectives. The total reserves at the year end date were £465K of which an amount of £185K was held in restricted funds. The trustees consider the state of the charity to be satisfactory, and that it is achieving its objectives.

A Detailed Report for Activities in 2021 is available on the Charity Commission site.

Signed Lisa Mooney

Date 19 January 2022

**Younger People with Dementia (Berkshire) CIO**  
**Registered Charity no. 1171720**

**Independent Examiner's Report**  
**For Period Ending 31 March 2021**

**Responsibilities and basis of report**

I report to the trustees on my examination of the accounts of the above charity ("the Charity") for the year ended 31/03/2021.

As the charity's trustees, you are responsible for the preparation of the accounts in accordance with the requirements of the Charities Act 2011 ("the Act").

**Independent examiner's statement**

I report in respect of my examination of the Charity's accounts carried out under section 145 of the 2011 Act and in carrying out my examination, I have followed all the applicable Directions given by the Charity Commission under section 145(5)(b) of the Act.

The charity's gross income exceeded £250,000 and I am qualified to undertake the examination by being a qualified member of the Association of Chartered Certified Accountants (ACCA).

I have completed my examination. I confirm that no material matters have come to my attention in connection with the examination which gives me cause to believe that in, any material respect:

- the accounting records were not kept in accordance with section 130 of the Charities Act; or
- the accounts did not accord with the accounting records; or
- the accounts did not comply with the applicable requirements concerning the form and content of accounts set out in the Charities (Accounts and Reports) Regulations 2008 other than any requirement that the accounts give a 'true and fair' view which is not a matter considered as part of an independent examination.

I have no concerns and have come across no other matters in connection with the examination to which attention should be drawn in this report in order to enable a proper understanding of the accounts to be reached.

*SM Jackson*

SM Jackson  
ACCA  
WORKING NUMBERS LIMITED  
12 St Mary's Road  
Mortimer Common  
Reading  
RG7 3UE

Date: 17 January 2022



**Younger People with Dementia (Berkshire) CIO**  
**Statement of Financial Activity**  
**12 months ending 31 March 2021**

	Unrestricted 2021 £	Restricted 2021 £	Total Funds 2021 £	Total Funds 2020 £
<b>Note</b>				
<b>Income:</b>				
Grants	101,635	251,881	353,516	367,444
Donations and Legacies	30,638	36,165	66,803	61,255
Activities for generating Funds	1,903	0	1,903	1,086
Income from Other Charitable activities				
<b>Total Income</b>	<b>134,176</b>	<b>288,046</b>	<b>422,222</b>	<b>429,785</b>
<b>Expenditure:</b>				
Expenditure on Charitable Activities	137,579	172,762	310,341	399,144
Governance Costs	1,096	0	1,096	549
<b>Total Expenditure</b>	<b>138,675</b>	<b>172,762</b>	<b>311,437</b>	<b>399,693</b>
Net income/(Expenditure)	-4,499	115,284	110,785	30,094
Movement in Funds	-2,335	2,335 -	-	-
Funds Brought forwards	286,969	67,636	354,605	324,511
<b>Total Funds Carried Forward</b>	<b>280,135</b>	<b>185,255</b>	<b>465,390</b>	<b>354,605</b>

**Younger People with Dementia (Berkshire) CIO**  
**Notes to the Unaudited Accounts**  
**12 Months Ending 31 March 2021**

Note **Accounting Policies**

1. Background

Younger People with Dementia (Berkshire) Charitable Incorporated Organisation (Charity Number 1171720) was set up in February 2017. This replaced the registered Charity of the same name (Charity number 1147290).

2. Basis of Accounting

These accounts have been prepared under the historical cost convention with items recognised at cost or transaction value unless otherwise stated in the relevant note(s) to these accounts. The accounts have been prepared in accordance with the Statement of Recommended Practice: Accounting and Reporting by Charities preparing their accounts in accordance with the Financial Reporting Standard applicable in the UK and Republic of Ireland (FRS 102) (effective 1 January 2015) (Charities SORP (FRS102)), the Financial Reporting Standard applicable in the UK and Republic of Ireland (FRS 102), and the Charities Act 2011.

Basis of preparing the Financial statements

The Financial Statements have been prepared under the going concern basis. The Charity has secured funding to secure the immediate future of the Charity for the next 18 months to 2 years on this basis Trustees view the Charity as a going concern.

Incoming resources

All Incoming resources are included on the statement of Financial Activities when the Charity is legally entitled to the income and the amount can be quantified.

Resources expended

Expenditure is accounted for on an accruals basis and has been classified under headings that aggregate all costs related to the category. Where costs cannot be directly attributed to a particular heading they have been allocated to activities on a basis consistent with the use of resources. Irrecoverable VAT is charged as a cost against the activity for which the expenditure is incurred.

Taxation

The Charity is exempt from corporation tax on its charitable activities.

Fund Accounting

Unrestricted funds can be used in accordance with the charitable objectives at the discretion of the Trustees. Restricted Funds can be used for the particular restricted purposes within the objects of the Charity. Restriction arise when specified by the donor or when funds are raised for a particular restricted purpose.

Fixed Assets

Depreciation has been provided on a straight line basis at a rate estimated to write off the value of the asset over its useful life.

Office Equipment	4 Years
Computer Equipment	4 Years

3. **Fixed Assets**

	2021 £	2020 £
<b>Cost</b>		
Cost as at 31st March 2020	4,963	4,560
Additions during the year	-	403
Cost as at 31st March 2021	<u>4,963</u>	<u>4,963</u>
<b>Accumulated Depreciation</b>		
Balance as at 31st March 2020	1,964	869
Charge for the year	1,045	1,095
Balance as at 31st March 2021	<u>3,009</u>	<u>1,964</u>
<b>Net book value at 31 March 2021</b>	<u><u>£1,954</u></u>	<u><u>£2,999</u></u>

**Younger People with Dementia (Berkshire) CIO**  
**Notes to the Unaudited Accounts**  
**12 Months Ending 31 March 2021**

	2021	2020
	£	£
<b>4. Other Debtors</b>		
Trade Debtors	-	50
Prepayments	261	157
Other Debtors	0	149
	<u>261</u>	<u>356</u>

	2021	2020
	£	£
<b>5. Creditors falling due within one year</b>		
Trade Creditors	938	698
Other Creditors	-	-
Accruals	435	150
	<u>1,373</u>	<u>848</u>

	Unrestricted	Restricted	Total 2021	2020
	£	£	£	£
<b>6. Reserves</b>				
As at 1st April 2020	286,969	67,636	354,605	324,511
Additions during the year	134,176	288,046	422,222	429,787
Expenditure During year	138,675	172,762	311,437	399,693
Movement Between Funds	-2,335	2,335	-	-
As at 31st March 2021	<u>280,135</u>	<u>185,255</u>	<u>465,390</u>	<u>354,605</u>

**7. Trustees Remuneration and Benefits**  
During the period the total Trustees Remuneration was £nil (2020:Nil)  
Trustees Expenses for 2021 were nil (2020: £283)