

# SAL'S NEWS

ISSUE 7 2020-2021



Shoes are relatively difficult to recycle because of all the different components they're made up of. As children tend to outgrow their shoes before they outwear them, we find their preloved shoes new feet.

**IN 8 YEARS WE HAVE DISTRIBUTED:**

**2,750,046** pairs of shoes in **52** countries  
(including the U.K.)

**THIS YEAR:**

**701,666** pairs were distributed overseas

**41,310** pairs were distributed within the U.K.  
(not including new school shoes, PE trainers and wellies)

**6,750** pairs of new school shoes, PE trainers and wellies were distributed within the U.K. from our **SCHOOL SHOES FUND**

**TOTAL: 749,746** pairs this year

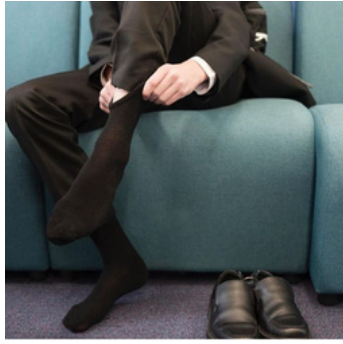


## SCHOOL SHOES FUND

Our School Shoes Fund enables us to purchase new school shoes for children in need here in the U.K. Launched in June 2020, as the financial impact of the global pandemic became apparent, we have gone on to distribute, on average, 250 pairs of new school shoes, PE trainers and wellies every month. In August 2020, ahead of the new academic year, we distributed 4,020 pairs.



# SHOE SHOPS



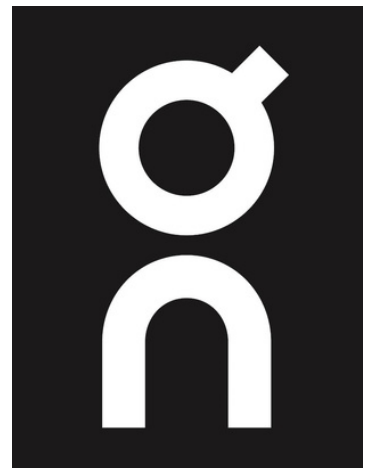
Working with The Guinness Partnership, we were delighted to open our first two Sal's Shoes 'Shops' at Emmaus, Salford and St. Paul's Centre, Crewe. Extreme poverty can feel undignified; our shoe shops aim to help maintain a sense of dignity for those who are facing poverty by empowering families in need to exercise choice and enjoy the experience of a shopping trip without having to pay for their 'purchases'.

## IN-KIND DONATIONS



MARKS &  
SPENCER

We feel incredibly fortunate to be on the receiving end of donations from retailers and manufacturers looking for a way to find good homes for end of season stock, samples and shoes that may have a slight cosmetic flaw but are otherwise perfect and ready to be put to use.





# DISTRIBUTIONS

Just a few of our distributions and some of the charities that we have worked with this year...



Haiti



Pakistan



Nicaragua



Ghana



Nicaragua



Kenya



Ghana



Nigeria



Greece



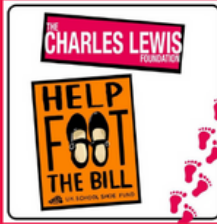
Malawi



Nicaragua



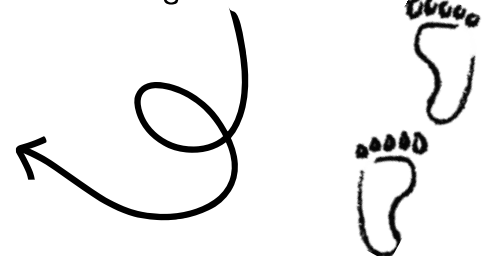
Nigeria



# FUNDING

As a relatively small charity, often our only real limitation is financial.

As well as asking our donors to donate £1 per pair of shoes, we are grateful to have received grants from these organisations:





# COVID-19 CHARITABLE FUND

The impact of the global pandemic has been uneven and unpredictable for charities, with projected declines in funding from all income sources. We are hugely grateful for the financial support for our UK-based work provided by the 3i Covid-19 Charitable Fund during a particularly challenging time.



## TOE 2 TOE

Our school shoes initiative was first piloted in 2016. Our first school collected over 300 pairs of



shoes at the end of that summer term. Thanks to our reach on social media, the following year over 650 schools across the U.K. signed up for Toe 2 Toe and over 175,000 pairs of shoes were collected. This year despite the global pandemic, we were fortunate that so many schools in the UK and other countries still rolled out the scheme, choosing to host collections when we weren't in lockdown.

SUPPORTED BY: **B Banner**

## FUNDRAISING

Fundraising efforts this year included the amazing 'Bare Foot Buddies' who walked over 4 miles barefoot and Iona and her mum who donated the money that they raised from sponsorship for cutting their hair between Sal's Shoes and Little Princess Trust.





# Clemie's Clothes



Clemie's Clothes started as an opportunity to spread joy (and sparkle) to the new owners of our Sal's Shoes. Packing fun, preloved dressing-up clothes in with the consignments of shoes was an easy way to nurture imagination at the same time as protecting little feet.

Since then, Clemie's Clothes has popped up whenever the stars have happened to align and we had the space and time to accommodate donations other than shoes. This year, a generous donor stepped in with a fantastic delivery of children's clothes. Our team of hardworking volunteers were able to put their sorting skills to use by categorising all of the clothing by size and by season, before inviting some UK baby banks to come in to HQ and replenish their stock.



Malawi



Malawi



Stripey Stork



Little Village



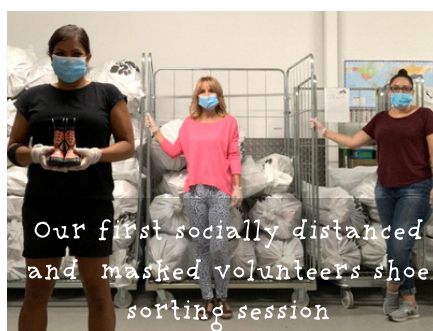
The Baby Bank



# FINDING NEW FEET ACROSS THE UK



## FINDING NEW FEET AROUND THE WORLD



Sal's Shoes is a Registered charity in England & Wales.  
Registered Charity Number: 1171670.  
All images provided by Sal's Shoes.  
Logo by rsicreative.com & newsletter by Source It Out.  
Copyright remains with respective owners.

# **SAL'S SHOES**

## **INDEPENDENT EXAMINER'S REPORT FOR THE YEAR ENDED 30 JUNE 2021**

### **Independent Examiner's Report to the Trustees of Sal's Shoes**

I report to the trustees on my examination of the accounts of Sals Shoes ('the charity') for the year ended 30 June 2021 which comprise the summary of receipts and payments and the statement of assets and liabilities.

This report is made solely to the charity's trustees, as a body, in accordance with section 145 of the Charities Act 2011. My work has been undertaken so that I might state to the charity's trustees those matters I am required to state to them in this report and for no other purpose. To the fullest extent permitted by law, I do not accept or assume responsibility to anyone other than the charity and the charity's trustees as a body, for my work, for this report, or for the opinions I have formed.

### **Responsibilities and basis of report**

As the trustees of the charity you are responsible for the preparation of the accounts in accordance with the requirements of the Charities Act 2011 ('the Act').

I report in respect of my examination of the charity's accounts carried out under section 145 of the Act and in carrying out my examination I have followed all the applicable Directions given by the Charity Commission under section 145(5)(b) of the Act.

An independent examination does not involve gathering all the evidence that would be required in an audit and consequently does not cover all the matters that an auditor considers in giving their opinion on the accounts. The planning and conduct of an audit goes beyond the limited assurance that an independent examination can provide. Consequently I express no audit opinion on the accounts and my report is limited to those specific matters set out in the independent examiner's statement.

### **Independent examiner's statement**

I have completed my examination. I confirm that no material matters have come to my attention in connection with the examination giving me cause to believe that in any material respect:

- accounting records were not kept in respect of the charity as required by section 130 of the Act; or
- the accounts do not accord with those records.

I have no concerns and have come across no other matters in connection with the examination to which attention should be drawn in this report in order to enable a proper understanding of the accounts to be reached.



Signed:

Date: 14 October 2021

Luke Turner ACA FCCA

### **Magma Audit LLP**

Unit 2, Charnwood Edge Business Park  
Syston Road  
Cossington  
Leicester  
LE7 4UZ



CHARITY COMMISSION  
FOR ENGLAND AND WALES

Sal's Shoes

## Receipts and payments accounts

CC16a

For the period  
from

01/07/2020

To

30/06/2021

### Section A Receipts and payments

	Unrestricted funds to the nearest £	Restricted funds to the nearest £	Endowment funds to the nearest £	Total funds to the nearest £	Last year to the nearest £
<b>A1 Receipts</b>					
Grants/Donations	89,860	18,920	-	108,780	52,169
VAT reimbursed	8,202	-	-	8,202	3,944
Trustee loan to charity	1,000	-	-	1,000	2,505
	-	-	-	-	-
	-	-	-	-	-
	-	-	-	-	-
<b>Sub total (Gross income for AR)</b>	<b>99,062</b>	<b>18,920</b>	<b>-</b>	<b>117,982</b>	<b>58,618</b>
<b>A2 Asset and investment sales, (see table).</b>					
	-	-	-	-	-
	-	-	-	-	-
<b>Sub total</b>	<b>-</b>	<b>-</b>	<b>-</b>	<b>-</b>	<b>-</b>
<b>Total receipts</b>	<b>99,062</b>	<b>18,920</b>	<b>-</b>	<b>117,982</b>	<b>58,618</b>
<b>A3 Payments</b>					
Carriage - donated goods	9,994	1,736	-	11,730	8,838
Volunteer expenses	255	-	-	255	463
Staff training	565	-	-	565	-
Purchase of shoe stock	17,501	-	-	17,501	1,675
Travel expenses	40	-	-	40	1,812
Advertising, marketing & social media	2,999	6,561	-	9,560	11,020
IT costs	1,014	-	-	1,014	603
Administration	7,970	-	-	7,970	6,953
Rent & premises	38,817	3,359	-	42,176	19,766
Telephone	2,193	-	-	2,193	1,966
Plant and machinery equipment	1,039	-	-	1,039	641
Subscriptions	630	-	-	630	429
Postage, printing & stationery	-	-	-	-	-
Accountancy	1,200	-	-	1,200	572
Consultancy fees	4,700	-	-	4,700	-
VAT on expenditure	8,626	-	-	8,626	4,565
Bank charges	157	-	-	157	7
Trustee reimbursed expenses	1,080	-	-	1,080	2,373
	-	-	-	-	-
<b>Sub total</b>	<b>98,780</b>	<b>11,656</b>	<b>-</b>	<b>110,436</b>	<b>61,683</b>
<b>A4 Asset and investment purchases, (see table)</b>					
	-	-	-	-	-
	-	-	-	-	-
<b>Sub total</b>	<b>-</b>	<b>-</b>	<b>-</b>	<b>-</b>	<b>-</b>
<b>Total payments</b>	<b>98,780</b>	<b>11,656</b>	<b>-</b>	<b>110,436</b>	<b>61,683</b>
<b>Net of receipts/(payments)</b>	<b>282</b>	<b>7,264</b>	<b>-</b>	<b>7,546</b>	<b>(3,065)</b>
<b>A5 Transfers between funds</b>	<b>-</b>	<b>-</b>	<b>-</b>	<b>-</b>	<b>-</b>
<b>A6 Cash funds last year end</b>	<b>1,619</b>	<b>-</b>	<b>-</b>	<b>1,619</b>	<b>4,684</b>
<b>Cash funds this year end</b>	<b>1,901</b>	<b>7,264</b>	<b>-</b>	<b>9,165</b>	<b>1,619</b>



## Section B Statement of assets and liabilities at the end of the period

Categories	Details	Unrestricted funds to nearest £	Restricted funds to nearest £	Endowment funds to nearest £
B1 Cash funds	Bank	8,960	-	-
	Cash	205	-	-
		-	-	-
	<b>Total cash funds</b>	<b>9,165</b>	<b>-</b>	<b>-</b>
	(agree balances with receipts and payments account(s))	Agreement Error	Agreement Error	OK
B2 Other monetary assets	VAT refund	2,260	-	-
		-	-	-
		-	-	-
		-	-	-
		-	-	-
		-	-	-
	Total	2,260	-	-
B3 Investment assets		Fund to which asset belongs	Cost (optional)	Current value (optional)
			-	-
			-	-
			-	-
			-	-
B4 Assets retained for the charity's own use		Fund to which asset belongs	Cost (optional)	Current value (optional)
	Office equipment	3,718	-	-
	Plant and machinery	1,057	-	-
			-	-
			-	-
			-	-
			-	-
	Total	4,775	-	-
B5 Liabilities		Fund to which liability relates	Amount due (optional)	When due (optional)
	Accountancy	1,200	-	
	Other creditor	1,132	-	
			-	
	Total	2,332	-	

Signed by one or two trustees on behalf of all the trustees

Signature



Print Name

Camilla Bowry

Date of approval

13 October 2021

## **SAL'S SHOES**

### **INDEPENDENT EXAMINER'S REPORT FOR THE YEAR ENDED 30 JUNE 2021**

#### **Independent Examiner's Report to the Trustees of Sal's Shoes**

I report to the trustees on my examination of the accounts of Sals Shoes ('the charity') for the year ended 30 June 2021 which comprise the summary of receipts and payments and the statement of assets and liabilities.

This report is made solely to the charity's trustees, as a body, in accordance with section 145 of the Charities Act 2011. My work has been undertaken so that I might state to the charity's trustees those matters I am required to state to them in this report and for no other purpose. To the fullest extent permitted by law, I do not accept or assume responsibility to anyone other than the charity and the charity's trustees as a body, for my work, for this report, or for the opinions I have formed.

#### **Responsibilities and basis of report**

As the trustees of the charity you are responsible for the preparation of the accounts in accordance with the requirements of the Charities Act 2011 ('the Act').

I report in respect of my examination of the charity's accounts carried out under section 145 of the Act and in carrying out my examination I have followed all the applicable Directions given by the Charity Commission under section 145(5)(b) of the Act.

An independent examination does not involve gathering all the evidence that would be required in an audit and consequently does not cover all the matters that an auditor considers in giving their opinion on the accounts. The planning and conduct of an audit goes beyond the limited assurance that an independent examination can provide. Consequently I express no audit opinion on the accounts and my report is limited to those specific matters set out in the independent examiner's statement.

#### **Independent examiner's statement**

I have completed my examination. I confirm that no material matters have come to my attention in connection with the examination giving me cause to believe that in any material respect:

- accounting records were not kept in respect of the charity as required by section 130 of the Act; or
- the accounts do not accord with those records.

I have no concerns and have come across no other matters in connection with the examination to which attention should be drawn in this report in order to enable a proper understanding of the accounts to be reached.



Signed:

Date: 14 October 2021

Luke Turner ACA FCCA

#### **Magma Audit LLP**

Unit 2, Charnwood Edge Business Park  
Syston Road  
Cossington  
Leicester  
LE7 4UZ





CHARITY COMMISSION  
FOR ENGLAND AND WALES

Sal's Shoes

## Receipts and payments accounts

CC16a

For the period  
from

01/07/2020

To

30/06/2021

### Section A Receipts and payments

	Unrestricted funds to the nearest £	Restricted funds to the nearest £	Endowment funds to the nearest £	Total funds to the nearest £	Last year to the nearest £
<b>A1 Receipts</b>					
Grants/Donations	89,860	18,920	-	108,780	52,169
VAT reimbursed	8,202	-	-	8,202	3,944
Trustee loan to charity	1,000	-	-	1,000	2,505
	-	-	-	-	-
	-	-	-	-	-
	-	-	-	-	-
	-	-	-	-	-
<b>Sub total (Gross income for AR)</b>	<b>99,062</b>	<b>18,920</b>	<b>-</b>	<b>117,982</b>	<b>58,618</b>
<b>A2 Asset and investment sales, (see table).</b>					
	-	-	-	-	-
	-	-	-	-	-
<b>Sub total</b>	<b>-</b>	<b>-</b>	<b>-</b>	<b>-</b>	<b>-</b>
<b>Total receipts</b>	<b>99,062</b>	<b>18,920</b>	<b>-</b>	<b>117,982</b>	<b>58,618</b>
<b>A3 Payments</b>					
Carriage - donated goods	9,994	1,736	-	11,730	8,838
Volunteer expenses	255	-	-	255	463
Staff training	565	-	-	565	-
Purchase of shoe stock	17,501	-	-	17,501	1,675
Travel expenses	40	-	-	40	1,812
Advertising, marketing & social media	2,999	6,561	-	9,560	11,020
IT costs	1,014	-	-	1,014	603
Administration	7,970	-	-	7,970	6,953
Rent & premises	38,817	3,359	-	42,176	19,766
Telephone	2,193	-	-	2,193	1,966
Plant and machinery equipment	1,039	-	-	1,039	641
Subscriptions	630	-	-	630	429
Postage, printing & stationery	-	-	-	-	-
Accountancy	1,200	-	-	1,200	572
Consultancy fees	4,700	-	-	4,700	-
VAT on expenditure	8,626	-	-	8,626	4,565
Bank charges	157	-	-	157	7
Trustee reimbursed expenses	1,080	-	-	1,080	2,373
	-	-	-	-	-
<b>Sub total</b>	<b>98,780</b>	<b>11,656</b>	<b>-</b>	<b>110,436</b>	<b>61,683</b>
<b>A4 Asset and investment purchases, (see table)</b>					
	-	-	-	-	-
	-	-	-	-	-
<b>Sub total</b>	<b>-</b>	<b>-</b>	<b>-</b>	<b>-</b>	<b>-</b>
<b>Total payments</b>	<b>98,780</b>	<b>11,656</b>	<b>-</b>	<b>110,436</b>	<b>61,683</b>
<b>Net of receipts/(payments)</b>	<b>282</b>	<b>7,264</b>	<b>-</b>	<b>7,546</b>	<b>(3,065)</b>
<b>A5 Transfers between funds</b>	<b>-</b>	<b>-</b>	<b>-</b>	<b>-</b>	<b>-</b>
<b>A6 Cash funds last year end</b>	<b>1,619</b>	<b>-</b>	<b>-</b>	<b>1,619</b>	<b>4,684</b>
<b>Cash funds this year end</b>	<b>1,901</b>	<b>7,264</b>	<b>-</b>	<b>9,165</b>	<b>1,619</b>

## Section B Statement of assets and liabilities at the end of the period

Categories	Details	Unrestricted funds to nearest £	Restricted funds to nearest £	Endowment funds to nearest £
<b>B1 Cash funds</b>	Bank	8,960	-	-
	Cash	205	-	-
		-	-	-
	<b>Total cash funds</b>	<b>9,165</b>	<b>-</b>	<b>-</b>
	(agree balances with receipts and payments account(s))	Agreement Error	Agreement Error	OK
<b>B2 Other monetary assets</b>	<b>Details</b>	<b>Unrestricted funds to nearest £</b>	<b>Restricted funds to nearest £</b>	<b>Endowment funds to nearest £</b>
	VAT refund	2,260	-	-
		-	-	-
		-	-	-
		-	-	-
		-	-	-
	Total	2,260	-	-
<b>B3 Investment assets</b>	<b>Details</b>	<b>Fund to which asset belongs</b>	<b>Cost (optional)</b>	<b>Current value (optional)</b>
			-	-
			-	-
			-	-
			-	-
			-	-
<b>B4 Assets retained for the charity's own use</b>	<b>Details</b>	<b>Fund to which asset belongs</b>	<b>Cost (optional)</b>	<b>Current value (optional)</b>
	Office equipment	3,718	-	-
	Plant and machinery	1,057	-	-
			-	-
			-	-
			-	-
			-	-
			-	-
	Total	4,775	-	-
<b>B5 Liabilities</b>	<b>Details</b>	<b>Fund to which liability relates</b>	<b>Amount due (optional)</b>	<b>When due (optional)</b>
	Accountancy	1,200	-	
	Other creditor	1,132	-	
			-	
	Total	2,332	-	

Signed by one or two trustees on behalf of all the trustees

Signature



Print Name

Camilla Bowry

Date of approval

13 October 2021